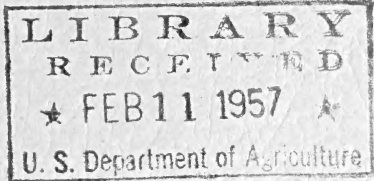


Old Fashioned Quality — Modern Service

62



# PERKINS- DEWILDE NURSERIES

INCORPORATED

**Shiloh, New Jersey**

Telephone Bridgeton 9-1018

4 Miles West of Bridgeton  
on Bridgeton-Salem Pike

---

## 1956-57

WHOLESALE ONLY

---

JACKSON & PERKINS CO., NEWARK, N. Y., OWNERS



**AZALEA**

Price per 100

**AZALEA *Kaempferi*. Pink. B&B.**

10-12 in.....	135.00
12-15 in.....	175.00
15-18 in.....	200.00
18-21 in.....	250.00
21-24 in.....	300.00

**AZALEA *Kaempferi*. Red. B&B.**

10-12 in.....	135.00
12-15 in.....	175.00
15-18 in.....	200.00
18-21 in.....	250.00
21-24 in.....	300.00
24-30 in.....	350.00

**AZALEA *Kaempferi*. Brick red. B&B.**

10-12 in.....	135.00
12-15 in.....	175.00
15-18 in.....	200.00
18-21 in.....	250.00
21-24 in.....	300.00
24-30 in.....	350.00

**AZALEA KURUME *varieties*.**

*amoena*. Purplish red, double. B&B.

6- 8 in.....	60.00
8-10 in.....	85.00
10-12 in.....	110.00
12-15 in.....	175.00
15-18 in.....	200.00

*arnoldiana*. Purplish red.

10-12 in.....	135.00
12-15 in.....	175.00
15-18 in.....	200.00

*Christmas cheer*. Red, double. B&B.

4- 5 in .....	40.00
5- 6 in .....	50.00
6- 7 in .....	60.00
7- 8 in .....	70.00
8- 9 in.....	100.00
9-10 in.....	110.00
10-12 in.....	135.00
12-15 in.....	175.00
15-18 in.....	200.00

*flame*. Orange red. B&B.

8-10 in.....	100.00
10-12 in.....	135.00
12-15 in.....	175.00
15-18 in.....	200.00
18-21 in.....	250.00
21-24 in.....	300.00

**AZALEA KURUME varieties—continued.** Price per 100

*binodigeri*. Red. B&B.

4- 5 in.....	40.00
5- 6 in.....	50.00
6- 7 in.....	60.00
7- 8 in.....	70.00
8- 9 in.....	100.00
9-10 in.....	110.00
10-12 in.....	135.00
12-15 in.....	175.00
15-18 in.....	200.00
18-21 in.....	250.00
21-24 in.....	300.00



Azalea Hinodigeri

*binomayo*. Soft pink. B&B.

6- 7 in.....	60.00
7- 8 in.....	70.00
8- 9 in.....	100.00
9-10 in.....	110.00
10-12 in.....	135.00
12-15 in.....	175.00
15-18 in.....	200.00
18-21 in.....	250.00
21-24 in.....	300.00

**MAY GLORY.** Same as Red Progress but blooms about ten days later. B&B.

5- 6 in.....	50.00
6- 7 in.....	60.00
7- 8 in.....	70.00
8- 9 in.....	100.00
9-10 in.....	110.00
10-12 in.....	135.00
12-15 in.....	175.00
15-18 in.....	200.00
18-21 in.....	250.00
21-24 in.....	300.00

**PINK PROGRESS.** Clear pink later flowering than Red Progress. B&B.

5- 6 in.....	50.00
6- 7 in.....	60.00
7- 8 in.....	70.00
8- 9 in.....	100.00
9-10 in.....	110.00
10-12 in.....	135.00
12-15 in.....	175.00
15-18 in.....	200.00
18-21 in.....	250.00
21-24 in.....	300.00

AZALEA KURUME varieties—continued. Price per 100

RED PROGRESS. Red flowers half again as large as Hinodigeri. B&B.

5- 6 in.....	50.00
6- 7 in.....	60.00
7- 8 in.....	70.00
8- 9 in.....	100.00
9-10 in.....	110.00
10-12 in.....	135.00
12-15 in.....	175.00
15-18 in.....	200.00

*sanderi*. Very late pink. B&B. Spreading type.

6- 7 in.....	60.00
7- 8 in.....	70.00
8- 9 in.....	100.00
9-10 in.....	110.00
10-12 in.....	135.00
12-15 in.....	175.00
15-18 in.....	200.00
18-24 in.....	250.00
21-24 in.....	300.00
24-30 in.....	350.00

*sanderi*. Very late pink. B&B. Upright growing type.

6- 7 in.....	60.00
7- 8 in.....	70.00
8- 9 in.....	100.00
9-10 in.....	110.00
10-12 in.....	135.00
12-15 in.....	175.00
15-18 in.....	200.00
18-21 in.....	250.00
21-24 in.....	300.00
24-30 in.....	350.00

*snow*. Pure white. B&B.

5- 6 in.....	60.00
6- 7 in.....	70.00
7- 8 in.....	80.00
8- 9 in.....	110.00
9-10 in.....	135.00
10-12 in.....	175.00
12-15 in.....	200.00
15-18 in.....	250.00

*cavalier*. Red, large flower.

7- 8 in.....	70.00
8- 9 in.....	100.00
9-10 in.....	110.00
10-12 in.....	135.00

BELTSVILLE AZALEAS

*rose glory*. Double purple lavender.

5- 6 in.....	50.00
6- 7 in.....	60.00
7- 8 in.....	70.00
8- 9 in.....	100.00

*rose banner*. Double rose.

7- 8 in.....	70.00
8- 9 in.....	100.00
9-10 in.....	110.00
10-12 in.....	135.00
12-15 in.....	175.00

BELTSVILLE AZALEAS—continued Price per 100

*polar bear*. White

7- 8 in.....	70.00
8- 9 in.....	100.00
9-10 in.....	110.00
10-12 in.....	135.00

*white perfection*. Double white.

7- 8 in.....	70.00
8- 9 in.....	100.00
9-10 in.....	110.00
10-12 in.....	135.00
12-15 in.....	175.00

*guy yerkes*. Double salmon pink.

5- 6 in.....	50.00
6- 7 in.....	60.00
7- 8 in.....	70.00
8- 9 in.....	100.00
9-10 in.....	110.00

*b. b. hume*. Double white, yellow throat.

7- 8 in.....	70.00
8- 9 in.....	100.00
9-10 in.....	110.00
10-12 in.....	135.00

*majestic pink*. Rose pink.

5- 6 in.....	50.00
6- 7 in.....	60.00
7- 8 in.....	70.00
8- 9 in.....	100.00
9-10 in.....	110.00



Azaleas grown in natural shade

**EVERGREEN AND  
SEMI-EVERGREEN SHRUBS**

Price per 100

*ABELIA grandiflora*. Glossy abelia. White flowers,  
almost evergreen foliage. B&B.

18-24 in.....	125.00
2- 3 ft.....	175.00
3- 4 ft.....	250.00

BERBERIS <i>Julianae</i> B&B.	Price per 100
12-15 in.....	190.00
15-18 in.....	240.00
18-24 in.....	300.00
24-30 in.....	350.00
30-36 in.....	400.00
3-3½ ft.....	475.00

*verruculosa*. B&B.

10-12 in.....	150.00
12-15 in.....	175.00
15-18 in.....	200.00
18-24 in.....	250.00

EUONYMUS PATENS B & B

12-15 in.....	150.00
15-18 in.....	200.00
18-24 in.....	250.00
24-30 in.....	350.00

EUONYMOUS RADICANS *vegetus*.

12-15 in.....	150.00
15-18 in.....	200.00
18-24 in.....	250.00

ENKIANTHUS *campanulata*.

12-15 in.....	150.00
15-18 in.....	200.00
18-24 in.....	250.00
24-30 in.....	300.00

LIGUSTRUM *lucidum*. B&B.

15-18 in.....	150.00
18-24 in.....	175.00
24-30 in.....	200.00
30-36 in.....	250.00

OSMANTHUS *aquifolium*.

18-24 in.....	200.00
24-30 in.....	250.00
30-36 in.....	350.00

PIERIS

*japonica*. White bell-shaped flowers produced in clusters during April and May. B&B.

10-12 in.....	175.00
12-15 in.....	225.00
15-18 in.....	275.00
18-24 in.....	350.00

SALIX *tortuosa*.

5- 6 ft.....	100.00
6- 8 ft.....	150.00
8-10 ft.....	200.00

VIBURNUM, *rhytidophyllum*. B&B.

18-24 in.....	225.00
24-30 in.....	275.00
30-36 in.....	375.00
3-3½ ft.....	425.00



Abelia Grandiflora and Pieris Japonica  
grown in containers

**DECIDUOUS SHRUBS AND TREES**

ACER *polymorphum atropurpurea*. Blood leaf Japanese maple. Grafted plants. B&B. Price per 100

12-15 in.....	200.00
15-18 in.....	250.00
18-24 in.....	300.00

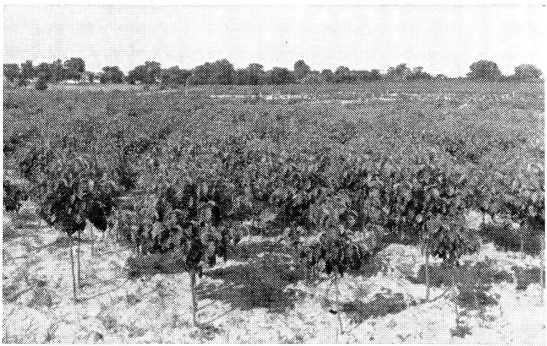
ARONIA *brilliantissima*.

Add 50c per plant for B&B.

18-24 in.....	50.00
2-3 ft.....	75.00
3-4 ft.....	100.00

CORNUS *florida rubra*. Pink flowering dogwood. B&B.

18-24 in.....	225.00
2-3 ft.....	325.00
3-4 ft.....	450.00
4-5 ft.....	Each 7.50



Cornus Florida Rubra

FLORIDA—White flowering dogwood.

2- 3 ft.....	200.00
3- 4 ft.....	300.00
4- 5 ft.....	400.00
5- 6 ft.....	500.00

CORNUS KOUSA

18-24 in.....	250.00
2-3 ft.....	350.00
3-4 ft.....	500.00
4-5 ft.....	650.00



DECIDUOUS SHRUBS—continued

Price per 100

HYDRANGEA

*Otaksa*. B&B.

3- 4 branches.....	60.00
5- 6 branches.....	75.00
7- 8 branches.....	100.00
8-10 branches.....	125.00
10-12 branches.....	150.00
12-15 branches.....	175.00
15-20 branches.....	200.00
20 branches and up.....	225.00

JASMINUM *nudiflorum* (Winter Jasmine). Yellow flowers. Very showy shrub in early spring. B&B.

18-24 in.....	75.00
2- 3 ft.....	100.00
3- 4 ft.....	150.00
4- 5 ft.....	175.00

LABURNUM *vossii*. Long pendulous racemes of yellow blooms. B&B.

18-24 in.....	175.00
2- 3 ft.....	275.00
3- 4 ft.....	325.00
4- 5 ft.....	400.00

LIGUSTRUM *ovalifolium aurea*. B&B.

15-18 in.....	60.00
18-24 in.....	75.00
2- 3 ft.....	100.00

MAGNOLIA *glauca*. Sweet bay. B&B.

18-24 in.....	200.00
2- 3 ft.....	250.00
3- 4 ft.....	350.00
4- 5 ft.....	Each 5.00
5- 6 ft.....	Each 7.50

*Lennei*. B&B.

18-24 in.....	300.00
2- 3 ft.....	400.00

*soulangeana*. B&B.

18-24 in.....	175.00
2- 3 ft.....	250.00
3- 4 ft.....	350.00
4- 5 ft.....	Each 5.00
5- 6 ft.....	Each 6.50
6- 7 ft.....	Each 9.00

*stellata*. B&B.

18-24 in.....	350.00
2- 3 ft.....	450.00
3- 4 ft.....	Each 6.00

VIBURNUM.

Add 50c per plant if wanted B&B. on all Viburnum.

*viburnum carlesii*. B&B.

15-18 in.....	175.00
18-24 in.....	225.00
24-30 in.....	325.00
30-36 in.....	Each 4.50

VIBURNUM—continued

Price per 100

*dilatatum.*

18-24 in.....	60.00
2- 3 ft.....	80.00
3- 4 ft.....	100.00

*Prunifolium.* (Black Haw.) White flowers. Black fruit.

18-24 in.....	75.00
2- 3 ft.....	125.00
3- 4 ft.....	150.00

*theiferum.*

18-24 in.....	60.00
2- 3 ft.....	75.00
3- 4 ft.....	85.00
4- 5 ft.....	100.00

*tomentosum plicatum.*

18-24 in.....	70.00
2- 3 ft.....	85.00
3- 4 ft.....	125.00
4- 5 ft.....	150.00
5- 6 ft.....	175.00

**VIBURNUM CARLCEPHALUM**

(Plant Patent No. 776)

A new fragrant snowball. Sturdy plants produce large clusters of very fragrant white flowers. Extremely hardy.

*Wholesale Prices*

	<i>Each</i>	<i>per 3</i>	<i>per 12</i>	<i>per 100</i>
15-18 in.	\$2.50	\$7.00	\$25.00	\$190.00
18-24 in.	3.00	8.00	30.00	225.00
24-36 in.	4.00	11.00	40.00	310.00

*Suggested Retail Prices*

15-18 in.	5.00	14.00	50.00
18-24 in.	6.00	16.00	60.00
24-36 in.	7.50	20.00	75.00

Shiloh, N.J.

### GREEN ISLAND HOLLY

Plant Pat. 817

A compact form of *Ilex Crenata Microphylla* with no awkward breaks of upright leaders. Where low, spreading, broad-leaved evergreens are needed, GREEN ISLAND HOLLY is the answer.

Exactly right for foundation use, low masses or specimens.

Happy in sun or moderate shade, wet or dry locations, lime or acid soil.

Has the same dark green appearance summer and winter.

Compact growing, requires no shearing.

Is hardy in the same range as Convexleaf Holly Bullata or Convexa.

GRADE	Recommended Retail Price	Wholesale Price
10-12 in	3.65 ea.	2.30 ea.
12-15 in.	4.75 ea.	2.75 ea.
15-18 in.	6.35 ea.	3.45 ea.
18-24 in.	8.90 ea.	4.75 ea.
24-30 in.	11.15 ea.	6.60 ea.

### ILEX (Holly)

Price per 100

ILEX *bullata*. (*Convexa*). B&B.

10-12 in.....	150.00
12-15 in.....	200.00
15-18 in.....	275.00
18-24 in.....	400.00

BULLATA *supreme*.

10-12 in.....	175.00
12-15 in.....	225.00
15-18 in.....	300.00

*crenata*. Japanese holly. Smooth green leaves, ever green with black berries. B&B.

15-18 in.....	225.00
18-24 in.....	350.00
24-30 in.....	450.00
30-36 in.....	Each 6.50
36-42 in.....	Each 8.50

MICROPHYLLA

15-18 in.....	225.00
18-24 in.....	350.00
24-30 in.....	450.00
30-36 in.....	Each 6.50

*crenata latifolia*. Evergreen, broad leaf. B&B.

15-18 in.....	225.00
18-24 in.....	350.00
24-30 in.....	450.00
30-36 in.....	Each 6.50
36-42 in.....	Each 8.50

ILEX—continued

Price per 100

*glabra*. Inkberry. Black berries. B&B.

15-18 in.....	225.00
18-24 in.....	300.00
24-30 in.....	400.00
30-36 in.....	500.00

CRENATA ROTUNDIFOLIA

12-15 in.....	200.00
15-18 in.....	250.00
18-24 in.....	400.00
24-30 in.....each	5.50

*opaca*. American holly. Red berries. B&B.

18-24 in.....	275.00
24-30 in.....	350.00
30-36 in.....	450.00
3- 4 ft.....	<i>Each</i> 5.50
4- 5 ft.....	<i>Each</i> 8.50
5- 6 ft.....	<i>Each</i> 12.50
6- 7 ft.....	<i>Each</i> 15.00
7- 8 ft.....	<i>Each</i> 17.50

*sieboldi*. (Add 50c per plant for B&B.)

18-24 in.....	60.00
2- 3 ft.....	75.00
3- 4 ft.....	100.00

*verticillata*. Common Winterberry. (Add 50c per plant for B&B.)

18-24 in.....	60.00
2- 3 ft.....	75.00
3- 4 ft.....	100.00

**HYBRID LILACS**

Price per 100

18-24 in.....	65.00
2- 3 ft.....	85.00

(Add 50c per plant for B. & B.)

- Ambassadeur, Single Blue
- Candeur, Single White
- Congo, Single Magenta
- Edith Cavell, Double White
- Ellen Wilmott, Double White
- Firmament, Single Blue
- Glory, Single Magenta
- Katherine Havemeyer, Double Pink
- Lucie Baltet, Single Pink
- Ludwig Spaeth, Single Purple
- Mme. Antoine Buchner, Double Pink
- Mrs. Ed. Harding, Double Magenta
- Mme. Lemoine, Double White
- Monge, Single Purple
- Monument, Single White
- Night, Single Purple
- Paul Hariot, Double Purple
- Paul Thirion, Double Magenta
- Pres. Grevy, Double Blue
- Pres. Falliers, Double Lilac
- Pres. Viger, Double Blue
- Ruhm Von Horstenstein, Single Magenta
- Wm. Robinson, Double Magenta

## BOXWOOD

<i>BUXUS sempervirens</i> . Bush. B&B.	Price per 100
8-10 in.....	100.00
10-12 in.....	150.00
12-15 in.....	175.00
15-18 in.....	200.00
18-21 in.....	250.00
21-24 in.....	350.00

*pyramidal*. B&B.

15-18 in.....	200.00
18-21 in.....	225.00
21-24 in.....	275.00

*suffruticosa*. B&B.

4- 6 in.....	50.00
6- 8 in.....	60.00
8-10 in.....	100.00
10-12 in.....	150.00



Boxwood Bush

## CONIFERS, SPRUCES, PINES and YEWs

<i>CHAMAECYPARIS Lawsoniana alumi</i> .	Price per 100
18-24 in.....	150.00
24-30 in.....	200.00
30-36 in.....	250.00
36-42 in.....	300.00
3½-4 ft.....	350.00

*Nootkatensis Glauca*.

18-24 in.....	150.00
24-30 in.....	200.00
30-36 in.....	250.00
3-3½ ft.....	300.00
3½-4 ft.....	400.00

*obtusata gracilis pyr*. Slender hinoki cypress.

18-24 in.....	225.00
24-30 in.....	300.00
30-36 in.....	400.00
3-3½ ft.....	500.00
3½-4 ft.....	<i>Each</i> 6.50

## CHAMAECYPARIS—continued

Price per 100

*Obtusa Magnifica.*

18-24 in.....	150.00
24-30 in.....	200.00
30-36 in.....	250.00
36-42 in.....	300.00
3½-4 ft.....	400.00
4-4½ ft.....	500.00

*obtusa nana.* Dwarf hinoki cypress.

8-10 in.....	175.00
10-12 in.....	225.00
12-15 in.....	275.00
15-18 in.....	350.00

*obtusa nana compacta.*

6- 8 in.....	125.00
8-10 in.....	175.00
10-12 in.....	225.00
12-15 in.....	300.00

*pisifera, aurea.* Golden Sawara retinospora.

18-24 in.....	175.00
24-30 in.....	225.00
30-36 in.....	275.00
3-3½ ft.....	325.00
3½-4 ft.....	425.00
4-4½ ft.....	525.00
4½-5 ft.....	Each 6.25
5-5½ ft.....	Each 7.50
5½-6 ft.....	Each 8.50

*pisifera plumosa.*

15-18 in.....	125.00
18-24 in.....	175.00
24-30 in.....	225.00
30-36 in.....	275.00
36-42 in.....	325.00
3½-4 ft.....	350.00
4-4½ ft.....	400.00
4½-5 ft.....	Each 5.00
5- 6 ft.....	Each 6.00

*pisifera plumosa aurea.*

15-18 in.....	125.00
18-24 in.....	175.00
24-30 in.....	250.00
30-36 in.....	275.00
3-3½ ft.....	325.00
3½-4 ft.....	425.00
4-4½ ft.....	Each 5.75

*pisifera plumosa lutescens.*

8-10 in.....	100.00
10-12 in.....	125.00
12-15 in.....	150.00
15-18 in.....	175.00
18-24 in.....	200.00

CHAMAECYPARIS—continued

Price per 100

*squarrosa Veitchi.*

15-18 in.....	175.00
18-24 in.....	200.00
24-30 in.....	250.00
30-36 in.....	325.00

CRYPTOMERIA. *Lobbii*

24-30 in.....	300.00
30-36 in.....	400.00
36-42 in.....	450.00
42-48 in.....	<i>Each</i> 5.00

JUNIPERUS *chinensis mascula.*

18-24 in.....	250.00
24-30 in.....	300.00
30-36 in.....	400.00
3-3½ ft.....	450.00
3½-4 ft.....	<i>Each</i> 5.00
4-4½ ft.....	<i>Each</i> 6.25
4½-5 ft.....	<i>Each</i> 7.00
5-5½ ft.....	<i>Each</i> 8.00



Juniper Columnaris Glauca, left —  
Juniper Chinensis Masculata, right

*chinensis columnaris.*

24-30 in.....	300.00
30-36 in.....	400.00
3-3½ ft.....	450.00
3½-4 ft.....	<i>Each</i> 5.00
4-4½ ft.....	<i>Each</i> 6.00
4½-5 ft.....	<i>Each</i> 7.00
5-5½ ft.....	<i>Each</i> 8.50

*chinensis columnaris hetzi* (Dark green foliage).

24-30 in.....	300.00
30-36 in.....	400.00
3-3½ ft.....	450.00
3½-4 ft.....	<i>Each</i> 5.00
4-4½ ft.....	<i>Each</i> 6.00

*chinensis femina.* (Spreading type.)

12-15 in.....	175.00
15-18 in.....	250.00
18-24 in.....	325.00
24-30 in.....	375.00
30-36 in.....	425.00

JUNIPERUS—continued

Price per 100

*chinensis columnaris glauca.*

24-30 in.....	300.00
30-36 in.....	400.00
3-3½ ft.....	450.00
3½-4 ft.....	<i>Each</i> 5.00
4-4½ ft.....	<i>Each</i> 6.00
4½-5 ft.....	<i>Each</i> 7.00
5-5½ ft.....	<i>Each</i> 8.50

*chinensis Pfitzeriana.*

15-18 in.....	225.00
18-24 in.....	325.00
24-30 in.....	400.00
30-36 in.....	<i>Each</i> 5.00
36-42 in.....	<i>Each</i> 7.00



Juniper Chinensis Pfitzeriana

*chinensis Pfitzeriana Compacta Glauca*

12-15 in.....	200.00
15-18 in.....	250.00
18-24 in.....	350.00
24-30 in.....	450.00
30-36 in.....	<i>Each</i> 5.00
3-3½ ft.....	<i>Each</i> 7.00

*chinensis Pfitzeriana Compacta Nelsonii.*

12-15 in.....	175.00
15-18 in.....	225.00
18-24 in.....	325.00
24-30 in.....	400.00

*chinensis Hetzi glauca.*

15-18 in.....	225.00
18-24 in.....	325.00
24-30 in.....	400.00

*chinensis Sargentii.*

12-15 in.....	275.00
15-18 in.....	300.00
18-24 in.....	400.00
24-30 in.....	500.00



JUNIPERUS—continued

Price per 100

*chinensis Sargenti variegata*. Yellow tipped.

12-15 in.....	225.00
15-18 in.....	275.00

*communis hibernica*.

15-18 in.....	100.00
18-24 in.....	150.00
24-30 in.....	175.00
30-36 in.....	225.00
3-3½ ft.....	275.00

*communis depressa plumosa*.

12-15 in.....	175.00
15-18 in.....	200.00
18-24 in.....	225.00
24-30 in.....	300.00
30-36 in.....	350.00
36-42 in.....	425.00

*excelsa stricta*.

8-10 in.....	75.00
10-12 in.....	100.00
12-15 in.....	150.00
15-18 in.....	200.00
18-24 in.....	250.00
24-30 in.....	300.00
30-36 in.....	350.00
36-42 in.....	400.00

*sabina*.

12-15 in.....	200.00
15-18 in.....	250.00
18-24 in.....	300.00
24-30 in.....	400.00
30-36 in.....	Each 5.00

*squamata Meyeri*.

10-12 in.....	150.00
12-15 in.....	200.00
15-18 in.....	250.00
18-24 in.....	275.00
24-30 in.....	325.00

*Suecica*. Swedish Juniper.

15-18 in.....	100.00
18-24 in.....	150.00
24-30 in.....	175.00
30-36 in.....	225.00
36-42 in.....	275.00

*Virginiana Burkii*.

18-24 in.....	225.00
24-30 in.....	300.00
30-36 in.....	400.00
36-42 in.....	450.00
3½-4 ft.....	Each 5.00
4-4½ ft.....	Each 6.25

JUNIPERUS—continued

Price per 100

*virginiana cannarti.*

18-24 in.....	225.00
24-30 in.....	300.00
30-36 in.....	400.00
36-42 in.....	450.00
3½-4 ft.....	500.00
4-4½ ft.....	<i>Each</i> 6.25

*virginiana glauca.*

18-24 in.....	225.00
24-30 in.....	300.00
30-36 in.....	400.00
3-3½ ft.....	450.00
3½-4 ft.....	500.00
4-4½ ft.....	<i>Each</i> 6.25
4½-5 ft.....	<i>Each</i> 7.25

*virginiana globosa.*

12-15 in.....	150.00
15-18 in.....	200.00
18-24 in.....	300.00
24-30 in.....	375.00

*virginiana Kettleeri.*

24-30 in.....	300.00
30-36 in.....	400.00
3-3½ ft.....	450.00
3½-4 ft.....	500.00
4-4½ ft.....	<i>Each</i> 6.25
4½-5 ft.....	<i>Each</i> 7.25
5-5½ ft.....	<i>Each</i> 8.25

*pyramidaliformis Hilli.*

18-24 in.....	225.00
24-30 in.....	300.00
30-36 in.....	400.00
3-3½ ft.....	450.00
3½-4 ft.....	500.00
4-4½ ft.....	<i>Each</i> 6.25

*virginiana Schotti.*

3-3½ ft.....	450.00
3½-4 ft.....	500.00
4-4½ ft.....	<i>Each</i> 6.25
4½-5 ft.....	<i>Each</i> 7.25
5-5½ ft.....	<i>Each</i> 8.25

PICEA. *Glauca Albertiana* (Alberta White Spruce).

15-18 in.....	150.00
18-24 in.....	200.00
24-30 in.....	275.00
30-36 in.....	350.00
3-3½ ft.....	400.00

*excelsa.*

15-18 in.....	90.00
18-24 in.....	140.00
24-30 in.....	200.00
30-36 in.....	275.00
36-42 in.....	350.00

*Kosteriana.* Koster's blue spruce.

15-18 in.....	<i>Each</i> 5.00
18-24 in.....	<i>Each</i> 6.50
24-30 in.....	<i>Each</i> 8.00

PICEA—continued

Price per 100

*pungens glauca*

15-18 in.....	250.00
18-24 in.....	350.00
24-30 in.....	500.00

*pungens*

15-18 in.....	200.00
18-24 in.....	250.00
24-30 in.....	325.00



Kosters Blue Spruce

PINUS. *Mugbus*

8-10 in.....	175.00
10-12 in.....	200.00
12-15 in.....	250.00
15-18 in.....	350.00
18-24 in.....	Each 5.00
24-30 in.....	Each 6.00

PINUS *nigra*.

2-3 ft.....	400.00
3-4 ft.....	500.00
4-5 ft.....	600.00

PINUS *Strobus*.

18-24 in.....	200.00
2-3 ft.....	300.00
3-4 ft.....	400.00
4-5 ft.....	500.00

PINUS *sylvestris*.

2-3 ft.....	300.00
3-4 ft.....	400.00
4-5 ft.....	500.00

PSEUDOTSUGA *Douglasi*.

15-18 in.....	200.00
18-24 in.....	225.00
24-30 in.....	300.00
30-36 in.....	350.00
3-3½ ft.....	400.00
3½-4 ft.....	450.00
4-4½ ft.....	Each 5.50

TAXUS *baccata repandens*.

12-15 in.....	300.00
15-18 in.....	375.00
18-24 in.....	475.00

TAXUS—continued

Price per 100

*columnaris* (Adam's Strain)

18-24 in.....	325.00
24-30 in.....	450.00
30-36 in.....	<i>Each</i> 6.00

*cuspidata.*

12-15 in.....	250.00
15-18 in.....	350.00
18-24 in.....	450.00
24-30 in.....	<i>Each</i> 6.25
30-36 in.....	<i>Each</i> 9.00
3-3½ ft.....	<i>Each</i> 12.00

*cuspidata brevifolia.*

8-10 in.....	200.00
10-12 in.....	250.00
12-15 in.....	300.00
15-18 in.....	400.00
18-21 in.....	500.00

*cuspidata densa.*

12-15 in.....	275.00
15-18 in.....	375.00
18-24 in.....	500.00
24-30 in.....	<i>Each</i> 6.50

*cuspidata capitata.*

18-24 in.....	375.00
24-30 in.....	475.00
30-36 in.....	<i>Each</i> 6.00
3-3½ ft.....	<i>Each</i> 7.50
3½-4 ft.....	<i>Each</i> 10.00

*cuspidata microphylla.*

A distinctive type of upright Taxus. Very fine needle. Will lend itself to most any topiary form.

15-18 in.....	300.00
18-24 in.....	375.00
24-30 in.....	475.00

*intermedia.*

12-15 in.....	275.00
15-18 in.....	350.00
18-24 in.....	475.00
24-30 in.....	<i>Each</i> 6.50

*cuspidata vermeulen.*

12-15 in.....	225.00
15-18 in.....	275.00

*cuspidata viridis.*

A spreading type Taxus distinctive for its long wide needle structure. Very dark green.

15-18 in.....	375.00
18-24 in.....	475.00
24-30 in.....	<i>Each</i> 6.50

*Hatfield Spreader.*

12-15 in.....	250.00
15-18 in.....	350.00
18-24 in.....	475.00
24-30 in.....	<i>Each</i> 6.25

TAXUS—continued

Price per 100

*Hatfield upright.*

15-18 in.....	275.00
18-24 in.....	350.00
24-30 in.....	450.00
30-36 in.....	<i>Each</i> 6.00

*media Hicksi.*

12-15 in.....	225.00
15-18 in.....	275.00
18-24 in.....	350.00
24-30 in.....	450.00
30-36 in.....	<i>Each</i> 6.00



Taxus Hatfield Upright

*media Hunnewelliana.*

12-15 in.....	250.00
15-18 in.....	350.00
18-24 in.....	475.00
24-30 in.....	<i>Each</i> 6.25

*media Irish.*

12-15 in.....	250.00
15-18 in.....	350.00
18-24 in.....	475.00
24-30 in.....	<i>Each</i> 6.25



Taxus Media Brownii

TAXUS—continued	Price per 100
<i>media Browni.</i>	
12-15 in.....	250.00
15-18 in.....	375.00
18-24 in.....	500.00
24-30 in.....	<i>Each</i> 6.75
<i>media Kelseyi.</i>	
12-15 in.....	250.00
15-18 in.....	350.00
18-24 in.....	475.00
<i>media Moon's Columnaris.</i>	
15-18 in.....	275.00
18-24 in.....	350.00
24-30 in.....	475.00
<i>media Thayeri.</i>	
12-15 in.....	250.00
15-18 in.....	350.00
18-24 in.....	475.00
24-30 in.....	<i>Each</i> 6.25
30-36 in.....	<i>Each</i> 9.00
THUYA <i>Occidentalis comica densa.</i>	
10-12 in.....	100.00
12-15 in.....	150.00
15-18 in.....	175.00
18-24 in.....	200.00
24-30 in.....	250.00
<i>occidentalis Douglasi aurea.</i>	
18-24 in.....	150.00
24-30 in.....	200.00
30-36 in.....	300.00
3-3½ ft.....	350.00
3½-4 ft.....	400.00
4-4½ ft.....	450.00
4½-5 ft.....	500.00
<i>occidentalis Douglasi spiralis.</i>	
18-24 in.....	150.00
24-30 in.....	200.00
30-36 in.....	300.00
36-42 in.....	350.00
42-48 in.....	400.00
4-4½ ft.....	450.00
4½-5 ft.....	<i>Each</i> 5.00
5-5½ ft.....	<i>Each</i> 6.00
<i>occidentalis globosa.</i>	
10-12 in.....	100.00
12-15 in.....	150.00
15-18 in.....	175.00
18-24 in.....	200.00
24-30 in.....	300.00
<i>occidentalis little gem</i>	
10-12 in.....	125.00
12-15 in.....	150.00
15-18 in.....	175.00
<i>occidentalis nigra.</i>	
18-24 in.....	150.00
24-30 in.....	200.00
30-36 in.....	250.00
3-3½ ft.....	300.00
3½-4 ft.....	350.00
4-4½ ft.....	400.00
4½-5 ft.....	450.00
5-5½ ft.....	<i>Each</i> 5.00

THUYA—continued

Price per 100

*occidentalis pyramidalis.*

18-24 in.....	150.00
24-30 in.....	200.00
30-36 in.....	250.00
3-3½ ft.....	300.00
3½-4 ft.....	350.00
4-4½ ft.....	400.00
4½-5 ft.....	450.00
5-5½ ft.....	<i>Each</i> 5.00
5½-6 ft.....	<i>Each</i> 6.00

*occidentalis Rosenthalii.*

18-24 in.....	150.00
24-30 in.....	200.00
30-36 in.....	250.00
36-42 in.....	300.00
3½-4 ft.....	350.00

*occidentalis Wareana (siberica).*

18-24 in.....	150.00
24-30 in.....	200.00
30-36 in.....	300.00
36-42 in.....	350.00
3½-4 ft.....	400.00
4-4½ ft.....	450.00

*occidentalis Woodwardii.*

10-12 in.....	100.00
12-15 in.....	150.00
15-18 in.....	175.00
18-24 in.....	200.00
24-30 in.....	300.00

*occidentalis Holmstruppii*

(Dwarf, dark green pyramidal form Thuya)

12-15 in.....	100.00
15-18 in.....	125.00
18-24 in.....	150.00
24-30 in.....	225.00
30-36 in.....	300.00

*plicata elegantissima.*

18-24 in.....	150.00
24-30 in.....	200.00
30-36 in.....	250.00
3-3½ ft.....	300.00

*orientalis*

24-30 in.....	175.00
30-36 in.....	225.00
36-42 in.....	300.00
42-48 in.....	350.00
4-4½ ft.....	400.00

THUYA—continued

Price per 100

*orientalis aurea nana.*

8-10 in.....	85.00
10-12 in.....	110.00
12-15 in.....	135.00
15-18 in.....	160.00
18-21 in.....	190.00
21-24 in.....	225.00
24-27 in.....	250.00
27-30 in.....	275.00
30-33 in.....	300.00
3½-4 ft.....	<i>Each</i> 5.00

*orientalis conspicua*

18-24 in.....	200.00
24-30 in.....	250.00
30-36 in.....	300.00
36-42 in.....	400.00
3½-4 ft.....	450.00
4-4½ ft.....	<i>Each</i> 5.00
4½-5 ft.....	<i>Each</i> 5.50

*orientalis Bakeri.*

15-18 in.....	100.00
18-24 in.....	125.00
24-30 in.....	140.00
30-36 in.....	165.00
36-42 in.....	200.00

*orientalis elegantissima.*

18-24 in.....	175.00
24-30 in.....	225.00
30-36 in.....	300.00
36-42 in.....	350.00
42-48 in.....	400.00
4-4½ ft.....	450.00
4½-5 ft.....	<i>Each</i> 5.00
5-5½ ft.....	<i>Each</i> 6.50
5½-6 ft.....	<i>Each</i> 7.50

*orientalis Newarki.*

15-18 in.....	100.00
18-24 in.....	125.00
24-30 in.....	140.00
30-36 in.....	165.00
36-42 in.....	200.00

TSUGA CANADENSIS. Canadian Hemlock.

18-24 in.....	250.00
24-30 in.....	350.00
30-36 in.....	450.00
36-42 in.....	<i>Each</i> 6.00
3½-4 ft.....	<i>Each</i> 7.50

TSUGA CAROLINIANA. Carolina Hemlock.

18-24 in.....	250.00
24-30 in.....	350.00
30-36 in.....	450.00



## CONTAINER GROWN PLANTS

We are pleased to include in this list, for the first time, a special section devoted entirely to container grown plants. While this method of growing nursery stock is not new with us, we do pride ourselves in developing an assortment of popular items in a short span of time.

These plants have been grown a year or more in the size container best suited to them for producing a perfect root system. This in turn assures you success when transplanting. We know you will be well pleased with the results.

Additional profit is now yours with the planting season extended several weeks of the year through the use of container grown material—No more waiting because of inclement weather making it impossible to dig. Just select the plants needed for your job and carry them away—

Please plan to visit us soon. We want you to see this assortment. We know you will be as enthusiastic as we are about it.

	1 Gal.	2 Gals.
ABELIA <i>Grandiflora</i> .....	\$1.10	\$1.75
ACER <i>Polymorphum Atropurpurea</i>		
1 Year.....	1.50	
2 Year.....	2.00	
ACER <i>Polymorphum Atropurpurea Asbio Beni</i>		
2 Year.....	2.00	
ACER <i>Dissectum Virides</i>		
2 Year.....	2.75	
ACER <i>Polymorphum Dissectum Atropurpurea</i>		
1 Year.....	2.00	
2 Year.....	2.75	
BUXUS <i>Sempervirens</i> .....		1.50
BUXUS <i>Suffruticosa</i> .....	1.00	
COTONEASTER <i>Apiculata</i>		
1 Year.....	1.50	
2 Year.....		2.00
COTONEASTER <i>Franchetti</i>		
1 Year.....	1.50	
2 Year.....		2.00



Container grown stock under natural shade

CONTAINER GROWN PLANTS—continued

COTONEASTER <i>Henryana</i>	1 Gal.	2 Gal.
1 Year.....	1.50	
2 Year.....		2.00
COTONEASTER <i>Microphylla</i>		
1 Year.....	1.50	
2 Year.....		2.00
COTONEASTER <i>Horizontalis</i>		
1 Year.....	1.50	
2 Year.....		2.00
CHAMAECYPARIS <i>Obtusa Nana</i> .....		3.00
CHAMAECYPARIS <i>Obtusa Nana Compacta</i>		2.00
EUONYMOUS <i>Patens</i> .....		2.00
HYDRANGEA <i>Otaksa</i> .....	1.25	



Ilex Microphylla and Ilex Bullata

ILEX <i>Bullata</i> .....		2.00
ILEX <i>Bullata Supreme</i> .....	1.25	
ILEX <i>Microphylla</i> .....		2.50
ILEX <i>Rotundifolia</i> .....	1.25	
ILEX <i>Verticillata</i> .....		1.25
JUNIPER <i>Chinensis Pfitzeriana</i> .....		1.75
JUNIPER <i>Chinensis Pfitzeriana Compacta</i> <i>Glauca</i> .....		2.25
JUNIPER <i>Chinensis Sargentii</i> .....		3.00
JUNIPER <i>Communis Depressa Plumosa</i> .....		2.00
JUNIPER <i>Excelsa Stricta</i> .....		1.50
LIGUSTRUM <i>Lucidum</i> .....		1.50



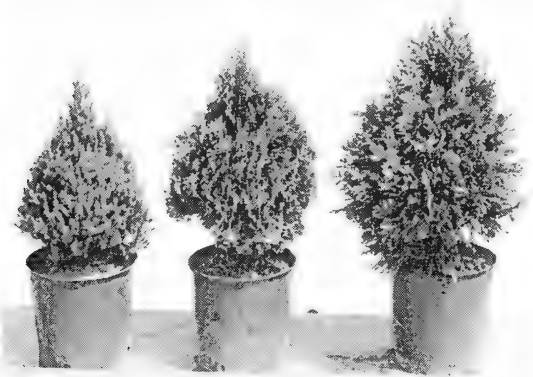
Container grown Buxus Sempervirens Thuya  
Or. Aurea Nana-Chamaecyparis Obtusa Nana

CONTAINER GROWN PLANTS—continued

	1 Gal.	2 Gal.
PIERIS <i>Japonica</i> .....		2.25
PYRACANTHA <i>Coccinea Lalandi</i>		
1 Year.....	1.50	
2 Year.....		2.00
PYRACANTHA <i>Rodgersiana</i> . Orange berries		
1 Year.....	1.50	
2 Year.....		2.00
PYRACANTHA <i>Rodgersiana</i> . Dwarf. Red berries		
1 Year.....	1.50	
2 Year.....		2.00
PYRACANTHA <i>Rodgersiana</i> . Upright. Red berries		
1 Year.....	1.50	
2 Year.....		2.00
PYRACANTHA <i>Rodgersiana Augustifolia</i> , yellow berries		
1 Year.....	1.50	
2 Year.....		2.00
TAXUS <i>Media Hatfield Spreader</i> .....		2.00
TAXUS <i>Media Hatfield Upright</i> .....		2.00
THUYA <i>Orientalis Aurea Nana</i> .....		1.25
THUYA <i>Orientalis Bakeri</i> .....		1.25
VIBURNUM <i>Theiferum</i> .....		1.25



Juniper Sargentii - Juniper Communis Glauca -  
Juniper Depressa Plumosa



Juniper Excelsa Stricta - Thuja Occ. Holmstrupperi -  
Thuja Plicata Elegantissima



An excellent block of container grown stock



Front yard at P. & D. Nurseries

## TERMS AND CONDITIONS OF SALE

This list cancels all previous quotations. All agreements and contracts are made subject to crop losses through unavoidable causes.

**THE PRICES** in this list are based upon present market conditions and are subject to change without notice. These are wholesale prices and apply only to wholesale quantities; in no case will we fill retail orders even from nurserymen. All orders should be made up of 10's or multiples of 10.

**TERMS.** 30 days net, 2 % discount 10 days, from date of shipment. Interest at 6 % per annum to be paid after maturity. These terms are offered to those of established credit. Cash, security, or satisfactory references are required from unknown parties. All shipments are F.O.B. Shiloh, New Jersey, unless otherwise agreed.

**SHIPPING.** Customers are requested to give definite instructions for shipping. In the absence of special instructions we will use our own judgment, but with the distinct understanding that it is without responsibility on our part. All shipments travel at the risk and cost of the purchaser.

**BOXES AND BALES** will be charged at actual cost.

**CLAIMS** for any cause must be made promptly on receipt of goods. Any stock that is not exactly as represented must be reported promptly and on authority should be returned to us immediately. We will cheerfully and without question credit back the unsatisfactory plants, or send others; but we will not entertain claims made after goods have been once accepted, or when report is not made within ten days after arrival of the stock.

**LIMITED LIABILITY AND NON-WARRANTY.** We express or imply no warranty as to productiveness or life of the stock we sell. It is mutually agreed that our liability for untruthfulness to name is confined to free replacement or refund of purchase price plus interest, and should the stock prove to be untrue to the name under which it is sold, it is further agreed that such adjustment shall be the liquidated damages and all the damages to which the purchaser shall be entitled by reason of the premises.

**INSPECTION.** Certificate of inspection will be furnished with every shipment.

**SPECIAL NOTICE.** Correspondents are requested to use their printed business letterheads. We do not quote price to retail buyers. We use every effort to limit the distribution of trade prices to those whom we know to be entitled to receive them.

**LOCATION.** We are located 4 miles west of Bridgeton on Bridgeton-Salem Pike and cordially invite a visit and inspection of our establishment.

**PERKINS-DE WILDE NURSERIES, INC.**

*SHILOH, NEW JERSEY*

## CONTENTS

AZALEAS .....	1 - 4
SHRUBS (Evergreen and Semi-Evergreen).....	4 - 5
SHRUBS AND TREES (Deciduous).....	6 - 8
ILEX (Holly) .....	9 - 10
HYBRID LILACS .....	10
BOXWOOD .....	11
EVERGREENS .....	11 - 22
TERMS AND CONDITIONS.....	27
CONTAINER GROWN PLANTS .....	23 - 26





