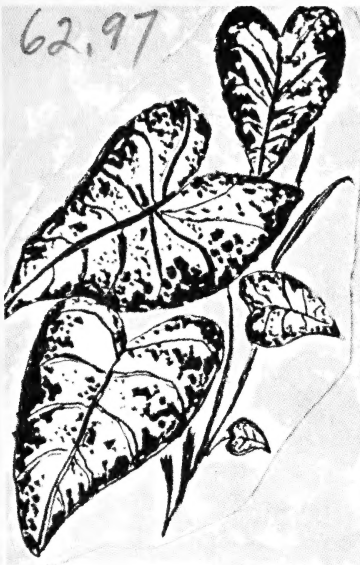


62.97



1956 Catalog



MAR 20 1956
Library of the University of Wisconsin

INDEX

	Page
Letter	2
Geraniums	3-6
Gloxinias	7
Begonias	
(Tuberous	
Rooted)	7-8
Caladiums	8
Lillies	9
Gladiolas	10
Misc. Bulbs	10
Ivies	11-12
Dahlias	12
Cacti	13



INDEX

Begonias	Page
(Fibrous	
Rooted)	13-
	14-15
African	
Violets	16
Chrysanthemums	
	17-18
House Plants	19-23
Order Blank	25-26
Special Offer	
Page	24
Miscellaneous	27
Group Offer	28



PAUER'S

GREENHOUSES

ROUTE 1, BOX 184

WAUKESHA, WISCONSIN



TO OUR CUSTOMERS:

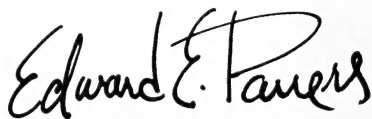
For 33 years we have endeavored to offer our customers the most beautiful, the hardiest and the newest plants grown in America at prices generally lower than competition. We have been able to this because Pauer's Greenhouses is a family business.

The plants we offer in this catalog, are grown by us under quality controlled conditions and with a great deal of family pride. Many of these offerings are our own creation. One reason for the superiority of Pauer's flowers is that they are watered only with famous Waukesha mineral water.

We stand behind each and every plant we sell and guarantee satisfaction. Our customers are our greatest boosters.

For the finest garden, both indoors and outdoors, you've ever had.

Sincerely yours,

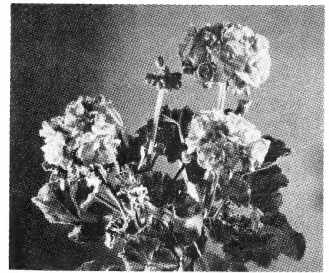
A handwritten signature in cursive script that reads "Edward E. Pauers". The signature is written in dark ink and is positioned above the printed name.

EDWARD E. PAUERS, President

geraniums



VIV GERANIUM



SANDRA IRENE

ZONAL GERANIUM

Zonal Geraniums are doubles and semi-double flowering. Are generally grown for pot plants and bedding. Our lists are of true and tested varieties that will grow well under the most adverse conditions.

VIV GERANIUM

Gorgeous new color . . . different than any other "red" geranium you've ever seen! A combination of brilliant crimson delicately blended with tinges of blue on beautifully big, fully double flowers. It's the newest of the new geraniums . . . our own introduction . . . first time ever offered! Grows compactly on strong stems. Blooms profusely.
No. GZ01. Each...75c. Order it for your garden now! **3 for \$2.00.**

SANDRA IRENE

Makes beautiful house plants. Our own introduction. Full double, very brilliant red color. Low robust plant, deep green foliage. Early bloomer. **No. GZ02. Each.....50c**

HEINRICH'S BUCHNER

Semi-double, white double, pure white flowers. A very early bloomer. Improved strain of M. M. E. Buchner. **No. GZ03. Each.....50c**

FIAT ENCHANTRESS

Semi-double, soft salmon pink with grayish green foliage. Soft in appearance because of its splendid pubescence. **No. GZ04. Each.....50c**

ALWAYS

Double, soft delicate pink with enormous florets. Petals edged in bright pink. Hybrid. **No. GZ05. Each.....50c**

DREAMS

Full, double, large size flowers. Rich shade of deep green, salmon pink or salmon coral. **No. GZ06. Each.....50c**

VERITE

Double, fine clean white. Similar to the Buchner except foliage is brighter. Blooms a little later in some sections. **No. GZ07. Each.....50c.**

FRAICHEUR

A double peacock-type. White with narrow red edge on petals. An improved Canadian pink and white. Heart of plant not compact. **No. GZ08. Each.....50c**

PAINTED LADY VARIETIES

White centered, the two colors blending from one to the other. They are leading pot plants. This class is receiving the greatest amount of interest among the singles at the present time.

CHEERIO

Free flowering, orange, salmon, white center. Plants are often completely covered with flowers. One of the showiest. **No. GP01. Each.....65c**

SALMON QUEEN

White through brilliant salmon. **No. GP02. Each.....65c**

LADY DRYDEN

Scarlet red with white center which is mostly confined to two upper petals. **No. GP03. Each.....65c**

RAMONA NO. 2

White to light pink. A very profuse bloomer and compact plant. **No. GP04. Each....65c**

PAINTED LADY

White through light cerise red. Very popular. **No. GP05. Each.....65c**

SPECIAL PAINTED LADY OFFERING:

No. GPX01. One of each of above, 5 for \$2.95.

UNUSUAL TYPE GERANIUMS

The varieties listed are out of the ordinary and add life to any plant collection. They are not unusual but beautiful—and in great demand all around the world.

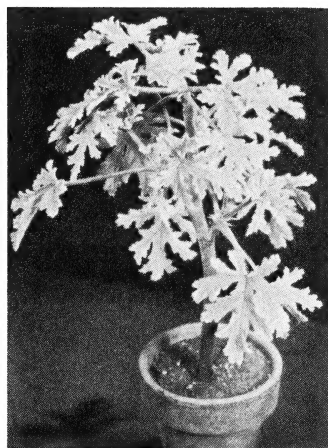
NOEL (WHITE POINSETTA)

Most beautiful of the cactus flowered. Curved petaled, double flowers. Pure white. **No. G001. Each.....75c**

PINK POINSETTA

Double flowers, narrow flat petals in soft pink. Strong plant. **No. G002. Each.....75c**

geraniums



SOUTHERN CROSS

Large double, beautiful reddish coral. Very fine plant with zonal foliage. No. G003.75c

MORNING STAR

A splendid double in brilliant light salmon . . . Often has decided yellow tone. Low plant, self branching. No. G004. Each75c

CRIMSON STAR

Brilliant red, single version of Silver Star. No. G005. Each75c

HULDA CONN

Folded double, salmon flowers. Smaller and darker than Morning Star. Free flowering. No. G006. Each75c

SPECIAL UNUSUAL AND ODD FLOWERED GROUP OFFERING:

No. GOX01. One of each, 8 for \$4.95.

BIRD'S EGG GERANIUM

A very popular collector's item, but fine geraniums even without the novelty of the petals being stippled with tiny carmine dots like those found on a bird's egg.

SINGLE LIGHT PINK

Almost white, well speckled. No. GE01. Each75c

SINGLE ROSE PINK

Excellent flower with speckles. No. GE02. Each75c

DOUBLE LAVENDER PINK

Fine large double flower, speckled. Strong plant. No. GE03. Each75c

SINGLE CORAL (BODE 1955)

A large flowered, single coral with good speckle. This is the most beautiful of the new developments. Once almost a lost class. No. GE04. Each75c

SINGLE CERISE

Color all hybridizers attain only. Considerable speckle but petal and speckle colors are too much alike to be showy. No. GE05. Each75c

SPECIAL BIRDSEGG GERANIUM GROUP OFFERING:

No. GEX101. One of each above, 5 for \$2.95.

ROSEBUD VARIETIES

The rosebuds are the most beautiful of the novelties. The florets of all four varieties are extremely double tiny rosettes, which hold their shape throughout the life of the flower. Plants are hardy and dependable and very free flowering.

APPLEBLOSSOM ROSEBUD

White edged with rose. No. GR01. Each65c

CERISE ROSEBUD

Cerise red. No. GR02. Each65c

PINK ROSEBUD

Bright pink, largest flowered. No. GR03. Each65c

SCARLET ROSEBUD

Vivid, glistening scarlet. No. GR04. Each65c

SPECIAL ROSEBUD GROUP OFFERING:

No. GRX01. One of each above, \$1.95.

IVY LEAVED GERANIUMS

Ivy-leaved geraniums are used for ground cover, for hanging baskets, window-boxes, and pot plants. The world over, there is no subject so widely used for hanging baskets and window-boxes nor one that gives the riot of color.

SNOWDRIFT

Double pure white rosebud type. Low trailing close jointed. Small wood and myriad of blossoms. No. G101. Each50c

DOUBLE LILAC WHITE

Full double white rosebud type mostly white with occasional lilac in center of flower. No. G102. Each50c

BRIDESMAID

Large flowered beautiful orchid. Tendency to over bloom. No. G103. Each50c

SANTA PAULA

Low growing, much branching. Lavender blue flowers. Year old plant often has as many as 150 flowers. No. G104. Each50c

GALILEE

Double light clear pink. Free bloomer. A favorite. No. G105. Each50c

THE BLUSH

Full double rosebud type. Soft pink with sprouts from Snow Drift. Low growing—Soft light green foliage. No. G106. Each50c

geraniums

CARLOS UHDEN

Bright light red double. Opens wide, shows white center which brightens the red. **No. G107. Each.....50c**

VICTORVILLE

New red double. Wide opening like small roses. Wooded and fairly compact. **No. G108. Each.....50c**

SUNSET (DUKE EDINBURGH VARIEGATED)

Bright cream or pale yellow leaves with green, small wood. Stands full sun well. **No. G109. Each.....50c**

SPECIAL IVY LEAF OFFERING:

No. GIX01. One of each above, 9 for \$3.75.

FANCY LEAVED ZONALS

Healthy fancy-leaved are easy to grow. Their restricted green chlorophyll areas necessitate light feedings more often than the all green-leaved varieties. They appreciate a sandy soil, for good drainage, and lots of light.

MARSHAL MAC MAHON (MARECHAL)

Strong plant, good color. Wide zone of bright yellow and brown, large single red flowers. **No. GFL01. Each.....50c**

MADAME LANGUTH (WM.)

Strong grower. Green leaf edged in creamy white. Often has rich brownish cast. Double flowers, light crimson on red. **No. GFL02. Each.....50c**

MOUNTAINS OF SNOW

Very attractive green leaf with wide clean white edges. Single orange red flowers. **No. GFL03. Each.....50c**

SKIES OF ITALY

Beautiful maple shaped leaf, bright yellow with chocolate zone, well splashed with scarlet and purple. **No. GFL04. Each.....50c**

DOUBLE POLLOCK

Highly colored, unusual all yellow leaf. Leaves are rounder than Skies of Italy but, similarly colored and the plant more dwarfed. Double Red Flowers. **No. GFL05. Each.....50c**

ALPHA

Semi-dwarf plant with small wood and deeply serrated foliage. Greenish-yellow to bright yellow, with chocolate or brown zone. Profuse single red flowers. **No. GFL06. Each.....50c**

CRYSTAL PALACE GEM

Yellow leaf with green center. Single light red flowers. Low grower. **No. GFL107. Each.....50c**

HAPPY THOUGHT

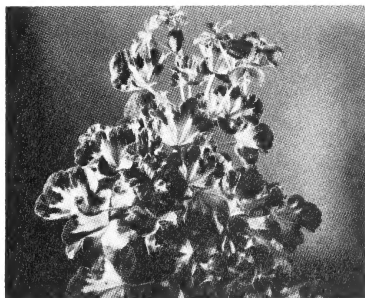
Tri-colored leaves with large ivory center. Faint bronze zone, bright green edging. Single red flower. **No. GFL08. Each.....50c**

SPECIAL FANCY LEAVED ZONAL OFFERING:

No. GFLX01. One of each above, 8 for \$3.25.



SKIES OF ITALY



HAPPY THOUGHT

geraniums

SCENTED LEAVED GERANIUM

We offer only the finest varieties of the Scented-leaved: Each is distinct from the other. Orders for Scented-leaved triple each year. Scenteds succeed indoors very well and even when not in bloom, an attractive fragrance is always there-often strong enough to scent a room. Most Scenteds add character to the garden; some have beautiful flowers, others highly colored foliage. Scenteds ship very well and survive practically 100%. Easy to grow.

LADY PLYMOUTH

Old Fashioned Rose, green lacy leaves. Popular, scented. Good pot or border plant. No. GS01. Each.....50c

LADY PLYMOUTH VARIEGATED

Creamy white edge on green lacy green leaf. Rose scented. No. GS02. Each.....50c

PRINCE RUPERT

Upright stems with stiff crackled leaves. Illusion of Juniper Tree. Light fushia flower. Lemon scent. No. GS03. Each.....50c

VARIEGATED PRINCE RUPERT (FRENCH LACE)

Similar to above but 213 of size. Best of scented. Develops into a prize pot plant. No. GS04. Each.....50c

NUTMEG

Semi-prostrate, criss-cross of small hard wood. Round waxy gray green foliage. Sprays of tiny white flowers. No. GS05. Each.....50c

APPLE CIDER

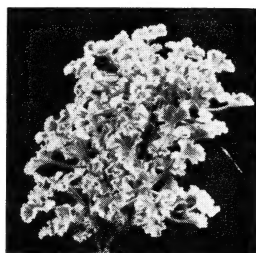
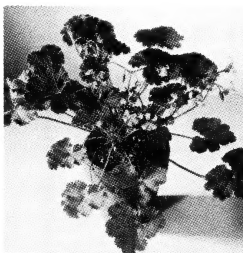
Apple and nutmeg cross. Light Green foliage. No. GS06. Each 50c

PINE

Clean scent more turpentine than pine. Very popular. No. GS07. Each.....50c

APPLE BARREL

Strong clean apple scent. Round waxy dollar size leaves. Flowers similar to fragrans varieties. No. GS08. Each.....50c



GINGER

Grows 14" to 18" first season. Full and round. 1" lavender flowers. No. GS09. Each... 50c

LIME

Attractive low round plant with saw toothed foliage. Lavender flowers, good bloom. No. GS010. Each.....50c

ALMOND (PRETTY POLLY)

Light green with silvery pink flowers, dark crimson blotches. No. GS011. Each.....50c

STRAWBERRY (COUNTESS SCARBOROUGH)

Upright type similar to crispum. Reddish green leaves close to stem. Small lavender pink flowers. No. GSL12. Each.....50c

PEACH

Gooseberry leaved. Distinct odor. Upright type. Green foliage close to stem. Variegated in hit and miss. Pale orchid flowers. No. GSL13. Each.....50c

ORANGE (CITRINELLA PRINCE OR ORANGE)

Similar to lime, leaves less notched. Blooms well. Medium size viola like flowers. Orchid blotched with crimson. No. GS014. Each.....50c

PEPPERMINT

Trailing plant with large very pubescent gray foliage. No. GS015. Each.....50c

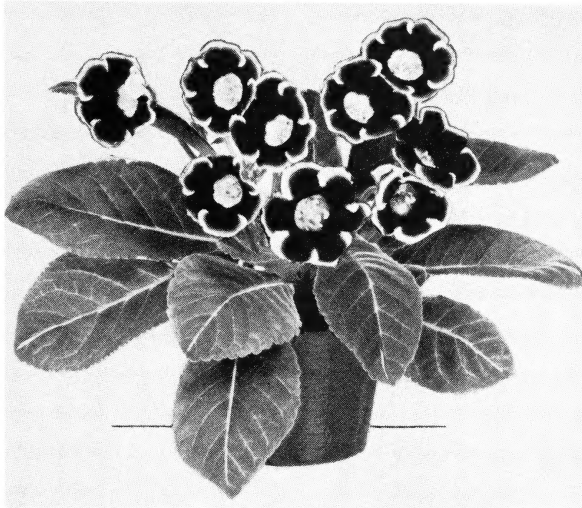
PUNGENT PEPPERMINT

Upright type with deeply cut gray foliage. No. GS016 Each.....50c
Special scented leaf Geranium offer: No. GSX01. One of each of above, 16 for \$6.25, or 8 for \$3.50.

SPECIAL GERANIUM GROUP COLLECTION:

Save over \$4.00. 25, potted, ready to plant Geraniums. (Out selection). Consists of not less than 8 Fancy Leaf, odd or Unusual Geraniums. Order this bargain offer today. No. CXX01. ONLY.....\$11.95

gloxinias



Magnificent, showy, large open inverted bell shaped flowers bloom profusely above the velvety green foliage. Makes an ideal pot plant for both summer and winter blooming. Easy to plant . . . start bulbs in pots in a sandy loose soil, with the top of the bulb level with the soil line.

EMPEROR FREDERICK

Red with white border. No. BL01. Each . . . 35c

ETOIL EDE FEU

Bright red. No. BL02. Each . . . 35c

VIOLACEA

Blue variety. No. BL03. Each . . . 35c

TIGRINA

Spotted and Tigrina red. No. BL04. Each . . . 35c

WATERLOO

Deep red. No. BL05. Each . . . 35c

DEFIANCE

Red scarlet. No. BL06. Each . . . 35c

MONT BLANC

Beautiful white. No. BL07. Each . . . 35c

PRINCE ALBERT

Deep blue. No. BL08. Each . . . 35c

PRINCESS ELIZABETH

Light blue with white border. No. BL09. Each . . . 35c

ROI DES ROCHES

Deep red. No. BL10. Each . . . 35c

SPECIAL GLOXINIA BULB OFFERING:

All above large size bulbs. No. BLX01, 3 for \$1.00, 6 for \$1.75.

SPECIAL:

Economy size bulbs mixed colors, No. BLX02, 6 for \$1.00, 12 for \$1.75.

begonias (tuberous rooted)

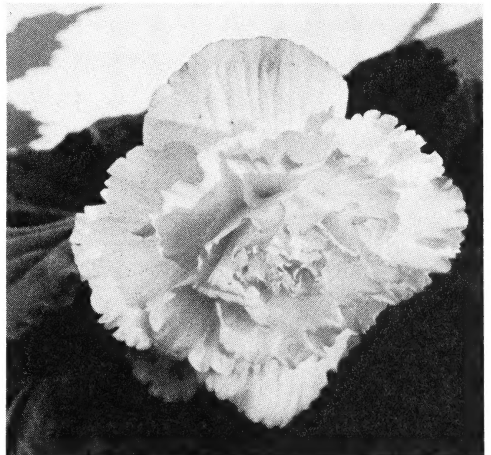
Double flowering perfect as potted plants during Spring and early Summer. Can be set in garden in semi-shady location. Start bulbs in pots in sandy, loose soil, with top of the bulb level with the soil line. In Fall dry up and store in damp peat moss.

DOUBLE FLOWERED CAMILLIA

A giant like flowering camilia plant. Very unusual. Perfect for setting off formal gardens. Comes in scarlet, dark red, rose, orange, copper, salmon, yellow, white. No. BT01. 35c each. 3 for \$1.00, 6 for \$1.75.

EXTRA SPECIAL:

Assorted colors economical size Camillia Begonia. No. BTX01. 6 for \$1.00.



DOUBLE FLOWERED CAMILLIA

begonias (tuberous rooted)

DOUBLE ROSEBUD

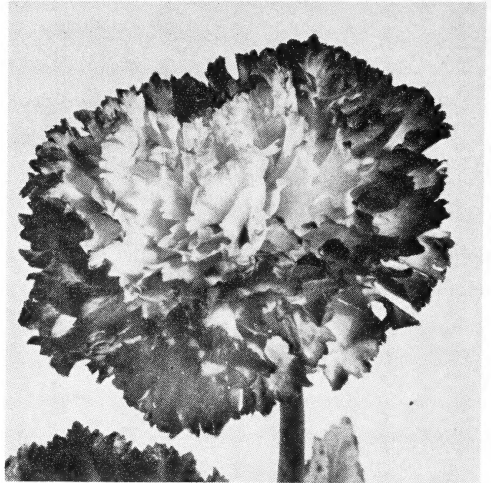
Flowers of the most exquisite form resembling perfect rosebuds. Its beautiful two-tone pastel shading will enhance home and garden. **No. BT02. 35c each, 3 for \$1.00, 6 for \$1.75.**

DOUBLE FRILLED OR CARNATION

Large full flower resembling carnation petals are frilled with cerated edges. Beautiful beyond words. **No. BT03. 35c each, 3 for \$1.00, 6 for \$1.75.**

DOUBLE HANGING BASKET

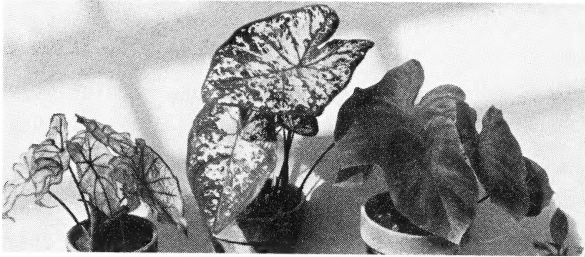
Known as Pendula or Lloydii type. Hundreds of small double flowers produced from a single bulb. You have to see it to believe it. **No. BT04. 35c each, 3 for \$1.00, 6 for \$1.75.**



DOUBLE FRILLED

NOTE: Bulbs shipped from January through June only.

caladiums



Culture planting of Caladiums. Plant in 4" pots in moist soil, not wet. Plant at least 1" deep. (Bulb roots from the top just under eyes of the buds. Place pots in warm shaded place. Use good leaf mold soil in 70 to 90 degree temperatures. Caladiums are tropical plants by nature and need tropical environment. After the plant has put on a growth of several leaves, water coupiously. Fertilization; a well balanced fertilizer may be mixed with the soil when transplanting. This should be followed by a weak solution of liquid fertilizer. Semi-acid soil is most suitable.

CRIMSON WAVE

Large crinkled transparent leaves, deep green border. **No. BS01. Each . . . 35c**

JOHN PEED

Shining bright metallic leaves, red center on moss green ground. **No. BS02.**

Each 35c

CANDIDIUM

Small white leaves, green ribs and veins. Fine variety, a vigorous grower. **No.**

BS03. Each. 35c

LORD DERBY

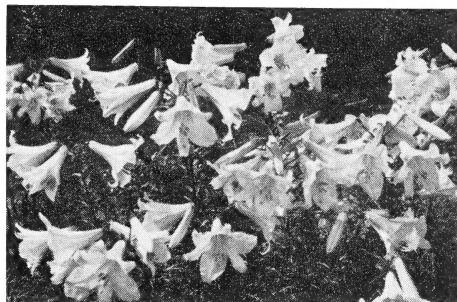
Transparent rose colored leaves with dark ribs and narrow green edge. **No. BS04.**

Each 35c

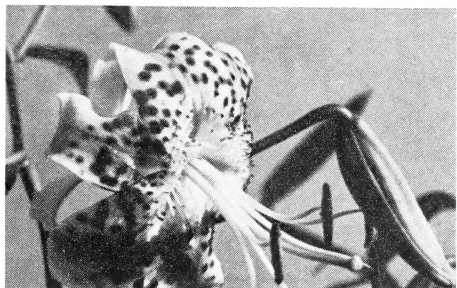
SPECIAL CALADIUM GROUP OFFERING:

No BSX01. 3 for \$1.00, 6 for \$1.75.

lillies



REGALE



SPECIOSUM RUBRUM

From out of the West—the land of enchantment we bring you the most beautiful group of lillies ever offered. Every one of the varieties will add thrilling beauty and grace to your garden. EASY TO GROW. Specially packaged with complete Cultural directions. PLANT WHEN RECEIVED.

CALLA LILLIES (LARGE SIZE BULBS BRILLIANT BLOOMING)

Adds beauty to your garden or home. Large pure white. An all time favorite. Beautiful, graceful, long lasting. Foliage. No. BC01. Each...40c

GOLDEN YELLOW

Big handsome blooms with attractive white spotted decorative foliage. No. BC02. Each...45c

BLACK CALLA

Very large black flower changes to maroon as bloom becomes older. No. BC03. Each...75c

PINK CALLA

Dainty dwarf specimen, rose pink flower which changes to cerise as blooms mature. No. BC04. Each...75c

SPECIAL CALLA LILLY OFFERING:

No. BCX01. One of each above 4 for \$2.00.

HARDY LILLIES

The stately Queen of the garden plants. They take little room for so much color and sweet odor. No garden is complete without some. Plant at least 8" deep.

DAURICUM PARDINUM

Orange, red, yellow, center spotted red. No. BG01. Each...45c

HENRY I

Orange, yellow. Ten to twenty flowers on each stem. No. BG02. Each...45c

PHILIPPINENSE FORMOSAUM

White superior, white long trumpet. No. BG03. Each...35c

REGALE

White trumpet, outside. Carmine, one of the most popular novelties for the garden. No. BG04. Each...35c

REGALE ALBUM

Pure white. No. BG05. Each...35c

SPECIOSUM RUBRUM

White tinted pink and heavily spotted with red. No. BG06. Each...75c

PENIUFOLIUM

Vivid scarlet. No. BG07. Each...25c
Golden gleam, gold orange. No. BG08. Each...25c

TIGRINUM (SINGLE TIGER LILLY)

Orange-red, black spots. No. BG09. Each...45c

TENUFOLIUM FLORE PLENO (DOUBLE TIGER LILLY)

Orange, black spots. No. BG010. Each...45c

UMBELLATUM ERECTUM

Dark orange, red. No. BG011. Each...45c

WILLMOTTIAE (IMPROVED)

Orange red, spotted brown. 25" high. No. BG012. Each...45c

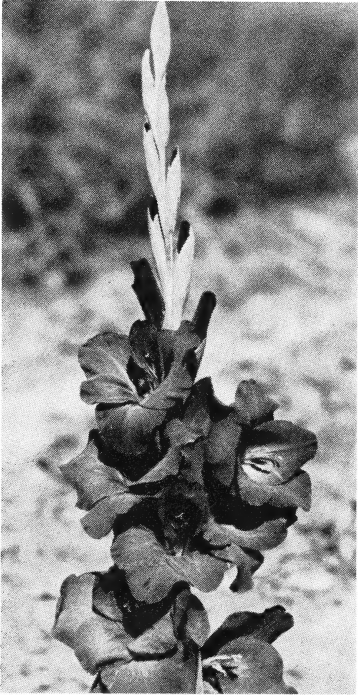
SPECIAL HARDY LILLY GROUP OFFERING:

No. BGX01. 12 large size bulbs, one of each above, \$4.50.



CALLA LILLIES

gladiolous



Clean healthy, high crown bulbs, free from disease and tripe. Easiest most satisfying of flowers to grow.

SNOW PRINCESS

White. No. B001.

VANGAARD

Creamy white with red blotch. No. B002.

HOPMANS GLORY

Single flower, yellow spotlight, creamy yellow, carmine red blotches. No. B003.

BIT OF HEAVEN

Coppery orange. No. B004.

GENERAL EISENHAUER

Begonia rose. No. B005.

GLORIOSA

Bright rose scarlet. No. B006.

ROSA VAN LIMA

Bright pink. B007.

JO WAGENAAR

Dark old carmine, red shaded velvet. Red, white stripe. No. B008.

MANSOER

Blood red, deep velvet sheen. No. B009.

NEW EUROPE

Geranium red. No. B010.

PALET

Vermillion red, carmine markings. No. B011.

CARDINAL SPELLMAN

Light violet purple. No. B012.

MODERN TIMES

Crimson carmine, white lines on lower petals. No. B013.

MRS. MARKS MEMORY

Rosy magenta. No. B014.

SILHOUETTE

Lilac shaded. No. B015.

All above, 6 for 40c; 12 for 75c; 25 for \$1.25; 100 for \$3.75.

Above varieties packaged not less than 6 bulbs of a kind.

SPECIAL GLADIOLUS GROUP OFFERING:

Fill your garden with gorgeous blooms and be the envy of your neighborhood. Here is a rainbow assortment of the finest named varieties in a well balanced range of color. Guaranteed blooming size bulbs. They grow almost anywhere. You cannot have too many Glads . . . and they multiply for next year! Save at this bargain price. No. BOX01. 25 for 85c, 100 for \$2.95.

miscellaneous bulbs

MONTBRETIAS

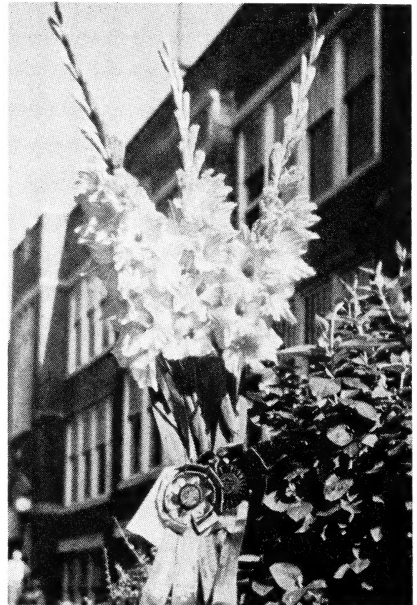
Fine for cut flowers. Thrive best in moist rich soil. Protect against hot sun. Super fine mixed large flowering bulbs. No. BM01. 12 for \$1.00, 25 for \$1.85.

ANEMONES

Double Anemones are grown for cut flowers. Very showy. Ideal for table decoration. ST. BRIDGET. Splendid mixture. Top size bulbs. No. BA01. 12 for \$1.00, 50 for \$3.50.

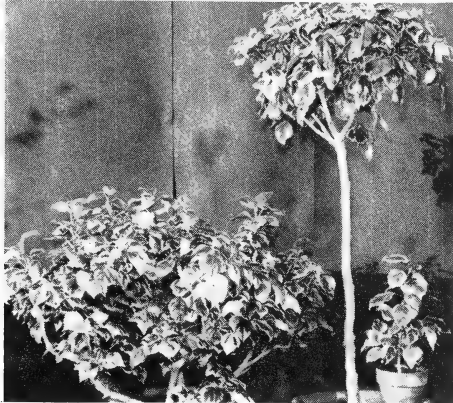
ACIDANTHERA

Bi-color Murielae. Splendid bulbous plant from Abyssinia. Somewhat on the order of Gladiolus. Pure white with purple blue blotches. Sweet scented. Perfect for cutting. Top size bulbs. No. BB01. 12 for 75c, 50 for \$2.75.



ivies

Ivies are truly a versatile plant. Grows with a minimum of care. Does well in water or as potted plant. Can be used in window or porch boxes for the summer. Makes decorative indoor house plants in the winter. Order your variety now!



SOLEDAD TREE IVY



EMERALD JEWEL IVY

SOLEDAD TREE IVY

The only true ivy that grows upright. Can be trained to a ball shaped or branching tree. Has a large distinct fascinating light green leaf, surrounded by a wide margin of ivory white. Almost resembles Variegated holly-leaves. A splendid addition to other ivies or as a specimen plant. Tough . . . grows well under adverse conditions. **No. IV01. Each \$1.25**

ABUNDANCE IVY

New. Slightly curled leaves, beautifully veined. **No. IV02. Each 50c**

MAPLE QUEEN

A real queen in self branching house ivies. Maple shaped leaf. **No. IV03. Each 50c**

BUNCHII . . .

Non-trailing, medium slightly ruffled leaves. **No. IV04. Each 50c**

CHRYSANNA

One of the favorites for a good, well branched ivy. **No. IV05. Each 50c**

GREEN FEATHER

Smallest leaved type. Compact, odd. **No. IV06. Each 50c**

MARMORATA

Small mottled green and white leaf. Very charming. Hardy. Snowflake & Dis-color identical to this. **No. IV07. Each 50c**

SYLVANIAN BEAUTY

Beautiful medium glossy pleated leaf, overlapping and growing in garland effect. Like Garland. **No. IV08. Each 50c**

GLACIER IVY

Has dainty, small leaves which are light green in center with wide, white bands-around margins. Makes colorful vine for the home. **No. IV09. Each 50c**

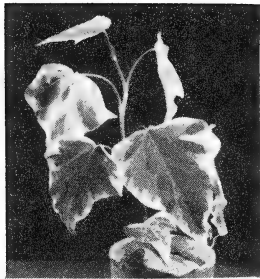
GOLD DUST IVY

Deep green leaves speckled with yellow. Looks like gold dust has been sprinkled on leaves. **No. IV10. Each 50c**
 Fan leaves of this ivy are shaped and veined like palm-fan. Dark green color, branches freely. **No. IV11. Each 50c**



SYLVANIAN BEAUTY

ivies



**BIG LEAF
VARIEGATED IVY**



SOLEDAD TREE IVY



SWEETHEART IVY



GLACIER IVY

GREEN RIPPLE IVY

An easy grown plant. Green leaves rippled deep, sharply notched and pointed. **No. IV12. Each..... 50c**

TELECURL IVY

Small deep green leaves, tightly curled. Free branching plant. One of our favorites. **No. IV13. Each..... 50c**

BIG LEAF VARIEGATED IVY

Attracted large leaves with a light green center surrounded by a wide band of cream. **No. IV14. Each..... 50c**

SWEETHEART IVY

An interesting deep green ivy with true heart shaped leaves. **No. IV15. Each 50c**

CURLILOKS IVY

Self branching with leaves which are crested, waved or crimped. The young growing tips are tinged red with curliness increased when grown in full sun. **No. IV16. Each..... 50c**

EMERALD JEWEL IVY

Attractive free branching ivy covered with small three pointed leaves. **No. IV17. Each..... 50c**

REDFLAME IVY (HEMIGRAPHIS COLORATA)

Colorful, semi-trailing plant with purplish red leaves. Small white tubular flowers. **No. IV18. Each..... 50c**

GRAPE IVY (CISSUS RHOMBIFOLIA)

Although this is not a true ivy it is one of the toughest vines for the house. Ideal in homes where the air is hot and dry. 3 glossy, toothed and painted leaflets make the leaf. **No. IV19. Each..... 50c**

SPECIAL PAUER'S IVY OFFERING:

No. IVX01. Our choice of 6 above only \$2.50.

dahlias

Our own selection of gorgeous colors. These beauties bloom and bloom right up to frost time.

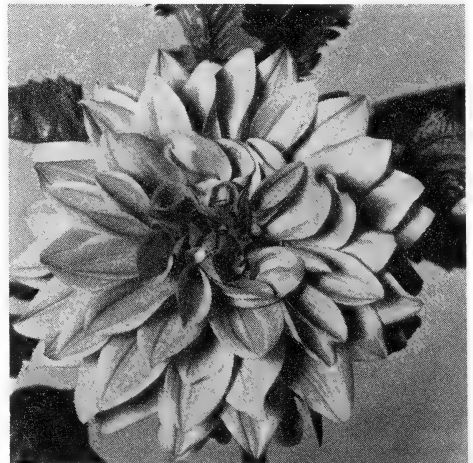
Giant decorative Dahlias in mixed colors. **No. BD01. 35c each, 3 for \$1.00, 6 for \$1.75.**

CACTUS AND SEMI CACTUS DAHLIAS

Mixed colors. **No. BD02. 35c each, 3 for \$1.00, 6 for \$1.75.**

POMPON DAHLIAS (LILLIPUT DAHLIAS)

Mixed colors. **No. BD03. 35c each, 3 for \$1.00, 6 for \$1.75.**



DAHLIA

colorful cacti

CACTI & SUCCULENT

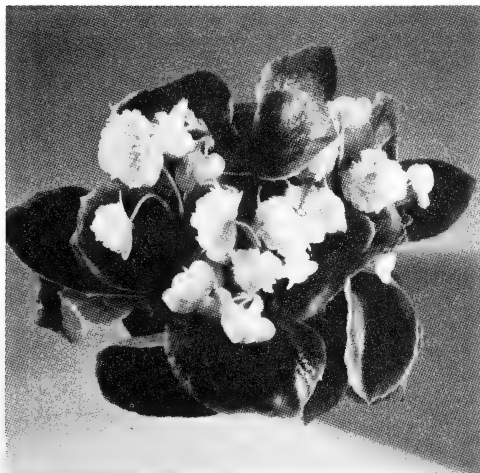
Cacti are fun and easy to grow. They are intensely interesting having many odd and curious shapes. Most of them have beautiful blooms at one time or another. They do well potted in a sunny window, are good in the garden in summer; particularly a rock garden. An assortment of interesting plants, all different for your Dish Garden or sunny window.

SPECIAL CACTI OFFERING:

No. CCX01. 6 of the better varieties, each different, 6 for \$2.25.



begonias (fibrous rooted)



GENEVA

Of all house plants, the fibrous rooted Begonia of which there are more than a thousand varieties, including their hybrids, is a universal favorite that's allotted space in almost every window garden. Only partial sun is needed. Soil should be rather dry with good drainage. Foliage should be pinched back for stocky growth. Begonias bloom most of the year including the wintertime.

WHITE CALLA QUEEN BEGONIA

One of the most unusual house plants known, the striking appearance of this beautiful plant is a delight to both amateurs and professionals. Super abundant foliage has glistening, waxy leaves . . . is variegated with delicate shadings of white, green, pinks and reds. Many leaves are pure white, edged with red and pinks formed like miniature white calla lillies. This luxuriant foliage is crowned by constantly blooming, brilliant red flowers which appear in bold contrast to the delicate green and white foliage. Carefully cultured and potgrown. No. FB01. Each \$1.75, 3 for \$5.00.

GENEVA

Double Semperflorens. Ball shaped double flowers that bloom freely. Shiny green foliage. White, Red, Pink, Snow Blush. No. FB02. Each 75c. Special No. FBX01. 4 One of each color \$2.50.

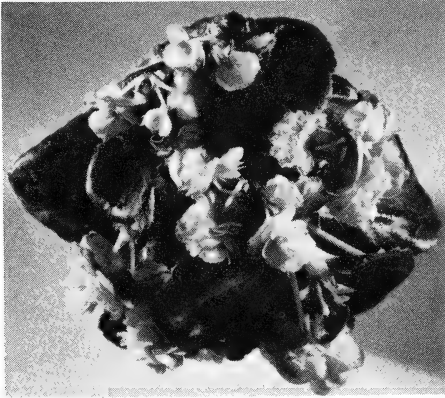
FIESTA

This spectacular new Begonia has brilliant golden yellow cox-comb centers contracting vividly against clustered rich red petals. Dazzling Booms are set against waxy green red edged leaves that present a variable Fiesta of color. Plants have as many as 15 flowers on one stem. No. FB03. Each . . . \$1.00

SIESTA

Same as above only yellow cox-comb center against delicate pink petals. No. FB04. Each . . . \$1.00

begonias (fibrous rooted)



JOAN STRONG

RED BRONZED LEAVED FIBEROUS BEGONIAS

Red Bronzed Leaf varieties all fully double flowering. Hybrid species, and every one distinctly different.

PIED PIPER

Dwarf growing with abundance of miniature class pink double ball shaped flowers. **No. FB07. Each.....\$1.00**

JOAN STRONG

Semi-dwarf, bushy, with striking bronze red foliage. Double ball shaped flowers. **No. FB08. Each.....\$1.00**

BALLET

Red leaves, sometimes appearing black. Most wanted of all Begonias. White double flowering variety. **No. FB09. Each.....\$1.50**

RED CAMELLIA

Red bronze leaves. Fully double bright red flowers on stiff stems. A display in itself. **No. FB010. Each.....\$1.25**

RED HOOD

Red leaved free branching plant. Semi ball shaped double higher in crown. Ivory, pink, yellow. Some petals tipped with red. **No. FB019. Each.....\$1.00**

CURLY LOCKS

Red bronze leaf, double yellow flowers. High crown up to an inch long. Set on close flowering pink petals. **No. FB020. Each.....\$1.25**

LITTLE GEM

Dark red leaves, low growing. Rich pink shading to dark pink and red. Large fully double flowers. Free blooming. **No. FB021. Each.....\$1.25**

GOLDY LOCKS

Grows about 12" high with hmigh crown. Golden yellow glowers flecked with red. Clustered with pink petals. **No. FB022. Each.....\$1.50**

PINK CAMILLIA

Red bronze leaves. Strong grower. Double beautiful pink flowers up to 1" across. Bloom in large clusters. **No. FB023. Each.....\$1.00**

THIMBLEBERRY

Dark foliage dwarf habit. Flowers hang in large clusters resembling ripe fruit. Colors change from dark red to light red and yellow as the season changes. **No. FB024. Each \$1.25**

VARIGATA

Same growing habit of camillias. Dark double pink flowers. Distinctively lined with lighter pink giving a variegated effect. **No. FB025. Each.....\$1.00**

FIREFLY

Red bronze leaves. Ball shaped flaming red. Fuzzy appearing flecked with bright yellow between the red. **No. FB026. Each.....\$1.00**

SNOW DROP

Bronze leaves, low bushy grower. White ball shaped flowers. Propogates easily. **No. FB011.....\$1.00**

SPECIAL

Bronze red leaved Begonia offering. **No. FBX04. One each of all 14 varieties.....\$14.75**

EXTRA SPECIAL OFFERING:

No. FBX04. 6 potted plants our choice. Each one different, 6 for \$5.00.



GORGEOUS! NEW!

FIESTA



**FIBROUS
ROOTED**

BEGONIA

begonias (fibrous rooted)



STITCHES



JEAN-PERNET

BO-PEEP

Low-growing with abundance of miniature class pink double ball shaped flowers. No. FB62. Each. \$1.00

BEGONIA FOLOSIA (MINIATURE ANGEL WING)

Tiny Angel shaped leaves. Notched miniature foliage, dainty white flowers. Can be trained to tree form. No. FB012. Each. \$1.00

LETTUCE LEAF

Recognized for its unique hirsute growth. Leaves have crinkled edges tinged with rose. Gray pink flowers. No. FB013. Each. \$1.25

STITCHES (DARK MAIZE)

Dark green leaves edged with almost black stitches. Tiny abundant flowers shaded from red to pink. No. FB014. Each. \$1.00

COLUMBINA ANGEL WINGS

Green leaves, silver spotted on top, deep red underneath. Pink flowers in large clusters. No. FB015. Each. \$1.00

JEAN-PERNET

Bronzed green leaves on top, red underneath. Appearing transparent in bright light. Constant bloomer. Shrimp pink flowers. No. FB016. Each. \$1.00

FUCHOIDIS (FLORABUNDA ROSA)

This plant closely resembles the garden type Florabunda Rose. Likes the sun. No. FB017. Each. 75c

SPECIAL BEGONIA OFFERING:

- Includes 4 Geneva Doubles and one each of following: JOAN STRONG, LETTUCE LEAF STITCHES AND CALA QUEEN \$6.95
- 4 Geneva Doubles. No. WBX03. Only \$2.50
- 4 Begonia combinations. No. FBX02. JOAN STRONG, LETTUCE LEAF, CALA QUEEN AND STITCHES. Only \$4.95

REX BEGONIA

The Rex is strictly a shade plant; northern exposure is best. Out potting soil is two-thirds compost, one-third old sod soil; a liberal amount of bone meal, and a sprinkling of wood ashes and charcoal.

GLORY OF ST. ALBINS

Very brilliant leaves of bright rose overlaid with silver. No. BR02. Each. \$1.50

CURLY STARDUST

Gray green leaves speckled with silver. No. BR03. Each. \$1.50

PINKY

Solid silvery pink with delicate purple markings. No. BR04. Each. \$1.50

LUCILLE CLOSSON

Dark leaves with purple pink blotches. BR05. Each. \$1.50

SILVER GREEN HEART

Very beautiful leaves almost entirely silver green. Solid green at center. No. BR01. Each. \$1.50

SPECIAL REX BEGONIA OFFERING:

No. BRX01. 5 one of each only \$6.95.

african violets



(ST. PAULIAS)

Collectors everywhere are enthusiastically devoting much time and interest in this most popular and fascinating hobby. No group of house plants is complete without a few African Violets displayed in their midst. The ease of culture is quite simple. Cultural instructions sent with each order of African Violets. We list the latest and choicest varieties; known for their quality of bloom and exceptional growing characteristics. Ours is a choice, limited selection which we know will give you real satisfaction.

VELVET GIRL

Distinctive red bi-color. Girl leaf. Prolific bloomer. No. AF01. Each.....\$1.00

SAILORS DELIGHT

Outstanding light blue double flowers; fine foliage. No. AF02. Each.....\$1.00

PURPLE KNIGHT

Extra large rich purple flowers; dark foliage. No. AF03. Each.....\$1.00

PINK CHEER

Fine deep rose-pink flowers in clusters; dark quilted foliage. No. AF04. Each.....\$1.00

PAINTED GIRL

Dainty white flowers have wine color edges. No. AF05. Each.....\$1.00

DOUBLE LADY

Immense dark purple on girl type foliage. No. AF06. Each.....\$1.00

RED LADY

Fine non-fading dark-red with girl foliage. One of the best. No. AF07. Each.....\$1.00

WHITE MADONNA

Pure white double blooms; dark green girl foliage. One of the best double whites. No. AF08. Each.....\$1.00

LAVENDER BEAUTY

Very large free blooming mauve-lavender with silvery sheen. Healthy green foliage. No. AF09. Each.....\$1.00

STAR GIRL

White flowers with blue edges. Choice girl foliage. No. AF10. Each.....\$1.00

CHEROKEE

The reddest of the reds. Rich dark velvety red on vivid waxy green foliage. No. AF11. Each.....\$1.00

BLACK MAGIC

Large dark-blue golden eye double. Vigorous dark foliage. A fine addition. No. AF12. Each.....\$1.00

SNOW PRINCE

The best pure white with large waxy white flowers; grows well above apple-green foliage. No. AF13. Each.....\$1.00

ORCHID SUNSET

Large double orchid flowers open into fluffy balls. No. AF14. Each.....\$1.00

FANTASY

Large lavender flowers flecked with purple. Most unusual as every flower is marked differently. No. AF15. Each.....\$1.00

RED KING

Large wine-red flowers growing from compact plant. Dark foliage. No. AF16. Each.....\$1.00

JERSEY GIANT

Very large violet-purple. Intense green foliage. No. AF17. Each.....\$1.00

SPECIAL AFRICAN VIOLET GROUP OFFERING:

To acquaint you with these lovely plants we are making this special group offering: No. AFY01. 6 violets of our choice, \$5.00; 12 violets of our choice, \$10.00.

chrysanthemums



MYRTLE WALGREEN

PERENNIAL HARDY CHRYSANTHEMUMS:

Among the easiest to grow plants, Chrysanthemums are extremely hardy and add spectacular color to your garden. They can be transferred from garden to house in the fall, providing you with a lovely, long lasting house plant. (Cushion Mums are a very popular low growing Mum).

WHITE:

APPROXIMATE BLOOMING DATES

WHITE CUSHION:

White showing traces of pink buds. No. CY01.

Short Sept. 15th 50c ea.

POWDERPUFF:

CUSHION, border, white. No. CY02.

Short Sept. 15th 50c ea.

CHRIS COLUMBUS:

Large decorative pompon. No. CY03.

Tall Oct. 1st 50c ea.

AVALANCHE:

Large decorative, cream white. No. CY04.

Tall Oct. 5th 50c ea.



AVALANCHE

YELLOW:

GOLDEN CARPET:

CUSHION, border, golden. No. CY05.

Short Sept. 15th 50c ea.

SEPT. GOLD:

CUSHION, border, lemon. No. CY06.

Short Sept. 25th 50c ea.

SULPHUR SPOON:

Spoon, light yellow. No. CY07.

Med. Sept. 25th 50c ea.

CHIQUITA:

Small button, deep lemon. No. CY08.

Med. Oct. 1st 50c ea.

YEL. CHRIS. COLUMBUS:

Medium large, bright lemon. No. CY09.

Med. Oct. 1st 50c ea.

YEL. AVALANCHES:

Large decorative, background light-lemon. No.

Tall Oct. 5th 50c ea.

YEL. BLANKET:

Small yellow button. No. CY11.

Med. Oct. 10th 50c ea.

chrysanthemums

LAVENDER & PINK:

APPROXIMATE
BLOOMING DATES

AMELIA: Cushion, border, lavender pink. No. CY12.	Short	Sept. 5th	50c ea.
ROSA: CUSHION, border, rose pink. No. CY13.	Med.	Sept. 5th	50c ea.
DEAN KAY: CUSHION, border, shell pink. No. CY14.	Short	Sept. 5th	50c ea.
CHIPPEWA: Decorative, bright purple. No. CY15.	Med.	Sept. 15th	50c ea.
IMP. E. WONDER: Pompon, lavender pink. No. CY16.	Med.	Sept. 25th	50c ea.
ROSITA: Button, light lavender rose. No. CY17.	Med.	Sept. 28th	50c ea.
MYRTLE WALGREEN: Large pompon, amaranth purple.. No. CY18.	Med.	Oct. 1st	50c ea.

BRONZE & RED:

GLOW WORM: Semi-double CUSHION, orange scarlet. No. CY19.	Short	Sept. 8th	50c ea.
GOBLIN: Small pompon, golden bronze. No. CY20.	Tall	Sept. 20th	50c ea.
ROUGE CUSHION: CUSHION, border bright red. No. CY21.	Short	Sept. 25th	50c ea.
MAHOGANY CUSHION: CUSHION, border, jasper red. No. CY22.	Short	Sept. 25th	50c ea.
KATHLEEN LEHMAN: Large decorative, orange bronze. No. CY23.	Med.	Sept. 28th	50c ea.
ADMIRATION: Decorative, salmon fawn. No. CY24.	Med.	Sept. 28th	50c ea.
BONFIRE: Decorative, bright red. No. CY25.	Med.	Oct. 1st	50c ea.

SPECIAL CHRYSANTHEMUM OFFERING:

Make up your own collection of these fine mums to give your garden constant bloom and color right into frost time. And don't forget all the cut flowers, too, at these money saving prices.

SUPER SPECIAL OFFER:

No. CYX01. 6 of our choice, \$2.75.

(Chrysanthemums are shipped from late February through June only.)



house plants

HOUSE HARDY FOLIAGE PLANTS

Special care is given to all our house plants from the cutting or seedling stage to assure you greater success in growing them in your home. These plants are at least 2 1/4" established potted plants which makes a good size plant for repotting.

POTHOS (AUREUS)

Green leaves, irregular blotched with green and yellow markings. Makes nice contrasting effect. No. HP01. Each40c

POTHOS (AUREUS VARIGATED)

New Marble Queen. Creamy white leaves, green markings. A slow growing plant, very beautiful. No. HP02. Each75c

RAINBOW VINE (PELLONIA PULCHRA)

A small plant with marble leaves, black veins. No. HP03. Each50c



**VELVET PLANT
(GYNURA)**

NEPHTHYTIS

Needs little sun, keep soil moist. Tolerant to room temperature. Grows nicely in water. Grows to a charming climber with arrow head shaped leaves.



NEW SAXIFRAGA



POTHOS

NEPHTHYTIS EMERALD GEM

Green glossy leaves. No. HP04. Each50c

NEPHTHYTIS GREEN GOLD

Yellow and gold color. Margin of leaves emerald green. No. HP05. Each75c

NEPHTHYTIS WHITE GOLD

Leaves are practically all white with green veins. No. HP06. Each75c

NEW SAXIFRAGA TRI-COLOR

Beautifully variegated greens and creams contrast with maroon splashes and pink edgings. Adds interest to plants. Perfect for dish garden. Brand new in this country. No. HP07. Each\$1.00

STRAWBERRY BEGONIA (SAXIFRAGA SARMENTOSA)

Partial sun. Keep soil on moist side, moderate temperature. Trailing plant, round hairy dark green leaves, white veins. Ideal for hanging pots or baskets. No. HP08. Each50c

PHILODENDRON CORDATUM

Our choice regular Philodendron with glossy green heart shaped leaves. Requires little care and sunlight. Grows well in water. No. HP09. Each40c

house plants



**WATERMELON
PEPEROMIA**

WATERMELON PEPEROMIA

This plant has thick heart shaped leaves with silver stripes running between the veins. Each leaf gives the appearance of a miniature striped watermelon. **No. HP011. Each50c**

PHILODENDRON MICAN (RED LEAF)

An easy growing Philodendron with small heart shaped iridescent leaves. Red bronze on top, red green underneath. **No. HP010. Each . .75c**

VARIEGATED PEPEROMIA PERICATA

First time offered, our own introduction. Honey yellow, white leaves with green centers. Truly a beautiful plant. Upright grower with ornate lines. **No. HP012. Each \$1.00**

PEPEROMIA PERICATA

A good companion to Watermelon Begonia. Solid light green glossy leaves. Very modern lines. Upright grower. **No. HP013. Each50c**

GREEN PEPEROMIA (PEPEROMIA OBTUSIFOLIA)

Glossy green leaves on erect or semitrailing stems make this Peperomia a favorite. **No. HP014. Each50c**

VARIEGATED PEPEROMIA (PEPEROMIA OBTUSIFOLIA VARIEGATA)

One of the loveliest plants in this genus is the variegated Peperomia. The leaves are irregularly marked, usually with about as much creamy yellow as light green color. They should not receive too much direct sun. **No. HP015. Each50c**

PEPEROMIA ROTUNDIFOLIA

A semivining type Peperomia from Puerto Rico. Sturdy but soft and graceful little self-branching plant with reddish stems. **No. HP016. Each50c**

NEANTHE BELLA PALM

A choice slow growing dwarf palm, which is excellent for dish gardens or an individual plant. Ideally suited for small pottery. **No. HP017. Each75c**



COLEUS



HIBISCUS

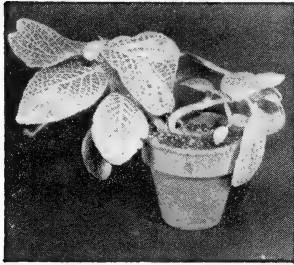


PEPEROMIA PERICATA

house plants



HOYA CARNOSA



FITTONIA

PEPEROMIA VARIEGATED SCANDENS

A bushy trailing variety. Creamy white edged on light green leaves— an easy grower. **No. HP018. Each .75c**

HOYA CARNOSA VARIEGATED (WAX PLANT)

A vining house plant, thick green waxy leaves cream edges; turning pink in sunlight. Flowers long lasting and fragrant. **No. HP019. Each . . . \$1.00**

HOYA CARNOSA

The old fashioned green foliage wax plant. Flowers in umbels. Light pink with star shaped center of rose. **No. HP020. Each75c**

PANAMIGAS (PILEA INVOLUCRATA)

Quilted dark green leaves, greenish Ming pod shaped blooms. Known as the South American Friendship plant. Easy to grow, different and a very nice foliage plant. **No. HP021. Each75c**

ALUMINUM PLANT (PILEA CADIEREI)

A new comer for window gardeners which is easy to grow. Native of Indo-China and is a small upright grower with broad green leaves, beautifully barred with silver; also called the Watermelon Pilea. **No. HP022. Each50c**

SPOTTED DRACENA (DRACAENA GOD SEFFIANA)

Very hardy rugged house plant. Lovely dark green leaves densely marked with creamy yellow spots. **No. HP023. Each75c**

WHITE EDGED DRACAENA (DRACAENA SANDERIANA)

Spiral sword-like green and white striped leaves. Good for contrast with other foliage plants for dish gardens, or as individual plants. Rugged. **No. HP024. Each75c**

RABBIT TRACKS OR PRAYER PLANT (MARANTA KERCHOVEANA)

Interesting large oval light green leaves with chocolate blotches on both sides of the mid-rib. Blotches resemble tracks of a rabbit. Also called the "Prayer Plant" . . . at night it folds together its leaves like hands in meditating Prayer. **No. HP025. Each50c**

HOUSE BLOOMING MOCK ORANGE (PITTISPORIUM VARIEGATED)

Hardy house plant . Olive green leathery leaves, edged in white. Creamy white fragrant flowers. **No. HP026. Each75c**

AUSTRALIAN LAUREL (PITTISPORIUM)

Glossy green shrubby growth. It has very fragrant white flowers. **No. HP027. Each50c**

FITTONIA (ARGYONEURA)

Choice foliage plant. Light green leaves with fine silver netting. Loves shade. Keep well watered. **No. HP028. Each50c**

FITTONIA VERCHAFELTI (PINK FITTONIA)

Choice foliage plant, but scarce. Light green leaves, fine pink netting. Loves shade. Keep well watered. **No. HP029. Each \$1.00**

house plants

VELVET PLANT (GYNURA)

Leaves and stems have look and feel of velvet. Deep velvety purple. Likes it hot, on the dry side. **No. HP030. Each50c**

PICK-A-BACK (TOLMIEA)

Excellent talbe plant. Grows in partial shade. Very interesting. New leaf rides on back of parent plant. Needs plenty of water. **No. HP031. Each50c**

EUONYMOUS JAPONICA ("GOLDEN QUEEN")

Glossy green leaves centered with gold. Strong grower. **No. HP032. Each . .50c**

EUONYMOUS MINIMA

Miniature leaves with grey veins. Wonderful trailing habit. **No. HP033. Each75c**

EUONYMOUS ARGENTEO

Bushy trailing green leaves with broad silver margin. **No. HP034. Each75c**

BROWALLIA MAJOR (BUSH MAJOR)

Blossoms freely with violet-blue trumpet shaped flowers. Does well either in house or garden. Long lasting blooms. **No. HP035. Each50c**

IMPATIENS SULTANA

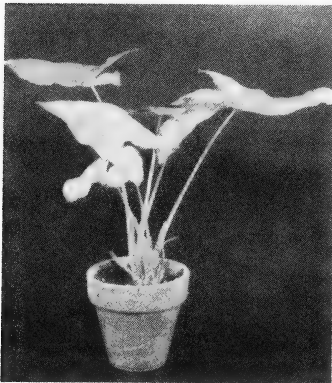
Blooms in a sunny window all winter long, and in garden, window or porch boxes. They like the sun but in the garden will do well in partial shade. Red, orange, pink, orchid, white variegated leaf, red flower. **No. HP036. Each40c**
5 for \$1.75

COLEUS

Everyone loves the bright colors of Coleus. The beautifully colored leaves of this plant will brighten up any sunny window. Will give splashes of color to garden spots, window or porch boxes. One plant that gives most color for its value. Our Coleus contains brightest rainbow collection available. **No. HP037. Each35c. 3 for \$1.00**

CISSUS DISCOLOR (REX BEGONIA VINE)

This plant is a lovely tendril climber, leaves oval tapering; rich green with mottled silvery metallic luster, red beneath. A sprinkling crimson dispersed over prime leaves. We haven't seen a more intensely colored; climbing or trailing vine. **No. HP038. Each \$1.25**



NEPHYTIS WHITE GOLD

FERNS

Probably the most useful group of plants as they thrive and add beauty in those spots in rooms where there's little light or sun. Dwarf type. 4 varieties. **No. HP039. Each50c**
4 for \$1.75

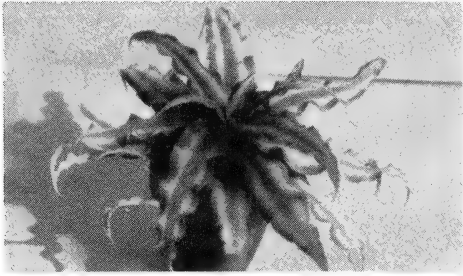
CRASSULA VARIEGATED

These fleshy, intensely variegated creamy white leaves stripped with green, tinged with pink. Grown as pot plant in miniature desert gardens. Will stand much abuse but not over watering. **No. HP040. Each50c**

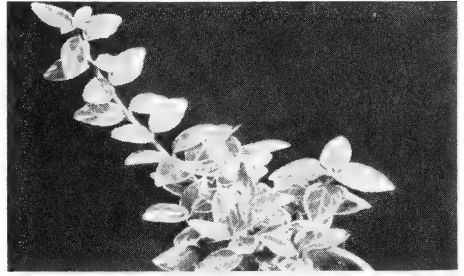
CRASSULA PERFORMATAX (STRING OF BUTTONS)

Bushy, trailing habit with small variegated leaves. **No. HP041. Each50c**

house plants



CRYPTANTHUS



EUONYMOUS ARGENTEO

HIBISCUS

(Rose Sinensis Variegated "Rose of China"). A gorgeous Asiatic tropical shrub; will not stand frost. Makes a good house and garden plant. Leaves broadly oval. Has white and red splashed leaves with tinges of pink. Flowers usually solitary; in upper leaf-axils; 4 to 6 in. long; typically rose-red flaring. Spectacular, showy, both on account of its petals and long columns of stamens. Use them outside for the summer. **No. HP042. Each \$1.50**

JACOBINA (PINK PLUMES)

Flowers up-right 6" long. Keep well watered. **No. HP043. Each 75c**

CHRISTMAS CACTUS (ZYGOCACTUS)

A single Brazilian specie, spineless Cacti. Popular under the same name of Crab Cactus or Christmas Cactus. Flowers very showy; 2½" to 3" long, red. Unlike most Cacti, Christmas cactus can be easily grown and is a favorite house plant. It needs more water than other Cacti and is a fine plant for the window sill or hanging basket. **No. HP044. Each 75c**

FATHSHEDERAS

Dark green glossy leaves, upright grower. Ivy-like leaves grow in tree form. Leaves about 3" wide, leathery in appearance. Makes a fine specimen plant or for group planting. **No. HP045. Each 75c**

FATSHEDERA VARIEGATED

Dark green glossy leaves, wide margins of ivory white. Ivy like leaves grow in tree form. Leaves about 3" wide, leathery in appearance. Makes a fine specimen plant for use in group planting. **No. HP046. Each \$1.00**

ANTHERICUM VARIGATUM

(SPIDER PLANT, ST. BERNARD LILLY). Hardy decorative house plant. Leaves brightly striped white and green. Flowers last for weeks. **No. HP047. Each 75c**

CRYPTANTHUS (POSEUS PICTUS)

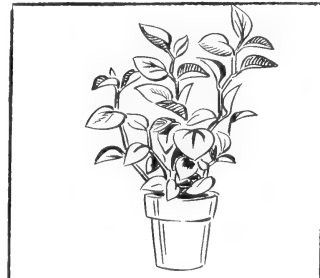
Flat reddish star with rosy stripe. Really unique as a house plant. **No. HP048. Each 75c**

CISSUS STRIATA

A miniature leaved grape Ivy with lacy small 5 lobes leaves. Reddish tone underneath leaves. **No. HP049. Each 75c**



PEPEROMIA



PEPEROMIA SCANDENS

PAUER'S

Special Offers!

FREE, FREE, FREE, PLANT DICTIONARY

You can have this directory sent to you **absolutely free** by simply sending us four of your friends names who are flower lovers. We would like to include them on our flower catalog list. You don't have to send an order to get your free dictionary.



Special Bonus!

Earn a Special Bonus. With each order of \$5.00 or more up to \$10.00 we will send you a beautiful special plant worth at least 50c.

With each order of \$10.00 or more we'll send along with your order a beautiful plant worth over \$1.00.

Flowers... MAKE THE PERFECT GIFT

Use this catalog throughout the year as an easy means of sending a gift for special events and holidays. We will ship at a specified time in order that your gift arrives on the specified date.



We Guarantee Satisfaction!

If you are not pleased with your order or if it reaches you in poor condition, RETURN IMMEDIATELY. Write us, explaining reason for returning merchandise and if you wish a replacement or refund. Money will be refunded or replacement made only when the PLANT or MERCHANDISE is RETURNED along with the invoice enclosed in the original package. Please send your NAME and ADDRESS (clearly printed) with the returned stock.

REPLACEMENT:

Where conditions **beyond our control** result in plant loss, you would not, of course,

expect us to make replacement. Such conditions include improper planting or care, such as: bad drainage, heat, carelessness, neglect or lack of experience on the part of the planter. These are conditions entirely beyond our control and we cannot be held responsible because of them.

Any stock which arrives in poor condition should be returned immediately for replacement. Should plant merely look wilted, pot and water immediately. Our guarantee WILL NOT apply if we receive no notification of plant failure, or if plants are not returned, **within 15 days** from the date you receive the merchandise.

PLANTS BADLY DAMAGED IN TRANSIT SELDOM SURVIVE

DAMAGED PLANTS are kept by customer at own risk.

INSTRUCTIONS FOR GROWING AND POTTING SENT WITH EACH PLANT

miscellaneous items



"Quick-Stream" WATER BULB

IDEAL FOR WATERING PLANTS
IN SMALL POTS, PLANTERS, ETC.

Ends the annoyance of overflowing wall planters and other small plant containers. Large, long-lasting rubber bulb holds one-half quart of water.

No. 003 \$1.69

for easier weeding, etc.—try

"CUSHION-AIRE"

KNEE PADS

Be comfortable while weeding or planting in your garden without worry of grass stains or aching knees. These super-soft sponge rubber pads are adjustable to any size. Made of finest sponge rubber for long wear and extra comfort. Get a pair today. Ideal as an unusual gift for your gardening friend, bridge prize or remembrance.

No. 005. Per pair. \$2.95

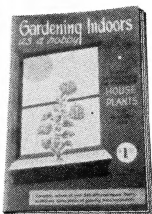


Genuine
SPONGE
RUBBER

NOW! the "how-to-do-it" book on growth and care of house plants

"GARDENING INDOORS as a hobby"

By William Ruben



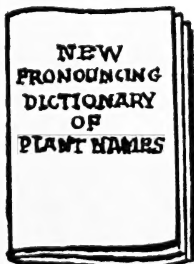
Over 55 pages chock full of easy-to-read, clearly explained information on the care of house plants. Contains basic information on the complete culture of over 245 different house plants . . . explaining every phase of growing them successfully. Contents also include descriptions with accompanying illustrations; information on potting, soil, soil mixtures, propagating and dozens of tips on control of plant diseases, kind of light needed by various plants, and the best months in which to start different varieties. Makes "a wonderful reference book for every question on growing problems or easy plant identification. Our special purchase brings you this unusual book value regularly priced at \$1.00 for the sensationally low price of

Reg. \$1.00 ea.

NOW! 50c

No. 006 **50c Now!**

NEW PLANT DICTIONARY



Here's a handy little book wanted by every home gardener and nurseryman, "The Pronouncing Dictionary of Plant Names." Contains over three thousand botanical plant names. Gives

correct pronunciation and popular name of each plant listed. Convenient pocket size. Paper bound cover. No. 004. Only **35c**

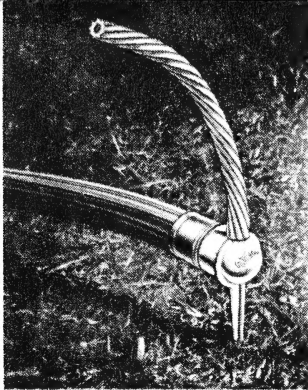
"PLASTITE"

Flower Arranging Kit



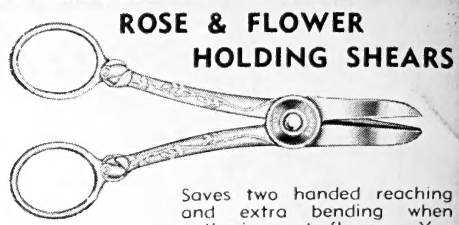
A handy kit that enables you to produce your best ideas in flower groupings. Contains the new "Plastite" adhesive clay, extremely easy to mold or shape for any kind of stem support desired.

Kit also includes 1 No. 3 Pin holder, and 2 plastic Candle holders. It's so inexpensive you may want to order two or three. **No. 008. Only 99c**



**"WATER WHIP"
Sprinkler**

Spectacular whirling action. Covers 50 ft. dia. area with a gentle rain-like fall of water. Essential for watering plants and flowers without damaging petals. Rotating movement is produced by natural water pressure . . . has no mechanical continuance to get out of order. **\$1.69**
No. 007. Only . . .



**ROSE & FLOWER
HOLDING SHEARS**

Saves two handed reaching and extra bending when gathering cut flowers. You merely extend your arm over deep beds . . . shears cuts and holds flower stems in one clean snip. Has long wearing stainless steel blades and nickel plated handles. **\$2.95**
No. 010.

SPECIAL COMPLETE FLOWERING GARDEN!

Save up to 50%

170 Separate Bulbs and Plants,

Only \$24.95

Here's What You Get

SIX MUMS

TWELVE GERANIUMS

HUNDRED GLADIOLUS

SIX GLOXINIAS

SIX CALADIUMS

FOUR CALLA LILLIES

TWELVE DOUBLE ANLMONEE

TWELVE LILLIE BULBS

SIX DAHLIAS

SIX DOUBLE FLOWERING

CAMELIA TUBEROUS

BEGONIAS

COMPLETE FLOWERING GARDEN NO. S5X01

PAUER'S GREENHOUSES

P.O. Box 184, Waukesha, Wisconsin



Sec. 34.66 P. L. & R.
U. S. POSTAGE
PAID
Permit No. 521