

62.35

1956

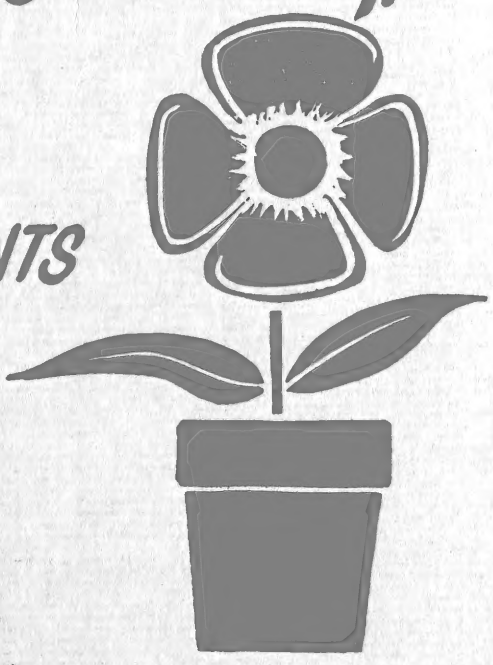
Ra

LIB
REC
★ FEB 21 1956 ★
U. S. Department of Agriculture

RETAIL CATALOGUE

Shoreline Nurseries Inc.

CACTI
SUCCULENTS
HOUSE
PLANTS



KENNEBUNKPORT, MAINE

Foreword

By way of introduction, we should like to tell you a little about ourselves. We are located in a picturesque section of Kennebunkport, one of New England's most charming resorts and art colonies. This is the home of writers, Booth Tarkington and Kenneth Roberts; artists, William Fisher, Abbott Graves, William Gillett, Edward Mayo; the Arundel Opera Theater; the Kennebunkport Playhouse, The Brick Store Museum and many other cultural interests. What better location for growing and collecting exotic, unusual plants.

The years of experience in the horticultural field by our staff is many. We are proud of our plants, and the items that we ship to you, I'm sure, will be outstanding additions to your collection. In our four greenhouses, we are constantly adding to our own collections so that we can offer the home plant enthusiast a wide selection of plants so that each can build a collection that suits his or her own interests. Our own specialty is cacti, succulents and foliage plants. From the slopes of the Andes to the vast expanse of Brazil; from the jungles of Venezuela, the giant cacti forests of Mexico, and countless other places throughout the world hundreds of varieties have been found.

Some of the things we would like to emphasize are, our plants are growing plants. They are acclimated plants. They have plenty of live roots so that they can keep right on growing.

A lot of the items listed in this catalogue are in limited supply so that some time might be necessary to fill an order. Our prices are as low as consistent with the high quality of our plants. Supply and demand make our prices. Some plants are easier to start than others, making them less expensive to purchase. The lesser price is no reflection on the quality. Generally the pot size of these plants listed is 2 $\frac{1}{4}$ ". Larger specimens will be quoted upon request.

We hope this catalogue will help you find exciting new plants as well as the common. On a visit to Maine pay us a visit.

Shoreline Nurseries, Inc.,

William A. Foster,

President and General Manager.



Foliage and Flowering Plants



Aucuba Japonica



Aglaonema Simplex

- F-101 **ABUTILON (Flowering or Parlor Maple)**
Maple-leaf like foliage. Showy bell-like flowers in various colors50
- F-102 **ALTERNANTHERA BETTZICKANA (Joseph's Coat or Calico Plant)**
Tufts of low growing, red, pink, yellow and green foliage50
- F-103 **AGLAONEMA SIMPLEX (Chinese Evergreen)**
A large green leaf plant especially useful in darker corners as a specimen. In 3-inch pot 1.25
- F-104 **AGLAONEMA COMMUTATUM (Variegated Chinese Evergreen)**
Variegated form of above. White splashes on deep green. In 3-inch pot 1.50
- F-105 **ASPIDISTRA ELATIOR (Cast Iron Plant)**
Native of China. A large green leaf foliage plant suitable for difficult locations. In 3-inch pot .. 1.00
- F-106 **AUCUBA JAPONICA (Gold Dust Tree)**
A lovely large leafed plant, green leaves flecked with gold75
- F-107 **BILLBERGIA NUTANS**
Harsh pineapple-like foliage with attractive flower spikes 1.00
- F-108 **BELOPERONE GUTTATA (Shrimp Plant)**
Showy red cone-like bracts make this an attractive blooming plant65
- F-109 **CISSUS RHOMBIFOLIA (Grape Ivy)**
Attractive, easy to grow vine. Grape bronzy leaf50
- F-110 **CISSUS ANTARTICA (Kangaroo Vine)**
Glossy, metallic-green, notched leaf of medium size. Strong growing vine65



Dracena Godseffiana



Cissus Rhombifolia

- F-111 CISSUS DISCOLOR**
One of the most ornamental of all the Cissus group. Silvery-green leaves with deep maroon veins 1.00
- F-112 CISSUS ANTARCTICA MINIMA (Miniature Kangaroo Vine)**
A small leaved form of the above. More compact in growth. Very attractive75
- F-113 CISSUS CAPENSIS (Evergreen Grape)**
Medium grape-like leaf of rusty green. Large, strong growing75
- F-114 CYANOTIS SOMALIENSIS (Pussy Ears)**
A small bright green, furry leaved vine bearing small purple blooms65
- F-115 DRACENA GODSEFFIANA**
A slender much-branched plant with green leaves speckled with white75
- F-116 DRACENA SANDERIANA**
Green and white striped leaves in a vase-like effect75
- F-117 DIEFFENBACHIA PICTA (Dumb Cane)**
A large broad-leaf foliage plant, deep green flecked with white. In 3-inch pot 1.50
- F-118 DIEFFENBACHIA ROEHSII**
A pale leaf hybrid with deep green vein. Especially attractive. In 4-inch pot 2.00
- F-119 EUONYMUS JAPONICUS VARIEGATED**
Green and white boxwood foliage50
- F-120 EUONYMUS JAPONICUS VIRIDI-VARIEGATUS**
A variety with bright green foliage and golden center. A lovely plant50
- F-121 NEPHROLEPIS EXALTATA (Boston Fern)**
A popular easily grown fern very attractive and useful as large specimen. In 3-inch pot75
- F-122 ADIANTUM (Maidenhair Fern)**
Very graceful feathery foliage50
- F-123 CRYPTOMIUM FALCATUM (House Holly Fern)**
A sharp-toothed leaf. One of the best for home use50



Hedera (Ivy)

- F-124 ASPLENIUM NIDUS (Birdsnest Fern)**
 A Brazilian fern that produces fronds in a whorl around a brown hairy central growing plant. The fronds are spatula-shaped and reach two or more feet in length. It is valuable as a potted foliage plant in the young stage of growth85
- F-125 PTERIS (Table Ferns)**
 Used mostly in combination with other plants. They are mostly small ferns, suitable for house use. Mixed selection only. Four plants, each different 1.50
- F-126 CRYPTANTHUS ROSEUS (Starfish Plant)**
 Rosette of stiff rose-colored sword-like leaves .65
- F-127 FATSHEDERA (Tree Ivy)**
 Glossy, large ivy-like leaves on upright stems .50
- F-128 FATSHEDERA VARIEGATED**
 Green and white leaved form of the above ... 1.00
- F-129 COLUMNEA BANKSI**
 Small brown tinged succulent leaves, scarlet tubular flowers 1.00
- F-130 CHLOROPHYTUM ELATUM (Spider Plant)**
 Long green and white striped, lily-like foliage trails from central rosette. Sends out runners on which new plantlets grow50
- F-131 FICUS PUMILA (Creeping Fig)**
 Small leaves, wiry stemmed vine, which has nice trailing habit50
- F-132 FICUS ELASTICA (Rubber Plant)**
 A large growing, broad-leaved foliage plant. Very easy to grow. In 3-inch pot 1.50
- F-133 FICUS PANDURATA (Fiddle Plant)**
 The Pandurata is a large-leaved foliage plant, violin shaped leaves. In 3-inch pot 2.50
- F-134 FITTONIA ARGYRONEURA (Mosaic Plant)**
 Green and white netted foliage on low spreading plant. Very nice45
- F-135 FITTONIA RED-LEAF**
 Red and white netted foliage on low spreading plant75
- F-136 HEDERA SPECIE (Shamrock Ivy)**
 A lovely fast growing ivy with close-branching, deep green leaves50

F-137	H.S. CALIFORNIA BRANCHING IVY	
	A choice free branching variety35
F-138	H.S. PITTSBURG IVY	
	A very fast growing free branching ivy35
F-139	H.S. GREEN RIPPLES IVY	
	Dark green vein running through a small attractive leaf35
F-140	H.S. HEART LEAF IVY	
	The heart shaped leaves put this ivy into a class of its own45
F-141	H.S. ENGLISH IVY	
	Medium leaved hardy ivy. Widely used for pot and outdoor plantings35
F-142	H.S. PIN OAK IVY	
	Small leaved, free branching35
F-143	H.S. PARSLEY IVY	
	Small round ruffled leaf35
F-144	H.S. CURLY LOCKS IVY	
	Medium leaves curled and crested35
F-145	H.S. GREEN FEATHER IVY	
	Very small feather-like leaves. Bushy, slow trailing35
F-146	H.S. FAN IVY	
	Fan shaped, ruffled, light green, medium leaves. Bushy, slow trailing35
F-147	H.S. STAR IVY	
	Small star shaped leaves35
F-148	H.S. GLACIER IVY	
	The best small-leaved variegated green and white45
F-149	H.S. GOLD DUST IVY	
	Green and gold, mottled medium leaf, strong grower35
F-150	H.S. NEEDLEPOINT IVY	
	A dwarf pointed leaf, free branching type35
F-151	IREesine HEROSTII (Beef Steak Plant)	
	Bright red foliage35
F-152	IREesine RETICULATA	
	Green and gold foliage with red stems. Colorful foliage plant35
F-153	HOMALOCADIUM PLATYCLADUM (Ribbon Bush or Centipede Plant)	
	Curious flat green stems and small shield-like leaves65



Nephthytis



Maranta



Manettia

- F-154 MARANTA KERCHOVEANA (Prayer Plant)**
 Low rosette of bright green leaves with maroon spots50
- F-155 MARANTA MASSANGEANA**
 A new prayer plant. More colorful than the above with a purple underside 1.00
- F-156 MANETTIA BICOLOR (Brazilian Fire-Cracker)**
 Tubular scarlet flowers with yellow tips. Fast growing trailing stems. An extra fine free blooming plant50
- F-157 HOYA CARNOSA (Wax Plant)**
 Thick waxy green leaves. Lovely flesh colored blooms75
- F-158 HOYA CARNOSA VARIEGATED**
 Leaves green and white which tint rose in sun. Pretty vine 1.00
- F-159 NEPHTHYTIS AFZELII (Arrowhead Plant)**
 Sagittate leaves arrow-shaped. An attractive soft green vine50
- F-160 PANDANUS**
 A sword-like green foliage, bright, lustrous and attractive. Remarkably hardy in the house. In 3-inch pot 1.50
- F-161 PEPEROMIA FOSTERIANA (Vining Peperomia)**
 Dark green leaves with a prominent lighter vein. Low spreading growth65
- F-162 PEPEROMIA HEDERIFOLIA (Silver Leaf Peperomia)**
 It has beautiful silver grey leaves and grows compact. Choice65
- F-163 PEPEROMIA MINIMA**
 This dwarf free branching plant, quite different. It forms compact plants and has small green leaves which are reddish on the under side45
- F-164 PEPEROMIA OBTUSIFOLIA**
 Thick glossy-green leaves35
- F-165 PEPEROMIA OBTUSIFOLIA VERIEGATA**
 Thick green and white leaves50
- F-166 PEPEROMIA SANDERSII ARGYREIA (Watermelon Begonia)**
 Pelate leaves with silver and green circular stripes50



Philodendron-Dubia

- F-167 **PHILODENDRON CORDATUM** (Parlor Ivy)
Common heart-leaved popular vine for sunless places50
- F-168 **PHILODENDRON MICANS**
Same as above, but with dark glittering maroon-colored leaves50
- F-169 **PHILODENDRON HASTATUM**
A luxurious large green arrow-type leaf. In 4-inch pot 3.00
- F-170 **PHILODENDRON PERTUSUM** (Cut Leaf Philodendron)
Broad 12-inch leaf with deep cuts. Luxuriant green 3.50
- F-171 **PHILODENDRON DUBIA**
Same as above. Fewer cuts in leaf. In 4-inch pot 2.50
- F-172 **PHILODENDRON MANDANATA** (Blushing Philodendron)
A bronze-tinged medium-pointed leaf. In 4-inch pot 3.00
- F-173 **PHILODENDRON PANDUREFORMA**
A spear-head lush green leaf. Medium size attractive vine 1.50
- F-174 **PILEA CADIEREI** (Aluminum Plant)
Pretty silver and green foliage50
- F-175 **PILEA MICROPHYLLA** (Artillary Plant)
Succulent fern-like foliage. Flowers inconspicuous but form pollen which puffs out when the plant is shaken35
- F-176 **PILEA NUMMULARIAEFOLIA** (Miniature Peperomia)
An attractive green fast growing creeping small leaved plant35
- F-177 **PITTOSPORUM TOBIRA** (Australian Laurel)
Rounded glossy leaves with white central vein. Fragrant white blooms. Small shrubby plant65
- F-178 **SCHIZOCENTRON ELEGANS** (Spanish Shawl)
Small green leaves with red stems. Pretty wine colored blooms in Spring and Summer50



Sansevieria



Setcreasea Striata

- F-179 **SANSEVIERIA ZEYLANICA** (Snake Plant)
 Long leathery green foliage with black stripe markings35
- F-180 **SANSEVIERIA LAURENTII** (Gold Stripe Sansevieria)
 Same as above, but with gold edging65
- F-181 **RUELLIA MAKOYANA**
 Dark, white-veined leaves. Pretty bright pink blooms. Easy to grow50
- F-182 **SENECIO MIKANIOIDES** (German Ivy)
 Fast growing green ivy-like vine35
- F-183 **SETCREASIA STRIATA** (Striped Inch Plant)
 Green and white striped foliage plant35
- F-184 **TOLMIA MENZESI** (Mother of Thousands—Pick a Back Plant)
 The new plants form on leaves. Light green. An interesting variety35
- F-185 **TRADESCANTIA BLOSFELDIA** (Flowering Inch Plant)
 Velvet purple leaves, lavender blooms35
- F-186 **TRADESCANTIA FLUMINENSIS** (Wandering Jew)35
- F-187 **TRICHOSPORUM LOBBIANUM** (Lobb's Basket Vine)
 Purple-tinged green thick leaves. Interesting scarlet leaves surrounded by purple calyx75
- F-188 **TETRANEMA MEXICANUM** (Mexican Foxglove)
 Native of Vera Cruz. A free flowering, sweet scented plant that will flower continually. Seed pods should be kept removed as more flowers will come at the same spot. They should be given strong light and be kept moist. An occasional application of plant food will keep the plant flowering65

Dwarf Geraniums

Double-Flowered

- F-221 **ALTAIR**
 Dark green foliage with darker ring. Blooms a lovely shade of rose-red 1.00
- F-222 **ARCTURUS**
 Dark foliage. Vivid bright scarlet blooms in good sized clusters 1.15
- F-223 **KLEINER LIEBLING (Little Darling)**
 Free blooming, small single pink. Green foliage50
- F-224 **PIGMY**
 Small double scarlet blooms in profusion. Compact green foliage. Easy to grow but hard to ship, therefore plants will be shipped at your risk. Air shipment necessary on long distance65
- F-225 **SALMON COMET**
 Very dwarf and slow growing. Distinctive dark green foliage with outstanding dark ring and crimped edge. Flowers a beautiful shade of salmon, narrow tapering petals 1.15
- F-226 **VENUS**
 Flesh pink blooms with dark foliage 1.10

Double Geraniums

- F-230 **AMERICAN BEAUTY**
 Large crimson-rose. Tall growing35
- F-231 **BETTER TIMES**
 Crimson red. Free flowering, compact. Very good35
- F-232 **DRYDEN**
 Cherry red blending to white in center. One of the best. Very free flowering50
- F-233 **GALLANT**
 Salmon-red. Free blooming red flower35
- F-234 **MARQUIS DE MONTMART**
 Rosy purple with orange tint50
- F-235 **PRIDE OF CAMDEN**
 Free blooming dark red35
- F-236 **RADIO RED**
 Free blooming scarlet. Compact35

F-237	SPRINGFIELD VIOLET	A blend of purple, scarlet, orange35
F-238	ALWAYS	A beautiful large soft peach-colored bloom shaded to white. Free blooming, well formed plant..	.50
F-239	ENCHANTRESS FIAT	Very light soft pink. Free blooming, low, compact, very fine50
F-240	FIAT QUEEN	A spot from Fiat. Salmon pink with picotee edge50
F-241	MRS. LAWRENCE	A fine low growing, free blooming light pink	.35
F-242	OLYMPIC	Salmon pink, compact, bushy and free blooming35
F-243	PINK BARNEY	A fine bright pink35
F-244	PINK FIAT	A good salmon coral. Best of the bright pinks	.35
F-245	PRINCE OF ORANGE	Popular bright salmon orange35
F-246	LULLABY	A large salmon-apricot75
F-247	JEAN OBERLE (Double Apple Blossom)	A good large flowered white flushed pink35
F-248	MEMORIES	Light orchid shading to white. A dwarf, free blooming50

Fancy Leaf Geraniums

F-250	BECKWITH PRIDE	Foliage mottled. Showy salmon-red blooms .	.50
F-251	MADAME SALLERON	Dwarf variegated. No blooms35
F-252	MADAME SALLERON UPRIGHT	Larger form of the above. Small single pink blooms35
F-253	MRS. PARKER	Leaf has wide white border with silver green center. Blooms double, light pink75
F-254	WILHELM LANGGUTH	Wide creamy border. Large double rose blooms	.50
F-255	SILVER RUBY	Silver-grey with narrow white edge. Double rose red bloom35

F-256	ALPHA	Golden foliage with narrow red ring. Low growing. Abundant single red blooms50
F-257	BRONZE BEAUTY	Golden leaf with red ring. Single pink bloom	.50
F-258	CLOTH OF GOLD	Golden leaf. Flowers single, bright pink35
F-259	DISTINCTION	Bright green, crimped edge leaf with scalloped edge. Single red blooms in tight clusters50
F-260	HAPPY THOUGHT	Green edge, cream butterfly center and rust zone. Blooms single red50
F-261	LADY CULLEN	Golden edge with red, brown green zone. Blooms red50

To Grow Better House Plants

- A. Pots should not be over-sized.
- B. Water only when dry.
- C. Use a balanced potting soil—package soil is available in most stores.
- D. Provide adequate drainage and do not over-water.
- E. Use small amounts of charcoal as a soil conditioner.
- F. Fertilize sparingly. Used too often can be harmful.
- G. Dry air is harmful. Humidify when possible.
- H. The average house plant does not like full, direct sun.
- I. At the first sign of insects use recommended plant insecticide.
- J. Follow directions carefully when using insecticides to avoid harm to the plant.
- K. For bushy plants cut back occasionally.

Growing Aids For Plants

Rootone—A rooting hormone.

Vermiculoam—A rooting medium.

New Era Potting Soil, African Violet Soil and Humus.

Union Plastic Pots.

New Era Plant Food—For most plants.

New Era African Violet Food.

Ortho Liquid Plant Food—An all-purpose liquid.

Ortho Isotox—All-purpose insecticide.

If the above are not available in your neighborhood stores, write us for prices.

Plants For Special Occasions

For North windows—Away from direct sunlight

Aglaonema
Cicous
Dieffenbachia
Hedera

Peperomia
Philodendron
Tolmiea
Tradescantia

For South windows—Full light

Abutilon
Cacti
Geraniums

For East and West windows

Beloperone
Caladium
Cissus
Dieffenbachia
Dracaena

Ferns
Ficus
Hedera
Tradescantia

PLANTS WHICH CAN WITHSTAND MORE HARDSHIPS THAN MOST OF THE OTHERS FROM THE STAND-POINT OF TEMPERATURE, LIGHT, AND IMPROPER WATERING—THE EASILY GROWN PLANTS:

Aglaonema
Coleus
Cissus
Dieffenbachia
Dracaena
Ficus

Nephtytis
Pandanus
Philodendron
Pothos
Sansevieria

Our Customer Information Service

To try to help our customers with their complete gardening problems, both indoor and outdoor, we maintain an extensive library covering practically every phase of Horticulture. Feel free to write us at any time.

- F-262 MRS. VELMA COX
Golden edge with colorful zone of pink, red brown.
Salmon flowers 1.50
- F-263 SKIES OF ITALY
Golden edge with green, brown and red zone.
Blooms single red50

Odd Geraniums

- F-270 ASCOTOSUM
Grey green scalloped edge foliage. Fluffy salmon-
pink blooms35
- F-271 JEANNE
Single bright blooms with notched edge. Ivy-like
foliage35

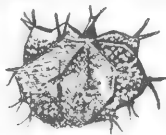
Ivy Geraniums

- F-280 CESAR FRANCK
Double rose pink. A strong growing variety .35
- F-281 COMTESS DE GREY
Semi-double light pink. Very free blooming . .35
- F-282 GALILEE
Double medium pink. One of the best pinks . .50
- F-283 CLIFF HOUSE
Double, soft lavender-pink35
- F-284 EL GAUCHO
Double, bright rose-cerise50
- F-285 JOSEPH WARREN
Double violet-purple, free blooming50
- F-286 LAVENDER ROSE
Small compact, fragrant foliage. Free blooming,
double lavender35
- F-287 LEOPARD
Double lavender pink with crimson spots. Bushy,
slow trailing35
- F-288 MME. MARGOT
Green and white variegated leaf. Single pink
blooms50
- F-289 SALMON ENCHANTRESS
Double salmon-pink with darker pink mark-
ings50
- F-290 SUNSET (L'ELEGANTE)
Variegated green and white leaf, which tints pink
when grown dry or in bright sun. Flowers are
single white tinted lavender75
- F-291 SNOWDRIFT
Double white. Tints pink in summer50

Cacti and Succulents

- C-301 **AEONIUM ARBOREUM ATROPURPEUM**
Terminal rose purple, rosettes35
- C-302 **AEONIUM HAWORTHI (Pin Wheel)**
Terminal rose tinted grey green rosetes35
- C-303 **ADRONOMICHTUS CRISTATUS (Crinkled Leaves)**
Native of Africa. The leaves with a crinkled edge, forming a beautiful dark green rosette. As the plant grows older it has many reddish-brown aerial roots along the stem of the plant35
- C-304 **ANACAMPEROS TELEPHIASTRUM (Copper Leaves)**
An unusual succulent that we have found quite interesting. The leaves turn real coppery in color if they are exposed to strong sunlight. Fine white hairs grow from the axils of the leaves35
- C-305 **ALOE ARISTATA**
Very choice. Leaves set with pearly dots35
- C-306 **ALOE GLOBOSA (Crocodile Aloe)**
Incurved35
- C-307 **ALOE HAMVIR (Needle Aloe)**
Dark green, erect35
- C-308 **ALOE NOBILIS (Green Aloe)**35
- C-309 **ALOE VERIEGATA (Partridge Breast)**
Native of Africa, the leaves are grey green, edged with pink. When in flower it may reach three (3) feet50
- C-310 **ALOE NOBILIS HYBRID (Gold Toothed Aloe)**
Stiff dark green leaves with yellow teeth35
- C-311 **ASTROPHYTUM MYRIOSTIGMA (Bishop's Cap)**
This neat globular cacti is spineless. The entire plant is densely dotted with minute star-like scales or hairs, which give it a greyish white, stone-like appearance. It has yellow flowers during the summer and fall50
- C-312 **ASTROPHYTUM ORNATUM (Ornamental Bishop's Cap or Golden Monk's Hood)**
This gem is from Central Mexico. Its globular body with deep ribs, which are often twisted like a screw, is studded with many white starry scales. Areoles woolly and brownish with a number of straight stiff spines radiating in all directions .50

Astrophytum Ornatum



Aloe Aristata





Peanut Cactus

Cereus Peruvianus

Crassula Pseudo
-Lycopodiodes

- C-313 CEPHALOCEREUS SENILIS (Old Man Cactus)
Long grey-haired curiosity 1.00
- C-314 CEPHALOCEREUS CHRYSACANTHUS (Golden Spines)
Native of Mexico. A lovely species. Column type branching from the base. Light shining green, covered with fine golden spines75
- C-315 CEPHALOCEREUS MEZCELAENSIS
Stout columnar short spines65
- C-316 CEREUS PERUVIANUS (Peruvian Apple)
Free branching with prominent ribs which are closely set with clusters of stiff spines. Color varies from bluish green to dull green35
- C-317 CHAMEOCEREUS SLIVESTRI (Peanut Cactus)
Native of Western Argentina. A miniature plant with many short stems. Flowers in May and June, and the blossom is a beautiful scarlet35
- C-318 CRASSULA ARBORESCENS (Jade Plant)
Glossy succulent green leaves35
- C-319 CRASSULA CULTRATA
Tiny form with greyish red edged leaves35
- C-320 CRASSULA DELTOIDES (Silver Beads)
Mealy35
- C-321 CRASSULA LACTEA (The Flowering Crassula)
Native of Africa. This plant resembles the Jade Plant except that it grows prostrate or trailing. It flowers freely in large clusters35
- C-322 CRASSULA IMPERIALIS (Giant Watch Chain)
Stout green upright branches on long trailing stem35
- C-323 CRASSULA PAGODA
Long stems of square rosettes. Greyish-green in color35
- C-324 CRASSULA PERFORATA (Necklace Plant)
Trailing white flowers35
- C-325 CRASSULA PSEUDO-LYCOPODIODES (Chinese Ground Pine)
Dark green thin branches35
- C-326 CRASSULA RUPESTRIS (Rosary Plant)
Fat small silver and green leaf35

- C-327 **CRASSULA TETROGONA** (Baby Xmas Tree)
 Small trees with four rows of leaves35
- C-328 **CLEISTOCACTUS STRAUSII** (Silver Torch)
 A most lovely species from Bolivia. Stem slender
 erect and completely covered with delicate white
 spines65
- C-329 **CEREUS POCO**
 A variety that is similar in growth to *cereus pasacana*
 but has dense brown spines along each rib. The ribs
 are close together, therefore this plant appears to be
 entirely covered with spines50
- C-330 **CRASSULA SCHMIDTI**
 A cluster forming plant with long narrow leaves which
 become quite reddish in the sun. Small red flowers in
 the late summer35
- C-331 **ECHEVERIA ELEGANS** (Pearl)
 Native of Mexico. Drops of water lodging between the
 leaves stay so perfectly round that they resemble
 pearls. Leaves compact, pale blue green50
- C-332 **ECHEVERIA GILVA** (Simulans)
 Wax rosette. Native of Mexico. A light green, which
 forms heavy neat rosettes. When grown in full sun,
 leaf tips become prettily tinted with pink. Free
 flowering50
- C-333 **ECHEVERIA MULTICAULIS** (Copper Leaf)
 A taller branching type with dark green coppery
 shade leaves. Free flowering50
- C-334 **ECHEVERIA PULVINATA** (Plush Plant)
 Native of Mexico, its thick dark green leaves at
 times become red on the upper surface. Rosebud
 flowers50
- C-335 **ECHEVERIA PERBELLA**
 Light green wax rosettes35
- C-336 **ECHEVERIA PULV-OLIVER**
 Highly colored, free flowering35
- C-337 **ECHEVERIA SET-OLIVER** (Chenile Plant)
 Plush covered leaves35
- C-338 **ECHEVERIA SECUNDA-GLAUCA** (Hens and
 Chickens)35
- C-339 **ECHEVERIA SETOSA** (Doris Taylor)
 Native of Mexico. Sometimes called the firecracker
 plant on account of its vivid flowers. Low stemless
 rosettes of hairy leaves, vivid flowers of red and
 yellow35



Euphorbia Splendens Echinopsis Hybrid Gaster-Aloe

- C-340 ECHINOPSIS HYBRID (Easter Lily Cactus)**
 Native of South America. Because of their free flowering habits they hybridize freely. Therefore in growing these plants from seed, a great variety of types can be obtained. These varieties are too numerous to name and so they are sold under the name of Echinopsis Hybrid. They are all fast growing and many of them flower from 2 years on .35
- C-341 ECHINOPSIS MULTIPLEX (Barrel Cactus)**
 Taller growing form of above45
- C-342 ESPOSTOA LANATA**
 Silky white-haired column50
- C-343 EUPHORBIA SPLENDENS (Crown of Thorns)**
 Native of Madagascar. This plant is one of the few Euphorbias that have leaves. It is one of the most satisfactory of all house plants. When kept in a sunny window and moderately moist it will flower continuously over a long period of time. Specimens have been known to live over 100 years50
- C-344 EUPHORBIA SUBMAMMILLARIS (Corn Cob)**
 This novelty from South Africa is one of the most interesting plants. Its resemblance to a green corn-cob is very striking, hence its popular name. The old plants branch freely45
- C-345 ECHINOCACTUS GRASONI (Golden Ball)**
 Native of Mexico. The ribs in very young plants are divided into conical warts but later they are straight and continuous. Because of this oddity the young plants do not resemble the older plants. The plants are globular in shape and golden in color50
- C-346 ECHINOCEREUS DE LAETII (Lesser Old Man)**
 Native of Mexico. A beautiful and popular species of easy cultivation. Stems pale green, sprouting freely from the base entirely covered with long white hairs. Thrives well in a very sunny location and should be abundantly watered in summer. Will soon send up suckers making a nice group in about three years50
- C-347 FAUCARIA TIGRINA (Tiger Jaw)**
 Open tooth jaws, yellow flowers35



Kalanchoe Somaliense

Kalanchoe Tomentosa

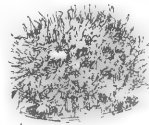
- C-348 **GASTER-ALOE (Spotted Beauty)**
 Trim white-warted rosettes45
- C-349 **GASTERIA HYBRID (Ox Tongue)**
 Dotted white35
- C-350 **FEROCACTUS LATISPINUS (Devil's Tongue)**
 Native of Western and Central Mexico. A well known and very popular species. Plants are broadly globular, greyish green having notched ribs and very strong spines, the lower of the central spines being strongly hooked. A decidedly good looking cactus50
- C-351 **FEROCACTUS MELOCACTIFORMIS (Electrode Cactus)**
 Native of Mexico. This is a round cactus with very high ribs and long curved spines. The prominent position of the ribs and spines give the appearance of electrodes. The bluish color is quite distinctive. This is one of the better cacti50
- C-352 **GRAPTOPETALUM PARAGUAYENSE HYBRID (Ghost Plant)**35
- C-353 **GRAPTOPETALUM AMETHYSTIMUM (Jewel Leaf Plant)**
 Native of Mexico. The leaves of this plant are delicately tinted in soft amethyst. The flowers are pastel red50
- C-354 **HARRISIS MARTIM (Snake Cactus)**
 Native of Argentina. Stems upright, tall growing, becoming prostrate or sprawling as plant gets larger. Flowers are white, blooming at night. Can be trained on a trellis or trailed along the ground .35
- C-355 **HAWORTHIA CHALWINII (Aristocrat Plant)**
 Small spotted rosette35
- C-356 **HAWORTHIA CYMBIFORMIS (Windowed Plant)**35
- C-357 **LEMAIREOCEREUS PRUINOSUS**
 Native of Central Mexico. A columnar species with few off shoots. The color and shape of this cactus is very striking. It is blue-green and has the appearance of being very rugged. This is one of our favorites and deserves a place in any cactus collection50

- C-358 **LEMAIRCOCEREUS MARGINATUS** (Organ Pipe Cactus)
Native of Mexico. It is often planted to form hedges in Mexico. A fast growing specie requiring full sun and warmth. The spines are very short but the areoles where the spines originate are very pronounced and close together making a margin-like effect whereby the plant received its name50
- C-359 **KALANCHOE FEDTSCHENKOI** (Blue Bryophyllum)
The leaves are an interesting purple grey color, which is quite outstanding. The flowers are a showy coral red and last a long time35
- C-360 **KALANCHOE BLOSSFELDIANA**
A fine winter blooming plant. A full grown plant has hundreds of small red flowers in winter .. .50
- C-361 **KALANCHOE MARMORATA** (Pen Wiper Plant)
Native of Abyssinia. Strikingly marked plant with many dark purple blotches on the leaves .35
- C-362 **KALANCHOE SOMMALENSIS**
Native of Africa. A very unusual and pretty plant that has a square stem and odd shaped leaves which when kept in the sun becomes tinted in beautiful yellow and red. The flowers have a spicy fragrance35
- C-363 **KALANCHOE TOMENTOSA** (Panda Bear)
Thick narrow grey leaves with striking brown markings on the edge of the leaves. The leaves are covered with a soft plush35
- C-364 **KLEINIA RADICANS** (Creeping Berries)
Trailing. Bronzy succulent leaves35
- C-365 **KLEINIA REPENS** (Blue Chalk Sticks)
Upright blue-grey pointed leaves35
- C-366 **MAMMILLARIA HAHANIANA** (Old Lady Cactus)
Stem globular flattened at the top, green, entirely covered with white spines and long white hairs or bristles. Grows freely and flowers abundantly in full sunshine. Flowers in ring, around the top, rather small and crimson65
- C-367 **MAMMILLARIA BOCASANA** (Powder Puff)
Native of Mexico. A beautiful free clustering plant. Plants globular, long slender tubercles with many long white silky hairs, central spines needle-like, at least one hooked at the tip. Blooms freely in spring. Flowers are reddish on outside. inner petals are a creamy white50

- C-368 MAMMILLARIA GRACILIS (Thimble Cactus)**
 Native of Mexico. These miniature plants branch freely at the top. Off shoots grow to thimble size and then form off shoots of their own. The off shoots break off from the parent plant very easily but readily take root. They flower freely35
- C-369 MAMMILLARIA ERYTHROSPERMA (Fish Hook Cactus)**
 Native of Mexico. This is a dark green cactus that clusters freely. Axils with hair-like bristles. Areols bear carmine red flowers in the spring45



Mamm'illaria Elongata



Mammillaria Bocasana

- C-370 MAMMILLARIA ELONGATA (Lace Cactus)**
 Native of Western Mexico. Abundantly clustering and branching. Stem cylindrical, some erect, and some more or less prostrate. Areoles round with 15-20 spines radiating outwards star-like, recurved. pale yellow. Flowers from the side axils65
- C-371 OPUNTIA CYLINDRICA (Emerald Idol)**
 Native of Peru. Branches or joints with continuous cylindrical growth. Spines whitish and not very sharp35
- C-372 OPUNTIA BRASILIENSIS**
 Native of Brazil. Round tree-like stems with thin flat pads of pale green. Flowers are yellow35
- C-373 OPUNTIA MICRODASYS (Bunny Ears)**
 Flat pads with tiny yellow spine clusters35
- C-374 OPUNTIA MICRODASYS ALBISPINA (Honey Bunny)**
 White spines35
- C-375 OPUNTIA MONACANTEA (Irish Mittens)**
 Small glossy green pads, unusually spineless .35
- C-376 OPUNTIA RUFIDA (Red Bunny Ears)**
 Rounded pads with reddish spines35

- C-377 **OPUNTIA-VILIS** (Mexican Dwarf Tree)
 Branched little trees35
- C-378 **OREOCEREUS TROLLI** (Old Man of the Andes)
 Native of South America. This beautiful cacti
 comes from the eastern slopes of the Andes. It is
 covered with a dense coat of white hair65
- C-379 **PLEIOSPILOS BOLUS** (Living Stone)
 Native of Africa. Called "Living Stone" from its
 resemblance to small pieces of weathered granite
 rock50
- C-380 **PARODIA AUREISPINA** (Tom Thumb Cactus)
 Native of Argentina. This small globular cactus is
 covered with golden spines on spiral ribs. The cen-
 tral spines are long and hooked. Flowers are borne
 at the top and are golden yellow50
- C-381 **SEDUM CARNEUM VARIEGATUM** (Variegated
 Sedum)
 Native from Japan. Fine for dish gardens as its
 pretty variegated leaves form a mat that blends
 with most all conditions35
- C-382 **PACHYVERIA SCHEIDECKERI**
 Pachyverias are hybrids of Echeverias crossed with
 pachyphytums. This variety is very pretty, form-
 ing small rosettes with whitish green leaves .35

**Tricho-Cereus Opuntia Brasiliensis Stapelia Variegata
 Spachianus**



- C-383 TRICHICEREUS SPACHIANUS**
Native of Western Argentina. Used quite a bit for grafting. It has a very clean vigorous appearance50
- C-384 SEDUM PACHYPHYLLUM (Many Fingers)**
Native of Mexico. Round club-shaped leaves with red tips and yellow flowers35
- C-385 PORTULACARIA AFRA (Elephant Wood)**
Native of South Africa. Grows to a small tree in its native South Africa. Its small glossy leaves on red stems are very attractive. It will grow in either sun or partial shade35
- C-386 PACHYPHYTUM COMPACTUM ("Thick" Plant)**
Native of Mexico. Its formation is very outstanding and it has beautiful flowers50
- C-387 PACHYCEREUS COLUMNA-TRAJANIA (Mexican Giant)**
Their color is grey-green with many low ribs .50
- C-388 SEDUM ADOLPHI (Golden Sedum)**
Native of Mexico. The thick golden yellow leaves of this plant are most attractive. It has white flowers, and blooms quite freely35
- C-389 TRICHOCEREUS PASACANA**
Native of Argentina and Bolivia. Light dull green, with many stiff ribs. Rusty brown areoles furnished with numerous thick spines, awl shaped, varying in color from a pale yellow to a dark reddish brown or tan50
- C-390 SEDUM MULTICEPS (Miniature Joshua Tree)**
A different sedum said to resemble the western Joshua tree although it is not related. The flowers are yellow35
- C-391 STAPELIA VARIEGATA (Toad Cactus)**
Native of South Africa. This plant has short, fleshy, many toothed stems. Very odd flowers, the leathery "petals" resemble skin and are buff colored spotted with maroon35
- C-392 SEDUM STAHLII (Bead Plant)**
Tiny, fat, round leaves which turn a reddish brown in full sun. The flowers are yellow35
- C-393 SEDUM MEXICANUM**
Native of Mexico. A dark green low growing plant. The color of the flowers are yellow35
- C-394 SEDUM GUATEMALENSE (Christmas Cheer)**
Round dark green club-shaped leaves that turn bright red in the bright sun35

Please Read Before Ordering

GUARANTEE

Our plants are healthy and carefully packed. They are guaranteed to reach you in good condition. Beyond that we cannot take responsibility for how they grow. Notice must be given within five days after receiving plant for adjustment in case of damage during transit.

Prices quoted are for 2¼" size pots except where noted. Prices are subject to change without notice. All items subject to remaining unsold.

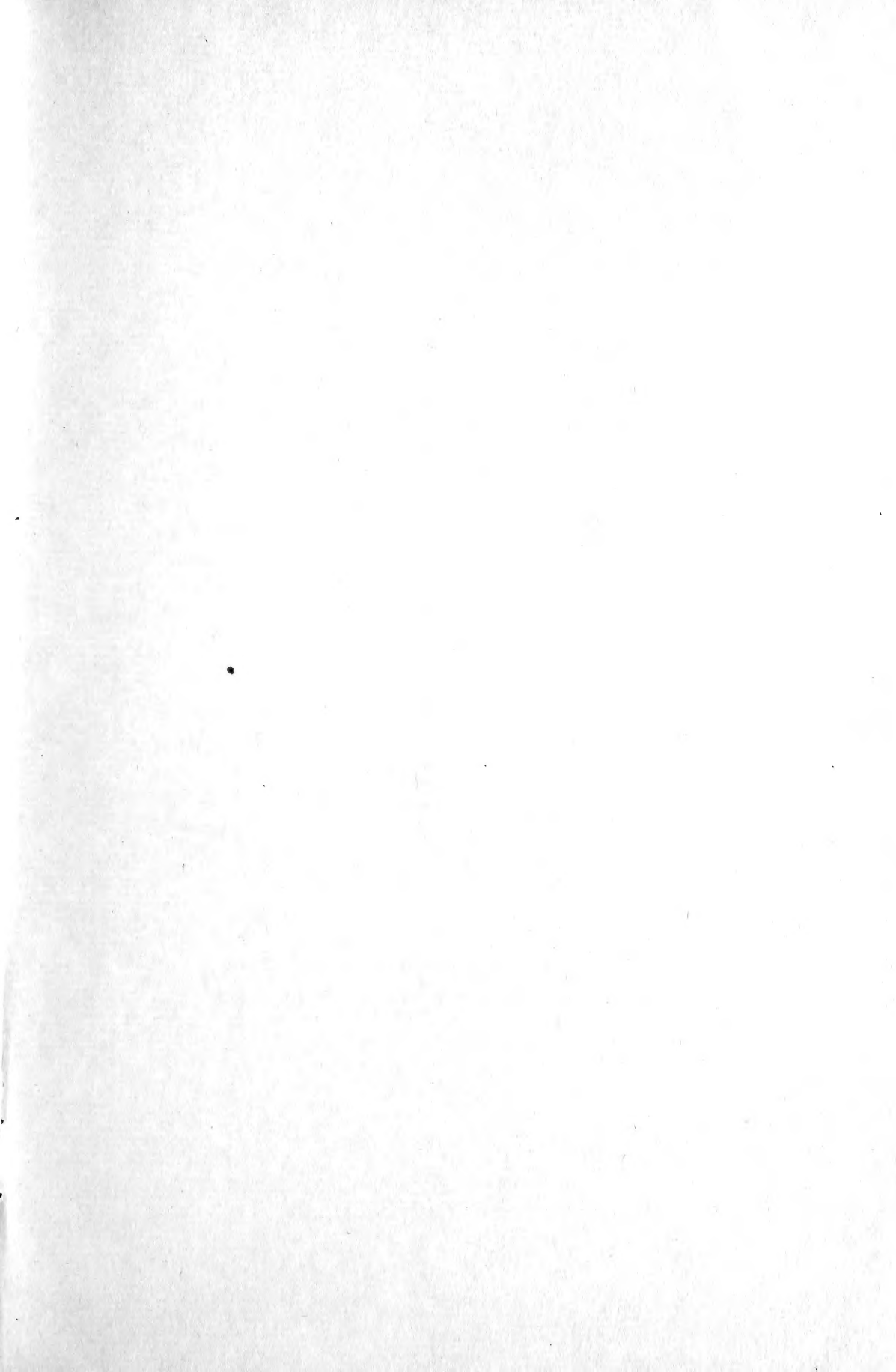
TERMS

Cash with order. Payment by check, money order or cash. We cannot accept C.O.D. orders.

SHIPMENT

All plants are prepaid and packed free of charge within the continental limits of the United States, providing the order totals \$2.00 or more. On orders less than \$2.00 add \$.50 for packing and postage. All orders from outside of the United States must be accompanied by import permit obtained from the government agency of country receiving shipment.

Our business has been built by satisfied customers, and we believe that we can continue to satisfy our friends. If the plants do not come up to what you think they should, we invite you to write us.



*Shoreline
Nurseries, Inc.
Kennebunkport, Maine*

PLACE
STAMP
HERE

U. S. DEPARTMENT OF AGRICULTURE

LIBRARY

WASHINGTON 25, D. C.

PENALTY
PA.

OFFICIAL BUSINESS

PRINTED MATTER

Library, U. S. Dept. of Agriculture
WASHINGTON 25, D. C.

Bibli.