

62.41

# SHRUBS AND TREES

from

# SEED



### CAPE MYRTLE

A shrub which grows to 20 feet. Hardy to Baltimore. Much planted in the South. Deciduous. Flowers bright pink and some red, or reddish purple. Much used for hedges.

*Since  
1936*

## WOODLOT SEED CO.

NORWAY • MICHIGAN

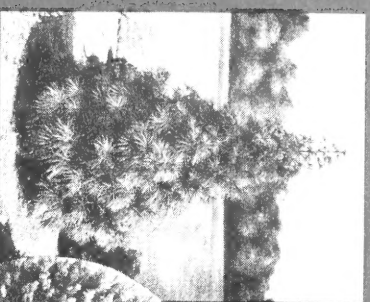


# It's easy to grow your own shrubs and trees from seed

**JAPANESE QUINCE**  
A quite hardy shrub, deciduous, grows to three feet. Flowers red or scarlet, with leaves green with red tips.



**SHRUBBY ALTHEA**  
(Rose of Sharon)  
Can be grown over most of the U.S. and lower part of Canada, late flowering, white flowers, to 15 feet. Deciduous.



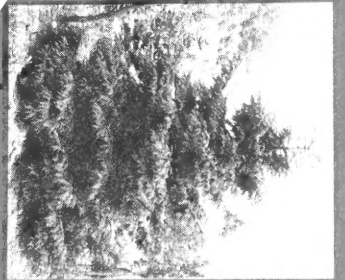
**EUROPEAN MOUNTAIN ASH**  
(Or Rowan Tree)  
Is hardy, grows to a height of 45 feet. A very popular Mountain Ash. Deciduous.



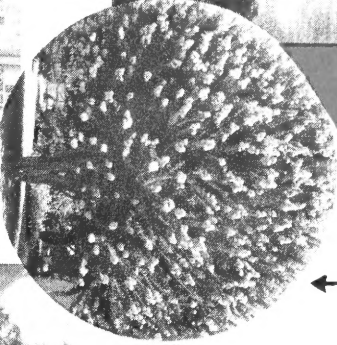
**ORIENTAL ARBOR VITAE**  
A tree which attains height of 50 feet. Very popular, suited to mild climates. Much planted in the South, has lustrous green foliage. An evergreen.



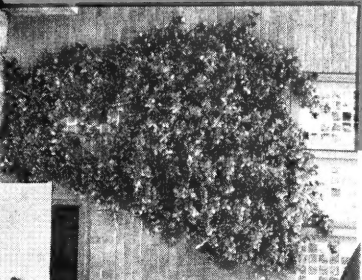
**ORIENTAL SPRUCE**  
A graceful and compact tree, with very dark green foliage. Moderately hardy Evergreen.



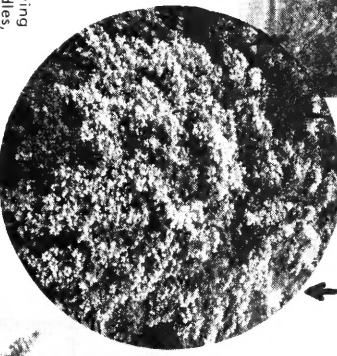
**UMBRELLA PINE**  
An easily grown tree, very beautiful. Has dark green foliage, suited to mild zones. Evergreen.



**WINTERCREEPER**  
(Or Evergreen Bittersweet)  
Useful as a ground cover. A trailing evergreen. Leaves above are dark green.

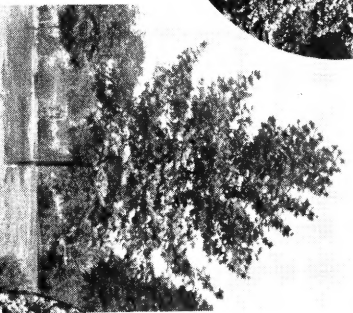


**AUSTRIAN PINE**  
This is a fast growing tree, has very stiff needles, and glossy dark green foliage. A good screen or windbreak tree. Hardy except in very cold sections. Evergreen.

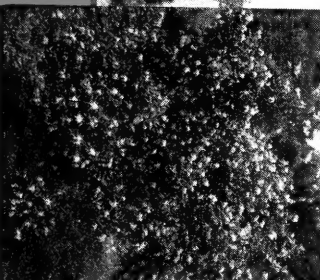


**BEAUTY BUSH**  
A shrub which grows to ten feet. Has bell shaped blossoms with a beautiful shade of pink. Needs good drainage. Deciduous.

**PLANE TREE**  
Has large leaves similar to maple. Stands up well in the cities. There are trees now in the U.S. 300 to 400 years old. A popular street tree. Hardy to New England. Deciduous.



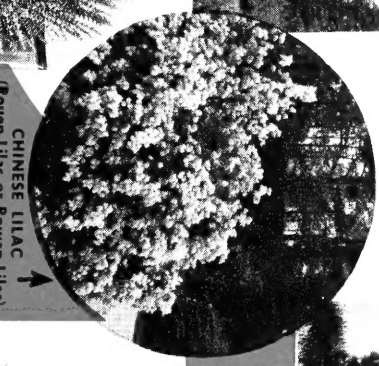
**TATARIAN HONEYSUCKLE**  
A neat appearing shrub of vigorous growth. Grows to 9 feet in almost any soil. Flowers pink to white. Deciduous.



**JAPANESE BLACK PINE**  
Has dark green foliage, with dense spreading and drooping branches. Suited to New England and does well on the seacoast. Much used in dwarfing trees. Evergreen.

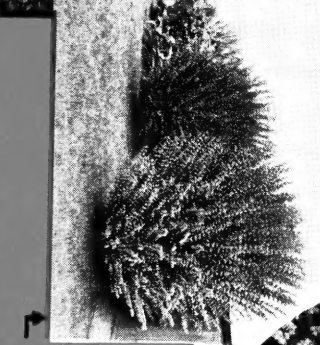


**ENGLEMANN SPRUCE**  
A very hardy tree. One of the best spruces. Is pyramidal in appearance. Has evergreen foliage.



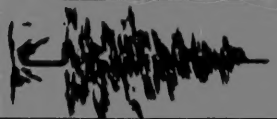
**CHINESE LILAC**  
(Rouan Lilac or Rowan Lilac)  
Has small clusters of purple lilac flowers. Moderately hardy. Attains a height of 15 feet. Deciduous.

**CALIFORNIA PRIVET**  
Height to 15 feet. Is hardy to New England. Has lustrous green leaves. Small clusters of creamy white flowers. Semi-evergreen.



**ROSE DAPHNE**  
(Garland Flower)  
An evergreen growing one to two feet high. Has small and fragrant pink flowers.

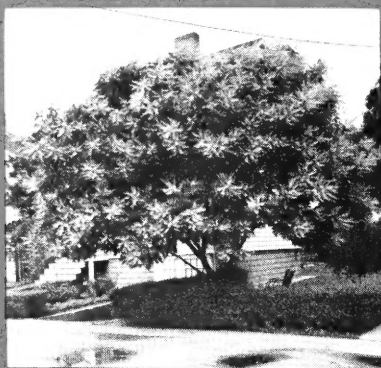
**SYCAMORE**  
(Button ball, Buttonwood)  
Probably the largest deciduous American tree. Is hardy. Some four to five hundred years old.



# SHRUBS AND TREES

## GOLDEN RAIN TREE (Pride of India, China-Tree, Varnish Tree)

Grows to 30 feet. Flowers small and yellow, but in large clusters. Much used as a street tree in Ohio. Suited to many soils. Hardy to New England.



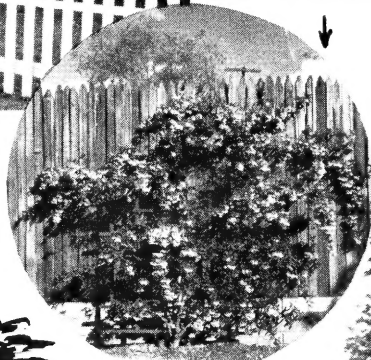
## SILK TREE

This is a beautiful tree which grows to 30 feet or more. Two kinds, one hardy, the other suited only to the South and California. Has a long flowering season. Pale pink flowers. Deciduous.



## SCARLET FIRETHORN

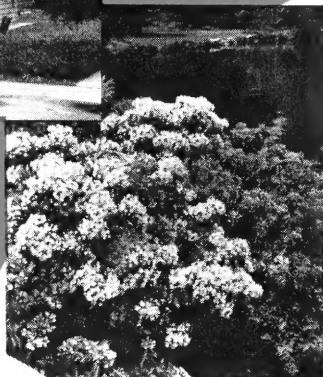
Grows six to ten feet, has small white flowers, bright red berries, dark green foliage. Suited to mild climates. Deciduous.



## WINGED SPINDLE TREE

(Winged Euonymus,  
Winged Spindlewood)

Leaves are brilliant scarlet in fall. An attractive shrub to 9 feet. Hardy, deciduous. Easily grown.



## MOUNTAIN LAUREL

(Calico Bush, Kalmia Latifolia)

A very beautiful and lovely evergreen shrub which grows to 8 feet. Flowers from white to pink. Evergreen leaves greenish yellow below. A much planted shrub. Much used in foundation planting. Hardy.



**GROW YOUR  
OWN SHRUBS  
AND TREES  
FROM**

**SEED**

*Tips ...*

**ON PLANTING**

With your order will be sent additional **TIPS ON PLANTING**

## WITCH HAZEL

A shrub, deciduous, which grows to 15 feet. The last flowering shrub in the season. Useful for shade planting. Flowers are yellow.



## SWEET MOCK ORANGE

Grows to nine feet in height, quite hardy. Grows well in dry situations, fragrant. Flowers white, leaves yellowish in fall. Deciduous.



## JUNIPER-HORIZONTAL

A good ground cover. With dark green leaves. Can be pruned easily. Hardy evergreen.

**WOODLOT SEED CO.  
NORWAY • MICHIGAN**

# Woodlot Seed Company

Norway, Michigan

JAN 17 1956

Dear Friend:

When you asked us to send you complete information on how to grow trees and shrubs from SEED, perhaps we did not send you enough information to convince you that it can be done.

Since you inquired thousands of others have done likewise and are now successfully planting shrub and tree seeds...at a fraction of the cost of buying seedlings and planting them.

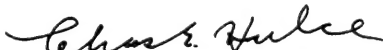
If you will take a few minutes and go over the folders enclosed... read what others say about how they have successfully planted and grown trees and shrubs from seeds... check the prices on the lists enclosed, you will see what I mean when I say that at a fraction of the cost of buying seedlings and planting them you can successfully grow from seed a large variety of shrubs and trees.

Just look at the illustrations in the folders enclosed...you will see how hardy trees and shrubs look grown from seed. And, to do this it doesn't take any exceptional skill...neither must you have a "green thumb" to do it.

Therefore, believing that since you were interested originally in growing trees and shrubs from seed, I am again sending you a current folder, price lists and a few letters from what others say about their success in growing trees and shrubs from seed. I suggest you look over the price lists, and if you have a county agent, agricultural or soil advisor, ask him as to the best trees and shrubs suited to your soil and climate. Having once selected those trees and shrubs that are best suited, I am sure you will have the success others have had from planting seeds.

Your order will receive prompt attention...it is our policy to ship orders promptly, so why not do as hundreds of others are doing...order your seeds now.

Cordially,



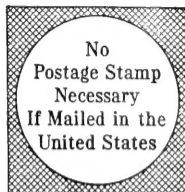
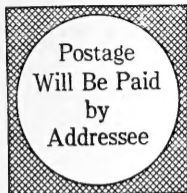
CHARLES E. HULCE

CEH:jr

Enc.

P.S. Since 1936 we've been sending shrub and tree SEEDS to thousands of people like you.





**BUSINESS REPLY ENVELOPE**  
FIRST CLASS PERMIT No. 9 (Sec. 34.9 P.L.&R.) NORWAY, MICH.

**WOODLOT SEED CO.**  
**NORWAY, MICHIGAN**



