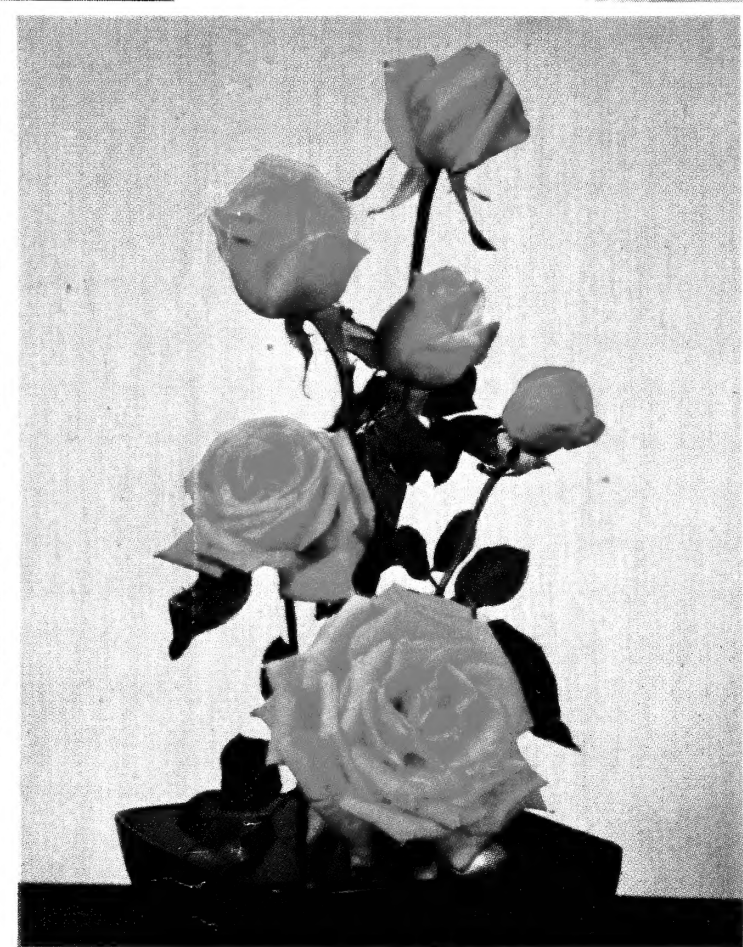


62

Ro

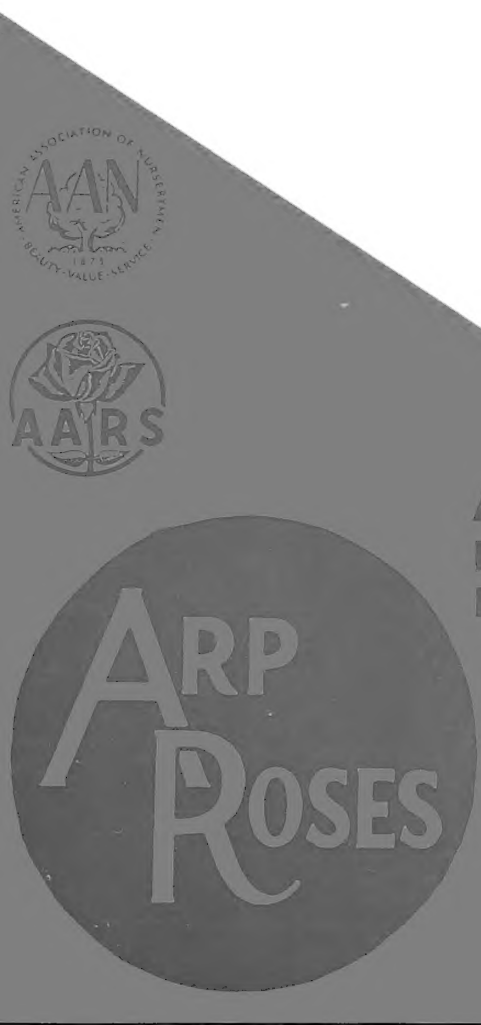
BEAUTY GROWS AT ARP



PINK FROST Pat. 1269

An Arp rose introduction, this huge hybrid tea show type is rapidly gaining favor for its extreme fragrance, heavy growth, sturdy neck, attractive color blends. Pink Frost is a great rose by all standards.

LIBRARY RECEIVED
★ SEP 23 1957 ★
U. S. Department of Agriculture



ARP ROSES

ARP NURSERY COMPANY
PHONE 2-2672
P. O. Box 3338 TYLER • TEXAS

**PECAN, WALNUT
PERSIMMON TREES**

Fall 1957 • Spring 1958
Wholesale Price List



NON-PATENTED

ARP-GROWN

BAREROOT

ROSEBUSHES

(On non-patented varieties the price each is determined by total number of rose-bushes of all kinds in your season's total order.)

Price each, F.O.B., Arp—Boxing at Cost (except cash orders boxed free)

Large Rose Box	\$3.50
Medium Rose Box	2.50

GROUP A

(Less than 10 of a kind, No. 1 only) RATES 100 UP ARE FOR 10 OF A KIND AND SIZE

	1 to 10	100	500 to 2,499	2,500 up
Grade No. 1	\$.70	\$.55	\$.50	\$.47
Grade No. 1½45	.40	.37

RED

Ami Quinard
 Charles K. Douglas
 Christopher Stone
 Grenoble
 Red Radiance
 Rouge Mallerin

WHITE

Frau Karl Druschki
 Kaiserin A. Viktoria
 Konigin Luise

TWO-TONE

Condesa de Sastago
 Edith Nellie Perkins
 Talisman

YELLOW

Golden Charm
 Soeur Therese

PINK

Betty Uprichard
 Dainty Bess
 Editor McFarland
 Radiance

FLORIBUNDA

Else Poulsen, Pink
 Golden Salmon
 Ideal, Red
 Improved Lafayette, Red

CLIMBERS

Cl. Golden Charm
 Cl. Mrs. duPont, Yellow
 Cl. Poinsettia, Red
 Cl. Radiance, Pink
 Cl. Red Talisman
 Cl. Soeur Therese, Yellow
 Cl. Talisman, two-tone
 Cl. White American Beauty
 (F. K. Druschki)
 Paul's Scarlet Climber

GROUP B

(Less than 10 of a kind, No. 1 only) 10 OR MULTIPLES OF 10 OF A KIND

	1 to 10	100	500 to 2,499	2,500 up
Grade No. 1	\$.75	\$.60	\$.53	\$.50
Grade No. 1½50	.43	.40

RED

American Beauty
 Better Times
 Crimson Glory
 Etoile de Hollande
 Poinsettia

WHITE

Caledonia
 Rex Anderson

PINK

Briarcliff
 Picture
 The Doctor

TWO-TONE

Countess Vandal
 McGredy's Sunset
 Pres. Herbert Hoover

YELLOW

Eclipse
 McGredy's Yellow
 Mrs. Pierre S. du Pont

FLORIBUNDA

Betty Prior
 Floradora, Red
 Red Ripples
 Rosenelfe, Pink

CLIMBERS

Blaze, Red, Improved
 Cl. American Beauty
 Cl. Cecile Brunner, Pink
 "sweetheart"
 Cl. Etoile de Hollande, Red
 New Dawn, Pink
 White Dawn

SPECIAL! TRUE BABY SWEETHEART, Cecile Brunner

No. 1, \$1.00 each, No. 1½, \$.80 each.

DIRECT-TO-GARDEN SHIPPING ORDERS INVITED

SHIPMENTS FROM ARP REFRIGERATION OCTOBER 15 'TIL MAY 1



Queen Kay Howard and her court will lead the southwest's extravagant Texas Rose Festival at Tyler, Oct. 17-20, 1957.



Open garden, celebrating first spring bloom at Arp Nursery Company, Tyler, introduced 3,000 guests to 55 newer rose varieties.



Lemon Chiffon, the Yellow Rose of Texas, was beautifully introduced with Sakowitz's Houston fashions (all lemon) by 1955 Festival queen.



Lemon Chiffon fashions compliment the model and the mannequin. The fragrant, prolific yellow rose boasts brilliant lasting color.

Patented Roses

Beautifully Packaged for 2-Week Display

ARP'S RANCH HOUSE STYLE

SMALL CASES OF 10
LARGE CASES OF 25
5 OR MULTIPLES OF 5 OF A KIND

TRADE DISCOUNT

40%

HYBRID TEA

RED

- Each
- \$2.25 Charlotte Armstrong (Pat. 455)
 - 2.25 Mirandy (Pat. 632)
 - 2.25 New Yorker (Pat. 823)
 - 2.25 Nocturne (Pat. 713)
 - 1.75 Rubaiyat (Pat. 758)
 - 2.50 Zulu Queen (Pat. 363)

WHITE

- 2.25 Blanche Mallerin (Pat. 594)
- 3.00 White Knight (Pat. 1359)
- 1958 All-America HT

PINK

- 2.25 Enchantment (Pat. 737)
- 2.75 Helen Traubel (Pat. 1028)
- 1.75 Kath. T. Marshall (Pat. 607)
- 2.50 Pink Frost (Pat. 1269)
- 2.25 Show Girl (Pat. 646)
- 2.50 Tiffany (Pat. 1304)

YELLOW

- 2.50 Burnaby (Pat. 1314)
- 2.00 Diamond Jubilee (Pat. 824)
- 2.00 Fred Howard (Pat. 1006)
- 2.00 Golden Scepter (Pat. 910)
- 2.50 Lemon Chiffon (Pat. 1241)
- 2.25 Lowell Thomas (Pat. 595)
- 2.50 Peace (Pat. 591)

TWO-TONE

- 2.50 Love Song (Pat. 1360)
- 2.75 Mojave (Pat. 1176)
- 2.00 Orange Sweetheart (Pat. 1155)

CLIMBERS

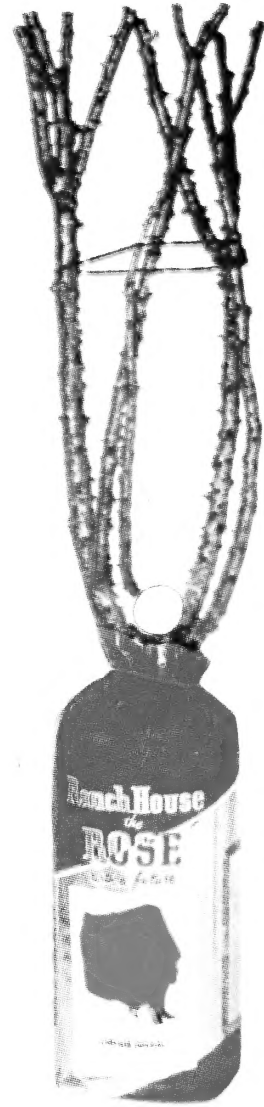
- Each
- \$2.50 Cl. Crimson Glory (Pat. 736)
 - 2.50 Cl. Goldilocks (Pat. 1090)
 - 2.25 Peace (Pat. 932)
 - 2.00 Cl. Summer Snow (Pat. 400)
 - 2.00 Dr. J. H. Nicolas (Pat. 457)
 - 2.25 Dream Girl (Pat. 643)
 - 2.75 Gladiator (Pat. 1524)
 - 2.75 Golden Showers (Pat. 1557)

GRANDIFLORA

- 2.75 Montezuma (Pat. 1383)
- 2.50 Queen Elizabeth (Pat. 1259)
- 2.50 Roundelay (Pat. 1280)

FLORIBUNDA

- 2.50 Circus (Pat. 1382) Bicolor
- 1.50 Donald Prior (Pat. 377) Red
- 2.00 Fashion (Pat. 789) Coral
- ~~2.00~~ Fusilier (P.R.R.) Orange-Red
- 2.50 1958 AARS
- 2.00 Geranium Red (Pat. 811) Red
- 2.50 Gold Cup (P.R.R.)
- 1958 AARS
- 1.75 Goldilocks (Pat. 672) Yellow
- 2.00 Jiminy Cricket (Pat. 1346) Tangerine
- 2.00 Lavender Pinocchio (Pat. 947)
- 2.00 Ma Perkins (Pat. 1143) Pink
- 2.00 Pinkie (Pat. 712) Pink
- 1.75 Pinocchio (Pat. 484) Pale Pink
- 1.75 Red Pinocchio (Pat. 812) Dark Red
- 2.75 Spartan (Pat. 1357) Orange
- 1.50 Summer Snow (Pat. 416) White
- 2.00 Vogue (Pat. 926) Cherry-red
- 2.50 White Bouquet (Pat. 1415)
- 1.50 World's Fair (Pat. 362) Red



MIXED CASE FOR TESTING DEMAND

Order The L-F Case

	Retail Each
Mixed Cases of 25	
2 Mirandy, red	\$2.25
2 New Yorker, red	2.25
2 Nocturne, red	2.25
2 Rubaiyat, red	1.75
2 Pink Frost, pink	2.50
2 K. T. Marshall, pink	1.75
2 Lemon Chiffon, yellow	2.50
2 Peace, yellow	2.50
2 Mojave, two-tone	2.75
2 Cl. Crimson Glory, red.....	2.50
1 Golden Showers, yellow climber.....	2.75
2 Fashion, coral-pink floribunda.....	2.00
2 Spartan, orange floribunda	2.75
<hr/>	
25 Retail for \$61.00 Disc. 40% Cost \$36.60	

A Rosebush with a Future!

TERMS—WHOLESALE

2% 10 days, 30 days net to customers with established credit. If credit has not been arranged or previously established, terms are understood to be 25% cash with order, balance before shipment. Cash orders bareroot packed free, others packed at cost of materials (Large Rose Box \$3.50; Medium Rose Box \$2.50; Large Pecan Bale \$3.00; Medium Pecan Bale \$2.00).

This price list supersedes earlier quotations and covers first-class stock F.O.B. Arp, Texas. Satisfaction on delivery, true varieties and full grades are guaranteed. Unsatisfactory delivery must be reported immediately. The Arp Nursery warrants to the extent of the purchase price that nursery stock sold is true-to-name and as described within recognized tolerances. Seller gives no other or further warranty, express or implied, and will under no circumstances be liable for more than the invoice value at the time of purchase.

1957-58 NON-PATENTED PACKAGE

Buyer's Choice in Solid Cases
1-A and R-A, D-E, 1-E, and R-E

Shipper's Fastest Selling Selection in Mixed Cases
1-B and R-B

Proven best in their class, these standard, heavy flowering roses are available in solid large or solid small cases of your choice of three styles: Deluxe Ranch House, No. 1 Everblooming and Royal Rose Packs:

NO. 1 RED AND SILVER PACK 75c

(AAN grade standard, heavy No. 1 or better)
Red and Silver Bag with 5 x 7-inch Flower Illustration

COST PER BUSH PACK: 75c \$18.75 PER CASE OF 25

Order Case

CONTENTS

1-A 25 No. 1 single bush packs, SOLID case of 25 of one variety of your selection.

1-B 25 No. 1 mixed Shipper's selection of fast-selling named varieties assorted by colors for popular demand: 7 red, 4 pink, 2 white, 4 yellow, 4 two-two, 2 climbers, 2 floribundas.

1-C 25 No. 1 grade, assorted as follows

3 Red Radiance	2 Golden Charm
2 Crimson Glory	2 Soeur Therese, Yellow
2 Ami Quinard, Red	2 Edith Nellie Perkins, 2-Tone
2 K. A. Viktoria, White	2 Talisman, 2-Tone
3 Radiance, Pink	2 Blaze, Red Climber
2 Editor McFarland, Pink	1 Cl. Talisman, 2-Tone

1-D 25 No. 1 packs, mixed case

5 Red Radiance	4 K. A. Viktoria, White
4 Poinsettia, Red	4 Golden Charm
4 Pink Radiance	4 Talisman, 2-Tone

1-E Small Cases of 10 Only—No. 1 Packs, solid cases of 10 of one variety of your selection—\$7.50



RANCH HOUSE The Deluxe Pack

Order Case

No.	Contents	ITEM	Each
D-E	10	DELUXE RANCH HOUSE PACK.....	\$0.95

2-year Giant—Minimum of 5 of a kind or multiples of 5, your selection of varieties (non-patented) listed at left. Specify variety.

40 lbs. Case of 10: \$9.50

DISPLAY SALES AIDS

1. Color variety label and planting instructions on each package.
2. Extra color illustrations, for poster, window or counter display, included free when requested.
3. Ranch House, Royal Rose and Arp Pecan newspaper mat service for advertising layouts, headings and illustrations, available free.
4. All-America Rose Selections folder and gardening suggestions leaflet available free.
5. Point-of-purchase sheets (color poster 22 x 14 in.) mailed with package invoices.



Royal

AWARD-WINNING

SINGLE PACKS

60c

(AAN grade standard, heavy No. 1½)

The Popular Gold and Blue Color Combination

COST PER BUSH PACK: 60c

\$18.00 PER CASE OF 30

Order Case

CONTENTS

R-A 30 Royal Rose single bush packs, SOLID case of 30 of one variety of your selection.

R-B 30 Royal Rose packs, Shipper's selection of fast-selling named varieties, assorted by color for popular demand: 8 red, 5 pink, 2 white, 5 yellow, 4 two-tone, 3 climbers, 3 floribundas—

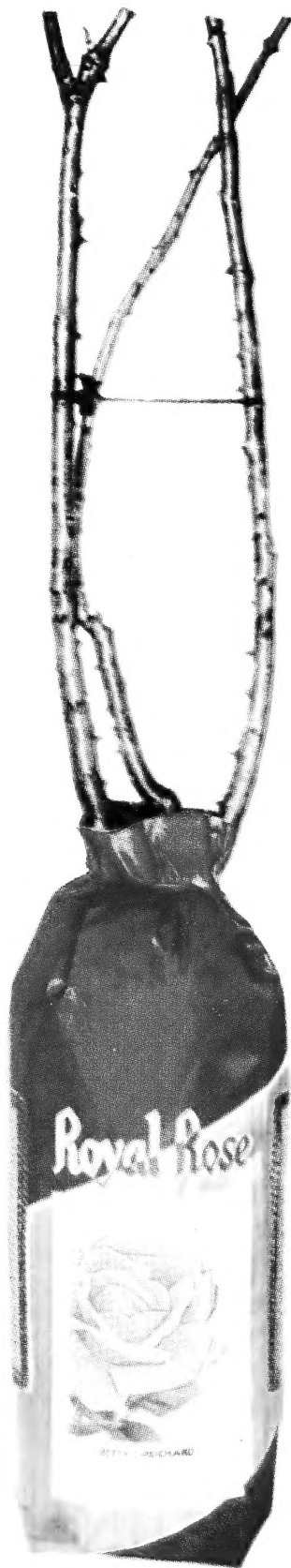
R-C 30 Royal Rose, mixed, as follows:

3 Red Radiance	2 Edith Nellie Perkins, 2-tone
2 Crimson Glory	2 Talisman, 2-tone
2 Ami Quinard	3 Blaze, Red climber
2 K. A. Viktoria, White	2 Paul's Scarlet climber
3 Radiance, Pink	1 Cl. Talisman, 2-tone
2 Ed. McFarland, Pink	2 Floradora,
2 Golden Charm	Red floribunda
2 Soeur Therese, Yellow	

R-D 30 Royal Rose, mixed

5 Red Radiance	5 K. A. Viktoria
5 Poinsettia, Red	5 Golden Charm
5 Radiance, Pink	5 Talisman, Two-tone

R-E Small Cases of 12 Only—Royal Rose packs, solid cases of 12 of one variety of your selection



Rose



NON-PATENTED ROSE BUSHES IN COLLECTIONS OF 5

Popular variety assortments collected in one large "Royal Rose" pack, 5 bushes to the unit, 12 units to the case. All are monthly blooming, budded Hybrid Tea, 2-year-old, field-grown, colorfully wrapped, attractively illustrated.

Minimum Order: 1 case.

Shipping wt.: 70 pounds.

\$1.60

(C-3A)

OTHERS

\$1.75

Order Case CONTENTS—NON-PATENTED

C-1A 12 Royal Rose Collections, 5 named bushes; 1 each:
 Etoile de Hollande, Red Golden Charm, Yellow
 Pink Radiance Condesa de Sagato, 2-tone
 K. A. Viktoria, White
 Cost Each \$1.75 Case of 12 \$21.00

C-2A 12 Royal Rose Collections, 5 named; 1 each:
 Red Radiance Frau Karl Druschki, White
 Briarcliff, Pink Talisman, 2-tone
 Souer Therese, Yellow
 Cost Each \$1.75 Case of 12 \$21.00

C-3A 12 Royal Rose Collections of 5 Varieties unnamed,
 but mixed color, 1 each:
 Red, pink, white, yellow and two-tone, identified by tag.
 Cost Each \$1.60 Case of 12 \$19.20

C-4A 12 Radiance Collections
 5-bush Royal Rose pack, each containing:
 3 Red Radiance 2 Pink Radiance
 Cost Each \$1.75 Case of 12 \$21.00

THRIFTY-THREE \$1.15

Beautiful 3-pound package of 3 Rose bushes of a kind, non-patented:

T-A 20 Thrifty-Three packs of 3 bushes of a kind (60 bushes) in colorful red and silver bag, shipper's selection of good standard named varieties assorted by color for fast sales.
 Cost Each \$1.15 Case of 20 \$23.00

T-W 20 Packs of 3 mixed, Red and Silver Packs:
 1 red 1 yellow, 1 pink
 Cost Each \$1.15 Case of 20 \$23.00



Varieties

PAPERSHELL PECANS

BURKETT. A favorite of West Texas, introduced by J. H. Burkett of Clyde. Size large, shell thin, kernel plump, flavor excellent. Is one of the most popular varieties. Runs 40 nuts per pound and 55% kernel. Very healthy, regular bearer.

DELMAS. From Jackson County, Mississippi. Widely disseminated, size large, shell medium thin, kernel plump, quality good. Runs 45 nuts per pound and 48% kernel. Scabs in damper localities. Heavy bearing, vigorous, beautifully shaped tree.

MAHAN. The Giant Pecan—originated in Mississippi. Largest nut, thinnest shell, and bears when very young. May not last as long or fill as well as other pecans in some localities but is highly valued in others.

MOORE. From Jefferson County, Florida. Runs 67 nuts per pound and 49% kernel. Usually prolific and one of the best commercial varieties for East. Fast growing, early maturing, medium size, thin shell.

MONEYMAKER. From Madison Parish, Louisiana. Runs 51 nuts per pound and 46% kernel. Widely disseminated; size medium. Recommended only for eastern portions of the country. Nut, well filled with rich meat, is easily cracked. Upright grower, beautiful foliage. Early and prolific.

SCHLEY. Thrifty, vigorous, "Eastern" tree originated in Jackson County, Mississippi. Long, medium to large, thin-shell nuts run 47 per pound, 61% kernel, full and plump, and richly flavored. This old, widely disseminated variety, said to be a Stuart Seedling, is only average bearer, but commands top market price. A very high-class pecan.

STUART. Most widely disseminated, grown farther north than most varieties. A large, strong tree, well shaped, also originated in Jackson County, Mississippi. Good quality large nuts run 55 per pound, 44% kernel, medium-thin shell. The old and well-known papershell pecan.

SUCCESS. Large oblong nuts with thin shells and partitions, runs 37 per pound and 52% kernel. Full, sweet flavored, yellow, excellent quality. Strong grower, regular, heavy bearer from Stuart and Schley territory, widely used and one of the most valuable Eastern varieties.

TEXAS PROLIFIC. (Sometimes called **Sovereign**.) Introduced by E. E. Risien, San Saba, Texas. Runs 48 nuts per pound and 54% kernel. Very prolific and widely disseminated in Texas. A very popular variety. Medium thick shell, rich kernel; heavy, early bearer, and fast growing tree.

WESTERN SCHLEY. Introduced by Guy Risien, San Saba, Texas. Runs 59 nuts per pound and 60% kernel. Thin shell and good cracking quality. Resembles the Eastern Schley very much, but probably more valuable for Texas. Very prolific and seems to do well over a wide area.

BAREROOT GRAFTED PECAN TREES

PRICE EACH — F.O.B. ARP

Size	Price Each, Lots of 10	50	500 up
18 to 24 inches	\$1.45	\$1.35	\$1.25
2 to 3 feet	1.65	1.45	1.35
3 to 4 feet	1.90	1.70	1.60
4 to 5 feet	2.25	2.05	1.95
5 to 6 feet	2.90	2.70	2.55
6 to 7 feet, Branched	3.95	3.75	3.60
7 to 8 feet, Branched	4.95	4.75	4.60
8 to 10 feet, Branched	6.75	6.50	6.30
10 to 12 feet, Branched	8.65	8.40	8.20
12 to 15 feet, Branched	10.75	10.55	10.40



PECAN TREES

PACKAGED

Better Looking, Faster Selling, Longer Lasting. Pre-packaged and exclusive with Arp Nursery Co. because the Arp Tree Packer, like the Arp Rose Packer, is original in design and construction.

PRICES—F.O.B. ARP

Minimum Order Multiples of 5 of a kind, in cases of 10 Trees Size	Each Lots of 10 to 45	Each Lots of 50 Up
18 to 24 inches.....	\$1.75	\$1.65
2 to 3 feet.....	1.95	1.85
3 to 4 feet.....	2.20	2.10
4 to 5 feet.....	2.65	2.50

Minimum Order Multiples of 4 of a kind, in cases of 8 Trees Size	Lots of 8	Lots of 40
5 to 6 feet.....	3.30	3.15
6 to 7 feet.....	4.35	4.20
7 to 8 feet.....	5.45	5.25
8 to 10 feet, light.....	7.25	7.00

PAPERSHELL VARIETIES:

- | | | |
|---------|----------------|----------------|
| Success | Schley | Moore |
| Stuart | Texas Prolific | Western Schley |
| Mahan | Moneymaker | Burkett |
| | | Delmas |

Root-Packaged Pecan Trees are uniformly, beautifully contained in colorful green waterproof bag. Tempting pecan nuts in two shades of brown are spotted over this modern package. Nursery and Garden department tree sales in pecan territory will surely be stimulated when these clean, neat, dormant Arp Pecans, heavy-bodied and amply rooted, are displayed. Tree and nut illustrations in 4-color process, with planting instructions, appear on every package.

Most important commercial varieties, popular, thrifty sizes of vigorous selected Arp Pecans, famous in nursery business for 36 years, are offered in quantities. Promotional advertising in your community can be worthwhile now.

Pecan is a most desirable tree. Fruitful, shapely, permanent, it affords cooling shade all summer long.

Urge your customers to plant at least a few trees that will outlive their grandchildren—provide tasty nuts for the table and the kitchen while covering the play area or pasture with welcome relief from summer temperatures, year after year, and for so very little money!

From the Gulf of Mexico to Southern Pennsylvania, from the Atlantic to the Panhandle, in grove or landscape project, on boulevard or patio, Pecans from Arp can be important and profitable in your nursery sales.

Shipping season is usually Nov. 1 to March 10.

Freshly dug stock goes into each order. Motor freight line gives cheapest transportation to most Southern points. Truckload distribution can be arranged.

Burlapped case of 10 packaged trees (minimum order) weighs 70 to 90 lbs., depending on size of tree ordered. Trees larger than 5 feet are packed in cases of 8 (minimum order).





Bareroot PECAN • PERSIMMON • WALNUT

GRAFTED TREES AND NURSERY-GROWN SEEDLINGS

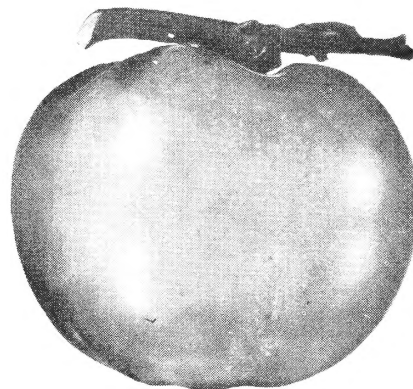
Grafted

JAPANESE PERSIMMON

on American Persimmon, 2-yr.-old
Bearing in the Nursery

TEXAS PECANS

Native thin-shell
seedling, nursery
grown 3 and 4
years.



Price Each, Lots of

Size	10	50	500 Up
18 to 24 inches.....	\$0.65	\$0.50	\$0.45
2 to 3 feet.....	.75	.60	.55
3 to 4 feet.....	.85	.70	.65
4 to 5 feet.....	1.00	.80	.75
5 to 6 feet.....	1.25	1.05	1.00
6 to 7 feet.....	1.50	1.30	1.25
7 to 8 feet.....	1.75	1.55	1.50

Excellent Shapely, Productive Shade Trees, Long-Lived and Prolific Bearer of Thin-Shelled Nuts, from Southern Illinois to the Gulf and from Texas Panhandle to the Atlantic.

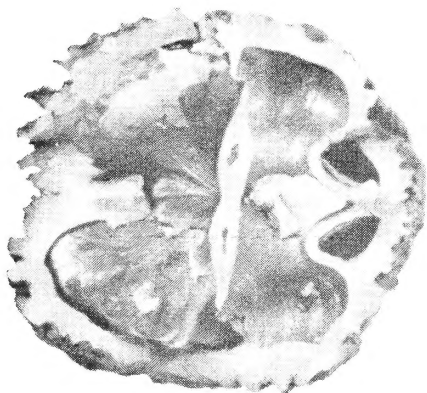
Comparatively hardy. Fine eating fruit, large, round and red, almost seedless. Bears when young. Fair frost-resistance. Ornamental foliage. Varieties: Eureka and Tanenashi.

Price Each in lots of:

SIZE	10	50	500 up
2 to 3 feet.....	\$0.80	\$0.70	\$0.65
3 to 4 feet.....	1.00	.90	.85
4 to 5 feet.....	1.25	1.10	1.05
5 to 6 feet.....	1.75	1.60	1.55

THOMAS BLACK WALNUT

Grafts

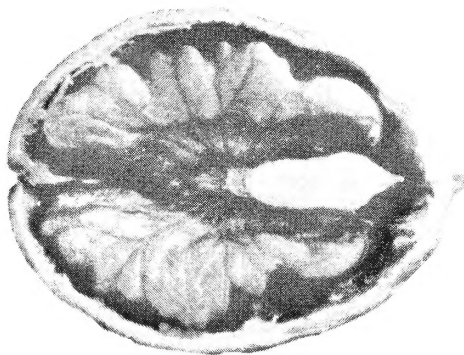


Bears when very young, often the second or third year after planting. Nuts are of immense size and have delicious flavor. Thin shells and large kernels that come out easily because they are so large and plump. Grown in almost every state. Very hardy and a fast grower.

SIZE	10 to 90	100 up
18 to 24 in.	\$0.90	\$0.80
2 to 3 ft.	1.04	.96
3 to 4 ft.	1.27	1.19
4 to 5 ft.	1.61	1.54
5 to 6 ft.	2.25	

ENGLISH WALNUT

Grafts



Large, plump nuts of extra-fine quality from a splendid shade tree. For moderate climates not usually subject to severely sudden temperature changes.

SIZE	10 to 90	100 up
18 to 24 in.	\$1.30	\$1.20
2 to 3 ft.	1.50	1.30
3 to 4 ft.	1.70	1.50
4 to 5 ft.	2.00	1.75
5 to 6 ft.	2.60	

AMERICAN BLACK WALNUT

Nursery-grown Seedlings



Selected from good strain with large nuts and fine kernels. Trees are fast growing and good for shade as well as nuts.

SIZES	10 to 90	100 up
18 to 24 in.	\$0.45	\$0.40
2 to 3 ft.50	.45
3 to 4 ft.60	.55
4 to 5 ft.80	.75

F.O.B. ARP, BURLAP BALED AT COST, EXCEPT CASH ORDERS BALED FREE

ARP NURSERY COMPANY

5th at Wall

P. O. Box 3338

Phone: 2-2672

TYLER, TEXAS

TREES PACKAGED FOR DISPLAY SALE

Thomas Black Walnut

Bears very young, often the second or third year after planting. Nuts are of immense size and have delicious flavor. Thin shells and large kernels that come out easily because they are so large and plump. Grown in almost every state. Very hardy and a fast grower.

Size	Price each in Cases of 10
2 to 3 feet.....	\$1.39
3 to 4 feet.....	1.67
4 to 5 feet.....	2.05

English Walnut

Large, plump nuts of extra-fine quality from a splendid shade tree. For moderate climates not usually subject to severely sudden temperature changes.

Size	Price each in Cases of 10
2 to 3 feet.....	\$1.75
3 to 4 feet.....	1.95
4 to 5 feet.....	2.40

American Black Walnut

Selected from good strain with large nuts and fine kernels. Trees are fast growing and good for shade trees as well as nuts.

Size	Price each in Cases of 10
2 to 3 feet.....	\$0.83
3 to 4 feet.....	.98
4 to 5 feet.....	1.21

Grafted Japanese Persimmons

Varieties: Eureka and Tanenashi on American Persimmon 2-year-old

Comparatively hardy. Fine eating fruit, large, round and red, almost seedless. Bears when young. Fair frost resistance.

Sizes	Price Each In Case of 10	Each Minimum 10 Cases 100 Trees and Up
2 to 3 feet.....	\$1.10	\$1.00
3 to 4 feet.....	1.35	1.25
4 to 5 feet.....	1.70	1.55
5 to 6 feet.....	2.25	2.10

SHIPPING WEIGHT: Approx. 50 lbs. per case of 10

CONTAINER-GROWN ROSES FOR SPRING 1958

For Your Truck's Loading at Arp, or for Arp Truck Delivery in 300-Mile Radius at Additional Transport Cost: Most Popular and Novel Varieties Booked, Subject to Crop, at Current Retail Each Plus 50c Per Container, Less Trade Discount: 40%

Your Customers Want Facts

For sales display at room temperature, clear wax properly applied is the best treatment for retaining moisture in rose canes. Other preservatives known and tested are comparatively ineffective wastes of time and money. POLYETHYLENE HOLDS WELL IN REFRIGERATION. No package protects beyond 3 weeks except at temperatures in mid-thirties.

TRUCKLOADS DELIVERED AT COST. Group delivery to most convenient distribution point (for LCL freight to destination) if desired will be charged at 3c per bareroot and 6c per packaged rosebush, 4c to 20c per bareroot and 10c to 35c per packaged tree depending on size.

Retail nurseries establish own replacement policy. At wholesale your guarantee is that true varieties of full grade, as represented, will arrive in good condition. Neither storage life nor transplanting results are guaranteed by wholesale grower. Reasonable adjustment on perishable merchandise can only be considered if error or damage is reported promptly on delivery.

R. MULTIFLORA JAPONICA is the understock. Vigorous, fibrous, nematode resistant, Arp's selected strains of Multiflora rose are superior to any understocks with which they've been fairly compared.

PLANT PATENT NOTICE:

The following provisions apply to all patented and trade-marked plants we sell. Each of the plants so indicated is a patented variety under the laws of the United States and any asexual reproduction or distribution by sale, gift or otherwise of scions, buds or cuttings therefrom for such reproduction without license from the patent owners constitutes an infringement of the patent for same. Any unauthorized reproduction, sale or other distribution of reproducing propagating material of these roses prohibited by the patents, under the names and/or trade-marks of the patent owner or any other name or names, will subject the reproducer, seller, or distributors thereof to prosecution for infringement under the United States Patent and Trade-Mark Laws.



ARP NURSERY COMPANY

P. O. Box 3338

TYLER • TEXAS