

SB115
.Z9085

R. 1002

Ir

I
R
I
S



1
9
5
7

LIBRARY OF AGRICULTURE

Brown's

Sunnyhill Gardens

LIBRARY
RECEIVED
★ MAR 26 1957
U. S. Department of Agriculture

ROUTE 4, BOX 145
WALLA WALLA, WASHINGTON

Introductions For 1957

GAY PRINCESS

\$ 20.00

(O. L. Brown '57) Midseason; Average Hgt. 34"
((Hall pink sdlg. x June Bride)) x (Altar Light)
Fertile both ways.

Luscious lemon yellow self. All petals, including styles, are HEAVILY Laced- Standards are well domed and falls are semi-flaring. Flowers open well without tearing or distortion despite the extreme lacing. If you like laced irises you are sure to like this one. (Pictured on cover)

CO-INTRODUCING With Fairmount Gardens, Lowell, Mass.

BETH COREY

\$20.00

(Watkins-Watkins '57) Height 40" Midseason to late.
(Shining Waters x Gloriole) x Great Lakes) X Chivalry.

Lovely, large, non fading medium blue self, adorned with a radiant yellow beard Standards are well domed and falls flare nicely. Stalks are tall and sturdy, with excellent branching. Bud sockets carry three and four buds each, giving a wealth of bloom. Plants are very husky and vigorous. Greatly admired by our many garden visitors. H. C. A. I. S. 1953

ALL HONEY

\$15.00

(DeForest '56) Golden honey-colored self. Closed standards and flaring falls on well branched stalk.

ALLINE ROGERS

\$ 1.00

(Kleinsorge '50) Huge blend of ashes of roses, gold and tan. Form is flaring and the flowers are ruffled.

ALTAR LIGHT

\$10.00

(O. L. Brown '54) A large flower with well domed standards of light yellow. The falls light yellow shading to near white in the center of falls with a bronze overlay at the outer portion of the hafts. Lightly ruffled throughout and of heavy substance. Long blooming period.

APRICOT GLORY

\$ 2.00

(Muhl. '51) A smooth apricot pink with a self colored beard and with slightly deeper coloring on haft.

ARABI PASHA

\$ 3.50

(G. Anley '53) A flaring deep cornflower blue with a blue-tipped beard. The flowers are tailored and smoothly finished yet the falls have a wave or dip in the very center giving it a jaunty appearance. Dykes Medal Award in England, 1953.

ARGUS PHEASANT

\$ 1.00

(DeForest '48) This Dykes Medal winner is a large brown self with broad flaring falls and wide standards. One of the very finest in this color class.

ARLENE WOOD

\$ 1.00

(L. Norton '52) Dove orchid standards clean lilac orchid falls with lemon beard. A wide margin of deeply crimped and laced edges throughout make this one very stunning.

AUNT AMORET

\$ 1.50

(Craig '51) Unusual fancy plicata of violet on white.

BALLERINA

\$ 1.50

(D. Hall '51) Large, well formed iris of flamingo pink. Good substance and excellent branching.

BALLET DANCER

\$.75

(Kleinsorge '49) A rich blend of light tan and golden apricot. Lovely ruffled flowers of flaring form.

BANG

\$25.00

(Craig '55) A rich bright red. Tops in this color class.

BANNER BRIGHT

\$ 3.50

(L. Crosby '54) Bright self in a coloring of orange and yellow buff.

BEACON HILL

\$ 8.00

(Corey '54) A clean light blue, smooth and ruffled. Good size and increase, 36"

BEECHLEAF

\$15.00

(Kleinsorge '55) Lovely ruffled brown. Enlivened by copper and violet undertones.

- BELLA MOHR** \$15.00
(Ohl '55) Wide, full, dark glowing purple free of haft markings. An "Elmohr" with "Sable" coloring! Vigorous.
- BELLE AMIE** \$.50
(J. Ohl '49) A large ruffled iris in lemon-ice color, very fine.
- BELLERIVE** \$.75
(C. Benson '49) A large cream iris, semi-flared and ruffled, good substance.
- BETH COREY**
"See Introductions"
- BIG GAME** \$ 8.50
(Fay '54) A deep violet self. The tall stalks produce many large blooms throughout the season.
- BIG UTE** \$10.00
(Wallace '54) A large burgundy red with a blue sheen below the beard. Makes an attractive clump.
- BLACK HILLS** \$ 2.50
(Fay '51) Here is another blue-black Iris, a descendant of Black Forest. A nicely proportioned, stylish blue-black with beard to match.
- BLACK MICHAEL** \$ 2.00
(Morris '49) Unusually tall near-black iris from England. The domed standards are dark blue-violet and flaring falls are deep velvety, violet-black. Withstands severe weather. Silver Medal '48 (England)
- BLACK TAFFETA** \$ 7.50
(Songer '54) An unusually rich, dark black purple self with a self-colored beard. The form is excellent and it has broad, slightly ruffled petals and a glistening finish.
- BLUE CLIF** \$10.00
(Hamblen '56) Campanula violet self with lighter area near the hafts. Fine form and heavy substance.
- BLUE DEBUT** \$10.00
(Wallace '55) Pale blue self, lightly ruffled and laced.
- BLUE HAWAII** \$ 2.00
(Schreiner '54) A large rich marine blue. An iris of great color value.
- BLUE SAPPHIRE** \$ 3.00
(Schriener '53) Large, beautifully formed and ruffled light blue with heavy substance. Outstanding.
- BLUE STARDUST** \$ 3.00
(Muhl. '55) Cornflower blue, glittering with "stardust". Lovely, wide, large flowers.
- BLUMOHR** \$ 1.50
(W. Marx '49) A pale powder blue of large size and beautiful onco form. This iris with its long lasting blooms is a joy to have.
- BOLD CONTRAST** \$ 8.50
(Linse '54) One of the newer variegatas. Inca gold standards, reddish brown falls, edged color of standards.
- BOLD COPPER** \$ 1.00
(Sass '50) Rich glowing red copper blend with beautifully ruffled flowers of flaring form and heavy substance.
- BONNIE DUNDEE** \$ 4.00
(Norton '54) Lavender-orchid self with heavily crimped edges. Light yellow beard and haft.
- BREAK OF DAWN** \$ 2.00
(Sass '53) Deep seashell pink with self colored beard.
- BRIGADOON** \$30.00
(Tompkins '55) A blend of Fuchsia and Amethyst with rich brown beard and smooth finish.
- BRIGHT HALO** \$15.00
(Randolph '55) Bright yellow standards. Falls white with yellow overlay. A very fine midseason variety.
- BRIGHT HOUR** \$ 3.50
(G. Douglas '52) Probably the most stunning of all the new amoeanas. Silvery-white standards, rich purple falls with a white border two-thirds of the way down the falls.
- BRONZE BROCADE** \$.75
(Nesmith '48) Warm copper-red and brown blend with flush of purple on the falls.
- BUTTERFLY BLUE** \$ 3.00
(Fay '52) Frosted clear light blue with pale lemon beard. No haft markings. Falls are semi-flaring and ruffled. Well branched and hardy.
- BUTTERHORN** \$20.00
(Sass '55) Very fine, cool lemon yellow. Mattie Gates type.
- CAHOKIA** \$ 1.00
(Faight '48) Lovely clear light blue with slight turquoise cast. Lemon yellow beard. Fine form and heavy substance.

- CAIRO** \$ 2.00
(Klein '52) A gigantic flower of spreading form done in rich light tan with a glowing yellow undertone and a suffusion of buff on the hafts. A real beauty.
- CAPTAIN'S LADY** \$ 7.50
(O.L. Brown '55) Standards orchid, falls creamy white with edges brushed the same color as standards. A tangerine beard adds to the beauty of this plicata. Vigorous and hardy. Early.
- CARMELA** \$12.00
(Schreiner '55) One of the new "crinkled" iris, in the color of caramel and honey.
- CAROLINE JANE** \$ 3.50
(DeForest '51) Glistening white ground plicata, stitched and flushed light violet. Very large ruffled flowers on tall, well branched stalks. One of the finest new plicatas.
- CASA MORENA** \$.50
(DeForest '43) A nice iris in a burnt sienna and chestnut color with bronze beard. Medium height, good bloomer.
- CASCADE SPLENDOR** \$.50
(Kleinsorge '45) A ruffled pinkish apricot blend, has fine form and heavy substance.
- CASCADIAN** \$ 3.00
(Linse '52) One of the most beautiful newer whites. Crisp and ruffled with extraordinary white falls and a white beard. This is an outstanding show flower.
- CASTLE ROCK** \$ 2.00
(Loomis '52) Large blue and white plicata with a blue blaze through center of falls. Tall.
- CATHEDRAL BELLS** \$ 3.50
(Wallace '53) Tall, wide, light pink with serrated edges and flaring falls.
- CATHERINE CLAAR** \$ 7.50
(E. Claar '55) A new addition to the Amoena class. Falls are very dark and standards white. Very late.
- CELESTIAL BLUE** \$10.00
(Bro. Charles '54) Clear light blue self of fine form on well branched stalks.
- CENTURIAN** \$ 1.00
(Wills '50) EM. 35" Handsome rich burnished brown with hint of blue below gold beard. Fine substance and good branching.
- CERULEAN** \$ 3.00
(Craig '50) Large, broad greyed-cerulean blue.
- CHANTILLY** \$.50
(D. Hall '45) An orchid pink in soft hues with edges of petals crimped like lace. Blooms over a long period of time.
- CHARMAIZE** \$ 1.75
(D. Lyon '49) Rich yellow with a strong undertone of chartreuse. A wide full flower of good height.
- CHIQUITA** \$ 1.25
(Knowlton '51) Lovely is this ruffled charming neglecta with its pansy-like coloring and finish.
- CHIVALRY** \$.50
(J. Wills '44) Lovely medium blue with heavy substance and ruffled flaring form. Lengthy blooming period.
- CINNAMON TOAST** \$ 6.00
(Sass '53) Large yellow plicata sanded red-brown.
- CLARA B.** \$ 2.50
(Muhl '52) Large white with a lacey border of lemon yellow. Unusual and attractive.
- CLIFFS OF DOVER** \$ 3.00
(Fay '53) Large ruffled clear white with light yellow beard.
- CLOUD CAP** \$ 2.00
(De-Forest '50) Very tall, large pink with red beard. An eyecatcher much admired by all the visitors.
- CLOUDLESS SKY** \$15.00
(Watkins-Graves '55) Light Cerulean Blue self. Lightly ruffled blooms on sturdy stalks.
- COLUMBIA** \$ 3.50
(Tompkins '52) Rich medium blue with flaring form.
- CONCORD VELVET** \$ 1.00
(Crosby '52) Large well-formed flowers of rich Concord grape purple. Tall and well branched.
- CONFETTI** \$.60
(Schreiner '48) Large pink plicata on creamy white ground. Well branched with many buds. A good dependable grower.
- CORDOVAN** \$.50
(Kleinsorge '46) Coppery brown of an unusual finish. Heavy substance and fine form, always a favorite here.
- CORONATION TAPESTRY** \$ 4.00
(Craig '52) A lovely onco hybrid of many colors. Tall and large.

- CORPORAL MARY** \$.75
(Graves '49) A large flower of deep cream with a white blaze on the falls.
- COUNTRY BUTTER** \$ 2.00
(Sass '53) Deep butter yellow with a richer beard.
- CREAM AND TANGERINE** \$12.50
(Muhl. '56) Light Peach-Yellow self with a peach-tangerine beard.
- CRISPETTE** \$ 5.00
(Schreiner '54) Deep orchid with fluted petals and lacy edging.
- DARK BOATMAN** \$15.00
(Cook '54) The standards are deep violet, the wide velvety falls are black violet; the beard is same color as standards.
- DARK CHOCOLATE** \$ 8.00
(George H. Murray '54) The name is very befitting this dark chocolate self that is free of any red tones. A large, wide somewhat ruffled, heavily substandard flower.
- DARK MELODY** \$ 1.00
(Sass '51) A most appealing and novel new plicata with cream ground and heavy border of dark purple. Brown beard.
- DAWN REFLECTION** \$ 1.00
(Stevens '48) A gigantic plicata of rich Ivory with a flush of lilac in the standards and a dainty, stitched border of rose pink around the falls.
- DEEP BLACK** \$15.00
(Cook '55) Very dark Violet, falls somewhat darker with deep violet beard.
- DEFIANCE** \$14.00
(Tompkins '53) Smoothly finished red-brown self. Quite free of haft markings.
- DESERT SONG** \$.50
(O. Fay '46) Rich cream of ruffled flaring form, fine substance. Large flowers. A very smooth iris of good habits.
- DOLLY VARDEN** \$ 2.00
(D. Hall '50) A deep flamingo pink with an overlay of rich salmon. Heavy substance and fine branching. A good performer.
- DREAMCASTLE** \$.50
(P. Cook '43) Deep orchid pink with broad hafts and wide petals. A white beard makes this iris very attractive.
- DREAM DANCE** \$ 8.00
(Carl Larson '54) A light golden tan self with mother of pearl area in the center of the falls. Lightly ruffled and of heavy substance. Very lovely.
- DREAMY** \$ 2.50
(Linse '53) Extra large ruffled white with white beard and heavy substance.
- DRESS REHEARSAL** \$ 5.00
(Lapham '54) Large, smooth red self. Takes the heat well.
- EASTERMOHR** \$ 5.00
(Weidner '53) An Onco-hybrid that is really blue. A cross of Wm. Mohr x Easter Morn, it has inherited the color and excellent branching from the pollen parent. A large, ruffled flower with firmly cupped standards and semi-flaring falls.
- EBONY ECHO** \$ 1.25
(Tompkins '48) Large with broad petals and very horizontal falls. Heavy substance in a deep carmine red with black velvety overlay. Takes weather quite well.
- ELEANOR'S PRIDE** \$25.00
(Watkins-Watkins '56) Beautiful Powder blue self with white beard. Extra large blooms are well displayed on husky, vigorous plants.
- ENCHANTED PEARL** \$15.00
(Rex Brown '56) Pearly toned blue white. Lightly ruffled blooms of heavy substance are carried on tall well branched stalks.
- ENGRAVED** \$ 3.50
(Craig '52) Strange and unique oncoplicata of white with an over-all intense network of crisp steel engraving. Large.
- ESCAPADE** \$ 2.00
(Tompkins '52) Beautiful and different, Rich glowing orchid with a shimmering border of gold and a gold beard. Broad and ruffled. Charming carefree color effect.
- EVA SLOAN** \$ 6.00
(Faught '53) Beautiful cream and white of fine form and substance.
- EVENING STAR** \$15.00
(Corey '55) Lovely lemon cream. Very wide, heavily ruffled, and excellent branching. An outstanding newcomer.
- EXTRAVAGANZA** \$.50
(G. Douglas '41) Cream standards, red purple falls with copper overlay. A fine late blooming iris tall here.

- FABULOUS KATE** \$ 1.50
(Muhl '50) Huge medium yellow, heavily ruffled.
- FANTASY** \$ 1.00
(Hall '47) Rich orchid lavender with a full tangerine beard. Very good.
- FIREBRIGHT** \$10.00
(Craig '54) Excellent deep red, rich and intense, with blue blaze on the haft. Smoothly finished.
- FIRECRACKER** \$.50
(D. Hall '43) A very bright red and yellow plicata. Commands attention.
- FIREDANCE** \$ 1.00
(O. Fay '47) A more brilliant Firecracker, with the markings confined to a distinct heavy border on the falls.
- FIRST VIOLET** \$ 7.00
(DeForest '52) A beauty of clear sparkling Manganese violet. Lighter beard and wide clean hafts.
- FLAMINGO BAY** \$ 6.00
(Muhlestein '53) Tall well branched flamingo pink with good color and lovely wide blossoms.
- FOR SURE** \$ 4.00
(Linse '53) A true hybrid with Lady Mohr as a parent. A creamy tan washed with violet about the beard. Very ruffled and with really excellent branching. A lovely iris.
- FORTUNE'S GIFT** \$10.00
(Mitsch '55) Large, well formed deep bronze self.
- FOXFIRE** \$ 3.50
(Fox '53) Very rich yellow of excellent form.
- FRANCES CRAIG** \$ 3.50
(Craig '52) Immense, pale greyed lavender flowers on tall stems. For substance, quality and garden color it is tops.
- FRANCES KENT** \$ 2.00
(DeForest '51) Light apricot cream. Deep tangerine beard, pink flush at the haft. Charmingly different.
- FRIVOL** \$ 1.00
(Whiting '54) 36 inches. A rich rose and gold blend with all edges heavily ruffled and frilled.
- FRONTIER DAYS** \$ 5.00
(Tompkins '53) Near cardinal red with glossy finish.
- FRONT PAGE** \$10.00
(Kleinsorge '55) Large, red-gold with lighter area in center of falls. Tall.
- FULL REWARD** \$10.00
(Kleinsorge '55) Deep toned yellow with broad falls and domed standards. Prolific bloomer, nice branching.
- GARNET GLOW** \$ 1.50
(Sass '51) Dark red-purple with flaring form. The tangerine beard adds to its charm.
- GAY BORDER** \$.50
(DeForest '49) White plicata evenly bordered with maroon.
- GAYLORD** \$ 3.00
(G. Douglas '50) Large new amoena in heavy demand.
- GAY PRINCESS**
(O.L. Brown '57) "See Introduction"
- GAZA** \$ 1.00
(Jory) Lovely Mohr onco-bred of Clay pink. Hardy.
- GENE WILD** \$ 5.00
(Craig '52) Simply stunning is this warm white and old rose fancy plicata. One of Craig's very best.
- GLOWING AMBER** \$ 5.00
(Craig '53) Golden amber overlaid with a smoky umber and sepia. Fancy.
- GOLDEN ALPS** \$10.00
(Brummitt '55) Cream standards and golden falls; rich, wide and lovely.
- GOLDEN HAWK** \$10.00
(Smith '51) An exceptionally handsome large primrose yellow self with cupped standards and semi-flaring falls.
- GOLDEN SUNSHINE** \$ 3.00
(Schreiner '52) Very fine, Clear yellow self.
- GOLDEN SYMPHONY** \$.75
(Horton '44) Yellow standards. Lavender blue falls with border of yellow. This is generally a late bloomer.
- GOLDEN TWILIGHT** \$ 3.50
(Tompkins '53) A new blend of golden apricot, widely flaring and ruffled.
- GOLDEN VALLEY** \$20.00
(O. L. Brown '56) Midseason. A bright yellow self, wide, semi-flaring falls. Domed standards. Well branched.

- GOLD TORCH** \$ 2.00
(Muhl. '55) A good deep yellow to prolong the season. Somewhat ruffled.
- GOOD MEASURE** \$ 2.00
(Whiting '53) Brilliant, deep, cadmium yellow without an orange influence. Superb grower.
- GREAT DAY** \$ 5.00
(Tompkins '53) Rich, glossy, ruffled flaring, non-fading deep red, devoid of haft markings.
- GREEN MOHR** \$ 2.00
(Muhl. '51) Large blooms of greenish-chartreuse. One of the most attractive and interesting of the Mohr "family".
- GYPSY HEART** \$ 3.00
(Tompkins '53) Lovely new bicolor. Standards soft buttercup yellow, falls are clear orchid blue.
- HALLMARK** \$ 7.50
(Hall '54) Large smoothly finished and beautifully ruffled golden apricot. Unusually broad falls enhanced by deep tangerine beard.
- HAPPY BIRTHDAY** \$ 2.50
(D. Hall '52) Large, well formed, deep Flamingo pink, dark tangerine beard. Definitely becoming a Western favorite.
- HAPPY MEETING** \$ 17.50
(D. Lyon '55) Heavily ruffled and flared plicata of white bordered with deep violet. Many blooms carried on tall, branched stalks.
- HEATHER ROSE** \$.75
(D. Hall '50) The name describes this very lovely iris with it's tangerine beard.
- HELLEBORE** \$ 5.00
(C. Taylor '53) An attractive red-brown of good form and substance.
- HERITAGE** \$ 1.00
(D. Hall '50) A flamingo pink, deeper than Cherie and taller. Slightly ruffled and no haft markings. Very fine.
- HERMIT THRUSH** \$ 10.00
(Mitsch '55) Beautiful, smooth medium brown with a glistening finish. Flowers are wide and ruffled. Tall stalks with fine branching.
- HIGH COMMAND** \$.50
(Long '45) This large tall variegata from England has yellow standards and blackish maroon falls edged white.
- HIGH TOR** \$ 2.00
(Fielding '52) Huge, fragrant, ruffled chicory blue; falls slightly darker.
- HI-TIME** \$.75
(D. Hall '50) Lustrous golden apricot with full deep tangerine beard. Well branched and a vigorous grower.
- HIT PARADE** \$.50
(D. Hall '47) Large, vigorous flamingo pink. Always puts on a good show here.
- HONEY RUFFLES** \$ 3.00
(Suiter) Nicely fluted lemon self. White blaze below lemon beard.
- ICE CARNIVAL** \$ 10.00
(Watkins '54) Very ruffled, crisp flower, with light azure blue standards and white falls.
- INCA CHIEF** \$ 3.00
(Mitsch '52) Immense lustrous golden-bronze self, slightly ruffled, well proportioned and of gorgeous coloring.
- INDIANA NIGHT** \$.50
(P. Cook '42) Large; dark blue-purple. Taller than most in this color class, has a nice velvety finish.
- INSPIRATION** \$.50
(Stevens '37) Extra large mulberry pink, different and always in demand.
- IVORY SUPREME** \$ 5.00
(Carpenter '53) Large pale ivory cream flushed with velvety ivory at the hafts. Standards are domed and ruffled, falls are wide and flaring.
- JANE PHILLIPS** \$.75
(Graves '50) Exquisite clear blue with domed standards and flaring falls. Truly a top quality iris.
- JAN HESS** \$ 12.00
(Watkins '55) A broadly formed medium blue bitone. Firm substantenced flowers on well branched stalks.
- JOAN CRAWFORD** \$ 12.00
(C. Benson '54) Large silvery-blue self with white tipped beard.
- JOSEPH'S MANTLE** \$ 1.00
(Craig '49) Deep cream-lemon plicata with all-over brushings of reddish brown.

- JUNE BRIDE** \$ 2.00
(Hall '52) An apricot pink with an out-standing geranium-red beard. A large flower with horizontal falls making it most desirable.
- JUNE MEREDITH** \$15.00
(Muhl. '54) Lovely rich pink self with a heavy, long deep tangerine beard. Heavy substance.
- JUNE SUNLIGHT** \$ 5.00
(McCormick '53) Velvety-appearing clean self of light cadmium yellow with heavy orange beard. Superb substance.
- KALIFA FATIMA** \$ 3.00
(C.G. White '52) Smoothly tailored Onco derivative. Lovely lavender-white with black-purple markings and beard. Hardy North.
- KEN** \$15.00
(E. Rundlett '56) Unusual, deep shade of hyacinth blue. The wide falls are lightly waved and of heavy, velvety finish.
- KINGS JESTER** \$.60
(Stevens '48) Unusual plicata, of a silvery white with deep maroon markings. Large, with semi-flaring falls. Fast becoming a favorite among plicatas.
- KOL NIDRE** \$ 4.00
(D. Lyon '53) A vibrant bi-tone with violet standards and dahlia purple falls. Nice form and branching.
- LADY BLUEBEARD** \$ 5.00
(Suiter '55) A new ruffled white with heavy blue beard. Long bloomer of good height. Very lovely.
- LADY ILSE** \$ 3.50
(K. Smith '51) Large ruffled flower of powder blue with an iridescent sheen.
- LAKE WALDEN** \$ 5.00
(Fraim '53) Light medium blue bi-tone. Mid season to late.
- LEADING LADY** \$.75
(Lyell '50) Yellow standards. Falls are white edged yellow. A good iris of medium height.
- LEGIONNAIRE** \$ 3.50
(Watkins-Graves '53) Exquisite flower of pale blue with a deeper blue flush toward the center of the flower. Crisp ruffling of both standards and falls gives added charm. Superb branching and long season of bloom.
- LIMELIGHT** \$ 2.00
(Hall '52) Canary yellow to a greenish yellow with Chantilly ruffling. Cool -- Crisp -- Lovely.
- LOVE STORY** \$ 1.00
(Sapp '50) A tall, well branched Flamingo pink. Blooms have a nice perky flare.
- MAJOR EFF** \$15.00
(Watkins-Watkins '55) Medium violet blue self. Domed standards, white beard on flaring falls. Tall, with three way branching.
- MAJORETTE** \$ 5.50
(Meiss '53) Vividly colored iris of deep maroon falls accentuated by a pure white beard, and epaulet-like white plicata markings at the haft.
- MARY MC CLELLAN** \$14.00
(Craig '52) A quality iris in deep blue, large with nice form and branching.
- MARY RANDALL** \$ 5.00
(O. Fay '51) A self of rose pink (Bengal Rose) with deep tangerine red beard. Flowers are large with heavy substance and near perfect form. Falls are round and flaring with rippled edge.
- MASKED BALL** \$ 1.00
(Buss '49) A lovely plicata. Standards are heavily colored deep blue on white and falls are snow white with a narrow border of blue. A blue tipped beard completes it.
- MAUVE DUST** \$ 3.50
(Craig) A huge and tall Mohr hybrid in a particularly attractive subdued rose-violet.
- MAUVE QUEEN** \$ 2.00
(Whiting '54) L. 32 in. A smooth blend of rosy violet tones with a deeper blush of pansy violet in the center of the fall. Beard and haft are wax yellow.
- MAY HALL** \$10.00
(D. Hall '54) A pleasing shade of clear pink with lovely form. Good branching, many blossoms.
- MELODY LANE** \$ 1.00
(D. Hall '49) Rich golden apricot with tangerine red beard. Lovely.
- MEMORIES** \$ 8.50
(Henry Sass '53) Carrot red with darker beard. Excellent substance. Considered a break in the "pinks."

- MEMPHIS BELLE** \$ 3.00
(J. Pierce '52) Large, well formed orchid pink self, smoothly tailored. A tangerine beard adds to its beauty. Sturdy well branched stalks. Early.
- MIDCONTINENT** \$ 1.00
(Whiting '52) A rich golden brown. Long season of bloom.
- MIDNIGHT BLUE** \$ 2.00
(Schreiner '54) A trimly tailored blue-black iris with deep violet overtones.
- MISS CHRISTINE** \$ 6.00
(Watkins - Watkins '54) Large flowers of rich creamy yellow with broad falls lightly ruffled. Strong, well branched stalks with many blooms.
- MISSION GLORY** \$ 4.00
(Hamblen '54) A rich glowing red brown self with lovely classical form and smooth finish. Extra heavy substance.
- MOHR BEAUTY** \$ 1.00
(Miliken '49) Clear light yellow of heavy substance and sleek finish with the Elmohr form. Lovely domed standards.
- MOHR GLORIOUS** \$ 8.00
(Muhl. '52) Similar to Elmohr but has larger flowers with heavier substance and extremely broad petals. The color is very mulberry red.
- MOHR MAJESTY** \$ 2.00
(Walker '52) Standards buff color, falls, broad and overlaid wine color.
- MOHRNING DOVE** \$ 3.00
(Craig) Very large, curiously patterned broad, flaring, dove-gray Mohr.
- MOHR VELVET** \$ 1.25
(Muhlestein '52) A smooth rich yellow self with velvety falls. The plush-like appearance of this flower is almost without counterpart in yellows. Pure Pogon iris in appearance.
- MORNING MELODY** \$.75
(Becherer '48) Soft orchid lavender, white beard. Fragrant, pleasing.
- MOULIN ROUGE** \$ 8.00
(Tompkins '54) Near crimson red with a velvety finish and a faint purple-red sheen over the petals. One of Tompkins finest to date.
- MYSTIC MELODY** \$ 1.50
(Stevens '51) Cream standards, butter yellow falls. More contrast than Pinnacle. By the same hybridizer.
- NEW ADVENTURE** \$ 6.00
(Muhlestein '54) New and different is this pink plicata with a tangerine beard. Large flowers of excellent substance placed on a tall, well branched stalk.
- NEW HOPE** \$ 1.00
(DeForest '50) Large plicata with gleaming white ground and wide border of violet.
- NIGHT 'N DAY** \$25.00
(DeForest '55) Standards pale violet, falls deep violet. Large flowers on a well branched stalk.
- NIGHT PATROL** \$ 5.50
(Benson '54) Deep violet blue self with horizontal falls. A very fine iris.
- NOMOHR** \$15.00
(J. M. Gibson '55) Beautifully ruffled bamboo cream with a light flush of red-violet in the falls. Large and vigorous.
- NORTHWESTERN** \$ 3.00
(F. Cook '51) A pure self of Royal Purple, with fine form and broad slightly ruffled petals.
- OLYMPUS SKIES** \$ 7.50
(Carlston '55) An important new plicata. Very wide white marked with blue. Large and tall.
- ORANGE APRICOT** \$ 7.50
(Muhl. '55) A lovely wide flower of smooth finish in cadmium plated orange.
- ORANGE BANNER** \$15.00
(Waters '55) A large showy orange yellow self. Domed standards, semi flaring falls.
- ORANGE CREAMO** \$ 5.00
(Muhlestein '53) Flaring orange-apricot self with good substance. Tall and well branched with wide full flowers.
- ORCHID RUFFLES** \$ 3.50
(Schreiner '54) Beautiful true lavender with lacy ruffling and shimmering texture.
- ORCHID QUEEN** \$10.00
(Schortman '55) An orchid and cream novelty. Ground color is cream, falls heavily patterned with lines of orchid. Tall strong stalks.
- ORIENTAL GLORY** \$ 2.00
(Salbach '50) Stunning rich red blend. Standards, mahogany, falls mahogany brown shading to gold at haft. Blue blaze in center of falls.

ORIENTAL PRINCE \$ 1.00
(Suiter) Standards gold, white falls edged in gold. Enhanced by a heavy brown beard.

OYEZ \$ 1.00
Pinkish-cream, heavily veined deep maroon.

PACEMAKER \$ 1.00
(Lapham '50) A pleasing velvety red of large size, with no haft marks.

PAGAN PRINCESS \$.75
(Douglas '48) A near bi-tone, standards are a rosy pink and falls fuschia red, with tangerine beard. Large and tall.

PAGAN ROYAL \$ 2.00
(Douglas '51) A rich dark red violet of good form, with flaring ruffled falls.

PALOMINO \$ 3.50
(D. Hall '52) Creamy pink standards, falls of pale ivory buff banded with amber. Red-orange beard. Beautiful texture.

PARADISE PINK \$ 1.00
(Lapham '50) Deep pink of fine form with red-orange beard. This one carries well in the garden.

PARTY DRESS \$ 1.50
(Muhl. '51) Much ruffled and lacy pink with closed standards and deep geranium red beard. Exceptionally long blooming period. A very fine iris indeed.

PATIENCE \$10.00
(Schortman '55) A heavy substandard flower of a smooth magenta color. Tall and well branched. Many buds.

PATRICIAN \$ 5.00
(H.F. Hall '53) White, with overlay of barium yellow on upper part of the falls at each side of the full yellow beard. Horizontal falls accentuate the bright pattern.

PERMANENT WAVE \$ 1.00
(Williams '48) Flaring light blue with gold at the heart. Falls ruffled at tips.

PHOEBUS APOLLO \$14.00
(White '54) Intense yellow of waxlike finish. Lightly ruffled; full, wide falls.

PICTURE BOUQUET \$15.00
(O.L. Brown '56) Large, well formed pink self. All petals laced. Many blooms to the stalk, making a lovely bouquet.

PIERRE MENARD \$ 1.00
(P. Cook '49) Smooth deep rich blue with fine flaring form. Large and tall, an altogether lovely flower.

PINAFORE LASS \$ 2.00
(F. Cook '51) Lavender blue with white blaze at the haft. Deepening color at edges of the very ruffled and scalloped falls.

PINK BOUNTIFUL \$.75
(P. Cook '49) Smooth orchid pink of excellent form and large size. Very floriferous.

PINK ENCHANTMENT \$35.00
(Muhl. '54) The deepest pink iris which we have seen to date. Set off with a nice cerise beard.

PINK FORMAL \$ 1.00
Muhl. '49) Very large, broad petaled iris of flamingo pink with a full red beard. A vigorous grower.

PINK FULFILLMENT \$35.00
(Muhl '54) This fine pink was awarded the "Presidents Cup" in 1954. Large deep pink of good substance.

PINK PLUME \$ 1.00
(Schreiner '51) A broad petaled and exquisitely formed orchid pink. Very popular.

PINK SENSATION \$ 1.00
(D. Hall '48) Nicely formed iris of clear pink, softly brushed with gold at the heart. Floriferous, good carrying quality.

PINNACLE \$ 1.00
(Stevens '49) Clear, sparkling white standards and primrose yellow falls. Rounded form throughout. Substance and branching very fine. Rapid increaser.

PLAYMATE \$ 7.50
(O.L. Brown '56) Large, light yellow. Heavily ruffled standards, semi-flaring falls. Novel.

PORT \$ 7.50
(Craig) Medium large, deep port-wine red self. The very smooth hafts are somewhat warmer.

PORT WINE \$ 2.00
(Sass '50) A beautiful plicata. Of white with almost solid border of rich purple. Boldly effective.

PRAIRIE JEWEL \$ 5.00
(Sass '53) Flamingo pink standards. Deep dahlia-red falls, red beard.

PRAISEWORTHY \$ 8.00
(Muhl. '55) A magnificent light powder blue iris set off by a yellow beard. Flaring falls, good substance.

- PRETTY PANSY** \$ 1.00
(Sass '49) White ground, heavily striated with purple, leaving only a white blaze on the falls and at the base of standards.
- PRETTY QUADROON** \$ 1.25
(Kleinsorge '49) Deep metallic brown with wide flaring falls, nicely domed and ruffled standards. A well behaved iris.
- PRESENT** \$ 1.00
Lilac-pink, deep rose veining.
- PRIVATEER** \$10.00
(Tompkins '54) A brilliant red self with very broad petals and lovely flaring form.
- PROSPECTOR** \$.75
(Kleinsorge '50) Lovely, flaring yellow, with light area in falls which highlights this popular flower.
- PURISSAMOHR** \$ 2.50
(E. Weidner '52) A lovely sparkling white Onco hybrid. Closely domed standards and broad flaring falls with nice ruffling. This very floriferous white is truly different.
- PURPLE SAGE** \$ 6.00
(Suiter) Royal purple self. Nice wide falls, large flowers of excellent color value.
- QUECHEE** \$ 1.00
(Knowlton '50) A handsome garnet-red self. Cupped standards. The falls are rounded and flaring. Heavy bronze beard. A good red and a fine grower.
- QUEEN'S LACE** \$20.00
(Muhl. '55) A creamy white with edges and beard of light yellow. All petals are extremely laced.
- RANGER** \$.50
(Kleinsorge '43) Large velvety red of good form and substance. Late.
- RASPBERRY RIBBON** \$ 2.00
(Schreiner '51) A crisp ruffled plicata of beautiful form. Standards, raspberry. Falls, snowy white with a band of raspberry etched around the border. Orange beard.
- REAL GOLD** \$ 3.50
(Austin '52) A Mohr hybrid done in gold and golden-buff, with a golden-bronze beard. Not tall, but blooms are large and rounded.
- REGINA MARIA** \$18.00
(Hinkle '55) Very large, smooth medium blue. The flaring form on tall stalks makes it a standout.
- REHOBETH** \$ 8.00
(DeForest '53) Extra large clear blue of lovely ruffled form. Good height and nice branching.
- RUFFLED APACHE** \$ 7.00
(Wallace '54) Standards golden yellow, falls a reddish blend. Extremely laced and crimped. Striking.
- RUFFLED ELEGANCE** \$10.00
(R. M. White '55) A subtle blend of rosy violet. Very ruffled flowers on tall, well branched stalks. Different.
- RUFFLED ORGANDY** \$ 2.50
(E. Brennan '51) Ruffled, translucent flower with creamy ground. Both standards and falls bordered buff. Lustrous, pearly undertone. Tall, strong well branched stalks from 10 to 17 buds. Blooms throughout season.
- RUFFLED SNOW** \$ 4.00
(Hamblen '56) Large, flaring wide and ruffled warm white. Light green veining, lemon beard tipped white. Well branched, sturdy.
- RUFFLED STARLITE** \$ 7.50
(Hamblen '56) Large ruffled French-blue self. A mid season to late of good habits.
- RUSSET WINGS** \$.50
(Wills '46) A large glowing russet self of heavy substance. Wide, ruffled and flaring falls. Sturdy stalks.
- RUTH** \$.65
(Innes '50) Tall, large yellow heavily ruffled throughout. Very popular, and is generous with increase.
- SABLE NIGHT** \$ 8.00
(P. Cook '52) Very dark black-purple with reddish undertone. Somber purple, brown-tipped beard.
- SEA LAVENDER** \$ 4.00
(Brummitt '55) Tall, flaring sea lavender self.
- SHILOH** \$ 6.00
(Wills '54) Ruffled blue bicolor with white tipped beard. Very fine.
- SIERRA SKIES** \$ 8.00
(Schortman '54) Near spectrum blue, is this large well formed iris. Superb blooms on heavy stalks.
- SLIVER CHALICE** \$ 7.50
(Hamblen '56) Heavy substantanced Gentician-blue, shading to silvery white at the hafts. Broad and ruffled. Crisply finished.

- SILVER STAR** \$ 3.50
(Schreiner '55) A tall, light blue with an airy grace.
- SKY DYE** \$ 7.50
(Nelson '55) A warm sky blue with well domed standards and wide, flaring falls. Stalks are well branched.
- SKY RANGER** \$.50
(D. Hall '48) Very tall, heavily ruffled medium blue.
- SMILING LIGHT** \$10.00
(Tompkins '54) A gleaming violet self of smooth medium tone. Beautifully formed flowers with broad ruffled petals.
- SNOW FLURRY** \$.50
(C. Rees '39) Lovely white with a faint blue cast. Full and ruffled.
- SNOW GODDESS** \$12.00
(Becherer '55) Wide ruffled white with yellow beard. Lovely in a clump.
- SOLID GOLD** \$ 2.75
(Kleinsorge '51) Deep smooth yellow. Wide petals and fine substance. A nicely formed flower.
- SONG OF SONGS** \$.65
(Crosby '50) Light yellow standards with white falls edged color of standards. Chantilly laceing and ruffling.
- SOUTH PACIFIC** \$10.00
(Smith '54) A pale medium blue with near white beard. Well substandard flowers with lots of fragrance.
- SOUTHWESTERN** \$ 3.50
(F. Cook '53) A rich blend of purple, brown, copper and rose. Flowers are fragrant and carried on tall, well branched stalks.
- SPANISH FANDANGO** \$ 1.75
(Kleinsorge '51) Jaunty, ruffled iris with coppery yellow standards and brilliant, chestnut - red velvety falls. Abundant blooms on well branched stalks.
- SPANISH PEAKS** \$ 1.00
(Loomis '47) Large and ruffled, pure white self. Wide petals, really a choice white in any company.
- SPOTLIGHT** \$ 2.00
(Schreiner '52) Deep toned golden yellow with slightly deeper beard. Semi flaring, with excellent branching.
- STARSHINE** \$ 1.00
(J. Wills '49) Deep cream standards and very horizontal falls of white, with a faint flush of blue in center and edged with color of the standards.
- STATEN ISLAND** \$.75
(K. Smith '47) Bright gold standards and falls of velvety red edged in gold. A gay iris of much eye appeal.
- STEP UP** \$ 2.00
(Muhlestein '52) A different amoena. White standards, light violet falls.
- STORM WARNING** \$ 3.50
(Schreiner '53) Large, blue-black. Taller than most in this color class.
- SUGARPLUM** \$ 6.00
(Corey '53) Soft creamy pink self with soft yellow haft and yellow beard. Flared and laced.
- SUNBEAU** \$ 2.50
(Brownell '53) Deep orange yellow on tall, well branched stalks.
- SUNRAY** \$ 1.00
(D. Hall '50) Large ruffled light yellow with fine form and substance. Beard is Tangerine orange.
- SUNSET BLAZE** \$ 1.00
(Kleinsorge '48) Deep flame-red with a coppery salmon overlay. Striking.
- SURPRISE PARTY** \$ 6.00
(Klein. '55) Rosy lavender standards and golden apricot falls. A new and colorful combination.
- SURRENDER** \$ 2.00
(Tompkins '51) White, with an overlay of yellow on hafts and outer edges of falls, fading to plicata like markings of yellow and pink. Different.
- SWAN BALLETT** \$20.00
(Muhl. '55) This all white iris of great substance is further enhanced by the very flaring falls and moderate ruffling throughout.
- SWEEPSTAKE** \$ 2.50
(Brownell '52) Huge ruffled red-violet. Profuse bloomer.
- TABASCO** \$ 2.00
(Craig '51) Fancy plicata, flaring and rich colored like paprika on an omelet - red and gold.
- TAFFY BROWN** \$15.00
(W. Chandler '56) The name aptly describes the color of this lovely, wide, ruffled iris. Small blue blaze at tip of beard. A welcome addition to this color class.

- TECHNICOLOR** \$ 1.50
(Whiting '50) Ruby red self with a light pattern of gold at haft. Bright compared to other reds. Tends to be a bit short here, average 24" to 30".
- TEMPLE BELLS** \$ 3.50
(D. Hall '52) Clear apricot yellow self with red-orange beard. Very striking.
- TEXAS WAY** \$ 7.50
(DeForest '54) Very large dark purple, lightly ruffled.
- THE CITADEL** \$10.00
(Watkins '54) A pure all white iris. Standards are broad and full, widely spreading falls. This iris is very highly rated.
- THORWALD** \$ 6.00
(Knowlton '55) Large Orange-Tan self.
- THOTMES III** \$ 2.00
(Kleinsorge '50) Smooth glistening golden tan self with light bronze beard. An iris of immense size with unusually broad falls and very heavy substance.
- TOPFLIGHT** \$ 2.00
(D. Hall '53) Golden apricot self with very thick beard of fiery orange-red.
- TOP HAT** \$ 5.00
(Schreiner '54) Large, tailored, black - purple.
- TOWN TALK** \$10.00
(Lapham '54) Large red self, with a heavy orange beard. One of Mr. Laphams finest offerings.
- TRANQUILITY** \$ 1.00
(Fay '50) Very large milk white iris with white beard. Full petaled with nice domed standards and flaring falls.
- TRELAWNY** \$ 2.00
(Corey '53) Silky, blue-lavender self of great charm.
- TRULY YOURS** \$ 3.00
(Fay '49) An outstanding iris. The heart is bright yellow shading off to almost white at top of standards and bottom of falls. The entire blooms edged with neat Chantilly lacing.
- TWENTY GRAND** \$ 3.50
(Norton '53) Standards yellow, falls orchid, with broad tan-gold border, heavily crinkled. Orange beard.
- VIOLET GRACE** \$15.00
(Wadland '55) A very large flower of aster violet with a white area in falls. Wide, ruffled, and with heavy substance. Vigorous and hardy.
- VIOLET HARMONY** \$ 3.50
(E. Lowry '52) Beautiful shade of medium violet with wide flaring falls and closed standards. Superb quality in every respect.
- VOODOO** \$.60
(Kleinsorge '48) Chocolate brown standards, and velvety red-brown falls. Entirely different than other flowers in this color class.
- WARPATH** \$ 1.50
(Craig '51) A brilliant copper red with an iridescent sheen.
- WATERMELON** \$ 8.00
(Waters '54) Very large blend of greenish lemon and pink.
- WEDDING BOUQUET** \$ 4.00
(Buttrick '52) An iris of great individuality and charm. Pure white ruffled, broad petaled flowers with domed standards and semi-flaring falls. The unopened buds and under side of falls are chartreuse.
- WIDE AWAKE** \$ 3.50
(Lapham '53) Light buff pink self, with flame scarlet beard.
- WINGS OF SONG** \$ 2.50
(Whiting '53) Standards rich yellow, falls white with a wide ruffled border of yellow. Very bright and attractive.
- WONDERBAR** \$ 2.00
(Schreiner '53) Beautifully formed cream of good substance. This is a needed color in every garden.
- YARKAND** \$ 1.00
Amethyst standards, mulberry falls.
- YESTERYEAR** \$15.00
(C. E. Branch '56) Something new and different in this unusual color. "Palest orange to Champagne" Extremely ruffled and of good substance. Charming.

The average "peak" of our bloom season varies from MAY 18th, to MAY 25th, with the season extending on into June.

Visitors Are Welcome

We hope to show you the following new varieties which are being grown for stock and are not for sale this year.

AIRY CHARM -----(Branch)	MELODRAMA -----(P. Cook)
ANYTIME -----(Cavagnaro)	MONIQUE -----(McKee)
APPLAUSE -----(D. Hall)	MOONCHILD -----(Craig)
BRIAR ROSE -----(D. Hall)	MORNING SUNLIGHT (Randolph)
COLLEGIATE -----(D. Hall)	ON PARADE -----(L. Crosby)
DREAM DUST -----(Branch)	PIN UP GIRL -----(L. Noyd)
DR. WANLASS -----(Wanlass)	SNOW BALLET -----(D. Palmer)
ELIZABETH NOBLE -----(K. Smith)	SWEET HARMONY -----(Branch)
FLEETA -----(Fay)	SMITHSONIAN -----(G. Plough)
FRILLY FRINGES -----(Bro. Charles)	SNOW PHANTOM -----(M. Brownell)
FUTURAMIC -----(G. Plough)	TAHOLA -----(Gibson)
GAIL -----(Mrs. R. Jensen)	VALE YNDAIA -----(M. Brownell)
GARNET ROYAL" -----(Cory)	YOUNG BRAVE -----(Les Petersen)
TECHNY CHIMES -----(Bro. Charles)	#51-33 -----(Bro. Charles)

For Added Interest - Many Guest Iris

From far and near the "Guests" have come to visit in our garden where they will be on display for your pleasure and ours. You are invited to come and see these as they bloom.

INVERNESS H.C. '56 (Watkins)	ANGELS CURLS (Branch)
TRIUMVERATE H.C. '55 (Watkins)	FELICIA (Branch)
CINNA MAC H.C. '56 (Hopson)	FIESTA WAY (Branch)
FLUER D' BLANC (L. Gaultier)	MAGIC MOOD (Branch)
HUNT MOHR (E. Hunt)	PALE CANDLELIGHT (Branch)
RAVEN COUNTRY H.C.'54((Muhlestein)	
NASHOBA (Rob't Carney)	TRULY VIOLET (Davidson)
LUSCIOUS (Rob't Carney)	6-A-1 (F. Smith)
INDIAN BAY H.C. '56 (J. Scharff)	55-35 (D. Boen)
GAY APPAREL H.C. '55 (C. Schirmer)	56-1 (D. Boen)
RARE GOLD H.C. '55 (C. Schirmer)	
TB-94 H.C. '56 (C. Schirmer)	#2554 (M. Brownell)
VA-136 H.C. '56 (C. Schirmer)	#1656 (M. Brownell)
VA-140 H.C. '56 (C. Schirmer)	#3054 (M. Brownell)
WHITE BOUQUET (G. Hinkle)	
SUN FESTIVAL (L. Noyd)	E-61-4 (Roger Babson)
LEMON MERINGUE (L. Noyd)	

*We Guarantee...*our irises to be true to name and healthy, also that they will live and grow for you. Any, failing to do so, will be replaced or money refunded, our option. Notification must be made by October 1st, year of purchase.

*Terms Of Sale...*Cash with order, check, draft or money order. No C.O.D's. Please . . . Minimum order \$3.00 . . . Washington residents add 3 1/3% sales tax. WE PAY POSTAGE ON ORDERS OF FIVE (5) DOLLARS OR MORE in United States and Canada. On lesser orders - Add FIFTY CENTS for postage.

*Shipment...*Starts about July 10th. Orders filled as received, with only the very best of our fresh stock.

. . . NO WHOLESALE LIST . . .

*Note ...*All varieties in good supply have been priced at "Collection" discount rates. YOU have the advantage of YOUR CHOICE of selections. If we may substitute please list a few alternates. You will receive full value or better.

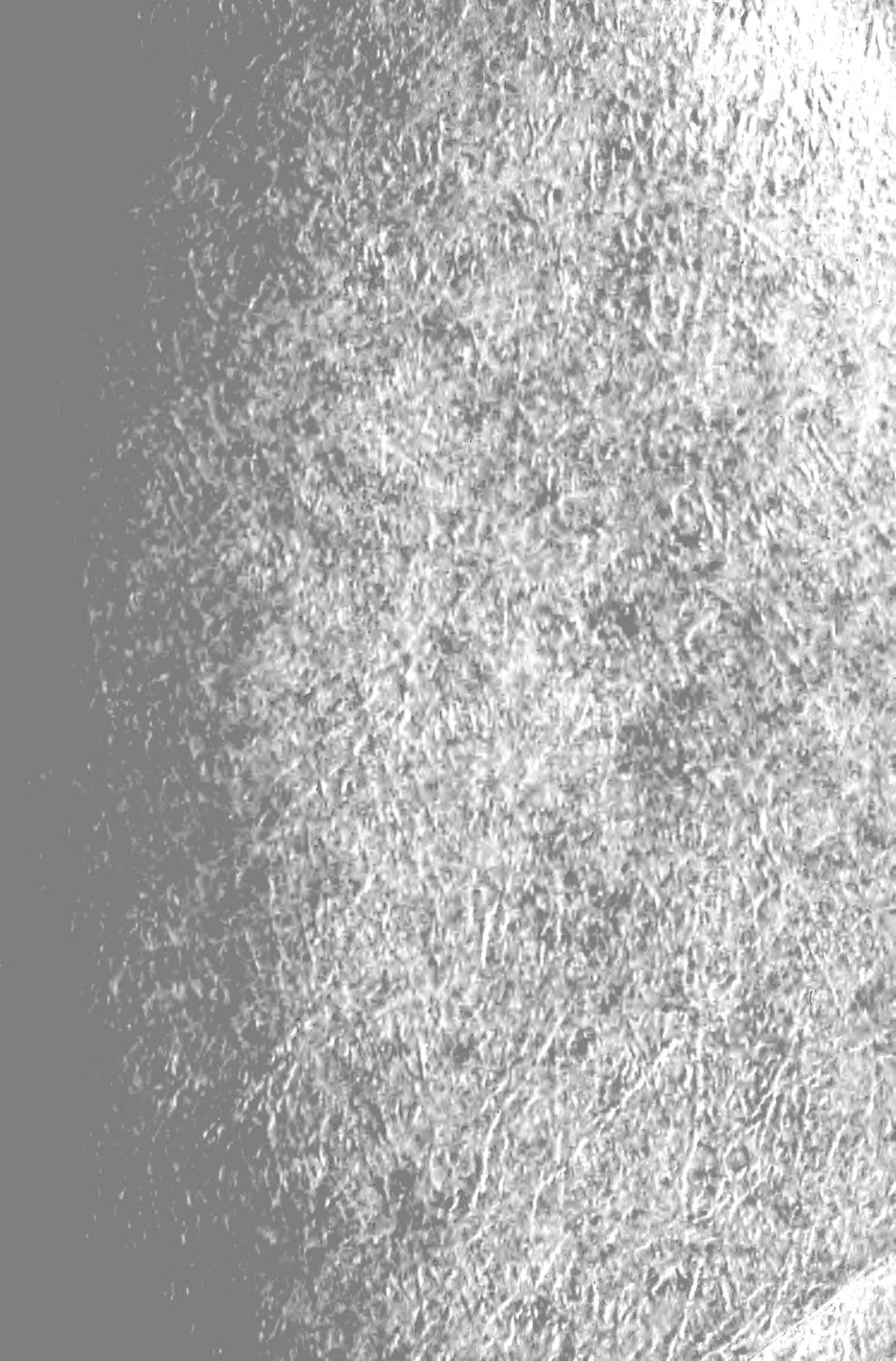
*Remember...*We like to be generous; please list a few extra varieties so that we may select a gift which you would like.

Once again we wish to extend our sincere thanks to the many customers who have written such kind letters and cards of appreciation.

To all of you . . . May your next Iris season be one of the best.

Sincerely,

Mr. and Mrs. Tom M. Brown



Brown's Sunnyhill Gardens

ROUTE 4, BOX 145

WALLA WALLA, WASHINGTON

TO—

Form 3547 Requested