

62

CLEVENGER'S GARDENS

KIRKSVILLE, MISSOURI

1957



FEB 28 1957

U. S. Department of Agriculture

HEMEROCALLIS

(Day Lily)

TALL BEARDED IRIS

SIBERIAN IRIS

PEONIES

U. S. DEPARTMENT OF AGRICULTURE

LIBRARY

WASHINGTON 25, D. C.

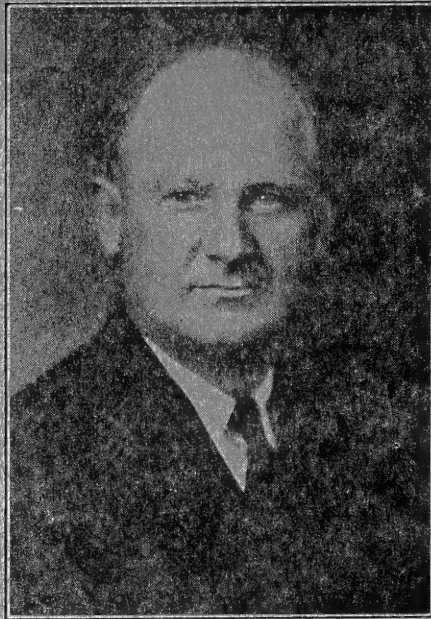
OFFICIAL BUSINESS

PRINTED MATTER

PENALTY FOR PRIVATE USE TO AVOID
PAYMENT OF POSTAGE, \$300
(GPO)

Library, U. S. Dept. of Agriculture,
WASHINGTON 25, D. C.

Bibl.



1957 GREETINGS

GREETINGS to our friends of yesteryear. We are again endeavoring to take up the loose ends and enter the retail field again. This time we have the help of a faithful assistant, Mr. Dick Gima of Okinawa. Dick has been with me for five years and will be a very able assistant. He dearly loves all kinds of flowers. We do not ask for all your orders, but we would appreciate some of your patronage. We promise to send you plants of the finest kind.

Our plants are fully inspected. They are guaranteed to be free from disease. We have one of the finest collections of hemerocallis and iris in the middle west. Our catalog is quite modest. Our garden is one of quality, not quantity. We do not issue a wholesale list.

Garden Clubs are especially invited to visit our garden. May 20 to May 30 iris are at their best. Day lilies begin to bloom in June and are in flower during July and August.

If Garden Clubs will pool their orders through the secretary of the club they will be given a substantial reduction in price. We have a desire to serve you and we are inviting you to try our service. We will not be satisfied until you are more than pleased.

We are offering a few of our best former introductions. These have been fully tested and have measured up with the best. We are proud of them. We have some outstanding seedlings in both iris and daylilies. These will be introduced as soon as we have enough stock. *Watch for them.*

SINCERELY,

—DR. LEWIS CLEVENGER, Hybridizer
DICK GIMA, Assistant

MY OWN INTRODUCTIONS

I have been out of the iris business since 1951, hence I have not introduced any during this time. I am listing here what I consider my best iris. All of these have been fully tested and found to be of the very finest in their color class. I can recommend these to you.

EVENGLOW (48)— A huge, rosy-lavender, with splendid substance and fine form. Has a strong stalk, with well placed flowers. A leader in its color class. Beard yellow, 37" ----- **Each \$2.00**

ETTA LOU— A large, light blue, of splendid form, good substance, height 36". One of the best light blues. A fine plant for a clump. Beard yellow **Each \$2.00**

HOWDY (42)— Very large, ruffled, icy-white, with yellow beard. Buds are sky-blue, but the flowers fade to a lovely blue-white, strong stalk, blossoms well spaced. Ranks with the best whites ----- **Each \$2.00**

PHRADIE WELLS (50)— Large flower, strong stalk, 38". Color is a blend of orange, apricot, and pink. A very beautiful blend, orange beard. Makes a striking clump in the garden ----- **Each \$2.00**

SONATA IN GOLD— A lovely cream, large flower, sturdy stalk, 36" **Each \$1.00**

THE CHIEFTIAN (46)— Medium size, copper-red, blue feather at end of beard, fine branching, 40", orange beard, standards closed, flaring falls **Each \$1.00**

WINEBERRY (46)— Large, smoky violet, edged brown, silver sprinkling over all, 36" beard orange ----- **Each \$2.00**

SPECIAL—

One each of the introductions named above for **ONLY** ----- **\$9.00**

JOIN THESE SOCIETIES

These societies are worth belonging to. The bulletins, newsletters, and yearbooks they publish are very valuable to the plant lover.

AMERICAN IRIS SOCIETY, 3902 Hillsboro Road, Nashville, Tennessee. Dues \$5.00 per year.

AMERICAN PEONY SOCIETY, Rapidam, Virginia, Dues \$5.00 per year.

THE HEMEROCALLIS SOCIETY, 416 Arter Ave., Topeka, Kans. Dues \$3.50 per year.

SPECIAL OFFERS

Any ten (10) 75 cent iris or daylily may be had for only \$5.00.

Any ten (10) \$1.00 iris or daylily may be had for \$7.50

If you will make out your order for as much as \$25.00, write me for a special quotation. This does not include those marked "net".

I will be available for lectures on horticultural subjects, or judging iris and daylilies at any time. Please write me for information.

PEONIES

If you are interested in getting the best peonies on the market, write for quotation. We feel sure we can interest you. Please submit your list.

TERMS OF SALE

Please read before ordering. Order early and get the best. Cash with order, either check, money order, or draft. Do not send stamps. Cash is sent at your own risk. Orders are filled in rotation as they are received.

Postage is paid on all orders amounting to \$5.00. Parcel Post is very high now and there is no profit on a small order. If your order amounts to less than \$5.00, please send 50 cents to help pay postage. Please write your name and address plainly. This is very important.

We guarantee all our plants to be free from disease, or insects. Our garden is annually inspected by a state accredited inspector. We send you first grade plants. It is up to you as a gardner to grow them well.

We do not substitute unless you tell us to do so. It is always well to give second choice.

If you for any reason are dissatisfied please tell us so we can make it right. Your satisfaction is our best advertisement.

HEMEROCALLIS

(Daylily)

The daylily is a perennial that has taken the floral world by storm in the last ten years. Hybridizers have produced many new colors and forms. It blooms in July and August when the garden is rather bare. It is practically fool proof requiring very little care. I am proud to present to you my list of first class daylilies. Daylilies are shipped during August-September.

- AFTERGLOW**—36" Beautiful soft buff, rosy veins and throat **\$1.50**
- ALLURE**—30" Light canary self. Medium sized flower. Night bloomer **\$0.75**
- AMHERST**—30" Large, purple flower with white bands through petals. Frilled. Heavy texture, new -- **\$5.00**
- AUGUST PIONEER**—30" Late blooming. Chrome yellow, flushed red **\$0.75**
- AUTUMN PRINCE** —40" Late. Many small, bell-like blooms. Lovely **\$1.00**
- AUTUMN RED**—Midseason 30". Lovely red **\$0.75**
- BAGDAD**—Midseason 36" Copper red, orange throat. 5 in. flowers. Fragrant **\$0.75**
- BAGGETTE**—30" Early. Pale lemon, shaded, old rose, deeper eye zone **\$2.00**
- BALLET DANCER**—38" Mid. Dainty, soft buff pink. Full flowers. Pleasing **\$1.00**

- BARONET**—24" Crepy, crimson - orange flower. Remontant. Lovely. **\$0.75**
- BESS VESTAL**—36" Bright red flowers. Petals very wide. One of the best **\$4.00**
- BICOLOR**—40" Mid. Red-Yellow bicolor. One that always blooms **\$0.75**
- BLACK CHERRY**— 36" Deep, dark-red. Recurved segments. Does not fade **\$2.00**
- BLACK FALCON**—30" A good wine-red **\$1.75**
- BOUNTIFUL**—30" Mid. Large, lemon-yellow. Sun-resistant. Very fine **\$1.00**
- BOUTONNIERE**—36" Late. Miniature flowers. Yellow. Heavy bloomer. **\$0.75**
- BRANDYWINE**— 32" Mid. Rich garnet mahogany. Purple eye. Petals ruffled **\$1.50**
- BROCADE**— 42" Mid. Rose - Yellow pastel. Smooth texture. Lovely -- **\$3.00**
- BRONZE GLOW**— 26" Mid. Bronzy-yellow. Attractive petals, curly **\$2.00**
- BROWN EYED SUSAN**— 36" Mid. Rich yellow. Brown eye zone. Good grower **\$0.75**
- BRUNETTE**—30" E. Dark purple red. Very early **\$0.75**
- CABALLERO**— 40" Mid. Lily-like bicolor, rose petals, yellow sepals, very effective **\$1.00**
- CANARI**—40" Mid. Lovely pale yellow with green throat. Striking ---- **\$1.00**

- CANDY HEART**— 38" Mid. Lovely, flesh pink with Carmine halo. Good. New ----- **\$4.00**
- CATHEDRAL TOWERS**— 40" Mid. Clear yellow with large purple eye zone ----- **\$2.50**
- CHARMAINE**— 40" Clear satiny pink, Scarce. Very lovely ----- **\$6.00**
- CHLOE**— 38" Mid. Wide petals. Orange with flecks of Sepia, large ----- **\$3.00**
- CIBOLA**— 36" Mid. Large, full-petaled lily. Spanish orange ----- **\$3.00**
- CIRCE**— 36" Mid. A medium-sized, yellow flower, ruffled, many blooms. Excellent ----- **\$1.00**
- COLONEL JOE**— Very large, wide, ruffled. Light lemon cream. Very fine ----- **\$8.00**
- COLONIAL DAME**— 38" Mid. Large, apricot, rosy halo. Crepy texture. Lovely ----- **\$2.00**
- COPPER COLONEL**— 40" Mid. Large Recurved. Yellow, flushed red. Very good ----- **\$3.00**
- CONSTANCE**— 38" Mid. Very large, vigorous blend of yellow-red. remontant ----- **\$2.00**
- CORAL BELLS**—44" Late, Mult. flora type, dainty salmon-orange, deeper eye zone, lovely ----- **\$2.00**
- CORNELL**— 36" Mid. Deep crimson red petals. Yellow sepals. Recurved, frilled ----- **\$1.50**
- CRYSTAL PINK**— 36" Mid. Large, vigorous, chamois pink. Lovely in shade ----- **\$1.00**
- DAWN PLAY**— 38" Mid. Deep velvety, rose-red, golden heart. Very fine ----- **\$1.00**
- DELICACY**— 38" Late, Multiflora type, valuable, late species. Peach-color. Many flowers. Lovely -- **\$2.00**
- DISPLAY**—38" Med. Perhaps the best red. Striking, large flower. Deep in color. Excellent ----- **\$2.00**
- DOLLY VARDEN**— 40" Mid. Full, open flower. Chinese Coral Pink, lines of rose on petals ----- **\$1.00**
- DOROTHY McDADE**— 38" Late, light yellow, very fine, late bloomer **\$1.00**
- DRAGONETTE**—30" Med. Lovely red with twisted petals. Outstanding ----- **\$1.50**
- DUCHESS OF WINDSOR**— 24" Mid. Cream with golden glint with flush of rose. Form is lovely. Petals are broad, vigorous ----- **\$1.00**
- DRESDEN CHINA**— 36" Cream flushed buff. Good. ----- **\$1.00**
- EL MAGNIFICIO**— 36" Mid. Very large. Blend of red, orange, brown. Wide petals, vigorous. Rich, deep-brown halo ----- **\$2.50**
- ERIC JUNIOR**— 28" Mid. Small, glowing red, recurved. Beautiful for border front ----- **\$1.00**
- EVELYN CLAAR**. One of the best pinks. Petals wide. Silken finish. Salmon pink. Very good grower. ----- **\$8.00**
- FASCINATION**— 40" Mid. Medium-yellow with halo. Broad petals. Large, as many as 50 flowers to a stem ----- **\$3.00**
- FELICITY**— 32" Mid. Lovely ruffled yellow. Many flowers to a scape. ----- **\$2.50**
- FESTIVAL**— 40" Brilliant yellow, red bicolor. Great size. Good grower. ----- **\$1.00**
- FLAMBEAU**— 36" Mid. Bright Scarlet, green throat ----- **\$2.00**
- FLAMBOYANT**— 35" Mid. Deep yellow. Indian red halo. Lovely in clump ----- **\$3.50**
- FRANC P. BABSON**— 36" Mid. A brand new lily. A lovely red, splendid form. Good grower--- net **\$15.00**
- FRIAR TUCK**— 30" Mid. Deep, rich yellow, deep mahogany red eye-zone ----- **\$2.00**
- FULVA ROSEA**— 40" (Species). A lovely pink, clear carmine. Excellent grower ----- **\$1.00**
- GALA**— 36" Mid. Deep velvety red. ----- **\$1.00**
- GAY TROUBADOUR**— 40" Mid. Red-yellow bicolor. Yellow line through each petal. Large flower ----- **\$1.00**
- GEORGIA**— Large, recurved, buff pink. A very lovely thing. Good grower ----- **\$1.50**
- GLORY**— 30" Mid. Big, clear yellow. Lovely. Ruffled, fragrant. A must. ----- **\$1.50**

- GEO. YELD**— 34" Mid. Large, Canary yellow, with red brushing. Old but lovely **\$0.75**
- GLOWING GOLD**— 35" E. Lovely orange, recurved, twisted petals **\$1.50**
- GOLIATH**— 26" Mid. 7 in. blossoms of deep yellow. Prolific, fine .. **\$0.75**
- GOLDEN WEST**— 48" Mid. Large, waxy flowers of bright yellow. Very fine **\$0.75**
- GRETCHEM**— Large, floriferous, rose red. A fine clone **\$3.00**
- GRISSELLE**— 32" Mid. Bright rose, veined deeper. Reflexed petals. Very fine **\$2.50**
- GUNGA DIN**— 42" Mid. Dark red purple. Green-yellow throat. Exc. **\$1.50**
- GYPSY**— 36" Mid. Deep orange with red flush. A good doer. **\$0.75**
- HALO** (Wheeler) 36" Mid. Rich yellow. Cinnamon halo. Triangular form **\$1.50**
- HANKOW**— 40" L. Deep yellow, scarlet eye zone. Long blooming. Fine. **\$0.75**
- HESPERUS**— 42" Mid. Beautiful lemon chrome. Wide petals. 6-inch flowers **\$1.00**
- HELEN WHEELER**— 44" Mid. Lovely salmon pink. Translucent .. **\$1.00**
- HERMOSA**— 40" Mid. A lovely, yellow orange, large flower **\$3.00**
- HIGHLAND CHIEFTAIN**— 42" A fine, long-blooming wine **\$0.75**
- HONEY REDHEAD**— 38" Lovely velvety red with white border on petals **\$0.75**
- HOWDY**— 34" Mid. Bicolor-- Orchid-Purple and Cream. Big flowers. Showy **\$3.00**
- HYPERION**— 36" Mid. Large canary yellow. Smooth. Very fine **\$1.00**
- IVORY CHASTE**— 40" Mid. Pure ivory in color. Big. Beautiful form. Wide petals **\$5.00**
- J. S. GAYNOR**— 40" Mid. Waxy apricot-orange. Very fine plant ... **\$1.00**
- JACK**— 20" Mid. Miniature red. Good. Deep red in color **\$1.00**
- JILL**— 20" Mid. Miniature. Red. Good. **\$1.00**
- JEAN**— 38" Mid. Rich red-brown and gold bicolor. An excellent plant **\$1.00**
- JENNIE LOVE**— 38" Mid. Lovely, new pink. Petals and sepals twisted **\$5.00**
- JUDGE ORR**— 36" E. Soft orange-yellow. Blooms with iris, frilled. **\$1.00**
- KILLARNEY LASS**— 34" L. Very attractive. Neat, real pink **\$4.00**
- KIM**— 38" Mid. The brown daylily with a purple sheen. Rare color. **\$1.50**
- KINDLY LIGHT**— 36" Mid. A true spider. Large, yellow, ruffled **\$4.00**
- KNIGHTHOOD**— 38" Mid. Deep maroon crimson self, broad, large **\$3.50**
- KRIS KRINGLE**— A good, deep red, big **\$4.00**
- LADY BOUNTIFUL**— 48"-E. Yellow, with pink edge on petals, lovely **\$2.50**
- LAUREL**— 36" Mid. Dainty, rose pink self. Not a good grower here .. **\$5.00**
- LEMON LUSTRE**— A beautiful light yellow, large, perfume. A must **\$2.00**
- LILIPUT**— 18" Mid. A small flower on a short stem, deep red, very good **\$2.00**
- LINDA**— 36" Mid. Creamy yellow, crinkled petals, rose markings **\$0.75**
- MABEL FULLER**— 36" Mid. Deep, luminous red. Very fine. Segments reflexed **\$3.00**
- MARCUS**— 36" Mid. Deep yellow, red overcast. A good plant **\$0.75**
- MAID MARIAN**— 42" Mid. Large, graceful coral pink. Ruffled. Top-notch **\$4.00**
- MARIONETTE**— 36" Mid. Butter yellow, mahogany eye zone. Does not fade. Fine **\$2.00**
- MAGIC MORN**— 40" Mid. Full formed. Sparkling rose red. Good... **\$6.00**
- MARTHA RUSSELL**— 36" Mid. Good, deep red **\$0.75**
- MARY GUENTHER**— 36" Mid. Bicolor-- petals carmine red; sepals yellow **\$0.75**
- MEADOW GOLD**— 36" Mid. deep yellow, golden **\$1.50**
- MIDWEST MAJESTY**— 38" Mid. Very large, medium yellow, perfect form. A must **\$4.00**
- MIDWEST CAVALIER**— 36" Mid. A good yellow with deep eye zone **\$1.00**

- MIKADO**— 38" Mid. Old, but very good. Rich orange, mahogany eye. Bold **\$0.75**
- MIMOSA ROSE**— 36" Mid. Wide Petaled. Coral rose; sun proof. Lovely. **\$4.00**
- MISS HOUSTON**, a splendid lav.-pink. **\$1.00**
- MISSION BELLS**— 36" Mid. large, wide petals, clear med. yellow, ruffled, fine **\$2.00**
- MONGOL**—38" Mid. Very large, clear yellow, fine in clump, exc. bloomer. **\$1.00**
- MOONRAY**— 30" Mid. Dainty, light yellow, inverted red. V, on petals. **\$1.00**
- MOROCCO RED**— 38" Mid. Dark red self. Small, yellow throat, a top notcher **\$0.75**
- MRS. DAVID HALL**— A very large, deep yellow, with dark red eye. Splendid **\$6.00**
- MRS. HUGH JOHNSON**— 36" Mid. A firey red with satin sheen, wide petals, stands sun **\$1.00**
- MRS. RAYMOND KNOTTS**— 34" Mid. golden apricot, with bell form, a new one **\$5.00**
- MRS. W. H. WAYMAN**— 40" Mid. A fine medium yellow, good for cutting **\$0.75**
- MULTIFLORA** (species) lots of small yellow flowers, very late **\$0.75**
- MYKAWA**— 36" Mid. A splendid red. **\$0.75**
- NATIONAL VELVET**— 34" Mid. Glow ing velvet red, a new red of quality. **\$8.00**
- NEBRASKA**— 38" Mid. Pure orange color, large, tubular flower ... **\$0.75**
- NINA WINEGAR**— 36" Mid. Very large, rich yellow spider, interesting, ruffled **\$3.00**
- NARANJA**— 36" Mid. Clear, deep orange, large and very fine, the best. **\$3.00**
- NORTH STAR**— 38" Mid. Close approach to white, very pale yellow, a graceful flower **\$3.00**
- ORANGE BEAUTY**— 44" Mid. A very fine, big orange, broad petals... **\$2.50**
- ORANGO**— 38" Mid. Very large, pure orange, wide segments, good increaser **\$4.00**
- OPHIR**— 36" Mid. An excellent, older yellow, good bloomer and increaser. **\$0.75**
- PAINTED LADY**— 38" Mid. Bronze and yellow, overlaid rose, big, popular **\$1.50**
- PARTY GOWN**— 33" E. Bicolor petals, yellow washed red, sepals yellow and red **\$1.00**
- PEACH GLOW**— 36" Mid. Peachy yellow, a lovely flower, medium size, good grower **\$1.00**
- PEARL SHELL**— 38" Mid. Shell pink, very large, delicate coloring, good increaser, new **\$5.00**
- PERSIAN PRINCESS**— 36" E. Dark red, purple overlay, an excellent, dark one **\$0.75**
- PIEFACE MISSY**— 40" Mid. Large, fluted, varying shades of yellow, vigorous, new **\$5.00**
- PIQUANTE**— 40" Mid. Deep, rosy pink, raspberry overtones, a beauty, vigorous **\$1.00**
- PINK ANGEL**— 38" Mid. Free blooming, lavender pink **\$2.00**
- PINK CHARM**— 38" Mid. Older, but lovely, petals recurved, lovely pink. **\$1.00**
- PORT**— 36" Mid. Small, dark red, many blooms on a scape, a dandy. **\$0.75**
- POTENTATE**— 36" Mid. Smooth, luminous purple, floriferous, med., flower, good **\$3.00**
- PRIMULA**— 36" Mid. Large, frilled yellow **\$3.00**
- PSYCHE**— 36" Mid. Soft yellow, recurved petals, wide, faint halo **\$2.00**
- PURPLE MIST**— 36" Mid. Gorgeous pink purple, a true beauty **\$2.00**
- PURPLE WATERS**— 38" Mid. Full, big flower of wine, very lovely **\$0.75**
- RAJAH**— 40" Large English red eye zone, a splendid daylily **\$0.75**
- REDROCK CANYON**—48" Mid. Large orange red, petals creped, new **\$1.50**

REDWOOD— 42" Mid. Varnish-like finish on a deep red, yellow throat. _____ \$1.00

REGAL LADY—42" Mid. Large, state ly rose bitone _____ \$1.00

RINGLETS— 32" Mid. Small flowers, recurved, creped and curled, deep golden, a honey _____ \$7.50

ROSA BOWER—36" E. Carmine pink, rose eye zone, veining in petals, new _____ \$3.00

ROSALIND— 38" Mid. Clear, bright rose pink _____ \$1.50

ROSITA— 36" Mid. A good bicolor. _____ \$0.75

RUBY SUPREME— 36" Mid. Large, full red _____ \$1.00

RUFFLED PINAFORE— 30" Mid. Large, crinkled, ruffled, yellow halo. _____ \$6.00

SACHEM— 42" Mid. Large, dark, Indian red _____ \$0.75

SEMINOLE CHIEF— 42" Med. large, cherry red _____ \$1.50

SERENADE— 36" Mid. A good blend, vigorous _____ \$0.75

SCORPIO— 48" Mid. Spider, long, curly segments, buff orange, fulvous eye _____ \$3.00

SHOW GIRL— 36" Mid. Orchid-pink, ruffled, reflexed petals, lovely \$5.00

SILVER STAR— 36" Mid. Light yellow, good _____ \$1.00

SPENCER FULLER— 42" Mid. Copper-bronze, glowing, ruffled and reflexed _____ \$3.00

STAR OF GOLD— 48" Mid. 7-inch light yellow, very impressive... \$1.00

STYGIAN— 36" Mid. Pansy, purple, mahogany, large _____ \$1.50

SWEET BRIAR— 40" Mid. Flesh pink petals and sepals, recurved, a good one _____ \$1.00

TEJAS— 36" E. Intense fiery red, velvet sheen, a fine bloomer _____ \$1.00

THERON— 30" Mid. Large, full mahogany red, with a purple-gold effect _____ \$0.75

THE DIRECTOR— 30" Mid. Petals ruffled and crepy, deep wine red, large _____ \$1.00

VESPERS— 40" Mid. Frilled, pale cream, new and good _____ \$2.50

VULCAN— 36" Mid. Attractive, velvety maroon _____ \$0.75

WHITE LADY— 36" Mid. Splendid, light, creamy yellow _____ \$1.00

WINSOME— 36" E. Iovely, light yellow _____ \$0.75

GENERAL IRIS LIST

AL BORAK— Extremely wide, brown and copper russet, 38" _____ \$5.00

AND THOU— A lovely, blue-white, good grower, 36" _____ \$0.75

APRICOT SUPREME— Tall, deep, apricot self, large, broad flowers, red beard _____ \$2.00

ARGUS PHEASANT— Smooth, soft, brown self, broad petals, excellent. _____ \$2.00

ARLENE WOOD— Large, full, very ruffled, dove orchid, beautiful, net _____ \$3.00

AUBURN— Deep copper and henna-brown, vivid, early, 36", excellent. _____ \$1.00

BEECHLEAF— Brown with violet undertone, ruffled copper infusion, orange-brown beard, pretty quadron seedling, _____ net \$22.50

BELLERIVE— Big, deep cream, petals ruffled, good grower, 36" _ \$1.50

BLACK RUBY— Deep black red, glossy, early, bronze beard, good grower, 36" _____ \$1.25

BLACK AND GOLD— Two-color combination, lovely _____ \$1.00

BLACK HILLS— Tall, ebony black, floriferous, a must _____ \$3.00

BLIZZARD— Fine, pure white, tall, frilled and ruffled, yellow beard. _____ \$1.00

BRIAR ROSE— From pink breeding, deep rose-raspberry, tall, late, red beard, a very fine iris, new, net \$15.

BRIGHT SONG— A brilliant raspberry pink, with tangerine beard, tall, different _____ \$2.00

BRONZE BROCADE— Blend- copper red-tobacco brown, dark brown border, beautiful, 38" _____ \$1.25

- BLUE BLAZES**— Bold, medium blue, yellow beard, lighter at shaft, 36" ----- \$2.00
- BLUEBIRD BLUE**— Large, full, tailored flower, med. blue, very fine, 36" ----- net \$5.00
- BLUE RHYTHM**— Cornflower blue, large, wide, flaring, one of the finest, 38" ----- \$0.75
- BLUE SAPPHIRE**— Large, ruffled, light blue, gold beard, tall, 38", ----- net \$5.00
- BLUE VALLEY**— Medium blue, broad, ruffled, a very fine garden iris, 40" ----- \$1.00
- CAHOKIA**— Lovely light blue, elegant form, pure in color ----- \$2.00
- CARMELA**— Ruffled, heavily laced, crepy petals, honey color, a must, new ----- net \$20.00
- CATHEDRAL BELLS**— A grand, new, pink, ruffled, big, 42" ---- net \$7.50
- CHANTILLY**— Original, lacy, orchid pink, from pink breeding 36"-- \$1.00
- CHARMAIZE**— Wide, full flowers of chartreuse yellow, beautiful, 36". ----- \$3.00
- CHERIE**— Soft shell pink, one of the finest, frilled edge, 36" ----- \$3.00
- CHIVALRY**— Very fine, med. blue, wide, broad, ruffled, flaring falls, excellent, 36" ----- \$1.00
- CLOUD CAP**— Largest of the pinks, broad petals, ruffled, good, 40" \$4.00
- CLIFFS OF DOVER**— Large, flaring, ruffled, white, pale yellow beard, superior, ----- net \$6.00
- CLIFFDELL**— A lovely, lacy edge, blend, 36" ----- net \$5.00
- CONGO**— Large, dark iris, of reddish sheen, black under tone, yellow beard ----- net \$5.00
- CORDOLON**— Big, rose blend, late, a very worthwhile flower --- net \$6.00
- CRISPETTE**— A color gem of deep orchid with lacy edge, fluted, ideal form, 34" ----- net \$12.00
- CRINKLED RIBBON**— A new blend, with a heavy laced edge, lovely, ----- net \$15.00
- DESERT SONG**— Beautiful cream iris with butterscotch tinge, fine, 40" ----- \$1.00
- DISTANCE**— Fine, light blue, translucent, with a silver cast, large flower, 33" ----- \$1.00
- DREAMY**— Huge, ruffled, pure white, a gorgeous iris. Must be seen. Colossal ----- net \$5.00
- ELIZABETH OF ENGLAND**, a clean azure blue, fine form, ruffled. \$2.00
- ETTA LOU**— See introductions.
- EVEN GLOW**— See introductions.
- FANTASY**— Beautiful, ruffled, rose and orchid pink, different, tangerine beard, nice ----- \$3.00
- FLORADORA**— An early Hall pink, good, lovely color ----- \$1.00
- FRANCES KENT**— Tall, wide, ruffled flower of chartreuse-cream, pink flush, pink beard, extra good. ----- net \$5.00
- FRONT PAGE**— Superb seedling, of Solid Gold, very large, 38" net \$15.00
- FUCHSIA**— Deep raspberry pink, red beard, and thick, rich and vivid, flaring, 34" ----- \$3.00
- FULL REWARD**— Seedling of Solid Gold, very large, deep yellow, wide falls, fine, 36" ----- net \$15.00
- GARDEN FLAME**— Deep rose, mahogany, rich and lovely, large, late, broad 36" ----- \$1.00
- GOLDEN FLEECE**— Very fine light yellow-cream, edged in gold, filmy, good, 36" ----- \$1.00
- GOLDEN SUNSHINE**— Clean, clear, bright yellow, wide petals, lovely form, soft color, a must, 38", net ----- net \$4.00
- GREAT LAKES**— Clear, blue self, regal, broad petals, ideal 42" --- \$0.75
- GREEN GLOW**— Very large, broad, greenish, white-chartreuse, 38" \$1.00
- GREEN PASTURES**— Chartreuse-yellow, touch of blue at beard, large, tall ----- \$1.00
- GYPSY**— Orange cast, variegata--copper-gold St.-chestnut brown F., rich, 38" ----- \$0.75
- HARBOR BLUE**— Massive, glossy, sapphire blue, magnificent, new, 40" ----- net \$12.00
- HAPPY BIRTHDAY**— Famous Hall pink, light pink, ruffled, large, vigorous, fine, 38" ----- net \$5.00

- HEATHER ROSE**— Rosy orchid pink with tang. beard, striking combination, 34" ----- **\$1.50**
- HEART'S DESIRE**— Brilliant, rose-red, smooth finish, ruffled, brown, at haft, 38" ----- **\$2.00**
- HELEN MCGREGOR**— Clear, pale blue, lemon beard, perfect form, ruffled, large, 36" ----- **\$1.00**
- HERITAGE**— Full petaled, pink of deep shade, ruffled, flaring, tang. beard, 34" ----- **\$2.00**
- HI-TIME**— Golden apricot pink, tangerine beard, med., flowers, silky, vigorous, 36" ----- **\$1.00**
- HIT PARADE**— Ruffled flamingo pink, tangerine beard, vigorous, 34" **\$0.75**
- HOWDY**— See introductions.
- INCA CHIEF**— Burnished, golden-bronze, ruffled, immense size, a must, 38" ----- net **\$6.00**
- ILLINOIS SUNSHINE**— Bold, rich yellow, orange beard, large, very good, 38" ----- **\$1.00**
- IVORY PETALS**— Tan or old ivory shade, undertone of pale chartreuse, very large, broad, 36" ----- **\$3.00**
- IVORY SUPREME**— Tall, outstanding, perfect form, ruffled, cream-ivory ----- net **\$8.00**
- JANE PHILLIPS**— Lovely light blue, deeper than Helen McGregor, 38", a must ----- **\$1.00**
- JUNE BRIDE**— Luscious, deep apricot pink, red beard, large, 30" **\$4.00**
- LADY BOSCAWEN**— Alabaster white, perfect in color and form, huge, yellow beard, 36" ----- **\$0.75**
- LADY MOHR**— St. oyster white, F. pale chartreuse, dark patch at beard, large, good ----- **\$1.00**
- LATIGO**— Purest white, huge, slight lemon at haft, gleaming, beautiful, 38" ----- net **\$4.00**
- LAVANESQUE**— Lacy frilled, orchid pink, gold beard and haft, 40", ----- net **\$8.50**
- LAVENDER AND GOLD LACE**— Has lovely bicolor, St. yellow flushed lavender, F. deep lavender edged in lacy gold, a beauty, 38" ---- **\$0.75**
- LEADING LADY**— Large, combination of white and yellow, St. yellow, F. white, edged in yellow, good, 37" ----- **\$2.00**
- LILAC LANE**— Pearly pink lilac, large, flaring, ruffled, vigorous, 36" ----- **\$1.25**
- LIME LIGHT**— Pure canary yellow, lacy edging, very large, beautiful, 38" ----- net **\$5.00**
- LOVE STORY**— Perky, flaring, pink, a lovely iris, 37" ----- **\$2.00**
- LYNN LANGFORD**— Smooth orchid with golden center and haft, smooth blend, very sturdy, 36" ----- **\$0.75**
- MASKED BALL**— Unusual plicata, St. heavily striated with deep, blue-purple, F. white, bordered purple, beard yellow, 32" ----- **\$1.50**
- MARY RANDALL**— Bengal rose, fine form, ruffled, tang. beard, very fine iris, 36" ----- net **\$10.00**
- MASTER WHITE**— A lovely, pure-white, big ----- **\$0.75**
- MATTIE GATES**— A clear, wax-like flower of cool yellow, ruffled good ----- **\$1.00**
- MIDWEST GEM**— Used a lot in breeding for lacy edge, a lovely blend ----- **\$1.00**
- MOHR BEAUTY**— Beautifully ruffled, light yellow, like Elmoehr, lovely, 36" ----- **\$2.50**
- MORNING MELODY**— Alluring orchid-lavender, white beard, large, good, 38" ----- **\$2.00**
- MOONLIGHT SONATA**— Lovely yellow with green tints, petals laced, 30" ----- **\$1.00**
- NARAIN**— An early, very large, medium blue with blue beard, good grower, 36" ----- **\$0.75**
- NEW SNOW**— Perfectly formed, ruffled, pure white, a lovely iris, 38" ----- **\$1.00**
- OLA KALA**— A gorgeous, pure yellow, perfect in form, a champion, 36" ----- **\$0.75**
- ORCHID MIST**— Bright lavender pink, with deep tang. beard, 34" ---- **\$1.50**

- ORCHID RUFFLES**— True lavender in color, lacy ruffling, new and lovely, 33'' ----- net **\$10.00**
- ORELIO**— Lively, rich brown-red, copious form, good substance, 35'' ----- **\$1.00**
- ORIENTAL GLORY**— Rich red blend, mahogany and gold, center blue cast, beard is bronze and gold, different, 38'' ----- net **\$4.00**
- PACEMAKER**— Smooth, velvety red, large, excellent form, very rich, 36'' ----- net **\$3.00**
- PALOMINO**— A rare pink plicata, ivory pink, with edging of amber copper, tang. beard, a wonderful flower, 38'' ----- net **\$10.00**
- PARAGON**— Delicate, pearly shell color, or opalescent pink, margin of copper on edge of petals, yellow throat, 38'' ----- net **\$2.50**
- PARTY DRESS**— Ruffled laced, dainty pink, a commanding flower, 34'' ----- net **\$3.00**
- PAGAN PRINCESS**— Rosy pink standards, F. is rich purple, deep tang. beard, unusual pattern, 36'' -- **\$2.00**
- PHRADIE WELLS**— See introduction.
- PINK SENSATION**— Delicate, light pink, tang. beard, early, very fine, 32'' ----- **\$3.00**
- PIERRE MENARD**— Magnificent, rich, medium blue, huge, broad petals, 38'' ----- **\$2.50**
- PINK FORMAL**— Very large, wide, deep pink, deep tang. beard, good breeder, 38'' ----- **\$2.50**
- PINK TALCUM**—Peach blossom pink, red beard, delicate color, good form, vigorous, 46'' ----- **\$1.00**
- PINK PLUME**— Orchid pink, excellent form, highly praised ----- **\$2.00**
- PINK CAMEO**— Fresh cameo pink, translucent, tangerine beard, clean, fresh, 36'' ----- **\$1.00**
- PRAIRIE JEWEL**— Shell pink, St. purple-red falls, tang. beard, really pretty, different, 36'' ----- net **\$15.00**
- PRETTY QUADROON**— Metallic light copper-brown, brown beard, broad, unusual color, 34'' ----- **\$3.00**
- RADIATION**— Deep pink, faintly tinted orchid, fiery red beard, 34'' **\$3.00**
- RAINBOW ROOM**— Artistic blending of many colors, mainly lilac-yellow, 36'' ----- **\$1.00**
- RED AMBER**— Reddish amber-yellow, good grower ----- **\$0.75**
- RED TORCH**— Two-toned iris, St. is gold-bronze, F. pure real velvet red, rounded form, flaring ----- **\$0.75**
- RED WAVES**— A good red, good grower, 36'' ----- **\$0.75**
- ROCKET**— Orange-chrome, wide petals, lovely orange cast, 36'' --- **\$1.00**
- RUFFLED APACHE**— Huge, very ruffled-laced, blend of gold and red, stunning, 34'' ----- net **\$12.00**
- RUTH**— Two-toned yellow, heavily-laced and crinkled, lovely, 36'' **\$1.00**
- SABLE**— Almost black, blue violet, blue beard, lovely sheen, a favorite, 34'' ----- **\$1.00**
- SALUSKIN**— A tall, pink, good grower, big ----- **\$1.00**
- SEA LARK**— Slate blue, flush of purple in center of falls, highly original, different, 36'' ----- **\$1.00**
- SARAH GOODLOE**— A deep maroon self, late ----- **\$2.00**
- SIERRA SKIES**—Near spectrum blue, highly praised, new ----- net **\$15.00**
- SNOW FLURRY**— An old standby, beautiful white-blue, with ruffles, splendid breeder, 40'' ----- **\$1.00**
- SNOSHEEN**— Glistening pure white, ruffled, outstanding, lovely pure form, 36'' ----- net **\$7.50**
- SOLID GOLD**— Deep, pure, rich yellow, full form, huge and gorgeous, 36'' ----- net **\$7.50**
- SONATA IN GOLD**— See introduction.
- SPANISH PEAKS**— Huge, ruffled, broad-petaled, pure white, hard to beat, 40'' ----- **\$1.50**
- SPANISH FANDANGO**— Swirling and ruffled, brilliant copper-yellow, chestnut red, tall, vigorous, variegata, ----- net **\$3.00**
- SONG OF SONGS**— A beauty in ivory-cream and gold, deep lacing on edge, good, 36'' ----- **\$1.00**

- STRATOSPHERE BLUE**— Smooth, ultra-marine blue, tall, good — **\$0.75**
- STAR-SHINE**— St. deep cream, F. is white flushed pale blue, a beauty, 36'' ----- **\$2.00**
- SURPRISE PARTY**— St. Rosy lavender, F. gold apricot, pastel hues, lovely contrast, good size, net **\$9.00**
- SUNRAY**— Large, ruffled, light yellow, from pink breeding, fast increaser, lovely, almost perfect, 38'' ----- **\$1.50**
- SUNSET BLAZE**— Tall, huge, golden flame salmon blend, almost a red, beard yellow, impressive, 42'' **\$1.75**
- SYLVIA MURRAY**— Light, silvery-blue, huge flowers, a grand iris, 40'' ----- **\$0.75**
- TALLY-HO**— F. bright fuchsia, St. lighter orchid, new and pleasing pattern, from pink breeding, 32'', ----- **\$5.00**
- TEMPTATION**— Unique color, golden chamois, with blending of pink and coral, large, broad petals, 40'' **\$3.00**
- THE ADMIRAL**— Rich, blue bitone, 36'' ----- **\$0.75**
- THE BISHOP**— Dark, violet, good iris, 36'' ----- **\$0.75**
- THE CHIEFTIAN**— See introductions.
- THREE CHEERS**— Brilliant violet and mulberry bicolor, St. pale violet, F. mulberry purple. good, 38'' ----- **\$0.75**
- THOTMES III**— Massive, glistening, golden tan, bronze beard, ruffled, flaring, 36'' ----- net **\$4.00**
- THREE OAKS**— Very large, rose pink blend, overlay of copper, blue in center of falls, broad ----- **\$0.75**
- TRANQUILITY**— Large, milk-white, tailored flower, white beard, flaring, 38'' ----- **\$3.00**
- TRULY YOURS**— Bright yellow throat, St. and F. get lighter toward edge, edge is heavily laced and fluted, 38'' ----- net **\$7.00**
- TWILIGHT SKY**— Pink bud pink with red beard, hardy and vigorous, 35'', late ----- **\$1.00**
- VATICAN PURPLE**— Rich dark blue purple, spreading falls, good, 36'', ----- **\$0.75**
- VELVET DUSK**— Large flower, deep, purple black, excellent form, 36'', ----- **\$0.75**
- WAR AND PEACE**— English iris, blend of rose, purple, and red, a lovely blend, 36'' ----- **\$1.00**
- WHITE WEDGEWOOD**— Large, blue-white, with blue beard, good, 36'', ----- **\$0.75**
- WINEBERRY**— See introductions.
- WONDERBAR**— A lovely cream-ivory flower, large fine form, 38'' net **\$4.00**
- ZANTHA**— Very large, golden yellow, very much liked, 35'' ----- **\$1.00**

SIBERIAN IRIS

Here is a splendid list of the better kinds of Siberians. Price is for a small clump, not a single fan. These iris like a rich, moist soil. Plant three inches deep. Plants shipped about September 15.

CAESAR — A lovely, tall, blue-purple, 40''	\$1.00
CAESAR'S BROTHER — Deeper in color than Caesar, 40'', pansy violet	\$1.00
COOL SPRING — Pearly blue, floriferous, 30''	\$1.00
ERIC THE RED — Lovely, wine red, tall	\$2.00
GATINEAU — Large, clear, light blue, 40''	\$1.00
LLEWELLYN — Large, electric blue, good, 40''	\$1.00
TURQUOISE CUP — Soft turquoise blue, tall	\$1.00
TYCOON — Largest, iris, violet, a must	\$3.00
SUMMER SKY — Pale blue St., white falls	\$1.00
SNOW CREST — Large, refined, white, tall	\$1.00
TONAWANDA REDFLARE — Newest red, wide	\$2.00
TROPIC NIGHT — Very rich, deep purple, large	\$2.00
LADY NORTHCLIFFE — A lovely, huge, white	\$1.50
TUNKHANNOCK — A new, large, flaring white	\$1.50

SPURIA IRIS

SUNNY DAY — A tall, canary yellow, a perfect cut flower	\$1.00
OCHROLEUCA — White and yellow, a good grower	\$1.00
LORD WOLSEY — Deep blue, yellow signal, large flowers	\$1.00
MRS. A. W. TAIT — Light blue, early, 30''	\$1.00

NOTE: SPURIA iris are shipped about September 15.

SEEDLINGS

When I select my finest seedlings for registration and introduction, I always have many that are almost as good as those selected. These are grown and sold to customers who want something good but not high priced. These seedlings are not the cast away type, but lovely, big, full-bodied flowers that will please. No parentage is given with these. That means a lot of work, hence they cost more. I have iris seedlings in many colors and forms, blue, white, yellow, blends, and the lovely pinks, etc.

In the daylilies I have yellow, orange, cream, light yellow, red, rose, purple, etc. You will like these seedlings. Order by color.

Price per rhizome, or root, \$1.00, or \$10.00 per dozen.

HYBRID SEED

For many years I have been selling hybrid seed, both iris and daylilies to people who are interested in growing iris from seed. It is a very interesting and profitable hobby. Several of my customers have written me that they have had splendid results. Some have introduced iris produced from these seeds. Old Mother Nature has no secrets. You are just as likely to get a "break" as I am. When they "happen" they are worth a lot to iris fanciers. I am using only the very choicest iris in the different color classes. All cannot be named here. I am selling seeds of both iris and daylilies in three different classes.

Twenty-five (25) seeds to a packet.

IRIS

- CLASS I** Seeds from crosses in which parentage can be given. This includes crosses for red, pink, yellow, white, blue, etc. I usually make a number of crosses in each color per pkt. **\$2.50**
- CLASS II** Seeds from those special iris with lacy edging per pkt. **\$3.00**
- CLASS III** Mixed seed. Seeds from white, red, blue, yellow, etc., crosses are placed together. This is a very good buy per pkt. **\$1.00**
- I always give good count.

DAYLILIES (50 Seeds in Packet)

CLASS I Seeds from crosses in which names of parents are given. Crosses are made in reds, yellows, orange, wine, purple, blends, etc. Only the latest, big, broad petaled plants are used per pkt. **\$2.50**

CLASS II Seeds from the finest pink daylilies on the market. This is a special class and these seeds are valuable per pkt. **\$3.00**

CLASS III Seeds from several different colors are mixed. This is a good buy. Price per pkt. **\$1.00**

All of the crosses made are made after much study. Much time is given to working out the best cross in a given color. The crosses are made scientifically. This has been my life's work.

For 30 years I taught genetics in college, and the knowledge I have of the subject enables me to make a cross that will "nick." So, if you like adventure, like to work with unseen forces that will give you a lift, try raising some good plants from seeds. It's exhilarating.

MIXED SEED can also be furnished from **SPURIA** and **SIBERIAN** iris.

Price per pkt. **\$1.00**

Iris seed should be subjected to a cold treatment before planting. If you live in a state where cold weather occurs, then plant outside in a good, well-prepared bed about November 1st. Don't expect every seed to germinate the first year. They won't. Sometimes they stay in the soil several years and then germinate. I usually get from 50 per cent to 90 per cent germination. Keep bed moist but not too wet after planting. Mulch with grass or excelsior when hard freezing occurs. This prevents heaving. Seed will be shipped about September 1.

Daylily seed may be planted as soon as they are gathered. They may also be planted early in spring.

If you live in the Southern States, young seedlings will grow all winter. In the North they must be protected with a mulch. Seeds are shipped about September 1. Special crosses will be made, but that is a matter for correspondence. Please write me fully what you have in mind. I will do my best.

Here's hoping you will develop a wonderful hobby.

DR. LEWIS CLEVINGER, Hybridizer
Kirksville, Missouri