

9/155

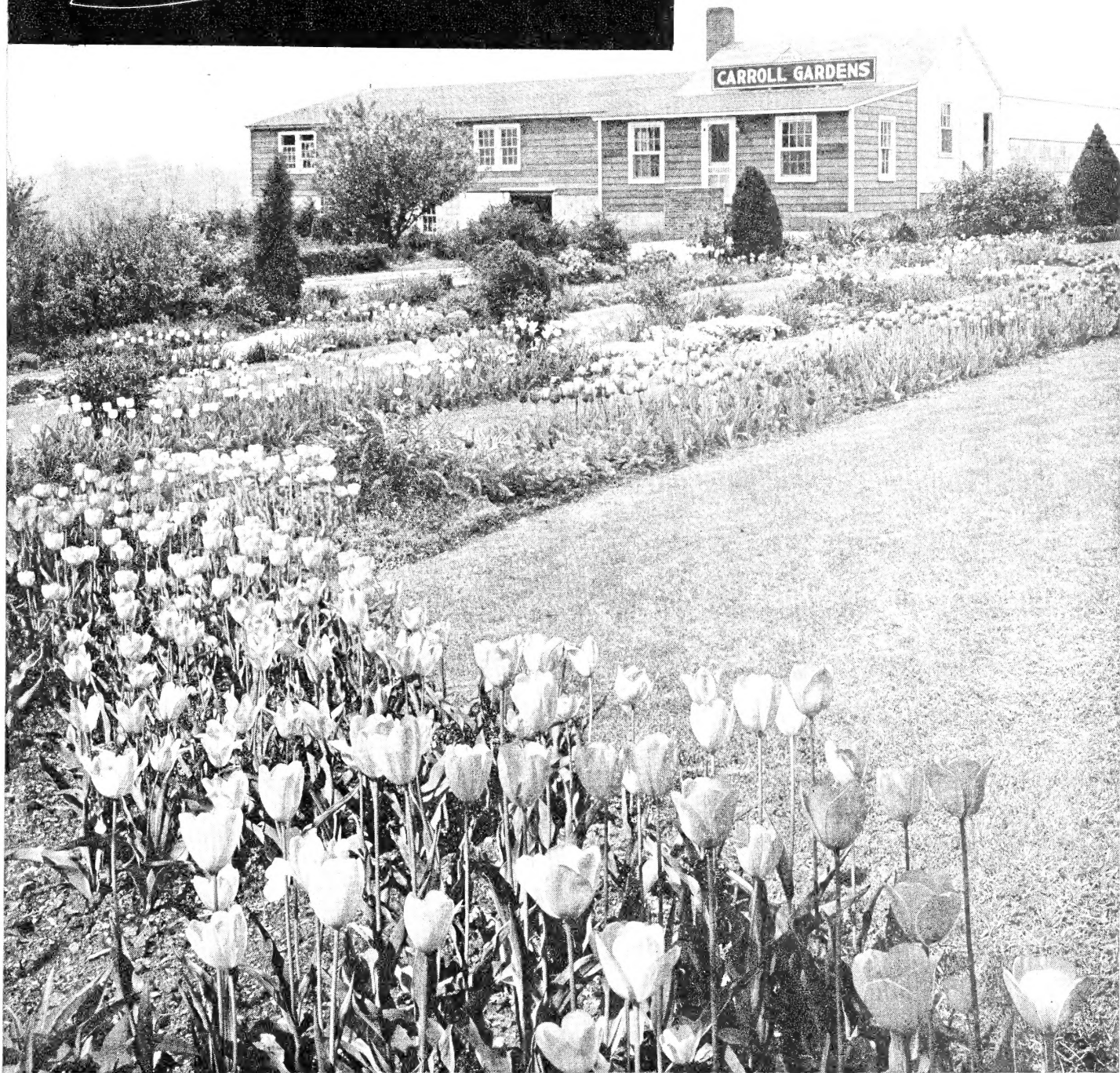
Carroll Gardens

THE WORLD'S FINEST PERENNIALS, ROSES, BULBS

Westminster, Md.

28 #

Your Fall Planting Guide for 1957



Many varieties of TULIPS, including all the latest ones, are sent to us from Holland and tested in our gardens. The picture above shows many of the varieties listed on pages 2 and 3. It is only these selected and pre-tested varieties, plus top-size bulbs, that give superior results. A trial order will convince you.

Three Outstanding Buys in Tulips

HANDSOME DARWIN TULIPS BY COLORS

White, Purple, Yellow, Red, Pink.

6 of any one color for 75c; 12 for \$1.35;
25 for \$2.50

SPECIAL OFFER 7F-50: 100 bulbs (20
each of the 5 colors) for \$9.50

CARROLL GARDENS SPECIAL BLEND

Your best buy in long-stemmed mixed Tulips. Prepared here at Carroll Gardens, it is composed of the finest varieties of Ideal Darwin, Breeder and Cottage Tulips. Sure to thrill you when they bloom next spring.

25 top-size bulbs for \$3.00; 50 for \$5.50;
100 for \$10.50; 250 for \$25.00

LONG-STEMMED TULIPS

INEXPENSIVE MIXTURE

These come to us already mixed from our grower in Holland. Includes many varieties and types of long-stemmed Tulips.

25 top-size bulbs for \$2.25; 50 for \$4.00;
100 for \$7.50; 250 for \$18.00

Mail Your Order Now to CARROLL GARDENS, Westminster, Maryland

Carroll Gardens Selected Long-Stemmed TULIPS

IDEAL DARWIN TULIPS

Flowers of most graceful habit, with lively, sparkling colors, including many pastels.

6 of any one variety for 90c; 12 for \$1.65; 25 for \$3.00, except where noted

- Annie Speelman.** Creamy white, with white base and anthers. Oval-shaped flower opens creamy white, turning to pure white.
- Arabian Nights.** Large, perfect, egg-shaped flowers of chestnut-red with darker sheen.
- Caroline Testout.** Soft pink with large white base. Non-fading.
- Coronado.** Dark begonia-rose with pure white base and black anthers. Long-pointed, large, broad flower of excellent substance.
- Cum Laude.** Deep violet with blue overtone. Ivory-white center with blue halo.
- Duke of Wellington.** Outstanding pure white flower with cream anthers and base. Perfect form; longish petals.
- Glacier.** Giant white, oval flowers; white base and anthers.
- Golden Smile.** New, very large two-toned yellow; outer petals yellow, inner petals dark yellow. Highly recommended. 6 for \$1.10; 12 for \$2.00; 25 for \$3.85.
- Mark Anthony.** Clear dark wine-purple, inside and out. Purple base; black anthers.
- Mavourneen.** Violet-magenta, edged silver outside; intense magenta to base inside.
- Nestinari.** Oxblood-red; black base, margined yellow; scarlet-red inside.
- Notre Dame.** Claret-red with violet undertone; same inside with blue sheen. Brilliant blue base.
- Queen of the Night.** Dark velvet-maroon with bright sheen. Darkest Tulip ever introduced.
- Spanish Beauty.** Deep American Beauty red outside; lighter inside. White and blue base.
- Treasure Island.** Finest silvery yellow, non-fading. Huge, squarish flowers, pointed; tapering outward. 3 for 85c; 6 for \$1.60; 12 for \$3.00; 25 for \$5.75.
- Vagabond Prince.** Inside clear purple with blue and white base; outside carmine-purple edged violet-purple. Anthers black. A new color.
- William Tell.** Raspberry-rose, paler edges; rose-pink inside. White center, black anthers.

MIXED IDEAL DARWINS. All colors. 12 for \$1.50; 25 for \$2.85; 100 for \$10.50

THE BETTER DARWIN TULIPS

These newer and better varieties have larger flowers, sturdier stems and better colors.

6 of any one variety for 85c; 12 for \$1.50; 25 for \$2.85

- Breitner.** Dark scarlet-red.
- City of Haarlem.** Vermilion-scarlet; black center, edged white.
- Clara Butt.** Clear pink, flushed salmon-rose.
- Eclipse.** Crimson-maroon with blue base.
- Flag of War.** A distinctive dark crimson with a dark base.
- Golden Age.** Fine two-tone. Bright golden orange, lighter inside.
- Insurpassable.** Lilac-mauve ribbed with white.
- Niphetos.** Lemon-yellow, darker at opening; pale ivory-yellow when grown. Light base; yellow anthers.
- Pride of Zwaneburg.** Bright pink, suffused rose-red. White base and black anthers.
- Princess Elizabeth.** Pink with lighter border, deepening with age.
- Scotch Lassie.** Deep lavender-purple; dark blue base.
- Sunkist.** Buttercup-yellow. Large, oval flower.
- The Bishop.** Clear deep violet-blue; white base.

MIXED DARWINS. 12 for \$1.25; 25 for \$2.35; 100 for \$8.00

COTTAGE TULIPS

These graceful flowers are mostly oval, with somewhat recurved petals. Every color imaginable can be found in this class.

6 of any one variety for 85c; 12 for \$1.50; 25 for \$2.85, except where noted

- Artist.** Visitors during flowering time exclaim "How lovely!" The color inside is salmon-rose and green, outside salmon-rose, purple and green. Specially recommended for the border and rockery. It is more a Species than a Cottage Tulip. 12 in. 6 for \$1.10; 12 for \$2.00; 25 for \$3.85.
- Belle Jaune.** Golden yellow with bright yellow interior; light base. Yellow anthers.
- General de la Rey.** Soft old-rose with lavender overcast.
- Golden Measure.** Golden yellow with a faint reddish tone on petal edges. Very fragrant.
- G. W. Leak.** Orange-red; green and yellow base.
- Ivory Glory.** Huge, egg-shaped, creamy to snow-white flower.
- Marshall Haig.** Brilliant scarlet with red interior and yellow base.
- Persian Beauty.** Carmine-rose, edged yellow and bronze.
- Queen of Spain.** Pale yellow, flushed pink; yellow anthers. Age increases the pink shading.
- Rosy Wings.** Salmon-orange. Large, cup-shaped flower with white base. Early. 18 in.
- Smiling Queen.** Paul Neyron rose, edged silvery pink; white base.

MIXED COTTAGES. All colors. 12 for \$1.25; 25 for \$2.35; 100 for \$8.00.

NEW AND UNUSUAL TULIPS

35c each; any 3 for \$1.00; any 6 for \$1.85; any 12 for \$3.50

- Blue Shimmer.** (Ideal Darwin.) Slaty purple; big, oval flower. Long lasting. 26 in.
- Everglow.** (Ideal Darwin.) Vivid carmine, edged with glowing orange. Long-lasting flower on sturdy stem. 26 in.
- Fair Angel.** (Cottage.) Pale sulphur-yellow with carmine band. Long flower of large size and good substance. A most distinctive variety. 26 in.
- Golden Treasure.** (Cottage.) Outer petals primrose-yellow, inside golden yellow. Large, oval-shaped flower with pointed petals, carried on stiff stems. Does not fade. 20 in.
- Guido Gezelle.** (Ideal Darwin.) Lovely uniform-growing raspberry color. Large flowers with reflexing petals. White base, with blue markings in center; anthers yellow. 26 in.
- King's Ransom.** (Ideal Darwin.) Large, broad flower of soft pale yellow. The petals are slightly edged cream-yellow. Very beautiful and highly recommended. 28 in.
- Silvermine.** (Ideal Darwin.) Purest and most noble white Tulip. Flowers of perfect form and great substance. Tall, sturdy stems. Pure white with white anthers. 2½ ft.

NEW GIANT BREEDER TULIPS

Enormous flowers in rich pastel tones and gorgeous blendings of purple, bronze, violet, old-gold, buff and maroon.

6 of any one variety for 90c; 12 for \$1.65; 25 for \$3.00

- Bonnie Prince.** Lilac, flushed reddish lilac; outer petals darker with light edges. Blue center.
- Cheyenne.** Inside light geranium-red; outside carmine, edged orange-red. Base and anthers yellow.
- Dragon's Blood.** Chinese lacquered inside; dull oxblood-red outside.
- Garden Magic.** Large yellow. Yellow base and black anthers.
- Morocco Beauty.** Clear morocco-red; interior dark reddish mahogany.
- Mount Royal.** Bright bluish violet, broadly edged soft bronze; inside much brighter, especially toward the yellow base. Dark anthers.
- Oriental.** Oval flower of soft Havana brown, overlaid with light violet. Yellow base.

MIXED BREEDERS. 12 for \$1.45; 25 for \$2.75; 100 for \$9.50.

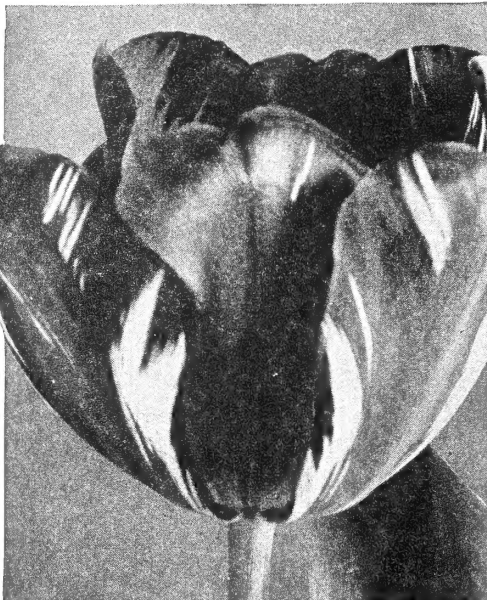
Lily-flowered TULIPS

An extremely graceful and decorative class with reflexing petals, useful for all garden locations including the rock garden. Interesting and beautifully shaped flowers in brilliant colors. Blooming period April 20 to May 20

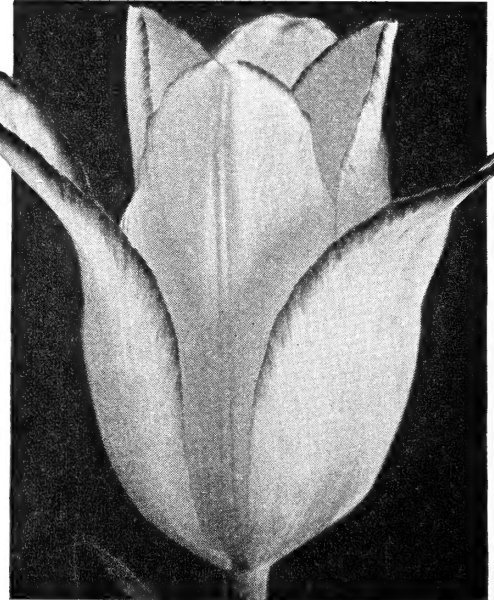
6 of any one variety for 95c; 12 for \$1.65; 25 for \$3.00

- Astor.** Pale lilac-bronze, shaded salmon. Good novelty.
- Elegans Alba.** White with red edge.
- Fascinating.** Creamy yellow; inside dark yellow. Exquisite color.
- Golden Duchess.** Deep primrose-yellow. Large flower of great beauty.
- Mildred.** A very large flower of soft rose-pink on a tall, stiff stem.
- Spitfire.** New fiery scarlet.
- The Bride.** Creamy white, turning to pure white with age. Unusual.

MIXED LILY-FLOWERED. All colors. 12 for \$1.50; 25 for \$2.85; 100 for \$10.50



REMBRANDT TULIP, American Flag



LILY-FLOWERED TULIP, Elegans Alba

ODD TULIPS that are *Interesting and Beautiful*

BOTANICAL TULIPS

These interesting varieties show a bewildering variation of size and shape of flowers, structure of leaves, habits, etc. They may be planted in the rock garden between creeping plants or in colonies in small, warm nooks, a situation where the larger-flowered garden Tulips would be out of place. Blooming period March to late May. They multiply and come back every year.

- Biflora.** Several delicate, small white flowers on a stem. 6 for 75c; 12 for \$1.35; 25 for \$2.50.
- Chrysantha.** Light yellow interior; outside rose. Very dainty. 6 for 75c; 12 for \$1.35; 25 for \$2.50.
- Clusiana.** Outer petals bright cherry-red; inside creamy white. Violet base. Very distinct. 6 for 85c; 12 for \$1.60; 25 for \$3.00.
- Dasystemon.** Canary-yellow and white; several flowers on a stem. 6 for \$1.00; 12 for \$1.85; 25 for \$3.50.
- Eichleri.** Crimson-scarlet, shaded orange; black center marked with gold. Lily type. Recommended. 12 for \$1.10; 25 for \$2.00.
- Fosteriana, Red Emperor.** Large scarlet-red, black center; yellow border. Flowers with Narcissus. 6 for 85c; 12 for \$1.50; 25 for \$2.85; 100 for \$9.50.
- Fosteriana, Princeps.** Same as Red Emperor. Blooms ten days later. Not as tall. 6 for 85c; 12 for \$1.50; 25 for \$2.85.
- Fosteriana, Rockery Beauty.** A very brilliant vermilion-red variety. Free and long-lasting bloom. 8 in. 6 for \$1.00; 12 for \$1.85; 25 for \$3.50.
- Fosteriana, White Empress (Fosteriana Purissima).** A white form of the famous Red Emperor. 3 for \$1.95; 6 for \$3.65; 12 for \$6.50.
- Kaufmanniana (The Water-Lily Tulip).** Creamy white, tinged rosy red. First of all species to bloom. 6 for 65c; 12 for \$1.20; 25 for \$2.25.
- Kaufmanniana, Cesar Franck.** Dark yellow, marked brilliant red; red and black center. Dwarf. 6 for \$1.10; 12 for \$2.00.
- Kaufmanniana, Gaicly.** Very dwarf. White; outside bright red. 6 for \$1.10; 12 for \$2.00; 25 for \$3.75.
- Kaufmanniana, Scarlet Elegance.** Inside brilliant scarlet; outside slightly dull. Very beautiful. 3 for 75c; 6 for \$1.35; 12 for \$2.50.
- Kaufmanniana, Sweelink.** Self-colored yellow; small red tip on each flower. Foliage lined brown. 6 for \$1.35; 12 for \$2.50.

Kaufmanniana, Rainbow Mixture. Contains red, rose, yellow, white and many other colors. 6 for 85c; 12 for \$1.50; 25 for \$2.85; 100 for \$9.50.

- Linifolia.** Brilliant vermilion-red. Excellent for the rock garden. 6 for \$1.10; 12 for \$2.00; 25 for \$3.75.
- Persica.** Inside brilliant yellow; outside golden bronze. Very fragrant; several flowers on a branching stem. 6 for \$1.25; 12 for \$2.25.
- Praestans Fusilier.** Large, bright orange-red; several flowers on a branching stem. Highly recommended for rock gardens. Blooms in April. 6 for \$1.00; 12 for \$1.85; 25 for \$3.50.

FOSTERIANA TULIP, Red Emperor



PARROT
TULIP

BOTANICAL TULIPS, continued

- Pulchella Violaacea.** A miniature Tulip growing only 4 to 6 inches high. Bright purple-violet flowers with a black base. Very early. 6 for \$1.50; 12 for \$2.75.
- Saxatilis.** Delicate lilac, yellow center. Flowers in April. 6 for 95c; 12 for \$1.75; 25 for \$3.25.
- Sylvestris.** Pure yellow. Sweet scented. Fine for naturalizing. 6 for 65c; 12 for \$1.20; 25 for \$2.00; 100 for \$7.50.

SINGLE EARLY TULIPS

Many may be forced to bloom indoors in January. Most bloom outdoors about the same time when planted in masses. Blooming period April 10 to May 1.

6 of any one variety for 85c; 12 for \$1.50; 25 for \$2.85

- Brilliant Star.** Scarlet-red. Very attractive.
- Keizerskroon.** Bright crimson-scarlet, edged clear yellow. Large flower.
- Pink Beauty.** Vivid cherry-rose, center of petals striped white.
- White Hawk.** Large; pure white.
- Yellow Prince.** Yellow; sweet scented.
- MIXED.** All colors. **12 for \$1.25; 25 for \$2.35; 100 for \$8.00.**

DOUBLE EARLY TULIPS

Chiefly grown for their showy effect in masses. Excellent for low borders and groups and for solid beds where early varieties with double, peony-like flowers are desired. Blooming period April 10 to May 1.

6 of any one variety for 90c; 12 for \$1.70; 25 for \$3.25

- Mr. Van Der Hoef.** Golden yellow.
- Peach Blossom.** Brilliant dark rosy pink.
- Scarlet Cardinal.** Brilliant vermilion-scarlet.
- Schoonoord.** Large, full-flowered pure white.
- MIXED.** All colors. **12 for \$1.35; 25 for \$2.50; 100 for \$9.00.**

DOUBLE LATE TULIPS (Peony-Flowered)

Taller than the Double Early. Blooming period early to late May.

6 of any one variety for 75c; 12 for \$1.35; 25 for \$2.50

- Eros.** Old-rose, tinted silvery rose. Large peony-flowered. Fine variety.
- Mt. Tacoma.** Large flower, resembling a double, pure white peony.
- Rocket.** A sport of Eros. Beautiful scarlet-red.
- Royal Yellow.** Deep yellow, full double flower of medium size.
- MIXED.** All colors. **12 for \$1.10; 25 for \$2.00; 100 for \$7.50.**
- Good Gracious (Chinese Lantern Tulip).** Pink, salmon, orange and yellow blends. Yellow base. Exceptional novelty. 2 ft. 6 for 85c; 12 for \$1.50; 25 for \$2.85; 100 for \$10.50.

PARROT TULIPS

Showy flowers with curiously lacerated petals, especially suitable for cutting. Excellent in front of shrubs, evergreens and in the border.

6 of any one variety for 85c; 12 for \$1.50; 25 for \$2.85, except where noted

- Black Parrot.** Brilliant velvety maroon-black. Strong stem and flower.
- Blue Parrot.** Violet and mauve, inside purple shaded steel-blue.
- Fantasy.** Salmon-pink, darker interior. Fine garden variety.
- Orange Favorite.** Bright orange; golden yellow center. Sweet scented.
- Texas Gold.** Clear yellow flowers on sturdy, 24-inch stems. A beauty.
- Therese.** Bright cochineal-carmine, inside vivid cerise-scarlet. Parrot-green outside; white center, tinted blue.
- White Parrot.** New white. Outstanding. 75c each; 3 for \$2.00.
- MIXED.** All colors. **12 for \$1.25; 25 for \$2.25; 100 for \$8.50.**

MULTI-FLOWERED TULIPS (The Tree Tulip)

A new type producing three or more flowers on a branching stem. Blooming period early to late May.

6 for 95c; 12 for \$1.75; 25 for \$3.25.

- Rose Mist.** Fine pink, averaging four or more strong blooms.
- Wallflower.** Shiny red, interior yellow. Vigorous; three to five flowers.
- American Flag (Old Glory).** Dark red Rembrandt Tulip with broad white lines and blue center. 6 for 85c; 12 for \$1.50; 25 for \$2.85.

NARCISSUS - DAFFODILS

DAINTY MINIATURE DAFFODILS

- Albus** (Angel's Tears). Drooping, creamy white flowers with reflexing perianth. 6 for 75c; 12 for \$1.25; 25 for \$2.25.
- Albus plenus odoratus**. Snowy white; sweet scented. Gardenia-like blossoms. Late. 6 for 95c; 12 for \$1.75; 25 for \$3.25.
- Beryl**. A lovely little Cyclamineus hybrid bearing gracefully drooping flowers with primrose-yellow, slightly reflexing perianth and small, globular, bright orange cup shading to gold. 6 for 85c; 12 for \$1.50; 25 for \$2.85.
- Bulbocodium conspicuum**. The yellow Hoop-Petticoat. Flowers rich golden yellow, of hoop-petticoat form. 6 in. 6 for 75c; 12 for \$1.25; 25 for \$2.25.
- Bulbocodium citrinus**. Lovely sulphur-yellow. 6 for 85c; 12 for \$1.50; 25 for \$2.85.
- Canaliculatus**. Small flower. Yellow perianth with clear yellow cup. 6 for 85c; 12 for \$1.50; 25 for \$2.85.
- Cyclamineus, Peeping Tom**. Intense deep yellow. Narrow trumpet and reflexing perianth. Early and long lasting. 12 in. \$1.00 each; 3 for \$2.85; 6 for \$5.50.
- February Gold**. Perianth golden yellow; trumpet fringed orange. Very early. 6 for 85c; 12 for \$1.50; 25 for \$2.85.
- Johnstoni, Queen of Spain**. Another distinctive little Daffodil with clear lemon-yellow flowers in March and April. 10 in. 6 for \$2.00; 12 for \$3.85.
- Jonquilla flore pleno**. The true old double sweet Jonquil produces little heads of rich yellow, double flowers in May. Very fragrant. 6 for 85c; 12 for \$1.50; 25 for \$2.85.
- Jonquilla simplex**. The true single sweet Jonquil, with clusters of numerous small, rich yellow flowers of delicious scent in May. 6 for 75c; 12 for \$1.25; 25 for \$2.25.
- Jonquilla tenuior**. The silver Jonquil. 6 for \$1.50; 12 for \$2.85.
- Juncifolius**. Small rich yellow flowers, with a dainty little flattish crown. Delicately fragrant. 3 to 4 inches. 6 for 85c; 12 for \$1.50; 25 for \$2.85.
- Minimus**. A Miniature Trumpet Daffodil growing only 3 to 4 inches high, with small golden yellow flowers. 6 for 85c; 12 for \$1.50; 25 for \$2.85.
- Old Pheasant's Eye**. Perianth pure white and reflexing; eye margined deep orange-red. Very fragrant. A favorite old variety. 6 for 75c; 12 for \$1.25; 25 for \$2.25.
- Triandrus pulchellus**. Lovely sport of Triandrus Albus with a very bright buttercup-yellow flower. 6 for \$1.50; 12 for \$2.85.

UNUSUAL DAFFODILS

- La Argentina**. Broad white perianth; cup white but frilled with radiating stripes of yellow and orange. It never fails to draw attention. 3 for \$1.00; 6 for \$1.85; 12 for \$3.50.
- Milk & Cream**. A "different" shade. Pure white perianth; enormous self-colored flat crown of Indian-yellow color, showing distinct shadings of salmon. It shows the color better after it has been open a few days. 65c each; 3 for \$1.65; 6 for \$3.00; 12 for \$5.50.
- Polar Ice**. Pure white with fringed, nearly white crown. A very attractive novelty. 3 for 85c; 6 for \$1.50; 12 for \$2.85.
- Thalia**. Two or three lovely pure white flowers per stem, 2 inches or more across, making a beautiful cluster. Very suitable for the rock garden or flower border and for forcing. 3 for 85c; 6 for \$1.50; 12 for \$2.85.

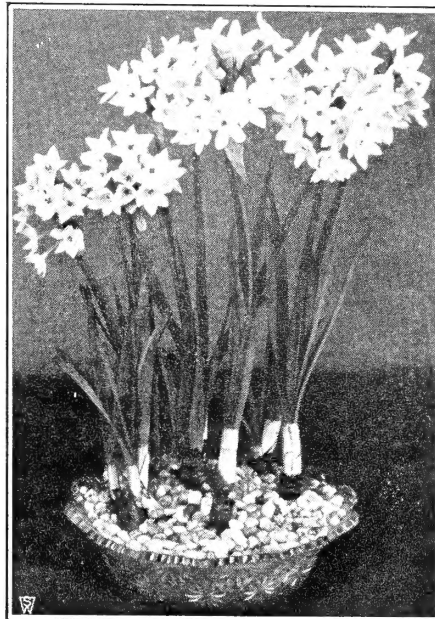
Typical blooms and size of Miniature Daffodils. The variety shown is **Triandrus Albus**.



A typical bloom of the New Giant John Evelyn Hybrid Daffodils.

GIANT TRUMPET DAFFODILS

- Ada Finch**. One of the very earliest Daffodils. Pure white, overlapping perianth; large well-shaped trumpet with deeply flanged and rolled rim. 3 for \$1.00; 6 for \$1.85; 12 for \$3.50.
- Beersheba**. The famous white Daffodil—a magnificent flower. Large, perfectly flat perianth; trumpet long and flanged at mouth. 3 for 85c; 6 for \$1.50; 12 for \$2.85.
- Gertie Millar**. Pure white perianth and a beautifully proportioned, pale primrose cup, deeply fluted and frilled. A most handsome flower. 3 for 85c; 6 for \$1.50; 12 for \$2.85.
- Golden Harvest**. One of the largest trumpet varieties. The perianth is well formed and overlapping; the trumpet is of good shape and proportion, rolled back at the brim. Deep golden yellow. 3 for 85c; 6 for \$1.50; 12 for \$2.85.
- Grapefruit**. Unusual coloring. The large flower is a cool, uniform lemon-green, bleaching to almost ivory. \$1.50 each; 3 for \$4.00.
- King Alfred**. The popular yellow Daffodil. 6 for \$1.00; 12 for \$1.85; 25 for \$3.50.
- Limone**. The perianth is primrose-yellow and trumpet of a lighter shade but broadly edged darker yellow and nicely fringed. Inside, the cup is creamy white. A new color combination. 3 for \$1.00; 6 for \$1.85; 12 for \$3.50.
- Lord Nelson**. An enormous, pale yellow flower of elegant form. Broad, overlapping perianth. 3 for \$1.00; 6 for \$1.85; 12 for \$3.50.
- Lord Wellington**. A fine deep golden yellow. Long, graceful trumpet carried on a stiff stem. 3 for 85c; 6 for \$1.50; 12 for \$2.85.
- Mount Hood**. Giant-sized flower of purest white. Its perfect form makes it one of the most admired Daffodils in our garden. 3 for 85c; 6 for \$1.50; 12 for \$2.85.
- President LeBrun**. Bicolor. Deep yellow trumpet, tinged orange; overlapping, pure white perianth. 3 for 85c; 6 for \$1.50; 12 for \$2.85.
- Spring Glory**. Pure yellow trumpet; white perianth. 3 for 85c; 6 for \$1.50; 12 for \$2.85.
- Unsurpassable**. Extremely large, yellow flower. 3 for 85c; 6 for \$1.50; 12 for \$2.85.



Sweet-scented Paper-White Narcissus for indoor forcing. Imported, large-size bulbs, 3 for 70c; 6 for \$1.25; 12 for \$2.25; 25 for \$4.25.

FOUR OUTSTANDING NEW DAFFODILS

- Apricot Attraction**. Apricot perianth; brilliant scarlet crown. Very unusual. \$1.25 each; 3 for \$3.25; 6 or more, \$1.00 each.
- Lourdes**. A distinctive new large-flowered John Evelyn hybrid. Lovely pale yellow perianth, with fringed, bright orange crown. A new color combination. \$1.00 each; 3 for \$2.50; 6 for \$4.50.
- Mother Catherine Grufflemans**. Broad white perianth of excellent substance. The base of the cap is delicate pale cream, shaded very light ochre, changing upwards into a broad band of pale, soft ochre-yellow, nicely edged with sulphur-yellow. Really outstanding; strongly recommended. \$4.00 each; 3 for \$11.00.
- Stentor**. A magnificent new Giant Trumpet Daffodil with large, uniform blooms of clear soft yellow throughout. Must be seen to be appreciated. \$4.25 each; 3 for \$12.00.



Quality and Varieties Unsurpassed

The NEW JOHN EVELYN HYBRID DAFFODILS

These extremely vigorous new hybrids have no objection to adverse weather conditions. All have large, flat, frilled crowns of excellent substance. They are vigorous, free flowering and excellent for naturalizing. They multiply and bloom for years without dividing.

- Brookville.** Very substantial, broad, flat, pure white perianth; large, completely ruffled, lemon-yellow cup. 40c each; 3 for \$1.10; 6 for \$2.00; 12 for \$3.75.
- Confuoco.** Large, pale yellow perianth, with orange-red cup. 75c each; 3 for \$2.00; 6 for \$3.75.
- Duke of Windsor.** Broad, overlapping perianth—large and white; pale yellow cup, which is very flaring and short, nicely ruffled. 50c each; 3 for \$1.35; 6 for \$2.35; 12 for \$4.35.
- Golden Majestic.** Soft yellow perianth. The crown is of a deeper yellow shade, large and substantial. Free flowering. 65c each; 3 for \$1.65; 6 for \$3.00; 12 for \$5.50.
- Leviathan.** Cream-white perianth; cup yellow, flaring, nicely ruffled and laciniated at rim, with deeper golden yellow edge. 40c each; 3 for \$1.10; 6 for \$2.00; 12 for \$3.75.
- Manco.** Ivory-white perianth; large, frilled crown of brilliant reddish orange. 50c each; 3 for \$1.35; 6 for \$2.35; 12 for \$4.35.
- Mary Blonck.** Large, long, white perianth; flaring, rich orange cup. Poeticus tint inside, paler outside. 40c each; 3 for \$1.10; 6 for \$2.00; 12 for \$3.75.
- Orange Monarch.** Broad, ivory-white perianth; enormous, flaring crown of brilliant orange. Early. 65c each; 3 for \$1.65; 6 for \$3.00; 12 for \$5.50.
- Red Marley.** Pale yellow perianth and a very distinct orange-red cup, well extended so that it looks almost like a trumpet Daffodil. 50c each; 3 for \$1.35; 6 for \$2.35; 12 for \$4.35.
- Skyrocket.** Creamy white perianth; large tangerine cup. 50c each; 3 for \$1.35; 6 for \$2.35; 12 for \$4.35.
- Times Square.** Large, pure white perianth; deep orange, fringed cup. 65c each; 3 for \$1.65; 6 for \$3.00; 12 for \$5.50.
- Wodan.** Broad, canary-yellow perianth; large, flaring, frilled crown of same color, edge light orange. 65c each; 3 for \$1.65; 6 for \$3.00; 12 for \$5.50.

PINK DAFFODILS

- Champagne.** Pure white perianth; trumpet pale cream-pink, with broad, ruffled, apricot edges. With age it turns to salmon-pink. 65c each; 3 for \$1.65; 6 for \$3.00; 12 for \$5.50.
- Lady Bird.** White perianth. Large, flaring, pink trumpet, evenly ruffled, pale apricot outside, deep orange-apricot inside. 50c each; 3 for \$1.35; 6 for \$2.35; 12 for \$4.35.
- Louise de Coligny.** Fragrant. White perianth; trumpet yellow when first open, turning to apricot-pink. Very lovely. 65c each; 3 for \$1.65; 6 for \$3.00; 12 for \$5.50.
- Mrs. R. O. Backhouse.** The famous "pink Daffodil." Perianth ivory-white; long slim trumpet of apricot-pink, changing to shell-pink. 3 for 75c; 6 for \$1.35; 12 for \$2.35; 25 for \$4.35.
- Pink Glory.** Pure white perianth; trumpet opens light Indian yellow, soon shading to a lovely pink. 65c each; 3 for \$1.65; 6 for \$3.00; 12 for \$5.50.

DOUBLE DAFFODILS

- Cheerfulness.** A double Poetaz. Creamy white, with occasional orange in center. 6 for 75c; 12 for \$1.25; 25 for \$2.25.
- Cheerfulness Yellow.** A new yellow Cheerfulness. Very attractive. 6 for 75c; 12 for \$1.25; 25 for \$2.25.
- Inglescombe.** Beautiful soft yellow. 6 for \$1.00; 12 for \$1.85.
- Irene Copeland.** Snow-white flowers with primrose markings. 6 for \$1.00; 12 for \$1.85.
- Mary Copeland.** Creamy white; deep orange center. 3 for 85c; 6 for \$1.50; 12 for \$2.85.
- Shirley Temple.** Pure white. The loveliest double white variety ever offered. 65c each; 3 for \$1.65; 6 for \$3.00; 12 for \$5.50.
- Twink.** Creamy yellow and red. 6 for \$1.00; 12 for \$1.85; 25 for \$3.50.

CARROLL GARDENS

Inexpensive Special Blend Daffodil Mixture

is composed of many varieties of all types. Really an outstanding mixture for naturalizing and for group or mass planting. Large bulbs; all will bloom next spring.

25 for \$3.00; 50 for \$5.50; 100 for \$9.50; 250 for \$22.50;
500 for \$42.50; 1000 for \$82.50

CARROLL GARDENS

Blue Ribbon DAFFODIL MIXTURE

For Show Purposes in Your Garden—For Cut Flowers in Your Home

A well-balanced mixture of top-notch Daffodils. Plant this mixture this fall and your garden will be the talk of the neighborhood next spring.

12 for \$3.00; 25 for \$5.50; 50 for \$9.75; 100 for \$17.50

Sweet-Scented Bunch-Flowered Daffodils

- Early Perfection.** White perianth; light yellow cup. 6 for 75c; 12 for \$1.25; 25 for \$2.25.
- Geranium.** White perianth; lovely orange-red cup. 6 for 75c; 12 for \$1.25; 25 for \$2.25.
- Trevithian.** Free-flowering variety producing two or more sweetly scented flowers on a stem. A pale self lemon-yellow. 6 for 75c; 12 for \$1.25; 25 for \$2.25.

Other Daffodils

- Actaea.** Broad, snow-white perianth. The very large eye is broadly margined with dark red. 6 for 75c; 12 for \$1.25; 25 for \$2.25.
- Firetail.** Creamy white perianth and large orange cup with scarlet-orange frill. 6 for 75c; 12 for \$1.25; 25 for \$2.25.
- John Evelyn.** Perianth pure white; cup lemon-yellow. 6 for 75c; 12 for \$1.25; 25 for \$2.25.

Actaea. A lovely old-fashioned Narcissus with small, distinct eye.



Bunch-Flowered Narcissus, Geranium

Mary Blonck, one of the John Evelyn Hybrids (about half natural size)

Trumpet Daffodil, Lord Nelson (much smaller than natural size)

Special Daffodil Collection

to give you representation of the various kinds of Daffodils.

6 each of the four types shown here, 24 bulbs in all, for only **\$4.50**

Ask for Offer 7F-51

You save 85c

Geranium. Bunch flowered; very sweet scented.
Mary Blonck. White with orange cup.
Lord Nelson. Soft yellow throughout.
Actaea. White with scarlet eye.

A wonderful collection for the beginner.

Fragrant HYACINTHS—CROCUS—COLCHICUM

to Plant This Fall

HYACINTHS

Our Hyacinths are the very best obtainable, in both quality and variety. A trial order will convince you.

15 to 16 cm., the ideal size for outdoor planting, 30c each; any 6 for \$1.60; any 12 for \$3.00; any 25 for \$5.75

City of Haarlem. Pale yellow.

Grand Maitre. Deep lavender.

Lady Derby. Clear rose-pink.

La Victoire. Shiny carmine-red.

L'Innocence. Best pure white.

Marie. Best deep blue.

Perle Brilliant. Light blue, tinged lavender.

Myosotis. Clear light blue.

HYACINTHS: 18 to 19 cm., extra-large bulbs, finest for forcing indoors and for exhibition blooms outdoors. Yellow, White, Pink, Red, Light Blue, Deep Blue.

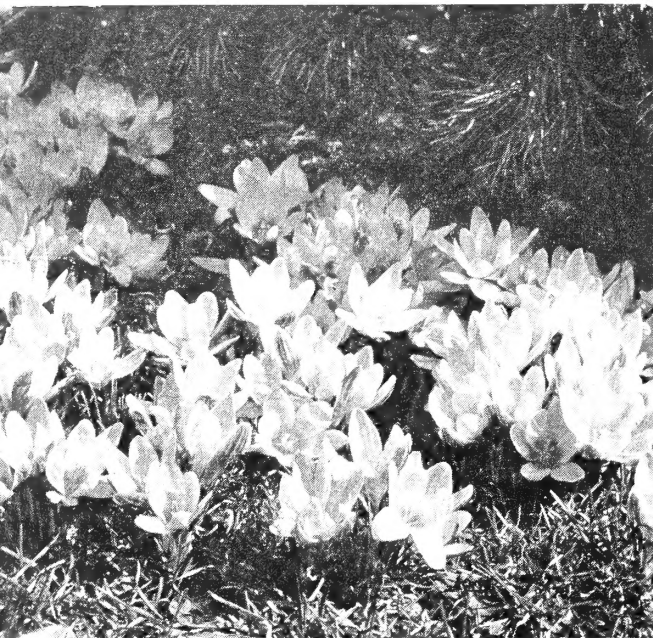
40c each; any 3 for \$1.10; any 6 for \$2.00; any 12 for \$3.75; any 25 for \$7.00

CROCUS—Top-Quality Bulbs

5 lovely colors: Purple, Blue, Striped, White, Yellow

12 of any one color for 65c; 25 for \$1.20; 50 for \$2.10; 100 for \$4.00

MIXED COLORS. 25 for \$1.00; 50 for \$1.85; 100 for \$3.50; 250 for \$8.00.



**CROCUS
COLCHICUM**



HYACINTH PLANTING

COLCHICUM "The Wonder Bulb"

Yes, They'll Bloom for You this Fall

Six of any variety at the dozen rate

Autumnale Album. Pure white. 3 for \$1.00; 12 for \$3.50.

Autumnale Roseum Plenum. Double; rosy lilac. 3 for \$1.00; 12 for \$3.50.

Speciosum. Large; deep rosy purple. 3 for \$1.00; 12 for \$3.50.

Speciosum Album. New. Very large, pure white. \$2.00 each; 12 for \$22.00.

Bornmuelleri. Cup-shaped. Long-tubed, rosy lilac flowers. Early. 3 for \$1.25; 12 for \$4.25.

Premier. New. Pinkish mauve. Large white center. 75c each; 12 for \$7.50.

Lilac Wonder. Beautiful mauve-violet. 3 for \$1.50; 12 for \$5.00.

The Giant. Deep lilac-mauve, fine white base. The largest late flowering. 3 for \$1.50; 12 for \$5.00.

Violet Queen. Deep violet-purple. 3 for \$1.50; 12 for \$5.00.

Waterlily. New and scarce. Large, full double; lilac-mauve. \$2.75 each; 12 for \$25.00.

GIANT-FLOWERED HYBRIDS IN MIXED SHADES
3 for \$1.25; 6 for \$2.25; 12 for \$4.25; 25 for \$8.00; 50 for \$15.00

SPECIAL COLLECTION

6 Outstanding Varieties

Autumnale Album

Lilac Wonder

Autumnale Roseum Plenum

Bornmuelleri

Violet Queen

The Giant

12 BULBS, 2 EACH OF ABOVE VARIETIES \$4.50
OFFER 7F-52

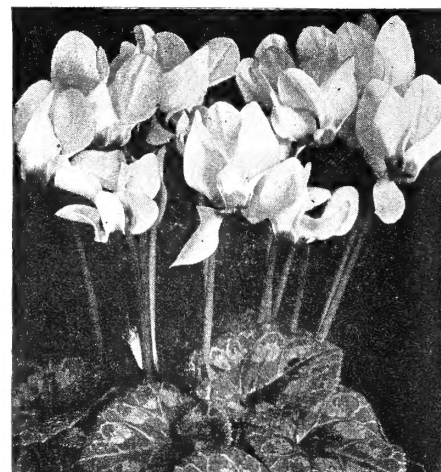
STERNBERGIA LUTEA

Gorgeous yellow; blooms the same time, similar in growth to Colchicum. 3 for \$1.00; 12 for \$3.50.

HARDY CYCLAMEN

Neapolitanum. Rosy pink flowers, with foliage silvery and marbled. Prefers little shade. 75c each; 3 for \$2.00; 6 for \$3.75; 12 for \$7.00.

HARDY CYCLAMEN



Hardy Garden LILIES — Oregon-Grown Bulbs

Ready to Plant in Your Garden this Fall

These glorious new and better Lilies were grown in Oregon, on the slopes of Mount Hood. Order bulbs now. They will be shipped with their full root systems intact, in late October and early November, which is the proper planting time. Select a spot for them in rich, porous soil that is sunny and well drained. Full cultural instructions will be sent with shipment.

Auratum Platyphyllum (Goldband Lily). Immense blooms, from 7 to 9 inches across, exotic and richly scented. As many as 15 are borne on a mature plant, standing fully 6 or 7 feet high. Needs rich, well-drained soil and prefers light shade. Late fall planting gives best results. \$1.25 each; 3 for \$3.25.

Enchantment. A most beautiful, vibrantly colored new hybrid with many large, cupped, upright flowers of an intense, blaring nasturtium-red. Long-lasting flowers. Late June and early July bloom. 75c each; 3 for \$2.00.

Estate. A magnificent Lily for midsummer. Extra-large, pure white flowers freely produced on 4-foot stems. Plant 6 to 8 inches deep in average soil. \$1.00 each; 3 for \$2.75.

Fireflame. A vivid, sparkling Indian-red. Wide-petaled flowers of great substance that face straight upward and glossy, healthy foliage combine to make this a most rewarding plant. Late June flowering. Grows 2 to 3 feet tall. \$1.00 each; 3 for \$2.75.

Formosanum. The latest flowering of all the popular Lilies, this white trumpet type is especially desirable for moderate climates. Often flowers as late as September. Our strain is tall and free flowering. Plant 5 to 6 inches deep in sun or partial shade; water during the summer. 75c each; 3 for \$2.00.

Golden Chalice Hybrids. A fine group of seedling Lilies we can heartily recommend. Warm golden colors predominate in this early June, cup-shaped group, 1 to 2 feet tall. Full sun. Plant several bulbs together. 75c each; 3 for \$2.00.

Golden Clarion. A fine de Graaff strain of trumpet types, ranging in color from clear yellow to gold. Very beautiful and richly colored. Yellow and gold trumpets are sensational whenever exhibited. \$2.00 each; 3 for \$5.00.

Green Mountain Hybrids. An impressive group of trumpet Lilies with very large flowers, combined with a green throat and brown petal exteriors. Distinct in shape and color from Olympic Hybrids, and valuable for exhibition and specimen planting as well as cutting. Same culture as Olympic Hybrids; plant in very light shade. \$1.10 each; 3 for \$3.00.

Heart's Desire. Imagine a giant Regal Lily with huge, orange-throated flowers. These trumpet Lilies, fully as tall and vigorous, are of hybrid origin, which gives them added vigor and beauty. Huge pyramids of flowers in warm tones. \$1.75 each; 3 for \$4.75.

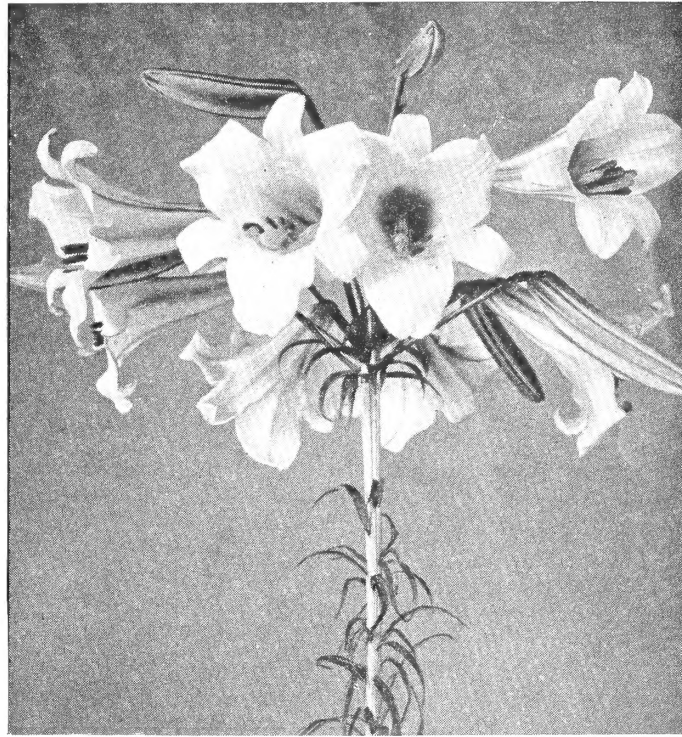
Henryi. Grows 5 to 8 feet tall. Blooms in late July and August, with 20 or more golden orange, recurved, pendent flowers. Plant 6 inches deep and 8 to 12 inches apart. 75c each; 3 for \$2.00.

Lillian Cummings. A grand Lily from Canada with grenadine-red flowers on 3 to 5-foot stems. Vigorous, disease-free garden plant. Plant 4 to 5 inches deep in full sun or partial shade. July flowering. 75c each; 3 for \$2.00.

Madonna. The oldest Lily known. Must be planted very shallow. Order now and plant just as early as possible. 75c each; 3 for \$2.00; 12 for \$7.00.

Olympic Hybrids. The finest, tallest and largest trumpet Lilies yet produced. Broader and stronger flowers than the Regal Lily, with pyramidal flower heads. Flowers vary from ivory-white through soft green, with deeper green and russet tints on the outside. These graceful, 5 to 7-foot plants flower in July and do well in full sun or light shade. 65c each; 3 for \$1.65.

Olympic Pink. Selected from tens of thousands of Olympic Lilies. A strain with accentuated coloring and large, widely expanded flowers. New, robust, giant trumpet Lilies in shades of fuchsia to rose-pink. They need filtered sunlight and cool weather to bring out their best color. They are apt to bleach in full sun. \$3.50 each; 3 for \$9.50.



GREEN MOUNTAIN HYBRID

Free LILY FOLDER

Beautifully Illustrated in Full Color
SEND FOR YOUR FREE COPY NOW
Many of Jan De Graaff varieties shown in Color

**All Our LILIES Are Healthy American-Grown BULBS
Guaranteed to Bloom Next Summer**

Parade. Rich golden yellow, outward-facing flowers with burnished gold midrib in each petal. Blooms well spaced on 2-foot stems. June, July. \$1.00 each; 3 for \$2.75.

Rainbow Hybrids. A Candlestick Lily in gay, sparkling new colors. Vigorous and hardy. From 1 to 3 feet tall, they will grow anywhere. Colors range from pale straw-yellow to deepest maroon. June flowering. 60c each; 3 for \$1.50; 12 for \$5.50.

Red Champion. The lovely Speciosum Lily from Japan. Has won out in all competitive trials. Blooms in late August. \$1.25 each; 3 for \$3.50; 12 for \$12.50.

Regale. The most widely grown of all trumpet Lilies and has done a great deal to popularize the Lily family for garden use. Prolific, sturdy and hardy. 50c each; 3 for \$1.25; 12 for \$4.25.

Sunburst. Flowers resemble Henryi in shape, although larger and less reflexed. The colors range from white through cream and yellow to orange. Excellent for cut flowers and very vigorous in the garden. Late July and August. A seedling strain. \$1.50 each; 3 for \$4.00.

Sunburst Yellow. New introduction with pure golden yellow, star-shaped, non-fading flowers. \$2.00 each; 3 for \$5.00.

Talisman. A completely new and different Tiger Lily. Vigorous and prolific. Flowers in early July. Perfect for the border, for the open woodland, for cutting. Stands 5 to 6 feet tall, with many large, nodding flowers. 75c each; 3 for \$2.00; 12 for \$7.50.

Tenuifolium (pumilum). Thin, wiry stems, seldom more than 2 feet tall, bear numerous bright scarlet or lacquer-red flowers in June. Small and dainty. Prefers full sun and a well-drained location. Plant 4 inches deep. 50c each; 3 for \$1.25; 12 for \$4.50.

White Champion. A worthy companion for Red Champion. Purest white, vigorous and dependable. August, September. \$1.25 each; 3 for \$3.25.

Startling New Lily, JILLIAN WALLACE

(Auratum Hybrid)

This bold and lovely Lily is the best of all the new Auratum Hybrids. It was raised in Australia by Mr. Roy M. Wallace. The fully open flowers are more than 8 inches across, and the plants bear as many as 7 of the huge flowers on 5 to 6-foot stems. The petals are carmine-red with white margins, spotted with intense deep crimson. The petals are slightly crested on the inner edges near the base. The flowers are strongly but nicely scented. Very limited stock, not more than 2 per customer. Flowering-size bulbs, \$6.00 each; 2 for \$11.00.



RED CHAMPION

LILY-OF-THE-VALLEY (Convallaria)

Everybody knows and loves the white Lily-of-the-Valley. Will grow satisfactorily in average garden soil in either sun or shade. 6 for 75c; 12 for \$1.35; 25 for \$2.35; 50 for \$4.35; 100 for \$8.00.

Pink Lily-of-the-Valley. Identical in every respect with the well-known white form, but soft pink in color. Deliciously fragrant, with airy grace. Makes lovely corsages and dainty arrangements. \$1.00 each; 3 for \$2.75; 6 for \$5.00.

Little Bulbs to Bring Big Thrills Next Spring



SQUILL



GLORY-OF-THE-SNOW



SPANISH BLUEBELLS



SNOWDROPS



GRAPE HYACINTHS

ALLIUM

Attractive bulbous plants producing erect, bare stems with globular heads of flowers, resembling the blue lace flower or bunch primrose. Hardy, fine for rock gardens and borders.

- Moly.** Bright yellow flowers in June. 12 in. high. 12 for \$1.00; 25 for \$1.85.
- Ostrowskianum.** Small heads of carmine-pink flowers in June. 6 in. 12 for \$1.00; 25 for \$1.85.

ANEMONE

These popular flowers of French origin are exceedingly brilliant in color and excellent for cutting. They like to be planted about 6 inches deep in a cool, moist but well-drained soil. For northern states we advocate early spring planting; for the southern section of the country, fall planting is best. Cover in winter with strawy manure.

12 of any one variety for 85c; 25 for \$1.50; 100 for \$5.50

- Apennina.** Single blue flowers. Excellent for rock garden or naturalizing.
- Apennina Alba.** Pure white form of the above.
- Blue Poppy.** Large, single blue flowers.
- De Caen.** Fine shades of blue, white and scarlet. Very tall.
- His Excellency.** Very large flowers, 3 inches across. Vivid vermilion, silvery white base, blue-black central boss. 12 in. high.
- St. Brigid.** Very popular. Unusually large flowers in a wide range of brilliant colors.
- White Poppy.** Large, single white flowers. Long stems.
- Blanda Atrocaerulea.** Very lovely deep blue.
- Blanda Rosea.** Pink.
- Blanda Mixed.** Various colors.

HARDY ORCHID (Bletilla)

- Hycinthina.** Can be grown in the garden or house in a small pot of peaty soil. Planted in November, will bloom in March. Plant may be removed to the garden where it will grow freely or be forced into bloom again the following winter. Six to eight Cattleya-colored flowers grow on a 12 to 15-inch stem. They last six to eight weeks. 75c each; 3 for \$2.00; 6 for \$3.75; 12 for \$7.00.
- Hycinthina Alba.** White form of above. \$1.00 each; 3 for \$2.85; 6 for \$5.50.

GLORY-OF-THE-SNOW (Chionodoxa)

Excellent little flowers for early spring bloom in the rock garden and other places. They will naturalize and come back year after year. Pink, White, Light Blue, Deep Blue and Mixed. 12 for 75c; 25 for \$1.35; 50 for \$2.50; 100 for \$4.00.

WINTER ACONITE (Eranthis)

Hyemalis. Clear yellow; very early. Good for rock garden, under Sedums or trees. 12 for 65c; 25 for \$1.20; 100 for \$4.00.

DOGS-TOOTH VIOLET (Erythronium)

Mixed. Mixture of many shades. Fine for naturalizing or rock garden in light shade. 12 for \$1.50; 25 for \$2.85; 100 for \$9.50.

CROWN IMPERIALS (Fritillaria imperialis)

Crown Imperials want a good soil and much sun, and may be left undisturbed for years. Plant early in a sheltered location. Height about 3 feet. 3 for \$3.50; 6 for \$6.50; 12 for \$12.00.

We have been told by our bulb expert in Holland that these bulbs will keep ground moles away from the garden.

CHECKERED LILY (Fritillaria meleagris)

Mixed. All colors. 12 for 85c; 25 for \$1.50.

SNOWDROP (Galanthus)

- Nivalis Flore-Pleno.** Double white. 12 for \$1.25; 25 for \$2.25; 100 for \$7.50.
- Nivalis Simplex.** White. The old standby. 12 for 75c; 25 for \$1.35; 100 for \$4.50.

IXIOLIRION

Pallasi (Tataricum). Choice hardy bulb which in early June produces several deep blue, tubular flowers on slender stems. 12 for 75c; 25 for \$1.35; 100 for \$4.50.

GRAPE HYACINTH (Muscari)

Armeniacum (Early Giant). Deep cobalt-blue, producing many spikes. Good for forcing and massing; fragrant. 12 for 65c; 25 for \$1.20; 100 for \$4.00.

Azureum. Bright blue flowers. Fine for forcing in January. 12 for 65c; 25 for \$1.20; 100 for \$4.00.

Botryoides Album. White Grape Hyacinth. Bears fragrant little pure white flowers. 12 for 75c; 25 for \$1.35; 100 for \$4.50.

Plumosum. Plume Hyacinth. Feathery plumes of violet-colored flowers in May. 6 for 85c; 12 for \$1.50; 25 for \$2.85; 100 for \$9.00.

RANUNCULUS

Mixed. The best and hardiest varieties. 12 for 85c; 25 for \$1.50.

SQUILL (Scilla)

- Sibirica Alba.** Pure white. 12 for 95c; 25 for \$1.65; 100 for \$5.25.
- Sibirica, Spring Beauty.** Light blue. Very large and free flowering. 12 for 95c; 25 for \$1.65; 100 for \$5.25.

SPANISH BLUEBELL (Scilla campanulata or hispanica)

Spanish Bluebells come into bloom in May. They do well in shade or sun. Height 12 to 15 inches.

Blue Ribbon. Very large, showy, deep blue flowers on 12 to 15-inch stems, in May and early June. 12 for \$1.00; 25 for \$1.85; 100 for \$6.00.

Heavenly Blue. Like Blue Ribbon but with light blue flowers. 12 for \$1.00; 25 for \$1.85; 100 for \$6.00.

Queen of the Pinks. Lovely pink flowers. 12 for 95c; 25 for \$1.65; 100 for \$5.25.

White Triumphant. A showy white variety. 12 for \$1.00; 25 for \$1.85; 100 for \$6.00.

Mixed. All colors. 12 for 75c; 25 for \$1.35; 100 for \$4.50.

TRITELEIA

Uniflora. White-shaded blue flowers; sweet scented. 12 for 75c; 25 for \$1.35; 100 for \$4.50.

Uniflora Violacea. Light violet; sweet scented. 12 for 75c; 25 for \$1.35; 100 for \$4.50.

TRITONIA

Crocata. Mixed colors. 12 for \$1.00; 25 for \$1.85.

100 SMALL BULBS \$5.95 for Your Garden

This collection of 100 bulbs will brighten your rock garden or wild garden in early spring. Plant 2 to 4 inches apart, between low plants. Ten each of the following ten:

- | | |
|-------------------------------------|------------------------|
| Miniature Tulips | Crocus |
| Assorted Miniature Daffodils | Grape Hyacinths |
| Assorted Snowdrops | Winter Aconite |
| Assorted Scilla | Puschkinia |
| Glory-of-the-Snow | Anemone |

OFFER 7F-53 100 bulbs for \$5.95

Finest Roses to Plant This Fall 2 yr. No. 1 Field-Grown Plants

ALL-AMERICA WINNERS FOR 1958

FUSILIER. Floribunda. Prop. Rights Reserved. Flaming orange-scarlet. Fragrant and floriferous. \$2.50 each; 3 for \$6.60.

GOLD CUP. Floribunda. Plant Pat. Applied for. Deep yellow, non-fading blooms. Sweet Rose fragrance. \$2.50 each; 3 for \$6.60.

WHITE KNIGHT. Hybrid Tea. Plant Pat. 1359. Pure satiny white color. The perfect white Hybrid Tea. \$3.00 each; 3 for \$7.95.

Hybrid Tea Roses

Ami Quinard. Blackish maroon. \$1.50 each; 3 for \$3.90.

Blanche Mailerin. Plant Pat. 594. Outstanding white. \$2.25 each; 3 for \$6.00.

Chrysler Imperial. Plant Pat. 1167. Vivid crimson-red. \$2.50 each; 3 for \$6.60.

Condesa de Sastago. Orange-scarlet and yellow. \$1.50 each; 3 for \$3.90.

Crimson Glory. Deep crimson-red. \$1.50 each; 3 for \$3.90.

Eclipse. Long yellow buds. \$1.50 each; 3 for \$3.90.

Editor McFarland. Pink, slightly suffused yellow. \$1.50 each; 3 for \$3.90.

Forty-niner. Plant Pat. 792. Rich chrome-yellow and red. \$2.25 each; 3 for \$6.00.

Helen Traubel. Plant Pat. 1028. Lively pink. \$2.50 each; 3 for \$6.60.

Isobel Harkness. Plant Pat. App. for. A bright shining yellow. \$3.00 each; 3 for \$7.95.

K. A. Viktoria. Open bloom is cream-white; appealing scent. \$1.50 each; 3 for \$3.90.

Love Song. Plant Pat. 1360. Pink with vivid yellow on reverse side. \$2.50 each; 3 for \$6.60.

McGredy's Scarlet. Velvety crimson-scarlet. \$1.50 each; 3 for \$3.90.

Mirandy. Plant Pat. 632. Maroon-red. \$2.25 each; 3 for \$6.00.

Mission Bells. Plant Pat. 923. Deep salmon-pink. \$2.00 each; 3 for \$5.25.

Mojave. Plant Pat. 1176. Beautiful orange. \$2.75 each; 3 for \$7.20.

Mrs. E. P. Thom. Canary-yellow with long buds. \$1.50 each; 3 for \$3.90.

Nocturne. Plant Pat. 713. Deep red. \$2.25 each; 3 for \$6.00.

Peace. Plant Pat. 591. Everybody's favorite yellow Rose. \$2.50 each; 3 for \$6.60.

Picture. Dainty pink with rich salmon undertone. \$1.50 each; 3 for \$3.90.

Poinsettia. Fire-red with long pointed bud. \$1.50 each; 3 for \$3.90.

President Herbert Hoover. Two-tone maroon and orange. \$1.50 each; 3 for \$3.90.

Radiance. Popular pink. \$1.50 each; 3 for \$3.90.

Red Radiance. Rose-red. \$1.50 each; 3 for \$3.90.

Rubaiyat. Plant Pat. 758. Rose-pink changing to cerise-red. \$1.75 each; 3 for \$4.65.

Sister Therese. Beautiful yellow blooms. \$1.50 each; 3 for \$3.90.

Sutter's Gold. Plant Pat. 885. Bright yellow shaded orange. \$2.25 each; 3 for \$6.00.

Talisman. Bright rose tinged with orange. \$1.50 each; 3 for \$3.90.

Texas Centennial. Brilliant red blooms changing to salmon-pink. \$1.50 each; 3 for \$3.90.

Tiffany. Plant Pat. 1304. Phlox-pink. Exquisite for cutting. \$2.50 each; 3 for \$6.60.

Floribunda Roses

Baby Blaze. Plant Pat. 1362. Dashing red. \$2.00 each; 3 for \$5.25.

Circus. Plant Pat. 1382. Multicolor—rich yellow and red to orange-buff suffused pink. \$2.50 each; 3 for \$6.60.

Floribunda Roses, continued

Fashion. Plant Pat. 789. Coral-pink suffused with gold. \$2.00 each; 3 for \$5.25.

Floradora. Dazzling bright cinnabar-red. \$1.50 each; 3 for \$3.90.

Garnette. Garnet-red "sweetheart" flowers. \$1.75 each; 3 for \$4.65.

Goldilocks. Plant Pat. 672. Rich golden yellow. \$1.75 each; 3 for \$4.65.

Jiminy Cricket. Plant Pat. 1346. Tangerine-red opening to coral-orange. \$2.00 each; 3 for \$5.25.

Red Pinocchio. Plant Pat. 812. Rich carmine. \$1.75 each; 3 for \$4.65.

Spartan. Plant Pat. 1357. Orange-red, changing to reddish coral. \$2.75 each; 3 for \$7.20.

Vogue. Plant Pat. 926. Pastel scarlet opening to rose-pink. \$2.00 each; 3 for \$5.25.

White Bouquet. Plant Pat. 1415. Double white flowers. \$2.50 each; 3 for \$6.60.

Climbing Roses

Blaze. Huge clusters of vivid scarlet. \$1.50 each; 3 for \$3.90.

City of York. An attractive creamy white climber, blooming profusely and making a fine showing. \$1.50 each; 3 for \$3.90.

Climbing Crimson Glory. Plant Pat. 736. Deep velvety crimson. \$2.50 each; 3 for \$6.60.

Climbing Etoile de Hollande. Fragrant, unfading red blooms. \$1.50 each; 3 for \$3.90.

Climbing Talisman. Two-tone scarlet and yellow. \$1.50 each; 3 for \$3.90.

Golden Showers. Plant Pat. 1557. Canary-yellow blooms. \$2.75 each; 3 for \$7.20.

Gold Rush. Double high-centered blooms of gold color. \$1.50 each; 3 for \$3.90.

Inspiration. Sparkling pink tones. \$2.25 each; 3 for \$6.00.

New Dawn. The everblooming form of Dr. W. Van Fleet. Soft pink. \$1.50 each; 3 for \$3.90.

Paul's Scarlet Climber. The most widely planted scarlet climber. Hardy and easy to grow. \$1.50 each; 3 for \$3.90.

Prosperity. White tinted with pale pink. \$2.00 each; 3 for \$5.25.

New Grandifloras

Buccaneer. Plant Pat. 1119. Long, slender buds and cupped flowers of clear yellow. Tall and free branching. A very superior new Rose. \$2.50 each; 3 for \$6.60.

Carrousel. Plant Pat. 1066. Unfading rich dark red. Semi-double flowers, sometimes carried singly and sometimes in big sprays. About 3 feet tall. \$2.00 each; 3 for \$5.25.

Montezuma. Plant Pat. 1383. Long slender buds and large blooms of a rosy salmon color. A good cutting Rose with long stems. \$2.75 each; 3 for \$7.20.

Queen Elizabeth. Plant Pat. 1259. Beautiful pink blooms carried upright on a proud, tall plant. Lightly ruffled petals. \$2.50 each; 3 for \$6.60.

7 Popular Repeat-Blooming Roses for only \$9.50

Condesa de Sastago. Double, bicolor red and yellow.

Crimson Glory. Double, deep crimson-red; fragrant.

Eclipse. Semi-double, clear yellow; long buds.

Editor McFarland. Double deep pink.

K. A. Viktoria. Double white.

Picture. Double pink.

President Herbert Hoover. Semi-double, copper and pink.

ASK FOR OFFER 7F-54 7 Roses for \$9.50



DAYLILY, Lady Esther, growing in the perennial border

DAYLILIES (HEMEROCALLIS)

The Backbone of Your Summer Garden

HARDY AND EASY-TO-GROW

TWELVE BEST NEWER DAYLILIES

To bloom from May to October. Each distinctively different.

- Augusta.** Large, pale yellow. Late July and August. 3½ to 4 ft. \$1.50 each.
- Carnival.** Large bicolor. Light red, with yellow stripe in center of each petal; full, golden yellow throat. June and early July. 3 to 4 ft. \$1.50 each.
- Crimson Banner.** Another new and distinct variety with medium-sized, brilliant crimson blooms. June and early July. Grows only 2 ft. high. \$2.00 each.
- Enchantress.** Soft yellow with faint pink on petals and throat. Late July and August. 4 ft. \$1.50 each.
- Jane.** Large flower with long petals. Bright scarlet-red with golden throat. Late June and July. \$1.50 each.
- La Bella.** Very large, velvety maroon-red with golden green throat. Very different. July. 4 to 4½ ft. \$2.00 each.
- Lady Esther.** Large blooms of soft pale yellow. Early June to mid-July and occasionally again in the fall. 3 to 3½ ft. \$1.50 each.
- Mrs. C. L. Seith.** Very large, deep golden yellow. May and June. \$1.50 each.
- Nacarado.** Very free blooming. Bright cardinal-red, with lower half of the inside bright yellow. July and August. 3½ to 4 ft. \$2.00 each.
- Painted Lady.** Yellow, flushed with coppery cinnamon. Very large flower, heavily ruffled. July and August. 2½ ft. \$1.50 each.
- Pink Charm.** Dusty rose-pink, shading to rose-red. July. \$1.50 each.
- Rose Du Barry.** Unusual tone of strawberry-red. Outstanding. June and July. \$1.50 each.

VERY SPECIAL: You may select one each of any 3 varieties from the above list for only \$4.00

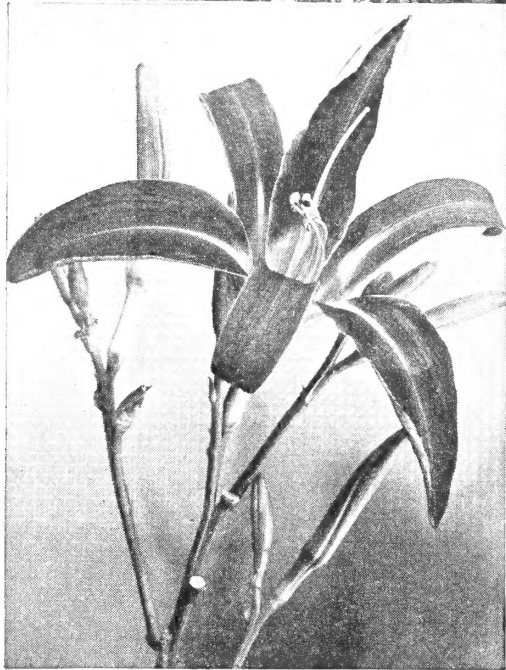
Any 6 for \$7.00

1 each of all 12 varieties for \$10.00

ASK FOR OFFER 7F-56

AUTUMN PRINCE. Small flower of glistening lemon-yellow. September and October. 2½ to 3 ft. Limited stock, not more than 3 per customer. \$2.50 each; 3 for \$6.50.

HYPERION. 3 ft. Still very popular pale yellow Daylily. Huge, impressive blooms July to August. 75c each; 3 for \$2.00; 6 for \$3.50; 12 for \$6.50; 25 for \$12.00.



ROSE DU BARRY

Six Popular Daylilies

To give you bloom from May to September. 75c each; 3 of one variety for \$2.00; 6 for \$3.50; 12 for \$6.50; 25 for \$12.00

- August Pioneer.** 2½ ft. Small flowers of chrome-orange. Early August to mid-September.
- Gypsy.** 2 ft. Deep orange. June to July.
- Linda.** 3 ft. Golden yellow, with cinnamon bars on each petal. July to August.
- Mikado.** 3 ft. Orange, marked purple-red. May to June.
- Mrs. W. H. Wyman.** 3½ ft. Pale glistening yellow. Late July and August.
- Ophir.** 3½ ft. Huge blooms of rich golden yellow. July to August.

SPECIAL GROUP OFFER
1 each of these 6 varieties for **\$4.00**
ASK FOR OFFER 7F-55

Nancy Mae. Red. **FREE** with this Group.

JAPANESE IRIS

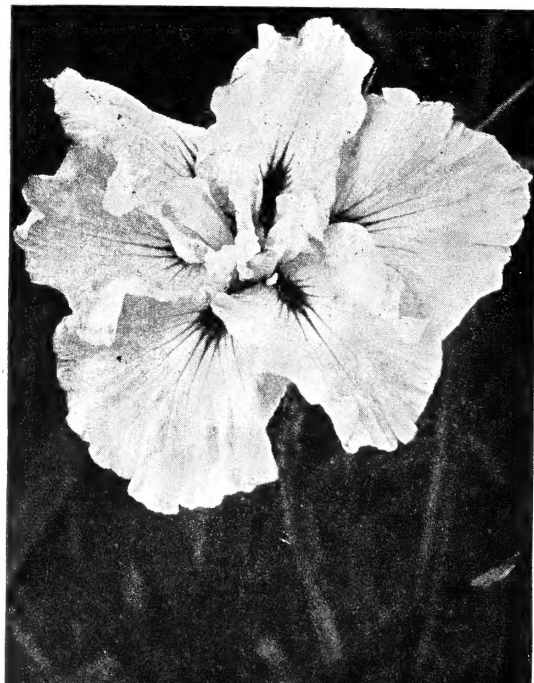


Easily grown in any good average garden soil which is fairly rich and has good drainage. Divide the plants every three or four years, early in the spring or in September and October. Their average height is 2 to 3 feet.

- (D) Double varieties with 6-petaled flowers.
- (S) Single varieties with 3-petaled flowers.

75c each; 3 for \$2.00; 6 for \$3.75; 12 for \$7.00

- Betty F. Holmes.** (D) Huge white blooms. A most beautiful variety.
- Blue Heron.** (D) Beautiful deep sky-blue with white center.
- Chameleon.** (D) White marbled and flamed blue; light and dark flowers on the same plant.
- Fascination.** (D) Gray-blue. Free-blooming. A sturdy grower with 2½ to 3-foot stems.
- Flamingo.** (D) Deep rose, white in center. Rather tall.
- Light in the Opal.** (D) Very light pink flushed and mottled darker bluish in center.
- Rews Emperor.** (D) Very large, deep red. Early.
- Rosa Anna.** (D) Light mauve heavily veined purple.
- True Blue.** (D) Very large flower of self true blue color.
- Waving Waters.** (D) Very light blue marked and flushed white. Heavy ruffled petals.
- Mixed.** 6 for \$2.50; 12 for \$4.50.





DOUBLE ORIENTAL POPPY, Salmon Glow

- Crimson Pompon.** Deep crimson, pompon-like flowers; fully double.
Curtis Giant Salmon. Pink. Strong growing.
G. I. Joe. Deep rose-pink, ruffled.
Glowing Embers. Bright nopal-red; cup-shaped blooms, crinkled.
Glowing Rose. Large, brilliant glowing rose-pink. \$1.00 each; 3 for \$2.85.
Helen Elizabeth. Deeply crinkled flower of La France pink.
Henri Cayeux Improved. Old-rose, shading into burgundy.
Marcus Perry. Enormous 8-inch flowers of orange-scarlet; strong stems.
May Curtis. Watermelon-rose. One of the finest. \$2.00 each; 3 for \$5.00.
May Sadler. Deep salmon-pink.
Raspberry Queen. Unusual color—crushed black raspberry. Plant in partial shade for the color will fade in bright sunshine. \$1.25 each; 3 for \$3.25.
Ridgewood Beauty. Heavily crinkled, deep salmon-pink.
Salmon Glow. Large, salmon-orange, double. Early.
Tangerine. Beautiful pure orange; purple-maroon spots.
Watermelon. Heavily crinkled, watermelon-pink.
CHOICE MIXTURE. Many shades. 3 for \$1.50; 6 for \$2.50; 12 for \$4.50

Oriental Poppies

to Plant from Late August to November

Oriental Poppies, with their brilliant gigantic blooms, are among the very finest perennials for the garden, particularly now that soft pastel tints are available, ranging from the softest of pink to deep red and white. They are easily grown and once established will live for many years. The best time to plant them is September and October. Poppies should be planted deeper than the general run of perennials. Set the crowns approximately 2 inches below the level of the ground. Mulch the first winter after planting, using excelsior, pine branches, or other material of similar nature. This mulch should not be applied until the ground is frozen, possibly November or December, depending on the locality. The plants offered here are strong, field-grown specimens and should bloom satisfactorily next year. *Order now.*

85c each; any 3 for \$2.50; any 6 for \$4.50; any 12 for \$8.00, except where noted

- Barr's White.** White with black spots.
Big Jim. Crinkly petals of deep carmine-red. \$1.00 each; 3 for \$2.85.
Buckeye Red. Dark cardinal-red with a black blotch.
Carmen. Very large, dark cardinal-red with a black blotch. Late. \$1.50 each; 3 for \$4.00.
Carnival. Lower part creamy white; upper half nasturtium-red. \$2.00 each; 3 for \$5.00.
Crise Beauty. Lovely crise-pink.
Cheerio. Shell-pink, cherry-red base spots. \$1.00 each; 3 for \$2.85.



ORIENTAL POPPIES

SPECIAL MONEY-SAVING COLLECTION

8 Outstanding Varieties

- Barr's White.** Best white.
Big Jim. Deep red.
Carnival. Bicolor white and red.
Curtis Giant. Salmon pink.
Helen Elizabeth. La France pink.
Henri Cayeux Improved. Purple.
Raspberry Queen. Crushed raspberry.
Salmon Glow. Double salmon-pink.

SPECIAL COLLECTION OFFER 7F-57
1 each of the 8 for \$5.00
Each Variety Labeled

DUTCH IRIS



BULBOUS IRIS (DUTCH IRIS)

Inexpensive, Easy-to-Grow, Orchid-like Blooms

Often called the "Poor Man's Orchid" because of their beautiful, orchid-like blooms. They are easily grown in the garden, for they are hardy and come back year after year. They bloom during May and June, and their average height is 18 to 24 inches. Bulbous Iris are much more effective when planted in groups; they prefer well-drained, sunny locations. Plant the bulbs 4 to 6 inches deep and 4 to 5 inches apart.

6 of any one variety for 65c; 12 for \$1.10; 25 for \$2.00

- Blue Champion.** Porcelain-blue, yellow blotch.
Bronze Queen. Bronze with orange blotch.
Golden Harvest. Nice yellow.
H. C. Van Vliet. Violet-blue, orange blotch.
Imperator. Dark blue.
Lemon Queen. Citron-yellow.
Le Mogol. Deep bronze with olive-green blotch.
Orange King. Deep clear orange.
Wedgwood. Light blue.
White Excelsior. Pure white.
White Perfection. Large, pure white.

MIXTURE. All colors. 12 for 95c; 25 for \$1.75; 50 for \$3.25.

LITTLE IRIS SPECIES

Dantordiae. A beautiful little Iris from eastern Asia Minor. Bright golden flowers resembling *Iris reticulata* in form, produced in early February. Height 3 inches. 6 for 85c; 12 for \$1.50; 25 for \$2.85.

Reticulata. A small form of the Spanish or Dutch Iris. One of the treasures of the perennial or rock garden; may also be forced into bloom in the house with the greatest ease. Six to eight bulbs put into a 4 to 6-inch pot when received will bloom about Christmas time. The fragrant blossoms remind one of a bunch of fresh violets. Perfectly hardy with reasonable protection. 6 for 75c; 12 for \$1.35; 25 for \$2.25.

Finer BEARDED IRIS

Especially Selected List of Outstanding Varieties

- Aladdin's Wish.** 40 in. Light blue with brushings of thick cream radiating through the large blossoms. A husky, tall, well-branched Iris that is an interesting novelty. 75c each.
- Amigo.** 36 in. A striking contrast, with clear light lavender standards effectively foiled by the deep purple velvet, trimly edged falls. 60c each.
- Arab Chief.** 36 in. A near self of rich copper-cream, of splendid texture and substance. Pure cadmium beard and metallic overlay at the haft give it radiance. 75c each.
- Argus Pheasant.** 36 in. Large flowers with broad, flaring falls and wide standards. A smooth, bright golden Argus-brown with self beard. \$1.50 each.
- Ballerina.** Large, ruffled, wide-petaled flamingo-pink self, with deep orange beard. Petals thick and lustrous; form ideal. \$2.00 each.
- Ballet Dancer.** 37 in. A delightful golden apricot-tan self with flaring form symbolizing the swirling skirts of the ballet dancer. \$1.00 each.
- Bandmaster.** 38 in. A powder-blue Iris of vigorous-growing, free-blooming habit that makes it a favorite with all who have seen it. 75c each.
- Bazaar.** 36 in. Colorful as a Tunisian bazaar is this glorified version of Raspberry Ribbon with its broad falls and leathery substance. A free-blooming wine-colored plicata. \$7.50 each.
- Berkeley Gold.** 36 in. Large, clear deep yellow self. Fine form, heavy substance and smooth texture. Older than some, but still good. 60c each.
- Black Hills.** 38 in. A very tall, ebony-black Iris with lots of bloom, widely spaced on the stem. Those who have grown Black Forest will find this variety as deep in color but much taller. \$4.00 each.
- Blue Rhythm.** 38 in. One of the most popular Iris grown. Large flowers of near cornflower-blue with a silvery overtone. Splendid form and branching habit. 75c each.
- Blue Shimmer.** 38 in. Blue and white plicata with large blooms heavily marked and dotted blue-violet. One of the most popular plicatas. 75c each.
- Blue Valley.** 36 in. Large, medium blue self with flaring falls and wide hafts. Pleasingly ruffled. Excellent substance and form, with no hint of lavender. \$1.00 each.
- Bonny.** 36 in. One of the famous seashell family, peppermint-pink in color, with leathery substance and smooth coloring without a solitary vein. Flowers medium size; vigorous grower. \$1.00 each.
- Bryce Canyon.** 36 in. A distinctive brown self. Copper-brown touched with henna. 75c each.
- Buffawn.** 36 in. Flaring blooms of light tan color with a pinkish glow; prominent red-orange beard. 60c each.
- Casa Morena.** 38 in. Deep glistening brown standards and falls; beard orange. Large and lustrous. \$1.00 each.
- Chamois.** 36 in. Pure chamois with yellow beard tipped bronze. No veining or markings. Both standards and falls are waved at the edges. A fine Iris. \$1.00 each.
- Chantilly.** 36 in. Charming, ruffled orchid-pink. Edges of both standards and falls are heavily frilled and fluted, giving the appearance of lacy edgings. \$1.00 each.
- Cherie.** 34 in. Best known of the "flamingo-pinks," this Dykes Medal winner is a large, ruffled, full-bodied pink self of excellent form and substance, with a deep tangerine beard. \$2.00 each.
- China Maid.** 36 in. Soft mallow-pink enhanced by a blending of golden buff at the edges of the petals. 75c each.
- Chivalry.** 36 in. Fine medium blue with flaring falls, domed standards and heavy substance. \$1.00 each.
- City of Lincoln.** 38 in. For years this was the most popular variegata. Clear golden standards contrast with the fiery red falls. 60c each.
- Copper Medallion.** 38 in. Large, full blossoms have the glitter and sparkle of a newly minted penny. We think this variety one of the very finest coppers. \$2.00 each.
- Crispette.** 36 in. True deep orchid color in a flower that has broad, lacy-edged and delightfully fluted petals. The full beard is orange-red. \$7.50 each.
- Dawn Reflection.** The largest plicata, attractively waved and flaring. Ivory-white; falls precisely edged pink, more generously suffused lilac on the standards. \$1.50 each.
- Daybreak.** 36 in. Gay golden pink with a coppery undertone—one of the finer pink blends. Slightly ruffled. 75c each.
- Desert Song.** 38 in. A bright creamy lemon-yellow self of heavy texture. The flowers are ruffled, large and flaring. Very dependable. \$1.00 each.
- Destiny.** 36 in. A rich, somber-toned variety with exceedingly velvety black, plum-purple falls and standards and rich gold beard. An effective, very dark Iris. 60c each.
- Display.** 34 in. A smooth red that shades to maroon on the falls. 60c each.
- Distance.** 36 in. Smoothly finished light blue with a misty, silvery sheen that adds to its beauty. 75c each.
- Dreamcastle.** 36 in. Pure orchid-pink, done to perfection. A vision of sheer loveliness. A nearly white beard emphasizes the solid orchid-pink color. 75c each.
- Elmohr.** 40 in. Rich red-mulberry. Fine form and heavy substance. One of the largest of all. Since its introduction in 1942, it has won many honors and continues to be near the top in popularity. \$1.00 each.
- Elsa Sass.** 36 in. Enticing "lemon-ice" toned yellow, an entirely new shade. Cool and frost-like sulphur-yellow with a white blaze near the haft. 60c each.
- Extravaganza.** 36 in. An amoena with cream-white standards and rich velvety prune-plum falls. One of the last to bloom. \$1.00 each.
- Fantasy.** 34 in. Attractive rose and orchid-toned pink. Tangerine beard. \$1.50 each.
- Flora Zenor.** 38 in. Cameo-pink with lines of heavier color near the haft. It has the typical tangerine beard of the pinks. 75c each.
- Frances Craig.** 40 in. A very large, excellently formed onco-bred of soft powder-blue. This is one of the top Iris in its class. \$5.00 each.
- Garden Glory.** 34 in. Pure deep wine-red self, dark and rich, yet glowing with a glossy sheen. A wonderfully pleasing, smooth self without any markings to mar it in any way. \$1.00 each.
- Garden Magic.** 36 in. Velvety rich red bicolor. The standards are somewhat lighter than the glossy falls. An older one, but still good. 60c each.
- Gaylord.** 38 in. The white taffeta and violet combination of Wabash is here repeated, but in a flower much larger. Fine form and substance. \$4.50 each.
- Goldbeater.** 36 in. Solidly colored chrome-yellow without any markings or blendings of any kind. Very large flowers on excellent branched stems. 75c each.
- Golden Fleece.** 40 in. Beautifully ruffled yellow. Standards are a clear lemon-yellow, while the falls are cream white with a band of deeper yellow. 60c each.
- Golden Russet.** 40 in. A handsome golden russet self of great size. Quite popular because of its enormous proportions. Flowers up to 7 inches high and 9 inches broad. \$1.00 each.
- Golden Spike.** 36 in. Deep yellow self with heavy orange beard. Flowers are large and smooth. 60c each.
- Golden Sunshine.** Outstanding clear soft yellow. Large blooms of excellent form. \$3.00 each.
- Grand Canyon.** 34 in. Unusual blend of deep tones of plum, copper and gold. Nothing quite like it. 60c each.
- Great Lakes.** 40 in. Clear blue self of a medium shade. Well-rounded, large blossoms on tall, well-branched stalks. Has been very popular for many years. 75c each.
- Gudrun.** 30 in. A splendid white for foreground planting. 60c each.
- Gypsy.** 38 in. Coppery gold standards; falls chestnut-brown. An attractive variegata. 60c each.
- Gypsy Rose.** 40 in. Rich tapestry-red infused with copper and accentuated by a bluish blaze on falls. \$1.50 each.
- Happy Birthday.** 36 in. This new pink is of good size, exquisitely ruffled and of fine substance. The color is a rich, clear pink, deeper than Cherie. \$3.00 each.
- Heritage.** Deep flamingo-pink, with tangerine beard. A full-petaled flower of heavy substance, slightly ruffled. \$1.50 each.
- Hi-Time.** 35 in. Lustrous golden apricot, sometimes called peach-pink. Tangerine beard. \$1.50 each.
- Inca Chief.** 34 in. Brilliant, shining, burnished golden bronze of uniform color throughout. Flowers are very large and perfectly proportioned. \$4.00 each.
- Indiana Night.** 38 in. Rich velvety purple, almost black. A rich, satisfying Iris. 75c each.
- Jake.** 40 in. A glistening white of heavy substance on well-branched stems. Has been very popular. 60c each.
- June Bride.** 30 in. Deep flamingo-pink with an odd buff-apricot undertone. Lovely flaring form. \$3.00 each.
- Katherine Day.** 36 in. Large, pure white with no yellow in the center. Broad, wavy petals. 60c each.
- Lady Mohr.** 38 in. Standards are clear oystershell-white; falls frosted chartreuse-yellow with a purple patch surrounding the beard. \$1.00 each.
- Lighthouse.** 38 in. Standards are old-rose and the falls a shade of coppery red. It appears to be lighted from within. 75c each.
- Limelight.** 36 in. This lively new Iris is a blending of canary-yellow and greenish lemon. The well-formed flowers have a deep, lacy, chantilly-like edging. \$3.00 each.
- Lothario.** 36 in. Amoena-type blue bicolor. The standards are light blue; the falls rich blue-purple. 75c each.
- Marquita.** 34 in. Amoena type in cream and watermelon-rose. Falls are veined with maroon. Unusual. \$1.00 each.
- Mary Randall.** 36 in. A smooth self of rich deep orchid or bengal-rose with a full tangerine beard. Broad petals and excellent form. \$7.50 each.
- Master Charles.** 36 in. Rich, glowing mulberry-purple with distinctive charm and form. Standards are true purple, with blackish sheen blending to brown at base. Falls are the same color. Very nice. 60c each.
- Matterhorn.** 36 in. Pure glistening white, even the beard. Delicately waved and ruffled. 60c each.
- Maytime.** 36 in. A large, pink-toned amoena of clean, fresh coloring. The standards are clear orchid-pink, wide and firmly held. The broad falls are of deeper rose-pink. \$3.00 each.
- Mexico.** 36 in. Blended bicolor with golden buff standards and broad, glowing red falls. 75c each.
- Ming Yellow.** 36 in. One of the largest yellows. Clear, smooth and evenly toned. 75c each.
- Minnie Colquitt.** 36 in. Massive white plicata with a broad band of wine-purple stitching at the edges of the flaring falls, and the same color repeated in the standards. Both standards and falls are slightly ruffled. 75c each.
- Missouri.** 36 in. The giant blooms of faultless form and heavy enameled texture are a clear rich shade of medium blue. 75c each.
- Misty Gold.** 36 in. A lovely gold-spangled, lemon-colored Iris with ruffled and fluted petals. 75c each.
- Moonglight Madonna.** 36 in. An attractively ruffled, lemon-ice self. 75c each.

10 Outstanding IRIS for only \$5.00

Each variety labeled
ASK FOR OFFER 7F-38

One each of the following 10 varieties:

Aladdin's Wish	Jake	Sable
Arab Chief	Mexico	Spindrift
Blue Rhythm	Moonglight Madonna	The Red Douglas
	Ola Kala	

Mulberry Rose. 42 in. An imposing Iris that is really different—a self of radiant mulberry-rose. Large blooms, self colored. 75c each.

New Snow. 38 in. White as new snow. Large, ruffled, flaring falls and full, bright yellow beard. No haft markings. Delightfully crisp. One of the very best whites. \$1.00 each.

Ola Kala. 38 in. This Dykes Medal winner is a rich deep yellow self with flaring falls. The branching is good. Very popular. 75c each.

Oriental Glory. An unusual shade of mahogany-red with orange beard; large and unusual. \$2.50 each.

Pacemaker. 36 in. Smooth, velvety red self. One of the best reds. Glossy sheen and good size. \$1.50 each.

Palomino. 36 in. The standards are soft ivory with a light pink infusion, and the falls are pale ivory with a border of copper-amber which widens at the haft to nearly touch the fiery red beard. \$5.00 each.

Pink Cameo. 36 in. This smoothly tailored shell-pink combines purity of color, excellent branching, good substance and a startling tangerine beard. 75c each.

Pinnacle. 38 in. The standards are clear white, while the falls are primrose-yellow. \$1.50 each.

Prairie Sunset. 36 in. Half the colors of the rainbow mingle in the loveliest combination imaginable. In its tints are pink, rose, apricot and peach, with a radiant sprinkling of gleaming gold. 75c each.

Prospector. 34 in. Deep golden yellow—almost orange—with a bold patch of ivory on the falls. \$1.00 each.

Radiation. 33 in. A pleasing tone of orchid-pink with standards and falls the same color. Deep tangerine beard. \$2.00 each.

Rainbow Room. 36 in. A handsome blend of yellow and all the rainbow colors. Accented with a blaze of blue at the center of the falls. \$1.00 each.

Ranger. 36 in. Deep near crimson-red self. Bronze-orange beard on browning haft. A fine Iris. \$1.00 each.

Raspberry Ribbon. 34 in. A clean-cut plicata. The standards are almost completely raspberry-red. Falls are gleaming white in the center of a surrounding band matching the standards. Orange beard. \$2.50 each.

Rocket. 36 in. The standards are deepest chrome-yellow and the falls really orange almost to the edge. Domed standards, flaring falls and wide hafts. 60c each.

Russet Wings. 36 in. A smooth combination of copper and apricot with a russet tone. Gleaming gold dusting. Crisp, flaring flowers that do not fade in the sun. \$1.00 each.

Sable. 37 in. The old standby in dark blackish purple hues, and still good. 75c each.

Snow Flurry. 40 in. Standards are pure icy white, beautifully ruffled. The falls are big, broad, clear white. There is a faint hint of blue when the flower first opens. 75c each.

Snowking. 36 in. One of the best white Iris. Ideal in stem and branching habit and fortunately of rugged hardiness. 60c each.

Solid Gold. 38 in. This is a very beautiful, rich deep yellow self. The flowers are very large, with wide hafts and ideal form. \$4.00 each.

Solid Mahogany. Deep mahogany-red flowers of heavy substance; one of the darkest reds. \$1.00 each.

Spanish Peaks. 42 in. Handsome true white self—the throat, beard, styles are all white. The very large, broad-petaled flowers are of very excellent, heavy substance. \$1.00 each.

Spindrift. 36 in. This delicate seashell-pink is accentuated by a fiery tangerine beard. The falls have some veining. 75c each.

Spotlight. 40 in. Rich deep golden yellow self of intense coloring. A tiny white glint below the rich beard adds a highlight. Large, full blooms on a well-branched stalk. \$3.00 each.

Spun Gold. 38 in. This Dykes Medal winner is pure golden yellow with a plush-like texture and rich golden beard. 60c each.

Starshine. 38 in. A real beauty and very popular. Standards are deep cream color, while the falls are blue-white edged cream. \$1.50 each.

Storm Warning. 36 in. The blacks are coming of age—and size. Here is a full-sized black of sumptuous sheen and classic form. \$5.00 each.

Sylvia Murray. 40 in. Beautifully formed light blue with delightful fragrance. 75c each.

The Red Douglas. 38 in. This smoothly finished rosy wine-red Iris is solid at the haft, with a brownish cast near the center. The beard is deep orange. 75c each.

Three Oaks. 38 in. An outstanding blend of rose-pink with copper, set off by a pronounced blue blaze on the falls. The long, heavy stalks are short branched but produce a spectacular effect of color in the garden. 75c each.

Tiffany. 36 in. Gaily painted yellow plicata with rose or deep pink stitching on a yellow background. 60c each.

Tobacco Road. 34 in. A clear golden brown tobacco-colored self. The falls are almost horizontal. Used a great deal in breeding browns. \$1.00 each.

Top Hat. 34 in. Large, flaring, tailored black-purple. \$7.50 each.

Truly Yours. 42 in. Combines bright yellow and light cream colors, with both standards and falls edged like Chantilly lace. Voted the most popular Iris grown. \$4.00 each.

Vanity Fair. 36 in. Clear medium true pink, very smooth and tailored. Fiery tangerine beard. \$3.00 each.

Vatican Purple. 38 in. Very rich blue-purple self. The well-rounded flowers are of very good substance, with attractive, crisply flaring shape. The finish is glossy. \$1.00 each.

Violet Symphony. 36 in. Gleaming lilac-mauve self. A splendid Iris, near the top of its class. 75c each.

Wabash. 36 in. This classic amoena has white standards and deep blue falls which have a definite margin of white. 60c each.

Zantha. Very large, gorgeous golden yellow blooms, a bit softer in color in extreme heat. Unsurpassed for a blaze of color. Winner of the President's Cup. \$1.00 each.

Zebra. 30 in. Valuable mostly for its foliage, which is striped creamy yellow and green. Produces medium blue flowers, but is a rather shy bloomer. 75c each.



LIGHTHOUSE

FALL-BLOOMING IRIS

These are the varieties that bloom in spring and fall under favorable conditions.

60c each; 3 for \$1.50; 6 for \$2.75; 12 for \$4.85

Autumn Queen. 1½ ft. Pure white. A sure bloomer in fall.
Black Magic. 2 ft. Intense deep violet-blue. Free blooming.
Equinox. Light blue.
Sangreal. 2 ft. Beautiful yellow; large.

MINIATURE BEARDED IRIS

These dainty little Iris bloom in April and early May.

**50c each; 3 of any one variety for \$1.25;
 6 for \$2.25; 12 for \$4.25**

Fairy. 6 in. Pale blue. **Prairie Gem.** 10 in. Yellow.
La Fiancee. 12 in. White. **Sambo.** 10 in. Deep blue.

SIBERIAN IRIS (Iris Sibirica)

The Siberian Iris have much smaller flowers than Bearded and Oriental Iris but what they lack in size they make up in grace of flower and foliage. They are hardy and grow well in almost any kind of soil, though a moist location is preferred. Well adapted for naturalizing along streams, among shrubs or in perennial plantings.

60c each; 3 for \$1.50; 6 for \$2.75; 12 for \$4.85

Caesar's Brother. A stately plant not too tall—30 inches high. It is the best of the entire lot of dark blue Siberian Iris and was given Honorable Mention by the American Iris Society. The flowers are an unusually rich black pansy-violet with a beautiful depth of color. A superb plant for any garden.
Perry's Blue. 2½ to 3 ft. Clear blue.
Snow Queen. 2 ft. Pure white; dwarf.

Buy in lots of 3 and Save Money!

60c each, any 3 for \$1.50

75c each, any 3 for \$2.00

\$1.00 each, any 3 for \$2.50

\$1.50 each, any 3 for \$3.75

\$2.00 each, any 3 for \$5.00

\$2.50 each, any 3 for \$6.25

\$3.00 each or over, any quantity at each rate

10 Popular IRIS for only \$4.00

Each variety labeled
ASK FOR OFFER 7F-59

One each of the following 10 varieties:

Blue Shimmer	Garden Magic	Gudrun
Daybreak	Goldbeater	Prairie Sunset
Destiny	Golden Fleece	Wabash
	Great Lakes	



BLEEDING-HEART

OLD-FASHIONED BLEEDING HEART

(*Dicentra spectabilis*)

A plant of grandmother's day, still indispensable. No garden should be without it. 3 for \$2.00; 12 for \$7.00; 75c each.

SINGLE PAINTED DAISY

Huge, single blooms often 3 to 4 inches across on sturdy, 2 to 2½-foot stems. Wonderful for cutting. Pleasing, brilliant colors. 3 for \$1.50; 6 for \$2.75; 12 for \$4.85.



PAINTED DAISY (*Pyrethrum*)

THREE NEW PAINTED DAISIES

(*Pyrethrum*)

Crimson Giant. Scarlet-crimson with golden center. Huge single blooms often 3 to 4 inches across on sturdy, 2 to 2½-foot stems. Wonderful for cutting.

Helen. New double pure pink.

Rose Mist. Rose-carmine petals with double-crested rose center which appears to have been dipped in stardust, giving it a silvery appearance. Sturdy grower and prolific bloomer. The 2-foot, stiff stems make it excellent as a cut flower.

\$1.00 each; any 3 for \$2.75; 6 for \$5.00

ASTILBE

Astilbes are ideal perennials for shaded locations, but they also do well in the sun. They prefer rather rich, moisture-retaining soil; watering is essential during dry weather. Plants bloom freely in June and July and the foliage remains attractive for the rest of the summer. Height about 2 feet.

America. Lilac-rose.

Fanal. Glowing dark garnet-red.

Gladstone. White.

Gloria superba. Deep rose-pink.

75c each; 3 for \$2.00; 6 for \$3.75; 12 for \$7.00

Peachblossom. Peachblossom-pink.

Rhineland. Bright crimson.

Simplicifolia rosea. A dwarf species with pink flowers. 12 to 15 in. high.

MAGIC LILY (Hardy *Amaryllis*)

Lycoris squamigera (*Amaryllis Halli*). Green foliage grows until July, when it ripens and disappears. About a month later the flower stalks rise 2 to 3 feet, developing 8 to 12 large, lily-shaped flowers of delicate lilac-pink. Perfectly hardy. Cover crown 4 inches. 75c each; 3 for \$2.00; 6 for \$3.50

HARDY PERENNIALS

For a More Complete Selection Please Refer
to our General Catalog

DELPHINIUM

The New Astolat Strain. A new strain of the popular Giant Pacific Delphiniums, including a good percentage of pink flowers. We suggest that you order at least six plants so as to be sure of getting some pink ones. The other shades run from purest white to dark blue and mauve. All have giant, double flowers. Mixed colors only, 75c each; 3 for \$2.00; 6 for \$3.50; 12 for \$6.50; 25 for \$12.00.

Giant Pacific Hybrids. Spectacular spikes of double blooms in June and July and often again in the fall. Available in separate colors: Light Blue, Deep Blue, Mauve, White, and Mixed. 60c each; 3 for \$1.50; 6 for \$2.75; 12 for \$4.85.

Two Easy-to-Grow Delphiniums. Both of these have lovely single florets and grow from 3 to 5 feet high.

Belladonna Improved. Light blue.

Lamartine. Deep marine-blue.

60c each; 3 for \$1.50; 6 for \$2.75; 12 for \$4.85

HARDY OUTDOOR FERNS

Ideal Plants for shady spots in the garden

Leatherwood Fern. Evergreen. Attractive and vigorous grower. 2 to 3 ft.

Maidenhair Fern. One of the most distinct and beautiful Ferns. Prefers a moist, shady location. 18 to 24 in.

Lady Fern. Exceedingly showy and vigorous. Shade. 2 to 3 ft.

Toothed Woodfern. Almost evergreen. Fine effects when massed in shade. Prefers a rich, moist soil. 2 to 3 ft.

Cinnamon Fern. Strong, vigorous growing, suited to varied locations in shade or semi-shade. 3 to 4 ft.

Christmas Fern. Evergreen. Extremely ornamental for massing in shade or partial shade. 1 to 2 ft.

Ostrich Fern. Bold growing, usually along streams. Very ornamental in a moist, shady location. 3 to 5 ft.

Royal Fern. A strong, tall species that thrives in shady or sunny locations. 3 ft.

60c each; 3 of any one variety for \$1.50; 6 for \$2.50; 12 for \$4.85

Long-Spurred COLUMBINE (*Aquilegia*)

Columbines are "must" plants for every garden, however small. They adapt themselves easily and often self-sow, to the delight of most gardeners. Few plants are more graceful in form, and the blooms are delightful for cutting. Plant in sun or light shade in average soil.

Mrs. Scott Elliott's Strain. Outstanding for its wide range of color. We offer these long-spurred Columbines with justifiable pride. Mixed or separate colors. 60c each; 3 for \$1.50; 6 for \$2.75; 12 for \$4.85.

OFFER 7F-60. Long-spurred Columbines in five colors: **Pink, Red, White, Blue, Yellow.**

1 each of the 5 colors for \$2.35

New Double BALLOON-FLOWER

(*Platycodon*)

Dependable, hardy plants giving a wealth of bloom for a long time in summer, when color is most needed in the garden. They are easily grown in any average soil. Full sun is preferred, but they will do fairly well in part shade.

Double White. Beautiful double blooms on 18 to 24-inch plants. Fine for cutting and garden decoration.

Double Blue. A good companion for Double White.

Double Pink. Attractive pink.

Single Shell-Pink. 18 in. Distinctive pale pink flowers. Blooms freely all summer.

65c each; 3 for \$1.65; 6 for \$3.00; 12 for \$5.50

ASTILBE



for Many Uses

THE CHRISTMAS ROSE (Helleborus)

Niger. This hardy perennial attracts great interest wherever it is grown, because of its lovely single white flowers and its unique blooming season—December to March. The flowers are flushed with pink and are borne on sturdy stems. A partly shaded location is necessary, and the soil should be enriched with equal parts of manure, leaf mold, sand and good loam. Watering is essential during dry periods in the summer. \$1.25 each; 3 for \$3.25; 12 for \$12.00.



CHRISTMAS ROSE



HARDY SUMMER PHLOX

PHLOX *divaricata*

Laphami. A new form of the popular early spring-flowering Phlox. Flowers are larger, clear blue, and very freely produced on 8 to 10-inch stems. It is much easier to grow than the old form. Excellent for shade as well as sun. 60c each; 3 for \$1.50; 6 for \$2.75; 12 for \$4.85.

PHLOX *subulata*, Intensity

Perhaps one of the showiest of this popular, early spring blooming perennial. It is a clear, brilliant, rather deep pink—a new color in creeping Phlox. The plant is completely covered with blooms. Is very distinctive and always admired. A strong grower, as easy to grow as other Phlox. 85c each; 3 for \$2.25; 6 for \$4.25; 12 for \$7.50.

RUSSELL LUPINS

Plant Lupins this fall to brighten your garden from May to July next year. They grow 3½ feet high with flower spikes 2 feet long, representing practically every color in the rainbow. They like a partially shaded location in rich, lime-free soil. Particularly recommended for cooler sections of the country. Strong plants, sure to bloom. 3 for \$1.50; 6 for \$2.75; 12 for \$4.85; 25 for \$8.75; 60c each.

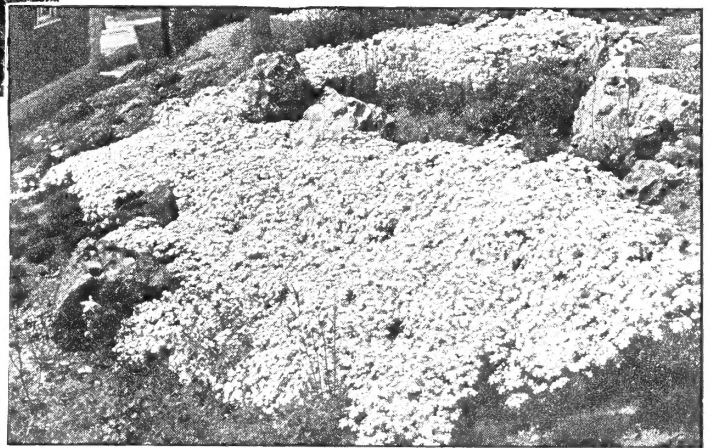
IMPORTANT • PLEASE NOTE

POSTAL and EXPRESS RATES have been increasing for the past few years, and recently postal rates went up 25% more. This makes it impossible for us to absorb all the transportation cost as we have in the past and still maintain the same prices and our usual high standard of products. Instead of raising prices, we decided to ask our customers to send a few cents extra with the order, and help to absorb part of the transportation cost.

HOW MUCH TO SEND: On all orders less than and up to \$5.00 add 50c for postage. All orders over \$5.00, send 50c plus 5c for each additional dollar over \$5.00.

For example, if your order came to \$9.00, you would send 50c for the first \$5.00, and 5c for each of the additional \$4.00, making a total of 70c.

RUSSELL LUPINS



NEW PHLOX SUBULATA, Intensity

HARDY SUMMER PHLOX

Hardy Phlox is the backbone of your garden during the summer months when color is so much needed. It can be depended on to produce an abundance of bloom over a long period. A sunny location in good rich soil gives best results. Water well in very dry seasons.

12 POPULAR VARIETIES

- Aida.** Deep wine-purple. 18 to 24 in.
- Border Queen.** Watermelon-pink. 18 in.
- Caroline Vandenberg.** A popular lavender-blue. 2 ft.
- Daily Sketch.** Pink with crimson eye. 2½ ft.
- Leo Schlageter.** Brilliant red. 2 ft.
- Lilian.** Cameo-pink with blue eye. 2 ft.
- Mary Louise.** White. 2 ft.
- Miss Lingard.** White flowers, delightful for cutting. Early. 2½ to 3 ft.
- Ruth May.** Appleblossom-pink. 2 ft.
- Salmon Beauty.** Salmon with white eye. 2 ft.
- Salmon Glow.** Deep salmon. 2 ft.
- San Antonio.** Blood-red. 2 ft.

60c each; 3 for \$1.50; 6 for \$2.75; 12 for \$4.85

OFFER 7F-61 1 each of the 12 for.....\$4.50

6 FINE NEWER VARIETIES

- Brigadier.** Beautiful orange-red, yellow tint.
- Charles Curtis (True).** Deep intense red.
- Elizabeth Arden.** Lavender-pink.
- Sir John Falstaff.** Deep salmon-pink.
- White Admiral.** Beautiful white.
- Windsor.** Deep orange-red.

75c each; 3 of one variety for \$2.00; 6 for \$3.50; 12 for \$6.50

OFFER 7F-62 1 each of the 6 for.....\$3.50

OFFER 7F-62A 3 each of the 6 for.....\$9.00

SPROUSE DELIGHT New Spring and Fall-Blooming Phlox subulata

An exclusive Carroll Gardens introduction. Originated by W. W. Sprouse of Staunton, Va. This new variety is very showy, with deep rose-colored flowers two to three times as large as the regular creeping Phlox. It is more upright in growth, with stems 6 to 8 inches high. Blooms freely in the spring, about 10 days to two weeks later than the usual varieties and again in the fall. It is really an outstanding novelty which you will want in your garden. 75c each; 3 for \$2.00; 6 for \$3.50; 12 for \$6.50; 25 for \$12.00.

4 POPULAR COLORS OF PHLOX SUBULATA

Pink Red White Blue
Your choice, any one color, 60c each; 3 for \$1.50; 6 for \$2.75; 12 for \$4.85

CARROLL GARDENS

Finest PEONIES



SINGLE PEONY, Mikado

SINGLE PEONIES

The Single Peonies are excellent in the garden. Their lighter flowers and stiff but graceful stems make them stand up better than Double Peonies. With their brilliant colors they are unsurpassed for the perennial border and in front of and among shrubbery. They are of easy culture and bloom about the same time as Double Peonies. Their average height is 2 to 3 feet.

Jeanne Lapandry. Pure white; flat cream center. \$2.50 each; 3 for \$6.50.

King of England. Deep carmine. \$1.25 each; 3 for \$3.25.

Kinsui. Light salmon-pink; pure golden center. Large flowers with two rows of petals. \$1.25 each; 3 for \$3.25.

L'Étincelante. Carmine with a silvery margin; gold center. \$1.25 each; 3 for \$3.25.

Mikado. Deep crimson; staminodes dark rose-red with golden edges. Large flowers. \$1.25 each; 3 for \$3.25.

The Pearl. Very large, creamy flowers with red edge; bright pink center. \$2.00 each; 3 for \$5.25.

VERY SPECIAL: 2 Single Peonies, Assorted Colors, for \$1.00

PEONY OFFICINALIS

(Early or May-Blooming Peonies)

In this group belongs the early red Peony of our grandmother's garden. However, some outstanding new varieties have been developed and are offered here. This group will help greatly to extend the Peony season due to the fact that they come into bloom about two weeks earlier than others.

Alba Plena. True white. Double. \$2.00 each; 3 for \$5.25.

Rosea Plena. Bright rose. Double. \$1.50 each; 3 for \$4.00.

Rubra Plena. Rich dark red. Double. \$1.50 each; 3 for \$4.00.

FERN-LEAF PEONIES (*Tenuifolia*)

This distinct species comes into bloom very early and has graceful, very small fern-leaf foliage. It is entirely distinct from any other Peonies. Very brilliant and much admired by visitors in our garden.

Tenuifolia Rosea. Single Pink. \$2.00 each; 3 for \$5.00.

Tenuifolia Plena. Double red. \$2.50 each; 3 for \$6.75.

Peonies are long-lived plants that do not require transplanting unless they show signs of deterioration. For that reason it is worthwhile to be particular about the place where they are to be planted. Choose a sunny location that gets good drainage. Dig deep, and use some well-rotted cow manure or a commercial fertilizer to enrich the soil. Bone-meal is also recommended.

Fall is the best time to plant Peonies. Plant so that the eyes are 1½ to 2 inches below the soil surface.

The varieties offered here are the very finest in their class; only the highest rated are offered. The plants offered are strong, 3 to 5-eye, healthy plants and should give excellent results.

DOUBLE PEONIES

The number following the name means the rating of the American Peony Society. (E) indicates earliest flowering varieties; (E-M) early to midseason; (M) midseason; (M-L) midseason to late; (L) latest blooming varieties.

Baroness Schroeder. 9.0 (M) Blush, turning to purest white; fragrant. \$1.25 each; 3 for \$3.25.

Cornelia Shaylor. 9.1 (L) Shell-pink. Fine-shaped flower. Outstanding. \$1.75 each; 3 for \$4.75.

E. C. Shaw. 9.1 (M-L) Light old-rose; very fragrant. \$2.50 each; 3 for \$6.50.

Festiva Maxima. 9.3 (E) Fine white, with few crimson flecks. \$1.25 each; 3 for \$3.25; 12 for \$12.00.

Inspecteur Lavergne. 8.7 (E) Beautiful deep red. \$1.50 each; 3 for \$4.00.

Jeannot. 9.2 (L) Light lavender-pink; very sweetly rose scented. \$1.50 each; 3 for \$4.00.

Karl Rosenfield. 8.8 (M) Bright crimson. Free bloomer. One of the best deep reds for cutting. \$1.25 each; 3 for \$3.25; 12 for \$12.00.

Lady Alexandra Duff. 9.1 (E-M) Light pink, fading to white, touched with yellow and carmine. \$1.50 each; 3 for \$4.00.

Le Cygne. 9.9 (E) Finest pure white. The highest rated Peony. \$2.50 each; 3 for \$6.50.

Miss Eckart. 8.1 (L) Very large. Deep pink on sturdy stems. \$2.00 each; 3 for \$5.25.

Mons. Jules Elie. (E) Immense flower of fine pink. One of the best pinks for cutting. \$1.25 each; 3 for \$3.25; 12 for \$12.00.

Mons. Martin Cahuzac. 8.8 (E-M) Dark maroon-red. The darkest Peony. \$2.25 each; 3 for \$6.00.

Mrs. Edward Harding. 9.3 (M) Pure white, golden stamens. \$1.50 each; 3 for \$4.00.

Primevere. 8.6 (M) Light creamy yellow. \$1.75 each; 3 for \$4.75.

Richard Carvel. 8.8 (M) Brilliant crimson. \$1.50 each; 3 for \$4.00.

Sarah Bernhardt. 9.0 (L) Deep rose-pink, silver tipped; fragrant. Free bloomer; fine late cut flower. \$1.50 each; 3 for \$4.00; 12 for \$12.50.

Therese. 9.8 (E-M) Very large, pale, translucent old-rose-pink, paling toward the base. \$2.00 each; 3 for \$5.25.

Walter Faxon. 9.3 (M) Vivid shell-pink of luminous intensity. \$2.00 each; 3 for \$5.25.

VERY SPECIAL: 2 Double Peonies, Assorted Colors, for \$1.00

TREE PEONIES

This famous group is the shrub type. The stems do not die to the ground each year as the herbaceous Peonies do, and in the course of many years they will reach the height of 3 to 4 feet. Most varieties bloom in early spring—late April to the end of May, depending on the locality. They are of easy culture and grow anywhere other Peonies do. It is best, however, to plant them where they are sheltered from sweeping wind.

Prices quoted are for 2-year-old, 5-inch pot plants. Field-grown plants are available at 2½ times the prices quoted for potted plants.

We also have many additional varieties.

Archiduc Ludovico. Large; flesh-pink, turning to soft lilac. \$5.00 each.

Argosy. Single; pure yellow. \$10.50 each.

Athlete. Glazed mauve, shaded rose. \$5.50 each.

Flora. Pure transparent white, slightly blotched violet, carmine at throat. \$11.50 each.

Jules Pirlot. Satiny pink, flushed carmine. \$5.00 each.

La Lorraine. Large double flowers of a soft sulphur-yellow with a salmon tinge when opening. \$7.50 each.

Satin Rouge. Double; blood-orange. An altogether new color in Peonies. \$12.50 each.

Yaso-no-Mine. Semi-double; pure white. \$25.00 each.

CARROLL GARDENS
WESTMINSTER • MARYLAND

U. S. National Arboretum
Washington 25, D. C.

BULK RATE

U. S. POSTAGE
PAID

WESTMINSTER, MD.

Permit No. 112

RETURN POSTAGE
GUARANTEED