

62

DIBBLE'S

Farm Seed Facts
1891-1957

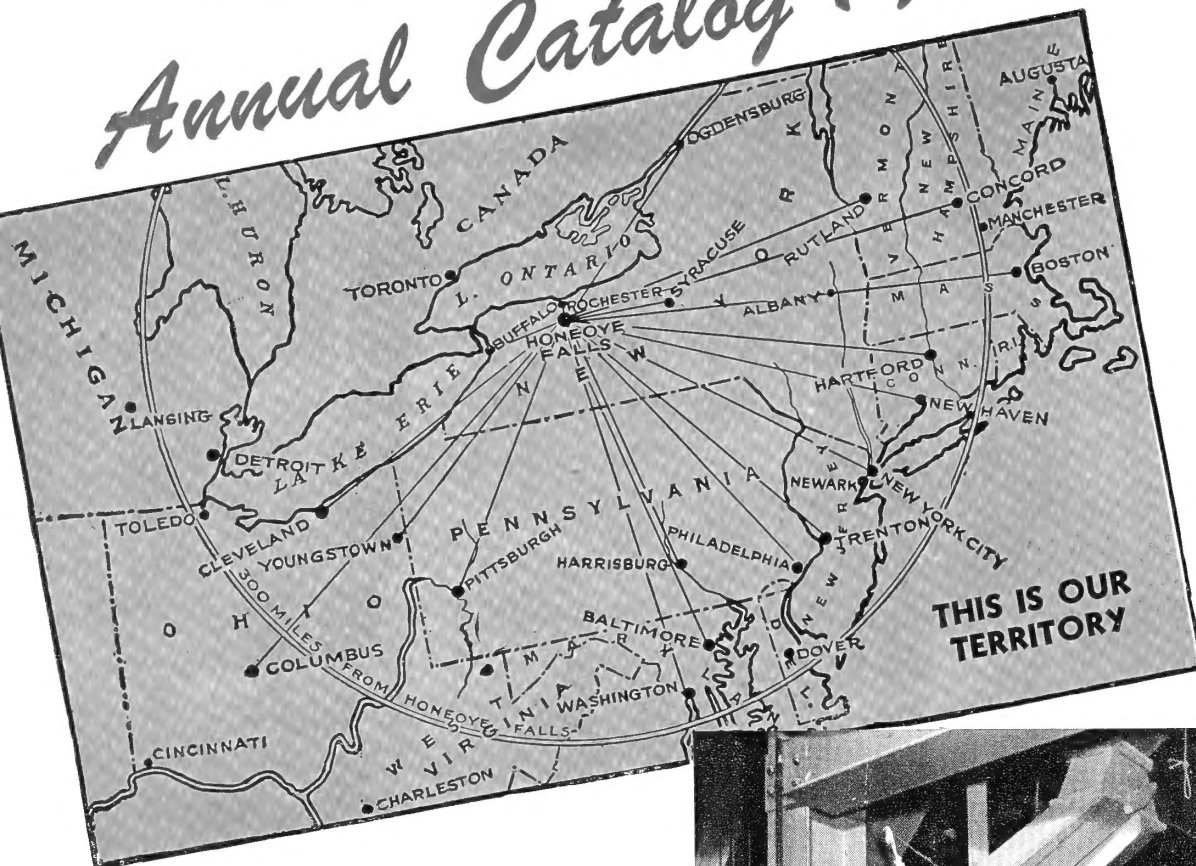
114

LIBRARY
RECEIVED
★ JAN 31 1957 ★
U. S. Department of Agriculture



HUDSON WINTER BARLEY

DIBBLE'S Annual Catalog 1957



Officers:

HARWOOD MARTIN,
President and Treasurer

DEAN G. MARTIN,
Vice-President

RALPH E. MARTIN,
Secretary

Conditions of Sale

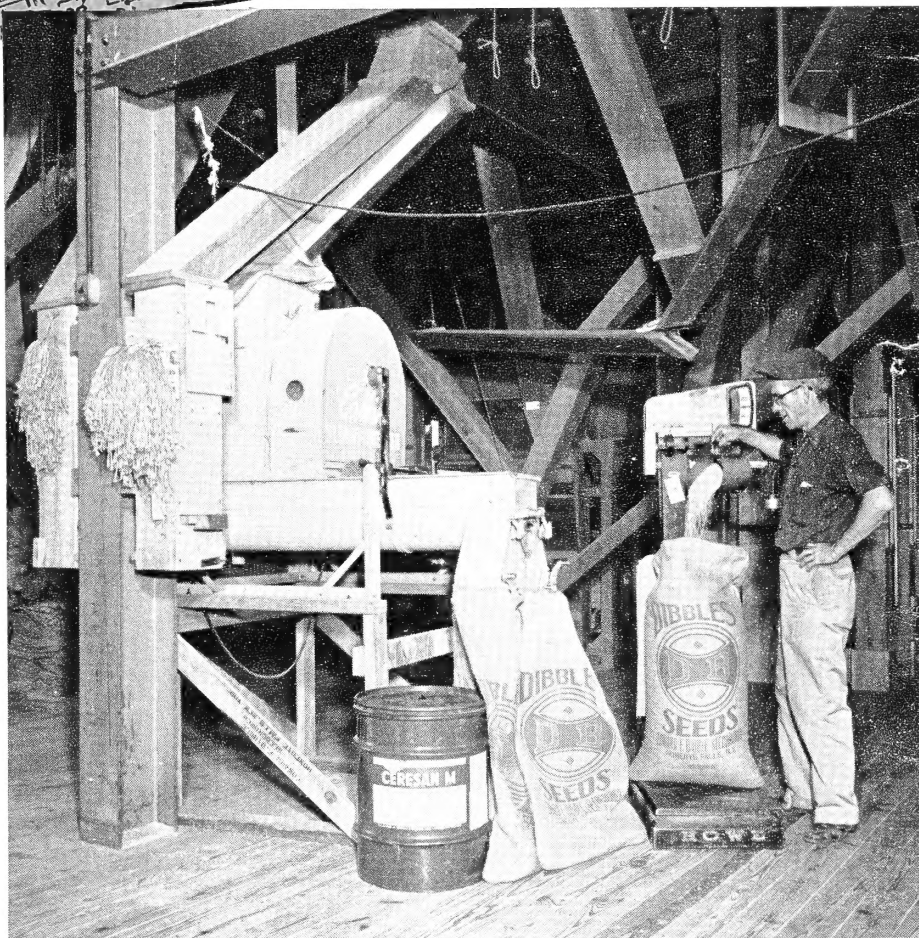
We assume responsibility that the seeds or tubers reach the purchaser in good condition. We offer to refund the purchase price of any seeds or tubers found by tests to be unsatisfactory to you within ten days after the seeds or tubers reach you. In common with all responsible seedsmen "The Edward F. Dibble Seedgrowing Company warrants to the extent of the purchase price that seeds or tubers sold are as described on the container within recognized tolerances. Seller gives no other or further warranty express or implied."

THE duty of our Company (Edward F. Dibble Seedgrowing) is plain and simple—to furnish farm seeds we would be proud to sow ourselves. Dibble's reputation for absolutely top-grade—and only top-grade—farm seeds has been building up for sixty-six years. Farmers in our area look to us, as their fathers did, to supply them with clean, high-germinating farm seeds that are always true to name. They know that we are constantly looking for improved strains and that these replace older ones when we are convinced that a real improvement has been made.

Our founder, Edward F. Dibble, held to this simple statement: "Farm seeds and farm seeds only; one grade and that the best obtainable at the lowest price consistent with the highest possible quality." That is so direct and honest a creed that we have never wanted to change it. We believe that growers in 1957 will be just as satisfied with it as they were in 1891.

We will be glad to fill any order directly at our warehouse for you if you wish to drive here. We will also ship any quantity of seed to any farm in the United States.

Increase your yields and your profits by planting only the best—Dibble's.



Cleaning and treating certified seed at our warehouse for top-grade seed production. Let Dibble supply your entire demand for premium-grade field seed. Send in an order through our convenient mailing system and these higher yielding seeds will be shipped directly to you.

EDWARD F. DIBBLE SEEDGROWER

Honeoye Falls, N. Y.

Dibble's Seed Corn

Every bushel Northern Grown. Average germination all lots tested to date above 95%.

CERTIFIED DOUBLE CROSS HYBRID

Arasan Treated

Per bu. 56 lbs.

Mich. 250	}	FLAT KERNELS	\$10.00
		ROUND KERNELS	\$ 7.50
Cornell M-4	}	FLAT KERNELS	\$ 9.50
		ROUND KERNELS	\$ 7.00
Cornell M-1	}	FLAT KERNELS	\$ 9.50
Penn. 444	}	FLAT KERNELS	\$ 9.50
Ohio M-15	}	FLAT KERNELS	\$ 9.50
Ohio K-62	}	FLAT KERNELS	\$ 9.50
Ohio K-24	}	FLAT KERNELS	\$ 9.50

Round Kernels Recommended for Grain Drills

👉 OPEN POLLINATED 👈

TREATED

ENSILAGE VARIETIES

IMPROVED LEAMING	\$ 6.00
WEST BRANCH SWEEPSTAKES	\$ 6.00
LANCASTER COUNTY SURE CROP	\$ 6.00

Sweet Corn

GARDEN ASSORTMENT - Five Varieties

2 oz. Spancross	60 days	} Complete Ass't	\$1.50
4 oz. Marcross	65 days		
4 oz. Carmelcross	70 days		
4 oz. Sherman	77 days		
1 lb. Golden Cross Bantam	83 days		

Postage Paid to 5th Zone

SPANCROSS, MARCROSS, CRAMELCROSS, SHERMAN, IOCHIEF, GOLDEN CROSS BANTAM HYBRID.

1 to 2 lbs. 65c per lb., 3 to 9 lbs. 55c per lb.	Prepaid.
10 to 19 lbs. 50c per lb.	Not Prepaid.
20 lbs. or over 45c per lb.	Not Prepaid.

STOWELL'S EVERGREEN

1 to 2 lbs. 45c per lb., 3 to 9 lbs. 40c per lb.	Prepaid.
10 to 19 lbs. 35c per lb.	Not prepaid.
20 lbs. or over 30c per lb.	Not Prepaid.

Stanley's Crow Repellent

ONE QUART (Enough for four bushels of seed corn) ..	\$1.75
ONE PINT (Enough for two bushels of seed corn)	\$1.00
ONE-HALF PINT (Enough for one bu. of seed corn) ..	\$.60

NOD - O - GEN

When ordering cultures specify kind of seed to be inoculated.

FOR ALFALFA and CLOVERS 2-in-1 COMBINATION

1 Bu. Size	\$.50
2½ Bu. Size	\$1.10

FOR SOY BEANS

2 Bu. Size	\$.45
5 Bu. Size	\$.65
30 Bu. Size	\$3.80

FOR BIRDSFOOT TREFOIL

10 lb. Size	\$.25
1 Bu. Size	\$.75

FOR VETCH and PEA

1 Bu. Size	\$.45
100 lb. Size	\$.55

Miscellaneous Seeds

Per lb.

JAPANESE MILLET	9c
HUNGARIAN MILLET	12c
FANCY RED TOP	70c
FANCY KENTUCKY BLUE GRASS	90c
FANCY ORCHARD GRASS	45c
SUDAN GRASS	13c
PIPER SUDAN GRASS (Certified)	18c
AMBER CANE SORGUM	17c
DOMESTIC RYE GRASS	12c
PERENNIAL RYE GRASS	17c
BROME GRASS (Domestic)	54c
REED'S CANARY GRASS	75c
CHEWINGS FESCUE	60c
CREEPING RED FESCUE	60c
ILLAHEE FESCUE	82c
COLONIAL BENT GRASS	90c
HIGHLAND BENT GRASS	90c
WINTER VETCH	26c
RAPE, DWARF ESSEX	20c
WHITE DUTCH CLOVER	\$1.10
KENT WILD WHITE CLOVER	\$1.75
MERION KENTUCKY BLUE GRASS	\$2.95

Dibble's Soy Beans

Per bu. 60 lbs.

CAYUGA SOY BEANS	\$ 5.00
EARLYANNA SOY BEANS	\$ 5.00
HAWKEYE SOY BEANS	\$ 5.00

Dibble's Seed Peas

Per bu. 60 lbs.

FANCY WHITE CANADA FIELD PEAS ..	\$ 6.60
----------------------------------	---------

Dibble's Buckwheat

Per bu. 48 lbs.

JAPANESE	\$ 2.90
----------------	---------

Dibble's Lawn Grass Mixture

RED, WHITE and BLUE MIXTURE

For Normal Soils and Sunshine

1 to 9 lbs.	\$1.00 per lb.
10 lbs. or over	\$.95 per lb.

RED, WHITE and BLUE WITH FESCUE

For Dry or Sandy Soil

1 to 9 lbs.	\$.90 per lb.
10 lbs. or over	\$.85 per lb.

SHADY LAWN MIXTURE

1 to 9 lbs.	\$.85 per lb.
10 lbs. or over	\$.80 per lb.

MERION BLUE GRASS MIXTURE .. \$2.00 per lb.

50% Merion Kentucky Blue Grass 30% Illahee Fescue
20% Colonial Bent.

Pasture Mixtures

Suggested by Cornell

Per lb.

GENERAL PURPOSE PASTURE MIXT. 45c

Sow 15 lbs. Per Acre.

POULTRY PASTURE MIXTURE

Sow 12 lbs. Per Acre.

For other mixtures order seeds separately

Seed Disinfectants

CERESAN M	14 oz. \$1.60	3 lbs. \$4.45
	14 oz. Treats 30 bus. Wheat, Oats or Barley	
SEMESAN-BEL	3 oz. \$1.05	1 lb. \$3.50
	1 lb. Treats 60 to 80 bus. Potatoes,	4 lbs. \$10.65
ARASAN 75	1 oz. 50c	8 oz. \$1.50
	1 oz. Treats 1 bu. Corn	

CYCLONE SEED SOWER

Hand Seed Sowers

Hand Seed Sowers (Heavy Duty) .. \$ 5.50 Prepaid

Power Seed Sowers - Model S-3 \$65.95 Prepaid

Power Take-off (state make of tractor)



PRICE LIST CONTINUED ON OTHER SIDE



DIBBLE'S PRICE LIST

from

Edward F. Dibble Seedgrower, Honeoye Falls, N.Y.

JANUARY 23, 1957

TERMS NET. NO DISCOUNTS ALLOWED. BAGS and SACKS FREE and NOT RETURNABLE.

CASH WITH ORDER. PRICES ARE F. O. B. (Except as Noted) AT HONEOYE FALLS, N. Y.

Dibble's D. B. Brand Alfalfa, Clover and Grass Seeds are the highest grade obtainable. Average analysis for years has been approximately 99.70% pure and an average of around 99.50% is guaranteed.

Every bag of Dibble's Alfalfa, Clover, Grass and Grain Seeds has a tag showing our Purity and Germination test. They are sold on a ten-day-money-back-if-you-want-it guarantee subject to any test you may choose to make.

Is there a fairer way to sell, or a safer way to buy Farm Seeds?

WE QUOTE TODAY'S VALUES SUBJECT TO MARKET CHANGES. Order now and let us ship as soon as possible

D. B. Brand Alfalfa

Per bu. 60 lbs.

RANGER ALFALFA (Certified)	\$30.90
NARRAGANSETT ALFALFA (Certified) ..	\$43.20
DU PUIS ALFALFA (Certified)	\$38.40
VERNAL ALFALFA (Certified)	\$43.20
GRIMM ALFALFA (Certified)	\$31.20
COMMON ALFALFA (Northern Grown) ..	\$27.30

Purity about 99.50% or above.

D. B. Brand Clover

Northern Domestic Grown Per bu. 60 lbs.

MEDIUM RED	\$31.20
MAMMOTH RED	\$31.20
PENNSCOTT (Certified)	\$34.20

Purity about 99.50% or above.

Alsike Clover

Per bu. 60 lbs.

BEST GRADE (Above 98.25%)	\$28.20
---------------------------------	---------

Sweet Clover

Per bu. 60 lbs.

WHITE BLOSSOM (Scarified)	\$13.80
---------------------------------	---------

Ladino Clover

Per lb.

LADINO CLOVER (Certified)	\$.80
20 lbs. or over	\$.75

DIBBLE'S SEED POTATOES

Certified U. S. No. 1

👉 100 POUND SACKS 👈

	Per Cwt.	1 to 9 Sacks	10 sacks or over
DIBBLE'S RUSSET	\$4.75	\$4.50	\$4.50
SMOOTH RURAL	\$4.75	\$4.50	\$4.50
GREEN MOUNTAIN	\$4.75	\$4.50	\$4.50
KATAHDIN	\$4.50	\$4.25	\$4.25
SEBAGO	\$4.50	\$4.25	\$4.25
ONTARIO	\$4.50	\$4.25	\$4.25
KENNEBEC	\$4.75	\$4.50	\$4.50
RED PONTIAC	\$4.75	\$4.50	\$4.50
CHIPPEWA	\$4.75	\$4.50	\$4.50
IRISH COBBLER	\$4.75	\$4.50	\$4.50
EARLY OHIO	\$5.00	\$4.75	\$4.75
RED WARBA	\$5.00	\$4.75	\$4.75
RED BLISS TRIUMPH	\$5.00	\$4.75	\$4.75

Dibble's Seed Oats

Ceresan
Treated

Sacked 3 bu. per bag	Per bu. 32 lbs.
HEAVYWEIGHT, per bu.	\$ 1.90
GARRY (Certified)	\$ 2.00
RODNEY (Certified)	\$ 2.00
CRAIG (Certified)	\$ 1.90
MOHAWK (Certified)	\$ 1.90
CLINTON (Certified)	\$ 1.90
AJAX (Certified)	\$ 1.90
50 bu. or over (any variety) ...	5c less per bu.

Dibble's Seed Barley

Ceresan
Treated

	Per bu. 48 lbs.
ERIE, TWO ROWED (Certified)	\$ 2.95
40 bu. or over	10c less per bu.

Timothy

Per bu. 45 lbs.

D. B. BRAND TIMOTHY	\$12.60
3 Bushels or over	\$12.15
CLIMAX TIMOTHY (Certified)	\$30.60

Timothy and Alsike Mixture

Per bu. 45 lbs.

Lot "D" Average 22% Alsike	\$14.40
3 Bushels or over	\$13.95

Birdsfoot Trefoil

Per lb.

EMPIRE BRAND (N. Y. State Certified) ...	\$ 1.80
25 lbs. or over	\$ 1.70
VIKING BRAND (N. Y. State Certified) ...	\$ 2.05
25 lbs. or over	\$ 2.00
EUROPEAN	\$ 1.10
25 lbs. or over	\$ 1.05
(Inoculation Furnished With Trefoil)	

Dibble's Spring Wheat per bu. 60 lbs. \$ 4.75

Cabbage Seed

Hot water treated and mailed parcel post prepaid.

	Per lb.
REED'S SUPERIOR DANISH BALLHEAD ..	\$ 8.00
D. B. BRAND DANISH BALLHEAD	\$ 7.00
D. B. BRAND GLORY OF ENKHUIZEN ...	\$ 7.00

Prices on all seeds will be quoted
delivered your station, on request.

➡ **PRICE LIST CONTINUED ON OTHER SIDE** ←

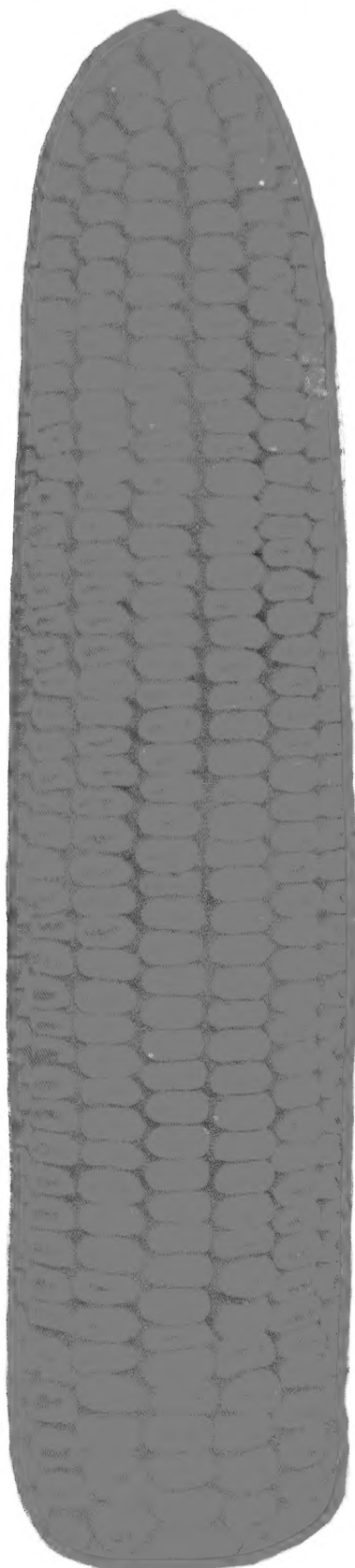
All quotations are for immediate acceptance subject to confirmation on receipt of order. Use order sheet in ordering. If not ready to order on receipt of this Price List, send for another when you are ready. Prices constantly changing. Prices are subject to change without notice.

DIBBLE'S *Cornell M-4*

OUR OUTSTANDING VARIETY FOR BEST IN GRAIN YIELD

A new yellow dent variety introduced to the farmer for the first time in 1953. Maturing in about 110 days, this variety has been an outstanding yielder for grain with a moisture content at harvest low enough for safe cribbing in western New York State and like areas. It has a very strong stalk, large ears and is easily husked, with ears high enough above the ground for mechanical pickers. We feel that M-4 will be the outstanding Corn hybrid used in New York State for grain production. This hybrid is tall, dark green and leafy, for excellent early to medium silage.

Since we have distributed Cornell M-4 it has maintained a high production record against all other hybrids in New York State.



Cornell M-4
IS THE BEST DUAL-PURPOSE
VARIETY FOR HUSKING
AND SILAGE



R. G. Wiggans, Professor of Plant Breeding, N. Y. State College of Agriculture, after inspecting Cornell M-4 in the College seed plots, finds that this variety is one of the best in its maturity class. This early hybrid has consistently produced more dry shelled grain per acre at elevations of 400 to 800 feet than later hybrids which carry 8 to 10 per cent more moisture at harvest.

DIBBLE'S HYBRID CORN

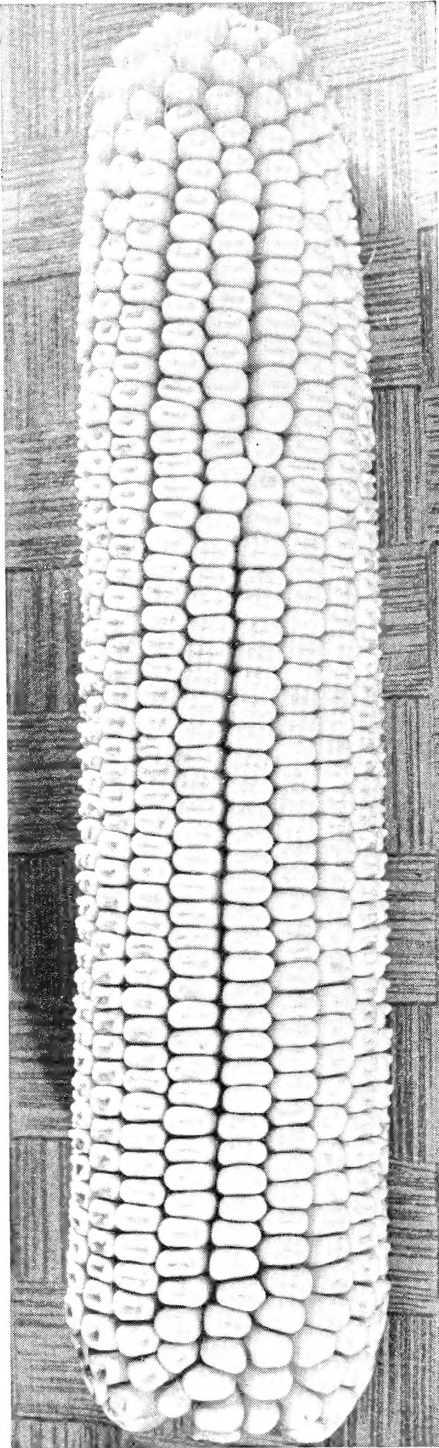
Dibble's Michigan 250

The Outstanding Early Corn

Michigan 250 is a hybrid Corn developed at the Michigan Agricultural Experiment Station. It is bright yellow, with medium-sized ears.

Michigan 250 is very early and exceptionally high yielding for an early Corn. It is medium tall and has excellent resistance to stalk rot. It will stand very well into the late fall.

For grain Corn production Michigan 250 is recommended at elevations from 900 to 1600 feet. This hybrid is the best early Corn for Northern New York and similar areas in the New England States, and for late planting in the areas where normally a later Corn would be planted.



DIBBLE'S
Michigan 250

The Outstanding Early Corn



HARWOOD MARTIN, President and Treasurer of our Company, checking over an excellent field of Michigan 250 just before harvesting for seed.

There is more money in raising Corn for grain if the yields are high and if the Corn can dry naturally for safe cribbing without spoilage or added cost for artificial drying. Cornell M-4 for the medium-length seasons of the Northeast below 800 feet elevation and Michigan 250 for the short seasons and above 1000 feet elevation will return the most money of any Corn grown particularly for grain. They are especially adapted for mechanical pickers.

DIBBLE'S selection of Corn hybrids is based on yielding ability observed upon personal inspection of many varieties at various field trials and yield results of farmers' plantings.

We have selected a number of hybrids that produce the highest yields in the various Corn seasons of our area, from the shortest seasons of northern areas and at high elevation to the long seasons of the Lower Hudson Valley and Long Island.

Our Seed Corn is of the highest germination and quality. Corn plants growing 9 to 10 inches apart in 3-foot rows we believe will give the highest yields for grain; for silage 8 to 9 inches apart is recommended.

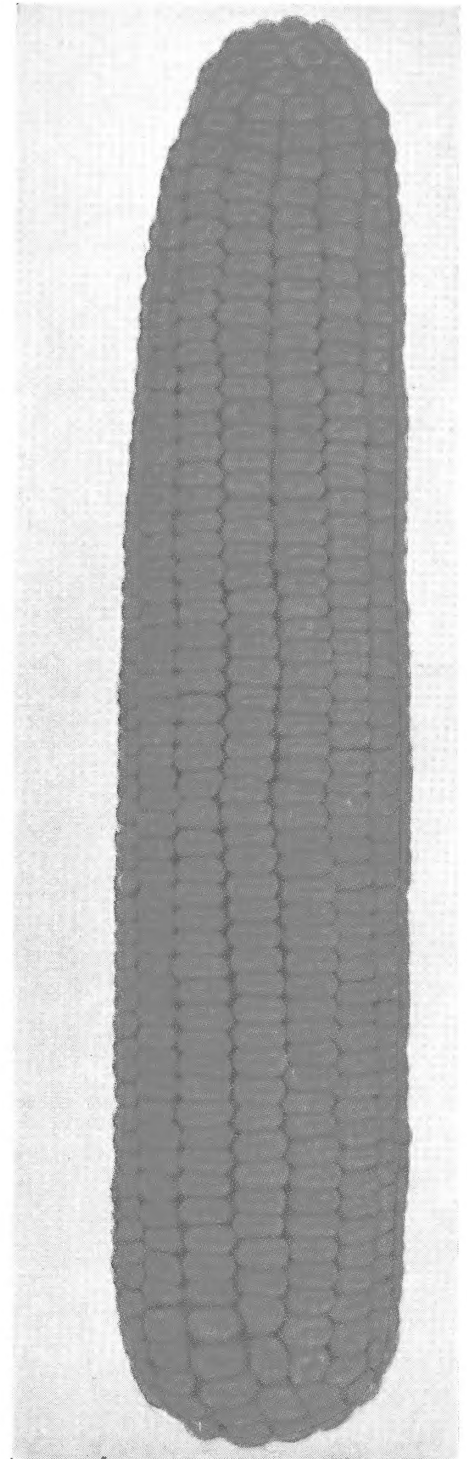
DIBBLE'S *Ohio K-62*

THE BIGGEST PRODUCER OF THE BIG SILO FILLERS

This is the big silo filler. A yellow dent hybrid without a superior in its maturity class. Being a few days later than Penn. 444 and Ohio K-24, this variety is the big tonnage producer of silage with strong stalks and large ears for the dairy farm where Corn is well grown in New York State and the Northeast. This is an excellent silage Corn for all the good Corn-growing dairy farms.



A. W. Yorks of Honeoye Falls, N. Y., with an excellent field of Ohio K-62 grown on his farm this past year for silage.



ROUND KERNELS are highly recommended for planting with a grain drill. For this reason they are sometimes known as Drill Size. Round kernels will produce just as good a crop as flat kernels provided the proper spacing is used. See Price-List for those varieties in which we can furnish the Round or Drill Size kernels. They are economical.

STANLEY'S CROW REPELLENT

These black-winged robbers won't stay long in a field protected by Stanley's Crow Repellent. Not poisonous, and does not affect the corn—but the crows leave. A 60-cent can treats a bushel of seed.

- | | |
|-------------------------------------|--------|
| 1 qt. | \$1.75 |
| (enough for 4 bushels of seed corn) | |
| 1 pt. | 1.00 |
| (enough for 2 bushels of seed corn) | |
| ½ pt. | .60 |
| (enough for 1 bushel of seed corn) | |



**DON'T BE WITHOUT
THIS HEAVY-PRODUCING
SILAGE CORN**

Ohio K-62

DIBBLE'S HYBRID CORN

Dibble's Ohio K-24 **The Big Producer** *try some*

Another big silo filler in large demand, maturing somewhat earlier than Sweepstakes. Like Ohio K-62 this variety is very tall, green and leafy, producing heavy tonnage in comparative ratings against other commercial hybrids. This hybrid is too late for grain in New York State except in the best sections of the lower Hudson Valley and Long Island, where it yields highly.



James Behan, Lima, N. Y., likes the high grain yield of Dibble's Penn. 444.

Dibble's Cornell M-1

A high-yielding, 110-day Corn. This yellow dent variety has been outstanding for grain yield and standability in all the various field trials of New York State. It has given excellent results in our territory at elevations above 500 feet, having a low moisture content at harvest for safe cribbing. Cornell M-1 is an excellent Corn for early silage in New York State and the Northeast where farmers want a tall, leafy, green silage Corn with a high grain content. In looking for Corn hybrids today, look for strength of stalk, for that has become as important as yielding ability.

Dibble's Penn. 444

This new outstanding hybrid of Pennsylvania origin is later in maturity than Michigan 250 and only a little later than Cornell M-4. Penn. 444 is high yielding and very resistant to root and stalk rot. It is a good husker. Plants are medium height, ears are medium height and well filled at the tip. Resistance to insects and disease is superior. Recommended for grain in the good growing sections of the Northeast at elevations below 900 feet, and for silage at higher elevations and short-season areas.

Maturity Guide

FOR DIBBLE'S SEED CORN

EARLY 100 to 110 days	{	Michigan 250 Cornell M-1	}	Mainly for grain production in New York State above elevations of 600 feet and early to medium seasons of the Northeast. Excellent for early silage producers, Cornell M-1 especially.
MEDIUM 110 to 115 days	{	Cornell M-4 Penn. 444	}	For grain in the good growing sections of western New York State and similar seasons of the Northeast. Excellent yields for silage at elevations around 800 feet in New York State and similar seasons of the Northeast.
MEDIUM LATE 115 to 125 days	{	Ohio K-62 Ohio K-24	}	Extremely heavy silage producers for the good Corn-growing dairy sections in New York State and the Northeast. For grain in the best Corn-growing sections of the Lower Hudson, Long Island, Pennsylvania, New Jersey and Connecticut.
LATE 130 days	{	West Branch Sweepstakes Leaming Lancaster County Sure Crop	}	Open-pollinated varieties that produce high yields of silage in the best growing sections of the Northeast.

DIBBLE'S *Recommendations* for Growing Corn



1. Corn yields best when a good sod is well manured and plowed under at least two weeks prior to Corn planting.
2. Weed control is most efficiently attained by successive seed-bed operations prior to planting.
3. For silage, select a medium tall, leafy, erect, productive Corn that will reach hard dough stage by harvest.
4. For grain, select a Corn that is productive, has sturdy stalks and will get fully ripe.
5. Plant May 10 to 25, soil and weather conditions permitting. Follow fertilizer recommendations.
6. For grain, Corn in 36-inch rows should average one stalk per 10 inches of row, and for silage one stalk per 9 inches of row.
7. Round or small kernels produce as much Corn per acre as flat kernels, provided the proper planting rate is used. Test for accuracy of planting.
8. Weeds should be controlled when small by shallow cultivation or spraying. Deep cultivation prunes Corn roots and reduces the yield.
9. For maximum yields postpone harvest of silage till ears are at least in hard dough stage and of grain till ears are fully mature.

We expect a large demand for Seed Corn since Corn is a likely crop to be depended on for cash income, especially with such a large wheat acreage cut.

For Grain

For all farms of the Northeast where Corn is being grown, Dibble's certified Cornell M-1 and M-4 is the safest investment for high grain yields. For safe storage in the most usual type of Corn cribs, Corn should not contain more than 20 per cent moisture. Both varieties have excellent records for strength of stalk and standability.

For Silage

Corn that reaches the early dent stage or late dough stage contains the highest nutritive value per ton. For good growing sections of the dairy region we like Dibble's Penn. 444, Ohio K-62 and Ohio K-24. Use them in sequence if two or three hybrids are desired. For Short-season areas, use Dibble's Cornell M-1, Dibble's Cornell M-4 and Penn. 444.

GUARANTEE

We guarantee every bushel of our Seed Corn to be northern-grown and thoroughly recleaned. Our germination tests show 90 per cent or above, and we sell Seed Corn subject to your test.

You may keep our Seed Corn ten days, test it any way you wish, and if it does not "make good," return it immediately and we will refund your

money, paying the freight both ways, or refill your order. We use reasonable care in packing and sending out our Seed Corn, but as so many circumstances may arise over which we have no control, we do not guarantee, nor will we be responsible for the crop grown from any of our seeds.

DIBBLE'S *Open-Pollinated Corn Varieties*

ARASAN 75

ARASAN 75 is a new, higher strength thiram seed disinfectant and protectant for the treatment of corn, peas, beans and other vegetable crops. Easy to use as a dry (dust) treatment. Improves stands and yields by reducing seed decay and seedling diseases. May be applied prior to, simultaneously with, or subsequent to the addition of Crow Repellent. 1 ounce treats 1 bushel of corn. Oz. 50c; 8 ozs. \$1.50.



WEST BRANCH SWEEPSTAKES ENSILAGE CORN

Ten days earlier and much more desirable in every way than the old Sweepstakes Ensilage Corn. This variety is grown for us in Central Pennsylvania near Williamsport. The New York State College of Agriculture found it gave a large green tonnage and matured early enough to qualify as an excellent silage variety. It ears heavily and matures earlier than most other varieties sold under the name of Sweepstakes.

Our West Branch Sweepstakes is a blend, made by crossing Lancaster Sure Crop, White Cap Yellow Dent, and a red variety of the Bloody Butcher type. The plant is a vigorous grower, 10 to 15 feet on good soil,

ears 8 to 12 inches in length, with 12 to 20 rows of kernels. Cob is usually large and rather well filled at the tip. The color of kernels varies from Red to White Cap Yellow Dent.

We have been selecting for the red-kernel type and have thereby cut down materially on the percentage of white-cap yellow ears. Some ears, however, have kernels with very light-colored caps and only a tinge of red on the sides of the kernels. Others are nearly red.

Our West Branch Sweepstakes is the most popular open-pollinated ensilage variety in all sections of New York State, except at high elevations where an earlier sort is needed.

Lancaster County Sure Crop

A splendid Corn of Pennsylvania origin and a leading variety in Lancaster County, the most productive agricultural county in the State.

Sure Crop is developed from two well-known old varieties. It has long, rather large ears and small cob, is an extremely heavy yielder, medium as to time of ripening, with stalks 10 to 18 feet high. Rich protein content makes it most desirable for ensilage. Practically sure to ripen on good Cornland anywhere in the East in the latitude of Pennsylvania where the parent seed-stock was grown.

A Good Start for a *Profitable Corn Crop*



Improved LEAMING CORN

Just 131 years ago (1826) a variety of Yellow Dent Corn was introduced to American farmers and named for the originator, Mr. J. B. Leaming. Soon "Leaming Corn," through sheer merit, became the most popular of the Dent Corns. Dibble's Improved Leaming is at least ten days earlier than the common Leaming of commerce. We recommend it as the most popular open-pollinated variety for ensilage purposes for the Middle and New England States

Our Improved Leaming reaches the hard dough stage for ensilage here in western New York in from 105 to 115 days of good Corn weather; the stalks average from 10 to 15 feet in height, and we have put into our silos, many a time, 30 tons of ensilage per acre, that would have husked 100 to 125 bushels of ears.

For over 100 years Leaming has proved to be one of the best varieties for ensilage.

Many farmers prefer to plant open-pollinated Corns for silage in preference to hybrids. For that reason we offer the above three varieties of open-pollinated Corn that have proved their worth throughout the Northeast.

NOD-O-GEN *The Pre-tested Inoculator*

Use NOD-O-GEN on all legumes to give you the following results:

1. Bigger crop yields (10 to 50%).
2. Build more protein in hay and forage crops.
3. Add valuable nitrogen to your soil.

When ordering cultures specify kind of seed to be inoculated.

FOR ALFALFA AND CLOVERS	FOR SOY BEANS
2-in-1 combination	2-bu. size\$0.45
1-bu. size \$0.60	5-bu. size65
2½-bu. size 1.10	30-bu. size 3.80
For BIRDSFOOT TREFOIL	FOR VETCH AND PEA
10-lb. size \$0.25	1-bu. size \$0.45
1-bu. size75	100-lb. size55

DIBBLE'S
Recleaned
TIMOTHY-ALSIKE
NATURAL
MIXTURES

The Bargain of the Grass Seed Trade

A boon to farmers wanting High-Grade Seeds at a Money-Saving Price
What they are, where they come from

AN IDEAL SEEDING FOR 10 ACRES 2 BUSHELS OF TIMOTHY-ALSIKE MIXTURE Plus 1 BUSHEL OF MEDIUM OR MAMMOTH CLOVER

IN SOME of the northwestern states, especially Minnesota, and in certain sections of Canada, Alsike and Timothy grow naturally together, ripen at the same time, are harvested and threshed, and as the seed grains of Alsike and Timothy are practically of the same size, the two varieties cannot be separated.

We frequently are able to buy round lots of these fancy Mixtures containing 20 per cent or more of Alsike at only slightly higher prices than for the best Timothy, and as we pass these seeds on to you at our usual small margin of profit, you get the Alsike you need in your seeding Mixture at a little above the regular *Timothy Price*, and then by adding the required amount of our D. B. Medium and Mammoth

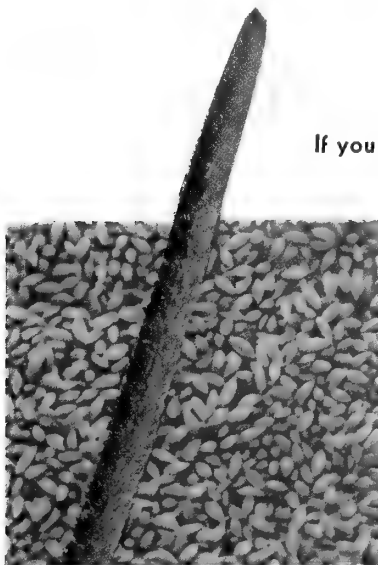
Clovers, you have an ideal Mixture and save money on every acre you seed down.

This is briefly the story of the Natural Mixture. Now these Mixtures are good, bad, and indifferent and no one should buy a Mixture of any kind without a positive guarantee from a responsible seller as to the purity and also the percentage of each variety of seed in the Mixture. We sell just one grade—the best—and give, on our guarantee tag attached to each bag, the purity, germination, and percentage of Alsike and Timothy in this particular Mixture. The quantity of the two principal seeds may vary in different lots, but in all cases you will find “less than ½ of 1 per cent of weed seeds.”

Beware of the Ordinary Timothy-Alsike Mixtures

EMERGENCY HAY CROPS

If you are short of hay for this coming season, we suggest that you use some of the following quick hay crop



D. B. Brand Timothy, 99.60 per cent pure

Two bushels of **Oats** and one bushel of **Canada Field Peas** per acre, sown as early in the spring as possible, constitutes about the best catch hay crop eastern farmers can plant. Cut for hay when Oats are in early milk stage. Seedings may be put out with this mixture, thereby causing no upsetting of the rotation.

SWEET CLOVER, sown with Oats on well-limed land, may be tall enough to cut with Oats, improving its protein content, and may be cut or pastured later.

SOY BEANS make an emergency hay crop, having a feeding value similar to Alfalfa. Inoculate Soy Beans. Drill shallow, on a good seed-bed, after corn-planting time, when weather is warm. Sow 6 to 8 pecks per acre if drilled solid, or 2 to 4 pecks in close rows. Cut after pods form and before leaves start to fall.

SUDAN GRASS, drilled at the rate of 35 pounds per acre soon after corn planting, makes considerable amount of hay. Cut when just headed out. It will sprout up and make pasture or a second crop of hay.

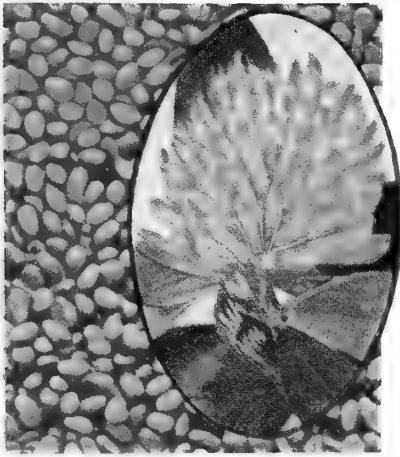
MILLETS are reliable producers and will make a crop in 60 to 80 days. Sow 30 pounds Golden or Hungarian Millet to the acre, or 20 pounds of Japanese, the latter in moist soil. Do not sow till weather is warm, and cut for hay just before the seed forms.

PRICES ARE NET F.O.B. Honeoye Falls, N. Y. Bags and sacks free and not weighed in with the seed.

TERMS: Strictly cash with order, except on carload lots, when a special price will be made you delivered to your station, payable on arrival and inspection of goods.

PRICE CHANGES: As prices constantly fluctuate throughout the season, we do not print them in this Catalog but issue special price-lists giving the very lowest prices prevailing at the time. If you are not ready to order when this Catalog reaches you, write us for a new price-list when you are ready.

Prices are subject to change without notice. If lower when order is received, the difference will be refunded; if higher, you will be notified.



D. B. Brand Red Clover 99.60% pure

D. B. BRAND CLOVER SEED

FOR HEAVY YIELDS

WE CONTINUE our well-known policy of handling just one grade of seeds, and that the best money will buy; nothing else goes into our warehouse, and nothing but the best can therefore go out to our customers.

The average analysis of D. B. Brand Clover and Grass Seeds at various experiment stations was above 99.60 per cent purity. Part of the samples were drawn by the official inspectors, some sent direct by us, and one-half were made for our customers.

Thoroughly cleaned seed of high germination, and from regions adapted for sowing in your territory, is the kind you want to sow.

The Clovers and other Legumes will put atmospheric nitrogen in the soil for you. Sow them liberally, and use Dibble's D. B. Brand.

Medium Red Clover. The common Red Clover largely grown throughout the country. This Clover requires well-drained soil and is especially suitable to rich bottom-lands or soils heavily fertilized. If cut early it is possible in a good season to get two or three cuttings.

Mammoth Red Clover. Compared with the Medium Red Clover, its flower, foliage, and stems are of darker color; it is later in maturing and of larger growth. When grown on rich bottom-lands or heavily fertilized soil, it makes a very rank growth and often is very coarse; hence the names Sapling Clover, Big Clover, or Pea-vine Clover. One of the best soiling crops. It is recommended for soils of ordinary or low productivity because here it will make a growth similar to Medium Clover on more fertile soils. A good stand of Mammoth Clover will last from 2 to 7 years, depending on conditions. Being 10 to 14 days later than Medium Clover, it will mature with Timothy.

Ladino Clover. A very large species of White Dutch Clover. More perennial in type than either Red or Alsike and used in pasture and hay mixtures where the aftermath is to be grazed.

Alsike Clover. The hardiest of all Clovers; perennial. On rich, moist soils it yields enormous crops. Its greatest value is for sowing with other Clovers and grasses, especially with Timothy.

Wild White Clover. A wild form of White Dutch Clover and a true perennial. On sweet soils it will survive indefinitely without reseeding. Use in the better grades of pasture and lawn mixtures.

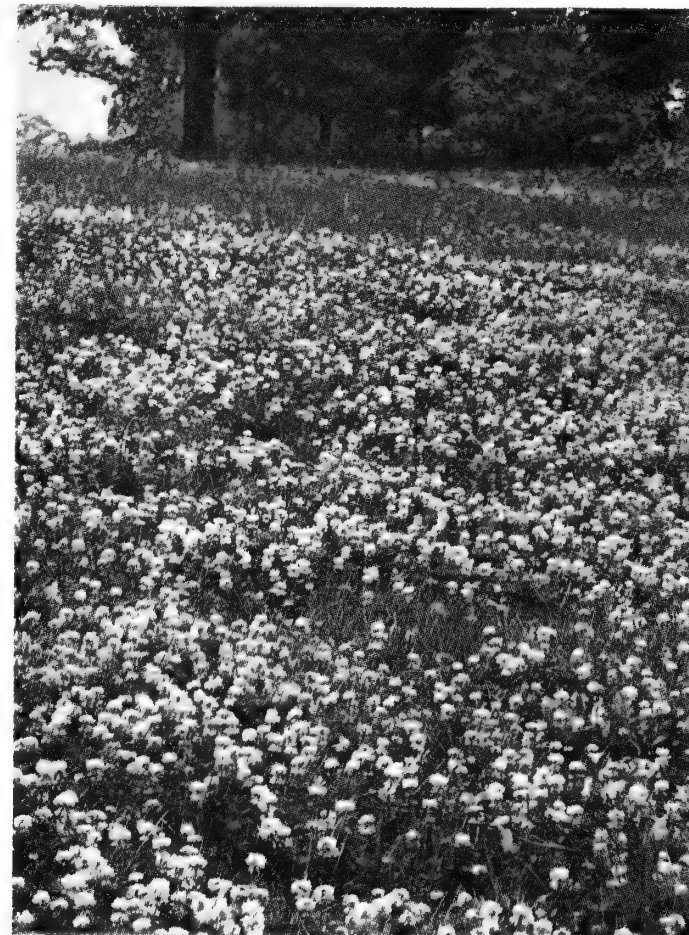
White Dutch Clover. A low Clover that spreads by sending out creeping stems that root at the joints. Not adapted for hay but used in pasture and lawn mixtures. On acid soils it quickly disappears.

Sweet Clover. Biennial white blossom is the commonest type of Sweet Clover, and the one which has come to the front so rapidly in recent years for forage, pasture, and soil-improvement. It will grow in almost any climate and on almost any type of soil, thriving on land too poor for Alfalfa or Red Clover.

LADINO, ALFALFA AND ORCHARD GRASS MIXTURE

Ladino Clover—1 lb.
 Alfalfa—3 to 6 lbs. } per acre
 Orchard Grass—6 lbs. }

A high-yielding mixture for rotated pastures and silage. Must be cut or grazed early to retain the palatability of the Orchard Grass and to maintain the Ladino. Good for two to five years. If soil is not suited to Alfalfa, you can leave out the Alfalfa and increase the Orchard Grass to 8 pounds.



LADINO CLOVER

ACRE RATE OF SEEDING

	Lbs.	Qts.
Alsike Clover } Mixed {	8	4
Timothy } Mixed {	8	6
Red Clover } Mixed {	10	5
Timothy } Mixed {	8	6
Red Clover } Mixed {	6	3
Alsike Clover } Mixed {	4	2
Timothy } Mixed {	8	6
Red Clover } Mixed {	3	1 1/2
Alsike Clover } Mixed {	5	2 1/2
Timothy } For wet land {	5	4
Red-Top } For wet land {	3	6
Red Clover.....	12	6
Alsike Clover.....	8	4
Red Clover } Mixed {	8	4
Alsike Clover } Mixed {	4	2
Alfalfa.....	12	6
Alfalfa, on wheat or with spring grain.....	15	8
Sweet Clover.....	15	8



D. B. BRAND TIMOTHY

D. B. Brand

*Grass
Seed*

FOR
HEAVY YIELDS

Timothy. Most valuable of all the grasses, especially in the North. It is better adapted to clay than to sandy soils and is at its best on moist and fertile soils.

Red-Top. No other grass will grow under as great a variety of conditions as Red Top and will thrive on almost every type of soil except sand. It is a rapid grower and is chiefly used as a wet-land or sour-land hay crop, often with Alsike and as a pasture grass on damp soils.

Kentucky Blue Grass. This is the most valuable grass for permanent pastures and lawns. It is hardy and thrives under heavy grazing. Soils of the moderately moist, medium to heavy types which produce the best Timothy are well suited for Kentucky Blue Grass.

Orchard Grass. A long-lived perennial that gets its name from its ability to grow in the partial shade of orchards and open woodlots. Its principal use is for pastures and silage under shady or dry conditions.

Brome Grass. An erect perennial with strong creeping root-stalks. Makes a thick firm turf and thrives well on dry, loose soil. Seeded with Alfalfa, 8 pounds of each per acre, it makes good summer pasture or hay.

Reed's Canary Grass. A hardy native perennial which is attracting wide attention as a forage crop because of its ability to grow well on lands too wet for the common farm crop. For areas too wet for other pasture grasses, use 8 pounds of Reed's Canary Grass per acre. If the soil is not actually swampy, add 1 pound of Ladino Clover per acre.

Domestic Rye Grass. A winter annual, recommended for a winter cover-crop. Twenty pounds per acre sown broadcast at the last cultivation of corn will produce a real sod. The amount of root growth is several times that of Rye and helps to prevent washing and to improve soil conditions after a Rye-grass cover-crop is plowed.

Sudan Grass. A quick-growing annual grass that has few equals as an emergency pasture during dry spells.

Dibble's Birdsfoot Trefoil. We believe that Trefoil has a place in our area as a forage crop only where Alfalfa and Red Clover do not thrive. There are two distinct varieties: *Empire*, a persistent and permanent legume for close grazing and hay production. It blooms 10 to 20 days later than Red Clover or Alfalfa. The *European* variety blooms at the same time as Alfalfa and Red Clover and is suited for hay.

FOR DRY SUMMER GRAZING USE A SUPPLEMENT PASTURE OF EITHER DIBBLE'S SUDAN GRASS OR AN ORCHARD AND LADINO MIXTURE

Domestic BROME GRASS



A lush hay or pasture crop may be obtained by using Brome Grass in combination with Alfalfa. We suggest using 8 pounds of Brome Grass and 8 pounds of Alfalfa per acre. Brome Grass is more palatable than Timothy, and like Alfalfa requires a fertile and well-drained soil.

Seeding Brome and Orchard Grass

You can use your grain drill. Mix the brome grass or orchard grass seed with the grain. Stir the mixture often. Set your drill shoes to sow the mixture as shallow as possible. With a mixture of oats at 1½ bushels to the acre and brome or orchard grass at the recommended rate, try a setting of 7 pecks. Sow the legume through the grass-seed box as usual.



DIBBLE'S *Heavy-Yielding* ALFALFA

THE hay crop is the most important one on the livestock farm and, next to silage corn, hay produces the greatest quantity of total digestible nutrients to the acre. Every farmer should be sure of a good supply of high-quality hay because it will reduce the grain bill and increase the check for livestock products.

We feel that the first essential in getting a good yield of high-quality hay is to seed a mixture of grasses and legumes that are adapted to the soil. There is no magic in mixture making but there is a vast difference in the quality of the seeds used. The safest thing to do is to use our D. B. Brand and be sure of the highest quality that money can buy.

Notwithstanding the fact that our seeds are tested in our own laboratory, we sell our D. B. Brand Seeds subject to your test, the test of your State Experiment Station, or that of the United States Department of Agriculture.

DIBBLE'S D. B. BRAND ALFALFA SEED

Buy Alfalfa Seed from Alfalfa Growers

1956 CROP

Alfalfa is the most wonderful and productive plant of the Legume family. It will grow on any good corn or wheat land, or on any soil that will give a good catch of clover. Once established, it is very hardy, sinking its roots deeply after moisture and nourishment, and the severest drought or coldest weather will not kill it.

Grows 3 to 4 feet high, can be cut two or three times each season, and produces four to five tons of hay to the acre. A ton of well-cured Alfalfa equals a ton of wheat-bran. With corn fodder or ensilage, it makes an ideal feed for milch cows or steers, and horses thrive on it when fed intelligently with a proper grain ration.

We sell Alfalfa subject to your test, the test of your State Experiment Station, or that of the United States Department of Agriculture. Keep your seed ten days, and if you are not convinced that it is as good as we say, return it at once; we will refund your money and pay the freight both ways.

We use all reasonable care in packing and sending out our Alfalfa Seed, but, as so many circumstances may arise after it leaves our possession, over which we have no control, we therefore do not guarantee, nor will we be responsible for the crop.

D. B. Brand Alfalfa, 99.50 per cent pure or better; the best obtainable. Average analysis of all our D. B. Brand Alfalfa Seed sold during the last ten years, was above 99.60 per cent pure and dodder-free.

NITROGEN (Use **NOD-O-GEN** on all legumes)
is the one plant food you **CAN** grow!

For best growth, and to put atmospheric nitrogen in the soil, it pays to inoculate all legumes. The cost is trivial compared with the profit. Legumes are clovers, peas and beans, alfalfa, soy beans, vetches and other plants that grow seeds in a pod. Their roots are the home of bacteria that draw fertility-building nitrogen from the air and store it in swellings on the roots, called nodules. These nodules not only feed nitrogen to the crop they are on, but rot in the ground and supply valuable nitrogen to the soil.



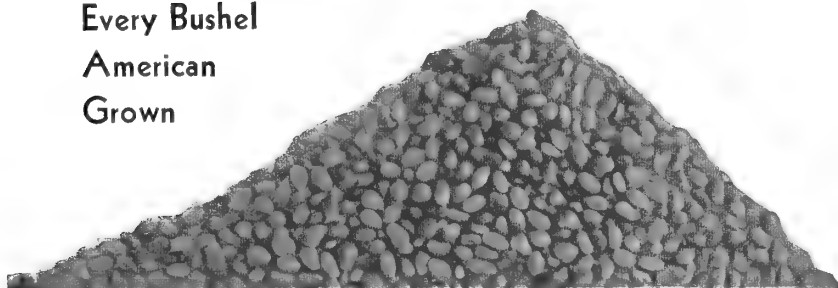
RANGER

Ranger, a long-lived Alfalfa, is highly resistant to bacterial wilt. It is winter hardy and is therefore well suited to our Northeastern conditions where a long-lived stand is desired. The only practical way to control wilt is to use a resistant variety, and for this reason we recommend Ranger as the variety to use where wilt may be a factor, and if you wish to leave the seeding for a period of several years. The big demand is for Ranger Alfalfa.

"The Cream of the Crop"

99.50% Pure or Better

Every Bushel
American
Grown



D. B. Brand Alfalfa Seed, 99.83 per cent pure



ALFALFA

Only Certified Ranger Alfalfa is recommended. Trueness-to-type tests and unsatisfactory history of non-certified seed production in Western States have shown that non-certified Ranger may not be true Ranger. Certified seed purchased from Dibble assures you of true Ranger and the most dependable source of Northern-adapted Alfalfa.

Narragansett Alfalfa

Narragansett is a new Northeastern-bred variety that is superior to all other sorts for many Alfalfa-growing conditions in the Northeast. It has been widely tested by Cornell for seven years. It is superior to all other available varieties in (1) stand establishment, (2) yield and (3) winter hardiness. It is especially outstanding in establishment and persistence of good stands on soils of moderate drainage for Alfalfa. Demonstration plantings on many farms confirm the superior stand establishment of this variety. Narragansett, if properly limed and fertilized, can extend successful Alfalfa production to many farms with moderately drained soils. It is not wilt-resistant, therefore should be used in short rotations (three to five years).

Only Certified seed is recommended.

Du Puits Alfalfa

Of French origin is the highest yielding variety on the fertile soils of the Northeast for stands up to three years. It starts earlier in the spring and recovers faster after cutting than other varieties. On three cuttings over 5 tons of Alfalfa may be expected.

Only Certified seed is recommended.

Vernal Alfalfa

Developed in Wisconsin, this is a wilt-resistant and winter-hardy variety. Recommended for the same conditions as Ranger. Limited supplies of certified seed will be available for 1957 planting.

Common Alfalfa

May be used on natural Alfalfa soils of the East where Common Alfalfa has grown successfully and where it is to be left down only two or three years.

Cornell Hay and Pasture Mixtures

RECOMMENDED BY THE
AGRONOMY AND PLANT BREEDING
DEPARTMENTS OF CORNELL UNIVERSITY

BIRDSFOOT TREFOIL-GRASS MIXTURES

These mixtures are suitable for long rotations and for areas to be left continuously in hay or pasture. They are recommended only where the seeding is to be left down for three years or longer.

For Hay, Silage or Pasture

Birdsfoot Trefoil..... 7 lbs. or 3 1/2 quarts
Timothy..... 5 lbs. or 3 1/2 quarts
Total for 1 acre.... 12 lbs. or 7 quarts

This mixture should not be sold mixed. Birdsfoot Trefoil seed should be inoculated with the proper nitrogen-fixing organisms and mixed with the Timothy seed immediately before sowing.

We furnish inoculation with each purchase of Trefoil.

Clover, either seeded or volunteer, is likely to cause a failure or poor stand of Birdsfoot.

For Hay, Silage or Pasture

Birdsfoot Trefoil..... 7 lbs. or 3 1/2 quarts
Smooth Brome Grass.. 8 lbs. or 18 quarts
Total for 1 acre.... 15 lbs. or 21 1/2 quarts

Empire Trefoil is first choice for long-term stands on areas difficult to plow or for continuous grazing. It will also cut high-quality hay from 10 to 20 days later than Red Clover or the European type.

European or Viking Trefoil is better suited for hay and may be used for rotated pastures. Hay yields higher than Empire and matures at time of Red Clover; establishes itself quicker and recovers faster after cutting.

CLOVER-GRASS MIXTURES

For Hay or Silage and Pasture

Medium Red Clover... 6 lbs. or 3 quarts
Ladino Clover..... 1 lb. or 1/2 quart
Timothy..... 6 lbs. or 4 quarts
Total seed for 1 acre.. 13 lbs. or 7 1/2 quarts

This mixture is recommended for seeding on soils not suitable for Alfalfa.

Modification for Dry, Shaley Soils:

Mammoth Red Clover... 6 lbs. or 3 quarts
Timothy..... 6 lbs. or 4 quarts
Total for 1 acre..... 12 lbs. or 7 quarts

Modification for Wet Land:

Alsike Clover..... 3 lbs. or 1 1/2 quarts
Ladino Clover..... 1 lb. or 1/2 quart
Timothy..... 6 lbs. or 4 quarts
Red-Top..... 2 lbs. or 2 quarts
Total for 1 acre.... 12 lbs. or 8 quarts

For Pasture or Silage

Ladino Clover..... 1 lb. or 1/2 quart
Orchard Grass..... 8 lbs. or 18 quarts
Total for 1 acre.... 9 lbs. or 18 1/2 quarts

These should be sold separately. The acreage of this mixture should be kept small enough so that it can be properly managed, because overripe orchard grass is neither palatable nor nutritious and tall, dense growth crowds out Ladino Clover.

This mixture produces a high-yielding crop, but it can seldom be made into high-quality hay. Any growth that cannot be closely grazed should be clipped and made into silage. Size of fields and grazing management plans should be made with this in mind.

Brome Grass may be substituted for the Orchard Grass and 3 to 6 pounds of Alfalfa may be added if soil conditions are suitable for Alfalfa.

ALFALFA-GRASS MIXTURES

For Hay or Silage

Alfalfa..... 8 lbs. or 4 quarts
Timothy..... 6 lbs. or 4 quarts
Total for 1 acre.... 14 lbs. or 8 quarts

Timothy is more easily and quickly established than Smooth Brome Grass on land that is not in a high state of fertility.

For Hay or Silage

Alfalfa..... 8 lbs. or 4 quarts
Smooth Brome Grass... 8 lbs. or 18 quarts
Total for 1 acre.... 16 lbs. or 22 quarts

These must be seeded separately. Brome Grass seed may be mixed with small grain; it may be sown with a hand seeder. In any case, it should be seeded shallow, but covered.

Both Alfalfa and Smooth Brome Grass are very drought resistant and require fertile, well-drained soil. Smooth Brome Grass is one of the most palatable grasses either as hay or pasture. It is often slow to become established and for one season or longer the harvest is likely to be nearly clear Alfalfa. It should be seeded only where it is to be left for three years or longer.

For Hay, Silage or Pasture

Birdsfoot Trefoil..... 4 lbs. or 2 quarts
Alfalfa..... 6 lbs. or 3 quarts
Timothy..... 6 lbs. or 4 quarts
Total for 1 acre..... 16 lbs. or 9 quarts

This mixture is recommended for fields where soil drainage is moderate to somewhat poor. Narragansett Alfalfa and European or Viking Birdsfoot Trefoil are an excellent combination for fields with variable drainage conditions. Narragansett gives high yields for two or three years. Trefoil fills in the wet spots and takes over as the Alfalfa thins out.

GENERAL-PURPOSE MIXTURE

For Hay, Silage or Pasture

Alfalfa..... 4 lbs. or 2 quarts
Medium Red Clover... 4 lbs. or 2 quarts
Ladino Clover..... 1 lb. or 1/2 quart
Timothy..... 6 lbs. or 4 quarts
Total for 1 acre.... 15 lbs. or 8 1/2 quarts

The proportion of Alfalfa should vary from 6 to 2 pounds according to how favorable the situation is for Alfalfa. As the Alfalfa is reduced, the Clover should be increased correspondingly.

Eight pounds of Brome Grass, sown separately, may be used in place of Timothy when most of the soil is well drained.

For Hay or Silage

Alfalfa..... 6 lbs. or 3 quarts
Medium Red Clover... 2 lbs. or 1 quart
Alsike..... 2 lbs. or 1 quart
Timothy..... 6 lbs. or 4 quarts
Total for 1 acre.... 16 lbs. or 9 quarts

This is a modification of the General-Purpose Mixture for short rotations where the crop is not to be pastured and where, for any reason, Ladino Clover is not wanted.

A seeding of this mixture cannot be expected to last long on land or under management which will not support a vigorous growth of Alfalfa.

POULTRY PASTURE MIXTURE

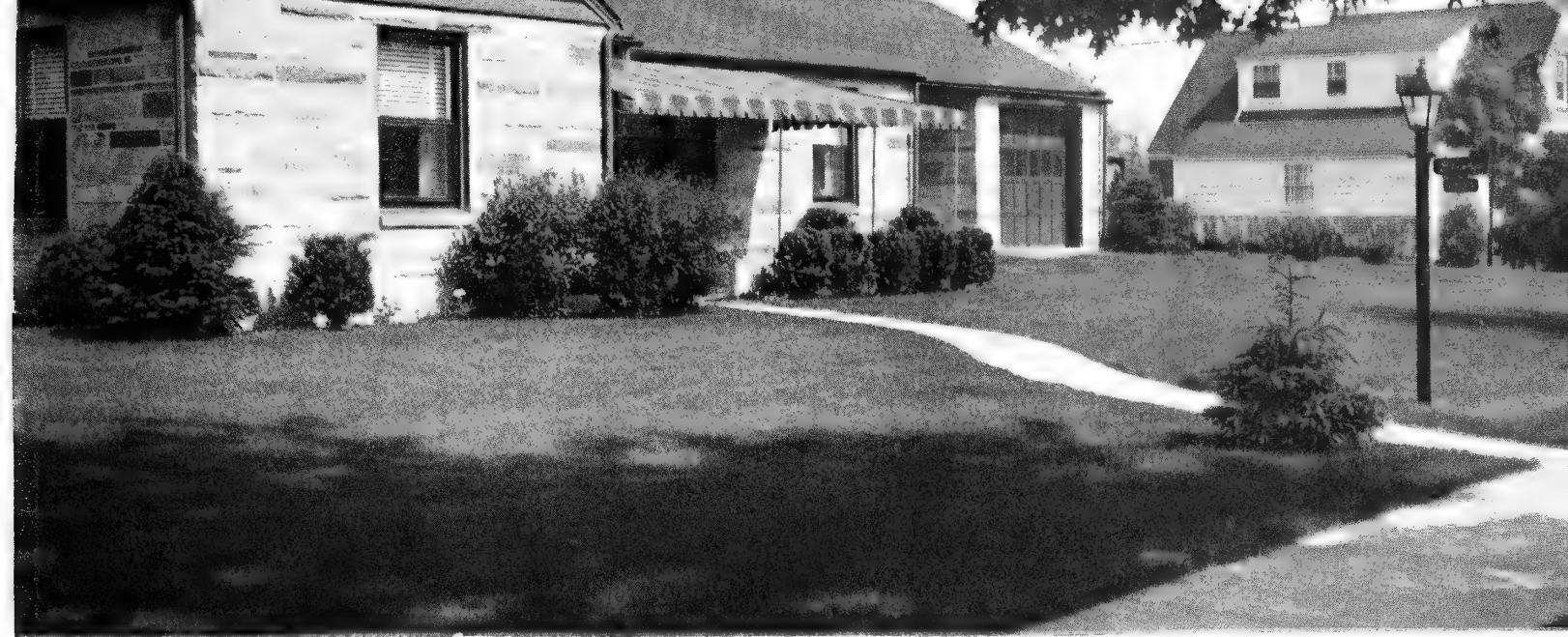
Ladino Clover..... 1 lb. or 1/2 quart
Wild White Clover.... 1 lb. or 1/2 quart
Timothy..... 5 lbs. or 3 1/2 quarts
Kentucky Blue Grass.. 5 lbs. or 11 quarts
Total for 1 acre.... 12 lbs. or 15 1/2 quarts

This permanent pasture mixture is also excellent for cattle, horses or sheep. It is recommended only for those areas to be left permanently in pasture where midsummer moisture conditions are adequate for such shallow-rooted plants as Wild White Clover and Kentucky Blue Grass.

For Diversion Ditches and Sod Waterways

Add 5 pounds Domestic Rye Grass and 2 pounds Red-Top to above mixture.





DIBBLE'S *Lawn Grass Mixtures*

90% PERMANENT SEEDS—THE BEST BUY IN LAWN SEED

Seed the lawn in early spring or early fall. We list four Mixtures for various conditions.

A well-kept lawn is a joy to any home-owner and will actually increase the value of his property. Good lawns once established will last a lifetime.

Dibble's Lawn Mixtures are superior in quality because they are composed of only those grasses found to be suitable for the best lawns in New York and adjoining states, and only the highest grade of these individual grasses is used.

Dibble's Merion Kentucky Blue Grass Mixture

50% Merion Kentucky Blue Grass 20% Colonial Bent
30% Illahee Fescue

Merion Kentucky Blue Grass is the aristocrat of the lawn grasses. It likes fertile soil in sunny conditions, tolerates drought, resists leaf-spot, and will stand close cutting.

Sow 3 lbs. of this mixture per 1000 square feet. See Special Price-List for prices.

Dibble's Red, White and Blue Lawn Mixture

Individual seeds used:
70% Kentucky Blue Grass 12½% Red-Top
12½% Colonial Bent Grass 5% White Clover

Contains only the highest grades of Kentucky Blue Grass, Colonial Bent, Wild White Clover, and Red-Top, mixed in the proper proportions. This has proved to be the best Lawn Mixture for any locality where Kentucky Blue Grass thrives, regardless of fancy names or cost. Sow 5 pounds per 1000 square feet.

The above Lawn Mixture can be furnished without White Clover, if so desired, at the same price.

Should you desire any other special mixture, kindly send us specifications and let us quote, or order individual seeds separately.

Dibble's Red, White and Blue Lawn Mixture with Fescue

Individual seeds used:
47% Kentucky Blue Grass 8% Red-Top
33% Red Fescue 3% White Clover
9% Colonial Bent Grass

Red Fescue is included in this mixture because it is the best grass for dry soil, either in sun or shade. For very dry or sandy soils it would be advisable to increase the Red Fescue and cut down on the Kentucky Blue Grass.

The above Lawn Mixture can be furnished without White Clover, if so desired, at the same price.

Dibble's Shady Lawn Mixture

Individual seeds used:
35% Red Fescue 15% Red-Top
25% Kentucky Blue Grass 5% White Clover
20% Poa Trivialis

Rough Blue Grass (*Poa Trivialis*) is included in this mixture because it is the best grass for heavy moist soil, or in moist shade. Red Fescue is also included because it does well in dry shade or sandy soils where other grasses fail. Sow 5 pounds per 1000 square feet.

The above Lawn Mixture can be furnished without White Clover, if so desired, at the same price.

IN BRIEF—

TO BUILD A NEW LAWN

Plan to seed in early fall or early spring.
If drainage is needed, supply it.
Rough-grade the area.
Add topsoil if it is needed.
Add organic matter if it is needed.
Fertilize the ground.
Add limestone if it is needed.
Mix any added materials thoroughly with the soil.
Prepare a fine seed bed.
Sow the right kind of seed.

Rake the seed-bed lightly.
Roll the seed-bed area.
Sprinkle the soil gently and keep it moist.
Mow the grass high.

TO KEEP YOUR LAWN GOOD

Mow to a height of 1½ inches.
Leave the clippings.
Fertilize the lawn in early fall.
Roll the lawn in early spring.
Lime the lawn when needed (test the soil).

... DIBBLE'S Seed Oats ...

We Offer the Best Yielding Oats for the Least Cost of Seed
Treated and Ready to Sow



DIBBLE'S *Seed Oats* GUARANTEE

We guarantee our Seed Oats thoroughly re-cleaned by the best mills known to the trade, and in first-class condition for sowing. Keep our Seed Oats ten days, test them, and if not entirely satisfactory in every way, return them at once and get your money back.

We use all reasonable care in packing and sending out our Seed Oats, but as so many circumstances may arise after they leave our possession, over which we have no control, we do not guarantee, nor will we be responsible for the crop grown from any of our seeds.

FOR PRICES
SEE SPECIAL PRICE-LIST

DIBBLE'S Garry Oats

High Yielding Variety for the Northeast.
The Most Promising New Oat.

The new Garry Oat originated from the Dominion Laboratories at Winnipeg, Canada and this is the second year that seed has been available to our Northeast farmers.

The Garry Oat combines in one variety the following desirable features:

1. High yielding ability.
2. Very stiff straw.
3. Medium height.
4. Medium early maturity.
5. High resistance to crown and stem rust.
6. Plump, meaty kernels.

The Garry Oat has exceptional stooing ability and maximum yields may be obtained by planting 2 bushels per acre.

DIBBLE'S

Tall Oat Varieties

Heavyweight

The Heaviest American Oat Grown

While in search of new varieties of Oats of value in the Northwest, where the best Oats are grown, we found, in Wyoming, several fields of a new variety with tall, stiff straw standing shoulder high and the heaviest American Oat grown. When these fields were threshed, the yield was over 100 bushels per acre and the weight over 45 pounds per measured bushel of pure white, thin-hulled grain. We purchased the entire lot, and from this source secured our stock seed of this, in our opinion, the heaviest and most productive American Oat. This was some thirty years ago. During that time we have distributed over 600,000 bushels to our customers, and wherever grown it has given wonderful yields in comparison with other varieties grown alongside. Crops averaging "just twice" the yield of common Oats have been reported to us by our customers. This Oat is of the Swedish type and being generations from the original importation, the law requires us to use the words "variety unknown."

Dibble's Heavyweight Oats have made wonderful yields for a large number of our customers in many states. We read of remarkable records and big yields of Oats in the western states, under irrigation, but right here in the East Dibble's Heavyweight Oats have produced record-breaking crops. Average weight 40 pounds per measured bushel. Sow $2\frac{1}{2}$ bushels per acre.

Ajax

A white-kernel Canadian Oat, tall and outstanding in yield. Ajax was the highest yielding Oat in the 1949 regional Oat trials in New York State. It has medium stiff straw and resistance to blight and race 45. This Oat is widely adapted and well recommended throughout the Northeast and states west of us. It matures about the same time as Moore and Erie Barley for Oat and Barley mixtures. Sow $2\frac{1}{2}$ bushels per acre.

Rodney

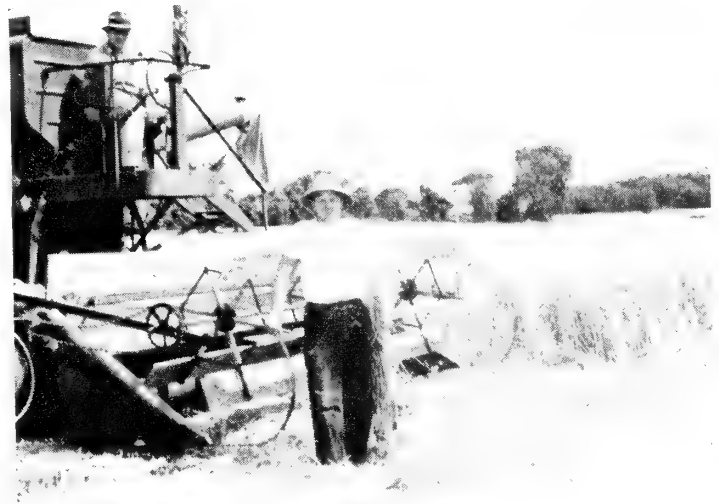
Rodney, a Canadian-bred Oat has proven to be a very desirable Oat for our Northeastern territory. Rodney yields about the same as the new Garry and has about the same height and stiffness of straw. It is five days later than Garry and has a very large, heavy kernel. Rodney has excellent resistance to the races of rust which are now prevalent. Sow 2 to $2\frac{1}{2}$ bushels per acre.

DIBBLE'S

Short Oat Varieties

Craig

Craig is a new variety released by the Cornell Agricultural Experiment Station in 1951. High yielding, uniform, shorter than Mohawk and nearly a week later. The maturity is late enough so as not to conflict with the wheat harvest. Craig is superior to Mohawk, Clinton and other common varieties in leaf-rust resistance. We had yields of 100 bushels per acre this past year. The Craig Oat is our outstanding offer among the short varieties. Sow 2 to $2\frac{1}{2}$ bushels per acre.



John Barker, Henrietta, N. Y., harvesting Certified Craig Oats that yielded just under 100 bushels per acre on 69 acres.

Mohawk

The Mohawk Oat was released by Cornell University to seed producers in 1947. Mohawk has exceptionally high yielding ability with high resistance to Helminthosporium blight and rust, which makes it a very dependable variety. Very stiff straw, early maturing, medium height, and heavy meaty kernel. A variety of wide adaptation, highly recommended for all sections of our territory. An excellent sort with which to make seedings. On fertile dairy farms where many other Oats tend to lodge, Mohawk has shown very good standability. Sow 2 to $2\frac{1}{2}$ bushels per acre.

Clinton

The Clinton Oat was developed by the Iowa Experiment Station and like Mohawk is resistant to blight and rust. It is very similar to Mohawk in performance and adaptation. Sow 2 to $2\frac{1}{2}$ bushels per acre.

CERESAN M

CERESAN M is the best dry seed disinfectant for small grains. It protects the crop from seedling diseases, seed rot and smut and usually increases yields as much as 5 bushels per acre. 14 ounces will treat 28 to 30 bushels of wheat, oats, barley or rye.

14-oz. can \$1.60; 3-lb. can \$4.45



Varieties to Use for Grain or Seed

CAYUGA. The earliest high-yielding variety recommended for grain production in New York State or in regions having a similar growing period. Planted in late May or early June this variety is ready for harvest by the middle of September. Use 35 to 40 pounds of seed per acre when planted in 21 to 28-inch rows or 90 to 100 pounds when drilled solid or in 14-inch rows.

EARLYANA. Earlyana is a new, early-maturing, high-yielding, high-quality Soy Bean introduced by the Indiana Agricultural Experiment Station. It is taller and a little later than Cayuga. The threshed Beans are uniformly yellow in color, slightly oval in shape, medium in size, with a satisfactory oil content. Row planting is advisable because of the tall habit of growth resulting in a tendency to lodge when planted too thick. When planted in late May or early June the Earlyana Soy Bean has never failed to ripen on our own farms here in Western New York.

Use 35 to 40 pounds per acre when planted in 21 to 28-inch rows, or 100 to 120 pounds when drilled solid or in 14-inch rows.

DIBBLE'S SOY BEANS

For Silage, Hay or Green Manure

HAWKEYE

Released for distribution in 1948. The seeds are yellow with a purplish gray hilum; oil content about 21 per cent. Hawkeye is a high-yielding, stiff-strawed variety maturing in about 115 days.

For silage use 15 pounds Soy Beans and 15 pounds corn to the acre; for hay or green manure use 6 to 8 pecks if drilled solid, or 3 to 4 pecks in close rows. If used for hay, cut after pods form and before the leaves start to fall.

• CYCLONE SEED SOWERS •

The Cyclone Seed Sower

The Cyclone Seed Sower has been a favorite with farmers for nearly a century. It is known and used throughout the world wherever seed is sown. Distributes accurately and quickly all smooth grass seed and grain, pellet and granular fertilizer. Has exclusive Double-Oscillating Feed and Instant Shut-Off: prevents waste and gives instant control. Sloping feed keeps seed flowing steadily downward to the outlet until the seed bag is entirely empty. Can be used any time, any place a man can walk. For a professional-looking lawn, use a time and labor-saving Cyclone Seed Sower. Built for many years of service. Capacity $\frac{1}{2}$ bushel. \$4.75, delivered.



The Cyclone Heavy-Duty Seed Sower

Of the same general construction as the Cyclone Seed Sower. It is built with heavier frame, gears and bearings for extra heavy wear. For broadcasting pellet and granular fertilizer as well as smooth grass seed. Ideal for field or lawn use. \$5.50, delivered.



COVER CROPS

We recommend sowing Domestic Rye Grass in cornfields at the time of last cultivation if the field is to be plowed under the following spring. This is a soil-conserving practice and will also provide late fall or early spring pasture. Domestic Rye Grass should be sowed before September 1, using 15 to 20 pounds per acre.

For spring seeding on wheat or spring grains nothing can surpass Mammoth Red Clover for a cover crop. Sow 5 to 6 quarts per acre on wheat ground early in March or on spring grains at time of drilling.

THE CYCLONE SEED SOWER will aid you in sowing these cover crops.

Model S-3 Cyclone Power Seed Sower



MODEL S-3 operates from the power take-off by means of a rugged, $\frac{1}{2}$ -inch, flexible shaft with oilite bearings and shear pin for long life. It has the same double oscillating feed and instant shut-off as the famous Cyclone Hand Sowers. This Power Seed Sower can be used to sow all seeds of the legumes, grasses or grains, and also fertilizer. Capacity 3 bushels. \$65.95, delivered. (State make of tractor.)

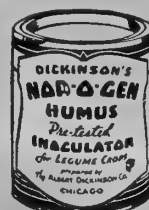
Before planting Soy Beans be sure to inoculate them with Nod-O-Gen. The little time and trifling expense involved are very much worth while when you consider the benefit inoculation brings to the soil. Nitrogen—the all-important element needed by your crops—will be replenished in your soil instead of used up when you plant inoculated Soy Beans.



NODOGEN

THE PRE-TESTED INOCULATOR

18



The Pre-tested
INOCULATOR
for Soy Beans

2-bu. size .	\$0.45
5-bu. size .	.65
30-bu. size .	3.80

DIBBLE'S SEED BARLEY



ERIE BARLEY
The Highest-Yielding Two-Row Variety

On request we will send you a Price-List on August 1 quoting seasonal seeds for August and September sowing. Indicate on the order sheet if you would like this Price-List, or drop us a post card about August 1.

We recommend Erie Barley as the best Spring Barley for our Northeastern farms.

We harvested some exceptionally good fields of certified seed this past year and suggest that you get started with this new two-rowed Erie Barley.

Sow 2 bushels per acre as early in the spring as the ground can be prepared.

ERIE BARLEY

Erie is a new variety of Spring Barley released by Cornell Agricultural Experiment Station in 1951. It is a selection from a cross between Alpha and Goldfoil and combines the many desirable features of these two varieties.

Erie is a two-rowed, smooth-awned, medium stiff-strawed variety of midseason maturity. Heads are erect; grain is plump, high in test weight and white to light yellow in color. It has resistance to powdery mildew, a disease which often reduced the yield of Alpha.

For September Sowing. WINTER WHEAT, BARLEY and RYE



Harwood Martin, President and Treasurer of our Company, in a field of Hudson Winter Barley growing on our own farms. We will have a good supply of this new high-yielding Barley for delivery in the fall of 1957.

May we send you a Price-List August 1, 1957?

Genesee Wheat. A new white Winter Wheat from Cornell, first released in 1952. Resistant to shattering; winter hardy; beardless; bronze chaff and stiff straw. Higher yielding than either Yorkwin or Cornell 595.

Genesee is the best variety for New York State except where extreme stiffness of straw is needed in which case Cornell 595 is recommended.

Cornell No. 595 Wheat. A white pastry flour Wheat released in 1942. Very stiff straw; very winter hardy. Beardless; bronze chaff. Highly resistant to loose smut.

Hudson Winter Barley. Offered first in 1953. Hudson is six rowed, bearded, with very stiff straw. The highest-yielding variety we have ever grown.

Cornell 76 Rye. Highest-yielding selection from Cornell.

Rosen Rye. A variety of Russian origin.

Balbo Rye. Widely used in sections of the corn belt and gaining in popularity in the Northeast.

Tetra Petkus Rye. Developed in Germany about 1928 and recently imported for trial in the United States. The kernels are twice the size of other winter Rye. In many tests it has outyielded ordinary Rye two to one.



Dibble's

RUSSET POTATOES



SEMESAN BEL

SEMESAN BEL -quick dip organic mercury disinfectant for seed potatoes. Merely dip, drain and dry. Increases yield up to 35 bushels per acre, according to New York tests. Reduces seed piece decay, scab and Rhizoctonia diseases. 1 pound treats 60 to 80 bushels of potatoes. 3-oz. can \$1.05; 1-lb. can \$3 50; 4-lb. can \$10.65.

Dibble's Russet

DIBBLE'S Russet Potatoes are round to oblong, of good size, with pure white flesh, russet skin and few, shallow eyes. The quality is superb, and either baked or boiled is not excelled by any other variety. Dibble's Russet is enormously productive and has all the qualities that make for a profitable market Potato. The tubers are as large, or larger, than Rurals, Carman or Raleigh, and where those sorts set only four or five tubers to a hill, the Russet produces eight, ten or even twelve big tubers. The vines are strong and disease-resistant.

Dibble's Russet Potato is the original round to oblong type of the Russet family. From its first introduction by us in 1912 it has been bred absolutely true to type, and our stock seed is saved from fields entirely free from early or late blight, and where the vines were green and healthy until killed by frost. Our customers say that Dibble's Russets carry these inbred qualities to every locality where they are planted.



DIBBLE'S Katahdin Potatoes

The Katahdin was originated as a hybrid by the U. S. Department of Agriculture at its Experiment Station at Presque Isle, Maine. It is a handsome, shallow-eyed, glossy, white skinned variety that matures a little later than Green Mountain but earlier than the Rurals. It has very few tubers of unmarketable size and has all varieties beaten in uniformity of shape, size and general appearance. It is widely adapted; does especially well on light, friable soil.

Seed Potato Guarantee

We guarantee our Seed Potatoes northern-grown, carefully assorted for seed purposes, a strictly first-class sample U. S. Grade No. 1 as to size. While we exercise great care to have our Seed Potatoes pure and reliable, so many circumstances may arise over which we have no control that we do not give any warranty, express or implied, nor will we be responsible for the crops grown therefrom. Customers are to examine their Seed Potatoes immediately on arrival, as they are perishable goods, and, if not entirely satisfactory, advise us at once; otherwise it is mutually agreed between the buyer and seller that they are satisfactory.



SEBAGO



DIBBLE'S IMPROVED GREEN MOUNTAIN

SEBAGO

Originated by the U. S. Department of Agriculture. A high-yielding variety somewhat later than the Smooth Rurals. White, shallow-eyed tubers thicker than Chippewa and of high table quality. Large vigorous foliage resistant to heat and drought, blight, yellow dwarf and scab. Especially desirable where blight occurs frequently or where spraying is omitted.

KENNEBEC

A new late variety introduced by the U. S. Department of Agriculture. Plant similar to Green Mountain but more vigorous. Very promising because it is very high yielding and blight resistant, with high starch content, and the tubers are of fine appearance. Tubers may become over-sized unless seed is planted close in row; resembles Katahdin except that it is somewhat more elongated. Widely adapted.

SMOOTH RURAL

The Smooth Rural group includes a large number of strong-growing, late-maturing varieties such as Sir Walter Raleigh, Rural New Yorker No. 2, Carman No. 3, Heavy Weight, and Pioneer Rural. They are practically identical. The tubers are white, oval flattened, and regular in form. Collectively they are often referred to as "blue sprout" Potatoes. Recommended for heavier soils and where Potatoes are grown under least favorable conditions. Tolerant of heat and drought; tubers keep well in storage and are slow to sprout in the spring. Table quality is excellent.

DIBBLE'S IMPROVED GREEN MOUNTAIN

Tubers are uniform in shape, oblong, with two good ends, slightly flattened; creamy white skin absolutely free from disease and with pure white flesh of excellent quality. Well adapted to northern latitudes where rainfall is abundant and the temperature not excessively high. As a rule, they do not succeed as well as the Rural group where they are subjected to unfavorable conditions during the time they are forming tubers.

ONTARIO

Introduced by the Cornell Agricultural Experiment Station in 1944, after many years of experimental work by Dr. F. M. Blodgett. It matures later than the Rural and Russet Rural and is resistant to scab, late blight and "Z" disease. Wide adaptation; tubers very smooth, white and slightly elongated. A very promising variety recommended where scab is a serious problem.

RED PONTIAC

Matures with Katahdin (about 120 days). Tubers are similar in appearance to Bliss Triumph, one of its parents, except that they have a dark red skin. Cooks white. Very high yielding; susceptible to scab. High eating quality and a good keeper.

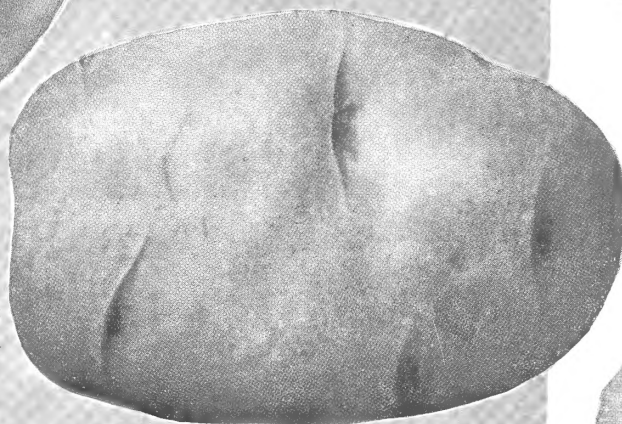
The Best 5

EARLY VARIETIES OF POTATOES ADAPTED TO THE NORTHERN AND EASTERN STATES



Red Warba

A sport of Warba found in Minnesota in 1933. Tested by the Minnesota Agricultural Experiment Station and released in 1939. Earlier than Cobbler and a heavy yielder. Tubers thick, red in color, with fairly deep eyes. Recommended for home gardens, muck soils and early market.



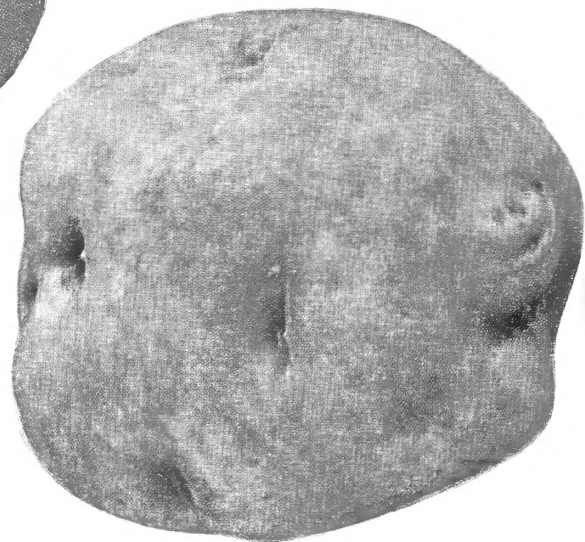
EARLY OHIO

Early Ohio

For the first early variety nothing compares with the Early Ohio. It is round to oblong, with pink skin, white flesh of excellent quality, and extra early. Our pedigree stock was grown from North Dakota Certified seed.

Irish Cobbler

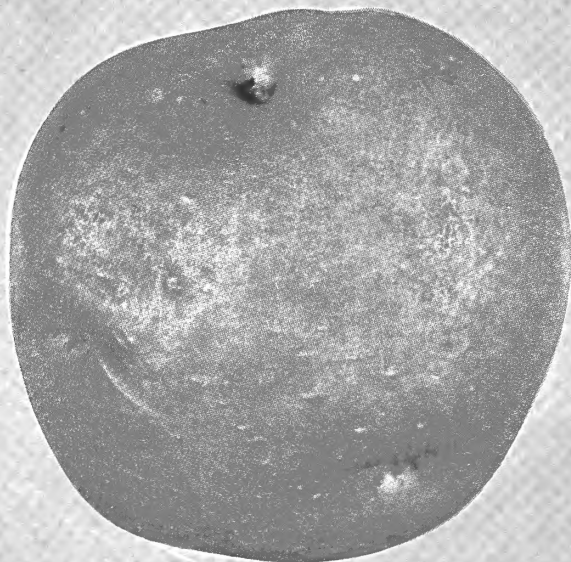
The best early white Potato for all-round culture. Tubers are smooth, round, plump, creamy white; eyes well developed. The white flesh is of excellent quality. A week to ten days later than Early Ohio, but usually more productive, with tubers of good eating quality while the vines are still green. The fields from which we saved stock seed averaged 325 to 625 bushels per acre.



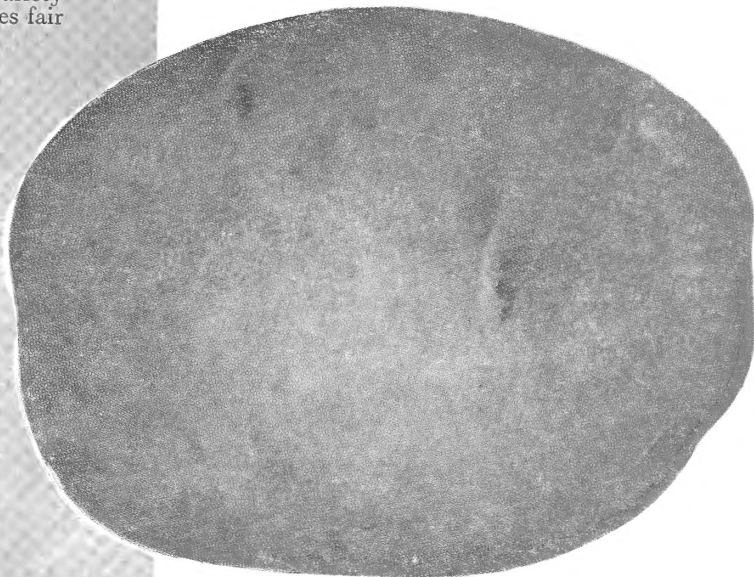
IRISH COBBLER

Red Bliss Triumph

Very early (80 days). Skin red; tubers blocky, usually with shallow eyes. Even though it is susceptible to scab and mosaic, it is a very suitable variety for early marketing, local markets and home gardens. Cooking qualities fair to excellent.



RED BLISS TRIUMPH



CHIPPEWA

Chippewa

Originated by the U. S. Department of Agriculture and is seven to ten days later than Irish Cobblers. It sets tubers early and they develop fast. Immune to mild mosaic and superior to the Cobbler in smoothness and whiteness. It has outyielded the best strains of Cobblers on both muck and upland soils.

DIBBLE'S Sweet Corn

WE BELIEVE that every farmer should grow Sweet Corn so that he may have it available for his table or to sell in the local market. By planting at weekly intervals you can have Corn until frost comes.

The Hybrid Sweet Corns have replaced the open-pollinated sorts for canning, market gardening and home use. They are more uniform in size and give larger yields.

We offer six of the best yellow hybrids and list them in order of maturing.

Hybrid Sweet Corn

SPANCROSS

60 days. Extra early. 23 days earlier than Golden Cross. Resistant to wilt and cold; good yielder; medium size; good quality. Recommended for the first planting.

MARCROSS

65 days. Early. Outstanding for its large uniform ear; wilt resistant and resistant to cold. Good yielder, excellent quality for an early Corn. One of the best for early market.

CARMELCROSS

70 days. Early midseason. Wilt resistant; excellent quality for an early Corn. Better yielder than Spancross or Marcross.

SHERMAN

77 days. Midseason. A really big eared hybrid having fine quality and good appearance. Bred for wilt and drought resistance. We have replaced Lincoln with this superior variety.

GOLDEN CROSS BANTAM

83 days. This variety has rapidly replaced open-pollinated sorts for canning, market gardening and home use and is by far the leading variety in cultivation today. Stalks about 6 feet tall with very uniform ears about 8 inches long. Planted at weekly intervals during May and June or even earlier if conditions permit, you will have the best of Sweet Corn throughout the season. Six to seven pounds will plant one acre.

IOCHIEF

85 days. Awarded All-America Gold Medal, 1951. A heavy-yielding, deep golden yellow hybrid. Ears 9 to 10 inches long and 16 to 18 rowed, with very deep grains. Excellent flavor; very tender. Somewhat resistant to heat and drought.

Open-Pollinated Sweet Corn

STOWELL'S EVERGREEN

The standard white variety maturing in about 95 days. It is an open-pollinated Sweet Corn, very productive and hardy. The ears are 8 to 9 inches long and the stalks will average 8 to 10 feet in height. While the quality of the ear for table use is not so good as the yellow hybrids, the larger ear and stalks make it the best variety to grow when maximum production is desired. It will produce the greatest amount of fodder, and a little Sweet Corn fodder is always desirable. Ten to fourteen pounds will plant one acre.

Golden Cross Bantam

Cabbage Seed

All of our Cabbage Seed is raised by growers who specialize in the raising of superior strains. For protection against disease the seed is hot-water treated.

Glory of Enkhuizen. 85 days. This late "domestic" Cabbage is the standard variety for kraut. Grows too large for shipping trade. Heads are large, weighing from 8 to 10 pounds, round, solid, with few outer leaves, of excellent quality.

Short-Stem Danish Ballhead. 100 days. The standard variety for storing for winter use. Heads usually weigh from 4 to 6 pounds but 10-pound heads are not uncommon under good conditions. The heads are slightly flattened, ball-shaped, solid and heavy.

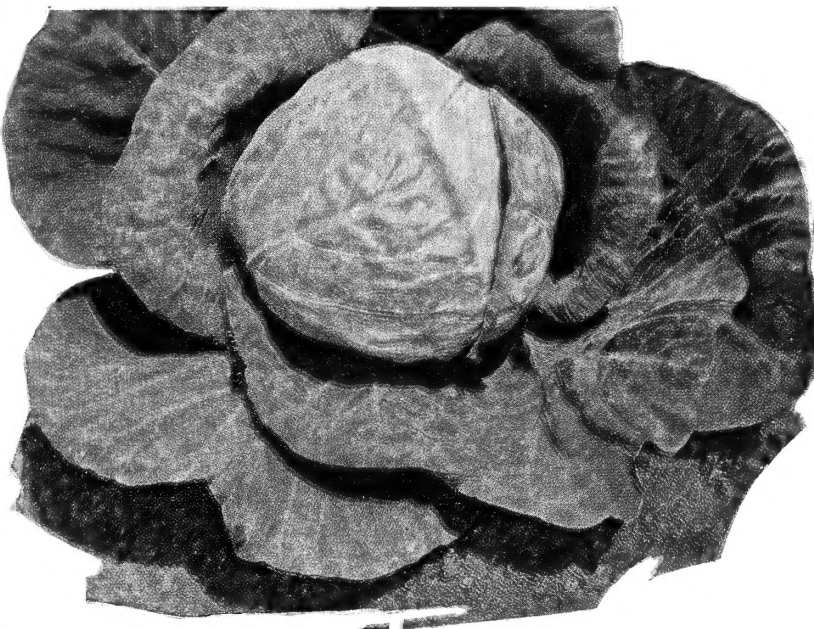
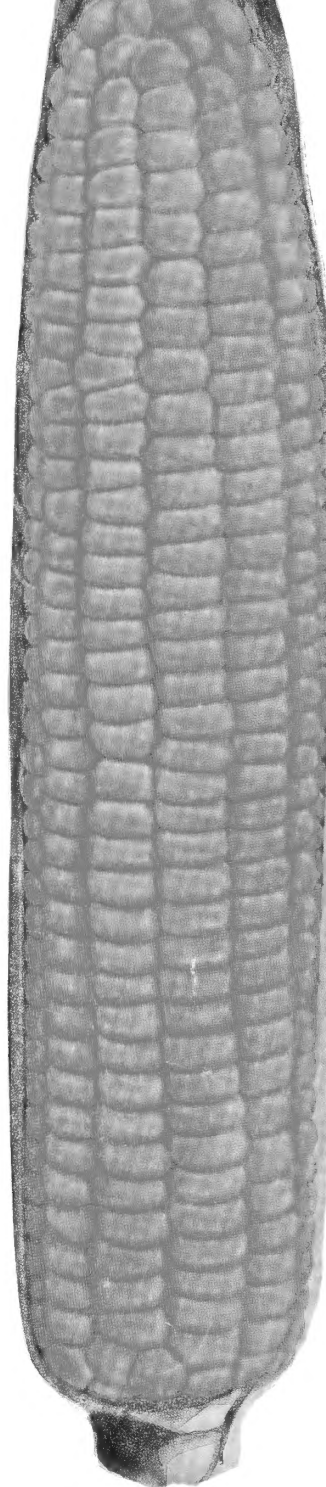
SWEET CORN GARDEN ASSORTMENT

For the convenience of our customers who would like Corn throughout the season for their table use, we have put up a garden assortment using the five varieties listed here.

2 ozs. Spancross 4 ozs. Carmelcross
4 ozs. Marcross 4 ozs. Sherman
1 lb. Golden Cross Bantam

Plant all five varieties at the first planting and then follow with Golden Cross Bantam at weekly intervals.

See Special Price-List for Prices



CORNELL M-4 CORN

DIBBLE'S
GARRY OATS

D. B. BRAND
TIMOTHY

D. B. BRAND
RANGER
ALFALFA

D. B. BRAND RED MEDIUM
CLOVER

DIBBLE'S RUSSET
POTATO

Edward F. Dibble Seedgrower
Honeoye Falls, New York

PRINTED
IN
U.S.A.