

62

NOTE: 3% sales tax is stuck on Penna. Don't fail to add it to your total purchase. And don't kick. It'll get worse.

Nu  
A/ll

# PRICE LIST

## Spring '57

This supersedes all prior prices quoted at any time.

Phone: ANDrews 9-3296

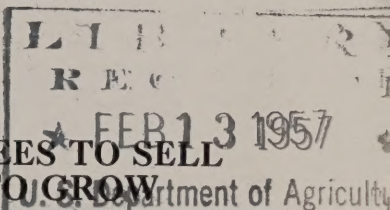
# NUT TREE NURSERIES

JOHN W. HERSHEY, Owner  
Downingtown, Pa.

This Nursery is National Headquarters for Information on Scientific Tree Crop Culture—The salvation of our hills.

Get Rich without plowing. Grow crops on shade trees.

**"Plant until you're Planted"**



**WE DON'T GROW TREES TO SELL**

**WE SELL TREES TO GROW**

Idle People	+	Idle Money	=	Prosperity
Idle Acres	+	Tree Crops	=	Prosperity

NOTE: We're not in business for profit. BUT for love of the land; the trees that grow on it, and to make America Better. Profit is only an "incidental necessity" to stay.



**THE CHINESE CHESTNUT'S BEAUTY**—As we move these delightful "lawn friends" to people who prefer the BEST I snapped this. We think they are beauties. The Chestnut story's on page 3. We'll plant you two or two hundred of these on your lawn or drive for just, two for \$250.00 within 50 miles. OR should you live a distance send a truck. Don't wait for the columnists and writers to start boosting chestnuts. Plant now. Then when the writers lead off about 'em; tell your neighbors. "O Yes! We were ahead of the leader, ours, are bearing."

**CONSULTATIONS BY APPOINTMENT.  
READ INSIDE PAGE BEFORE ORDERING.  
WE WROTE IT TO HELP YOU,**

NOTE—LOCATION—4 miles Northwest of Downingtown at Guthrieville on U.S. Route 322 (Horseshoe Pike.) Turn north at stone school house ¼ mile past Guthrieville, third place on left. Coming from the West turn left second road past the old Manor Church. From super highway, get off at Downingtown, follow signs to Eagle, turn left at hotel, continue about 6½ miles, see young nut grove on left, turn in, first farm on right. Via. Downingtown, fill up at Sunoco gas and ask direction. NO SUNDAY BUSINESS.

CALL CUSTOMERS:—Please mail or phone your order ahead. We're geared in packing **and** prices to mail order shipping. Glad to see you—glad to serve you. But may have to make a service charge of 10% for personal tree selection to cover costs. Thanks.

## PLANT, PLANT, PLANT.

### HOW WELL WILL AMERICA EAT IN 1975

asks the scientist? The answer is—How well will America put her "hill soil" to work. Plant "Tree Crops" now and have them bearing when slacked off "plow production" crosses with 20 million extra mouths to feed. Think it over and write me about 10 or 100 acres of chestnuts.

### CAN A FARMER CONTINUE IF HE ONLY CONSERVES HIS COWS, CHICKENS AND SEED? CONSERVATION IS NEGATIVE.

Make your slogan "BETTER THINGS FOR BETTER LIVING THRU LIVING THINGS." Let's go America. THE HERSHEY WAY. This folks is the starting at the beginning of—growing our trees in proper soil, organically managed. Then selection of seed for understock and scions to graft with.

Take advantage of quick production by setting our large healthy trees organically grown. It'll help you get rich without plowing. Here, on America's No. 1 Tree Crop farm, we find 8-10 ft. trees 5 yrs. ahead of small trees in 3 yrs.

NEXT STEP—We cut the tops—the branches—in short "the brush" off them to balance with the roots sheared off in digging, to give them a chance to start for you. Then dip in a costly wax to keep them from drying out until started.

All these things—plus our 30 years of experience in progeny testing makes just one place to buy better nut trees. That's here.

PLEASE NOTE: That crook in the stem of the tree is the "Hall Mark" of quality. If it isn't there, your tree isn't grafted.

Let us continue to serve you. Thanks for your many good wishes and the same to you.

### TERMS

#### Prices subject to change without notice.

We like cash with order except where special terms are arranged or from old customers with good credit.

All prices f.o.b. Nursery. Orders up to \$5.00 of small size stock can be mailed—add 13% for all orders to be prepaid. 20% West of Miss. **Minimum prepaid cost** for express \$2.07.

Prepaid shipments are only made for the accommodation of the customer. Extra charges on heavy or distant orders must be paid by the customer.

Express, delivers in half the time—few losses.

Our responsibility for transportation ceases when shipment has been delivered to the hands of the carrier (or transportation agency).

No order where an affidavit must accompany invoice will be considered for less than \$10.00.

PLEASE NOTE: We can not guarantee our trees to grow. Planting instructions are attached to the order. For cultural care send for 50¢ booklet.

All trees cut back and waxed dipped.

✓ **Chestnuts (Chinese) *Castanea Mollissima***

Sweet, delicious, Blight resistant.

Will not thrive on damp or heavy soils.

Set 40 x 40 feet for orchard 28 per acre.

Plant two for pollination. Bears 3-5 years.

These are the finest, heavy calipered largest sized quality trees offered in America.

A sprinkling of nuts cover the block.

They come so nearly true from seed, we recommend the planting of seedlings for home and commercial use. A large field awaits the use of the Chestnut for marketing and hog feed. I've planted 300.

One man reported his 21, 13-year-old trees bearing 1,836 lbs. Want in on it?

A most marvelous opportunity awaits the planters of these blight resistant chestnuts. But remember. We're selling you lawn beauty and nuts or a good bank account in a commercial planting. Trees grow low-spready, with a tendency to crookedness. Don't buy if you prefer a straight clothes tree to future beauty and nuts.



Such bearing just makes me dance in anticipation of the day our 300 trees will be doing the same. Sold 300 lbs. last year and didn't seem like many trees bore. Gosh what futures.

Remember we have no competition these are the tops in quality.

**ABUNDANCE SEEDLINGS**—We are proud to be able to offer this rare superior selection. It would thrill you to see this block of three year chestnuts growing in spite of three years draught.

The very, very best 1 and 3 year old. Six at dozen rate. 50 at the hundred rate.

✓ **Chestnuts: Abundance Seedlings:**

	Each	Dozen	Hundred
8-15 inches one year.....		\$10.00	
3- 4 ft.....	\$2.25	22.50	\$150.00
4- 5 ft.....	2.50	25.00	175.00
5- 6 ft.....	3.00	30.00	
6- 7 ft.....	3.50	35.50	

**CHESTNUT SEEDLINGS FROM SELECT SEED.**

	Each	Dozen	Hundred
8-15 in.....		\$ 5.00	\$ 40.00
12-18 in.....		\$ 7.00	\$ 50.00
18-24 in.....	\$1.00	10.00	70.00
2- 3 ft.....	\$1.25	\$12.50	\$ 90.00
3- 4 ft.....	1.75	17.50	125.00
4- 5 ft.....	2.25	22.50	160.00
5- 6 ft.....	2.75	27.50	210.00
6- 7 ft.....	3.25	32.50	250.00
7- 8 ft.....	3.75	37.50	285.00
8-10 ft.....	5.00	50.00	370.00
8-10 ft., extra heavy.....	6.00	60.00	425.00

**SPECIMEN SIZES:** We have reports of these bearing second year.

2-2½ in heavy 15 ft. up \$10.00 each; \$100 per doz. Loaded on trucks only.

## THOSE DRATTED GRAFTED CHESTNUT

I have 4 acres of grafted trees. They really thrill you the way they load themselves from childhood. N' you need the thrill to counter balance the "let down" as "so many" dies each year. Plant our sturdy seedlings.

### Japanese Chestnuts—C. Crenata.

Good bearers. Large nuts  
Poor flavor—Great game food

A small quantity of 5-12 ft. sizes same price as regular chestnuts page 3.

### Grafted Thin Shelled Black Walnut—*Juglan Nigra*

The black walnut has been called the "king of the forest", my wife says it's the "King" of the kitchen. Nature has done the favor of supplying it in a thin shelled package, easily cracked. If you're tiring of the "rat race" of spending every thing you make toward a "living," you can start choking the speed by planting nut trees on your lawn for lots of food, and plant plenty of black walnuts—they're the best.

#### Varieties

- **Thomas**, the leader and all around nut.
- **Elmer Meyers**, the more I see of this nut the better I like it. So's my customers. For those who like the Staber, this will take its place—is as thin-shelled, better bearer, better kernel.
- **Ohio**, most ornamental foliage. Best bearer with poor care.
- **Cornell**, (my introduction) a new northern selection of Thomas seedling. Cornell says Cornell matures its nuts at Ithaca in cool summers when native trees fail. Cracks as well as the Thomas. Try them especially in the north.

NOTE: No Elmer Meyer over 6-7 ft. size.

	Each	Dozen
3- 5 ft.....	\$5.00	\$50.00
5- 6 ft.....	5.50	55.00
6- 7 ft.....	5.75	57.50
7- 8 ft.....	6.50	65.00
8-10 ft.....	7.00	70.00
10-12 ft.....	8.00	80.00
Truck loading only.		
10-12 ft. extra heavy.....	10.00	

## BLACK WALNUT SEEDLINGS

Selection Thomas strain.

This marvelous strain—comes almost true from seed. Keeps YOU from having an excuse to "not have a nut grove" IF you can't afford the grafted varieties. They're nearly as thin shelled as their parent. It's a fact.

	Each	Dozen	Hundred
12-18 in. one yr.....	50¢	\$ 5.00	\$ 40.00
2-3 ft., 2 yr. strong.....	\$1.50	15.00	100.00
3-4 ft.....	1.75	17.50	125.00
4-5 ft.....	2.00	20.00	
5-7 ft.....	3.50		

- **Cut Leaf Black Walnut:** Keystone Variety. Each
- 6-7 ft..... \$ 8.00
- 8-12 ft. heavy just a few mention sub..... 10.00

- **LAMB WALNUT:** Supposed to be curly grained. Each
- Only a few 4-7 ft..... \$6.00

- **LADY APPLE.** This beautiful light colored apple with a red check has long been known for it's Xmas decoration. Only commercial plantings are in N.W. Fruit sells for \$8.00 and \$10.00 per bushel. Eastern hobbyists and orchard men might well profit by this, while you enjoy their rich beauty on the lawn or orchard. Slow to bear so hurry and plant one.

Strong, 2 yr. tree, 5-7 ft..... Each \$5.00

✓ **Butternut:** *J. Cinera*. Select Seedlings. A pretty common cracker.

	Each	Dozen
12"-18"-one yr. ....	\$ .50	\$ 5.00
3- 4 ft. ....	1.75	
4- 5 ft. ....	2.00	20.00
5- 6 ft. ....	2.50	25.00
7- 8 ft. ... heavy. ....	4.00	
8-10 ft. heavy. ....	5.00	
10-12 ft. heavy for truck loading only.....	12.00	

✓ **Grafted Butternuts:** Love, Craxezy. Good cracker for butternut. Will substitute varieties if necessary. We've had the new experience and fun of every graft failing this spring. Glad at least we can offer older trees.

5-7 ft. .... \$10.00

✓ **Eng. or Persian Walnut:** (*Juglans Regia*)

✓ **Broadview Variety**

Grafted on Black. Hardy as the black walnut. Originated in Russia. Stands 34 below. Nut large, attractive as the California nut. Bears in 5 to 7 years.

And the reported heavy bearing justifies our recommending it highly for a commercial orchard. Go to it. I have.

	Each	Dozen
3- 5 ft. ....	\$5.50	\$55.00
5- 6 ft. ....	6.50	65.00
6- 7 ft. ....	8.00	80.00
Nearly forgot, heavy bearing for balling.		
2-3 in caliper. ....	40.00	

✓ **Paw Paws** (*Asimina Triloba*)

Am pleased to offer seedling at the following prices. Don't have many roots but will grow with care.

Plant 2 for Pollenation.

	Each	Dozen
2—3 feet. ....	\$ .50	\$ 5.00
3—4 feet. ....	1.00	10.00

**JAPANESE FLOWERING CHERRY**

A real double pink flower, bursting forth as the coppery foliage unfolds. All you want IF I have enough. Don't crowd.

	Each	Dozen
4-5 ft. ....	\$4.50	\$45.00
5-6 ft. ....	5.50	55.00

**Filberts** (*Corylus Avelana*)

(plant two for pollenation)

Bears 3 to 5 years—18 feet height

✓ Barcellona, Nonpareil. ✓ Pollenators—Davianna and Du-Chilly. Do extra well in moist soils but grows anywhere.

	Each	Dozen
3—4 ft. ....	\$2.00	\$20.00
4—5 ft. ....	2.25	22.50
5—6 ft. ....	2.50	

**Hybrid Filberts** (*C. Mildredii*)

Plant two for Pollenation.

Our observation of the hybrids has been, surer bearers. Hardier than filberts in far north. Try them.

First prize winner at the famous Penna. Farm Show.

✓ **Bixby**, and several numbered varieties.

	Each	Dozen
2-4 ft. ....	\$2.75	\$27.50
4-6 ft. ....	3.75	37.50
6-7 ft. ....	4.00	

✓ **American Hazels** (*C. Americana*)

Better bearers than others but nuts are smaller.

Plant two for Pollenation.

✓ **Winkler**, excellent from Iowa.

2-4 ft. .... Each \$2.50

## Seedlings Filberts and Hazels

These folks we grow in quantity for borders, clumps, hedges. For wildlife and family use. Order by size. We'll fill with the best species for your climate. For instance. Many people in the north buy their Xmas hazels because they think they can't grow them. That's a mistake. The hazel will bear you a dandy dainty nut in quantity where the filberts freeze. But that don't mean, "any hazel." Let us supply you the BEST selection. The following is a lot for a little.

	Each	Dozen	Hundred
One year, 10-15 in.....		\$4.00	\$25.00
Two year, 18-24 in. strong.....		6.00	35.00
And a limited number of larger sizes—nice.			
3-5 ft.....	\$1.50	\$15.00	
50 at hundred rate.....			

➤ **JAPANESE HEARTNUT**—(*J. Cordiformus*). Fast grower, 40 ft. height. Beautiful, semi-tropical foliage, spreading. Nuts, heart shaped, easily cracked, borne in large grape like clusters. A Northern species. Don't do so well south of us.

➤ Wright variety-grafted on black walnut.

	Each
3-5 ft.....	\$ 7.50
5-7 ft.....	10.00

➤ **JAPANESE WALNUT**—(*J. Seiboldii*). A beautiful tree like above described, but darned inferior nut. People want 'em so we offer a few.

	Each
5- 7 ft.....	\$3.50
7-10 ft.....	6.00

**JuJube—Chinese Date:** *Zizyphus, Jujuba*.

Bears 3-4 years.

➤ Lang, Li, Tusoa varieties. Plant two for pollination.

	Each
Nice 2 yr. 3-5 ft.....	\$5.00

### Shagbark Hickory Hybrids

*Hickoria Ovata X Cordiformis*

These are really fast growing, sharp stiff foliage, dark green. Nut white, smooth thin shelled. Bears 5-6 years.

➤ **Fairbanks:** The fastest grower, can pace a maple any day, narrow, columnar.

	Each
3-5 ft.....	\$6.50
5-6 ft.....	7.00
7-8 ft.....	8.00

### RED BUD (*Cercis Canadensis*)

As America becomes more conscious of native plants the Red Bud is receiving greater respect, with its purple, rope-like branches of flowers. Maximum height 15 ft.

	Each	Dozen
3- 4 ft.....	\$ 1.50	\$15.00
4- 5 ft.....	1.75	17.50
5- 6 ft.....	2.50	25.00
6- 7 ft.....	5.00	

### WHITE RED BUD. (*C. Canadensis Alba*)

The most gorgeous "angel like" white you ever saw—"add a million" to your lawn!

	Each
3-4 ft.....	\$5.00

### THE SYMPHORICARPUS VULGARIS—Coralberry, known as Red Snowberry or Indian Currant

Good spring bird food.

	Each	Dozen	Hundred
2-3 feet.....	\$ .75	\$ 7.50	\$75.00
Heavy bushes.....	1.00	10.00	

✓ **Hardy Northern Pecan**—Bears 7 yrs. *H. Oliviformis*.

Marvelous for lawns, very ornamental, Bears in 7 to 10 years.

These varieties selected over many years of observation as the best.

✓ **Greenriver** and ✓ **Busseron**, plant two for pollination.

See prices below.

**Hicans.** *A pecan X shellbark, cross.*

All hicans have beautiful shiny foliage. All have excellent flavored nuts. Being hybrids are often slow to bear. Let us select the variety that is best for your locality.

Stock extra nice this year.

✓ <b>Bixby, Burton</b>	Each
5- 6 ft.....	\$ 9.00
6- 7 ft.....	10.00
7- 8 ft.....	11.00
8-10 ft.....	12.00
10-12 ft. Heavy. One or two of each variety.	Hurry
\$15.00 and \$20.00 in ground.	

**SUGAR MAPLE** (*Acer Saccharum*)

A leading long lived ornamental.

This remarkable crop tree, the source of the finest sugar and sirup in the world has been over-looked too long by forester and agricultural expert.

It is most beautiful, drought resistant and rapid growing. The only reason YOU haven't tapped your few trees is because it wasn't brought to your attention in our fast moving society.

	Each	Dozen
4- 5 ft.....	\$1.50	\$15.00
5- 6 ft.....	3.00	30.00
6- 8 ft.....	4.00	40.00
8-10 ft.....	6.00	
10-12 ft.—only a few but nice.....	10.00	

Tired of the plow "Rat Race" ? ?

Plant Nut Trees.

✓ **AMERICAN BEECH**—*Fagus Americana*.

2-3 feet.....	Ea. \$1.00	Doz. \$10.00	Hun. \$75.00
---------------	------------	--------------	--------------

✓ **Honey Locust (Thornless)** (*My Introduction*)

*Gleditsia triacanthos inermis* Sweet pods for cattle feed.

Bears 3-5 years. Famous for growth value.

The agricultural Experiment Station at Auburn, Alabama reports their 8 year trees bore, figured in oats value with 20 trees per acre equal 125 bushels per acre, plus a crop of hay or pasture without cost of annual field preparation, planting and harvesting. Mature trees will grow as much as 300 bushels of Oats food value per acre.

**Millwood**—This old variety needs no introduction.

**Smith**—More hardy for northern planting.

**Schofer**—Originating at Pennsburg, Pa. is 500 miles farther north than the home of other varieties. Hence it's possibilities in hardiness.

	Each	Dozen	Hundred
2- 3 ft.....	\$2.50	\$25.00	\$175.00
3- 4 ft.....	2.75	27.50	200.00
4- 5 ft.....	3.00	30.00	225.00
5- 6 ft.....	3.25	32.50	
6- 7 ft.....	3.50	35.00	
7- 8 ft.....	4.00		
8-10 ft.....	5.00		

A NOTE to be remembered. IF your too busy to plant trees, your too busy!

**The Oaks.** *Our strain introduction.*

**Sweet acorn strain. Rapid growing selections.**

**The White Oak.** (*Quercus Alba*)

Just 18 yrs. ago I started a simple selection work on the Wm. Penn White Oaks. In two years I was getting answers. Found strains of beautifully upright timber conformation, that grow as rapidly as the maple.

Amazingly easy. Like every thing in nature, it's simple when you relegate the clumsiness of the human element to the back ground.

These are the "corn fields of the future." When man grows up to use what he has, he'll **Oak** a mountain ridge, a hill-side, a rocky knoll.

According to production figures of bearing oaks a low of 274 bus. of corn per acre in hog food value can be grown on mts. and steep slopes. You can start YOUR future tax reduction by planting NOW?

Many people insist on a Black, Pin or Red Oak. The **WHITE** is **JUST** as beautiful flaming red in the autumn with the addition of—the **BEST** oak timber and the **BEST** acorn for feeding poultry and hogs.

**TURKEY OAK:** (*Q. Cerris*)

A European tree, fast grower, spready and upright. Especially attractive holly shaped, stiff, small leaf. Looks like holly in autumn till dropped by a heavy freeze. Even the great sized acorns are beautiful. And now again, thanks to the good wife's seed collecting we've got a good start of these in one year size.

<b>TURKEY OAK ONLY:</b>	Dozen	Hundred
8-12 in. one yr. seedlings.....	\$6.00	\$35.00
<b>WHITE and TURKEY ONLY</b>	Each	Dozen
3-4 ft. ....	\$ 2.00	
4-5 ft. ....	3.00	
7-8 ft. ....	8.00	\$80.00
8-10 ft. ....	10.00	100.00
10-12 ft. ....	12.00	120.00

Following for local trade only, no packing.

12-14 ft. .... \$15.00 to \$20.00 each

**Pears—Blight Resistant, Budded.**

Here's a family selection.

✓ **Maxine**—Resembles Bartlett—excellent. And never known to blight.

And here's where I get a kick, kidding the public. For 20 years I've offered this marvel at a fair price. They tell me, it's now patented and the buyers are gobblin' them up for \$9.00. Suckers!!

✓ **Worden Seckel**—about three-fourths size of Bartlett, flavor Seckel.

✓ <b>Duchess</b> —A delightful Fall pear.	Each	Dozen
3-5 ft., one yr. ....	\$2.50	\$25.00
5-6 ft. ....	2.75	

**Worden-Duchess only.**

6-7 ft. heavy.....	3.25
7-8 ft. heavy.....	4.00

**Golden Weeping Willow**

The most hardy, the most beautiful of all weeping willows. For fish feed set by the pond and stream. Their insect pests are great fish food. Try them.

5-7 ft. ....	Each	\$3.50
--------------	------	--------

**Amelanchier**

✓ **Juneberry**—plant two for pollenation

Anyone who wasn't raised with the pleasures of filling up on Juneberries as a kid-enjoyed the early beauty of the first-snowy glow of spring bloom—the rich color of their fruit with flocks of song birds eating them missed something. Don't let your children miss it.

Often known as *Shadberry, Juneberry, or Servisberry*

Bird feed, chicken feed, for dessert, ornamental

<i>Stolenifera</i> —bush form.	Each	Dozen
3-5 ft., strong, bushy plants.....	1.00	\$10.00
5-6 ft. heavy.....	4.00	
6-7 ft. heavy.....	5.00	



**Tree Form Amelanchier**

A. Laevis and Canadensis

Will substitute one for the other to fill order

Fruit, richer, tastier than bush. Bloom a white cloud in spring.

	Each	Dozen
3- 4 ft.....	\$1.50	\$15.00
4- 5 ft.....	2.00	20.00
5- 6 ft.....	3.00	30.00
6- 7 ft.....	5.00	
7-10 ft.....	7.00	

**THE REAL TREE FRUITS OF THE ORGANIC FARMER — TAKES NO SPRAYS**

**Persimmon:** Date Plum. *Diospyros Virginiana*

If you don't know these magnificent summer foliaged and colored fruit for autumn effect you're behind in landscaping. Hurry.

➤ **Josephine**, ripens fruit after the middle of September. Sweet, delicious, yellow.

➤ **Early Golden**, comes in a few days later, slightly larger, yellow.

➤ **Garretson**: An October ripener. Probably the sweetest of them all. Recommended by the Geneva experimental station as the best for far north.

➤ **Kitch**: ripe December 1st, small but delicious. This is the prune of the persimmon world. Dries on tree. So high in sugar content you can see the crystals when you break the flesh. Hangs all winter, slowly dropping to the middle of March. Greatest game food you ever saw.

	Each	Dozen
3-4 ft.....	\$3.75	
4-5 ft.....	4.00	
5-6 ft.....	4.50	

➤ **MALE PERSIMMONS:** Recommended where no wild persimmons grow. Seldom needed in the east. Each

One yr. grafts.....\$ 5.00

7-10 ft. blooming. Probably bloom second yr..... 10.00

➤ **Chinese Persimmons** (*D. Kiki*)

And now folks I'm able to offer these excellent, marvelous wonders of Oriental horticulture. You know those large ones you like to buy on the market. These are grafted high to prevent frost burst at ground.

Not recommended hardy north of Southern Penna., Jersey, L. I. and southern Ohio, west.

N' remember these are only for the real lover of growing rare plants—who feel he and a plant are one.

➤ **Okame**

	Each
4- 5 ft.....	\$ 5.00
5- 6 ft.....	6.00
6- 7 ft.....	7.00
8-10 ft. these are really nice.....	12.00

**Mulberry; (*Morus*) Grafted.**

We have a dandy stand of grafts this fall. So I'll tell you about their feeding value. Our shoats were on half feed during the whole mulberry season; sheep love them, roosters lead the hens to them each morning with a sales talk on laying eggs on a cooling, high sugar fruit diet. Birds are a riot every day in the grove detracting their attention from OUR foods. Squirrels and even crows come to the table. Next year we hope to have enough for US too.

➤ **Capsrun**—This is a large fruited everbearer. Hardy, very sweet fruit.

➤ **REICHERT**—A new hardy everbearing from S.E. Penna. Fruit about same as Hicks but tree more hardy.

➤ **Hoopes White**—A dandy, pink cheeked, very sweet.

	Each	Dozen
3- 5 ft.....	\$3.00	\$30.00
5- 7 ft.....	4.50	45.00
7-10 ft. heavy, bearing.....	6.50	

SPECIMEN SIZE MULBERRIES: Quoted on request.

**Tree Black Berries**

This new and interesting blackberry is supposed to grow—according to the introducer—18 ft. high, bear 7 tons per acre. Fruit large, sweet delicious. Here we find one 3 yr. bush supplies all the fruit a small family needs for 6 weeks.

	Each	Dozen	Hundred
Strong one yr. canes.....	\$1.00	\$10.00	\$50.00

**FOR ORNAMENTAL BIRD FOODS**

I offer the BEST in ornamentals. A bird tree is one with thick dense foliage where birds can nest and roost free from predators. The fruit, foliage and design of our selections are extremely beautiful. Put your "raming around" money in such plantings and the family will think their home their heaven and stay to enjoy it. It's the economics of God and no mistake.

**BUSH HONEYSUCKLE—Maacki**

Folks this is one of the real Bush Honeysuckles. We have it shading our cave and is a glowing show of red berries fall till January. For real beauty with bird feed this is it. Grows 15-18 ft. Try a few. Bird food trees means insect control. Singing birds make singing people. Try it.

		Each
Heavy bushes 4-5 ft.....		\$2.50
	5-6 ft.....	3.00
Extra Heavy 6-8 ft.....		5.00

**FLOWERING CRABS**

Beautiful pink flowers. Beautiful fruit. Fruit makes the best jelly this side of heaven.

**Hopa variety:**

	Each	Dozen
4-5 ft.....	\$2.25	\$22.50
5-6 ft.....	2.75	27.50
6-7 ft.....	3.50	35.00
7-8 ft.....	4.50	
8-10 ft.....	5.00	

**WILD PLUM (*Prunus*) Chickasaw.** A hardy, fairly disease free wildling I picked up on the Cumberland Plateau of Middle Tenn. Ornamental, great bird and hog food. Plant two for pollination.

	Each
3-5 ft.....	\$1.00

**Dogwood, Native White Flowering *Cornus Florida***  
We have the finest stock in America.

Use 25% sawdust in hole.

	Each	Dozen
3-4 feet.....	\$2.00	\$20.00
4-5 feet.....	2.50	25.00
5-6 feet.....	3.25	32.50
6-7 feet.....	4.00	

**Washington Hawthorn, *Crataegus Cordata.*** This gorgeous decorator flowers white June 1st, red berries glow in the sun up to January 1st or later in a solid mass. Bird food all winter. Plant two for pollination.

	Each	Dozen
2- 3 ft.....	\$2.50	\$25.00
3- 4 ft.....	3.00	30.00
4- 5 ft.....	3.50	35.00
5- 6 ft.....	4.25	42.50
6- 7 ft.....	5.00	50.00
7-8 ft.....	5.50	55.00
8-10 ft.....	7.00	

**European Mt. Ash *Sorbus Aucuparia*  
American Mt. Ash (*Sorbus Americana*)**

One of the most beautiful small lawn ornamentals. Their attractive fruit grow in large clusters. Not only decorate the home landscape but feed birds, especially quail and pheasants all winter. Must plant 2 for polination.

Prices next page.

**Mt. Ash Prices**

	Each	Dozen
3-4 ft.....	\$2.50	\$25.00
4-5 ft.....	3.00	30.00
5-6 ft.....	3.50	35.00
6-7 ft.....	4.00	40.00
7-8 ft.....	5.00	
American Only: 8-10 ft.....	10.00	

**ANOTHER AMERICAN MT. ASH: *S. Decora***

Growth smaller. Fruit, the most beautiful of the Mt. Ash. Ox blood red. Hangs all winter until birds consume it. Greatest cardinal attracter extant. It's never really been introduced and I don't know why. Very scarce. One to a customer, Pollination is needed. Plant a European with it.

	Each
3-5 ft.....	\$5.00
5-6 ft.....	7.00
6-7 ft.....	8.00

**Russian Olive**

*Eleagnus Augustifolia*

Gray attractive foliage all summer and miniature olives in fall make it odd and attractive. Excellent for birds and chicken feed. Plant two for pollination.

See prices next page.

	Each	Dozen
3-4 ft.....	\$2.00	\$20.00
4-5 ft.....	2.75	27.50
5-6 ft. heavy.....	3.50	
6-7 ft. heavy.....	4.50	

**Viburnum-Lentago (Black Haw)**

We like this bush all summer because of its leathery shining foliage.

Its flowers in late spring extend the spring blooming beauty. Its bunches of blue black sweet fruit nodding in the breezes hangs till January 1st attracts birds by the hundred—children by the dozen. Plant with 25% sawdust. Height 15-18 ft.

**VIBURNUM OPULUS**

**(European Highbush Cranberry)**

This richly colored red fruited bush glows gorgeously in the autumn and winter sun. Fruit will hang to early winter if birds don't eat them all. Height 12-15 ft. Plant with 25% sawdust in the hole.

Plant two of same species for pollination.

	Each
2-3 ft.....	\$1.75
3-4 ft.....	2.00
4-5 ft.....	2.50
5-6 ft.....	3.50

**BLUEBERRIES BLUEBERRIES**

*(Vaccinium Corymbosum)*

**HIGH BUSH**

**Home Grown Blueberries As You Like Them**

**FAMILY REQUIREMENTS:** Six for two. Double the number for the birds, and children.

**DISTANCE TO PLANT:** five to six feet apart on row. Rows ten feet apart. How many can you use? Six sold at the doz. rate.

**CULTURAL CARE:** Remember they **must** have light soil and a heavy mulch. If weeds come through pull them.

**PLANTING:** It's a good thing to mix the soil 50-50. Peat-leaf mold—and sawdust.

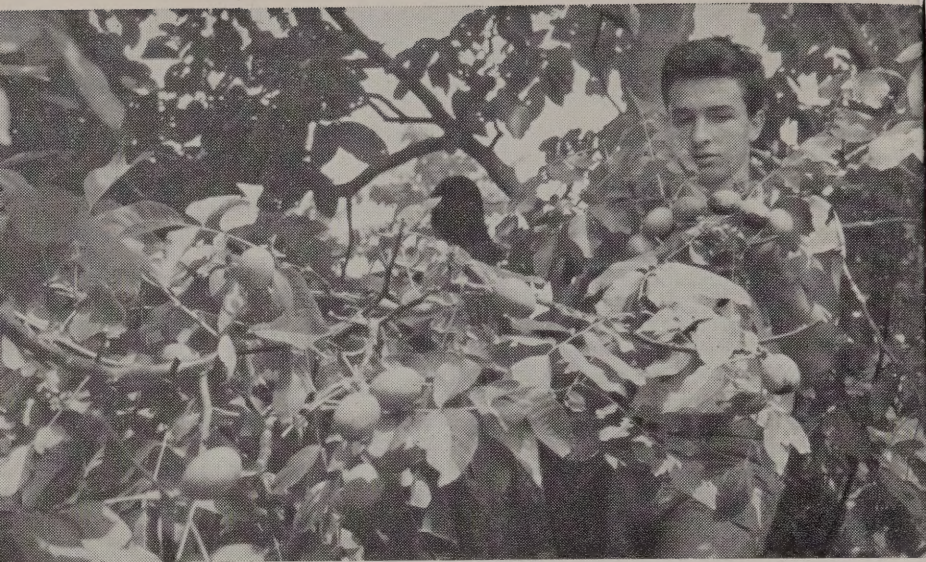
Heavy bearing, Cohansey, Concord, Jersey, Stanley, 5 yr. plants, transplanted. They're lifted with a nice ball. Don't know they're moved. Just keep on bearing.

	Each	Dozen
2—4 feet, heavy.....	3.00	30.00

**STANLEY, DIXIE, JERSEY,**

These are nice plants priced for mail order trade. Plant a lot and let them grow.

	Each	Dozen
12—18 inches.....	\$ .90	\$9.00



For beauty with a thrill plant our English Walnut grafted on Eastern black; hardy as the black walnut. More beautiful than MOST shade trees. This branch on a tree stands in our lawn border, 7 years old. Broadview variety has proven "itself" for lawn or orchard. It's really good.



A limb of our bearing honey locust in the pastures. See page 7 for description. We toured the dust bowl 1935. Saw honey locust bearing after 3 years of drought. Saw them thrive above irrigation; the foresters of the West confirmed what I observed in 4 states. The honey locust was the only "tree of the field for man's life," still alive. I then recommended the West plant millions of sweet podded honey locust to hold the soil; the water, the grass while they grow tons of feeds in pods. They didn't, but I still do. Isn't too late yet. Plant in the next rain.

### THE BOOK TREE CROPS

By the Father of the ideas. Tree Crops by Dr. J. Russell Smith. Tells all. Don't miss it. Better than a college education. Just \$6.00 Postpaid plus 3% sales taxes in Pennsylvania.

BOOKLET: Cultural Data..... 50¢  
 How to Graft booklet..... 25¢

My Responsibility As A Citizen In A Free Economy—  
 Rewritten September 1, 1955. Just 10¢.

**TRESPASS SIGNS** that work. Get your supply for this fall! They're cute. In large letters **Badly infested with Castanea Mellissima, Regia-Nigra—Dangerous.** \$1.00 per dozen mailed.