

62

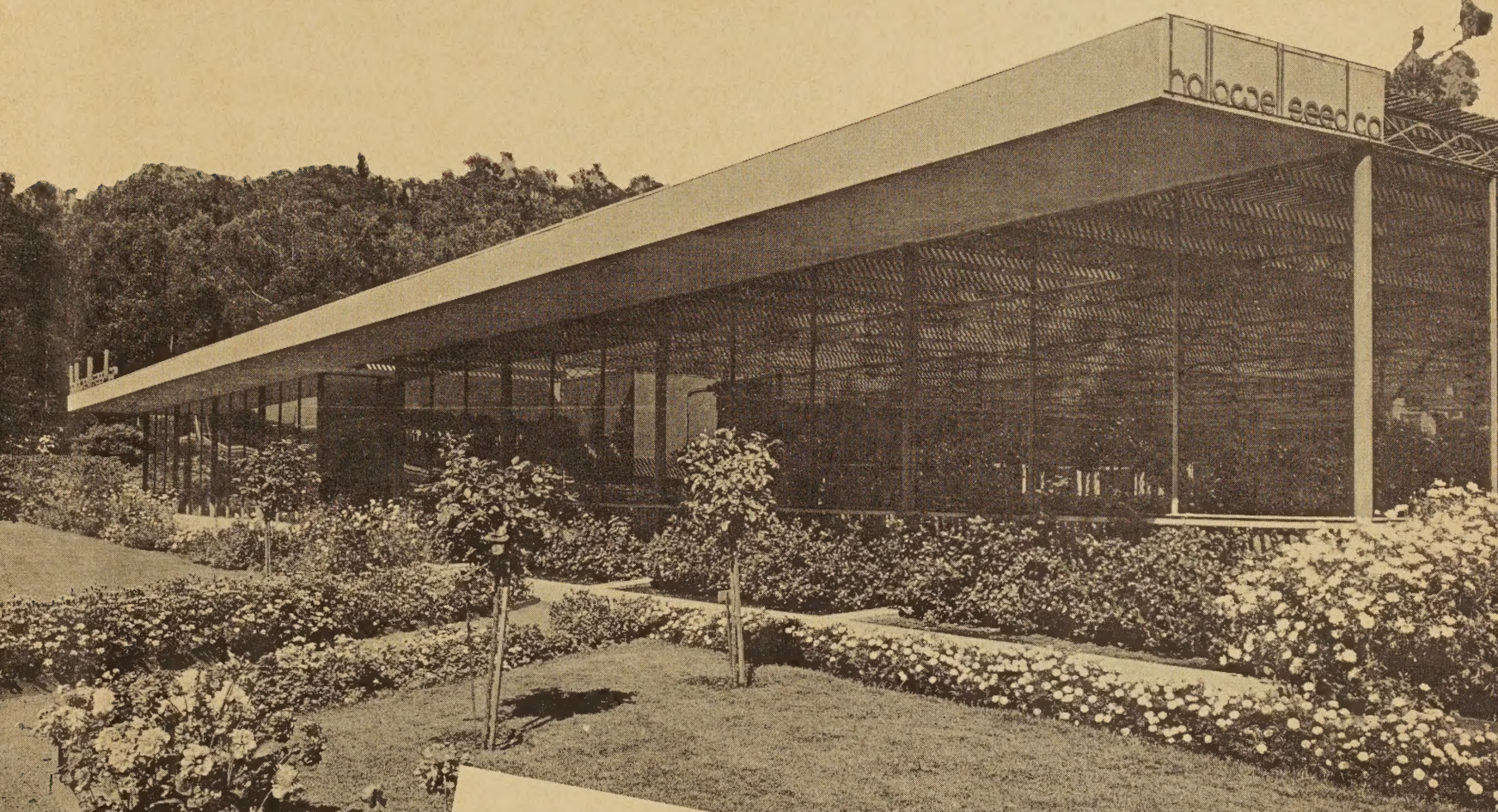
[1957]

LIBRARY
RECEIVED
★ AUG 9 1957 ★
U. S. Department of Agriculture

hallawell seed co.

2850 19th AVENUE AT SLOAT BOULEVARD

SAN FRANCISCO 27, CALIFORNIA



Announcement

... Effective July 1, 1957, we discontinued operation of our Downtown Market Street Store, and consolidated all departments of our business, Retail, Wholesale, and Mail-Order, at our well-known BLUE GLASS NURSERY, 19th Avenue at Sloat Boulevard. HERE we will continue to serve our customers with our usual high quality seeds, bulbs, plants and all garden supplies. THE NURSERY WILL BE OPEN EVERY DAY INCLUDING SUNDAYS . . . DRIVE IN PARKING SPACE.
Hours: 8:30 to 5:30.

Address all correspondence to
HALLAWELL SEED CO.
2850 19th Ave. at Sloat Blvd.
San Francisco 27
Telephone—LO 6-1875

SEEDS • BULBS • PLANTS • TREES • GARDEN ACCESSORIES • FERTILIZERS • INSECTICIDES

ORDER NOW

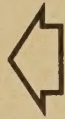
Use the order blank in this catalog. Order the seeds, bulbs or plants you will require for a given season and they will be sent to you at proper time for planting.



Hallawell's

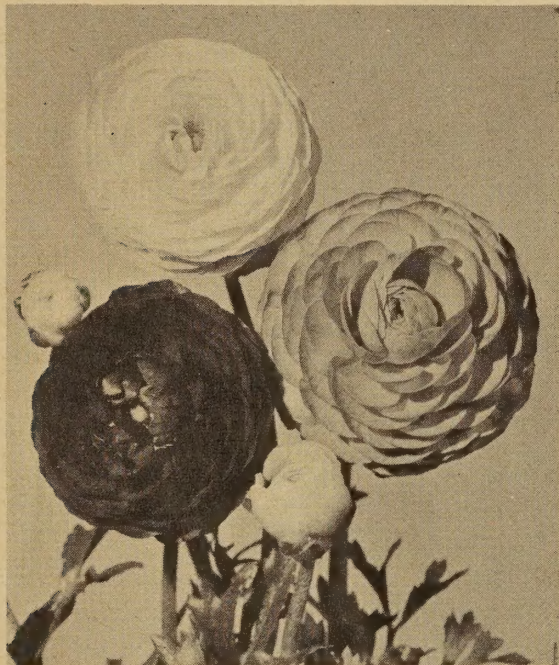
RADIO SEEDLING DAFFODIL COLLECTION

ORDER NOW — plant September to December



The finest assortment of modern daffodils ever offered. Bulbs producing flowers of every form and color combination from the newest and most exciting daffodil creations. From these bulbs you'll have a grand display of flowers next spring and for years to come. Plant them 7 inches deep and 6 to 8 inches apart.

40 Large No. 1 Bulbs \$5.00 postpaid



BEGONIA-FLOWERED RANUNCULUS

The Finest Strain of RANUNCULUS in Existence

Order Now, Plant September to Early Spring



Large wavy petaled flowers with perfect form, developed in the most desirable shades of red through yellow, orange, and pink to white. Branching plants grow 18 to 24 inches high. In mild climates plant during fall and winter months; cold climates in the spring. In heavy wet soil protect the bulbs with coarse sand.

HYBRID MIXTURE—Jumbo bulbs for exhibition flowers
12 for \$1.50, 50 for \$6.00, 100 for \$11.00

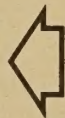
HYBRID MIXTURE—Medium size bulbs
12 for 75c, 50 for \$2.75, 100 for \$5.00

SEPARATE COLORS—Large size bulbs for exquisite flowers in separate shades of **Gold, Orange, Pink, Red, White.**

3 of one color 60c, 12 of one color \$1.75, 25 of one color \$3.35,
50 of one color \$6.50, 100 of one color \$12.50



LITTLE DARLING ROSE



We introduced this charming rose to San Franciscans in 1956 and it has been given enthusiastic approval by all who have planted it. Colorings are sunset orange through tones of rose-pink to yellow at base. Perfect in bud and bloom. Makes an exquisite boutonniere.

Order now for January delivery.

\$2.75 each

(See page 23 and back cover for other rose listings in this catalog)

KEEP THIS CATALOG

For time of planting chart, cultural directions and easy seasonal ordering.

FUCHSIA DISPLAY

Visit our Blue Glass Nursery and see the fine display of fuchsias during July, August, and September. Hundreds of beautiful specimen fuchsias in bloom, hangers, standards, and espaliers. The grandest Fuchsia Show in the Bay Area!

HALLAWELL SEED COMPANY

2850 19th Avenue at Sloat Boulevard, San Francisco 27, California

SAN FRANCISCO'S LEADING SEEDSMEN AND NURSERYMEN

Specializing in the Finest Quality Vegetable and Flower Seeds, Plants, Bulbs, and Garden Supplies

MAIL ORDER INFORMATION

MAIL ORDERS are given our prompt and careful attention. Use the handy order blank in this catalog. We ship all over the world.

ORDER EARLY—Send your order in as soon as you receive our catalog. Any items not available when order is received will be sent as soon as ready and in proper time for planting.

POSTPAID PRICES—Hallawell's pays the postage anywhere in continental United States on all seeds, plants and bulbs offered in this catalog; except where otherwise noted. Customer pays transportation charges on fertilizers, hardware, etc. (Prices subject to change without notice.)

SALES TAX—California customers, please add 4% State Sales Tax.

TERMS—REMITTANCE WITH ORDER, PLEASE, as we do not ship C.O.D. Send personal check, U. S. Money Order, Express, or Bank Money Order.

CITY DELIVERIES—Free delivery in San Francisco on all orders for \$3.00 or more.

NON-WARRANTY—While we exercise the greatest care to have our seeds, bulbs and plants of highest quality, success in gardening depends also upon proper culture, soil, and weather conditions. Therefore, Hallawell Seed Co. gives no warranty express or implied, as to the productiveness of any seeds, bulbs, or plants it sells, and will not be in any way responsible for the crop. Liability in all instances is limited to the purchase price.

PLANTING CALENDAR FOR SAN FRANCISCO BAY AREA

JANUARY and FEBRUARY

FLOWERS—Sow these seeds in the open ground—Alyssum, Bartonina, Calendula, Candytuft, Centaurea, Clarkia, Cosmos, Cynoglossum, Didiscus, Forget-me-not, Godetia, Gilia, Gypsophila, Larkspur, Linum, Lupinus, Mignonette, Nemophila, Phlox, Poppy, Sweet Peas, Torenia, Viola, Virginian Stock.

SEED IN FLATS or SEED STARTER—Alstroemeria, Arctotis, Begonia, Carnation, Cineraria, Cyclamen, Dahlias, Dianthus, Gaillardia, Gazania, Gloxinia, Iceland Poppy, Lobelia, Marigold, Matthiola, Mimulus, Nemesia, Nicotiana, Nierembergia, Nigella, Pansy, Petunia, Phacelia, Phlox, Salpiglossis, Scabiosa, Schizanthus, Snapdragon, Stocks, Verbena, Viola.

BULBS and ROOTS—Amaryllis, Begonia, Canna, Columbine, Delphinium, Gladiolus, Gloxinia, Lily-of-the-Valley, Per. Phlox, Primula, Tigridia, Yellow Calla.

TREES and SHRUBS—Flowering Trees, Fruit Trees, Berries, Grapes, Azaleas, Camellias, All shrubs, Roses, Tree Roses, Rhododendrons, etc.

VEGETABLES—Beets, Carrots, Endive, Eggplant, Lettuce, Parsley, Peas, Pepper, Radish, Spinach, Tomatoes, Artichoke plants, Asparagus Roots, Berries, Horesradish Roots, Onion Sets, Rhubarb.

MARCH and APRIL

FLOWERS—Sow in open ground—Ageratum, Alyssum, Amaranthus, Balsam, Bells of Ireland, Brachycome, Calendula, California Windbreak, Candytuft, Castor Bean, Celosia, Centaurea, Clarkia, Coboea, Cosmos, Four o'Clock, Godetia, Gourds, Gypsophila, Hollyhock, Kochia, Kudzu, Lathyrus, Linaria, Mignonette, Morning Glory, Nasturtium, Nicotiana, Nigella, Phlox, Poppies, Portulaca, Salpiglossis, Strawflowers, Sunflowers, Tithonia, Virginian Stock, Viscaria, Zinnias.

SOW IN FLATS or SEED STARTER—Agatheia, Ageratum, Asters, Bells of Ireland, Per. Alyssum, Asters, Carnation, Celosia, Centaurea, Cineraria, Coleus, Cyclamen, Dwarf Dahlias, Dianthus, Gail-

lardia, Gerbera, Gomphrena, Lobelia, Matthiola, Marigold, Nemesia, Nierembergia, Petunia, Phlox, Salpiglossis, Schizanthus, Snapdragon, Stocks, Tithonia, Torenia, Verbena, Zinnia.

BULBS, ROOTS, PLANTS—Begonia, Caladium, Canna, Dahlia, Gladiolus, Per. Phlox, Primula, Tigridia, Fuchsia, Geranium, Pelargoniums.

VEGETABLES—Beans, Beets, Carrots, Celery, Corn, Cucumber, Eggplant, Kale, Lettuce, Okra, Onion, Parsley, Pepper, Pumpkin, Radish, Salsify, Squash, Tomato, Artichoke Plants, Asparagus Roots, Berries, Grapes, Horseradish, Rhubarb.

MAY and JUNE

FLOWERS—Sow in open ground—Alyssum, Balsam, Bells of Ireland, Brachycome, Calendula, California Poppy, Candytuft, Centaurea, Clarkia, Cosmos, Gilia, Godetia, Gourds, Gypsophila, Kochia, Kudzu, Linaria, Nasturtium, Phlox, Portulaca, Salpiglossis, Virginian Stock, all Vines, Zinnias.

SOW IN FLATS—Asters, Begonia, Carnation, Calceolaria, Canterbury Bells, Columbine, Coreopsis, Delphinium, Dianthus, Doronicum, English Daisy, Foxglove, Gaillardia, Gerbera, Geum, Heuchera, Hollyhock, Marigold, Mimulus, Nemesia, Pentstemon, Petunia, Phlox, Per. Poppy, Primula, Pyrethrum, Salpiglossis, Streptocarpus, Stocks, Sweet William, Thalictrum, Tithonia, Wallflower.

BULBS and PLANTS—Chrysanthemums, Dahlia Tubers, Fuchias, Geraniums, Pelargoniums, Roses in Containers.

VEGETABLES—Beans, Beets, Carrots, Corn, Cucumber, Melons, Okra, Parsley, Peppers, Pumpkin, Radish, Squash, Spinach.

JULY and AUGUST

FLOWERS—Sow in open ground—Alyssum, Calendula, Candytuft, Cosmos, Gypsophila, Nasturtium, Winter Sweet Peas.

SOW IN FLATS—Per. Alyssum, Columbine, Delphinium, English Daisy, Pansy, Snapdragon, Streptocarpus, Sweet William, Viola, Winter Stocks, Wallflower.

INDEX	
ALSTROEMERIA	7
AMARYLLIS	5
ANEMONE	6
ARTICHOKE ROOTS	22
ASPARAGUS ROOTS	22
BEGONIAS	17
BERRIES	22
BLEEDING HEART	6
CALLA LILIES	7
CANNA	18
CHRYSANTHEMUM	19
CROCUS	6
DAFFODILS	4
DAHLIAS	18
ERYTHRONIUM	6
FLOWER SEEDS	9-16
FREESIAS	6
FRUIT TREES	22
FUCHSIAS	20
GERANIUM	20
GLADIOLUS	17
GLOXINIA	7
HYACINTHS	6
IRIS	4, 8
IXIA	8
LAWN SEEDS	24
LEUCOJUM	8
LEUCOCORYNE	8
LILIES	7
LILY OF THE VALLEY	8
MARGUERITE	18
MUSCARI	7
PELARGONIUMS	20
PEONIES	8
ROSES	23-24
SCILLA	8
SPARAXIS	8
STAR OF BETHLEHEM	8
STRAWBERRIES	22
TIGRIDIA	8
TULIPS	5
VEGETABLE SEEDS	21-22
WATSONIA	8

VEGETABLES—Beets, Broccoli, Brussel Sprouts, Cabbage, Carrots, Cauliflower, Endive, Kale, Kohl Rabi, Leek, Mustard, Parsley, Radish, Spinach, Turnip.

LAWNS—All Hallawell's Lawn Grasses, May to September.

SEPTEMBER - OCTOBER

NOVEMBER

FLOWERS—Sow in open ground—Arctotis, Calceolaria, Campanula, Cineraria, Delphinium, Dianthus, English Daisy, Forget-me-not, Foxglove, Gerbera, Geum, Godetia, Gypsophila, Heuchera, Hollyhock, Larkspur, Linaria, Nemophila, Pansy, all Poppies, Scabiosa, Snapdragon, Sweet Peas, Sweet William, Thalictrum, Viola, Wildflowers.

BULBS—Anemone, Crocus, Daffodils, Freesia, Hyacinth, Iris, Lily, Muscari, Ranunculus, Scilla, Tulips.

VEGETABLES—Beets, Broccoli, Carrot, Endive, Lettuce, Onion Seeds, Parsley, Peas, Radish, Spinach, Turnip.

DECEMBER

FLOWERS—Sow in open ground—Alyssum, Bartonina, Calendula, Candytuft, Centaurea, Clarkia, Collinsia, Forget-me-not, Godetia, Gilia, Larkspur, Linum Rubrum, Lupins, Nemophila, Poppy, Virginian Stock, Sweet Peas.

SOW IN FLATS—Bellis, Carnation, Coreopsis, Dianthus, Gaillardia, Lobelia, Pansy, Pentstemon, Phlox, Salvia, Scabiosa, Snapdragon, Stocks, Verbena, Viola.

BULBS—Amaryllis, Daffodils, Lillium, Lily-of-the-Valley, Narcissi, Ranunculus.

NURSERY PLANTS—Rose Bushes, Rose Trees, Climbing Roses, Orange and Lemon Trees, Evergreen and Deciduous Trees and Shrubs.

VEGETABLES—Beets, Carrot, Lettuce, Onion, Parsley, Parsnips, Peas, Radish, Spinach.



BEERSHEBA

Hallawell's

FINEST QUALITY DAFFODILS

Order Now for Planting September to December

Our extra size bulbs are large and heavy. Prices include postage within the 4th zone. For shipments 5th to 8th zones, Hawaii and Alaska, add 20% of the amount of daffodil order for postage. You'll have twice as many flowers from Hallawell's extra size bulbs and all prize winners.

ACTAEA—Broad snow-white perianth, small center cup margined red. 5 for \$1.00, 12 for \$2.00, 100 for \$12.50.

BEERSHEBA—Magnificent all white flower with long beautifully flanged trumpet. 3 for \$1.00, 12 for \$3.50, 10 for \$25.00.

CARLTON—Best all yellow daffodil; large perianth, frilled crown, strong erect stem. 4 for \$1.00, 12 for \$2.50, 100 for \$15.00.

CHEERFULNESS—Clusters of charming, creamy-white, double flowers. 5 for \$1.00, 12 for \$2.00, 100 for \$12.50.

DAMSON—Striking flower with cream perianth and intense fuchsia red cup. 5 for \$1.00, 12 for \$2.00, 100 for \$12.50.

FORTUNE—One of the finest daffodils. Perianth is creamy yellow with a broad orange cup. 5 for \$1.00, 12 for \$2.00, 100 for \$12.50.

GERANIUM—Clusters of 3 to 5 flowers on a stem, each with a broad white perianth and orange-red cup. 4 for \$1.00, 12 for \$2.50, 100 for \$14.00.

IRENE COPELAND—Double snow-white flowers with primrose markings. Miniature dahlia-form. 4 for \$1.00, 12 for \$2.50, 100 for \$14.00.

KING ALFRED—Huge rich golden-yellow daffodils on long sturdy stems. These are fine healthy bulbs for stunning flowers.

Large Round Bulbs—1 or more flowers from each bulb. 6 for \$1.00, 12 for \$1.75, 100 for \$9.00.

Extra Size Bulbs—2 to 4 flowers from each bulb. 5 for \$1.00, 12 for \$2.00, 100 for \$12.50.

JOHN EVELYN—A grand daffodil with white perianth and a broad, beautifully frilled lemon crown. 3 for \$1.00, 12 for \$3.00, 100 for \$20.00.

MRS. R. O. BACKHOUSE—The famous pink daffodil. Perianth is silvery-white, trumpet is apricot-pink. 3 for \$1.00, 12 for \$3.00, 100 for \$20.00.

NOVA SCOTIA—Creamy-white perianth, large yellow cup with lovely fringed orange margin. 5 for \$1.00, 12 for \$2.00, 100 for \$12.50.

SCARLET LEADER—A sensational flower with white perianth and a large vivid red cup. 3 for \$1.00, 12 for \$3.00, 100 for \$25.00.

THALIA—Lovely pure white flowers in clusters of 2-3 per stem. 5 for \$1.00, 12 for \$2.50, 100 for \$12.50.

TWINK—Large double daffodil with alternating primrose and orange petals. 5 for \$1.00, 12 for \$2.00, 100 for \$12.50.

FIELD MIXTURE DAFFODILS

A general assortment of many types and colors including large, medium, and small flowering varieties.

12 for \$1.50, 50 for \$5.95, 100 for \$11.00

MINIATURE DAFFODILS

For Rock Gardens or Pots

BULBOCODIUM CONSPICUUS—Dainty hoop-petticoat daffodils for pots or garden. Yellow flowers, 6 in. high.

7 for \$1.00, 12 for \$1.50, 100 for \$10.00

JONQUILLA SIMPLEX

(Queen Anne's Daffodil)

The true single Jonquil. Grows 6 to 8 in. high bearing clusters of yellow fragrant flowers.

12 for \$1.00, 25 for \$1.95, 100 for \$7.50

NARCISSUS

for growing in bowls

PLANT SEPTEMBER, OCTOBER, NOVEMBER

Select a bowl 4 to 6 in. deep. Fill with marble-sized pebbles. Place 4 to 6 bulbs just deep enough for water to touch base of bulb. In Bay Area climate keep bowl out doors until buds are ready to open, then bring into house.

PAPER WHITE GRANDIFLORA—Clusters of pure white star-shaped flowers, easily grown in pebbles.

5 for \$1.00, 12 for \$2.00, 25 for \$3.85

GRAND SOLEIL D'OR—Clusters of rich yellow flowers with deep orange cup in the center; fragrant and easily grown in pebbles.

5 for \$1.00, 12 for \$2.00, 100 for \$12.50

CHINESE LILY—The popular old-fashioned highly fragrant white flowers with yellow lip.

6 for \$1.35, 12 for \$2.50, 25 for \$4.85

NEW DUTCH IRIS

Plant September, October, November

For beautiful garden display and excellent cut flowers, try these outstanding originations of large orchid-like blooms. Stunning color combinations.

BLUE PEARL—Deep violet blue with orange blotch.

BRONZE BEAUTY—Deep blue standards, bright orange blotch.

KING MAUVE—Nearest approach to orchid-color.

HARMONY—Lilac standards, yellow falls, blotched orange.

LE MOGOL—Standards honey-toned brown, falls orange bronze.

PRINCESS BEATRIX—Standards and falls golden-yellow.

PRINCESS IRENE—Glistening white, golden-yellow falls.

WHITE PEARL—All white, large rounded falls with yellow blotch.

12 of one variety \$ 1.50
100 of one variety 11.00

NEW DUTCH IRIS MIXED—12 for \$1.50, 100 for \$11.00



DUTCH IRIS

All Our **TULIPS** Are Holland Grown

Extra Size Bulbs for Prize Blooms

Culture for Extra Size Holland Tulips

They are the best you can buy and under favorable soil and climatic conditions will produce most gratifying results. Plant tulip bulbs 7 inches deep. Remove the soil to a depth of 8-10 inches, loosen the bottom soil, spread bonemeal, 5 lbs. to 50 sq. ft. and cover it one inch with top soil, then set the bulbs 5 to 6 inches apart each way and replace soil.

ORDER NOW FOR PLANTING SEPTEMBER TO DECEMBER

HALLAWELL'S TESTED TULIPS

ALL TULIP VARIETIES OFFERED HERE HAVE BEEN TESTED IN OUR NURSERY GARDENS. BULBS ARE EXTRA SIZE FOR PRIZE BLOOMS.

ADVANCE—Bright scarlet with cerise shading; good stems. 5 for \$1.00, 12 for \$2.00, 100 for \$12.50.

ARISTOCRAT—Soft rosy-lilac with petals edged silvery-rose. 5 for \$1.00, 12 for \$2.00, 100 for \$12.50.

CHAPPAQUA—Huge lily-shaped blooms of deep rose shaded carmine. Tall strong stem. 4 for \$1.00, 12 for \$2.00, 100 for \$12.50.

CITY OF HAARLEM—Flowers of brilliant vermilion-scarlet. 4 for \$1.00, 12 for \$2.50, 100 for \$15.00.

CLARA BUTT—Lovely clear pink tinted salmon-rose. 7 for \$1.00, 12 for \$1.50, 100 for \$11.00.

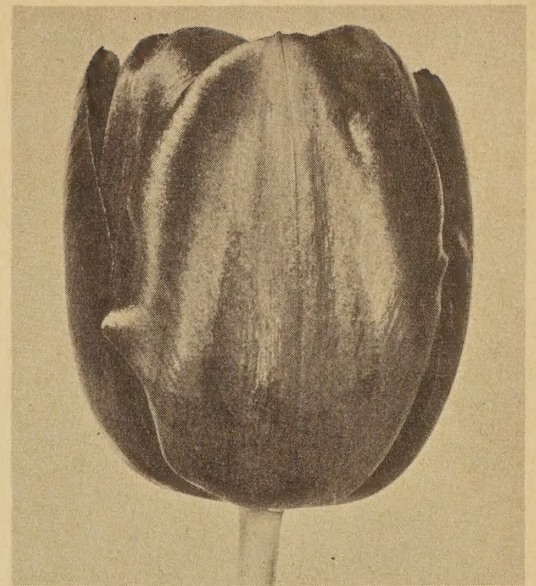
DILLENBURG—Bright orange-salmon with a deep lilac-rose flush. Stunning. 7 for \$1.00, 12 for \$1.50, 100 for \$11.00.

INGLESCOMBE YELLOW—Glossy canary-yellow, a fine old favorite. 7 for \$1.00, 12 for \$1.50, 100 for \$11.00.

INSURPASSABLE—Beautiful rosy-lilac on white ground, tall strong stems. 5 for \$1.00, 12 for \$2.00, 100 for \$12.50.

KATHLEEN PARLOW—Shell-pink, silvery edged. Good stem. 5 for \$1.00, 12 for \$2.00, 100 for \$12.50.

LOUIS XIV—Dark bluish-violet, feathered edge of golden bronze. 5 for \$1.00, 12 for \$2.50, 100 for \$15.00.



QUEEN OF THE NIGHT

MRS. JOHN SCHEEPERS—A stunning golden yellow—large oval flower. 5 for \$1.00, 12 for \$2.00, 100 for \$12.50.

PRIDE OF ZWANNENBURG—Lovely salmon-rose suffused rosy-red, tall. 5 for \$1.00, 12 for \$2.00, 100 for \$12.50.

QUEEN OF THE NIGHT—Deep purple-black, enlivened with a velvety sheen. 7 for \$1.00, 12 for \$1.50, 100 for \$11.00.

THE BISHOP—Beautiful deep violet-blue. Justly popular. 5 for \$1.00, 12 for \$2.00, 100 for \$12.50.

WHITE CITY—The finest white tulip in our Nursery Gardens. Pure white, larger flowered, longer stemmed than any other. 5 for \$1.00, 12 for \$2.00, 100 for \$12.50.

HALLAWELL'S SELECT TULIP MIXTURE

A fine mixture of extra size bulbs in good large flowering varieties, including many of those listed above.
12 for \$1.65, 100 for \$11.50

HALLAWELL'S HOLLAND TULIP MIXTURE

A mixture of old and new popular tulips chosen by our Holland growers to give you a grand display of color in your garden and prize blooms for cutting. These bulbs are all extra size for large flowers and sturdy stems.
12 for \$1.50, 100 for \$9.75, 250 for \$22.95

PARROT TULIPS

Large showy flowers with curiously lacinated and fringed petals. They are strikingly different.

BLUE PARROT—Bright violet with mauve. Flowers are very large with good stem. 5 for \$1.00, 12 for \$2.00, 100 for \$12.50.

FANTASY—A gorgeous rose-pink parrot of unusual and stunning form. 5 for \$1.00, 12 for \$2.00, 100 for \$12.50.

RED CHAMPION PARROT—Fiery-red blooms with a stunning rosy-red glow. 5 for \$1.00, 12 for \$2.50, 100 for \$17.50.

AMARYLLIS

Ready December to March

Easy to grow and one of the most beautiful flowers for pot or garden. For a house plant put one bulb in a 5 or 6-inch pot, leaving the neck and upper surface of the bulb exposed. California grown and world's best.

HYBRIDS MIXED—All best colors. Each \$1.00, 3 for \$2.85, 12 for \$10.00.

RED SPECTACULAR—Each \$1.25, 3 for \$3.45, 12 for \$12.00.

AMARYLLIS BELLADONNA (Resurrection Lily)—Lily-like pink flowers in large clusters atop sturdy 15-in stems. A great favorite in California. Each 75c, 3 for \$2.00, 12 for \$7.50.

GIANT DOUBLE TULIPS

Huge double blooms on strong erect stems. They resemble peonies in form. Prepare the soil with 5 lbs. bonemeal to 50 square feet and plant bulbs 6 to 7 inches deep.

COXA—Bright carmine-red with orange tint at base. Large semi-double flowers. Fragrant. 5 for \$1.00, 12 for \$2.00, 100 for \$12.50.

EROS—Huge double flowers of lilac-rose tinted silvery-rose. 4 for \$1.00, 12 for \$2.00, 100 for \$12.50.

MOUNT TACOMA—Magnificent giant double white flowers on strong stems. Very peony-like. 5 for \$1.00, 12 for \$2.00, 100 for \$12.50.

DOUBLE TULIPS MIXED—12 for \$2.25, 100 for \$14.50.

AMARYLLIS →

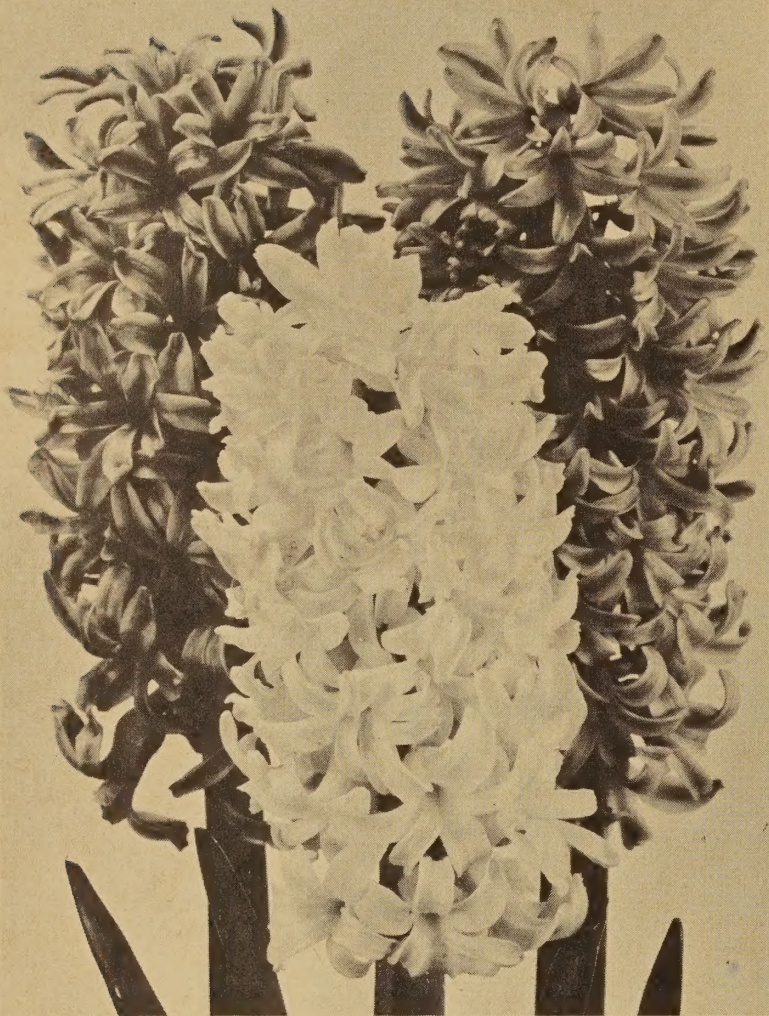


Hallawell's GIANT HYACINTHS

ORDER NOW FOR SEPTEMBER, OCTOBER, NOVEMBER PLANTING

Hyacinths are unsurpassed for beauty and fragrance in early spring and are one of the most popular flowers for growing in pots or hyacinth glasses for indoor bloom. Plant 6-7 inches deep.

EXTRA SIZE BULBS FOR GARDEN OR INDOOR CULTURE
WHERE THE LARGEST SPIKES OF FLOWERS ARE DESIRED



POT CULTURE—Use only the extra size hyacinth bulbs for pot or water culture. For pot plants put 1 bulb in a six-inch pot or several bulbs in a larger pot.

CITY OF HAARLEM—Best yellow.
INDIGO KING—Deep violet purple.
LA VICTOIRE—Glistening carmine red.
PEARL BRILLIANT—Fine pale blue.
L'INNOCENCE—Lovely pure white.
PINK PEARL—Rose pink.
PRINCESS MARGARET—Light pink.

Any of the above seven named Giant Hyacinths
Each 45c, 3 for \$1.25, 12 for \$4.00, 100 for \$30.00

MIXED COLORS—Extra size—a fine mixture of favorite colors blended for an effective display.
3 for \$1.15, 12 for \$4.00, 100 for \$30.00

GARDEN HYACINTHS

These are second size bulbs intended for outdoor planting where they will produce beautiful large spikes of flowers.

DUKE OF WESTMINSTER—Deep blue.
EDELWEISS—Pure white.
JAN BOS—Dark red.
LADY DERBY—Bright rose.
QUEEN OF BLUES—Light yellow.
YELLOW HAMMER—Yellow.

Any of above six named varieties
40c each, 3 for \$1.00, 12 for \$3.50, 100 for \$25.00

Quality Garden Hyacinths—Mixed. 12 for \$3.00, 100 for \$21.00

HYACINTH GLASS CULTURE

Fill glass with water almost to base of bulb. Keep glass in a cool, dark place, on a cold floor, covered with a box to keep them dark. Add water occasionally to keep glass filled. Do not bring them to light and warmth, until the flower buds are at least 3 inches above the bulb.

HYACINTH GLASSES, clear glass
Packed-Postpaid 90c each



ANEMONE

Bulbs available September to January

Lovely spring garden flowers in attractive shades of blue, pink, scarlet, etc., with stems to 1 foot. Plant 3 inches deep, 6 inches apart.

BLUE POPPY—Large single blue flowers.
HIS EXCELLENCY—Single, bright scarlet.
ROSEA—New lilac-rose, single.
THE BRIDE—Single white, yellow stamens.
ST. BRIGID MIXED—Semi-double flowers, assorted colors.
DE CAEN SINGLE MIXED—Includes all the best colors.
Each of above: 3 for 45c, 12 for \$1.50, 100 for \$10.00

BLEEDING HEART

Plant October to January

SPECTABILIS—An old-fashioned favorite. Large clumps, Each \$1.25, 3 for \$3.50, 12 for \$12.50.

GIANT SPRING CROCUS

One of the easiest to grow spring flowering bulbs. Our extra size bulbs have a long blooming season. Plant them 3 to 4 inches apart and 3 inches deep. Sept. to January.

GIANT PURPUREA—Deep purple.
QUEEN OF THE BLUES—Light lilac blue.
WHITE LADY—Pure white.
GIANT GOLDEN YELLOW
GIANT MIXED—A mixture of many colors.
Each of above: 12 for \$1.00, 100 for \$7.50

ERYTHRONIUM (Dogtooth Violet)

Mixed colors—beautiful little plants 6 to 7 inches high with small lily-like flowers in cream, pink, lavender, rose, and white. They do best in a cool shaded situation. Plant 2 in. deep.
6 for \$1.00, 12 for \$1.50, 100 for \$10.00

Fragrant CALIFORNIA FREESIAS

California freesias are noted for their exquisite fragrance. In a mild climate they may be grown in the garden but they may also be grown in pots.

COLORED HYBRID FREESIAS

In separate colors for pot culture or for group plantings of one color in the garden.

BLUE	BRIGHT RED	PINK	YELLOW
12 one color . . . \$1.00		25 one color . . . \$1.95	
50 one color . . . 3.80		100 one color . . . 7.50	

COLORED FREESIAS MIXED

A fine mixture of all colored hybrid freesias. No white ones included.

12 for \$1.00, 25 for \$1.95, 100 for \$7.50

FRAGRANT WHITE FREESIAS

An outstanding strain of white freesias for garden, greenhouse or pot culture. We suggest the extra size bulbs particularly for pot culture.

Extra Size Bulbs

3 for 50c, 12 for \$1.00, 50 for \$3.90, 100 for \$7.50

Medium Size Bulbs: 12 for 75c, 50 for \$2.75, 100 for \$5.00

Hallawell's

GARDEN LILIES

Order Now — Plant November to March

Strong healthy bulbs with live roots to help them become quickly established in your garden and abundant spring bloom may be expected.



L. AURATUM

AURATUM (Gold Band Lily)

Grandest of the hardy lilies. The fragrant waxy white, bowl-shaped blooms have a gold band and often crimson spots. Plant 5 to 7 inches deep. Height 4 feet. Large bulbs: \$1.00 each, 3 for \$2.85, 12 for \$10.00.

BELLINGHAM HYBRIDS

Fifteen to twenty flowers at one time, in gay colors ranging from yellow to brilliant orange-red. Recurving petals spotted. Six ft. high. Plant 5 inches deep in partial shade. 50c each, 3 for \$1.35, 12 for \$4.50, 25 for \$8.50

CANDIDUM (Madonna Lily)

Lovely white Easter-lily type, well known for its beauty and delightful fragrance. Bulbs are ready September 1st. Order early and plant with top of bulb one inch below the surface. Height 3-4 ft. Each 75c, 3 for \$1.95, 12 for \$7.50, 25 for \$14.85.

CROFT EASTER LILY

Large waxy white Easter Lily type blooms with a delightful fragrance. Plants are bushy, strong growing and prolific bloomers. For pot growing or the garden. Height 18 to 24 in. Each 65c, 3 for \$1.75, 12 for \$6.00, 25 for \$11.50.

FIESTA HYBRID LILIES

New Hybrids with neatly reflexed flowers on thin wiry stems. Flowers are turk's-cap shape, from yellow through orange, to rich dark red. Plant 6 in. deep in full sun. Height 3 ft. Each 50c, 3 for \$1.35, 12 for \$4.50, 25 for \$9.00.

MID-CENTURY HYBRIDS

Tiger Candlestick type with a color range from pastel straw-yellow to deepest maroon-red. Some are spotted like the tiger-lily, others may be vividly colored upright lilies. Plant 6 inches deep in full sun. Height 2 to 3 feet. Each 50c, 3 for \$1.35, 12 for \$4.50, 25 for \$9.00.

OLYMPIC HYBRIDS — Improved Regale Lily

Finest and tallest of the trumpet lilies. The sturdy strong growing plants bear lovely pyramidal clusters of blooms, ivory-white with russet tints on the outside. Partial shade or full sun. Height. 5 feet. Plant 5 inches deep. Two sizes of bulbs.

Medium: Each 50c, 3 for \$1.25, 12 for \$4.50, 25 for \$8.50.

Jumbo: Each 65c, 3 for \$1.85, 12 for \$6.00, 25 for \$11.85.

ALSTROEMERIA (Chilean Lily)

Clusters of lily-like flowers on stems to 20 inches. Colors include combinations of cream, through pink, salmon, and orange. Plant in fall.

3 for \$1.00, 12 for \$3.50, 100 for \$25.00

BULB BED COVERING

Sow these seeds on top of the bulb beds for additional color display. One pkt. will sow approximately 5 sq. ft., a large pkt. 25 sq. ft., 1 oz. 75 sq. ft.

NEMOPHILA, Baby Blue Eyes—Pkt. 15c, lge. pkt. 50c, oz. \$1.

VIRGINIAN STOCKS—Pkt. 15c, lge. pkt. 50c, oz. \$1.00.

FORGET-ME-NOT—Alpestris blue, Pkt. 25c, ¼ oz. \$1.00.

FORGET-ME-NOT—Rose-pink, Pkt. 25c, ¼ oz. \$1.25.

LINARIA, Northern Lights—Gay color mix. Pkt. 25c, ¼ oz. 60c.

Bulb Bed Cover Collection

1 pkt. each of above, value \$1.05, for 85c

SPECIOSUM RUBRUM (Red Champion)

Lovely reflexed deep colored blooms. Thrives in well drained soil and likes light shade during the hot part of the day. Bloom late August and September. Plant 6 in. deep. Height 4 feet. Each 65c, 3 for \$1.75, 12 for \$6.00, 25 for \$11.25.

SUNSET LILY (Pardalinum)

This spectacular lily is brilliant orange red with yellow tint at the base, and amber brown dots on the petals. It prefers light shade with cool moist soil. Plant 5 inches deep. Height 4 feet. Each 50c, 3 for \$1.35, 12 for \$4.50, 25 for \$9.00.

LILY COLLECTION — 5 Lilies

Auratum, Bellingham, Mid-Century, Fiesta, Sunset

1L— 5 bulbs, 1 of each (Value \$3.25) for only \$2.95

3L—15 bulbs, 3 of each (Value 9.00) for only 6.95

CALLA LILIES

PINK CALLA (Rehmannia)—A rare and interesting flower. It does not grow as tall or as large as the white calla. It may be grown in pots. Plant Nov. to March. Each 70c, 3 for \$1.95, 12 for \$6.50.

WHITE CALLA—This popular garden flower thrives in partial shade and plenty of moisture. Plant Sept. to Jan. Each 45c, 12 for \$4.00, 100 for \$27.50.

YELLOW CALLA—May be grown in pots or in the garden. Deep golden yellow flowers and green spotted foliage. Plant Nov. to March.

Medium sized bulbs: Each 45c, 3 for \$1.00, 12 for \$3.50, 100 for \$25.00.

Large bulbs: Each 65c, 3 for \$1.75, 12 for \$6.00, 100 for \$40.00.

BLACK CALLA (Arum Pictum)—Grows best in partial shade and rich soil. Plant Oct. to Jan. Each 75c, 12 for \$7.50, 25 for \$13.75.

GLOXINIA

Beautiful pot plants for indoor growing. The large trumpet shaped blooms are in rich colors and the decorative foliage is of soft velvety texture. Our California tubers are the finest strain grown.

EMP. FREDERICK—Scarlet bordered white.

EMP. WILLIAM—Violet bordered white.

HALLAWELL'S RED—Brilliant red.

MONT BLANC—Best pure white.

PINK—Shades of pink.

WATERLOO—Rich dark purple.

Large Tubers—Any 3 of above \$1.85. 6 tubers, 1 of each, \$3.50.

MIXED COLORS—3 for \$1.50, 6 for \$2.85, 12 for \$5.50

GRAPE HYACINTH (Muscari)

ARMENIACUM—Six-inch spikes of cobalt blue bells which resemble a bunch of grapes inverted. May be used in the rock garden or border and may be established permanently under trees or shrubs. 12 for 75c, 50 for \$2.75, 100 for \$5.00.

Hallawell's BULBS AND PLANTS for Your Garden



LILIES OF THE VALLEY

LILY OF THE VALLEY

Special out-door-grown pips for garden planting. Prepare the soil with plenty of peat moss or leaf mold, spread the root clump and cover about one inch. Do not let them dry out in the summer. We have a bed of these growing in all shade here in our Nursery Gardens. Ask to see them. Clumps of 18 to 25 pips. 1 clump \$1.50, 3 clumps \$4.00, 6 for \$7.50.

IXIA

MIXED COLORS—Attractive flowers on tall graceful stems. They are in shades of yellow, white, pink, red. Plant 3 or 4 inches deep and 4 inches apart. 12 for 75c, 25 for \$1.25, 100 for \$5.00.

LEUCOJUM

SPRING SNOWFLAKE—Graceful spikes of drooping white flowers, with petals tipped green. Plant in partial shade and leave bulbs undisturbed for best cut flowers. 7 for \$1.00, 12 for \$1.50, 100 for \$10.00.

LEUCOCORYNE (Glory of the Sun)

Delightfully fragrant flowers. Orchid-blue shading to a white center. There are 3 to 6 in. clusters on stems to 15 in. high. A first rate cut flower lasting a week in water. Grow them in pots or in the garden, same as freesias. 3 for 65c, 12 for \$2.50, 25 for \$4.95.

PEONIES

These varieties are good in any California climate, from sea level to the mountains.

ADOLPH ROUSSEAU—Finest deep red.
ALBERT CROUSEE—Dainty shell pink.
BARONESS SCHRODER—Elegant cream.
EDULUS SUPERBA—Best deep pink.
FESTIVA MAXIMA—White dotted red.
GLORY OF BOSKOOP—Salmon pink.

Each of above: \$1.25

TIGRIDIA (Tiger Flower)

Large flowers, 5 to 6 in. across, with the cup-shaped center tiger spotted red or maroon. A flower lasts one day only, but day after day for 2 to 3 months, fresh new flowers pop out of the bud sheath like rockets and in most fascinating color combinations. Plant 4 in. apart, 3 in. deep. Large bulbs: 5 for \$1.00, 12 for \$2.00, 25 for \$3.95.

SPARAXIS

Gay color combinations to provide interest among the low growing bulbous plants. Flowers are in varying shades of lavender, orange, pink, red and yellow. Height 7 to 10 in. 5 for 50c, 12 for \$1.00, 50 for \$3.75.

STAR OF BETHLEHEM (Ornithogalum)

Waxy, white, star-shaped flowers with a jet black center. They are in large clusters on 15 to 18 inch stems. 5 for \$1.00, 12 for \$2.00, 100 for \$15.00.

SCILLA CAMPANULATA

Spanish Blue Bell or Wood Hyacinth
 Erect 15-inch flower spikes with lovely bell like blooms. Plant them in a permanent bed where they will not be disturbed and have loads of early spring flowers for cutting. Sun or shade. 3 in. deep, 6 in. apart.

EXCELSIOR—Beautiful porcelain-blue.

L'INNOCENCE—A good pure white.

QUEEN OF PINKS—Deep rose-pink.

12 for \$1.00, 25 for \$2.00, 100 for \$7.50

WATSONIAS

Attractive spikes of trumpet flowers in shades of pink, salmon and rose to white. 2-3 ft. 3 for 50c, 12 for \$1.25, 25 for \$2.45.

BEARDED IRIS

Order Now for August to October Planting

Fifteen outstanding and reasonably priced Iris, all of them top varieties in 100 National favorites. A splendid collection of harmonious color combinations for your garden. Order early! Ready in August.

BLUE RHYTHM—Silvery cornflower-blue. Large flowers, 40 inches high. Each 75c, 3 for \$2.00.

BLUE SHIMMER—Sparkling ivory-white with shimmering blue stipple. 3 feet. Each 75c, 3 for \$2.00.

CASCADE SPLENDOR—A delightful blend of coppery-pink and bright tan. Large, beautifully ruffled flowers. Each \$1.25, 3 for \$3.25.

ELMOHR—Rich reddish violet, huge flowers with slight ruffle and perfect form. Each \$1.00, 3 for \$2.75.

GREAT LAKES—Clear light blue with great flaring falls. A record prize winner. Each 75c, 3 for \$2.00.

LADY MOHR—Standards are oyster-shell white, falls pale chartreuse and beige. Each \$1.00, 3 for \$2.75.

MULBERRY ROSE—An iris of sparkling brilliance, unlike any other. An unusual shade in the deep pink class. Each 75c, 3 for \$2.00.

OLA KALA—Rich deep yellow, almost orange, large flaring flowers slightly ruffled. 38 inches. Each 75c, 3 for \$2.00.

PINK CAMEO—Exquisite cameo-pink, with striking tangerine beard. 3 feet high. Each \$1.00, 3 for \$2.75.

SABLE—Luminous velvety-violet. An exquisite flower. Each 75c, 3 for \$2.00.

SIGNAL FLARE—A strikingly beautiful plicata. Standards golden-yellow blending to rich, copper brown. Each \$1.25, 3 for \$3.25.

SNOW FLURRY—Snow-white, ruffled flowers with faint blush of lilac-blue in bud. 3 feet. Each \$1.00, 3 for \$2.75.

SOLID MAHOGANY—Luminous mahogany-red, a stunning iris and best in its color class. 3 feet. Each 75c, 3 for \$2.00.

TIFFANJA—Standards creamy buff with lighter falls flecked and sprinkled light golden brown. Plicata. 3 feet. Each 75c, 3 for \$2.00.

TIFFANY—Deep rose-pink stitching on a yellow background. 34-inch stems. Each 75c, 3 for \$2.00.

Order
Early

Superior Quality BEARDED IRIS COLLECTION

1 Each of All 15 Varieties Listed Above, Each Variety Labeled.

A Wonderful \$13.25 Value for Only \$12.00 Postpaid.

Ready in
August

HALLAWELL'S FLOWER SEEDS

Known for Superior Quality

We packet our own seeds to assure their freshness and viability.

ACHILLEA

filipendulina (Yarrow)—Per. 3-4 ft. Flowers yellow, 5 in. across, stems 2-3 ft. May be dried. Keep well. Pkt. 25c, 1/8 oz. \$1.00.

AGERATUM (Floss Flower)

Dense clusters of fluffy flowers all summer. Sun or half shade, for window boxes or edgings.

BLUE PERFECTION—Mid-blue. 10 in. Pkt. 25c, 1/8 oz. 75c.

MIDGET BLUE—Dark blue, compact, 3-4 in. for ribbon border. Pkt. 25c, 1/8 oz. \$1.25.

ALYSSUM (Sweet Alyssum)

CARPET OF SNOW—White, carpet-like, spreads a foot or more. 4 in. high, fragrant. Pkt. 25c, 1/4 oz. 90c, oz. \$2.75.

LILAC QUEEN—Deep lavender-lilac, 6 in. Pkt. 25c, 1/4 oz. 90c.

ROYAL CARPET—All-America winner, rich violet, spreads to 1 ft.—does not exceed 3 in. in height. Blooms quickly. Pkt. 25c, 1/8 oz. \$1.00.

SAXATILE COMPACTUM (Gold Dust)—Per. Golden-yellow, blooms until frost. 1 ft. Pkt. 25c, 1/4 oz. 85c.

SAXATILE SILVER QUEEN—Per. Lemon-yellow, blooms until frost. 1 ft. Pkt. 50c, 1/8 oz. \$1.00.

VIOLET QUEEN—Lovely violet, 5 to 6 in. Pkt. 25c, 1/8 oz. \$1.00.

AMARANTHUS Tricolor

(Joseph's Coat)—Rich scarlet crimson foliage variegated yellow and green. Long red tassels. Pkt. 25c, 1/8 oz. 75c.

TETRA SNAPDRAGONS

(Antirrhinum)

Sturdy base-branching plants, glossy, dark green foliage, huge ruffled flowers. 18 to 24 inches high. Separate colors of **CRIMSON, DARK ORANGE, ORCHID, ROSE, SUNSET SHADES, WHITE, YELLOW.**

TETRA TALISMAN—A blend of gold scarlet and orange. Each of above: Pkt. 50c, 1/8 oz. \$3.50

TETRA FINE MIXED—Strikingly beautiful color combinations. Pkt. 35c, 1/8 oz. \$1.50.

MAXIMUM SNAPDRAGONS

Tall tapering spikes—30 to 36 in. Pkt. 25c, 1/8 oz. \$1.00

AQUILEGIA (Columbine)

HALLAWELL'S SELECT HYBRIDS—Lovely long spurred flowers in pleasing color combinations. Per. 2-3 ft. Pkt. 50c, 1/8 oz. \$2.00.

McKANA HYBRIDS—All-America winner. Stunning large flowers. Per. 3 ft. Pkt. 50c, 1/8 oz. \$2.00.

ARCTOTIS (African Daisy)

GRANDIS (African Lilac Daisy)—Silvery white flowers 2 1/2 in. across, blue center. Grows 3 ft. Pkt. 25c, 1/4 oz. 75c.

HALLAWELL'S ASTERS

Easy to grow from our fresh new crop seeds

Hallawell's asters are fresh and dependable. You'll find the germination high and they will produce strong healthy plants with prize blooms. They're easy to grow and prefer a warm sunny location.

GIANT INTERLACED ASTERS

Interlacing petals forming huge flowers of ostrich-feather type. 3 ft. high. In separate colors of **AZURE BLUE, CRIMSON, DARK BLUE, ORCHID, ROSE, SALMON-ROSE, SHELL PINK, WHITE, and MIXED.**

Each: Pkt. 35c, 1/8 oz. \$1.25

CREGO GIANT ASTERS

Large, full double fluffy flowers, 4 to 5 in. across, with gracefully curled ribbon petals. **AZURE BLUE, CRIMSON, DARK BLUE, ORCHID, ROSE, SALMON-ROSE, SHELL PINK, WHITE, also MIXTURE** (blend of best colors).

Each of above: Pkt. 25c, 1/4 oz. \$1.25

SINGLE DAISY ASTERS—Daisy-like flowers with yellow disc centers. Many colors. Pkt. 25c, 1/8 oz. 50c.

SUNSHINE ASTERS—A large ray of petals with an anemone-quilled center. Many colors. Pkt. 25c, 1/8 oz. \$1.00.

PERENNIAL ASTERS

(Michaelmas Daisy)

Start seeds early, will make a fine showing first year.

NEW LARGE FLOWERED—Mixed colors. Pkt. 35c, 1/8 oz. \$1.00.

PRINCESS ASTERS

Charming flowers 3 to 3 1/2 inches across with crested center and multiple rows of guard petals. 2 to 2 1/2 feet high.

PRINCESS MIXTURE—A very attractive mixture of all colors in this popular type. Pkt. 25c, 1/8 oz. \$1.00.

HALLAWELL'S BEAUTY ASTERS

Hallawell's **Beauty Asters** are distinguished by their charming incurving petal-type flowers. Grow 2 1/2 ft.

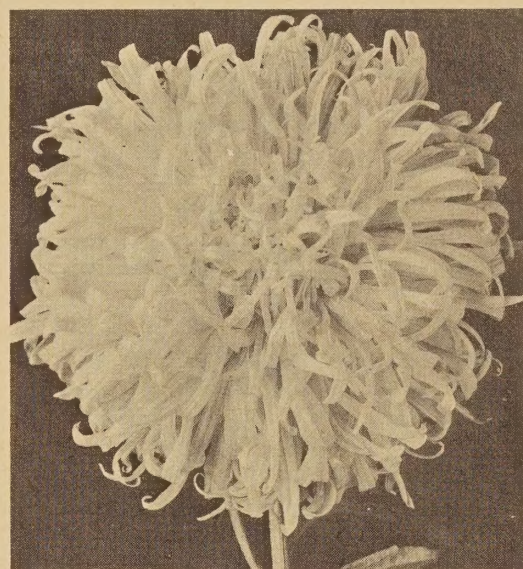
MIXED—Pkt. 25c, 1/8 oz. \$1.00.

BALSAM (Lady Slipper)

CAMELLIA-FLOWERED MIXTURE—Branching plants 2 ft. tall, attractive double flowers. Pkt. 25c, 1/4 oz. 75c.

BARTONIA (Mentzelia)

BLAZING STAR—Brilliant silken-textured golden-yellow flowers. 2 ft. across, easy to grow. 2 ft. Pkt. 25c, 1/2 oz. \$1.40.



ASTER, INTERLACED HOLLYWOOD



BEAUTY ASTER



SNAPDRAGON, TETRA MIXTURE

KEEP THIS CATALOG!

Gives you a planting chart for each month of the year.
Cultural directions to assist you with your plantings.

MAKES YOUR SEASONAL ORDERING EASY

BEGONIA SEEDS

HALLAWELL'S California strain of begonia seeds are the finest produced anywhere. Will bloom the first year.

CAMELLIA-FLOWERED—Exquisite blooms. Mixed colors. Pkt. \$1.00, 3 pkts. \$2.50.

BELLIS PERENNIS (English Daisy)

Giant double flowered biennials for beds and window boxes. Prefers cool moist soil, where it may bloom 2 to 3 years. 8 in.

MIXTURE—Pkt. 35c, 1/8 oz. \$1.25.

BELLS OF IRELAND

(*Molucella Laevis*)—Long stems of soft green bell-shaped bracts, each with a small white flower nestled in the center. 2 ft. annual. Pkt. 50c, 1/8 oz. \$1.00.

CALCEOLARIA (Purse Flower)

Tigered flowers in shades of orange, yellow, and rose. A fine greenhouse plant. 18 in. Pkt. \$1.00.

CALENDULA (Winter Marigold)

BEAUTY CALENDULAS—In winter when flowers are scarce, you'll appreciate these lovely Calendulas. Seeds sown in July to October will provide flowers for cutting all winter. Separate colors of **Apricot, Cream, Lemon, Persimmon, and Mixture.**

Each: Pkt. 25c, 1/2 oz. 85c.

CALIFORNIA WIND BREAK

LAVATERA ASSURGENTIFLORA—Evergreen perennial for windbreak. Grows 6 ft. tall the first year. Flowers are rosy-red. Pkt. 25c, oz. \$1.50.

CAMPANULA (Canterbury Bells)

ANNUAL CANTERBURY BELLS—Large single bell-shaped flowers of blue, lavender, rose, and white. 2 1/2 feet. Mixed. Pkt. 25c, 1/8 oz. \$1.00.

CUP AND SAUCER—Single cup-shaped flowers with saucer calyx. Sow in fall for spring bloom. Biennial, 2 ft. Mixture. Pkt. 25c, 1/8 oz. \$1.25, 1/2 oz. \$3.50.

CANARY BIRD VINE

Tender climbing annual with decorative foliage and delicately fringed yellow flowers. Pkt. 25c, 1/2 oz. \$1.00.

ANNUAL CANDYTUFT (Iberis)

DWARF MIXED—8 to 10 in. Lovely colors. Pkt. 25c, 1/4 oz. \$1.50.

SPLENDID MIXED—Compact, branching plant 1 ft. tall, covered with colorful flowers. Pkt. 25c, 1/2 oz. 95c.

HYACINTH FLOWERED CANDYTUFT—Four to six large hyacinth-like spikes of pure white flowers. Pkt. 25c, 1/4 oz. 75c.

PERENNIAL CANDYTUFT (1 ft.)

GIBALTARICA—Masses of lavender-pink flowers, shading to white. Ground cover. Pkt. 25c, 1/4 oz. \$1.00.

SEMPERVIRENS—A blanket of white flowers in early spring. Hardy and long lasting. Pkt. 35c, 1/8 oz. \$1.25.

CARNATIONS

ENFANT DE NICE—Robust plants bearing large full double flowers on long, sturdy stems for cutting. In separate colors of **Pale Pink, Red, Scarlet, Striped, Light Salmon, Yellow and Finest Mixed.** Pkt. 50c, 1/8 oz. \$1.75.

FANTASY CARNATION—If you like carnations you'll love Fantasy, with its innumerable variations in color markings. Picotee, pin-striped, penciled and blotched in yellow, red, pink, maroon, smoky and others. A carnival of color combinations. Pkt. 50c, 1/8 oz. \$1.50.

CHABAUD'S CARNATION—Robust plants bearing clove-scented flowers of fine form. Mixed colors: Pkt. 25c, 1/8 oz. \$1.50.

PAMPAS PLUME CELOSIA

TALL FEATHERED MIXED—Graceful branching plants 2 1/2 ft. high bearing many silken plumes of ostrich feather type. Shades of red and yellow. Mixed: Pkt. 25c, 1/4 oz. \$1.25.

CRESTED COCKSCOMB (Celosia Cristata)

So called because of resemblance in form to rooster's comb.

TOREADOR—A beautiful new cockscomb. Brilliant red. 2 ft. Pkt. 50c, 1/8 oz. \$2.50.

GLASGOW PRIZE—Very wide crimson combs 6 in. Pots and edgings. Green foliage. Pkt. 25c, 1/8 oz. \$1.00.

DWARF MIXED—1 ft. assorted colors. May be dried for winter decoration. Pkt. 25c, 1/8 oz. \$1.00.

BACHELOR BUTTON (Centaurea Cyanus)

Bushy plants bearing double flowers for cutting. Blooms all summer. Colors intense and clear. 2 ft.

BLUE BOY—Nice blue.

RED BOY—Ruby red.

PINKIE—Rose pink.

SNOWMAN—White.

DOUBLE MIXED—Hallawell's Formula Mixture.

Each: Pkt. 25c, 1/4 oz. 60c

Any 4 pkts. 85c

JUBILEE GEM—A dwarf double blue cornflower for edgings, borders and rock gardens. 1 ft. Pkt. 25c, 1/4 oz. \$1.00.

GIANT SWEET SULTAN (Centaurea Imperialis)

Large, fringed long-stemmed flowers for cutting. Give them partial shade where summers are hot.

MIXED COLORS—Pkt. 25c, 1/4 oz. \$1.00.

DUSTY MILLER (Centaurea Candidissima)—Prized for its silvery white foliage. Grows about 1 ft. high. Pkt. 35c, 1/8 oz. \$1.50.

CHRYSANTHEMUM (Painted Daisy)

Summer blooming annuals of compact growth, producing quantities of gay, single flowers 2 in. across. 2 1/2 ft.

MERRY MIX—Pkt. 25c, 1/4 oz. \$1.00.

CINERARIAS

CALIFORNIA SUPER GIANTS—A special Hallawell strain, the largest and most desirable cineraria grown. Flowers are 3 to 5 in. across and in huge well rounded trusses.

SUPER GIANTS BLUE SHADES—Pkt. \$1.00.

SUPER GIANTS SALMON SHADES—Pkt. \$1.00.

SUPER GIANTS MIXED—Many pleasing colors and color combinations. Pkt. \$1.00, 3 pkts. \$2.50, 1/64 oz. \$5.00.

BEDDING MIXTURES—Semi-dwarf large flowered for mass bedding. Pkt. 50c, 1/64 oz. \$3.50.

STELLATA—Spreading panicles of star-shaped single flowers in mixed colors. Will reseed. Shade. 2 ft. Pkt. 50c, 1/64 oz. \$3.00.

CLARKIA

Dainty double flowers, grow close together on branches with scant foliage. 2 ft.

DOUBLE MIXED—Pkt. 20c, 1/2 oz. \$1.00.

COBAEA SCANDENS (Cathedral Bells)

A very fine and rapid growing perennial climber with large bell-shaped purple flowers. Pkt. 25c, 1/8 oz. \$1.00.

COLEUS

Richly colored ornamental foliage plants. Pkt. 50c, 1/8 oz. \$3.50.

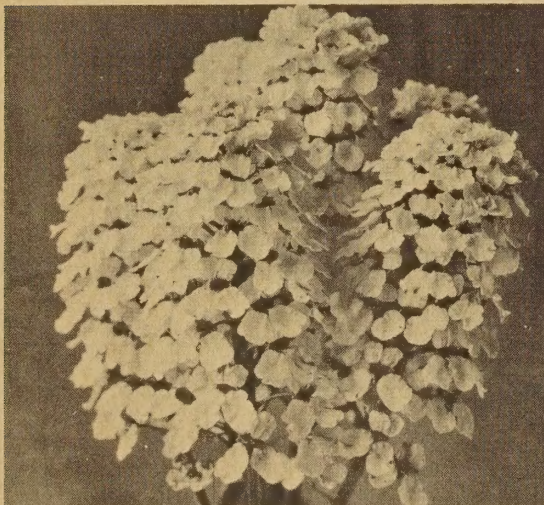
COLLINSIA (Chinese Houses)

BICOLOR—White flowers shaded lilac and rose-purple, clustered in tiers at intervals along the stems. Pkt. 25c, 1/4 oz. 50c.

COREOPSIS

A very popular and easily grown perennial which flowers the first year from early sown seeds. Plant 2 to 3 ft. tall.

DOUBLE SUNBURST—Semi-double clear yellow. Pkt. 25c, 1/4 oz. 75c.



CANDYTUFT



FANTASY CARNATION



CINERARIA, SUPER GIANT

Hallawell's SEED STARTER

Germinating all kinds of seeds is simple and easy with a Hallawell Seed Starter. It supplies moisture in just the right amount and without demanding too much attention. In fact, week-end gardeners may sow seeds and return the next week-end to find them sprouted and growing.

Just fill the Starter with a suitable soil mixture, sow the seeds, fill the water compartment and place the Starter in a protected place out of doors. Two fillings of water may be required to thoroughly moisten dry soil.

When seeds have sprouted, move the Starter to full sun and transplant to flats or the garden when plants are ready.

The Seed Starter is sturdy galvanized steel and will last for years.

In San Francisco \$2.35 each,
\$3.10 packed, postpaid.

2 for \$5.45 packed and postpaid within the 4th zone.

ORNAMENTAL SQUAW CORN

Multicolored grains of corn in shades of red, yellow, black, purple, and white; all on the same ear, but each ear different. In much demand for Hallowe'en. Pkt. 25c, ½ lb. \$1.00.

COSMOS

Branching plants 2 to 3 ft. tall with fine foliage and single flowers 4 to 6 in. across. They bloom in 10 to 12 weeks.

PINKIE—Clear rose pink.

PURITY—White.

RADIANCE—Deep rose.

Each: Pkt. 25c, ¼ oz. 75c

SENSATION MIXED—Delightful colors for bouquets. Pkt. 25c, ¼ oz. 75c.

CYCLAMEN

PERSICUM—May be grown in the garden where temperature gets as low as 16 to 18°. Plant in partial shade.

Finest Mixed—Pkt. \$1.00, 100 seeds \$3.50.

NEOPOLITANUM—Pink to carmine flowers and decorative white marbled foliage. Hardy perennial. 6 in. Pkt. of 25 seeds \$1.00, 100 seeds \$2.50.

CYNOGLOSSUM

(Chinese Forget-Me-Nots)

Graceful sprays of blue flowers. Easily grown from seeds sown in open ground.

AMABILE—Pretty turquoise-blue, 18 to 24 in. Pkt. 25c, ¼ oz. 40c.

FIRMAMENT—India-blue, dwarf plants, 15 in. Pkt. 25c, ¼ oz. 40c.

TALL DAHLIAS

DECORATIVE EXHIBITION HYBRIDS—

All new dahlias come from seeds and your chance of getting some fine new ones is very good. Many pleasant surprises may be expected. Bloom first year. Pkt. \$1.00, ⅛ oz. \$4.00.

CACTUS DOUBLE MIXED—Intended to produce many lovely, medium sized blooms. Pkt. 50c, ⅛ oz. \$2.50.

POMPON DOUBLE MIXED—The popular small flowered dahlia for cutting. Pkt. 50c, ⅛ oz. \$2.50.

DWARF DAHLIAS

Improved Dwarf Unwin Hybrids

Nearly all double with colors, including canary, buff, apricot, rose, scarlet with charming variegations and suffusions. 20 in. Pkt. 50c, ¼ oz. \$1.50.

DELPHINIUM

Hallawell's Strain of Pacific Giants

Double flowers 2 to 3 inches across on sturdy spikes 4 to 6 feet tall. Bright sparkling colors and deep velvety tones make this strain the finest in cultivation. Seeds started May through October will bloom the following summer.

ASTOLAT—Pale blush through shades of pale lavender-pink and lavender-rose. Bees are fawn and black. Pkt. \$1.00, ⅛ oz. \$4.00.

BLACK KNIGHT—Deep violet, dark bee. **BLUE BIRD**—Sparkling mid-blue, white bee.

CAMELLIARD—Handsome lavender, white bee.

GALAHAD—Stunning pure white, white bee.

GUINEVERE—Light pinkish lavender, white bee.

KING ARTHUR—Rich royal purple, white bee.

SUMMER SKIES—Clear light blue, white bee.

PACIFIC SERIES MIXED—A grand mixture from specimen plants of named varieties only.

Each: Pkt. \$1.00, ⅛ oz. \$3.50

HALLAWELL'S SPECIAL MIXTURE

A splendid mixture of colors from sky-blue through cornflower blue, mauve and heliotrope to the deep velvet blue shades. Pkt. 50c, ⅛ oz. \$2.50.

DWARF CHINESE DELPHINIUMS

Dwarf branching plants grown especially for cut flowers. Seeds started early, bloom first season and continue 2 to 3 years.

AZURE FAIRY—Pretty, light blue, 10 in. high.

BLUE BUTTERFLY—Ultramarine blue. 8 in. high.

Each: Pkt. 35c, ⅛ oz. \$1.25

DIANTHUS

GAIETY DOUBLE MIXED—New brilliant carnation shades including salmon scarlet and many beautiful color combinations. Pkt. 25c, ⅛ oz. 75c.

MAIDEN PINKS (Deltoides)

Rich rose-pink. 4 in. Pkt. 50c, ⅛ oz. \$2.00.

HARDY PERENNIAL PINKS

PLUMARIUS DOUBLE MIXED (Double Grass Pinks)—Double and semi-double flowers in charming color combinations. Pkt. 50c, ⅛ oz. \$1.50.

DIDISCUS

BLUE LACE FLOWER—Lacy flower heads about 2½ inches across, delicate lavender-blue, resembling Queen Anne's Lace. 1½ feet. Pkt. 25c, ¼ oz. \$1.25.

DIGITALIS (Foxglove)

GLOXINIAFLORA MIXED—Flowers are spotted like gloxinias. Thrive in sun or half shade. 3 to 4 feet. Pkt. 25c, ⅛ oz. 50c.

GIANT SHIRLEY PASTEL SHADES—New shades of apricot, cream yellow, rose-pink and heliotrope. 5 to 6 ft. Pkt. 25c, ⅛ oz. 75c.

DORONICUM

EXCELSUM—1 ft. Hardy perennial bearing bright yellow flowers nearly as large as a single Shasta daisy and of similar form. Pkt. 35c, ⅛ oz. \$2.50.

ESCHSCHOLTZIA

(California Poppy)

Seeds sown during spring and early summer will bloom before frost. Seeds sown during fall and winter will bloom the following spring. For roadsides and large area planting sow just before or during the rainy season.

AURANTIACA—Rich orange true California poppy. Pkt. 25c, Large pkt. 50c, oz. \$1.25, ¼ lb. \$4.00.

BRILLIANT MIXED—Shades of carmine, orange, yellow and white in a brilliant mixture. Pkt. 25c, oz. \$1.25, ¼ lb. \$4.50.

NEW HYBRIDS MIXED—Many new shades of eschscholtzia in this strain. Pkt. 25c, oz. \$2.25.

GAILLARDIA

PORTOLA HYBRIDS—Semi-double bronzy-red flowers. Each petal tipped yellow. Per. 2 ft. Pkt. 25c, ⅛ oz. 75c.

DOUBLE MIXED—Long blooming plants with curly ball blossoms in varied shades of red, yellow and orange. Pkt. 25c, ⅛ oz. 75c.



CLARKIA, DOUBLE MIXED



COREOPSIS, DOUBLE SUNBURST



DWARF UNWIN DAHLIAS

GAZANIA

HYBRIDS MIXED—Planted extensively in parking areas and on banks. Pkt. 50c, 1/8 oz. \$1.50.

GERBERA (Transvaal Daisy)

The large marguerite-like flowers come in all shades of pink, salmon, red and yellow and are borne on long, straight stems. They require a warm, sunny position. Pkt. 50c, 1/8 oz. \$4.00.

GEUM

(The Rose of the Rockery)

Perennial. 2 ft. Attractive double blooms on long stems for cutting. Blooming season may be prolonged by keeping flowers cut.

MRS. BRADSHAW—Large fiery scarlet. Pkt. 35c, 1/8 oz. \$1.00.

GILIA

CAPITATA (Thimble Flower)—A hardy California wildflower with lavender blue flowers. Pkt. 25c, 1/4 oz. 75c.

TRICOLOR (Bird's Eye)—A California wildflower, pale lilac single flowers; requires sun. Pkt. 25c, 1/4 oz. 75c.

GLOXINIA

A showy pot plant. Bell shaped flowers in rich and varied colorings. Blooms in 6-8 months from seeds. Finest California strain, assorted colors. Pkt. \$1.00, 2 pkts. \$1.85.

GODETIA

Bright and showy in mass plantings and excellent for cut flowers. They thrive in our Bay area climate and are well suited for beds and borders.

AZALEA FLOWERED—Compact plants, 18 inches, many double flowers. Mixed. Pkt. 25c, 1/8 oz. 75c.

DOUBLE MIXED—2 ft. Many good cut-flower colors. Pkt. 25c, 1/8 oz. 75c.

SINGLE MIXED—18 in., shades of scarlet, salmon, and white. Pkt. 25c, 1/8 oz. 75c.

GOMPHRENA (Everlasting)

Clover-like flowers that dry and may be used for winter bouquets. 1 ft. Mixed colors. Pkt. 25c, 1/4 oz. 75c.

GOURDS

Odd shapes and pretty color patterns—some smooth, others rough and warty. A coat of shellac makes them glossy for decoration.

SMALL FRUITED MIXED—Pkt. 25c, oz. 75c.

LARGE AND SMALL MIXED—Pkt. 25c, oz. 75c.

GYPSOPHILA (Baby's Breath)

Grows quickly from seeds sown directly in open ground. The dainty sprays are much used as filler in bouquets.

ELEGANS WHITE—2 ft., white, branching. Pkt. 25c, oz. 75c.

CARMINE—Pkt. 25c, 1/4 lb. 75c.

PANICULATA—Per. 3 ft. Myriads of tiny white single flowers on branching plants. Pkt. 25c, 1/4 oz. \$1.00.

HELIANTHUS (Sunflower)

SUN GOLD—Brilliant golden yellow, double flowers 6-8 in. across. Pkt. 25c, 1/4 oz. 50c.

HELICHRYSUM (Strawflower)

Double flowers 2 in. across in assorted colors. One of the finest "everlastings." Pkt. 25c, 1/8 oz. \$1.00.

HELIOTROPE

Delightfully fragrant. An old-fashioned favorite in the garden or as pot plant. Pkt. 50c, 1/8 oz. \$1.00.

HEUCHERA (Coral Bells)

SANGUINEA SPITFIRE—Per. 1 foot. Graceful feathery spikes of brilliant flowers. Blooms all summer. Pkt. 50c, 1/32 oz. \$2.50.

DOUBLE HOLLYHOCK

A select strain of lovely new colors and huge, begonia-like flowers. Easy to grow in a warm sunny location, excellent for screening fences or walls. Per. 6 ft.

SELECT MIXED—Pkt. 25c, 1/4 oz. \$1.85.

NEW ANNUAL HOLLYHOCK

TRIUMPH—Frilled rosette type double; blooms the first year from seeds. Many pleasing colors in mixture. Pkt. 25c, 1/4 oz. \$1.75.

ORNAMENTAL KALE

Strikingly beautiful color combinations of white, cream, pink and rose on dark green background of foliage. Pkt. 25c, 1/4 oz. 75c.

KOCHIA

CHILDSI—Quick growing summer hedge plants with green foliage turning scarlet in the fall. Pkt. 25c, 1/4 oz. 50c.

KUDZU VINE

Forty-foot vines in one season, rosy-lavender flowers. Soak seeds to hasten germination. Pkt. 25c, 1/4 oz. 50c.

LANTANA

HYBRIDS FINEST MIXED—Shades of orange, red, yellow and pink. Pot plants or garden where winters are mild. Pkt. 25c, 1/4 oz. \$1.00.

LARKSPUR

Hallawell's Base Branching

The perfect garden flower and beautiful in any climate. Seeds may also be sown in winter. 5 feet. In separate colors of **Carmine, Deep Blue, Light Blue, Pink, Rose Pink, Salmon, White**. Pkt. 25c, 2 pkts. 45c, 1/4 oz. 90c, 1/2 oz. \$1.50.

BASE BRANCHING FORMULA MIXTURE—Pkt. 25c, 1/4 oz. 75c.

LATHYRUS (Everlasting Pea)

LATIFOLIUS—Per. climber. A good fence cover. Flowers resemble sweet peas. Pkt. 25c, 1/4 oz. \$1.00.

LAVENDER

MUNSTEAD STRAIN—Perennial herb with fragrant flowers which may be dried. 2 ft. Pkt. 25c, 1/8 oz. \$2.50.

LINARIA (Baby Snapdragon)

NORTHERN LIGHTS—Free flowering plants with small spikes of snapdragon-type flowers in gay and fascinating color combinations. 18 in. Pkt. 25c, 1/4 oz. \$1.00.

FAIRY BOUQUET—Compact plants 10 in. Bright colors for border or bulb covering. Pkt. 25c, 1/4 oz. \$1.00.

LOBELIA

Easily grown edging and trailing plants, bearing multitudes of small flowers all season.

CAMBRIDGE BLUE—Light blue flowers, green foliage, compact plants. 6 in. high. Pkt. 25c, 1/8 oz. \$1.50.

CRYSTAL PALACE—Dark blue, dark foliage, compact plants, 4 in. high, for edging. Pkt. 25c, 1/8 oz. \$1.25.

SAPPHIRE (Trailing)—Sapphire-blue, white eye, for hanging baskets, window boxes, pots. Pkt. 25c, 1/8 oz. \$1.25.

LUNARIA (Money Plant)

2 1/2-ft. sprays of silvery seed pods for winter decoration. Pkt. 25c, 1/4 oz. 65c.

LUPINUS (Lupines)

NANUS—This is the lovely native California lupin, flowers are blue, spikes are 1 ft. high. One ounce to 250 sq. ft. Pkt. 25c, oz. \$1.00.

HALLAWELL'S GIANT LUPIN—Spikes 3 to 4 ft. tall in assorted colors of blue and white. Pkt. 25c, 1/2 oz. \$1.00.

RUSSELL LUPINE—Thrives in cool moist climates. Pkt. 25c, 1/4 oz. \$1.50.

MIGNONETTE

Delightfully fragrant, easy to grow. 1 ft. **GIANT MACHET**—Tapered spikes closely set with gray florets. Pkt. 25c, 1/4 oz. 75c.

SWEET SCENTED—Grown especially for its fragrance. 1 1/2 ft. Pkt. 25c, 1/4 oz. 75c.

MIMULUS

QUEEN'S PRIZE—Perennial trailing plant 1 ft. high with yellow flowers, spotted brown. Excellent in shaded beds. Pkt. 35c, 1/8 oz. \$1.00.

MORNING GLORIES

Quick growing vines for shade and beauty. Seeds sprout easily in warm soil and full sun.

HEAVENLY BLUE—Masses of sky-blue flowers 4 to 5 in. across. Plant in warm soil. Pkt. 25c, 1/4 oz. 50c.

SUPER GIANTS MIXED—Vines for shade. Large flowers. Pkt. 50c, 1/4 oz. \$1.00.

TALL MIXED MORNING GLORY—For quick shade. Pkt. 20c, 1/2 oz. 35c.

FORGET-ME-NOT (Myosotis)

Dainty blue flowers on compact plants. 1 ft. high. Fall sown seeds bloom early spring.

ALPESTRIS BLUE—Light blue flowers. Pkt. 25c, 1/4 oz. \$1.00.

ALPESTRIS ROSEA—Rose-pink flowers. Pkt. 25c, 1/4 oz. \$1.00.

INDIGO COMPACTA—Dark blue flowers. Pkt. 25c, 1/4 oz. \$1.50.



PHLOX, DWARF BEAUTY MIXED



GODETIA, DOUBLE MIXED

Hallawell's MARIGOLDS

Plant Hallawell's Marigolds for abundant summer and fall bloom. They are easy to grow.

Dwarf Double Marigolds

BUTTERBALL—Dwarf, compact plants, with crested, butter-yellow flowers. Pkt. 20c, ¼ oz. \$1.00.

HARMONY EXTRA DWARF—6 in. high. Deep orange with maroon brown collar. Pkt. 25c, ¼ oz. \$1.00.

ROYAL SCOT DWARF—Mahogany and gold striped flowers on compact plants 10 in. high. Pkt. 25c, ¼ oz. \$1.00.

RUSTY RED—Mahogany-red, double flowers 2 in. across on bushy plants 1 ft. high. Pkt. 25c, ¼ oz. \$1.00.

LEMON DROP—Grows 9-10 in. high and the neat, compact plants are covered with lemon yellow double flowers. Pkt. 25c, ¼ oz. \$1.00.

COLOR MAGIC—A circus parade of colors. Bushy plants 1 ft. high, and a mass of double flowers. Pkt. 25c, ¼ oz. \$1.00.

TANGERINE—Brilliant orange. Flowers double, 2 in. across, 1 ft. bushy plants. Pkt. 25c, ¼ oz. \$1.00.

SUNKIST—Compact plants 9 in. high, deep golden orange flowers. Pkt. 25c, ¼ oz. \$1.00.

AFRICAN ALL DOUBLE MIXED—Orange and lemon shades. Pkt. 25c, ¼ oz. \$1.00.

Dwarf Single French Marigolds

SUNNY—Lovely single yellow flowers 2 in. across. Delicate cerise markings. 15 in. Pkt. 25c, ¼ oz. \$1.00.

TINY GEM MIXTURE—A profusion of perfect, tiny flowers on compact plants 6 to 8 in. high. Shades of orange yellow. Pkt. 25, ¼ oz. \$1.00.

Medium Flowered Marigolds

GLITTERS—Fluffy, chrysanthemum-like, canary yellow flowers. 3 in. across. 2 ft. Pkt. 25c, ¼ oz. \$1.25.

Giant Flowered Marigolds

CRACKERJACK—Blooms exceeding 5 in. in diameter on branching compact plants 3 ft. high. Colors are attractive shades of orange and yellow. Pkt. 25c, ¼ oz. \$1.25.

ORANGE SUNSET—Rich orange colored flowers 4 to 5 in. across. 3 to 4 ft. Pkt. 25c, ¼ oz. \$1.00.

SUNSET GIANTS MIXED—A color range through orange, yellow and primrose. Pkt. 25c, ¼ oz. \$1.00.

POT O'GOLD—Golden orange flowers. Plants 18 in. Pkt. 25c, ¼ oz. \$1.00.

Carnation Flowered Marigolds

GUINEA GOLD—Golden orange. 2½ ft. Pkt. 25c, ¼ oz. \$1.00.



MARIGOLD

NASTURTIUMS

Trailing Double Nasturtiums

Long stemmed, semi-double fragrant flowers on trailing plants, suitable for ground cover.

GOLDEN GLEAM—Golden yellow.

MAHOGANY GLEAM—Mahogany red.

ORANGE GLEAM—Deep golden orange.

SCARLET GLEAM—Vivid fiery scarlet.

GLEAM HYBRIDS—A mixture of bright sparkling colors, excellent ground cover.

Each: Pkt. 25c, oz. 75c, ¼ lb. \$2.00, lb. \$6.00

Dwarf Double Nasturtiums

Dwarf compact plants, 1 ft. high and 1½ ft. across, bearing fragrant semi-double flowers.

GARNET GEM—Brilliant garnet red.

GOLDEN GEM—Pure golden yellow.

MAHOGANY GEM—Velvety dark red.

ORANGE GEM—Orange scarlet.

SCARLET GEM—Glowing fiery scarlet.

WARF GEM MIXED—Many colors, all double.

Each: Pkt. 25c, oz. 75c, ¼ lb. \$2.00,

Single Nasturtiums

The old fashioned single nasturtiums.

DWARF SINGLE MIXED—1 ft. high, all colors.

TALL SINGLE MIXED—Trailing.

Each: Pkt. 25c, oz. 75c, ¼ lb. \$2.00.

NEMESIA

Dwarf plants with dainty flowers in shades of blue, red, orange, rose, yellow and white. Thrives in cool coastal areas.

STRUMOSA MIXED—All the best colors. Pkt. 35c, ⅓ oz. \$1.50.

TRIUMPH MIXED—Compact plants 8 in. high. Pkt. 35c, ⅓ oz. \$1.50.

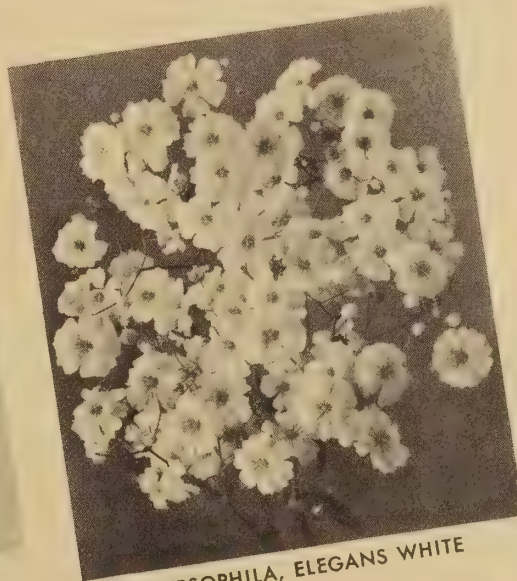
NEMOPHILA

INSIGNIS (Baby Blue Eyes)—A California wildflower. 10 to 12 in. high. Excellent bulb bed covering. Pkt. 25c, Large pkt. 50c, oz. \$1.00.

NEMOPHILA MIXED—Blue, Lilac, White, Mottled. Pkt. 25c, oz. \$1.00.

NICOTIANA

NEW SENSATION—Delightful fragrance, long tubed flowers in good colors. 2 ft. tall. Pkt. 25c, ¼ oz. \$1.00.



GYPSOPHILA, ELEGANS WHITE

NIEREMBERGIA (Cup Flower)

Compact plants 1 ft. high, violet purple, cup-shaped flowers 1 in. across. Pkt. 50c, 1/32 oz. \$2.00.

NIGELLA (Love in a Mist)

MISS JEKYLL—Old fashioned blue flowers. Easy to grow. Pkt. 25c, ⅓ oz. 50c.

PENTSTEMON

Two-foot flower spikes of closely set tubular flowers in shades of pink, lavender and red. Pkt. 35c, ⅓ oz. \$1.25.

Hallawell's PHLOX

CUSPIDATA (Champagne Stars)—Medium sized flowers with petals fringed and starred. A mixture in endless variety of colors. Pkt. 25c, ⅓ oz. 75c.

DRUMMONDI MIXED—All the phlox colors including the dark velvety shades of red. Pkt. 25c, ⅓ oz. 75c.

GIANT ART SHADES—A mixture of lovely, delicate art shades. 1 ft. high. Pkt. 25c, ⅓ oz. \$1.25.

DWARF BEAUTY PHLOX

Our exquisite Beauty phlox in separate colors. Plants are spreading, 4 to 6 in. high. We have **Blue, Pink, Crimson, Salmon, White**. Each: Pkt. 35c, ⅓ oz. \$1.50.

DWARF BEAUTY PHLOX MIXED

A mixture of bright, pleasing colors in shades of red through pink, primrose, violet and maroon. 4 to 6 in. high. Pkt. 25c, ⅓ oz. \$1.25.

ANNUAL POPPIES

Poppies make a grand display of color and seeds may be sown during winter.

SHIRLEY—Single flowers in shades of pink, red, rose, salmon, etc. 2½ ft. Pkt. 25c, ½ oz. \$1.00.

SHIRLEY DOUBLE—Double and semi-double flowers in a great variety of color combinations. 2½ ft. Pkt. 25c, ½ oz. \$1.00.

AMERICAN LEGION—Brilliant orange-scarlet. Pkt. 25c, ½ oz. \$1.00.

ORIENTAL POPPIES

Perennial plants bearing huge flowers in brilliant and fascinating color combinations.

SCARLET—Very beautiful shades of red. Pkt. 35c, ⅓ oz. \$1.50.

HYBRIDS—Shades of orange, scarlet, salmon. Pkt. 35c, ⅓ oz. \$1.50.

ICELAND POPPIES

Attractive perennial that flowers the first year from early sown seed.

GOLDEN GATE GIANTS—Hallawell's Special strain of largest flowers and longest stems in a grand color range. Pkt. 50c, ⅓ oz. \$2.00.

PASTEL TINTS—In many lovely shades. Pkt. 50c, ⅓ oz. \$3.50.

PORTULACA

Dense creeping plants 5 to 6 in. high, covered with flowers in brilliant and sparkling colors. Thrives in hot sun.

SINGLE MIXED—Orange, red, white and others. Pkt. 25c, ⅓ oz. 75c.

DOUBLE MIXED—Many brilliant colors. Pkt. 25c, ⅓ oz. \$1.25.

PYRETHRUM ROSEUM

Perennial cut flower daisies easily and quickly grown from seeds in sunny location. 2 ft.

DOUBLE MIXED—Some singles may be expected. Pkt. 50c, ⅓ oz. \$2.00.



PANSY, AMERICAN GIANT



DWARF SCHIZANTHUS



PRIMULUS, GIANT SUPERB MIXED

PRIMULAS

Primula Polyanthus

GIANT SUPERB MIXED—Hardy perennial primroses, a very popular shade plant along the coastal region where primulas are at their best. Pkt. 50c, $\frac{1}{8}$ oz. \$3.00.

Primula Malacoides

Where winters are mild, this charming primula blooms during winter, rain or shine. Start seeds during July and August for winter bloom.

MRS. ERIKSSON—Glowing rose-red.

NEW BABY—Best lavender pink.

TRUE ROSE—Most popular rose color.

WHITE GIANT—The best pure white. Pkt. 50c, $\frac{1}{32}$ oz. \$6.50

RICINUS

(Castor Oil Bean or Gopher Plant)

An annual which persists as a perennial in mild climates. Grows to a height of from 6 to 15 feet, and has large ornamental foliage.

ZANZIBARENSIS—A large-leaved variety, deep green and bronze, growing 10 to 15 feet high. Pkt. 25c, oz. \$1.25.

Hallawell's GIANT PANSIES

Fresh vital seeds to produce strong healthy plants for perfect blooms. Hallawell's Pansies are the finest in cultivation. We are proud of them and justly so. You'll be proud of them too when they bloom in your garden. For largest flowers enrich your pansy bed with manure before planting.

Hallawell's AMERICAN GIANTS

Contains all the rich deep colors known to pansies. Some are margined in contrasting color, others are heavily blotched in velvety tones, some are ruffled, others are plain, all of them have good long stems. Pkt. \$1.00, $\frac{1}{8}$ oz. \$4.00.

Hallawell's PASTEL TINTS

Soft delicate shades and fascinating color combinations. They are tints of pink, orchid, peach, coral, rose, salmon and buff. Many of the blooms are ruffled; all of them are beautiful. Pkt. \$1.00, $\frac{1}{8}$ oz. \$6.00.

SALPIGLOSSIS

Trumpet shaped flowers penciled, netted and veined in rich velvety colors. Highly prized in the Bay Area. Pkt. 25c, $\frac{1}{4}$ oz. \$1.00.

SALVIA (Scarlet Sage)

BLAZE OF FIRE—Bright orange-scarlet. 10 in. high. Pkt. 25c, $\frac{1}{8}$ oz. \$2.50.

SPLENDENS—Bright scarlet flowers, branching plants, 2½ to 3 ft. tall. Pkt. 25c, $\frac{1}{8}$ oz. \$1.50.

SCABIOSA (Pincushion)

HALLAWELL'S GIANT HYBRIDS—Shades of blue, red, pink, rose, salmon and white. Large ball shaped flowers. 3 ft. Pkt. 25c, $\frac{1}{4}$ oz. \$1.00.

Perennial Scabiosa

HOUSE'S HYBRIDS—Long stemmed ruffled flowers in a color range from dark blue to lavender. 2½ ft. Pkt. 50c, $\frac{1}{8}$ oz. \$2.00.

SCARLET RUNNER (Beans)

Ornamental and edible. Pkt. 25c, lb. \$1.00.

SCATTER GARDEN MIXTURE

A mixture of showy annuals, dwarf, medium and tall, for a grand display of color in areas where it would be difficult to intensely cultivate a garden. Large pkt. 45c, oz. \$1.25.

SCHIZANTHUS (Butterfly Flower)

Charming orchid-like flowers literally cover plants 10 to 12 inches tall. They grow splendidly in our San Francisco climate. 1½ ft.

HALLAWELL'S SELECT MIXTURE—A fine mixture of many rich and charming color combinations. Pkt. 25c, $\frac{1}{8}$ oz. \$1.75.

HALLAWELL'S DWARF MIXED—Neat compact plants 9 to 10 in. high, dainty orchid-like flowers in exquisite colors. Pkt. 35c, $\frac{1}{8}$ oz. \$2.00.

SHASTA DAISIES

A favorite California garden flower for mass plantings, long season garden show and cutting. 2 to 2½ feet.

ALASKA—Large single white flowers, small yellow center, strong straight stems. Pkt. 25c, $\frac{1}{8}$ oz. \$1.00.

GIANT DOUBLE—Flowers 3 to 4 in. across, pure white, with petals twisted and curled. Pkt. 50c, $\frac{1}{8}$ oz. \$2.50.

Hallawell's JUMBO

Giant exhibition blooms, blotched in contrasting colors, some margined, others ruffled and all of them on sturdy stems. Pkt. 50c, $\frac{1}{8}$ oz. \$3.00.

SWISS GIANTS MIXED

Our California grown seed of Swiss Giants is the finest strain grown. It includes all the most desirable colors in face, blotched and other interesting color forms. Pkt. 35c, $\frac{1}{8}$ oz. \$3.00.

SEPARATE COLOR PANSIES

SWISS WHITE—Large pure white.
CORONATION GOLD—Clear yellow.
ULLSWATER—Blue with black center.
Each of above: Pkt. 50c, $\frac{1}{8}$ oz. \$2.50

STATICE (Everlasting)

SINUATA—Graceful sprays of pretty flowers which hold their color well when dried. Useful for winter bouquets, wreaths, etc.

NEW HYBRIDS MIXED—All available colors and some from the trial beds. Easy to grow. Pkt. 25c, oz. \$1.25.

EARLY GIANT IMPERIAL STOCKS (Base Branching Strain)

These remarkable base branching stocks grow 2 ft. high with tall graceful spikes bearing 35 to 45 large individual florets. About 65% to 70% of the plants will bear double flowers.

ANTIQUE COPPER—Coppery-red shade.

BUTTERCUP—Soft canary yellow.

CHAMOIS—Ivory tinted old rose.

CRIMSON—Rose crimson.

FLESH—Exquisite shade of pink.

LAVENDER—Lavender to silver blue.

PURPLE—Fine luminous purple.

ROSE—Deep rose pink.

SANTA MARIA—Best pure white.

Each of above: Pkt. 25c, $\frac{1}{4}$ oz. \$2.00

Any 5 pkts. of above for \$1.00

GIANT IMPERIAL MIXED—Carefully selected colors for a well balanced mixture. Pkt. 25c, $\frac{1}{4}$ oz. \$2.00.

GIANT PERFECTION

Winter Stocks

Where winters are mild, sow these seeds during summer and fall for winter and very early spring bloom. Be sure to choose a well drained soil.

GIANT PERFECTION MIXED—Pkt. 25c, $\frac{1}{4}$ oz. \$2.00.

COLUMN STOCKS

One huge spike of fragrant double flowers from one plant—no more—so plant them close together, 5 to 6 inches apart in the row or each way in beds.

MIXTURE—Pkt. 50c, $\frac{1}{8}$ oz. \$3.00.

TRYSONIC STOCKS

Eighty-five per cent or more plants bearing double flowers, the highest percentage of double ever obtained from seedling stock plants. A packet of Trysonic Stocks contains approximately 150 seeds.

TRYSONIC HI-DOUBLE MIXED—Pkt. \$1.00, $\frac{1}{8}$ oz. \$3.00.

Hallawell's BEDDING PETUNIAS

For a quick display of color start seeds in flats and transplant to the garden. Seeds may also be sown in the open ground where the weather is warm. They bloom all summer.

BALLERINA—Soft glowing salmon flowers beautifully fringed. 1 ft. Pkt. 50c.

CARNIVAL—An astonishing variation of color in a moderate size planting. Flowers are 3 to 4 in. across, fringed, and ruffled. Pkt. 50c.

FIRE DANCE—Large, brilliant scarlet flowers, beautifully fringed, golden-yellow center. 1 ft. Pkt. 50c.

TANGO—Deeply fringed; scarlet-salmon flowers, 4 in. across, on plants 1 ft. high. Pkt. 50c.

RED SATIN—All-America winner. Vivid scarlet-red flowers on 1 ft. globe shaped plants. Pkt. 50c, 3 pkts. \$1.25, 1/128 oz. \$4.00.

CELESTIAL ROSE—Compact plants 1 ft. high, completely covered with bright rose flowers. Pkt. 25c, 1/8 oz. \$2.00.

FLAMING VELVET—Velvety mahogany-red with a scarlet sheen. Pkt. 25c, 1/8 oz. \$2.00.

ROSE OF HEAVEN—Rose-colored flowers on compact plants. 1 ft. high. Pkt. 25c, 1/8 oz. \$2.00.

VELVETY BLUE—Rich violet blue with a lovely silvery luster. Dwarf bushy plants. Pkt. 25c, 1/8 oz. \$2.50.

COMPACT SINGLE MIXED—This is our finest mixture of single bedding petunias. 1 ft. high. Pkt. 25c, 1/8 oz. \$2.00.

ROSY MORN—Bright rose with white center. 1 ft. Pkt. 25c, 1/8 oz. \$2.50.

SILVER BLUE—Medium light blue. Pkt. 25c, 1/8 oz. \$3.00.

SNOWBALL—Large round single, white flowers on bushy, compact plants 1 ft. high. Pkt. 25c, 1/8 oz. \$2.50.

GIANT RUFFLED PETUNIAS

The Finest California Strains

GIANT MIDGET—Hallawell's Special Strain of Early Giant ruffled flowers on midget base branching plants. Good color range. Pkt. 50c, 1/64 oz. \$1.00.

RUFFLED GIANTS OF CALIFORNIA

Hallawell's special strain of giant ruffled petunias in many charming colors. 1 1/2 ft. Pkt. 50c, 2 pkts. 90c, 1/64 oz. \$4.00.

DWARF GIANTS OF CALIFORNIA—Dwarf, compact plants bearing large deeply ruffled flowers in a good range of colors. 1 ft. Pkt. 50c, 1/64 oz. \$4.50.

THEODOSIA—Very frilly, deeply fringed, bright rosy-pink with conspicuous golden throat. Pkt. 50c, 1/64 oz. \$3.50.

WHITE MOUND—Beautifully frilled and fringed pure white. Pkt. 50c, 1/64 oz. \$3.50.

CANADIAN ALL DOUBLE—Exquisite full double ruffled flowers up to 4 inches across in a mixture of many pleasing colors. Pkt. \$1.50, 2 pkts. \$2.75.



PETUNIA, ROSY MORN



PETUNIA, DWARF CALIF. GIANTS

DWARF TEN WEEKS STOCKS

These Stocks grow about 1 foot high and are intended for bedding purposes only.

MIXTURE—A splendid assortment of colors. Pkt. 25c, 1/8 oz. \$2.00.

RUNNERLESS STRAWBERRY

Small edible, red berries with a pleasant, aromatic fragrance. Plants are runnerless, easy to grow and suitable for edging or pots. Pkt. 50c, 1/8 oz. \$1.00.

SWEET PEAS — See next page

SWEET WILLIAM

SINGLE MIXED—Large trusses of single flowers in shades of pink, red, and white. Pkt. 25c, 1/4 oz. \$1.00.

DOUBLE MIXED—Very large, compact trusses in a wonderful range of colors. Pkt. 25c, 1/4 oz. \$1.25.

THALICTRUM (Fairy Bells)

Dainty rosy-purple flowers with yellow stamens, plants 3 to 4 in. high with fern-like foliage. Pkt. 50c, 1/8 oz. \$1.50.

WHITE THALICTRUM—Pkt. 50c, 1/8 oz. \$1.50.

TITHONIA

TORCH—Brilliant orange-scarlet flowers 4 in. across. 4 ft. high. Pkt. 25c, 1/4 oz. \$1.50.

TORENIA

FOURNIERI—Bushy plants only a foot high, covered with pretty little flowers resembling a snapdragon. Sky-blue with a touch of gold on the lip. Pkt. 35c, 1/8 oz. \$2.00.

VERBENA

Plants are 1 ft. and will spread to 18 in. They like sun.

BEAUTY OF OXFORD—Rose-pink.

ROYALE—Royal blue, cream eye.

GIANT MIXED—All colors.

Each: Pkt. 25c, 1/8 oz. \$1.00

VIOLA

Lovely in window boxes, beds and for edgings. Hallawell's violas are large flowered.

ARKWRIGHT RUBY—Ruby crimson.

BLUE PERFECTION—Medium clear blue.

CHANTREYLAND—Lovely apricot.

LUTEA—Bright clear yellow.

WHITE PERFECTION—Clear white.

VIOLA MIXTURE—All colors.

Each: Pkt. 25c, 1/8 oz. \$2.50

VIRGINIAN STOCK

Small lavender-pink flowers on plants 6 in. high. Easy to grow ground cover. Pkt. 25c, large pkt. 50c, oz. \$1.00.

VISCARIA

Attractive single flowers in shades of rose and pink, on bushy plants 1 ft. high. Pkt. 25c, 1/4 oz. 75c.

WALLFLOWER

The much loved old fashioned perennial—18 in. tall.

SINGLE MIXED—Pkt. 25c, 1/4 oz. \$1.00.

DOUBLE MIXED—Pkt. 25c, 1/8 oz. \$2.00.

WILD FLOWERS

Annual native California wild flowers of many colors. For a grand spring display sow seeds during the rainy season. 1 oz. to 250 sq. ft., 5 lbs. to 1 acre. Pkt. 25c, large pkt. 50c, oz. \$1.50, 1/4 lb. \$4.50, lb. \$14.00.



SALPIGLOSSIS



GIANT IMPERIAL STOCKS

Hallawell's PRIZE SWEET PEAS

Giant MULTIFLORA SWEET PEAS

The grandest sweet peas ever grown. Just think, stems 18 to 24 inches long, with four to seven huge flowers on a stem. Seeds grown in the usual way produce big strong vines and loads of flowers for cutting. Available in the following separate colors: **Cerise, Deep Rose, Lavender, Orange-Cerise, Red, Rose, Salmon-Pink, White.** Each: Pkt. 35c, oz. \$1.00.

MULTIFLORA MIXED—All available colors. Pkt. 35c, oz. \$1.00.

GIANT MULTIFLORA COLLECTION—7 pkts., one of each color, \$2.25.

EARLY SPENCER SWEET PEAS For Winter Bloom

These early flowering sweet peas have all the fine qualities of our Giants, but they will bloom much more quickly. Where the winters are mild, seeds may be sown July through September for winter bloom, but the seed bed must be kept cool by shading until the seeds sprout.

- BALL ROSE**—Rose-pink.
- BLUE BONNET**—Deep purple.
- BRIDESMAID**—Silver-pink.
- DAPHNE**—Soft salmon-pink.
- HARMONY**—Excellent lavender.
- HOPE**—Very fine white.
- ORIENTAL**—Deep cream.
- OTHELLO**—Maroon.

Pkt. 25c, oz. \$1.00, ¼ lb \$3.50

EARLY SPENCER MIXED—All colors. Pkt. 25c, oz. \$1.00, ¼ lb. \$3.50.

Early Spencer Collection \$1.25

One packet each, our selection, of six colors Early Spencers for Winter bloom.

GIANT SPENCER SWEET PEAS

A large-flowered group of Sweet Peas. Many of the flowers are waved, some are ruffled and frilled. Four flowers to the stem are quite usual and there are often five. The stems are long and sturdy for cutting, the color range from pure white, to deepest maroon. These Giant Sweet Peas should be planted for spring and summer bloom. One ounce will sow a 25-foot row.

- CAPRI**—Light blue.
- CHINESE BLUE**—Deep blue.
- CREAM GIGANTIC**—Cream.
- FLAGSHIP**—Clear deep blue.
- GIGANTIC WHITE**—Pure white.
- HIGHLANDER**—Lavender.
- OLYMPIA**—Purple.
- PINKIE**—Rose-pink.
- PIRATES GOLD**—Golden orange.
- RED SUPREME**—Deep crimson.
- SALMON GIGANTIC**—Salmon-pink.
- SMILES**—Shrimp pink.
- WARRIOR**—Lovely velvety maroon.

Pkt. 25c, oz. \$1.00, ¼ lb. \$2.75

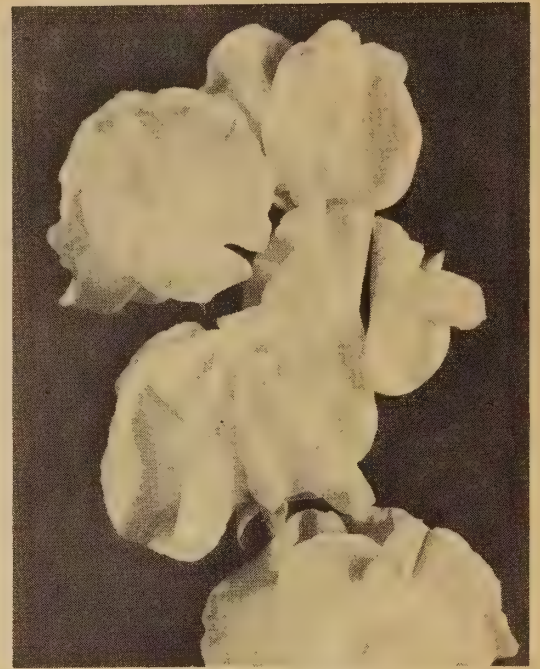
GIANT SPENCER MIXED—A grand mixture of the best large flowered varieties in a wide assortment of exquisite colors. Pkt. 25c, oz. 75c.

SPECIAL COLLECTION

One packet each of 6 varieties Giant Spencer Sweet Peas—Our selection of good color range—\$1.25

SUPERB COLLECTION

Contains 12 packets Hallawell's Giant Spencer Sweet Peas in a complete color range. Sufficient for 50-foot row—\$2.00.



MULTIFLORA SWEET PEAS

CUTHBERTSON'S SWEET PEAS

Heat resistant spring and summer flowering giants for hot summer climates where it has been difficult or impossible to grow the lovely giant sweet peas. This mixture includes many of the finest named varieties in a wide range of lovely colors. Pkt. 25c, oz. 75c.

DWARF SWEET PEAS

Compact plants 6 in. high covered with flowers on 3 to 4 in. stems. Many colors. Pkt. 35c, oz. \$1.00.

ZINNIAS



TOM THUMB ZINNIA

POMPON BABY ZINNIAS

Bushy plants 1½ to 2 ft. high bearing dozens of perfect, double, long stemmed flowers.

POMPON MIXED—Pkt. 25c, ¼ oz. 75c.

POMPON PASTEL MIXTURE—The lovely soft shades of baby zinnias, including apricot, yellow, pink, orchid and others. Pkt. 25c, ¼ oz. 75c.

BURPEE HYBRID ZINNIAS

Large fluffy and ruffled blooms up to 6 in. across with twisted and curled petals. Pkt. 25c, ¼ oz. 75c.

Hallawell's Zinnias are the finest strains in cultivation. The blooms have excellent form, the colors are clear, clean and attractive. This year plant Hallawell's, and have the finest zinnias you ever grew. Sow seeds in open ground when it has become thoroughly warm.

GIANT DAHLIA FLOWERED

Gold Medal Zinnias

Flowers 5 to 6 in. across, perfect dahlia-form in stunning colors. 2½ ft.

- CANARY BIRD**—Canary yellow.
- CRIMSON MONARCH**—Rich crimson.
- DREAM**—Rosy lavender.
- EXQUISITE**—Light rose, deeper center.
- ILLUMINATION**—Deep rose.
- ORIOLE**—Orange and gold.
- POLAR BEAR**—Pure white.
- ROYAL PURPLE**—Rich purple.
- SCARLET FLAME**—Scarlet.

Each: Pkt. 25c, ¼ oz. 85c, oz. \$2.50.

SPECIAL MIXED—A blend of strikingly beautiful colors. Pkt. 25c, ¼ oz. 75c, oz. \$2.50, ¼ lb. \$7.50.

ZINNIA ORTHO POLKA

Striking color combinations including pink, red, rose, purple, red and white flowers 4 in. across. Pkt. 25c, ¼ oz. \$1.50.

CALIFORNIA SUPER GIANTS

Perfect blooms 5 in. or more across on long stems and in magnificent colors. 3 to 4 ft. tall.

MIXED—Pkt. 25c, ¼ oz. 75c, oz. \$2.50, ¼ lb. \$7.50.

BLAZE ZINNIA

Mandarin red changing to scarlet-orange blooms 5 in. across. 2½ ft. Pkt. 35c, ¼ oz. \$1.50.

CROWN O'GOLD ZINNIA

PASTEL TINTS—Large double flowers in pastel tints, each petal glowing golden yellow at base. Pkt. 25c, ¼ oz. 75c.

ZINNIA LINEARIS

Plants 1 ft. high covered with single orange yellow flowers, each petal striped light yellow. Pkt. 35c, ¼ oz. \$2.50.

PEPPERMINT STICK ZINNIA

Medium sized flowers with petals flecked and striped in various contrasting color combinations. Pkt. 25c, ¼ oz. \$1.00.

TOM THUMB ZINNIA

Compact plants 6 to 8 in. high covered with perfect pompon type flowers in bright zinnia colors. Borders and window boxes. Pkt. 25c, ¼ oz. \$1.00.

PERSIAN CARPET ZINNIA

Double miniature flowers in rich color combinations including gold, bronze, and orange. Pkt. 35c, ¼ oz. \$1.50.

Hallawell's 1958 TUBEROUS BEGONIAS

Ready in January — Please Order Early if Possible.

The world's finest begonias, in the newest and most fascinating forms. Customers all over the world write us enthusiastically of their beauty. And they are extra size tubers for prize blooms the first year.

RUFFLED AND FRILLED DOUBLE

Huge double blooms of improved camellia type form in the following separate colors. Two or more of one color will be labeled.

JUMBO SIZE TUBERS—Dark red, orange, rose, salmon-pink, white, yellow, and mixed. Each 75c, 3 for \$2.00, 12 for \$7.50.

EXTRA SIZE TUBERS—Dark red, orange, rose, salmon-pink, white, yellow and mixed. Each 65c, 3 for \$1.75, 12 for \$5.50.

SINGLE FRILLED

Lovely blooms 4 in. across with central portion crested and profusely ruffled. Adds beauty and interest to any collection.

MIXED COLORS—Each 65c, 3 for \$1.75, 12 for \$5.50.

CARNATION FLOWERED

A double fringed type of exquisite beauty.

MIXED COLORS—Each 65c, 3 for \$1.75, 12 for \$5.50.

PICOTEE DOUBLE

Ruffled camellia form edged in contrasting color. Each 65c, 3 for \$1.75, 12 for \$5.50.

HOLLYHOCK BEGONIA

Single pink flowers on hollyhock-like stems, 12 to 18 inches high. May be grown in pots. You'll find them very interesting. Each 65c, 3 for \$1.75, 12 for \$5.50.

MULTIFLORA BEGONIAS

Multitudes of medium sized double flowers in assorted colors. Excellent for pot specimen plants and for bedding. Each 65c, 3 for \$1.75, 12 for \$5.50.



BEGONIA, RUFFLED AND FRILLED DOUBLE

HANGING BASKET LARGE FLOWERED

These new large flowered double form hanging begonias are the latest creation in hanging basket type. The flowers are full double and larger than any we have ever offered. In separate colors of orange, white, yellow, and mixed. Each 65c, 3 for \$1.75, 12 for \$5.50.

Hallawell's Extra Size GLADIOLUS

are well known for their fine quality. They make a most attractive display in the garden and the tall beautiful spikes of perfect flowers will be prize winners at any show. Prices include postage within the 4th zone. For shipments 5th to 8th zones, Ter. Hawaii and Alaska, add 20% of the amount of the gladiolus order for postage.

Hallawell Gladiolus bulbs are large size No. 1's to produce large flowers on tall spikes. They will give you gratifying results. Plant December to May.

ABU HASSAN—Rich velvety violet-blue.
BELLE JUAN—Exquisite, golden yellow.
BLACK OPAL—Deep red.
CORONA—Ruffled cream white edged pink.

ELIZABETH THE QUEEN—Exquisite ruffled lavender.

EVANGELINE—Soft shell pink, cream throat.

FRIENDSHIP—New ruffled pink, exquisite.

MODERN TIMES—Brilliant wine-red.

PASTEL—Smoky pastel.

RAVEL—Medium blue, red marks in throat.

ORANGE GOLD—Golden orange.

RED CHARM—Deep scarlet.

SPIC AND SPAN—Ruffled salmon-pink.

SPOT LIGHT—Golden-yellow, scarlet throat.

UHU—Chocolate brown.

WHITE GODDESS—Heavily ruffled white.

YELLOW HERALD—Fine ruffled lemon yellow.

GLADIOLUS PRICES

1 bulb 20c

2 bulbs of 1 variety..\$.35

12 bulbs of 1 variety.. 1.50

25 bulbs of 1 variety.. 2.75

50 bulbs of 1 variety.. 5.00

100 bulbs of 1 variety.. 9.50

Bulbs Available December to May

SELECT GLADIOLUS MIXTURE

A select mixture of only the choicest large flowered varieties in a wide range of colors. These large bulbs will produce the tallest spikes with the greatest number of blooms on each. Intended for a brilliant garden display and for prize blooms for cutting. 12 for \$1.50, 25 for \$2.75, 50 for \$5.00, 100 for \$9.50.

Rainbow Mixture Gladiolus

(Medium Size Bulbs)

Includes many choice gladiolus of all colors. The bulbs are medium size and if planted close together will make a colorful show in mass plantings.

MEDIUM SIZE BULBS—12 for 75c, 50 for \$3.00, 100 for \$5.50.

BABY GLADS

Order Now. Plant October, November, December

In California we plant these during the fall months for early spring bloom. They bloom early and make good cut flowers. The bulbs multiply. Plant 3 inches deep, 4 inches apart.

Spit Fire—Brilliant scarlet. **Amanda May**—Deep salmon.

The Bride—Large pure white. **Peach Blossom**—Blush pink.

6 for \$1.00, 12 for \$1.50, 100 for \$11.00

GLADIOLUS CULTURE—Our large No. 1 gladiolus will produce sturdy exhibition spikes 3 to 5 feet tall with many large perfect flowers. Plant 4 inches deep, 6 inches apart, in full sun if possible. Dig in fertilizer at time of planting and give a surface application when 1 foot high. When foliage is yellowed, dig and store bulbs in a dry place, dust them to prevent insect infestation during storage.



GLADIOLUS MIXED

DAHLIAS for 1958

Hallawell's dahlia tubers are the best quality you can buy. They are grown especially for garden reproduction and must not be confused with spent tubers offered at very low prices.

C denotes Cactus type. SC—Semi-cactus. FD—Formal decorative. ID—Informal decorative.

ALCAZAR (SC)—Glowing purple-red, silver reverse, silver tips. \$1.75 each.

ALICE MAY (ID)—Pure white, full centered, 10 in. blooms. \$1.25 each, 3 for \$3.50.

BERGER'S MASTERPIECE (IC)—Handsome smoky-pink. Rare and beautiful. \$1.75 each, 3 for \$4.95.

CALIFORNIA SUNSET (ID)—Beautiful orange and yellow. \$1.50 each.

CHEROKEE BRAVE (ID)—Rich oxblood red. 12 in. blooms. \$1.50 each.

CINNAMON BEAUTY (ID)—Lovely autumn shades. \$1.25 each.

COMMANDO (FD)—Giant Tyrian-purple blooms. \$1.50 each.

EL RUBIO (ID)—10 in. shaggy blooms, rich ruby red. \$1.25 each.

FIGARO (SC)—Golden yellow penciled scarlet. \$1.00 each.

GOLDEN RECTITUDE (C)—Seven inch blooms of exquisite light Spanish orange. Very long, strong stems. Excellent keeper. \$1.75 each.

HASLEROVA (FD)—Eight inch blooms, cream white, flecked and splashed wine red. The best of the bi-colors. \$1.50 each.

HYLAS (C)—Lovely 6 inch coral blooms with ideal placement on the stem. Very decorative on the plant, a jewel in the vase. \$1.25 each.

KELVIN (ID)—Huge 12 in. blooms, delicate pink and old rose. \$1.75 each.

KINDIGS PURPLE (ID)—Eight inch royal-purple blooms on long graceful stems. A fine new dahlia. \$1.25 each.

LOIS WALCHER (FD)—Rich pansy purple, each petal tipped white. \$1.00 each.

MAYOR OTIS (ID)—Huge 12 in. blooms, delicate copper and bronze. \$1.25 each.

MISS SHATTUCK (FD)—Eight to 10 in. pure white blooms, well placed on long strong stems. Keeps well when cut. \$1.50 each.

NEW LOOK (SC)—Excellent yellow, 10 inch blooms, long stems. \$1.00 each.

SYDNEY (ID)—A grand rose-pink, 10 in. blooms. \$1.25 each.

SKY ROCKET (SC)—Fine 10 in. blooms of beautiful vermilion. \$1.50 each.

TAIYO (C)—Velvety maroon-red petals, tipped white, sensational. \$1.25 each.

YELLOW SPIRAL (IC)—Handsome deep yellow, incurved. \$1.50 each.

MINIATURE DAHLIAS

Because miniature dahlias have hard stems they keep exceptionally well when cut. They bloom long and abundantly. Fine cut flowers.

BABY FONTENEAU (ID)—Bright rose.

HESTIA (C)—Peach pink.

LITTLE WISTERIA (FD)—White flushed orchid.

LOMBAERTS VIOLET (C)—Deep violet.

RUBY CHARM (C)—Cardinal-red.

TARGET (ID)—Brilliant orange.

TIP (C)—Canary yellow. Early.

WHITE FAWN (FD)—Pure white.

Above: Each \$1.00, 3 for \$2.75

POMPON DAHLIAS

Flowers average 1 to 2 in. across, have good stems and keep well.

AMBER QUEEN—Clear amber.

BETTY ANN—Finest clear pink.

HONEY—Yellow suffused red.

JOE FETTE—Best white pompon.

LEMON GEM—Light lemon yellow.

LIBBY ROHR—Deep lavender.

MARY MUNNS—Clear lavender.

PEGGY WOOD—Orange and white.

PIPES NOIR—Velvety black.

PRINCE CHARMING—Pastel pink.

RED WARRIOR—Crimson red.

Above: Each 65c, 10 for \$6.00



CACTUS DAHLIA



POMPON DAHLIA



DECORATIVE DAHLIA

BLOOMING DAHLIAS

See the dahlia trial gardens at our nursery. Select your varieties from blooming plants July through September.

CANNAS

Ready February to May

CITY OF PORTLAND—3½ ft. Rose-pink.

EUREKA—4 ft. Cream white.

KING HUMBERT—4 ft. Orange, bronze foliage.

RICHARD WALLACE—4 ft. Canary yellow.

THE PRESIDENT—4 ft. Bright red.

YELLOW KING HUMBERT—4½ feet. Golden yellow with crimson dots.

45c each, 3 for \$1.15, 12 for \$3.75

NEW PINK MARGUERITE

Available Now

Brand new and just like the well known white and yellow marguerite except that this one is a lovely orchid-pink with a bright yellow center. Well branched plants grow to about 3½ ft. and bloom freely for a long season. A very good cut flower.

\$2.75 each, \$3.25 postpaid to 4th zone

KEEP THIS CATALOG!

Gives you a planting chart for each month of the year. Cultural directions to assist you with your plantings. Makes your seasonal ordering easy.

Hallawell's 1958 CHRYSANTHEMUMS

Keep your garden glowing with color and have flowers for cutting long after summer blooms have finished. Plant these Hallawell "mums" during May, June and July. Order any time from January to May and plants will be sent at the proper planting time.

Prices—50c each, any 6 for \$2.50, 12 for \$4.50

LARGE FLOWERING TYPE

For branching plants to produce several flowers, pinch back when plants are 4 to 5 inches high. A second or third pinching back will give more branches and more flowers.

- ALBATROSS**—Incurving ivory white.
- BRONZE WAITE**—Best bronze reflex.
- GARNET KING**—Dark red reflex.
- HILDA BERGEN**—Incurving reddish bronze.
- MAJ. ED BOWES**—Light pink, incurving.
- MRS. H. E. KIDDER**—Rich yellow, incurving.
- ORCHID QUEEN**—Orchid pink, incurving.
- STEPHANIE**—Purple, pink reverse, incurving.
- WILLIAM TURNER**—Excellent incurving white.
- YELLOW POCKETT**—Large incurving yellow.

ANEMONE FLOWERED TYPE

These lovely "mums" have a quilled cushion center, surrounded by a ray of petals often of a contrasting color. They are very attractive.

- ESTRELITA**—Beautiful buff bronze.
- NORMA**—Pink petals, salmon center.
- TITAN**—Scarlet crimson.
- TUXEDO**—Rose to light pink
- WHITE FRIEDA**—White, yellow center.
- YELLOW ANEMONE**—Best all yellow.

CUSHION MUMS

Compact plants bearing a profusion of azalea-like flowers, late summer until frost.

- GOLDEN CARPET**—12 in. high. Golden yellow.
- LIPSTICK**—14 in. Beautiful red bronze.
- POWDER PUFF**—10 in. White for border.
- ROUGE CUSHION**—10 in. Red for border.
- SALMON CUSHION**—10 in. Salmon-pink.
- TWINKLE**—16 in. Deep violet.

SPIDERY and SPOON MUMS

A special Hallawell selection of exquisite cut flower varieties in the lovely spidery and spoon type.

- BUTTERFLY**—Bright yellow fishhook.
- BUNBU**—Orchid-lavender fishhook.
- COPPER ROCKET**—Coppery-bronze, quilled.
- GEORGIANA HEDINGER**—Light pink.
- GOLDEN LACE**—Deep yellow fishhook.
- MRS. S. WALLACE**—Bronze fishhook spider.
- PINK RAYONNANTE**—Pink, quilled spoon.
- PUNCH BOWL**—Striking burgundy-red.
- QUEEN'S LACE**—Fine petaled white.
- YOMEI**—Gold petal, red spoon.

SINGLE FLOWERING TYPE

Lovely daisy-like flowers on good stems for cutting. Pinch them back 2 or 3 times for many flowers.

- KATOAKA BRONZE**—Daisy-like bronze.
- KIMOTO WHITE**—Excellent cutflower.
- RED KING**—Fine red daisy.
- SUNRAY**—Yellow daisy type.
- W. H. BUCKINGHAM**—Best rose-pink.

POMPON TYPE

Flowers range in size from 3/4 inch to 3 inches across, usually in sprays of several flowers each. Supported plants may be grown 12 to 15 inches apart.

- ANNETTE**—Pink button pompon type.
- ARCADIA**—Lovely pure white.
- BABY YELLOW**—Golden yellow button type.
- BARCAROLE**—Golden-yellow ball type.
- BLACKHAWK**—Deep red, medium flower.
- BROWN BUTTON**—Fine bronzy red.
- BUTTERSCOTCH**—Bronze globular type.
- GRACIE FIELDS**—Exquisite rosy purple.
- HILIGHT**—Light pink, dark center.
- PINK DOT**—Clear pink, dark center.

SURPRISE MUM COLLECTIONS

If you can't decide quite which varieties you want, just leave it to us, and order the SURPRISE COLLECTION which fits your needs; each plant will be labeled and we're sure you'll be pleased.

SURPRISE COLLECTION No. 1

12 "mum" plants
(our selection)

\$4.50 value for
\$3.95

SURPRISE COLLECTION No. 2

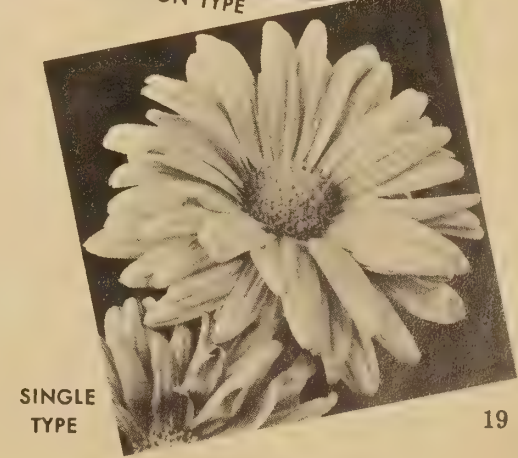
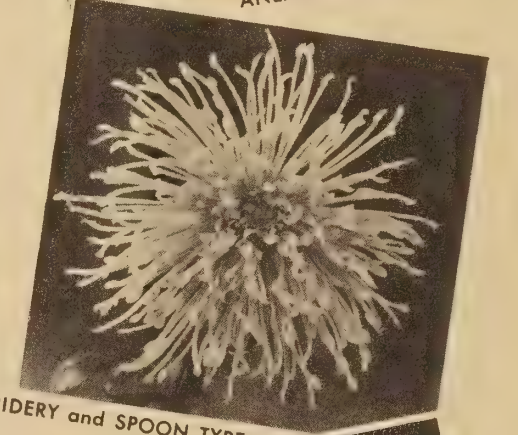
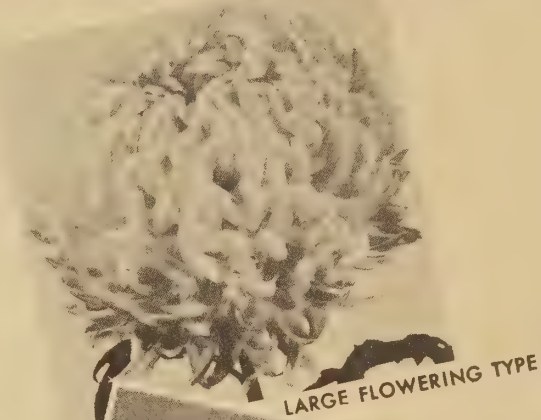
20 "mum" plants
(our selection)

\$7.50 value for
\$6.65

SURPRISE COLLECTION No. 3

35 "mum" plants
(our selection)

\$13.00 value for
\$11.50



SINGLE TYPE



FUCHSIAS for 1958

(Ready in April)

Prices: Ready-to-bloom plants from 4 in. pots, packed and postpaid:

Any 4 for \$6.00 — Any 6 for \$8.00

SAN FRANCISCO PRICES: \$1.00 each, any 6 for \$5.75

(First color is corola, second is sepals)

AUNT JULIA—Double, lavender, rose.

CATALINA—Double, white, crimson.

DU BARRY—Double, purple, pink.

FLYING CLOUD—Double, white, rosy-white.

GAY SENORITA—Single, magenta, rose.

GEORGANA—Double, gray-blue, pink.

GRAY LADY—Double, smoky-blue, pink.

JAMBOREE—Double, carmine, rose.

KING'S RANSOM—Double, purple, white.

LACE PETTICOAT—Double, blush pink, white.

LUNADO—Double, purple, rose.

MAZDA—Single, orange, blush.

MILLIONAIRE—Double, purple, red.

MOTH BLUE—Double, huge, lilac, red.

OLD SMOKY—Double, rose, old rose.

PAPA BLEUSS—Double, violet, pink.

POLAR SEA—Double, purple, white.

RUBEO—Double, crimson, carmine.

SAN LEANDRO—Double, magenta, vermilion.

SWEET LEILANI—Double, blue, rose-pink.

TU TU—Double, violet, rose.

UNCLE JULES—Double, purple, rose.

If you have the good fortune to live where Fuchsias can be grown in the garden, do not be without them. They will give you much pleasure with very little worry. Remember they are shade plants, give them plenty of peat moss or leaf mold in the soil, fertilize frequently, keep them growing and blooming.

TRAILING FUCHSIAS

ANNA—Double, magenta, red.

BALI-HI—Double, mauve, white.

BLOSSOM TIME—Single, all rose.

CARNIVAL—Double, red, frosty white.

EMBERGLOW—Double, purple, carmine rose.

PIO PICO—Double, violet, pink.

SAN MATEO—Double, purple, crimson.

STREAMLINER—Double, crimson, crimson.

SWINGTIME—Double, white, red.

SUNKISSED—Double, crimson, pink.

THUNDERBIRD—Double, vermilion, rose.

TUMBLING WATERS—Double, purple, crimson.

PELARGONIUMS 1958

(Ready in April)

Ready-to-bloom plants from 4-inch pots. Choice varieties of the most recent introductions, many with the characteristic blotches of contrasting colors.

Any 4 for \$6.00 postpaid — Any 6 for \$8.00 postpaid

SAN FRANCISCO PRICES: \$1.00 each, 6 for \$5.75, 12 for \$11.00

ALICE EASTWOOD—Large flowers, soft pink.

APRIL—White with small fuchsia blotches.

AZALEA—Large rosy-red, compact plant.

BONITA—Light lavender, veined dark maroon.

CHERIE—Ruffled pink, flowers blotched red.

CIRCUS DAY—Large rosy-pink.

CITY OF OAKLAND—Wavy, white, violet.

CORSAIR—Vermilion striped.

COVER GIRL—Pink, white throat.

DAWN—Large apricot-pink flowers.

FLAMINGO—Orange scarlet, brown blotch.

GERONIMO—Glowing red, compact grower.

GOLDLOCKS—Apricot orange, compact.

GRAND SLAM—Rosy-red, compact plant.

HARVEST MOON—Apricot, white throat.

MRS. MARY BARD—White, feathered fuchsia.

PINK SHELL—Lovely pink ruffled flowers.

LIL ABNER—Large, salmon coral blotched.

SAN DIEGO—Fine ruffled lavender.

THUNDERCLOUD—Huge, wavy flowers, almost black.

YUCATAN—Bright velvety red, compact.

New Hanging Basket Pelargoniums

FLOWER BASKET—Masses of small rose-pink flowers with crimson blotches. \$1.50 each.

BLACK LACE—Ruffled reddish black flowers in profusion. \$1.50 each.

GERANIUMS FOR 1958

Ready April 1st

Please order in advance if possible.

Ready-to-bloom plants from 4-inch pots:

Any 4 for \$ 6.00 postpaid

Any 6 for 8.00 postpaid

Any 12 for 14.00 postpaid

SAN FRANCISCO PRICE

\$1.00 each, 6 for \$5.50, 12 for \$10.00

APPLE BLOSSOM—Pink, semi-double.

BERTHE de PRISILLY—Double, clear pink.

BETTER TIMES—Double, carmine-scarlet.

CARMEL—Single, white edged red.

FESTIVAL—Double, rich salmon.

MARGARET DE LAYRE—Single white.

MAXIME KOVALESKY—Single, light orange.

ORANGE RICARD—Semi-double, orange.

PAUL CRAMPLE—Single, vermilion scarlet.

PRIDE OF CAMDEN—Double, dark-red.

WHITE MAGIC—Clear white.

Ivy Geraniums for 1958

CAYUCOS—Double, bright rose-pink.

CHARLES TURNER—Double, soft rose-pink.

CLIFF HOUSE—Semi-double, light lilac.

INTENSITY—Semi-double, orange scarlet.

JOSEPH WARREN—Double, purple.

LONG BEACH—Semi-double, pale salmon.

MEXICAN BEAUTY—Brilliant blood-red.

SANTA PAULA—Double, soft blue lavender.

SNOWDRIFT—Double, low growing white.

WILLY—Double, very dark red.

Hallawell's High Quality **VEGETABLE SEEDS** California Grown

ASPARAGUS

Paradise—Large green tips. Pkt. 15c, oz. 75c, ¼ lb \$2.25.

BUSH BEANS

1 pkt. of seeds will sow about 15 ft. of row, 1 lb. 50 ft.

Pkt. 25c, 6 oz. 50c, lb. \$1.00, 5 lbs. \$4.50

Black Eye Peas—3 ft. Green or shell.

Bountiful—Green pods 6-7 in. long.

Broad Windsor (Fava)—Green shell beans, endures frost.

Dwarf Horticultural (Italian Bush Beans)—Dark green pods splashed crimson.

Top Notch Golden Wax—Yellow pods.

POLE BEANS

Pkt. 25c, 6 oz. 50c, lb. \$1.00, 5 lbs. \$4.50

Blue Coco—Considered by gourmets one of the finest beans.

Blue Lake—Stringless pole, round pods.

Kentucky Wonder—Green pods.

Romano (Italian Pole Bean)—Very prolific.

Scarlet Runner—Ornamental and edible.

BUSH LIMA BEANS

Pkt. 25c, 6 oz. 50c, lb. \$1.00, 5 lbs. \$4.50

Improved Bush Lima—Large seeds.

Thorogreen—Small seeds.

BEETS

Where winters are mild, seeds may be sown all year. One ounce of seed sows 100 ft. of row.

Crosby's Egyptian—Flattened globe-shape. Pkt. 15c, oz. 35c, ¼ lb. \$1.00, lb. \$2.50.

Early Wonder—Early, flattened globe. Pkt. 15c, oz. 35c, ¼ lb. \$1.00, lb. \$2.50.

Detroit Dark Red—Globular. Pkt. 20c, oz. 45c, ¼ lb. \$1.25, lb. \$3.00.

BROCCOLI

Italian Green Sprouting—For home gardens. Pkt. 20c, ½ oz. 50c, oz. 75c, ¼ lb. \$2.00.

BRUSSELS SPROUTS

Culture the same as for Cabbage. Pkt. 25c, ¼ oz. 75c, oz. \$2.00

CABBAGE

Where winters are mild, sow seeds during June, July, and August for winter crop.

Copenhagen Market—70 days. 6-inch heads. Pkt. 25c, ½ oz. 40c, oz. 75c, ¼ lb. \$2.00, lb. \$6.00.

Early Jersey Wakefield—62 days, 7-inch heads. Pkt. 20c, ½ oz. 40c, oz. 75c, ¼ lb. \$2.00, lb. \$6.00.

Golden Acre—65 days. 6-in. heads. 3 lbs. Pkt. 20c, ½ oz. 45c, oz. 75c, ¼ lb. \$2.50

Late Flat Dutch—100 days, 12-in. heads. Pkt. 15c, ½ oz. 40c, oz. 75c, ¼ lb. \$1.75

Red Acre—63 days. 7-in. heads, 3½ lbs. Pkt. 25c, ½ oz. 40c, oz. 75c, ¼ lb. \$2.25

Chinese Cabbage—75 days. Pkt. 25c, ½ oz. 45c, oz. 85c.

CARROTS

They grow to eating size in about 79 days. 1 oz. will sow a 100-ft. row.

Chantenay Red Cored—5 to 6 in. long. Pkt. 15c, oz. 50c, ¼ lb. \$1.50, lb. \$3.00

French Forcing—Nearly round. Pkt. 15c, oz. 50c, ¼ lb. \$1.50, lb. \$4.00.

Imperator—8 in. long. Pkt. 15c, oz. 50c, ¼ lb. \$1.50, lb. \$3.00.

Nantes Half Long—6 in. long. Pkt. 15c, oz. 50c, ¼ lb. \$1.50, lb. \$3.00.

Oxheart—4½ in. long. Pkt. 15c, oz. 50c, ¼ lb. \$1.50, lb. \$3.00.

CAULIFLOWER

Culture same as for Cabbage.

Early Snowball—60 days. Pkt. 30c, ¼ oz. \$1.00, oz. \$3.00.

CELERY

Utah—Thick green stalks. Pkt. 25c, ½ oz. 60c, oz. \$1.00.

Celeriac—Turnip rooted. Pkt. 25c, ½ oz. 75c.

SWISS CHARD

Improved Silver—White rib. Pkt. 15c, oz. 25c, ¼ lb. 75c.

Lucullus—Dark green. Pkt. 15c, oz. 25c, ¼ lb. 75c.

Rhubarb Chard—Ornamental and edible. Pkt. 25c, oz. 65c.

CHICORY

Large Rooted—Pkt. 15c, oz. 50c.

Radichetti—Long narrow leaves. Pkt. 15c, oz. 75c.

CHIVES

For seasoning—Pkt. 25c, ¼ oz. \$1.00.

SWEET CORN

Golden Cross Bantam—Most widely used. Pkt. 25c, 6 oz. 60c, lb. \$1.00, 5 lbs. \$4.50.

Miniature Hybrid—3½-4 ft. tall, 6 in. ear. Pkt. 25c, 6 oz. 60c, lb. \$1.00, 5 lbs. \$4.50.

POP CORN

Purdue Hybrid—Golden yellow. Pkt. 25c, 6 oz. 60c, lb. \$1.00.

CORN SALAD

Broadleaved—Pkt. 25c, oz. 75c.

CUCUMBERS

Lemon (or Apple Cucumber)—A mild cucumber. Pkt. 25c, oz. 60c, ¼ lb. \$1.75.

Long Green—Dark green. Pkt. 15c, oz. 50c, ¼ lb. \$1.25.

Marketer—Dark green, tapered. Pkt. 15c, oz. 50c, ¼ lb. \$1.25.

Telegraph Climbing—Pkt. 50c.

COLLARDS

True Georgia—2-3 ft. tall. Pkt. 15c, oz. 25c, ¼ lb. 75c, lb. \$2.50.

ENDIVE

Green Curled—Tender and crisp. Pkt. 15c, oz. 40c, ¼ lb. \$1.00.

Escarolle—Full Heart Bavarian. Pkt. 15c, oz. 40c, ¼ lb. \$1.00.

EGG PLANT

New York—Round, purple. Pkt. 25c, oz. \$1.50.

HERBS

Anise—Garnishing, seasoning, cordials.

Basil, Sweet—Flavor soups, stews, salads.

Borage—Beverages, salads, flavoring, bees.

Caraway—Leaves in salads, seeds in pastry.

Catnip—Cat tonic, medicinal, seasoning.

Chervil—Pungent leaves for flavoring.

Coriander—Soups, stews, salads, meats.

Cress—Peppergrass.

Dill—Pickling, sauces, meats, etc.

Florence Fennel (Finocchio)—Salads.

Horehound—Candy flavoring, medicinal.

Hyssop—Medicinal, ornamental.

Rosemary—Roasts, fragrant sachets.

Sage—Seasoning for many foods.

Summer Savory—Salads, dressings, stews.

Sweet Marjoram—Flavor, fresh or dried.

Thyme—Flavor soups, stews, etc.

Water Cress—Easily grown in moist areas. ¼ oz. 50c.

Wormwood—Medicinal, beverage herb.

Mixed Herbs—Many different kinds.

Any of above herbs:

Pkt. 25c, 5 pkts. \$1.00, ¼ oz. 50c

KALE

Dwarf Scotch—Low growing. Pkt. 15c, oz. 50c.

Jersey or Thousand Headed—For greens. Pkt. 15c, oz. 50c.

Ornamental—Pkt. 25c, oz. 75c.

KOHL RABI

Early White Vienna—Pkt. 15c, ½ oz. 50c.

Purple Vienna—Pkt. 15c, ½ oz. 50c.

LEEK

Used for flavoring soups, etc. Pkt. 25c, ¼ oz. 40c, oz. \$1.00.

LETTUCE

Lettuce seeds require a cool soil for germinating—65° or cooler. Head varieties to head properly require cool weather. Loose leaf varieties may be grown any time.

Butter Lettuce (White Boston)—Light green. Pkt. 15c, oz. 50c, ¼ lb. \$1.25.

Great Lakes—Head. Pkt. 25c, ½ oz. 60c, oz. \$1.00.

Iceberg—Pkt. 15c, oz. 50c, ¼ lb. \$1.25.

Imperial 847—Hallawell's large, heading. Pkt. 25c, ½ oz. 40c, oz. 75c, ¼ lb. \$2.00.

Hallawell's Loose Leaf—Frilled leaves tinged red. Pkt. 15c, oz. 60c, ¼ lb. \$1.25.

Oak Leaf—Good resistance to hot weather. Pkt. 25c, oz. 60c, ¼ lb. \$1.25.

Romaine (Paris Cos)—Highly esteemed for its crispness. Pkt. 15c, oz. 50c, ¼ lb. \$1.00.

MUSHROOMS

Lambert pure culture Spawn in dry form. Package plants 50 square feet. \$2.25, \$2.60 postpaid.

MUSTARD

Southern Giant Curled—Large green leaves. Pkt. 15c, oz. 30c, ¼ lb. 75c.

Tendergreen—Thick, tender leaves, heat resistant. Pkt. 15c, oz. 30c, ¼ lb. 75c.

MUSKMELON

Honeydew—Round, oval melons. Pkt. 15c, oz. 50c, ¼ lb. \$1.25.

Imperial No. 45—Salmon-pink flesh. Pkt. 20c, ½ oz. 35c, oz. 65c, ¼ lb. \$1.25.

Persian (small type)—Globular, 6-lb. melons, fine flavor. Pkt. 15c, oz. 60c, ¼ lb. \$1.50.

Pershaw—Thick, firm golden-yellow flesh, sweet, spicy flavor. Oval shaped, about 6 lbs. Pkt. 25c, oz. 75c, ¼ lb. \$2.00.

Salmon Cranshaw—Deliciously sweet, salmon-pink. Pkt. 20c, ½ oz. 50c, ¼ lb. \$2.00.

OKRA

Clemson Spineless—Long green pods. Pkt. 15c, ¼ lb. \$1.00.

PARSLEY

Double Curled—Pkt. 15c, oz. 50c, ¼ lb. \$1.25.

Triple Curled—Pkt. 15c, oz. 50c, ¼ lb. \$1.25.

Plain—Pkt. 15c, oz. 50c, ¼ lb. \$1.25.

PEAS

A winter crop where winters are mild. 1 lb. to 100 ft. of row.

Pkt. 25c, 6 oz. 50c, lb. \$1.00, 5 lbs. \$4.50

Alaska—Height 30 in. First early.

American Wonder—Height 15 in. Early.

Laxton's Progress—18 in. Medium. Early.

Melting Sugar—Edible pods. 3-4 ft.

Telephone—5 ft. Large pods.

ONIONS

Plant onion sets for quick green onions. Sow seeds for mature onions. Where winters are mild, seeds sown November through February, will mature about July.

Australian Brown—Globe shaped. Pkt. 15c, ¼ oz. 35c, oz. \$1.00, lb. \$5.00.

Bunching Onion—White, for green onions. Pkt. 15c, ¼ oz. 35c, oz. \$1.00, lb. \$5.00.

Red Wethersfield—Large, flat, red skin. Pkt. 15c, ¼ oz. 35c, oz. \$1.00, lb. \$5.00.

Riverside Sweet Spanish (Hallawell's)—Very mild, globular. Keeps well. Excellent. Pkt. 20c, ¼ oz. 25c, oz. \$1.00, lb. \$6.50.

Southport White Globe—Large, white onions. Pkt. 15c, ¼ oz. 35c, oz. \$1.00, lb. \$6.00.

Torpedo—A Hallawell Specialty. Mild, well flavored. Long oval-shaped. Pkt. 25c, ¼ oz. 50c, oz. \$1.50.

Yellow Bermuda—Pkt. 15c, ¼ oz. 35c, oz. \$1.00.

ONION SETS

For young green onions, plant 2 in. deep and close together in the row. Lb. 50c, Postpaid 75c.

PARSNIP

Hollow Crown—Roots 12 to 15 in. long. Pkt. 15c, oz. 40c, ¼ lb. \$1.00.

PEPPERS

Anaheim Chili—Tapering fruits 6-8 in. long. Pkt. 20c, ¼ oz. 45c, oz. \$1.50.

California Wonder—Thick walled peppers 4 in. long by 3 in. through. Pkt. 25c, ½ oz. 90c, oz. \$1.50.

SEED POTATOES

Clean healthy potatoes to produce good eating potatoes. 10 lbs. plant about 100 ft. row.

Prices: 5 lbs. 75c, 10 lbs. \$1.35, postage extra, or will send by Express, transportation charges collect.

Rurbank—Long cylindrical tubers.

Early White Rose—Early.

Pontiac—Excellent early red potato.

DWARF FRUIT TREES

Ready in January

Normal size fruits on dwarf trees for small home garden. Place orders early for bare-root shipments during January, February. Add 75c packing and postage for one tree, 50c per tree for more than one.

Price: \$4.00 each

DWARF APPLES

GRAVENSTEIN—Red and yellow.

JONATHAN—Late, red.

DELICIOUS—Red, November.

RED ROME BEAUTY—October.

YELLOW DELICIOUS—September.

DWARF CHERRY

ROYAL ANNE—Light color. June.

DWARF PEACHES

ELBERTA—Large, August.

HALE HAVEN—Medium, August.

J. H. HALE—Large, late August.

DWARF PLUM

SANTA ROSA—Red, reddish flesh.

DWARF PEAR

BARTLETT—Most popular pear.

Combination Fruit Trees

\$7.50 each

APPLE—Three varieties.

PEAR—Three varieties.

CHERRY—Three varieties.

PLUM—Three varieties.

PUMPKIN

Cushaw Striped—Crookneck, 14 to 16 lbs. Keeps well. Pkt. 15c, oz. 35c, ¼ lb. \$1.00.

Dickinson—Large thick fleshed fruits. Pkt. 15c, oz. 35c, ¼ lb. \$1.00.

Sugar or Pie Pumpkin—Deep orange fruits, 6-8 lbs. Pkt. 20c, oz. 40c, ¼ lb. \$1.00.

RADISH

Crimson Giant—Large round red. Pkt. 15c, oz. 35c, ¼ lb. 75c.

French Breakfast—Scarlet, white tip, oval. Pkt. 15c, oz. 35c, ¼ lb. 75c.

Icicle—Long white, tender, crisp. Pkt. 15c, oz. 35c, ¼ lb. 75c.

Scarlet Globe—Round, bright scarlet. Pkt. 20c, oz. 45c, ¼ lb. 75c.

Sparkler—Globe-shaped rosy-carmine, white tip. Pkt. 20c, oz. 35c, ¼ lb. 75c.

WINTER SQUASH

Banana—Cylindrical—20-24 in. long, orange flesh. Pkt. 15c, oz. 35c, ¼ lb. \$1.00.

Hubbard—Globular, 9-10 in. through, green warted. Pkt. 15c, oz. 35c, ¼ lb. \$1.25.

Table Queen—Acorn shaped, 5-6 in. through. Pkt. 25c, oz. 50c, ¼ lb. \$1.25.

SQUASH

Benning's Bush Scallop—White tinted green. Pkt. 15c, oz. 35c, ¼ lb. \$1.00.

Caserta—Grayish-green, bush type. Pkt. 25c, oz. 35c, ¼ lb. \$1.00.

Italian Marrow Zucchini (Dark Green)—Hallawell's Special Strain. Excellent. Pkt. 20c, oz. 35c, ¼ lb. \$1.00.

Straightneck Bush—Lemon-yellow, warted. Pkt. 15c, oz. 35c, ¼ lb. \$1.00.

Yellow Summer Crookneck—Golden yellow, warted. Pkt. 15c, oz. 35c, ¼ lb. \$1.00.

SPINACH

Bloomsdale—Thick green leaves. Pkt. 15c, oz. 30c, ¼ lb. 80c.

New Zealand—Tender tips all summer. Pkt. 15c, oz. 35c, ¼ lb. 75c.

TOBACCO

Virginia—Pkt. 35c, 3 pkts. \$1.25.

TOMATOES

Allow 5 to 6 weeks for plants to grow from seed to transplanting size.

Bountiful—In clusters. Pkt. 35c, 3 pkts. \$1.00.

Earliana—Early. Pkt. 15c, ½ oz. 75c.

Marglobe—Globe shaped. Pkt. 15c, ½ oz. 75c.

Pearson Improved—Large flattened globe. Very productive. Pkt. 20c, 2 pkts. 35c, ½ oz. \$1.00.

Ponderosa or Beefsteak—Pkt. 20c, ½ oz. \$1.00.

PRESERVING TOMATOES

Red Cherry—Small round fruits.

Red Pear—Pear shaped, 2 in. long.

Yellow Pear—2 in. long.

Yellow Plum—Plum-shaped.

Each of above: Pkt. 25c, ¼ oz. 75c

TURNIPS

Purple Top Globe—Pkt. 15c, oz. 30c, ¼ lb. 75c.

WATERMELONS

Klondike Striped—Oblong, light green, darker rattlesnake striping. 18 in. long, 10 in. diameter. Pkt. 15c, oz. 40c, ¼ lb. \$1.00.

New Hampshire Midget—Round, 6x7 in., up to 6 lbs. Refrigerator size. Pkt. 25c, oz. 50c, ¼ lb. \$1.25.

VEGETABLE ROOTS

ASPARAGUS ROOTS

MARY WASHINGTON—Dark green.

PARADISE—Medium green.

Each: 12 for 85c, 25 for \$1.65, 100 for \$6.00

HORSERADISH ROOTS

January to May—Postpaid: 12 for \$2.00.

ARTICHOKE PLANTS

GREEN GLOBE—Large sucker plants. 45c each, 3 for \$1.25, 12 for \$4.75. Postage extra.

RHUBARB

ROOTS—85c each, 3 for \$2.25, 5 for \$3.50, 12 for \$7.50, postpaid to 4th zone.

BERRIES . . . fresh from your garden



BOYSENBERRY

BOYSENBERRY—Maroon red, few seeds. Highly flavored. 35c each, 6 for \$2.00, 12 for \$3.50.

THORNLESS BOYSENBERRY—Canes are smooth. 50c each, 3 for \$1.35, 6 for \$2.60, 12 for \$5.00.

THORNLESS LOGANBERRY—Large, red, tart berries. 50c each, 3 for \$1.35, 6 for \$2.60, 12 for \$5.00.

MAMMOTH BLACKBERRY—Early, prolific, well flavored. 35c each, 6 for \$2.00, 12 for \$3.50.

RASPBERRIES

LLOYD GEORGE—Largest and finest for home use.

MUNGER BLACK—Distinctive flavor; few seeds.

Each of above: 35c each, 6 for \$2.00, 12 for \$3.50

STRAWBERRIES

Enjoy the flavor and aroma of fully ripe berries fresh from your own garden.

BANNER—Large luscious berries, very prolific. 12 for 75c, 50 for \$3.00, 100 for \$5.50.

SHASTA—New medium large—fine flavored. 12 for \$1.00, 50 for \$3.75, 100 for \$7.00.

ROCKHILL—Runnerless. 25c each, 12 for \$2.00, 25 for \$3.75.



STRAWBERRY, BANNER

Hallawell's

CALIFORNIA ROSES

Hallawell's roses are large No. 1 grade, the best plants available. The bush varieties and tree roses will grow rapidly and bloom abundantly the first spring; climbing varieties the second year. Planting instructions will be sent with each order.

HYBRID TEAS

- CHARLOTTE ARMSTRONG**—Long carmine buds, brilliant spectrum-red blooms. Mildly fragrant. 3 ft. \$2.25 ea.
- CHRYSLER IMPERIAL**—All-America Winner. Lively glowing crimson in bud and huge open flower. Richly fragrant. 3 ft. \$2.50 each.
- ECLIPSE**—Elegant tapering buds of golden yellow; long ornamental sepals. Blooms abundantly. 3½ ft. \$2.00 each.
- ETOILE DE HOLLANDE**—Deep velvety crimson with lovely form and delightful fragrance. 3 ft. \$2.00 each.
- FIRST LOVE**—Perfect dainty pink buds, long and tapering, usually one on a stem. Mildly fragrant. 2-3 ft. \$2.25 ea.
- HELEN TRAUBEL**—All-America Winner. Long slender buds and perfect blooms. Color is dainty apricot pink. Fragrant. 3 ft. \$2.75 each.
- LAS VEGAS**—Lovely warm salmon-pink shading to yellow base. \$2.75 each.
- LOVE SONG**—Rich salmon-pink with brilliant yellow on lower petals. Slightly fragrant. \$2.50 each.
- MIDNIGHT**—Long slender buds of exquisite dark red, spicy fragrance. \$2.75 each.
- MME. HENRI GUILLOT**—Orange and coral-red buds opening urn-shaped and glowing golden yellow at base of petals. One of the best. 2-3 ft. \$2.00 ea.
- MOJAVE**—All-America Winner. Glowing orange blended with tones of salmon, scarlet and vermilion. Fine long stemmed buds for cutting. 3 to 4 ft. \$2.75 each.
- MRS. SAM MCGREDY**—Coppery-orange flushed red on outside of petals. Good buds for cutting. Mildly fragrant. 2½ ft. \$2.00 each.
- PEACE**—All-America Winner. One of the world's greatest roses. Delicate tints of yellow, cream, buff and apple blossom. Magnificent blooms. 3-4 ft. \$2.50 each.
- SATURNIA**—Cardinal-red buds with salmon-yellow and copper on the reverse. Fragrant and lovely in the cool coastal areas. 3 ft. \$2.00 each.
- SLEIGH BELLS**—Pure white ovoid buds on long stems for cutting. Free blooming and fragrant. \$2.00 each.
- SUN VALLEY**—Sparkling yellow, long cutting stems, shiny green foliage. 3-4 ft. \$2.50 each.
- SUTTER'S GOLD**—An All-America Winner. Long pointed bright yellow buds, richly shaded orange and red. A fine cutting rose. Fragrant. 2½ ft. \$2.25 ea.
- TALISMAN**—A charming combination of orange and yellow. An old favorite—always popular. 3 ft. \$2.00 each.
- TEXAS CENTENNIAL**—Carmine-red, a sport of Pres. Hoover with all its fine qualities. 3-4 ft. \$2.00 each.
- TIFFANY**—All-America Winner 1955. Beautiful pointed buds opening to high blooms of lovely phlox pink. They are produced singly on long cutting stems. \$2.50 each.

FLORIBUNDA ROSES

- CIRCUS**—All-America Winner 1956. Perfect buds of yellow with red markings. As the bud opens it changes to a brilliant scarlet. \$2.50 each.
- FASHION**—All-America Winner. Luminous coral-pink changing to coral and reddish tones. Blooms all summer. 2-3 ft. \$2.00 each.
- FUSILIER**—All-America. A rich and brilliant orange-red. Large clusters of wavy-petaled flowers all summer. \$2.50 each.
- GARNETTE**—A corsage rose of garnet-red buds opening to full double flowers 2 in. across. 20 in. \$2.00 each.
- GOLD CUP**—All-America Winner. Golden-yellow flowers most of the year and pleasantly fragrant. \$2.50 each.
- GOLDLOCKS**—Golden-yellow buds and blooms with a delightful fragrance. 2 ft. \$2.00 each.
- JIMINY CRICKET**—All-America Winner 1955. Stunning tangerine-red buds opening to coral-orange and changing finally to pink coral. Fragrant. \$2.25 each.
- LILIBET**—All-America Winner, named in honor of Queen Elizabeth II. Beautiful dawn-pink flowers all summer. \$2.00 each.
- LITTLE DARLING**—New. Charming sunset colorings of orange through rose-pink tones, to buttercup yellow. Perfect buds opening to 2½-inch blooms. Well named, it is a little darling! \$2.75 each.
- PINKIE**—Clusters of bright pink flowers all season. Clean, shiny foliage rain or shine. 18 in. \$2.00 each.
- RED PINOCCHIO**—Great clusters of velvety deep red, pointed buds. Fragrant. \$2.00 each.
- ROSESELF**—Lovely rose-pink, one of the best floribundas for cutting. 2-3 ft. \$2.00 each.
- SPARTAN**—Sparkling orange-red, fine bud and flower form. Pleasantly fragrant. \$2.75 each.
- VOGUE**—All-America Winner. Glowing cherry-red, flushed salmon; spicy fragrance. 2½ ft. \$2.00 each.
- WHITE BOUQUET**—All-America Winner. Pale cream to snowy-white. Large gardenia-like flowers to 4 in. 2 ft. \$2.50 each.

MINIATURE ROSES

- Charming for rockeries, pots or garden
Perfect buds and open flowers on plants only 8 to 12 inches high.
- BABY GOLD STAR**—Golden yellow\$1.50
 - BIT O' SUNSHINE**—Yellow..... 2.00
 - CINDERELLA**—White 2.00
 - MIDGET**—Carmine 1.50
 - RED IMP**—Bright red..... 2.00
 - ROULETTI**—Rose pink 1.50
 - SWEET FAIRY**—Light pink..... 1.50
 - TINKER BELL**—Pink..... 1.50
 - TOM THUMB**—Crimson 1.50

DISCOUNT

You may deduct 10% of total amount on 8 or more roses, bush, or climbing.

SUBSTITUTIONS

We will NOT substitute without your permission but you might include the names of 2 or 3 second choices, so we could fill your order in full if some are sold out.

MAIL ORDERS

For packing and postage within the 4th zone on our large No. 1 grade Roses, send:

- 50c for one or two roses
- 20c per rose for 3 or more

THE NEW GRANDIFLORA ROSES

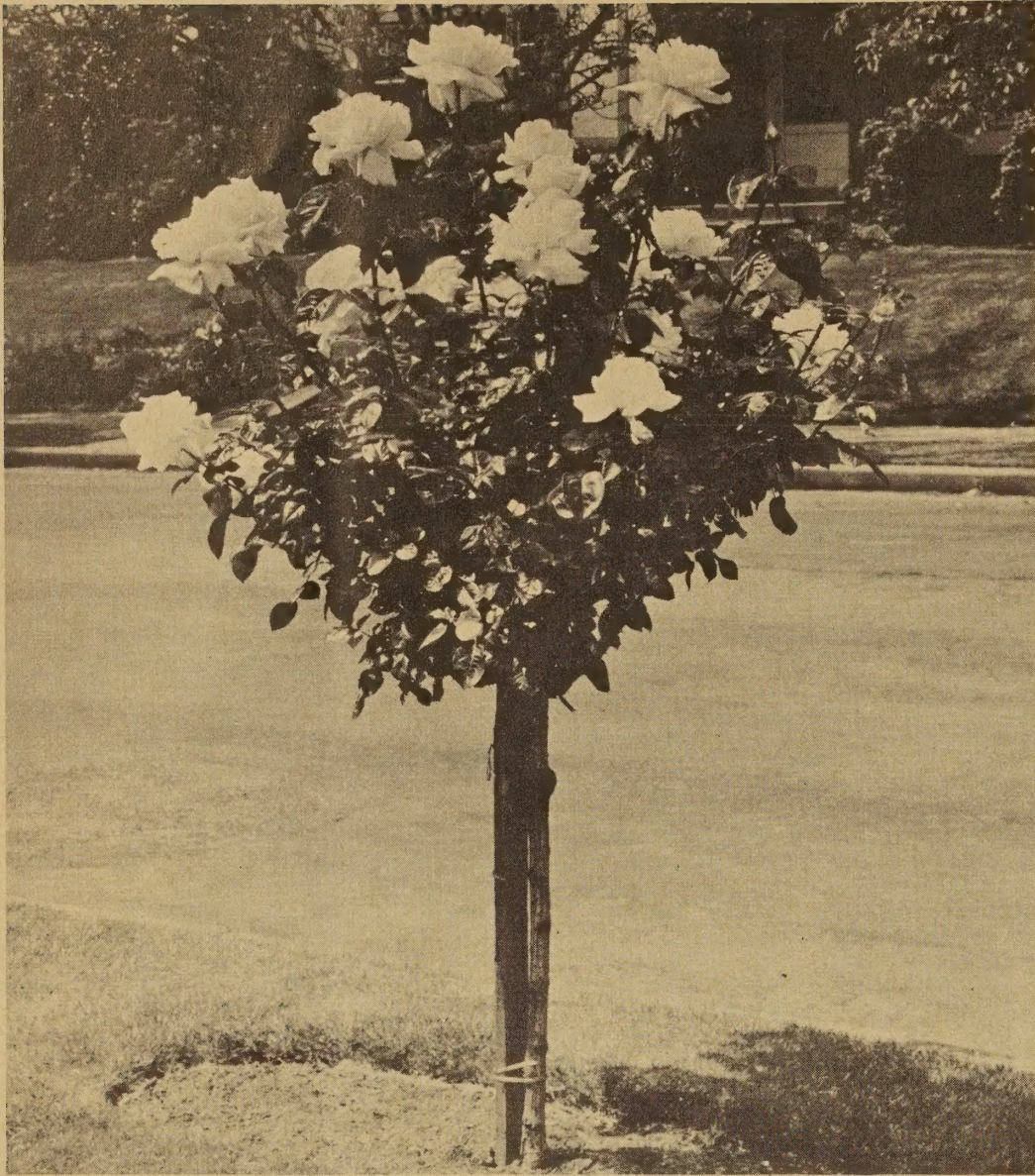
- BUCCANEER**—Gold Medal Winner at Geneva. Brilliant yellow, tapered buds, large open blooms on sturdy stems. Vigorous. 3-4 ft. \$2.50 each.
- CARROUSEL**—Here is a rose for any garden in most any climate. We have observed it in summer heat and San Francisco fog, and it always looks good! Blooms are velvety-red in clusters on long sturdy stems. 4 ft. \$2.00 each.
- MONTEZUMA**—Long slender buds of scarlet to orange. Vigorous plants. \$2.75 each.
- QUEEN ELIZABETH**—All-America Winner 1955. A lovely new Grandiflora rose, bearing exquisite high centered, clear pink blooms on long, thornless stems, fine for cutting. \$2.50 each.

CLIMBING ROSES

Extra Heavy 2-yr.-old No. 1 Grade

- BLAZE**—Masses of blazing scarlet, double flowers in clusters. \$2.00 each.
- Climbing CARROUSEL**—Awarded gold certificate by American Rose Society. Velvety dark red. Good in any climate. \$3.00 each.
- Climbing CECILE BRUNNER**—Baby size salmon-pink flowers in clusters. \$2.00 each.
- Climbing CHARLOTTE ARMSTRONG**—Brilliant red. \$2.50 each.
- Climbing CHRYSLER IMPERIAL**—Crimson. \$2.75 each.
- Climbing ETOILE DE HOLLANDE**—Deep velvety crimson. \$2.00 each.
- GOLDEN SHOWERS**—All-America Winner. Eight to 10 ft. pillar rose, clear golden-yellow blooms. \$3.00 each.
- HIGH NOON**—Intense yellow, long thornless stems. Grows to 8 ft. \$2.50 each.
- Climbing MRS. SAM MCGREDY**—Copper and orange buds. \$2.00 each.
- PAUL'S SCARLET**—Vivid scarlet blooms in clusters. \$2.00 each.
- Climbing PEACE**—All-America Winner. Buff, cream and pink, vigorous grower. \$2.50 each.
- Climbing PICTURE**—Lovely warm pink. \$2.25 each.
- Climbing PINKIE**—Perfect pink buds and clusters. Doesn't mildew or rust in our Nursery. \$2.75 each.
- Climbing SNOWBIRD**—One of the loveliest of the white roses. \$2.00 each.
- Climbing SUTTER'S GOLD**—Yellow. \$2.75 each.
- YELLOW CECILE BRUNNER**—Baby rose in yellow. \$2.00 each.

TREE ROSES See Back Cover



TREE ROSES

These fine tree roses will bloom soon after planting. They require special packing for shipping. To cover cost of packing, please send \$1.00 for 1 to 3 tree roses; 4 or more will be packed FREE. All will be sent by Express, transportation charges collect.

Prices: \$6.00 each, 6 for \$34.50

BUCCANEER—Yellow.
CARROUSEL—Velvety-red.
CHARLOTTE ARMSTRONG—Carmine.
CHRYSLER IMPERIAL—Crimson.
MONTEZUMA—Scarlet-orange.
FIRST LOVE—Rose-pink
ECLIPSE—Yellow.
HELEN TRAUBEL—Apricot-pink.
MME. HENRI GUILLOT—Coral.
MOJAVE—Orange.
PEACE—Yellow edged pink.
QUEEN ELIZABETH—Pink.
SLEIGH BELLS—White.
SUTTER'S GOLD—Golden yellow.
THE DOCTOR—Pink.
TIFFANY—Phlox pink.
JIMINY CRICKET—Tangerine.

LAWN SEED

Hallawell's Lawn Grass Seeds are well known for their excellent quality. Our various mixtures are the result of 42 years' experience in blending grass for western lawns.

PARK LAWN

Intended for sowing where the lawn will get the hardest usage. It wears well. Sow 1 lb. to 10x10 or 100 sq. ft.

Lb. 95c, 5 lbs. \$4.40, 10 lbs. \$8.00

LAWN CARPET

This is our prize blend of finest leaved grasses for the most attractive lawn. It is dark velvety green. Sow 1 lb. to 15x20 or 300 sq. ft.

Lb. \$2.00, 3 lbs. \$5.80, 5 lbs. \$9.50

EVERGREEN LAWN

This is our best dual-purpose lawn mixture, it is attractive and it wears well. Will stand the extremes of winter freezing or hot summer. Sow 1 lb. to 10x20 or 200 sq. ft.

Lb. \$2.00, 3 lbs. \$5.80, 5 lbs. \$9.50

STEEP BANK COVER

Eschscholtzia Aurantiaca (Hallawell's California Poppy)—Sow 1 oz. to 1000 sq. ft.
 Pkt. 15c, oz. \$1.25, ¼ lb. \$4.00, lb. \$12.50

HALLAWELL SEED CO.
 2850 19th Ave. at Sloat Blvd.
 SAN FRANCISCO 27, CALIF.

U S Dept Agric
 Librarian
 Washington 25 DC

BULK RATE
 U.S. POSTAGE
PAID
 Permit No. 86
 Portland, Oregon