

62

Per



ENGLISH ASTER, ANTWERP PEARL — See page 7



RUSSELL LUPINES — See page 23



FORSYTHIA
LYNWOOD GOLD
See page 36
←

LIBRARY
RECEIVED
★ MAR 7 1957 ★
U. S. Department of Agriculture

ENGLISH
VIOLA
EILEEN
→
See page 34
for this and
other varieties



LAMB NURSERIES

E. 101 SHARP AVENUE SPOKANE 2, WASH.

- HARDY PERENNIALS • IRIS
- CHRYSANTHEMUMS • ALPINES
- FLOWERING SHRUBS • POPPIES

1957

COMPLETE CATALOG Spring - Summer - Fall



Albion—A superlative new giant white with incurved petals and very full flowers. Early and vigorous. 2½'.
\$1.25 each; 3 for \$3.35

Dauntless—Very large bright orange copper. Extra heavy broad petals with full center. Early. 3'.
\$1.25 each; 3 for \$3.35

Charles E. Morris—Fine deep golden yellow incurved variety with extra large strong stemmed blooms in late August.
\$1.25 each; 3 for \$3.35

Crimson Champion—Brilliant deep crimson scarlet with slight coppery reverse. One of the most spectacular of all red-toned sorts. Very large and early. **\$1.25 each; 3 for \$3.35**

SPECIAL COLLECTION OFFER

One each of the above pictured
 New Early English Chrysanthemums \$4.25
 3 each of the 4 Varieties \$11.25

For Additional English Chrysanthemums See Pages 10-11

Please Read Carefully Before Ordering

ORDER EARLY—Unless specific instructions are given for later shipment we fill orders in the same order received. We sometimes get a bit behind during the rush season and the early order, of course, gets out first.

CONCERNING POSTAGE—ALL SHIPMENTS WILL BE SENT EXPRESS COLLECT UNLESS POSTAGE AND PACKING IS INCLUDED. PLEASE NOTE THAT OUR PRICES ARE MORE THAN SUFFICIENTLY LOWER THAN OTHER GROWERS TO WARRANT THIS CHARGE. 15% East of the Mississippi, and Texas, Oklahoma, Arkansas, Louisiana; 10% in other states West of the Mississippi river. Shipments over \$10.00 in the states of Idaho, Washington, Oregon will be prepaid. On orders for less than \$3.00 please add 50c for postage and handling charges. Shipments to Alaska, Eastern Canada, the Islands and Foreign Countries must be shipped by Air Mail to avoid delay. See paragraph, "Air Mail Shipment."

Minimum Order—On orders for less than \$3.00 please add 50c for postage and handling charges. On orders for more than \$3.00 please add postage as noted above.

Cash With Order—Please send remittance with order as we do not like to ship C. O. D. It is an additional expense to you and often causes delay.

Sales Tax—Washington residents will please add sales tax.

Air Mail Shipment is advisable on highly perishable items.

We are glad to ship C.O.D. for the Air Mail charge if remittance for plants accompanies order.

WE WILL PREPAY—We will prepay Iris orders amounting to \$3.00 or more to any part of the U. S. A. This applies to Iris alone and other plants will not be included in the same shipment.

RESPONSIBILITY—While we endeavor to fill all orders with the greatest of care, we can accept no responsibility, either express or implied for failure with stock purchased from us as there are too many existing conditions over which we have no control. Any stock that is not received in good condition will be replaced if we are notified within 5 days after receipt of shipment. No complaints will be entertained later than this.

CANCELLATIONS AND ORDER CHANGES—We must have thirty days notice if you wish to cancel your order or change the items ordered. Each order must go through many hands between the time it reaches our office and the plants are finally ready for shipment. It is absolutely impossible for us to take the time to run down an order on short notice during our rush shipping season.

Canadian Shipments—Our Canadian customers must first obtain a permit from the Department of Agriculture at Ottawa. Plants will then be shipped as requested. If shipment is to be made by mail, please add 15% for postage. See paragraph, "Concerning Postage."

Asterisk (*)—All plants thus marked are suitable for the front row border, edging, rockeries, wall gardens, etc.

May We Substitute?—When permitted to substitute we always give extra value even if no substitute is necessary. Our collection is large and contains many items of which stock is limited and if we are sold out we appreciate the opportunity of substituting.

NOTE—PLEASE DO NOT ASK US TO ACCEPT ORDERS FOR THREE PLANTS OF DIFFERENT KINDS AT THE THREE OF ONE KIND RATE. Three and dozen rates apply only to identical plants and not to a combination of several different varieties from a group.

We recommend the following Magazines:
American Poultry Journal, Farm Journal, Flower
Grower, Popular Gardening, Saturday Evening
Post



Fantail Pigeons

LIVE ORNAMENTS FOR YOUR GARDEN

Nothing is more lovely than these beautiful birds strutting about a garden. They are as proud as peacocks of their huge, beautiful tails and fairly quiver with excitement as they strut about. Their soft cooing is always delightfully soothing, and as they are not very strong flyers, due to the weight of the heavy tail, they are always close to their home which can be regulated at will. An artistically built dove cote atop a post, or a shelf placed inside an out building with a small hole cut through to let them in and out will do nicely. These birds are impervious to cold providing they have a dry home that is free from draft and safe from rodents.

Pigeons should be fed whole grain only. Where regular pigeon mix is not available at your feed store, the following is quite satisfactory: 3 parts red wheat, 2 parts whole corn, 1 part whole peas. If regular pigeon grit is not available, the birds should have access at all times to table salt, oyster shell and common chicken grit.

Pigeons can only be transported by Express as they must be cared for enroute. They will be shipped collect for transportation charges.

We can supply reds, yellows, blues and silvers at \$6.00 a pair, and saddles (white birds with colored wings) at \$7.50 a pair.

OLD FASHIONED KITCHEN HERBS

Chives (French Delicate)—Leaves excellent for salads.

Common Thyme—Leaves used for flavoring meats and fish.

Garlic—This is the true multiplier type increasing rapidly from bulblets formed by blossom heads. **3 for 65c; doz. \$2.15**

Lemon Verbena (Hardy)—Heavily lemon scented. Large leaved. Used in jellies, salads, drinks, etc.

Lemon Verbena (Tender)—Similar to above in usefulness but grows as tender shrub or houseplant.

Parsley—Commonly used for garnish and flavoring.

Peppermint—Leaves and tips add zest to cooling drinks.

Rose Geranium—Leaves used for flavoring jellies and puddings.

Rosemary—A delightful little evergreen shrub with fine leaves in demand for sandwich fillings and soups.

Sage—For use in seasoning meats, sausage, stuffings, cheese.

Savory, Winter—In demand for seasoning meats, liqueurs and stuffings.

Spearmint—Fresh leaves used to flavor sauces and cool drinks, especially juleps.

Sweetmary—Large fragrant leaves scent potpourris.

Sweet Woodruff—Hay-scented leaves used to flavor wines.

Tarragon, "Epicure"—Much prized in the making of salads and fruit cups. Also used in making vinegar.

True Lavender—Dried flowers popular in scenting linens.

65c each; 3 of one kind \$1.65; doz. \$6.50

One each of the above 16 Herbs \$9.50

HARDY PERENNIALS and ALPINES

PLEASE NOTE: 3 and dozen rates apply only to identical plants and not to a combination of several different varieties from a group.

TYPE OF PLANTS—We do not ship worn out field grown plants. Our entire stock is re-set each season at very great expense, but it insures our customers healthy young plants that establish easily and grow vigorously. In most cases these are supplied with a small earth ball which helps to maintain life and vigor while in transit. Do not remove this earth ball. If dry, dip lightly in water and plant intact.

Our packing is done by expert packers and even with the slow transportation of these times our stock goes to every state in the union in excellent condition.

All plants listed in this section may be planted either spring or fall

Before ordering, please read carefully instructions on page 3

AJUGA (A-ju'ga)—Bugle

A splendid rockery specimen or quick growing ground cover for a shady spot where the fine foliage soon forms large evergreen mats of varied color.

- **genevensis*—Rich dark green foliage and deep blue flowers on 6" spikes.
- **reptans alba*—A new form with snowy white flowers.
- **reptans fol. variegata*—Silver and green foliage with decided rose tints. Very attractive. Blue flowers.
- **reptans, Rosy Spires*—Lovely pink flowers above dark green mats.
- **reptans rubrifolia*—Striking bronze-red foliage in broad mats with deep blue flowers.

65c each; 3 of one kind \$1.65; doz. \$5.50
One each of the 5 Ajugas \$3.00

ARTEMISIA (Ar-te-mis'i-a)—Southernwood

A striking group for a sunny location greatly beloved for their aromatic foliage which is unsurpassed for use with cut flowers.

- dracunculus (Tarragon)*—Grown not only for the fine shapely bush covered with purple flowers, but as a culinary herb useful in making vinegar and for seasoning.
- **frigida*—Soft silken foliage of glistening silver in 6" mounds. A striking accent plant for rockery or wall.
- lactiflora*—A most attractive plant with astilbe-like, fragrant creamy white flowers, scenting the whole garden in August and September. 4'.
- Silver King (Ghost Plant)*—Striking variety with leaves like frosted silver, forming perfect mounds of white. Should be in every garden. 4'.

65c each; 3 of one kind \$1.65; doz. \$5.50
One each of the 4 Artemisias \$2.35

ARENARIA (Air-ee-nair'-i-a)—Sandwort

Dainty little creepers for the rockery or between stepping stones. Full sun and moderate moisture.

- **verna*—Like an emerald moss above which seem to float tiny white flowers on 1" stems.
- **verna aurea*—Rare form of golden moss.

65c each; 3 of one kind \$1.65; doz. \$5.50
One each of the 2 Arenarias \$1.15

ALLIUM (Al'-li-um)—Flowering Onions

A family of exquisite beauty blooming profusely and increasing in beauty each year. Should be grown in groups and allowed to form clumps for the best effect. Their airy, lacy blooms and dainty grassy foliage form distinct and pleasing contrast in the rockery, wall or border. Quite indifferent to soil, for full sun or light shade. An unusually long-lasting cut flower. May be planted spring or fall.

- **album*—Glorious snow white flowers on sturdy 18" stems.
- **cernuum*—Fine large heads of large rose pink flowers.
- **flavum minor*—Bright golden yellow flowers on wiry 6" stems.
- **globosum*—Large ball-shaped heads of rich mulberry purple.
- **pulchellum*—Large lacy heads of dainty lavender-rose flowers in midsummer. One of the most effective specimens we know.
- **tanguticum*—Large heads of soft pink flowers in late summer. 12".
- **tibeticum*—Fine mauve flowers in May. 10".

65c each; 3 of one kind \$1.65; doz. \$5.50
One each of the 7 Alliums \$4.25

AETHIONEMA (E-thi-on'-ema)—Persian Candytuft

A fascinating family of prostrate shrubby evergreen perennials having glaucous blue-green needle-like leaves which are ornamental the year around in the rockery, wall garden, or border. A well drained soil with full sun suits them best.

- **schistosum*—Large heads of lovely soft pink flowers with veining of deep rose. Large individual florets, wonderfully fragrant and ideal for cutting. 10".
- **Warley Rose*—A very permanent slow growing shrublet forming neat, compact plants. In May every little twig bursts into glorious bloom. The flowers are a rich bright pink, identical in form with the popular *Daphne cneorum*.

75c each; 3 of one kind \$2.00; doz. \$6.50
One each of the 2 Aethionemas \$1.35

ANDROSACE (An-dros'-a-see)—Rock Jasmine

Among the choicest of alpines come the Androsace. No other family puts on quite such a parade as these, changing their entire appearance several times each year and always remaining an interesting and lovely subject whether rolled into a small furry burr in late fall or gaily displaying its dainty flowers to the sun, or again busily increasing the colony after the blooming is over.

- **sarmentosa*—Forming many silvery rosettes of silky foliage which throw up dainty heads of verbena-like bright pink flowers. Indescribably lovely both as to flowers and year around foliage. Should be in every collection.

75c each; 3 for \$2.00; doz. \$7.50

ANCHUSA (An-shu'za)—Alkanet

The family is noted for ease of culture and brilliance of color. Blooming profusely for a long season, the ecstatic blues fill the need of pure vivid color in the border. Full sun or partial shade.

- **myosotidiflora*—Really a glorified Forget-me-not growing 8" tall and giving a wealth of small bright blue flowers.

65c each; 3 for \$1.65; doz. \$5.50

ALYSSUM (Al-is'-um)—Madwort

Absolutely indispensable for the rockery and alpine garden. The evergreen foliage is good the year around and its silvery color furnishes fine contrast. When in bloom they form bold masses of color. No group of plants gives more color and asks less care than this fine family. Plant in full sun.

- **citrinum*—Similar to saxatile, but a lovely, citron-yellow. A distinctly beautiful variation.

65c each; 3 for \$1.65; doz. \$5.50

- **saxatile compactum (Basket of Gold)*—Glorious masses of brilliant golden yellow flowers, extremely fragrant. Plant with Arabis, Dwarf Phlox, and Aubrietia for best effect.

65c each; 3 for \$1.65; doz. \$5.50

- **saxatile fl. pl.*—The fully double flowers accentuate the richness of the golden yellow color. Makes no seed. May to October.

85c each; 3 for \$2.25

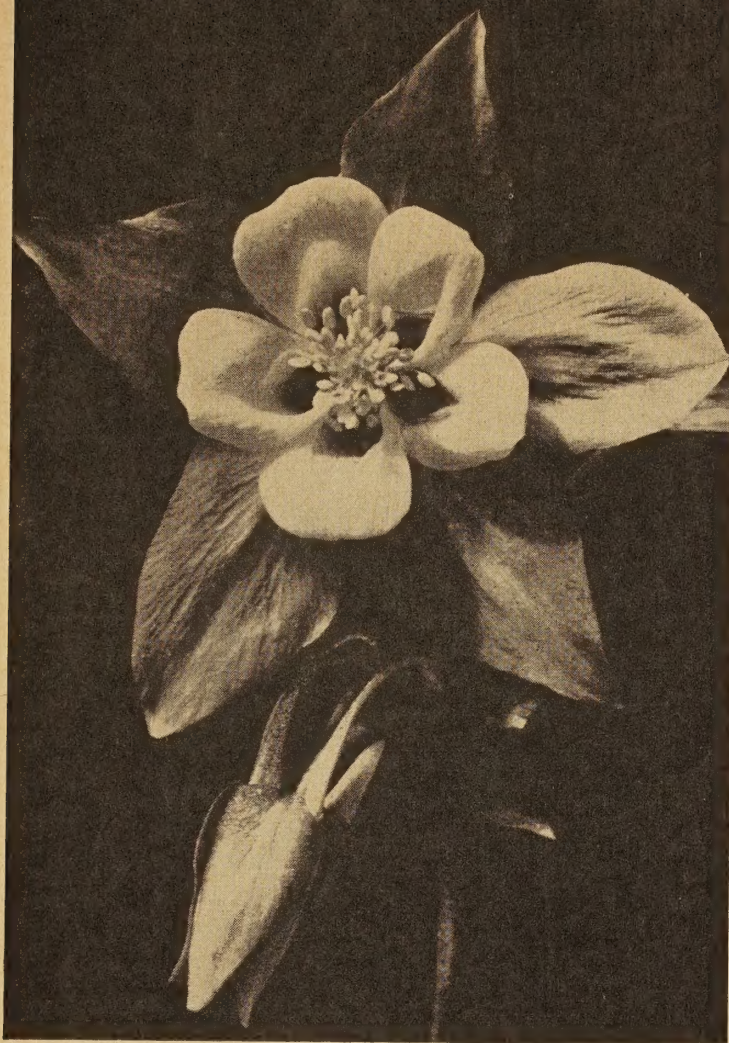
- **spinosum roseum*—Dense spiny, silvery foliage on woody stems and many small airy pink flowers during June and July. Very choice.

75c each; 3 for \$2.00; doz. \$7.50

- **spinosum album*—Lovely white form of above.

75c each; 3 for \$2.00; doz. \$7.50

One each of the 5 Alyssums \$3.35



AQUILEGIA NEW MCKANA HYBRID



ANTHEMIS

ANTHEMIS (An'-thi-mis)—Golden Marguerite

Extremely free flowering perennials with elegantly cut foliage and daisy-like flowers, furnishing an abundance of fine cutting material all summer and fall. Given a place in the sun, they are perfectly hardy anywhere and are indifferent to soil and moisture. Truly a foolproof plant.

Beauty of Grallagh—A newcomer from England with larger more deeply colored golden orange Daisies on heavy, well rounded plants. 2'. **\$1.00 each; 3 for \$2.50**

E. C. Buxton—Clean sparkling white with fine yellow eye. Lovely combined with yellow sorts. **75c each; 3 for \$2.00**

Moonlight—Large 2½" Daisies of soft yellow making a superb showing in the garden all summer. May be cut with strong wiry stems. One of the finest cut flowers grown.

75c each; 3 for \$2.00; doz. \$6.50

One each of the 3 Anthemis \$2.35; 3 each \$6.00

ACONITUM (Ak-oh-ny'-tum)—Monkshood

Stately perennials having finely cut leaves and branching racemes of hood shaped flowers; at home in sun or shade in a rich moist soil. Excellent cut flowers.

anthora—Pale yellow on 3' stems during June and July. **75c each; 3 for \$2.00; doz. \$7.50**

Barker's Variety—Immense heads of soft powder blue on 6' stalks in September. **75c each; 3 for \$2.00; doz. \$7.50**

fischeri—2' stems of lovely pale blue during September when flowers are very scarce. **75c each; 3 for \$2.00; doz. \$7.50**

napellus—Fine dark blue which will bloom several times if kept cut back, 4'. **75c each; 3 for \$2.00; doz. \$7.50**

napellus bicolor—Like above with blue and white flowers. **75c each; 3 for \$2.00; doz. \$7.50**

napellus, Sparks variety—Deep purple in branched spikes. 3'. **75c each; 3 for \$2.00; doz. \$7.50**

One each of the 6 Aconites \$4.15

ARABIS (A'-ra-bis)—Rock-Cress

Very useful plants for carpeting dry walls or banks, forming broad mats of evergreen foliage fairly smothered under a profusion of bloom in early spring. This whole family seems to thrive on neglect.

***albida**—Earliest of all. Pure white. 4".

***albida coccinea**—Bright rosy red flowers in great abundance.

***albida fl. pl.**—Charming double white form resembling a miniature double stock. Superb for cutting. 8".

***albida Rosabella**—Lovely rose pink form.

***albida variegata**—Very distinct, having a broad margin of creamy white around each finely notched leaf. Compact grower. White flowers.

65c each; 3 of one kind \$1.65; doz. \$5.50

One each of the 5 Arabis \$3.00

AQUILEGIA (Ak-wi-leej'-i-a)—Columbine

Most useful in moist partially shaded spots but equally good in full sun.

***Cap de Rosiers**—A stunning alpine novelty. Very double bright pink flowers on 8" stems. An extremely rare specimen. **75c each; 3 for \$2.00; doz. \$7.50**

Crimson Star—Huge flowers with crimson sepals and spurs and white petals. A very brilliant, long lived plant. **65c each; 3 for \$1.65; doz. \$5.50**

***flabella alba**—Immense pure white, short spurred flowers on 6" plants. Fine. **65c each; 3 for \$1.65; doz. \$5.50**

***jacunda**—Dainty little alpine. Large blue flowers with white corolla. 6". **65c each; 3 for \$1.65; doz. \$5.50**

longissima, Golden Beauty—Giant flowered pure yellow with extra long 4" spurs. **65c each; 3 for \$1.65; doz. \$5.50**

Mrs. Nichols—The finest long spurred blue we have found. Extra large, bold flowers of deep blue with white corolla. **65c each; 3 for \$1.65; doz. \$5.50**

Rose Queen—Long spurred type in finest pink shades. **65c each; 3 for \$1.65; doz. \$5.50**

One each of the 7 Aquilegias \$4.25

McKana Hybrids—Bronze Medal All America Selections 1955. One of the few perennials to attain this distinction. Gigantic blooms with very long spurs of unusually high coloring. Strong bushy plants, 3' tall with striking terminal flowers well supported on long wiry stems above the lacy foliage. Superb for garden display as well as excellent for cutting.

75c each; 3 for \$2.00; doz. \$6.50

AURICULA—See Primula auricula

All plants listed in this section may be planted either spring or fall



→
ANEMONE
PULSATILLA

←
ANEMONE
JAPONICA



ANEMONE (An-em'-on-ee) Japonica— Japanese Windflower

One of the most important of all hardy plants. Begins blooming in August and continues until cut down by frost. True aristocrats of the garden. Easiest culture. Perfectly hardy if given 3" of straw or leaves for winter protection.

alba—Large snowy white, like a glorified narcissus.
75c each; 3 for \$2.00; doz. \$7.50

Alice—Glorious silvery pink double.
75c each; 3 for \$2.00; doz. \$7.50

Margarete—A superb new sort having almost fully double flowers of clear bright pink. 85c each; 3 for \$2.25; doz. \$8.50

Max Vogel—Large, open, semi-double flowers of rich rose pink. Heavy deep green leaves. One of the most showy of all.
95c each; 3 for \$2.65; doz. \$9.50

Prince Henry—A very rare sort with large semi-double flowers of deep rosy red. 85c each; 3 for \$2.25; doz. \$8.50

Queen Charlotte—Very large semi-double LaFrance pink 3'
75c each; 3 for \$2.00; doz. \$7.50

September Charm—A beautiful new early bloomer. Flowers a lovely silvery pink shaded with rose and mauve. 2½'.
75c each; 3 for \$2.00; doz. \$7.50

Whirlwind—Large semi-double white. 3'.
75c each; 3 for \$2.00; doz. \$7.50

One each of the 8 Japanese Anemones \$5.75

ACHILLEA (A-kil-lee'-a)—Milfoil or Yarrow

Beautiful fern-like aromatic foliage for dry exposed places, giving a wealth of bloom during the whole season. The genus with which Achilles is reputed to have cured the wounds of his soldiers.

***argentea**—Lovely mounds of dainty frosted silver surmounted by snow white Daisies on 4" stems. Sun.

Golden Plate—New. Huge flat heads of deep golden yellow. Superb. 3'.

***millefolium roseum**—Brilliant red flowers in dense heads blooming continuously. 15".

***ptarmica, Boule de Neige**—Pure white double flowers in great profusion. 15".

***tomentosa**—Woolly mats of soft grey with golden yellow blooms on a 6" stem. July to September.

65c each; 3 of one kind \$1.65; doz. \$5.50
One each of the 5 Achilleas \$3.00

ANEMONE (Species)

***canadensis**—Dainty white flowers all summer on 8" stems clothed in ornate finely cut foliage. Rapid spreading ground cover for a shady spot.

65c each; 3 for \$1.65; doz. \$5.50

***hupehensis**—A Chinese sort blooming from early August until frost. Deep rose flowers 1½" in diameter. Profuse bloomer. 10".

75c each; 3 for \$2.00; doz. \$7.50

***nemerosa alba fl. pl.**—A very choice little woodlander. From creeping rootstocks come many lovely finely divided fern-like leaves and dainty double snow-white flowers like a tiny miniature Esther Reed Daisy. Given a moist spot in partial shade, it quickly forms a lovely little colony. 4".

75c each; 3 for \$2.00; doz. \$7.50

***pulsatilla**—Large crocus-like purple flowers in April, followed by fluffy seed plumes. The downy fern-like leaves appear after the flowers have passed and remain all season. 8".

65c each; 3 for \$1.65; doz. \$5.50

***pulsatilla rubra**—Deep mahogany red form of above.

75c each; 3 for \$2.00; doz. \$6.50

***sylvestris**—From spring till fall this lusty little plant produces large white flowers similar to the Japanese type but growing only a foot tall. The creeping root stock quickly forms a fine clump of basal leaves which throw up a continuous succession of bloom.

75c each; 3 for \$2.00; doz. \$7.50

One each of the 6 Anemone Species \$4.00

ANTHERICUM (An-ther'-i-kum)—St. Bruno's Lily

A graceful and useful plant having grass-like leaves and fine lily-like flowers. A good cut flower and lovely in the rockery or border. Full sun.

***ramosum**—Lovely little white Lilies in large heads on wiry stems. Quickly forming large clumps that are thoroughly hardy anywhere. A fine perennial that is really permanent.

75c each; 3 for \$2.00; doz. \$7.50

ARMERIA (Ar-meer'-ia)—Thrift or Sea Pink

A most satisfactory family of rock or wall plants forming neat grassy clumps which never get out of bounds. Of easiest culture in full sun. Unexcelled for low borders, rockeries and wall gardens.

***maritima alba**—Dainty heads of pure white flowers, blooming all season. 4".

***maritima brilliant**—A constant bloomer, with brilliant cherry-red flowers. 4".

***setacea (juniperifolia)**—Dainty rosy-pink flowers above slightly silvered cushions. About the most persistent bloomer in our garden. 3".

***setacea alba**—Crisp snow-white form of above.
65c each; 3 of one kind \$1.65; doz. \$5.50
One each of the 4 Armerias \$2.35



ASTER LUTEUS



ASTER CUSHION TYPE



TYPICAL ENGLISH ASTER

ASTER (Hardy)—Michaelmas-Daisy

Easiest of fall blooming perennials supplying color to the border and cut-flower material from August till frost. Grow in full sun in rich moist soil.

ASTERS—Species and Hybrids

***alpellus Triumph**—Masses of bright lilac blue flowers with large golden center in May and June followed by scattered bloom all summer and fall. A very lovely hybrid. 8"

85c each; 3 for \$2.25; doz. \$8.50

frikarti or Wonder of Stafa—One of the most constant blooming plants in existence. Huge clear lavender blue daisies of inestimable value for cutting. July to November.

85c each; 3 for \$2.25; doz. \$8.50

Gold Flake—Huge heads of deep golden yellow florets from July to Sept. 15"

75c each; 3 for \$2.00; doz. \$7.50

luteus—Dainty soft pale yellow hybrid growing 15" tall. August.

75c each; 3 for \$2.00; doz. \$7.50

***Wartburg Star**—Violet purple flowers with yellow centers on 12 to 15" stems from May till July. 65c each; 3 for \$1.65

Yunnanensis Napsbury—A very handsome Aster from China growing 2' tall with huge deep blue Daisies from May to July that are unexcelled for cutting.

85c each; 3 for \$2.25; doz. \$6.50

One each of the above 6 Asters \$4.35; 3 each \$12.00

ASTERS—Cushion Type Hardy Asters

This new group of Cushion Asters was developed by Professor Breithaupt of Corvallis, Oregon, and is by far the finest group of Dwarf Asters ever offered. They form complete cushions or mounds and flower right down to the ground. Absolutely nothing to compare with the vivid splashes of color furnished by these little gems in late summer and fall. Hardy anywhere. Prefer full sun with rich soil and plenty of moisture.

***Cameo**—Lovely opalescent-pink flowers on sturdy well rounded plants. 15".

***Canterbury Carpet**—Vigorous little plants growing 8" to 10" tall completely covered with canterbury-blue flowers from Mid-August to frost.

***Lavender Midget**—Mounds of purest lavender growing 8" tall and fully as broad. Superb in September and October.

***Little Blue Boy**—Beautiful clear blue seldom exceeding 6" in height and often 10" broad. A real gem.

***Pink Bouquet**—A very early clear pink forming compact 10" plants completely smothered with bloom.

***Violet Carpet**—Deep violet-blue, making a vivid showing because of the intense color. 10".

***White Fairy**—Starry flowers of lovely white tinged with blush pink when first open. 12".

85c each; 3 of one kind \$2.25; doz. \$8.50

One each of the 7 Cushion Asters \$5.65; 3 each \$15.00

ASTER ALPINUS—Dwarf Spring Flowering

Distinct woody little evergreen creepers with large deep green leaves and innumerable fine Daisy-like flowers in June. Give full sun in border, wall, or rock garden.

***Goliath**—Fine large lilac-blue flowered form.

65c each; 3 for \$1.65; doz. \$5.50

NEW GIANT FLOWERED ENGLISH ASTERS

This new race of Giant Flowered Asters is far ahead of all forms previously offered. They are larger and more double as well as being a distinct improvement in coloring. They form strong well branched bushes, giving a wealth of bloom in September. Excellent cut flowers lasting well in water. Full sun.

Alec Wallace—A lovely new shade of deep orchid pink. A prodigious bloomer on well branched bushes growing 2' tall.

Antwerp Pearl—Exceedingly free flowering with large wide open satiny-pink flowers and bright yellow eye. 4½'.

Arctic—A new white that is the best we have seen. Immense double flowers of purest snow white. 4½'.

British Queen—Bright china-blue. Good sized flowers in beautiful profusion, combined with the new color, form a most pleasing effect.

Cardinal—A new shade of vivid deep fuchsia red. A spectacular flower.

Eventide—A true English aristocrat. Almost fully double deep violet blue flowers of immense size. 3'.

Festival—A new shade of tyrian-rose with large very double flowers. The plants are very compact and heavily branched with bloom from the ground up. 2½'.

Janet McMullen—A superb new pink that is even larger than Plenty. The individual flowers are larger than a silver dollar, and quite double.

Plenty—The cleanest, finest clear blue of any Aster we have seen. Very double and huge in size.

The Archbishop—Massive sprays of superb deep blue-purple flowers. Very large and double. 2½'.

The Dean—Bright carmine pink. Very large single flowers, beautifully formed in huge sprays. 2½'.

Winston Churchill—The brightest red aster yet produced. Sturdy bushy plants of unusual vigor. Outshines all others in size and brilliance. 2½'.

Any of the above English Asters 85c each; 3 of one kind \$2.25; 12 of one kind \$8.50

One each of the 12 Giant English Asters \$9.35; 3 each \$25.00

ARCTOSTAPHYLOS (Ark-to-staf'-il-os)—Kinnikinic or Bearberry

***uva-ursi**—An excellent native evergreen creeper. Shiny dark green foliage and white flowers followed by bright orange red berries. Excellent for exposed places in the rocky or bank. Equally at home in sun or shade. Nursery grown plants. \$1.00 each; 3 for \$2.75; doz. \$10.00



AUBRIETIA

AUBRIETIA (Ah-bre'-she-a)—Rock Cress

For brilliance of mass color effect, Aubrietias have few equals. Although primarily a rock garden plant, they are equally valuable for edgings or spotted through the front row of the border. In the latter case they should be planted in groups 6" apart. They are also excellent cover for bulb beds, forming solid sheets of color from 2" to 4" high for weeks on end. If sheared lightly in July will give another performance in late August and September.

- ***Borsch's White**—A fine new white. The first of this color to be introduced. **75c each; 3 for \$2.00**
- ***bougainvillea**—Free blooming deep blue in brilliant sheets. **65c each; 3 for \$1.65; doz. \$5.50**
- ***Crimson King**—Fine rosy crimson florets forming dazzling carpets. **65c each; 3 for \$1.65; doz. \$5.50**
- ***Gloriosa**—Very large clear soft pink. One of the finest in this family. **65c each; 3 for \$1.65; doz. \$5.50**
- ***Gurgedyke**—A distinctly new shade in this amazing family. Brilliant red-purple flowers almost completely hide the foliage. **\$1.00 each; 3 for \$2.75; doz. \$10.00**
- ***Lamb's Brilliant**—The brightest red we have ever found. Strong grower and very showy. **85c each; 3 for \$2.25**
- ***Mrs. Lloyd Edwards**—Masses of rich glowing purple. **65c each; 3 for \$1.65; doz. \$5.50**
- ***Purdy's Brilliant**—Stunning bright rose-pink flowers. A most persistent bloomer. Compact habit. Very desirable. **75c each; 3 for \$2.00; doz. \$7.50**
- ***Purple Heart**—Very large double flowers of deep glowing purple. The finest double form yet. **\$1.00 each; 3 for \$2.75; doz. \$10.00**
- ***Rosette**—A glorious new fully double rose pink. Strong grower and free bloomer. An altogether charming new plant worthy of a choice position. **\$1.00 each; 3 for \$2.75; doz. \$10.00**
- ***variegata**—Lovely grey-green foliage margined silvery white with fine blue flowers. **85c each; 3 for \$2.25; doz. \$8.50**

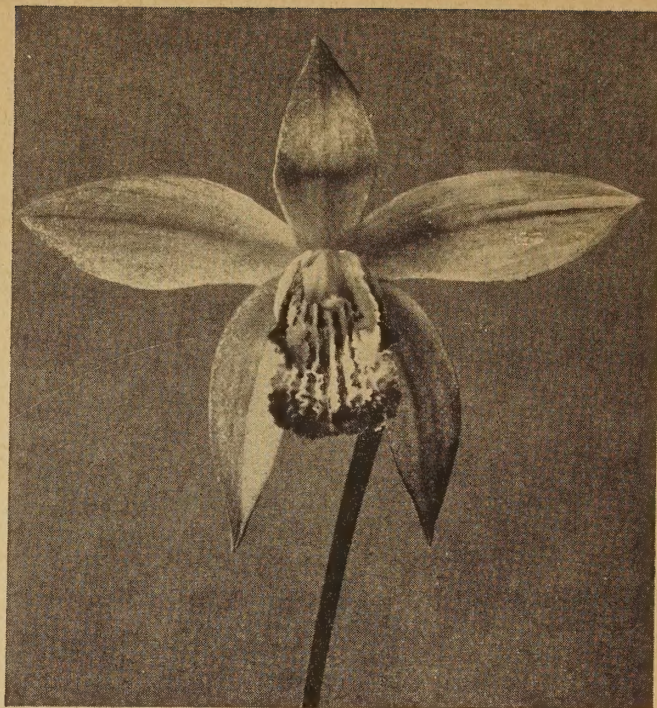
One each of the 11 Aubrietias \$7.50

ASPERULA (As-per-eu'-la)—Sweet Woodruff

Very dainty foliage making fine mats which lend an airy grace to their surroundings.

***odorata**—Creeping stems and whorled leaves surmounted by heads of filmy white flowers all season. Sweet odor when dried and greatly prized for scenting linens.

65c each; 3 for \$1.65; doz. \$5.50



BLETILLA

BLETILLA (Ble-till'-uh)—Hardy Orchid

***striata**—An exquisite small orchid that may be grown in any good garden soil in partial shade. Small cattleya colored orchids are produced in sprays in great profusion lasting from six to eight weeks. As easily grown as any garden perennial.

75c each; 3 for \$2.00; doz. \$6.50



CALCEOLARIA

CALCEOLARIA (Kal-see-oh-lair'-i-a)—Slipperwort

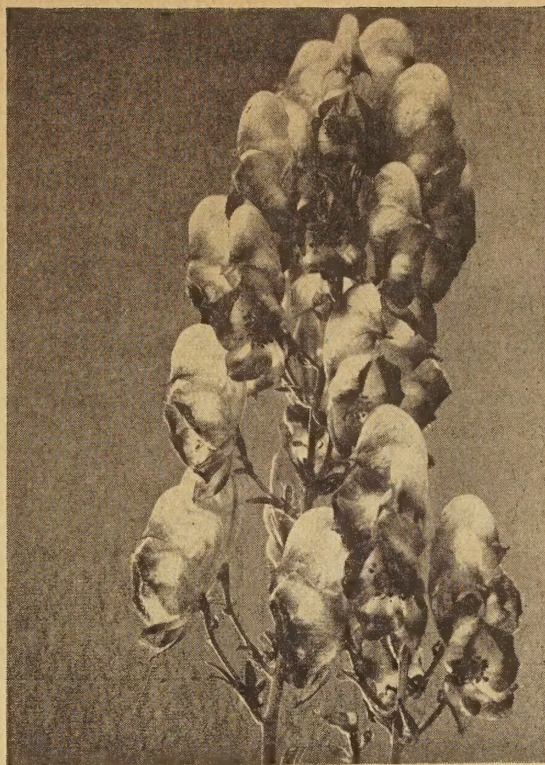
The hardy calceolarias are among the choicest of all garden subjects, blooming during the hottest part of summer when flowers are scarce. In the fern bed or among other shade loving plants they are quite at home.

***John Innes**—Large golden slippers minutely speckled with red. One friend remarked, "How can anything so delicately beautiful be hardy?" and the strange thing is, that they actually are hardy.

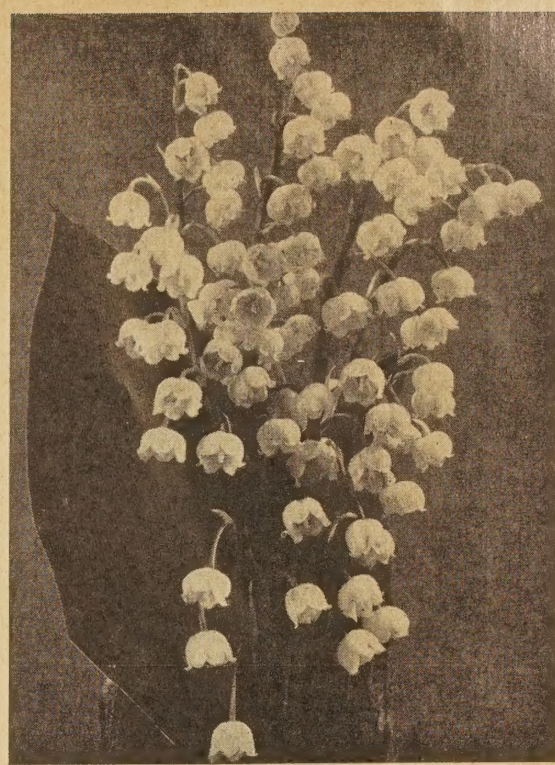
\$1.25 each; 3 for \$3.35; doz. \$12.50



CYPRIPEDIUM
(LADYSLIPPER OR MOCCASIN FLOWER)



ACONITUM



CONVALLARIA (LILY OF THE VALLEY)

CYPRIPEDIUM (Si-pri-pee'-di-um)—Ladyslipper or Moccasin Flower

Hardy orchids that thrive in a moist woody soil in a shady spot. Large moccasin-shaped flowers. While the plants will disappear during dry weather, the roots must never be allowed to dry out or they will not survive for another year.

**acaule*—"The red Ladyslipper." Really a rose purple. The fat heavy flowers are so large for the stem as to be almost amusing. Very popular. 85c each; 3 for \$2.25; doz. \$8.50

**pubescens*—Large yellow orchids with several blooms to the stem. 85c each; 3 for \$2.25; doz. \$8.50

**reginae*—The queen of hardy Orchids. Very large pink blooms on 12" stems. Well developed plants will have several blooms to the stem. 95c each; 3 for \$2.65; doz. \$9.50

One each of the 3 Ladyslippers \$2.45; 3 each \$6.50

CONVALLARIA (Kon-val-lair'-i-a)—Lily-of-the-Valley

**majalis*—Greatly beloved for its dainty, fragrant, waxy white bells. In combination with Phlox canadensis, it forms an exquisite table decoration. Likes some shade and moisture. Selected giant form. 6 pips 75c; doz. \$1.35; 100 \$8.50

**majalis fl. pl.*—An extremely rare variety with every bell beautifully doubled, intensifying the pure waxy beauty of this universal favorite. \$1.25 each; 3 for \$3.50; doz. \$10.00

**majalis rosea*—This glorious new Lily of the Valley is identical in every respect with the well known white form except in color which is a lovely soft pink. Increases rapidly in that difficult shaded spot. Deliciously fragrant, with all the airy grace of the genus. Make enviable corsages and dainty arrangements. This pink form is not suited for indoor culture as it will not show its true color.

3 for \$2.75; 6 for \$5.00; 12 for \$9.50; 25 for \$18.00
6 Single White, 1 Double White, 3 Pink \$4.15

CLEMATIS (Klem'-a-tis)—Shrubby Clematis

The following are herbaceous sorts coming from the ground each season and forming compact bushes. All are excellent subjects for the hardy border.

Davidiana—Bright green foliage and tubular, bell-shaped fragrant blue flowers. 75c each; 3 for \$2.00; doz. \$7.50

integrifolia coerulea—Interesting large deep blue flowers with twisted petals from June to August.

75c each; 3 for \$2.00; doz. \$7.50

Mandschurica—An extremely useful hardy border plant throwing three-foot canes bearing masses of lovely white flowers which lend themselves beautifully to almost any flower arrangement. A large clump in the border is truly a thing of great beauty. 75c each; 3 for \$2.00; doz. \$7.50

One each of the 3 Clematis \$2.10; 3 each \$5.75

CLEMATIS—For Climbing Varieties, See Hardy Vines



HARDY CYCLAMEN

CYCLAMEN (Sik'-la-men)—Hardy

**Neapolitanum*—Bulbous plants for partial shade, producing fragrant flowers by the hundred. This is a true Cyclamen in miniature that is hardy in the garden. A delightful specimen for the rockery or border.

Pink form, \$1.00 each; 3 for \$2.75; doz. \$10.00

White form, \$1.25 each; 3 for \$3.50; doz. \$12.50

One each \$1.95; 3 each \$5.75; 12 each \$20.00

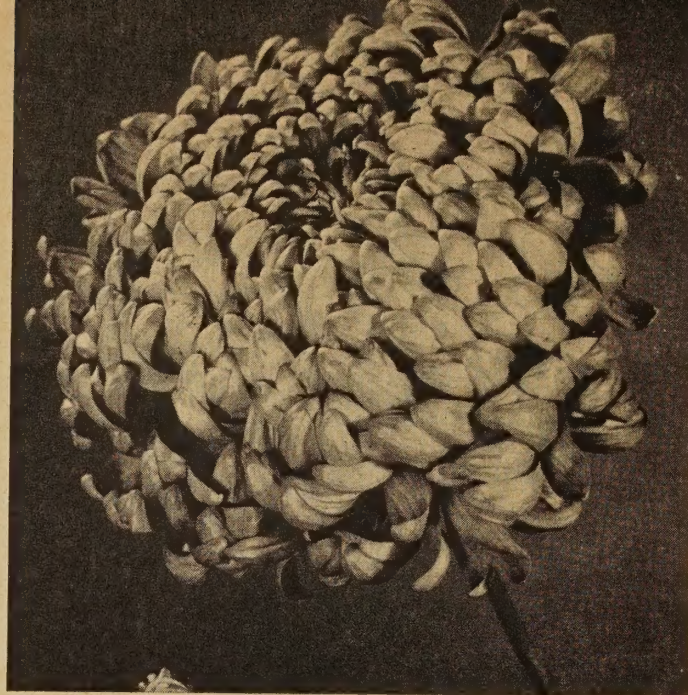
If you need plants for shade, try:

Anemone	Cyclamen	Funkia
Bletilla	Convallaria	Helleborus
Calceolaria	Dicentra	Pulmonaria
Cypripedium	Fuchsia	Primula

All plants listed in this section may be planted either spring or fall



FONDANT



DUKE OF WINDSOR

HARDY GARDEN CHRYSANTHEMUMS

CHRYSANTHEMUM (Kris-an'-the-mum)

Chrysanthemums have no equal as cut flowers. The early sorts will give good blooms by the first of July and by a judicious choice of types you may have bloom until actual freezing weather. Many sorts are impervious to light frosts. Give plenty of moisture in full sun and fertilize heavily. Three or 4 inches of barnyard manure should be spaded into the soil before planting is done. A handful of bone meal may be put in the bottom of the hole when plant is set out. A monthly feeding of some good commercial fertilizer will give exhibition blooms. A liberal feeding of superphosphate in July and again in August will hasten the blooming period.

WINTER PROTECTION—The best winter protection is nature's own. In other words their own tops. Never cut the old plants down in the fall. If further protection is desired use excelsior or evergreen boughs. Never use leaves, straw or other material that will smother the young new growth.

NEW EARLY FLOWERING ENGLISH CHRYSANTHEMUMS

To those who aspire to grow large flowered Chrysanthemums, the English varieties are the answer. If disbudded and properly fed, this strain will produce flowers from 5" to 6" across or more. If not disbudded, they will still be larger than any other garden varieties. They also have the habit of early blooming which makes them doubly valuable. Without reservation, the English sorts are the elite of outdoor Chrysanthemums.

Balcomb Brilliance—Flaming scarlet-red spiky flowers on stiff stems. This free bloomer is one of the distinctive reds. **85c each; 3 for \$2.25**

Belle Mauve—Immense incurved flowers of lovely pinkish mauve. Very strong grower and a profuse bloomer. **\$1.00 each; 3 for \$2.50**

Commando—Very large golden bronze with heavy petals forming a solid bloom which stands the weather well. **75c each; 3 for \$2.00**

Daffodil—Very fine deep yellow with an iridescent sheen. The large flowers are of exceptionally heavy texture. Wonderful cut flower. **65c each; 3 for \$1.65**

Duke of Windsor—Rich, glowing purple-violet. Huge incurving blooms of absolute perfection. When disbudded will rival the indoor Mums. **\$1.00 each; 3 for \$2.50**

Edale—Stiff spiky blooms of beautiful salmon pink. The blossoms are large and full. A worthwhile novelty. **85c each; 3 for \$2.25**

Fondant—Fine large deep rose with tints of gold. Prolific bloomer and early. Extra good. **85c each; 3 for \$2.25**

Garnet King—A huge flower, tightly incurved, of deep garnet red. It is not unusual for a well grown, carefully disbudded flower to measure 6" across. **\$1.00 each; 3 for \$2.50**

Gold Eagle—Immense thick shaggy blooms of lovely light creamy gold. Outer petals long and lacy. One of the finest of new English Chrysanthemums. **\$1.50 each; 3 for \$4.00**

H. Sutcliffe—Magnificent incurved blooms of gigantic size. A lovely soft clear yellow. Very early. **85c each; 3 for \$2.25**

Hurricane—One of the most outstanding red English Chrysanthemums to date. The enormous reflex blossoms of brilliant deep crimson are borne on sturdy stems. Very double, and satisfactory in every respect. **\$1.50 each; 3 for \$4.00**

Leda—Giant heliotrope pink. Beautiful incurving form and very early. **65c each; 3 for \$1.65; doz. \$6.50**

Madeline—Heavy growing variety with large soft pink incurved blooms. Good disbudding sort supplying excellent cut flowers. **75c each; 3 for \$2.00**

Marigold—Huge brilliant golden orange blooms of perfect form. Exceptionally early and a prolific bloomer. Extra choice. **85c each; 3 for \$2.25**

Mrs. Findley—An excellent bright yellow for growing in sprays. Slightly incurved and fluffy. Masses of bloom. **65c each; 3 for \$1.65**

Red McLeod—Huge fluffy incurved blossoms of red stained with rust. A strong grower, free blooming and very early. **85c each; 3 for \$2.25**

Salmon Frieda—A very strong growing silvery pink that is best suited for growing in sprays. Very early and extremely profuse blooming. **75c each; 3 for \$2.00**

Summer Snow—Fine pure white of medium size. Heavy blooms reflexing on the outside and incurving toward the center. Early and very lovely. **75c each; 3 for \$2.00**

Tibshelf Glory—Large sprays of 3" blooms with the perfection of form found in a miniature Dahlia. The color is a deep reddish orange that fairly glitters in the sun or under lamplight. **75c each; 3 for \$2.00**

Vulcan—Excellent deep crimson blooms flecked with gold on strong stiff stems. The petals are of unusually heavy texture. **85c each; 3 for \$2.25**

One each of the above 20 English Chrysanthemums
(Value \$17.65) \$15.00



H. SUTCLIFFE — See page 10



ALFERTON MASTERPIECE

NEW EXHIBITION ENGLISH CHRYSANTHEMUMS

The following recent importations are superior exhibition material. They are all suitable for disbudding and will then form huge 5" to 7" blooms equal to the usual greenhouse types.

Alferton Masterpiece—A superb exhibition variety producing very large deep flowers with long curling petals of bright chrome yellow.

Daydream—Luscious peach pink with long spiky outer petals gradually incurving at the center. Very large with tight double center.

Derek Ellis—A fine large incurved flower of plum crimson with silvery reverse. A distinctive color and a vivid addition to the class.

Dorothy Wearing—One of the finest bright pinks we have found. The unusually large flowers are slightly reflexed. They are compact and high built. An outstanding new Chrysanthemum.

Electron—A very large reflexing flower of brilliant orange. Free flowering and early.

Fawley Flame—Very large flat blooms of flaming scarlet or fire red. One of the brightest yet.

Film Star—Superb clear pink of unusual size and substance. Reflexing flowers in profusion.

Flaming Torch—Brilliant brick red shaded crimson. Immense flat blooms with broad petals.

G. K. Jessiman—Very distinct, large amber bronze. A deeply reflexed stylish flower. Beautifully formed sturdy 18" plants producing exquisite exhibition blooms.

Honor Bright—Gigantic rose pink with lustrous silvery sheen.

Ian Tandy—Extra strong stems bearing immense flowers of rich golden bronze. The flowers are Dahlia shaped, solid, firm petaled.

John Cooper—The very largest outdoor bronze we have seen. Immense high built flowers, slightly reflexed, of soft amber-bronze.

Valetta—Large stylish flowers with rolled petals of striking bright red. Lush foliage and sturdy habit.

Wm. Mayden—Fine rose-purple with compact Dahlia-shaped flowers on sturdy well branched plant.

\$1.00 each; 3 of one kind \$2.75

One each of the above 14 sorts \$12.75

FAVORITE ENGLISH CHRYSANTHEMUMS

Of the thousands of Chrysanthemums that have come from England, many have proven of such high merit that it seems that nothing can ever replace them. The following list has held its own with all the latest and finest. All are unusually hardy, unusually early, and very strong growers, producing immense quantities of exceptionally large flowers even without disbudding. All will bloom in August and early September.

Border White—Superb incurved white. Very large.

Bronze Supreme—Great fluffy blooms of yellow and bronze. Incurved.

Dusky Queen—Lustrous deep blackish crimson.

Dominator—Solid blooms of firm petaled bright rose pink.

Hope Valley—Huge white flushed delicate pink.

June Manser—Large reflexing flowers of clear pink.

Mrs. J. Smeardon—Immense deep rose with golden reverse.

Mrs. T. Riley—Huge silken white. Broad petaled, high built, solid bloom.

Mrs. Weber—Deep old rose, excellent in sprays without disbudding.

Migoli—Ball shaped, tightly incurved. Deep golden yellow.

Pamela James—Lovely warm salmon pink reflex.

Quaker Maid—Immense chestnut red with golden reverse.

Rosevern—Very lovely lilac-pink. Large flat blooms of excellent quality.

Salmon Lovelace—Superb salmon shaded orange.

Sunlit—Magnificent soft yellow flecked with crimson.

65c each; 3 of one kind \$1.65

One each of the above 15 sorts \$9.00; 3 each \$25.00

CASCADE CHRYSANTHEMUMS

An entirely distinct type designated as trailers. These plants are most effective planted on banks, in window boxes, porch boxes and urns, where they may cascade downward and give a wealth of fall coloring. A pail or pot fastened in the crotch of a tree is another ideal location

***Firefall**—Spectacular bright fiery red.

***Jane Harte**—A glittering mass of fine clear yellow.

***Hallowe'en**—Clear sparkling copper bronze.

***Lavender Beauty**—A lovely pastel shade of clear soft pinkish lavender.

75c each; 3 of one sort \$2.00

One each of the above 4 Cascades \$2.85; 3 each \$7.50

All plants listed in this section may be planted either spring or fall



CUSHION CHRYSANTHEMUM

NEW CUSHION CHRYSANTHEMUMS

* **Amelia or Cushion Type**—"Four months of blazing beauty," says one writer. This is really no exaggeration. The plants form mounds or cushions and bloom with such abandon as to defy description from the first of July to the end of October. All fully double. Frequently referred to as azaleamums. The following group has been selected here as the very finest of the many new sorts of recent introduction.

- * **Bronze Queen**—Lovely golden bronze flowers of exceptional size for a cushion Mum. Lovely mounds from 12" to 15" tall covered right to the ground with brilliant color.
- * **Brown Eyes**—A most unusual new shade of reddish-brown. Very double flowers of medium size on lovely 12" plants.
- * **Candy**—A superlative new button type as desirable as the name indicates. Perfect mounds of bright rose with a frosting of pure silver at the tip of each tiny notched petal. A "must" for every garden. Very early.
- * **Chorale**—Fully double Aster-shaped flowers of delightful pure pink, aging to chalk white. Vigorous, heavy grower, producing an amazing number of flowers during late summer and fall.
- * **Nankeen**—A superb new golden cushion. Fully double, tightly knit flowers of lively polished gold. Very early.
- * **Purple Queen**—Deep glowing rose-purple. Masses of bloom in the richest shade imaginable. The nearest approach to royal purple in cushion Mums.
- * **Red Cloud**—This one forms great mounds of superb glossy foliage, flaming with countless double flowers of brilliant mahogany-red over a two month period in late summer.
- * **Red Witch**—Brilliant blazing red blooms fairly smother the foliage on well rounded plants 15" tall. For sheer brilliance we cannot recommend this one too highly.
- * **Snow Fairy**—Very large and very double flowers with delicately lacinated petals giving the bloom an ethereal lace-like quality never before achieved in Chrysanthemums. Opens a pearly blush but quickly changes to snowy white.
- * **Tam O'Shanter**—The first really orange colored cushion Mum. A tremendous bloomer, vigorous grower and, of course, very early.
- * **Sparkle**—Early, bright, beautiful, long lasting. It is low, perfect cushion form without any tendency to sprawl. Large tightly petaled button type of deep reddish bronze tipped with gold.
- * **Violet Star**—New. A glorious new violet purple cushion. Well rounded plants completely covered with bloom by mid-season and continuing until heavy freezing weather.
- * **White Gull**—Very lovely, tiny white button type on low mounds of twiggy plants. Extra early and long blooming.

75c each; 3 of one kind \$2.00; doz. \$6.50

One each of above 13 Cushions \$9.00; 3 each \$24.00



SPOON CHRYSANTHEMUM

NOVEL SPOON CHRYSANTHEMUMS

At last we have Spoon Chrysanthemums that bloom in the early fall at the time Chrysanthemums should bloom. In addition to being early bloomers these lovely new sorts are extremely frost resistant, making a long blooming season.

- * **Burning Bright**—A most exciting new spoon. Jasper red with an orange base—in the setting sun it is on fire. Plant is a dignified 20" tall, spreads 16", shows a multitude of 4" flowers.
- * **Carol C.**—Delicate tubular petals of light lavender tipped with mallow-purple. Blooms early and lasts after heavy frost.
- * **Charm Spoon**—Lovely rose red with silvery tubes. The contrasting tubes give the flowers a distinctive center.
- * **Garnet Spoon**—Brilliant red spoons with purple tubes. The flowers have a satin-like sheen that is most unusual.
- * **Grand Canyon**—Magnolia purple. Bright as a whirling pinwheel. Wonderful to cut. 4" flowers in profusion. Early.
- * **Janice**—Apricot to Egyptian buff. An excellent form, frost resistant and beautifully carrying its flowers. Early.
- * **Lovely Nell**—Terra Cotta to maple yellow. Incurved. Frost resistant, healthily foliaged, stately for cutting. Early.
- * **Pumpkin Spoon**—Densely branched plant, 3" blooms of persimmon orange aging to stafford yellow. Free flowering and excellent cut. Very early.
- * **Remember Me**—The discs are perfectly formed, tremendous 6" spinning pinwheels of bright turkey red. The quills are so profuse that they crowd to a crest. The nest is so perfect that there is never a bad flower. Early.
- * **Suntone**—A very lovely large flowered spiky spoon opening the palest soft yellow and gradually changing to pure white. One of the finest of all new spoons.

75c each; 3 of one kind \$2.00

One each of the 10 Spoon Chrysanthemums \$7.00

NEW AMERICAN CHRYSANTHEMUMS

A great deal of work has been done in America on Chrysanthemums in recent years. These are now among the finest in the world and we take pleasure in offering the following fine group that we have carefully selected after testing hundreds of new sorts for Northern gardens. These are superbly hardy and bloom in the early fall when Chrysanthemums should bloom in the North.

- * **Cecelia**—Rich amaranth-purple. Bushy, well rounded plants 2' tall completely covered with bloom in early September.
- * **Cecil Beed**—New. Splendid early full double deep pink. 24", freely flowered in branching sprays. Disease and frost resistant.



FINGER LAKES



RAYONANTE CHRYSANTHEMUM

Crowning Glory (Lehman)—New 1954. Outstanding new flower of Spanish-orange overcast with coral, darker at center. Strong, upright plant. Blooms September. 25-30" tall.

Crown Jewel (Kraus)—New. 3-inch flat currant-red flowers with a brilliant sheen. Strong sturdy free blooming plant. September.

Delight—Great masses of perfectly formed, very double flowers of brilliant yellow that fairly glitter in early September.

Dragon Lady—A satin smooth bright Chinese red that holds its color without fading. Should give six weeks of color before frost.

Early Crimson—A very bright crimson, producing immense sprays of excellent quality. Unexcelled for cutting and garden display.

Finger Lakes—Giant formal flowers of perfect form. Deep bronzy-red with a golden reverse brightening the effect. Must be seen to be appreciated. We consider it one of the very best.

Golden Surprise—Excellent, very early, tightly knit, double variety. Flowers deep lemon chrome and slightly incurved. Lustrous foliage.

Jayeff—Bright dazzling pink flowers on sturdy upright plants. Very large individual blooms in immense heads.

Lee Powell—One of the largest in the group. Soft bronzy-yellow or bright straw color. Vigorous grower and a prodigious bloomer.

Malinda Brown—A magnificent orchid pink with strong lavender undertone. Flowers globular, mounded at center, petals strongly incurved and twisted. 2', Sept. 1.

Miss Lace—Pert and saucy, this is the glamour girl of the new group. True Grandmothers light pink, a bursting shower of fully double, 3" blooms sweeping en masse atop stately upright stems rising in quantity 2½' in perfect symmetry. Excellent cut-flowers, bloom first week in September, and the fresh pink flowers do not fade for weeks.

White Cloud—A superlative new early white of magnificent proportions. Sturdy 24" plants topped with masses of snowy 4" blooms. This is destined to lead the parade for a long time.

Any of the above 65c each; 3 of one kind \$1.65

One each of the 14 American Varieties \$8.25; 3 each \$21.75

RAYONANTE CHRYSANTHEMUMS

An exotic oriental type of flower with long slender petals which are quilled and pointed. When disbudded, these varieties will produce blossoms 7" or more across with a peculiar luminous appearance which is very appealing. The plants are sturdy growers with vigorous foliage and stems.

Bronze Rayonante—Beautiful bronze-buff pastel.

Pink Rayonante—Lovely silvery blush pink.

Salmon Rayonante—Luscious apricot salmon pink.

White Rayonante—Pure snow white with creamy center.

Yellow Rayonante—Glorious clear golden yellow.

75c each; 3 of one kind \$2.00

One each of the 5 Rayonantes \$3.45; 3 each \$9.25

NEW CARNATION FLOWERED CHRYSANTHEMUMS

From the University of Nebraska comes this superb new break in Chrysanthemum form. This new race is unusually vigorous, very hardy, and blooms with abandon in the early fall. It will be a very popular garden subject as soon as it becomes known to gardeners.

Pathfinder—A brand new variety in a brand new race. Carnation Flowered! 2' tall and 2' across. Very upright. A row is so neat it looks like a formal hedge. 5-10 blossoms in clusters, bright, non-fading yellow. 3" flowers are very double, high centered, and have a pronounced resemblance to the florist's carnation with typically notched petals. This departure is one of the most exciting that has ever happened in Chrysanthemums! Very early.

Plainsman—The second introduction in the new Carnation Flowered race! Very early, strong, wind-firm, grey green foliage. Strong cutting stems terminate in clusters of 3-5 radiantly beautiful 3" red-bronze-gold deeply pillowed flowers. Extremely double, literally spilling over with lacinated, notched, crisp carnation-like petals. Isn't it grand to look forward to? Sept. 10.

85c each; 3 of one sort \$2.25

One each of the above \$1.55; 3 each \$4.00

CHRYSANTHEMUM—Turfing Daisy

tchihatchewii—A most valuable plant for covering bare spots. Dainty white daisies and prostrate finely cut foliage. A very rapid creeper, evergreen and permanent.

65c each; 3 for \$1.65; doz. \$5.50

All plants listed in this section may be planted either spring or fall



SHASTA DAISY AGLAYA



SHASTA DAISY HORACE READ

CARYOPTERIS (Ka-ri-op'-ter-is)—Blue Spirea

Blue Mist—This perfectly hardy form of Caryopteris supplies a badly felt need for blue flowers during August and September. While suitable for the shrub border, it is equally suitable for the perennial border where the myriad heads of powder-blue, fragrant flowers are more than welcome during the season when bloom is at the low tide. Well rounded bushes 3' tall and equally broad.

\$1.25 each; 3 for \$3.50; doz. \$12.50



SHASTA DAISY ESTHER READ

CHRYSANTHEMUM MAXIMUM—Shasta Daisy

The well-beloved Shasta Daisy of the older gardens has become a great favorite in its newer forms, which, while improved in size of flower and number of petals, is still as hardy and easy of culture as the original. Any good garden soil in the sun with reasonable moisture is all it asks.

Aglaya (Lace Shasta)—A fully double flower with fringed lace-like petals. This new Daisy is everblooming with strong 18" stems. One of the best of all Shastas.

\$1.00 each; 3 for \$2.75; doz. \$10.00

Beaute Nivelloise—A superb single with unusually long, lacinated petals giving the bloom an exquisite lacy appearance.

95c each; 3 for \$2.65; doz. \$9.50

Esther Read Improved—One of the very finest cut flowers in existence. Very large fully double flowers with a high crest blooming continuously all season. Each individual flower is held erect on a sturdy long stem.

75c each; 3 for \$2.00; doz. \$7.50

Margaret Murray—Unusually heavy sturdy stems hold immense blossoms having broad outer petals surrounding a very heavy cushion of shorter cupping petals. An outstanding new Daisy.

\$1.25 each; 3 for \$3.50

Mt. Shasta—Discontinued in favor of Esther Read Improved.

Phyllis Elliott—Daintily frilled petals, flared and lacinated at the tips, give this an exquisite airiness. Superb cutting material.

75c each; 3 for \$2.00; doz. \$7.50

One each of the 5 Shasta Daisies \$4.35; 3 each \$11.50

SHASTA DAISY NOVELTIES

Cobham Gold—At last the long awaited color break in Shasta Daisies has occurred. We take pleasure in offering Cobham Gold which was produced by the Earl of Darney at Cobham and introduced by Reads of England. It has much the same habit and form as the famous Esther Read but is overlaid with a lovely golden tint radiating from the heart of the fully double flower. It is an everbloomer, easily grown and increases rapidly. England has given us many new things in recent years and this is among the most spectacular.

\$1.50 each; 3 for \$3.75

Horace Read (Plant Pat. 465)—A superb new Daisy from England. The giant flowers are fully double with broad thick petals of unusual substance. The sparkling snow white purity of the bloom together with its unusual keeping quality rank this among the finest cut flowers ever introduced to American gardens. Blooms from May to October.

\$1.50 each; 3 for \$3.75; doz. \$12.50

One each of the 2 Novelties \$2.75; 3 each \$7.50



SHASTA DAISY PHYLLIS ELLIOTT



DIANTHUS PINK SACHET

CAMPANULA (Kam-pan'-eu-la)—Bellflower

We are continually asked what can be used to give color to borders and rock gardens during the summer months and we always think first of Campanulas. This huge family ranges from tiny bells on 2" stems to tall and stately border plants. No gardener should overlook this group of long flowering perennials.

carpatica*, **Blue Carpet—Fine new form of deeper blue, a little dwarfer and more compact than type.

65c each; 3 for \$1.65; doz. \$5.50

Colina—Huge bells of deep velvety blue-purple, on 15" spikes. This is a little known sort that is worthy of wide cultivation. As an accent plant it is very striking due to the intense color.

75c each; 3 for \$2.00; doz. \$7.50

**garganica*—Compact rosettes of shiny foliage. Star-like blue flowers with a white eye. Very choice. True form from cuttings.

75c each; 3 for \$2.00; doz. \$6.50

***Mrs. G. F. Wilson**—A lovely hybrid with intense deep purple bells nodding gaily on wiry 4" stems. Very fine.

75c each; 3 for \$2.00

**poscharskyana*—A distinctive specie from Siberia with luminous violet-blue star-shaped flowers from July to frost. This sort forms wide mats of fine green with bloom on 4" stems.

65c each; 3 for \$1.65; doz. \$5.50

**turbinata*—Very large cup-like, erect flowers of violet blue on 4" stem. Striking plant.

75c each; 3 for \$2.00; doz. \$7.50

One each of the 6 Campanulas \$4.00

CAMPANULA PERSICIFOLIA—Peach-leaved

This type grows from 3 to 4' tall and furnishes masses of color in the border all of July and August when color is most needed.

Blue Gardenia—Exquisite very double deep blue.

Orchid Beauty—A new color break with handsome single bells of soft orchid.

Telham Beauty—Mammoth single bluebell.

White Pearl—Double pure white.

65c each; 3 of one kind \$1.65; doz. \$5.50

One each of the 4 Campanulas \$2.35

Dalluge—A superb new peach-leaved Campanula with huge violet bells that are true cup and saucer type. A real novelty.

\$1.00 each; 3 for \$2.50

DIANTHUS (Di-an'-thus)—Carnation Pinks

The beloved Pinks of our Grandmothers' gardens have taken on many new forms and hues but have lost none of their popularity during the years. Give any good garden soil with reasonable moisture and they repay with carnation-like flowers in profusion.

***Dina Weller**—A new compact form with an incredible number of lovely pink flowers with broad center band of red. 8".

65c each; 3 for \$1.65; doz. \$5.50

***June Carmine**—New. A superb double everblooming, carnation flowered sort with lovely deep rosy purple flowers all season.

75c each; 3 for \$2.10

***neglectus**—Very small tufts with large salmon pink flowers on 3" stems. Rare and very lovely.

75c each; 3 for \$2.00; doz. \$7.50

Pink Sachet—A lovely new soft pink with deep red eye.

The huge flowers are extremely sweet scented with a heavy Carnation fragrance. A very strong grower and thoroughly hardy.

90c each; 3 for \$2.40

***Rose Bowl**—A striking new plant that captivates everyone. Tight neat little clumps of deep green leaves 2" tall and sturdy 4" stems of large double flowers in brilliant purple-rose. This vigorous little plant blooms from early spring until freezing weather, making one of the brightest spots of any small alpine we have ever grown.

\$1.25 each

***Rose Cushion**—The finest foliated Dianthus grown, forming very compact close mats of rich blue-green. The leaves are so fine and thick as to remind one of woven fabric. Above this fine cushion come many large bright pink flowers on 2" stems. One of the finest rock garden plants grown.

75c each; 3 for \$2.00; doz. \$7.50

***Royal Midget**—Tiny, midget Carnation-like flowers of brilliant cerise on wiry 4" stems. A lovely cushion type forming inch high blue green mats.

\$1.00 each; 3 for \$2.50

***Tiny Rubies**—Lovely cushions of deep green foliage only 1" high—a perfect setting for tiny half-inch brilliant pink double flowers on naked 2" stems. This lovely hardy pink is among the very choicest of all dwarf plants. We cannot recommend it too highly.

75c each; 3 for \$2.00; doz. \$7.50

***Wallace Red**—Glorious new deep red. The flowers are double and make excellent cutting material all season. Very hardy and permanent.

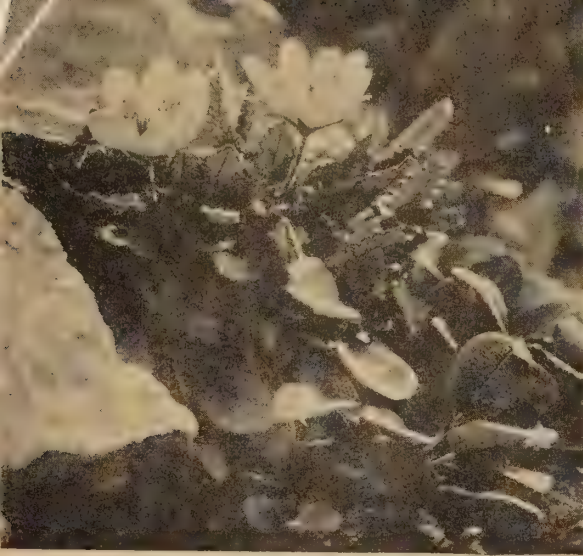
85c each; 3 for \$2.25; doz. \$8.50

***White Reserve**—Like a fine double white Carnation with true mat forming habit. 10". Exquisite Carnation fragrance.

75c each; 3 for \$2.00; doz. \$7.50

One each of the 10 Dianthus \$8.00; 3 each \$21.50

All plants listed in this section may be planted either spring or fall



DRYAS OCTOPETALA



DICENTRA FORMOSA
SWEETHEART



DICTAMNUS

DRYAS (Dry'-as)—Mountain Avens

Beautiful prostrate evergreen shrubs having neat oak-like leaves, green above and white underneath. Should have a place in the sun with reasonable moisture.

**octopetala*—Large anemone-like solitary white flowers all summer. 95c each; 3 for \$2.65; doz. \$9.50



DORONICUM

DORONICUM (Dor-on'-i-cum)—Leopard-bane

These glorified golden daisies are unrivalled for early spring flower decorations. Sun or light shade.

pardalianches, *Bunch of Gold*—Immense form growing to 4' with huge flowers. Will re-bloom if cut to the ground after flowering. 95c each; 3 for \$2.65; doz. \$9.50

cordifolium—Very dainty small yellow daisies on slender 18" stems. 65c each; 3 for \$1.65; doz. \$5.50

One each of the 2 Doronicums \$1.25

DIGITALIS (Dij-i-tay'-lis)—Foxglove

ambigua—A true perennial from Siberia having rich creamy yellow flowers penciled with brown. Dwarf and permanent. 2½'. 65c each; 3 for \$1.65; doz. \$5.50

DICTAMNUS (Dic-tam'-nus)—Gas Plant

A permanent long lived perennial with handsome ash-like leaves of delightful fragrance and lovely flowers which form a gas that may be ignited on hot evenings without damage. Should have a sunny, well drained position.

albus ruber—Forms an attractive bush 2½' tall having spikes of rosy pink flowers with deeper veinings during July. 95c each; 3 for \$2.65; doz. \$9.50

albus—A splendid pure white form. 85c each; 3 for \$2.25; doz. \$8.50

One each of the 2 Dictamnus \$1.65

DICENTRA (Dye-sen'-tra)—Bleeding Heart

Lovely plants for a moist spot in shade or partial shade. When established will give a wealth of bloom for years without disturbing.

**eximia*, *Plumy Bleeding Heart*—A dwarf 15" form blooming continuously with lovely finely cut foliage. 65c each; 3 for \$1.65; doz. \$5.50

**Oregona rosea*—A rare and lovely creeper with very ornamental blue green fern-like foliage and soft pink flowers all season. This is the true form grown from division only. \$1.00 each; 3 for \$2.50

**formosa*, *Sweetheart*—A pure white form blooming continuously from May to October. 75c each; 3 for \$2.00

spectabilis—The old-fashioned Bleeding Heart that is a favorite with all gardeners. Long, graceful racemes of lovely heart-shaped pink flowers in early spring. Form strong clumps 3' tall. Does well in any location with reasonable moisture. \$1.10 each; 3 for \$2.95; doz. \$11.00

One each of the 4 Dicentra \$3.25; 3 each \$8.75

EUPATORIUM (Eu-pa-tor'-i-um)—Hardy Ageratum

cannabinum fl. pl.—A stately perennial for the background. Many 5' canes terminating in huge heads of brilliant rosy purple double flowers. Fine for display and excellent for cutting. Aug. to Oct. 75c each; 3 for \$2.00; doz. \$6.50

ERODIUM (Er-oh'-di-um)—Heron's Bill

Distant cousins of the Geranium family with fern-like basal leaves and gay flowers on naked stems all season. Sun or partial shade.

**chamaedryoides roseum*—Tufts of tiny glossy fern-like leaves on which nestle countless deep pink, red-veined flowers from March to November. 1". 75c each; 3 for \$2.00; doz. \$7.50

EUPHORBIA—See Succulents, Page 30



DELPHINIUM PACIFIC GIANTS

DELPHINIUM (Del-fin'-i-um)—Larkspur

Nothing surpasses the Delphinium for usefulness. Plant in full sun and fertilize heavily.

If blossom stalks are cut to the ground before seed is set they immediately send up new flowers.

DELPHINIUM—Pacific Giants

Vetterle and Reinelt strain which is very mildew resistant. The flowers do not shatter and represent the very highest development in Delphiniums today.

While Delphiniums vary somewhat, our stock is grown from the introducers' seed and produce huge flowers of magnificent quality.

Black Knight Series—Huge florets of deep midnight-violet with heavy velvety texture.

Blue Jay Series—Brilliant true medium blue with dark bee.

Galahad Series—Enormous clear white blooms with heavy, glistening texture, white bee.

Guinevere Series—Glorious light pink lavender self with contrasting bees.

King Arthur Series—Brilliant royal violet with large white bee.

Summer Skies Series—Clearest light blue with white bee.

Any of the above Delphiniums 65c each; 3 of one kind \$1.65

One each of the 6 Pacific Giants \$3.75; 3 each for \$9.75

Round Table Series—A complete color assortment covering all the above and many more. 3 for \$1.55; doz. \$6.00

NEW DELPHINIUM ASTOLAT

A superb new race of Pacific Giant Delphinium showing a large percentage of deep rose and pink shades. Being Hybrids this group varies greatly in color but run largely to pinks. Stock is very scarce.

85c each; 3 for \$2.25; doz. \$7.50



DAPHNE CNEORUM

DAPHNE (Daf'-ne)—Garlandflower

***cneorum**—Shrubby little evergreens for full sun or partial sun in rich, well drained soil. Although a true shrub, usually grown in the perennial border or rockery because of its compact habit. Strong 1-yr. plants 85c each; 3 for \$2.25

***cneorum variegatum**—A very rare form of the above with handsome variegated foliage.

Strong 1-yr. plants 95c each; 3 for \$2.65; doz. \$9.50

One each of the 2 Daphne \$1.75; 3 each \$4.75



ERICA (HEATHER)

ERICA (Er'-i-ca)—Heather

The following Scotch Heather is perfectly hardy although few varieties survive in our rigid climate. These are low growing shrubs with densely arranged foliage on wiry stems. Beautiful in winter and spring with tiny bells and ornamental all summer because of the lovely foliage. Grow in sun or light shade in lime free soil with plenty of humus and moisture.

***carnea**—Spreading mats with dainty stems carrying innumerable ruddy-red bells in late winter and spring.

Strong 1-yr. plants 65c each; 3 for \$1.65; doz. \$6.50

Fine 2-yr. plants 90c each; 3 for \$2.40; doz. \$9.00

***Sherwoodi**—A new very hardy Heather that is very prostrate in habit and forms a wide mat smothered with brilliant rose-red bloom as soon as the snow is gone.

Strong 1-yr. 65c each; 3 for \$1.65; doz. \$6.50

2-yr. 90c each; 3 for \$2.40; doz. \$9.00

***Springwood Pink**—A sturdy growing form with bright pink flowers on branches a little more upright in habit than the above forms. Strong 1-yr. 65c each; 3 for \$1.65; doz. \$6.50

2-yr. 90c each; 3 for \$2.40; doz. \$9.00

One each of 3 Ericas 1-yr. \$1.75; 3 each \$4.75

2-yr. \$2.45; 3 each \$6.50

All plants listed in this section may be planted either spring or fall



HARDY FUCHSIA MAGELLANICA

HARDY FUCHSIA (Feu'-shuh)—Lady's Eardrops

The forms of magellanica offered here are thoroughly hardy if given a light covering of straw or leaves during the winter. They should be cut to the ground each year as they send up new canes in the late spring and bloom during the summer and fall. The pendant flowers are exact replicas of the familiar tender sorts in shape, but are smaller and produced in amazing profusion. They will grow in a shaded position where few plants will survive and form a charming scene for weeks on end. 2½' tall.

magellanica alba—A strong growing form producing masses of lovely, delicate blush-white blooms which contrast delightfully with the handsome glossy deep green foliage. The flowers hang from thread-like stems and completely line the long arching branches. So dainty and airy as to form a fairy-like picture in a shaded spot.

85c each; 3 for \$2.25; doz. \$8.50

magellanica folia variegata—The leaves of this form are variegated or marbled beautifully in shades of rose, bronze, and soft yellow which serve as a lovely foil for the brilliant red flower clusters.

85c each; 3 for \$2.25; doz. \$8.50

magellanica Senorita—A new selection that is even more robust than the type, having beautiful deep green leaves with red veining, growing on red stemmed branches. The flowers are brilliant ruby-red with a purple heart. The sprays are charming for cut flowers and flower arrangements, as well as forming a most attractive garden specimen.

95c each; 3 for \$2.65; doz. \$9.50

One each of the 3 Fuchsias \$2.45; 3 each \$6.95

FERNS (Furnz)—Hardy Sorts

Ferns should have a moist partially shaded position and delight in leaf mold or peaty soil but will do well in any garden soil if there is plenty of moisture.

bulbiferum—Dainty 15" fronds increasing rapidly from small bulbs formed on the backs of the fronds.

Christmas Fern—Evergreen dagger-like fronds on heavy 15-18" stems.

Interrupted Fern—Strong grower 18-20" tall growing from creeping root stock.

Maidenhair—Wiry black stems and delicate, graceful, beautifully cut fronds.

Ostrich—Large, broad, plume-like fronds. Very ornamental.

Any of the above Ferns 85c each; 3 of one kind \$2.25; doz. \$8.50

One each of the 5 Ferns \$3.95; 3 each \$10.95

FUNKIA (Funk'-ia)—Plaintain Lily

Hardy, herbaceous perennials with handsome tropical-appearing leaves and lily-like flowers. Any moist situation in sun or shade. Very effective planted in the shady border with ferns or waterside plantings, but does well in full sun.

***coerulea lanceolata**—Broad green leaves and violet blue flowers. 2'.
75c each; 3 for \$2.00; doz. \$7.50

***glauca**—A fine Japanese species with large blue-green leaves and violet flowers.
75c each; 3 for \$2.00; doz. \$7.50

***lancifolia**—Slender lance-shaped leaves and lilac-blue flowers in September. Very profuse.

75c each; 3 for \$2.00; doz. \$7.50

***lancifolia aurea**—A new form of lancifolia with lovely golden foliage and lilac-blue flowers in great profusion.

\$1.00 each; 3 for \$2.50; doz. \$9.50

***subcordata grandiflora**—Large, fragrant, pure white flowers from August to October.

95c each; 3 for \$2.65; doz. \$9.50

***Thomas Hogg**—A beautiful new sort having large rich deep green leaves beautifully margined with clear silver. Dainty lavender flowers in August.

95c each; 3 for \$2.65; doz. \$9.50

***undulata variegata**—Creamy white leaves, marked with bright, light green and soft lilac flowers. Grow in shade to retain the white foliage.

75c each; 3 for \$2.00; doz. \$7.50

One each of the 7 Funkias \$5.65; 3 for \$15.00

GLAUCIUM (Glau'-si-um)—Horned Poppy

Burbank Hybrids—A little known plant of striking beauty, forming 3' bushes which in the words of one writer are, "A decoratively feathered tangle of silver-frosted leafage." These plants bloom continuously, having very large silken poppies of waxy texture in shades of yellow, orange and buff.

75c each; 3 for \$2.10; doz. \$7.50

GENISTA (Jen-is'-ta)—Scotch Broom

***sagittalis**—A true Scotch Broom in miniature. Forms a dwarf prostrate mat 2' across and 6" high with curiously winged stems surmounted by brilliant golden yellow flowers from May to July. An excellent novelty.

\$1.00 each; 3 for \$2.50

GEUM (Jee'-um)—Avens

A group that is highly prized as a cut flower and doubly valuable because of the very ornamental evergreen, pinnate, basal leaves. If given plenty of moisture, will bloom all season. Full sun or light shade.

Dwarf Species

***Abbeys Orange**—Orange yellow flowers on 12" stems practically all season. Attractive foliage.

***Borisi**—Very brilliant form named for King Boris. Mat forming with dainty 8" stems and gorgeous orange-scarlet flowers.

65c each; 3 of one kind \$1.65; doz. \$5.50

One each of the Dwarf Geums \$1.15; 3 each \$3.15

Border Types

Borsch's West Hills—Fine golden copper. Strong, vigorous grower.

65c each; 3 for \$1.65; doz. \$5.50

Fire Opal—Dazzling orange-scarlet with rich orange sheen.

The spectacular double flowers are often 3" across on 2' stems abundantly produced from May to October. Very hardy and a strong grower. Excellent foliage. An all-round fine garden subject.

85c each; 3 for \$2.25; doz. \$8.50

Princess Juliana—Bright glowing orange flowers. Very double. One of the very strongest growers. Hardy and a profuse bloomer, making a fine splash of color in the garden as well as being a long lasting cut flower.

85c each; 3 for \$2.25; doz. \$8.50

Red Wings—The very finest deep ruby-red Geum. Perfectly hardy and almost everblooming. Brilliant double flowers on strong 2' stalks.

85c each; 3 for \$2.25; doz. \$8.50

rivale, Leonards Var. fl. pl.—Nodding coppery-rose in loose sprays. A valuable hardy, permanent plant.

75c each; 3 for \$2.00; doz. \$7.50

One each of the 5 Border Type Geums \$3.65; 3 each \$9.45

GORMANIA—See Succulents, Page 30



GERANIUM NEPALE



GEUM FIRE OPAL



GAILLARDIA AUREA PURA

GERANIUM (Jer-ay'-ni-um)—Crane's-bill

The true geranium is a hardy perennial and quite distinct from the type grown in the north as a greenhouse sort. They all have lovely foliage and are persistent bloomers. Excellent subjects for the rock garden and border.

***endressi**—A lovely rose pink form that blooms even more freely than the type from May to November. Sun or shade. 10". 75c each; 3 for \$2.00

***grandiflorum**—Delightful deep blue growing about 20" tall. Give it some shade in the rockery or border and it will delight you. 75c each; 3 for \$2.00; doz. \$7.50

***lancastriense**—A superb plant of restrained habit with masses of lovely salmon-pink flowers veined with crimson. Blooms from May to November. 4". \$1.00 each

***nepale**—Large fern-like leaves and clear soft blue flowers. If kept cut back will bloom all season. Rare and extremely fine. 16". Full sun. 75c each; 3 for \$2.00; doz. \$7.50

***pylzwianum**—Spreads rapidly by means of underground rhizomes and bulbils. Nicely cut leaves and large pink flowers on slender 4" stems. 75c each; 3 for \$2.00; doz. \$6.50

***sanguineum**—Forms mounds of lovely fern-like foliage which takes on brilliant fall coloring. The large purplish-red flowers continue throughout the season. Full sun. 65c each; 3 for \$1.65; doz. \$5.50

***sanguineum album**—A lovely pure white form of the above. 65c each; 3 for \$1.65; doz. \$5.50

***sanguineum alpinum**—A lovely creeper of restrained habit, having a continuous succession of fine rosy red flowers. 75c each; 3 for \$2.00; doz. \$7.50

One each of the 8 Geraniums \$5.75

GENTIANA (Jen-shi-an'-a)—Gentian

So named after the ancient king, Gentius of Illyria, and truly living up to their royal heritage. The intensity of their coloring has made them the standard of color description for blue throughout the world. Prefer a rich, moist soil.

***acaulis clusi**—The famous Gentian of the Alps. Dazzling blue trumpets cover the prostrate mats of heavy, deep green foliage. 85c each; 3 for \$2.25; doz. \$8.50

GAILLARDIA (Gayl-lar'-di-a)—Blanket Flower

One of the most desirable flowers for cutting that we know of. Richly colored, and blooming continuously, Gaillardias ask no favors except to be planted in the sun in light soil. They withstand a surprising amount of drought but do equally well in a moist position.

aurea pura—New. Extra large flowers of pure golden yellow on long strong stems.

Burgundy—Deep wine red flowers often showing splashes of bright golden yellow. Lovely for cutting.

65c each; 3 of one kind \$1.75

One each of the Gaillardias \$1.25; 3 each \$3.50

GYPSOPHILA (Jip-sof'-il-a)—Baby's Breath

Clouds of fine starry flowers in feathery panicles highly prized for cutting. All sorts like full sun and good drainage. A little lime is beneficial.

Bristol Fairy—A persistent blooming double with large perfectly formed pure white blooms. 2'.

85c each; 3 for \$2.25; doz. \$8.50

oldhamiana—A very lovely pink form, making compact plants 2 ft. tall. Free blooming. 65c each; 3 for \$1.65; doz. \$5.50

For Lavender Colored Baby's Breath—See Statice

paniculata compacta—Forms a billowy mound 3' high. Indispensable as cut flower. Excellent dried for winter bouquets. 65c each; 3 for \$1.65; doz. \$5.50

***repens bodgeri**—A new form of compact habit and perfectly formed double flowers. Excellent foliage and thoroughly hardy. 75c each; 3 for \$2.00; doz. \$7.50

***repens, Rosy Veil**—A companion to bodgeri, of the same habit and type, but with dainty pink flowers. 75c each; 3 for \$2.00; doz. \$7.50

One each of the 5 Gypsophilas \$3.25

HYDRANGEA (Hy-dran'-jee-a)

hortensis (Hybrid French Hydrangea)—This lovely pink hybrid is a hardy counterpart of the beautiful specimens offered by florists in pots. Should be treated as a perennial as it comes from the ground each season, forming huge heads of bloom in August on the new wood.

\$1.25 each; 3 for \$3.50



HELIANTHUS LODDON GOLD

HELIANTHUS (Hee-li-an'-thus)—Perennial Sunflower

Fine border plants growing 4' tall and forming fine clumps. Give full sun and fertilize freely for best results.

Loddon Gold—Handsome fully double flowers of deep pure yellow. Fine landscape variety and exquisite cut flower.

Coronation—Similar to above with broad guard petals and fully double cushioned center. New and fine.

85c each; 3 of one kind \$2.25; doz. \$8.50

One each of the 2 Helianthus \$1.50

HEDERA (Hed'-ur-a)—English Ivy

***Albany Ivy**—A new dwarf ivy that is unexcelled for low borders or edging, because of its compact habits. Needs no trimming to keep it in bounds. Naturally forms a shapely mound of deep green leaves. Excellent for growing in low dishes for table decoration. Shade.

***conglomerata minima**—A truly beautiful species of dwarf compact habit. The oddly twisted stems and leaves gives the plant a quaint oriental appearance.

***helix gracilis (Baltica Ivy)**—A lovely trailing vine with small marbled deeply cut foliage. A perfectly hardy evergreen for a shady spot.

65c each; 3 of one kind \$1.65; doz. \$5.50

One each of the 3 Hederas \$1.75

HELENIUM (He-lee'-ni-um)—Helen's Flower

Another gorgeous border plant blooming profusely in late summer. A very useful cut flower. 2½ to 4'.

Gartensonne—Broad heads of deep golden yellow.

65c each; 3 for \$1.65; doz. \$5.50

Crimson Beauty—Deep crimson-red blooms in profusion. One of the darkest Heleniums. 75c each; 3 for \$2.00; doz. \$7.50

Gypsy—One of the gayest things in the garden. The flower petals are red on one side and yellow on the other and the effect is enchanting. 75c each; 3 for \$2.10; doz. \$7.50

One each of 3 Heleniums \$2.00



HELIOPSIS INCOMPARABILIS

HELIOPSIS (Hee-li-op'-sis)—Orange Sunflower

One of the showiest of all border plants as well as affording quantities of excellent cut flowers. Shapely bushes 3' tall which are easily grown in any well drained soil in sun or partial shade. These fine plants bloom from July to frost and supply not only one of the finest garden displays but also furnish some of the finest cut flower material to be found among perennials.

Gold Greenheart—A very choice European introduction of typical habit and indifference to surroundings. The flowers are fully double and show an emerald green center while opening. 80c each; 3 for \$2.10; doz. \$8.00

incomparabilis—Excellent semi-double, Daisy-like flowers of deep golden orange produced in masses from the first of July to frost. Nothing introduced in recent years has received more favorable comment.

75c each; 3 for \$2.00; doz. \$7.50

One each of the 2 Helioopsis \$1.35

HEUCHERA (Hew'-ker-a)—Coral Bells

One of the most satisfactory plants for edgings, rockeries, walls, or borders. The dainty bells held erect by wiry 10" stems form a bright mist of color from early spring till frost. The attractive heart-shaped leaves are evergreen. Give rich soil in full sun. The increased demand has prompted us to collect the entire color range of modern Heuchera.

***Bloom's Var.**—Bright coral pink.

75c each; 3 for \$2.00; doz. \$7.50

***Coral Mist**—A novelty of the first water. Very tiny coral colored blooms in immense heads comparable only to Baby Breath in usefulness for arrangements. Very popular with our visitors. 95c each; 3 for \$2.65; doz. \$9.50

***Edge Hall**—Fine large flowered coral pink.

75c each; 3 for \$2.00; doz. \$7.50

***Freedom**—New extra large flowered shell pink.

85c each; 3 for \$2.25; doz. \$8.50

***glabella**—Fine soft yellow native.

75c each; 3 for \$2.00; doz. \$7.50

***Matin Bells**—Strong sturdy stems of bright coral red bells. A free blooming sort of recent introduction.

85c each; 3 for \$2.25; doz. \$8.50

***Pluie de Feu**—Deep rich red. 75c each; 3 for \$2.00; doz. \$7.50

- ***Queen of Hearts**—The brightest of all. Intense, fiery, coral scarlet. 95c each; 3 for \$2.65; doz. \$9.50
- ***rosamundi**—Tall coral pink. 75c each; 3 for \$2.00; doz. \$7.50
- ***sanguinea**—The original red coral bell. 75c each; 3 for \$2.00; doz. \$7.50
- ***Snowflake**—The finest and largest pure white yet introduced. Immense heads and prolific bloomer. 95c each; 3 for \$2.65; doz. \$9.50
- ***undulata**—A species seldom offered in this country. The small flowers come in enormous heads and are of deep chartreuse to green, each individual little flower filled with many orange tipped stamens. Not showy in the garden but much sought after by those who make flower arrangements. 85c each; 3 for \$2.25; doz. \$8.50

One each of the 12 Heucherias \$9.25



HYPERICUM HIDCOTE

HYPERICUM (Hi-per'-i-kum)—St. John's Wort

A useful and lovely group of perennials. The single row of petals inclose a large cushion of beautiful stamens. A delightful cut flower.

Hidcote—From England comes this lovely little shrub growing 18" tall and nearly as broad, making it an ideal plant for the perennial border or in front of taller shrubs. Masses of bright cup-shaped 2" fragrant flowers all summer.

***moserianum**—Immense blooms of brilliant yellow. The stamens are tipped with purple making it a very striking subject. 10".

***patulum henryi**—A shrubby little plant suitable for the border or large rockery. Innumerable bright golden flowers from July to September.

***reptans**—A lovely little trailer with dainty foliage and inch-wide flowers of soft yellow. The stamens are tipped with red anthers giving a most pleasing effect in the rockery or border. 4".

One each of the 4 Hypericums \$2.65
75c each; 3 of one kind \$2.00; doz. \$6.50



SINGLE HELIANTHEMUM

HELIANTHEMUM (Hee-li-an'-thi-mum)— Sun Rose

One of the finest evergreen rock plants or ground covers ever introduced. Prostrate little shrubs with fine foliage and countless thousands of beautiful flowers over a long period. Excellent on dry banks or any sunny position with good drainage.

SINGLE FORM

- ***Brunette**—Burnt orange, crimson rust eye.
- ***Dazzler**—Intense deep scarlet. Perhaps the brightest of all.
- ***Fairy**—Large pure white with lovely contrasting golden stamens.
- ***Flame**—Very large flame pink. Superb.
- ***Goldilocks**—Very large yellow flowers. Silvery foliage.
- ***Golden Nugget**—Very dwarf and prostrate. Golden yellow.
- ***Jock Scott**—Gorgeous tomato red. Strong grower.
- ***Mrs. Mold**—A new English importation with lovely fringed petals of salmon rose.
- ***Peach**—Very large apricot peach with heavy glossy foliage.
- ***Pumpkin**—A distinctive sort with bright pumpkin colored flowers.
- ***Seattle**—Intense red copper of great brilliance.

Any of the above Helianthemums 65c each; 3 of one kind \$1.65
One each of the 11 Single Helianthemums \$6.50

DOUBLE FORM

- ***Boule de Feu**—Double Crimson. 75c each; 3 for \$2.00; doz. \$7.50
- ***Double Chocolate**—Very double brownish copper 75c each; 3 for \$2.00; doz. \$7.50
- ***Snowball**—A lovely sparkling white. Very double. 75c each; 3 for \$2.00; doz. \$7.50
- ***Sun Fleck**—Glorious double yellow. 75c each; 3 for \$2.00; doz. \$7.50

One each of the 4 Double Helianthemums \$2.75

HERBS—See Page 3

All plants listed in this section may be planted either spring or fall

Legend of the Christmas Rose

The little girl wept bitterly for in the manger the Christ Child lay and she alone had no gift to offer. Then amidst great light an Angel appeared and cried, "Behold without!" And lo, the ground about was white as snow with waxen bloom. Quickly and thankfully she gathered a lovely gift and then with tear stained face offered them unto her Lord. Thus was born the Christmas Rose.



CHRISTMAS ROSE (HELLEBORUS NIGER ALTI-FOLIUS)

HELLEBORUS (Hell-i-bor'-us)

Plant in spring or fall but give a cool moist position with light shade from the noonday sun for best results. After blooming, a dressing of well-rotted manure is beneficial. All Helleborus offered here are grown in our own nursery and are not to be compared with the imported stock commonly offered. Helleborus that have gone through fumigation seldom survive.

***corsicus**—A sturdy grower with large Holly-like leaves and big open flowers of soft chartreuse much admired for arrangements. Often worn as St. Patrick's Day reminder as it blooms at that season.
Large \$3.50 each; 3 for \$9.50
Small \$2.00 each; 3 for \$5.50

***foetidus**—A lush tropical appearing shrubby sort growing 15" tall with finely divided palmate leaves and huge heads carrying literally hundreds of red tipped greenish flowers.
Large \$1.50 each; 3 for \$4.00; doz. \$15.00
Small 85c each; 3 for \$2.25; doz. \$8.50

***niger altifolius (Christmas Rose)**—A lovely winter blooming plant that will actually flower under the snow. Large palm-like leaves form a lovely setting for the waxen-white flowers. Split the stem when cutting and they will last for weeks in water. The variety altifolius is a decided improvement over the old niger.
Large \$1.50 each; 3 for \$4.00; doz. \$15.00
Small 85c each; 3 for \$2.25; doz. \$8.50

***orientalis (Lenten Rose)**—Huge palm-like leaves on 10" stems remaining lustrous green throughout winter. At Easter time these are replaced by new growth from the heart of which come sturdy 15" to 20" stems carrying large heads of lovely cup-shaped flowers 2" across. An old plant will produce hundreds of blooms. A vigorous grower and one of the most permanent of all perennials. Orientalis come in all shades from white to deep reds.

Mahogany red. Large \$1.50 each; 3 for \$4.00; doz. \$15.00
Small 85c each; 3 for \$2.25; doz. \$8.50

Snow white. Large \$1.50 each; 3 for \$4.00; doz. \$15.00
Small 85c each; 3 for \$2.25; doz. \$8.50

One each of 5 Helleborus Large \$8.75; 3 each \$24.00

One each of 5 Helleborus Small \$5.00; 3 each \$13.75

INCARVILLEA (In-kar-vil'-le-a)—Hardy Gloxinia

Exotic hardy plants from the orient having large Gloxinia-like flowers. Fine specimens for sunny position in the rockery or border.

***delavayi**—Huge trumpets of rich rose pink borne on stiff 18" stems in terminal trusses. Large ornate leaves that are coarsely toothed form a handsome setting for a most unusual garden subject. This plant is little known and should have much wider distribution as it is admired instantly by all who see it.
85c each; 3 for \$2.25; doz. \$7.50



HELLEBORUS ORIENTALIS (LENTEN ROSE)



INCARVILLEA

IRIS—See Summer Planting Section



IBERIS



RUSSELL LUPINES



LYTHRUM

IBERIS (I'-ber-is)—Candytuft

Extremely useful evergreen shrublets making compact mounds of deep green and dazzling display of bloom. One of the hardiest of plants and if trimmed severely after blooming is a source of delight for many years in either rockery or border.

**saxatilis*—Prostrate little evergreen that is completely hidden by masses of snow white flowers in May. Rare and exquisite.

**Snow Flake*—A splendid new sort with exceptionally large white flowers. 8".

**tenoreana*—A fine delicate pink. Will bloom itself to death if not pruned severely during the summer.

65c each; 3 of one kind \$1.65; doz. \$5.50

One each of the 3 Iberis \$1.75

LAMIUM (Lay'-mi-um)—Dead Nettle

A much neglected but worthwhile plant. Grown in partial shade with occasional severe shearing it is one of the loveliest dwarf plants. A great favorite with our visitors.

**maculatum*—Deep green foliage heavily marbled with red and silver above which the old rose salvia-like flowers bloom all season.

**maculatum album*—A rare white flowered form.

65c each; 3 of one kind \$1.65; doz. \$5.50

One each of the 2 Lamiums \$1.15

LUPINUS (Leu-py'-nus)—Lupine

Stately plants forming large clumps. Should have full sun and plenty of moisture. We furnish strong young plants that establish easily.

Russell's New Hybrids—An outstanding novelty from England, having won a Gold Medal from the Royal Horticultural Society. Huge spikes in colorings hitherto unknown in Lupines, such as rich orange, clear blues, indigo and countless bi-colors. Mixed colors only. 3 for \$1.65; doz. \$6.50

LAVANDULA (Lah-van'-deu-la)—Lavender

A delightful old-fashioned favorite that has never lost popularity. The dainty lavender flowers which retain their delicious fragrance when dried are greatly beloved. Give a sunny location and cut back when the bushes become straggly.

**delphinensis*—A very strong growing Lavender with leaves and flowers both a little larger than other types, forming sturdy 15" bushes.

**Twinkle Purple*—A deep purple form on compact shapely bushes.

**vera*—The true old lavender. A profuse bloomer with fine silvery leaves and purple flowers.

**vera rosea*—Dainty pink form.

65c each; 3 of one kind \$1.65; doz. \$5.50

One each of the 4 Lavandulas \$2.35

LYTHRUM (Lith'-rum)—Loosestrife

Stately border plants 5' tall forming shapely bushes of great value for the border and also for naturalizing in woodlands or along streams.

Dropmore Purple—A new purple sort in fine feathery masses. 75c each; 3 for \$2.00; doz. \$7.50

Morden's Gleam—A new bright red from the famous Canadian Experiment Station in Morden, Manitoba. 75c each; 3 for \$2.00; doz. \$7.50

Morden's Pink—An outstanding novelty with large rose pink florets. 75c each; 3 for \$2.00; doz. \$7.50

Morden's Rose—Another new one from Canada. Deep rose. 75c each; 3 for \$2.00; doz. \$7.50

One each of the 4 Lythrum \$2.75



LYCHNIS DIOICA FL. PL.

LYCHNIS (Lik'-nis)—Catchfly

Attractive perennials of easiest culture furnishing some of the brightest colors in the garden. Should be planted in groups in full sun where the effect is dazzling.

chalconica—Great heads of vivid scarlet flowers on 4' stalks blooming in June and July. Very few flowers of such startling, intense color.

65c each; 3 for \$1.65; doz. \$5.50

***dioica fl. pl.**—A spectacular new English introduction with very double bright pink flowers an inch in diameter. Another novelty of real merit.

\$1.00 each; 3 for \$2.50

***viscaria fl. pl.**—Perfectly double florets in large heads of deep rose. One of the finest and most satisfactory hardy plants.

75c each; 3 for \$2.00; doz. \$7.50

***viscaria splendens alba**—A lovely new pure white form.

65c each; 3 for \$1.65; doz. \$5.50

***viscaria, Zulu**—A glorious deep red sport that developed here. The unusual brilliance of color demands instant admiration.

85c each; 3 for \$2.25; doz. \$8.50

One each of the 5 Lychnis \$3.50

LEWISIA (Leu-is'-i-a)—Bitter Root

A group of rock plants so choice that they merit the very best spot in any rockery. Being natives of the Northwest, they are perfectly hardy anywhere, but demand perfect drainage. Plant in a soil composed of good loam, sand and stone chips or fine gravel and success is assured.

rediviva—In the late summer and fall this little gem sends up many fat needle-like leaves forming a dense rosette. In May a great bunch of buds appear each on a separate stem which open into flowers 2" across of rich satiny texture very similar to the Cactus bloom. The color varies from pure white to deep rose-pink, the darker colors predominating. After blooming the entire plant disappears for about two months. Best planted in a dry exposed position.

Potted plants, 65c each; 3 for \$1.65; doz. \$6.50

***Tweedyi**—Considered by the connoisseur to be the best rock plant in existence. It certainly is about the most difficult to come by as it can no longer be collected in the wild. The flowers are like satin, of the loveliest shade of bright peach and measure 2 to 3" in diameter. The evergreen leaves are fleshy and broad spoon shaped. Must have sharp drainage. Only a very few plants available this season.

Potted plants, \$2.50 each

LIATRIS (Ly-ay'-tris)—Blazing Star

From a grassy tuft arise stalks clothed in lovely fragrant blossoms. Sun or shade.

pyncnostachya—Tall rosy purple. Indescribably lovely.

65c each; 3 for \$1.65; doz. \$5.50

September Glory—Giant spikes and huge florets of striking purple.

75c each; 3 for \$2.00; doz. \$7.50

White Spire—Sparkling white counterpart of above.

75c each; 3 for \$2.00; doz. \$7.50

One each of the 3 Liatris \$1.95

LILY-OF-THE-VALLEY—See Convallaria

LEONTOPODIUM (Le-on-to-pohd'-i-um)—Edelweiss

Perhaps the most far-famed plant of the Swiss Alps, forming downy mats of silver in any well drained sunny spot that is not too dry.

***alpinum**—Star-like heads clothed with a dense woolly white substance. An interesting plant that always draws attention.

65c each; 3 for \$1.65; doz. \$5.50

MONARDA (Mon-ar'-da)—Bergamot

Attractive plants for the sunny border or in light shade. Very fragrant mint-like foliage, large brilliant flower heads.

Cambridge Scarlet—Brilliant crimson scarlet

70c each; 3 for \$1.80; doz. \$7.00

Croftway Pink—Choice salmon pink.

70c each; 3 for \$1.80; doz. \$7.00

***Granite Pink**—A superb new Monarda sent us by the Department of Horticulture at the University of New Hampshire. This new form is a complete departure in Monardas in that it grows only 10" tall. It has the lovely pink flowers of the parent, Croftway Pink, and is even more vigorous in growth and habit of bloom. A definitely worthwhile addition to all perennial plantings.

\$1.00 each; 3 for \$2.50; doz. \$8.75

Mahogany—Brilliant reddish mahogany.

70c each; 3 for \$1.80; doz. \$7.00

Purple Glory—Extra fine purple sort.

70c each; 3 for \$1.80; doz. \$7.00

Snow Queen—Large snowy white.

70c each; 3 for \$1.80; doz. \$7.00

Violet Queen—Rich pure violet.

70c each; 3 for \$1.80; doz. \$7.00

One each of the 7 Monardas \$4.95; 3 each \$12.75

MYOSOTIS (My-oh-soh'-tis)—Forget-me-not

One of the most beloved of all flowering plants, the dainty and lovely Forget-Me-Not continues to be a favorite everywhere. The forms offered here are true perennial types for shaded or partially shaded beds and borders. Will also thrive in full sun if given ample moisture. Superb along streams or about pools. Both types are everblooming and thoroughly hardy.

***Pinkie**—Great masses of bright pink bloom all season.

***Sapphire**—Brilliant sapphire blue form. Excellent for cutting.

65c each; 3 of one kind \$1.65; doz. \$5.50

One each of the 2 Perennial Forget-Me-Nots \$1.15

OENOTHERA (Ee-no-thee'-ra)—Evening Primrose

Especially valuable for the sunny well drained border or rockery. The lovely flowers open in late afternoon and persist until about noon the following day, when they close up and drop to make way for the new buds ready to unfold.

***Mexicana rosea**—From a compact leafy rosette arise much branched stems 10" tall which are covered with large deep rose flowers all season. The colony is increased by underground runners. We consider it one of the very finest things in our list.

85c each; 3 for \$2.25; doz. \$8.50



ONOSMA

ONOSMA (On'-os-ma)—Golden Drops

A delightful plant for the higher part of the rockery or wall garden. Enjoys full sun and light well drained soil.

***tauricum**—Forming a compact mass of rough hairy foliage 12" across above which the large heads of fragrant golden bells nod gaily in the sun. 85c each; 3 for \$2.25; doz. \$8.50

PULMONARIA (Pul-moh-nair'-i-a)—Lungwort

Noteworthy perennials adapted for the shady border or rockery. Should be grown in groups and reset every three or four years. They are especially lovely under deciduous trees and shrubs or along the waterside.

***lutea**—A new plant to American gardens, having very heavy, crinkled green leaves and masses of soft yellow flowers. Very strong grower and a prodigious bloomer.

85c each; 3 for \$2.25; doz. \$8.50

***Salmon Glow**—A new plant having lush green foliage and brilliant coral red flowers. A distinctive novelty.

85c each; 3 for \$2.25; doz. \$8.50

***saccharata maculata**—Large deep green leaves heavily spotted with silver and heads of mertensia-like bells in drooping clusters of pink and blue in early spring. The highly ornamental leaves persist all season. A fine plant for a cool spot.

65c each; 3 for \$1.65; doz. \$5.50

***saccharata, Mrs. Moon**—A new variety having more silver on the leaves and larger flowers showing greater contrast in the pink and blue heads.

85c each; 3 for \$2.25; doz. \$8.50
One each of the 4 Pulmonarias \$2.95

PHYGELIUS (Fy-gee'-li-us)—Cape Fuchsia

capensis—We cannot understand why this plant should be so little known. It is without question one of the very finest of all hardy perennials. The shapely 3' plants are covered with intense scarlet, tubular shaped flowers from July to September. One of the brightest of all hardy plants. Quite shrubby in mild climates. With us it must come from the ground each year, but entirely hardy anywhere. Full sun or light shade.

95c each; 3 for \$2.65; doz. \$9.50

PARDANTHUS (Par-danth'-us)—Blackberry Lily

Perfectly hardy lily-like plant of easy culture. Planted in groups in the sunny border they form a charming picture with slender strong stems 3' tall branching at the top and forming large heads of gay flowers.

chinensis (syn. balamcanda)—Orange colored flowers spotted black and handsome seed pods that resemble large blackberries. These are excellent in the winter bouquet.

75c each; 3 for \$2.00; doz. \$7.50



PENSTEMON RUBY KING

PENSTEMON—New Large Flowered Hybrids

No hardy perennial can surpass the brilliant display made from early summer till frost by this strain of easily grown, free-flowering Penstemon. The large gloxinia-like blooms are carried gracefully on 2' stems, with several stalks giving color throughout the season. Beside its usefulness in the perennial border, the flowers are excellent cut, lasting a week or more in water.

Firebird—Fiery red; from Switzerland.

85c each; 3 for \$2.25; doz. \$8.50

Garnet—Rich garnet red original of the strain.

85c each; 3 for \$2.25; doz. \$8.50

Ruby King—One of the showiest of new perennial plants. The 18 to 24" spikes bear myriads of rich, brilliant, ruby red trumpet-shaped flowers which are larger than those of the above types.

95c each; 3 for \$2.65; doz. \$9.50

One each of the 3 Large Flowered Hybrids \$2.50; 3 each \$6.85

PENSTEMON (Pen'-ste-mon)—Beard Tongue

***heterophyllus**—Handsome flowers of clear metallic blue on sturdy upright branches. 10".

75c each; 3 for \$2.00

***Newberry**—Tiny evergreen shrub with deep green Holly-like leaves and lovely deep rose flowers. Easy and permanent in full sun.

75c each; 3 for \$2.10

One each of the 2 Penstemon \$1.35

PENSTEMON—Barbatus hybrida

Giant Beard Tongue

From broad mats of glossy evergreen leaves this fine ever-bloomer sends up 3' stalks of richly colored flowers, from May to November.

Pink Beauty—Bright shell pink greatly admired for clearness of color.

75c each; 3 for \$2.00; doz. \$7.50

***Rose Elfe**—A superb new dwarf sort with fine pink flowers in great masses all season. Hardy and dependable.

75c each; 3 for \$2.00; doz. \$7.50

Ruby Gem—Fine large deep ruby-red.

75c each; 3 for \$2.00; doz. \$7.50

One each of the 3 Barbatus Hybrids \$2.15

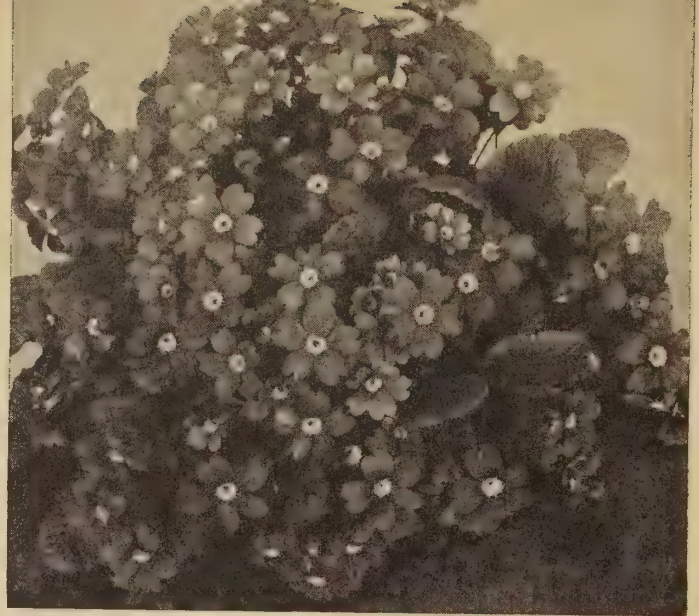
PIMELIA (Pim-eel'-e-a)—New Zealand Daphne

coartica—A very rare and lovely little prostrate shrub carpeting the ground with sturdy branches covered with glaucous foliage. Masses of fragrant filmy white flowers in the spring and tiny waxen white berries in the fall. Perfectly hardy, forming mats 2' across and 1" tall.

85c each; 3 for \$2.35; doz. \$8.50



PRIMULA JULIAE DOROTHY



PRIMULA JULIAE PRIMROSE LODGE

PRIMULA (Prim'-eu-la)—Primrose

All the Primroses offered in this list should have a cool shaded spot with plenty of leaf mold or peat moss in the soil. Work bone meal around the plants and mulch with well rotted manure in the fall for best results.

- ***cortusoides**—Large crinkled leaves covered with soft down form an excellent setting for slender 10" stems carrying delicate airy heads of bright rose colored flowers.
65c each; 3 for \$1.65; doz. \$5.50
- ***Japonica Red Hugh**—Heavy 18" stems with countless bright red flowers opening in true candelabra fashion.
75c each; 3 for \$2.00; doz. \$6.50
- ***Juliae**—Tiny creeper forming mats of shiny deep green foliage smothered by starry mats of flowers on 2" stems in early spring. 65c each; 3 for \$1.65; doz. \$5.50
- ***Ozon**—A wonderfully fine deep blue Polyantha grown from division. This plant has immense florets of real cobalt blue. Vigorous grower. 85c each; 3 for \$2.25; doz. \$8.50
One each of the above 4 Primroses \$2.75
- ***Colossal Giants**—A glorious mixture of all the finest Polyantha types ranging from pure white to deep orange and from blue to red and purple. Immense florets on strong sturdy stems. 3 for \$1.55; doz. \$6.00



PRIMULA JULIAE CREAM TART

Cream Tart—The largest flowered Juliae we have ever seen. This is a true acaulis type with unusually long stems carrying immense deep cream colored flowers. Vigorous strong grower. Profuse bloomer.
\$1.25 each; 3 for \$3.25

PRIMULA—Juliae Hybrids

In all the spring garden there is nothing, in our estimation, that makes quite the brilliant splash of color as does this fine group of plants. The beautiful evergreen foliage is almost completely hidden by the masses of flowers that appear as soon as the snow leaves us. They are as hardy as a Lilac bush and increase with unbelievable rapidity. They are the result of crosses of the hardy species Juliae and various other forms of Primulas. Therefore, some are acaulis type and others polyantha, but all are utterly lovely. Some even give us a good show again in the fall. No garden, large or small, should be without a good collection of this impressive family. Grow them in that shady spot where nothing seems to do well.

- ***Baker's Variety**—Fine cherry rose.
- ***Bright Eyes**—Very large deep rose pink. A heavy grower of excellent habits.
- ***Dorothy**—Dainty little Polyantha form crossed with the Cowslip. Soft yellow.
- ***Kinlough Beauty**—Brilliant, bright pink with large flowers of polyanthus type.
- ***Lollipop**—A newly imported variety that is unusually vigorous in all respects. A polyanthus type with bright rosy-red flowers with a white stripe down the center of each petal reminiscent of a stick of peppermint candy. A gay and lovely plant.
- ***Primrose Lodge**—Deep crimson flowers in large clusters. A fine Polyantha hybrid.
- ***Snow White**—The very finest white Primrose we have ever seen. The flowers almost completely hide the foliage.
- ***Wanda**—Especially fine deep violet.
75c each; 3 of one kind \$2.00; doz. \$6.50
One each of the 8 Juliae Hybrids \$5.75

PRIMULA AURICULA—Evergreen Primrose

In the Auricula we have a primrose that may be grown with no protection whatever in any part of the country. The broad fleshy leaves are evergreen and may often be seen encased in ice in our beds but when the ice is gone they are as firm as ever. In some varieties the leaves are coated with a silvery bloom that adds greatly to their charm. The sweetly scented flowers come in a wide range of colors. They bloom both spring and fall, asking only a rich, moist soil in sun or shade. A situation affording light shade from the noon-day sun suits them best. We are offering a few named sorts from our large collection of imported varieties, grown entirely from division and guaranteed true to name.

- ***Candlelight**—Soft yellow and burnished copper. An appealing soft-toned blend. \$1.00 each; 3 for \$2.75

PRIMULA AURICULA Continued Next Page



PRIMULA AURICULA

- ***Dainty Mary**—Foliage large, toothed and crinkled. Flowers a deep blue with an eye of pale blue heavily coated with powder. Very choice. **\$1.25 each; 3 for \$3.25**
- ***Garnet Beauty**—Very large blooms of fine deep garnet. Rich and lustrous coloring and very free flowering. **\$1.00 each; 3 for \$2.50**
- ***Golden Lady**—A superb deep golden yellow of large size with sturdy stems and splendid growing habit. The deep yellow edge incloses a fine white center or paste. **\$1.50 each; 3 for \$4.00**
- ***Indianola**—A most unusual reddish-copper. Very large florets and unusually free bloomer on vigorous strong plants. This is the earliest re-bloomer we have; always in bloom again by September 15. **\$1.25 each; 3 for \$3.25**
- ***Quaker Lady**—An early profuse bloomer having pale bluish-fawn colored flowers. Like the faded velvet flowers upon our Grandmothers' bonnets. **75c each; 3 for \$2.00**
- ***Royal Red**—This is not red at all with us but a very fine reddish purple. Immense flowers in unusually large heads. Excellent. **85c each; 3 for \$2.35**
- ***Royal Robe**—A most desirable sort with a rich blue-purple band encircling a golden disc. **\$1.00 each; 3 for \$2.50**
- ***Tapestry**—A medley of copper, blue and rose with lovely light border. This has always been a favorite with our visitors and is a personal pet here. **\$2.50 each**
- ***Violetta**—Vigorous grower with fine flowers of deep blue-violet. **75c each; 3 for \$2.00**

One each of the above Auriculas \$11.00

- ***Mixed**—A fine mixture grown from seed of named varieties showing a wide range of color. **3 for \$1.65; doz. \$5.50**

NEWLY IMPORTED PRIMROSE AURICULA

- ***Green Mountain**—A startling new green flowered sort with snowy white paste. One of the very few really green flowers. An exciting novelty for the connoisseur. Only a few to spare. **\$10.00 each**
- ***James Douglas**—Large heads of vivid bright blue-purple flowers. A striking and most unusual color from England. **\$2.50 each; 3 for \$6.50**



PHYSOSTEGIA

PHYSOSTEGIA (Fy-soh-steg'-i-a) - False Dragon's Head

Handsome plants for the sunny border or wild garden. Should be divided and re-set every three years to insure shapely clumps.

Summer Glow—Towering stems often exceeding 4', terminating in colorful spikes 1½' in length of rosy crimson. This new plant blooms in August when color is very scarce in the garden.

Summer Snow—A glorious pure white form of the above.

65c each; 3 of one kind \$1.65; doz. \$5.50
One each of the 2 Physostegias \$1.15



PACHYSANDRA

PACHYSANDRA (Pak-i-san'-dra)—Japanese Spurge

***terminalis**—An extremely fine plant used extensively for ground cover in either sun or shade. Will grow under trees, shrubs, evergreens, on banks or along driveways. Excellent thick, waxy evergreen foliage. 4".

3 for \$1.35; doz. \$4.75; 100 for \$20.00

***Silver variegated**—A lovely new form with silver and green leaves. This is particularly effective where contrast is desired with surrounding deep green plants.

65c each; 3 for \$1.65; doz. \$5.50

PLUMBAGO (Plum-ba'-go)—Leadwort

***larpentae** (syn. *Ceratostigma plumbaginoides*)—Lovely low growing plant with small, leathery heart-shaped leaves of bronzy-green covered with deep peacock blue flowers during the late summer and fall. Sun or light shade. 10".

75c each; 3 for \$2.00; doz. \$7.50

All plants listed in this section may be planted either spring or fall



PHLOX SUBULATA



PLATYCODON



POTENTILLA

PHLOX SUBULATA—Moss Pink

A fine spring blooming type with moss-like evergreen foliage and creeping habit. The foliage is hidden by masses of lovely flowers in April and May and makes fine green cover all the rest of the year. Excellent for covering bare spots or banks as well as in the border or rockery. Must have full sun. Will do with very little moisture.

- ***Alexander's Giant**—Exceptionally large blooms of deep rose with a distinct eye. Very fine.
- ***Arbutus**—Well named in that the plant in bloom resembles Arbutus. It is a solid mass of delicately shaded Arbutus pink.
- ***Astro**—A new large flowered deep orchid-rose. Very long blooming season.
- ***Autumn Rose**—A splendid deep rose sort with a marked tendency to rebloom in the fall.
- ***Blue Hills**—Very fine strong grower forming 2' mats with exquisite deep blue flowers.
- ***Brilliant**—Perhaps the brightest of all with masses of gorgeous brilliant red flowers on very prostrate plants.
- ***Orchid Lady**—Deep orchid with a distinct eye of darker shade. Lovely.
- ***Pink Perfection**—Fine new bright pink. Very strong vigorous grower. Compact habit.
- ***Sky Blue**—The finest new blue.
- ***White Delight**—Very compact dense cushions completely hidden by dazzling pure white flowers. The very finest white we have seen.
- White Perfection**—A new phlox and the first of its type to show a definite blue eye on a white flower. This is a lovely combination.

Any of the above 65c each; 3 of one kind \$1.65

One each of the 11 Phlox Subulata \$6.85; 3 each \$17.50

PHLOX OF VARIOUS SPECIES

- ***amoena**—Evergreen tufts with brilliant salmon pink flowers in May.
- ***divaricata canadensis**—Lovely fragrant blue flowers on 6" stems. Likes some shade. April and May.
- ***ovata caroliniana**—Large evergreen basal leaves and masses of brilliant reddish pink flowers in large heads. June. 6".
- ***stolonifera, Blue Ridge**—A fine creeper for sun or shade forming large mats of shiny leaves with handsome flower heads in June. We offer here the rare blue flowered form. 4".

75c each; 3 of one kind \$2.00; doz. \$6.50

One each of the Phlox Species \$2.85

PYRETHRUM (Painted Daisies)—See Fall Planting Section

PHLOX—Early Flowering

These are a cross between the Decussata and our native sorts and bloom from early summer until frost thus lengthening the season of this popular flower considerably. 15".

Miss Lingard—A grand white variety that is popular because of its continuous bloom from May to October.

70c each; 3 for \$1.80; doz. \$7.00

Rosalinde—A glorious shade of amaranth-pink blooming freely from June until freezing weather. The longest season of any Phlox. A neat grower of medium height.

70c each; 3 for \$1.80; doz. \$7.00

One each of the 2 early blooming Phlox \$1.30

Phlox Decussata

HARDY PHLOX

Unexcelled for brilliant garden display. Gives spectacular splurges of vivid color during the hot summer months. Easy to grow and perfectly hardy anywhere. Make your selection from the varieties shown in color on the Back Cover.

75c each; any 3 \$2.00; any 12 \$7.25

One each all 7 pictured Phlox \$4.50

POTENTILLA (Poh-ten-til'-la)—Cinquefoil

A very interesting family having strawberry-like leaves and gay flowers. If grown in light soil in a sunny situation with reasonable moisture they will bloom practically all summer.

- ***atrosanguinea**—Lovely silver grey, strawberry-like leaves growing close to the ground and large heads of strawberry-like flowers in vivid bright oxblood-red growing on wiry 10" stems. Very choice.
- ***cinerea**—A dainty evergreen creeper with lovely golden flowers on thread-like 2" stems.
- ***fragiformis**—Large flannel-like leaves outlined with silver, forming close tufts. Bright yellow buttercup-like flowers on 4" stems. An excellent accent plant for rockery or front row border.
- ***Miss Wilmott**—A brilliant salmon pink growing 15" tall. This one is not only a fine garden subject but also a lovely cut flower.
- ***warrensi**—Large heads of buttercup yellow all summer. 15".

65c each; 3 of one kind \$1.65; doz. \$5.50

One each of the 5 Potentillas \$3.10

SHRUBBY POTENTILLA—See Flowering Shrubs



RUDBECKIA GOLD STORM



Miniature Roses

FOR LASTING ENJOYMENT USE THEM FREELY

In the Rock Garden
For low borders
For exhibition

For arrangements
For corsages
For miniature gardens

For Winter blooming pot plants

RUDBECKIA (Rud-bek'-i-a)—Coneflower

Showy plants for the sunny border. Daisy-like flowers with a bronzy cone-shaped center.

Golden Globe—A greatly improved form of the old Golden Glow. This new form has compact fully double flowers with regular petals resembling a small Dahlia. The stalks are sturdy and strong, standing up well. An excellent long lasting cut flower as well as a fine garden subject. 5'.

85c each; 3 for \$2.25; doz. \$8.50

Gold Storm (Goldstrum)—Very large daisy-like flowers of rich golden yellow with a heavy cone of sooty black. The petals are slightly twisted giving the flower a jaunty appearance of great charm for cutting. Developed in Europe during the war and greatly admired.

85c each; 3 for \$2.25; doz. \$8.50

The King—A startling plant for the border with 4' stalks bearing huge deep crimson-red Daisy-like flowers having a large copper colored cone in the center. Individual flowers last for weeks. Indifferent to weather, soil or drought.

85c each; 3 for \$2.25; doz. \$8.50

White Lustre—A striking new sort with large pure white flowers contrasting beautifully with the characteristic copper colored cone. Strong, vigorous and free flowering. 3'.

\$1.10 each; 3 for \$3.00; doz. \$10.50

One each of the 4 Rudbeckias \$3.35; 3 each \$9.25

PLATYCODON (Plat-i-koh'-don)—Balloon Flower

Large crepe paper-like bells blooming over a long season. Should have a well-drained position in the sunny border. 2½'.

grandiflorum fl. pl.—One of the most outstanding new perennials in recent years. Lovely double flowers with the same fine habits of the single forms. Long lived and perfectly hardy anywhere. Flowers are fine medium blue with deeper veining.

grandiflorum album fl. pl.—A superb new pure white form of the above.

Shell Pink—A beautiful new pink form of this ever popular Bellflower.

75c each; 3 of one kind \$2.00; doz. \$6.50

One each of the 3 Platycodons \$2.10; 3 each \$5.75

ROSA (Ro'-sa) alpina—Miniature Rose

Very hardy little miniature roses for the front row border or rockery. Perfectly double and everblooming, growing 6" to 10" tall. Plant in full sun.

***Bright Jewel**—Myriads of tiny very double roses all season. The deep rosy red flowers are so vivid as to have unusual garden effect. Vigorous, heavy grower.

\$1.25 each; 3 for \$3.30; doz. \$12.50

***Cameo**—Lovely apple-blossom pink that is really charming.

\$1.00 each; 3 for \$2.75; doz. \$10.00

***Cinderella** (Plant Patent No. 1051)—Very lovely pearl white with dainty pink cast.

\$1.00 each; 3 for \$2.75

***Juliette**—A new miniature Gruss an Teplitz. A prodigious bloomer. Flowers an inch or more across of brilliant crimson. One of the very finest of recent novelties.

\$1.00 each; 3 for \$2.75; doz. \$10.00

***Oakington Ruby**—Tiny double blooms of ruby carmine.

\$1.00 each; 3 for \$2.50; doz. \$10.00

***Pixie Pearl**—Glorious snow white flowers of satiny texture, showing just a tinge of pink when in the bud. Unexcelled for corsages.

\$1.00 each; 3 for \$2.75; doz. \$10.00

***Red Elf** (Plant Patent No. 973)—Rich, deep velvety red with ¾" blooms. Vigorous and profuse bloomer.

\$1.00 each; 3 for \$2.70

***Red Imp** (Plant Pat. No. 1032)—Tiny flowers the size of a shoe button of richest, deepest crimson. Very double, showing no center. The cutest of the lot.

\$1.00 each; 3 for \$2.75; doz. \$10.00

***rouletti**—Fully double deep pink flowers.

\$1.00 each; 3 for \$2.50; doz. \$10.00

***Sweet Fairy** (Plant Patent No. 748)—The first miniature with true Rose fragrance. Dainty very double pure pink. Charming.

\$1.00 each; 3 for \$2.70

***Tom Thumb** (Plant Patent No. 169)—Very tiny deep crimson showing a white eye at the heart of the flower when fully open.

\$1.00 each; 3 for \$2.50; doz. \$10.00

One each of the 11 Miniature Roses \$9.95; 3 each \$25.00

SANGUINARIA (San-gui-nair'-i-a)—Blood Root

A choice little native for a shady spot delighting in cool moist leaf mold.

***canadensis**—Glistening pure white, waxy flowers, an inch across on 4" stems in very early spring followed by large glaucous blue-green leaves. 65c each; 3 for \$1.65; doz. \$5.50

All plants listed in this section may be planted either spring or fall

HARDY SUCCULENTS

All plants listed on this page have thick succulent foliage in addition to the fine flowering habit.

SEDUM (See'-dum)—Stonecrop

Interesting fleshy leaved plants for the rockery. Full sun and poor soil suit them best.

- ***anacampseros**—Striking silvered serpentine foliage and purple flowers.
- ***Asiaticum Wallichianum**—Fine erect growing sort with handsome heads of orange-yellow flowers. 12".
- ***Cape Blanco**—Very rare form, much branched with silvery white, thick, spatulate leaves.
- ***cauciculum**—Prostrate slender purple stems with blue gray thick fleshy leaves. Deep rose flowers in September.
- ***cristatum**—Blue-green tufts which flatten out at the tips in a cocks-comb like formation. Yellow flowers.
- ***ewersi**—Lovely blue-green little shrub with fine pink flowers.
- ***glauca**—Prostrate mats of tiny blue grey rosettes covered with golden yellow flowers in May. The foliage is lovely at all times.
- ***globosum (Old Man Bones)**—Interesting globular leaved sort.
- ***kamtschaticum**—A mat forming type with lovely deep green scalloped leaves and yellow flowers.
- ***kamtschaticum variegatum**—Fine variegated green and white.
- ***middendorffianum**—Choice and interesting with dainty branches and serrated leaves of rich bronzy-red.
- ***Oregonum**—Fat little globular leaves of brilliant emerald on 2" twigs which hug the ground. Yellow flowers.
- ***pruinatum forsterianum**—Masses of silver-blue spruce-like branches. 3".
- ***sieboldi**—Thick blue-green leaves with rich pink edging resembling pieces of broken china. Pink flowers.
- ***spathulifolium**—Fat little globular leaves of silver green on twiggy little plants. A most charming tropical appearing gem of refined habit. Yellow flowers.
- ***spathulifolium purpureum**—Very colorful form of the above having lovely bronze red foliage and bright yellow flowers.
- ***stahli**—A lovely deep green mossy type that colors a lovely red in autumn. Yellow flowers. 1".
- ***stoloniferum**—Fine evergreen creeper. Pink flowers.
- ***stoloniferum coccineum (Dragon's Blood)**—Crimson flowers and brilliant winter foliage. Very fine.

65c each; 3 of one kind \$1.65; doz. \$5.50

Any 10 Sedums \$6.00

One each of 19 Sedums \$10.50; 3 each \$27.50

SEDUM SPECTABILE

A bold growing type with large, broad, fat leaves of lovely blue-green. Heavy stems growing from 12" to 15" carry immense heads, often measuring 8" to 10" across, of brilliantly colored flowers. Superb in the border or large rock garden. Also excellent used as a tub plant. Exotically tropical in appearance but entirely hardy anywhere.

Brilliant—Rich amaranth red.

85c each; 3 for \$2.50; doz. \$8.50

Carmen—Brilliantly glowing deep rose heads of huge size. New.

95c each; 3 for \$2.65; doz. \$9.50

Meteor—Very beautiful bright pink form with many lateral heads surrounding the big central head. New and fine.

95c each; 3 for \$2.65; doz. \$9.50

Stardust—A magnificent snow white. This is the first truly white form that has been introduced.

95c each; 3 for \$2.65; doz. \$9.50

One each of the 4 Sedum Spectabile \$3.50; 3 each \$10.00



SEMPERVIVUM ARACHNOIDENUM

SEMPERVIVUM (Sem-per-vy'-vum)— Hen and Chickens

Fascinating group for the rockery. Happy anywhere in the sun.

- ***Alpha**—Hairy rosettes of fine rosy red.
- ***arachnoideum**—Tiny rosettes of pale green connected by fine silvery web-like hairs.
- ***arachnoideum major**—Larger than the above with masses of snowy cobwebs.
- ***arachnoideum rubrum**—Red tinted rosettes.
- ***arenaria**—Tiny emerald balls from the top of which, the chicks roll to the base to start new plants.
- ***Beta**—Fine coppery rosettes covered with soft white hair.
- ***brauni**—Green with red-brown margin.
- ***comolli**—A beauty with red flowers.
- ***Compt de Congal**—Fine large bronzy sort.
- ***doellianum**—Woolly grey rosettes.
- ***Emerald Giant**—Huge emerald green 8" across.
- ***Gamma**—Blue-green rosettes tipped with silvery hair.
- ***glaucum**—Large rosettes tipped with red.
- ***globiferum**—Pale green rosettes. Yellow flowers.
- ***Havana**—Very large deep green rosettes edged with purple.
- ***longbardum**—Broad pointed leaves tipped with red. Choice.
- ***magnificum**—A real giant with deep purple-red rosettes, 8" across. A striking sort.
- ***mettentianum**—4" rosettes of bronzy red.
- ***modgeri**—Medium sized rosettes completely covered with white down.
- ***Purdy's 60-2**—Medium sized. Long leaves marbled violet.
- ***purpurea acutifolia**—Pointed purple leaves.
- ***regina**—Emerald green tipped red.
- ***rubicundum**—Large pale green tipped red and covered with fine hair.
- ***rubicundum, Lowes Var.**—Woolly grey, edged with red.
- ***Schleham rubicundum**—Medium sized bright red.
- ***segueri**—Medium size bright green.
- ***tectorum**—Old-fashioned hen and chickens.
- ***verlotti**—Pale green tinged with red.
- ***Violaceum**—Deep purple with pointed leaves. Very large.
- ***Westchester Seedling**—Flannel-like leaves of blue-grey touched with bronze.

65c each; 3 of one kind \$1.65; doz. \$5.50

Any 10 Sempervivums \$6.00

One each of the 30 Sempervivums \$16.75

EUPHORBIA (Eu-for'-bi-a)—Spurge

The value of this family lies in the showy colored bracts above the leafy stalks. Hardy and lasting perennials.

- ***myrsinites**—Trailing evergreen shrublets. Fat little branches of sea-foam blue and gay yellow bracts.

65c each; 3 for \$1.65; doz. \$5.50

GORMANIA (Gor-man'-i-a)

- ***watsoni**—Fat little succulent leaves closely packed on much branched 2" plants, lightly dusted with silver giving this rare alpine a tropical appearance. Yellow Sedum-like flowers.

75c each; 3 for \$2.00; doz. \$7.50



SAXIFRAGA MEGASEA

SAXIFRAGA MEGASEA (Bergenia)

Very effective tropical appearance. Large glossy leaves from a creeping stock turning brilliant crimson in early fall and persisting throughout the winter. The immense heads of drooping bell-shaped flowers are borne on heavy red stems 18" tall, and bloom over a long period. May and June. Full sun or light shade.

- *cordifolia—Large heads of pink flowers very early.
- *crassifolia—Drooping masses of rose-pink flowers.
- *ligulata leichtlini—Large crinkled leaves and fine heads of deep rose colored flowers.
- *purpurascens—A little taller with deep reddish purple flowers.

75c each; 3 of one kind \$2.00; doz. \$6.50
One each of the 4 Saxifraga Megasea \$2.35

STATICE (Stat'-i-see)—Sea Lavender

A most useful plant for airy effects in the border and bouquets. Will grow and slowly increase for many years in any good garden soil in sun or partial shade.

- *latifolia—From a rosette of large basal leaves springs an immense head often 1½' high and 2' across of many branched wiry little stems terminating in countless bright blue-purple flowers. May be dried as well as used for fresh cut flowers. 65c each; 3 for \$1.65; doz. \$5.50

SPIRAEA (Spy-ree'-a)—Meadow Sweet

Delightful herbaceous plants for a moist situation in sun or shade forming large clumps with many stalks of feathery fragrant flowers in broad loosely built heads. One of the "must haves."

- aruncus—Graceful plumes of lacelike, creamy-white flowers in large spires on strong canes 4' tall. The large pinnate leaves are very ornamental all season. 65c each; 3 for \$1.65; doz. \$5.50
- *filipendula hexapetala—Deep green fern-like foliage forming a 4" mat with slender wiry stems 15" tall of deep cream flowers showing a pink reverse. 65c each; 3 for \$1.65; doz. \$5.50
- *filipendula fl. pl.—A little more dwarf than the above and very double flowers. A well established clump in full bloom is one of the daintiest things imaginable. 75c each; 3 for \$2.00; doz. \$7.50
- palmata elegans—An exquisite shade of glowing, deep salmon-pink flowers in large branching heads freely produced on 4' stalks. 75c each; 3 for \$2.00; doz. \$7.50
- ulmaria fl. pl.—Immense heads of wonderfully fragrant cream-colored double flowers on strong 4' canes, scenting the whole garden in July. 75c each; 3 for \$2.00; doz. \$6.50
- venusta (Martha Washington Plume)—Delightful rosy carmine flowers in well formed 10" heads blooming between palmata and ulmaria make this a most desirable border plant. 4'. 75c each; 3 for \$2.00; doz. \$7.50
One each of 6 Spiraeas \$3.85



SPIRAEA ASTILBE

SPIRAEA—Astilbe

Choice plants for shade or partial shade in a cool moist position, especially lovely growing among ferns.

- Betsy Cuperius—Fine spikes of pink and cream. 75c each; 3 for \$2.00; doz. \$7.50
- *chinensis pumila—Very dwarf sort with absurdly large heads of blue-toned deep rose flowers. 8". 85c each; 3 for \$2.25; doz. \$8.50
- Deutschland—A lovely pure white. 2'. 75c each; 3 for \$2.00; doz. \$7.50
- Fanal—A new vivid, brilliant red. This novelty is in a class by itself for bold color effect. 95c each; 3 for \$2.65; doz. \$9.50
- Feuer—New. A spectacular bright fiery red, even brighter than the famous Fanal. \$1.10 each; 3 for \$2.95; doz. \$11.00
- Gloria Supreme—Brilliant rose-pink. 85c each; 3 for \$2.25; doz. \$8.50
- Juno—Intense deep purplish rose. Very large heads on tall stems. 85c each; 3 for \$2.25; doz. \$8.50
One each of the 7 Astilbes \$5.65

SCABIOSA (Ska-be-oh'-sa)—Pincushion Flower

Very hardy plants for sunny border furnishing an abundance of very long stemmed cut flowers.

- Blue Snowflake—A novelty of unusual merit having flowers of exceptional size and substance. Immense soft blue with delicate pink anthers. 75c each; 3 for \$2.00; doz. \$6.50
- caucasica alba—A charming snow white "Blue Bonnet" that is perfect for cutting and arrangements. July to October. 65c each; 3 for \$1.65; doz. \$5.50
- Isaac House Hybrids—These charming Blue Bonnets are a lovely shade of soft deep lavender-blue. Large flowers all season. 65c each; 3 for \$1.65; doz. \$5.50
- pennsylvanica (syn. Cephalaria tatarica)—Large golden yellow flowers quite similar to the above but borne on branching plants 4' tall. Will cut with 15" stems. Superb keeping quality. 65c each; 3 for \$1.65; doz. \$5.50
One each of the 4 Scabiosas \$2.50

SHASTA DAISY—See Chrysanthemum Maximum



THALICTRUM AQUILEGIFOLIUM

THALICTRUM (Tha-lik'-trum)—Meadow-Rue

Beautiful border plants having foliage similar to columbine and maidenhair ferns. All are of the easiest culture in any good garden soil and will grow in sun or shade with reasonable moisture. Best effects from groups of three or more.

**adiantifolium*—Foliage like a Maidenhair Fern and great heads of yellow flowers in June. 15".

aquilegifolium—Graceful foliage like the Columbine with rosy purple flowers. 3'.

aquilegifolium album—White form of the above.

aquilegifolium roseum—Pink form. A new sort of great merit.

glaucum—Blue grey foliage, finely cut and great heads of Chinese-yellow fragrant flowers. 3'.

**minus*—Dainty foliage suitable for use in corsages or small flower arrangements. Flowers soft yellow with heavy brown anthers, also useful for cutting.

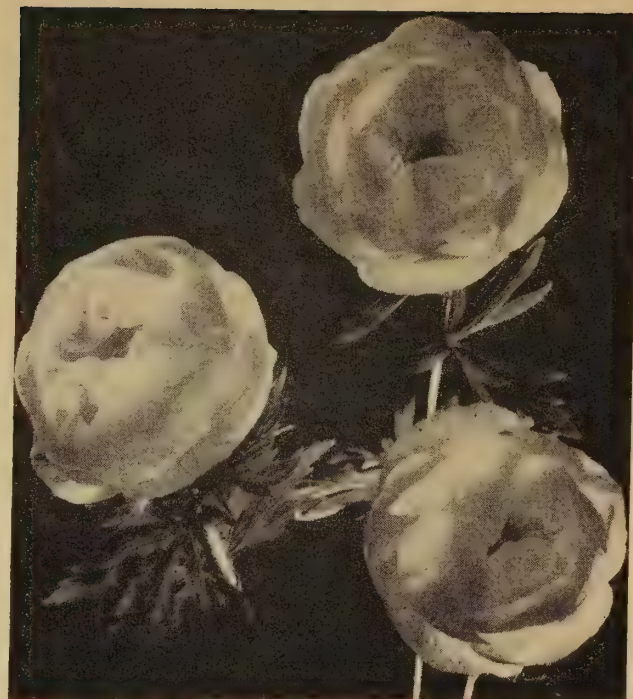
Any of the above 6 *Thalicttrum* 75c each;
3 of one kind \$2.00; doz. \$6.50

Rochebrunianum, *Lavender Mist*—A new form from the Orient that is similar to the old *dipterocarpum* but is much more vigorous and perfectly hardy. The lovely golden stamens are enclosed in a chalice of soft violet petals. 4'.
95c each; 3 for \$2.65; doz. \$9.50

One each of All 7 *Thalicttrums* \$4.95; 3 each \$14.25



THYMUS CITRIODORUS



TROLLIUS FIREGLOBE

TROLLIUS (Trol'-li-us)—Globe-flower

A most glorious golden buttercup, having thick, waxy, incurved petals, inclosing a bunch of large anthers of deeper shade. A well arranged planting of *Trollius* is a breath-taking sight and never fails to excite admiration. Give plenty of moisture in any good soil in sun or partial shade. A magnificent cut flower.

Fireglobe—Immense globe-shaped flowers of deep burnt orange.
\$1.00 each; 3 for \$2.75; doz. \$10.00

Lemon Queen—Bright golden yellow globes from early spring till fall.
85c each; 3 for \$2.25; doz. \$8.50

ledebouri—A late flowering variety having very large rich orange flowers a little more open than the others.
75c each; 3 for \$2.00; doz. \$7.50

Orange Globe—Immense deep orange globes from early spring till fall.
85c each; 3 for \$2.25; doz. \$8.50

One each of the 4 *Trollius* \$3.10

THYMUS (Tym'-us)—Thyme

Valuable plants having many uses such as carpeting, dry banks, covering barren exposed spots in the rockery, wall planting, covering the bulb bed or spring bulbs planted in rockery or border, between stepping stones, etc. All have evergreen aromatic foliage, and bloom profusely. An occasional shearing is beneficial.

**citriodorus aureus*—Golden variegated bushlets forming bright spots in the rockery or border the year around. Lemon scented.

**citriodorus argenteus*—Beautiful silver and white leaves.

**herba-barona*—Strongly caraway scented little trailer.

**lanuginosus*—Woolly prostrate foliage. Bright pink flowers. One of the best for stepping stones.

**serpyllum*—A rapid growing creeper useful for rockeries, between stepping stones, or on banks. May also be used in hot dry spots as ground cover and mowed with lawn mower. Very fragrant foliage hidden by bright pink flowers.

**serpyllum album*—Lovely creeper with snow white flowers.

**serpyllum, Annie Hall*—A hybrid that is slightly taller than the type with slightly silvered hairy foliage and masses of pink flowers.

**serpyllum coccineum*—Mats of fine foliage hidden by clouds of red flowers in June.

65c each; 3 of one kind \$1.65; doz. \$5.50

One each of the 8 *Thymes* \$4.75



TRADESCANTIA

TRITOMA (Tri-toh'-ma)—Torch Lily

At last we have winter hardy hybrids of this superb perennial. These new hybrids are not only hardy but bloom early and long, furnishing magnificent flowers for cutting all season as well as forming one of the most spectacular garden pictures. They prefer full sun with plenty of moisture. A well developed clump is a sight worth while. Highlight your garden with these new border gems.

Alcazar—A deeper orange-red than is ordinarily found in Tritomas. Tall, stately, straight spikes on healthy foliaged plants that produce regularly all summer if kept cut.

\$1.00 each; 3 for \$2.25; doz. \$7.50

Earliest of All—Magnificent coral-rose flowers, full and plump on strong 30" stems. A well established clump is a handsome sight.

\$1.00 each; 3 for \$2.25; doz. \$7.25

Goldmine—Striking yellow, shaded bronzy copper. Form bold clumps and furnish glorious cut flowers from July to frost. Wonderful garden effect.

85c each; 3 for \$2.25; doz. \$8.50

Primrose Beauty—Lovely arching spikes of spotless primrose-yellow form a charming picture in early summer. 30".

90c each; 3 for \$2.25; doz. \$7.00

Red and Gold—Sturdy spikes of pure cream yellow topped with rich bright red. 30".

\$1.00 each; 3 for \$2.25; doz. \$7.50

Rosea Superba—A most unusual combination of colors. Lower two-thirds of flower head is cold, clear white and the upper third is a lovely pinkish rosy red. Very free flowering all summer and fall. 3'.

\$1.00 each; 3 for \$2.25; doz. \$7.25

Summer Sunshine—Bold attractive plants and sturdy flame-red flower heads in profusion all season.

\$1.00 each; 3 for \$2.25; doz. \$7.25

White Giant—Magnificent creamy white blooms all season. A regal giant of excellent quality. 3'.

\$1.00 each; 3 for \$2.25; doz. \$7.25

W. S. Reeves—A spectacular new giant from England where it has created a sensation. With us it grows 5' to 6' tall with flower heads fully twice the size of any other sort. It is a brilliant coral red that literally dazzles the eye. We consider this one of the very finest new things in recent years.

\$1.25 each; 3 for \$3.50; doz. \$10.00

One each of the 9 Tritomas \$8.50

TRADESCANTIA (Trad-es-kan'-ti-a)—Spider-wort

Showy, useful plants forming large grassy clumps and sending up endless blossom stalks all summer. Each morning there is a cluster of new fresh blooms, each flower being made up of three petals and a showy cushion of downy stamens. Will grow and flourish under almost any condition in sun or shade. Best in colonies of three or more.

***Iris Pritchard**—White flowers, heavily stained with soft and clear blue. Very lovely.

***James C. Wequelin**—This is one of the choicest of garden flowers of recent European introduction. The flowers are about twice the size of the common variety and are a delightful pale blue. Tradescantia James C. Wequelin is of dwarf habit, grows about 10 to 12 inches high, and when in full bloom is one of the nicest things in the garden.

***Pauline**—Lovely large flowered orchid pink. Very prolific bloomer.

***Purple Dome**—Huge flowers in clusters of clear bright purple.

***Red Cloud**—Brilliant rosy red. The brightest color yet in this popular family.

***Snowcap**—A new form with immense flowers of purest white. Very fine.

65c each; 3 of one kind \$1.65; doz. \$5.50

One each of the 6 Tradescantias \$3.65

VINCA (Vin'-ka)—Periwinkle

A very useful and ornamental evergreen vine quickly forming a dense ground cover of glossy foliage. Its adaptability to both sun and shade make it extremely useful. It flourishes under trees where grass will not grow and on steep banks it will make a tidy evergreen lawn that does not need to be mowed. It is used extensively in cemetery plantings and should find a home on every wall or large rockery.

***alpina fl. pl.**—A fine new and still quite rare sort having lighter colored leaves than minor and very double red flowers. Perfectly hardy anywhere.

***minor**—Rich deep green leaves and large phlox-like blue flowers. There is no better ground cover than Vinca minor.

***minor alba**—A pure white-flowered form that is extremely scarce. A lovely sort in great demand.

***minor aurea variegata**—A perfectly hardy, golden yellow and green variegated leaved sort. A valuable plant lending a touch of color to the winter garden.

***minor, Bowles Variety**—A new European variety with broader foliage and heavier gloss. The flowers are larger and deeper blue. A profuse bloomer.

***minor fl. pl.**—This new Vinca has all the fine habits of growth as the type but with lovely double blue flowers. Thoroughly hardy.

65c each; 3 of one kind \$1.65; doz. \$5.50

One each of the 6 Vincas \$3.50; 3 each \$9.00

Visitors Welcome

In our display beds we have well developed specimens of practically everything listed in this catalog as well as many hundreds of other perennial novelties. This year we are growing about 400 varieties of Tall Bearded Iris, including many new ones. The first week in June is the best time to see these. In the fall we will have about 300 varieties of the finest Chrysanthemums in flower. The public is cordially invited to visit these displays at any time. We are located just one mile from the center of Spokane's business district. To reach us, go north on Division Street to Boone Avenue (Burgan's Big Store). We are just one block north and one block east of there.



TYPICAL ENGLISH VIOLA

English Violas



VIOLET VILMORINIANA

VIOLA—New English Bedding Type

These Violas are far ahead of all other types yet introduced. In addition to having flowers as large as Pansies, they are even more profuse bloomers than the older types, producing masses of color from early spring until fall. Their habit of stooling out from the ground produces a clump a foot or more across in a short time with literally hundreds of fragrant flowers. Our stock is all true, being grown from division only. Hardy, long-lived true perennial.

***Better Times**—This lovely new plant has flowers as large as a pansy but is true Viola type, stooling out from the ground to form a large clump which is covered from spring to fall with immense bright primrose yellow flowers. It is not only the most free flowering Viola we have ever seen but is also one of the most fragrant. True stock grown from division. **\$1.50 each; 3 for \$4.00**

***Eileen**—Magnificent deep royal blue similar in form to the famous Jersey Gem but fully three times as large and of finer color. Vigorous and free flowering, a two year clump often displaying fifty or more perfect, long stemmed flowers at one time. Blooms from May to November. **\$1.50 each; 3 for \$4.00**

***Enchantress**—An outstanding new sort with very large bright lavender blue flowers. Strong grower. Free bloomer. We cannot recommend it too highly. **\$1.00 each; 3 for \$2.50**

***Maggie Mott**—This is the lovely pure pale blue with creamy center that is used for borders and beds by the thousands in English gardens. **85c each; 3 for \$2.35; doz. \$8.50**

***Mt. Spokane**—A grand new snow white Viola coming from Better Times with all the excellent qualities of the parent. Long stemmed fragrant flowers of exquisite form and substance. **\$1.50 each; 3 for \$4.00**

One each of the 5 New English Violas **\$5.50; 3 each \$15.00**

VIOLA—Various Species (True Violets)

The following species are all happier in full sun although they will do fairly well in light shade. The popular belief that Violets are shade loving is a fallacy. With few exceptions they greatly prefer a well drained position in the sun.

***Alice Witter**—A new violet of the cucullata type having large white flowers with a distinct red eye. Very rare.

***canadensis**—Large white tinted pink blooming all summer. Upright branching habit. 6".

***cucullata**—A lovely deep sky-blue, large flowered violet of real charm.

***Double Russian**—Large double flowers of deep purple above deep green evergreen foliage. Forms fine clumps and blooms profusely.

***English**—A very large, long stemmed purple violet. Extremely fragrant and very prolific.

***Freckles**—A strong and vigorous grower with large white flowers minutely dotted with blue. Distinct and different.

***odorata semperflorens**—Lovely sweet scented perpetual flowering Violet of deep purple. An evergreen that is always in flower.

***palustris**—A fine evergreen sort that blooms so profusely as to hide the foliage in early spring. Very fragrant.

***priceana (Swiss Violet)**—Creamy yellow eye surrounded by rich deep blue beautifully veined. Each petal broadly margined with pure white. Strong, clean foliage. Very large.

***pubescens**—Yellow flowers penciled with black on branching 6" stems, blooming profusely from spring till fall.

***Red Giant**—Unusually large flowers on long strong stems, carried well above the leathery foliage. Color is deep red, a unique color in the popular family.

***Rosina**—Very bright deep pink flowers that are unusually fragrant. A well developed clump will produce hundreds of flowers making a brilliant splash of color. Heavy overgreen foliage.

***Royal Robe**—Lustrous shade of deepest violet. Very large, long stemmed.

***septentrionalis, Gloriole**—A most lovely selection of this very rare violet having waxy white flowers with a sky blue eye. Glossy leaved and hardy. One of the finest yet.

***Snow Princess**—A lovely snow-white form of cucullata. Very rare in gardens.

***sylvestris rosea**—Dainty heart-shaped leaves and myriads of lovely pink flowers all season.

***vilmoriniana (sulphurea)**—A very rare fragrant European violet of soft luscious apricot.

75c each; 3 of one kind \$2.00; doz. \$6.50

Any 10 Violets \$7.00

One each of the 17 Violets \$10.95



VERONICA PAVANNE



CLEMATIS PANICULATA



VENOSA (HARDY VERBENA)



YUCCA FILAMENTOSA

VERONICA (Ver-on'-i-ka)—Speedwell

A family whose value is greatly underrated. For rockeries, walls, banks, edging, etc., the dwarf members of the great clan are of outstanding importance. All are of the very easiest culture and bloom with such abandon as to rank them, in our opinion, among the very best of low growing plants. The taller sorts are useful in the border and their spikes of bloom work nicely in mixed bouquets.

***Barcarole**—A new English Hybrid becoming a great favorite with all who grow it. Compact plants with many 10" spikes of deep rose-pink flowers from June to August. A "must" for border or rockery. **95c each; 3 for \$2.65; doz. \$8.75**

***Crater Lake Blue**—A magnificent hybrid, quickly forming fine clumps of deep green foliage throwing up countless spikes of lovely gentian-blue flowers 10" tall. **75c each; 3 for \$2.00; doz. \$7.50**

holophylla—2' stalks of large deep green leaves that would appear to have been varnished, surmounted by long spikes of deep blue flowers. Very fine. **85c each; 3 for \$2.50; doz. \$8.50**

Icicle—A fine new white form growing from 15" to 18" tall forming a lovely spot in the border and affording excellent cut flower material. **85c each; 3 for \$2.50; doz. \$8.50**

Pavane—Another fine English Hybrid with 18" spikes of lovely clear pink flowers from June to August. Tall enough for cutting but restrained enough for the choicest spot in the border. **95c each; 3 for \$2.65; doz. \$8.75**

***satureoides**—Leathery deep green leaves on prostrate mats and 3" spikes of Gentian-blue flowers form a lovely picture in May. **75c each; 3 for \$2.00; doz. \$7.50**

***Sunny Border Blue**—A fine deep blue growing about 10" tall. A fine grower and excellent for color during the summer months. **85c each; 3 for \$2.25; doz. \$9.50**

***teucrium trehane**—Flat carpets of bright golden yellow foliage and bright sky blue flowers. 3". Lovely. **85c each; 3 for \$2.25; doz. \$9.50**

One each of the 8 Veronics \$6.25; 3 each \$17.95

VENOSA (Vee-no'-sah)—Hardy Verbena

bonariensis—A very hardy Verbena with fine heads of bright purple flowers on 18" stems. Form handsome clumps for the hardy border. **75c each; 3 for \$2.00; doz. \$7.50**

***Flame**—This vigorous creeping plant is one of the most prolific bloomers we know. It is literally covered with brilliant scarlet blossoms all season until heavy frost, and is excellent for the rockery or front row border. Should have winter protection in cold sections. **85c each; 3 for \$2.25; doz. \$8.50**

One each of the 2 Verbenas \$1.35

YUCCA (Yuk'-ka)—Adams Needle

Stately plants for sunny exposed positions having evergreen sword-like leaves. Perfectly hardy anywhere.

filamentosa—A bold subject sending up a strong stalk 5' tall with an immense branching head of large drooping creamy bells. **75c each; 3 for \$2.00; doz. \$6.50**

ZAUSCHNERIA (Zausch-neer'-i-a)—Humming Bird Fuchsia

One of the showiest of plants having brilliant fuchsia-like blooms on somewhat shrubby bushlets. At home in full sun. Especially good for wall or rockery planting but equally good in the sunny border.

***californica splendens**—Forms a mass of prostrate emerald green foliage with clouds of bright scarlet trumpets in late summer and fall. Very fine. **85c each; 3 for \$2.25; doz. \$8.50**

cana—Sturdy 2' stalks clothed in lovely silken silver foliage support well branched heads fairly bursting with bright scarlet Fuchsia-shaped bloom in the fall. A superb specimen plant. **\$1.00 each; 3 for \$2.50**

One each of the 2 Zauschnerias \$1.65

All plants listed in this section may be planted either spring or fall

FLOWERING SHRUBS

The many and varied uses of flowering shrubs certainly justify their use in every planting, large or small. There is no better background for the large perennial border than these and for the small border a few shrubs judiciously placed add charm as well as affording light shade for the plants demanding protection from the full sun. They are also used extensively for foundation plantings, informal hedges, screens, etc. No planting is complete without at least a few of the better type shrubs.

Almond—One of the finest of early blooming shrubs. The upright branches are completely clothed in miniature double pink cherry blossom-like flowers.

Strong 2-year, well branched, \$1.25 each; 3 for \$3.35; doz. \$12.50

Buddleia—Butterfly Bush—May be treated as perennials in the colder regions and shrubs in the milder climates. As they bloom on the new wood, they may be cut to the ground each spring and will quickly form new flowering canes.

Dubonnet—Exquisite French wine dubonnet.

75c each; 3 for \$2.00; doz. \$7.50

Fascination—New lovely pink.

95c each; 3 for \$2.65; doz. \$9.50

Hartwegi—Pure lilac blue. **75c each; 3 for \$2.00; doz. \$7.50**

Red Plume—Fine new red. **95c each; 3 for \$2.65; doz. \$9.50**

White Feather—Lacy new pure white.

75c each; 3 for \$2.00; doz. \$7.50

One each of the 5 Buddleias \$3.35

Calycanthus floridus—Sweetshrub. Large fragrant leaves and beautiful chocolate colored flowers. 4'.

85c each; 3 for \$2.25; doz. \$8.50

Caryopteris Blue Mist—This perfectly hardy form of *Caryopteris* supplies a badly felt need for blue flowers during August and September. While suitable for the shrub border, it is equally suitable for the perennial border where the myriad heads of power-blue, fragrant flowers are more than welcome during the season when bloom is at the low tide.

\$1.25 each; 3 for \$3.50; doz. \$12.50

Cotoneaster horizontalis—Very tiny shiny leaves and widely spreading little branches covered with brilliant berries in the fall.

1 yr. plants 65c each; 3 for \$1.65; doz. \$6.50

Daphne cneorum—See perennial list.

Daphne mezereum—The ever-popular February *Daphne*. Bursts into bloom before the foliage appears as soon as winter's bitterness is past. The upright branches are entirely clothed in highly fragrant rosy purple flowers which later produce attractive red berries.

Strong plants 6-9" \$1.25 each; 3 for \$3.35

Deutzia crenata—Double pink. **75c each; 3 for \$2.00; doz. \$7.50**

Deutzia gracilis—Dainty pink single flowers in arching sprays on well rounded plants. 2' tall.

75c each; 3 for \$2.00; doz. \$7.50

Deutzia Pride of Rochester—Double white.

75c each; 3 for \$2.00; doz. \$7.50

Euonymus nanus—Dwarf evergreen with trailing branches and lovely scarlet fruits. 3'. **75c each; 3 for \$2.00; doz. \$7.50**

Forsythia or Goldenbell—One of the earliest of all shrubs, blooming often before the snow is entirely gone. Branches completely covered with bloom before leaves appear. May be cut and taken indoors during the winter where they will quickly open to magnificent bloom.

Lynwood Gold—A new deep brilliant golden yellow of exceptional size. A great improvement over the well known *spectabilis*. Blooms in such amazing profusion as to hide the branches completely.

Potted plants 85c each; 3 for \$2.50

Spring Glory—A lovely soft pale yellow counterpart of the above.

Potted plants 85c each; 3 for \$2.50

Suspensa—This form has deep yellow flowers on long trailing branches. Unexcelled for banks and woodland plantings.

Potted plants 75c each; 3 for \$2.00

One each of the 3 Forsythias \$2.25; 3 each \$6.25

Holodiscus discolor—The famous native spiraea of the West. In June and July our mountains are filled with these beautifully formal shaped shrubs, growing from 6' to 8' tall. The bush is completely covered with huge 10" heads of creamy white bloom. Difficult to collect but easily grown from our nursery produced young plants. For either sun or shade.

\$1.25 each; 3 for \$3.25; doz. \$10.00

Hydrangea arborescens—White.

75c each; 3 for \$2.00; doz. \$7.50

Hydrangea hortensis (French Hybrid)—See perennial list.

Hydrangea paniculata—Pink shrub *Hydrangea*.

85c each; 3 for \$2.25; doz. \$8.50

Hypericum densiflorum—Strong growing hardy shrub growing 6' tall, completely covered with brilliant yellow bloom in mid-summer.

75c each; 3 for \$2.00; doz. \$7.50

(See Perennial List for other Shrubby Hypericum)

Kerria japonica—Brilliant single yellow blossoms on gracefully arching branches. Very choice summer flowering shrub.

75c each; 3 for \$2.00; doz. \$7.50

Kerria japonica fl. pl.—Choice double globe shaped flowers of bright golden yellow.

75c each; 3 for \$2.00; doz. \$7.50

Kolkwitzia amabilis—Beauty Bush. Clouds of dainty pink bell-shaped flowers.

\$1.25 each; 3 for \$3.35; doz. \$12.50

Ligustrum variegata—Variegated Privet. A striking shrub for use as an accent plant or as an individual specimen. Thick waxy leaves broadly margined with yellow.

Potted plants 75c each; 3 for \$2.00

Magnolia soulangeana—This *Magnolia* is the showiest of hardy sorts which makes it a worthwhile addition to the Northern garden. Forms a small tree to 15' with beautiful large glossy leaves. The spectacular fragrant tulip-shaped pinkish white flowers are produced in the early spring before the leaves appear and cause a sensation in any neighborhood.

Heavy plants 18-24" \$3.50 each; 3 for \$9.75

Philadelphus virginal—Double Mock-Orange.

1 yr. 75c each; 3 for \$2.00; doz. \$7.50

2 yr. \$1.25 each; 3 for \$3.25; doz. \$11.00

Potentilla fruticosa—A splendid symmetrically growing shrub with dainty fern-like leaves and lovely buttercup-like flowers all summer and fall.

Gold Drop—Brilliant golden yellow.

75c each; 3 for \$2.00; doz. \$7.50

Katherine Dykes—Lovely pale lemon yellow. A splendid new sort of real merit.

85c each; 3 for \$2.25; doz. \$8.50

Snowflake—A new pure white form with slightly larger blossoms and having the same perpetual flowering habit as the yellow types above.

75c each; 3 for \$2.00; doz. \$7.50

One each of the 3 Potentilla fruticosa \$2.15; 3 each \$5.95

Rose hugonis (Golden rose of China)—A large symmetrical shrub, almost evergreen, and entirely hardy anywhere without protection. Long arching sprays of soft yellow single roses.

Strong 1-yr. 75c each; 3 for \$2.10; doz. \$7.50

2-yr. \$1.50 each; 3 for \$4.00; doz. \$15.00

Spiraea macrothyrsa—Long conical heads of brilliant salmon all season. Excellent as a cut flower. 4'.

75c each; 3 for \$2.00; doz. \$7.50

Spiraea Anthony Waterer—Red *Spiraea*.

75c each; 3 for \$2.00; doz. \$7.50

Spiraea prunifolia—Double flowered Bridalwreath. Very double white flowers cover the branches before the leaves appear. Strong plants.

85c each; 3 for \$2.25; doz. \$8.50

- Spiraea Van Houttei**—Common Bridalwreath.
75c each; 3 for \$2.00; doz. \$7.50
- Syringa rothamagensis**—Red Persian Lilac.
75c each; 3 for \$2.00; doz. \$7.50
- Salix Capre**—French Pussy Willow.
75c each; 3 for \$2.00; doz. \$7.50
- Salix purpurea**—Dwarf blue leaved Arctic Willow.
75c each; 3 for \$2.00; doz. \$7.50
- Tamarix africana**—Spectacular feathery sprays of delicate pink in early spring. Excellent for use in bouquets.
75c each; 3 for \$2.00; doz. \$7.50
- Tamarix hispida**—Showy summer and fall blooming type.
85c each; 3 for \$2.25; doz. \$8.50
- Viburnum burkwoodi**—A superb new shrub worthy of a choice spot in every garden, rapidly forming shapely 5' bushes with heavy glossy foliage, evergreen in mild winters and deciduous in cold, but entirely hardy anywhere. Lovely waxen buds of deep coral opening to soft pink blooms with intense, spicy carnation fragrance. Unexcelled for cutting, corsages or flower arrangements.
Strong 1 yr.: \$1.00 each; 3 for \$2.75; doz. \$9.50
Sturdy 2 yr.: \$1.75 each; 3 for \$4.75; doz. \$17.50
- Viburnum carlesi**—Undoubtedly one of the finest of all hardy spring flowering shrubs. The exquisite globe-shaped blossoms seem to be made of smooth white wax tinged pink and are so deliciously fragrant that the entire garden is scented when they are in bloom. Even when not in bloom the handsome heavily veined grey green foliage makes it an attraction in the shrubby border. Forms well rounded bushes 5' high. Thoroughly hardy and easily grown.
Strong plants 15-18" \$2.00 each; 3 for \$5.00
- Viburnum opulus sterile**—Ever-popular common Snowball.
75c each; 3 for \$2.00; doz. \$7.50
- Viburnum opulus nanus**—Compact leafy shrublets suitable for edging or spotting along the perennial border. Pretty red twigs during fall and winter. 12".
65c each; 3 for \$1.65; doz. \$6.50
- Weigela**—Large heads of tubular-shaped flowers on shapely 5-6' bushes. Prefer an open sunny position.
Hendersoni—Very hardy deep pink.
Potted plants 75c each; 3 for \$2.00
- Vaniceki**—A new deep red. Vigorous and hardy.
Potted plants 75c each; 3 for \$2.00

BABY EVERGREENS

Well rooted young plants that will establish easily and make rapid growth.

- Boxwood**—Splendid broad leaved evergreen.
- Colo. Blue Spruce**—Fine blue green.
- Juniper andorra**—Silvery. Prostrate.
- Juniper communis**—Blue. Prostrate.
- Globe Arborvitae**.
- Juniper, Irish**—Silvery pyramid.
- Juniper pfitzeri**—Handsome grey green. Prostrate.
- Juniper plumosa**—Lovely plummy Juniper.
- Mugho Pine**—Much branched very dwarf pine.
- Pyramidal Arborvitae**.
- Retinospora filifera**—Fern-like, well rounded, upright shrub.
75c each; any 3 for \$2.10; any 12 for \$7.50

***Pachistima canbyi**—Prostrate little evergreen shrub with Holly-like leaves forming a superb ground cover for sun or shade. 1 yr. 75c each; 3 for \$2.00; doz. \$6.50

Pyracantha coccinea Lalandi—A remarkable evergreen shrub reaching 5'. Masses of tiny white bloom in the spring and huge heads of brilliant red berries in fall and winter. 1 yr. \$1.00 each; 3 for \$2.50; doz. \$9.00

HARDY VINES

Bignonia radicans—Huge trumpet-shaped flowers of rich deep orange, during late summer and fall. A strong growing vine that is excellent for covering old fences or unsightly spots. Extremely showy and very satisfactory.
75c each; 3 for \$2.00; doz. \$7.50

Celastrus scandens—Bittersweet—This is the popular vine that forms masses of orange scarlet fruits so loved by the winter birds. Will not fruit unless two or more are planted together. Heavy plants, 3 for \$2.00; 6 for \$3.75; doz. \$7.00

Clematis—This exquisite vine likes cool feet. It should be planted with an eastern or northern exposure or with a bush or strong growing plant to shade its roots. Clematis are by far the showiest of all flowering vines for the North. As it blooms on new wood, it should be pruned severely. This choice vine will then furnish an abundance of large very showy flowers for a long period.

Baron Veillard—Splendid large rose pink.

Henryi—Fine pure white.

Jackmani—Popular rich royal purple.

Mme. Edw. Andre—Very large rosy-carmine.

Ramona—Very large clear pale blue.

Any of the above Clematis \$1.35; 3 of one kind \$3.50

One each of the 5 Clematis vines \$6.00

Clematis montana rubens—Vigorous growing, free flowering Clematis reaching 15'. The attractive dark stemmed foliage makes a fine background for the delicate soft pink anemone type blossoms which are deliciously fragrant. Extremely rare and seldom offered.

Strong plants \$1.50 each; 3 for \$4.00

Clematis paniculata—This useful climber is one of the finest and most satisfactory of all hardy flowering vines. Rapid grower with dense green foliage. Tiny snow white flowers in immense panicles completely hide the vine in April and again in September. So intensely fragrant as to scent the entire yard.

Strong plants \$1.25 each; 3 for \$3.35

Clematis tangutica—A rapid, heavy growing vine quickly forming a bank of deep green foliage which makes an attractive foil for masses of large golden flowers all season interspersed with silvery seed plumes in late summer. Easiest culture in a sunny location.

\$1.25 each; 3 for \$3.25; doz. \$12.00

One each of the above 3 Clematis \$3.75

Euonymus radicans coloratus—A strong growing evergreen vine that turns rich mahogany red in winter. Very useful for covering tree trunks, or posts as well as buildings and fine for naturalizing under trees and shrubs as a ground cover.
75c each; 3 for \$2.00; doz. \$7.50

Lonicera Halliana aurea variegata—A lovely form of the famous Hall's Honeysuckle with golden variegated leaves and brilliant red flowers.

Potted plants \$1.00 each; 3 for \$2.50; doz. \$9.50

Lonicera heckrotti—A new everblooming vine with luxuriant deep green foliage which is not bothered by insects. Very large clusters of bright flame red flowers with a chrome-yellow throat, richly fragrant, and of real value as a cut flower.
95c each; 3 for \$2.65; doz. \$9.50

Polygonum auberti—One of the fastest growing vines cultivated. Under proper conditions a single plant will cover a space 25 ft. square in a single season. Unexcelled for trellises, summer houses, garages, and the fastest growing ground cover we know of. In the late summer and fall the whole vine is a mass of foamy white flowers that shimmer like silver in the sun. Commonly known as Silver Lace or Fleece Vine.
\$1.25 each; 3 for \$3.50; doz. \$12.50

Wisteria sinensis—Very popular rapid climber having long racemes of glorious purple pea-shaped flowers.

85c each; 3 for \$2.25; doz. \$8.50

All plants listed in this section may be planted either spring or fall

PLANTS IN THIS SECTION WILL BE SHIPPED IN SUMMER AND FALL ONLY

BEARDED IRIS

PLEASE READ THE FOLLOWING CAREFULLY BEFORE ORDERING IRIS

TIME OF SHIPMENT—We begin shipping Iris about July 1st and continue during the balance of the summer and fall. **POSITIVELY NO IRIS WILL BE SHIPPED IN THE SPRING**, but it may be included with your spring order and shipment will be made at the proper planting time.

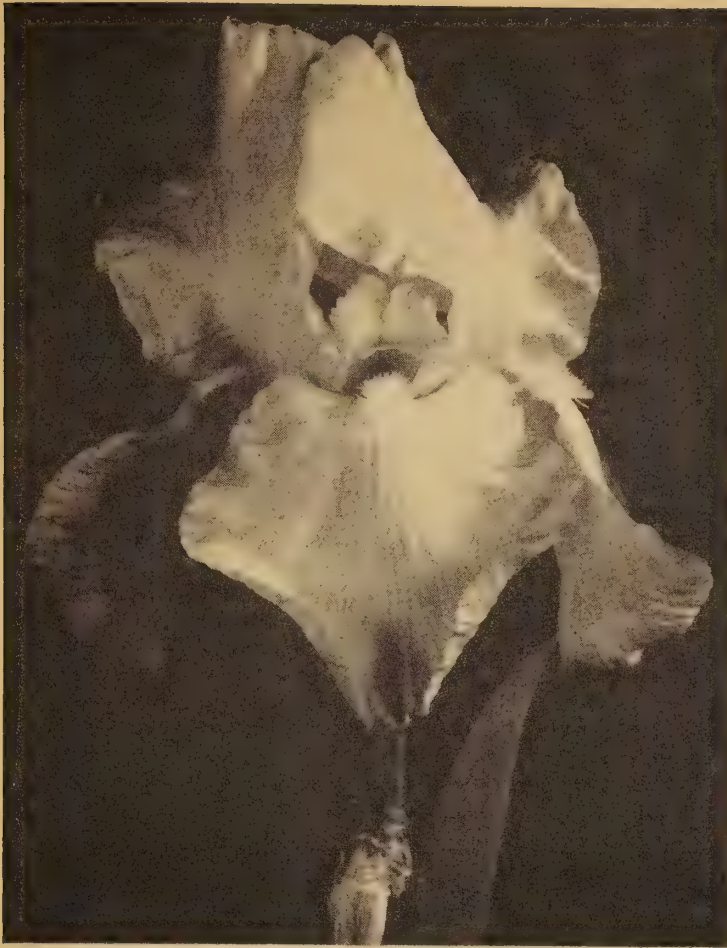
The following list has been carefully selected from the world's finest Irises, regardless of price. We are constantly revising and discarding as new and better varieties are developed. We are very proud of our Iris planting and are always glad to have visitors during the blooming season.

SPECIAL BONUS—On Iris orders amounting to \$5.00 or more, you may select an additional 50% Iris value. For example, you may choose \$7.50 value and pay only \$5.00; \$12.00 worth for \$8.00; \$15.00 for \$10.00 and so on. **Please note that this special bonus offer does not apply to Iris varieties marked "net" nor to the Bargain Collections, nor to anything other than Iris in this catalog.**

REMEMBER—We prepay all Iris orders over \$3.00 to any part of the U.S.A.

CULTURE—While it is true that Iris will grow under almost any condition, they respond gratefully to proper care. They prefer a sunny situation of their own which is not crowded with roots from trees or shrubs. Avoid over-fertilization. Bone meal worked into the soil about the plants annually is all that is needed to produce the best results. Plants should be lifted and divided every three or four years.

- Alline Rogers** (Kleinsorge 1950)—Superbly ruffled blend of pink, rose and old gold. Large well rounded flowers of fine substance. Very lovely. **\$1.00 each; 3 for \$2.50**
- Auburn** (Kleinsorge 1945)—A remarkably vivid Iris in glowing coppery henna brown with golden undertone and a blue blaze in the falls. 3'. **75c each; 3 for \$2.00**
- Ballerina** (Hall 1951)—One of the finest of the new flamingo-pinks. Very large ruffled flowers of delicious medium pink with deep orange beard. Form is superb and petals are thick and lustrous. **\$2.50 each**
- Ballet Dancer** (Kleinsorge 1949)—A glorious golden apricot with horizontal falls waved and ruffled like the skirts of a dancer. Large. Well branched 38" stems. **\$1.00 each**
- Ball Gown** (Craig 1950)—An outstanding new blend of deep brown and bright violet. A startling new combination. **\$2.00 each**
- Big Time** (Lapham 1951)—An impressive new red Iris that is larger and taller than Redward. Smooth well rounded flowers on tall well branched stalks. One of the very best new reds. **\$5.00 each**
- Black Forest** (Schreiner 1945)—A silken ebony blue black intensified by a very deep blackish beard. Medium height. **75c each; 3 for \$2.00**
- Black Hills** (Fay 1951)—A magnificent Iris of ebony-black with huge blooms on heavy tall stems up to 40". One of the very best of the new blacks. **\$3.50 each**
- Blue Rhythm**—Superb medium blue of noble proportions. Standards broad and domed with wide flaring falls. Perfectly branched 4' stalks and unusually robust, this Iris certainly deserves a place in every garden. Dykes Medal Winner for 1950. **75c each; 3 for \$2.00**
- Blue Shimmer**—A new and entirely different plicata. The white ground is evenly peppered with blue instead of the familiar stitching. The regal blooms have a charm that is beyond description. An extremely large flower and a strong grower. **75c each; 3 for \$2.00**
- Blue Valley** (K. Smith 1947)—One of the bluest of the new Iris with huge ruffled flowers with an unusual sparkling sheen. 36". **\$1.00 each; 3 for \$2.50**
- Bright Song** (Schroeder 1949)—A brilliant raspberry pink with tangerine beard. Lightly ruffled. Tall and well branched. Superb. **\$1.50 each; 3 for \$4.00**
- Bronze Brocade** (Nesmith 1948)—This regal giant is in a class by itself as to color. It is a magnificent blend of deep brown, copper and mahogany red. The huge flowers are borne on heavy 48" well branched stems very late in the season. Stock limited. **\$1.00 each; 3 for \$2.50**
- Campfire Glow** (Whiting 1947)—Deepest ruby overlaid with copper, with all the fire of an Oriental tapestry. Heavy substance and long blooming. 30". **\$1.00 each; 3 for \$2.50**
- Carabella** (DeForest 1949)—Magnificent medium salmon pink with pink beard. Large flowers of excellent form. A fine addition to the new pure pink class. **\$1.00 each; 3 for \$2.50**
- Carol Harker** (Naylor 1951)—A superb new medium blue with a golden throat. Large flaring flowers on three foot stems. **\$2.00 each; 3 for \$5.00**
- Casa Morena** (DeForest 1943)—Extra large flowers of glistening deep, rich brown. A completely new shade that is a real eye catcher. **\$1.00 each; 3 for \$2.50**
- Castle Rock** (Loomis 1952)—Another giant from Mr. Loomis. This one is a deep blue plicata over a very white ground showing a white patch in the center of the fall. Flower beautifully waved and ruffled. Tall well branched stems. The very best deep blue plicata. **\$3.50 each**
- Centurian** (Willis 1950)—A deep burnished brown self. Large flowers on well branched 3' stalks. Vigorous grower. **\$1.75 each**
- Cherie**—Very large ruffled pink of excellent substance. This is the most popular of all the new Hall "flamingo pinks". These new sorts show no shadow of violet. They are pure peach pink and lovely beyond description. Dyke's Medal Winner 1951. **\$2.00 each; 3 for \$5.00**
- Chivalry**—A smooth ruffled blue of extra fine substance. Strong sturdy stalks and perfect branching. Dykes Winner in 1947. **\$1.00 each; 3 for \$2.50**
- Cloud Cap** (DeForest 1950)—Perhaps the largest and tallest pink with tangerine beard. It is a massive flower on a vigorous growing plant. A really great Iris. **\$3.00 each**
- Color Carnival** (DeForest 1949)—A startling new pink that must be seen to be appreciated. Both standards and falls are clear deep pink with brilliant deep purple markings on the falls and a bright tangerine beard. Stunning. 36". **\$1.50 each; 3 for \$4.00**
- Coral Mist** (Grant 1941)—Bright rose pink dusted with cinnamon pink. Very large with good form and finish. 38". **75c each; 3 for \$2.00**
- Courtier** (Hall 1947)—Very deep salmon pink. Flowers of medium size on slender 24" stalks. One of the deepest pink shades to date. **\$1.00 each; 3 for \$2.50**
- Daffy** (DeForest 1947)—Unusual in that no two falls are marked alike. White ground brushed maroon. **75c each; 3 for \$2.00**



FABULOUS KATE

Dawn Reflection (Stevens 1948)—One of the largest of all plicatas. The ivory ground of the well flared nicely formed flowers is etched with delicate rose pink on the falls while the standards have slightly more color. Branching is ideal. **\$1.50 each; 3 for \$4.00**

Daybreak—Glorious coppery pink with deeper undertone. Closed standards and semi-flaring falls on strong 4' stalks. Tied for Dykes in 1946. **75c each; 3 for \$2.00**

Double Eagle (Samuelson 1954)—The most sensational Iris ever introduced. The first real break in bearded Iris of all time. This amazing Iris throws up unusually heavy, well branched 40" stems carrying huge buds. The first of these open with the conventional three standards and three falls but the later buds toss aside all convention and open to mammoth flowers having from six to 12 standards most beautifully ruffled and waved. Unusually heavy substance hold these lovely standards slightly apart, permitting the startling double effect to be fully apparent even from a distance. Through some lucky chance this new double Iris is a fine coppery chartreuse, a color that all Iris lovers are seeking. It is also among the strongest growers we have seen and thoroughly hardy even in our rigorous northern climate. It is not a freak that will revert to a single type but the first really double Iris to be offered anywhere.

\$7.50 each; 3 for \$20.00

Dreamcastle (Cook 1943)—A pure orchid pink of immense size. High domed standards and exceptional substance make this an outstanding specimen. **75c each; 3 for \$2.00**

Easter Bonnet (Maxwell 1946)—A very lovely pink with a broad half-inch margin of gold on standards and falls and more gold pouring from the heart. Superb. **\$1.00 each; 3 for \$2.50**

Ebony Echo (Tompkins 1948)—Brilliant carmine red with a blackish sheen. Horizontal falls with heavy ruffling. One of the most richly colored of all Iris. 30". **\$2.50 each**

Extravaganza (Douglas 1944)—An immense flower with creamy standards and rich plum colored falls. About the last to flower. 40". **\$1.00 each; 3 for \$2.50**

Fabulous Kate (Muhlestein 1950)—One of the most popular yellow Iris we have known. Immense flowers of medium color, widely flaring and delightful form. **\$1.50 each; 3 for \$4.00**

Fantasy (Hall 1947)—Quite distinctive from all other flamingo pinks in that it shows a definite orchid overtone to the luscious rose pink coloring. The whole flower is illumined by a brilliant tangerine beard. Large flower on well branched 30" stems. **\$1.50 each; 3 for \$4.00**

Firecracker (Hall 1943)—A brilliant burgundy red plicata with bright yellow trim. One of the most vivid of all red plicatas. **75c each; 3 for \$2.00**

Fire Dance (Fay 1947)—A very flashy, brightly marked plicata. The buff ground color of both standards and falls is heavily trimmed over all with dark wine red making a striking contrast. The blooms are well formed with flaring falls. **\$1.00 each; 3 for \$2.50**

Floradora (Hall 1947)—A pure medium toned flamingo pink self with geranium red beard. Well branched, 30" stalks. **\$1.00 each; 3 for \$2.50**

Fuchsia (Hall 1951)—A very brilliant, deeply colored raspberry-pink with a heavy beard that is nearly red. A startling new color in Iris. **\$2.50 each**

Garden Glory (Whiting 1943)—A rich Bordeaux-red with no markings to mar the superb effect. Bright golden beard. 30". **\$1.00 each; 3 for \$2.50**

Gay Border (DeForest 1949)—A clean sparkling white flower with lovely bright maroon-rose border. A most unusual color contrast in Iris. **\$1.00 each; 3 for \$2.50**

Golden Russett (Hall 1946)—A stunning flower of gigantic size, 7" high and 9" wide. A pure golden russett self. **\$1.00 each; 3 for \$2.50**

Golden Symphony (Horton 1944)—A spectacular flower of massive proportions blooming very late in the season. A medley of gold, copper, plum and brown. Very tall, well branched spikes carrying huge flowers. Invariably attracts all visitors here. **\$1.50 each; 3 for \$4.00**

Gold Ruffles (Muhlestein 1947)—Very large, heavily ruffled flowers of medium yellow, penciled with dark lines near the haft. 36". **\$1.00 each; 3 for \$2.50**

Gulf Stream (Fay 1946)—One of the deepest pure blues yet introduced enhanced by a really blue beard. No trace of purple mars the effect of this fine clear toned Iris. **75c each**

Green Shadows (H. Sass, 1943)—An unusual greenish copper that is stunning in cool weather. **\$1.00 each; 3 for \$2.50**

Heather Rose (Hall 1950)—A very lovely orchid pink with brilliant tangerine beard. Large flowers on 30" stalks. **\$1.25 each**

Helen McGregor—Beautifully ruffled flowers of clear pale blue. This is as near perfection in form and habit as has been attained in the Iris world. Dykes Medal Winner in 1949. **\$1.00 each; 3 for \$2.50**

Heritage (Hall 1949)—A great flamingo-pink, somewhat deeper in color than Cherie. The petals are of excellent texture and the semi-flaring ruffled form is ideal. One of the finest pinks in our collection. **\$2.00 each; 3 for \$5.00**

Hit Parade (Hall 1947)—Another fine flamingo pink, a little taller than most with smooth even coloring. Good substance and slightly ruffled. **75c each; 3 for \$2.00**

Illustrious (Hall 1953)—A very late deep indigo blue touched with brown at the haft. Flowers are very large and flaring with unusual substance. One of the finest blues we have ever grown. **\$2.00 each**

Inspiration (Stevens 1947)—A sensational Iris from New Zealand. Gigantic blooms of bright rose cerise with unbelievable lustre. Fragrant. 40". **75c each; 3 for \$2.00**

- Italian Joy** (Stevens 1947)—A brilliantly vivid Iris of glowing rosy wine flushed with copper. The falls are a deeper shade of bright fuchsia. 36". **\$1.00 each; 3 for \$2.50**
- Jane Phillips** (Graves 1950)—If you are looking for a high class blue Iris, this is it. Probably the truest blue of all. A light medium blue that is somewhat deeper than its famous parent Helen McGregor but retaining the classic form and size. **\$1.00 each; 3 for \$2.50**
- Keene Valley** (K. Smith 1949)—A superb smooth medium blue of huge proportions. One of the really great Iris of all time. 40" stalks, well branched, holding the immense blooms to show at the best advantage. **\$2.00 each**
- Lady Boscawen** (Graves 1946)—Well branched 48" stems with huge ruffled flowers. Perfection in alabaster white with pale yellow beard. Outstanding among the finest of new white Iris. **75c each; 3 for \$2.00**
- Lake Breeze**—A Gloriole seedling, heavily ruffled and wide flaring falls. A little deeper blue than its famous parent, but larger and more floriferous. **60c each; 3 for \$1.50**
- Lothario** (Schreiner 1942)—Light blue standards and plush-like deep blue falls. Really a more highly colored Amigo of twice the size. **75c each**
- Lynn Langford** (Hall 1946)—Deep orchid pink flushed with gold and bright golden beard. Flowers large with flaring falls on sturdy 3' stems. **\$1.00 each; 3 for \$2.50**
- Magic Carpet** (Schreiner 1942)—A very large and bright plicata with buffy standards and creamy gold falls, both completely overlaid with a brilliant pattern of rose red. **75c each; 3 for \$2.00**
- Mary Randall** (Fay 1951)—Dykes Medal Winner in 1954. This is the most admired Iris in the world today. It is a deep rose pink self with brilliant tangerine beard. Huge ruffled flowers of rounded, perfect form on very sturdy 3' stalks. Flowers well spaced. Very heavy substance. Stock will be very scarce for years to come. **\$10.00 each**
- Masked Ball** (Buss 1949)—A spectacular novelty with deep blue standards and white falls broadly margined with the same deep blue of the standards. 38". **\$1.25 each**
- Maytime** (Whiting 1950)—A new color in the Amoena class having lovely orchid pink standards and bright lilac rose falls. A bright, clean, fresh appearing flower that makes instant appeal. **\$3.50 each**
- Mellowglow**—Lovely honey-peach with soft pink flush. This comes from the "flamingo" pinks and has unusual pink tones which are most appealing. **\$1.00 each**
- Moonlight Sonata** (Stevens 1946)—A soft luminous sulphur yellow with tints of green emanating from the heart. Petals finely notched. A beauty from New Zealand. **\$1.00 each; 3 for \$2.50**
- New Hope** (DeForest 1950)—A stunning new white ground plicata, heavily margined with deep blue stippling. Tall, well branched with huge blooms. 40". **\$1.50 each**
- New Snow** (Fay 1946)—A white Iris that has the iridescent quality of new fallen snow when the sun first strikes it. Ruffled flaring flowers on heavy 40" stalks. This is one of the finest white Iris ever introduced. **\$1.00 each; 3 for \$2.50**
- Ola Kala** (Oh'la Ka-lah')—This is the Greek way of saying Okay, and this Iris is certainly well named. In 1946 this one tied for the Dykes Medal and in 1948 won it outright. Of all the fine new yellow Iris now being grown, this is perhaps the deepest in color. Heavily ruffled, medium large flowers on sturdy 3' stalks beautifully spaced. Add to this the fact that Ola Kala is unusually vigorous and prolific and we have an outstanding Iris. **75c each; 3 for \$2.00**
- Pagan Princess** (Douglas 1948)—This startling and spectacular new Iris is of deep pink overlaid bright purple giving the effect of brilliant vermilion in the garden. Tall well branched stems and huge flowers of heavy substance. Outstanding and unique in every respect. **\$1.00 each; 3 for \$2.50**
- Palomino** (Hall 1952)—One of the most striking Iris ever introduced. Large flowers of unusual substance, perfect form and excellent spacing. The color is a rich deep cream with a touch of pink in the standards and amber-copper on the shoulder and around the edge of the falls. A brilliant red beard forms a unique combination to this aristocratic Iris. 36". **\$7.50 each**
- Party Dress** (Muhlestein 1951)—A lovely ruffled flamingo pink of the very highest quality. Flaming beard, large flowered, well branched. A great favorite with visitors. **\$2.50 each**
- Pink Formal** (Muhlestein 1949)—A magnificent new rose pink with wide heavy petals and strong red-tangerine beard. Large flowers on tall stalks. An unusually vigorous hardy plant. Conceded to be the sensation among new pink Iris. **\$1.50 each**
- Pink Sensation** (Hall 1948)—One of the finest of Mr. Hall's famous flamingo pinks. This lovely creation is a clear delicate pink with no trace of orchid or mauve and has the famous tangerine beard. In addition to its fine color it is large with lacinated petals. The flowers are well rounded and carried on 33" stalks. One of the earliest to bloom. **\$2.00 each**
- Pink Tower** (Muhlestein 1948)—A regal giant of clear soft pink that is a sister seedling of Pink Formal. We never have enough of this one. **\$1.00 each; 3 for \$2.50**
- Pinnacle** (Stevens 1949)—A yellow amoena from New Zealand that is a real novelty. The standards are clean sparkling white with falls clear primrose yellow. Perfect branching on strong 3' stems. **\$1.50 each; 3 for \$4.00**
- Port Wine** (Sass Bros. 1950)—A striking flower of huge size. White with a broad border of royal purple. Destined for long popularity. **\$3.50 each**
- Pretender** (Cook 1951)—Deep golden standards and royal purple falls margined with gold and violet. A new color break of real charm. **\$5.00 each**
- Pretty Pansy** (Sass Bros. 1949)—A stunning new novelty with white areas surrounded by royal purple. Something really different in Iris. **\$1.50 each**
- Rainbow Room** (Sass 1946)—A rainbow blend of metallic blue, violet, gold and copper. Huge ruffled flowers on superb 3' stalks. Winner of many awards. **\$1.00 each; 3 for \$2.50**
- Rajah Brooke** (Norton 1945)—Rich oriental coloring in smooth velvety topaz bronze and pigeon-blood red. No veining to mar effect in this one. **75c each; 3 for 2.00**
- Ranger**—Very nearly a true crimson-red self. A dark but very brilliant flower. As a red it has few equals and no superiors. 3'. **\$1.00 each; 3 for \$2.50**
- Raspberry Ribbon** (Schreiner 1951)—A new more highly colored Minnie Colquitt. Crisply ruffled blooms of large size showing a large white patch surrounded by deep reddish stippling. A real eye catcher. **\$3.00 each**
- Redward** (Cook 1942)—This is the nearest true red we have grown. Large well formed flowers on medium stalks. Always a sell out. **\$1.00 each; 3 for \$2.50**
- Remembrance**—A delightful pink blend with sufficient gold in the make-up to lighten the effect. It fairly sparkles in the sun. **75c each; 3 for \$2.00**
- Rocket** (Whiting 1945)—A burnished coppery yellow that is the nearest approach to true orange. Large flowers on strong 3' stalks. Such intense color is seldom seen in the floral kingdom. **75c each; 3 for \$2.00**
- Rose Frills** (Suiter 1952)—A more highly colored Chantilly. Deep rose and violet with both falls and standards heavily crimped. Unusually heavy substance. Magnificent branching. **\$5.00 each**
- Rose Splendor**—Luscious pink with soft apricot shading. This is a very strong grower with beautifully branched stalks and immense flowers. The coloring is entirely distinctive. If you are looking for something different in pinks, this is it. **\$1.50 each; 3 for \$4.00**

Searchlight (Stevens 1947)—Real perfection in formation and habit. Deep pure gold throughout with no markings. Even the beard is identical in rich golden coloring. 40". **\$1.00 each**

Snow Flurry—A spectacular flower of blue-white beautifully ruffled and frilled, on 48" well branched stalks. **75c each**

Solid Gold (Kleinsorge 1951)—This is the finest yellow Iris ever offered at any price. It is superior in color, form, texture, and silken finish. Truly the ultimate in golden Iris.

\$6.00 each

Solid Mahogany—The name aptly describes this one. It has magnificent plush-like substance and is like a piece of fine velvet in the sun. There are no haft venations to mar the effect.

\$1.00 each; 3 for \$2.50

Spanish Peaks (Loomis 1947)—The finest of all whites. White even to the beard. Huge flowers of leathery texture and lovely form. From the man that gave us Elmohr and equally as good.

\$1.00 each; 3 for \$2.50

Staten Island (Smith 1947)—Gold standards and red falls. Considered the best of its color class.

\$1.50 each; 3 for \$4.00

Summit (Stevens 1951)—One of the finest of Mrs. Stevens' New Zealand Iris, this shows the greatest contrast between the standards and falls among her yellow amoenas. The deep golden falls, much deeper than those of Pinnacle, are capped by standards of clean snow-white, creating a stunning contrast. A "must have."

\$2.00 each; 3 for \$5.00

Spun Gold—Probably the most sought after yellow Iris. Perfect in every respect. Immense flowers well spaced on 4' stalks of heavy substance. Dykes Medal 1944.

75c each

Sunset Blaze (Kleinsorge 1948)—This is the famous Iris that won the President's cup at the AIS convention in 1949. An impressive flower that is so brilliant as to stand out in the field over all others. It has the brilliant coloring of a blazing red sunset. The huge flowers are proudly borne on heavy 42" stalks.

\$1.00 each; 3 for \$2.50

Sweet Marie (Muhlestein 1951)—Very large orchid pink with tangerine beard. Superbly ruffled throughout and loved at sight by everyone.

\$1.50 each

Tabasco (Craig 1951)—A most unusual fancy plicata described as like paprika on an omelet. Very large and very brilliant color effect.

\$4.00 each

Thotmes III (Kleinsorge 1950)—A gigantic flower of glistening golden tan with light bronze beard. There is more life and sparkle to this brown than most and it is one of the best growers we have found. 40".

\$3.50 each

The Red Douglas (J. Sass 1937)—Winner of the Dykes Medal in 1941, this colossal Iris has texture like heavy rich plush. The intense, deep wine red with a slight brownish cast is gorgeous beyond words. 40".

75c each

Truly Yours (Fay 1949)—A gigantic bloom of bright yellow shading to cream on the top of the standards and the bottom of the falls. The whole flower is beautifully ruffled and edged with lace. The majestic flowers are carried on strong 36" well branched stems. Dykes Medal 1953.

\$6.00 each

Twilight Sky (Fay 1949)—A superb deep pink Iris of smooth heavy substance. Bright pink buds and brilliant red beard. One of Mr. Fay's very finest.

\$1.00 each; 3 for \$2.50

Vatican Purple (Whiting 1943)—Superb, bold stalks carrying silken bright blue-purple flowers of flaring form with beautifully fluted petals.

75c each; 3 for \$2.00

Zantha (Fay 1947)—A superb exhibition sort with deepest pure yellow blooms of huge size and magnificent proportions. Well branched and a prolific bloomer as well as one of the best growers we have ever known. 40".

\$1.00 each

Zebra—The only variegated Iris known. The leaves are striped creamy yellow and green making a striking accent plant for the border. Indispensable in flower arrangements. Lavender blue flowers.

75c each; 3 for \$2.00



WILLIAM MOHR

"MOHR" IRIS

All of the increasingly popular family of Mohr Iris as well as various other hybrids belong in this class because they contain both Onco and regular Bearded Iris blood. The progeny of the the famous William Mohr is becoming legion. Listed below is a fine group showing a wide variation in color, shape and form. All are distinctly different from the ordinary Bearded Iris and would make a worthwhile addition to any fancier's collection.

Altamohr (Paul 1948)—Immense orchid violet of flaring form on very tall strong stems. 40". **75c each; 3 for \$2.00**

American Modern (Craig 1951)—Standards olive copper flecked with bluish green. Falls heavily marked with red. Large flowers carried on tall strong stems. Very vigorous grower.

\$3.50 each

Anita Catherine (Clarke 1949)—Very lovely cross between Purissima and Mohrson with large blue white flowers of excellent substance.

\$1.50 each

Barrimohr (Miller 1944)—Very large shapely purple bi-color.

\$1.00 each; 3 for \$2.50

Blumohr (Marx 1949)—A blue Wm. Mohr seedling. The large, typical Mohr shaped flowers are of pure lavender blue. Texture of the petals is excellent. A true novelty.

\$2.50 each

Butterfly Wings (White 1946)—Oyster shell blue with falls heavily marked bright copper bronze.

\$1.50 each

Capitola (Reinelt 1940)—Very early, large flowered Onco showing the famous Mohr veining. A very rich deep violet blue. Lovely.

\$1.00 each; 3 for \$2.50

Elmohr (Loomis 1942)—Spectacular flower of intense mulberry-purple. Immense in size, heavy substance and perfect form. Tall well branched. No collection is complete without Elmohr.

\$1.00 each; 3 for \$2.50

Flurry Mohr (Rees 1950)—A huge violet purple that resembles Japanese Iris in that the standards spread out forming huge flat blooms of exotic appearance.

\$1.00 each; 3 for \$2.50

Mohr Iris Continued Page 42

Remember, all Iris orders over \$3.00 are postpaid in the U.S.A.

Gaza (Jory 1949)—Large flowers of distinct Mohr type. A self of clay-pink. Quite an aristocrat in a somber way.

\$1.00 each; 3 for \$2.50

Grace Mohr (Jory 1935)—Enormous grey-blue with typical Mohr veining. Widely flaring flowers on 40" stalks.

60c each; 3 for \$1.50

Heigho (Craig 1949)—Very large rich violet blue with deeper signal patch. Vigorous grower and free bloomer.

\$1.50 each

Illusion (Kleinsorge 1943)—Lovely pure orchid on sturdy 24" stems.

\$1.00 each; 3 for \$2.50

Intermezzo (Tompkins 1944)—A strangely colored flower of large size with lovely ruffling. A blend of metallic grey-blue-violet perhaps, but must be seen to be appreciated.

\$1.00 each; 3 for \$2.50

Lady Mohr (Salbach 1944)—A most impressive Mohr type of oyster white heavily stained with greenish yellow. Falls a little deeper toned with a prominent dark patch of red violet. Superb.

\$1.00 each; 3 for \$2.50

Laurel Hill (Plough 1949)—Large rosy red-lavender with Mohr form and veining.

\$1.00 each; 3 for \$2.50

Madam Mohr (Becherer 1951)—Magnificent flowers of pure orchid having the true onco form.

\$2.00 each

Mohresque (Keith 1950)—An odd, unusual blend of light brown, yellowish-buff and chartreuse heavily flecked with deep purple. Very large flowers on sturdy 36" stems. Distinctive and very lovely.

\$1.00 each; 3 for \$2.50

Mohr Beauty (Milliken 1949)—A fine large yellow with white patch below the beard. An Elmohr seedling.

\$2.00 each

Mohrloff (Schirmer 1949) — Very heavily marked purple plicata. Claimed to be of much interest to hybridizers.

\$1.00 each; 3 for \$2.50

Mohrson (White 1935)—Intense violet purple, heavily veined and very lovely.

60c each; 3 for \$1.50

My Day (Tharp 1944)—Lovely blue-lavender with purple blaze. Marbled in white and veined in mulberry.

\$1.00 each

Ormohr (Kleinsorge 1937)—Lovely pale silvery violet with unusually heavy substance and long lasting quality. A great favorite.

60c each; 3 for \$1.50

Ormaco (Kleinsorge 1942)—Violet purple flushed and stained with copper.

60c each; 3 for \$1.50

Peshawar (Schreiner 1937)—A dwarf sort starting the season with delightful blooms of rich mulberry.

60c each; 3 for \$1.50

Rose Mohr (Lewis 1949)—A cross between Ormohr and Red Valor with true Mohr characteristics. Huge, well rounded flowers of beautiful soft mulberry with rosy undertones. Prolific and strong growing.

\$1.50 each; 3 for \$4.00

Soquel (Reinelt 1940)—Large violet blue blooming early in the season.

\$1.00 each; 3 for \$2.50

Sheriffa (White 1942)—A deep metallic-violet lightly veined. A striking flower reaching 5'.

60c each; 3 for \$1.50

Wm. Mohr (Mohr 1925)—Above very sparse foliage come the surprisingly large flowers of soft violet veined heavily with violet. This is the Granddaddy of all the Mohrs. Produces very small rhizomes.

60c each; 3 for \$1.50

One each of the 29 "Mohr" Iris (Value \$33.95) \$29.75 Net

IRIS SIBIRICA—Siberian Iris

Vigorous, graceful, grass-like foliage which retains its beauty throughout the season makes this class of prime value as a landscape variety. Especially effective in masses about the pool or waterside, but equally good in the border or large rockery.

Blue Heron—Very early bloomer producing fine medium blue flowers in mid-May.

60c each; 3 for \$1.50

Bob White—Charming white flowers with rich yellow blotch at the throat.

60c each; 3 for \$1.50

Butterfly—Excellent light blue. 30".

60c each; 3 for \$1.50



SIBERIAN IRIS ERIC THE RED

Caesar—A fine blue-purple of excellent substance.

60c each; 3 for \$1.50

Caesar's Brother — 48". H.M., A.I.S. 1936. A rich glossy, black-purple of perfect form. The darkest of all.

60c each; 3 for \$1.50

Cool Spring — Charming pearly blue flowers on widely branched stalks.

\$1.00 each; 3 for \$2.50

Eric the Red—The very finest red to date. A deep brilliant color.

\$1.50 each; 3 for \$4.00

Lewellyn—Glorious bright blue on 4' stalks.

60c each; 3 for \$1.50

May Morning—Very fine large dark velvety blue.

60c each; 3 for \$1.50

Ottawa—Striking bright blue flowers with contrasting white center.

60c each; 3 for \$1.50

Periwinkle—Lovely blue and white with widely flaring falls.

60c each; 3 for \$1.50

Royal Herald—Rich deep plum purple with broad drooping falls almost like black velvet. Striking and unique.

\$2.00 each; 3 for \$5.00

Sky Blue—The blue of the spring sky accentuated by a touch of brown in the throat. Lovely.

75c each; 3 for \$2.00

Tonawanda Red Flare—Very large red self with widely flaring falls. Strong vigorous grower. Free flowering.

\$1.50 each; 3 for \$4.00

Tunkhannock—Superb new white, the largest of all, with wide spreading falls. A real triumph in Siberians.

\$2.00 each

Wisteria—Very large flowered form with heavy, firm substance. Fine light blue on sturdy 4' stems. Greatly admired by everyone.

\$1.00 each; 3 for \$2.75

Zerita—Very tall, large flowers of dark blue with red styles. Very fine.

\$1.50 each; 3 for \$4.00

One each of the 17 Siberian Iris \$13.50



DWARF BEARDED IRIS

DWARF BEARDED IRIS

One of the finest of rock plants as they require very little care and when once established will increase in size and beauty for years. They are also used extensively as a border for the taller varieties, materially lengthening the season as they bloom several weeks earlier.

- * **Atrioviolacea**—A favorite old purple-red.
- * **Buzzar**—Lavender blue shaded pink.
- * **Cream Tart**—Creamy yellow flushed red.
- * **Dr. Mann**—Brilliant petunia-violet with smoky falls. Fragrant.
- * **Endymion**—Beautifully formed red violet self. Choice.
- * **Fairy**—Dainty sky blue with deeper shadows on the falls.
- * **Hybrida caerulea**—Rich deep blue purple.
- * **Iceberg**—Distinctive large flowered white, flushed green.
- * **Judy**—Very fine dark mulberry red self.
- * **Keepsake**—Deep golden yellow self.
- * **Ladies of Peeling**—New distinct pale blue. 9".
- * **La Tulipe**—Clean medium yellow self of nice form.
- * **Louise Starker**—Good clean white. Late bloomer.
- * **Margaret**—Excellent rich royal purple.
- * **Marocain**—Deep velvety blue purple. 6".
- * **Moon Gleam**—Very fine sulphur yellow with flaring falls.
- * **Negus**—Intense purple self, orange beard. 5".
- * **Neola**—Unique violet washed brown.
- * **Papoose**—Stunning mahogany and buff bicolor.
- * **Rich Blue**—Deep velvety blue.
- * **Rose Mist**—Fine rosy orchid.
- * **Sambo**—Very dark blue. Early.
- * **Sapphire**—Lovely rich sapphire blue.
- * **Sound Money**—Fine ruffled rich golden yellow.
- * **Stewart's Alpine**—Brilliant clear yellow.
- * **Tampa**—Fine new red midget with grassy foliage. Distinct.
- * **The Bride**—Excellent clean white. 6".
- * **Tiny Tony**—Very tiny, charming rich wine purple.
- * **Tiny Treasure**—Bright canary yellow miniature.
- * **Ylo**—Strong growing lemon yellow.

60c each; any 10 for \$5.50; any 20 for \$10.00
 One each of the 30 Dwarf Iris \$14.00
 10 sorts, unlabeled, \$3.50

For something different, try some of the Twice Flowering Iris listed on page 45.



INTERMEDIATE IRIS ZUA

INTERMEDIATE IRIS

These Iris bloom after the dwarfs and before the Tall Bearded. They serve to make a succession of bloom from April to June as well as being very lovely in the garden and for cutting.

- * **Dorothea**—Lovely soft grey-blue with standards that fall outward showing the beautiful heart of the bloom.
- * **Elizabeth Huntington**—A large blue bi-color that is crimped and ruffled throughout, making the flower appear to be made from crepe paper.
- * **Lady Luck**—A rich deep violet purple self, valuable for its especially early blooming habit. Very fragrant.
- * **Midwest**—Lovely plicata of rich mulberry on a cream ground. Often has four standards and four falls.
- * **Nyx**—Deep purple with a rich velvety sheen. One of the very darkest Iris grown.
- * **Zua**—Unbelievably ruffled and curled flowers of lovely blue-white. A real novelty.
- * **Zwanenburg**—Very lovely soft tan and copper with flecks of brown. A real novelty with pogocyclus heritage.
 60c each; one each of the 7 Intermediate Iris \$3.75

IRIS—Various Species

- * **cristata, Gold Crest**—Blue with rich golden crest.
 75c each; 3 for \$2.00
- * **dichotoma**—This is the Vesper Iris with countless small blue flowers opening in late afternoon each day. August. 3'.
 65c each; 3 for \$1.65; doz. \$6.50
- * **D. K. Williamson**—A lovely Louisiana hybrid of deep, rich royal purple. A superb flower. 3'. 75c each; 3 for \$2.00
- * **graminea**—Rich violet and blue flowers. Plum scented. 8".
 75c each; 3 for \$2.00
- * **pseudacoris**—Bright yellow with brown markings. May be grown in the pool or beside a stream in full sun but does well in the border. 60".
 65c each; 3 for \$1.65
- * **ruthenica**—Rare dwarf with rich deep blue blooms. 75c each
- * **tectorum**—A lovely deep blue Oriental, heavily frilled and crested. This is the famous roof Iris of Japan.
 \$1.00 each; 3 for \$2.50
 One each of the Iris species \$5.00; 3 each \$12.50

Bargain Collections

(Please note that the Special Bonus offered on page 38 does not apply to this page)

GROUP No. 1

Any of the following fine Iris varieties at 75c each; any 5 for \$3.00; any 10 for \$5.50; any 20 for \$10.00; any 35 for \$15.75; all 50 for \$20.00. All plants labeled.

- Alastor—Brilliant vermilion and gold.
- Alpine Glow—Very large ruffled soft rose.
- Amandine—Huge broad petaled delicate cream.
- Bataan—Unusual metallic coppery red.
- Black Banner—Intense velvety midnight blue.
- Bryce Canyon—Brilliant coppery bronze tones.
- Cascade Splendor—Classic ruffled pink and buff.
- Chantilly—Ruffled orchid, edged gold lace.
- Cloud Castle—Tremendous flaring powder blue.
- Cordovan—Brown as rich Cordovan leather.
- Cuban Carnival—Striking white brushed blue.
- Desert Song—One of the finest cream yellows.
- Display—Glorious rich deep Spanish red.
- Distance—Beautiful glistening silvery blue.
- Down East—Satin deep blue black.
- Garden Flame—Huge brilliant flame red.
- Goldbeater—Fine rich warm golden yellow.
- Gypsy—Spectacular red and gold two-tone.
- Indiana Night—One of the best of "Black" Iris.
- Juliet—Fiery blend of flame and copper.
- Katherine Fay—Grand hardy ruffled white.
- King's Jester—Splashy maroon on white plicata.
- Lancaster—Lovely broad petaled deep rose.
- Lidice—Very showy rich royal red purple.
- L. Blake—Sky blue with velvety purple falls.
- Lullaby—Lovely pink with heart of gold.
- Marquita—Magnolia-like rose and ivory.
- Mary Vernon—Glittering deep gold and ruby red.
- Melodist—Bright rose with glints of gold.
- Mexico—Popular golden buff and coppery red.
- Mulberry Rose—Huge, very bright rosy violet.
- Orange Gem—Gigantic deep brilliant orange.
- Pink Cameo—Lovely soft flamingo pink.
- Pink Reflection—Delicate light pink blend.
- Radiant Lady—Flaming bronzy red and gold.
- Red Torch—Velvety bright ox-blood red.
- Rose Top—Tremendous ivory trimmed rose.
- Sable—Stunning tall midnight blue black.
- Salmonette—Delightful salmony peach pink.
- San Antone—Glowing deep reddish brown.
- Sky Ranger—Large very ruffled medium blue.
- Spindrift—Delicate seashell and coral pink.
- Suzette—Creamy yellow stitched maroon.
- Tea Room—Fine rose pink blend flushed gold.
- Three Cheers—Lovely Amigo type blue and purple.
- Three Oaks—Immense rose pink overlaid copper.
- Treva—Shimmering golden apricot beauty.
- Vice Regal—Like plush. Royal purple velvet.
- Vision Fugitive—Extremely large lemon cream.
- Voodoo—Rich chocolate and blood red bicolor.

GROUP No. 2

Any of the following standard Iris varieties at 60c each; any 5 for \$2.50; any 10 for \$4.25; any 20 for \$8.00; any 35 for \$13.50; all 50 for \$18.00. All plants labeled.

- Amigo—Popular sky blue and velvety purple.
- Arctic—Tall stately ivory and lemon cream.
- Aubanel—Exquisite shrimp pink flushed rose.
- Azure Skies—Daintily ruffled clear sky blue.
- Berkeley Gold—Gleaming bright golden yellow.
- Beuschley's Giant—Huge, very tall medium blue.
- Beverly—Delightful deep rose pink beauty.
- Buffawn—One of the best of salmony buffs.
- California Gold—Glittering pure golden yellow.
- Cheerio—Brilliant red and shining gold.
- Claret Velvet—Mammoth smoldering wine red.
- Coralie—Crushed strawberries and cream.
- Coritica—Old ivory stitched cinnamon.
- Elsa Sass—Ruffled lemon ice flushed green.
- Flora Zenor—Lovely soft cameo pink.
- Florentine—Tremendous blue on white plicata.
- Fortune—Gleaming metallic golden copper.
- Frieda Mohr—Massive lilac rose pink.
- Fair Elaine—Classic cream and gold beauty.
- Garden Magic—Immense bright mahogany red.
- Grand Canyon—Fine plum, copper and rose blend.
- Great Lakes—Famous Dykes Medal sky blue.
- Gudrun—Huge thick petaled snow white.
- Gypsy Baron—Distinctively veined medium blue.
- Hoogsan—Lovely delphinium blue Hoogiana hybrid.
- Late Sun—Very large glittering coppery gold.
- Los Angeles—Cool icy white brushed blue.
- Master Charles—Heavy blooming deep red purple.
- Matterhorn—Perfection in alabaster white.
- Melanie—Gigantic tall bright rose pink.
- Melody Lace—Superb pink stitched plicata.
- Minnie Colquitt—Striking deep purple on white.
- Misty Gold—Beautiful white flecked with gold.
- Monadnock—Late blooming rose red beauty.
- Ming Yellow—Magnificent deep yellow giant.
- Pink Ruffles—Very ruffled orchid pink gem.
- Prairie Sunset—Lovely blend of pink and copper.
- Prince of Orange—Brilliant golden orange.
- Rebellion—Deep smoldering mahogany.
- Red Valor—Beautiful dark velvety red.
- Rosy Wings—Lovely crushed strawberry and buff.
- Royal Scot—Giant cream heavily trimmed red.
- Ruth Pollock—Striking yellow marked violet.
- Sandia—Huge exquisite raspberry rose.
- San Francisco—Very large white stitched blue.
- Siegfried—Tremendous maroon and buff plicata.
- Stained Glass—Outstanding bright coppery red.
- Wabash—Stunning blue and white two-tone.
- White Goddess—Clean sparkling snow white.
- Wm. Setchell—Largest flowered medium blue.

SPECIAL IRIS OFFER

To those who wish a collection of fine Iris, but are not interested in the names, the following prices should make instant appeal. These are fine roots of grand varieties but shipped without names.

25 for \$6.00; 50 for \$11.00

100 for \$20.00; 1000 for \$175.00

BUTTERFLY IRIS

Iris spuria—A lovely beardless form with large heavily textured blooms. These flower a little later than the bearded type and lengthen the Iris season by several weeks. Excellent for cutting and make beautiful corsages. 48".

Mrs. A. W. Tait—Superb porcelain blue and gold.
White Heron—Immense ivory with large golden patch.

\$1.25 each; 3 of one kind \$2.75

One each of the 2 Spuria Iris \$2.00; 3 each \$5.00

TWICE-FLOWERING IRIS

This splendid group blooms freely in the spring and again in September and October. Many of the varieties listed below are almost continuous bloomers. For best results they should be watered freely during the summer months.

- Autumn Elf**—Lavender and cream. Prolific bloomer.
Autumn Flame—Brilliant deep red bicolor.
Autumn Frost—Very large white, flushed green.
Autumn King—Vigorous rich deep blue.
Autumn Queen—Pure snow white.
Autumn Sunset—Bright red, pink and bronze blend.
Autumn Surprise—Fine medium blue self.
Black Magic—Intense deep blue.
Cryso—Fine deep orange yellow.
Dorcas Hutcheson—Rich pansy-violet.
Eleanor Roosevelt—Very deep raisin purple.
Equinox—A rich violet bi-color.
Ethel Peckham—Fine tall dark red self.
Gibson Girl (Gibson 1948)—Exceptionally fine plicata similar to Tiffany and one of the most reliable twice flowering sorts.
Golden Cataract—Bright pure golden yellow.
Lieut. Chavagnac—Brilliant purple.
Marti Everest—Fine large deep blue.
October Blaze—Dancing reddish tones.
October Opera—Huge purplish red.
Olive White—Cream with green gold veining and dark markings at the haft.
Sangreal—A frilled yellow that is a most reliable rebloomer.
September Skies—A smooth violet with deeper falls.
Southland—Large, lemon chrome yellow.
Surefire—Fine cream yellow.
Ultra—Brilliant ultra marine blue.
White Autumn King—Magnificent pure white.

60c each; any 10 for \$5.00

One each of the 26 Twice Flowering Iris \$11.00

10 sorts, unlabeled, \$4.25

PAPAVER (Pa-pav'-ver) ORIENTALE—

Oriental Poppy

Few people realize what great strides have been made in the hybridization of Oriental Poppies in the last few years. We may now have flowers of such gigantic size and color variation as to astound all who have not kept pace with the recent achievements. The colors range from purest white through all the tints from delicate pink to rose and crushed strawberry, red to mahogany, orange to terra cotta. The main blooming season is in early summer but many sorts bloom intermittently all summer and fall. One of the most permanent of perennials and certainly of the easiest culture asking only a place in full sun with reasonable drainage. Shipment will be made only during late summer and fall as they transplant best then but may be included with spring orders and shipments will be made at planting time.

Cerise Beauty—Lovely deep rose with glittering blackish purple blotches. Profuse bloomer. Medium height.

85c each; 3 for \$2.25

Cheerio—A new break in color. The lovely soft pink flowers have a deep red blotch at the base of each petal.

\$1.00 each; 3 for \$2.50

Crimson Pompon—Very double flowers of fine dark red. This is the first double in dark red. Sturdy medium height plants blooming very profusely. A recent Dutch importation.

85c each; 3 for \$2.25

Curtis Giant Flame—The giant blazing red flowers will often measure 11" across on 4' stems when plant is well established. The largest of the giants and almost barbaric in appearance.

\$1.00 each; 3 for \$2.50



ORIENTAL POPPY

Enchantress—This is the closest approach to lavender in this family. Flowers very large on strong 40" stems. Color a decidedly lavender pink. \$1.00 each; 3 for \$2.50

Field Marshal Vonder Glotz—The very finest of all white Poppies. Large, vigorous, tall, with snowy white flowers and coal-black spot at base of each petal.

\$1.25 each; 3 for \$3.00

Helen Elizabeth—One of the very finest pink poppies ever introduced. The large flowers are carried on 3' stems and are a charming shade of LaFrance pink with no dark spots at all.

75c each; 3 for \$2.10; doz. \$7.50

Henri Cayeux Improved—Fine large flowers of a peculiar shade of ashes of roses flushed burgundy. Nothing else like this one.

85c each; 3 for \$2.25

Ridgewood Beauty—A new variety with large fluffy flowers of vivid pink with contrasting black basal spots.

\$1.00 each; 3 for \$2.50

Salmon Glow—A beautiful double Poppy of rich glowing salmon-orange. Flowers 8" across. In great demand.

75c each; 3 for \$2.10; doz. \$7.50

Toreador—Huge 9" flowers of handsome carmine-red with lovely markings at the base of petals. Heavily crinkled. 30".

75c each; 3 for \$2.10; doz. \$7.50

Wunderkind—This unusual flower is of true Begonia-rose. It is a strong grower with large flowers on 36" stems.

\$1.00 each; 3 for \$2.50; doz. \$9.50

One each of the 12 Oriental Poppies \$10.00; 3 each \$27.50

POPPY BARGAIN

We have a few fine Oriental Poppies on which the names have become lost. We are offering these in mixture only at the following attractive prices:

10 for \$6.50; 25 for \$15.00

FRITILLARIA (Frit-il-lair'-i-a)—Crown Imperial

imperialis aurora—Stately stalks crowned by huge drooping bells of orange scarlet which in turn are surmounted by pineapple-like tufts of leaves. Perfectly hardy and long-lived. One of the earliest things to bloom. Grow in full sun in any good garden soil. Plant bulbs in fall only, 6" deep.

\$1.25 each; 3 for \$3.25; doz. \$11.50



PAINTED DAISIES



PEONY SARAH BERNHARDT

PYRETHRUM (Py-ree'-thrum)—Painted Daisy

Pyrethrums have been called the spring blooming Chrysanthemum and we think that the newer sorts are a very close rival of that popular flower. As a cut flower for Memorial Day they certainly have no superior. If not allowed to seed there will be scattered blooms all summer, although these as well as the first flowers after transplanting, are apt to be single even in the double varieties. All are propagated vegetatively and are true to name.

PLEASE NOTE—Due to scarcity of stock Pyrethrum will be shipped only in the fall. They may be included with spring orders and shipment will be made in September.

Corillion—A startling new salmon pink, a color never before seen in Painted Daisies. Medium sized single blooms. Unique. **\$1.50 each; 3 for \$4.25**

Crimson Giant—The very finest large flowered crimson. Broad velvety petals surround a lovely golden disk. Single. **\$1.50 each; 3 for \$4.25**

Dorothy Hockley—Fully double snow white, with fringed petals. Crisp, perky blooms of unusual substance. **\$1.50 each; 3 for \$4.25**

Florence Shadley—Very large fully double orchid pink. A silvery sheen adds greatly to the color tone. **\$1.00 each; 3 for \$2.50**

Ghengis Khan—Bright rose-red double. Brilliant medium sized flowers unusually fine for cutting. **\$1.00 each; 3 for \$2.50**

Pasadena—This is the finest Painted Daisy that we have ever seen. It is a very large, very double silvery pink. While the color is light it has the unusual luster of damask silk and stands out among our large collection of fine imported Daisies. **\$3.50 each**

Poinsettia—This is the brightest red fully double Daisy that we have found. Large, beautifully formed and a vigorous grower. **\$3.50 each**

Rose Giant—Offered for the first time, this new giant single pink is really outstanding. The petals are exceptionally broad and flat with a fine lustrous sheen. **\$1.50 each; 3 for \$4.25**

Senator—One of the largest and finest having fully double flowers of extra heavy substance on very long sturdy stems. Deep rose red. Imported stock. **\$3.50 each**

Silver Tips—Very deep old rose generously tipped with white. An outstanding double variety. **\$1.50 each**

Snow Queen—We are happy to be able to again offer this giant white. The outer petals are long and broad, inclosing a very double cushion of shorter petals. We have had specimens 3" in diameter. **\$2.00 each; 3 for \$5.00**

One each of the 11 Pyrethrum (value \$22.00) \$20.00

PAEONIAS—Peonies

Peonies will be shipped in the fall only but may be included with spring orders and shipment will be made at planting time. It is very important that Peony roots be planted with eyes not more than 2" below ground level. The following are the only sorts available for sale this season.

Edulis Superba—This is the most popular flower grown for Memorial Day. A glorious early Peony, fully double and the finest shade of bright pink. It is as fragrant as a rose and grows 3' tall, making it invaluable as a cut flower at the season when most urgently needed. An unusually strong, vigorous grower. **\$1.50 each; 3 for \$4.00; doz. \$15.00**

Festiva Maxima—Large full rose type of paper white with crimson flecks. Early **\$1.50 each; 3 for \$4.00; doz. \$15.00**

Helen—The best single pink. Very strong grower and profuse bloomer. A double row of bright shell pink petals and a mass of bright yellow stamens. Very lovely. **\$2.50 each; 3 for \$6.50; doz. \$22.00**

Isani Gidui—The very finest white Japanese Peony. Snow white guard petals cup a very large cushion of golden petaloides. **\$3.50 each; 3 for \$9.00; doz. \$33.00**

Kelway's Glorious—Immense blooms of silken texture and snowy whiteness. Very fragrant. Late **\$2.50 each**

Karl Rosenfield—Rich, deep, brilliant red. Vigorous free flowering. Late blooming. **\$1.50 each**

Krinkled White—A large single white with petals beautifully waved and crinkled. Tall vigorous grower blooming very late. **\$3.00 each; 3 for \$8.00; doz. \$30.00**

Mons. Jules Elie—Huge blooms of pure bright pink. Petals incurved like a hot-house Chrysanthemum. **\$1.50 each**

Officinalis rubra—The grand old red Memorial Day Peony. **\$1.50 each; 3 for \$4.00; doz. \$15.00**

Sarah Bernhardt—Apple blossom pink, tipped silver. Delicately scented. **\$1.50 each; 3 for \$4.00; doz. \$15.00**

Tenuifolia Latifolia—Bright crimson single with lovely fern-like leaves. Strong grower and very early. **\$2.00 each; 3 for \$5.00; doz. \$18.50**

Therese—Old rose pink of immense size and substance. Fully double flowers held on sturdy stems in mid-season. **\$2.00 each; 3 for \$5.00; doz. \$18.50**

One each of 12 above Peonies \$22.00
(Value \$24.50)

BARGAIN PEONY OFFER

Three most popular Peonies.....\$3.50
One each: Festiva Maxima (White), Mons. Jules Elie (Pink), Officinalis rubra (Red). Regular value \$4.50.



ASTOLAT SERIES DELPHINIUM — See page 17



HYDRANGEA HORTENSIS — See page 19



HOLODISCUS DISCOLOR (OCEAN SPRAY) — See page 36



FLAMINGO IRIS CHERIE — See page 38

PYRACANTHA — See page 37





**SIR JOHN FALSTAFF
LILAC TIME**

**WORLD PEACE
SALMON BEAUTY
BRIGHT EYES**

**LEO SCHLAGATER
PROGRESS**

Any of above Phlox 75c each; any 3 \$2.00; all 7 \$4.50; any 12 \$7.25



CALYCANTHUS (SWEET SHRUB) — See page 36



CHRYSANTHEMUM CHARM SPOON — See page 12



GENTIANA ACAULIS CLUSI — See page 19



TYPICAL MINIATURE ROSE — See page 29



MUGHO PINE — See page 37