

62

# 1957

AGRICULTURE

PENALTY FOR PRIVATE USE TO AVOID  
PAYMENT OF POSTAGE, \$300  
(GPO)

WASHINGTON 25, D. C.

NESS

Sec. 34.66 P. L. & R.  
**U. S. POSTAGE  
PAID**  
MILFORD, IOWA  
PERMIT No. 2

of Agricul' re

25, D. C.

# Milford Nursery

PHONE 8261

MILFORD, IOWA



FRENCH LILAC CHAS. X

## French Lilacs

Beautiful plants for specimen or hedge planting. Very young plants bloom and are perfectly hardy. Bloom each spring.

Madam Casimir Perier, first rank double white.

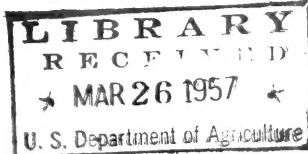
Chas. X., deep reddish purple.

Belle De Nancy, double rose.

Bleutre, blue.

18-24 in. \$1.25 each

3 for \$3.50



## CRIMSON KING MAPLE

(Pat. 735)

The aristocrat of ornamental trees. Its distinctive rich maroon purple color adds an exhilarating contrast to the prevalent greens of other trees. Holds its bright color from spring until the leaves drop in the fall.

6 to 7 ft. whips

\$5.50 each

3 for \$15.00



CRIMSON KING MAPLE (Pat. 735)

## GOLDEN SHOWERS

(PAT. APPLIED FOR)

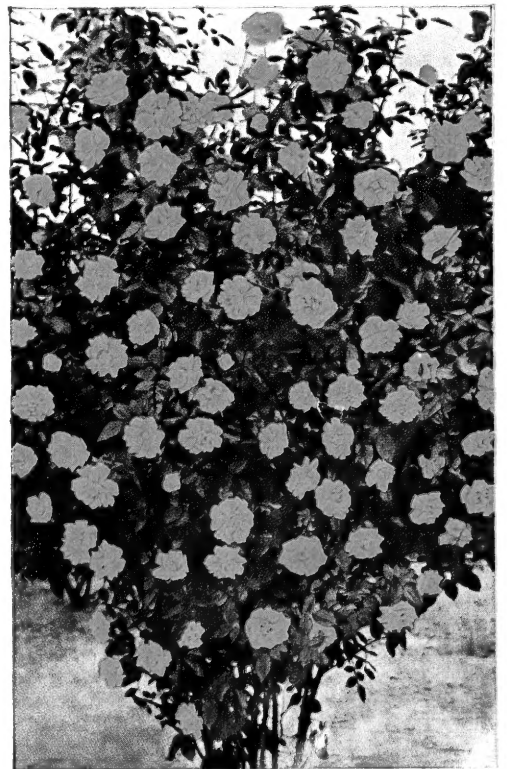
1957 AARS WINNER

GOLDEN SHOWERS (Pat. Applied For)—1957 AARS winner. A beautiful golden climbing rose that actually blooms from early spring through late fall. Almost thornless. The hardiest everblooming climber.

Each \$3.00; 3 for \$7.95

SEE NEXT PAGE FOR

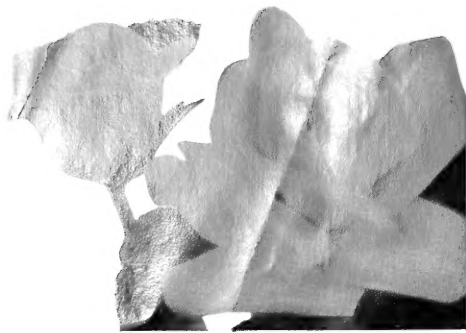
COMPLETE LIST OF ROSES



GOLDEN SHOWERS

# Favorite Patented and Hybrid Everblooming Tea Roses

2 Year No. 1 Plants



VOGUE

**TEXAN**—(Pat. Floribunda)—Red as a prairie fire. Trail as a ten gallon hat. Sotly-scented as a southern belle. A wonderful new rose.

Each \$2.50; 3 for \$6.60

**CHRYSLER IMPERIAL**—Pat. No. 1167—Vivid rich crimson color unmatched by any other red rose. Buds open to large, high centered flowers measuring up to five inches across. Has abundant, dark green, semi-glossy foliage. AARS winner.

Each \$2.50; 3 for \$6.60

**CRIMSON GLORY**—(Patented)—America's Favorite Red Rose. Large rich crimson blooms of exceptional fragrance.

Specimen plants—\$1.75 each; 3 for \$4.50

**PEACE**—Pat. No. 591—Buds of golden yellow edged with pink. As they open color changes from canary-yellow, to pale golden, to iridescent cream. Petals are edged with apple-blossom pink.

Each \$2.50; 3 for \$6.60

**WHITE BOKA**—(Pat. No. 1415)—1957 AARS winner. A lovely new cluster flowering white rose. Perfect for beds and borders. Free blooming, spicy scented, very attractive over a long season.

Each \$2.50; 3 for \$6.60

**FIRST LOVE**—Pat. No. 921—Delightful shade of pale dawn pink, often tinted with shades of salmon, orchid and rose. Vigorous long stems, an ideal cut flower.

Each \$2.25; 3 for \$6.00

**VOGUE**—Pat. No. 926—New Floribunda with brilliantly glowing cherry-coral flowers. Individual flowers three to four inches in diameter. Rich spicy fragrance.

Each \$2.00; 3 for \$5.25

**FASHION**—Pat. No. 789—Blooms all season long. Has brilliant luminous coral flowers overlaid with gold.

Each \$2.00; 3 for \$5.25

**CARROUSEL**—Pat. No. 1066—A rose of the new Grandiflora class. Large clusters of deep glowing red. Continuous blooming and a very strong vigorous grower.

Each \$2.00; 3 for \$5.25

**BUCCANEER**—Pat. No. 1119—Another new Grandiflora class rose. Brilliant flowers of non-fading yellow. Strong grower. Gold metal winner in Geneva, Switzerland and Certificate of Merit at Bagatelle and Rome.

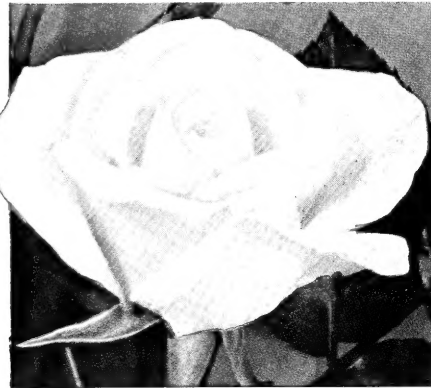
Each \$2.50; 3 for \$6.60

**QUEEN ELIZABETH**—Pat. No. 1259—America's first Grandiflora rose. A new class formed to include the best features of the Floribundas and the Hybrid Teas. Taller, more vigorous than the Hybrid Teas with the abundant flowers of the Floribunda class. Flowers are a blend of soft carmine rose and dawn pink. Delightfully fragrant. Continuous bloomer.

Each \$2.50; 3 for \$6.60

**TIFFANY**—Pat. No. 1304—A robust upright plant with dark green foliage producing the finest light pink blooms imaginable. Produces long pointed buds of deep pink with golden yellow shading at the base. Flowers open to perfectly formed high-centered blooms of pleasing radiant light pink.

Each \$2.50; 3 for \$6.60



WHITE BOKA



CHRYSLER IMPERIAL

**JIMINY CRICKET**—Pat. No. 1346—A gay new Floribunda with tangerine and red buds. Opening to coral-orange and ending up as a neat open flower of pink coral. Vigorous growth and prolific blooming habit of this rose make it the outstanding Floribunda of the year.

Each \$2.00; 3 for \$5.25

**LILIBET (AARS Winner 1954)**—Pat. No. 1209—A dainty pleasantly fragrant floribunda. A neat compact bush freely producing bouquets of clear pink blooms.

Each \$2.00; 3 for \$5.25

## EVERBLOOMING HYBRID TEA ROSES

**COUNTESS VANDAL**—A brilliant bronze, lightening to gold at the base. Petals unfold to carmine-pink.

**CHRISTOPHER STONE**—Brilliant glowing crimson.

**ETOILE DE HOLLANDE**—One of the best of the bright reds.

**PRESIDENT HERBERT HOOVER**—A combination of cerise toned orange scarlet and yellow.

**TALISMAN**—A glorious combination of gold and crimson.

**PICTURE**—A velvety clear rose pink.

**SNOW BIRD**—Soft pearly white.

**ECLIPSE**—Bud long-pointed, deep gold. Flowers yellow on long strong stems.

Select 2 yr. No. 1 plants—

Each \$1.25; 5 for \$5.75; 10 for \$9.95

## FLORIBUNDA ROSES

**EUTIN**—Large clusters of very double, deep, red flowers.

**FLORADORA**—A brilliant scarlet and geranium red, very outstanding.

**LAFAYETTE IMPROVED**—Bright clear cherry red.

**ROSE ELFE**—Very large, double high-centered, pink, cluster on long stem.

**DAGMAR SPAETH**—Alabaster white edged pink.

**POULSEN YELLOW**—Gay golden yellow.

Each \$1.25; 5 for \$5.10

## HARDY BUSH ROSES

\$1.00 each; 3 for \$3.00

**GROOTENDORST SUPREME**—A sturdy bush bearing large clusters of bright red blooms. Hardy.

**PINK GROOTENDORST**—Similar to above except that the blooms are an exquisite pink.

**HARRISON'S YELLOW**—Golden yellow blooms borne profusely. Very hardy.

## CLIMBING ROSES

2-year-old \$1.25; 3 for \$3.30

**BLAZE**—Hardy, vigorous climber. Recurrent bloomer.

**NEW DAWN**—Double deep pink borne in large clusters. Ever blooming.

**PAUL'S SCARLET**—Most popular red climber.

**DOUBLOONS**—Large double, gold.



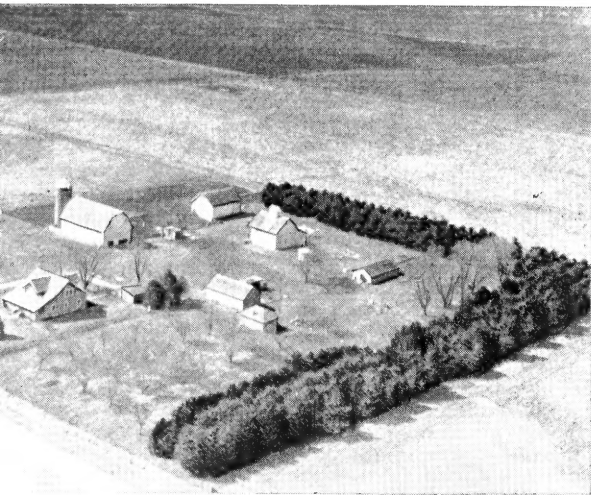
CLEMATIS JACKMANI

## VINES for beauty

- BITTERSWEET**. 2-year No. 1 65c each; 3 for \$1.80
- BOSTON IVY**—Beautiful, verdant foliage in Spring and Summer, changing to crimson scarlet in Autumn. Clings to brick, stone or concrete walls—does best on north or east side of house in this area.
- 2-year No. 1 85c each; 3 for \$2.40
- ENGLEMAN IVY**—A grand hardy clinging vine that is very thrifty. Turns brilliant red in fall. 65c each; 3 for \$1.80
- GOLD FLAME HONEYSUCKLE**—Everblooming trumpet shaped flowers. Fragrant flowers, bright red outside, yellow inside. 85c each; 3 for \$2.40
- TRUMPET VINE**—Upright growing vine. Trumpet shaped scarlet flowers in July and August. 75c each; 3 for \$2.10
- LARGE FLOWERED CLEMATIS**—Popular Hybrids with large brilliant blooms. The plants offered here are from 4-inch greenhouse pots and may be grown in the house until danger of frost is over when they can be planted outdoors. They are hardy and can go throughout winters nicely once they are established.

	Each	Per 3
Clematis, Baron Villard, lavender.....	.75	\$2.10
Clematis, Jackmani, purple flowers.....	.75	2.10
Clematis, Madam Andre, red flowers.....	.75	2.10

Add 15% on Above for Postage



# EVERGREENS FOR FARM WINDBREAKS



FRESHLY DUG, LOCALLY GROWN TREES, FULLY ACCLIMATED

Again this year, we offer the best of the windbreak evergreens. It is hard to imagine a better investment in comfort, both for yourself and livestock, than an evergreen windbreak.

Plant 16 to 18 feet apart in two to five staggered rows.

All of these trees are grown right here in Milford and are accustomed to our hard winters and dry summers.

## BLACK HILLS SPRUCE

*We consider this our finest value in windbreak evergreen*

Beauty, vitality, symmetry and the habit of holding its branches all the way to the ground combine to make this an ideal windbreak tree. A favorite for specimen lawn planting as well as groves. Very hardy and drought resistant.

**Compact grower, very hardy—an ideal windbreak**

	Per 10	Per 100
12-15 inch, 2 trans. ....	\$10.00	\$ 90.00
15-18 inch, 2 trans. ....	12.50	120.00
18-24 inch, 2 trans. ....	18.50	175.00
24-30 inch, 2 trans. ....	24.50	225.00

## DOUGLAS FIR

Noted for its rapid growth and its freedom from insect troubles, this tree is making big gains in popularity each year. As a small tree it is irregular but by the time it has reached 3 feet it will be dense and symmetrical. Holds its branches to the ground. Recommended by Iowa State College.

*A fast grower, of open habit when small. Makes an excellent tree.*

	Per 10	Per 100
15-18 inch, 2 trans. ....	\$12.50	\$120.00
18-24 inch, 2 trans. ....	18.50	175.00

## COLORADO SPRUCE

While the trees listed here are not the extra select blue shiners, many of them will develop into blue specimens. They are all grown from seed from selected blue trees. In other respects, the Colorado Spruce is very similar to the Black Hills Spruce of about the same rate of growth and just as hardy.

*A beautiful hardy tree, many will have a bluish cast. One of the best windbreak trees.*

	Per 10	Per 100
12-15 inch, 2 trans. ....	9.00	85.00
15-18 inch, 2 trans. ....	12.50	115.00
18-24 inch, 2 trans. ....	18.50	175.00
24-30 inch, 2 trans. ....	24.50	225.00

## NORWAY SPRUCE

The fastest growing spruce that we know of that will grow in this locality. Likes a fairly heavy soil.

	Per 10	Per 100
15-18 inch .....	\$10.00	\$ 95.00
18-24 inch .....	13.50	125.00
24-30 inch .....	17.50	150.00

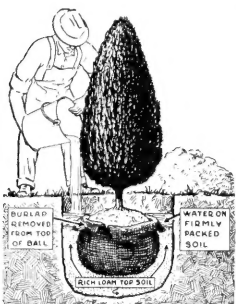
We do not like to ship evergreens nor have them dug for long periods of time, especially trees not B&B. Wherever possible we suggest that you call for and get freshly dug trees.



WINDBREAK OF BLACK HILLS SPRUCE

### Extra Charge For Evergreens Dug With Ball and Burlapped

The increased cost of labor and material has made it necessary to make a slight extra charge for digging Evergreens with a ball, and burlapping for them. This additional charge is as follows:



### Machine Dug—No long wait

	Each
12-18 in. ....	\$ .35
18-24 in. ....	.45
2-3 ft. ....	.60
3-4 ft. ....	1.00
4-5 ft. ....	2.00



DOUGLAS FIR



BLACK HILLS SPRUCE



NORWAY SPRUCE

Milford Nursery

Telephone 8261

Milford, Iowa

# DECIDUOUS TREES for FARM WINDBREAKS

	Per 50	Per 100
ASH, GREEN—Hardy. Dependable.		
2-3 ft. ....	\$ 4.00	\$ 7.50
AMERICAN ELM—Hardy, beautiful and long-lived.		
2-3 ft. ....	\$ 4.50	\$ 8.00
3-4 ft. ....	6.00	11.00
CHINESE ELM—Siberian strain—fast growing and hardy.		
3-4 ft. ....	\$ 8.00	\$14.00

	Per 50	Per 100
RUSSIAN GOLDEN WILLOW—The fast growing willow.		
2-3 ft. ....	\$ 5.00	\$ 8.50
3-4 ft. ....	7.00	12.50
SILVER MAPLE—The well-known soft maple. Fine for windbreak.		
2-3 ft. ....	\$ 7.00	\$13.50
LOMBARDY POPLAR:		
3-4 ft. ....	\$ 8.00	\$15.00
HONEY LOCUST:		
2-3 ft. ....	\$ 5.50	\$10.00



LOMBARDY POPLAR



TARTARIAN HONEYSUCKLE

## WINDBREAKS TARTARIAN HONEYSUCKLE

The best shrub we know of for filling in the bottom of groves and for snow fences or tall hedges. Perfectly hardy and easy to transplant. Will thrive in either full sun or partial shade. Is best when planted about 3 feet apart and untrimmed. Blooms heavily in the spring followed by bright berries liked by birds.

	Per 50	Per 100
18-24 inch .....	\$15.00	\$27.00
2- 3 foot .....	20.00	33.00

## Chrysanthemums

ROBERT BRYDON—A garnet red, double flower of 3 inches. Growth is more spreading and bushy than the other Chicago varieties. 2 feet. Mid-September.

BUTTERBALL—Double, ball-like dark lemon-yellow flowers produced profusely on low compact plants. Mid-September.

SEPTEMBER BRONZE—Shapely little pompon blossoms, shading from golden bronze to intense warm bronze. Mid-September to November.

CHIPPEWA—Double. Magnificent flowers of rich aster-purple in large clusters. Early September. 2 to 2½ feet.

ALGONQUIN—Fine, brilliant, double yellow. Midsummer. 18 inches.

GERONIMO—Earliest of all. Will be in full bloom by mid-August most years. A warm rich bronze.

BURGUNDY—Purplish-wine. The richest of colors. The plants are of sturdy habit and first blooms appear around the middle of September.

MRS. P. S. DU PONT—Double. The dominant shade is a soft peach tint, blended with mauve undertone. 2½ feet. In full flower early October.

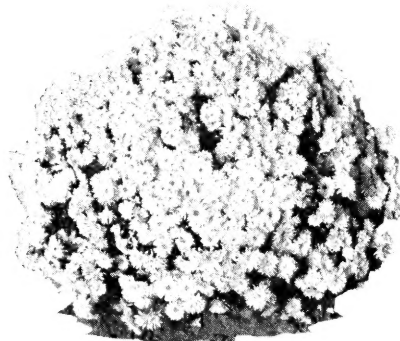
BOREAS—Purest white. Wonderful for fall bouquets.

PINCUSHION MUMS—Red, pink, white, yellow or bronze.

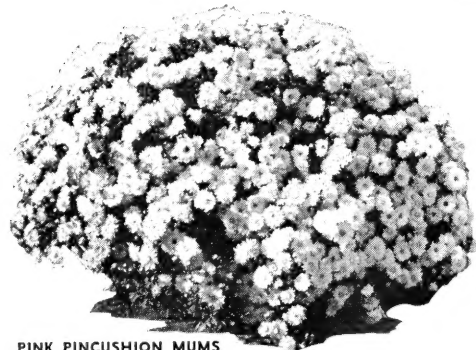
### — Two sizes of plants —

Rooted cutting—will bloom first season.  
(Ready about May 1)  
5 for \$1.00 postpaid

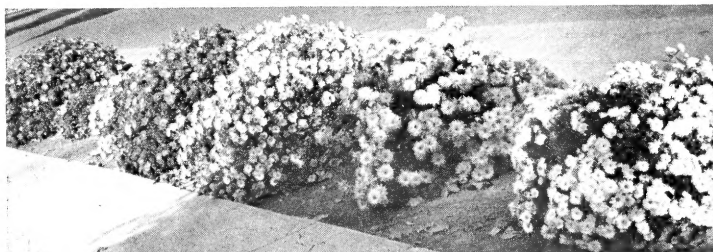
2 year clumps—Bigger plants for larger clumps and more blooms  
40c each; 5 for \$1.75  
Add 15% for postage



BUTTERBALL



PINK PINCUSHION MUMS



### WE GUARANTEE COMPLETE SATISFACTION

WE GUARANTEE THAT WHEN STOCK PURCHASED FROM US ARRIVES, YOU WILL BE COMPLETELY SATISFIED. If, for any reason, you are not pleased with your order, mail it back to us at once and we either will refill your order or refund your money, which ever you prefer. We guarantee our stock to be true to name and, if it should prove otherwise, we either will replace free of charge or refund purchase price.

We positively guarantee all stock sold by us to be State inspected and ship a duplicate of certificate of inspection with every order.

We have no control over weather conditions but will replace at one-half the purchase price any of our stock that fails to start if we are notified of failure before October 1. Notification should be accompanied by one-half purchase price. We cannot be liable for any damages other than herein named.

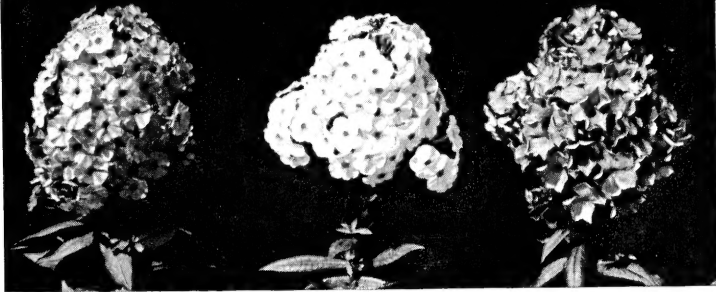
Above Guarantee is good only when account is paid in full within 30 days of receipt of goods.

### It's FUN to PLAN and PLANT

You can actually add much to the enjoyment of a planting if you plan and plant it yourself. Consult your garden magazines, your extension service bulletins and above all use your own original ideas. Make your planting show personality.

**Do it yourself and save**

**Milford Nursery, Milford, Iowa**



FLASH

LILLIAN

LEO SCHLAGETER

# Hardy Phlox

Plant Phlox for glorious midsummer blooms

FLASH—New, large, rosy red.

WIDAR—Pink, one of the hardiest and easiest to grow.

LILLIAN—Beautiful delicate pink.

AFRICA—Brilliant carmine red with blood-red eye.

MISS LINGARD—Pearly white, remarkable bloomer, the best early white known.

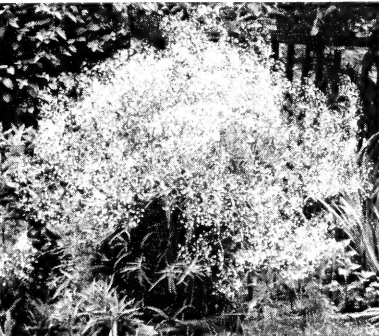
PURPLE HEART—Purple.

CHEERFULNESS—Sparkling pink.

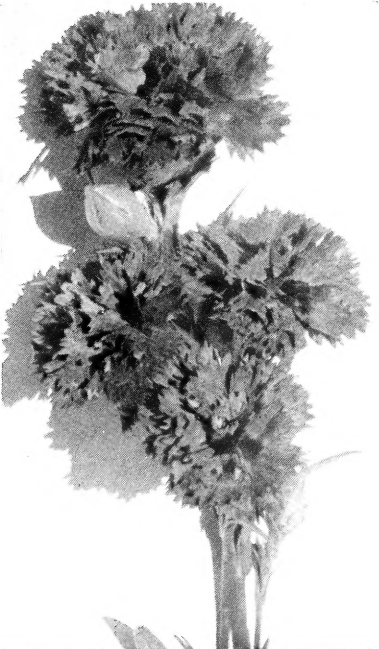
35c each; 4 for \$1.25. Strong field grown plants. Will bloom this year.



DIANTHUS (PINKS)



BRISTOL FAIRY



HARDY CARNATIONS

## Colorful Perennials

CHOICE FIELD GROWN

Add 15% for postage

2 for 60c; 6 for \$1.50; 10 for \$2.50

WHITE BABY'S BREATH (*Gypsophila Paniculata*) — Clouds of dainty white flowers, very desirable for mixed bouquets.

PINK BABY BREATH (*Gypsophila Pacifica*)—Produces tangles of pink misty blooms. Every flower garden should have this fine plant.

DELPHINIUM BELLADONNA—The choice sky-blue variety so often seen in florists' arrangements. Very dependable.

DELPHINIUM BELLAMOSA—Same as Belladonna except deep blue.

SHASTA DAISY (Alaska)—One of the finest cut flowers. They are easy to raise and free bloomers. A large flowered variety with glistening white blossoms in late June and July.

PAINTED DAISY — James Kelnay (*Pyrethrum*)—A superb flower for summer bouquets. A superior strain of large single red flowers.

DIANTHUS (Sweet William)—Interesting flower of pink, red, salmon, etc. Very choice for border plantings.

DIANTHUS (Pinks)—Spicy gay blooms for border plantings.

### HARDY FERN

Ostrich Plume — Very graceful with finely cut pinnules. For shaded places.

35c each; 10 for \$3.00



COLUMBINE

ORIENTAL POPPY — Large bright red blooms with jet black throat.

HARDY CARNATIONS—Ruby red. Carnations are in a class by themselves for continuous blooms from June till frost. Plant in an exposed sunny location. Bright red flowers on a long stem. Flowers as large as greenhouse kinds.

GAILLARDIA—Monarch Strain. Gaillardias produce a mass of brilliant bronze and gold flowers from July to September. They seem to do well even when neglected. A superior strain of large unusually bright flowers.

PAMPAS GRASS—PLUME GRASS —Grow these large plumes for winter bouquets. Plant in sunny spot and cut and dry the plumes when they are about three-quarters open.

VESPER IRIS — Sprays of fragrant flowers on tall branches. The blooms are delicate lavender with brown spots on throat. Blooms in July and September.

COLUMBINE (Mrs. Scott Elliot Strain)—Dainty extra long spurring varieties. Lovely pastel shades. Make a very good cut flower.

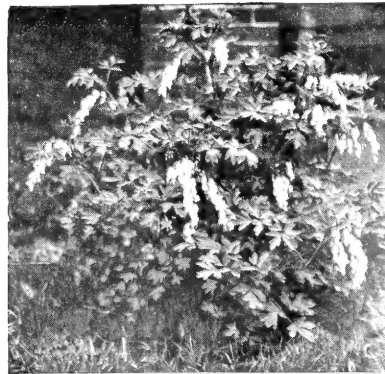
### BLEEDING HEART

Old Fashioned Bleeding Heart. The old time favorite with long graceful stems of rose-pink flowers. Blooms April and May.

60c each; 3 for \$1.75

Fern Leafed BLEEDING HEART  
Everblooming

45c each; 3 for \$1.25



OLD FASHIONED BLEEDING HEART



PACIFIC GIANT DELPHINIUM

### GIANT PACIFIC HYBRID DELPHINIUM

The best strain of Delphinium in existence. Planted in a sunny well drained location, these aristocratic plants will produce flower spikes over four feet high and individual flowers up to three inches across. If you want the best in Delphiniums, try these Pacific Hybrids.

50c each; 4 for \$1.75

### COLUMBINE

McKANA'S GIANT—Large extra long-spurred flowers 3 to 4 inches across in a gay mixture of colors one of the showiest of all columbines.

65c each 3 for \$1.80

### BRISTOL FAIRY

Grafted Double Baby's Breath. Every garden should have this dainty and delightful plant. Flowers double and pearly white, often dried for winter bouquets.

65c each; 3 for \$1.80

### ROSY VEIL

A grafted baby's breath similar to Bristol fairy except the blooms are a dainty pink.

65c each 3 for \$1.80



SHASTA DAISY

# Select Gladiolus

The finest new Glads, favorite of people who raise them for flower shows and similar exhibitions.

- AUREOLE**—Beautiful light yellow, heavily ruffled, fine for cut flowers.
- BENJAMIN BRITTEN**—Deep mauve lavender, a healthy variety and a strong grower.
- BURMA**—Deep rose red wide open florets, heavily ruffled—an extra good show glad.
- EVANGELINE**—Pale rose with creamy throat, very tall spike with large ruffled florets.
- GARDENIA**—Pure creamy white, one of the earliest flowering.
- WHITE GOLD**—Large clear ivory flowers shading to gold in the throat. Good for arranging.
- SPIC AND SPAN**—Tall straight spikes of ruffled deep pink—a healthy grower and the best of the deep pinks.
- ELIZABETH THE QUEEN**—Soft rose-lavender, ruffled.
- GOLD DUST**—A fine soft clear yellow. Early.
- J. V. KONYENBURG**—Vermilion-red, well placed flowers on tall stem.
- MORNING KISS**—Tall growing white; lilac shading in throat.

**12 for \$1.00; 25 for \$1.75; 50 for \$3.00**

**RAINBOW ASSORTMENT**  
*All colors—best varieties—not labelled*  
**25 for \$1.00; 100 for \$3.00**

## Tuberous Rooted Begonias

*The Most Glorious Blooms You Ever Saw*

When you see these plants in bloom, you will hardly believe your eyes. Planted in partial shade, they will present a gorgeous profusion of giant, dazzling, brilliant, camellia-like flowers.

The bulbs may be dug after frost and dried, then replanted in pots for winter blooms.

Rose    White    Gold    Scarlet    Pink

**5 Selected Bulbs for \$1.00 Postpaid**

## Beautiful Giant Dahlias

**Easy to Raise. These Dahlias will produce dozens of huge brilliant flowers from June 'til frost**

- JANE COWL**—Glistening bronze buff and old gold.
- CHEROKEE BRAVE**—Very large, ox blood red.
- JERSEY BEAUTY**—Pure pink. Leader of all pinks for cut bouquets.
- COMMANDO**—New large deep lavender.
- GALLANT FOX**—Large deep crimson red.
- QUEEN CITY**—The color has no equal in any Dahlia—scarlet pink. Blooms all summer.
- MRS. GEO. LE BOUTILLIER**—Bright carmine red. Very large.
- COMMODORE**—Giant pure yellow.
- WHITE WONDER**—A great white that is a real beauty.

**40c each; 4 for \$1.40**

**60c each; 3 for \$1.75**

## Beautiful Garden Lilies

**Will Bloom This Summer**

- REGAL LILY**—Easily the favorite lily. They thrive in a sunny location, often having more than a dozen large white lilies per stem.  
**35c each; 4 for \$1.00, postpaid**
- LILIUM AURATUM (Gold Band Lily)**—White, spotted crimson with gold band. Flowers late July to September. Does best in partial shade. Very fragrant.  
**75c each; 3 for \$1.90, postpaid**
- RUBRUM LILY**—We are once more able to offer this excellent lily. The exquisite pink and red spotted flowers are in a class by themselves.  
**75c each; 3 for \$1.90, postpaid**
- TENUFOLIUM LILY (Coral Lily)**—Easily grown on poor soil. This lovely flower will produce many glistening waxy coral colored lilies on a tall, stiff stem. Blooms in June.  
**25c each; 5 for \$1.10, postpaid**
- GOLDEN CHALICE HYBRIDS**—A magnificent new vigorous growing hybrid. Color ranges from clear lemon yellow to a rich gold. Flowers borne in large clusters.  
**80c each; 3 for \$2.25**

**Add 15% for Postage**

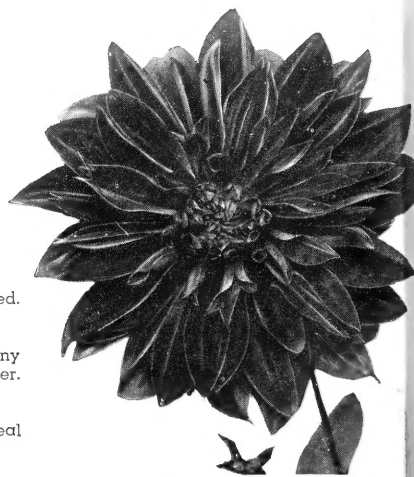


TUBEROUS ROOTED BEGONIAS

**On All Bulbs and Perennials Add 15% Postage**



JANE COWL



CHEROKEE BRAVE



REGAL LILY



TENUFOLIUM LILY



PRIVET AMUR RIVER

## Hedges Make Charming Borders

	Per 10	Per 25	Per 100
GREENLEAF BARBERRY (Thunbergi). 18-24 in. ....	\$ 5.00	\$12.00	\$45.00
PRIVET. AMUR RIVER. 18-24 in. ....	2.50	5.50	20.00
LOWDENSE PRIVET 9-12 in. ....	3.50		
12-15 in. ....	5.00		
ALPINE CURRANT. 12-15 in. ....	3.75	8.00	30.00
18-24 in. ....	6.00	13.00	50.00
SPIREA VAN HOUTTEI. 12-18 in. ....	3.15	7.50	28.00
TARTARIAN HONEYSUCKLE. 18-24 in. ....	3.00	7.50	27.00



## Our Selection Peonies

2 red, 1 white, 1 pink  
**\$1.55**

Priced per division of 3 or more eyes

EDULIS SUPERBA—Early pink.  
FELIX CROUSSE—Red.  
FESTIVA MAXIMA—White touched with pink.  
FRANCES WILLARD—White.  
LOUIS VAN HOUTTEI—Crimson.  
MARGUERITE GUARD—Light pink.

All Named Varieties

**50¢** each; **4 for \$1.80**

Add 15% for postage

## Dwarf Apples

A great deal of interest has been shown the last few years in dwarf fruit trees. These trees are just the same as the standard trees as to fruit quality except they mature into small trees—very desirable for town lots or any other spot where space is limited. Bear young and have the same size apples produced by the standard trees.

Dwarf McIntosh 4-6 ft.  
Delcon 4-6 ft.  
Dwarf Wealthy 4-6 ft.  
**\$3.50 each; 3 for \$9.00**



DWARF WEALTHY



GIANT LATHAM

## RASPBERRIES

**GIANT LATHAM**—This vigorous variety can be depended upon to produce a big crop of highly flavored bright red berries. Latham is the big market variety of Minnesota.  
**10 for \$1.75; 25 for \$4.00; 100 for \$14.25**

**SODUS**—Large purple berries so sought after because of their unexcelled flavor.  
**10 for \$1.75; 25 for \$4.00; 100 for \$15.00**

**CHIEF**—Giant red berries borne in great abundance.  
**10 for \$1.75; 25 for \$4.00; 100 for \$14.25**

**INDIAN SUMMER**—A new everbearing Red Raspberry of exceedingly high quality. It will produce two crops in one season.  
**10 for \$2.50; 25 for \$5.00; 100 for \$18.50**

**BLACKHAWK**—New Blackhawk Raspberry, a new and superior variety.  
**3 for \$1.00; 10 for \$3.15; 25 for \$6.25**

**CUMBERLAND**—A hardy, heavy producing black raspberry—No. 1 tip.  
**10 for \$1.75; 25 for \$4.00; 100 for \$15.00**

# SHADE TREES

The choice shade trees offered in this list are carefully selected varieties that will thrive in your locality. They grow in Milford—they will grow for you.

## Note the Large Sizes

	Each	Per 10
MARSHALL ASH—Seedless. 5-6 ft. ....	\$3.20	\$30.00
BIRCH CLUMPS—White Birch clumps of 3 or more distinct trunks attractive and naturalistic. 5-6 ft. ....	\$5.50	\$50.00
BIRCH (American White)—White bark birch of the north. 5-6 ft., each .....	\$3.00	
BIRCH—Cut leaf weeping. Beautiful white trunks, Long weeping branches. Very popular. 5-6 ft., each .....	\$3.50	
ELM, American—Hardy. Long life: 5-6 ft. ....	\$1.30	\$12.50
6-8 ft. ....	1.75	15.00
ELM, Hybrid 5-6 ft. ....	\$3.00	
ELM, Moline—Very popular, smooth barked elm. 6-8 ft. ....	\$2.85	
5-6 ft. ....	2.25	
HACKBERRY 5-6 ft. ....	\$2.50	
6-8 ft. ....	3.50	
LINDEN, Basswood—A grafted type of distinct pyramid shape: 5-6 ft. ....	\$3.50	
MORaine LOCUST (Pat. 836)—Newest and best of the Locusts. Does not shed seed pods. Fast growth, yet long-lived. 5-6 ft. whips .....	\$5.00	
6-7 ft. ....	\$6.50	
SUNBURST LOCUST 5-6 ft. ....	\$5.00	

	Each	Per 10
VARIEGATED NORWAY MAPLE—A beautiful tree with green and white variegated leaves. 5-6 ft. ....	\$4.00	
MAPLE, Schwedler: Red leaves (supply limited). 5-6 ft. straight whips.....	\$3.00	
MAPLE, Silver 5-6 ft. ....	2.00	
MAPLE, Norway: 6-8 ft. whips .....	\$2.25	
MAPLE, Hard or Sugar: 5-6 ft. ....	\$2.00	\$17.50
6-8 ft. ....	2.50	22.50
8-10 ft. ....	5.00	40.00
MOUNTAIN ASH: 5-6 ft. ....	\$3.75	
PIN OAK: 5-6 ft. ....	\$4.00	
6-8 ft. ....	6.00	
POPLAR, BOLLEANA—Green bark, leaves silver on under side. A very outstanding poplar: 5-6 ft. ....	\$1.80	
POPLAR, LOMBARDY: 5-6 ft. ....	.85	\$ 8.00
6-8 ft. ....	.95	9.00
WILLOW, NIOBE—Golden Weeping Willow: 5-6 ft. ....	2.00	
SYCAMORE 6-8 ft. ....	4.00	



PIN OAK



LINDEN, BASSWOOD



ELM, MOLINE



MARSHALL ASH

## Flowering Trees for Beauty and Shade

Excellent for Accent or Specimen Planting

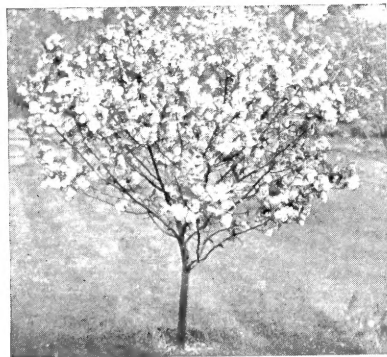
### FLOWERING PLUMS

	Each
PURPLE LEAF PLUM—Purple leaves and shell pink flowers. 18-24 in., Bush form each .....	\$1.40
ROSE TREE OF CHINA (Prunis Triloba)—Double, flowering plum. An excellent small tree with rose-like pink flowers. 18-24 in., each .....	\$1.25
3-4 ft. each .....	\$2.50

### FLOWERING CRABS

HOPA—A very good crab. In spring the tree covers with large rose colored blossoms, followed by small reddish fruit. 5-6 ft., each .....	\$2.00
BECHTEL—Low growing, double pink flowers. 3-4 ft., each .....	\$2.00

Visitors Always Welcome



ROSE TREE OF CHINA



LOMBARDY POPLARS



## Plum Varieties

**UNDERWOOD**—A tree for the north. Large red plum. Sweet.

**WANETA**—One of the very best. Large, red. Fine quality.

**SAPA**—A very good plum. Bears heavily and on small trees. Fruit with purple skin and flesh. Very good eating and canning plum.

**OKA**—Bears young and heavily. The fruit is solid red. A plum-cherry cross.

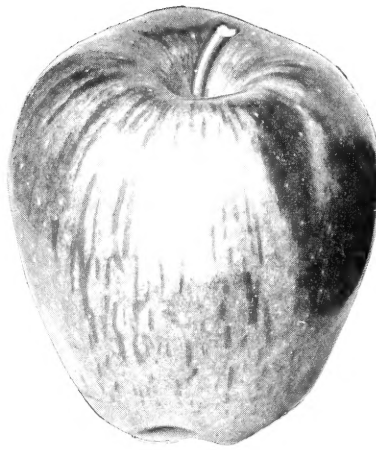
**SUPERIOR**—A large red, sweet plum which in addition to its other virtues is a fine pollinizer for other varieties.

**NEW PIPESTONE**—A Minnesota introduction. Large rich red with golden blush. Equally good for eating or cooking.

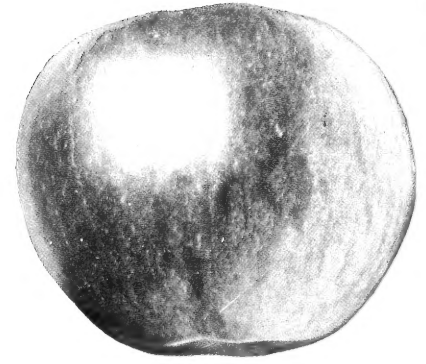
**REDCOAT**—Large freestone. One of the best for canning.

**LA CRESCENT**—A large yellow plum of excellent quality. Sweet and large fruited.

4-6 ft., \$1.50 each; 3 for \$4.35; 10 for \$14.00



DELICIOUS



WEALTHY

## Dependable APPLE TREES

Direct from Nursery to You

**ANOKA**—Yellow streaked with red. Excellent flavor and bears very soon after planting. Season—August.

**DOLGA CRAB**—Brilliant red. Tree is beautiful in bloom, fruit is good eating and used for jelly making.

**DUCHESS**—Familiar harvest apple. A good eating and cooking apple. Season—August.

**HARALSON**—Very hardy tree. Bears heavily a good sized red fruit with fine keeping qualities. One of the coming apples of this region.

**BEACON**—Bright red—finest new summer apple, ripens shortly after Duchess. Keeps well.

**MINJON**—The Jonathan of the North. By actual performance it has earned a foremost place in northern orchards. Bright red, fine for cooking and eating. Bears heavily.

**NORTHWEST GREENING**—One of the best northern winter apple trees. Fruit green, large, a good keeper.

**PRAIRIE SPY**—(Min. 1007)—A new winter apple, bright red and an excellent keeper.

**WEALTHY**—The most popular late summer and fall apple, fruit fine quality for cooking or eating, red.

**WHITNEY CRAB**—Fine apple for eating, red striped.

**YELLOW TRANSPARENT**—A heavy bearing, good eating summer apple, yellow.

**RED DELICIOUS**—One of the finest flavored of them all. Large fruit and heavy bearer. Good keeper.

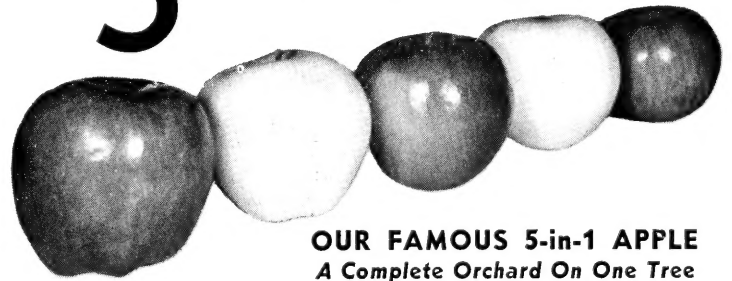
**FIRESIDE**—Our highest quality eating apple. Rich in flavor, almost sweet. Fruit keeps all winter.

5-7 ft., \$1.50 each; 3 for \$4.25; 10 for \$14.00



WANETA

## 5-IN-ONE



### OUR FAMOUS 5-in-1 APPLE A Complete Orchard On One Tree

This splendid tree is ideal for small yards or any place where a real novelty is desired. Not just an ornament, the 5 in 1 tree will produce Whitney, Jonathan, Wealthy, Yellow Transparent, and Red Delicious all on one tree.

4 to 6 ft. Trees Only \$3.00; 5 for \$12.50

## Strawberries

This Year Have Strawberries Fresh From Your Own Garden

### JUNE BEARING

**SENATOR DUNLAP**—The old faithful of June berries. Never fails to produce a big crop of giant, sweet berries in June. Excellent for canning and freezing.  
50 for \$1.50; 100 for \$2.75

### EVERBEARING

**SCARLET GEM**—The most popular everbearing strawberry. Does well in almost any garden. Plants set this spring will produce fruit this summer and fall. Extremely productive. The berries are firm, of excellent quality and flavor.  
25 for \$1.50; 50 for \$2.25; 100 for \$4.00

**NEW STREAMLINER**—All reports of this berry have been enthusiastic. The berries are huge, of finest quality and good keepers. According to many it is the best strawberry in existence. We urge you to try some of this new variety.  
25 for \$2.00; 50 for \$3.25; 100 for \$5.95

**SUPERFECTION**—The heaviest producing everbearer. Big, firm juicy, bright red berries. In trial gardens at Iowa State gardens this berry produced 11.9 quarts per acre.

25 for \$2.00; 50 for \$3.25; 100 for \$5.95, postpaid

All Strawberry Plants Postpaid—Visit Our Nursery



SENATOR DUNLAP



PARADISE ASPARAGUS

## Small Fruit

### CURRENTS—2-Year No. 1

RED LAKE—New, light red berries, very productive.

50c each; 10 for \$4.00

### GOOSEBERRIES—2-Year No. 1

PIXWELL—Pale green.

75c each

### THORNLESS BOYSENBERRIES

Delicious big berries borne in large clusters. No. 1 tips.

10 for \$1.50; 25 for \$3.50

### ASPARAGUS

PARADISE—No. 1 plants.

50 for \$2.50; 100 for \$4.00

### RHUBARB

GIANT.

40c each; 10 for \$3.50

CHIPMAN'S RED—Best red.

80c each



RED LAKE CURRANT



PIXWELL GOOSEBERRY

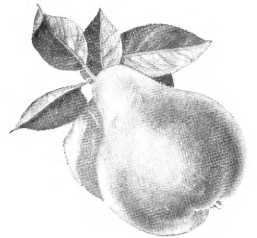
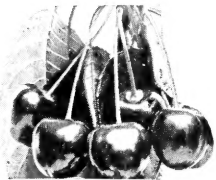


RHUBARB ROOTS



THORNLESS BOYSENBERRY

## GRAPES, PEARS and CHERRIES



### GRAPES

Easy to grow. Sturdy 2-year-old No. 1 plants

CONCORD—The dependable grape—never fails to have a crop of big blue-black juicy grapes.

2 for 75c; 5 for \$1.75; 10 for \$3.00

NIAGARA—The best white grape. Large, sweet, juicy. Easy to grow.

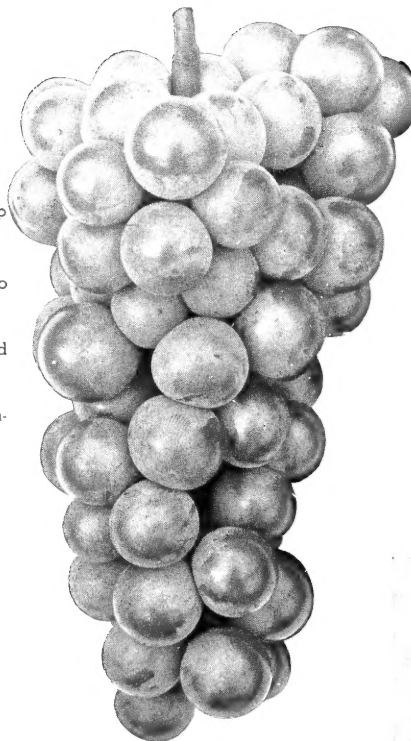
2 for 85c; 5 for \$1.80; 10 for \$3.50

MOORE'S EARLY—A large blue-black grape of unsurpassed quality.

2 for 90c; 5 for \$2.00; 10 for \$3.60

FREDONIA—Of best quality. Fully 3 weeks earlier than Concord. Bears large clusters of blue-black fruit.

2 for 80c; 5 for \$1.75; 10 for \$3.25



### PEARS

Delicious—Easy to Grow—Do Well Planted in Sod—Right in Your Own Yard!

DOUGLAS PEAR—Large, yellow and sweet. Bears on a very young tree. Blight resistant.

5-6 ft., \$1.85 each; 3 for \$5.25

### SOUR CHERRIES

MONTMORENCY—Dark red, high quality cherry, good for pies.

4-6 ft., \$2.10 each; 3 for \$6.00

EARLY RICHMOND—Bright red. Similar to Montmorency but about two weeks earlier.

4-6 ft., \$2.10 each; 3 for \$6.00

METEOR—A new cherry from the Minnesota experiment station. A very hardy, heavily bearing, excellent quality fruit. Self-pollinating.

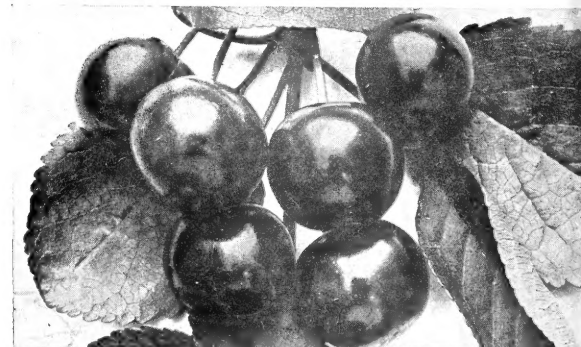
3 to 5 ft., \$2.50 each; 3 for \$6.75

DWARF RICH—A new variety from the U.S.D.A. Extremely-hardy Dwarf Cherry; fruit is bright red and has fine flavor.

3-5 ft., \$3.00 each; 3 for \$8.80



DOUGLAS PEAR



MONTMORENCY

# Colorful **FLOWERING SHRUBS**

**HOW TO GROW SHRUBS** Any good growing soil is excellent. Spade deeply and work down well, as you would for a garden crop. Keep shrubs 20 to 25 inches away from the foundation. Set deeply and firmly, the larger growing types 24 to 36 inches apart, with dwarf varieties 12 to 18 inches apart. Trim back the tops to insure quicker, better growth, then keep them cultivated the first year or two, watering them in the evening during dry spells. After the first year they will require little care other than any annual pruning you may wish to give them. Each year's growth will add to the charm of your planting, and to the size and quality of the blooms.

**PINK FLOWERING ALMOND**—Double flowering shrub usually in bloom about Memorial Day.

2-3 ft., 80c each; 10 for \$7.50

**BARBERRY (Thunbergii)**—A beautiful bright green compact shrub with loads of scarlet berries in the fall. Hardy everywhere.

18-24 in., 60c each; 10 for \$5.50

**BARBERRY, RED LEAF**—Similar to the Green Barberry except that the leaves, when planted in a sunny location, are a bright red.

12-18 in., 60c each; 10 for \$5.50

**COTONEASTER**—Has bright green glossy leaves, turning rich scarlet in the fall. A fine shrub for tall hedges and specimen plantings.

2-3 ft., 60c each; 10 for \$5.00

18-24 in., 50c each; 10 for \$3.75

**DOGWOOD, RED BARK**—A shrub that is particularly showy in the winter when its blood red twigs form a sharp contrast to the snow.

18-24 in., 85c each; 10 for \$8.00

**VARIEGATED DOGWOOD**—A beautiful shrub with variegated green and silver leaves. Shrub colors a bright red in winter. Does well in sun or semi-shade.

18-24 in., \$1.50 each; 10 for \$14.00

**DWARF NINE BARK**—Compact dwarf shrub. Very good for foundation plantings.

2-3 ft., 75c each; 10 for \$7.00

**EUONYMUS ALATUS**—Interesting corky bark. Leaves turn brilliant crimson in autumn.

2-3 ft., \$3.00 each

**EUONYMUS ALATUS COMPACTA**—A dwarf, compact form of Euonymus ideally suited for foundation plantings. Yellow flowers followed by red berries. Foliage turns brilliant coppery crimson in fall.

2-3 ft. specimens, \$3.50 each; 2 for \$6.25

**FORSYTHIA**—The first to flower in the spring. The shrub covers with golden yellow flowers before the first leaf is seen. Sometimes this shrub will be in bloom while snow is still on the ground.

2-3 ft., \$1.00 each; 10 for \$9.00

**GOLDEN ELDER**—A beautiful large shrub for a sunny location. Its golden yellow foliage adds much interest to any planting.

18-24 in., 50c each; 10 for \$4.00

**HYDRANGEA ARBORESCENS (Hills of Snow)**—A summer flowering hydrangea that bears lots of snow white round flowers. Does well in shade.

12-18 in., 60c each; 10 for \$5.00

18-24 in., 90c each; 10 for \$8.50

**HYDRANGEA P. G.**—This shrub follows the above in blooming season, bearing large cone shaped flowers that turn from white to pink to bronze and last for weeks. A hardy shrub that does well in a shady location.

12-18 in., 65c each; 10 for \$6.00

18-24 in., 95c each; 10 for \$9.00

**BLUE PRINCE HYDRANGEA**—Large blue flowers. Blooms in July and August. Semi-hardy, needs winter protection. Add one tablespoon of aluminum sulphate per plant to get blue color in our soils.

2 yr. plant \$1.25 each; 10 for \$11.00

**HONEYSUCKLE TARTARIAN**—The most popular tall shrub. Hardy and ideal for background plantings. We have it in red, pink and white flowers. After it is out of bloom it covers with berries that are sought by birds.

18-24 in., 35c each; 10 for \$3.00

2-3 ft., 45c each; 10 for \$4.25

**HIGH BUSH CRANBERRY**—A beautiful fall shrub that has large clusters of bright red waxy berries in the fall and winter.

2-3 ft., \$1.15 each; 10 for \$11.00

18-24 in., 80c each; 10 for \$7.50

**NEW DWARF HYPERICUM**—A new prostrate variety very useful as a facer plant or ground cover. Large waxy, golden yellow flowers practically all summer. Tops cut to about 10 inches.

85c each; 3 for \$2.40

**LILAC, PERSIAN (Rothomagensis)**—A fine shrub for specimen and hedge planting. Blooms great quantities of lavender sweet scented flowers. Has an attractive foliage.

2-3 ft., 90c each; 10 for \$8.00

**PHILADELPHUS SNOWFLAKE**—Pat. No. 58. Each bloom intensely double, glistening white.

18-24 in., \$1.35 each; 10 for \$12.50

**PHILADELPHUS VIRGINALIS**—Semi-double, fragrant white flowers, much larger than any other variety. Blooms intermittently all summer.

2-3 ft., \$1.10 each; 10 for \$10.00

**FLOWERING JAPANESE QUINCE**—An attractive shrub with deep green leaves and waxy scarlet flowers.

18-24 in., each \$1; 3 for \$2.25

**SNOWBERRY**—An improved snowberry ideal for a shady spot. Has a dainty foliage and a white berry.

2-3 ft., 50c each; 10 for \$4.00

**SNOW BALL**—One of the old time plants that has survived by its merits. Has many large ball shaped white clusters of flowers in May. Thrives in shady location.

18-24 in., \$1.35 each; 10 for \$13.00

**BRIDAL WREATH (Spirea Van Houttei)**—If you want a shrub that you can depend on to bloom profusely under most any condition, try Bridal Wreath. For years this fine shrub, with its cheery white, gracefully arched sprays of blooms, has been used for Spring bouquets and Decoration Day bouquets.

18-24 in., 40c each; 10 for \$3.50

2-3 ft., 50c each; 10 for \$4.00

**BLUE SPIREA**—Low growing shrub, covered with numerous clusters of powdery blue fringed flowers from August until frost. Roots are hardy but tops die back in winter like a perennial.

2 yr. old, 50c each

**SPIREA FROEBEL**—Medium sized spirea with lots of rose-red clusters of flowers in midsummer.

12-18 in., 55c each; 10 for \$5.00

**SPIREA ANTHONY WATERER**—Blooms from July until frost. Ideal for borders. This dwarf plant is our most popular small shrub. The flowers are borne in rose-red clusters.

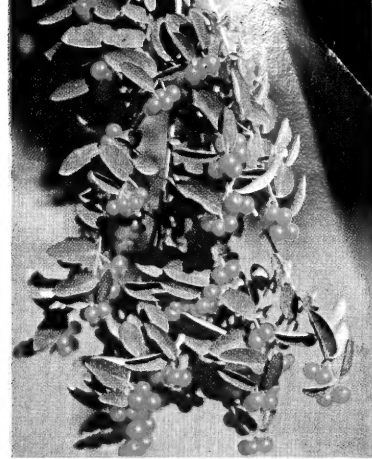
15-18 in., 80c each; 10 for \$7.50

**FERN LEAF SUMAC**—Soft fern-like foliage so desirable for shrub borders.

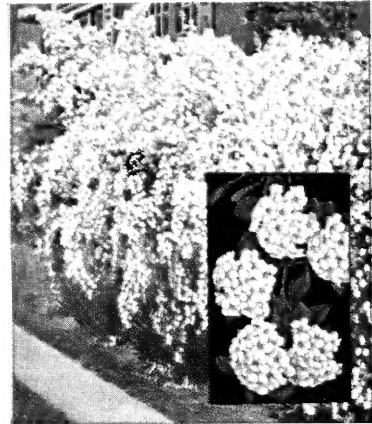
2-3 ft., 90c each; 10 for \$8.00

**TAMARIX FLOWERING**—Has fine feathery foliage colored gray-green and in early summer covers with mist-like dark pink flowers.

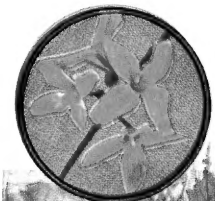
2-3 ft., 95c each; 10 for \$9.00



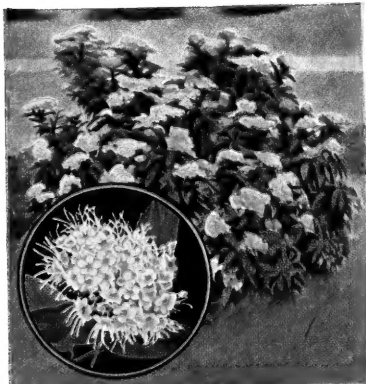
HONEYSUCKLE, TARTARIAN



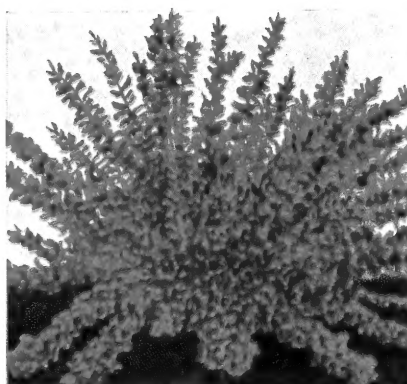
SPIREA VAN HOUTTEI



FORSYTHIA



SPIREA, ANTHONY WATERER



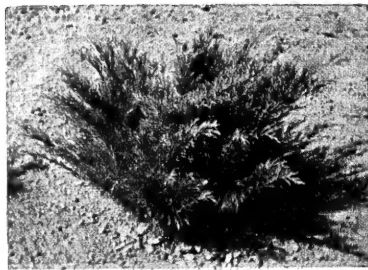
BARBERRY, RED LEAF



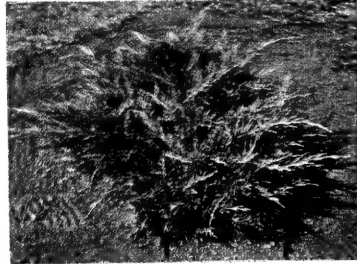
HYDRANGEA ARBORESCENS



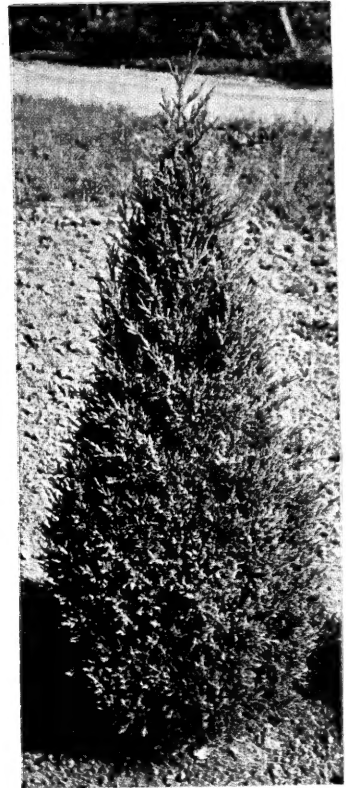
CANNART JUNIPER



SAVIN JUNIPER



PFITZER JUNIPER



JUNIPER, DUNDEE

# EVERGREENS

## Select Specimens

### FAMOUS COLORADO BLUE SPRUCE

Best known and most sought evergreens—new growth in spring and summer is a bright, powdery blue

12-15 in. ....	Each \$1.50	Per pair \$2.90
15-18 in. ....	Each 2.00	Per pair 3.75
18-24 in. ....	Each 3.50	Per pair 6.00

By Express, Not Prepaid

### WOODWARD GLOBE ARBOR VITAE

A bright green globe. Keeps its ball-like shape without trimming. Very popular.

	Each
12-18 in. ....	\$2.50
18-24 in. ....	3.50

### SIBERIAN ARBOR VITAE

So named because of its rugged constitution. While not a true dwarf it is easily held down by occasional trimming. An excellent tree for foundation plantings.

	Each
18-24 in. ....	\$3.50
24-30 in. ....	4.50

### PYRAMIDAL ARBOR VITAE

A densely columnar type with dark green lacy foliage. Compact and erect.

	Each
12-18 in. ....	\$1.00
18-24 in. ....	2.50
2-2½ ft. ....	3.00
2½-3 ft. ....	4.00
3-3½ ft. ....	5.00

### CHANDLER'S SILVER JUNIPER

A bright silvery blue juniper of exceptional beauty. Sheared to pyramids.

	Each
2½-3 ft. ....	\$5.00
3-4 ft. ....	7.50

### ANDORRA JUNIPER

A low spreading Juniper of extreme hardiness. The foliage is bright silvery green in the summer turning to purple with first hard frosts of autumn. An ideal tree for foundation and rock garden plantings.

	Each
1½-2 ft. ....	\$2.50
2-2½ ft. ....	3.00
2½-3 ft. ....	3.50



DOUGLAS FIR

### CANNART JUNIPER

One of the favorite varieties with a deep Green Whipcord foliage. Has clusters of powdery blue berries. Tends to be rather open when small but makes one of the most beautiful trees when older.

	Each
2½-3 ft. ....	\$5.50
3-4 ft. ....	7.50

### DUNDEE JUNIPER

A grafted tree of deep gray-green foliage in summer, turning to a dark plum color in winter. Grows naturally into a pyramidal shape. (Sheared to pyramids.)

	Each
2½-3 ft. ....	\$5.00
3-4 ft. ....	7.50

### MEYERI JUNIPER

A dwarf of exceptional beauty. The leaves are plump and of bright shiny blue color. The foliage appears of different colors when viewed from different angles—tones of white, pinkish red and green. Irregular shape. A fine tree for dwarf foundation plantings.

	Each
12-15 in. ....	\$3.50
15-18 in. ....	4.50

### GOLDEN PFITZER JUNIPER

A Juniper similar to the Pfitzer except that the foliage during the growing season is a bright golden color turning to deep bronze in winter.

	Each
15-18 in. ....	\$2.50
18-24 in. ....	3.50

### SPINY GREEK JUNIPER

A complete dwarf tree. Very trim and dainty. Should be planted where it gets a little protection.

	Each
10-15 in. ....	\$2.50
18-24 in. ....	3.50

### PFITZER JUNIPER

The best known of the Junipers. Hardy with beautiful gray-green feathery foliage. A spreading type of exceptional beauty.

	Each
10-18 in. ....	\$2.50
18-24 in. ....	3.75

### SAVIN JUNIPER

Easily transplanted, beautiful, dependable. Has dark green foliage and graceful spreading branches. About three feet high at maturity. A favorite for foundation plantings.

	Each
12-18 in. ....	\$2.50
18-24 in. ....	3.50
2-3 ft. ....	4.00



SIBERIAN ARBOR VITAE



ARBOR VITAE, PYRAMIDAL

B & B Extra. See page 3.