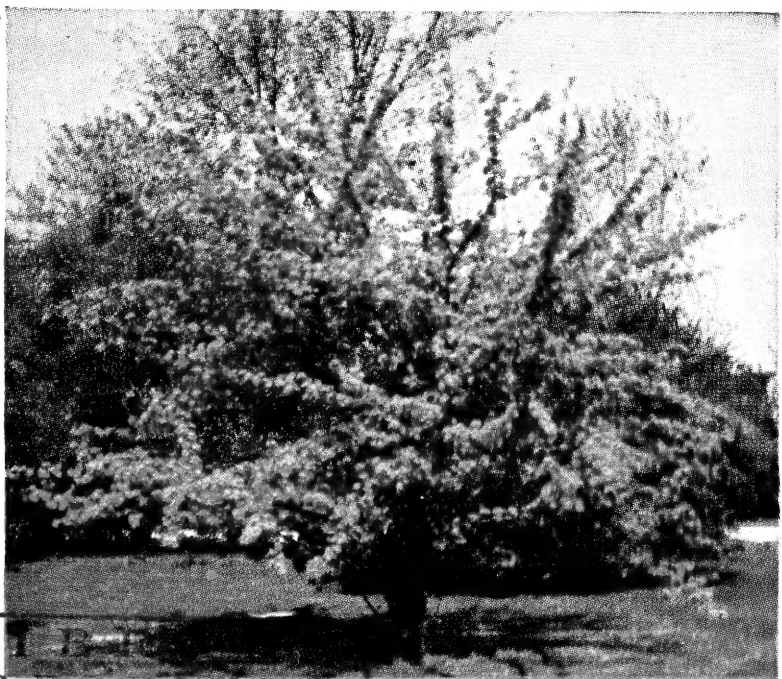


62



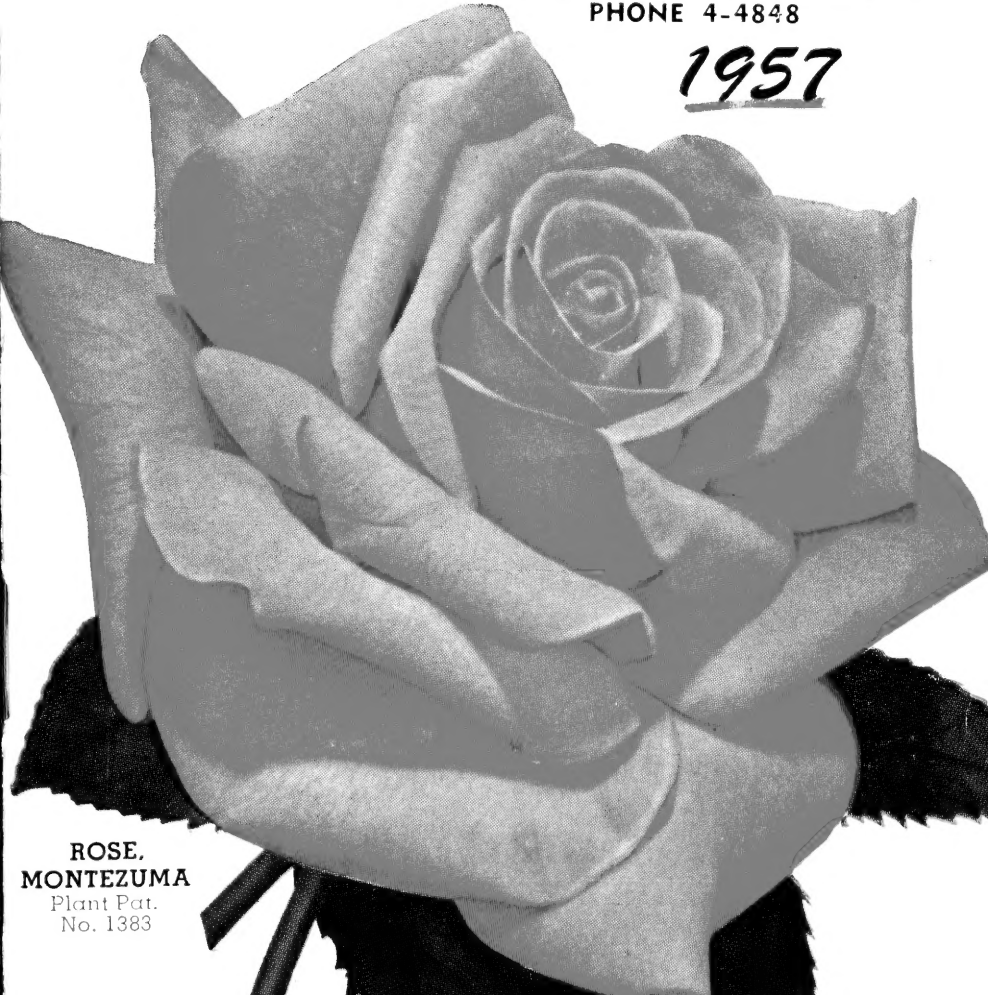
LIBRARY  
RECEIVED  
★ FEB 26 1957 ★  
U. S. Department of Agriculture

ALMEY CRAB

# NEBRASKA NURSERIES

4815 "O" Street  
LINCOLN, NEBRASKA  
PHONE 4-4848

1957



ROSE.  
MONTEZUMA  
Plant Pat.  
No. 1383

# NEBRASKA NURSERIES



DWARF PFITZER



GOLDEN PFITZER and MOFFET JUNIPER



GLOBE JUNIPER



## BUDGET PLAN

A bank-approved budget plan is available for landscaping your home.

For a few dollars a month, you can have your home beautified now rather than waiting for years.

Moreover, the plants which are growing on your property instead of in the nursery increase in value 25% each year.

Eventually, you will want your home landscaped—why not do it now, and at the same time save money?

## LAWN AERIFICATION

Aerification should be a regular part of the lawn maintenance program. Traffic, rainfall, watering and mowing tend to make the soil compact. Regular loosening of the soil is needed to maintain the physical condition favorable for grass growth.

Aerification is helpful where thatch conditions exist in order to break through the surface material so water, fertilizer and air can penetrate. Aerified turf requires less water, absorbs more rainfall, encourages deeper root penetration and makes better use of fertilizer. Call us for estimates.

\* \* \*

All those who love nature, she loves in return, and will richly reward, not perhaps with the good things, as they are commonly called, but with the best things, of this world—not with money and title, horses and carriages, but with the bright and happy thoughts, contentment and peace of mind.—John Lubbock

WE GIVE AND REDEEM  
BLUE COMMUNITY SAVINGS STAMPS

# NEBRASKA NURSERIES, INC.

*"Located on the Miracle Mile"*

4815 "O" STREET

Phone 4-4848

LINCOLN 10

NEBRASKA

# Nebraska Nurseries

## EVERBLOOMING FLORIBUNDAS

Floribundas are truly "Roses for Everybody's Garden" . . . hardy, easy to grow and bloom from June until heavy frost. Every gardener wants as many flowers as possible for the least amount of care. Floribundas will make your garden more colorful, more attractive . . . the envy of all your friends and neighbors.

- BABY BLAZE.** (Pat. 1362) Vigorous grower, bushy. Flowers produced in large clusters—rich velvety cherry red that does not blue in any stage. ....\$2.00
- BETTY PRIOR** (Pat. 340). Red to shell pink, the "pink dogwood" rose .....\$1.75
- CHATTER.** (Pat. 739) Unusually bright crimson, generous flower clusters continuously in bloom. ....\$1.50
- CHINA DOLL** (Pat. 678). One of the most wanted roses for low-growing spots in your garden. Large clusters of true rose-pink blooms.....\$2.00
- CIRCUS** (Pat. 1382). A changing show of colors—bright yellow, red, orange, buff and pink—all displayed at once. AARS 1956 .....\$2.50
- DAGMAR SPATH.** White, edged pale pink .....\$1.50
- ELSE POULSEN.** Rose pink blooms on tall plants .....\$1.50
- EUTIN.** The large cluster red rose so much in demand for both hedge and mass plantings. Foliage is exceptionally good, and the bushy plants are in bloom from June 1st to late fall .....\$1.50
- FASHION** (Pat. 789). Sensational new salmon orange. 1950 AARS .....\$2.00
- FRENHAM.** Semi-double, deep unfading scarlet; large trusses. Good foliage .....\$1.50
- GOLDILOCKS** (Pat. 672). Lemon-yellow blooms on plants covered with disease - resistant glossy, dark green foliage.....\$1.50
- IMPROVED LAFAYETTE.** The hardiest and largest flowering Floribunda. Large clusters of brilliant cherry red blooms all summer...\$1.50
- JIMINY CRICKET** (P.A.F.). Coral orange shading to pink. Vigorous, with glossy green foliage .....\$2.50
- LILIBET** (Pat. 1209). Double, clear rose pink; fragrant, large clusters. Glossy foliage on vigorous, bushy plants .....\$2.00
- MA PERKINS** (Pat. 1143). Sparkling, coral-pink clusters on vigorous plants.....\$2.25
- MASQUERADE** (Pat. 975). Clusters of 10 to 25 buds show blooms of yellow, red, pink. Vigorous, with dark green foliage .....\$2.00

- POULSEN'S BEDDER.** Shell pink, double blooms on vigorous plants—always in bloom .....\$1.75
- RED PINOCCHIO** (Pat. 812). Velvety red flowers on medium height plants—good foliage—\$1.50
- SPARTAN** (Pat. 1357) Sparkling warm reddish coral, distinctively perfect buds and flowers. Plants are bushy and tall, covered with rich dark green foliage.....\$2.75
- TEXAN** (P.A.F.). New—fiery red blossoms on vigorous plants. A cross between Peace and Improved Lafayette so the flowers are unusually large for a floribunda.....\$2.50
- VALENTINE.** (Pat. 1029) Cluster-flowered, low bushy compact plants with crimson flowers that hold their color well.....\$1.75
- VOGUE** (Pat. 926). Excellent cutting variety of Floribunda—large blooms of a luminous coral red. Leathery dark green foliage on bushy plants .....\$2.00
- WHITE BOUQUET** (Pat. 1415) **1957 ALL AMERICA ROSE WINNER.** Sparkling white gardenia-like blooms with a sweet spicy fragrance. Dark green foliage.....\$2.50
- WORLD'S FAIR** (Pat. 362). A.A.R.S. winner and official rose of the great New York World's Fair. Blackest red in early spring and fall, blazing scarlet during the summer. Continuous bloomer and very hardy.....\$1.50

## EVERBLOOMING GRANDIFLORAS

“The New GRANDIFLORA CLASS consists of varieties relatively tall in growth, free flowering, often with many flowers in clusters but with individual stems long enough for cutting. The flower size, though not necessarily as large as Hybrid Teas, is larger than the average Floribunda, with Hybrid Tea Standard for bud and flower form.”

- BUCCANEER** (Pat. 1119). Brilliant unfading yellow—awarded certificates of merit from Switzerland, Paris and Rome Trial Gardens..\$2.50
- CARROUSEL** (Pat. 1066). Dark red velvety petals show no tendency to blue—foliage is mildew resistant. The plant grows tall and is magnificent as an everblooming background or hedge .....\$2.00

### MONTEZUMA GRANDIFLORA

(Front cover)

The King of the Grandifloras—rich coppery bronze-orange, long slender bud produced in cluster profusion and on single stems. Tall free branching bushy plants.....\$2.75

- QUEEN ELIZABETH** (Pat. 1259). AARS 1955—lovely new color, delicate waxy shrimp pink. Tall upright and exceptionally vigorous .....\$2.75
- ROUNDELAY** (Pat. 1280). Deep red buds open to neat, full blooms of vivid glowing red. Vigorous .....\$2.75

## EVERBLOOMING HYBRID TEA ROSES

- CHARLOTTE ARMSTRONG** (Pat. 455). Carmine buds, rich cerise, full blooms .....\$2.25
- CHRISTOPHER STONE.** Long pointed bud of deep crimson . . . fragrant .....\$1.50
- CHRYSLER IMPERIAL** (P.A.F.). AARS 1953, long tapering bud of vivid rich crimson.....\$2.50
- CRIMSON GLORY.** Repeatedly voted the finest red rose in America. Exceptionally free flowering .....\$1.50
- DAINTY BESS.** Waxy delicate single pink blooms with dark red stamens .....\$1.75
- DUQUESA DE PENARANDA.** Vigorous plants with apricot pink blooms .....\$1.50
- ECLIPSE.** Bud long-pointed, deep gold. Flowers yellow on strong stems. Foliage leathery.....\$1.50
- ETOILE DE HOLLANDE.** Fragrant, very dark red .....\$1.50
- FIRST LOVE** (921) Right at top of the American Rose Society's list of recommended pink roses. Long pointed bud of soft dawn pink...\$2.25
- GOLDEN DAWN.** Golden yellow, strong grower \$1.50
- GOLDEN MASTERPIECE** (Pat. 1284) Enormous fragrant, golden yellow flowers with high centers. Strong plant.....\$2.75
- HELEN TRAUBEL** (Pat. 1028). AARS 1952—long pointed buds of deep pink with apricot tones...\$2.50
- K. A. VICTORIA.** The ivory white rose .....\$1.50
- LOVE SONG.** (Pat. 1360) Out of Peace comes a lovely rich salmon-pink with light yellow reverse. Very large and double blooms—foliage is heavy deep green.....\$2.50
- LOWELL THOMAS** (Pat. 595). Long pointed buds of canary yellow, bushy plants .....\$2.00
- MIRANDY** (Pat. 632). Very double, rich dark red blooms—fragrant .....\$2.25
- MOJAVE** (Pat. 1176). Glowing apricot-orange. Slender buds and double flowers borne single on long, straight stems .....\$2.75
- PEACE** (Pat. 591). AARS 1948. One of the largest hybrid tea roses—creamy yellow edged with apple-blossom pink .....\$2.50
- PICTURE.** Very double, high centered, velvety, clear rose pink .....\$1.50
- PRESIDENT HERBERT HOOVER.** Multi-colored with shadings of pink, yellow and copper...\$1.50
- RADIANCE.** The most profuse blooming old-fashioned pink rose .....\$1.50
- REX ANDERSON** (Pat. 335). Pale lemon-yellow to white. Large flowers—vigorous plants.....\$1.75
- RUBAIYAT** (Pat. 758). Long pointed buds of rose-red on tall free blooming plants .....\$1.75
- SHOW GIRL** (Pat. 646). The rose with the most perfect buds—deep pink, opening soft pink...\$2.00
- THE DOCTOR.** Enormous, semi-double, cupped flowers, fragrant and satiny pink.....\$1.50

**TIFFANY** (Pat. 1304). The long pointed buds are deep pink, opening to perfectly formed, double high centered blooms of phlox pink. Dark green foliage on vigorous, upright plants .....\$2.50

## CLIMBING ROSES

- AMERICAN BEAUTY.** The old fashioned large flowering cherry red climber.....\$1.50
- AMERICAN PILLAR.** Large, single carmine-pink, white eye—immense clusters .....\$1.50
- DR. J. H. NICOLAS** (Pat. 457). Deep rose pink everblooming pillar type—flowers measure 5 to 6 inches across .....\$2.00
- GOLDEN SHOWERS.** (P.A.F.) AARS winner for 1957. Hardy and highly resistant to disease, it combines beautifully shaped long-pointed buds of daffodil-yellow and high-centered, open yellow blooms. Almost thornless.....\$3.00
- HIGH NOON** (Pat. 704). Intense yellow blooms of good form. Very free blooming pillar type...\$2.50
- IMPROVED BLAZE.** According to all reports, this new variety of Blaze with its brilliant red clusters of blooms, will bloom several times during the summer.....\$2.00
- NEW DAWN.** Everblooming flesh pink .....\$1.75
- PAUL'S SCARLET.** The most popular large flowering red climbing rose.....\$1.50
- WHITE DAWN.** The finest everblooming white climbing rose. Double blooms resembling gardenias .....\$1.75

## SHRUB ROSES

- BELLE POITEVINE.** Everblooming, clear, brilliant pink clusters from June until late fall. Include these in your shrub border .....\$1.75
- RED GROOTENDORST.** Bright cherry-red, carnation type flowers on beautifully foliaged shrubs. Blooms from June until heavy frost, requires no winter protection .....\$1.65
- SIR THOMAS LIPTON.** Earliest to bloom—starting in May and continuing until late fall. Semi-double fragrant pure white blooms. Excellent in shrub border.....\$1.75

### Plant Bare Root Trees Immediately

Have your ground ready by the time your trees arrive. Do not expose the roots to the air. After unpacking the shipment, put the roots into a tub of water or thin mud and soak them for about one hour. Take out one tree at a time from the tub; then holding the tree in place with one hand, fill the hole about three-fourths full with soil, packing firmly. Water thoroughly, and when it has soaked in fill up the remainder of the hole. Top dress with well rotted barn-yard manure or pulverized sheep manure. DO NOT use Chemical Plant Food on newly planted nursery stock.

# Nebraska Nurseries Specimen Evergreens

## HEMLOCK

**CANADIAN.** Valuable for landscape use in partial or heavy shade, or on north side of buildings. Makes a regular conical form, tapering evenly from a broad base to a long thrifty shoot. Grows very rapidly and stands pruning well.

3½-4 feet .....\$20.00

## JUNIPERS

**ANDORRA.** A trailing beauty of superb coloring. Low spreading branches, covered with finely cut foliage. Bright silvery green color during the summer, turning to mauve-pink during the winter.

15-18 inch .....\$5.00      18-24 inch .....\$6.00

**CANAERT.** An outstanding grafted variety of Virginia Juniper with dark green whip cord foliage and attractive bluish fruit. It requires trimming to produce and maintain a formal shape.

18-24 inch .....\$7.00      2½-3 feet .....\$10.00  
2-2½ feet ..... 8.50      3-3½ feet ..... 12.00

**CHANDLER'S SILVER.** An upright growing grafted type of the Colorado Silver, similar to the Moffet.

2½-3 feet .....\$10.00      3½-4 feet .....\$14.00  
3-3½ feet ..... 12.00      4-4½ feet ..... 16.00

**DUNDEE.** Another upright-growing grafted variety of Virginia Juniper which, with a minimum of shearing, can be kept a compact, symmetrical pyramid of moderate size. Its summer color is silver green and its winter color is an attractive plum purple.

18-24 inch .....\$6.50      2-2½ feet .....\$7.50  
2½-3 feet .....\$8.50

**HETZI.** A spreading type of evergreen resembling Juniper Pfitzer in habit of growth with silver-green foliage. Grows quite rapidly, stands shearing well, and makes up into a splendid compact evergreen. Often called Silver Pfitzer.

15-18 inch .....\$6.00      18-24 inch .....\$7.00  
2-2½ feet .....\$9.00

**HETZI GLOBE.** Same as above except the tree has been trimmed to a globe shape.

15-18 inch .....\$3.00      18-24 inch .....\$10.00

**HETZI STAKED UPRIGHT.** Same as above except that the tree has been trained in an upright position.

3-3½ feet tall .....\$12.00

**HILL'S PYRAMIDAL.** Grafted form of the Virginia Juniper. Dark green foliage and slow growing.

18-24 inch .....\$6.50

**HILLBUSH.** Natural habit of growth similar to Juniper Savin or can be developed into a perfect ball shape. The foliage is remarkably robust and healthy looking, a fine deep rich green color.

15-18 inch .....\$6.50      2½-3 feet .....\$12.00



## WHY PLANT GRAFTED EVERGREENS?

Evergreens, like other varieties of trees, are constantly being improved, and we have devoted a number of years to producing trees that are outstanding in color and habit of growth. To obtain these results, we graft from trees that we have carefully selected and held under observation long enough to prove their superior qualities. In these grafted types only it is possible to have perfect mates as to color of foliage and uniformity of growth. Where identical mates in evergreens are desired, we advise planting GRAFTED types.

**HORIZONTALIS.** Long, trailing stems with upright spreading branches and dark blue green foliage. Grows rapidly and makes a very pleasing effect when planted on terraces.

15-18 inch .....\$5.00      18-24 inch .....\$6.00

**KETELEER.** Grafted upright type with bright green foliage. It is a broad pyramid in habit with ascending branches. Berries are much larger than on any other Juniper.

18-24 inch .....\$6.50

**MEYER.** The outstanding characteristics of this evergreen are its irregular habit of growth and unusual color. The leaves are plump, pointed and prickly, and of bright shining blue color.

12-15 inch .....\$5.50      15-18 inch .....\$6.50

**MOFFETT.** An attractive grafted type of the Colorado Silver, with mixed green and silver foliage. Can be grown without shearing.

18-24 inch .....\$6.50      2-2½ feet .....\$7.50

**PFITZER.** The most important low spreading evergreen ever grown. It will stand considerable shade and crowding, which makes it a great favorite for foundation planting, borders and in front of larger evergreens. Color stays a deep blue-green. Sheared compact specimens.

12-15 inch .....\$5.00      2-2½ feet .....\$ 9.00  
 15-18 inch ..... 6.00      2½-3 feet ..... 10.00  
 18-24 inch ..... 7.00      3-3½ feet ..... 12.00

### GOLDEN PFITZER

(Inside front cover)

An exquisite yellow form of the widely known Pfitzer Juniper. The new foliage comes out a clear canary yellow interspersed with green. Should be planted in full sun. Now available at popular prices.

15-18" .....\$6.00  
 18-24" ..... 7.00

**SAVIN.** The old familiar, low, many-branched shrub. Well covered with short, tufted, dark green foliage. Likes sunny location better than shade.

15-18 inch .....\$6.00      18-24 inch .....\$7.00

**VIRGINIA GLAUCA.** Its most distinctive feature is the silvery blue color, which is almost blue-white in the spring, darkening somewhat as the season progresses.

3-3½ feet .....\$12.00      3½-4 feet .....\$14.00

## JUNIPERS, Continued

**VON EHROH.** An extremely rapid growing dark green variation of the Savin Juniper. Makes an excellent trimmed boxed evergreen hedge.

15-18 inch .....\$6.00	2-2½ feet .....\$ 9.00
18-24 inch ..... 7.00	2½-3 feet ..... 10.00

**VON EHROH GLOBE.** Same as above except the tree has been trimmed to a globe shape.

15-18 inch .....\$8.00	18-24 inch .....\$10.00
------------------------	-------------------------

**VON EHROH STAKED UPRIGHT.** Trained in an upright growing position—makes an excellent screen or hedge.

3½-4 feet tall .....	\$14.00
----------------------	---------

**WELCH'S.** A grafted columnar type of scopulorum that retains its pyramidal habit of growth without shearing. Foliage is bright silver green.

2½-3 feet .....\$8.50	3-3½ feet .....\$10.00
-----------------------	------------------------

**YORK.** Grafted form of the Colorado Silver—its grey green flat fern like foliage resembles that of the Arbor Vitae.

3-3½ feet .....\$10.00	3½-4 feet .....\$12.00
------------------------	------------------------

## SPECIMEN PINES

**AUSTRIAN.** Spreading branches with long dark green needles. Splendid tree for ornamental planting either in the background or as a choice specimen on the lawn.

18-24 inch .....\$6.00	2-2½ feet .....\$7.00
2½-3 feet .....	\$8.50

**SCOTCH.** There is always something decorative about the Scotch Pine. When young it is a stocky, bushy, rounded tree, densely covered with blue-green needles of medium length. In older, mature trees it has a delightful irregularity of outline that is so picturesque on the landscape.

18-24 inch .....\$6.00	2-2½ feet .....\$7.00
2½-3 feet .....	\$8.50

**WHITE.** Noted for its soft, light silvery green needles, and its graceful, majestic stature. It is extremely rapid in growth, hardy and dependable. Very distinctive in lawn groups or backgrounds.

18-24 inch .....\$6.00	2-2½ feet .....\$7.00
2½-3 feet .....	\$8.50

## SPRUCE

**BLACK HILL.** A compact little beauty, its thick foliage of dark green interspersed with blue tints.

15-18 inch .....\$5.00	18-24 inch .....\$6.00
2-2½ feet .....	\$7.50

**MOERHEIM.** Again available—the aristocrat of all evergreens, grafted Moerheim Blue Spruce. The bright steel-blue needles are longer than those of the Colorado Blue.

18-24 inch .....\$14.00	2½-3 feet .....\$20.00
2-2½ feet .....\$17.00	3-3½ feet .....\$25.00
3½-4 feet .....	\$30.00

## PLANTING SERVICE

Prices in this list do not include planting.  
For quotations on planting service and landscape estimates phone 4-4848.

## THE JAPANESE YEW

Yews will grow luxuriantly on the north side of buildings and under the shade of other trees, maintaining their waxy, deep blackish green color.

**BERRYBUSH YEW.** An upright growing type attracting favorable comment everywhere for its wealth of red berries in autumn. Bears young. A dense, full bush.

2-2½ feet .....\$15.00	2½-3 feet .....\$18.00
3-3½ feet .....\$25.00	

**HICKS YEW.** This is a columnar form with branches ascending almost vertically, generally growing with numerous stems.

18-24 inch .....\$12.00	2½-3 feet .....\$18.00
2-2½ feet ..... 15.00	3-3½ feet ..... 25.00

**SPREADING YEW.** Grows more wide than tall, branching out from bottom with several stems, developing into a bush form.

15-18 inch .....\$10.00	18-24 inch .....\$13.00
2-2½ feet .....\$17.00	

**UPRIGHT BREVIFOLIA.** Compact upright type with a broad base and narrow top pyramid with more red berries than most types.

2-2½ feet .....\$15.00	2½-3 feet .....\$18.00
------------------------	------------------------

**UPRIGHT JAPANESE YEW.** Resembles Douglas Fir in habit of growth—broad at the base and tapering to the top of the tree.

2½-3 feet .....\$19.00	3-3½ feet .....\$35.00
------------------------	------------------------

## EVERGREEN BARGAINS

### BARE ROOT JUNIPERS

Save money by buying nice young trees and growing them into specimens yourself. These trees can be moved successfully bare-root, without a ball of earth. See planting instructions bottom page 5.

#### JUNIPER, ANDORRA

12-15 inch.....\$1.50	15-18 inch.....\$2.00
-----------------------	-----------------------

#### JUNIPER, PFITZER—SAVIN and HETZI

12-15 inch.....\$2.00	15-18 inch.....\$2.50
-----------------------	-----------------------

### CONTAINER GROWN

Rooted and established in containers to eliminate loss in transplanting.

**PINE, AUSTRIAN and WHITE, 4 yr.....\$ .75**

**SPRUCE, BLACK HILLS .....\$ .75 and \$1.50**

**YEW.....\$2.00, \$2.50, \$3.00**

## IS YOUR DOORWAY INVITING?

The landscaping near your door is important. It receives close inspection from each person who enters your home. Let us help you select materials that will stay neat and attractive.

# Shade and Ornamental Trees

**APRICOT, Chinese.** Recommended for use as an ornamental tree because of its picturesque shape and colorful bloom.

4-5 feet .....\$2.50

**ASH, Green.** Long recognized as one of our better shade trees. Disease resistant, medium height—recommended for the ranch type home.

4-5 feet .....\$2.50      5-6 feet .....\$3.00

**BIRCH, Cutleaf Weeping.** Cut leaf, white bark, weeping branches.

5-6 feet .....\$7.00      7-8 feet .....\$10.00

## ALMEY CRAB

(Front cover)

Almey has huge dollar-size blooms of rich glistening, fiery crimson. Each petal has at its base, pure white markings that give the blossom the appearance of a five-point star surrounded by crimson. Usually blooms the first or second year. New, so order early.

5-6' .....\$5.00

**CRAB, Flame.** Pale pink buds followed by large white blossoms. Erect growing trees with green foliage. Brilliant flame-colored fruit late fall and autumn.

5-6 feet .....\$4.00

7-8 feet, 1¼ inch cal. ....\$8.50

**CRAB, Floribunda.** Spreading growth and prolific flowering. Blossoms are a light pink blending into white. Fruit is yellowish green and relished by the birds.

7-8' .....\$7.50

**CRAB, Red Flowering Hopa.** Beautiful upright growing tree with attractive foliage. Entirely covered with crimson buds opening to rose colored flowers in April. Fruit red.

4-5 feet .....\$2.50      5-6 feet .....\$3.50

6-7 feet, 1 inch cal. ....\$7.00

7-8 feet, 1¼ inch cal. ....\$8.50

**ELM, Chinese.** The fast growing drouth resistant shade tree.

5-6 feet .....\$2.25      6-8 feet .....\$3.00

8-10 feet .....\$4.50

**ELM, Hybrid Grafted.** Grows as fast as Chinese Elm, however leaves are almost as large as American Elm. Hardy, drouth and disease resistant.

6-8 feet .....\$8.00      8-10 feet .....\$10.50

**HAWTHORN, Minnesota.** New variety with upright habit of growth. Apparently free from cedar rust.

4-5 feet .....\$4.75      5-6 feet .....\$5.75

**KENTUCKY COFFEETREE.** Light blue green fern-like foliage. Very picturesque even in winter. Excellent for use in clump effect.

5-6 feet .....\$4.50      6-7 feet .....\$8.00

- LINDEN, American.** A fine native tree, with large heart shaped leaves. Fragrant cream-white flowers in June.  
6-8 feet .....\$6.00
- LINDEN, Redmond.** New grafted compact Linden with an exceptionally straight trunk and branches growing close together on the trunk.  
6-8 feet .....\$7.50
- LOCUST, Imperial—NEW. (P.A.F.)** Much more compact than other Honeylocusts. Grows straight without staking, and produces a dense and uniform crown with a minimum of trimming. No seedpods or thorns.  
8-10 feet, 1¼ inch cal. ....\$12.50
- LOCUST, Moraine (Pat. 836).** Grafted form of the Honeylocust but without seeds or thorns. Fast growing vase shaped tree which is replacing our American Elms.  
7-8 feet, two year top branched .....\$10.00  
1½ inch caliper, well branched ..... 16.00
- LOCUST, Sunburst (Pat.1313)** New tree color—its bright, golden yellow branch tips, in rich contrast with the deep green inner foliage, make it look like a flowering tree bursting with bloom. Plant in full sun.  
1¼ inch caliper .....\$16.00
- LOCUST, Thornless Honeylocust.** Rapid growing tree, with delicate fernlike foliage of bright green.  
5-6 feet .....\$4.50      7-8 feet .....\$7.50  
6-7 feet .....6.00      8-10 feet .....10.00
- MAGNOLIA, Soulangeana.** Most decorative and popular of the Hardy Magnolias, producing very large, rose-colored blooms just before the leaves come in the spring. The blooms measure from 4 to 5 inches across. Magnolias prefer north and east exposure where the ground will stay frozen as late as possible in the spring.  
2½-3 feet, B & B....\$ 8.00    4-5 feet, B & B....\$15.00  
3 -4 feet, B & B.... 12.50    5-6 feet, B & B.... 20.00
- MAPLE, Crimson King (Pat. 735).** The tips of the branches or new growth are a glistening red all summer. Very slow growing and must have protection from south and west wind.  
7-8, feet container grown .....\$10.00
- MAPLE, Norway Columnar.** A very narrow upright growing tree resembling Poplar, however rate of growth is very slow.  
5-6 feet .....\$5.00
- MAPLE, Schwedler.** Purple-red leaves in the spring, shading to bronze by mid-summer.  
7-8 feet container .....\$10.00
- MAPLE, Soft.** The fastest growing and largest of the Maples.  
6-8 feet .....\$5.50  
1¼-1½ inch caliper .....\$10.00  
1½-1¾ inch caliper .....\$12.50
- MAPLE, Sycamore.** Habit of growth and green foliage is quite similar to Norway Maple.  
6-7 feet .....\$4.00

**MAPLE, Wier's Cutleaf.** Very ornamental fast growing tree with graceful drooping limbs and cut leaf foliage.

6-8 feet .....\$6.00      8-10 feet .....\$8.00

**OAK, Pin.** Records have shown that the Pin Oak, the fastest growing of all the Oaks, actually grows almost as fast as the American Elm, and is one of the most enduring of all trees. These tall pyramidal shaped trees have rich green foliage which is deeply cut and colors to a glorious coppery red in the fall. Larger sizes available.

5-6 feet .....\$7.50      6-8 feet .....\$10.00

**OAK, Red.** Growth habit is more open than that of the Pin Oak and its leathery dark green leaves are larger. Colors beautifully in the fall.

7-8 feet, Balled and Burlapped.....\$15.00

1¼-1½ inch, Balled and Burlapped..... 18.00

1½-1¾ inch, Balled and Burlapped..... 20.00

1¾-2 inch, Balled and Burlapped..... 25.00

## DOUBLE RED FLOWERING PEACH

(Back cover)

Profusely laden with rich rose-red double blooms. Flowering Peach should be severely pruned every year as soon as they have finished blooming .....\$3.75

**PLUM, Purple Leaf—Thundercloud.** The darkest maroon red variety . . . foliage stays dark bronzy purple all summer. Single pink flowers in the spring.

4-5 feet .....\$3.00      5-6 feet .....\$4.75

**POPLAR, Lombardy.** Tall, slim pyramid, branching from the ground. Heavy two year branched.

5-6 feet .....\$1.00      6-8 feet .....\$1.50

**REDBUD.** Large shrub or small tree with pinkish lavender blooms completely covering the branches before the leaves appear.

2-3 feet, multistem .....\$2.50

3-4 feet, multistem ..... 3.00

4-5 feet, multistem ..... 4.50

**SYCAMORE.** Large, handsome leaves. Smooth, light colored, almost creamy-white bark with age, gives tree a striking appearance.

5-6 feet .....\$3.50      6-8 feet .....\$5.50

8-10 feet .....\$7.50

**WILLOW, Weeping Golden.** Light green leaves, golden yellow bark.

4-5 feet .....\$1.00

## FOREST TREE SEEDLINGS

Per 100

**ELM, AMERICAN**

18-24 inch .....\$ 7.50

**ELM, CHINESE**

18-24 inch ..... 7.50

**LOCUST, THORNLESS**

18-24 inch ..... 10.00

**OLIVE, RUSSIAN**

18-24 inch ..... 20.00

# Nebraska Nurseries

## ORNAMENTAL SHRUBS

- ALMOND, Flowering.** Double pink flowers early spring.  
18-24 inch, own root—branched.....\$1.50
- ALTHEA, Red, Pink, and White.** Upright growing, double hollyhock type flowers in red, pink, or white. Blooms in August.  
2-3 feet .....\$1.75
- BARBERRY, Green.** Red berries and coppery red foliage in the fall.  
15-18 inch .....\$ .75      18-24 inch .....\$1.00
- BARBERRY, Mentorensis.** Strong, upright growing branches and heavy thorns. The leathery foliage is a very dark green.  
12-15 inch .....\$1.65
- BARBERRY, Red.** Planted in full sun, the leaves stay red all summer.  
15-18 inch .....\$1.25
- BEAUTY BUSH.** Large shrub with slender graceful arching branches covered with small delicate pink weigela-like flowers in May.  
2-3 feet .....\$2.00
- COTONEASTER, Peking (Acutifolia).** Glossy dark green leaves and black fruit.  
18-24 inch .....\$ .75
- COTONEASTER, Spreading (Divaricata).** Handsome shrub of vigorous spreading habit. Shiny dark green foliage . . . used extensively for floral arrangements. Showy scarlet berries.  
18-24 inch, container grown .....\$4.00
- CRANBERRY BUSH.** Resembles Snowball, white flowers are followed by clusters of bright red berries.  
18-24 inch .....\$1.75
- DESMODIUM (Purple Bushclover).** Perennial shrub with gracefully arching branches covered with reddish purple flowers in September.  
Blooming size plants, container grown .....\$1.75
- DOGWOOD, Bailey's Bright Red.** A recent introduction with brighter red bark.  
2-3 feet .....\$1.75
- DOGWOOD, Variegated.** Medium growing shrub with variegated white and green foliage, that can be used effectively in arrangements. Bark remains red in winter.  
18-24 inch .....\$2.00
- EUONYMUS, Alatus (Winged Euonymus).** There is no shrub which will draw more attention in the fall than this winged cork-barked euonymus. Leaves turn a brilliant, coppery-crimson tinged rose. Easy to grow, thrives in full sun or partial shade.  
2-3 feet .....\$4.50

## ORNAMENTAL SHRUBS, Continued

**EUONYMUS, Alatus Dwarf.** Same as above, except dwarf compact form. Fall coloring seems to be a little more brilliant, however the cork-barked wings are not as prominent.

18-24 inch .....\$3.50

**EUONYMUS, Fortune.** New, upright growing evergreen shrub with dark green foliage. Makes a beautiful hedge.

15-18 inch .....\$1.60

**EUONYMUS, Patens.** One of the most attractive of all shrubs. The bushy plants have glossy green foliage, brilliant coral red berries and stay green most of the winter. Excellent for north side plantings, but does equally well in the shrub border or used as a hedge.

12-18 inch .....\$2.00      15-18 inch .....\$2.50

15-18 inch, Balled and Burlapped .....\$5.00

18-24 inch, Balled and Burlapped .....\$6.00

**FORSYTHIA, Lynwood Gold.** New, originated in Ireland. Branches are erect and literally smothered under deep golden yellow flowers from top to bottom.

2-3 feet .....\$2.00

**FORSYTHIA, Spring Glory.** Enormous pale yellow flowers completely cover the branches before the leaves appear. See illustrated folder.

2-3 feet .....\$1.50      3-4 feet .....\$2.00

### GOLDEN VICARY

(Inside back cover)

The true Golden Vicary—thick leathery rich golden yellow leaves. Plants should be cut back each spring because the new growth carries the most brilliant color. Retains its foliage late in the fall. Must be planted in full sun .....\$1.50

**HONEYSUCKLE, Clavey's Dwarf.** A new low-growing very compact honeysuckle. Small yellow flowers followed by the usual red berries.

12-15 inch .....\$1.75

**HONEYSUCKLE, Zabel's Red.** Dark green foliage completely covers this new upright growing variety. Flowers are red followed by brilliant red fruit. Makes a beautiful screen.

2-3 feet .....\$1.35      3-4 feet .....\$1.75

**HYDRANGEA A. G.** Large flat heads of double snow-white flowers. Likes shade.

2-3 feet .....\$1.75

**HYDRANGEA P. G.** Late flowering, turns delicate pink and buff. Can be used for winter bouquets.

2-3 feet .....\$1.75

**HYPERICUM, Hidcote.** New dwarf variety—flowers are waxy, golden yellow, cup-shaped and produced more freely than on other varieties.

Blooming size plants, container grown .....\$1.75



## FRENCH LILACS

**ADELAIDE DUNBAR.** Semi-double, deep maroon-red in bud, opening violet red.

**CHARLES JOLY.** Double florets of darkest red-purple.

**ELLEN WILLMOTT.** Immense double flowers of purest alabaster-white.

**PAUL THERION.** Buds are a rich dark red, open to a bright crimson purple.

**PRES. LINCOLN.** Wedge-wood blue, an unusual color in lilacs.

18-24 inch, container grown .....\$3.50

**LILAC, Persian Purple.** Sometimes called Chinese Lilac. Various shades of lavender and purple blossoms literally cover the compact plants in May. This Lilac does not spread away from the plant as the old-fashioned Lilac does.

18-24 inch .....\$1.00

18-24 inch, heavy plants ..... 1.25

2-3 feet, heavy plants ..... 1.50

**MAHONIA (Oregon Holly-grape).** An evergreen shrub with shiny large, spiny, metallic looking leaves which turn a bronzy red in autumn. In spring the clusters of yellow flowers are very attractive and are followed by blue fruit in June and July. Does not mind shade and has very ornamental foliage for cutting.

12-15 inch, balled and burlapped .....\$ 7.50

**MOCKORANGE, Snowflake (Pat. 538).** The new, very double mockorange. Blooms very profusely during June and July. Plant Snowflake as a specimen, a screen or as a tall border.

2-3 feet.....\$1.75

**MOCKORANGE, Virginal.** Semi-double fragrant flowers almost two inches in diameter. Repeats several times during the summer and fall.

2-3 feet .....\$1.75

**PLUM, Double Flowering—Triloba.** The same profusion of double pink flowers as the well-known Flowering Almond.

3-4 feet .....\$3.00

**POTENTILLA, Gold Drop.** Small shrub with fern-like leaves and intensely brilliant golden yellow, Butter-cup flowers, June until October.

15-18 inch .....\$1.50

**PUSSY WILLOW.** Large shrub or small bushy tree with soft pearl gray catkins.

2-3 feet, container grown .....\$1.50

## SPRAYING

We are power equipped to do spraying with insecticides and fungicides on lawns, trees, shrubs and evergreens.

# Nebraska Nurseries

## PYRACANTHA

(Inside back cover)

A most remarkable fruiting evergreen shrub. Can be used where space is limited along foundation and trained against either a wall or fence.

18-24 inch .....\$4.00

**QUINCE, Crimson Beauty.** The most brilliant early blooming spring shrub . . . large, double two-inch brilliant scarlet blossoms that don't fade. This outstanding new variety blooms over a much longer period. The leathery dark green foliage and neat upright habit of growth, which requires no pruning, makes this an ideal shrub for either foundation or shrub border. Plant same as roses—hill over tops completely until growth starts.

18-24 inch .....\$2.50      2½-3 feet .....\$3.00

**QUINCE, Glowing Ember.** Upright growing variety of uniform habit—brilliant red flowers.

18-24 inch .....\$1.75

**QUINCE, Texan.** New large clear pink. New growth on leaves is reddish. Plant same as roses, hill over the tops completely until growth starts.

18-24 inch .....\$2.00

**ROSE, Belle Poitevine.** Everblooming, clear, brilliant pink clusters from June until late fall. Include these in your shrub border .....

\$1.75

**ROSE, Red Grootendorst.** Bright cherry-red, carnation type flowers on beautiful foliaged shrubs. Blooms from June until heavy frost, requires no winter protection .....

\$1.65

**ROSE, Sir Thomas Lipton.** Earliest to bloom—starting in May and continuing until late fall. Semi-double fragrant pure white blooms. Excellent in shrub border .....

\$1.75

**SNOWBALL.** White flowers, early spring.

2-3 feet ..... 2.00

**SPIREA, Arguta.** Delicate light green leaves and single white flowers early spring.

2-3 feet .....\$1.50

**SPIREA, Blue Mist.** Powdery blue, fringed flowers during August and September. Foliage is silvery green.

Blooming Size Plants, container grown .....\$1.50

**SPIREA, Dwarf Ninebark.** Dense growing shrub with attractive foliage, white flowers and small red pods.

18-24 inch .....\$1.25

**SPIREA, Frobel.** Clusters of rose-red flowers all summer . . . keep the spent blooms cut. Foliage colors beautifully in the fall.

15-18 inch.....\$ .75      18-24 inch.....\$1.00

**SPIREA, Japanese Red.** Similar to Frobel, except flowers are bright red.

12-15 inch .....\$1.50

- SPIREA, Prunifolia** (Double Bridal Wreath). More strikingly beautiful than the single type . . . florets are very double, completely covering the plants.  
18-24 inch .....\$1.50
- SPIREA, Sorbifolia.** Very attractive foliage all summer. Produce large, fluffy heads of white flowers in June and July.  
2-3 feet .....\$1.75
- SPIREA, Van Houtte.** The most popular of all the Spireas. Arching branches covered with white blossoms in spring.  
18-24 inch .....\$.75      2-3 feet .....\$1.00
- VIBURNUM, Dentatum** (Arrow Wood). Attractive foliage—bluish-black fruit.  
12-18 inch .....\$1.00      18-24 inch .....\$1.35  
2-3 feet .....\$1.50
- VIBURNUM, Lantana** (Wayfaring tree). Bold, striking, fall color. Fruits red then black.  
2-3 feet .....\$1.75
- WEIGELA, Bristol Ruby (Pat. 492)** Most outstanding new red flowering shrub. Soft-ruby-red flowers deepening to garnet-crimson. Blooms profusely during spring and early summer and repeats in late summer and early fall.  
18-24 inch .....\$2.00

## HEDGES—LIVING FENCES

- BARBERRY, Green.** Red berries and coppery red foliage in the fall.  
12-15 inch, branched .....Per 100, \$40.00
- BARBERRY, Red.** Planted in full sun, the leaves stay red all summer.  
15-18 inch .....Per 100, \$60.00
- ELM, Chinese.** The fast growing hedge.  
18-24 inch .....Per 100, \$7.50
- HONEYSUCKLE, Zabel's Red.** A really beautiful hedge. Very hardy, vigorous upright grower with brilliant red flowers and bright red fruit.  
18-24 inch hedging .....Per 100, \$50.00
- LILAC, Persian.** Fast growing hedge—can be left to grow informally or trimmed. See Lilac under shrubs.
- PRIVET, Amur River.** For small formal boxed hedges, plant them six inches apart in a single row, and keep sheared.  
18-24 inch hedging .....Per 100, \$18.00
- ROSES, Floribunda and Shrub Roses.** Fast becoming the most popular hedges—everblooming—easily cared for. See Roses Pages 8 and 9.
- SPIREA, Van Houtte.** The most popular of all the Spireas. Arching branches covered with white blossoms in spring.  
18-24 inch hedging .....Per 100, \$50.00

## SPRAYING

We are power equipped to do spraying with insecticides and fungicides on lawns, trees, shrubs and evergreens.

## CLIMBING VINES

**BOSTON IVY.** The best vine for walls, as it clings to any surface without support. Foliage colors beautifully in the fall.

No. 1, potted plants.....\$1.50

**CLEMATIS, Jackmani.** When this vine is in full flower it is a solid mass of royal purple.

No. 1, Blooming size potted plants.....\$1.75

**CLEMATIS, Paniculata** (Sweet Autumn Clematis). The most satisfactory, hardy climbing Clematis. A strong grower, it is completely covered with small, pure white, fragrant flowers in late summer and early fall.

No. 1, Blooming size potted plants.....\$1.50

**HONEYSUCKLE, Goldflame.** Immense, showy clusters of trumpet-shaped buds and fragrant blooms. The outside of the petals is brilliant flame-pink, the inside a creamy golden yellow. Dark glossy foliage adds to its charm. Blooms from early spring until heavy frost.

No. 1, Blooming size plants .....\$1.50

**HONEYSUCKLE, Hall's.** Favorite old-fashioned vine with fragrant buff-yellow flowers throughout the summer. Does well in shade or sun and is excellent for covering rough objects or banks.

No. 1 plants .....\$ .60

**SILVER LACE VINE.** The fastest growing vine under cultivation. Will grow 25 to 30 feet first year. Feathery white blooms in August.

No. 1, Blooming size potted plants .....\$1.50

## NEBRASKA NURSERIES GUARANTEE

We guarantee our nursery stock to be first class and to reach you in healthy growing condition. Any stock that fails to grow will be replaced the next season provided we are notified by July 1st after delivery or planting; such replacement to be made at one-half the original purchase price, except that stock planted by this nursery will be replaced free of charge. Claims for replacement must be made before July 1st in writing or in person at the nursery. In no case will stock be replaced more than once.

We guarantee our nursery stock to be true to name. We take special care in labeling. Should any prove to be untrue we agree to replace or refund the purchase price.

This guarantee does not cover damage by adverse weather conditions, neglect, or insects.

No guarantee on bulbs, seeds, annuals or potted plants that are in leaf or blooming when purchased.

Give newly planted Nursery Stock a **thorough soaking**, twice each week during the first summer and fall.

# Nebraska Nurseries

## HARDY GROUND COVERING PLANTS AND TRAILING SHRUBS AND VINES

**BALTIC IVY.** A most graceful vine with small glossy almost evergreen foliage. Splendid vine on walls with north or east exposure, also an excellent ground cover. Very slow.

Each .....\$ .50

**DWARF LACE PLANT (*Polygonum Reynowtria*).** A new ground cover that wants full sun. Pale green foliage turns brilliant red in autumn. Buds of deep coral and salmon open to lacy sprays of pink flowers. Height from 4 to 8 inches.

Potted Plants .....\$ .25

Large Clumps ..... .75

**EUONYMUS, Coloratus.** (Purple-leaf Wintercreeper). A trailing evergreen vine that can be used effectively as a ground cover or to train against wall or rocks in natural beauty. The foliage which is always good is at its height when in the autumn it takes on the rich colorings of red and bronze that are carried through the winter.

No. 1, Potted Plants.....\$1.50

**EUONYMUS, Radicans.** An excellent low semi-trailing shrub, fine in either shade or sun. Its habit is a bushy growth with small dark shiny green foliage. This vine may also be trimmed into small evergreen hedge or used as a ground cover.

No. 1, Potted Plants.....\$1.50

**EUONYMUS, Radicans Vegetus.** (Evergreen Bittersweet). A strong growing variety, with larger leaves than the above type, and producing bright orange-red berries.

No. 1, Potted Plants.....\$1.50

**HONEYSUCKLE, Hall's Japan.**

See Climbing Vines.

**JUNIPER, Andorra**

See Bare root evergreens.

**VINCA, Bowles Variety.** A trailing evergreen type plant, used extensively for carpeting the ground under shrubs or trees or on graves, where it is too shady for grass or other plants.

No. 1, Potted Plants.....\$ .50

### PLANTING GUIDE

Your success with evergreens, shrubs, trees and roses depends largely upon proper planting, plenty of water and top dressing of well rotted barn yard manure or other recommended plant foods. Planting Guides are sent with each order of Nursery Stock.

# Nebraska Nurseries

## BULBS—PERENNIALS—PLANTS

**ARTEMISA—SILVER KING.** A striking white-leaved contrast plant. Excellent for bouquets.....\$1.50

### BLEEDING HEART

**OLD FASHIONED.** Graceful heart-shaped pink flowers are always attractive.  
Blooming size in Cloverset Pots.....\$1.50

### CANNAS

**CITY OF PORTLAND.** Rose pink.

**RICHARD WALLACE.** Canary yellow.

**THE PRESIDENT.** Glowing scarlet.

**YELLOW KING HUMBERT.** Yellow, spotted and flecked with deep red.

### CHRYSANTHEMUM—CUSHION

**BRONZE CUSHION.** Coppery bronze.

**CHAMPION CUSHION.** Deep bronzy red.

**MAJOR CUSHION.** Excellent pink cushion.

**POWDER PUFF.** White in low wide mounds.

**REDWOOD.** Bright deep red in low mounds.

**SEPTEMBER CHEER.** Cherry-rose-pink to red.

**YELLOW CUSHION.** Golden yellow shaded bronze.

Each.....\$ .50                      \$4.50 per 10

### COLUMBINE

**CRIMSON STAR.** Bright crimson outside, waxy white inside.

**LONG SPURRED BLUE.** Large flowers in all shades of blue.

Each.....\$ .50                      10 for.....\$4.50

### FERNS

**OSTRICH PLUME.** Likes shade and protection from winds.

Each.....\$ .50                      10 for.....\$4.50

### FUNKIA

**COERULEA LANCEOLATA.** Broad green leaves, blue flowers.

**VARIEGATED.** Variegated foliage, blue flowers.

Each.....\$ .60                      10 for.....\$5.50

### GLADIOLI

#### TOP SIZE BULBS ONLY

Eighteen select Holland and American Grown varieties . . . all colors available. Full size color plates at the nursery.

#### PLANTING SERVICE

Prices in this list do not include planting. For quotations on planting service and landscape estimates phone 4-4848.

## LILIES

Our Lily bulbs are all growing in pots for easy transplanting—plant them this spring and enjoy blooms from them this summer.

- HENRYI.** The Golden Speciosum—flowers golden yellow, blooms August and September. Each \$ .60
- MADONNA.** Pure white — June blooming . . . imported bulbs ..... Each \$1.00
- ORANGE TRIUMPH.** Best of the orange colored lilies—glowing orange tinted pink . . . blooms in July ..... Each \$ .75
- REGAL.** White, outside tinged pink—blooms in July. Each ..... \$ .60
- RUBRUM.** Bright pink with small maroon spots and edged white ..... Each \$ .75

## ORIENTAL POPPIES

- BEAUTY OF LIVERMORE.** The finest dark crimson with black blotch; profuse bloomer.
- HELEN ELIZABETH.** No doubt the finest and largest of the pink poppies. Delicate flesh-pink.
- MAY SADLER.** Salmon pink with black markings. Each.....\$ .60      10 for.....\$5.50

## PEONIES

Large 5 to 8 eye division.

Suggest Fall Planting only in our area.

- BARONESS SCHROEDER.** Blush pink.
- EDULIS SUPERBA.** Bright, clear mauve-pink.
- FELIX CROUSSE.** Brilliant, ruby-red.
- FESTIVA MAXIMA.** Pure white flecked crimson.
- MARTHA BULLOCK.** Soft rose-pink shading to silvery shell-pink.
- MARY BRAND.** Bright red.
- MICHAEL VALIENT.** Very late rose red.
- MONS JULES ELIE.** Lilac pink—very large.
- REINE HORTENSE.** Rose-pink flecked with crimson.
- RICHARD CARVEL.** Real early, bright crimson.
- SARAH BERNHARDT.** Apple blossom pink. Large Divisions ..... \$1.00

## PHLOX CREEPING

- Each .....\$ .50      10 for .....\$4.50

## Growing With Lincoln

We have doubled our acreage for growing evergreens, shade trees and shrubs, to meet the increasing demand for good landscape materials. In addition to the 70 acres of growing fields located at 56th and Holdrege, we have purchased another 70 acres southeast of Lincoln. For the convenience of our customers, our offices, storage, sales and display grounds will remain at the present location, 48th and "O" Streets, where they have been for thirty years.

# Nebraska Nurseries

## DWARF APPLES

- DELICIOUS RED—Winter apple
- DELICIOUS YELLOW—Winter apple
- McINTOSH DARK RED—Winter apple
- STAYMEN'S WINESAP—Winter apple
- Dwarf Apple .....\$4.75

## STANDARD APPLES

- DELICIOUS DARK RED—Winter apple
- DELICIOUS YELLOW—Winter apple
- DUCHESS—Summer apple
- GRIMES GOLDEN—Fall apple
- CORTLAND—Fall apple
- Heavy specimens .....\$2.75

## APRICOTS

**SCOUT.** A Canadian variety of extreme hardiness! The freestone fruit is tender, fine grained, and delicious. Colors beautiful golden yellow, with reddish blush. Starts to bear while very young. Two-year specimens, heavy caliper.....\$3.00

## CHERRY

- EARLY RICHMOND.** Bright red, early and a good pie cherry.
- METEOR.** New . . . strong upright grower, large leaves quite resistant to leaf spot. Fruit very large, stone small and free.
- MONTMORENCY.** Large red fruit, ripening ten days later than Early Richmond. The most popular all-purpose variety. Two-year specimens, heavy caliper.....\$2.75

## PEACH

- CHAMPION.** Free-stone, white flesh, firm but very juicy. A consistent heavy yielder.
- ELBERTA.** Firm yellow flesh, luscious flavor. Bears young and yields abundantly.
- POLLY.** Free-stone, white flesh, firm but very juicy. A consistent heavy yielder.
- RED HAVEN.** A luscious beauty—real early, yellow meated, almost solid red. Two-year specimens, heavy caliper .....\$2.25

## PICTURESQUE FRUIT TREE

Oftentimes a picturesque fruit tree is a beautiful addition to the landscape. The bloom in spring adds a cheering sight. Many fruit trees grow in interesting shapes and it's fun to have both beauty and fruit from them.



## DWARF PEAR

**BARTLETT.** The well known summer pear, golden yellow and excellent flavor .....\$4.00

## STANDARD PEAR

**BARTLETT.** The well known summer pear, golden yellow and excellent flavor.  
Two-year specimens, heavy caliper .....\$2.75

## PLUMS

**BURBANK.** The largest red plum—the firm yellow flesh is unusually sweet and juicy. Prolific bearer and very early.

**REDCOAT.** A perfect freestone—one of the best of the Minnesota developments. The bright crimson fruit has excellent flavor.

**WANETA.** The fruit is of immense size, deep bright red color. One of the most productive of any Plum that grows. Tree bears very young.  
Two-year specimens, heavy caliper .....\$2.50

## SMALL FRUITS

<b>ASPARAGUS, Paradise</b> .....	Per Doz.	\$1.00
<b>ASPARAGUS, Paradise</b> .....	Per 100	6.50
<b>CURRANT, Red Lake</b> .....	Each	.60
<b>GOOSEBERRY, Pixwell</b> .....	Each	.80
<b>GRAPE, Concord</b> .....	Each	.50
<b>GRAPE, Fredonia—early black</b> .....	Each	.60
<b>GRAPE, Niagara—white sweet</b> .....	Each	.60
<b>RASPBERRY, Latham</b> .....	Per Doz.	3.00
<b>RASPBERRY, Indian Summer</b> .....	Per Doz.	3.00
<b>RASPBERRY, Sodus, purple</b> .....	Per Doz.	3.00
<b>RHUBARB, Chipman's Canada Red</b> .....	Each	.85
<b>RHUBARB, Valentine (New)</b> .....	Each	1.35

## SEEDS

### FLOWER SEEDS

Ferry's — Mandeville — Northrup King

### LAWN SEEDS — Call 4-4848 for prices.

Creeping Red Fescue — High Test Kentucky Blue Grass

Red Top — Annual Rye — Perennial Rye  
White Dutch Clover

## PEAT MOSS

**WACCO FORTIFIED.** It is 100% organic material—mosses and mineral plant foods. Sphagnum moss that will hold up to 20 times its own weight in water. Available in all size bags from \$4.00 to \$4.95

**BLACK HYPNUM** Peat available in \$1.95 and \$3.15.

# FERTILIZERS

## ARMOUR'S PULVERIZED SHEEP MANURE

The finest plant food for the Rose Garden and Perennial Border. No danger of burning or over-feeding. Use an extra heavy application and notice the difference in the texture of the soil.

50 lbs.....\$1.85      100 lbs.....\$3.70

## MILLER'S HI-ORGANIC

10 - 6 - 4

Ground Fish  
Tankage

Dried Blood  
Boron

Cotton Seed Meal

25 lbs. ....\$3.00      50 lbs. ....\$4.50

## MILORGANITE

the natural organic FERTILIZER

Nobody can produce a permanently attractive lawn with soil and seed only. Essential plant food is needed, too . . . All the VITAL ONES required by grass are available in MILORGANITE.

40 lbs., covers 1,000 sq. feet .....\$2.50  
80 lbs., covers 2,000 sq. feet ..... 3.95

## PAX

### Crabgrass and SOIL PEST CONTROL

Improved with AR-76 and Chlordane—apply early spring or fall to assure next summer's lawn free of ugly, menacing crab grass.

## WACCO

10-10-5

The new lawn and tree food with a very high iron content to eliminate the chlorotic condition of our shade trees and lawns.

40 lbs. (covers 2,500 sq. feet) .....\$3.95

### OTHER FERTILIZERS

We carry many other fertilizers and plant foods, among them—Garden and Lawn a 14-14-14 plant food, 15-15-0 under various trade names and the new UREA 45%. SULFASOIL AND FESUL for trees and shrubs are also new in the area—call us for more information.

WE GIVE AND REDEEM

BLUE COMMUNITY SAVINGS STAMPS

## NEBRASKA NURSERIES, INC.

*"Located on the Miracle Mile"*

4815 "O" STREET

Phone 4-4848

LINCOLN 10

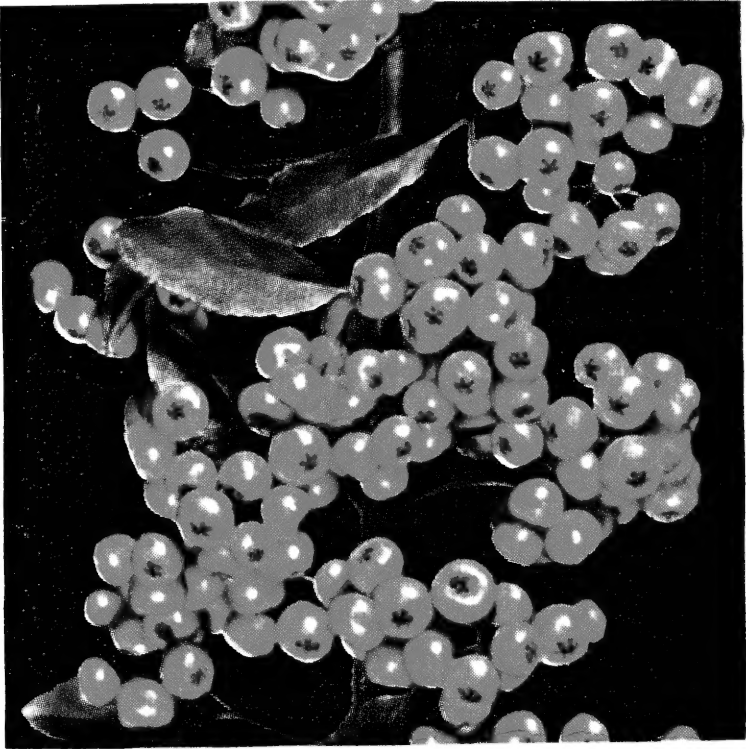
NEBRASKA

# NEBRASKA NURSERIES



## GOLDEN VICARY

Waxy golden yellow foliage all summer.



## PYRACANTHA

White flowers in spring; brilliant orange berries in fall.



## COTONEASTER DIVARICATA

Small green polished leaves and red, egg-shaped fruits in fall



**GLOWING EMBER QUINCE**

See our listing of the new  
Crimson Beauty cherry-red variety.



**RED FLOWERING PEACH**

Brilliant double red blooms completely cover the trees in early spring.

**NEBRASKA**



**NURSERIES, Inc.**

**4815 "O" St.**

**Lincoln, Nebr.**