

62

LIBRARY
RECEIVED
★ MAR 20 1957 ★
U. S. Department of Agriculture

presenting...

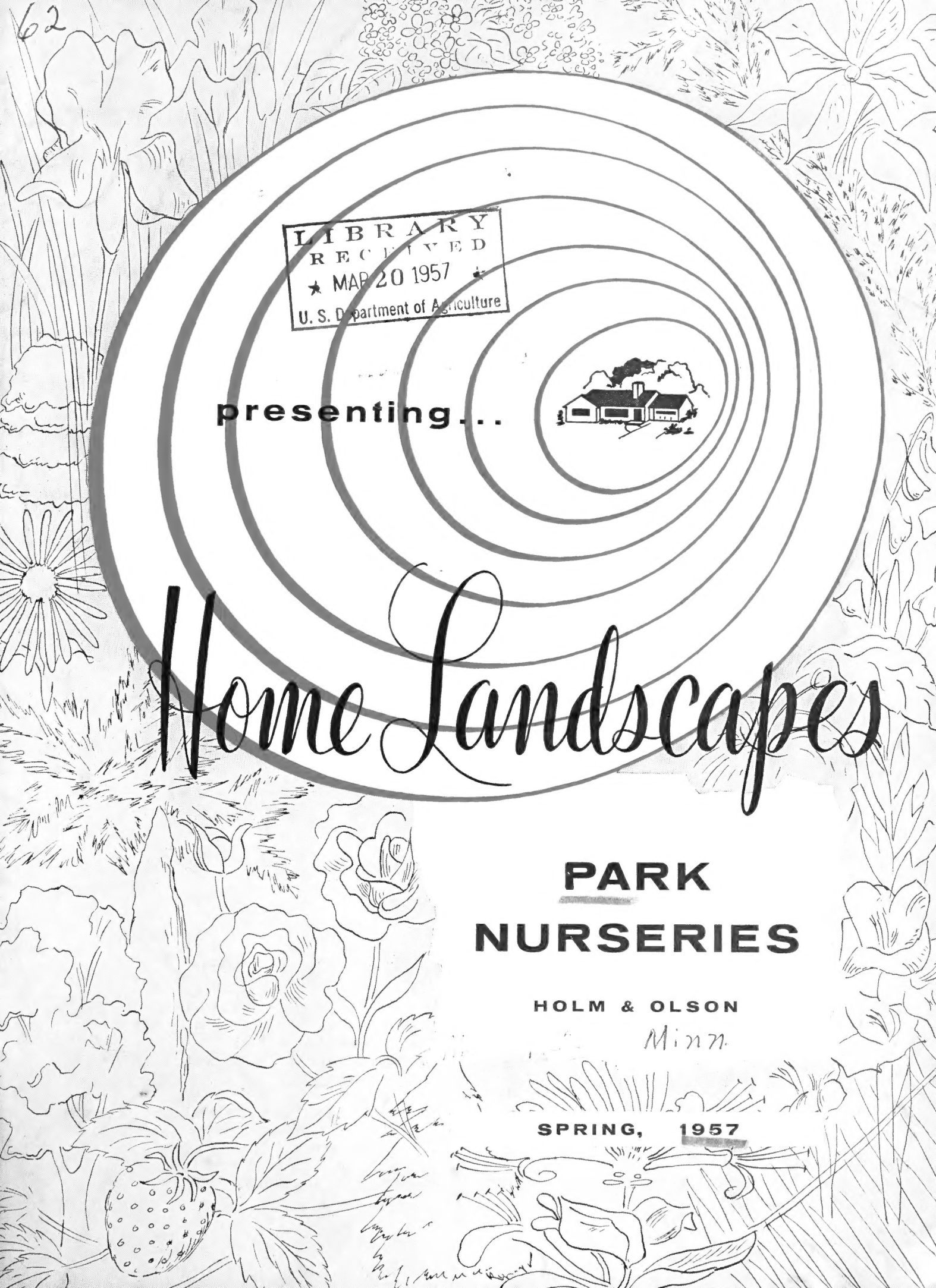


Home Landscapes

**PARK
NURSERIES**

HOLM & OLSON
Minn.

SPRING, 1957





Complete Landscape Service

1. **Twin City Service.** Our Landscape Gardeners are prepared to handle your landscape problems for you. It makes no difference how large or how small your grounds may be, we are prepared to render you this service.

Careful planting, skilled gardeners, modern equipment and choice plants of dependable quality are the foundation of our complete service.

2. **For Our Out-of-Town Customers.** We help you **Plan-By-Mail**. Send us a sketch and measurements of your grounds. We will suggest ways of making your property most attractive.
3. **Special Out-of-Town Consultation.** For larger public and private properties a personal call by our Landscape Architects may be to your advantage. These special trips can be arranged by appointment. The charges are moderate.



Park Nurseries

can help you plan

"Home Landscapes" 1957

A guide to more attractive home grounds, gardens, industrial sites, Parks, Cemeteries and Golf Courses. Dedicated to men and women who appreciate the refined pleasures and beauty attached to landscape gardening and horticulture, and who desire to develop the maximum amount of beauty, comfort and use at a minimum of expense and care.

*61 YEARS IN BUSINESS REFLECTS SERVICE,
QUALITY AND DEPENDABILITY*

MAKE FULL USE OF OUR LANDSCAPE SERVICE
YOUR INQUIRIES ARE ALWAYS WELCOME

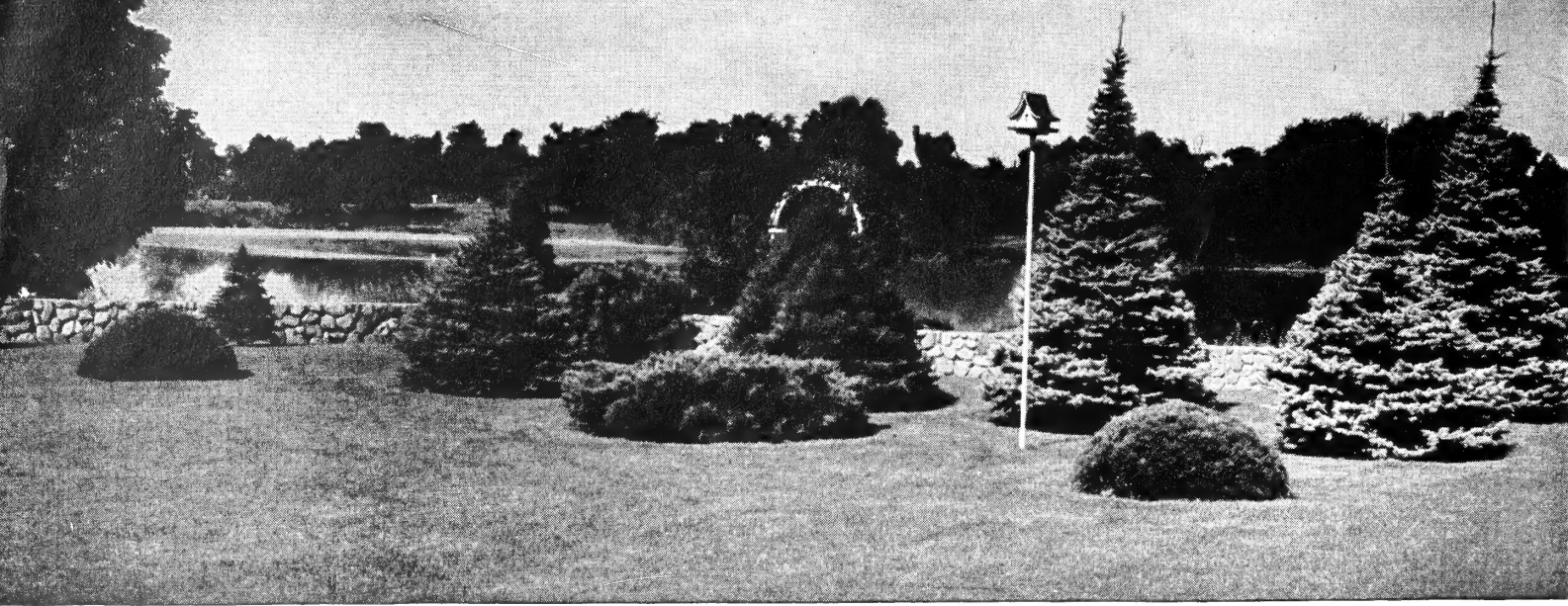


THE PARK NURSERIES
ST. PAUL 2, MINN.

Phone St. Paul CApital 2-7335

Minneapolis 8, CApital 2-7335





Plant Evergreens for Year Round Beauty

EVERGREENS are our most important group of trees. They are stately as individuals and strikingly effective and imposing in masses. They are invaluable as screens. Planted in masses, form a background for Spring blooming shrubs, bright winter colored shrubs and small fruiting trees. Evergreens make possible some of the most enchanting results in ornamental planting.

At the Park Nurseries the Evergreens are given particular attention to develop their full beauty and symmetrical growth. They are dug with solid root balls so that they can be moved without loss of vitality. Full planting directions are always given to assure you the best results. **COME TO THE NURSERY AND SEE OUR EVERGREENS.**

To help you realize how much growing-time you can save when you plant Evergreens of substantial size **WE GIVE THE AGE, AS WELL AS THE SIZE, OF THE OLDER TREES** along with their prices.

Evergreens Build Lasting Beauty

The Arborvitae—Thuja

American Arborvitae (*Thuja occidentalis*). 20 ft. A native evergreen with soft, lacy, fan-shaped foliage. The tree is bushy at the bottom and tapers toward the top. Stands trimming well.

2 to 3 ft., 8 yr.-----	\$5.50	3 to 4 ft., 10 yr.-----	\$8.00
4 to 5 ft., 11 yr.-----	12.00	5 to 6 ft., 12 yr.-----	18.00
6 to 7 ft., 13 yr.-----	\$24.00		

Pyramidal Arborvitae (*Thuja occidentalis pyramidalis*). 18 ft. An attractive, solid pyramid of soft green that retains its outline without shearing. Useful in foundation plantings.

2½ to 3 ft., 10 yr.-----	\$7.00	3 to 4 ft., 12 yr.-----	\$10.00
4 to 5 ft., 13 yr.-----	15.00	5 to 6 ft., 14 yr.-----	20.00
6 to 7 ft., 16 yr.-----	\$25.00		

Siberian Arborvitae (*Thuja wareana siberica*). 8 ft. A symmetrical, compact evergreen of conical outline with broad base. Rich green leaves. Very useful in foundation plantings.

18 to 24 in., 10 yr.-----	\$7.00	2 to 2½ ft., 11 yr.-----	\$10.00
2½ to 3 ft., 13 yr.-----	12.00	3 to 3½ ft., 15 yr.-----	16.00

Sherman Arborvitae (*Thuja Occi. Shermani*). 15 ft. An upright tree with dense, compact, dark green foliage. New introduction. Used in groups and house plantings.

2 to 3 ft.-----	\$ 8.00	3 to 4 ft.-----	\$14.00
4 to 5 ft.-----	16.00	5 to 6 ft.-----	20.00

The Cedars and Junipers

Dundee Juniper (*Juniper virginiana Hilli*). 15 ft. A new, and the most interesting Pyramidal type Juniper produced. Spring color bluish green changing to Plum color in fall. Growth thick and compact. Hardy and drought resistant.

2 to 3 ft., 8 yr.-----	\$ 9.50	3 to 4 ft., 10 yr.-----	\$14.00
4 to 5 ft., 11 yr.-----	17.00	5 to 6 ft., 12 yr.-----	21.50
6 to 7 ft.-----	\$28.00		

Pfitzer's Juniper (*Juniperus pfitzeriana*). 6 ft. A graceful, bushy evergreen suited to foreground plantings and particularly adapted to house foundation Evergreen groups. Foliage is an attractive greenish-hue. The branches are spreading and gracefully drooping. Stands the city's dust and soot well.

15 to 18 in., 7 yr.-----	\$6.00	18 to 24 in., 9 yr.-----	\$7.50
24 to 30 in., 10 yr.-----	9.50	30 to 36 in., 12 yr.-----	12.00
3 to 4 ft., 13 yr.-----	\$15.00		

Hetzii Juniper. An upright form of Pfitzer Juniper with silvery blue foliage.

24 to 30 in.-----	\$9.00
-------------------	--------

Silver Cedar (*Juniperus scopulorum*, grafted varieties). 15 ft. A new, pyramidal type Cedar of striking beauty. Bright silvery-green foliage that holds its color all year through. The growth is compact and symmetrical making it a superb, ornamental evergreen. Very hardy and drought resistant.

2 to 3 ft., 8 yr.-----	\$ 9.50	3 to 4 ft., 10 yr.-----	\$14.00
4 to 5 ft., 11 yr.-----	17.00	5 to 6 ft., 12 yr.-----	21.50
6 to 7 ft., 13 yr.-----	\$28.00		

COME TO OUR NURSERY AND SELECT YOUR EVERGREENS, 1200 ST. CLAIR AVENUE

EVERGREENS ARE THE ARISTOCRATS OF THE PLANT WORLD THEY GIVE DIGNITY AND CHARM TO THE HOME AND GROUNDS

Andorra Juniper (*Juniper horizontalis plumosa*). 5 ft. spread. A dwarf spreading Juniper of silvery green, turning pinkish or purple in autumn, a distinct color which holds until Spring.

15 to 18 in., 7 yr.-----\$6.00 18 to 24 in., 9 yr.-----\$7.50
24 to 30 in. spread, 12 yr. \$9.00

Red Cedar (*Juniperus virginiana*). 25 ft. Useful wherever a pyramid of rich green is wanted. Probably the most useful of all evergreens because of its beauty, hardiness and adaptability. Can be kept trimmed and shaped to most any out'line. Grows naturally to a tall pyramid with broad base.

3 to 4 ft., 9 yr.-----\$ 9.00 4 to 5 ft., 10 yr.-----\$12.00
5 to 6 ft., 11 yr.----- 17.00 6 to 7 ft., 12 yr.----- 22.00

Savin's Juniper (*Juniperus sabina*). 3 ft. A thickly branched, low-spreading shrub form. Hardy and very desirable wherever a low type evergreen is wanted. A native of Alpine mountain regions and thrives well under Minnesota conditions. Stands city atmospheric conditions.

15 to 18 in., 8 yr.-----\$6.00 18 to 24 in., 9 yr.-----\$7.50
24 to 30 in., 10 yr.----- 9.00 30 to 36 in., 12 yr.-----12.00

The Pines

Austrian Pine (*Pinus nigra*). 50 ft. A decorative, vigorous and tall-growing tree. Long, slender, dark-green needles. Its rapid growth and highly ornamental foliage make it very desirable wherever a tall evergreen on the lawn is wanted.

2 to 3 ft., 8 yr.-----\$9.00 3 to 4 ft., 9 yr.-----\$12.00
4 to 5 ft., 10 yr.-----\$17.00

Dwarf Mugho Pine (*Pinus mughus*). 3 ft. Very popular compact and dwarf-growing evergreen. Unexcelled for planting about the foundation lines or in front of taller evergreens. In the spring the new growth resembles miniature candles at the end of each branch.

15 to 18 in. spread, 8 yr. \$8.00 18 to 24 in. spread, 9 yr. \$10.00
24 to 30 in. spread, 11 yr.-----\$12.00

White Pine (*Pinus strobus*). 50 ft. A decorative tree with stout spreading branches forming a broad pyramidal head. Foliage dark green and lustrous. Hardy and vigorous.

2 to 3 ft., 8 yr.-----\$9.00 3 to 4 ft., 10 yr.-----\$12.00

The Douglas Fir

Douglas Fir (*Pseudotsuga douglasi*). 40 ft. The large bluish-green needles are soft and fragrant. A dependable and handsome large-growing tree of conical shape. Splendid for lawn specimen or in the background of an evergreen group.

3 to 4 ft., 11 yr.-----\$10.00 4 to 5 ft., 13 yr.-----\$15.00
5 to 6 ft., 14 yr. ----- 20.00 6 to 7 ft., 16 yr. ----- 27.50

The Spruces—Picea

Black Hills Spruce (*Picea canadensis albertiana*). 30 ft. A native of the Black Hills and the hardiest of all spruces. The growth is a rounded, compact pyramid with branches low to the ground. Foliage is a bright fresh green. Stands dry soils and open exposures and is always an ornamental specimen.

18 to 24 in., 10 yr.-----\$5.00 24 to 30 in., 11 yr.-----\$6.50
30 to 36 in., 12 yr.----- 9.00 3 to 4 ft., 13 yr.-----12.00
4 to 5 ft., 15 yr.-----17.00 5 to 6 ft., 17 yr.-----22.00

Blue Spruce, "Colorado" (*Picea pungens glauca*). 35 ft. The most admired of all evergreens because of its luxuriant, rich, silvery-blue needles. Outstanding as a lawn specimen. Our Blue Spruce trees have an unusually bright color and are full branched and solid specimens.

2 to 2½ ft., 11 yr.-----\$10.50 2½ to 3 ft., 12 yr.-----\$13.00
3 to 3½ ft., 12 yr.----- 15.00 3½ to 4 ft., 15 yr.----- 18.00
4 to 4½ ft., 16 yr.----- 22.00 4½ to 5 ft., 18 yr.----- 25.00
5 to 6 ft., 19 yr.----- 30.00 6 to 7 ft., 20 yr.----- 40.00

Colorado Spruce (*Picea pungens*). 35 ft. An attractive, hardy spruce of even full-branched growth. Similar to the Blue Spruce but with less blue color. Grows easily in most any situation and makes a shapely, sturdy tree.

24 to 30 in., 11 yr.-----\$7.50 30 to 36 in., 12 yr.-----\$9.50
3 to 4 ft.-----12.00 4 to 5 ft.-----17.00
5 to 6 ft. -----22.00

The Yews—Taxus

Interest in Yew trees is fast increasing. No family of Evergreens has such popularity in recent years as the Yews. This interest is easily accounted for. The answer is the outstanding merit of the trees in richness of color, variation of form, thriftiness of growth and adaptability to various soils and planting locations.

Yew, Upright. (*Taxus capitata*). 5 ft.

A very ornamental, medium-size Evergreen with clean, waxy, dark-green leaves. Grows close, upright and compact. The fruit is a red berry.

2½ to 3 ft., 10 yr. ----- \$22.00
3 to 3½ ft., 13 yr. ----- 27.00
3½ to 4 ft., 13 yr.----- 35.00
4 to 4½ ft., 17 yr. ----- 45.00

Yew, Dwarf Japanese (*Taxus cuspidata nana*). 2½ ft. A dwarf and very compact Yew with rich, dark-green foliage.

15 to 18 in., 11 yr. ----- \$12.00
18 to 24 in., 12 yr. ----- 16.00





Ornamental Trees

FOR SHADE,
SHELTER AND
LASTING BEAUTY

Bring Comfort and Beauty to the Home Grounds

THE attractiveness and comfort needed to complete a landscape setting is the proper placing of desirable trees. Thought given to selecting the best varieties for a particular use is important. In the border they may be used as accents, on the lawn to provide welcome shade, to cast interesting shadows, to supply flowers, fruit and foliage effects. A tree or group of trees add a feeling of quiet thoughtful repose to home atmosphere. We will gladly help you select suitable varieties for your grounds.

Since trees reach their maturity slowly you can save years of waiting by using larger sizes. That you may better judge the time saved by planting older stock we give both the sizes and the approximate age with the prices in our catalog listing. COME TO THE NURSERY AND SEE OUR TREES.

The Ash

American White Ash (*Fraxinus americana*). 60 ft. A native tree of straight, trim growth. Splendid for lawn or boulevard. A clean tree not troubled generally by insects and dependably hardy through the north.

6 to 8 ft.	\$2.75	8 to 10 ft.	\$5.00
1 1/4 to 1 1/2 diam., 7 yr. --	6.00	1 1/2 to 2 in. diam., 8 yr. --	8.00
		2 to 2 1/2 in. diam.	\$12.00

The Birches

Cutleaf Weeping Birch. 35 ft. A graceful white-barked, weeping tree. Tall and slender with branches bending to the ground. Delicately-cut leaves. Very popular for lawn planting.

6 to 8 ft.	\$6.00	8 to 10 ft.	\$7.00
		1 1/4 to 1 1/2 in.	\$9.00

White or Paper Birch. 40 ft. Upright and rapidly growing with grayish-white bark. Very attractive as a specimen or when planted near Evergreens.

5 to 6 ft.	\$2.50	6 to 8 ft.	\$3.50
-----------------	--------	-----------------	--------

White Birch Clumps. Balled specimen trees—10 ft. high, 3 stems. Balled and burlapped\$10.00

The Hackberry

Hackberry (*Celtis occidentalis*). 50 ft. A hardy, native long-lived tree with rough bark. The foliage somewhat resembles the Elm. Wide spreading tops giving good shade.

6 to 8 ft.	\$2.75	8 to 10 ft.	\$5.00
1 1/2 to 2 in. diam.	8.00	2 to 2 1/2 in. diam., 12 yr. 11.00	

Flowering Crabs

Flowering Crabs are planted for beauty of flower, foliage and fruit. They are used for accents in the shrub border, or as specimens in the lawn.

Almey Crab. New. White-starred, red flowers followed by hundreds of red fruits large as silver dollars. Starts bearing when young, is one of the showiest, dependable Crabs. Plant as specimen or background.

4 to 5 ft.	\$3.00	5 to 6 ft.	\$3.50
-----------------	--------	-----------------	--------

Dolgo Crab. 15 ft. A splendid lawn tree of symmetrical shape that is beautiful in both flower and fruit. Fruit is an intense bright red and covers the tree.

4 to 5 ft.	\$2.50	5 to 6 ft.	\$3.00
-----------------	--------	-----------------	--------

Specimens \$10.00 and \$15.00

Flame Crab. New. A medium size, profusely-flowering tree. The brilliant red, edible fruits cover the branches from September to January.

4 to 5 ft.	\$2.50	5 to 6 ft.	\$3.00
-----------------	--------	-----------------	--------

Hopa Crab. 15 ft. A new ornamental tree with abundant rose colored flowers that cover the branches in May. Strikingly ornamental red fruits that hang on until late fall.

4 to 5 ft.	\$2.50	5 to 6 ft.	\$3.00
-----------------	--------	-----------------	--------

Specimens \$10.00 and \$15.00

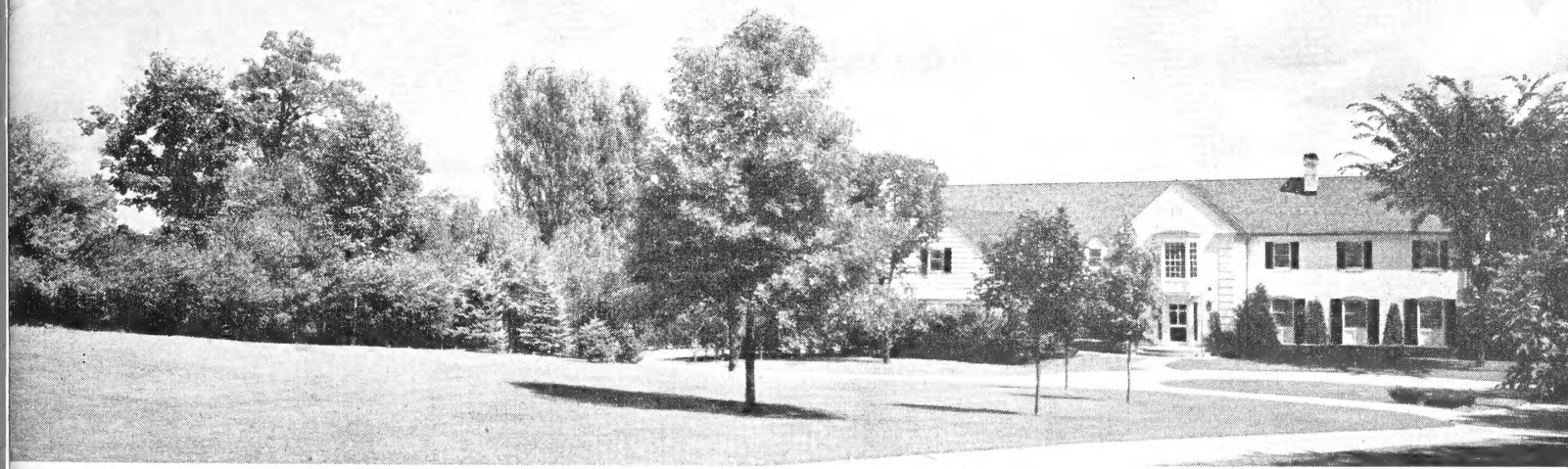
Red Silver Crab. 12 ft. A new ornamental tree with silver cut leaved foliage, ornamental red fruit in abundance.

4 to 5 ft.	\$2.50
-----------------	--------

Strathmore Crab. 15-20 ft. A new ornamental introduction. Upright in growth, narrow spread, rosy pink flowers, red fruits that hang late into fall.

4 to 5 ft.	\$4.00
-----------------	--------

PLEASE NOTE: In the description the figures following the name indicate the approximate height of growth.



YOUR grounds are not complete without the use of trees. They give elevation against the sky and produce shadows on the lawn; frame beautiful vistas and shut out undesirable views.

The Horsechestnut

Horsechestnut (Buckeye) (*Aesculus hippocastanum*). 40 ft. Five-fingered leaves. Covered in May with white flowers that stand up like candles. A most unusual and desirable lawn tree.

6 to 8 ft. -----\$7.00 8 to 10 ft. -----\$10.00

The Coffee Tree

Kentucky Coffee Tree (*Gymnocladus dioica*). 40 ft. A tree gnarled and thickly branched, bark gray and rough. Develops a wide-spreading top. Foliage airy and graceful.

6 to 8 ft. -----\$4.00 1 to 1½ in. diam. -----\$10.00

The Elms

American Elm (*Ulmus americana*). 60 ft. A gracefully-arching and wide-spreading tree that is unquestionably the most popular tree in America for shade, street and lawn planting. It is tough grained and fast growing which places it at the head of the "permanent" class of ornamental trees. Very hardy.

6 to 8 ft. -----\$2.75 8 to 10 ft. -----\$5.00
 1½ to 2 in. diam., 7 yr. 8.00 2 to 2½ in. diam., 9 yr. 12.00
 2½ to 3 in. diam., 11 yr. 16.00 3 to 3½ in. diam., 14 yr. 20.00
 Larger specimen Elms priced on request.

Flowering Crabs on display.



The Maples—for fall color

Norway Maple (*Acer platanoides*). 50 ft. A handsome lawn and shade tree forming a perfect rounded head of broad, dark green leaves.

6 to 8 ft. -----\$6.00 8 to 10 ft. -----\$8.00
 1¼ to 1½ in. diam., 8 yr. 12.00 1½ to 2 in. diam., 9 yr. 18.00
 2 to 2½ in. diam., 10 yr. -----\$22.00

Purple Leaf Maple (*Acer platanoides* Schwedler). 40 ft. Leaves are bright reddish-purple in spring toning to a deep purplish-green later. Highly prized for lawn planting.

6 to 8 ft. -----\$7.00 8 to 10 ft. -----\$10.00
 1¼ to 1½ in. diam. -----13.00 1½ to 2 in. diam., ----- 20.00

Silver Maple (*Acer dasycarpum*). 60 ft. The leaves are light green with silvery green beneath. A native rapid-growing tree that succeeds anywhere.

6 to 8 ft. -----\$2.75 8 to 10 ft. -----\$ 5.00
 1½ to 2 in. diam., 5 yr. 7.50 2 to 2½ in. diam., 7 yr. 10.00

Sugar Maple (Hard Maple) (*Acer saccharum*). 70 ft. A symmetrical hardy native tree of great beauty. Forms a dense oval head of dark green leaves. Brilliant fall coloration.

6 to 8 ft. -----\$6.00 8 to 10 ft. -----\$8.00
 1¼ to 1½ in. diam., 10 yr. 12.00 1½ to 2 in. diam., 11 yr. 18.00
 2 to 2½ in. diam., 12 yr. -----\$22.00

Tatarian Maple (*Acer tataricum* Ginnala). 15 ft. A very hardy, shrub-like tree for lawn specimen or with tall shrubs in the border. Fall coloring a bright red.
 3 to 4 ft., bushy -----\$2.00
 4 to 5 ft., bushy ----- 2.50

NORWAY MAPLE "Crimson King"
Acer Plantanoides Schwedleri Nigra.
 (Plant Pat. No. 735.) A new Red Leaf Norway Maple from Europe, retaining its bright coloring throughout the summer. A magnificent tree giving color to the garden all summer.
 7 to 8 ft. -----Each \$14.00
 8 to 10 ft. -----Each 18.00

**A GIFT CERTIFICATE FROM
 PARK NURSERIES**
 To a friend for Christmas, Easter, Mother's Day and Birthdays. A living Tree, Evergreen, Shrub, Rose or Perennials will bring exciting and lasting joy.



Plant a Living Memorial Tree

THE first and most important consideration in planting a living memorial tree is to be sure that it is located with foresight, and that every detail is considered before planting takes place.

Ornamental Trees

Deciduous Trees are those that drop their leaves in winter. They are fairly rapid growing and are easily planted in the Spring. Deciduous trees are well suited for planting as lawn and street trees, they give shade in the summer and admit light in the winter.

Linden—Basswood

American Linden (Basswood) (*Tilia americana*). 70 ft. A stately tree with broad, heart-shaped leaves; fragrant white flowers. Quite hardy, native; fine for lawn or street planting.

6 to 8 ft. -----\$4.00 8 to 10 ft. -----\$6.00
 1½ to 2 in. diam., 7 yr.-----\$9.00

Moraine Locust

Locust—Gleditsia triacanthos Moraine. (Pat. No. 836)
 An improved Honey Locust with a rounded head when young, vase shaped when older. Does not produce seed pods or thorns. Graceful, hardy.

1¼ to 1½ in. diam.-----\$20.00

The Mountain Ash

Mountain Ash (*Sorbus aucuparia*). 30 ft. White flowers in May followed by bright orange-red berries, which hang on for months. Very ornamental. Used as a specimen on the lawn or as an accent in the border.

6 to 8 ft. -----\$3.50 8 to 10 ft. -----\$5.00

PLUM, Purple Leaf. Please see under shrubs—page 11.

The Poplars

Bolleana Poplar (*Populus bolleana*). 40 ft. Upright columnar growth with smooth, gray-green bark. Glossy, green leaves with downy white undersides. Makes a strong vertical accent.

6 to 8 ft. -----\$2.75 8 to 10 ft. -----\$3.50
 10 to 12 ft. ----- 4.50 2 in. diam., 6 yr.----- 7.00

Lombardy Poplar (*Populus fastigiata*). 40 ft. A tall picturesque, spike-like tree. Erect and pyramidal in form. Planted for landscape effect, as an accent or for screening purposes. Grows quickly. Seldom spreads over 8 ft. wide and can be used to advantage in places of restricted size between buildings, in small lawns and along narrow avenues.

6 to 8 ft. -----\$1.50 8 to 10 ft. -----\$2.00
 10 to 12 ft. -----\$3.00

The Willows

Golden Willow (*Salix vitellina aurea*). 35 ft. A symmetrical, round-topped tree. Rapidly growing with branches of rich golden yellow. Very hardy.

6 to 8 ft. -----\$2.00 8 to 10 ft. -----\$3.00

Niobe Weeping Willow. 30 ft. Golden bark and graceful weeping branches that sweep the ground. A much-admired lawn tree.

6 to 8 ft. -----\$3.00 8 to 10 ft. -----\$4.00

Wisconsin Weeping Willow. 30 ft. The hardiest of the weeping willows. Very desirable for a quick growing, ornamental lawn specimen. Dark colored bark.

6 to 8 ft.-----\$3.00

Vines

FLOWERING - CLIMBING TRAILING

THE grace and beauty of well placed vines add charm to building, walls and trellis. Use them to soften harsh angles, to frame vistas and to screen undesirable views. Their flowers are produced in masses, important in providing color.

BITTERSWEET (*Celastrus scandens*). A hardy rapid-growing native climber with glossy leaves and often with red berries in the fall.
Strong, 2 yr. plants.....\$1.00 Extra size.....\$1.25

BOSTON IVY (*Ampelopsis veitchii*). A small-leaved ivy that clings to walls closely. Needs protection in Minnesota. Excellent for low walls or piers.
Strong 2 yr. plants.....\$1.25 Extra size.....\$1.50

ENGLEMAN'S IVY (*Ampelopsis engelmannii*). Clings without support to brick, stone or plaster. Grows rapidly and is absolutely hardy. Crimson fall color.
Strong 2 yr. plants.....\$1.00 Extra size\$1.25

GRAPE, Hardy Beta. A rapid growing vine with handsome foliage for pergolas, arbors and fences. Desirable fruit of tart flavor for eating or preserving.
Strong 2 yr. plants\$0.50

HONEYSUCKLE, Scarlet Trumpet (*Lonicera sempervirens*). A graceful twining vine for small lattices. The bright, scarlet flowers are very attractive.
Strong plants\$1.25

MATRIMONY VINE (*Lycium chinensis*). A good trailer to cover slopes. Large red berries follow the bright purple flowers.
Strong 2 yr. plants\$1.00

Hedges

Add character and beauty to the garden. The uses are varied. A screen, a border, a wall of green.

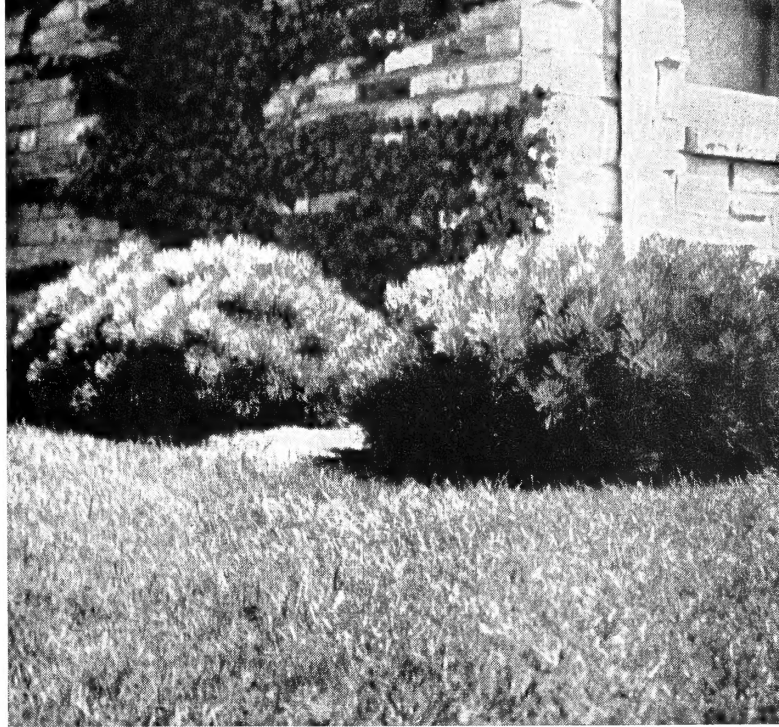
BARBERRY, Thunbergii. Makes a neat low boundary. Small leaves. Red berries. Stands trimming.
12 to 18 in.\$40.00 per 100
18 to 24 in. 50.00 per 100

BUCKTHORN. A very hardy and dense-growing ornamental hedge. Rich green leaves that are always attractive. Highly recommended.
2 to 3 ft., bushy plants\$50.00 per 100
3 to 4 ft., bushy plants 60.00 per 100

Currant, Alpine—A hardy, dense-growing, low hedge.
15 to 18 in.\$85.00 per 100

HONEYSUCKLE (Tartarian). A rapid growing tall hedge with pink flowers and red berries.
2 to 3 ft.\$60.00 per 100
3 to 4 ft. 75.00 per 100

PLEASE NOTE—25 or more plants sold at the 100 rate.



Boston Ivy clings to Brick and Stone walls.

We Start Your Clematis Vines for You

For your best results we supply all Clematis in strong plants that are potted and in active growth when delivered. Remove the plant from the pot and plant the top of the earth ball three inches below the ground level.

Clematis—Queen of Flowering Vines

Purple Clematis (Jackmani). The popular, large-flowering clematis with gorgeous flowers of velvety, violet-purple. Beautiful on a trellis or lattice.

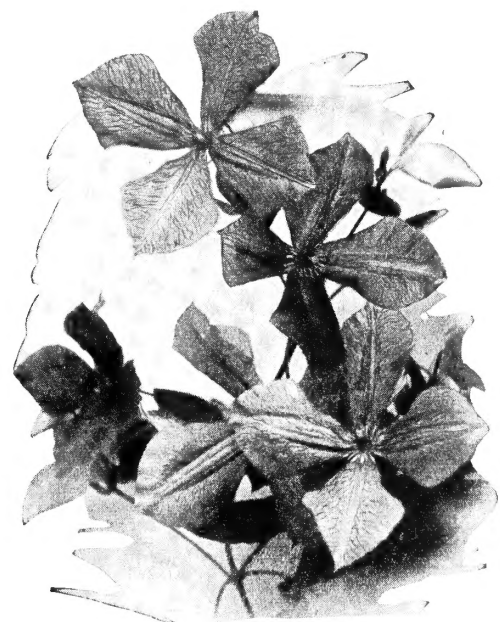
Strong, potted plants\$2.00
Extra strong, potted plants\$3.00

Red Clematis (Mme. Ed. Andre). Large, rosy-carmine flowers.

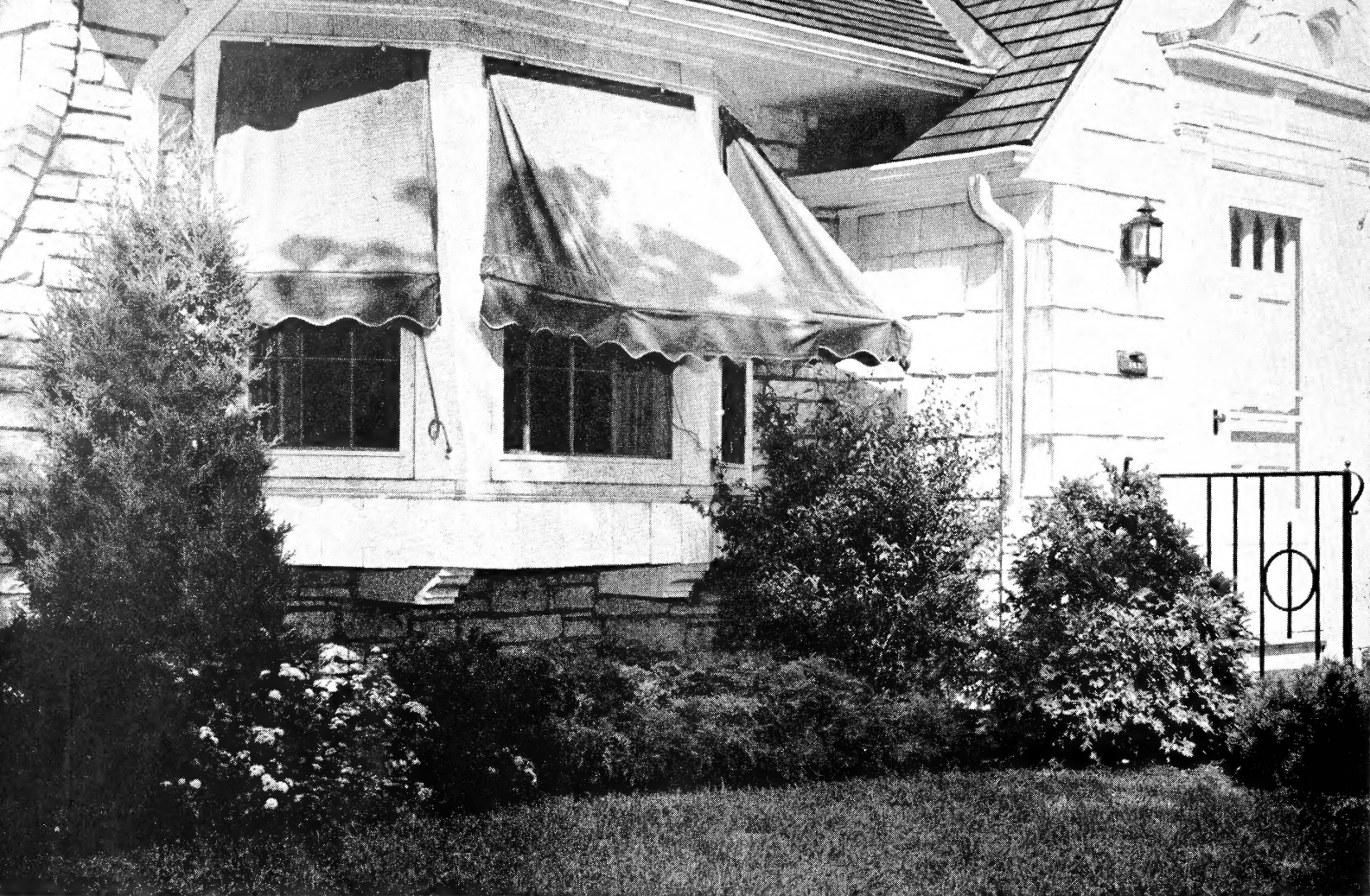
Strong, potted plants\$2.00

Sweet Clematis (Paniculata). A dependable flowering vine for fence or lattice. In late summer it is covered with great sheets of fragrant, white starry flowers.

Strong, growing plants\$1.50



The large purple flowers of the Jackmani Clematis.



Colorful Shrubs

Much of the beauty and charm in landscape planting comes from the free use of flowering shrubs. Their delicate coloring, fragrance and profusion of bloom entitles them to an important place in your home yard.

Flowering Almond

Double Flowering Almond (*Amygdalus rosea*). 4 to 5 ft. A symmetrical upright shrub with a striking display of pink, rose-like flowers along the branches in early spring. One of the earliest shrubs to bloom. A white-flowering variety is also offered.

2 to 3 ft. -----\$1.75 3 to 4 ft. -----\$2.00

Amelanchier (Juneberry)

Juneberry (*Amelanchier canadensis*). 15 ft. Good native shrub with white flowers early in spring and black fruit that attracts birds. A tall and desirable background shrub.

2 to 3 ft. -----\$1.25 3 to 4 ft. -----\$1.50

Buckthorn

Buckthorn (*Rhamnus cathartica*). 8 to 10 ft. Very dependable dense-growing shrub with lustrous leaves and black berries. A twiggy growth that permits of trimming to any desired form or outline. (See page 7 for hedge prices and sizes.)

2 to 3 ft. -----\$1.00 3 to 4 ft. -----\$1.50
4 to 5 ft. -----\$1.75

Barberry

Green Barberry (*Berberis thunbergii*). 2½ ft. The most popular hardy dwarf shrub with low, spreading growth to form a dense bush. Red berries, brilliant fall foliage color. Grows most anywhere—in partial shade, sunny, moist or dry places. (For hedges please see page 7.)

12 to 18 in. -----\$1.00 18 to 24 in. -----\$1.25

The New Red-Leaved Barberry

Red-Leaved Barberry. 2½ ft. Similar in growth to the Japanese Barberry but has rich, bronze-red leaves that hold their red color all summer. A bright contrast to other shrubs. Plant in full sun for best leaf color. One of the best of the newer plants.

12 to 18 in. -----\$1.35 18 to 24 in. -----\$1.75

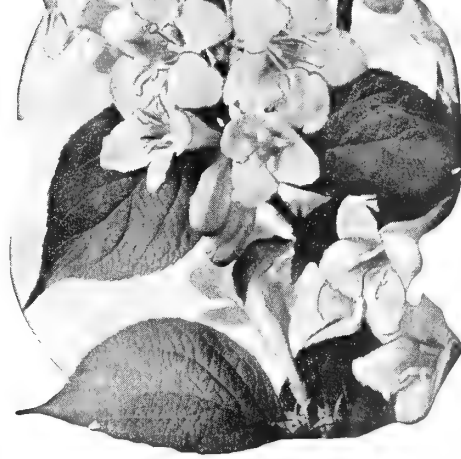
A Gift Certificate from Park Nurseries

To a friend for Christmas, Easter, Mother's Day and Birthdays. A living Tree, Evergreen, Shrub, Rose or Perennials will bring exciting and lasting joy.

PLEASE NOTE: The figures following the shrub name show the approximate height of growth.



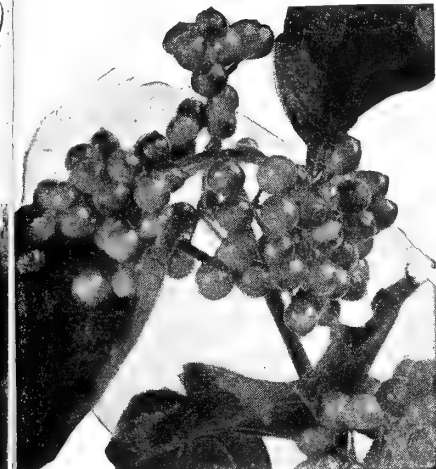
The new double-flowering Mock Orange.



Pink Weigela blossoms.



Snowberry.



The High-bush Cranberry.



The Large-Flowered Hydrangea.



French Lilac Double.

Early Flowering Shrubs

Our collection is extensive, hardy and practical, carefully grown, the plants vigorous and healthy.

Caryopteris

Caryopteris Incana. Blue Spirea. (New) A charming low growing shrub, flowers real blue, height 24 to 30 inches. Blooms from July 15th up to frost. Foliage slightly toothed, silvery green in color. This shrub is used as a border plant, example—plant in front of Bridal Wreath. Makes a good filler shrub in a flower border.

12 to 18 in. -----\$0.85

Coralberry

Coralberry (Symphoricarpos vulgaris). 3 to 4 ft. A medium height, graceful, native shrub that grows well in sun or shade. Red berries cluster the ends of the branches in late summer.

2 to 3 ft. -----\$1.00 3 to 4 ft. -----\$1.25

Cotoneaster

Cotoneaster acutifolia. QUINCE BERRY. 6 ft. A neat, clean shrub with dark, glossy green leaves. A dense-growing and highly ornamental bush all season with a striking, bright yellow fall coloration.

18 to 24 in. -----\$1.00 2 to 3 ft. -----\$1.35
3 to 4 ft. -----\$1.75

Currants (Ornamental)

Mountain Currant (Ribes alpinum). 4 ft. Excellent, dense-growing, very hardy ornamental shrub. Stands shearing and will grow in shade. Probably the most generally useful of all the dwarf shrubs.

15 to 18 in. -----\$1.25 18 to 24 in. -----\$1.75
24 to 30 in. -----\$2.25

Yellow-Flowering Currant (Ribes aureum). 6 ft. A substantial, spreading bush with large, yellow, fragrant flowers in spring. Stands shade. A very popular old-fashioned shrub.

2 to 3 ft. -----\$1.00 3 to 4 ft. -----\$1.25

Caragana

Siberian Pea Tree (Caragana arborescens). 8 ft. A tall shrub of upright growth with bright green pea-like leaves. Yellow flowers in May followed by ornamental seed pods. Stands poor soils and dry locations.

2 to 3 ft. -----\$0.75 3 to 4 ft. -----\$1.00
4 to 5 ft. -----\$1.50

WE INVITE YOU TO INSPECT OUR NURSERY AND GARDENS, 1200 ST. CLAIR AVENUE

Northern Grown Shrubs

FOR FLOWER, FOLIAGE AND FRUIT

DAPHNE

Daphne Cneorum. A low evergreen shrub, spreading habit, covered with rose pink flowers. Blooms from early Spring through late fall. Very fragrant. Used in the flower border.
10 to 12 in. plants B & B\$3.00

Dogwood (Cornus)

Golden Dogwood (*Cornus siberica aurea*). 6 ft. Highly valued for its bright yellow branches in fall and winter and particularly attractive when planted near the red-barked variety. White flowers.

2 to 3 ft.\$1.35 3 to 4 ft.\$1.75

Red-Twiggled Dogwood (*Cornus siberica*). 6 ft. A hardy, vigorous bush with bright coral-red branches which make the sturdy shrub attractive in all seasons. Strong and erect in growth.

2 to 3 ft.\$1.35 3 to 4 ft.\$1.75

Variiegated Dogwood (*Cornus elegantissima*). 6 ft. The green leaves are striped and margined with white. Red colored bark. An unusual plant making a bright spot of color in the shrub group.

2 to 3 ft.\$2.25 3 to 4 ft.\$2.75

Elderberry (Sambucus)

Cut-Leaved Elder (*Sambucus nigra laciniata*). 6 ft. Lacy, fern-like leaves that make a pleasing contrast with other shrubs. The branches are spreading and gracefully drooping.

2 to 3 ft.\$1.50 3 to 4 ft.\$1.75

Golden Elder (*Sambucus aurea*). 7 ft. A handsome wide-spreading shrub with bright yellow leaves all season. It shows its brightest color when planted in a sunny spot.

2 to 3 ft.\$1.50 3 to 4 ft.\$1.75

Red-Berried Elder (*Sambucus racemosa*). 7 ft. Big clusters of bright red berries in July. A large native shrub of spreading growth.

2 to 3 ft.\$1.50 3 to 4 ft.\$1.75

Euonymus (Strawberry Bush)

Euonymus Alatus. WINGED STRAWBERRY BUSH. 6 to 8 ft. The bark on its horizontally-growing branches has a curious winged development. The leaves are clean and lustrous and have a brilliant fall color. Rose colored berries in fall.

2 to 3 ft.\$4.00 3 to 4 ft.\$5.00

Euonymus Alatus Compacta. Dwarf Winged Euonymus. 5 ft. A very choice dwarf compact form of Alatus. Will thrive in shade.

18 to 24 in.\$3.50 2 to 3 ft.\$4.00

Euonymus Europaeus. STRAWBERRY BUSH. 8 ft. An admirable, hardy shrub with upright, slender, green branches; neat foliage and pink colored fruits. Bright fall foliage color.

2 to 3 ft.\$1.65 3 to 4 ft.\$2.00

Golden Bell (Forsythia)

Forsythia. GOLDEN BELL. 5 ft. A graceful, drooping shrub with golden, bell-shaped flowers in spring. Needs winter protection in Minnesota.

2 to 3 ft.\$1.50 3 to 4 ft.\$1.75

The Honeysuckles (Lonicera)

Pink Honeysuckle (*Lonicera tatarica rosea*). The popular pink to rose flowering Honeysuckle bush. Bright red berries follow the blossoms. Very hardy, rapid-growing shrub that thrives well in sun or partial shade.

18 to 24 in.\$0.75 2 to 3 ft.\$1.25
3 to 4 ft.1.50 4 to 5 ft.2.00

Morrow's Honeysuckle (*Lonicera Morrowi*). 5 to 6 ft. Compact yet spreading growth with gracefully curved branches. Cream-yellow flowers cover the stems in May followed by red berries in July.

2 to 3 ft.\$1.25 3 to 4 ft.\$1.50
4 to 5 ft.\$2.00

White Honeysuckle (*L. tatarica alba*). 8 ft. A hardy bush honeysuckle with white flowers. The general appearance and type of growth is similar to the Pink flowering variety.

2 to 3 ft.\$1.25 3 to 4 ft.\$1.50

Red Honeysuckle (*Lonicera Zabeli*). 8 ft. A new true red flowering shrub. Upright in growth, branches slender and graceful. Blooms profusely.

3 to 4 ft.\$1.50 4 to 5 ft.\$2.00

Dwarf Honeysuckle (*Lonicera Nana Claveyi*). 3 ft. A dwarf form of bush honeysuckle, very ornamental for a dwarf shrub.

15 to 18 in.\$1.25 18 to 24 in.\$1.75

The Mockoranges (Syringa)

Sweet Mockorange (*Philadelphus coronarius*). 8 ft. A popular, old-time favorite. Big, pure-white and delightfully fragrant flowers in June that give the plant its name. A splendid ornamental and hardy tall shrub.

18 to 24 in.\$0.75 2 to 3 ft.\$1.25
3 to 4 ft.\$1.75 4 to 5 ft.\$2.25

Double-Flowering (Virginal) Mockorange. 4 to 5 ft. Magnificent new variety with large, creamy-white and fragrant double flowers. Full bloom in spring followed by occasional flowers all season. Excellent foliage and a shrub that always attracts attention.

2 to 3 ft.\$1.50 3 to 4 ft.\$2.00

Golden Mockorange (*Philadelphus aureus*). 3 ft. Striking golden yellow foliage. Growth low and compact, flower clusters white. Used as an accent in shrub borders.

15 to 18 in.\$2.25 18 to 24 in.\$3.00
24 to 30 in.,4.00 30 to 36 in.5.00

Lemoine's Mockorange (*Philadelphus Lemoinei*). 5 ft. A hardy, erect fine-leaved shrub. Its slender branches bear an abundance of fragrant white flowers in June. Particularly desirable in house foundation plantings.

2 to 3 ft.\$1.25 3 to 4 ft.\$1.75

Double-Flowering (Snowflake) Mockorange. Pat. 538. 6 ft. First offering of this new outstanding shrub. Double flowering, sweet scented and a profuse bloomer. Shrub exceptionally hardy, gracefully branched, foliage dense.

2 to 3 ft.\$1.75 3 to 4 ft.\$2.25



The Hydrangeas

Hydrangea, Large Flowering (*H. paniculata grandiflora*). 4 ft. Magnificent, conical flowers of white that have a pink color in fall and are often cut for winter house decoration. The largest and most handsome flowers of all hardy shrubs.

18 to 24 in.-----\$1.50 2 to 3 ft.-----\$2.00

Hydrangea Snowhill (*H. arborescens grandiflora*). 3½ ft. Large white snowball-like flowers from June to frost. A pleasing bush in every way with large leaves and spreading growth. Likes partial shade. Always admired in house-foundation plantings.

18 to 24 in.-----\$1.50 2 to 3 ft.-----\$2.00

The Ninebarks (*Physocarpus*)

Dwarf Ninebark (*Physocarpus monogynus*). 3½ ft. A desirable addition to the list of hardy, dwarf shrubs. Native of Colorado. Makes a full bush of upright growth with small leaves. Bears white flowers in spring. Grows well in most any soil.

2 to 3 ft. -----\$1.50 3 to 4 ft. -----\$1.75

Golden Ninebark (*Physocarpus aureus*). 6 ft. A full-branched bushy, golden-leaved shrub. Makes a pleasing color contrast in shrub groups.

2 to 3 ft. -----\$1.50 3 to 4 ft. -----\$1.75

Tall Ninebark (*Physocarpus opulifolius*). 7 ft. A vigorous, large-leaved shrub that is excellent for use as a screen or background planting. The white flowers of spring are followed by red seed pods.

2 to 3 ft. -----\$1.25 3 to 4 ft. -----\$1.50
4 to 5 ft. -----\$1.75

Snowberry (*Symphoricarpos*)

White Snowberry (*Symphoricarpos racemosus*). 4 ft. Slender, graceful shrub with large waxy white berries in September that remain far into the winter. Splendid for planting in front of larger shrubs and under trees.

2 to 3 ft. -----\$1.00 3 to 4 ft. -----\$1.25

The Plums—Ornamental Varieties

Pink-Flowering Plum (*Prunus triloba*). 5 ft. A great attraction in early Spring when the branches carry clusters of large, double pink rose-like flowers. Similar to the Flowering Almond but a more desirable and hardier shrub.

2 to 3 ft. -----\$2.00 3 to 4 ft. -----\$2.75
4 to 5 ft. -----\$3.25

Purple-Leaf Plum (*Prunus Cistena*). 6 ft. An outstanding shrub. Dark reddish purple foliage with red leaves at end of branches. Flowers small, color dark pink. Use as accent plant.

2 to 3 ft. -----\$2.00 3 to 4 ft. -----\$2.75
4 to 5 ft. -----\$3.25

Purple-Leaf Plum (Newport). 10 ft. A shrub of substantial size that has dark, purple-colored leaves all summer. Makes a striking color contrast in shrub plantings or as a lawn specimen.

2 to 3 ft. -----\$2.00 3 to 4 ft. -----\$2.75
4 to 5 ft. -----\$3.25

POTENTILLA

Potentilla Gold Drop. 2½ ft. A choice shrub for foreground planting. Symmetrical little bushes with dense small deeply cut leaves and bright golden yellow flowers like strawberry blossoms from June to September.

15 to 18 in. -----\$1.50

PRIVIT

Privit Lodense. 2 to 3 ft. Low compact shrub, foliage dark green. Holds foliage late in the fall. Sometimes used for hedges.

18 to 24 in. -----\$1.50

Privit Golden. 3 ft. Striking golden foliage. Used for accent shrub.

18 to 24 in. -----\$1.50

Early Flowering Spiraeas

The many varied and interesting types of Spiraeas make them, as a group, the most popular and most generally planted of all the hardy shrubs. We list the better and dependable varieties that are all easy to grow.

The Spiraeas

Blue Spirea. *Caryopteris Incana.* (New) A charming low growing shrub, flowers real blue, height 24 to 30 inches. Blooms from July 15th up to frost. Foliage slightly toothed, silvery green in color. This shrub is used as a border plant, example—plant in front of Bridal Wreath. Makes a good filler shrub in a flower border.

12 to 18 in. -----\$0.85

Bridal Wreath (*Spiraea Van Houttei*). 5½ ft. Most admired of all shrubs. A graceful bush with arching branches that is a snow-bank of flowers in late May. Grows well in most any situation.

2 to 3 ft. -----\$1.00 3 to 4 ft. -----\$1.25
4 to 5 ft. -----\$1.75

Crimson Spirea (*S. Anthony Waterer*). 2 ft. A free-flowering dwarf shrub of compact form. Rosy-crimson flowers in flat-top clusters all summer. A pleasing color combination planted with Snow-hill Hydrangea.

15 to 18 in. -----\$1.25 18 to 24 in. -----\$1.50

Garland Spirea (*S. Arguta*). A cloud of dainty white blossoms in May. Graceful and attractive all season with long light-green leaves.

18 to 24 in. -----\$1.00 2 to 3 ft. -----\$1.50
3 to 4 ft. -----\$2.00

Pink Summer Spirea (*S. Billardi*). 5 ft. Spikes of pink flowers at the end of the stems in July and August. Blooms when other shrubs are out of flower.

2 to 3 ft. -----\$1.00 3 to 4 ft. -----\$1.25

Plume Spirea (*S. Sorbifolia*). 4 ft. Leaves resemble a Mountain Ash. Flowers are in plummy spikes of white in July.

2 to 3 ft. -----\$1.25 3 to 4 ft. -----\$1.75

Snow Garland (*S. Thunbergi*). 3 ft. Light, feathery leaves on slender branches that are mass of white blossoms in early spring. A refined appearance all summer.

18 to 24 in. -----\$1.00 2 to 3 ft. -----\$1.50

Russian Olive (*Oleaster*)

Russian Olive (*Elaeagnus angustifolia*). 12 ft. A hardy tall shrub with willow-like leaves of rich silvery white. Suited for background plantings and very hardy. Yellow fruits follow the inconspicuous flowers of spring.

3 to 4 ft. -----\$1.50 4 to 5 ft. -----\$2.00

The Sumacs (*Rhus*)

Fragrant Sumac (*Rhus aromatica*). 3 ft. Excellent, medium height hardy shrub. Three-parted, fragrant leaves and bright autumn color. Stands shade.

18 to 24 in. -----\$0.75 2 to 3 ft. -----\$1.00

Tamarix

Tamarix Pentandra. SUMMER TAMARIX. 7 ft. A striking plant with feathery leaves and open clusters of pink flowers at the end of the branches in June and July. Useful in bouquets. The foliage is unlike any other shrub and makes a striking picture.

2 to 3 ft. -----\$1.50 3 to 4 ft. -----\$1.75

Tatarian Maple—for Fall Color

Tatarian Maple (*Acer tataricum Ginnala*). 15 ft. A very hardy, shrub-like tree for lawn specimen or with tall shrubs in the border. Fall coloring a bright red.

3 to 4 ft., bushy -----\$2.00 4 to 5 ft., bushy -----\$2.50

The Weigelas

(Weigelas need favorable and protected positions—not recommended for planting north of the Twin-Cities.)

Eva Rathke Weigela. 4 ft. Well covered with crimson trumpet-shaped flowers in July. Very free blooming.

2 to 3 ft. -----\$1.75

Weigela Rosea. 5 ft. Well rounded bush that has a profusion of bright pink bell-shaped flowers in late June.

2 to 3 ft. -----\$1.50

The Viburnums

Viburnums are hardy, full shaped bushes. Very ornamental in foliage and fruit.

Arrow-Wood (*Viburnum dentatum*). 8 ft. An upright bush with glossy green leaves. The flat clusters of creamy-white flowers in June are followed by ornamental black berries. A tall shrub, handsome in every way.

2 to 3 ft. -----\$1.75 3 to 4 ft. -----\$2.50

Highbush Cranberry (*Viburnum opulus*). 8 ft. Named for its big clusters of edible red berries that follow the flat-topped white flowers. A full, handsome shrub with brilliant fall foliage color.

2 to 3 ft. -----\$1.75 3 to 4 ft. -----\$2.50
4 to 5 ft. -----\$3.50

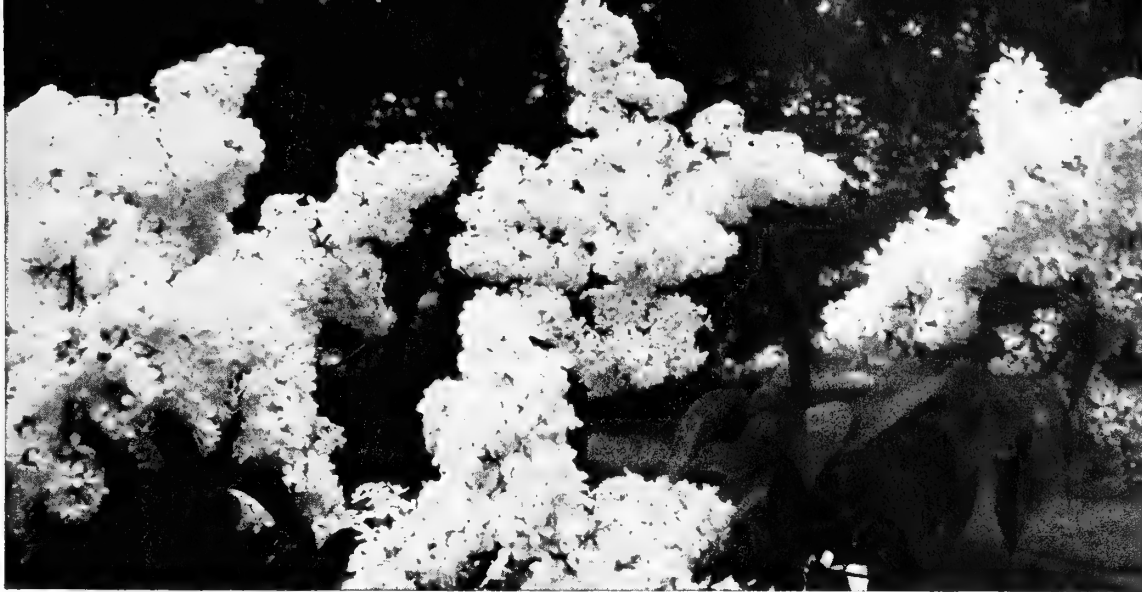
Snowball (*Viburnum opulus sterile*). 8 ft. The popular, familiar "snowball" bush with white flowers in June.

2 to 3 ft. -----\$1.75 3 to 4 ft. -----\$2.50

Wayfaring-Tree (*Viburnum lantana*). 9 ft. Unusual, leathery, dark green, crinkled leaves. Red berries that ripen to black follow the white flowers. An excellent, tall, full, border shrub.

2 to 3 ft. -----\$1.75 3 to 4 ft. -----\$2.50





Much charm of home grounds comes from the free use of flowering lilacs.

Lilacs for Fragrance and Beauty

The Lilac like the Rose is more closely wrapped up in the esteem and affection of the American Gardener. It offers so much fragrance, color, profusion of bloom and thick rich green foliage.

Throughout our northern states the Lilac thrives splendidly and quickly grows into a magnificent shrub. Dependable and absolutely hardy.

ENJOY THE NEW FRENCH LILACS

French Hybrid Lilacs are modern improvements of the old-fashioned lilac. The flowers are gorgeous in coloring and much larger in size. The French Lilacs bloom when young and bear year after year a profusion of delightful blossoms.

Selected French Lilacs

Alphonse Lavalle. Flowers double, of medium size, color blue changing to a lavender violet. Deeper within than without. Clusters large, shapely and compact. A recommended variety.
18 to 24 in. -----\$1.50 2 to 3 ft. -----\$2.50
3 to 4 ft. -----\$3.50

Belle de Nancy. Flowers large, double, developing into large compact clusters. Satiny pink in color. A splendid variety for both flower and foliage. Blooms in profusion.
18 to 24 in. -----\$1.50 2 to 3 ft. -----\$2.50
3 to 4 ft. -----\$3.50

Charles Joly. Flowers double, large. A very dark purple red with silver reflex. Clusters open of medium size. A favorite variety, one of the best all-around double dark colored French lilacs.
2 to 3 ft. -----\$3.00 3 to 4 ft. -----\$4.00

Charles X. A free flowering favorite. Flowers single of medium size, color reddish violet with a bluish tinge. compact clusters of medium size. One of the most free flowering of all French lilacs.
18 to 24 in. -----\$1.50 2 to 3 ft. -----\$2.50

Congo. Double dark red. Darkest of all.
2 to 3 ft. -----\$3.00 3 to 4 ft. -----\$4.00

Catherine Havemeyer. Large, double flowers, pink.
2 to 3 ft. -----\$3.00 3 to 4 ft. -----\$4.00

Ludwig Spaeth. Flowers single in large well filled clusters, very deep maroon-red. A free bloomer and of strong thrifty growth. A very popular variety and without question the best all-around dark colored lilac.
2 to 3 ft. -----\$3.00 3 to 4 ft. -----\$4.00

Marie Legraye. Flowers large, single, creamy white. Clusters of medium size. A strong, erect and very profuse bloomer. Note: this plant blooms when very young.
18 to 24 in. -----\$1.50 2 to 3 ft. -----\$2.50
3 to 4 ft. -----\$3.50

Michael Buchner. Flowers double, medium to large, color pinkish lilac differing from most varieties in the blending of its colors. Clusters long and narrow. A well known and one of the most popular varieties.
18 to 24 in. -----\$1.50 2 to 3 ft. -----\$2.50
3 to 4 ft. -----\$3.50

Madam Lemoine. Flowers large, double, pure white. Clusters narrow, medium to large. One of the most satisfactory and popular of the double whites. A very vigorous and dependable bloomer.
18 to 24 in. -----\$1.50 2 to 3 ft. -----\$2.50
3 to 4 ft. -----\$3.50

Miss Ellen Wilmott. Large flowers, double to very double. Creamy white in very large and long panicles. A strong grower and a free bloomer, generally rated as the best of the double white lilacs.
2 to 3 ft. -----\$3.00 3 to 4 ft. -----\$4.00

SPECIAL

Large specimen French Lilacs—Pink, White, Blue, Purple.

Bare root—each -----\$5.00
Balled and burlapped—each ----- 7.50

Lilac, Japanese Tree (*Syringa japonica*). Small tree in habit of growth. Flowers come in loose clusters of creamy-white, in June, 15 ft.
3 to 4 ft. -----\$3.00 4 to 5 ft. -----\$4.00

Persian Lilac (*Syringa persica*). 7 ft. Has small leaves and open graceful growth. Light purple flowers in May. Lacks the heavy coarse appearance of the common lilac.
2 to 3 ft. -----\$1.50 3 to 4 ft. -----\$2.00
4 to 5 ft. -----\$2.50

Purple Lilac (*Syringa vulgaris*). 10 ft. The old-fashioned, fragrant lilac. A hardy and dependable shrub that everyone admires. Offered also in white-flowering variety.
18 to 24 in. -----\$0.75 2 to 3 ft. -----\$1.50
3 to 4 ft. -----2.00 4 to 5 ft. -----2.50

Villosa Pink-Flowering Lilac. 10 ft. Unusually ornamental in rich dark foliage with pink-lilac flowers in June. A choice variety that flowers two weeks later than the other types.
2 to 3 ft. -----\$1.50 3 to 4 ft. -----\$2.00

WE INVITE YOU TO INSPECT OUR NURSERY AND GARDENS, 1200 ST. CLAIR AVENUE



"HOME LANDSCAPES" illustrates, suggests and tells you about many choice hardy trees, shrubs and plants, the growth and beauty of which you can enjoy right in your home yard. The varieties are those that are adapted to soil and climate of these North Central States.

Evergreens for the Open Lawn

The selection of Evergreens is an investment in dignity and permanence. Choose them carefully with an eye to the future. Give them plenty of room. Plant in well drained soil.

American Arborvitae	Austrian Pine
Dundee Juniper	Mountain Pine
Red Cedar	Black Hill Spruce
Douglas Fir	Colorado Spruce.

Evergreens for Around the House and Buildings

Plantings at the doorway and around the house foundation will delight you in all seasons with their green color. Do not crowd. Plant in fertile well drained soil.

Pyramidal Arborvitae	Savin Juniper
Siberian Arborvitae	Andorra Juniper
Chandler Silver Cedar	Mugho Pine
Pfitzer Juniper	Yew (Dwarf).

Lawn Trees

Careful thought given to selecting the best varieties for a particular use and location is important. They may be used as accent, for shade, shadows, and to supply flower, fruit and foliage.

Flowering Crabs	American Linden
Horse Chestnut	Mountain Ash
American Elm	Hackberry
Maples in variety	Red Maple

Early Flowering Trees

Flowering trees are a part of the glory of Spring. There is no waiting for a show of flowers and color. Recommended—Specimens. Flowering Crabs are outstanding.

Dolgo Crab	Mountain Ash
Flame Crab	Purple Leaf Plum
Hopa Crab	Dbl. Flowering Plum
Red Silver	Horse Chestnut

Shrubs for North Exposure of House

Alpine Currant	Snowberry white
Hydrangea arborescens	Bridal Wreath
Euonymus alatus	Dwarf Ninebark

Shrubs with Exceptional Flowering Qualities

This group contains many of the old favorites as well as many of the new varieties. Your border will be aglow with summer color when these varieties are planted in groups.

Dbl. Flowering Almond	Hybrid Rugosa Roses
Yellow Flowering Currant	Bridal Wreath
Honeysuckle in variety	Spiraea Anthony Waterer
Hydrangea, Large Flowering	Spiraea Snow Garland
Virginal Mockorange	Weigelia
Snowflake Mockorange	Dbl. Flowering Plum
Hybrid French Lilacs	Persian Lilac

Low Shrubs, for House and Border Plantings

Flowering and foliage shrub plantings near the house should consist of low and medium compact slow growing plants.

Green Barberry	Rugosa Roses
Red Barberry	Dwarf Ninebark
Alpine Currant	Spiraea Thunbergi
Golden Mockorange	Spiraea Anthony Waterer

Colorful Shrubs for Accent in the Border.

Use these shrubs in sunny exposure. They will spotlight the border and house plantings with exciting beauty. Plant in groups of three and five.

Red-leaved Barberry	Golden Mockorange
Euonymus alatus nana	Russian Olive
Variogated Dogwood	Golden Ninebark
Purple Leaf Plum	Tamarix

Fruiting Shrubs and Small Trees that Attract Birds

There are a number of plants which produce edible seeds and fruit attractive to birds. Following are the most important and ornamental.

Barberry	Euonymus
Cotoneaster	Honeysuckle
Dogwood	Snowberry
Highbush Cranberry	Russian Olive
Arrowwood	Mountain Ash

THE PARK NURSERIES — HOLM & OLSON, INC.

SAINT PAUL 2, MINN. and ROCHESTER, MINN.

A Chart of the Hardy Garden Flowers

This chart makes it easy to plan your flower plantings. The height of growth, general color and the season of bloom of the more popular perennials is shown.

SEASON					VARIETY NAME	HEIGHT IN FEET 1. 2. 3. 4. 5.	COLOR					
MAY	JUNE	JULY	AUGUST	SEPT. OCT.			WHITE	PINK	YELLOW	ORANGE	RED	BLUE
					ACHILLEA - BALL OF SNOW							
					ACONITUM - MONKSHOOD							
					ANCHUSA - ALKANET							
					ANTHEMIS - HARDY MARGUERITE							
					AQUILEGIA - IN VARS - COLUMBINE							
					ASCLEPIAS - BUTTERFLY WILD							
					ASTER - NEW ENGLAND							
					ASTILBE - HYBRID VARIETIES							
					BOCCONIA - PLUME POPPY							
					BOLTONIA ASTEROIDES							
					CAMPANULA - HARE BELL							
					CHRYSANTHEMUM - ALASKA DAISY							
					COREOPSIS - TICKSEED							
					DILPHINIUM - IN VARS - LARKSPUR							
					DIELYTRA - BLEEDING HEART							
					DIANTHUS - SWEET WILLIAM							
					DIANTHUS - SCOTCH PINK							
					FUNKIA - WHITE PLANTAIN LILY							
					FUNKIA - BLUE PLANTAIN LILY							
					GAILLARDIA - BLANKET FLOWER							
					GYPSOPHILA - BABY'S BREATH							
					HELIOPSIS - ORANGE SUNFLOWER							
					HEUCHERA - CORAL BELLS							
					HEMEROCALLIS - LEMON DAY LILY							
					HOLLYHOCKS - IN VARS.							
					IRIS - GERMANICA - IN VARS							
					LILIUM - TIGER LILY							
					LILY-OF-THE-VALLEY							
					LYCHNIS - JERUSALEM CROSS							
					LYTHRUM - LOOSESTRIPE							
					MONARDA - OSWIGO TEA							
					MYOSOTIS - FORGET-ME-NOT							
					PEONIES - IN VAR.							
					PAPAVER - ORIENTAL POPPY							
					PHLOX - IN VARS.							
					PLATYCODON - BELLFLOWER							
					PYRETHRUM - PERSIAN DAISY							
					PYRETHRUM - OX-EYE DAISY							
					RUDBECKIA - GOLDEN GLOW							
					SEDUM - STONE CROP							
					STATICE - SEA-LAVENDER							
					TROLLIUS - GLOBE FLOWER							
					YUCCA - ADAM'S NEEDLE							

Hardy Perennial Garden Special

35 to 40 ft.

5 ft.

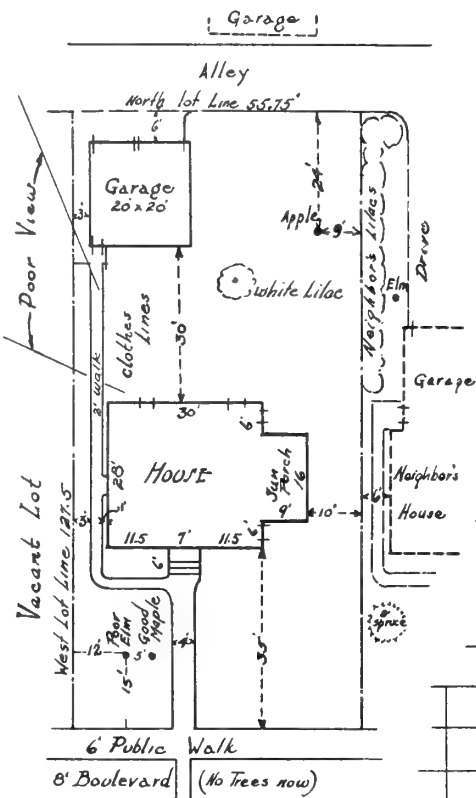
18 inches

- A 5 Delph. blue
- B 3 Peony pink
- C 5 Iris yellow
- D 3 Gaillardia
- E 2 Helenium
- F 3 Coreopsis yellow
- G 9 Phlox pink
- H 2 Fall Aster purple
- R 4 Shasta Daisy
- K 4 Gas plant pink
- L 5 Lythrum pink
- O 5 Iris white

Special\$27.00

LET PARK NURSERIES HELP YOU PLAN

Make full use of our experienced designers. Send us a sketch, measurements and if possible a photo of your house and grounds. For the average city lot send us the information as indicated on the adjoining plan. Show the size of grounds or that part of the grounds you are planning to improve and plant, location of drive, walks, house, garage, trees and present plantings. This information will enable us to furnish you with a detailed planting plan. This cross-section page is to be used for making survey. Scale—one square equaling a definite unit of measure.



EXAMPLE OF SURVEY

**Plant
Ever-Blooming
Hybrid
Tea Roses**



ILLUSTRATED and described are the choicest and most popular varieties of Hybrid Tea Roses. These varieties are northern grown, reliably hardy, and will furnish a generous supply of flowers throughout the growing season. No garden is complete without them, in fact, they are indispensable.

PRICES—Strong Plants—started and growing in pots—\$2.50 each; 5 for \$12.00, 10 for \$22.00. Not mailable.

Pink and Rose Colors

- BETTY UPRICHARD.** Very fragrant flowers of salmon-pink tinted with copper pink on outside. Long-pointed buds.
- COUNTESS VANDAL.** Lovely, coppery pink and gold, with long, pointed buds. The outstanding favorite in two-tone pinks.
- DAME EDITH HELEN.** A brilliant soft pink. Long pointed buds and huge, full flowers. Highly perfumed.
- PICTURE.** Velvety clear rose-pink with undertones of salmon. Very double.
- RADIANCE.** Large, double blooms of bright rose pink. A popular variety that succeeds everywhere. Long blooming season.

Scarlet and Crimson Roses

- CRIMSON GLORY.** Large, full, deep velvety crimson. Fragrant. Continuously in bloom.
- ETOILE DE HOLLANDE.** Large, bright crimson red. Free bloomer. The most popular red garden rose. Well-formed flowers.
- RED RADIANCE.** Bright rosy red. Very large full flowers on a vigorous plant. Very free in blooming.
- ROSE OF FREEDOM.** Long stemmed, current red blooms.

White Monthly Roses

- KAISERIN AUGUSTE VIKTORIA.** Creamy buds developing into bright snow-white blooms. Fragrant. The perfect white rose.
- FRAU KARL DRUSCHKI.** This is the ideal hardy white rose; pure in color, perfect in form, strong grower, Hybrid Perpetual.
- SNOWBIRD.** Most prolific, pure white rose. Full petaled and perfectly formed.

Yellow and Copper Shades

- GOLDEN DAWN.** Very double, fragrant lemon-yellow blossoms. Remarkably fine foliage. Vigorous and free-flowering.
- HINRICH GAEDE.** Bud pointed, nasturtium red opening orange-yellow with nasturtium yellow glow.
- PRESIDENT HOOVER.** Long pointed buds opening to various shades of orange. Spice fragrance.
- SISTER THERESE.** Bud long pointed; flower very large, semi-double, cupped. Golden yellow, edges spotted madder carmine. Good foliage.
- TALISMAN.** Fragrant flowers of glowing golden-yellow, tinted copper, red and orange. The most vividly colored rose.

THE REASONS WHY PARK NURSERIES PREPARED, POTTED ROSES ARE BETTER

These **Specially Prepared Roses** are all carefully selected 2 and 3 year old field plants. They have been started early in 6 inch pots and are in healthy, active growth when you receive them. Plant them right into your garden and they will produce results quickly. **With these started potted rose plants you are certain of beautiful roses to enjoy this season.**



The New "Patented Roses"

**WE SUPPLY THESE NEW ROSES IN POTTED, GROWING
PLANTS SURE TO BLOOM FOR YOU THIS SEASON**

CHARLOTTE ARMSTRONG (Patent No. 455). Brilliant blood-red on long stems opening to spectrum-red.

Potted plants -----\$2.50 each

CHRYSLER IMPERIAL (Plant Pat. No. 1167). Vivid rich tones of crimson with lustre of garnet in the folds.

Potted plants -----\$3.50 each

DIAMOND JUBILEE (Patented). Double, high centered flowers of glowing buff-orange with a touch of orange yellow at base.

Potted plants -----\$2.50 each

HELEN TRAUBEL (Patented). Sparkling pink changing to luminous apricot. Vigorous.

Potted plants -----\$3.00 each

MOJAVE (Plant Pat. No. 1176). A. A. R. S. 1954. Color is a blend of salmon, apricot and orange, varying with the weather.

Potted plants -----\$3.50 each

PEACE (Plant Pat. 591). All-American Rose selection for 1946. Distinguished by the changing colors through which it passes—yellow, gold, cream, ivory, white and pink.

Potted plants -----\$3.00 each

SUTTER'S GOLD (Patented). A. A. R. S. for 1950. Beautiful, long pointed yellow bud, richly shaded with orange and red. Rich tea fragrance.

Potted plants -----\$2.50 each

TIFFANY (Patented). All America Rose selection for 1955. Long pointed buds of deep pink with golden yellow shading at base. Outstanding fragrance with exceptional lasting qualities.

Potted plants -----\$3.50 each

The Floribunda Roses

The Floribunda Roses are small size bushes, very popular because of their dwarf size and heavy flowering. The roses are borne in full clusters and are in bloom continuously throughout the summer.

CIRCUS (Patent No. 1382). New multicolor Floribunda. Yellow, with tight buds marked with red, changing to orange, scarlet and pink. Only winner A.A.R.S. award for 1956.

Potted plants -----\$3.00 each

EUTIN. Glowing carmine red. Very free blooming on strong stems.

Potted plants -----\$2.50 each

FASHION (Patent No. 789). Single, brilliant luminous coral flowers overlaid with gold.

Potted plants -----\$2.50 each

GARNETTE. Petite red sweetheart roses.

Potted plants -----\$2.50 each

GOLDILOCKS (Patent No. 672). Rich golden yellow, long lasting and vigorous.

Potted plants -----\$2.50 each

JIMINY CRICKET (Patented). Tangerine red buds opening to coral orange, finishing in pink. Free flowering, long lasting. A.A.R.S. award for 1955.

Potted plants -----\$3.00 each

PINOCCHIO (Patent No. 484). Abundance of pointed buds of salmon-flushed gold, opening to miniature hybrid tea like rose.

Potted plants -----\$2.50 each

RED PINOCCHIO (Patent No. 812). A welcome addition to the Pinocchio family. Color is a rich carmine acquiring a velvety cast as flower opens.

Potted plants -----\$2.50 each

VOGUE (Patent No. 926). Unique brilliant glowing cherry-coral color, opening slowly from a dark cherry ovoid bud. Rich spicy fragrance. A. A. R. S. award for 1952.

Potted plants -----\$2.50 each

WHITE BOUQUET. (Patent No. 1415) 1957 A.A.R.S. Award winner. Lovely white floribunda with 4-5 inch gardenia like blooms, in clusters and individual blooms. Sweet spicy fragrance.

Potted plants -----\$3.00 each

Hardy Rugosa Roses

The new Rugosa Roses are full and double, sweetly fragrant and the flowers appear abundantly and almost continuously from June until October. The plants are particularly valuable for hardiness, healthiness and ability to thrive under most adverse conditions of soil and climate, withstanding Minnesota winters without covering.

We offer strong, dormant plants that will bloom this year.

PRICES—STRONG PLANTS \$2.00 EACH.

AGNES. Double, open, fragrant, pale amber, deeper center, short stem.

AMELIA GRAVEREAUX. Bud ovoid, flowers double, carmine, shaded red. Strong stem. Foliage large.

BELLE POITEVINE. Bud long-pointed. Flowers large, semi-double, open, rose pink to magenta pink. Recurrent bloom. Bushy.

F. J. GROOTENDORST. Small open-double, bright red flowers, edges serrated like a carnation; cluster flowered. Foliage small, wrinkled, dark.

HANSA. Double, fragrant, wine red flowers. Handsome dark green foliage. Sturdy growth and long season of bloom.

HUGONIS. An early flowering shrub rose with sprays of light yellow roses along the graceful branches.

RUBRIFOLIA. A hardy rose with red leaves all summer. Blossoms are a bright pink followed by red fruits.

SARAH VAN FLEET. Large, semi-double, open, cup shaped flowers; wild rose pink. Foliage leathery. Blooms throughout the season.

SIR THOMAS LIPTON. Double, cup shaped, fragrant white flowers. Seasonal and recurrent bloom.

The Climbing Roses

For House-Wall and Garden-Trellis

Plant Climbing Roses near the porch or on the house walls to have their fragrance and color close at hand. Use them in the garden to decorate lattices, arbors, pillars, pergolas and as festoons over walls.

PRICES—POTTED, GROWING CLIMBERS, EACH \$2.50

BLAZE. (Plant Patent No. 10). A marvelous everblooming scarlet red climbing rose, vigorous grower and blooms over a long season.

CLIMBING AMERICAN BEAUTY. Large, double flowers of bright rose pink.

DOROTHY PERKINS. Big clusters of soft, shell-pink roses. Flowers profusely.

GOLDEN SHOWERS. (Patented) A.A.R.S. for 1957. Vigorous six to eight foot plants with masses of good sized rich yellow blooms all summer.
Potted plants -----\$3.50 each

NEW DAWN. (Plant Patent No. 1). Everblooming climber; large exquisite flowers of delicate pink on long stems. Fragrant.

PAUL'S SCARLET CLIMBER. Loose clusters of large-sized, double flowers of bright scarlet red. Unexcelled brilliance.



SPECIAL COLLECTION — DOUBLE FLOWERING RUGOSA ROSES

Hardy Roses that bloom all season. Need no winter covering. Plant them in a sunny spot near house or in the garden.

1 BELLE POITEVINE—Rosy Pink

1 HANSA—Wine Red

1 GROOTENDORST—Crimson

1 SIR THOS. LIPTON—White

4 STRONG STURDY PLANTS TO

BLOOM THIS YEAR -----\$7.00

Tree Roses

Tree Roses give added interest to any garden. Strong plants on 3 to 4 foot stems, available in pink, red or yellow.

Potted plants -----each \$7.50

When shipped, add \$2.00 for packing.

**WE INVITE YOU TO VISIT
OUR NURSERY AND GARDENS.**

Select your Roses at PARK NURSERIES, 1200 St. Clair Ave.



Hardy Garden Lilies

The Royal or Regal Lily, one of the most beautiful and hardiest lilies grown in Minnesota
—worthy of a place in every garden.

Lilies are so beautiful that everyone who sees them at once wishes to grow them. There is no reason why the Lilies mentioned here should not be grown in all gardens. They are hardy and easily grown. No garden is complete without them.

THE LARGE-FLOWERING LILIES

Our specially-prepared, potted and growing Lilies are sure to bloom. The graceful growth and gorgeous flowers make the Lilies the attraction spot of the garden.

When planting remove from pot and plant the earth ball 5 inches below ground level.

AURATUM. GOLDBANDED LILY. 3 ft. Fragrant white flowers spotted crimson with central yellow band. Red anthers. July and August. **Started and potted plants, \$1.25 each; 6 for \$7.00.**

REGALE. REGAL LILY. Large fragrant white flowers that are striped pink outside and have yellow shadings within the cup. July. Large bulbs, 75 cts.; **Started plants, \$1.00; 6 for \$5.50.**

SPECIOSUM RUBRUM. CRIMSON SPOTTED LILY. 3 ft. A fragrant lily, under-color white, shaded and spotted with crimson. August and September. **Started potted plants, \$1.25; 6 for \$7.00.**

Lily Elegans. ORANGE CANDLESTICK LILY. 18 in. Very hardy variety producing orange-red flowers in great numbers. July. Bulbs, 50 cts. each.

Lily Tigrinum, fl. pl. DOUBLE TIGER LILY. 3 to 4 ft. An improved variety of this old favorite. Orange-red spotted black. July and August. Large bulbs, 50 cts. each.

***FUNKIA (Hosta) caerulea.** BLUE PLANTAIN LILY. 3 ft. Lavender-purple flowers, striped with lighter color. July. Bold, dark green foliage. 60 cts. each.

FUNKIA GLAUCA. Large blue-gray leaves. Makes a fine specimen plant in the border. 75 cts. each.

Funkia Subcordata. WHITE PLANTAIN LILY. 18 in. Fragrant white, lily-like flowers in August and September. Bright glossy foliage. 85 cts. each.

***Funkia Variegata.** STRIPED PLANTAIN LILY. 15 in. Broad, waxy foliage, beautifully variegated with white. Very attractive border plant. Blue flowers in July. Stands shade. 60 cts. each.

LILY-OF-THE-VALLEY. 8 to 10 in. Pure white dainty bell-shaped flowers in May and June. Bulb clusters, 40 cts. each. Heavy clumps, 60 cts.

THE HEMEROCALLIS—Day Lily

Hemerocallis are very valuable for planting in borders, in the cut flower garden and for utilizing in moist and shady positions. They are especially valuable where tones of yellow and orange are desired during the summer and early autumn.

Hemerocallis Dumortieri. Striped Day Lily. 20 in. A medium height, rich cadmium yellow lily with brown stripes on the outside of flower. Blooms in June. 50 cts. each.

Anna Betscher. 3 ft. Round, broad-petaled, rich buttercup yellow. Blooms in July. 75 cts. each.

Flava. Lemon Day Lily. 2½ ft. Sweetly scented, lemon yellow flowers on strong stems, blooming in June. The old fashioned Lemon Lily. 50 cts. each.

Goldeni. 3 to 4 ft. Well rounded, deep golden yellow flowers blooming in July. 75 cts. each.

Hyperion. 3 to 4 ft. The giant flowers of lemon yellow, borne on strong stems makes it the outstanding yellow lily in the garden. Hardy, free-flowering. Blooms in late July. \$1.00 each.

Judge Orr. 3 ft. A large-flowering, tall, free blooming, golden yellow lily, in June. A sure bloomer. 50 cts. each.

Margaret Perry. 3 ft. A tall, stately stem. Pale yellow flowers. Blooms in July. 50 cts. each.

Middendorfi. 2 ft. Rich yellow lilies in July. Same color as Flava, yet blooms a month later. 50 cts. each.

Mikado. 3 ft. Rich orange with large spot of mahogany red on each petal gives striking contrast. Blooms in June. 75 cts. each.

Thunbergi. 2½ ft. A late, free-flowering yellow, blooming in July. 50 cts. each.

DAY LILY COLLECTION

A collection of six different Day Lilies to bloom from May to August, including 1 Hyperion, considered the best yellow. All are very graceful, free flowering and hardy.

SPECIAL GROUP—6 Plants.....Price \$2.50

Iris

RICH IN COLOR

PROFUSE IN
FLOWERS



"ORCHIDS OF THE GARDEN" is a name often given to the hardy Iris. Everyone succeeds with Iris for it will thrive and bloom abundantly in most any soil. There are few garden flowers that are as gay and colorful.

In the new varieties you will find richer blues, purer reds, better pinks, and larger yellows.

PLANTING DIRECTIONS—Plant the roots just below the surface in an open, sunny spot. Protect with a light covering of hay or straw in late fall.

The varieties are grouped according to color effect.

Red-Toned Iris

Price Each

Casa Moreno —Rich coppery brown	\$1.50
Cheerio —(S) Lustrous gold, (F) rich velvety red50
Copper Lustre —Copper toned overlaid with golden iridescence50
Dauntless —Brilliant bronze-red effect. Large self color.....	.50
Elmohr —Rich mulberry red	1.00
Indian Chief —Gorgeous red50
Ranger —Brilliant crimson red	1.50

White Iris

Crystal Beauty —Gorgeous stately pure white	\$0.50
Lady Mohr —(S) Oyster white. (F) Greenish yellow.....	1.00
Los Angeles —Snowy white with blue touch. Giant flowers..	.75
Snow King —Giant white50
Wabash —Standards white, falls ultramarine	1.00
White Queen —A fragrant snow white50
Winter Carnival —Large, flaring, pure white.....	1.00

Dark Blues and Purples

Black Forest —The blackest Iris	\$2.00
Missouri —Large, tall, true blue75
Sierra Blue —Tall, soft enamel like blue50
Winneshiek —Large velvety dark blue violet50

Light Blue Iris

Great Lakes —Pure clear blue	\$1.00
Princess Beatrice —Silvery blue-lavender50
Sensation —Remarkable crisp corn-flower blue75
Wm. Mohr —Immense frilled flower of soft lilac and violet.....	.75

Brown-Purple Iris

Depute Nomblot —Purple, bronze and claret-crimson.....	\$0.50
Evolution —Bronze buff and heliotrope blue50

SPECIAL—RAINBOW IRIS COLLECTION

A choice collection of colorful Iris. **Eight strong roots**—one each of **pink-toned, white, red-toned, lavender, yellow, blue, purple** and **pastel**. All roots carefully labeled.

A "Rainbow Collection"—**8 plants (\$4.00 value) for...\$3.50**
(Parcel postage 50 cts. extra.)

Pink-Toned Iris

Price Each

China Maid —Gigantic pink, blended copper and gold.....	\$0.75
Dream —Lovely rose-pink with orange beard50
Frieda Mohr —(S) Light pink-lilac; (F) lilac rose.....	.50
Inspiration —Vivid rose toned.	1.00
Morocco Rose —Large, rose pink75
Mulberry Rose —Radiant mulberry rose-deep pink	1.00
Rameses —A new pink-buff blend.....	.50

Yellow Iris

Gold Imperial —Clear yellow with bright orange beard	\$0.50
Golden Majesty —Rich deep golden yellow on 3 ft. stems....	1.00
Talisman —Blend of yellow and peach rose shades50

"IRIS ORCHIDS" COLLECTION

Superb New Varieties that Excel in Size and Color

Buechley's Giant —A giant in size and bloom, medium blue...\$0.50	
Indian Chief —Gorgeous red50
Grand Canyon —Deep colored blend of plum, copper and gold, reminding one of the Grand Canyon75
Gudrun —Large snowy white60
Jean Cayeaux —Great flowers of orange buff and brown.....	.75
Mrs. J. L. Gibson —Rich velvety dark blue50
Mulberry Rose —Radiant mulberry rose-deep pink	1.00
Pink Opal —Large, clear satiny pink75
Sable —Deepest black-blue	1.00
Sunset Serenade —Golden tan and apricot	1.00
Special Collection 1 each 10 varieties	5.00

Early Flowering Dwarf Iris (Pumila)

The very early flowering low growing Iris. They multiply rapidly, bloom profusely and take care of themselves. Well suited for Rock Gardens and border planting.

Colors—choice of yellow, blue, purple and white. Each 40 cts.

For shipments by Parcel Post please add 6c per root to Iris for postage.

Choice Peonies

PEONIES LEND THEMSELVES ADMIRABLY TO BORDER PLANTING

A collection of many of the world's finest Peony creations are listed here at moderate prices. We supply Peonies in the best planting size—all strong healthy 3 to 5 eye divisions and all freshly dug.

PLANTING PEONIES—Plant peonies in beds and borders. Most useful and valuable as accent and fillers in the perennial garden.

Plant in good soil with the top of the roots about 2 inches under the surface of ground.

QUANTITY PRICE—5 or more Peonies (your selection) sold at 10% discount from the each price.

For parcel post shipments add 10c per root.

RED DOUBLE-PEONIES

Karl Rosefield —Rich, glowing crimson. Large flowers.....	\$1.25
Longfellow —Cherry, with crimson tones. Strong stems	1.25
Lora Dexheimer —An intense flaming crimson-red	1.25
Mary Brand —Abundant blooming; clear red. Long lasting	1.25
Mons. Martin Cahuzac —Darkest maroon-red peony	3.00
Mr. L. Van Leeuwen —Light crimson; abundant bloomer	1.25
Tenuifolia Fl. Pl. —(FERN-LEAF PEONY). Very early, double crimson with fern-like leaves. Blooms in late May	5.00

Should be planted in late August. Order now for delivery at proper time.

WHITE DOUBLE-PEONIES

Alsace Lorraine —A rich, creamy-white. Mid-season.....	\$1.25
Avalanche —Large cone-shaped ivory-white. Strong grower	1.25
Enchantresse —Big, globular, late creamy-white. Showy.....	1.25
Festiva Maxima —Splendid white with crimson flakes.....	1.25
Frances Willard —Mid-season, exquisite pure white	1.25
Mme. Jules Dessert —Cream tinted with buff and salmon.....	1.25
Mons. Dupont —Large flower with crimson blotch. Tall.....	1.25
Mrs. A. M. Brand —Large, glistening, fragrant, pure white.....	3.00

THE NEW SINGLE PEONIES

Unusually Lovely Flowers of Great Charm and Beauty

The outer row of large petals surrounds a center of smaller petals or brilliant yellow stamens. The flowers are strikingly decorative both in the garden and for cutting.

Albiflora —Silky white with yellow center. Fragrant.....	\$1.25
Exquisite —Pure white border petals with center of white and yellow. Sturdy growth	1.25
Le Jour —Largest single white peony. Gold center	1.25
Mikado —Crimson. Like a giant red poppy	1.25
Pride of Langport —Brilliant soft peach-pink, very large.....	1.25

HOME-YARD PEONY COLLECTION

A selected assortment of six choice, large-flowering, double Peonies. 6 varieties, all different,—2 white, 2 pink, 2 red.
SPECIAL PRICE—6 Choice Plants.....\$5.00 (Postage 50c)

We suggest this as a pleasing group of fine Peonies for those who want choice flowers and are unfamiliar with variety names.



Double White Avalanche



Single Early Mikado

PINK DOUBLE-PEONIES

Claire Dubois —A globular, clear violet-rose. Late.....	\$1.25
Florence Macbeth —Very large, soft blush-pink.....	2.00
Kelway's Queen —Large double, bright rose pink.....	1.25
La Fee —A strikingly beautiful soft, pink blend	1.25
Lilian Gumm —Large rose pink	1.25
Martha Bulloch —Enormous, shell-pink fragrant flowers	2.50
Mons. Jules Elle —Enormous, shell pink fragrant flowers.....	1.25
Mrs. John Kleitsch (New) —A glorious, fragrant, deep rose pink	2.00
Myrtle Gentry (New) —Clear pink with salmon tint. Fragrant	2.00
Phoebe Cary —A large, soft, rose pink. Fragrant	1.25
Reine Hortense —Delicate pink with crimson flecks.....	1.25
Sarah Bernhardt —Bright apple-blossom pink, silver tipped....	1.25

Hardy Garden Phlox

FOR COLOR IN
YOUR GARDEN



The Phlox is without doubt the most colorful and most popular of all the perennials. The showy flowers are the brightest spot in the garden during middle to late summer.

The recent Phlox introductions are marked improvements over the older types. We offer a very careful selection of the better and newer varieties.

PLANTING—Plant phlox in well drained enriched soil. Never let plants go to seed, never water overhead. Keep plants well watered by letting hose run slowly on the ground. This prevents mildew. Space phlox roots 12 to 15 inches apart and cover the roots with 1½ inches of soil.

The Red Phlox

- Augusta (New Plant Patent).** The finest, vividly colored American Beauty red phlox. 85c each.
- B. Come.** A deep shade of red-plum. Tall growing.
- Beacon.** A pleasing cherry-red. Tall growing. Large flowers.
- Charles Curtis.** Sparkling sunset red. Does not fade or discolor.
- Flash.** A new, brilliant color. Flaming scarlet that is often vermilion. Large flowers freely produce.
- Leo Schlageter (New).** One of the most pleasing full rich scarlets with orange cast. Tall. 3 ft.
- R. P. Struthers.** A choice soft red. Tall and free blooming.

Lavender and Blue Phlox

- Caroline Vandenberg (New).** Very large flowers of light-blue tones.
- Miss Eibel Pritchard.** A new French-mauve colored phlox. General color effect is light blue. Good sized flowers in large clusters.

The White Phlox

- Bridesmaid.** White flowers with a crimson-carmine eye.
- F. G. VonLassburg.** Medium height, free flowering white.
- Mary Louise (New).** Pure white, exceptionally large. Good grower, free bloomer, medium height. 85 cts. each.
- Miss Lingard.** Very early blooming and fragrant. Glossy green foliage. Immense heads of white flowers. 85c each.
- Mrs. Jenkins.** Large flowering, pure white.

PRICES OF PHLOX (Unless otherwise noted)
Strong plants—75c each.
3 of one variety for \$2.00
(For shipment by parcel post add 10% for postage.)

The Pink Phlox

- Cheerfulness (New).** 3 ft. Sparkling salmon orange.
- Daily Sketch (New).** English novelty. Grows to 3 ft. Big flower heads with extra large florets. A bright salmon pink with vivid crimson eye.
- Enchantress.** A strong-growing plant with clear salmon-pink flowers that have a darker eye.
- Lilian.** Soft cameo pink. Strong grower.
- Mrs. I. F. Farrington.** Delightful salmon shade, darker eye.
- Pantheon.** Deep salmon-pink petals with lighter centers.
- Rheinlander.** A very beautiful salmon-pink with deeper center. Flower heads are large and held on strong stems.
- Rijnstroom.** A lovely rose-pink, much like Paul Neyron rose. Very large flower heads. Strong grower.
- Thor.** Rich, salmon-pink with crimson eye.

The Dwarf Early Phlox

For Borders and for Rock Gardens

- PHLOX SUBULATA.** A mass of bloom in early spring covers the delicate moss-like foliage. Excellent for rockery and border, and invaluable for carpeting the ground or covering graves.
- Lilacina—Pink—White**50c each; 3 for \$1.25
- "VIVID" (New).** An improved early, dwarf pink with unusually Brilliant clear pink flowers60c each.
- PHLOX DIVARICATA (Wild Sweet William).** Large fragrant lavender flowers on 9 inch stems in April and May. Likes shade. Ideal for ground cover between Tulips, edging for spring flowering borders50c each; 3 for \$1.25

SPECIAL—HOME YARD PHLOX COLLECTION

Ten field-grown roots, 2 each of 5 popular varieties—light pink; white; deep pink; red and lavender.
SPECIAL GROUP PRICE—10 Plants.....\$6.00
(Postage 50 cts. extra.)



Hardy Garden Flowers

EARLY SPRING UNTIL LATE FALL

THE interest in hardy flowers was never so wide spread as at the present time. The reason is—Flowering perennials are the backbone of the flower garden, most of them repeating faithfully each year with a minimum of attention. These plants live in the open ground. Many are useful as cut flowers, others for border displays or the Rock Garden. The best effect is usually produced by setting the plants out in separate groups of three or five of one variety.

You will find listed here not only the older favorites but many new, choice varieties and novelties. Dependable and hardy all through the North.

Park Nurseries Perennials are sturdy 2 year old, field-grown plants that are dug freshly to your order. We make no attempt to compete with the ordinary offerings of Perennial plants. We grow and distribute the better strains of quality plants. Come to the Nursery and see our plants.

ROCK GARDEN PLANTS. Varieties marked with a star () are adapted to rockeries.

1957 PRICES FOR PERENNIALS

(unless otherwise noted)

Strong 2 yr. field plants 50 cents each; 4 of one variety \$1.75

Extra size, 60 cents.

(For shipment by parcel post add 10%)

ACHILLEA. PERRY'S BALL-OF-SNOW. 1½ ft. Pure white flowers like a small pompon chrysanthemum. Blooms June to September.

ACONITUM fischeri. MONKSHOOD. 3 ft. Strong spikes of dark blue, helmet-shaped flowers. September and October. 60 cts.

ALASKA DAISY. Large white and yellow daisy.

***ALYSSUM saxatile compactum. GOLDEN TUFT.** 12 in. Masses of yellow flowers in early spring. For rockery or border.

ANCHUSA italica, Dropmore. ALKANET. 4 to 5 ft. Turquoise blue flowers in June and July. Large heavy leaves.

***Anchusa Myosotidiflora.** 12 in. Unusual perennial from Russia. Light blue, forget-me-not flowers rise above the clump of heart shaped leaves. Sun or shade. Blooms May and June. 60 cts.

***ANEMONE pulsatilla. PASQUE FLOWER.** 9 in. Cupped flowers of violet to purple in April and May. 60 cts.

ANTHEMIS tinctoria kelwayi. HARDY MARGUERITE. 1½ ft. Daisy-like flowers of golden yellow. June to October.

Aquilegia chrysantha. GOLDEN COLUMBINE. 2 ft. Yellow flowers with long spurs. June to August.

Aquilegia, "Crimson Star." (New). 2 ft. Entirely new color in Columbines—crimson and white combination. Unusual and effective. Large flowers.

Aquilegia helenae. BLUE COLUMBINE. 1½ ft. June to August. Bright blue with long white spurs.

Aquilegia Hybrids. Long-spurred flowers in a variety of beautiful colors. Choice for garden display or cutting.

ARTEMISIA lactiflora. 3 to 4 ft. MOUNTAIN FRINGE. Plumes of sweetly scented creamy white flowers. August to September.

***ARABIS alpina. ROCKCRESS.** An early blooming dwarf border plant. Covered with white flowers in April and May.

Chrysanthemums

FOR

LATE SUMMER

AND EARLY FALL COLOR



Aster, "Amethyst." 3 to 4 ft. Purple-blue flowers produced by the hundreds in September and October. 60 cts. each.

Aster, Blue Gem. Double blue flowers. 3 ft. 60 cts. each.

Aster Frikarti. New. 3 ft. Large, lavender-blue asters from July to frost. A delightful flower for display and cutting. 75 cts. each.

Aster novae-angliae. NEW ENGLAND ASTER. (Michaelmas Daisy). 4 to 5 ft. Hardy purple Aster. September and October. 60 cts. each.

Aster, Lil Fardell. 4 to 5 ft. Showy flowers are rich, mauve pink. September and October. 60 cts. each.

Aster, Mt. Everest. (New). 3 ft. Pyramids of pure white, which flower right down to the ground. September. 60 cts. each.

Aster, Red Rover. (New). 3 to 4 ft. Deep rosy red flowers with golden center. A novelty for the fall garden. September. 60 cts. each.

ASTILBE "Betsy Cuperus." (New). 4 ft. Dainty flowers of white with pink centers in graceful spikes 18 inches long. June. \$1.00 each.

Astilbe, "Peach Blossom." (New). 2 ft. Bears long plumes of delicate light-pink flowers. Excellent flower border plant. June. \$1.00 each.

BABYSBREATH. See *Gypsophila*, page 26.

BLEEDING HEART (*Dicentra spectabilis*). 18 in. Rose-crimson heart-shaped flowers. The old garden favorite. April and May. 85 cts; extra size, \$1.00.

***CAMPANULA Carpatica.** CARPATHIAN HAREBELL. 8 to 10 in. Bell-shaped, light blue flowers in July and August.

***CAMPANULA Calycanthema.** CUP-AND-SAUCER. 3 ft. Erect plants. Large cup and saucer flowers. June and July. Colors mixed in rose, white and blue.

Campanula medium. CANTERBURY BELLS. 3 ft. A biennial. Large bell-shaped flowers of rose, blue and white. July.

CENTAUREA montana. PERENNIAL CORN-FLOWER, 1½ ft. Violet blue flowers. July to September.

CLEMATIS Mandschurica. 3 ft. Bears abundantly attractive white Clematis flowers, July to September. Unexcelled for cutting. Always attracts attention. Strong plants, 75 cts. each.

COREOPSIS Lanceolata grandiflora. TICK-SEED. 2 ft. Golden yellow flowers on long graceful stems from June until frost. Fine for cutting.

DAISY, Alaska. 12 to 15 in. An improved Daisy that blooms in middle to late summer. White flowers with yellow center.

Daisy, Shasta. 18 in. The popular June flowering white daisy.

NEW HARDY GARDEN CHRYSANTHEMUMS

Your garden can afford to be extravagant with the New Fall flowering Chrysanthemums. They are most attractive in pastel colors, easy to grow and bloom profusely. Extend your flowering season six weeks by planting these new gems of the garden.

Cushion mums. Low growing, 10 to 12 in. high, spreading to 2 ft. or more, forming cushions of bloom. Start flowering early in September. **Bronze, Pink, Red, White and Yellow.** 50 cts. each; 3 for \$1.25.

EARLY LARGE FLOWERING

SPECIAL MUM COLLECTION

Early blooming, large flowering kinds in yellow, bronze, red, lavender and pink. 35 cts. each; 3 for \$1.00. Collection of one each, six different varieties ----- \$2.00

DAPHNE CNEORUM

A low evergreen shrub, spreading habit, covered with rose pink flowers. Blooms from early Spring through late Fall. Very fragrant. Used in the flower border.

10 to 12 in. plants B & B-----\$3.00

WE INVITE YOU TO VISIT OUR NURSERY GARDENS, 1200 ST. CLAIR AVENUE



No home landscape is complete without hardy garden flowers. A garden of perennials is a continuous pleasure from early spring until late fall. They give great satisfaction when arranged in clumps, masses and drifts of one kind.

DELPHINIUM (Larkspur)

The Delphinium (Larkspur) of today possesses a beauty and dignity of its own. It is without rival, a plant of tall habits and erect. Flower spikes blue and freely borne.

Delphinium Belladonna. 3 to 4 ft. The finest and most continuous blooming of all, never being out of flower from the end of June until cut down by hard frost. The turquoise blue of its flowers is not equaled for delicacy and beauty by any other flower. 60 cts. each.

Delphinium Bellamosum. 3 ft. Color deep blue, with white eye. Free blooming habit. 60 cts. each.

Delphinium LaMartine. 4 ft. Flowers deep blue with white eye. Strong stems, good for cutting. 75 cts. each.

Delphinium "H & O Hybrids." 4 to 5 ft. Our own selected strain of large flowering Larkspurs in a wide range of light and dark colors. 75 cts. each. 4 for \$2.75.

Delphinium "New Hollyhock." Very full, spire shaped (like a hollyhock) heads of single and double flowers in many shades of blue; no two alike. Tall and sturdy growth. The best of the Hybrid selection. 75 cts. each. 4 for \$2.75.

***Dianthus Plumarius.** CLOVE PINK. 9 in. The fragrant white to scarlet flowers bloom in early summer. Grass-like leaves.

DICTAMNUS Fraxinella albus. WHITE GAS PLANT. 3 ft. Heavy spikes of white flowers in June and July. Flowers and foliage intensely aromatic. Especially useful where Lupines do not thrive. \$1.00 each.

Dictamnus Fraxinella. GAS PLANT. 3 ft. Heavy spikes of deep pink, purple-veined flowers in June and July. Flowers and foliage both fragrant. \$1.00 each.

***DICENTRA Eximia.** PLUMY BLEEDING HEART. 9 to 12 in. Rosy pink heart-shaped flower in bloom from May through August. Delicate, finely cut foliage. 75 cts. each.

Dicentra Spectabilis. BLEEDING HEART. 18 in. 85 cts. each; extra size, \$1.00.

DIGITALIS. GIANT SHIRLY FOXGLOVE. 4 ft. Long flower heads of bell-shaped blossoms. Colors, rose, shell pink and blue mixed. July.

***EUPHORBIA Polychroma.** A rare border and rock garden plant. Grows to 1 ft. in compact form. Covered in June with lemon-yellow rose-like flowers.

***FERNS, Hardy.** We offer a selection of the best strong-growing native hardy ferns suitable for yard planting. 60 cts. each.

***FORGET-ME-NOT (Myosotis semperflorens).** 10 in. Dainty blue flowers with yellow eye from May to September. Fine dwarf border plants. Likes shade and moist places.

FUNKIA—See page 20.

GAILLARDIA Grandiflora. BLANKET FLOWER. 2 ft. Rich red and crimson petals with broad border of yellow. June to October. Unsurpassed for cutting.

GYPSOPHILA Paniculata. BABYBREATH, 2 to 3 ft. Unexcelled cut flowers. Tiny white blossoms cover the plant through July and August.

DOUBLE BABYBREATH Gypsophila. BRISTOL FAIRY. Full, double, snow-white flowers in large sprays. True, grafted variety. \$1.00 each.

HELENIUM autumnale superbum. YELLOW STAR. 4 to 5 ft. Golden-yellow flowers in August and September. 60 cts. each.

HEMEROCALLIS—SEE PAGE 20

1957 PRICES FOR PERENNIALS

(unless otherwise noted)

Strong 2 yr. field plants 50 cents each; 4 of one variety \$1.75

Extra size, 60 cents.

(For shipment by parcel post add 10%)



For Color, Fragrance, and Profusion of Bloom, Plant More Perennials

***HEUCHERA Pleu-de-Feu.** ALUMROOT. 18 in. Tuft of handsome evergreen leaves with delicate, crimson flower bells on slender stems. July. 60 cts.; extra strong, 75 cts.

***Heuchera Sanguinea.** CORALBELLS. 18 in. A variety of the above with bright coral-red flowers. 60 cts. each; extra strong, 75 cts.

HIBISCUS. ROSEMALLOW. 4 to 5 ft. Giant, funnel-shaped flowers of red, white or pink on sturdy plants. July and August. 60 cts. each.

Hollyhock. DOUBLE FLOWERING. 5 to 7 ft. Yellow, white, pink and red colors. July and August.

LATHYRUS Latifolius. PERENNIAL SWEET PEA. Semi-climbing plants with showy pea-flowers of deep pink over a long season. 60 cts. each.

LILIES—See page 20.

LILY OF THE VALLEY—See page 20.

LINUM NARBONNENSE. Blue Flax. 18 in. Graceful foliage with delicate flowers of azure blue with white eye. May to August.

LUPINUS Polyphyllus. LUPINE. 3 to 4 ft. Azure blue, pea-shaped flowers in long spikes. Late May and June. 60 cts. each.

LYTHRUM Morden Hybrid (New). A real clear rose pink form growing 3 ft. high. July to September. 75 cts.; extra size \$1.00.

MONARDA didyma. OSWEGO TEA. 3 ft. Compact heads of bright red flowers. Aromatic foliage. June to September.

Monarda Salmon Queen. Attractive clear salmon pink flowers, fragrant foliage.

PHYSOSTEGIA. ROSY SPIRE. 3 ft. Spikes of ball-like flowers, color rosy-crimson. Blooms in September.

Physostegia "vivid." FALSE DRAGONHEAD. 2 ft. Spikes of deep pink, bell-like flowers in September. Excellent cut flowers.

PACHYSANDRA TERMINALIS (Spurge)

A ground cover plant 6 to 8 inches high, forming broad mats of bright, glossy green foliage. This plant will grow in all shady situations and is the only plant to grow under evergreens. Space plants 5 inches apart.

40c each

\$4.00 doz.

\$30.00 per 100

PLATYCODON grandiflorum. BALLOON FLOWER. 18 in. Star-shaped blue or white flowers at the tip of each branch. Compact, bushy growth. June to September.

POLYGONUM Reynoutria-Dwarf Lace Plant. This handsome ground cover is easy to grow, very hardy and establishes itself rapidly. Does best in full sun. Pale green foliage turns bright red in fall. Height 1 ft., 60 cts. each.

PYRETHRUM Hybridum. PERSIAN DAISY. 2½ ft. Daisy-shaped flowers in white to shades of pink, rose and red. Splendid for cutting. May and June.

Pyrethrum Uliginosum. GIANT DAISY. 4 to 5 ft. Large white flowers in August and September. Splendid for cutting.

ORIENTAL POPPIES

New Named Varieties—75 cts. each, as follows:

Beauty of Livermore. Crimson with dark shadings.

Mrs. J. Harkness. Bright salmon, rose scarlet.

Mrs. Perry. Salmon pink, shaded apricot. "Best Pink Poppy."

POPPY, Oriental (Papaver orientale). 2½ ft. Massive cup-shaped flowers of deep scarlet.

***Poppy, Iceland (Papaver nudicaule).** 12 in. Cup-shaped flowers of clear colors, white, yellow and orange scarlet. Bloom all summer.

RUDBECKIA laciniata. GOLDEN GLOW. 5 to 6 ft. The popular, double yellow blossoms of August and September.

Rudbeckia purpurea. PURPLE CONE FLOWER. 3 to 4 ft. Rose-purple flowers with tall, brown center. August to October.

SALVIA pitcheri. MEADOW SAGE. 3 to 4 ft. Every stem tipped with spikes of pretty sky-blue flowers. August and September.

SEDUM—A splendid edging and rockery plant.

Sedum, Dwarf Varieties—These hardy plants grow closely to the ground to make a thick carpet of foliage. Choice of **yellow, white** and **pink** flowering kinds. Price 35 cts. each; 3 for \$1.00.

Sedum Spectabile—Erect growing with heads of rose pink flowers in August. Fleshy, light-green leaves.

STATICE latifolia. SEA LAVENDER. 2 ft. Delicate purple-blue flowers cover the branching top in August and September. 75 cts.



Hardy Perennials

THALICTRUM adiantifolium. MEADOW RUE. 2½ ft. Graceful foliage like a Maiden Hair fern. Clusters of open, white flower balls in June. 60 cts. each.

TROLLIUS, Asiaticus. YELLOW GLOBE FLOWER. 2 ft. A glorified Buttercup. Handsome dark green foliage with yellow cup-like flowers in May and June. 75 cts.; extra size, \$1.00.

Trollius ledebouri. ORANGE GLOBE FLOWER. 2½ ft. Strong-growing, hardy perennial with handsome foliage and large orange flowers. 75 cts. each; extra size \$1.00 each.

VALERIANA officinalis. HARDY GARDEN HELIOTROPE. 3 ft. Sweetly fragrant, gray-pink flowers in June and July.

VERONICA longifolia. JAPANESE SPEEDWELL. 2 ft. Long spikes of attractive blue-violet flowers. August and September. A good garden and cut flower.

Veronica blue spires. 2 ft. Improved variety, deep blue spikes. Upright, continuous bloomer, withstands heat. 50 cts. each.

***Veronica rupestris.** Grows 3 in. high with thickly matted, deep green foliage. Excellent for rock garden plantings. Well covered with bright blue flowers in early June.

***Veronica Spicata.** SPEEDWELL. 1½ ft. Spikes of blue flowers. June to September. Excellent garden plant.

***VIOLA.** JERSEY GEM. 8 in. Rich green foliage with blue flowers like small pansies. May to September. Splendid border plant and a delightful, dainty cut flower.

***YUCCA filamentosa.** ADAM'S NEEDLE. 4 ft. Stiff sword-shaped leaves with tall spikes of white, dropping flowers in July. 50 cts. each; extra size 75 cts.

Gladiolus Bulbs

CARRARA—White.

GENERAL EISENHOWER—Salmon pink.

HUNTRESS—Dark lavender.

NEW EUROPE—Light bright pink.

PAUL REUBENS—Purple.

PINK RADIANCE—Clear pink.

ROSA VAN LIMA—Light pink.

ROSE O'DAY—Deep lavender.

TIVOLI—Clear pink.

YELLOW HERALD—Light yellow.

Per doz. \$1.00-----100 \$7.50

PARK NURSERIES MIXED—All colors.

Per doz. 90c -----100 \$7.00

GROUND COVER PLANTS

PACHYSANDRA. A ground cover plant 6 to 8 inches high, forming broad mats of bright, glossy green foliage.

40 cts. each

\$4.00 doz.

\$30.00 per 100

PACHISTIMA CANBYI. 1 ft. Low, dense mass of fine evergreen foliage. Splendid for ground cover. Grows in shade.

75 cts.

\$7.50 doz.



Park Nurseries "High Test" Lawn Grass Seed

Good lawns can only follow the use of clean, pure seed of high germination test. Park Nurseries High Test Seed is dependably good—selected, re-cleaned seed that is the best in quality that we can secure.

AMOUNT OF SEED TO SOW — Allow one pound of seed to every 200 square feet of new lawn area. For re-seeding on old lawns one pound of seed to 400 square feet will be sufficient.

HISTORY BEHIND A QUALITY GRASS SEED MIXTURE

Grass seeds are usually purchased under brand names, the basis of all good grass seed mixtures must be the same. The important feature of a good mixture is that it must contain heavy well developed seeds from selected grass stocks that have been grown and cured for the distinct purpose of seed production.

Purity of the seed, free from weed seeds, germination and weight per bushel are the important factors to consider. Avoid mixtures that contain annual weed seed, Timothy and domestic Rye grass.

Prices are given for seed packed and ready to ship. Add 10c per lb. for parcel post if shipment by mail is wanted.

"Velvet Sod" Seed

"Velvet Sod" Lawn Seed is an unusually high grade and careful mixture of permanent fine-bladed, rich green grasses. Specially prepared to meet the climatic conditions of our northern states. Its high weight of 24 lbs. per bushel indicates its purity and freshness from chaff and adulterations. We use this seed on all our own landscape work and recommend it as the best seed obtainable.

1 lb. \$1.70; 5 lbs. \$8.25; 10 lbs. \$16.00; 20 lbs. \$30.00

Shady-Side Seed

Where ordinary grasses will not grow we suggest sowing this special "shady-side" mixture which contains varieties naturally tolerant to shade. Extra attention of fertilizing and watering is very important under these shade conditions and a light re-seeding each spring helps maintain the sod.

1 lb. \$1.70; 5 lbs. \$8.25; 10 lbs. \$16.00; 20 lbs. \$30.00

Red Top Grass

Red Top is a fine-leaved grass that germinates and develops very quickly. It is of particular value in getting a new sod established. For a permanent lawn it should not be sown alone.

1 lb. \$1.30; 5 lbs. \$6.00

Merion Kentucky Blue Grass

Fast spreader, stands closer mowing. Produces thicker turf and stays green all season. 1 lb. covers 750 sq. ft. Available in limited quantity only.

1 lb. \$5.00; 5 lbs. \$22.50

Astoria Creeping Bent Grass

A true, unmixed creeping bent seed. It produces a thick, low and close-growing turf for lawns and golf greens. (Creeping Bent sod requires often and close cutting and special attention in fertilizing.)

1 lb. \$2.00; 5 lbs. \$9.00; 10 lbs. \$18.00

Creeping Red Fescue

A perennial grass with fine blade and spreading root system. Withstands rough use, drought resistant and grows on light or sandy soils. A good grass seed to add to shaded areas.

1 lb. \$1.20; 5 lbs. \$5.50

Kentucky Blue Grass

A beautiful grass that should be the main constituent of every good lawn here in the north. It is sometimes used alone but as it develops slowly, it becomes better established if sown in a mixture. Our seed is a very choice grade of carefully re-cleaned extra heavy seed with an average weight of 24 lbs. per bushel.

1 lb. \$1.75; 5 lbs. \$8.25

White Clover Seed

The best imported white Dutch clover with small leaves and dense growth. Very often sown with other grasses, particularly in a new lawn, where it helps cover the ground, thicken the sod and so tends to crowd out weeds.

½ lb. \$.90; 1 lb. \$1.75; 5 lbs. \$8.50

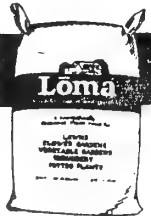
Send for "HOW TO MAKE A LAWN." This booklet tells you how to make and care for a lawn. It gives practical and helpful information. Mailed on request.

Fertilizers

FOR LAWN AND GARDEN



There are three chemical elements of plant food commonly used in fertilizers. They are Nitrogen, Phosphate and Potash. A balanced fertilizer is one which contains all three, commonly expressed in a formula of three numbers. The first indicates the proportion of Nitrogen, the second Phosphate and the third Potash.



Lōma
BEING A PAT. OFF.
beautifies lawns and gardens

ALL PURPOSE FERTILIZER
Free of All Odor

The PERFECT PLANT FOOD
For Lawns and Victory Gardens

Loma is a concentrated plant food. It produces a luxuriant, healthy growth of foliage and flowers.

For the Lawn. Apply 40 lbs. to each 1,000 sq. ft. of area. Scatter evenly and wet down.

For the Garden. Apply along the rows or around plants according to directions on package.

25 lbs. \$1.80; 50 lbs. \$2.80; 100 lbs. \$4.85

Dried Cattle Manure—Driconure

A time tested all organic fertilizer made entirely of animal manures. Dehydrated, finely ground for more convenient handling. Good for flowers, shrubs and lawn. One 50 lb. bag will fertilize 500 square feet of area. 50 lb. bag \$3.60; 80 lb. bag \$5.25

TREE FEEDING

Promotes new growth, more foliage and healthy trees.

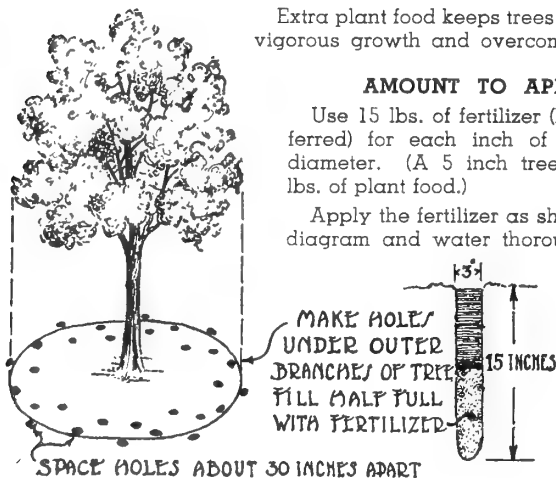
How to Fertilize Your Trees

Extra plant food keeps trees in healthy, vigorous growth and overcomes drouth.

AMOUNT TO APPLY

Use 15 lbs. of fertilizer (LOMA preferred) for each inch of tree trunk diameter. (A 5 inch tree needs 75 lbs. of plant food.)

Apply the fertilizer as shown in the diagram and water thoroughly.



Bone Meal

Our Bone Meal is ground fine, slightly steamed and acts quickly. Use freely when top dressing. 20 lbs. to 1,000 sq. ft. is recommended. Apply to flower borders one lb. to 15 sq. ft. and cultivate in. Use generously around trees and shrubs.

25 lbs. \$2.85; 50 lbs. \$5.35; 100 lbs. \$8.00

Loma Turfood—10-6-4

A high grade organic plant food.

40 lb. bags \$2.80; 80 lb. bags \$4.85

Milorganite—For the Lawn

Activated sludge fertilizer scientifically prepared, a natural plant food rich in organic nitrogen. A non-burning, long-lasting lawn fertilizer. Apply in early spring and fall. Use 40 lbs. to 1,000 sq. ft.

80 lb. bags, \$4.00

PEAT

A native Minnesota prepared peat a splendid soil builder and conditioner. It is clean and odorless. Peat will lighten and aerate a heavy soil and add the needed humus and texture to sandy soil.

(1 bale weighs about 125 lbs. and covers 800 sq. ft. to depth of 1/2 in.)

\$5.00 per bale.

Many Choose This Complete Plant Food

Gardeners use Vigoro on lawns, flowers, trees, and vegetables. It is complete plant food that supplies the vital elements plants need from the soil for vigorous growth. Feed everything you grow Vigoro.

50 lbs. \$2.65



Garden Supplies

CYANOGENAS

Cyanogas A. Dust. For ants, moles, rats and gophers.

1 lb. \$1.25; 5 lbs. \$4.25

Cyanogas Ant Killer. Ants die instantly when you drop a little Cyanogas Ant Killer into the entrance of the nest.

4 oz. can 50c

SOIL—For Lawn and Garden Twin City area only

2 Cubic yards ----- \$ 8.00
5 Cubic yards ----- 17.00

BARNYARD CATTLE MANURE Twin City area only

1 Cubic yard ----- \$ 8.00
2 Cubic yards ----- 15.00

WEEDONE

Weedone, the original 2-4 D weedkiller. Kills dandelions, plantain, chickweed, and most other lawn weeds. Also kills poison ivy, poison oak, bind weed and other noxious weeds that plague the gardener. Formula: 6 oz. Weedone to 5 gallons of water. This solution will cover 1,000 sq. ft. applied under pressure. Weedone does not kill Crab Grass.

8 fluid ounce bottle (for 1,000 sq. ft.)-----\$1.00
1 quart bottle (for 5,000 sq. ft.)----- 2.75
1 gallon can (for 20,000 sq. ft.)----- 6.75

WEEDONE CRAB GRASS KILLER

A superior product for the control of crab grass and chickweed. This combination also kills such lawn weeds as dandelion, plantain, purslane, etc., without killing the grass or clover.

6½ oz. can \$1.25; 26 oz. can \$3.75

GARDEN TOOLS

Complete line available at our Nursery.

TRI-GEN

TRI-GEN gives complete protection against all plant insects and diseases, including black-spot, mildew, aphid (plant-lice), slug worms, caterpillars, etc. Especially recommended for roses, asters, snapdragons, carnations, hollyhocks, delphiniums, phlox, chrysanthemums, zinnias, golden glo, dahlias, and many other plants.

E—Kit. Protects 6 to 10 roses for season-----\$1.70
A—Kit. Protects 12 to 20 roses for season----- 2.50
B—Kit. Protects 50 to 80 roses for season----- 6.25
C—Kit. Protects 100 to 160 roses for season----- 9.50

KEN

Sprayall



COMPLETE SPRAYER—Self-contained

Fingertip controlled nozzle sprays from fog-mist to full stream. Double action. Continuous spraying.

Handles all spray solutions.

Constructed of brass and 100% neoprene tubing. Resistant to all spray solutions—easy to operate—simple to clean—with proper care will last a lifetime.

No tank to clean—hose is placed directly in ordinary bucket containing spray solution which is screened as it passes into the sprayer.

Ordinarily inaccessible high places easily reached; sprays up to thirty-five feet.

Price ----- \$7.95

LITTLE GIANT

Same style as above, smaller size to fit any Mason jar; designed specifically for home use.

Complete (except for Mason jar) ----- \$4.95

METHODS OF CONTROLLING INSECTS

Chewing Insects. Arsenate of Lead kills all eating and chewing insects. Example, grubs. 1 to 2 tablespoons of arsenate of lead to 1 gallon of water. 1 lb. 90 cts.; 4 lb. bags, \$2.50.

Sucking Insects. Nicotine 40% kills all sucking insects. Example, plant lice. 1 tablespoon to 3 gallons of water. 5 ounces, \$1.40

Dormant Spray. Lime-Sulphur for scale, scabs and soot blotch. 1 lb. to 1 gallon of water. 1 lb. 85 cts.

Fungus Diseases. Bordeaux prevents blight, rot, mildew and fungus. 1 to 2 tablespoons to a gallon of water. 1 lb., 90 cts.

Black Spot and Mildew. Dusting Sulphur for roses and other plants. 2 lbs. 75 cts.

Grub and Earth Worms. Chlordane Dust 6%. For dusting in gardens and on lawns to control ants, cut worms, slugs, snails, sod worms, etc. 1 lb. containers 65 cts.; 4 lb. bags \$1.65.

Pine Needle Scale. Malathion 50 Spray. 2½ pints per 100 gals. water. Spray last part of May—first of June.
4 oz. \$1.25; Pint \$3.00

DIMITE—For Red Spider

A quick, positive, long lasting contact control for mites and red spider damaging evergreens, flowers, fruits and shade trees, etc., in a water mixable solution.

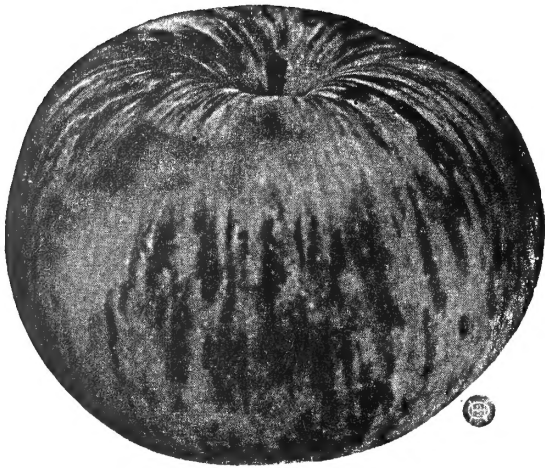
2 oz. 75 cents

TRI-GEN ROSE FOOD

Tri-Ogen Rose Food alone supplies all the essential food elements necessary to produce roses at their best. Contains both inorganic and organic ingredients, including valuable trace elements.

5 lb. bag \$0.90; 10 lb. bag \$1.50

Fruits and Berries for Orchard, Garden and Home

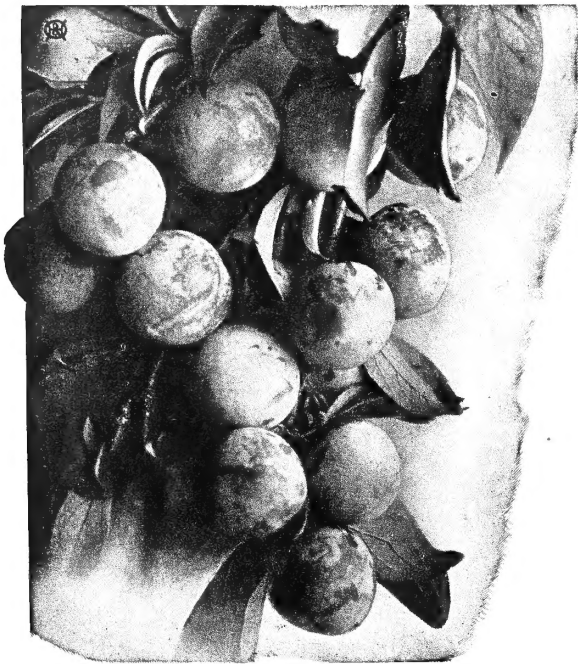


Apples

The Hardy Apples

Price—Strong Trees, 5 to 6 feet, \$2.25 each.

No other fruit tree contributes more to your garden and orchard than the apple. As the trees grow older, their good features become more pronounced and your tree more valuable.



Plums

ANOKA. Large yellow, red-striped fruit of fine flavor in August. Bears early on young trees—often fruiting second year after planting.

BEACON. An early-ripening, highly colored, deep red apple of good size. Valued for both eating and cooking. Excellent keeper under ordinary conditions.

DUCHESS. Yellow with red stripes. Ripens early. A large size popular September fruit. Bears heavily. Free from blight. An old time favorite for pies and sauce.

FIRESIDE. An attractive, red long keeping apple with a high flavored, rich deliciousness that makes it just the fruit for a winter evening by the fire. Good bearer every year.

HARALSON. Deep red winter apple. Fine quality. A hardy and dependable Minnesota apple. Considered the best keeper. Makes strong growing trees bearing freely.

MINJON. A Minnesota form of Jonathan, good eating and cooking quality. Fruit brilliant red; bears profusely.

PRAIRIE SPY. Bright red over a yellow ground, medium size, late. Very productive and of excellent flavor.

WEALTHY. A fine quality red apple that fruits abundantly. A popular Minnesota variety. Good for market and home orchard. Season, September to January.

Hardy Crab Apples

Price—Strong Trees, 5 to 6 feet, \$2.25 each.

DOLGO. Good flavored, highly ornamental bright red fruit. Makes excellent jelly. Ripe in September. \$3.00.

WHITNEY. Best of the sweet crabapples. Large, well flavored and early red fruit. Favorite for picking.

Hardy Plums

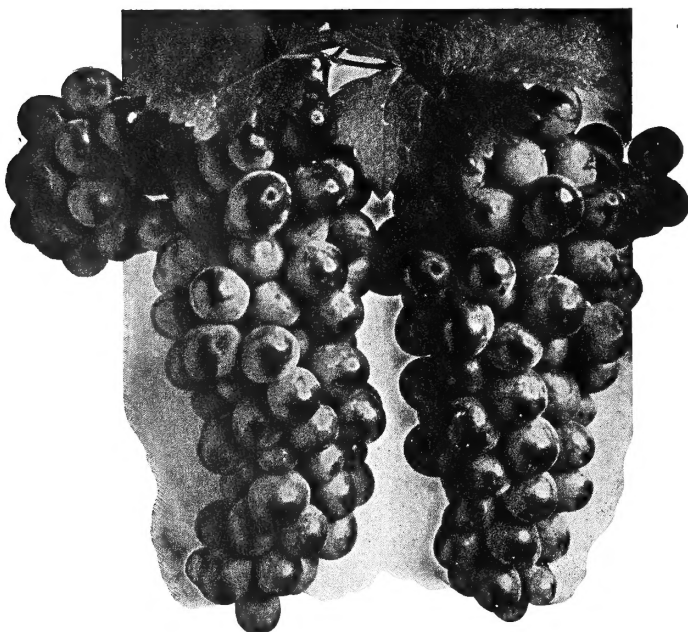
Price—Strong Trees, 5 to 6 feet, \$2.50 each.

LaCRESCENT. Our best quality yellow plum. Sweet and juicy.

PIPESTONE. Large yellow fruit with a red blush. Midseason. Excellent quality for dessert or preserving.

SUPERIOR. (New introduction.) Large, conic-shaped, deep red juicy fruit. Small pit. Nearly free-stone.

UNDERWOOD. Early ripening attractive red plum. A very popular hardy variety. Trees bear annually.



Grapes

Plant America!

Asparagus

PARADISE. An excellent green asparagus.

Price—Strong Roots, \$1.00 per dozen; \$6.00 per 100.

Cherries

Price—Strong Trees, \$3.00 each.

MONTMORENCY. A sour cherry. Hardy. Luscious juicy red fruit.

OKA CHERRY. New hardy and productive hybrid from So. Dak. Low-headed tree producing tremendous crops of large red fruit. Color, rich purple-red inside and out. Flavor delicious for dessert or preserving.

Currants

Price—Strong 2-year Plants, 60 cts.; \$4.50 per 10.

RED LAKE. New Minnesota currant. Erect bush. Large red fruit in heavy clusters. Excellent flavor.

Gooseberries

Price—Strong 2-year Plants, 90 cts.; \$4.00 per 5.

PIXWELL. Very productive, large, light green when immature ripening to pink. It is the abundance of fruit which hangs away from the stems making it easy to pick, that gives it its name.

Grapes

Price—Strong Plants, 50 cts. each; \$2.25 per 5.

BETA. A medium size, black grape with sprightly flavor. Unusual hardiness and a heavy bearer.

CONCORD. The large, black grape. Always popular.

Hardy Pears

PARKER. The hardiest of the pears and, after extensive trial, now recommended for Minnesota. Produces abundant, rather small but excellent quality fruit. 4 to 5 ft., \$2.50.

Raspberries

Price—25 cts. each; \$2.00 per 10.

CHIEF. The new Minnesota introduction. Early and heavy crops of firm, red berries. Very hardy.

LATHAM. Large red berries in abundance. Later than Chief. A hardy Minnesota variety with fruit of very attractive color.

Rhubarb or Pie Plant

CHIPMANS RED. (New). Highly colored red stalk, very succulent and tender. A splendid improved variety. \$1.00.

McDONALD. Sweet and tender. \$0.75.

Strawberries

SENATOR DUNLAP. June-bearing. Considered the most dependable, all-purpose strawberry. Large crops of big, deep red berries.

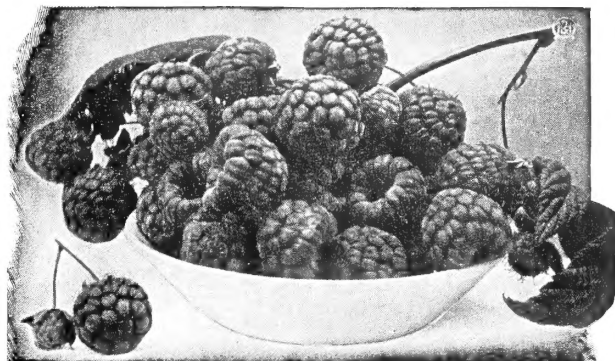
Price—Strong Plants, 60 cts. per dozen; \$3.00 per 100.

BRUNES MARVEL. Everbearing. Large, sweet berries, free stem, produced freely.

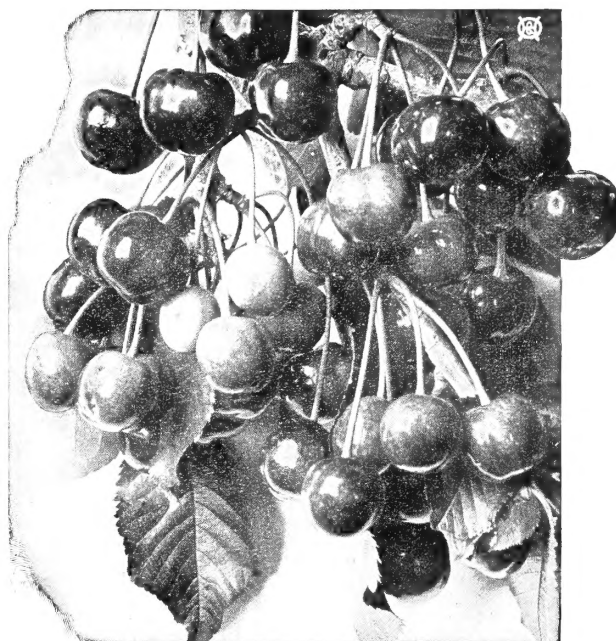
Price—\$1.00 per dozen; \$7.50 per 100.

A GIFT CERTIFICATE FROM PARK NURSERIES

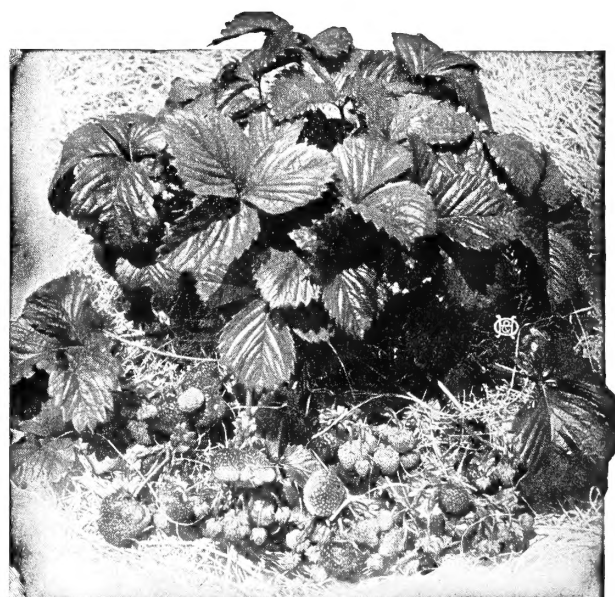
To a friend for Christmas, Easter, Mother's Day and Birthdays. A living Tree, Evergreen, Shrub, Rose or Perennials will bring exciting and lasting joy.



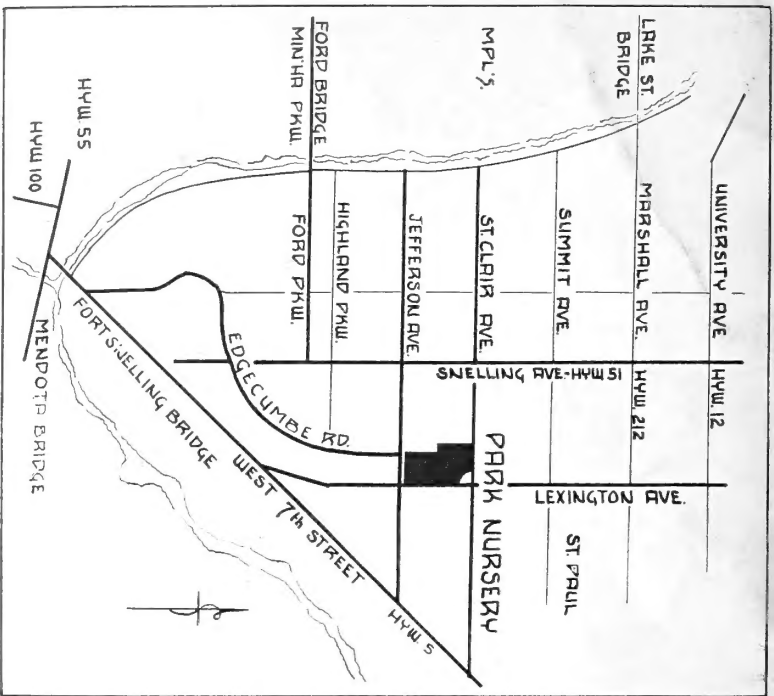
Raspberries



Montmorency Cherries



Strawberries



How We S

WHEN TO ORDER. Try to make up your order and send it in soon after this catalog reaches you. Early orders enable us to reserve for you the plants wanted and to give you the first selections. **Your order will be shipped just when the weather is most favorable** and at just the right time for planting. Order now.

How to Order. Send in your orders by whatever means you prefer and we assure you of prompt, careful attention. For your convenience our order blank is placed in this catalog, ready for your use.

Give Shipping Instructions. Tell us how you want shipments made: whether by Freight, Parcel Post (suitable only for small packages) or Express, and indicate any special routing. We recommend Express as most advantageous and desirable excepting on heavy, bulky shipments. When not instructed we will use our best judgment.

No Packing Charge. Catalog prices are all based on stock F. O. B. St. Paul and no charge is made for packing. Twin-City deliveries are made to any St. Paul or Minneapolis address.

Terms. Cash with order is expected and money should be sent by check, post office order or bank draft. If credit is to be arranged please advise us in ample time and furnish the usual business references. All accounts are due by the 10th of the month following date of purchase.

THE PARK NURSERIES
HOLM & OLSON, INC.
 20 West 5th St.
 SAINT PAUL 2, MINN.

BULK RATE
 U. S. POSTAGE
PAID
 St. Paul, Minn.
 Permit No. 250

U. S. DEPARTMENT OF AGRICULTURE

LIBRARY

WASHINGTON 25, D. C.

OFFICIAL BUSINESS

PRINTED MATTER

PENALTY FOR PRIVATE USE TO AVOID
 PAYMENT OF POSTAGE, \$300
 (GPO)

U. S. Dept. of Agriculture
 Library
 Washington 25, D. C.

Bibl.

ciation and Twin City Nurserymen's Association. **All Trees, Evergreens, Shrubs, Perennials and Seeds** are regularly inspected by the State Department of Agriculture, for which a certificate has been issued for 1957.

FULL PLANTING INSTRUCTIONS are sent with the acknowledgment of every order. Consult us freely for any further information you may need. We want the opportunity to help you and no expense will be spared to make every order we send you give entire satisfaction.

The Liberal Plant Guarantee

First. You are assured that you will receive the best quality of live, healthy plants, properly packed to reach you safely. If any plant ordered proves untrue to variety it will be re-supplied without charge.

Second. We agree to re-supply any plants that may fail to become established the first season after planting at one-half the original catalogued purchase price. Requests for any such replacements must reach us before October 1st of that season and the account must be paid in full when due.