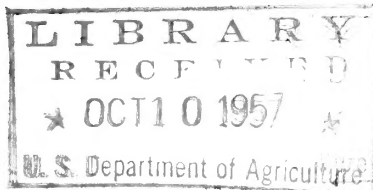


62
JOHN SCHEEPERS, Inc.

Flower Bulb Specialists

37 WALL STREET
NEW YORK 5, N. Y.

[1957]



121
BULK RATE

PAID

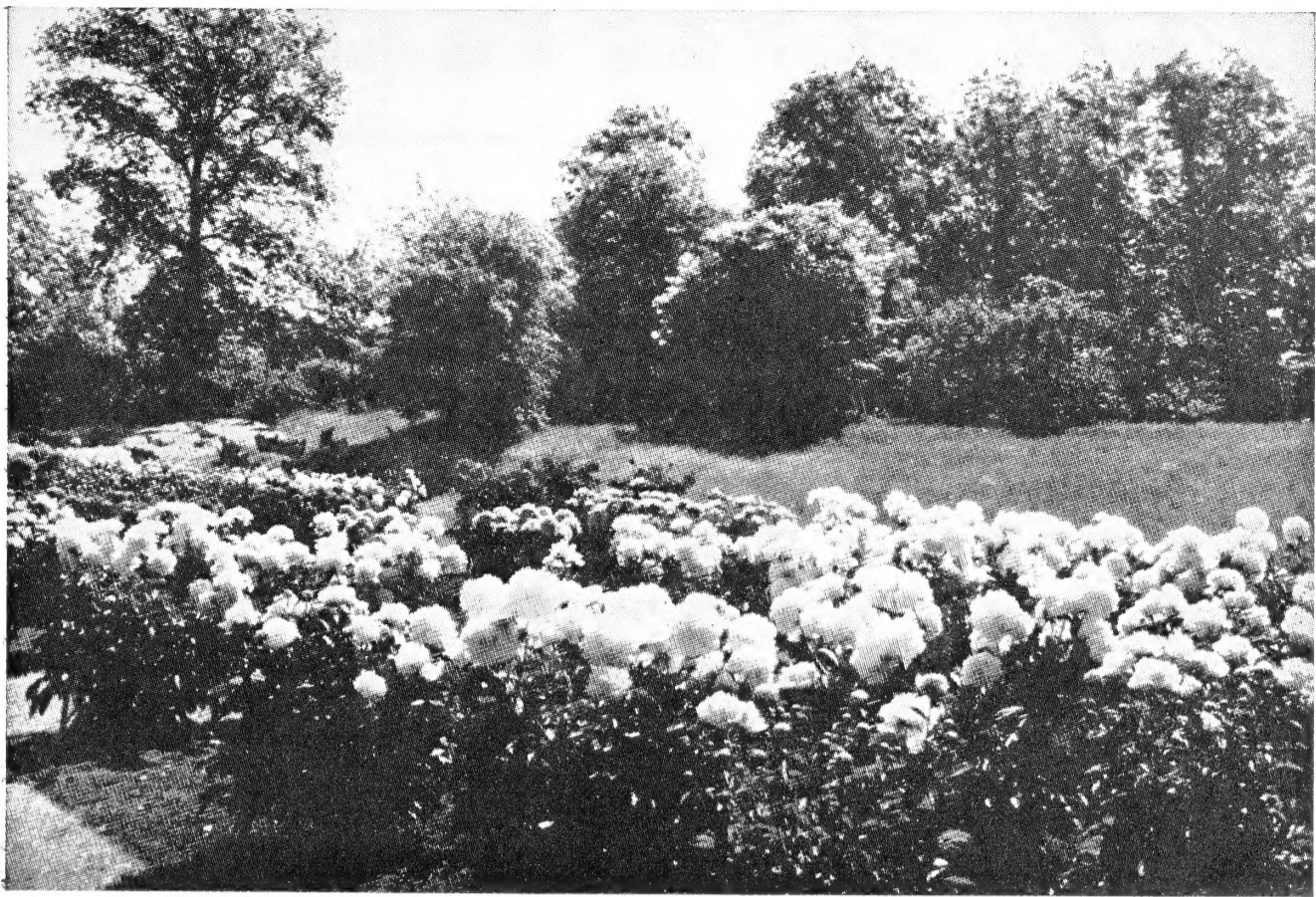
U. S. POSTAGE
LEVITTOWN, N. Y.
PERMIT No. 183

Beauty From Bulbs

SUPPLEMENT: [3]x
PEONIES
NEW LILIES
EREMURI

United States Dept. Agriculture
Library
Washington 25, D. C.





Delightfully Fragrant

Hardy Peonies

*Increase Garden Beauty—
Reduce labor costs*

Peonies are possibly the most permanent of our herbaceous plants and of easiest culture. They will thrive satisfactorily in any good garden soil. Cover the eyes of the roots with one inch of soil and plant in full sun. Give the areas where Peonies are planted a top dressing of well rotted cow manure or chicken manure just before winter weather sets in and you will have exhibition quality plants each season from our superior quality stock. When properly fed they may be left undisturbed for 10 years and more and will increase in beauty with each season's growth. Keep well cultivated for finest results.

Long Lists of Peonies are confusing. We have therefore selected a Master List of Peonies, consisting of highest rated varieties. You may therefore make your selections with assurance of having the finest.

When planning a Peony border make sure that you select Early, Mid-Season and Late varieties for your planting—then you may enjoy the delightful fragrant Peonies over a long period of time.

DOUBLE PEONIES

(Highest Quality Stock)

ADOLPHE ROSSEAU. Early. Large flowers of deep garnet-red. One of the very finest Peonies. Fragrant. Extra heavy clumps. Each, \$1.75.

BARONESS SCHROEDER. Late, Mid-Season. Large double, flesh white to soft pink, with a delicate rose fragrance. Extra heavy clumps. Each, \$1.75.

DUCHESS DE NEMOURS. Early. Beautiful large flowers that are produced in great abundance. One of the earliest of all to flower. Beautiful creamy white that is darker toward the center of the bloom. A very lovely variety. Extra heavy clumps. \$2.00 each.

FESTIVA MAXIMA. Early. Large flowers of pure milky white with a few crimson flecks in the center. A perfect peony. Sweet fragrance. Extra heavy clumps. Each, \$1.75.

GLOBE OF LIGHT. Midseason. Yellow is a much desired color in Peonies and for this reason we suggest that this variety be included in your collection. Except for a row of deep rose petals on the outside—the full double center, cup shaped, is clear yellow—very full flower and it certainly looks like a yellow Peony in the garden. Fragrant and very attractive. Extra heavy clumps. \$3.50.

SPECIAL COLLECTION HARDY DOUBLE PEONIES

Consisting of one extra heavy clump each of the 12 exhibition varieties listed. Total, 12 Extra Heavy Clumps.

Catalog Price, \$28.75

**SPECIAL COLLECTION
PRICE \$25.00**

LE CYGNE. Early. One of the very finest and fully justifying this distinction. Very large, ivory white, without the slightest trace of any other color. Exquisitely fragrant. Perfect rose type with a perfect flower to every stem. Extra heavy clumps. Each, \$3.00.

MARTHA BULLOCK. Late. A mammoth flower, often measuring 12 inches in diameter. A silvery shell pink, deepening at the center to a deep rose pink. Fine rose fragrance. Extra heavy clumps. Each, \$3.25.

MONS. JULES ELIE. Mid-Season. This is the largest and most striking of the pink peonies. A gigantic flower of perfect crown type, the center like a large Exhibition chrysanthemum with large prominent guard petals. Delightfully fragrant. Extra heavy clumps. Each, \$2.50.

MRS. A. M. BRAND. Late. One of the highest-rated varieties. A most remarkable peony, received a Gold Medal for its superior merit. Very large flowers of perfect rose form, pure white and exquisitely fragrant. Extra heavy clumps. Each, \$3.00.

SOLANGE. Late. One of the highest rated varieties. Of a very unusual shading of creamy white with golden-brownish lights. Perfect rose type. No other peony like it. Extra heavy clumps. Each, \$2.00.

SOUVENIR DE LOUIS BIGOT. Late Mid-Season. One of the most distinct of all the pink varieties. Very large, fragrant, rose-type flowers with fringed petals of bright Bengal rose, slightly tinged carmine at the base, changing later to salmon pink with a silvery reflex. Extra heavy clumps. Each, \$2.00.

WALTER FAXON. Mid-Season. One of the finest of all peonies. Soft coral pink, shaded lighter at the ends of the petals and a deeper rose pink at the base. Delightfully fragrant. Extra heavy clumps. Each, \$2.25.

SINGLE AND ORIENTAL PEONIES

(Highest Quality Stock)

ANTWERPEN. Enormous flowers of carmine pink with the petals in a double row, surrounding a beautiful center of golden yellow for a very charming effect. A wonderful flower. Award of Merit in Holland. Extra heavy clumps. Each, \$1.75.

KING OF ENGLAND. Large beautiful flowers of deep carmine, center is golden and shaped like a crown. One of the very best and ideal for landscape effect—causes immediate attention in the garden. Extra heavy clumps. \$2.75 each.

RIGOLOTO. Very outstanding and draws immediate attention in the garden. Deep garnet red with the center a lighter shade of red tinted pink; prettily tufted in the center. Extra heavy clumps. Each, \$3.00.

SNOW WHEEL. One of the most beautiful of all. Very large flowers of pure white with a pure yellow center. Petals of heavy substance and long lasting. Extra heavy clumps. Each, \$3.75.

TOKIO. A beautiful large flower, with guards of rose pink, and a pink, yellow and buff center. Very attractive. Extra heavy clumps. Each, \$1.75.

SPECIAL COLLECTION SINGLE AND ORIENTAL PEONIES

Consisting of one extra heavy clump each of the 5 exhibition varieties listed. Total 5 Extra Heavy Clumps.

Catalog Price \$13.00

**SPECIAL COLLECTION
PRICE \$11.50**

For Peony companion flowers—Iris—Hemerocallis, etc.—See 1957 Fall Edition of "Beauty from Bulbs" recently mailed to you.



*A Scheepers Prize-Winning Exhibit at the New York Show. Fox Tail Lilies in background (Eremuri)
For other Lilies see our Fall 1957 Catalog recently mailed to you.*





Success with Lilies is now Assured!

This list of New and Rare varieties are all American Grown Bulbs. They have been cultivated under climatic conditions that assure absolute hardiness throughout the country. All are prize-winning varieties and we urge our customers to plant them in their gardens and see what great advancements have been made these past few years. They are disease resistant and very easy to grow and they will be one of the proudest achievements that the gardener knows.

New and Rare Lilies

AURELIAN HYBRIDS

Large trumpet shaped lilies of exceptional merit. Extra strong growth; large quantities of blossoms to the plant and rare colorings. All are delightfully fragrant.

AURELIAN APRICOT TRUMPETS. July and August Flowering. Produce glowing flowers in tones of apricot, saffron and tangerine. The wide open trumpet type blooms are produced on very strong stems 5 to 6 feet tall—from 6 to 12 blooms on each stem. Delightfully fragrant. \$5.00 each; \$14.00 for 3.

AURELIAN MOONLIGHT TRUMPETS. July and August Flowering. Same type growth of plant as above. The colors are cream and light yellow. \$3.75 each; \$10.50 for 3.

AURELIAN PINK TRUMPETS. July and August Flowering. Same fine growth as above varieties. The colors are clear pink and light rose. \$3.75 each; \$10.50 for 3.

AURELIAN SUNSHINE FLARES. July and August Flowering. Same fine growth as above types of Aurelians, the only difference being in the shape of the flowers. The blooms are large and flaring intermediate in form between trumpet and the recurved type of bloom. They vary in color from shades of yellow to pure gold. Very beautiful and effective in the garden. \$5.00 each; \$14.00 for 3.

BRANDYWINE. Mid-June Flowering. Large heads of outward facing flowers on 3 to 4 foot stems. Color is orange-yellow dotted oxblood red. This variety is a recent introduction of the U.S. Dept. Agriculture, Beltsville Station, and is a prize winner. \$3.50 each; \$10.00 for 3.

CORSAIR. June and July Flowering. Very attractive hybrid trumpet lily. The blooms are really vase-shaped, face upward on the stem and of medium size. Strong stiff stems 2 to 3 feet tall with from 12 to 15 well placed blooms. Color is also unusual and beautiful, a soft apricot yellow, flushed red at the tips of each petal. \$3.00 each; \$8.50 for 3.

CYRUS GATES. July Flowering. A very vigorous grower with large, broad petaled, reflexed flowers of rich orange-yellow, spotted purple at base and reddish bronze towards tips of the petals. Very colorful and beautiful. Grows 6 to 8 feet high. \$2.00 each; \$5.50 for 3; \$17.00 for 10.

GOLDEN NUGGET. July and August Flowering. Lemon yellow lightly dotted reddish brown, fragrant and very beautiful. Strong stems growing from 6 to 8 feet high; the very large recurved flowers are produced in profusion, 25 and more when established. A conversation piece indeed. A 1957 introduction and surely a prize-winner. \$6.00 each; \$16.00 for 3.

MOUNTAINEER. June Flowering. A new hybrid of great beauty. The 3 to 4 foot stems carry many outward facing, slightly recurved flowers neatly arranged. The basic color is capsicum red dotted dark brown at the center. Fine fragrance. Abundant foliage and a graceful and attractive lily. \$2.75 each; \$7.50 for 3.

NEPALESE ROBUSTA. July Flowering. Originally from Burma, but this is the new greatly improved strain having much larger flowers. It grows from 3 to 4 feet high. From 3 to 7 funnel-shaped flowers, about 5 inches

across, are held on strong wiry stems. Basic color is pod green with the base of each petal marked deep purple; very beautiful and different. Delightfully fragrant. \$5.00 each; \$14.00 for 3.

PAINTED LADY HYBRIDS. June and July Flowering. These are seedlings of various Martagon and Hansonii Hybrids. Typical martagon type flowers with recurved petals. Grows from 4 to 6 feet high, with up to 60 flowers to a stem. Colors range from white with a few maroon spots through various shades of yellow dotted red, brown or rose, tangerine orange spotted red, spinel red with brown spots, lavender with garnet spots, etc. \$3.75 each; \$11.00 for 3.

RED FORTUNE. June Flowering. This is by far the best of the early red varieties. The large upright flowers are currant red, the lower third of the petals is dotted darker red and has attractive red anthers. Very pretty. \$4.00 each; \$11.00 for 3.

SPECIAL COLLECTIONS

No. 1

Consisting of one extra selected bulb each of the varieties listed. Total 12 bulbs.

List Price \$47.50

SPECIAL PRICE \$42.50

No. 1A

Same as above only three extra selected bulbs each of the varieties listed. Total 36 bulbs.

List Price \$118.50

SPECIAL PRICE \$100.00

Eremuri

Foxtail Lilies, Giant Asphodels

*"Till now one dreamed not what could be done
With a bit of earth and a ray of sun."*

—LOWELL

A WELL GROWN clump of Eremuri may justly be regarded as an achievement to be proud of. The great flower stalk, often ten feet tall and more, rises from a crowded tuft of long, narrow leaves, and is crowned by a flower spike two to three feet long, composed of closely set bell shaped flowers, star-like in effect, in soft tones of rose, yellow, salmon and white.

When the gigantic flowering is over, the plant disappears entirely, but reappears very early in the spring, when it is advisable to protect the young flower spike from late frosts.

To fill the great bare space left when the plant goes to rest, Gypsophilas may be planted near at hand and kept staked until the Eremurus dies down, when they may be allowed to fall forward in its place. Some of our clients have most successfully planted them on the north side of evergreens. Fine in lily border too.

BUNGEI. Vigorous, citron-yellow, reaching 4 feet in height. Extremely handsome; flowers in July. Extra heavy specimen roots, \$2.00 each.

ELWESII. Enormous soft pink spike; broad green foliage. A vigorous, distinct form of E. robustus. Height, 10 to 12 feet. Flower in early June. Extra heavy specimen roots, \$3.00 each.

ELWESII ALBUS. Same habit as above; pure white. Very beautiful; flowers in early June. Extra heavy specimen roots, \$2.50 each.

HIMALAICUS. Pure white, close-furnished spike. Height, 6 to 8 feet. Flowers in early June. Extra heavy specimen roots, \$2.25 each.

ROBUSTUS. Rosy pink. A beautiful vigorous species; glaucous foliage. Flowers in early June. Height, 6 to 8

feet. Extra heavy specimen roots, \$2.50 each.

Special Collection of one extra selected, specimen root each of the above five varieties, total five roots. Regular catalog price, \$12.25.

Special Collection Price, \$11.00

Place your order now—We will ship at proper planting time with full cultural directions.

All make ideal gifts—We will package and ship as such—enclosing gift card.

For Other Fall Planting Bulbs and Roots see "Beauty From Bulbs"
1957 Fall edition, recently mailed to you.

JOHN SCHEEPERS, INC.

Flower Bulb Specialists

Telephone
HANOVER 2-1177

37 WALL STREET, NEW YORK 5, N. Y.

Cable Address
TULIPS, New York

"Serving America's Finest Gardens for Over 40 Years"



MAIL THIS ORDER CARD TODAY

Date.....

JOHN SCHEEPERS, Inc.
37 Wall Street
New York 5, N. Y.

Gentlemen: Kindly ship the following:

PEONIES—Double

-Adolphe Rosseau
-Baroness Schroeder
-Duchesse de Nemours
-Festiva Maxima
-Globe of Light
-Le Cygne
-Martha Bullock
-Mons. Jules Elie
-Mrs. A. M. Brand
-Solange
-Souvenir de Louis Bigot
-Walter Faxon
-**Special Collections**
@ \$25.00

PEONIES—Single

-Antwerpen
-King of England
-Rigoloto
-Snow Wheel
-Tokio
-**Special Collections**
@ \$11.50

LILIUM

-Aurelian Apricot Trumpets
-Aurelian Moonlight
Trumpets
-Aurelian Pink Trumpets
-Aurelian Sunshine Flares
-Brandywine
-Corsair
-Cyrus Gates
-Golden Nugget
-Mountaineer
-Nepalense Robusta
-Painted Lady Hybrids
-Red Fortune
-**Special Collection No. 1**
@ \$42.50
-**Special Collection No. 1A**
@ \$100.00

EREMURI—FOXTAIL LILIES

-Bungei
-Elwesii
-Elwesii Albus
-Himalaicus
-Robustus
-**Special Collection**
@ \$11.00

(We will bill you after shipment is made.)

Name.....

Address.....

City.....State.....

Postage
Will be Paid
by
Addressee

No
Postage Stamp
Necessary
if Mailed in the
United States

BUSINESS REPLY CARD

First Class Permit No. 47266, Sec. 34.9 P. L. & R., New York, N. Y.

JOHN SCHEEPERS, Inc.

Flower Bulb Specialists

37 Wall Street

New York 5, N. Y.

