

# STRAWBERRY PLANTS

195<sup>7</sup> Season

LIBRARY  
RECEIVED  
★ DEC 21 1956 ★  
U. S. Department of Agriculture



**SINCLAIR NURSERIES**  
DAYTON, TENNESSEE



# STRAWBERRIES

To our friends old and new, we wish to express our thanks for your kind patronage.

We set out, back in 1907, at the age of twelve, our first little strawberry patch, and sold our first plants in the year 1912. With time out for Army service in the First World War, we have been growing and marketing strawberry plants ever since. In the past our sales have been about 90% at the wholesale level, but, with this season we hope to sell mostly at retail, hence, the printing of this, our first little catalog.

Sinclair Nurseries, are a father and sons partnership, David, the father, Paul and Donald, the sons. We are located five miles west of Dayton, on Tennessee 30 Highway. Our farms are located twelve miles northwest of Dayton on the Cumberland Plateau, where in 1945 we bought some 2000 acres of cut over timberland.

New land is cleared each year for the growing of our entire acreage of plants. We dammed up a spring fed creek last fall, and now have a nice sixteen acre lake, storing some one hundred acre feet of water for irrigation. By pouring on the water and fertilizer we have grown solid beds of heavily rooted plants. The kind that will do the job for you, when planted. We do not have plants of any variety that are more than two years removed from parent virus free and nematode free stock, which is supplied to us by the United States Department of Agriculture, Bureau of Plant Industry, Beltsville, Maryland.

We have ample good soil, and, give our plantings at least three thousand feet isolation from other strawberries. We use a rigid spray and dusting program, starting with an application of systemic poison soon after planting, and, followed by at least eight sprays or dustings with Parathion and Malathion. We use a spray of Parathion alternated with a thorough dusting with Malathion. This is the program required by our Tennessee Department of Agriculture, for the production of Foundation Certified Strawberry plants. Every plant we send out will have such a certificate.

Our location on top of the Cumberland Plateau, at nearly one-half mile elevation, gives us cool summers, and quite cold winters. Zero temperatures

are common, with our winters about as severe as those in central Ohio. We make shipments to every state, and Canada. Some of our largest sales are made in Mexico and Cuba.

With this season, we are growing virus free and nematode free strawberry plants exclusively. There is an amazing difference between the virus free and common strawberry plant stocks. There is both vigor of plant growth and fruit production. Official results of tests by our Tennessee Experiment Stations show clearly almost doubled yields in comparative tests.

Blakemore has been considered a virus resistant variety, but, with Blakemore, the yields on an acre basis, were one hundred ninety-eight crates, of twenty-four quarts, for virus free, versus, one hundred four crates for common stock plants. With virus susceptible varieties, such as Tennessee Beauty, Catskill and Premier, the differences were even greater. So get your share of the increased profits to be made by planting our new-land grown virus and nematode free plants. We have cold storage facilities available, and after April 1st, all shipments will be from storage. We start our shipping season October 1st, and close June 1st.

The variety descriptions given include statements from best sources available as to territory where best adapted. Our list covers most of the commercial varieties grown in the U.S.A. From these you can select those that do well in your territory. If in doubt, get the advice of some successful grower in your locality, or that of your County Agricultural Agent. Strawberry plants do best if set early. Just as soon as ground can be worked in the spring, or at earliest garden making time. Fall planting is not recommended, except for points south of a line drawn east to west, and passing through Atlanta, and all along the Atlantic Coast, from Norfolk, Virginia, to the South.

## BLAKEMORE

Blakemore is grown on more acres than any other variety. Grown in every southern state, in some states 90% of the acreage is Blakemore. It is popular in many states because it will stand adverse conditions and still make a crop. The best shipping berry for the south, and one of the best as far north as southern Illinois, Indiana, and Ohio. Our virus free Blakemores have a vigor and ability to perform, that the variety had when first introduced, some twenty years ago.

You get a good fruiting bed under almost any conditions. Firm, bright red berries that keep their color after picking, and when fully ripe; ideal for distant shipments and accepted on any market. Blakemore is the variety the processors prefer, both for preserving and freezing. Properly spaced Blakemore beds give medium to large size fruit, with good size retained to the last picking. We have never seen a yellow plant in our virus free Blakemores. Get old time vigor and productiveness, by setting these plants.

## DIXIELAND

This is the new rival of Blakemore, and will probably tend to replace it. With us it is about three days (one picking) later. The berries are large, much larger than Blakemore, and bright red, just a shade darker than Blakemore, very firm and solid. Dixieland plants are produced freely, making solid beds of large vigorous plants. At Beltsville, Maryland, Dixieland made 403, twenty-four quart crates an acre as compared to 241 for Blakemore. Try wherever Blakemore is grown. We have some 500,000 excellent plants. First come, first served.

Virus-free Dixieland grown under irrigation.



## PREMIER OR HOWARD 17

The early berry for the north and midwest. Because the first blooms are carried on short stems, and protected by the leaves, it is known as the Frost Proof berry. Most widely grown in its area. Our virus free Premiers are vigorous in plant growth, almost as productive of plant growth as Blakemores. Both color and quality are good, and few varieties are so productive. Not recommended for the south, but, in its territory a very profitable variety. We have a million or more Premier plants, and can fill your order, large or small.

## EMPIRE

Originated in New York, and was introduced in 1950. This is the first year we have had Empire and have not fruited it as yet. The appearance of the plants is excellent, with healthy dark green foliage, and quite productive of medium sized plants. Good in the Premier section, and reported to have much better quality than Premier, more attractive, better shipper, and slightly later than Premier.

## FAIRFAX

Tops in quality, with a distinctive flavor and aroma. Large dark red berries becoming dark purple with age. Plants are large, few in number, and with healthy foliage. A home garden or home market variety. Principally grown in the north and east, but not important commercially anywhere.

## POCAHONTAS

A full brother to Dixieland, as both resulted from a cross of Midland with Tennessee Shipper. Here it is about a week later than Blakemore. Fruits firm, tart but with good flavor, has a nice bright red color, large size and very productive. In over 50 state wide on the farm tests of five varieties in Tennessee for 1955, Pocahontas led in yields. Other varieties in the tests were Blakemore, Tennessee Beauty, Tennessee Shipper and Albritton. Pocahontas is acceptable to the processors and will soon be an important variety. Recommended for commercial planting in Blakemore area, for trial elsewhere. In Kansas 1955 tests, Pocahontas led with 13,788 quarts to the acre at Manhattan Experiment Station.

# TENNESSEE BEAUTY

When we start to write about Tennessee Beauty, we feel we have finally struck "pay dirt," as the saying goes. Truly a Beauty, and except for the fact that the name Tennessee was given to it, resulting in the localizing of this outstanding variety, it would long since have been the leading late variety over a wide area. North and south, east and west, Tennessee Beauty does well, and its merits are fast becoming known. Has the ability to produce large crops of beautiful clear red berries, quality good and ships well. While the berries tend to darken slightly after picking, the market accepts it with alacrity. In spite of late frosts 530 crates per acre was the yield in tests at Tennessee Exp. Station, in 1955. This from virus free plants supplied by us. Freedom from virus disease results in many fine large plants and heavy production. We have solid beds four feet wide where only 5000 plants per acre were set. Two million of these thrifty plants with which to fill your orders.

Virus-free Tennessee Beauty grown under irrigation.



## TENNESSEE SHIPPER

You can pick Shippers once a week and lose few berries from rot, such is its firmness and keeping quality. Fruit is tart but good if fully ripe and color a nice bright red, that stays that way. Fully equal to Blakemore in yield, and good for about the same states. Shipper is making a comeback since virus free plants are available, as apparently virus disease has a greater effect on Shipper than some other varieties. Virus free Shipper will amaze you with the vigor of plants and abundance of fruit. One picking later than Blakemore.

## MISSIONARY

The only named strawberry that is said to be a selection made from the wild. Introduced in 1900, and of Virginia origin. The sandy loams of the Southern Coastal plain suit it best. The leading variety in Florida and South Texas, where it bears from November to April. Fruit dark red, tart and of good flavor. A good shipper and a favorite of the ice cream trade or "juice" man. Virus and nematode free Missionary such as we offer deserve a chance to prove their superiority in your fields.

## KLONDIKE

Until Blakemore came along Klondike (also spelled Klondyke) was the leading variety, and grown on more acres than any other berry. Our virus free Klondike makes beautiful plants, with the glossy dark green leaves free of leaf disease that the variety had forty years ago. The nearly round deep red berries are produced in clusters. No better berry for preserves, jelly, jams, etc. You old timers like myself will remember how good they were eaten fully ripe, out of hand. We have a nice lot of vigorous plants. Sell out of Klondike every season.

## KLONMORE

Result of a cross of Klondike with Blakemore made in Louisiana. Very early and adapted to a more limited territory than most varieties. Good in Louisiana, where 80% of the acreage is set to it; Southern Coastal plains to South Carolina. Should not be planted elsewhere. Fruit is medium in size,



colored like Blakemore and quite high in quality. One of the best long distance shippers. Recommend it as tops in the region where adapted, practically worthless any other place.

## FLORIDA NINETY

The new Florida berry that is cutting in on Missionary. This is the first year we have grown it, and all of our plants are first year increase from Beltsville stock. We have read no description of the variety but the fruit is much like Klommore in appearance. You can judge of its vigor, by the fact that we have grown over 150,000 plants from 1500 plants set. Dr. Brooks, who selected it, said it is a seedling from a mixed plot of Missionary, Blakemore, Tennessee Shipper and Klommore. Exact parentage unknown. Should do well where Missionary is grown.

## MIDLAND

This variety was introduced some years ago with a sort of blaze of glory. Never too good a plant maker it soon practically stopped making runners, apparently due to infection with virus disease. We have been growing Midland for two years, and each year it has proved to be a good plant maker. We saw it fruiting at Beltsville, in May, and considered it one of the best of over 200 named and seedling varieties there. Evidently freedom from virus disease makes the difference between success and failure with Midland. We would not ask for a better or more vigorous variety than Midland has been with us. We have about 200,000 plants this year, started with 175 spring of 1954. Fruit is fairly dark, firm, and of very good quality. One of the best for freezing. Medium early. If you have quit Midland because of the difficulty in getting a row, try our virus free plants and see the difference.

## CATSKILL

This variety is quite susceptible to injury from virus disease, but, with the virus free stock now available should rapidly come back. We find it one of the best for fruit here on the Plateau, and have never seen more large berries than Catskill makes. We are at least 600 miles south of its place of breed-

ing in New York, so it has a wide range of adaptability. Fruit is moderately firm, quality good and has good color. Said to have a higher vitamin content than any other strawberry. Berries are large in size, and retain this size, with many real “whoppers” till the end of the season. A record yield of over 21,000 quarts an acre was produced in Massachusetts soon after Catskill was introduced. Virus free Catskill has the vigor of plant needed to produce very high yields for you. We have about 600,000 excellent husky, healthy plants. Medium late variety.

## ROBINSON OR KARDINAL KING

Sometimes called Scarlet Beauty. Large size berries and bright light red color have made Robinson a popular variety in Michigan and other northern states. With us it is too soft to ship to our distant markets, but yields is good and sells well on our Chattanooga market. Freedom from virus gives Robinson greatly increased plant vigor, but this is manifested in much larger and deeper rooted plants, that are somewhat less in number. Robinson is the only variety in which we have observed this reaction. Virus free Robinson still makes more than enough for a good fruiting row but not the small weak plants and damaging surplus of the infected stock. We sell lots of Robinson and have lots of good plants, close to 1,000,000. Does well wherever Premier is grown.

## DUNLAP

This is the long time favorite of the Midwest and Northwest. We sell lots of Dunlap in Canada. Stands extreme cold and other adverse conditions and is grown where no other strawberry will succeed. An extremely vigorous variety making lots of productive plants. Fruit a deep red to the center, good quality, and makes good preserves and delicious jam. Ripens in mid-season and lasts for several weeks. We have a lot of nice virus free plants.

## ARMORE

We fruited Armore for the first time last season, and liked it very much. Very productive of large berries, of good flavor and color. Parentage Aroma and Blakemore, and originated in Missouri a few years ago. The plants are

large, free of leaf diseases and bear over a long season. In fact we have noted a few berries all this summer. This is not too unusual however, when we have cool rainy summer weather, here on the mountain top. This has been noted with other varieties. Armore makes enough plants for a good row, but never a damaging surplus. Try this good *new* late variety.

---

We offer three red stele resistant varieties for those who have soils infested with this fungus pest. Red stele has never been discovered in our locality, but is said to be quite destructive, where present.

## ✓ STELEMASTER

Resistant to three races of red stele root fungus. The berries ripen early, about with Blakemore, medium in size, with a few large berries, and quite productive. Color a medium red, with a light interior color, flavor moderately tart and good. Plants are large and produced in enough number for a good row. We recently received a report that Stelemaster was going down in the east with leaf scorch. We received our first planting stock this spring from the U.S.D.A. and supply of plants limited. If you need red stele resistance try these virus and nematode free plants.

## ✓ SPARKLE

In our opinion this is the best of the red stele resistant varieties. It is so good that we sell out early every year. Makes plants quite freely, plants medium in size and free of leaf diseases. Sets a lot of berries, fruit is medium in size, rather long and pointed, color bright red, but darkens when fully ripe. Quality good and sells readily on the market. Sparkle is a good late variety and increasing in favor all over areas where Premier grows well. We have a nice lot of healthy vigorous plants, but advise ordering early as we sold out in January last season.

## VERMILION

The third of the red stele resistant varieties we offer. Illinois introduction from the strawberry breeding program of that state. Recommended for the central and other states where red stele may be troublesome. Plant growth is strong and vigorous, but not more than is needed for a good wide row. Fruit is rather dark when fully ripe, quality quite good. Firm enough for shipment. Season midseason to late. We have about 100,000 good plants.

## MASSEY

Well liked in eastern North Carolina, where it has been quite prominent. Color rather dark red, firm and of excellent flavor. We have fruited here but does not seem to be adapted, except in the light sandy soils of the Coastal plain. Our plants are both virus and nematode free.

## ALBRITTON

This variety was introduced in North Carolina, a few years ago, where it was developed at the Willard station and selected for tests in 1946. Like Massey it is at its best on the Eastern coastal plain from Virginia south. In North Carolina it is being set on more acres than any other variety. Medium to late, very large berries of firm texture and high quality. One of the most attractive when packed and brings premium prices. Grown from U.S.D.A. virus free and nematode free plants.

## AROMA

Once the most popular late variety. First grown in Kansas in the late 1890's. We have seen 25 Aroma berries heap up a quart berry box. Fruit large, a bright light red and firm enough to ship to distant markets. Virus free Aroma has the vigor and productiveness of the old time Aroma and we believe it will come back strong. We have a fine lot of beautiful vigorous plants.

## BELLMAR

This U.S.D.A. introduction is a full sister to Blakemore. This good early variety does well in Iowa and other states north of the Blakemore territory. Beautiful deep red berries of good flavor, one of the best for home garden use. Virus free Bellmar plants are quite vigorous and productive. You will be delighted with the results if planted.

## TENNESSEAN

This Tennessee introduction just misses being an outstandingly good variety. If you allow only enough plants to set to get a well spaced row Tennessean will give very high yields of attractive light red berries of excellent quality. If you allow it to make thick beds, yield will be poor and also size. Properly grown Tennessean is better than Blakemore in both size and yield. Ships well and general attractive appearance brings premium prices over Blakemore on the market. We have a nice lot of virus free plants.

---

## GROWING STRAWBERRIES

Most states have issued Bulletins giving methods and varieties suited to local conditions, and these are very useful. Strawberries are easy to grow but do require quite a bit of attention and at least some hand hoeing and weeding. Select land that is as free of weed seed as possible, a loose loamy soil is best but strawberries are grown with success on all soils, from sands to heavy clays, if a moderate level of fertility is present. If Chemical Fertilizers are used be careful not to allow roots to come in direct contact with it. We like a 1-3-1 ratio for spring application followed by a heavier application in early fall when blossom buds are forming. Plants must be set with crowns above soil level but all roots covered. Clip off a few inches of the roots if they can't be set without doubling. Cultivation should start soon after plants are set and be often enough to keep free of grass and weeds. Close and frequent cultivation will minimize the amount of hand work needed. Chemical weed killers are useful and the best we have tried is Crag Herbicide No. 1. If used be certain to closely follow manufacturers directions. Allow only enough runner

plants to set to form a well spaced row. Our best yields have been from less than 100,000 plants to the acre. With virus free plants you need set only about  $\frac{3}{4}$  as many plants as of common stocks. A mulch of wheat or rye straw after first freeze gives winter protection. This also keeps the berries clean and retains soil moisture. Use a rate of one to  $1\frac{1}{2}$  tons per acre, or 20 to 30 pounds per 100 feet of row.

## INSTRUCTIONS TO CUSTOMERS

Terms: Cash with order. Remit by Check, Draft or Money Order. If you send currency please register your letter. No C.O.D. shipments made except when part payment is made in advance. C.O.D. fees paid by Purchaser. We start shipments October 1st and close season June 1. After April 1st all shipments made from cold storage. Before that date either fresh dug plants or from storage at your option. All shipments guaranteed to reach you in good condition. After delivery, conditions that may affect the plants are beyond our control and any claims for shortage, poor condition or any other matter must be made immediately on delivery to you.

## TRUE TO NAME

We take every precaution to have all plants true to name and will refund your money if any prove otherwise; but will not be responsible for any greater sum than that received by us for the plants.

## VIRUS-FREE

All of the plants we offer in this catalog have been field grown by us from Foundation stock virus-free and nematode-free strawberry plants supplied by the United States Department of Agriculture, Bureau of Plant Industry, Beltsville, Maryland. And as before stated, grown under such conditions as to maintain freedom from virus diseases. While no guarantee can be made that these plants are 100 percent free from virus diseases we sincerely believe them to be so, because of the measures taken to prevent infection and the absence of the Aphid vector from our environment.

## A WORD AS TO OUR PRICES, ETC.

We have quite a long growing season, grow our plants on good soil and under irrigation as needed. Being free from virus disease gives the added vigor that results in good plant production and we have made our prices as

low as we can and expect to remain in business. We have no doubt that you can buy cheaper plants on the market. We know also that our prices are fully competitive with other plants of comparative quality. Prices given are our best prices for the quantities on which quotations are made. If you need large quantities of strawberry plants we will give special quotations on request.

All orders acknowledged promptly and shipped promptly or as near as possible to any date you specify. If no date specified we will ship at proper planting time for your locality. Strawberries do best if set Early, or just as soon as severe freezing weather is over and land can be prepared. For Northern States and Canada this is April and May; Middle States March and April and in the South February and March. For the deep South Fall setting is probably best.

## RED STAR

This very late variety comes into production when most strawberries are gone. Quality is good, color a deep vivid red and when grown under favorable conditions large crops are secured. To produce Red Star at its best a deep moist soil is needed and also seems to be at its best at the higher altitudes. We sell lots of Red Star in West Virginia where it is known and liked. Plants are large, not subject to leaf diseases, not a good plant maker but does make enough runner plants for a good fruiting row.

If you need a variety to extend the season for home use or nearby market set our Virus-free Red Star.

## PRICE LIST

Fall 1955

Spring 1956

	Postpaid					Collect Express		
	25	50	100	250	500	1000	5000	10,000
<b>Early Varieties</b>								
Blakemore .....	\$.80	\$1.25	\$2.00	\$3.75	\$6.50	\$10.00	\$45.00	\$50.00
Bellmar .....	.80	1.25	2.00	3.75	6.50	10.00	45.00	80.00
Dixieland .....	.90	1.50	2.25	4.50	8.00	12.00	55.00	100.00
Klondike .....	.80	1.25	2.00	3.75	6.50	10.00	45.00	80.00
Klonmore .....	.80	1.25	2.00	3.75	6.50	10.00	45.00	80.00
Florida 90 .....	.80	1.25	2.00	3.75	6.50	10.00	45.00	80.00
Missionary .....	.80	1.25	2.00	3.75	5.50	10.00	45.00	80.00
Premier .....	.80	1.25	2.00	3.75	6.50	10.00	45.00	80.00
Dunlap .....	.80	1.25	2.00	3.75	6.50	10.00	45.00	80.00
Tennessean .....	.80	1.25	2.00	3.75	6.50	10.00	45.00	80.00
Tennessee Shipper .....	.80	1.25	2.00	3.75	6.50	10.00	45.00	80.00
Empire .....	2.00	3.00	5.00					
<b>Midseason Varieties</b>								
Albritton .....	.90	1.50	2.25	4.50	8.00	11.00	50.00	95.00
Catskill .....	.90	1.50	2.25	4.50	8.00	11.00	50.00	95.00
Massey .....	.80	1.25	2.00	3.75	6.50	10.00	45.00	80.00
Midland .....	.90	1.50	2.25	4.50	8.00	11.00	50.00	95.00
Pocahontas .....	.90	1.50	2.25	4.50	8.00	12.00	55.00	100.00
Fairfax .....	.90	1.25	2.25	4.50	8.00	12.00	55.00	100.00
Stelemaster .....	.90	1.25	2.25	4.50	8.00	12.00		
Vermilion .....	.90	1.25	2.25	4.50	8.00	12.00	55.00	100.00
<b>Late Varieties</b>								
Armore .....	.90	1.25	2.25	4.50	8.00	11.00	50.00	95.00
Aroma .....	.90	1.25	2.25	4.00	7.00	10.00	45.00	80.00
Robinson .....	.80	1.25	2.00	3.75	6.50	10.00	45.00	80.00
Sparkle .....	.80	1.25	2.00	3.75	6.50	10.00	45.00	80.00
Tennessee Beauty .....	.90	1.25	2.25	4.25	7.50	11.00	50.00	95.00
Red Star .....	.90	1.25	2.25	4.50	8.00	12.00	55.00	100.00

On all orders received before February 15th when accompanied by payment in full, we will give a bonus of 10 percent. Our choice of varieties but from those suited to your locality.

Address all letters and make remittances payable to

# SINCLAIR NURSERIES

DAYTON, TENNESSEE

Telephone Dayton 504



# SPECIAL STRAWBERRY COLLECTIONS

We are offering a number of Special Collections that are suited to the sections of the country indicated. Because these can be packed at slack times we offer at sharply reduced prices and all offers are delivered postpaid. Because of the interest in Everbearing varieties two of these collections are of everbearers. These are excellent plants of the varieties but are not virus-free stock. We had these grown by a local farmer under contract to us to use for our Wholesale trade. All plants offered in these collections are of our best virus-free stock with the exception stated above.

No. 1—\$2.50—Postpaid  
Northeastern States  
50 Premier  
50 Catskill  
50 Sparkle

No. 2—\$4.00—Postpaid  
100 Premier  
100 Catskill  
100 Sparkle

No. 3—\$2.25—Postpaid  
Deep South—Gulf States  
50 Missionary  
50 Klondike  
50 Klonmore

No. 4—\$3.75—Postpaid  
100 Missionary  
100 Klondike  
100 Klonmore

No. 5—\$2.75—Postpaid  
Virginia—Carolinas  
50 Albritton  
50 Dixieland  
50 Pocahontas

No. 6—\$5.00—Postpaid  
100 Albritton  
100 Dixieland  
100 Pocahontas

No. 7—\$2.25—Postpaid  
Midwestern States  
50 Dunlap  
50 Bellmar  
50 Premier

No. 8—\$3.75—Postpaid  
100 Dunlap  
100 Bellmar  
100 Premier

No. 9—\$2.50—Postpaid  
South-Central States  
50 Blakemore  
50 Armore  
50 Tennessee Beauty

No. 10—\$4.00—Postpaid  
100 Blakemore  
100 Armore  
100 Tennessee Beauty

No. 11—\$2.75—Postpaid  
Red Stele Resistant  
50 Sparkle  
50 Vermilion  
50 Stelemaster

No. 12—\$5.00—Postpaid  
100 Sparkle  
100 Vermilion  
100 Stelemaster

Everbearing Specials

No. 13—\$3.00—Postpaid  
50 Gem  
50 Superfection  
50 Streamliner

No. 14—\$5.50—Postpaid  
100 Gem  
100 Superfection  
190 Streamliner

Order any of the above collections by number. We will have them prepacked and held in storage, ready to attach shipping tag and place in the mail bag.



SINCLAIR'S WHOLESALE PRICES ON STRAWBERRY PLANTS DECEMBER 1, 1956

For many years we have specialized in the growing of Strawberry Plants for the Nursery Trade. We have more than 2,000 acres of good land on the top of famed Cumberland Plateau at almost one half mile elevation. Summers are long and cool, but winters are quite severe, zero and lower temperatures being common. We grow all our strawberries on land that has never been cultivated, clearing new land from the forest each year for our plant crop.

We have been one of the co-operating nurseries since the beginning of the USDA program for the production of virus and nematode free strawberry plants. Parent stock for all our strawberry plants was supplied to us by the Bureau of Plant Industry, U. S. Department of Agriculture.

Our facilities are ample to care for your orders promptly, large or small. We will make shipments to your customers under your tags, or direct to you for reshipment. Unless you have your own cold storage facilities, we recommend shipment direct to your customers. When orders are handled in this manner, the plants will be certain to be received in the best condition for planting. After April 1, all orders will be filled with plants which are dug while dormant and held in our modern cold storage at 30 degrees.

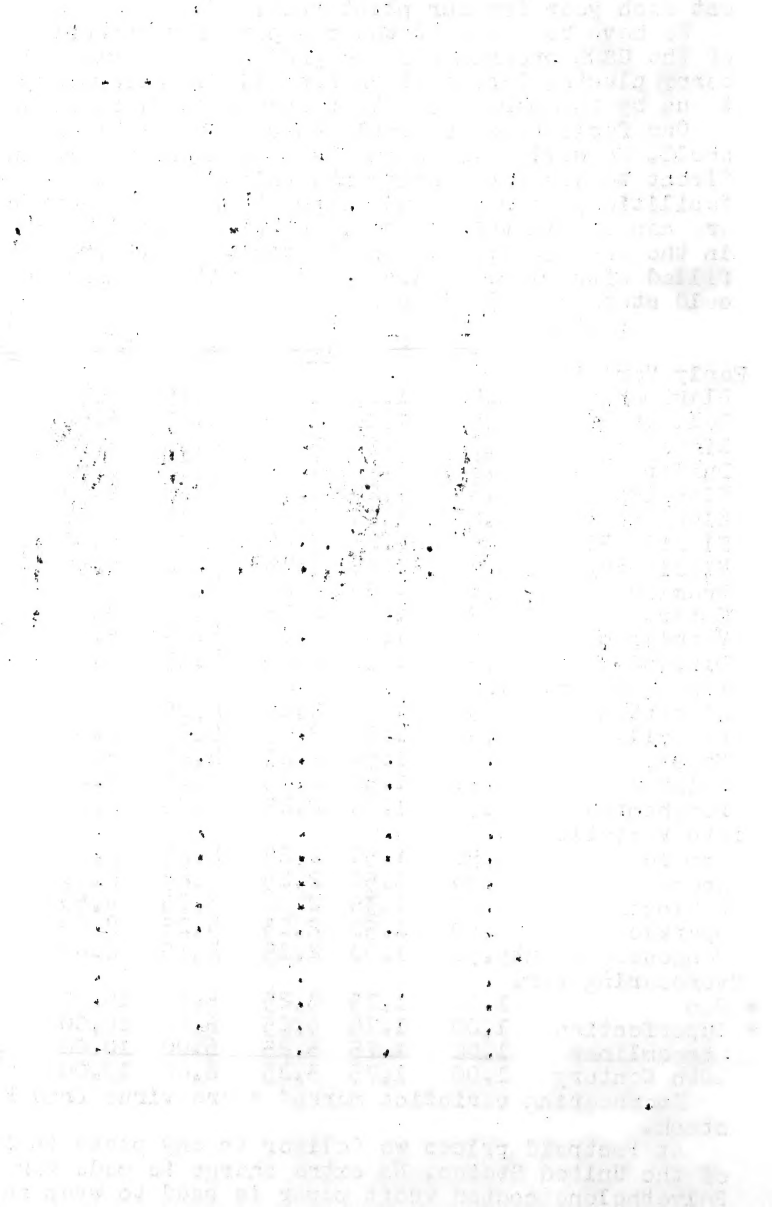
Postpaid

	25	50	100	250	500	Express 1000	Collect 5000	10,000
<b>Early Varieties</b>								
↳ Blakomoro	\$.80	\$1.25	\$2.00	\$3.75	\$6.50	\$9.00	\$12.50	\$80.00
↳ Bollmar	.80	1.25	2.00	3.75	6.50	9.00	12.50	80.00
↳ Dixieland	.90	1.50	2.25	4.25	8.00	10.00	15.00	85.00
↳ Dunlap	.80	1.25	2.00	3.75	6.50	9.00	12.50	80.00
↳ Klondiko	.80	1.25	2.00	3.75	6.50	9.00	12.50	80.00
↳ Klomoro	.80	1.25	2.00	3.75	6.50	9.00	12.50	80.00
↳ Florida 90	.80	1.25	2.00	3.75	6.50	9.00	12.50	80.00
↳ Missionary	.80	1.25	1.75	3.00	5.50	8.00	35.00	60.00
↳ Premier	.90	1.50	2.25	4.25	8.00	10.00	15.00	85.00
↳ Empire	.90	1.50	2.25	4.25	8.00	12.00	57.50	100.00
↳ Vermilion	.90	1.50	2.25	4.25	8.00	11.00	52.50	90.00
↳ Midland	.90	1.50	2.25	4.25	8.00	11.00	52.50	90.00
<b>Midseason Varieties</b>								
↳ Albritton	.90	1.50	2.25	4.25	8.00	11.00	52.50	90.00
↳ Catskill	.90	1.50	2.25	4.25	8.00	11.00	52.50	100.00
↳ Massey	.90	1.50	2.25	4.25	8.00	10.00	45.00	85.00
↳ Fairfax	.90	1.50	2.25	4.25	8.00	12.00		
↳ Pocahontas	.90	1.50	2.25	4.25	8.00	12.00	57.50	100.00
<b>Late Varieties</b>								
↳ Armoro	.90	1.50	2.25	4.25	8.00	11.00	52.50	90.00
↳ Aroma	.90	1.50	2.25	4.25	8.00	10.00	45.00	85.00
↳ Robinson	.80	1.35	2.00	3.75	6.50	9.00	12.50	80.00
↳ Sparkle	.90	1.50	2.25	4.25	8.00	10.00	45.00	85.00
↳ Tennessee Beauty	.90	1.50	2.25	4.25	8.00	10.00	45.00	85.00
<b>Everbearing Var.</b>								
*↳ Gem	1.00	1.75	3.25	6.00	10.00	17.50	85.00	150.00
*↳ Superfection	1.00	1.75	3.25	6.00	10.00	17.50	85.00	150.00
↳ Streamliner	1.00	1.75	3.25	6.00	10.00	17.50	85.00	150.00
↳ Oth Century	1.00	1.75	3.25	6.00	10.00	17.50	85.00	150.00

Everbearing varieties marked \* are virus free Foundation certified stock.

At Postpaid prices we deliver to any place in the continental limits of the United States. No extra charge is made for packing or package. Polyethylene coated kraft paper is used to wrap small orders, larger orders packed in light, wire bound crates.

Our new land soils are practically free of nematodes, but to make doubly sure we treat the soil with Chlordane and DD. We carry out a close schedule of dustings with Parathion for the control of aphids and other insects, and our plants fully meet all the Tennessee Department of Agriculture requirements for the production of Foundation Stock strawberry plants. They are carefully dug and graded, bunched in 25's (26-27) and each bunch labeled with variety name. All quotations are subject to prior sale and are for shipment from now until June 15, 1957. TERMS: Cash with order or before shipment is made. C. O. D. orders must be accompanied by one third cash. A discount of 5% allowed on any order totalling \$100.00 or more when accompanied by payment in full.





*Benson Printing Co.*  
*Nashville, Tenn.*

