

62

Bu

Bu



DOVER



APEL DOORN

LIBRARY
SEP 26 1957
U.S. Department of Agriculture



OXFORD

Bulbs
Plants
Seeds
Supplies

WHOLESALE
CATALOG

FALL
1957

S.S. Skidelsky & Co., inc. 144 WEST 27th St., N. Y. 1, N. Y.



Algonquin
5-0733-4-5

S. S. SKIDELSKY & CO., INC.

144 WEST 27th ST., NEW YORK 1, N. Y.

YOUR GUARANTEE



OF QUALITY



ESTABLISHED
1897
OUR 61st YEAR

Bulbs, Plants, Seeds, Supplies



HYACINTH CITY OF HAARLEM (See page 9)



HYACINTH DELFTS BLUE (See page 9)

TERMS

All bills are subject to 2 per cent discount within 10 days from invoice date. Sixty days net. Sight draft, plus interest thereafter.

Shipments are forwarded by best carrier, in our judgment, at time of delivery, unless otherwise specified by customer.

First-class stock is carefully packed when shipment is made, and we hold good order receipt from the transportation company. Our responsibility ceases thereafter. If the stock reaches you in bad condition, notify agent and bring claim against the delivery company for damage by their negligence, as no allowance for this cause can or will be made by us.

All items in this list are offered subject to crop deliveries or failures, and being unsold on receipt of order, and other conditions beyond our control, and ALL PRICES ARE SUBJECT TO CHANGE WITHOUT NOTICE.

Bulbs, whether shipped on arrival or placed in cold storage for later delivery, may be examined at time of arrival if desired, but no claims will be entertained at a later date. As to all items other than bulbs, claims must be made within five days after receipt or they cannot be recognized.

In the interest of time saving, we ask that you authorize us, when necessary, to substitute with the nearest similar size or variety.

Discounts for cash with order, applying on orders from \$5.00 up.

Bulbs, plants, supplies, 3%.

Flower seeds, 5%. (8% on orders \$25.00 or over). Cyclamen, Grass and Vegetable seeds, and Fertilizers, Net. No C.O.D.'s

New accounts desiring credit, please give three trade references.

The prices in this catalog except on Flower Seeds **Are Not Pre-paid**. Please include sufficient postage with cash orders. Postage will be billed on Charge Orders.

Disclaimer. While we, S. S. Skidelsky & Co., Inc. exercise the greatest care to have all seeds pure and reliable, and all bulbs, plants and cuttings true to name, we do not give any warranty, express or implied, and will not be in any way responsible for the crop. If the purchaser does not accept the goods on these terms they must be returned at once and the money will be refunded. Our liability in all instances, is limited to the purchase price of the seeds, bulbs, roots or plants.

SINCE 1897 WE HAVE SERVED THE WHOLESALE TRADE WITH ONLY THE BEST IN BULBS, PLANTS, SEEDS, SUPPLIES.

IF PARCEL POST SHIPMENT IS DESIRED, PLEASE INCLUDE 10%
ADDITIONAL WITH YOUR REMITTANCE TO COVER POSTAGE.
ANY OVER REMITTANCE WILL BE REFUNDED OR IF INSUF-
FICIENT WILL INVOICE THE DIFFERENCE. NO C.O.D.'s.

Fold On This Line

No
Postage Stamp
Necessary
If Mailed in the
United States



BUSINESS REPLY ENVELOPE

First Class Permit No. 10571, New York, N. Y.

S. S. SKIDELSKY & CO., INC.
144 WEST 27th STREET
NEW YORK 1, N. Y.

Postage
Will be Paid
by
Addressee

Fold On This Line



IMPORTANT — BEFORE SEALING,
be sure your name and address
is plainly written on the other side.

Fold On This Line

Use This Handy Self Mailing Order Blank.
No Addressing • No Envelope Necessary.

Be sure Names, Numbers, and Descriptions are indicated correctly on your Order.

Be sure Check or Money Order is enclosed.



BULBS FOR FORCING and Fall Planting



GLACIER (See page 2)



CITY OF HAARLEM

DARWIN TULIPS	Top size- Per 100	12 up Per 1000	1st size- Per 100	11/12 Per 1000
Afterglow. Deep rosy crimson, edged salmon orange; unique. Height 28 inches.....	5.00	45.00	4.50	40.00
*Alabaster. Large heavy textured pure white. Can be forced from Jan. 15th. Height 20 inches.....	6.00	55.00	5.50	50.00
*All Bright. Bright Red Bartigon sport. Can be forced from Jan. 15th. Height 24 inches.....	5.50	50.00	4.50	40.00
*Annie Speelman. Large creamy white, shaded yellow. Height 28 inches.....	6.00	55.00	5.50	50.00
*Aristocrat. Satiny pink with lighter edge. Improved Princess Elizabeth. Can be forced after Jan. 15th. Height 28 inches.....	5.50	50.00	5.00	45.00
*Bartigon. Crimson red. Can be forced from Jan. 15th. Height 24 inches.....	5.00	45.00	4.25	38.00
*Bartigon Maximus. A larger form of Bartigon. Clear crimson red, white base, ringed deep blue. Extra fine for forcing and pans, cutting and bedding. Height 24 inches.....	5.25	47.00	4.50	40.00

DARWIN TULIPS	Top size- Per 100	12 up Per 1000	1st size- Per 100	11/12 Per 1000
*Beator. Blood red, edged lilac rose. Can be forced from Jan. 15th. Height 25 inches.....	5.50	50.00	4.75	42.50
Blue Aimable. Bright violet-blue; white base, starred blue. Height 25 inches.....	5.00	45.00	4.50	40.00
*Campfire. Blood-red Bartigon sport. Extra fine forcer. Height 24 inches.....	5.25	47.00	4.50	40.00
Charles Needham. Huge glowing vermilion-scarlet. Height 24 inches.....	6.25	58.00	5.50	50.00
*City of Haarlem. Intense deep scarlet, with white margined deep blue base. One of the best Scarlet Darwin Tulips for growing indoors as well as outdoors. Height 25 inches.....	6.50	60.00	6.00	55.00
Clara Butt. Beautiful clear salmon pink with blue base. One of the old, good bedding varieties. Height 23 inches.....	5.00	44.00	4.25	37.00
*Demeter. Reddish-purple, extra large perfect shaped flower. Very early, excellent forcer. Can be forced Dec. 25th. Height 28 inches.....	5.50	50.00	5.00	44.00

*Varieties recommended for forcing.



SCOTCH LASSIE (See page 3)

DARWIN TULIPS

	Top size- Per 100	12 up Per 1000	1st size- Per 100	11/12 Per 1000
Margeaux. Deep wine red with lighter edges, blue base. Height 26 inches.....	5.50	50.00	5.00	45.00
Mr. van Zyl. Medium large. Rosy-pink with lighter edge.....	5.25	48.00	5.00	44.00
*Nardi. Large vivid crimson. Can be forced from Jan. 15th. Height 22 inches	5.00	45.00	4.25	37.00
*Niphetos. Medium large soft sulphur yellow, inside primrose-yellow. Fine lasting qualities. Can be forced from Jan. 25th. Height 26 inches.	5.50	50.00	5.00	45.00
*Pandion. Purple, edged white. Can be forced from Feb. 15th. Height 25 inches	5.75	52.00	5.00	45.00
*Paul Richter. Large bright orange, yellow base. Excellent for pans or cut. Can be forced from Jan. 1st	6.25	58.00	5.50	48.00
*Philip Snowden. Delicate rose Bartigon sport, extra large flower. Can be forced from Jan. 15th. Height 24 inches	5.00	44.00	4.25	37.00
Pride of Haarlem. Brilliant rosy-carmine with blue base. Large flower on tall, strong stem. One of the most popular varieties. Height 30 inches	5.00	44.00	4.25	37.00
*Pride of Zwaneburg. Enormous bright rose with lighter edge. Can be forced from Jan. 15th. Height 28 inches.....	5.50	50.00	5.00	46.00
*Princess Elizabeth (Julie Virnot). Vivid rosy pink with lighter edges. Very fine for forcing and planting outside. Height 29 inches.....	5.00	45.00	4.25	38.00

DARWIN TULIPS

	Top size- Per 100	12 up Per 1000	1st size- Per 100	11/12 Per 1000
*Desiree. Vermilion red. Can be forced from Jan. 2nd. Height 25 inches	5.50	50.00	5.00	45.00
Dorrie Overall. Dark petunia violet edged mauve. Fine for late forcing. Height 26 inches.....	5.50	50.00	5.00	44.00
Duke of Wellington. Pure white good substance. Height 25 inches	5.75	52.00	5.00	45.00
Eclipse. Glowing blood red, very fine. Height 25 inches.....	6.25	58.00	5.50	48.00
Farncombe Sanders. Fiery rose scarlet. Height 28 inches	5.00	45.00	4.25	38.00
Glacier. (Syn. Wild Lust). Extra large ivory-white, large oval shaped flower with fine lasting qualities. Height 27 inches.....	5.50	50.00	5.00	45.00
*Golden Age. Golden yellow edged salmon orange. Can be forced from Jan. 25th. Height 24 inches	5.50	50.00	5.00	44.00
*Insurpassable. A very large lilac flower of fine form and great substance; a tall and strong growing variety. Height 28 inches.....	5.50	50.00	5.00	45.00
King George V. Deep cherry rose with blue and white base. Large flower of splendid form on strong tall stem. Height 30 inches.....	5.00	45.00	4.25	37.00
La Tulipe Noire. Velvety deep maroon black; the darkest of all Tulips Height 28 inches.....	5.25	47.00	4.50	40.00
Madame Butterfly. Large violet purple with lighter edge. Height 28 inches	5.00	45.00	4.50	40.00
*Mamasa. Bright buttercup yellow. Excellent forcer.....	5.25	48.00	5.00	44.00



CORDELL HULL (See page 3)

*Varieties recommended for forcing.

DARWIN TULIPS

	Top size- Per 100	12 up Per 1000	1st size- Per 100	11/12 Per 1000
*Princess Mary. Huge brilliant rose-pink. Exrta fine form and good forcer. Height 28 inches.....	6.00	55.00	5.50	50.00
*Prunus. Clear salmon pink Bartigon sport. Can be forced from Jan. 15th. Height 24 inches.....	5.00	45.00	4.25	38.00
*Queen of Bartigons. Pure salmon pink. Can be forced from Jan. 15th. Height 24 inches.....	6.25	58.00	5.50	48.00
Queen of the Night. Large deep velvet maroon. Height 28 inches....	5.00	44.00	4.25	37.00
*Red Pitt. Bright red Wm. Pitt sport. Can be forced from Jan. 10th Height 24 inches.....	5.00	45.00	4.25	37.00
*Scarlet Sensation. Large scarlet. Can be forced from Jan. 10th. Height 24 inches.....	5.00	45.00	4.25	37.00
Scotch Lassie. Large deep lavender. Height 26 inches.....	5.00	45.00	4.25	37.00
Sunkist. Large deep golden yellow. Height 26 inches.....	5.00	45.00	4.50	40.00
The Bishop. Beautiful deep heliotrope; blue base with white halo and purple anthers; a large flower of great beauty, tall sturdy grower. Height 30 inches.....	5.50	50.00	5.00	45.00
*The Peach. Peach colored with white center. Height 30 inches. Can be forced from Feb. 15th.....	5.00	45.00	4.50	40.00
*Utopia. Large cardinal red. Can be forced from Jan. 20th. Height 22 inches.....	5.50	50.00	4.50	40.00
White Giant. Extra tall giant pure white flower which has unusual lasting qualities. Height 28 inches	5.50	50.00	5.00	45.00
*Wm. Pitt. Bright scarlet with purplish bloom on the outer petals; and blue starred white base. Excellent variety for forcing. Height 25 inches.....	5.00	44.00	4.25	37.00
Yellow Giant. Rich deep golden yellow with black anthers. Globular flower on tall, strong stem. Height 32 inches.....	4.75	42.00	4.25	37.00
*Zwanenburg. Pure white with black anthers; tall stem. This variety has good keeping qualities. Height 29 inches.....	5.25	48.00	5.00	44.00
Superfine Darwin Mixed.....	4.50	40.00	4.10	36.00

REMBRANDT TULIPS

*Cordell Hull. Large blood red on white. Can be forced from Jan. 20th. Height 24 inches.....	5.25	48.00	4.50	40.00
---	------	-------	------	-------

TULIP COLLECTION

Clara Butt	Golden Age	Queen of the Night
City of Haarlem	Insurpassable	Red Emperor
Demeter	Keizerskroon	The Bishop
Duke of Wellington	Margeaux	Wm. Pitt
Glacier	Philip Snowden	Yellow Giant

1500 BULBS — 100 EACH OF THE VARIETIES LISTED

ALL TOP SIZE
SEPARATELY LABELED
SPECIAL PRICE \$70.00



MR. VAN ZYL (See page 2)

MENDEL TULIPS

	Top size- Per 100	12 up Per 1000	1st size- Per 100	11/12 Per 1000
*Athleet. Pure white sport of Weber. Can be forced from Jan. 10th. Height 18 inches.....	5.00	45.00	4.50	40.00
*Cellini. Large geranium pink, white base. Can be forced from Jan. 15th. Height 12 inches.....	6.50	60.00	5.50	50.00
*Fuga. Ox-blood red. Can be forced from Dec. 20th. Height 10 inches....	5.50	50.00	4.50	40.00
*Her Grace. Large white edged deep lilac rose. Can be forced from Jan. 1st. Height 18 inches.....	5.00	44.00	4.50	40.00
*John Gay. Large orange red. Can be forced from Dec. 20th. Height 14 inches.....	5.00	45.00	4.50	40.00
*Krelage's Triumph. Large crimson red. Can be forced from Dec. 20th. Height 14 inches.....	4.75	42.00	4.25	37.00
*Olaf. Finest scarlet for pans. Can be forced from Dec. 15th. Height 14 inches.....	5.50	50.00	5.00	44.00
*Olga. Violet red, edged white. Can be forced from Dec. 5th. Height 16 inches.....	6.25	58.00	5.50	50.00
*Piquante. Carmine purple, strongly edged white, can be forced from Dec. 25th. Height 16 inches.....	5.50	50.00	5.00	45.00
*Shackelton. Pure white. Can be forced from Jan. 15th. Height 16 inches....	5.25	48.00	5.00	44.00
*Van der Eerden. Rosy red, fiery red at edges. Can be forced from Jan. 15th. Height 16 inches.....	4.75	42.00	4.25	37.00
*Weber. Large white with broad pink border. Can be forced from Jan. 15th. Height 18 inches.....	4.75	42.00	4.25	37.00
*White Sail. Creamy, passing to pure white. Can be forced from Dec. 25th. Height 18 inches.....	5.00	45.00	4.50	40.00

*Varieties recommended for forcing.



DENBOLA

TRIUMPH TULIPS

	Top size- Per 100	12 up Per 1000	1st size- Per 100	11/12 Per 1000
*Korneforus. Clear red, a fine flower of strong texture on tall strong stem: forces fairly early. One of the best. Height 22 inches.....	5.25	48.00	5.00	44.00
*Lustige Witwe. (Syn. Merry Widow). Glowing deep red, edged pure white. Can be forced from Jan. 20th. Height 18 inches.....	5.50	50.00	5.00	45.00
*Makassar. Dark canary-yellow. Can be forced from Jan. 20th. Height 16 inches.....	6.50	60.00	5.25	48.00
*Nivea. Large pure white. Can be forced from Jan. 20th. Height 18 inches	6.50	60.00	5.25	48.00
*Paris. Orange red, edged yellow. Fine variety for pans. Height 18 inches. Can be forced from Feb. 15th	5.50	50.00	5.00	45.00
*Red Giant. Large scarlet. Height 16 inches. Can be forced from Jan. 20th	5.50	50.00	5.00	45.00
*Reforma. Sulphury yellow, edged golden yellow. Can be forced from Jan. 20th. Height 18 inches.....	4.75	42.00	4.25	37.00
*Rose Beauty. Deep pink changing to cherry-red, white base. Height 15 inches. Can be forced from Feb. 1st.	5.25	48.00	5.00	44.00
*White House. Large pure white. Can be forced from Jan. 20th. Height 18 inches	6.50	60.00	6.00	55.00

TRIUMPH TULIPS

	Top size- Per 100	12 up Per 1000	1st size- Per 100	11/12 Per 1000
*Alberio. Wine-red with lighter margin, large flower on medium length strong stem. Fine for medium early forcing. Height 24 inches.....	4.75	42.00	4.25	37.00
*Aureola. Bright red, edged golden yellow. Elmus sport. Can be forced from Jan. 25th. Height 18 inches	5.25	48.00	5.00	44.00
*Bruno Walter. Deep chrome yellow, outside flushed purple. Can be forced from Jan. 15th. Height 16 inches	5.50	50.00	5.00	45.00
*Crater. Large rich crimson. Fine for pots and can be flowered for Valentine's Day. Can be forced from Jan. 10th. Height 16 inches.....	5.00	45.00	4.50	40.00
*Denbola. Large. Deep red edged white. Can be forced from Jan. 10th. Height 16 inches.....	6.00	55.00	5.25	48.00
*Edith Eddy. Huge carmine-red, edged white. Can be forced from Jan. 15th. Height 18 inches.....	4.75	42.00	4.25	37.00
*Elizabeth Evers. Deep bright carmine rose white base. Can be forced from Feb. 1st. Height 15 inches....	5.00	45.00	4.50	40.00
*Elmus. Large carmine red, edged white. Can be forced from Jan. 25th. Height 18 inches.....	5.25	48.00	5.00	44.00
*Emmy Peeck. Lively lilac rose. Can be forced from Jan. 15th. Height 22 inches	6.50	60.00	5.50	50.00
*Glory of Noordwijk. Large deep rose white base. Can be forced from Jan 20th. Height 18 inches.....	5.00	45.00	4.50	40.00



RED GIANT

*Varieties recommended for forcing.

COTTAGE TULIPS

	Top size- Per 100	12 up Per 1000	1st size- Per 100	11/12 Per 1000
Advance. Huge fiery scarlet blackish-blue base. Height 30 inches....	5.25	48.00	5.00	44.00
*Albino. Pure white, fine form and substance. Height 14 inches.....	5.25	48.00	5.00	44.00
Barbara Pratt. Cherry pink, slightly lighter edged, creamy yellow base. Height 26 inches.....	5.00	45.00	4.50	40.00
Belle Jaune. Large deep yellow. Height 24 inches.....	5.00	45.00	4.50	40.00
*Carrara. One of the finest of all white Tulips. Good forcer. Height 23 inches.....	5.00	45.00	4.50	40.00
Chappaqua. Oval shaped carmine rose, edged blue. Height 32 inches	5.50	50.00	5.00	45.00
Dido. Orange red; slightly flushed cerise with amber-orange edges. Height 30 inches.....	5.00	45.00	4.50	40.00
*Golden Harvest. Lemon-yellow, large flower. Height 28 inches.....	4.50	40.00	4.00	35.00
*Golden Measure. Golden yellow with tiny red edge. Can be forced from Feb. 15th. Height 25 inches.	5.25	48.00	5.00	44.00
Grenadier. Medium large. Bright orange-scarlet. Height 20 inches....	5.00	45.00	4.50	40.00
G. W. Leak. Brilliant vermilion scarlet, creamy yellow base. Height 26 inches.....	5.50	50.00	5.00	45.00
Marjorie Bowen. Large buff and salmon, shading to lilac rose, flushed salmon. Height 28 inches.....	5.00	45.00	4.50	40.00
Marshall Haig. Brilliant scarlet. Height 28 inches.....	5.50	50.00	5.00	45.00
*Mother's Day (Lemon Queen). Lemon yellow, long flower, perfect shape. Can be forced from Jan. 20th. Height 24 inches.....	4.75	42.00	4.25	37.00



ROSY WINGS



MRS. JOHN T. SCHEEPERS

COTTAGE TULIPS

	Top size- Per 100	12 up Per 1000	1st size- Per 100	11/12 Per 1000
Mrs. John T. Scheepers. An enormous flower of bright yellow color, oval shaped and of great substance. One of the largest and best of all yellow tulips. Height 26 inches.....	5.50	50.00	5.00	45.00
Mrs. Moon. Rich golden yellow, a large flower of good substance, with pointed reflexing petals, Height 25 inches.....	5.50	50.00	5.00	45.00
*Northern Queen. Large white edged pink. Height 26 inches.....	5.00	45.00	4.50	40.00
Ossi Oswalda. Medium sized creamy white, flushed rose, turning into rose as the flower ages. Height 24 inches.....	5.00	45.00	4.50	40.00
Princess Margaret Rose. Yellow artistically edged orange-red. Height 22 inches.....	4.50	40.00	4.00	35.00
Rosabella. Medium large. Pale rose with lighter edge. Height 24 inches	5.50	50.00	5.00	45.00
Rosy Wings. Pure radiant pink, white base. Height 24 inches.....	5.00	45.00	4.50	40.00
Smiling Queen. Rose Neyron red, edged silvery pink, white base. Height 30 inches.....	5.50	50.00	5.00	45.00
*Wall Street. Medium large. Lemon-yellow. Can be forced from Jan. 15th. Height 24 inches.....	4.50	40.00	4.00	35.00
*White City. Long oval pure white. Height 28 inches.....	6.00	55.00	5.25	48.00
Superfine Cottage Mixed	4.50	40.00	4.10	36.00

*Varieties recommended for forcing.



BLACK PARROT

PARROT TULIPS

	Top size- Per	12 up Per	1st size- Per	11/12 Per
Black Parrot. Blackish purple. Hgt. 24"	100	1000	100	1000
Blue Parrot. Huge bluish heliotrope. Height 24 inches.....	5.00	45.00	4.50	40.00
Discovery. Violet pink, edged silvery white. Height 29 inches.....	5.50	50.00	5.00	45.00
*Doorman. Cherry red, edged golden yellow. Can be forced from Jan. 10th. Height 16 inches.....	6.50	60.00	6.00	55.00
Double Fantasy. Sport of Fantasy with double flowers. Hgt. 22".....	8.00	75.00	7.00	65.00
Fantasy. Salmon-pink with green. Height 22 inches.....	5.25	48.00	5.00	44.00
Gemma. Medium size. White and pink. Height 22 inches.....	7.50	70.00	6.50	60.00
Orange Favorite. Large orange, with green blotches and yellow base. Height 22 inches.....	5.00	45.00	4.50	40.00
Orange Parrot. Pure orange. Hgt. 24"	5.50	50.00	5.00	45.00
*Pitt's Parrot. Glowing scarlet. Can be forced from Jan. 5th. Hgt. 24".....	6.00	55.00	5.25	48.00
*Red Champion. Large cochineal-red, flushed scarlet. Height 24 inches. Force from Jan. 20th.....	7.00	65.00	6.00	55.00
Sunshine. Pure golden-yellow. Height 18 inches.....	6.00	55.00	5.25	48.00
Texas Gold. Deep yellow, narrow edge. Height 22 inches.....	5.25	48.00	5.00	44.00

LILY FLOWERED TULIPS

Captain Fryatt. Medium size. Garnet-red. Height 24 inches.....	7.00	65.00	6.00	55.00
Golden Duchess. Medium large. Golden-yellow. Height 26 inches.....	7.00	65.00	6.50	60.00
Marcellina. Medium small carmine rose. Height 22 inches.....	5.50	50.00	5.00	45.00
White Duchess. Snow white. Hgt. 20"	6.00	55.00	5.25	48.00
White Triumphator. Large pure white. Height 22 inches.....	5.50	50.00	5.00	45.00

*Varieties recommended for forcing.

BREEDER TULIP

	Top size- Per	12 up Per	1st size- Per	11/12 Per
Alice Keith. Orange tinted reddish-purple. Height 25 inches.....	5.00	45.00	4.50	40.00
Bacchus. Bright purple. Height 26 inches.....	5.50	50.00	5.00	45.00
Cherbourg. Golden yellow heavily shaded and margined bronze. Height 27 inches.....	6.50	60.00	5.75	52.00
Dillenburg. Bright salmon orange, with deep lilac rose flush on the outer petal. Height 28 inches.....	4.75	42.00	4.25	37.00
Dom Pedro. Medium large flower of morocco - red on cadmium - yellow ground. Height 24 inches.....	5.50	50.00	5.00	45.00
George Grappe. Large lavender mauve, blue base. Height 30 inches.....	5.50	50.00	5.00	45.00
Indian Chief. Very large reddish mahogany, slightly flushed violet. Height 32 inches.....	7.00	65.00	6.50	60.00
J. J. Bouwman. Large tomato red, flushed claret, edged yellow. Height 26 inches.....	5.50	50.00	5.00	45.00
Louis XIV. Purple flushed golden bronze, recommended. Height 26 inches.....	6.50	60.00	5.75	52.00
Orange Delight. Bronzy orange with deep orange shadings. Height 26 inches.....	6.50	60.00	6.00	55.00
President Hoover. Orange scarlet. Height 26 inches.....	5.50	50.00	5.00	45.00
Tantalus. Large dull yellow, flushed pale purple and lilac. Height 30 inches.....	6.50	60.00	5.50	50.00
Superfine Breeder Mixed	4.75	42.00	4.25	38.00



FANTASY

SINGLE EARLY TULIPS

	Top size- Per 100	12 up Per 1000	1st size- Per 100	11/12 Per 1000
* Bellona. Pure golden yellow. Good forcer. Force from Jan. 10th. Height 14 inches.....	6.50	60.00	6.00	55.00
* Coleur Cardinal. Rich deep crimson scarlet. Late forcer. Excellent for pots. Height 12 inches.....	6.50	60.00	6.00	55.00
* Crown Imperial. Rose tipped yellow. Very early forcer. Excellent for pots. Can be forced from Jan. 1st. Height 16 inches.....	6.50	60.00	6.00	55.00
* General De Wet. Orange shaded orange-scarlet. Sweet scented. Hgt. 14 inches.....	5.50	50.00	5.00	45.00
* Ibis. Large deep rose. Can be forced from Jan. 1st. Height 12 inches.....	5.50	50.00	5.00	45.00
* Keizerskroon. Bright crimson scarlet with broad golden yellow border. Medium late forcer. Fine bedder. Height 16 inches.....	5.50	50.00	5.00	45.00
Pink Beauty. Deep Rose with broad stripe of white on center of petals. Height 13 inches.....	6.50	60.00	6.00	55.00
Prince Carnaval. Artistic combination of red and yellow. Height 13 inches	5.50	50.00	5.00	45.00
* Rising Sun. Golden yellow; medium sized oval flower of great substance on stout stem. Good for forcing. Height 16 inches.....	5.50	50.00	5.00	45.00
* Sunburst. Large flowered yellow flushed red. Can be forced from Feb. 1st. Height 12 inches.....	5.50	50.00	5.00	45.00
* Ursa Minor. Large golden yellow. Can be forced from Jan. 15th Height 13 inches.....	5.00	45.00	4.50	40.00
White Beauty. Very large pure white, well formed flower on very strong stem. Height 12 inches.....	7.00	65.00	6.50	60.00



LOUIS XIV (See page 6)



KEIZERSKROON

DOUBLE EARLY TULIPS

	Top size- Per 100	12 up Per 1000	1st size- Per 100	11/12 Per 1000
* Bonanza. Carmine red, edged yellow. Can be forced from Jan. 15th. Height 16 inches.....	5.00	45.00	4.50	40.00
* Electra. Bright cerise carmine, a glistening color. Large, very double flower. Height 12 inches.....	6.50	60.00	5.25	48.00
* Marechal Niel. Yellow flushed orange. Can be forced from Jan. 15th. Height 10 inches.....	6.50	60.00	5.25	48.00
* Mr. Van Der Hoeft. Fine deep canary yellow, bedder and forcer. Height 11 inches.....	6.50	60.00	5.25	48.00
* Murillo Maximus. White flushed pink, taller and earlier than Murillo. Can be forced from Dec. 15th. Height 12 inches.....	6.50	60.00	5.25	48.00
* Orange Nassau. Bright orange scarlet heavily suffused orange. Hgt. 11".....	6.50	60.00	5.25	48.00
* Peach Blossom. Silvery pink on white ground flushed carmine rose. Fine bedder and forcer. Hgt. 12".....	6.50	60.00	5.25	48.00
* Schoonoord. Pure white, large flower; ideal bedder and forcer. Hgt. 12".....	6.50	60.00	5.50	50.00
* Triumphator. Very bright satin rose, of good form, paler at edges, very fine. Height 10 inches.....	6.50	60.00	5.50	50.00
* Vuurbaak. Bright scarlet with orange flush, very large full flower on strong stem. Grand for bedding and a good forcer. Hgt. 12".....	6.50	60.00	5.75	52.00
* Willemsoord. Carmine edged white. Sport of Murillo. Can be forced from Jan. 15th.....	6.50	60.00	5.75	52.00
* Wilhelm Kordes. Bright orange flushed red. Can be forced from Jan. 15th. Height 12 inches.....	6.50	60.00	5.25	48.00

*Varieties recommended for forcing.



FOSTERIANA RED EMPEROR

TULIP SPECIES

	Top Size	Per 100	Per 1000
Clusiana (The Lady Tulip). Outer petals cherry-red, inner petals white, with violet centre. Excellent for pots. Height 8 inches	6.50	60.00	
Fosteriana Purissima . Large pure white. Same as the world famous "Red Emperor" except in color. Height 20 inches	15.00	140.00	
Fosteriana Red Emperor (Madame Lefebvre) . Enormous fiery scarlet with yellow bordered large black base. Height 20 inches.....	6.00	55.00	Top—12 up
	5.50	50.00	1st—11/12
Kaufmanniana . Yellowish white, outside tinted carmine. Height 6 inches.....	5.50	50.00	
Praestens Fusilier . Vermillion-orange, 2-4 flowers to a stalk. Can be forced in moderate temperature from Feb. 1st	12.50	120.00	

DARWIN HYBRID TULIPS

(See Front Cover)

A new race of tulips, the results of crossings between Darwin Tulips and Fosteriana varieties. They produce enormous blooms, strong stems, vivid colors.

APELDOORN. Orange scarlet, black base, edged yellow.

DOVER. Fiery poppy-red, very large.

GENERAL EISENHOWER. Orange red, very large.

GUDOSHNIK. Yellow, spotted red.

OXFORD. Red, flushed purple-red.

F. D. ROOSEVELT. Clear orange-red, extra large.

TOP SIZE — 12 cm up

ALL VARIETIES LISTED

9.00 Per 100

80.00 Per 1000

DOUBLE LATE OR PEONY FLOWERED

	Top size- Per 100	12 up Per 1000	1st size- Per 100	11/12 Per 1000
Coxa . Carmine red edged vermillion with small white border. Extra large flower. Height 22 inches.....	5.50	50.00	5.00	45.00
Eros . Old rose. Huge double flower. Height 22 inches.....	5.50	50.00	5.00	45.00
*Livingstone . Cochineal red. Height 18 inches. Can be forced from Feb. 1st	5.50	50.00	5.00	45.00
Mount Tacoma . Large double pure white Tulip with yellow base. Height 24 inches.....	5.50	50.00	5.00	45.00
Orange Triumph . Orange-red flushed brown, narrow yellow edge. Height 22 inches	5.00	45.00	4.50	40.00
Rockett . Cherry red Eros sport. Height 22 inches.....	5.00	45.00	4.50	40.00
Royal Yellow . Deep golden yellow. Height 22 inches.....	5.50	50.00	5.00	45.00
Uncle Tom . Glossy dark maroon red. Large double flower. Height 22 inches	5.50	50.00	5.00	45.00

NARCISSUS (Polyanthus Type)

	Per 100	Per 1000
CHINESE SACRED LILY 14/16 cm.....	8.00	75.00
16/18 cm.....	9.00	85.00
GRAND SOLIEL D'OR 14/16 cm.....	8.00	70.00
16/18 cm.....	9.00	80.00
18/20 cm.....	10.50	95.00

PAPERWHITE GRANDIFLORA

The **Original True Grandiflora Strain** imported from abroad. Large pure white sweetly scented blooms, borne in a cluster on strong stems, carried well above the deep green foliage.

	Italian Grown		French Grown	
	Per 100	Per 1000	Per 100	Per 1000
12/13 cm. (1500 per case).....	5.50	50.00		
13/14 cm. (1250 per case).....	7.00	65.00	8.00	75.00
14/15 cm. (1000 per case).....	8.00	75.00	8.50	80.00
15/16 cm. (800 per case).....	8.50	80.00	9.50	90.00
16/17 cm. (650 per case).....	9.00	85.00	10.50	100.00



PAPER WHITE GRANDIFLORA

*Varieties recommended for forcing.



~~DELFT'S BLUE~~ PINK PEARL

HYACINTHS

PRICE CLASS

WHITE

- 1 *Carnegie. Pure white, large compact truss on short stem.
- 1 *Edelweiss. Pure white, broad truss, large bells.
- 2 *L'Innocence. Pure white, most popular of all whites.

RED, PINK AND ROSE SHADES

- 1 *Anne Marie. Delicate pink, strong stem, large bells.
- 2 *Gertrude. Rich rose, with deeper stripe down center of petal.
- 1 *Jan Bos. Deep scarlet, lighter centered bells, early forcer.
- 3 *Lady Derby. Light rose-pink, fine large spike.
- 1 *La Victoire. Bright deep rosy crimson; close truss; fine form.
- 2 *Marconi. Cerise pink, dense bold spike, good form.
- 1 *Pink Pearl. Rose pink, heavy spike, large bells, early forcer.
- 1 *Princess Margaret. Delicate pink, long spike.
- 2 *Queen of the Pinks. Bright cerise pink. Fine compact spike, good form.

BLUE AND LAVENDER SHADES

- 3 *Bismark. Light sky-blue, very large truss. Excellent for early forcing.
- 3 *Delft's Blue. Bright porcelain blue, compact spike.
- 3 *Dr. Lieber. Dark porcelain-blue with lilac tinge.
- 3 *Dr. Stresemann. Sky blue, broad well shaped truss.
- 3 *Grand Maitre. Vivid mid-blue, good spike, very attractive.
- 3 *King of the Blues. Bright blue, fine spike, good form.
- 3 *Myosotis. Medium light-lavender blue.
- 3 *Perle Brilliant. Light blue, large well formed truss.
- 3 *Queen of the Blues. Cambridge blue, long truss, large bell.

YELLOW

- 1 *City of Haarlem. Bright yellow; fine large truss; suitable for bedding and forcing.

PRICES ON ALL VARIETIES

	Class 1		Class 2		Class 3	
	Per 100	Per 1000	Per 100	Per 1000	Per 100	Per 1000
19 up (Top Size)	17.50	165.00	15.00	140.00	12.50	115.00
18/19 (1st size)	15.00	140.00	13.00	120.00	10.50	95.00
17/18 (2nd size)	12.00	110.00	10.50	97.00	8.75	78.00
16/17 (3rd size)	9.50	85.00	8.50	75.00	7.50	65.00
15/16 (Bedding size) ..	8.00	70.00	7.50	65.00	6.75	58.00
14/15 (Miniature)	7.00	60.00	6.75	58.00	6.25	52.00

*Varieties recommended for forcing



KING ALFRED

The most outstanding florists variety well suited for all purposes. Well known for its forcing qualities—beautiful deep golden yellow, very substantial with long strong stem. Blooms in 4 weeks from Dec. 25th.

	KING ALFRED — American Grown	
	Per 100	Per 1000
Jumbo ..	12.50	115.00
D.N. No. 1 ..	10.00	90.00
D.N. No. 2 ..	7.50	65.00
KING ALFRED — Dutch Grown		
D.N. No. 1 ..	9.50	85.00
D.N. No. 2 ..	7.50	65.00



FRENCH ROMAN HYACINTHS

"Romans" are invaluable for early pot and bowl work. Can easily be brought in flower for Christmas and later.

	Per 100	Per 1000
*WHITE		
15/16 cm. (scarce)	17.50	165.00
14/15 cm.	15.00	138.00
13/14 cm.	12.00	110.00
12/13 cm.	8.50	75.00
*BLUE		
14/15 cm.	8.50	75.00
*PINK		
12/13 cm.	10.50	95.00
13 cm up	12.50	110.00



MUSIC HALL

NARCISSUS (DAFFODILS)

BLUE DIAMOND BRAND—YOUR GUARANTEE OF QUALITY

	Double Nosed No. 1	
	Per 100	Per 1000
YELLOW TRUMPET		
* Aerolite. Medium yellow trumpet with deep primrose perianth. Fine for cutting.....	11.00	100.00
* Flower Carpet. Large deep golden yellow trumpet and perianth. Bloom is larger than King Alfred. Early forcer	11.00	100.00
Golden Harvest. Very large deep golden-yellow flower. Earlier than King Alfred. Can be forced from Dec. 20th	11.50	105.00
* Grandest. Extra large golden yellow. Can be forced after Jan. 20th. Fine for pans and late cutting	16.00	150.00
King Alfred. See previous page.		
Lord Wellington. Large bright yellow of finest form. Medium early. Can be forced from Jan. 20th.....	11.50	105.00
Magnificence. Uniform deep yellow. Very early. Can be forced from Dec. 15th	10.50	95.00
* Rembrandt. Golden-yellow. Medium early. Can be forced after January 15th	11.00	100.00
* The First. Cream perianth, golden trumpet. Very large. Should be forced to bloom from Dec. 15th to Jan. 15th only. The first lot intended for Christmas should be placed in the forcing house Nov. 28th	10.00	90.00
Unsurpassable. Huge golden-yellow flower. Can be forced after Jan. 15th	11.00	100.00
Wrestler. Fine medium sized yellow flower, very free flowering. Can be forced after Jan. 15th	9.50	85.00



MOUNT HOOD

	Double Nosed No. 1	
	Per 100	Per 1000
BI-COLOR TRUMPET		
Magnet. Perianth creamy white, trumpet yellow. Can be forced from Jan. 15th	9.50	85.00
Music Hall. Medium early. Perianth white, trumpet yellow. Can be forced after Jan. 15th	9.50	85.00
President Lebrun. Pure white perianth, with lemon yellow trumpet passing to creamy-white. Large well formed flower. Can be forced after Jan. 20th	9.50	85.00
Queen of Bicolors. Perianth pure white, trumpet canary yellow. Medium early. Can be forced after Jan. 15th....	9.50	85.00
Spring Glory. White perianth, long golden trumpet. Blooms in four weeks from Jan. 15th	9.50	85.00
WHITE TRUMPET		
Beersheba. Large pure white trumpet and perianth. Extra fine form and good substance. Can be forced after Jan. 25th	11.00	100.00
Imperator. Large creamy-white trumpet. Medium late. Can be forced after Jan. 15th	10.00	90.00
Mrs. E. H. Krelage. Finest white Daffodil. Blooms in four weeks from Jan. 15th	9.00	80.00
Mount Hood. Large pure ivory-white perianth, creamy white trumpet	11.00	100.00

TRIANDRUS HYBRIDS		
Thalia. Two or three lovely pure white flowers per stem. 2 inches or more across, making a beautiful cluster. Very suitable for the rock garden or forcing	11.00	100.00

TRUMPET DAFFODIL COLLECTION	
BEERSHEBA	PRESIDENT LEBRUN
GOLDEN HARVEST	QUEEN OF BICOLORS
MOUNT HOOD	REMBRANDT
MRS. R. O. BACKHOUSE	UNSURPASSABLE

400 Bulbs — 50 each of varieties listed.
All Double Nosed No. 1 Separately labeled.
Special Price 45.00

*American Grown.



SEMPER AVANTI



MRS. R. O. BACKHOUSE

LARGE CUPPED VARIETIES

Double Nosed No. 1
Per Per
100 1000

Carl'on. Clear soft yellow perianth and trumpet, broad and overlapping large expanding trumpet, frilled at mouth. An impressive flower and long lasting	9.50	85.00
Clamor. Medium size. Perianth white, cup yellow-orange-red edge. Can be forced after Jan. 10th	9.50	85.00
Daisy Schaefer. Large white perianth, lemon yellow cup. Medium late. Can be forced after Jan. 15th	9.00	80.00
Dick Wellband. Perianth pure white, cup bright orange-red. Can be forced after Jan. 20th	9.50	85.00
Flower Record. Long pointed white perianth, wide open golden-yellow crown edged bright red. Long stemmed. Can be forced after Jan. 10th	9.50	85.00
Fortune. Perianth deep yellow, trumpet shaped orange cup. Early. Can be forced after Jan. 20th	9.00	80.00
Gertie Miller. Pure white perianth large creamy white cup. Late	9.50	85.00
John Evelyn. Pure white perianth, wide frilled cup of soft, orange-yellow	8.50	75.00
Monique. Perianth white, cup golden yellow edged orange. Medium early. Can be forced after Jan. 15th	9.50	85.00
Mrs. R. O. Backhouse. Perianth, creamy-white, small trumpet-shaped cup of pale apricot passing to pink. Can be forced after Jan. 25th	9.50	85.00
Orange Glow. Large flower. Perianth yellow with pale-orange cup. Can be forced after Jan. 20th	8.50	75.00

JONQUILLA HYBRIDS

Golden Sceptre. Deep gold flowers of great substance. Star-shaped perianth. free flowering	7.00	60.00
---	------	-------

LARGE CUPPED VARIETIES (Contd.)

Double Nosed No. 1
Per Per
100 1000

Scarlet Elegance. Perianth deep-yellow, cup orange-red. Free flowering. Can be forced after Jan. 20th	9.00	80.00
Semper Avanti. Perianth creamy-white. Large bright orange cup. Very free flowering. Can be forced after Jan. 15th	9.00	80.00
Solario. Perianth pure white, large canary yellow cup. Can be forced from Jan. 15th	9.50	85.00
Tunis. Broad, pointed creamy white perianth slightly recurving, with widely expanded sulphur-yellow cup, edged amber, deepening with age. Can be forced after Jan. 20th	8.50	75.00

SHORT CUPPED VARIETIES

Bath's Flame. Large yellow petals, shading into a brilliant red fringed cup. Blooms in four weeks from Dec. 15th	9.00	80.00
*Diana Kasner. Pure white perianth, large yellow cup, frilled; blood red; very free flowering. Excellent forcer	8.00	75.00
Edward Buxton. Light yellow perianth, deep orange cup. Can be forced from Jan. 10th	9.00	80.00
Firetail. Ivory white perianth, blood red cup. Medium late	8.00	70.00
Goveley. Very round, overlapping, smooth waxy pure white perianth, large golden yellow cup with intense red edge, very free flowering	8.50	75.00
La Riente. Perianth white, cup deep red. Can be forced from Jan. 15th	8.50	75.00
Mrs. Barclay. Very showy variety with broad overlapping white perianth and large flat apricot-orange crown, broadly banded deep orange-red. A perfect show flower	8.50	75.00
Verger. Pure white perianth, deep red cup. Can be forced from Jan. 25th	10.00	90.00

*American Grown.



TEXAS

POETICUS

Double	Nosed	No. 1
	Per	Per
	100	1000

- ..Actee. Large, flat, overlapping pure white perianth, with yellow eye, broadly margined scarlet. A most beautiful exhibition flower and the largest and best Poeticus 8.50 75.00
- Sarchedon. Pure white perianth, yellow eye with broad red edge. Medium early. Can be forced after Jan. 25th 8.00 70.00

DOUBLE

- Cheerfulness. Double white Poetaz, good stem, a fine show variety 7.50 65.00
- Inglescombe. One of the finest of all double Daffodils. Bright sulphur yellow, uniform in color throughout; flowers of perfect form, very large, on stiff erect stems 9.50 85.00
- Mary Copeland. Pure white perianth with intense bright scarlet center 10.00 90.00
- *Texas. Huge double flower. Outer and inside petals bright yellow, bright orange center. Can be forced after Jan. 20th 9.50 85.00
- Twink. Petals alternating, soft primrose and clear orange. Forces easily, free flowering and hardy 9.50 85.00
- Van Sion. Golden yellow. Fine for pans. Blooms in four weeks from Jan. 1st 10.00 90.00
- Yellow Cheerfulness. Double soft Yellow Poetaz. Sport of Cheerfulness. 8.00 70.00

POETAZ

Double	Nosed	No. 1
	Per	Per
	100	1000

- Cheerfulness. See Double Narcissus for description 7.50 65.00
- Cragford. Cream-white perianth, dark orange cup. Can be forced from Dec. 10th 9.00 80.00
- Early Perfection. The earliest of all Poetaz. Six to eight flowers per stem. Can be forced to bloom in early January. Pure white perianth, clear, white cup 8.50 75.00
- Geranium. Large pure white perianth, cup deep orange-red. Medium late. Can be forced after Feb. 1st 7.50 65.00
- Laurens Koster. White perianth, orange cup. Free flowering. Blooms in two weeks from Jan. 15th 7.00 60.00
- L'Innocence. Large flowered pure white wavy perianth, large bright canary yellow cup; averaging 5 flowers on a stem; one of the best whites 8.50 75.00
- La Fiancee. Medium large. Perianth white, light orange cup. Medium early. Can be forced after Jan. 1st 9.50 85.00
- Scarlet Gem. Deep golden yellow perianth brilliant red cup. Medium late. Can be forced after Jan. 15th 8.50 75.00
- St. Agnes. Creamy white perianth, bright orange cup. Medium early. Can be forced after Jan. 10th 8.00 70.00
- Yellow Cheerfulness. See Double Narcissus for description. 8.00 70.00



CHEERFULNESS

*American Grown.

MIXTURE

Per	Per
100	1000

- "SSS" Blue Diamond Mixed. Contains many varieties of all types especially blended for naturalizing 6.00 50.00

Selected Lily Bulbs

Blue Diamond is the finest of its kind for greenhouse culture



HOUSE OF EASTER LILIES GROWN FROM S.S.S. BULBS

LILIUM ACE

Similar to CROFT with luxuriant darker green foliage. Very strong grower and prolific bloomer.

7/8"	250 per case.....	Prices
8/9"	200 per case.....	on
9/10"	150 per case.....	Application

LILIUM CROFT

Special Selected Strain grown in Oregon. Unquestionably the finest Lily for Pots.

7/8"	250 per case.....	Prices
8/9"	200 per case.....	on
9/10"	150 per case.....	Application
10" up	100 per case.....	

LILIUM ERABU (True Strain)

Early flowering Longiflorum Lily from Japan. Per Case

6/8"	400 per case.....	42.00
7/9"	300 per case.....	40.00
8/10"	225 per case.....	40.00
9/10"	200 per case.....	40.00
10/11"	150 per case.....	40.00
11/13"	120 per case.....	40.00
9/10"	100 per case (Baby Case).....	25.00

LILIUM GEORGIA BELLE

Heavy textured pure white trumpet. Strong grower, very free flowering Will produce many blooms from a small sized bulb.

6 1/2/7"	300 per case.....	65.00
7/8"	250 per case.....	75.00
8/9"	200 per case.....	78.00
9/10"	150 per case.....	78.00

LILIUM FLORIDII CERTIFIED

A very fine selected strain of Floridii. Especially for early cutting. Per Case

6 1/2/7"	300 per case.....	55.00
7/8"	250 per case.....	75.00
8/9"	200 per case.....	75.00
9/10"	150 per case.....	75.00

LILIUM GIGANTEUM — from Japan (Southern Mountain Grown)

Finest white trumpet lily for forcing. Especially suited for late flowering out of cold storage. Per Case

6/8"	400 per case.....	45.00
7/9"	300 per case.....	45.00
8/9"	250 per case.....	48.00
8/10"	225 per case.....	48.00
9/10"	200 per case.....	48.00

LILIUM NOBILI — from Japan

White trumpet, similar to Giganteum but larger, better producer.

7/9"	300 per case	9/10"	200 per case
8/10"	225 per case	10/11"	150 per case

All Sizes — 55.00 Per Case

LILIUM LONGIFLORUM "ESTATE LILY"

Vigorous grower sending up strong stems which carry 4 to 8 immense pure white trumpet lilies. Flowers are long lasting much more so than the other Longiflorum types.

6/7"	300 per case.....	Prices
7/8"	250 per case.....	
8/9"	200 per case.....	on
9/10"	150 per case.....	
10" up	100 per case.....	Application

"SKID'S Special New Strain Longiflorum"

Very strong Virus-free early blooming variety. Heavy textured. Pure white trumpet, very free flowering.

7/9"	100 per case.....	25.00 Per Case
------------	-------------------	----------------



LILIUM CANDIDUM (Northern Grown)

CANDIDUM (Madonna Lily)

This lily likes a good, deep loamy soil, not too dry, and a sunny situation where it can be left undisturbed for years. Plant shallow, covering the bulbs not more than 1 inch or 2-3 inches if the soil is very light. Height 4-6 ft. June flowering.

TRUE FRENCH NORTHERN GROWN

Size	Per case	Per 100	Per 1000	Size	Per case	Per 100	Per 1000
20/22 cm	300	14.00	130.00	30/32 cm	100	32.50	310.00
22/24 cm	250	16.50	150.00	32/35 cm	100	37.50	350.00
24/26 cm	200	18.50	170.00	35/40 cm	75	45.00	425.00
26/28 cm	150	22.50	210.00	40 cm up	50	47.50	450.00
28/30 cm	125	28.50	270.00				

SOUTHERN GROWN

Size	Per case	Per 100	Per 1000	Size	Per case	Per 100	Per 1000
20/22 cm	500	11.00	100.00	26/28 cm	250	18.00	170.00
22/24 cm	300	13.00	120.00	28/30 cm	200	22.50	215.00
24/26 cm	250	15.50	145.00	30 cm up	150	27.50	260.00

LILY BULBS FROM JAPAN

December-January Delivery

	Quantity	Per Case	Per 100	Per Case
Auratum. The magnificent golden banded lily of Japan, large white flowers with a golden band down the center of each petal. The fragrant flowers, heavily spotted crimson, are carried on strong stems 3-6 feet high. Stem rooting, plant 8-12" deep.				
	7/9"	250	16.00	35.00
	8/9"	200	20.00	35.00
	9/10"	140	28.00	35.00
	9/11"	125	30.00	35.00
	11/13"	90	32.50	35.00
	13/15"	50	32.50	35.00
Auratum Platyphyllum. Undoubtedly the best of the Auratum family. Large flowers and stronger grower than Auratum. Plant the same as Auratum.				
	8/9"	200	22.00	38.00
	9/10"	140	30.00	38.00
	9/11"	125	32.00	38.00
	11/13"	90	38.00	38.00
	13/15"	50	38.00	38.00
Rubrum Magnificum. Handsome heads of flowers with reflexing petals heavily spotted crimson on white ground.				
	7/9"	250	16.00	35.00
	8/9"	200	20.00	35.00
	9/10"	140	28.00	35.00
	9/11"	125	30.00	35.00
	10/11"	100	35.00	35.00
	11/13"	90	35.00	35.00
	13/15"	50	35.00	35.00



RUBRUM MAGNIFICUM

LILIUM REGALE (Oregon Grown)

One of the finest most beautiful of all Lilies, and certainly one of the easiest to grow, thriving in a great variety of soils. Slender stems, crowned with several large, funnel-shaped flowers variably wine-colored without, pure white on the face, clear yellow within the tube; anthers golden. Vigorous grower, attaining sometimes as high as twenty flowers or even more on a single stem. Stem rooting. Plant the bulb 8" deep in any good well drained loam, with or without lime, preferably in a sunny position. Height 4-6 ft. July flowering.

Size	Quantity	Per 100	Per 1000
7/8"	250 per case	15.00	140.00
8/9"	200 per case	19.00	180.00
9/10"	150 per case	26.00	250.00
10/11"	100 per case	35.00	340.00
11/12"	75 per case	42.00	400.00

NORTHWEST GROWN

These acclimated, American-grown, disease-free and hardy bulbs are bursting with the vigor of their hybrid origin. Delivered with vigorous root system. Carefully packed in peat moss.

SPECIOSUM "RUBRUM"

Finest selected strain. Entirely disease free, freer of flower, richer of color, far superior to the imported stock.

7/8" 250 per case	75.00	9/10" 150 per case	75.00
8/9" 200 per case	75.00	10/11" 100 per case	60.00

SPECIOSUM "LUCIE WILSON"

A superior Rubrum. Entirely free from virus. Will produce maximum quantity and quality blooms under proper growing conditions. Bud count ranges from 9 to 12 blooms per stalk in outside gardens and 12 to 15 per stalk under glass.

7/8" 150 per case	60.00	9/10" 100 per case	60.00
8/9" 125 per case	60.00	10/11" 80 per case	60.00

SPECIOSUM "ROSEMEADE"

Blooms same color as Lucie Wilson but one-third smaller and one-third more blooms per stalk. Foliage considerably shorter and brownish green color, carries 12 to 15 blooms per stalk in the field and 16 to 22 under glass. For the forcer who wants plenty of blooms, "Rosemeade" is the answer.

7/8" 150 per case	68.00	9/10" 100 per case	68.00
8/9" 125 per case	68.00	10/11" 80 per case	65.00

HARDY LILY BULBS FROM HOLLAND — Delivery November to Spring



ORANGE TRIUMPH

	Size	Per Case	100
Formosanum. (Late flowering.) Pure white, externally colored reddish brown.....	3/4"	1000	8.00
	4/5"	750	10.00
	5" up	500	13.00
G. C. Creelman. (Regale hybrid.) Improved Regale, larger and freer of flower.....	5/6"	500	9.00
	6/7"	400	12.00
	7/8"	250	15.00
	8/9"	200	19.00
	9/10"	150	23.00
	10/11"	100	28.00
	11" up	100	32.00
Hansoni. Golden-yellow wax like flowers with reflexing petals spotted maroon-brown, June flowering. Height 4 ft.....	Top	250	38.00
Henryi. Soft orange-yellow resembling in form L. Speciosum. Aug.-Sept. flowering.....	6/7"	400	11.00
	7/8"	250	15.00
	8/9"	200	18.00
	9/10"	150	22.00
	10/11"	100	27.00
	11/12"	100	30.00
Orange Triumph. (New Hybrid Lily Croceum X Umbellatum.) Strong growing variety, with intense green glossy foliage. Flowers are borne in tiers, partly erect. Individual blooms 6" long and nearly as wide. Color bright orange with very few tiny maroon spots. Excellent for forcing in pots. Ideal cut flower as well as one of the best for Garden planting. June flowering. Height 4 ft.	5/6"	500	12.00
	6/7"	400	15.00
	7/8"	250	20.00
	8/9"	200	24.00
	9/10"	150	28.00



REGALE

	Size	Per Case	100
Regale. Selected strain. Healthy and free flowering.....	5/6"	500	9.00
	6/7"	400	12.00
(See previous page for description.)	7/8"	250	15.00
	8/9"	200	18.00
	9/10"	150	22.00
	10/11"	100	27.00
	11/12"	100	30.00
Regale Album. White sport of Regale. Flowers purest white both inside and outside of bloom. Habit of growth same as Regale.	6/7"	400	12.00
	7/8"	250	16.00
	8/9"	200	20.00
	9/10"	150	24.00
	10/11"	100	30.00
	11" up	100	35.00
Rubrum Magnificum. Deep pink, spotted crimson.	7/8"	250	25.00
	8/9"	200	30.00
	9" up	100	38.00
Tenuifolium. Glossy scarlet flowers with reflexed petals. Height 1 1/2 ft. June flowering.....	3/4"	1000	6.00
	4/5"	750	8.00
Tenuifolium Golden Gleam. Golden-yellow form of Lil. Tenuifolium.....	3/4"	1000	9.00
	4/5"	750	11.00
Tigrinum Flore Pleno. Double orange scarlet flowers spotted crimson. Height 4 ft. Aug.-Sept. flowering.....	4/5"	500	7.00
	5/6"	400	10.00
Tigrinum Splendens. Very handsome, producing pyramidal heads of bright fiery orange-scarlet flowers with large crimson brown spots. Height 6 ft. Aug.-Sept. flowering.....	4/5"	750	6.00
	5/6"	500	8.00
	6/7"	400	11.00
	7/8"	250	13.00
	8/9"	200	15.00

SPECIAL HARDY LILY OFFER (Holland Grown)

- 50 Regale 8/9
- 50 Orange Triumph 7/8
- 50 Rubrum 8/9
- 50 Regale Album 8/9
- 50 Henryi 8/9

250 BULBS AS LISTED

EACH SEPARATELY LABELED

SPECIAL PRICE 50.00

LILIUM RUBRUM (California Grown)

Specially grown for planting in early fall. Cured and dug early for October shipment.

Per 100

8/9".....	100 per case.....	25.00
9/10".....	100 per case.....	30.00
10/11".....	100 per case.....	35.00



L. Centifolium "Olympic Hybrids"

New American Hybrid Lilies for Garden and Greenhouse "Oregon Grown"

These acclimated Oregon grown lilies are entirely hardy and disease free. The bulbs are bursting with vigor of their hybrid origin, and are delivered with vigorous root system for planting at proper time in early fall.

THE NEW BOOK OF LILIES—By Jan De Graff. Superbly illustrated in natural colors, this book sums up basic culture, pests and diseases and what to do about them, how to grow lilies, reference charts, blooming dates, etc., etc. Per Copy 3.50 Postpaid.

Refer to Lily Folder in full color and convenient order blank included in this mailing.

**COLLECTION OFFERS
PICTURES AVAILABLE, THESE VARIETIES ONLY**

COLLECTION CODE	Quan.	Varieties	Size	Price Per Collection
SK 1	Bulbs packed in units of three, with peat moss, in 48 polyethylene bags, each bag with color label, giving description and cultural instructions.			
STANDARD COLLECTION	24	*Enchantment	5/6"	42.50
	24	*Fiesta Hybrids	5/6"	
(Banner For Display supplied NO/CHARGE)	24	*Golden Chalice Hybrids	5/6"	
	24	*Mid-Century Hybrids	5/6"	
	24	*Olympic Hybrids	6/7"	
	24	*Valencia	5/6"	
SK 2	Bulbs individually packed in polyethylene bags, with peat moss, color labeled. 96 labeled bags.			
SELECT COLLECTION	24	*Red Champion Strain (L. speciosum rubrum)	7/8"	65.00
	24	*Gold Band Lilies Select (L. auratum platyphyllum)	7/8"	
	24	*Aurelian Hybrids (Sunburst Strain)	7/8"	
	24	*Aurelian Hybrids (Golden Clarion Strain)	7/8"	
SK 3	Packed in Polyethylene bags, 24 bulbs per bag, with peat moss, all carefully labeled.			
FLORIST'S COLLECTION	24	*Enchantment	5/6"	45.00
	24	Croesus	5/6"	
MID-CENTURY HYBRIDS	24	Destiny	5/6"	
	24	Harmony	5/6"	
	24	Joan Evans	5/6"	
	24	Tangelo	5/6"	
SK 4	Collection carefully labeled, packed in polyethylene bags with peat moss.			
NOVELTY COLLECTION	3	L. auratum hybrid clone Jillian Wallace	6/7"	32.50
	3	L. centifolium hybrid strain Pink Perfection	6/7"	
	3	L. regale strain Royal Gold	6/7"	
	3	L. sargentiae hybrid clone Green Dragon	6/7"	
SK 5	Collection carefully labeled, packed in polyethylene bags with peat moss.			
LEMON-YELLOW COLLECTION	24	Mid-Century Hybrid "Destiny"	5/6"	50.00
	24	Mid-Century Hybrid "Felicity"	5/6"	
	24	Aurelian Hybrid "Moonlight Strain," new lemon-yellow Sunburst type	6/7"	
SK 6	This collection, carefully labeled, packed in polyethylene bags with peat moss.			
SHOW COLLECTION	24	*Mid-Century Hybrid "Enchantment"	5/6"	60.00
	24	*Gold Band Lily Improved Oregon-grown, true L. Auratum platyphyllum	6/7"	
	24	*L. speciosum rubrum Oregon-grown selection "Red Champion Strain"	6/7"	
	12	*L. centifolium strain "Olympic Hybrids Select"	6/7"	
	12	*L. centifolium hybrid strain "Pink Perfection"	6/7"	
	12	*L. Aurelian Hybrid Strain "Golden Clarion"	6/7"	

MID-CENTURY HYBRIDS

OUTWARD FACING

FELICITY. Large lemon-yellow outward facing flowers. The flowers have great substance, the plant is hardy, very vigorous and prolific.

TANGELO. Vivid orange, blooms slightly, star shaped. Height 25 inches. Late June flowering.

VALENCIA. Soft orange-yellow. Flowers open flat with tiny maroon dots. Height 26 inches. Late June flowering.

UPRIGHT FLOWERING

CROESUS. Large, goblet-shaped golden yellow flowers, nicely marked with near black spots. Flower has great substance, is long lasting, both when cut and on the plant. Unusually resistant to pests and diseases.

DESTINY. Tall, cool, purest lemon-yellow with just enough brown spots on the petals to afford a beautiful contrast. As many as ten large flowers open at one time on three to four foot stems.

ENCHANTMENT. (U. S. Plant Patent 862). Vivid nasturtium red, petals nicely spotted. Height 28 inches. Late June—early July flowering.

GOLDEN CHALICE HYBRID. Upright flowering. Color range clear lemon-yellow through shades of gold and apricot-orange. Height 2 1/2 to 4 feet. June flowering.

HARMONY. Wide petalled brilliant orange. Nicely spotted. Height 30 inches. July flowering.

JOAN EVANS. Broad petalled golden yellow. Height 25 inches. July flowering.

MID-CENTURY HYBRIDS. (Blended colors and types.) Especially selected for beauty, hardiness and vigor.

GENERAL LISTING

AURELIAN HYBRIDS.

"Golden Clarion Strain." Golden yellow trumpet, the result of crossing L. Henryi with the Olympic strain.

AURELIAN HYBRIDS.

"Moonlight Strain." Rare new lemon-yellow form, resembling in color L. Henryi Citrinum but more vigorous and larger in size.

AURELIAN HYBRIDS.

"Sunburst Strain." Resemble L. Henryi in shape. Colors include white, yellow and orange. Height 5 feet. July flowering.

CENTIFOLIUM HYBRID STRAIN.

"Olympic Hybrid Select." Finest specimens which are selected in the field during flowering season for substance, vigor and size of bloom. The best of the Olympics.

CENTIFOLIUM HYBRID STRAIN.

"Pink Perfection." Robust giant trumpet in shades of fuchsia to rose pink. Height 4 feet. July flowering.

FIESTA HYBRIDS. Gracefully reflexed flowers in beautiful color range from bright yellow through orange to a rich dark red.

GOLD BAND LILY IMPROVED.

"True L. Auratum Platyphyllum." Broad petalled white flowers banded with yellow, spotted crimson. Height 5 feet. August-September flowering.

JILLIAN WALLACE. Flowers more than eight inches across. The plants bear as many as seven huge blooms on 5 ft. stems. Color vibrant crimson red bordered with white.

OLYMPIC HYBRIDS. Style of blooms vary from trumpet shape to open bowl type, petals slightly twisted and ruffled. Color from creamy white to soft pink. Height 5 feet. July flowering.

RED CHAMPION. Deep pink spotted crimson. Height 4 to 6 feet. August—September flowering.

REGALE STRAIN.

"Royal Gold." A golden-yellow true breeding mutation of the Regal Lily. Identical with the best L. Regale except for its true golden coloring. Flowers have a most attractive, shiny glistening surface, which adds to its beauty.

SARGENTIAE HYBRID CLONE.

"Green Dragon." Finest chartreuse-colored, bowl shaped trumpet lily. Very much in demand and will be a favorite for many years to come.

BEGONIAS-TUBEROUS ROOTED

"MINIMUM ORDER 100 BULBS AND NOT LESS THAN 10 IN ANY ONE COLOR"

AMERICAN GROWN

New Ruffled Camellia Type.

Blooms are beautifully frilled and ruffled in a complete range of all colors.

COLORS—Apricot, Blush, Cardinal Red, Crimson Rose, Dark Salmon, Dark Red, Light Salmon, Pink, White, Rose, Scarlet, Yellow, Orange, Flame Orange.

New Rose Form Type.

Improved Camellia Type. Petals are smooth and long with a very distinct center.

COLORS—White, Blush, Pink, Rose, Crimson Rose, American Beauty, Dark Red, Scarlet, Cardinal Red, Orange, Flame Orange, Apricot, Yellow, Light Salmon, Dark Salmon.

PRICES ON ALL ABOVE LISTED

1-1/4 - 1-1/2"	1-1/2 - 2"	2 - 2-1/2"	2-1/2" Up
Per	Per	Per	Per
100	1000	100	1000
8.50	80.00	14.00	130.00
		19.00	180.00
			27.50
			260.00

BELGIUM GROWN

	Size	Per 100	Per 1000
Double Camellia Flowered	1 1/4-1 1/2"	6.00	50.00
Giant double camellia-like Flower.....	1 1/2-2"	9.50	85.00
COLORS—Crimson, Pink, White, Coppery, Rose, Scarlet, Orange, Yellow, Salmon.	2-2 1/2"	14.00	130.00
	2 1/2" Up	17.00	160.00
Double Rosebud			
Flowers of the most exquisite form resembling perfect rosebuds, with beautiful two-tone pastel shade coloring.....	1 1/4-1 1/2"	7.00	60.00
	1 1/2-2"	12.00	110.00
	2" Up	14.00	135.00
Double Frilled or Carnation (Fimb. Plena.)			
Petals are frilled with serrated edges, flower when in full bloom resembles a Carnation	1 1/4-1 1/2"	7.00	60.00
	1 1/2-2"	12.00	110.00
	2" Up	14.00	135.00
COLORS—Crimson, Pink, Orange, White, Yellow, Coppery.			
Double Picotee			
The flowers are slightly smaller than the large Camellia Type in some instances but of beautiful Camellia form, with two-toned combinations of the colors Pink and White with a definitely contrasting edge.....	1 1/4-1 1/2"	7.00	60.00
	1 1/2-2"	12.00	110.00
	2" Up	14.00	135.00
Double Hanging Basket			
Known as Pendula or Lloydii type. Hundreds of small double flowers produced from a single bulb	1 1/4-1 1/2"	7.50	65.00
	1 1/2-2"	12.50	115.00
	2-2 1/2"	18.00	170.00
	2 1/2" up	20.00	190.00
COLORS—Scarlet, Pink, Yellow, White, Orange, Salmon.			
Giant Single Frilled (Crispa)			
Large profusely frilled and ruffled single flowers. Fine for bedding.....	1 1/4-1 1/2"	7.00	60.00
	1 1/2-2"	12.00	110.00
	2" Up	14.00	135.00
COLORS—Crimson, Pink, Orange, White, Yellow, Coppery.			
Begonia Multiflora (Lilliput or Miniature)			
Group of double flowered Begonias which are especially adapted for borders. They are best suited for mass plantings and will bloom profusely throughout the summer.			
Ami Jean Bard. Copper-yellow.....	1-2"	13.00	120.00
Gents Juweeltje. Salmon.....	1-2"	14.00	130.00
Helen Harms. Yellow.....	1-2"	14.00	130.00
Le Flamboyant. Scarlet.....	1-2"	13.00	120.00
Madame R. Gale. Deep Copper.....	1-2"	13.00	120.00

BEGONIA MULTIFLORA MAXIMA

New strain developed by crossing the popular Camellia flowered with Multiflora. Growth is compact, the rigid stems are covered with many medium sized double blooms. Excellent pot and bedding plant.

COLORS—Red, Fire Red, Copper, Rose, Pink, Yellow, White, Switzerland Red-Dark leaves.

Top Size	Per 100	Per 1000	Collection - 25 Each
1"-Up	16.00	150.00	8 Colors Listed
			Per Collection 30.00



BEGONIA MULTIFLORA MAXIMA

AMARYLLIS

"SSS" New Giant Flowered Hybrids

Finest Hybrid strain which can be had in separate varieties, true to color. Mammoth sized blooms measuring eight to eleven inches in diameter. Very free flowering and most varieties will produce two stems, bearing three to four flowers each. Shape of bloom is round and very symmetrical and flat. Connection between the flower and stem is very short avoiding hanging flower heads.

Varieties may be ordered separately, buyer's choice but not more than 10% of total quantity in the variety L'Innocence.

Where L'Innocence is ordered separately please add 15% to hundred rate.

VARIETIES

- Claret.** Enormous deep wine red.
- Scarlet Admiral.** Glossy deep scarlet.
- Red Rover.** Large bright red.
- Fire King.** Light scarlet.
- Dazzler.** Deep orange red.
- Orange King.** Clear orange.
- Salmon Queen.** Salmon orange.
- Pink Perfection.** Bright pink with light salmon reflex.
- Striped Beauty.** Pure white with rose-pink stripes.
- Border Gem.** Bright red with pure white edge.
- L'Innocence.** Pure white, no markings.

SPECIAL OFFER

12 top sized bulbs which will include all varieties and not more than 2 bulbs of variety L'Innocence.

SPECIAL PRICE: 22.00 per dozen

Top Size: Separate Named Varieties: 175.00 per hundred 25 bulbs or more at hundred rate.

Giant American Hybrids (Hippeastrum) MIXED

	Per 100	Per 1000
2 1/2-3"	20.00	190.00
3-3 1/2"	32.50	310.00
3 1/2-4" (Scarce)	47.50	450.00

MISCELLANEOUS BULBS

		Per	Per
	ALLIUM	100	1000
Alba Gigantea.	Umbels of pure white flowers. Superior to old Neapolitanum. Fine cutting item.....	4.50	40.00

	SINGLE ANEMONES		
Monarch de Caen.	Beautiful poppy-flowered Anemone. Saucer-shaped blooms in bright shades of pink, red, blue, etc.	No 1 Jumbo	4.00 35.00 6.00 55.00
Blue Poppy.	Large single flowers in various shades of blue.....	No 1 Jumbo	4.00 35.00 6.00 55.00
His Excellency.	Huge red, brilliant flower.....	No 1 Jumbo	4.00 35.00 6.00 55.00
The Bride.	Large pure white flower with white center.....	No 1 Jumbo	4.00 35.00 6.00 55.00
	SEMI DOUBLE		
St. Brigid.	Semi-double flower in bright shades of red, pink and blue.....	No 1 Jumbo	4.00 35.00 6.00 55.00

	CALLAS		
Aethiopica.	Large pure White.....	1 1/2-1 3/4" 1 3/4-2" 2-2 1/2" 2 1/2" Up	15.50 140.00 22.50 200.00 27.50 260.00 36.00 350.00
Elliottiana.	Golden Yellow Flower.....	2-2 1/2" 2 1/2-3" 3" Up	17.50 160.00 30.00 280.00 42.00 390.00
Godfrey (Greenhouse Grown).	Finest disease free strain. Free flowering pure white.....	Top Size 1st Size 2nd Size	40.00 375.00 35.00 325.00 30.00 275.00

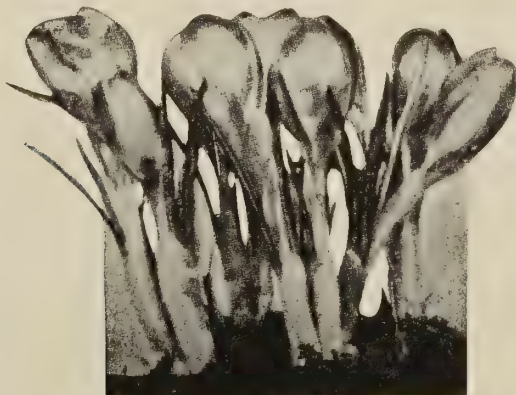
	NOVELTY CALLAS		Per
Arum Pictum (Black Calla).	Very large black flowers, fading to maroon as the bloom becomes older. There is no disagreeable odor. A fine novelty.....	Top size	35.00
Rehmanni Superba (Pink Calla).	A dwarf calla having a rose pink flower which fades to cerise as bloom matures. Very unusual.....	Top size	30.00

	CHIONODOXA LUCILIAE (Glory of the Snow)	Per	Per
	Brilliant blue white center.....	100	1000
		2.00	15.00

	FANCY-LEAVED CALADIUMS	Per	Per
	SEPARATE NAMED VARIETIES	100	1000
	1-1 1/2 inch.....	11.00	100.00
	1 1/2-2 1/2 inch.....	19.50	185.00
	2 1/2-3 1/2 inch.....	27.50	265.00
	3 1/2 inch up.....	37.50	365.00

	NAMED VARIETIES MIXED		
	1-1 1/2 inch.....	10.00	90.00
	1 1/2-2 1/2 inch.....	19.00	180.00
	2 1/2-3 1/2 inch.....	27.00	260.00
	3 1/2 inch up.....	37.00	360.00
	(Special descriptive list mailed on request)		

	GALANTHUS NIVALIS (Snowdrops)	Per	Per
	Large flowered pure white with green markings.....	100	1000
		3.00	25.00



CROCUS

ANEMONE DE CAEN



BABY GLADIOLUS (Colvilli)

		Per	Per
		100	1000
Blushing Bride.	Blush white, carmine blotch.....	4.50	40.00
Charm.	Violet rose.....	4.00	35.00
Nymph.	White carmine blotched.....	4.50	40.00
Peach Blossom.	Exquisite pink.....	4.00	35.00
Spitfire.	Brilliant reddish salmon.....	4.00	35.00
The Bride.	Lovely white.....	4.50	40.00
Tritis Supreme.	This is a re-selection of Tritis Hybrids. Very sturdy stems with upright flowers of perfect placement. Color is creamy white, and the blooms, when fully open are delightfully fragrant. They are early bloomers and will keep for more than a week when cut.....	8.00	75.00

	FREESIAS		
	NEW HYBRIDS		
Mammoth White		1/2-5/8"	5/8-3/4"
Extra large pure white	100	1000	100 1000
Very early	2.75	22.50	3.50 30.00 5.00 45.00
Marie (Pat #609)			
Largest, earliest, most beautiful of all white freesias.....	3.00	25.00	4.00 35.00 5.00 45.00
	STANDARD LISTING		
Flo.	Large flowering		
Deep blue.....	2.75	22.50	3.50 30.00 5.00 45.00
Golden Giant			
Bright Golden-Yellow.....	2.75	22.50	3.50 30.00 5.00 45.00
Judy Early Large			
Double yellow.....	2.75	22.50	3.50 30.00 5.00 45.00
Rainbow Mixture			
	2.50	20.00	3.25 27.50 4.75 42.50

	"SSS" GIANT HYBRIDS		
Pure White	2.50	20.00	3.50 30.00 5.00 45.00
Light Yellow	2.50	20.00	3.50 30.00 5.00 45.00
Rose	2.50	20.00	3.50 30.00 5.00 45.00
Bright Red	2.50	20.00	3.50 30.00 5.00 45.00
Finest Blue	2.50	20.00	3.50 30.00 5.00 45.00
Pink	2.50	20.00	3.50 30.00 5.00 45.00
Lavender	2.50	20.00	3.50 30.00 5.00 45.00
Orange	2.50	20.00	3.50 30.00 5.00 45.00
Mixture	2.50	20.00	3.50 30.00 5.00 45.00

	SPRING FLOWERING CROCUS		Per	Per
		Size	100	1000
Enchantress.	Light blue paler margin.....	9-10 cm.	2.50	20.00
Mont Blanc.	Pure white.....	9-10 cm.	3.25	27.50
Purpurea Grandiflora.	Rich purple.....	9-10 cm.	2.50	20.00
Sir Walter Scott.	White striped purple.....	9-10 cm.	2.50	20.00
Yellow Mammoth.	Deep yellow.....	9-10 cm.	2.50	20.00
Mixed.	All colors included.....	9-10 cm.	2.50	20.00

GLOXINIAS

Minimum order 100 Bulbs and not less than 10 of any one variety.

- Blanche De Meru. Pinkish rose, white throat.
- Emperor Frederick. Scarlet bordered white.
- Emperor William. Violet bordered white.
- Etoile De Feu. Light scarlet, compact growth.
- Mont Blanc. Clear glistening white.
- Prince Albert. Darkest violet, beautifully frilled.
- Princess Elizabeth. Light blue, white throat.
- Queen Wilhelmina. Dark rose.
- Roi Des Rouges. Brilliant crimson scarlet, huge flower beautifully frilled.
- Tigrina (Spotted and stained hybrids). Large flower with a short throat. Entire blossom veined and spotted, in a mixture of pink, blue, purple, and red markings on white.
- Violacea. Soft violet.

PRICES ON ALL ABOVE VARIETIES		Per 100	Per 1000
1 1/2-2"	18.50	175.00
2-2 1/2"	24.00	230.00
2 1/2" Up	30.00	285.00

IRIS

BLUE RIBBON. Strong growing, deep blue.	9/10 cm.	10-11 cm.	11 cm. up		
American Grown	100 1000	100 1000	100 1000	4.50 35.00	6.50 55.00
WEDGEWOOD. Clear light blue.	**8 1/2-9 cm.	9/10 cm.	10/11 cm.		
American Grown	100 1000	100 1000	100 1000	**3.00 19.00	4.50 35.00
Holland Grown*	8/9 cm.	*2.00 13.00	3.50 25.00	5.00 40.00	

DUTCH IRIS

	6-7 cm.	7-8 cm.	8-9 cm.		
Blue Triumphator. Very fine deep blue, very uniform in color and growth. Not quite as early as Wedgewood.....	100 1000	100 1000	100 1000	2.25 18.00	3.50 30.00
Golden Harvest. Tall golden yellow	2.00 11.00	2.50 17.00	3.25 27.00		
H. C. Van Vliet. Large deep blue	2.00 11.00	2.50 17.00	3.00 25.00		
Imperator. Popular dark blue	2.00 11.00	2.50 17.00	4.00 35.00		
Jeanne D'Arc. Extra large creamy-white, yellow blotch on falls.	2.25 15.00	3.00 22.50	3.50 30.00		
Lemon Queen. Large light citron yellow, lips of petals intense deep orange, strong grower	2.25 18.00	3.25 27.50	4.00 35.00		
White Excelsior. Pure white	2.00 11.00	2.50 16.00	3.00 22.50		
White Perfection. Very large pure white, with orange stripe on lip	2.25 15.00	3.00 22.50	3.50 30.00		
White Superior. Extra large pure white	2.00 12.00	2.50 17.00	3.25 27.00		
Yellow Queen. Golden yellow.	2.50 17.00	3.00 25.00			

IRIS RETICULATA

Sweet scented deep violet purple flowers with golden blotch, flowering outdoors in February. Can be forced inside to bloom at Christmas 2.50 20.00

IXIAS (African Corn Lilies)

"SSS" Mixed. Splendid assortment of all colors..... 2.00 15.00

LEUCOCORYNE (Glory of the Sun)

Ixioides OdorataTop Size 9.50 85.00



GLOXINIA EMPEROR FREDERICK

MUSCARI (Grape Hyacinths)

	Per 100	Per 1000
Armeniacum. Large clear blue.....	2.00	15.00
Botryoides Albus. (White Grape hyacinth). Cluster of white corals	2.50	20.00
Heavenly Blue. Bright sky-blue.....	2.00	15.00

ORNITHOGALUM

Arabicum. Globe-shaped white flowers with jet black center. Very fragrant, grows to height of 2 feet Top Size 6.50 60.00

OXALIS

Bermuda Buttercup. Yellow.....	3.50	30.00
Grand Duchess. Lavender.....	3.50	30.00
Grand Duchess. Rose Pink	3.50	30.00
Grand Duchess. White.....	3.50	30.00

RANUNCULUS

S.S.S. Supreme Strain. The largest and most magnificent strain of Ranunculus. Flowers are very double and some semi-double, with light green centers.

	No. 1		Jumbo	
	100	1000	100	1000
Supreme Gold Shades	4.00	32.50	7.00	60.00
Supreme Orange Shades	4.00	32.50	7.00	60.00
Supreme Pink Shades	4.00	32.50	7.00	60.00
Supreme Red Shades	4.00	32.50	7.00	60.00
Supreme White Shades (Whites predominate.)	4.00	32.50	7.00	60.00
Supreme Yellow Shades	4.00	32.50	7.00	60.00
Supreme Mixed (Beautiful range of all colors.)	3.75	30.00	6.00	50.00

SCILLA CAMPANULATA (Wood Hyacinth)

Tall stems of large open campanulate bell-shaped flowers. Top Size 100 1000

Alba Maxima. Large white, long spikes.....	2.75	22.50
Blue Queen. Lavender blue.....	2.75	22.50
Excelsior. Deep lavender striped blue, robust.....	2.75	22.50
Rose Queen. Lavender pink, long spikes.....	2.75	22.50

SCILLA Siberica (Siberian Squill). Bright blue, flowers early spring 3.00 25.00

LILY OF THE VALLEY

S.S.S. EXHIBITION PIPS

Let us take care of your requirements for shipment throughout the year

Case of 250.....	25.00
Case of 500.....	50.00
Case of 1000.....	95.00



10 BARGAIN DARWIN TULIPS



LOW COST RECOMMENDED STORE ORDER

All top selling items.

No. of BAGS	Bulbs per BAG	SIZE	VARIETY
TULIPS			
DARWIN			
10	10	11-12	American Flag
10	10	11-12	Dorrie Overall
10	10	11-12	Clara Butt
10	10	11-12	La Tulipe Noire
10	10	11-12	Red Pitt
10	10	11-12	Zwanenburg
10	10	11-12	Rainbow Mixture
COTTAGE			
10	10	11-12	Chappaqua
10	10	11-12	Flaming Beauty
10	10	11-12	Golden Harvest
PARROT			
10	10	11-12	Blue Parrot
PEONY FLOWERED			
10	10	11-12	Eros
10	10	11-12	Nizza
SPECIE TULIPS			
10	10	11-12	Red Emperor
10	10	11-12	Peacock
HYACINTHS			
10	6	15-16	White
10	6	15-16	Blue
10	6	15-16	Red
10	6	15-16	Mixed
DAFFODILS			
10	6	D.N. #2	King Alfred
CROCUS			
10	25	9-10	Mixed Colors

210 Bags as Listed—Price 105.00

105 Bags as Listed—Price 55.00
(One half Order.)

—FALL BULBS PACKED IN POLYETHELENE
The Modern Bulb Package with Buying Appeal.
For the Retailer or Local Seedsman.

25 BAGS OR MORE OF AN ITEM WILL BE CHARGED AT THE 100 RATE.

Each SSS Polyethylene bag contains just the right number of bulbs for fast turnover. The customer sees at a glance THE LARGE SIZE, CLEAN, FIRST CLASS BULBS, without opening package or needless handling. Tag shows true color picture, and gives complete description and planting facts.

MINIMUM ORDER 50 BAGS.

Tulips. Selected	Per 10 Bags	Per 100 Bags
11-12 cm.		
10 bulbs per bag		
DARWIN		
American Flag. Red & White..	5.75	55.00
Clara Butt. Salmon Pink.....	5.25	51.00
Dorrie Overall. Violet.....	5.25	51.00
Lady Hillingdon. Orange.....	5.25	51.00
La Tulipe Noire. Black.....	5.25	51.00
Princess Elizabeth. Pink.....	5.25	51.00
Eclipse. Blood-red.....	5.75	55.00
Red Pitt. Bright red.....	5.25	51.00
Zwanenburg. White.....	5.25	51.00
Rainbow Mixture.....	4.75	43.00

COTTAGE		
Chappaqua. Rose Pink.....	5.75	55.00
Golden Harvest. Yellow.....	5.25	51.00
Mrs. J. T. Scheepers. Yellow....	5.25	51.00
Flaming Beauty. Yellow and red	5.25	51.00

PEONY-FLOWERED TULIPS		
Selected 12 cm. up		
6 bulbs per bag		
Eros. Old rose.....	4.20	40.00
Mount Tacoma. White.....	4.20	40.00
Nizza. Yellow and red.....	4.20	40.00
Rocket. Red.....	4.20	40.00

DARWIN TULIPS		
Selected 12 cm. up		
6 bulbs per bag		
Aristocrat. Rose.....	4.20	40.00
Duke of Wellington. White.....	4.20	40.00
Insurpassable. Lavender.....	4.20	40.00
Queen of the Night. Black.....	4.20	40.00
New Orleans. Wine-red.....	4.20	40.00
Scarlet Leader. Scarlet.....	4.20	40.00
Sunkist. Yellow.....	4.20	40.00
The Peach. Peach color.....	4.20	40.00

PARROT TULIPS		
Selected 12 cm. up		
6 bulbs per bag		
Blue Parrot. Heliotrope.....	4.20	40.00
Fantasy. Pink.....	4.20	40.00
Sunshine. Yellow.....	4.80	45.00

SPECIE TULIPS		
10 bulbs per bag		
The World's Famous		
Red Emperor. 11-12.....	6.25	60.00
Exciting New		
Peacock Tulips 11-12.....	8.00	75.00
Dainty Candystick		
Tulip Clusiana 5-6.....	7.00	65.00

HYACINTHS		
15-16 cm. 6 bulbs per bag	Per 10 Bags	Per 100 Bags
Bismarck. Sky-blue.....	5.75	55.00
City of Haarlem. Yellow.....	5.75	55.00
Jan Bos. Red.....	5.75	55.00
L'Innocence. White.....	5.75	55.00
Pink Pearl. Pink.....	5.75	55.00
Mixed.....	5.75	55.00
18-19 cm. 3 bulbs per bag		
Bismark. Sky blue.....	5.00	48.00
City of Haarlem. Yellow.....	5.00	48.00
Jan. Bos. Red.....	5.00	48.00
L'Innocence. White.....	5.00	48.00
Pink Pearl. Pink.....	5.00	48.00
Mixed.....	5.00	48.00

DAFFODILS—NARCISSUS		
Double Nose #2		
6 bulbs per bag		
Cheerfulness. Double Poetaz...	5.25	51.00
Deanna Durbin. Red cup.....	5.25	51.00
Geranium. Bouquet flowered...	5.25	51.00
King Alfred. Yellow trumpet...	5.25	51.00
Mount Hood. White trumpet...	7.00	65.00
Mrs. R. O. Backhouse. Pink daffodil.....	7.00	65.00
Scarlet Elegance. Red cup.....	5.25	51.00
Music Hall. Bi-color trumpet....	7.00	65.00

DAFFODILS—NARCISSUS		
Best Mixed D.N.#3 & Round		
25 bulbs per bag		
Packed in cotton orange		
Mesh bags with colorful tags.		
Golden trumpet Daffodil Mixture.....	9.25	85.00
Narcissus all types Mixed.....	8.75	80.00

CROCUS 9-10 cm.		
10 bulbs per bag		
Blue.....	2.50	23.00
Striped.....	2.50	23.00
White.....	2.50	23.00
Yellow.....	2.50	23.00

CROCUS 9-10 cm.		
25 bulbs per bag		
Mixed.....	5.50	52.50

MISCELLANEOUS BULBS		
25 bulbs per bag		
Chionodoxa (Glory of the Snow)	3.75	35.00
Muscari (Blue Grape Hyacinths)	3.75	35.00
Scilla Siberica (Blue Squill)....	5.25	50.00
Galanthus (Snowdrops).....	6.75	64.00



SELECT GLADIOLUS BULBS

AMERICAN GROWN



MINIMUM ORDER
100 BULBS OF A VARIETY

For Less than 250 of a Variety.
ADD 15% to THOUSAND RATE.

PINK, SALMON AND ROSE SHADES

	Price Per 1000	
	1st Size 1 1/2" Up	2nd Size
Beauty's Blush. Beautiful blush pink	35.00	30.00
Burma. Heavily ruffled deep rose	35.00	30.00
Ethel Cave Cole. Light pink	32.00	26.00
Elmer's Rose. Deep rose, heavily ruffled	40.00	35.00
Evangeline. Nicely ruffled light pink	35.00	30.00
Friendship. Clear light pink early	35.00	30.00
Margaret Fulton. Clear rose salmon	27.00	22.00
Phantom Beauty. Large clear exhibition, light pink	35.00	30.00
Philippo's Memory. Dawn pink, throat light salmon, red marking	35.00	30.00
Picardy. Large salmon	35.00	30.00
Rosa Van Lima. Light rose pink	32.00	26.00
Rose Charm. Light rose	35.00	30.00
Spic and Span. Ruffled bright pink	35.00	30.00

RED AND MAROON SHADES

Boulogne. Tall wine red	35.00	30.00
Dieppe. Deep salmon red, darker blotch	36.00	32.00
Harry Hopkins. Deep wine red	35.00	30.00
Johan Van Konyenburg. Rich glowing orange-scarlet	35.00	30.00
Mansoer. Deep maroon	32.00	26.00
Modern Times. Light wine red	32.00	26.00
New Europe. Large orange-scarlet	32.00	26.00
Sans Souci. Large scarlet	35.00	30.00
Valeria. Large orange-scarlet	35.00	30.00

LAVENDER, BLUE AND PURPLE SHADES

Benjamin Britten. Deep lavender mauve	35.00	30.00
Col. W. C. Atkinson. Tall deep lavender	35.00	30.00
Elizabeth the Queen. Large ruffled lavender	32.00	26.00
King David. Best ruffled purple	35.00	30.00
Lavender Lace. New light lavender	40.00	35.00
Ravel. Violet blue, reddish markings	40.00	35.00

GLADIOLUS COLLECTIONS

Each variety separately packed and labeled in collection form in a complete range of color. For a succession of bloom we recommend separate plantings at intervals of two weeks.

THE CUT FLOWER COLLECTION

Burma	Hans Van Meegeran
Boulogne	Modern Times
Elizabeth the Queen	Snow Princess
Florence Nightingale	Spic and Span
Friendship	Valeria

1000 Bulbs—100 each of the varieties listed, all first size
Separately labeled

Special Price 34.00

2000 Bulbs—200 each as listed..... 63.00

THE HOME MARKET COLLECTION

Col. W. C. Atkinson	Phantom Beauty
Dieppe	Philippo's Memory
Mother Fischer	Sans Souci
October Sunshine	White Goddess

800 Bulbs—100 each of the Varieties listed, all first size.
Separately labeled

Special Price . . . 30.00

1600 Bulbs—200 each as listed . . . 58.00

IF SOLD OUT OF ANY VARIETIES WE WILL SUBSTITUTE
AS MAY BE NECESSARY WITH OTHERS
OF EQUAL OR BETTER VALUE.

MINIMUM ORDER
100 BULBS OF A VARIETY

For Less than 250 of a Variety.
ADD 15% to THOUSAND RATE.

WHITE AND CREAM SHADES

	Price Per 1000	
	1st Size	2nd Size
Florence Nightingale. Beautiful glistening white	35.00	30.00
June Bells. Early pure white	35.00	30.00
Leif Erickson. Tall creamy white	35.00	30.00
Margaret Beaton. Pure white, scarlet eye	35.00	30.00
Morning Kiss. Pure white	36.00	32.00
Mother Fischer. Finest new white	40.00	35.00
Salmon's Glory. Creamy white, red blotch	35.00	30.00
Snow Princess. Creamy white	27.00	22.00
White Goddess. Heavily ruffled creamy white	36.00	32.00

YELLOW APRICOT AND ORANGE SHADES

Gold. Rich deep golden yellow	40.00	35.00
Hans Van Meegeran. Canary yellow	35.00	30.00
Hopman's Glory. Sunflower yellow	35.00	30.00
October Sunshine. Late orange yellow	36.00	32.00
Orange Gold. Golden orange shade	35.00	30.00
Pactolus. Apricot cream, orange red blotch	35.00	30.00
Spotlight. Deep yellow with scarlet spot.....	36.00	32.00

SMOKY AND ODD SHADES

Buckeye Bronze. Large rose-bronze	35.00	30.00
Uhu. Lilac red, lilac stripes	35.00	30.00

PACKAGED GLADIOLUS IN POLYETHYLENE BAGS

FOR THE RETAILER AND LOCAL SEEDSMEN

SELF SELLING — FULLY ILLUSTRATED IN COLOR
COMPLETE CULTURAL INFORMATION ON EACH BAG.

Large No. 1 Size Bulbs packed 10 per bag Varieties

Alfred Nobel. Pink, white blotch	Pactolus. Apricot, red blotch
Aranjuez. Orange	Palet. Crimson, blue blotch
General Eisenhower. Bright pink	Paul Rubens. Purple
Hans Van Meegeran. Yellow	Picardy. Salmon pink
Hawaii. Smoky red	Rosa Van Lima. Light rose
Leeuwenhorst. Salmon pink	Silhouet. Smoky
Mabel Violet. Deep violet	Spotlight. Yellow with red spot
Mansoer. Deep maroon	Snow Princess. Creamy white
Maria Goretti. Pure white	Spic & Span. Bright pink
Memorial Day. Purple	Vanguard. White, red blotch
Merry Widow. Purple, white blotch	Winston Churchill. Scarlet
New Europe. Orange scarlet	

Deluxe Mixture. All colors included

VARIETIES MAY BE ORDERED AS DESIRED

Packed	Price per ctn.
50 bags per carton	20.00
100 bags per carton	38.00
150 bags per carton	54.00

Please order in units of 50, 100, 150 Bags as specified.

CHOICE RAINBOW MIXTURE

We can arrange bulk packing or packed in bags of 100, 50, 25, Bulbs per bag, suitable for counter trade, affixed to each bag is an attractive colored picture with the quantity and imprinted —

"CHOICE GLADIOLUS" RAINBOW MIXTURE

PRICE SCHEDULE

ALL PRICES PER THOUSAND

Large number one size — packed 2000 or 1000 per case	
Bulk Packing	30.00
100 bulbs per bag	31.00
50 bulbs per bag	32.00
25 bulbs per bag	33.00



SUMMER FLOWERING BULBS AND ROOTS

MINIMUM ORDER 100 BULBS OF A VARIETY



Acidantha Murialiae. Known also as Gladiolus Murialiae. Pure white blooms with crimson maroon blotch, borne in a cluster. Tall growing, attaining a height of 4 feet. Sweet scented. Blooms mid August-September. Fine for cutting. Culture same as Gladiolus.
Per 100 4.00 Per 1000 30.00

CALADIUM ESCULENTUM

(Elephant's Ear)

Giant decorative leaves, rich bright green. Soft velvety texture. Splendid for mass planting in shaded locations. Do not plant outdoors until after May 1st.

	Per 100	Per 1000
5/7 inch circumference	8.00	70.00
7/9 inch circumference	11.00	100.00
9/11 inch circumference	18.50	175.00

CANNAS

City of Portland. 5 ft. Rosy pink, green leaf	7.00	60.00
Copper Giant. 3 1/2 ft. Coppery-red-green leaf	7.00	60.00
Dorothy S. 4 ft. drought resistant large flowered salmon-red President sport	7.00	60.00
Hungaria. 4 ft. Glowing pink, green leaf	7.00	60.00
King Humbert. 4 ft. Orange scarlet, bronze leaf	7.00	60.00
King Midas. 4 ft. Yellow, green leaf	7.00	60.00
Richard Wallace. 4 ft. Canary yellow, green leaf	7.00	60.00
Shenandoah. 4 ft. Salmon pink, bronze leaf	7.00	60.00
The President. 4 ft. Rich scarlet, green leaf	7.00	60.00
Wintzer's Colossal. 5 ft. Scarlet, green leaf	7.00	60.00
Yellow King Humbert. 4 ft. Yellow, softly spotted red, green leaf	7.00	60.00

DAHLIAS

Write For Our Complete Listing Featuring Many Outstanding Varieties.

CALADIUM FANCY LEAVED ASSORTMENT

Ready Packed in Display Carton
Attractive color Poster of Each Variety
Each Compartment Contains a Separate Variety
150 Bulbs (1 1/2-2") 25 Each 6 Varieties
Per Carton (Bulk Packed) 27.50

BEGONIA ASSORTMENT

AMERICAN GROWN

Ready Packed in Display Carton with Attractive Color Poster of Each Variety
Each Compartment Contains

A SEPARATE COLOR OF THE NEW RUFFLED CAMELLIA

Standardly Packed in All Sizes
300 Bulbs (60 Each Color) 1 1/4-1 1/2"
200 Bulbs (40 Each Color) 1 1/2-2"
150 Bulbs (30 Each Color) 2-2 1/2"
100 Bulbs (20 Each Color) 2 1/2" Up

ALL SIZES
35.00 Per Carton

GLORIOSA ROTHSCHILDIANA

A Practical and Beautiful Novelty for Corsage or Cut Flowers

A profusion of brilliant red and yellow flowers resembling the Speciosum Lily, but a trifle smaller. Can be had in flower for Christmas as well as through the year. Requires three to four months to bloom. Grows taller than Speciosum and should have a bit higher temperature.

Large size tubers .. Per 100 60.00

ISMENE

Calathina (Peruvian Daffodil)

Pure white, waxy fragrant blossoms resembling Amaryllis.

	Per 100	Per 1000
Top size	37.50	350.00
1st size	35.00	325.00

MONTBRETIAS

NEW EARLHAM LARGE FLOWERING

	Per 100	Per 1000
Comet. Orange and red	5.00	45.00
Lady Oxford. Coral-red shaded maroon	5.00	45.00
Lady Wilson. Large bright orange	5.00	45.00
Norwich Canary. Large canary yellow	5.00	45.00
Earlham Hybrid Mixture	4.00	30.00

TIGRIDIAS (Shell Flower)

PAVONIA HYBRIDS

	Per 100	Per 1000
Alba. Pure white, yellow center, spotted carmine	4.00	35.00
Canariensis. Yellow, deeper center, scarlet spots	4.00	35.00
Red Giant. Bright red	4.00	35.00
Rose Giant. Bright rose	4.00	35.00
Pavonia Superfine Mixed	3.75	32.50

TUBEROSE S.S.S. SPECIAL IMPROVED STRAIN

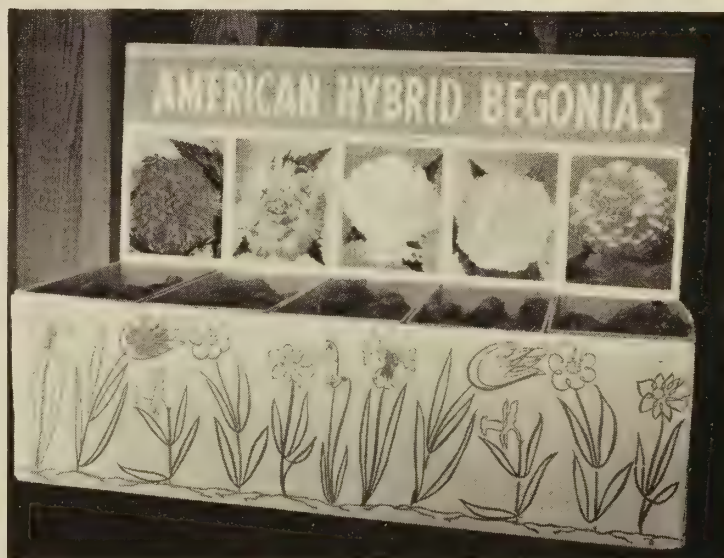
This strain is especially selected for its pure white double flowers of waxlike texture, and by far superior to the ordinary strain offered generally.

	Per 100	Per 1000
No. 1. 4-6 in.	7.50	65.00

MEXICAN SINGLE TUBEROSE

Everblooming pure white.

	Per 100	Per 1000
Top size	7.50	65.00



CARNATIONS



CERTIFIED ROOTED CUTTINGS

NEW VARIETIES AND SELECTIONS

	Per 100	Per 1000
*BRAUN'S SIM. Salmon pink.....	Min. 250 500 at 1000 or more	20.00 18.00 160.00
*BRAUN'S YELLOW SIM	Min 250 500 at 1000 or more	20.00 18.00 160.00
BRIGADOON. Lemon yellow seedling, from White Sim and Miller's Yellow. Habit and production same as Sim, except plants are a little shorter, and 1-2 weeks slower. Branches more freely. Good size flower.		200.00
CRIMSON PRINCE. Crimson. Parentage Davis Supreme and Pelargonium. Medium and high crown flowers. Good production. Some splitting. Requires ample water at all times.....		15.00 125.00
DUSTY. (Maier). Pastel pink, sport of (Red) Wm. Sim. Superior keeping qualities, excellent shipper.....	Min. 250 500 at 1000 or more	20.00 18.00 160.00
*HOOSIER PRINCESS. (B & S). Lavender pink. Glows pink under artificial light. Large full flowers, stiff and long stems. Few splits; clean, vigorous growth.		20.00 180.00
IMP. EDW. WINKLER. (Winkler). Deeper pink than Edw. Winkler. Better petal formation. Stiff stems. Good size flower. Produces, keeps and ships well.....		20.00 180.00
IMP. SIDNEY LITTLEFIELD. Dark pink. Virus free, better growth and color.....		15.00 125.00
KEEFERS CHERI SIM. (B & S). Bright dark salmon pink. growth and production like Sim.....	300-975 1000 or more	20.00 18.00 160.00
*MAJESTIC (Patten). Outstanding red, about the color of Cardinal Sim. Large full flower on good stem....		22.00 180.00
*PORTRAIT. (Geiger). Mutation of Mamie, same strong growing habits. Different new shade of pink-brilliant rose pink. Holds its color at all seasons of the year. Large flower, good keeper.Min. 250		20.00 180.00
SALMONAISE VIRGINIA. Light salmon. Sport of Hercules. Holds its color well in hot weather.....		15.00 125.00
S. ARTHUR PEPPERMINT SIM. Sport of Cardinal Sim. Pure white background, fine red penciling. 3-4" flowers. Same habits as Sim family but no splitting....		20.00 150.00
SCANIA. Red. New selection from Europe. November and later.....		15.00 125.00
SELECT LIGHT PINK LITTLEFIELD. New selection.....		15.00 125.00
*WHITE BOSTON (Patten). Sport Dk. Pink Boston. Same characteristics. A clean White, prolific bloomer, good stem. Rarely splits.....		20.00 150.00

STANDARD VARIETIES

DEEP PINK

	Per 100	Per 1000
Boston. Dark pink. 2 1/2-3" flower.....	15.00	125.00
Calypso Sim. Deep shrimp pink.....	15.00	125.00
Imp. Edw. Winkler. Deeper than Edw. Winkler.....	20.00	180.00
Imp. Sidney Littlefield. New.....	15.00	125.00
*Portrait. (Geiger). Mutation of Mamie. New shade of pink-brilliant rose pink..... Min. 250	20.00	180.00
Saugus Pink. Soft deep pink.....	15.00	125.00
Sidney Littlefield. A rich glowing dark pink.....	15.00	125.00

LIGHT PINK

Dusty. Pastel pink, sport of (Red) Wm. Sim	Min. 250 500 at 1000 or more	20.00 18.00 160.00
Hercules Virginia. Giant sport of Virginia.....	15.00	125.00
*Hoosier Desire. Clear light pink.....	15.00	135.00
Light Pink Littlefield. Select. New.....	15.00	125.00
Light Pink Sim.	15.00	125.00
Nancy Thomson. Glowing light pink. Sport of Sidney Littlefield.....	15.00	125.00
Petersen's Pink Sim. Sport of Wm. Sim. Flesh pink....	15.00	125.00
Pink Beauty. Sport of pink Sim, shade darker.....	15.00	125.00
Shell Pink Sim.	15.00	125.00

SALMON PINK

*Braun's Sim. Salmon pink.....	Min. 250 500 at 1000 or more	20.00 18.00 160.00
Coral. Brilliant salmon. At times slightly flaked.....	20.00	150.00
Debbie. Pink sport of Wm. Sim.....	20.00	150.00
Keefers Cheri Sim. (B & S). Bright dark salmon pink...	20.00	150.00
Laddie Sim. Salmon pink sport of Sim.....	20.00	150.00
Salmonaise Virginia. Light salmon. Sport of Hercules...	15.00	125.00
Shocking Pink Sim. Brilliant dark salmon. Sport of Sim	15.00	125.00

MEDIUM PINK

Citation. Rose pink, silver edges.....	15.00	125.00
*Hoosier Princess (B & S). Lavender pink, large flower.	20.00	180.00
Lavender Rose. Seedling carrying 3 to 3 1/2 in. flowers	15.00	125.00

CRIMSON

C. W. Weld. Dark Red Maroon.....	15.00	125.00
Congo. Crimson.....	15.00	125.00
*Crimson King (Patten). Large Crimson full flower....	20.00	150.00
Crimson Prince. Crimson. Requires ample water at all times.....	15.00	125.00
Topper	15.00	125.00
Vesta.	13.50	120.00

RED

Cardinal Sim. Color similar to King Cardinal.....	15.00	125.00
Dark Red Sim. Sport of Wm. Sim, shade darker.....	15.00	125.00
Imp. Red Sim. (Hill's).....	15.00	125.00
Ember Sim. Sport of Wm. Sim. Large flower, slightly lighter in color.....	15.00	125.00
Jumbo Cardinal (B & S). King Cardinal sport. Brilliant red.....	15.00	125.00
*Majestic (Patten). Outstanding red, large full flower	20.00	150.00
Red Gayety. Sport of Gayety.....	15.00	125.00
Scania. New European selection.....	15.00	125.00

We cannot accept orders for less than 100 cuttings of one variety: 250 or more of a variety at the 1000 rate except where noted. All varieties marked * are patented or restricted and subject to signed agreements.



CARNATIONS — CERTIFIED ROOTED CUTTINGS

WE CANNOT ACCEPT ORDERS FOR LESS THAN 100 CUTTINGS OF ONE VARIETY: 250 OR MORE OF A VARIETY AT THE 1000 RATE EXCEPT WHERE NOTED.

STANDARD VARIETIES

RED—(Continued)

	Per 100	Per 1000
Scarlet Littlefield. Sport of S. Littlefield.....	15.00	125.00
*Tom Knipe (B & S). A little deeper than King Cardinal	15.00	125.00
*William Sim. (Patten). Cardinal red. Very large full flowers, plants large and bushy.....	20.00	150.00

WHITE

Electra.....	15.00	125.00
*Hoosier Spice (B & S). Pure white fragrant.....	15.00	135.00
Imp. Olivette	12.00	100.00
Northland. Fine white.....	12.00	100.00
Snowdrift. Clear snow white.....	15.00	125.00
White Apollo.....	15.00	125.00
*White Boston (Patten). Clear White. Sport Dk. Pink Boston. Same characteristics.....	20.00	150.00
White Sidney Littlefield. Pure white, sport of Sidney Littlefield. Has all the good characteristics of its parent	15.00	125.00
White Sim Imp. Selection from White Sim. Larger flower. Stiffer stem	15.00	125.00

YELLOW

*Braun's Yellow Sim.....	Min. 250 500 1000 or more	20.00 18.00 160.00
Brigadoon. Pure lemon yellow.....		200.00
Golden Harvest. Golden yellow. Slight pink markings	Min. 250	180.00
Harvest Moon. Orange yellow.....	15.00	125.00
*Hoosier Gold (B & S). Clear yellow, light pink stripes	15.00	135.00
Midas.....	11.00	100.00
Miller's Yellow Imp. (Thomson). Reselected strain. clear yellow, good production.....	15.00	125.00
*Patten's Yellow. Imp. Miller's Yellow similar in color	20.00	150.00
Shirley Ann. Reselected Miller's Yellow.....	15.00	125.00

NOVELTIES AND VARIEGATED COLORS

Anniversary (Peterson). Sport of Wm. Sim, slightly darker	15.00	125.00
Cooper's Var. Sim. Like Mamie, except more red and regular streaks	15.00	125.00
Gayety. White, Red markings.....	15.00	125.00
Lavender Rose. Seedling carrying 3-3 1/2" flowers.....	15.00	125.00
Lavender Variegated Littlefield.....	15.00	125.00
Mamie. White variegated sport of Wm. Sim. with red markings	15.00	125.00
Mohawk. Yellow with pink stripes.....	15.00	125.00
Pearson's Peppermint Sim. Sport of Sim. Pure white background, with fine red penciling marks.....	15.00	125.00
Peking Pink Littlefield. Sport of White Littlefield, deep pink to scarlet center, petals white tipped....	15.00	125.00
Pelargonium. Crimson and white.....	15.00	125.00
Peppermint Stick Littlefield. Variegated sport of Sidney Littlefield.	15.00	125.00
Pride of Woburn. Bright fuchsia, orchid edge.....	15.00	125.00
Purple Littlefield. Littlefield sport royal purple.....	15.00	125.00
S. Arthur Peppermint Sim. Sport of Cardinal Sim. Pure white background, fine red penciling.....	15.00	125.00
*Sarah Jane Knipe (B & S). Brilliant rosy magenta with silver edges	15.00	125.00
Scarlet Sim. Red and white sport of Wm. Sim.....	15.00	125.00

NOVELTIES AND VARIEGATED COLORS—Continued

	Per 100	Per 1000
Starlite. Sport of Olivette, white variegated.....	10.00	90.00
*Symphony (B & S). Reddish-purple stripes on a delicate mauve ground.....	20.00	150.00
*Tetra-Sara Jane (B & S). Tetraploid-Magenta with silver edges.....	25.00	200.00
Variegated Lavender Littlefield.....	15.00	125.00
*Weirich's Peppermint Sim. Variegated sport of Wm. Sim. White to delicate pink with red penciling.....		150.00

YODER BROS. VARIETIES

	Price Class
AMBROSIA. New. Salmon pink, shade lighter than Venus. Stiff stem, good shipper.	P
APHRODITE. Clear light pink.....	S-2
APOLLO. Salmon pink.....	S-5
ATHENA. New. Lustrous salmon pink, slightly deeper than Venus. Vigorous habit, strong stem.....	S-4
AURORA. Large white. Strong stem.....	S-4
CASSANDRA. Yellow variegated, pink penciling.....	S-2
ELECTRA. New. Large informal white, petals deeply serrated. Same vigor and production of White Sim with an improved stem for winter flowering. Does not split.	P
HERMES. Dark pink. Improvement over Minerva.....	S-2
MENTOR. Rose pink. Strong stems, good keeper.....	S-2
MIDAS. Good Yellow.....	S-3
NECTAR. Orange-yellow variegated, with broad scarlet stripes. Flower flatter, more fringed and larger than Saturn.....	S-1
RED APOLLO. New. Dark salmon red, sport of Apollo. Larger and more heavily petalled than its parent, with same growing habits.	P
SIREN. Bright scarlet. Medium length stem, heavy producer....	S-3
THOR. Intense scarlet of medium size. Good producer.....	S-2
TITAN. Intense crimson red, full flower, high production.....	S-1
VENUS. Large salmon pink. Long stem.....	S-3
WHITE APOLLO. White sport of Apollo.....	S-4

Prices apply to the number of cuttings of any one variety per shipment.

Price Class	PER 100					
	50	100	250-450	500-950	1000-2500	2500 & up
S-5	6.50	11.00	10.50	10.00	9.50	9.00
S-4	7.00	12.00	11.50	11.00	10.50	10.00
S-3	7.50	13.00	12.50	12.00	11.50	11.00
S-2	8.00	14.00	13.50	13.00	12.50	12.00
S-1	8.50	15.00	14.50	14.00	13.50	13.00
P-	9.00	16.00	15.50	15.00	14.50	14.00

CHRYSANTHEMUMS—ONE OF OUR SPECIALTIES

Write For New Complete "Mum" Catalogue.

For 61 years S.S.S. and Co. have been supplying the highest quality Seeds, Bulbs and Plants to the finest Florists and Seedsmen in America.

Our firm and representatives are well qualified to assist you with the latest cultural practices, and aid in selecting varieties best suited for your markets.

This service is yours for the asking.

Always Remember: "Skidelsky's representative is on your staff but not on your payroll"

ROSES FOR FORCING AND SPRING SALES

Fine robust 2 year plants with heavy canes, properly graded and packed. For forcing in Fall and for Spring Sales. Shipped F.O.B. Penna. or New Jersey shipping point. Minimum order 50 plants. Minimum 10 of a variety. Packing extra at cost. **If sold out of any varieties we will substitute unless requested not to do so.**

STANDARD VARIETIES

HYBRID TEAS

- WHITE** F. K. DRUSCHKI. Large ivory-white
 K. A. VICTORIA. Snow-white, large double flowers
 McGREY'S IVORY. Large creamy-white, fragrant
 MME. JULES BOUCHE. White, tinged pink
- PINK** BETTY UPRICHARD. Two Tone pink
 COUNTESS VANDAL. Two tone salmon-pink and copper
 MME. COCHET-COCHET. Coppery pink.
 MAX GRAF. Trailing rose-pink-for ground cover.
 MISS ROWENNA THOM. Clear pink
 PICTURE. Pink
 PINK DAWN. Pink, touched with salmon-rose
 PINK RADIANCE. Brilliant rose-pink, fragrant
 THE DOCTOR. Large deep pink
- YELLOW-ORANGE** AUTUMN. Orange
 ECLIPSE. Rich golden yellow
 GOLDEN DAWN. Lemon yellow.
 JOANNA HILL. Golden yellow shaded apricot
 McGREY'S YELLOW. Buttercup yellow, fragrant
 MRS. E. P. THOM. Large deep yellow
 MRS. P. S. DU PONT. Golden yellow
 SISTER THERESE. Deep chrome-yellow
- RED** BETTER TIMES. Popular red
 CHRISTOPHER STONE. Bright red
 CRIMSON GLORY. Deep velvety-crimson
 ETOILE DE HOLLANDE. Clear deep red
 MARGARET McGREY. Large orange-scarlet
 McGREY'S SCARLET. Brilliant scarlet shaded rose-pink
 POINSETTIA. Red
 RED HOOVER.
 RED RADIANCE. Bright rose-red
 RED TALISMAN.
 TEXAS CENTENNIAL. Carmine-red

- TWO-TONE** ANGEL'S MATEU. Orange-rose
 AUTUMN. Orange, yellow and red.
 BETTY UPRICHARD. Two-tone pink
 CONDESA DE SASTAGO. Coppery-pink & golden yellow
 COUNTESS VANDAL. Two tone salmon pink and copper
 DUQUESA DE PENARANDA. Orange and peach
 EDITH NELLIÉ PERKINS. Two tone pink
 GIRONA. Turkey-red-and yellow.
 GOLDEN SASTAGO. Yellow and Buff.
 PRES. HOOVER. Yellow with pink and flame shading
 TALISMAN. Golden-yellow and copper-red

FLORIBUNDAS

- DAGMAR SPATH. White edged pink
 FLORADORA. Scarlet-red.
 FRENHAM. Red
 GARNETTE. Red
 IMP. LAFAYETTE. Crimson.
 THE FAIRY. (Shrub Rose). Pink.

CLIMBERS

- CL. BLAZE. Glowing scarlet.
 CL. GOLD RUSH. Bright Yellow.
 CL. MRS. DUPONT. Golden yellow.
 CL. MRS. E. P. THOM. Yellow.
 CL. NEW DAWN. Blush pink.
 CL. PINK RADIANCE.
 CL. PAUL'S SCARLET. Bright scarlet.
 CL. PRES. HOOVER. Multi-color.
 CL. SILVER MOON. Creamy-white, semi-double.
 CL. SNOWBIRD. White.
 CL. TALISMAN. Golden yellow, Copper-Red.
 CL. WHITE DAWN. White.

PRICES FOR STANDARD VARIETIES

	Per 10	30-290	300 up
#1	.70 each	.65 each	.60 each
#1½	.60	.55	.48

FORCING ROSES

WELL GROWN, CAREFULLY HARVESTED FORCING ROSES FOR EASTER AND LATER FLOWERING F.O.B. OHIO SHIPPING POINT

POLYANTHAS or BABY RAMBLERS

- | | |
|------------------------------|----------------------------|
| CAMEO. Pink, salmon and gold | MOTHER'S DAY. Bright red. |
| DICK KOSTER. Deep pink | MOTHER'S DAY ORANGE |
| GLORIA MUNDI. Orange scarlet | SPORT. Vivid salmon |
| MARGO KOSTER. Pink, orange | PINK KOSTER. Clear pink |
| VERDUM. Carmine | TR. DE ORLEANS. Cherry red |

Grade	Per 10	Per 100
XXX	8.50	70.00
XX	5.50	50.00
MED. or #1½	4.00	32.00
#2	3.50	20.00

CLIMBING-SELECTED XXX GRADE

BLAZE. Red	BONFIRE. Red	PAUL'S SCARLET. Red
Per 10.....	8.50	Per 100.....
		75.00

EXOTICA By A. B. GRAF

Pictorial Cyclopedic of indoor plants. New and fascinating. Completely illustrated. 600 pages \$17.50

EXOTICS— 96 page illustrated book on Exotic plants. \$2.50

MINIATURE ROSES

F.O.B. PENNSYLVANIA SHIPPING POINT

Miniature Roses are permanently tiny, hardy outdoor plants, as hardy as regular H. T. Garden Roses. They should not be confused with Polyantha Roses. These miniatures grow only about 6 to 12 inches high, with blooms the size of a 5 or 10 cent piece when fully open.

Miniature Roses are shipped from September until May, from 3 inch pots with soil on their roots, and each plant is wrapped with Sphagnum moss in wax paper. On dormant plants shipped after Dec. 1st tops are cut back about 1 inch to assure vigorous, symmetrical growth from the base.

For over the counter sales pot them in 3 or 4 inch pots and bring into growth in a greenhouse or out of doors.

	PRICE PER PLANT	
	10-90	100 up
Baby Gold Star—Yellow75	.70
Cinderella—Cream White625	.575
Midget—Deep Pink625	.575
Pixie—White625	.575
Red Imp—Crimson625	.575
Robin—Bright red75	.70
Sweet Fairy—Deep Pink625	.575
Tinker Bell—Bright Pink625	.575
Tom Thumb—Red625	.575

Miniature Tree Roses, Assorted..... Each 2.00

ROSES FOR FORCING AND SPRING SALES

Fine robust 2 year plants with heavy canes, properly graded and packed. For forcing in Fall and for Spring Sales. Shipped F.O.B. Penna. or New Jersey shipping point. Minimum order 50 plants. Minimum 10 of a variety. Packing extra at cost. **If sold out of any varieties we will substitute unless requested not to do so.**

HYBRID TEAS

Retail Each	PINK
2.00	CAPISTRANO. Deep rose-pink, fragrant
2.25	DR. DEBAT. Pink
2.00	EDEN ROSE. Rose pink
2.25	ENCHANTMENT. Peach pink.
2.00	GOOD NEWS. Pink.
2.75	HELEN TRAUBEL. Light pink to apricot pink
2.25	HENRY FORD. Pink
1.75	K. T. MARSHALL. Warm glowing pink, fragrant
2.00	MME. HENRI GUILLOT. Raspberry pink.
2.00	MISSION BELLS. Salmon-pink to shrimp pink
2.75	MONTEZUMA. Salmon
2.50	QUEEN ELIZABETH. Silvery pink
2.25	SHOW GIRL. Pink
2.00	SUZON LOTHE. Shell pink
2.00	SYMPHONIE. Dark Pink
2.25	TALLYHOE. Two-toned old rose.
2.50	TIFFANY. Deep pink
2.00	TOM BRENNEMAN. Pink

RED

2.50	CHARLES MALLERIN. Red
2.25	CHARLOTTE ARMSTRONG. Carmine
2.50	CHRYSLER IMPERIAL. Red
2.00	DETROITER. Carmine red
2.25	FANDAGO. Rich deep scarlet
2.00	GRAND DUCHESS CHARLOTTE. Brick red
2.00	HAPPINESS. Red
1.75	HEART'S DESIRE. Bright red
2.25	MIRANDY. Rich dark red
2.25	NEW YORKER. Red
2.25	NOCTURNE. Red
2.25	PRESIDENT EISENHOWER. Red
1.75	RUBAIYAT. Rose red
1.75	SAN FERNANDO. Scarlet red
2.50	ZULU QUEEN. Maroon-darkest red.

WHITE

2.25	BLANCHE MALLERIN. Pure white
1.75	REX ANDERSON. White
2.00	SLEIGH BELLS. White with cream center
3.00	WHITE KNIGHT. White
2.25	WHITE SWAN. White

YELLOW-ORANGE

2.50	BUCANEER. Yellow
1.75	BUTTERSCOTCH. Buff yellow
2.00	DIAMOND JUBILEE. Buff orange
2.50	FORT KNOX. Yellow
2.00	FRED HOWARD. Rich yellow edged light pink
2.75	GOLDEN MASTERPIECE. Yellow
2.00	GOLDEN SCEPTRE. Yellow
2.50	LADY ELGIN. Orange-apricot
2.25	LOWELL THOMAS. Deep golden-yellow
1.75	McGREDY'S SUNSET. Yellow tipped orange
2.00	PENNSYLVANIA. Apricot.
2.50	SUN KING. Bright yellow
2.25	SUTTER'S GOLD. Yellow with orange red shading

TWO-TONE

1.50	APRICOT QUEEN. Two-tone apricot
2.50	CARELESS LOVE. Deep pink, white speckled
2.25	CONFIDENCE. Bi-Pink.
2.25	FORTY-NINER. Red inside petals, yellow outside
2.25	GRAND'MERE JENNY. Pink and gold
2.00	HUNTSMAN. Red and yellow
2.50	LOVE SONG. Salmon pink and gold
2.00	MIAMI. Gold and flamingo
2.75	MOJAVE. Salmon, apricot and orange blend.
2.00	OPERA. Golden yellow and scarlet
2.25	PAGEANT. Golden yellow, vermillion red
2.50	PEACE. Bright yellow edged carmine and pink

PATENTED VARIETIES

Retail Each	CLIMBERS
2.50	CL. CORAL DAWN. Coral pink
2.50	CL. CRIMSON GLORY. Red
2.00	CL. DR. J. H. NICOLAS. Pink
2.50	CL. DREAM GIRL. Light pink
2.75	CL. GLADIATOR. Deep pink
3.00	CL. GOLDEN SHOWERS. Yellow
2.50	CL. GOLDSLOCKS. Yellow
2.50	CL. MORNING DAWN. Soft pink
2.50	CL. PARADE. Light rose red
2.25	CL. PEACE. Yellow and pink
2.50	CL. RED EMPRESS. Spirea red
2.50	CL. SPECTACULAR. Orange scarlet
2.00	CL. SUMMER SNOW. White

FLORIBUNDAS

2.50	AMY VANDERBILT. Purple to lavender lilac
2.00	BABY BLAZE. Red
1.75	BETTY PRIOR. Pink
2.00	CARROUSEL. Red
1.50	CHATTER. Bright crimson
2.50	CIRCUS. Multi-color
2.00	COCORICO. Deep red
1.50	CRIMSON ROSETTE. Crimson
2.00	FASHION. Orange
2.50	FUSILIER. Bright red
2.00	GERANIUM RED.
2.00	GLACIER. White
2.50	GOLD CUP. Golden yellow
2.50	GOLDEN FLEECE. Tawny yellow
1.75	GOLDSLOCKS. Yellow
1.75	IRENE OF DENMARK. White
2.00	JIMINY CRICKET. Salmon orange
2.00	LILIBET. Salmon pink
2.00	MA PERKINS. Salmon pink
2.00	MASQUERADE. Multi-color
1.75	PINK GARNETTE
1.75	PINK BOUNTIFUL. Pink
1.75	PINOCCHIO. Salmon
2.50	QUEEN ELIZABETH. Pink
1.75	RED FAVORITE. Deep red
1.75	RED PINOCCHIO. Red
1.75	RED WONDER. Red
2.75	SPARTAN. Coral
2.50	SUMATRA. Flashing red
1.50	SUMMER SNOW. White
2.50	THE TEXAN. Fiery red
2.00	VOGUE. Begonia-rose
2.50	WHITE BOUQUET. White
1.50	WORLD'S FAIR. Red
1.75	YELLOW PINOCCHIO. Yellow

PRICE OF PATENTED ROSES

Retail	Wholesale Each		
	10	20-90	100 Up
1.50	.90	.75	.70
1.75	1.00	.87½	.80
2.00	1.10	1.00	.95
2.25	1.25	1.12½	1.05
2.50	1.40	1.25	1.20
2.75	1.50	1.37½	1.30
3.00	1.65	1.50	1.40
	# 1½ Grade—20% less		

The rate on patented varieties is determined by the number of each variety ordered, not total of all varieties.

**COMPLETE SEED AND PERENNIAL
CATALOGS AVAILABLE FOR THE ASKING**

DORMANT AZALEAS FOR FORCING FALL 1957

INDICA—Grafted, large flowered Belgian varieties, selected well shaped 3-4 yr. field grown plants. F. O. B. Northern New Jersey

	Diameter of Crown		
	7/8"	8/10"	10/12"
Albert & Elizabeth. Double white with pink border.....	7/8"	8/10"	10/12"
Beatrice. Early double salmon red, darker than Paul Schame. Can be forced for Xmas.....		8/10"	10/12"
Blushing Bride. Double pale pink.....		8/10"	10/12"
Eric Schame. Early salmon rose.....		8/10"	10/12"
Ernest Thiers. Semi-double, bold crimson.....		8/10"	10/12"
Haerens Beauty. Mid-season double, satiny shell pink.....	8/10"		10/12"
Mme. Petrick. Christmas flowering, double rose.....	7/8"	8/10"	10/12"
Mme. Vander Cruyssen. Semi-double, carmine rose, early.....		8/10"	10/12"
Mme. Van Gill. Orange, double.....		8/10"	10/12"
Memoria Sanders. Early dark red.....	7/8"	8/10"	10/12"
Niobe. Late double white.....		8/10"	10/12"
Simon Mardner. Early double rose.....		8/10"	10/12"
Triomphe. Double red with purple sheen.....		8/10"	10/12"
Vervaeneana. Double, large rosy salmon.....	7/8"	8/10"	10/12"
Vervaeneana Alba. Large double, pure white.....	7/8"	8/10"	10/12"
Violacea. Deep purplish violet, double.....		8/10"	10/12"
Assorted Varieties.....	7/8"	8/10"	10/12"
	7/8" 1.35 EACH	8/10" 1.65 EACH	10/12" 2.10 EACH

KURUME, PERICAT and small flowered INDICAS, heavy 2 year field grown plants.

- Coral Bells.** Dainty coral pink, semi-double.
 - Hexe.** Deep crimson, semi-double, Dwarf Indica.
 - Hexe De Saffelare.** Crimson large flowers.
 - Hinodegiri.** Carmine red, hardy.
 - Mrs. Fisher.** Semi-double salmon pink.
 - Polar Bear.** Hardy. White, hose in hose. Late blooming, compact.
 - Rival.** Salmon rose. Double pericat.
 - Rose Pericat.** Rose pink.
 - Salmon Beauty.** Salmon pink, hose in hose type.
 - Sensation.** Deep pink, hose in hose type. Pericat.
 - Snow.** Pure white, hose in hose type.
 - Sweetheart Supreme.** Fine pink, resembles a Sweetheart Rose when opening. Pericat.
- | | | |
|---------------|---------------|-----------------|
| 5/6" .65 EACH | 7/8" .90 EACH | 8/10" 1.35 EACH |
|---------------|---------------|-----------------|

INDICA OWN ROOT, large flowered Belgian type.

- Ernest Thiers, Paul Schame, Triomphe.**
- | | |
|---------------|----------------|
| 5/6" .75 EACH | 6/8" 1.00 EACH |
|---------------|----------------|

RUTHERFORDIANAS, bush

- Constance.** Early to mid-season, large single cerise pink.
 - Mother of Pearl.** Light pink, large double. Mid-Season to late.
 - Orange Queen.** Orange pink, hose-in-hose, late blooming.
 - Pres. Roosevelt.** Bright salmon, hose-in-hose. Early to mid-season.
 - Salmon Perfection.** Large bright salmon, double. Mid-season to late.
- | |
|----------------|
| 7/8" 1.00 EACH |
|----------------|

Prices quoted are on orders for 100 plants or more. Free truck delivery in metropolitan area. Longer distances at cost. Packing extra if by express. Discount on orders 1000 or more 10%.

Fall shipment to November only at above prices. Later deliveries out of storage, Dec. to Feb., subject to 20% additional on orders placed prior to Nov.

HANDLING AFTER RECEIPT of Plants: Thoroughly water rootballs and store in cool and light greenhouse. Pot or plant in moist peat and never allow to dry out. Forcing of early varieties can begin in sunny house in November with gradually increasing night temperatures to 70°, syringing frequently to help the buds to break. For later bloom keep below 50° until 2 to 4 weeks before being needed, when temperature should be raised to between 50 and 60°, according to variety, and time wanted. For Easter they may actually have to be held back to keep from blooming early.

CORAL BELLE SUPREME. New Patented. Sport of Coral Bells. Flowers twice as large as its parent. 3-4 hose in hose, semi-double and deeper pink. Early mid-season, profuse bloomer. Heavier branches than parent. Propagates easy.

Rooted cuttings	17.50 per 100	150.00 per 1000
2 1/2"	27.50 per 100	250.00 per 1000

KURUMES, KAEMPFERIS, GABLES (Hardy Types)

F.O.B. Southern New Jersey

E	Coral Bells—hose in hose, light pink							
EM	Hexe—hose in hose, cerise red							
EM	Hinodegiri—single, cerise red							
EM	Hino Crimson—single, crimson							
EM	Snow—hose in hose, white							
ML	Caroline Gable—hose in hose, cerise red							
ML	K-7—hose in hose, light salmon							
ML	K-18—hose in hose, bright pink							
ML	Orange Cup—hose in hose, orange							
ML	Salmon Special—hose in hose, ruffled salmon							
ML	Maxwelli Alba—single, white							
	3/5" 4/6" 5/7" 6/8" 8/10" 10/12" 12/14" 14/16"							
Oct.-Nov.	.48	.60	.80	.90	1.25	1.60	2.10	2.65
Dec.-Feb.	.50	.63	.85	.95	1.35	1.70	2.20	2.80
March	.51	.66	.90	1.00	1.45	1.80	2.35	2.95
April	.53	.68	.95	1.05	1.50	1.85	2.45	3.05
Potted-dormant	.90	1.25	1.35	1.85	2.45	3.00	3.80	

PERICATS and SEMI-HARDIES (Larger Flowers)

EM	Pericat Salmon—hose in hose, salmon, compact							
EM	Dawn—hose in hose, light pink							
M	Eastertide—hose in hose, ruffled salmon							
EM	Fortune—hose in hose, bright salmon red							
M	Gardenia—semi-double, white							
ML	Morning Glow—hose in hose, light pink							
M	M. R. Mulford—hose in hose, cerise red							
EM	Pericat Salmon—hose in hose, Salmon, compact							
E	Pericat White—hose in hose, white							
M	Pink Supreme—hose in hose, medium pink							
M	*Red Wing—(Pat.) hose in hose, ruffled cerise red.							
EM	Sensation—hose in hose, medium pink, compact							
M	Splendor—hose in hose, medium pink							
EM	Sweetheart Supreme—semi-double, blush pink							
	3/5" 4/6" 5/7" 6/8" 8/10" 10/12" 12/14" 14/16"							
Oct.-Nov.	.48	.60	.80	.90	1.25	1.60	2.10	2.65
Dec.-Feb.	.53	.68	.90	1.05	1.50	1.85	2.45	3.05
March	.58	.78	1.00	1.15	1.65	2.00	2.70	3.35
Potted-dormant	1.05	1.40	1.55	2.15	2.75	3.45	4.40	
	*.15 per plant additional.							

INDICAS, Large Flowers (Not Hardy)

EM	ALBERT AND ELIZABETH. Double, salmon and white.							
EM	CANDYSTICK. Double, red and white variegated.							
M	JEAN HAERNS. Double, bright pink.							
E	PAUL SCHAME. Double, salmon.							
EM	TRIOMPHE. Double, cerise red.							
ML	VANDERCRYSSEN. Double, dark pink.							
EM	VERVAENEANA. Double, pink and white.							
EM	VERVAENEANA ALBA. Double, white.							
	3/5" 4/6" 5/7" 6/8" 8/10" 10/12" 12/14" 14/16"							
Oct.-Nov.	.53	.85	1.05	1.35	1.85	2.40	3.00	3.70
Dec.-Feb.	.58	.93	1.15	1.45	2.05	2.65	3.30	4.10
March	.63	1.00	1.25	1.55	2.20	2.90	3.60	4.45
Potted-dormant	1.25	1.65	1.90	2.70	3.60	4.30	5.40	

*Mostly own root. 8/10" and up mostly grafted.

- E Early—Forces for Xmas.
- EM Early Mid-season—good Jan. forcer.
- M Mid-Season—Forces from mid-Feb on.
- ML Late Mid-season—Forces from mid March on.
- Fall—prices to November 15th.
- Winter—prices December—February
- March—prices for March
- Mother's Day—prices for delivery after Easter.
- Potted plants delivered in dormant condition.
- Min. 5 plants of a variety and size. Truck delivery at nominal cost where possible, otherwise express. 250 and over write for price.

PLANT SPECIALTIES



CYCLAMEN (See page 29)

AGERATUM

Blue Boy	Dwarf Pink	Magnolia	
Cardinal Mundelein	Blue Devon	Dwarf White	
Riverside Imp.	Purple Beauty		
		100	1000
Each above	Rooted Cuttings	3.50	30.00
	2 1/4 inch	10.00	90.00

ANTIRRHINUM-SNAPDRAGON

Summer and hot weather varieties—For Greenhouse and cloth house growing grown in sterilized soil.

Hybrid varieties for Sept. and Oct. blooming. List of varieties and colors on request.

SEEDLINGS: \$17.00 per 1,000 TRANSPLANTS: \$35.00 per 1,000

BEGONIAS 2 1/4" BEDDING OR GREENHOUSE

	Per 100	Per 1000
Adeline	12.00	110.00
Carmen	12.00	110.00
Indian Maid	12.00	110.00
Luminosa	12.00	110.00
Pink Queen	14.00	130.00
Double Red-Pink—White	16.00	150.00
Rose Bud, Pink-red	15.00	135.00
Coraline Lucerne	} Each	25.00
Geneva White or Scarlet		
Westport Beauty		
Rex Begonias Assorted	50.00	
Rex Begonias. Fancy-leaved European varieties. Perfect foliage. Plants for Easter and Mother's Day. Cartons of 50 plants—5 to 7 varieties. Fall and later.	35.00	300.00
Xmas Begonias. May 15 and later.		
Lady Mac Supreme. New. Sport of Lady Mac, with all its good qualities and so many new characteristics. Rich glowing. Deep pink bordering on better times color. Flower stems red. Flowers long lasting. Retaining its color. Deep green veined foliage. Compact growth. Will develop in cooler temperature than other varieties, and will be in prime condition for Xmas sales, if grown in night temperature of 56°	50 for	30.00
	55.00	500.00
Lady Mac. Fine rose pink	42.50	375.00
Marjorie Gibbs. Large clear self pink	42.50	375.00
Melior	42.50	375.00

Less than 50 plants of a variety, at 50c each. Min. 25 of a variety.

Norwegian Begonias. Min. 50 of a variety.

Christmas Flowering. Non-Shattering. Larger deeper pink, some bordering on red.

Tove	Dark Marina	Spirit of Norway	
Solbachen	Karoline	Skavane	
Red Soltheim	Dark Solbachen	Compacta	
Each above		47.50	425.00

Special collection of 50 plants, some of each variety, labeled 52.50 per 100—250 or more 475.00 per 1000

CALCEOLARIA. 2 1/4 INCH. September to January delivery.

	Per 25	Per 100
Easter Varieties—Seedling Type.		
Multiflora Nana. Excellent strain	6.25	20.00
Multiflora Nana. Gilbert's strain	6.25	20.00
Multiflora Nana. F-I Hybrids	6.25	20.00
Triumph. Shades of yellow, orange, red, rose	6.25	20.00
Mixed.	5.50	18.00
Mother's Day Varieties—grown from cuttings		
Greater New York. Shades of red, yellow, bronze, honey-dew, etc.	9.00	30.00
Mary Louise. Brilliant, carmine red, early	9.00	30.00
Pure Flame. Brilliant Flame Red	9.00	30.00
Pink Perfection. Rich Rosy pink	9.00	30.00
Stewartii. Canary yellow	9.00	30.00
Rosacker's Brilliant. Deep rich garnet red	9.00	30.00
Imp. Perfection. Yellow, orange and amber shades	9.00	30.00
Golden Talisman. Golden amber	9.00	30.00
Cherry Queen. Deep reddish pink	9.00	30.00
Suzanne. Canary yellow, blooming several weeks earlier than Stewartii	9.00	30.00

CINERARIA 2 1/4 INCH

	Per 100	Per 1000
Cremers Prize Strain	12.00	110.00
Siter's Rainbow Strain	12.00	110.00

COLEUS	Standard varieties	Rooted Cuttings	Per 100	Per 1000
		2 1/4 inch	4.00	35.00
			12.00	100.00

FERNS IN FLATS

TABLE FERNS—Shipped as Grown in flats (approx. 150 Plants per Flat—June to Sept.

PTERIS VARIETIES	Per Flat
Adiantoides. Similar to small leaf Holly Fern	7.00
Argyreae. Large robust variegated broad leaf	7.00
Cretica Albo-Lineata. Leathery leaf with broad cream white center stripe	7.00
Flabellata. Dainty feathered foliage	
Rivertoniana. Graceful lacy foliage, medium height (for small and medium Poinsettia pans)	7.00
Tremula. Robust grower, feathered leaf	7.00
Victoria. Variegated dwarf	7.00
Wilsoni. Graceful light green fronds	7.00
Wimsetti. Narrow leaves, crested tips (for small to medium Poinsettia pans)	7.00
Assorted Pteris varieties	8.00

FERNS, OTHER TYPES. In flats.

Adiantum Wrightii. (Maiden Hair.)	
Fancy Gloriosum type	8.50
Aspidium Tsussimense. Dwarf for Terrariums	7.50
Asplenium Nidus-Avis (Bird Nest Fern)	10.00
Cyrtomium Rockford. Compactum. Holly Fern	8.00
Less 5% on 10 or more flats	

Table Ferns. From 2 inch pots.	Aug.-Sept.	Per 100	Per 1000
	Winter Shipment	15.00	90.00
		20.00	

Ferns. From small pots. 2 inch	
Polypodium Mandaianum. Bluish gray	35.00
Adiantum Wrightii. (Maiden Hair). Fall-Winter	
2 1/4 inch	30.00
Dwarf Boston, Scotti, Roosevelt, Verona, Tall Boston, Whitmani Teddy Jr.	15.00
	125.00



WILSONII, VICTORIA, RIVERTONIANA, TREMULA

PLANT SPECIALTIES



IVY HAHN'S SELF BRANCHING

CYCLAMEN		100	1000
Transplanted Seedlings in season	3-5 leaf	14.00	120.00
Transplanted Seedlings in season	5-7 leaf	16.00	140.00
May-Aug. Pot grown	3 inch	40.00	375.00
May-Aug. Pot grown, Selected	3 inch	45.00	425.00
June-Oct Pot grown, Selected	4 inch	75.00	725.00

DAISIES 2 1/4"			
Boston Yellow Improved		12.50	110.00
Nicholson's Giant White		12.50	110.00

DRACAENA			
Indivisa. Slender green leaf. Useful for summer bedding, vases, etc.	2 1/4 inch	12.00	100.00
	3 inch	20.00
	4 inch	35.00

FUCHSIAS				
	Rooted Cutting		2 1/4 Inch	
	100	1000	100	1000
Bagdad, Black Prince	6.00	55.00	13.00	120.00
Little Beauty, Giant Pink	6.00	55.00	13.00	120.00
Pink Beauty, Pride of Orion	6.00	55.00	13.00	120.00
Double Varieties				
Hollydale, Lavender pink	6.00	55.00	13.00	120.00
Winston Churchill, Deep violet	6.00	55.00	13.00	120.00

GERANIUMS.	2 1/4"—minimum 100 of a variety		
Better Times, Red			
Fiat, Salmon pink			
Imp. Poitevine, Salmon pink			
Irene, Red, Ricard color.			
Irvington Beauty, Rose pink			
Madonna, White			
Mme. Buchner, Snow white			
Mme. Landry, Apricot salmon			
Mrs. Lawrence, Pink			
		Mrs. Escham, Salmon pink	
		Olympic Red, Bright red	
		Picardy, Salmon pink	
		Pink Olympic.	
		Pride of Camden, Red	
		Radio Red, Dark red	
		Red Fiat, Bright scarlet	
		Ricard Improved, Scarlet	
		Sandra Irene, Sport Red	
		Fiat, Brilliant red	
Above varieties	15.00 per 100	135.00 per 1000	
Dark Red Irene, Vivid red, Sport of Irene	20.00 per 100	150.00 per 1000	
Enchantress Fiat	16.50 per 100	150.00 per 1000	
Ivy Leaved Pink	16.50 per 100	150.00 per 1000	
Olympic Dawn, True sport Pk, Olympic	16.00 per 100	150.00 per 1000	
White Mountain, Large pure white.	16.00 per 100	150.00 per 1000	
Mrs. Bailey, Red, Early flowering, Short compact large flower heads	22.50 per 100	175.00 per 1000	

GARDENIAS			
Veitchii	2 1/4 inch	20.00
	Feb.-June 2 1/2 inch	25.00	240.00
For Easter and Mother's Day—			
	Nov.-Feb. 4 inch	85.00
	5 inch med.	125.00
	5 inch heavy	150.00

GLOXINIAS. F.O.B. Fla.		100	1000
Hybrid Seedlings. Shipped in 2" Bands, 50 per carton.		20.00	180.00

HELIOTROPE.			
Old fashioned sweet scented	R.C. 2 1/4"	4.00	35.00
	2 1/4"	10.00
Royal Fragrance	R.C. 2 1/4"	6.00	45.00
	2 1/4"	12.00

LANTANAS 2 1/4 inch			
Assorted Varieties		12.50	115.00
Southern		13.50	125.00

PELARGONIUMS			
Standard varieties. Best selection for pot plant culture.			
2 1/4"		20.00	190.00
3"		28.00	270.00
Premium Varieties.			
2 1/4"		28.00
3"		37.50
25 of a variety at 100 rate—250 of a variety at 1000 rate.			

PETUNIA DOUBLE MIXED	R.C. 2 1/4"	6.00	45.00
	2 1/4"	12.00	110.00

PRIMULA OBCONICA 2 1/4" June and Later			
Obconica Grandiflora		12.50	100.00
Malacoides		12.50	100.00

SAINTPAULIA (African Violets) 2 1/4"			
Red Man, Single		37.50	350.00
Painted Girl, Single orchid and white var.		37.50	350.00
Blue Wonder, Light blue and white		37.50	350.00
Double Neptune, Blue	Purple Knight		
Pink Cheer	Snow Prince		
Red King	Midnight Lady, Double blue		
Queen Cushion, Double orchid			
Each above	27.50 per 100	250.00 per 1000	

VERBENA BEAUTY OF OXFORD.			
Pink, Lavender, Scarlet, Cerise.	R.C. 2 1/4"	4.00	35.00
Mayflower, Pink	2 1/4"	10.00

VINCA VARIEGATED	R.C. 2 1/4"	5.00	45.00
	2 1/4"	12.50	110.00
	3"	25.00

VITUS RHOMBIFOLIA (Grape Ivy)	2 1/4"	12.00	110.00
--------------------------------------	--------	-------	--------

IVIES (Hedera)

English	Rooted Cuttings 2 1/4"	4.00	25.00
	2 1/4"	9.00	80.00
Green Ripple (Pat.)	Rooted Cuttings	6.00	50.00
	2000 or more Rooted Cuttings	45.00
Hahn's Self Branching	Rooted Cuttings	4.50	35.00
Imp. Sylvania Beauty (pat.)	Rooted Cuttings	7.00	60.00
Maple Queen (pat.)	Rooted Cuttings	6.00	50.00
	2000 or more Rooted Cuttings	45.00
Star Ivy	Rooted Cuttings	4.50	35.00
Shamrock (Pat.)	Rooted Cuttings	6.00	50.00

ABOVE VARIETIES AVAILABLE

Each in 2 1/2 inch	20.00 per 100	4 inch	50.00 per 100
3 inch	35.00 per 100	and	75.00 per 100
	and 50.00 per 100		
Hahn's New Variegated (Pat.)	Rooted Cuttings	6.50	50.00
	2 1/2 inch	25.00
	3 inch	35.00
	and	50.00
	4 inch	75.00
Hagenburger's Variegated	Rooted Cuttings	7.00	65.00
Golddust, Yellow variegated small leaved	Rooted cuttings	8.00	75.00
	Rooted Cuttings	8.00	75.00
Glacier, Highly variegated white, small leaved.	Rooted Cuttings	8.00	75.00
R. C. minimum 100 of a variety — 2 1/4 inch minimum 50 of a variety.			

PLANT SPECIALTIES

HYDRANGEAS (Fall Delivery—for forcing)

- | | |
|------------------------------------|------------------------|
| M. Alpengluhn. Light red. | E. Sanctis. Medium Red |
| M. Flamboyant. Medium red | E. Zurich. Light Red |
| M. Monte Forte Perle. Carmine red. | M. Todi. Dark pink |
| M. Sainte Therese. Best white. | |

PRICES Per 100

	3" 1 Shoot	4" 2 or More	5" 3 or More	6" 4 or More	7" 7 or More
	50.00	80.00	100.00	150.00	250.00
Europa. Salmon pink					
Hamburg. Carmine					
3" rose pot	100	1000			
1 shoot	50.00	400.00		100	1000
2 shoots	60.00	500.00		2 shoots	70.00
3 shoots	70.00	600.00		3 shoots	80.00
4 shoots	75.00	650.00		4 shoots	90.00
				5 shoots	110.00
				5" or 6" 7-10	135.00
				shoots	1150.00
Merveille. Light red.					
Rosabelle. Rose pink.					
Regula. White.					
3" rose pot					
1 shoot	50.00	400.00		2 shoots	75.00
2 shoots	65.00	550.00		3 shoots	85.00
3 shoots	75.00	650.00		4 shoots	95.00
4 shoots	85.00	750.00		5 shoots	110.00
				5" or 6" 7-10	135.00
				shoots	1200.00
Gertrude Glahn. Dark rose					
Kunnert. Rose pink.					
3" rose pot					
1 shoot	45.00	350.00		2 shoots	65.00
2 shoots	55.00	450.00		3 shoots	75.00
3 shoots	65.00	550.00		4 shoots	85.00
4 shoots	70.00	600.00		5 shoots	95.00
				5" or 6" 7-10	120.00
				shoots	1050.00
ROOTED CUTTINGS—Spring delivery					
				100	1000
Gertrude Glahn				Prima	10.00
Europa				Leopold III	10.00
Hamburg				Merveille	16.00
Kunnert				Regula	16.00
Engel's White				Rosabelle	16.00
Drapes Pink				Strafford	16.00
				King George	18.00
					150.00

GERMAN VARIETIES

Alpengluhn	Gerta Steiniger	Monte Forte Perle	Red Emperor
Dr. Kunnert	Holstein	Mouvelle Europa	St. Bovo
Eldorado	Lemmenhof	Pres. Eisenhower	Splendeur
Enzindom	Mad. De Ridder	Raymond Drapes	Superbe
	100	1000	100
3" 1 shoot	50.00	450.00	105.00
4" 2 shoots	85.00	750.00	120.00
4" 3 shoots	95.00	850.00	
Rooted cuttings above varieties			25.00
Except Varieties			200.00
Alpengluhn	Sante Therese	Monte Forte Perle	
Enzindom	Sanctis	Superbe	
Flamboyant	Zurich	Todi	30.00

DAPHNE CNEORUM—FOR EASTER & MOTHER'S DAY

F.O.B. MASS.	10-25	30-100	125 up
	Each	Each	Each
5-7"	.90	.85	.80
7-9"	1.20	1.15	1.10
9-12"	1.45	1.40	1.35

Packing at cost — 5-7", & 7-9" 27¢, 9-12"-10¢ per plant. Shipped in paper pots

DIELYTRA (Dicentra, Bleeding Heart)

	Per 100
Spectabilis 3-5 eyes	50.00
5-8 eyes	65.00
8 eyes	80.00

SUCCULENTS AND CACTI ASSORTMENTS

	Min. 100 each Assortment—500 at 1000 Rate	100	1000
Fifth Ave. Assortment-Choice		9.00	80.00
South Side Assortment (Cacti & Hard Succulents)		7.00	60.00
Greenhouse Special Assortment (Succulents for dish gardens and or 2 1/4 inch)		6.00	50.00
Assortment Choice Cacti Seedlings for 2 and 2 1/4 inch		9.00	80.00
Assorted unrooted succulents		3.50	25.00
A ALL PURPOSE STANDARD. Cacti and Succulents; ten or more standard varieties in uniform good selection for general dish garden work or individual 2 to 2 1/2-in pots		5.00	42.50
B ALL-PURPOSE SUPERIOR. Cacti and Succulents; includes the better, more durable and showier types of Succulents and Cacti, in 15 or more varieties. This is our most favored all around commercial assortment		6.00	52.50
C ALL-PURPOSE CHOICE. Cacti and Succulents; limited to the more valuable, hard Succulents and most desirable Cacti, selected for keeping quality, odd shape and beauty		9.00	80.00
H ALL-SUCCULENT ECONOMY, ten or more varieties, useful and showy — an economical and colorful filler		4.50	37.50
K ALL-SUCCULENT FANCY, the harder slow-growing and fancy types of succulents specially selected for best keeping quality, oddity as well as color		7.50	70.00
N ALL-CACTUS SELECT, various types of Cacti from cuttings and seedlings; globular, branched, eared, padded and columnar varieties in best selection		9.50	90.00
P SUNSET COLLECTION for fanciers; fifty named varieties of Cacti and other Succulents such as Euphorbias, Haworthias, Echeverias, etc., and including all leading forms		9.50	90.00
S SUB-TROPIC DIXIE ASSORTMENT, as favoured in New York, small Foliage plants with compatible Succulents and Sansevierias		8.50	80.00

F.O.B. CALIFORNIA. COMPLETE LIST SEPARATE NAMED SUCCULENTS ON REQUEST

SPIREA (Astilbe)

Suitable for flowering, forcing in about 12 weeks. Strong Forcing Clumps.

Deutschland. White	Fanal. Red.
Gladstone. White	Gloria Superba. Deep pink
America. Lillac rose.	Rhineland. Crimson
Peach Blossom. Peach Pink	Bloom. Soft pink.
42.50 per 100	400.00 per 1000



PHILODENDRON SELLOUM (See page 32)

FOLIAGE AND DISH GARDEN PLANTS

	100	1000		100	1000
<i>Acuba Crotonfolia</i> (or similar). 4-6" Rooted cuttings	15.00	135.00	<i>Ficus Pandurata</i> Mossed rooted layers	50.00
6" Rooted cuttings	17.50	160.00	4 inch	75.00
<i>Aglaonema</i> . See Chinese Evergreen below.			<i>Fittonia Argyreaneura</i> Rooted cuttings	10.00	85.00
<i>Dwarf Aluminum Plant</i> . New dwarf type, self-branching, dense compact. Does not overgrow..... R.C.	12.50	100.00	2 1/2 inch	22.00	180.00
2 1/4 inch	20.00	180.00	<i>Ligustrum Lucidum</i> (Privet) for dish gardens... 2 1/4 inch	15.00	125.00
<i>Aralia Seiboldi</i> 2 1/4 inch	22.00	190.00	<i>Maranta Kerchoveana</i> 2 1/4 inch	22.00	180.00
<i>Boxwood Japonica</i> . Select grade..... 7.00	65.00		Rooted Cuttings	10.00	80.00
<i>Sarcococca Ruscifolia</i> 2 1/4 inch	18.00	150.00	<i>Osmanthus Aquifolium</i> . Delivery December		
<i>Chinese Evergreen (Aglaonema)</i> .			For dish gardens..... 2 1/4 inch	20.00	160.00
4-8 inch tall, unrooted	80.00	<i>Osmanthus Variegated</i> (grafted stock)..... 2 1/4 inch	30.00	250.00
8-12 inch tall, unrooted	100.00	<i>Nephtytis Emerald Gem</i> Rooted Cuttings	7.00	60.00
3- 5 inch Tall—Bare rooted	10.00	75.00	2 1/4"	12.00	100.00
4- 6 inch Tall—Bare rooted	12.50	100.00	2 1/2"- (2 plants)	17.50	150.00
5- 7 inch Tall—Bare rooted	15.00	125.00	<i>Green Gold</i> (Yellow Var.)..... Rooted cuttings	7.00	65.00
6- 8 inch Tall—Bare rooted	22.00	200.00	2 1/4 inch	16.00	150.00
8-10 inch Tall—Bare rooted	27.50	250.00	2 1/2 inch 2 plants	17.50	160.00
10-12 inch Tall—Bare rooted	32.00	300.00	<i>Liberica</i> . Trailing plant, leaves like arrowheads.		
12-15 inch Tall—Bare rooted	36.00	350.00	Rooted cuttings	7.00	60.00
2 1/4 inch	25.00	Vines for propagating 5000 Eyes for	40.00
2 1/2 inch	35.00	2 1/4 inch	10.00
<i>Commutatum</i> . (Variegated). Rooted cuttings 4/8"	120.00	and	15.00
Rooted cuttings 8/12"	160.00	<i>Pachysandra</i> . Silver edged..... 2 1/4 inch	18.00	150.00
2 inch	22.50	200.00	<i>Palms Neatha Bella</i> (<i>Chamaedara Elegans</i>) Seedlings	6.50	50.00
2 1/2 inch	27.50	250.00	1 1/2-2 leaf Seedlings	4.00	35.00
<i>Crotons</i> . Assorted varieties..... 2 1/4 inch	27.50	250.00	Transplants	7.00	60.00
3 inch	35.00	large Transplants	9.00	80.00
and	50.00	F.O.B. Fla. 2 1/4 inch	22.00	180.00
<i>Crassula Arborescens</i> . (Jade Plant) unrooted			F.O.B. Ohio 2 1/4 inch	18.00	150.00
2-3 head	17.50	<i>Peperomia Dwarf</i> . New Strain. Green. Stays dwarf,		
Rooted Small	25.00	branches freely..... 2 1/4 inch	17.50	150.00
Unrooted 3-5 head	35.00	<i>Fosteriana</i> (Yining)..... 2 1/2 inch	22.00	180.00
Rooted 3-5 head	40.00	<i>Peperomia Obtusifolia</i> . Green..... Rooted cuttings	7.00	60.00
<i>Crassula Variegated</i> Rooted Cuttings	7.00	65.00	2 1/4 inch	12.50	100.00
Write us for your requirements on other Succulents and Cactus.			2 1/2 inch	16.00	140.00
<i>Cryptanthus Tri-color</i> . (Rainbow Plant).....			35.00
Unrooted 2 1/4 inch-2 1/2 inch	50.00	F.O.B. Porto Rico, 3-4 leaves Unrooted cuttings.....
and	75.00	<i>Pericata</i> . Fine for dish gardens and pots... 2 1/4 inch	15.00
3 inch	75.00	<i>Sandersi</i> . (Watermelon leaved)..... 2 1/4 inch	25.00
4 inch	100.00	<i>Silver Heart</i> . New. Markings similar to watermelon		
<i>Dieffenbachia Braziliensis</i> 2 1/4 inch	30.00	Begonia. Heart shaped leaves..... 2 1/4 inch	20.00	180.00
<i>Picta</i> 3 inch	35.00	<i>Silver Leaved</i> . Variegated <i>Obtusifolia</i> 2 1/4 inch	16.00	150.00
<i>Roehrsi</i> 3 inch	50.00	450.00	Rooted cuttings	12.00	100.00
<i>Dracaena Canes</i> Write for prices			<i>Emerald Ripple</i> . Dwarf variety. Small dark green		
<i>Dracaena Eugene Andre</i> Rooted cuttings	27.50	225.00	leaf with a decided crinkle..... 2 1/4 inch	27.50	225.00
2 1/4 inch	35.00	3 inch	35.00	325.00
3 inch	50.00	Rooted cuttings	10.00	90.00
<i>Godseffiana</i> . Leaf green, spotted cream white			<i>Royal Gold</i> . Variegated. (Pat.) Rooted cuttings	8.50	60.00
2 1/4 inch	17.50	150.00	2 1/4 inch	15.00
and	25.00			
2 Tiers Unrooted cuttings	55.00			
3 Tiers Unrooted cuttings	80.00			
Rooted cuttings	80.00			
<i>Massangeana</i> . Green Leaf..... 3 inch	37.50	350.00			
4 inch	50.00			
Unrooted cuttings	22.00	200.00			
Rooted cuttings	27.50	250.00			
<i>Sanderiana</i> . Foliage, light green edged creamy white					
2 1/4 inch	20.00			
and	25.00			
2 1/2 inch	35.00			
Unrooted 4-6 inch	65.00			
Unrooted 6-8 inch	80.00			
Unrooted 8-10 inch	90.00			
<i>Warneki</i> . Green with white stripes 8-12" Unrooted	200.00			
12-16" Unrooted	275.00			
Rooted Cuttings	45.00	425.00			
3 inch	50.00	450.00			
<i>Fatshedera</i> . Green,..... Rooted Cuttings	10.00	80.00			
Variegated..... Rooted Cuttings	10.00	80.00			
2 1/4 inch	22.00	180.00			
<i>Ficus Decora</i> Mossed Rooted layers	100.00			
4 inch	150.00			
<i>Doescheri</i> Mossed rooted layers	50.00			
4 inch	75.00			
<i>Elastica</i> Mossed rooted layers	35.00			
4 inch	50.00			

(Continued on page 33)



PHILODENDRON MELINONI (See page 32)



*PHILODENDRON CORDATUM 2 1/2"—3 TO POT

FOLIAGE AND DISH GARDEN PLANTS

	100	1000
Philodendron Cordatum.....	Started Eye R.C.	45.00
	Rooted cuttings	7.00
	2 1/4 inch	16.00
	3 plants 2 1/2 inch	22.00
	4 plants 3 inch	27.50
	3 plants staked in pot 2 1/2 inch	27.50
	3 plants unstaked, 12 in. tall in pot 2 1/2 inch	22.50
*Prepaid—2 1/2 inch—3-4 plants.....	Min. 50 plants	26.50
	500 at 1000 rate	245.00
F.O.B. Porto Rico, 5-6 eyes per vine.....	Unrooted	65.00
	1 Eye Unrooted	13.00
	Started Eye Rooted cuttings	20.00
	2 plants 2 1/4 inch	130.00
	3 plants 2 1/4 inch	180.00

PHILODENDRON—LARGE LEAF VARIETIES

Dubium	Rooted cuttings.....	25.00					
	3 inch.....	40.00					
	F.O.B. Porto Rico.....	Unrooted 8/12 inch	160.00				
Hastatum	Rooted cuttings Medium	25.00					
	3" pots	40.00					
	4" pots	75.00					
	4" pots - double	95.00					
F.O.B. Porto Rico.....	Unrooted 6/9 inch	160.00					
	9/12 inch	225.00					
Mandianum	3" pots	40.00					
	4" pots	75.00					
	4" pots - double	95.00					
Monstera Deliciosa	Unrooted cuttings.....	45.00					
	4" pots	95.00					
	6" pots - double	250.00					
Panduraeforme	Rooted cuttings-Baby						
	Pandas.....	10.00					
	Rooted cuttings-medium..	12.50					
	Rooted cuttings large	15.00					
	3" pots 2 plants	40.00					
4" pots 3 plants	75.00						
Pertusum	Rooted tips.....	75.00					
	4" pots-double	110.00					
	6" pots specimens each	2.00					
	F.O.B. Porto Rico.....	Unrooted cuttings 10/15"	275.00				
	Unrooted cuttings 15/20"	325.00					
Totem Poles	24"	30"	36"	48"	60"	72"	
	Cypress, One Side	1.50	3.00	4.00	5.50	8.00	10.50
	Cypress, Two Sides		4.50	6.00	8.00	11.00	15.00
	Fernwood, Two Sides		5.50	7.00	10.00	14.50	20.00
	Totem Poles consist of Large Leaf Philodendron planted with Cordatum or Pothos as filler.						
Pilea Cadieri (Aluminum plant).....	Rooted cuttings	6.00	50.00				
	2 1/4 inch	16.50	150.00				
Spathiphyllum Kochii.....	3-5 leaves Rooted cuttings	16.00	150.00				
	4", Bushy	100.00					

NEWER PHILODENDRONS — HYBRIDS AND SPECIES

	Bare Root for 2 1/2" pot	1000	3" Pots
AURICULATUM.....	25.00	225.00	60.00
CRUENTUM.....			60.00
FLORIDA (Rooted Cuttings).....	35.00		60.00
FLORIDA COMPACTA.....			60.00
GIGANTUM X IMBE.....	25.00	225.00	
GUTTIFERUM (Rooted Cuttings).....	35.00		60.00
LACINEATUM (Rooted Cuttings).....	25.00		60.00
LYNETTE.....	25.00	225.00	60.00
MELINONI.....	25.00	225.00	60.00
SELLOUM TYPE.....	25.00	225.00	50.00
SQUAMIFERUM.....	25.00	225.00	60.00
SQUAM X IMBE.....	25.00	225.00	60.00
WENDLANDII.....	25.00	225.00	60.00
WENDLANDII X IMBE.....	25.00	225.00	60.00
XANTHASOMA LINDENII.....	50.00		75.00

25 of a variety and size at 100 rate, 250 of a variety and size at 1000 rate. 50 mixed of a size at 100 rate, 500 mixed of a size at 1000 rate.

SPECIAL COLLECTIONS.

- No. 1. 20 large leaf Philodendrons from 4" pots, 8 or more species and hybrids. **\$25.00.**
- No. 2. 35 large leaf Philodendrons from 3" pots, 8 or more species and hybrids. **\$25.00.**
- No. 3. 100 Bare Root for 2 1/2" pots, 5 or more species and hybrids.
- No. 4. 12 large leaf Philodendron from 6" pots, 5 or more species and hybrids.
- No. 5. 20 large leaf Philodendron from 4" pots, 5 or more species and hybrids.
- No. 6. 35 large leaf Philodendron from 3" pots, 5 or more species and hybrids.

Collections Nos. 3-4-5-6 as listed **Each 20.00**



PHILODENDRON AURICULATUM



SANSEVIERIA HAHNII

FOLIAGE AND DISH GARDEN PLANTS

(Continued from page 31)

	100	1000		
Pothos Wilcoxii.	Rooted cuttings	7.00	60.00	
	2 1/4 inch	11.00	100.00	
	and	15.00	140.00	
	3 plants 2 1/2 inch	22.00	175.00	
	4 plants 3 inch	27.50	250.00	
Marble Queen.	Rooted cuttings	12.50	110.00	
	2 plants 2 1/2 inch	22.00	190.00	
	3 plants 3 inch	30.00	280.00	
Ruellia Makoyana. Trailing velvet plant.....	2 1/4 inch	20.00	
Sansevieria Hahnii. True dwarf, compact. Minimum 100 of a size.				
Rosette leaves.	Pot grown plants 2 1/4 inch	15.00	
Rosette leaves.	Pot grown plants 2 1/2 inch	20.00	
	Bare Root for 2 1/4 inch	10.00	80.00	
	Bare Root for 2 1/2 inch	12.50	100.00	
	Bare Root for 3 inch	15.00	125.00	
	Bare Root for heavy 3 inch	20.00	150.00	
Golden Hahnii 2 1/2 inch	50.00	
	3 inch	75.00	
	Bare Root for 2 1/2 inch	35.00	
	Bare Root for 3 inch	50.00	
Silver Hahnii. 2 1/4 inch	20.00	
	2 1/2 inch	25.00	
	3 inch	35.00	
	Bare Root for 2 1/4 inch	12.50	100.00	
	Bare Root for 2 1/2 inch	15.00	125.00	
	Bare Root for 3 inch	20.00	175.00	
Laurentii (Gold Striped) 3 leaves up				
	4-6 inch	12-15 inch	} 15.00	140.00
	6-8 inch	15-18 inch		
	8-12 inch	18-20 inch		
Zeylonica. 3 leaves up.				
	4-6 inch	8-12 inch	} 8.00	70.00
	6-8 inch	12-15 inch		
		15-18 inch		
Schefflera	Seedlings	5.50	40.00
		Oct.-July Transplants	7.50	55.00
		Large Transplants	8.50	65.00
Vitus Rhombifolia. (Grape Ivy)..... 2 1/4 inch	12.00	110.00	
	and	15.00	140.00	

POINSETTIA STOCK PLANTS

Orders placed after January 1st will be subject to 10% packing charge.
*Changes in orders accepted until Feb. 1, 1958

Order now. All prices per 100 and are f.o.b. eastern cities, % Railway Express Agency on orders placed for spring delivery, except No. 4 plants, —Express direct to carry through successfully.

New Ecke Pink. Blooming and growing habits same as regular pink, but having long bracts similar to Oakleaf type.

Barbara Ecke Supreme. Patented variety sold under patent restrictions. The finest of all pot-plant varieties, for Central and Northern part of U.S. Bracts flexible similar to Oakleaf.

Indianapolis. Red. Exceptionally fine variety for the Southern States. Grows short and stocky.

Ecke White.				
Super Jumbo.....	180.00	No. 1	120.00	No. 3
Jumbo.....	150.00	No. 2	90.00	No. 4
				60.00
				40.00

Imp. Albert Ecke, Mrs. Paul Ecke, Oakleaf, Pink.				
Super Jumbo.....	150.00	No. 1	100.00	No. 3
Jumbo.....	125.00	No. 2	80.00	No. 4
				60.00
				35.00

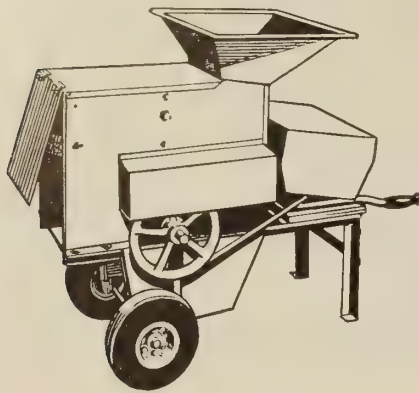
Double Henriette Ecke, St. Louis.				
Super Jumbo.....	135.00	No. 1	85.00	No. 3
Jumbo.....	110.00	No. 2	65.00	No. 4
				45.00
				25.00

2 1/4" July and Later		Per 100	Per 1000
Albert Ecke Imp. Ecke white.....		22.50	200.00
Mrs. Paul Ecke, Ind. Red.....		22.50	200.00
Barbara Ecke Supreme.....		25.00	225.00



POINSETTIA

LINDIG SOIL SHREDDERS



The new Model B with the ACTIONIZED shredding blades is the product of several years actual testing in the field and is the finest shredder to be found on the market today.

The Model B is designed for the speedy, thorough, perfect shredding of soil, peat, manure, compost piles leaf mold, sphagnum moss, shingle tow and sods; also for mixing soil with manure, commercial fertilizer, etc. The Model B will shred five to six times as much soil as could be screened by hand in a given time. All the valuable manure and other humus are retained, assuring you better soil conditions at all times. Stronger plant growth and greater profits are yours with powered shredding.

Model JR-B. For the small grower or as a second shredder for the large grower to use on the potting bench. Height 27 ins., length 36 ins. Hopper size, 15 x 15 ins. Rotor 7 ins. wide with 3 sets of blades.

- Without power \$105.00
- With 1/2 h.p. motor..... 155.00
- With 1 1/2 h.p. Gas Engine & Clutch..... 159.00

Following models are 36 ins. high and 46 ins. over-all. Steel wheels.

Model No. 1B-4. Feeder hopper size, 16 x 18 ins. Beater drum, 8 1/2 ins. wide, with four rows of teeth. Without motor..... 140.00

Model No. 1B-6. Same as Model No. 1A, except that beater drum has six rows of teeth. Designed for extra-fine shredding.

Without motor 150.00

Model No. 2B-6. Feeder hopper size, 16 x 20 ins. Beater drum 19 1/2 ins. wide with six rows of teeth. Without motor..... 170.00

Model No. 2B-8. Same as Model No. 2-A, except beater drum has eight rows of teeth. Designed for extra-fine shredding.

Without motor 175.00

Electric Motor. 3/4 h.p., for use with models 1B-4, 1B-6, or 2B-6 Each..... 70.00

1 h.p. For use with Models 2B-6 or 2B-8, Each 112.00

1 1/2 h.p. 1 phase Elec. Motor...... 150.00

2 h.p. Gas Engine..... 72.00

2 1/2 h.p. Gas Engine for 2B-8...... 85.00

Rubber Tires 10x3.50x4 Heavy duty with tubes, Ball bearing set..... 22.00

Semi-pneumatic, 10x2.75, Ball bearing set 14.00

Hopper Extension, Model 1B & 2B raises front of hopper 12"..... 4.00 Ea.

Screening Attachment. For use with all models. Designed to remove rocks, sticks, roots and other undesirable material from the shredded soil.

For Models No. 1B-4 and 1B-6..... 55.00

For Models No. 2B-6 and 2B-8..... 65.00

All prices F.O.B. St. Paul, Minn.

"STEAM-FLO" SOIL STERILIZER

The portable oil fired sterilizer that will sterilize a 5' x 50' bed in 2 hours, maintaining from 8-10 lbs. pressure, burning from 4-4 1/2 gals. of #1 fuel oil per hour.

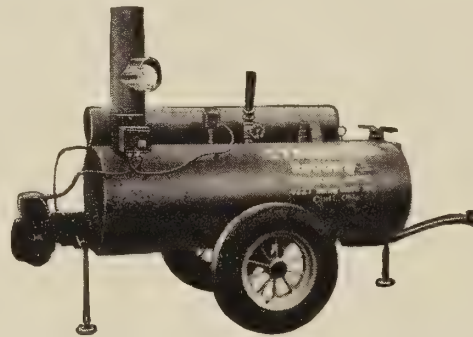
All welds are tested under 100 lbs. pressure, equipped with controls to keep from overheating.

To start: Just plug into electric, flues are made of heavy boiler plate to insure long life.

Burner can be taken off in case it needs cleaning. Designed to give years of service with very little upkeep.

Saves labor—kills weeds, nematodes and injurious bacteria. Equipped with low water cut-off and automatic water feeder.

Portable—weight 950 lbs. empty.



Prices for "Steam Flo" Equipment

Steam-flo sterilizer — completely equipped with 600 x 16 wheels but no tires..... \$685.00

25 feet 1 1/4" steam hose with two female connectors tested for 25 lbs..... 35.00

1.9" O.D. aluminum tubing, flanged and drilled. 45 foot

Weston soil thermometer 7.50

F.O.B. Cincinnati, Ohio

SISAL-GLAZE

The lasting Plastic that's clear as glass.

Available in widths of 36" and 42"

	Per sq. ft.
5 MIL	
Less than 1,100 sq. ft.....	.08
1,100 to 6,500 sq. ft.....	.07
6,500 to 10,000 sq. ft.....	.06
10 MIL	
Less than 1,100 sq. ft.....	.16
1,100 to 6,500 sq. ft.....	.14
6,500 to 10,000 sq. ft.....	.12

Sisal-Glaez will be cut to any length desired.

Quantity price sent on request.

SMITH LIGHTNING SPRAYER

24 G.O
3 1/2 Gallon Capacity



Sprayer with large opening for easy filling. The tank is made of Armco Zinc grip steel for long wear and the pump of seamless brass.

Price 10.50 each

BEAN SPARTAN SPRAYERS

A dependable, efficient sprayer that will handle every medium capacity spraying job.

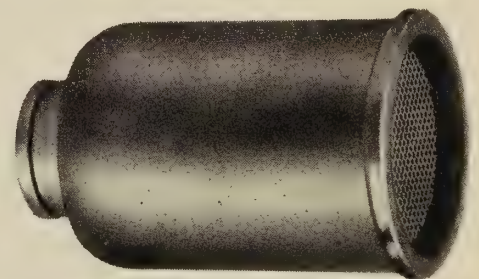
Capacity: 15 gal. Rate of discharge 3 gal. per minute at 300 lbs. pressure. Equipped with 25 ft. 3/8 in. hose and Defender Gun.

Model 33B. Equipped with 1 1/2 H.P. gas engine for 3 G.P.M. discharge at 300 lbs. pressure 242.00

Model 33MB. Equipped with 1/2 H.P. single phase electric motor with 25 ft. length of cord and switch for 3 gal. per minute at 250 lbs. pressure 258.00

F.O.B. Lansing, Mich.

WATER BREAKER



Rex Aqua Flo. Made of cast aluminum. Waters seedlings. No splashing of water on plant foliage. Practically indestructible.

3.50 each

6 for 18.00

MIDGET ROTARY DUSTER

The ideal duster for spot dusting of insecticides and fungicides. Throws an 8 foot dust stream with just one simple turn of the handle. Made of aluminum with rust proof metal alloy gears. Swivel nozzle permits top dusting or under dusting of plants. Light weight. Weighs only 1 1/4 lbs.

Each 9.95

GROWERS SUPPLIES

GRO-TAINER THE ALL NEW SEEDLING FLAT

You'll find that GRO-TAINER'S have strength and rigidity. Designed for proper moisture control. One drainage hole is placed under the normal center of each plant. Top dimensions 8" long x 6" wide. Bottom dimensions 7" long x 5 1/4" wide. Depth 2 1/2" inside. Enough space to grow a baker's dozen of Quality plants. Packed 200 per carton.

Per 1000
Price..... **58.00**

VITA-GREEN POTS

The new pot for growing on stock which is planted with the plant, thereby eliminating transplanting shock. Attractive green color stimulates plant sales.

Size	Packed Per case	Price Per 1000
2 1/4 in.....	2000.....	7.10
2 1/2 in.....	2000.....	8.60
3 in.....	2000.....	12.40
3 1/2 in.....	1000.....	14.30
4 in.....	1000.....	16.75

PERENNIAL POTS

Made of a hard durable material, with a solid stapled bottom; carefully designed with openings to insure proper drainage.

Size	Case of 200	1000
5x5 1/2 in.....	10.80	47.50
6x6 1/2 in.....	12.90	58.50
8x5 in. Mum Pan.....	14.00	65.00
7x9 1/2 in.....	15.00	69.00

BIRD NEPONSET PAPER POTS

Sold in units of 1000 only.

	RED Per 1000
2-in.....	9.00
2 1/4-in.....	9.00
2 1/2-in.....	9.10
3-in.....	9.60
3 1/2-in.....	12.80
4-in.....	15.50
5-in.....	19.00
6-in.....	23.40

BIRD Vita-Bands

SIZE	VITA BAND "10"		VITA BAND "D"		VITA BAND "H"	
	Quantity Per case	Per 1000	Quantity Per case	Per 1000	Quantity Per case	Per 1000
1 1/2 x 2 1/2"	2000	4.70	2000	4.85	-----	-----
1 3/4 x 2 1/2"	2000	5.00	2000	5.15	1000	6.10
2 x 2 1/2"	2000	5.25	2000	5.35	1000	6.45
2 x 3 "	2000	5.75	2000	6.05	1000	7.55
2 1/2 x 3 "	2000	6.25	2000	6.30	1000	8.10
3 x 3 "	1000	6.90	2000	7.05	1000	8.50
4 x 3 "	1000	9.00	1000	9.25	500	10.45
4 x 4 "	500	11.25	1000	11.60	500	12.90

TOM THUMB FLATS

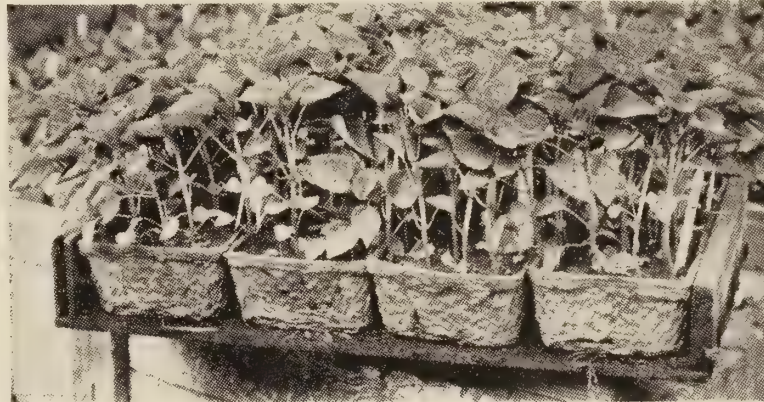
Made of heavy fibre resinous material. Easily set up. Comes in two sizes to hold either a dozen 1-3/4-inch or a dozen 2-inch. You will find these ideal for counter sales of bedding or vegetable plants.

PRICE—Size No. 1 — **44.70** per 1000 — Complete with 12,000 No. 10—bands — **96.80** — Per 1000

PRICE—Size No. 2 — **49.60** per 1000 — Complete with 12,000 No. 10—bands — **106.70** — Per 1000

E-Z FLATS

The newest in molded containers for merchandising flower and vegetable plants. E-Z flats are light weight, durable containers which combine economy and eye appeal. Plants in E-Z flats grow better than in some other types of containers. "For better growing and efficient merchandising use E-Z flats."



- # 55
500 Per Case
- # 58
250 Per Case
- # 68
250 Per Case

SIZES AVAILABLE — PRICE PER 1000

QUANTITY	No. 55 4 1/2 x 5 1/2 x 2 1/2		No. 58 5 x 8 x 2 1/2		No. 68 6 x 8 x 2 3/4	
	250-750	40.00	56.00	64.00		
1000-4750	38.00	53.50	59.50			
5000-9750	37.00	53.00	59.00			
10,000 up	36.50	51.50	57.50			

SAMPLES SENT ON REQUEST • ORDER BY CASE LOTS ONLY

PEAT POTS

To establish young plants when tight schedules do not permit direct benching, use nutrient treated Peat Pots. These pots are molded from 75 per cent Peat and 25 per cent wood pulp, and contain 1.3 per cent Nitrogen, 1 per cent Phosphoric Acid and 1.6 per cent Potash. They are weed disease free.

Plants grow faster and make more vigorous and rapid growth than plants grown in other types of containers. Nutrient treated Peat Pots dry out slower than clay pots, therefore require less frequent watering. Because the roots penetrate the wall of the nutrient treated Peat Pot, there is no knocking out, thereby saving time and labor.

PRICES FOR NUTRIENT TREATED PEAT POTS

2 1/4" (3000 per carton)		3" (1500 per carton)	
Quantity	per 1000	Quantity	per 1000
3,000—18,000	7.25	1,500— 9,000	13.25
21,000—72,000	6.75	10,500—49,500	12.25
75,000 up	6.50	51,000 up	11.25

Cartons weigh 35 lbs. each and are shipped by Freight, Truck or Express.
Shipped in full carton lots only.

WOOD VENEER PLANT BANDS

Stapled wood veneer bands used by many of the largest growers.

Size in inches	Bands Only Per 1000	Bands with Bottoms Per 1000
1 3/4 x 1 3/4 x 2	\$4.90	\$7.60
1 3/4 x 1 3/4 x 2 1/2	5.00	7.60
2 x 2 x 2	5.00	7.60
2 x 2 x 2 1/2	5.10	7.70
2 1/4 x 2 1/4 x 2 1/2	5.30	7.80
2 1/2 x 2 1/2 x 2 1/2	5.40	8.00
2 x 2 x 3	5.40	8.00
2 1/2 x 2 1/2 x 3	5.80	8.50
3 x 3 x 3	6.20	8.80
3 x 3 x 4	6.40	9.20
4 x 4 x 3	6.50	9.50
4 x 4 x 4	7.40	10.40

PLANT STAKES

CANE STAKES (Dyed Green)

BALE LOTS ONLY—F.O.B. New York

Pencil Thickness	2000 Per Bale
1 1/2 Ft.	\$ 6.00
2 Ft.	8.00
2 1/2 Ft.	10.00
3 Ft.	13.00
4 Ft.	18.00
5 Ft.	24.00
6 Ft. (Natural)	28.00

SPLIT BAMBOO HYACINTH STAKES

Green Dyed	Per Bale 5000
12 inch	\$13.00
15 inch	16.00
18 inch	20.00
24 inch	25.00

DISCOUNTS

Quantity	Less	%
10 Bales up	Less	5%
25 Bales up	Less	10%

HEAVY BAMBOO CANES

PRICE PER 100

Length	Diameter		
	3/8"	1/2-5/8"	5/8-3/4"
3 ft.	3.00		
4 ft.	4.10	5.60	6.50
5 ft.		6.20	7.80
6 ft.		7.25	9.10
7 ft.		8.00	9.40
8 ft.		9.40	10.00

ROUND GREEN POINTED HARD WOOD STAKES

	Per 1000	Case of 4000
12"	4.70	17.30
15"	5.30	19.70
18"	5.85	21.55

GREEN ENAMELED PLANT STAKES

Can be shipped to plant requirements. Put up in 1000 pieces per bundle.

Prices per 1000 pieces F.O.B. Fostoria, Ohio

Length	# 14 Gauge App. 5/64" Per 1000
12"	4.65
15"	5.50
18"	6.60
21"	7.60
24"	8.65
27"	9.30
30"	10.75
36"	12.70
42"	14.65
48"	16.50

PLAS-TIES

Round Plas-Ties. Wire center wound with plastic. Quick and serviceable.

	5,000	10,000
4 inch	6.00	10.00
8 inch	10.00	18.00
12 inch	15.00	27.00

TWIST-EMS

Twist-Ems. Flat green tapes reinforced with wire centers.

	5,000	10,000	25,000
4 inch	5.15	9.60	23.50
8 inch	9.00	17.00	41.50
12 inch	13.10	25.50	60.95

Twist-Ems Roll. 250 foot roll of Twist-Ems. Cut the size you need. 1.00 per roll

TWIST-EM "SOLD TAGS"

Eliminate error in stock that has been purchased, just twist one of these bright red tags marked "SOLD" around the particular item. SAVES CONFUSION. SAVES TIME.

Box of 2500 for \$6.00

WOOD LABELS

	Per 1000 Painted
Pot Labels—5/8 in. wide	
4 in., packages of 1000	3.75
5 in., packages of 1000	4.10
6 in., packages of 1000	4.50
8 in., packages of 500	6.60
Garden Labels	
8 in. x 7/8 in. wide	9.00
10 in. x 7/8 in. wide	10.20
12 in. x 1 7/8 in. wide	17.50

NOTE.—8" packed 250 per ctn.
10" packed 250 per ctn.
12" packed 100 per ctn.

Wood Tree Labels

3 1/2 in. Copper Wired	
1000 per package	4.50

EVERLASTING STAKE FASTENER

Supporting stakes and wires that cross each other above your benches are definitely tied to each other when you use the EVERLASTING STAKE FASTENER.



500	3.00
1,000	5.75

WOOD PRESERVATIVES

Cuprinol #10 — Insects and fungi just don't go in wood treated with Cuprinol. This excellent wood preserver is harmless to plants. One gallon covers 400 sq. ft.

5 gal.	22.00	50 gal.	189.00
--------	-------	---------	--------

Cuprinol for Florists for Dipping #14.

5 gal.	14.25	50 gal.	119.25
--------	-------	---------	--------

20 gal. or more shipped prepaid.

HOSE

Plastic— Resinite Gold stripe 3/4" x 50' 17.95 Ea. 4 or more 16.50 each

Rubber— 2 ply rayon cord. Black 3/4" x 50' 12.75 each 5 or more 11.00 each

5/8" x 50' 9.00 each 5 or more 7.50 each

TWIST LOCK HOSE COUPLERS

Saves labor, time and Tempers. Cannot come apart or leak. All Bronze. Precision made. Unconditional guarantee.

Per Set — \$2.20 Each

Additional faucet connections — .50 Ea.

"GRO-HOSE" Polyethylene watering tubes with holes spaced 8" apart. Waters the full length and width of your benches automatically.

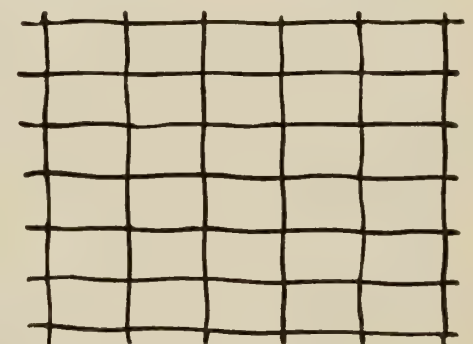
1-1000 ft.	9 1/2c. ft.	1001-5000 ft.	8 1/2c. ft.
		Over 5,000 ft.	7 1/2c. ft.

GRO HOSE HEADERS

Two way	3.00 ea.	Four way	3.75 ea.
---------	----------	----------	----------

CANVAS Sterilizing Hose. The perfect steam conductor when sterilizing. 18c. foot

6" x 8" WIRE FABRIC



No need to use string and wire. Once installed can be raised or lowered. Weighs only 6 lbs. per 100 sq. feet. Galvanized for long life. 6" x 8" mesh can be used for all cut flower crops. 200 lineal feet per roll.

Width	Price per Roll
36"	15.90
42"	17.20
48"	19.50
54"	21.70
60"	24.90

F.O.B. Long Island Shipping point

BLACK CLOTH

Two standard grades to choose from. Tested and approved by commercial growers and experiment stations for inside and outside shading.

Furnished in 36" widths or sewed into wide sheets in multiples of 18" to specifications.

No. 258	.74 sq. yd.
No. 575	.67 sq. yd.

TUFEDGE STERILIZING CLOTH

Sterilizing covers made of neoprene impregnated material that is black on one side, aluminum finished on the opposite. Completely waterproof and steam confining. They are impervious to petroleum products, mildew rot and to nearly all acids and alkalis. May be used for fumigation and have been checked and approved for use with soil fumigants.

6-12 ft. wide	1.50 sq. yd.
Less than 6 ft.	
more than 12 ft. wide	1.60 sq. yd.

LARVA COVER

A lightweight gas tight cover made of green Monsanto Velon plastic for steam sterilizing, soil fumigating, water proofing, etc.

FLORIST GREEN (Heavy duty vinyl)

6-2/3 ft. x 100 ft. (seamless)	38.50 roll
6-2/3 ft. x 150 ft. (seamless)	58.00 roll
10 ft. x 100 ft.	77.50 roll
Black Mulch 1 1/2 Mill 3' x 1600'	39.00 roll

POLYETHYLENE. (For plastic greenhouses) 2 mil-clear 6-2/3 ft. x 300 ft.

1 to 5 rolls	23.00 roll
6 or more	22.00 roll

SOIL FUMIGATION

Bromex. Controls most nematodes and soil insects. It can be used safely with reasonable ventilation in the presence of living plants in mixed crop greenhouses or outdoor areas.

	Per lb
40 lb. drum	.50
250 lb. drum	.42

Fumigun. For applying Bromex and Larvacide. **\$48.50 each**

PESTMASTER SOIL FUMIGANT or DOW-FUME MC-2 (each contains 98% methyl bromide with 2% chloropicrin added). Use for control of weeds, diseases nematodes and other soil pests in seed beds and local areas.

In 11b. cans	Price
6 lbs.	6.00
12 lbs.	11.40
24 lbs.	20.40

Jiffy Applicator. For applying Pestmaster soil fumigant or Dowfume MC-2. Complete with 10 foot saran plastic hose **\$3.75.**

Extra 10 foot Saran Plastic hose **1.50 each**

VAPAM-4S SOIL FUMIGANT

	Per gal.
1 Gal.	6.00
5 Gal.	4.85

FULEX APHID-SMOKE FUMIGATORS

For Aphids and Adult White Flies on Florist crops.

	Carton (24 cans)	
1,000 cu. ft.	11.00	
2,000 cu. ft.	11.00	
5,000 cu. ft.	14.00	
10,000 cu. ft.	17.00	
20,000 cu. ft.	25.00	

FULEX SPIDER-MITE FUMIGATORS

For Red Spiders, including some Parathion resistant strains on carnations, chrysanthemums and snapdragons.

	Carton (24 cans)	
1,000 cu. ft.	11.50	
2,000 cu. ft.	11.50	
5,000 cu. ft.	14.50	
10,000 cu. ft.	19.00	
20,000 cu. ft.	31.00	

SMOKE FUMIGATORS FULEX PARATHION FUMIGATORS

For Red Spiders, Aphids and Thrips on florist crops.

	Carton (24 cans)	
1,000 cu. ft.	11.50	
2,000 cu. ft.	11.50	
5,000 cu. ft.	14.50	
10,000 cu. ft.	17.00	
20,000 cu. ft.	26.00	

PLANTFUME DIELDRIN SMOKE GENERATOR

Controls thrips, fall army worms, leaf rollers, tarnished plant bugs and Japanese beetles. 10,000 cu. ft. generator **15.00** ctn. of 36 40,000 cu. ft. generator **17.50** ctn. of 12

PLANTFUME MILDEW SMOKE GENERATOR

Controls mildew roses. 5,000 cu. ft. generator **\$19.00** ctn. of 36 20,000 cu. ft. generator **22.00** ctn. of 12

PLANTFUME 103 SMOKE GENERATORS

Controls two spotted spider mite, aphids, thrips, etc. 5,000 cu. ft. generator **\$10.50** ctn. of 36 20,000 cu. ft. generator **12.00** ctn. of 36

D-X AERO-SPRAY



An aerosol type spray bomb for controlling insects on flowering and foliage house plants. Contains three powerful insecticides — pyrethrum, rotenone and piperonyl cyclonene. Safe and effective on all house plants.

	SUGGESTED
SIZE	WEIGHT DEALERS RETAIL
12 10 oz. spray	
bombs	11 lbs. 11.70 \$1.49 ea.

AEROSOL (Disposable) BOMB

New double strength formulations to suit your requirements. Each bomb covers 200,000 cu. ft.

Control your greenhouse pests with the newest method of fumigation. Less work—easier handling—use and throw away—no deposits. Can be used with existing applicator!

Will do everything that present old fashioned 4 lb. returnable aerosol will do in half the time.

USE ONLY WITH GAS MASK AND PROTECTIVE CLOTHING

Parathion	Per Bomb
Dithion	each 8.00
Aramite	each 12.00
Aramite & Lindane	each 12.50
Meta Demeton	each 14.00
Plantphos	each 16.00
Chlorompa	each 13.50

Packed 4 Bombs per shipping container.

Applicator	6.50
Extra long applicator	9.00

Gas Mask to be used should be approved by the U.S. Agricultural Dept.

ROOT-FORMING CHEMICALS

Hormodin #1	1 lb.	3.00
Hormodin #2	1 lb.	4.50
Hormodin #3	1/2 lb.	4.50

ROOTONE

Reg. U. S. Pat. Off.

Roots cuttings faster and makes more roots. 2 oz. 1.00 1 lb. 5.00

RAINBOW ROOTING POWDER

For Tender, Semi-Woody, & Woody Cuttings. Packaged in 1# cans.

\$2.00 Each

PLANTSTIM

Contains *Gibrel

Amazing Growth Stimulant

increases Plant size up to 3 Times over normal. Water soluble.

4 oz. 10.50

*GIBREL is the trade mark of MERCK & CO., for its plant growth substance.

PUSH BUTTON SPRAY 12 oz. Aerosol 2.50 Each

CARNATION PACKS

Protect your carnations and give them greater sales appeal by using these packs. The use of carnation packs not only saves the flowers but also enforces careful handling, packing and shipping.

	Per 1000	Per 1000
1000	30.25	10,000 23.10
5000	24.75	15,000 to 25,000 20.35

One color printing on face of holder **2.75** per 1000 extra. In amount over 10,000, free. If divider is needed, add **5.00** per 1000 to above prices.

SIECK'S "DUAL-USE" CARNATION HOLDER

Made of the finest quality (0.28 weight) manila board, kraft-backed and glosswaxed making it extremely moisture resistant and especially resistant to the dampness of humid refrigerators.

Quantity	Per 1000
5000 thru 9900	24.00
10000 " 19900	22.50
20000 " 24900	21.00
25000 up	20.00

Printing (up to 6 lines) in either one of two colors of ink, Red or Green, on face of holder. All orders of less than 10000 holders shipped in one unit shipment there is an additional charge of **2.75**.

If two color printing is desired, (Red and Green only), an additional charge of **5.50** per 1000 on all orders less than 10000.

On all orders of 10000 or more, there will be an additional charge of **2.75** per 1000 on all two color printing jobs.

MUM PACKS

Protect your mums and give them greater sales appeal by using the new "mum pack." Reduces handling and breakage.

	Per 1000	Per 1000
1000	20.35	16.50
10,000	14.85	13.75

For printing in one color on face of holder add **\$2.75** per 1000, for 5000 or more add **\$1.35** per 1000.

WOOD BUNCHING STICKS

For packing carnations, mums, etc. clean, smooth sanded bright white wood sticks, 1/8 inch thick, 13/16 inch wide and 8 3/8" long.

	Per 1000	Per 1000
1000	\$12.50	11.50
10,000	10.50	9.50

10,000 or more printed at **\$2.50**
Per 1000 extra. Allow 4 weeks.

FLOWER PRESERVATIVE

ALADDIN.—A cut flower vitalizer. Aladdin is more than just a flower food, it is a nutrient, stimulant, preservative, bactericide and fungicide—all in one.

Aladdin doubles life, beauty, color, form and fragrance of cut flowers.

1 lb. of Aladdin makes 10 gal. of solution.		
15 lb.	9.50	75 lb. 42.00
25 lb.	15.00	100 lb. 55.00
50 lb.	29.00	

Measuring cup enclosed in each drum.
50 packet display box.....**\$3.00**

FLORALIFE

Floralife insures days more life and beauty for your cut flowers, eliminates complaints, increases profits, no need to change water or re-cut stems.

250 qt. drum (10 lbs.).....	4.00
500 qt. drum (20 lbs.).....	7.50
1000 qt. drum (40 lbs.).....	13.50
2000 qt. drum (80 lbs.).....	25.00

Floralife packets with your own
3-line imprint

500 imprinted pkts. — TWO QUART size	
— factory filled.....	25.00
1000 imprinted pkts. — TWO QUARTS	
size — factory filled.....	40.00
Allow 1.00 extra for imprinting less than 500.	
Unfilled, imprinted envelopes for	
hand filling.....	10.00 per 1000

FERTILIZERS FERTILIZER MATERIALS

	100	500
	lbs.	lbs.
Aluminum Sulfate	5.00	25.00
Ammonium Nitrate	7.00	31.50
Bone Meal Steamed	7.00	31.50
Calcium Nitrate	5.75	25.75
Dried Blood	11.00	50.00
Iron Sulphate	3.50
Muriate of Potash	4.75	22.50
Nitrate of Soda	5.50	25.00
Potassium Sulphate	5.50	25.00
Sulphate of Ammonia	5.00	22.50
Superphosphate	2.75	12.50
Cow Manure (dried)	4.25	19.25
Sheep Manure (dried)	4.25	19.25

COMPLETE FERTILIZER

Electra 5-10-3. The all purpose plant food
Highly organic. Complete in every detail.
80 lbs.....**6.00**

WATER SOLUBLE FERTILIZER

Hy-gro 13-26-13.

10 lbs.....	4.35	30 lbs.....	11.25
100 lbs.....	27.00		

Hyponex			
10 lbs.....	5.35	25 lbs.....	10.00
50 lbs.....	16.67	100 lbs.....	26.67

Plant Prod 15-30-15.			
25 lbs.....	9.00	50 lbs.....	12.00
100 lbs.....	21.00		

Plant Prod "200" (20-20-20).			
25 lbs.....	7.75	50 lbs.....	10.50
100 lbs.....	18.00		

LIQUID "M" CRYSTALS 17-23-17

A new water soluble fertilizer made by the makers of Electra.

25 lbs.....	8.00	50 lbs.....	12.50
100 lbs.....	20.00		

BORDEN'S "38"

(38% Nitrogen)

The new slow release nitrogen fertilizer, for dry application, that feeds plants steadily and continuously, without danger of toxic by-products that might cause burning and root injury. **One application lasts all season in most areas!**

PACKED 50 LBS. PER BAG:

1-5	\$12.00 each
6 bags up	11.00 each

PETERS SPECIAL SOLUBLE FERTILIZERS

Carnation Special	16- 4-24
Cut Flower Special	20-20-20
Pot Plant Special	15-15-15
Potash Special	20- 5-30
Azalea Neutral	21- 7- 7
Azalea Acid	21- 7- 7
Rose Special	25- 0-25
Maryland Special	25-10-10
Price for above fertilizers, per 25 lb. bag.	
25- 75 lbs.....	6.50
100-475 lbs.....	6.00
500-975 lbs.....	5.50

PHOSPHATE SPECIAL 15-30-15 NITROGEN SPECIAL 40- 3- 3

Price for above fertilizers, per 25 lb. bag.	
25- 75 lbs.....	7.00
100-475 lbs.....	6.50
500-975 lbs.....	6.00

Peat Moss (Granulated). Imported horticultural grade.

Large Bale	5.00
5 Bales	22.50

Peat Orchid (App.) 50 lbs./bale
1 bale.....**12.50** 5 bales.....**55.00**
F.O.B. Fla.

FUNGICIDES

CAPTAN. Useful in control of leafspot, rust, damping off, etc.

50% WP. 2 lbs.....	2.00	10 lbs.....	8.75
--------------------	------	-------------	------

5% DITHANE (Parzate) DUST (Zineb)
Contains 5% Zineb and is used where a dust is preferred to a liquid application.

5 lbs.....	1.25	50 lbs.....	9.75
------------	------	-------------	------

FERMATE. Highly effective against many fungi and for control of certain plant diseases. Compatible with most insecticides. Your best bet for preventing cutting rot in the sand and damping of seedlings.

3 lbs. bag	2.70	Case (12-3 lb. bags)	28.80
------------	------	----------------------	-------

F-15 FERBAM DUST (Fermate). Contains 11% Ferbam in dust form.

5 lbs.....	1.00	50 lbs.....	8.75
------------	------	-------------	------

Mildex—Acts as an eradicant to kill powdery mildew spores and mycelium after the disease appears and protects old and new leaves covered with it against new infection.

3 lb. bag.....	6.30	6 bags.....	36.00
----------------	------	-------------	-------

N. I. CERESAN..... 1 lb. **1.60**

OMAZENE. Useful in the control of powdery mildew and black spot on roses.

4 lbs.	11.60	50 lbs.....	142.50
-------------	-------	-------------	--------

PANODRENCH. For control of damping off in greenhouse and nurseries on flowers and ornamentals. Panodrench contains a dye so that the diluted solution can be easily identified. Easy to use. Mix 1 teaspoon of Panodrench to each 3 gallons of water and apply with sprinkling can.

4 oz.....	5.95	16 oz.....	19.20
-----------	------	------------	-------

PARZATE. Controls many fungi and diseases.
3 lb. bag.....**3.40** Case (12-3) lb. bags.....**36.00**

SEMESAN. 12 oz. **2.85**

SULPHUR. (Wettable). 5 lbs. **75**

TERRACLOR. Useful in the control of stem rot caused by rhizoctonia on Carnations, Poinsettias, Chrysanthemums, etc.

5 lbs.....	5.25	50 lbs.....	47.75
------------	------	-------------	-------

ZERLATE. A zinc base fungicide useful in controlling and preventing many disease organisms. It can be used where Fermate is suggested and is sometimes undesirable. Can be mixed with Insecticides such as Nicotine, Pyrethrum, Rotenone, D.D.T. and Arsenicals.
3 lb. bag **2.70** Case 36 lbs. **28.80**

INSECTICIDES

ARAMITE. Highly effective against two spotted mite (including parathion resistant variety). Harmless to beneficial insects, non hazardous to humans.

15% wettable powder.....4 lbs. **3.35**

BLACK LEAF. 40. (Nicotine Sulphate). For use against thrips aphids and other sucking insects.

10 lb. tin.....**14.70**

CHLORDANE. (40% Wettable Powder)

4 lbs.....**2.75**

5% Chlordane dust.

5 lbs.....**.90** 50 lbs.....**7.50**

45% Chlordane liquid. 1 Gal.....**5.75**

CHLOROBENZILATE (Geigy 338)

Useful in the control of resistant spider.

25% Wettable powder 4 lbs.....**7.50**

CYANO GAS. Greenhouse fumigant, eliminates aphids, thrips, whitefly or soft scale.

5 lbs.**4.25**

25 lbs.**13.75**

100 lbs.**37.75**

DU PONT SPREADER, STICKER. Effectively combines all sprays to make a better sticking and spreading solution. 1 gal.....**9.20**

50% "DDT" Wettable Powder. For control of rose chafers, leaf hoppers, flea beetles aphids, cabbage worms, codling moth, tent caterpillars, etc. Easy to use.

5 lbs.....**1.80** 50 lbs.....**16.00**

5% D.D.T. Dust. Contains 5%D.D.T. and is blended of micro-mesh materials for use on numerous crops.

5 lbs.....**.60** 50 lbs.....**5.35**

DIMITE......Gal.....**12.00**

ENDRIN

1 Qt.....**4.50** 1 Gal.....**15.00**

KELTHANE. For control of resistant red spider.

1 Gal.....**14.75** 5 gal. drum.....**68.75**

LINDANE. 25% wettable powder. For control of aphids, thrips, symphyliids.

1 lb.....**2.50** 5 lbs.....**10.00**

MELATHION. 25% wettable powder. For control of aphids, mealy bug, thrips, whitefly.

2 lb. bags...**1.50** ea. Case 12-2 lb. bags **16.20**

MELATHION. 50% emulsion.....Gal. **17.50**

NICOFUME LIQUID. For vaporizing and spraying 8 lb. tin (1 gal.).....**13.80**

40 lb. drum (5 gal.)**67.20**

NICOFUME "PRESSURE" FUMIGATORS.

Outstanding as a method of Greenhouse Fumigation. Controls Aphids, Green Fly, Black Fly, Mites, Mealy Bugs, etc.

12 1/2-lb. tins **5.65** 12 1-lb. tins **10.70**

NNOR. Rotenone spray for control of red spider, thrips, etc.

Gal..... **10.00** 5 Gal.....**45.00**

ORNAMENTAL DUST. Contains captan, lindane, aramite. Control for insects and disease.

5 lb. bag.....**2.25** 50 lb. bag.....**19.00**

PLANTHION Wettable 15%. (For outdoor use only. Good control of cyclamen mite on delphinium, red spider on evergreens, azaleas, hydrangeas, etc.

4 lbs.....**3.50**

RED ARROW. Highly concentrated Pyrethrum-Rotenone spray. Kills many varieties of sucking and chewing insects.....Gal.....**15.00**

SLUG-KILL. A scientifically balanced metaldehyde dust for control of slugs. Apply at the rate of 2 lbs. per 1000 sq. ft.

4 lbs.....**3.20**

20 lbs.....**14.50** 50 lbs.....**33.00**

SODIUM SELENATE. Especially practical for Carnations and Mums. Eliminates red spider thrip, midge, aphid and many other insects. Save labor, time and money. When sodium selenate is applied to the soil, the plants absorb it through the roots making them poisonous to any chewing insects. 1 lb. treats 1800 sq. ft. of bench space.

4 oz.....**7.00** 1 lb.....**23.00**

P. 40. Contains 2% Sodium Selenate in Granular Superphosphate for dry application. Broadcast as a fertilizer at the rate of 3 lbs. per 100 sq. feet.

25 lbs.....**20.00** 50 lbs.....**37.50**

100 lbs.....**70.00**

SUI-SLUG. Very fine ready made preparation for the control of snails and slugs.

4 lbs.....**12.50** 10 lbs.....**25.00**

SYSTOX. Systemic insecticide which has given control of aphids, and many other sucking insects; various species of spider mites, used as a liquid for absorption through the root system.

1 Gal.....**32.00**

TONACIDE (Regular)

50 lbs.....**10.50** 100 lbs.....**20.00**

TONACIDE with D.D.T. Added.

50 lbs.....**11.50** 100 lbs.....**22.00**

VAPOTONE. Controls aphids, mealy bug, red spider, etc. Contains Tepp.

Gal.....**12.00**

CRAG HERBICIDE-1

(Trademark)

Slashes Nursery Weeding Costs. Crag does not kill grown weeds but is to be used as a preventative by killing the seeds as they sprout. Crag must be in moist soil before it becomes active, therefore even if drift gets on the leaves of established plants no injury will result. Prevent weeds before they become a problem.

PRICE

2 lb. Bag..... **4.75**

Case of 16/2# bags **68.80**

THE MIGHTY MOE

The Mighty Moe speeds up tilling, cultivating, lawn trimming and edging, floor polishing and other chores. Easily converted to an electric drill, saw or bench grinder, using attachments. Bites into the toughest soil and mulches it. Will dig 5 1/2" wide and 6" deep. Extra tines extend width to 10 1/2". Users say they do their spading and cultivating in one fourth the time. Manicures lawns alongside walks and driveways. Saves you from bending and tiring hand snipping. Rolls easily on wheels. A joy to use! Easy to keep lawns neat and trim.

Price for Tiller as shown in illustration.....**44.95**

Extension Tines.....**3.80 Ea.**

Lawn Edger.....**9.95**

Other attachments include, Drill Arbor with Chuck, Bench Grinder, Table Saw and Floor Polisher. Prices on request.

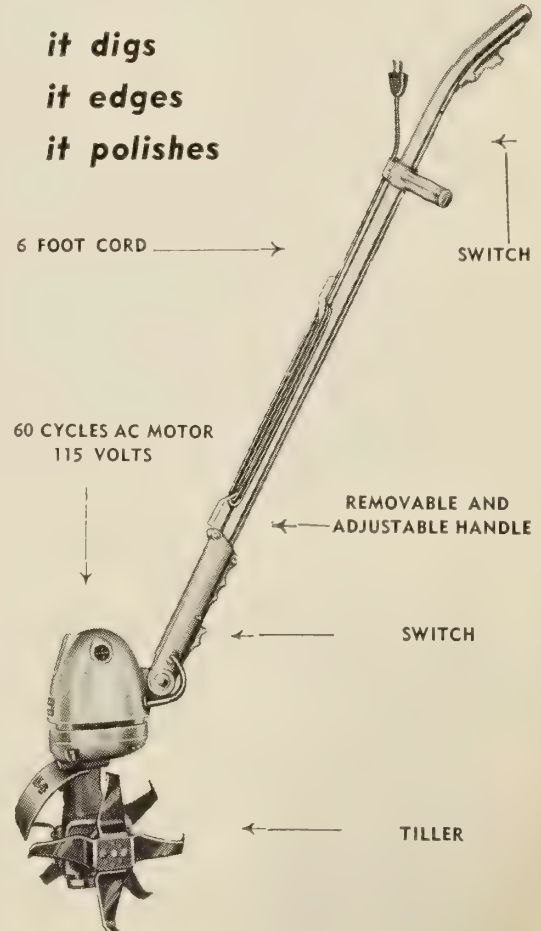
Does so many things electrically

THE MIGHTY MOE

it digs

it edges

it polishes



UL Approved

Growers Everywhere Agree! IT PAYS TO OWN AN S.S.S. AUTOMATIC WATER ROBOT

BECAUSE "IT PROPERLY APPLIES WATER BETTER THAN BY HAND" . . . "SAVES MONEY" . . . "SAVES WATERING TIME" . . . "RELEASES A MAN TO DO OTHER WORK"

1—AUTOMATIC SHUTOFF

Saves you time and labor. The Water Robot waters better than manual watering and automatically shuts off at the machine when two benches or beds have been watered as you directed. All done with 1/3 H.P. Electric Motor.

2—AUTOMATIC SHUT OFF ALARM

The S.S.S. Automatic Water Robot delivers as much or as little liquid as you require. Water or liquid fertilizer passes freely with no constriction of pressure or volume. The convenient shut off alarm tells you when the job is done.

3—AUTOMATIC LEVEL HOSE WINDER

It is not necessary to have the reel aligned perfectly with the bench or walk because the Automatic Level Hose Winder prevents the hose from tangling or piling up on the reel.

4—MICRO-SWITCH CONTROLS

Guards against spot flooding. Especially when it encounters an overload, the Robot automatically stops winding . . . automatically shuts itself off.

5—VARIABLE SPEED DRIVE

Speed of winding can be adjusted from 2 to 3 feet per minute.

6—RUBBER-TIRED WHEELS

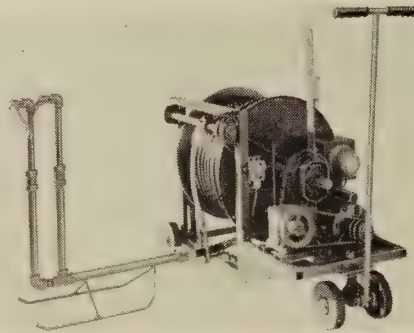
Makes it easy for one man to move.

7—ADJUSTABLE RISER

The telescope-like riser on the watering sled allows quick and easy adjusting of the nozzles at the required height.

8—COMPACTNESS

Maximum width of Water Robot is only 24 in. with a 125 ft. reel. Only 28 in. wide with a 200 ft. reel. Easily passes through practically any door or end aisle. Turns completely around in its own 36 in. length.



S.S.S. Automatic Water Robot

GUARANTEE

The **S. S. S. AUTOMATIC WATER ROBOT** is fully guaranteed to do the job as specified. In addition, every Robot is guaranteed for one full year against all mechanical failures.

PRICE

No. 1 Model — 690.00
No. 2 Model — 675.00 Plus Hose

No. 1 Model Reel accommodates 175 Ft. 3/4 inch I.D. Plastic or Rubber Hose.

No. 2 Model Reel accommodates 250 ft. 3/4 inch I.D. Rubber hose or 300 ft. Plastic Hose.

3/4 in. I.D. Plastic Hose Ft. .49

3/4 in. I.D. Rubber Hose Ft. .49

All prices F.O.B. Midwest

* Time for Fishing

JOHN FRERIKS

Babylon, L.I., New York

July 22, 1957

Dear Mr. Skidell:

Your Water Robot gives me much time to go fishing instead of hand watering. I have never had better quality Carnations in my many years of growing. This due to the efficient performance which the Robot provides. I don't know what I would do without it.

Sincerely yours,
John Freriks

*Photostatic copy of this letter sent upon request.

PLANTMIST

The Only Complete Misting System

Installation as Easy as Hanging Curtains.

Now every grower can afford to mist his greenhouse with inexpensive plastic lined Aluminum pipe and nozzles.

1. Corrosion free, no nozzle clog from scale build up in pipe.
2. 90% labor removed installing, we do most of labor for you.
3. Hang like curtains — spot your hangers suspend and join couplings.
4. Light weight — 10 foot length — 1 1/4 lbs.
5. No drilling or tapping or threading pipe necessary.
6. Inexpensive.
7. Operates on low pressure water.
8. Plastic lined aluminum pipe thru out.
9. Nozzles deliver fine mist.
10. All you do is paint joints and push the pipe lengths together.
11. Pipe comes in 10 foot lengths with nozzles accurately placed for optimum mist control.
12. Adjustable hangers for leveling water lines, adjust height over plants.
13. Line hung in walk will mist two 4' benches.
14. Suitable water strainer supplied.
15. Suitable timing device supplied.
16. Portability—if necessary, can be moved from one house to another.

Write for questionnaire to be filled out which will give us the necessary information to quote you a price. A small demonstration model of Plastic Lined Aluminum Pipe and Nozzles may be had on request. This demonstrator will fit the male connection on your watering hose. **WRITE FOR IT TODAY.**



S. S. S. WATER ROBOT

A Robot in operation at one of our satisfied customers.



ROYAL GOLD

*America's Latest
Garden Hobby!*

WORLD  FAMOUS

Jan de Graaff

hardy LILY hybrids

AMERICAN HYBRID LILIES FOR GARDEN AND GREENHOUSE

No orders for less than \$25.00 please.

OFFERED BY S. S. SKIDELSKY AND CO. INC.

144 WEST 27TH STREET • NEW YORK 1, N.Y.

Refer to page 16 (Fall Catalog included in this mailing) for complete listing other wholesale collection offers.

WHOLESALE PRICES: To arrive at wholesale price use retail prices listed this folder and deduct **40%**.

EXAMPLE: COLLECTION A
 RETAIL PRICE (3 BULBS) **\$7.50**
 YOUR COST (3 BULBS) **4.50**

PRICES LISTED IN THIS FOLDER ARE **RETAIL** OR THOSE YOU CHARGE YOUR CUSTOMER



TANGELO

mid-century hybrids collection E

The story of our Mid-Century Hybrids—so named for the year of their commercial introduction—is a relatively simple one. Crossing a group of upright-flowering Lilies of the *L. hollandicum* type, then named *L. umbellatum*, *L. elegans*, etc., with pollen taken from *L. tigrinum* (Tiger Lily), we obtained hundreds of fine, true hybrids. Some of these new seedlings resembled the Tiger Lily parents, others were upright-flowering and a smaller group had large, outward-facing flowers. Of each type we named several distinct color variants and built up substantial stocks. Now, after years of observation, we have reduced the number to just a few varieties—

MID-CENTURY MIXED HYBRIDS



ENCHANTMENT

VALENCIA



WORLD  FAMOUS

Jan de Graaff

mid-century hybrids

heart's desire

A few of the Aurelian Hybrids raised by us, have the true intermediate bowlshape—largest size flowers imaginable, borne on strong, tall stems, in colors that range from off-white to soft yellow and jade. Center of the flower often shows an orange heart with stripes radiating towards the tips of the petals. These exciting hybrids are among the very finest raised and we recommend them.

Seven inch bulbs each **\$1.75**; three for **\$5.00**



HEART'S DESIRE STRAIN

WORLD FAMOUS



Jan de Graaff

novelties

prosperity

An entirely new color in the outward-facing Mid-Century type Lilies. A cool lemon-yellow shade, with huge flowers on a tall stem, this Lily has true hybrid vigor and is very prolific. The plants will divide to form large clumps in the garden, a fine novelty to set off against delphinium or other perennials.

Five-inch bulbs each **\$1.50**; three for **\$4.25**

royal gold

A golden-yellow, true-breeding mutation of the Regal Lily. This beautiful new variety is identical with the best *L. regale* except for its true golden coloring. The flowers have a most attractive, shiny, glistening surface, which adds to its beauty.

A sensational novelty now offered at a price you can afford—**\$3.00** each, **\$8.50** for three, selected six-inch or larger bulbs.

PROSPERITY



aurelian hybrids collection A

Aurelian Lilies—A chance Lily seedling, grown in the year 1900 in the Royal Botanic Gardens at Kew, England, proved that the tall, hardy Chinese *Lilium henryi* could be crossed with the fine trumpet Lilies brought from China at the turn of the century. A similar hybrid was raised in France some twenty-five years later. With these examples to guide us, we repeated these crosses on a large scale. The resulting hybrids are of great vigor and beauty.

This collection includes Golden Clarion, the finest golden yellow trumpet Lily strain ever raised; the Pink Perfection strain will stand out in any garden, and the lovely Green Mountain strain, soft green and jade, often with a maroon stripe on the reverse of the petal. All three strains will grow from five to seven feet tall; they are hardy, increase rapidly and vigorously. They flower towards the end of July. Plant in light shade. Large, seven-inch circumference bulbs.

COLLECTION A—One Golden Clarion Strain
One Green Mountain Strain
One Pink Perfection Strain

Three bulbs, one of each strain \$ 7.50
Nine bulbs, three of each 21.00

GOLDEN CLARION STRAIN



AURELIAN HYBRIDS



PINK PERFECTION STRAIN



GREEN MOUNTAIN STRAIN

Lilies of the future!

WORLD FAMOUS



Jan de Graaff
aurelian hybrids



WORLD  FAMOUS

Jan de Graaff
long season hybrids

collection D

An unusual offer—three distinctly new Lily strains, one to flower in May, one for June and one for July. The lovely Golden Chalice strain is the result of hybridizing and selecting strains of Candlestick Lilies. They are hardy, dependable and multiply rapidly. May flowering. The Fiesta Hybrids resulted from the crossing of two distinct species, *L. amabile* and *L. davidi*, both from China. From these ancestors they inherit brilliant coloring, great hardiness and true hybrid vigor. The Sunburst strain, too, comes from species that thrive in the rugged mountains of central China. These plants are a magnificent addition to the July garden; their tall stems and lovely, huge, star-shaped flowers are best seen among summer-flowering perennials and against a background of tall shrubs. Here, in one collection, we are offering three new Lilies that will be of lasting value. Sunburst, large six inch bulbs. Fiesta and Golden Chalice, five inch bulbs.

SUNBURST STRAIN



GOLDEN CHALICE STRAIN



FIESTA STRAIN

Six Golden Chalice strain
Six Fiesta strain
Six Sunburst strain—all eighteen bulbs for . . . **\$13.50**

A double collection, for the larger garden or to share with your friends, thirty-six bulbs, for only . . . **\$25.00**



collection B

Olympic Hybrids—A major project of our breeding program for years, we are especially proud to offer this modern strain of trumpet Lilies to gardening America. Field tests have definitely proven them to be the finest strain of hardy trumpet Lilies available.

Their breeding history includes such varieties and species as *L. leucanthum*, *var centifolium*, *Sargentiae*, *Brownii* and *L. myriophyllum var. superbum*. Careful selection of the finest and choicest plants from these crosses has resulted in the present Olympic strain which is characterized by its extreme vigor and size, form, coloring and good placement of flowers. There is a pleasing variation among the individual plants of the strain and all types, from the stylized typical trumpet-shaped flowers to the more unusual forms such as the widely-opened, bowl-shaped flowers with slightly-twisted and ruffled petals. The color range of all the parent plants is present in the Olympic Hybrids in addition to new combinations and types which include creamy trumpets, soft fuchsia-pink and the

WORLD  FAMOUS

Jan de Graaff

olympic hybrids

popular cool, icy-green. The exteriors of the petals are delicately shaded with light greenish-brown or soft wine tints and in some instances are a pure, glistening white. July flowering, they bloom later than *L. regale* and their period of flowering extends from three weeks to a month. They do equally well in full sun or partial shade.

WE OFFER Six JUMBO bulbs, eight inches in circumference **\$ 6.00**

Twelve JUMBO bulbs, eight inches in circumference . . . **11.00**

order now—These glorious Lilies were grown for you in Oregon, on the slopes of lovely Mount Hood. On them every care and attention has been lavished so that they will thrive for you in your own garden and will bloom next year and for years to come in all their glory. The bulbs will be shipped as living plants, with their full root-system intact, carefully packed with damp peatmoss in polyethylene bags—each variety and lot labeled as to name and type. We are doing everything to get these plump and live bulbs to you with the minimum of delay. PLEASE cooperate and order early.

the New Book of LILIES

by Jan de Graaff—Superbly illustrated in natural colors, this book sums up some twenty years' experience with lilies, their commercial production, their history and their uses in the garden. An authentic and delightful book on this loveliest of all flowers. Where they come from, companion plants, basic culture, pests and diseases and what to do about them, how to grow lilies, reference charts, blooming dates, etc. etc. Order direct from us. Per copy **\$3.50** postpaid.

order now—All Lilies will be shipped when ready, beginning October first and earliest shipments will go to those who *must* have early delivery. Otherwise all orders will be filled strictly in rotation, as received.

guarantee—We guarantee all Lilies to be true to name, top quality, free from pests and diseases and to reach you in a live and healthy condition. If for any reason you are not completely satisfied, please notify us promptly.

WORLD FAMOUS



Jan de Graaff
oriental lilies



JILLIAN WALLACE

collection C

Oriental Collection—From the slopes of volcanic mountains, growing in porous ash and in a soil that is never rich, come two exotic Lilies—the Gold Band and the brilliantly colored *L. speciosum rubrum*. From among them we have selected two improved types, the broad-leaved Gold Band Lily—*L. auratum platyphyllum* and the lovely Red Champion strain of *L. speciosum*. A hybrid between these two species has been recently raised in Australia—the magnificent “Jillian Wallace”, with giant eight-inch flowers of a color even more intense than the illustration indicates.



Plant as soon as the bulbs are received, mulch with well-decayed leafmold and water when dry. We have grown these Lilies in full sun and have had good results too in semi-shade.

WE OFFER Three JUMBO bulbs of *L. auratum platyphyllum*, eight inches or larger.

Three JUMBO bulbs of *L. speciosum* Red Champion strain, eight inches or larger

One large bulb of “Jillian Wallace”

All seven bulbs for **\$13.50**
A double collection, fourteen bulbs . . . **25.00**

left: L. SPECIOSUM RED CHAMPION
right: L. AURATUM PLATYPHYLLUM



DESTINY

the very best from among the hundreds of colors and types available in this hybrid strain. Croesus is an upright-flowering type with large, broad-petaled flowers of a rich golden yellow. We know that any gardener will be happy with this lovely, well-shaped flower and strong-growing plant. Destiny, illustrated, is a true lemon-yellow—a startling new color that was the sensation of the year. Enchantment (U.S. Plant Patent No. 862) and Valencia are already well-known to many gardeners. The Mid-Century Hybrids, unnamed, represent the many types and colors that were too close to already named varieties to be selected individually. Increasing rapidly, growing vigorously, these mixed hybrids are a good source for cut-flowers. Their blazing colors will delight you. All bulbs five inches or larger.

Eighteen bulbs—three each of Croesus, Destiny, Enchantment and Valencia; plus six New Hybrids Mixed Colors and Types **\$12.00**

Thirty-six bulbs—six of each named variety plus twelve Mixed for **\$23.00**

cultural instructions

Soils and Location: Lilies must have perfect drainage such as a gentle slope can provide. Air drainage too is important, for a good breeze can keep many garden pests and diseases away. If your site is level and the soil heavy, then prepare raised beds for the bulbs. Take care not to damage the roots in planting.

Sun or Shade: Lilies need sunlight, at least until 2 p.m. Filtered sunlight or semi-shade may bring out the more delicate colors, but they tend to make weak stems and soft flowers. Do not plant near house walls, walks or drives that reflect sunlight or heat.

Depth of Planting: *L. candidum* should be planted with not more than one inch of settled soil over the top of the bulbs. All others need not more than four inches of soil over them.

Mulch and Groundcover: Lilies are gross feeders and root deeply. They need a porous, well-aerated soil, rich in humus and well-balanced plant food. They like a good mulch of well-rotted cow manure, rich compost or decaying leafmold, and this can be applied several times during the growing season. The mulch keeps the soil cool, discourages weed growth and eliminates the need for surface cultivation which might hurt the stem roots. Shallow-rooted ground cover keeps the ground shaded and is beneficial. Do not expect your lilies to compete with strong-growing perennials or shrubs.

Cutting Flowers: Like all plants, lilies need their stems and foliage to build for next year's

growth. Cutting the *flowers only*, preventing them from setting seed, is beneficial. Cutting the foliage is harmful in direct proportion to the amount taken. Cutting stems with foliage year after year will definitely kill the plant.

Fertilizers: Natural fertilizers, such as well-rotted cow manure, are ideal. A handful of balanced fertilizer scattered over every few feet, a pound of wood ashes per every twenty square feet, and such applications repeated two or three times during the growing season, will help to keep the lilies strong and healthy. If your soil and water are alkaline, then two or three times during the growing season scatter a pinch or two of agricultural sulphur over the surface and water it in. Peat moss, being slightly acid, is good for lilies. It provides an ideal medium for the stem roots when used as a mulch.

On Arrival: Lily bulbs are never completely dormant. They must be received as soon as possible after digging, hence orders should be placed as early as possible. If slightly limp after their long trip, place them in wet peat moss for a few days. They will soon freshen up and should then be planted immediately. Never plant new bulbs where other lilies have failed to grow and never plant in heavy, soggy soil. They cannot be treated like tulip or daffodil bulbs which can be dried out and go completely dormant. *Drainage is paramount.*

Pot Culture: The soil mixture must be loose and porous. Two parts sandy loam, one of leafmold, and one of sand is good. An inch of gravel should be placed in the bottom for drainage. Fill the pot half full of soil mix, add a handful of sand, set the bulb on the sand, then sur-

round with more sand. The pot is then filled with soil mix, watered, labeled, staked and placed in a cool place until spring.

Spraying: Control aphids and fungus diseases with the same sprays used for roses.

Forcing: The quality of the flowers and plants is much improved by cold storage of the bulbs and the flower yield is greatest following storage for six weeks at a temperature between 32 and 40 degrees Fahrenheit. Experiments have shown that our Mid-Century Lilies when forced without cold storage flowered by the end of March, those cold stored for six weeks flowered by the middle of February. The average elapsed time between planting of bulbs taken from cold storage and flowering was 60 days. A night temperature of 55 to 60 degrees is recommended, with ample water as the buds begin to show.

FUNGUS CONTROL IN LILIES:

1. Prevention is much easier than curing.
2. Sprays are better than dusts because they are more likely to give good coverage. They should be applied when foliage is dry and particular attention should be paid to covering the underside of the leaves.
3. Spraying should be started soon after Lilies emerge, and continued at about ten-day intervals until just before flowering. After flowering, dead flowers and seed pods should be removed and the Lilies should be sprayed thoroughly afterward.
4. In the fall, after stems have either browned through natural maturing, or from freezing, all stems and foliage should be removed and burned.

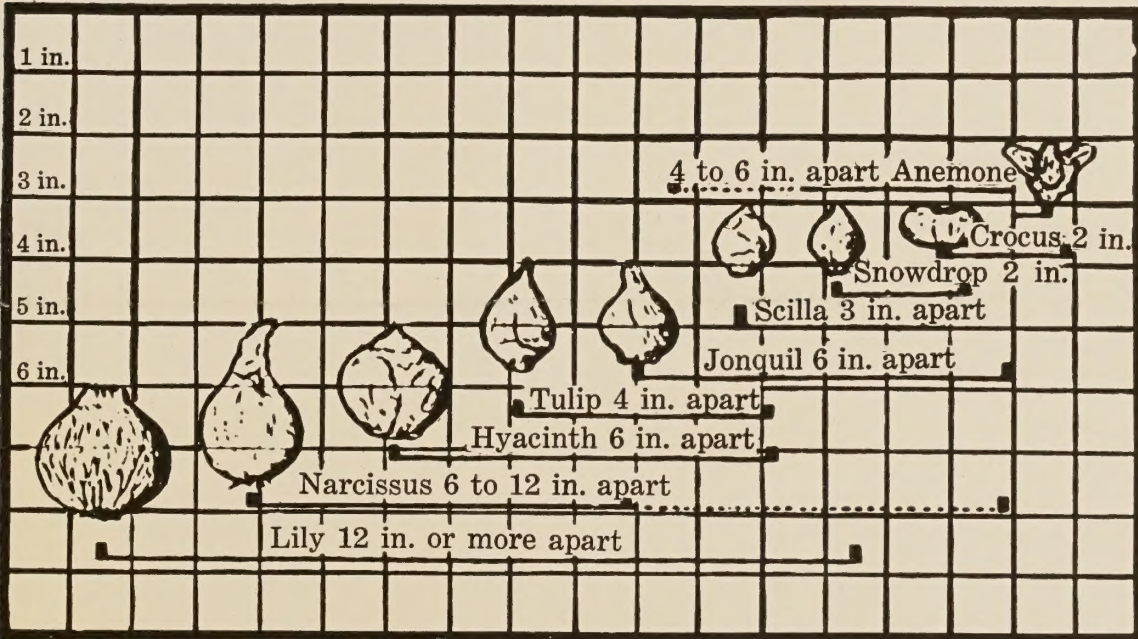


STAGED BY JULIUS ROEHRS CO.

BULBS SUPPLIED BY S.S.S. & CO., INC.

Depth to Plant

BULB PLANTING CHART



INDEX (Continued)

Ivy	29
Ixia	19
Labels	36
Lantanas	29
Leucocoryne	19
Ligustrum	31
Lil. Candidum	14
Lily Book	16
Lily Bulbs	13-16
Lily of the Valley	19
Maranta	31
Mighty Moe	39
Montbretias	22
Muscari	19
Narcissus	8-12
Nephtytis	31
Ornithogalum	19
Osmanthus	31
Oxalis	19
Pachysandra	31
Packaged Bulbs	20
Palms	31
Pelargonium	29
Peperomia	31
Petunia	29
Philodendrons	32
Plant Bands	35-36
Plant-Mist	40
Plant Ties	36
Plant Stakes	36
Plant-Stim	37
Poinsettias	33
Pothos	33
Pots	35
Primula	29
Ranunculus	19
Root Forming Chemicals	37
Roses	25-26
Ruellia	33
Saintpaulia	29
Sansevieria	33
Schefflera	33
Scilla	19
Sisal-Glaze	34
Soil Shredder	34
Soil Sterilizer	34
Spathiphyllum	32
Spiraea	30
Sprayers	34
Stake Fasteners	36
Sterilizing Materials	37
Succulents	30
Tigridias	22
Tuberose	22
Tulips—	
Breeder	6
Cottage	5
Darwin	1-3
Lily Flowered	6
Rembrandt	3
Mendel	3
Parrot	6
Peony Flwd	8
Single & Double Early	7
Species	8
Triumph	4
Darwin Hybrids	8
Twist Lock	36
Verbena	29
Vinca	29
Vitus	29-33
Water Breaker	34
Water Robot	40
Weed-Killer	39
Wire Fabric	36

QUANTITY OF BULBS NECESSARY FOR ROUND BEDS

Diameter	Distance Apart	
	4 in.	6 in.
3 ft.	95	37
4 ft.	127	61
5 ft.	225	81
6 ft.	271	127
7 ft.	410	169
8 ft.	469	225
9 ft.	650	271
10 ft.	721	331

INDEX

Acuba	31	Dahlias	22
Ageratum	28	Daisies	29
Aglaonema	31	Daphne	30
Allium	18	Dieffenbachia	31
Aluminum Plant	31-32	Dielytra	30
Amaryllis	17	Dracaena	29-31
Anemones	18	Duster	34
Antirrhinum	28	E-Z Flats	35
Aralia	31	Fatsy	31
Azaleas	27	Ferns	28
Begonias (Plants)	28	Fertilizers	38
Begonias (Tuberous Rooted)	17-22	Ficus	31
Boxwood	31	Fittonia	31
Bunching Sticks	38	Flower Preservative	38
Caladium Esculentum	22	Freelias	18
Caladiums (Fancy Leaves)	18-22	Fumigants	37
Callas	18	Fungicides	38
Calceolaria (Plants)	28	Fuschias	29
Cannas	22	Galanthus	18
Carnation—		Gardenias	29
Mum Packs	37-38	Geraniums	29
Carnations	23-24	Gladiolus (Baby)	18
Cineraria	28	Gladiolus (Large Flowering)	21
Chinese Evergreen	31	Gloriosa	22
Chionodoxa	18	Gloxinias (Bulbs)	19
Cloth	37	Gloxinias (Plants)	29
Coleus	28	Heliotrope	29
Crassula	31	Hose	36
Crocus	18	Hyacinths—	
Crotons	31	Holland	9
Cryptanthus	31	French Romans	9
Cuprinol	36	Hydrangeas	30
Cyclamen	29	Insecticides	37-39
Daffodils (See Narcissus)	9-12	Iris	19
		Ismene	22

EASTER—April 6th, 1958

March 29th, 1959

April 17th, 1960

MOTHER'S DAY—May 11th, 1958



BLUE PARROT



SUPERFINE DARWIN MIXTURE (See Page 3)

WHOLESALE
CATALOG



UNCLE TOM

FALL

**1
9
5
7**

S.S. Skidelsky & Co., inc. 144 WEST 27th St., N. Y. 1, N. Y.