



STASSEN FLORAL GARDENS, Inc.,
ROSLYN HEIGHTS, L. I., N. Y.

BULBS FOR CHRISTMAS BLOOMING

(For further description see page 15)

		10 for	25 for
1	"BRILLIANT STAR" Tulips	\$ 1.25	2.90
2	"CRAGFORD" bunchflowering Narcissus, fragrant	1.75	4.00
3	"JOFFRE" Tulips	1.80	4.10

Coll. 10 "Cragford", 5
 "Brilliant Star", 5
 "Joffre" 1
 20 for \$ **3.15**

106 Jefferson Ave.

Telephone: **MAyfair 1-1932**



Introducing
"N=4" TULIPS OF NEXT DECADE
STASSEN BRINGS THEM TO YOU TODAY

Exclusively in this catalog

Today the Dutch hybridizers are successfully developing an entirely new race of tulips. Thousands of hybrids are developed but only represent hereditary units already known. Once in a million does the hybrid show, as in this case, a REDOUBLING of hereditary units called "N=4" and result in new qualities. These Tulips:

- ✓ Dwarf all other Tulips in size of flower
- ✓ Produce amazing new Tulip colors
- ✓ Surpass all the desirable qualities of present-day Tulips besides giving qualities as yet unknown

Stassen is fortunate to be able to introduce *now* the "N=4" unnamed Tulips of the next generation.

"N=4" Tulips sold only in
UNITS OF 21 BULBS at \$ **3.90**
3 Units \$ **10.90**

POSTPAID to any address — see order blank!

*This page is even
too small to show
the actual size of
the "N=4" Tulips*

Due to the fact that these magnificent Tulips MUST BE SHIPPED DIRECT TO YOU FROM THE EXPERIMENTAL FARMS IN HOLLAND and because the supply is definitely limited ORDERS MUST REACH US BY SEPTEMBER 20, 1957.



Early-flowering **DOUBLE TULIPS**

8 — 10 inches

Bloom in April

- 1 **WILLEM SOORD** 3 **WILHELM KORDES**
 2 **GOYA** 4 **BOULE DE NEIGE** 5 **SCARLET CARDINAL**

Any one variety: 10 for \$ 1.30 25 for \$ 2.95 100 for \$ 10.75

◀ Coll. 2 5 each of 5 Double Tulip varieties 2.95
 25 for \$

Coll. 3 5 each of 6 Single Tulip varieties 3.35 ▶
 30 for \$

Early-flowering **SINGLE TULIPS**

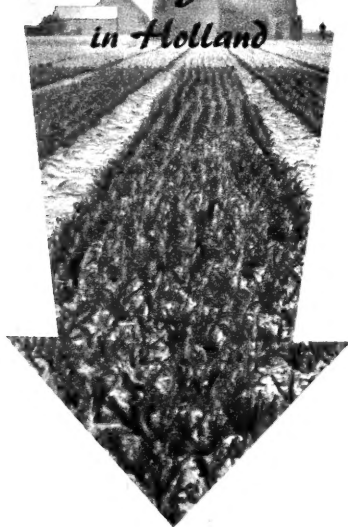
8 — 10 inches

Bloom in April

- 6 **VAN DER NEER** 9 **COULEUR CARDINAL**
 7 **PRINCE CARNAVAL** 10 **KEIZERSKROON**
 8 **BELLONA** 11 **PINK BEAUTY**

Any one variety: 10 for \$ 1.25 25 for \$ 2.80 100 for \$ 10.25

*From Stassen
Bulb Farms
in Holland*



Early Flowering **TULIPS**

They bloom in April, a period when few other flowers display such a wide range of brilliant colors. Moreover they are very fine forcing Tulips, which may be grown in pots to flower from January onwards. Use them for bedding or in groups among the springflowering perennials and shrubs to have a lovely springgarden.



Onexpensive **SINGLE EARLY TULIPS** *for mass plantings*

They have a dwarf growing habit and very fine, strong longlasting flowers. Varying widely in shape and color, they fill the gap between the earliest botanical varieties and the longstemmed Darwins. Grow 10 inches tall.

WHITE HAWK — white

YELLOW PRINCE — pure yellow

GENERAL DE WET — salmon-orange

CRIMSON QUEEN — brilliant red

PINK PERFECTION — delicate pink

ANY ONE VARIETY: 10 for \$ 0.90, 25 for \$ 2.05, 100 for \$ 7.50

Collection 4 10 each of 5 Single
Early varieties 50 for \$ **3.75**

**SPLENDID MIXTURE of SINGLE EARLY
TULIPS.** Ideal for massplantings for color effect
10 for \$ 0.80 25 for \$ 1.85 100 for \$ 6.75

Onexpensive **DOUBLE EARLY TULIPS** *for mass plantings*

The fully double flowers resemble Peonies, when they open in the sun. Planted close together they form a veritable carpet of flowers. Ideal for bedding.

ELECTRA — crimson red

PEACH BLOSSOM — crimson pink

MARÉCHAL NIEL — orange

MURILLO — rosy white

MR. V. D. HOEF — pure yellow

ANY ONE VARIETY: 10 for \$ 0.95, 25 for \$ 2.15, 100 for \$ 7.75

Collection 5 10 each of 5 inex-
pensive *double*
varieties. 50 for \$ **3.90**

SPLENDID MIXTURE of DOUBLE EARLY TULIPS

Planted closely together they give
a spectacular display.

10 for \$ 0.85 25 for \$ 1.95

100 for \$ 7.00

Terms of Sale

Delivery. Our prices include all transportation-charges and arrival of the bulbs in good condition at your address.

Cultivation. Easy-to-follow planting-instructions enclosed with every shipment.

Guarantee. All bulbs are guaranteed to be true to name and color and sure to bloom. Our liability however is limited to the purchase-price of the bulbs.



See previous page for

Page 4

EARLY TULIP illustrations



PEACOCK TULIPS

*An amazing
Mixture for the
Rockgarden*

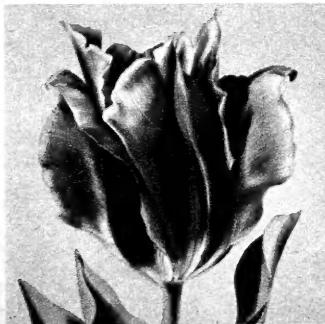
This group of hybrids has been obtained by crossing the lovely Waterlily Tulips with the spectacular Greigii Tulip. Their peculiar characteristic is that the large flowers are unfurled full and wide — revealing magnificent color variations in a manner similar to the Peacock, which proudly displays its feathers. Each Tulip displays an amazing variety of gay harmonious colors and the foliage is distinctly striped and spotted purple-brown. They flower for a long time continuously from the period of the early botanical varieties until the later flowering tulips. Heights vary from 8—10 inches. Groups in the Rockgarden will give a breathtaking and unforgettable show.

10 for \$ 1.75 25 for \$ 4.00 100 for \$ 14.50

Novelty Tulip "ARTIST"

This is perhaps the most strange and bewildering variety of all novelties. Dwarfgrowing, but flowering in May. The large flowers have gracefully pointed petals of a deep and warm shade of apricot-orange, shot with a rosy-buff shade and on the outside with a conspicuous green streak. Petals are slightly undulate, giving the flower a most lovely appearance. We consider this variety as a very meritorious addition to the assortment of lateflowering tulips, since it cannot be compared with any other variety in cultivation.

3 for \$ 0.55 10 for \$ 1.65 25 for \$ 3.75



Other Tulips in this Catalog

illustrated in colors

Longstemmed DARWIN TULIPS	see pages 7—10
Fantastic PARROT TULIPS	see pages 6, 7, 10, 11
Double Late PEONY TULIPS	see pages 14—15
Artistic REMBRANDT TULIPS	see pages 14—15
Exciting BOTANICAL TULIPS	see page 13
Elegant LILY TULIPS	see pages 10—11

Page 5



QUESTIONS AND ANSWERS

Holland-grown bulbs are the finest obtainable because they are produced by the world's foremost bulbgrowers who have generations of experience behind them. All bulbs ordered from this catalog are genuine Holland bulbs and come to you Direct from Holland. Grown and packaged in Holland, they assure you of healthy, top-quality bulbs capable of giving you the best possible flowering results.

- ARE HOLLAND BULBS DIFFICULT TO GROW?
No. Under normal conditions Holland bulbs will produce well-developed flowers because the flower-buds are already formed inside the bulbs when you receive them.
- DO THEY REQUIRE ANY SPECIAL ATTENTION?
No. Once planted, the bulbs take care of themselves. No weeding, no spraying for insects. Without further bother, they will produce gorgeous flowers in your garden year after year.
- WHERE CAN I PLANT THEM?
Anywhere, in either sun or partial shade. In partial shade especially Daffodils and Narcissus and many varieties of miscellaneous bulbs.
- WHAT KIND OF SOIL DO THEY NEED?
No special kind. Any well dug garden soil will grow them.
- IS FERTILIZER NECESSARY?
Chemical fertilizers are not advised. An application of an organic fertilizer such as bonemeal may be helpful, but not absolutely necessary for good results.
- HOW MANY BULBS WILL I NEED?
Tulips require 5 to 8 bulbs per square foot. Daffodils 4 to 5 bulbs, Hyacinths 3 to 4 bulbs, and the Heralds of Spring about 12 bulbs.
- WHICH COMBINATIONS ARE EFFECTFUL?
Tulips with Pansies or Forget-Me-Not, Daffodils with Blue Grape Hyacinths or Mertensia.
- DO BULBS NEED PROTECTION DURING THE WINTER?
No, they are hardy. If you live in a climate where the ground alternately freezes and thaws, cover the ground with a light mulch.
- SHOULD I CUT DOWN THE GREEN FOLIAGE AFTER THE BLOOMS ARE GONE?
No, let it die down naturally. The green foliage is essential for the development of the new bulbs.
- SHOULD BULBS BE TAKEN UP AFTER THEY BLOOM?
Daffodils, Heralds of Spring and Lilies should be left undisturbed to multiply. Tulips and Hyacinths can remain in the ground for 3 years, but if you desire to move them to a new location, dig bulbs after the foliage has died down completely. Store bulbs in a cool place and replant in the fall.



Fantastic **PARROT TULIPS**

For description and prices see to the right →

← *Fantastic*
PARROT TULIPS

Grow 20—28 inches tall Bloom in May
 When fully open the Parrot Tulips are of an enormous size; their unique forms lend themselves for unusual floral decorations. Therefore they are the most spectacular cut-flowers of all Tulip strains. These new varieties have all sturdy stems which carry the heavy flowers erect and show them in the most advantageous manner.

- 1 FIREBIRD
- 2 TEXAS GOLD
- 3 PIERSON
- 4 BLACK PARROT
- 5 FANTASY
- 6 BLUE PARROT
- 7 ORANGE PARROT

Any one variety:
 10 for \$ 1.05 25 for \$ 2.40 100 for \$ 8.75

Coll. 6 5 each of 7 PARROT Tulip varieties 35 for \$ 3.35

Coll. 7 10 each of 7 PARROT Tulip varieties 70 for \$ 6.15

Special Mixture of
PARROT TULIPS

A most valuable mixture with an unusual variation of shapes and colors.
 10 f. \$ 0.95 25 f. \$ 2.20 100 f. \$ 8.00

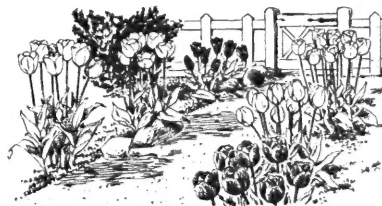
De Luxe DARWIN TULIPS

Darwin is not merely a name for a group of Tulips, it has become a conception for longstemmed, gaily colored Tulips of stately appearance. Flowering in May they display their noble flowers in the most colorful month of the year, when the whole Nature displays an abundance of flowers. Tulip Time in May—don't miss it in your own Garden next year! To ensure the most effectful show follow the simple instructions given below and your garden will be turned into a veritable Fairyland also by a small quantity of the fine Darwin Tulips that are offered on the next three pages.

Where to plant?



A cheery note of "Welcome" greets the visitor to this home with Tulips along the garden path ▼



How to plant?

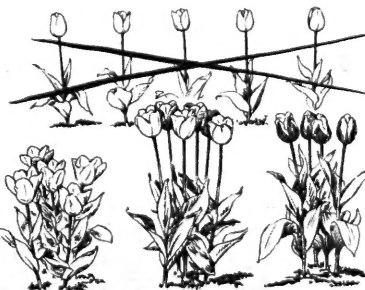


Garden ornaments make excellent settings for group planting of Tulips ▲

Evergreens provide a fine backdrop ▼



A practical method to plant Tulips is to dig a hole about 6 inches deep. Set bulbs 4—5 inches apart and replace the soil



Group planting is more effective than planting in single rows. Use only one color to each group ▲

See next pages for PRIZE-WINNING, EXHIBITION and POPULAR DARWIN varieties





Hol

Grow 28-30 inches tall **PRIZE-WINNING DARWIN varieties** Bloom in May

- | | | |
|--------------------------|------------------------|---------------------|
| 1 LADY HILLINGDON | 4 ANKARA | 7 WHITE ROCK |
| 2 PINK ATTRACTION | 5 SWEET HARMONY | 8 APELDOORN |
| 3 ARISTOCRAT | 6 DEMETER | |

Any one variety: 10 for \$ 1.40 25 for \$ 3.30 100 for \$ 12.00

Coll. 8 5 each of 8 Prize-winning DARWIN varieties 40 for \$ 5.30

Coll. 9 10 each of 8 Prize-winning DARWIN varieties 80 for \$ 9.60



Grow 28—30 inches tall

- 1 MR. VAN ZIJL
- 2 QUEEN OF NIGHT
- 3 PANDION
- 4 DORRIE OVERALL

EXHIBITION DARWIN Varieties

Bloom in May

- 5 DUKE OF WELLINGTON
- 6 THE PEACH
- 7 NEW ORLEANS
- 8 MONTGOMERY
- 9 SUNKIST
- 10 SCARLET LEADER

Any one variety: 10 for \$ 1.10 25 for \$ 2.60 100 for \$ 9.50

Coll. 10 5 each of 10 Exhibition DARWIN varieties 50 for \$ 5.20

Coll. 11 10 each of 10 Exhibition DARWIN varieties 100 for \$ 9.50

See NEXT PAGE for Popular varieties of Darwin Tulips →

DARWIN TULIPS (Continued)

Darwin varieties number at least to 700 or 800! We have tested hundreds of them as well under European as well as under American conditions. The Tulips offered in this Catalogue are a result of a painstaking study of all their qualities as garden tulips or cutflowers. All grow tall with stately erect flowerstems and substantial flowers of heavy texture and each of them is the best in its own color-group.

In addition to the Prize-Winning and Exhibition varieties shown on the two previous pages we list some very fine varieties below, which for many years have been the most sought-after Darwin varieties and still are the favorite colors for cutting.

- CLARA BUTT**, salmon pink, oval flower
- PHILIPPE DE COMMINES**, maroon black
- NIPHETOS**, ivory yellow, the "Queen of Tulips"
- GOLDEN HARVEST**, deep yellow, used by the million for market
- PRIDE OF HAARLEM**, beautiful cherry-red
- ZWANENBURG**, purest snow-white
- RED PITT**, deep bloodred
- PRINCESS ELIZABETH**, soft pink, lighter edge
- SCOTCH LASSIE**, delicate lavender
- FLAMING BEAUTY**, red flames on yellow ground

Any one variety: 10 for \$ 0.95, 25 for \$ 2.20, 100 for \$ 8.00

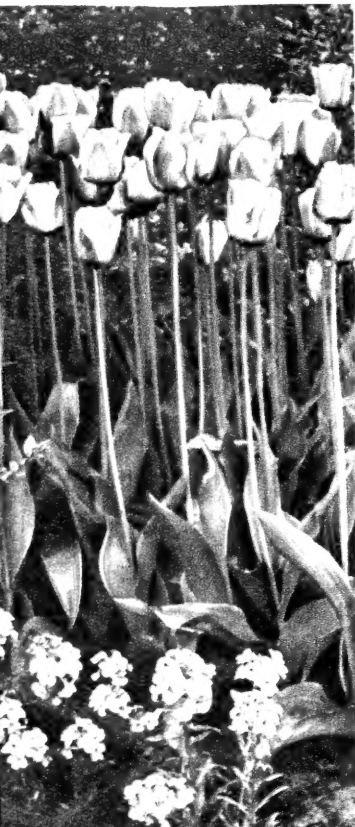
Collection 12 10 each of 10 Popular Darwin varieties 100 for \$ 8.00

Collection 13 25 each of 10 Popular Darwin varieties 250 for \$ 19.25

Rainbow Mixture of DARWIN TULIPS

A beautiful mixture of all possible shades and colors. Extremely fine for cutting.

10 for \$ 0.90 25 for \$ 2.05 100 for \$ 7.50



Princess Elizabeth

Elegant → LILY TULIPS

Grow 20—28 inches tall Bloom in May
No other Tulips combine the grace and boldness of these Lily Tulips. Their long pointed petals delicately recurving and their exquisite colors create startling effects in the garden. Elegant flowers for floral arrangements.

	10 for	50 for
	\$	\$
1	WHITE TRIUMPHATOR	1.00 4.15
2	CHINA PINK	1.00 4.15
3	QUEEN OF SHEBA (new)	2.15 9.00
4	SEBASTIAN	1.00 4.15
5	LILAC TIME	1.00 4.15
6	DYANITO	1.25 5.25

Coll. 14 5 bulbs each of 6 Lily-flowered varieties. 30 for \$ 3.45

SPLENDID MIXTURE of elegantly formed **LILY TULIPS**
10 f. \$ 0.95 25 f. \$ 2.20 100 f. \$ 8.00

New!

7 Parrot Tulip → «VAN DYCK»

A novelty of great beauty and charm being a distinct improvement on the wellknown and famous "Fantasy". Its most outstanding feature is the sturdy and erect stem, moreover a very beautifully formed flower with fringed and incised petals.

3 for \$ 0.85 10 for \$ 2.55 25 for \$ 5.85



1

2

4

3

5

6

7

70

MID-SEASON Triumph TULIPS

This group of mid-season flowering varieties has become very popular, because of their excellent qualities as garden-tulips. They are of medium height, bearing fine substantial flowers on strong, erect stems. Therefore Triumph Tulips are more and more used for large beds and fine groups, also the flowers display a wide range of brilliant colors, among which there are many outstanding two-toned combinations.

AUREOLA. Warm red, edged golden yellow
BRUNO WALTER. Warm orange salmon, sweet-scented
HIS EXCELLENCY. Bright yellow, fine bedding variety
PAX. Purest snow-white

RED MATADOR. Brilliant red, longstemmed
ROLAND. Carmine-scarlet, edged ivory white
ROSE BEAUTY. Pink, changing to cherry-red

Any one variety: 10 for \$ 1.15, 25 for \$ 2.60, 100 for \$ 9.50

Collection 15 5 each of 7 Triumph varieties 35 for \$ 3.65

Latest-Flowering TULIPS (very tall growing)

In this group we list together some of the finest May-flowering Tulips, which normally are offered as Single late and Breeder Tulips. They have very fine, substantial flowers on long but wiry stems. All flower very late in the season, supplying valuable cutflowers when all other Tulips are over.

CHAPPAQUA (Single late). Salmon pink
DILLENBURG (Breeder). Salmon-orange, shaded bronze
LOUIS XIV (Breeder). Deep purple with a brown edge

PRINCESS MARGARET ROSE (Single late). Golden yellow, edged scarlet
SAGINAW (Breeder). Magenta-red with a brick red gloss
SMILING QUEEN (Single late). Satiny-pink with a white base

Any one variety: 10 for \$ 1.15, 25 for \$ 2.60, 100 for \$ 9.50

Collection 16 5 each of 6 latest-flowering Tulip varieties 30 for \$ 3.15

Amazing BOUQUET TULIPS

A whole bouquet of Tulips from every bulb! Imagine four or more dazzling Tulips from a single stem instead of a single bloom. The main stem has several side branches, each producing its own Tulip flower! Approximately 20 inches in height. Bloom in May.

	3 for	10 for	25 for
GEORGETTE , yellow with red rim	\$ 0.60	\$ 1.80	\$ 4.20
LICETTE , red with yellow rim	1.00	3.00	6.90
MONS. MOTTET , creamy white, flushed rose	0.40	1.20	2.75
RADIANT RED , brilliant scarlet	0.40	1.20	2.75

Collection 18 3 each of 4 Bouquet varieties 12 for \$ 2.15

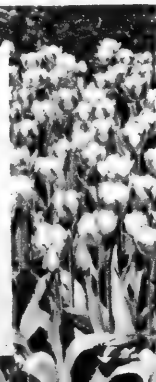


Coll. 17 March-to-May Tulip Collection

7 to 8 weeks of continuous Tulip bloom! Imagine having Tulips in bloom weeks before your neighbour and even after most Tulips have finished blooming. This collection enables you to plant each group separately in those places where you want Tulip-flowers at the time each group will bloom.

- 10 EARLIEST FLOWERING
- 10 MEDIUM-EARLY FLOWERING
- 10 MID-SEASON FLOWERING
- 10 LATE-SEASON FLOWERING
- 10 LATEST FLOWERING

50 for \$ 3.75



Exciting **BOTANICAL TULIPS**

These are the original species of Tulips, as they grow in the remote mountains of Western Asia and the Mediterranean. Discovered only half a century ago, they have conquered the gardens of Europe and America in a very short time. Original in their shapes and with a breathtaking color-pattern, they have amazed even the most experted tulipgrower. Now a rockgarden in spring cannot be imagined without their gay-colored flowers. Planted deep enough in a sunny location they will increase in beauty each year, if left undisturbed.

	3 for	10 f.	25 f.
JOHANN STRAUSS (Improved Water-lily Tulip), creamy flowers with a red streak outside; foliage spotted purple brown. 8 inches. April	\$	\$	\$
	0.45	1.35	3.15
KAUFMANNIANA (Waterlily Tulip), creamy with a red flush outside. 8 inches. April	0.40	1.25	2.90
EICHLERI MAX. , starry flower with pointed petals, widely opening in the sun			

	3 for	10 f.	25 f.
to brilliant scarlet flower with a black, yellow rimmed centre. 10 inches. April	\$	\$	\$
	0.35	1.05	2.35
CANTATE , peculiar for its glossy green foliage; flowers vermilion scarlet. Fine for the rockery. 10 inches. April	0.55	1.65	3.65
FUSILIER , dwarfgrowing, each bulb produces a bunch of several brilliant vermilion flowers. 8 inches. April	0.80	2.55	5.70

Coll. 19 5 each of 5 Botanical Tulip varieties **25 for \$ 3.90**

«Red Emperor» Tulip

(see also back of wrapper)

Millions of these gorgeous Tulips now find their way to thousands of gardens in Europe and America. From a rare item not more than 25 years ago it has become the most popular tulip, whose red cannot be missed in any springgarden. A few flowering «Red Emperor» Tulips catch the eye from a long distance, while more of these Tulips give a luxurious and unforgettable aspect to any garden. No other Tulip equals this variety in size, in stature or in its brilliant scarlet color. **10 for \$ 1.60, 25 for \$ 3.70, 100 for \$ 13.50**

Coll. 20 15 «Red Emperor» Tulips and 6 Giant Trumpet Daffodils «Mount Hood» (see illustration page 32), purest snowwhite. Together they make a striking effect **21 bulbs for \$ 3.25**

DARWIN HYBRID

«Holland Glozy»

One of the finest and most sensational novelties of late years. Flowers measure 7—8 inches across and are of a glowing orange-vermilion. Longlasting and early-flowering. They combine the superb qualities of both the Darwintulip and Tulipa Fosteriana. Indispensable for every flowergarden.

3 for \$ 1.20 10 for \$ 3.60 25 for \$ 8.50



Eichleri max.



Kaufmanniana



Late-flowering **PEONY TULIPS**

Grow 18 inches tall

- 1 **ROCKET**
- 2 **EROS**

Any one variety: 10 for \$ 1.10 25 for \$ 2.60 100 for \$ 9.50

- 3 **LILAC QUEEN**
- 4 **NIZZA**

- 5 **GERBRANDT KIEFT**
- (Latest novelty)
- 6 **SYMPHONIA**

Bloom in May

Coll. 21 5 each of 6 PEONY Tulip varieties . . . 30 for \$ 3.15

Coll. 22 10 each of 6 PEONY Tulip varieties . . . 60 for \$ 5.75

7 *Artistic*
REMBRANDT TULIPS

An amazing variety of colors in a mixture

10 for \$ 1.25 25 for \$ 2.90 100 for \$ 10.50

Late-Flowering

← PEONY TULIPS

They give tremendous flowers, packed with numerous petals, forming a completely filled flower that strongly resembles a Peony. Among the last of the May-flowering Tulips to bloom. Their heavy, massive flowers are supported by strong stems 18 inches high. Known for their longlasting qualities they revel in a little shading against the hot mid-day sun, which helps them carry their spectacular blooms erect.

Unusual Mixture of all
PEONY TULIP COLORS
10 for \$ 1.00 25 for \$ 2.35
100 for \$ 8.50



Artistic ← REMBRANDT TULIPS

These flamboyant Tulips are rightly named after the celebrated painter. Each flower is fantastically striped, feathered or beautifully flamed in an amazing variety of brilliant colors as if mixed on the artist's palette. Grow 26 inches tall. Bloom in May.

SUPERFINE MIXTURE
10 for \$ 1.25 25 for \$ 2.90
100 for \$ 10.50

Bulbs for **WINTER** Indoor Blooming (See Front Cover)

The varieties of *Narcissus* and *Tulips*, illustrated on the cover, can be forced to bloom with Christmas with the greatest of ease. The *Narcissus* bulbs have been harvested before the normal time and stored in the coldstorage warehouse, to develop the flowers earlier in the bulb, which enables an earlier flowering in the home.



- | | | | |
|--|---------|---------|---------|
| 1 Early Tulips "BRILLIANT STAR", the wellknown Christmas Tulip | 3 for | 10 for | 25 for |
| | \$ 0.40 | \$ 1.25 | \$ 2.90 |
| 2 <i>Narcissus</i> "CRAGFORD" (Bunchflowering), sweetscented and richflowering, easy to grow in either soil or pebbles | 0.60 | 1.75 | 4.00 |
| 3 Early Tulips "JOFFRE", the yellow sport of "Brilliant Star" | 0.60 | 1.80 | 4.10 |

Coll. 23 3 Brilliant Star, 5 Cragford *Narcissus* and 3 Joffre
11 for \$ 1.70

Easy-to-grow "PAPERWHITE"

Narcissus

A bunchflowering *Narcissus* with delicately fragrant flowers. Nothing is easier than to grow these bulbs in bowls only filled with pebbles and water. They may be put into the light from the beginning. Within five weeks they are in full bloom. For best results don't start growing before the middle of November and then put them into the bowls at intervals of two weeks for continuous blooming.

10 for \$ 2.10 25 for \$ 4.80 100 for \$ 17.50



Prepared **AMARYLLIS** to bloom for the Holidays



Prepared *Amaryllis* undergo a special treatment which advances their flowering-time by more than two months. The cut-through bulb, shown in the illustration, had the flowerbud completed on October 16th. These sure-to-bloom bulbs will flower within eight weeks after planting.

VIVID RED Each \$ 3.50, 3 for \$ 9.50 **PURE WHITE** Each \$ 3.75, 3 for \$ 10.00
DEEP SCARLET Each \$ 3.60, 3 for \$ 9.70

Coll. 24 3 Prepared **AMARYLLIS** in 3 colors 3 for \$ 9.60



MAMMOTH-SIZE HYACINTHS to grow on water
(for Glasses and Luxos)

Growing Hyacinth bulbs on water, is a hobby which fills one with wonder and delight.
It is fascinating to observe the flower development from day to day.

SOFT PINK SNOW WHITE DARK BLUE
PURE YELLOW SKY BLUE BRIGHT RED
Any one color : **Each \$ 0.45 3 for \$ 1.20 10 for \$ 3.60**

Coll. 25 1 each of 6 Hyacinth colors **6 for \$ 2.25**
Coll. 26 3 Mammoth-Size Hyacinths RED,
WHITE, BLUE and 3 Luxos **Complete \$ 3.70**
Coll. 27 6 Mammoth-Size Hyacinths in
6 colors and 6 Luxos **Complete \$ 6.85**

" LUXO "

Improved Hyacinth Vase
(Registered Trade Mark)

Clear plastic vase with an ingeniously designed holder to keep Hyacinth erect at all times, particularly when flower is in full bloom. For prices see collections. Make Ideal Gifts! We ship to any U. S. address postpaid.



HYACINTHS for POTS

To bloom from the end of January to the end of March as desired. Plant bulbs singly in pots or 3 to a pan.

SKY BLUE
DARK BLUE

Any one color :

SOFT PINK
PURE YELLOW

3 for \$ 0.70 10 for \$ 2.10

BRIGHT RED
SNOW WHITE

25 for \$ 4.75

Coll. 28 3 Red, 3 White, 3 Blue . . . 9 for \$ 1.90

Coll. 29 3 each of 6 colors 18 for \$ 3.45

FOR YOUR CONVENIENCE WE SUPPLY

Attractive **Plastic** Pots to hold 3 Hyacinth bulbs.
3 Pots for \$ 0.65

Potting Soil. Specially prepared for potting
Soil for 3 Pots \$ 0.50



"Delft Blue"

Exhibition **HYACINTHS**

Stassen of Holland grows acres and acres of the finest Hyacinths. From the moment the first Hyacinth-sprouts appear above the ground in spring until July when the bulbs are harvested, each plant is constantly inspected. After the harvest bulbs are cured and treated in modern equipped bulb warehouses and special attention is given to the selection of bulbs that will produce large flower-spikes, densely packed with florets. The following varieties are suitable for growing in the garden as well as for pots and window-boxes. For Hyacinths to grow on water see page 16.

Blue shades:

- * **DELFT BLUE.** Deep porcelain blue
- OSTARA.** Dark blue
- PERLE BRILLANTE.** The best light blue variety

Red and Pink shades:

- * **ANNE MARIE.** Salmon pink, very early
- * **JAN BOS.** Carmine-scarlet
- LA VICTOIRE.** Carmine red
- * **PINK PEARL.** Crimson pink

White varieties:

- * **L'INNOCENCE.** Purest white

Purple and Yellow shades:

- * **AMETHYST.** Amethyst-violet, recent variety
- * **CITY OF HAARLEM.** Light golden yellow
- ORANJE BOVEN.** Salmon-orange
- YELLOW HAMMER.** Straw yellow

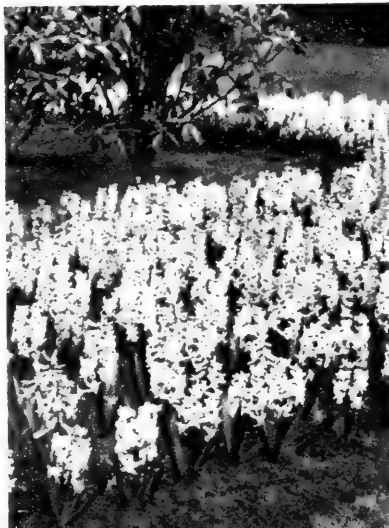
Any one variety: 3 for \$ 0.95 10 for \$ 2.85 25 for \$ 6.65

Coll. 1 each of the 12
30 exhibition varieties 12 for \$ 3.60

Coll. 1 each of the
31 6 varieties marked * 6 for \$ 1.85

Questions and Answers

- HOW TO OBTAIN HYACINTHS WITH PERFECT FLOWERS?
Buy your Hyacinths directly from the source. Stassen Hyacinths are guaranteed Dutch bulbs, cared for from the very beginning until they reach you. Good Dutch bulbs have fully developed flowerbuds inside the bulb when they are shipped to you.
- ARE HYACINTHS HARDY?
Yes, but it is advisable to use some covering in very cold climates to protect the young sprouts when they appear above the ground in Spring.
- CAN YOU GROW THEM INDOORS?
Yes. Pot your Hyacinths between mid-October and December and put them in a dark and cool place. Water them regularly. When sprouts are 3 inches high place them in a warm room and in the light.
- WHICH HYACINTHS CAN BE GROWN ON GLASSES?
Only the biggest size, offered on page 16.



Double-flowered Hyacinth **SCARLET PERFECTION**

A novelty Hyacinth of great charm and beauty; sport of the wellknown "Tubergen Scarlet" with entirely Double flowers; each flower consisting of several florets sheathed one into another. The extinct type of the double Hyacinth has revived in this novelty.

Each \$ 0.55 3 for \$ 1.50 10 for \$ 4.50

Garden or Bedding **HYACINTHS** →

The biggest thrill of the spring comes, when —after the first warm days—Hyacinths suddenly appear above the ground with their large flower heads bursting into bloom in the brightest colors. The Hyacinths offered on the next page by color are especially suitable for garden planting. They will produce magnificent flower spikes on strong stems at a time when color is so much needed in the garden. Their sweet fragrance is delightful and permeates the whole garden. Why not plant some with Daffodils which bloom at the same time in April?

Collection 32

A border of Hyacinths and Daffodils

Use the golden Daffodils as a background, for they will make the brilliantly colored Hyacinths stand out more boldly. 5 each of BLUE, WHITE, RED, YELLOW, PINK Hyacinths and 25 Golden Daffodils.
50 for \$ 6.45

Rainbow Mixture of **GARDEN HYACINTHS**

This amazing mixture of the brightest colors is especially suitable to plant as a solid bed, or scattered in clumps throughout the garden. Produce large flowers of misform height, making them easily adaptable to any design or pattern.

10 f. \$ 1.50 25 f. \$ 3.50 100 f. \$ 12.90



GARDEN or BEDDING HYACINTHS

SKY BLUE
DARK BLUE
CLEAR PINK

PURE YELLOW
BRIGHT RED

Any one color: 10 for \$ 1.65

SNOW WHITE
DEEP PURPLE

25 for \$ 3.85 100 for \$ 14.25

Coll. 33 5 each of 7 colors 35 for \$ **5.55**

Coll. 34 5 each of DARK BLUE, SNOW WHITE, BRIGHT RED . 15 for \$ **2.45**

Hardy GARDEN LILIES



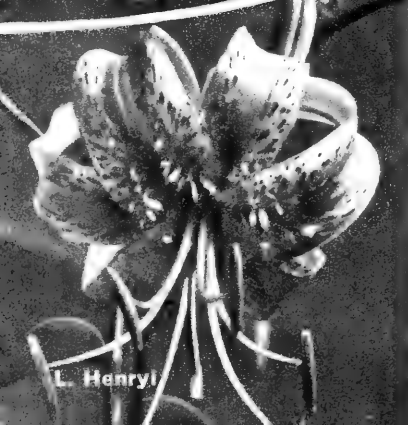
There is hardly any flower, more stately and at the same time more graceful than the Lily. Its numerous species and varieties display a wide variation of color, shape of flower and period of blooming. All are handsome and interesting. Lilies love to have their "beads in the sun and feet in the shade" — so provide a location where the base of the plant will be somewhat shaded. Leave them undisturbed for years and they become more vigorous and richer flowering year after year.

LILIUM CANDIDUM (Madonna Lily). Loveliest snow-white Lily. Delightfully fragrant. Height 4 ft. June	3 for	10 for	25 for
	\$ 1.20	\$ 3.60	\$ 8.50
FIRE KING . A new hybrid Lily of great beauty. Large clusters of orange-red flowers. Height 4 ft. June. See illustration page 22	2.90	8.75	20.00
HENRYI . Apricot-yellow, tall-growing. Does also in shade. Height 5—6 ft. August	1.35	4.00	9.50
ORANGE TRIUMPH . Deep orange. Richflowering. Height 3 ft. June	1.35	4.00	9.50
REGALE . Royal Lily with large white flowers. Height 4 ft. July	1.15	3.50	8.00
SPECIOSUM RUBRUM . Pink flowers with reflexed petals. 4 ft. July—August	1.65	5.00	11.50
TIGRINUM . Tiger Lily. Red with black spots. Height 4 ft. August	1.15	3.50	8.00

Coll. 35 1 each of 7 Lily varieties 7 for \$ **3.60**

Coll. 36 3 each of Candidum, Fire King, Orange Triumph and Regale. **6.25**
12 early-Flowering Lilies for \$

L. regale



L. Henryi

Hardy AMARYLLIS (Lycoris)

Produce Daffodil-like foliage in spring. This dies down in summer and as if by magic the flower-spikes suddenly appear in August. The lily-like flowers are delightfully fragrant and carried on 2—3 ft. stems. Perfectly hardy.

	Each	3 for	10 f.
Lycoris squamigera (PINK) , very hardy	\$ 0.40	\$ 1.00	\$ 3.00
Lycoris radiata (RED) , very fine	0.25	0.60	1.75
Lycoris aurea (YELLOW)	0.40	1.00	3.00

Coll. 37 3 each of 3 Lycoris varieties 9 for \$ **2.50**



Lycoris



Unusual Late-Spring Flowering **BULBS**

For prices and description see opposite page!

1 **LILY "FIRE KING"**

2 **IRIS REGELIOCYCLUS "ANDROMACHE"**

3 **ANEMONE FULGENS MULTIPETALA**

4 **EREMURUS BUNGEI**

5 **OXALIS ADENOPHYLLA**

Chilcan Woodsorrel)

6 **TURBAN RANUNCULUS MIXTURE**

7 **SPARAXIS "SUPERBA" MIXTURE**

Coll. 42 1 Lily "Fire King", 5 Iris "Andromache", 10 Anemone fulgens, 3 Eremurus, 10 Oxalis adenophylla, 10 Turban Ranunculus, 10 Sparaxis "Superba".

49 for \$ 4.75

← Unusual Late-Springflowering **BULBS**

Illustrated on opposite page

- | | | | |
|--|---------|---------|----------|
| | 3 for | 10 for | 25 for |
| 1 LILIUM "FIRE KING" , the best of all modern Hybrid Lilies, produces colossal clusters of deep orange-red flowers. 4 ft. June. | \$ 2.90 | \$ 8.75 | \$ 20.00 |
| 2 IRIS "ANDROMACHE" Regeliocyclus Hybrid, with quite outstanding veined flowers. Sunny location, June-flowering, 12 inches tall | 0.65 | 1.95 | 4.55 |
| 3 ANEMONE FULGENS MULTIPETALA , fine cutflowers of a rare deep scarlet color. 10 inches. May. | — | 0.50 | 1.15 |
| 4 EREMURUS BUNGEI , Foxtail Lilies. Huge golden yellow spikes. Perfect cutflowers. 4 ft. June | 1.10 | 3.30 | 7.70 |
| 5 OXALIS ADENOPHYLLA , Chilean Woodsorrel. They produce dwarf cushions of finely palmate foliage, covered with circular delicate pink flowers. 3 inches high. Bloom in May. | — | 0.60 | 1.40 |
| 6 TURBAN RANUNCULUS , a fine mixture of the best colors. Require a sunny location and not too heavy soil. 10 inches tall. June | — | 0.50 | 1.15 |
| 7 SPARAXIS "SUPERBA" , the finest mixture of these charming Capebulbs. 10 inches. June | — | 0.35 | 0.85 |

Varieties of Springflowering Bulbs →

Illustrated on next page!

- | | | | |
|--|--------|--------|---------|
| | 10 for | 25 for | 100 for |
| 1. FRITILLARIA MELEGRI . Guinea Hen-Flower. Interesting bell-shaped, checkered flowers in different colors. 10 inches. May-flowering | 0.40 | 0.95 | 3.50 |
| 2. CAMASSIA QUAMASH . Starry blue flowers. Grows 16 inches tall. Bloom in late May | 0.40 | 0.90 | 3.25 |
| 3. HYACINTHUS AZUREUS . A small species of wild Hyacinth with spikes of dark blue flowers. Fine for naturalizing. Bloom in early May. Grows 6 inches tall | 0.35 | 0.75 | 2.75 |
| 4. PUSCHKINIA LIBANOTICA . Dense spikes of white flowers, veined blue. Fine for naturalizing. Blooms in April. Grows 6 inches tall | 0.30 | 0.70 | 2.50 |
| 5. LEUCOJUM VERNUM (Snowflake). Resembles the snowdrop but flowers are larger. Does well between shrubs and in woodland. Grows 8 inches tall. May-flowering | 0.95 | 2.20 | 8.00 |
| 6. ERYTHRONIUM DENS CANIS (Dog Tooth Violet). Nicely variegated foliage, flowers pink with strongly reflexed petals. Bloom April. 5 inches tall | 1.45 | 3.30 | 12.00 |
| 7. ANEMONE APENNINA . Finely incised foliage; numerous clear blue flowers. 8 inches high. Bloom in May | 0.80 | 1.80 | 6.50 |

Collection 43

25 each of **ANEMONE FULGENS, TURBAN RANUNCULUS, SPARAXIS "SUPERBA", OXALIS ADENOPHYLLA**

100 for \$ **4.10**



ALLIUM MOLY, Golden Leek. Globular umbels of golden yellow flowers. 12 inches. June-flowering. **10 for \$ 0.25**
25 for \$ 0.55 **100 for \$ 2.00**

ANEMONE "THE CAEN"

The well-known and beloved Garden Anemones. Single flowers in a great variety of colors. Grow 10 inches tall. May. **10 for \$ 0.40** **25 for \$ 0.90**

100 for \$ 3.25



ANEMONE "ST-BRIGID"

The flowers of this strain are semi-double. Fine cutflowers. **10 for \$ 0.50**
25 for \$ 1.10 **100 for \$ 4.00**



Rare Spring-Flowering BULBS

For complete description see previous page!		
	25 for	100 for
1 FRITILLARIA MELEAGRIS	\$ 0.95	3.50
2 CAMASSIA QUAMASH	0.90	3.25
3 HYACINTHUS AZUREUS	0.75	2.75
4 PUSCHKINIA LIBANOTICA	0.70	2.50
5 LEUCOJUM VERNUM (Snowflake)	2.20	8.00
6 ERYTHRONIUM DENS CANIS (Dog Tooth)	3.30	12.00
7 ANEMONE APENNINA	1.80	6.50

Coll. 44 10 each of above 7 rare varieties 70 for \$ 4.45

Coll. 45 10 each of above 5 new Dutch Iris varieties 50 for \$ 3.15

New DUTCH IRIS

(See also page 21)	10 for	50 for
8 PRINCESS IRENE	\$ 1.10	4.50
9 BLUE CHAMPION	0.70	3.00
10 KING MAUVE	0.60	2.50
11 LEMON QUEEN	0.65	2.75
12 JEANNE D'ARC	0.40	1.60



THE FIRST FLOWERS OF SPRING

	10 for	25 for	100 for
1 NARCISSUS CANALICULATUS	\$ 1.10	\$ 2.50	\$ 9.00
2 IRIS RETICULATA	0.40	0.95	3.50
3 IRIS DANFORDIAE	1.00	2.35	8.50
4 CYCLAMEN ATKINSII	3 for \$ 2.05	6.25	14.50
5 CHIONODOXA GIGANTEA	0.30	0.70	2.50

Coll. 46

10 each of Nr. 2, 5, 6, 7,
8, 9; 5 each of Nr. 1, 3;
3 each of Nr. 4,
10. 76 for \$ **6.20**

	10 for	25 for	100 for
6 CROCUS SIEBERI	\$ 0.35	\$ 0.85	\$ 3.00
7 GALANTHUS ELWESII	0.65	1.45	5.25
8 SCILLA "SPRING BEAUTY"	0.70	1.65	6.00
9 WINTER ACONITES	0.40	0.95	3.50
10 NARCISSUS ASTURIENSIS	1.45	3.30	12.00

THE First FLOWERS OF SPRING *greet the First Robins*

Think of the joy and excitement of discovering "The Heralds of Spring"! Even while traces of snow are still on the ground, they will make their bold appearance and jubilantly announce that spring is stirring in the air! Height 4-5 inches. Flowering March-April, unless otherwise stated.

BLUE BELLS (<i>Scilla campanulata</i>), 10 for 25 for 100 f. fine for naturalizing, white, pink or blue . 10 inches high. Bloom in May	\$	\$	\$
BLUE BELLS (<i>Scilla campanulata</i>), in finest mixture.	0.40	0.95	3.50
CHIONODOXA LUCILIAE (Glorv of the Snow), blue with white centre. 4 inches. March—April	0.30	0.60	2.25
CHIONODOXA GIGANTEA *	0.30	0.70	2.50
IRIS DANFORDIAE *	1.00	2.35	8.50
IRIS RETICULATA *	0.40	0.95	3.50
CROCUS SIEBERI *	0.35	0.85	3.00
CYCLAMEN ATKINSII * 3 for \$2.05	6.25	14.50	—
GAL. ELWESII (Giant Snowdrop)*	0.65	1.45	5.25
MUSCARI ARMENIACUM (Blue Grape Hyacinth), see back of wrapper. Fine for naturalizing. 4 inches. April	0.30	0.60	2.25
MUSCARI BOTR. ALBUM (White Grape Hyacinth). 4 inches. April . .	0.50	1.10	4.00

NARCISSUS ASTURIENSIS *	1.45	3.30	12.00
NARCISSUS CANALICULATUS *	1.10	2.50	9.00
SCILLA SIBIRICA (Blue Squill), fine for naturalizing with numerous spikes of dark blue flowers. 4 inches. April	0.40	0.90	3.25
SCILLA "SPRING BEAUTY" , larger than foregoing *	0.70	1.65	6.00
SNOWDROPS SINGLE , fine for naturalizing in halfshady places, earliest-flowering	0.60	1.40	5.00
SNOWDROPS DOUBLE , very showy because of the completely double flowers	0.85	1.95	7.00
WINTER ACONITES (<i>Eranthis hymnalis</i>), winterflowering, very dwarf, for halfshady places under trees and shrubs	0.40	0.95	3.50

All varieties marked * are illustrated on previous page!

HERALDS of SPRING

Special mixture of dwarf, earlyflowering bulbs for naturalizing.
 25 for \$ 0.70 100 for \$ 2.50 500 for \$ 11.50

March—April

Improved GIANT CROCUS

6 inches tall

These named varieties stand out for free-flowering qualities and size of flower. For effective displays plant large groups closely together. Crocus don't require special soil and do well in any location, also in half shade where many plants fail. Varieties marked * are suitable for growing indoors.

- BLUE RIBBON**, violet blue, the "bluest" variety
 - JEANNE D'ARC**, novelty, purest white
 - ***KATHLEEN PARLOW**, snow white, largeflowered
 - ***KING OF THE STRIPED**, striped violet on white
 - LITTLE DORRIT**, delicate bluish violet, novelty
- Any one variety: 10 for \$ 0.40

- ***YELLOW MAMMOTH**, early, deep golden yellow
 - PICKWICK**, sharply veined violet on white
 - ***REMEMBRANCE**, glossy purple, very largeflowered
 - ***VANGUARD**, early, greyish-violet, dark violet outside
 - VERSICOLOR PICTURATUS**, Silvercloth Crocus, fine striped purple on a white base
- 25 for \$ 0.95 100 for \$ 3.50

Coll. 47 5 each of above 10 Improved Crocus varieties 50 for \$ 1.90

Coll. 48 5 each of the 5 vars. marked * for indoor growing 25 for \$ 1.00

Grand Mixture of CROCUS

A fine assortment of all possible colors. They will display a wonderful multicolored effect in very early spring. 25 for \$ 0.75 100 for \$ 2.75 500 for \$ 13.00

Large-Flowered CROCUS →

- 4-5 inches Bloom in March-April
 - GLOSSY PURPLE**
 - SKY BLUE**
 - SNOW WHITE**
 - VARIEGATED STRIPED**
 - GOLDEN YELLOW**
- Any one color: 25 for \$ 0.85
 100 for \$ 3.00 500 for \$ 14.25

Coll. 10 each of 5 colors
 49 50 for \$ 1.70

Coll. 25 each of 5 colors
 50 125 for \$ 3.75

BOTANICAL CROCUS →

Richflowering

- 1 **E. P. BOWLES**
 - 2 **SNOWBUNTING**
 - 3 **ZWANENBURG BRONZE**
 - 4 **WHITEWELL PURPLE**
- Any one color;
 25 for \$ 0.85 100 for \$ 3.00

Coll. 25 each of 4 varieties
 51 100 for \$ 3.00



HROL

1

2

3

4



Treasure Chest of **HOLLAND BULBS**
for Children
Collection 52

Children love flowers. With this collection planted in their own little garden, their love of nature is furthered and developed.

- 3 HYACINTHS RED, WHITE, BLUE**
to grow on water; also 3 **Hyacinth cups** to hold the bulbs
- 3 PAPERWHITE NARCISSUS**
to grow on pebbles and water
- 3 CANDY STICK TULIPS**
- 3 PEACOCK TULIPS**
- 5 CROCUS**, mixed colors
- 5 BLUE GRAPE HYACINTHS**
- 5 SINGLE SNOWDROPS**
- 5 BLUE SQUILLS**

All varieties are labeled. Complete **ONLY \$ 3.50**
(Value \$ 4.25)



Your **DREAM GARDEN**

Collection 54

Just for You! For the new Home Owners we have selected in one group a complete Spring Garden of Holland Bulbs suitable for new and small gardens.

Your **DREAM GARDEN** consists of:

- 25 HOLLAND TULIPS** in 5 separate colors
- 9 DUTCH HYACINTHS** in 3 colors
- 25 GOLDEN TRUMPET DAFFODILS**
- 25 CROCUS** mixed colors
- 25 HERALDS OF SPRING**
(Includes Scilla, Snowdrops, Grape Hyacinths, etc.)

109 bulbs for
ONLY \$ 6.90



Page 28

Rockgarden

Collection 53

Brighten your Rockgarden with these gay, glittering personalities! These early spring-flowering bulbs are specially suitable because of their size and habit of growth.

All are perfectly hardy and, when once planted, may be left undisturbed to multiply freely, year after year.

- 5 PEACOCK TULIPS**
- 5 EICHLERI TULIPS**
- 5 MINIATURE NARCISSUS ODORUS**
- 10 CROCUS** mixed colors
- 10 IRIS RETICULATA**
- 10 SNOWDROPS**
- 10 BLUE MUSCARI**
- 10 SCILLA SIBIRICA**

65 for ONLY \$ 3.35
(Value \$ 4.00)



Collection 55

For
Naturalizing
in Woodland

A lovely effect is obtained by planting the following varieties anywhere under trees and between shrubs and let them grow wild. They multiply freely, returning each spring with more blooms than ever before.

- 25 NARCISSUS**
- 25 BLUEBELLS** (Sc. campanulata)
- 25 SNOWDROPS**
- 25 BLUE GRAPE HYACINTHS**
- 25 GLORY OF THE SNOW** (Chionodoxa)
- 25 CROCUS** mixed colors

150 bulbs for **ONLY \$ 5.50**

Holland Bulbs are indispensable for The Spring Garden!

DAFFODILS for Naturalizing

Is there a sight more welcome than the graceful Daffodils and Narcissus brightening the awakening garden? Dacing and nodding in the pale April sunshine, the joy of beholding is renewed daily during their entire glorious blooming season. Scatter them throughout the garden, under trees, on slopes, in fields. They will return each spring with an increasing number of cheerful blooms.

GOLDEN TRUMPET DAFFODILS Mixed. A choice of all yellow Trumpet Daffodils	25 for	100 for	500 for
RED-CUPPED NARCISSUS Mixed. A wide and varied assortment of vivid colored, short-cupped varieties	\$ 1.85	\$ 6.75	\$ 32.00
BOUQUET AND DOUBLE NARCISSUS Mixed. Fragrant bunch-flowering and fully double-flowered varieties in an unusual assortment	1.70	6.25	29.50
	1.80	6.50	30.50

Coll. 30 Trumpet, **10** Red-cupped,
56 **10** Bouquet-Double
Daffodils **50** for \$ **3.50**

Coll. 50 Trumpet, **25** Red-cupped,
57 **25** Bouquet-Double
Daffodils **100** for \$ **6.55**

General Mixture of DAFFODILS - NARCISSUS

The diversity of shapes and colors, along with early and late flowering varieties, make this mixture exceedingly interesting.

25 for \$ **1.75** **100** for \$ **6.40** **500** for \$ **30.00**



Narc. nanus

Miniature NARCISSUS for the Rockery

An interesting group of dainty Narcissus for planting in small groups in your Rockgarden. You will enjoy them from the earliest days of Spring onward.

BULBOCODIUM CONSPICUUS. 10 for 25 for		
The Hoop Petticoat. Rich golden yellow flowers with rush-like foliage	\$ 0.75	\$ 1.75
LOBULARIS. A miniature Bicolor Trumpet Daffodil. Very fine	1.00	2.25
ODORUS (Single Jonquil). 2—3 flowers on each stem, deep yellow. Sweet-scented. Easily naturalizing	0.60	1.40
NANUS. A trim little Daffodil of bright yellow with slender trumpet	1.10	2.55
TRIANDRUS ALBUS. Angel's Tears. Creamy white flowers with reflexed petals	1.00	2.25

Coll. 60 5 each of 5 Miniature Narcissus varieties . . . 25 for \$ **2.20**

MERTENSIA Virginia Bluebell

A beautiful hardy perennial which grows 1—1 1/2 ft. high, bearing many flower clusters of a soft porcelain-blue shade. They thrive in either sun or shade and flower more abundantly every year. The finest plant to combine with Trumpet Daffodils for a beautiful picture of blue and gold. **10** for \$ **2.65** **25** for \$ **6.05** **100** for \$ **22.00**

Coll. 58 25 Golden Trumpet Daffodils and 6 Mertensia. A lovely combination returning each spring **31** for \$ **3.25**

Blue Grape Hyacinths and White Narcissus make the loveliest of Spring Pictures when massed in clumps.
Coll. 59 25 **WHITE NARCISSUS** and 50 **BLUE GRAPE HYACINTHS** **75** for \$ **2.75**



Grow 20-24 inches tall

De Luxe **DAFFODILS - NARCISSUS**

Bloom in April

	10 for	25 for
1 ARANJUEZ	\$ 1.90	\$ 4.40
2 MRS. R. O. BACKHOUSE	1.70	3.95
3 FEBRUARY GOLD	2.55	5.85
4 MOUNT HOOD	1.80	4.15

	10 for	25 for
5 IRENE COPELAND	\$ 1.90	\$ 4.40
6 UNSURPASSABLE	2.10	4.75
7 VERGER	1.90	4.40

Coll. **65** 3 each of 7 De Luxe varieties
21 for \$ **4.10**

Coll. **66** 5 each of 7 De Luxe varieties
35 for \$ **6.35**