

ROSES and CAMELLIAS

of Thomasville

SB115
Z9T52
R

REF/RAR

LIBRARY
REC
★ SEP 24 1956 ★
U. S. Department of Agriculture



©

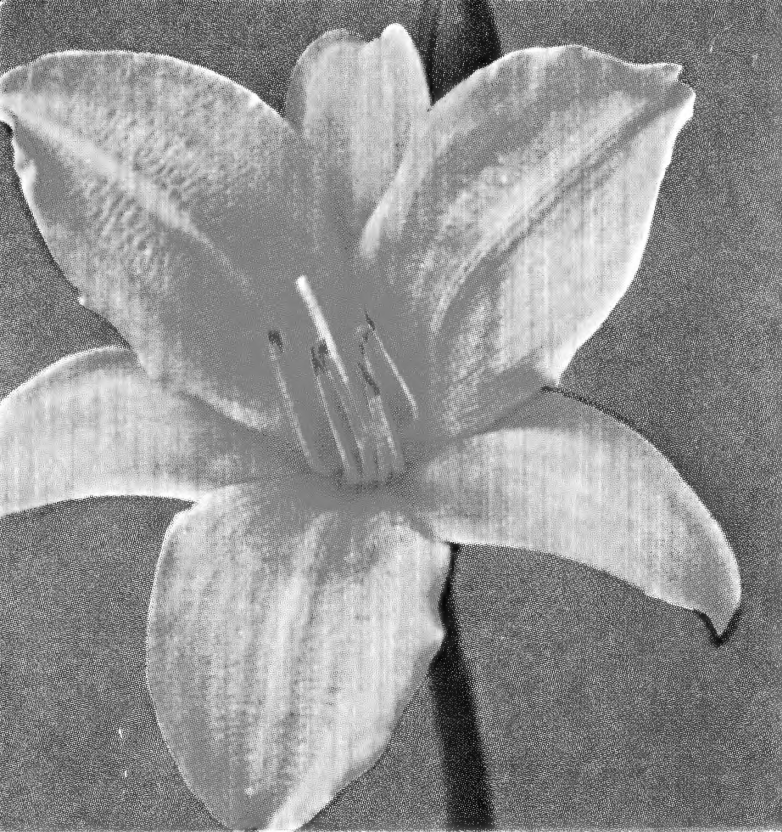
New 1957 All-America Winner, Floribunda Rose, WHITE BOUQUET. See page 15.

• HJORT'S 1957 BOOKLET •

THOMASVILLE NURSERIES, INC.

"Home of Roses"

THOMASVILLE, GEORGIA



Heemerocallis The Perennial Supreme!

Daylily fever is spreading by leaps and bounds, and once you catch it there seems to be no stopping its spread—but nobody wants to. There is no other flower which gives more pure enjoyment than the new Daylily hybrids. They are lovely beyond words, and fit every garden need. There are the cool lemon-yellows, the warm apricots, the lovely lavender-hued flowers, the luscious blends, and then the deep orange tones for accent—the bright reds, the dull reds, the purple and mahogany and brown shades. The range is wide, the size and forms vary widely, and all are lovely.

One of the easiest perennials to grow, adaptable to almost any location, but please provide at least a half day of sunshine.

DUCHESS OF WINDSOR. A Distinctive Daylily. See page 21.

LOCATION, INVITATION, GUARANTEE, ETC. . . .

Location. Office, trial grounds and sales yard at intersection of Boston Road and Boulevard, east at city limits. The Thomasville-Boston Road is a link of U. S. Highway 84. Office telephone: Canal 6-5568. If no answer, call Canal 6-5659.

Invitation to Visitors. Visitors are welcome at our nursery every day in the year, and there is no obligation to purchase. See Roses in garden of Sam Hjort adjoining main nursery and in our fields, April through October; also Camellias at nursery grounds November through February, and Daylilies March through summer.

Substitution. Always in the fall and often through most of the winter we can fill orders with first-choice varieties. When a variety is sold out we will substitute with a similar one of equal or greater value, unless instructed not to do so.

Guarantee. We guarantee all plants to be up to grade, properly dug and packed, and shipped according to instructions. Most people who pay their good money for plants set them carefully and tend them properly. Instructions for planting and care accompany every shipment. We do not make a blanket guarantee that our plants will live, but we will adjust satisfactorily any reasonable claim, provided losses were not from weather or conditions over which we have no control, and your claim is filed by July 1.

Order Early. Whether you want plants shipped as early as October or as late as March, we strongly advise your ordering early. We can then reserve the stock to make sure your order can be filled complete and with the best materials.

Visitors Please Note

We wish to serve everyone in turn. At the height of the season sometimes many cars are at the nursery at one time. In order that salesmen may know who is "next," please give your name at the office upon arrival. The ladies in the office will then see that you are served in turn and as quickly as possible consistent with adequate and courteous attention to all.

WE ARE MEMBERS OF

All-America Camellia Selections
American Association of Nurserymen
Southern Nurserymen's Association
Georgia Nurserymen's Association

Florida Nurserymen's and Growers' Association
American Hemerocallis Society

All-America Rose Selections
American Camellia Society
American Rose Society
Georgia Rose Society



Golden Showers Useful and Lovely!

A pillar-type Rose, and the first climber to win an All-America Award in years. This superb new Rose has so many good qualities it was a natural to win the highest honor. While it may be used in several ways—as a pillar or as an unchecked climber—its greatest usefulness in the Lower South, including Florida, is when pruned fairly hard. As a vigorous “bush” it will perform well, having the quality many climbers do not possess—the ability to bloom freely on new wood. And such long, upright, stiff stems and long-pointed, golden buds, opening into large, golden flowers which fade slowly! The color pictures do not do justice to this beautiful Rose. Listed with Climbing Roses, page 19.



GOLDEN SHOWERS
All-America Winner for 1957

Foreword . . .

THOMASVILLE is always a delightful place to visit, for here perhaps a larger percentage of people are garden-minded than in any other place in America, and many delight in sharing their garden beauties and garden experience with others. Most of these gardens, however, can be made available to many people only for such special occasions as garden pilgrimages, the Camellia Show and the Rose Show. Ours, however, is open to visitors every day in the year, and although we are in the nursery business, a visitor does not necessarily have to purchase.

Each season sees more and more people visit our large Rose garden, which includes a portion devoted to testing new creations of members of the All-America Rose Selections. Likewise, many visitors come to see Camellias, Flowering Trees, Daylilies, and other things in season. And still we think many more should come, for where else can one see so many different things of beauty, and find people who like to share their experiences like the Hjorts?

Rainfall has been plentiful—not too much, not too little, this season—and the Rose plants are some of the best we have ever produced. All the Daylilies, and many of the Azaleas and Camellias as well, are growing in sterilized soil, which is enriched and under irrigation, and the quality of plants is above the average.

We hope that in the planting season of fall, 1956, through spring, 1957, many people will come to the nursery for plants. But we know many cannot, and to those people we pledge the same careful selection and good service as if you came to see us.

THOMASVILLE NURSERIES, INC.

by *Sam. C. Hjort*, President

Thomasville, Georgia

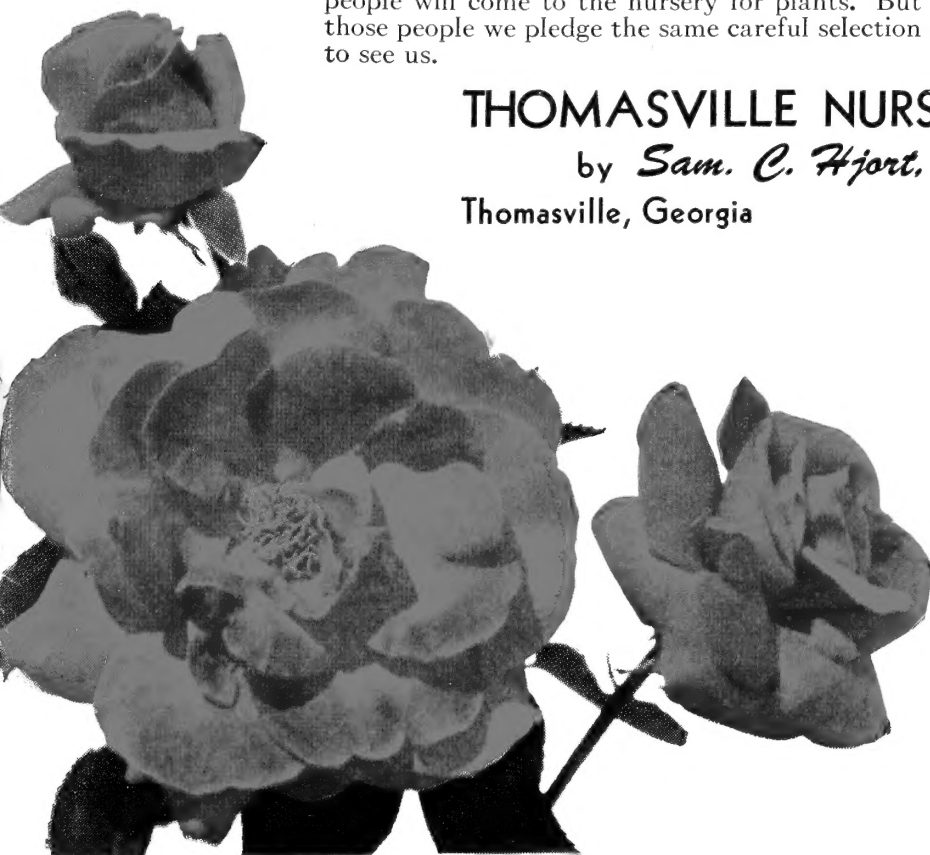
August 1, 1956

The Thomasville Rose Show

April 26, 1957

Rose time in the Deep South is celebrated annually through the staging of the Thomasville Rose Show, the most spectacular flower show in the Southeast, by the Thomasville Garden Club, assisted by the Chamber of Commerce and other civic groups. There will be tours of famous Southern plantations, the Rose Show, special exhibits and the Rose Show dances.

The 1957 show will be one of great beauty, size and merit. If you miss seeing the Thomasville Rose Show, you miss a delightful experience. All Thomasville welcomes you!

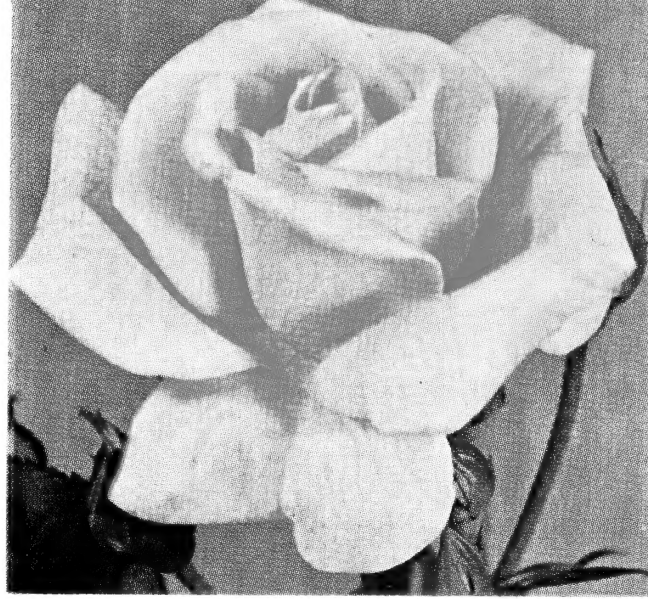


HJORT'S Thomasville Nurseries

... 59 YEARS WITH ROSES

Roses are not hard to grow if a few simple instructions, sent with shipments, are followed. It is fortunate, too, that control of pests has become greatly simplified with the coming of new and more efficient chemicals. The use of Captan controls most fungus diseases, such as blackspot, and Malathion kills most insects. By using these as a spray or dust every ten days you keep bushes healthy, growing and blooming.

Thomasville, "City of Roses," has long been known as a Rose center, and not only professional but amateur growers here have gained a national reputation for successful Rose culture.



© BETSY McCALL
New Floribunda for 1957. See page 12.

ROSE INDEX

Ardelles	5	Dean Collins	10	Montezuma	10
Baby Blaze	12	Devoniensis	16	Moss Roses	18
Banksia, White	20	Donald Prior	13	Mrs. B. R. Cant	17
Banksia, Yellow	20	Dr. W. Van Fleet	20	Mrs. Charles Bell	6
Baroness Henriette Snoy	16	Duchesse de Brabant	17	Mrs. Dudley Cross	17
Belle of Portugal	19	Duchess of Sutherland	9	Mrs. Dunlop Best	17
Betsy McCall	12	Eclipse	5	Mrs. Herbert Stevens	17
Better Times	5	Editor McFarland	5	New Dawn	20
Betty Prior	12	Editor McFarland, Light	5	Nocturne	6
Blanche Mallerin	5	Elie Beauvillain	20	Old Gold	17
Blaze	19	Else Poulsen	13	Papa Gontier	17
Bon Silene	16	Embers	13	Paul Neyron	9
Bouquet	12	Etoile de Hollande	5	Paul's Scarlet Climber	20
Briarcliff	5	Etoile de Lyon	17	Peace	6
Bridesmaid	16	Fashion	13	Perle d'Or	17
Buccaneer	10	Floradora	13	Picayune	15
Carrousel	10	Frau Karl Druschki	9	Picture	6
Cecile Brunner	12,16	Freiherr von Marschall	17	Pinkie	14
Centifolia (Cabbage)	18	Freensham	13	Pink Rosette	14
Charles Mallerin	5	General Jacqueminot	9	Pinocchio	14
Chatillon Rose	15	Geranium Red	13	Poinsettia	6
Charlotte Armstrong	5	Gloire de Dijon	20	Poulsen's Bedder	14
Cherokee, Pink	20	Golden Dawn	5	President Herbert Hoover	17
Cherokee, White	20	Golden Salmon Superior	15	Princesse de Sagan	11
Chic	12	Golden Showers	19	Queen Elizabeth	11
China Doll	12	Goldilocks	14	Radiance	6
Chrysler Imperial	5	Grey Pearl	5	Red Pinocchio	15
Circus	13	Grossherzog Ernst Ludwig	20	Red Radiance	6
City of York	19	Gruss an Aachen	14	Red Ripples	15
Cl. Cecile Brunner	19	Gruss an Teplitz	17	Reine Marie Henriette	20
Cl. Charlotte Armstrong	19	Guinee	20	Reve d'Or	20
Cl. Columbia	19	Helen Traubel	5	Rex Anderson	7
Cl. Countess Vandal	19	Improved Lafayette	14	Rose des Peintres	18
Cl. Crimson Glory	19	Independence	14	Roundelay	11
Cl. Dainty Bess	19	Jiminy Cricket	14	Roxburghi	18
Cl. Devoniensis	19	Kaiserin A. Viktoria	5	Rubaiyat	7
Cl. Etoile de Hollande	19	Katherine T. Marshall	5	Safrano	17
Cl. Goldilocks	19	Lady Hillingdon	17	Silver Moon	20
Cl. Kaiserin A. Viktoria	19	La France	5	Snowbird	17
Cl. Killarney	19	Lamarque	20	Snowflake	15,17
Cl. Louis Philippe	19	Lavender Pinocchio	14	Soeur Therese	7
Cl. Maman Cochet, Pink	19	Louis Philippe	17	Solfaterre	20
Cl. Maman Cochet, White	20	Love Song	5	Souv. de la Malmaison	17
Cl. Peace	19	Lowell Thomas	5	Sparkler	15
Cl. Papa Gontier	19	Lydia	5	Spartan	15
Cl. Mrs. Charles Bell	19	Maman Cochet, Pink	17	Summer Snow	15
Cl. Perle d'Or	19	Maman Cochet, White	18	Susan Louise	17
Cl. Perle des Jardins	19	Ma Perkins	14	Sutter's Gold	7
Cl. Snowbird	20	Marechal Niel	20	Sweetheart Rose	12
Cl. Summer Snow	20	Marie van Houtte	17	Talisman	7
Cl. Talisman	20	Masquerade	14	The Doctor	8
Cl. Yellow C. Brunner	20	McGredy's Sunset	5	The Fairy	15
Cloth of Gold	20	Mermaid	20	Tiffany	7
Cocorico	13	Mirandy	5	Twilight	8
Comtesse Riza du Parc	16	Mission Bells	6	Vogue	15
Confidence	5	Mme. Camille	17	White Bouquet	15
Countess Vandal	5	Mme. Lambert	17	White Swan	8
Coupe d'Hebe	16	Mojave	6	William Allen Richardson	20
Crimson Glory	5			William R. Smith	18
Crimson Rosette	13			Yellow Talisman	8
Dagmar Spath	13				
Dainty Bess	5				

HYBRID TEA *Roses*

Ardelle. Plant Patent App. for. A cross of Peace and Mrs. Chas. Lamplough. Very large, lemon-white, double, fragrant bloom. \$2.50.

Better Times. Cerise-red; pointed buds on long, stiff stems. Fine for cutting. \$1.25.

Blanche Mallerin. Plant Patent 594. Pure paper-white. Long-pointed buds open into large flowers. \$2.25.

Briarcliff. Rose-pink; large, double, fragrant. Stiff stems; good growth. \$1.25.

Charles Mallerin. Plant Patent 933. Very dark, velvety crimson-red; long-pointed buds and large double flowers on long stems. A tall, vigorous bush, the showpiece of any garden. The flowers are superb for both cutting and exhibiting. \$2.50.

Charlotte Armstrong. Plant Patent 455. A truly great Rose, second only to Peace in national popularity. Buds long-pointed, carmine-red; open flower cerise. Long stems; vigorous growth. Should be in every collection of Hybrid Tea Roses. \$2.25.

Chrysler Imperial. Plant Patent 1167. All-America Winner for 1953; perhaps the finest dark red Rose to date. Vivid crimson with darker overtones; large, very double, spicy fragrance. Compact, sturdy growth. \$2.50.

Confidence. Plant Patent 1192. A new Rose from the originator of Peace. This is a peach-toned pastel flower of always notable form. It has long, streamlined buds and large double flowers on strong stems. Vigorous bush. \$2.25.

Countess Vandal. Coppery salmon-pink; long-pointed buds and large, high-centered flowers on stiff stems. Vigorous; outstanding. A favorite at Thomasville, where many varieties are grown. \$1.50.

Crimson Glory. All that the name implies. Deep crimson-red; very double; highly fragrant. Growth vigorous; bloom constant. In a popularity contest the country over, it stood with Peace and Charlotte Armstrong to comprise the top three. \$1.50.

Dainty Bess. Large, single, wild-rose-pink flowers in clusters. Bush vigorous; continuous bloomer. One of the loveliest of all Roses. \$1.50.

Eclipse. Long, streamlined buds of deep yellow. Vigorous and thrifty, with abundant foliage. \$1.50.

Editor McFarland. Deep pink; comparable to Radiance in growth and blooming. Very strong. \$1.25.

Etoile de Hollande. Brilliant crimson. Large, fairly double, fragrant blooms on long stems. Vigorous; continuous bloomer. The most generally successful and satisfactory of non-patented dark red Roses. \$1.25.

Golden Dawn. Bud is sunflower-yellow, flushed with old-rose; flower very double and fragrant, borne on stiff stem. A vigorous bush with abundant foliage. Fine for the Lower South. \$1.25.

Grey Pearl. Plant Patent 680. A unique lavender-gray to deep pink, tinted with mauve-violet. \$2.50.

Helen Traubel. Plant Patent 1028. All-America Winner for 1952. Beautiful pink Rose named for the first lady of American opera. Long, tapered buds; large flower. Color varies with the weather; sometimes it is a lively, light pink, often it is a salmon-pink or apricot. Very vigorous growth. \$2.50.

Kaiserin Auguste Viktoria. White, with slight lemon tint at center. Beautiful bud and fairly large, double flower. The most generally satisfactory of white Hybrid Teas. \$1.25.

Katherine T. Marshall. Plant Patent 607. Clear, glowing pink buds, slightly salmon, and large, double flowers on long, stiff stems. One of the Top Ten Roses of America, and greatly valued in the South for its superb and dependable qualities. \$1.75.

La France. The original Hybrid Tea Rose, still treasured by many Southern gardeners for its fine qualities of repeating bloom, strong growth and beautiful, light pink flowers. Large and very fragrant. \$1.75.

Light Editor McFarland. One of the very finest and most dependable of Roses for the South. A sport of Editor McFarland discovered in our fields by Peter W. Hjort. Exactly like the parent, except that it is a light pink color, considered by many to be more beautiful than the original variety. This Rose does exceptionally well in Florida and the Lower South. \$1.50.

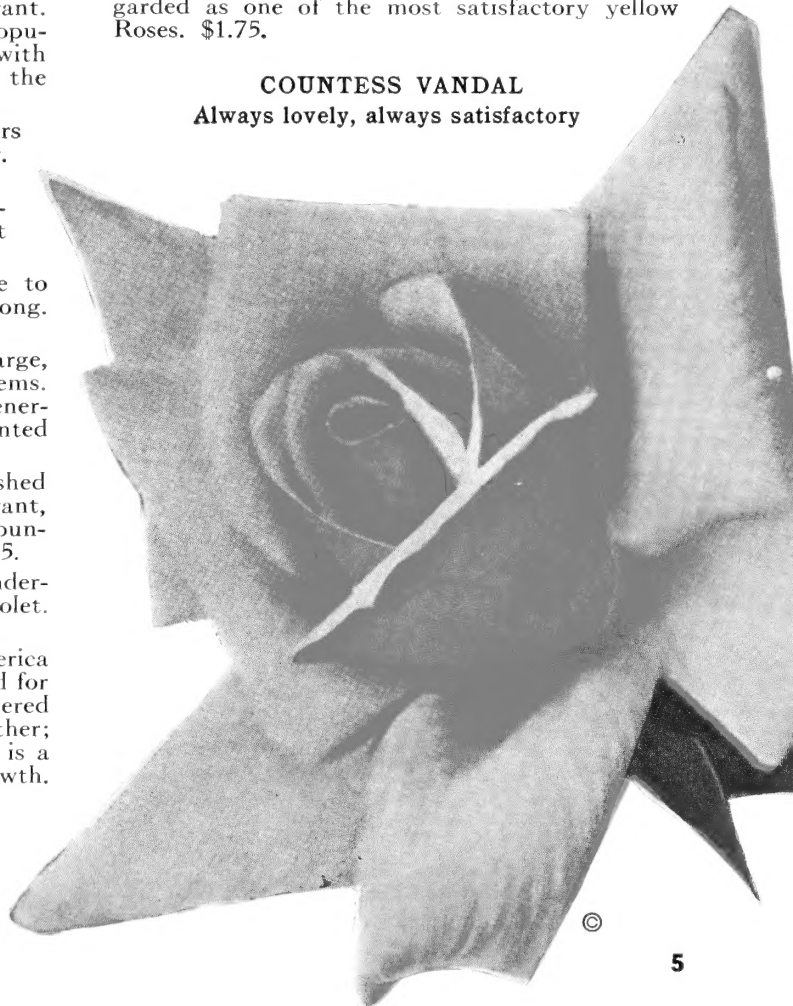
Love Song. Plant Patent 1360. The most beautiful bicolor Rose, greatly admired in our test garden. The long-pointed buds are deep yellow tinged pink, opening to large, double, deep rose-colored flowers tinged yellow. An upright, sturdy bush with dense foliage. \$2.50.

Lowell Thomas. Plant Patent 595. Deep golden yellow in spring and fall; lighter in summer. High, cupped center and large, open flower. It is a favorite in many parts of America. Grows well at Thomasville. \$2.25.

Lydia. Deep golden yellow; double, fragrant flowers of good size. Glossy foliage. A lovely variety. \$1.50.

McGredy's Sunset. Plant Patent 317. Deep golden yellow, tinged orange; opens clear yellow. Large, heat-resistant flower; strong stem. Heavy foliage on a vigorous plant. At Thomasville regarded as one of the most satisfactory yellow Roses. \$1.75.

COUNTESS VANDAL
Always lovely, always satisfactory



Hybrid Tea Roses



LIGHT
EDITOR McFARLAND

Mirandy. Plant Patent 632. Very large, double, dark garnet-red; highly fragrant. Upright and vigorous in growth. Usually produces one flower to a stem, eliminating disbudding, and always producing specimen blooms. At Thomasville, where many varieties have been tried, it is a favorite dark red. \$2.25.

Mission Bells. Plant Patent 923. All-America Winner for 1950, and one of the most vigorous and rewarding of Roses. Deep shrimp-pink buds, opening to large, salmon-pink flowers. Strong, branched growth, constantly in bloom. Anyone who can grow Roses at all can grow Mission Bells. For its many good points it deserves a place in every garden. \$2.00.

Mojave. Plant Patent 1176. All-America Winner for 1954. Completely new color combination of blended salmon, apricot and orange. \$2.75.

Mrs. Charles Bell. Sport of Radiance, and identical with parent in vigorous growth, freedom of bloom and size of flower. Always dependable, always satisfactory, and easily the best of its color, shell-pink, for the South. \$1.25.

BIG VALUE Non-Patented Roses

Editor McFarland. Deep pink.

Etoile de Hollande. Dark red.

Radiance. Carmine-pink.

Red Radiance. Medium red.

Yellow Talisman. Yellow.

(Regular Value \$6.25)

SPECIAL, one each, \$5.00

Three of each for \$14.00

ASK FOR OFFER NO. H-4

Nocturne. Plant Patent 713. Deep cardinal-red; long-pointed buds and large flowers on stiff stems, usually one perfect flower to a stem. Most vigorous of dark reds at Thomasville. In a close race with Mirandy and Crimson Glory, Nocturne is first in popularity in the Southeast. \$2.25.

Peace. Plant Patent 591. World's No. 1 Rose. Winner of all top national awards in America, France, England and other countries, and blue ribbons and sweepstakes in shows everywhere. Peace is a strong grower, with large, handsome foliage and produces very large, very double and lasting flowers of soft yellow, flushed and tinged pink. An exquisite Rose. \$2.50.

Picture. Long-pointed buds and double, fragrant, rose-pink flowers, produced on a strong bush. An attractive flower for cutting, with good substance and long-lasting qualities. A Southern favorite. \$1.50.

Poinsettia. Distinctively different from other reds in color and foliage. Poinsettia-scarlet, double blooms, borne on strong stems. Large foliage; vigorous bush. \$1.25.

President Herbert Hoover. Flame-pink, scarlet and yellow; long-pointed buds on heavy, stiff stems. A good Rose, honoring a sound and patriotic American. \$1.25.

Radiance. The great, dependable favorite of the South. Carmine-pink blooms on strong stems. A vigorous, free bloomer over a long season. It may be a lazy gardener's Rose, but everyone loves it for its admirable qualities. \$1.25.

Red Radiance. Easily the most generally planted red Rose in the South for like its parent Radiance it is practically perfect in size, stem, growth, freedom of bloom and persistency. \$1.25.



EDITOR McFARLAND

THOMASVILLE NURSERIES

Hybrid Tea Roses

Rex Anderson. Plant Patent 335. Ivory-white, perfectly formed, slow-opening, large flower. May be grown to enormous size by disbudding. \$1.75.

Rubaiyat. Plant Patent 758. Here is a large Rose fully as vigorous as Radiance. Large, cerise-red buds, opening to rose-red flowers. The strong bush produces many fine flowers on strong stems; large foliage. Has become a great favorite. \$1.75.

Join the AMERICAN ROSE SOCIETY AND THE GEORGIA ROSE SOCIETY

Rose lovers everywhere will find membership in the American Rose Society most helpful and interesting. For \$4.50 yearly dues one receives every spring a beautiful illustrated Annual, the monthly American Rose Magazine, each issue full of interesting material, use of the lending library and personal help on Rose problems. We also invite you, wherever you live, to join the Georgia Rose Society, which issues a bi-monthly News Letter, several mimeographed sheets of timely Rose information.

For \$5.50 you will receive membership in both the American Rose Society and the Georgia Rose Society. Remittance should be mailed to Georgia Rose Society, Box 328, Thomasville, Ga. We receive no commissions. Only because these are non-profit organizations is it possible to give so much for \$5.50.



MIRANDY
All-America Winner 1945

Soeur Therese. Long-pointed, chrome-yellow buds, opening to daffodil-like flowers. A favorite in many localities. \$1.25.

Sutter's Gold. Plant Patent 885. Beautiful long-pointed buds richly shaded orange and red, opening into yellow flowers. Fairly vigorous in growth; free bloomer. One of the four 1950 All-America Winners. \$2.25.

Talisman. Brilliant red and gold buds, opening to orange-yellow flowers, gradually changing to light yellow, tinged pink. \$1.25.

Tiffany. Plant Patent 1304. All-America Winner for 1955. A strikingly beautiful warm pink Rose, shading to yellow at the base. Lovely, long-pointed buds, opening into large, double flowers that last well; produced on strong, stiff stems. The bush is of vigorous growth; the bloom is plentiful. Favorable reports from tests here and the entire Southeast show that it is dependable. We highly recommend this Rose and believe that Tiffany has come to stay a long, long time. \$2.50.

OTHER HYBRID TEA ROSES

In limited supply we have fine plants of **Bravo**, \$2.25; **Burnaby**, \$2.50; **Happiness**, \$2.25; **Killarney**, \$1.50; **Killarney Queen**, \$1.50; **Korovo**, \$1.25; **Pageant**, \$2.25; **President Eisenhower**, \$2.25.

THREE TOP BLENDS

Helen Traubel. Pink-apricot.

Peace. Yellow, tinged pink.

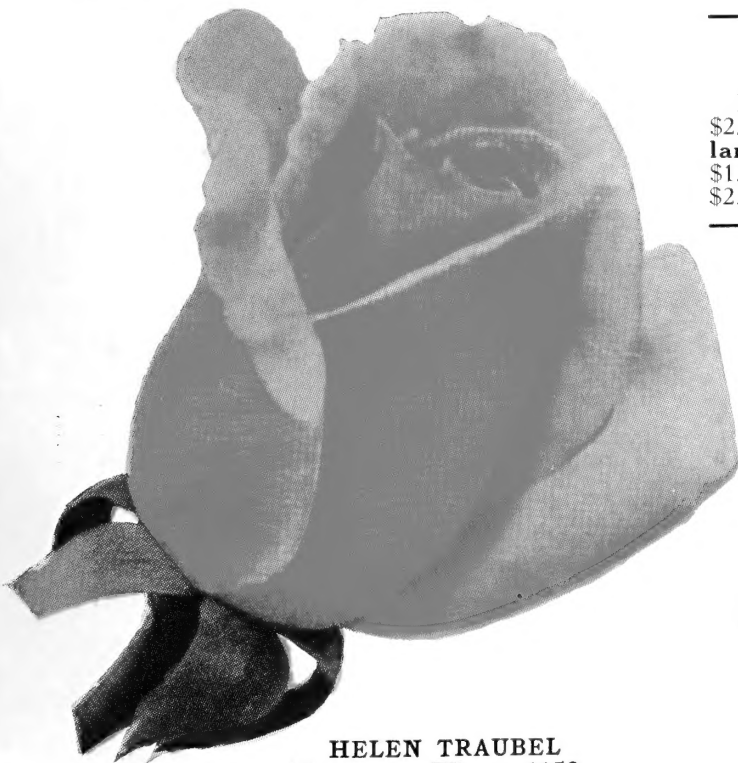
Tiffany. Pink with yellow base.

(Regular Value \$7.50)

SPECIAL, one each, \$6.75

Three of each for \$19.80

ASK FOR OFFER NO. H-3



HELEN TRAUBEL
All-America Winner 1952

THOMASVILLE, GEORGIA



©

TWILIGHT. A glamorous new color

Hybrid Tea Roses

The Doctor. Sparkling pink, pointed bud; large, rose-pink flower. Does not grow fast first year; afterward is large, thrifty and outstanding. For those who can exercise a little patience and give it a little extra care it usually becomes a most charming and appreciated pink Rose. \$1.50.

Twilight. Plant Patent 1434. A lovely new pastel lavender-lilac with a light silvery reverse. The bud is pointed, and the flower opens gradually to show a high center. \$2.75.

White Swan. Plant Patent 1115. A fine exhibition variety with upright bush, which is rare in a white Rose. Long-pointed buds of alabaster-white open slowly to fine, pure white blooms up to 4 inches across. \$2.25.

Yellow Talisman. Buds golden yellow, long pointed; flowers somewhat lighter. Very successfully grown at Thomasville. Bush is vigorous, superior to its parent. \$1.25.

Thomasville Favorite Non-Patented Roses

Countess Vandal. Salmon-pink.

Crimson Glory. Dark red.

Eclipse. Yellow.

K. A. Viktoria. White.

(Regular Value \$5.75)

SPECIAL, one each, \$5.00

Three of each for \$14.50

ASK FOR OFFER NO. H-2

Thomasville Favorite Patented Roses

Charlotte Armstrong. Carmine.

Mirandy. Dark red.

Peace. Yellow, tinged pink.

Tiffany. Pink.

White Swan. Pure white.

(Regular Value \$11.75)

SPECIAL, one each, \$10.50

Three of each for \$31.20

ASK FOR OFFER NO. H-1

SEE . . .

Top Quality

**ROSES
HERE**

FROM APRIL TO OCTOBER our Rose fields are a colorful sight. We grow the best. Come to see them.



TIFFANY. All-America Winner 1955

This lovely Rose has everything—color, form, fragrance, good stems and foliage, sturdiness, vigor and constancy.



© PEACE
World's No. 1 Rose

While ours is a very extensive Rose listing and the plants are of excellent quality, some varieties are in limited supply. If a variety is sold out, we substitute a similar one unless instructed not to do so.

Prices of Hybrid Tea Roses

- All \$1.25 Roses are 3 for \$3.15, 6 for \$6.00, 12 for \$11.00
- All \$1.50 Roses are 3 for \$3.90, 6 for \$7.80, 12 for \$15.60
- All \$1.75 Roses are 3 for \$4.65, 6 for \$9.30, 12 for \$18.60
- All \$2.00 Roses are 3 for \$5.25, 6 for \$10.50, 12 for \$21.00
- All \$2.25 Roses are 3 for \$6.00, 6 for \$12.00, 12 for \$24.00
- All \$2.50 Roses are 3 for \$6.60, 6 for \$13.20, 12 for \$26.40
- All \$2.75 Roses are 3 for \$7.20, 6 for \$14.40, 12 for \$28.80

All Rose plants shipped postpaid.



NOCTURNE
All-America
Winner 1948

Hybrid Perpetual ROSES

Duchess of Sutherland. Large, very double, pointed buds of lovely peach-pink, opening into immense flowers. Long, stiff stems and very few thorns.

Frau Karl Druschki (White American Beauty). This is the one pure paper-white Rose without a tinge of pink or lemon. Very large and double. In the Southeast repeats in blooming.

General Jacqueminot. Bud scarlet-crimson; flower large, clear red; very fragrant. The vigorous old "Jack Rose" deserves a place in every Southern garden.

Paul Neyron. Greatest of all pink Hybrid Perpetuals. Immense, cup-like bud; perfect, well-formed flower. A grand old Hybrid Perpetual.

All Hybrid Perpetual Roses, \$1.50 each, 3 for \$3.90, 6 for \$7.50, 12 for \$13.20



GENERAL JACQUEMINOT

Grandiflora

ROSES

Rosarians have created a brand-new class, Grandiflora, for a very lovely, vigorous and versatile group of Roses. The Grandifloras combine several characteristics of both Hybrid Tea and Floribunda. They are tall, free-flowering plants which produce sometimes clustered blooms, sometimes single specimens, on long stems fine for cutting. Flower size falls between the Hybrid Tea and Floribunda; flower and bud form are similar to the Hybrid Tea class.

Queen Elizabeth is the first Grandiflora to win the All-America award.

BUCCANEER

Holds its golden color through all seasons.

PRICES ON GRANDIFLORA ROSES

All \$2.00 Roses are 3 for \$5.25, 6 for \$10.50

All \$2.50 Roses are 3 for \$6.60, 6 for \$13.20

All \$2.75 Roses are 3 for \$7.20, 6 for \$14.40

All Rose plants shipped postpaid.

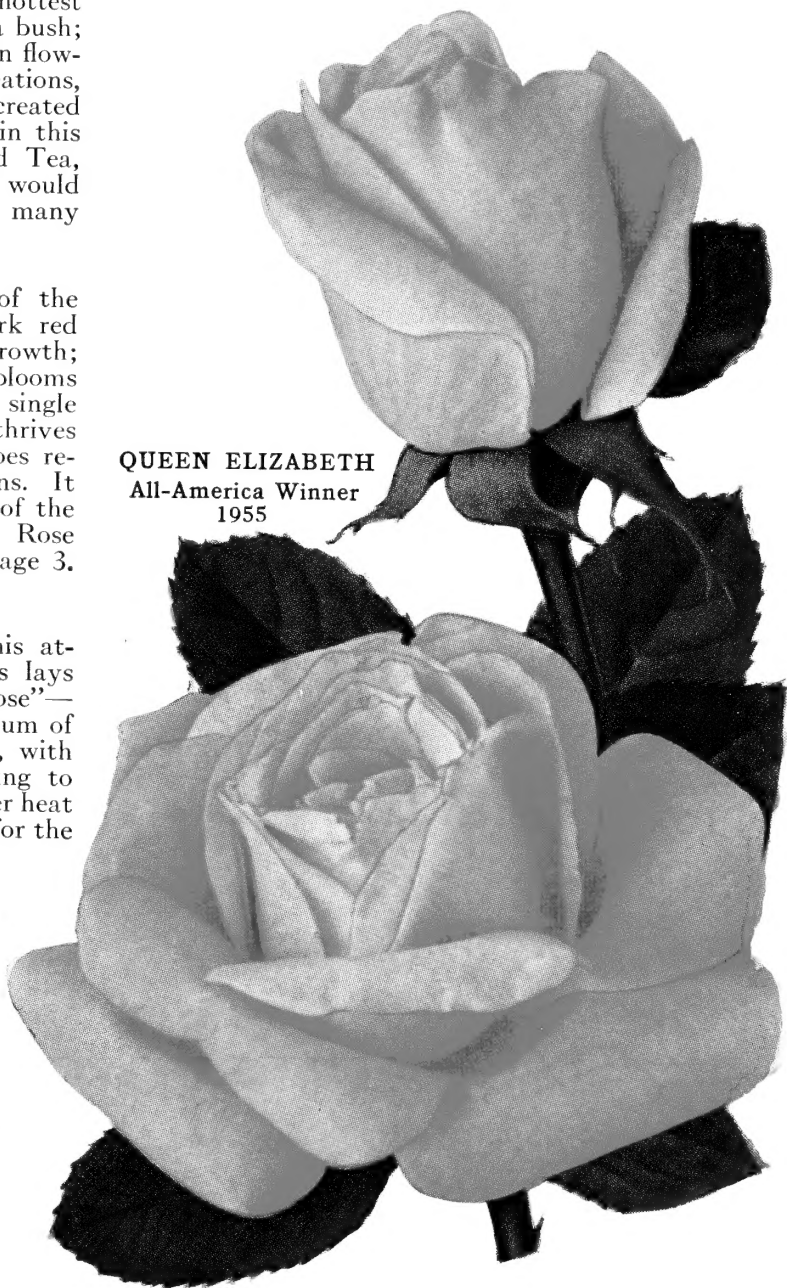
Buccaneer. Plant Patent 1119. Brilliant and non-fading yellow, without a tinge of other color. Holds color well throughout hottest summer weather. Vigorous Grandiflora bush; long stems; pointed buds and good open flowers. One of Herbert Swim's finest creations, and if the Grandiflora class had been created in 1952, when it was first recognized in this variety, not large enough for Hybrid Tea, not small enough for Floribunda, it would have won the All-America award so many believe it well deserves. \$2.50.

Carousel. Plant Patent 1066. One of the showiest and most satisfactory of dark red Roses to date. Very vigorous in growth; branching and free-flowering. Large blooms for a cluster variety; some blooms on single stems; color is non-fading. Carousel thrives in many sections of America; often does remarkably well under adverse conditions. It has recently won the Gold Certificate of the American Rose Society, one of the Rose world's top honors. See illustration, page 3. \$2.00.

Dean Collins. Plant Patent 1279. This attractive Rose of the Grandiflora class lays claim to being the "lazy gardener's Rose"—growing almost anywhere with a minimum of care. Tall growing and well branched, with an abundance of rose-red buds, opening to double, carmine-red blooms. The summer heat does not fade this Rose, a good quality for the Lower South, including Florida. \$2.00.

Montezuma. Plant Patent 1383. Here is a fine Rose, new for 1956, bringing new color to the Grandiflora class. For quality of bloom, vigorous growth and continuous flowering, we think this variety has come to stay. Long-pointed, orange-scarlet buds open to salmon-orange blooms of good substance on long stems. Some are produced singly; other stems bear clusters, all fine for cutting. \$2.75.

QUEEN ELIZABETH
All-America Winner
1955



GRANDIFLORA ROSES

All Grandiflora Collection

Buccaneer. Golden yellow.
Carrousel. Velvety dark red.
Dean Collins. Rose-red.
Montezuma. Salmon-orange.
Queen Elizabeth. Rose-pink.
Roundelay. Dark red.
(Regular Value \$14.25)

SPECIAL, one each, \$12.60

Three of each for \$37.50

ASK FOR OFFER NO. G-1




MONTEZUMA brings a new color

Queen Elizabeth. Plant Patent 1259. All-America Winner for 1955. A very lovely Rose, honoring a very lovely lady! This pure pink Rose is one of the finest varieties ever introduced in America. Not every All-America winner in the past has thrived in the South, but this one is well-nigh perfection. In test gardens in all the Southern states it has shown excellent growth and flowering qualities. Queen Elizabeth is a charming color, a blending of carmine-rose with dawn-pink. It is a profuse bloomer and of the most vigorous growth. It is a development of the noted hybridizer, Dr. Walter Lammerts, who calls it strongly, for he has given us such other splendid Roses as Charlotte Armstrong and Chrysler Imperial. Everyone will love Queen Elizabeth! \$2.50.

Roundelay. Plant Patent 1280. A dark red Rose of much merit and a fine addition to the Grandiflora class. From one of its parents, Charlotte Armstrong, it inherits beautiful form at all stages. From Floradora, the other parent, comes the characteristic of blooming very freely and lasting well. Stems are long and strong enough for cutting. Flowers, some on single stems, some in clusters, are delightfully fragrant. A vigorous rapid grower with ample, dark green foliage. \$2.50.

Sam. Hjort says:

"I have lived my life with Roses and love many varieties, but if I could have only one Rose it would be Queen Elizabeth!"



ROUNDELAY
Superb new
Grandiflora

Floribunda ROSES

Prices of Floribunda Roses

All \$1.25 Roses are 3 for \$3.15, 6 for \$6.00, 12 for \$11.00
 All \$1.50 Roses are 3 for \$3.90, 6 for \$7.80, 12 for \$15.00
 All \$1.75 Roses are 3 for \$4.65, 6 for \$9.30, 12 for \$18.60
 All \$2.00 Roses are 3 for \$5.25, 6 for \$10.50, 12 for \$20.00
 All \$2.25 Roses are 3 for \$6.00, 6 for \$12.00, 12 for \$24.00
 All \$2.50 Roses are 3 for \$6.60, 6 for \$13.20, 12 for \$26.40
 All \$2.75 Roses are 3 for \$7.20, 6 for \$14.40, 12 for \$28.80

All Rose plants shipped postpaid.

What those who have become acquainted with Floribunda Roses like so much about them is that in the Lower South, including Florida, they are the easiest to grow, almost like common shrubs. And who could ask more of a plant that blooms all season, as does the Floribunda, beginning the first spring and continuing year after year?

Aside from the sturdiness and ease of culture that make them wonderful for beds and borders, Floribundas come in a very wide range of color, make lovely cut-flower arrangements and as such last very long. No wonder people are saying, "Floribundas are Fascinating."

China Doll. Plant Patent 678. The most dwarf of the Floribundas, this little Polyantha-like bush, rarely growing more than 18 inches in height, produces a great profusion of small, double flowers of a bright shade of China-rose. Excellent where a dwarf Rose is needed. \$2.00.

Albany, Ga.: "As you may remember, I was somewhat reluctant about the Chic Rose. But on your recommendation I bought three of them and now I think it is the finest Floribunda that grows. I never like to cut Roses the first year, but it has been difficult to resist cutting these and I have found that they outlast all other Floribundas by at least two days as cut flowers. Thank you very much for recommending this Rose to me."—E.L.C.



BOUQUET. An old-fashioned Floribunda

Baby Blaze. Plant Patent 1362. A brand-new Floribunda well named. Has appearance of being a prolific bush form of the climber Blaze. \$2.00.

Betsy McCall. Plant Patent App. for. Exquisite new Floribunda for 1957. Fairly large flower of light salmon-pink. Strong bush, blooming well all season. See illustration, page 4. \$2.50.

Betty Prior. Plant Patent 340. Rose-red buds open to five-petaled, shell-pink blooms, borne in great profusion on a vigorous bush. \$1.75.

Bouquet. Large clusters of semi-double, deep pink bloom. Long lasting as a cut flower. Large, attractive foliage. A very desirable Floribunda. \$1.50.

Cecile Brunner. The "Sweetheart Rose." One of the treasures of old Southern gardens, just as valued today as in the past. It is a Tea-Polyantha that develops into a large, vigorous bush, producing an abundance of very small, double, light pink blooms in clusters over a long season. \$1.75.

Chic. Plant Patent 1286. A Floribunda of exceptional merit for the South and perhaps for other sections. It is a Rose of perfect Floribunda characteristics, much branched, vigorous, flowering freely in clusters. The color is salmon-pink in the bud, becoming bright pink with faint salmon shading. In our test garden and nursery fields it bloomed right on through the hottest weather, and we have seen it performing well in Alabama, Florida and North Carolina. For those who like double pink bloom of practically the Ma Perkins color but borne in greater profusion, on good stems fine for cutting, this is a very nice new Floribunda. \$2.00.

Newest Floribundas

Betsy McCall. Salmon-pink.

Spartan. Coral-red.

White Bouquet. 1957 AARS Winner.

(Regular Value \$7.75)

SPECIAL, one each, \$6.90

Three of each for \$20.40

ASK FOR OFFER NO. F-1



© **CHIC.** Double, fragrant, lasting

THOMASVILLE NURSERIES

FLORIBUNDA ROSES

Circus. Plant Patent 1382. This newcomer, the only All-America winner for 1956, has created quite a sensation in the Floribunda world, being one of the loveliest, most cheerful and alluring Roses to come to gardens in a long, long time. Circus is a three-ring, thrill-packed show of colors as the bright yellow and orange buds open, displaying ever-changing tones of yellow, buff, pink and bright red. The big-flowered clusters display all of these breath-taking colors at once in a delightful mass effect. But there is more to Circus than color. The bush is a typical Floribunda in habit, and the flowers are fine for cutting. \$2.50.

Cocorico. Plant Patent 1193. A gay, rollicking, semi-double, orange-scarlet Floribunda from the talented A. Meillard of France, creator of Peace. For color that really stands out, this is a good one. \$2.00.

Crimson Rosette. Plant Patent 901. Coiled "rosette" shape; deep red, very double flowers in clusters on stiff stems. As a bedding variety it is superb, but it has much merit as a long-lasting cut flower. This variety is something new and charming in Floribundas, and worthy of a place in any garden. \$1.50.

Dagmar Spath. Pure white flowers. Free flowering, producing masses of bloom with golden stamens. An ideal bedding Rose of medium height. \$1.25.

Donald Prior. Plant Patent 377. A perfect Crimson Glory deep red color, producing great masses of bloom over a long season, right on through the hottest summer weather. Very vigorous. A great favorite in the Lower South, and rightly so, for it is always showy and easy to grow. \$1.50.

Else Poulsen. One of the older Floribundas, but widely grown because it is a most satisfactory performer. The semi-double, bright rose-pink flowers are carried on erect, strong plants. Good for a hedge or as a bedding variety; also good for cutting. \$1.25.



© GOLDILOCKS. Finest yellow Floribunda

Embers. Plant Patent 1178. A new Floribunda of glowing, fiery red color, aptly named Embers. Blooms adequately, although not in masses. Moderately spreading in growth habit, making an attractive bush. A different and worthy addition to the Floribunda group. \$2.00.

Fashion. Plant Patent 789. Buds Oriental-red, opening to a luminous pink, overlaid with gold, becoming coral with age. The bush is vigorous and branching in habit, and blooms all through the Rose season. All the praise continually heaped on this Rose is well deserved; its popularity increases and it is a favorite wherever grown. \$2.00.

Floradora. Constantly in bloom and an entirely new shade in Roses—a brilliant cinnabar-red, as arresting under artificial light as in the garden. Floradora blooms are always eye-catchers; everyone stops to admire them. As a cut flower it is exceptionally long lasting. Floradora should be in every Floribunda garden. \$1.25.

Frensham. Deep crimson-red flowers of medium size, borne in typical Floribunda clusters. Very compact and branching growth, making it an excellent border, hedge or bedding variety. Sturdy in growth and constant in bloom. \$1.25.

Geranium Red. Plant Patent 811. Here is the most unusual and most admired red Floribunda at Thomasville. In color it is all the name implies, and the flowers are somewhat larger than most varieties of this group. The camellia-like flowers are a vivid, bright, geranium-like red, and no picture does it full credit. The bush is a strong one, flowering from spring till late fall in the South. As a bedding Rose and as a cut-flower variety, this distinctively different Floribunda has been much admired by all who have seen it. \$2.00.



© GERANIUM RED
A unique, showy, fragrant Floribunda

THOMASVILLE, GEORGIA

Modern Floribundas

Circus. Multicolor. AARS Winner for 1956.

Spartan. Showy coral-red.

White Bouquet. AARS Winner for 1957.

(Regular Value \$7.75)

SPECIAL, one each, \$6.90

Three of each for \$20.40

ASK FOR OFFER NO. F-2

FLORIBUNDA ROSES

SPARTAN

A striking coral-red



Lavender Pinocchio. Plant Patent 947. An entirely new color in Roses—a true clear lavender enriched by masses of golden stamens. Nice as a cut flower and fine in the garden as something entirely different. \$2.00.

Ma Perkins. Plant Patent 1143. 1953 All-America Winner. Most charming in color and form. Buds are coral with tinges of red and a touch of yellow at the base; open flowers are lovely coral-shell-pink. Compact and vigorous. A worthy companion of Fashion and Vogue. \$2.00.

Masquerade. Plant Patent 975. A unique and striking multicolor. Many clusters of 10 to 25 blooms to the stem, of yellow, red, pink, lemon and sometimes orange. Bush very vigorous; very showy. \$2.00.

Pinkie. Plant Patent 712. A very lovely little Rose of perfect Sweetheart size and form. Deep pink, opening lighter. A most profuse bloomer, repeating over a long season. An All-America Winner of 1948. \$1.75.

Pink Rosette. Plant Patent 902. A new and lovely form in Floribundas. Beautiful rosette-shaped, small, double flowers borne in large clusters on a small, compact, healthy bush. Flowers are long lasting and very fine for corsages. \$1.50.

Pinocchio. Plant Patent 484. Pink, suffused salmon; small, double flowers in clusters. Strong, compact, floriferous bush. \$1.75.

Poulsen's Bedder. Clear, bright pink petals, slightly ruffled. Somewhat tall for a Floribunda, constant and profuse in bloom; very effective as a hedge or bedding variety. \$1.25.

Goldilocks. Plant Patent 672. Easily the best yellow Floribunda to date. Aptly named, this variety produces masses of perfect, small, golden blooms. The buds are miniatures of Hybrid Tea perfection, opening into fully double flowers. The bush is of strong and compact growth. Stems are strong and flowers fine for cutting. \$1.75.

Gruss an Aachen. Large, double, salmon-pink flowers on a small, compact bush. \$1.50.

Improved Lafayette. Large; semi-double; cherry-red. Very strong grower and profuse bloomer over a long season. Ideal for borders or group plantings where Floribundas are most effective. \$1.25.

Independence. Plant Patent 1036. A brilliant and satisfactory new Floribunda. Double flowers, mostly in clusters, are large in size for a Floribunda, and are of the most vivid orange-scarlet color, which holds well in hottest sun. \$1.75.

Jiminy Cricket. Plant Patent 1346. 1955 All-America Winner. A most brilliant and striking Floribunda produced in great profusion on a vigorous bush. Vivid tangerine-orange color in bud, changing to coral or vermilion as it opens, and finishing a shade of pink-coral. The flowers have the appearance of a deep and intensified Fashion, and the glossy foliage adds to its attractiveness. In our test garden and fields it has been the most admired Floribunda—quite a tribute, for there are a number of other fascinating Floribundas. \$2.00.

Four Favorite Floribundas

Crimson Rosette. Dark red.

Goldilocks. Yellow.

Pink Rosette. Rose-pink.

Summer Snow. White.

(Regular Value \$6.25)

SPECIAL, one each, \$5.50

Three of each for \$15.90

ASK FOR OFFER NO. F-4

The Fashion Group

Fashion. Coral-salmon.

Jiminy Cricket. Tangerine-orange.

Ma Perkins. Salmon-pink.

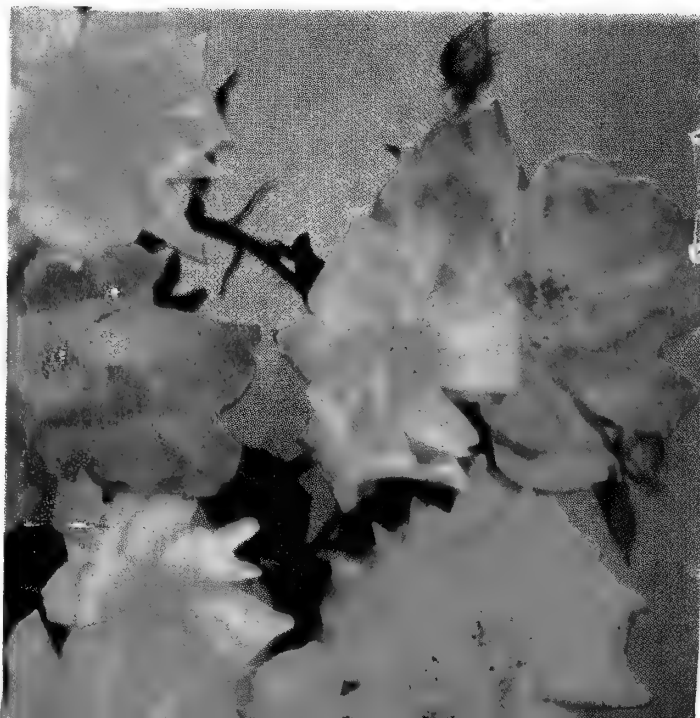
(Regular Value \$6.00)

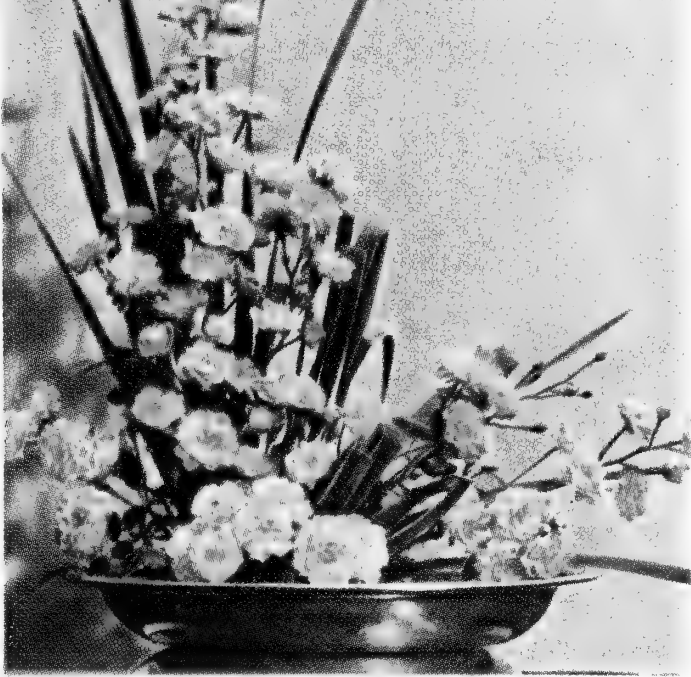
SPECIAL, one each, \$5.35

Three of each for \$15.75

ASK FOR OFFER NO. F-3

© **MASQUERADE.** An exciting multicolor





THE FAIRY

Hardy, continuous-blooming, shrub Rose

Red Pinocchio. Plant Patent 812. Very double, very dark red flowers borne in large clusters on a medium-sized, compact bush. Excellent for hedge and border use. A great bloomer in hottest weather, and a very satisfactory Floribunda everywhere it is grown. \$1.75.

Red Ripples. Brilliant scarlet in both bud and open flower; wavy petals; large clusters profusely borne on an upright, vigorous bush. \$1.25.

Snowflake. Small, semi-double, ivory-white flowers produced freely on very vigorous, bushy, Tea-Polyantha plants. Very disease resistant. \$1.50.

Spartan. Plant Patent 1357. A striking coral-red Floribunda, producing a great profusion of medium-sized, very double flowers on a vigorous and tall-growing bush. Greatly admired, greatly prized for color, vitality and cut-flower use. \$2.75.

FLORIBUNDA ROSES

Summer Snow. Plant Patent 416. A most prolific Floribunda giving great clusters of pure white blooms throughout the Rose season. Low, compact habit of growth. Outstanding in any Rose planting. \$1.50.

The Fairy. A valuable ornamental plant for many uses. It gives hundreds of flowers at a time, keeps blooming from April to freezing weather and thrives with less care than most cultivated plants.

The small, sweet seashell-pink Roses come in big sprays continually. The plant growth is very thick and bushy, densely branching and densely covered with small, shining, pretty foliage right down to the ground, as pretty as boxwood and needs no spraying. It will grow to 4 feet in height and just as broad, or can be kept lower if pruned low each spring. It is superb as an ever-flowering accent plant, on either side of a walk or doorway, under a window, or elsewhere. It is equally superb for a border planting, either alone or with other shrubs. \$1.50.

Vogue. Plant Patent 926. Small, Hybrid-Tea-like buds of deep rose, flushed salmon, opening into graceful, high-centered, somewhat lighter flowers. We would call the color half-way between that of Fashion and Floradora. Vogue is an elegant, lady-like Rose, exquisite both indoors and out. It is not primarily a cutting variety, but is so lovely that you will want to use it in bouquets as often as possible. It blooms freely. A 1952 All-America Winner. \$2.00.

White Bouquet. Plant Patent 1415. All-America Winner for 1957. The first white Rose ever to win an All-America Award. Sparkling, 4-inch, pure white flowers and lustrous green foliage. The flowers are gardenia-like, and when the center petals open fully, a small circle of golden stamens gives an additional note of charm. Profuse in bloom over the long Rose season in the South. Plants grow to a height of 2 to 3 feet, with about the same spread, and are wonderful for bedding and border plantings. See illustration, front cover. \$2.50.

Southern Favorite Floribundas

Chic. Finest pink Floribunda.
Fashion. Showy coral-salmon.
Geranium Red. Geranium-like red.
Goldilocks. Golden yellow.
Red Pinocchio. Darkest red.
Summer Snow. Profuse white.

(Regular Value \$11.00)

SPECIAL, one each, \$9.75

Three of each for \$28.95

ASK FOR OFFER NO. F-5

Standard Floribunda Special

Non-Patented Varieties

Dagmar Spath. Pure white.
Floradora. Cinnabar-red.
Improved Lafayette. Cherry-red.
Poulsen's Bedder. Shell-pink.
Red Ripples. Dark red.

(Regular Value \$6.25)

SPECIAL, one each, \$5.50

Three of each for \$15.00

ASK FOR OFFER NO. F-6

DWARF *Polyantha* Roses

These are commonly called "Baby Roses" and are excellent for borders, hedges or any place where a small, compact plant is needed.

Chatillon Rose. Small, double, rose-pink flowers borne profusely over a long season.

Golden Salmon Superior. All that the name implies, and a unique color in Roses.

Picayune. Charming dwarf Polyantha of old Southern gardens. Produces a great profusion of small double flowers in clusters. Buds light pink, opening pure white. Very dwarf and compact in growth. \$1.50.

Sparkler. Very dark red sport of Golden Salmon. Very profuse bloomer all the Rose season.

In limited supply we have other Polyanthas, and invite correspondence.

All Dwarf Polyantha Roses are \$1.25 each, 3 for \$3.15, 6 for \$6.00, 12 for \$11.00, except as noted.



HJORT'S *Old-Fashioned* Tea Roses

This group of Roses is perfectly adapted to the hot, moist summers of the Lower South, including Florida, and soils that are sandy, although the Teas grow all over the entire South in any good Rose soil.

Tea Roses were brought to Europe from China's gardens in the late 1700's. In northern Europe they were not well received, but in southern France they found conditions of climate and soil suitable and rapidly gained favor. Soon they were brought to America. They did not thrive in the North, but once planted in the South, especially along the Gulf and coastal areas, became immensely popular and outlived other classes of Roses.

Most Teas are not considered cut-flower varieties, but some produce large flowers on stiff stems. The best of these are Baroness Henriette Snoy, William R. Smith, Maman Cochet, Mrs. Dudley Cross and Mme. Lambard. A lot of the others are much better than generally believed. The pink varieties are the favorites in the Teas, for while the reds grow vigorously it is admitted none of them have color comparable to Crimson Glory and Etoile de Hollande, nor are there yellows like Eclipse and Soeur Therese—they are lighter. One does not plant Teas for flowers like Peace and Chrysler Imperial, but for profusion of bloom, ease of growth and length of life.

If you are not so sure you can grow good Roses, by all means start with the Teas. You will love them for their dependable qualities. And really, they are beautiful!

All Old-Fashioned Roses are \$1.75 each, 3 for \$4.50,
6 for \$8.00, 12 for \$15.00, by Parcel Post, prepaid

Baroness Henriette Snoy is a new member of the Old-Fashioned Tea group, and one of the most beautiful and satisfactory of Roses for Southern gardens. The lovely, pointed buds and large, double, well-formed flowers are peach-pink, shaded cream, and are freely produced on vigorous stems. The bush is spreading and vigorous, with abundant, heavy foliage, most resistant to blackspot. We are the first firm in America to offer this Rose, and many who have seen it in our gardens and fields agree that it is the finest of the Teas, which is saying much, for there are other choice ones.

Bon Silene. Deep rose to carmine, almost red in the fall; large and fairly double. Miss Julia Wright in Thomasville has one her grandmother planted 90 years ago. Like to plant one for your posterity?

Bridesmaid. Clear silvery pink; small, double flowers; fragrant. Abundant foliage; persistent bloomer.

Cecile Brunner. The "Sweetheart Rose." One of the treasures of Old South gardens, just as valued today as in the past. A Tea-Polyantha hybrid, also classed as a Floribunda, which develops into a large, vigorous bush producing an abundance of small, double, light pink blooms in clusters over the entire Rose season.

Comtesse Riza du Parc. Light salmon-rose; double. A strong grower with abundant foliage. Good bloomer, especially in fall, far into cool weather.

Coupe d'Hebe. (Bourbon.) Delicate pink, changing to blush. Flowers large, double, perfect in shape. Fragrant, like other Bourbons.

Devoniensis. The Magnolia Rose. A lovely Rose that was a great favorite a generation ago, and for which we have had many inquiries since we began offering more Tea varieties. Lovely white, flushed pink flowers borne freely on a vigorous bush.

HJORT'S *Old-Fashioned* TEA ROSES

Duchesse de Brabant. Soft shell-pink. Bud short, globular; open, cupped flower. Growth vigorous and hardy. This dependable old Tea continues to be a great favorite.

Etoile de Lyon. Deep saffron-yellow; large, very double and fragrant. Considered by many to be the finest of the Teas of yellow shading. We are glad we have enough of this variety to offer it this season.

Freiherr von Marschall. Carmine-red; double. Vigorous and constant. A fine old Tea Rose, sometimes called the Double Papa Gontier. A wonderful grower and bloomer; especially good for fall flowering.

Gross an Teplitz. This old Hybrid China Rose has some Tea blood in it, and we place it in this group. Dark, velvety scarlet; spicy fragrance. Bush very strong and prolific; flowers fairly double on rather short stems. A fine Rose for hedges.

Lady Hillingdon. Deepest yellow of all Tea varieties. Bud long pointed; flower semi-double, fragrant. Bushy growth; bronze foliage. A favorite Tea Rose.

Louis Philippe. (China.) This is a most unusual Rose of deep red color. Foliage dark and glossy. Compact and vigorous in growth, it is used extensively as a hedge Rose and blooms profusely over a long season. In fact, in mild seasons it blooms throughout the winter in Florida and Gulf Coast areas.

Maman Cochet. Clear silvery pink. Long-pointed bud and large, fragrant flower. This variety does not grow off so rapidly as such Teas as Mrs. Dudley Cross and Mme. Lambard but eventually makes fully as large a bush. One of the best cut-flower Teas.

Marie van Houtte. Canary-yellow; petals tipped pink. In fall or during a mild winter the flowers show an enchanting lavender cast not seen in any other Rose. Foliage is dark and abundant; growth vigorous and compact. A very lovely and rewarding Tea Rose.

Mme. Camille. Large, full, well formed; aurora-pink, veined with white reflections; fragrant. A lovely old Tea.

Mme. Lambard. This Rose is one of the great favorites of those who have Tea varieties. In the spring it is carmine-pink, shaded salmon, a little lighter in summer. In fall it is almost red, when it is in its glory. A rank grower and profuse bloomer over a long season that extends into cool weather. A generation ago it was the leader of the Tea Rose group, and today there are many who still think it is the best.

Mrs. B. R. Cant. Deep rose to light red; large, double flowers. Vigorous and profuse; bush is one of the largest of all varieties. One of the best of Tea Roses, it is a great favorite in many places in the South, such as New Orleans, Mobile, Florida and the Carolinas. Ranks right along with William R. Smith, Baroness Henriette Snoy and Mrs. Dudley Cross, and ought to be in every Tea Rose collection.

Mrs. Dudley Cross. Most vigorous of the yellow Tea Roses. Canary-yellow, long, Cochet-like buds, opening light yellow and gradually developing tints of pink—a fascinating combination. This rank-growing, showy and completely satisfactory Rose should be among the first in any Tea collection.

Mrs. Herbert Stevens. Bud long pointed, white slightly tinged pink; open flower fairly large and double, pure paper-white. Typical strong Tea growth and free bloom.

Mrs. Dunlop Best. The most satisfactory and rewarding new Tea Rose since Baroness Henriette Snoy. Saffron-yellow with apricot shadings. Bud long pointed; flower large, double, fragrant. Perhaps Mrs. Dunlop Best is best described as a glorified Safrano, being larger and deeper in color. A good cut-flower Tea, much admired by those who have seen Tea Roses in our gardens and fields the past few years.

Old Gold. A fine, rare and lovely old Tea Rose. It is more pink than gold—deep pink, shaded gold. Beautiful pointed buds and fairly double flowers. A large bush, blooming freely.

Papa Gontier. Rose-red; fine, long-pointed buds and large, semi-double flowers.

Perle d'Or. The salmon Sweetheart Rose.

Princesse de Sagan. An old, deep red Tea Rose; fairly double; profuse and constant. We recovered this fine old Rose in 1946.

Safrano. Saffron-yellow. Very vigorous bush and free bloomer. A very old, dependable Tea, appreciated where it is known.

Snowbird. Bud long pointed; flower double, high centered, very fragrant; white with creamy center. Foliage leathery. Like other Teas, highly resistant to blackspot.

Snowflake (Marie Lambert). Small, semi-double, pure white blooms borne profusely in clusters over a long season, on a vigorous bush. It can well be used with colored Floribunda Roses. Greatly prized at Thomasville.

Souv. de la Malmaison. (Bourbon.) Very large, double flower; creamy flesh-pink with rosy center; highly fragrant. A famous old Rose, dating back to 1843, still lovely and still satisfactory. Small wonder it has witnessed the demise of thousands and thousands of other Roses and still lives! In it are combined the qualities we expect in a Rose.

Susan Louise. (Hybrid Gigantea.) A bush form of the greatly prized climber, Belle of Portugal. This Hybrid Gigantea Rose looks and performs like a full-blooded Tea Rose. Upright in growth, producing very long-pointed buds of deep pink, opening to large, slightly lighter flowers. Vigorous; easy to grow; long life.



BARONESS HENRIETTE SNOY

HJORT'S *Old-Fashioned* TEA ROSES

PRINCESSE
DE SAGAN



White Maman Cochet. Sport of Maman Cochet. Long-pointed, white buds, tinged pink, opening into large, double, fragrant flowers. Since its introduction in 1896 it has steadily maintained its position as the leading and best white Tea Rose. While some Teas are not rated as cut-flower Roses, this one is, and should be in every garden of Tea varieties.

William R. Smith. The one finest of all Tea Roses. More people write us or tell us when they visit our garden and fields, of their love for this Rose and their success in growing it, than any other in this group, and there are other Teas of great merit. Beautiful, pointed buds open into large, double, light pink, fragrant flowers, produced on long, stiff stems with a few large thorns. Grows well all over the South and in Cuba. In the Southern tip of Florida it has been called the "Key West Rock Rose," although that seems a peculiar name for a Tea variety that makes so large a bush. William R. Smith should start any collection of Tea Roses.

Columbus, Ga.: "I have really enjoyed my new Roses this spring. I do like the old-fashioned Tea Roses. My William R. Smith are so pretty. I want to get more this fall."—Mrs. E.F.T.

The Thomasville Rose Show

April 26, 1957

Rose time in the Deep South is celebrated annually through the staging of the Thomasville Rose Show, the most spectacular flower show in the Southeast by the Thomasville Garden Club, assisted by the Chamber of Commerce and other civic groups. There will be tours of famous Southern plantations, the Rose Shows and special exhibits at the Veterans Domiciliary.

The 1957 show will be one of great beauty, size and merit. If you miss seeing the Thomasville Rose Show you miss a delightful experience. All Thomasville welcomes you!

MISCELLANEOUS

Old-Fashioned Bush Roses

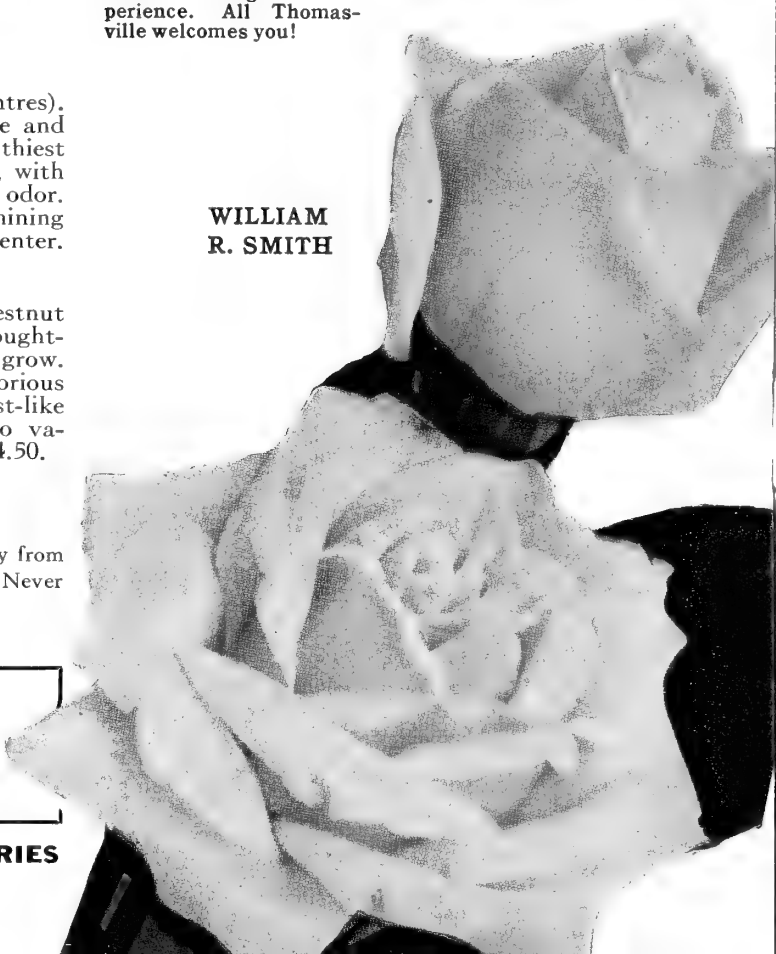
Rosa centifolia (Cabbage Rose; Rose des Peintres). Easily the best of the Cabbage Roses here and outblossoms the others. It is one of the healthiest and most vigorous varieties in our garden, with an unmodified and really intense Old-Rose odor. The large, many-petaled flowers have a shining deep pink color which deepens toward the center. \$1.75 each; 3 for \$4.50.

Rosa Roxburghi (*Rosa microphylla*; Chestnut Rose). A most unusual, scarce and much sought-after old Rose, yet one of the easiest to grow. The buds are like chestnut burrs. A glorious shrub Rose with beautiful green, locust-like foliage and double, fragrant flowers. Two varieties, pink and white. \$1.75 each; 3 for \$4.50.

Durham, N. C.: "I bought Baroness Henriette Snoy from you two years ago and have been most pleased. Never had a Rose grow off faster."—Mrs. D.E.T.

In limited supply we have some Moss and other old-fashioned varieties, at \$1.75 each, 3 for \$4.50.

WILLIAM
R. SMITH





GOLDEN SHOWERS
All-America Winner 1957

GOLDEN SHOWERS. Plant Patent App. for. All-America Winner for 1957. Here is a most useful pillar-type climber, the first pillar Rose ever to win an All-America Award. You can grow it three different ways: If you do not prune for two years, you get a shrub 8 to 10 feet tall; tops of branches will arch out gracefully, producing an abundance of bloom. If you want a regular climber, you can train canes against a building or trellis. In the coastal and Florida areas its greatest use may come in its being treated as a symmetrical and vigorous bush, cutting the canes back to the base each season, for unlike many climbers which bloom only on second-year wood, Golden Showers will bloom on first-year wood, producing many long-pointed, golden buds on long, erect stems. The flowers open a little lighter, but are deeper than most yellow Roses in the warm climates. Many deep yellow Hybrid Teas are of doubtful value in Florida, but Golden Showers, treated as a large bush, gives the answer to the need for a better yellow Rose. \$3.00.

Climbing Roses

Including Old-Fashioned Varieties

Explanation of Symbols: CT, Climbing Tea; CHT, Climbing Hybrid Tea; HG, Hybrid Gigantea; N, Noisette (practically a climbing Tea); LC, Large Climbers which mostly bloom profusely in spring; CB, Climbing Bourbon (similar to Tea); CFI, Climbing Floribunda; CC, Climbing China; HBc, Hybrid Bracteata.

Belle of Portugal. HG. Long-pointed buds open into large, semi-double, light pink flowers. Glossy foliage. Very strong grower, producing a great profusion of bloom in the spring. \$1.50.

Blaze. LC. A most popular red variety. Rich leathery foliage. Grows to a considerable height. Recurrent bloom. \$1.50.

City of York. LC. Semi-double; pure white with golden stamens. Dark, glossy foliage. Awarded Gold Medal of the American Rose Society. \$1.50.

Cl. Cecile Brunner. CFI. A strong climbing form of the favorite "Sweetheart Rose." Bears a great profusion of tiniest, double flowers in clusters. Abundant foliage; constant bloom. \$1.50.

Cl. Charlotte Armstrong. CHT. Plant Patent 523. Everyone knows how fine the famous Charlotte Armstrong Rose is in the bush form, all over the South and other sections. Now here is a vigorous climbing sport, giving us the color distinctive of this variety, medium red in spring and fall, often deep pink in the summer. \$2.50.

Cl. Columbia. CHT. A fine climbing sport of the bush Columbia, bearing silvery pink blooms on good stems for cutting. \$1.50.

Cl. Countess Vandal. CHT. Excellent climbing form of the popular bush variety. \$1.50.

Cl. Crimson Glory. CHT. Plant Patent 736. Extremely vigorous climber, blooming well throughout the entire Rose season. Rich crimson-red; very double and fragrant. The most praised of all red climbers in many grown at Thomasville. \$2.50.

Cl. Dainty Bess. CHT. Vigorous climbing form of the lovely single-flowered wild-Rose-colored variety. \$1.50.

Cl. Devoniensis. CT. White, faintly tinged pink; large, double. Strong growth, recurrent bloom. A great favorite where it is known. \$1.50.

Cl. Etoile de Hollande. CHT. Dependable climbing form of the well-known bush variety. \$1.25.

Cl. Goldilocks. CFI. Plant Patent 1090. Vigorous and prolific sport of the popular Floribunda, this climber is very beautiful. \$2.50.

Cl. Kaiserin Auguste Viktoria. CHT. Strong free-flowering sport of the bush variety. \$1.50.

Cl. Killarney. CHT. Sport of bush Pink Killarney. Vigorous and prolific over the entire Rose season. A great favorite in the Southeast. \$1.25.

Cl. Louis Philippe. CC. Sport of the fine old bush variety; deep red. Foliage small, glossy. \$1.50.

Cl. Maman Cochet. CT. Sport of the pink bush Tea. A profuse and vigorous climber. \$1.50.

Cl. Mrs. Charles Bell. CHT. A strong sport of the favorite bush variety. \$1.25.

Cl. Peace. CHT. Plant Patent 932. One of the finest of all climbers. Vigorous; constant bloomer. Large, perfect flowers, fine for cutting. \$2.25.

Cl. Papa Gontier. CT. Rose-red; long-pointed buds. Free bloomer, vigorous. Very satisfactory. \$1.50.

Cl. Perle des Jardins. CT. A vigorous climber, similar to Marechal Niel but grows off more quickly. \$1.50.

Cl. Perle d'Or. CFI. A very rank-growing and profuse-flowering sport of the salmon "Sweetheart Rose." A great favorite with those who know this Rose. Perfect for the South. \$1.50.

© **CL. CRIMSON GLORY**



Climbing Roses

- Cl. Snowbird.** CT. Valuable climbing sport of the superb Tea Rose Snowbird. Very double, white flowers on good stems. Growth very vigorous. \$1.50.
- Cl. Summer Snow.** CFI. Plant Patent 400. This prolific Rose fills the need for a white climber with plentiful foliage and abundant and repeating bloom. \$2.00.
- Cl. Talisman.** CHT. A vigorous sport of the bush Talisman; identical in color and form with its parent. Those who may not have done well with the bush variety should try the climber; it is very strong and dependable. \$1.25.
- Cl. White Maman Cochet.** CT. While the bush Maman Cochet Rose is perfect for the Lower South, there are those in the Upper South and extreme Southern Florida who would like to have it grow better. This climber is the answer. The large, lovely white Cochet buds, tipped pink, open pure white. \$1.50.
- Cl. Yellow Cecile Brunner.** CFI. Where the original "Sweetheart Rose" is pink, here now is a true yellow, with no tinges of other color. The same small double flowers in many clusters; buds golden, opening lighter. \$1.50.
- Cloth of Gold (Chromatella).** N. A very rare, vigorous old Noisette. Will climb 30 feet or more. Fairly deep yellow, fragrant; repeats in bloom. \$1.50.
- Dr. W. Van Fleet.** LC. See New Dawn.
- Elie Beauvillain.** N. One of the most beautiful and profuse of all vigorous climbing Roses for the South, usually called a Climbing Tea but having all the characteristics of the Noisette climbers. Large, full flowers of shining rose-pink with yellow base. \$1.50.
- Gloire de Dijon.** N. Where Elie Beauvillain is pink with yellow base, Gloire de Dijon reverses the combination. Both are extremely vigorous, not given to much repeat bloom, but oh what a magnificent show in the spring! Still a favorite after 90 years. \$2.00.
- Grossherzog Ernst Ludwig.** N. Commonly called the Pink Marechal Niel. Large, double, fragrant flowers; vigorous growth. \$1.50.
- Guinee.** CHT. Very large and double; deep red. Extra fragrant. Extremely strong bush, with abundant spring bloom and some flowering the rest of the season. A very striking and handsome variety. \$1.50.
- Lamarque.** N. Pure white with lemon center; medium size, double and fragrant. A rank grower, producing intermittent bloom over a long season. Because of its excellent qualities, this old Rose, given us by Marechal of France in 1830, has continued to this day to be a great favorite in the South where it is extensively grown. \$1.50.
- Marechal Niel.** N. Favorite of all old climbers in the Lower South. Bud large, full, pointed; flower large, full, double, fragrant. The golden yellow flowers are borne singly, or sometimes in clusters, on fair stems. Ample foliage; good growth. \$1.50.
- Mermaid.** HBc. Very large, perfectly single, lemon-yellow, Cherokee-like bloom, produced in clusters on a very thrifty plant. Many places in the South do not have this Rose, but where it is grown, as at Jacksonville, Fla., and Thomasville, Ga., it is one of the most admired of all Roses in early spring. \$1.50.
- New Dawn.** LC. An everblooming form of the lovely light pink Dr. Van Fleet. Long-stemmed flowers and beautiful glossy foliage. \$1.50.
- Paul's Scarlet Climber.** LC. Brilliant scarlet, semi-double flowers in large, heavy clusters. A profuse bloomer at the height of the spring blooming period, always reliable. A great favorite wherever Roses are grown. \$1.25.
- Pink Cherokee.** Lovely, light pink, Dainty Bess-like blooms borne profusely in the spring on typical Cherokee bush of strong habit. A fine old Southern Rose. \$1.50.
- Reine Marie Henriette.** CT. Cherry-red; large; double; fragrant. Growth vigorous; profuse bloomer; repeats. An old Southern favorite we are glad to bring back. \$1.50.
- Reve d'Or.** N. Buff-yellow; medium size; fragrant. Foliage rich green, extending to base of plant. A free-blooming climber that is a great favorite at Thomasville. \$1.50.
- Silver Moon.** LC. Very large; single; pure white with golden stamens. Clusters of flowers on long, strong stems. Very strong grower and abundant spring bloomer. A truly magnificent Rose for the South. \$1.25.
- Solfaterre.** N. Our favorite of all the fine, dependable Noisette group of climbers for the South. Lovely lemon-yellow blooms, double and fragrant, borne abundantly in repeating surges throughout a long season. Very vigorous and easy to grow, Solfaterre is tops in climbing Roses for the South. \$1.50.
- White Banksia.** The Banksias are the first Roses to bloom in the spring. They flower in winter in Florida and often start before the end of February at Thomasville. While Banksias may be trained on arches or pergolas, often they are tied to pines or other trees and reach a height of more than 30 feet. White Banksia has a delightful violet fragrance. \$1.50.
- White Cherokee.** A great favorite everywhere used, and the National Flower of Georgia. Large, single, pure white blooms borne profusely in the earliest spring on strong canes with glossy foliage. \$1.50.
- William Allen Richardson.** N. The darkest golden of the fine Noisette climbers. Small, double, fragrant flowers on a vigorous plant. Long a favorite at Thomasville. \$1.50.
- Yellow Banksia.** While this one is not fragrant, it has all the other characteristics of White Banksia. The lovely yellow flowers, small and double, in clusters, cover the plant when in full bloom. Highly prized by generations of Rose growers in the South. \$1.50.

Prices of Climbing Roses

- All \$1.25 Climbing Roses are 3 for \$3.15, 6 for \$6.00, 12 for \$11.00
- All \$1.50 Climbing Roses are 3 for \$3.90, 6 for \$7.50, 12 for \$13.20
- All \$1.75 Climbing Roses are 3 for \$4.50. No further discount.
- All \$2.00 Climbing Roses are 3 for \$5.25. No further discount.
- All \$2.50 Climbing Roses are 3 for \$6.60. No further discount.
- All \$2.75 Climbing Roses are 3 for \$7.20. No further discount.
- All \$3.00 Climbing Roses are 3 for \$7.95. No further discount.

All Roses are shipped prepaid

THOMASVILLE NURSERIES

HEMEROCALLIS

Daylilies

PRICES OF DAYLILIES

All 50c Daylilies are \$5.00 per 12; 6 or more at 12 rate.

All 75c Daylilies are \$7.50 per 12; 6 or more at 12 rate.

All \$1.00 Daylilies are \$10.00 per 12; 6 or more at 12 rate.

In ordering Daylilies priced as above, you may select as desired. For example, in ordering 12 plants you may choose 12 varieties, or all one variety, or any way you wish in that price group.

All Daylilies priced at \$1.50 or more are Net.

Orders for \$3.50 or more are shipped parcel post prepaid. On orders for less than \$3.50, please add 50c for postage.

Explanation of symbols: E, early; M, midseason; L, late; Ev., evergreen; Dor., dormant; Re., repeats.



J. A. CRAWFORD

- Afterglow.** (Stout.) M. Dor. An unusual pale buff over pastel-peach-pink. \$1.00.
- Athlone.** (Russell.) M. Ev. Re. Large and lovely bicolor of deep rose and gold with darker eye-zone. Prolific. \$2.00.
- Autumn Red.** (Nesmith.) L. Dor. Velvety red with a long season of bloom. 50c.
- Bagdad.** (Stout.) M. Dor. Rich combination of colors. Clear orange throat; outer petals coppery red over orange veins. Mid-zone madder-brown. Fragrant. \$1.00.
- Baronet.** (Stout.) E. Ev. Re. Orange-red, its early bloom almost matched by fall flowering. Dependable old variety. 50c.
- Bernice Russell.** (Russell.) M. Ev. Large flower, same parentage as Painted Lady. Rosy crimson-yellow. Very showy. \$1.50.
- B. H. Farr.** (Stout.) M. Ev. Large flower with graceful recurved petals. Glowing rosy peach with parallel darker veinings. Remains open evenings. 75c.
- Black Falcon.** (Nesmith.) M. Dor. Very dark maroon-red; large open blooms with wavy edges and shallow pale yellow cup. \$1.50.
- Black Prince.** (Russell.) M. Dor. Dark wine-red with black overlay. Sunfast; vigorous; good form. \$1.00.
- Brocade.** (Taylor.) A Prima Donna seedling with the same smooth texture and large size. Near amber-rose with darker veinings and eye-zone. Good branching; floriferous; open evenings. \$3.00.
- Caballero.** (Stout.) M. Ev. Very showy rose-red and soft gold bicolor. No. 18 on popularity list of 100 Daylilies. \$1.00.
- Capistrano.** (Milliken.) E. Ev. Large, very bright yellow. Petals are wide, wavy and reflexed. Flowers over long season. \$1.00.
- Cibola.** (Hill.) M. Dor. Lovely, large, Spanish-yellow. Good form and substance. \$4.00.
- Claudette.** (Register.) M. Ev. Canary-yellow, slightly recurved petals with glistening sheen; sepals brushed cinnamon. Medium flower; profuse bloomer. \$3.00.
- Colonial Dame.** (Milliken.) M. Dor. Re. No. 4 in the Daylily popularity poll. Apricot with rosy bandings. Creped and ruffled. Opens flat. Lovely! \$2.00.
- Dauntless.** (Stout.) M. Ev. Soft golden yellow with faint halo. Heavy substance, wide petals. Fragrant. Winner of Stout Award for 1955. An older Daylily that stays on merit. 75c.
- Dixie Belle.** (Russell.) M. Dor. Deep rosy red, slightly recurved. Quite showy. 50c.
- Dr. Stout.** (Traub.) M. Ev. Deep orange-yellow with veining and dusting of burnished red. Triangular form; brilliant. \$1.00.
- Duchess of Windsor.** (Hayward.) Light fulvous brown markings on yellow-cream base. Broad, crepy petals. See illustration, page 2. \$1.00.
- Edward VII.** (Connell.) M. Ev. Rich gold self. Very large; wide petals. Sunfast. \$3.50.
- Elvenia Slosson.** (Taylor.) Rosy red with primrose-yellow throat. Increases fast and blooms well. \$3.00.
- Evelyn Claar.** (Kraus.) E-M. Dor. No. 1 on latest Daylily poll. Broad-petaled blooms of cool orchid-pink. One of the best of pinks. \$7.50.
- Fantasia.** (Stout.) M. Ev. Pale red, gradually shading to burnt-sienna. Outstanding feature is twisting and curling of petals. \$1.00.
- Friar Tuck.** (Lester.) L. Dor. Re. Deep, rich yellow with velvet finish. Mahogany eye-zone. Sunfast. \$3.00.
- Garnet Robe.** (Milliken.) M. Dor. Deep, velvety red; always high on the popularity polls. \$2.50.
- Georgia.** (Stout.) M. Ev. Peach-pink; large; wide petaled. A fine Daylily, one of Dr. Stout's best. \$2.00.
- Gladiator.** (Russell.) M. Ev. Golden yellow; salmon eye-zone. One of Russell's best. \$1.50.
- Glory.** (Bechtold.) M. Dor. Immense, clear yellow flower. Will remain a "glory" of gardens for years to come. \$1.50.
- Gold Cargo.** (Russell.) E. Ev. Seven-inch, thick-textured rich gold self. Stays open late. \$5.00 would not be too much for this one. \$2.00.
- Golden Orchid.** (Dennett.) Large, rich golden orange self. Heavy texture. Sunfast. \$3.00.
- Golden West.** (Sass.) M. Ev. Tall growing, large, showy bright yellow. Very good. \$1.00.
- Hazel Sawyer.** (Wheeler.) E-M. Ev. Re. Filled lavender-pink; yellow throat. Fast multiplier; free bloomer. 50c.
- Hyperion.** (Mead.) L. Dor. The large flowers are pale lemon-yellow and of most artistic form. Exquisitely fragrant. An old variety that stays in the popularity polls. 50c.
- Ivory Chalice.** (Nesmith.) M-L. Dor. A very lovely Daylily. Medium size, pale yellow, heavy substance. Flowers on tall, closely branched stalks. Exquisitely fragrant. \$4.00.

HEMEROCALLIS

Daylilies

Marco Polo. (Lester.) L. Dor. Velvety red, triangular form, twisted petals. \$2.00.

Marionette. (Lester.) L. Dor. Non-fading blooms of rich buttercup-yellow with a velvet finish and a wide mahogany band on all six segments. \$3.00.

Mikado. (Stout.) A handsome and fragrant Daylily. Large flower of rich orange with conspicuous deep mahogany-red throat. Bold color contrasts make this variety stand out. Twenty years old, but so good it will be used a long, long time. Repeat bloomer. 50c.

Mimosa Rose. (Lester.) E-M. Dor. Lovely coral-rose; wide petals, recurved at tips; sunproof. \$3.00.

Miss Houston. (Russell.) M. Ev. Light pink, with deeper shadings. \$1.00.

Modesty. (Betscher.) M. Ev. Large, uniform, clear soft yellow. 50c.

Mongol. (Norton.) M. Ev. Very large; lemon-yellow, slightly ruffled. Fine stems. \$1.00.

Morocco Red. (Nesmith.) Fine flower of velvety Morocco-red with the color evenly placed on the petals and sepals, extending to the heart of the flower, leaving a bit of orange showing in the cup. Vigorous and profuse. \$1.00.

Mrs. B. F. Bonner. (Russell.) E. Ev. Lovely pale yellow with broad petals; fragrant. \$1.00.

Mrs. Hugh Johnson. (Russell.) E. Dor. Non-fading deep red; wide, reflexed petals. One of Russell's best. \$1.00.

Mrs. John J. Tigert. (Watkins.) M. Dor. Bright red with darker marking. Vigorous and profuse. 50c.

Mrs. Leroy Rogers. (Lester.) M. Dor. Large; buff-yellow. Very good. \$1.00.

Naranja. (Wheeler.) E. Ev. Deep orange self; slightly ruffled. \$3.50.

Olympus. (Wheeler.) L. Dor. Huge flowers of light orange with peach dusting. \$3.50.

Orange Beauty. (Sass.) Lovely smooth orange self with broad petals. \$3.50.

Painted Lady. (Russell.) M. Ev. Huge, 8-inch bloom; yellow with cinnamon overlay. Always high in popularity polls. \$2.00.

Patricia. (Stout.) M. Ev. Fine pale lemon-yellow with a green shading in the throat. Has nice texture and blooms well. 50c.

Peach Blush. (Lester.) M. Dor. An outstanding and well-named Daylily. Large, peach-yellow bloom, with faint pink eye-zone. \$2.00.

Pink Bowknot. (Taylor.) M. Ev. Re. Salmon-pink with heavy ivory midrib and daffodil throat. The triangular form and heavy substance are distinctive characteristics. One of the best in the pink class. \$5.00.

Pink Charm. (Nesmith.) L. Ev. Beautiful open flower with very recurving petals and sepals of soft ochre-red, giving the effect of a deeply colored coral-pink lily. The center of flower shows a star of light cadmium in pleasing contrast to the pink stamens. \$1.00.



PAINTED LADY

J. A. Crawford. E. Ev. Deep yellow; prolific; fragrant. An old variety that is always lovely and rewarding. 50c.

Jewell Russell. (Russell.) M. Ev. For those who love light colors, here is a very pale lemon. Large, 7-inch flower. \$2.00.

Kanapaha. (Watkins.) M. Ev. In a color class by itself, a rich raspberry-rose self. Multiplies rapidly; blooms profusely. Anyone will like this one. \$1.00.

Kindly Light. (Bechtold.) M. Dor. An outstanding spider type. While it is very large, its beauty is not in its immensity, but its rare shape with twisted petals and ruffled edges. A glowing yellow, with citrus accent. \$5.00.

Lampasas. (Russell.) L. Dor. Attractive bicolor with rosy petals and lemon sepals. Flowers are large and have a graceful, wide-open flare. \$1.00.

Lena Brock Hoover. (Russell.) E. Dor. Light purple flower with violet veinings and deeper purple eye-zone. 50c.

Linda. (Stout.) L. Dor. Golden yellow and cinnamon, shading to buff tones, with red eye and lemon-green throat—all in sharp contrast to the bright, clear yellow sepals. Practically a bicolor with pastel shaded eye-zone. Grown in shaded spot, it is lovely. 50c.

Lochinvar. (Taylor.) E. Ev. Re. Shades of amber, pepper and Pompeian red; yellow throat. \$3.00.

Mamie Lake. (Russell.) E-M. Ev. Very showy. It has huge, 8-inch blooms with petals of rosy orchid with deeper eye-zone and lemon-yellow sepals. Large lemon throat, shading to green. \$1.00.

HEMEROCALLIS - *Daylilies*

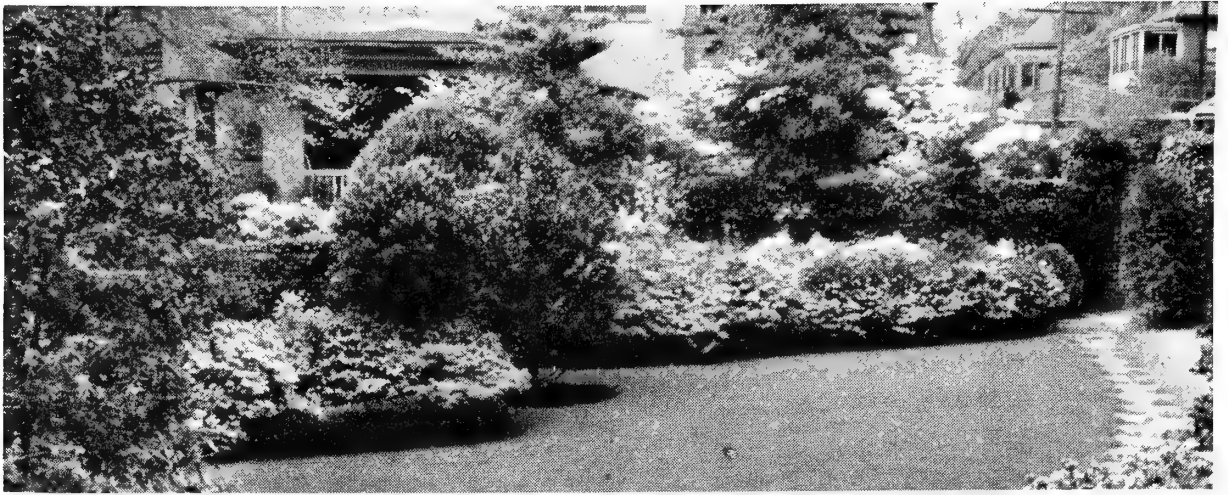
- Prima Donna.** (Taylor.) M. Ev. Re. A very lovely and famous Daylily, always high in the popularity polls. A pastel blend producing peach tones in subtle variations. \$7.50.
- Psyche.** (Wheeler.) M. Ev. Unusual form, with broad, much-frilled petals which recurve like iris falls. Soft yellow in cool weather, with faint violet sheen. Lovely. \$3.00.
- Purple Finch.** (Nesmith.) M. Dor. Rich, glowing red-purple. One of the best in its class. \$1.50.
- Purple Sage.** (Russell.) M. Dor. Re. One of the darkest of the wine-purples. \$1.00.
- Purple Waters.** (Russell.) M. Ev. Very attractive wine-purple with yellow-green throat; large bloom. This one, on the edge of our azalea woodland, attracted much attention. \$1.00.
- Queen of Gonzales.** E. Ev. Re. Pure orange self; one of the best. \$1.50.
- Radiant.** (Yeld.) Clear, fine orange of good texture. Not a large Daylily, but very profuse and cheerful. 50c.
- Red Rock Canyon.** (Milliken.) M. Ev. A majestic Daylily. Full, large, orange-red with broad petals. Always showy. \$1.00.
- Royal Toga.** (Register.) Very dark royal-purple self with cool green throat. Profuse bloomer all season. Stands sun better than many of its class. A fine variety. \$7.50.
- Ruby Supreme.** (Wheeler.) M. Ev. Re. Large, wide segments; deep ruby-red with throat of greenish gold. Very good branching; vigorous. \$1.00.
- Sachem.** (Stout.) M. Ev. Medium large and full; dark red, near carmine; yellowish orange throat. Holds color and form well in hot weather. Good evenings. Fragrant. 50c.
- Salmon Sheen.** (Taylor.) E. Ev. Re. Salmon color with canna-red veining. Good substance, well branched. Stays open evenings. \$5.00.
- San Pedro.** (Russell.) M. Ev. Large, canary-yellow flowers. 50c.
- Scarlet Sunset.** (Wheeler.) M. Ev. A flaming scarlet self; bright and showy. \$1.50.
- Seminole Chief.** (Lester.) M. Dor. A bright, velvety, almost cherry-red flower. Blooms a long time. 75c.
- Serenade.** (Stout.) M. Dor. Very light pastel yellow and pink in pleasing harmony. Petals twisted and crinkled, and with faint halo. 50c.
- Show Girl.** (Wheeler.) E. Ev. Re. Soft orchid-pink with rosy veinings. Wide, ruffled, reflexed segments. Should have some shade, where it will produce large, handsome flowers. \$3.50.
- Skylark.** (Russell.) M. Dor. Graceful, glistening, pale yellow with thick texture and faint green throat. \$1.00.
- Spice.** (Taylor.) M. Ev. Re. Rosy tan with small golden yellow throat. An intriguing sort. \$2.00.
- Spider Red.** L. Dor. Tall, burnt-orange-red self, with a deeper halo. Large flower, a striking spider type. \$1.00.
- Starlight.** (Nesmith.) Lovely pale yellow blooms. Fragrant. Remains open nights. \$1.00.
- Su-Lin.** (Nesmith.) M. Dor. Lovely pastel orchid-pink and cream bicolor. Plant this one in shade. \$1.50.
- Sun Chaser.** (Russell.) Brilliant Chinese-red blooms, ruffled and recurved. This is a distinctive variety that has to be seen to be appreciated. \$2.00.
- Tejas.** (Russell.) E. Dor. Re. Fiery red with yellow throat. Profuse bloomer; fast multiplier. 50c.
- The Director.** (Russell.) M. Dor. Wine-red with veins of burgundy on petals. Sepals a lighter shade; large chrome throat. Fully ruffled. \$1.00.
- Vulcan.** (Stout.) E. Ev. Dark red with orange throat. Pointed, velvety petals. Vigorous; profuse bloomer. 50c.
- War Path.** (Russell.) M. Ev. Re. Satin-sheened dark mahogany-red petals and sepals. Stands up well in sun; vigorous and showy. \$1.00.
- Warsaw.** (Russell.) M. Ev. Re. A vigorous deep red Daylily. Almost everblooming; a good grower and very prolific. \$1.00.



SERENADE

DAYLILIES IN LIMITED SUPPLY

In addition to the varieties here cataloged, we have a few plants each of nearly 100 others, many of which are new.



AZALEAS ARE EXTENSIVELY USED IN BORDER PLANTINGS



JUDGE SOLOMON

Croemina. Finest of all extra-early-flowering Azaleas. Very large flower of light pink. Very compact in growth and profuse in blooming.

Elegans. Light, clear pink; makes a large, fast-growing, symmetrical bush. More than any other variety, this makes Thomasville lovely in the spring. Early.

Fielder's White. Long considered the best of all early white Indica Azaleas for its large, pure white, exquisitely formed flowers and profuse blooming habit, early and midseason. We especially recommend this Azalea. We always felt more whites should be planted.

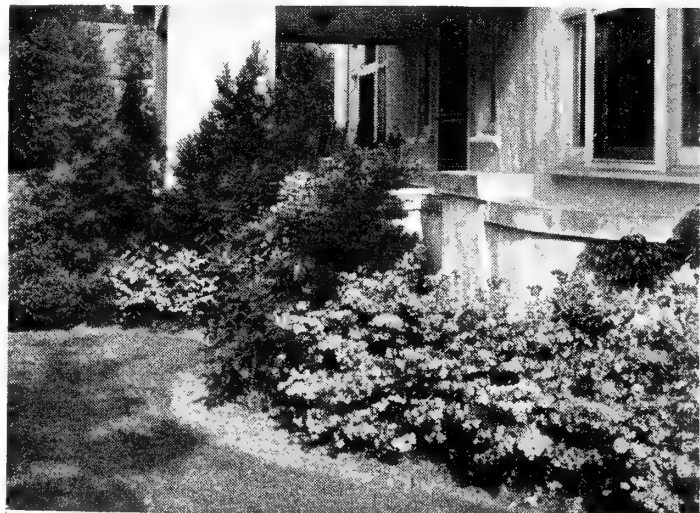
INDICA AZALEAS

Tall, compact-growing, large-flowered ever-green Azaleas are excellent for landscape uses. All of our Azaleas are compact, shapely specimen plants, given ample space in growing beds to make the best quality bushes for immediate effects. They are far superior to ill-shaped, close-grown plants at bargain prices. If you want some real good plants, you should see these. If you can't come to the nursery, the sizes we list can be packed light and secure and sent by express.

PRICES OF AZALEA INDICA

	Each	12
8 to 12 in., bare root.....	\$0 75	\$7 50
12 to 15 in., bare root.....	1 00	10 00
15 to 18 in., B&B.....	1 50	15 00

In limited supply we have some larger Azaleas at \$2.50 to \$5.00 each, and in some varieties some small ones at 25c to 50c each.



AZALEAS ARE EFFECTIVELY USED IN FOUNDATION PLANTINGS

THOMASVILLE NURSERIES

INDICA AZALEAS

Formosa. Long called the greatest of Indica Azaleas. Large, purplish pink flowers. Bush grows tall and shapely. Dark green foliage. Easy to grow; late bloomer.

George L. Taber. Finest of variegated Azaleas; shows so little variegation that it is almost a blush-pink. Very large flower; blooms late. Symmetrical, bushy growth. Always admired, always satisfactory.

Judge Solomon. A beautiful deep pink sport of Formosa. Flowers, foliage, vigor, habit of growth and flowering season identical with Formosa. Color is deep pink without a trace of purple; we think it easily the finest of the Formosa sports.

Lawsal. Bright salmon-pink. Tall, bushy grower; late flowering. We highly recommend Lawsal as one of the hardiest and most satisfactory of Indica Azaleas.

Mrs. G. G. Gerbing. A lovely new white sport of George L. Taber, with very large blooms, large foliage and compact habit of growth identical with its parent. Blooms late, giving a needed white to bloom in the season of Formosa and Pride of Mobile. We regard this strikingly handsome new Azalea as easily the finest white variety to date.

President Clays (Flame). Flame-red, a delightful color through a woodland or fronting a dark background. Tall and compact; fast grower; early.



AZALEA AUSTRINA

Vittata Fortunei. Picturesque, open-growing Azalea. White with lavender stripes and splotches. Earliest bloomer; sometimes has large crop of bloom in late fall, with some recurring bloom in winter or spring.

Azalea austrina (Native Yellow Azalea). This beautiful Azalea is found in Northwestern Florida to Central Georgia. All we offer this year are the best shades of yellow, the finest types of this species. 18 to 24 in., \$3.00; 2 to 3 ft., \$5.00 each.

LIRIOPE MUSCARI *The Big Blue Liriope*



No one who has seen *L. Muscari* in bloom at Thomasville in the summer will forget the sight. This is the most useful border plant. Grows well in dense shade or full sun. Used to border walks and beds, on slopes to prevent washing, as a ground cover, in porch boxes and as potted plants. Averages 8 to 12 inches in height and spread.

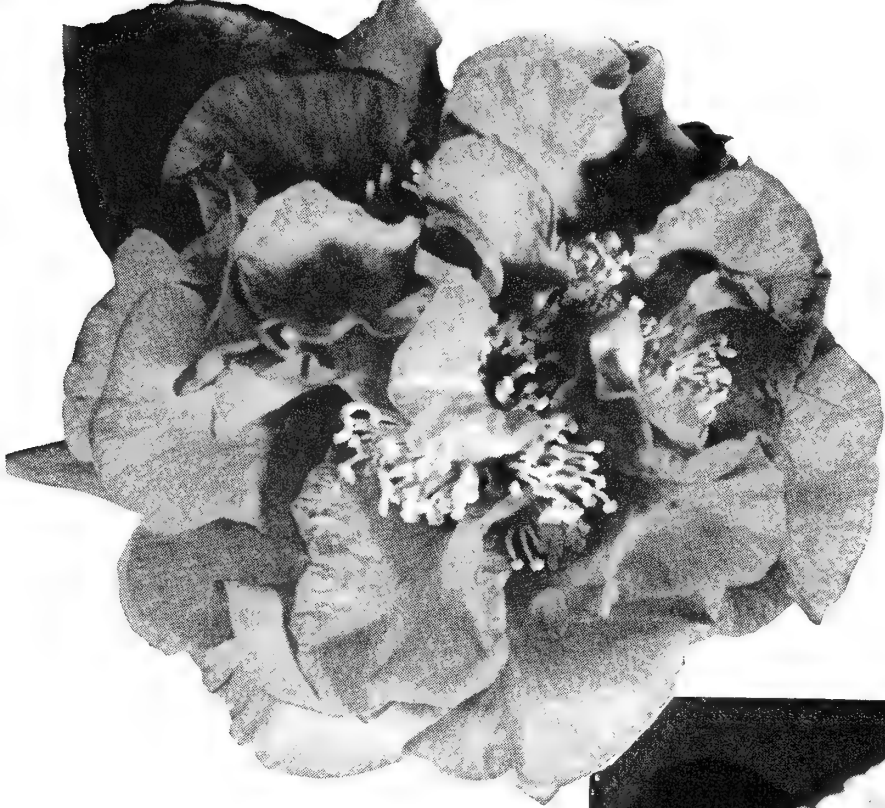
It is easy to grow and thrives best in light, enriched soils but persists in hard and heavy soils. Though it blooms anywhere, the foliage is of better dark green color in shade. Set out the plants any time; several years later they may be divided into four times the quantity.

Our *L. Muscari*, sometimes listed as *L. graminifolia densiflora*, is grown from divisions only. We grow no seedlings; they usually revert to the small-leaf type with light, stringy, flowers of short duration. Our division-grown *L. Muscari* has wide leaves and produces uniform, heavy spikes of deep lavender-blue flowers over a long season. Plant 6 inches apart.

Liriope is hardy and may be planted in the entire South. If not ready to plant a border, try a dozen or more plants.

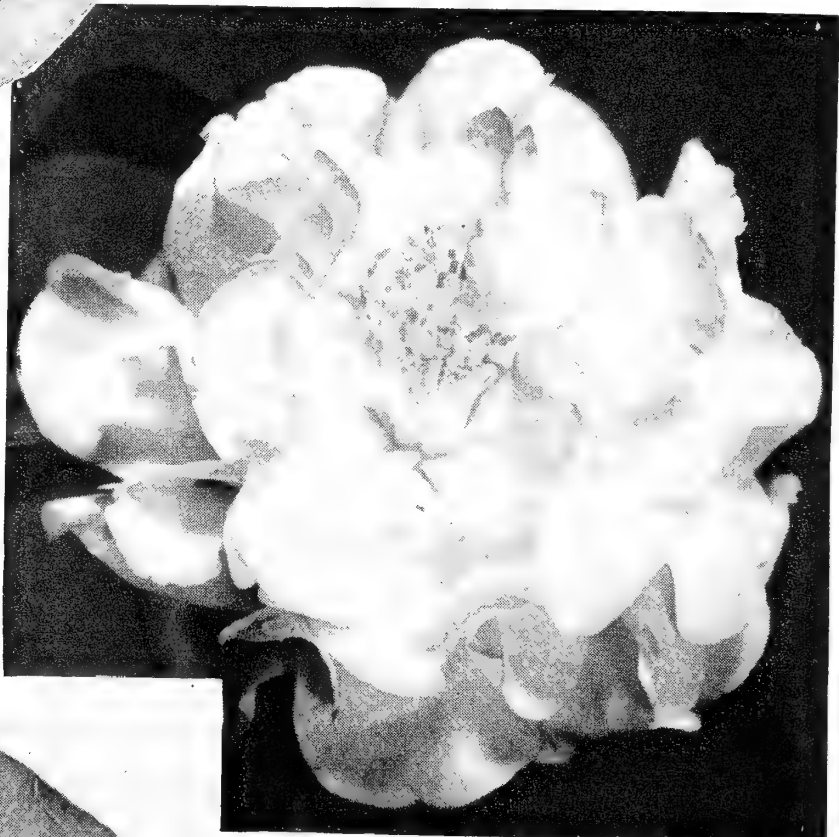
PRICES OF LIRIOPE MUSCARI

	Each	12	100
Division plants	\$0 15	\$1 50	\$10 00
Transportation prepaid			



*Three
Lovely*
CAMELLIAS
From
Thomasville

Camellia
TOMORROW



Camellia
BETTY SHEFFIELD



Camellia
ANN SMITH

LOVELY THOMASVILLE CAMELLIAS

Ann Smith. A large and beautiful new semi-double, deep red Camellia raised as a seedling by Mrs. J. W. Mann, Valdosta, Ga., and named in memory of a lovely young lady, the late Miss Ann Smith, of Valdosta. Very uniform, compact, somewhat rounded growth, with attractive, large, dark green foliage. Flowers are large, frequently more than 5 inches across, often deep pink at the beginning of the flowering season or in its final stages, but dark red in cold weather. For a large-flowered variety it is a very free bloomer, and large plants in full bloom on our display grounds last winter were greatly admired by all who saw them. Compact, field-grown specimens, 2-yr. grafts, 18 to 24 in., \$20.00; 12 to 18 in., \$15.00; 1-yr. grafts, also field grown, \$7.50 to \$10.00 each.

Betty Sheffield. This charming Camellia, raised as a seedling by Mrs. A. B. Sheffield of Quitman and introduced by us a few years ago, has become one of America's leading varieties, being greatly prized from Norfolk to Texas, and on the Pacific Coast. Large, often 6-inch, very regular semi-double to loose peony form, white with occasional red or pink splotch or stripe. Petals slightly waved; golden stamens interspersed among petals. The bush is a strong, vigorous grower, upright and compact, and the foliage is large and distinctive. Superior to many others of similar color. Available in sizes and at prices shown on page 28.

Betty Sheffield, Pink. A very valuable new Camellia developed as a sport of Betty Sheffield, with all the characteristics of the parent and differing only in the deep rose-pink color. Occasionally a grafted plant will show some little variegation, which only adds to its attractiveness. Available in same sizes and prices as Ann Smith.

Blanche Maxwell. A pure white sport of Pearl Maxwell. Regularly imbricated (formal double) flower of large size, often 5½ inches across. It is a late-flowering variety, valuable in giving us a "formal" with which to finish the season, but even more valued for its perfect form and large size. Like its parent, makes an upright, shapely, compact bush, with large, thick, somewhat rounded foliage. Same sizes and prices as Ann Smith.

Bryan Wright. See page 28.

Fragrance. All that the name implies. Skeptical? So were we, thinking the first bloom had been "doctored." Visitors to our grounds and those of the originator, Mrs. Curtis Murphy, of Moultrie, Ga., have been amazed to discover the pleasing fragrance of this Camellia. Flowers are medium in size, deep pink to light red. Foliage is large and dark green; bush is compact and symmetrical in growth. Stocky, field-grown specimens, at prices shown on page 28.

In Camellias this season we are offering only sturdy, field-grown plants, the quality of which is far superior to the usual run of shade-grown or canned plants in general circulation. People usually get what they pay for. We invite everyone who possibly can do so to come to the nursery and see the fine quality of our Camellias.



SALLY HARRELL

Frank Eidson. A very early new Camellia of great merit raised as an unknown seedling by Mrs. Frank Eidson and named in honor of her husband, a retired businessman and former mayor of Thomasville. Large, semi-double flowers are white, splashed with pink and red, and borne freely on a symmetrical bush. Available in grafted plants at prices shown on page 28.

Frank Gibson. See page 28.

Kate Thrash. A lovely new variety with a lot of good qualities. The flowers are rose-pink, often 3 inches deep and 4 inches in diameter, almost perfect peony form, with a few short stamens interspersed among petals. Stems are long, making it an unusually nice variety for cutting. The flowers hold on the bush a long time. After the hard freeze of November 2, 1954, most Camellias in our fields lost their flower buds, but Kate Thrash came through as if nothing had happened and was one of the few to go on and bloom. This variety was originated as a seedling by capable Mrs. W. T. (Sue) Roughton, of Thomasville, a lovely person with an intense interest in gardening, especially with Daylilies and Camellias. \$10.00 to \$15.00 each.

Pearl Maxwell. See page 29.

Sally Harrell. Almost a perfect White Debutante, and something we have been looking for for a long time. Grown as a seedling by Mr. Eustace Harrell, of Thomasville, and named in honor of his daughter. Habit of growth almost identical with Debutante, and like it a fairly early bloomer, continuing over a long period. We are very conservative about introducing new Camellias and have asked to be excused about a lot of them. We have watched this one five years and are now glad we can strongly recommend it. All our plants are heavy, field-grown, grafted stock. 2-yr. grafts, \$15.00; 1-yr. grafts, \$7.50 to \$10.00 each.

Tomorrow. One of the most notable of Camellia introductions in recent years. Raised as a seedling by Mrs. Ross Hayes, of Thomasville. Very large, semi-double to loose peony-form flowers, often 6 inches across, sometimes deep pink at the beginning of the flowering season but usually light red. Produced rather freely for a Camellia of its size, on a strong, symmetrical bush with dark green foliage. Like the other Camellias we grow, our plants of Tomorrow are all field grown, on large stocks, and the quality is well above the average. 2-yr. grafts, \$12.50 to \$15.00 each; 1-yr. grafts, \$7.50 to \$10.00 each.

Camellia

COMPACT, FIELD-GROWN, TOP-QUALITY CAMELLIAS

All of our Camellias are superior, field-grown plants.

PRICES OF CAMELLIAS Except as noted

GRAFTED PLANTS

	Each
8 to 12 in., field grown, 1 yr. only, B&B.....	\$7 50
12 to 15 in., field grown, 1 yr. and 2 yr., B&B.....	8 50
15 to 18 in., field grown, 1 yr. and 2 yr., B&B.....	10 00
18 to 24 in., field grown, 2 yr. and 3 yr., medium, B&B... ..	12 50
18 to 24 in., field grown, 2 yr. and 3 yr., specimen, B&B... ..	15 00

Adolphe Audusson. Generally considered the finest of semi-double red Camellias. Very dark red with golden stamens. Heavy, dark green foliage. A "must" for every Camellia garden. Grafted, all sizes.

ADOLPHE AUDUSSON

Adolphe Audusson, Variegated. Large, semi-double; very dark red, marbled white. Ours is a superior strain, lighter than most. Very choice. Grafted, all sizes.

Beau Harp. One of the finest of all Camellias. Rose-red; very large; peony form. Vigorous, upright growth. Grafted, all sizes.

Beau Harp, Variegated (Dr. John Bell). Worthy sport of the above, considered by many to be even more showy and attractive than the parent. Grafted, all sizes.

Bryan Wright. A lovely, very light pink Camellia, in color half way between Lady Hume's Blush and Pink Perfection. It is a fairly early bloomer, and the first flowers are often formal; later they are almost double peony form, and at the end of the season they open and show a few very golden stamens interspersed in the petals. Grafted, all sizes.

Edwin H. Folk. Very large, loose, semi-double. Vigorous, upright growth. Grafted, all sizes.

Emmett Pfingstl. Sport of the newer Camellia Joseph Pfingstl, and considered by many to be superior to the parent, which is claiming much. Emmett Pfingstl is like the parent, except that the beautiful flowers are spotted and splotched with white. Grafted, all sizes.

Frank Gibson. A most distinctive Camellia, different from all others. Anemone form, pure white with a large mass of gold-edged petaloids in the center. Vigorous, open, upright growth. Grafted, all sizes.

Fred Sander (Fimbriata Superba). Medium size; semi-double; distinct saw-edge; deep red. Grafted, 18 to 24 in.

Frizzle White. Very large; pure white; semi-double to loose peony form. A superior Camellia deserving a better name. Grafted, all sizes.

CINDERELLA. *The First All-America Selections Winner* (See Back Cover)

Cinderella is one of the loveliest Camellias ever produced—a charming flower of light silvery pink, shading deeper inside, with darker veinings. Practically every petal is fimbriated. A compact ring of golden stamens in the center adds to its attractiveness. The large flower is semi-double in form, often more than 5 inches across, and is produced freely on a nice, symmetrical bush from November to March.

Our plants of Cinderella are field-grown, shapely specimens, most of them set with flower buds. This variety scored high in test gardens from Norfolk to Louisiana and on the Pacific Coast, and will prove to be a valuable Camellia for all gardens in these sections.

2-yr. grafts, 18 to 24 in., \$20.00; 12 to 18 in., \$15.00. 1-yr. grafts, \$10.00 to \$12.50

C. M. Wilson. Sport of Elegans (Chandler), and exactly like its parent in every particular except color of the flower, which is a very lovely, clear light pink. New Camellias may come and go, but here is one that will stay. Grafted, all sizes. Own-root, 18 to 24 in., \$5.00; 2 to 3 ft., \$7.50.

Comte de Nesselrode. Large; semi-double with petals intermixed; light pink, splotched and striped deep pink. Sometimes called a glorified Herme, but is superior in flower, foliage and growth. An old but very fine variety; name lost for years. Has created much interest at flower shows where it appeared under various local names. At Thomasville it is always attractive. Grafted, all sizes.

Daikagura. Finest of the very early Camellias. At Thomasville it almost invariably commences blooming in September and continues through Christmas. Large; irregular double; deep pink. Always lovely, always satisfactory. Grafted, all sizes.

Daikagura, Ward's Variegated. The lightest strain of variegated Daikagura. Very choice. Grafted, all sizes.

Haku-rakuten (Refugee). Large; semi-double; pure white, with long, showy stamens. Grafted, all sizes.

High Hat. Lovely, light pink sport of Daikagura. Like parent, blooms very early. Grafted, 8 to 12 in. to 15 to 18 in.

Joshua Youtz. Finest new white Camellia. Large; irregular double; pure white. Like other Daikaguras, blooms very early. Grafted, all sizes.

Kerlerec. A beautiful cameo-pink Camellia, medium large, anemone to peony form. Fairly early to bloom and repeats through most of the season. 1-yr. grafts.

King Cotton. Pure white, large, anemone form. Medium, compact growth. Early. A very good Camellia from Mr. Hugh Shackelford of Albany. 1-yr. grafts, \$10.00 each.

Lady Kay. Peony-form sport of Dark Strain Ville de Nantes; a most interesting flower, with every petal well serrated. In great favor with those who have it, especially those who grow Ville de Nantes well. 1-yr. grafts.

JAPONICA •

Light Gigantea. An almost solid white form of Gigantea, with a few showy splashes of red. Very lovely and superior. Grafted, all sizes.

Mme. Chiang Kai-shek. Might well be called "Pink Donckelari," although its growth is far more vigorous. One of the most satisfactory of pink, semi-double Camellias. Grafted, all sizes.

Masterpiece. White. Large, high-centered, formal double to rose-form double. Vigorous, open, upright growth. Very large foliage. 1-yr. grafts.

Mathotiana Supreme. Sport of Mathotiana. Rose-form double with stamens interspersed among petals. A most outstanding flower. 1-yr. grafts.

Pearl Maxwell. A new regularly imbricated (formal double) Camellia with a large flower of light pink; many blooms measured $5\frac{1}{2}$ inches across. While not as heavy as the Mathotianas, it is not far behind in size, and for exquisite, soft color it is quite superior to other varieties of its form. Pearl Maxwell is a seedling of Enrico Bettoni and like the parent is a vigorous grower and late bloomer. Raised from a seed by Mrs. C. O. Maxwell, Cairo, Ga. and named for her. Grafted, all sizes.

Pink Shadows. Deep salmon-pink shaded darker pink. Large, semi-double; fimbriated inner petals. Medium, compact growth. Distinctive, pointed, lustrous green foliage. Grafted, all sizes.

Pride of Descanso. Very large; semi-double to semi-peony form. Vigorous, compact, rather rounded bush. Midseason bloomer. A fine white with golden stamens. Grafted, all sizes.



MATHOTIANA RUBRA



DAIKAGURA

Princess Elizabeth. Blush-pink on outer petals; inner petals white with white stamens. Large, peony form with regular outer petals and irregular inner petals. Grafted, all sizes.

Shiro-Chan. A pure white Elegans Chandleri, with all the good qualities of that old variety. Regardless of the white Camellias one has, this should be in every Southern collection. 1-yr. grafts.

Simeon. Deep pink. Very large, semi-double to semi-peony form, with large petals and high center intermixed with stamens. Vigorous, upright growth. 1-yr. grafts.

Thelma Dale. Very large; incomplete double with petal sizes intermixed; rose-pink. Very choice. Grafted, all sizes.

Ville de Nantes, Light Strain. All these plants were grown from flowers that were mostly white. All graftwood was carefully selected. Ville de Nantes is called the world's No. 1 Camellia. The flower is extra large, semi-double, most blooms white with red markings, occasional solid red or near red bloom. Grafted, all sizes.

Ward's Daikagura. See Daikagura, Ward's Variegated.

White Crane (Haku-Tsuru). Pure white, very large, semi-double with large, crinkled petals and center petaloids that stand up like "rabbit ears." Vigorous, upright growth. In the Thomasville-Tallahassee area year after year it has no superior in anything new or old. 1-yr. grafts.

White Daikagura. See Joshua Youtz.

White Empress. Very large; pure white, golden stamens. In popularity it is the leading semi-double Camellia. Grafted, all sizes.

White Queen. Very large; semi-double; pure white. Looks like a giant form of Snowdrift. Late bloomer. Grafted, all sizes.

Wildwood. Light pink. Very large, semi-double to peony form; thin petals. Upright, compact 2-yr. grafts, 12 to 18 in., and 1-yr. grafts.

ADDITIONAL NEW VARIETIES OF CAMELLIA JAPONICA

Some of the Camellias herein described are available in good, field-grown plants on own roots at somewhat lower prices than grafted plants. Also in grafted plants are available a few plants each of choice, field-grown stock in many other new and rare varieties, including Adolphe Audusson Special, Beatrix Hoyt, Brockling, Daitairin, Donation Variegated, Drama Girl, Edwin Folk Variegated, Emmett Barnes, Flame, Flame Variegated, Flowerwood, Glen 40, Glen 40 Variegated, Hishi Kairito, J. C. Williams, Marjorie Magnificent, Masquerade, Mathotiana Special, Mattie O'Reilly, Mme. Marguerite Calusaut, Margaret Ratcliffe, Nina Avery, Ruth Royer, Selma Shelander, St. Andre, Victory White and fully fifty others.

Standard Varieties

We have a wide assortment of popular varieties in field-grown plants, mostly compact specimens. Varieties include Alba Plena, Daikagura, Debutante, Elegans, Mathotiana, White Empress, Woodville Red and many others, at competitive prices. Some grafted, others own-root.

Since these Camellias are obtainable in many places, we prefer not to ship these specimen, balled and burlapped plants. Transportation costs have become too high. But they are excellent buys for those who can visit the nursery and make selections.

CAMELLIA SASANQUA

The colorful and fast-growing Sasanquas are finally coming into favor in the South, as they so richly deserve. Easy to grow, effective in landscape uses, as border, hedge or specimen plants, they present a brilliant show from September to February. At Thomasville their heaviest season of bloom comes in the months of November and December. Sasanquas, while thriving anywhere that *Camellia japonicas* are grown, are more cold resistant and have a wider range of adaptability.

Hinodegumo. One of the most beautiful of all Sasanquas. Blush-pink with deeper edges; semi-double. Good foliage; strong bush.

Jean May. A lovely new variety from Ralph May of Fernandina. Large, shell-pink, semi-double blooms. Glossy foliage; compact habit. 12 to 18 in., \$3.50; 18 to 24 in., \$5.00; 2 to 3 ft., \$7.50.

Oleifera. A delightful light pink Sasanqua. Very large flowers; crinkled petals, white, tipped rose. Very fast grower.

Pink Snow. Pink form of the double white Snow-on-the-Mountain Sasanqua. Beautiful, light rose-pink color, deeper than the single-flowering varieties. Like its parent, this variety grows into a shapely and compact bush.

Rosea. Medium, single, deep pink flowers in great profusion. Fast grower; free bloomer.

Setsugekka. Very large; semi-double; white with faint pink tinge; ruffled edges. Has more fragrance than most Camellias. A very lovely and very worthwhile Sasanqua.

Showa-no-Sakae (Usu Beni). A very beautiful new Sasanqua. Large, soft pink blooms, almost as double as Snow-on-the-Mountain. Upright, vigorous bush with good foliage.

Snow-on-the-Mountain. The large, double, white flowers resemble a carnation and are borne in such profusion as to literally cover the entire plant. Compact and rounded in growth.

CAMELLIA SASANQUA, SHOWA-NO-SAKAE

One of the Best of the Newer Sasanquas

Apple Blossom. An extra-early-flowering Sasanqua, usually the first to flower with us. Flowers fairly large; single; white, tinged pink. Fast-growing bush.

Beni Kantsubaki (Shishigashira). Rose-red to crimson; fairly double; very profuse. Bush is slower grower than most Sasanquas, but compact of growth; foliage very dark. This is an excellent Sasanqua, one of the most cheerful and colorful of fall-blooming Camellias. 12 to 18 in., \$3.50; 18 to 24 in., \$5.00 to \$7.50 each.

Cleopatra. Large, deep pink flowers; semi-double with crinkled petals. Foliage thick and glossy; bush of very compact, shapely growth.

Daydream. Quite large, single to semi-double white flowers, borne on a very vigorous bush, with dark green foliage. Instead of using ligustrum or some other common evergreen for a border or hedge, why not pay a little more and use this very good Sasanqua?

PRICES OF CAMELLIA SASANQUA

(Except as noted)

	Each	12
18 to 24 in., branched	\$2 50	\$25 00
18 to 24 in., specimen	3 50	35 00
2 to 2½ ft., branched	3 50	35 00
2 to 2½ ft., specimen	5 00	50 00

Specimen plants one year older, pruned and compact. Limited stock of larger sizes available in some varieties.

RELIANCE AZALEA AND CAMELLIA SPECIAL FERTILIZER

For maximum growth, bloom, and general well-being, it is necessary to feed your plants properly. Unfortunately for the Azalea and Camellia grower, most commercial fertilizers are made neutral by the use of limestone, and are not suitable for acid-loving plants.

To meet this need we keep in stock Reliance Azalea and Camellia Special, a commercial fertilizer which is acid, easy to apply, and has no objectionable odor. It supplies a balanced and complete food for these plants. With your purchases you will receive a little booklet giving much information on the planting and care of Azaleas and Camellias.

Prices of Reliance Azalea and Camellia Special Fertilizer: 25 lbs. \$1.75, 50 lbs. \$2.75, 100 lbs. \$5.00, f.o.b. Thomasville, Ga.

ORDER BLANK

**THOMASVILLE NURSERIES, INC.
THOMASVILLE · GEORGIA**

Date _____ 195__

Gentlemen:

Send me on _____ by _____
Specify date wanted Express—Parcel Post—Freight

the Nursery Stock listed hereafter, for which I enclose \$ _____

Name _____
MR., MRS. or MISS

Street and No. _____

Post Office _____ State _____

Express or Freight Office _____
If different from Post Office

NOTE: If a plant you order is already sold out, we will select for you a similar variety of equal or greater value, if such is available. If you do not wish this service mark X here

QUANTITY	NAME OF PLANT	PRICE	TOTAL
GEORGIA CUSTOMERS PLEASE INCLUDE 3 PER CENT SALES TAX REQUIRED BY LAW			

Carried forward

QUANTITY NAME OF PLANT PRICE TOTAL

Brought forward

NOTE: If a plant you order is already sold out, we will select for you a similar variety of equal or greater value if such is available. If you do not wish this service mark X here.

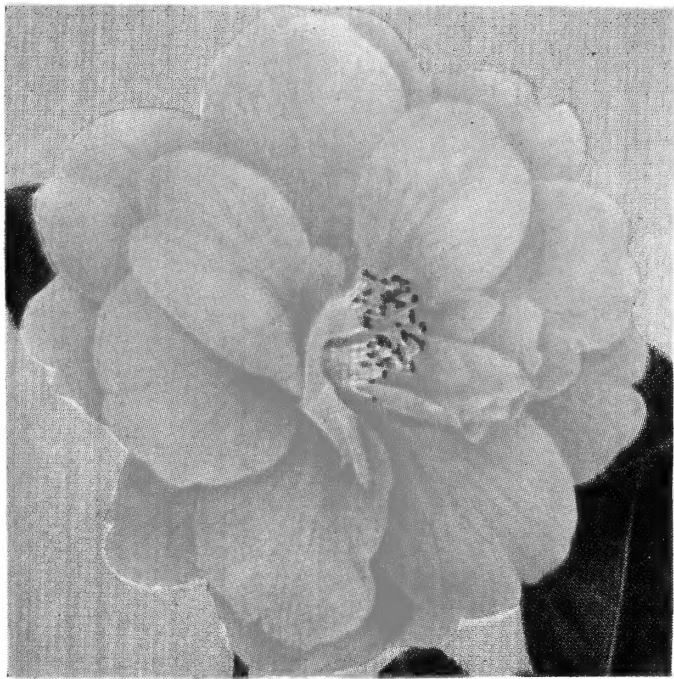
GEORGIA CUSTOMERS PLEASE INCLUDE 3 PER CENT SALES TAX REQUIRED BY LAW

Total

CAMELLIA

Donation

A new Camellia of extreme hardiness and great attractiveness. The light rose-pink flowers are of medium size, borne in great profusion, midseason to late. It has the habit of blooming from the top to the bottom of the bush and is quickly singled out in any collection of varieties in flower. It is a hybrid of *Camellia japonica* and *C. saluenensis* (the latter is very hardy). In the hard freeze of November, 1950, Mr. D. C. Strother of Ft. Valley, Ga., had a lot of 1-year grafted varieties, and only Donation and Marjorie Magnificent survived. Its extreme hardiness was proved again two years ago when a blizzard swept the Southeast on November 2. These blizzards don't come too often (we had a period from 1924 to 1950 without any here), but when they do appear, we appreciate hardy Camellias. 2-yr. grafts on heavy, 6 to 8-yr. understocks in field. 12 to 18 in., \$10.00; 18 to 24 in., \$15.00; 1-yr. grafts, \$7.50.



CAMELLIA, DONATION

Oriental MAGNOLIAS

Oriental Magnolias are rapidly increasing in popularity in the South, being one of the showiest and most satisfactory of large shrubs or small trees. We are glad to be able to offer a collection of varieties such as few growers have developed. All balled and burlapped specimens.

Cordata. The yellow Magnolia. A native but extremely rare variety. Ours are grafted on Oriental Magnolia stocks, to make a more dwarf and desirable tree. Flowers medium size, canary-yellow in color, produced very late in season. 2 to 3 ft., \$7.50; 3 to 4 ft., \$10.00 each.

Denudata Alba. Seedling of Denudata or Conspicua. Flowers slightly larger than parent; mostly pure white to lemon-white, but occasionally showing a faint tinge of purplish pink at base. 3 to 4 ft., \$10.00; 4 to 6 ft., \$15.00 each.

Denudata Purpliana. Translucent reddish purple. Very large. Different and distinctive. 3 to 4 ft., \$7.50; 4 to 6 ft., \$10.00 each.

Rustica Rubra. Very large, cup-shaped, purplish red flower. One of the most beautiful Magnolias. Late. 2 to 3 ft., \$5.00; 3 to 4 ft., \$7.50 each.

Soulangeana. Most popular variety in the United States, long prized for its beautiful, cup-like form, light pink color and extreme earliness of bloom. 2 to 3 ft., \$3.50; 3 to 4 ft., \$5.00; 4 to 6 ft., \$7.50 each.

Soulangeana Alba Superba. Lovely very light pink; early. A rare and very charming variety. 2 to 3 ft., \$5.00; 3 to 4 ft., \$7.50 each.

Soulangeana Alexandrina. A hybrid that is more vigorous than the well-known Soulangeana. Flower larger, with 9 petals; most blooms are deep purplish pink, lighter inside. 2 to 3 ft., \$3.50; 3 to 4 ft., \$5.00; 4 to 6 ft., \$7.50 each.

Soulangeana Lennei. Possibly largest of all Magnolias. Large, cup-shaped, deep purple flower. Late bloomer. 2 to 3 ft., \$5.00; 3 to 4 ft., \$7.50; 4 to 6 ft., \$10.00 each.

Stellata (Star Magnolia). Dwarf variety, seldom reaching a height of more than 10 feet. Produces numerous, waterlily-like flowers in early spring. 18 to 24 in., \$3.50; 2 to 3 ft., \$5.00 each.

SEE THE THOMASVILLE CAMELLIA SHOW

Don't miss the Thomasville Camellia Show on Saturday and Sunday, January 19 and 20, 1957. At the same time our large collection of Camellias will be in bloom at our main nursery; visitors always welcome, without obligation to purchase.

Plants as Gifts

Roses, Camellias, etc., make delightful gifts to send at Christmas, on birthdays or any special occasions. Such gifts are lasting and become more beautiful as time goes along. Send us your card, or authorize us to write your name on a special one, and we will place in an envelope, attach to the plant, and ship according to your instructions. If you wish, we will forward transportation prepaid and bill you with the actual cost. Please send such orders as far in advance of shipping date as possible. The supplying of gift plants for our customers has become one of our specialties.



The *First* All-America Camellia Selections Winner
CAMELLIA JAPONICA, CINDERELLA

Cinderella is one of the loveliest Camellias ever produced—a charming flower of light silvery pink, shading deeper inside, with darker veinings. Practically every petal is fimbriated. A compact ring of golden stamens in the center adds to its attractiveness. The large flower is semi-double in form, often more than 5 inches across, and is produced freely on a nice, symmetrical bush from November to March.

Our plants of Cinderella are field-grown, shapely specimens, most of them set with flower buds. This variety scored high in test gardens from Norfolk to Louisiana and on the Pacific Coast, and will prove to be a valuable Camellia for all gardens in these sections. 2-yr. grafts, 18 to 24 in., \$20.00; 12 to 18 in., \$15.00. 1-yr. grafts, \$10.00 to \$12.50.

• HJORT'S 1957 BOOKLET •

THOMASVILLE NURSERIES, INC.

"Home of Roses"

THOMASVILLE, GEORGIA