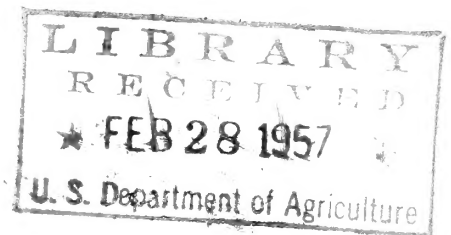


# GARDEN MUMS FOR '57



---

**Perennials  
Picturesque Ivies  
House Plants**

---

**TERRACE VIEW GARDENS**

*Grafton Longden, Jr.*

**GREENCASTLE, INDIANA**

# An Invitation

You are most welcome at our greenhouses at all times. Hours during the Spring months are 7:30 a.m. to 6 p.m. every day except Sunday. The rest of the year, the hours are 8:00 a.m. to 5:00 p.m. We are closed Sunday, although we will make Sunday Appearments. We are also closed Wednesday afternoons during January, February, July and August.

We are located on the east edge of Greencastle on the Indianapolis Road (State Road 240). Phone 585-R.

**TERRACE VIEW GARDENS: Grafton Longden, Jr., Greencastle, Indiana**

---

## INFORMATION, TERMS, ETC.

**GENERAL TERMS—Cash with Order.** We pay delivery charges on all orders of \$2.50 or more, to any point in the United States, unless otherwise stated in catalog. **ON ORDERS OF LESS THAN \$2.50, PLEASE INCLUDE 35c TO COVER COSTS OF POSTAGE, PACKING AND HANDLING.**

**METHOD OF SHIPPING—**All plants are carefully wrapped and packed. Shipment is made the best way. Most orders are sent by Parcel Post. Either **Special Handling** or **Special Delivery** may save a delay of one to several days. If either service is desired, please include remittance to cover and mark order thus. On orders of less than \$5.00, the charges are usually 25c for **Special Handling** and 45c for **Special Delivery**. Extra large orders are generally sent by Prepaid Express. If you are unable to receive orders by Express, please advise when placing your order.

**WE DO NOT SUBSTITUTE WITHOUT PERMISSION.** If we may substitute, please indicate on order and give second choice if possible.

**GUARANTEE—We Guarantee Satisfaction—**If your order reaches you in poor condition, please advise at once, and if possible, a replacement will be sent to you. If not, your money will be refunded. Should there be a mistake in your order, advise promptly, we will do our best to correct it. No claims will be given consideration if made more than 10 days after receipt of your package. **When requesting adjustments, please include your original Order Blank.**

**ALL PLANTS LISTED IN THIS CATALOG ARE YOUNG POTTED PLANTS IN A HEALTHY GROWING CONDITION, AND ARE SHIPPED TO YOU IN THE SOIL IN WHICH THEY WERE GROWN, UNLESS STATED OTHERWISE.**

Because of the many conditions affecting plant growth, we will make no warranty, express or implied, as to the productiveness of plants, bulbs or seeds listed herein, and we will in no case be liable for more than the original purchase price.

We watch weather conditions and do not ship during periods of extreme weather.

**ALL ORDERS PROMPTLY ACKNOWLEDGED** if shipment cannot be made within the next few days.

---

**PLANT MARVEL**  
*"feed as you water"*

The Best and Safest Fertilizer to Use on African Violets or Any Other House Plant. Shipped Postpaid Only with an Order for Plants.

Complete Directions and Aluminum Measuring Spoon with each Package.

(If ordered alone add the following postage)

½ pound Can (makes 125 gallons).....\$ .75 plus .25 postage  
1 pound Can (makes 250 gallons).....\$1.25 plus .30 postage

## I - B O M B

Insecticide spray that controls aphids, red spider, mites, thrips, white fly and mealy bugs. Fine for use on any house plant. Harmless, safe, and easily used in the home—just press the button. Safe on African Violets. Also fine for outside plants.

**\$1.59 plus 15c postage**

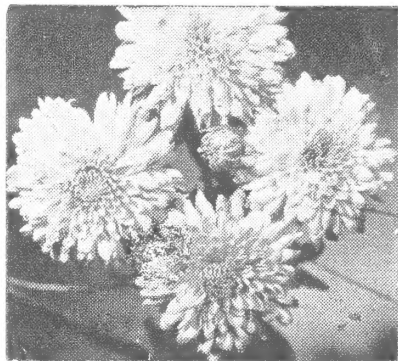
## Plastic Trellis

Nice for Ivies or other trailing plants. Comes in red, green, and yellow. Pictured in Hoya illustration on page 14. (Sold in assorted colors only.)

**25c each**

# HARDY CHRYSANTHEMUMS

Hardy Garden Chrysanthemums are easy to grow. All plants listed here are healthy young potted plants which will bloom for you this fall. We give the approximate period for blooming. A culture sheet is sent with each order. R before catalog number means rated high by visitors to our Display.



D—Double. E—Early blooming (before  
SD—Semi-Double. Sept. 15.)  
S—Single. M—Blooming Sept. 15-30.  
H—Height in inches. L—Blooming early October.

## NEW 1957 INTRODUCTIONS

**PC-269 ARTIST'S DELIGHT**—(Bristol '57) D-M-H24. Coral-geranium pink and fawn flowers in perfect sprays. \$1.00 each.

**PC-270 BLANCHE LITWILLER**—(Kraus '57)—D-E. Large lavender-pink pompon flowers. \$1.00 each.

**YC-253 DUNE SAND**—(U. of Nebr.) D-M-H30. Soft clear fawn yellow flowers borne on long stems which are excellent for cutting. Healthy disease resistant plants bloom late September until hard freeze. 80c each.

**PC-271 EDNA ROWLEY**—(Kraus '57) D-M. Lavender-pink ruby eyed button. Blooms prolifically and is a fine cutter. \$1.00 each.

**YC-254 GOLD RIBBON**—(U. of Nebr.) D-E-H15. Light orange to deep yellow flowers produced on sturdy cushion plants with bloom extending from August to November. 80c each.

**YC-272 GOLDEN FANTASY**—(U. of Minn.) D-M-H18. Rewarding rich brilliant yellow three inch flowers spectacularly fringed. \$1.00 each.

**WC-273 NEW DRIFTED SNOW**—(Lehman '57) D-M. Heavy textured, fluffy, three inch white flowers. Blooms nearly two months. 80c each.

**YC-252 PRAIRIE SUNSHINE**—(U. of Nebr.) D-E-H24. Large 3 to 4 inch flowers of pure yellow with good substance cover healthy plants from early August until hard freeze; 3 full months of color. 80c each.

**PC-274 STYLISH**—(Bristol '57) D-L-H28. Recurved decorative flowers are different and lovely; vermilion maturing to rose. \$1.00 each.

**WC-275 WHITE SAIL**—(Lehman '57) D-M. Three inch white with slight cream center. Best midseason white. \$1.00 each.

**YC-182 ADMIRATION**—D-M-H20. A delightful medley of peach and bronzy salmon. Large 3-inch flowers in heavy sprays. 75c each.

**PC-222 ADORABLE**—(Lehman '56) D-M-H20. Large, bright rose-pink with glowing peach center. \$1.00 each.

**PC-62 ALLEGRO**—D-L-H20. Glowing shrimp pink with salmon sheen. 50c each.

**R BC-185 APACHE**—D-E-H24. Orient red to dark brilliant firecracker red with golden overcast. Outstanding with quilled petals and very popular. 75c each.

**BC-71 APRICOT GLOW**—D-E-H17. Glowing apricot bronze; early flowering cushion. 45c each.

**PC-125 ARISTOCRAT**—D-L-H24. Deep cerise with overtone of bright rose. Majestic flowers prolifically produced. 75c each.

\***BC-1 ARAPAHOE**—D-L-H24. Large bronzy red flowers with bronze reverse. Very beautiful and a deep color. 75c each.

**BC-146 BEACON**—D-M-H30. Fully double 4 inch flowers of coral apricot shading to nasturtium orange at center. Tall and fine for cutting. 55c each.

**PC-8 BETTY**—D-L-H30. Superbly formed flowers of vivacious salmon pink. 50c each.

**RC-268 BIRETTA**—D-M-H30. Glowing cardinal red flowers. Tall and fine for cutting. **50c each.**

**PC-256 CAMEO**—D-M-H15. Fully double 2 inch blooms of a lovely true pink completely cover the cushion plants. A lovely mound of pink when in full bloom. **75c each.**

**BC-209 CARNIVAL**—D-L-H24. Large glistening burnt orange and yellow flowers. **50c each.**

**R PC-19 CECELIA**—D-M-H18. Large mounds of soft deep peony purple flowers. **60c each.**

**YC-9 CHARLES NYE**—D-M-H28. Large ball shaped flowers of rich buttercup yellow. The standard by which all other yellows are judged. **50c each.**

**R YC-121 CHIQUITA**—D-M-H20. Compact deep lemon yellow button pompons on low plant. **50c each.**

**YC-246 COMPANION**—D-E-H24. Fully double golden bronze. Early bloomer and fine for cutting. **60c each.**

**BC-224 COPPERSMITH**—(Bristol '56) D-M-H20. Double decorative terra cotta to deep amber flowers. Beautiful. **80c each.**

**R PC-203 COQUETTE**—D-M-H18. A beguiling mound extravagantly studded with smooth rose-pink flowers from midseason to freeze. **75c each.**

**YC-120 CREAM PUFF**—(Cunningham '56) D-E-H12. Low cushion of bright creamy yellow with sulphur tints. Blooms very early and stays nice until frost. **75c each.**

**RC-205 CROWN JEWEL**—D-E-H27. Bright crimson-red with brilliant sheen. **75c each.**

**R BC-204 CROWNING GLORY**—D-M-H28. Very large fully double flowers 4 inches across. Enchanting coral apricot shading to nasturtium orange at the center. **75c each.**

**WC-206 CRYSTAL MAID**—D-M-H24. New. Creamy white pompon flowers in early September. A showy border plant of compact growth. **60c each.**

**RC-45 CUTIE**—D-L-H22. Tiny cherry red button. **45c each.**

**YC-208 DELIGHT**—D-E-H28. Perfect 2½ inch flowers of golden yellow. **50c each.**

**R RC-53 EARLY CRIMSON**—D-E-H24. Large rich flowers of bright crimson. **60c each.**

**YC-10 EARLY GOLD**—D-E-H15. Low mass of yellow globes by Sept. 10. **50c each.**

**BC-276 EARLY HARVEST**—D-E-H16. Superior bright cushion of mahogany-orange. **60c each.**

**BC-175 EARLY KATHLEEN**—D-E-H24. New. Early coppery bronze flowers. Good cut flower. **60c each.**

**R PC-242 EARLY LAVENDER**—D-E-H20. Very free flowering silvery lavender with slightly deeper center. Fine cushion and border plant. **75c each.**

**\*PC-55 EVANGELINE**—D-M-H30. A stunning pastel charmer, sweetheart pink with very large flowers. **75c each.**

**PC-223 EVELYN DEVANEY**—(Lehman '56) D-M-H26. Delicate pearly true shell-pink flowers. Grand for cutting. **80c each.**

**PC-184 FASCINATION**—D-M-H24. Bountiful large 4 inch flowers of silvery lavender pink with occasional blooms of pure white. **60c each.**

**RC-135 FIRE ENGINE**—S-M-H24. Bright, dark cardinal red with orange reverse. Petals open somewhat spoon shaped. Outstanding. **60c each.**

**BC-189 FLAMBOYANT**—D-E-H24. Tangerine scarlet overlaid orange gradually flaming into orange scarlet. Non-fading blooms ideal for cutting. **75c each.**

**R \*BC-193 FOOTBALL BRONZE**—D-E-H24. New. Early large flowering bronze and amber incurved petals. Plant is strong and upright. Beautiful. **80c each.**

**WC-241 FROSTY**—D-M-H18. New. Mass of 2-inch pure white pompons cover this cushion and border plant. **75c each.**

**BC-239 GEORGE LUXTON**—D-E-H24. New. Soft bronze flowers in profusion by September 1st. Excellent cutter. **75c each.**

**YC-130 GOLD SPOON**—SD-L-H24. Large flowers of gold shading to yellow. **60c each.**

**R YC-142 GOLDEN MOUND**—D-E-H18. Excellent golden yellow cushion. **50c each.**

**BC-52 GOLDEN SUNSET**—D-M-H22. Very large flowers of burnished gold with ruby red centers. A lovely blend. **60c each.**

**R \*PC-227 HELEN BOGUE**—(Kraus '56) D-M-H20. A large rosy purple flower with unusual swirled centers and reflexed petals. A beautiful new color and rated tops by us. **80c each.**

**BC-50 HOLIDAY**—D-M-H24. Large bright golden bronze flowers 4 inches across. 60c each.

**BC-32 HUNTSMAN**—D-L-H30. Vivid bright scarlet orange overlaid with bronze and red tints. 60c each.

**R WC-226 JESSAMINE WILLIAMS**—(Kraus '56) D-M-H18. Double Rayonnante type. Petals quilled and spoon tipped. White flowers 2-4 inches across with beautiful sprays for cutting. Really tops. 80c each.

**PC-207 JEWELTONE**—D-M-H24. Sparkling bright rose-pink pompon; compact and showy. 60c each.

**PC-170 JOAN HELEN**—SD-E-H18. A mass of glittering crimson purple flowers with yellow centers; cushion and popular. 50c each.

**PC-11 JOYBRINGER**—D-L-H20. Outstanding deep rose with salmon tinted flowers on spreading cushion plant. 60c each.

**PC-176 JOYOUS**—D-L-H20. New. Free flowering cushion of cheery rose-pink blooms, hazed with gold. Beautiful. 75c each.

**RC-194 KIOWA**—D-L-H24. New. Fully double brilliant orange red pompons prolifically produced. 60c each.

**PC-195 LADY'S CHOICE**—D-M-H26. New. Stately plant of large 4-inch flowers of pink ivory. A truly pastel color. 75c each.

**YC-15 LEE POWELL**—D-M-H30. Large shaggy Chinese yellow flowers. Lovely. 60c each.

**YC-113 LEMON DROP**—D-E-H17. Early lemon yellow button pompons. Very hardy. Semi-cushion. 50c each.

**WC-211 LIMELIGHT**—D-M-H30. Three inch pompons of white with greenish cream cast when opening. Beautiful. 60c each.

**R RC-213 LIPSTICK**—D-E-H18. The finest bright red cushion we know. Makes a perfect mound and is very showy and popular. 60c each.

**WC-210 LITTLE ESKIMO**—D-M-H15. Pure creamy white, ball shaped button pompons in abundance. 50c each.

**PC-242 LORENZO**—D-M-H20. Glowing rich deep purple flowers. 60c each.

**PC-139 MALINDA BROWN**—D-M-H24. Magnificent clear self lavender. Flowers globular; petals strongly incurved and twisted. 50c each.

**PC-16 MASQUERADE**—D-L-H20. Masses of one inch silvery rose balls with deeper centers until maturity. Very fine. 60c each.

**RC-183 MISCHIEF**—S-L-H20. Hundreds of tiny flowers of beet root purple with bright yellow centers cover the plant. Novelty. 60c each.

\* **YC-196 MURIEL RICE**—D-M-H-26. New. Large double 4 inch flowers of light primrose yellow maturing to deep cream, later acquiring a lavender tint. 75c each.

**BC-262 NANCY SCOTT**—D-E-H14. Burnt orange 1½ inch poms on cushion plant. Attractive. 60c each.

**YC-198 NORTH PLATTE**—D-L-H26. New. Large yellow flowers with orange shading; spoon petaled 3-4 inch blooms. 60c each.

**PC-67 OLIVE LONGLAND**—D-M-H24. Large apricot toned salmon pink flowers. 45c each.

**R PC-177 ORCHID HELEN**—D-E-H18. Orchid pink flowers of unusual beauty on cushion plant. 50c each.

**PC-78 ORCHID SPOON**—SD-L-H24. Lovely orchid lilac spoon. 50c each.

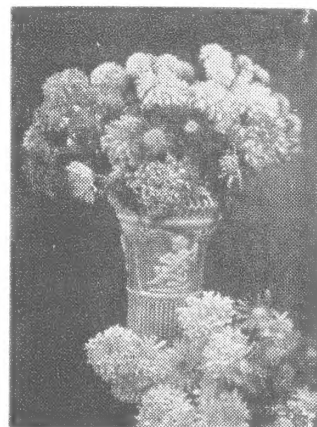
**WC-234 OSTOSA** — D-M-H20. Large glistening, pure white poms on compact plants. 60c each.

**YC-162 PATHFINDER** — D-E-H22. Non-fading bright clear yellow carnation-flowered blooms. Compact and showy. 60c each.

**PC-72 PATRICIA LEHMAN** — D-M-H24. Fluffy sparkling geranium pink flowers with peach center. 60c each.

**WC-52 PEPITA** — D-M-H22. Compact eggshell white flowers with cream center; cushion. 45c each.

**YC-266 PHOEBE**—S-L-H20. Tingling butter yellow petals with red central throats. 60c each.



**R PC-186 PINK QUILL**—D-M-H24. A large full centered spidery quill. Outer petals flesh to shell pink with deeper center. Beautiful. **\$1.00 each.**

**BC-163 PLAINSMAN**—D-M-H22. Outstanding coppery bronze carnation-flowered blooms with gold flushes. Beautiful. **60c each.**

**R PC-228 PURPLE WATERS**—(Lehman '56) D-M-H24. The best early deep purple. Double 3 inch flowers completely smother the plant. Wonderful color that was voted tops in our Display. **75c each.**

**R YC-199 REAL GOLD**—D-M-H20. New. Large firm pure deep gold flowers different from any other yellow. Very popular. **75c each.**

**RC-247 REMEMBRANCE**—D-M-H24. Dark carmine red pompons that hold color exceptionally well. **60c each.**

**YC-215 REVERENCE**—D-E-H22. Large light chamois-yellow. Blooms early with continuous bloom to freeze. **75c each.**

**PC-268 REVERIE**—D-M-H24. Fascinating lovely coffee-pink blooms with artful tintings and mahogany eye. **75c each.**

**RC-136 ROUGE CUSHION**—SD-M-H18. Intense firecracker red flowers maturing to red bronze. Popular. **50c each.**

**RC-214 SEPTEMBER CHEER**—D-E-H20. A profusion of rich cherry red flowers. **50c each.**

**PC-259 SUCCESSOR**—D-E-H18. Blooms are lavender pink with red eye. Very striking cushion. **60c each.**

**WC-263 SNOWSPOON**—S-M-H20. Excellent all white spoons with golden-yellow center. Beautiful and a good cut flower. **60c each.**

**YC-187 TALISMAN**—D-M-H26. Button pompons of soft apricot overlaid with lavender rose. **60c each.**

**RC-42 THE CHIEF**—D-L-H24. Striking Spanish red flowers with a golden reverse. **50c each.**

**R RC-250 TRIBUTE**—D-E-H22. Lovely daphne red maturing to daphne pink with a deeper center. Wonderful all season and very highly rated. **75c each.**

**PC-134 VIOLET**—D-E-H20. Full purple flowers with good color and substance. **45c each.**

**R PC-39 VIOLET GLORYMUM**—D-E-H15. A mound of striking soft purple flowers. Dwarf and popular cushion. **60c each.**

**YC-191 VISION**—D-L-H24. A soft harmony of pearl and ivory with just a hint of fawn. **60c each.**

**RC-258 VULCAN**—D-E-H20. Full double dark red flowers on compact plants. **60c each.**

**WC-106 WHITE BOUNTY**—D-M-H24. Small white button pompons with small sulphur yellow center. **50c each.**

**WC-24 WHITE CLOUD**—D-E-H26. Pure white flowers with buds and undeveloped petals showing lemon. One of the finest whites we know and a choice cut flower. Lovely from early September until hard freeze. **50c each.**

**WC-238 WHITE GULL**—D-E-H10. Tiniest white button. **50c each.**

**WC-229 WHITE MASQUERADE**—(Ladygo '56) D-L-H20. Masses of one inch glistening white spheres completely cover plant. Tightly knit firm petaled button blooms. **75c each.**

---

**R PC-201 HEROS JEAN GUIZONNIER**—D-L-H20. **NEW!** Long quilled petals of rosy purple. Petals are quilled but open on the tips. French novelty with huge blooms up to 7 inches across without disbud-  
ding; incurved. Very beautiful and caused much comment. **\$1.00 each.**

**PC-265 AMI CHARLES SOUCHET**—D-L-H20. **NEW!** Beautiful deep rosewood sport of Heros Jean Guizonnier. **\$1.00 each.**



**EXTRA LARGE FLOWERING EXHIBITION GARDEN VARIETIES** are listed here. Four to five inch blooms result when grown in the garden. 6 to 8 inch blooms are produced when grown disbudded. Starred varieties in the regular list also make very large flowers if disbudded.

**BC-264 BRONZE GIANT**—(Lehman '56) D-M-H28. Imposing decorative flowers of bright intense bronze. Long stems ideal for cutting. **\$1.00 each.**

**YC-225 BUTTERSCOTCH**—(Kraus '56) D-M-H26. Pure golden yellow to deep golden amber blooms on a perfect plant. 3½ to 4-inch semi-incurved flowers are borne in profusion. **80c each.**

**RC-257 DISPLAY**—D-L-H24. Very bright scarlet bronze incurved flowers. **80c each.**

**PC-217 DOREEN MONTE**—D-L-H26. Incurved large bright deep rose-pink with salmon cast. Bronze buds. **75c each.**

**RC-261 FRED STONE**—(Kraus '56) S-L-H30. Large duplex of non-fading oxblood red. Showy and long lasting. **80c each.**

**YC-240 GARLAND POWELL**—D-L-H24. Large bright deep yellow flowers are borne profusely. Semi-incurved. **80c each.**

**RC-237 INDIAN RED**—D-L-H26. Large Indian-rust colored flowers with unique center swirl which gives them distinctive charm. **80c each.**

**BC-218 MOHAVE GOLD**—D-L-H24. Extra large flowers of brightest golden bronze cover the plants from early September until severe frost. **80c each.**

**PC-220 ROSETONE**—D-M-H24. New. Lovely large lavender-rose flowers. Incurved to reflex. **80c each.**

**WC-221 SUPERLATIVE**—D-L-H26. A huge white incurve of perfect shape. Firm texture. A really super variety. **\$1.00 each.**

**BUY 3 MUMS (of the same variety) AT THE FOLLOWING PRICES:**  
**45c varieties—3 of same for \$1.20**      **75c varieties—3 of same for \$2.00**  
**50c varieties—3 of same for \$1.25**      **80c varieties—3 of same for \$2.20**  
**60c varieties—3 of same for \$1.50**      **\$1.00 varieties—3 of same for \$2.50**

## PERENNIALS

### DELPHINIUMS

The tall, slender, graceful spikes of large well formed flowers make them ideal for tall borders, back-grounds, prize beds or cutting. They will grow 4 to 5 feet tall and will bloom the first year if proper care is given. Varieties listed below are **GIANT PACIFIC HYBRIDS**, outstanding and mildew resisting.

**PD-1 BLACK KNIGHT**—Deep midnight violet.

**PD-2 SUMMER SKIES**—Light blue with an attractively contrasting white bee.

**PD-3 KING ARTHUR**—Exceptionally large royal violet flowers with prominent white bee.

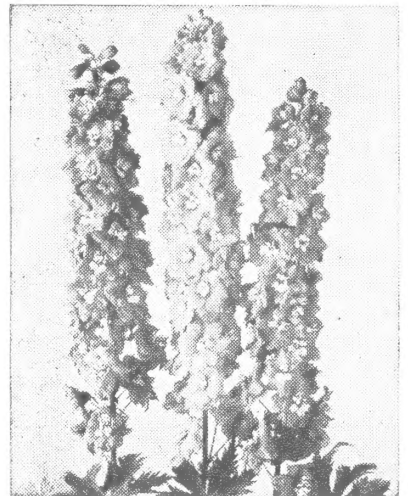
**PD-4 BLUEBIRD**—Clearest of medium blues with a dark bee.

**PD-5 GALAHAD**—Finest clear white Delphinium. Large double flowers on closely set spikes.

**PD-7 ASTOLAT (Pink Delphinium)**—The flowers vary in shade from pale blush through all the shades of lilac pink to deep raspberry rose, with large fawn black or brown bees for contrast.

**35c each; 3 for \$1.00; 6 for \$1.85; 12 for \$3.25**

**SPECIAL OFFER—SP-1—Two each of the 6 Types of Delphiniums for \$3.00**

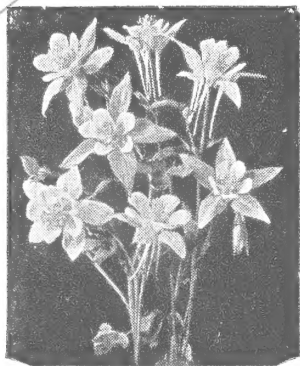


### T r i t o m a

(RED HOT POKER)

**PT-1.** Large attractive spikes of red or orange red flowers from late summer until frost. They will grow two to three feet tall. Field grown roots.

**35c each; 3 for \$1.00**



## ACQUILEGIA - COLUMBINE

**PA-1 McKana's Giant** — All America Bronze Medal Winner. Sensational new strain of Columbine with extremely large graceful bloom and extra long spurs. Mixed colors.

30c each; 6 for \$1.65; 12 for \$3.00

## P Y R E T H R U M

(PAINTED DAISY)

**PP-1.** Showy daisy-like flowers in shades of rose, pink, and red are produced in May and June. They are wonderful as cut flowers and the fern like foliage makes the plants attractive even when they are not in bloom. Grow them in rich soil in a fairly sunny location. We have 1-year old roots to offer.

30c each; 6 for \$1.65; 12 for \$3.00

## Balloon Flower

(PLATYCODON GRANDIFLORUM)

Buds resemble small blown up balloons, opening into star-shaped bells of fine quality and texture. These showy and delightful flowers with their clusters of bloom should be in all perennial borders. This plant, with lots of flowers from June to October, will stand more abuse than many and still put on a bright show. Grows to 2 feet and is fine for cutting. We offer 2-year old roots.

**B-1 Dbl. Pink Hybrid; B-2 Single Shell Pink; B-3 Double White; B-4 Double Blue.**

40c each; 3 for \$1.10; 6 for \$2.15

## G y p s o p h i l a

(BABY'S BREATH)

**PG-1 BRISTOL FAIRY**—Sensational double flowering Baby's Breath. Large white florets in airy panicles make it ideal for cutting. Blooms almost all summer from early June until frost. True grafted double flowering variety which will bloom heavily the first year.

60c each; 3 for \$1.50

**PG-2 FLAMINGO**—New pink double. Flowers all summer. Opens blush pink and deepens. These are field grown roots.

85c each; 3 for \$2.25

## V e r o n i c a

(SPEEDWELL)

Lovely long spikes of flowers up to 2 feet. It is finest perennial for the late summer garden. From July on the sturdy spikes add needed touches of color to the border. It is a good cut flower and grows in average garden soil; will grow in partial shade.

**PV-1 BLUE CHAMPION**—Tall bright blue. 2 ft.

**PV-2 ICICLE**—Pure white. 1½ to 2 ft.

**PV-3 MINUET (New)**—Delicate pure pink; silvery foliage. 1½ ft.

**PV-4 SUNNY BORDER. BLUE**—Compact growing; deep blue. 1½ ft.

40c each; 3 for \$1.10; 6 for \$2.15

## P r i m r o s e s

Primroses are among the earliest of flowers. They grow 6 to 8 inches high. Ideal for shady spots in the Rock Garden or in the shade of trees and shrubs. These are blooming size plants in various colors. Choice Giant-Flowered Mixed.

35c each; 3 for \$1.00; 6 for \$1.85



## HARDY PHLOX

Handsome trusses with large thickly clustered florets make Phlox the queen of the midsummer garden. Strong 1 year old roots which we send will bloom this summer and will have color for many weeks.

**PX-1 AMERICAN BEAUTY**—Large clear deep pink flowerheads; appealing.

**PX-2 CHIEFTAIN**—Striking deep crimson. A real eye catcher.

**PX-3 HARVEST FIRE**—Large fiery salmon-orange florets. Flashing.

**PX-4 PRIME MINISTER**—Large white with sparkling crimson eye. Charming.

**PX-5 RED GLORY (Charles Curtis)**—Intensely glowing trusses of deep clear red. One of the best.

**PX-7 ROYAL PURPLE**—Compact flowerheads of dark violet blue.

**PX-6 SIR JOHN FALSTAFF**—Giant salmon-pink florets with reddish eyes. Exquisite beauty with immense trusses; mildew resisting.

60c each; 3 of same variety \$1.50

**SP-5—SPECIAL PHLOX GARDEN OFFER—THE EXQUISITE SEVEN**

One each of the seven varieties. A \$4.20 value for \$3.50

**SP-6—SPECIAL OFFER**—Three each (21 all told) for only \$9.75

## HARDY GROUND COVER

Ground covers are useful to cover bare ground where grass and many plants refuse to grow. They may transfer an ugly barren spot to a bower of beauty. They are useful in many situations.

**AJUGA METALICA CRISPA**—An excellent ground cover for sunny or semi-shady spots. In early Spring dense spikes of blue flowers appear. Leaves have metallic sheen. Not evasive.

**BALTIC IVY (Hedera helix gracilis)**—A small leaved hardy Ivy which is excellent for a ground cover. Special extra hardy Indiana strain. Identical in habit with English Ivy but smaller more graceful foliage.

**VINCA MINOR (Periwinkle) Improved Bowles' Variety**—Glossy foliage makes a "magic carpet" of ground cover, which stays green winter and summer. In early Summer a profusion of bright blue flowers are produced.

3 for \$1.00; 25 for \$8.00; 50 for \$15.00; 100 for \$25.00

## Coleus

**FC-1.** The beautiful colored leaves of this plant will enhance your garden or brighten any sunny window. Everyone loves the bright colors of the Coleus. For best results temperature should not fall below 60 degrees F. at any time.

20c each; 10 plants (no two alike) \$1.75; 50 plants for \$7.50

## LARGE FLOWERING CANNAS

No other flower will give as brilliant a display all summer and fall as a bed or border of Cannas.

**CB-5 ROSEMOND COLE**—Extremely large, gold-edged red flower; green foliage. 3 ft.

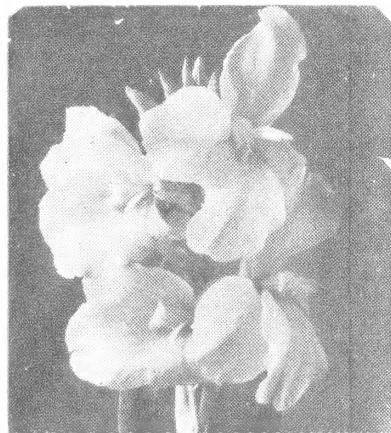
**CB-4 CITY OF PORTLAND**—Non-fading deep pink; green foliage. Best pink. 3 ft.

**CB-3 THE PRESIDENT**—Heavy blooming flaming scarlet flowers; rich green foliage. 3 ft.

**CB-2 KING HUMBERT**—Scarlet red blooms and handsome bronze foliage. 4 ft.

**CB-1 RICHARD WALLACE**—Canary yellow flowers with slight throat markings; green foliage. 3½ ft.

30c each; 6 for \$1.60; 10 for \$2.50



# RED RICH STRAWBERRY

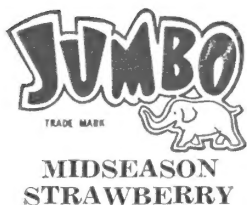
THE CHAMPION OF ALL EVERBEARING STRAWBERRIES



Deep red luscious berries from June until frost. Very firm red flesh clear through. Honey sweet flavor. Unequaled for freezing—a firm texture that holds shape when thawed.

They make a beautiful garden border or edging. Each plant is a bright bouquet of luxuriant foliage, white blossoms and sparkling red fruit.

12 for \$2.95; 25 for \$5.00; 50 for \$8.50  
100 for \$15.00; 250 for \$32.50



Here's the new record breaker June bearing strawberry everyone's talking about. Deep red clear thru with extra sweet, wonderful flavor. Firm and solid for shipping and freezing. Large robust plants make tremendous yields. We recommend this all-purpose berry for your garden.

25 for \$2.25; 50 for \$3.85; 100 for \$6.00

## PYRAMID GARDEN

Ornamental and practical pyramid bed is made of heavy gauge aluminum; will not rust or corrode. This Terraced Garden consists of five bands 5 inches wide. It is 6 feet wide at base, 22 inches high. (50 Strawberry plant size.) Adds beauty and saves valuable garden space.



PG-1—Complete with instructions for assembly, only \$9.95 Postpaid  
SP-7—Pyramid with 50 Red Rich plants for \$18.00 Postpaid

VARIATION: Get several of these Pyramids. Plant with Mums or other Perennials for a brilliant and colorful yard.

### OPTIONAL ACCESSORIES FOR SIX-FOOT PYRAMID

Special nozzle with hose attachment makes it easy to sprinkle entire garden. Make Pyramid a miniature greenhouse by use of support strips and transparent plastic cover. Protects early plants from frost. Stiff water and weather-proof net protects against birds.

PG-2—Aluminum Support Strips...\$3.95  
PG-3—Plastic Cover...\$6.75  
PG-4—Sprinkler Complete...\$4.95  
PG-5—Protective Net...\$6.75

## Lantanas

A popular semi-dwarf plant for flower beds, urns and porch boxes for it seems to be in full bloom all the time. The flowers become deeper and darker with age. Best in full sun.

AL-4 CRAIGH—Deep pink.  
AL-1 GOLDEN KING—Pure yellow.  
AL-2 SCHMIDT—Yellow shading to fiery orange.  
AL-5 SCHULZ—Deep red.  
AL-3 SOUTHERN — Dwarf shrimp pink.  
AL-6 WEEPING — Lavender flowers on long slender stems. Excellent for hanging baskets, porch boxes and urns.  
25c each; 5 for \$1.15; 10 for \$2.00

## Vinca Variegata

VV-1. Universal favorites for urns, boxes and baskets are these variegated Vinca vines. Oval, almost round, leaves are light green in the center with cream colored margins. They will survive very cold weather and in protected area even live all winter.

30c each; 5 for \$1.15; 10 for \$2.00

# GARDEN OR ZONAL GERANIUMS

YOUNG WELL-ROOTED POTTED PLANTS READY TO START BLOOMING

**G-4 APPLE BLOSSOM**—Shades from white center to true apple blossom pink; compact with zoned foliage.

**G-1 AVALON RED**—Large flowers of most brilliant rich clear red on strong growing plant.

**G-2 BETTER TIMES**—Large deep red flowers. It is free flowering and most popular dark red.

**G-3 CALIFORNIA BEAUTY**—Large flowers of clear pink with white center; profuse bloomer.

**G-6 IRVINGTON BEAUTY**—Free blooming with deep rose flowers on a bushy plant.

**G-10 OLYMPIC RED**—An exceptionally good free flowering bright red. Compact grower.

**G-8 SALMON IDEAL**—Large deep salmon apricot flowers with gold and orange tints in the sun. Free blooming, sturdy plant with lovely zoned foliage.

**G-9 SNOWBALL**—Best large white with flowers of fine form. Does well even in dry areas.

40c each; 8 for \$2.75

## FUCHSIAS

(Upright Growing unless stated otherwise)

**HF-10 BERNEDETTE**—Double deep blue flowers of medium size with pale rose to red sepals.

**HF-11 CARDINAL**—All red, dark wine colored flowers. Will take sun.

**HF-12 CHINA DOLL**—Double white centers with red sepals.

**HF-13 DIAMANT**—Large double white flowers with an occasional streak of carmine; bright scarlet sepals.

**HF-1 HOLLYDALE**—Popular double orchid corolla flushed pink and dark pink petals.

**HF-5 JINGLE BELLS**—Double flowers of dark blue to purple with red sepals. Stamens extend beyond bell-shaped flowers.

**HF-4 MINNESOTA**—Semi-double flowers of deep purple to carmine with ivory rose sepals. Very hardy and will take much sun.

**HF-15 MISSION BELLS**—Large single flowers of deep purple with red sepals.

**HF-2 PRIDE OF ORION**—Double white center streaked cerise with sepals deep crimson.

**HF-16 RUFUS**—Single turkey red flowers. Will take sun.

**HF-19 SHARON**—Semi-double center of pale scarlet with light rose sepals.

**HF-18 TREASURE**—Double pale orchid center with neyon rose sepals. One of the best.

**HF-8 WINSTON CHURCHILL**—Double deep violet center with reflexed pink sepals.

40c each; 5 for \$1.85

**SP-2—SPECIAL OFFER**—One each of the above Fuchsias for \$4.75



Chrysanthemums, Perennials, Geraniums and Fuchsias Available Until June 1st

VISIT OUR CHRYSANTHEMUM DISPLAY THIS FALL

It will be at peak in early October

# IVIES

**IV-34 FLUFFY RUFFLES IVY**—New! Appealing, extraordinarily curled and ruffled leaves which remind one of swirling skirts. New growth is crested with velvety brown fuzz. It is slow growing but very self branching. Distinctive. Our own introduction. **85c each.**

**IV-36 CALIFORNIA GOLD IVY**—New! Large curly green leaves speckled heavily with yellow appear to have been sprinkled with gold. **50c each.**

**IV-29 EMERALD JEWEL**—Small green 3-pointed leaves are attractive; free branching. **45c each.**

**IV-30 ERECTA IVY**—Stiff triangular dark green leaves along an upright stem; very unusual. **50c each.**

**IV-24 FANNETTE IVY**—Dark green leaves veined and shaped like a half open palm fan. **40c each.**

**IV-22 GERANIUM IVY (Big Deal)**—Large rounded dark green leaves with edges puckered as if gathered on a thread remind one of a geranium leaf. Different. **50c each.**

**IV-32 GHOST TREE IVY**—A new unusual bush or tree Ivy of real character with large leathery and glossy, highly variegated green and cream leaves. Interesting blooms. Very out of the ordinary. Large plants from 3 and 4 inch pots. **\$1.75 each.**

**IV-2 GLACIER IVY**—Very colorful vine for the house. Dainty small leaves which are light green in center with wide white bands around margins. **40c each.**

**IV-5 GOLD DUST IVY**—Leaves are deep green speckled with yellow giving the appearance of having been sprinkled with gold dust. **40c each; 3 for \$1.10.**



Ghost Tree Ivy

**IV-25 GREEN CROWN**—New. An extremely free branching Ivy with luxurious close growing leaves. A pot crowned with this miniature leaved Ivy is indeed attractive. Our own introduction. **50c each.**

**IV-17 GREEN SPEARS IVY**—Very slender spear-like leaves. **45c each.**

**IV-15 IDEAL IVY**—A very useful plant with slightly curly deep green leaves; very free branching. **40c each.**

**IV-33 IVALACE IVY**—New. Medium sized bright green leaves are five-lobed and the margins are finely crimped, making the edging look like fine lace. **50c each.**

**IV-10 JUBILEE IVY**—A dwarf self-branching plant with closely set, tiny light green leaves with white bands on margins. **45c each.**

**IV-8 PARSLEY IVY**—Lovely parsley green leaves with edges crimped like parsley. **45c each.**

**IV-23 SHAMROCK IVY**—Three joined lobes make each leaf. Gives trefoil effect to this lovely Ivy. **45c each.**

**IV-12 SNOWFLAKE IVY**—Leaves of the Hahn shape except smaller. Leaves splashed with white, giving the appearance of being covered with snow. Our popular introduction. **50c each.**

**IV-16 SWEETHEART IVY**—Interesting deep green truly heart shaped leaves. Very rugged easy grower. **40c each.**

**IV-26 TEAR DROP IVY**—New! Different! An upright self branching Ivy with pretty green oval leaves. A crinkled or raised appearance between veins is evident. The leaves are in the shape of a tear drop. Our own introduction. **45c each.**

**IV-11 TELECURL IVY**—Small deep green tight curly leaves on a very free branching plant. **40c each.**

**IV-20 TRITON IVY**—Each leaf has 3 narrow pronged lobes with center prong twice as long as outer ones. It is upright and self branching with open, airy, needle pointed leaves. **50c each.**

**IV-31 WILLIAMSANA IVY**—Delightfully curled and frilled medium sized leaves which curl downward. Margins are white and the centers an attractive green and gray-green. A thrifty growing variegated Ivy. **50c each.**

**SP-3—SPECIAL OFFER—CREAM OF THE CROP IVY COLLECTION**  
One each of the 20 listed Ivies. (Does not include IV-34 or IV-36.) A \$10.35 Value for \$9.00  
We reserve the right to substitute an Ivy of equal value if necessary.

---

## FATSHEDERA LIZEI VARIEGATA (Ivy Hybrid)

**FH-1 Variegated Fatshedera**—An interesting and upright growing plant. Glossy light green maple-like leaves are irregularly outlined with white. Very attractive in planters.

**75c each**

## PEPEROMIAS

**P-15 PEPEROMIA 'EMERALD RIPPLE'**—NEW! Dwarf compact growing plant with an abundance of deep emerald green corrugated heart shaped, crinkled leaves. Beautiful plant and graceful habit. **75c each.**

**P-12 PEPEROMIA 'SILVER MOUND'** (*hederifolia*) — NEW! An elegant plant having silvery gray heart shaped, crinkled leaves with darker veins. Does fine out of direct sunlight. A mound of beauty. **50c each.**



**P. Pulchella**

**P-16 PEPEROMIA BLANDA**—Grayish olive green rounded leaves; sturdy upright growth. Distinctive and very pretty in planters. **50c each.**

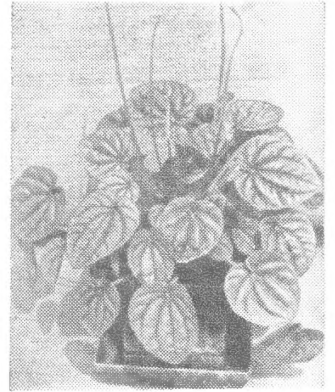
**P-14 PEPEROMIA GLABELLA VARIEGATA**—NEW! Dainty, free branching plant with small oval pointed light green leaves, highly variegated cream white, on red stems (increasing in brightness with age). In a class by itself. **95c each**

**P-9 PEPEROMIA PULCHELLA**—A small, bushy plant densely covered with tiny green leaves, red underneath with red stems. **50c each.**

**P-1 PEPEROMIA SANDERSI** (*Watermelon Begonia*)—Thick heart shaped leaves with wide silver stripes running between green veins. **40c each.**



**Green Crown Ivy**



**P. 'Silver Mound'**

## DWARF PONDEROSA LEMON

**LH-1.** Small tropical trees for home decoration. These trees will produce large edible lemons while still in 4 or 5 inch pots. Glossy green foliage makes them lovely house plants. Sturdy plants out of 3 and 4 inch pots. **85c each.**

**NOTICE:** The Above Plant Cannot Be Shipped Into Citrus Growing States.

## SCINDAPSUS (Pothos)

**PH-6 Pothos Aureus (Devil's Ivy)**—Variegated vines useful for a trailing or vining effect in planters. Green leaves are irregularly blotched with cream or yellow markings. Variegation more marked in sunshine. **40c each.**

## SAXIFRAGA SARMENTOSA (Strawberry Begonia)

**SA-1.** Many runners are produced, each carrying one or more plantlets. Leaves are green above with striking white veins, and reddish below. **30c each.**

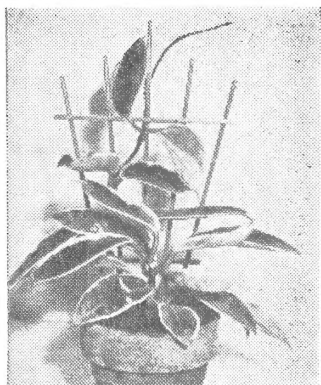
## ASPARAGUS PLUMOSA (Lace Fern)

**AP-1.** The fine feathery foliage of this fern like plant is very attractive and makes a nice plant which is easy to grow in the home or in the porch box. **25c each.**

## STENANDRIUM LINDENI

**SH-1.** Another charmer in foliage plants which comes from Peru. Deep olive green foliage is attractively veined with yellow. Bushy spreading habit. **75c each.**

## HOYA (Wax Plant)



**H-5 HOYA AUSTRALIS**—Oval, almost round, light green thick waxy leaves. **75c each.**

**H-4 HOYA BELLA**—Dwarf, vining plants with small waxy dark green leaves. With proper care bloom first year. **\$1.00 each.**

**H-3 HOYA CARNOSA**—A vining house plant with thick waxy deep green leaves. (Not included in Collection SP-4.) **75c each.**

**H-1 HOYA CARNOSA VARIEGATA**—Thick green waxy leaves edged with cream and an occasional tinge of pink in the leaves. **75c each.**

**H-2 HOYA CARNOSA EXOTICA** — Golden cream and white leaf blades edged green. **75c each.**

**SP-4—SPECIAL HOYA OFFER—One Each of the Four Kinds for \$2.85**

## Philodendron

**PH-1 PHILODENDRON CORDATUM**—Graceful vines with glossy, heart shaped green leaves. Easily grown and used in planters, on mantels; also as totem poles. **35c each.**

**PH-3 PHILODENDRON MICAN (Red Leaf Philodendron)**—A small vining plant with distinctive heart shaped iridescent leaves which are red-bronze on top and red-green underneath. Gives a velvety appearance and is very choice. **75c each.**

### DECORATIVE LARGE LEAF TYPE

**PH-9 PHILODENDRON WENDLANDII**—A non vining species with narrow elongated leaves having thick spongy petioles, arranged like a bird's nest fern. Out of 4-inch pot. **\$2.75 each.**

**PH-10 PHILODENDRON SQUAMIFERUM**—A truly exotic plant of spectacular leaf design, often referred to as anchor leaf. The petiole or stem is covered with red hairs. Out of 4-inch pot. **\$2.75 each.**

**PH-5 PHILODENDRON DUBIUM**—Beautiful large deeply and irregularly cut green leaves. Out of 4-inch pot. **\$2.50 each.**

**PH-4 PHILODENDRON PANDURIFORME (Fiddle Leaf Philodendron)**—Truly exotic with large fiddle shaped leaves of deep olive green. Out of 3-inch pot. **\$2.50 each.**

**PH-11 PHILODENDRON SELLOUM**—Very lovely and popular non-vining Brazilian species. Mature leaves are notched almost to the midrib; young leaves are only scalloped. Stands slightly below freezing temperature. 4-inch pot. **\$2.50 each.**

## Dieffenbachias

**DH-1 DIEFFENBACHIA PICTA**—An excellent house plant with large green leaves streaked and spotted white. Plants sent are 10-15 inches tall. **\$1.75 each.**

**DH-2 DIEFFENBACHIA RUDOLPH ROEHR** — Spectacular house plant with creamy white leaves and dark green veins. Plants sent are 10-15 inches tall. **\$2.00 each.**

## Billbergia Nutans

**BH-1 BILLBERGIA NUTANS**—A Bromeliad having tall narrow stiff grass-like foliage with flowers of blue-edged green petals, conspicuous golden stamens and striking pink bracts. Decidedly out of the ordinary. Plants are shipped from 3-inch pots. **\$1.00 each.**

## Cacti and Succulents

A Cacti and Succulent collection you will enjoy. Specify if you desire all Cacti or all Succulents; otherwise collection will be mixed.

**C-1— 5 Plants, All Different, \$1.25**

**C-2—10 Plants, All Different, \$2.00**



# AFRICAN VIOLETS

INCLUDE 25c ADDITIONAL ON EACH ORDER FOR SPECIAL HANDLING

**DOUBLE ARBUTUS PINK**—New! Deep pink double. \$2.00 each.

**OHIO BOUNTIFUL**—New! Lovely double pink flowers; floriferous. \$2.00 each.

**SHINE BOY**—Waxy, shiny leaves with myriads of blue flowers. Very pretty in brass planter. \$1.50 each.

**SILVER LINING**—Double of deep blue with silvery white edging. \$1.50 each.

**LAVENDA**—Very lovely double lavender. Good bloomer. \$1.50 each.

## GLOXINIAS

Magnificent pot plant for summer and winter blooming with showy large open inverted bell shaped flowers borne above the velvety green foliage. Culture sheet sent with order.

**BG-1 BLANCHE DE MERU** — Rose and white throat.

**BG-2 PRINCESS ELIZABETH**—Blue and white throat.

**BG-3 WATERLOO**—Deep red.

**BG-4 TIGRINA**—Spotted and netted.

**BG-5 EMPEROR FREDERICK**—Red with white border.

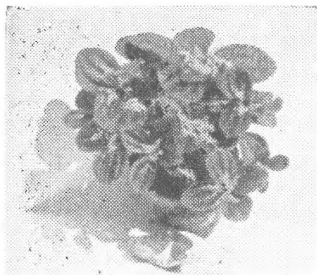
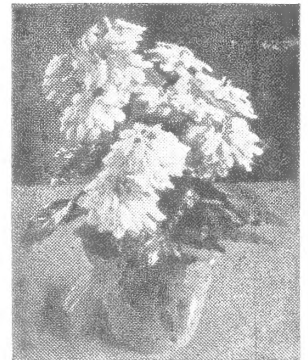
Large Size Bulbs—40c each; 4 for \$1.45

## Crossandra Undifolia

A new exotic, easy to raise, everblooming house plant with spikes of overlapping pink florets. House plants with glossy green foliage which bloom in about 6 to 9 months from seed. Cultural directions with order.

CS-1—Packet of 7 seeds— 50c

CS-2—Packet of 15 seeds—\$1.00



## Panamigas

(PILEA INVOLUCRATA)

HP-1. Quilted dark green leaves with greenish Ming pod shaped blooms. It is known as the South American Friendship Plant. Easy to grow, different and a very nice foliage plant.

50c each

---

## Plant Labels

Mark your plants with these plain wooden labels which are smooth surfaced for ease of writing and pointed for sticking in the soil.

4 inch—20c per dozen; \$1.00 per 100

6 inch—25c per dozen; \$1.50 per 100



—IDEAL GROWING MEDIUM—

Traps and Stores Air and Water releasing them as needed to bring about strong root systems.

IDEAL FOR STARTING ALL CUTTINGS AND SEEDS

4 quart bag—75c; ½ bushel bag—\$1.40

# SPECIALS!

## TUBEROUS ROOTED BEGONIAS

### LARGE DOUBLE CAMELLIA FLOWERED

BT-11. Highly prized as pot plants for house culture during spring and early summer or to put in the garden in a semi-shady location where they will produce a continuous display of flowers until late fall.

Start bulbs in pots in sandy loose soil with the top of the bulb level with the soil line. In fall dry up and store over winter in damp peat moss or Terra-Lite. We offer 1½ inch bulbs.

- |         |        |
|---------|--------|
| PINK    | ORANGE |
| CRIMSON | WHITE  |
| SCARLET | MIXED  |
| YELLOW  |        |

25c each; 5 for \$1.00

## FREE PLANTS!

With all Orders of \$5.00 or More!  
(Received before May 1, 1957.)

The larger the order—the more plants. You are sure to be pleased. We will select types of plants similar to those in your order.

## TERRACE VIEW GARDENS

GRAFTON LONGDEN, JR.

Greencastle, Indiana

Return Postage Guaranteed



Sec. 34.66, P. L. & R.  
**U. S. POSTAGE**  
**PAID**  
 Permit No. 59  
 Greencastle, Indiana

PENALTY FOR PRIVATE USE TO AVOID  
PAYMENT OF POSTAGE, \$300  
(GPO)

U. S. DEPARTMENT OF AGRICULTURE  
LIBRARY

WASHINGTON 25, D. C.

OFFICIAL BUSINESS

PRINTED MATTER

U.S. Dept. of Agriculture  
Library  
Washington 25, D.C.

BIBL