

62

1957 our

50th Anniversary

LIBRARY
RECEIVED
★ FEB 13 1957 ★
U. S. Department of Agriculture

Chief and Paduke Brands

HYBRID TEA ROSES

SEE PAGE 15 & 16



HELEN
TRAUBEL

CHRYSLER
IMPERIAL

GOLDEN
MASTERPIECE

TALISMAN

1906-1956—OUR FIRST 50 YEARS

Yopp *Seed Company*

INCORPORATED

118-120 SOUTH SECOND STREET, PADUCAH, KENTUCKY

TELEPHONE 2-4393

Your Guide to a Beautiful Yard And a Beautiful Garden

INDEX

VEGETABLE SEEDS		Page			Page			Page
Asparagus	1	Okra	4	Cannas	14	Dahlia Bulbs	14	
Beans, bush, green podded.....	1	Parsnips	4	Dahlia Bulbs	14	Gladiolus	13, 14	
Beans, dwarf wax podded.....	1	Peas	4	Tuberoses	14	Roses	15, 16	
Beans, cornfield	1	Pepper	5	Sweet Peas	13			
Beans, pole	1	Popcorn —						
Beans, lima	1	Purdue, Dynamite, Minyhybrid	8					
Beets, table	2	Pumpkin	4					
Broccoli	3	Radish	5					
Cabbage	2	Salsify	5					
Carrots	2	Spinach	5					
Cauliflower	3	Squash	6					
Celery	2	Tomatoes	6					
Collards	3	Turnip	6					
Corn, sweet	3	Vegetable Crops Planting Chart	7					
Corn, sweet hybrid	3							
Corn, hybrid	Inside back cover							
Cucumber	2							
Eggplant	3							
Fertilizer for Lawns	14							
Herbs	5							
Kale	4							
Lettuce	3							
Melon, musk, cantaloupe	4							
Mustard	4							
Melon, water	6							
Mustard Spinach	5							

FARM SEEDS		Page
Corn, field	Inside Back Cover	
Corn, Hybrid Seed	Inside Back Cover	
Edible Field Peas	4	
Tobacco Seed	20	

FLOWER SEED and FLOWER BULBS		Page
Flower Seed	9, 10, 11, 12, 13	
Flower Seed Planting Guide	8	

MISCELLANEOUS		Page
Blossom-Set	6	
Dusters	19	
Dusts—Chief Brand	18	
Garden Gloves	20	
Hotkaps	20	
Lawn Grass	17	
Mole Killer	20	
Nitragen	20	
Pest Control Products	18	
Plantabbs	19	
Plant Food	19	
Pruners	19	
Seed Sowers	19	
Spray Pumps	19	
Terra-Lite Vermiculite	14	
Weed and Brush Killers	19	

TO OUR CUSTOMERS: All prices contained in this catalogue are those in effect Jan. 1, 1957, and are F.O.B. Paducah, except where otherwise noted. Prices are subject to change without notice.

NON-WARRANTY—YOPP SEED CO. INC., warrants to the extent of the purchase price that seeds, plants, bulbs, insecticides, etc., sold are as described on the container within recognized tolerance. Seller gives no other or further warranty, express or implied.

U. S. PARCEL POST RATES—ZONES FROM PADUCAH, KY.

Zone	Miles	For First Pound Allow	For Each Add'l lb. Add		For First Pound Allow	For Each Add'l lb. Add
1st & 2nd	Up to 150.....	23c	.04	Sixth	1000 to 1400.....	28c .12
Third	150 to 300.....	23c	.06	Seventh	1400 to 1800.....	30c .16
Fourth	300 to 600.....	24c	.07	Eighth	1800	32c .19
Fifth	600 to 1000.....	26c	.10			

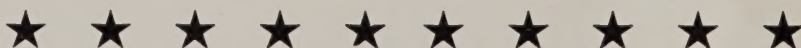
All-America Vegetables for the Purchase Area

ALL-AMERICA VEGETABLE GARDEN

The official judges have reviewed the All-America vegetable winners since the selections began in 1932, and picked the most worthy. Yopps offers you the following 11 of those selected. Descriptions on pages noted. These have proven extra well suited for our soils and climate.

- Fordhook 242 Bush Lima Bean (p.1)
- Early Prol. Straightneck Squash (p.6)
- Perfected Detroit Beet (p. 2)
- Imperator Carrot (p. 2)
- Cherry Belle Radish (p. 5)
- Tenderpod Bush Snapbean (p. 1)
- Pritchard Tomato (p. 6)
- America Spinach (p. 5)
- Premier Great Lakes Lettuce (p. 3)
- Lochief Sweet Corn (p. 3)
- Marketer Cucumber (p. 2)

Time Tested—Time Proven
BUY ALL-AMERICA SELECTIONS



ORDER EARLY!

LET US HELP YOU PLAN YOUR GARDEN

Your planting seed is the least of all garden or farm expense. Why gamble dollars to save a few cents when the harvest is at stake? Buy With Confidence From Yopp's serving the purchase area for 50 years.

BUY FRESH SEED DIRECT!

Use our prompt mail-order service for all your garden needs, whether it's a matter of seed, plants, bulbs, fertilizer or insect control.



TOP QUALITY SEED FOR YOUR GARDEN

VEGETABLES FOR FREEZING

The Symbol (fr) following the variety names indicates vegetables suitable for home freezing.

★ALL AMERICA Vegetable garden. Postage Paid on Pkts. and Oz. Only

ASPARAGUS

Oz. Seed, 75 Roots, Plants 100 ft. Row

MARY WASHINGTON (fr)—Thick, tall green spears with purple tops. Highly rust resistant. Rapid growing. Tender. Pkt., 10c; oz., 20c; ¼ lb., 50c; lb., \$1.75.

BEANS

Green Podded, Dwarf or Bush

1 Lb. Plants 100 Ft. Row

BOUNTIFUL (fr)—48 Days. An early, heavy-yielding variety. The leading flat podded bean for market and home use. Flat, light-green, stringless, but slightly fibrous pods of finest quality. Pkt., 15c; ½ lb., 30c; lb., 50c.

COMMODORE BUSH KENTUCKY WONDER—58 Days. Pods 7½ to 8½ in. long, round, stringless, of finest flavor and quality. Pod appearance resembles Kentucky Wonder. Pkt., 20c; ½ lb., 35c; lb., 60c.

CONTENDER—50 Days. A very heavy yielding, easy to pick, tolerant to hot weather. Pods are 7 inches long, medium green, stringless, and almost fiberless. Resistant to common bean mosaic and powdery mildew. Pkt., 20c; ½ lb., 35c; lb., 60c.

STRINGLESS GREEN POD (fr)—50 Days. Large sturdy plants. Meaty round pods, brittle and strictly stringless. Medium green pods, oval yellowish-brown seed. Pkt., 15c; ½ lb., 30c; lb., 50c.

TENDERGREEN (fr)—53 Days. Large, erect plants. Abundant, round dark-green pods, strictly stringless and fleshy. Pkt., 15c; ½ lb., 30c; lb., 50c.

★**TENDERPOD (fr)**—50 Days. A fine home garden variety. Pod quality excellent 5 to 5½ inches long. Seed are white with reddish spot on either side of eye. Pkt., 20c; ½ lb., 35c lb., 60c.

TENNESSEE GREEN POD—54 Days. A great favorite. A heavy bearer with meaty pods, stringless in early snap stage. Good flavor. Pods are large, broad, long and flat, about 6½ in. long by ¾ in. wide. Pkt., 15c; ½ lb., 30c; lb., 50c.

★**TOPCROP**—50 Days. Does well in the home garden, market garden and is excellent for commercial processing. 5½ to 6 inches long. Mosaic resistant. Round, medium light green pods. Pkt., 15c; ½ lb., 30c; lb., 50c.

★**WADE'S BUSH SNAP BEAN**—53 Days. Resistant to common bean mosaic and powdery mildew. Deep green pod, long, round, slender with reddish brown seed. Pkt., 20c; ½ lb., 35c; lb., 60c.

Wax Podded, Dwarf or Bush

1 Lb. Plants 100 Ft. Row

IMPROVED GOLDEN WAX (fr)—51 Days. Small, erect, plants, moderately productive. Straight, thick, flat pods, creamy yellow and stringless. Pkt., 15c; ½ lb., 30c; lb., 50c.



★**TOPCROP BEAN**—Meaty entirely stringless and without fiber. Highly productive and resistant to common bean mosaic.

Beans, Pole

½ Lb. Plants 100 Ft. Row

KENTUCKY WONDER (fr)—65 Days. Strong climber, hardy, long-bearing. Curved, almost round pods, slightly stringy, but brittle and fiberless. Meaty. Pkt., 15c; ½ lb., 20c; lb., 40c.

KENTUCKY WONDER WAX (fr)—67 Days. Vigorous, good climbing plants; waxy-yellow pods, flat and nearly stringless. Pkt., 20c; ½ lb., 35c; lb., 60c.

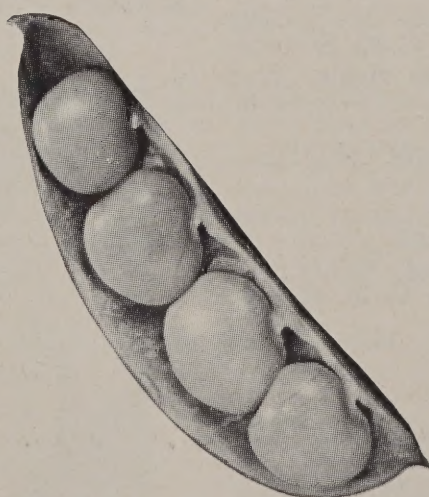
MCCASLAN—66 Days. Dry shelled or snap, good climber. Medium green thick, flat pods. Meaty, stringless and tender. Pkt., 15c; ½ lb., 30c; lb., 50c.

Real Cornfield Beans

STRIPED CREASEBACK—72 Days. Round, straight, medium green, of good quality. Well known. Pkt., 15c; ½ lb., 30c; lb., 50c.

WHITE CREASEBACK (Blue Lake)—65 Days. Heavy bearing, round, quite stringless. Small oval seed, 120 per ounce. Best cornfield bean in snap stage and for dry shell beans. Pkt., 15c; ½ lb., 30c; lb., 50c.

MISSOURI WONDER—66 Days. Saves garden space and poles; grows in shade of corn. Splendid variety for home, market and canning. Round, meaty and deliciously tender. Pkt., 15c; ½ lb., 30c; lb., 50c.



★**FORKHOOK NO. 242 BUSH LIMA**—Straight pods with plump, large beans. Especially recommended for productivity under adverse conditions.

Lima, Dwarf or Bush

1 Lb. Plants 100 Ft. Row

★**FORDHOOK BUSH 242 (fr)**—75 Days. Straight pods, large beans, excellent quality. Pkt., 20c; ½ lb., 30c; lb., 50c.

HENDERSON'S BUSH (fr)—65 Days. Known as Baby Lima or Butter Bean. Plants small, early and bushy. Pkt., 15c; ½ lb., 25c; lb., 45c.

WHITE BUSH LIMA (fr)—68 Days. Medium size, larger than Henderson. One of the most popular varieties for home canning and market use. Pkt., 15c; ½ lb., 25c; lb., 45c.

JACKSON WONDER BUSH LIMA (Calico Bush Lima)—65 Days. Most prolific of all bush limas. Flavor rich and delicious. Extremely drought resistant. Surest cropper. Pkt., 15c; ½ lb., 25c; lb., 45c.

★**THOROGREEN BUSH LIMA (fr)**—68 Days. An All-America green seeded edition of the popular Henderson variety and fully as prolific. Its great value is in its green color. Pkt., 15c; ½ lb., 25c; lb., 45c.

Lima, Pole

½ Lb. Plants 100 Ft. Row

KING OF THE GARDEN (fr)—88 Days. Flat, smooth pods with four or five white, large, flat beans. Pkt., 15; ½ lb., 30c; lb., 50c.

SMALL WHITE POLE LIMA (Sieva)—77 days. Very prolific and hardy grower for "butter beans." The 3 inch, dark green curved pods contain 3 to 4 creamy white beans. Pkt. 15c; ½ lb. 25c; lb., 45c.

MEDIUM WHITE POLE LIMA (fr)—78 days. Produces larger beans than Sieva. Very prolific. Stands drought and heat. Pkt., 15c; ½ lb., 25c; lb., 45c.

FLORIDA BUTTER POLE—78 days. Will make abundant crop under seasonal conditions that make other varieties fail. Seed spotted with brownish red. Pods in clusters, 3 beans per pod. Pkt., 15c; ½ lb., 25c; lb., 45c.

CHRISTMAS POLE LIMA—90 days. Large, colored true pole lima. Dry beans are large and flat. Pkt., 20c; ½ lb., 35c; lb., 60c.

DIXIE BUTTER PEA (fr)

75 days. Without question the finest, meatiest, most delicious butter pea or bean with almost round, white richly flavored, nutritious "butterpeas" that continue to bear until frost! May be served fresh. Ideal for freezing, canning and market. Excellent shelled dry. Will bear longer and in dryer weather than any standard butterbean. Never fails to produce. Vines are bush. Pkt., 20c; ½ lb., 35c; lb., 60c.

Chief Brand ROTENONE for Bean Beetles

Contains no DDT. Safe to use on all vegetables and excellent protection for beans all summer. Postpaid, 5 lbs., \$1.50. Order now and have ready when needed.

CRISP TENDER CARROTS FROM YOUR GARDEN

VARIETY FOR SHELL BEANS

DWARF HORTICULTURAL. Pkt. 15c; lb. 50c.
DWARF RED KIDNEY. Pkt. 15c; lb. 45c.
DWARF WHITE KIDNEY. Pkt. 15c; lb., 45c.
DWARF WHITE NAVY. Pkt. 15c; lb. 35c.
GREAT NORTHERN. Pkt. 15c; lb. 35c.

WHITE HALF RUNNER

(For Snap and Shelled Beans)

60 days. One of the outstanding new beans. Genuine half runners loaded with medium round, positively stringless and delicious light green pods. Seeds are pure white, ideal for shelling. In other words, it is a variety for you to grow in your garden. Postpaid, pkt. 20c; ½ lb., 35c; lb., 60c.

BEETS

2 oz. plants 100 ft. row

Postage Paid on Pkts. and Ozs. Only

★DETROIT DARK RED—56 days. Good canning variety. Pkt. 10c; oz. 15c; ¼ lb. 40c; 1 lb. \$1.25.
EARLY WONDER—50 days. Early; globe shape; good bright red. Pkt. 10c; oz. 15c; ¼ lb. 40c; lb. \$1.25.
IMPROVED BLOOD TURNIP — 56 days. True blood turnip shape beet. Pkt. 10c; oz. 15c; ¼ lb. 40c; lb. \$1.25.
CROSBY'S EGYPTIAN—52 days. Globe shape, smooth deep blood color beet. Pkt. 10c; oz. 15c; ¼ lb. 40c; lb. \$1.25.
SWISS CHARD—45 to 55 days. Foliage used same as Spinach. Pkt. 10c; oz. 15c; ¼ lb. 40c; lb. \$1.25.

CABBAGE

1 oz. seed usually makes at least 1000 good plants.

GOLDEN ACRE—65 days from plants. Early as Jersey Wakefield, round heads. Pkt. 10c; oz. 35c; ¼ lb. \$1.25; lb. \$4.00.
COPENHAGEN MARKET—70 days from plants. Early, ball shape, large head. Pkt. 10c; oz. 35c; ¼ lb. \$1.00; lb. \$3.00.
MARION MARKET—78 days from plants. (Yellow Resistant). Same shape and size as Copenhagen Market. Pkt. 10c; oz. 35c; ¼ lb. \$1.25; lb. \$4.00.
WISCONSIN ALL SEASONS—90-95 days from plants. (Yellow Resistant). A favorite for kraut making. Pkt. 10c; oz. 35c; ¼ lb. \$1.25; lb. \$4.00.
JERSEY WAKEFIELD—62-65 days from plants. Earliest heading, pointed cabbage. Pkt. 10c; oz. 35c; ¼ lb. 1.00; lb. \$3.00.
CHARLESTON WAKEFIELD. Week later than Jersey, large heads. Pkt. 10c; oz. 35c; ¼ lb. \$1.00; lb. \$3.00.
EARLY FLAT DUTCH — 70 days from plants. Very popular, early flat heads. Pkt. 10c; oz. 35c; ¼ lb. \$1.00; lb. \$3.00.
BONANZA—70-75 days from plants. NEW. The heads become hard when small and remain firm for a long period without cracking. 4 pound round heads. Pkt. 10c; oz. 50c; ¼ lb. \$1.50; lb. \$5.00.
CHINESE CABBAGE—75 days from seed. Heads long, almost cylindrical. Pkt. 10c; oz. 20c; ¼ lb. 60c; lb. \$2.25.

CARROTS

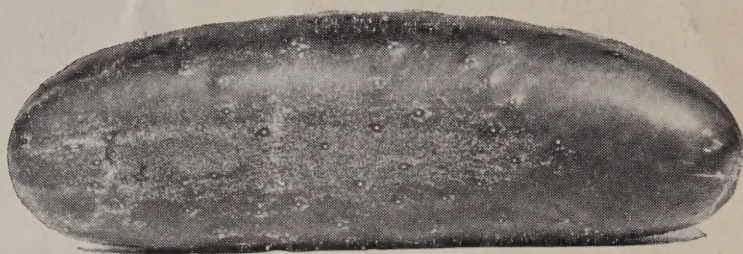
1 oz. plants 100 ft. row

★IMPERATOR—77 days. New, 7 to 9 inches long, good color. Pkt. 10c; oz. 20c; ¼ lb. 50c; lb. \$1.75.
CHANTENAY—70 days. Roots 6 in. long, medium early. Pkt. 10c; oz. 20c; ¼ lb. 50c; lb. \$1.75.
DANVER'S HALF-LONG—75 days. Rich orange red variety, medium size. Pkt. 10c; oz. 20c; ¼ lb. 50c; lb. \$1.75.

CELERY

1 oz. sows 400 ft. of row. Makes about 5,000 plants

GOLDEN SELF BLANCHING—118 days. Good quality. Pkt. 10c; oz. 60c; ¼ lb. \$2.00; lb. \$7.00.
GIANT PASCAL—135 days. Dark green, good. Pkt. 10c; oz. 60c; ¼ lb. \$2.00; lb. \$7.00.



BURPEE'S HYBRID

CUCUMBER

1 oz. plants 100 ft. row

Postage Paid on Pkts. and Ozs.

A. & C.—63 days. New, about 8 inches long; good. Pkt. 10c; oz. 20c; ¼ lb. 60c; lb. \$2.00.
★CUBIT CUCUMBER. All American Bronze Medal. Handsome dark green, 7 to 8 inch. Pkt. 10c; oz. 20c; ¼ lb. 60c; lb. \$2.00.
EARLY FORTUNE—62 days. White spine. Early 8 to 10 in. long, rich green. Pkt. 10c; oz. 20c; ¼ lb. 50c; lb. \$1.75.
STRAIGHT EIGHT—62 days. About 8 in. long; deep rich green, good. Pkt. 10c; oz. 20c; ¼ lb. 60c; lb. \$2.00.
EARLY CLUSTER—54 days. Black spine. Very early, small and borne in clusters. Pkt. 10c; oz. 20c; ¼ lb. 50c; lb. \$1.75.
SNOW'S PICKLING—58 days. Black spine. Productive pickling sort. Pkt. 10c; oz. 20c; ¼ lb. 50c; lb. \$1.75.
IMPROVED LONG GREEN—70 days. Black spine. Popular old garden variety. Pkt. 10c; oz. 20c; ¼ lb. 50c; lb. \$1.75.
★MARKETER—65 days. White spine. The leading shipping and marketing cucumber. 8 inches long, 2¼ inches in diameter. Pkt. 10c; oz. 20c; ¼ lb. 60c; lb. \$2.00.
BURPEE'S HYBRID. Pkts. only 35c. 3 Pkts. \$1.00.



MARION MARKET CABBAGE

Ky.'s Delicacy—Genuine Kentucky BIBB LETTUCE

CAULIFLOWER

Needs rich soil and abundant watering. Cultivate same as cabbage but protect heads from sunlight to insure the prized white curd. This is done by gathering leaves together loosely as soon as heads begin forming, and tying them well at the top.

★**EARLY SNOWBALL (fr)**—55 days. Best and most widely used early variety. Medium, firm compact heads of fine flavor. 6-7 inches in diameter. Pkt., 10c; ¼ oz., 45c; ½ oz., 80c; oz., \$1.40.

COLLARDS

Sow seed heavily and transplant when 4 in. high, or sow in rows and thin to 16 to 18 in. apart when plants are well started. 1 oz. to 100 ft. row.

SOUTHERN OR GEORGIA—24 to 36 Days. An excellent cooked greens. Long stemmed plant with clustered leaves. Withstands heat and thin soil. Pkt., 10c; oz., 15c; ¼ lb., 35c; lb., \$1.00.

BROCCOLI

Give culture as for cauliflower. Grows easily as cabbage and has a superior food value and flavor. 1 oz. sows 100 ft. row.

GREEN SPROUTING (fr)—60 days from plants. Contains vitamins A, B1. Well suited to almost any soil. To those who like to grow new and interesting vegetables, we suggest a trial. Pkt., 10c; oz., 30c; ¼ lb., \$1.00; lb., \$3.00.

BRUSSELS SPROUTS

¼ oz. sows 100 ft. row

LONG ISLAND IMPROVED—90 days from plants. Most commonly sown as a fall, winter and early spring crop. Produces solid round, cabbage-like balls 1½ in. diameter. Pkt., 10c; oz., 35c; ¼ lb., \$1.00.

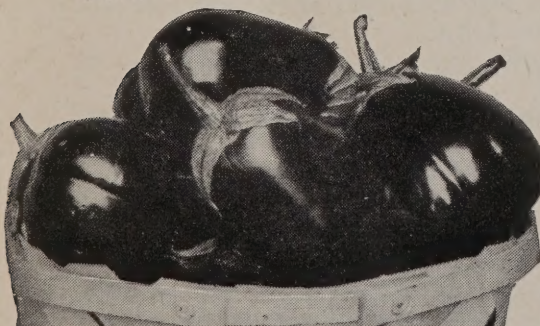
EGGPLANT

½ oz. plants 100 ft. row

Requires continuous warm weather for best results. Seed should be started in a hotbed, as it is slow to germinate. Set plants in open ground when 2 in. tall and protect from hot sun when young. Be sure to keep young plants developing rapidly. Cultivate freely. To produce large fruits, remove lateral branches so as to reduce number of fruits per plant. Spray to protect from potato bugs with Sabadilla dust.

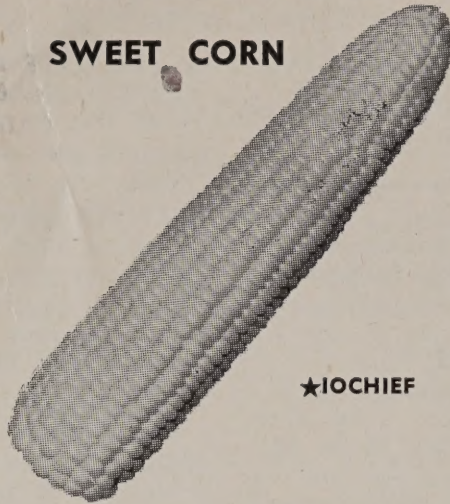
BLACK BEAUTY (fr)—81 days from plants. Large, egg-shaped, smooth, very dark purple fruits. Keeps well. Plant bears 4 to 5 fruits. Early maturing. Pkt., 10c; oz., 50c; ¼ lb., \$1.60; lb., \$6.00.

IMPROVED NEW YORK SPINELESS—83 days from plants. Standard for home use and market. Fruits evenly colored. Plants 28-32 in. tall, are strong vigorous growers. Producing 4 to 8 fruits of dark, rich purple color. Extra fine and always give satisfaction under proper cultivation. Pkt., 10c; oz., 50c; ¼ lb., \$1.60; lb., \$6.00.



Postage paid on pkts. and oz. only

SWEET CORN



★**IOCHIEF**

Hybrids

½ Lb. Plants 100 Ft. Row

★**FLAGSHIP IMPROVED**—82 days. Very attractive golden yellow kernels with good quality for fresh use. Stalks 7½ feet tall; ears 8½ inches long, 12 to 16 straight even rows. Pkt., 15c; ½ lb., 35c; lb., 60c.

★**IOCHIEF**—83 days. A yellow hybrid sweet corn with sensational qualities. Sugar sweet and tender—stays prime longer—rich color. Pkt., 15c; ½ lb., 35c; lb., 60c.

GOLDEN CROSS BANTAM (fr)—85 days. Extremely uniform. Ears 10 to 14 rows, slightly lighter yellow than Golden Bantam. Pkt., 15c; ½ lb., 30c; lb., 50c.

GOLD RUSH (fr)—66 days. Grows 6 ft. tall, 8½ in. ear, 12 to 14 rowed, well filled to tip. Tender, sweet, of fine quality. Best early. Pkt., 15c; ½ lb., 30c; lb., 50c.

SWEETANGOLD—82 days. Bright, glossy yellow kernels with fine flavor. Grows 7½ feet tall; ears 9 inches long, 14 to 18 rows. Stands drought and wilt remarkably well. Pkt., 15c; ½ lb., 35c; lb., 65c.

Open-Pollinated

COUNTRY GENTLEMAN OR SHOE PEG (fr)—92 days. Prolific late variety. Favored by canners. Irregular kernels, very deep, sweet. Pkt., 10c; ½ lb., 20c; lb., 35c.

GOLDEN BANTAM (fr)—84 days. The best and most favorably known of all the yellow varieties. Stalks often have 2 ears. Ears 8 rowed, kernels broad, with tender hull. Pkt., 10c; ½ lb., 20c; lb., 35c.

STOWELL'S EVERGREEN—85 days. White. Large ears about 8 in. long. Big kernels. Very sweet. Good late variety. Pkt., 10c; ½ lb., 20c; lb., 35c.

ROASTING EAR CORN

HYBRID TRUCKERS FAVORITE—80 days. A true genuine hybrid bred to stay in roasting ear stage combining earliness with medium large, very uniform ears to bring highest market prices and will delight your taste at the dinner table. Pkt., 10c; ½ lb., 25c; lb., 40c.

ADAMS EARLY—75 days. Very hardy and can be planted early. Sometimes called 50 day corn. Pkt., 10c; ½ lb., 20c; lb., 35c.

TRUCKERS FAVORITE—85 days. Makes fine roasting ears in 75-85 days. Valuable to plant very early and very late. Pkt., 10c; ½ lb., 15c; lb., 25c.

HICKORY KING—90 days. In both yellow and white varieties. A large flat grained corn making tender flavorful roasting ears. Called hominy corn. Just boil and spread on a little butter. Delicious. Pkt., 10c; ½ lb., 15c; lb., 25c.

LETTUCE

Bibb is the new sensation for individual salads. It really has the flavor. Ask the folks in Kentucky. This distinctive crisp lettuce is undoubtedly the most popular salad vegetable in the entire country. Kentucky Bibb is a "must" in your garden.

KENTUCKY BIBB—65 days. Small butterheads. Bibb lettuce grows the same as other varieties except the plants are set only 6 in. apart because of their small size. Can also be planted in late August for a fall crop. Pkt., 10c; oz., 35c; ¼ lb., \$1.00; lb., \$3.50.



KENTUCKY BIBB LETTUCE

★**PREMIER GREAT LAKES**—83 days. An outstanding Iceberg or crisp-head type. A summer lettuce that stands heat well and is very resistant to tip burn. Heads medium, solid. Pkt., 15c; oz., 50c; ¼ lb., \$1.75; lb., \$5.50.

BIG BOSTON OR MAMMOTH BOSTON—75 days. Popular for cold frame forcing and outside culture. Medium, compact, heads with creamy yellow heart. Pkt., 10c; oz., 20c; ¼ lb., 60c; lb., \$1.75.

NEW YORK OR WONDERFUL—78 days. The standard crisp head lettuce. Large globular shaped head, dark green with blanched, silvery white heart. Successfully grown outdoors spring, summer and fall. Pkt., 10c; oz., 35c; ¼ lb., \$1.00; lb., \$3.00.

Loose Leaf Varieties

BLACK SEEDED SIMPSON—46 days. Light green, frilled and crumpled. Pkt., 10c; oz., 20c; ¼ lb., 60c; lb., \$1.75.

GRAND RAPIDS—43 days. Erect, compact plants. Light green, broad heavily fringed. For forcing or early planting. Pkt., 10c; oz., 20c; ¼ lb., 60c; lb., \$1.75.

OAK LEAF—43 days. A popular leaf lettuce for home gardens. Rich, dark green leaves, tender and delicious. Fine resistance to hot weather. Pkt., 15c; oz., 35c; ¼ lb., \$1.00; lb., \$3.00.

PRIZEHEAD—45 days. Early non-heading sort. Medium sized plants, crisp and tender. Color light brown on a medium green base. Leaves frilled at edges, and crumpled. Pkt., 10c; oz., 20c; ¼ lb., 60c; lb., \$1.75.

★**SALAD BOWL**—44 days. Delicious bowl-full of rich green and decorative leaf lettuce. Pkt., 10c; oz., 40c; ¼ lb., \$1.00; lb., \$3.50.

CHICKEN LETTUCE—Smooth leaf, non-heading for poultry, rabbits and livestock. The more you cut, the more it grows. Pkt., 10c; oz., 20c; ¼ lb., 60c; lb., \$1.75.

Garden Peas "Fresh or Deep Freezed" . . . Delicious

KALE

1 OZ. PLANTS 100 FT. ROW

SIBERIAN—65 days. Hardy, Winter variety; crimped leaves. Pkt. 10c; oz. 30c; ¼ lb. 75c; lb. \$2.00.

DWARF BLUE CURLED SCOTCH—60-75 days. Low growing, compact, finely curled. Pkt. 10c; oz. 30c; ¼ lb. 75c; lb. \$2.00.

DWARF GREEN CURLED—65-75 days. Leaves are finely curled; very hardy. Good market variety. Pkt. 10c; oz. 30c; ¼ lb. 75c; lb. \$2.00.

MUSTARD

1 OZ. PLANTS 100 FT. ROW

Postage Paid on Pkts. and Ozs. Only.

SOUTHERN GIANT CURLED—40 days. Very large green curled leaves. Pkt. 10c; oz. 15c; ¼ lb. 25c; lb. 75c; 5 lbs. \$3.50.

CHINESE BROADLEAF—45 days. Large size broadleaf, good flavor. Pkt. 10c; oz. 15c; ¼ lb. 25c; lb. 75c; 5 lbs. \$3.50.

FLORIDA BROADLEAF—45 days. Leaf smaller and broader than Chinese. Pkt. 10c; oz. 15c; ¼ lb. 25c; lb. 75c; 5 lbs. \$3.50.

MUSKMELON or CANTALOUPE

1 OZ. PLANTS 25 HILLS

Postage Paid on Pkts. and Ozs. Only.

HALE'S BEST—80 days. Rockyford type, larger, better quality. Pkt. 10c; oz. 20c; ¼ lb. 60c; lb. \$1.75.

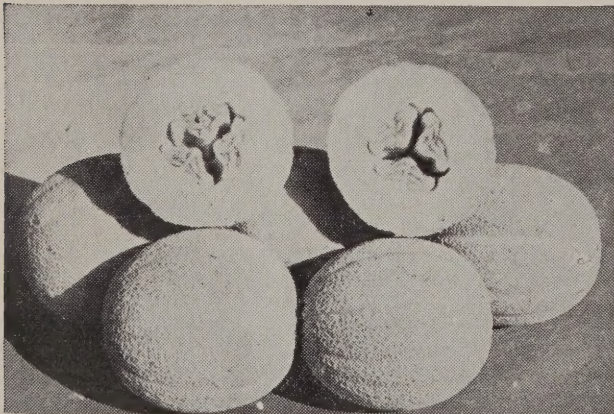
GREEN-FLESH ROCKYFORD—85 days. Closely netted, green flesh. Pkt. 10c; oz. 20c; ¼ lb. 60c; lb. \$1.75.

SUGAR ROCK—90 days. Larger than Rockyford; salmon flesh. Pkt. 10c; oz. 20c; ¼ lb. 60c; lb. \$1.75.

HEARTS OF GOLD—90 days. Excellent quality, deep salmon flesh. Pkt. 10c; oz. 20c; ¼ lb. 60c; lb. \$1.75.

TIP TOP. Delicious flavor, large orange flesh. Pkt. 10c; oz. 20c; ¼ lb. 60c; lb. \$1.75.

HACKENSACK, EXTRA EARLY—82 days. Its earliness makes it useful in home and local truck gardens. 5 inches deep and 7 inches in diameter; distinct ribbing, coarse netting, sweet green flesh. Pkt. 10c; oz. 20c; ¼ lb. 60c; lb. \$1.75.



HALE'S BEST

OKRA

1 OZ. PLANTS 100 FT. ROW

Postage Paid on Pkts. and Ozs. Only.

WHITE VELVET—60 days. Very light green dwarf variety. Pkt. 10c; oz. 15c; ¼ lb. 35c; lb. 75c.

DWARF LONG POD GREEN—50 days. Good quality long green variety. Pkt. 10c; oz. 15c; ¼ lb. 35c; lb. 75c.

PERKINS TALL GREEN—55 days. Heavy yielder. Pkt. 10c; oz. 15c; ¼ lb. 35c; lb. 75c.

NEW CLEMSON SPINELESS—55 days. 4 ft. After many years of intense breeding this spineless okra has been developed which produces a very uniform, dark green, long pod of the Perkins type. It is easily picked without discomfiture. Pkt. 10c; oz. 15c; ¼ lb. 35c; lb. 75c.

PEAS

1 LB. PLANTS 100 FT. ROW

Postage Paid on Pkts. Only

ALASKA—52 days. 2½ ft. Early, productive, hardy. Pkt. 10c; lb. 30c; 5 lbs. \$1.25.

LAXTONIAN—54 days. Vines 15-18 inches tall, large pods. Pkt. 15c; lb. 40c; 5 lbs. \$1.75.

LAXTON'S PROGRESS (fr)—62 days. Dwarf, early, freezing peas. Pkt. 15c; lb. 40c; 5 lbs. \$1.75.

LAXTON'S SUPERB. (Early Bird). Earliest large podded type. Dwarf. Pkt. 15c; lb. 40c; 5 lbs. \$1.75.

LITTLE MARVEL (fr). Dwarf; small sweet canning peas. Pkt. 15c; lb. 40c; 5 lbs. \$1.75.

GRADUS. Large podded, late; 3-3½ ft. Pkt. 15c; lb. 40c; 5 lbs. \$1.75.

TELEPHONE—75 days. Giant podded, late; 4-5 ft. Pkt. 15c; lb. 40c; 5 lbs. \$1.75.

THOMAS LAXTON—55 days. Freezing peas; 3 ft. Pkt. 15c; lb. 40c; 5 lbs. \$1.75.

EDIBLE FIELD PEAS

½ lb Plants 100 ft. Row

Order Early. Postage Extra.

BLACK EYED PEAS. Large black eyed peas make a profitable crop for picking before getting dry, and hulled and sold on the market or the dry peas sold during the winter. Lb. 30c; 5 lbs. 25c per lb.

BROWN CROWDERS. Very fine for table use; also make very good hay crop. Lb. 35c.

PURPLE HILL OR VELVET. Large brown-eyed peas; very prolific. Lb. 35c.

CREAM CROWDERS. Excellent quality. Similar to White Crowders. Lb. 35c.

DIXIELEE PEA. Virtually a never fail variety. Slightly vining on fertile soil—bunch on poorer soil. Pods are 8 inches. Its eating quality is excellent. Cans and freezes to perfection. ¼ lb. 20c; ½ lb. 30c; lb. 50c.

PARSLEY—70 days. Moss curled. Pkt. 10c; oz. 20c; ¼ lb. 65c; lb. \$1.90.

PARSNIPS

½ Oz. Plants 100 ft. Row

Postage Paid on Pkts. and Ozs. Only

ALL AMERICAN—125 days. New variety, good. Pkt. 10c; oz. 15c; ¼ lb. 35c; lb. \$1.00.

SUGAR HOLLOW CROWN—125 days. Old standard variety; smooth. Pkt. 10c; oz. 15c; ¼ lb. 35c; lb. \$1.00.

PUMPKIN

SMALL SUGAR OR NEW ENGLAND PIE—110 days.

Earliest and best for pies; grown in home and market gardens, and for shipping. Fruit 6 to 8 inches in diameter; flesh thick, orange-yellow of unexcelled quality. Pkt. 10c; oz. 25c; ¼ lb. 75c; lb. \$2.25.

TENNESSEE SWEET POTATO—105 days. Pkt. 10c; oz. 20c; ¼ lb. 55c; lb. \$1.75.

MAMMOTH PUMPKIN—120 days. Pkt. 10c; oz. 20c; ¼ lb. 55c; lb. \$1.75.

LARGE YELLOW FIELD—118 days. Pkt. 10c; oz. 15c; ¼ lb. 35c; lb. \$1.00.

CUSHAW, GREEN STRIPED—110 days. Pkt. 10c; oz. 20c; ¼ lb. 50c; lb. \$1.50.

JACK O'LANTERN—120 days. Now a pumpkin bred for Hallowe'en. It is the right size, the right shape; for best Jack O'Lantern carving. Pkt. 10c; oz. 35c; ¼ lb. \$1.00; lb. \$3.00.

SPINACH SUPPLIES ESSENTIAL MINERALS, VITAMINS



HUNGARIAN WAX

Postage Paid on Pkts. and Oz. Only.

PEPPERS

Need long growing season: start indoors 8 weeks before plants are wanted. Set plants 15" x 24" and feed liberally for bigger fruits.

Warm, mellow soil in sheltered location is best. Cultivate regularly, drawing soil up around stems. When plants are 7" to 8" tall, hoe in light dressing of commercial fertilizer. Do not plant hot peppers near sweet; they are apt to cross. 1 oz. pepper seed usually makes 1,000 strong plants.

Sweet

CALIFORNIA WONDER IMPROVED—73 days from plants. Number one quality peppers, about 4 in. long and 3½ in. diameter, very smooth, 3 and 4 lobed, glossy green, turning bright crimson when ripe. Remarkable thick walls, tender, sweet. Pkt., 10c; oz., 50c; ¼ lb., \$1.50; lb., \$5.00.

PIMENTO OR PERFECTION—75 days from plants. Best of the medium sized sweet peppers. Excellent for stuffing. Smooth, heart-shaped, about 3-in. long. Pkt., 10c; oz., 55c; ¼ lb., \$1.70; lb., \$5.50

★**SWEET BANANA—70 days from plants.** The pointed fruits measure 6½ to 7 in. long by 1½ in. thick, with a banana color turning to a brilliant red at maturity. The flavor is sweet and appealing, and the flesh is thick for a pepper of this type. Heavy yielder; 20 to 24 in. tall. Pkt., 10c; oz., 55c; ¼ lb., \$1.70; lb., \$5.50.

WORLD BEATER—73 days from plants. One of the best large peppers. Glossy-green, changes to bright red. Mild, very sweet, thick flesh. Pkt., 10c; oz., 50c; ¼ lb., \$1.70; lb., \$5.50.

Hot

HUNGARIAN WAX—65 days from plants. Slender, waxy yellow fruit about 6 in. long turns red when ripe. Semi-hot. Pkt., 10c; oz., 60c; ¼ lb., \$1.95; lb., \$6.50.

LONG RED CAYENNE—63 days from plants. The hot favorite. For canning, pickling, drying. Pungent flavored fruit, tapering and twisted. Pkt., 10c; oz., 55c; ¼ lb., \$1.70; lb., \$5.50.

Radishes Contain Vitamin B-1 and Grow QUICKLY!

RADISH

Soil should be light, quick and rich to insure rapid growth. Slow growth makes the flavor too strong. Sow as early as ground can be worked, as radishes are very hardy. Make successive sowings up to hot weather. When in the third leaf, thin to give roots plenty of room. Pull promptly when mature. The secret of crisp, delicious radishes is quick growth, prompt picking.

★**CHERRY BELLE—22 days.** A popular short-topped type for both forcing and outdoor garden use. Round, smooth and red, with crisp firm white flesh. Extra early. Pkt., 10c; oz., 20c; ¼ lb., 35c; lb., \$1.00.

EARLY SCARLET GLOBE—22 days. Globe uniform, smooth, crisp flesh and spicy. A table and market favorite. Pkt., 10c; oz., 15c; ¼ lb., 30c; lb., 80c.

CRIMSON GIANT—28 days. Large round, 1 to 1½ in. Deep crimson roots. Very crisp and tender for its size. Pkt., 10c; oz., 15c; ¼ lb., 30c; lb., 80c.

SPARKLER WHITE TIPPED—25 days. Carmine red with white tip. Flesh white, crisp and mild. Pkt., 10c; oz., 15c; ¼ lb., 30c; lb., 80c.

FRENCH BREAKFAST—24 days. Roots thicker toward bottom. 1½ in. long by ½ to ¾ in. Dull scarlet, white tipped. Pkt., 10c; oz., 15c; ¼ lb., 30c; lb., 80c.

WHITE ICICLE—27 days. Tapering roots 5 to 5½ in. White mild flesh. Pkt., 10c; oz., 15c; ¼ lb., 30c; lb., 80c.



CHERRY BELLE RADISH

Fall and Winter Varieties

CELESTIAL OR CHINESE WHITE WINTER—60 days. White flesh, rather mild in flavor. Roots large, 8 in. long and 2½ to 3 inches in diameter, cylindrical with heavy shoulder. Pkt., 10c; oz., 15c; ¼ lb., 35c; lb., \$1.00.

LONG BLACK SPANISH—58 days. Good keeping winter variety. White, crisp and pungent. 8 to 9 in. long, slightly tapered. Pkt., 10c; oz., 15c; ¼ lb., 35c; lb., \$1.00.

CHINA ROSE WINTER—50 days. The most popular winter radish. Dependable, easy to grow. Roots blunt at end, 5 in. long. Pkt., 10c; oz., 15c; ¼ lb., 35c; lb., \$1.00.

Activated SEPTOSAN cleans septic tanks the new, modern way. Safe. A box of 12 envelopes (6 applications) \$1.75 postpaid.

HERBS

Every home garden should have some of the popular herbs: Anise, Basil, Borage, Caraway, Coriander, Chives, Dill, Fennel, Sweet Marjoram, Rosemary, Sage, Thyme. Pkt., each, 10c.

Salsify—A Worthy Crop

MAMMOTH SANDWICH ISLAND—150 days. Has long, white tapering roots with flavor resembling oysters. Fine for home garden or market. Pkt., 10c; oz., 45c; ¼ lb., \$1.25; lb., \$3.50.

Rhubarb Roots

Set out roots in early spring for large and juicy stalks the following spring. Does well in moist, rich, heavily manured partly shaded locations. They make the most delicious pies. Available after Mar. 1st. **WRITE FOR PRICES.**

Horseradish Roots

Set roots small end down or flat with tops 2 in. below surface. Cultivate well until leaves cover the ground. Roots may be started indoors in pots of water for oriental looking house plants. Available after Mar. 1st. **WRITE FOR PRICES.**

SPINACH

1 oz. plants 100 ft. row

BLOOMSDALE LONG STANDING—45 days. Stands 10 to 14 days longer before bolting; rich deep glossy green, one of the best for market and canning. Oz., 10c; ¼ lb., 20c; lb., 60c.

★**IMPROVED NOBEL SPINACH—43 days.** Giant thick-leaved. Leaves are huge, crisp and of delicious flavor. Oz., 10c; ¼ lb., 20c; lb., 60c.

NEW ZEALAND—THE SUMMER SPINACH. 65 days. Grows in the hottest weather. Cut it and it comes again furnishing fine flavored greens all summer. Pkt., 10c; oz., 20c; ¼ lb., 50c; lb., \$1.50.

★**AMERICA (fr)—45 days.** The newest and finest true spinach. Heat resistant, suitable for summer planting. Suitable for market and superb for the home garden. Pkt., 10c; oz., 15c; ¼ lb., 30c; lb., 75c.

TENDERGREEN—SPINACH-MUSTARD. 35 days. A new type of greens that is really taking garden by storm. For a new kind of flavor try Tendergreens. Oz., 10c; ¼ lb., 25c; lb., 75c.



BLOOMSDALE SPINACH

TOMATOES—FOR DELIGHTFUL EATING

Rutgers Is the Tomato Market King



BLOSSOM-SET HAVE RIPE TOMATOES 1 TO 3 WEEKS EARLIER EASY TO USE . . . JUST SPRAY

Tomatoes larger, meatier . . . more delicious flavor . . . bigger yields, earlier . . . many seedless. Postpaid, 4 oz., 75c; 12 oz. Aerosol, \$1.98.

MAKES BLOSSOMS SET FRUIT.

SQUASH

1/2 OZ. PLANTS 100 FT. ROW

EARLY SUMMER CROOKNECK—52 days. Good. Pkt., 10c; oz., 15c; 1/4 lb., 40c; lb., \$1.25.

★**YELLOW STRAIGHT NECK—50 days.** More easily packed for shipping. Pkt., 10c; oz., 15c; 1/4 lb., 40c; lb., \$1.25.

WHITE SCALLOP BUSH—52 days. Very prolific, early. Pkt., 10c; oz., 15c; 1/4 lb., 40c; lb., \$1.25.

ZUCCHINI—60 days. Long, dark green Squash. Pkt., 10c; oz., 20c; 1/4 lb., 50c; lb., \$1.50.

YANKEE HYBRID YELLOW—50 days. Pkt., 10c; oz., 60c; 1/4 lb., \$2.00; lb., \$6.00.

★**CASERTA—50 days.** All America, long, green. Pkt., 10c; oz., 20c; 1/4 lb., 60c; lb., \$2.00.

TURNIP

PURPLE TOP WHITE GLOBE—55 days. The Best Globe. Oz., 10c; 1/4 lb., 20c; 1 lb., 60c.

PURPLE TOP FLAT STRAP LEAF—45 days. Early flat. Oz., 10c; 1/4 lb., 35c; lb., \$1.00.

POMERANIAN WHITE GLOBE—75 days. White Globe shape, fine. Oz., 10c; 1/4 lb., 35c; lb., \$1.00.

SHOGAIN—42 days. Early louse resistant turnip. Oz., 10c; 1/4 lb., 25c; lb., 60c.

SEVEN TOP—42 days. Turnip Greens. Oz., 10c; 1/4 lb., 20c; lb., 60c.

RUTABAGA—90 days. American purple top. Oz., 10c; 1/4 lb., 35c; lb., \$1.00.

CHIEF BRAND TOMATO DUST. A complete dust to control both tomato hornworm and tomato blight. Dust every week or 10 days in the field. 2 lb. bag, 85c Postpaid.

TOMATO

Postage Paid on Pkts. and Ozs.

BREAK O'DAY. First, early, smooth, large globe tomato. Pkt., 10c; oz., 60c; 1/4 lb., \$1.75; lb., \$6.00

VALIANT. Earliana type, fine for extra early crop. Pkt., 10c; oz., 60c; 1/4 lb., \$1.75; lb., \$6.00.

MARGLOBE. Wilt resistant, heavy producer; smooth. Pkt., 10c; oz., 60c; 1/4 lb., \$1.75; lb., \$6.00.

RUTGERS. New, very popular. Pkt., 10c; oz., 50c; 1/4 lb., \$1.50; lb., \$5.00.

LOUISIANA PINK. Wilt resistant, good shipping pink tomato. Pkt., 10c; oz., 60c; 1/4 lb., \$1.75; lb., \$6.50.

PONDEROSA. Large purplish pink, sometimes known as beef steak. Pkt., 10c; oz., 90c; 1/4 lb., \$2.75; lb., \$9.00.

★**PRITCHARD.** Wilt resistant, heavy producer. Pkt., 10c; oz., 60c; 1/4 lb., \$1.75; lb., \$6.00.

UNTREATED ALFALFA SEED FOR TEA. We are having calls for alfalfa for tea making in treatment for arthritis and similar ailments. We will gladly send suggested directions with each purchase upon request only. lb., \$1.00 Postpaid.

SALAD NOVELTIES

- **YELLOW PLUM—73 days.** Free from acid.
 - **YELLOW PEAR—73 days.** Unusually mild.
 - **RED PEAR—73 days.** Pear-shaped tomato borne in heavy clusters. May be preserved or pickled.
 - **RED CHERRY—73 days.** Delicious and attractive whole in salads. Very disease resistant.
- Pkt., 15c; 2 for 25c; oz., 90c; 1/4 lb., \$2.75; lb., \$9.00.



BURPEE'S BIG BOY, GIANT HYBRID—72 days. Largest of the true first-generation (F1) hybrids, at its peak of production in mid-season when many standard varieties decline in yield and size of fruit. Big Boy Tomatoes are perfectly smooth, deep globe in shape, very firm, extra large, average weigh 1 lb. or more. 1 Pkt., 50c; 2 Pkts., 95c; 3 Pkts., \$1.35; 5 Pkts., \$2.15 Postpaid.

STOKES F 2 HYBRID TOMATO SEED

STOKESCROSS NO. 1. Early ripening. Ripens 65 days after transplanting. This is essentially a market garden tomato. Garden Packet Size, 50c. (approx. 200 seed) Ounce, \$3.50.

STOKESCROSS NO. 4. Fruit ripens 80 days after transplanting. Has a long harvesting season. One of the best canning tomatoes. Garden Packet Size, 50c (approx. 200 seed). Ounce, \$3.50.

WATERMELON

1 OZ. PLANTS 100 FT. ROW

DIXIE QUEEN—85 days. Pkt., 10c; oz., 25c; 1/4 lb. 70c; lb. \$2.00.

BLACK LEE—90 days. Wilt resistant, black seeded, large dark green rind, good. Pkt., 10c; oz., 20c; 1/4 lb., 60c; lb., \$1.75.

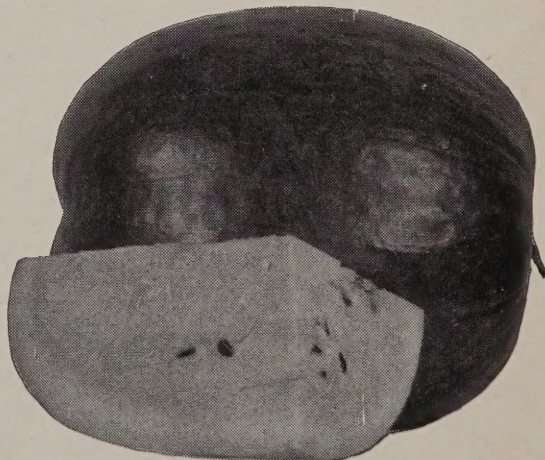
STONE MOUNTAIN—90 days. Most popular large grey rind melon. Pkt., 10c; oz., 20c; 1/4 lb., 60c; lb., \$1.75

KLECKLEY'S SWEET—85 days. Popular variety, long green, good quality. Pkt., 10c; oz., 20c; 1/4 lb., 60c; lb., \$1.75.

FLORIDA GIANT—88 days. (Black Diamond). Extra large round green, good quality. Pkt., 10c; oz., 20c; 1/4 lb., 60c; lb., \$1.75.

CREAM FLESHED—90 days. Best yellow flesh variety. Pkt., 10c; oz., 20c; 1/4 lb., 60c; lb., \$1.75.

CONGO—90 days. Firm, fine grain, red flesh. Fruit oblong. New. Pkt., 10c; oz., 25c; 1/4 lb., 75c; lb., \$2.25.



BLACK DIAMOND

VEGETABLE CROPS PLANTING CHART

KIND	Seeds for 100 ft. row	Seed for 1 Acre		†Approximate number of seeds per pound	Distance between rows		Plants apart in rows	Depth of planting	Time of planting in open ground		Ready for use from date of seeding
		Drilled in field	If transplanted		Horse cultivation	Hand cultivation			South	North	
Asparagus, seed	1 oz.	5 lbs.	1 lb.	22400	30 to 36 in.	18 to 24 in.	3 in.	1 in.	Autumn or early spring.	Early spring	1 or 2 yr. (plants)
Asparagus, root	66 roots.	60 lbs.	6,000.	1200	5 ft.	4 ft.	18 in.	2 in.	Autumn or early spring.	Early spring	2 years
Beans, dwarf	1 lb.	30 lbs.		1200	30 to 36 in.	18 to 24 in.	2 in.	1 in.	Feb., April, Aug., Sept.	April to July	42 to 75 days
Beans, pole	1/2 lb.	10 lbs.		19200	28 to 36 in.	12 to 18 in.	2 in.	1 in.	Late spring.	May and June	65 to 90 days
Beet (and Swiss Chard)	1 oz.	5 lbs.		24000	28 to 36 in.	20 in.	4 in.	1 in.	Feb.-April (Aug., Sept.)	April to August	45 to 60 days
Beet, Mangel & Sugar)	1/4 oz.	2 lbs.		160000	30 to 40 in.	24 to 36 in.	18 to 24 in.	1/2 in.	Jan. to July	April to August	90 to 120 days
Broccoli	1/4 oz.	2 lbs.		136000	30 to 36 in.	18 to 24 in.	12 to 16 in.	1/2 in.	Jan. to July	May and June	90 to 100 days
Brossoli Sprouts	1/4 oz.	4 oz.		152000	30 to 36 in.	24 to 30 in.	10 to 12 in.	1/2 in.	July and August	June and July	100 to 120 days
Cabbage, Chinese	1/4 oz.	4 oz.		120000	30 to 40 in.	24 to 36 in.	16 to 24 in.	1/2 in.	Oct. to Dec.	March and April	110 to 120 days
Cabbage, early	1/4 oz.	4 oz.		160000	6 to 8 ft.	6 to 8 ft.	4 every 4 ft.	1 in.	Feb. to April	April to June	85 to 150 days
Cabbage, late	1/4 oz.	4 oz.		320000	30 to 36 in.	12 to 18 in.	2 in.	1/2 in.	Mar. and April, Sept.	April to June	55 to 80 days
Cantaloupe	1/2 oz.	3 lbs.		1280000	3 to 6 ft.	18 to 36 in.	2 in.	1/2 in.	Jan. and Feb. (June)	April to June	95 to 110 days
Muskmelon	1/2 oz.	3 lbs.		256000	30 in.	18 in.	4 in.	1/2 in.	Aug. and Oct.	May and June	120 to 150 days
Cauliflower	1/4 oz.	2 lbs.		1280000	30 to 36 in.	24 to 30 in.	6 in.	1/2 in.	July and August	April to June	100 days
Celery	1/4 oz.	1 lb.		256000	30 to 36 in.	24 to 30 in.	14 to 18 in.	1/2 in.	March to July	April to June	100 days
Chicory, Witloof	1/4 oz.	4 lbs.		480000	36 to 42 in.	30 to 36 in.	4 every 3 ft.	1 in.	May and June	Late Spring	100 to 120 days
Chicory, Magdeburg	1/4 oz.	8 lbs.		3520	Broadcast			Water	June and July	June and July	60 days
Collards	1/4 oz.	10 lbs.		2400000	4 to 6 ft.	4 to 6 ft.	4 every 3 ft.	1 in.	Early spring.	May to July	55 to 90 days
Corn, sweet	1/2 oz.	3 lbs.		160000	24 to 30 in.	24 to 30 in.	18 in.	1/2 in.	Feb. and March (Sept.)	April to Sept.	60 to 70 days
Cress, water	1/2 oz.	2 lbs.		96000	30 to 36 in.	18 in.	18 in.	1/2 in.	Feb. to April	April to July	50 to 70 days
Cucumber	1/8 oz.	4 lbs.		240000	30 to 36 in.	18 to 24 in.	18 in.	1/2 in.	Feb. to April	April and May	125 to 140 days
Eggplant	1/4 oz.	3 lbs.		144000	30 to 36 in.	18 to 24 in.	6 in.	1/2 in.	Oct. to Feb.	April (July)	100 days
Endive	1/4 oz.	4 lbs.		135000	30 to 36 in.	18 to 24 in.	6 in.	1/2 in.	Sept. to May	Aug., Sept. (Mar., April)	55 to 60 days
Kale or Borecole	1/4 oz.	4 lbs.		176000	30 to 36 in.	14 to 20 in.	4 in.	1/2 in.	May to Sept.	March to May	50 to 70 days
Kohl-rabi	1/4 oz.	4 lbs.		320000	30 to 36 in.	12 to 18 in.	6 in.	1/2 in.	Sept. to March	March to May	120 to 150 days
Leek	1/4 oz.	3 lbs.		288000	30 to 36 in.	12 to 18 in.	4 or 5 to ft.	1/4 in.	Autumn or early spring	March to Sept.	70 to 90 days
Lettuce	1/4 oz.	4 lbs.		7200	4 to 5 ft.	3 to 4 ft.	24 in.	1 in.	Feb. to April	March to May (Sept.)	60 to 90 days
Mustard	2 oz.	8 lbs.		120000	24 to 36 in.	12 to 18 in.	2 in.	1/2 in.	Oct. to March	May and June	90 to 140 days
Okra	1 oz.	4 lbs.		120000	24 to 36 in.	12 to 18 in.	2 in.	1 in.	Early spring or autumn	Feb. to May	100 days
Onion, seed	1 qt.	12 bu.		120000	24 to 36 in.	12 to 18 in.	2 in.	1 in.	Sept. to May-Sept.	April	90 days
Onion sets	1 lb.	50 lbs.		240000	24 to 36 in.	12 to 18 in.	3 in.	1/2 in.	Feb., March	March-April	65 to 90 days
Onion seed for sets	1/4 oz.	3 lbs.		112000	30 to 36 in.	18 to 24 in.	2 in.	1/2 in.	March to June	March to June	45 to 75 days
Parsnip	1 lb.	150 lbs.		2000	3 to 4 ft.	3 ft.	1 in.	1 to 2 in.	May	May	100 to 110 days
Peas	1/2 lb.	25 lbs.		2800	30 to 36 in.	18 to 24 in.	15 in.	1/2 in.	Early spring	May and June	130 to 150 days
Peas, Crowder	1/8 oz.	2 lbs.		72000	30 to 36 in.	18 to 24 in.	4 every 6 ft.	1 in.	April and May	May to July	75 to 90 days
Pepper	1/2 oz.	4 lbs.		3200	8 to 12 ft.	8 to 12 ft.	1 in.	1/2 in.	Sept. to April	March to Sept.	20 to 75 days
Pumpkin	1/2 oz.	10 lbs.		64000	30 to 36 in.	18 to 24 in.	4 in.	1/2 in.	Early spring	Early spring	1 or 2 yr. (plants)
Radish	1/2 oz.	8 lbs.		32000	5 ft.	4 ft.	30 in.	3 to 4 in.	Autumn or early spring	Early spring	2 or 3 years
Rhubarb, seed	40 roots	2 lbs.		64000	30 to 36 in.	18 to 24 in.	6 in.	1/2 to 1 in.	Aug. and Sept.	June-July	90 days
Rhubarb, roots	1/4 oz.	8 lbs.		48000	30 to 36 in.	18 to 24 in.	2 in.	1/2 in.	Early spring	Early spring	150 days
Rutabaga	1/2 oz.	30 lbs.		1920	30 to 36 in.	16 to 36 in.	2 in.	1 in.	April-May-June	May-June	90 to 120 days
Salsify	1/2 lb.	12 lbs.		48000	30 to 36 in.	12 to 18 in.	2 in.	1 in.	Sept. to March	Sept. and early spring	45 days is min.
Soy Beans, Vegetable	1 oz.	4 lbs.		2000	3 to 4 ft.	7 to 10 ft.	4 every 4 ft.	1 in.	Spring	May to July	65 to 70 days
Squash, summer	1/2 oz.	2 lbs.		160000	3 to 5 ft.	3 to 4 ft.	3 to 4 ft.	1/2 in.	March-April	May to June	125 to 150 days
Squash, winter	1/8 oz.	12 lbs.		12000	3 to 5 ft.	3 to 4 ft.	3 to 4 ft.	1/4 in.	Aug. to Oct.	April and Aug.	45 to 90 days
Tomato	1 oz.	2 lbs.		208000	18 to 24 in.	12 to 18 in.	2 in.	1/4 in.	Aug. to Oct.	April and Aug.	45 to 50 days
Tomato, Pelleted	1/2 oz.	6 lbs.		208000	8 to 12 ft.	8 to 12 ft.	4 every 6 ft.	1 in.	March to May	May and June	100 to 130 days
Turnip	1 oz.	5 lbs.		3600							
Turnip, for greens	1 oz.	3 lbs.									
Watermelon	1 oz.	3 lbs.									

†The number of seeds per pound varies widely between varieties and lots of same species but figures given are approximate average.

FLOWER SEED PLANTING GUIDE

A—annual P—perennial	B—biennial	Height of Plant	Shape of Plant	Color of Flowers	Good Cut Flowers	Best Use	Location Sun-Shady	When to Plant
Arctotis (A)		8-12 in.	bushy	several	yes	border	sunny	March to May
Acroclinium (A)		18-24 in.	bushy	several	yes	bedding	sunny	March to May
Ageratum (A)		8-24 in.	bushy	many	yes	bedding	sunny	Jan. to April
Alyssum (A)		2-12 in.	spreading	gold, blue	fair	edging	sunny	March to April
Arabis (A)		6-12 in.	spreading	white	no	edging	sunny	April to May
Antirrhinum (A)		18-24 in.	bushy	many	yes	bedding	any	February to April
Anchusa		18-24 in.	bushy	blue	yes	border	sunny	March to May
Aster (A)		12-30 in.	bushy	many	yes	bedding	any	April to June
Balsam (A)		18-30 in.	erect	many	fair	border	sunny	March to May
Calendula (A)		12-36 in.	bushy	many	yes	bedding	sunny	January to April
Hearts and Honey Vine (A)		10-18 in.	vine	several	no	climbing	sunny	March to May
Cosmos (A)		48-72 in.	bushy	several	yes	bedding	sunny	April to May
Cypress Vine (A)		10-18 ft.	vine	several	no	climbing	sunny	April to May
Chrysanthemum (A)		24-36 in.	bushy	several	yes	bedding	sunny	March to May
Calliopsis (A)		12-36 in.	bushy	yellow	yes	bedding	sunny	January to April
Candytuft (A)		12-18 in.	bushy	many	yes	bedding	sunny	March to April
Canterbury Bells (A) (B)		18-24 in.	bushy	several	fair	border	sunny	March to May
Carnation (A)		18-36 in.	bushy	many	yes	bedding	sunny	February to March
Celosia (A)		2-2½ ft.	branchy	several	yes	bedding	sunny	March to May
Centaurea (A)		24-36 in.	erect	several	yes	bedding	sunny	February to May
Clarkia (A)		15-30 in.	bushy	several	yes	border	sunny	March to April
Cockscomb (A)		12-24 in.	bushy	several	no	border	sunny	April to May
Cleome (A)		4-5 ft.	tall	pink	yes	border	sunny	March to April
Coleus (A)		12-24 in.	bushy	several	no	bedding	sunny	March to April
Columbine (P)		24-48 in.	branchy	several	yes	border	any	March to September
Dahlia (A)		36-72 in.	bushy	many	yes	bedding	sunny	February to March
Daisy Shasta (P)		10-30 in.	bushy	several	yes	edging	any	Feb. to March and Aug.
Delphinium (A)		36-60 in.	tall	several	yes	border	sunny	March to May
Dianthus (A)		12-15 in.	bushy	many	yes	bedding	sunny	March to May
Digitalis (B)		30-48 in.	erect	many	yes	border	shady	February to March
Didiscus (A)		24-36 in.	slender	blue	yes	cutting	shady	February to March
Digitalis (Foxglove) (B)		30-48 in.	erect	many	yes	border	shady	February to March
Didiscus (A)		24-36 in.	slender	blue	yes	cutting	shady	February to March
Eschscholtzia (A)		10-12 in.	bushy	several	yes	bedding	sunny	March to May
Euphorbia (A)		2-4 ft.	bushy	white	no	border	sunny	May to June
Forget-Me-Not (P)		8-12 in.	bushy	many	yes	edging	shady	March to April
Four O'Clock (A)		2-3 ft.	bushy	many	no	edging	shady	March to April
Gaillardia (P) (A)		18-30 in.	bushy	many	yes	bedding	sunny	February to March
Gypsophila (P) (A)		18-24 in.	branchy	white	yes	border	sunny	May to June
Helichrysum (A)		24-36 in.	bushy	many	yes	bedding	sunny	February to March
Hollyhock (P)		5-8 ft.	slender	many	yes	border	moist	Feb. to March and Aug.
Kochia (A)		36 in.	bushy	green	no	border	sunny	March to May
Larkspur (A)		34-46 in.	tall	many	yes	bedding	sunny	March to May-Sept. to Oct.
Lantana (A)		24-36 in.	branchy	many	yes	bedding	sunny	February to May
Lathyrus (P)		6-12 ft.	vine	many	yes	blanket	sunny	February to May
Linum (P)		12-30 in.	clump	blue	no	bedding	sunny	March to May
Lobellia (A)		6-8 in.	bushy	blue	fair	edging	shady	March to May
Lupins (A) (P)		24-30 in.	erect	many	yes	border	shady	April to May
Marigold (A)		8-30 in.	bushy	many	yes	bedding	sunny	March to May
Mourning Bride (Scabiosa) (A)		20-30 in.	bushy	many	yes	bedding	sunny	March to May
Morning Glory (A)		20-50 ft.	vine	many	no	shade	sunny	March to May
Moonflower (A)		20-30 ft.	vine	many	no	shade	sunny	March to April
Nasturtium (A)		12 in.-8 ft.	bush-vine	several	yes	edging	sunny	April to June
Nicotiana (A)		30-42 in.	branchy	several	yes	border	sunny	March to May
Pansy (A)		4-6 in.	clump	many	yes	edging	any	March to September
Petunia (A)		18-24 in.	bushy	many	fair	bedding	any	February to May
Phlox (A) (P)		12-18 in.	bushy	many	yes	bedding	sunny	March to May-Sept. to Oct.
Poppy (A) (P)		24-60 in.	erect	many	yes	bedding	sunny	Jan. to April-Sept. to Oct.
Pyrethrum (P)		2-24 in.	erect	many	yes	bedding	sunny	Feb. to May
Portulaca (A)		4-6 in.	spready	several	no	edging	sunny	March to June
Ricinus (A)		5-10 ft.	branchy	green	no	massing	sunny	May to June
Salpiglossis (A)		18-30 in.	bushy	several	yes	border	any	October to March
Salvia (A)		24-42 in.	bushy	red	yes	bedding	sunny	March to May
Sweet William (P) (A)		12-24 in.	bushy	many	yes	bedding	sunny	January to April
Verbena (A)		6-10 in.	spready	many	yes	edging	sunny	February to May
Vinca (A)		15-18 in.	bushy	pink, white	fair	bedding	sunny	February to May
Zinnia (A)		6-36 in.	bushy	many	yes	bedding	sunny	March to August
Sweet Peas (A)		4-8 ft.	vine	many	yes	cutting	sunny	February to April
Gourds (A)		10-25 ft.	vine	white	no	novelty	sunny	April to June

PURDUE 32 OR K4 HYBRID POPCORN—100 days. To make more popping corn per row or acre, this is the proven hybrid to plant. Pkt. 20c; ½ lb. 40c; lb. 75c.

DYNAMITE OR SOUTH AMERICAN POPCORN 100 days. Pops enormous golden kernels. Usually two ears to stalk. Pkt. 10c; ½ lb. 15c; lb. 30c.

MINYHYBRID—80 days. This white hybrid is an improvement over Japanese hullless for yield and popping. It also matures earlier. Pkt. 20c; ½ lb. 40c; lb. 75c.

YOPP'S FLOWER SEED, BULBS and PLANTS for spring planting are described on pages 9-16. May we suggest:

- ASTER, Powderpuff page 9
- BELLS OF IRELAND, page 9
- COLUMBINE (Aquilegia), page 10
- HEARTS AND HONEY VINE, page 9
- MARIGOLD, Crackerjack, page 11
- PETUNIA, Popcorn, page 12
- SWEET PEAS, Spencer, page 13
- ZINNIA, Blaze, page 13

Fall bulbs and plants are not listed. Our fall listings of Holland bulbs will be sent on request.

FLOWERS ARE EASILY GROWN FROM SEED



**ANTIRRHINUM, MIXED
FLOWER SEED**



ASTER POWDERPUFFS

ARCTOTIS (African Daisy). New Hybrids, 8-12 inches. A new race resembling the famous Gerberas but much easier to grow in the garden. Flower 2½ to 3 inches; likes a dry sunny location. Excellent as a border plant and fine for cutting. **Pkt., 10c.**

ACROCLINIUM (Everlasting) Annual daisy-like flowers with straw silky petals. Can be dried for winter bouquets. Mixed. **Pkt., 10c.**

AGERATUM. Midget Blue. Three inch globular plants are smothered with Ageratum blue flowers. Most uniform in habit, truest in color yet produced. The best we know for narrow ribbon planting. **Pkt., 10c.**

AGERATUM. Tall Mixed. **Pkt., 10c.**

ALYSSUM. Annual. Popular little flower for edgings. Blooms all summer. Carpet of Snow, Violet Queen, Snow Cloth, Lilac Queen. **Each Packet, 10c.**

ALYSSUM SAXATILE. Per. (Basket of Gold). Spreading plant with a profusion of gold flowers. **Pkt., 10c.**

ALYSSUM ROYAL CARPET. Unfading, spreading violet blue. **Pkt., 25c.**

ARABIS (Rock Cress) Spreading dwarf spring flowering plants. They do well in any soil, but need plenty of sun. Alpina. 1 ft. April. Pure white. **Pkt., 10c.**

ANTIRRHINUM (Snapdragon) Rust resistant. Mixed colors, **Canary Bird, Yellow; Copper King, Bronze Copper; Campfire, Luminous Scarlet; Paradise, Rose Red; Sensation, Pure Pink; New Velvet, giant tall velvety rich crimson. Packet, 10c Each.**

ANTIRRHINUM TETRAPLOID (Tetra Snapdragon) Mixed. **Pkt., 10c.**

ANTIRRHINUM (Snapdragon) Naramek Strain. Mixed. **Pkt., 10c.**

AMARANTHUS (Love Lies Bleeding) Red and mixed. 3 ft. **Each Packet, 10c.**

★ **ANCHUSA (Blue Bird).** **Pkt., 10c.**

ASTER, POWDERPUFF. Bouquet type. Ideal for cutting. Plants strictly upright bearing quilled flowers on top of 2 ft. plant. NEW! Full double "puff-ball" cut flowers. Mixed colors. **Pkt., 25c.**

ASTER. Wilt resistant. **Princess** (new), ideal cut flower, long stems, crested centers, remains full when flower is completely open. **Anne, peach blossom. Linda, clear light rose. Susan, true deep blue. Pat, new bright crimson. Elizabeth, pure white. Mixed colors. Pkt., 25c Each**

ASTER AMERICAN BRANCHING. Azure Blue, Crimson, Purple, Rose, Scarlet, Shell Pink, White, Mixed. **Each Pkt., 10c.**

BALSAM (Lady's Slipper) Double Camellia flowered, finest mixed. **Pkt., 10c.**

BABY'S BREATH. See Gypsophila.

BLUE LACE FLOWER. See Didiscus.

BELLS OF IRELAND. Annual novelty; fine for cutting. Bell shaped flowers are closely grouped on two foot stems. Both flowers and foliage are apple green. Easily grown. **Pkt., 10c.** Used in dried flower arrangements.

BACHELOR BUTTON. See Centaurea.

BEAN SCARLET RUNNER. Climbs, flowers like hyacinth bean but scarlet. **Pkt., 10c.**

BLACK EYED SUSAN (Thunbergia) Vine, Orange and Yellow flower with dark eye. **Pkt., 10c.**

BURNING BUSH. See Kochia.

BACHELOR BUTTON (Gomphrena) Strawflowers. Purple and mixed. **Each Pkt., 10c.**

★ **CALENDULA DOUBLE.** Ball's Gold, Ball's Orange and mixed. **Each Pkt., 10c.**

CALIFORNIA POPPY. Scarlet flower like cypress vine but larger. **Pkt., 10c.**

HEARTS AND HONEY VINE. (NEW). Like cypress vine but blooms all day, while colors change from pinkish orange to pinkish red and rose pink. 10-12 ft. graceful vines. Easily grown. **Pkt., 25c.**

GET MASS DISPLAY WITH THESE FLOWERS

GROW DAHLIAS FROM SEED



COLUMBINE, MCKANA'S GIANT

- DAHLIA**, Unwin's Hybrid. Annual. A Dahlia that will bloom from seed the first year. Mixed colors. **Pkt. 10c.**
- DAHLIA**. Annual. Giant flowering, mixed colors. **Pkt. 10c.**
- SHASTA DAISY**. Perennial. White flower, with yellow centers, on long stems. **Pkt. 10c.**
- DELPHINIUM**. Per. Pacific Giants, new strain, flower 2 to 3 inches in diameter, fully double. Mixed. **Per Pkt. 25c.**
- DELPHINIUM**. Belladonna Hybrids, Light Blue, Bellamosum, Bright Dark Blue. **Each Pkt. 25c.**
- DELPHINIUM**. Blackmore and Longdon strain mixed, Chinese Tall finest mixed. **Each Pkt. 25c.**
- DIANTHUS HEDDEWIGI (Pinks)**. Annual. Double Mixed colors. **Pkt. 10c.**
- DIANTHUS** Annual. Single Mixed. **Pkt. 10c.**
- DIANTHUS**. Chinese. Double Mixed. **Pkt. 10c.**
- DIANTHUS**. Hybrid Sweet Wivelsfield. A multiflora type; free flowering. **Pkt. 10c.**
- DIGITALIS (Foxglove)**. A tall, biannual with spikes of vari-colored, spotted flowers. Mixed colors. **Pkt. 10c.**
- DIDISCUS (Blue Lace Flower)**. Annual. Lacy, blue flowers on long stem. **Pkt. 10c.**
- ESCHSCHOLTZIA (California Poppy)**. Annual; a showy free-flowering plant. **Pkt. 10c.**
- EUPHORBIA (Snow on the Mountain)**. Annual. Variegated white and green leaves. **Pkt. 10c.**
- FORGET-ME-NOT (Cynoglossum)**. Annual; grows 2 to 3 feet tall; blooms all summer; good cut flower. Mixed colors. **Pkt. 10c.**
- FORGET-ME-NOT (Myosotis)**. Perennial; dwarf plant that does well in moist shade and blooms all summer. **Pkt. 10c.**
- FOUR O'CLOCK (Marvel of Peru)**. Annual; grows 2 to 3 feet tall; blooms all summer. Mixed colors. **Pkt. 10c.**
- FOXGLOVE**. See Digitalis.
- GEUMS**. Showy, producing a wealth of attractive flowers. Much prized for cutting. Excellent for border. **Lady Stratheden, Golden Yellow; Mrs. Bradshaw, Orange Scarlet. Mixed colors. Each Packet 10c.**

- COSMOS**. True early mammoth, single, Crimson Queen, Rose Queen, White Queen and mixed. **Each Pkt., 10c.**
- COSMOS**. Double and Mixed. **Pkt., 10c.**
- COSMOS**. Sensation, Radiance and mixed. **Each Pkt., 10c.**
- ★**COSMOS**. Fiesta, orange yellow. **Pkt., 25c Each.**
- CYPRESS VINE**. Mixed. **Pkt., 10c.**
- CHINESE WOOLFLOWER (Celosia Child's)** Mixed colors. **Pkt., 10c.**
- CALLIOPSIS**, Annual. Very graceful, bright flowers for borders. **Pkt., 10c.**
- CANDYTUFT (Iberis Sempervirens)** Per. Also Evegreen. Grows 8 to 10 inches tall and covered with clusters of tiny white flowers. **Pkt., 10c.**
- CANDYTUFT**. Annual. Very attractive bedding and border plant. Makes a dainty cut flower. Mixed colors. **Pkt., 10c.**
- CANTERBURY BELLS (Campanula)** Perennial Calycanthema (Cup and Saucer). Mixed colors. **Pkt., 10c.**
- CARNATION**. Chabaud's giant double improved. Cardinal Red, Crimson, Deep Rose, Salmon Rose, and White. **Pkt., 10c Each.**

★**COLUMBINE, MCKANA'S GIANT**. New! Flowers 4 in. wide with 3 to 4 in. spurs. Full color range in color. Bloom first year from seed if started early, transplanting outside in spring. **Pkt., 25c.**

- CELOSIA (Giant Pompas Plume)** Mixed colors. **Pkt., 10c.**
- CENTAUREA**, Cyanus Double. (Bachelor Button or Cornflower) Special Strain. **Blue Boy, Pinkie, and Red Boy, Snowman and Finest Mixed. Pkt., 10c each.**
- CLARKIA**. Annual. Pretty and easily-grown flowers. **Pkt., 10c.**
- COCKSCOMB**. Annual dwarf, mixed colors. **Pkt., 10c.**
- COCKSCOMB**. Tall royal velvet, a rich carmine-crimson. **Pkt., 10c.**
- ★**CLEOME (Giant Spider Plant)**. Annual. **Pink Queen. Pkt., 10c.**
- COLEUS**. Annual. These showy plants are grown for their foliage. **Pkt., 25c.**
- COLUMBINE**. Perennial. Dobbies Improved Hybrids. Mixed. **Pkt., 10c.**
- COLUMBINE**. Mrs. Scott Elliott. Mixed. **Pkt., 10c.**

Rid Your Lawn of Moles

FORCE'S MOLE KILLER

35c 65c \$1.15 Postpaid



DAHLIA UNWIN'S HYBRID

A PAGE OF FAVORITE FLOWERS

GAILLARDIA. (Blanket Flower). Perennial. Splendid bedding, border and cut flowers. Mixed colors. Pkt. 10c.

GAILLARDIA. Annual. Single, double and mixed. Pkt. 10c each.

GYPSOPHILA. (Baby's Breath.) Annual. White. Pkt. 10c.

GYPSOPHILA. (Baby's Breath). Perennial. Grows 2 feet tall and makes excellent cut flowers. Pkt. 10c.

HELICHRYSUM. (Strawflower). Annual. Grows 2 feet tall; has many double colored flowers. Desirable as dried specimens. Pkt. 10c.

HELIOTROPE. Well known; fragrant border plant. Pkt. 25c each.

HOLLYHOCK. Perennial. Grows 4 to 5 feet tall; excellent for borders. Double Red, Rose, Yellow, Orange Prince and Mixed colors. Pkt. 10c each.

KOCHIA. (Summer Cypress.) (Burning Bush.) Annual. Bushy foliage plant; bright green, turning red in fall. Pkt. 10c.

IPOMEA. See Morning Glory.

LARKSPUR SUPREME (New Strain). Double on long spikes, well placed. Fine for cutting. Lilac, White, Pink, Rose, Dark Blue, Salmon and mixed. Each Pkt. 10c.

LANTANA. Annual shrubby plant with Verbena-like flowers. Pkt. 10c.

LATHYRUS LATIFOLIUS (Hardy Sweet Pea). Mixed. Pkt. 10c.

LINUM. Perennial. An abundance of misty blue flowers that bloom all summer. Pkt. 10c.

LOBELIA. Annual. Blue border plant, blooms all summer, 6 inches tall. Pkt. 10c.

LUPINS. Annual. Giant King Mixed. Pkt. 10c.

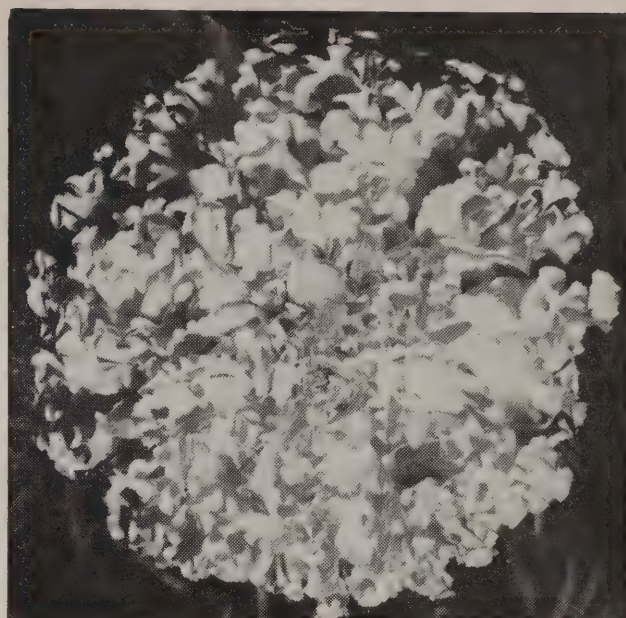
MARIGOLD. Carnation flowered. Giant Burpee's Gold R.H.S. 48. Odorless. Pkt. 10c. Clinton R.H.S. 48, Orange frilled and odorless. Pkt. 10c

MARIGOLD, FLUFFY RUFFLES. Large flowered pure gold with lacy ruffled florets. Pkt. 25c.



**Handy! Speedy!
PLANT TIE**

"Twist-ems" are dark green strong tapes with wire reinforcing that make perfect plant ties with a twist of the wrist. For plants and vines. 8 in.—Pkg. of 100, 25c; 16 in.—100 for 50c. Postpaid.



MARIGOLD CRACKERJACK

MARIGOLD. Gigantea. A remarkable new sweet scented extremely large flower. Full Double Mixed. Each Pkt. 10c.

MARIGOLD. African. All Double Mixed. Pkt. 10c.

MARIGOLD, CRACKERJACK. New for 1957. Immense blooms growing on a compact plant. Earlier than other giant flowered types. Full color range from primrose through yellow to gold and finally to brilliant orange. An impressive cut-flower. Pkt. 25c.

MARIGOLD, LEMONDROP. (New). Extra dwarf double. Full Double Canary Yellow. Compact plant. Pkt. 25c.

MARIGOLD, YELLOW SUPREME. All-America. Primrose Yellow, Carnation flowered. All double odorless flowers. 2½ in. across. Pkt. 10c.

MARIGOLD, PYGMY. All-America. Extra dwarf Lemon Yellow. Pkt. 10c.

MARIGOLD. Odorless Mixed. Pkt. 10c.

MARIGOLD. French (Tagetes Petala) **Butterball,** Butter Yellow, 6 to 8 inches tall. All-America '42. **Sunkist,** orange, A.M. R.H.S. '48, and mixed. Each Pkt. 10c.

★ **MARIGOLD. Glitters, chrysanthemum flowered.** Winner of All-America '51 Award, 2½ to 3 ft. tall, color bright Lemon Yellow, early. Pkt. 25c.

MIGNONETTE. A quick growing sweet-scented old-fashioned flower. Pkt. 10c.

MOURNING BRIDE. (Scabiosa.) Imperial Giants, Blue Moon, Rosette, Salmon Rose, King of Blacks, Dark Red. Mixed colors. Pkt. 10c each.

★ **MORNING GLORY. Clarke's Earliest Heavenly Blue,** sky blue shading golden yellow in throat. **Blue Star**—light blue with dark blue ribs to form a star. **Rose Marie**—double deep rose. **Scarlet O'Hara**—dark wine red. Each Pkt. 10c.

MOONFLOWER. White. Pkt. 10c.

1956 CANDY PINK MORNING GLORY

Candy Pink is reported by the originator to be the first pink Morning Glory ever created. A completely new color—Pink—America's favorite color. Flower is 4 in. in diameter. Plant often attains height of 15 to 20 ft. A bright rose-pink salmon, pure and sparkling. Blooms throughout summer until fall frost. Pkt. 25c.



CANDY-PINK MORNING GLORY

YOU WILL ENJOY THE NEW VARIETIES



DOUBLE GLEAM NASTURTIUM

NASTURTIUM. Annual. Double delightfully sweet-scented, large flowers. Mixed colors. **Pkt. 10c.**

★**NASTURTIUM.** Double Scarlet, Scarlet Gleam; Double Golden, Golden Gleam; Double Mixed Colors. **Pkt. 10c.**

NICOTIANA AFFINIS. Sweet scented flowering Tobacco Affinis, Crimson King, White, Daylight, Sensation, Mixture, (new). Blooms during day. **Each Pkt. 10c.**

NIEREMBERGIA (Cupflower)—Perennial. Purple Robe 8 to 10 inches. Deep Violet Purple. Does not fade. **Pkt. 25c.**

NIGELLA (Love in Mist) Cornflower Blue. Annual. **Pkt. 10c.**

PANSY—Maple Leaf Giants. Choice mixed, Large flowers held well above foliage on long stems. **Pkt. 25c.**

PANSY — Aalsmeer Giants. Choice mixed. Earliest Giant to bloom. **Pkt. 25c.**

PANSY — Mastodon Giants. Mixed colors. **Pkt. 25c.**

PANSY—Roggli Swiss Giants—Greatest Pansies yet. Sensation wherever grown.

Ullswater, Blue. Enormous dark blue.

Rheingold, Yellow. Mammoth.

Raspberry. Rose. New

Swiss Mixed.

Each Pkt. 25c.

PETUNIA. Nana Compacta, dwarf compact free flowering 12 inch plants bearing many medium sized plain edged single flowers. For bedding and borders.

Admiral, deep velvety violet, 12 in. **Pkt. 15c.**

Celestial Rose, low growing bright rose. **Pkt. 15c.**

★**Fire Chief,** scarlet red. Gold Medal. **Pkt. 25c.**

Rose of Heaven, rose pink. **Pkt. 15c.**

Violacea, deep velvety purple. **Pkt. 15c.**

Petunia, Nana Compacta. Mixed blend. **Pkt. 15c.**

PETUNIA. Hybridæ. 20 to 24 inches.

General Dodds, blood red. **Pkt. 10c.**

Howard Star, reddish purple white star. **Pkt. 10c.**

Violacea, deep violet. **Pkt. 10c.**

Hybridæ, Mixed. **Pkt. 10c.**

PETUNIA. Balcony, 18 inches.

Black Prince, deep velvety red. **Pkt. 10c.**

Balcony Red, crimson. **Pkt. 10c.**

Balcony Rose, bright rose. **Pkt. 10c.**

Balcony Mixed. **Pkt. 10c.**

PETUNIA. Elk's Pride. Imp. Large flowering, rich velvety purple. **Pkt. 25c.**

PETUNIA. Giants of California. Dwarf Ramona strain, dark and light shades. Giant fringed blossoms. **Pkt. 25c.**

PETUNIA. Giants of California. Bodger's supreme florist strain. Mixed. **Pkt. 25c.**

PETUNIA, POPCORN—Dwarf Snowstorm. Pure white with yellow-shaded throat. A dwarf version identical in flower-form and size of bloom with Snowstorm. It is earlier blooming and its habit is exceedingly dwarf and compact. Excellent for pots and bedding. **Pkt. 25c.**

PHLOX. (Drummondii). Annual. A hardy free blooming border plant. Mixed colors. **Pkt. 10c.**

PHLOX. (Drummondii). Hardy Annual. Cecily, dwarf mixed; fine large flowers. **Pkt. 10c.**

★**PHLOX (Globe).** Hardy Annual. Each color in the mixture is the same height and shape throughout flowering season. Color range is brilliant. Plants grow about 12 in. tall and form a rounded globe. **Pkt. 25c.**

POPPY. (Shirley, Annual). American Legion, Red; Sweet Briar, Pink; Mixed colors. **Pkt. 10c.**

POPPY. Oriental. Perennial. Immense orange scarlet blossoms. **Pkt. 10c.**

PINKS. See Dianthus.

PYRETHUM. Perennial. (Painted Daisy) Roseum mixed. **Pkt. 10c.**

PORTULACA (Moss). Annual. Likes sunny places. Single mixed. Double mixed. **Each Pkt. 10c.**

ROCK GARDEN MIXTURE. Annual. **Pkt. 10c.**

RICINUS. (Castor Bean.) Annual. Large tropical foliage plant with large leaves. **Pkt. 10c.**

SALPIGLOSSIS. (Painted Tongue—Velvet Flower.) Annual. Mixed. **Pkt. 10c.**

SALVIA-SCARLET SAGE

Universally popular. A strong grower and free flowering beauty. Long spires of intense scarlet bloom from mid-summer till frost. A bed of salvia will give a perfect blaze of scarlet.

GLOBE of Fire, America. 12 to 16 in. **Pkt. 10c.**

SPLENDENS. 18 to 24 inches. **Pkt. 10c.**



PETUNIA POPCORN

GROW MAGNIFICENT CUT FLOWERS!

THE FINEST RAINBOW GLADIOLUS BULBS

SWEET WILLIAM. Perennial. Fine for beds and borders. In many colors. Double mixed. **Pkt. 10c.**

SWEET WILLIAM. Annual. Single mixed. **Pkt. 10c.**

SWEET WILLIAM. Perennial. Double mixed. **Pkt. 10c.**

SWEET WILLIAM. Hardy Perennial. Newport Pink, Scarlet Beauty. **Pkt. 10c.**

VERBENA. Hybrid Grandiflora. Annual. Colorful border plant that blooms continuously all summer. Mixed colors. **Pkt. 10c.**

VINCA. (Periwinkle.) A good bedding and border plant that does well in both sun and shade. 2 feet tall. **Pkt. 10c.**

ZINNIA. Tom Thumb. Mixed. Plants 6 to 8 inches. Fine for border. **Pkt. 10c.**

ZINNIA. Lilliput. Canary Yellow, Crimson, Valencia Orange, Snowball White, Salmon Rose, Rose and mixed. **Each Pkt. 10c.**

ZINNIA. California Giant or Mammoth. Crimson Queen, rich crimson. Daffodil, rich canary yellow. Cherry Cerise Queen, brilliant cherry rose. Grenadier, bright dark red. Golden Queen, golden yellow. Lavender Queen, deep rosy lavender. Orange King, orange scarlet. Purity, largest best white. Rose Queen, striking deep rose. Scarlet Queen, glowing deep scarlet. Violet Queen, deep purple. **Pkt. 10c.** California Giant Mixed. **Pkt. 10c.**

ZINNIA GRACILLENIA. (Red Riding Hood) Miniature Deep Scarlet flowers. **Pkt. 10c.**

ZINNIA. Gold Medal Dahlia flowered. Canary Bird, rich canary yellow. Dream, deep rosy lavender. Exquisite, light rose, deep rose center. Golden Dawn, golden yellow. Crimson Monarch, deep crimson, large. Illumination, deep rose. Luminosa, bright pink. Will Rogers, deepest scarlet. Polar Bear, white. Royal Purple, purple. Scarlet Flame, bright scarlet. **Each Pkt. 10c.**

ZINNIA. Fantasy, medium size flower, 2½ to 3 inch shaggy petals make double flowers. Melody, orchid lavender. Star Dust, canary yellow. **Pkt. 10c each.** Fantasy Mixed colors. **Pkt. 10c.**

★**ZINNIA, BLAZE.** Cactus flowered, flame-orange with twisted flat petals. **Pkt. 25c.**

ZINNIA, BURPEE'S HYBRID. Varied mixture of chrysanthemum flowered type flowers. Gorgeous range of color combinations. **Pkt. 25c.**

ZINNIA, FLORADALE. Scarlet vibrant red with twisted flat petals. Vigorous. **Pkt. 25c.**

ZINNIA, RIVERSIDE BEAUTY. Glowing salmon pink. Unusual in Zinnia curled and twisted petals. **Pkt. 25c.**

ZINNIA, SUPER GIANT MIXED. Improved, extremely large, fluffy, informal flower in full color mixture. Hybrids. **Pkt. 25c.**

SPENCER SWEET PEAS

Pkt. 10c; oz. 35c

BLACK DIAMOND—Dark Maroon. Beautiful color.

GIGANTIC—Pure White. Newest and finest white.

HIGHLANDER—Large flowered, clear lavender.

MOUNT EVEREST—Large ruffled white.

MRS. R. BOLTON—Almond pink. Very large.

PIPER—Salmon to scarlet cerise.

RED BOY—Rich crimson, long stems, vigorous.

ROB ROY—Scarlet.

RADAR—Best rich salmon pink.

SPENCER MIXED COLORS.

GOURDS. Large and small varieties mixed.

GOURDS. Large varieties mixed.

GOURDS. Small ornamental varieties mixed.

Above, Each Pkt. 10c.



SWEET PEAS, CUTHBERTSON

before the Summer Spencer sorts. Mixed colors only. **Above, Each Pkt. 10c; oz. 35c.**

COLORFUL SHOW WINNING GLADIOLAS 39 EXQUISITE SELECTIONS



GLADIOLUS

TOP RANKING GLADIOLUS

1. **ABU HASSAN.** Clear dark blue. **Doz. \$150**
2. **ACCA LAURENTIA.** Deep orange-yellow with creamy white blotch on lower petals. **Doz. \$1.50.**
3. **BEAUTY'S BLUSH.** Soft blush pink. Excellent cut flower. **Doz. \$1.75.**
4. **BENJAMIN BRITTEN.** A new deep toned lavender approaching light purple. **Doz. \$1.75.**
5. **BURMA.** Deep rose. Fine exhibition variety. **Doz. \$1.25.**
6. **DAISY MAE.** Tall orange-pink with cherry blotch. **Doz. \$1.50.**
7. **DREAM GIRL.** A soft magenta-pink. Large florets on a tall straight stem. **Doz. \$1.75.**
8. **ELIZABETH THE QUEEN.** The best and most beautiful clear lavender. **Doz. \$1.50.**
9. **FLORENCE NIGHTINGALE.** Glistening white. Wonderful for show and cut flowers. **Doz. \$1.50.**

THE CHOICE OF GARDEN DAHLIAS

CANNAS BLOOM ALL SUMMER LONG

10. **FRIENDSHIP.** Bright true pink. Doz. \$1.50.
11. **GENERAL EISENHOWER.** Brilliant begonia rose flowers of immense size. Doz. \$1.50.
12. **GOLD DUST.** Early deep yellow blooms. Splendid cut flowers. Doz. \$1.25.
13. **HANS van MEEGEREN.** Deep primrose-yellow with soft apricot throat. Doz. \$1.50.
14. **JO WAGENAAR.** Very deep red. Doz. \$1.50.
15. **J. VAN KONIJORENBURG.** Clear rich orange-red. An eye-catcher. Doz. \$1.50.
16. **KING DAVID.** Royal Purple. Very ruffled, deep velvety throat. Doz. \$1.75.
17. **LEEUWENHORST.** An extra large new pink. Superb cut flowers. Doz. \$1.50.
18. **LILAC TIME.** Enormous spike with wide open flowers of clear lilac-blue. Doz. \$1.50.
19. **MANSOER.** Chocolate red, almost brown. Very unusual novelty. Doz. \$1.50.
20. **MARIA GORETTI.** A new white variety considered the choicest in its class. Doz. \$1.75.
21. **MEMORIAL DAY.** Wine red. Doz. \$1.50.
22. **MOTHER FISCHER.** Heavy ruffled white. A winner at flower shows. Doz. \$2.00.
23. **PACTOLUS.** Ruffled apricot. Doz. \$1.75.
24. **PARTHIENA.** Deep mauve-lavender. Doz. \$1.75.
25. **PICARDY.** Popular, large, ruffled apricot-pink. Doz. \$1.25.
26. **POINSETTIA.** Bright red; dark foliage. Doz. \$1.75.
27. **POLYNESIA.** A pure salmon, deeper than Picardy. Doz. \$1.75.
28. **PURPLE SUPREME.** Considered by many as the best commercial purple. Doz. \$1.75.
29. **RED CHARM.** One of the very finest medium reds from Europe. Doz. \$1.75.
30. **SALMAN'S GLORY.** Pure light cream. Doz. \$1.75.
31. **SHERWOOD.** Lightly ruffled purple. Doz. \$1.75.
32. **SNOW PRINCESS.** Early, large, pure white. One of the best—usually a prize winner. Doz. \$1.00.
33. **SPIC AND SPAN.** Ruffled rich pink. Doz. \$1.75.
34. **SPOTLIGHT.** Beautiful deep, golden yellow. Unexcelled for cutting. Doz. \$1.25.
35. **VALERIA.** Distinctive light red. Doz. \$1.75.
36. **WEDGEWOOD.** Waxy ruffled new lavender with cream throat. Doz. \$1.50.
37. **WHITE GOLD.** Ruffled cream white. Doz. \$1.25.
38. **YELLOW HERALD.** Ruffled yellow. Doz. \$1.75.
39. **YOPP'S CHOICE RAINBOW MIXTURE.** Includes choice gladiolus of all colors. Doz. \$1.00.

ALL GLADIOLUS PRICES ARE POSTPAID.



TERRA-LITE VERMICULITE

Terra-Lite vermiculite holds and releases air and moisture in just the right quantities. Not a fertilizer, but a superior growing medium—good for all these jobs:

- **Starting Seeds.** Quicker, bigger development, easy to transplant.
 - **Lightening Soil.** Breaks up heavy clay, aerates soil.
 - **An Ideal Mulch.** Protects plants winter or summer.
 - **Transplanting.** Promotes healthy growth for all plants.
 - **New Lawns.** Finer lawns, with less frequent watering.
 - **Rooting Cuttings.** Sure-fire medium for strong fast rooting.
 - **Storing Bulbs.** Stops storage rot. Keeps bulbs firm and plump.
- 4-qt. bag 70c; 1/2-bu. bag \$1.35. Postpaid.

DAHLIA

Dec.—Decorative. C—Cactus. SC—Semi-Cactus
B—Ball or Snow Type.

1. **A. D. LAVONI.** (Ball) Popular pink, profuse bloomer. 50c, 3 for \$1.25.
2. **AVALON.** (Dec.) Beautiful clear yellow. An old favorite. 50c, 3 for \$1.25.
3. **CLARA CARDER.** (Dec.) Cyclamen-pink. 50c, 3 for \$1.25.
4. **COMMANDO.** (Dec.) Large pure lavender. 50c, 3 for \$1.25.
5. **D DAY.** (Dec.) Outstanding medium sized pure pink; fine for cutting. 50c, 3 for \$1.25.
6. **DR. TAYLOR.** (Dec.) Beautiful red. 50c, 3 for \$1.25.
7. **FOREST FIRE.** (Dec.) Wonderful bi-color, lemon yellow, blended to rich scarlet. 50c, 3 for \$1.25.
8. **GERTRUDE BRINTON.** (Dec.) Brick red. 50c, 3 for \$1.25.
9. **JANE COWL.** (Dec.) Pleasing warm buff. Gold and salmon. Massive. 50c, 3 for \$1.25.
10. **JERSEY'S BEAUTY.** (Dec.) Salmon pink. Truly beautiful. 50c, 3 for \$1.25.
11. **LOIS WALCHER.** (Dec.) Pansy purple tipped white. Exceptionally showy. 50c, 3 for \$1.25.
12. **MICHIGAN WHITE.** (SC.) Perfectly shaped white flowers on long strong stems. 60c, 3 for \$1.50.
13. **MRS. GEO. LE BOUTILLIER.** (Dec.) Deep rich carmine red. 50c, 3 for \$1.25.
14. **MRS. I. DE VER WARNER.** (Dec.) Favorite orchid-lavender for garden use. 50c, 3 for \$1.25.
15. **MARIE.** (Dec.) Light rose-pink, with yellow reflex. 50c, 3 for \$1.25.
16. **MONARCH OF EAST.** (Dec.) Large bronze, gold and copper. 60c, 3 for \$1.50.
17. **ROYAL PENNANT.** (Dec.) Royal purple, extra large. 50c, 3 for \$1.25.
18. **THE COMMODORE.** (Dec.) Bright lemon-yellow. 50c, 3 for \$1.25.
19. **STORM KING.** (Ball) Pure white. fine for commercial cutting. 50c, 3 for \$1.25.
20. **WHITE WONDER.** (Dec.) Pure large white. 50c, 3 for \$1.25.

ALL DAHLIA PRICES ARE PREPAID.

CANNA BULBS

- PRESIDENT.** Giant red blossoms, green foliage. \$1.75 per Dozen. Postpaid.
- CITY OF PORTLAND.** Pink blossom, green foliage. \$1.75 per Dozen. Postpaid.
- RED KING HUMBERT.** Bronze leaf, red blossoms. \$1.75 per Dozen. Postpaid.
- YELLOW KING HUMBERT.** Yellow blossoms, flecked red, green foliage. \$1.75 per Dozen. Postpaid.
- WYOMING.** Bronze leaf, tall, large golden orange blossom, flecked red. \$1.75 per Dozen. Postpaid.
- COPPER GIANT.** A fine pink, large flowers. Heads deep pink with copper cast. Deep green foliage. \$1.75 per Dozen. Postpaid.

CALADIUM (Elephant Ear)

Large, 65c each. Medium, 55c each.
Small, 40c each.
Postpaid.

TUBEROSES

- DWARF EXCELSIOR.** Double Pearl. Doz. \$1.50 Postpaid.
- MEXICAN SINGLE.** Doz. \$1.50 Postpaid.

YOPP'S BEST ROSES OF ALL COLORS!

**Strictly No. 1 Grade
Hardy, 2-Year-Old Field Grown
Well-Branched Budded Rose Plants
February Shipment**

RED HYBRID TEAS

- CHRISTOPHER STONE.** Bud long-pointed; flower large, scarlet overlaid crimson. **Each \$1.35.**
- CRIMSON GLORY.** Large, very fragrant, deep velvety crimson. **Each \$1.35.**
- ETOILE DE HOLLANDE.** Double bright red blooms. One of the best. **Each \$1.35.**
- McGREDY'S SCARLET.** Beautifully formed, high-centered blooms of brilliant scarlet shaded rose-pink. A vigorous grower. **Each \$1.35.**
- NIGHT.** Bud long-pointed, flower double, deepest blackish crimson, shaded maroon. **Each \$1.35.**
- POINSETTIA.** Long-pointed bud, flower large, double. Bright unfading scarlet. Free bloomer. **Each \$1.35.**
- RED RADIANCE.** A sport of Radiance. Clear even shade of red. **Each \$1.35.**

PINK HYBRID TEAS

- COUNTESS VANDAL.** Bud orange copper. Flower brilliant pink with yellow base. **Each \$1.35.**
- EDITOR McFARLAND.** Glowing pink, large blooms, strong stems on a vigorous plant. **Each \$1.35.**
- THE DOCTOR.** Enormous semi-double cupped. Fragrant satiny pink. **Each \$1.35.**
- LOS ANGELES.** Perfectly formed long pointed buds and double blooms with reflexed petals; luminous flame pink toned coral. **Each \$1.35.**
- PINK DAWN.** Long pointed buds, pink shaded with cream. Large flower. **Each \$1.35.**
- PINK RADIANCE.** Double, cupped, cameo-pink to deeper in center. **Each \$1.35.**

WHITE HYBRID TEAS

- CALEDONIA.** Long-pointed bud; flower large, double, high-centered with a slight fragrance, white. **Each \$1.35.**
- McGREDY'S IVORY.** Long-pointed bud; flower very large, double, fragrant, creamy white, yellow base. **Each \$1.35.**
- MME. JULES BOUCHE.** Fragrant white blooms, center shaded blush. Very free blooming with tall growth. **Each \$1.35.**

ROSE DUST. A multi-purpose blend for the control of insects and diseases found on roses and other ornamental plantings out of doors. Postpaid, 1 lb. \$1.69; 3 lbs. \$3.94. Not postpaid, 1 lb. \$1.49; 3 lbs. \$3.59.

YELLOW HYBRID TEAS

- ECLIPSE.** Streamlined rose, very long pointed buds, bright yellow. **Each \$1.35.**
- GOLDEN RAPTURE.** Beautifully formed buds, double blooms, rich yellow. **Each \$1.35.**
- JOANNA HILL.** Creamy yellow. An excellent cut flower. **Each \$1.35.**

McGREDY'S YELLOW. Bright buttercup-yellow, slightly fragrant, large. Foliage glossy, dark. Vigorous. **Each \$1.35.**

MRS. E. P. THOM. Bud long-pointed, flower double, clear deep canary yellow. **Each \$1.35.**

MRS. P. S. DUPONT. Golden yellow, to lighter with age. **Each \$1.35.**

MULTI-COLOR HYBRID TEAS

- DUQUESA DE PENERANDA.** Blend of Apricot-orange and pink. Double blooms. **Each \$1.35.**
- HINRICH GAEDE.** Talisman-color rose, but double high centered buds. Beautiful flower. **Each \$1.35.**
- MME. JOSEPH PERRAUD.** Long pointed copper-yellow bud, opening to a large golden-orange flower. **Each \$1.35.**
- PRESIDENT HERBERT HOOVER.** Extremely large double blooms of creamy yellow, tinted flame pink. **Each \$1.35.**
- SIGNORA.** Bud long-pointed, orange-red. Flower, large, double, fragrant, orange-apricot, turning apricot suffused gold. Large, glossy foliage. Vigorous. **Each \$1.35.**
- TALISMAN.** Fragrant, golden yellow and copper-red. **Each \$1.35.**

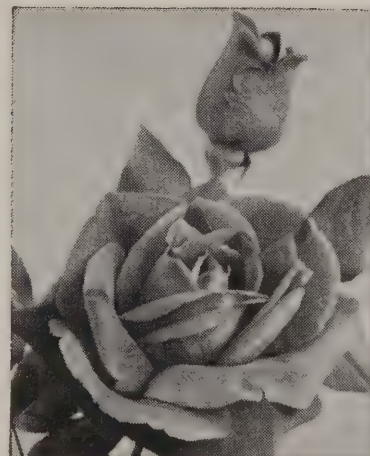
POLYANTHAS and FLORIBUNDAS

- EUTIN.** Bud pointed-globular, flower cupped, glowing carmine red. Cluster up to 100 blooms on strong stem. Vigorous, foliage large. **Each \$1.35.**
- FRENHAM.** Semi-double, deep unfading scarlet; large trusses. Abundant foliage. **Each \$1.35.**
- GOLDEN SALMON.** Clusters of bright salmon-orange flowers. **Each \$1.35.**
- IMPROVED LAFAYETTE.** Deep glowing red, large blooms suffused with vivid crimson. **Each \$1.35.**

SPECIAL!

**All \$1.35 Roses—3 for \$3.75; 6 for \$7.25;
12 for \$14.00**

Postage and Packing Extra



CRIMSON GLORY



PRESIDENT HOOVER

ALL-AMERICA ROSE WINNERS ARE FINEST!

GOLDEN SHOWERS. P.A.F. Four to five inch dafodil yellow fragrant blooms on six to eight foot plants. Extremely vigorous, very few thorns, flowers continuously throughout the summer. **Each \$3.00.**

CLIMBERS

AMERICAN PILLAR. Large, single, open, carmine-pink, white eye, golden stamens; immense cluster on long stem. **Each \$1.35.**

BLAZE. Semi-double, brilliant scarlet. Vigorous. **Each \$1.35.**

CL. ETOILE DE HOLLANDE. Double bright red blooms. **Each \$1.35.**

MARY WALLACE. Bud long-pointed; flower very large semi-double, fragrant, warm rose-pink. **Each \$1.35.**

CL. MCGREDY'S IVORY. Long pointed bud; flower very large double; fragrant. Creamy white. **Each \$1.35.**

CL. MRS. P. S. DUPONT. Golden yellow, to lighter with age, fragrant and well-formed. **Each \$1.35.**

NEW DAWN. Double, slightly fragrant, blush pink, long stem. **Each \$1.35.**

PAUL'S SCARLET. Semi-double, vivid scarlet shaded bright crimson. Does not burn or fade. **Each \$1.35.**

CL. TALISMAN. Double, high centered golden yellow and copper-red, long stem. **Each \$1.35.**

WHITE DAWN. Double, slightly fragrant, long stem. Foliage dark glossy. Recurrent bloom. **Each \$1.35.**

PATENTED CLIMBERS

CL. CRIMSON GLORY. Fragrant, deep velvety crimson. **Each \$2.50; 3 for \$6.75.**

CL. PEACE. Lemon-yellow, edged rose-pink, very double. **Each \$2.25.**

DR. J. H. NICHOLAS. Large, full, rose-pink. Pillar. **Each \$2.00; 3 for \$5.25.**

HIGH NOON. Intense yellow blooms of good form. Pillar. **Each \$2.50; 3 for \$6.75.**

PATENTED FLORIBUNDAS AND POLYANTHAS

CHINA DOLL. Low growing, deep pink. Continuous bloom. **Each \$2.00.**

CRIMSON ROSETTE. Dark crimson, slightly fragrant. Foliage leathery, dark. Blooms profusely. Vigorous; dwarf. **Each \$1.50.**

FASHION. Coral-pink overlaid with gold. Large blooms. **Each \$2.00.**

GOLDILOCKS. Deep yellow clusters. Continuous blooms. **Each \$1.75.**

INDEPENDENCE. Brilliant, unfading, orange-scarlet flowers are borne in clusters of six or more. Vigorous and compact, with good foliage. **Each \$1.75.**

JIMINY CRICKET. All-America 1955. Coral-orange, shading to pink. **Each \$2.00.**

PINOCCHIO. Pink suffused salmon, edges deeper. **Each \$1.75.**

RED PINOCCHIO. Flower velvety red; blooms in clusters. **Each \$1.75.**

WHITE BOUQUET. All America 1957. Plants grow 18-24 inches high with lustrous dark green leaves. Gardenia-like flowers 4-5 inches across develop from light cream buds. Sweet spicy fragrance. **Each \$2.50.**

WILDFIRE. Long lasting semi-single bloms of brilliant eye catching red. **Each \$2.00.**

CIRCUS. All America 1956. First multicolor floribunda, gay bright flowers from rich yellow to red in the bud to orange-buff flushed. Pink in the open flower. Medium height; glossy foliage. **Each \$2.50.**

PATENTED HYBRID TEAS

BLANCHE MALLERIN. This is a pure white fragrant hybrid tea rose. The petals are as white as alabaster with a live satiny sheen. **Each \$2.25.**

CHARLOTTE ARMSTRONG. Bud long-pointed blood red opening to cerise flowers. **Each \$2.25.**

CHRYSLER IMPERIAL. 1952 All America winner; deep crimson with large blooms. **Each \$2.50.**

FORTY-NINER. Inside petals vivid orient-red, outside chrome-yellow. **Each 2.25.**

FRED HOWARD. The ovoid buds are golden yellow, delicately tinted light pink at the tips; as they open, they become rich buff-yellow shaded pinkish. The broad, 4-inch blooms have 50 to 60 petals carried on long cutting stems. **Each \$2.00.**

GOLDEN MASTERPIECE. Enormous fragrant, golden yellow flowers with high centers. **Each \$2.75.**

HELEN TRAUBEL. Long-pointed buds and flowers of deep pink to apricot base. Free blooming. **Each \$2.50.**

KATHERINE T. MARSHALL. Growth and foliage equal to Radiance. Long fine stems; buds long pointed, deep coral pink with suffusions of yellow. **Each \$1.75.**

LOVE SONG. A new variety with huge blooms of deep salmon with gold reverse. Plant is vigorous similar to Peace. This is definitely a winner. **Each \$2.50.**

LOWELL THOMAS. Lemon yellow, strong stem. **Each \$2.25.**

MISSION BELLS. Glowing deep salmon, opening to shrimp-pink. **Each \$2.00.**

MIRANDY. Large, double, Garnet-red. **Each \$2.25.**

MOJAVE. Glowing apricot-orange, slender buds and double flowers borne singly on long straight stems. **Each \$2.75.**

NEW YORKER. Large velvety scarlet. Fragrant. **Each \$2.25.**

PEACE. Lemon-yellow edged rose-pink. Very double. **Each \$2.50.**

REX ANDERSON. Truly outstanding white. Delicate, lovely, ivory-white, perfectly formed. Slow opening, and may be grown to enormous size by dis-budding. **Each \$1.75.**

RUBAIYAT. A brilliant rose with a profusion of long graceful buds appearing early in June and continuing into the fall. Buds are crimson-pink on the outside, showing a rich crimson-red color as they open. **Each \$1.75.**

SHOW GIRL. Bud long-pointed, flower large, deep pink, long stem. **Each \$2.25.**

SUTER'S GOLD. Long-pointed bright yellow buds shaded orange-red. **Each \$2.25.**

TALLYHO. Buds cardinal-red opening to deep pink. **Each \$2.25.**

TIFFANY. All America 1955. Tiffany is a beautiful phlox pink. The long pointed buds are deep pink with yellow shading at base. The flowers open to perfectly formed double high-centered blooms. **Each \$2.50.**

All Prices on Rose Bushes Are F.O.B. Paducah, Kentucky. Postage and Express Charges Extra

Yopp's Lawn Grasses for the Purchase Area

BACKED BY FIFTY YEARS OF EXPERIENCE

We offer you the best in lawn mixtures for the purchase area. We formulate our own mixtures for our own area. We take pride in our selection of special turf grasses from the best domestic and imported seeds. The least expensive item in any lawn is the seed. The best seed is the cheapest regardless of price.

YOPP'S SUNNY LAWN GRASS. Our own special formula mixture for full sun to semi-shaded areas. It grows quickly, has a rich green color, and years of experience have proven it to be one of the best lawn mixtures for fall and spring planting. **Do not mow less than two full inches.** Postpaid, lb., \$1.15; 5 lbs., \$5.00; 10 lbs., \$9.50.

YOPP'S SHADY LAWN GRASS. Especially adapted to shady areas under trees and around the house. This mixture is composed of dwarf grasses that are shade tolerant. Under trees apply a double quantity of fertilizer. Plant in fall or early spring. **Do not mow less than two full inches.** Postpaid, lb., \$1.15; 5 lbs., \$5.00; 10 lbs., \$9.50.

YOPP'S NEW ALL-PURPOSE GRASS. This is a new formulation eliminating all annual or nurse grasses. Blended for our type soils and climate. Provides a smooth, velvety, springy turf that grows in sun or shade. For best results lime prior to seeding. **Do not mow less than two full inches.** Postpaid, lb., \$1.50; 5 lbs., \$7.00; 10 lbs., \$13.00.

RENEWING OLD LAWNS

Every fall and spring fill in thin and bare spots with more seed, cut grass closely, apply a good fertilizer, rake in, and broadcast seed evenly, one pound or more per 500 sq. ft., according to the thickness of the stand and again run the mower over the lawn. This will put the seed into the soil. Water freely.

BLUE GRASS KENTUCKY. One of the main perennial grasses, growing best in well prepared limed soils. Has a pleasing dark green color and fine texture. Plant in spring or fall. Postpaid, lb., \$1.25; 5 lbs., \$6.00; 10 lbs., \$11.50.

BLUE GRASS MERION. The brand new sensational blue grass that forms a dense, dark green turf that experts say chokes out crabgrass, is resistant to leaf spot, tolerates closer mowing than common blue grass, is considerably more resistant to heat or drought, and establishes itself more quickly than common blue grass. Plant in spring or fall. Seeding rate, 2 lbs. per 1,000 sq. ft. Postpaid, lb., \$3.95; 5 lbs., \$19.00;

BENT CREEPING HIGHLAND. This bent will withstand drought better than other varieties. One of the finest textured grasses with a dark green color. 2 lbs., sows 1,000 sq. ft. Postpaid, lb., \$1.25; 5 lbs., \$5.75.

FESCUE, ILLAHEE CREEPING RED. A new strain of creeping red fescue spreads from roots that creep underground. Fine textured perennial grass that thickens up into a dense carpet of green turf. Ideal for playgrounds and lawns subjected to heavy wear. Thrives on all types of soil. 2 lbs. sows 1,000 sq. ft. Postpaid, lb., \$1.25; 5 lbs., \$5.75; 10 lbs., \$10.00.

FESCUE, CHEWINGS. An improved strain of Chewings Fescue, rated as the best of the strains tested. More resistant to disease, and stands closer mowing. Especially adapted for use under trees. Blades are fine, needle-like, of deep green color. Good for lawns, golf courses, airports, cemeteries and playgrounds. Sow 2 lbs. per 1,000 sq. ft. Postpaid, lb., \$1.25; 5 lbs., \$5.75; 10 lbs., \$10.00.

POA TRIVIALIS. Sometimes called shady blue grass. Blades narrow, soft and glossy and is particularly adapted for heavily shaded areas. Lime soils produce a good permanent cover. Plant in spring or fall. Postpaid, lb., \$1.25; 5 lbs., \$5.75.

RYE GRASS, WINTER. Use for temporary planting of winter lawns to provide a luxuriant green turf, or for overplanting Bermuda and other winter dormant grass. Usually planted in fall. Seeding rate 10 lbs. per 1,000 sq. ft. Postpaid, 5 lbs., \$1.40; 10 lbs., \$2.25.

RYE GRASS, PERENNIAL. A tufted, short lived perennial of finer texture than common Rye grass. Sow 10 lbs. per 1,000 sq. ft. Postpaid, 5 lbs., \$1.75; 10 lbs., \$3.25.

WHITE DUTCH CLOVER FOR LAWNS. Thrives on poor soils where grasses will not grow well. Good for sun or shade. Sow 2 lbs. per 1,000 sq. ft. Postpaid, lb., \$1.50; 5 lbs., \$7.00.

BERMUDA, HULLED SEED. Stands drought and scorching summer sun better than any other variety. It does not grow in shaded areas or under trees. Our hulled Bermuda seed sprouts in a week when the soil is warm and moist. Seed at the rate of 2 lbs. per 1,000 sq. ft. Bermuda seed will not sprout in cool soils. Do not plant until May. Postpaid, lb., \$1.00; 5 lbs., \$4.50; 10 lbs., \$8.00.

HOW MUCH SEED ?

Plant enough seed to get a thick, heavy mat of grass and you'll need far less reseeding. The wise minimum for new lawn planting may be figured from this table.

Size of Plot	Square Feet	Amount of Seed
10 x 30	300	1 lb.
20 x 50	1,000	3 lbs.
40 x 50	2,000	6 lbs.
50 x 100	5,000	15 lbs.
100 x 100	10,000	30 lbs.
150 x 100	15,000	45 lbs.
200 x 125	25,000	75 lbs.

For reseeding, use at least half the above amounts.

Grasses From Roots—Sod

These Shipments Are F.O.B. Nursery

Zoysia Grasses

Forms a very thick, dense sod of fine textured turf. Once established, it requires but average care, and chokes out weed growth. Grand for full sun to fairly heavy shade. It requires a full season from sprigging or plugging to cover well. Good care is also needed to get it well established. For detailed instructions on planting, write for our special Zoysia Bulletin. Plant in spring and summer. Available only in sod. 1 sq. yd. plants about 400 sq. ft. of area.

ZOYSIA MATRELLA (Manila Grass). Most widely planted Zoysia, originally distributed here in the South. F.O.B. Nursery, 1 square yard, \$5.00. 5 yards or over at \$4.75 per yard. Express shipments East of Mississippi River only.

MEYER (Z-52) ZOYSIA. New U. S. D. A. development, more vigorous, hardier, tougher and generally more successful than above. Well worth the difference. 1 square yard, \$18.00. 5 yds. for \$75.00. F.O.B. Nursery.

NEW HYBRID EMERALD ZOYSIA. Newest and best of all Zoysias. Vigorous growing hybrid that spreads rapidly in well prepared, highly fertilized soil, to make a fine bladed, "luscious" dream lawn! Emerald Zoysia (genuine stock). 1 sq. yd. \$35.00. F.O.B. Nursery.

BERMUDA, TIFTON 57 (TIFFLAWN). A very new low growing strain much finer in texture than ordinary bermuda. Requires less mowing and makes thick tuft. Plant in late spring through summer. Large 1800 sprig bag, \$6.25; 2 bags for \$12.00 F.O.B. Nursery. (Set sprigs 6 to 12 in. apart.)

BERMUDA, TIFTON 127, (TIFFINE). Very tiny bladed bermuda making densest turf imaginable staying beautifully green all summer with very little mowing. (Set sprigs 6 to 12 inches apart.) One square yard (to plant 1500 sq. ft.) \$6.25. 2 for \$12.00. F.O.B. Nursery.

WRITE FOR QUANTITY PRICES.



Insecticides—Fungicides—Miticides

SUCKING-CHEWING INSECTS

HERE'S WHAT THEY DO

APHID—Sucks. Colors and sizes varied. Found on under side of leaf and on stems. Soft-bodied, wingless—also with long, narrow transparent wings 3 times as long as its body. Causes discoloring or curling of leaves. Control: **Lindane, Blackleaf 40, Malathion dust.**

LEAF-HOPPER—Sucks. Found on under side of leaves. Pale green. Slender winged, wedge shaped. Gives leaf tips scorched appearance, puckering. Control: **Isotox garden spray M, Blackleaf 40, Malathion dust.**

THRIPS—Sucks. Tiny yellow or brownish slender bodied, pointed at both ends. Narrow plume-like wings. Nymphs wingless, same size and shape, but watery white with bright red eyes. Control: **Lindane, Red Arrow spray, Malathion dust.**

RED SPIDER MITE—Sucks. Found at apple blossom time on under side of leaves. 8 legged, very tiny, reddish, whitish, greenish mite. Causes yellow or brown blotches on leaves with powdery appearance on under side. Control: **Aramite, Lindane, Volck oil spray, Malathion Dust.**

SQUASH OR STINK BUG—Sucks. Egg clusters of reddish brown eggs on under side of leaves. Bug flat, brownish, stinking. Control: **Sabadilla dust, Methoxychlor dust.**

CHEWING INSECTS

MEXICAN BEAN BEETLE—Chews. 8 black spots on each wing. Spiny larvae skeletonizes leaves. Control: **Chief Brand Rotenone dust.**

CABBAGE WORM—Velvety green with yellow stripes. Chews holes in leaves. Control: **Sabadilla dust, Chief Brand Rotenone dust, Methoxychlor dust.**

COLORADO POTATO BEETLE—Lays yellowish orange eggs in groups of 20-30 on underside of leaves. 5 yellow and 5 black stripes on each wing. Chews. Control: **Dow Special Potato Spray.**

CUCUMBER BEETLE—Yellow with 3 black stripes on back. Chews. Control: **Methoxychlor dust.**

CUT WORM—Cuts off plants at soil level. Found within 8"-10" radius of plant, about an inch below ground surface. Dull colored, variably-striped. Curled up. Chews. Control: **Chlordane dust.**

CORN EAR WORM—Chews. Green to brownish, with white stripes along sides. Found in silk end of ear. Control: **DDT, Rhothane dust.**

FLEA BEETLE—Chews. Shiny, black, round beetle. Chews sieve-like holes. Control: **DDT, Methoxychlor dust, 5-5 Strawberry dust.**

TOMATO HORN WORM—Chews. Large green worm with yellow markings and prominent horn-like projection at rear. Control: **Chief Brand Special Tomato Dust.**

CAPTAN (New)—Superb new control of most fungus diseases. Captan (50%) 1/2 lb. \$1.75 Postpaid. Makes up to 25 gallons diluted spray.

SPECIAL CONTROLS

BLACK LEAF 40—For sucking insects and poultry lice. Kills plant lice on roses, shrubbery, fruits and vegetables. Postpaid, 1 oz., 55c; 5 oz., \$1.45; 1 lb., \$2.60.

LINDANE CONCENTRATE—For Aphids. Also controls red spider, bag worm, thrips, caterpillars and leaf miners. Economical to use. Postpaid, 8 oz., \$1.75; pt., \$2.95; qt., \$4.75.

ISOTOX GARDEN SPRAY M—A powerful combination containing Lindane, Malathion and DDT. Controls soil insects such as, wireworms, cutworms, mole crickets and sow bugs. Postpaid, 4 oz., \$1.50; 8 oz., \$2.25.

RED ARROW GARDEN SPRAY—For plant lice on roses. Also controls bean leaf beetles and cabbage worms. Postpaid, 2 oz., 75c; 4 oz., \$1.25; pt., \$3.35; qt., \$5.95.

VOLCK OIL SPRAY—A highly refined oil spray for use against scale insects, mealybugs, red spiders, and white flies on plants. This fine product also acts as an excellent leaf polish. Postpaid, 4 oz., 50c; 16 oz., \$1.25; 32 oz., \$2.25.

ARSENATE OF LEAD—For chewing and all leaf eating insects. Postpaid, 1 lb., 75c; 3 lb., \$1.45.

CHIEF BRAND DUSTS

ROTHANE HORNWORM DUST—An effective worm control, but leaves no arsenical residue. Postpaid, 5 lb. bag, \$1.50.

SPECIAL TOMATO DUST—Controls both worms and blight. Dust tomato plants every 10 days in the field. 5 lb. bag, \$1.75. Postpaid.

5-5 STRAWBERRY DUST—A Chlordane-DDT formulation giving effective control of flea beetles, tarnished plant bug and strawberry weevil. Gives outstanding results on grasshoppers and army worms. Postpaid, 5 lbs., \$1.50.

MALATHION DUST—Contains one of the most powerful insecticides yet developed. Controls lice, mites and worms on cabbage, turnips, kale and mustard. May be used to within 10 days of harvest of vegetables. Excellent for plant lice on roses. Postpaid, 2 lbs., \$1.00.

METHOXYCHLOR DUST—Recommended by leading specialists as the best control of Cucumber Beetle, Melon Bug and Blister Beetle. Safe, no arsenical residue. Postpaid, 5 lbs. \$1.75.

SABADILLA DUST—A superb control of many insects heretofore impossible to kill with dusts or sprays. Excellent for combating pickle worm, squash bugs and melon worms. Postpaid, 2 lbs., \$1.00; 4 lbs., \$1.50.

WRITE FOR QUANTITY PRICES and COMPLETE SPRAYING GUIDE.

FUNGICIDES

BORDEAUX MIXTURE—Standard for mildew, black spot on roses, flowers, shrubs and some vegetables. Postpaid, 1 lb., 65c; 4 lbs., \$1.75.

WETTABLE DUSTING SULPHUR—Excellent against mildew, black spot and bulb rot. Dispels chiggers in lawn used as dust. Postpaid, 2 lbs., 85c; 6 lbs., \$1.65.

FERMATE (FERBAM). Is an effective control for black spot and rust on roses; leaf scorch on azaleas; leaf spot on geraniums and snapdragons. Also controls anthracnose on tomatoes, snap-beans; damping-off of lettuce, celery and blue mold in plant beds. Postpaid, 8 ozs., \$1.00; 3 lbs., \$2.75.

BLUE MOLD DUST—Control for rust, anthracnose and mildew on vegetables and blue mold on tobacco plant beds. Postpaid, 5 lbs., \$1.50.

CHIEF BRAND 75 ROTENONE

Non-arsenical. A very effective and highly recommended dust for the control of bean beetle and many other insects. Safe to use. Postpaid, 5 lbs., \$1.50.

HOUSEHOLD PESTS

CHLORDANE CONCENTRATE—To control roaches, waterbugs, spiders, silverfish, termites, ants by contact, by inhalation or when eaten. For residual control use 1 oz. to 1 1/2 pts. of water. Postpaid, 4 ozs. 90c; 8 ozs., \$1.45; pt., \$2.20; qt., \$3.75.

LINDANE CONCENTRATE—A safe residual spray for fly control around the exterior of homes, on porches and in barns. Controls lice and mange on beef cattle, hogs, horses, sheep and goats. Postpaid, 8 ozs., \$1.75; pt., \$2.95; qt., \$4.75.

MALATHION CONCENTRATE—New powerful, residual control for flies around the home, on porches; outside areas, such as patios, barbecue pits and similar areas where flies congregate. Kills DDT resistant flies. Lasting, kills for days. Postpaid, 4 ozs., \$1.39; pt., \$2.98; qt., \$5.29.

ORTHO FLY KILLER BAIT

Simplest fly killer in history!

Easy—No Spraying!

Scatter By Hand!

This amazing new fly killer contains powerful attractant that flies cannot resist.

Fast—Kills in Minutes

Lasting—Kills for Days

Double Action—Kills Maggots

Complete Directions With Each Can. Postpaid, 1 lb., \$1.50. Covers 1000 sq. ft. of fly feeding area.

Send to Yopp's for These Garden Needs

WEED AND BRUSH KILLERS

AMMATE—DuPont. For poison ivy, oak and sumac. Dead remains are fireproof and do not harm livestock. Postpaid, 2 lbs., \$1.50; 6 lbs., \$3.50.

CRABGRASS and CHICKWEED KILLER. (Weedone). The proven chickweed and crabgrass control in lawns without killing desirable grasses and clover. Treated lawns will not poison children or pets. Postpaid, 6½ oz., \$1.25; 26 oz. can, \$3.69.

BERMUDA—JOHNSON GRASS KILLER. (TCA 90%). New grass killer controls Johnson, Bermuda and quack grasses. The period of so-called soil sterility is usually short. Postpaid, 1½ lb. can, \$2.45; 10 lb. can, \$6.95.

WEEDONE 2, 4-D and 2, 4, 5-T. Kills weeds without killing grass. 8 oz. in 6 gal. water to 1,200 sq. ft. of lawn area. Postpaid, 8 oz., \$1.35; qt., \$3.25.

PLANT FOODS AND SOIL CONDITIONERS

HYPONEX—With Hyponex and water, plants grow and flower abundantly, regardless of the poorness or sterility of the soil. Hyponex is ideal for Hydroponics. Postpaid, 3 oz., 25c; 7 oz., 50c; 1 lb., \$1.00.

RA-PID-GRO. Leaf feeding plant food for lawns, gardens and shrubs. Ra-Pid-Gro is absorbed through the leaves of the plant and through the root system. Postpaid, 1 lb., \$1.25; 5 lbs., \$4.50.

KRILIUM IS THE SOIL CONDITIONER

If your garden soil is hard packed, light clay or silt and very hard to work, it needs Krilium, a powerful synthetic that will make clay soils loose, porous and easily worked.

New Lower Postpaid Prices Try It This Spring

1 lb. (treats 20 sq. ft.) \$1.39
5 lbs. (treats 100 sq. ft.) \$4.95
10 lbs. (treats 1,000 sq. ft.) \$25.00

ROOTONE—For better rooting of cuttings, seeds and bulbs. Postpaid, ¼ oz., 25c; 2 oz., \$1.00; 1 lb., \$5.00.

ESMINEL—Essential mineral elements. Only one treatment lasts all year even with heavy cropping. Grow healthier, finer crops, much richer in vital vitamins. 5 lbs. sufficient for the average garden up to 5,000 sq. ft. Postpaid, 5 lbs., \$1.25.

PLANTABS—11-15-20. Makes plants grow bigger, healthier, lovelier, indoors and out. Postpaid, 50 tablets, 39c; 90 tablets, 59c; 200 tablets, \$1.00.

WARFARIN—KILLS RATS and MICE (BLACKLEAF). Absolutely proven and effective killer for all sorts of rats and mice. Recommended by governmental authorities. Ready to use. 1 lb., \$1.25; 4 lbs. (farm size) \$3.95, Postpaid.

SPRAYERS—DUSTERS—At Lowest Prices

NEW PERFECTION. The very finest ever built. 3½ gallons. Heavy galvanized metal. Complete. Postpaid, \$16.95.

FEENY MODEL BX DUSTER

Capacity approximately one pint. It is ideal for applying insecticide to fruits, vegetables and shrubs. Postpaid, \$1.75.

BOOSTER SPRAYER—291

Strong, tested, galvanized, pump type, pressure sprayer complete with hose and nozzle. Holds 3½ gallons. Garden size. Postpaid, \$9.10.

MISTY HAND SPRAYER—403

Well built, strong and effective 1 quart size sprayer for household and small garden use. Postpaid, 95c.

MERCURY CONTINUOUS HAND SPRAYER

Quart size. Heavy duty garden hand sprayer. \$2.15 each. Postpaid.

BLIZZARD STREAMLINER—No. 14G

The finest sprayer ever made. Seamless brass pump. Solid copper tank. Postpaid, \$6.75.

ADMIRAL DUSTER

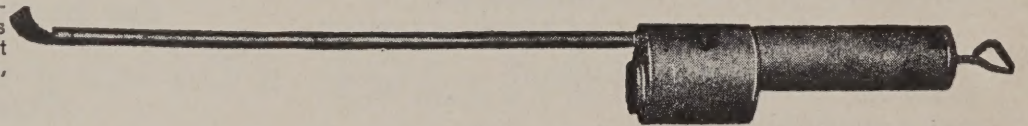
Well known and favorite hand, plunger type duster. Dust reservoir 2¾x4½ in. Complete with extension tubes and fittings—ready for dusting. Postpaid, \$2.85.

BUGWISER—220G. A sensational value. 3 gal. capacity with new Roto-valve cut-off. Postpaid, \$8.95.



BOOSTER SPRAYER
Postpaid, \$9.10

FEENY MODEL F DUSTER

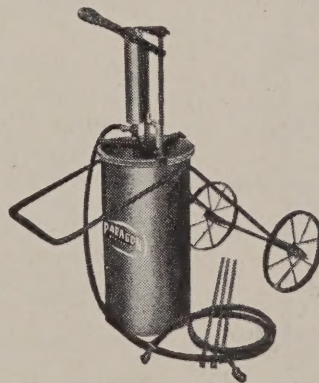


MODEL F—FEENY DUSTER—The hopper capacity is approximately one quart. Equipped with two 12 in. extension tubes, one straight nozzle and one special curved nozzle for dusting the undersides of flower and vegetable plants. Price \$2.75 Postpaid.

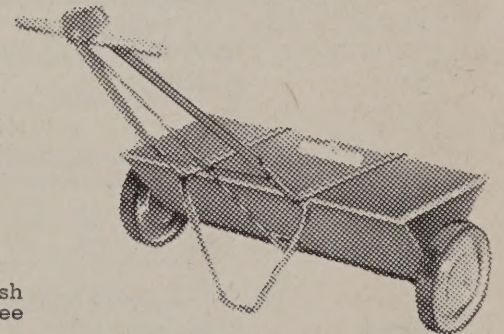
SALEM FERTILIZER SPREADERS

All models equipped with patented automatic shut-off and selective feed control.

Just Lift the Handle and the Flow of Fertilizer Stops



NO. 3 PARAGON. A real whitewash sprayer, powerful enough for tree spraying. \$49.95 F.O.B. Paducah.



16 in.—A small size for small lawns \$6.15 F.O.B., Paducah.

20 in.—The Favorite with the Average Home Owner. \$9.85 F.O.B. Paducah.

30 in.—A Larger Model for a Quicker Job. \$13.75 F.O.B. Paducah.

We are HEADQUARTERS

- Spray Repair Parts
- Pruning Shears
- Fruit Ladders
- Power Sprayers
- Hanson Brodjet Sprayers
- Hahn Weed Sprayers
- Agricultural Insecticides



Each \$4.75 Postpaid

IN-THE-ROW PLASTIC GREENHOUSE

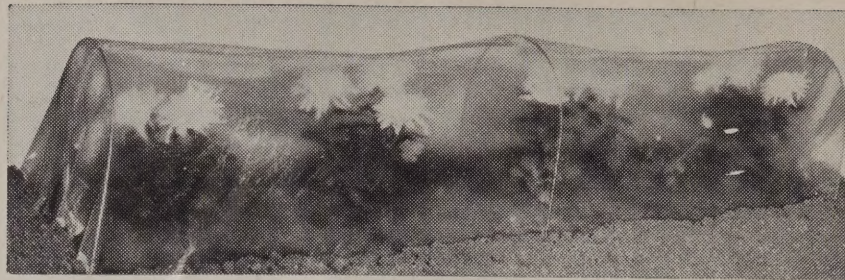


GERMACO HOTKAPS can make you extra dollars this season. They protect plants from frost, wind, rain, insects and ground crusting. Thus they produce hardier, quicker crops. You get higher prices!

Prices: 1,000 for \$18.35; 5,000 lots at \$18.20; 10,000 lots at \$18.05; Germaco steel HOT-CAP Setter, \$1.95.

HOTKAPS for your backyard garden.

25 HOTKAPS and Setter.....\$.95 Postpaid \$1.25
 100 HOTKAPS and Setter..... 3.15 Postpaid 3.55
 250 HOTKAPS 5.90 Postpaid 6.50



GROW FLOWERS, VEGETABLES 1-2 MONTHS EARLIER

Specially made plastic covering, supported by wire wickets, admits warmth of sun, prevents damage from frost, wind and rain. Protects tender plants like Petunias, Tomatoes down to 25°F.; cool weather plants like lettuce down to 10°F.

THREE SIZES

- Completely Prefabricated
- Ready to Use

Postpaid **\$1.95** Covers a bed 5 feet long, 12 inches wide by 12 inches high.
 No. 5
 Postpaid **\$4.95** Covers 25 feet of row, 12 inches wide by 12 inches high.
 No. 36
 Postpaid **\$7.50** Covers 25 feet, 24 inches wide, 18 inches high.
 No. 54

Can Be Used Again Next Year!

CYANO GAS A-Dust KILLS

Ants, Rats, Mice, Insects

Also good for Woodchucks, Groundhogs, Prairie Dogs, Ground Squirrels, Gophers, Moles and other similar rodent and insects pests.
 1 lb., \$1.25. Not mailable

TOBACCO SEED

BURLEY 1. This is a stand-up type of excellent quality Burley. It has a large number of leaves together on the stalk. Burley 1 must be topped and kept suckered to prevent loss of lower leaves. It is highly resistant to black root-rot. 1/2 oz. 75c Postpaid.

BURLEY 11-A. This is a stand-up type, good yielding, good quality Burley. It is moderately resistant to black shank, fusarium-wilt and black root-rot. Best results can be obtained from this variety when used in rotation. 1/2 oz., 75c Postpaid.

BURLEY 21. This is a stand-up variety, highly resistant to wildfire, black root-rot and mosaic. The plants are early and vigorous, producing a good yield of high quality smoking tobacco. 1/2 oz., 75c Postpaid.

KY. 61. This is a semi stand-up variety with a large, wide leaf. It is resistant to wild fire, mosaic and black root-rot. Quality is satisfactory if the tobacco is ripe, otherwise it is inclined to be red in the upper leaves. 1/2 oz., 75c Postpaid.

WHITE BURLEY KY. 16. Kentucky 16 is root-rot resistant. Stand-up type. 1/2 oz. 75c postage paid.

WHITE BURLEY KY. (F-17-A-46) 35. Kentucky F-17-A-46 is root-rot resistant, mosaic resistant, Fusarium-wilt resistant. Stand-up type. 1/2 oz. 75c postage paid.

WHITE BURLEY KY. 41-A. Kentucky 41-A is root-rot resistant. It is high-yielding and semi-stand-up type. 1/2 oz. 75c postage paid.

KY. 151. This is a mosaic or wallon resistant variety of dark fire-cured or dark air-cured tobacco similar to Brown Leaf. 1/2 oz. \$1.00 Postpaid.

National
Eezy Wear
Garden Gloves

PROTECT YOUR HANDS
with these
SOFT LEATHER GLOVES

Specially designed to give you everything you want in a garden glove.

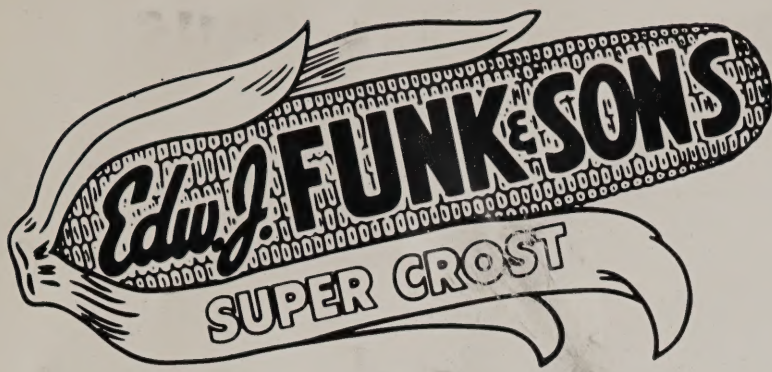
DIRT-PROOF Sizes: Small, Durable
Easy to Wear Medium, Large. **WASHABLE**
\$1.49 pair; postpaid \$1.59

Inoculate all Legume Seeds with

NITRAGIN

OVER FIFTY YEARS OF SERVICE
 When ordering, Always state name of seed.

<p>ALFALFA AND CLOVERS (AB)</p> <p>Size Retail</p> <p>1 bu. ea.\$.65</p> <p>2 bu. ea. 1.10</p> <p>LESPEDEZA (L)</p> <p>100 lb. size ea. ..\$.65</p> <p>PEAS, VETCHES (All But Crown) (C)</p> <p>100 lb. size ea. ..\$.65</p> <p>SOYBEANS (S)</p> <p>2 bu. ea.\$.50</p> <p>5 bu. ea.70</p> <p>25 bu. ea. 3.25</p> <p>BEANS (D) Navy, Pinto, Wax, String, Kidney and Great Northern</p> <p>100 lb. size ea. ..\$.65</p>	<p>PEANUTS, COW PEAS (E)</p> <p>Size Retail</p> <p>100 lb. size ea. ..\$.65</p> <p>BIRDSFOOT Trefoil—Broadleaf and Narrow-leaf</p> <p>4 lb. ea.\$.25</p> <p>1/2 bu. ea.75</p> <p>SPECIAL CULTURES— Give name of seed when ordering. Big Trefoil, Crown Vetch, Kudzu, Garbanzo (Chick Pea), Lima Bean, Sanfoin, Sesbania, Astragalus Sp. (Milkvetch), Leucaena glauca. Others upon request.</p> <p>1/8 bu. ea.\$.25</p> <p>1 bu. ea.75</p> <p>GARDEN SIZE— Peas, Beans, Sweet Peas, Lupines, Lima Beans, and Edible Soybeans.</p> <p>Enough for 5 lbs. seed—Retail Price 25c ea.</p>
---	---



HYBRID SEED CORN

SUPER-SAFE MULTI-CROSS BRED ESPECIALLY FOR KENTUCKY

Assures Complete Pollination

Super-Safe Multi-Cross 700A has a wide range of adaptability and pollinates over a period of from three to four weeks because it has bred into it seven inbred lines instead of the usual four in other hybrids. Its strong, vigorous tassel furnishes abundant pollen. 700A is characterized by many dark green leaves on sturdy plants—a big ear on every stalk with short strong shanks—resistant to ear rots—tolerates corn borers. It yields well on all soil types, and has excellent picker qualities. Large, massive, fibrous roots give it freedom from lodging. Its deep kernels are full of soft starch high in protein, and is truly a superior feeding quality hybrid.

Price . . . \$11.00 Bu. F.O.B. Paducah, Kentucky



Other Hybrids for Kentucky

840—Known throughout the South Central Corn Belt areas for bumper yields, this popular pedigree has been further improved to provide maximum ear fill. Excellent root and standability, good pickability, fine quality grain as well as high insect resistance, are typical examples of 840's superiority.

Price . . . \$10.00 Bu. F.O.B. Paducah, Kentucky

829—Bred for planting on river or creek bottoms and vine infested land, this special pedigree overcomes the problems of excessive rank growth on such ground. A sturdy stalked corn, 829 has dark green foliage and bears well-covered Reid type ears high in food value. Carried at uniform height, they are easy to pick by hand or machine. Extra deep roots give this variety standability.

Price . . . \$10.00 Bu., F.O.B. Paducah, Kentucky

85AA—This pedigree was bred to meet the demands of farmers who need an early, fast maturing variety for late planting. The quick tasseling and fast ear setting properties of 85A make it a sure variety. Uniformity and a loose husk permit easy picking. This popular variety produces a good ear of medium indentation with sufficient foliage to make it an excellent choice for late planting.

Price . . . \$10.00 Bu., F.O.B. Paducah, Kentucky

Prices for all varieties F.O.B. Paducah

These prices apply to regular flat grain. Write for prices on Round Grains.

OPEN POLLINATED VARIETIES

SILVER MINE WHITE	bushel	\$5.00
BOONE COUNTY WHITE	bushel	\$5.00
RED COB WHITE DENT	bushel	\$5.00
NEAL'S PAYMASTER	bushel	\$5.00
LEAMING YELLOW	bushel	\$5.00
JARVIS PROLIFIC	bushel	\$5.00

KENTUCKY-GROWN HYBRID SEED CORN

YELLOW HYBRIDS U. S. 13

The earliest hybrid recommended for Kentucky and most popular variety. Low, strong stalk, excellent root.

Gallon, \$1.75 Peck, \$3.00 ½ Bushel, \$5.50
Bushel, \$10.00

844D

A popular yellow hybrid. Maturing early with a good yielding record and good standing quality.

Gallon, \$1.75 Peck, \$3.00 ½ Bushel, \$5.50
Bushel, \$10.00

WHITE HYBRID U. S. 523

A high yielding white hybrid with an excellent stalk. Growth type and plant similar to Ky. 203, but carries the ears longer and is much easier to harvest.

Gallon, \$1.75 Peck, \$3.00 ½ Bushel, \$5.50
Bushel, \$10.00

INDIANA 909

This white hybrid is early maturing, yields well and stands up well for harvesting with a picker. The ears are low on the stalk. It does well under moderate moisture and fertility conditions and can be classed with U. S. 13 as to type of performance.

Gallon, \$1.75 Peck, \$3.25 ½ Bushel, \$6.00
Bushel, \$11.00

PLANTING DIRECTIONS

When to Plant Your Lawn. The finest lawns are made during the cool months in fall and spring.

Prepare Soil Well

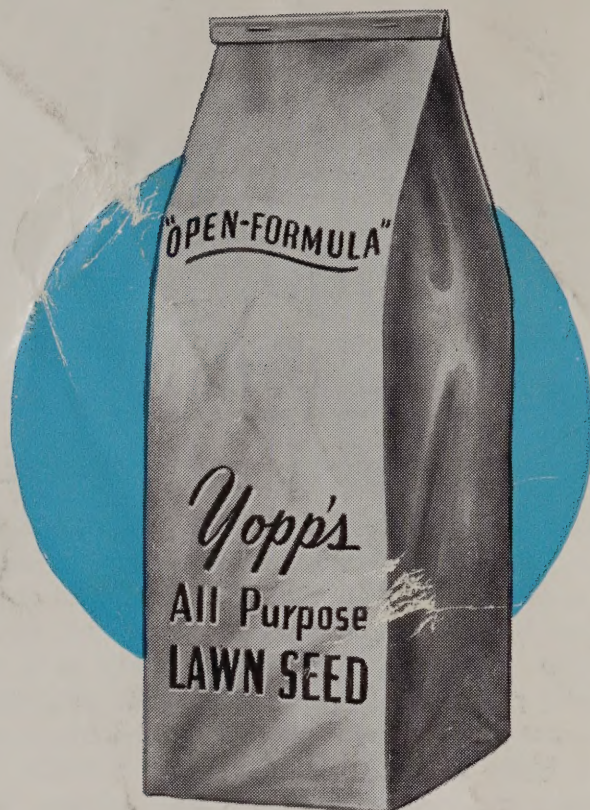
Spade or plow soil 8 inches deep. Remove rocks, roots and litter. Where shady, there is frequently moss, showing lack of fertility, acid condition and poor aeration. To correct this apply agricultural limestone (200 lbs. per 1000 sq. ft.). Add at least one bale of peat moss per 1000 sq. ft. to sandy or clay soils. Work in well with a potato fork before applying fertilizers. Apply 100 lbs. of Sheep Manure and 25 lbs. of 10-6-4 Vertagreen Turf Builder to each 1000 sq. ft. (50x20). Rake in thoroughly, mixing fertilizer with soil and working the surface smooth and level. Soak ground thoroughly.

Seeding the Lawn

Most grasses, except Hulled Bermuda, Merion Blue Grass and Rye Grass are seeded at the rate of 3-5 lbs. per 1000 sq. ft. See special seeding rates of individual grasses on page 17. Broadcast seeds evenly by hand or with the use of a seeder. Firm with a roller or drag lightly and smoothly with the back or rake, and water thoroughly. Do not cover over one-fourth inch.

Lawn Maintenance

Always keep newly seeded lawns well watered to insure good germination and quick rooting. Make first mowing when grass is 2 inches high setting mower to cut at 2 inches. Feed lawns in March and September with Milorganite organic fertilizer, 30 lbs. per 1000 sq. ft. In dry weather, water lawns thoroughly with a rotary or oscillating sprinkler, soaking ground to a depth of 4 inches or more.



YOPP'S

**SELECT MIXTURES
FOR PURCHASE AREA**

Prices and Detailed Descriptions, Page 17



YOPP SEED CO., INC. — 118-120 South 2nd Street — PADUCAH, KY. — Tel. 2-4393