

Historic, Archive Document

Do not assume content reflects current scientific knowledge, policies, or practices.

62.41

c13420

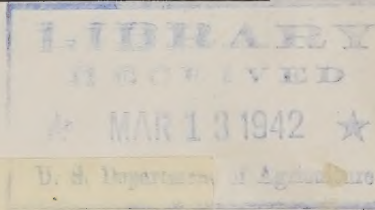
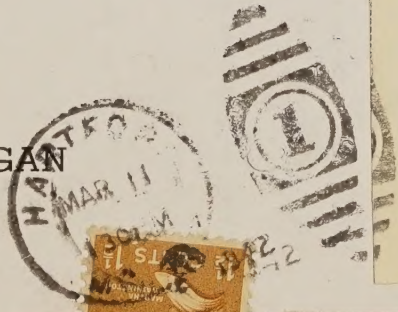
Sec- 562, P. L. & R.

WHOLESALE Gladiolus Price List



J. C. VAN LIEROP
BULB GROWERS
HARTFORD - - - MICHIGAN

(Return Postage Guaranteed)



U. S. DEPARTMENT OF AGRICULTURE,
WASHINGTON, D. C.
BUREAU OF PLANT INDUSTRY
Fruit and Vegetable Crops and Diseases
M. B. N.

8-3591

WHOLESALE PRICE LIST

Price per 1000, 100 at 1000 Rate	No. 1	No. 2	No. 3
	1 ½" and up	1 ¼" 1 ½"	1-1 ¼"
ALBANIA —Pure white, medium size flowers, average height, placement fair, reliable cut-flower. Mid-season.	\$10.00	\$8.00	\$6.00
ALBATROSS —Pure white, extremely large florets, tall spike, placement fair, good commercial cutflower. Early.	15.00	12.00	10.00
ALICE TIPLADY —True orange, primulines type, medium height, placement fair. Mid-season.	10.00	8.00	6.00
AMERICA —Lavender pink, large florets, medium height, placement fair, well known variety. Mid-season.	10.00	8.00	6.00
ANNA EBERIUS —Uniform purple, deeper throat, medium size flower, medium height, placement good. Mid-season.	12.00	10.00	8.00
APRICOT GLOW —Orange buff, primulines type, placement fair, good cut-flower. Early mid-season.	10.00	8.00	6.00
AVE MARIA —Light blue with small purple blotches, dark red markings ending in white on lower petals, large florets, medium height, placement good. Mid-season.	20.00	16.00	13.00
BAGDAD —Smoky old rose blending to a light throat, faint blotch of cream, excellent spike, unusually large flowers, placement good, exceptional cutflower variety. Late Mid-season.	10.00	8.00	6.00
BERTY SNOW —Lavender pink, large open flowers, medium height, straight spike, placement fair, good commercial cutflower. Late mid-season.	10.00	8.00	6.00
BETTY NUTHALL —Salmon pink with a light yellow throat, light carmine feathering, tall spike, placement excellent. A good late cutflower.	10.00	8.00	6.00
BLUE BEAUTY —Deep violet blue with purple markings, very large wide open florets, tall spike. Mid-season.	35.00	30.00	24.00
BREAK O'DAY —LaFrance pink, deeper pencilling on yellow, large open flowers, placement fair. Early.	10.00	8.00	6.00
BYVOET'S GLORY —Light red with large light throat, flecked red, medium size, improved Mrs. F. King, good cutflower variety. Early.	18.00	14.00	11.00
CARMEN SYLVA —Pure white, pointed petals, large flowers, tall spike, placement good. Excellent cutflower. Late mid-season.	12.00	10.00	8.00
CHARLES DICKENS —Uniform purple, violet with deeper throat, tall spike, good size flowers, placement perfect, excellent cutflower. Late mid-season.	15.00	12.00	10.00
COMMANDER KOEHL —Extremely large blood red, uniform color, tall spike, placement perfect, good commercial variety. Mid-season.	20.00	16.00	13.00
DR. F. E. BENNETT —Uniform fiery red, ruffled, large well placed flowers, strong tall spike, best commercial red. Mid-season.	14.00	11.00	9.00

	No. 1 1½" and up	No. 2 1¼" - 1½"	No. 3 1-1¼"
Price per 1000, 100 at 1000 Rate			
DUNA —Clear pink buff, large blooms, tall spike, placement good. Mid-season.	12.00	10.00	8.00
E. J. SHAYLOR —Ruffled deep rose pink, deeper pencil, medium height, placement fair, reliable commercial variety. Late mid-season.	10.00	8.00	6.00
ELIZABETH TABOR —Early pink with prominent blood red blotch, large open flowers, tall spike, placement good.	10.00	8.00	6.00
EMILE AUBRUN —Smoky rose, deep red blotch, large florets, placement fair. Mid-season.	12.00	10.00	8.00
EUTERPE —Light lavender, darker and lighter on lower lip, pointed petals, placement fair. A good new early lavender.	16.00	13.00	11.00
EXCELLENCE —Fiery brick red, uniform color, tall spike, placement fair. Early.	12.00	10.00	8.00
FLAMING SWORD —Early brick red, medium size flower, tall spike, good commercial red, placement good.	10.00	8.00	6.00
GIANT NYMPH —Uniform light pink, cream throat, large flowers, strong spike, placement excellent. Mid-season.	10.00	8.00	6.00
GLORIANA —Tall orange buff, lighter throat, medium size flowers, placement good. Mid-season.	10.00	8.00	6.00
GOLDEN DREAM —Tall pure yellow, medium size flowers, strong stem, placement good, popular cutflower. Late mid-season.	10.00	8.00	6.00
GOLD DUST —Newest yellow yet produced, average height, proper placement, promising variety. Early.	25.00	20.00	16.00
GOLD EAGLE —Bright yellow, medium size flowers tall spike, placement good, excellent grower, fine cutflower. Early.	10.00	8.00	6.00
HALLEY —Early salmon pink, carmine pencilling on gold, large open flowers, tall spike, placement fair.	10.00	8.00	6.00
HEAVENLY BLUE —Light blue, purple stripe on lower lip, average height, medium size flowers on strong stem, placement good, fine cutflower. Late mid-season.	20.00	16.00	13.00
HELGA —Early salmon pink, lighter throat, medium height, medium size flowers, placement good, reliable cutflower.	10.00	8.00	6.00
ISOLA BELLA —Pale light lavender, ruffled enormous flowers, tall strong spike, placement excellent, new variety with good commercial possibilities. Late.	30.00	24.00	18.00
J. H. McFARLAND —Orange buff with lemon yellow throat, tall spike, placement fair. Mid-season.	10.00	8.00	6.00
J. S. BACH —Salmon red with lighter throat and white pencilling, tall strong spike, well placed large ruffled flowers, excellent cutflower. Early.	20.00	16.00	13.00
KASSEL —Uniform dark scarlet, large flowers with pointed petals, placement fair, good cutflower variety. Mid-season.	16.00	13.00	11.00

	No. 1 1½" and up	No. 2 1¼" 1½"	No. 3 1-1¼"
Price per 1000, 100 at 1000 Rate			
LA PALOMA —Uniform golden orange, tall spike, placement fair, good cut-flower. Late mid-season.	10.00	8.00	6.00
LILAC FAVORITE —Early pale pink, primulines type, medium height, medium flowers, placement fair.	12.00	10.00	8.00
LOS ANGELES —Tall salmon pink with deeper throat, medium size flowers, placement good, excellent cutflower. Early mid-season.	10.00	8.00	6.00
MAID OF ORLEANS —Large creamy white with deeper cream throat, tall spike, placement excellent, best commercial white. Early.	15.00	12.00	10.00
MAIDEN'S BLUSH —Delicate light pink, primulines type, medium height, placement fair. Early.	10.00	8.00	6.00
MAMMOTH WHITE —Extremely large white, lily type, good garden variety. Mid-season.	15.00	12.00	10.00
MARGARET FULTON —Clear coral pink, lighter pencilling, average height, excellent cutflower. Mid-season.	10.00	8.00	6.00
MARMORA —Smoky lavender grey, petunia colored blotch, large flowers, medium height, placement good. Late mid-season.	12.00	10.00	8.00
MARNIA —Large fine orange, tall spike, placement good. Mid-season.	10.00	8.00	6.00
MARY PICKFORD —Milky white, cream center, medium size flowers, average height, placement fair. Early.	10.00	8.00	6.00
MILDRED LOUISE —Salmon pink with bright yellow throat, large open florets, tall spike, placement good. Early mid-season.	15.00	12.00	10.00
MINUET —Uniform clear lavender, large florets on straight strong spike, placement excellent, good cutflower and best commercial lavender. Late mid-season.	15.00	12.00	10.00
MORAVIAN —Ruffled dainty lavender with purple pencilling, primulines type, medium flowers, average height, placement good, excellent cutflower. Mid-season.	10.00	8.00	6.00
MOROCCO —Deep maroon with darker edges, well placed flowers, medium height. Mid-season.	16.00	13.00	10.00
MOTHER MACHREE —Smoky lavender pink, pencilled red on yellow, strong spike, medium height, average size flowers, placement good. Late mid-season.	16.00	13.00	11.00
MR. W. H. PHIPPS —Uniform soft pink, large florets on tall spike, placement good. Mid-season.	12.00	10.00	8.00
MRS. F. C. HORNBERGER —Pure white, medium size flowers, average height, placement fair, a good cutflower. Late mid-season.	11.00	9.00	7.00
MRS. F. C. PETERS —Rose lilac with crimson blotch, large open florets, tall spike, placement good. Late mid-season.	12.00	10.00	8.00
MRS. FRANCIS KING —Flaming red with darker markings, medium size flowers, placement good, fine cut-flower variety. Late mid-season.	10.00	8.00	6.00

Price per 1000, 100 at 1000 Rate	No. 1	No. 2	No. 3
	1½" and up	1¼" 1½"	1-1¼"
MRS. FRANK PENDLETON —Good commercial pink with prominent blotch, placement fair. Late mid-season.	10.00	8.00	6.00
MRS. LEON DOUGLAS —Tall begonia rose flaked scarlet, large florets, good cutflower. Mid-season.	11.00	9.00	7.00
MRS. LULU HUNT —Large early geranium pink blending to shrimp center, decorative type, placement good, outstanding commercial variety, tall spike.	16.00	13.00	11.00
MRS. P. W. SISSON —Uniform light cameo pink, ruffled, average height, placement good, fine cutflower variety. Late mid-season.	10.00	8.00	6.00
MRS. VAN KONYNENBURG —Light blue medium height, good size florets, placement fair, a good commercial variety. Early.	15.00	12.00	10.00
1910 ROSE —Bright rose pink, white penciling, medium size flowers, average height, good cutflower. Early.	10.00	8.00	6.00
ODIN —Deep salmon pink with prominent dark blotch, average height, placement fair, a good cutflower. Mid-season.	10.00	8.00	6.00
ORANGE QUEEN —Copper orange, primulines type, medium height. Mid-season.	10.00	8.00	6.00
PANTHEON —Pure ruffled white with prominent carmine stripe on lower petals, large flowers on tall spike, placement good. Mid-season.	10.00	8.00	6.00
PAUL PFITZER —Uniform purple with darker edges, a ruffled novelty. Early mid-season.	18.00	14.00	11.00
PEACE —Tall late white, feathered lilac, placement good, fine cutflower.	10.00	8.00	6.00
PELEGRINA —Extremely dark velvety blue, average height, placement fair, flowers of medium size, best deep commercial blue. Late.	15.00	12.00	10.00
PERSIA —Uniform velvety maroon, medium height. Mid-season.	14.00	12.00	10.00
PHAENOMEN —Dainty pink with canary yellow throat, attractive color, primulines type, medium height, placement good. Early.	10.00	8.00	6.00
PICARDY —Large salmon pink, tall spike, placement very good, most popular glad today. Early mid-season.	10.00	8.00	6.00
POLAR ICE —Early tall pure white, large flowers, placement good, one of the best whites.	16.00	13.00	11.00
PRIDE OF WANAKAH —Tall deep rose with darker blotch, placement fair, excellent cutflower. Early mid-season.	10.00	8.00	6.00
PRIMROSE —Creamy white, small ruffled primulines type, placement fair, excellent for table decorations. Mid-season.	10.00	8.00	6.00
PRIMROSE PRINCESS —Tall sulphur yellow, large flowers on excellent spike. Mid-season.	12.00	10.00	8.00
RED PHIPPS —Earliest bright red, medium size well placed florets on good spike, fine cutflower.	12.00	10.00	8.00

Price per 1000, 100 at 1000 Rate	No. 1	No. 2	No. 3
	1½" and up	1¼" 1½"	1-1¼"
ROSA VAN LIMA —Bright pink with light throat and pencilling, large flowers, average height, placement good, enormous commercial possibilities, stock scarce. Mid-season.	25.00	20.00	16.00
ROYAL PURPLE —Purple with gold markings, tall spike, placement fair, very attractive flower. Late mid-season.	18.00	14.00	11.00
SOUVENIR —Butter yellow, primulines type, placement good, fine commercial variety. Mid-season.	10.00	8.00	6.00
STAR OF BETHLEHEM —Tall pure white, milky white throat, large flowers, placement good, excellent outflower, late introduction. Early mid-season.	16.00	13.00	10.00
VEILCHENBLAU —Uniform blue with darker blotch and a light throat, large florets, medium height, placement excellent. Late mid-season.	20.00	16.00	13.00
VIRGINIA —Fiery scarlet red large florets, medium spike. Late mid-season.	11.00	9.00	7.00
WASAGA —Glowing clear ruffled buff, large flower, tall spike, placement good. Mid-season.	10.00	8.00	6.00
WILBRINCK —Early light pink, large open florets, tall spike, placement fair.	10.00	8.00	6.00
ZAUBERFLOTE —Deep pink with rose blotch, extremely large florets, placement good, tall spike, a new excellent producer. Early mid-season.	22.00	18.00	14.00

TERMS OF SALE

ALL PRICES f.o.b. Hartford, Mich. 2% discount for cash with order, or 25% cash down balance C.O.D. no discount. No orders less than \$2.50 will be accepted at our list prices. 100 bulbs at 1000 rate.

**ALL PRICES SUBJECT TO CHANGE WITHOUT NOTICE.
ALL ORDERS SUBJECT TO PRIOR SALE.**

THRIP CONTROL

The control of this insect is absolutely essential to gladiolus culture. Means of prevention is advisable. If thrips are present in storage, Napthalene Flakes should be sprinkled over the bulbs and covered with papers for a few days. At planting time all bulbs should be soaked for a few hours in Bichloride of Mercury, 1 oz. to 7 gallons of water. In the field, the foliage may be sprayed with Tartar emetic-molasses spray or some good commercial solution, as Rototox. If these precautions are taken, practically all injury from disease and thrip may be prevented. We have never seen any thrip or thrip injury in our fields, due perhaps to our precaution and comparative isolation from other fields of gladiolus.

