

Foreword

Our 1957 growing season was excellent. Just about the right amount of rainfall all during April, May, June and July. August was rather dry, but by the end of the month we had more rains, and so we have harvested the finest bulbs ever.

For several years now, like most gladiolus growers, we have experienced some degree of grub and wire worm injury, on a percentage of the bulbs harvested, making them unsaleable, due to appearance. After trying several chemicals, I finally tried a dust manufactured by Haviland Products, of Grand Rapids. It contains about 5% Dieldrin and 8% Thiram, and is called Haviland Seed Treater. It certainly proved very helpful for me, and even some badly pock marked corms dusted and planted this season, produced fine clean bulbs. It can be obtained either from the manufacturer or myself. A 2-lb. package, will treat 5,000 large corms, and will cost you \$2.98. Large amounts subject to special quotation.

Performance this season, was simply out of this world. Many varieties grew so well, that our State Inspector hardly knew the variety, when he inspected them. To mention some of the topnotchers in their respective colors, here is the way we saw them:

WHITES: FLORADORA, SNOW CLAD, SIERRA SNOW, WHITECLIFFE, WHITE FRILLS and ANGELS SERENADE were all wonderful.

CREAMS: MARCO POLO (The tallest glad I ever saw), FRENCH VANILLA and a much overlooked variety TAHOE.

YELLOWS: MING YELLOW, SCEPTRE, GOLDEN BOY, GOLD BOND, GOLDEN DIANA, and FORSYTHIA.

REDS: Without any doubt, H. J. WARR, ROYAL MOUNTED, and RED MILL are currently our finest exhibition reds. DAVID WARR and RED RYDER are also splendid.

PINKS: I would say that our finest pinks as of right now are EDITH WARR, CORONATION, SALMON QUEEN, PINK ELEGANCE, PINK HARMONY, LORETTA, BOUDOIR and PALOMAR.

ROSE: CORAL ROSE, ROSELYN, GREAT DAY, LORI DEE, ROSANNAH and BURMA. Our BURMA grew 60" with 21 buds and 8 open this season. The strain is good.

LAVENDER: ORCHID MIST, VALDA, BRIDAL ORCHID.

ORANGE: ORANGE FLAME and MANDALAY.

BLUES: The brand new BLUE ANGEL and BLUE PEARL are mighty fine. BLUE DIAMOND, BLUE BUTTERFLY, BLUE PETER, HYLDA PRABEL, SAILOR BOY and VIOLET CHARM are all topnotchers and healthy.

BUFFS: PEACH GLOW and PATROL lead the list.

PURPLES: PURPLE JET, WONDER BOY, THE RAJAH and KING DAVID are TOPS.

BLACK REDS: ACE OF SPADES, BLACK CHERRY and CONGO.

SMOKIES: STORMY WEATHER.

There are others listed in the regular list, which is self explanatory. We annually discard a lot of varieties, either for poor performance, poor health, or because there are better varieties coming along. We do not sell these, but rather dump them. If they are not satisfactory for me, they are certainly not for you.

I am not a large grower. I am a SPECIALIST. NOT THE CHICK SALE variety, but one with years of experience, who selects the newest and finest originations, assists in introducing them, and believe in them. The others are discarded. You may be sure of anything I introduce. Much of the BARGAIN stuff that is offered by the large nurseries is JUNK.

1958 Introductions

From the stock of the late Percy Barrett, Beaufort, Quebec:

BLUE ANGEL (476) A medium blue, with almost no throat, heavy textured, ruffled and needle-pointed, grows 54" tall, with a 24" flowerhead, 19 to 21 buds, opens 8 with 8 in color, about 70 days, excellent foliage and stems, and one of the finest blues from the Barrett stock, which represented 30 years breeding for blues. Stock limited, and will be sold on a first come, first served basis.

BLUE PEARL (476) Another medium blue, somewhat similar to **BLUE ANGEL** in background color, but with a slight cream throat, on which is spotted a deep violet pearl shaped spot, about the size of a large bean, which lights the floret up. Heavy textured, ruffled, and needle-pointed, growing 54", with a 24" flowerhead, 19 to 21 buds, opens 8 with 8 in color also about 70 days, excellent foliage and stems, and another grand blue from the famous Barrett collection. Stock also limited and will be sold as long as the stock permits.

From J. W. Harris, formerly Sarina, Ontario, now Forest, Ontario:

PINK CASCADE (442) A beautiful orchid shade of pink, with a large white throat. Perfect placing and facing, heavily ruffled, heavy texture, with 20 buds, and will open 10 to 11 easily, with balance in color. Wide open florets, which lay flat against the stem, stands wind, rain and heat well, grows 54", with a 24" flowerhead, every spike is uniform, have never seen a misplaced floret. One of the really great glads, from a great gladiolus breeder.

All three above priced as follows:

Large \$3.00, Medium \$2.00, Small \$1.00, with Bulbets at 3 for \$1.00.

Also from J. W. Harris: Our last year's premium bulb:

ATLANTIC DAWN (466) The only good sport of Elizabeth The Queen I have ever seen or heard of. A grey, orchid tone, with same habits as "The Queen" but with bright cerise throat marks, which light up the floret completely. A fine, strong grower, 54" tall, 24" flowerhead, with 21 buds, carrying 8 open, and 8 in color. A really fine glad which many will verify, who received it as a premium bulb in 1957. Any size corm at \$1.00, each, with Blbts. at 4 for \$1.00.

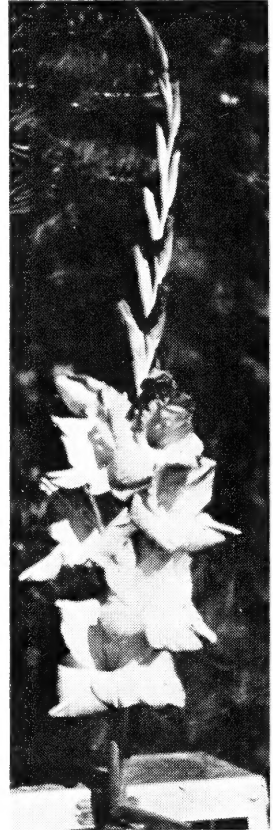
From Wm. Warr of Verdun, Quebec, Originator of **EDITH WARR**,
DAVID WARR and **HOWARD J. WARR**:

DEEPFREEZE (400) A glistening frosty white of excellent substance, ruffled with marvelous foliage. Grows 60" easily, with 21 buds, opening up to 10, with balance in color. Not just another white, but a pure iridescent white, which will become a beautiful addition to the white class.

Large \$3.00, M \$2.00, S \$1.00, with Blbts. 35c or 3 for \$1.00.

From E. C. Wurst, Four Oaks Gladiola Gardens, Erie, Pa.
Courtesy Sydney Mode, Vankleek Hill, Ontario

SUN GLOW—In recent years Burma has given the Glad world many outstanding seedlings and sports, some of which are Director, San Antonio and Brenda, here comes another in Sun Glow. It is a glistening, flaming, orange scarlet, so flashy it stands out across a field. The blooms are quite massive holding eight or more open florets in precise formal



BLUE ANGEL

placement. The florets are intensely ruffled and very have textured. Sun Glow attains a good height, is extremely healthy, a rapid propagator and produces fine bulbs. Blooms early midseason. A large stock permits a real bargain

Bulbs any size \$1.00 each, one bulb and 10 blbts. for \$2.00.

Grower's Unit: 2L, 3M, 15S and 100 Blbts. for \$25.00.

From Sydney Mode—a Barrett Seedling

PINK CURLS (342, MS.) An extremely ruffled, frilled and fluted variety with heavy waxy textured florets in an extraordinary beautiful clear shade of medium pink which lightens to the throat and displays a deep pink picotee edge. The opening buds resemble lovely carnations. Pink Curls is definitely the ultimate in beauty and will be very popular for decorative purposes and home use. Not an exhibition glad as the heads lack sufficient length growing from 20 to 22 inches, 18 buds, 45 inches in height. A healthy field grower and a rapid propagator.

Bulbs any size \$1.00 each. Bulblets 10 for \$1.00.

From Walter White, St. Therese, Quebec

FASCINATION (466) This is a true lavender, a vender, a very beautiful ruffled flower. The throat is pure white with a slight stippling of the same overall color. It is a tall straight grower averaging 60 inches in height, 21 to 23 buds on a flowerhead of 30 inches, florets 4½ to 5 inches, seven to eight open at once in ideal formal placement. Fascination is definitely a flower of quality, beauty and charm and a fine exhibition prospect. Blooms midseason.

Bulbs L \$3.00, M \$2.00, S \$1.00. Bulblets 10 for \$3.00. Sold only with purchase of a bulb, no units available this season.

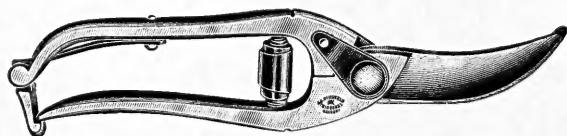
SOLITAIRE—Practically a self helitrope, a very colorful glad that easily opens ten large florets in formal style to create excellent exhibition spikes, also opens easily after cutting and still holds its fresh color. Field height 56" flowerhead 26 to 28 inches with 21 buds. Won Champion seedling and Best Second Day Spike at Province of Quebec show.

Bulbs L \$3.00, M \$2.00, S \$1.00. Bulblets 10 for \$3.00 with bulb.

Grower's Unit—2L, 3M, 8S, 75 bulblets for \$25.00.

MANDY—A very deep mahogany brown with deeper throat markings. A new and most unusual color in glads. The large attractive florets of heavy substance are well attached in formal placement and the massive spike is most striking. This will prove a fine addition to any collection, an easy grower, field height 54 inches, flowerhead 36 inches. Blooms midseason.

Bulbs any size \$2.00. One bulb and 10 bulblets for \$4.00.



I have so many inquiries for the type of pruners and knives which I use, I am offering them to my mail order friends. When you get sick of those old cheap pruners and want a lifetime

pruner, for cutting the tops off glads, or dividing dahlias, or pruning shrubbery, etc., here is the very finest. I have them 20 years in use, and still going strong. They are 8½" long, made by Henkel's Twin Works, Germany.

Per Each Postpaid \$8.00



When you get tired of sharpening those cheap knives, get yourself a good Henkel imported knife, for a lifetime use. Holds an edge, and you will throw out all other knives when you get one of these. Ivory celluloid handle, German

Silver lining, German Silver bolsters, 4" when closed.

Per Each Postpaid \$5.00

General Bulb List

ACE OF SPADES (454) The ace of black reds. Opens 6 nicely ruffled 5 in. florets on long flowerheads. Sensational and very popular.

L 2 for 25c; M 4 for 25c; S 6 for 30c; Blbts. 25 for 50c

ALLAH (491) Huge, rich smoky or AOC. Ruffled and needlepointed. Tall with 20 in. flowerheads and 8 open. A beauty.

L 35c; M 25c; S 2 for 30c; Blbts. 50 for \$1.00

ANGEL'S SERENADE (406) Intensely ruffled and heavily textured pale cream. A thrilling 1955 introduction by the originator of Elizabeth the Queen. Good height with 22 in. head and 8 open.

L 75c; M 50c; S 25c; Blbts. 10 for 75c

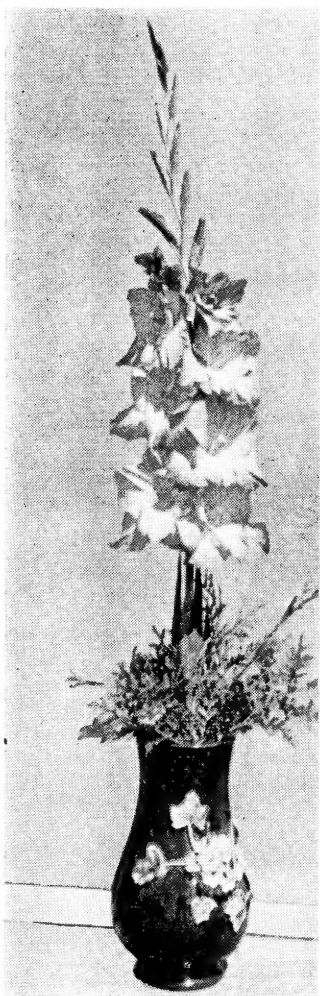
APPLEBLOSSOM—All-America selection. See enclosed Special List.

AVENGER (452) Very deep, glistening rose red. Has a pleasing and inverted cream U in the throat. Grows tall with 5 in. velvety florets and up to 9 open on good stems.

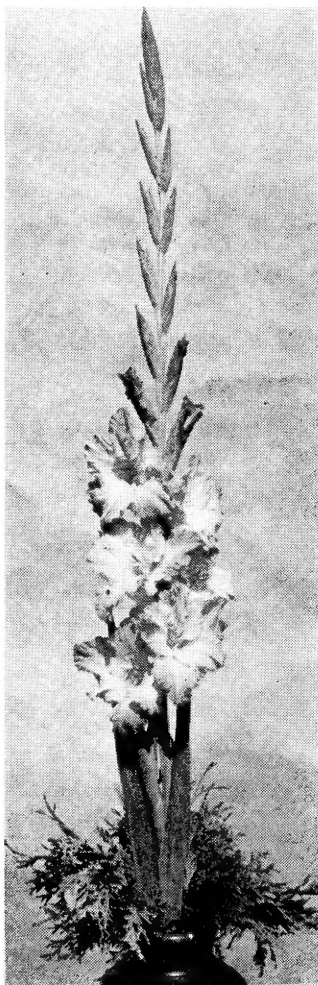
L 75c; M 50c; S 25c; Blbts. 10 for 75c

BALMORAL (466) Ruffled and fluted rosy lavender with creamy white throat. Tall with long flowerhead and 8 open. A finer 1954 introduction.

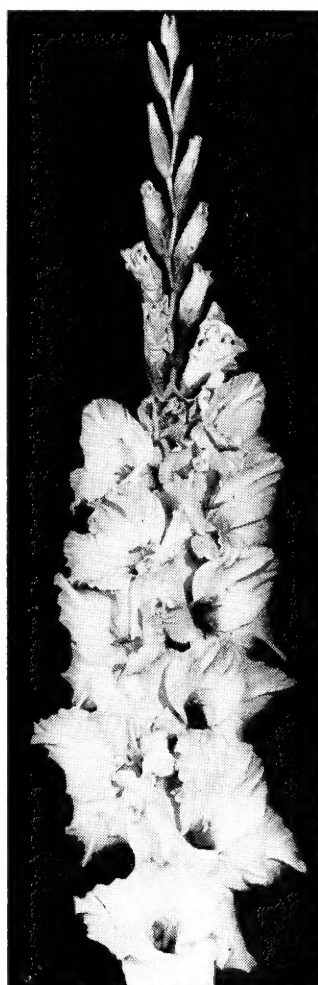
L 50c; M 35c; S 25c; Blbts. 10 for 50c



BLUE DIAMOND



HONEY LOU



CORAL ROSE

- BARRETT'S BEAUTY** (401) Intensely ruffled white with purple lined throat. Long heads with 8 open in good placement. A fine basket glad.
L 2 for 25c; M 2 for 20c; Blbts. Pkg. 25c
- BLACK CHERRY** (554) A giant black red with up to 9 huge florets open. About 19 buds. A grand show glad and a good bulb maker.
L 30c; M 20c; S 2 for 25c; No Blbts.
- BLUE BUTTERFLY** (476) Early, pale ruffled blue with deeper throat. Tall, with 22 buds and 30 in. head. A grand mate for noted Blue Peter. Exceptionally strong grower with robust health and propagation.
L \$3.00; M \$2.00; S \$1.00; Blbts. 30c each
- BLUE DIAMOND** (476) A sparkling medium blue with small feather of similar shade on a cream throat. It opens 6 large attractive florets or a 25" head with 20 buds. Very early, Excellent bulbs and fine growth from bulblets. A grand garden glad and pollen parent and a fine exhibition variety.
L \$2.00; M \$1.25; S 75c; Blbts. 10-\$2.00
- BLUE PETER** (478) A very tall growing dark blue, with a 25 in. flower-head. Up to 25 buds with 8 open. This is a deep blue, not a violet. An advance in blue breeding. Champion seedling at 1955 Canadian Gladiolus Show, and several awards of merit.
L \$2.00; M \$1.25; S 75c; Blbts. 3 for 25c
- BOUDOIR** (542) A huge, clean medium pink, with light cream throat. Grows 66 in. easily with a 30 in. flowerhead, carrying 20 with 6 to 7 open. Florets measure 6½ in., with extra heavy texture. Perfect for either commercial or exhibition.
L 75c; M 50c; S 25c; Blbts. 10 for 75c
- BRILLIANT** (436) A firemen's red, that stands out like a lighthouse. Tall, 19 buds, opens 8, and a real exhibition or commercial.
L 50c; M 35c; Blbts. 10 for 50c
- BURMA** (564) Lovely ruffled deep rose. Up to 8 large wide open florets with the balance of the spike in color. One of the best.
L 2 for 25c; M 4 for 30c; S 5 for 20c; Blbts. Pkg. 25c
- CARIBBEAN**—All-America Selection. See enclosed Special List.
- CONFESSION** (400) A pure white sport of Friendship which is desirable because of its earliness. All the fine habits of Friendship.
L \$1.00; M 75c; S 50c; Blbts. 10 for \$1.00
- CONGO** (554) A giant, heavy textured maroon black. Tall, strong plants that will open 8 huge, perfectly placed florets on a long flowerhead. This one gave a grand performance in the 1956 trials. Try it.
Any size bulb \$3.00; 1 bulb and 5 Blbts. \$4.50
- CORAL ROSE** (462) Accurately named in true coral rose, with slightly deeper throat. Will open 10 with the balance of buds in color on a 56" spike. A 1957 release that has already won championships and has been scored 92 by competent judges. A splendid propagator.
L \$1.50; M \$1.00; S 50c; Blbts. 10 for 50c
- CORONATION** (440) A medium light pink with cream throat. Exceptional performance during test here. Nicely ruffled and needle-pointed, with 19 buds on a 25" head with 7 or more open. Has already received Silver and Gold medals, and scored 92 points in N.A.G.C. trials. A really outstanding glad.
L \$1.25; M 75c; M 50c; Blbts. 10 for \$1.00
- CUPID** (300) Waxy, ruffled white 3½" florets with 14 to 15 buds. A wonderful variety for arrangements.
L 2 for 25c; M 4 for 30c; S 5 for 20c; Blbts. Pkg. 25c
- DAVID WARR** (436) Ruffled orange scarlet, early and a rapid propagator. Popular for commercial or exhibition purposes. Don't miss this.
L 35c; M 25c; S 2 for 30c; Blbts. 20 for 50c
- DIXIE ROSE** (464) Deep, velvety purplish rose. Tall with long flower-heads and 7 or more open. A favorite early variety,
L 2 for 25c; M 4 for 25c; S 6 for 25c; Blbts. 20 for 25c

- DOLLY VARDEN** (533) Huge deep salmon with large, attractive cream throat. Opens 9 or more on husky spikes. A great exhibition glad.
L 2 for 25c; M 4 for 25c; S 6 for 25c; Blbts. Pkg. 25c
- DREAM QUEEN** (000) Rich, medium deep, salmony pink with delicately peppered gloxina-like throat. Opens 8 5-in., perfectly placed, beautiful blooms on an 18-bud head on 50-inch plants.
L 35c; M 25c; S 2 for 35c; Blbts. 3 for 25c, 100 for \$4.00
- EDITH WARR** (542) Very close to perfection for exhibition and commercial use. 6" florets with 6-7 open and 6 in color on a 19-bud, sturdy spike of 54". Color is almost light enough to be termed light pink. The tremendous flowerhead, deep green foliage and strong stems are a sight to behold.
L 50c; M 35c; S 20c; Blbts. 10 for \$1.00
- EMPEROR**—All-America selection. See enclosed Special List.
- EVENING STAR** (500) Intensely ruffled and frilled pure white -with leathery texture. Tall with long heads and 8 or more 6 in. blooms open.
L 50c; M 35c; S 20c; Blbts. 20 for 75c
- FAR EAST** (410) A huge ruffled and waved chartreuse yellow, with a bright scarlet throat spot. Open 8 on a 20-bud spike, tall, straight vigorous, and a chartreuse addition to White Tower.
Any size bulb, \$2.00, or 1 bulb and 10 Blbts. for \$4.00
- FLORADORA** (406) A sensational 1957 introduction. Velvety light cream with deeper cream throat. A deluxe exhibition glad and a very tall, powerful grower with long flowerheads, 22 buds and 8 open. Excellent attachment and ideal formal placement. Very healthy and a fast propagator.
L \$2.00; M \$1.25; S 75c; Blbts. 2 for 25c
- FLORENCE NIGHTINGALE** (400) The top ranking general purpose white. Many times a show Champion. Now being grown by the millions for cutting.
L 2 for 25c; M 4 for 30c; S 5 for 20c; Blbts. Pkg. 25c
- FORSYTHIA** (512) A giant chartreuse yellow with heavy texture. Ruffled and fluted. Tall, with long flowerheads of 20 buds and 8 open.
L 2 for 25c; M 2 for 20c; S 4 for 25c; Blbts. 20 for 35c
- FORT KNOX** (412) Deep yellow like Gold but produces 30-inch heads with 23 buds. Color, good growing habits and fine blooms merit it one of the best.
L 25c; M 20c; S 15c; Blbts. 20 for 25c
- FRAZER** (432) Deep, heavily ruffled salmon with deeper throat. Tall, with 8 open on 22" flowerhead. A grand commercial or exhibition glad.
L 2 for 25c; M 3 for 25c S 6 for 25c; Blbts. Pkg. 25c
- FRIENDSHIP** (442) (Fischer) Ruffled light pink blending to light throat. Well formed bloom. One of the good early light pink cut-flowers.
L 2 for 25c; M 3 for 25c; S 5 for 25c
- GOLD** (412) A beautiful self-colored deep yellow. Lovely well attached florets on tall strong stems. A very promising variety.
L 3 for 25c; M 4 for 25c; S 6 for 25c; Blbts. 20 for 25c
- GOLD BOND** (510) A very tall strong growing clear light yellow, another very popular 1953 introduction.
L 25c; M 20c; Blbts. 20 for 25c
- GOLDEN BOY** (312) A bright canary yellow. Not large but produces ideal exhibition spikes. A very vigorous grower that already has a wonderful show record.
L 30c; M 20c; S 15c; Blbts. 10 for 25c
- GOLDEN DIANA** (412) The new deep yellow which made such a hit, a beautiful rich clear color, good spikes on stems of average height.
L 35c; M 25c; S 15c Blbts. 20 for 50c

- GREAT DAY** (466) A glorified Elmer's Rose, slightly deeper rose, heavy ruffled and needle-pointed, grows 56 in. with a 24 in. flowerhead. 8 open.
L 30c; M 25c; S 20c; Blbts. 40 for \$1.00
- HARRIET** (370) Lively, deep ruffled purple. Tall, and will open 7-8 4 in. blooms. Possibly the best in size and color. Numerous awards.
L 2 for 25c; M 4 for 25c; S 6 for 25c; Blbts. 20 for 25c
- HARRISBURGER** (552) The sensational red of 1953 introduction, a magnificent clear cherry red which produces grand blooms, very highly rated in trial gardens.
L 25c; M 20c; S 2 for 25c; Blbts. 20 for 25c
- HIT PARADE** (368) The finest lavender I have seen or grown in the 300 size. Grows 48 in. to 50 in. tall, with 19 buds, ruffled, and opens 8 on a 20-bud-spike. A grand new lavender commercial, that you will eventually own. A tremendous propagator, hence the low price.
Any size bulb \$1.00, or 3 for \$2.50
- HONEY LOU** (466) Another 1957 release of rare beauty. A fine blending of rose and lavender with buff throat. Florets are firmly attached on strong stems and have heavy ruffling and fine texture. t grows tall with 20 to 22 buds. Midseason.
L \$2.00; M \$1.25; S 75c; Blbts. 2 or 25c
- HOWARD J. WARR** (552) Intensely brilliant deep cherry red. Grows tall with long flowerheads and 8 open. Heavily ruffled with extra heavy texture. This tops Harrisburger in my book. Don't miss it.
L \$1.00; M 75c; S 50c; Blbts. 10 for \$1.00
- HYLDA PRABEL** (477) Lovely light violet blue with slight cream throat and violet dart. Has a 22 in. flowerhead and 8 wide open florets. Opens from tight bud and stands heat and drought.
L \$1.00; M 75c; S 50c; Blbts. 5 for \$1.00
- JINNI MARIE** (432) Ruffled salmon pink with deeper throat. Opens to 10 florets on long spikes. Good propagator. Makes fine growth from bulbets.
L 2 for 25c; M 4 for 25c; M 6 for 25c; Blbts. 50 for \$1.00; 100 for \$2.00
- JITTERBUG** (436) As lively as the name implies. Brilliant heavily ruffled scarlet with needle-pointed petals. Tall. 24" head. 8 open.
L 25c; M 20c; S 15c; Blbts. 25 for \$1.00
- JOLICOEUR** (Jolly Heart) (561) Very outstanding performance in our fields for two years prior to release in 1957. A very large, beautiful light rose pink with striking red throat blotch. Beautiful color effect. Tall, with 21 buds on 28" head and 7 open.
L \$2.00; M \$1.25; S 75c; Blbts. 2 for 25c
- KAREN** (465) A beautiful exhibition glad and a healthy easy grower. A magenta rose with a large yellow blotch. One we highly recommend.
L 35c; M 20c; S 2 for 30c; Blbts. 20 for 50c
- KASHMIR** (470) A heavily ruffled shade of solid purple. It opens 6 to 8 large florets on tall 20-bud spikes. Outstanding.
L 2 for 25c; M 4 for 25c; S 6 for 25c; Blbts. 20 for 25c 100 for \$1.00
- KING DAVID** (570) The super purple. Outstanding grower from bulbet to bulb. Robust, opening 10 heavily ruffled large, attractive florets.
L 2 for 25c; M 4 for 25c; S 6 for 25c; Blbts. Pkg. 25c
- LEAH GORHAM** (450) Attractive light red, light throat. Tall strong plants with long heads. A good commercial and exhibition glad.
L 25c; M 20c; S 15c; Blbts. Pkg. 25c
- LILA WALLACE** (464) Exquisite, medium sized velvety cerise rose. It will open 8 on an 18-bud spike and blooms readily from bulbets.
L 2 for 25c; M 5 for 35c; S 5 for 20c; Blbts. Pkg. 25c
- LORETTA** (342) A masterpiece in clear flesh pink. Tall straight, formal spikes and early. Unquestionably the finest glad in 342 class.
L 75c; M 50c; S 25c; Blbts. 20 for \$1.00

LORI DEE (460) The sensation in the lights pinks. A 60" plant with 20 buds and up to 10 open. A very healthy, robust variety, grand for either exhibition or commercial use.

L 25c; M 20c; S 3 for 25c; Blbts. 20 for 50c

LYNNE HILL (462) A dandy rose purple with silver edged petals. Opens 7 or more. A very unusual color. Try it for sure.

L 2 for 30c; M 3 for 20c; S 4 for 25c; Blbts. 30 for 50c

MANDALAY (520) Immense florets of medium salmon orange with large cream throat, heavy textured, good facing and spacing.

L 50c; M 35c; S 20c; Blbts. 10 for 50c

MARCO POLO (507) This huge cream with cerise throat has texture like leather. Grows 66" easily, with 21 buds and will open 10 with 11 in color. A real giant with class and distinction. It has scored 92 at different seedling shows.

L \$1.50; M \$1.00; S 50c; Blbts. 10 for 50c

MARGERY (462) Bright cerise rose with a deeper rose throat, a most beautiful and distinctive color. An excellent grower. Ideal plant habits.

L 25c; M 20c; S 15c; Blbts. 20 for 50c

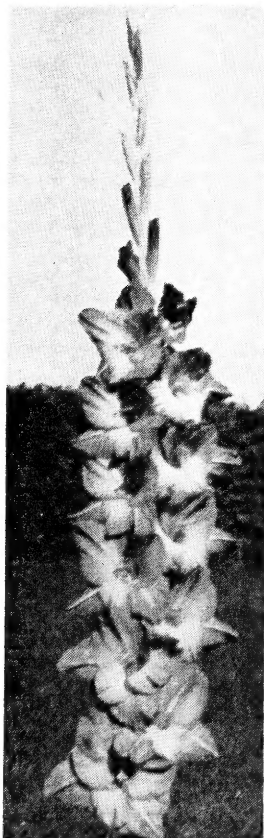
MAYTIME—All-America selection. See enclosed Special List.

MING YELLOW (412) An outstanding new commercial yellow; its attractive shade of a deep yellow self will make it very popular. A strong healthy grower.

L 50c; M 35c; S 20c; Blbts. 20 for 75c

MISS DAINTY (401) A beautiful pure white with light purple throat spot. Tall, clean and very beautiful.

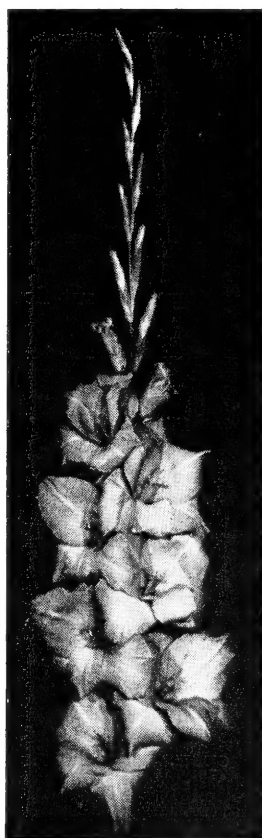
L 35c; M 20c; S 3 for 25c; Blbts. 20 for 50c



SALMON QUEEN



AVENGER



PINK HARMONY

MOUNT ROYAL (552) A really fine healthy, strong growing deep red with a beautiful lustre of petal like silk. Truly a regal flower. Open seven 5½" florets of 22 buds on a 30" head. Grows five feet and blooms in 90 days.

L \$2.00; M \$1.25; S 75c; Blbts. 2 for 25c

ORANGE FLAME (420) Brilliant flame orange with clear yellow throat. Our best commercial and a strong exhibition glad. An early robust variety of good height.

L 50c; M 35c; S 2 for 35c; Blbts. 10 for 50c

ORCHID MIST (467) Ruffled light rose lavender, shading deeper toward edges and distinct lavender blotch. Height about 44" with a 22" flower-head. Heavily needle pointed with a 4½" florets. Opens wide and flat. Lady visitors selected this as the most beautiful glad in the patch.

L 25c; M 3 for 25c; S 4 for 20c; Blbts. 50 for \$1.00

PALOMAR (442) A rival for Spic & Span for commercial use. A show winner also. Medium deep pink with big creamy white center. Tall, with up to 10 open. Very prolific and healthy.

L 50c; M 35c; S 20c; Blbts. 10 for 50c

PALOMINO (416) (Walter White) A buff pink with a yellow throat; a lovely autumn color. It will open to 13 florets in perfect placement when field grown. Late midseason.

L \$2.00; M \$1.25; S 75c; Blbts. 2 for 25c

PEACH GLOW (416) Tall, large orange buff with long flowerheads and heavy texture. A great show winner and a beautiful commercial glad.

L 3 for 25c; M 4 for 25c; S 6 for 25c; Blbts. 25 for 15c

PINK CLASSIC (540) Heavily ruffled huge light pink overlaid deeper with lighter throat. Very fine.

L 2 for 25c; M 2 for 20c; S 4 for 20c; Blbts. Pkg. 25c

PINK ELEGANCE (450) Lovely, ruffled and extra heavy textured La-France pink. One of the finest 1955 introductions. Winner of AHA medal at Quebec in 1954. Many other wins to its credit.

L 75c; M 50c; S 25c; Blbts. 10 for 75c

PINK HARMONY (540) Early, marvelous pure pink with cream blotch. Tall, strong and vigorous. Long flowerheads. Grand in every way.

L 35c; M 25c; S 15c; Blbts. 10 for 30c

PINK PRIDE (541) A grand medium light pink with red throat marking. Many open on 5-foot spikes with long heads. Fine for exhibition. Also a topnotch cut-flower.

L 2 for 25c; M 3 for 25c; S 6 for 25c; Blbts. 10 for 20c

PRINCESS AURORA (420) Very tall ruffled medium deep orange with yellow throat. It will open 9 on a 24" head. Up to 22 buds on a robust spike.

L 75c; M 50c; S 35c; Blbts. 10 for 75c

PURPLE JET (470) A very tall growing purple with a long ribbon of bloom on a 30" head with 8 to 10 open. Excellent attachment, placement and health. A very promising exhibition variety from the originator of popular Rosannah.

L \$2.00; M \$1.20; S 75c; Blbts. 2 for 25c

RED RYDER (450) Tall, brilliant medium red with 24" head carrying 19 buds and 8 or more open. Ruffled with heavy texture. A fine commercial red also.

L 40c; M 30c; S 20c; Blbts. 20 for 75c

REVELATION (436) A tall, large scarlet with deeper throat and many open. Excellent straight spikes. A promising all-purpose glad.

L 25c; M 20c; S 15c; Blbts. 20 for 35c

RHETT BUTLER (336) Bright flaming orange scarlet. Positively the earliest red. A valuable early cut-flower. A good propagator.

L 2 for 25c; M 5 for 35c; S 5 for 20c; Blbts. Pkg. 25c

ROSANNAH (563) A very tall, all-purpose, ruffled medium rose with long heads and 10 open. Fine bloom from all size bulbs. An enormous propagator.

L 2 for 25c; M 2 for 20c; S 4 for 25c; Blbts. 10 for 25c

ROSE QUEEN (562) Ruffled lavender rose of heavy texture. Long heads and fine facing and spacing. A grand all-purpose glad. Recommended.

L 75c; M 50c; S 25c; Blbts. 10 for 35c

ROSELYN (464) A beautiful ruffled deep rose of heavy texture, opens 8 well attached florets in excellent formal placement. Early, vigorous and healthy, one of the best.

L 35c; M 25c; M 2 for 30c; Blbts. 10 for 25c

ROSITA (563) A grand new rose, produces massive exhibition blooms easy grower, excellent habits and one of the very best glads today.

L 25c; M 20c; S 15c; Blbts. 10 for 25c

ROYAL MOUNTED (452) Nicely ruffled bright red with attractive brilliance. Tall, with 24" head and 8 open. One of the best 1955 introductions.

L 75c; M 50c; S 35c; Blbts. 10 for 75c

ROYAL SCOT (470) A very outstanding rose purple. Opens 8 to 10 well-placed attractive florets on strong erect stems. This is a prize winning purple.

L 25c; M 20c; S 10c; Blbts. 25 for 25c

ROYAL STEWART—All-America selection. See enclosed Special List.

ROYAL TREAT (452) A very ruffled deep blood red, open 8 florets on a long flowerhead. 1952 release.

L 25c; M 20c; Blbts. 12 for 25c

ROYAL VELVET (470) A beautiful medium velvet purple. 6 large wide open florets in perfect placement on heads of 28 inches. Blooms in early season.

L 50c; M 35c; S 25c; Blbts. 6 for 25c

ROYAL VISIT (573) A lovely rose purple that has been overlooked. A dandy exhibition glad and a good commercial. Good facing and placement on 54" plants.

L 35c; M 25c; S 15c; Blbts. 10 for 35c

SAILOR BOY (476) A new light blue with deeper blue lines on a yellow throat, produces attractive well-proportioned spikes. An easy grower and rapid propagator.

L 75c; M 50c; S 25c; Blbts. 10 for 75c

SALMON QUEEN (532) Tall, ruffled giant salmon with cream throat and many open. Grand champion at Montreal in 1954. Don't miss it.

L 75c; M 50c; S 25c; Blbts. 10 for 75c

SCEPTRE (410) Medium self yellow. A very strong grower with heads of 36 inches. Many top awards to its credit already. Grand commercial prospects.

L 75c; M 50c; S 25c; Blbts. 10 for 75c

SNOWCLAD (500) Sensational white released in 1953 and best white in our field this season, pure white with a small cream blotch; very tall grower.

L 25c; M 20c; S 2 for 20c; Blbts. 10 for 25c

STORMY WEATHER (480) The most popular smoky and a great show glad. A blending of lavender rose and grey. Tall, with many open.

L 2 for 25c; M 3 for 25c; S 6 for 25c; Blbts. Pkg. 25c

SWEETEST MAID (430) About the most exotic glad in the garden. Heavily ruffled pure pink with deeper throat. Good height with 8 open.

L 50c; M 35c; S 25c; Blbts. 10 for 50c

TAHOE (406) Here is a sure fire commercial which will win its share of prizes also. Clear cream with a faint tinting of baby pink at the edges. Plants are sturdy, straight and tall. About 8 of 18 buds will open in perfect placement.

L 25c; M 2 for 30c; S 3 for 30c; Blbts. Pkg. 25c

THE CLOWN (397) The first of the Raggedy Ann series. Unique and unusual. Cream with oddly placed brown blotches. Good height and 8 open. Try it.

L 75c; M 50c; S 35c; Blbts. 10 for 75c

THE RAJAH (570) Very popular ruffled rich red purple. A tall, strong grower with heavy texture. 6 or more open.

L 2 for 30c; M 2 for 20c; S 4 for 25c; Blbts. 40 for 25c

TRAVELLER (460) A light rose with a small deeper throat mark. Opens 10 attractive florets in perfect placement. Highly rated by all.

L 35c; M 25c; S 20c; Blbts. 10 for 25c

TRIM (366). Clear blue toned lavender with white throat. Grows 50" with 26" flowerhead. Opens 7.

L 35c; M 25c; S 15c; Blbts. 10 for 35c

TRULY FAIR (464) A very early "American Beauty" red. Very tall and nicely ruffled. Long flowerheads with 8 or more open.

L 35c; M 25c; S 15c; Blbts. 10 for 25c

VIOLET CHARM (476) A grand light violet blue with cream throat and violet arrow. Strong, straight spikes. A great exhibition glad.

L 2 for 25c; M 4 for 25c; S 6 for 25c; Blbts. 20 for 25c

WEDGEWOOD (336) Waxy, ruffled light lavender with cream throat. A very popular and artistic all-purpose variety.

L 2 for 25c; M 4 for 30c; S 5 for 20c; Blbts. Pkg. 25c

WHISTLESTOP (462) A grand medium rose of 1953 release, excellent habits and ideal blooms bound to become very popular.

L 50c; M 35c; S 20c; Blbts. 10 for 50c

WHITECLIFFE (501) A mammoth pure white, well attached formal placed huge attractive florets, a tall stately grower, a very fine variety.

L 20c; M 15c; Blbts. 20 for 25c

WHITE FRILLS (400) Beautiful ruffled pure white with formal placement on tall straight stems. Very healthy and robust.

L 35c; M 25c; S 20c; Blbts. 15 for 25c

WHITE SAILS (401) Crisp heavy textured white fuchsia spears in throat. Many open in fine placement on long flowerheads. Strong grower with a fine show background.

L 25c; M 20c; S 3 for 25c; Blbts. 10 for 25c

WONDER BOY (470) A sensational purple! A rich dark purple of very fine substance produces magnificent exhibition bloom, one we highly recommend.

L 35c; M 25c; S 15c; Blbts. 20 for 50c

Small and Miniature Glads

- ALECIA** (200) A lovely round-flowered snow white; one of our favorite small glads. Stamens are creamy white also.
L 25c; M 20c; S 15c; Blbts. 10 for 25c
- ARIA** (244) Charming deep pink with light throat. Opens 3-inch florets on tall 20-bud spikes.
L 2 for 20c; M 4 for 30c; S 5 for 20c; Blbts. Pkg. 25c
- ATOM** (236) A fiery scarlet with white edges. 15 buds with 4-5 open. Very fine and popular.
L 2 for 25c; M 3 for 25c; S 5 for 25c; Blbts. Pkg. 25c
- BABY BETTY** (240) A taller and more refined Little Sweetheart. A very nice light pink.
L 2 for 20c; M 4 for 30c; S 5 for 20c; Blbts. Pkg. 25c
- BONNIE PRINCE** (262) About the prettiest small variety to date in the rose shades. Medium rose with slightly deeper markings.
L 40c; M 30c; S 15c; Blbts. 8 for 25c
- BO PEEP** (231) Ruffled rich buffy salmon, with beautiful Gloxinia throat. Beautiful and popular.
L 2 for 25c; M 3 for 25c; S 5 for 25c; Blbts. Pkg. 25c
- CRINKLES** (262) Late, medium deep rose with heavy ruffling. Will open 6 florets. A grand glad for arrangements.
L and M 25c; Blbts. 10 for 25c
- CRINKLETTE** (224) Deep orange with yellow throat and red stripe in throat. Will open 5 or more. Dainty and nice.
L and M 25c; Blbts. 10 for 25c
- EXQUISITE MIDGET** (140) The smallest pink glad I have seen. Clean, apple blossom pink $\frac{3}{4}$ to 1 in. Grows 16" tall with 8 buds and 4 open. Lovely for corsages.
L 25c; M 20c; S 15c; No Bulblets
- FADDIST** (243) Medium pink with brilliant red throat markings. Very choice for corsages.
L 2 for 20c; M 4 for 30c; S 5 for 20c; Blbts. Pkg. 25c
- FIGURINE** (217) Very early buff and light brown combination. Lots of ruffling. Will open 6 on straight spikes.
L and M 25c; Blbts. 10 for 25c
- Flicker** (222) Medium orange with scarlet and yellow markings. A very popular bi-color miniature.
L 2 for 25c; M 2 for 15c; No Bulblets
- GAILY GLAD** (211) Another eye-catcher. This one is more of a char-treuse yellow with a darker red throat blotch. Very good.
L 35c; M 25c; S 2 for 25c; Blbts. 10 for 25c; 100 for \$2.00
- GREMLIN** (251) Salmon scarlet or light red with attractive throat marks. A semi-face-up type.
L 25c; M 20c; S 15c; Blbts. 20 for 25c
- HEIDI** (210) Very dainty ruffled yellow, with no throat markings. Grows 36" tall with 19 buds and 8 open and the balance of spike in color. The finest ruffled yellow miniature I have seen.
Any size bulb \$1.00; Blbts. 10 for \$1.00
- LITTLE GOLD** (220) A magnificent ruffled golden miniature of excellent substance, a sensational introduction.
L 2 for 25c; M 4 for 30c; S 5 for 20c; Blbts. Pkg. 25c
- LITTLE PAL** (260) Light pinkish rose with deep rose throat plume. Very attractive with about 6 open.
L 35c; M 20c

- MARIONETTE** (213) Ruffled yellow flushed red with deep rose blotch. Very distinctive and popular.
L 25c; M 15c
- MICKEY** (214) A classy miniature by Jack Harris. Light yellow plush with all petals edged in rose. Tall; and carries 17 buds with 6 to 8 open. It has scored 88 in several seedling classes. One of the loveliest little glads.
Bulbs \$1.00 each, any size; Bulblets 10 for \$1.00
- NADIA** (231) Bright salmon upper petals and lower petals. Opens 6-8 with 15 buds.
L 2 for 20c; M 4 for 30c; S 5 for 20c; Blbts. Pkg. 25c
- OCEAN SPRAY** (307) Light cream plush with amber throat. Very distinctive and appealing.
L 25c; M 15c
- ORANGE BUTTERFLY** (222) An old "stand-by" orange that makes tall wiry spikes with 8-10 open.
L 2 for 20c; M 4 for 30c; S 5 for 20c; Blbts. Pkg. 25c
- PETER PAN** (233) Highly ruffled deep orange pink. Deeper throat. 6 to 8 open on 3-foot spikes. A miniature champion often.
L 25c; M 20c
- PINOCCHIO** (290) A novelty blend of orange pink and yellow. Heavily ruffled and very choice.
L 2 for 25c; M 3 for 30c; S 4 for 25c; Blbts. Pkg. 25c
- PINT SIZE** (166) One of the smallest. A tiny lavender with cream throat. 6 or 7 open of the 16 to 18 buds. A winner.
L 39c; M 20c
- PIROUETTE** (232) A tiny ruffled salmon, produces excellent decorative spikes very easy grower and rapid propagator.
L 25c; M 20c; S 15c; Blbts. 20 for 25c
- QUEEN OF BREMEN** (268) Delightful lavender pink with light throat. Grand for arrangements.
L 2 for 20c; M 4 for 30c; S 5 for 20c; Blbts. Pkg. 25c
- STARLET** (200) One of our favorites. Opens 5-6 white 3" blossoms on tall wiry stem.
L 2 or 20c; M 4 for 30c; S 5 for 20c; Blbts. Pkg. 25c
- STATUETTE** (211) Extra fine yellow with darker stippled throat marking. One of the best miniatures, very popular.
L 2 for 30c; M 2 for 20c; S 4 for 25c; Blbts. Pkg. 35c
- TWINKLES** (232) Ruffled scarlet with yellow throat. Tall, attractive and very popular.
L 20c; M 2 for 30c; S 3 for 25c; Blbts. Pkg. 25c
- WEDDING DAY** (...) Exotic, pure cup-shaped ruffled and fluted white. A masterpiece for use in wedding bouquets makeup work and corsages.
L 25c; M 20c; S 3 for 25c; Blbts. 10 for 25c
- WHITE BUTTERFLY** (200) White with soft cream throat. A dnady cut-flower and early.
L 2 for 20c; M 4 for 30c; S 5 for 20c; Blbts. Pkg. 25c
- WHITE LACE** (200) Immaculate snowy white with ivory throat. Waxy and heavily frilled.
L 2 for 25c; M 3 for 25c; S 5 for 25c; Blbts. Pkg. 25c
- WILL SCARLET** (236) An "old timer" but still one of the best true miniature scarlets.
L 2 for 20c; M 4 for 30c; S 5 for 25c; Blbts. Pkg. 25c
- YELLOW BIRD** (212) Undoubtedly the finest deep yellow miniature. Tall, with 8 open, straight, wiry spikes
L 2 for 35c; M 2 for 25c; S 5 for 30c; Blbts. Pkg. 25c

Fragrant Varieties

By O. B. SPENCER

DARK FRAGRANCE (454) A grand ruffled maroon carrying 19 buds, with 6 open, 5" florets. This is positively the first dark red glad. A really great discovery.

L 60c; M 40c; S 20c; Blbts. 10 for 60c

PINK FRAGRANCE (340) Similar to This Is It in growth, form and fragrance, but a clear light pink with lighter throat, 4½" florets with 6 open, 5" florets. This is positively the first dark red glad. A really great

L 40c; M 25c; S 15c; Blbts. 10 for 40c

PROGRESS (364) Ruffled rose red of medium height with 8 open on a 17-bud spike. It carries a definite rose fragrance.

L 30c; M 20c; S 10c; Blbts. 10 for 30c

RED SCENT (436) A sister of Dark Fragrance. A brilliant scarlet which would be a fine glad without fragrance. 17 to 19 buds, with 6 open. Heavily ruffled. Excellent fragrance. Our first good red fragrant.

L 60c; M 40c; S 20c; Blbts. 10 for 60c

SACHET (300) Ruffled pure white with medium sized florets that carry a nice persistent fragrance. It blooms nicely from any size bulbs.

L 30c; M 20c; S 10c; Blbts. 10 for 30c

SWEETIE (251) A new fragrant glad in a showy light red with a big white throat. 3" florets that are nicely ruffled. Will open 6 on a 14-16 bud spike. Dainty spikes from small bulbs that make lovely arrangements.

L 40c; M 25c; S 15c; Blbts. 10 for 40c

THISISIT (432) Nice clean deep salmon with about six 4½" florets open. The fragrance is noticeable in newly opened florets, and when cut and opened inside.

L 20c; M 2 for 25c; S 3 for 25c; Blbts. Pkg. 25c

YELLOW ROSE (432) This is believed to be the most fragrant variety to date. A very fine variety aside from its fragrance for it opens 6 or more 5 in. nicely ruffled blooms on a tall straight stem.

L 40c; M 25c; S 15c; Blbts. 10 for 40c

Goslings Dragons

DOUBLES AND NOVELTIES

Here is a list of new introductions, from that Master Geneticist, Botanist and Student of the unusual in gladiolus, Lucian Gosling, of Ludington, Mich. For the connoisseur, who wants something new and entirely different, either for the garden, or for breeding, purposes, there is nothing to compare with them. Flower arrangers from all over this part of the country, come here to get them for unusual arrangements.

BLUE DRAGON

A tall light blue Dragon whose petals are finely lacinated and edged with spurs to enhance a perfect symmetry. It will open seven lovely pale violet florets of its sixteen buds, but those thorny buds above are as lovely as the opened florets. I am more than proud of this stately beauty.

Any Size Corm \$3.00

GOLDEN WEDDING

A delightful pale yellow in the Wedding Day effect. Its short spike is filled with daintily folded and crinkled florets, with tiny spurs on the reverse side of the buds to give them accent. Though the florets are large, the petalage is so delicate and dainty it could pass for an orchid anywhere. This one is truly a dream of beauty, and should be invaluable to florists.

Any Size Corm \$3.00

STARLIGHT

A bright light red dragon with white spurs on the buds. The inner face of opened florets shows all red, but those unopened buds are all abristle with those white spurs, like the Evening Star when the sinking sun sets it afire in the western sky. This is truly a curious and exquisite novelty.

Any Size Corm \$3.00

DOUBLE CREAM

This is in shape and growth much like that first double of Koerner's, Multipetal, but it is a lovely creamy white, flecked lightly on the petal tips with lavender. Most of its ten florets will open at once, and that creamy color is more useful than Multipetal's yellow. Those double florets, full as a carnation, will entrance you.

Any Size Corm \$2.00

ELIZABETH THE ORCHID

This is that old favorite, Elizabeth the Queen, in exquisite flaring florets in the orchid effect of Grey Dragon. Though only five of its twelve buds will open at once, those bristling lavender buds above will enchant you. Try this one on your florist.

Any Size Corm \$2.00

DOUBLE GOLD

This semidouble has golden yellow petals streaked with orange, in perfect placement with six buds open and the rest in color. If you want to give your glad garden a truly vivid accent, plant some Double Gold among them. Its striking color and shape really makes it stand out.

Any Size Corm \$2.00

ROSY DREAMS

The shade and shape of Rose Orchid, but on a tall and stately spike that will open eight of eighteen buds at once. This is one of the taller of the Dragons, usually rearing its lovely head above all the others. This should be a real thrill to those glad fans who love the rosy shades.

Any Size Corm \$3.00

Former Introductions from Lucian Gosling

DINOSAUR—This is variable, ranging from sprawling blossoms like Grey Dragon, to spurred double florets, color always in bright orangy pink.

L 35c; M 25c; S 15c; Blbts. 10 for 35c

FAIRY DRAGON—This dragon is the key to the fairyland of new shapes, forms and types of dragons. Usually it bears fine needle spurred cupped florets in lavender pink, but occasionally it produces creased and fluted petals.

L 20c; M 15c; S 10c; Blbts. 10 for 25c

GLORY DRAGON—A spurred sport of Salman's Glory with the same color and beauty. Tall, vigorous and a splendid seed setter.

L 50c; M 35c; S 20c; Blbts. 10 for 50c

GREY DRAGON—Orchid type, with sprawling florets, folded and spurred, in lavender grey smoke. The oddest floret you ever saw, especially interesting in floral work.

L 25c; M 20c; S 15c; Blbts. 10 for 25c

MANYPETALS—A deep Burma Rose double. Tall strong stems with 12 to 14 open. The multitude of petals are twisted and lacinated profusely. Large bulblets often bloom. Stock is limited so order early.

L \$2.00; M \$1.50; S 75c; Blbts. 8 for \$1.00

MOTHER DRAGON—A lightly spurred, long headed salmon pink "Face-up" with ability to produce good seed. This and Fairy Dragon are the most satisfactory seed producers. Extremely limited stock.

L \$1.00; M 75c; S 50c; Blbts. 10 for \$1.00

MULTIPETAL—From Arthur Koerner's original stock. A many petalled double of dragon parentage it produces a high percentage of doubles, when bred on to seed bearing dragons.

L 25c; M 20c; S 15c; Blbts. 10 for 25c

PETALS OF EIGHT—A short-headed yellow, usually having two extra petals per floret giving it a peculiar density. Not a dragon.

L 25c; M 20c; S 15c; Blbts. 10 for 25c

RELUCTANT DRAGON—Next to White Dragon, this one is the most beautiful of the dragons. A beautifully ruffled and spurred "face-up" in salmon, with a yellow throat. Nice long flowerhead, 15 to 18 buds holding 5 to 7 open. Another real gem in a novelty. Hybridizers please note. Limited stock.

L \$1.00; M 75c; S 50c; Blbts. 10 for \$1.00

ROSE ORCHID—Technically a glad, but more like an orchid. It carries 8 to 10 heavily lacinated, spurred and interlocking florets. Very unusual and a novel corsage maker.

L \$1.00; M 75c; S 50c; Blbts. 10 for \$1.00

SHAGGY DRAGON—A large bright salmon double. Not as double as Carniola or Multipetal, having 12 to 15 petals in cupped "face-ups."

L 25c; M 20c; S 15c; Blbts. 10 for 25c

THE FAIRY GIANT—The giant of Dragons. 6 to 8 huge, hooded lavender florets with spurred petals and about 6 extruded, bristling buds above in perfect form. The florescence is huge and massive, the plant should be staked.

L \$2.00; M \$1.50; S 75c; Blbts. 4 for \$1.00

WHITE DRAGON—Globular creased and crinkled florets of heavy texture in ivory white with a pink dot in throat. Complex spurs on this clustered bloom make it appear double, and a rare delight for arrangers.

L \$1.00; M 75c; S 50c; Blbts. 10 for \$1.00

"New Exotic Hybrid" Gladiolus

New "Exotic Hybrids," not just another gladiolus, with probably a different color or form of floret. But a completely new race with an entirely new concept of gladiolus use for the home and for floral use.

The long stiff gladiolus spike may be a masterpiece on the show table, in a basket or tall vase. But it becomes rather impossible to use that same spike in an arrangement suited to modern needs in our smaller homes.

The "Exotic Hybrids" were developed with only one purpose in mind, more flowers to be used by more people in their homes and daily lives.

The spikes are not long and some varieties crook considerably. Sister Elizabeth Kenny has eight long lacy petals per floret, the spikes are supported by long thin stems and over half will bend to the ground. Yet we considered it outstanding enough to apply for patent, and others in position to know, agree with us.

Most "Exotic Hybrid" varieties have double florets. Here again the spikes are not long. But florets with up to twenty-five petals are not uncommon, giving a fullness to floral work no other gladiolus can equal.

KOERNER'S MEMORY (Doerr '55)

Four-inch florets varying in color from salmon at the outer edge of petals to pink and blending to cream in the throat, giving it a peaches and cream combination. Has up to 18 petals per floret. 12 buds on 18-inch spike, 4 open, 4 in color.

Any size bulb 50c, Blbts. 10 for \$1.00

SISTER ELIZABETH KENNY* (Doerr '55)

Eight long lacy petals in a light cream shade tending to green in the throat. The 5-inch florets are carried 10 on a 16-inch spike, 4 open, 4 in color.

Large or medium bulbs 50c

ORCHID DRIFTWOOD (Doerr '55)

Twelve 3-inch oddly shaped florets on a 16-inch spike gives it a driftwood effect in floral work. Each floret has 12 petals, orchid lavender, shading to cream in throat.

Any size bulb 50c

ARTHUR C. KOERNER* (Doerr '56)

A beautiful red charm color with up to 18 petals per floret. Twelve 3-inch florets on an 18-inch spike. 4 open, 4 in color.

Any size bulb 50c

MULTIPETAL NO. 1 (Koerner)

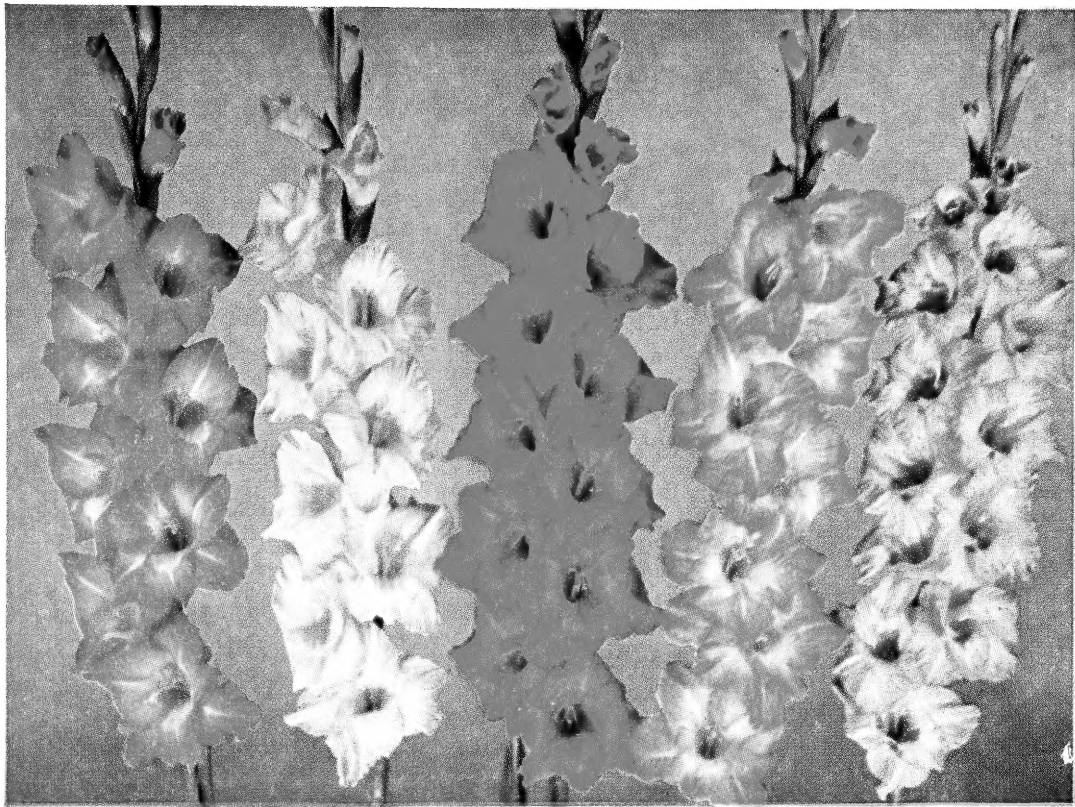
Multipetal No. 1 was the pollen parent of all "Exotic Hybrids" listed above. Originated by the late Arthur Koerner of Minnesota some years ago. It was placed on the market at \$10.00 per bulb. Makes a medium sized plant with florets of 12 petals and more. Pale yellow in color with bright red deep in throat. Very nice in floral work.

Any size bulb 50c; Blbts. 10 for 50c

Prices all above net. No discount.

*Patent applied for. U. S. & Canadian rights reserved.

One Bulb Each of All 5 varieties for \$2.00 P.P.



All-America Beauties

★ EASY TO GROW ★ HEALTHY ★ TESTED

These are the selections of the All-America Gladiolus Trial Gardens, and are the cream of the crop. They are sure to grow and bloom for YOU! In the picture above, they are, from left to right, EMPEROR, APPLEBLOSSOM, ROYAL STEWART, MAYTIME AND CARIBBEAN.

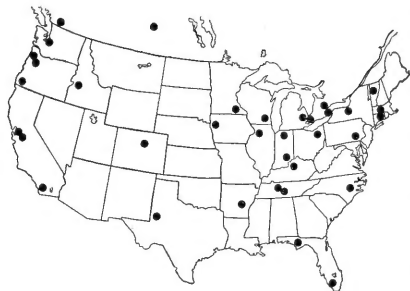
Uniform low bulb prices and cultural directions on other side. Every genuine bulb is packaged with the registered AAGS trademark.

A few select florists have been licensed to offer cut flowers of the All Americas for sale. Each dozen bears the variety name with the AAGS trademark on the tag. Ask for them!!!

BRUCE COLLINS
UTICA, MICHIGAN



Printed in USA



The thirty-five All-America Trial Garden locations (see map) are in every type of soil and climate. Recommendation by this non-profit, industry-wide organization is recognized as the most coveted award for any gladiolus. Every variety tested is rated on thirteen specific traits: Color Value, Freedom from Short Heads, Floret Form, Substance, Facing & Placement, Attachment, Freedom from Weathering, Opening & Keeping Qualities, Individuality, Freedom from Crooking, Foliage Health, Husk & Bulb Health, Propagation. **EMPEROR** is the 1958 winner, and is now available with **ROYAL STEWART**, **APPLEBLOSSOM**, **MAYTIME** and **CARIBBEAN**.

All-America varieties are all protected by U.S. plant patents and sold at uniform low prices—the lowest ever for new, quality introductions. Even if you have not been successful with glads before, try the All-Americas. They are *different*.

CULTURE: AAGS recommends these steps for growing glads: (1) Open package at once and store bulb in cool dry place. (2) Plant at intervals of 10 days from last killing frost. Early plantings can stand moderate frost. (3) Plant in open sunny place, in bed or row, and in any well-drained soil. (4) Plant bulbs 5 inches deep, at least 4 inches apart. Use any good commercial fertilizer, but do not put it in

contact with the bulb. (5) Glads like plenty of water, especially when bud is forming. (6) When cutting, leave 4 leaves to mature the bulb. (7) Thrips are insect pests of glads. For complete control, use DDT dust or spray every 10 days. (8) Some growers soak bulbs in Lysol solution for 2 hours before planting and plant wet. Use 1¼ teaspoons Lysol to 1 gallon water.

PRICE: \$.50 each, \$5.00 per dozen (any combination) or one of each variety for \$2.25.

EMPEROR (Pl. Pat. Pending) is a robust grower, royal purple with light throat. A rich, distinctive color. Makes majestic spikes that grow very tall.

ROYAL STEWART (Pl. Pat. 1339) is a he-man red, straight and with 8-10 open at once. An outstanding winner of top Awards.

MAYTIME (Pl. Pat. 1591) is a real stunning pink with white throat. Delightful for arrangements, Ruffled and healthy. Remarkably easy to grow.

CARIBBEAN (Pl. Pat. Pending) is a light blue with throat of cream and white. Sparkling color, ruffled. A top performer in every way.

APPLEBLOSSOM (Pl. Pat. 1517) is white with rose-pink edges—a real beauty. An easy grower that performs excellently with only average culture.



So Easy and So Much Fun
To Grow

ALL-AMERICA GLADIOLUS SELECTIONS

INCORPORATED

Your Handy Gladiolus Order Form

BRUCE COLLINS

UTICA, MICHIGAN

Date

Name—Mr., Mrs., or Miss

Street or R.F.D. No.

Post Office State

Express Office When?

(If different from Post Office)

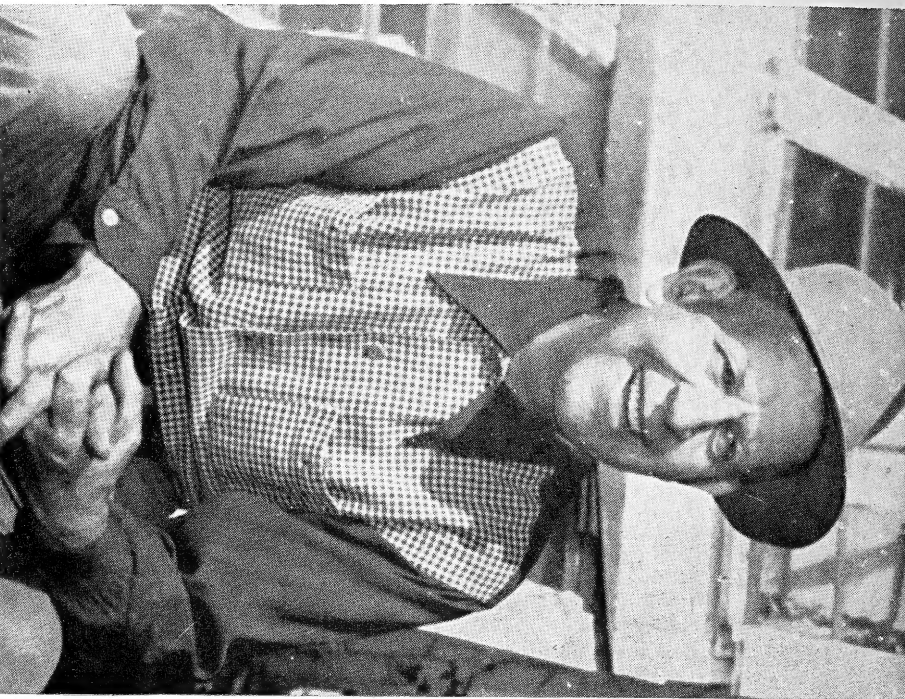
IN CASE WE ARE SOLD OUT OF ANY ITEM, SHALL WE

Substitute Nearest Size Substitute Nearest Variety Refund

Note: Order accepted by Bruce Collins subject to stock, and subject to being filled in numerical sequence. Check
M. O. \$

Quantity	Size	Variety Name	Rate	Amount
1.
2.
3.
4.
5.
6.
7.
8.
9.
10.
11.
12.
13.
14.
15.
16.
17.
18.
19.
20.
21.
22.

NOTE: Bruce Collins will refund the purchase price on any order found unsatisfactory upon receipt, and promptly returned; but no guarantee of growth or satisfaction is given; responsibility for crop is denied. **TOTAL**



A Candid Shot of the Old Boy, Himself. So when he talks about 45 years of growing glads, you will know he isn't kidding—

BRUCE COLLINS

8844 River Road

Utica, Michigan

U. S. DEPARTMENT OF AGRICULTURE

LIBRARY
WASHINGTON 25, D. C.

OFFICIAL BUSINESS

PRINTED MATTER

BIBLIOGRAPHY DIVISION
LIBRARY, U. S. DEPT. OF AGRICULTURE
WASHINGTON 25, D. C.

PENALTY FOR PRIVATE USE TO AVOID
PAYMENT OF POSTAGE, \$300
(GPO)

RETURN POSTAGE GUARANTEED