

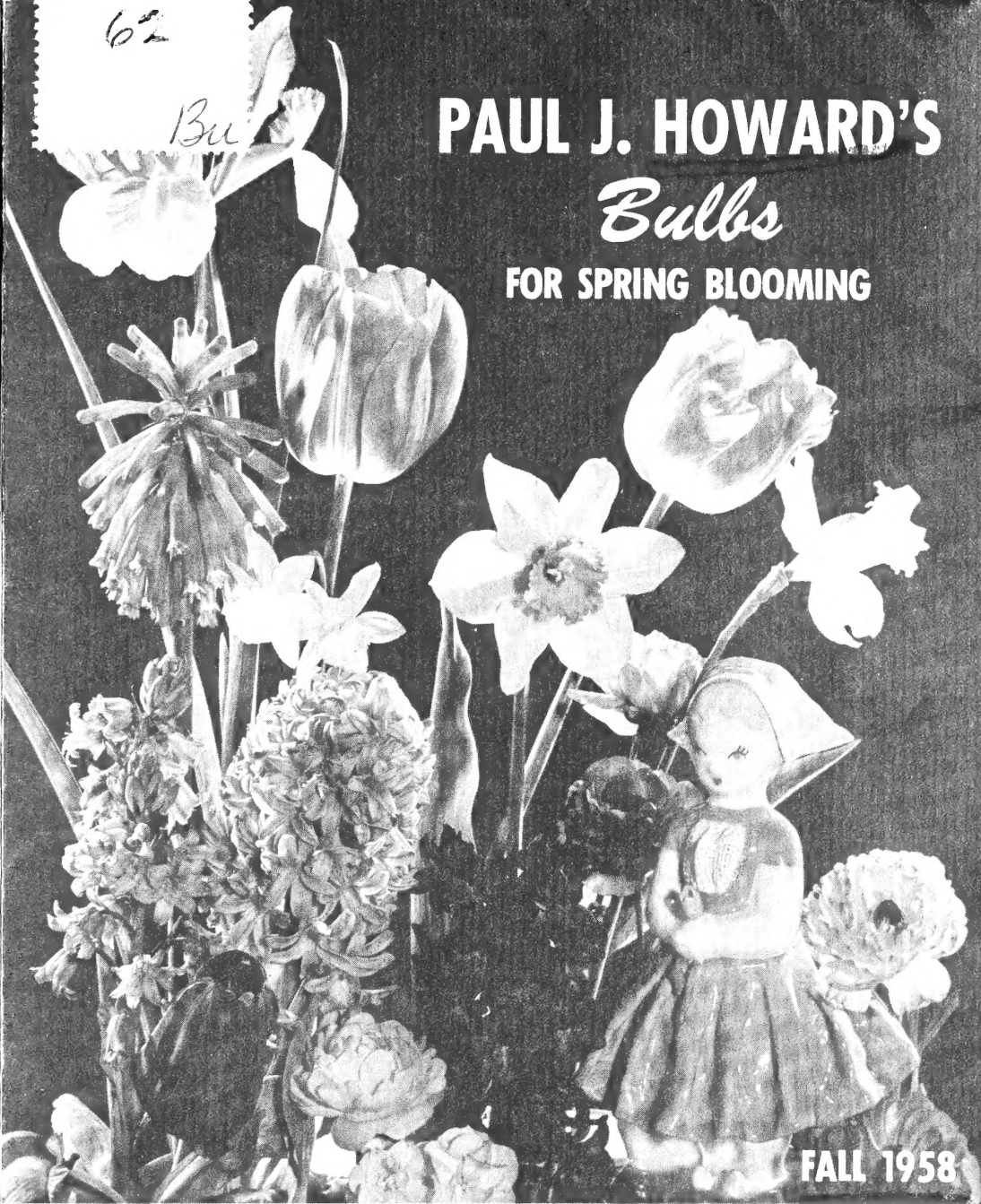
62

Bu

PAUL J. HOWARD'S

Bulbs

FOR SPRING BLOOMING



FALL 1958

PAUL J. HOWARD'S California Flowerland
 11700 National Boulevard • Los Angeles 64, California
 RETURN POSTAGE GUARANTEED

BULK RATE
 U. S. POSTAGE
PAID
 Los Angeles, Calif.
 Permit No. 12531

BIBLIOGRAPHY DIVISION
 LIBRARY- U.S. DEPT. OF AGRICULTURE
 WASHINGTON 25, D. C.
 OCT 20 1958
 U. S. Department of Agriculture

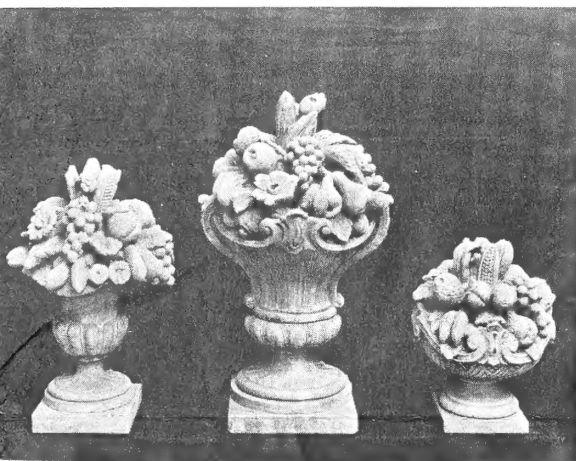
From Italy

Paul J. Howard's has imported a unique collection

of Morseletto stone figures and ornaments, hand carved, to grace your garden and terrace. Shown here are but a few—

Baskets of handcarved fruit.

Can be used in so many places throughout your home and garden. Use them in pairs or as separates. Range in height from 20 inches to 29 inches. Prices from \$100 to \$135.00 each

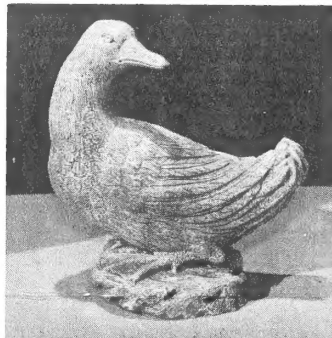


The ultimate in garden fountains. Five feet tall with three separate basins for cascading water.

All hand sculptured, \$650.00



A graceful life size duck to complete your garden setting. Place him on the terrace or near a pool. 14 inches in height. \$90.00



Saint Fiacre. The patron saint of gardens. Stands three feet tall. This figure calls for a very special spot in your garden. \$155.00



SHOP EARLY FOR CHRISTMAS

You will be proud to see, to buy and to receive any of our hundreds of new imports from England, Italy, France and Ireland—Germany and Switzerland.

Hand tooled Venetian leather items for men and women. \$1.25 to \$27.00

Straw place mats, jewelry, aprons, hats, animals, Christmas toys \$1.00 to \$15.00

Antiques from England—crystals, porcelains, brass, copper, for every room in your home \$5.00 to \$250.00

Cache pots in every shape, size and color—pottery or metal. \$1.50 to \$55.00

Hand-made Nativity scenes, carved toys and figures, for all ages, from Germany and Switzerland 50c to \$10.00

From our Christmas Shop—a new shipment of ornaments from the Italian Alps, never shown in this country before. 25c to \$1.00 each

Ornamental Flower Pots. A vast collection of imports from France, Italy and England, as well as many California ones, in color, style and size for every decor or need.

And for Patio and Garden Decoration—terra cotta, glazed and unglazed pots, Redwood planters and pots.

A REMINDER

Come in and select your "personalized" Christmas cards from over forty excellent albums.

Imprinting orders taken up to December 15.

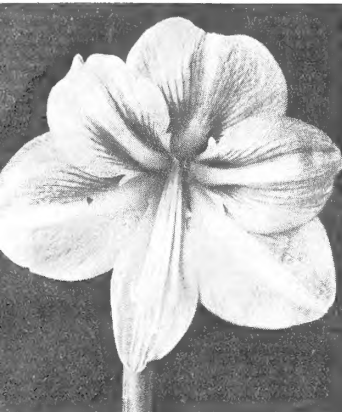
An early Christmas gift. Santa Head with snow white cardboard beard and red stocking cap which comes off to reveal a cylinder full of delicious candies. Ideal children's gift or party favor. \$2.95, complete with candy.



PAUL J. HOWARD'S California Flowerland

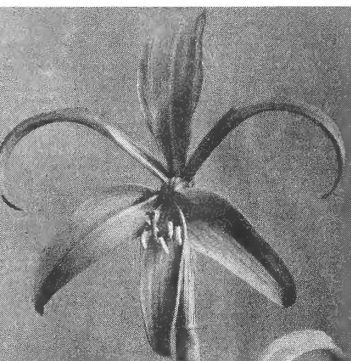
11700 NATIONAL BLVD., LOS ANGELES 64, CALIF.

PAUL J. HOWARD'S Exotic Bulbs for Pot Culture



GIANT HYBRID AMARYLLIS

VIVID RED SPREKELIA



GIANT HYBRID AMARYLLIS

These produce immense, showy lily-like blooms in clusters of 3 to 6, on massive stems, produced above broad, strap-like leaves. They are exotic garden subjects in mild areas, and prized as pot plants. Plant in rich soil with good drainage, so neck of bulb is at least one inch above the ground.

Separate colors: Crimson, Scarlet, White with Pink stripes. Each \$1.00, 3 for \$2.75, dozen \$10.00.

Amaryllis Bulbs, mixed colors, each 75c, dozen \$7.50.

Ismene Calathina. Basket Lily. Clusters of big fragrant white flowers resembling daffodils, on 2-ft. stems; long strap leaves. Blooms in summer. Plant in the border in rich, well drained soil, water freely. Each 75c, 3 for \$2.00, dozen \$6.50.

Muscari Plumosum. Plume Hyacinth. An unusual and fascinating flower, with massive spikes of feathery violet purple 7 to 10 inches high. Blooms early in summer, very showy. Dozen \$1.75, 100 for \$12.50.

Lachenalia aurea. Easily grown bulb from South Africa. Twelve-inch spikes of long pendulous flowers, golden yellow tipped red, attractive as cut flowers. Plant in the garden, an inch deep, in rich loam, or grow 5 or 6 in a pot. 3 for 50c, dozen \$1.50, 100 for \$10.00.

LYCORIS AND NERINE bear big round clusters of wavy blooms in late summer or fall.

Lycoris aurea. A rare and unusual plant of the Amaryllis family, with large flower heads of bright yellow, on 2 ft. stems, in fall. Grow in pots or in the ground, in a light, sunny location. 3 for \$1.00, dozen \$3.50.

Lycoris radiata (Guernsey Lily.) Clusters of bright coral red blooms on long, strong stems. Plant 3 bulbs in a 5-inch pot, or grow them outdoors, like Amaryllis. 3 for \$1.00, dozen \$3.50.

Lycoris squamigera. Large flowers of rose pink, very fragrant, in summer, long broad leaves. Grow in pots or in the garden, like Amaryllis. 3 for \$1.00, dozen \$3.50.

Nerine Bowdeni. Striking large flowers, pink with rose line down each petal, in clusters of 7 to 10 on tall strong stems, in fall; strap-shaped leaves. Grow in pots or in the ground, like amaryllis, water freely until they have bloomed. 3 for \$1.00, dozen \$3.50.

Sprekelia formosissima. Aztec Lily. Striking, orchid-shaped blooms of bright red on long stems, in late spring and summer. Culture same as for Amaryllis. Each 75c, 3 for \$2.00, dozen \$7.50.

OUTSTANDING GLADIOLUS From Leading American Specialists Bulbs Ready in November

- Country Girl.** Huge new light lavender, immense spikes.
- Fire Opal.** Dazzling fiery scarlet with yellow throat, deeply ruffled.
- Friendship.** NEW Ruffled soft pink with yellow throat.
- Gold.** The best deep golden yellow.
- Lady Jane.** Immense cream and chartreuse yellow, fine cut flower.
- Pink Diamond.** Exquisite frosty pastel pink of heavy texture and ruffling.
- Poinsettia.** Favorite brilliant red, ruffled.
- Ravel.** Tall violet blue with touch of red in throat.
- Regina.** NEW. Six ft. spikes of huge golden apricot blooms, shaded orange and deeply frilled.
- Snow Cloud.** Outstanding pure white, massive petals deeply frilled.
- Truly Fair.** NEW. Rich American Beauty rose red with satin sheen.
- Wild Rose.** NEW. Frilled rose pink with cream throat, lovely cut flower.
- High Finance.** Smoky orange with grey markings and cream throat, immense size, striking novelty.

PRICE: No. 1 Top Size Bulbs, 3 of 1 variety, 50c; dozen \$1.50, 100 for \$10.00.

PLANT GLADIOLUS BULBS any time from November to April, for continuous bloom all spring and summer. Select only big plump bulbs. Plant in a sunny location, with good drainage, in well prepared soil that has had bone meal or bulb food added. Set bulbs 4 to 5 inches deep and 6 to 8 inches apart. Water regularly, and when plants have developed 5 or 6 leaves, begin spraying for thrips. Protect Gladiolus also from slugs and snails with a good snail bait.

PAUL J. HOWARD'S HARDY IRIS

- Blue Rhythm.** Beautifully formed blooms of lovely cornflower blue, blooms late. Each \$1.00, 3 for \$2.75.
- Alice Harding.** Soft yellow, very large flowers of fine form. Blooms the year around. Each 85c, 3 for \$2.00, 10 for \$6.50.
- Helen McGregor.** Large frilled blooms of clear light blue, without lavender shading. A prize and one of the best. Each \$1.00, 3 for \$2.75.
- Lux.** Vivid big flowers with standards of glowing old gold suffused with apricot, falls are flaring, brownish rose tinged with carmine. Each 85c, 3 for \$2.00, 10 for \$6.50.
- Maytime.** Beautifully formed Iris with pale orchid pink standards and falls of deeper rose pink, shaded gold. Each \$2.50, 3 for \$6.50.
- Mme. Louis Aureau.** Distinctly different, one of the finest. Standards and falls are creamy white, stippled rosy mauve, deeper at edges, and veined brown at base. Each 85c, 3 for \$2.00, 10 for \$6.50.
- Ola Kala.** Prize winning clear yellow, heavily ruffled and flared. Tall, vigorous plant. Each \$1.00, 3 for \$2.75.
- Paladin.** Very large, broad lavender falls bordered and flushed green gold, standards are pale gold. Each 85c, 3 for \$2.00, 10 for \$6.50.
- Snow Flurry.** A lovely flower with ruffled falls and standards of palest ice blue-white. Blooms. Freely. Each 85c, 3 for \$2.00, 10 for \$6.50.
- Zampa.** Rich metallic bluish purple, one of the most free flowering. Each 85c, 3 for 2.00, 10 for \$6.50.

PAUL J. HOWARD'S California Flowerland
11700 NATIONAL BLVD., LOS ANGELES 64, CALIF.

PAUL J. HOWARD'S

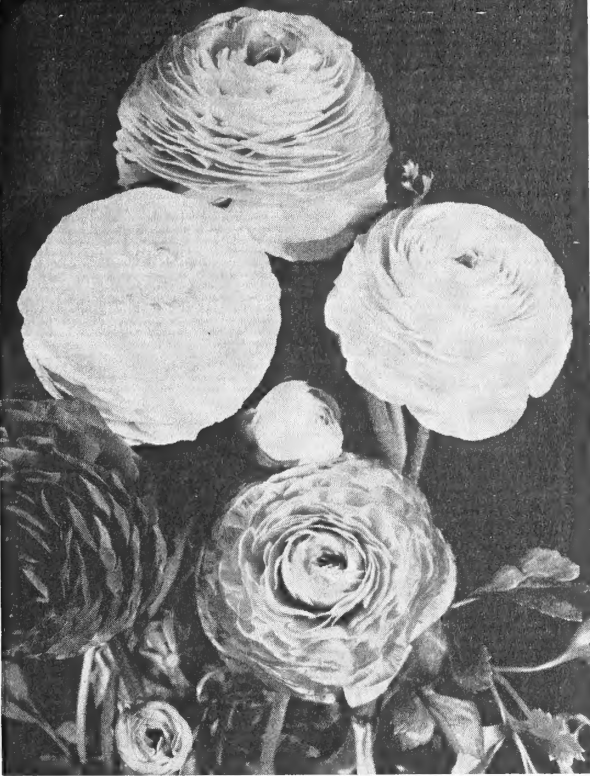
JUMBO RANUNCULUS

Paul J. Howard's Jumbo Ranunculus are famed for their brilliant colors, huge silky double blooms and long flowering season, each bulb producing dozens of buds and flowers. Ranunculus are easily grown. Plant in full sun, in well drained soil, after October first when nights are cool. Soak bulbs a few hours in water or start in moist sand. Set bulbs with prongs down, 6 to 12 inches apart, depending on size of bulbs, and cover about one inch.

Red Shades
Rose Shades
Pink Shades
California Flowerland Mixture of all Shades

White Soft Yellow
Golden Yellow
Sunset Shade (Orange)

PRICE: Jumbo Bulbs, dozen \$1.50, 100 for \$11.50.



DOUBLE RANUNCULUS, showiest spring flowers.

Crocus. Earliest of all bulbs to bloom, large cup-shaped flowers on short stems. Grow in half-shade in the garden, or in pots. Purple, White, yellow, Striped. Dozen 75c, 100 for \$5.00.

Scilla Campanulata. (Wood Hyacinth). Bell-shaped flowers on 10-inch stems. Plant 4 inches deep. Blue, Pink, White. Dozen \$1.00, 100 for \$7.50.

Muscari Conicum. (Grape Hyacinth). Short spikes of small bright blue blooms in early spring. Culture same as Freesias. Dozen 75c, 100 for \$5.00.

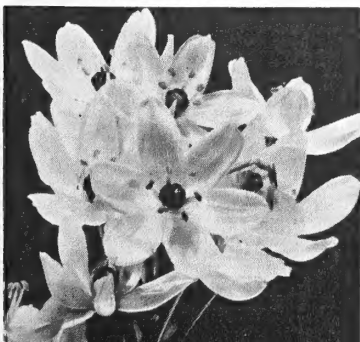
Leucojum vernum. Spring Snowflakes. Slender spikes of small white flowers, like lily-of-the-valley. Plant in good garden soil, 3 inches deep. Dozen \$1.50, 100 for \$10.00.

Glory of the Sun. *Leucocoryne ixioides odorata.* Fragrant star-shaped flowers, soft blue, in slender sprays. Plant 3 inches deep, 4 to 6 inches apart. Dozen \$2.00, 100 for \$15.00.

SHOWY SPARAXIS
Ixias and Tritonias
have similar blooms.



STAR OF BETHLEHEM



LOVELY ANEMONES

Broad petalled poppy-like flowers with showy centers, resembling Ranunculus in culture and habit of growth. Set bulbs with pointed side down.

Blue Poppy. Violet blue with black center.

His Excellency. Scarlet, black center.

Rosea. Rose shades.

The Bride. White, greenish center.

California Flowerland Mixture of All Colors

NEW DOUBLE ANEMONES

The Admiral. Large double rose pink.

The Governor. Double scarlet, white center.

Lord Lieutenant. Double pastel blue.

Double White.

St. Brigid Double Anemones. All Colors and Shades, in mixture.

PRICE OF ALL ANEMONES:

Jumbo Bulbs, dozen \$1.50, 100, \$10.00.

Flame Freesia. (*Tritonia crocata*) Sprays of showy flowers in vivid orange, as easily grown as Freesias. Dozen \$1.00, 100 for \$6.00.

Sparaxis. Spikes of flaring, star-shaped flowers, in brilliant shades, with contrasting colors in throat. Plant like Freesias, in full sun. New Hybrids, Mixed Colors, dozen \$1.00, 100 for \$6.00.

Ixias. Showy star or cup shaped blooms, crimson, rose, red, yellow or white with contrasting centers, on slender 10-inch stems, bloom many weeks. Plant in sun or half-shade, cover one inch. Mixed Colors, dozen 50c, 100 for \$3.50.

STAR OF BETHLEHEM

Ornithogalum arabicum. Long lasting as cut flowers and in the garden. Round clusters of pure white flowers, jet-centered, on tall, strong stems. Dozen \$1.75, 100 for \$11.50.

FRAGRANT FREESIAS

For permanent borders, and graceful cut flowers. Plant in early fall, in sun or half-shade, in good garden soil mixed with peat, compost or leaf mold (no manure) and bulb food. Set bulbs 2 inches deep, 3 inches apart, water regularly.

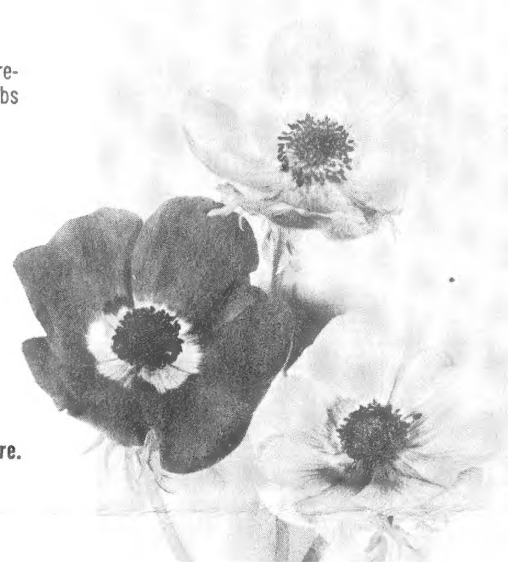
Giant White
Golden Yellow
Bright Rose

Double Yellow
Soft Pink
Blue
Lavender

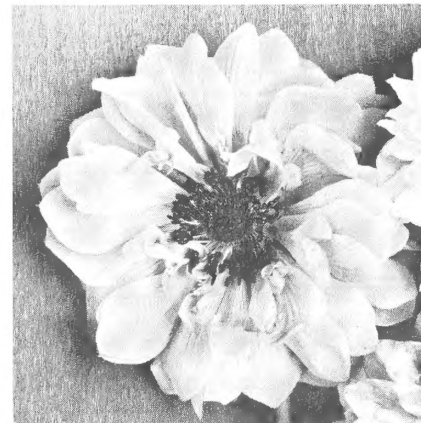
California Flowerland Mixture of All Shades
Dozen 85c, 100 for \$6.50



POPPY-LIKE SINGLE ANEMONES



DOUBLE ANEMONE, free flowering



MAMMOTH FREESIAS



PAUL J. HOWARD'S
CALIFORNIA FLOWERLAND

11700 National Blvd., Los Angeles 64, California



Tulips are showiest when planted in masses.

PAUL J. HOWARD'S TULIPS FOR SOUTHLAND GARDENS

From nearly 70 varieties in our Tulip Trials last spring, we have selected these Tulips as the best for Southland gardens. All have great vigor, produced wonderful big blooms of exceptional beauty, on long strong stems, each one outstanding in its color group.

You can grow fine Tulips in the Southland, as everyone knows who has seen the Tulips in bloom at California Flowerland.

Follow these rules —

1. Buy the best, top-size bulbs of varieties proven for the Southland.
2. Plant when ground is cool, in November or early December. Set bulbs 6 to 8 inches deep, water thoroughly at planting time. When growth appears in spring, water deeply and regularly. In our mild winter weather, lack of water may stunt the growth and blooms of Tulips not suited to our conditions.

NOTE: Storing Tulip bulbs in a refrigerator (not deep freezer) for several weeks before planting will stimulate proper development of growth and blooms.

OUTSTANDING NOVELTY TULIPS

Asta Nielson. Very tall and vigorous light yellow of great size and beauty, one of the earliest to bloom. **3 for 70c, dozen for \$2.00, 100 for \$14.50.**

Bond Street. A wonderful big cupshaped yellow, golden orange outside; long blooming season. **3 for 85c, dozen \$2.50, 100 for \$18.00.**

Chinese Bandit. Immense Chinese red with bronze and orange shading, yellow center; tall, long lasting. **3 for 70c, dozen \$2.00, 100 for \$14.50.**

Gen. de la Rey. Showy novelty — an unusual and artistic combination of bronze and rose; center is purple with black stamens. Blooms late. **3 for 70c, dozen \$2.00, 100 for \$14.50.**

Helen Keller. Exquisite long pale yellow blooms, golden yellow inside; fine cut flower, long lasting. **3 for 85c, dozen \$2.50, 100 for \$18.00.**

Maureen. Immense ivory or marble white with yellow anthers of exquisite form and substance. **3 for \$1.45, dozen \$5.00, 50 for \$15.00.**

Pandion. Rich violet purple with silvery white edge; very tall. **3 for 70c, dozen \$2.00, 100 for \$14.50.**

Pink Supreme. Very fine vivid lilac rose, lighter inside, tall, long lasting. **3 for 85c, dozen \$2.50, 100 for \$18.00.**

Queen of Sheba. The showiest of all-lily flowering, with pointed petals; bright dark red edged golden yellow, black anthers, like a showy garden lily. This lasted a full month in our garden. **3 for 85c, dozen \$2.50, 100 for \$18.00.**

Santa Monica. We consider this the finest tulip for the Southland — massive cupshaped cherry red blooms on tall, extra strong stems. Marvelous, long lasting in the garden, just as fine when cut. **3 for 85c, dozen \$2.50, 100 for \$18.00.**

White City. Massive pure white flowers with yellow anthers. **3 for 70c, dozen \$2.00, 100 for \$14.50.**

GARDEN TESTED NEWER TULIPS

Now offered at the price of ordinary, older Tulips.

All Top Size Bulbs, Dozen \$1.65, 100 for \$11.00.

Aristocrat. Soft lilac rose, lighter at edges.

Cordell Hull. Striking maroon red with white markings; late.

Mrs. John Scheepers. Golden yellow, one of the best, blooms early.

Pride of Zwanenburg. Fine salmon pink, with lighter edges, late.

Queen of the Night. Good novelty tulip, very dark maroon.

Scarlet O'Hara. Vivid geranium red, black center and stamens, circled with gold on tall stems; long lasting, blooms late.

Scotch Lassie. Rich deep lilac lavender, fine for massing.

Smiling Queen. Fine rosy pink, silvery edge, white center, long lasting.

Sunkist. Excellent deep golden yellow, late.

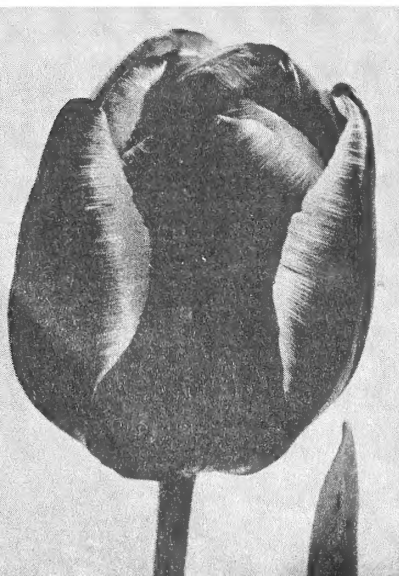
The Bishop. Favorite deep violet purple.

Winnetou. Vivid deep orange red with bronze sheen, yellow and black center.

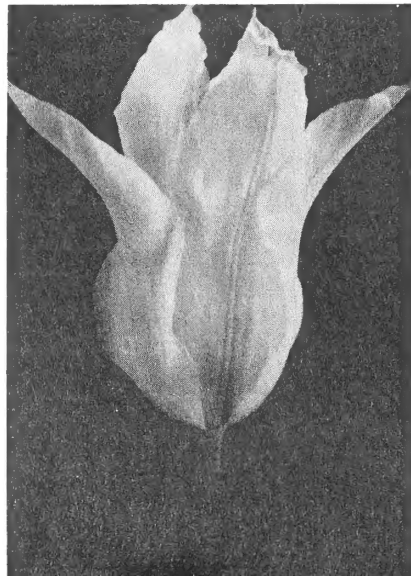
White Triumphator. Resembles a lovely Easter lily, pure white with long pointed petals, on long strong stems.

The Lady Tulip - Tulipa Clusiana. Slender pointed blooms peppermint striped crimson and white, on 12-inch stems. Charming for borders, rock gardens and in pots. **3 for 70c, dozen \$2.00, 100 for \$14.50.**

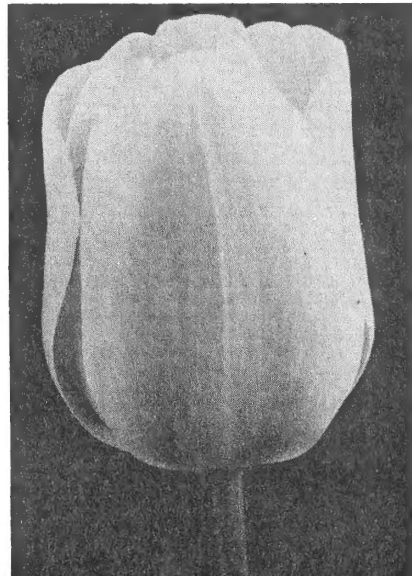
Pandion



White Triumphator



Maureen



Cordell Hull



CALIFORNIA FLOWERLAND

Spectacular Fringed Tulips

An Exciting New Class of Tulips we are proud to introduce to Southland gardens. These lovely Tulips, in unusual colorings, with edges of petals finely fringed, were a sensation in our Tulip Trials last springs. All are exceptionally vigorous with large blooms of the Darwin type, on tall sturdy stems; Flowers lasted several weeks in the garden and when cut.

Amy. Large cup-shaped flowers of pale lavender with bright blue center and deep purple stamens; edges heavily fringed. **Each \$1.50, 3 for \$4.00.**

Gypsy Queen. An exotic blend of amber, orange and rose tones, with conspicuous golden center and lavender stripe down each petal. **Each \$1.50, 3 for \$4.00.**

Maja. Very beautiful light lemon yellow, on tall strong stems; finely fringed edges. **Each \$1.50, 3 for \$4.00.**

Swan Wings. Exquisite fringed blooms of pure white, with faint lavender shading as flower ages. **Each \$1.50, 3 for \$4.00.**

M. POSTMUS

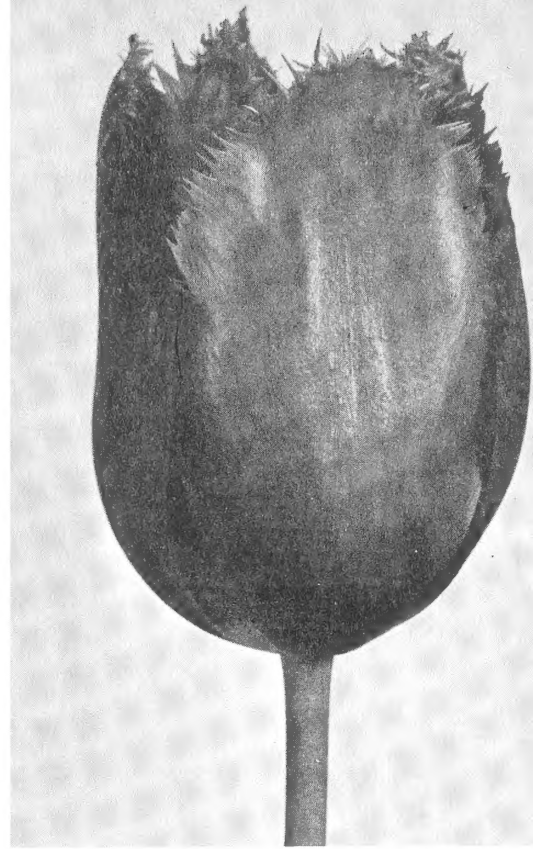
The most admired Tulip in our gardens last spring. Immense blooms of bright deep cherry red, with conspicuous fringed edges, on tall, strong stems, lasted several weeks. **3 for \$1.00, dozen \$2.95, 50 for \$1.00.**

Get Acquainted Collection of 6 NEW FRINGED TULIPS

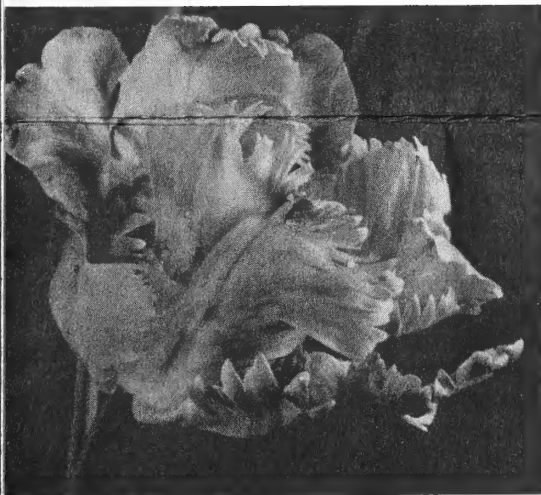
1 each: Amy
Gypsy Queen
Maja
Swan Wings
2 M. Postmus

for \$5.50

(Cost if purchased separately, \$6.66)



EXOTIC PARROT TULIPS



Parrot Tulip

These produce enormous flowers with deeply cut and fringed petals, in rich, vivid colors, usually oddly marked or bordered.

Van Dyck. Showiest of all Parrot tulips, and the most vigorous. Outside is brilliant rosy lilac, inside bright rosy red. The immense blooms are borne on tall, strong stems and last several weeks. **3 for \$1.45, dozen \$5.00, 50 for \$15.00.**

Blue Parrot. Large massive ruffled blooms of bright violet, flushed steel blue, on tall, straight stems.

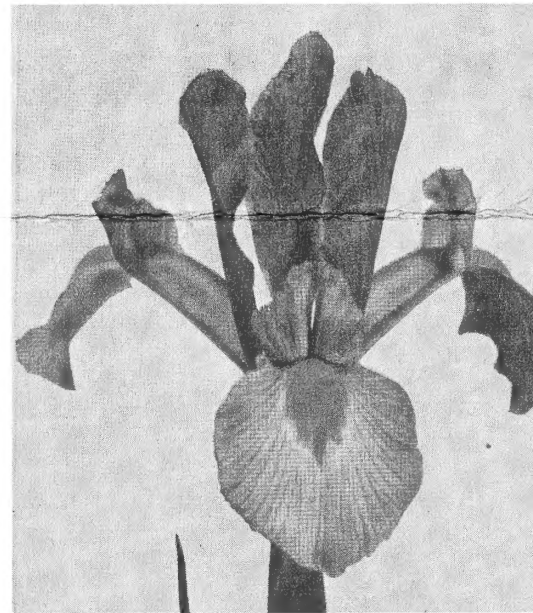
Fantasy. Favorite rose pink, with green markings.

Red Parrot. Magnificent long lasting flowers, 8 inches across, bright rosy red.

Texas Gold. Massive golden yellow, on strong, erect stems.

Admiral Doorman. Broad petalled cherry red, edged and marked with yellow, outstanding and showy, on fine stems.

The above Parrot Tulips: 3 for 70c, dozen \$2.00, 100 for \$14.50.



Dutch Iris

BABY GLADIOLUS

Slender spikes of butterfly-like flowers for cutting and garden display. Early flowering, disease-free, as easily grown as the larger Gladiolus. Plant as early as possible, in sandy loam, full sun, 2 inches deep.

Amanda Mahy. Salmon pink.

Nymph. Pure white with red throat.

Orangeade. Soft orange.

Peach Blossom. Light pink.

Spitfire. Scarlet.

The Bride. Pure white.

Dozen \$1.50, 100 for \$10.00.

Gladiolus Tristis Concolor. Fragrant blooms of light chartreuse yellow, on tall slender stems. **Dozen \$2.00, 100 for \$15.00.**

DUTCH IRIS

LONG LASTING AND SHOWY

Beautiful orchid-like flowers of heavy substance and bright colors on strong stems, make Dutch Iris ideal for flower arrangements and garden display, from February to April.

Plant in early fall, in sun or part shade, in well drained, pulverized soil 3 to 4 inches deep. Keep well watered after foliage appears; protect from slugs and snails.

Belle Jaune. Golden yellow.

Blue Ribbon. Huge royal blue.

Bronze Beauty. Bronze, with blue standards.

Delft Blue. Clear bright blue.

Gold and Silver. Huge white, yellow falls.

PRICE: Dozen \$1.35, 100 for \$8.50.

Joan of Arc. Immense creamy white.

King Mauve. Lovely orchid mauve.

Le Mogol. Tall bronze with olive lip.

Tangerine. Deep orange yellow.

Wedgewood Iris. Fine early clear blue, for massing and cut flowers. **Dozen 75c, 100 for \$5.00.**

PAUL J. HOWARD'S Flower Seeds

FOR FALL AND WINTER SOWING

All Flower Seeds sent prepaid in U.S.A. Please add 4% sales tax to all California orders.

Calendula. Pacific Beauty. Apricot, Cream, Lemon, Persimmon, and Mixed Colors. Pkt. 25c.

DELPHINIUM. Pacific Giants. Astelot, rose shades; Black Knight, dark blue; Blue Bird, medium blue with white eye; Blue Jay, medium blue; Cameliard, lavender; Knight Arthur, deep violet; Lancelet, lilac; Galahad, pure white; Summer Skies, light blue; Round Table, all shades in mixture. Pkt. 35c, 5 pkts., \$1.40.

PANSY. Paul J. Howard's Swwis Giants. Finest of all strains, immense richly colored long stemmed blooms. Mixed Colors, Pkt. 50c.

Iceland Poppy. Pink Champagne. Silky pink blooms, 18-inch stems. Pkt. 35c.

Iceland Poppy. Gartford Giants, Mixed Colors. Pkt. 25c.

SNAPDRAGONS. Giant Ruffled Tetraploid, Rust Resistant. Pink, Rose, Orchid, Yellow, White, Mixed Colors.

Snappedragon, Dwarf Magic Carpet. Short spikes of pink flowers, spreading plant. PRICE: Pkt. 25c, 5 pkts. \$1.00.

STOCKS

New Trysomic Imperial Branching. This strain produces as high as 85% double flowers. Rose, Canary Yellow, Chamois Yellow, Red, Lilac Lavender, Navy Blue, White, and Mixed Colors. Pkt. 50c, 6 pkts. \$2.50.

Trysomic 7-Weeks Stocks, Mixed Colors. Pkt. 25c.

Double 10-Weeks Bedding Stocks (1 ft.) Azure Blue, Dark Blue, Flesh, Rose, Blood Red, White, and Mixed Colors. Pkt. 25c, 5 pkts. \$1.00.

SWEET PEAS

For Fall and Winter Sowing —
Winter and Spring Bloom

One packet of seed will plant 10 feet of row; an ounce will plant 35 feet.

Early Multiflora Sweet Peas. Beautiful huge blooms, usually 5 to 8 to a long strong stem. Christmas Red, Orange Cerise, Whirlwind (cream pink) George J. Ball (coral rose), Rose, White, Orchid, Elk's Purple, and Mixed Colors.

Early or Winter Flowering Spencers. California Flowerland Mixture of All Colors.

PRICE of All Sweet Peas: Pkt. 25c, 5 pkts. \$1.00. 1/2 oz. 50c, oz. 70c, 1/4 lb. \$2.25, lb. \$7.50.

FLOWER SEEDS

For Ground Covers, Borders

Alyssum, Royal Carpet. Purple flowers, dwarf spreading plants. Pkt. 35c, 1/4 oz. \$1.65, 1/2 oz. \$3.00, oz. \$5.00.

Alyssum, Snow Cloth. Spreading plant, 3 inches high, white flowers. Pkt. 25c, 1/2 oz. 85c, oz. \$1.50.

Bellis - English Daisy. Crimson, Rose, White, and Mixed Colors. Pkt. 25c.

Candytuft-Umbellata, Mixed Colors. Pkt. 25c, 1/2 oz. 50c, oz. 75c.

Candytuft - Iceberg. NEW giant white, 5 or 6 spikes per plant. Pkt. 35c.

Candytuft - Dwarf Coronaria Gem. 6-inch plants, deep green foliage, white flowers. Pkt. 25c, 1/2 oz. \$1.50, oz. \$2.75.

Nemesia, Nana compacta. Mixed Colors. Pkt. 25c, 1/4 oz. \$2.50.

Viola Cornuta. Light Blue, Dark Blue, Yellow, White, Apricot, Ruby, George Peach - light peach, Mixed Colors. All: Pkt. 25c, 5 pkts. for \$1.00.

Virginia Stock, Mixed Colors. Pkt. 25c, 1/2 oz. 50c, oz. 95c.

CALIFORNIA

NATIVE FLOWER SEEDS

California Poppy. Escholtzia Aurantiaca. Pkt. 25c, oz. \$1.25, lb. \$12.50.

Lupinus Nanus. Blue Bonnet. Pkt. 25c, oz. 65c, lb. \$6.50.

Nemophila. Baby Blue Eyes. Pkt. 25c, 1/2 oz. 60c, oz. \$1.00.

California Native Flower Mixture. Pkt. 25c, oz. \$1.50, lb. \$15.00.

MAIL ORDERS

All Small Bulbs: Anemone, Ranunculus, Crocus, Freesia, Dutch Iris, Ixia, Leucocoryne, Sparaxis, Tritonia, Scilla, etc., are sent prepaid anywhere in the United States.

All Other Bulbs: Daffodils, Jonquils, Hyacinths, Lilies, Tulips, Callia, Amaryllis, Lycoris, etc., Ornithogalum, Gladiolus, Hardy Iris, delivered free in Metropolitan (Los Angeles) area. Customers in all other areas, please add 10% of the amount of order to remittance, to help cover packing and shipping costs.

Sales Tax: Please add 4% sales tax to all orders to be sent anywhere in California.

WE DO NOT SHIP C.O.D. ORDERS.

PAUL J. HOWARD'S California Flowerland
11700 National Blvd., Los Angeles 64