

Historic, Archive Document

Do not assume content reflects current scientific knowledge, policies, or practices.



62.73

LIBRARY
RECEIVED
★ NOV 20 1946 ★
Department of Agriculture

The Adams County Nursery and Fruit Farms

Aspen, Pa.

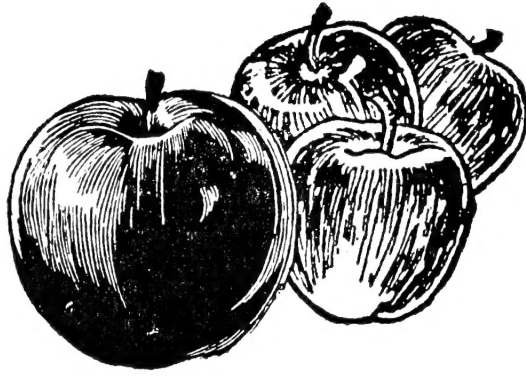
ESTABLISHED 1905



*Growers of Fine Fruit Trees
Sold Direct from Nursery to the Planter*

PRICES EFFECTIVE FOR DELIVERY
FALL 1946 AND SPRING 1947





Aspers, Penna.

Dear Friends & Customers:

We are abandoning our custom of issuing a price list for Fall and one for Spring. This catalog carries our complete line of nursery stock and lists the prices of stock for planting this Fall 1946 and Spring 1947. If you should misplace this catalog before ordering for Spring do not hesitate to write for another copy.

You will find listed herein a fine selection of the leading varieties of fruits adaptable to your locality. We are working under difficulties, as most of you are, but we have spared no expense in producing the highest type of fruit trees.

We extend to you an invitation to visit our nursery and see the trees we have to offer you. I am sure that they will please in every way. We have been producing fine fruit trees since 1905 and operate and own approximately 250 acres of orchards.

Place your order early. We try to fill orders in the order they are received. Make your selection from this catalog and mail it soon.

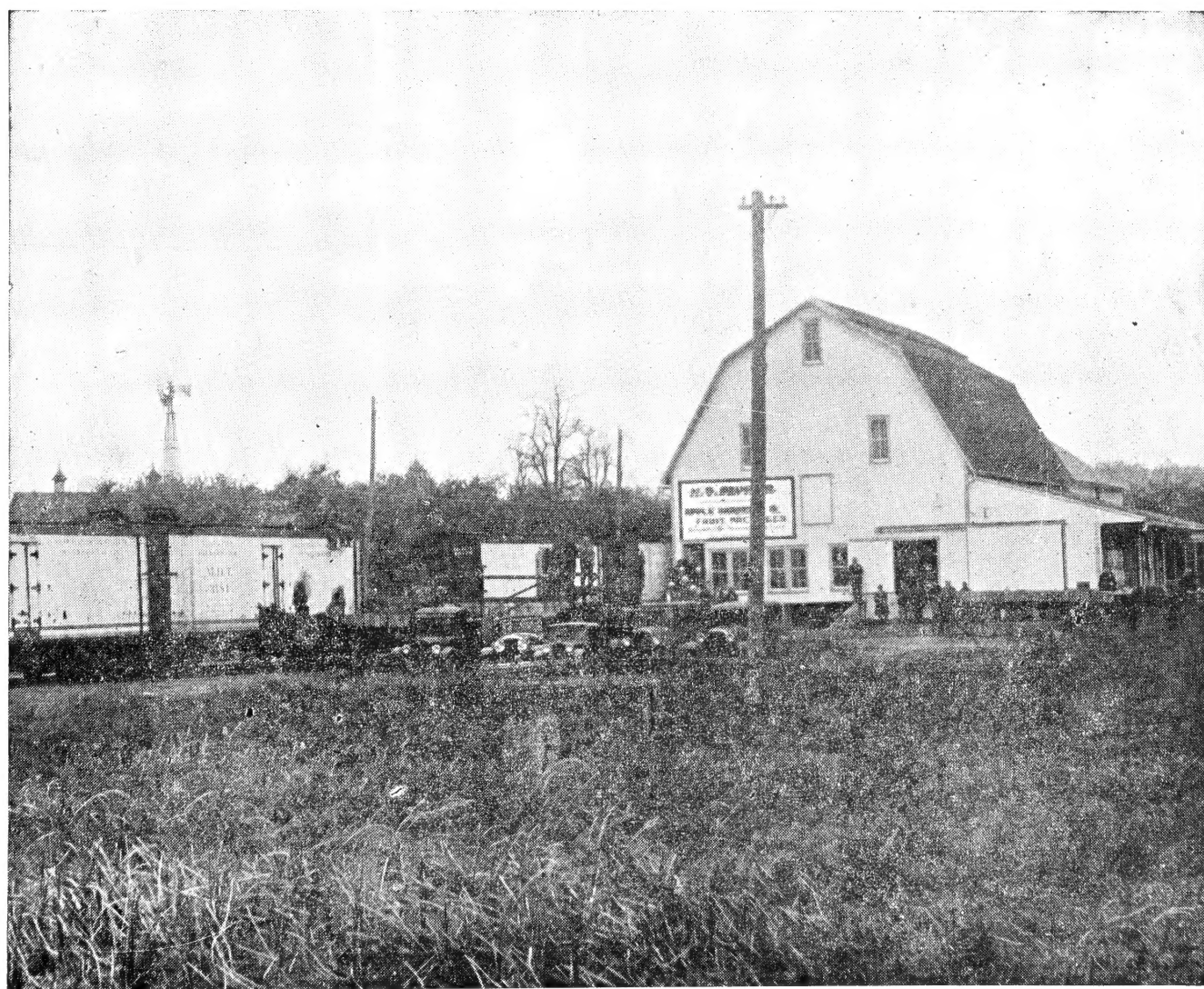
Yours for a thrifty and productive orchard,
Adams County Nursery & Fruit Farms,
H. G. Baugher, Proprietor

The Adams County Nursery and Fruit Farms



H. G. BAUGHER, Aspers P. O., Penna.

BENDERSVILLE STATION



A VIEW OF OUR LARGE PACKING HOUSE

REASONS YOU SHOULD BUY THE FINEST FRUIT TREES GROWN

Our fruit trees are grown on the best grade whole root seedlings right here in the leading fruit county of Pennsylvania. In addition the soil is especially prepared in advance to planting the seedlings, thus providing the richest fruit soil available. I supervise the cutting of buds and the best of care is taken to have every variety true to name. My Nursery is inspected every year by State Nursery Inspectors, to see that all nursery stock is clean and healthy. A Certificate of Inspection accompanies all purchases.

This price list contains a list of the best fruits for this latitude and their descriptions are not exaggerated or misleading.

Come to the Nursery, if you can do so, make your selection, and take them with you in your automobile or truck and save 1¢ per tree. Otherwise, we will ship them to you by Express, Freight or Parcel Post, as you may wish.

To reach the Nursery from Harrisburg, take U. S. Route 11 to Carlisle, then route 34 through Mt. Holly Springs and on to Pitzer's Trucking Station and Garage, turn left there and follow hard road through the village of Aspers, Pa., on out past the Church and then the school house close by the Nursery. From Gettysburg, take U. S. Route 34, through Biglerville and on to Pitzer's Trucking Station and Garage; turn right there and follow hard road through the village of Aspers, Pa., on out past the Church and then the school house and Nursery is just ahead at the railroad.

I have ideal shipping facilities—a large packing-house on a siding of the Reading Railroad. The trees are carefully packed and should reach the purchaser in the best of condition.

The greatest of care is taken to have all trees, etc., true to label. Any proving not so will be replaced or purchase price refunded, upon proper proof. In no case shall my maximum responsibility exceed the original amount paid.

All orders are accepted on the condition that they shall be void should any injury befall the stock from hail, storm, or other causes beyond our control.

Order early and be sure to get the varieties and quantity you want.

Any sales tax, Federal or State that may be imposed on nursery stock should be added to the amount of your order.

OUR GUARANTEE

We guarantee every tree to be as represented in grade and quality and if on arrival you do not find them as we say they are, return them to us securely packed and in good condition within five days and your money will be refunded in full. We give no guarantee as to growth.

PACKING OF NURSERY STOCK

All packing will be done in boxes or bales, thus protecting the roots and trees well in shipping. No charge is made for packing or delivery to railroad at Bendersville Station.

SHIPPING OF NURSERY STOCK

The spring shipment of nursery stock begins about March 15 to April 1, depending on an early or late season. Fall shipments about November 15th. Purchasers are requested to state whether they wish stock shipped by freight or express.

PLANTING OF FRUIT TREES

It is a wise thing to choose land that is well-drained because no fruit trees can thrive in a damp, soggy soil. Plum and quince will stand a greater amount of dampness than other fruits, but they are better if they do not have to contend with unfavorable drainage. The best-drained soil is that whose natural elevation conduces to the rapid elimination of surplus water. A gently sloping hillside, free from hollows or swales where late frosts may not linger, affords the best site. Peaches ought to get the highest locations, because there is less danger from late spring frosts on high ground than on low.

If possible, the land should be prepared as for a good crop of grain, although heavy fertilization is not essential if soil is reasonably fertile.

Have the holes dug in the proper places for the trees, large enough to receive the roots comfortably without bending or twisting them. Stake out the orchard in advance to be sure that the holes get dug in the right places.

When the trees arrive from the nursery, open the package and plant them immediately if it is possible. Be very careful to keep the roots covered to prevent their drying out. In planting, set the trees upright near the center of the holes, spread out the roots evenly, and work fine earth in among them, making sure that they are packed in close contact with the soil. If small air-pockets remain about the roots they will extract moisture from them, so injuring them that the trees may die. Do not apply commercial fertilizer or manure to the roots when planting. Any material of this type used should be applied on the top soil after tree is planted.

In setting out young trees, place them a little deeper than they grew in the nursery. The earthmark on the base of the stem is the best guide in this.

If it is impossible to plant the trees immediately, dig them in. To do this, dig a trench, shovel width and depth, and long enough to hold the roots when they are placed side by side upright. Shift fine earth over the roots, and when the trench is half full, soak them with water and pile on the remainder of the earth. In this temporary planting the trees will keep in good condition for a week or two, until you get them planted.

CARE OF FRUIT TREES

Newly planted trees should be well cultivated the first season, to conserve moisture and to keep down weeds and grass. It is not always good economy to intercrop with grass, small fruits, or grain, unless the young trees are making extraordinary strong growth. When the trees are well established, the spaces between the rows may be used for other crops for a few years, until the trees need the space; but while making their initial growth the trees ought not have to compete with other crops for the plant-food in the ground.

One of the most important items in the care of Fruit Trees is to see that they are trained right from the start. Our two-year-old sizes have the heads already formed, with three to five scaffold limbs well arranged along the trunk to support the head. These trees should be cut back, leaving just the scaffold limbs shortened to the point where it is desired to have the head of the tree.

One-year trees, or whips, should be trimmed to smooth, straight stems, cutting them squarely off at the distance from the ground at which it is desired to have them branch. Usually, apples, plums, pears, and cherries are headed a little higher than peaches, which ought to be encouraged to branch as low as possible. The after-pruning is a matter which requires some knowledge of tree-growth and habit, as well as the purpose for which the trees are grown.

LEADING VARIETIES OF PEACH TREES

Good thrifty one year old trees.

	1 to 9	10 to 49	50 or more
5 to 6 ft., 11/16 and up ...	\$1.85	\$1.55	\$1.25
4 to 5 ft., 9 to 11/16	1.45	1.20	.95
3 to 4 ft., 7/16 to 9/16	1.20	1.00	.80
2 to 3 ft., 5 to 7/16	1.05	.90	.70
2 to 3 ft., 1/4 to 5/1685	.70	.55
18 to 24 inch70	.55	.45

Different varieties of peaches may be ordered to get quantity price, but no other fruits may be included.

REMEMBER, the Net Cash Price will be 1¢ per tree less than above prices if you call at our nursery for your trees.

These leading varieties of Peach are listed, just as near as possible, in their order of ripening.

GREENSBORO

An early, white-fleshed Peach that ranks high because of its showy fruit and its large, vigorous, healthy, early-bearing, and prolific trees. It is considered one of the best early varieties as it ripens July 10 to 15. Fine market Peach. Not always free from seed. Fine Desert Peach.

CUMBERLAND

An excellent white fleshed peach. Fruit large, attractive color. Considered by many growers to be equal or better than Belle of Georgia, ripening a few days earlier than Golden Jubilee.

RARITAN ROSE (N. J. 97)

This variety is a very early, white, freestone peach of good quality ripening 3 to 5 days before Golden Jubilee.

REDHAVEN

A new yellow peach introduced by Michigan Experiment Station. This is a cross of Hale Haven and Kalhaven. The fruit is medium in size, very smooth skin, firm fleshed, brilliant colored. Fruit ripens before Golden Jubilee.

GOLDEN JUBILEE

Developed and introduced by the New Jersey Experiment Station. A yellow, early freestone Peach, ripening about three weeks before Elberta, and of good quality. One of the best new varieties.

TRIOGEM (N. J. 70)

A red all over, yellow freestone, ripening about two days later than Golden Jubilee. It is superior to the Golden Jubilee because it is firmer, ripens slowly, ships well, colors much better, peaches on the inside of the tree are well colored, and has high quality. Considered to be one of Best New Jersey introductions.

SUNHIGH

A large smooth yellow freestone peach of highest quality introduced by New Jersey Experiment Station in 1938. The flesh is firm, color bright red over an orange ground color. It is the most attractive of any of the newer peaches. Ripens right after Triogem and with Hale Haven. This is a very promising variety.

HALE-HAVEN

Yellow, freestone, large, high red color, firm, good flavor. It takes on red color early and the peaches show good red color several days before ripening, which gives it a distinct advantage for marketing. Very hardy in fruit bud and a heavy bearer. Ripens about 2 weeks before Elberta. Hale-Haven is a new variety, being a cross between the famous J. H. Hale and the well known new variety, South Haven, being originated by the Michigan Experimental Station.

SOUTH HAVEN

A large yellow freestone, ripening about ten days before Elberta. A profitable commercial Peach, originating in Michigan.

GOLDEN EAST (N. J. 87)

A large oval shaped yellow peach, usually freestone, high colored, ripening with Hiley or two weeks before Elberta.

BELLE OF GEORGIA

Very large Peach with red cheek; flesh white and firm, of excellent flavor; fine shipper. Ripens August 1 to 15.

SUMMERCREST (N. J. 94)

This is a large yellow freestone peach ripening three to five days before Elberta. The fruit is of high quality. This peach seems inclined to favor poorer soil as it has a tendency to make too much growth and produce dull colored fruit if grown on rich soil. A cross of J. H. Hale and Cumberland introduced by New Jersey Experiment Station in 1938.

ELBERTA

One of the greatest commercial yellow Peaches known. Good shipper. Tree hardy and good grower. Ripens August 20 to September 1.

J. H. HALE

Yellow; very large in size and globular in shape; skin thick, smooth and without fuzz; flesh deep yellow, fine-grained, firm, of extra quality; good shipper. It ripens a little ahead of the Elberta, and brings highest prices.

SHIPPER'S LATE RED

A large highly colored Peach. Very hardy, yellow fleshed and freestone of good quality. Ripens just after Hale and Elberta.

GAGE ELBERTA

A very hardy, disease resistant Elberta type peach. This variety is being planted by commercial planters in large quantities because of its hardiness and good bearing qualities. Fruit hard to distinguish from Elberta. Ripens two to three days later than Elberta.

BRACKETT

A fine yellow freestone Peach. Similar to Elberta, but of better flavor. A good commercial variety. A good shipper. Ripens a week later than Elberta.

AFTERGLO (N. J. 84)

A large high colored yellow freestone peach ripening three to five days after Elberta. Red coloring carries through the flesh, it being especially red about the pit. A variety that appears hardy and worthy of trial.

LIZZIE

Lizzie is a medium size, yellow, freestone peach ripening about two weeks after Elberta. The tree is a strong grower and productive.

LATE ELBERTA

(Sometimes called the Rex.) One of the best of the late varieties, ripening about 10 days to two weeks after Elberta. It is of large size, with yellow flesh. Very desirable market Peach.

LEADING VARIETIES OF APPLE TREES

TWO AND THREE YEAR OLD TREES

Prices On Select Apple Trees. As Fine As Any Obtainable.

Prices listed are per tree.

	1 to 9	10 to 49	50 or more
5 to 6 ft., 11/16 and up ...	\$1.85	\$1.55	\$1.25
4 to 5 ft., 9-11/16	1.45	1.20	.95
3 to 4 ft., 7-9/16	1.20	1.00	.80

PRICES ON ONE YEAR APPLE TREES

4 to 5 ft., 1 year old	\$1.45	\$1.20	.95
3 to 4 ft., 1 year old	1.20	1.00	.80
2 to 3 ft., 1 year old	1.05	.90	.70

Different varieties of apples may be ordered to get quantity price, but no other fruits may be included.

REMEMBER, the Net Cash Price will be 1¢ per tree less than above prices if you call at our nursery for your trees.

We invite you to compare ours with any grown.

YELLOW TRANSPARENT

Earliest and best; white, tender, juicy, sprightly subacid; grows upright; bears when young, making good filler. Ripens July 1 to 15.

LODI

A Transparent type apple of much larger size and more firm. It ripens a few days later than Yellow Transparent, but is large and can be picked with Transparent. It should be interplanted for cross pollination.

WEALTHY

Medium size, round or pointed almost solid red; flesh white, crisp, juicy; bears young. Ripens August 1 to 15.

SUMMER RAMBO

Very large; greenish red, striped, tender, juicy; tree strong grower. Ripens August 15 to September 15.

SMOKEHOUSE

One of the old kinds welcomed in every home. Ripens in September and can be kept in common storage late into the winter.

GRIMES GOLDEN

A good-sized yellow Apple of high quality. Ripens in September; can be kept late into the winter.

JONATHAN

Very red Apple, smooth, of good size and fine quality. Ripens in September; can be kept in common storage late in the winter.

McINTOSH

Bright, deep red; fine quality. Ripens in September and keeps late into the winter in common storage.

YELLOW DELICIOUS

A good variety, resembling the Red Delicious somewhat in shape. Ripens about same time as Grimes Golden.

TURLEY

A beautiful apple resembling Stayman Winesap and of Stayman type. The fruit does not crack. It looks like a good commercial variety.

LOWRY

A comparatively new variety that is fast becoming a commercial variety wherever grown. A mahogany colored apple of medium size ripening with or slightly before Red Delicious.

STAYMAN WINESAP

Large; mostly covered with red; crisp and juicy. Tree a strong grower. Ripens in October and ready for use soon after picking; keeps late into spring.

YORK IMPERIAL

A medium to large winter Apple with yellow skin shaded red; firm, juicy subacid. An excellent canning and shipping Apple and good for export. Ripens in October.

BALDWIN

A fine winter Apple. Succeeds well in the Northeastern States.

ROME BEAUTY

Large, round, winter sort, mottled and mostly covered with red; the flavor and quality are very fine. It is also a good late keeper.

RED DELICIOUS

(Sometimes called Starks' Delicious). An excellent winter Apple. Brilliant dark red skin, shading to yellow at the blossom end, and growing somewhat in quince shape; very attractive.

FALLAWATER (or Pound Apple)

Large, pale green, shaded to yellow. One of the good old kind. Keeps well into the winter in common storage.

PARADISE (WINTER SWEET)

Large, creamy white, rosy cheeked. One of the best sweet winter varieties.

NORTHERN SPY

Large, red winter Apple; crisp and juicy. Does well in Northern States.

WINTER RAMBO

Pale green, striped red; tender and crisp. Fine winter Apple.

CORTLAND

A cross between McIntosh and Ben Davis, inheriting the good qualities of both parents. It is a beautiful red, larger than McIntosh, and matures a month later; hangs well to the tree. It keeps late in winter.

DOUBLE RED YORK (No Extra Charge)

This is a sport of the regular York Imperial. It colors earlier and produces higher color than the regular York Imperial.

DOUBLE RED DELICIOUS (No Extra Charge)

A much higher colored fruit than the regular Delicious, coloring earlier, similar in every other respect to the regular Delicious.

DOUBLE RED STAYMAN (No Extra Charge)

Similar to the Stayman Winesap, excepting that it colors earlier and produces fruit of higher color.

RED CRAB

This is an all red crab apple, medium size, fruit very handsome, produces a fine red jelly.

CHERRIES

Prices listed are per tree.

SWEET CHERRY (1 and 2 year trees)	1-9	10-50	50 or more
Extra Select 5 to 6 ft., 11/16 up	\$2.60	\$2.25	\$1.75
4 to 5 ft., 9/16 to 11/16	2.25	1.85	1.50
3 to 4 ft., 7/16 to 9/16	1.85	1.55	1.25

SENECA

Ripens two weeks before Black Tartarian which it resembles. Quality is excellent.

BLACK TARTARIAN

Sweet. Very large, dark red Cherry, becoming black when over-ripe; juicy. Ripens in June.

GOVERNOR WOOD

Sweet. Large, light red; juicy, rich delicious. Tree healthy and productive. Ripens in June.

LAMBERT

Sweet. A fine variety, and one of the largest dark sweet Cherries. Flesh firm; rich, juicy. Tree a strong grower and enormous bearer. Ripens in July.

NAPOLEON

Sweet. Large; pale yellow or red; firm, juicy, sweet and productive. Ripens in July.

SCHMIDT'S BIGARREAU

Sweet. Fruit very large, of deep mahogany color; flesh is tender; very juicy, with a fine, rich flavor. Fruit grows in clusters. An excellent shipper; larger than Black Tartarian, and brings good prices. Ripens in middle to last of June.

BING

This is one of the largest eastern sweet cherries. Fruit dark red almost black when ripe. A fine market variety. Ripens mid July.

WINDSOR

Sweet. Large, liver-colored fruit with remarkably firm flesh of fine quality. Tree hardy and prolific. A valuable late variety. Ripens about first of July.

YELLOW SPANISH

Sweet. Large; pale yellow, with red cheek; flesh firm, juicy, and excellent. One of the best light-colored Cherries. Vigorous and productive. Ripens middle of June.

SOUR CHERRY

(1 and 2 year trees)	1-9	10-49	50 or more
4 to 5 feet, 11/16 up	\$1.95	\$1.65	\$1.20
3 to 4 feet, 9/16 to 11/16	1.75	1.50	1.10
2 to 3 feet, 7/16 to 9/16	1.25	1.00	1.05
2 to 3 feet, 5/16 to 7/16	1.00	.95	.85

LARGE MONTMORENCY

Sour. Large; red; productive. One of the best sour Cherries for commercial planting. Ripens in July. When cherry is fully ripe it is only slightly tart. The best sour cherry grown.

PLUMS

	1-9	10-49	50 or more
1 and 2 years old, 4 to 5 feet	\$1.95	\$1.65	\$1.20

ABUNDANCE

One of the greatbearers. Fruits of lemon to red color, sweet and juicy. Ripening in August.

WASHINGTON

A fine quality yellow plum of the Gage type.

METHLEY

A new plum that is rapidly gaining favor due to its fine quality and appearance. Fruit reddish purple with red flesh, very juicy with a distinctive flavor. Fruit medium to large in size.

PACIFIC

A very large bluish colored plum of good quality, ripening in mid season. This plum worthy of trial.

BURBANK

Cherry-red. Most profitable among growers for market. Ripens 10 to 14 days later than Abundance.

GREEN GAGE

A fine sweet Plum when ripe, the green color then turning yellowish. Ripens September 1.

ITALIAN PRUNE (Fellenberg)

A fine commercial plum, dark purple, medium size, juicy, delicious, fine for canning or drying.

SHIROW

A large, sweet, yellow Plum; fine shipper and market sort. Ripens in August.

BRADSHAW

Very large dark violet red, flesh yellowish green, juicy and pleasant. Tree vigorous, erect and productive. Ripens August.

STANLEY PRUNE

A fine prune type plum, excellent quality, freestone, fruit large in size, dark blue skin, greenish yellow flesh, juicy and fine grained. Heavy bearer. Ripens mid-season. A New York State Experiment Station introduction.

PEARS

Prices listed are per tree.

	1-9	10-49	50 or more
2 year trees, 5 to 6 ft.	\$2.25	\$1.85	\$1.40
2 year trees, 4 to 5 ft.	1.95	1.65	1.20
2 year trees, 3 to 4 ft.	1.75	1.45	1.05
1 year trees, 4 to 5 ft.	1.95	1.65	1.20
1 year trees, 3 to 4 ft.	1.75	1.45	1.05

BARTLETT

Large; buttery, juicy, high flavored; great bearer. This has long been considered one of the choicest canning varieties. A favorite for all uses. Ripens in August.

GORHAM

A Bartlett type pear of good quality ripening two weeks later than Bartlett. This variety is very resistant to blight.

CLAPP'S FAVORITE

Very large; yellow and dull red skin, with russet specks; flesh melting, rich. Resembles Bartlett very much. Ripens in August.

SECKEL

Small; skin rich yellowish brown when fully ripe, with deep brownish red cheek; flesh very fine-grained, sweet, juicy, melting, buttery. One of the richest and highest flavored Pears. Equally popular for dessert and pickling. Ripens in September.

SHELDON

A large, round, russet and red Pear of very fine quality; melting, rich, and delicious. Tree vigorous, erect and handsome; bears well. Ripens in October.

KIEFFER

Large; handsome Pear with remarkable keeping qualities. Fine for making butter and canning.

BEURRE D'ANJOU

Large; buttery, melting, rich, vinous. The best late fall and early winter Pear. Can be kept in cold storage until late spring.

NECTARINES

Prices listed are per tree.

	1-9	10-49	50 or more
4-5 ft.	\$1.95	\$1.65	\$1.20
3-4 ft.	1.75	1.45	1.05

GOLDEN FLAME

A smooth skinned Plum-Peach. Tree grows like a peach, fruit resembles large plum, flavor is a combination of both. Good for canning and preserving.

APRICOTS

1 and 2 years old, 4-6 ft. \$1.95 each

MOORPARK

A fine, rich-flavored Apricot, becoming rather large under favorable conditions. Firm and juicy. Ripening in July.

QUINCES

Prices listed are per tree.

2 year trees

	1-9	10-50
4-5 ft.	\$1.75	\$1.50

ORANGE

Fruit large, bright yellow, of excellent quality. Earlier than champion.

CHAMPION

A prolific and constant bearer of oval fruit, averaging larger than Orange and ripening later. A long keeper.

GRAPE STALKS

	1 to 9	10 to 25	25 to 50	50 or More
No. 1, 2 year	45c	40c	35c	30c

Grape-vines should be planted 6 to 8 feet apart, in rows 8 feet apart.

DELAWARE

This is considered to be one of the highest quality grapes in cultivation. Berries are bright red and firm. The vines are hardy and productive.

CONCORD

The leading market, vineyard, and home-garden variety. Dark blue berries of fine quality.

WORDEN

Resembles Concord but is sweeter, larger in bunch and berry, and a week to ten days earlier than that variety.

FREDONIA

A very promising black grape ripening two weeks earlier than Worden. Clusters are medium and compact, berries are large and round, skin thick and tough, the flesh juicy and very good quality.

NIAGARA

The standard white Grape. It ripens with Concord but the bunches and berries are larger; very sweet.

MOORE'S EARLY

Bunch medium; berry large, round; vine exceedingly hardy. Ripens three weeks ahead of the Concord, making it desirable for early market.

CACO

The new red Grape has a most delicious flavor and is of the highest quality.

CATAWBA

Deep coppery red, becoming purple when ripe, bunches medium, hardy and productive.

RASPBERRIES

Spring shipment only

BLACK

	10	25	50	100	300	500	1000
Cumberland, No.1 tips	\$2.00	3.00	6.00	10.00	26.00	40.00	80.00

CUMBERLAND

A healthy, vigorous grower, sending up stout, stalky, well-branched canes that produce immense crops of very large, firm black berries. The most profitable market variety of its class. Ripens in mid-season.

RED

Latham, No. 1 succor plants	\$2.00	3.00	6.00	10.00	26.00	40.00	80.00
--	---------------	-------------	-------------	--------------	--------------	--------------	--------------

LATHAM

A new, very hardy, heavy bearing variety. Considered most profitable of the red varieties.

BLACKBERRIES

Spring shipment only

	10	25	50	100	300	500	1000
	\$1.80	3.30	5.70	9.90	27.00	34.50	60.00

ELDORADO

Recommended as the best commercial berry. Jet-black, sweet and pleasant to the taste. Endures the winter well.

ASPARAGUS

Spring shipment only

MARY WASHINGTON

This is considered the best of the Washington strains. Produces heavy crops and is a very profitable variety.

	50	100	250	500	1000
Two year No. 1	\$3.75	6.00	12.00	18.75	30.00

NUTS

ENGLISH WALNUT

3 to 4 foot trees	\$2.50 Each
2 to 3 foot trees	\$2.00 Each

A fine, lofty growing tree, with handsome, spreading head. It produces large crops of thin-shelled, delicious nuts which are always in demand at good prices. Every home-garden should have an English Walnut tree making nice shade.

TERMS

Cash with order, or satisfactory reference. When placing an order for future delivery, send a deposit of 25% with order and balance before date of shipment

REFERENCES AS TO MY RELIABILITY

I refer you to The Gettysburg National Bank, Gettysburg, Pa., The Biglerville National Bank, Biglerville, Pa., or to any of my thousands of pleased customers.

Come to the nursery if you can in your car or truck. Make your selection and take the trees with you.

To reach the Nursery from Harrisburg, take U. S. Route 11 to Carlisle, then route 34 through Mt. Holly Springs and on to Pitzer's Trucking Station and Garage, turn left there and follow hard road through the village of Aspers, Pa., on out past the Church and then the school house close by the Nursery. From Gettysburg, take U. S. Route 34, through Biglerville and on to Pitzer's Trucking Station and Garage; turn right there and follow hard road through the village of Aspers, Pa., on out past the Church and then the school house and Nursery is just ahead at the railroad.

VISITORS WELCOME

Visitors are always welcome. Come and I will be glad to show you around. My many years of experience in growing nursery stock and orchard experience have taught me a lot of things you should know. **No business transacted on Sundays.**

DISEASE FREE STOCK

All nursery stock has been officially inspected by a state inspector and a Certificate of inspection is attached to each shipment.

A Few of the Reasons Why You Should Buy Our Trees

- 1. We dig our trees in the Spring and do not store them over the Winter.**
- 2. We use Deisel Power to dig our trees. This method gives them an excellent root system.**
- 3. Our trees have been examined and pronounced true to name by leading authorities in Fruit Tree Identification.**
- 4. I have been producing fine fruit trees for the past 40 years.**
- 5. We are located in the largest fruit growing county of Penna.**
- 6. We grow and sell direct from the Nursery to the Planter.**

COMMONWEALTH OF PENNSYLVANIA
DEPARTMENT OF AGRICULTURE
Nursery Certificate 81 (Resident)

THIS IS TO CERTIFY THAT THE NURSERY PREMISES of ADAMS COUNTY NURSERY AND FRUIT FARMS, H. G. Baugher, Prop., Aspers, Pa., including 20 acres of stock have been officially inspected and passed in accordance with the provisions of the Act of April 21, 1937, P. L. 318.

Permission is hereby granted this nursery to sell, deliver or transport nursery stock, not including bramble plants, which has been officially inspected for the year ending September 30, 1947; provided that a tag on which an exact copy of this certificate is printed must be attached to each package, box, bale, truckload or carload lot of nursery stock sold or delivered.

This Certificate does not cover the requirements of any special quarantine or regulation promulgated by the Commonwealth or by the United States Department of Agriculture. Furthermore, this certificate does not apply to trees obtained from the Commonwealth of Pennsylvania or uninspected nursery stock from any source.

A separate certificate for the grower of bramble plants is required.

This certificate is void after September 30, 1947, but may be revoked for cause

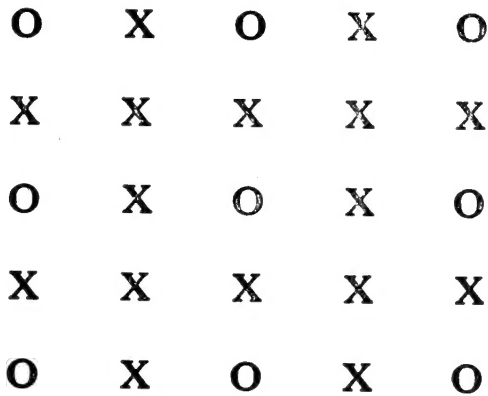
Issued at the State Capitol, Harrisburg, Pa., July 5, 1946

T. L. GUYTON, Director, Bureau of Plant Industry

DISTANCES APART FOR PLANTING

Apples 30 to 40 ft. each way	Quinces 8 to 14 ft. each way
Pears 20 to 30 ft. each way	Grapes 8 ft. each way
Plums 16 to 20 ft. each way	Asparagus 1 to 1½ ft.
Peaches 18 to 22 ft. each way	Raspberries, Black 3 by 6 ft.
Cherries 20 to 25 ft. each way	Raspberries, Red 3 by 5 ft.
Apricots 16 to 20 ft. each way	Blackberries 3 by 5 ft.

Diagram showing fruit tree planting of permanents and fillers.

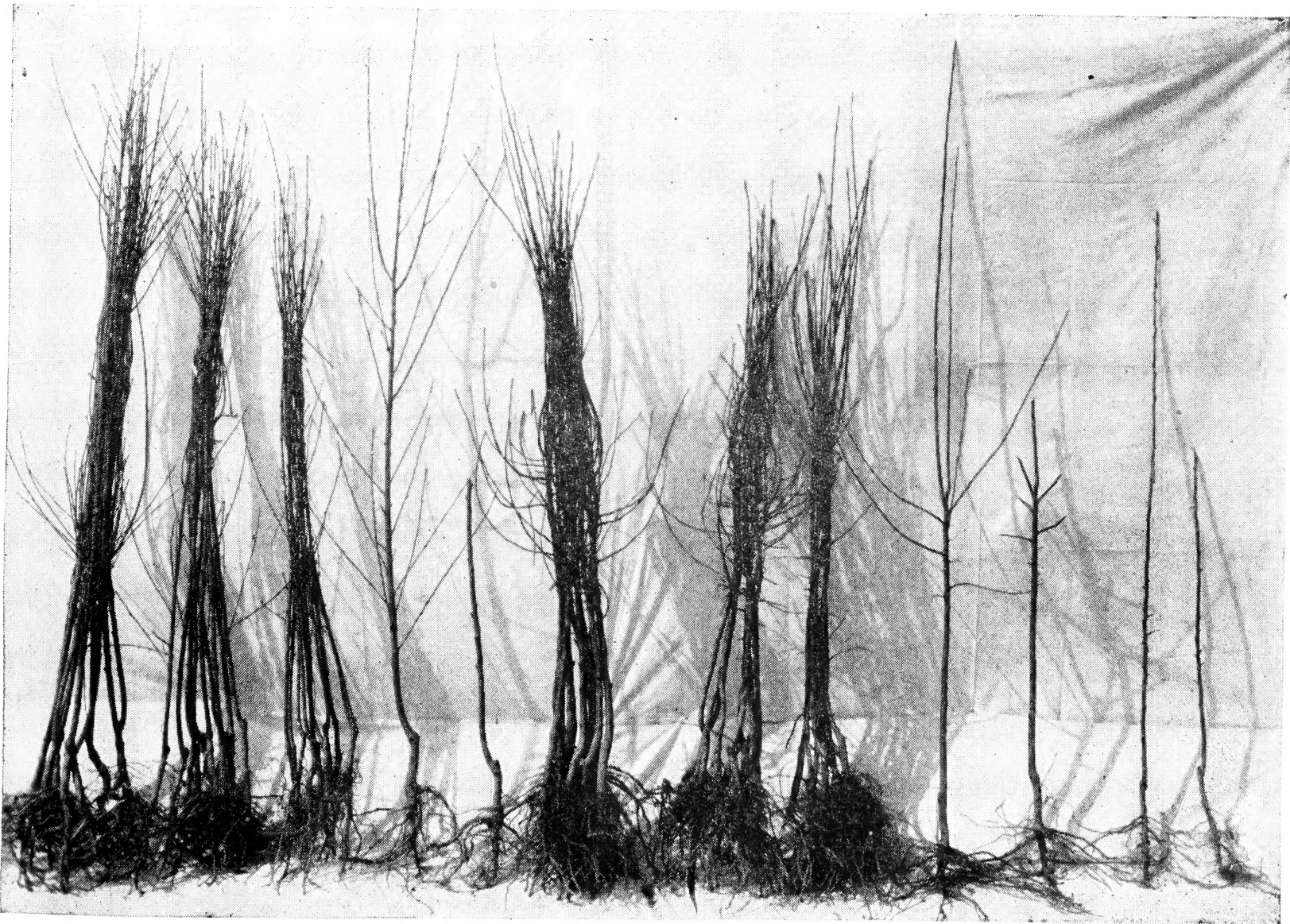


NUMBER OF SHRUBS OR PLANTS FOR AN ACRE

Distance Apart	No. of Plants	Distance Apart	No. of Plants
6 x 6 feet	1,210	16½ x 16½ feet	160
6½ x 6½ "	1,031	17 x 17 "	150
7 x 7 "	881	18 x 18 "	134
8 x 8 "	680	19 x 19 "	120
9 x 9 "	537	20 x 20 "	108
10 x 10 "	435	25 x 25 "	69
11 x 11 "	360	30 x 30 "	48
12 x 12 "	302	33 x 33 "	40
13 x 13 "	257	40 x 40 "	27
14 x 14 "	222	50 x 50 "	17
15 x 15 "	193	60 x 60 "	12
16 x 16 "	170	66 x 66 "	10

X—Represents Fillers.

O—Represents Permanents.



One Year Peach

Unpruned Pruned

Two Year Apple

Unpruned Pruned

1 year Pruned
Unpruned
Apple

