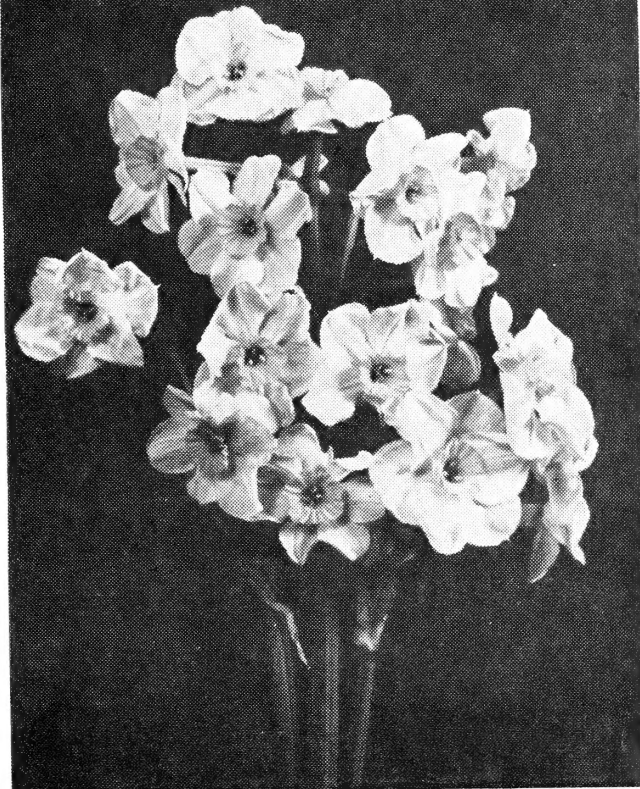


62



FOR THE BEST FROM THE WEST
BUY SPRING BULBS NOW
FOR FALL PLANTING

Bu

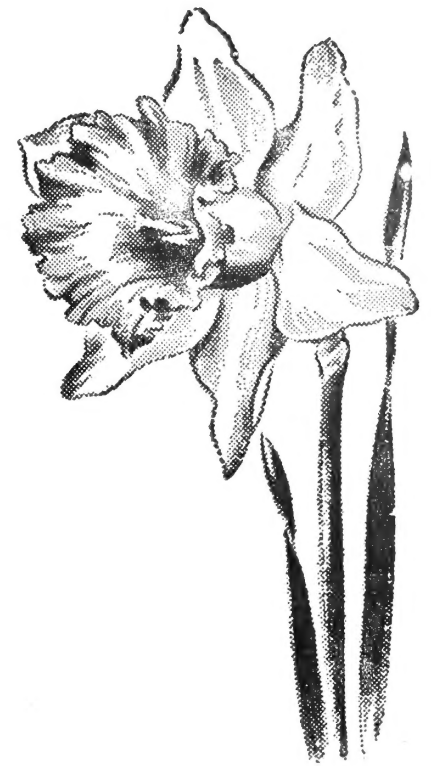
[1958]

From
Ben Korsten Jr.
P. O. Box 96
Sumner, Wash.

LIBRARY
RECEIVED
JAN 29 1958 ★
U. S. Department of Agriculture

GERANIUM

Order Daffodils Now For Fall Planting



WITH COMPLIMENTS FROM

Ben Korsten Jr.

P.O. BOX 96 - - SUMNER, WASHINGTON

Daffodils

		Cost Per 100	Cost Per 1000
CARLTON	P Largest Inc. with deep yellow flower and enormous wide cup. Good and easy forcer. Good cooler.	-----	-----
CHEERFULNESS	P Double, white Poetaz variety.	-----	-----
FLOWER CARPET	P King Alfred type with more flowers.	-----	-----
FORTUNE	P Large orange cup with deep yellow perianth. Force at low temperature only to get good color on cup.	-----	-----
KING ALFRED	P Golden yellow, large trumpet, strong flowers, good forcers. Good cooler and extra shipper.	-----	-----
MOUNT HOOD	P Largest pure white trumpet. Nice for pans. Good forcer.	-----	-----
REMBRANDT	P Large yellow trumpet, excellent for pans. Food forcer and cooler.	-----	-----
UNSURPASSABLE	P Largest golden yellow trumpet. Good forcer.	-----	-----
VERGER	P Scarlet cup with pure white perianth. Good forcer.	-----	-----

Newer Varieties of Daffodils

ACTEA	P The best, largest and purest white poeticus. Good forcer.	-----	-----
BODILLY	P & T Large lemon yellow cup with purest white overlapping perianth. Good forcer.	-----	-----
DUKE OF WINDSOR	New, large white with yellow cup.	-----	-----
FEU DE JOIE	T Double, elegant flower, pure white with orange. Good forcer and cooler.	-----	-----

P — Pictures available.
T — Color transparencies available at cost.

Newer Varieties of Daffodils (Cont.)

Cost
Per
100

Cost
Per
1000

FLAMING SUN	T	Large golden yellow flat cup with orange edge and large yellow perianth. Beautiful flower.	-----	-----
GERANIUM	P	Beautiful Poetaz with deep orange red cup and pure white perianth.	-----	-----
INGLESCOMBE		Double, beautiful, all yellow flower.	-----	-----
IRENE COPELAND	T	Double, beautiful creamy-white flower, nice forcer for pans and cut flowers.	-----	-----
JULES VERNE		New, white perianth with large lemon yellow cup.	-----	-----
LEEUWENHORST	T	Large yellow cup with narrow edge of deep orange and creamy white perianth.	-----	-----
LORD WELLINGTON	P	New King Alfred type with larger flowers.	-----	-----
MARTHA WASHINGTON	T	Extra large perianth with orange cup. From two to three flowers on stem.	-----	-----
MARY ROOZEN	T	Large orange cup with deep yellow perianth. Largest and best of its kind.	-----	-----
MRS. R. O. BACKHOUSE	P	Still one of the best pink trumpets.	-----	-----
MUSIC HALL	P	Large flower and one of the best bi-colors.	-----	-----
PORTHILLY	P & T	Orange red cup with yellow perianth; striking contrast	-----	-----
REINE BLANCHE		New, beautiful pure white.	-----	-----
SELMA LAGERLOF	P & T	Large flat orange cup with pure white perianth. One of the most beautiful novelties.	-----	-----
ST. LOUIS	T	Deep yellow cup with red border and pure white perianth.	-----	-----
TORONTO	P & T	Primrose yellow cup with large white perianth. Also nice forcer.	-----	-----
TRIANDUS THALIA		Elegant variety with 3 white bell-type flowers on a stem.	-----	-----
YELLOW CHEERFULNESS		Double yellow Poetaz variety.	-----	-----

Tulips

ALLARD PIERSON		Mahogany red Darwin tulip. Extra early forcer.	-----	-----
GOLDEN HARVEST		One of the best yellow tulips for early and late forcing. Sturdy flower.	-----	-----
PAUL RICHTER	T	New, bright red on strong stem. Very easy forcer.	-----	-----
PAX		New, pure white triumph tulip. Very easy forcer.	-----	-----
PRINCESS ELIZABETH		Still one of the best pink Darwin tulips. Good forcer for Valentine's and later.	-----	-----
RED PITT		Fine scarlet red Darwin tulip. Good forcer.	-----	-----
ROSE COPELAND		Still the easiest rose Darwin tulip to force early.	-----	-----
UTOPIA		Bright rosy red. Good forcer.	-----	-----
WM. PITT		Light scarlet red Darwin tulip. Good forcer.	-----	-----

P — Pictures available.

T — Color transparencies available at cost.

Parrots

		Cost Per 100	Cost Per 1000
ADVENTURE	Large orange-red.	-----	-----
BLACK PARROT	P Almost black.	-----	-----
DISCOVERY	P Lovely pink.	-----	-----
PARROT WONDER	Largest red.	-----	-----
TEXAS GOLD	P Yellow.	-----	-----



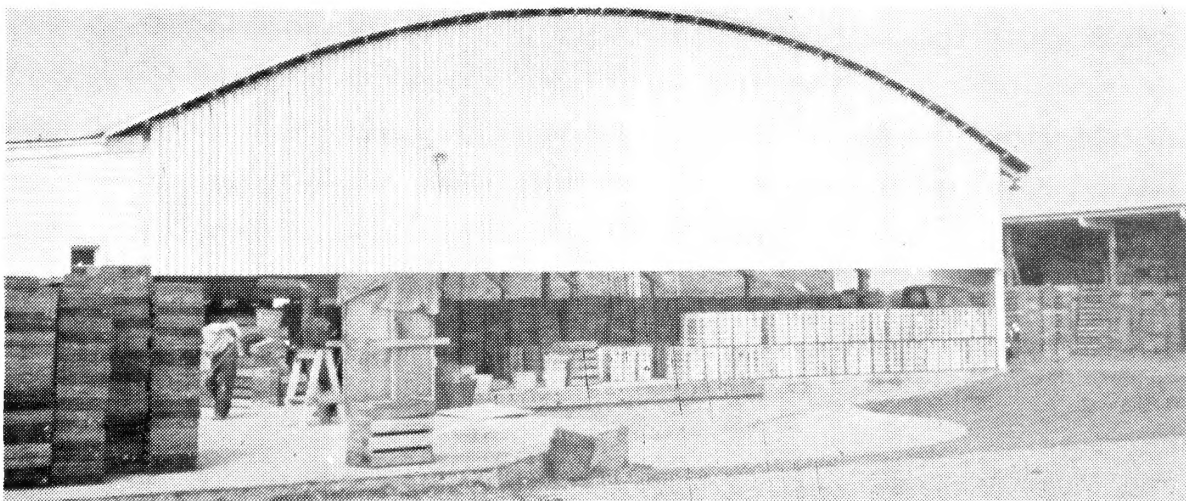
A VIEW OF OUR TULIP FIELDS

Newer Varieties of Tulips

		Cost Per 100	Cost Per 1000
ARISTOCRAT	P Large, extra long lavender rose flower on tall stem for late forcing and cold frame.	-----	-----
CRATER	P Deep red on strong stem, especially recommended for Valentine forcing or late pans.	-----	-----
DORRIE OVERALL	Lavender blue, large flower on strong stem.	-----	-----
ELMUS	P Bright red, with white edge. Good for pans for Valentine's Day and later.	-----	-----
GEN. EISENHOWER	P Newest orange red, with largest tulip flower.	-----	-----
GOLDEN MEASURE	P New large golden yellow Darwin tulip. Good forcer.	-----	-----
HER GRACE	P Beautiful two-toned tulip, pink-edged, white base. Good forcer.	-----	-----
MARIETTA	Large lily flower, salmon rose.	-----	-----
MERRY WIDOW	Red with white edge. Very easy forcer.	-----	-----
OLAF	Bright scarlet red. Good for early forcing only.	-----	-----
OVERDALE	New, bright red. Very easy forcer.	-----	-----
PR. ELIZABETH MAX	Giant flowers of Pr. Elizabeth.	-----	-----
RED MATADOR	New, large bright red flower on strong stem.	-----	-----
ROSY WINGS	P Beautiful new apricot pink.	-----	-----
SCARLET SENSATION	Scarlet red. Easy forcer.	-----	-----
SMILING QUEEN	P The finest and newest light salmon pink tulip.	-----	-----
SWEET HARMONY	New, light yellow, with white edge.	-----	-----

P — Pictures Available.

A current list of the latest introductions, available in limited quantities, sent on request.



OUR NEW WAREHOUSE
WHERE WE CAN TREAT
THEM THE RIGHT WAY.



Mount Rainer and Puyallup Valley Daffodil Fields

Where the Flowers Meet the Mountain

Iris

		Cost Per 100	Cost Per 1000
BLUE RIBBON	P New, extra deep blue, large flower.	-----	-----
PRINCESS BEATRIX	P New, extra deep yellow, large flower.	-----	-----
WHITE PERFECTION	P Beautiful new pure white. Large flower.	-----	-----
WEDGEWOOD 10 UP	P Light blue. Easiest for early forcing.	-----	-----
WEDGEWOOD 9/10	P Light blue. Good for early forcing.	-----	-----
WEDGEWOOD 8½/9	P Light blue, for late forcing. Especially recommended for cold frame and outdoors.	-----	-----

P — Pictures Available.

All varieties listed are grown on our Farms in Sumner, Washington.