

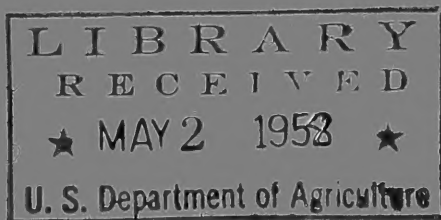
62

Ir

1958

MARGARET CRUISE

LAWSON IRIS GARDENS



POST OFFICE BOX 314
VALLEY CENTER, CALIFORNIA

GREETINGS FOR 1958

We take great pleasure in presenting this list of for your approval. You will find many new varieties added. Also, after many years of hybridizing and selecting of the best seedlings, we have decided to introduce four of our own new creations. We hope you will like them too.

Our winters are cold enough to assure hardy rhizomes and the warm dry summers harden them for shipping and transplanting. Many have written how pleased they were with the results of the plants they received from us.

May we take this opportunity to thank our many customers for their splendid orders, and those who have written to us expressing their satisfaction and thanks for the extras. I wish we could answer all of you personally. If you have not already done so, won't you send us a trial order and then join our list of satisfied customers? We are growing each year and it is you, our customers, who have made it possible. We are still small enough though that each order receives my personal inspection.

Visitors are always welcome, but a special invitation to you at IRIS BLOOMING TIME, April and May, with our peak bloom about May 1st.

Valley Center is 9 miles N.E. of Escondido, on the road to Mt. Palomar, where the famous observatory is located. We are on the main road . . . just look for our sign.

Sincerely,

MRS. FRANCES J. LAWSON.

TERMS OF SALE

CASH with order, check, draft or money order. No C.O.D. shipment.

CALIFORNIA residents please add 4 % sales tax.

POSTAGE PAID on orders of \$5.00 or more. On smaller orders add 50c to help with the expense of packing and postage.

VERY SPECIAL POSTAGE OFFER—If you will send \$1.00 toward postage, we will include with your order iris listed at \$3.00 or more.

EXTRAS—choose your own. On orders of \$10.00 or more, not including the Collections and special offers, you may choose free extra iris up to one-half of the value of your order, that is for a \$10.00 order select an additional \$5.00 worth free, for a \$20.00 order select \$10.00

worth free and so on. But please add several alternates as we may be short on some items. On orders for less than \$10.00 please suggest some extras you would like and if possible we will choose from your list or send some similar variety. We want to be generous so will include free gift iris with all orders.

SPECIAL BONUS: On all orders postmarked before June 15, 1958, you may select iris worth 10% of your order as an extra bonus. This special bonus applies to all orders including the Collections, etc. So get your order in early, win the extra free iris and avoid the possibility of our being sold out, as some varieties are in short supply. Please list several extra varieties which we may substitute if necessary.

Member of: American Iris Society

Southern California Iris Society

BETTER IRIS AT BETTER SAVINGS

GROUP A

Values \$10.00 to \$15.00

BELLAMERE	PHOEBUS APOLLO
CLEMENTINA	SAPPHIRE SEA
GOLDEN HAWK	SNOW GODDESS
NOMOHR	TRULY FAIR

Select 3 different iris \$18.50
 Select 6 different iris \$32.50

GROUP B

Values \$5.00 to \$8.00

CHANCELLOR	MAHARAJAH
FUTURAMIC	RUFFLED TAFFETA
HARBOR BLUE	SLICK CHICK
HIGH HEAVEN	SPRING MELODY

Select 3 different iris \$9.50
 Select 6 different iris \$17.50

GROUP C

Values \$3.00 to \$4.00

BERMUDA BLUE	MARGARET CRUISE
BETROTHAL	ROBERT ALEXANDER
CASCADIAN	SORAYA
COPPER DAWN	SWAGGER
DAMASCUS BLADE	THE LAUGHING
DANCING DEB	CAVALIER
DREAMY	
EDITH JANE	VEILED IN MYSTERY
FRANCES CRAIG	VIVEZA

Select 3 different iris \$5.50
 Select 6 different iris \$9.50
 Select 10 different iris \$15.00

GROUP D

Values \$2.00 to \$2.50

ANATOLIA	FANCYANCY
BERTHA LOMBARD	LONG SHADOWS
BLUING	MAYTIME
COLOR CARNIVAL	MODESTY
COMPETITOR	SO SWEET
CONTENT	SPELLBOUND
DECEMBER ROYALTY	THE PIRATE
EIGHTEEN KARAT	TRAIL BLAZER

Select 3 different iris \$3.75
 Select 6 different iris \$6.50
 Select 10 different iris \$10.00

GROUP E

Values \$1.00 to \$1.50

ARGUS PHEASANT	RICH RAIMENT
BURNISHED BRONZE	RUFFLED BOUQUET
HEROIQUE	TECHNICOLOR
JOANNA JANSSE	TEMPLE CITY
JOSEPH'S MANTLE	THANKSGIVING
LADY DIANA	FIRELIGHT
MELODY LANE	WHISPERS
MOHRESQUE	WOODMONT
PRESIDENT	PLUMBAGO

Select 5 different iris \$3.00
 Select 10 different iris \$5.50
 Select 15 different iris \$7.50

ROYAL COLLECTION

Select one from each group, 5
 different iris, your choice \$15.00
 Select two from each group, 10
 different iris, your choice \$25.00

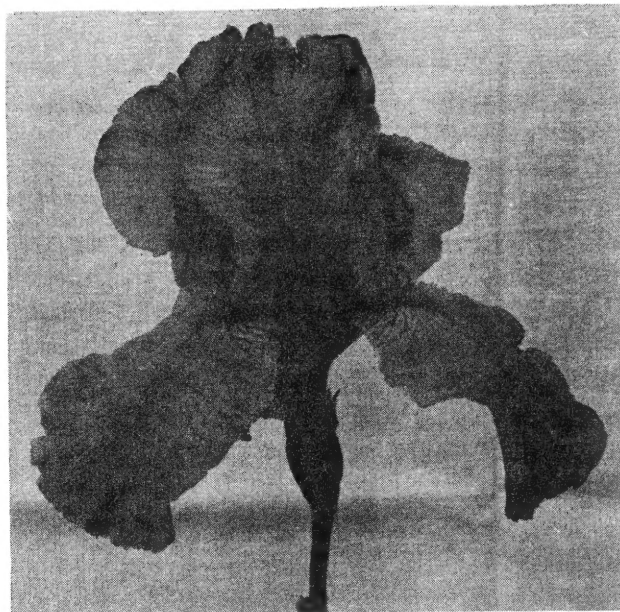
RAINBOW COLLECTION

Select 3 different iris from Group C
 Select 3 different iris from Group D
 Select 3 different iris from Group E
 9 different iris \$10.50
 Select double the above
 18 different iris \$19.50

Grand Monarch Collection

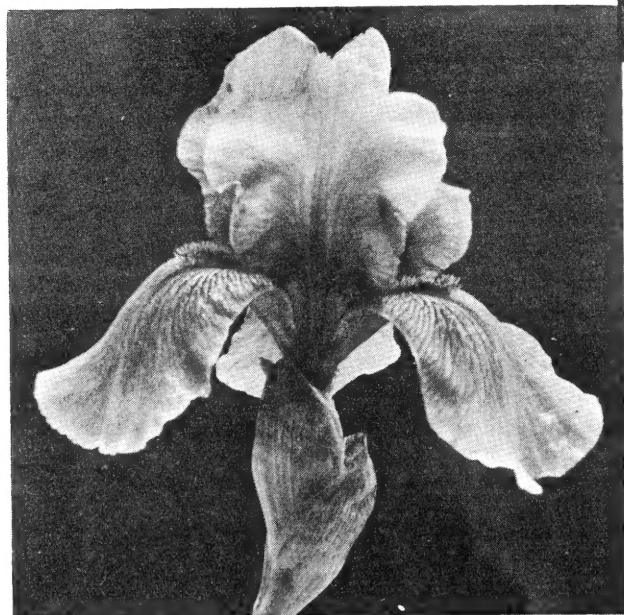
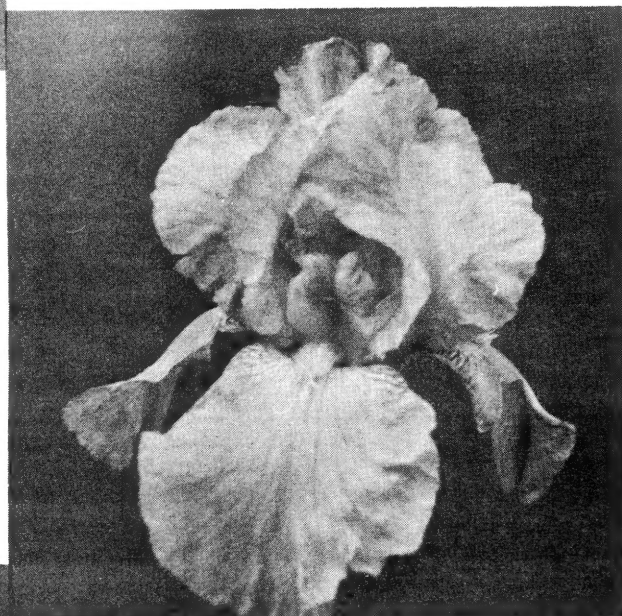
All 64 varieties on this page (a \$241.50 value) \$100.00

1958 INTRODUCTIONS



BOLD BLUE (Lawson) M. 36" No. 54-28
 (Great Lakes X Katherine Fay) This is a large, round, bold flower in marine blue. The falls are slightly darker and quite ruffled. There is a bright orange beard for contrast and pollen for the hybridizers \$10.00

BROOKS (Lawson) M. 36" No. 54-27
 (Great Lakes X Katherine Fay) A lovely cornflower blue with a pale blue beard. It is very ruffled and of heavy substance, making a long lasting flower. It is fertile both ways and from its parentage should produce some interesting seedlings \$20.00

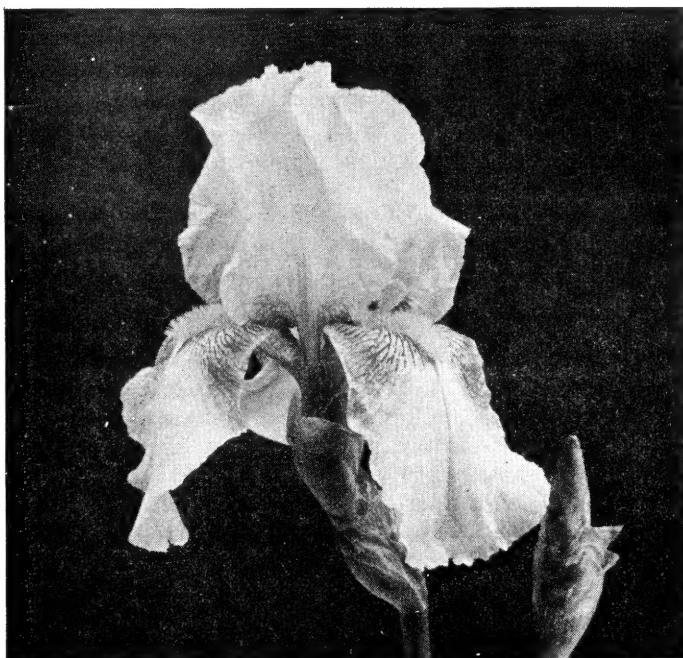


MARQUISE LA GRECA (C. G. White) M. 30" (parentage unknown) One of the few oncobreds that has a really onco-type blossom on a well-branched stalk. It is a buffy olive with the falls closely lined with Burnt Umber and narrowly edged with Honey Yellow. It has a signal patch of Anthracene Violet. It is fertile both ways and is producing some interesting seedlings in various greenish shades. For the hybridizer \$15.00

1958 INTRODUCTIONS

NO-TOP (Lawson) M. 36" No. 53-7 (Purissima X Spindrift). This is one of the iris that received so much attention at the A.I.S. Convention in Memphis last year. It was a guest in Mrs. Elby Martin's garden and she wrote that it caused more comment than any other iris. Several thought it was the greenest iris seen. However, in our garden it seems a cool white with greenish buds. The name describes it as it has no standards but has six bearded falls that open out flat like a Japanese. It is a large flower, 6 to 7 inches across. There are usually 6, sometimes 8, styles in the center. It has no pollen but will set seed. A novelty iris that also offers breeding possibilities. Co-introduced by the Rainbow Hybridizing Gardens \$15.00

PAUMA (Lawson) M. 36" No. 56-18 (parentage—two *plicata* seedlings) This lovely *plicata* has Empire Yellow standards. The falls are cream with Burnt Sienna lines and dots at the haft, shading down to green and brown dots at the lower edge. The buds are quite green. Has pollen \$10.00



IRIS CULTURE

Iris are easy to plant and require a minimum of care. They will do well in almost any sunny, well drained spot. Spread the roots and plant so the rhizome is just barely covered with soil. The soil should be kept moist until the plant is well established, then will withstand drought and neglect, but respond bountifully to proper care and culture. Bone meal may be worked into the soil before planting, a small handful to each plant, or used as a side dressing once a year. Be careful if you use fertilizers, not to let it come in contact with the rhizome, as it may cause rot. Since iris multiply rapidly, planting should be spaced from 12 to 18 inches apart to allow for proper ventilation. Divide them about every three years for best results.

— GENERAL LIST —

ADMIRAL NIMITZ (Graves '48) Fine large white with bright gold beard75
ADMIRATION (K. Smith '46) Impressive clear yellow	1.00
AFTER MIDNIGHT (Muhlestein '49) Large tall well formed dark purple	1.00
AIRY MISS (Linse '55) Broad and flaring red-violet	1.50
AL BORAK (DeForest '52) A wide, horizontal flaring brown	2.50
ALDURA (Larsen '43) Large blue and white plicata75
ALICE LEMEN (Plough '57) A lacy beauty with heavily crimped and fluted edges. The standards and hafts are Empire yellow, the falls are white with a bright yellow beard. Fertile both ways	20.00
ALLINE ROGERS (Kleinsorge '50) Blend of tan, pinkish rose and gold	1.50
ALLRED (Lothrop '49) A flaring, velvety brown red75
ALTA MOHR (Paul '48) Large orchid violet oncobred	1.00
AMANDINE (Douglas '46) Late, large and ruffled light cream	1.00
AMERICAN MODERN (Craig '51) An oncobred in olive-ocre, flecked bluish green and veined red	1.50
AMULETTE (Sass '53) Orange buff with violet flush on the falls	1.50
ANATOLIA (Craig '49) M. 30" Violet with onco veining on the falls	2.00
ANITA CATHERINE (Clarke '49) Large blue white with lighter falls75
ANTHONY (Randall '45) A yellow blend from England75
APPLE CAPITOL (Noyd '57) A lovely rich deep red with ruffling and good branching. An eye catcher and good addition to the red class	20.00
APRICOT GLORY (Muhlestein '51) Smooth apricot with self colored beard, slightly darker at the hafts	2.50
APRICOT SUPREME (Tompkins '51) Tall, well branched apricot salmon	1.00
ARCADIA BUTTERCUP (Milliken '47) A bright deep yellow75
ARGUS PHEASANT (DeForest '48) This magnificent brown won the Dykes Medal in 1952	1.00
ASKALON (Jory '49) Lavender bicolor flushed yellow on the falls	1.00
ASOKA OF NEPAL (White '50) E. 24" Oncobred, yellow buff flecked with maroon. Easy to grow and has very fertile pollen	5.00
AUNT AMORET (Craig '51) Fancy ruffled violet on white plicata	2.00
BALLERINA (Hall '51) A beautiful wide ruffled light pink	1.50
BALLET DANCER (Kleinsorge '49) Flaring, ruffled buffy golden apricot	1.00
BANDED BEAUTY (Sass '48) A brown banded plicata75
BARGAIN DAY (Mitchell '49) Yellow standards, velvety red falls75
BAY STATE (Corey '49) Exquisite, smoothly finished blue75
BEL AIR (Milliken '47) Fragrant, ruffled, medium violet75
BELLAMERE (Paquet '57) A lovely mauvette blending out into a narrow edge of heliotrope. Has a bright yellow beard and is nicely ruffled	10.00
BELLERIVE (Benson '49) Ruffled, flaring, rich cream	1.00
BELMONT HILL (Paquet '55) A flaring rich yellow with tan overcast and deep yellow beard	3.00
BENTON OBERON (Morris '52) A trim flower in fuchsia-heliotrope with a bright red-tangerine beard	10.00
BENTON OLIVE (Morris '49) Olive-buff, with falls flushed purple	2.00
BENTON OPHELIA (Morris '51) A lovely light, rosy flesh pink deepening at the throat	3.50
BERMUDA BLUE (Lothrop '54) A fragrant near self in medium blue, good form, branching and substance	4.00
BERTHA LOMBARD (Eckels '55) Deep reddish brown, gold patch on the falls	2.50
BETHEL (Linse '54) Golden rosy-tan self, lighter at the haft	3.00
BETROTHAL (Lothrop '54) Fragrant, sparkling, pure Empire yellow. Fertile both ways ..	4.00
BIG TIME (Lapham '51) A very large red self	2.50
BLACK DIAMOND (Schreiner '51) Lustrous ebony-blue-black	1.50
BLACK FOREST (Schreiner '45) Short, very dark purple, almost black	1.00
BLACK RUBY (Dolman '49) Velvety crimson black75
BLUE ANGEL WINGS (McKee '49) Lovely blue white75
BLUEBIRD BLUE (O. Fay '53) Medium violet blue self	2.50
BLUE ELEGANCE (Jory '48) Chicory blue with darker onco veining	1.00
BLUE ENSIGN (Meyer '37) Quality medium blue. Dykes Medal, England '4975
BLUE OX (Craig '49) Large oncobred in lilac blue	1.00
BLUE PARAKEET (Waters '50) Large medium blue with olive haft	1.50
BLUE RHYTHM (Whiting '45) Cornflower blue. Dykes Medal 195075
BLUE SHIMMER (Sass '42) Large white, all over blue stippling75
BLUE THROAT (Loomis '56) Light blue or blue white with a blue tipped beard	5.00
BLUE VALLEY (K. Smith '47) Large, ruffled, near a true blue75
BLUE VIOLET (Craig '48) Massive, flaring, dark violet blue75

BLUING (Craig '51) Short, flaring, light blue oncobred 2.00

BLUMOHR (Marx 49) Lovely medium blue oncobred 2.00

BOLD CONTRAST (Linse '54) Smooth gold and red variegata 8.50

BRIGHT HOUR (Douglas '52) Stunning amoena, white standards with purple falls bordered white 3.50

BROWN SUEDE (Heller '48) Distinctive brown bitone, darker falls75

BUCKTHORN BROWN (Milliken '48) Fragrant glistening brown 1.25

BURGUNDY ROSE (Hall '46) Amethyst blended with rose pink 1.00

BURGUNDY SPLASH (Craig '49) Standards subdued burgundy, falls yellow with 1" stippled burgundy border 1.50

BURNISHED BRONZE (Craig '50) Dark blend of henna-brown with bright violet blaze 1.00

BUTTERFLY WINGS (White '46) Oncobred, light wisteria blue with falls heavily lined russet red 1.00

BUTTERSCOTCH KISS (Plough '57) A new creation in crinkled buff and orchid. The large flowers are heavily substantced with edges of petals very heavily laced. Fertile both ways 35.00

CAHOKIA (Faught '48) Light blue with lemon colored beard 1.00

CALIFORNIA PINK (Heller '48) Orchid pink with lilac-white beard75

CALIFORNIA ROSE (Salbach '47) Luscious pink and tan blend75

CALOR (Craig '50) Brilliant orange overlaid copper 2.00

CAMEROUN (Cayeux '38) Almost black with a beautiful sheen60

CAPE BON (Tompkins '43) Red with copper undertones75

CAPELLA (Sass '50) A very large rich yellow .75

CAPITOLA (Reinelt '40) A larger, better formed Wm. Mohr, very fertile pollen75

CAPTIVATION (Tompkins '49) Plicata, white edged orchid-pink75

CARBELLA (DeForest '49) A large light salmon pink 1.00

CARIBOU TRAIL (Plough '57) Beautiful rich golden brown with a violet blaze in center of the falls. All petal edges are heavily laced. Vigorous grower 20.00

CAROLINE JANE (DeForest '51) Very large, wide, ruffled blue and white plicata of exquisite charm 3.50

CAROUSEL (Douglas '48) Blend of rosy violet and copper gold75

CASCADIAN (Linse '52) EM 36" Very wide ruffled white with greenish cast through center of falls 3.00

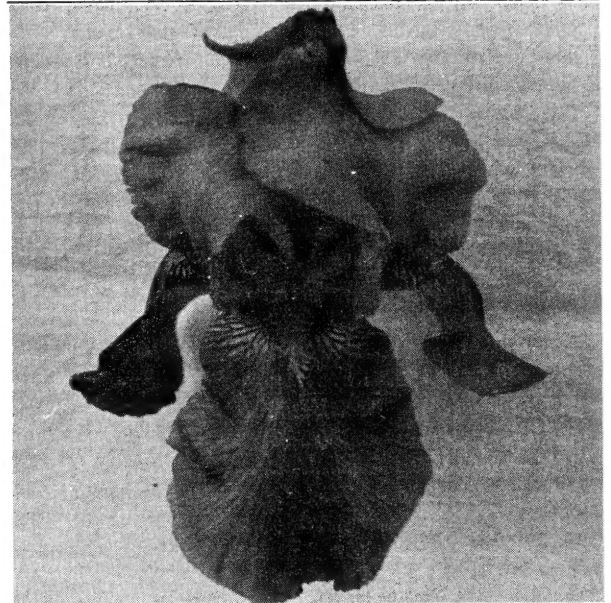
CASCARONE (Heller '48) M 45" Heavily ruffled plicata, violet standards, yellow falls bordered and stippled violet75

CASINO (Plough '55) EM 40" Veined rosy mulberry oncobred 5.00

CATHEDRAL BELLS (Wallace '53) 38" Tall, wide, light pink with serrated edges and flaring falls 2.00

CERULEAN (Craig '50) E 40" Large oncobred of greyed-blue 3.00

CHAMMOIS (Kleinsorge '44) Stunning light golden tan 1.00



CHANCELLOR (Lothrop '55) ML 42" An impressive dark violet near self with heavy substance and good branching, fertile both ways 5.00

CHANTILLY (Hall '45) ML 36" Ruffled orchid pink with lacy edges75

CHANTIMORENA (Austin '55) Terra-cotta brown with lacy edges 1.00

CHAR-MAIZE (Lyon '49) 44" Beautifully formed flowers of chartreuse with wide ruffled petals of heavy substance, withstands both heat and wind 1.75

CHEEKS OF TAN (Craig '50) Mallow pink blend with tan hafts 1.00

CHERIE (Hall '47) 34" Large ruffled pink with tangerine beard. Dykes Medal '51 1.50

CHINOOK PASS (Norton '50) 36" Gorgeous blue with light yellow area at the hafts and centers 1.00

CHIPPITICA (Noyd '56) ML 30" Yellow cream and brown quality plicata 5.00

CHIQUITA (Knowlton '51) Charming with its ruffled pale-lavender standards with darker falls 1.50

CHIVALRY (Wills '44) 36" Ruffled medium blue. Dykes Medal 1947 1.00

CHI-YUN (DeForest '47) EM Wide, full ruffled white75

CINNAMON TOAST (Sass '53) Cream and red-brown plicata 5.00

CLEMENTINA (Austin '55) A huge oncobred of pale bluish lavender marbled with deep amethyst, opens out flat 10.00

CLIFFDELL (Norton '52) 38" Lacy edged blend of brown and gold with flush of orchid rose on the falls 2.50

CLOUD CAP (De Forest '50) 40" Large ruffled apple-blossom pink	2.00	DAMASCUS BLADE (White '53) VL 38" An exotic blend of steel-gray and mauve-pink. It is 1/4 onco, fragrant, hardy and blooms late thus prolonging the season. A good grower producing huge showy flowers on strong, tall stalks	3.50
COLOR CARNIVAL (DeForest '49) 36" Unusual, deep pink with bold dashes of purple on the falls	2.00	DANCING DEB (Tompkins '52) ML 38" Ruffled, clear light heliotrope	3.00
COLOSSAL (Marx '46) Fragrant gigantic lavender oncobred	1.00	DANUBE WAVE (Schreiner '47) EM Large, full, ruffled marine-blue75
COMPETITOR (Lothrop '53) 36" A charming and different plicata. The standards are clear yellow, the falls marked with reddish-brown, bordered with yellow and a white blaze in the center	2.00	DARK CHOCOLATE (Murray '54) 38" A beautifully formed large, wide, flaring chocolate self	8.00
CONCINNA (Lothrop '49) E 34" Creamy pink standards, rose falls75	DAWN PATROL (Paquet '53) ML 35" Ivory standards, flaring white falls the edges of which curl under giving the falls a pointed look and an individuality of its own	1.00
CONFETTI (Schreiner '49) Plicata, white with rose-pink markings60	DAZZELIER (Hall '52) Dazzling orange yellow	1.50
CONTENT (Lothrop '54) E 40" Tall, early primrose yellow	2.00	DECEMBER ROYALTY (Austin '51) Rich plush-like purple that reblooms in mild climates in the winter	2.50
COPPER CANYON (Tompkins '50) L 38" Large flaring copper, deeper at throat	3.00	DEEP MAROON (Muhlestein '52) 30" Smooth maroon-red bicolor, darker falls	2.00
COPPER DAWN (Gersdorff '54) Fragrant soft copper pink self	3.00	DEFIANCE (Tompkins '53) Rich cardinal red self that the hybridizers are using heavily ..	15.00
COPPER LUSTRE (Kirk '34) 32" Large copper gold. Dykes Medal 193860	DEPUTE NOMBLLOT (Cayeux '29) Tall claret crimson. Dykes Medal France 193060
COPPER MEDALLION (Schreiner '51) Large bright copper	1.50	DESERT SONG (Fay '46) EM 36" Large yellow cream self75
CORDOVAN (Kleinsorge '46) Ruffled coppery brown75	DESERT SUNRISE (Craig '50) Pale green gold flushed lilac on the falls	1.00
CORONA DEL MAR (Heller '48) 48" A good blue that stands up in all kinds of weather75	DESERT TWILIGHT (Miess '52) EM Pastel blend of violet-lobelia with warm mauve-wood brown hafts	4.50
CORONATION TAPESTRY (Craig '53) 36" Novel and striking as a rich Persian tapestry in mahogany, rose and brown	3.50	DOLLY VARDEN (Hall '50) Large salmon pink	3.00
COUNTRY BUTTER (Sass '53) 36" Deep butter yellow with richer beard	2.50	DOWAGER QUEEN (Craig '50) Very large semi-flaring red-purple	1.50
COUNTRY LASS (Walker '47) EM 38" Large ruffled rose pink blend75	DREAM DANCE (Larsen '54) EML 36" Light golden-tan self with a mother-of-pearl area in center of falls, different	8.00
COURT HERALD (Stevens '52) 38" Vibrant rich burnished gold	1.00	DREAMY (Linse '53) EM 38" White, large, flaring and very ruffled, even a white beard	3.00
COURTIER (Hall '47) A deep pink and a fine parent75	EASTMONT (Plough '56) EML 40" Intense violet with brilliant coloring, large and ruffled, part onco	7.50
CRACKERJACK (Lothrop '49) 34" Red-copper blend, orange throat75	EBONY ECHO (Tompkins '48) ML 34" Large, heavily ruffled, velvety carmine red with a black sheen	1.50
CRIMSON BEAUTY (Austin '53) Large bitone with bronzy gold standards tinted crimson and dark red falls	2.50	EDITH JANE (Lothrop '55) MY 40" A gay unusual iris with a slight infusion of onco. Yellow standards and dark violet falls edged in gold	4.00
CRIMSON GLAZE (Craig '50) Bright brown-red bicolor	1.00	EIGHTEEN KARAT (Lohman '53) Tall, ruffled, flaring self of deep rich gold, heavy substance	2.50
CRINKLED SUNSET (Plough '57) A blend of sunset coloring, the standards are lavender and buff while the falls are violet, pink and buff. A colorful iris with heavily laced edges	15.00	ELMOHR (Loomis '42) ML 34" Colossal wine-red, part onco. Dykes Medal 1945	1.00
CRISPETTE (Schreiner '54) Deep orchid with fluted and lacy edge	5.00	EL PASO (Kleinsorge '49) EM A lively, metallic golden brown75
CUBA LIBRE (Plough '57) Fancy type plicata, standards are pansy violet, falls are plum purple with a bright clear yellow on the hafts and throat	10.00		
CUSTARD (Craig '50) Yellow marked with cinnamon	1.00		
DAFFY (DeForest '47) 40" Creamy falls are oddly peppered, marbled and striped in maroon violet75		

ENGRAVED (Craig '52) EM 32" Strange and lovely oncobred of white with an over-all pattern of steel-like engraving	3.50	GENEROUS (Muhlestein '55) 24" Gigantic, part onco, golden russet and it is fertile both ways	8.00
ENVOY (DeForest '49) 34" Glowing black red bitone	1.00	GHOSTIE (Craig '49) Strange, beautiful silver splashed lavender	1.00
EXOTIC (Linse '54) 48" Brilliant tan-rose and gold, with lilac blaze and lovely lace edging	2.50	GIBSON GIRL (Gibson '48) Cream with rose purple markings, everblooming75
EXTRAVAGANZA (Douglas '44) L Cream standards, red-purple falls	1.00	GLISTENING COPPER (Muhlestein '53) Brilliant smoothly finished copper	3.50
FABIOLA (Wallace '54) Rich majenta or grape-purple	2.00	GOLD BROCADE (Heller '48) Tall, dark, golden yellow sprinkled with gold dust	1.00
FAIRY FANCY (Sass '53) White with overlay of blue-purple	2.00	GOLDEN GLEAM (Miess '51) 38" Dandelion yellow with darker veins on falls	2.00
FANCYANCY (Austin '53) Silvery lilac standards and deep amethyst falls veined in white with brown lacework and stippling at the haft	2.50	GOLDEN HAWK (Smith '51) Exceptionally fine yellow with broad petals and semi-flaring form	10.00
FANCYWORK (Craig '51) 40" Burgundy veining over lighter ground	4.00	GOLD SMOKE (Clarke '52) Lustrous, smokey gold oncobred, with a suffusion of soft lilac on the falls	1.50
FANTASY (Hall '47) 30" Blend of orchid-pink and rose	1.00	GOLD SOVEREIGN (Whiting '49) 34" Ruffled vivid orange-yellow self	1.00
FAR CROSS (White '41) E 24" Part onco, a dark maroon beauty75	GREAT LAKES (Cousins '38) 35" Clear sky blue. Dykes Medal 194275
FAREWELL (Craig '51) A fine large orchid self which also blooms in the fall	4.00	GRECIAN ROBE (Heller '48) 38" A very tall cream and gold75
FIREBRIGHT (Craig '54) Deep red blend with violet blaze on the falls	10.00	GREENGLOW (Muhlestein '49) 36" Very large greenish-chartreuse-white	1.00
FIRE DANCE (Fay '47) Heavily marked wine-red on buff	1.50	GREEN PASTURES (Heller '47) 44" Yellow-chartreuse self with touch of blue at tip of the beard	1.00
FIRST FLIGHT (Plough '57) Color is Bishop's violet, the standards lightly suffused with buff. All petals have a heavy laced edge	15.00	GREEN WHISPER (Button '49) Kid-skin white with greenish undertone75
FIRST VIOLET (DeForest '52) 38" Large ruffled blue violet self Dykes Medal 1956	7.50	GROS GRAIN (Craig '50) Flaring gray-lilac, Mohr hybrid	1.25
FLAMING FIRE (Sass '50) ML 38" Immense flaming red bitone	1.00	GUDRUN (K. Dykes '30) Enormous heavy textured white. D. M. Eng. '3160
FOR SURE (Linse '53) EM 36" Very distinct and novel, part onco. Large ruffled flowers of creamy tan with margin of yellow and falls washed with violet	4.00	GUSSIE (Corey '53) ML Lacy edged orchid with lemon beard	2.50
FRANCES CRAIG (Craig '52) 44" Part onco, immense pale grayed lavender	3.50	HAPPY BIRTHDAY (Hall '52) 36" Large, bright, flaring, ruffled pink	3.00
FRANCES KENT (DeForest '51) Light apricot, cream and chartreuse with tangerine beard and haft flushed pink	2.00	HAPPY VALLEY (Miess '50) E Lovely large flaring medium blue	1.50
FRONTIER DAYS (Tompkins '53) ML 38" Large, rich, near cardinal red	5.00	HARBOR BLUE (Schreiner '54) Tall, lovely light blue self	5.00
FROSTY (Craig '50) Ruffled white, stippled violet border	1.00	HARLEQUIN (Stevens '49) Exotic plicata, silvery falls heavily marked with chocolate and purple	1.00
FUCHSIA (Hall '51) Rich raspberry pink or fuchsia-orchid	2.00	HAZEL REED (Craig '50) 40" Henna-brown with gold undertone	1.50
FUTURAMIC (Plough '56) 33" Frilled and shirred beauty in soft pastel tones, yellow shading to rose	7.50	HEADLANDS (Craig '50) 40" Immense flaring hyacinth blue	2.00
GAY NINETIES (Lohman '57) A horned iris, it is a yellow ground plicata with the standards heavily marked with garnet red, and a border on the falls. The horns extend out and upward from the end of the beard	20.00	HEATHERLANDS (Craig '53) Fancy heather and violet plicata, falls striated with white	4.00
GAZA (Jory '49) A Mohr oncobred in clay pink	1.00	HEIGHO (Craig '49) ML 40" Medium violet-blue oncobred	1.00
		HELEN COLLINGWOOD (Smith '49) ML Blue-white standards, violet-purple falls	1.50
		HELEN MCGREGOR (Graves '46) ML 36" Ruffled very light blue. D. M. 1949	1.00
		HENEN MCKENZIE (Graves '50) Very nice pure white	1.50

HERITAGE (Hall '49) 34" Deep flamingo pink, tangerine beard	1.00
HEROIQUE (Bloese '52) EM 40" Very large white self	1.00
HIGH COMMAND (Long '45) A variegata from England, yellow standards and black maroon falls edged white	1.00
HIGH HEAVEN (Plough '54) Heavily substantced light to medium blue	7.50
HIGH TOR (Fielding '52) L 38" Huge, fragrant ruffled chicory blue	2.00
HI-TIME (Hall '50) Light golden apricot, tangerine beard75
HIT PARADE (Hall '47) 30" Large pink with tangerine beard75
HORNED SKYLARK (Austin '57) 52" A very tall horned iris in clear yellow with flaring, nearly horizontal falls. Sets seed easily	20.00
HUMMING BIRD (Knowlton '52) Buff standards white falls bordered buff	2.00
HURRICANE (Craig '49) Oncobred, powder blue with dark flecks	2.00
IB-MAC (Van Tubergen '10) E 12" Violet with dark signal patch. Hybridizers iris, very fertile pollen	1.00
ILLINOIS (Hall '49) Large creamy yellow self75
ILLUSION (Kleinsorge '43) Lovely orchid self, part onco	1.00
INCA CHIEF (Mitch '52) ML 35" Large, brilliant ruffled golden bronze	3.00
INKY BLUEBEARD (Noyd '56) E-L 36" Black-purple with light blue beard. Easy parent, fertile both ways	15.00
ITALIAN JOY (Stevens '47) Rosy wine flushed bronze75
JANE PHILLIPS (Graves '50) ML 38" Exquisite bright light blue	1.00
JOAN CRAWFORD (Benson '54) 40" Big silvery blue self with white tipped beard. Falls flaring and rippled	15.00
JOANNA JANSSE (Wedgwood '54) E-L Violet blue bitone, long blooming season	1.00
JOSEPH'S MANTLE (Craig '49) Huge gold-buff brushed plicata, falls bordered red-brown. Blooms again in fall	1.50
JUNE BRIDE (Hall '52) L. Large deep apricot pink, red beard	2.00
JUNE MEREDITH (Muhlestein '54) ML 36" Intense, bright, clear ruffly pink	15.00
KALIFA FATIMA (White '52) EM 24" Oncobred, grey marked with blue and purple. Fertile pollen	4.50
KEENE VALLEY (Smith '49) Medium blue, large, ruffled, flaring	1.50
KING'S JESTER (Stevens '48) 38" Plicata, white with rose-maroon stitching75
LABAN EFFENDI (White '53) 30" Exotic oncobred, lavender standards and purple falls with black signal	3.00
LADAK (White '48) 30" Unusual oncobred, purple-brown standards with purple falls flecked white and dotted red-brown at the haft. Scarce	4.00
LADY ALBRIGHT (Muhlestein '50) ML 36" A brilliant rich blend of copper gold and rosy violet flushed blue	2.00
LADY DIANA (Lohman '52) ML 38" Fragrant lobelia violet self	1.00
LADY MOHR (Salbach '44) Novel cream and chartreuse oncobred	1.00
L'AMOHR (Craig '54) E 34" Unusual smokey orchid pink with signal patch. From Lady Mohr	3.00
LATE SUNSET (Ohl '50) 30" Yellow plicata marked with burgundy	1.00
LAUREL HILL (Plough '49) Veined rosy-lavender Mohr hybrid	1.00
LELA DIXON (Douglas '49) EM 36" Fine blue and white plicata75
LEMON SILK (Austin '54) EM 30" Regeliabred, lemon-yellow standards, creamy falls edged yellow and often flushed rosy-lilac	1.50
LILAC ARBOR (Stevens '48) Light lilac self	1.00
LILAC LANE (Whiting '47) 36" Large ruffled flaring lilac self	1.50
LIMELIGHT (Hall '52) 36" Canary yellow and greenish yellow, lace edge	3.00
LINDORA (Sass '50) 38" Orange-yellow standards, white falls edged yellow	1.00
LONG SHADOWS (Lothrop '53) EM 38" Large deep blue-purple, blue beard	2.50
LORD MARMION (Milliken '49) Huge, tall, early pansy-purple75
LOVELACE (Mitchell '48) ML 36" White plicata with soft pink stippling	1.00
LOVE STORY (Sapp '50) 38" Perky flaring flamingo pink	1.25
MADAME LOUIS AUREAU (Cayeux '34) Plicata, heliotrope on white. D. M. France 193450
MADAME MAURICE LASSAILLY (Cayeux '35) Lavender blue bicolor. Dykes Medal, France 193550
MADAM MOHR (Betcherer '51) 40" Lovely powder-blue with onco form	2.00
MAHARAJAH (White '55) ML 40" Sparkling dark blend of honey-gold and reddish tawny shades. Fertile both ways	5.00
MAJESTIC GOLD (Heller '48) 42" Large deep gold that blooms several times a year	1.00
MAJORETTE (Miess '53) 36" Unusual red-violet bicolor with a white beard, flaring and ruffled	6.00
MARGARET CRUISE (White '54) EM 36" Striking large ruffled empire yellow with the broad, semi-flaring falls lined with hazel-brown	3.00
MARSALA (DeForest '51) Self of bright Persian rose with heavy red beard	3.50
MARY RANDALL (Fay '51) 38" Rich bengal rose with a tangerine beard. Dykes Medal 1954	5.00
MASKED BALL (Buss '49) 34" Purple and white plicata, standards heavily marked	1.00
MASTER NEIL (Jensen '52) EM 32" Oncobred plicata, cream with bright cinnamon markings	3.00

MAYTIME (Whiting '50) ML 38" Lovely pink bi-color, darker falls	2.00
MELODY LANE (Hall '49) EM 36" Large glistening golden apricot pink	1.50
MIMOSA GOLD (Douglas '47) ML. A flaring brilliant yellow	1.00
MISSOURI (Grinter '33) ML Medium deep blue. Dykes Medal 193760
MOAB (Jory '49) EM 30" Strange, exotic, deep brown Mohr hybrid	1.00
MODESTY (Taylor '54) Yellow standards, white falls edged yellow	2.00
MOHR AND MORE (Muhlestein '53) 40" A part onco rich purple that often has 4 or 5 standards and falls	3.00
MOHR BEAUTY (Milliken '49) ML Pale yellow with white area in falls	1.00
MOHRESQUE (Keith '50) EM 38" Oncobred, light brown, buff and chartreuse flecked with purple. Will set seed	1.50
MOHR MAJESTY (Walker '52) 37" Huge oncobred in buff tones with lavender infusion	2.00
MOLASSES (White '44) Oncobred, red-brown bi-color, orange beard	1.00
MOLTEN (Craig '50) Bright blend of golden copper and rose, with violet blaze	1.50
MONTECITO (Milliken '50) Lemon yellow, frosty white area in the falls	2.50
MOON GODDESS (Craig '49) Large ruffled pale wisteria75
MORNING BLUE (Jory '48) ML Large, tall, rich blue bitone oncobred	1.00
MORNING MELODY (Becherer '48) 38" Large orchid self with white beard	1.00
MRS. DOUGLAS PATTISON (Craig '50) Brilliant cornflower blue	1.00
MRS. J. L. GIBSON (Gibson '30) Velvety blue-purple. Dykes Medal Eng. '4860
MT. MCKINLEY (Schreiner '47) EM Blue white standards, purple falls	1.00
MUIR GLACIER (Heller '48) EE-VL Fragrant large blue-white75
MULBERRY SNOW (Austin '55) A horned iris with smooth dark reddish wine standards. The falls are mulberry lined in white with a white blaze at top of each fall around the beard giving a "snow-capped" appearance	15.00
MYSTIC MELODY (Stevens '51) ML 39" Cream standards, butter yellow falls	1.50
NEW HOPE (DeForest '50) EM 36" Stunning plicata, white with heavy pattern of dark violet-blue	1.50
NEW HORIZON (Fay '46) ML 38" Peach pink with tangerine beard	1.00
NEW LOOK (Johnson '52) ML 34" Red-purple oncobred veined dark red	2.00
NEW SNOW (Fay '46) 38" Large ruffled flaring white	1.00
NOMOHR (Gibson '55) EML 40" Bamboo cream with violet onco lines at haft, fertile pollen	10.00
NORAH (Lapham '52) 40" Large clear apple blossom pink	2.50
NOVA GRANDE (Tompkins '49) A very brilliant velvety yellow75
OLA KALA (Sass '43) ML Tall brilliant yellow. Dykes Medal 194875
ORANGE APRICOT (Muhlestein '55) EM 36" Smooth light golden apricot	5.00
ORANGE CREAMO (Muhlestein '53) ML Flaring apricot-orange self	5.00
ORCHID FINALE (Albrecht '57) A lovely orchid that blooms over a long period of time, husky grower	20.00
ORELIO (DeForest '47) ML 35" Large rich brownish red	1.00
ORIENTAL GLORY (Salbach '50) 30" Brilliant mahogany red brown blend with blue blaze on the falls	2.00
OVER HERE (White '38) 32" Oncobred, light silvery red with blackish crimson veins on the almost white hafts75
OZIE WATERS (Linse '56) Fragrant, huge deep rose-red oncobred with brownish hafts, old gold beard and prominent black signal	17.50
PACEMAKER (Lapham '50) EM 35" Large tall impressive red	1.00
PAGAN GOLD (Douglas '51) 40" Rich velvety gleaming yellow	3.50
PAGAN PRINCESS (Douglas '48) 38" Deep persian pink and rose	1.00
PALOMINO (Hall '52) 36" Ivory and pink with a bonfire red beard	3.50
PARADISE PINK (Lapham '50) ML 36" Showy deep pink with red beard	1.00
PARTY DRESS (Muhlestein '51) ML 34" Ruffled glistening pink	1.50
PATHFINDER (Whiting '48) 36" Large, warm pink and orchid tones	1.00
PEACH BROCADE (Hall '55) 34" Peach-gold-tan blend with lacy edge	6.00
PEACH PARFAIT (Craig '48) Large peach pink self75
PEARL ORIENTAL (Heller '48) 34" Pearly white with infusion of pink, distinctive autumn bloomer	1.00
PEG DABAGH (Craig '48) EM 40" Tall clear blue-violet, part onco75
PHLOX PINK (Linse '56) 40" A delicate shade of phlox pink. Large, tall, hardy and of rapid increase. From New Snow X Capitola ..	10.00
PHOEBUS APOLLO (White '54) EM 36" A fragrant, part onco beauty of intense wax yellow, heavy substance and semi-flaring form. It has good branching, grows well and is fertile. A new breath taking beauty that is really sensational	15.00
PIERRE MENARD (Faught '48) 36" Very large flaring medium blue	1.50
PINAFORE LASS (Cook '51) 36" Broad and very ruffled rich blue purple with a large splash of white in center of falls. Gives effect of Japanese iris. Nothing else like it	2.00

PINK BOUNTIFUL (Cook '49) 38" Big smooth orchid pink 1.00

PINK BOUQUET (Hall '53) 30" Ruffled baby ribbon pink 3.00

PINK CAMEO (Fay '46) Pale cameo pink, tangerine beard75

PINK FORMAL (Muhlestein '49) 36" Very large deep salmon pink 1.00

PINK MATRON (Taylor) 40" Delightful pink blend 1.00

PINK MAUVE MOHR (Noyd '56) EM 34" Nicely formed mauve pink with tangerine beard. Good pod parent 7.50

PINK PINAFORE (Austin '52) EM 34" A charming pink plicata 3.50

PINK PLUME (Schreiner '51) 36" Large bright orchid pink 1.00

PINK SAILS (Sass '50) EM A real pink, good for breeding 1.00

PINK SALMON (Muhlestein '48) EM 36" Large flaring salmon pink 1.50

PINK SENSATION (Hall '48) EM 35" Splendid, one of the purest deep pinks 1.50

PINK TOWER (Muhlestein '48) EM 38" Large, tall, light shell pink 1.00

PINNACLE (Stevens '49) ML 35" Pure white standards, yellow falls 1.00

PLACER MAID (Austin '52) 24" Lovely fancy in pastel tints of buff, white and lavender, pencilled in brown 2.50

PORCELAIN BLUE (Sass '51) 36" particularly clear light blue 1.00

PORT WINE (Sass '50) ML 38" A fragrant striking plicata of white with heavy border of deep red-purple 2.50

PRAIRIE JEWEL (Sass '53) Large, striking, with shell pink standards, dahlia red falls and red beard 10.00

PRAIRIE SUNSET (Sass '39) ML 34" Large blend of sunset colors, peach, apricot and gold. Dykes Medal 194360

PRESENT (White '41) E 32" Exotic amethyst pink oncobred with deep pink veins 1.00

PRESIDENT (Lohman '52) ML 50" Rich mulberry with a metallic sheen, part onco 1.00

PRETENDER (Cook '51) ML 32" A new race of variegatas, yellow standards and blue-purple falls bordered yellow 3.50

PRETTY GAY (Plough '57) From Party Dress x Mary Randall comes this startling pure white with a fiery red beard. There are no haft markings and the petals are wide and of good substance. Fertile both ways 20.00

PRETTY PANSY (Sass '49) 37" White heavily striated with purple 1.00

PRETTY PINK (Murray '56) Huge rosy pink with good substance 8.00

PRETTY QUADROON (Kleinsorge '49) Lovely metallic copper brown 2.00

PRINCESS MICHELE (Loebner '55) ML 35" Large, flaring, ruffled pink-orchid bitone, the falls slightly darker. It is fragrant and can take heat, sun, rain or wind 3.50

PRIVATEER (Tompkins '54) Large, flaring, brilliant brownish red. Does not burn or fade 10.00

PROSPECTOR (Kleinsorge '50) 37" Flaring intense golden yellow with light area in the falls 1.00

PURISSAMOHR (Weidner '52) M 40" Very large pure white oncobred with a golden tan beard 3.50

QUEECHEE (Knowlton '50) 36" Lovely garnet-red self 1.50

QUEEN'S LACE (Muhlestein '55) Creamy white with a heavy Chantilly lace edge. Fertile pollen 15.00

QUEST (Plough '56) 40" A lacy edged cyclamen purple with yellow hafts and beard, lighter standards 3.50

RADIATION (Hall '48) Orchid pink with tangerine beard 1.00

RAINBOW ROOM (Sass '46) 36" Blend of gold, tan and lilac with blue blaze on the falls 1.00

RAINIER VALLEY (Crandall '55) EM 35" Tailored, flaring, intense medium blue 3.00

RANGER (Kleinsorge '43) L 34" Very large, near a crimson red 1.00

RARE PEARL (Schramm '54) EM 34" Beautiful pearly blend of pink, cream and buff 3.00

RASPBERRY RIBBON (Schreiner '51) EM 34" Stunning plicata of white bordered by solid raspberry 1.50

RAVEN WING (Milliken '51) EM 38" Tall dark purple with most potent pollen of all the darks 1.50

REAL GOLD (Austin '51) 24" A different oncobred in golden-buff with soft brown veins and bronze beard 3.50

REGAL ROBE (Craig '48) Violet-purple bicolor 1.00

REHOBETH (DeForest '53) Simply huge pale sky blue of excellent form 7.50

RELENTLESS (Cook '48) ML 38" A fragrant and velvety deep red75

RICH RAIMENT (Craig '49) 36" Plicata, cream stippled red-brown 1.00

RIMROCK (Moore '52) Yellow brushed red-brown 2.00

RIVIERA (Plough '57) Very large Dresden yellow with a blue white flush below the yellow beard, heavily ruffled and a vigorous grower 15.00

ROBERT ALEXANDER (Lothrop '55) ML 40" Large ruffled amber yellow 3.00

RODEO (DeForest '47) 36" Very large cream with tan markings60

ROSE OF ENGLAND (Long) VE 34" Large pink with lavender flush 1.00

ROSIRED (Craig '50) Large hollyhock-red self 1.00

ROYAL BAND (Craig '50) ML Purple on white plicata, also fall bloom 1.00

ROYAL GIANT (Craig) ML Light and deep purple bicolor	1.00	SOLID MAHOGANY (Sass '44) Deep reddish-brown	1.00
ROYAL SOVERIEGN (Stevens '51) EM Very rich deep orange yellow	1.50	SORAYA (Lothrop '54) ML 40" A pastel blend of lilac-pink-buff and blazed purple	3.00
RUFFLED BOUQUET (Rees '47) EM 36" Very heavily ruffled rich cream with deeper toned standards	1.50	SO SWEET (LaFrenz '54) E 38" Fragrant pale porcelain blue-white	2.50
RUFFLED ORGANDY (Brenan '53) 36" Glistening opalescent ruffled cream bordered with buff	2.50	SPANISH FANDANGO (Kleinsorge '51) Golden tan standards, velvety red falls	1.50
RUFFLED TAFFETA (Miess '54) EM 40" Large very ruffled deep pinkish lavender	7.50	SPANISH PEAKS (Loomis '47) ML 38" Pure white, large and ruffled	1.00
RUSSET WINGS (Wills '46) 40" Blend of gold, copper and apricot	1.00	SPELLBOUND (Linse '51) ML 40" Large flaring and ruffled red with a golden overlay and lovely fragrance	2.50
RUTH (Innes '50) 36" Heavily ruffled yellow with lighter color in center of the falls	1.00	SPRING MELODY (Miess '54) ML 40" Dandelion yellow self, broad, ruffled and flaring	7.00
SABLE (Cook '38) Superb early black purple60	SPRING ROMANCE (Miess '49) EM 42" Huge blooms of creamy-white with frosty overlay and heavy orange beard	1.25
SABLE NIGHT (Cook '52) 36" Large, very dark black-purple with reddish undertone. Dykes Medal 1955	9.00	SPRING SUNSHINE (Milliken '47) 42" Creamy-yellow, tall and simply huge	1.00
SAFARI (Plough '55) ML 30" A plicata in cream and warm brown	2.00	SPUN GOLD (Glutzbeck '40) The first velvety yellow. Dykes Medal '4460
SALMON SHELL (Muhlestein '50) Large salmon pink self	1.00	STARLIFT (Benson '54) 40" Smooth tall ruffled cornflower blue	8.00
SALUSKIN (Nelson '48) EM 45" Big light peach pink75	STAR SHINE (Wills '49) ML 38" Deep cream standards, blue-white falls	1.00
SAN ANTONE (Kleinsorge '47) Deep glowing sand-brown	1.00	STATEN ISLAND (Smith '47) L 36" Bright gold standards and velvety red falls edged with gold75
SAN FRANCISCO (Mohr-Mitchell '27) White and blue plicata. Dykes Medal '2760	SUEZ (Schreiner '44) 33" Oncobred, veined and dotted rosy mulberry75
SAPPHIRE SEA (Noyd '56) 38" Very fragrant large crisp light blue	10.00	SULTRY HOUR (Lothrop '54) 38" A striking greyed violet	1.50
SAVAGE (Craig '49) Bronze red with magenta blaze	2.50	SUMMER SUN (Craig '51) Very full flaring deep yellow	2.00
SENORITA ILSA (Rogers '53) 40" Huge beautifully formed pure white	5.00	SUMMIT (Stevens '51) 40" Charming with its snow white standards and falls of deep golden yellow	1.50
SEVENTEEN (Noyd '57) A beautiful deep pink self with tangerine beard and laced and serrated edges	10.00	SUNRAY (Hall '50) 36" A ruffled light yellow of ideal form	1.00
SHADY LADY (Craig '50) L 40" Blend of mauve and plum	1.00	SUNSET BLAZE (Kleinsorge '48) EM 40" Brilliant blend of flame red and coppery salmon	1.00
SIERRA SKIES (Schortman '54) EML 38" This is near spectrum blue and of excellent quality	8.00	SURRENDER (Tompkins '51) ML 38" White with canary yellow on hafts and outer edges of falls	1.50
SILVER PLATTER (Craig '50) Tall, immense flat pale blue	1.00	SWAGGER (Lothrop '53) ML 38" Jaunty blue-black with broad flaring falls	3.00
SKY CRYSTAL (Sass '55) 38" Wide gardenia-like white with slight blue cast, lightly ruffled	10.00	SWAN BALLE (Muhlestein '55) Beautiful ruffled flaring all white including white tipped beard	17.50
SKY RANGER (Hall '48) Very tall large blue	1.00	TABU (Schreiner '54) 34" A near black self, large and velvety	5.00
SLICK CHICK (Linse '54) 36" A great breeders iris from Lady Mohr. A snowy white with green midribs and green buds, onco form and loads of pollen as fertile as that of Capitola, also sets seed	5.00	TANGO (Sass '54) 38" Heavily substandard large rich blue	2.00
SNOSHEEN (Sass '50) 36" Beautifully ruffled pure white with frosty finish	2.50	TECHNICOLOR (Whiting '50) 36" Brilliant ruby red, near a true red	1.50
SNOW GODDESS (Becherer '55) EM 38" Lovely form, wide ruffled white with yellow beard	10.00	TEMPLAR (White '47) Ruffled cream stippled lilac to purple75
SOLID GOLD (Kleinsorge '51) 40" Very large intense deep rich yellow	2.00	TEMPLE CITY (Lohman '52) EML 38" Fragrant deep yellow prolific bloomer	1.00
		TEN SLEEP (Moore '52) 36" An exotic plicata of white heavily marked in dark blue, flowers marked differently	2.50

THANKSGIVING FIRELIGHT (Austin '50) Fragrant fall bloomer in blend of yellow, bronze and dark red	1.00
THE KNOCKOUT (Muhlestein '51) 36" Rich golden yellow, lighter falls	2.00
THE LAUGHING CAVALIER (Lothrop '53) ML 36" Blue bicolor with dark velvety falls, white beard	3.00
THE MAD HATTER (Lyon '51) 36" Large semi-flaring dark maroon red	2.00
THE PIRATE (Lothrop '53) 38" Dark blue-purple with brown veins in the falls	2.00
THOTMES III (Kleinsorge '50) 40" A gigantic glistening golden-tan	2.50
TOBACCO ROAD (Kleinsorge '42) ML 34" Flaring rich golden tobacco brown	1.00
TOP FLIGHT (Hall '53) ML 32" Luscious rich deep orange apricot with a fiery orange-red beard	2.50
TOP HAT (Schreiner '54) Large and tall blackish purple with a dark beard	5.00
TOURNAMENT QUEEN (Milliken '46) Bright fuchsia, mulberry-pink bicolor, winter bloomer75
TRAIL BLAZER (Milliken '51) Vibrant blend of red, mulberry and purple with a touch of blue below the cinnamon beard. Big, bold and very attractive	2.50
TRANQUILITY (Fay '50) 38" Superb milk-white with white beard	1.50
TRIFARI (Sass '53) 38" Distinct bright yellow plicata with brown markings	3.00
TROPIC MOON (Stevens '50) ML Flaring lemon-cream border iris	1.00
TRULY FAIR (Plough '56) EML 48" A bright medium pink with an intense red beard. Tall and vigorous	10.00
TRULY YOURS (Fay '49) L 38" Huge unusual yellow and white combination with heavy ruffling. Dykes Medal '53	3.00
TRY AGAIN (Aylett '42) An oncobred on the order of Suez, fertile both ways	3.00
TWILIGHT SKY (Fay '49) EM 35" Soft clear pink with red beard75
UTAH SKY (Muhlestein '55) A cornflower blue with very wide falls	5.00
VALGANZA (Brenan '53) 38" A variegata with yellow standards and red-purple falls	2.00
VANDA (Miles '46) 36" Lovely blue, superb parent	1.50
VEILED IN MYSTERY (Milliken '51) Unusual fluted and ruffled off-white with dusting of pale chartreuse	3.00
VENETIAN RED (Milliken) Antique venetian red with cinnamon beard	1.00
VENTURA (Walker '47) Pink-mulberry, hafts reddish-brown75
VERONICA (Lothrop '50) Large soft rose brown blend75
VICTORIAN VEIL (Craig '50) 40" Densely marked rose violet on white	1.00
VIGIL (Wills '47) Hardy vigorous snowy white75
VIOLET HARMONY (Lowry '52) 38" Large ruffled violet with a lighter area on the falls. D. M. 1957	5.00
VIVEZA (White '54) EM 40" Brilliant and vivid yellow bitone, waved standards of clear yellow with falls of burnt sienna. About one-quarter onco, well branched and will set seed	3.00
VOODOO (Kleinsorge '48) Ruffled chocolate and red brown75
WABASH (Williamson '57) L. White standards, purple falls. D. M. 194060
WAYFARER (Mitchell '48) White edged and stippled lavender75
WEDDING BOUQUET (Buttrick '52) 35" Big ruffled beautifully formed white. The buds are chartreuse	5.00
WEIRDIE (Craig '49) All-over markings of rose on buff	1.00
WELCOME GUEST (Linse '52) Large ruffled amber gold with haft and center of yellow gold	4.00
WHISPERS (Linse '51) L 40" Yellow standards, white falls	1.50
WHITE PEACOCK (Pattison '52) 36" Lovely white, broad, ruffled and near perfection	3.25
WHITE RUFFLES (Taylor '47) 38" Large ruffled warm white	1.00
WHITE SMOKE (Rees '50) ML 42" Large ruffled smokey blue white	1.00
WILLIAM MOHR (Mohr-Mitchell '25) E 18" Famous oncobred, soft veined violet60
WILMA VALETTE (Craig '50) Big crimson-burgundy fancy plicata	1.00
WOODSOR (Tompkins '50) ML 38" Beautifully formed deep violet-blue	1.00
WINGS OF FLIGHT (Austin '57) 42" A horned iris with flaring white falls bordered with pearly mauve that matches the heavily ruffled standards. Fragrant and a vigorous grower	10.00
WITCH DOCTOR (Plough '55) E-L 28" Very large onco of greyed blue-lavender with buffy-tan haft and heart	7.50
WOODMONT PLUMBAGO (Mitchell '52) Large plicata, white with deep blue-purple markings	1.00
WOODMONT PLUME (Mitchell '52) 36" Huge, heavy substantced, gay burgundy on white plicata	1.00
YELLOW TOWER (Muhlestein '50) Tall medium yellow	1.00
YNEZ (Lothrop '49) ML 36" Fragrant plicata, standards heavily marked reddish brown with border of creamy yellow falls75
ZANTHA (Fay '47) 36" Simply huge, clear brilliant yellow	1.00
ZEBRA (Pallida Variegata) (Krelage) 24" Outstanding for its foliage which is boldly striped creamy yellow and green. Small lavender-blue flowers75
ZILPAH (Lothrop '49) ML 30" Lavender standards with purple falls75

CHOICE OLDER VARIETIES

"Special Clearance"

60c each or

You select any 10 for \$5.00—20 for \$8.00—40 for \$14.95

or we will send

Our choice of 12 for \$5.00—25 for \$8.00—50 for \$14.95

ADVANCE GUARD—white dotted purple
AIRY GRACE—cream, brown at haft
ALADDIN'S WISH—cream brushed blue
ALBA SUPERBA—huge white
ALPINE GLOW—lilac, rose, yellow blend
AMBER GEM—chestnut brown and gold
AMITY—white with blue markings
AND THOU—large blue white
ANNA GRAY—vigorous light blue
ANN SHERIDAN—empire yellow
ARAB CHIEF—large burnt orange
AUBURN—coppery henna brown
AUTUMN LEAF—warm brown
AZALEA—creamy pink, coral beard
AZURE SKIES—ruffled pale blue
BABS—dark velvety red purple
BARRIMOHR—mulberry bitone oncobred
BEN BOLT—fine large blue black
BERKELEY GOLD—good deep yellow
BILLOWY SEA—large light blue
BISHOP'S ROBE—velvety blue black
BLACK BANNER—tall silky dark purple
BLUE GLOW—blue with brown hafts
BRIGHT LIGHTS—yellow, brown dots
BRILLIANT AMBER—amber blend
BRONZE EMBLEM—bronze, maroon falls
BRYCE CANYON—large henna copper
CARNIVAL PARADE—yellow plicata
CASA MORENA—reddish brown
CASCADE SPLENDOR—pinkish apricot
CHANSONETTE—orchid, cream throat
CHIEF POKING FIRE—reddish brown
CHINA LADY—large clear ivory
CIGARETTE—pongee cream
CLOTH OF GOLD—brilliant yellow
CLOUD CASTLE—huge wisteria blue
CLYTE—very large clear yellow
COFFEE & CREAM—cream and brown
CONTRA COSTA—brown dots on buff
COPPER RIVER—ruffled copper tan

DAYBREAK—pink and yellow blend
DECORUS—yellow, orchid, pink blend
DEEP MAHOGANY—tan, maroon falls
DEEP NIGHT—fragrant mulberry
DEL ROSA—cream, rose red falls
DISTANCE—light silvery blue
DIXIE BELLE—large ruffled white
DIXIE SUNSHINE—early fragrant yellow
DUET—honey beige, violet falls
EASTER BONNET—pink, gold border
EDITH RORKE—white, blue stitching
ELENA CHOOSING—buff oncobred
ENCHANTED—white, veined mulberry
ESQUIRE—rich medium blue violet
FAIR ENOUGH—silvery blue, half onco
FASHION PLATE—lavender and gold
FATHER'S DAY—clear blue violet
FIRECRACKER—yellow and red plicata
FORT KNOX—flaring deep yellow
FRANCELIA—deep yellow, orange beard
FRANCONIA—tall, cool white
GANGWAY—bright yellow
GAY SENORITA—yellow with brown veins
GAY TROUBADOR—bright reddish copper
GENERAL MacARTHUR—White, gold beard
GENTLE FLORENCE—white flushed violet
GILT EDGE—cream with yellow border
GOLDBEATER—rich deep yellow
GOLDEN EAGLE—light satiny yellow
GOLDEN RUFFLES—ruffled golden yellow
GOLDEN RUSSET—light golden russet
GOLDEN SYMPHONY—yellow S., lavender F.
GOOD NEWS—golden brown
GOOD SIR—bronze, rose purple falls
GRACE EADIE—pale yellow white
GRACE MOHR—large violet oncobred
GRACE'S GRACE—flaring blue purple
GRAND MARSHALL—tall bronze yellow
GULFSTREAM—rich deep blue
GYPSY—gold with chestnut brown falls

GYPSY BARON—white, purple markings
GYPSY KING—metallic purple oncobred
GYPSY ROSE—yellow, rose, red blend
HAPPY MAID—large light blue
HARMONETTA—light lavender blue
HARRIET THOREAU—tall orchid pink
HELEN FITZGERALD—large lobelia violet
HIJA MIA—soft empire yellow
HILLS OF GOLD—tall golden yellow
INNOVATION—white, rose pink edge
INSPIRATION—mulberry pink
IVORY TOWER—immense banana cream
JOURNEY'S END—light yellow blend
JULIET—flame copper and salmon
KATHERINE FAY—fragrant white
KERMISS—white and purple plicata
LADY BOSCAWEN—ruffled white, sparkles
LADY OF SHALOTT—rosy white, F. edged pink
LAELIA PINK—rose pink, darker falls
LA GOLONDRINA—large royal purple
LAKE BREEZE—ruffled medium blue
LAKE GEORGE—flaring medium blue
LAMPLIGHT—peach buff blend
LAMPLIT HOUR—white with yellow falls
LOIS—tall graceful cream
LOOMIS V 20—flamingo pink seedling
LOTHARIO—velvety blue bicolor
LOUISE BLAKE—S. sky blue, F. blue purple
LOVE AFFAIR—rose pink plicata
LULLABY—pale orchid pink blend
LYNN LANGFORD—orchid, gold haft
MAGIC CARPET—yellow dotted red
MANOAH—lustrous blue purple
MARIPOSA MIA—tall ruffled white
MAROON DAMASK—brownish red bicolor
MARQUITA—cream falls veined red
MARY VERNON—S. bronze, F. red
MASTER CHARLES—mulberry, brown haft
MATTIE GATES—lemon yellow and white
MELLOWGLOW—luscious apricot blend
MELODY LACE—yellow edged orchid
MEXICO—buff and red brown
MICHAEL—rose pink, gold on haft
MICHILLINDA—white, orchid pink dots
MINNIE COLQUITT—white dotted purple
MIOBELLE—lustrous rose blend
MIOGEM—metallic rose blend
MISS SALLY—medium rose blend
MISTY GOLD—ruffled lemon and gold
MOTHER LODE—creamy yellow
MOUNT HERMON—large silvery white
MOUNT TIMP—white and rose plicata

MULBERRY ROSE—deep rose purple
NANTUCKET—velvety ruby red
NATIONAL WHITE—tall white
NECHO—satiny red purple
N. J. THOMAS—blue purple oncobred
ODE—orange bitone for the border
OKLAHOMA—olive yellow, blue flush
ORANGE GEM—deep orange yellow
ORMACO—rusty violet, part onco
OVERTURE—pale flamingo pink
PAINTED DESERT—tan, blue blend
PALOS VERDES—reed yellow, green lines
PARIAN—large blue white
PATRICE—cream, rosy lavender marks
PEACHBLOW—cream and peach plicata
PERU—tall, large, powder blue
PIKES PEAK PINK—flamingo pink
PINK LACE—lightly ruffled pink
PRECIOUS—cream speckled apricot
PRINCESS OF BRENTWOOD—soft pink blend
QUALITY FIRST—beautiful white
QUINQUE—tall rose red
RADIANT COMMAND—lavender and purple
RAJAH BROOKE—S. yellow, F. deep red
RED MAJESTY—copper red, yellow haft
RED TORCH—S. bronze, F. ruby red
RED VALOR—large, tall, good red
REDWARD—crimson red for the border
REFUGEE—buff yellow, red beard
REMEMBRANCE—pink and yellow blend
RILLA GABBERT—golden tan blend
ROCKET—orange chrome bitone
ROSE BOWL—tall deep rose
ROSE GOLD—iridescent rose blend
ROSE TOP—cream, rose stitching
ROSY FUTURE—silvery rose, tan haft
ROSY RUFFLES—rosy lavender pink
ROUGE BOUQUET—flaring dark red
ROYAL SCOT—yellow and red plicata
RUSSIAN BRONZE—S. bronze, F. maroon
SALMONETTE—light salmon pink
SAN PASQUAL—violet carmine bitone
SANTA CRUZ—yellow with red veins
SEA LARK—violet blue flushed purple
SEARCHLIGHT—dark yellow self
SEDUCTION—cream edged soft pink
SERENATA—pink, russet, red blend
SHANNOPIN—cream, pinkish rose falls
SHERIFFA—metallic blue violet oncobred
SHISHALDIN—tall golden brown
SIERRA PRIMROSE—fragrant primrose yellow
SILVER CHARM—grey blue oncobred

SLEEPY HOLLOW—velvety deep violet
SNOW CARNIVAL—large ruffled pure white
SNOW FLURRY—ruffled blue white
SONRISA—coppery pink blend
SOQUEL—veined lavender oncobred
SORREL TOP—cream, rose brown markings
SOUSUN—early lemon yellow
SOUTH SEAS—sky blue with yellow beard
SPINDRIFT—coral pink, tangerine beard
SPRING CLOUD—white and blue plicata
SPRING SECRETARY—gold, lavender, yellow
SULTAN'S ROBE—rose, copper, blue blend
SUNNY RUFFLES—lemon yellow, darker edge
SUNSET GLORY—glowing orange copper
SUNSET HAZE—misty tan bend
SUNSET SERENADE—yellow, copper, peach
SUZETTE—cream, maroon on edges
SWEET ALICE—soft rose pink
SYLVAN SONG—light yellow self
SYLVIA MURRAY—clear light frosty blue
SYRINGA—fragrant lilac lavender
TEAL—lilac, tan, purple, blue blaze
TEA ROSE—fine mallow pink

THE ADMIRAL—an intense blue self
THE BISHOP—large rich purple
THE CAPITOL—creamy white, orange beard
THE DARB—buff and rosy orchid
THE SPARTAN—deep yellow, orange beard
THREE CHEERS—light blue and purple
THREE OAKS—pink, copper, blue blend
THREE SISTERS—S. cream, F. red violet
TIFFANJA—buff & white, speckled tan
TIFFANY—yellow, deep rose stitching
TISHOMINGO—frosty wisteria blue
TOP SCORE—S. gold, F. reddish brown
VAL—light blue with lines in the falls
VEISHEA—copper, rose, blue blend
VIOLET SYMPHONY—ruffled gleaming violet
VISION OF MIRZA—cream marbled rose brown
WHITE SPIRE—very tall white
WHITE WEDGEWOOD—white, blue beard
WM. A. SETCHELL—mammoth dark purple
WINTER CARNIVAL—white with gold throat
WOODLAND BEAUTY—brown, tan, pink blend
YUMA—yellow, marked red purple and brown
ZUA—crinkled blue white

LANDSCAPE IRIS

THE MOST FOR YOUR MONEY If you want iris for mass effect and driveway plantings, but do not care for the names, try this special collection, all different, many colors including pinks, choice seedlings and surplus named varieties, unlabeled.

25 for \$3

50 for \$5

100 (2 each of 50 varieties) for \$9

INEXPENSIVE OLD FAVORITES

35c each or

You select any 10 for \$3.00—20 for \$5.00—40 for \$9.00
or we will send

Our choice of 12 for \$3.00—25 for \$5.00—50 for \$9.00

ALASTOR—deep pink, orange beard
ALTA ROSA—rich rose lavender
ARETHUSA—huge daphne red
AZTEC COPPER—smoky copper
BERMUDA SAND—light coffee tan
BETSY ROSS—delightful mauve
BEVERLY HILLS—large pink blend
BLUE CRYSTAL—early light blue
BLUE DELIGHT—wisteria blue
BLUE PETER—blue purple
BLUE RIVER—early medium blue
BRONZED COPPER—copper blend
BRONZINO—buff and bronzy red
BROWN FEATHERS—yellow & brown
BRUNHILDE—fragrant blue violet
BUCKSKIN—large deep tan
BUFFAWN—pinkish buff
CALIFORNIA PEACH—pink blend
CARVED IVORY—large cream
CHICORY BLUE—slightly ruffled blue
CHINA BOY—huge bronzy red
CHINA MAID—pink, gold, lilac blend
CHOSEN—large primrose yellow
CHRYSOLITE—cream, orange beard
CLOVELLY—white, seafoam green
COPPER CASCADE—copper brown
CORITICA—yellow edged with tan
CRIMSON TIDE—flaring red
DAY'S FAREWELL—rosy lavender
DEAR ME—ruffled pink blend
DEEP VELVET—rich red purple
DISPLAY—brilliant red brown
EDA—yellow bitone for border
ELAN—early white, part onco
EPISODE—apricot yellow blend
FLORA CAMPBELL—russet red
FLORA ZENOR—cameo pink
FLORENTINE—white dotted blue
FORTUNE—large rich gold
FRANK ADAMS—tan and rosy red
GARDEN MAGIC—velvety red
GOLDEN FLEECE—cream edged gold
GOLDEN MADONNA—cream and yellow
GOLDEN SPIKE—large deep yellow
GRACE BALLARD—apricot pink blend
GRAND CANYON—plum copper gold blend
HER GRACE—tall smokey blue blend
HIWASSEE—lilac pink bicolor
ICY BLUE—crisp light blue
JASMINE—clear golden yellow
JASPER AGATE—copper red blend
JINEEN—huge tall medium blue

LADY GRACE—tall creamy white
LADY NAOMI—white dotted blue
LATE SUN—deep yellow self
LIGHTHOUSE—rose and copper
LORD DONGAN—violet and purple
LORELEI—yellow and purple
LOS ANGELES—white, blue throat
LUCERNE—tall blue violet
MAJENICA—salmon pink blend
MARGARET BOND—yellow self
MARY E. NICHOLS—cream and gold
MATTERHORN—gigantic pure white
MAY CODDINGTON—early yellow
MELANIE—light orchid pink
MELITZA—salmon tan, red beard
MING YELLOW—very large yellow
MISS CALIFORNIA—orchid pink
MISSION MADONNA—light yellow
MOONLIT SEA—cream washed blue
MOROCCO ROSE—rose pink and gold
MT. SKY—tall ruffled light blue
NASSAK—white and blue plicata
NARANJA—near orange
NED LE FEVRE—rose and salmon blend
NIGHTFALL—pansy purple bitone
NOEL—tall white, gold beard
OLD PARCHMENT—creamy tan
OLD ROSE—large rose pink blend
ORANGE FLAME—orange and copper
ORMOHR—grey lavender oncobred
PALE MOONLIGHT—tall pale blue
PATRICIA—ruffled white
PERSIA—a smokey blue
PINK FROST—pale clear pink
PINK RUFFLES—lilac pink
POLLY—smooth medium blue
RED GLEAM—sparkling red
RENE CAYEUX—cream and purple
ROYAL COACH—yellow dotted brown
RUTH POLLOCK—yellow dotted rose
SAMOVAR—rich burnished copper
SAN GABRIEL—early light blue
SHARKSKIN—tall warm white
SPANISH CAVALIER—bronze and red
STARDOM—bronzy salmon
SURF—ruffled white
SWEET ALIBI—creamy yellow
TREASURE ISLAND—clear yellow
THE GUARDSMAN—dusky mulberry
UKIAH—red maroon bitone
WESTLANDER—lavender and violet
WEST POINT—late blue bitone

MINIATURE IRIS

Here the ideal is small flowers, gracefully arranged on slender stems, and they are much used in flower arrangements. They are also useful in the rock garden and for border plantings. Most of the rhizomes are small. Height 15" to 28".

BENTON OLD MADRID —orchid pink50
BOBBY HOUDYSHEL —white, orchid pink35
BRIDE —8" dwarf white, green veins35
CAROLINE E. STRINGER —pinkish white35
CHEWINK —pale blue, gold beard50
CHURCHMOUSE —lavender brown50
COCKATOO —ruffled clear yellow35
DAYSTAR —creamy white, red beard75
DORCAS HUTCHINSON —violet50
ELEANOR ROOSEVELT —purple35
FRISCOETTE —small San Francisco50
FRO —yellow35
GOLDEN LIGHT —yellow and apricot35
KEWPIE —mulberry rose75
KINGLET —splendid deep yellow75
LA BOHEMIENNE —salmon pink75
LITTLE ELSA —10" dwarf lemon and white50
LITTLE FRIEDA —little Frieda Mohr35
LODESTAR —yellow standards, scarlet falls edged yellow75
MIDWEST —white dotted rose35
MONTOUR —pinkish cinnamon standards, reddish brown falls	1.00
NAMBE —yellow standards, violet falls bordered yellow75
ORCHID IMP —orchid pink35
PEWEE —pert little white50
PINK DOVE —lilac pink and rose	1.00
PRECIOUS GEM —white stitched rose	1.00
RHAGES —orchid, purple markings50
RHYTHM —a flat iris with six falls and no standards. Color, deep blue violet, except for whitish hafts and yellow beard. A novel item for arrangement fans	3.50
ROMEO —S. yellow, F. purple35
SANDYSON —cream sanded lavender50
SMARTY PANTS —yellow standards, red striped falls50
SOUTHLAND —golden yellow self35
SPARK —coppery red and maroon50
SPOT —S. blue white, F. blue streaked with purple50
SUSA —small red purple35
TITMOUSE —yellow speckled violet50
TOKAY —salmon pink blend35
TRUE CHARM —small Los Angeles35
VALIANT OLA —miniature Ola Kala	1.00
WARBLER —light yellow50
WIDGET —white, lavender markings75

WHITE'S "LITTLE ONCOS"

These are small flowers, mostly low growing, and have very small rhizomes. You will love them because of their strong onco characteristics and ease of growing. Withhold summer water, and give them good drainage. Height 10" to 24"

BEDTIME —brown, purple veins75
BELADI —red purple dotted violet75
BRILLIG —purple veins on yellow75
CITRINE —smokey chartreuse veined in a darker green tone	2.50
COGETTE —smokey purple, dark veins75
KISH —white veined & dotted in violet	1.00
MOZO —yellow veined bronze red50
MUSTAPHA —taupe gray and lavender with maroon falls50
MYOMY —white with edges veined and dotted with rosy purple	1.00
OYEZ —one of the most strikingly beautiful, white veined red purple	1.00
SUSAN OF HILLY —pale violet with yellow falls shaded violet	1.00
TOP HILLY —cream with buff veins50
YARKAND —light wisteria violet veined with purple, black beard	1.00
YOUNG APRIL —violet with purple and brown veins75

Other Little Oncos

BALROUDOUR —blue, olive, maroon75
CHERUB —chartreuse, purple veins	1.00
MISS MUFFET —violet and chartreuse veined in brown and purple50
MME. SAVOUILLAN —blue blend50
PESHAWAR —velvety brownish red35
SIR TREVOR LAWRENCE —lovely blue50
ZWANNENBURG —olive green flecked purple and brown35

Make Your Own Collections

from this page and save money

Any 4 of the 35c iris for	\$.95
Any 4 of the 50c iris for	1.25
Any 4 of the 75c iris for	1.95
Any 4 of the \$1.00 iris for	2.75
ALL 4 COLLECTIONS—16 iris—for	6.50

"EXTRA SPECIAL"

CITRINE OR RHYTHM half price with any order for \$5.00 or more from this page

Lawson Iris Gardens

Post Office Box 314 — Valley Center, California



KISH

U. S. DEPARTMENT OF AGRICULTURE

LIBRARY
WASHINGTON 25, D. C.

OFFICIAL BUSINESS
PRINTED MATTER

HERBACEOUS DIVISION
LIBRARY, U. S. DEPT. OF AGRICULTURE
WASHINGTON 25, D. C.

PENALTY FOR POSTAGE USE TO AVOID
PAYMENT OF POSTAGE, \$300
(GPO)



FORWARDING OR RETURN POSTAGE GUARANTEED