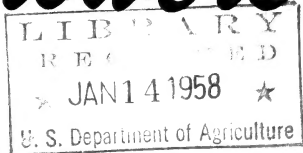


# MIDWEST



BRIGHT SCARLET GLOBE, SHORT TOP—See description on page 20

## Seed Growers



505 Walnut Street, Kansas City 6, Mo.

Phone Vltor 2-1493

## 1958 CATALOG FOR MARKET GROWERS

## ASPARAGUS *One-half pound at pound price*

	Oz.	¼ lb.	lb.
Paradise .....	\$ .50	\$1.75	\$5.00
Mary Washington .....	.25	.85	2.50
Washington No. 500 .....	.50	1.75	5.00



SEMINOLE

## BEANS

*The beans we offer are Idaho grown and practically disease free*

### Seminole

A new disease resistant greenpod bush bean of Tendergreen type. Picks in 54 days. Plants 20 inches tall with 23 inch spread. Pods average 6 inches long—round, straight, stringless, meaty fiberless, and good quality. In trials last year this new variety, by far, out-yielded Tendergreen.

**Lb. 65c, 5 Lbs. \$3.00, 10 Lbs. \$5.00,  
100 Lbs. \$35.00**

### BEANS—DWARF OR BUSH—GREEN PODDED

	50 Pounds at 100-Pound Price			
	Lb.	5 Lbs.	10 Lbs.	100 Lbs.
Hyscore .....	\$ .70	\$3.25	\$6.00	\$50.00
Topcrop U. S. No. 1 .....	.65	3.00	5.00	35.00
Wade .....	.65	3.00	5.00	35.00
Burpee's Stringless Greenpod .....	.60	2.50	4.50	30.00
Contender .....	.60	2.50	4.50	30.00
French Horticultural (Romaine) .....	.65	3.00	5.00	40.00
Full Measure .....	.60	2.50	4.50	30.00
Tender Green .....	.60	2.50	4.50	30.00
Stringless Black Valentine .....	.60	2.50	4.50	30.00
Pearl Green .....	.70	3.25	6.00	50.00
Tenderlong 15 .....	.65	3.00	5.00	35.00
Dwarf Kentucky Wonder .....	.70	3.25	6.00	50.00

### BEST DWARF YELLOW OR WAX PODDED

	50 Pounds at 100-Pound Price			
	Lb.	5 Lbs.	10 Lbs.	100 Lbs.
Round Pod Kidney or Brittle Wax ..	\$ .65	\$3.00	\$5.00	\$35.00
Pencil Pod Wax .....	.65	3.00	5.00	35.00
Unrivalled Wax .....	.65	3.00	5.00	38.00
Cherokee Wax .....	.60	2.50	4.50	32.00

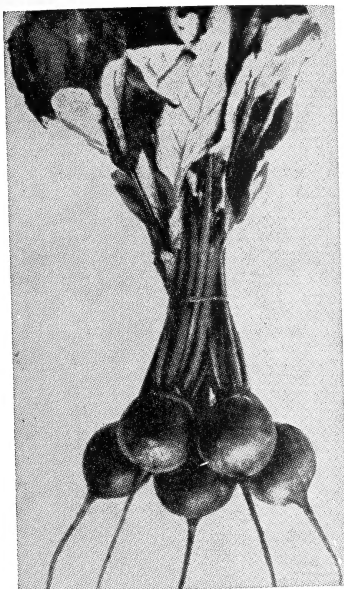
### BEANS—DWARF LIMA

	50 Pounds at 100-Pound Price			
	Lb.	5 Lbs.	10 Lbs.	100 Lbs.
Henderson's Bush Lima Improved ..	\$ .60	\$2.50	\$4.50	\$32.00
Fordhook No. 242 .....	.65	3.00	5.00	35.00
Allgreen, Baby Limas .....	.60	2.50	4.50	32.00

### BEST VARIETIES—POLE BEANS

	50 Pounds at 100-Pound Price			
	Lb.	5 Lbs.	10 Lbs.	100 Lbs.
Kentucky Wonder .....	\$ .60	\$2.50	\$4.50	\$32.00
Kansas Wonder .....	.70	3.00	5.00	36.00
White Seeded Kentucky Wonder 191	.65	3.00	5.00	38.00

# BEETS



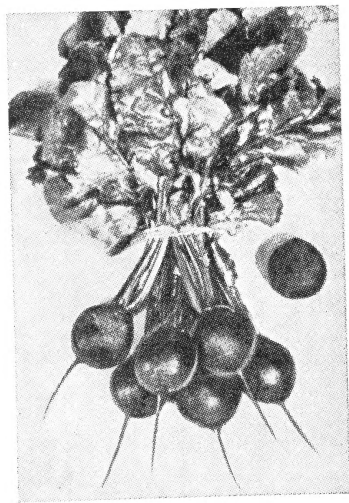
MATCHLESS, GREEN TOP

## Matchless, Green Top

An outstanding stock for shippers and market gardeners

A pedigreed stock, the result of many years of breeding; unsurpassed in earliness, uniformity and in depth of interior color. Distinctive green tops, erect, uniform in size and color, bunching very attractively for market. Roots round when young, semi-globular later, deep red, smooth, with small neck and tap root. Flesh deep dark red, tender, and of excellent quality. 55 days.

Oz. 15c, ¼ Lb. 50c, Lb. \$1.50



DETROIT DARK RED PERFECTED

## Detroit Dark Red Perfected

This beet is one of the most outstanding selections of Detroit Dark Red for dark, uniform interior color. Especially adapted for bunching purposes. The root is globe shape, slightly flattened at base. Interior color dark blood red, minimum of zoning. Flesh is excellent in quality. The top is tall, dark green leaves tinged with dark red. This variety is a good grower and heavy cropper. 58 days.

Oz. 15c, ¼ Lb. 50c, Lb. \$1.50

Which Variety  
Will Suit  
Your Needs  
Best?

	Oz.	¼ Lb.	Lb.
Detroit Dark Red Short Top.....	\$0.15	\$0.50	\$1.50
Asgrow Wonder .....	.15	.50	1.50
New Crosby, Dark Red .....	.15	.50	1.50
Light Red Crosby .....	.15	.50	1.50
Early Wonder Green Top, Select Strain...	.15	.50	1.25
Eclipse, Light .....	.15	.50	1.50
Green Top Bunching .....	.15	.50	1.50
Early Wonder Tall Top .....	.15	.50	1.50
SWISS CHARD Ford Hook Giant.....	.15	.50	1.50

## BEETS—STOCK

	Oz.	¼ Lb.	Lb.
Mammoth Long Red .....	\$0.15	\$0.40	\$1.25
Giant Half Sugar (Green Shoulder).....	.15	.40	1.25

# CABBAGE



EARLY MARKET

## Early Market Cabbage, 62 Days

This is an extra early strain of Copenhagen, splendid for early market and shippers. Plants small, compact, stem short, heads uniformly round; average weight about 3 lbs. The most outstanding feature of this variety is that it matures its crops nearly 100 per cent the first cutting.

Oz. 80c,  $\frac{1}{4}$  Lb. \$2.70, Lb. \$8.00

## Earliest of All

### *Yellows Resistant*

A variety that truly upholds its name. This is the earliest "yellows resistant" strain of the Golden Acre type, slightly smaller and fully seven days earlier. Many of our growers reported harvesting this variety in 58 days.

Oz. 80c,  $\frac{1}{4}$  Lb. \$2.70, Lb. \$8.00



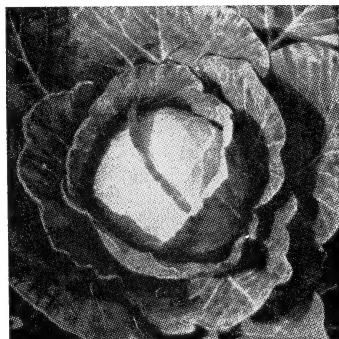
EARLIEST OF ALL, YELLOWS RESISTANT

## Resistant Golden Acre

### *Extra Early, 65 Days*

This strain has proven highly resistant to "yellows" and has made it possible for growers to produce a good crop of early cabbage in many areas infested with this disease. The heads closely resemble our strain of regular Golden Acre, but mature a day or two later.

Oz. 70c,  $\frac{1}{4}$  Lb. \$2.35, Lb. \$7.00



GOLDEN ACRE, YELLOWS RESISTANT



## Highland Ballhead

A single plant selection from Danish Ballhead for a more uniform type and higher tonnage. Heads  $7\frac{1}{2}$  to 8 inches in diameter, not unusual for this variety to produce heads from 5 to 6 pounds. We recommend this variety very highly for soil not infested with yellows.

Oz. 60c,  $\frac{1}{4}$  Lb. \$2.00, Lb. \$6.00

## Marion Market Second Early

A "yellows" resistant type of Copenhagen Market and one of the first resistant strains to be developed. Marion Market has proven very profitable for many growers because of its dependability and heavy yields even on yellows infected soil. The plants and heads are larger than Standard Copenhagen Market and require about 10 days longer to mature. The heads are round, very solid and excellent for shipping. Season 75 days.

Oz. 60c,  $\frac{1}{4}$  Lb. \$2.00, Lb. \$6.00

## Evergreen Hollander

Yellows resistant is a true Hollander but much more uniform than Wisconsin No. 8; earlier in maturity, smooth large heads with blue-green leaves. Season 95 days.

Oz. 70c,  $\frac{1}{4}$  Lb. \$2.35, Lb. \$7.00

## Globe, Yellows Resistant

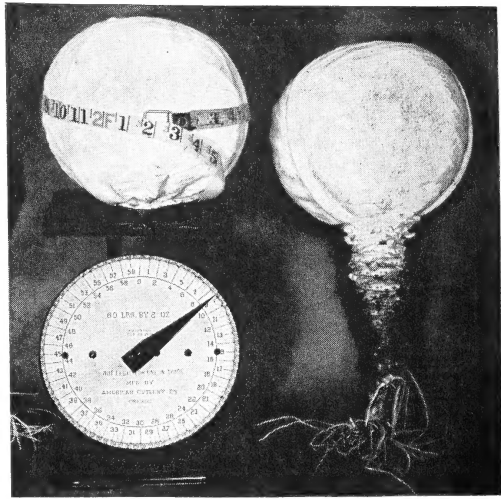
A strain developed from Glory of Enkhuizen at the Wisconsin experiment station. The heads are globular, commonly six to seven inches in diameter, firm and of good quality. This is one of the best mid-season varieties. Season 80 days.

Oz. 60c,  $\frac{1}{4}$  Lb. \$2.00, Lb. \$6.00

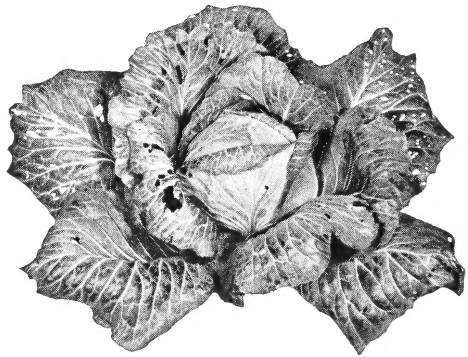
## Wisconsin Hollander, No. 8, Late

This is a "yellows" resistant strain of the Danish Ballhead type. An excellent late variety for storage and shipping. The plants are large and very hardy. The heads are large, practically round and solid. Season 105 days.

Oz. 60c,  $\frac{1}{4}$  Lb. \$2.00, Lb. \$6.00



HIGHLAND BALLHEAD



EVERGREEN HOLLANDER

## Midwest Ballhead

This finely bred new strain of Danish Ballhead was developed to meet the growing demands by growers for a smaller average head. The plant and head color is deeper bluer green than any other Ballhead that we know of. Don't fail to try this in this year's plantings. Supply very limited. Order early.

Oz. 70c,  $\frac{1}{4}$  Lb. \$2.35, Lb. \$7.00

See Page 4 for Other Cabbage Listings

Seeds of Quality by Test Are Sold by Midwest



MICHIHLI

**Haco, Red**

The Earliest Red Cabbage. This famous early red variety is again available! The solid, round heads are medium-sized, 3-4 lbs., and mature a little later than Golden Acre. Red Haco is remarkable for its ability to stand a long time without splitting even under adverse weather conditions. The best variety for early harvest. **Oz. 70c, ¼ Lb. \$2.35, Lb. \$7.00**

**CHINESE CABBAGE**

**Michihli**

This cabbage is similar to Chihli but with a uniformity hitherto unknown in Chinese cabbage strains. Exceptionally sure heading, vigorous in growth, rich dark green outer leaves without a yellowish cast. The heads are well blanched, firmer and larger than ordinary Chihli. Crisp, tender, fine flavored.

**Oz. 30c, ¼ Lb. \$1.00, Lb. \$3.00**

**Chihli Oz. 25c, ¼ Lb. 85c, Lb. \$2.50**

**Red Hollander, Yellows Resistant**

The only red cabbage bred and introduced for resistance to yellows. The head is round, solid and dark red in color. We recommend this variety for shipping and storage. Season 105 days.

**Oz. \$1.00, ¼ Lb. \$3.50, Lb. \$10.00**

**Golden Acre, Elite**

Our seed of this popular variety is the true uniform early strain, that we have sold for years and is vastly superior to most stocks sold.

**Oz. 60c, ¼ Lb. \$2.00, Lb. \$6.00**

*Hot water  
treated seed  
upon request  
on any variety  
listed*

	Oz.	¼ lb.	Lb.
Golden Acre .....	\$0.50	\$1.75	\$5.00
Copenhagen Market .....	.50	1.75	5.00
Greenback, Yellows Resistant Round Dutch .....	.70	2.35	7.00
Badger Ballhead, Yellows Resistant.....	.70	2.35	7.00
Pride of Denmark .....	.60	2.00	6.00
Bonanza .....	.60	2.00	6.00
Ferry's Round Dutch .....	.50	1.75	5.00
Oakview Ballhead .....	.50	1.75	5.00
Ferry's Hollander .....	.60	2.00	6.00
Chieftain Savoy, Improved American Savoy .....	.60	2.00	6.00
Red Acre, Early .....	.70	2.35	7.00
Round Red Dutch, Mid-Season Red.....	.70	2.35	7.00
Mammoth Red Rock .....	.60	2.00	6.00
Hollander Short Stem, N. K. Strain.....	.70	2.35	7.00
Resistant Glory, Yellows Resistant.....	.60	2.00	6.00
Red Acre, Yellows Resistant.....		<b>Crop failed</b>	
Danish Ballhead, Yellows Resistant.....	\$ .60	\$2.00	\$6.00
Racine Market, Yellows Resistant.....	.60	2.00	6.00
Bugner, Short Stem Yellows Resistant....	.60	2.00	6.00
Badger Market, Yellows Resistant.....	.60	2.00	6.00
Danish Ballhead, Greenpack Strain, Y. R....	.70	2.35	7.00

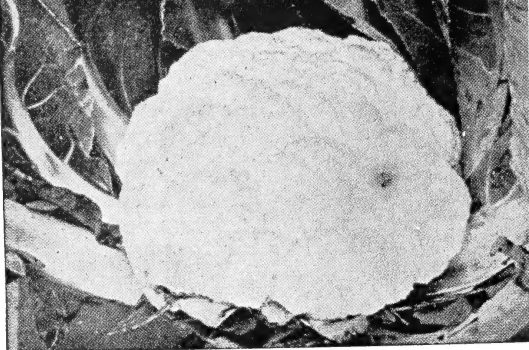
**Detroit, Yellows Resistant**

This variety is about 5 days later than our Golden Acre Yellows Resistant and a little larger. Very good for second early where tonnage is desired.

**Oz. 60c, ¼ Lb. \$2.00, Lb. \$6.00**

# CAULIFLOWER

A Variety of  
Outstanding Merit  
Be Sure to Try This!



CAULIFLOWER SNOWBALL, STOCK 84

## Cauliflower Snowball, Stock 84

Formerly called *Midwest Special Snowball*

This strain is of the White Mountain and Snowdrift type, but its crop matures more evenly and about five days earlier. Just as heavy and firm as White Mountain and Snowdrift, with unusually good foliage protection, something most other fast-maturing varieties lack. This variety has proved most satisfactory for use under a wide range of conditions. We recommend this for main crop to market gardeners and shippers.

Oz. \$3.00, ¼ Lb. \$10.00, Lb. \$35.00

## Early White Top

The most satisfactory early variety thus offered to the trade. The plant is sturdy with more protecting foliage to cover the head. We recommend this variety in districts having a short growing season.

Oz. \$3.00, ¼ Lb. \$10.00, Lb. \$35.00

## Snowball, Stock 57

is a highly successful introduction and is now widely recognized as the best Snowball strain on the market today. Not only for fall crops but in midsummer as well, it has excelled all others in quality, color and uniformity. It cuts out practically 100 per cent perfect heads, deep and solid with snow white curds. Don't fail to include this in this year's plantings.

Oz. \$3.00, ¼ Lb. \$10.00, Lb. \$35.00

## White Mountain

The best adapted variety for use under a wide range of conditions and generally considered the most satisfactory strain for main crop for Fall harvest. Plants are large and erect with ample foliage for head coverage. The heads are large, heavy, smooth, compact and very white. This is undoubtedly the best variety on the market today.

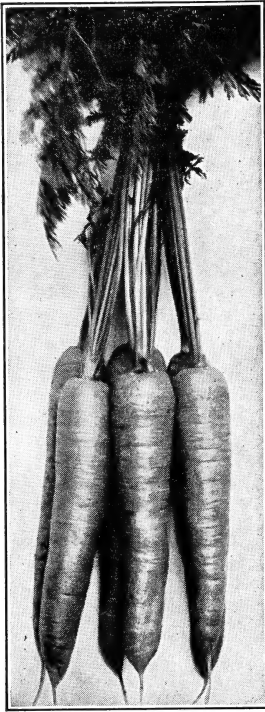
Oz. \$3.00, ¼ Lb. \$10.00, Lb. \$35.00

Hot water treated seed for protection against  
black-leg and black rot upon request

	Oz.	¼ Lb.	Lb.
Snowball M .....	\$2.50	\$ 9.00	\$30.00
White Mountain, Late Strain .....	3.00	10.00	35.00
Snowball No. 34 .....	3.00	10.00	35.00
Snowdrift .....	3.00	10.00	35.00
Pioneer, July King .....	3.00	10.00	35.00
White Excelsior .....	3.00	10.00	35.00
Snowball X .....	2.50	9.00	30.00
Snowball E .....	2.50	9.00	30.00
Snowball Imperial .....	2.50	9.00	30.00

Seeds of Quality by Test Are Sold by Midwest

# CARROTS



IMPERATOR LONG TYPE

## Imperator Long Type

Outstanding for bunching. Our strain of this famous bunching carrot is much superior to others in smoothness, uniform slender shape and deep orange color. The carrots are ideal for high class bunching trade, growing about 9 to 10 inches long, smooth, somewhat tapering, and the fine dark color is carried right down to the tip. The tops are just right for bunching.

Oz. 25c,  $\frac{1}{4}$  Lb. 80c, Lb. \$2.40

## California Bunching

An excellent strong top variety for bunching. The roots are about eight inches long, cylindrical in shape, pointed when young but become almost stump-rooted at maturity. The flesh is most attractive, deep orange in color. The core is the same color as the flesh, and gives the appearance of having no core at all. We recommend this strain for growers desiring a long bunching carrot. Season 77 days.

Oz. 25c,  $\frac{1}{4}$  Lb. 85c, Lb. \$2.50

## Gold Spike

A new introduction. It resembles Imperator Long Type, but has a much shorter top, 12 to 15 inches tall.

Oz. 35c,  $\frac{1}{4}$  Lb. \$1.15, Lb. \$3.50

## Nantes, XXX Strain

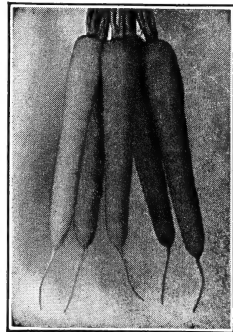
The last word in quality. This variety is about seven to eight inches long, one and one-half inches thick, straight cylindrical, strictly stump-rooted at maturity, making this an ideal variety for busheling, yet on account of its strong tops it is well adapted for bunching. Maturity 63 days.

Oz. 25c,  $\frac{1}{4}$  Lb. 80c, Lb. \$2.40

## Touchon

A highly refined carrot of the Nantes type but more preferred by many growers because it has longer and stronger tops. Maturity 65 days.

Oz. 25c,  $\frac{1}{4}$  Lb. 80c, Lb. \$2.40



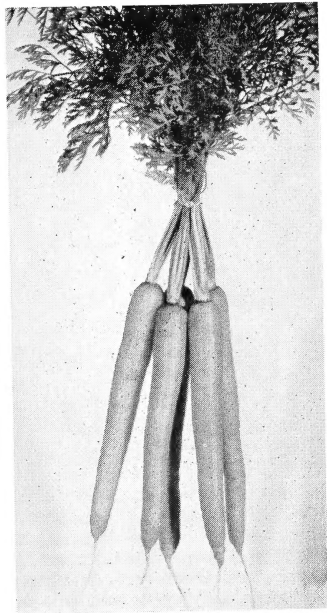
GOLD SPIKE

**MIDWEST Seeds Are Selected  
to Meet the Demands of the  
Growing Market**

**Gold Pak**

An All America selection Bronze Medal Winner for 1956, this rich orange long slender carrot was tailor-made for growers and shippers of bunching or cello-pack carrots. We recommend this variety very highly and be sure to include this in this year's plantings.

**Oz. 40c, ¼ Lb. \$1.35, Lb. \$4.00**

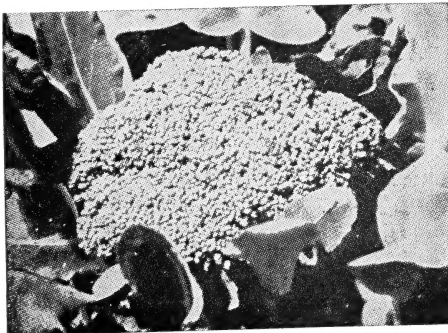
**Nantes Strong Top**

A new selection developed out of our outstanding strain of Nantes, has the same general root characteristics as the old strain but has a noticeably longer and stronger top. Maturity 67 days.

**Oz. 30c, ¼ Lb. 95c, Lb. \$2.90**

*Our carrot  
seed is graded  
to assure a  
more uniform  
stand*

	Oz.	¼ lb.	Lb.
Coreless .....	\$0.25	\$0.80	\$2.40
Scarlet Nantes .....	.25	.80	2.40
Imperator .....	.25	.75	2.25
Chantenay Long Type .....	.20	.70	2.00
Chantenay Red Cored (Royal).....	.25	.80	2.40
Danvers Red Cored .....	.25	.75	2.25
Tender Sweet .....	.25	.85	2.50
Supreme Half-Long .....	.25	.80	2.40
Hutchinson .....	.30	.90	2.70
California Bunching Short Top .....	.35	1.15	3.50
Morse Bunching .....	.30	.90	2.70

**BROCCOLI****Early Propegano, Improved**

A specially selected strain of unusually high quality for shippers and market gardeners.

**Oz. 50c, ¼ Lb. \$1.75, Lb. \$5.00**

**Early Italian Green Sprouting**

**Oz. 50c, ¼ Lb. \$1.75, Lb. \$5.00**

**Waltham 29**

**Oz. 75c, ¼ Lb. \$2.50, Lb. \$7.50**

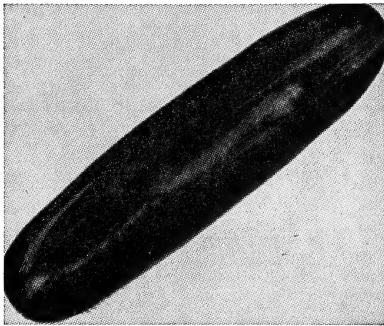
**DeCicco**

**Oz. 50c, ¼ Lb. \$1.75, Lb. \$5.00**

**Green Mountain**

(Mammoth Early Sprouting)

**Oz. 75c, ¼ Lb. \$2.50, Lb. \$7.50**



CUBIT

# CUCUMBER

## Cubit

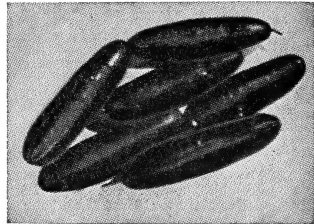
1944 Winner of All-America Bronze Medal. This variety is of the A & C and Colorado class, vines prolific, fruit smooth, dark green color, cylindrical with blunt ends; length eight and one-half inches, small seed cavity, an excellent shipper, holds its color, crisp texture and flesh quality well in shipping or on the market.

Oz. 30c, ¼ Lb. \$1.00, Lb. \$3.00

## Niagara

This is the best mosaic resistant variety in the dark green cucumber class. Fruits 10 to 11 inches long, two inches in diameter and very slender, tapering slightly at the ends. Because of its unusual dark green color and very vigorous vine we recommend this as one of the best varieties for late planting.

Oz. 30c, ¼ Lb. \$1.00, Lb. \$3.00



MARKETER—A beautiful uniform cucumber and a fine shipper

## Darkie

By far the finest slicer yet developed. Darkie has the shape, size, color and yielding ability that both growers and their customers want, the fruits are uniformly beautiful, long and slim, color is dark green and the fruit on the late pickings is the same excellent quality as on the first. Be sure to include this in this year's planting.

Oz. 35c, ¼ Lb. \$1.20, Lb. \$3.50

## Marketer

This variety produces very dark green cylindrical fruits which taper slightly at the ends. Fruits are eight to nine inches long. Its uniform shape and dark green color make it an excellent variety for shipping or local market.

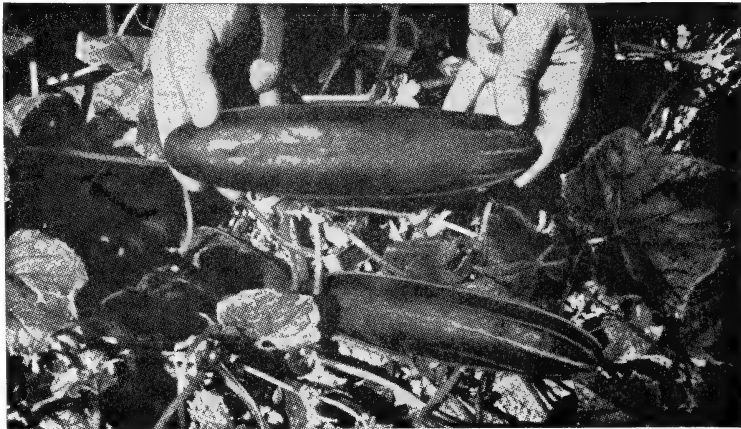
Oz. 25c, ¼ Lb. 85c, Lb. \$2.50

**MIDWEST SEEDS** are selected to meet the demands of the growing market

	Oz.	¼ Lb.	Lb.
Our Wonderful	\$.25	\$0.85	\$2.50
Wondergreen	.25	.85	2.50
Colorado	.25	.85	2.50
A & C	.25	.85	2.50
Longfellow	.25	.85	2.50
Ashley D.M.R.	.35	1.20	3.50
Stays Green	.25	.70	2.25
Palomar D.M.R.	.40	1.25	3.75
Klondike	.25	.85	2.50

Burpee's Hybrid	\$.35	\$10.00	\$35.00
Straight Eight	.25	.85	2.50
National Pickling	.25	.75	2.25
Chicago Pickling	.25	.75	2.25
Double Yield Pickling	.25	.85	2.50
Boston Pickling	.25	.75	2.25
Ohio MR 17, Mosaic Resistant	.25	.85	2.50
Producer	.25	.85	2.50

# CUCUMBER MARKETER LONG TYPE



A NEW LONGER AND DARKER GREEN STRAIN

This variety grows about ten inches long, two inches in diameter and slender. This variety is very popular because of its excellent shape and intense dark green color, which is maintained longer than any other variety. One of the few varieties that do well under nearly any growing condition.

Oz. 30c, ¼ Lb. \$1.00, Lb. \$3.00

## COLLARDS

	Oz.	¼ lb.	lb.
True Georgia .....	\$ .15	\$ .40	\$1.20
Louisiana Sweet .....	.15	.40	1.20
Vates, New .....	.15	.50	1.50

## KOHL-RABI

	Oz.	¼ lb.	lb.
Triumph of Prague			
Forcing .....	\$ .50	\$1.75	\$5.00
Early White Vienna.	.45	1.50	4.50
Early Purple Vienna	.50	1.75	5.00

## ENDIVE

	Oz.	¼ lb.	lb.
Green Curled Pink			
Ribbed .....	\$ .25	\$ .75	\$2.25
Florida Deep Heart,			
Escarole .....	.25	.75	2.25
Golden Heart Fringed,			
Holland grown ...	.45	1.50	4.50
Large Green Curled.	.25	.75	2.25
Premier Green Curled,			
New .....	.40	1.35	4.00
Deep Heart Fringed.	.30	1.00	3.00
President Curled ...	.40	1.35	4.00

## DILL

	Oz.	¼ lb.	lb.
Mammoth .....	\$ .15	\$ .45	\$1.25

## KALE

	Oz.	¼ lb.	lb.
Siberian, Long Stand-			
ing, for wintering			
over .....	\$ .15	\$ .50	\$1.50
Dwarf Green Curled			
Scotch .....	.25	.85	2.50
Blue Scotch or			
Bloomsdale .....	.25	.85	2.50
Dwarf Curled, Vates			
Strain .....	.25	.85	2.50

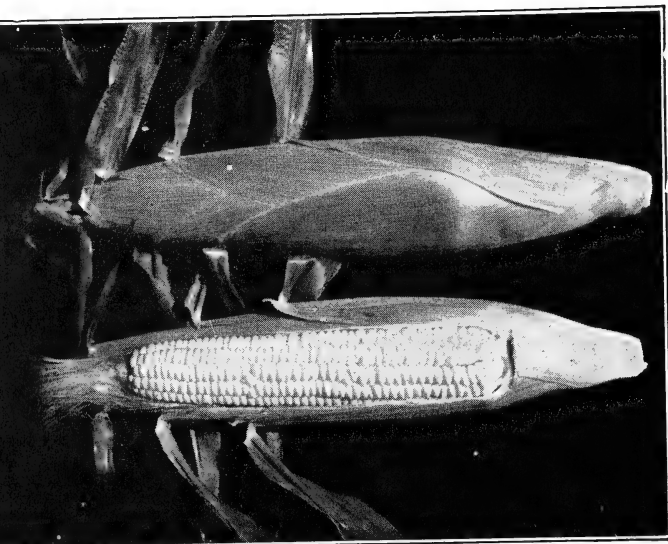
## LEEK

	Oz.	¼ lb.	lb.
Elephant .....	\$ .75	\$2.50	\$7.50
Large American Flag	.75	2.50	7.50
Monstrous Carenton.	.75	2.50	7.50

## CHICORY

	Oz.	¼ lb.	lb.
Witloof (French Endive)			
Holland Grown ...	\$ .50	\$1.50	\$5.00

Seeds of Quality by Test Are Sold by Midwest



GOLD CREST

## HYBRID SWEET CORN

Be sure  
to try this  
Early Hybrid

### MORNING SUN

#### **Gold Crest**

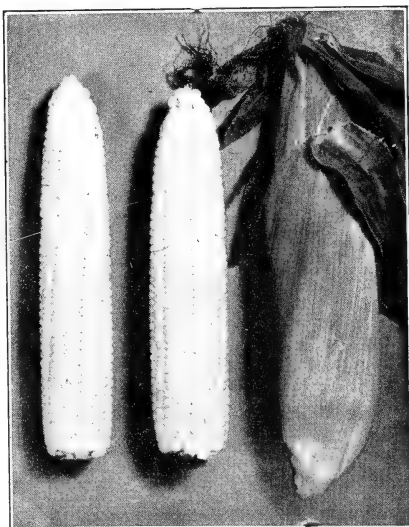
Be first on the market with this early hybrid. In trials conducted here in the middle west last year this variety matured 3 days ahead of North Star. The stalk is 5 to 5½ feet tall, and ears 7½ to 8 inches long. We believe this variety to be one of the best early corns on the market today. 66 days. **FOR BEST RESULTS** suggest an application of nitrate when corn is 18 inches high.

Lb. 70c, 5 Lbs. \$3.25, 10 Lbs. \$6.50,  
100 Lbs. \$60.00

#### **Morning Sun**

This large, early hybrid in all trials last season proved to be an outstanding variety both for productiveness and large, tight-husked ears. The stalks are 5½ to 6 feet tall, ears are 8 inches long and have 14 to 16 rows of deep yellow sweet tender kernels. 72 days.

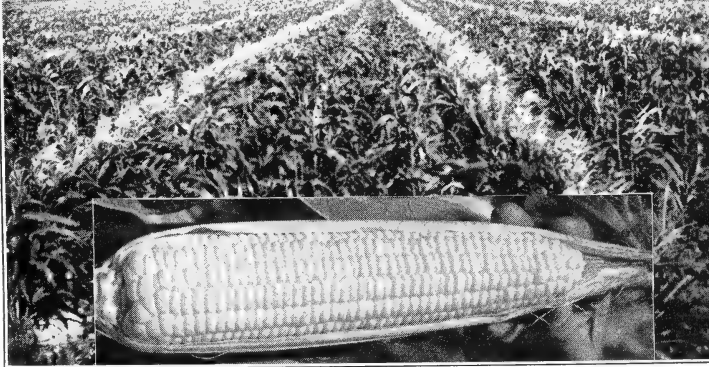
Lb. 70c, 5 Lbs. \$3.25, 10 Lbs. \$6.00,  
100 Lbs. \$55.00



**FOR BEST RESULTS**  
... An Application of Nitrate  
When Corn Is 18 Inches High



## F-M CROSS



F-M CROSS

### F-M Cross

Of all the hybrids so far developed this is one of the best for shipping and long distance hauling. It matures just ahead of Golden Cross. Ears are 8 to 9 inches long, 14 to 16 rowed. In quality it is unsurpassed as the deep golden kernels remain in edible condition for two weeks after the crop is ready. We highly recommend as a main crop. 79 days.

Lb. 70c, 5 Lbs. \$3.25, 10 Lbs. \$6.50,  
100 Lbs. \$60.00

### Golden Cross Bantam Improved

Our customers were unusually well pleased with this new variety last year and found it far superior to regular Golden Cross Bantam at its finest. It grows taller with broader leaves and a huskier plant than the regular strain and carries the ears higher. The ears are about nine inches long. Very attractive and the same wonderful flavor and sweetness as the regular Golden Cross Bantam. 84 days.

Lb. 70c, 5 Lbs. \$3.25, 10 Lbs. \$6.00  
100 Lbs. \$50.00

Write for  
special prices  
on larger  
quantities

	Lb.	5 Lbs.	10 Lbs.	100 Lbs.
Marcross C 6x13 .....	\$.70	\$3.25	\$6.00	\$45.00
Seneca 60 Yellow .....	.90	4.25	8.00	65.00
Tendergold .....	.70	3.25	6.00	45.00
Golden Cross Bantam, Improved ...	.70	3.25	6.00	50.00
Iochief .....	.70	3.25	6.00	50.00
Evergreen Hybrid .....	.70	3.25	6.00	50.00
Seneca 60x13 (Daybreak) .....	.90	4.25	8.00	65.00
Lincoln .....	.70	3.25	6.00	48.00
Spangcross C3x13 .....	.70	3.25	6.00	50.00
Ioana .....	.70	3.25	6.00	45.00
Seneca Golden .....	.90	4.25	8.00	65.00
Sta-Cross .....	.70	3.25	6.00	45.00
Gold Rush .....	.70	3.25	6.00	50.00
Whipcross .....	.70	3.25	6.00	48.00
Golden Rocket .....	.70	3.25	6.00	50.00
Carmelcross .....	.70	3.25	6.00	48.00
Golden Security .....	.70	3.25	6.50	60.00
Calumet .....	.70	3.25	6.50	60.00
Golden Harvest .....	.70	3.25	6.50	60.00
Main Cross .....	.70	3.25	6.00	55.00
Golden Beauty .....	.70	3.25	6.00	50.00
Double Duty .....	.70	3.25	6.50	60.00

### Indian Ornamental Corn

These multicolored ears are very popular for fall decorations.

Lb. 80c, 5 Lbs. \$3.45, 10 Lbs. \$6.50, 25 lbs. or more at 60c Lb.

# HEAD LETTUCE

## Great Lakes No. 118

This main crop strain matures in about 85 days from planting, depending on locality and date of planting. This lettuce has the rare quality of a completely covered head, which is large, round, very firm and excellent in quality. The plant is dark green and resistant to tip burn and sun burn. The head is so well protected by the upright, extra-fringed leaves that sun burn is impossible. Great Lakes No. 118 is an outstanding strain for late market or for a section where it is difficult to grow head lettuce because of weather conditions. It is a sure header.



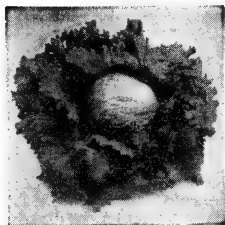
PENNLAKE

## Pennlake

The result of a cross between Imperial 847 and Great Lakes. Because of its crisp, dark green, smooth foliage, it belongs in the general Great Lakes class, without the usual objectionable ribbiness. We consider this variety a genuine contribution to the trade. Matures in about 83 days.

Oz. 60c,  $\frac{1}{4}$  Lb. \$2.00, Lb. \$6.00

Oz. 60c,  $\frac{1}{4}$  Lb. \$2.00, Lb. \$6.00

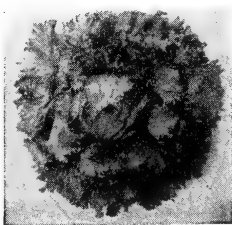


EARLY GREAT LAKES

## Early Great Lakes

Matures in about 75 days from planting, varying with time of year and locality. It is gray-green in color. The wrapper leaves lay back from the head, exposing a large, well-rounded head with a smooth base and small ribs. It is very uniform in maturity. We have records of 95 per cent being cut for market on the first cutting. It is at its best when fully mature. Early Great Lakes received the highest rating in the New York State Trials for 1947.

Oz. 60c,  $\frac{1}{4}$  Lb. \$2.00, Lb. \$6.00

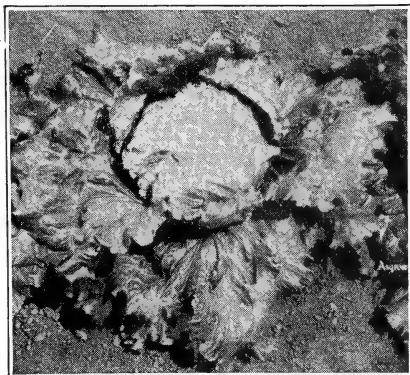


SUMMER GREAT LAKES

## Summer Great Lakes

Matures in about 80 days from planting, depending on locality and time of planting. This variety was selected primarily for its resistance to tip burn, sun burn and rain. A bright green color, large outer wrapper leaves that stand erect and protect the heads from the elements. It is slow to bolt and stands up under most adverse weather conditions when other varieties wilt and pass out of the picture. This is true in all sections of the country where it has been tried.

Oz. 60c,  $\frac{1}{4}$  Lb. \$2.00, Lb. \$6.00



**PREMIER GREAT LAKES**

*Ideal for early planting, uniformity and crispness of heads make best for early crops.*

### Great Lakes 659G

An outstanding lettuce with completely protected head, this is a hot weather lettuce but will take hard frost in the late stages of maturing. It is the most tip burn resistant of all Great Lakes having very dark color, smooth base, making an excellent package or carton lettuce, and is a very good shipper. Received the All-Canadian in Canadian trials.

**Oz. 60c, ¼ Lb. \$2.00, Lb. \$6.00**

### Great Lakes 66

A new selection, distinctive for its large plant and dark green color. Upright, medium frilled wrapper leaves give good protection to the large, well formed heads. Butts unusually smooth and well colored. Matures a few days after the Great Lakes 118. Should do well where a large Great Lakes is wanted.

**Oz. 60c, ¼ Lb. \$2.00, Lb. \$6.00**

## PREMIER

### GREAT LAKES LETTUCE

The greatest and most outstanding success in head lettuce of recent introduction. Developed at Penn State College. This variety is more refined and slightly earlier than Great Lakes. Excellent for Spring, Summer and Fall cutting. In our opinion this lettuce will take the country by storm.

**Oz. 60c, ¼ Lb. \$2.00, Lb. \$6.00**

### Cornell No. 456

A selection of the Imperial type developed by the United States Department of Agriculture and Cornell Experiment Station. Has proved very sure heading when grown in the East during the summer months. Particularly adapted for growing on muck soils. Frame and head slightly smaller than Great Lakes and of lighter green color. Resistant to tip burn and early bolting.

**Oz. 60c, ¼ Lb. \$2.00, Lb. \$6.00**

### Burpeeana

This remarkable new lettuce has shiny deep green butterheads with very slight bronze markings. Matures in 75 days, is moderately crinkled or savoyed and is always crisp and tender. Burpeeana is less subject to tip burn than most butterheads, however it does better in cool weather and stands much longer than Bibb.

**Oz. \$1.00, ¼ Lb. \$3.00, Lb. \$9.00**

	Oz.	¼ Lb.	Lb.
Great Lakes No. 366A .....	\$ .60	\$2.00	\$6.00
Imperial No. 55 .....	.45	1.50	4.50
Imperial No. 44 .....	.45	1.50	4.50
Great Lakes .....	.60	2.00	6.00
New York No. 12 .....	.45	1.50	4.50
White Boston or Unrivalled Summer .....	.30	1.00	3.00
Jade .....	.75	2.50	7.50

# LEAF LETTUCE

	Oz.	¼ Lb.	Lb.
Black Seeded Simpson .....	\$ .25	\$ .75	\$2.25
Grand Rapids, Old Type .....	.25	.75	2.25
Grand Rapids, Washington Strain.....	.25	.80	2.40
Grand Rapids, U. S. No. 1.....	.25	.90	2.60
Grand Rapids, Tip Burn Resistant.....	.25	.80	2.40
Bibb .....	.30	1.00	3.00
Oak Leaf .....	.30	1.00	3.00
Prize Head .....	.25	.75	2.25
Salad Bowl .....	.60	2.00	6.00
Slobolt .....	.60	2.00	6.00

## COS or ROMAINE VARIETIES

	Oz.	¼ Lb.	Lb.
Paris Island Cos, Dark Green, Mosaic Resistant, Slo Bolting .....	\$ .40	\$1.35	\$4.00
Dark Green Cos .....	.25	.85	2.50
Paris White Cos, Light Green.....	.25	.85	2.50

## CELERY

	Oz.	¼ Lb.	Lb.
Colorado Pascal, Medium heavy strain....	\$3.50	\$12.00	\$35.00
Cornell No. 619 .....	2.00	6.50	20.00
Utah Pascal 52-70H, New.....	3.50	12.00	35.00
Utah or Golden Crisp .....	1.50	5.00	15.00
Golden Plume, Tall strain.....	1.50	5.00	15.00
Golden Self-Blanching, Tall strain.....	1.50	5.00	15.00
Summer Pascal, Waltham strain.....	1.50	5.00	15.00
Utah Pascal No. 16.....	1.50	5.00	15.00
Utah Pascal No. 15.....	1.50	5.00	15.00
Giant Pascal, Early California Strain.....	2.50	8.50	25.00
Utah 10B .....	1.50	5.00	15.00
Supreme Golden .....	1.50	5.00	15.00

## CELERIAC

	Oz.	¼ Lb.	Lb.
Ace Turnip Rooted .....	\$ .80	\$2.70	\$8.00

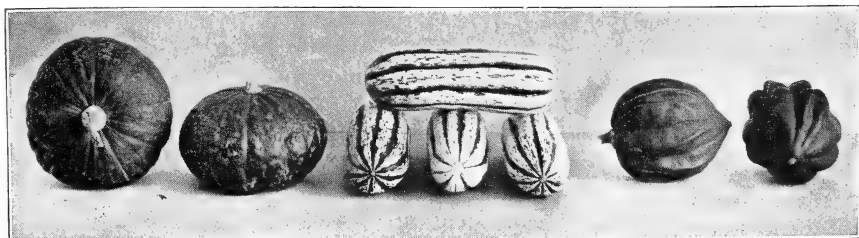
## EGG PLANT

	Oz.	¼ Lb.	Lb.
Burpee Hybrid .....	\$9.00	\$25.00	
Black Beauty .....	1.00	3.35	\$10.00
E-Z Market .....	1.00	3.35	10.00
Florida High Bush .....	1.00	3.35	10.00
Fort Meyers Market .....	1.00	3.35	10.00
New Orleans Market .....	1.00	3.35	10.00
Long Purple .....	1.00	3.35	10.00
Black Beauty Long Type.....		<b>Sold Out</b>	

## MUSTARD

	Oz.	¼ Lb.	1 Lb.	5 Lb.	10 Lb.
Southern Giant Curled, Long Standing .....	\$ .15	\$ .35	\$1.00	\$4.50	\$8.50
Fordhook Fancy .....	.15	.35	1.00	4.50	8.50
Florida Broad Leaf .....	.15	.35	1.00	4.50	8.50
Fordhook Fancy, Long Standing.....	.15	.35	1.00	4.50	8.50
Moss Curled, Long Standing (Holland Grown) .....	.15	.35	1.00	4.50	8.50
Green Wave, Extra Long Standing .....	.15	.50	1.50	7.25	14.00

# SQUASH



BUTTERCUP

DELICATA

TABLE QUEEN, LARGE

## Table Queen, Large

A recent selection out of Table Queen. Average 2 to 3 inches longer and an inch broader than the original strain. Fruits 7 inches long by 6 inches in diameter; dull dark green. Excellent keeper. For best baking quality fruits should be left to mature until shell is hard.

Oz. 20c, ¼ Lb. 70c, Lb. \$2.00

## Early Prolific Straightneck

In our opinion this is one of the most valuable and promising squashes available today. It is a bush type, early, fruit straight for convenience in packing and shipping, and unusually attractive. Very prolific over long period. All America Selection, 1948. Twelve inches long and 3½ inches in diameter and slightly smaller at stem end; most attractive yellow color. Firm and of excellent quality and flavor.

Oz. 20c, ¼ Lb. 70c, Lb. \$2.00

	Oz.	¼ Lb.	Lb.
Black Zucchini			
Hybrid	\$.60	\$2.00	\$6.00
Sweet Potato	.30	.95	2.75
Yankee Hybrid	.60	2.00	6.00
Early White Bush	.15	.50	1.50
Banana Jumbo Pink	.30	1.00	3.00
Warted Hubbard, Dennings Black Strain	.25	.80	2.50
Chicago Warted Hubbard, Improved	.25	.80	2.50
Zucchini Black	.25	.80	2.50
Zucchini Grey	.25	.80	2.50
Des Moines, Table Queen or Acorn, Small	.20	.70	2.00
Blue Hubbard, Special Strain XXX	.30	1.00	3.00
Buttercup	.30	1.00	3.00
Butternut	.30	1.00	3.00
Delicious, Green	.30	1.00	3.00
Cocozella, Bush	.25	.80	2.50
Cocozella, Vining	.25	.80	2.50

## Early Summer Crookneck

### 50 days

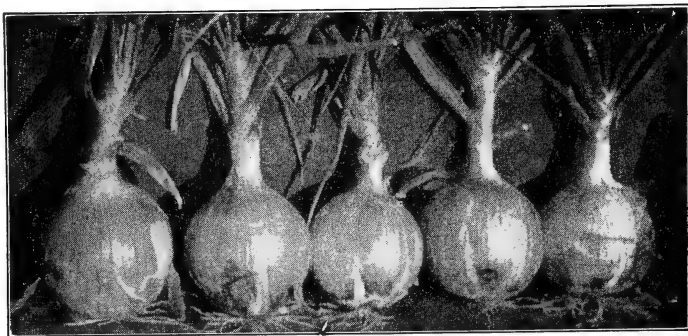
Southern planters will find our stock of this highly desirable because of its uniform size and color. Fruits are attractively warted, become 10 inches long and 3½ inches through the bowl at maturity. Neck curved, skin bright orange-yellow. Good for home and market garden use; very prolific.

Lb. \$1.25, 5 Lbs. \$6.00, 10 Lbs. \$11.50,  
25 Lbs. \$27.50, 100 Lbs. \$100.00

Green Gold	.50	1.70	5.00
Caserta	.30	1.00	3.00
Banana, Grey or Pink	.25	.80	2.50
Turk's Turban, Orna- mental, Very Highly Colored	.80	2.70	8.00

Seeds of Quality by Test Are Sold by Midwest

# ONION

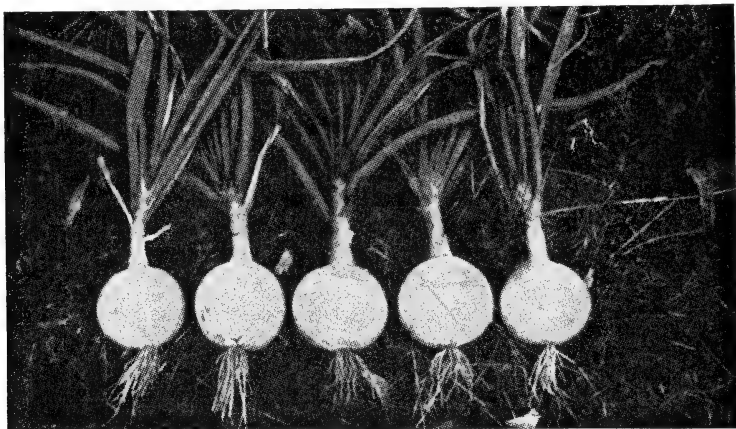


**YELLOW SWEET SPANISH UTAH JUMBO**—*Unsurpassed for production, shipping and storing. Picture taken early in season before bulbs have matured.*

## **Yellow Sweet Spanish Utah Jumbo**

Unquestionably the finest Sweet Spanish for growers and shippers. Produces tremendous tonnage of U. S. No. 1 per acre and stores over entire winter with a remarkably low shrinkage. A vigorous grower and overcomes thrip damage. Bulbs—Large, perfect globe shape, small neck curves down excellently, with heavy protecting deep yellowish-brown skin. If not familiar with this strain we suggest that you try it in comparison with what you are now using if keeping quality, deep color and thrip resistance is desired.

**Oz. 50c, ¼ Lb. \$1.70, Lb. \$5.00**



**WHITE SWEET SPANISH UTAH JUMBO STRAIN**—*An Outstanding Strain*

## **White Sweet Spanish Utah Jumbo Strain**

This new strain of the White Sweet Spanish was developed in Utah. Bulbs average larger than the regular White Sweet Spanish. Are good keepers, and with outstanding ability to resist the attack of thrips. A very heavy yielder, globular paper white bulbs, flavor very mild, size mostly 4 to 4½ inches when well grown. If you are a grower of White Onions, don't fail to plant this variety.

**Oz. 70c, ¼ Lb. \$2.35, Lb. \$7.00**

## Early Yellow Globe

The best early Yellow Onion. Will stand storage better than most early varieties. Under normal conditions, bulbs ready 10 days ahead of Southport Yellow Globe Brigham strain. Color rich, deep yellow. Vigorous and productive. Our strain is outstanding for its dark Yellow husk and unusually good keeping qualities.

Oz. 45c, ¼ Lb. \$1.50, Lb. \$4.50

## Downing's Yellow Globe

Ours is the true strain of this fine onion which is noted for its long keeping qualities, they are deep globe in shape, with a very heavy skin and dark color. It has become one of the most popular and widely grown varieties for both muck and upland.

Oz. 45c, ¼ Lb. \$1.50, Lb. \$4.50



EARLY YELLOW GLOBE

## White Bunch or White Lisbon

We are again able to offer this popular white bunching onion from imported stock. This variety is planted very extensively for table use or green bunching. Produces long slender onions, pure white, mild, and tender. One of the best for bunching under good conditions. It is slow to bulb, has a heavy top that stands up well during summer months.

Oz. 45c, ¼ Lb. \$1.50, Lb. \$4.50

## New Wonder Bunch

Strictly a bunching variety as it never bulbs. Planted about May 15th makes an ideal bunching onion for August. Our growers in the South and West have found this variety very profitable for Summer bunching as it holds its dark green tops even during the hottest summer months.

Oz. 45c, ¼ Lb. \$1.50, Lb. \$4.50

	Oz.	¼ Lb.	Lb.
Yellow Spanish No. 6, California Grown..	.70	\$2.35	\$7.00
Mountain Globe Danvers .....	.50	1.70	5.00
Crystal White Wax .....	.30	.95	2.75
Prosperity .....	.45	1.50	4.50
Ebenezer Yellow .....	.30	1.00	3.00
Southport Large Red Globe.....	.50	1.70	5.00
Southport White Globe .....	.50	1.70	5.00
White Portugal .....	.45	1.50	4.50
Evergreen Long White Bunching.....	.45	1.50	4.50
Beltsville Bunching .....		<b>Sold Out</b>	
Yellow Sweet Spanish, Utah Strain.....	.50	1.70	5.00
White Sweet Spanish, Utah Strain for Bunching .....	.50	1.70	5.00
Hybrid Brown Beauty .....	.90	3.00	9.00
Hybrid Epoch .....	.90	3.00	9.00
Hybrid Aristocrat .....	.90	3.00	9.00
Hybrid Fiesta .....	1.00	3.35	10.00

Seeds of Quality by Test Are Sold by Midwest

# PEPPERS

## California Wonder, Special Strain

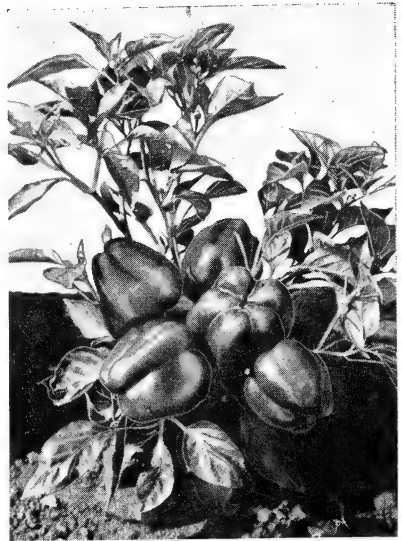
For large size, good shape and big yields. California Wonder, Special is unsurpassed. It ripens about a week earlier than regular California Wonder and produces heavy crops of fine large blocky fruit of the same type as that variety. The plants are medium tall, very sturdy, and produce big heavy peppers in great abundance.

Oz. \$1.20, ¼ Lb. \$4.00, Lb. \$12.00

## Resistant Wonder

Our Mosaic resistant version of our well known California Wonder, XXX. Fruit are large, meaty, and blocky. Plants are very sturdy, and remain upright throughout the growing season. Large leaves and medium dense foliage shade fruit well.

Oz. \$1.20, ¼ Lb. \$4.00, Lb. \$12.00



CALIFORNIA WONDER, *Special Strain*



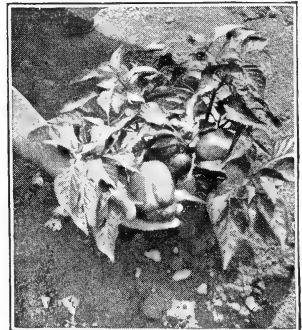
PEPPER, *Resistant Wonder*

## California Wonder, XXX Strain

An earlier and more productive strain of the California Wonder type, but maturing ten days to two weeks ahead of this variety. Fruits, mostly 4-lobed, blocky with thick, mild flesh. Particularly desirable in areas of shorter season.

Oz. \$1.20, ¼ Lb. \$4.00, Lb. \$12.00

One-half Pound at Pound Price	Oz.	¼ Lb.	Lb.
Pride of the Market.....	\$1.00	\$3.35	\$10.00
California Wonder .....	.80	2.70	8.00
Sunnybrook (Pimento) .....	1.00	3.35	10.00
Oakview Wonder .....	1.00	3.35	10.00
Yellow Sweet Bull Nose.....	1.20	4.00	12.00
Calwonder, Early .....	1.00	3.35	10.00
Neapolitan .....	1.00	3.35	10.00
Long Red Cayenne .....	1.00	3.35	10.00
Imp. Thick Long Red.....	1.20	4.00	12.00
Ozark Wonder .....	1.00	3.35	10.00
Vinedale .....	1.20	4.00	12.00
Harris Earliest Improved .....	1.20	4.00	12.00
Harris Early Giant .....	1.20	4.00	12.00
Floral Gem .....	1.20	4.00	12.00
Yellow Hot Hungarian .....	1.00	3.35	10.00



CALIFORNIA WONDER, *XXX Strain*

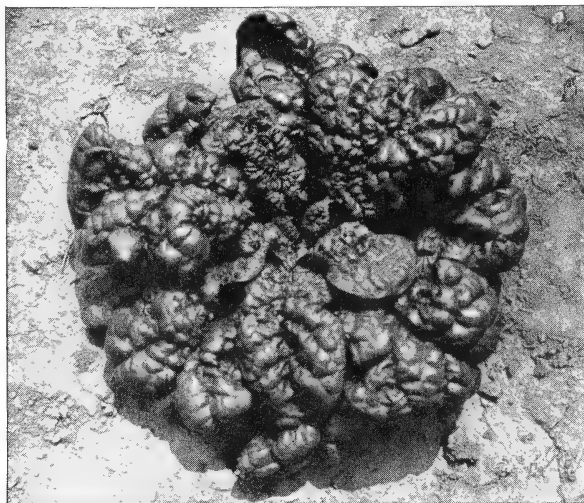


## PEPPERS

	Oz.	¼ lb.	Lb.			
King of the North...	.90	3.00	9.00	Small Chili .....	1.00	3.35 10.00
Sweet Banana, Yellow	1.20	4.00	12.00	Anaheim Chili .....	1.00	3.35 10.00
Romanian, Medium				Jalapeno Chili .....	1.20	4.00 12.00
Yellow Hot .....	2.00	7.00	20.00	Fresno Chili .....	1.20	4.00 12.00
Mexican Chili				Pennwonder .....	1.20	4.00 12.00
Improved .....	1.20	4.00	12.00	Perfection Pimento..	1.00	3.35 10.00
Red Cherry, Hot....	1.00	3.35	10.00	Liberty Bell, Mosaic		
World Beater No. 13.	1.00	3.35	10.00	Resistant .....	1.50	4.70 14.00
Chinese Giant .....	\$1.00	\$3.35	\$10.00	Yolo Wonder, Mo-		
Ruby King .....	.80	2.70	8.00	saic Resistant ....	1.20	4.00 12.00
				Illinois F. 5.....	1.50	4.70 14.00

## SPINACH

SPECIAL  
SUMMER SAVOY



### Special Summer Savoy

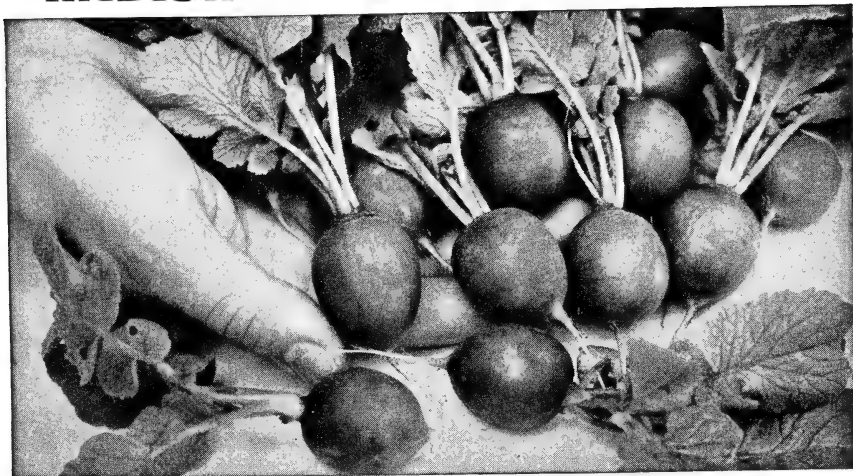
An excellent strain taken from a single plant selection out of Longstanding Bloomsdale but a decided improvement for summer planting inasmuch as it stands about a week longer without bolting. Very heavily crumpled, dark green and somewhat slower growing.

Lb. 70c, 5 Lbs. \$3.25, 10 Lbs. \$6.00, 100 Lbs. \$50.00

	lb.	5 lbs.	10 lbs.	100 lbs.
America, Extra Longstanding .....	\$ .70	\$3.25	\$6.00	\$50.00
Bloomsdale Dark Green .....	.60	2.75	5.00	45.00
Bloomsdale Savoy Longstanding, No. 306 .....	.60	2.75	5.00	48.00
Longstanding Bloomsdale, Special..	.60	2.75	5.00	48.00
Longstanding Savoy, Regular Strain	.60	2.75	5.00	48.00
Hybrid No. 7 .....	1.25	6.00	11.00	100.00
Dixie Market .....	.85	4.00	7.50	70.00
Giant Noble .....	.60	2.75	5.00	48.00
Old Dominion, Blight Resistant....	.60	2.75	5.00	45.00
Virginia Blight Resistant, Bloomsdale .....	.60	2.75	5.00	45.00
New Zealand .....	1.25			

We Are Quoting Only Holland Grown Spinach Seed

# RADISH



BRIGHT SCARLET GLOBE, *Greenhouse Special Short Top*

## **Bright Scarlet Globe** *Greenhouse Special*

The most attractive variety of the Scarlet Globe type. In the past several years it has proved to be one of the best for outdoor sowing where a short top and a bright, globe-shaped bulb is desired. Does exceptionally well for year around sowing.

Lb. \$1.00, 5 Lbs. \$4.75, 10 Lbs. \$9.00,  
100 Lbs. \$80.00

## **Comet**

Brightest colored of the bunching or table radishes, true ball shaped with thin tap root. Quality excellent and it remains solid long after other radishes have become pithy. The tops are a little longer than our Bright Scarlet Globe. This variety does remarkably well on light soil, peat or muck.

Lb. \$1.00, 5 Lbs. \$4.75, 10 Lbs. \$9.00,  
100 Lbs. \$80.00

## **Early Scarlet Globe** *Medium Top*

This variety in every way resembles our Bright Scarlet Globe except that it has longer tops, therefore we recommend this medium top variety for planting in early Spring or late Fall when a longer top is desired.

Lb. 90c, 5 Lbs. \$4.25, 10 Lbs. \$8.00,  
100 Lbs. \$75.00

## **Icicle, Short Top**

The finest of the long white Radishes, it is so much superior to ordinary stocks of Icicle that there is no comparison. Be sure to try our strain as we have yet to see anything that will equal it.

Lb. \$1.00, 5 Lbs. \$4.75, 10 Lbs. \$9.00,  
100 Lbs. \$80.00



SCARLET GLOBE, *Short Top Summer Strain*

MIDWEST SEED GROWERS, Kansas City 6, Mo.

## Radish Scarlet Globe

### Short Top Summer Strain

A new introduction of the Short Top Scarlet Globe type. Does well on nearly every type of soil. The color is very bright red, olive shaped and stands remarkably long before becoming pithy. Its most outstanding feature is that it holds its short top and produces good olive-shaped bulbs even during the hottest summer months.

Lb. \$1.00, 5 Lbs. \$4.75, 10 Lbs. \$9.00,  
100 Lbs. \$80.00

## Cavalier

A highly colored and very attractive variety for all purposes and especially for shipping. Tops small, roots oblong-globe, slightly longer than broad, very firm and of bright, almost true scarlet color. Especially adapted for forcing and growing on muck land.

Lb. \$1.00, 5 Lbs. \$4.75, 10 Lbs. \$9.00,  
100 Lbs. \$80.00

## RADISH

	Lb.	5 Lbs.	10 Lbs.	100 Lbs.
Cherry Belle .....	\$1.00	\$4.75	\$9.00	\$80.00
Bi-Color, Holland Grown .....	1.10	5.00	9.50	90.00
White Icicle, Medium Top.....	1.00	4.75	9.00	80.00
White Strasburg .....	1.00	4.75	9.00	
Round Black Spanish .....	1.00	4.75	9.00	
Long Black Spanish .....	1.00	4.75	9.00	
Mammoth White Winter .....	1.00	4.75	9.00	
Scarlet Globe, Short Top .....	1.00	4.75	9.00	80.00
Champion .....	1.95	9.50	18.50	

Fifty Pounds  
or Over at  
100 Pound  
Prices

## TURNIPS

	Oz.	¼ lb.	Lb.
Purple Top White Globe, XXX Strain. \$	.15	\$ .45	\$1.25
Purple Top Milan...	.15	.50	1.50
Early White Milan..	.15	.50	1.50
Tokyo Market .....	.20	.70	2.00
Purple Top White Globe .....	.15	.30	.80
Seven Top .....	.15	.30	.90
Snow Ball .....	.15	.50	1.50
Cow Horn .....	.15	.30	.80

## RUTABAGA

	Oz.	¼ lb.	Lb.
Laurentian, Ca- nadian .....	\$.15	\$.50	\$1.50
Golden Neckless ...	.15	.50	1.50

We have a complete line of  
rubber bands and jute twine.  
Write for prices.

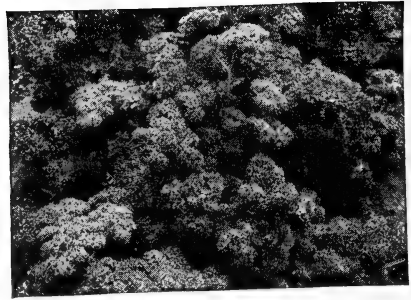
## OKRA

	Oz.	¼ lb.	Lb.
White Velvet .....	\$.15	\$.35	\$1.00
Perkins Mammoth .....	.15	.35	1.00
Dwarf Green, Kansas City Grown.....	.15	.50	1.50
Clemson Spineless .....	.15	.35	1.00

NOTICE: Write for Special Prices on Large Quantity Orders

Seeds of Quality by Test Are Sold by Midwest

# PARSLEY



PARSLEY DOUBLE MOSS CURLED

## Parsley Double Moss Curled 70 Days

This is a vigorous growing, compact, productive sort. Leaves are very dark green in color, finely cut and so thickly curled that a plant resembles a bunch of moss. This is a fast-growing parsley and best for early cutting.

Oz. 20c, ¼ Lb. 70c, Lb. \$2.00

## PARSLEY

	Oz.	¼ lb.	Lb.
Perfection Curled ..	\$.20	\$ .70	\$2.00
Paramount .....	.20	.70	2.00
Victory Curled .....	.20	.70	2.00
Hamburg Rooted ...	.20	.70	2.00
Plain, Dark Green			
Italian .....	.30	1.00	3.00
Evergreen Curled ..	.20	.70	2.00

## PEAS

	Lb.	5 lbs.	10 lbs.	100 lbs.
Alaska .....	\$.50	\$2.00	\$3.50	\$30.00
Thos. Laxton, Dark Podded .....	.50	2.00	3.50	30.00
Laxtonian .....	.50	2.00	3.50	30.00
Dwarf Telephone .....	.50	2.00	3.50	30.00
Little Marvel .....	.50	2.00	3.50	30.00
Hundred Fold .....	.50	2.00	3.50	30.00
Telephone .....	.50	2.00	3.50	30.00
Alderman, Dark Podded .....	.50	2.00	3.50	30.00
Laxton Progress, Improved .....	.50	2.00	3.50	30.00
World's Record .....	.50	2.00	3.50	30.00
Giant Stride .....	.50	2.00	3.50	30.00
Icer 95, Western Giant.....	.50	2.00	3.50	30.00
Black Eye Cow Peas .....	.50	2.00	3.50	30.00

NOTICE: Write for Special Prices on Large Quantity Orders

## PUMPKIN

One-half Pound at Pound Price

	Oz.	¼ lb.	Lb.
Large Cheese or			
Kentucky Field ...	\$.20	\$ .60	\$1.75
Small Sugar .....	.15	.50	1.50
Connecticut Field ..	.15	.50	1.50
King of Mammoth...	.20	.65	2.00
Cushaw Striped ....	.20	.60	1.75
Halloween .....	.30	1.00	3.00
Cushaw White .....	.20	.60	1.75
Jack O'Lantern .....	.30	1.00	3.00

## SAGE

	Oz.	¼ lb.	Lb.
Large Leaved			
Garden .....	\$.60	\$2.00	\$6.00

## PARSNIP

	Oz.	¼ lb.	Lb.
Hollow Crown			
All-American ....	\$.15	\$ .40	\$1.25
Model, the Best			
Smooth, Snow White			
Parsnip for Packag-			
ing and Busheling.	.15	.40	1.25

## SALSIFY OR OYSTER PLANT

	Oz.	¼ lb.	Lb.
Mammoth Sandwich			
Island .....	\$.50	\$1.70	\$5.00

# WATERMELON

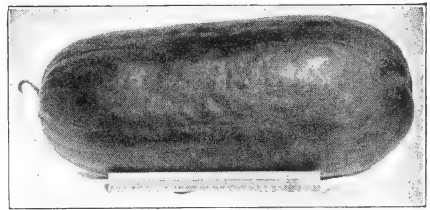
## BLACK DIAMOND

A New Improved Strain (Certified)  
For the Critical Melon Growers

## Blacklee, Wilt Resistant

This melon is truly wilt-resistant. Blacklee is oblong in shape, rind dark green, flesh rich red, seeds black. A very solid melon, free from hollow centers, heavier than any other melon in proportion to size with which we are acquainted. Average weight 30 to 35 pounds. Flesh of fine texture, free from stringiness, crisp, melting and sweet. Our trials have shown it to be nearly 100 per cent free from wilt. Has a tough, thin rind, making it one of the best of all the quality shippers.

Oz. 30c, ¼ Lb. \$1.00, Lb. \$3.00



## BLACKLEE WILT RESISTANT

A Wilt-Resistant Variety  
Rapidly Gaining in Importance

Black Diamond			
Yellow Belly Cert.	.30	1.00	3.00
Oklahoma Chief,			
Florida Giant or			
Clara Lee	.30	1.00	3.00
Blackstone, Certified	.40	1.35	4.00
Dixie Queen, Wilt			
Resistant	.30	1.00	3.00
Sugar Baby, New Ice			
Box Type, Dark			
Green	.45	1.50	4.50
Congo, Certified An-			
thraxnose Resistant	.30	1.00	3.00
Winter Queen	.30	1.00	3.00
California Honey,			
70 Days	.40	1.35	4.00
New Hampshire			
Midget, 60 Days	.35	1.15	3.50
Hawkesbury, Wilt			
Resistant	.30	1.00	3.00



## Black Diamond, Improved Certified

An improved strain of Black Diamond. It is a large, round melon with a black, shiny, glossy rind and has no kind of stripe; just solid, smooth black green. Its flesh is blood red, tender and very sweet. It has grayish black seeds. They grow large, most of them averaging 40 to 50 pounds and under favorable conditions will grow 60 to 70 pounds. The rind is very thin and tough and they can be hauled without damage any distance that any melon can be hauled. They are hardy and resist drought better than most varieties. They ripen along with the Black Diamond and other mid-season melons. Certified seed.

Oz. 30c, ¼ Lb. \$1.00, Lb. \$3.00

## Charleston Gray

Charleston Gray has high resistance to anthracnose, fusarium wilt, and sunburn. Highly productive, it produces a melon of superior shape averaging 35 pounds. While the rind is somewhat thin it is very hard. Another advantage is that it is relatively free from hollow heart, white heart, and gourdneck. The seeds are black. All this plus its superior eating quality make Charleston Gray the melon with the golden future.

Oz. 40c, ¼ Lb. \$1.35, Lb. \$4.00

	Oz.	¼ Lb.	Lb.
Early Kansas	\$.25	\$ .85	\$2.50
Wilson Sweet, 73 days	.30	1.00	3.00
Smoky Joe	.30	1.00	3.00
Fairfax, Wilt and Mo-			
saic Resistant	.35	1.15	3.50
Fourth of July or			
Northern Sweet	.30	1.00	3.00
Early Canada, 70 days,			
Medium Size	.35	1.15	3.50

Seeds of Quality by Test Are Sold by Midwest



## TOMATOES

See complete Tomato  
Listings on page 25

### Bo-Kay

We offer a most superb strain of this splendid variety in point of earliness, uniformity and general desirability; particularly valuable for shipping; definite disease resistance recommends this variety for use in sections infested with Fusarium Wilt and Nailhead Rust. Plants thrifty and heavily productive of long bearing period. Fruits uniform deep scarlet; large, uniformly globe-shaped, smooth, solid and of distinct quality. Season 75 days.

Oz. \$1.00, ¼ Lb. \$3.35, Lb. \$10.00

### Grothen's Globe *Super Break o'Day*

A new early-maturing, wilt-resistant variety which is becoming popular in some sections for shipping. Similar to Break o'Day, but the fruits are of deeper scarlet and are free from objectionable yellow about the stem end. The vine has larger stems than Break o'Day and the leaflets are much larger and more abundant. The vines stand up better than the Break o'Day and the additional foliage protects the fruit from sun scald. The fruits are globe shaped with no flat sides. We recommend this variety very highly for your first early crop.

Oz. \$1.00, ¼ Lb. \$3.35, Lb. \$10.00

### Rutgers Certified

This variety developed by the New Jersey Agricultural Experiment Station produces a sturdy, vigorous plant with thick stem and an abundance of foliage which protects the fruits from sun scald. The fruits are globe shaped and resem-

ble Marglobe in appearance but ripen a few days earlier and are of a slightly brighter scarlet color. The flesh is firm, bright red throughout and of delicious flavor. Season 80 days.

Oz. \$1.00, ¼ Lb. \$3.35, Lb. \$10.00

### Valiant Certified, 68 Days

This variety is becoming very popular with market gardeners. A half-brother of Stokesdale, it develops a deep Marglobe type tomato and ripens within 3 days of Earliana. It is 4 days earlier and often 2 ounces heavier than Stokesdale. A valuable tomato for market but not primarily adapted as a canner. Our sales have steadily increased on this variety.

Oz. \$1.00, ¼ Lb. \$3.35, Lb. \$10.00

*We recommend you try these  
outstanding varieties*

### Tomato Shawnee

Truly the finest F2. This is not only our opinion but also of every grower who has used it. It has everything, vigor, earliness and maintains its wonderful quality and size throughout the entire picking season. Fruits are globe shaped solid and meaty and they color to an even rich red. Vines bushy, spreading giving good foliage cover. One of our most recent successful introductions, highly prolific. Matures along with Valiant.

¼ Oz. \$4.50, ½ Oz. \$8.00, Oz. \$15.00

## Fireball Tomato, 64 Days

A highly successful, first early tomato. Fireball has very small open vines that can be set only one or two feet apart. The early blossoms set large clusters even in cool weather, and the fruit ripens quickly from pale green to bright red. They are of good size, smooth, globe shape and evenly colored and are unusually firm, mild-flavored and delicious for such an early type. We highly recommend Fireball for your earliest crops, for home use or market.

1 Oz. \$2.00, ¼ Lb. \$6.50, 1 Lb. \$20.00

## Early Red Chief Tomato, 70 Days

We had crops in Michigan, Kansas, Colorado, Canada and Minnesota last year of this variety and had good results in each section. It ripened only five days later than Victor but far surpassed it in quality. Fruits are medium large globe shaped, smooth and firm, evenly colored bright deep scarlet red, and ripen fully to the stem. Best adapted for light soils.

Oz. \$2.50, ¼ Lb. \$8.50, Lb. \$25.00

## Early Bird Tomato

### Extra Early, 63 Days

An outstanding variety recently introduced for the finest early market tomato of the present time. The vines are small and should be set about two feet apart. A very heavy yielding early tomato. The fruits are of medium size, smooth, globe shaped, evenly colored and unusually firm for such an early type; performs best on light soils with heavy fertilization. Well adapted for northern climates. Be sure to try this first early variety.

Oz. \$2.50, ¼ Lb. \$8.50, Lb. \$25.00

## Hybrid Tomato Seed

¼ Oz. ½ Oz. 1 Oz.

Fordhook Hybrid .. \$ 6.00 \$11.00 \$20.00

Burpee's Hybrid .. 6.00 11.00 20.00

Big Boy Hybrid ... 10.00 18.00 35.00

Burpee's Big

Early Hybrid ... 10.00 18.00 35.00

We can supply proving ground stocks on Stokesdale and Valiant Tomato.

1 Oz. \$4.00, ¼ Lb. \$13.50, 1 Lb. \$40.00

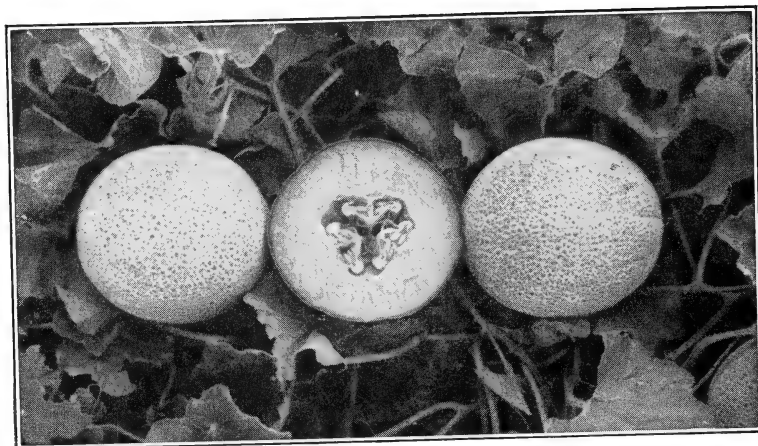
	Oz.	¼ Lb.	Lb.
Earlypak .....	\$1.20	\$4.00	\$12.00
Ace .....	1.20	4.00	12.00
Queens .....	1.20	4.00	12.00
Homestead .....	1.20	4.00	12.00
Firesteel .....	1.20	4.00	12.00
King of the Stakers.	2.00	7.00	21.00
Marglobe Certified ..	1.00	3.35	10.00
Bonny Best Crown			
Set .....	2.00	7.00	21.00
Moscow .....	1.50	5.00	15.00
Supreme Gulf State.	1.20	4.00	12.00
Pritchard or Scarlet			
Topper Certified ..	1.00	3.35	10.00
Long Red .....	1.50	5.00	15.00
Crack Proof Pink...	3.00	9.00	
Bonny Best .....	1.00	3.35	10.00
Chalks Early Jewel.	1.00	3.35	10.00
John Baer .....	1.00	3.35	10.00
Super Purple King..	1.20	4.00	12.00
Beefsteak .....	1.00	3.35	10.00
Dwarf Champion ...	1.00	3.35	10.00
Greater Baltimore	1.00	3.35	10.00
Livingston's Beauty.	1.20	4.00	12.00
Purple King .....	1.20	4.00	12.00
Dwarf Stone .....	1.00	3.35	10.00
New Stone .....	1.00	3.35	10.00
Dwarf Ponderosa ...	1.00	3.35	10.00
Tall Ponderosa, Pink	1.20	4.00	12.00
Yellow Pear, Yellow			
Plum, Red Pear...	2.00	7.00	
Victor .....	1.00	3.35	10.00
Bounty .....	1.00	3.35	10.00
Sioux .....	1.20	4.00	12.00
Oxheart .....	1.80	6.00	18.00
Pearson Improved ..	1.00	3.35	10.00
Ground Cherry or			
Husk .....	2.00		
San Marzano .....	2.00	7.00	20.00
Golden Jubilee ....	1.50	5.00	15.00
J. Moran .....	1.20	4.00	12.00
Stokesdale Certified.	1.00	3.35	10.00
Garden State ....	1.20	4.00	12.00
Glamour .....	1.20	4.00	12.00
Stokescross No. 1 F <sub>2</sub> , 70 da..	4.00	12.00	
Stokescross No. 4 F <sub>2</sub> , 75 da..	4.00	12.00	
Stokescross No. 5 F <sub>2</sub> , 77 da..	4.00	12.00	
Stokescross No. 6 F <sub>2</sub> , 77 da..	4.00	12.00	

The choice of parents for Stokescross No. 6 has developed a crack resistance of approximately 80 per cent. We consider it a tomato of great importance. Fruit size 5½ ounces.

¼ Oz. ½ Oz. 1 Oz.

Foremost E-21 F<sub>2</sub>...\$4.50 \$8.00 \$15.00

# CANTALOUPE



IMPROVED HALES BEST NO. 36—For quality and uniformity it's "tops"

## Improved Hales Best No. 36

Our most popular strain of the Hales Best variety, because of its earliness and uniformity. We have sold more seed of this strain than any other of the Hales Best varieties which is an indication of its success both in the field and on the markets. The flesh is thick, firm, salmon colored and of very fine flavor. The seed cavity is small and compact. The melons are slightly oval, firm and well netted, making splendid shippers. Season 82 days.

Oz. 25c,  $\frac{1}{4}$  Lb. 65c, Lb. \$2.00

## Michigan Honey Rock

One of our recent introductions, this fusarium resistant strain is excellent wherever Honey Rock is grown. It is an early, medium-sized oval melon with heavy nettings, 4 to 5 lbs. in weight and the fine-textured flesh is very sweet. Uniform and a heavy yielder. We find it best if picked at "half-slip" stage. Highly recommended.

Oz. 40c,  $\frac{1}{4}$  Lb. \$1.35, Lb. \$4.00

## Harvest Queen

*Leading Market and Shipping Melon*

Harvest Queen is rated the finest melon yet developed in many sections. It is a fusarium resistant Queen of Colorado type, slightly earlier and yields better. The oval melons are medium sized, just right for crating and shipping, with a thick ropy net covering the hard rind. They ripen from blue gray to golden yellow. The deep orange, extra thick flesh is fine textured and very firm with a delicious sweet musky flavor. The quality is still excellent five or six days after picking.

Oz. 40c,  $\frac{1}{4}$  Lb. \$1.35, Lb. \$4.00

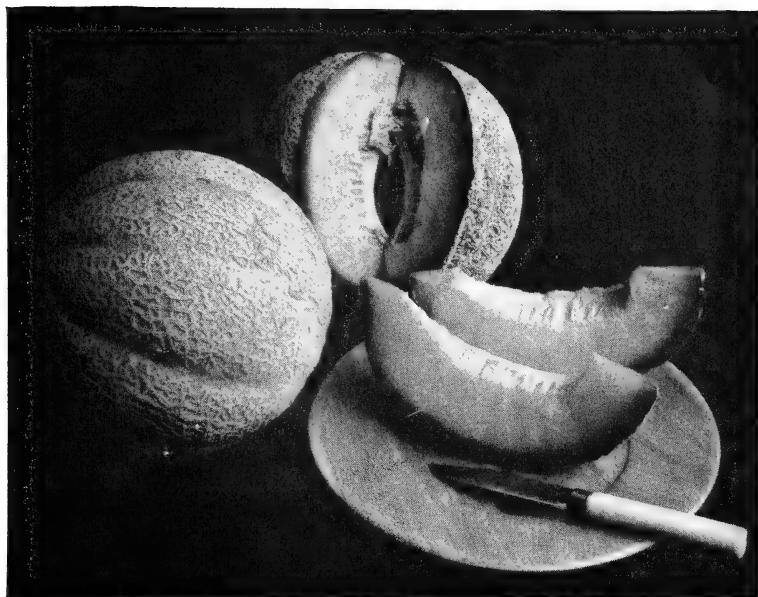
## Schoons Hard Shell

A new and excellent flavored melon of the Queen of Colorado type growing about one-third larger and has the qualities of the Queen of Colorado.

Oz. 25c,  $\frac{1}{4}$  Lb. 95c, Lb. \$2.75

MIDWEST SEED GROWERS, Kansas City 6, Mo.





IROQUOIS

### Iroquois

Introduced by Cornell University as Cornell No. 36. The fruit resembles Bender in appearance, but not quite so large, more the size of Seneca Bender but more oval. Under most conditions the flesh is thicker, darker orange and of better quality than Bender. Growers troubled with fusarium wilt will find Iroquois well worth a trial. Season 90 days. **Oz. 30c, ¼ Lb. \$1.00 Lb. \$3.00**

### Delicious 51

The earliest large melon in existence. Fruits are somewhat smaller and several days earlier than Bender's Surprise but in shape and color closely resemble that well known variety. Flesh deep salmon colored, firm and deliciously sweet. An excellent melon for roadside stands. Season approximately 83 days. Wilt resistant.

**Oz. 40c, ¼ Lb. \$1.35, Lb. \$4.00**

## CANTALOUPE AND MUSKMELON

	Oz.	¼ Lb.	Lb.
Hales Best, Special Strain.....	\$ .25	\$ .85	\$2.50
Hales Best Jumbo .....	.25	.85	2.50
Golden Osage, Hard Shell.....	.25	.95	2.75
Pride of Wisconsin, Breakfast Queen.....	.25	.95	2.75
Large Hearts of Gold, Morrill's Strain....	.25	.85	2.50
Honey Rock or Sugar Rock.....	.25	.95	2.75
Queen of Colorado .....	.30	1.00	3.00
Pecos, Ideal for the South.....	.25	.65	2.00
Mildew Resistant No. 45.....	.25	.85	2.50
Honey Dew, Green Flesh.....	.30	1.00	3.00
Gold Cup, New .....	.30	1.00	3.00

# ANNUALS

<b>Asparagus Fern</b>	100	1000	3000
	Seeds	Seeds	Seeds
Plumosa Nanus .....	\$.30	\$2.50	\$6.00
Sprengeris .....	.30	2.50	6.00

<b>Ageratum</b>	1/16 Oz.	1/8 Oz.	1/4 Oz.	1 Oz.
Blue Midget, 3" .....	\$.60	\$1.00	\$1.75	\$5.00
Blue Ball, 4" .....	.60	1.00	1.75	5.00
Blue Mink, 6" Tetra .....	1.00	1.75	3.00	9.00
Fairy Pink .....	.80	1.40	2.70	8.00

<b>Alyssum</b>				
Carpet of Snow, 2 1/2" .....	\$.15	\$.25	\$.40	\$1.25
Violet Queen Imp., 4" .....	.60	1.00	1.75	5.00
Royal Carpet, 3" .....	.50	.90	1.35	4.00

<b>Snapdragon, Tetra</b>				
Bright Rose .....	\$.60	\$1.10	\$2.00	\$6.00
Candlelight Yellow .....	.60	1.10	2.00	6.00
Deep Salmon .....	.60	1.10	2.00	6.00
Crimson .....	.60	1.10	2.00	6.00
Tetra Mixed .....	.60	1.00	1.70	5.00

<b>Snapdragon, Super Majestic, 18"</b>				
Orange Shades .....	\$.75	\$1.25	\$2.00	\$6.00
Orchid Shades .....	.75	1.25	2.00	6.00
Pink and Rose Shades .....	.75	1.25	2.00	6.00
Red Shades .....	.75	1.25	2.00	6.00
Yellow and White .....	.75	1.25	2.00	6.00
Superb Mix .....	.75	1.25	2.00	6.00

<b>Snapdragon, Maximum Rust Resistant, 2 1/2"</b>				
Alaska White .....	\$.50	\$.90	\$1.50	\$4.50
Rosalie Salmon .....	.50	.90	1.50	4.50
Cherry Rose .....	.50	.90	1.50	4.50
Padre Crimson .....	.50	.90	1.50	4.50
Yellow Giant .....	.50	.90	1.50	4.50
Pink Sensation .....	.50	.90	1.50	4.50
Velvet Giant .....	.50	.90	1.50	4.50
Majus Maximum, Large Flower, Mixed .....	.50	.90	1.50	4.50
Colossal Mix .....	.50	.90	1.50	4.50
Mardi Gras Mixed F-2 .....	.50	.90	1.50	4.50

<b>Aster, American Branching Wilt Resistant</b>	1/4 Oz.	1 Oz.	1/4 Lb.
Azure Blue .....	\$.75	\$2.50	\$7.50
Crimson .....	.75	2.50	7.50
Peach Blossom .....	.75	2.50	7.50
Peerless Pink .....	.75	2.50	7.50
White .....	.75	2.50	7.50
Rose .....	.75	2.50	7.50
Finest Mixed .....	.60	2.25	6.75

<b>Aster, Bouquet Type, Wilt Resistant</b>			
Coppery Rose .....	\$1.50	\$4.50	\$13.50
Crimson Rose .....	1.50	4.50	13.50
Rose Bouquet .....	1.50	4.50	13.50
Scarlet Bouquet .....	1.50	4.50	13.50
White Bouquet .....	1.50	4.50	13.50
Powderpuff Mix .....	1.50	4.50	13.50
Hearts of France Red .....	1.25	3.75	7.50
Crejo Mix .....	.75	2.25	6.75
Queen of the Market Mix .....	.75	2.25	6.75
Early Giants of Calif. Mix .....	1.25	3.75	7.50

<b>Balsam, Bush Flowering</b>	1/16 Oz.	1/8 Oz.	1/4 Oz.	1 Oz.
Torch or Red .....	\$.30	\$.50	\$.80	\$2.50
Rose .....	.30	.50	.80	2.50
White .....	.30	.50	.80	2.50
Mixed .....	.30	.50	.80	2.50

<b>Bells of Ireland</b>	1/16 Oz.	1/8 Oz.	1/4 Oz.	1 Oz.
.....	\$.35	\$.60	\$1.00	\$3.00

<b>Calliopsis, 18", Annual Coreopsis</b>				
Gold Crest .....	\$.25	\$.45	\$.85	\$2.25

<b>Coreopsis, Perennial Calliop, 3"</b>				
Sunburst .....	\$.25	\$.40	\$.70	\$2.00

<b>Calendula</b>	1/4 Oz.	1 Oz.	1/4 Lb.
Balls Lemon Queen .....	\$.45	\$1.25	\$3.75
Balls Orange .....	.45	1.25	3.75
Choice Mix .....	.45	1.25	3.75

<b>Cosmos</b>				
Dazzler Red .....	\$.50	\$1.75	\$4.00	
Pink .....	.50	1.75	4.00	
White .....	.50	1.75	4.00	
Radiance Rose .....	.50	1.75	4.00	
Mixed Above Colors .....	.50	1.75	4.00	

<b>Coleus</b>	1/32 Oz.	1/16 Oz.	1/8 Oz.	1/4 Oz.
Rainbow Formula Mix .....	\$1.25	\$2.25	\$4.00	\$7.00
Large Fancy Leaved Formula Mix .....	1.50	2.75	5.00	9.00

<b>Celosia</b>	1/16 Oz.	1/8 Oz.	1/4 Oz.	1 Oz.
Dwarf Empress, 1" .....	\$.35	\$.60	\$1.00	\$3.00
Toreador Brt. Red 20" .....	.35	.60	1.00	3.00
Plumosa Golden Fleece .....	.30	.50	.85	2.50
Choice Mix Colors .....	.30	.50	.85	2.50
Plumosa Forest Fire, 3' .....	.50	.85	1.50	4.50

<b>Centurea, Bachelor Button</b>	1 Oz.	1/4 Lb.	1 Lb.
Blue Boy .....	\$.50	\$1.70	\$5.00
Pinkie .....	.50	1.70	5.00
Red Boy .....	.50	1.70	5.00
Snowman .....	.50	1.70	5.00
Finest Mix .....	.50	1.70	5.00

<b>Cleome</b>	1/16 Oz.	1/8 Oz.	1/4 Oz.	1 Oz.
Helen Campbell .....	\$.30	\$.50	\$.85	\$2.50
Pink Queen .....	.30	.50	.85	2.50

<b>Dahlia</b>				
Unwins Hybrid .....	\$.40	\$.65	\$1.00	\$3.00

<b>Dianthus Heddewiggi Annual Pinks</b>	1/8 Oz.	1/4 Oz.	1 Oz.
Double Gaiety Mixed .....	\$.40	\$.70	\$2.00
Single Gaiety Mixed .....	.35	.60	1.75

<b>Dianthus Plumarius Perennial Pinks</b>	1/16 Oz.	1/8 Oz.	1/4 Oz.	1 Oz.
Cyclops Single Mixed Red Eye .....	\$.50	\$.85	\$1.50	\$4.50
Double Mixed .....	.50	.85	1.50	4.50

<b>Dimorphotheca, African Daisy, 1"</b>				
Golden West .....	\$2.45	\$.80	\$1.50	\$4.50
Orange Beauty .....	.45	.80	1.50	4.50
White Beauty .....	.45	.80	1.50	4.50
Mixed Hybrids .....	.45	.80	1.50	4.50

<b>Gypsophila</b>	1 Oz.	1/4 Lb.	1 Lb.
Covent Garden .....	\$.25	\$.85	\$2.50

Gourds	1 Oz.	¼ Lb.	1 Lb.
Small Mix .....	\$.55	\$1.65	
Large Mix .....	.55	1.65	
Small Names Varieties.....	.90	2.75	

Helichrysum	1/16 Oz.	¼ Oz.	½ Oz.	1 Oz.
Everlasting Straw				
Flower .....	\$.30	\$.50	\$.85	\$2.50

Gomphrena				
Globosa Purple .....	\$.40	\$.60	\$1.00	\$3.00
Globosa Mix .....	.25	.35	.60	1.75

Larkspur, Regal Strain	¼ Oz.	1 Oz.	¼ Lb.
Regal Dark Blue.....	\$.45	\$1.60	\$5.00
Regal Light Blue.....	.45	1.60	5.00
Regal Pink .....	.45	1.60	5.00
Regal Rose .....	.45	1.60	5.00
Regal Salmon .....	.45	1.60	5.00
Regal White .....	.45	1.60	5.00
Regal Mix .....	.45	1.60	5.00

Larkspur, Giant Imperial			
Carmine King .....	\$.45	\$1.60	\$5.00
Blue Spire .....	.45	1.60	5.00
Dazzler Scarlet .....	.45	1.60	5.00
Exquisite Pink .....	.45	1.60	5.00
Lilac King .....	.45	1.60	5.00
White King .....	.45	1.60	5.00

Lobelia	1/16 Oz.	¼ Oz.	½ Oz.	1 Oz.
Cambridge Blue, Light				
Blue, Green Foliage ..	\$.40	\$.75	\$1.35	\$4.00
Crystal Palace, Dark				
Blue, Dark Foliage ..	.40	.75	1.35	4.00
Mrs. Calibran, Deep				
Blue with Eye and				
Light Foliage .....	.40	.75	1.35	4.00

Lantana			
Hybrida Mix .....	\$.40	\$.60	\$1.00
			\$3.00

Phlox Drummondii				
Cinnabar Red .....	\$.35	\$.60	\$1.00	\$3.00
Rosea Rose .....	.35	.60	1.00	3.00
White .....	.35	.60	1.00	3.00
Star Phlox Cuspidate				
Mix .....	.35	.60	1.00	3.00

### Petunia, Double Varieties

**All Double Colossal Shades Mix**—100 per cent Grandiflora, fringed full double form. Well balanced mixed colors, such as salmon, scarlet, rose, pink, white, variegated lavender, blue purple, etc. Flower size 4 to 5 inches across. Dwarf and bushy, growing 11 to 12 inches tall. Early blooming for doubles. We are confident this strain will meet all critical demands. See price below.

Allego, Bright	1/128 Oz.	1/64 Oz.	1/32 Oz.	1/16 Oz.
Salmon .....	\$7.25	\$14.00	\$27.00	\$52.00
Caprice, Rose Pink ..	7.25	14.00	27.00	52.00
Minuet, Lavender ....	7.25	14.00	27.00	52.00
Rhapsody, Burgundy				
Red .....	7.25	14.00	27.00	52.00

### Petunia, F-1 Grandiflora, Single Fringed and Ruffled

**Blue Mantle—F-1 Hybrid, Large Grandiflora**—Flowers waved and ruffled. Color, velvety blue. Sizes 3 to 3¼ inches across. Extra dwarf, compact and uniform grower. Plant height 8 inches when grown in pots, 10 inches when grown outdoors. Early to bloom, very vigorous. We recommend this variety very highly. See price on next page.

**Snow Lady—F-1 Hybrid, Dwarf, Large, Fringed**—One hundred per cent grandiflora type. Large, pure white, well fringed and ruffled flowers. Dwarf in growth. The best giant white we know, extra early flowering. Recommended highly for pot, bed or border. See price on next page.

### Phlox Drummondii, Dwarf

	1/16 Oz.	¼ Oz.	½ Oz.	1 Oz.
Apricot .....	\$.50	\$.90	\$1.50	\$4.50
Pink .....	.50	.90	1.50	4.50
Violet .....	.50	.90	1.50	4.50
Dwarf Globe Mix ....	.75	1.25	2.35	7.00
Twinkle, Dwarf				
Star Mix .....	.75	1.25	2.35	7.00

Marigold, Dwarf	¼ Oz.	1 Oz.	¼ Lb.
Butterball .....	\$.50	\$1.50	\$4.50
Midget Harmony .....	.50	1.50	4.50
Spry .....	.50	1.50	4.50
Sunkist Yellow .....	.50	1.50	4.50
Cupid, Either Yellow			
or Orange .....	1.50	5.00	17.50
Lemon Drop .....	.60	1.75	5.00
Glow .....	.50	1.50	4.50
Yellow Prgym .....	.50	1.50	4.50
Red Head, 12" .....	.50	1.50	4.50
Rusty Red .....	.50	1.50	4.50
Melody, 10" .....	.50	1.50	4.50
Eldorado, 19" .....	.50	1.50	4.50
Tangerine, 10" .....	.50	1.50	4.50
Naughty Marietta .....	.50	1.50	4.50

### Marigold, Tall

African Orange .....	\$.85	\$2.50	\$7.50
African Lemon .....	.50	2.50	7.50
Full Double Orange .....	.85	2.50	7.50
Sunset Giant .....	.65	2.00	7.00
Mammoth Mum .....	.85	2.50	7.50
Crackerjack, New, Best			
Large Type .....	.95	2.75	9.00

### Nemesia

	1/32 Oz.	1/16 Oz.	¼ Oz.
Grandiflora Strumosa			
Mix, 12" .....	\$.75	\$1.40	\$2.50
Nana Compacta Superbis-			
sima Grandi Flo. Mix, 9" ..	.75	1.40	2.50

### Nicotiana

	1/16 Oz.	¼ Oz.	½ Oz.
Daylight Sensation Mix, 2' ..	\$.40	\$.70	\$1.25
Sweet Scented Red, 3' .....	.40	.70	1.25
Sweet Scented White, 3' .....	.40	.70	1.25
Sweet Scented Crimson			
Bedder, 15" .....	.40	.70	1.25

### Nierembergia,

Cup Flower	1/32 Oz.	1/16 Oz.	¼ Oz.
Purple Robe Deep			
Purple, 8" .....	\$1.65	\$3.00	\$5.00

Nocturne, Deep Purple	7.25	14.00	27.00	52.00
Sonata, Pure White ..	7.25	14.00	27.00	52.00
Glorious Mix .....	7.25	14.00	27.00	52.00
Gaiety, Carmine				
and White .....	7.25	14.00	27.00	52.00
All Double Colossal				
Shades Mix .....	6.50	12.00	22.00	40.00

	1/128 Oz.	1/64 Oz.	1/32 Oz.	1/16 Oz.	1/8 Oz.	1/4 Oz.
Bolero Carmine Pink .....	\$3.85	\$7.50	\$13.50	\$25.00	\$48.00	\$94.00
Crusader, Striped Rose, Pink and White .....	3.85	7.50	13.50	25.00	48.00	94.00
Fire Dance, Salmon, Scarlet, Yellow Tr. ....	3.85	7.50	13.50	25.00	48.00	94.00
La Paloma, Pure White .....	3.85	7.50	13.50	25.00	48.00	94.00
Prima Donna, Rose Pink .....	3.85	7.50	13.50	25.00	48.00	94.00
Tango, Deep Scarlet, Salmon .....	3.85	7.50	13.50	25.00	48.00	94.00
Choice Mix of Above Colors .....	3.85	7.50	13.50	25.00	48.00	94.00
Ballerina, Soft Salmon .....	3.85	7.50	13.50	25.00	48.00	94.00
Black Magic .....	3.85	7.50	13.50	25.00	48.00	94.00
Fairyland .....	3.85	7.50	13.50	25.00	48.00	94.00
Flirt .....	3.85	7.50	13.50	25.00	48.00	94.00
Glitters .....	3.85	7.50	13.50	25.00	48.00	94.00
Minstrel .....	3.85	7.50	13.50	25.00	48.00	94.00
Blue Mantle .....	3.85	7.50	13.50	25.00	48.00	94.00
Snow Lady .....	3.85	7.50	13.50	25.00	48.00	94.00

**Pink Satin—F-1 Hybrid Multiflora**—This new variety possesses the same attractive globe shaped plant as its companion, Red Satin. Also has the ability to cover itself with bloom, and the same persistently compact habit of growth. The brilliant rose pink flowers command attention by their intense concentration of color, and then relieves that intensity with a clear, white area deep in the throat of the bloom. See price below.

**Maytime—F-1 Hybrid Grandiflora**—A new clear salmon pink, 100 per cent Grandiflora Flowers 3½ to 4 inches across, fringed, extremely free flowering. Growing habit, very uniform, compact, spreading to about 2 to 3 inches, average height 12 inches. See prices below.

**Bonfire—F-1 Hybrid, Dwarf, Large**—A companion to Fire Dance, but we believe this to be a much better variety. Medium sized flowers measure 3 inches across, plant height 8 to 10 inches. Compact, uniform in growth. Color, scarlet with golden center. Much more disease resistant than Fire Dance. See prices below.

**Blue Lustre—F-1 Hybrid Grandiflora**—New this year. A velvety blue, and as they mature they develop a rich red undertone. Plants grow only a foot tall, spreading to 24 inches, bearing an incredible number of waved lustrous flowers. It is the earliest and largest Grandiflora with not a single pause in production through the summer. See prices below.

**Petunia, F-1 Hybrid Multiflowered, Single, Plain Edged**

	1/128 Oz.	1/64 Oz.	1/32 Oz.	1/16 Oz.	1/8 Oz.	1/4 Oz.
Red Satin, Scarlet Red .....	\$4.00	\$7.50	\$14.50	\$26.00	\$46.00	\$82.00
Peach Satin, Soft Salmon .....	4.00	7.50	14.50	26.00	46.00	82.00
Pink Satin, Bright Pink .....	4.00	7.50	14.50	26.00	46.00	82.00
Maytime, Light Salmon Pink .....	6.50	12.00	22.00	40.00		
Bonfire, Red with Golden Throat .....	3.00	5.50	10.00	18.00	35.00	65.00
Blue Lustre, Deep Mid-Blue .....	6.50	12.00	22.00	40.00		
Apache, Rose Red .....	3.00	5.50	10.00	18.00	35.00	65.00
Comanche, Scarlet Red .....	3.00	5.50	10.00	18.00	35.00	65.00
Linda, Salmon Pink .....	3.00	5.50	10.00	18.00	35.00	65.00
Paleface, Pure White .....	3.00	5.50	10.00	18.00	35.00	65.00
Rose Charm, Rich Rose .....	3.00	5.50	10.00	18.00	35.00	65.00
Sioux, Medium Salmon .....	3.00	5.50	10.00	18.00	35.00	65.00
Choice Mix of Above Colors .....	3.00	5.50	10.00	18.00	35.00	65.00
Inca, Rose Red, Gold Throat .....	3.00	5.50	10.00	18.00	35.00	65.00
Mohawk, Rose Pink .....	3.00	5.50	10.00	18.00	35.00	65.00
Silver Medal, Salmon Pink .....	3.00	5.50	10.00	18.00	35.00	65.00

**Petunia, Giants of California, Dwarf and Tall Varieties**

Giants of California, Best Mix, Wide Color Range, 12" .....	\$ .80	\$1.50	\$2.75	\$5.00	\$9.00	\$17.00
Dwarf Giants of California, Best Mix, 7" .....	1.50	2.50	4.25	7.50	13.00	25.00
Extra Dwarf Giants of California for Pot, 6" ..	1.75	2.75	4.75	8.50	15.00	28.00
Paramount Giants, Mix Colors .....	1.75	2.75	4.75	8.50	15.00	28.00
Petunia F-2 Hybrid Carnival Mix .....	1.00	2.00	3.50	6.00	11.50	20.00

**Petunia, Nana Compacta, 12"**

	1/32 Oz.	1/16 Oz.	1/8 Oz.	1/4 Oz.	1 Oz.
Blue Bedder Imp. ....	\$ .35	\$ .60	\$1.10	\$2.00	\$6.00
Celestial Rose .....	.25	.40	.70	1.35	4.00
Elks Star, Reddish, Pure White .....	1.25	2.25	4.00	7.00	20.00
Rosy Morn .....	.25	.40	.70	1.35	4.00
Silver Blue, Lt. Blue .....	.60	1.00	1.75	3.00	9.00
Firechief .....	.95	1.75	3.00	5.00	15.00
Glow, Bright Carmine .....	.95	1.75	3.00	5.00	15.00
Rose of Heaven .....	.25	.40	.70	1.35	4.00
Twinkles .....	.35	.60	1.10	2.00	6.00
Violeace, Violet .....	.25	.40	.70	1.35	4.00
Dazzler .....	2.75	5.00	9.00	17.00	50.00
Dwarf Elks Pride, Purple .....	2.75	5.00	9.00	17.00	50.00
Admiral, Violet Blue .....	2.00	3.50	6.00	10.00	30.00

	1/32	1/16	1/8	1/4	1
	Oz.	Oz.	Oz.	Oz.	Oz.
Lipstick .....	.95	1.75	3.00	5.00	15.00
Snowstorm .....	3.00	5.50	10.50	20.00	60.00
King Henry, Velvety Red .....	2.00	3.50	6.00	10.00	30.00
Topaz Queen .....	.35	.60	1.10	2.00	6.00
Snowball Imp .....	.35	.60	1.00	2.00	6.00

	1/128	1/64	1/32	1/16	1/8	1/4	1
	Oz.	Oz.	Oz.	Oz.	Oz.	Oz.	Oz.
Popcorn .....	\$1.75	\$3.00	\$6.00	\$9.50	\$18.00	\$30.00	
Royalty .....	1.00	1.75	3.00	5.50	10.50	20.00	60.00
Theodosia .....	1.25	1.75	3.00	5.50	10.50	20.00	60.00
Dainty Lady Dwarf, Yellow .....	1.50	2.25	4.00	6.50	12.00	23.50	70.00

<b>Portulaca</b>	1/16 Oz.	1/8 Oz.	1/4 Oz.	1 Oz.
Single Mix .....	\$ .35	\$ .50	\$ .85	\$2.50
Double Mix .....	.50	.75	1.35	4.00

### Verbena, Upright Types

Firelight .....	.50	.80	1.35	4.00
Roselight .....	.50	.80	1.35	4.00
Salmon Queen .....	.50	.80	1.35	4.00
Snow White .....	.50	.80	1.35	4.00
Starlight .....	.50	.80	1.35	4.00
Bush Type Mix .....	.50	.80	1.35	4.00

### Verbena, Ely Dwarf, Upright New, 8"

Rainbow Mix, Very Early Bloom .....	\$ .70	\$1.00	\$1.70	\$5.00
-------------------------------------	--------	--------	--------	--------

### Verbena, Grandi Flora

Annapolis Blue .....	\$ .45	\$ .80	\$1.50	\$4.50
Beauty of Oxford, Pink .....	.45	.80	1.50	4.50
Brilliant Salmon, Rose, White Eye .....	.45	.80	1.50	4.50
Royal Blue, Blue, No Eye .....	.45	.80	1.50	4.50
Spectrum Red .....	.45	.80	1.50	4.50
White .....	.45	.80	1.50	4.50
Grandi Flora Mix .....	.40	.75	1.35	4.00
Hybrida Common Mix .....	.35	.60	1.00	3.00

### Vinca Rosea Periwinkle

Alba, Pure White .....	\$ .35	\$ .60	\$1.00	\$3.00
Rose .....	.35	.60	1.00	3.00
White with Crimson Eye .....	.35	.60	1.00	3.00
Mixed .....	.35	.60	1.00	3.00
Little Pinkie Dwarf ..	.80	1.50	2.35	7.00

### Stocks, 10 Weeks

Blood Red .....	\$ .30	\$ .50	\$ .85	\$2.50
Rose .....	.30	.50	.85	2.50
Canary Yellow .....	.30	.50	.85	2.50
Crimson .....	.30	.50	.85	2.50
Flash .....	.30	.50	.85	2.50
Light Blue .....	.30	.50	.85	2.50

	1/16 Oz.	1/8 Oz.	1/4 Oz.	1 Oz.
Royal Purple .....	.30	.50	.85	2.50
White .....	.30	.50	.85	2.50
Finest Mix .....	.30	.50	.85	2.50

### Salvia

	1/16 Oz.	1/8 Oz.	1/4 Oz.	1 Oz.	1/4 Lb.
Scarlet Pygmy of Dwarf Fireball .....	\$ .95	\$1.75	\$3.35	\$10.00	\$35.00
Blaze of Fire .....	.85	1.50	2.50	8.00	26.00
St. John's Fire .....	.85	1.50	2.50	8.00	26.00
Bonfire .....	.60	1.00	1.70	5.00	15.00
Splendence .....	.60	1.00	1.70	5.00	15.00
America .....	.60	1.00	1.70	5.00	15.00
Farinacea Blue Bedder .....	.60	1.00	1.70	5.00	15.00

### Sweet Peas, Novelty

	1/16 Oz.	1/8 Oz.	1/4 Oz.	1 Oz.
Spencer, Bush Type, 8", Little Sweetheart ..	\$ .85	\$1.00	\$1.70	\$5.00

### Thunbergia, Black Eyed Susan

Finest Mixed .....	.25	.40	.70	2.00
--------------------	-----	-----	-----	------

### Zinnia, Giants of California and Dahlia Flowered

	1 Oz.	1/4 Lb.	1 Lb.
Miss Willmott, Pink .....	\$1.20	\$4.00	\$12.00
Violet Queen, Purple .....	1.20	4.00	12.00
Illumination, Pink .....	1.20	4.00	12.00
Orange King, Orange .....	1.20	4.00	12.00
Oriole, Orange and Gold ..	1.20	4.00	12.00
Exquisite, Bright Rose, Deep Center .....	1.20	4.00	12.00
Canary Bird .....	1.20	4.00	12.00
Crimson Monarch .....	1.20	4.00	12.00
Golden Dawn, Deep Yellow ..	1.20	4.00	12.00
Will Rogers, Scarlet .....	1.20	4.00	12.00
All Giant Mixed .....	1.20	4.00	12.00
Peppermint Stick .....	2.00		
Blaze .....	3.00		
Little Red Riding Hood ..	2.00		
Lilliput Mix .....	1.20	4.00	12.00
Orthopolka Imp Pepper-mint Stick .....	2.50	7.50	

### Plain Pot Labels

4 Inch .....	\$2.80 per 1000
5 Inch .....	3.00 per 1000
6 Inch .....	3.40 per 1000
8 Inch .....	2.50 per 500

Not Post Paid.

# BIENNIALS and HARDY PERENNIALS

## Carnations (Grenadin)

	1/16 Oz.	1/8 Oz.	1/4 Oz.	1 Oz.
Deep Scarlet .....	.75	\$1.25	\$2.00	\$6.00
Rose Queen .....	.75	1.25	2.00	6.00
White .....	.75	1.25	2.00	6.00
Yellow .....	.75	1.25	2.00	6.00
King of the Blacks .....	.75	1.25	2.00	6.00
Ely Dwarf Vienna .....	.75	1.25	2.00	6.00
Perpetual Giants .....	.90	1.50	2.50	7.50
Marguerite .....	.50	.90	1.40	2.75

## Myosotis Victoria Dwarf

Indigo Blue .....	.60	\$1.00	\$1.75	\$5.00
Azure Blue .....	.60	1.00	1.75	5.00
White .....	.60	1.00	1.75	5.00
Rose .....	.60	1.00	1.75	5.00

## Bellis Perennia 1/16 Oz. 1/8 Oz. 1/4 Oz. 1 Oz.

Monstrosa Red .....	.75	\$1.25	\$2.00	\$6.00
Monstrosa Rose .....	.75	1.25	2.00	6.00
Monstrosa White .....	.75	1.25	2.00	6.00
Monstrosa Mixed .....	.75	1.75	2.00	6.00

## Viola 1/16 Oz. 1/8 Oz. 1/4 Oz. 1 Oz.

Arkwright Ruby				
Crimson .....	.75	\$1.25	\$2.00	\$6.00
Luteo Splendence				
Yellow .....	.75	1.25	2.00	6.00
White Perfection .....	.75	1.25	2.00	6.00
Chantryland Apricot .....	.75	1.25	2.00	6.00
Admiration Deep				
Violet Blue .....	.75	1.25	2.00	6.00
Purple Bedder, Wine				
Purple, Yellow Eye .....	.75	1.25	2.00	6.00

## Delphinium

Belladonna, Lt. Blue .....	.50	\$.80	\$1.35	\$4.00
Bellamosum, Dk. Blue .....	.50	.80	1.35	4.00
Blackmore & Langdon .....	.50	.80	1.35	4.00

## Delphinium Pac. Giants

Black Knight,				
Blue DB .....	\$1.50	\$2.50	\$4.00	\$12.50
Blue Bird, Medium				
Blue WB .....	1.50	2.50	4.00	12.50
Blue Jay, Medium				
Blue DB .....	1.50	2.50	4.00	12.50
Cameliard, Lav-				
ender WB .....	1.50	2.50	4.00	12.50
Galahad, White WB .....	1.50	2.50	4.00	12.50
Guinevere, Pink WB .....	1.50	2.50	4.00	12.50
King Arthur, Deep				
Violet WB .....	1.50	2.50	4.00	12.50
Lancelot, Lilac WB .....	1.50	2.50	4.00	12.50
Percival, White DB .....	1.50	2.50	4.00	12.50
Summer Skies, Lt.				
Blue WB .....	1.50	2.50	4.00	12.50
Pacific Giants Mix .....	1.50	2.50	4.00	12.50

## Digitalis, Foxglove

Excelsior Hybrid Mix .....	.35	\$.60	\$1.00	\$3.00
Giant Shirley				
Hybrid Mix .....	.35	.60	1.00	3.00

## Columbine, Long Spurred

Blue Shades .....	\$.90	\$1.50	\$2.50	\$7.50
Copper Queen .....	.90	1.50	2.50	7.50
Crimson Star .....	.90	1.50	2.50	7.50
Orange and				
Scarlet Shades .....	.90	1.50	2.50	7.50
Pink Shades .....	.90	1.50	2.50	7.50
Rose Queen .....	.90	1.50	2.50	7.50
Snow Queen .....	.90	1.50	2.50	7.50
Mrs. Scott Elliott .....	.90	1.50	2.50	7.50

## Canterbury Bells Cup and Saucer Mixed

Cup and Saucer Mix .....	\$.40	\$.70	\$1.25	\$3.75
Cup and Saucer,				
Dark Blue .....	.40	.70	1.25	3.75
Cup and Saucer,				
Light Blue .....	.40	.70	1.25	3.75
Cup and Saucer, Rose .....	.40	.70	1.25	3.75
Cup and Saucer,				
White .....	.40	.70	1.25	3.75

## Candytuft, Perennial Iberis

Jacunda Dwarf,				
Pink, 4" .....	\$2.50	\$4.00	\$7.00	\$20.00
Sempervrens,				
White, 12" .....	.40	.75	1.35	4.00

## Ameria, Sea Pink

	1/16 Oz.	1/8 Oz.	1/4 Oz.	1 Oz.
Alpina, Bright Rose, 6" .....	2.00	3.50	10.00	30.00

## Pyrethrum

Robinson, Dark				
Crimson .....	.70	\$1.25	\$2.35	\$7.00
Roseum, Rose .....	.70	1.25	2.35	7.00
Robinson Giants				
Hybrid Mix .....	.70	1.25	2.35	7.00
Hybridum Double				
Mix (Highest Per-				
centage of Doubles .....	.70	1.25	2.35	7.00

## Shasta Daisy

Alaska .....	\$.30	\$.50	\$.85	\$2.50
Exhibition Strain,				
Large, Double .....	.90	1.50	2.70	8.00
Diensers Giants,				
Double .....	1.35	2.00	3.35	10.00

## Perennial Asters

Lavender Blue and				
White Mix .....	\$1.40	\$2.75	\$5.00	\$16.00
Blue .....	1.75	3.25	6.00	18.00

## Pansy

Dwarf Swiss 1/16 Oz. 1/8 Oz. 1/4 Oz. 1 Oz. 1/4 Lb.					
Giants .....	\$1.25	\$2.00	\$3.35	\$10.00	\$35.00
America .....	1.20	1.75	3.00	9.00	31.50
Engleman's					
Giant .....	1.50	2.50	4.00	12.00	42.00
Swiss Florist					
Strain X .....	1.25	2.00	3.35	10.00	35.00
Super Swiss					
Giants X .....	1.25	2.00	3.35	10.00	35.00
Dwarf Swiss					
Giants, Exhib-					
itor Strain .....	2.00	3.00	4.50	13.50	47.25
Sensation, New .....	2.00	3.00	5.00	15.00	
Carnival Mix,					
Best Color					
Range .....	1.25	2.00	3.35	10.00	35.00

## Sweet Williams 1/16 Oz. 1/8 Oz. 1/4 Oz. 1 Oz.

Dwarf Alpine Mix .....	\$.60	\$1.00	\$1.70	\$5.00
Dark Crimson .....	.30	.50	.85	2.50
Giant White .....	.30	.50	.85	2.50
Homeland, Dark Red,				
White Center .....	.30	.50	.85	2.50
Newport, Pink .....	.30	.50	.85	2.50
Mixed Colors .....	.30	.50	.85	2.50

## Tritoma, Red Hot Poker

Hybrida Mirabilis .....	\$.50	\$.90	\$1.50	\$4.50
-------------------------	-------	-------	--------	--------

# How to Order

**By carefully following these suggestions many mistakes may be avoided  
AND BETTER SERVICE CAN BE GIVEN**

**FREE TRANSPORTATION** All seeds quoted herein are shipped anywhere in the United States proper by Parcel Post, Express or Freight, our option, all transportation and packing charges paid by us excepting Peas, Beans and Corn which we cannot ship paid beyond the 4th Parcel Post zone unless accompanied with other seed. Large bulk orders which may include Peas, Beans and Corn will be shipped to your nearest express or freight office, transportation paid. C.O.D. and money order return fees are not considered as transportation charges and, therefore, must be paid for by the customer.

**TERMS OF SALE** While our regular terms are cash with order we are pleased to offer open account to gardeners of established credit or who can furnish us with satisfactory business references; at least three established business concerns that have extended credit to you or who know you through past business dealings. (Names of friends, neighbors, relatives, etc., are not sufficient to establish credit relations.)

**HOW TO MAKE REMITTANCES** Remittances may be made at our risk by any of the following methods: (1st and best) Post Office Order; (2nd) Bank Draft or Check; (3rd) Express Company Money Order; (4th) Registered Letter. Cash or stamps are sent at purchaser's risk; however, the Postal Department asks us to discourage the use of stamps.

**ORDER BLANK AND ENVELOPE** An order blank and envelope are enclosed for your convenience. We suggest you print your name and address. If you wish to reorder and have no order blank, send it to us on plain paper. It will receive the same prompt consideration. Additional order blanks will gladly be sent on request.

**SHIPPING INSTRUCTIONS** When goods are to be shipped by Freight or Express, give plain shipping directions; otherwise we use our best judgment in routing. Goods on which we pay transportation are shipped at our option.

**LARGE ORDERS** Institutions, Gardeners or Florists' wishing larger quantities than quoted are requested to send in list for quotations which will be returned promptly with lowest possible prices.

**NON-WARRANTY** We give no warranty, expressed or implied, as to the productiveness of any seeds we sell and we will not be in any way responsible for the crop. Our liability in all instances is limited to the purchase price of the seed. If purchaser does not accept the goods on these terms, they are at once to be returned to us at our expense.—Midwest Seed Growers.

**ONE-HALF POUNDS DELIVERED AT ONE POUND PRICES**

**FIFTY POUNDS OR OVER DELIVERED AT ONE HUNDRED POUND PRICES**

**Prices Subject to Change Without Notice**

# 1958 CATALOG FOR MARKET GROWERS



CAULIFLOWER SNOWBALL STOCK 84—See Description on Page 5  
*Formerly Called Midwest Special Snowball*

## **MIDWEST** *Seed Growers*

505 Walnut Street, Kansas City 6, Missouri

PHONE LOCAL AND LONG DISTANCE • VICTOR 2-1493