

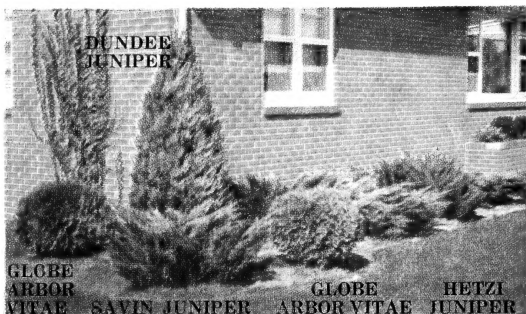


FLYING FLOREBUNDA ROSE
 \$1.35 each 3 for \$3.75

**BOSTON
 IVY
 VINE**

← Will cling to smooth walls. Fast grower, deep green foliage

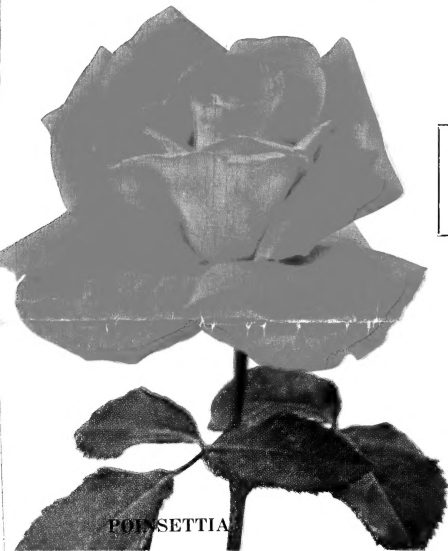
each \$1.25



DUNDEE JUNIPER
GLOBE ARBORVITAE **GLOBE HETZI JUNIPER**
SAVIN JUNIPER **ARBORVITAE**

EVERGREEN PRICES ON PAGE 7

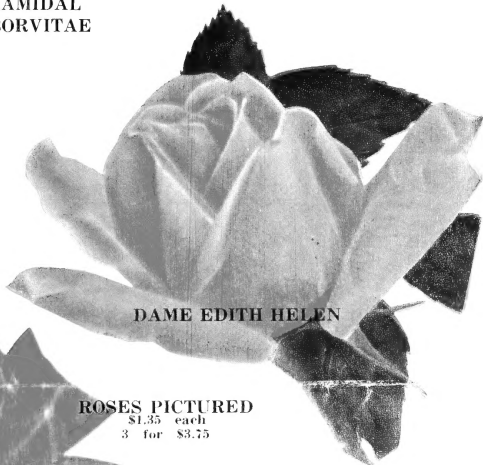
PYRAMIDAL ARBORVITAE



POINSETTIA

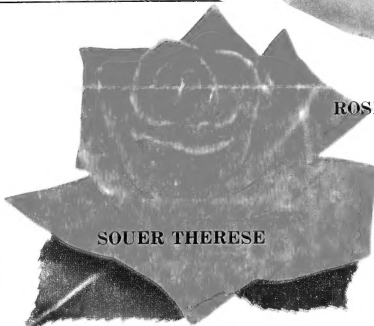
LANDSCAPE SERVICE

We will be glad to help you plan all kinds of landscape work, and give free estimates on any work you want done.



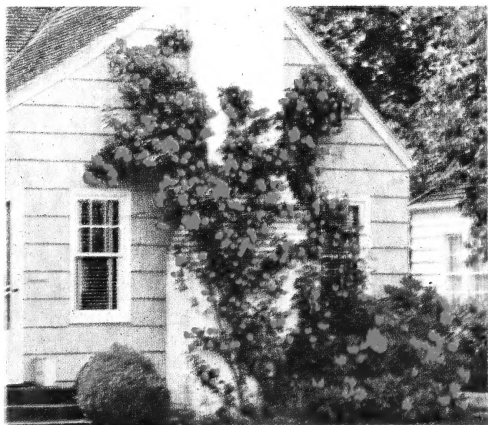
DAME EDITH HELEN

ROSES PICTURED
 \$1.35 each
 3 for \$3.75



SOUER THERESE

IMPROVED LAFAYETTE
 \$1.35 each 3 for \$3.75



CLIMBER—(Patent No. 10)—The most famous red climbing rose. Large clusters of cup-shaped blooms of vivid scarlet cover the broad vine magnificently in June, followed by intermittent flowers all season. Each \$1.50

**MEYERS
 Nursery**

1435 Independence Ave.
 Waterloo, Iowa

1958

LIBRARY
 RECEIVED
 ★ MAR 31 1958 ★
 U. S. Department of Agriculture

BULK RATE
 U. S. POSTAGE
 PAID
 WATERLOO, IOWA
 Permit No. 1290

ATURE

— PLENTY FREE PARKING —



Landscaping
INCREASES
YOUR
Property
VALUE



... and YOU can do
 much of the Work Yourself

GUARANTEE AND CONDITIONS

We are careful to keep our varieties true to name and will replace any portion of the stock that may prove otherwise, or refund the price paid for such portions. It is agreed that the original price shall be the maximum damages the purchaser is entitled to. Any material failing to grow will be resupplied at one-half the original cost of the stock provided we are informed of such failure prior to Sept. 1st following purchase.

These prices are for delivery at the nursery or to your residence in Waterloo or Cedar Falls. Out of city orders will be delivered P.O.B. to post office, express, and freight and truck line terminals. 25¢ delivery charge will be made on all orders less than \$2.00.

TERMS OF PAYMENT are cash on or before delivery of the stock, unless previously otherwise agreed upon. Remittances may be by check or any convenient form, payable to Meyers Nursery.

Beautiful Garden Lillies

Plant Meyers Large Select Bulbs This Spring
 for Fine Blooms This Summer

Coral Lily (Tenuifolium) — Charming, small-flowering lily of bright scarlet, blooming through June. Very hardy and long lived. **Each 39¢**

Hyeri—Rich apricot-yellow. The flower petals are curled beautifully. Height 3 to 5 feet. Blooms August and September. **Each 55¢ 3 for \$1.50**

Gold Banded Lily (Auratum)—One of the most beautiful of all lilies. Large, graceful, fragrant flowers of ivory-white thickly studded with crimson spots, with a golden band through the center of each petal. 3-5 feet July-September. **Each 75¢ 3 for \$1.80**

Rubrum (Speciosum Magnificum)—One of the grandest of them all—extra large flowers of pink and white blend with crimson spots, and sweetly fragrant. Choose a well-drained spot, lightly shaded for finest blooms. 3-4 feet. August-September. **Each 75¢ 3 for \$1.80**

Elegans Atropurpureum—Deed red shaded crimson, large flowers. Splendid for bedding. Height 12 to 15 inches. Blooms in June. Plant 4 to 5 inches deep. **Each 35¢**

Regal—The all-time favorite. Magnificent, large white blooms lightly tinged pink, with golden yellow center, and so fragrant. Sunlight or partial shade. 4-6 ft. Entirely hardy. July. **Each 39¢ 3 for 98¢ 6 for \$1.65**

Orange Triumph—A brilliant flash in the June garden. Strong, 2-ft. stems are crowded with clusters of glowing orange-yellow blooms. Very fine; extra hardy; free flowering. **Each 50¢ 3 for \$1.35**

Umbellatum—Large, straight, funnel-shaped flowers of burning orange-red color. Blooms June and July. Height 2 feet. **Each 50¢ 3 for \$1.35**

Estate—Glorius, hardy Easter lily. Big, noble, pure white, fragrant flowers. Plant 7 to 9 inches deep in good well-drained soil, sun or light shade. **Each 60¢ 3 for \$1.60**

Meyers Says --
-- Plant Spring Bulbs For Those
Year Long Blooms of Beauty

QUALITY
NURSERY
STOCK
AT QUALITY
PRICES

PEONIES

- Avalanche.** A magnificent, pure white with a few pencillings of carmine. Delightfully fragrant; late mid-season **\$1.00**
- Eduhis Superba.** The large flowers of beautiful deep pink are usually in bloom for decoration Day. Very grand **\$1.00**
- Felix Crousse.** Its large, globular flowers, are a brilliant, dazzling ruby-red. Late midseason **\$1.00**
- Special Offer.** One each of the above 3 Peonies for **\$2.75**
- Festiva Maxima.** Large flowers, often 7 to 8 inches in diameter. Flowers pure white, dotted carmine. Fragrant; early **\$1.00**
- Karl Rosefield.** Huge ball-like flowers of rich velvety-crimson. Extra fine; early midseason **\$1.00**
- Longfellow.** Perhaps the most brilliant of all red Peonies. Early midseason. Very fine show or garden variety **\$1.25**
- Martha Bullock.** Gigantic, cupped shaped flowers of bright old-rose pink. Rose-like fragrance; late .. **\$1.75**
- Myrtle Gentry.** "The Perfect Peony." Immense flowers of beautiful light pink changing to rosy white. Late **\$1.75**
- Reine Hortense.** Very large flowers of beautiful uniform light pink. A prize winner at the shows. Mid-season **\$1.25**

BLEEDING HEARTS

Bleeding Heart (Dicentra spectabilis.) The genuine old-fashioned Bleeding Heart, producing many heart-shaped rosy-flowers in drooping spikes. Strong field-grown roots, with 3 to 5 eyes. **Each 95¢**
3 for \$2.50 postpaid

Fern-Leafed Bleeding Heart (Eximial) These lovely pink flowers keep coming all Summer long and the fern-like foliage is very attractive. Grows 1 ft. tall. Thrives in sun or partial shade. **Each 50¢**
3 for \$1.25

Gladiolus

Glads are one of the easiest flowers to grow and are fine for cut flowers, and make brilliant display in the garden. Plant 5-6 inches deep; 6-12 inches apart, and make several plantings two weeks apart, for a long season of bloom. Our bulbs are all first size. The varieties we list are some of the finest.

10 "Glorious" Glads

- Leading Lady**—Large, ruffled creamy white.
- Spotlight**—Large bright yellow with red pencil line.
- Orange Gold**—Tall Brilliant orange shading to yellow.
- Phantom Beauty**—Shell pink opening 10 to 12 flowers.
- Spic and Span**—Leading prize winner today salmon pink
- Tivoli**—Tall light rose pink.
- Elizabeth the Queen**—Finest ruffled lavender.
- Dieppe**—Unique shade of salmon scarlet.
- Red Charm**—King of the reds.
- Burma**—Beautifully ruffled deep rose red.

Above 10 Varieties — No. 1 Bulbs
3 for 35¢ 10 for 98¢ 25 for \$2.10

Popular Cannas

- Cannas are becoming more popular. The new varieties with large flowers in new colors are unequalled for creating a colorful show from July till frost. They do best in full sun and respond quickly to feeding.
- City of Portland.** 3½ ft. Compact, luxuriant, dwarf, growth. Leaves green. Flowers rosy pink.
- King Humbert.** 4 ft. Scarlet flowers, bronze leaves. This remarkable "Gold Medal" Canna has been the sensation of the past fifteen years.
- The President.** 4 ft. A rich glowing scarlet on strong stalks; green foliage.
- Yellow King Humbert.** 4 ft. Foliage a very dark green, flowers a deep rich yellow, softly spotted and blotched with bright red.

PRICES OF ABOVE

25¢ each 3 for 65¢ \$2.30 per doz.

DORMANT 2-3 EYE ROOTS

Tuberous Begonias

Choice of these popular colors: (c) PINK, (d) DARK RED, (e) SALMON, (f) SCARLET, (g) WHITE and (h) YELLOW. All double flowered.
No. 1 size Each 30¢ 3 for 75¢ 10 for \$2.25
Jumbo Size, Each 39¢ 3 for 98¢ 10 for \$2.75

DWARF IRIS

These varieties bloom two weeks in advance of the tall bearded Iris. **Cyanea**—6 in. Very dwarf, rich crimson purple; fragrant **Each 50¢**
Fairy—6 in. Pale Blue..... **Each 50¢**
Keepsake—8 in. Bright golden yellow on slender stalks **Each 60¢**
Mist O' Pink—8 in. Misty red-pink on slender stems **Each 60¢**

IRIS

NEW AND BETTER IRIS

- Extra large flowers far superior to the oldtime Iris. Numbers after names indicate average height.
- Blue Monarch**—38 in. Very fine large lavender blue..... **Each 35¢**
- California Gold**—35 in. Magnificent, large flowers of dazzling deep golden yellow flowers **Each 50¢**
- Challenge**—Large, blackish red purple **Each 35¢**
- Crystal Beauty**—40 in. Perfectly shaped flowers of pure white. **Each 50¢**
- Dautless**—32 in. A velvety rose red producing a most effective clump in the garden **Each 35¢**
- Goblin Red**—30 in. New rich blood red. A fine red Iris **Each 35¢**
- Garden Magic**—The flowers are large dark velvety red, almost maroon **Each \$1.00**
- Great Lakes**—48 in. Immense spreading flowers of clear azure blue. **Each \$1.00**
- Pink Opal**—Tall, large uniform pink-toned Iris **Each 50¢**
- Pink Satin**—42 in. Large finely shaped flowers of a very delicate, yet glistening pink **Each 35¢**
- Wabash**—39 in. "Si" snow white, "F" hyacinth violet. One of the finest of all Irises..... **Each 75¢**
- Missouri**—36 in. Clear vivid blue of sensational size **Each 50¢**
- Mulberry Rose**—40 in. Huge flowers of radiant, lovely mulberry rose with a bronze beard **Each 75¢**
- New Snow**—40 in. The large ruffled flowers are as white as new fallen snow; yellow beard **Each \$1.00**
- Nightfall**—36 in. Rich blackish, pansy-purple color with standards several shades lighter than falls. **Each 60¢**
- Ola-Kala**—36 in. Brilliant ruffled deep orange-yellow. Dykes Medal winner* for 1948 **Each 75¢**

Hardy Perennials

Prices, unless otherwise noted of Perennial Plants:
Each \$39 - 3 for \$1.15 - 10 for \$3.50

ASTERS, Hardy—Red, Pink, White, Blue. 50¢ each
—**Hardy Ageratum**—Lovely light purple-blue flowers of fluffy texture from August until frost; fine for cutting. 12-18 inch.

AQUILEGIA, COLUMBINES—Not particular as to soil, endures some shade. Red pink, white, yellow.

CREeping PHLOX (Subulata)—These grow scarcely four inches tall, with moss-like foliage that stays green all winter. In the spring, completely covered with flowers. Thrives in sun or part shade.

Blue, Pink, Red, White

CARNATION—Dwarf 15 in.; compact, double flowers. State variety.

—Red King—Bright red.

—Pink Beauty—Soft pink.

—Puff Ball—White as snow.

CANTERBURY BELLS—Big, bell-shaped flowers leading the 2-ft. spikes. Blooms in June. Blue, Rose and Pink.

DELPHINIUM, Pacific Hybrids—The flowers are immense, 2½ to 3 inches across. The colors range from pure white, sky blue to deepest indigo-blue, purples, violets, and those exquisite shades of orchid-pink. The plants grow 4 to 7 feet tall with flower trusses often 3 to 4 feet long. Each 59¢; 3 for \$1.25

—**Bellamosa**—2-4 ft. Like above but dark blue all summer.

—**Belladonna**—2-4 ft. Light blue, all summer.

—**Chinese Blue**—1-2 ft. Finely cut foliage. Gentian blue, all summer.

—**Delphinium, Larkspur**—All like limestone soil and good drainage.

GAILLARDIA, Blanket Flower—1 to 2 ft. Flowers have red, yellow, and orange blended.

—**Gypsophila (Baby's Breath)**—2 to 3 ft. Great masses of small white flowers in July-August. Lovely in the garden and fine for cutting.

HOLLYHOCKS—6 ft. towers of blooms, with big, double flowers all summer. Red, Pink or Yellow. State color. Doz. \$1.75

Lycium Chalcidonia (Maltese Cross)—Very fine durable, old-fashioned flower with dense heads flashy scarlet throughout midsummer.

LUPINUS polyphyllus (Lupine)—Extremely handsome perennial with beautiful palmate foliage and long spikes of brilliantly colored sweet pea-shaped. Plant in well-drained spots with soil that is not too rich and free from lime. Blue, Rose, Red and Mixed shades.

LINUM PERENE, HARDY FLAX—1 to 2 ft. Light, graceful foliage and stems. Pale blue flowers each morning. June-September if cut down occasionally.

—**Morden Lythrum**—It's beautiful—it's hardy—it's grand. Throughout the summer there is a continuous succession of lovely rose-carmine spikes that are ideal for cutting. Originating in Canada, it is completely hardy, thrives everywhere. Plant grows 3 ft. or more tall. 65¢ Each.

MONARDA—(Haremint) — Fringed flower heads of blazing scarlet appear on 20 to 30 inch stems in July and August; foliage somewhat aromatic.

PERENNIAL SWEET PEA — (Lathyrus) — Hardy creeper or climber, with lovely clustered flowers, pink to rose-red, throughout the summer. Fine for cutting.

Platyodon grandiflora, Ballon Flower—2 to 3 ft. June-October. Large ball-shaped flowers either blue, White or Pink. Inflated ballon like buds.

Oriental Poppies—2 to 3 feet. Large orange-scarlet flowers with black centers. May-June.

PYRETHRUM, PERSION OR PAINTED DAISY — 2 to 3 ft. tall. All colors, white to deep red.

SHASTA DAISY—Early Glistening white flowers in countless numbers during June, are a beautiful sight in the garden; grand in bouquets. Mature growth about 15 in. tall.

Sedum Spectabile—Most notable of the Erect Sedums, producing a mound of excellent light green foliage, topped with immense heads of handsome rose-colored flowers in late summer and fall.

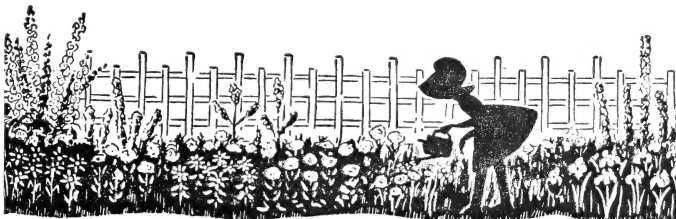
STOKESIA (Stokes' Aster) — We highly recommend this as a border plant. Beautiful aster-flowers of lilac-blue are in abundance nearly all summer.

SWEET WILLIAM — These brilliantly colored old-fashioned garden plants are as indispensable today as they were 100 years ago.

—**Pink Beauty**—A sparkling crushed strawberry-pink.

—**Scarlet Beauty**—A vivid scarlet. Very choice and effective. 1½ ft.

YUCCA filamentosa, Adam's Needle—4 to 6 ft. Tall pyramidal clusters of large creamy flowers; June-July. Heavy 3-year plants, 50¢.



CHRYSANTHEMUM

Each 65¢; 3 for \$1.75 6 for \$3.25

Algonquin—Fine, brilliant, double yellow. Mid-September. 18 inches.

Amber Glow — A 2½ inch flower of soft salmon or peach pink. Flowers very profusely. Blooms October

Avalanche—Large well formed double white flowers in great quantities. 2½ to 3 feet. Late September.

Burgundy—Rich deep red. Fully double. Perfect form. Early October. 2½ feet.

Harbinger—Double 2½ to 3-inch flowers of golden bronze. Grow 27 inches tall.

Red Velvet—Double 3-inch flowers of crimson. Grow 24 inches tall.

Lavender Lady—A lovely true lavender, no trace of mauve, purple, or magenta appears under any light condition. Flowers are full, double, 3 inches across. Early October.

Heatherbloom — D. (KRAUS)—Very double; heather-pink, center of shaded rose red with gold tipping. An outstanding flower.

Olive Longland — D. (KRAUS)—Three inch apricot toned salmon-pink. Blooms freely the best of the pastel shades.

September Dawn — Gorgeous deep pink of an autumn sunrise. Large double well formed flowers of 3½ inches.

Arapahoe—Huge rich red flowers. Stems 30 to 36 in. high. University of Nebraska origination.

Cecil Beed—Finest early pink mum.

Blush White—(Nebr.) Beautiful blush white large blooms.

Adoration—Large spreading double blooms. Pink on a cream background. Easy to disbud. Plants will carry 6 to 8 blooms 5 to 6 inches in diameter. Fine for cutting. Late September. 36 inches

Butterball—30 inch double. Large lemon-chrome.

Dahlia—20 inch double, wine red. September 10.

Duluth—36 inch double, yellow. September 20.

Glowing Coals—D. (KRAUS)—Bright deep cherry-red with orange reverse. Well branched plants of large sprays. One of the best early reds.

Polar Ice—A pure white double flower of 3 inches. Grows vigorously, flowers freely, and bunches nicely. Early September.

Pygmy Gold — A distinct, fine Pom Pom type. The color of a clean golden yellow. Early September.

Albaster—White incurved bloom.

Challenger—Bright bronzy red blooms

Chim Cold—Large double yellow

CUSHION MUMS

Each 65¢; 3 for \$1.75 6 for \$3.25

Bronze Cushion (King Cushion) — Deep autumn tints of bronze and copper.

Red Cushion—A splendid early crimson red variety.

White Cushion (Queen Cushion) — Extra fine early pure white.

Yellow Cushion—Pure golden yellow; early flowering and long lasting.

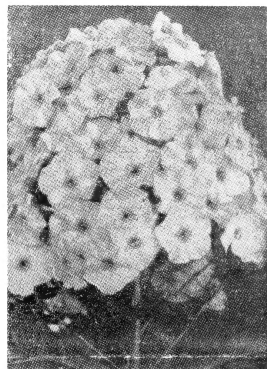
Black Velvet—Bushy midnight red.

Butterball—Best early butter yellow.

Coral Sea—Salmon, suffused copper rose.

Coral Cushion—Best bright pink cushion.

Nanook—White mounds, cream centers.



PHLOX

Each 45¢ 3 for \$1.25

Dr. Chas. H. Mayo—White with crimson eye.

Eva Forester—Large heads. Flower clear pink.

Florence—Beautiful waxy, white flowers.

Flash—New. Showy bright red.

Jules Sandeau—Brilliant watermelon pink.

Prime Minister—White, red eye.

Von Hockberg—Deep, velvety red.

Burgundy—Rich, deep wine glow.

Starlight—Purple, white star eye.

Lillian—Best clear salmon pink.

Mrs. Jenkins—Pure snow white.

Brilliant—Firey scarlet, dark eyes.

ORIENTAL POPPIES

Helen Elizabeth—50¢—This is a real acquisition of light La France pink. The petals are deeply crinkled.

Nancy—50¢—Deep crimson flowers on long stems, with glossy black blotches at the base of each petal.

Hercules—50¢—Immense flower, often 9 inches across, of true scarlet, borne on extra tall and sturdy stem.

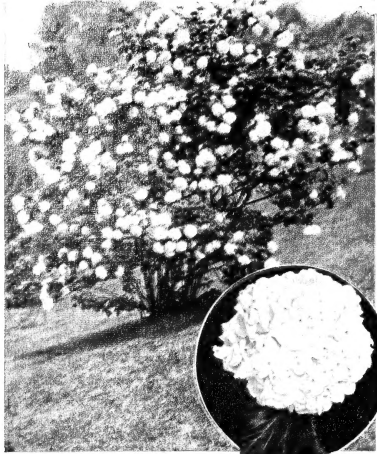
Sass Pink—50¢—No doubt one of the finest and largest pink poppies. The immense blooms are of fine crepe texture.

Sultana—60¢ - 3 for \$1.65—Brilliant watermelon pink flowers of extraordinary size.

Sungod—60¢ - 3 for \$1.65—A brilliantly colored poppy, bright Saturn-red with golden glow. Outstanding in color, vigor and bloom.

Surprise—60¢ - 3 for \$1.65—Giant flowers in unusual quantities of the brightest vermilion-red which is enhanced because of the pronounced blue-black, round spots at the base of the flower.

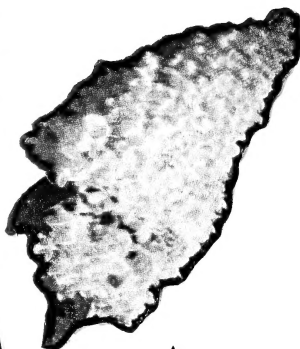
Sonata—60¢ - 3 for \$1.65—Beautiful soft, camellia-rose flowers in great numbers grace this variety in early spring. Large in size pleasing in color.



SNOWBALL

Large compact shrub, blooms near Decoration Day. For background corners or as individual shrub.

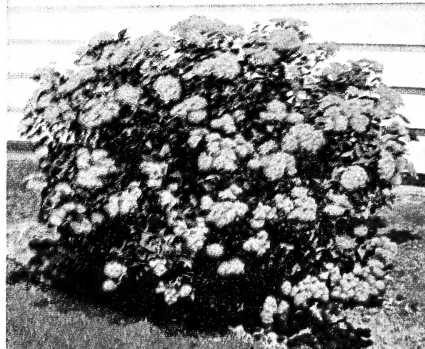
18-24 incheseach \$1.25
24-36 incheseach \$1.60



S 60 Hydrangea, P. G.

At first the coneshaped flowers are white, then turn pink and bronze. It thrives in partial shade.

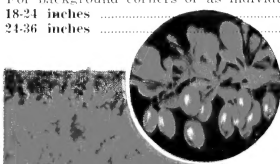
2-3 ft.each \$1.30



SPIREA ANTHONY WATERER

A dwarf type shrub for foundation planting, green foliage with pink flowers all summer, very compact.

12-18 inches\$.90
18-24 inches\$1.25

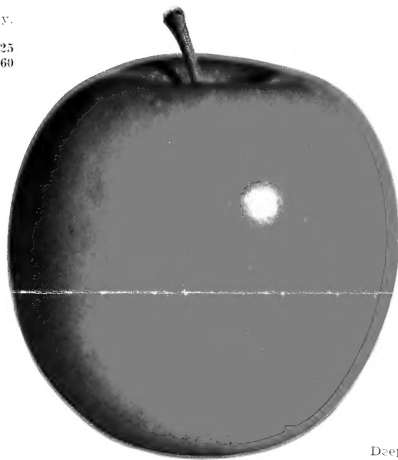


RED BARBERRY

Dwarf, red foliage, red berries in fall. Good with evergreen planting, foundation planting and as a hedge.

12-18 inches each \$.90

18-24 inches each \$1.25



JONADEL

NEW "IOWA STATE COLLEGE" INTRODUCTION — JONATHAN - DELICIOUS cross. Bears, large fruit, smooth skin, cherry red bark. Red. Crisp and juicy flesh, flavor milder than Jonathan. BLIGHT RESISTANT. Order Now.

5-6 ft.each \$3.50

Pink Flowering Almond

4 to 6 feet. Large, double pink flowers before the leaves.

2-3 feeteach \$1.35



CLUMP BIRCH

Decorative tree with white bark winter and summer. Deep Green foliage turning in fall.

3 stems 2-4 ft.\$3.95
3 stems 4-6 ft.\$5.95
3 stems 6-8 ft.\$9.95

GOLDEN MOCKORANGE

Dwarf, yellow foliage. Use with evergreen and foundation planting.

12-18 incheseach \$2.00

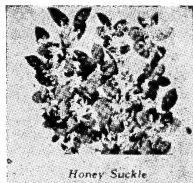


MULTIFLORA ROSE

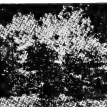
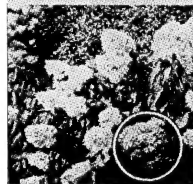
Grows bushy, very hardy, covered with small white roses in early summer.

HEAVY NO. 2 plants

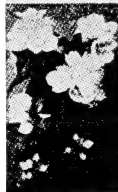
25 for	\$ 3.95
50 for	6.50
100 for	11.95



Honey Suckle



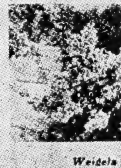
Spiraea Thunbergii



Mock Orange



Lilac Tree



Weigelia

HARDY FERNS

Many ask us "What can I plant in shady places?" Among the very best are these Hardy Ferns. They thrive in the shade. That is their natural home. Perfectly hardy they come up year after year.

MI20 American Maidenhair—Fine on north side. Grows a foot tall.

MI21 Hayscented—Grows in semi-sunny places as well as shade. 12 to 18 inches tall.

MI22 Interrupted—Good for foundation planting in shade or part shade. 2 to 4 feet tall.

MI23 Lady—Likes the shade. 1 to 2 feet tall.

MI24 Ostrich Plume—Especially fine for a shady rather moist spot. 2 to 4 feet tall.

Your choice above ferns
5 for \$1.65 - 3 for \$1.15 - Each \$45

. . . Plant MEYERS FLOWERING SHRUBS . . .

Pink Flowering Almond—4 to 6 feet. Large, double, pink flowers before the leaves.

Barberry, Green Leaf (Thunberg's Japanese)—Ideal for border and low foundation planting. Makes a low, dense, rounded bush 3 feet tall and just as wide. Grows in sun or partial shade. The foliage colors a beautiful bronzy-red in the fall, with bright red berries.

Red Leaved Barberry—3 to 6 feet. A form with purplish red foliage all summer if in sun.

Cotoneaster Acutifolia Quinceberry—5 to 8 feet. Small glossy, dark green leaves with brilliant fall coloring. Splendid hedge plant.

Gold Twig Dodwood—6 to 8 feet. Highly decorative with golden yellow bark in winter.

Dogwood, Red-Twigged—6 to 8 feet. Good foliage coloring red in fall. Bright red bark in winter.

Dogwood, Elegantissima—6 feet. Silver edging on the leaves makes a pleasing contrast to other shrubs.

Eunymus alatus—Winged Wahoo—6 to 10 feet. Broad corky wings on the twigs, red berries and brilliant fall foliage makes this attractive at all seasons. Unexcelled for specimens.

Forsythia intermedia, Yellow Bells—6 to 8 feet. Arching branches. Blooms very early. Branches may be forced indoors.

High Bush Cranberry—6 to 10 feet. The fruiting form of the common Snowball. Bright scarlet berries in the fall.

860 Hydrangea, P.G.—At first the coneshaped flowers are white, then turn pink and bronze. When cut they last for many weeks inside. It thrives in partial shade. Grows 4 to 6 feet tall and is in bloom from mid-summer to frost.

Honeysuckle Zabeli—10 to 12 feet. Upright growing dark green foliage, rosy red flowers and bright red fruit. One of the best of all honeysuckles.

Honeysuckle Tartarian—6 to 8 feet. Upright. Pink or white flowers, red berries.

Lilac, Old-fashioned purple—Large very attractive, pleasantly fragrant clusters in May. Most popular and loved lilac of them all. Hardy and vigorous.

Rothomagensis Lilac—Many large blooms; beautiful reddish-lilac. Very Hardy.

Aurea. Golden Mockorange—4-5 ft. A dwarf compact variety with yellow foliage.

Coronarius. Sweet Mockorange—8-10 ft. The old fashioned kind.

Virginalis. Virginal Mockorange—4 to 5 feet. Large, semi-double, fragrant, quite continuous.

Ninebark Golden Leaf—4-5 ft. A very hardy shrub having white flowers in May and June. Very attractive yellow foliage.

Prunus—cestana, Hansen's Purple Leaved Plum—6 to 8 feet. Bright reddish-purple foliage throughout the season. Purplish-pink blossoms purple fruit. The best red-leaved shrub.

Triloba—Double Flowering Plum—7-8 ft. Clear pink, double rose-like flowers in April-May. Much admired by everyone

Quince—Japanese Flowering, Cydonia japonica—4 to 6 feet. Scarlet flowers before the glossy green leaves.

Snowberry—Red, Indian Current—3 to 5 feet. Endures densest shade and dry soil. Covered with small red berries in early winter.

Snowberry, White—3 to 5 feet. Endures much shade, Large white berries in fall.

Spiraea—Anthony Waterer—2 to 3 feet. Very compact. Pink flowers all summer.

Billardi—4 to 6 feet Bright pink fluffy flowers in spikes July-October. Upright grower.

Spiraea, Froebeli—3 to 4 feet. Resembles Anthony Waterer. More vigorous. Purplish-red fall foliage.

Spiraea, Thunbergii—3 to 4 feet. Slender, arching branches and fine feathery light green foliage. White.

Sorbifolia Ash Leaved Spiraea—2 to 4 feet. Splendid foliage, white plumes in July.

Vanhouttei Vanhouttei Spiraea—5 to 7 feet. Commonly called Bridal Wreath. White flowers in May. Graceful habit. Thrives almost everywhere.

Tamarix pen randa, Blue-Green Tamarix—4 to 8 feet. Fine feathery blue-green foliage. Racemes of delicate pink flowers.

Weigelia—Vanickei Red Flowered Weigelia—4 to 6 feet. Rich reddish-purple flowers June-August.

Rosea. Pink Weigelia—4 to 6 feet. Mass of pink in June. For protected places

Privet (Amoor River)—This is the best of the hedge plants. Can be trimmed to any height, very dense, dark green foliage.

PLANT MEYERS HEDGES

Meyers Hedge Plants should be spaced 12 inches apart excepting for Honeysuckle and Spiraea vanhouttei which may be spaced 2 feet apart. A single row of plants is enough for a good hedge

PRICES OF ORNAMENTAL SHRUBS

	12-18"	18-24"	2-3'	3-4'
ALTHEA, red, blue, pink	\$.075	\$.098	\$1.25	\$.....
ALMOND, Pink dbl.75	.98	1.35
AZALEA, Mollis	3.00
BARBERRY, Redleaf90	1.25
BARBERRY, Thunberg65	.80	1.10
COTONEASTER, Acutifolia95	1.50	2.20
CURRANT, Alpine95	1.50	1.95
DOGWOOD, Elegantissima	1.85	2.25
DOGWOOD, Red Twig85	1.10	1.50
DOGWOOD, Yellow Twig85	1.10
EUONYMUS, Alatus	2.50	3.00
EUONYMUS, Burning Bush	1.50	2.00
FORSYTHIA, Intermedia95	1.10	1.50
HONEYSUCKLE, Tartarian49	.95	1.10	1.50
HONEYSUCKLE, Zabeli60	1.00	1.30	1.75
HYDRANGEA, P. G.	7.00	1.00	1.30	1.75
HYDRANGEA, Hills of Snow85	1.15	1.45	1.75
LILAC, Common Purple60	.80	1.00	1.50
LILAC, Single white	1.00	1.25
LILAC, Rothomagensis60	.95	1.15	1.50
LILAC, French	1.10	1.65	1.95	2.25
MINNESOTA SNOWFLAKE	1.25	1.50	2.00
MOCKORANGE, Golden	2.00	2.75
MOCKORANGE, Coronarius75	.90	1.25
MOCKORANGE, Virginal90	1.00	1.25	1.95
NINEBARK, Golden Leaf85	1.10	1.40
NINEBARK, Dwarf75	.95	1.25	1.75
PRUNUS, Cistena	1.50	1.75	2.50
PRUNUS, Triloba	1.75
QUINCE, Japan Upright	1.50
QUINCE, Red Flowering95	1.15
SNOWBALL, Common90	1.25	1.60	2.00
SNOWBERRY, Red50	.70	.90	1.15
SNOWBERRY, White50	.70	.90	1.15
SPIREA, Anthony Waterer90	1.25
SPIREA, Froebeli65	.90	1.25
SPIREA, Ballardii60	.75	.90	1.25
SPIREA, Sarbitolia75	1.00	1.25
SPIREA, Thunbergii65	.90	1.25	1.50
SPIREA, Van Houttei35	.60	.85	1.10
TAMARIX, Hispida	1.15
WEIGELIA, Vanickei	1.00	1.50
WEIGELIA, Rosea75	1.00	1.10

PRICES OF HEDGE PLANTS

Variety	9-12	12-18"	18-24"	2-3'
BARBERRY Thunberg	\$20.00	\$24.00	\$ 30.00	\$
COTONEASTER, Peiking ..	55.00	75.00	98.00
CURRANT, Alpine	50.00	85.00	120.00	160.00
HONEYSUCKLE, Tart	19.95	26.50
BRIDAL WREATH	18.50	24.50	38.50
PRIVET, Amoor River	13.50	16.00	21.50	30.00

Exhibition DAHLIAS DECORATIVE

Outstanding varieties with vigorous growing habits, large blooms, strait stems and free-blooming qualities.

Francis Laroeco — Sulphur-yellow; long erect stems.

Each 45¢ 3 for \$1.25

Gallant Fox—Dark claret-red. Robust grower

Each 45¢ 3 for \$1.25

Jane Cow—Massive blooms of bronzy buff and gold.

Each 45¢ 3 for \$1.25

Jersey's Beauty—The finest true rose-pink

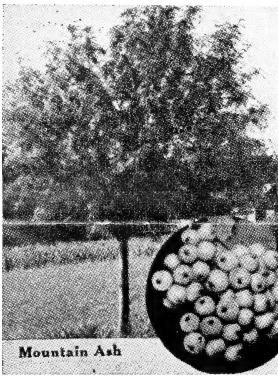
Each 45¢ 3 for \$1.25

Rosy Darlene—Beautiful light rose-pink with darker rose center.

Each 45¢ 3 for \$1.25

White King — Pure white; beautiful form.

Each 45¢ 3 for \$1.25



Mountain Ash

FLOWERING CRABS

BetHEL Double Flowering — 10 to 15 feet. A double form of the Wild Prairie Crab. Large, double, pink, fragrant flowers.

2-3 feet Each \$1.75

Eley Flowering Crab—M. eleyi — Purplish-red foliage during the season. Red flowers and fruit.

Red Flash—15-20 feet. Originated by Prof. Hansen. Large red flowers.

Hopa, Hansen's Red Flowering Crab—24-25 feet a rapid up-right growing kind with large red flowers, fruit, new growth and wood.

4-5 feet Each \$1.98

5-6 feet Each \$2.98

New Almey Flowering Crab—Breath-taking clouds of gollar size blooms of glistening firey crimson! Developed in Canada, it's now the most colorful flowering crab in America! From a distance the tree looks like a mass of flame.

6-8 feet Each \$4.25

FOR WINDBREAKS and GROVE Plantings

Break the cold of those freezing Winter winds. Plant a windbreak. Your home will be easier to heat, more comfortable. Your livestock will Winter better, put on cheaper gains for you, when in the protection of a good windbreak. Every farm home should have the protection and beautification provided by awindbreak. Plant yours this spring.

WINDBREAK EVERGREENS

Prices per each are for transplanted trees with bare root. Ball and Burlapped trees are priced on page 7.

	18-25 in.	24-30 in.	3-4 feet
Norway Spruce	\$2.50	\$3.00	\$5.00
White Pine	2.50	3.00	5.00
American Arbor Vitae	2.50	3.00	5.00

FAST-GROWING WINDBREAK TREES

Plant 10 to five rows for most effective protection. Plant six feet apart in rows eight feet apart. Cultivate first two years.

	10	100
American Elm 18-24"	\$.80	\$ 7.00
Black Walnut 12-18	1.00	9.85
Caroline Poplar 4-5'	2.25	19.95
Chinese Elm 18-24"	1.00	7.00
Chinese Elm 5-6'	5.95	50.00
Golden Willow 2-3'	1.50	10.00
Laurel Willow 3-3'	1.50	10.00
Soft Maple 18-24"95	8.00
Lombardy Poplar 2-3'	1.95	14.75

CLIMBING VINES CLEMATIS

CLEMATIS, Large Flowering

All like cool, well drained, but moist limestone soil with sun for the tops.

Jacknanni—Large, violet purple.

Clantis Henry—Immense flowers of lustrous white.

Clematis Andre—Handsome blooms of soft velvety-red.

Clematis Ramona—Exquisite lavender-blue flowers.

3 inch pot plants, above kinds, Each \$1.50

Anpelpolis, englemanni, Engelmann Ivy — Hardest vine clinging to smooth walls.

Size No. 1, Each, \$85; 2 for \$1.50

Bittersweet, American, Celastrus scandens — Well known native twining vine; large red and orange berries.

Size No. 1, Each, \$85; 2 for \$1.50

Vetchil, Boston Ivy — Very refined, but less hardy than englemanni. Two year.

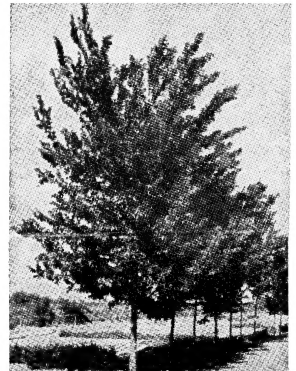
Size No. 1, Each \$1.25

Heckrotti, Honeysuckle — Large fragrant, flame-red trumpets, lined with gold are produced in immense showy clusters; blooming from early summer until frost. The blooms are produced the same year the plant is set out. Foliage, dark blue-green, disease and pest free. Hardy

Each \$1.00

Honeysuckle, Scarlet Trumpet, Lonicera sempervirens — Almost evergreen. Long coral flowers continuously. Excellent for cutting.

Size No. 1, Each, \$70; 2 for \$1.25



SYCAMORE

... Plant MEYERS SHADE TREES ...

Ash, Green — A fast growing shade tree. Not easily broken by storms or likely to be injured by pests.

Birch, Cutleaved Weeping — 30 to 40 feet. A very attractive ornamental tree with white bark and fine drooping branches.

Birch, European White — 30 to 40 feet. A hardy attractive tree with white bark.

Ash, European Mountain — A valuable tree on a small lawn; scarlet berries.

Elm, American White — 80 to 100 feet. One of the best of all shade trees. Thrives in almost all situations.

Elm, Chinese — Extremely rapid and dense growing. Suitable for dry soils. Twigs fine and much bent. Leaves small and remain green late. Cut back heavily in transplanting.

Elm, Moline — A very vigorous upright variety of the above with large, close set leaves. Budded and all one type.

Hackberry — strong, rapid growing shade tree.

Locust, Moraine — 50 feet. A new patented tree completely seedless and thornless with a pleasing vase shape similar to the elm. The small compound leaves make a filtered shade.

Lombardy Poplar, Populus nigra italica—50-70 feet. The well known very columnar poplar widely planted for tall screens, accents and hedges along drives. The dense upright branches form a slender tapering tree from the ground to a slightly pointed top.

Linden—American Tilia Americana — 60 to 80 feet. Large leaves, splendid shade tree.

Maple — Schwedler, Purple Norway — 40 to 50 feet. Large, bright purplish-red foliage in spring, turning to bronzy-green in summer and yellow in fall. Budded on common Norway Maple. One of the most colorful shade trees.

Maple—Hard or Sugar—One of the best shade trees which colors brilliantly in the fall.

Maple, Silver — A beautiful fast growing Maple, with compact, sturdy branches and large, dark green leaves. One of the best.

Maple, Crimson King — In the spring the foliage is a rich red and carries this deep red foliage through the entire season.

Red Oak Pin, Quercus borealis — 60-80 feet. One of the faster growing of the upland Oaks.

Oak Pin, Quercus palustris — 75-90 feet. Grows rapidly in moist soil. Leaves are retained and color splendidly. Transplants easier than most oaks. Lower branches somewhat drooping.

Willow, Niobe Willow — 40-50 feet. Golden yellow bark, very long penulous branches. Strikingly beautiful as a specimen or at the waterside. Very rapid grower. Plant early.

PRICES OF SHADE TREES

	5-6'	6-8'	8-10'	10-12'
ASH, Green	\$2.00	\$ 3.25	\$ 5.50	\$ 7.50
BIRCH, Cutleaved Weeping ..	5.25	7.50	9.00
BIRCH, European White	3.50	4.50	6.00
MOUNTAIN ASH, European	3.00	4.95	6.00	8.00
ELM, American White	1.75	2.85	3.95	5.00
ELM, Chinese	1.75	2.75	3.95	5.00
ELM, Moline	2.25	4.00	5.00
ELM, Hybrid	5.00	9.50
HACKBERRY	3.95	4.50	6.00	7.50
LOCUST, Thornless Honey	2.00	3.50	5.00	7.50
LOCUST, Moraine	5.95	7.50
LOCUST, Sunburst	8.50
POPLAR, Lombardy	1.00	1.75	2.25	2.75
Lombardy Poplar, 10 for....	8.75	12.50	19.00	23.00
LINDEN, American	4.50	7.50	10.50
MAPLE, Schwedler branched	5.00	8.00	12.00
MAPLE, Hard or Sugar	4.50	6.95	8.95	12.50
MAPLE, Silver	2.00	3.50	4.50	5.50
MAPLE, Crimson King Whips	4.95	7.00	8.50
OAK, Red Pin	5.00	7.00	9.00
OAK, Pin	5.00	7.95	10.00	14.50
SYCAMORE	3.00	4.50	5.95	8.00
WILLOW, Niobe Weeping	2.25	3.25	4.25

... Specimen Evergreens ...

ARBORVITAE

American, Thuja Occidentalis—A selected dark green, broadly pyramidal form grown from cuttings. It is the hardest and most drought-resistant Arborvitae.
Globe—2½ to 4 feet. A dwarf form which makes compact globes without trimming.
Pyramidal—15 to 20 feet. Grows in columnar form with shearing. Brighter and darker green than the common Arborvitae. Much used in entrance, foundation.
Siberian—10 to 15 feet. One of the hardest of all the Arborvitae, very compact, broadly conical in form and with dense dark green foliage.

JUNIPER

Chinensis, Chinese Juniper—20 feet. Resembles Red Cedar. Does not get red in winter.
Cannarti J. virginia cannarti—15 to 20 ft. A grafted form, clear green throughout the year. Needs shearing to make a close, regular pyramid. Unexcelled year round.
Dundee—A grafted narrow pyramidal form with compact regular growth without shearing.
Plumosa, Andorra Juniper—1½ feet. A rich, bright green in spring and summer, and attractive purplish bruce in winter.
Pfitzer—5 to 6 feet. A dwarf variety of the Chinese Juniper. The foliage is bluish-green and the branches grow out horizontally from the stem.
Sabina, Savin Juniper—4 to 5 feet. A bushy little tree with semi-erect branches and clear green foliage.
Virginia—25 to 30 feet. Sheared specimens of our native Red Cedar. Splendid blue or green summer coloring, purplish-red in winter. Thrives in poor dry soils.

PINE

Mugho, Dwarf Mountain Pine—3 to 5 feet. This makes a compact dome-shaped bush broader than high. Size apply to width rather than height.
White, P. Strobus—50 to 100 feet the softest foliage of the pines. Endures some shade and is the longest lived and largest growing pine.
Austrian—25 to 30 feet. Bright green at all times and endures city conditions exceptionally well.

SPRUCE

Black Hills—50 to 70 feet. A native of the Black Hills. It does very well over a wide range and makes the finest specimens of all Spruce.
Colorado Blue—Selected Blue Specimens or Shiners.
Norway Spruce—A rapid growing, thrifty Evergreen with wide adaptability as to soils and locations. This

FIRS

Balsam Fir—Beautiful, heavy, lustrous deep green foliage. Fine for ornamental planting and for "living Christmas trees". Also a good windbreak tree.
Concolor Fir—Long graceful needles, varying in color from light green to gray-blue. Tree grows compact and shapely.
Douglas Fir—A hardy, quick growing, drought resisting, deep green tree. Ideal to use as an ornamental or windbreak tree.

YEW S

Japanese—Japanese Yew, spreading T. cuspidata—4-6 ft. A spreading irregular bush form. Can be kept low by shearing.

Japanese Yew, Upright T. capitata—8-12 ft. Broadly pyramidal. May be sheared into any form.

Prices of Evergreens (Prices include Balling and Burlapping)

	10-12"	12-15"	15-18"	18-24"	2-2½'	2½-3'	3-3½'	3½-4'	4-5'	5-6'
ARBORVITAE										
American	\$1.25	\$2.50	\$3.00	\$3.75	\$4.95	\$6.00	\$7.50	\$9.00	\$10.50	\$...
Globe	3.00	5.00	6.00	8.00	9.00					
Pyramidal	1.75	2.25	3.00	4.50	6.00	7.50	9.00	10.00	12.00	15.00
Siberian	2.10	3.50	6.00	8.00	9.00					
Sherman			7.00	8.00	9.00					
FIRS										
Douglas Fir				4.00	5.50	6.50	7.75	9.75	14.00	18.00
Concolor Fir					4.00	6.00	7.00	8.50	10.50	20.00
JUNIPERS										
Silver	1.75	2.75	3.50	4.50	6.00	7.50	8.50			
Andorra Creeping	2.00	3.00	5.50	7.00	8.00	10.00	12.00	15.00		
Cannarti	2.00	3.00	3.50	5.00	7.00	8.00	10.00	12.00	14.00	
Dundee	2.00	3.00	3.50	6.50	8.00	9.00	11.00	13.00		
Keteleeri									12.00	14.00
Glaucia	2.00	3.00	3.50	4.50	7.00	9.00	10.00	12.00	14.00	
Helzi	2.40	5.00	6.00	8.00	10.00	10.00	10.00	10.00		
Pfitzer	2.40	5.00	6.00	8.00	10.00	12.00	14.50	16.00		
Savin	2.40	5.00	6.00	8.00	10.00	12.00	14.00	16.00		
Virginiana	1.25	1.85	3.50	4.50	6.50	8.00	9.00	11.00	12.00	15.00
PINE										
Pine - Austrian	1.25	1.75	2.00	3.00	6.00	8.00	9.00	11.00	12.00	
Scotch	1.25	1.75	2.00	3.00	6.00	8.00	9.00	11.00	12.00	
White	1.25	1.75	2.00	3.00	4.00	5.00	7.00	9.00		
Mugho		5.00	5.00	8.00	9.00	12.00	15.00			
Ponderosa			2.50	3.50	4.50	6.50	8.00	9.00	10.00	
SPRUCE										
Black Hills	1.95		3.50	5.00	6.50	8.00	10.00	12.00	13.00	
Colorado Blue	2.10	3.50	5.00	8.00	9.00	12.00	15.00			
Norway Spruce	1.10	1.75	2.00	3.50	4.00	5.00	7.00			
YEW S										
Japanese Spreading	5.00	6.50	9.00	12.00	15.00	18.00				
Japanese Upright	5.00	6.50	8.50	10.00	15.00	20.00	26.00			
Hicks Yew			7.50		12.50	16.50				

Lawn Seed

We offer a special mixture of extra good quality Lawn Seed that we do not hesitate to recommend very highly. We mix only the best grades of seed which insures a good stand of grass. You cannot afford to take chances with your lawn. The best policy is to sow clean seed. In addition our Lawn Seed is Gro-coated. Gro-coat protection means the use of fungicides which disinfect the area around the seed. There is a growth stimulator added which is designed to increase early root development. Home owners tell us they get faster growth, larger plants and many more of them when they sow Gro-coated lawn grass seed. We mix two grades of seed, one for ordinary seeding and another for shady spots. One pound of seed will sow approximately 250 square feet.

MEYERS LAWN MIXTURE contains 50% blue grass recommended by "Iowa State College" with 5% clover and 45% other fast growing PERENNIAL grasses.

per lb.	\$1.00
5 lbs.	\$4.75
10 lbs.	\$8.50

KENTUCKY BLUE GRASS

per lb.	\$1.15
5 lbs.	\$5.25
10 lbs.	\$9.95

PERENNIAL REY GRASS

per lb.	\$3.00
10 lbs.	\$2.95

The above prices are subject to change without notice.

WE HAVE ROLLER and SEEDER TO LEND, to the do-it-yourself person. We will be glad to recommend how it should be done.

PLANT FOOD

Vertagreen Rath

10 lbs.	\$1.10	
25 lbs.	1.80	\$1.60
50 lbs.	2.80	2.50
100 lbs.	5.35	4.90

NEW VERTAGREEN 10-8-6

Plant Food

80 lbs.	\$ 5.45
160 lbs.	9.95

ROSE FOOD

5 lbs.	\$.85
10 lbs.	1.50
25 lbs.	3.70

DRIED COW MANURE

25 lbs.	\$ 1.50
50 lbs.	2.60

DRIED SHEEP MANURE

25 lbs.	\$ 1.50
50 lbs.	2.60

HORTICULTURAL PEAT

Bag (2 bu)	\$ 1.75
1 Yard (At Nursery)	10.00
1 Yard (Delivered)	12.50
1 Large Bale	5.05

LIME

50 lbs.	\$ 1.00
---------	---------



T.M.'S REG. U.S. PAT. OFF. ORTHO, ISOTOX, ORTHOCID

- Fruit Tree Spray**
1 lb. \$1.39
- Vegetable Dust**
8 oz. duster gun, \$1.19
- Rose Dust**
8 oz. duster gun, \$1.19
- Bordeaux Mixture**
1 lb. 80¢
- Lime Sulphur**
1 lb. 85¢
- Arsenate of Lead**
1 lb. 90¢
- Black Leaf 40**—For Aphids and all sucking insects.
6 oz. \$1.98
- Dusting Sulphur**—Used to combat red spider on evergreens and for black spot and mildew on roses.
2 lbs. 85¢
- TRI-OGEN SPRAY** — Three-way spray, insecticide, fungicide, stimulant. Outstanding rose spray, contains fermate.
- E kit at \$1.50** - A kit at \$2.55
- Weed-B-Bone**—Preparation of 2 4 D plus 2 4 T in liquid form that will kill most lawn weeds without injury to grass.
8 oz. bottle \$1.19 - Qt. \$2.98
- CRABGRASS KILLER**
8 oz. can \$1.25



Anyone
can grow
Roses

MEYERS ROSES

Western Grown under Irrigation

America's Finest

PLANT A GAY-BLOOMING
ROSE HEDGE



Floribunda

...and
Plant
Up!

Everblooming Roses

The roses listed on this page are 2-year No. 1 plants grown in Northern California.

Christopher Stone — H. T. sensational new red rose. Large brilliant crimson-scarlet shaded deeper. Has a delicious old-rose scent.

Picture — Velvety clear rose-pink with undertones of salmon. Very double.

Countess Vandall — Long pointed bud, upright stems. Color combination can hardly be described, pink, copper, gold and salmon. Fragrant.

Ami Quinard—The "black rose". Crimson-maroon with blackish luster.

McGredy's Yellow—Bright, buttercup-yellow; perfect form; vigorous and healthy.

The Doctor—Large, beautiful buds opening to enormous semi-double, cupped flowers of satiny pink. Fragrant. Plant vigorous and bushy.

Poinsetta — H. T. Large unfading scarlet flowers. Long pointed bud.

Pedrables—Large, creamy-white opening to pure white with a yellow center. Airy fragrance.

President Herbert Hoover — Long stems on vigorous plants; extremely large double blooms of creamy yellow.

Each of the Above \$1.35; 3 for \$3.75

Climbing Roses

Crimson Rambler—Bright red, large clusters. Very popular climber.

Climbing American Beauty — Large, rich carmine, somewhat fragrant.

Gardenia—The popular yellow climber. Profuse bloomer. Glossy, healthy foliage.

Paul's Scarlet — Large, bright pure red, semi-double, in clusters.

Each \$1.25 3 for \$3.25

Dr. J. H. Nicolas — Patent No. 457 — plant carrying dark green foliage, produces fully double deep rose pink flowers, everblooming Each \$2.00

PLEASE NOTE

The Roses listed in this catalog are 2 year, field grown, No. 1 plants.

New Sensational GRANDIFLORA

Carrusel—(Plant Pat. No. 10666) A new vivid red Grandiflora. The fully opened flower is about 3 to 4 inches across. Foliage is excellent and disease resistant.

Each, \$2.00 3 for \$5.25, postpaid

Queen Elizabeth—(Plant Pat. No. 1259) A 1955 All-America Winner! Breathtaking blooms of delicate pink. Flowers combine the magnificent qualities of hybrid teas with the sturdy, free-flowering habit of floribundas.

Each, \$2.50 3 for \$6.60, postpaid

Montezuma—(Plant Pat. No. 1383) Splashing scarlet-orange, changing to a lighter even more radiant salmon-orange in warm weather.

Each, \$2.75 3 for \$7.20, postpaid

Patented Hybrid Tea Roses

He'n Traubel—Patent applied for—Named after one of the greatest American Concert artists. The color varies with the weather, sometimes a light sparkling pink, more often a luminous apricot.

Each \$2.75 3 or more \$2.40 each

New Yorker—Patent No. 825. Brilliant red with color long lasting and sun-resistant. Plant is sturdy, up-right and vigorous. Often measuring 6½ inches across.

Each \$2.25 3 or more \$2.00 each

Forty Niner—Plant Patent No. 792. (Retail at \$2.25 each). Dazzling chorme-yellow on the outside of the buds and vivid oriental-red on the inside.

Lowell Thomas, (7-3) Patent No. 595. (Retail at \$2.25 each; 3 or more \$2.00). Bud large, long-pointed, flower large, very double (35 to 40 petals), high-centered, long lasting, clear canary-yellow on strong stem.
Pace—Patent No. 591. Ovid buds and golden yellow etched with pink as they open, color changes from canaryyellow to pale golden, to iridescent cream.

Each \$2.50 3 or more \$2.20 each

Rose of Freedom—Patent No. 791. Winne CITY OF PORTLAND AWARD for 1947. A Hybrid Tea with 60 to 70 petaled, long-stemmed, currant red blooms with delightful true rose fragrance.

Each \$2.00 3 or more \$1.70 each

Golden Masterpiece—Plant Patent No. 1284. (Retail at \$2.75 each). Enormous, fragrant, golden yellow flowers with high centers. A sensational new rose. Glossy foliage on a strong plant.

Queen Elizabeth—Patent No. 1259. First Grandiflora Rose. Pure Pink, and its blooms are set off dramatically by glossy, deep green foliage.

Each \$2.50 3 or more \$2.20 each

Tiffany. (Patent applied for). A cross of Charlotte Armstrong and Grona, is a beautiful phlox pink, producing blooms of outstanding quality.

Each \$2.50 3 or more \$2.40 each

Hardy, Rugged Roses

F. J. Grootendorst—Bright red fringed flowers; large clusters freely produced throughout the growing season.

Hansa—Double, beautiful violet-red flowers of large size; freely produced. Hardy and dependable.

Pink Grootendorst—Double flowers of clear pink. Everblooming Baby Rugosa type blooms.

Sir Thomas Lipton—Snowy white flowers of unusual quality. Blooms freely all season.

Hardy Rugged Roses, Each \$1.50 3 for \$3.90

FLORIBUNDA ROSES

Pinochi (P.P. 484) — Clusters of salmon-pink all through the season. About 2 feet tall.

Each \$1.75 3 for \$4.65

White Pinochio, Patent No. 1010. New outstanding floribunda, semi-double flowers of pure white with yellow stamens. Large 2 to 2½ inch flowers.

Each \$1.50 3 for \$3.90

Yellow Pinochio, Patent No. 992. Newest member of the Pinochio family. Sturdy bush about three feet tall, producing great masses of bloom in an apricot yellow color.

Each \$1.50 3 for \$3.90

Eutim, large clusters of very double, deep red flowers on a vigorous mildew resistant bush.

Each \$1.25 3 for \$3.30

Floradora, Scarlet and geranium red floribunda producing double 24 petaled flowers. Height 2½ feet AARS 1945 award.

Each \$1.25 3 for \$3.30

Red Pinochio. Bright red companion to the original Pinochio. Plants are robust growers and produce great quantities of blooms from spring thru the fall.

Each \$1.75 3 for \$4.65

Yellow Poulson (Yellow). Compact buds of copper-yellow; double flowers deep yellow. Fragrant.

Each \$1.25 3 for \$3.30

Jiminy Cricket. Patent applied for—A Floribunda which features tangerine red buds, opening to coral-orange and finishing in a pink coral which is cuse to the color of Fashion.

Each \$2.25 3 or more \$2.00 each

White Boquet (New)—Plant Pat. No. 1415. (Retail at \$2.50 each). A lovely new white rose with gardenia-like 4 to 5 in. flowers of opulent white and sweet spicy fragrance.

Frensham. Our best. Beautifully formed buds come from June to frost. Crimson-red floribunda. 30 inches.

Each \$1.35 3 for \$3.90

Ma Perkins. Patent Applied for. 1953 AARS Winner. This is very free blooming Floribunda rose, with its sweetly pungent fragrance, shows a translucent light fashion color with shades of red in outer petals.

Each \$2.00

Garnette, comparatively new variety of merit producing red sweet-heart roses. The plant attains a height of only about 18 inches and carries crinkled holly-like foliage.

Each \$1.50 3 for \$3.90

**CHRISTOPHER
STONE**

ECLIPSE

**REX
ANDERSON**

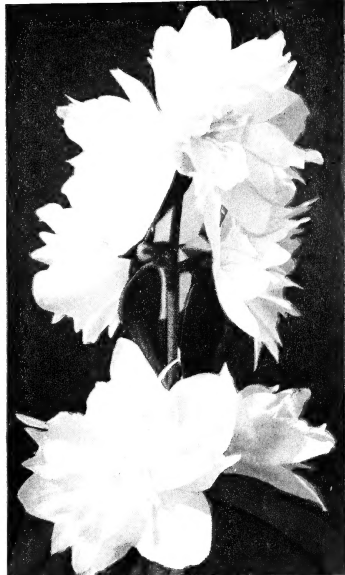
THE DOCTOR

**CRIMSON
GLORY**

**MEYERS NURSERY
ROSE SPECIAL**

All Everblooming
2 year — No. 1 Plants
Each \$1.35

**—ALL FIVE FOR—
\$5.25**



Philadelphus

MINNESOTA SNOWFLAKE

Plant Patent No. 538

NEW DOUBLE MOCKORANGE

The most valuable and widely accepted shrub introduction of recent years.

18-24 inches	Each \$1.25	3 for \$3.00
2-3 ft.	Each \$1.50	3 for \$3.75
3-4 ft.	Each \$2.00	3 for \$5.00



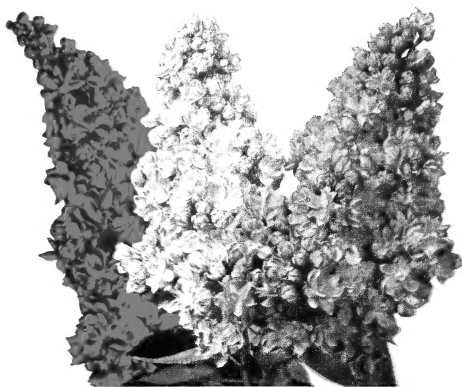
VIRGINIA JUNIPER

YEW

PERSEA

MUGHO PINE

EVERGREEN PRICES ON PAGE 7



FRENCH LILACS

Fancy (Bush Form) Ultimate height 8 feet.

Belle de Nancy—Double-flowered, color light purple, bluish tinge; late, with large trusses.

Charles Joly—Double-flowered, very dark reddish purple; superb.

Mme Lemoine—(Double). Large white flowers in immense clusters.

President Grey—(Double). Large panicles of beautiful pale blue flowers.

Ludwig Spaeth—(Single). Very attractive dark red flowers. One of the best varieties.

Prices of above varieties

18-24"	Each \$1.65	3 for \$4.50
2-3'	Each \$1.95	3 for \$5.50

CHINESE LILAC

True Rothomagensis — Rich Amaranth Purple — Like old fashioned lilacs but much improved. Grows 10 ft. high, makes breath-taking sight in full bloom.

Prepaid

18-24 inches	Each \$.95	3 for \$2.55
2-3 feet	Each \$1.15	3 for \$3.30

**BRIDAY WREATH
HEDGE**

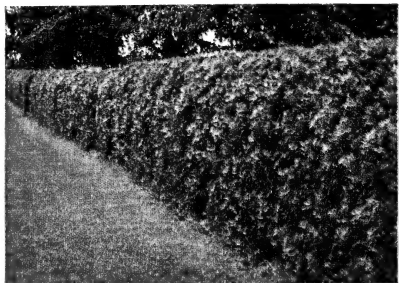
The best natural hedge for this climate. Grows 5 to 6 feet high. Blooms with an abundance of white flowers. Can be trimmed. Plant 3 feet apart for a natural hedge or 1 foot apart for a low trimmed hedge.

2 year size, well branched plants.

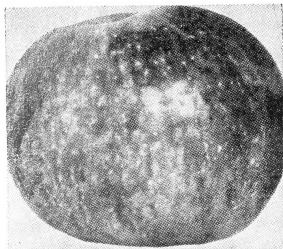
Prepaid per 10 per 25 per 100

12-18"\$2.50 \$5.75 \$18.50

18-24"\$3.25 \$7.50 \$24.50



MEYERS HARDY FRUIT FOR IOWA



APPLES

EARLY VARIETIES

Weacon—This new apple originated at the Minnesota Fruit Experiment Station. The fruit is large, solid bright red of very fine quality. It ripens in August.

Yellow Transparent—The favorite early apple. Ripens in July. Bears young, heavily and every year. **Red Duchess**—Top of the list for summer cooking apples.

FALL VARIETIES

Wealthy—The grand fall apple that does well everywhere. Large size fruit, striped red, tender, juicy, excellent quality.

Fameuse (Snow)—Crimson striped apple, with pure white flesh, juicy and of highest quality. October.

WINTER VARIETIES

Jonathan—Almost everybody knows it and likes it. A fine bright red apple of highest quality with crisp flesh.

Haralson—Large good red apple that keeps all winter. Heavy bearer, very hardy.

Fireside—A hardy and productive tree of the Delicious type, equal to it in quality. Suitable for northern sections.

Red Delicious—This is the original Delicious which originated in Iowa and has been planted from coast to coast for its superb quality and mild juicy flavor. **McIntosh, Siskit Red**—This large red apple is popular in the east, and also in sections of other states. Flesh snow-white of very high quality.

Yellow Delicious—This is now the most popular yellow apple in all America. It bears young and heavily.

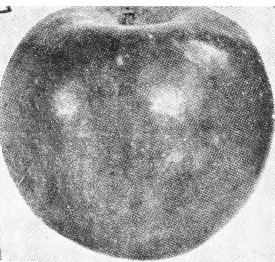
Min-Jon—The brand new, four-star "Minnesota Jonathan", originated by the Minnesota State Breeding Farm. It produces beautiful, luscious apples way up to the Canadian line. Dark shiny red all over, with yellow crisp flesh.

CRAB VARIETIES

Whitney—Always called a Crab, but as large as some apples. Red striped fruit of excellent flavor, not tart. Makes delicious pickles and butter.

PRICES OF APPLES AND CRAB APPLE

	Each	Per 3	Per 6	Per 10
4 to 5 feet	\$1.35	\$4.50	\$8.75	\$12.00
5 to 6 feet	1.95	3.75	10.95	16.75
6 to 8 feet	2.50	6.75	13.00	20.00



5 HARDY VARIETIES OF APPLES ON 1 TREE

This 5-in-1 Apple Tree has five different kinds of apples, all on one tree. They are five of our best, most popular kinds, giving you fruit from early summer well into the winter.

Price of 5-in-1 Apple TreesEach \$3.85

DWARF APPLE TREES

YELLOW TRANSPARENT — YELLOW DELICIOUS WEALTHY — MCINTOSH — DELCON — DELICIOUS
4-5 feetEach \$3.95 3 for \$10.95

PEARS

Bartlett—Our most popular summer Pear. Fruit is large, yellow with bluish, juicy sweet, high quality.

Lincoln—Early fall pear. A good grower and producing good crops of fruit delicious for both canning and eating.

Parker—A new summer pear ripening a few days after Bartlett. Tested in Northern Iowa, it is harder than Bartlett. Good bearer. Highest quality. Blight resistant.

Patten—Originating in Iowa, this is a very hardy Pear which can be planted in cold sections like northern Iowa, Minnesota, etc. Ripens in August. The fruit is large, yellow with bluish, juicy, sweet, luscious flavor. Good bearer.

PRICES ON ALL PEARS

4 to 5 feet	Each \$1.95	3 for \$5.40
5 to 7 feet	Each \$2.35	3 for \$6.50

DWARF PEARS

	Bartlett	Duchess	Max Red
Each
	\$3.15 3 for \$8.95		

PLUMS

La Crescent—Outstanding yellow plum. The big, tender, sweet fruit makes delicious preserves and pies.

Pipstone—The grand big new purplish-red plum from Minnesota, as large as tropical fruit but all hardy. Finest quality; excellent for canning or eating fresh.

Bears young and heavily; ripens in August.

Red Coat—Big prune-shaped plums of vivid scarlet; rich, juicy, meaty flesh of delicious flavor. Entirely freestone.

Stanley—A new prune-type plum from New York that is rapidly becoming the most popular of all plums. Immense fruit of clear rich firm meaty flesh of rich, delicious flavor. Can be peeled as you would a peach. Ripens early in August. A good pollinizer for other plums.

Superior—A plum that should be in every planting. Immense fruit of clear rich firm meaty flesh of rich, delicious flavor. Can be peeled as you would a peach. Ripens early in August. A good pollinizer for other plums.

Waneta—Juicy, medium sized fruit of rich, fine flavor; dark purple skin and flesh. Excellent for canning. Bears enormous crops.

PRICE OF PLUM TREES

4 to 5 feet	Each \$1.95	3 for \$5.35
5 to 6 feet	Each 2.25	3 for 6.00

CURRENTS

Full of tangy, snappy flavor that makes perfect jelly alone or with other fruits. 2-year No. 1 bushes—hardy and easy to grow. Shipped Prepaid at planting time.

Cherry—Tremendous yields of large, red, tasty berries. Easy to pick.

Perfection—Improved strain that gives biggest yield of spicy berries.

Red Lake—Juicy red berries on long bunches. Hardy, disease-resistant.

State varietyEach, \$.60; per 10 \$4.98

BLACKBERRIES

Alfred—Earliest blackberry. Productive. Large fruit. Profitable.

Snyder—Very hardy and productive.

State variety, Postpaid from nursery:
10 for \$1.75; 25 for \$4.00; 100 for \$12.00

ASPARAGUS

Washington Variety—Introduced by U. S. Dept. of Agriculture—hardy long-lived, rust resistant. Plant in rich soil, 4 in. deep, 18 in. apart in rows 4 ft. apart. For best results, fertilize annually.

10 for \$ 90 25 for \$1.75 50 for \$3.20
100 for \$14.75

RHUBARB

Giant Victoria (Wine Plant)—This is the largest and best of the seedling varieties. Good, heavy stalks, juicy stems. Rich wine in color.

Heavy Roots, Each, \$.90 10 for \$1.50
Jumbo Roots, Each, \$3.00 10 for \$2.50

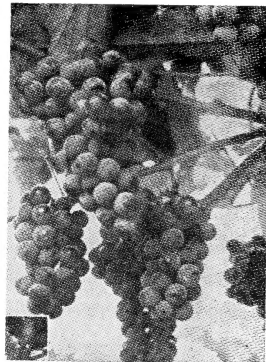
McDonald Seedless—Produces stalks of giant size, bright red—tender and flavorful. Does not go to seed.

Each division \$.65; 3 for \$1.75

Canada Red—All red rhubarb. It's positively the sweetest and finest of all. It's rich red color extending to the heart and clear up into the leaves.

GOOSEBERRIES

Pixwell
2-year plantsEach 98¢ 3 for \$2.35



GRAPES

Concord—Best known black grape. Heavy plants.

Caco—the best red.

Niagra—Large, white.

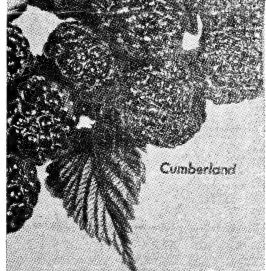
Worden—Black.

Fredonia—Black, two weeks earlier than Worden.

Agawam—Large red.

Portland—Earliest white.

2-year No. 1 Each \$.50 10 for \$3.95



BLACK RASPBERRIES

Cumberland—Best Black, Large, glossy. Sweet flavor. Big crop every year.

1-year No. 1 Plants
10 for \$1.95; 25 for \$3.45; 100 for \$14.95

BLACK HAWK RASPBERRY

Finest new black cap black raspberry. Introduced by Iowa State College, this berry is large, firm and glossy black. It picks easily, does not crumble and is excellent for freezing and canning because the berries retain their shape perfectly. One of the finest and most delicious berries you'll find.

Heavy No. 1 Plants
6 for \$2.10 12 for \$3.85
100 for \$25.00

PURPLE RASPBERRY

Sodus Purple Raspberry—New—Rich—Delicious and heaviest producer of all Raspberries. Berries are very large purple, firm, while the flavor is exceptionally rich and sweet.

Select No. 1 Plants
10 for \$2.25; 25 for \$4.95; 50 for \$8.95
2,9877 etainon..... etainon

VEGETABLE and FLOWER SEEDS



RED RASPBERRIES

Latham—Midseason. Good Shipper. Big luscious berries. Very prolific.

Sunrise—Large Berries. Do not crumble.

10 for \$2.30 25 for \$4.95
100 for \$17.95

Indian Summer—Bears a full crop in June and another in the fall. The berries are long mammoth, deep red, small cavity, and rich in flavor. The plants are hardy, tall and thrifty, in production they will equal and out-bear any red Raspberry.

10 for \$2.50 25 for \$5.75
100 for \$19.95



Streamliner, Everbearing

Very large fruit of brilliant scarlet red, has exceptionally rich quality and flavor — the grandest berries imaginable for eating fresh, canning, freezing, preserving.

Superfection 4031. This wonderful everbearer will produce big, sweet berries in 12 weeks. They are deep rich red, firm, smooth, and have wonderful keeping quality. Hold their color excellently. Superfection is a marvelous bearer.

Postpaid Prices — EVERBEARERS
25 for \$1.75 100 for \$3.50
200 for \$10.00

JUNEBEARERS

Giant Robinson, Junebearer Robinson is glossy, scarlet red, with a sweet, mild flavor. Giant size, conical shaped. Abundant crop.

RELIABLE DUNLAP

The berries are dark crimson, with deep red flesh of marvelous quality. The plants are healthy, vigorous, and very productive.

POSTPAID PRICES
50—\$1.65 100—\$2.75 200—\$5.00
500—\$10.25
Premier, 50—\$2.25 100—\$3.50

We are stocking a complete assortment of vegetables and annual and perennial flower seeds in packets and cartons. The cartons contain about enough seeds for one planting the ordinary garden. Peas, beans and sweet corn are packed in cartons and sell at 20¢ per carton. Most other vegetables and flowers sell at 10¢ and 15¢ per packet. These seeds are furnished to us by the FERRY-MORSE SEED CO., which is one of the largest growers of seeds in the country. All of the varieties we stock are adapted to this vicinity and are the best strains to be had. We are now stocking Burpee Flower and Garden Seeds.

Besides the seeds in packets, we are offering the following seeds in bulk. These seeds are available at the nursery or we will send them to you postpaid anywhere in Iowa at these prices.

BEANS

Pencil Pod Wax (52 days)
Stringless Green Pod (52 days)
Burpee Bush Lima (78 days)
Henderson's Bush Lima (68 days)
Kentucky Wonder (65 days)
Carton, 15¢ - ½ lb. 40¢ - 1 lb. 70¢
Not Prepaid 5 lbs. \$2.75

BEETS

Crosby's Egyptian Early Red
Detroit Dark Red
Pkt. 15¢ - 1 oz. 45¢ - 1 lb. \$1.10

CARROTS

Danvers Half Long and Imperator
Pkt. 10¢ - ½ oz. 29¢ - 1 oz. 45¢

CUCUMBERS

Chicago Pickling (60 days)
Long Green (68 days)
½ oz. 25¢ - 1 oz. 40¢ - ¼ lb \$1.10
1 lb. \$3.25

SWISS CHARD

Pkt. 15¢ - 1 oz. 30¢ - ¼ lb. 70¢

LETTUCE

Black Seeded Simpson (45 days)
Early Prizehead (45 days)
½ oz. 25¢ - 1 oz. 40¢

PEAS — AMERICAN

Iceberg, good heading kind.
American Wonder (60 days)
Laxetonian (60 days)
Little Marvel (64 days)
Freezonia (62 days) ¼
½ lb. 40¢ - 1 lb. 70¢ - 2 lbs. \$1.19

SQUASH

Acorn — Hubbard — Buttercup
1 oz. 25¢ - ¼ lb. 75¢

PUMPKIN

Sugar or New England Pie.
1 oz. 30¢ - ¼ lb. 75¢

RADISH

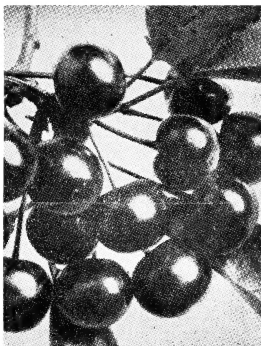
Early Scarlet Globe
Icicle, long white
Scarlet Turrup, white tip
1 oz. 30¢ - ¼ lb. 65¢

SWEET PEAS

Spencer Superb Mixed
Cuthbertson Mixed
½ oz. 30¢ - 1 oz. 50¢

SWEET CORN

Golden Cross Bantam (82 days)
Marcross (71 days)
Iochief, main crop variety
½ lb. 45¢ - 1 lb. 80¢
Golden Bantam (78 days)
Stowell's Evergreen (78 days)
Above 2 kinds
1 lb. 50¢ - 5 lbs. \$1.95



Delicious Cherries

Cherries are very hardy—ours are sure to bear, large and heavy rooted. Plant some of all of them for all season bearing.

Early Richmond—Early, English pie cherry, red.
Montmorency—Midseason, main crop, large dark red. Our favorite.

PRICES OF CHERRY TREES

3 to 4 feet Each \$1.85 3 for \$5.00
4 to 5 feet Each \$2.25 3 for \$5.75
5 to 6 feet Each \$2.75 3 for \$7.50

Dwarf Cherries

North Star Meteor
1-5 foot Each \$2.95

PEACHES

Peaches in Central Iowa should be planted where they will have as much winter protection as possible.

Hale Haven—Rivaling the Alberta, this peach is a few days earlier and harder.

Polly—Claimed by some as the hardiest peach. A large blushed, free stone, ripening just before the Alberta. White flesh.

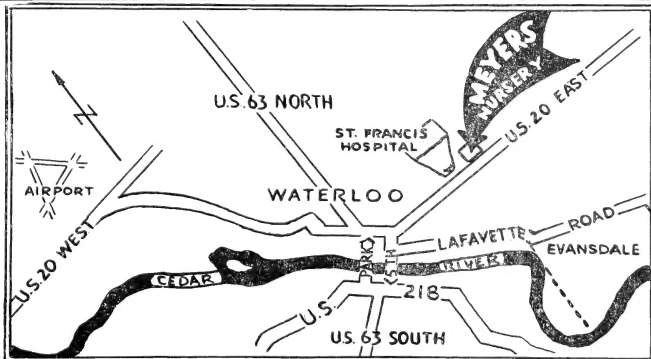
5 to 6 feet Each \$1.75 10 for \$15.50

MEYERS NURSERY

1435 Independence Ave. Waterloo, Iowa

SPRING - 1958

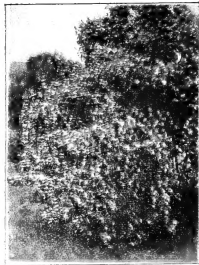
PLENTY FREE PARKING





COTONEASTER ACUTIFOLIA

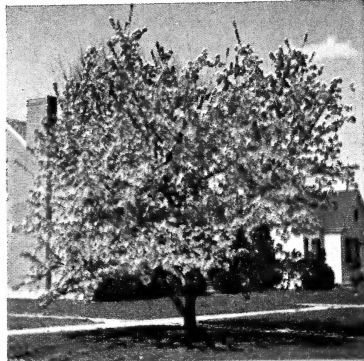
Dark Green thick foliage to ground. Fall coloring and black berries.
 2 to 3 ft. each \$1.50



HONEYSUCKLE

Upright growing to 10 ft. Dark green foliage to the ground and can be trimmed. Use for Screening, Windbreaks and Hedges.

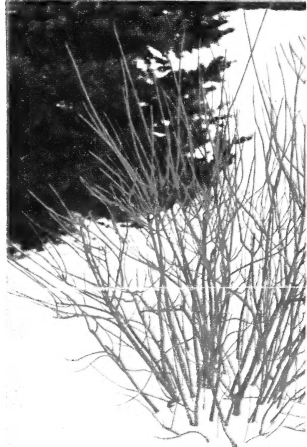
12-18 in. each \$.35
 18-24 in. each .75
 24-36 in. each 1.10
 36-48 in. each 1.50
 15-25 plants 10% off
 25-50 plants 20% off
 50-100 plants 30% off



Eley Flowering Crab — M. eleyi

Purplish-red foliage through the season. Red flowers and fruit.

4.5 ft. each \$1.98
 5-6 ft. each \$2.98



RED DOGWOOD

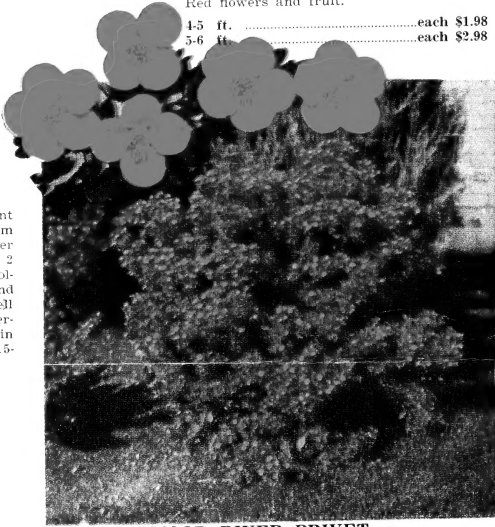
Use Dogwood for winter coloring in those bare corners of your yard and house. Grows to 7 foot but will stand trimming. Foliage is thick, deep green in summer.

Each
 2 to 3 ft. \$ 1.10
 3 to 4 ft. 1.45
 4 to 5 ft. 1.85

GOLD DROP

(Potentilla) Brilliant yellow flowers bloom from June to October on this compact, 2 to 2½ foot bush. Foliage is dense and fern-like. Goes well with shrubs or perennials, especially in full sun. 12 to 15-inch plants.

Each \$1.00
 3 for \$2.65



AMOR RIVER PRIVET

Finest of the hedges, dark green foliage that lasts till October. Plant at one foot apart and have a hedge that is the envy of your neighborhood.

Price per 10 25 100
 12-18 inches\$1.75 \$4.50 \$16.00
 18-24 inches\$2.25 \$5.85 \$21.50

**P L E N T Y
 O F
 F R E E P A R K I N G**

LOMBARDY POPLAR

Makes the best and fastest tall background planting for your suburban yard. Stops those cold winter winds and gives shade to yard in the summer, foliage deep green and thick to the ground. Height of 60 ft. but can be trimmed to 12 ft. or higher.

USE LOMBARDY POPLAR FOR A QUICK WINDBREAK

each per 10
 3 to 4 ft.\$.45 \$3.50
 4 to 5 ft.65 5.00
 5 to 6 ft. 1.00 8.75
 6 to 8 ft. 1.75 12.50
 8 to 10 ft. 2.25 19.00

