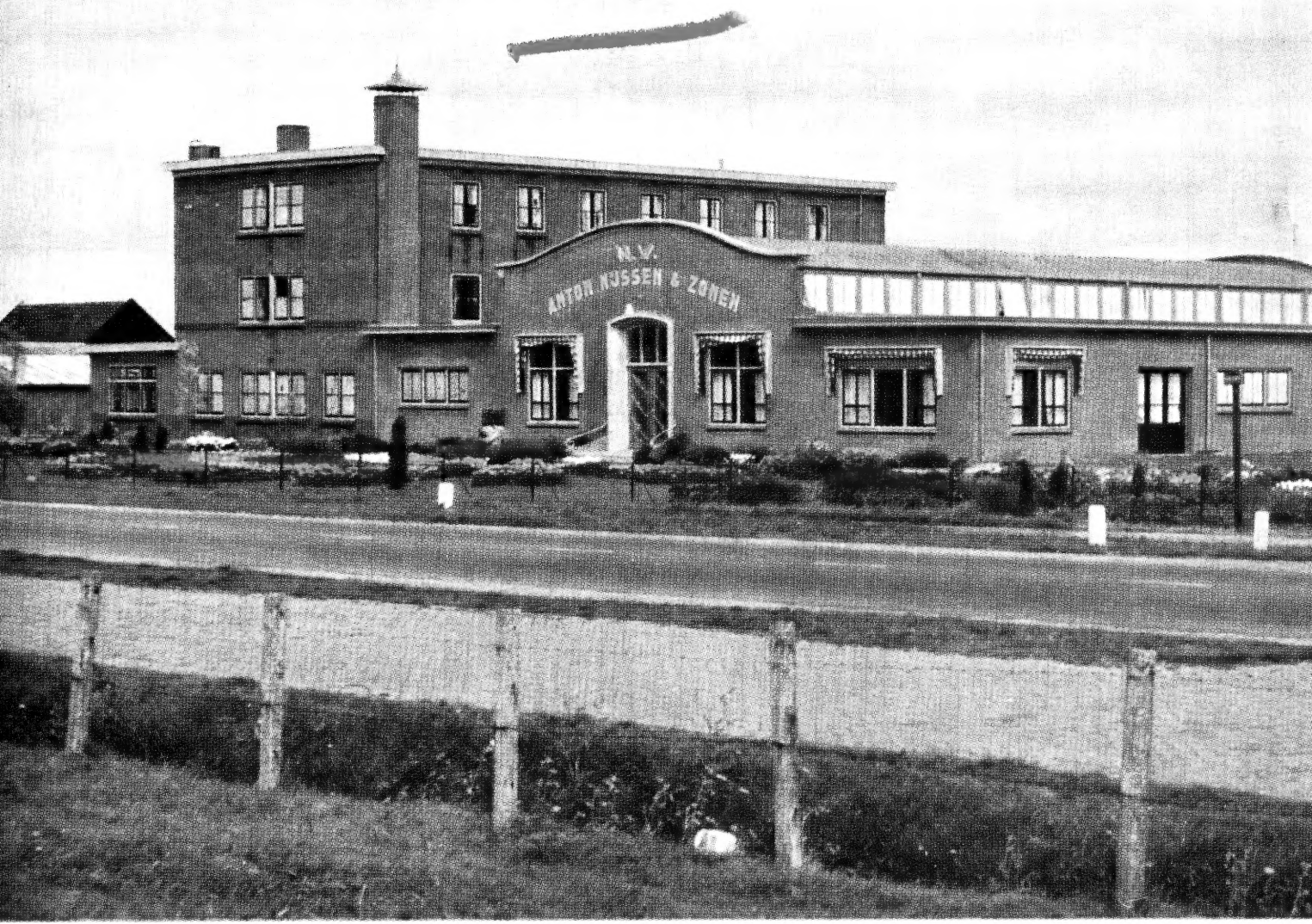


62

[1958]

Bu



Part view of our office and warehouses at Santpoort (Holland)

DESCRIPTIVE LIST OF

LIBRARY  
 RECEIVED  
 ★ JAN 29 1958 ★  
 U.S. Department of Agriculture

HYACINTHS,  
 TULIPS,  
 DAFFODILS and  
 NARCISSI

with  
*forcing dates and other  
 valuable details*

WITH COMPLIMENTS OF:

**Anthony Nyssen & Sons** INC.

SANTPOORT (HOLLAND)

BABYLON, N.Y. P.O. BOX 446



# *Anthony Nyssen & Sons, INC.*

WHOLESALE BULB GROWERS

IMPORT - EXPORT

SANTPOORT (HOLLAND)

Phone: 8 3 2 9

BABYLON, N.Y., P.O.BOX 446

Phone: 9 - 0 3 3 5

**Bankers in U.S.A.:** The Chase National Bank,  
25, Broadway, New York, N.Y.

**Bankers in Holland:** Nederlandsche Handel Mij. N.V.,  
Beverwijk, Holland

**Cable Address:** Leonidas, Haarlem (Holland)  
Nyba, Babylon, N.Y.

HERALD HYACINTHS

PRECOOLED TULIPS, DAFFODILS, AND NARCISSI

*"Our Specialty"*



*Important*

TO

*Greenhouse Owners*

We do our utmost to give you the best possible forcing and flowering results by storing the flower bulbs (Hyacinths, Tulips, and Daffodils) at a certain temperature during various intervals, in accordance with up to date scientific methods.

After this treatment the bulbs are to be stored at a cool place until planting time.

Shipping under water level, with today's steamers that have a good ventilation system, will keep the bulbs in the right condition. However, the weather conditions in August in the United States are very unpredictable and if the temperature is too high, it is to be expected that many of the advantages of the special treatment will get lost in transportation from steamer to destination, and more so if the bulbs have to travel a long inland distance.

Seedhouses stores, and dealers, selling flower bulbs for garden use have other interests. In many parts of the country they have to count with the possibility of an early start of the winter. Consequently they wish to stretch the selling time and to receive the bulbs at a very early date.

*Do not be alarmed*

IF YOUR LOCAL STORES OFFER BULBS BEFORE YOU HAVE RECEIVED SAME

*Later shipment is to your advantage*

## *Ten Golden Rules*

1. Unpack the bulbs immediately upon arrival.
2. Precooled and Prepared Bulbs are to be planted at once.
3. Store the bulbs at a cool, dry and well ventilated place until planting time.
4. Preferrably use old pots after washing them.
5. New pots can be used only if soaked thoroughly. (About 3 weeks.)
6. Any fresh garden soil can be used.
7. Never add fresh manure or fertilizer to the soil. If your soil is very heavy, some magnesium lime and (or) pure sand is to be added. If the soil is very poor, a small addition of bone meal is justified.
8. The bulbs are never to be planted in or covered with soil used for bulbs before.
9. A good rooting system is essential when bringing the bulbs in the greenhouse.
10. Do not expose the bulbs to the full light before the sprouts are tall enough.

<p>EASTER DATES: 1955 April 10 - 1956 April 1 1957 April 21 - 1958 April 6 1959 March 29 - 1960 April 17</p>
--

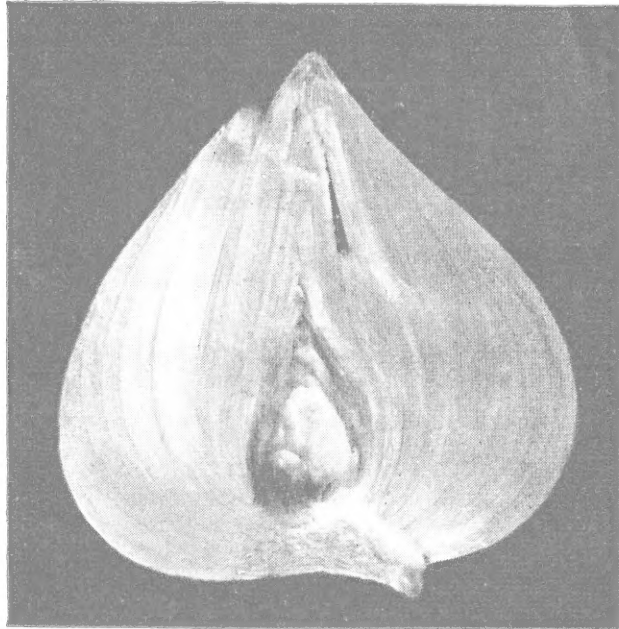
## Herald Hyacinths

"OUR SPECIALTY"

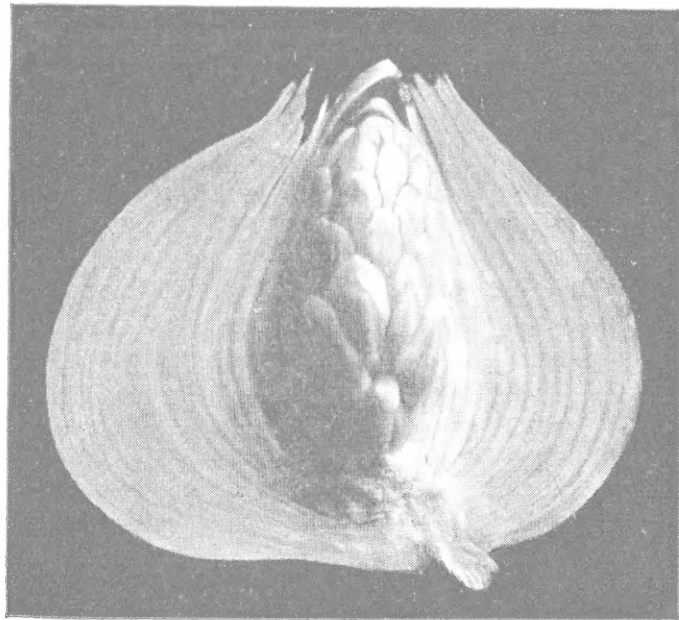
The name of these on the most modern way prepared Hyacinths is patented.

This **special preparing system** is mainly based on soil heating and has proved to be unsurpassed.

These on a more natural way prepared Hyacinths will give you the highest possible percentage of perfect flowers.



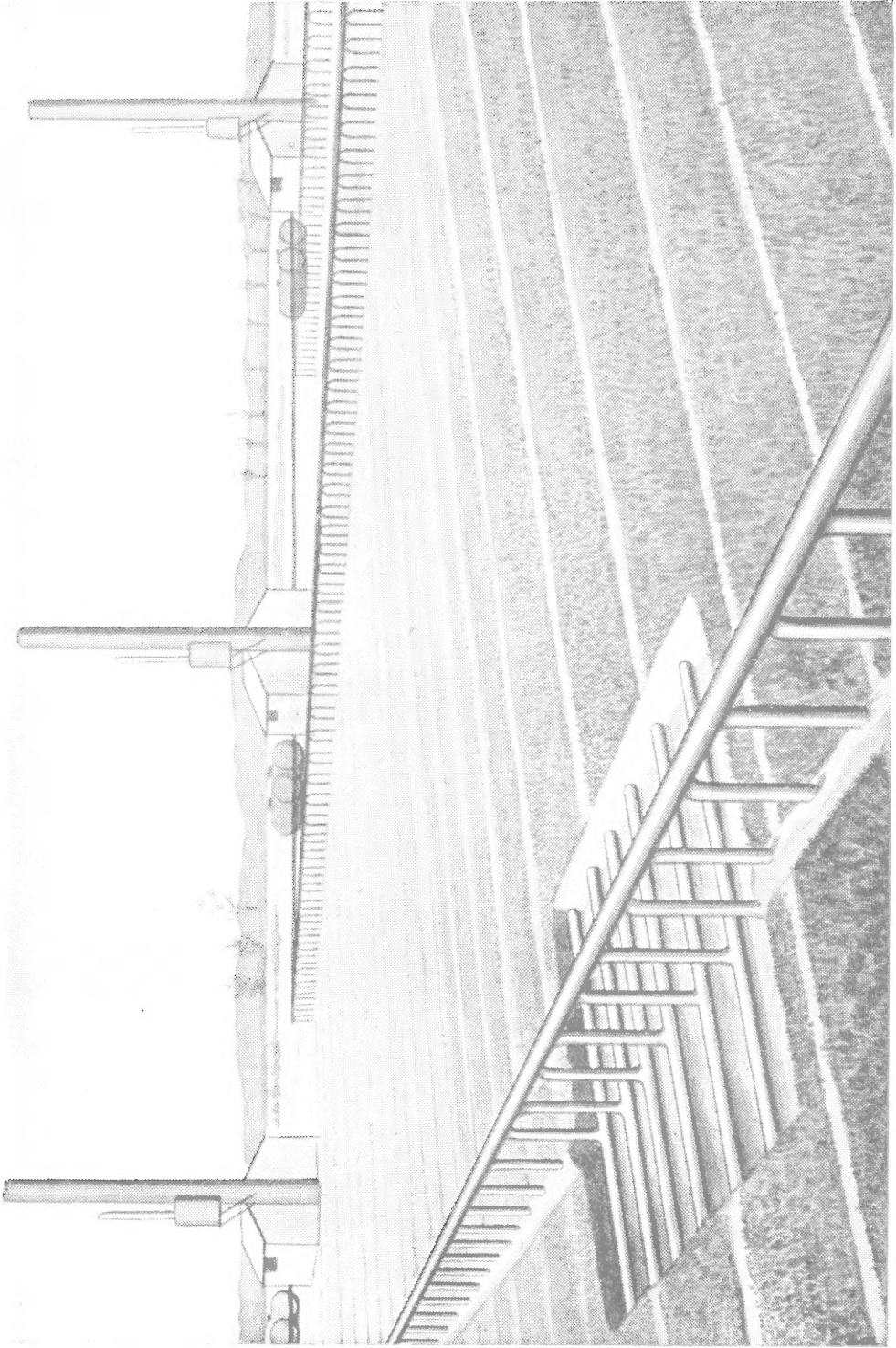
Old System Prepared Hyacinth PINK PEARL  
Diametric view about September first.



Herald Hyacinth PINK PEARL  
Diametric view about September first.

## Herald Hyacinths

ESPECIALLY RECOMMENDED FOR CHRISTMAS AND JANUARY FORCING



*Our soil heated „Herald Hyacinths” growing station at Santpoort (Holland)*



## *Herald Hyacinths*

Herald Hyacinths are to be treated the same way as the old system prepared Hyacinths.

The bulbs are to be unpacked and planted immediately upon arrival.

If you do not use a bulb cellar, bury them at the coldest spot of your garden and cover them with an extra layer of straw or other material after you have covered them with soil in the usual way. Do not cover them with fresh manure.

The bulbs must be well rooted before you can force them in the greenhouse. In the greenhouse it is important to keep them almost dark for the first eight to ten days. The most recommendable temperature for the first two days is about 55° Fahrenheit (13° Celsius) whereafter same can be gradually raised to 70° Fahrenheit (21° Celsius).

If bottom heat is applied, do not put the flats or pots too close to the water pipes. If the pipes are too close to the benches, it is advisable to place empty flats upside down or eventually a layer of moist peat moss on the bench and place the pots or flats on that. If the pipes are too close to the roots, same will get damaged and burnt (brown colored) and consequently the flowers will develop abnormally on too short a stem.

The bulbs are to be placed in a partly shaded section of the greenhouse when the sprouts are about 4 inches tall. Give freely water. Daily watering keeps the roots damp which is especially important when bottom heat is applied.

**Herald Hyacinths** are available in the following varieties:

**RED AND PINK:**

**Anne Marie**, light pink.

**Jan Bos**, beautiful scarlet.

**Pink Pearl**, rosy pink.

**WHITE:**

**Arentine Arendse**.

**L'Innocence**.

**Edelweiss**.

**BLUE:**

**Bismarck**, sky blue.

**Ostara**, fine porcelain blue.

*Precooled Tulips, Daffodils and Narcissii*

"OUR SPECIALTY"

The handling of precooled bulbs is only justified if they do not have to travel too long a distance from the cold storage to destination or if the temperature during this transportation can be checked and regulated. Otherwise it is to be expected that many of the advantages of the precooling will get lost in transportation.

It certainly will be known to you that precooled bulbs are to be planted immediately upon arrival.

The temperature in the bulb cellar or of the soil in which the bulbs are to be buried is very important. The most recommendable temperature is about 9° Celsius (48° Fahrenheit) and should not be over 13° Celsius (55° Fahrenheit). Too high a temperature will delay the flowering time. If the temperature is too high, the easiest way to equalize matters is by watering the soil with cold water.

On the other side, too low a temperature may be harmful to the development of the flower buds. Every grower will check the temperature in the greenhouse at regular intervals and we wish to emphasize that, by handling precooled bulbs, checking of the soil temperature is of the same importance. This temperature should never be below 7° Celsius (45° Fahrenheit). If the soil temperature is too low, it is advisable to cover the bulbs with an extra sheet of straw or other material after you have covered them with soil as usual.

In the greenhouse the precooled bulbs are in general to be treated like the regular ones. For the first week do not give a higher temperature than 13° Celsius (55° Fahrenheit), whereafter the temperature can be gradually raised to 20° Celsius (68° Fahrenheit) till the plants begin to bloom. As far as precooled daffodils and narcissii are concerned it is advisable to keep the temperature a little lower if possible. We recommend 50° Fahrenheit for the first week whereafter the temperature can be gradually raised to 64° Fahrenheit.

On next pages we give a list of the most recommendable varieties for precooling with the earliest dates that — under normal conditions (a good rooting system and sufficient length of the sprouts) — the bulbs can be brought in the greenhouse and to be had in flower:

# ANTHONY NYSSSEN & SONS, INC.

SINGLE EARLY TULIPS:	Can be brought in the Greenhouse	Flowering time
CROWN IMPERIAL . . . . .	December 1	Starting Dec. 20
WINTERGOLD . . . . .	" 8	" " 30

## DARWIN TULIPS:

ROSE COPLAND . . . . .	" 3	" " 30
Wm. COPLAND . . . . .	" 3	" " 30
COPLANDS RIVAL . . . . .	" 3	" " 30
Wm. PITT . . . . .	" 15	" Jan. 15
RED PITT . . . . .	" 15	" " 15

## MENDEL TULIPS:

ATHLEET . . . . .	" 15	" " 5
FUGA . . . . .	" 1	" Dec. 20
HILDEGARDA . . . . .	" 1	" " 20
EARLY QUEEN . . . . .	" 1	" " 20
IMPERATOR . . . . .	" 1	" " 22
KRELAGE'S TRIUMPH . . . . .	" 1	" " 22
PIQUANTE . . . . .	" 8	" " 26
VAN DER EERDEN . . . . .	" 15	" Jan. 5
WEBER . . . . .	" 15	" " 5
WHITE SAIL . . . . .	" 1	" Dec. 20

## TRIUMPH TULIPS:

EDITH EDDY . . . . .	" 15	" Jan. 10
NIVEA . . . . .	" 25	" " 25
KORNEFOROS . . . . .	" 15	" " 10

# ANTHONY NYSSSEN & SONS, INC.

	Can be brought in the Greenhouse	Flowering time
<b>COTTAGE TULIPS:</b>		
ALBINO . . . . .	Decemb. 15	Starting Jan. 10
CARRARA . . . . .	" 25	" " 20
GOLDEN HARVEST . . . . .	" 15	" " 10

## DAFFODILS AND NARCISSI:

CARLTON . . . . .	" 1	" Dec. 20
EARLY PERFECTION . . . . .	" 1	" " 20
EDWARD BUXTON . . . . .	" 1	" " 20
FLOWER RECORD . . . . .	" 5	" " 25
FORTUNE . . . . .	" 1	" " 20
GOLDEN HARVEST . . . . .	Novemb. 25	" " 15
HELIOS . . . . .	" 25	" " 15
KING ALFRED . . . . .	Decemb. 20	" Jan. 10
MAGNIFICENCE . . . . .	Novemb. 20	" Dec. 10
REMBRANDT . . . . .	Decemb. 15	" Jan. 5
SCARLET ELEGANCE . . . . .	" 5	" Dec. 25
TEXAS . . . . .	" 1	" " 20
VERGER . . . . .	" 1	" " 20

## ANTHONY NYSSSEN & SONS, INC.

### *Earliest forcing dates of Tulips and Narcissi*

The dates added to the descriptions are the **earliest** dates on which the varieties normally may be brought in the greenhouse. The variety is not recommended for forcing if no date is stated. The varieties of Darwin-, Cottage-, and Parrot Tulips which are suitable for forcing are also marked \*.

The approximate height (not forced) is listed in inches.

## Single Early Tulips

- Apricot Yellow**, sulphur yellow suffusing into salmon orange, good forcer; 12"; Jan. 5 . . . . .
- BEL AMI**, dark rose, early; 14"; Dec. 15 . . . . .
- BELLONA**, golden yellow, good forcer; 13"; Jan. 15 . . . . .
- BRILLIANT STAR**, brilliant scarlet, early forcer; 10"; Dec. 1 . . . . .
- BRILLIANT STAR MAX.**, the large Brilliant Star; 10"; Dec. 1 . . . . .
- COULEUR CARDINAL**, brilliant crimson, slightly blue shaded; 13"; Jan. 25 . . . . .
- CROWN IMPERIAL**, red with yellow border, very early forcer; 12"; Dec. 20 . . . . .
- ELLEN MOORE**, bright orange, spotted yellow. Sport of Fred. Moore; 11"; Dec. 25 . . . . .
- Fred. Moore**, bright orange, early forcer; 11"; Dec. 25 . . . . .
- GENERAL DE WET**, orange, very exquisite flower; 13"; Jan. 5 . . . . .
- GOLDEN MASCOT**, pure yellow; 12"; Jan. 12 . . . . .
- IBIS**, splendid deep rose, large flower; 12"; Jan. 1 . . . . .
- JOFFRE**, the yellow Brilliant Star; 10"; Dec. 1 . . . . .
- KEIZERSKROON**, bright red with broad golden yellow border; 14"; Febr. 1 . . . . .
- King of the Yellows**, deep golden yellow; 10"; Dec. 10 . . . . .
- Lady Moore**, orange scarlet. Sport of Fred Moore; 11"; Dec. 25 . . . . .
- LA REINE MAX.**, large white flower, slightly pink edged; 12"; Jan. 1 . . . . .

ANTHONY NYSSSEN & SONS, INC.

SINGLE EARLY TULIPS — Continued

- MADAME GEVERS** (Herman Schlegel Max.), primrose, large flower; 12"; Jan. 1 . . . . .
- MON TRESOR**, pure golden yellow. Large flower; 10"; Dec. 1 . . . . .
- Olympiade**, yellow. Strong stem; 12"; Jan. 25 . . . . .
- PINK BEAUTY**, deep rose with white flush outside. Large well formed flower; 12" . . . . .
- PLUVIA D'ORO**, dark golden yellow, excellent forcer; 10"; Jan. 20 . . . . .
- PRINCE CARNIVAL** (Sport of Prince of Austria), yellow, red striped; 13"; Jan. 5 . . . . .
- PRINCE OF AUSTRIA**, fine orange, red outside, brilliant scarlet inside; 13"; Jan. 5 . . . . .
- RISING SUN**, fine deep yellow. Large flower; 13"; Feb. 1 . . . . .
- SUNBURST**, orange yellow, red flamed; 12"; Jan. 28 . . . . .
- THOMAS EDISON**, orange red. Excellent for early forcing; 12"; Dec. 15 . . . . .
- URSA MINOR**, dark golden yellow; 13"; Jan. 18 . . . . .
- Van der Neer**, clear deep violet. Fine large flower; 10"; Jan. 1 . . . . .
- VERMILLION BRILLIANT**, brilliant vermilion scarlet. Large flower. Excellent for forcing; 10"; Jan. 1 . . . . .
- WHITE HAWK**, pure white, early; 12"; Jan. 1 . . . . .
- Yellow Prince**, bright yellow, good forcer; 10"; Jan. 15 . . . . .

## Double Early Tulips

- Bonanza**, carmine red, edged yellow; 16"; Jan. 1 . . . . .
- Boule de Neige**, pure white; 10"; Jan. 15 . . . . .
- COURONNE D'OR**, fine old golden yellow, slightly orange shaded. Good forcer; 12"; Jan. 15 . . . . .
- DANTE**, brilliant scarlet, excellent for forcing. Large flower; 12"; Jan. 15 . . . . .
- ELECTRA**, splendid deep carmine. Sport of Murillo; 10"; Jan. 15 . . . . .
- EL TOREADOR**, red, orange bordered; 10"; Dec. 15 . . . . .
- GOYA**, vivid light orange red, sport of Murillo; 10"; Jan. 15 . . . . .
- HOANGHO**, pure yellow, sturdy stem; 9"; Jan. 15 . . . . .
- Maréchal Niel**, golden yellow suffusing into deep orange; 10"; Jan. 15 . . . . .
- Marquette**, crimson, shaded orange, edged yellow; 10"; Jan. 15 . . . . .
- Mr. VAN DER HOFF**, pure golden yellow, good forcer. Large flower; 10"; Jan. 15 . . . . .
- MURILLO**, white suffusing into delicate pink; 10"; Jan. 15 . . . . .
- MURILLO MAXIMA**, sport of Murillo; 14"; Jan. 10 . . . . .
- Orange Nassau**, bright orange; 10"; Jan. 15 . . . . .
- PAUL CRAMPEL**, geranium red; 10"; Jan. 15 . . . . .
- PEACH BLOSSOM**, dark pink. Sport of Murillo. Excellent for forcing; 10"; Jan. 15 . . . . .
- RED BLOSSOM**, vivid reddish purple; sport of Murillo; 10"; Jan. 15 . . . . .
- Scarlet Cardinal**, scarlet, early; 10"; Dec. 10 . . . . .
- SCHOONOORD**, snowwhite. Sport of Murillo; 10"; Jan. 15 . . . . .
- TEAROSE**, sulphur yellow, when fully developed slightly orange shaded; 10"; Jan. 15 . . . . .
- Titian**, red with yellow border; 10"; Jan. 10 . . . . .
- TRIUMPHATOR**, dark pink, white base; 10"; Jan. 15 . . . . .
- VUURBAAK**, dazzling scarlet. Large flower; 10"; Jan. 25 . . . . .
- WILHELM KORDES**, bright orange, red flushed, Murillo sport; 10"; Jan. 15 . . . . .
- Willemsoord**, carmine red with white edges; 10"; Jan. 15 . . . . .

# Mendel Tulips

This choice collection contains the best varieties, which will certainly keep their place on the market owing to their splendid flowers and excellent forcing qualities.

A forcing temperature of about 60 degrees is the most recommendable for the majority of the varieties of Mendel Tulips. Their length of stem when forced is in average between the height of the single earlies and darwins.

- ATHLEET**, pure white, sport of Weber; 18"; Jan. 5 . . . . .
- BRIGHTLING**, rose, very strong, large flower; 14"; Jan. 1 . . . . .
- EARLY QUEEN**, rose, lilyflowering, very early; 14" Dec. 5 . . . . .
- FRIDTJOF NANSEN**, bright scarlet, very early; 16"; Dec. 25 . . . . .
- FUGA**, blood red; 10"; Dec. 20 . . . . .
- HERAUT**, orange red, very good forcer; 14"; Jan. 1 . . . . .
- HER GRACE**, white with broad dark pink border, large; 18";  
Jan. 10 . . . . .
- HILDEGARDA**, bright red, earliest of all Mendeltulips; 12";  
Dec. 20 . . . . .
- IMPERATOR**, carmine rose, large flower; 14"; Jan. 1 . . . . .
- JOHN GAY**, orange, egg shaped flower; 14"; Dec. 15 . . . . .
- KRELAGE'S TRIUMPH**, red, very early; 14"; Dec. 5 . . . . .
- OLAF**, scarlet, especially recommended for pans; 14";  
Dec. 15 . . . . .
- OLGA**, violet red, white edged; 16"; Dec. 5 . . . . .
- ORANGE WONDER**, bronzy orange, scarlet shaded; 16";  
Dec. 28 . . . . .
- PIQUANTE**, cerise red with yellow border; 16"; Dec. 28 . . . . .
- SCARLET ADMIRAL**, shining red, large flower, strong stem;  
16"; Jan. 26 . . . . .
- SCARLET WONDER**, extra scarlet, very early; 16"; Dec. 28 . . . . .
- SHACKLETON**, pure white; 16"; Jan. 15 . . . . .
- TOPSCORE**, geranium red, yellow base; 16"; Dec. 20 . . . . .
- VAN DER EERDEN**, carmine pink, excellent for forcing;  
16"; Jan. 10 . . . . .
- WEBER**, white with pink border, tall, extra large flower; 18";  
Jan. 10 . . . . .
- WHITE SAIL**, white (opens creamy white); 16"; Dec. 26 . . . . .
- WHITE VIRGIN**, pure white; 16"; Jan. 10 . . . . .



## Triumph Tulips

- ALBERIO**, deep wine red, large flower, early forcer; 16";  
Jan. 10 . . . . .
- AUREOLA**, dark wine red, yellow bordered; 18"; Jan. 25
- AVIATEUR**, bright red, golden yellow bordered; 16"; Jan. 20
- BANDOENG**, brownish red, yellow shaded, good forcer; 16";  
Jan. 15 . . . . .
- BRUNO WALTER**, dark orange, yellow, sweet scented; 16";  
Jan. 15 . . . . .
- CRATER**, deep carmine, darker to the base, splendid flower;  
16"; Jan. 15 . . . . .
- DENBOLA**, cerise red, slightly yellow bordered. Large; 16";  
Jan. 15 . . . . .
- EDITH EDDY**, carmine purple, white base, slightly white  
edged; 18"; Jan. 15 . . . . .
- ELISABETH EVERS**, beautiful pink, large flower on strong  
stem; 15"; Jan. 20 . . . . .
- ELMUS**, cerise red with creamy white edges. Large; 18";  
Jan. 15 . . . . .
- GLORY OF NOORDWIJK**, rose with white base. Strong  
stem, excellent forcer; 16"; Jan. 20 . . . . .
- HINDENBURG**, purple red, yellow bordered; 20"; Jan. 15 .
- KANSAS**, snowwhite, base inside lemon-yellow; 16"; Jan. 15
- KANTARA**, pure white. Very recommendable for late forcing;  
18"; Jan. 15 . . . . .
- KÖRNEFOROS**, lively red, white centre, excellent for forcing;  
20"; Jan. 15 . . . . .
- Mr. KERBERT**, rose with white base, recommended for pots  
at Eastertime; 18" . . . . .
- Mr. ZIMMERMAN**, very fine rose, large flower; 20"; Jan. 25
- NIVEA**, pure white, very large flower, strong stem, the best  
white tulip for forcing; 18"; Jan. 25 . . . . .
- OVERDALE**, red, purple flushed; 16"; Dec. 25 . . . . .
- PARIS**, orange red, yellow edged; 16"; Jan. 20 . . . . .
- PAX**, pure white; 18"; Dec. 25 . . . . .
- PICCADILLY**, carmine red, white edges; 18"; Jan. 20
- PINK GLOW**, satin rose; 16"; Jan. 15 . . . . .
- PRELUDIUM**, rose, white base; 16"; Feb. 1 . . . . .
- PRINCESS BEATRIX**, sport of Alberio, orange, margin, 16";  
Jan. 10 . . . . .
- RED GIANT**, scarlet, excellent for Easter forcing in pots; 16";  
Jan. 20 . . . . .

- RED MATADOR**, orange scarlet; 18"; Feb. 1 . . . . .
- REFORMA**, sulphur yellow, golden yellow edged; 16"; Feb. 1 . . . . .
- RHINELAND**, yellow with broad sharp marked red border; 18"; Jan. 20 . . . . .
- ROLAND**, bright scarlet, ivory edged; 18"; Dec. 25 . . . . .
- ROSE BEAUTY**, deep rose with white flush outside, very fine; 15"; Feb. 1 . . . . .
- SANDRINGHAM**, lively pink, base pure white; 16"; Feb. 1 . . . . .
- SECR. VOORS**, brilliant crimson, large flower. Extra for late forcing; 16"; Feb. 1 . . . . .
- TELESCOPIUM**, violet rose, early and easy forcer; 20"; Feb. 1 . . . . .
- YUKI SAN**, red, bright golden yellow edged. Very good forcer; 14"; Jan. 25 . . . . .

## Double Triumph Tulips

- CHERRY BLOSSOM**, amarant red with yellow; 18"; Jan. 25 . . . . .
- COXA**, orange red with small pale yellow edges; 18"; Jan. 20 . . . . .
- EROS**, old rose, splendid double flower; 22" . . . . .
- LIVINGSTONE**, vivid red, 18"; Feb. 1 . . . . .
- MAY WONDER**, rose, large flower; 20" . . . . .
- MOUNT TACOMA**, pure white, very large flower; 18"; Feb. 1 . . . . .
- NIZZA**, lemon yellow, red flamed. Creamy white on the top; 14"; Feb. 20 . . . . .
- ORANGE TRIUMPH**, brown flushed orange red, narrow yellow edge; 20" . . . . .
- PALETTE**, red suffusing into lilac, yellow border suffusing into light yellow; 20" . . . . .
- ROCKET**, cherry red, sport of Eros; 22" . . . . .
- ROYAL YELLOW**, golden yellow, 18" . . . . .
- SNOW PRINCE**, pure white, 18"; Feb. 1 . . . . .
- SYMPHONIA**, cherry red, double sport of Pride of Haarlem; 26" . . . . .
- TORCH**, dark red, very double flower, sturdy stem; 18" . . . . .
- UNCLE TOM**, very dark glossy red; 20"; Feb. 10 . . . . .

# Darwin Tulips

- Afterglow**, bright orange, lighter edged, bright centre; 28" .
- \***ALL BRIGHT**, brilliant scarlet, Sport of Bartigon; 24"; Jan. 15
- AMERICAN FLAG**, vivid red, white striped and flaked; 22"
- \***Aristocrat**, rose. Large flower, strong stem; 28"; Jan. 15 .
- Baronne de la Tocnaye**, bright rose, margined blush rose; 22"
- \***BARTIGON**, carmine red. Excellent for forcing, very early; 24"; Jan. 15 . . . . .
- \***BARTIGON MAX.**, the large Bartigon; 24"; Jan. 15 . . . . .
- Black Eagle**, deep purple; 26" . . . . .
- BLEU AIMABLE**, bright violet purple; 24" . . . . .
- \***Campfire**, beautiful red. Sport of Bartigon; 24"; Jan. 15 .
- CEYLON**, chrome yellow, yellow stamens; 22" . . . . .
- CHARLES NEEDHAM**, brilliant scarlet. Beautiful formed flower; 24" . . . . .
- CITY OF HAARLEM**, beautiful red. Large flower; 28" . . . . .
- CLARA BUTT**, clear self-colored salmon rosy pink; 24" . . . . .
- \***Copland's Purple**, purple sport of Wm Copland; 24"; Dec. 25
- \***COPLAND'S RIVAL**, reddish violet. Early forcer; 24"; Dec. 25 . . . . .
- CORDELL HULL**, blood red on white; Bartigon sport; 24"; Jan. 15 . . . . .
- CUM LAUDE**, dark campanula violet; 24" . . . . .
- \***Demeter**, deep blue. Large flower, strong stem. Early; 28" Dec. 20 . . . . .
- DORRIE OVERALL**, dark petunia violet, edged mauve; 24"
- DUKE OF WELLINGTON**, pure white; 28" . . . . .
- \***EARLY BARTIGON**, early sport of Bartigon; 24"; Jan. 1 . . . . .
- Eclipse**, dark fiery red, black centre; 26" . . . . .
- FARNCOMBE SANDERS**, fiery scarlet. Large; 28" . . . . .
- FAUST**, deep purple with blue base. Very large, well formed; 22" . . . . .
- GIANT**, dark violet, large flower; 28" . . . . .
- GLACIER (WILDLUST)**, ivory white, Very large, oval shaped substantial flower; 26" . . . . .
- GLORIA SWANSON**, rosy-red with white base. Strong stem; 26" . . . . .

# ANTHONY NYSSSEN & SONS, INC.

## DARWIN TULIPS — Continued

- \***GOLDEN AGE**, bright golden-orange, slightly tinted orange bronze; 24"; Jan. 20 . . . . .
- \***Insurpassable**, lilac. Well formed large flower; 26"; Jan. 15 . . . . .
- KING GEORGE V**, brilliant carmine red; 28" . . . . .
- King Harold (Mahogany)**, deep purple red, white base; 26" . . . . .
- King Mauve**, beautiful mauve, shaded rosy-purple and blue. Large flower; 26" . . . . .
- LA TULIPE NOIRE (The Black Tulip)**, large flower; 26" . . . . .
- MADAME BUTTERFLY**, violet blue; 28" . . . . .
- \***MAMASSA**, bright buttercup yellow; 24"; Feb. 1 . . . . .
- MARGAUX**, dark wine red, large flower; 26" . . . . .
- \***MONTGOMERY**, white with carmine red edge, sport of Bartigon; 24"; Jan. 15 . . . . .
- Mr. VAN ZIJL**, dark rosy pink with broad white margin; 26" . . . . .
- \***Mrs. GRULLEMANS**, pure white. Large flower; 26"; Jan. 15 . . . . .
- NARDI**, carmine red; 22"; Jan. 15 . . . . .
- NEW ORLEANS**, burgundy red; 24" . . . . .
- \***NIPHETOS**, light lemon yellow. Perfectly formed substantial flower; 26"; Jan. 20 . . . . .
- \***PALEMBANG**, yellow, buttercup yellow edges; 26"; Feb. 1 . . . . .
- PANDION**, white, purple edged; 24" . . . . .
- \***PAUL RICHTER**, geranium red; 24"; Jan. 15 . . . . .
- PHILIPPE DE COMINES**, velvety dark purple; 26" . . . . .
- \***Philip Snowden**, deep pink. Sport of Bartigon; 24"; Jan. 15 . . . . .
- PRIDE OF HAARLEM**, cerise. Extra large; 28" . . . . .
- \***PRIDE OF ZWANENBURG**, salmon pink. Large flower, strong stem; 28"; Jan. 20 . . . . .
- \***PRINCESS ELISABETH**, vivid rosy pink. Good forcer; 26"; Jan. 25 . . . . .
- \***PRINCESS ELISABETH MAXIMA**, large flowering sport of Princess Elisabeth . . . . .
- \***PROF. RAUWENHOF**, fine carmine red, large flower; 28"; Jan. 15 . . . . .
- \***PRUNUS**, bright salmon pink. Sport of Bartigon; 24"; Jan. 15 . . . . .
- QUEEN OF NIGHT**, the darkest of all Darwintulips; 28" . . . . .
- RED MASTER**, a purple red sport of Pride of Haarlem; 28" . . . . .

ANTHONY NYSSSEN & SONS, INC.

DARWIN TULIPS – Continued

- \*RED PITT, lovely vermilion red. Sport of Wm. Pitt; 24";  
Jan. 5 . . . . .
- \*ROSE COPLAND, pink, sport of Wm. Copland; 24";  
Dec. 25 . . . . .
- Scarlet Beauty, scarlet, very fine; 26" . . . . .
- SCARLET O'HARA, geranium lake; 24" . . . . .
- SCARLET LEADER, bright scarlet. Very large flower; 26" . . . . .
- \*SCARLET SENSATION, scarlet, large flower; 24"; Jan. 5 . . . . .
- SCOTCH LASSIE, deep lavender blue; 26" . . . . .
- \*SMILING QUEEN, beautiful rosy pink, silvery edges; 26";  
Jan. 20 . . . . .
- SUNKIST, brilliant golden yellow. Well-formed substantial  
flower; 26" . . . . .
- SWEET HARMONY, lemon yellow, ivory white edged; 26" . . . . .
- THE BISHOP, bright violet blue. Extra; 28" . . . . .
- THE PEACH, lovely light pink; 26" . . . . .
- The Sultan, glossy maroon-black; 20" . . . . .
- \*UTOPIA, bright red, strong stem. Early forcer; 22"; Jan. 25 . . . . .
- WHITE GIANT, pure white. Extra; 28" . . . . .
- WILDLUST, ivory white Very large oval shaped substantial  
flower; 26" . . . . .
- \*WILLIAM COPLAND, mauve. Early forcer; 24"; Dec. 25 . . . . .
- \*WILLIAM PITT, brilliant crimson red. Splendid forcer; 24";  
Jan. 5 . . . . .
- Yellow Giant, yellow. Large flower, tall stem; 30" . . . . .
- ZINA, dark buttercup yellow, very late; 26" . . . . .
- ZWANENBURG, pure white. Large flower; 26" . . . . .

## Late and Cottage Tulips

- ADVANCE**, fiery red, outside of petals with purple shade, black centre. Enormous flower; 30" . . . . .
- \***ALBINO**, pure white. Large flower; 20"; Jan. 10 . . . . .
- ARGO**, yellow, orange spotted; 24" . . . . .
- BELLE JAUNE**, deep yellow. Very large beautiful oval shaped flower; 24" . . . . .
- \***CARRARA**, white. Large flower; 20"; Jan. 15 . . . . .
- CHAPPAQUA**, light violet rose; 25" . . . . .
- DIDO**, orange red, cerise tinged. Large flower . . . . .
- FLAMING BEAUTY**, a yellow red striped and flushed sport of Inglescombe Yellow; 22" . . . . .
- \***GOLDEN HARVEST**, lemon yellow. Large flower; 26"; Jan. 12 . . . . .
- \***GOLDEN MEASURE**, dark canary yellow; 22"; Jan. 25 . . . . .
- GRENADIER**, dazzling vermilion orange. Extra. Large flower; 19" . . . . .
- G. W. LEAK**, bright vermilion scarlet, yellow base. Strong stem; 26" . . . . .
- HENRY CORREVON**, beautiful carmine red, white base; 26"
- INGLESCOMBE YELLOW**, pure yellow; 22" . . . . .
- LINCOLNSHIRE**, red sport of Inglescombe Yellow; 22" . . . . .
- MARJORIE BOWEN**, salmon orange, shaded salmon pink; 23" . . . . .
- MARSHAL HAIG**, brilliant scarlet, yellow centre. Large well-formed flower; 24" . . . . .
- MAYFLOWER**, fiery scarlet with black base. Very large flower; 25" . . . . .
- Mongolia**, dark yellow. Very large flower; 28" . . . . .
- MONS. S. MOTTET**, bunch flowering. White; 21" . . . . .
- \***MOTHER'S DAY**, pale primrose. Long shaped flower; 24"; Jan. 22 . . . . .
- MOUNT EREBUS (WHITE CITY)**, creamy white; 26" . . . . .
- Mr. WENTHOLT**, deep golden yellow. Large flower; 22" . . . . .
- Mr. JOHN T. SCHEEPERS**, light yellow. Very large well shaped flower; 26" . . . . .
- Mrs. MOON**, pure yellow. Large flower; 24" . . . . .
- NORTHERN QUEEN**, pink and white, large flower; 26" . . . . .

- OSSI OSWALDA, creamy white, edged bright violet pink; 24" . . . . .
- PRINCESS MARGARET ROSE, yellow orange, edged and flushed orange red, sport of Inglescombe Yellow; 22" . . . . .
- ROSY WINGS, apricot pink, excellent flower; 24" . . . . .
- SMILING ANN, white edged pink, medium large; 28" . . . . .
- \*THEMIS, pure white, excellent for forcing; 20"; Jan. 12 . . . . .
- \*WALLSTREET, golden yellow. Large flower of unusual form; 24"; Jan. 20 . . . . .
- WILLEM BARENDZ, creamy white; 20"; Feb. 20 . . . . .
- YELLOW EMPEROR, golden yellow, wellformed flower; 24" . . . . .
- Zomerschoon, salmon pink, spotted crimson; 17" . . . . .

## Lily Flowering Tulips

- ALASKA, pure yellow, sweet scented; 18" . . . . .
- BEVERLEY, vivid orange red; 22" . . . . .
- CAPTAIN FRYATT, garnet red, violet blue centre; 22" . . . . .
- GISELA, light pink; 22" . . . . .
- GOLDEN DUCHESS, bright yellow, large flower; 26" . . . . .
- MARCELLINA, dark rosy pink, pure white base; 22" . . . . .
- MARIETTE, dark satin rose; 22" . . . . .
- MAYTIME, violet red with creamy white edge; 24" . . . . .
- MILDRED, satin rose; 26" . . . . .
- PAINTED LILY, buttercup yellow, scarlet edges; 21" . . . . .
- PICOTEE, white, pink edged, suffusing into rose; 15" . . . . .
- STANISLAUS, orange red, yellow centre; 20" . . . . .
- THE BRIDE, pure white, large flower; 22" . . . . .
- WHITE DUCHESS, snow white; 20" . . . . .
- WHITE TRIUMPHATOR, pure white; 20" . . . . .
- YELLOW MARVEL, golden yellow, sturdy stem; 22" . . . . .

## Breeder Tulips

Breeders are the unbroken forms of the old Florist tulips. Most of the varieties are purple maroon and terracotta colored. They are of enormous size and vigorous growth. These tulips are very valuable for the garden, producing by their refined colors a most artistic effect.

- ADMIRAL TROMP**, bright orange red, shaded salmon. Large flower; 30"
- ALICE KEITH**, beautiful orange red, bronze border; 25"
- BACCHUS**, dark plum color. Large flower; 24"
- Cherbourg**, golden yellow, outside bronze; 24"
- CHEYENNE**, carmine red, edged orange red; 24"
- CUNERA**, purple-bronze suffusing into bright bronze. Long strong stem; 26"
- DILLENBURG**, bright salmon orange, shaded lilac rose. Large flower. Strong stem; 24"
- Don Pedro**, coffee color; 22"
- GEORGE GRAPPE**, lavender mauve, large flower; 27"
- Indian Chief (Meyerbeer)**, coppery red. Large flower, exquisite form; 25"
- JESSIE**, light coffee-brown, shaded violet bronze; 32"
- J. J. Bouman**, tomato-red, flushed scarlet, edged yellow; 26"
- LOUIS XIV**, dark purple, bronze bordered, outstanding; 30"
- MANITOU**, carmine red with orange edges; 26"
- ORANGE DELIGHT**, clear bronze; 26"
- PANORAMA**, reddish mahogany. Large flower; 20"
- PAPAGO**, poppy red, yellow base; 24"
- PONTIAC**, mahogany red; 26"
- President Hoover**, orange scarlet; 26"
- Prince of Orange (Orange Beauty)**, golden orange; 20"
- SAGINAW**, dark magenta red, orange edges; 24"
- TANTALUS**, light cadium yellow with violet. Very large flower; 30"
- Velvet King**, purple violet; 20"
- WINNETOU**, orange red, orange and bronze edges; 24"



# Parrot Tulips

- BLACK PARROT, purplish black; 24" . . . . .
- BLUE PARROT, violet blue, large; 24" . . . . .
- \*DISCOVERY, pink; 26"; Jan. 25 . . . . .
- \*DOORMAN, cherry red, yellow edges; 16"; Jan. 15 . . . . .
- FANTASY, salmon pink with green; 22" . . . . .
- FIREBIRD, scarlet. Sport of Fantasy; 22" . . . . .
- Gadelan, the blue Parrot; 20" . . . . .
- ORANGE FAVORITE, nice orange and green; 22" . . . . .
- ORANGE PARROT, dark orange, sport of Orange Beauty; 22" . . . . .
- \*PARROT PIERSON (Miss Kay), dark scarlet-red. Sport of Darwin Allard Pierson; 24"; Jan. 15 . . . . .
- \*PITT'S PARROT, cochineal red; 24"; Jan. 5 . . . . .
- \*RED CHAMPION, bright carmine red. Sport of Darwin Bartigon; 24"; Jan. 20 . . . . .
- SUNSHINE, bright golden yellow. Sport of Cottage tulip Bouton d'Or; 18" . . . . .
- TEXAS GOLD, dark yellow, sport of Inglescombe Yellow; 22" . . . . .
- THÉRÈSE, rosy-red; 24" . . . . .
- VIOLET QUEEN, purple violet. Large; 24" . . . . .

**TULIPA SPECIES** or *Botanical Tulips*

- TULIPA CHRYSANTHA, rosy red outside, light yellow interior; 8"
- " CLUSIANA, outer petals cherry red, inner petals white; 12"
- " CORNUTA STENOPETALA (ACUMINATA), red and yellow long pointed flower; 10"
- " DASYSTEMON (TARDA), yellow and white, bunch flowering; 7"
- " EICHLERI, crimson scarlet, large flower; 12"
- \* " FOSTERIANA CANTATE, vermilion red; 12"; Feb. 5
- \* " " GALATA, orange scarlet, yellow base, 14"; Feb. 5
- \* " " PRINCEPS, orange scarlet, very large-flower; 12"; Feb. 5
- \* " " RED EMPEROR (MAD. LEFEBER), brilliant vermilion red; 12"; Feb. 5
- " HAGERI, brownish orange red; 12"
- " KAUFMANNIANA, the waterlily Tulip, creamy yellow shaded light red, inside dark yellow; 6"
- " " AUREA, yellow, outside red; 8"
- " " CÉSAR FRANCK, dark yellow, outside red with yell. edge; 8"
- " " ELLIOTT, white, outside rosy red; 8"
- " " GAIETY, white, outside red; 6"
- " " JOHANN STRAUSS, white, outside with red blotches; 8"
- " " PRIMROSE, primrose yellow, yellow centre; 8"
- " " VIVALDI, yellow with red spots, inside cream with red ring; 11"
- " MARJOLETTI, lemon yellow, rose base; 18"
- " PERSICA, dark yellow, late flowering; 7"
- " PRAECOX, scarlet, black and yellow base; 15"
- " PRAESTANS, bright orange red, several flowers on a stem; 8"
- " " FUSILIER, vermilion orange, bunch flowering; 8"
- " SYLVESTRIS (FLORENTINA ODORATA), yellow, sweet scented; 17"
- " TURKESTANICA, white, orange yellow centre, bunch flowering; 12"

# Narcissi and Daffodils

## YELLOW TRUMPETS

- COVENT GARDEN**, uniform yellow, recommended for pots; 17"; Jan. 15 . . . . .
- FLOWER CARPET**, dark golden yellow; 16"; Jan. 15 . . . . .
- GODOLPHIN**, clear yellow, perfectly shaped; 14" Jan. 20 . . . . .
- GOLDEN HARVEST**, dark golden yellow, large trumpet; 16"; Jan. 1 . . . . .
- KING ALFRED**, rich golden yellow; 16"; Jan. 15 . . . . .
- LORD WELLINGTON**, bright yellow, large flower; 14"; Jan. 20 . . . . .
- MAGNIFICENCE**, dark golden yellow; 14"; Dec. 25 . . . . .
- REMBRANDT**, nice golden yellow; 14"; Jan. 10 . . . . .
- UNSURPASSABLE**, golden yellow, very large well shaped flower; 16"; Jan. 15 . . . . .
- WILLIAM THE SILENT**, enormous yellow trumpet; 16"; Feb. 1 . . . . .

## BICOLOR TRUMPETS

- BONYTHON**, pure white perianth, primrose trumpet, best and early forcer; 12"; Jan. 12 . . . . .
- MAGNET**, yell. trumpet, creamy white perianth; 14"; Jan. 15 . . . . .
- MUSIC HALL**, yellow trumpet, white perianth, good forcer; 16"; Jan. 15 . . . . .
- PRESIDENT LEBRUN**, lemon yellow trumpet suffusing into creamy white, white perianth; 14"; Jan. 15 . . . . .
- QUEEN OF THE BICOLORS**, golden-yellow trumpet, pure white perianth, one of the finest **New Bicolors**; 14"; Jan. 18 . . . . .
- SIR HENRY DETERDING**, white perianth, yellow trumpet very richflowering, good forcer; 14"; Jan. 15 . . . . .
- SPRING GLORY**, large yellow trumpet, white perianth; 14"; Jan. 15 . . . . .

## WHITE TRUMPETS

- BEERSHEBA**, pure white, large; 12"; Jan. 20 . . . . .
- IMPERATOR**, white perianth, creamy trumpet; 14" . . . . .
- MOUNT HOOD**, creamy white trumpet, ivory white perianth; 14" . . . . .
- Mrs. Ernst H. Krelage**, ivorywhite, very refined; 14"; Jan. 20 . . . . .
- ROMAINE**, pure white perianth, creamy trumpet, excellent shaped flower; 14"; Jan. 12 . . . . .

LARGE CUPPED NARCISSI

- AEROLITE, bright yellow trumpet, primrose yellow perianth; 14"; Jan. 15 . . . . .
- CALIFORNIA, bright yellow; 16"; Jan. 15 . . . . .
- CARLTON, uniform light yellow, very large and well shaped; 16"; Jan. 12 . . . . .
- CLAMOR, creamy white perianth with orange cup, orange-red edged; 14"; Jan. 12 . . . . .
- DAISY SCHAEFFER, creamy white perianth, large light yellow cup; 16"; Jan. 15 . . . . .
- DEANNE DURBIN, orange cup, white perianth; 12"; Jan. 15
- DICK WELLBAND, pure white perianth of perfect form, large deep orange-red cup; 14"; Jan. 20 . . . . .
- FLOWER RECORD, dark yellow cup edged orange, white perianth; 12"; Jan. 10 . . . . .
- FORTUNE, clear yellow perianth with large golden-orange crown; 18"; Jan. 18 . . . . .
- GERTIE MILLAR, white perianth, large creamy white cup; 14"
- HAVELOCK, a very wellformed yellow flower, very large; 16"; Jan. 12 . . . . .
- HELIOS, yellow perianth, orange cup, very early, **extra**; 14"; Jan. 3 . . . . .
- JOHN EVELYN, large flat orange cup, the perianth is much overlapping white; 12"; Jan. 28 . . . . .
- MERCATO, white perianth, yellow crown with orange border; 14"; Jan. 25 . . . . .
- MONIQUE, golden yellow cup, white perianth; 16"; Jan. 15
- Mrs. R. O. BACKHOUSE, apricot pink trumpet, nicely fringed edge, perianth ivory white; 15"; Jan. 15 . . . . .
- SCARLET ELEGANCE, dark orange red cup with scarlet edge, perianth dark yellow; 16"; Jan. 15 . . . . .
- SCARLET LEADER, creamy white perianth; large fiery red cup, substantial flower; 16"; Jan. 15 . . . . .
- SEMPRE AVANTI, creamy white perianth, large bright orange cup, excellent for pots; 14"; Jan. 15 . . . . .
- TUNIS, broad white perianth, large cup light primrose shaded gold; 16"; Jan. 15 . . . . .

SMALL CUPPED NARCISSI

- EDWARD BUXTON**, light yellow perianth, dark orange cup, 16"; Jan. 10 . . . . .
- FIRETAIL**, ivory white perianth, dark carmine scarlet cup; 16"
- LADY MOORE**, perianth creamy white, cup golden yellow, edged orange scarlet . . . . .
- LA RIANTE**, perianth pure white, cup dark red; 12"; Jan. 15
- Mrs. BARCLAY**, creamy white perianth with large overlapping petals, large flat yellow cup with scarlet edge; 14"; Jan. 15
- VERGER**, perianth pure white, cup dark red; 14" Jan. 20 . . . . .

POETAZ

- CHEERFULNESS**, the double Poetaz, white perianth, full double white and yellow centre: 14"; Jan. 25 . . . . .
- CRAGFORD**, white perianth, orange crown; 14"; Dec. 10 . . . . .
- CARUSO (Richard Tauber)**, very richflowering and large, clear white perianth with orange-yellow eye; 14"; Jan. 20
- EARLY PERFECTION**, creamy white perianth, cup lemon yellow; 12"; Jan. 1 . . . . .
- GERANIUM**, white perianth, deep scarlet eye. Very recommendable; 14"; Feb. 1 . . . . .
- LA FIANCEE**, broad and thick pure white perianth, with a large deep orange red eye; 14"; Jan. 1 . . . . .
- LAURENS KOSTER**, white perianth, yellow cup, splendid forcer; 14"; Jan. 15 . . . . .
- L'INNOCENCE**, pure white perianth with dark yellow cup, excellent forcer, large; 14"; Jan. 10 . . . . .
- SCARLET GEM**, perianth primrose yellow, cup dark orange; 14"; Jan. 15 . . . . .
- ST. AGNES**, white perianth, orange red cup; 16"; Jan. 10 . . . . .
- YELLOW CHEERFULNELS**, light yellow; 14"; Jan. 25 . . . . .

POETICUS

- ACTEA**, broad snow-white perianth with a very large eye, broadly margined dark red; 16"; Jan. 25 . . . . .
- ORNATUS MAXIMUS**, pure white round perianth, scarlet margined eye; 13"; Jan. 10 . . . . .

DOUBLE NARCISSI

- Albus Plenus Odoratus**, double pure white; 14" . . . . .  
**DAPHNE**, pure white, shaped like a Gardenia; 12"; Jan. 25 .  
**Inglescombe**, primrose yellow, perfectly formed; 16" . . . . .  
**IRENE COPLAND**, extra double, pure white lemon-yellow  
shaded; 14"; Jan. 15 . . . . .  
**MARY COPLAND**, very large flowering, well formed, pure  
white flower, clear orange shaded; 14" . . . . .  
**TEXAS**, yellow with orange red, **extra**; 16"; Jan. 15 . . . . .  
**TWINK**, creamy yellow and orange. Semi double, very fine;  
14"; Jan. 10 . . . . .  
**VON SION**, golden yellow; 12"; Jan. 1 . . . . .

JONQUILLA AND CAMPERNELLI

- CAMPERNELLI ODORUS REGULOSUS SINGLE**, golden  
yellow, two to four flowers on a stem, sweet scented; 10"  
**CAMPERNELLI ODORUS REGULOSUS DOUBLE**, heads of  
sweet scented double yellow flowers, tall stem; 10" . . . . .  
**CAMPERNELLI ORANGE QUEEN**, dark yellow orange flow-  
ers, two or three to a stem, free flowering; 10" . . . . .  
**GOLDEN PERFECTION**, golden yellow, largest Jonquil; 12"  
**GOLDEN SCEPTRE**, dark golden yellow Jonquil, sweet  
scented; 14" . . . . .  
**JONQUILLA DOUBLE**, golden yellow, sweet scented, several  
flowers on a stem; 10" . . . . .  
**JONQUILLA SINGLE**, dark yellow, sweet scented; 10" .  
**TREVITHIAN**, light lemon yellow, pure yellow cup; 16"; Jan.  
10 . . . . .

---

We also carry *Gladioli, Iris, Lilies, Crocus, Scilla,*  
a complete stock of: *Muscari, Begonias, Gloxinias,*  
*and other Miscellaneous Bulbs.*

*Ask for our Special Quotations!*

---



