

LIBRARY  
 RECEIVED  
 ★ DEC 13 1957 ★  
 U. S. Department of Agriculture

NEAL BROS. INC.

Toledo Ohio

1958

CHRYSANTHEMUMS

WHAT CAUSES PREMATURE BUDDING OF CHRYSANTHEMUM CUTTINGS  
DURING THE WINTER AND SPRING MONTHS, AND WHAT TO DO TO  
PREVENT IT.

Bud initiation can occur any time during the Spring months whenever your temperatures in the Greenhouses are consistently 60 degrees Fahrenheit or above, and the days are short enough to initiate bud setting. These conditions can occur any time up until May 1st depending upon the variety and the locality in which they are being grown. Some varieties such as the Garden Varieties and Early shading varieties require very little short day treatment, coupled with high temperatures to initiate buds. This same tendency to set bud readily is what makes these varieties desirable for early shading and garden work.

In order to prevent this premature setting of buds, these same varieties should be placed where they can be given additional light during the winter and early spring months. Use 60 watt bulbs spaced 4 feet apart and 30 inches above the plants. Use the lights for a period of 3 hours each night after dark up until May 1st, keeping in mind that at no time should there be a period of more than  $8\frac{1}{2}$  hrs. continuous darkness.

## NEW GARDEN VARIETIES 1958

### INTRODUCTIONS BY DEPETRIS

#### BIG TEN SERIES

This series is especially designed for the home gardener with advanced interest in garden mums. It consists of varieties that responds well to disbudding, producing the large type football blooms.

To add to their versatility many of these varieties will make valuable additions to commercial pot plant growers as well as early disbuds for outdoor and greenhouse flowering.

#### OHIO STATE

Large golden cactus decorative. Luxurious dark green foliage. Compact and sturdy grower lending itself well to disbudding or spring pot plant culture. Flowers October 15.

#### MINNESOTA

Large white incurved pompon. Lends itself well to disbudding and is particularly suitable for spring pot plant culture. Flowers October 10.

#### IOWA

Bright lemon medium incurved. Makes a sturdy compact pot plant, especially useful in the Spring months. Quite productive and beautiful as a garden disbud. Matures October 15.

#### MICHIGAN STATE

Large white decorative pompon ranging 4" in diameter when disbudded. Responds well and makes a beautifully shaped pot plant and garden disbud. Flowers October 14.

#### NORTHWESTERN

Large full bronze incurved variety with good substance. An unusual early flowering variety of good compact growth. Makes an ideal football mum. Flowers October 10.

#### INDIANA

Large full cactus type, amber bronze in color. A real novelty for the home gardener. Has commercial value for its adaptability as a spring pot plant. Flowers normally October 10.

NEW GARDEN VARIETIES 1958

INTRODUCTIONS BY DEPETRIS

BIG TEN SERIES

PURDUE (H)

Large full incurving, lively bronze sturdy and compact by nature lending itself beautifully to pot plant culture. Ideally suited for background plantings. Flowers October.12.

WISCONSIN

A large solid very formal incurved, rich deep apricot, bronze in color. A very healthy grower especially adaptable for cut flower disbuds and garden work. Matures October.15.

ILLINOIS

A large formal golden yellow incurved with excellent substance. A credit to the new spring pot plants and large disbud garden mums.

MICHIGAN

Large clear yellow blooms fully 4" across. Not a new introduction but was added to the Big 10 Series because of its adaptability to disbudding.

OTHER DEPETRIS INTRODUCTIONS

ZYLON

Large deep crimson red, semi-incurved, similar to Garnet King in color. Responds well to shade. Excellent cloth house variety. Responding in the 8 week standards. Zylon will be a welcome addition.

MAJESTIC - DePetris

Medium incurved bright rosewood bronze pompon. Responds beautifully to Spring or Fall pot plant culture. Improved by disbudding, either in pots or in outdoor specimen plantings. Flowers naturally October.15.

-----  
NEW INTRODUCTIONS FOR 1958

CANARY DOT - Neal

Bright yellow pompon. Sport of Yellow Dot. Unlike most of the Dot varieties, it has one solid color. Useful in the Cloth House or Spring flower programs.

NEW INTRODUCTIONS FOR 1958

IMP. DK. BEAUREGARD - Neal

An intense dark reddish bronze sport of the ever popular Beauregard. Doesn't have the open center that Beauregard has. Should be used during the period that is suitable for Beauregard.

RED HUMDINGER

Sport of the popular Humdinger. An intense red that will prove to be a valuable addition to the pot plant industry.

DK. REWARD - Neal

A vivid dark sport of Reward, particularly useful in high temperature periods when Reward fades. A definite color improvement over the popular Reward. Flowers October 25.

ILL. ACCENT - Univ. of Ill.

Large formal bright magenta decorative. Almost the same color as Humdinger. Useful in a disbud or spray program April thru June, or Sept. thru November. Has added utility as a pot plant using tall treatment. A valuable and versatile 11 week addition.

YEL. CALUMET - Neal

Bright lemon pompon, sport of the popular Calumet. Its fine cut flower qualities make it a very worthwhile contribution to the garden class. Also worthwhile as a Spring pot plant using a delayed pinch. Matures October 10.

DK. CALUMET - Neal

Dark bronze sport of Calumet supplementing the commercial cut flower group. An excellent bronze for cut inside or Cloth House use. Useful as a Spring or fall pot. Flowers October 10.

RED ENTERPRISE - Neal

Rose red sport of Enterprise. Valuable as a cut flower. Responds well to Cloth House shadings. Flowers October 15.

LT. PK. ENTERPRISE - Neal

Light pink sport of Enterprise.

NEW LISTINGS FOR 1958

P O M P O N S

SILVER BOW

Large white pompon. Makes a satisfactory disbud. Responds April thru November. Excellent response to shade with tolerance to high temperatures. Flowers October 25.

MEMENTO

A chalk white single. Excellent as a Cloth House variety or early shade variety. A 9 week variety responding November 30.

ICE CREAM

Large cream white decorative. Tolerant of high or low temperatures. Suitable for fast disbud programs. Flowers November 10.

WHITEHOUSE

Intermediate white anemone. Responds uniformly under high temperatures. Adaptable for pots May through Nov. Normal flowering date November 5.

HAPPINESS

Large golden yellow single. Reliable under high temperature conditions. An excellent 9 week cloth house or greenhouse variety.

STATESMAN

Small yellow pompon of good substance and intense color. Valuable summer greenhouse variety and Cloth House variety. More productive than Sunup. Responds in 9 weeks.

DANDY

Medium yellow pompon responding in 9 weeks. A very productive variety that responds under high and low temperature conditions. A much needed addition to this response group.

YELLOWTOP

A bright lemon sport of Whitetop. Has the same values of Whitetop. Useful as a Cloth House variety and greenhouse, April thru November.

NEW LISTINGS FOR 1958

P O M P O N S

YEL. PACESETTER

A lemon sport of Pacesetter. Useful for cut flower April thru June, or Sept. thru November. Satisfactory as a pot plant using the tall treatment.

HEYDAY

Medium pompon. Bright yellow in color. A valuable 10 week addition for flowering April thru June, and Sept. thru November in the greenhouse. Responds well in the Cloth house.

GINGER

Medium anemone in the 9 week response group. An intense reddish bronze used primarily as a pot plant. Excellent shape as a pot. A big improvement over Gypsy.

BRONZECHIP

Medium decorative sport of the popular Bluechip. A lively orange bronze responding in 9 weeks.

NECTARINE

Intermediate decorative. Apricot orange in color. Vigorous growing, useful in fast disbud or spray programs. Greenhouse mid April thru May, and Sept. thru November. Responds Nov. 5 normally.

INCA

Intermediate amber bronze anemone. A good 10 week addition that is useful as a pot plant the year round.

THOMAS JOHNSON

Large decorative, deep orchid pink in color. Attractive in spray form and useful in disbud programs. Excellent for spring flowering in the greenhouse or cloth house programs.

PINK CHIP

Medium decorative soft pink sport of Bluechip, adding variety to the 9 week pinks.

DK. PORTRAIT

Dark sport of Portrait. Useful where a deep pink than Portrait is desired.

NEW LISTINGS FOR 1958

P O M P O N S

PK. PORTRAIT

Lt. pink sport of the variety Portrait.

PERSONALITY

Large luminous pink 10 week pompon. Makes a very impressive full pot plant. Recommended March thru June and Sept. thru December.

CADENZA

Large lavender pink anemone lending itself suitably to disbudding. Vigorous growing and responsive. Tolerant to low temperatures. Recommended October thru May. Flowers naturally November 10.

DELMAR

A vigorous growing clear pink decorative. A very productive growth habit, surpassing Almega. Recommended March thru April and mid September thru November. A much needed 11 week variety.

S T A N D A R D S

WH. PINK CHIEF

A pure white selection of Pink Chief. Fills a much needed vacancy for a responsive 8 week standard that will tolerate heat.

WHIRLWIND

A large pure white reflexed standard. Responsive during high temperature periods. A 10 week variety having an interesting novel form.

OREGON

Large white semi-incurved standard responding in 10 weeks. Primarily used as a pot plant. A vigorous growing compact variety that is void of black centers in the winter. Rapidly becoming the favorite white pot plant.



NEW LISTINGS FOR 1958

S T A N D A R D S

FRED SHOESMITH

Large pure white incurved responding in 10 weeks. A valuable addition to winter flowering standards. Excels Ind. White in the winter months with sure response. Performs best in a November thru June program.

SENTINEL

Medium tightly incurved ivory white Standard flowering naturally around November 8. A very desirable flower and ships well. Should be grown during periods of high light intensity.

BLAZING WEST

Large incurved golden yellow Standard suitable for flowering April thru June and mid September through November. Flowers naturally November 1.

CHAIRMAN

Large reflexed golden yellow. Suitable for standards or fast disbuds. Will initiate buds at low temperature. Flowers in the 10 week response group.

YEL. BETSY ROSS

Lemon yellow sport of Betsy Ross. Initiates and develops buds under high temperature conditions. Holds its color surprisingly well under high light conditions.

IND. GOLD

Deep golden sport of Ind. Yellow.

YEL. CALYPSO

Large yellow incurved variety especially suitable for pot plant culture. Has the size of Indianapolis but is more compact. 10 week response.

YEL. LEIGHTON

Lemon yellow sport of Susan Leighton. Rigid stems and a good grower. Flowers normally November 6.

BR. CALYPSO

Large orange bronze Standard used primarily for pot plants. Has the size of Indianapolis, but more compact growth habit. Responds in 10 weeks.

NEW LISTINGS FOR 1958

S T A N D A R D S

COPPER QUEEN

Large incurved copper standard. Sport of Orchid Queen. Larger flower and more vigorous growing than Bronze Orchid Queen. Responds in the 10 week group.

BLUE RIBBON

Small incurved Standard. Most suitable for pot culture. Can be used the year around. Color is a marked improvement over Queen of Pinks, especially during high light intensity periods.

LAVENDER QUEEN

Lavender Sport of Orchid Queen. Flower more compact than DK.Orchid Queen. Responds in 10 weeks.

LAUGHTER

Medium small semi-incurved light lavender, but holds its color well under high temperature. Excellent shading variety. 10 week response.

MERRIMENT

Medium reflexed lavender pink, responds under low temperature conditions standards or fast disbuds, Sept. thru mid June. Responds on November 10.

NEW GARDEN LISTINGS

WH. SAIL

Large white decorative with cream center. Vigorous grower, prolific bloomer. Flowers September 23.

WH. MASQUERADE

Silvery white button producing low masses of blooms. A good companion for the popular Masquerade. Flower date October 10.

RUBY BREITHAUPT

Large decorative, displaying informal flowers of bright primrose yellow. Fine for secondary border or table bouquets. Flowers October 1.

NEW GARDEN LISTINGS

KINGS RANSOM

Golden yellow decorative making a splendid fall showing. Large showy blossoms. An outstanding contribution to the Spring and Fall garden pots. Matures October 1.

BRONZE QUEEN (H)

Coppery bronze pompon of cushion type growth. Compact and showy it makes a beautiful low border planting or yard specimen. Flowers September 20.

MOJAVE GOLD

Huge golden bronze with disc like flowers. A real show in any garden. Matures September 26.

DOLLI-ETTE

Medium spoon, attractive golden bronze. Useful as a Spring or Fall pot plant as a novelty. Prolific blooming habit making an excellent border planting. Blooms naturally October 10.

PURPLE QUEEN (H)

Medium pompon, cushion type growth. Dark purple. Compact growth displaying huge masses of blooms. Flowers September 20.

BLANCHE LITWILLER

Large lavender pink pompon. Blooms are lavishly produced on good strong stems. Matures around September 23.

EDNA ROWLEY

A beautiful pink button pompon with a ruby eye. A good variety for home arrangements and very showy in the garden. Flowers September 26.

STYLISH

Large cactus type decorative, old rose. Makes a beautiful showing in any garden. Outstanding for cut flower arrangements. This variety will highlight any garden. Flowers around September 28.

ARTIST'S DELIGHT

Large coral geranium pink decorative perfect sprays for design work. An outstanding variety to accent a garden. Matures September 29.

NEW GARDEN LISTINGS

FUSCHIA FAIRY

Small light pink decorative with cushion like growth.  
Makes an attractive border planting. Useful as a Spring  
pot plant. Blooms October 14.

\* RECOMMENDED FOR POT CULTURE

POMPONS - SINGLES AND ANEMONES

<u>VARIETY</u>	<u>NORMAL PINCH DATE</u>	<u>MATURES</u>	<u>PRICE 50 ONLY</u>
<u>WHITE</u>			
<u>8 WEEK VARIETIES</u>			
<u>CALIF. WH. DAISY</u> - Medium single pure white (Kimoto's White) petals.....	7-20	10-15	4.00
<u>BLIZZARD</u> - A pure white pompon with good spray formation. Responds well in the early Cloth House and Greenhouses July thru September.....	7-20	10-15	3.90
<u>SILVER BALL</u> - Large pompon, pure white.....	7-20	10-15	3.65
<u>IRENE</u> - Small white pompon.....	7-20	10-20	4.15
<u>PRISTINE</u> - Pure white pompon, very good March thru October under glass, or in the Cloth House from August thru October.....	7-20	10-20	3.65
<u>9 WEEK VARIETIES</u>			
<u>SILVER BOW</u> - Large white pompon, tolerant to high temperature, excellent disbud April thru October.....	7-25	10-25	4.00
<u>VESTA</u> - White button with good form, blooms are produced on good stems with excellent sprays, responds in 9 weeks.....	7-25	10-25	3.90
<u>POPCORN</u> - Medium pompon, very productive, white suffused with pink.....	7-25	10-25	3.75
<u>WH. POPCORN</u> - Medium cream pompon, sport of Popcorn.....	7-25	10-25	3.65
<u>WH. KEEPSAKE</u> - White, sport of Keepsake.....	7-25	10-25	3.75
<u>KEEPSAKE</u> - White pompon, tall with good spray formation, recommended March thru October will be suffused with light pink during early Spring and late Fall.....	7-25	10-25	3.50
* <u>MONTY</u> - Large white decorative, very good as pot plant, recommended year around thru the South. March thru December in the North.....	7-25	10-25	3.75
<u>SONGSTER</u> - Medium pompon, pure white.....	7-25	10-25	3.75
<u>PINOCCHIO</u> - Small pompon, hard button white...	7-25	10-25	3.65

POMPONS - SINGLES AND ANEMONES

<u>VARIETY</u>	<u>NORMAL PINCH DATE</u>	<u>MATURES</u>	<u>PRICE 50 ONLY</u>
<u>9 WEEK VARIETIES</u>			
* <u>GRANITE STATE</u> - Large white disbud, pompon, perfect form ideal as pot plant, responds well, recommended August thru November, April thru June.....	7-25	10-25	3.75
<u>ARCADIA</u> - Medium pompon, pure white.....	7-25	10-28	4.00
<u>MEMENTO</u> - Medium single, tolerant of high or low temperature.....	7-25	10-30	4.00
<u>WH. DOTY</u> - Large white pompon, responds well to disbudding.....	7-25	11-1	3.90
<u>ALASKA</u> - Intermediate white anemone with white cushion, responds well during summer months April thru November.....	7-25	11-1	3.65
<u>SEAGULL</u> - Medium pompon, cream white.....	7-25	11-1	3.75
<u>HALO</u> - White daisy having exceptionally good performance during May thru September under Glass.....	7-25	11-1	3.75
<u>WHITEHOUSE</u> - Medium anemone (White) tolerant of high temperature.....	7-25	11-1	4.15
<u>10. WEEK VARIETIES</u>			
<u>WH. ANEMONE</u> - Medium anemone good as spray or disbud.....	7-28	11-5	4.00
<u>WHITETOP</u> - Large white decorative pompon of exceptional merits very good May thru November 5th under glass or Cloth House. Good production plus quality growth.....	7-28	11-5	3.25
<u>MADONNA</u> - Medium large clear white pompon showing traces of pink during cool nights in late Cloth House. Excellent growth..	7-28	11-5	3.75
<u>ICEBERG</u> - Large flower white, good disbud.....	7-28	11-5	3.50
<u>ENCORE</u> - Pure white large pompons, produced on rigid stems, excellent late August thru September in Cloth House, and October thru November 5th under glass.....	7-28	11-5	3.65

POMPONS - SINGLES AND ANEMONES

<u>VARIETY</u>	<u>NORMAL PINCH DATE</u>	<u>MATURES</u>	<u>PRICE 50 ONLY</u>
<u>WHITE</u>			
<u>10 WEEK VARIETIES</u>			
<u>ILL. IGLOO</u> - A good cream white pompon, that responds well to year around flowering from March thru November, a variety that should be used in all year around schedules.....	7-28	11-10	3.65
<u>VESPER</u> - Medium large pompon, white.....	7-28	11-10	4.00
<u>PACESETTER</u> - A good medium size white that produces and ships well, with good substance and stems, responds readily to off season flowering .....	7-28	11-10	3.65
<u>LITTLE AMERICA</u> - Small spray type anemone, pure white used for pots, good small disbud.....	7-28	11-10	3.65
<u>ICE CREAM</u> - Large Cream White Deco. Excellent disbud or spray type, April thru Dec....	7-28	11-10	4.15
<u>SHASTA</u> - Medium large white anemone, a variety that can be depended upon to respond to off season treatment at all times throughout the year. Ships well for an anemone and takes dyes readily. We recommend this variety certainly as the best and most dependable of all varieties for the beginner in year around blooming.....	7-28	11-10	3.25
<u>ILL. SNOWDRIFT</u> - A pure white novelty showing some traces of pink when first opening. The petals are deeply serrated giving it the appearance of being a spider pompon or lacy effect, recommended March thru June and in the Cloth House late August thru October. Dyes very well and we find a ready sale at all times.....	7-28	11-12	3.65
<u>11 WEEK VARIETIES</u>			
<u>WH. TAFFETA</u> - Medium decorative, white sport of Taffeta, responds the same.....	8-1	11-15	3.75
<u>WH. FREIDA</u> - Large anemone, good disbudded or sprays, White.....	8-1	11-15	3.50
<u>SNOWFLURRY</u> - Small white button pompon.....	8-1	11-15	4.00

POMPONS - SINGLES AND ANEMONES

<u>VARIETY</u>	<u>NORMAL PINCH DATE</u>	<u>MATURES</u>	<u>PRICE 50 ONLY</u>
<u>11 WEEK VARIETIES</u>			
<u>SCULPTURE</u> - Large single, responds well, ivory white.....	8-1	11-15	3.90
<u>ILL. STARFLOWER</u> - Large white spoon daisy type flowers are full 6" across in sprays. Petals are rigid and spaced far apart giving the flower a spider type appearance. A true novelty for the selective retailer.....	8-1	11-18	4.00
<u>SEAFOAM</u> - Medium pompon, White.....	8-1	11-20	4.00
<u>PRISCILLA</u> - Medium pompon good producer, ivory white.....	8-1	11-20	3.75
<u>ILL. PEACE</u> - A very attractive white anemone with a cream cushion. Flowers are produced in abundance on well formed sprays, with strong stems, a very useful white for Thanksgiving.....	8-1	11-20	4.00
<u>HIGHBROW</u> - Large ivory decorative of excellent substance and growth habits. Excellent late Cloth House, September thru October 15th.....	8-1	11-20	3.75
<u>L. IS. BEAUTY</u> - Large anemone disbud, white, yellow center.....	8-1	11-20	3.75
<u>PARAMOUNT</u> - Very formal type creamy white large pompon, very good normal season and for extending the season thru February.....	8-1	11-23	3.65
<u>12 WEEK VARIETIES</u>			
<u>SILVERCREST</u> - Small formal white pompon likened to an early Snowcrest.....	8-5	11-25	3.90
<u>*WH. LADY</u> - Large white anemone disbud, good pot for normal season.....	8-5	11-25	4.00
<u>WH. YULETIDE</u> - Medium decorative pompon, pure white.....	8-5	11-25	3.50
<u>WH. VALENCIA</u> - Large single, responds to dis-budding, White.....	8-5	11-28	3.90



POMPONS - SINGLES AND ANEMONES

<u>VARIETY</u>	<u>NORMAL PINCH DATE</u>	<u>MATURES</u>	<u>PRICE 50. ONLY</u>
<u>12 WEEK VARIETIES</u>			
<u>WHITE</u>			
<u>CORDOVA</u> - Medium decorative pompon, productive cream white.....	8-5	11-30	3.90
<u>BELRAY</u> - Pure White large flowers produced on excellent growth and sprays, excellent from normal season thru March, quality will be improved if temperature is lowered after it starts to flower...	8-5	11-30	3.50
<u>FORTUNE</u> - Medium formal pompon, cream white..	8-5	12-1	3.65
<u>13 WEEK VARIETIES</u>			
<u>COTILLION</u> - Medium pompon, white.....	8-10	12-5	4.15
<u>CARRARA</u> - Medium decorative, low growth for side benches, pure white.....	8-10	12-5	3.90
<u>WH. ENCHANTRESS</u> - Large white anemone, good in sprays or disbudded, very good for extending season from December thru March, responds sharply.....	8-10	12-5	3.90
<u>CAMEO</u> - Large decorative, very attractive, ivory white.....	8-10	12-5	3.90
<u>ACCLAIM</u> - Large creamy white of excellent substance and form, easy to grow and responds well for extending the season thru March.....	8-10	12-5	3.40
<u>WH. SNOWDROP</u> - Large pompon, sport of Snowdrop pure white.....	8-10	12-8	3.90
<u>IMP. WH. SUPREME</u> - Large anemone disbud, white suffused with plnk.....	8-10	12-10	4.00
<u>YUKON</u> - Medium single, pure white petals....	8-10	12-10	4.00
<u>ILL. STARLET</u> - Small Anemone, good substance in sprays white with yellow center.....	8-10	12-10	3.90
<u>SNOW QUEEN</u> - Medium pompon, pure white.....	8-10	12-10	3.90

POMPONS - SINGLES AND ANEMONES

<u>VARIETY</u>	<u>NORMAL PINCH DATE</u>	<u>MATURES</u>	<u>PRICE 50 ONLY</u>
<u>14 WEEK VARIETIES</u>			
<u>SNOWCAP</u> - Large formal white pompon of good substance, responds to bud setting readily in extended season flowering, where temperatures can be held at 60 degrees.....	8-15	12-15	3.75
<u>GARZA</u> - Medium anemone good sprays, pure white.....	8-15	12-15	3.75
<u>SILVERSMITH</u> - Large showy white decorative, a very productive pompon, not as sharp a response as Snowcrest but when handled properly and grown with low nitrates, the season can be extended December thru March very readily.....	8-15	12-15	3.50
<u>SNOWCREST</u> - White having a sharp green center, very attractive when cut before the center is fully opened, very good growth habit and spray formation, responds very readily for off-season blooming, December thru March. Very sharp responding 14 week variety.....	8-15	12-15	3.75
<u>SATELLITE</u> - Medium pompon, tall, ivory white.	8-15	12-15	3.90
<u>WEDDING BELLS</u> - Medium size white pompon with green eye.....	8-15	12-20	4.00
<u>IMP. WH. KRAMER</u> - A West Coast variety used very extensively in California. Good shipper and producer, large decorative pompon. A definite improvement over White Kramer.....	8-15	12-20	4.25
<u>HEIRLOOM</u> - Medium decorative, white.....	8-15	12-20	4.00
<u>ILL. ALBA</u> - Large single, pure white, does not pink at low temperatures, a good Christmas White.....	8-15	12-20	4.25
<u>SNOW</u> - Medium large pompon, Cream white.....	8-20	12-25	3.65
<u>REVELATION</u> - Medium large decorative, white the most accepted variety for late December and January, blooming without lights.....	8-20	12-25	3.65

POMPONS - SINGLES AND ANEMONES

<u>VARIETY</u>	<u>NORMAL PINCH DATE</u>	<u>MATURES</u>	<u>PRICE 50 ONLY</u>
<u>WHITE</u>			
<u>14 WEEK VARIETIES</u>			
<u>ILL. SNOWBOUND</u> - Medium large decorative, requires 60 degrees to initiate bud and 50 degrees to develop.....	8-20	1-2	3.90
<u>TALMEDA</u> - The latest white pompon, without using lights.....	8-20	1-5	3.75
<u>ILL. CASCADE</u> - Large decorative clear white, December thru February.....	8-20	1-5	3.75
<u>YELLOW</u>			
<u>8 WEEK VARIETIES</u>			
<u>SARASOTA</u> - Bright lemon pompon produced on good stems with excellent spray formation, for cutting either under glass or outside throughout the South. Also good in the early Cloth House.....	7-20	10-15	4.00
<u>YEL. IRENE</u> - Small button pompon, light lemon	7-20	10-15	4.15
<u>RODELL IMP.</u> - Small button pompon, productive, light lemon.....	7-20	10-20	3.65
<u>9 WEEK VARIETIES</u>			
<u>SYBIL</u> - An excellent multi-petalled daisy having a large broad petalled form with very good substance. Color is yellowish apricot of a very appealing hue. Excellent stem and foliage with outstanding production. Blooms normally Oct. 25 and responds readily to shading in 9 weeks...	7-25	10-25	3.90
<u>GOLDFINCH</u> - Vigorous growing solid type pompon, a golden yellow pompon that responds well in the 9 week class. Excellent for Cloth House and early Spring blooming. Recommended Mar. thru Oct....	7-25	10-25	4.15
<u>GOLDEN HERALD</u> - Large golden yellow decorative flowers. Excellent as a disbud or spray very productive and responds to year around flowering very readily. When dis-budded flowers are 4½: or more across...	7-25	10-25	3.65
<u>GOLD COAST</u> - Bright yellow formal pompon, a very good year around variety recommended March thru October.....	7-25	10-25	3.40

POMPONS - SINGLES AND ANEMONES

<u>VARIETY</u>	<u>NORMAL PINCH DATE</u>	<u>MATURES</u>	<u>PRICE 50 ONLY</u>
<u>YELLOW</u>			
<u>9 WEEK VARIETIES</u>			
<u>YEL. DOT</u> - Medium pompon, yellow bright center	7-25	10-25	4.00
<u>CANARY DOT</u> - Bright yellow pompon without the red center, useful cloth house and spring flowering.....	7-25	10-25	3.75
<u>RED DOT</u> - Bright yellow pompon with bronze red center, sport of Pink Dot, responds to off-season flowering. Recommended for September thru October 15 Cloth house and normal, March thru May in Spring.....	7-25	10-25	3.75
<u>YEL. ARCADIA</u> - Medium pompon, lemon.....	7-25	10-28	4.00
<u>SUNUP</u> - Hard small yellow pompon produced on well formed sprays and long stems, a high temperature variety at its best June thru September.....	7-25	10-28	3.90
<u>HAPPINESS</u> - Large single Golden Yellow, reliable under high temperature conditions.....	7-25	10-28	4.00
<u>AZTEC</u> - Golden yellow daisy of good texture produced on excellent stems and spray formation. Good off season daisy, re- commended April thru October.....	7-25	10-28	3.75
<u>YEL. DOTY</u> - Large pompon disbud, bronze yellow.	7-25	11-1	4.15
<u>SCH. YEL. DAISY</u> - Medium single, bright lemon.	7-25	11-1	3.90
<u>YEL. SEAGULL</u> - Medium pompon, light lemon.....	7-25	11-1	4.15
<u>YEL. HALO</u> - Medium single, responds well, deep lemon.....	7-25	11-1	3.90
<u>STARBRIGHT</u> - Large golden yellow daisy, used from July to November under glass.....	7-25	11-1	3.90
<u>STATESMAN</u> - Small yellow Pompon - valuable summer variety because of high tempera- ture tolerance.....	7-25	11-1	4.00
<u>MARY L. HALL</u> - Medium pompon, responds well April thru November, deep lemon.....	7-25	11-1	3.65

POMPONS - SINGLES AND ANEMONES

<u>VARIETY</u>	<u>NORMAL PINCH DATE</u>	<u>MATURES</u>	<u>PRICE 50 ONLY</u>
<u>YELLOW</u>			
<u>9 WEEK VARIETIES</u>			
<u>DANDY</u> - Medium Pompon - yellow - tolerant of high or low temperature. Heavy producer.....	7-25	11-1	4.00
<u>SUNRAY</u> - Small yellow anemone grown to sprays a sure response variety under about all conditions.....	7-25	11-3	3.75
<u>10 WEEK VARIETIES</u>			
<u>OR. BEAUREGARD</u> - Orange yellow, sport of Beauregard, very good off-season from March thru November.....	7-28	11-5	3.65
<u>YEL. BEAUREGARD</u> - Clear golden yellow, sport of Beauregard, a welcome addition to the Beauregard family. Same response and highly recommended as an all around 10 week yellow.....	7-28	11-5	3.65
<u>CONSTELLATION</u> - Medium decorative, deep lemon.....	7-28	11-5	3.90
<u>BARCAROLE</u> - Medium pompon, response is good-Golden Yellow.....	7-28	11-5	3.90
<u>CRESCENDO</u> - Large lemon yellow, an off season variety, more useful in the program July thru September, under glass than possibly at anyother time.....	7-28	11-5	3.65
<u>YELLOWTOP</u> - Bright lemon sport of Whitetop-April thru November Greenhouse, Excellent for Cloth House shading .....	7-28	11-5	4.00
<u>LUXURY</u> - Large decorative at its best as a disbud June thru October, a high temperature variety.....	7-28	11-8	3.75
<u>ILL. GOLD CUP</u> - Large pompon, buttercup yellow.....	7-28	11-10	3.75
<u>JEALOUSY</u> - Hard button yellow pompon, good response and good producer, recommended April thru November.....	7-28	11-10	3.65
<u>YEL. IGLOO</u> - Large pompon, lemon yellow, sport of Igloo, responds readily to off-season flowering.....	7-28	11-10	3.65

POMPONS - SINGLES AND ANEMONES

<u>VARIETY</u>	<u>NORMAL PINCH DATE</u>	<u>MATURES</u>	<u>PRICE 50 ONLY</u>
<u>YELLOW</u>			
<u>10 WEEK VARIETIES</u>			
<u>YEL. SHASTA</u> - Large lemon yellow anemone for year around blooming, a sure to bloom yellow for all seasons.....	7-28	11-10	3.40
<u>YEL. PACESETTER</u> - Large yellow single - sport of Pacesetter useful for pot plants using a delayed pinch - Excellent in shading program - April - June.....	7-28	11-10	4.00
<u>HEYDAY</u> - Medium Pompon, Bright Yellow - Greenhouse - April - June & middle September - November - a valuable cloth house addition.....	7-28	11-10	4.00
<u>11 WEEK VARIETIES</u>			
<u>GOLDEN CHORD</u> - Large yellow pompons produced on good stems with dark green foliage, a beautiful pompon in its season - October thru February.....	7-28	11-13	3.65
<u>FORTY-NINER</u> - A very good responding golden yellow pompon for flowering September thru March.....	7-28	11-15	3.40
<u>YEL. SCULPTURE</u> - Medium single, sport of Sculpture, same response, lemon yellow.	7-28	11-15	3.90
<u>GOLD BALL</u> - Golden Yellow, Solid Pompon.....	7-28	11-15	3.75
<u>SUSANNE MILLER</u> - Large anemone disbud, buff yellow.....	7-28	11-15	4.00
<u>PRINCETON</u> - Medium decorative, orange yellow.....	7-28	11-15	4.00
<u>YEL. L. IS. BEAUTY</u> - Large anemone disbud, buff yellow.....	8-1	11-20	3.90
<u>KLONDIKE</u> - Medium Pompon, Exceptionally good, March thru May, orange yellow.....	8-1	11-20	3.75
<u>LOLLIPOP</u> - Lemon yellow perfect ball pompon, very hard flower on very stiff stems, recommended off season September thru March, responds very readily under most conditions.....	8-1	11-20	3.50

POMPONS - SINGLES AND ANEMONES

<u>VARIETY</u>	<u>NORMAL PINCH DATE</u>	<u>MATURES</u>	<u>PRICE 50 ONLY</u>
<u>YELLOW</u>			
<u>11 WEEK VARIETIES</u>			
<u>PIPPIN</u> - Deep lemon yellow pompons produced in abundance on good stems with dark green foliage.....	8-1	11-20	3.75
<u>YEL. Highbrow</u> - Sport of Highbrow can be used where-ever Highbrow is used.....	8-1	11-20	3.75
<u>SULTAN</u> - Larger than Beauregard, golden yellow.....	8-1	11-22	4.00
<u>YEL. ROLINDA</u> - Medium anemone, good pot normal buff yellow.....	8-1	11-23	3.75
<u>YEL. PARAMOUNT</u> - Large pompon, sport of Paramount, deep lemon.....	8-1	11-23	3.75
<u>12 WEEK VARIETIES</u>			
<u>GOLDENROD</u> - Well formed yellow pompon on good stems, golden yellow and uniform response in extended season, blooming November thru March.....	8-5	11-25	3.90
<u>HIGHLANDER</u> - Medium decorative, heavy grower, deep lemon.....	8-5	11-25	3.75
<u>GOLDSMITH</u> - Large decorative on good sprays, deep golden.....	8-5	11-25	3.75
<u>SUNNYSIDE</u> - Small pompon, very productive, golden yellow.....	8-5	11-25	3.65
<u>YEL. VALENCIA</u> - Large single, good disbud, golden yellow.....	8-5	11-28	3.90
<u>OMEGA</u> - Medium pompon, very productive, good substance, golden yellow.....	8-5	12-1	3.65
<u>YEL. GALAXY</u> - Sport of Galaxy, deep lemon yellow daisy, with wide flat petals, produced on good stems with well formed sprays, very useful in off-season flowering December thru March.....	8-5	12-1	3.75
<u>YEL. FORTUNE</u> - Sport of Fortune, deep lemon.....	8-5	12-1	3.90

POMPONS - SINGLES AND ANEMONES

<u>VARIETY</u>	<u>NORMAL PINCH DATE</u>	<u>MATURES</u>	<u>PRICE 50 ONLY</u>
<u>13 WEEK VARIETIES</u>			
<u>YELLOW</u>			
<u>YEL. ENCHANTRESS</u> - Large anemone, spray or disbud, good response, light lemon color.....	8-10	12-5	3.90
<u>YEL. ACCLAIM</u> - Large pompon, sport of Acclaim	8-10	12-5	3.75
<u>GOLDEN ACCLAIM</u> - Golden yellow, sport of Acclaim, spray program for extending the season thru March.....	8-10	12-5	3.75
<u>YEL. CAMEO</u> - Medium decorative, tall light lemon.....	8-10	12-5	4.15
<u>DK. YEL. CAMEO</u> - A deep yellow selection from Yellow Cameo... ..	8-10	12-5	4.00
<u>CINDERELLA</u> - Medium single, lemon yellow....	8-10	12-5	4.00
<u>IMP. YEL. SUPREME</u> - Large anemone disbud, light lemon.....	8-10	12-10	4.00
<u>CORSAIR</u> - Large golden yellow pompons for winter and early Spring, recommended for December thru March flowering. Responds readily under most reasonable growing conditions, good sprays and stems	8-10	12-12	3.50
<u>14 WEEK VARIETIES</u>			
<u>SHAMROCK</u> - Large decorative, bright lemon... ..	8-15	12-15	3.75
<u>YEL. SNOWCREST</u> - Light lemon yellow with bright green center. Very attractive when cut before the center is fully opened. December thru March sharp response.....	8-15	12-15	3.90
<u>YEL. GARZA</u> - medium anemone, light lemon....	8-15	12-15	3.90
<u>VIBRANT</u> - Large decorative, very good response for extending the season, Dec. thru March, heavy producer, deep lemon.	8-15	12-20	3.65
<u>SUNRISE</u> - Medium pompon, responds in low temperature, lemon.....	8-15	12-20	3.75
<u>IMP. YEL. KRAMER</u> - Large decorative, good shipper used extensively on the West Coast. Darker sport of Yel. Kramer.....	8-15	12-20	4.25



POMPONS - SINGLES AND ANEMONES

<u>VARIETY</u>	<u>NORMAL PINCH DATE</u>	<u>MATURES</u>	<u>PRICE 50 ONLY</u>
<u>YELLOW</u>			
<u>14 WEEK VARIETIES</u>			
<u>YEL. SNOW</u> - Medium pompon, very productive, deep lemon.....	8-15	12-25	3.75
<u>YEL. REVELATION</u> - Medium pompon, good pro- ducer lemon yellow.....	8-20	12-25	3.65
<u>YULEFLAME</u> - Large decorative, deep lemon.....	8-20	12-25	3.75
<u>SIREN</u> - Medium decorative, lemon yellow.....	8-20	12-25	3.75
<u>ILL. YEL. SNOWBOUND</u> - Medium decorative, light lemon. Requires 60 degrees to initiate bud and 50 degrees to develop.....	8-20	12-25	4.00
<u>BRONZE &amp; RED</u>			
<u>8 WEEK VARIETIES</u>			
<u>RAJAH</u> - Large scarlet red daisy with good stems and sprays, excellent as cut flowers under glass or the garden, also good in the early cloth house.....	7-20	10-15	4.15
<u>JAMES STEWART</u> - Apricot golden samll pompon, produces well on good stems and sprays. Good as cut flowers in the early Cloth House under glass or in the garden with protection.....	7-20	10-15	4.00
<u>SAGAMORE</u> - Brilliant orange bronze large decora- tive, suitable for pot culture.....	7-20	10-18	4.15
<u>PARADISE</u> - Deep coral red daisy, recommended March thru June, or normal.....	7-20	10-20	4.15
<u>PAXON</u> - Luminous bronze pompon with deeply serrated petals resembling Ill. Snowdrift but larger and fuller, having small glossy finely cut foliage. Blooms Oct. 20th. A very good novelty in the 9 week group.....	7-20	10-20	4.00
<u>BR. MARY McARTHUR</u> - Medium pompon, sport of Mary McArthur, orange bronze.....	7-20	10-20	4.00

POMPONS - SINGLES AND ANEMONES

<u>VARIETY</u>	<u>NORMAL PINCH DATE</u>	<u>MATURES</u>	<u>PRICE 50 ONLY</u>
<u>BRONZE &amp; RED</u>			
<u>9 WEEK VARIETIES</u>			
<u>FIREBIRD</u> - Medium decorative, reddish bronze.....	7-25	10-25	4.00
<u>BUCKSKIN</u> - Twany bronze daisy, very good producer, responds to off- season blooming March thru June and early cloth house.....	7-25	10-25	3.75
<u>BUCCANEER</u> - Medium single, responds well to off season blooming, rich orange apricot	7-25	11-1	3.75
<u>GINGER</u> - Medium Anemone - Reddish Bronze, Makes a well rounded pot plant. Better Color than Gypsy.....	7-25	11-1	4.15
<u>IMP. BR. DAISY</u> - Medium single, intense orange bronze.....	7-25	11-1	4.15
<u>NAVAHO</u> - Medium pompon, mahogany red.....	7-25	11-1	4.00
<u>IMP. RED DAISY</u> - Medium single, bright deep red.....	7-25	11-1	4.00
<u>RED SENECA</u> - Medium decorative pompon, reddish bronze.....	7-25	11-1	4.00
<u>BRONZE CHIP</u> - Medium decorative lively Or. Bronze sport of Blue Chip.....	7-25	11-1	4.00
<u>10 WEEK VARIETIES</u>			
<u>JETFIRE</u> - A flaming bronze red, medium decorative Pompon. This color is affected very little by hot weather. Excellent as a cut flower either under glass or in the Cloth House. Recommended April thru October. Also as a pot plant.....	7-28	11-5	3.50
<u>RUBICON</u> - Large bronze red decorative of good substance, good September thru November in greenhouse.....	7-28	11-1	3.65
<u>IMP. DK. BEAUREGARD</u> (New) - Dark Bronze Sport of Beauregard.....	7-28	11-5	4.00

POMPONS - SINGLES AND ANEMONES

<u>VARIETY</u>	<u>NORMAL PINCH DATE</u>	<u>MATURES</u>	<u>PRICE 50 ONLY</u>
<u>BRONZE &amp; RED</u>			
<u>10 WEEK VARIETIES</u>			
<u>BEAUREGARD</u> - Orange bronze decorative pompon of good form and substance. Excellent growth habits, responds very well for off-season schedules. Recommended highly for Cloth House from Sept. 1 thru October. Responds well in Spring Blooming, March thru May.....	7-28	11-5	3.40
<u>NECTARINE</u> - Medium decorative apricot orange. Greenhouse middle April thru May, responds well in Cloth House.....	7-28	11-5	4.00
<u>BITTERSWEET</u> - Medium single, bright red.....	7-28	11-5	3.90
<u>MRS. CHAS. WYLIE</u> - Dark Bronze anemone.....	7-28	11-5	3.90
<u>BARBARA FULLER</u> - Medium deep coral red anemone, excellent late Fall Pot plant.....	7-28	11-10	3.90
* <u>COPPERHEAD</u> - Very large coppery bronze decorative good disbudded or in sprays, excellent cut flower and recommended for pots. Must be pinched later than is usually recommended when grown as pots, because of height.....	7-28	11-10	3.75
<u>INCA</u> - Medium anemone, Amber bronze, useful as a pot plant the year around.....	7-28	11-10	4.00
<u>CHEVRON</u> - Intense mahogany red, withstands summer and early Fall heat.....	7-28	11-10	4.00
<u>CLIMAX</u> - Vivid intense orange, holds its warm orange shade very well in hot weather, April thru mid November programs.....	7-28	11-10	3.65
<u>THE TITAN</u> - Large anemone, disbud or spray, scarlet crimson.....	7-28	11-10	4.00
<u>BR. PANDORA</u> - Coral bronze, sport of Pandora...	7-28	11-10	4.00
<u>RED HUMDINGER</u> - Sport of the popular Humdinger, a badly needed valuable addition to the pot varieties.....	7-28	11-10	3.75
<u>PARAGON</u> - Large decorative, late Cloth House - red.....	7-28	11-12	3.90

POMPONS - SINGLES AND ANEMONES

<u>VARIETY</u>	<u>NORMAL PINCH DATE</u>	<u>MATURES</u>	<u>PRICE 50 ONLY</u>
<u>BRONZE &amp; RED</u>			
<u>10 WEEK VARIETIES</u>			
<u>BR. MASTERPIECE</u> - Large pompon, good disbud, responds well, rosewood.....	7-28	11-12	3.90
<u>DK. BR. MASTERPIECE</u> - An improvement over Br. Masterpiece, very good as disbud or spray. Used extensively along the West Coast, Dark Bronze.....	7-28	11-12	4.00
<u>11 WEEK VARIETIES</u>			
<u>RED PRINCETON</u> - Medium decorative, Brazil Red..	7-28	11-15	4.15
<u>RUBAIYAT</u> - Velvety red formal pompon, excellent red for extending the season thru October and January.....	8-1	11-20	3.65
<u>THELMA</u> - Medium size orange scarlet pompon pro- duced on good rigid stems and excellent sprays. A wonderful color admired by everyone. Responds well to late shading in the Cloth House. Recommended September thru March.....	8-1	11-20	3.50
<u>LEGAL TENDER</u> - Medium decorative, red gold.....	8-1	11-20	3.90
<u>RUSTICON</u> - Large pompon, rust bronze.....	8-1	11-20	3.75
<u>DK. BR. MINUET</u> - Medium pompon, dark rosewood salmon.....	8-1	11-23	4.25
<u>12 WEEK VARIETIES</u>			
<u>BR. GOLDSMITH</u> - Large decorative, responds to off-season blooming, Mars orange.....	8-5	11-25	3.75
<u>YOLANDA</u> - Small anemone, productive, orange bronze.....	8-5	11-25	4.15
<u>CRIMSON VALENCIA</u> - Large single, good disbud or spray, red crimson.....	8-5	11-28	4.00
<u>APR. VALENCIA</u> - Large single, disbud or spray, Apricot.....	8-5	11-28	3.90

POMPONS - SINGLES AND ANEMONES

<u>VARIETY</u>	<u>NORMAL PINCH DATE</u>	<u>MATURES</u>	<u>PRICE 50 ONLY</u>
<u>BRONZE &amp; RED</u>			
<u>12 WEEK VARIETIES</u>			
<u>GALAXY</u> - Orange scarlet single, responds readily to delayed flowering. Excellent for extending the season December thru March...	8-5	12-1	3.65
<u>13 WEEK VARIETIES</u>			
<u>BR. ENCHANTRESS</u> - Large anemone, disbud or spray responds well to off-season blooming, orange scarlet.....	8-10	12-5	4.15
<u>RED ENCHANTRESS</u> - A red sport of Enchantress, responds very readily to off-season blooming and should be very useful from Dec. 5th thru Feb. Good grown in sprays but disbudding enhances the color and with proper handling produces a large red at Christmas when reds are needed.....	8-10	12-5	3.90
<u>DEBONAIR</u> - Large pompon, responds nicely for Christmas when delayed with light. Crimson red.....	8-10	12-5	3.90
<u>CALVACADE</u> - Medium pompon, very good normal bloomer, mandarin red and gold.....	8-10	12-10	4.25
<u>HARLEQUIN</u> - Medium size crimson red decorative very good for delaying thru Christmas.....	8-10	12-20	4.00
<u>CHRIST. STAR</u> - Red Daisy, excellent winter variety, responds well to extended off-season blooming Dec. thru January.....	8-10	12-12	3.75
<u>BR. MINSTREL</u> - Medium pompon, coral bronze.....	8-10	12-12	3.90
<u>RED MINSTREL</u> - An Imp. Br. Minstrel, reddish bronze.....	8-10	12-12	3.90
<u>DK. BR. MINSTREL</u> - Medium pompon, deep reddish bronze.....	8-10	12-12	3.90
<u>14 WEEK VARIETIES</u>			
<u>CHRIST. GREETINGS</u> - Large decorative red pompon, responds well for extending the season December thru February.....	8-15	12-15	3.65

POMPONS - SINGLES AND ANEMONES

<u>VARIETY</u>	<u>NORMAL PINCH DATE</u>	<u>MATURES</u>	<u>PRICE 50 ONLY</u>
<u>BRONZE &amp; RED</u>			
<u>14 WEEK VARIETIES</u>			
<u>BR. KRAMER</u> - Bronze decorative, very good shipper, used extensively along the West Coast.....	8-15	12-20	4.25
<u>MERRYMAKER</u> - Medium single, responds well December thru March, crimson with bronze reverse.....	8-15	12-20	3.75
<u>POINSETTIA</u> - Large bright red daisy, sparse production, but beautiful for Christmas	8-15	12-20	3.75
<u>RED KRAMER</u> - Red Decorative.....	8-15	12-20	4.25
<u>BRICK RED KRAMER</u> - Brick red decorative pompons produced on stiff stems and good sprays, used extensively on the West Coast, a good shipper.....	8-15	12-20	4.25
<u>PINK &amp; LAVENDER</u>			
<u>8 WEEK VARIETIES</u>			
<u>ETHRELDA</u> - Dark orchid pink, dwarf, excellent pot plant.....	7-20	10-15	4.00
<u>JEWELL</u> - Lavender pink button pompons, need very little introduction. An old timer that is very versatile for either cut flowers under glass, or in the Gardens, and early Cloth House. Responds as a Spring Pot....	7-20	10-15	4.00
<u>CAROLYN YOSICK</u> - Medium Decorative Lavender.....	7-20	10-15	3.90
<u>CAPT. COOK</u> - Medium pompon, responds well to shading, deep rose.....	7-20	10-23	4.00
<u>MARY MCARTHUR</u> - Small pompon, salmon rose..	7-20	10-23	4.15
<u>9 WEEK VARIETIES</u>			
<u>PK. DOT</u> - Medium pompon, light lavender....	7-25	10-25	3.65
<u>PINKETTE</u> - Medium pompon, responds well April thru October. Lavender pink.....	7-25	10-25	3.90
<u>JESSIE</u> - Medium pompon, solid pink sport of Pk. Dot. Light lavender.....	7-25	10-25	3.75

POMPONS - SINGLES AND ANEMONES

<u>VARIETY</u>	<u>NORMAL PINCH DATE</u>	<u>MATURES</u>	<u>PRICE 50 ONLY</u>
<u>PINK &amp; LAVENDER</u>			
<u>9 WEEK VARIETIES</u>			
<u>REWARD</u> - Bright pink daisy, responds very well to year around blooming. A wonderful variety, has a sharp bud set and should be used in most programs from March thru October blooming.....	7-25	10-25	3.75
<u>DK. REWARD (NEW)</u> - Dk. sport of Reward - particularly useful under high temperature conditions.....	7-25	10-25	4.50
<u>THOMAS JOHNSON</u> - Large decorative - deep orchid pink - vigorous growing.....	7-25	10-28	4.00
<u>*BLUECHIP</u> - Medium large decorative, luminous orchid pink, responds easily to off-season flowering, excellent from March thru October blooming.....	7-25	11-1	3.25
<u>PINKCHIP</u> - Medium decorative, Light Pink sport of Bluechip.....	7-25	11-1	4.00
<u>LILLIAN DOTY</u> - Large pompon, good disbud for off-season August thru October. Light lavender.....	7-25	11-1	4.00
<u>TEMPO</u> - Large pink decorative, dark lavender recommended March thru June, and September thru October for Cloth House Culture.....	7-25	11-3	3.90
<u>10 WEEK VARIETIES</u>			
<u>DELIGHT (GHSE)</u> - Pink Daisy, tolerant to high temperatures, April thru mid Nov. programs.....	7-28	11-5	3.75
<u>DARK PORTRAIT</u> - Dark sport of Portrait - useful where a deeper pink is desirable	7-28	11-5	4.00
<u>*PORTRAIT</u> - Luminous orchid pink, short growth recommended as pot plant or cut flower in off-season blooming.....	7-28	11-8	3.25
<u>PINK PORTRAIT</u> - Sport of Portrait, same response as Portrait.....	7-28	11-5	4.00

POMPONS - SINGLES AND ANEMONES

<u>VARIETY</u>	<u>NORMAL PINCH DATE</u>	<u>MATURES</u>	<u>PRICE 50 ONLY</u>
<u>PINK &amp; LAVENDER</u>			
<u>10 WEEK VARIETIES</u>			
* <u>CRITERION</u> - A very good addition to the year around pink pot plants, large decorative pompon, suitable for disbudding. Low and bushy when grown as pot. Responds uniformly the year-around. Also excellent as disbud cut flower.....			
	7-28	11-8	3.65
<u>PENNANT</u> - Deep pink decorative, holds color well in all shading programs and responds well March thru October flowering			
	7-28	11-10	3.65
<u>BONNIE</u> - Very pleasing pink, large flowers, responds with Ill. Igloo. Formal and hard spray crops, April thru mid November.....			
	7-28	11-10	3.75
* <u>HUMDINGER</u> - Large violet formal pompon, low compact growth, good as pot plant..			
	7-28	11-10	3.75
<u>PERSONALITY</u> - Large Pompon, luminous Pink. An excellent pot plant variety which is tolerant of cool temperatures for bud initiation. A compact grower and good producer - Particularly useful - March through June and Fall Months.....			
	7-28	11-10	4.00
* <u>QUEEN OF PINKS</u> - Small incurved pink disbud, the number one pink pot at most seasons, responds very sharply to off-season blooming, a very formal flower of good substance and color during most of the year. Recommended September thru June..			
	7-28	11-10	3.50
<u>DK. PK. PANDORA</u> - Dark pink, sport of Pandora, same response as Pandora:.....			
	7-28	11-10	4.15
<u>CADENZA</u> - Large anemone - Lavender pink October thru May tolerant of low temperature.....			
	7-28	11-10	4.00
<u>PANDORA</u> - Large decorative pompon, bright deep pink, good in normal season and August & September Cloth House.....			
	7-28	11-10	3.75
<u>SCINTILLATION</u> - Pink, very vigorous superb Cloth House variety mid August thru mid October, must have 60 degrees for bud initiation.....			
	7-28	11-10	4.15



POMPONS - SINGLES AND ANEMONES

<u>VARIETY</u>	<u>NORMAL PINCH DATE</u>	<u>MATURES</u>	<u>PRICE 50 ONLY</u>
<u>PINK &amp; LAVENDER</u>			
<u>10 WEEK VARIETIES</u>			
<u>MASTERPIECE</u> - Bright deep lavender, free growing and responds to off-season flowering readily. Fades rapidly in warm temperatures, but is still used in a lot of schedules, very productive.....	7-28	11-12	3.75
<u>CELEBRATION</u> - Intermediate pompon, salmon pink with golden bronze overcast... Requires low temperature finish, spray program April thru May and Sept. thru Nov.....	7-28	11-12	4.25
<u>TAFFETA</u> - A two tone soft pink decorative, responds readily to off-season flowering, lacks some in color, but its ease of response makes this variety desirable in some schedules.....	7-28	11-12	3.65
<u>ILL. ACCENT</u> - Large formal Brt.. Magenta formal decorative (Humdinger color) useful as a pot plant, disbud or spray type, April thru March as a cut flower.....	7-28	11-12	4.25
<u>11 WEEK VARIETIES</u>			
<u>FREIDA</u> - Large anemone, disbud or spray, light lavender pink.....	8-1	11-15	3.75
<u>DK. NORMA</u> - Large anemone disbud, dark lavender.....	8-1	11-15	4.00
<u>ILL. FORMAL</u> - Large decorative, quilled petal lavender pink.....	8-1	11-18	3.90
<u>NUGANO</u> - Medium pompon, rose pink in color very desirable for Thanksgiving.....	8-1	11-20	4.15
<u>DELMAR</u> - Large Lt. Lavender Pompon, March thru April, Mid Sept. thru October - Cloth House.....	8-1	11-20	3.75
<u>GRAND SLAM</u> - Medium large single, good normal bloomer, silvery pink.....	8-1	11-20	4.00
<u>PK. L. IS. BEAUTY</u> - Large disbud anemone, light lavender.....	8-1	11-20	4.00
<u>ALMEGA</u> - Large pompon, form and color good-light lavender .....	8-1	11-20	3.65

POMPONS - SINGLES AND ANEMONES

<u>VARIETY</u>	<u>NORMAL PINCH DATE</u>	<u>MATURES</u>	<u>PRICE 50 ONLY</u>
<u>PINK &amp; LAVENDER</u>			
<u>11 WEEK VARIETIES</u>			
<u>MINUET</u> - Medium pompon, good form and substance, rose pink.....	8-1	11-23	3.90
<u>12 WEEK VARIETIES</u>			
* <u>BEAUT. LADY</u> - Large lavender pink anemone, good as pot plant for extending the season Dec. and January.....	8-5	11-25	3.75
<u>VALENCIA</u> - Large single, disbud or apray, responds well, rose pink.....	8-5	11-28	3.90
<u>DK. VALENCIA</u> - Large single, disbud or spray, responds well, orchid pink.....	8-5	11-28	3.75
<u>HERITAGE</u> - Large dark pink formal pompon, good producer, responds to off-season blooming recommended Dec. thru March.....	8-5	12-1	4.00
<u>13 WEEK VARIETIES</u>			
<u>DK. ENCHANTRESS</u> - Large anemone, disbud or spray, dark lavender.....	8-10	12-5	4.00
<u>ENCHANTRESS</u> - Large anemone, can be grown as disbud or spray, should be used more for extending the season. - Responds sharply with bud set, sets even with marginal temperature. A beautiful pink that makes a big showing, recommended December thru March flowering.....	8-10	12-5	4.00
<u>DEBUTANTE</u> - Large pink daisy, responds sharply to off-season blooming, very nice color, with good sprays and growth habit. December thru March.....	8-10	12-10	3.75
<u>IMP. DK. SUPREME</u> - Large anemone, disbud, lavender pink.....	8-10	12-10	4.00
<u>LT. PK. MINSTREL</u> - Sport of Minstrel, shell pink.....	8-15	12-12	3.75
<u>MINSTREL</u> - Medium pompon, good substance, lavender pink.....	8-15	12-12	3.75
<u>IMP. PK. MINSTREL</u> - A beautiful shade of pink pompon, produced on good sprays with good stems and foliage. Good normal season and delays well if the temperature is kept at a constant 60 degrees.....	8-15	12-12	3.90

POMPONS - SINGLES AND ANEMONES

<u>VARIETY</u>	<u>NORMAL PINCH DATE</u>	<u>MATURES</u>	<u>PRICE 50 ONLY</u>
<u>PINK &amp; LAVENDER</u>			
<u>14 WEEK VARIETIES</u>			
<u>RIVIERA</u> - Medium decorative, responds December thru March, lavender rose pink.....	8-15	12-15	3.90
<u>DK. RIVIERA</u> - Medium decorative, deep lavender same as Riviera, except darker.	8-15	12-15	4.00
<u>BURGUNDY KRAMER</u> - Medium decorative, burgundy.....	8-15	12-20	4.25
<u>AMER. BEAUTY KRAMER</u> - Dark Rose Pink decorative pompon produced on excellent growth with good stems and foliage. All the Kramer varieties are used in quantity along the West Coast and are good shippers.....	8-15	12-20	4.25
<u>PK. KRAMER</u> - Medium decorative, rosy lavender.....	8-15	12-20	4.25
<u>MEDALLION</u> - Lavender rose pompon, produced on good growth, recommended Dec. thru February for off-season flowering.....	8-15	12-20	3.90
<u>ROSE MEDALLION</u> - Rose pink, sport of Medallion.....	8-15	12-20	4.15
<u>LYNDA McLANE</u> - Medium pompon, light lavender, good growth habits, excellent late pink pompon.....	8-15	12-25	3.90
<u>ALVODA</u> - Large pink pompon for the late December program.....	8-15	12-25	3.75

S T A N D A R D S

WHITE

8 WEEK VARIETIES

<u>WHITE PINK CHIEF</u> - Pure white selection from Pink Chief.....	7-20	10-15	4.00
<u>SILVER SHEEN</u> - Medium incurved, white.....	7-20	10-20	3.65

STANDARDS

<u>VARIETY</u>	<u>NORMAL PINCH DATE</u>	<u>MATURES</u>	<u>PRICE 50 ONLY</u>
<u>WHITE</u>			
<u>9 WEEK VARIETIES</u>			
<u>MARBLEHEAD</u> - Small incurved, pure white responds to short disbud programs, during hot weather, holds its size well.....	7-25	10-25	3.75
<u>SILVER QUEEN</u> - A new white spider of excellent quality with superb stem and foliage.....	7-25	10-25	4.00
* <u>LUNA</u> - Small cream white incurved compact spreading habit, responds well under cool temperatures, good year around pot.....	7-25	10-25	3.75
<u>NIGHTINGALE</u> - A beautiful white spider variety with a Chartreuse green overcast used very extensively along the West Coast. Excellent shipper in great demand.....	7-25	10-25	3.90
<u>AMBASSADOR</u> - Large incurved, cream white.....	7-25	10-25	3.75
<u>SNOW WHITE</u> - Large incurved, white.....	7-25	11-1	3.40
* <u>QUEEN'S LACE</u> - Very artistic pure white spider, responds to off-season flowering September thru November and March thru May a pot plant, requires staking and should be pinched 10 days after short days have been started..	7-25	11-1	3.65
<u>WHIRLWIND</u> - Large pure white reflexed Standard.	7-25	11-1	4.00
* <u>WILSON'S WHITE</u> - A large flowered pure white incurved with loose petals, responds readily to off season flowering. Its habit of growing compact and spreading and its ready response has made this the best white pot variety to date for year around flowering.	7-25	11-1	3.50
<u>MRS. H. ROBINSON</u> - Large white incurved, used extensively thru the South for blooming at All Saints Day.....	7-25	11-1	3.90
<u>ALBATROSS</u> - Large incurved pure white Standard used very extensively along the West Coast, good shipper and excellent stems. A good variety for All Saints Day.....	7-25	11-1	3.40

S T A N D A R D S

<u>VARIETY</u>	<u>NORMAL PINCH DATE</u>	<u>MATURES</u>	<u>PRICE 50 ONLY</u>
<u>WHITE</u>			
<u>9 WEEK VARIETIES</u>			
<u>WH. MARY GARDEN</u> - White spider, sport of Mary Garden.....	7-25	11-1	3.90
<u>10 WEEK VARIETIES</u>			
<u>OREGON</u> - Semi inc. white, vigorous growing compact lending itself for pot plant culture excellent breaking habits producing flowers free of black centers.....	7-28	11-5	4.00
<u>GT. BETSY ROSS</u> - Pure white sport of Betsy Ross, large incurved standard, excellent normal season variety and for the year around Standard. Responds readily and withstands the heat, recommended for June thru October flowering.....	7-28	11-5	3.40
<u>WH. RAYONANTE</u> - Large white spider, straight tubular petals, flowers have good substance and ships exceedingly well. Used very extensively along the West Coast, and for off-season blooming September or in the Cloth House.....	7-28	11-5	3.90
<u>FRED SHOESMITH</u> - Large incurved pure white. Larger than Indianapolis in the winter, excellent substance a valuable addition to winter standards.....	7-28	11-5	4.25
<u>*IND. WHITE</u> - Large incurved pure white standard excellent for off-season blooming, responding readily to marginal temperatures. Recommended March thru May and Oct. thru Dec. Also used extensively for pots.....	7-28	11-5	3.15
<u>SUSAN LEIGHTON</u> - Large white spider, Standard and pot plant programs, recommended for Oct. and Nov. flowering, intolerant of low light intensities.....	7-28	11-6	3.90
<u>SENTINEL</u> - Med. Incurved white. Tolerant of high temperatures, requires high light intensities.....	7-28	11-8	4.00
<u>MONUMENT</u> - Medium incurved, Cream white.....	7-28	11-10	3.75
<u>CRYSTAL QUEEN</u> - An Imp. Jean Elizabeth in (Imp. Jean Eliz.) clearness of color, excellent for off-season Nov thru March.....	7-28	11-10	3.65

S T A N D A R D S

<u>VARIETY</u>	<u>NORMAL PINCH DATE</u>	<u>MATURES</u>	<u>PRICE 50 ONLY</u>
<u>WHITE</u>			
<u>10 WEEK VARIETIES</u>			
<u>WH. POCKETT</u> - Large exhibition, white.....	7-28	11-10	4.00
<u>11 WEEK VARIETIES</u>			
<u>STERLING</u> - Large incurved white.....	8-1	11-15	4.00
<u>MARKETEER</u> - Medium incurved white.....	8-1	11-18	3.65
<u>MEFO</u> - Large incurved cream white standard responds to off-season blooming. Recommended November thru March.....	8-1	11-20	3.40
* <u>WH. FRICK</u> - Medium semi-incurved, white suffused with pink.....	8-1	11-20	4.15
<u>WH. PETER JOHN</u> - Medium reflexed white, used extensively along the West Coast, grown as disbuds or China Mums.....	8-1	11-23	3.90
<u>12 WEEK VARIETIES</u>			
<u>CHATTANOOGA</u> - Large incurved white, very good for normal bloom and used for extended blooming December thru March through the South.....	8-1	11-25	3.75
<u>DEC. GLORY</u> - Medium incurved, perfect form, good shipper, white.....	8-5	12-1	3.75
<u>MARG. MOELLER</u> - Medium incurved, White.....	8-5	12-3	3.75
<u>13 WEEK VARIETIES</u>			
<u>DEC. WHITE</u> - Medium incurved, White.....	8-10	12-5	3.90
<u>WH. MISTLETOE</u> - Medium incurved, White.....	8-10	12-5	4.15
<u>SNOWLINE</u> - Large incurved, White.....	8-10	12-10	4.00
<u>SMITH'S WHITE</u> - A medium size white semi-incurved used for late normal blooming, does not respond too well in delayed blooming.....	8-10	12-13	3.65

S T A N D A R D S

<u>VARIETY</u>	<u>NORMAL PINCH DATE</u>	<u>MATURES</u>	<u>PRICE 50 ONLY</u>
<u>8 WEEK VARIETIES</u>			
<u>HARVEST GOLDEN</u> - Medium incurved, deep golden.....	7-20	10-15	3.75
* <u>GOLD LODE</u> - Reflexed golden yellow flower, very good spring pot. Also good large garden disbud and early Fall under glass	7-20	10-15	4.00
<u>CELESTRA</u> - Small incurved, very solid Mum, bright lemon.....	7-20	10-15	4.00
<u>BUTTERBALL</u> (GHSE) - Small incurved light golden.....	7-20	10-20	3.90
<u>MRS. KIDDER</u> - Medium incurved, responds well, very good for local use, deep lemon.....	7-20	10-20	3.75
* <u>BLAZING GOLD</u> - Medium sized Standard used extensively as a pot plant and early Mums, responds readily for off-season pots.....	7-20	10-23	3.50
<u>9 WEEK VARIETIES</u>			
* <u>GEORGIA</u> - Intermediate incurved, a very showy yellow pot Mum, naturally compact growth, recommended April thru Nov. and year around through the South.....	7-25	10-25	3.75
<u>MORIBANA</u> - Intense golden spider with a prominent disc. Very good substance and strong stems, an excellent spider of lasting quality, responds to shade readily.....	7-25	10-28	4.25
<u>LUYONA</u> - Large yellow spider mum on good stems with quality blooms.....	7-25	10-25	3.90
<u>YEL. AMBASSADOR</u> - Large incurved, light lemon yellow.....	7-25	10-25	3.90
<u>SUNGLOW</u> - Large incurved, good shipper golden yellow.....	7-25	10-25	3.90
<u>GOOD NEWS</u> - Golden yellow incurved Standard with waxy petals, the year around Standard that all other Standards are compared with. Response is sure at all times. Shipping qualities are superb, used very heavily along the West Coast.....	7-25	11-1	3.15

S T A N D A R D S

<u>VARIETY</u>	<u>NORMAL PINCH DATE</u>	<u>MATURES</u>	<u>PRICE 50 ONLY</u>
<u>9 WEEK VARIETIES</u>			
<u>YEL. IVANHOE</u> - Golden yellow sport from Ivanhoe, very good as disbud or China Mums, responds uniformly.....	7-25	11-1	3.75
<u>BLAZING WEST</u> - Golden yellow. Large incurved possessing exceptional stem quality....	7-25	11-1	4.50
* <u>YEL. LACE</u> - Sport of Queens Lace, responds to same treatment, light lemon.....	7-25	11-1	3.75
* <u>GOLD LACE</u> - Spider, golden yellow.....	7-25	11-1	3.75
<u>YEL. ALBATROSS</u> - Lemon yellow, sport of Albatross good shipper used along the West Coast..	7-25	11-1	4.25
<u>WILSON'S YELLOW</u> - Sport of Wilson's White....	7-25	11-1	4.00
<u>10 WEEK VARIETIES</u>			
<u>CHAIRMAN</u> - Large Golden yellow Decorative Standard - Tolerant of low temperatures for bud initiation.....	7-28	11-5	4.00
<u>YEL. WAIKIKI</u> - Spider lemon yellow.....	7-28	11-5	4.25
* <u>DK. IND. YELLOW</u> - Large incurved deep lemon..	7-28	11-5	3.50
* <u>IMP. IND. YELLOW</u> - Large incurved, deep lemon.....	7-28	11-5	3.25
<u>YEL. BETSY ROSS</u> - Lemon yellow incurved, sport of Betsy Ross.....	7-28	11-5	4.00
* <u>IND. YELLOW</u> - Large incurved, bright lemon yellow, very versatile and used in all seasons, both in cut flower schedules and pot plant schedules. Sets bud uniformly even at marginal temperatures. All the other Ind. Yellow sports respond to the same treatment.....	7-28	11-5	3.25
<u>IND. GOLD</u> - Golden sport of Ind. Yellow.....	7-28	11-5	3.75
<u>YEL. RAYONANTE</u> - Large yellow spider straight tubular petals, very extensively used along the West Coast Good snipper, responds to off-season flowering September on in the Cloth House.....	7-28	11-5	3.90



S T A N D A R D S

<u>VARIETY</u>	<u>NORMAL PINCH DATE</u>	<u>MATURES</u>	<u>PRICE 50 ONLY</u>
<u>YELLOW</u>			
<u>10 WEEK VARIETIES</u>			
<u>YEL. CALYPSO</u> - Large lemon Yel. incurved, short growing particularly useful for pot culture.....	7-28	11-5	4.00
<u>YEL. DELAWARE</u> - Sport of Delaware, same response and growth habits as Delaware. A welcome addition to the pot plant group..	7-28	11-8	4.00
<u>YEL. LEIGHTON</u> - Lemon yellow sport of Susan Leighton.....	7-28	11-8	4.00
<u>YEL. MONUMENT</u> - Large incurved light lemon yellow.....	7-28	11-10	3.75
<u>IMP. YEL. RAYONANTE</u> - Clear yellow sport of Rayonante.....	7-28	11-5	3.90
<u>YEL. QUEEN</u> - Light lemon yellow, sport of Orchid Queen, used in all programs where the other Queens are used.....	7-28	11-10	3.65
<u>YEL. POCKETT</u> - Large exhibition, light lemon yellow.....	7-28	11-10	4.15
<u>11 WEEK VARIETIES</u>			
<u>LORRAINE</u> - Spider, lemon yellow.....	8-1	11-15	4.15
<u>YEL. MARKETEEER</u> - Medium incurved, light lemon..	8-1	11-18	4.00
<u>YEL. MEFO</u> - Large incurved yellow Standard, responds to off-season blooming and is used in most off-season schedules from November thru June.....	8-1	11-20	3.40
<u>*BONN. DELUXE</u> - Small incurved Standard, the top variety in pot plants. Habit of growth and response is superb, the variety that other pot plants are judged by. Included in all schedules, but temperature should be 65° degrees or above during the dark months to produce a uniform bud set.....	8-1	11-20	3.15
<u>FRIENDLY RIVAL</u> - Large incurved, responds well, very good for local use, deep chrome.....	8-1	11-20	3.75

S T A N D A R D S

<u>VARIETY</u>	<u>NORMAL PINCH DATE</u>	<u>MATURES</u>	<u>PRICE 50 ONLY</u>
<u>YELLOW</u>			
<u>11 WEEK VARIETIES</u>			
<u>HARVESTER</u> - Medium incurved good substance, deep lemon.....	8-1	11-23	3.65
<u>MARIE DE PETRIS</u> - Medium incurved; stiff stem good shipper, deep golden.....	8-1	11-23	3.75
<u>YEL. PETER JOHN</u> - Medium lemon yellow re- flexed standard of good substance and growth. Use extensively along the West Coast as disbuds or China Mums.....	8-1	11-23	4.00
<u>12 WEEK VARIETIES</u>			
<u>DK. YEL. CHATTANOOGA</u> - Large incurved, deep lemon yellow, sport of Chattanooga.....	8-5	11-25	3.75
<u>*SUNGOLD</u> - Large incurved, quilled at times, deep lemon yellow.....	8-5	11-25	3.90
<u>GOLDEN PEARSON</u> - Golden yellow incurved standard, sport of Gladys Pearson; used very extensively for blooming at Thanks- giving.....	8-5	11-25	3.75
<u>YEL. DEC. GLORY</u> - Medium incurved, sport of December Glory.....	8-5	12-1	3.90
<u>GOLDEN MRS. ROSS</u> - Large incurved, very good for local use, light golden.....	8-5	12-3	3.75
<u>YEL. MOELLER</u> - Medium incurved, lemon yellow.	8-5	12-3	4.15
<u>13 WEEK VARIETIES</u>			
<u>GOLDEN MISTLETOE</u> - Medium incurved, light golden.....	8-10	12-5	4.15
<u>TOBINS YELLOW</u> - Sport of Smiths White, light yellow semi-curved. The best late Standard flowering normally Dec. 15, can be held for Christmas.....	8-10	12-13	3.65
<u>METEORE</u> - Medium incurved, deep lemon.....	8-10	12-13	3.75
<u>DAUNTLESS</u> - Small incurved, lemon yellow....	8-10	12-13	4.15

S T A N D A R D S

<u>VARIETY</u>	<u>NORMAL PINCH DATE</u>	<u>MATURES</u>	<u>PRICE 50 ONLY</u>
<u>BRONZE &amp; RED</u>			
<u>8 WEEK VARIETIES</u>			
<u>MAYFORD'S TRIUMPH</u> - Large orange reflexed, exceptional color for the garden and early under Glass. Wonderful cut outside where seasons are late enough.....	7-20	10-15	4.00
<u>AMBER BRIGHT</u> - Large golden bronze incurved, beautiful in the outside garden as cut flowers where the weather permits. Should be grown 6 to 8 Stems to the plant disbudded, amber bronze.....	7-20	10-15	3.90
<u>ZYLON (NEW)</u> - Medium Crimson incurved. Excellent for garden or early greenhouse use. Responds well to Cloth House shading.....	7-20	10-20	4.50
<u>9 WEEK VARIETIES</u>			
<u>DETROIT NEWS</u> - Large incurved standard, responds well and is the top bronze for year around schedules. Used very extensively along the West Coast.....	7-25	11-1	3.40
* <u>ROYAL BRONZE</u> Large orange bronze disbud, produced on tall straight stems very good as disbud. Responds well to off-season flowering. Used some as pot, but is normally too tall.....	7-25	11-1	3.75
<u>IVANHOE</u> - Large disbud bronze, produced on good straight stems, used as disbud or China Mums along the West Coast.....	7-25	11-1	3.90
<u>10 WEEK VARIETIES</u>			
<u>MRS. EISENHOWER</u> - Large golden bronze spider, quills are slightly barbed and possess great substance. Very vigorous and tall growth. Good foliage and stem. Normal bloom November 5.....	7-28	11-5	4.00
* <u>DK. IND. BRONZE</u> - Large incurved sport of Ind. Bronze, dark bronze.....	7-28	11-5	3.50
<u>WAIKIKI</u> - Spider Bronze.....	7-28	11-5	4.00

S T A N D A R D S

<u>VARIETY</u>	<u>NORMAL PINCH DATE</u>	<u>MATURES</u>	<u>PRICE 50 ONLY</u>
----------------	------------------------------	----------------	--------------------------

BRONZE & RED

10 WEEK VARIETIES

* <u>IND. BRONZE</u> - Large incurved buff bronze Standard, a good bronze for November thru March, but fades during the late spring and summer, responds readily.....	7-28	11-5	3.50
<u>IND. APRICOT</u> - Apricot, sport of Ind. Bronze....	7-28	11-5	3.90
<u>GENA HARWOOD</u> - Large bronze spider, sport of (Br. Rayonante) Rayoante, very good shipper used extensively along the West Coast. Responds to off-season blooming Sept. on in Cloth House.....	7-28	11-5	3.90
<u>LUZON</u> - Large Apricot bronze spider, outstand- ing stem and flower quality.....	7-28	11-5	4.15
<u>ANACONDA</u> - Large incurved, very good for local use, copper red.....	7-28	11-8	3.90
* <u>DELAWARE</u> - Reddish bronze excellent compact free breaking pot plant variety, re- sponds sharply to year around flowering. Looks very promising as year around variety, particularly during the late summer and fall.....	7-28	11-8	3.50
<u>BR. CALYPSO</u> - Or. Bronze incurved, very short, use only for pot culture.....	7-28	11-10	4.00
<u>COPPER QUEEN</u> - Copper sport of Orchid Queen....	7-28	11-10	4.00
<u>BR. ORCHID QUEEN</u> - Large incurved, apricot buff	7-28	11-10	3.90
<u>MRS. ROY</u> - Large incurved, reddish bronze with golden buff reverse, responds evenly to off-season flowering.....	7-28	11-13	3.65
<u>GARNET KING</u> - Medium reflexed standard, the only true red Standard, velvety red excellent as cut, normal season and for pot plant.....	7-28	11-13	3.90

11 WEEK VARIETIES

<u>BALCOMBE'S PERFECTION</u> - Large orange bronze Standard of medium height.....	7-28	11-15	4.15
--	------	-------	------

S T A N D A R D S

<u>VARIETY</u>	<u>NORMAL PINCH DATE</u>	<u>MATURES</u>	<u>PRICE 50 ONLY</u>
<u>BRONZE &amp; RED</u>			
<u>11 WEEK VARIETIES</u>			
<u>CALVERT'S GOLD</u> - Intermediate semi-incurved Standard and short crops mid October thru April. Best mid October thru January.....	7-28	11-20	3.75
<u>BR. FRICK</u> - Medium incurved, light bronze.....	8-1	11-20	4.15
<u>BR. PETER JOHN</u> - Medium reflexed rosewood bronze used extensively along California Coast as disbud or China Mums.....	8-1	11-23	4.00
<u>12 WEEK VARIETIES</u>			
<u>GLADYS PEARSON</u> - Large light buff bronze Standard still very much in demand for normal season blooming.....	8-5	11-25	3.75
<u>OAK LEAF</u> - Dark bronze, sport of Gladys Pearson. As is true with all the Pearsons, these are the Thanksgiving Football Mums very easily grown sure fire mum.....	8-5	11-25	3.75
<u>13 WEEK VARIETIES</u>			
<u>BR. MISTLETOE</u> - Medium incurved, buff bronze ...	8-10	12-5	4.15
<u>PINK &amp; LAVENDER</u>			
<u>8 WEEK VARIETIES</u>			
<u>PK. CHIEF</u> - Medium size incurved pink Standard, good normal season and as early Garden Disbuds in the Southern Gardens where weather permits.....	7-20	10-15	3.75
* <u>MAJOR BOWES</u> - Deep lavender Standard, good for normal season under glass, and as early out-door cut flower in the Southern gardens where weather permits.....	7-20	10-15	4.00
<u>9 WEEK VARIETIES</u>			
<u>BLUE RIBBON</u> - Small lavender, pink incurved color improves Queen of Pinks during high temperature, responds sharply.....	7-25	11-1	4.00
<u>MARY GARDEN</u> - Large light lavender spider good stem, respnds very well to Cloth. House shading for September on.....	7-25	11-1	3.90

S T A N D A R D S

<u>VARIETY</u>	<u>NORMAL PINCH DATE</u>	<u>MATURES</u>	<u>PRICE 50 ONLY</u>
<u>PINK &amp; LAVENDER</u>			
<u>9 WEEK VARIETIES</u>			
<u>BUNBU</u> - Spider deep lavender pink.....	7-25	11-1	4.25
<u>10 WEEK VARIETIES</u>			
<u>RAYONANTE</u> - Large lavender spider with straight tubular petals, good shipper used extensively along the West Coast, responds to off-season flowering Sept. on in Cloth House.....	7-28	11-5	3.90
<u>J.W. PRINCE</u> - Medium incurved, lavender Standard with good substance, sport of Chieftan, and is used as China Mums on the West Coast.....	7-28	11-5	3.75
* <u>IND. PINK</u> - Large incurved Standard, bright lavender, like all of the Indianapolis varieties responds to off-season blooming and is very versatile making it the top selling pink Standard. Fades badly during the very hot weather.....	7-28	11-5	3.25
* <u>PEGGY HOOVER</u> - Spider, lavender pink.....	7-28	11-10	4.15
<u>LAV. QUEEN</u> - Large incurved, color more intense than Dark Orchid Queen.....	7-28	11-10	3.75
<u>ORCHID QUEEN</u> - Large incurved, lavender.....	7-28	11-10	3.75
<u>DK. ORCHID QUEEN</u> - Dark sport of Orchid Queen responds well for off-season blooming and is particularly useful during January thru March. Used extensively along the West Coast.....	7-28	11-10	3.65
<u>PK. POCKETT</u> - Large exhibition, lavender....	7-28	11-10	4.15
<u>MASUMI PINK</u> - Large incurved, deep pink.....	7-28	11-10	4.15
<u>LAUGHTER</u> - Medium Semi incurved, light lavender pink.....	7-28	11-10	4.00
<u>MERRIMENT</u> - Med. Reflexed - Lavender Pink...	7-29	11-10	4.15
<u>11 WEEK VARIETIES</u>			
<u>CALVERTS PINK</u> - Intermediate incurved orchid pink suffused with salmon. Standard or short crop, mid November thru January...	8-1	11-17	3.75

S T A N D A R D S

<u>VARIETY</u>	<u>NORMAL PINCH DATE</u>	<u>MATURES</u>	<u>PRICE 50 ONLY</u>
<u>PINK &amp; LAVENDER</u>			
<u>11 WEEK VARIETIES</u>			
<u>ARISTOCRAT</u> - Large incurved, deep lavender.....	8-1	11-20	3.90
* <u>HELEN FRICK</u> - Medium incurved, rose pink...	8-1	11-20	3.90
* <u>THANKS PINK</u> - Medium reflexed dark amaranth..	8-1	11-23	3.90
<u>DK. PETER JOHN</u> - Medium reflexed, amaranth, used as disbud or China Mum along the West Coast.....	8-1	11-23	4.00
<u>ED. SEIDEWITZ</u> - Large incurved, very good normal bloomer, lavender pink.....	8-1	11-23	3.90
<u>LT. PETER JOHN</u> - Lavender, reflexed used very extensively as disbud or China Mum along the West Coast.....	8-1	11-23	4.00
<u>13 WEEK VARIETIES</u>			
<u>PK. MISTLETOE</u> - Medium incurved, lavender...	8-10	12-5	4.15

GARDEN VARIETIES

\*RECOMMENDED FOR SPRING POT PLANTS PINCHED  
AND SHORT DAY TREATMENT SAME DAY

(D) VARIETIES RECOMMENDED AS BETTER WHEN DISBUDED.

<u>VARIETY</u>	<u>HEIGHT</u>	<u>MATURES</u>	<u>PRICE 50 ONLY</u>
<u>WHITE</u>			
<u>OSAGE</u> - Cushion, decorative, border, white...	Short	Sept. 5	4.00
<u>CANDLELIGHT</u> - Decorative, secondary border, ivory white.....	Med.	Sept. 5	3.90
<u>D.D.AHRENS</u> - Decorative, background, white...	Tall	Sept. 10	4.00
<u>PAPER WHITE</u> - Decorative, secondary border, white.....	Med.	Sept. 10	3.75
<u>*CRYSTAL MAID</u> - Cream decorative pompon produced on low growing plant that is well suited for borders. Responds well to Spring pot culture. Also very good for 3" pot bloom- ing.....	Short	Sept. 12	4.00
<u>*CHRIS COLUMBUS</u> - Large decorative pompon, cream white. Responds to off-season blooming and is the top white Garden Variety for Spring pot blooming. Also tops for 3" pot blooming.....	Tall	Sept. 15	3.65
<u>WH. CUSHION</u> - Cushion, border, white, showing traces of pink in bud. Blooms later the first year.....	Short	Sept. 15	3.50
<u>*GLORIA</u> - A very free flowering medium sized decorative pompon. Flowers are larger and more double than Chris Columbus. Good growth habits and foliage. Makes a beautiful Spring pot plant.....	Med.	Sept. 15	4.00
<u>*CALCITE</u> - Cream white decorative, responds to off-season blooming. Good Spring Garden pot plant.....	Med.	Sept. 15	3.75
<u>POWDERPUFF</u> - Cushion, border, white.....	Short	Sept. 15	3.75
<u>POLAR ICE</u> - Decorative and secondary border, white.....	Med.	Sept. 15	3.90
<u>*WH. BOUNTY</u> - Cream white button pompon. Responds to off-season blooming. Spring garden pot plant.....	Tall	Sept. 15	3.65



GARDEN VARIETIES

<u>VARIETY</u>	<u>HEIGHT</u>	<u>MATURES</u>	<u>PRICE 50 ONLY</u>
<u>WHITE</u>			
D. <u>WH. TOWER</u> - Large pompon, secondary border and cut, cream white.....	Tall	Sept. 15	3.90
<u>BENORA</u> - Dwarf cushion type growth with excellent stems and foliage. Large 3" White flowers on well shaped plants.....	Short	Sept. 20	4.00
<u>WHITE SAIL</u> - Large white decorative with cream center, a clean vigorous grower...	Med.	Sept. 23	4.50
<u>WH. WONDER</u> - Large pompon, secondary border and cut. Ivory white.....	Med.	Sept. 25	3.90
<u>JESSAMINE WILLIAMS</u> - White, quilled type spoon, early free flowering variety.....	Med.	Sept. 25	4.15
* <u>SHALIMAR (H)</u> - Large white decorative flowers produced on medium height growth. Good Mother's Day and later pot. Better when disbudded.....	Med.	Sept. 25	3.90
<u>THERESA STONE</u> - Cream ivory pompon for secondary border or cut.....	Med.	Sept. 25	4.15
<u>WH. RICE</u> - Large pompon border and pots, white.....	Short	Sept. 25	3.90
* <u>OSTOSA</u> - Large white low growing, responds to off-season blooming. A good addition to the Spring Garden pots.....	Short	Sept. 25	4.00
<u>WH. CLOUD</u> - Decorative, secondary border, white.....	Tall	Sept. 25	4.00
<u>NORTH STAR</u> - Single, background and cut flower, White.....	Med.	Sept. 28	3.90
* <u>PEPITA</u> - Small button pompon, good spring pot plant variety.....	Med.	Sept. 28	3.90
<u>SPINDRIFT</u> - Decorative, secondary border, white.....	Med.	Oct. 1	4.00
<u>GARDENIA</u> - Large white decorative, flowers are very double and large, 3½" in diameter. A very profuse bloomer combining extreme vigor and strong stems with excellent foliage on a semi-dwarf plant. An outstanding variety.....	Med.	Oct. 1	3.75

GARDEN VARIETIES

VARIETY	HEIGHT	MATURES	PRICE 50 ONLY
<u>WHITE</u>			
<u>MARSHMALLOW</u> - Medium single with waxy petals very good low growing garden variety Excellent for Spring pots.....	Med.	Oct. 5	4.15
<u>LIMELIGHT</u> - Decorative, background and cut, white.....	Med.	Oct. 5	4.00
<u>LYRIC</u> - Small single with good substance in petals. Very attractive as Spring pot plant. Very good also as 3" Pot Plant...	Short	Oct. 5	4.00
<u>AVALANCHE</u> - Large decorative secondary border, cream white.....	Tall	Oct. 5	4.15
<u>HORIZON</u> - Medium decorative pompons produced on good sprays with excellent stems and foliage. Exceptionally good as early cut flower under glass or in the garden. Re- sponds very well for off-season flowering in the Spring, either as cut or pot plant	Med.	Oct. 5	3.90
<u>IVORY GLOW</u> - Large disbud, ivory.....	Med.	Oct. 5	3.75
* <u>CLASSIC</u> - Pure white pompon, used as a cut flower under glass or in the garden, not as good for this purpose as Horizon, but acceptable.....	Tall	Oct. 10	4.00
* <u>MINNESOTA (NEW)</u> - Large white, incurved Pompon, beautiful for disbud and Pot Plant culture	Med.	Oct. 10	4.50
* <u>MAESTRO</u> - Medium pompons, cream in color, pro- duced on very low growing plants. Re- sponds to off-season blooming. Recommend- ed as Spring Garden Pots.....	Short	Oct. 10	4.15
* <u>ALBION</u> - Large decorative, white, compact growth habit. Very attractive as a Spring pot plant.....	Med.	Oct. 10	4.25
<u>WH. MASQUERADE</u> - Silvery White Button - a good companion for the popular Masquerade.....	Med.	Oct. 10	4.50
<u>WH. SPOON</u> - Spoon, secondary border, white....	Med.	Oct. 10	3.90
* <u>SILVERPLATE</u> - Medium decorative, pure white responds well for Spring Pot Sales.....	Med.	Oct. 12	4.00
<u>MICHIGAN STATE (NEW)</u> - Large white, decorative, Responds well to disbudding. Makes a beautiful shaped pot plant for Spring and fall flowering.....	Med.	Oct. 14	4.50

GARDEN VARIETIES

<u>VARIETY</u>	<u>HEIGHT</u>	<u>MATURES</u>	<u>PRICE 50 ONLY</u>
<u>WHITE</u>			
<u>PILGRIM</u> - Clear white, a very good garden variety for Spring pots. Excellent for secondary borders.....	Med.	Oct. 15	4.15
<u>SILVER BALL</u> - Large pompon, background or cut, white.....	Tall	Oct. 15	3.65
<u>IRENE</u> - Small secondary border, or cut, white.....	Med.	Oct. 15	4.15
<u>BLIZZARD</u> - A pure white pompon with good spray formation, responds well in the early Cloth House and Greenhouses July thru Sept....	Med.	Oct. 15	3.90
<u>YELLOW</u>			
<u>PATHFINDER</u> - Decorative, serrated petals, secondary border, deep lemon.....	Med.	Aug. 28	4.00
<u>REVERENCE</u> - Large decorative border, chamois yellow.....	Short	Sept. 1	4.15
* <u>EARLY GOLD</u> - Medium pompon, low growing, responds very sharply to off-season blooming. Sometimes considered too short.....	Short	Sept. 5	4.25
<u>GOLDEN HOURS</u> - Pompon, secondary border, chrome yellow.....	Med.	Sept. 8	3.65
<u>DELIGHT (H)</u> - Medium pompon, secondary border, golden.....	Med.	Sept. 12	4.00
<u>GENISTA</u> - Decorative, secondary border, canary yellow.....	Med.	Sept. 12	4.00
<u>SUNAPEE</u> - Pompon, secondary border, deep lemon.....	Tall	Sept. 15	3.75
* <u>POMPONETTE</u> - Orange pompon of medium size, low growing. Responds to off-season blooming. Good spring garden pompon...	Short	Sept. 15	3.65
<u>YEL. CUSHION</u> - Cushion, decorative, border, light yellow.....	Short	Sept. 15	3.50
<u>GOLDEN CUSHION</u> - Cushion, border, golden yellow.....	Short	Sept. 15	3.50

GARDEN VARIETIES

<u>VARIETY</u>	<u>HEIGHT</u>	<u>MATURES</u>	<u>PRICE 50 ONLY</u>
<u>YELLOW</u>			
<u>DEFIANCE</u> (H) - Decorative, secondary border, golden yellow.....	Tall	Sept. 15	4.00
* <u>YEL. CHRIS COLUMBUS</u> - Medium large decorative, bright lemon, responds sharply to off-season blooming. By far the best of all the yellows for Spring Garden pots, either as 6" or 3"	Med	Sept. 15	3.65
<u>MURIEL RICE</u> - Large decorative, secondary border, light lemon.....	Med.	Sept. 15	4.15
* <u>EARLY YELLOW</u> - Small button, secondary border, deep lemon.....	Short	Sept. 15	3.75
<u>GOLDEN CARPET</u> - Cushion, border, golden....	Short	Sept. 15	3.90
* <u>D MING</u> - Medium large pompon, golden orange yellow, responds well for Spring pot plants.....	Med.	Sept. 18	4.15
<u>GOLDEN GOPHER</u> - Decorative and secondary border, orange yellow.....	Med.	Sept. 20	4.25
* <u>SEPT. SUNSHINE</u> - Medium single, very prolific with blooms. Responds well for Spring pot plants, very showy, bright lemon.....	Med.	Sept. 20	3.65
* <u>AGLOW</u> - Orange yellow pompon. Responds well as Spring garden pot plant.....	Med.	Sept. 20	4.15
<u>REAL GOLD</u> - Large decorative, secondary border, deep golden.....	Med.	Sept. 20	4.00
<u>WYCHWOOD</u> - Large pompon, secondary border, canary.....	Med.	Sept. 20	3.65
<u>CANARY WONDER</u> - Large pompon, secondary border and cut, canary yellow.....	Med.	Sept. 25	3.90
<u>GOLDEN WONDER</u> - Large pompon, secondary border and cut, golden.....	Med.	Sept. 25	3.90
<u>CHARLES NYE</u> - Large pompon, secondary border, deep lemon.....	Tall	Sept. 25	4.00
<u>SEPT. GOLD</u> - Cushion, border, lemon .....	Short	Sept. 25	3.75
<u>GOLDEN SUNSET</u> - Large decorative, background, copper gold.....	Med.	Sept. 25	3.90

GARDEN VARIETIES

<u>VARIETY</u>	<u>HEIGHT</u>	<u>MATURES</u>	<u>PRICE 50 ONLY</u>
<u>YELLOW</u>			
* <u>HONEYCOMB</u> - Honey yellow pompon, good form, responds well for Spring Garden pot plants.....	Med.	Sept. 25	4.00
* <u>MOONLIGHT</u> (Depetris) - Large decorative, bright yellow pompon. Responds well for Spring garden pots.....	Med.	Sept. 25	4.15
<u>LEE POWELL</u> - Large decorative, background and cut, Chinese yellow.....	Tall	Sept. 25	4.15
<u>SULPHUR SPOON</u> - Spoon, secondary border, light yellow.....	Med.	Sept. 25	4.00
<u>TANGERINE</u> - Large decorative, secondary border, deep orange.....	Med.	Sept. 25	3.90
<u>ASTORIA</u> - A very free flowering plant producing numerous sprays of deep lemon pompons on stiff stems.....	Med.	Sept. 28	4.00
<u>YEL. SUPREME</u> (H) - Cushion, border, bright lemon.....	Short	Sept. 28	3.50
<u>RUBY BREITHAUPT</u> - Large decorative shaggy flowers of bright primrose yellow.....	Med.	Oct. 1	4.50
<u>FREYA</u> - Very large deep golden yellow 4" blooms produced on medium upright growth with excellent stems and foliage. Good flower placement.....	Med.	Oct. 1	4.15
* <u>KINGS RANSOM</u> - Golden yellow decorative, excellent grower with an abundance of flowers. Very good Spring pot plant...	Med.	Oct. 1	4.50
<u>TRANQUILITY</u> - Decorative, secondary border, light lemon yellow.....	Med.	Oct. 1	4.00
* <u>CHIQUITA</u> - Small button, deep lemon, responds well for Spring garden pot plants.....	Med.	Oct. 1	4.00
<u>ETHEL WATERS</u> - Large incurved, disbud, light lemon, sport of Ivory Glow.....	Med.	Oct. 5	4.15
<u>JAMES EADIE</u> - Large pompon, secondary border, deep chrome.....	Med.	Oct. 5	3.90
<u>NEWTON</u> - Large 4" golden yellow cactus flowering and dwarf bushy growth. Good stem and foliage. Blooms from late Sept. Fully matures Oct. 5.....	Med.	Oct. 5	4.25

GARDEN VARIETIES

<u>VARIETY</u>	<u>HEIGHT</u>	<u>MATURES</u>	<u>PRICE 50 ONLY</u>
<u>YELLOW</u>			
* <u>ILLINOIS (NEW)</u> - Medium incurved, bright golden. Lovely as a disbud. Attractive as a Spring or Fall pot plant.....	Med.	Oct. 5	4.50
<u>YEL. AVALANCHE</u> - Large decorative, background, light lemon.....	Tall	Oct. 5	4.15
<u>ROULETTE</u> - Large decorative, bright yellow dwarf growth. Response good for Spring pots, and an excellent addition.....	Short	Oct. 5	4.15
<u>POLARIS</u> - Single, secondary border, golden buff.....	Med.	Oct. 5	4.15
<u>MRS. ROTAN</u> - Large decorative, secondary border and pot, deep chrome.....	Med.	Oct. 5	4.00
<u>SUNSTONE</u> - Spoon, novelty, background or cascade, light yellow.....	Tall	Oct. 8	4.00
* <u>SPODE</u> - Large incurved, short growing bright lemon garden variety suitable for growing as disbud. Responds well for Spring pot plants.....	Short	Oct. 8	4.00
* <u>YEL. SPOON</u> - Very artistic spoon type flowers, respond well at Mother's Day and later as Spring pot plants. Very novel, light yellow in color.....	Med.	Oct. 10	4.00
<u>TREASURE</u> - Golden yellow pompons produced on good stems and sprays for cut. Excellent for normal blooming under glass or outside blooming throughout the South.....	Tall	Oct. 10	4.00
<u>GOLDEN SPOON</u> - Spoon, secondary border, golden yellow.....	Med.	Oct. 10	3.90
* <u>YEL. BLANKET</u> - Small yellow button, responds for Spring garden pot plants.....	Med.	Oct. 10	3.65
<u>BRIGHT FORECAST</u> - Pompon, background and cut flower, bright lemon.....	Tall	Oct. 10	3.90
* <u>GOLDRUSH</u> - Medium single, lemon yellow, responds to off-season blooming. Excellent cut flower under glass, or in the garden. Responds well as a Spring garden pot plant.....	Med.	Oct. 10	4.15

GARDEN VARIETIES

<u>VARIETY</u>	<u>HEIGHT</u>	<u>MATURES</u>	<u>PRICE 50 ONLY</u>
<u>YELLOW</u>			
<u>YEL. CALUMET</u> (H) - Lemon yellow pompon, sport of Calumet. Will be a valuable addition to the early yellow cut flowers. Responds well as a Spring or Fall pot plant.....	Med.	Oct. 10	4.50
<u>ARLORA</u> - Beautiful large perfect shaped blooms well spaced on very rigid stems from well branched plants with bright green foliage. Flowers are bright lemon and fully double. Excellent specimen plant. Useful as a spring and Fall pot plant..	Med.	Oct. 10	4.00
<u>SWEEPSTAKE</u> - Pompon, secondary border, buff lemon.....	Med.	Oct. 12	4.00
<u>GOLDFIELD</u> - Large yellow pompon. Solid round blooms, semi-dwarf growth habit with good stem and foliage.....	Med.	Oct. 12	4.25
<u>MICHIGAN</u> - Large clear yellow blooms fully 4" and larger across, produced on beautiful vigorous plants with rigid stems. Should be disbudded and supported due to the size of the bloom. Good outside cut flower when protected from frost.....	Med.	Oct. 12	4.50
<u>MOONBRIGHT</u> - Soft moonlight yellow, large perfectly incurved Chrysanthemum. Semi-dwarf habit, excellent foliage.....	Med.	Oct. 12	4.00
* <u>SUNBURST</u> - Large cactus type 4" and larger when disbudded. Beautiful golden yellow blooms produced on vigorous plants with excellent foliage and stems. Should be supported since heavy rains and wind will blow the large blooms over.....	Med.	Oct. 12	4.00
* <u>GOLD LODGE</u> - Medium reflexed, bright yellow, early enough for garden use around Toledo and farther south. Responds excellently for Spring Garden pot plants, either disbud or spray.....	Med.	Oct. 15	4.00
<u>JUDITH ANDERSON</u> - Button, border, bright lemon.....	Med.	Oct. 15	3.75
<u>RODELL IMPROVED</u> - Button, background plantings, and cut flowers, light lemon.....	Med.	Oct. 15	3.65

GARDEN VARIETIES

<u>VARIETY</u>	<u>HEIGHT</u>	<u>MATURES</u>	<u>PRICE 50 ONLY</u>
<u>YELLOW</u>			
<u>YEL. IRENE</u> - Small button, background plantings, and cut flowers, light lemon.....	Med.	Oct. 15	4.15
<u>BUTTERCUP (H)</u> - Large incurved, background and cut, golden.....	Short	Oct. 15	4.15
<u>VALIANT</u> - Another large incurved, light golden Mum, early enough for garden use. Responds well for Spring pot plants. Should be disbudded.....	Med.	Oct. 15	4.00
* <u>OHIO STATE (H)(NEW)</u> - Large cactus golden yellow. Responds well for Spring or Fall pots. One of the loveliest of the garden disbuds.....	Med.	Oct. 15	4.50
<u>HONEYSWEET</u> - Large incurved, golden yellow, early enough for garden use and responds excellently for Spring pot plants. Should be disbudded.....	Med.	Oct. 15	4.00
<u>SARASOTA</u> - Medium pompon, bright lemon, excellent cut flower variety for under glass or the early Cloth House.....	Med.	Oct. 15	4.00
* <u>IOWA (NEW)</u> - Medium incurved bright lemon, makes a sturdy compact pot plant, particularly suitable in the Spring. Useful as a garden disbud.....	Med.	Oct. 15	4.50
<u>BRONZE &amp; RED</u>			
<u>GLOW WORM</u> - Semi-double cushion, border, orange scarlet.....	Short	Sept. 8	4.00
<u>EARLY HARVEST</u> - Cushion, border, mahogany orange.....	Short	Sept. 8	4.25
<u>HARBINGER</u> - Large decorative, border, golden bronze.....	Short	Sept. 8	4.15
* <u>W.P.SNYDER</u> - Medium pompon, apricot orange. Responds well for Spring pots. Beautiful orange yellow well shaped plant. Must have full 60 degrees temperature if bloomed before Mother's Day.....	Med.	Sept. 10	4.00
<u>AUTUMN SCNG</u> - Decorative, secondary border, wine rose.....	Med.	Sept. 10	3.75



GARDEN VARIETIES

<u>VARIETY</u>	<u>HEIGHT</u>	<u>MATURES</u>	<u>PRICE 50 ONLY</u>
<u>BRONZE &amp; RED</u>			
<u>GEO. LUXTON</u> - Large decorative, secondary border, light bronze.....	Med.	Sept. 12	4.00
<u>BR. POMPONETTE</u> - Pompon, border, golden bronze.....	Short	Sept 15	4.25
<u>EARLY CRIMSON</u> - Decorative, secondary border, bright crimson.....	Med.	Sept. 15	3.90
<u>APACHE</u> - Large decorative, secondary border, red and gold.....	Med.	Sept. 15	4.00
<u>EARLY BRONZE</u> - Button, border, orange bronze.....	Short	Sept. 15	3.75
<u>RED GOLD</u> - Button, border, red & gold.....	Med.	Sept. 15	3.90
<u>DK. RED GOLD</u> - Button, dark red sport of Red Gold.....	Med.	Sept. 15	3.90
<u>NEW MARJ. MILLS</u> - Large pompon, border, ruby red.....	Short	Sept 15	4.25
<u>CHIPPA RED</u> - Large decorative, secondary border and cut, maroon red.....	Med.	Sept. 15	3.90
<u>FLAMBOYANT</u> - Decorative and secondary border, and cut, flaming orange bronze.....	Med.	Sept. 15	4.00
<u>EARLY KATHLEEN</u> - Decorative, secondary border, coppery bronze.....	Med.	Sept. 15	4.15
<u>COMPANION</u> - Reliable early bloomer with good stems for home cutting. Fully double golden bronze.....	Med.	Sept. 15	4.15
<u>AUTUMN BEAUTY</u> - Decorative, secondary border, chestnut red.....	Med.	Sept. 15	4.00
<u>SEPT. BRONZE</u> - Button, secondary border, golden bronze.....	Med.	Sept. 20	3.75
* <u>TORONTO</u> - Cushion border, bronze. Responds well as a Spring pot plant.....	Short	Sept. 20	4.15
* <u>BRONZE QUEEN (H)</u> - Copper bronze cushion pompon type growth, very compact and showy as border planting. Very attractive as a Spring pot plant.....	Short	Sept. 20	4.00

GARDEN VARIETIES

<u>VARIETY</u>	<u>HEIGHT</u>	<u>MATURES</u>	<u>PRICE 50 ONLY</u>
<u>BRONZE &amp; RED</u>			
<u>RED GLOW</u> - Small pompon, secondary border, dark red.....	Med.	Sept. 20	3.90
* <u>ORSONA</u> - Reddish bronze pompon, responds well for Spring Garden pots.....	Med.	Sept. 20	4.00
<u>SCARLET CRIMSON</u> - Decorative, secondary border, bright red.....	Med.	Sept. 20	3.90
<u>MME. CADILLAC</u> - Large pompon, border, raspberry wine.....	Short	Sept. 20	3.90
<u>ROUGE CUSHION</u> - Cushion, border, bright red	Short	Sept. 25	3.90
<u>BR. WONDER</u> - Pompon, secondary border and cut, rosewood bronze.....	Med.	Sept. 25	3.90
<u>PLAINSMAN</u> - Decorative, secondary border, orange bronze.....	Med.	Sept. 25	4.00
<u>CROWN JEWELL</u> - Decorative, secondary border, bright red.....	Short	Sept. 25	4.00
<u>CHAMP. CUSHION</u> - Cushion border, deep bronze.....	Short	Sept. 25	3.50
<u>COMD. CUSHION</u> - Cushion, border, red.....	Short	Sept. 25	3.50
<u>ALPENA</u> - Decorative, secondary border, dark red.....	Med.	Sept. 25	4.00
<u>MAHOGANY CUSHION</u> - Cushion, border, jasper red.....	Short	Sept. 25	3.50
<u>ELITE CUSHION</u> - Cushion, border, salmon bronze.....	Short	Sept. 25	3.50
<u>HOLIDAY (H)</u> - Large decorative, secondary border and cut, golden bronze.....	Med.	Sept. 25	4.00
<u>FOOTBALL BRONZE</u> - Bronze buff.....	Tall	Sept. 25	4.15
<u>COPPERSMITH</u> - Copper bronze decorative pom	Med.	Sept. 25	4.15
<u>MOJAVE GOLD</u> - Large decorative, disc like flowers, golden bronze.....	Med.	Sept. 26	4.50
<u>CROWNING GLORY</u> - Coral bronze.....	Med.	Sept. 28	4.00

GARDEN VARIETIES

<u>VARIETY</u>	<u>HEIGHT</u>	<u>MATURES</u>	<u>PRICE 50 ONLY</u>
<u>BRONZE &amp; RED</u>			
* <u>REMEMBRANCE</u> - Decorative, dark carmine red, holds color well and response good for Spring pots when temperature is held at full 60 degrees during bud set. Better to use for Mother's Day or later.....	Med.	Sept. 28	3.75
<u>LIPSTICK</u> - Cushion, border, ruby orange...	Short	Sept. 28	4.25
<u>KATHLEEN LEHMAN</u> - Large decorative, secondary border, orange bronze.....	Med.	Sept. 28	4.00
* <u>MOROCCO</u> - Dwarf cushion type growth producing 3½" blooms in large quantities on well shaped plants. Attractive as a Spring and Fall plant.....	Short	Oct. 1	4.15
* <u>CAPRICE</u> - Large full decorative 4" blooms having a good deep apricot bronze color. Strong bushy semi-dwarf growth with excellent foliage. Useful as a Spring and Fall pot plant.....	Med.	Oct. 1	4.15
<u>ADMIRATION</u> - Decorative, secondary border, salmon fawn.....	Med.	Sept. 28	3.75
* <u>IRON MOUNTAIN</u> - Deep red pompon, changing to rust. A very beautiful red when first open, fades rapidly. Responds very sharply for Spring pots. Well suited for either 6" or 3" pots, and responds for Valentines Day.....	Med.	Oct. 1	3.90
<u>JUBILEE (H)</u> - Pompon, secondary border, crimson red.....	Med.	Oct. 1	4.00
<u>FIESTA</u> - Pompon, secondary border, orange rust, good for cut.....	Tall	Oct. 1	3.90
<u>RED CLOUD</u> - Cushion, border, scarlet red..	Med.	Oct. 1	3.65
<u>RED RIDING HOOD</u> - Decorative, secondary border, bright red.....	Med.	Oct. 1	3.90
<u>SAM WILLISTON</u> - Cushion, border, deep red.	Short	Oct. 1	3.50
<u>LESHARA</u> - Decorative, novelty, secondary border, mulberry red.....	Med.	Oct. 1	3.75
<u>BONFIRE</u> - Decorative, secondary border, bright red.....	Med.	Oct. 1	4.15

GARDEN VARIETIES

<u>VARIETY</u>	<u>HEIGHT</u>	<u>MATURES</u>	<u>PRICE 50 ONLY</u>
<u>BRONZE &amp; RED</u>			
<u>FIRE ENGINE</u> - Single secondary border, flaming red.....	Med.	Oct. 1	3.75
<u>CARD. SPOON</u> - Spoon type, secondary border, red bronze.....	Med.	Oct. 5	4.15
<u>FIRECRACKER</u> - Decorative, background and cut, mahogany bronze.....	Tall	Oct. 5	4.15
<u>CYDONIA</u> - Decorative, background and cut, mahogany bronze.....	Tall	Oct. 5	3.75
* <u>SEPT. CHEER</u> - Cherry red single, low growing, responds well for Spring pot plants.....	Med.	Oct. 5	3.65
<u>BURGUNDY</u> - Large pompon, background and cut, wine red.....	Tall	Oct. 5	3.75
<u>RUBY POMPON</u> - Pompon, secondary border, ruby crimson.....	Med.	Oct. 5	3.75
* <u>RED VELVET</u> - Large decorative, dark crimson, responds readily for Spring pots. Not quite as showy as Remembrance or Iron Mountain	Med.	Oct. 5	4.15
* <u>MONA</u> - Rust bronze formal pompon, responds for Spring garden pots.....	Med.	Oct. 5	4.00
<u>INDIAN RED</u> - Indian rust color, unique type flower.....	Med.	Oct. 5	4.15
<u>COURAGEOUS</u> - Decorative, secondary border, dark ruby red.....	Med.	Oct. 5	3.75
* <u>MRS. DUPONT</u> - Coral buff, large decorative pompon, responds to off-season blooming, good for Spring pots.....	Tall	Oct. 5	4.15
<u>ANDANTE</u> - Large broad petalled decorative of luminous peach apricot. Free growing, but compact.....	Tall	Oct. 8	4.50
<u>AVIATOR</u> - Pompon, secondary border, copper bronze.....	Med.	Oct. 8	4.00
<u>SUCCESS</u> - Large pompon, disbud, secondary border, deep crimson red.....	Med.	Oct. 8	4.00
<u>ORANGEADE</u> - Intermediate daisy, orange bronze compact, prolific garden variety.....	Med.	Oct. 10	4.15

GARDEN VARIETIES

<u>VARIETY</u>	<u>HEIGHT</u>	<u>MATURES</u>	<u>PRICE 50 ONLY</u>
<u>BRONZE &amp; RED</u>			
<u>GLADIATOR</u> - Large 4" full decorative orange red blooms produced on plants of medium height with upright stems and good foliage. Very free flowering considering size of blooms. Try disbudding this one.....	Med.	Oct. 10	4.15
*D <u>CALUMET</u> (H) - Brilliant apricot large decorative pompons produced on excellent sprays, having good stems and foliage. Responds very well as Spring pots making a better plant than Mrs. Dupont. Responds well in the early Cloth House and is used normal in the greenhouse as a cut flower. Also where the weather permits, it is a wonderful cut flower garden variety.....	Med.	Oct. 10	4.00
<u>DK. CALUMET</u> (H) - Bronze sport of the widely used Calumet useful for Spring pots or cut.....	Med.	Oct. 10	4.50
* <u>DOLLI-ETTE</u> - Medium spoon, golden bronze, useful as a spring or fall pot plant, prolific in blooming bed making an excellent border planting.....	Med.	Oct. 10	4.15
<u>HUNTSMAN</u> - Large decorative, background or cut, scarlet orange.....	Tall	Oct. 10	4.15
<u>CARNIVAL</u> - Pompon, background or cut, burnt orange.....	Med.	Oct. 10	4.00
<u>CARMINE QUEEN</u> - Deep carmine red formal pompon, produced on excellent sprays, good early red cut flower under glass or in the garden.....	Tall	Oct. 10	4.15
<u>NORTHWESTERN</u> (NEW) - Reddish bronze, medium incurved. Makes an ideal football mum when disbudded.....	Med.	Oct. 10	4.50
* <u>INDIANA</u> (NEW) - Large cactus pompon. Novelty spring and fall pot. A novel addition to the garden disbuds.....	Med.	Oct. 10	4.50
<u>ADMIRAL</u> - Pompon, background and cut, dark red.....	Med.	Oct. 12	4.00
* <u>PURDUE</u> (H)(NEW) - Medium incurved lively bronze, gold reverse. Lends itself well to Spring and fall pot plant culture. Makes a beautiful garden disbud..	Med.	Oct. 12	4.50

GARDEN VARIETIES

<u>VARIETY</u>	<u>HEIGHT</u>	<u>MATURES</u>	<u>PRICE 50 ONLY</u>
<u>BRONZE &amp; RED</u>			
<u>CRUSADER</u> - Large double crimson red blooms 4" or more, larger when disbudded, produced on strong robust stems with very strong flower petioles. This is an outstanding specimen variety when disbudded for the late Mum garden or as a China Mum.....	Med.	Oct. 12	4.15
* <u>RADIANCE</u> - Red decorative, responds uniformly and breaks freely making an excellent Spring pot plant.....	Med.	Oct. 15	4.00
* <u>JAMES STEWART</u> - Small pompon, apricot gold in color, produced on excellent sprays and good stems. Good for early Cloth House cut and normal blooming under glass, also in the garden.....	Tall	Oct. 14	4.00
* <u>MAJESTIC (NEW)</u> - Medium incurved bright rosewood bronze pompon useful in Spring or Fall pot plant programs. Improved considerably by disbudding.....	Med.	Oct. 15	4.50
<u>RED ENTERPRISE</u> - Rose red, medium pompon..	Tall	Oct. 15	4.50
<u>RESOLUTE</u> - Large bright red, compactly incurved, suitable for disbudding, semi- dwarf, desirable as a Spring pot.....	Med.	Oct. 15	4.50
<u>WISCONSIN (NEW)</u> - Medium incurved, deep apricot bronze, responds well to disbudding.	Med.	Oct. 15	4.50
<u>TAJAH</u> - Large scarlet red daisy with good sprays and stems. Excellent as cut flower in the garden or under glass normal.....	Tall	Oct. 15	4.15
<u>CHOPIN</u> - Large incurved disbud, background, light bronze.....	Med.	Oct. 15	4.15
<u>HELMA</u> - Large rich red, semi-incurved, good stem and excellent foliage, a very colorful and durable flower.....	Med.	Oct. 15	4.50
<u>PINK &amp; LAVENDER</u>			
<u>GLADNESS</u> - Decorative pompon, border, China rose.....	Short	Aug. 28	4.00
<u>CECIL BEED</u> - Decorative, secondary border, deep lavender.....	Med.	Sept. 1	3.75

GARDEN VARIETIES

<u>VARIETY</u>	<u>HEIGHT</u>	<u>MATURES</u>	<u>PRICE 50 ONLY</u>
<u>PINK &amp; LAVENDER</u>			
<u>SALMON PRECOSE</u> - Large decorative, border, salmon pink.....	Short	Sept. 1	3.90
<u>AMELIA</u> - Cushion, border, lavender pink...	Short	Sept. 5	3.50
<u>ROSA</u> - Cushion, border, rose pink.....	Med.	Sept. 5	3.75
<u>DEAN KAY</u> - Cushion, border, shell pink....	Short	Sept. 5	3.50
<u>PURPLE STAR</u> - Decorative pompon, secondary border, brilliant purple.....	Med.	Sept. 5	3.75
* <u>JOAN HELEN</u> - Dark purple shading to crimson, responds for Spring pot plants very readily, makes a beautiful plant. Color is good..	Med.	Sept. 10	3.75
<u>NYE'S FAVORITE</u> - Large shaggy decorative, lavender, responds for Spring pot plants.....	Med.	Sept. 10	3.75
<u>BARBARA SMALL</u> - Pompon, secondary border and cut, lavender.....	Tall	Sept. 10	4.00
* <u>ORCHID HELEN</u> - Medium decorative, orchid lavender, responds for Spring garden pot plants.....	Med.	Sept. 10	4.00
<u>SUCCESSOR</u> - Decorative, secondary border, silver lavender.....	Med.	Sept. 10	4.00
<u>LORENZO</u> - Quilled, secondary border, dark purple.....	Med.	Sept. 15	4.00
<u>ROYAL ROBE</u> - Decorative, secondary border, dark purple.....	Med.	Sept. 15	4.00
<u>CHIPPEWA</u> - Decorative, secondary border, and cut, bright purple.....	Med.	Sept. 15	3.90
<u>VIOLET</u> - Decorative, bright purple.....	Med.	Sept. 15	3.65
* <u>PURPLE QUEEN (H)</u> - Medium pompon, cushion type growth. Dark purple, compact growth makes a beautiful border planting. Responds well to Spring and Fall pot culture.....	Short	Sept. 20	4.00
* <u>PURPLE SPOON</u> - Soft purple. Makes an attractive compact spring pot plant.....	Med.	Sept. 20	4.00
<u>TAPESTRY</u> - Decorative, secondary border, salmon pink.....	Med.	Sept. 20	3.90

GARDEN VARIETIES

<u>VARIETY</u>	<u>HEIGHT</u>	<u>MATURES</u>	<u>PRICE 50. ONLY</u>
<u>PINK &amp; LAVENDER</u>			
* <u>PURPLE WATERS</u> - Deep purple. Responds well for spring pot plant culture.....	Med.	Sept. 20	4.00
<u>HEATHER BLOOM</u> - Decorative, secondary border, heather pink.....	Med.	Sept. 20	3.75
* <u>ALERT</u> - Large decorative, dark purple pompons produced on beautiful shaped plants. Responds excellently for Mothers Day and later blooming as pot plants, either as 6" or 3" pots..	Med.	Sept. 20	3.75
* <u>BLANCHE LITWILLER</u> - Large pompon, lavender pink. Medium, excellent for cutting and floral work. Attractive also as a Spring pot plant.....	Med.	Sept. 23	4.50
<u>PINK QUILL</u> - Large decorative, quill type, shell pink with solid centers.....	Med.	Sept. 25	4.50
<u>OLIVE LONGLAND</u> - Decorative, secondary border, apricot salmon pink.....	Med.	Sept. 25	3.65
<u>EVANGELINE</u> - Large decorative, secondary border, flesh pink.....	Tall	Sept. 25	4.00
* <u>JEWELTONE</u> - Pompon, secondary border, or pots, rose pink.....	Short	Sept. 25	4.00
<u>LADY'S CHOICE</u> - Large decorative, secondary border or pots, ivory pink.....	Med.	Sept. 25	4.00
* <u>REFLECTION</u> - Decorative, secondary border, rosy lavender Displays exceptional qualities for spring Pot plants.....	Med.	Sept. 25	4.15
* <u>PETRISIAN ROSE</u> - Medium pompon, lavender rose in color, very versatile. Ideal as a garden cut flower. Very good under glass as an early cut flower and responds either as a cut flower or spring pot plant very well.....	Med.	Sept. 25	3.90
* <u>CECELIA</u> - Medium decorative, purple flowers produced in abundance on beautiful shaped plants. Responds well as a Spring pot plant.....	Short	Sept. 25	3.50
<u>IMP. E. WONDER</u> - Pompon, secondary border and cut, lavender pink.....	Med.	Sept. 25	3.90



GARDEN VARIETIES

<u>VARIETY</u>	<u>HEIGHT</u>	<u>MATURES</u>	<u>PRICE 50 ONLY</u>
<u>PINK &amp; LAVENDER</u>			
* <u>SPELLBOUND</u> - Medium decorative, brilliant lavender pompon. Responds beautifully to Spring bloomings as pot plants.....	Med.	Sept. 25	3.65
<u>CAPT. J. SMITH</u> - Cushion, border plant, lavender pink.....	Short	Sept. 25	3.50
<u>EVELYN DEVANEY</u> - Shell pink.....	Med.	Sept. 25	4.00
<u>PURPLE CUSHION</u> - Sport of Cecelia.....	Med.	Sept. 25	3.75
* <u>MAJOR CUSHION</u> - Small decorative lavender pompon, produced on a well rounded plant. Responds for Spring pot plants, either as a 6" or 3" pot mums. Temperature should be 60 degrees or better.....	Short	Sept. 25	3.50
<u>EDNA ROWLEY</u> - Button, lavender pink with ruby eye. Excellent for cutting and arrangements.....	Med.	Sept. 26	4.50
<u>TUNEFUL</u> - Rose pink pompon, large decorative blooms with darker centers, excellent for cutting in the home garden.....	Tall	Sept. 28	4.00
<u>COQUETTE</u> - Cushion, border, rosy pink.....	Short	Sept. 25	4.15
<u>ROSITA</u> - Button, secondary border, light lavender rose.....	Med.	Sept. 28	3.75
* <u>JOYOUS</u> - Cushion, decorative, border, lavender. Compact and productive, a very lovely Spring pot plant.....	Short	Sept. 28	4.00
<u>MALINDA BROWN</u> - Pompon, secondary border and cut, lavender rose.....	Med.	Sept. 28	4.00
<u>BETTY</u> - Decorative, background and cut, pink rose center.....	Tall	Sept. 28	3.75
* <u>TWINKLE</u> - Cushion, border, deep rose purple, novel color for Spring pots.....	Med.	Sept. 28	3.75
<u>PAT. LEHMAN</u> - Decorative, background and secondary border, peach pink.....	Tall	Sept. 28	4.00
<u>STYLISH</u> - Large cactus decorative, old rose, very shapely.....	Med.	Sept. 28	4.50
* <u>ARISTOCRAT (H)</u> - Large decorative, secondary border, deep wine. Useful as a large flowering Spring or Fall pot plant.....	Med.	Sept. 28	4.15

GARDEN VARIETIES

<u>VARIETY</u>	<u>HEIGHT</u>	<u>MATURES</u>	<u>PRICE 50 ONLY.</u>
<u>PINK &amp; LAVENDER</u>			
<u>ARTIST'S DELIGHT</u> - Large coral geranium pink decorative, perfect sprays for design work.....	Med.	Sept. 29	4.50
<u>FASCINATION</u> - Large decorative, secondary border, lavender pink.....	Med.	Oct. 1	4.00
<u>TROUBADOUR</u> - Bright rosy crimson large blooms 3" across.....	Med.	Oct. 1	3.90
<u>TIFFANY ROSE</u> - Medium large deep rose single, very prolific bloomer, responds well for Spring pot plants.....	Med.	Oct. 1	3.65
<u>OLD LAVENDER</u> - Large decorative, background, bright lavender.....	Med.	Oct. 1	4.15
<u>SONNY</u> - Small salmon pink pompon, excellent cut flower, either under glass or in the garden. Also responds good in the early Cloth House shadings.....	Med.	Oct. 1	3.75
<u>HELEN BOGUE</u> - Large rose purple decorative.	Tall	Oct. 1	4.50
<u>MAYFLOWER</u> - Very hard solid pompons, soft luminous pink, borne atop perfect sprays and rigid stems. Excellent early cut flower.....	Med.	Oct. 1	4.00
<u>*MISCHIEF</u> - Small purple daisies with prominent yellow centers produced in abundance on sturdy well rounded plants. Respond very uniformly to off-season blooming. Makes a wonderful 6" pot for spring blooming. Cannot be used in the same proportion as white and yellow, but a very desirable Spring pot plant.....	Short	Oct. 1	3.90
<u>CHARM SPOON</u> - Spoon, secondary border, rhodonite rose.....	Med.	Oct. 1	4.00
<u>ALEX CUMMINGS</u> - Decorative, disbud and background, deep rose pink.....	Tall	Oct. 3	4.15
<u>NORTHERN QUEEN</u> - Large decorative, good cut under glass or in the garden. Rose pink, dark center.....	Med.	Oct. 5	4.15
<u>*PETRISIAN PINK</u> - Decorative, background, cut, light pink.....	Med.	Oct. 5	3.90

GARDEN VARIETIES

<u>VARIETY</u>	<u>HEIGHT</u>	<u>MATURES</u>	<u>PRICE 50 ONLY</u>
<u>PINK &amp; LAVENDER</u>			
* <u>LAVENDER LADY</u> - Lavender decorative pompons produced on a rather tall spreading growth. Responds well for Spring pots..	Tall	Oct. 5	4.00
<u>DREAM GIRL</u> - Pompon, background and cut, light lavender.....	Med.	Oct. 10	4.15
* <u>COURTIER</u> - Medium decorative, lavender pink pompons, good as garden cut flowers and respond well for Spring pots.....	Med.	Oct. 10	4.00
* <u>TIME</u> - Large deep lavender rose pompons produced on strong stems. Good specimen plant in the garden when disbudded. Also responds for Spring pot plants.....	Med.	Oct. 10	4.00
* <u>ORCHID SPOON</u> - Orchid lavender spoon; responds for Mother's Day and later as a pot plant novelty.....	Med.	Oct. 10	3.75
<u>ROSE SPOON</u> - Spoon, secondary border, lavender rose pink.....	Med.	Oct. 10	3.90
<u>LASSIE</u> - Large decorative, background and cut, deep pink.....	Med.	Oct. 10	4.00
* <u>MASQUERADE</u> - Lavender pink button pompons with dark rose centers, respond well for Spring pot plants.....	Med.	Oct. 10	3.90
* <u>JOYBRINGER</u> - Low branching decorative pompon, lavender rose overlaid with salmon. Ideally suited for Spring pot plants. Responds well and makes a beautiful shaped plant. Color could be a little more desirable.....	Short	Oct. 10	3.90
<u>TITANIA</u> - Large raspberry rose, tall vigorous growth habit for background plantings..	Tall	Oct. 12	4.25
<u>RONNIE</u> - Button, background and cut, dark lavender.....	Med.	Oct. 12	4.00
<u>ALLEGRO</u> - Cushion type, secondary border and background, shrimp pink.....	Med.	Oct. 12	4.00
<u>ADAGIO</u> - Pompon, background, raspberry rose.....	Tall	Oct. 12	4.00

GARDEN VARIETIES

<u>VARIETY</u>	<u>HEIGHT</u>	<u>MATURES</u>	<u>PRICE 50 ONLY</u>
<u>PINK &amp; LAVENDER</u>			
* <u>FUCHSIA FAIRY</u> - Small decorative, light pink, valuable as a Spring pot and also as an outside border planting.....	Short	Oct. 14	4.15
<u>CUPID</u> - Small decorative, dahlia formed pink, very good as a garden pot variety for Spring.....	Med.	Oct. 15	4.15
* <u>JEWELL</u> -Lavender pink button pompons need very little introduction, an old timer that is very versatile for either cut flowers under glass, or in the garden and the early Cloth House. Responds as a Spring pot..	Med.	Oct. 15	4.00
<u>ENTERPRISE</u> - Medium pompon, amaranth rose, produced on well formed and good stems. Exceptionally good as early Fall cut flowers under glass, or in the garden when the weather permits. Also responds well in the early Cloth House.....	Tall	Oct. 15	4.15
<u>LT. PINK ENTERPRISE (NEW)</u> - Sport of Enterprise.....	Tall	Oct. 15	4.50
<u>ELIZABETH HOOD</u> - Large decorative, light lavender rose produced on good stems and sprays. Good cut flower under glass or in the outside garden where weather permits.....	Med.	Oct. 15	4.00

PRICES PER 100

PRICE 50 ONLY	100 - 250	300 - 450	500 p 950	1000 UP
3.15	6.00	5.75	5.50	5.25
3.25	6.25	6.00	5.75	5.50
3.40	6.50	6.25	6.00	5.75
3.50	6.75	6.50	6.25	6.00
3.65	7.00	6.75	6.50	6.25
3.75	7.25	7.00	6.75	6.50
3.90	7.50	7.25	7.00	6.75
4.00	7.75	7.50	7.25	7.00
4.15	8.00	7.75	7.50	7.25
4.25	8.25	8.00	7.75	7.50
4.50	8.75	8.50	8.25	8.00

COLLECTIONS OUR SELECTIONS

Rooted Cuttings of a given number of varieties may be ordered as a Collection. Example - 500 R.C. - 50 each of 10 varieties, or 350 R.C. - 50 each of 7 varieties. Any desired quantity may be ordered in units of 50 or more. Minimum collection is for 300 R.C. Please state if Standards or Pompons are wanted, also Week Group desired.

COLLECTION PRICES PER 100

<u>300 - 450</u>	<u>500 - 950</u>	<u>1000 UP</u>
6.00	5.75	5.50

GARDEN VARIETY COLLECTIONS

For Growers who are not familiar with Garden Varieties, but who want a well balanced assortment, we offer the following Collections which include the better varieties for each specific purpose.

<u>COLLECTION #1</u>	<u>COLLECTION #2</u>	<u>COLLECTION #3</u>
Taller Varieties for cuttings	For bedding or borders.	50% for Cutting 50% for Bedding
<u>COLLECTION #4</u>	<u>COLLECTION #5</u>	
For Easter, Mother's Day or Memorial Day Pots.	Cushion Varieties only	



INDEX OF VARIETIES

<u>VARIETY</u>	<u>PAGE</u>	<u>VARIETY</u>	<u>PAGE</u>
Celebration.....	31	Dk. Norma.....	31
Celestra.....	37	Dk. Orch. Queen.....	44
Chairman.....	38	Dk. Pk. Pandora.....	30
Champ. Cushion.....	56	Dk. Peter John.....	45
Chas. Nye.....	50	Dk. Portrait.....	29
Charm Spoon.....	64	Dk. Red Gold.....	55
Chattanooga.....	36	Dk. Reward.....	29
Chevron.....	25	Dk. Riviera.....	33
Chippa Red.....	55	Dk. Valencia.....	32
Chippewa.....	61	Dk. Yel. Cameo.....	22
Chiquita.....	51	Dk. Yel. Chattanooga.....	40
Chopin.....	60	Dauntless.....	40
Chris. Columbus.....	46	Dean Kay.....	61
Christ. Greetings.....	27	Debonair.....	27
Christ. Star.....	27	Debutante.....	32
Cinderella.....	22	Dec. Glory.....	36
Classic.....	48	Dec. White.....	36
Climax.....	25	Defiance (H).....	50
Comd. Cushion.....	56	Delaware.....	42
Companion.....	55	Delight (ghse.).....	29
Constellation.....	19	Delight (H).....	49
Copper Queen.....	42	Delmar.....	31
Copperhead.....	25	Detroit News.....	41
Coppersmith.....	56	Dolli-ette.....	59
Coquette.....	63	Dream Girl.....	65
Cordova.....	15		
Corsair.....	22	E	
Cotillion.....	15		
Courageous.....	58	Early Bronze.....	55
Courtier.....	65	Early Crimson.....	55
Crescendo.....	19	Early Gold.....	49
Crimson Valencia.....	26	Early Harvest.....	54
Criterion.....	30	Early Kathleen.....	55
Crown Jewell.....	56	Early Yellow.....	50
Crowning Glory.....	56	Ed. Seidewitz.....	45
Crusader.....	60	Edna Rowley.....	63
Crystal Maid.....	46	Elite Cushion.....	56
Crystal Queen.....		Eliz. Hood.....	60
.. (Imp. Jean Eliz.).....	35	Enchantress.....	32
Cupid.....	66	Encore.....	12
Cydonia.....	58	Enterprise.....	66
		Ethel Waters.....	51
D		Ethrelda.....	28
		Evangeline.....	62
D. D. Ahrens.....	46	Evelyn Devaney.....	63
Dandy.....	19		
Dk. Br. Masterpiece.....	26	F	
Dk. Br. Minstrel.....	27		
Dk. Br. Minuet.....	26	Fascination.....	64
Dk. Calumet (H).....	59	Fiesta.....	57
Dk. Enchantress.....	32	Firebird.....	24
Dk. Ind. Bronze.....	41	Firecracker.....	58
Dk. Ind. Yellow.....	38	Fire Engine.....	58

INDEX OF VARIETIES

<u>VARIETY</u>	<u>PAGE</u>	<u>VARIETY</u>	<u>PAGE</u>
Flamboyant.....	55	.....H.....	
Football Bronze.....	56	.....	
Fortune (ghse.).....	15	Halo.....	12
Forty-Niner.....	20	Happiness.....	18
Fred Shoemith.....	35	Harbinger.....	54
Freida.....	31	Harlequin.....	27
Freya.....	51	Harvester.....	40
Friendly Rival.....	39	Harvest Golden.....	37
Fuchsia Fairy.....	66	Heather Bloom.....	62
		Heirloom.....	16
		Helen Bogue.....	64
		Helen Frick.....	45
		Helma.....	60
		Heritage.....	32
		Heyday.....	20
		Highbrow.....	14
		Highlander.....	21
		Holiday (H).....	56
		Honeycomb.....	51
		Honeysweet.....	54
		Horizon.....	48
		Humdinger.....	30
		Huntsman.....	59
		.....I.....	
		.....	
		Iceberg.....	12
		Ice Cream.....	13
		Ill. Accent.....	31
		Ill. Alba.....	16
		Ill. Cascade.....	17
		Ill. Formal.....	31
		Ill. Gold Cup.....	19
		Ill. Igloo.....	13
		Ill. Peace.....	14
		Ill. Snowbound.....	17
		Ill. Snowdrift.....	13
		Ill. Starflower.....	14
		Ill. Starlet.....	15
		Ill. Yel. Snowbound.....	23
		Illinois.....	52
		Imp. Br. Daisy.....	24
		Imp. Dk. Beauregard.....	24
		Imp. Dk. Supreme.....	32
		Imp. Early Wonder.....	62
		Imp. Ind. Yellow.....	38
		Imp. Pk. Minstrel.....	32
		Imp. Red Daisy.....	24
		Imp. Wh. Kramer.....	16
		Imp. Yel. Kramer.....	22
		Imp. Wh. Supreme.....	15
		Imp. Yel. Rayonante.....	39
		Imp. Yel. Supreme.....	22
Gardenia.....	47		
Garnet King.....	42		
Garza.....	16		
Gena Harwood.....			
(Br. Rayonante).....	42		
Genista.....	49		
George Luxton.....	55		
Georgia.....	37		
Gt. Eetsy Ross.....	35		
Ginger.....	24		
Gladiator.....	59		
Gladness.....	60		
Gladys Pearson.....	43		
Gloria.....	46		
Glow Worm.....	54		
Gold Ball.....	20		
Gold Coast.....	17		
Gold Lace.....	38		
Gold Lode.....	37, 53		
Golden Acclaim.....	22		
Golden Carpet.....	50		
Golden Chord.....	20		
Golden Cushion.....	49		
Golden Gopher.....	50		
Golden Herald.....	17		
Golden Hours.....	49		
Golden Mistletoe.....	40		
Golden Mrs. Ross.....	40		
Golden Pearson.....	40		
Golden Spoon.....	52		
Golden Sunset.....	50		
Golden Wonder.....	50		
Goldenrod.....	21		
Goldfield.....	53		
Goldfinch.....	17		
Goldrush.....	52		
Goldsmith.....	21		
Good News.....	37		
Grand Slam.....	31		
Granite State.....	12		



INDEX OF VARIETIES

VARIETY	PAGE	VARIETY	PAGE
Inca.....	25	Lipstick.....	57
Ind. Apricot.....	42	Little America.....	13
Ind. Bronze.....	42	Lollipop.....	20
Ind. Gold.....	38	L. Is. Beauty.....	14
Ind. Rink.....	44	Lorraine.....	39
Ind. White.....	35	Lorenzo.....	61
Ind. Yellow.....	38	Luna.....	34
Indian Red.....	58	Luxury.....	19
Indiana.....	59	Luyona.....	37
Iowa.....	54	Luzon.....	42
Irene.....	11, 49	Lynda McLane.....	33
Iron Mountain.....	57	Lyric.....	48
Ivanhoe.....	41		
Ivory Glow.....	48		
		M	
		Madonna.....	12
J		Maestro.....	48
James Eadie.....	51	Mah. Cushion.....	56
James Stewart.....	23, 60	Majestic.....	60
Jealousy.....	19	Maj. Bowes.....	43
Jessamine Williams.....	47	Maj. Cushion.....	63
Jessie.....	28	Malinda Brown.....	63
Jetfire.....	24	Marblehead.....	34
Jewell.....	28, 66	Marg. Moeller.....	36
Jewel-tone.....	62	Marie DePetris.....	40
Joan Helen.....	61	Marketeer.....	36
Joybringer.....	65	Marshmallow.....	48
Joyous.....	63	Mary Garden.....	43
Jubilee (H).....	57	Mary L. Hall.....	18
Judith Anderson.....	53	Mary McArthur.....	28
J. W. Prince.....	44	Masquerade.....	65
		Masterpiece.....	31
K		Masumi Pink.....	44
Kath. Lehman.....	57	Mayflower.....	64
Keepsake.....	11	Mayford's Triumph.....	41
Kings Ransom.....	51	Medallion.....	33
Klondike.....	20	Mefo.....	36
		Memento.....	12
L		Merriment.....	44
Lady's Choice.....	62	Merrymaker.....	28
Lassie.....	65	Meteore.....	40
Laughter.....	44	Michigan.....	53
Lav. Lady.....	65	Michigan State.....	48
Lav. Queen.....	44	Ming.....	50
Lee Powell.....	51	Minnesota.....	48
Legal Tender.....	26	Minstrel.....	32
Leshara.....	57	Minuet.....	32
Lt. Pk. Enterprise.....	66	Mischief.....	64
Lt. Peter John.....	45	Mme. Cadillac.....	56
Lt. Pk. Minstrel.....	32	Mojave Gold.....	56
Lillian Doty.....	29	Mona.....	58
Limelight.....	40	Monty.....	11
		Monument.....	35
		Moonbright.....	53

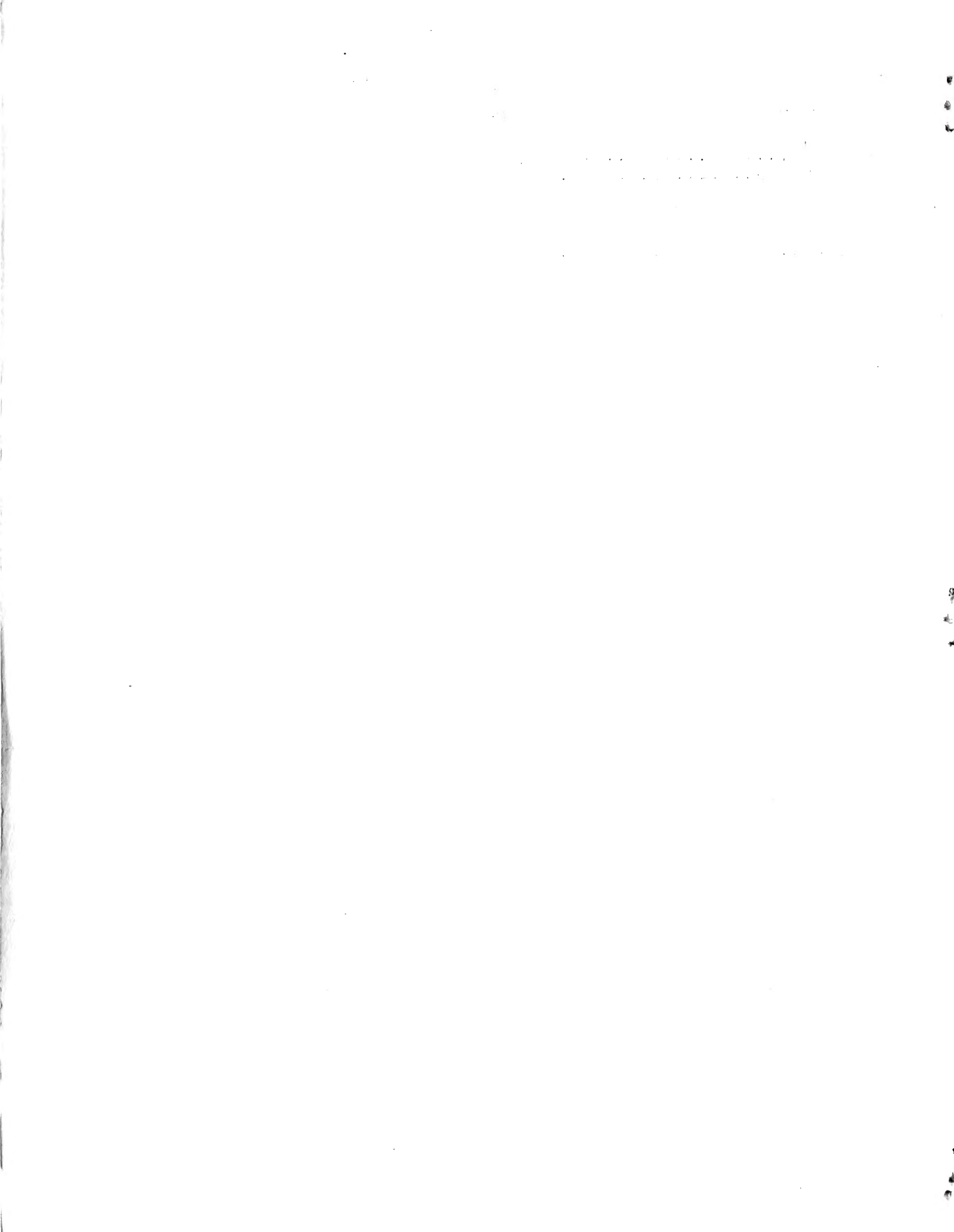




INDEX OF VARIETIES

<u>VARIETY</u>	<u>PAGE</u>	<u>VARIETY</u>	<u>PAGE</u>
Tranquility.....	51	Y	
Treasure.....	52	Yel. Acclaim.....	22
Troubadour.....	64	Yel. Albatross.....	38
Tuneful.....	63	Yel. Ambassador.....	37
Twinkle.....	63	Yel. Arcadia.....	18
V			
Valencia.....	32	Yel. Avalanche.....	52
Valiant.....	54	Yel. Beauregard.....	19
Vesper.....	13	Yel. Betsy Ross.....	38
Vesta.....	11	Yel. Blanket.....	52
Vibrant.....	22	Yel. Calumet.....	53
Violet.....	61	Yel. Calypso.....	39
W			
Waikiki.....	41	Yel. Cameo.....	22
Wedding Bells.....	16	Yel. Chris. Columbus.....	50
Whirlwind.....	34	Yel. Cushion.....	49
Wh. Anemone.....	12	Yel. Dec. Glory.....	40
Wh. Bounty.....	46	Yel. Delaware.....	39
Wh. Cloud.....	47	Yel. Dot.....	18
Wh. Cushion.....	46	Yel. Doty.....	18
Wh. Doty.....	12	Yel. Enchantress.....	22
Wh. Enchantress.....	15	Yel. Fortune.....	21
Wh. Freida.....	13	Yel. Galaxy.....	21
Wh. Frick.....	36	Yel. Garza.....	22
Whitehouse.....	12	Yel. Halo.....	18
Wh. Keepsake.....	11	Yel. Highbrow.....	21
Wh. Lady.....	14	Yel. Igloo.....	18, 19
Wh. Mary Garden.....	35	Yel. Irene.....	17, 54
Wh. Masquerade.....	48	Yel. Ivanhoe.....	38
Wh. Mistletoe.....	36	Yel. Lace.....	38
Wh. Peter John.....	36	Yel. Leighton.....	39
Wh. Pink Chief.....	33	Yel. L. Is. Beauty.....	20
Wh. Pockett.....	36	Yel. Marketeer.....	39
Wh. Popcorn.....	11	Yel. Mefo.....	39
Wh. Rayonante.....	35	Yel. Moeller.....	40
Wh. Rice.....	47	Yel. Monument.....	39
Wh. Sail.....	47	Yel. Pacesetter.....	20
Wh. Snowdrop.....	15	Yel. Paramount.....	21
Wh. Spoon.....	48	Yel. Peter John.....	40
Wh. Taffeta.....	13	Yel. Pockett.....	39
Whitetop.....	12	Yel. Queen.....	39
Wh. Tower.....	47	Yel. Rayonante.....	38
Wh. Valencia.....	14	Yel. Revelation.....	23
Wh. Wonder.....	47	Yel. Rokinda.....	21
Wh. Yuletide.....	14	Yel. Seagull.....	18
Wilson's White.....	34	Yel. Sculpture.....	20
Wilson's Yellow.....	38	Yel. Shasta.....	20
Wisconsin.....	60	Yel. Snow.....	23
W. P. Snyder.....	54	Yel. Snowcrest.....	22
Wychwood.....	50	Yel. Spoon.....	52
		Yel. Supreme (H).....	51
		Yellowtop.....	19
		Yel. Valencia.....	21
		Yel. Waikiki.....	38
		Yolanda.....	26





1  
2  
3

4  
5  
6

7  
8  
9

