

62  
**"Yours for Growing Satisfaction"**  
**Spring 1958**

**GOLD CUP**

177—(Pat. Applied For.) All-America Award winner for 1958. Here at last is an excellent yellow Floribunda. Plants, about 2½ feet high, are covered with shining foliage. The pointed buds open into fragrant flowers 3 to 4 inches across. They remain a pure golden color until the petals drop. A "must" for that bright spot in your garden.

Each \$2.50      3 for \$6.60      12 for \$26.40

LIBRARY  
 RECEIVED  
 NOV 21 1957  
 U. S. Department of Agriculture

Fashion

**GOLD CUP SPECIAL**

Cat. No. 810  
 One of each variety pictured  
 3 Roses,  
 2-yr. No. 1 Plants  
**for Only \$6.15**  
 Reg. Value \$7.00  
 1 FREE Rose—  
 Our Choice

Gold Cup



**FUSILIER**

178—(Pat. Applied For.) All-America Award winner for 1958. A most exciting new Floribunda. Medium height plants produce young leaves of an interesting red, maturing into a glossy dark green. The fiery orange-red blossoms, 3 to 3½ inches across, are borne in heavy clusters, giving your garden a brilliant splash of color.

Each \$ 2.50  
 3 for 6.60  
 12 for 26.40

**FASHION**

149—(Pat. No. 789.) Considered the finest Floribunda yet introduced. Buds are an Oriental red opening to a sparkling coral-pink, sometimes shaded with gold. The last stages have a reddish tinge. The blooms are unfading and the great profusion from spring to fall assures you constant color. A bed in front of a picture window is ideal.

Each \$2.00      3 for \$5.25      12 for \$21.00

**SPRING SHIPMENT ONLY**

Fusilier



**NEOSHO**

*Nurseries Co.*  
**NEOSHO, MISSOURI**



World's Fair

## WHITE BOUQUET SPECIAL

Cat. No. 820  
5 Top Varieties, 2-yr. No. 1 Plants

**Only \$8.35**

Regular Value \$9.50

1 FREE Rose—Our Choice  
SPRING SHIPMENT ONLY



White Bouquet

### 181—WHITE BOUQUET

(Pat. No. 1415.) An enchantingly lovely white Floribunda with sparkling 4- to 5-inch flowers and a contrastingly luxurious dark green foliage.

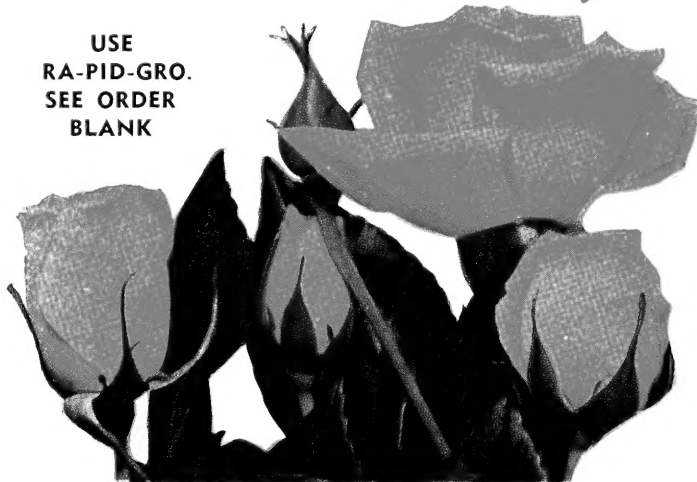
Each ..... \$ 2.50  
3 for ..... 6.60  
12 for ..... 26.40

### 152 WORLD'S FAIR

(Pat. No. 362.) Dark, almost blackish red flowers, pleasingly fragrant. The semi-double blossoms are produced from spring to fall.

Each ..... \$ 1.50  
3 for ..... 3.90  
12 for ..... 15.60

USE  
RA-PID-GRO.  
SEE ORDER  
BLANK



Goldilocks

### 150—GOLDILOCKS

(Pat. No. 672.) A true golden yellow Floribunda. The large, double blossoms are fragrant and are borne in clusters from spring to fall. A vigorous grower with glossy foliage. The best yellow Floribunda.

Each ..... \$ 1.75  
3 for ..... 4.65  
12 for ..... 18.60

### 182 JIMINY CRICKET

(Pat. No. 1346.) This All-America Award winner produces masses of urn-shaped, tangerine-red buds which open to a blend of orange and vermilion tones, aging to a good coral-pink. Blossoms freely on good bush from 3 to 4 feet tall with glossy green foliage.

Each ..... \$ 2.00  
3 for ..... 5.25  
12 for ..... 21.00



Independence

SPRING  
SHIPMENT  
ONLY

### 173 Independence

(Patent No. 1036.) Brilliant orange-scarlet Floribunda, in clusters of six or more with blooms up to six inches across.

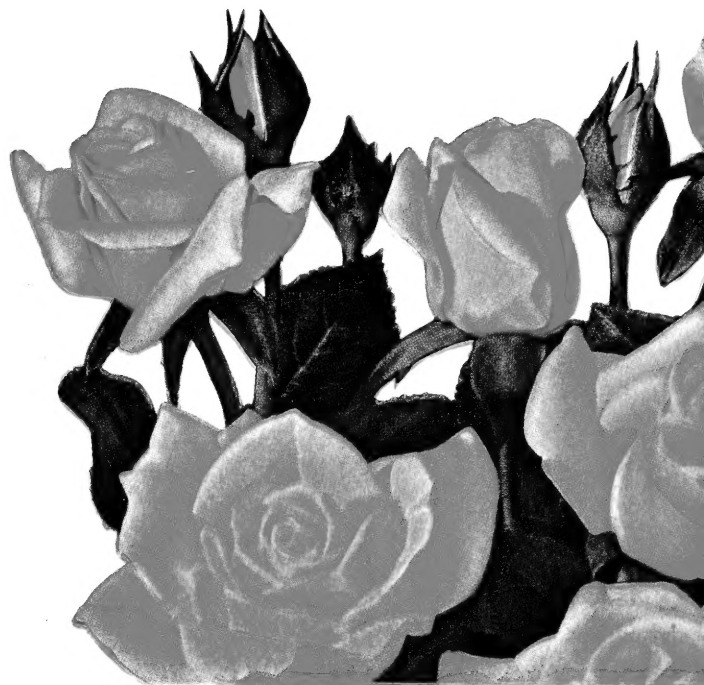
Each .. \$ 1.75  
3 for .. 4.65  
12 for .. 18.60



Jiminy Cricket



Frolic



## for Hardiness and Color

**174—COCORICO.** (Patent No. 1193.) (Not pictured.) A gay, sassy color, orange-red, 2½- to 3-inch flowers with 5 to 9 velvety petals. Blooms continuously in open, well formed clusters. Bushy plant of medium height.

Each ..... \$ 2.00  
 3 for ..... 5.25  
 12 for ..... 21.00

**175—FROLIC.** (Patent No. 1179.) Unbelievably large clusters with each perfect bud opening to a double bloom of clear bright pink about 2¾ inches across. Plant grows 2 to 3 feet tall. A continuous bloomer. Fine for hedges or border.

Each ..... \$ 2.00  
 3 for ..... 5.25  
 12 for ..... 19.20

**147—CIRCUS.** (Pat. No. 1382.) The only All-America winner for 1955-1956. Circus is truly gay, with its many colors of orange, bright yellow, turning to buff, with a trace of apple-blossom-pink. The plant is medium low growing, with good foliage and makes an excellent border plant.

Each \$2.50      3 for \$6.60      12 for \$24.00

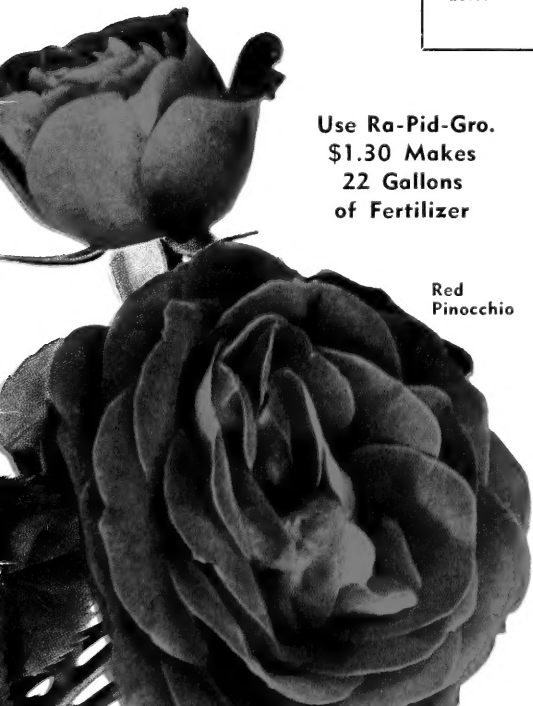
Mexico, Missouri, March 25, 1957

*"We are well pleased with the Roses that we received. They look like such strong plants and we set them out just before the much needed rain. The evergreens that we purchased from you last year look wonderful. The Roses are all coming out, too. I feel that I can always count on your produces being true to name and dependable."*

Mrs. A. Gorrell, Mexico, Missouri



Use Ra-Pid-Gro.  
 \$1.30 Makes  
 22 Gallons  
 of Fertilizer



Red Pinocchio

**148—RED PINOCCHIO.** (Pat. No. 812.) Clusters of large, double, velvety red blooms that are unusually long lasting on the bush or after cutting. Continuous bloom and fragrance add to its value.

Each ..... \$ 1.75  
 3 for ..... 4.65  
 12 for ..... 18.60



Vogue

**151—VOGUE.** (Pat. No. 926.) A bright cherry-coral Floribunda with perfect high-centered flowers 3 to 4 inches across. They are borne in clusters and react well to cutting. Plant with Fashion for a rich, colorful combination.

Each ..... \$ 2.00  
 3 for ..... 5.25  
 12 for ..... 21.00

SPRING SHIPMENT ONLY

# Everblooming Floribunda



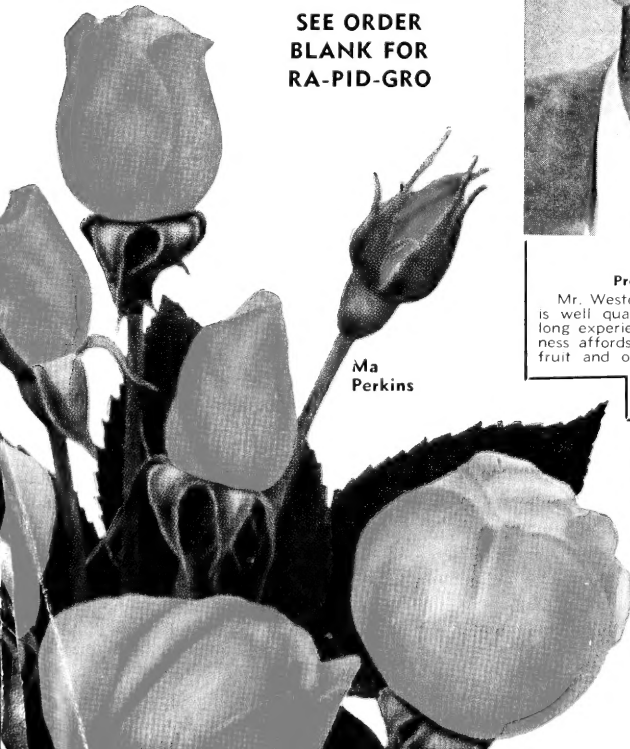
**176—IRENE OF DENMARK.** (Pat. No. 889.) Sweetheart type buds. Open blooms are large, double, and frosty white. Vigorous and bushy to 2½ feet. Small, neat foliage.

Each ..... \$ 1.75  
 3 for ..... 4.65  
 12 for ..... 18.60

**154—MA PERKINS.** (Pat. No. 1143.) A free blooming Floribunda of sparkling coral-pink. Outer petals have shades of red in the bud and slight shades of gold are present in the early stages. When fully open it is unusually double and at its best with a predominant shade of shell-pink. Award winner in 1952-1953.

Each ..... \$ 2.00  
 3 for ..... 5.25  
 12 for ..... 21.00

**SEE ORDER  
 BLANK FOR  
 RA-PID-GRO**

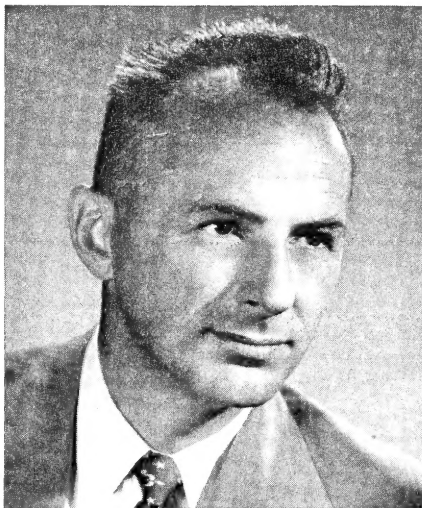


Ma Perkins



**153—RED CAP.** (Pat. No. 1292.) Clusters of fiery red blooms, large for a Floribunda. Wavy petals; flowers open bright vermilion, gradually deepening to a velvety crimson. Compact plant 2 to 3 feet tall. High resistance to foliage trouble.

Each ..... \$ 2.00  
 3 for ..... 5.25  
 12 for ..... 19.20



**JOSEPH B. WESTON**  
 President and General Manager

Mr. Weston, our President and General Manager, is well qualified to head Neosho Nurseries. His long experience in all phases of the nursery business affords our customers expert advice on their fruit and ornamental plantings. He has selected these favorites and offers them to you at an attractive price. Try them—you'll agree they are beautiful!

**155—SPARTAN.** (Pat. No. 1357.) Burnt orange buds open into high-centered flowers of a beautiful orange-red, shading to coral-red, with old tea fragrance. Extremely resistant to disease and insects.

Each ..... \$ 2.75  
 3 for ..... 7.20  
 12 for ..... 28.80



Spartan

**MA PERKINS  
 SPECIAL**

Cat. No. 814

All 4 Pictured

**For Only \$7.45**

(Regular Value \$8.50)

1 FREE Rose—Our Choice

**SPRING SHIPMENT ONLY**



# Roses

• COLOR •  
 BOUQUETS • BORDERS  
 PROLIFIC BLOOMS  
 ALL SUMMER



**146—EUTIN.** As many as 100 blossoms in clusters on one strong stem. An extremely popular Floribunda of glowing carmine-red color and continuous bloom. Grows 2 to 3 feet tall and excellent for foundation plantings.

**145—ORANGE TRIUMPH.** (Polyantha.) (Not pictured.) Small, double, high-centered blossoms of salmon-red with orange shadings. Free bloomer. One of the best for Midwest.

**140—CHEERIO.** Unusually large blooming pink Floribunda. Blossoms are Hybrid Tea size, semi-double, bright pink with a darker reverse. Extremely hardy.

**143—IMPROVED LAFAYETTE.** Semi-double flowers of glowing red suffused crimson. Slightly fragrant. It is a heavy bloomer and we consider it the best non-patent among Floribundas.



**141—FRENHAM.** Big trusses of deep fading scarlet blooms, semi-double, to 3 inches. Grows 3 to 3½ feet tall. Vigorous, dense foliage, prolific bloomer.

### PRICES

Each	.....	\$ 1.35
3 for	.....	3.85
6 for	.....	7.40
12 for	.....	13.75
24 for	.....	25.75

**142—FLORADORA.** Glowing orange-scarlet blossoms in sprays of six to twelve. Tiny buds open to full, double, Camellia-like blooms. Grows 3 to 4 feet tall.

Lafayette

Cheerio

Floradora

### CHEERIO SPECIAL

Cat. No. 811

1 of each variety listed

**All 6 for \$6.65**

(Regular Value \$7.40)

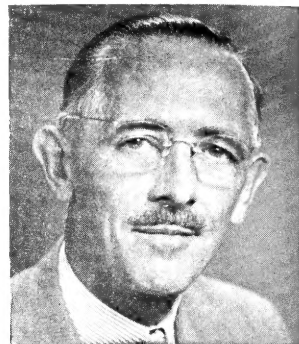
2 Collections for \$12.50

SPRING SHIPMENT  
 ONLY

**USE  
 RA-PID-GRO**

# Everblooming Grandifloras

A thrilling new class of Everblooming Roses. A strong growing type with Hybrid Tea blooms and Floribunda profusion. Plant one or all for summer-long color.



**M. VAUGHN WOODARD**  
Landscape Architect  
and Sales Manager

Mr. Woodard is recognized as one of the best Landscape men in the Middle West, and well he should be, for he came to Neosho for that purpose 36 years ago! He has helped beautify the entire region.

Vaughn loves Roses and recommends Grandifloras for every planting. Try this selection of his—you'll like them!

Please order by number and name.



Montezuma

**184—MONTEZUMA.** (Pat. No. 1383.) An outstanding Grandiflora of vivid rosy salmon. Long, slender buds. Blooms up to 4 inches across, with dense foliage. Grows 3 to 5 feet tall and produces great quantities of bloom.

Each \$2.75    3 for \$7.20



Buccaneer

**183—BUCCANEER.** (Pat. No. 1119.) Brilliant unfading yellow Grandiflora. Quantities of medium sized blooms produced on tall growing plant. Holds color well, long stems for fine cut flowers.

Each \$2.50    3 for \$6.60

## GRANDIFLORA COLLECTION

Cat. No. 812

All Four, 2-Year No. 1 Plants

**For \$8.55**

(Regular Value \$9.75)

1 FREE Rose—Our Choice

**107—QUEEN ELIZABETH.** (Pat. No. 1259.) All-America Award winner for 1955. The first of the new "Grandiflora" class named for its abundance of flowers combined with the magnificent qualities of the Hybrid Tea. The blossoms are a breath-taking blending of soft carmine-rose and dawn-pink with almost thornless stems. Very fragrant and an abundant bloomer.

Each \$2.50

3 for \$6.60

**139—CARROUSEL.** (Pat. No. 1066.) A garnet-red Grandiflora. Vigorous, upright, bushy, growing to about 3 feet. Its glorious blooms are beautiful and numerous. The color is unfading, always dark, rich red throughout. Will produce bloom all summer and we consider it one of the best Roses.

Each \$2.00

3 for \$5.25

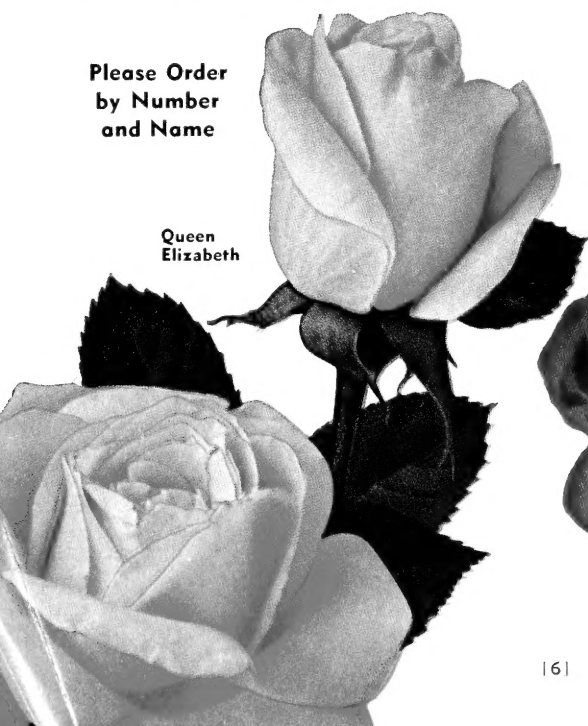
12 for \$21.00

**SPRING SHIPMENT ONLY**

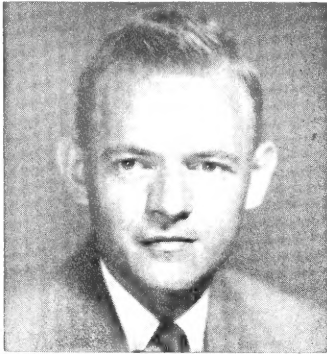
Please Order  
by Number  
and Name

Queen  
Elizabeth

Carrousel



# and Hybrid Teas



**VAUGHN WOODARD, JR.**  
Superintendent Shipping  
Department

Woody is in charge of our truck deliveries and all shipments, as well as helping solve the landscaping problems of the area. The group of Roses on this page is an excellent one and he'll be glad to ship them to you promptly.

**111—LAS VEGAS.** (Pat. No. 1486.) Long, pointed buds open into warm salmon-pink flowers with a golden sheen at the base. The flowers are high-centered and often measure 6 inches across. It is a vigorous plant covered with dark foliage.  
Each \$2.50      3 for \$6.60

**106—HELEN TRAUBEL.** (Pat. No. 1028.) Lovely pink shades from carnation to apricot in almost every petal. Long buds, open into blooms up to 6 inches across. Delicate fragrance; resists shattering on bush or after cutting. 42 to 56 petals.  
Each \$2.75      3 for \$7.20

## LAS VEGAS COLLECTION

Cat. No. 813

All Four Pictured,  
2-Year, No. 1 Plants

**For \$9.00**

(Regular Value \$10.25)

**1 FREE Rose—Our Choice**

**138—MOJAVE.** (Pat. No. 1176.) Winner for 1953-1954. Radiant orange with flame-like tones of scarlet and vermilion. Long, tapered buds on long stems will make this one a favorite for cutting. Plants are vigorous with glossy foliage. Perhaps the finest orange rose yet produced and sure to become extremely popular.

Each \$2.75

3 for \$7.20

**101—CHARLOTTE ARMSTRONG.** (Pat. No. 455.) Long, tapering, blood-red buds open into magnificent cerise flowers. Medium heavy bloomer every month, May through September. A wonderful cutting Rose.

Each \$2.25

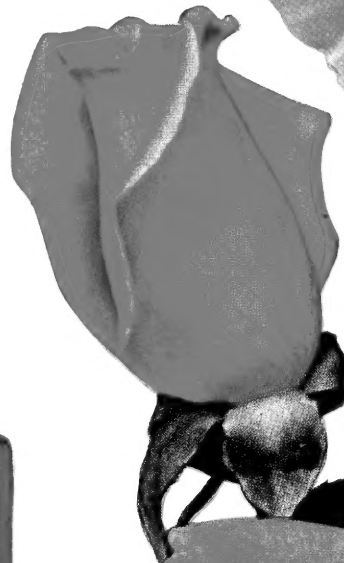
3 for \$6.00



Las Vegas



Helen Traubel



Mojave

**SPRING SHIPMENT ONLY**



Charlotte  
Armstrong



[7]

**USE  
RA-PID-GRO**



# Plant ROSES

## SHOW GIRL SPECIAL

Cat. No. 822

One of each variety shown,  
2-yr. No. 1 plants

**All for \$8.40**

Regular Value \$9.50

1 FREE Rose—Our Choice

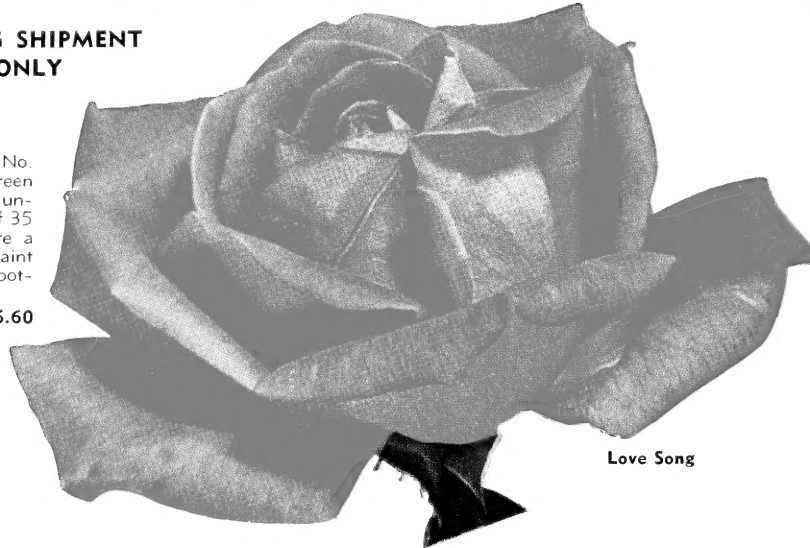


Show Girl

### SPRING SHIPMENT ONLY

**114—LOVE SONG.** (Pat. No. 1360.) Beautiful dark green foliage contrasting with unusually double blossoms of 35 to 50 petals. Flowers are a rich salmon-pink with faint shades of yellow on the bottom third of the petals.

Each \$2.50    3 for \$6.60



Love Song

**112—SHOW GIRL** (Pat. No. 646). One of the very best pink Roses, noted for its long pointed, perfect buds of deep pink. Large, semi-double, fragrant blossoms. Its long stems make it one of the best for cutting.

Each \$2.25    3 for \$6.00

**113—CHRYSLER IMPERIAL** (Pat. No. 1167). Big, 40 to 50 petaled blooms of rich crimson-red on long, stout stems. Rich fragrance. Well branched, upright plant of medium height. All-America Award Winner, 1953.

Each \$2.50    3 for \$6.60

Chrysler  
Imperial



**109—LOWELL THOMAS** (Pat. No. 595). Large, clear yellow with slight tea fragrance. Holds color unusually well and is called "easiest of all yellows to grow."

Each \$2.25    3 for \$6.00

Lowell  
Thomas





# in March and April

**G. B. WILLIAMS**  
Vice-President  
and Treasurer

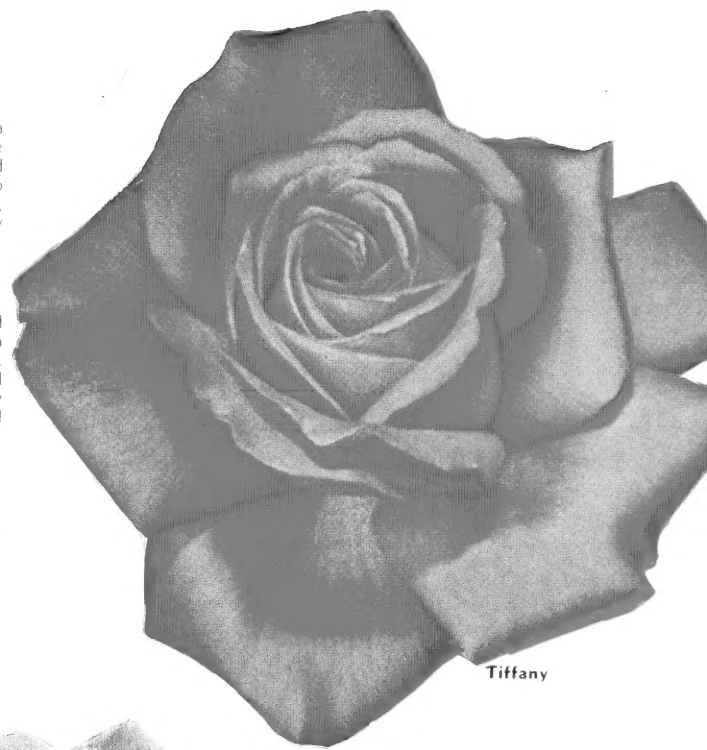
Mr. Williams is our credit manager, so address time payment orders to him. Try to send your credit order in early so he will have a few days to check your references without delaying the shipment of your order. He has been here almost 40 years, so feel free to ask him any questions you wish.

**102—TIFFANY.** (Pat. No. 1304.) All-America Award winner for 1955. Extremely large blooms and vigorous grower. Long, pointed buds, golden yellow at base, shading to deep pink. Flowers open to perfectly formed, double, high-centered blooms with heavy texture and long lasting qualities.

Each \$2.50      3 for \$6.60

**104—PEACE** (Pat. No. 591). The most talked about Rose today. It is fresh looking from bud to petal fall, yet constantly changing. Bud is golden, opening to lemon-yellow edged with pink. Very double and exceptionally large. 5½ to 6 inches. Long lasting and quite vigorous.

Each \$2.50      3 for \$6.60



Tiffany

**100—MIDNIGHT.** (Pat. No. 1542.) A wonderful, velvety, black-red Rose. Strong habit of growth and a most wonderful fragrance makes this Rose a beautiful addition to your Rose plantings. Magnificent bouquets.

Each \$2.75      3 for \$7.20

June 27, 1957

*"I wish to inform you that the Roses we ordered in the spring have been blooming very profusely. We are so pleased with them. Every one lived."*

Yours truly,  
Mrs. Eda C. Jones  
Richland, Missouri

## PEACE SPECIAL

Cat. No. 823

One of each variety shown.

All Four, 2-Yr., No. 1 Plants

For \$9.45

(Regular Value \$10.75)

1 Rose FREE—Our Choice



Peace

**105—WHITE KNIGHT.**

(Pat. No. 1359.) All-America Award winner for 1958. Called a perfect white Rose. Long, pointed buds open into the purest white flowers of 35 petals. Strong, upright grower. Excellent for cutting, offering white Roses that stay white. Does not "ball" as so many other white Roses do.

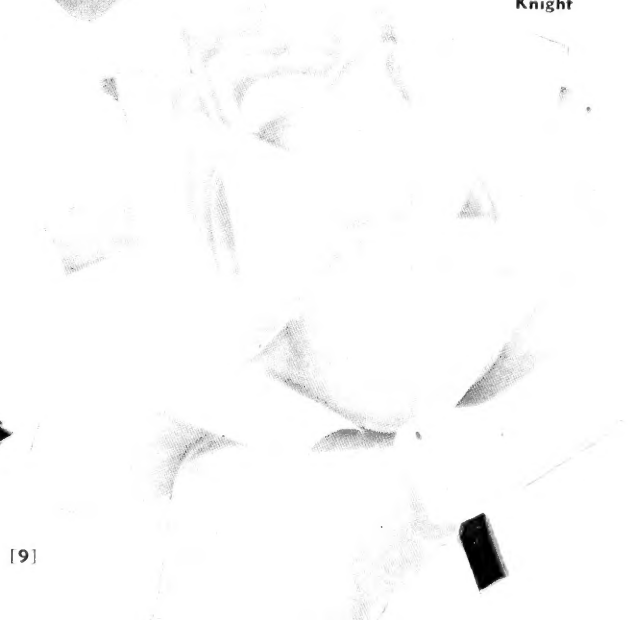
Each ..... \$3.00  
3 for ..... 7.95

White Knight

**SPRING SHIPMENT ONLY**



Midnight



## EVERBLOOMING HYBRID TEAS

**103—SUTTER'S GOLD** (Pat. No. 885). Constant bloomer with true golden yellow petals veined with copper. An excellent cutting Rose. Lasts 4 or 5 days or more in the vase. Strong insect resistance; keep well sprayed against fungus.

Each \$2.25      3 for \$6.00

**110—NEW YORKER** (Pat. No. 823.) An outstanding Rose of velvety scarlet color. Produces abundantly, large high centered double blossoms with strong fruit fragrance. Very popular.

Each \$2.25      3 for \$6.00



New Yorker

**SPRING SHIPMENT ONLY**

**Spring Shipment Only**

**108—REX ANDERSON** (Pat. Expired). One of the most popular whites, it is a free bloomer with beautifully formed buds and double blossoms with shadings of yellow and gold at the base of ivory-white petals. Will produce enormous flowers if some of the buds are removed.

Each ..... \$ 1.35  
 3 for ..... 3.85  
 6 for ..... 7.40  
 12 for ..... 13.75  
 24 for ..... 25.75



Sutter's Gold



Rex Anderson

### NEW YORKER SPECIAL

Cat. No. 824

- 1 New Yorker
- 1 Sutter's Gold
- 1 Rex Anderson

**All 3 for \$5.25**

1 FREE Rose Our Choice

Golden Wings



**170—GOLDEN WINGS** (Pat. No. 1419). A beautiful single flower borne in great profusion. Purest yellow color which holds well in full sun. More of the shrub Rose type and would make a beautiful hedge. Heavy bloomer, forcing flowers from spring until frost. Extremely winter hardy. Carries a national rating of 9.6. Every home owner has a place for one or more.

Each \$2.50      3 for \$6.60

**56—RED GROOTENDORST.** Ever-blooming hardy shrub Rose, 4 to 6 feet tall. Blooms all summer with clusters of double flowers. Fine for borders or foundations.

18-24 in., each \$1.10  
 3 for \$3.00  
 2-2½ ft., each \$1.30  
 3 for \$3.75

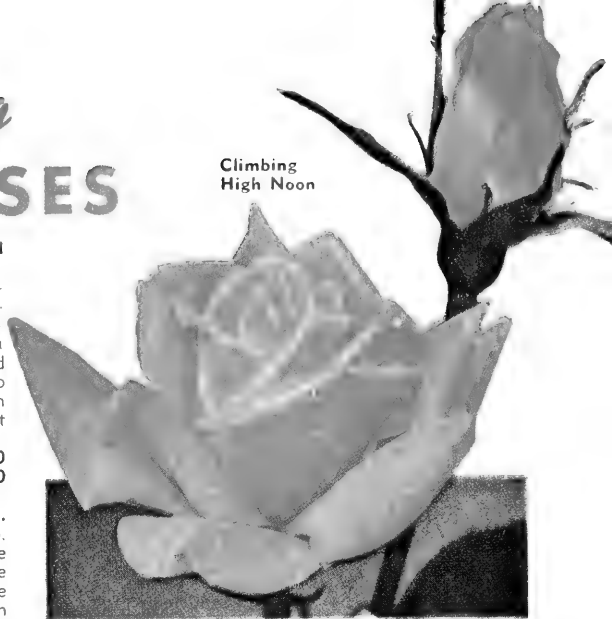
Red Grootendorst



**SPRING  
SHIPMENT  
ONLY**

# Everblooming CLIMBING ROSES

Climbing  
High Noon



**168—CLIMBING HIGH NOON.** (Hybrid Tea.) (Pat. No. 704.) An exceptionally brilliant yellow climber with unfading blossoms throughout the spring, summer and fall. Grows compactly to 8 to 10 feet tall with satiny green foliage. Best yellow climber.

Each ..... \$2.50  
3 for ..... 6.60

**156—CLIMBING PINKIE.** (Floribunda.) (Pat. No. 1076.) Most everyone has a garden spot where a 6- to 8-foot plant like this one is just right. In the spring it is a cloud of delightful pink bloom—the same perfect little buds and double flowers which won an All-America Award for the bush Pinkie in 1948. Produces cluster after cluster of dainty flowers from spring until fall.

Each \$2.75      3 for \$7.20

**169—CLIMBING WORLD'S FAIR.** (Floribunda.) (Pat. No. 546.) This variety will answer the need for a good dark red climber that is truly everblooming. Profuse bloomer.

Each \$2.00      3 for \$5.25

## CLIMBING ROSE COLLECTION

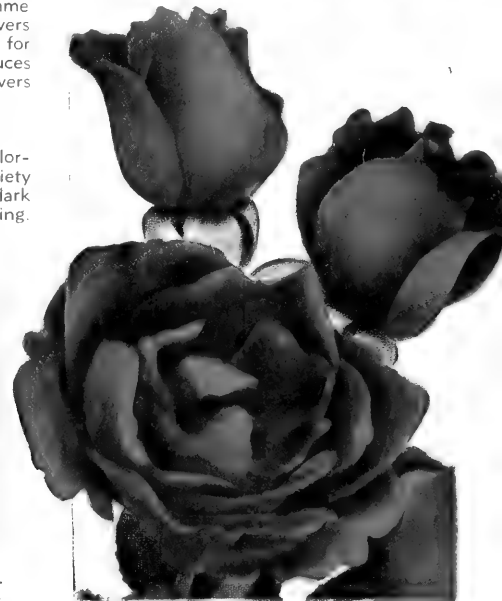
Cat. No. 821

- 1 Clg. Parade
- 1 Clg. World's Fair
- 1 Clg. High Noon

**All 3—2-Yr., No. 1 Plants  
\$6.15**

(Regular Value \$7.00)

**1 FREE Rose—Our Choice**



Climbing World's Fair

**162—CLIMBING GOLDEN SHOWERS.** (Hybrid Tea.) (Pat. No. 1557.) All-America Award winner for 1957. A Pillar type Rose with exquisitely shaped deep yellow, long, pointed buds and large, fragrant, high-centered, daffodil-yellow flowers. Winter hardy, ever-blooming pillar and Climbing Rose that blooms from early spring through late fall. Almost thornless stems. Large, glossy dark green foliage which is highly resistant to mildew and black spot.

Each \$2.75      3 for \$7.20

**165—CLIMBING PARADE.** (Floribunda.) (Pat. No. 1253.) Masses of rose-pink blooms in spring and fall, with intermittent blooms between. Rosy flowers 4 to 5 inches in diameter, spicy fragrance and dark green foliage. Grows easily and will thrive in semi-shade as well as full sunlight.

Each ... \$2.50  
3 for ... 6.60

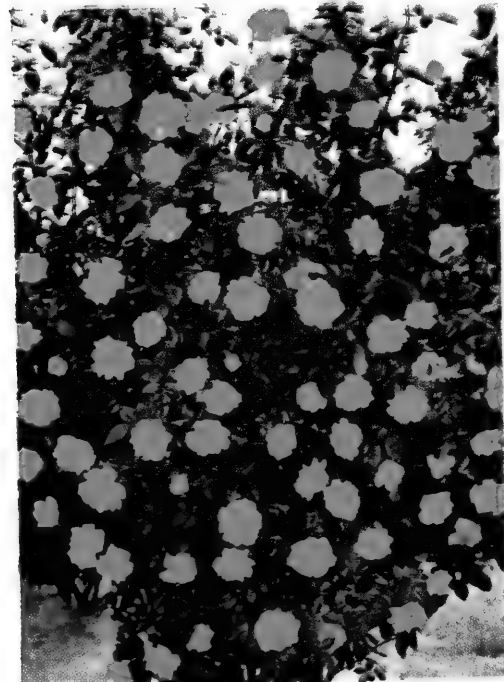


Climbing  
Parade



Climbing Pinkie

Golden Showers



# EVERBLOOMING

PRICES FOR ROSES ON PAGES 12, 13, 14

All Plants 2-Year, No. 1  
 Each \$1.35      3 for \$3.85      6 for \$7.40  
 12 for \$13.75      24 for \$25.75



The Doctor

**130—THE DOCTOR.**

One of the best pink Roses of all time. Well formed buds develop into enormous, satiny pink blooms up to six inches across. It is very fragrant and the sparkling texture of the petals is long remembered. Be sure to plant this one.

**126—POINSETTIA.** The exciting color of Poinsettias gives this Rose a lasting brilliance. Beautiful, long, pointed buds, large double flowers, produced in abundance. Vigorous.

**133—ECLIPSE.** Slender, urn-shaped buds over 2 inches long, of deep gold. Long stems and spicy fragrance. Good bloomer.

**136—MME. JOS. PERRAUD.** Very large, fragrant blossoms of buff color shaded with orange and pink. Bud orange and pointed. Vigorous in the Midwest.

**121—MCGREY'S IVORY.** Long, pointed buds with large, double flowers of creamy white. Very fragrant. Considered one of the best white Roses.

**129—CRIMSON GLORY.** (Pat. No. 105 Expired.) The most popular red Rose at regular prices. A rich, velvety crimson with unusual fragrance. Buds are urn-shaped, borne in great profusion.



Poinsettia



Eclipse



Mme. Jos. Perraud



McGredy's Ivory

**EVERBLOOMING ROSE COLLECTION**

Cat. No. 816

**ALL 6 ROSES ON THIS PAGE— \$ 6.95**  
 (Regular Value \$7.40)

**TWO COLLECTIONS For Only— \$12.85**  
 (Regular Value \$13.75)

**FOUR COLLECTIONS For Only— \$23.95**  
 (Regular Value \$25.75)

**COLLECTION No. 819**

One of each of all 12 pictured on pages 12 and 13.

**All for \$12.85**  
 (Regular Value \$13.75)



Crimson Glory

**SPRING SHIPMENT ONLY**



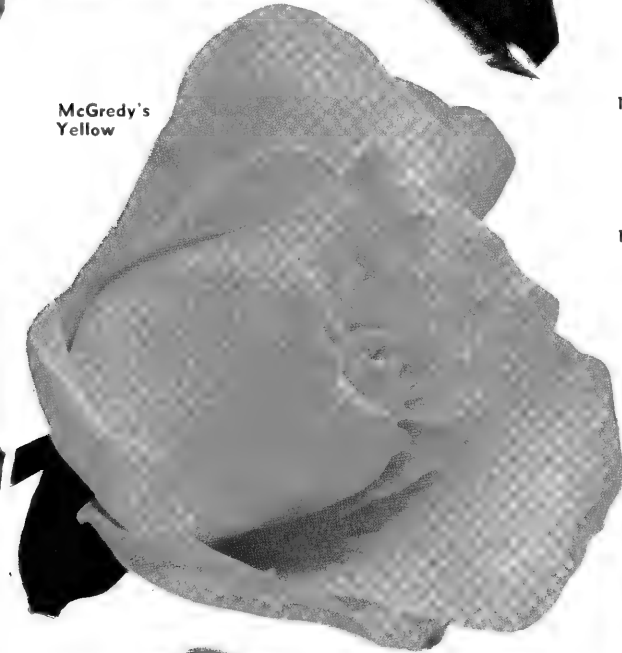
# HYBRID TEA ROSES

Here is your opportunity to buy the very finest 2-year, No. 1 Roses. Grown and stored under the best conditions. A choice listing of dependable, colorful Roses.

Editor  
McFarland



McGredy's  
Yellow



Red  
Radiance



President Hoover

**131—EDITOR McFARLAND.** A bright glowing pink with well formed buds and long lasting blooms. A vigorous bloomer; good for cutting.

**125—PRESIDENT HOOVER.** This long-time favorite is one of our most beautiful Roses. Long, pointed buds, opening into double flowers of varying shades of orange, yellow and red. Vigorous and a heavy bloomer. Long stems.

**122—McGREDY'S YELLOW.** Slightly fragrant, buttercup-yellow with long, pointed buds and large double flowers slightly lighter in color. It is a good grower and free bloomer, making it one of the better yellows.

**127—PINK RADIANCE.** A brilliant carmine-pink with cameo-pink shadings. Bud globular, flower large, double and intensely fragrant.

**128—RED RADIANCE.** Sport of Pink Radiance with all its good points, but a bright cerise-red.

**119—ETOILE DE HOLLANDE.** The perfect buds produced on upright stems make this the standard for judging red Roses. The bright red color is unfading. Hardy and excellent for cutting. Long time favorite.



Pink  
Radiance

## COLLECTION No. 817

One of each variety  
pictured on this page.

**ALL SIX ROSES**

For \$6.95

(Regular Value \$7.40)

**TWO COLLECTIONS**

For \$12.85

(Regular Value \$13.75)

**FOUR COLLECTIONS**

For \$23.95

(Regular Value \$25.75)

Etoile de  
Hollande



Spring  
Shipment  
Only

# Everblooming ROSES

All Plants 2-Yr., No. 1



Christopher Stone



Condesa de Sastago

**123—CHRISTOPHER STONE.** Brilliant scarlet-crimson with large clusters of golden stamens. Long, pointed buds and large double flowers that do not "blue." Unusually fragrant, heavy bloomer. One of the best bright red Roses.

**116—CONDESA DE SASTAGO.** A distinct two-color with Oriental-red inside and rich yellow outside. Strong grower, free bloomer, with glossy foliage.

**COLLECTION No. 818**  
**ONE OF EACH variety pictured on this page, only \$6.95**  
(Regular Value \$7.40)  
**TWO COLLECTIONS, \$12.85**  
(Regular Value \$13.75)  
**FOUR COLLECTIONS, \$23.95**  
(Regular Value \$25.75)



Picture

**118—SNOWBIRD.**

Will outbloom any white rose. Produces a large number of well formed, snow-white blooms which have a feathery look when fully open. Many petaled, high-centered flowers.

Snowbird

**135—PICTURE.** Difficult to describe or picture. Perfect buds that open to a warm clear pink with a touch of salmon. Delightfully fragrant and heavy bloomer.

**117—DUQUESA DE PENARANDA.** Very large, fragrant flowers of orange and apricot shaded with copper. The color is exceptionally bright in contrast with other Roses. A strong grower with shiny light green foliage.

Duquesa de Penaranda

**134—COUNTESS VANDAL.** (Pat. No. 38 Expired.) Long, tapered, coppery buds opening into high-centered double blooms, salmon-pink inside. Very fragrant and produced on good stems for cutting.

**SPRING  
SHIPMENT  
ONLY**

## PRICES

Each . . . \$1.35  
 3 for . . . 3.85  
 6 for . . . 7.40  
 12 for . . . 13.75  
 24 for . . . 25.75



Countess Vandal



Everblooming Paul's Scarlet

**166—EVERBLOOMING PAUL'S SCARLET.**

A new strain which gives bloom in spring, summer and fall. Brilliant, double red blossoms, same color as Paul's Scarlet. Don't confuse this with Blaze as offered in most catalogs. This is a new strain and really an everbloomer.

March 6, 1957

*I want to thank you for such nice Roses. I find that the Roses I buy from Neosho Nurseries are far better than I get anywhere else.*

J. W. Cunningham  
Afton, Oklahoma

Climbing  
Coral  
Pillar



**EVERBLOOMING  
CLIMBING  
ROSES**

**PRICES**

Each .....	\$ 1.35
3 for .....	3.85
6 for .....	7.40
12 for .....	13.75
24 for .....	25.75

**158—CLIMBING NEW DAWN.**

A sport of Dr. Van Fleet and the first everblooming climber. A blush-pink with long stems. It blooms from spring to frost.

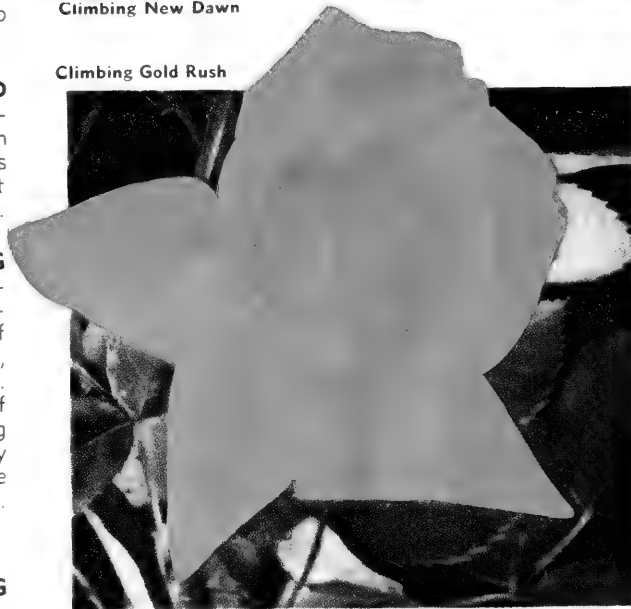


Climbing New Dawn

**157—CLIMBING GOLD RUSH.**

A lively, everblooming climber with large, double blossoms of molten gold. Fast growing in popularity.

Climbing Gold Rush



**160—CLIMBING CORAL PILLAR.**

Flowers are large and brilliant, a blending of rose, pink, carmine, gold, and apricot. Hardly ever out of bloom from spring until frost. Strikingly beautiful. A pillar type growing to 8 to 10 ft. tall.

**163—CLIMBING WHITE DAWN.**

New, hardy everblooming white climbing Rose. Flowers are double, snow-white, fragrant, and are produced constantly from spring until frost.

Climbing White Dawn



**CLIMBING  
ROSE SPECIAL**

Cat. No. 825

All 5 Roses

Pictured

2-yr., No. 1,

\$6.15

SPRING SHIPMENT  
ONLY



Red Flowering Peach

**323—RED FLOWERING PEACH.** Brilliant double red flowers completely cover this small tree in early spring. Outstanding in its beauty.

	Each	3 for
2-3 ft. . . . .	\$1.00	\$2.50
3-4 ft. . . . .	1.40	3.45
4-5 ft. . . . .	1.95	5.25
5-6 ft. . . . .	2.50	6.95

**321—JAPANESE FLOWERING CHERRY (Kwan-zan).** Completely covered in the spring with large, double, rosy pink flowers. It starts blooming a year or two after planting. Perfectly hardy and a lovely thing in blossom. AVAILABLE SPRING ONLY.

	Each	3 for
3-4 ft. . . . .	\$3.50	\$9.25



Flowering Cherry



Red Leaf Plum

**322—RED LEAF PLUM.** A small tree growing to 10 feet tall, with brilliant bronze-red foliage all summer. Upright grower, makes a fine foliage contrast. Hardy anywhere.

	Each	3 for
2-3 ft. . . . .	\$1.35	\$3.50
3-4 ft. . . . .	1.65	4.25
4-5 ft. . . . .	2.25	5.95

**238—ALLRED PLUM.** See page 40.

**318—PINK FLOWERING DOGWOOD.** Same as white except for color of blossoms, which is a deep pink or red. Blooms when quite young. Dogwoods set bloom for next year in late summer and fall, so if season is dry they should be well watered in August and September. Wrapped in moss. AVAILABLE SPRING ONLY.

	Each	3 for
18-24 in. . . . .	\$2.95	\$ 8.35
24-30 in. . . . .	3.60	10.25
30-36 in. . . . .	4.70	13.50
3- 4 ft. . . . .	5.95	16.95

White Dogwood

**317—WHITE DOGWOOD.** An outstanding native tree with large white flowers in spring. Attractive foliage turns a crimson-red in fall and on older trees red berries give winter color.

2-3 ft., each	\$1.95;
3 for	\$5.25.
3-4 ft., each	\$2.95;
3 for	\$7.95.
4-5 ft., each	\$4.50;
3 for	\$11.95.

**SPECIAL No. 830**

- 1 Mimosa, 3-4 ft.
- 1 Hopa Crab, 3-4 ft.
- 1 Red Leaf Plum, 3-4 ft.

**All 3 for Only \$3.95**

(Regular Value \$5.00)

**345—MOUNTAIN ASH.** Foliage is a beautiful green against a light, smooth bark. Has a broad head, very compact, with creamy white blossoms in spring followed by clusters of red berries in late summer and fall. Grows rapidly.

	Each
4-5 ft. branched . . . . .	\$2.95
5-6 ft. branched . . . . .	3.75

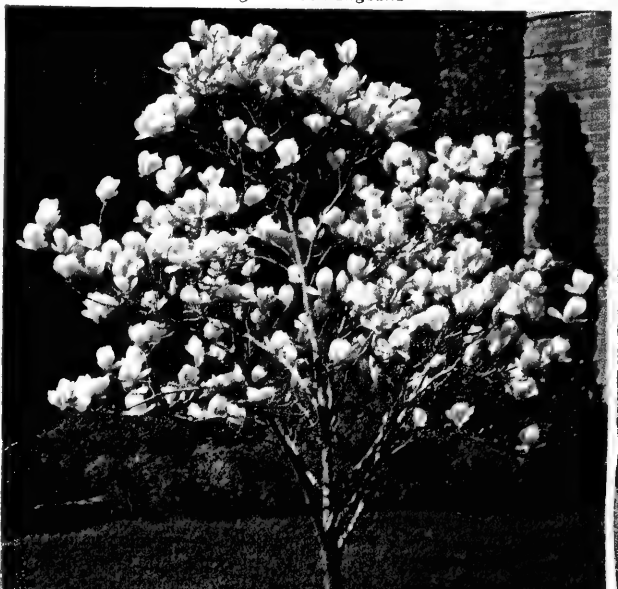
**72—MAGNOLIA SOULANGEANA.** Large pink Tulip-like flowers in early spring before leaves appear. This Magnolia is hardy and one of the showiest. Makes a bush or small tree. Drops leaves in fall. Plants should be moved only in the spring. Enjoy a deep, moist, but well drained location.

**73—MAGNOLIA SOULANGEANA NIGRA.** Dark purple flowers with petals 4 to 5 inches long, pink inside. Bloom in early spring before foliage appears.

	Each	3 for
18-24 in., wrapped in moss	\$3.25	\$8.95

**MAGNOLIA GRANDIFLORA.** (Evergreen.) See page 27.

Magnolia Soulangeana







Jay Darling Crab

**329—GOLDEN RAIN (Koelreuteria).** A beautiful drought-resistant tree with brilliant yellow flowers in enormous panicles at tips. Late in summer numerous bladder-shaped pods adorn its branches. Handsome tree with open-headed top, seldom more than 30 feet high. Stands hot, dry winds and city conditions. Each 3 for  
 3-4 ft. branched \$3.25 \$9.00  
 4-5 ft. branched 3.95 10.75

**326—RUSSIAN OLIVE.** A small tree or large shrub to 20 feet. Withstands heat and drought. Gray leaves covered with silvery dust. The orange berries are coated with silvery scales and are very showy in the fall. Each 3 for  
 2-3 ft. .... \$1.00 \$2.50  
 3-4 ft. .... 1.40 3.45  
 4-5 ft. .... 1.95 5.25

**319—CHINESE REDBUD.** Similar to the native Redbud, but has larger, rounded leaves and a more compact, shrubby habit of growth. Purplish pink flowers are nearly twice as large as those of the native type and considerably darker. Each 3 for  
 18-24 in. .... \$1.95  
 2-3 ft. .... 2.75  
 3-4 ft. .... 3.95



Golden Rain (Koelreuteria)

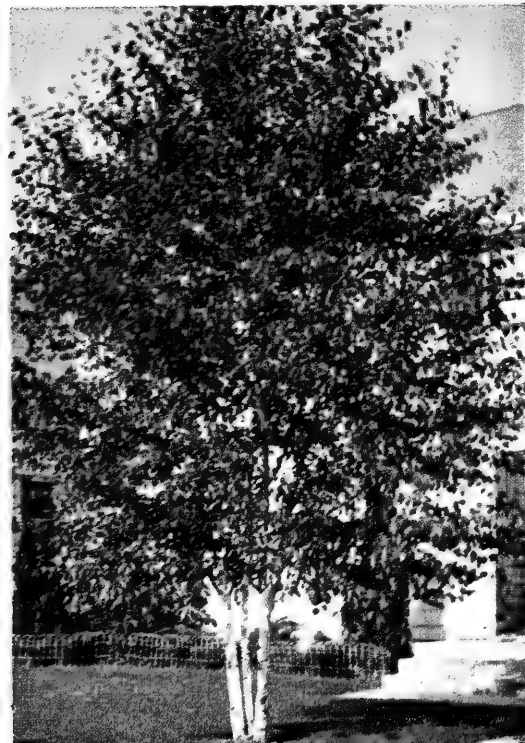
# TREES . . .

## FLOWERING CRABS

- **316—HOPA CRAB.** Upright grower with attractive foliage and entirely covered in spring with crimson buds, opening to rose colored flowers. Small red fruits hang on until fall. Grows to 20 feet.
- 313—ALDENHAM CRAB.** Semi-double purplish red flowers, fruit purplish red, foliage dark reddish green.
- **315—JAY DARLING.** Purplish red flowers, bright red fruit. Bronze-green foliage. Fruit good for jelly.
- 325—MARSHALL'S SLENDER.** Slender, pyramidal habit of growth. Pink flowers and red fruits.
- **328—ALMEY FLOWERING CRAB.** Glowing fiery crimson blooms cover this strong, healthy tree each spring. Almey starts blooming when very young and will occasionally bloom the year it is set out. Hardy everywhere.

FLOWERING CRAB PRICES		
	Each	3 for
2-3 ft. ....	\$1.50	\$3.95
3-4 ft. ....	1.75	4.75
4-5 ft. ....	2.50	6.75
5-6 ft. ....	3.25	8.75

Clump Birch



**324—REDBUD.** Slender, graceful tree to 25 feet. Before leaves come out branches are covered with clusters of small purplish pink flowers, which are extra charming in combination with Dogwoods and Evergreens. Each 3 for  
 2-3 ft. .... \$1.35 \$3.50  
 3-4 ft. .... 1.65 4.25  
 4-5 ft. .... 2.25 5.95  
 5-6 ft. .... 3.50 8.95

**WHITE BIRCH.** A small tree with white bark after tree matures. The green foliage turns a pleasing yellow in the fall. Grows 25 to 30 feet tall. We offer this in clumps with two or three distinct trunks, or a single trunk tree. AVAILABLE SPRING ONLY.

AVAILABLE SPRING ONLY.		
	Each	3 for
<b>343—Straight Stems,</b>		
4-5 ft. ....	\$2.65	\$7.50
5-6 ft. ....	3.45	9.45
<b>344—Clumps, 3-4 ft.</b>	3.25	8.95

**320—MIMOSA (Silk Tree).** Unusual flowering tree with spreading top, fern-like foliage and feathery powder-puff, deep pink and yellow blossoms all summer long. Must be seen to be appreciated. Each 3 for  
 2-3 ft. .... \$1.00 \$2.50  
 3-4 ft. .... 1.40 3.45  
 4-5 ft. .... 1.95 5.25

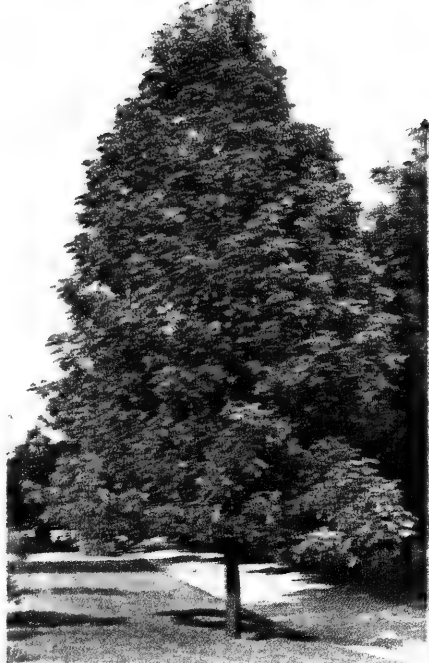


American Redbud

Mimosa



# Neosha QUALITY TREES



**White Ash**

**330—ASH, WHITE.** A tough, long-lived tree of moderately rapid growth, with dark green foliage, turning bronze and purple in the fall. A deep rooted tree with excellent lawn characteristics, making it one of the best for permanent shade plantings. We are able to offer them at these very attractive prices:

	Each	2 for
4-5 ft. ....	\$1.95	\$3.50
5-6 ft. ....	2.25	4.25
6-8 ft. ....	3.25	5.95
8-10 ft. ....	4.75	8.75

**332—CHINESE ELM.** One of the fastest growing shade trees. Small leaves, rather dense foliage. Stands extreme drought conditions exceptionally well. Should be pruned after two or three seasons of growth. Plant several at our attractive prices and enjoy their shade in a few short years.

	Each	3 for
4-5 ft. ....	\$1.25	\$ 3.25
5-6 ft. ....	1.75	4.95
6-8 ft. ....	2.50	6.95
8-10 ft. ....	3.75	10.35
10-12 ft. ....	4.75	13.25

**339—CHINESE ELM WINDBREAK.** Heavy rooted seedlings. Ideal for windbreaks or hedges.

	25 for	50 for	100 for	500 for
12-18 in. ....	\$2.75	\$ 4.50	\$ 8.25	\$36.00
18-24 in. ....	3.75	6.85	12.50	52.50
2-3 ft. ....	5.95	10.95	19.95	84.00

**Chinese Elm**



## 333—BROAD LEAF CHINESE ELM.

(Hybrid Elm.) Hardy, drought and disease desistant. A beautiful budded Elm discovered in our nursery row, from which we have propagated for twenty years. Our supply is extremely limited this year, so order early.

	Each	3 for
4-5 ft. ....	\$2.75	\$ 7.25
5-6 ft. ....	3.35	8.95
6-8 ft. ....	4.25	11.75
8-10 ft. ....	5.35	14.75
10-12 ft. ....	6.95	18.50

## LOCUST

### 351—MORAINÉ LOCUST. (Pat. No. 836.)

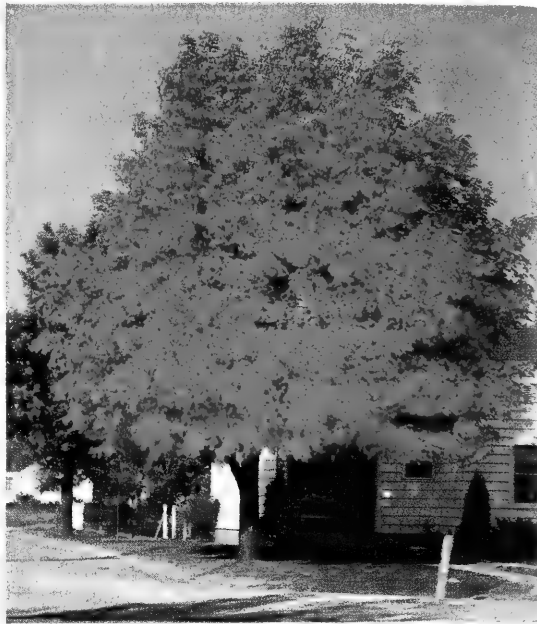
Grows tall and vase-shaped, attaining a mature height of 80 to 100 feet. It grows more rapidly than common Locust due to the absence of seed pods and thorns. Compound leaves let sufficient light filter through for a good lawn under tree and they require little raking in the fall. A most easily transplanted and desirable tree for the city lawn.

Each 5-6 ft. whips ..... \$5.00

### 350—THORNLESS HONEYLOCUST (Gleditsia).

A splendid tree, withstanding city conditions. Easy to transplant and hardy anywhere. Fern-like foliage and fairly rapid growth.

	Each	2 for
5-6 ft. ....	\$2.50	\$4.50
6-8 ft. ....	3.50	6.50
8-10 ft. ....	4.75	8.75



**335—SUGAR MAPLE.** Commonly known as Hard Maple, it is one of the most desirable trees grown. A straight, dense grower with heavy foliage which colors brilliantly in the fall.

	Each	2 for
4-5 ft. ....	\$2.95	\$ 5.25
5-6 ft. ....	3.75	6.75
6-8 ft. ....	4.95	9.25
8-10 ft. ....	7.35	13.50
10-12 ft. ....	9.45	17.75

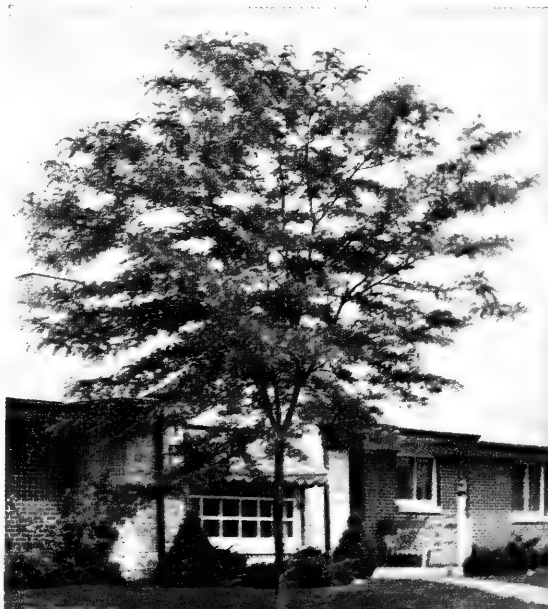
**336—NORWAY MAPLE.** Similar to Sugar Maple, but lower headed and foliage colors mostly yellow in the fall.

	Each	2 for
4-5 ft. ....	\$2.95	\$ 5.25
5-6 ft. ....	3.75	6.75
6-8 ft. ....	4.95	9.25
8-10 ft. ....	7.35	13.50

**337—SCHWEDLER'S MAPLE.** Glorious colored foliage in spring with shades of scarlet, red and purple. During summer months leaves turn deep ruddy green.

	Each
4-5 ft. ....	\$3.00
5-6 ft. ....	4.00

**Thornless Locust**



**FREE  
GIFT  
FOR  
YOU**  
SEE INSERT

USE  
RA - PID - GRO



**Crimson King Maple**

**349—CRIMSON KING MAPLE.** (Pat. No. 735.) New red leaf, truly the King of all Maple trees. A maroon or red-leaved tree which maintains its color throughout the summer. It glistens in the sun. Mature height 50 feet. **AVAILABLE SPRING ONLY.**

	<b>Each</b>
4-5 ft. whips	\$4.50
5-6 ft. whips	5.50

**347—RUBRUM MAPLE (Scarlet).** Brilliant red fall foliage. This tree is of faster growth than Sugar Maple. Has bright red blossoms early in spring. Will grow in low, wet ground where many trees fail. Grows 80 to 100 feet tall.

	<b>Each</b>	<b>2 for</b>
5- 6 ft.	\$3.50	\$ 6.35
6- 8 ft.	4.75	8.95
8-10 ft.	6.95	12.95

**334—SILVER MAPLE.** Often called Soft Maple. Fast growing with small green leaves, silver underneath. Colors yellow in the fall. Grows 80 to 100 feet tall.

	<b>Each</b>	<b>2 for</b>
5- 6 ft.	\$2.50	\$4.50
6- 8 ft.	3.25	5.85
8-10 ft.	4.50	8.50

**Sycamore**



**SPECIAL SHADE TREES**

These varieties are balled and burlapped and must be picked up at the nursery.

**PIN OAK.** The fastest growing Oak and a beauty. Broad, pyramidal habit with glossy leaves which color deep scarlet in the fall. Excellent long-lived shade tree.

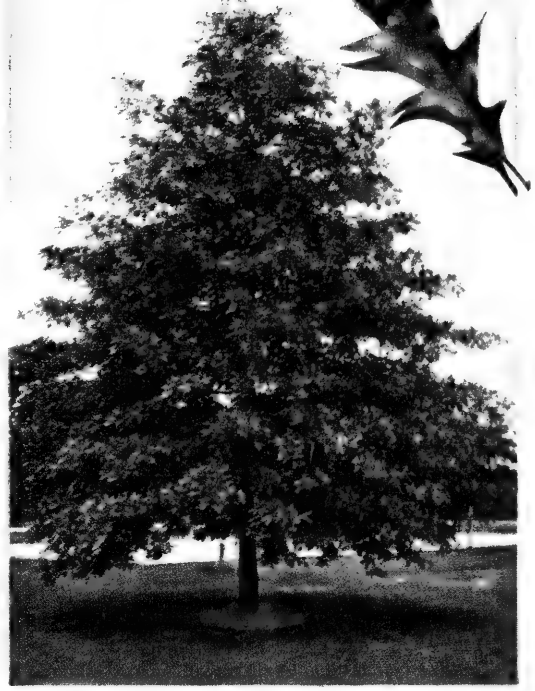
	<b>Each</b>
5- 6 ft.	\$ 6.25
6- 8 ft.	9.25
8-10 ft.	12.00

**SWEET GUM.** Straight trunk, pyramidal habit with star-shaped foliage which colors brilliantly in the fall. Has a corky bark and will stand wet soil as well as dry.

	<b>Each</b>
4-5 ft.	\$4.50
5-6 ft.	5.50
6-8 ft.	8.50

**TULIP TREE.** Tall, stately tree to 80 feet, with large, glossy leaves and beautiful orange and yellow Tulip-like, small flowers in early summer. Foliage colors yellow in the fall. Medium rapid growth.

	<b>Each</b>
5-6 ft.	\$5.50
6-8 ft.	7.50



**Pin Oak**

**SPECIAL SHADE TREES TAXODIUM**

(Bald Cypress). Has foliage somewhat like Hemlock, light and feathery, but is deciduous. Will grow in wet, swampy ground or on a hilltop. Makes a good shade tree, grows about a foot a year, does not spread too wide, casts full shade in summer, sheds its leaves in fall and has no single bad habit.

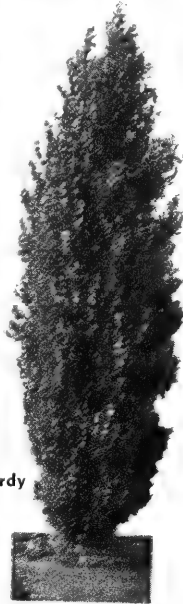
	<b>Each</b>	<b>\$</b>
4- 5 ft., B&B	5.00	
5- 6 ft., B&B	6.25	
6- 8 ft., B&B	9.25	
8-10 ft., B&B	12.50	
10-12 ft., B&B	15.95	



**HURLEY KRITZ**

**Superintendent in Charge of Filling and Packing All Orders**

Hurley Kritz is in charge of the storage of our hundreds of thousands of plants, including shade trees. He has had 35 years of experience in preparing your plants for you and realizes the importance of storing shade trees properly so they will transplant successfully. Ask for his advice on your shade tree problems.



**Lombardy Poplar**

**348—AMERICAN LINDEN (Basswood).** Rapid growing tree to 60 or 80 feet. Large, heart-shaped leaves with fragrant yellow blossoms in early June. Valuable as shade or street tree and very ornamental.

	<b>Each</b>	<b>2 for</b>
5-6 ft.	\$3.25	\$6.00
6-8 ft.	4.50	8.00

**340—LOMBARDY POPLAR.** Tall, slender, pyramidal tree of rapid growth, but comparatively short-lived. Fine for screens and accent points.

	<b>Each</b>	<b>5 for</b>	<b>25 for</b>
3- 4 ft.	\$0.60	\$2.65	\$10.95
4- 5 ft.	.80	3.50	14.95
5- 6 ft.	1.00	4.50	19.95
6- 8 ft.	1.35	5.95	25.00
8-10 ft.	1.80	7.95	36.95

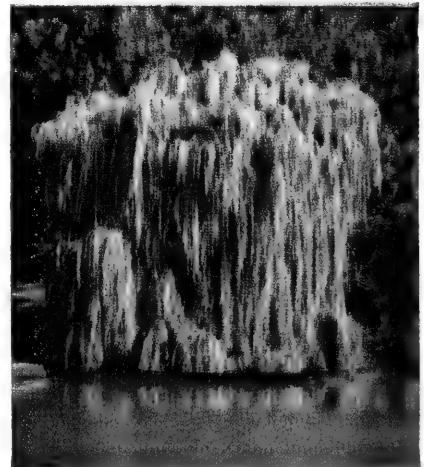
**338—SYCAMORE (Platanus orientalis).** Makes a broad spreading tree 60 to 80 feet tall, with broad, coarse foliage which resists city smoke, dust and the ravages of insects. For a rapid growing tree of permanence it holds first place.

	<b>Each</b>	<b>2 for</b>
5- 6 ft.	\$2.75	\$ 4.95
6- 8 ft.	3.75	6.95
8-10 ft.	5.50	9.95
10-12 ft.	7.50	13.95

**WEeping WILLOW.** Beautiful, graceful, lacy tree with long, drooping branches, densely covered with fresh green leaves. A rapid grower. We have either the green barked or golden barked varieties. State preference when ordering.

	<b>Each</b>	<b>2 for</b>
4- 5 ft.	\$1.35	\$2.45
5- 6 ft.	1.75	3.15
6- 8 ft.	2.75	4.95
8-10 ft.	4.00	7.65

**Weeping Willow**







Azalea

Neosho's Beautiful Flowering

Shrubs

RA-PID-GRO

For feeding all your plants. See Order Blank insert.



Red Barberry

AZALEAS

We have tried several different types of Azaleas here at Neosho and find the varieties listed are perfectly hardy in our Midwest conditions. Mulch with peat moss and feed with Azalea fertilizer. Will do best if given some shade and protection from southwest winds and full afternoon sun.

- 78—HINODEGIRI. Flowers brilliant red, produced so as to completely cover the plant. Rounded, glossy leaves.
- 77—CORAL BELLS. Hardy plant with dark green foliage. Flowers are a clear pink with speckled throat.
- 79—POUKHANENSIS. The hardiest and easiest to grow. Foliage hangs on well in winter. Large orchid blossoms.
 

Each	2 for
9-12 in. ....	\$2.25 \$3.95

AZALEA FERTILIZER

A basic fertilizer for all acid loving plants such as Azaleas, Hydrangeas, Evergreens.

5 lbs. ....	\$0.75
10 lbs. ....	1.30

- 45—FLOWERING ALMOND. One of the earliest shrubs to bloom, with beautiful, small, double rose-pink flowers. Grows 3 to 4 feet tall.
 

Each	3 for
18-24 in. ....	\$1.35 \$3.75
2- 3 ft. ....	1.60 4.25



Flowering Almond

EVER POPULAR BARBERRIES

- 14—RED-LEAF BARBERRY. Blood-red leaves make this shrub stand out in any planting. Grows 4 to 5 feet tall and should have sunlight for best color.
 

Each	3 for	10 for
15-18 in. ....	\$1.00	\$2.50 \$ 7.50
18-24 in. ....	1.25	3.25 9.50
24-30 in. (Extra Heavy)	1.60	4.25 12.50
- 1—GREEN BARBERRY. Dense, thorny shrub with green foliage which colors red and orange in fall. Brilliant red berries all winter. Grows in sun or shade. Also makes a good hedge.
 

Each	3 for	10 for
15-18 in. ....	\$0.80	\$2.10 \$5.95
18-24 in. ....	1.05	2.65 6.95
- 6—MENTOR BARBERRY. Usually evergreen in this section. Is rather upright in habit with thick, heavy foliage of dark green color. Withstands terrific heat and drought.
 

Each	3 for
18-24 in. ....	\$1.75 \$4.50
24-30 in. ....	2.25 6.00
- 7—DWARF GREEN BARBERRY. This dwarf growing green Barberry has extremely dense foliage. Ultimate height about 2 feet, but can be kept sheared lower if desired. Excellent low growing hedge for borders, etc.
 

Each	3 for
18-24 in. ....	\$1.75 \$4.50
24-30 in. ....	2.25 6.00

ALTHEA (Rose of Sharon). Large, double, Hollyhock-like flowers of pink, white, red or purple. Blooms in July and August when most other shrubs have finished. Slow to start in spring, but stands considerable neglect. A large growing shrub to 15 feet. Fine for screens and border.

- 12—PINK 13—RED 46—PURPLE 47—WHITE
 

Each	4 for
18-24 in. ....	\$0.95 \$3.35
2- 3 ft. ....	1.20 4.00

Butterfly Bush



BUTTERFLY BUSH (Buddleia; Summer Lilac). Fine for cutting—these long, fragrant flower spikes cover the plant all summer. Grows 5 to 6 feet tall. Tops die back in the winter, but come again in the spring more vigorous than ever. Cut to ground when planting.

16—PINK CHARMING. Rosy orchid-pink flowers. Spikes 15 to 18 inches long. Bright green foliage.

19—ROYAL PURPLE. Brilliant reddish purple variety. Blooms all summer.
 

Each	3 for
Medium .....	\$0.75 \$1.85
No. 1 .....	1.00 2.50



Althea



# Flowering SHRUBS

## CRAPEMYRTLE SPECIAL

Cat. No. 835

1 Red 1 White

1 Pink

18-24 in.

All 3 for \$2.25

Red Crapemyrtle

**CRAPEMYRTLE.** Grow these like everblooming Roses, mounding soil around stems in late fall. Blooms on new growth. Prune to within 2 inches of the ground when planting and early each succeeding spring. **VERY SLOW IN STARTING GROWTH IN THE SPRING. WILL OFTEN REMAIN DORMANT UNTIL JUNE.** Glossy green foliage and clusters of flowers late in the summer in colors indicated below.

20—RED	21—PINK	Each	3 for
18-24 in. ....		\$0.80	\$2.10
2- 3 ft. ....		1.05	2.90

**22—CRAPEMYRTLE, COUNTRY RED.** A new hardier and dwarf growing strain. Beautiful red blossoms all summer. Blooms on new wood each year, so prune back severely every spring.

**18—CRAPEMYRTLE, WHITE.** A clear white with yellow shadings in the center. Very showy.

18-24 in. ....	Each	3 for
2- 3 ft. ....	\$1.10	\$2.95
	1.35	3.75

**5—DWARF BLUE CRAPEMYRTLE.** Blooms on new wood each year. Beautiful lavender-blue color.

18-24 in. ....	Each	3 for
	\$1.15	\$3.10

**15—BLUE MIST.** One of the most attractive low growing shrubs. From August to frost every branch has clusters of small, fringed, powder-blue flowers giving a misty appearance. A neat, compact plant 2 feet tall with narrow, silvery green foliage. Tops die back in winter so cut off old tops in early spring.

Medium	Each	3 for
No. 1	\$1.00	\$2.50
	1.20	3.35

**69—EUONYMUS PATENS (Winterberry).** Broadleaf evergreen shrub. Bright berries resembling Bittersweet burst open in fall and remain all winter. Perfectly hardy. Grows 5 to 6 feet tall, but may be sheared smaller if desired.

18-24 in. ....	Each	3 for
	\$1.50	\$3.95

Euonymus Patens



Blue Mist



Pink Crapemyrtle

**50—BUSH CHERRY (Prunus tomentosa).** Hardy ornamental shrub with white blossoms followed by rich, red fruit which is ornamental and may also be used in making jam and jelly.

18-24 in. ....	Each	3 for
2- 3 ft. ....	\$1.35	\$3.75
	1.60	4.25

**3—CALYCANTHUS (Sweet Shrub).** Unusual dark red-brown flowers in early spring. Deliciously fragrant. Plant has handsome glossy foliage. Grows 4 to 5 feet tall and will endure shade.

18-24 in. ....	Each	3 for
2- 3 ft. ....	\$1.25	\$3.45
	1.50	3.95

**23—DESMODIUM.** Medium growing shrub with long, graceful branches covered with large clusters of rosy purple Sweet Pea-like flowers in early fall. Very showy. Grows 5 to 6 feet tall. Cut back to ground when planting.

No. 1	Each	3 for
	\$1.50	\$3.95

**53—DEUTZIA GRACILIS.** Seldom more than 2 or 3 feet high, this is one of the most graceful and prettiest dwarf shrubs. Covered in spring with a profusion of delicate snowy white flowers. Will grow in shade.

15-18 in. ....	Each	3 for
	\$1.35	\$3.75

**11—EUONYMUS ALATUS COMPACTA.** A low, dense, rounded shrub 3 to 4 feet tall, which is ideal for low foundation plantings. Foliage colors an unbelievable brilliant red in autumn. Very hardy and will grow in partial shade.

18-24 in. ....	Each	3 for
	\$2.50	\$6.50

**49—BEAUTY BUSH.** In spring the graceful, arching branches are completely covered with lovely pink blossoms, delightfully fragrant. Grows 8 to 10 feet tall. Takes 2 or 3 years to bloom.

18-24 in. ....	Each	3 for
2- 3 ft. ....	\$1.35	\$3.75
	1.75	4.50

Beauty Bush



When

Planting

Use

Ra-Pid-Gro

1 lb. 1.30

5 lbs. \$4.75

See

Order

Blank

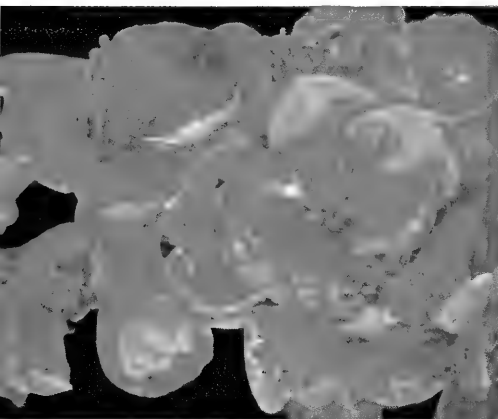
# Neosha SHRUBS



Hypericum



Cardinal Red Quince



Red Quince



**SPRING  
BEAUTY  
SPECIAL**  
Cat. No. 836  
2 Forsythia  
2 Flowering Quince  
18-24 in.  
**All 4 for \$3.50**

Zabelli  
Honeysuckle



Forsythia



Everblooming Honeysuckle

## HONEYSUCKLES

- 60—**HONEYSUCKLE, HECKROTTI** (Everblooming). Everblooming bright flame-pink and creamy gold two-toned flowers. May be grown as a vine or trained as bush by pruning. 

	<b>Each</b>	<b>3 for</b>
No. 1	\$2.50	\$7.00
Medium	\$1.00	\$2.50
No. 1	1.25	3.35
- 25—**HONEYSUCKLE, TATARIAN**. One of the first shrubs to leaf out in the spring. Retains its foliage well into winter. The small pink blossoms are followed by bright red fruits. Normally grows into a plant 6 to 12 feet tall and will thrive in any soil. 

	<b>Each</b>	<b>3 for</b>
18-24 in.	\$0.80	\$2.10
2- 3 ft.	1.00	2.50
3- 4 ft. (Extra Heavy)	1.25	3.35
- 26—**HONEYSUCKLE, ZABELLI, RED**. An improved type of Bush Honeysuckle, with deeper red blooms and better foliage. Grows 8 to 10 feet tall. 

	<b>Each</b>	<b>3 for</b>
18-24 in.	\$1.00	\$2.50
2- 3 ft.	1.25	3.35
3- 4 ft.	1.50	3.95

- 61—**HYPERICUM, SUNGOLD**. (Patent No. 568.) A brilliant mound of gold in summer. Large, dazzling golden flowers on a low growing shrub, with attractive green foliage, which colors orange and red in fall. Grows 3 to 4 feet tall.

	<b>Each</b>	<b>3 for</b>	<b>12 for</b>
No. 1	\$2.50	\$7.00	\$25.00

- 54—**RED FLOWERING QUINCE (Fire Bush)**. Brilliant scarlet blossoms in early spring followed by fragrant yellow Quinces which combine with Apples to make delicious jelly. Our plants are propagated from selected cuttings to insure blossoms of pure scarlet color. Grows 6 to 8 feet tall.

	<b>Each</b>	<b>3 for</b>
18-24 in.	\$1.15	\$2.95
2- 3 ft.	1.50	3.95

- 52—**CARDINAL RED QUINCE**. A selected strain of Flowering Quince. Upright growth and brilliant red blooms. A beautiful addition to any planting.

	<b>Each</b>	<b>3 for</b>
18-24 in.	\$1.40	\$3.75

- 24—**FORSYTHIA (Golden Bell)**. Bright golden bell-like flowers line the arching branches even before leaves appear. Foliage rich, dark green turning plum to bronze in fall. Grows 6 to 8 feet tall.

	<b>Each</b>	<b>3 for</b>
18-24 in.	\$1.00	\$2.75
2- 3 ft.	1.25	3.35
3- 4 ft. (Extra Heavy)	1.50	3.95

- 10—**FORSYTHIA, LYNWOOD GOLD**. A wonderful new variety from Ireland. The sturdy, upright branches are completely covered with brilliant yellow flowers from top to bottom. Individual blooms are of richer substance than the usual Forsythia blooms. Nothing finer for a splash of gold in your springtime landscape.

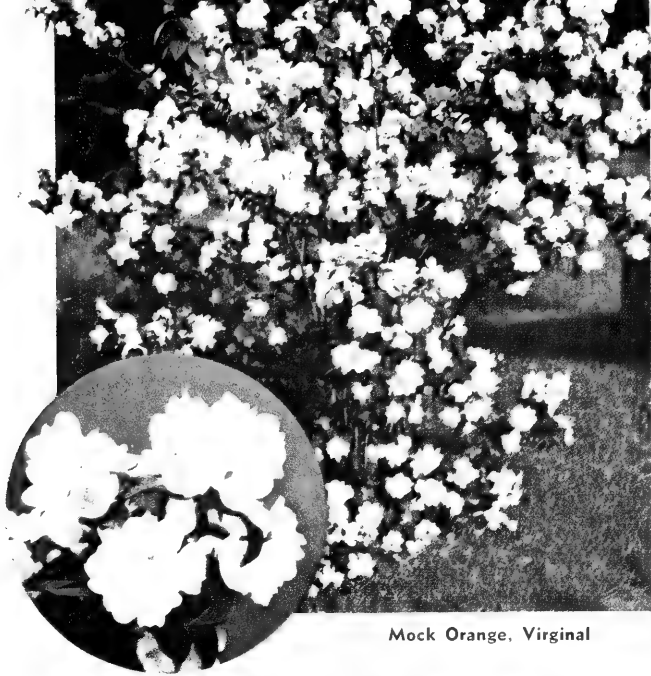
	<b>Each</b>	<b>3 for</b>
18-24 in.	\$1.25	\$3.35
2- 3 ft.	1.50	3.95

- 4—**FORSYTHIA, DWARF**. A new variety originated in Arnold Arboretum, the original plant being only 2 feet tall and about 4 feet across, with drooping branches that root where they touch the ground, so will be ideal for ground cover.

	<b>Each</b>	<b>3 for</b>
18-24 in.	\$1.50	\$3.95
2- 3 ft.	1.75	4.50



FOR  
LOVELY  
SUMMER  
COLOR  
SELECT  
SHRUBS  
FROM  
THE  
FOLLOW-  
ING  
PAGES



Mock Orange, Virginal

Chinese Lilac



Hydrangea A. G.



French  
Lilac

34—**MOCK ORANGE, VIRGINAL.** Semi-double Mock Orange. Large white flowers in profusion, exquisitely fragrant. Grows 6 to 8 feet tall. Bloom is single first year.

18-24 in. ....	Each	3 for
2- 3 ft. ....	\$1.25	\$3.35
	1.50	3.95

35—**MOCK ORANGE, WHITE BOUQUET.** The most profuse bloomer. The twiggy branching plant is completely covered with pure white flowers in spring. Fragrant. Grows 6 to 8 feet tall.

18-24 in. ....	Each	3 for
2- 3 ft. ....	\$1.25	\$3.35
	1.50	3.95

63—**CHINESE LILAC.** A Lilac variety with very fragrant, bright purple flowers in large, loose clusters. Shrub grows 6 to 8 feet tall and is more graceful in general appearance than common Lilac. Usually blooms the first year after transplanting.

18-24 in. ....	Each	3 for
2- 3 ft. ....	\$1.15	\$2.95
	1.50	3.95

**FRENCH LILACS.** These hybrid type Lilacs grow 6 to 8 feet tall and usually bloom the first year after transplanting, with large, fragrant flower heads in spring. Cut old flowers off after blooming.

	30—RED	31—PINK	32—BLUE	33—WHITE	Each	4 for
18-24 in. ....					\$1.50	\$4.95
2- 3 ft. ....					2.00	6.75

28—**HYDRANGEA, A. G.** Loads of large, Snowball-like flowers in June and July, with big, round, dark green leaves. Will stand shade. Grows 4 to 6 feet tall.

18-24 in. ....	Each	3 for
2- 3 ft. ....	\$1.25	\$3.35
	1.50	3.95

29—**HYDRANGEA, P. G.** Giant cone-shaped flowers to 10 inches long, first pure white, turning pink, then bronze. Blooms August and September. Grows 6 to 8 feet tall.

18-24 in. ....	Each	3 for
2- 3 ft. ....	\$1.25	\$3.35
	1.50	3.95

27—**HYDRANGEA, NIKKO BLUE or PINK.** Immense flower heads, pink in alkaline soil, blue in acid soil. Keep well watered and mulch in winter. Water with 2 tablespoons of Aluminum Sulphate to 1 gallon of water several times during growing season for blue flowers.

No. 1 .....	Each	3 for
	\$1.65	\$4.25

Hydrangea P. G.



USE  
RAPID-GRO

FREE  
GIFT  
SEE  
INSERT





Spirea Thunbergi

# Neosho SHRUBS

## SPIREAS

40—SPIREA, ANTHONY WATERER. Neat dense shrub, 2 to 3 feet tall, with rose-red flowers all summer. Fine for foundation planting.

	Each	3 for
12-18 in. . . . .	\$1.10	\$2.95
18-24 in. . . . .	1.35	3.45



Spirea Anthony Waterer

42—SPIREA THUNBERGI

(Snow Garland). Slender, graceful form with delicate green leaves and great profusion of small, white flowers in early spring. Grows 5 to 6 feet tall.

	Each	3 for
18-24 in. . . . .	\$0.80	\$2.10
2- 3 ft. . . . .	1.00	2.50

43—SPIREA VAN HOUTTEI. Pure white flowers on arching branches entirely cover the plant in April and May. Grows anywhere. 6 to 8 feet tall.

	Each	3 for	10 for
18-24 in. . . . .	\$0.75	\$1.95	\$5.50
2- 3 ft. . . . .	.90	2.50	6.50
3- 4 ft. . . . .	1.15	3.15	8.50



Snowball

36—SNOWBALL. In late spring this old-fashioned but popular shrub is covered with clusters of white flowers that look like giant Snowballs. Foliage is deep green and shrub is hardy anywhere. Grows 12 to 15 feet tall.

	Each	3 for
18-24 in. . . . .	\$1.35	\$3.45
2- 3 ft. . . . .	1.75	4.50

9—PINK TAMARISK. Light, feathery foliage and bright pink, fluffy flowers in May. Prune severely when planting as it is slow to start growth when transplanted. Grows 12 to 15 feet tall.

	Each	3 for
18-24 in. . . . .	\$1.00	\$2.50
2- 3 ft. . . . .	1.25	3.35

65—VITEX (Chaste Tree). Grows 8 to 10 feet tall with big palm-like foliage and branching spikes of beautiful lavender-blue flowers in August and September. Will stand hot location.

	Each	3 for
18-24 in. . . . .	\$1.15	\$2.95
2- 3 ft. . . . .	1.35	3.75

38—WEIGELA, BRISTOL RUBY. (Pat. No. 492.) Grows anywhere and in the spring is a solid mass of ruby-red, trumpet-shaped flowers and will often bloom intermittently all summer. Makes a shrub 6 to 8 feet tall and 6 feet across. One of the best.

	Each	3 for
18-24 in. . . . .	\$2.00	\$5.75
2- 3 ft. . . . .	2.50	7.00

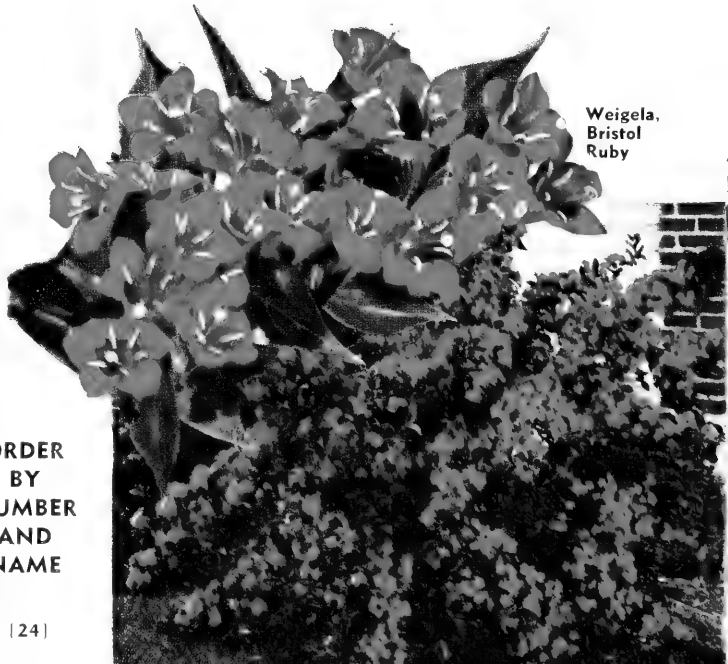
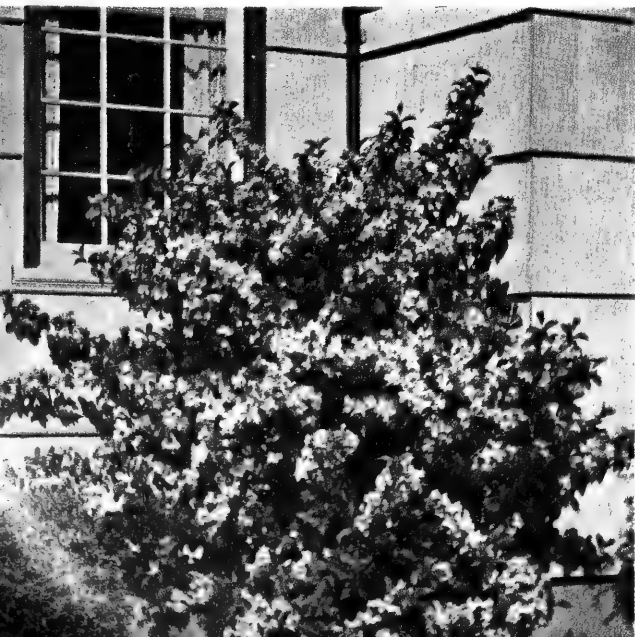
37—WEIGELA, ROSEA. Bright pink, trumpet-shaped flowers in May. Grows 6 to 8 feet tall.

	Each	3 for
18-24 in. . . . .	\$1.10	\$2.95
2- 3 ft. . . . .	1.35	3.45

39—WEIGELA, VANICEKI (Cardinal! Shrub). Another improved red variety which is most winter hardy.

	Each	3 for
18-24 in. . . . .	\$1.50	\$3.95
2- 3 ft. . . . .	2.00	5.25

Weigela Rosea



Weigela, Bristol Ruby

ORDER BY NUMBER AND NAME



FOR QUICK GROWTH AFTER PLANTING USE RA-PID-GRO—SEE ORDER BLANK

# NEOSHO HARDY HEDGES

## PRIVET HEDGES

### HOW TO PLANT PRIVET

Privet hedges should be planted in a trench 1 foot wide and 15 to 18 inches deep, setting plants 9 to 12 inches apart and planted deep enough that lower branches are partly covered with soil. They should be trimmed back to within 4 or 5 inches of the ground to help develop more side branches and should be kept trimmed as they grow to develop thick base. A good hedge should be wider at the bottom than at the top and early trimming is the only way this can be accomplished.

- 303—AMUR NORTH PRIVET.** Hardest of all Privets, standing 20 degrees below zero without damage. Can be trimmed to any height and makes a dense hedge.
- 304—AMUR SOUTH PRIVET (Evergreen).** Will retain its foliage all winter here at Neosho in average winter. Fast grower, but can be kept trimmed to any height.
- 302—CALIFORNIA PRIVET.** Semi-evergreen with thick, dark green foliage. Not hardy north of latitude of Kansas City. Can be trimmed to any desired height. Plant 9 to 12 inches apart.
- 306—POLISH PRIVET.** A hardy vigorous strain of European Privet carrying dark green foliage, hanging on late in the fall.



Amur River South (Evergreen)

#### PRIVET PRICES

	25 for	50 for	100 for
12-18 in. ....	\$4.75	\$ 8.75	\$15.75
18-24 in. ....	5.75	10.75	19.75
2- 3 ft. ....	7.75	13.75	25.00

A beautiful green wall that beautifies as it serves to make a barrier or a screen at very small initial cost and no maintenance except to prune to desired shape and height.

## SHRUB HEDGES

**311—HONEYSUCKLE, TATARIAN.** One of the most satisfactory tall growing hedge plants. It is strong vigorous and hardy. One of the first shrubs to leaf out in the spring. Retains its foliage well into winter. The small pink blossoms are followed by bright red fruits. Normally grows into a hedge 6 to 12 feet and will thrive in any soil. Plant 3 feet apart.

	10 for	25 for	100 for
12-18 in. ....	\$5.50	\$13.50	\$40.00
2- 3 ft. ....	7.50	16.50	60.00
3- 4 ft. ....	9.00	20.00	75.00

**300—GREEN BARBERRY.** Same as Red Barberry except foliage is green, coloring beautifully in the fall.

	10 for	25 for	100 for
12-18 in. ....	\$3.75	\$8.25	\$30.00

**301—RED BARBERRY.** A protective as well as ornamental hedge, as the small spines will keep out cats, dogs and chickens. Makes an attractive hedge either trimmed or untrimmed. Perfectly hardy. Red berries and foliage in fall. Plant 18 to 24 inches apart.

	10 for	25 for	100 for
12-18 in. ....	\$6.50	\$15.00	\$52.50

**305—EUONYMUS PATENS.** Evergreen in this area. Ideal evergreen hedge. Should be kept trimmed for best effect. Plant 12 to 18 inches apart in row.

	25 for	50 for	100 for	500 for	1000 for
9-12 in. ....				\$15.00	\$27.50
12-18 in. ....				18.00	33.00

**312—MULTIFLORA ROSE.** Conservation people recommend this as a living hedge for erosion control and wild life refuge. Has small thorns, white blossoms in June followed by red fruits which birds like. Grows 6 to 8 feet tall and about as wide. Plant 18 inches apart. NOT SUITABLE FOR SMALL CITY LOTS.

	25 for	50 for	100 for	500 for	1000 for
12-18 in. ....	\$2.50	\$4.50	\$ 7.95	\$33.50	\$62.00
18-24 in. ....	3.50	6.25	11.00	50.00	89.75

**307—SPIREA VAN HOUTTEI (Bridal Wreath).** Makes a beautiful untrimmed hedge and is the most widely planted shrub in the United States.

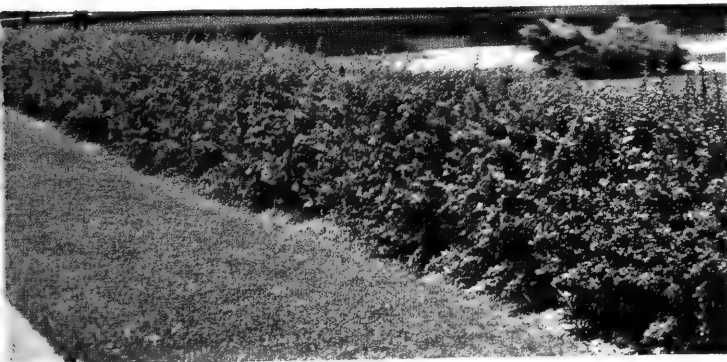
	10 for	25 for	50 for	100 for
12-18 in. ....	\$3.50	\$7.50	\$15.00	\$27.50
18-24 in. ....	4.50	9.00	18.00	33.50
2-3 ft. ....	6.00	12.00	24.00	49.75

Spirea Van Houttei

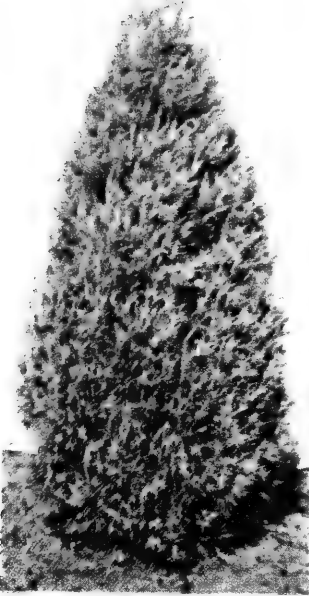


Tatarian Honeysuckle

Red Barberry

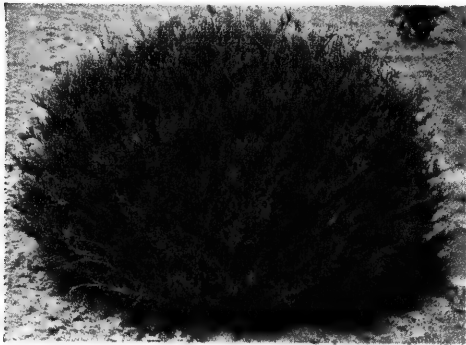


# HARDY EVERGREENS JUNIPERS



Virginia Glauca Juniper

Globe Juniper



Cannarti Juniper



Pfitzer Compacta Juniper

<b>BURKI JUNIPER</b>		
	Each	2 for
3-4 ft. ....	\$ 9.50	\$18.50
4-5 ft. ....	10.75	20.95
5-6 ft. ....	12.25	23.95

<b>CANNARTI JUNIPER</b>		
	Each	2 for
3-4 ft. ....	\$ 9.50	\$18.50
4-5 ft. ....	10.75	20.95
5-6 ft. ....	12.25	23.95

<b>CUPRESSIFOLIA JUNIPER</b>		
	Each	2 for
3-4 ft. ....	\$ 9.50	\$18.50
4-5 ft. ....	10.75	20.95

<b>DUNDEE JUNIPER</b>		
	Each	2 for
30-36 in. ....	\$ 7.75	\$14.95
3- 4 ft. ....	9.50	18.50
4- 5 ft. ....	10.75	20.95

<b>IRISH JUNIPER</b>		
	Each	2 for
24-30 in. ....	\$ 3.95	\$ 7.50
30-36 in. ....	4.75	8.95
3- 4 ft. ....	6.00	11.50

<b>KETELEERI JUNIPER</b>		
	Each	2 for
3-4 ft. ....	\$ 7.95	\$15.00
4-5 ft. ....	9.25	17.75
5-6 ft. ....	11.50	21.50

<b>VIRGINIANA GLAUCA JUNIPER</b>		
	Each	2 for
3-4 ft. ....	\$ 9.50	\$18.50
4-5 ft. ....	10.75	20.95

<b>GLOBE JUNIPER</b>		
	Each	2 for
15-18 in. ....	\$5.25	\$10.00
18-24 in. ....	6.25	11.35

<b>SPINY GREEK JUNIPER</b>		
	Each	2 for
15-18 in. ....	\$3.50	\$6.50
18-24 in. ....	4.65	8.75

## ARBOR-VITAE

<b>BERCKMANN'S GOLDEN</b>		
	Each	2 for
15-18 in. ....	\$3.50	\$6.65
18-24 in. ....	4.50	8.50
24-30 in. ....	5.25	9.75

<b>BONITA</b>		
	Each	2 for
15-18 in. ....	\$3.75	\$6.95
18-24 in. ....	4.50	8.50

<b>EXCELSA</b>		
	Each	2 for
24-30 in. ....	\$3.50	\$ 6.65
30-36 in. ....	4.25	7.95
3- 4 ft. ....	5.50	10.50

<b>ANDORRA JUNIPER</b>		
	Each	2 for
15-18 in. ....	\$3.75	\$ 6.95
18-24 in. ....	4.75	8.95
24-30 in. ....	5.95	11.35

<b>MEYERI JUNIPER</b>		
	Each	2 for
15-18 in. ....	\$5.25	\$10.00
18-24 in. ....	6.25	11.75
24-30 in. ....	7.75	14.75

<b>PROCUMBENS JUNIPER</b>		
	Each	2 for
15-18 in. ....	\$4.25	\$ 8.00
18-24 in. ....	5.25	10.00

<b>PFITZER JUNIPER</b>			
	Each	2 for	5 for
15-18 in. ....	\$3.85	\$ 7.35	\$17.35
18-24 in. ....	4.85	9.35	22.35
24-30 in. ....	6.10	11.70	28.25
30-36 in. ....	7.50	13.95	33.50
3- 4 ft. ....	9.50	18.50	44.95

<b>PFITZER JUNIPER, COMPACTA</b>			
	Each	2 for	5 for
15-18 in. ....	\$4.25	\$ 8.00	\$18.95
18-24 in. ....	5.25	10.00	23.75
24-30 in. ....	6.50	12.50	29.95
30-36 in. ....	7.95	15.25	36.95

<b>PFITZER JUNIPER, DWARF</b>			
	Each	2 for	5 for
15-18 in. ....	\$4.25	\$ 8.00	\$18.95
18-24 in. ....	5.25	10.00	23.75

<b>PFITZER JUNIPER, GOLD TIP</b>			
	Each	2 for	5 for
15-18 in. ....	\$3.85	\$ 7.35	\$17.35
18-24 in. ....	4.85	9.35	22.35
24-30 in. ....	6.10	11.70	28.25
30-36 in. ....	7.50	13.95	33.50
3-4 ft. ....	9.50	18.50	44.95

<b>PFITZER JUNIPER, SILVER</b>			
	Each	2 for	5 for
15-18 in. ....	\$4.25	\$ 8.00	\$18.95
18-24 in. ....	5.25	10.00	23.75
24-30 in. ....	6.50	12.50	29.95

## TAXUS-Yew

**TAXUS CUSPIDATA** (Spreading Yew).

**TAXUS HICKSI** (Upright Yew).

	Each	2 for
18-24 in. ....	\$ 9.75	\$18.50
24-30 in. ....	11.50	22.50

Taxus Hicksi and Ilex Rotundifolia



USE RA-PID-GRO FOR PLANTING EVERGREENS

# Specimen Types

They Will Enhance Your Lawn With Their Grace and Beauty



Austrian Pine

<b>AUSTRIAN PINE</b>	Each		<b>DOUGLAS FIR</b>	Each	
2-3 ft. ....	\$7.95		24-30 in. ....	\$ 8.25	
3-4 ft. ....	9.95		30-36 in. ....	10.00	
			36-42 in. ....	12.00	
<b>SCOTCH PINE</b>	Each		<b>DWARF SPRUCE</b>	Each	
2-3 ft. ....	\$7.95		18-24 in. ....	\$ 6.75	
3-4 ft. ....	9.95		24-30 in. ....	8.25	
<b>WHITE PINE</b>	Each		30-36 in. ....	10.50	
2-3 ft. ....	\$7.95		<b>HEMLOCK</b>	Each	
3-4 ft. ....	9.95		2-3 ft. ....	\$ 7.95	
<b>COLORADO GREEN SPRUCE</b>	Each	2 for	3-4 ft. ....	9.95	
24-30 in. ....	\$6.75	\$12.95	4-5 ft. ....	12.50	
30-36 in. ....	7.50	14.00			
36-42 in. ....	9.50	18.50			

## BROADLEAF EVERGREENS

<b>CHERRY LAUREL</b>	Each	2 for	5 for
2-3 ft. ...	\$3.50	\$ 6.50	\$14.95
3-4 ft. ...	4.50	8.50	20.00
4-5 ft. ...	5.50	10.50	25.00

<b>COTONEASTER DIVARICATA</b>	Each	2 for
18-24 in. ....	\$3.25	\$5.85
24-30 in. ....	4.00	7.50
30-36 in. ....	5.00	9.00

<b>EUONYMUS PATENS, Small Leaf</b>	Each	2 for	5 for
15-18 in. ...	\$3.35	\$6.25	\$15.00
18-24 in. ...	3.95	7.50	17.50

<b>EUONYMUS PATENS</b>	Each	2 for
18-24 in. ....	\$3.50	\$6.50

<b>NANDINA</b>	Each	2 for	5 for
15-18 in. ...	\$2.75	\$5.25	\$12.50
18-24 in. ...	3.25	6.25	14.95
24-30 in. ...	3.95	7.50	18.50



Nandina

<b>BOXWOOD</b>	Each	2 for	5 for
12-15 in. ....	\$4.35	\$ 8.15	\$19.25
15-18 in. (Extra Heavy) .....	5.25	9.95	23.75
18-24 in. (Extra Heavy) .....	6.50	12.50	28.95

<b>EUONYMUS RADICANS, UPRIGHT</b>	Each	2 for	5 for
15-18 in. ...	\$3.35	\$6.25	\$15.00
18-24 in. ...	3.95	7.50	17.50

<b>MAGNOLIA GRANDIFLORA (Spring Only)</b>	Each
2-3 ft. ....	\$ 4.95
3-4 ft. ....	6.75
4-5 ft. ....	8.75
5-6 ft. ....	10.75

<b>MAGNOLIA SOULANGEANA (Extra Heavy) (Spring Only)</b>	Each
18-24 in. ....	\$ 6.00
2- 3 ft. ....	7.50
3- 4 ft. ....	10.00

<b>MAGNOLIA SOULANGEANA NIGRA (Extra Heavy)</b>	Each
2-3 ft. ....	\$ 7.50
3-4 ft. ....	10.00

<b>ROTUNDIFOLIA HOLLY (Round Leaf)</b>	Each	2 for	5 for
12-15 in. ....	\$3.00	\$5.75	\$13.00
15-18 in. ....	3.95	7.50	17.50
18-24 in. ....	4.75	8.95	21.00
24-30 in. ....	5.75	10.95	26.25

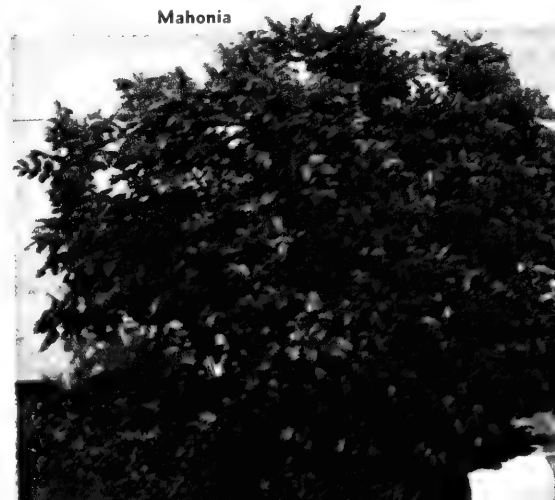
<b>MAHONIA</b>	Each	2 for
15-18 in. ...	\$3.95	\$ 7.50
18-24 in. ...	4.95	9.50
24-30 in. ...	6.25	11.95

<b>ABELIA</b>	Each	2 for
18-24 in. ....	\$3.50	\$6.35
24-30 in. ....	4.25	7.95

<b>BURFORDI HOLLY. (Spring Only.)</b>	Each	2 for	5 for
15-18 in. ....	\$3.75	\$ 6.95	\$16.50
18-24 in. ....	4.65	8.75	21.00
24-30 in. ....	5.75	10.95	25.75



Abelia



Mahonia

Drive to Neosho to select your Evergreens. We DO NOT ship the balled and burlapped plants listed on pages 26-27.

# VINES

- 575—**CLEMATIS, MME. ANDRE.** Large purplish crimson flowers.  
 576—**CLEMATIS, BARON VEILLARD.** Lovely large pink blossoms. Free blooming.  
 577—**CLEMATIS JACKMANI.** The popular purple variety with large purplish blue flowers.  
 578—**CLEMATIS HENRYI.** A large flowering white Clematis of unusual size and beauty.

Each \$1.50    3 for \$4.00

451—**VINCA MINOR (Trailing Myrtle).** A trailing evergreen plant for carpeting ground under shrubs or trees where it is too shady for grass to grow.

2-Yr., No. 1

Each ..... \$0.35  
 3 for ..... .90  
 10 for ..... 2.50

442—**ENGLISH IVY.** Beautiful dark green evergreen leaf. Clings to masonry if used on north or east side where protected from hot sun.

445—**BALTIC IVY.** A hardier form of English Ivy with dark green foliage.

441—**BOSTON IVY.** The most popular plant for covering brick, stone or wood. Clings to smoothest surface. Colors beautifully in fall, mottled brilliant orange-red.

Each ..... 3 for ..... 10 for .....  
 \$0.75 ..... \$1.95 ..... \$5.75

440—**BITTERSWEET.** Clusters of orange-scarlet berries, which make a lovely winter bouquet when dried. Plant two for pollination.

Each 80c    3 for \$2.10

444—**HONEYSUCKLE, HALL'S (Evergreen).** Fragrant white and yellow flowers and attractive blue-green foliage which remains most of the winter. Grows anywhere.

Each 55c    3 for \$1.50    10 for \$4.25

60—**HONEYSUCKLE, HECKROTTI (Everblooming).** Bright flame-pink and creamy gold, two-toned flowers.

Each 3 for .....  
 No. 1 ..... \$1.00 \$2.50  
 Medium ..... 1.25 3.35

449—**SILVER LACE VINE.** The Silver Lace Vine often grows 20 feet the first season. Thousands of fleecy white flowers in late summer. Hardy and easy to grow.

Each \$1.25    3 for \$3.35

448—**PINK WISTERIA.** This is the finest pink Wisteria we have ever seen. Clusters about 15 to 18 inches long. Slow to commence blooming, but once started it blooms profusely. May be trained to tree form.

447—**DOUBLE VIOLET WISTERIA.** The only double Wisteria known in this country and has the darkest colored flowers of all. These are exactly like dark colored purple Violets, borne in clusters about 15 inches long. Very free bloomer. May be trained to tree form.

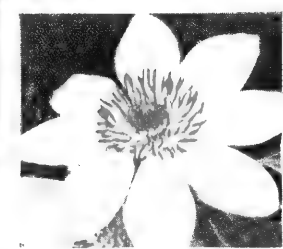
Each 2 for .....  
 2-yr. Grafts, Heavy ..... \$1.95 \$3.50



Vinca Minor

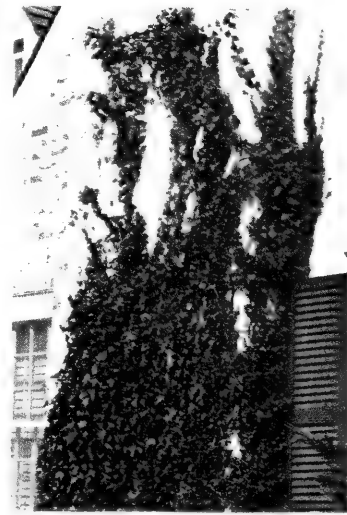


Clematis



Silver Lace Vine

Lily, Speciosum Rubrum



English Ivy



## HARDY LILIES

650—**REGALE.** One of the most beautiful and hardiest Lilies grown. Center of flower flushed with yellow shading to white. Outside of petals is streaked with brown shaded with pearly tint. Always covered with blooms.

Each 55c    3 for \$1.45

651—**CORAL LILY.** A charming little early flowering Lily with strongly recurved petals of waxy texture. Deep scarlet.

Each 40c    3 for \$1.00

652—**EMERALD LILY.** Long, lovely white flowers with a beautiful emerald-green throat. Blooms from August until frost. Easy to grow and perfectly hardy.

Each 55c    3 for \$1.45

653—**SPECIOSUM RUBRUM.** (Spring only.) The loveliest of all Lilies. Flowers bright pink edged white. Blooms August and September on stems 3 to 4 feet tall. Will come up every year.

Each 80c    3 for \$2.15

649—**ESTATE LILY.** True Easter Lily type that is hardy outdoors. Grows 2 or 3 feet tall. Has apple-blossom fragrance. Plant 5 inches deep and mulch in winter.

Each 60c    3 for \$1.50



Regale Lily

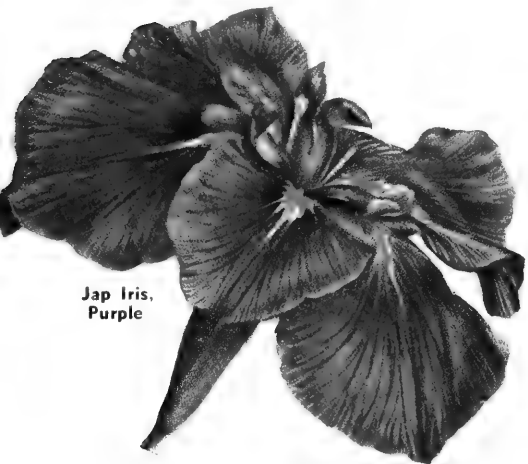


# Neosho's Beautiful IRIS

- 620—ARAB CHIEF. Rich, burnt orange.
- 621—BLUE RHYTHM. Soft medium blue with silvery tone.
- 622—CASA MORENA. Glowing, deep rich coppery brown.
- 623—GRAND CANYON. Blend of plum, copper, and gold. Lightly ruffled.
- 624—NEW SNOW. Large, ruffled, pure white flowers. Yellow beard.
- 625—OLA KALA. Very dark yellow self, medium large, ruffled flowers.
- 626—HIT PARADE. The finest true pink. A softness and finish seldom seen.
- 627—WABASH. Clear white standards and bright purple falls.
- 628—SABLE. Blue-black-violet. Blue beard. Large flowers.
- 629—SOLID MAHOGANY. One of the darkest mahogany-reds.

Each ..... \$0.60  
 3 for ..... 1.40

10 for ..... \$4.25  
 20 for ..... 7.50



Jap Iris,  
Purple

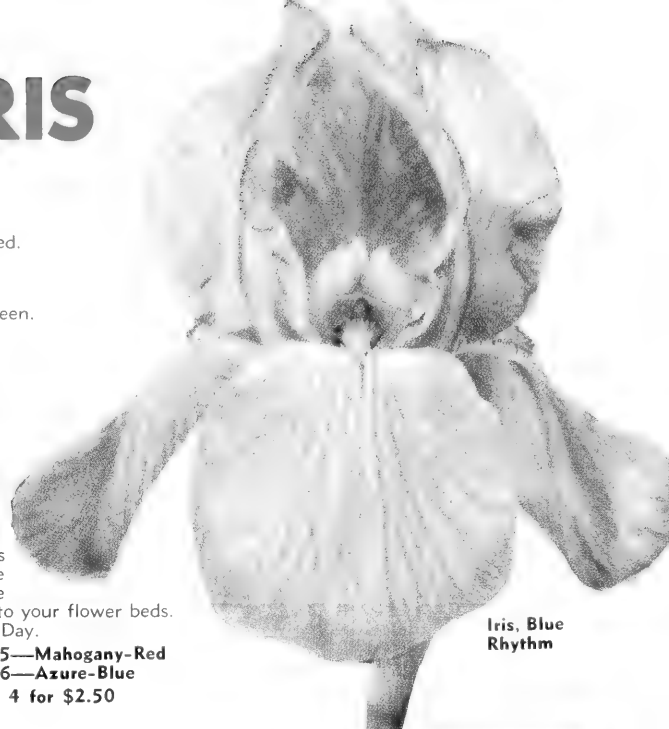
## JAPANESE IRIS

Immense flowers without standards. The beautiful colors make this a lovely addition to your flower beds. Blooms for Memorial Day.

- 643—Purple                      645—Mahogany-Red
- 644—White                      646—Azure-Blue

Each 75c

4 for \$2.50



Iris, Blue Rhythm

## DWARF IRIS

An excellent flower for beds and borders. Bloom in April and May. Grow about 6 inches tall. Add a wonderful touch of color and beauty to your lawn.

- 640—BLUE                      641—YELLOW
- 639—RED-PURPLE                      642—WHITE

Each 35c

4 for \$1.25

8 for \$2.00

**DELUXE IRIS COLLECTION**  
 Cat. No. 803  
 Our selection from choice named varieties.  
**10 for \$3.65**

# Peonies

- 600—MONS. JULES ELIE. A beautiful light rose Peony with delicate silver markings. Early.
- 601—KARL ROSENFELD. A tall, rich red flower blooming late.
- 602—EDULIS SUPERBA. A very fragrant dark pink Peony. Blossoms early.
- 603—FESTIVA MAXIMA. Favorite early blooming white with red markings.

- 604—FELIX CROUSSE. A fine, sure blooming dark red Peony. Midseason.
- 605—THERESE. Satiny pink blooms changing to lilac-white in center.
- 606—WALTER FAXON. Delicate bright rose deepening at center. An extra fine Peony.

Each \$1.00    3 for \$2.50    6 for \$4.50

**PEONY SPECIAL No. 800**  
 1 Red    1 Pink    1 White  
**All 3 for only \$2.25**  
 2 SPECIALS—6 PLANTS  
**Only \$4.00**

[29]

Felix Crousse

Festiva Maxima

Edulis Superba



# Gold Medal **GLADIOLUS**



- 668—**PICARDY**. A sensational shrimp-pink.
- 669—**FLORENCE NIGHTINGALE**. Glistening ruffled white. Most outstanding.

*Rainbow*  
**GLAD COLLECTION**  
Cat. No. 802

We offer you this special collection of fine Glad bulbs in an assortment of beautiful colors. These bulbs will produce large blooms the first year.

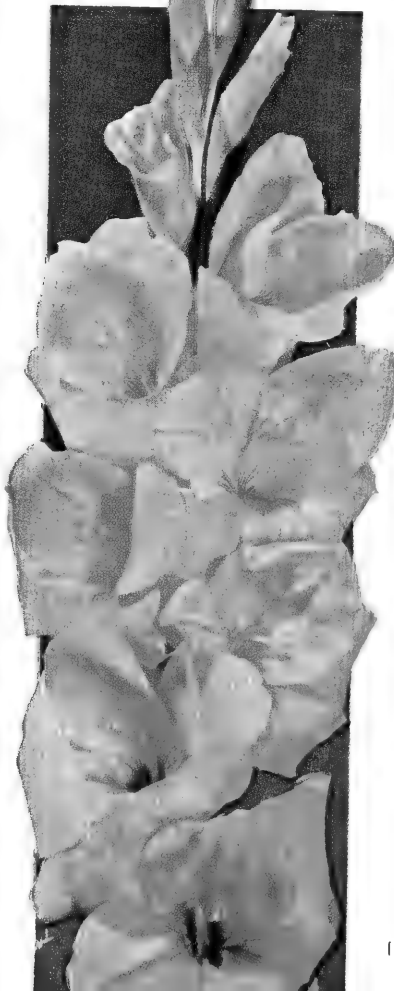
15 for \$0.85	50 for \$1.95
25 for 1.20	100 for 3.65
	200 for \$6.95

- 670—**FRIENDSHIP**. Beautiful early rose with lighter throat. One of the best in recent years.
- 671—**PACTOLUS**. Apricot-cream-yellow with deep orange-red blotch. Very unusual.
- 672—**RED CHARM**. Very fine dark red.
- 673—**SANS SOUCI**. Deep scarlet-red. A narrow creamy line on the lower petals seems to add to its beauty.
- 674—**SPIC & SPAN**. Deep ruffled pink. Sweepstakes winner in many shows.
- 675—**SHERWOOD**. Ruffled deep purple with slightly deeper throat.
- 676—**SPOTLIGHT**. Clear deep yellow with scarlet blotch.

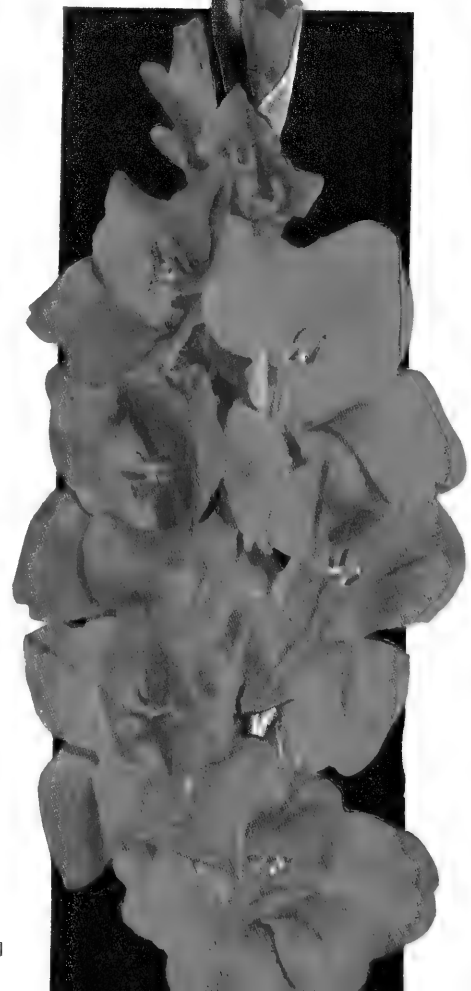
6 for . . . . \$0.45	50 for . . . \$2.30
12 for . . . . .75	100 for . . . 4.25
25 for . . . . 1.30	200 for . . . 7.95

**For Large Blooms  
Use Ra-Pid-Gro.  
Prices on Order  
Blank Insert**

Spotlight

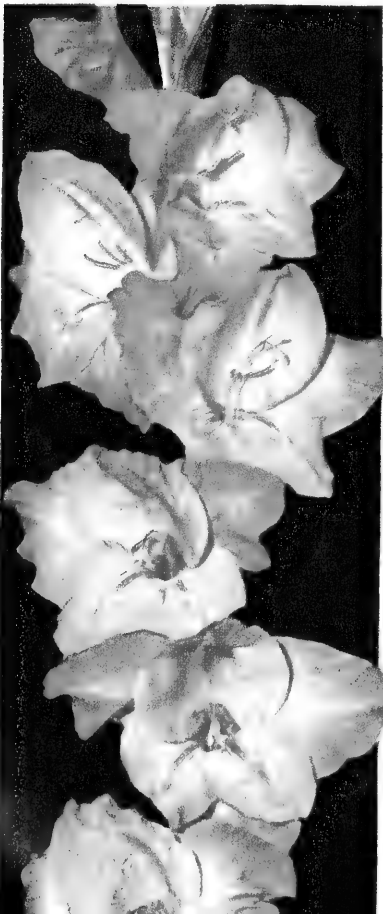


Red Charm



Sherwood

Spic and Span



## Choice Decorative

# DAHLIAS



Rose  
Glory



Sagamore



Mrs. Geo.  
Le Boutillier

Avalon

- 685—**AVALON**. Large flowers of clear yellow on long stems.
- 686—**GERTRUDE BRINTON**. Very beautiful scarlet-red.
- 687—**SAGAMORE**. Very fine autumn colored bronze.
- 688—**MRS. WARNER**. Large flowers of lavender-pink. Can be grown to a diameter of 11 inches.
- 689—**MRS. GEORGE LeBOUTILLIER**. Bright carmine-red shading to a rich cardinal-red at the center with full petals and a deep flower. Average diameter of this Dahlia is 10 inches.
- 690—**ROSE GLORY**. Lovely rose-pink. Most popular pink; large flowers.
- 691—**WHITE WONDER**. Large, beautiful white.
- |                 |                   |
|-----------------|-------------------|
| Each ... \$0.50 | 14 for ... \$4.35 |
| 3 for ... 1.35  | 28 for ... 8.40   |
| 7 for ... 2.60  |                   |

## CANNAS

- 694—**PRESIDENT**. The scarlet flowers and green foliage make this brilliant Canna a favorite. Grows 4 feet tall.
- 695—**KING HUMBERT**. A bright orange-scarlet flower with lively bronze foliage. Grows 4 feet tall.
- 696—**YELLOW HUMBERT**. A beautiful yellow with red markings. Grows 4½ feet tall.
- 697—**CITY OF PORTLAND**. Soft coral-pink with green foliage. Grows 4 feet tall.

4 for ... \$0.80	24 for ... \$3.35
8 for ... 1.40	48 for ... 6.25
12 for ... 1.95	

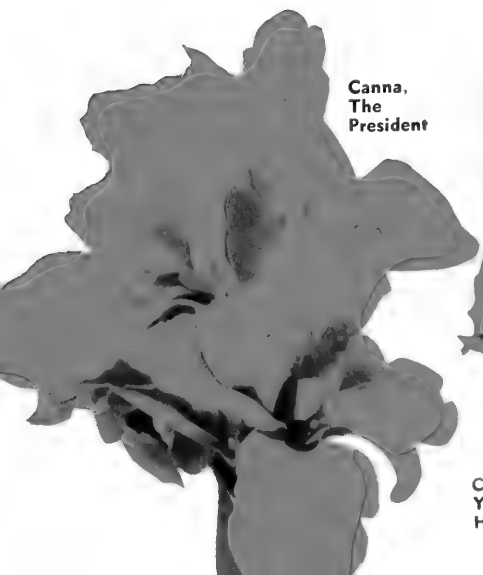
## TUBEROUS ROOTED BEGONIA

Our beautiful Begonias can be used in so many ways, and are so easy to grow that everyone should include them in their garden. Beautiful, double blooms in an array of colors. Use indoors in pots or plant outside in shaded locations. They are beautiful in bowls or saucers as bouquets. EXTRA LARGE SIZE BULBS.

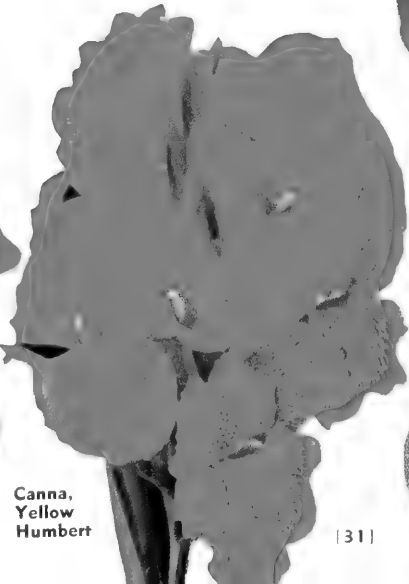
- |                     |                    |
|---------------------|--------------------|
| 680— <b>SCARLET</b> | 683— <b>YELLOW</b> |
| 681— <b>PINK</b>    | 684— <b>WHITE</b>  |
| 682— <b>SALMON</b>  |                    |
- |                 |                   |
|-----------------|-------------------|
| Each ... \$0.45 | 10 for ... \$3.50 |
| 5 for ... 2.00  | 25 for ... 7.50   |



Tuberous-  
Rooted  
Begonias



Canna,  
The  
President

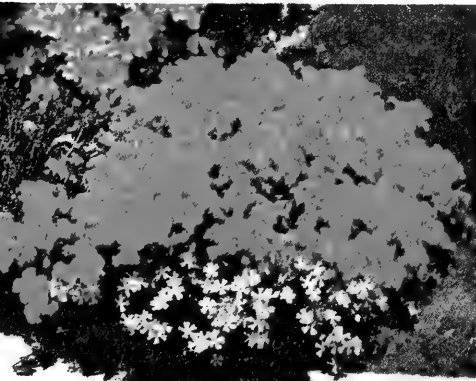


Canna,  
Yellow  
Humbert





Candytuft



Alyssum, Basket of Gold

Balloon Flower



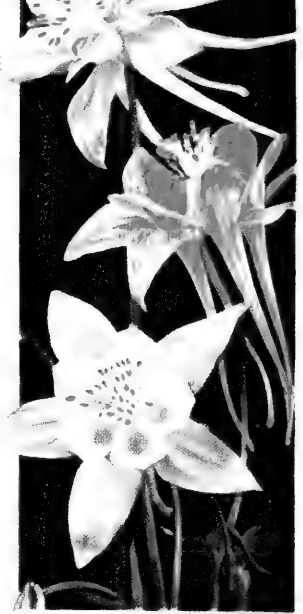
# Colorful Perennials

PRICES UNLESS OTHERWISE NOTED

Each 55c    3 for \$1.50    6 for \$2.75  
 12 for \$5.10    24 for \$8.85

Our hardy perennials will give you masses of color and fragrance from early spring until frost. For borders, rock gardens and beds they are unexcelled. Unfortunately space does not permit us to display all varieties in color; however, we have a complete assortment in stock ready to fill your orders. Complete list below. Extra heavy, field-grown plants.

- 500—**ALYSSUM (Basket of Gold)**. Masses of golden blooms in early spring.
- 502—**BABY'S BREATH (Gypsophila)**. Misty white blooms on dainty stems.
- 506—**BALLOON FLOWER**. Rich blue, star-shaped flowers. July to September.
- 507—**CANDYTUFT**. Low growing evergreen foliage and mounds of white blooms.



Columbine

**COLUMBINE**. Excellent for shaded locations. Beautiful long-spurred flowers in pink, yellow and blue.  
 512—PINK    513—YELLOW    514—BLUE

529—**DELPHINIUM, LA MARTINE**. Rich, dark blue spikes. Masses of flowers in early summer.

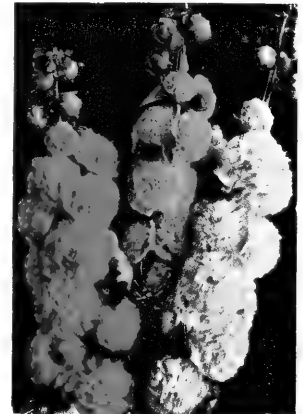
534—**DELPHINIUM, BELLAMOSA**. Magnificent; medium blue.

535—**HELIANTHEMUM (Rock Rose)**. Low, spreading plants form a mat of foliage and bloom from July to September with small, single flowers in shades of pink, red, and white. Very hardy.

**HIBISCUS**. Hollyhock-like blooms on 4-foot, bushy plants.  
 536—PINK    537—RED

**HOLLYHOCKS, DOUBLE**. A good plant for border; exquisite double blooms.

540—RED    542—PINK  
 541—YELLOW    543—WHITE



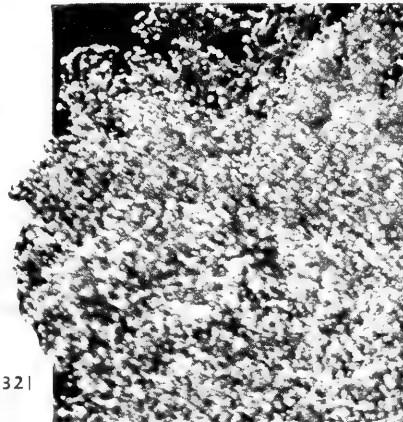
Double Hollyhock

503—**BABY'S BREATH, BRISTOL FAIRY**. This beautiful improved double Baby's Breath will bloom all summer if kept cut.

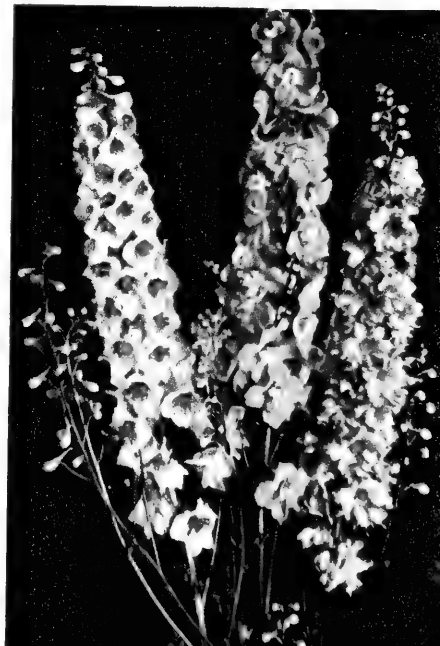
504—**OLD-FASHIONED BLEEDING HEART**. Perfect pink, heart-shaped flowers hanging along the stems make this an exquisite plant in May and June

Each 95c    3 for \$2.50

Baby's Breath, Bristol Fairy



Delphiniums





# Colorful Perennials - Continued

## PERENNIAL PRICES

Each .....	\$0.55	6 for .....	\$2.75
3 for .....	1.50	12 for .....	5.10
24 for .....	\$8.85		



Shasta Daisy

Gaillardia



Hardy Carnations



Lythrum

**CARNATIONS.** A delightful spicy fragrance. Flowers all summer.

508—PINK 509—RED 510—YELLOW

530—DAISY, PAINTED. Daisy-like flowers in red, pink and white. Excellent cut flowers.

570—LIRIOPE, MUSCARI. Low, grass-like plant with spikes of blue flowers.

538—LYTHRUM. Bushy plant, 3 feet tall with pink spikes all summer. Easy to grow.

545—CLOVE PINKS. Fine for sunny border. Red, white and pink flowers of a very pleasing spicy fragrance.

546—PRIMROSE (Missouri). Low, spreading plant with large yellow flowers. Excellent for borders.

**SWEET WILLIAM.** Dense, rounded flower heads of 20 to 30 blooms.

562—RED 564—WHITE  
563—PINK 565—PURPLE

533—GAILLARDIA. Rich burgundy blooms tipped in gold.

528—DAISY, SHASTA. Large, frilled, double, white blossoms in June and July.

572—TEUCRIUM. Fine evergreen perennial. Foliage resembles Boxwood. Here at Neosho it retains foliage all winter. Makes an excellent dwarf hedge or border as it may be pruned to any desired height.

Each 75c 3 for \$1.85 10 for \$5.95

**505—DICENTRA HYBRID, BOUNTIFUL.** (Pat. No. 1198.)

This is a remarkable hybrid, in a robust way resembling the Plumy Bleeding Heart, but vastly superior. It forms a clump fully 18 inches in diameter with handsome dark blue-green foliage, about 10 inches high. The flowers appear in early May and as many as 30 to 40 flower stems can be counted on a 2-year established plant. Stalks are about 18 to 20 inches tall and topped with fuchsia-red flowers which are about double in size of the common Plumy Bleeding Heart. The flowers last well into July, and throughout the summer a few flowers are produced; but in the early autumn it blooms as freely again as it did in spring. Perfectly hardy, does well in any well drained soil and prefers sun to shade.

Each \$1.25 3 for \$3.35 12 for \$11.00



Clove Pinks

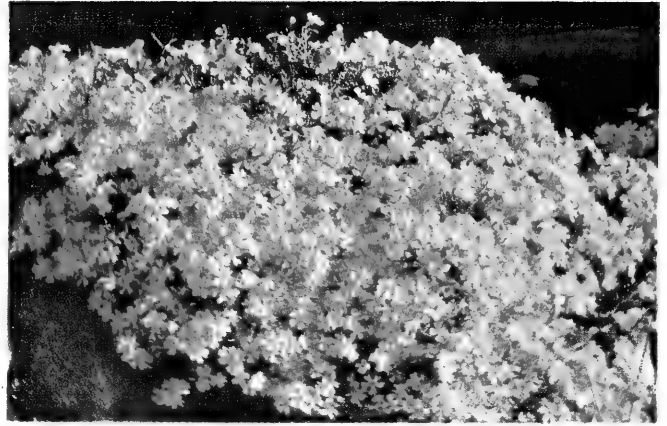
Dicentra Hybrid, Bountiful



# HARDY PHLOX

A wealth of color the first year, and all summer long. Grandeur at a minimum of cost. Ultimate height 2 to 3 feet.

- 551—**IRENE.** One of the best cherry-red Phlox. Medium height with bronzy green foliage.
- 552—**MARY LOUISE.** Without doubt the best white Phlox, with immense heads of purest white. Free bloomer.
- 549—**DAILY SKETCH.** A magnificent Phlox. Lustrous, sparkling pink with deeper eye. Very large flowers on tall, straight stems
- 553—**ROYAL PURPLE.** Rich shaded violet with deeper eye
- 556—**CAROLINE VANDENBERG.** Beautiful blue-lavender
- 557—**SAN ANTONIO.** Rich ruby-red. Large



## CREeping PHLOX (Phlox Subulata)

Early spring flowering perennial with moss-like evergreen foliage. Completely covered in early spring with masses of bloom. We offer both red and pink.

547—PINK

548—RED

### PRICES, ALL PHLOX

Each	\$0.55	6 for	\$2.75
3 for	1.50	12 for	5.10
	24 for		\$8.85

### PLANTING AND CULTURAL METHODS FOR PHLOX

*The soil should be well drained, deeply spaded, and enriched with a good plant food. Planting may be done in fall or spring in a sunny border. Set the plants 10 inches apart. Lift and divide every three or four years or they will become crowded, resulting in poor, small flowers. Never let plants go to seed, never water overhead, always keep blooms and foliage dry, letting hose run slowly on the ground. This method of watering prevents mildew.*



Irene

Mary Louise

Daily Sketch

Royal Purple

San Antonio

Caroline Vandenberg

### PHLOX SPECIAL

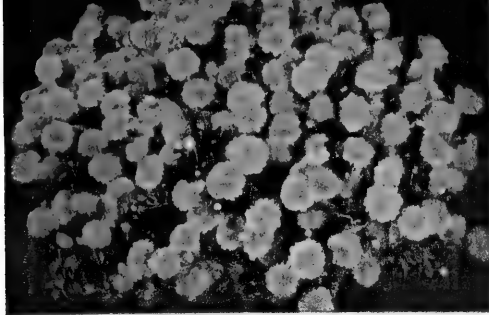
Cat. No. 807

One of each of the 6 large flowering varieties.

**Only \$2.25**

Two each of this group.

**Only \$4.25**



Bronze Cushion Mum

Our Mums are heavy, field-grown clumps. It is important to plant them no deeper than grown in the nursery row. DO NOT COVER THE TINY GREEN SHOOTS at the base of the plant. When planting use Ra-Pid-Gro (see catalog insert) and feed frequently through the summer.

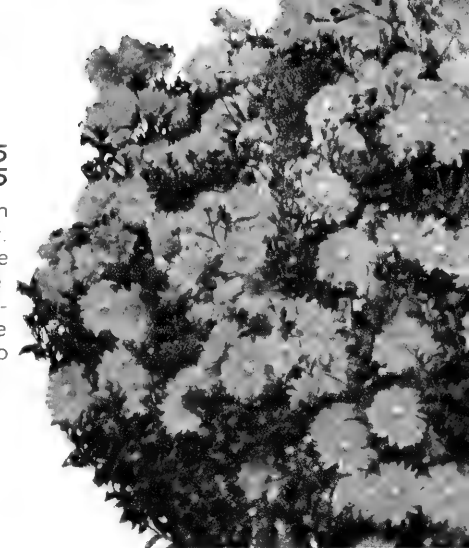
## Cushion Mums

Each ..... \$0.55    10 for ... \$4.25  
 5 for ..... 2.50    25 for ... 9.15

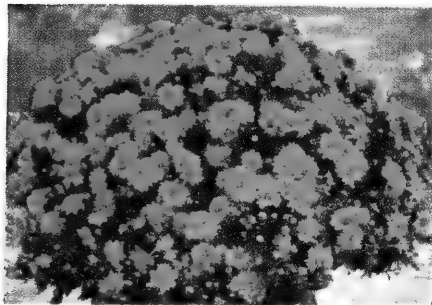
Our Mums simply flood your garden with color from midsummer until frost. Growing about 2 feet tall, they can be used anywhere a mass of color is desired. These Mums will produce hundreds of blooms the first year and the plants will last for many seasons to come. Make beautiful borders.

- 522—PINK
- 523—RED
- 524—YELLOW
- 525—BRONZE
- 526—WHITE

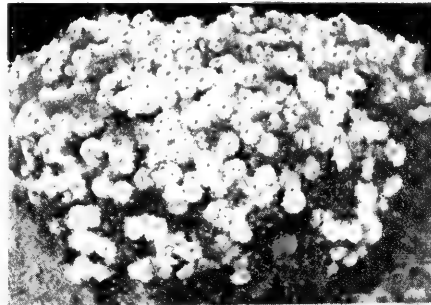
All 5 for  
 Only  
 \$2.50



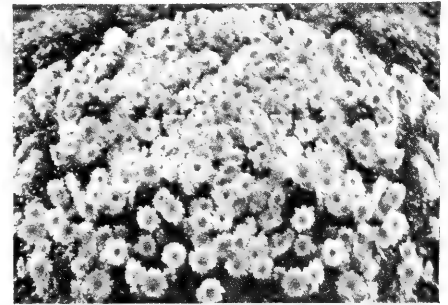
Red Cushion Mum



Yellow Cushion Mum



White Cushion Mum



Pink Cushion Mum

## Large Flowered CHRYSANTHEMUMS

The finest of the large flowering, tall growing Chrysanthemums. Bloom from September until frost. Excellent for cutting.

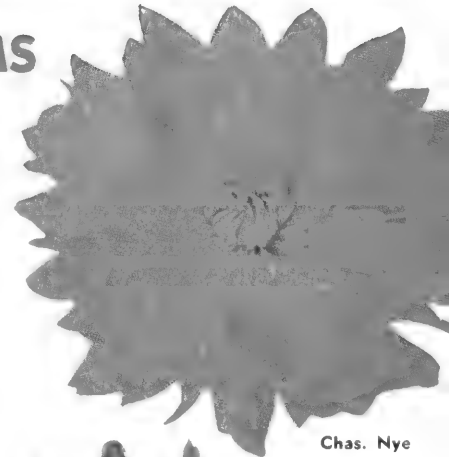
518—**CHARLES NYE.** A brilliant golden yellow.

519—**POLAR ICE.** Pure white, double flowers on long stems.

520—**RED VELVET.** Rich, velvety crimson flowers; fully double.

521—**SEPTEMBER DAWN.** A true pink flower. Very large and double

PRICES			
Each	...	\$0.55	12 for ... \$5.10
4 for	...	2.00	24 for ... 8.85



Polar Ice

Chas. Nye

Sept. Dawn



Red Velvet





Dark Red Jonathan

# Neosho Improved

Many commercial orchardists depend upon Neosho Nurseries Company for new and improved true-to-name varieties. We have long had a reputation for supplying trees that produce profitable, productive orchards that we are zealous to maintain. Let us help you to "Growing Satisfaction."

**272—GRIMES GOLDEN.** A favorite since grandfather can remember. Rich, golden color, fine flavor, and aroma, an ideal dessert Apple, and an equally fine cooker. Easy to grow, hardy, and prolific bearer.

**279—ANOKA** (Old Folks Apple). So called because it bears after the second year. A large, striped red Apple of good quality, which continues ripening over a full month in August. Hardy as an Oak.

**281—SUMMER CHAMPION.** A large, attractive red, fine quality late summer Apple which fills a vacancy in every home orchard and finds a ready market at top prices.

**289—HIBERNAL.** One of the hardiest Apple varieties. Tree vigorous, very spreading, adapted for top-working of most commercial varieties. Fruit is large, flat, greenish yellow with splashes of red. Good color.

**288—VIRGINIA CRAB.** One of the best jelly Crab Apples. Medium size, golden yellow. A late bloomer and prolific bearer, seldom failing to have a crop. Will produce crops with as little attention as any Crab Apple that we know.

**282—DARK RED DUCHESS.** One of the most profitable summer Apples. Bears exceedingly young and extra heavy. A more solid red and richer color than regular Duchess.

**270—DARK RED DELICIOUS.** Everyone is familiar with Red Delicious, but this is an improved sport that ripens and colors a solid blood-red two weeks earlier so as to command top prices on every market.

**293—VANCE DELICIOUS.** This fine dark red strain of Delicious comes from the southeast Apple region. It matures a full two weeks ahead of Delicious, and the color is a dark yet attractive bright red. The possibilities are unlimited—early color, maturity, and high price on an early market.

**271—YELLOW DELICIOUS.** Best yellow Apple on the market. Large, beautiful golden yellow Apple. Firm flesh and stores well until late winter. Tree is vigorous grower and begins bearing at a very early age.

**286—RED WILLOW TWIG.** An improved red sport of Willow Twig which has been a favorite with the commercial growers as a large red Apple that keeps well in storage until May.

**277—TURLEY.** Too much cannot be said of this wonderful Apple of the Stayman Winesap type. Unusually fine color, shape, and uniformity. Exceptionally large, solid red, heavy producer. Ripens September 25 to October 10.

**285—WEALTHY.** (Late Summer.) A most dependable and widely planted late summer Apple. Bright red striped; medium to large size; ripens over a long season. Very good quality. Very hardy. Bears young.

**273—DARK RED JONATHAN.** The best and most widely planted all-purpose Apple grown. No matter what the peddler is selling, if they are red they all call them Jonathan. Dark Red Jonathan is a sport that attains a solid dark red color two weeks earlier and hence brings top prices on every market.

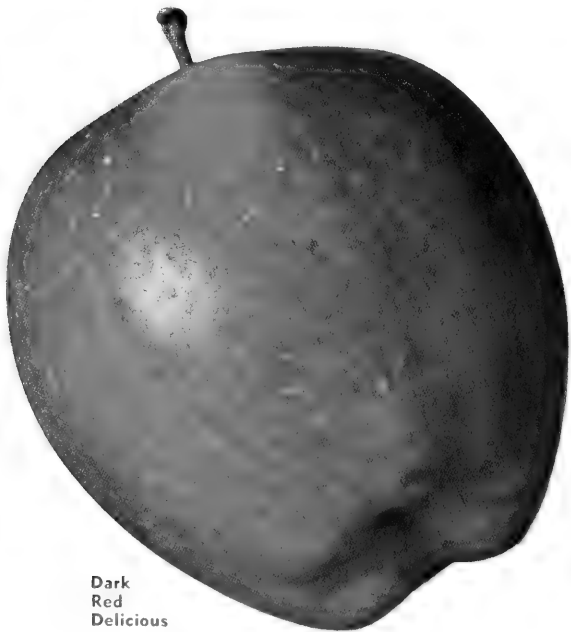
**275—RED ROME.** Blooms later than other Apples, which is a great advantage in escaping spring frosts. A more beautiful solid red Apple was never grown. A vigorous grower, prolific bearer. It starts to bear at an early age. Ripens October 1st. A very profitable commercial Apple.

## ALL-SEASON APPLE SPECIAL

Cat. No. 841

- |                      |                    |
|----------------------|--------------------|
| 1 Dark Red Jonathan  | 1 Yellow Delicious |
| 1 Dark Red Delicious | 1 Golden Lodi      |
| 1 Dark Red Stayman   |                    |

- |                          |        |                     |
|--------------------------|--------|---------------------|
| 5 Trees, 3-4 ft. . . . . | \$5.45 | (Reg. Value \$7.25) |
| 5 Trees, 4-5 ft. . . . . | 6.95   | (Reg. Value 8.00)   |
| 5 Trees, 5-7 ft. . . . . | 7.95   | (Reg. Value 9.00)   |



Dark Red Delicious

USE  
RA-  
PID-  
GRO



Yellow Delicious

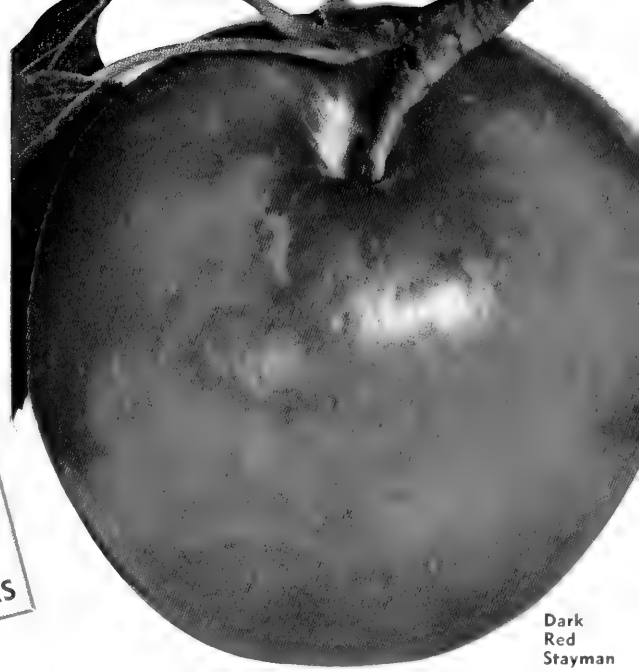


# APPLE Varieties

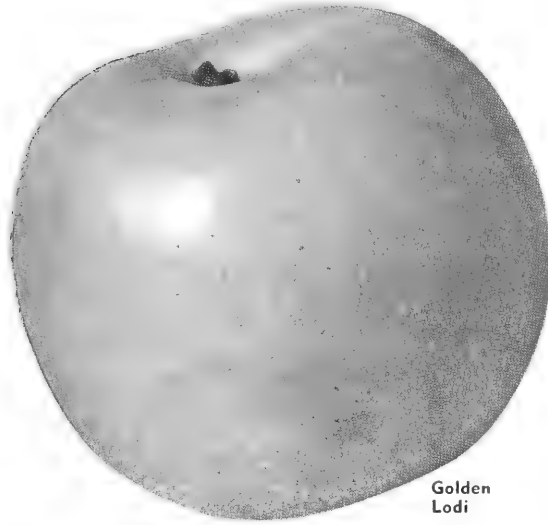
## PRICES ON APPLE VARIETIES

	Each	5 Rate Each	10 Rate Each	25 Rate Each	100 Rate Each
11/16 in. ....	\$2.00	\$1.80	\$1.60	\$1.40	\$1.15
9/16 in. ....	1.75	1.60	1.40	1.20	1.05
7/16 in. ....	1.35	1.25	1.10	.95	.70
5/16 in. ....	1.00	.90	.80	.65	.50

WRITE FOR QUANTITY PRICES



Dark Red Stayman



Golden Lodi

SEE  
BACK  
COVER  
FOR  
DWARF  
VARIETIES

276—**DARK RED STAYMAN.** The Neosho Dark Red Stayman is a marvelous improvement over many Stayman Apples; has more color and keeping qualities. It is a solid dark red, which makes it a universal favorite. Ripens 1st of October to 15th of October.

274—**GOLDEN LODI.** A greatly improved Yellow Transparent. Much larger, a rich yellow, firm, thick-skinned Apple that ships well. Ripens first week in July and reaches market when they are anxious for early apples. Tree is spreading, not upright like a Pear tree, as so many early apples are.

292—**JONADEL (Jonathan x Delicious).** A fine new introduction similar in shape to Jonathan, but larger. Skin is smooth and firm, and color cherry-red to dark red. It is crisp and juicy, with milder flavor than Jonathan. Stores well from January to March and does not get mealy. Tree appears to be blight resistant. Introduced by Iowa State University. Because of the small supply available we must limit the number to not more than 10 to a customer.

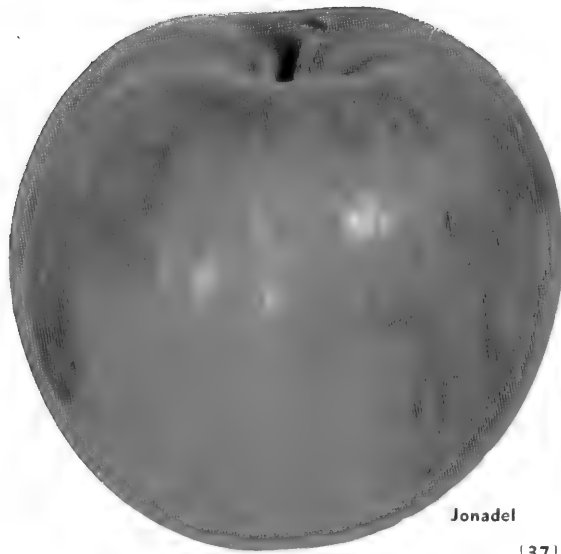
### JONADEL PRICES

	Each	3 for	10 for
11/16 in. ....	\$2.75	\$6.75	\$19.50
9/16 in. ....	2.25	5.40	14.50
7/16 in. ....	1.90	4.50	10.95

284—**WHETSTONE (Winter Jonathan).** A new cross combining the qualities of Jonathan, Delicious, and Ben Davis. A large, beautiful dark red winter Apple that will hang on the tree till Thanksgiving and keep until spring. A heavy producer, 64 to 80 apples will fill a bushel.

287—**YORKING.** New improved York Imperial inheriting all good qualities of the old variety. Heavy bearer, easy to handle and stands late storage. Fine commercial variety. Has 100% color early in season, making a beautiful appearance while still firm.

278—**YELLOW TRANSPARENT.** Most popular early summer Apple. Medium size, clear yellow, excellent for cooking. Tree is hardy, upright, and a heavy bearer.



Jonadel



## 5 in 1

5-in-1  
**THE AMAZING  
ONE TREE ORCHARD**  
Cat. No. 290

One tree makes an Apple orchard. Space for one full size tree is all you need to enjoy the varieties you would normally get from five. You have apples growing in your own yard all summer long. Early, midseason, late—all crisp, juicy wonderful. Some of the finest varieties available including Grimes Golden, Jonathan, Red Delicious, and Yellow Transparent.



Each 2 for  
9/16 in. \$3.50 \$6.50

# Neosho Home Grown

## PEACH PRICES—ALL VARIETIES

	5	10	25	100
	Rate	Rate	Rate	Rate
11/16 in. ....	Each \$1.75	Each \$1.60	Each \$1.40	Each \$1.20
9/16 in. ....	1.50	1.35	1.15	1.05
7/16 in. ....	1.20	1.10	.95	.80
5/16 in. ....	.90	.80	.70	.60



Elberta

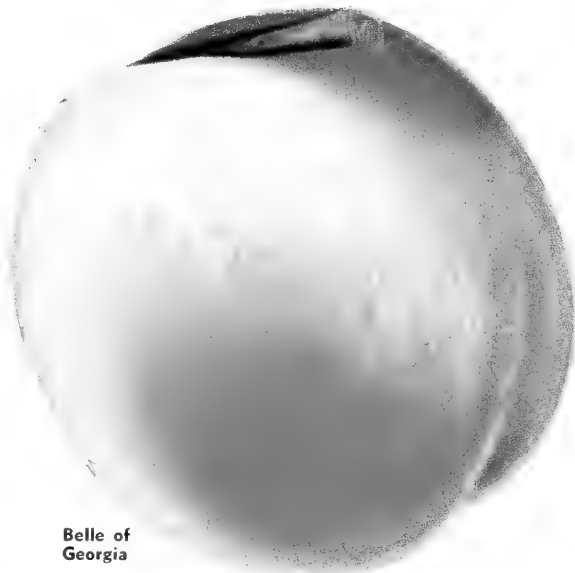
Plant With  
Ra-Pid-Gro

### ELBERTA PEACH SPECIAL

Cat. No. 845

1 July Elberta	1 Gage Elberta	1 Elberta
4-5 ft., 3 for \$3.75		3-4 ft., 3 for \$2.75
(Reg. Value \$4.50)		(Reg. Value \$3.60)

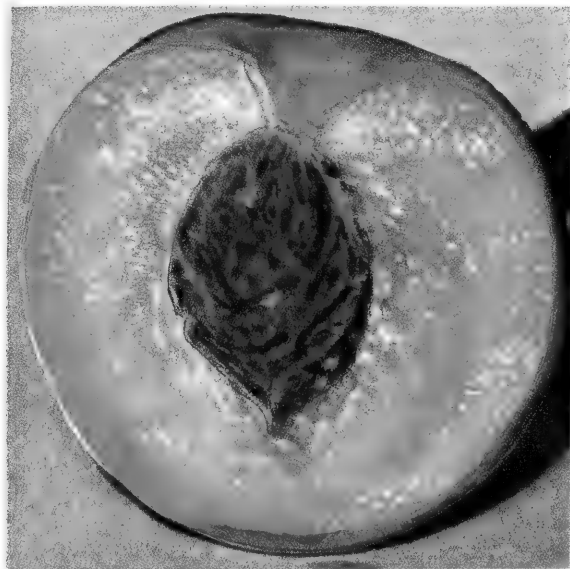
- 252—**CHAMPION.** (Freestone.) A peculiar honey sweetness makes it an ideal Peach for home use and local market. Ripens August 1st. Large, white Peach.
- 262—**DIXIGEM.** Ripens several days ahead of Golden Jubilee and about with Red Haven. Fruit is medium size, and a bright, attractive red blush covers about half the surface. Flesh is yellow with fine texture and excellent flavor. Vigorous and productive.
- 267—**NEWDAY.** (Freestone.) Yellow freestone of good quality. It resembles Elberta in color, shape and size. Ripens a week after Golden Jubilee and is more firm than Golden Jubilee.
- 250—**LORING.** (Freestone.) Resembles Golden Jubilee in color and shape, but is firmer and does not soften at the tip. Large, yellow-fleshed freestone with bright red color over yellow under color. Ripens about two weeks ahead of Elberta.
- 251—**BELLE OF GEORGIA.** (Freestone.) From coast to coast it has been and is the favorite white Peach. Unusually large, creamy white, red blushed, and wonderful quality. Hardy, vigorous, productive, regular bearer. Ripens August 1st.



Belle of Georgia



Gage Elberta



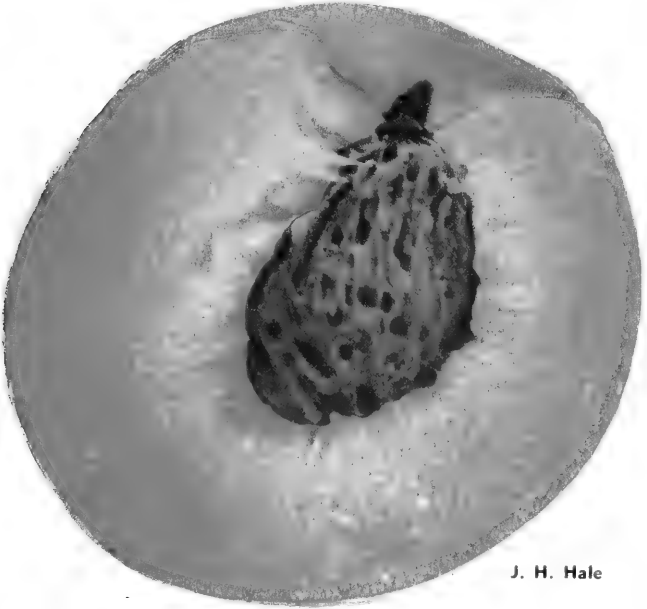
July Elberta

# PEACH Trees

- **257—GOLDEN JUBILEE.** (Freestone.) A beautiful yellow freestone Peach ripening 25 days ahead of Elberta, about July 15th. Good size and quality. Plant Golden Jubilee this year and you will have these hardy freestone Peaches bearing for you in two or three years.
- **266—REDSKIN.** (Freestone.) A Peach introduced by the University of Maryland, having the best features of Hale and Elberta. Ripens slightly earlier than Elberta. Fruit is round with firm yellow flesh. Excellent for shipping and canning. Vigorous and productive.
- **260—RED HAVEN.** (Freestone.) A smooth-skinned, almost fuzzless, early yellow freestone of fine quality. Ripens uniformly early in July. Tree is vigorous and bears so heavily that fruit should be thinned to increase size.
- **261—CHINESE CLING.** A huge, round, white Peach with a juicy, yet rather firm flesh. Its flavor is unique and far surpasses all other white Peaches for canning or freezing. No home orchard should be without one.
- **263—INDIAN BLOOD.** (Clingstone.) Late. An old-fashioned favorite of fine flavor. Flesh is blood-red color. Wonderful for canning, pickling and preserving.
- **264—RED BIRD.** (Clingstone.) An unusually large, early commercial variety. Very firm and ships well. Creamy white covered with bright red. Ripens July 1st.
- **258—J. H. HALE.** (Freestone.) The largest of the high quality commercial Peaches. Ripens August 5th, just ahead of Elberta. The color is a beautiful yellow and it is the preferred Peach on most every market during its season. Quality unsurpassable.



**Golden Jubilee**



**J. H. Hale**

- **265—TULIP.** (Semi-freestone.) The best extra early, semi-freestone grown at the Missouri Fruit Experiment Station. Ripens six weeks ahead of Elberta. Fruit medium to large, nearly round with good color before picking time. Short fuzz, fine texture and excellent flavor. Firm, yellow flesh, stands shipping well.
- **259—HALE-HAVEN.** (Freestone.) A magnificent cross between the wonderful quality of J. H. Hale and the hardiness of South Haven. Wonderful size and color and shipping qualities. Hardy in bud and vigorous tree. A profit making variety you cannot afford to overlook. Ripens August 1st.

**ALL-SEASON PEACH SPECIAL**  
Cat. No. 846

1 J. H. Hale	1 Red Bird Cling	1 Golden Jubilee
1 Early Elberta	1 Belle of Georgia	1 Hale-Haven
4-5 ft. trees—All 6 for \$6.50		3-4 ft. trees—All 6 for \$4.75
(Regular Value \$8.10)		(Regular Value \$6.60)

**Hale-Haven**

**SEE ORDER  
BLANK  
FOR  
RA-PID-GRO  
PRICES**



**Tulip**



# Neosho Choice PLUMS



**Ozark Premier**

240—**OZARK PREMIER.** This outstanding cross between Burbank and Methley is an extra large, bright red, delicious Plum which ripens August 1st. Bears heavily and should grace every planting.



**Bluefre**

## PLUM PRICES

	Each	5 Rate Each	10 Rate Each	25 Rate Each
11/16 in. ....	\$2.25	\$2.00	\$1.75	\$1.60
9/16 in. ....	1.90	1.70	1.50	1.35
7/16 in. ....	1.55	1.35	1.20	1.05
5/16 in. ....	1.25	1.10	1.00	.90

241—**SAPA.** Can you imagine Plums the first or second year? That's what you can be assured with Sapa. Juicy purplish flesh of good quality ripening in July. Bears every year.

242—**STANLEY PRUNE.** (Freestone.) The best of the Prunes because the tree is so sturdy and vigorous, and thrives where other Prunes fail. Begins bearing second year and produces large, beautiful sweet golden fleshed purplish blue freestone Prunes delightful to eat fresh from the tree.

235—**AMERICA.** Hang as thick on the limbs as they can stick. A rich flavor, good size yellow Plum with red cheek. Wonderful for jellies, preserves, butter, or conserves.

236—**BURBANK.** The name itself is sufficient evidence that it is outstanding. A large, cherry-red, solid meated Plum of rich flavor which bears well if planted along with another variety to cross pollinize.

237—**BLUEFRE.** A cross of Stanley and President. Tree is vigorous, upright, and produces a heavy crop. Fruit is freestone, large, shaped like President, and the skin is blue like Stanley. Firm, greenish yellow flesh with good flavor.

239—**PRESIDENT.** (Freestone). Nearly as large as an Apple. An immense purplish black, firm Plum of wonderful quality which you will enjoy eating fresh from the tree. Plant a Stanley with it for pollination.



**Allred**

238—**ALLRED.** A new Plum which we consider one of the best. It is ornamental as well as fruitful. The tree, the foliage (all season long), the flowers, and the fruit are all purple-red. A beautiful tree all year. Makes an upright tree which bears regularly and heavily. Very hardy. Excellent to eat fresh from the tree, or for sauce and jam.

"Soak roots of fruit trees and other deciduous plants in RA-PID-GRO just before planting, then water them after planting with the solution. Use 1 lb. to 22 gallons of water.

1 lb. ....	\$1.30
2 lbs. ....	2.50
5 lbs. ....	4.75
10 lbs. ....	9.00

## APRICOT and NECTARINE

### APRICOT and NECTARINE PRICES

	Each	5 Rate Each	10 Rate Each	25 Rate Each
11/16 in. ....	\$2.25	\$2.00	\$1.75	\$1.60
9/16 in. ....	1.90	1.70	1.50	1.35
7/16 in. ....	1.55	1.35	1.20	1.05
5/16 in. ....	1.25	1.10	1.00	.90

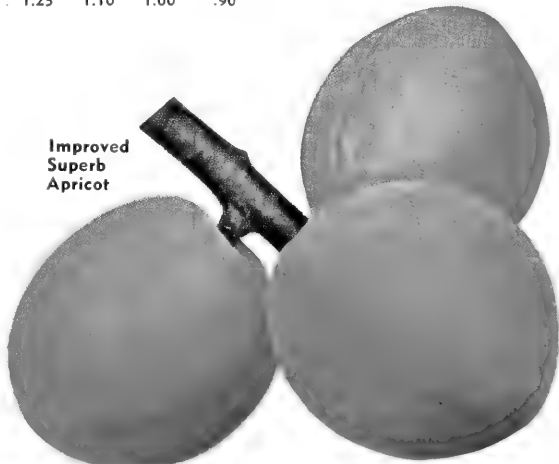
245—**CHINESE APRICOT.** A very fine Apricot. Large size with very sweet flavor. Smooth skinned, pale orange color with a bright red cheek. Very hardy and one of the best Apricots.

246—**IMPROVED SUPERB APRICOT (Scheihing).** An orchardist named Scheihing at Guthrie, Oklahoma, had a particular Superb Apricot tree that bore abundant crops for several successive years, and you must admit that is practically unheard of, since Apricots bloom so early they often get caught by spring frosts. The fruit was larger and juicier than regular Superb. We secured buds from this tree and have perpetuated this wonderful (Scheihing) Improved Superb Apricot to offer you.

247—**NECTARINE, SURECROP.** So named because of its unusual hardiness against spring frost. Fruit is half and half, with skin like a Plum, seed like a Peach, and meat half way between. Freestone, large, beautiful red. Often bears the second year.



**Nectarine, Surecrop**



**Improved Superb Apricot**



# Neosho CHERRIES



Early Richmond



Montmorency

## VIRUS FREE CHERRY

Eliminate Cherry virus in your new orchard by planting Neosho certified trees. Our seedling understock is propagated from trees indexed virus free and our budwood is secured from trees "certified" virus free by the Missouri Agricultural Experiment Station.

## SOUR CHERRIES

Keep Cherries sprayed with Actidione at least 3 times to hold the foliage on the tree. The result is more luscious fruit, more abundant fruit, and plenty of new growth for the next year's crop. See your spray dealer.

- ✓ 200—**EARLY RICHMOND.** Lengthen your season by planting some Early Richmond, too. It is the best of the early sour Cherries. Ripens a week ahead of Montmorency.
- ✓ 201—**MONTMORENCY.** The favorite of all sour Cherries for over a century. There are more Montmorency Cherries in the United States than all of the rest of the Cherries combined. Fruit is firm, round, glowing red. Ideal for pies, cobbblers, or canning. Our trees are virus free.
- ✓ 203—**METEOR.** A brilliant new pie Cherry. Fruit is a clear light red; the skin is thin and tender. Flesh is pleasant and mildly acid and quality is very good. Fruit is large and tree is a strong, vigorous grower. Ripens about midseason.

### SOUR CHERRY PRICES

	Each	5 Rate Each	10 Rate Each	25 Rate Each
11/16 in. ....	\$2.25	\$2.00	\$1.75	\$1.60
9/16 in. ....	1.90	1.70	1.50	1.35
7/16 in. ....	1.55	1.35	1.20	1.05
5/16 in. ....	1.25	1.10	1.00	.90

WRITE FOR QUANTITY PRICES

### CHERRY PIE SPECIAL—Cat. No. 850

2 Early Richmond and 2 Montmorency

All 4 trees, 7/16 in. . . \$4.75 All 4 trees, 11/16 in. . . \$7.25  
(Regular Value \$6.20) (Regular Value \$9.00)

## SWEET CHERRIES

Never plant a sweet Cherry by itself. Plant Black Tartarian to pollinize other varieties and make them bear heavily.

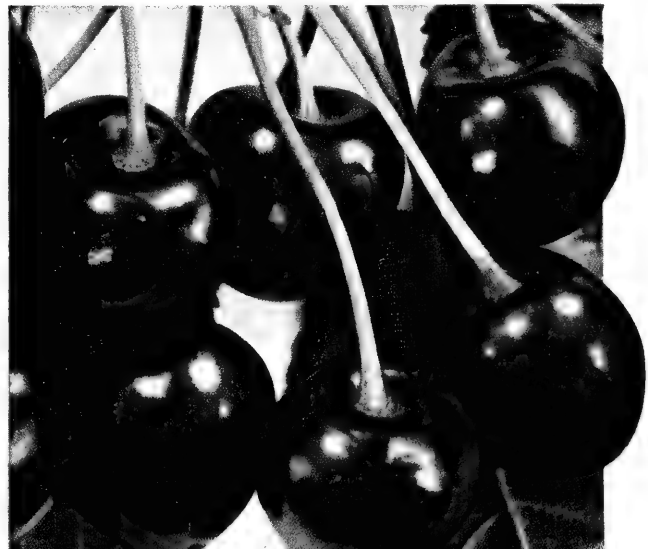
- ✓ 205—**BING.** A large, luscious firm deep red heart-shaped sweet Cherry of delicious flavor. Midseason. Has no superior for all purposes.
- ✓ 206—**BLACK TARTARIAN.** A very productive early sweet Cherry of good quality which stands the dry, hot weather in the Middle West better than all others.
- ✓ 207—**LAMBERT.** Bing all over again in quality and desirability, but ripens a week to ten days later and is a brighter red.
- ✓ 209—**NAPOLEON (Royal Ann).** Like Montmorency, it has been a favorite for a century. Large, delicious, sweet, heart-shaped with a creamy yellow background and pink cheek.

- ✓ 210—**SENECA.** Large, black sweet Cherry with unusually good flavor. Ripens with Strawberries. Tree is large, vigorous grower, heavy producer. One of the best of the new sweet Cherries for Midwest.

### SWEET CHERRY PRICES

	Each	5 Rate Each	10 Rate Each	25 Rate Each
11/16 in. ....	\$2.25	\$2.10	\$1.90	\$1.75
9/16 in. ....	2.00	1.85	1.65	1.50
7/16 in. ....	1.70	1.55	1.45	1.35

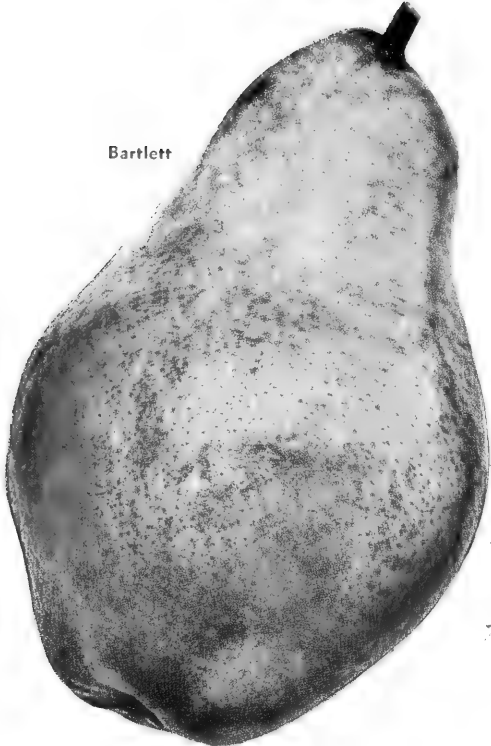
Seneca



Napoleon

# Juicy PEARS

Bartlett



## PEAR PRICES

	Each	5 Rate Each	10 Rate Each	25 Rate Each
11/16 in., 5-7 ft. ....	\$2.25	\$2.00	\$1.75	\$1.60
9/16 in., 4-6 ft. ....	1.90	1.70	1.50	1.35
7/16 in., 3-4 ft. ....	1.55	1.35	1.20	1.05
5/16 in., 2-3 ft. ....	1.25	1.10	1.00	.90

### WRITE FOR QUANTITY PRICES

There are few tastier dishes than fresh Pears from your own trees. These varieties have been selected for hardiness and quality. Plant several trees and have plenty for eating fresh or preserving to enjoy all winter. The special offer listed is ideally suited for the home garden.

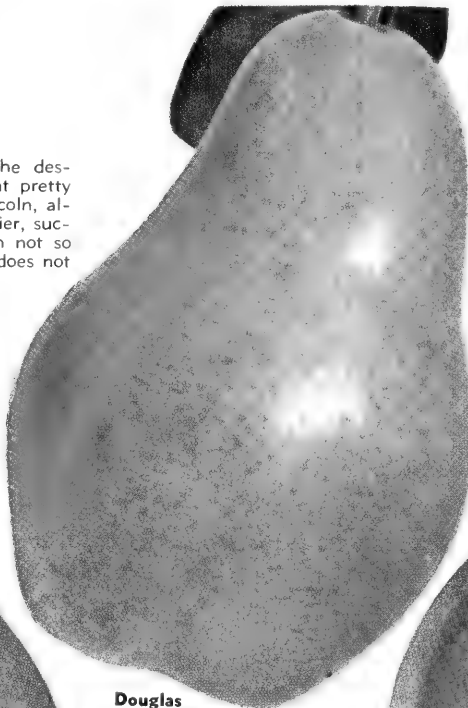
- ✓ 215—**BARTLETT.** Known and grown from coast to coast and fully deserving of its popularity, both for home and commercial planting. Fine quality. White, juicy meat.
- ✓ 216—**DOUGLAS.** More resistant to blight than any of the other varieties. Ripens in the fall after Bartlett and before Kieffer. More of the Bartlett type—but not as high quality. One of its outstanding characteristics is it often blooms a second time and bears a crop if the early bloom gets killed by spring frosts.
- ✓ 221—**SECKEL.** Because of its sweetness it is called the Sugar Pear. It is a honey in more ways than one. Everyone should have one or more. Though small in size, it is delicious in flavor, wonderful for preserves and conserves.

### Plant With Ra-Pid-Gro

✓ 218—**LINCOLN.** Just read the description of Bartlett and that pretty nearly tells the story of Lincoln, although it ripens a little earlier, succeeds further south, though not so tender and juicy so that it does not bruise easily.

✓ 219—**CORELESS PEAR.** Can you imagine a Pear without seeds or core to bother with? Well, that's Edmonds Seedless. All juicy, white, sweet, firm meat that ripens ten days ahead of Bartlett. What more can be added excepting it is a heavy producer?

Douglas



Lincoln



### SUGAR PEAR SPECIAL

Cat. No. 852

1 Seckel 1 Coreless  
1 Lincoln

3 Trees, 2-3 ft., \$2.95  
(Regular Value \$3.75)

3 Trees, 4-6 ft., \$4.75  
(Regular Value \$5.70)

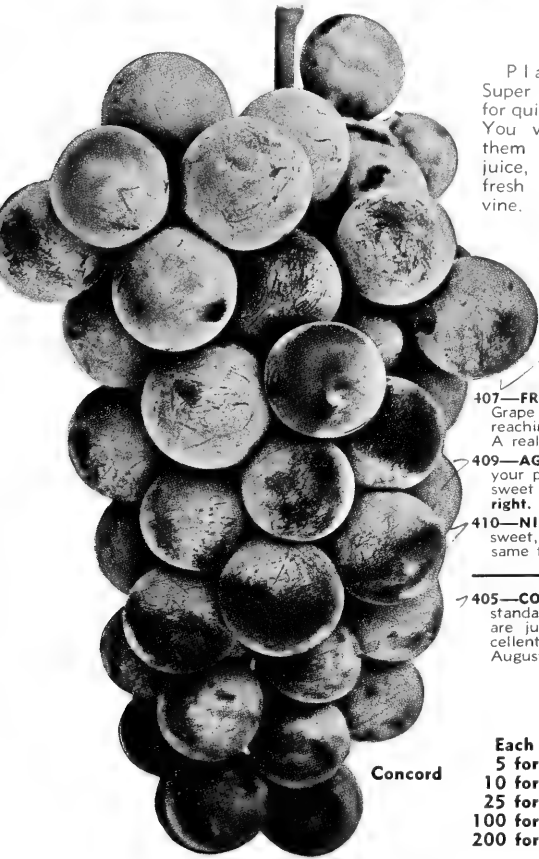
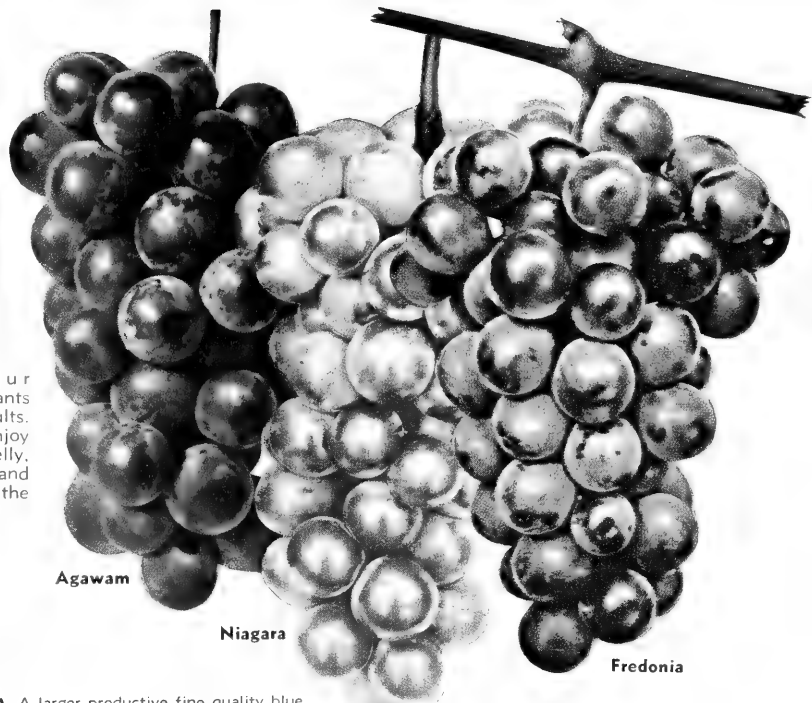
Coreless



# Neosho GRAPES

Offer a Lifetime of Increased Yield and Value

Write for Special Prices on Large Quantities.  
State Variety, Grade and Number Desired.



Plant our Super X plants for quick results. You will enjoy them for jelly, juice, jam, and fresh from the vine.

Agawam

Niagara

Fredonia

407—**FREDONIA**. A larger productive fine quality blue Grape that ripens several weeks ahead of Concord, reaching the early market and bringing top prices. A real money maker. **Prices at right.**

409—**AGAWAM**. Ripens after Concord, prolonging your picking season ten days. The best of the large sweet red Grapes. Larger than Concord. **Prices at right.**

410—**NIAGARA**. Hardy, popular white Grape. Large, sweet, juicy berries of fine quality. Ripens about the same time as Concord. **Prices at right.**

405—**CONCORD**. Who doesn't know Concord, the standard for a century by which all other Grapes are judged? Hardy, good size, blue Grape of excellent flavor and very productive. Ripens about August 15th in southwest Missouri.

### CONCORD PRICES

	Super X	
	2-Yr., No. 1	1-Yr., No. 1
Each	\$ 0.45	\$ 0.35
5 for	1.95	1.50
10 for	3.45	2.60
25 for	7.50	5.95
100 for	25.00	20.90
200 for	42.50	37.50

### PRICES FOR FREDONIA, AGAWAM, NIAGARA

	Super X		Select
	2-Yr., No. 1	1-Yr., No. 1	
Each	\$ 0.55	\$ 0.45	
5 for	2.45	1.95	
10 for	4.50	3.45	
25 for	9.95	7.50	
100 for	35.75	25.00	

### RED, WHITE AND BLUE GRAPE SPECIAL

Cat. No. 860

An ideal assortment for every home owner. This assortment chosen for hardiness, productivity, ease in growing, long season, and wonderful quality. Sturdy vines.

2 Agawam 2 Niagara 2 Fredonia 2 Concord

**8 Vines for \$2.95**

(Regular Value \$3.75)

## NUT TREES

213—**STUART PECAN**. The only soft-shelled southern variety that can be grown as far north as Kansas City. The most widely planted of all soft-shelled Pecans. A large, fine flavored, thin-shelled Paper-shell that will delight anyone. Plant 40 feet apart.

	Each	3 for	10 for
2-3 ft.	\$2.95	\$ 7.50	\$21.50
3-4 ft.	3.25	8.95	24.95
4-5 ft.	3.75	10.45	29.75

214—**HAZELNUT**. Round sweet kernels easily removed and delicious for many uses. Plants are ornamental with deep green foliage and compact bushy habit of growth. Fruits freely. Plant a group of them in the corner of your yard.

	Each	3 for
18-24 in.	\$1.15	\$2.95
2-3 ft.	1.50	3.95
3-4 ft.	1.95	5.25

212—**THOMAS BLACK WALNUT**. Now you can have an improved grafted Black Walnut which is giant in size and kernels come out in halves. Thomas is the fastest growing and produces the largest nuts. It bears very young generally next year after planting. A mature tree will produce 15 to 40 bushels of nuts. The nuts are immense size and crack easily. Meats are delicious flavor. Will grow anywhere.

	Each	3 for	10 for
18-24 in.	\$1.65	\$4.40	\$12.75
2-3 ft.	2.25	6.15	17.95

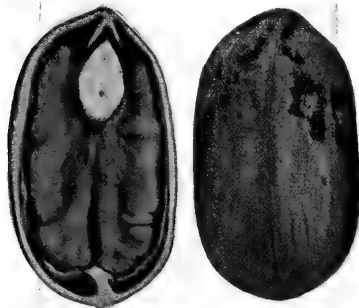
### NUT TREE SPECIAL—Cat. No. 832

- 1 Hazelnut, 2-3 ft.
- 1 Thomas Walnut, 1 1/2-2 ft.
- 1 Stuart Pecan, 2-3 ft.

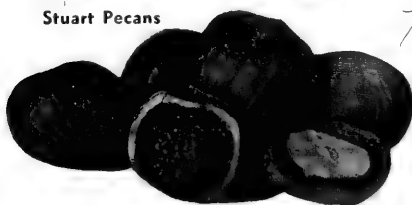
**All 3 for Only \$5.25**

(Regular Value \$6.10)

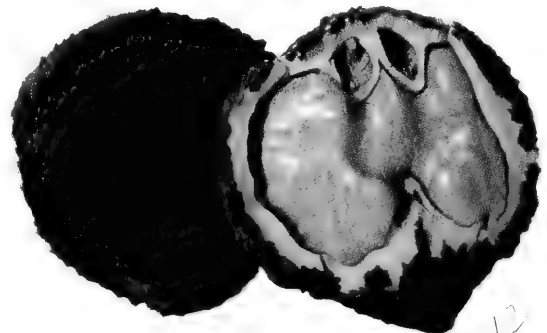
Thomas Black Walnut



Stuart Pecans



Hazelnuts

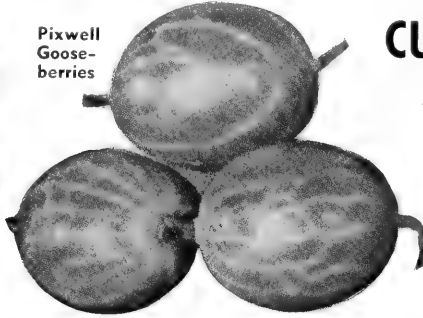


# FRESH FROM YOUR OWN GARDEN



Red Lake Currant

5 for ..... \$1.10  
10 for ..... 1.95



Pixwell Gooseberries

Each \$0.70      5 for \$3.00      10 for \$5.50

## CURRANTS - GOOSEBERRIES

➤ **402—RED LAKE CURRANT.** A new red Currant of superior quality and flavor, with larger berries. Heavy yielding and very hardy.

Each \$0.60    5 for \$2.75    10 for \$5.00

➤ **400—PIXWELL GOOSEBERRY.** Introduced by the U. S. Department of Agriculture. The same high quality and favorable characteristics of Oregon Champion, but with the distinct and

favorable advantage that it stands the hot, dry weather so much better and succeeds 500 miles further south and west.

## BLACKBERRIES



Blackberries

- **415—McDONALD.** Very early. Large, oblong, very good quality. Drought resistant, vigorous grower. Plant in rows 8 to 10 feet apart. The vines trail the first season like Dewberry, but grow upright the next year. We will include with each 25 McDonald plants 5 plants of Early Harvest FREE for cross pollination. Plant every fourth or fifth plant. Best Blackberry for size, quality, and production.
- **416—EARLY HARVEST.** Glossy jet-black berries of medium size and excellent quality. Heavy bearer and very hardy. Ripens early, ahead of dry weather.
- **417—ELDORADO.** The hardest, best quality Blackberry. Thrives on poor soil. Large, firm, sweet flavored. A heavy, regular bearer.

Mary Washington Asparagus



## ASPARAGUS

**452—MARY WASHINGTON.** The U. S. Department of Agriculture developed this variety. It is rust resistant and the best variety for home use or market. It is earlier, stalks are larger, more tender, more productive than any other variety.

HEAVY, 1-YEAR		JUMBO 2-YEAR	
10 for .....	\$0.65	10 for .....	\$0.85
25 for .....	1.30	25 for .....	1.75
50 for .....	2.00	50 for .....	3.00
100 for .....	3.75	100 for .....	5.00
200 for .....	6.95	200 for .....	8.95

## RHUBARB

**454—CANADA RED.** The best red Rhubarb. Grown from divisions, which guarantee it true to name. Giant size stalks, tender and sweet, requiring less sugar. Stays tender into middle of summer.

	Each	3 for	6 for
Large Divisions .....	\$0.90	\$2.50	\$3.95

**453—VICTORIA.** The standard Rhubarb for years. A large pink stalked variety; early, tender and mild, but grown from seed, not divisions, so that we can offer them at much lower prices, but cannot guarantee true to name.

	3 for	6 for	12 for
Small .....	\$0.50	\$0.85	\$1.45
Medium .....	.75	1.25	2.10
Large .....	.95	1.70	2.90



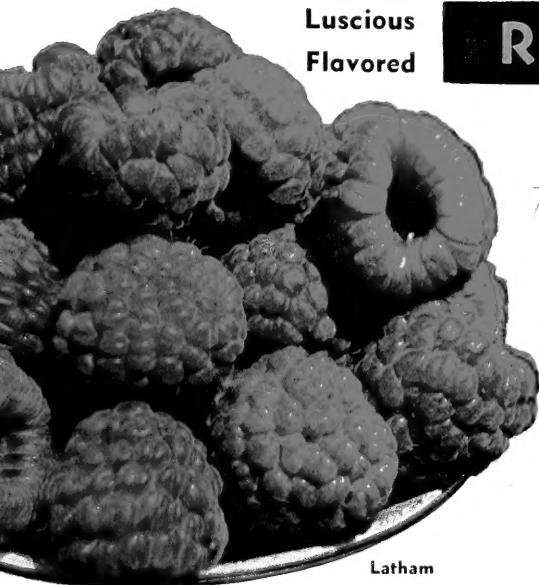
Canada Red Rhubarb



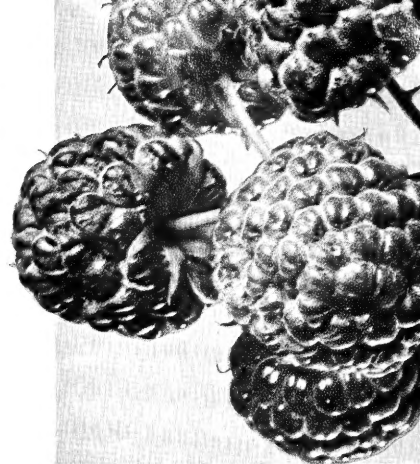
Luscious  
Flavored

# RASPBERRIES

## "Sure to Grow"



Latham



Sodus

September



### HOME BERRY COLLECTION

Cat. No. 862

Our selection of the best varieties for your home berry patch. The wonderful September Red Raspberry, the standard Blackcap, the sensational Thornless Boysenberry, and the Eldorado Blackberry. These are all good yielders of fine quality berries. Plant them and you will have plenty of luscious berries for sauce, pies, jellies and preserves. Our fine healthy plants will grow vigorously for you.

- 6 September Red Raspberry
- 6 Cumberland Black Raspberry
- 6 Thornless Boysenberry
- 6 Eldorado Blackberry

1 Grape—FREE

24 plants for ..... \$3.95  
48 plants for ..... 7.45

431—**CUMBERLAND.** Black Raspberry. For decades Cumberland has led all the rest from coast to coast. There are more Cumberland planted than all the Blackcaps. Large, firm, sweet, midseason berries. Self supporting, non-suckering plants. Set in early spring.

5 for ..... \$1.10      50 for ..... \$ 6.95  
10 for ..... 1.95      100 for ..... 12.75  
25 for ..... 3.95      200 for ..... 23.50

433—**SODUS.** Purple Raspberry. The best garden Raspberry. Berries large, firm, and excellent quality. Extremely hardy, drought resistant and not subject to winter injury. Does not require winter protection even in Minnesota. A good shipping and canning berry because of its wonderful keeping qualities. Produces fruit of large size, fine color and good flavor. Most productive Raspberry. Often produces a second full crop. See prices below.

436—**LATHAM.** Red Raspberry. A superior late red Raspberry which does well in all sections of the country. Adaptable to all sorts of soil conditions, climates, and sections. Cold weather has no effect on Latham, as it originated in Minnesota. A great shipping and canning berry because of its wonderful keeping qualities. Produces fruit of large size, fine color, and good flavor. See prices below.

434—**SEPTEMBER.** New everbearing Red Raspberry. Many are planting September as a one-crop variety because of its vigor and large size, fine flavored berries. Berries are much larger than other everbearing types and of excellent quality. The summer crop ripens very early; the autumn crop from September until frost. See prices below.

#### PRICES LATHAM—SODUS—SEPTEMBER

5 for ..... \$1.35      50 for ..... \$ 8.75  
10 for ..... 2.45      100 for ..... 15.95  
25 for ..... 4.95      200 for ..... 29.50

432—**MORRISON.** Black Raspberry. A new improved introduction with all Cumberland fine qualities, but of larger size, a little later ripening, but best of all, of healthy, vigorous growth that stands hot, dry weather exceptionally well.

5 for ..... \$1.25      50 for ..... \$ 7.75  
10 for ..... 2.25      100 for ..... 14.50  
25 for ..... 4.50      200 for ..... 26.00

Morrison



### THORNLESS BOYSENBERRY

Cat. No. 430

Immense berries as long as 2 inches, with fruit ripening for a 6 to 8 weeks period. You can have them fresh from the vine for weeks. Will make 6 to 8 feet of growth the first year and produce abundantly the second year. Rich, large berries of a tangy Raspberry-Dewberry flavor. Ideal for juice, canning, and preserves.

5 for ..... \$1.25      50 for ..... \$ 7.75  
10 for ..... 2.25      100 for ..... 14.50  
25 for ..... 4.50      200 for ..... 26.00



# EVERBEARING STRAWBERRIES

## SPRING SHIPMENT ONLY

*Everbearing Strawberries will bear this summer and fall. Large size—wonderful color—delicious flavor.*

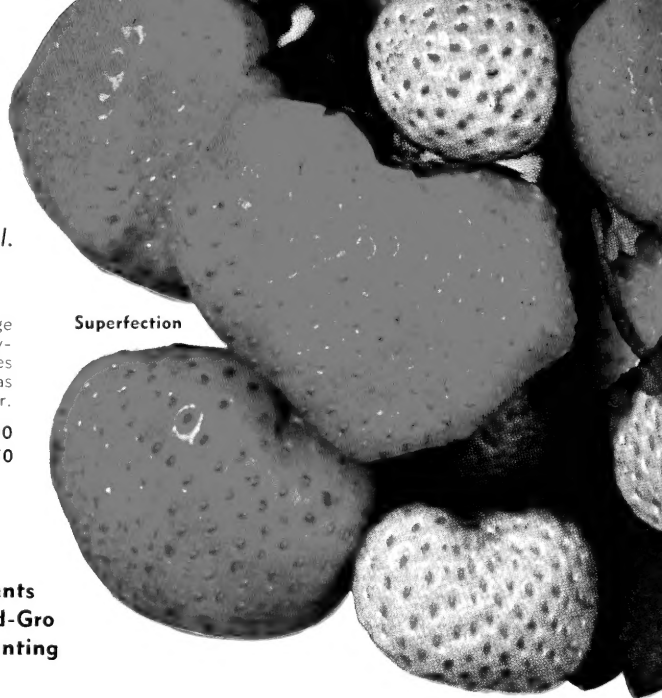
**420—STREAMLINER.** The outstanding everbearing Strawberry. Very large berries of rich, red color and the finest flavor and quality of any Strawberry. Starts bearing 60 to 90 days after planting and you will have berries right up to heavy frosts. It is a heavy bearer and self-pollenizing. It has everything—large size, excellent flavor, good color, and is a heavy bearer.

25 for .....\$1.50    100 for .....\$4.25    500 for .....\$16.00  
50 for ..... 2.50    200 for ..... 7.50    1000 for ..... 29.50



Streamliner

**Dip Plants  
in Ra-Pid-Gro  
When Planting**



Superfection

**427—SUPERFECTION.** This exceptionally large, round, red berry has a sweet, pleasing mellow flavor and is delicious to eat fresh, canned, preserved, as well as fresh frozen. Bears an abundance of large berries throughout the late summer and fall season. One of the best everbearers ever introduced, and cannot be too highly recommended.

25 for .....\$1.50    100 for .....\$4.25    500 for .....\$16.00  
50 for ..... 2.50    200 for ..... 7.50    1000 for ..... 29.50

## ALL SEASON STRAWBERRY SPECIAL

Cat. No. 865

A special selection of varieties to give the average family fresh, delicious Strawberries throughout the season.

25 Superfection 50 Blakemore 25 Streamliner 50 Aroma

**150 Plants for \$4.65**

(Regular Value \$5.25)

# POCAHONTAS

Cat. No. 421

(Not Everbearing)

A new spring bearing introduction by the U. S. Department of Agriculture, with large, dark red berries. Extra good plant maker and heavy producer. Excellent quality and highly flavored.

### PRICES

25 for .....\$ 1.10  
50 for ..... 1.85  
100 for ..... 2.75  
200 for ..... 5.00  
500 for ..... 10.00  
1000 for ..... 17.50

SPRING  
SHIPMENT  
ONLY



# Strawberries FRESH FROM YOUR OWN GARDEN

SPRING SHIPMENT ONLY



426—**ARMORE.** (Virus Free.) Just think—a Missouri University cross combining the better qualities of Aroma and Blakemore. Aroma quality and size and Blakemore plant making, productivity and drought resistance. An excellent berry. **Prices below.**

424—**AROMA.** (Midseason.) Aroma has made the Ozarks famous as the area raising the world's finest Strawberries. Large, luscious, sweet berries, very firm. Will ship 1000 miles and arrive in good condition. **Prices below.**

423—**BLAKEMORE.** (Virus Free.) Extra early, bright red berry highly flavored and a tremendous yielder; self-pollinating. A heavy plant maker. Easy to develop a full wide row the first season. Fine for quick freezing. Thrifty, prolific, and adapted to various soils and climates. A money-maker wherever Strawberries will grow. **Prices below.**

422—**DUNLAP.** (Virus Free.) Thrives in every section and is ideal for home use and local market. A deep, glossy red, medium size berry of rich honeyed sweetness. **Prices below.**

425—**NEW ROBINSON.** (Virus Free.) A scarlet beauty. Sweet, solid berries, long fruiting period, heavy producer. One of the fanciest and most attractive Strawberries ever introduced. Uniform, extra large, scarlet berries are solid red all the way through, with a delicious sweet flavor. A thrifty plant maker with heavy, light green foliage. Ripens just after Blakemore and fruits over a long period, holding its large size to the last picking. **Prices below.**

## PRICES

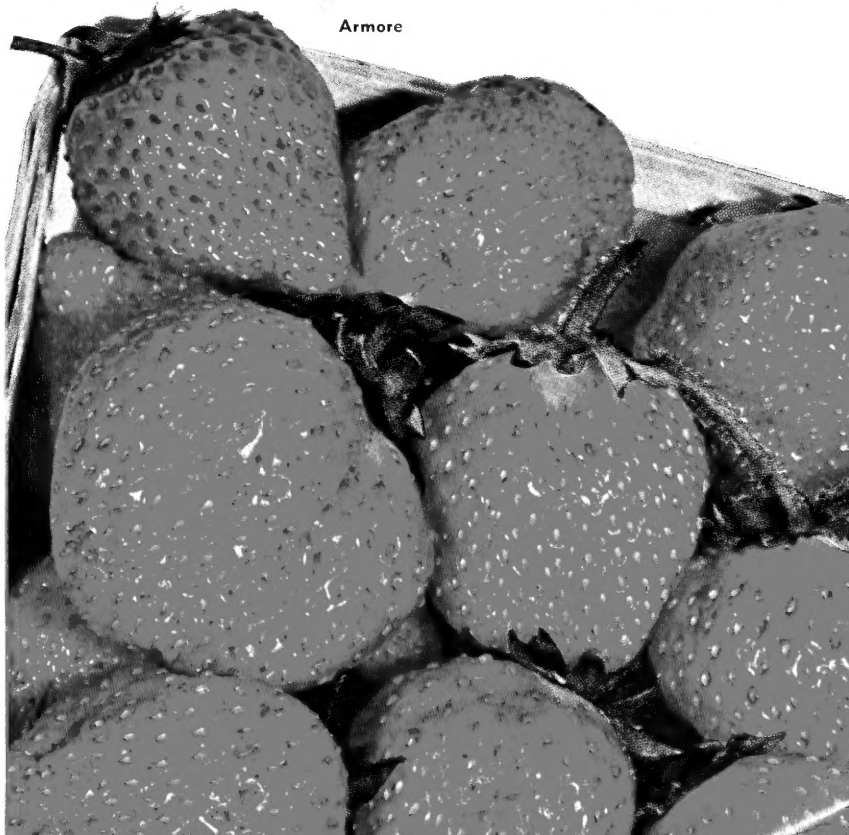
25 for .....	\$1.00	200 for ...	\$ 4.50
50 for .....	1.75	500 for ...	8.50
100 for .....	2.75	1000 for ...	16.00
		2000 for ...	30.00

WRITE FOR SPECIAL QUANTITY PRICES

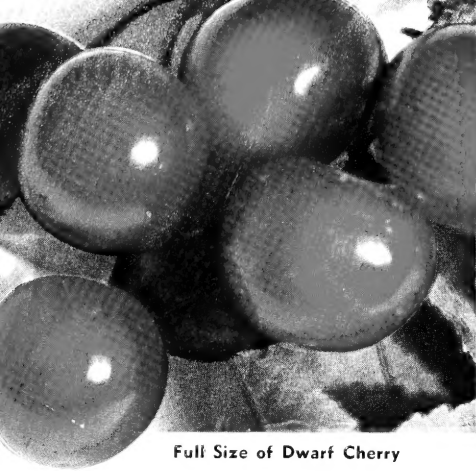
## VIRUS FREE

There is a difference in virus-free Strawberry plants. The foundation planting stock is grown from plants started each year in greenhouses and screenhouse. Following this procedure year after year it is possible to maintain for our customers the highest possible degree of freedom from virus and other diseases. Unless growers set plants of this type, there is much less assurance of this substantial freedom from disease. Increase your chances for a more profitable crop by setting Neosho's quality Strawberry plants.

Armore







Full Size of Dwarf Cherry

- TASTY
- EASY PICKING
- ECONOMICAL
- BEAUTIFUL
- CONVENIENT
- HARDY

## DWARF CHERRY TREES

202—**NORTH STAR CHERRY.** A new dwarf Cherry. It is a wonderful pie Cherry. Bears after the second year and the tree is unusually hardy. Our strain is propagated from virus-free trees.

11/16 in., \$2.75 each; 9/16 in., \$2.35 each; 7/16 in., \$1.95 each

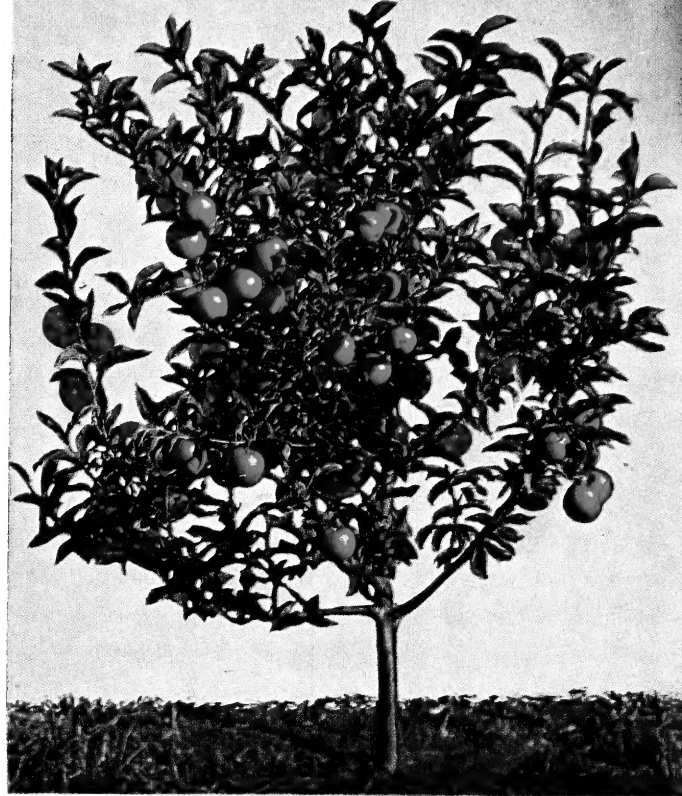


## DWARF PEARS

220—**DWARF BARTLETT.** Fruit often larger than from standard trees. Many times the second year after planting these Bartlett bear rich top quality Pears—large delicious fruit—a pleasure to eat and serve. Ideal for garden or small yard space.

229—**DWARF SECKEL.** This dwarf tree produces the same delicious fruit that you get from the standard size tree.

9/16 in., \$3.00 each; 2 for \$4.95  
7/16 in., \$2.25 each; 2 for \$3.75



## DWARF APPLE TREES

Pretty and practical—that's how we describe dwarf Apple trees. They are decorative in the spring when full of bloom—**BEAR FULL SIZE FRUIT** in great abundance. Perfect for the small garden, since you can plant them 10 to 12 feet apart. Our dwarf trees start producing apples after the second year. Budded from famous Malling Stock to assure a permanently dwarfed tree. They reach a maximum height of ten feet at maturity. Plant two or more of the following varieties to allow cross pollination.

225—Dark Red Jonathan	227—Lodi
226—Red Delicious	228—Yellow Delicious
9/16 in., \$3.50 each; 4 for \$12.00	
7/16 in., \$2.95 each; 4 for \$10.50	

## DELCON SEMI-DWARF APPLE

Cat. No. 291

Wonderful tasting fruit with a flavor that is a cross between Delicious and Jonathan—many like it better than either one. Color is medium dark red with yellow background. Has Delicious knobs. Ripens September 15th in southern Missouri.

9/16 in., \$2.65 each; 2 for \$4.75    7/16 in., \$2.25 each; 2 for \$3.95  
5/16 in., \$1.85 each; 2 for \$3.25

TRY THESE PRACTICAL DWARF FRUIT TREES  
THEY ARE HARDY, USEFUL, BEAUTIFUL

### DWARF FRUIT TREE GARDEN

Cat. No. 842

- 1 Yellow Delicious, 7/16 in.
- 1 Bartlett Pear, 7/16 in.
- 1 North Star Cherry, 7/16 in.
- 1 Yellow Freestone Peach (Standard Size)—FREE

All for \$5.95  
(Regular Value \$6.90)