

LIBRARY  
RECEIVED  
JAN 16 1958  
U. S. Department of Agriculture

*The*

# PLUMFIELD NURSERIES

TELEPHONE PARK 1-3622

2105 NORTH NYE AVENUE

*Fremont, Nebraska*

## 1958

*Trees that please*



*Nebraska grown*



★  
*Largest  
and  
Finest  
Selection  
in the  
Mid-West*



★  
HOME OF L. A. MOFFET, MANAGER

★  
*We Urge  
You  
to Visit  
Our  
Nurseries*

SOME OF THE ADVANTAGES OF BUYING FROM *Plumfield Nurseries . . .*

Years of experience in growing Nursery Stock and solving many of your planning problems. A large organization of trained help. Fourteen of our employees have a total of 480 years' experience. Improved modern warehouse, ventilated and temperatures controlled, keeping stock in healthy growing condition. Modern equipment enables us to grow Nursery Stock that gives satisfaction to the most particular buyer. Our stock grown at Fremont, Nebraska, in clean, cultivated fields under ideal climatic conditions for replanting. A new Certificate of Inspection from State Inspector each year. Stock handled with the least possible exposure assuring high survival results. Low prices for fine quality guaranteed Nursery Stock.

### HOW TO ORDER

Please name second choice. In case we are out of variety or grade wanted, this will help us to make prompt shipment.

### PLEASE STATE HOW TO SHIP EXPRESS or FREIGHT CHARGES COLLECT

If mail shipment is desired, add 20% to order unless order is under \$2.00, then add 40c to cover special packing and postage.

Fruit Trees, Shade Trees, balled Evergreens and large Shrubs cannot be shipped by Parcel Post.

Our NURSERY STOCK is grown on the best land in the Platte and Elkhorn valleys. We use modern machinery; have modern FROST-PROOF STORAGE, and life-long TRAINED HELP. Our office and packing grounds are located one block south of U. S. Highway No. 30, on Nye Avenue.

We extend you a personal invitation to visit our NURSERIES AND STORAGEES at any time of the year.

## OUR GUARANTEE

Our NURSERY STOCK is guaranteed to reach you in a healthy, growing condition. Stock that fails to show growth will be replaced, if notified by July 1st following delivery. After this date, we will replace at one-half the current price, if notified by October 1st, following delivery, F. O. B. our packing grounds.

Replacements will be made of same size as originally bought. Planting service at cost.

### SHORTAGES OR COMPLAINTS MUST BE REPORTED AT ONCE

If any NURSERY STOCK proves untrue to description, we hold ourselves in readiness, on proper proof, to replace it or refund the amount paid, but we shall, in no case be liable for any sum greater than the amount originally received for said NURSERY STOCK.





BEFORE YOU SEAL ENVELOPE!  
DID YOU PRINT YOUR COMPLETE  
NAME AND ADDRESS CAREFULLY?  
BE SURE YOU SHOW THE CORRECT  
POST OFFICE ADDRESS

**Fremont,  
Nebraska**

**PLUMFIELD NURSERIES**

PLACE  
STAMP  
HERE

FROM

---

---



# Plumfield Apples

Apple Trees too large for parcel post shipment.

## WINTER VARIETIES

|                                       | Each   | Lots of 4 each | Lots of 8 each | Lots of 12 each |
|---------------------------------------|--------|----------------|----------------|-----------------|
| 11/16 in. cal., 5-7 ft., select.....  | \$1.70 | \$1.65         | \$1.60         | \$1.55          |
| 9/16 in. cal., 4-6 ft., standard..... | 1.50   | 1.45           | 1.40           | 1.35            |

➤ **CORTLAND**—Deep red. Good commercial variety. Comes into bearing young.

➤ **DARK RED JONATHAN**—The new dark red Jonathan. Colors two to three weeks earlier than Jonathan, and a deeper red.

➤ **GRIMES GOLDEN**—Rich golden color. An extra good all-round apple.

➤ **HARALSON**—Solid red. Fruit is of excellent quality, and a good keeper.

➤ **JONATHAN**—Red. The best apple of all. Should be included in every planting.

➤ **NORTHWESTERN GREENING**—Yellowish green. Flesh crisp and juicy. Very hardy.

➤ **RED DELICIOUS**—Solid red. One of the most popular apples. Fruit large, flesh white, tender and juicy.

➤ **STAYMEN WINESAP**—Deep red. Good commercial variety.

➤ **WINESAP—Crimson.** A medium sized apple of fine flavor.

➤ **YELLOW DELICIOUS**—Golden yellow. Sweet, spicy flavor.

THESE PRICES APPLY TO ALL VARIETIES OF APPLES AND CRAB APPLES AS LISTED BELOW.

## SUMMER VARIETIES

➤ **ANOKA**—July to August. This variety fruits very young. Red and yellow striped.

➤ **DUCHESS**—August. An old variety, but still one of the best. A good cooking apple.

➤ **EARLY HARVEST**—July. The earliest summer apple. Pale yellow fruit.

➤ **EARLY McINTOSH**—Two weeks later than Yellow Transparent. Handsome red color and pleasing taste. Good quality.

➤ **RED DUCHESS**—All red color. Season and quality same as Duchess.

➤ **YELLOW TRANSPARENT**—July to August. Fruits quite young. Large clear yellow.

## FALL VARIETIES

➤ **FAMEUSE or SNOW**—August. Light red fruit; delicious flavor.

➤ **WEALTHY**—Early September. One of the old standard varieties. Bears young and is very hardy.

## CRAB APPLE

➤ **DOLGO**—Fiery red. Bears young and abundantly. Tree very ornamental.

➤ **WHITNEY**—Light yellow striped red. Large fruit.

# Plumfield Nurseries EARLY BEARING

## DWARF APPLE

Description of standard varieties listed above also applies to the dwarf varieties.

|                  |                    |
|------------------|--------------------|
| CORTLAND         | McINTOSH RED       |
| DELICIOUS, RED   | WEALTHY            |
| JONATHAN         | YELLOW TRANSPARENT |
| YELLOW DELICIOUS |                    |

|                                | Each   | Lots of 4 each |
|--------------------------------|--------|----------------|
| 11/16 in. cal., 5 to 6 ft..... | \$3.00 | \$2.95         |
| 9/16 in., cal., 4 to 5 ft..... | 2.50   | 2.45           |
| 7/16 in. cal., 3 to 4 ft.....  | 2.00   | 1.95           |

Dwarf growing, young bearing fruit trees, are not new; they have been successfully grown in Europe for 200 years and in Eastern United States for 75 years. Are becoming more popular every year. They have many advantages in the small yard and garden, bear young, require less space, can be sprayed and pruned easily. The quality of the fruit is as good as fruit grown on standard stocks, and can be harvested without the use of tall ladders.





# Plumfield FRUIT TREES

## Apricots

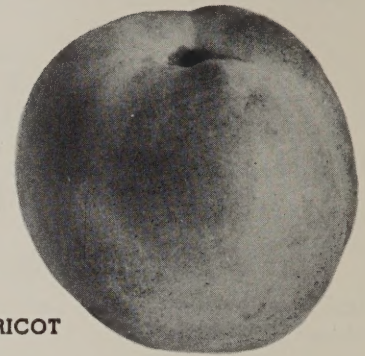
CANNOT SHIP BY PARCEL POST

Apricots bloom early and many times are caught by frost. Heavy mulching after the ground freezes solid will retard their early blooming.

CHINESE—Yellow. Large fruit, and very hardy.

MOORPARK—Orange-yellow. Fruit large, with rich, sweet flavor.

|   | Each   | Lots of<br>4 each |
|---|--------|-------------------|
| 11/16 in. caliper, 5-7 ft., select .....  | \$2.20 | \$2.15            |
| 9/16 in. caliper, 4-5 ft., standard ..... | 1.80   | 1.75              |
| 7/16 in. caliper, 3-4 ft.....             | 1.40   | 1.35              |



CHINESE APRICOT

## Cherries

CANNOT SHIP BY PARCEL POST

There is no fruit tree more profitable than the Cherry, especially the sour varieties, which are very desirable for pies and canning. They bear fruit very soon after planting and bring good returns on your investment. Cherries are easily raised, as they are adaptable to almost any kind of soil, and should be planted in large enough quantities to insure plenty of this desirable fruit for the family. You may select varieties and obtain quantity prices.

### SOUR CHERRIES

|   | Each   | Lots of<br>4 each |
|---|--------|-------------------|
| 11/16 in. caliper, 5-6 ft., select .....  | \$2.20 | \$2.15            |
| 9/16 in. caliper, 4-5 ft., standard ..... | 1.90   | 1.85              |
| 7/16 in. caliper, 3-4 ft. ....            | 1.60   | 1.55              |

EARLY RICHMOND—Bright red. Earliest, and a good pie cherry.

ENGLISH MORELLO—Blackish red when fully ripe. Tart, but very rich for canning.

MONTMORENCY—Large, red. The best all-purpose cherry.

### SWEET CHERRIES

BLACK TARTARIAN—A big purple-black sweet cherry of fine flavor. Very juicy.

YELLOW GLASS—Golden yellow. A hardy and productive sweet cherry.

|   | Each   | Lots of<br>4 each |
|---|--------|-------------------|
| 11/16 in. caliper, 5-6 ft., select .....  | \$2.80 | \$2.75            |
| 9/16 in. caliper, 4-5 ft., standard ..... | 2.20   | 2.15              |
| 7/16 in. caliper, 3-4 ft., standard ..... | 1.70   | 1.65              |



MONTMORENCY

## Pears

CANNOT BE SHIPPED PARCEL POST

BARTLETT (Summer)—Golden yellow, red cheek. Excellent flavor.

CLAPP'S FAVORITE (Summer)—Large pear. Excellent quality, smooth flesh. Hardy and bears young.

DOUGLAS (Winter)—The best winter pear. Hardy. Bears young and productive.

DUCHESS (Autumn)—Large greenish yellow. Flesh white. Excellent flavor. Hardy and productive.

FLEMISH BEAUTY (Autumn)—Large, beautiful, excellent quality, juicy. Hardy and productive.

|  | Each   | Lots of<br>4 each |
|--|--------|-------------------|
| 11/16 in. caliper, 5-7 ft. ....          | \$2.00 | \$1.95            |
| 9/16 in. caliper, 4-6 ft., standard..... | 1.70   | 1.65              |
| 7/16 in. caliper, 3-4 ft.....            | 1.40   | 1.35              |

### DWARF PEARS

DWARF MAX-RED BARTLETT—High quality fruit carrying a good over-all red color. Keeps longer than Bartlett and ripens in regular Bartlett season. 11/16 inch caliper, select. \$3.75 each; lots of 4, \$3.65 each.

DWARF DUCHESS—Large greenish yellow. White flesh, excellent flavor. Same quality of fruit as regular Duchess variety. 11/16 inch caliper, select. \$3.25 each; lots of 4, \$3.15 each.

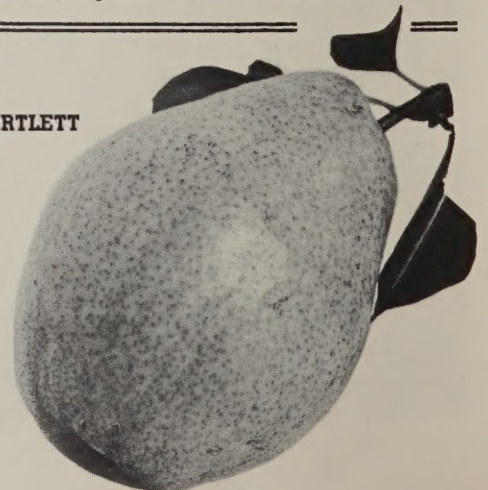
### BUSH TYPE CHERRIES

CAN BE SHIPPED PARCEL POST

HANSEN'S BUSH CHERRY—Makes a beautiful shrub, bears almost as much fruit as a plum tree. Good to eat fresh, canned, or in preserves.

|                        |                           |
|------------------------|---------------------------|
| 3-4 ft., 3 year.....   | \$0.80 Each; 5 for \$3.75 |
| 2-3 ft., 3 year.....   | .60 Each; 5 for 2.75      |
| 18-24 in., 1 year..... | .15 Each; 5 for .65       |

BARTLETT





# FRUIT TREES • Continued

Trees on this page cannot be shipped parcel post.

## Plums

We wish to call your attention especially to the Hansen Hybrids and Minnesota Hybrids. These varieties will produce an abundance of high quality fruit. Usually bear the second year after planting. You should arrange to plant some of these. You may make a selection of varieties and obtain quantity prices.



**WANETA PLUM**

|   | Each   | Lots of 4 each |
|---|--------|----------------|
| 11/16 in. caliper, 5-7 ft., select .....  | \$2.00 | \$1.95         |
| 9/16 in. caliper, 4-5 ft., standard ..... | 1.70   | 1.65           |
| 7/16 in. caliper, 3-4 ft. ....            | 1.40   | 1.35           |

### MINNESOTA HYBRIDS

- **LA CRESCENT**—August. Large. Golden, blushed with red. Very hardy.
- **MONITOR**—August. Large. Red, very hardy and productive. High quality.
- **SUPERIOR**—Ripens over a long period. Large red fruit, yellow flesh, juicy and sweet. We recommend this variety.

### HANSEN HYBRIDS

- **OPATA**—July. Medium size. Fruit purplish-red, with green flesh.
- **SAPA**—July. Medium size. Fruit purple with red flesh. Juicy and very good.
- **TOKA**—August. Large, red and very desirable. Similar to Hanska.
- **WANETA**—August. Large, red and very productive.

## Peaches

Next to Apples, Peaches are used for more purposes than most other fruits. Peaches picked from your own orchard are the finest flavored and best. One crop of fruit pays the grower many, many times the original cost of the trees. Peach can be profitably used as fillers in Apple orchards. We carry a long list of varieties and are listing only a few of the most popular.

|   | Each   | Lots of 4 each |
|---|--------|----------------|
| 11/16 in. caliper, 5-7 ft., select .....  | \$1.40 | \$1.35         |
| 9/16 in. caliper, 4-6 ft., standard ..... | 1.30   | 1.25           |
| 7/16 in. caliper, 3-4 ft. ....            | 1.00   | .95            |

- **CHAMPION**—Early. White with brilliant red cheek. Freestone.
- **ELBERTA**—Mid-season. Deep yellow with brilliant blush. Freestone.
- **GOLDEN JUBILEE**—Early. Apricot yellow with blush. Freestone.
- **HALE HAVEN**—Mid-season. Orange yellow overspread with red. Freestone.
- **J. H. HALE**—Mid-season. Yellow; almost free from fuzz. Freestone.
- **POLLY**—Early. Creamy white with red blush. Freestone. Very hardy.



**HALE HAVEN**



**CHAMPION**

**We Solicit Your Inquiries  
for Varieties Not Listed.**

44



# Plumfield SMALL FRUITS

## Currants

## Gooseberries



RED LAKE



GOOSEBERRIES

**PERFECTION**—Bright red, extra large fruit. Good market variety  
Two-year heavy .....\$0.50 Each—6 for \$2.75

**HOUGHTON**—Green, turning pale red when ripe. Heavy producer.  
Two-year heavy .....\$0.65 Each—6 for \$3.90

**RED LAKE**—From Minnesota Breeding Farm. Red, large berries. Very hardy. One of the best.  
Two-year heavy .....\$0.50 Each—6 for \$2.75

**OREGON CHAMPION**—Medium sized berries. One of the best varieties for pies.  
Two-year heavy .....\$0.75 Each—6 for \$4.20

## Grapes



CONCORD

**BETA**—A small black grape. One of the hardiest varieties.

Two-year heavy .....\$0.50 Each—6 for \$2.75  
One-year ..... .40 Each—6 for 2.15

**CACO**—Red. A new variety. Excellent for table use.

Two-year heavy .....\$0.55 Each—6 for \$3.00  
One-year ..... .45 Each—6 for 2.40

**CONCORD**—The old reliable all-purpose grape. Black, hardy and very productive.

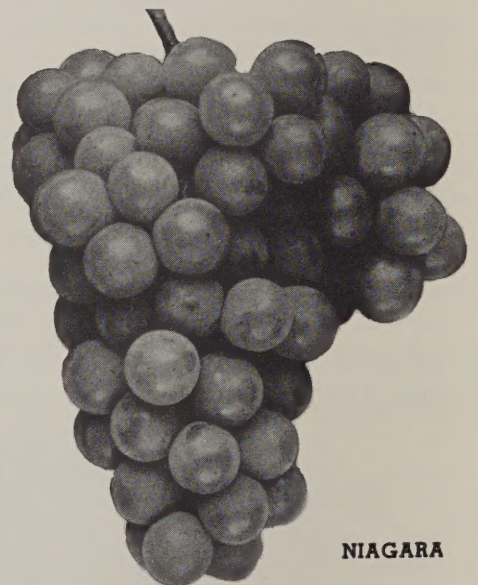
Two-year heavy .....\$0.40 Each—6 for \$2.10  
One-year ..... .30 Each—6 for 1.50

**MOORE'S EARLY**—Blue-black. Popular home and market variety.

Two-year heavy .....\$0.50 Each—6 for \$2.75  
One-year ..... .40 Each—6 for 2.15

**NIAGARA**—White. Large berries in compact bunches. Excellent for jelly or wine.

Two-year heavy .....\$0.50 Each—6 for \$2.75  
One-year ..... .40 Each—6 for 2.15



NIAGARA

### NEW VARIETIES

**FREDONIA**—A new early black, good producer of high quality. Ideal for home planting.

Two-year heavy.....\$0.50 Each—6 for \$2.75  
One-year ..... .40 Each—6 for 2.15

**SHERIDAN**—Black fruit. Heavy bunches of delicious sweet fruit. You should plant some of this variety.

Two-year heavy.....\$0.55 Each—6 for \$3.00  
One-year ..... .45 Each—6 for 2.40

FOR LARGER QUANTITIES, WRITE FOR SPECIAL PRICES



# Plumfield SMALL FRUITS • continued

## Raspberries



LATHAM RASPBERRIES

Raspberries do well in most any soil. It is best to plant them where they are protected from the hot summer winds as they ripen in July. Raspberries are a very profitable crop.

- **CUMBERLAND**—Black. One of the most reliable varieties, and widely planted. 2-year old. 5 for \$1.00; 10 for \$1.90; 25 for \$4.35; 50 for \$8.00.
- **INDIAN SUMMER**—Large glossy red everbearing raspberry with wonderful flavor. Good keeping quality. 5 for \$1.25; 10 for 2.40; 25 for \$5.75; 50 for \$10.00.
- **LATHAM**—Red. A fine fruit for home or market. Large fruit; bears heavily. 5 for \$1.00; 10 for \$1.90; 25 for \$4.35; 50 for \$8.00
- **MORRISON BLACK RASPBERRY**—This new raspberry is the largest ever grown. Has very few seeds. A vigorous grower and is rapidly gaining favor among berry growers. 5 for \$1.00; 10 for \$1.90; 25 for \$4.35; 50 for \$8.00.



CUMBERLAND

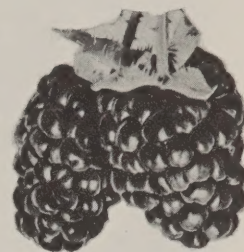
➤ **SODUS PURPLE RASPBERRY**—This is the heaviest bearing of all raspberries. Does well in the Midwest and produced a good crop when many other varieties failed. Upright grower and produces large berries. This variety should not be overlooked as it is an all around berry and has a delicious flavor. 5 for \$1.00; 10 for \$1.90; 25 for \$4.35; 50 for \$8.00.

## Boysenberries



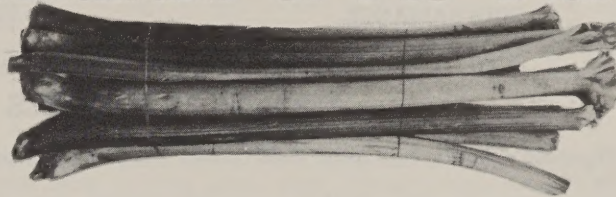
➤ **BOYSENBERRY (Thornless)**—Large berries of delicious flavor. Almost seedless. Bears heavily over a long season. 5 for \$1.00; 10 for \$1.90; 25 for \$4.35.

## Blackberries



➤ **SNYDER AND ELDORADO**—These are the hardiest and a favorite with fruit growers. Will stand cold winters and are good market varieties. Fruit medium to large. No. 1 root cutting plants. 5 for \$1.00; 10 for \$1.80; 25 for \$3.75.

## Rhubarb or Pie-Plant



**CHIPMAN'S CANADA RED**—The best of all rhubarbs. Stalks are large and completely red. Retains a rich red color after cooking. Sweetest of all rhubarbs, therefore takes less sugar. Very productive. Pull and use all spring and summer. Seldom produces any seed. 75c each; 3 for \$2.10.

**MCDONALD'S CHERRY**—Originated in Canada. Grows 3 feet tall, nearly seedless. Fine sweet flavor and most beautiful sauce. Can pick all summer. 75c each; 3 for \$2.10.

**RUBY RED**—Seedless. Red all the way through. Extra fine flavor, and very beautiful red sauce. Can be picked all summer. 75c each; 3 for \$2.10.

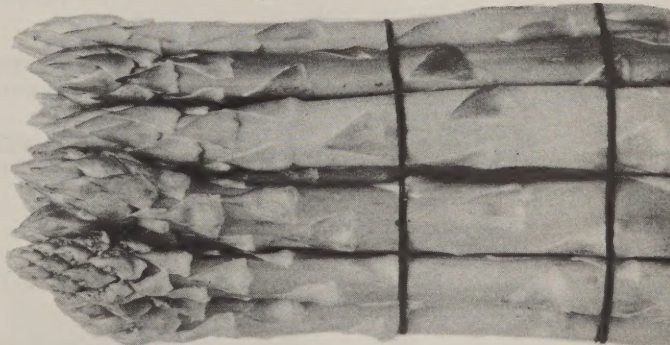
**VICTORIA**—Old fashioned green rhubarb. 3 for 50c; 10 for \$1.50; 25 for \$3.50.

## Horseradish

Plant a few crowns or cuttings and grow your own. Crowns will produce the first year.

|              | Per 3  | Per 10 | Per 25 | Per 100 |
|--------------|--------|--------|--------|---------|
| Crowns ..... | \$0.60 | \$1.75 | \$4.00 | \$15.00 |

## Asparagus

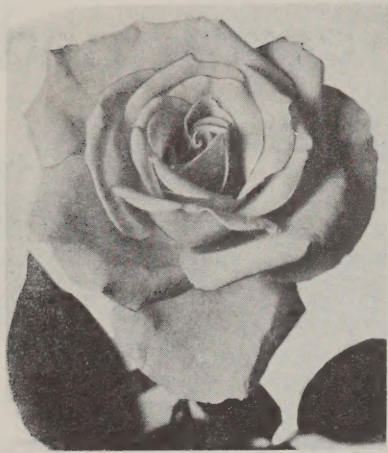


**MARTHA WASHINGTON**—Rustproof. This is undoubtedly the best Asparagus grown. Plant so that crowns will be about four inches deep in the ground, enabling you to cut the stalks below the ground. For best results plant two-year, heavy plants. 10 for 65c; 25 for \$1.25; 50 for \$2.25; 100 for \$4.00.

**NEW PARADISE ASPARAGUS**—Superior quality. Produces much faster. We recommend this variety. 10 for 75c; 25 for \$1.50; 50 for \$2.75; 100 for \$5.00.

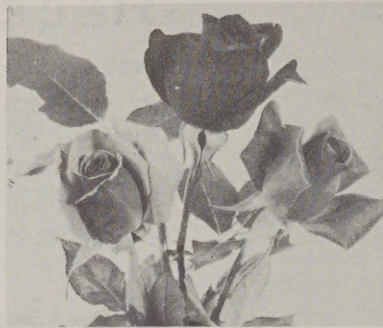
b6





**PINK RADIANCE**

# Plumfield ROSES



**PINK DAWN**



**PICTURE**

## HYBRID TEA ROSES

Plumfield's hardy 2-year-old field grown roses will bloom the same year they are planted.

|                                   | Each   | Per 3  | Per 12  |
|-----------------------------------|--------|--------|---------|
| 2-year heavy selected plants..... | \$1.25 | \$3.50 | \$13.50 |
| 2-year standard plants .....      | 1.00   | 2.90   | 10.00   |



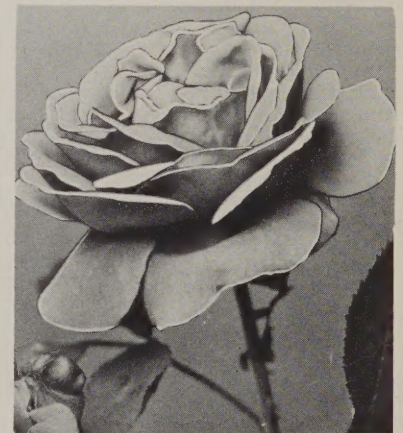
**K. A. VIKTORIA**

### RED SHADES

- AMI QUINARD**—Tall, vigorous and profuse. One of the darkest red.
- CRIMSON GLORY**—Color deep crimson, a "glory" rose, glorious in its perfect form, large size and fragrant.
- GRUSS AN TEPLITZ**—Vivid, fiery crimson, sweetly fragrant.
- E. G. HILL**—Dazzling scarlet, shading to a deeper pure red.
- ETOILE DE HOLLANDE**—Bright, dark red, deliciously perfumed.
- McGREDY'S SCARLET**—Brilliant scarlet shaded rose-pink; vigorous.
- POINSETTIA**—Long pointed buds, double open flowers. Scarlet.
- RADIANCE, RED**—Bright rose red form of Radiance.

### WHITE SHADES

- CALEDONIA**—Large, double white, borne singly on long, strong stems.
- K. A. VIKTORIA**—Popular, snowy white, double.
- McGREDY'S IVORY**—Large, well shaped, creamy white. Fragrant.



**McGREDY'S SCARLET**

### YELLOW SHADES

- GOLDEN RAPTURE**—Long lasting, beautifully formed buds, fully double blooms of rich yellow on long stems. A vigorous grower.
- MRS. E. P. THOM**—Rich lemon yellow, sweetly scented.

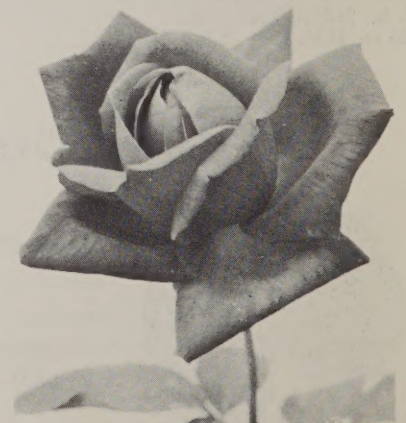
**McGREDY'S YELLOW**—Bright buttercup yellow; perfect form; vigorous.

### PINK SHADES

- BETTY UPRICHARD**—Delicate salmon pink shaded with coppery orange.
- PICTURE**—Warm pink, undertones of salmon; strong and vigorous.
- PINK DAWN**—Perfectly formed, deep rose pink, toned orange.
- RADIANCE, PINK**—Rosy carmine pink, large beautiful form.
- THE DOCTOR**—Large buds, semi-double flowers. Satiny pink. Fragrant.

### TWO-TONED SHADES

- MRS. SAM McGREDY**—Large double flowers, pointed buds, scarlet-copper-orange. Fragrant.
- PRES. HERBERT HOOVER**—Orange and pink, flamed and suffused with vivid rose pink.
- TALISMAN**—A combination of shadings of gold, apricot, yellow, and deep pink.



**AMI QUINARD**



# Plumfield ROSES

## PATENTED HYBRID TEA



PEACE

**CAPRISTRANO** (Patent No. 992)—Rich shade of deep glowing rose pink, in the buds as well as in open flower. It retains its brilliant color throughout the life of the flower without fading. Produces large flowers on extra long, strong heavy stems. Blooms have a rich, lasting fragrance. All American rose selection for 1950. **\$2.00 each.**

**CHARLOTTE ARMSTRONG** (Patent No. 445)—Unique color with long slender blood-red buds opening in magnificent, brilliantly colored open flowers. All American rose selection in 1941. **\$2.25 each.**

**CHRYSLER IMPERIAL** (Patent No. 1167)—In color, Chrysler Imperial is unmatched by any other red rose. Its vivid rich tones of crimson are enhanced by darker overtones of glowing oxblood red, and the gem-like lustre of garnet in the folds retain its sparkling beauty. Long tapering buds unfold even in adverse weather, opening to high centered flowers measuring  $4\frac{1}{2}$  to 5 inches with 40 to 50 wide petals. A.A.R.S. award for 1953. **\$2.50 each.**

**FORTY-NINER** (Patent No. 792)—Brilliantly hued bi-color that justly secured an All American Rose Selection Award for 1949. Its contrasting colors are startling in their brilliance and yet they blend together beautifully. Inside of petals is a vivid orient-red, while the outside is a chrome-yellow, changing to straw-yellow. The long buds open to a well shaped bloom of 25 to 40 petals. Mildly fragrant. **\$2.25 each.**

**HELEN TRAUBEL** (Patent No. 1028)—Color varies with weather. Sometimes a light sparkling pink, more often a luminous apricot. Has unusually large and long buds. Very vigorous grower. All American Rose Selection Award 1952. **\$2.75 each.**

**MIRANDY** (Patent No. 632)—First place winner of All American rose competition for 1945. A strong free-branching plant producing large, long-pointed ovoid buds of rich dark red with black shadings, opening to chrysanthemum-red. The flower of 50 petals displays new beauties of form and is long lasting. Marvelously fragrant. **\$2.25 each.**

**MOJAVE** (Patent No. 1176)—All American Rose Selection Award for 1954. A Charlotte Armstrong cross retaining many of the fine plant characteristics of its parent along with the slender bud of that variety. The color is a blend of salmon, apricot and orange, and occasionally in cool weather the salmon color changes to red blended with the other two colors. **\$2.75 each.**

**NEW YORKER** (Patent No. 823)—Brilliant red, with color long lasting and sun resistant. Plant is sturdy, upright and vigorous. The buds slowly open into very large flowers, often measuring  $6\frac{1}{2}$  inches across, of scarlet with rose red undertones and overlaid with rich velvety-sheen. **\$2.25 each.**

**PEACE** (Patent No. 591)—Ovoid buds and golden-yellow etched with pink as they open, color changes from canary-yellow to pale golden. Petals are edged with apple-blossom pink that deepens as the flower slowly opens to glorious 5-inch blooms. All American award for 1946. **\$2.50 each.**

**ROSE OF FREEDOM** (Patent No. 791)—Winner City of Portland Award for 1947. A Hybrid Tea with beautiful 60 to 70 petaled, long-stemmed, currant-red blooms with delightful true rose fragrance. Blooms are normally borne on strong straight 28 to 32-inch stems. New wood usually thornless. A free bloomer and disease resistant foliage. Highest scoring red rose in 1946 and 1947 nation-wide trials. **\$2.00 each.**

**SUTTER'S GOLD** (Patent No. 885)—Beautiful, long-pointed, yellow bud, richly shaded with orange and red. Rich tea fragrance not found in any other yellow rose. The 24-petaled flowers are high-centered and richly colored. All American award for 1950. **\$2.25 each.**



ROSE OF FREEDOM



# Plumfield ROSES

## PATENTED FLORIBUNDA ROSES



WORLD'S FAIR

**BABY BLAZE** (Patent rights reserved)—A 1955 introduction which features dark red buds, opening to a rich velvety cherry red color and only a few shades lighter when fully opened. Excellent for group plantings, foundation plantings and hedges. Vigorous grower. **\$2.00 each.**

**CHATTER** (Patent No. 739)—Unusually bright crimson, generous flower clusters, continuously in bloom, velvety firm petals. **\$1.50 each.**

**CIRCUS** (Patent No. 1382)—New multi-color Floribunda and only winner in A.A.R.S. Award for 1956. The predominant color is yellow with the tight buds richly marked with red. As the blooms unfold, they offer an everchanging succession of delightful shades with the fully-blown flowers putting on a finishing flourish of bright scarlet. Stems are straight and sturdy, fine for cutting. Flowers borne in clusters. Fragrant. **\$2.50 each.**

**FASHION** (Patent No. 789)—Brilliant luminous coral flowers overlaid with gold, opening with wavy graceful petals. All season bloom, large clusters and singly. All American award for 1950. **\$2.00 each.**

**GERANIUM RED** (Patent No. 811)—Flowers very double (fifty petals), strong geranium fragrance, bright geranium red; cluster. **\$2.00 each.**

**GOLDBLOCKS** (Patent No. 672)—Rich golden yellow, buds are ovoid in shape, long lasting, hardy and vigorous. **\$1.75 each.**

## PATENTED GRANDIFLORA ROSES

"The New GRANDIFLORA CLASS consists of varieties relatively tall in growth, free flowering, often with many flowers in clusters but with individual stems long enough for cutting. The flower size, though not necessarily as large as hybrid teas, is larger than the average Floribunda, with Hybrid Tea Standard for bud and flower form."

**CARROUSEL** (Patent No. 1066)—The large double flowers could easily class this rose as a Hybrid Tea, but the blooms appear in clusters so free blooming it is classed as a Floribunda. Continuous mass of glowing deep red flowers regardless of weather. Tall growing, rather upright. Mildew resistant. **\$2.00 each.**

**QUEEN ELIZABETH** (Patent No. 1259)—First Grandiflora rose. Pure pink on almost thornless stems which are ideal for cutting. Blooms singly and in clusters. Queen Elizabeth is a cross between Charlotte Armstrong and Floradora. Both of the parents were recipients of the A.A.R.S. for 1955. **\$2.50 each.**

**LILIBET** (Patent No. 1209)—1953 and 1954 A.A.R.S. winner. A model hardy plant produces radiant roses in clusters of exquisite pink tones. The colors range from light rose to soft dawn pink during the progressive stages of bloom. **\$2.00 each.**

**MA PERKINS** (Patent No. 1143)—1953 A.A.R.S. winner. This very free blooming floribunda rose, with its sweetly pungent fragrance, shows a translucent light fashion color with shades of red in outer petals. Flowers are cup shaped. Rich green foliage. **\$2.00 each.**

**PINOCCHIO** (Patent No. 484)—A hardy plant producing an abundance of pointed buds of salmon-flushed gold, opening to miniature hybrid tea-like roses of soft clear pink, and in great clusters. **\$1.75 each.**

**PINOCCHIO RED** (Patent No. 812)—Masses of unfading clusters. Rich carmine; gradually deepens as blooms open. Wild rose fragrance. Prolific bloomer. **\$1.75 each.**

**PINOCCHIO WHITE** (Patent No. 1010)—New outstanding floribunda, semi-double flowers of pure white with yellow stamens. Large 2 to 2½-inch flowers. **\$1.50 each.**

**PINOCCHIO YELLOW** (Patent No. 992)—Newest member of the Pinocchio family. Sturdy bush about 3 feet tall, producing great masses of bloom in an apricot-yellow color. **\$1.50 each.**

**SPARTAN** (Patent No. 1357)—A rich warm new rose with a scintillating color of sparkling orange red in bud which gently softens to a reddish coral at the finish. Flowers are produced both in large clusters and singly on long stems. Foliage is a rich dark green and one of the toughest and most disease resistant of any rose. **\$2.75 each.**

**VOGUE** (Patent No. 926)—New floribunda with its own unique brilliant glowing cherry-coral color. Individual flowers 3 to 4 inches in diameter are hybrid tea shaped with perfect high centered form. They open slowly from a dark cherry ovoid bud to the delightful cherry-coral open flower. Rich spicy fragrance. A.A.R.S. award for 1952. **\$2.00 each.**

**WHITE BOUQUET** (Patent No. 1415)—1957 A.A.R.S. Award. Lovely white gardenia-like blooms. Sweet spicy fragrance. Flowers in clusters and individual blooms. Medium sized plant. Excellent for bedding or border planting. **\$2.50 each.**

**WORLD'S FAIR** (Patent No. 362)—First award, "All American Rose Selection for Floribunda, 1940." Produces large clusters velvety bloom of fragrant blackish-scarlet with mass of golden stamens. **\$1.50 each.**



VOGUE

Be sure to read our Planting Instructions, "How to Plant Your Roses." This is important if you expect to get a good survival.



# Plumfield ROSES



IDEAL

## BABY and FLORIBUNDA ROSES

2 year select plants, \$1.25 each; 3 for \$3.50; 12 for \$13.50.

**BABY CHATEAU**—Deep red massive blooms. One of the best of its type.

**CAMEO**—A distinct shade of shell pink and salmon with a glow of gold.

**DAGMAR SPAETH**—Alabaster white edged pink.



ELSE POULSEN

BABY and FLORIBUNDA ROSES Continued

**ELSE POULSEN**—Bright, rose-pink, fragrant.

**EUTIN**—Large clusters of very double, deep red flowers. Large flowers. Mildew resistant bush. One of the best.

**FLORADORA**—Scarlet and geranium red floribunda producing double 25 petaled flowers. Height 2½ ft.

**FRENHAM**—Large, semi-double, slightly fragrant, deep crimson, foliage dark, leathery. Very vigorous, bushy; abundant bloom.

**GOLDEN SALMON SUPERIOR**—Bright orange salmon. Blooms continually. An improvement on Golden Salmon.

**LAFAYETTE IMPROVED**—Large clusters of bright cherry crimson.



EUTIN

## RUGOSA ROSES

**F. J. GROOTENDORST SUPREME**—Double bright crimson in large clusters. 18-24 inches. \$1.35 each; 3 for \$4.05.

**BLAZE EVERBLOOMING**—New improved strain of the popular Blaze climber. 2 year select, \$1.55 each; 3 for \$4.40.



LAFAYETTE IMPROVED

## CLIMBING ROSES

**BLAZE**—Hardy, vigorous climbing rose similar to Paul's Scarlet. Recurrent blooming. Scarlet crimson flower. 2 year select, \$1.25 each; 3 for \$3.50.

**CLIMBING AMERICAN BEAUTY**—Brilliant carmine red. 2 year select, \$1.25 each; 3 for \$3.50.

**CRIMSON RAMBLER**—Deep crimson. 2 year select, \$1.00 each; 3 for \$2.70.

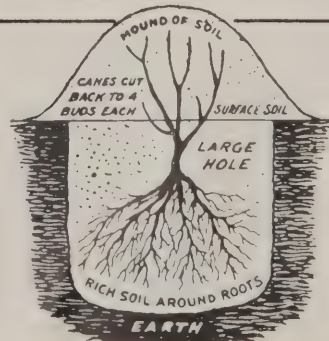
**PAUL'S SCARLET**—Intense scarlet flowers of excellent shape and moderate size. Borne in small trusses. 2 year select, \$1.25 each; 3 for \$3.50.



BLAZE EVERBLOOMING

## How To Plant Your Roses . . . .

To obtain success in growing roses it is important that they are properly planted. The roots should be trimmed back some and the hole dug large enough so that roots will not be crowded. Place the plant in the hole so that the bud union above the roots is at least two inches below the level of the ground, then fill in around the roots with dirt and water in well. After the water has seeped away, cut each cane back to about four inches above the level of the ground and cover the plant over completely with a mound of earth. After about six inches of new growth has forced through the mound of earth you can hoe the mound away gradually.







A SHRUB AND EVERGREEN PLANTING TWO YEARS OLD

**HOME FRUIT AND GARDEN SPRAYING CHART**

(One Gallon—Tablespoon Spraying Formulas)

| FIRST SPRAY                                      |   |   |   |  |  |
|--|---|---|---|--|--|
| Fruit or Vegetable                               | FOR   | PURPOSE   | TIME  | SPRAY SOLUTION   |  |
| Apple<br>Pear<br>Cherry<br>Peach<br>Plum         | <b>BARK SPRAY</b><br>Including all forms of scale and scab.                                   | To increase life, vitality and productivity of tree.                        | When the leaves have fallen in the fall or before the leaf buds have formed in the spring.            | For each gallon use<br>10 tbsp. Dry Lime Sulphur.  |  |
|  | <b>SECOND SPRAY</b><br>This is the Most Important Spray as to results and time of application |   |   |  |  |
|  | <b>WORM SPRAY</b>   | To kill the fruit worms and insects of leaf and bark.                       | When the petals of the blossom are about one-half fallen.   | 2 tbsp. Dry Arsenate of Lead<br>1 tbsp. Dry Lime Sulphur<br>1 tsp. Nicotine Sulphate   |  |
|  | <b>THIRD AND EXTRA SPRAYS</b>   |   |   |  |  |
|  | <b>LEAF SPRAY</b>   | To control disease and kill worms and insects developed after second spray. | Two weeks after second spray—and extra spray should worms and insects appear.                         | 2 tbsp. Dry Arsenate of Lead<br>1 tbsp. Dry Lime Sulphur<br>1 tsp. Nicotine Sulphate   |  |
| FIRST SPRAY                                      |   |   |   |  |  |
| Currant<br>Gooseberry<br>Raspberry<br>Blackberry | <b>BARK SPRAY</b><br>Including all forms of scale and scab.                                   | To increase life, vitality and productivity of plant.                       | Early in the spring while plants are dormant.   | 10 tbsp. Dry Lime Sulphur  |  |
|  | <b>SUBSEQUENT SPRAYS</b>  |   |   |  |  |
|  | <b>WORM SPRAY</b>   | To kill fruit worms, control disease, kill insects of leaf and bark.        | When worms first appear and thereafter at 14-day intervals until five applications have been made.    | 2 tbsp. Dry Arsenate of Lead<br>1 tbsp. Dry Lime Sulphur<br>Add 1 tsp. Nicotine Sulphate to first application only.            |  |
| REGULAR AND EXTRA SPRAYS                         |   |   |   |  |  |
| Grape  | <b>BUG AND INSECT SPRAY</b>   | To kill bugs and prevent wormy fruit.                                       | As soon as foliage appears and repeat at 15-day periods until four applications have been made.       | 2 tbsp. Dry Arsenate of Lead<br>1 tbsp. Prepared Bordeaux Mixture<br>If Lice appear add 1 teaspoon Nicotine Sulphate.          |  |
| REGULAR AND EXTRA SPRAYS                         |   |   |   |  |  |
| Potato<br>Cucumber<br>Muskmelon<br>Tomatoes      | <b>BUG AND BLIGHT SPRAY</b>   | To kill bugs and control blight, especially with potatoes.                  | When plants are real young and thereafter at 10-day intervals until five applications have been made. | 2 tbsp. Dry Arsenate of Lead<br>3 tbsp. Prepared Bordeaux Mixture.<br>When small Lice appear add 1 teaspoon Nicotine Sulphate. |  |
| REGULAR AND EXTRA SPRAYS                         |   |   |   |  |  |
| Rose Bushes<br>and Other<br>Shrubbery            | <b>BUG, INSECT AND LEAF DISEASE SPRAY</b>   | To kill insects and bugs and increase vitality of shrub.                    | Apply as foliage appears, especially on Rose Bushes and thereafter at two-week intervals.             | 2 tbsp. Dry Arsenate of Lead<br>3 tbsp. Prepared Bordeaux Mixture.   |  |
|  | <b>GREEN LICE (Aphis) SPRAY</b>   |   | As lice (Aphis) appear.   | 1 tsp. Nicotine Sulphate.<br>Use in combination with Arsenate of Lead and Bordeaux spray or separately, as desired.            |  |





ONE OF OUR LANDSCAPED HOMES

# Plumfield SHRUBS

Beautify your home and add value to your property. The grades of shrubs that we are listing are standard grades, and are good strong plants, well branched. We have a complete assortment, and invite you to come to our storage and select your stock.

Special Landscape grades available at slight additional charge



FLOWERING ALMOND

### Tall Growing Shrubs

- Beauty Bush
- †\*Dogwoods
- †Elders
- \*Forsythias
- †\*Honeysuckles
- Lilacs
- \*Mock-orange
- Sumacs
- Snowball
- †Cranberry Bush
- Tamarix
- Golden Leaf Ninebark

(\*Shrubs suitable for shady place)  
(†Shrubs with attractive berries)

### Medium Height Shrubs

- Flowering Quince
- †Cotoneaster
- \*Hydrangea
- Rhodotypos
- †Golden Currants
- Sorbaria
- Spirea Arguta
- Spirea Billardi
- Spirea Prunifolia
- \*Spirea Van Houtte
- Weigelas

### Dwarf Growing Shrubs

- †\*Barberry
- Golden Mock Orange
- Potentilla Fruticosa
- Spirea Anthony Waterer
- Spirea Froebelli
- Spirea Callosa Alba
- Spirea Thunbergi
- †\*Snowberry, White
- †\*Snowberry, Red

**ALMONDS (Pink or White)**—A dwarf early flowering shrub. Branches covered with beautiful rose-colored flowers.  
18-24 in.....\$1.25    2-3 ft.....\$1.50  
3-4 ft..... 1.85

**BARBERRY (Red Leaved)**—Red foliage, with red berries in the winter. Must be planted in the sun in order to bring out the color of the foliage.  
15-18 in.....\$1.15    18-24 in.....\$1.40  
2-3 ft..... 1.65

**BARBERRY THUNBERGI**—Green leaved. A useful shrub for border and foundation planting. Leaves change to brilliant crimson scarlet and gold in the fall and red berries remain almost all winter.  
12-15 in.....\$0.60    15-18 in.....\$0.80  
18-24 in..... .95    2-3 ft..... 1.10

**BEAUTY BUSH**—Blooms in early summer. Long arching branches covered with clusters of pale pink trumpet shaped flowers.  
18-24 in.....\$1.40    2-3 ft.....\$1.65

**BUTTERFLY BUSH (Ile de France)**—A perennial shrub dying to the ground in winter, producing large flowers of rich reddish purple in long panicles.  
No. 1.....\$0.90    3 for.....\$2.55

**BUTTERFLY BUSH (Charming)**—A new patented variety. Long sprays of lavender-pink blooms which are quite pink compared with other varieties of Butterfly Bush.  
No. 1.....\$0.90    3 for.....\$2.55



THUNBERGI BARBERRY



# Flowering SHRUBS

**COTONEASTER**—Glossy, dark green leaves turning to brilliant shades in the fall. Black fruit.  
 18-24 in.....\$0.85 2-3 ft.....\$1.15  
 3-4 ft..... 1.50

**DOGWOOD (Goldentwig)**—Yellow branches and canes. Small white flowers followed by silver berries.  
 2-3 ft.....\$1.35 3-4 ft.....\$1.65

**DOGWOOD (Red Bark)**—A favorite shrub because of the red bark on twigs and canes during the winter. Silver berries.  
 18-24 in.....\$1.00 2-3 ft.....\$1.35  
 3-4 ft..... 1.65

**ELDER (Golden Leaved)**—Bright yellow foliage throughout the summer. The berries attract the birds.  
 2-3 ft.....\$1.40 3-4 ft.....\$1.65

**EUONYMUS, atropurpureus, Wahoo**—12-15 ft. Native, hardy vigorous shrub or small trees producing an abundance of scarlet berries. Attractive colored foliage in autumn.  
 2-3 ft.....\$1.40



**HONEYSUCKLE BUSH**

**HONEYSUCKLE RED TATARIAN**—The most extensively used Bush Honeysuckle. Blooms freely and carries loads of bright red berries in mid-summer.  
 18-24 in.....\$0.95 2-3 ft.....\$1.25  
 3-4 ft..... 1.50



**FORSYTHIA**

**FORSYTHIA or GOLDEN BELL (Intermedia)**—Early blooming shrub of a spreading habit of growth. Very free blooming.  
 18-24 in.....\$1.10 2-3 ft.....\$1.40  
 3-4 ft..... 1.65

**FORSYTHIA FORTUNEI**—Upright, tall-growing shrub. Branches arching and bearing clusters of golden yellow blossoms.  
 2-3 ft.....\$1.40 3-4 ft.....\$1.65

**HONEYSUCKLE PINK TATARIAN**—Planted extensively, bearing heavily with pink blossoms, and producing large quantities of scarlet berries.  
 18-24 in.....\$0.95 2-3 ft.....\$1.25  
 3-4 ft..... 1.50

**HONEYSUCKLE, ZABEL**—Improved strain of Red Tatarian; a very good red.  
 18-24 in.....\$1.00 2-3 ft.....\$1.25  
 3-4 ft..... 1.50



**HYDRANGEA P. G.**

**HYDRANGEA PANICULATA GRANDIFLORA**—Large showy panicles of creamy white flowers changing to rose, then purple and bronze. Blooms late summer.  
 12-18 in.....\$0.80 18-24 in.....\$1.15  
 2-3 ft..... 1.40

**HYDRANGEA ARBORESCENS GRANDIFLORA**—Blooms in mid-summer. Blossoms resemble huge snowballs.  
 12-18 in.....\$0.80 18-24 in.....\$1.15  
 2-3 ft..... 1.40

**FLOWERING QUINCE (Cydonia Japonica)**—Scarlet flowers appear before the leaves. A very popular shrub.  
 12-18 in.....\$0.90 18-24 in.....\$0.95  
 2-3 ft..... 1.25

Special Landscape grades available at slight additional charge



# Plumfield Flowering SHRUBS • Cont'd



LILAC



PHILADELPHUS GLACIER

**LILAC ROTHOMAGENSIS (Chinese)**—A tall growing shrub with slender, arching branches producing purplish-red flowers.

18-24 in.....\$1.15    2-3 ft.....\$1.40  
3- 4 ft. .... 1.65

**LILAC PERSIAN RED**—Similar to Rothomagensis, except that the flowers are more nearly red.

18-24 in.....\$1.15    2-3 ft.....\$1.40  
3-4 ft. .... 1.65

## FRENCH LILACS

**Alphonse Laval**—Double lilac.

**Belle de Nancy**—Double rose, with white center.

**Chas. Joly**—Double purple.

**Chas. X**—Single reddish purple.

**De caisne**—Single azure blue.

**General Sheridan**—Double white.

**Jacq. Collett**—Double pink.

**Michel Buckner**—Single lilac.

**Mme. Abel Chatenay**—Double white.

**President Grevy**—Double bluish lilac.

**Vaubon**—Double lilac pink.

18 to 24 in.....\$1.65    2 to 3 ft. .... \$2.10  
3 to 4 ft. .... 2.75

**PHILADELPHUS CORONARIUS (Sweet Mock Orange)**—Tall growing, producing a profusion of large white, fragrant blossoms. Bloom in late spring.

2-3 ft.....\$1.40    3-4 ft. heavy.....\$1.75

**PHILADELPHUS GLACIER**—Large, white flowers, very double, sweet scented. Shrub hardy, symmetrical and compact. Leaves bluish green. Does not grow as fast as standard varieties of Philadelphus, therefore more desirable for average garden or lawn.

18-24 in.....\$1.15    2-3 ft.....\$1.40  
3- 4 ft. heavy..... 1.75

**PHILADELPHUS VIRGINAL**—Showy white, semi-double blossoms produced over a long season, beginning in May.

12-18 in. ....\$0.80    18-24 in. ....\$1.15  
2- 3 ft. .... 1.40

**PRIVET, AMUR RIVER**—See hedging.

**SNOWBALL**—See Viburnum Opulus Sterillis.

**SPIREA ANTHONY WATERER**—A popular low-growing shrub, in bloom constantly all summer. Large, flat clusters of deep rose colored blossoms.

12-15 in. ....\$1.00    15-18 in. ....\$1.15  
18-24 in. heavy ..... 1.40    2-2½ ft..... 1.65

**SPIREA BILLARDI (Billard's Spirea)**—Long feathery plumes of dainty pink. Blooms in mid-summer.

18-24 in. ....\$1.00    2-3 ft. .... \$1.25  
3-4 ft. heavy ..... 1.60

**SPIREA FROEBELI (Froebel's Spirea)**—Dwarf, vigorous grower. Young foliage tinged red, flowers rose color.

12-18 in. ....\$0.85    18-24 in. ....\$1.00  
2- 3 ft. heavy ..... 1.15

**SPIREA MULTIFLORA**—Semi-dwarf shrub that resembles both the Spirea Arguta and Spirea Thunbergi. Grows well in both shady and sunny places. Flowers are white, blooms early in spring before the foliage starts. Ideal for foundation plantings.

2-3 ft. .... \$1.25    3-4 ft.....\$1.50

**SPIREA THUNBERG**—Graceful early flowering shrub. Pure white flowers, bright green feathery foliage.

18-24 in. ....\$1.15    2-3 ft. heavy.....\$1.25

Special Landscape grades available at slight additional charge



# Plumfield Flowering SHRUBS • Cont'd



**SPIREA VANHOUTTE**



**HIGH BUSH CRANBERRY**



**SNOWBALL**

**SPIREA VANHOUTTE**—The most popular of all the Spireas. Arching branches covered with white blossoms, in spring.  
 12-18 in. ....\$0.65    2-3 ft. ....\$1.00  
 18-24 in. .... .80    3-4 ft. heavy..... 1.25

**SYMPHORICARPUS RACEMOSUS (White Snowberry)**—Pink flowers in mid-season, followed by large berries of snow white color.  
 18-24 in. ....\$0.65    2-3 ft. heavy .....\$0.80  
 3-4 ft. heavy..... 1.00

**SYMPHORICARPUS VULGARIS or CORALBERRY (Red Snowberry)**—Dwarf native shrub. Loaded with red berries that remain on the branches all winter.  
 18-24 in. ....\$0.65    2-3 ft. heavy.....\$0.80

**VIBURNAM OPULUS (Cranberry Bush)**—Single white flowers in spring followed by red berries that hang on almost all winter.  
 18-24 in. ....\$1.25    2-3 ft. heavy.....\$1.50

**VIBURNUM OPULUS STERILIS (Snowball)**—One of the best loved of spring flowering shrubs. Large ball-like clusters of flowers. Does not produce fruits or seeds.  
 18-24 in. ....\$1.40    2-3 ft. heavy.....\$1.75

**TAMARIX HISPIDA (Kashagar Tamarix)**—Soft, feathery, silver foliage. Bright pink flowers freely produced.  
 18-24 in. ....\$1.00    2-3 ft. ....\$1.25  
 3-4 ft. heavy ..... 1.40

## HEDGING

A well cared for hedge brings to your home that distinguished touch of beauty and dignity. Formal hedges, such as Privet, should be pruned often throughout the summer.



Use the taller-growing Hedging shrubs to transform your back yard into an Outdoor Living-room with walls of living green. The tall hedge will give you privacy.

### AMUR RIVET PRIVET

This is a lighter grade of stock than our standard grades but it is young, healthy stock and will do well.

**PRIVET, AMUR RIVER**—These are used almost exclusively for hedges.

|                       | Per 10  | Per 25  | Per 100 |
|-----------------------|---------|---------|---------|
| 12-18 in. light ..... | \$ 2.50 | \$ 5.75 | \$20.00 |
| 12-18 in. heavy ..... | 2.90    | 6.75    | 24.00   |
| 18-24 in. ....        | 3.80    | 9.00    | 32.50   |

**BARBERRY, THUNBERGI**—Two-year-old seedlings.

|                | Per 10  | Per 25  | Per 100 |
|----------------|---------|---------|---------|
| 9-12 in. ....  | \$ 2.30 | \$ 4.25 | \$18.00 |
| 12-18 in. .... | 2.70    | 6.25    | 22.00   |

**HONEYSUCKLE**—Makes a good tall hedge.

|                | Per 10  | Per 25  | Per 100 |
|----------------|---------|---------|---------|
| 12-18 in. .... | \$ 2.30 | \$ 5.25 | \$18.00 |
| 18-24 in. .... | 3.00    | 7.00    | 24.00   |

**MULBERRY**—(See Seedlings, page 22.)

**ROSA MULTIFLORA**—(See Seedlings, page 22.)

**SPIREA VANHOUTTE (Bridal Wreath)**—Makes a nice hedge when trimmed.

|                | Per 10  | Per 25  | Per 100 |
|----------------|---------|---------|---------|
| 10-15 in. .... | \$ 1.80 | \$ 4.00 | \$17.00 |
| 12-18 in. .... | 2.90    | 6.75    | 24.00   |
| 18-24 in. .... | 3.60    | 8.50    | 31.00   |

Special Landscape grades available at slight additional charge



# Plumfield VINES



**CLEMATIS PANICULATA**

Plant  
Hardy  
Climbing  
Vines  
to Make  
Your  
Home  
Inviting



**HONEYSUCKLE VINE**

**CLEMATIS PANICULATA (Sweet scented Clematis)**—Small fragrant white flowers freely produced in autumn.  
2 year heavy.....**\$1.35**

Large Flowering Clematis should be grown on trellises.

**CLEMATIS HENRYI**—Large white flowers.  
Dormant Pot Plants.....**\$1.60**

**CLEMATIS JACKMANI**—Large purple flowers.  
Dormant Pot Plants.....**\$1.60**

**CLEMATIS MME. ED. ANDRE**—Large red flowers.  
Dormant Pot Plants.....**\$1.60**

**CLEMATIS RAMONA**—Large light blue flowers.  
Dormant Pot Plants.....**\$1.60**

**BIGNONIA RADICANS (Trumpet Vine)**—A strong growing, hardy vine, good for pillars and fences. Large trumpet-shaped flowers, loved by humming birds.  
3 year old.....**\$1.00**

**CELESTRUS SCANDENS (Bittersweet)**—A native twining vine. Large clusters of berries in fall, with orange husks and bright red berries.  
2 year old.....**\$0.85** 3 year old.....**\$1.00**

**AMPELOPSIS VEITCHII (Boston Ivy)**—A graceful vine that clings tightly to stone or brick walls. Does best on the east or north. Glossy, three-lobed leaves.  
2 year old.....**\$1.10** 3 year old.....**\$1.35**

**AMPELOPSIS ENGELMANI (Engelman's Creeper)**—A vigorous growing, clinging vine. Very hardy. Brilliant fall coloring.  
2 year old.....**\$0.85** 3 year old.....**\$1.00**

**WISTERIA AMERICAN (Frutescens)**—Long clusters of lilac purple flowers in June and July. Much used on arbors and trellises.  
2 year old.....**\$1.00** 3 year old.....**\$1.10**

**HONEYSUCKLE HALEANA**—White blossoms fading to a deep yellow, produced in profusion over a long blooming season. Very fragrant.  
2 year old.....**\$0.65** 3 year old.....**\$0.75**

**HONEYSUCKLE, Lonicera (Gold Flame)**—Everblooming honeysuckle, blooming from early summer until killing frost. Showy, tubular flowers with recurving petals flame red outside, bright yellow inside. Very fragrant and hardy.  
2 year .....**\$1.10**

**HECKROTTI**—Everblooming trumpet-shaped flowers. Fragrant, bright red outside, yellow inside. Hardy.  
2 year .....**\$1.10**

**HONEYSUCKLE SEMPERVIRENS (Scarlet Trumpet)**—Foliage of deep bluish green. Flowers are scarlet, freely produced.  
2 year .....**\$0.85**



**SILVER LACE VINE**

**POLYGONUM AUBERTI (China Fleecevine or Lace Vine)**—Large feathery sprays of creamy white flowers produced in late summer and fall. Rapid grower.  
2 year .....**\$1.10**

We Solicit Your Inquiries for Varieties Not Listed.



# Plumfield . . . . . SHADE

Shade Trees cannot be shipped parcel post.

Plumfield shade and ornamental trees are first-class, well shaped, young and vigorous. Grown in soil that specially develops fibrous roots, which insures good results. All grades are based on standardized grades, where caliper and height are both important.



**CUTLEAF WEEPING WHITE BIRCH**

**BIRCH, CUT LEAF WEEPING**—A tall white-barked tree with gracefully drooping branches. Leaves deeply cut.

|               |         |
|---------------|---------|
| 5- 6 ft.....  | \$ 4.25 |
| 6- 7 ft.....  | 6.00    |
| 8-10 ft.....  | 8.00    |
| 10-12 ft..... | 12.00   |

**ASH, AMERICAN GREEN**—Tall growing tree. Foliage dark green, changing to gorgeous shades of purple and yellow in fall.

|              |         |
|--------------|---------|
| 5- 6 ft..... | \$ 2.75 |
| 6- 8 ft..... | 4.00    |
| 8-10 ft..... | 5.75    |



**AMERICAN ELM**

**ELM, AMERICAN WHITE**—The grandest of all trees for this region. Tall wide-spreading tops.

|                      |        |
|----------------------|--------|
| 5- 6 ft.....         | \$1.75 |
| 6- 8 ft.....         | 2.75   |
| 8-10 ft.....         | 4.15   |
| 10-12 ft.....        | 5.50   |
| 1½-in. caliper ..... | 8.25   |



**THORNLESS HONEY LOCUST**

**LOCUST, THORNLESS HONEY**—Same as Honey Locust but thornless. Makes a very good street or shade tree.

|              |         |
|--------------|---------|
| 5- 6 ft..... | \$ 3.75 |
| 6- 8 ft..... | 6.25    |
| 8-10 ft..... | 8.25    |

**LOCUST, MAXWELL**—This is a thornless and podless grafted tree. Has same habit of growth as shown in the picture of thornless honeylocust. Grows fast, one of our best and most hardy types of shade trees.

|             |         |
|-------------|---------|
| 5-6 ft..... | \$ 5.50 |
|-------------|---------|



**MOLINE ELM**

**MOLINE ELM**—The Moline Elm is a budded tree and is recommended for street and yard plantings where uniform trees are desired. Habit of growth is pyramidal. Very attractive large, waxy green leaves.

|                   |         |
|-------------------|---------|
| 6- 8 ft.....      | \$ 3.75 |
| 8-10 ft.....      | 5.50    |
| 1¼" caliper ..... | 7.25    |



**HACKBERRY**

**HACKBERRY**—Grows into a large tree, with luxuriant foliage. Limbs are seldom broken by wind.

|              |        |
|--------------|--------|
| 5- 6 ft..... | \$2.75 |
| 6- 8 ft..... | 4.75   |
| 8-10 ft..... | 6.90   |



**REDMOND LINDEN**

**REDMOND LINDEN, Grafted tree, Crimean Basswood**—Has an exceptionally straight trunk with branches growing close together on the trunk, making it very compact. Is a beautiful lawn or street tree.

|              |         |
|--------------|---------|
| 4- 5 ft..... | \$ 2.35 |
| 5- 6 ft..... | 4.75    |
| 6- 8 ft..... | 6.25    |



# TREES . . . . Fremont, Nebraska

Shade Trees cannot be shipped parcel post.

Grown in nursery rows, root pruned, transplanted and spaced to insure best root system and specimen trees.

Where caliper grades are shown, as 1 inch, 2 inch, 3 inch, etc., it means the diameter six inches above the ground.

We Invite You  
to Visit Our  
Nurseries and Sales Grounds



**RED OAK**

**MAPLE, SCHWEDLER (Schwedleri) (Purple Leaf Maple)**—40-50 ft. A perfectly shaped tree. Gleaming red and purple in spring. Purplish green in mid-summer and in autumn golden yellow.

- 6- 7 ft. whips.....\$ 4.75
- 6- 8 ft. branched..... 8.15
- 8-10 ft. branched..... 10.00

**MAPLE, SILVER (Soft Maple)**—The fastest growing and largest of the maples. Leaves are silver underneath.

- 5- 6 ft.....\$2.00
- 6- 8 ft..... 3.50
- 8-10 ft..... 4.75
- 10-12 ft..... 5.50

---

## DECIDUOUS TREES WINDBREAKS

---

You will find varieties and prices listed on page 22.

---



**HARD MAPLE**

**MAPLE, SUGAR (Hard Maple)**—Tall stately trees of great beauty. Foliage turns to brilliant shades of yellow, orange and scarlet in autumn.

- 6- 8 ft.....\$ 6.25
- 8-10 ft..... 8.25
- 1 1/4-in. caliper..... 12.00

**OAK, RED (Quercus rubra)** 60-80 ft.—An excellent tree for park and street planting. Beautiful foliage turning red in autumn.

- 6- 8 ft.....\$ 8.25
- 8-10 ft..... 10.75



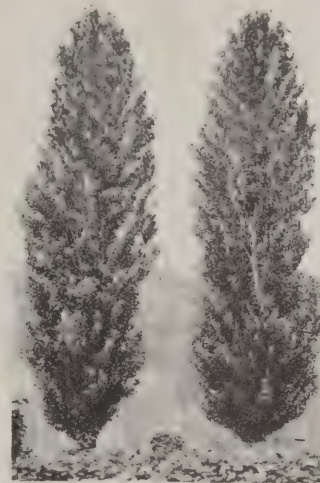
**PIN OAK**

**OAK, PIN**—Tall, pyramidal shape. Foliage glossy green, becoming brilliantly colored in autumn.

- 5- 6 ft.....\$ 4.40
- 6- 8 ft..... 8.25
- 8-10 ft..... 10.75
- 1 1/4-in. caliper..... 12.00
- 1 1/2-in. caliper..... 13.75

**RUSSIAN OLIVE**—Attractive, silver gray leaves and grayish white berries. Used frequently for hedges and windbreaks.

- 5- 6 ft.....\$ 2.50
- 6- 8 ft..... 3.75
- 8-10 ft..... 5.00



**LOMBARDY POPLAR**

**POPLAR, LOMBARDY (2 Year)**—A tall, pyramidal tree, limbs from the ground up. Fine for screens, and does not seed.

- 5- 6 ft.....\$0.75
- 6- 8 ft..... 1.10
- 8-10 ft..... 1.50
- 10-12 ft..... 1.70
- 1 1/2-in. caliper..... 2.50



**NIobe WEeping WILLOW**

**WILLOW, NIobe WEeping**—Bark on twigs and branches of a golden yellow color, giving the tree a handsome appearance both winter and summer.

- 4- 5 ft.....\$1.10
- 5- 6 ft..... 1.75
- 6- 8 ft..... 2.75
- 8-10 ft..... 3.75

**WILLOW, PUSSY**—Small tree, with catkins on the branches in early spring.

- 18-24 in.....\$0.60
- 2-3 ft..... .85
- 3-4 ft..... 1.10



# Plumfield Ornamental Flowering Trees



**PRUNUS TRILOBA**

**PRUNUS MINNESOTA PURPLE**—A hardy, purple leaved tree. Its rich, purplish-red foliage makes it a desirable tree. We grow it in bush form. Pink flowers and purple fruit.

18-24 in.....\$1.65  
2-3 ft.....2.00  
3-4 ft.....2.75

**PRUNUS TENELLA (Russian Almond)**—3 to 5 feet. Wonderful for border plantings. Flowers rose colored to white, small hard fruit.

18 to 24 in.....\$1.65  
2 to 3 ft.....2.00  
3 to 4 ft.....2.75

**PRUNUS TRILOBA (Flowering Plum)**—A profusion of handsome, double pink flowers. Vigorous shrub or small tree.

18-24 in.....\$1.65  
2-3 ft.....2.00  
3-4 ft.....2.75

**CRAB, BECHTEL'S DOUBLE FLOWERING**—Profuse bloomer. Flowers very double, dainty pink and exceedingly fragrant.

2-3 ft.....\$1.65  
3-4 ft.....2.50

**CRAB, HOPA (Red Flowering)**—An upright growing tree with beautiful foliage. Loaded with rose-colored flowers in April. Fruit is red inside and out, and hangs on until late autumn. Hardy and free from disease.

3-4 ft.....\$1.75  
4-5 ft.....2.25  
5-6 ft.....3.00  
6-8 ft.....3.75



**FLOWERING CRAB**

**CRAB, RED SILVER.** 18-20 ft.—Fruit rich maroon red, foliage somewhat cut-leaved with silver and red color. A remarkable combination.

3-4 ft.....\$2.15  
4-5 ft.....3.00  
5-6 ft.....3.75  
6-8 ft.....4.75

**RED BUD**—Small native tree. Pinkish-red flowers appear in spring before the leaves.

18-24 in.....\$1.00  
2-3 ft.....1.35  
3-4 ft.....2.10  
4-5 ft.....3.50

**SHADE TREES CANNOT BE SHIPPED BY PARCEL POST**

**PRUNUS, CISTENA (Hansen's Purple Leaved Plum)**—Dwarf grower, with rich purple-red foliage. Pink flowers and purple fruit.

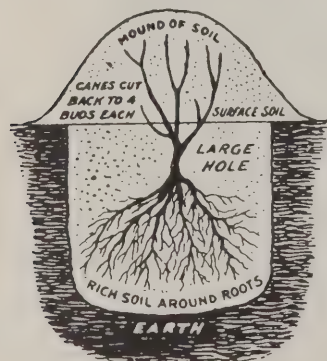
18-24 in.....\$1.65  
2-3 ft.....2.00  
3-4 ft.....2.75

**PRUNUS FRUTICOSA (Mongolian Cherry)**—2 to 4 feet. A nice plant to use where low to medium growth is desired. White flowers, small purple red fruit.

18 to 24 in.....\$1.65

## HOW TO PLANT

In planting in yard, garden, or field, the ground should be well prepared, and stock should be handled with least possible exposure. We offer the following suggestions on some of the more important plants.



**How to Plant Roses**



**How to Plant Balled Evergreens**



**Wrong Way**



**Right Way**

To determine the number of plants required per acre for any distance multiply the two plant distances and divide the product into 43,560 (the number of square feet per acre).

## PLANTING DISTANCE OF FRUIT TREES

|                      | Usual recommended distance | Best average distance | Number Per acre at average distance |              | Usual recommended distance | Best average distance | Number Per acre at average distance |
|----------------------|----------------------------|-----------------------|-------------------------------------|--------------|----------------------------|-----------------------|-------------------------------------|
| Apple                | 25 to 32 feet              | 30x30 feet            | 48                                  | Blackberry   | 1 1/2 to 3x7 feet          | 2x7 feet              | 3110                                |
| Plum and Apricots    | 16 to 22 feet              | 20x20 feet            | 108                                 | Gooseberry   | 4x6 feet                   | 4x6 feet              | 1815                                |
| Pear                 | 22 to 30 feet              | 25x25 feet            | 69                                  | Currant      | 4x6 feet                   | 4x6 feet              | 1815                                |
| Cherries and Peaches | 12 to 16 feet              | 14x14 feet            | 147                                 | Grape        | 8x8 feet                   | 8x8 feet              | 680                                 |
| Raspberry—(Hill)     | 4x6 or 5x5 feet            | 4x 6 feet             | 1815                                | Strawberry—  |                            |                       |                                     |
| (Hedge)              | 1 1/2x3 by 6 to 7 feet     | 2x 6 feet             | 3630                                | Everbearing  | 15 to 18 in.x3 to 4 ft.    | 1 1/2x3 feet          | 9680                                |
|                      |                            |                       |                                     | June bearing | 18 to 24 in. x 4 ft.       | 2x4 feet              | 5445                                |



# FARMSTEAD WINDBREAK PLANTINGS

The pictures on this page of farmstead plantings are becoming common sights throughout the Midwest. We can think of no greater contribution toward the beautifying of our midwestern states than what these many farmstead plantings present us with. We must all remember that our complete livelihood depends upon the soil, therefore we must preserve it. Properly planted windbreaks pay good dividends. They protect against hot winds from burning up crops as well as carrying the top soil away. They protect livestock and farm buildings from cold winds and snow. Remember, wind dries out the soil and dry soil seldom produces profitable crops.



Farmstead Planting of Spruce and Pines.



Farmstead Windbreak of Evergreens showing method of planting.



The large Evergreens in this planting add a lot of beauty to this farm home, as well as stopping hard driving winds, also stops dust from gravel and dirt roads.



Lombardy Poplar Windbreak is one of our evergreen fields.



Protecting young shrubs in our field with an evergreen windbreak.



Chinese Elm background furnished much protection in our baby evergreen fields.



# FOREST TREE SEEDLINGS . . .

## for Windbreak, Shelterbelt and Woodlot Plantings

It is good farm economy to systematically plant and maintain carefully arranged farm plantings. You may plant them to protect the farm buildings and feed lots against cold winter winds, or to trap heavy snow-falls and keep it out of the corrals and farm yard. In much of this plains country the winds often blow the soils and cause them to drift badly. Good shelterbelt plantings will do much to save the soils and protect the crops.

Besides improved farm appearance, plantings soon grow into a source of wood supply, posts and lumber. A good farm planting is a valuable asset which grows in value each year.

The selections of deciduous (broadleaf) trees listed below are those species which have proved to be the most valuable for the midwest area. Many farmers and ranchers consider it a good practice to use a row or two of shrubs in each planting which aids the trees by keeping down internal wind movement and the loss of valuable leaf litter. Shrubs also become a source of food and cover for desirable wildlife. All our stock is carefully graded and selected to insure vigor and good survival.

For the best arrangement and selection of species for your individual needs we suggest that you consult your Soil Conservation District or your County Agent.

If mail shipment is desired, add 15% to order unless order is under \$2.00, then add 30 cents to cover special packing and postage. Otherwise we will ship best way, charges collect.

| Variety              | Per 50  | Per 100 | Per 200 | Per 500 |                                 | Per 50  | Per 100 | Per 200 | Per 500  |
|----------------------|---------|---------|---------|---------|---------------------------------|---------|---------|---------|----------|
| <b>ASH, GREEN</b>    |         |         |         |         | <b>HANSEN BUSH CHERRY</b>       |         |         |         |          |
| 2-3 ft.....          | \$ 4.00 | \$ 7.00 | \$13.50 | \$30.40 | 2-3 ft.....                     | \$ 7.00 | \$13.00 | \$25.50 | \$57.40  |
| 18-24 in.....        | 3.40    | 5.60    | 10.70   | 24.10   | 18-24 in.....                   | 5.50    | 10.00   | 19.50   | 43.90    |
| 12-18 in.....        | 2.50    | 4.00    | 7.50    | 16.90   | 12-18 in.....                   | 3.50    | 6.00    | 11.50   | 25.90    |
|                      |         |         |         |         | 6-12 in.....                    | 2.50    | 4.00    | 7.50    | 16.90    |
| <b>BOX ELDER</b>     |         |         |         |         | <b>LOCUST, BLACK</b>            |         |         |         |          |
| 18-24 in.....        | \$ 3.30 | \$ 5.60 | \$10.70 | \$24.10 | 3-4 ft.....                     | \$ 5.50 | \$10.00 | \$19.50 | \$43.85  |
| 12-18 in.....        | 2.50    | 4.00    | 7.50    | 16.90   | 2-3 ft.....                     | 4.00    | 7.00    | 13.50   | 30.40    |
| 6-12 in.....         | 1.70    | 2.40    | 4.30    | 9.70    | 18-24 in.....                   | 3.30    | 5.60    | 10.70   | 24.10    |
|                      |         |         |         |         | 12-18 in.....                   | 2.50    | 4.00    | 7.50    | 16.90    |
| <b>CARAGANA</b>      |         |         |         |         | 6-12 in.....                    | 1.70    | 2.40    | 4.30    | 9.70     |
| 18-24 in.....        | \$ 4.50 | \$ 8.00 | \$15.50 | \$34.90 | <b>LOCUST, HONEY, THORNLESS</b> |         |         |         |          |
| 12-18 in.....        | 3.50    | 6.00    | 11.50   | 25.90   | 2-3 ft.....                     | \$ 5.00 | \$ 9.00 | \$17.50 | \$43.75  |
| 6-12 in.....         | 2.30    | 3.60    | 6.70    | 15.05   | 18-24 in.....                   | 3.50    | 6.00    | 11.50   | 25.90    |
| <b>CHOKECHERRY</b>   |         |         |         |         | 12-18 in.....                   | 2.70    | 4.40    | 8.30    | 18.75    |
| 18-24 in.....        | \$ 7.00 | \$13.00 | \$25.50 | \$57.35 | 6-12 in.....                    | 1.90    | 2.80    | 5.10    | 11.45    |
| 12-18 in.....        | 5.50    | 10.00   | 19.50   | 43.80   | <b>MULBERRY</b>                 |         |         |         |          |
| 6-12 in.....         | 4.50    | 8.00    | 15.50   | 34.90   | 2-3 ft.....                     | \$ 5.00 | \$ 9.00 | \$17.50 | \$39.40  |
| <b>COTTONWOOD</b>    |         |         |         |         | 18-24 in.....                   | 3.50    | 6.00    | 11.50   | 25.90    |
| 4-5 ft.....          | \$ 4.00 | \$ 7.00 | \$13.50 | \$30.40 | 12-18 in.....                   | 2.50    | 4.00    | 7.50    | 16.90    |
| 3-4 ft.....          | 3.00    | 5.00    | 9.50    | 21.45   | 6-12 in.....                    | 1.70    | 2.40    | 4.30    | 9.70     |
| 2-3 ft.....          | 2.50    | 4.00    | 7.50    | 16.90   | <b>NANKING CHERRY</b>           |         |         |         |          |
| 12-24 in.....        | 2.00    | 3.00    | 5.50    | 12.40   | 2-3 ft.....                     | \$12.50 | \$24.00 | \$47.50 | \$107.00 |
| <b>ELM, AMERICAN</b> |         |         |         |         | 18-24 in.....                   | 8.50    | 16.00   | 31.50   | 77.75    |
| 2-3 ft.....          | \$ 4.00 | \$ 7.00 | \$13.50 | \$30.40 | 12-18 in.....                   | 6.00    | 11.00   | 21.50   | 48.40    |
| 18-24 in.....        | 3.00    | 5.00    | 9.50    | 21.35   | <b>OAK, PIN</b>                 |         |         |         |          |
| 12-18 in.....        | 2.50    | 4.00    | 7.50    | 16.90   | 2-3 ft.....                     | \$16.50 | \$32.00 | \$63.50 | \$142.90 |
| 6-12 in.....         | 1.75    | 2.50    | 4.50    | 10.10   | 18-24 in.....                   | 12.50   | 24.00   | 47.50   | 104.85   |
| <b>ELM, CHINESE</b>  |         |         |         |         | 12-18 in.....                   | 9.00    | 17.00   | 33.50   | 75.40    |
| 3-4 ft.....          | 8.00    | 15.00   | 29.50   | 67.50   | 6-12 in.....                    | 6.50    | 12.00   | 23.50   | 52.90    |
| 2-3 ft.....          | 4.50    | 8.00    | 15.50   | 34.90   | <b>OAK, RED</b>                 |         |         |         |          |
| 18-24 in.....        | 3.30    | 5.60    | 10.70   | 25.20   | 2-3 ft.....                     | \$17.50 | \$34.00 | \$67.50 | \$151.90 |
| 12-18 in.....        | 2.50    | 4.00    | 7.50    | 18.00   | 18-24 in.....                   | 13.50   | 26.00   | 51.50   | 115.90   |
| 6-12 in.....         | 1.70    | 2.40    | 4.30    | 10.80   | 12-18 in.....                   | 9.50    | 18.00   | 35.50   | 79.90    |
| <b>HACKBERRY</b>     |         |         |         |         | 6-12 in.....                    | 7.50    | 14.00   | 27.50   | 61.90    |
| 2-3 Ft.....          | \$ 7.00 | \$13.00 | \$25.50 | \$57.35 | <b>OLIVE, RUSSIAN</b>           |         |         |         |          |
| 18-24 in.....        | 4.50    | 8.00    | 15.50   | 34.90   | 18-24 in.....                   | \$ 5.00 | \$ 9.50 | \$18.50 | \$41.65  |
| 12-18 in.....        | 3.00    | 5.00    | 9.50    | 21.35   | 12-18 in.....                   | 3.50    | 6.00    | 11.50   | 25.90    |
| 8-12 in.....         | 2.00    | 3.00    | 5.50    | 12.35   | 6-12 in.....                    | 2.50    | 4.00    | 7.50    | 16.90    |
|                      |         |         |         |         | <b>PLUM SEEDLINGS, AMERICAN</b> |         |         |         |          |
|                      |         |         |         |         | 3-4 ft.....                     | \$ 6.50 | \$12.00 | \$23.50 | \$52.90  |
|                      |         |         |         |         | 2-3 ft.....                     | 5.00    | 9.00    | 17.50   | 39.40    |
|                      |         |         |         |         | 12-18 in.....                   | 3.50    | 6.00    | 11.50   | 25.90    |
|                      |         |         |         |         | <b>ROSA MULTIFLORA</b>          |         |         |         |          |
|                      |         |         |         |         | 12-18 in.....                   | \$ 3.50 | \$ 6.00 | \$11.50 | \$25.90  |
|                      |         |         |         |         | 8-12 in.....                    | 2.50    | 4.00    | 7.50    | 16.90    |

We Invite You to Visit Our  
 Nurseries and Sales Grounds



# EVERGREENS for Windbreaks . . .



Evergreens are the most valuable of all trees for farmstead plantings because of their lasting beauty and the fact that they form a dense effective wind barrier for the entire year. They are slightly more difficult than deciduous trees to establish, but are well worth the required extra care. Most of the species should provide protection for 100 to 300 years if fenced from livestock. You may plant them as a solid evergreen planting or as a row or two along a deciduous windbreak. They should be cultivated clean for the first few years until they shade out competitive vegetation.

Evergreens cannot be packed with other stock but will be shipped separately because, as a rule, the frost does not go out of the ground as soon around evergreens.

**TRANSPLANTING**—These Evergreens have all been transplanted one or more times. The letter "T" following the size indicates the number of times transplanted. Transplanting is done to develop more fibrous roots which start much faster than large heavy tap roots. This class of stock will give you a better percentage of survival than stock not transplanted. For the fact these cannot be packed with other stock, we will ship **POSTPAID**.

## ARBOR VITAE

**AMERICAN ARBOR VITAE**—Fern-like green foliage.

|                 | Per 10  | Per 25  | Per 50  | Per 100 |
|-----------------|---------|---------|---------|---------|
| 6-10 in. T..... | \$ 2.10 | \$ 4.10 | \$ 7.25 | \$13.30 |

**CHINESE ARBOR VITAE**

|                 | Per 10  | Per 25  | Per 50  | Per 100 |
|-----------------|---------|---------|---------|---------|
| 6-10 in. T..... | \$ 2.10 | \$ 4.10 | \$ 7.25 | \$13.30 |

## SPRUCE

**BLACK HILLS SPRUCE**

|                 | Per 10  | Per 25  | Per 50  | Per 100 |
|-----------------|---------|---------|---------|---------|
| 6-10 in. T..... | \$ 2.85 | \$ 6.00 | \$11.00 | \$19.95 |

**COLORADO BLUE SPRUCE**

|                 | Per 10  | Per 25  | Per 50  | Per 100 |
|-----------------|---------|---------|---------|---------|
| 6-10 in. T..... | \$ 2.85 | \$ 6.00 | \$11.00 | \$19.95 |

**NORWAY SPRUCE**

|                 | Per 10  | Per 25  | Per 50  | Per 100 |
|-----------------|---------|---------|---------|---------|
| 6-10 in. T..... | \$ 2.85 | \$ 6.00 | \$11.00 | \$19.95 |

## PINES

**AUSTRIAN PINE**

|                  | Per 10  | Per 25  | Per 50  | Per 100 |
|------------------|---------|---------|---------|---------|
| 12-18 in. T..... | \$ 5.15 | \$11.35 | \$21.90 | \$42.00 |
| 10-12 in. T..... | 2.70    | 5.35    | 10.30   | 18.15   |
| 6-10 in. T.....  | 2.10    | 4.10    | 7.50    | 13.30   |

**BULL PINE**

|                  | Per 10  | Per 25  | Per 50  | Per 100 |
|------------------|---------|---------|---------|---------|
| 12-18 in. T..... | \$ 5.15 | \$11.35 | \$21.90 | \$42.00 |
| 10-12 in. T..... | 2.70    | 5.35    | 10.30   | 18.15   |
| 6-10 in. T.....  | 2.10    | 4.10    | 7.50    | 13.30   |

**SCOTCH PINE**

|                  | Per 10  | Per 25  | Per 50  | Per 100 |
|------------------|---------|---------|---------|---------|
| 12-18 in. T..... | \$ 5.15 | \$11.35 | \$21.90 | \$42.00 |
| 10-12 in. T..... | 2.70    | 5.35    | 10.30   | 18.15   |
| 6-10 in. T.....  | 2.10    | 4.10    | 7.50    | 13.30   |

**JACK PINE**

|                  | Per 10  | Per 25  | Per 50  | Per 100 |
|------------------|---------|---------|---------|---------|
| 10-12 in. T..... | \$ 2.70 | \$ 5.35 | \$10.30 | \$18.15 |



# Plumfield EVERGREENS

## Spruce and Pines

### SPECIMEN STOCK



**CANADENSIS ALBERTIANA**

**Black Hills Spruce**

Native of the Black Hills of South Dakota. Foliage varies from dark green to blue. One of the most hardy Spruce. Grows symmetrical, compact and very shapely.

|               |         |
|---------------|---------|
| 18-24 in..... | \$ 5.00 |
| 2-2½ ft.....  | 6.00    |
| 2½-3 ft.....  | 7.00    |
| 3-3½ ft.....  | 8.50    |



**PINUS STROBUS**

**(White Pine)**

Native of the North and planted extensively in the Middle West. Grows from 12 to 18 inches a year. Ultimate height 60 to 80 feet. Foliage bluish green, needles soft, 2 to 3 inches long.

|              |         |
|--------------|---------|
| 3-3½ ft..... | \$10.00 |
| 3½-4 ft..... | 12.50   |
| 4-4½ ft..... | 15.00   |



**COLORADO BLUE SPRUCE**

**Select Color**

A selected blue colored type. Taken from Colorado Blue varieties.

|              |         |
|--------------|---------|
| 2½-3 ft..... | \$15.00 |
| 3-3½ ft..... | 17.50   |
| 3½-4 ft..... | 20.00   |

**Medium Blue Color**

Medium in color. Gets more blue as it attains age.

|              |         |
|--------------|---------|
| 2-2½ ft..... | \$ 9.00 |
| 2½-3 ft..... | 12.00   |
| 3-3½ ft..... | 15.00   |

**KOSTER'S BLUE SPRUCE**

A type of the Colorado blue spruce of the highest colored and most striking of all the evergreens for lawn planting. The foliage is a rich and beautiful silver blue.

|              |         |
|--------------|---------|
| 3-3½ ft..... | \$30.00 |
| 3½-4 ft..... | 35.00   |



**PINUS REGENSIS SYLVESTRIS**

**(Scotch Pine)**

This variety has superiority over other Scotch Pines. Very hardy. Grows straight and fast, does well on light, dry soils. Grows from 12 to 18 inches a year. Ultimate height 60 to 80 feet. Foliage light green, needles 2 to 3 inches long, buds brown.

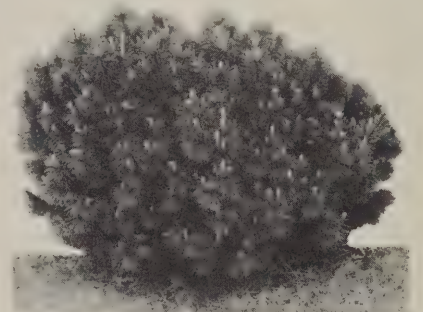
|              |         |
|--------------|---------|
| 3-3½ ft..... | \$10.00 |
| 3½-4 ft..... | 12.50   |



**PINUS NIGRA (Austrian Pine)**

An outstanding Pine in the Middle West. Quite resistant to smoky atmosphere and irregular weather conditions. Has long needles, rich dark green. The dormant eyes at tips of branches are white and resemble candles. Grows about 12 inches a year. Ultimate height 50 to 60 feet.

|              |         |
|--------------|---------|
| 2½-3 ft..... | \$ 8.00 |
| 3-3½ ft..... | 10.00   |
| 3½-4 ft..... | 12.50   |



**PINE MUGHO**

Very hardy. Spreading, dwarf, compact habit. Fine for rockeries, foundation plantings, used in front of larger growing varieties.

|               |         |
|---------------|---------|
| 15-18 in..... | \$ 6.00 |
| 18-24 in..... | 7.50    |
| 2-2½ ft.....  | 9.00    |



# Plumfield EVERGREENS

## GRAFTED JUNIPER VARIETIES



**JUNIPER CANNARTI**

**VIRGINIANA CANNARTI, Cannart's Red Cedar. 20-30 ft.**

Foliage deep, rich green. Main stem very straight. Branches almost horizontal. Requires shearing to attain compactness.

3-3½ ft.....\$12.50



**JUNIPER MOFFETI**

Another wonderful tree selected from the Rocky Mountains of Colorado and is a dandy tree. Foliage sharp, light greenish-silver color, tips of branches are more silver. Habit is upright and pyramidal, branches grow close together making a very dense tree. Grows about 12 inches a year. Can be sheared if desired.

3-3½ ft.....\$12.50

3½-4 ft..... 14.00

4-4½ ft..... 16.00

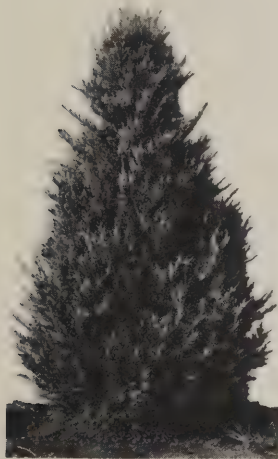


**MONTANA NO. 1**

Montana No. 1 is a semi-dwarf, dark green tree and we are sure that this variety is one that you will be hearing a lot about in the future. It is not a new variety with us as we have been growing it for years but since it is a very slow grower it requires a longer time to build up an adequate supply to offer to the trade. This tree will be the answer to many of your landscape problems where semi-dwarf trees are desired.

2½-3 ft.....\$10.00

3-3½ ft..... 12.50



**BLUE HEAVEN**

The Blue Heaven is one of the most colorful junipers that we have ever seen. It is a columnar type scopulorum that becomes more compact and beautiful with age. We have been producing this variety for a number of years and it has proved very satisfactory. If you desire a tree with outstanding blue foliage, then this is the tree to plant.

3-3½ ft.....\$12.50



**JUNIPER WELCHI**

The Welchi is the most satisfactory columnar type Scopulorum on the market today. Foliage is a light, evenly mixed greenish-silver. Leaves sharp but lay very close to the stem. Branches are very full and tufted at the base tapering out to a prominent point, yet they are sharply curved upward forming a fine outstanding columnar tree. Grows about one foot a year. Ultimate height 20 to 25 feet. Can be sheared if necessary.

3-3½ ft.....\$12.50

3½-4 ft..... 14.00



**JUNIPER SUTHERLAND**

This type of evergreen is definitely green in color as compared to the other varieties of Scopulorum. It is bushier in growth habit than the others, and consequently wider at the various given heights than is the case with other varieties of the same size. Its beauty in our opinion is to allow it to grow in a natural manner without shearing.

2½-3 ft.....\$10.00

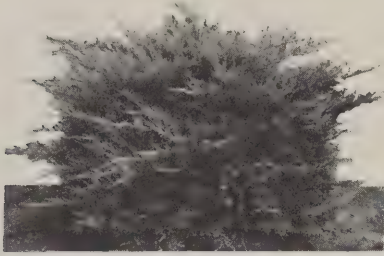
3-3½ ft..... 12.50

3½-4 ft..... 14.00



# Plumfield SPREADING JUNIPERS

## FOR FOUNDATION AND BORDER PLANTINGS



**SABINA JUNIPER**

Grows a trifle more upright than Pfitzer with fan-shaped branches. Is equally as hardy and has deep green foliage. Withstands smoky conditions in cities.

|               |               |
|---------------|---------------|
| 18-24 in..... | <b>\$6.00</b> |
| 2-2½ ft.....  | <b>7.50</b>   |
| 2½-3 ft.....  | <b>8.50</b>   |

**JUNIPER HETZI**—Spreading type similar to Pfitzer Juniper. Outstanding silver foliage. Excellent landscape plant.

|              |               |
|--------------|---------------|
| 2-2½ ft..... | <b>\$8.00</b> |
| 2½-3 ft..... | <b>9.00</b>   |

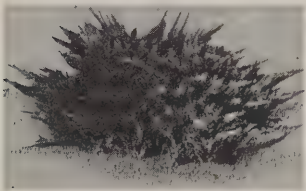


**PFITZER'S JUNIPER**

(*Juniperus chinensis pfitzeriana*)

Exceptionally beautiful, graceful and hardy—no wonder it is one of the most popular. Handsome, feathery, gray-green foliage covers the arching, spreading branches as it develops its broad, picturesque form. Hardy everywhere, and does well in shade as well as sunlight.

|               |               |
|---------------|---------------|
| 18-24 in..... | <b>\$7.00</b> |
| 2-2½ ft.....  | <b>8.00</b>   |
| 2½-3 ft.....  | <b>9.00</b>   |



**CREEPING JUNIPER**

## Creeping Junipers for Ground Cover

A very desirable ground cover. Ideal for use in rock gardens, grave covering, terraces and around basement windows. Spreads reasonably fast, forming a dense, compact mat about 4 to 8 inches thick.

10 to 12 inch bare root plants, packed in wet moss,  
**\$1.50 each, 3 for \$4.00. Postpaid.**

## TAXUS—JAPANESE YEWS

The aristocrat of all the evergreens. It retains a foliage which is lush, rich dark green and waxy the year around. An ideal plant for shaded or partially shaded areas such as the north and east sides of buildings. Not suitable for plantings on the west or south sides of buildings unless there is sufficient shade from nearby trees. These can be sheared if so desired.



**TAXUS HATFIELD**

**TAXUS BROWNI (Brown's Yew)**—This is a spreading type of plant. Its normal development is quite compact. Can be trimmed into globe form if desired. Field grown. Balled and burlapped.

|                 |                |
|-----------------|----------------|
|                 | Each           |
| 18-24 in.....   | <b>\$14.00</b> |
| 2 to 2½ ft..... | <b>17.50</b>   |

**TAXUS HATFIELD (Hatfield Yew)**—A plant with upright stems and considered to be an upright. It develops a top which is slightly broader than the bottom. Foliage is very heavy and extremely dark green. Field grown. Balled and burlapped.

|                 |                |
|-----------------|----------------|
|                 | Each           |
| 2 to 2½ ft..... | <b>\$17.50</b> |



**SPREADING YEW**



# ***WHY LANDSCAPE!***

---

There are many reasons for landscaping but no doubt the primary reason is pride. It is only natural for us to be proud of the appearance of our home and we landscape for the same reason that we remodel and redecorate the inside of our home. The outward appearance of our home is an open book for the public to view and enjoy with us. Everyone sees the outside of a home while a very small per cent of people ever see the inside. Regardless of how little or how much we may landscape our home, it gives us a feeling of pride and satisfaction in the realization that we are really contributing to our community.

The true value of landscaping can be measured in many ways. Homes shaded with trees certainly lend much comfort during the hot summer months. Furthermore, where homes are shaded with trees, the life of paint and shingles is prolonged. Bluegrass lawns survive much better when protected by trees and shrubs. Every man, beast and bird benefits from the protection of plant life.

Trees and shrubs properly arranged not only frame a home for better appearance but give lawn and home both width and depth. An assortment of plants furnishes a varied color of foliage and bloom throughout the season.

When considering all of the advantages of planting your home, farms, parks and the like, you suddenly realize that it really doesn't cost to landscape. It pays.







# Plumfield EVERGREENS

## Smaller Sized Bare-Root Evergreens



You can save money by using these young and vigorous evergreens. These plants are well rooted, insuring good survival and fast growth. Your planting will increase in value the first year. These are bare rooted triple transplants. They are packed in wet moss and wrapped in moisture-proof paper. Shipped postpaid.

|  | Each   | Per 3  |
|--|--------|--------|
| Pyramidal Arbor Vitae, 12 to 18 inches.....    | \$2.40 | \$6.00 |
| Silver Juniper, 12 to 18 inches.....           | 2.20   | 5.90   |
| Juniper Pfitzer, 12 to 18 inches.....          | 2.40   | 6.00   |
| Savins Juniper, 12 to 18 inches.....           | 2.40   | 6.00   |
| Globe Arbor Vitae, 9 to 12 inches.....         | 2.10   | 5.15   |
| Yew, Spreading, 12 to 18 inches.....           | 2.50   | 6.20   |
| Yew, Upright, 12 to 18 inches.....             | 2.60   | 6.55   |
| Andorra Creeping Juniper, 12 to 18 inches..... | 2.20   | 5.90   |
| Austrian Pine, 12 to 18 inches.....            | 1.70   | 4.25   |

Postpaid

## Potted Evergreens

Ask our sales clerks to show you our Potted Evergreens. We have sold a limited supply of these for the past several years and our customers report wonderful survival and growth. Ideal small plants at economical prices. They are sure to grow as the roots are well established in the soil. You will be surprised what you can buy for a few dollars and will give a complete planting within a short time. For sale at our nursery only as they cannot be easily shipped.

These are growing in one gallon metal containers. Note—where shipment is desired, these are packed five in a one-bushel basket. Order five of a kind or an assortment. Not prepaid.



| SPREADING JUNIPERS                    | Each   |
|---------------------------------------|--------|
| Hetzi Juniper, 12 to 18 inches.....   | \$2.50 |
| Pfitzer Juniper, 12 to 18 inches..... | 2.50   |
| Kosteri Juniper, 12 to 18 inches..... | 2.75   |
| Savins Juniper, 12 to 18 inches.....  | 2.75   |

| CREeping JUNIPERS               | Each |
|---------------------------------|------|
| Puchellus, 10 to 12 inches..... | 2.50 |
| Japonica, 12 to 18 inches.....  | 2.50 |
| Andorra, 12 to 18 inches.....   | 2.50 |

| ARBOR VITAE                               | Each |
|---|------|
| Globe Arbor Vitae, 9 to 12 inches.....    | 2.50 |
| Upright Arbor Vitae, 12 to 18 inches..... | 2.70 |

| JAPANESE YEw                        | Each |
|-------------------------------------|------|
| Upright Yew, 12 to 18 inches.....   | 2.80 |
| Spreading Yew, 12 to 18 inches..... | 2.80 |

| UPRIGHT JUNIPERS                    | Each |
|-------------------------------------|------|
| Spiny Greek, 12 to 18 inches.....   | 2.50 |
| Irish Juniper, 12 to 18 inches..... | 2.20 |
| Red Cedar, 18 to 24 inches.....     | 2.25 |

| PINES                           | Each |
|---------------------------------|------|
| Mugho Pine, 9 to 12 inches..... | 2.20 |

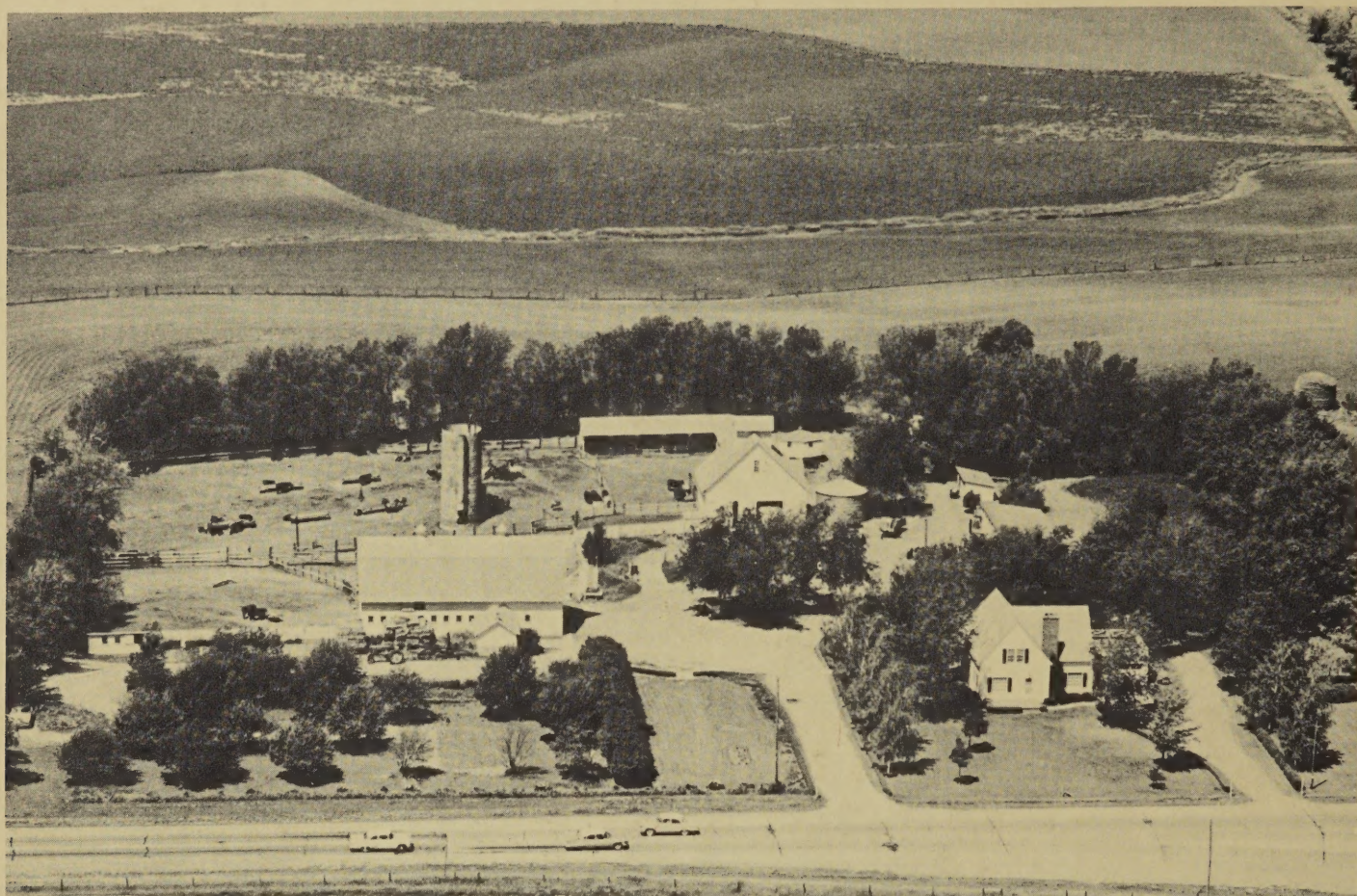
| FIRS                               | Each |
|------------------------------------|------|
| Balsam Fir, 12 to 18 inches.....   | 2.20 |
| Concolor Fir, 12 to 18 inches..... | 2.20 |
| Douglas Fir, 12 to 18 inches.....  | 2.20 |

| SPRUCE                            | Each |
|-----------------------------------|------|
| Black Hills, 12 to 18 inches..... | 2.30 |



TREES THAT PLEASE

NEBRASKA GROWN



C. F. KUEHL FARM, MILLARD, NEBRASKA. THIS FARMSTEAD PLANTED WITH PLUMFIELD NURSERY STOCK IN 1942.



**THE PLUMFIELD NURSERIES**  
**FREMONT, NEBRASKA**