

# SHRUBS AND TREES

from

# SEED

LIBRARY  
RECEIVED  
★ JAN 27 1958 ★  
U.S. Department of Agriculture



#### GRAPE MYRTLE

A shrub which grows to 20 feet. Hardy to Baltimore. Much planted in the South. Deciduous. Flowers bright pink and some red, or reddish purple. Much used for hedges.

*Since  
1936*

## WOODLOT SEED CO.

NORWAY • MICHIGAN



# It's easy to grow your own shrubs and trees from seed

**JAPANESE QUINCE**  
A quite hardy shrub, deciduous, grows to three feet. Flowers red or scarlet, with leaves green with red tips.

**SHRUBBY ALTHEA**  
(Rose of Sharon)  
Can be grown over most of the U.S. and lower part of Canada, late flowering, white flowers. To 15 feet. Deciduous.

**EUROPEAN MOUNTAIN ASH**  
(Or Rowan Tree)  
Is hardy, grows to a height of 45 feet. A very popular Mountain Ash. Deciduous.

That shrubs and trees can be grown successfully from seed is proven by the thousands of orders for many varieties of shrubs and trees that have been filled by us since 1936. The proof of this . . . many customers have ordered and reordered again and again over the last ten years.

The trees and shrubs illustrated here show how hardy they look when grown from seed . . . doesn't take any exceptional skill to successfully grow trees and shrubs from seed . . . simply a few common sense rules such as these—Select trees and shrubs that are best suited to your soil and climate. If you don't know what they are ask your County Agent, Agricultural Advisor, Soil Conservationist or Forestry Department. Having made the proper selection, order your seed and prepare the seed bed similar to the way you would prepare it for a garden crop, such as onions. Also, if you desire, you can start them indoors in frames; a few weeks later transfer the seedlings to cold frame outdoors . . . and still later to outdoor beds . . . just a few hints on how to plant.

**ORIENTAL ARBOR VITAE**  
A tree which attains height of 50 feet. Very popular, suited to mild climates. Much planted in the South, has lustrous green foliage. An evergreen.

**UMBRELLA PINE**  
An easily grown tree, very beautiful. Has dark green foliage, suited to mild zones. Evergreen.

**WINTERCREPER**  
(Or Evergreen Bittersweet)  
Useful as a ground cover. A trailing evergreen. Leaves above are dark green.

**AUSTRIAN PINE**  
This is a fast growing tree, has very stiff needles, and glossy dark green foliage. A good screen or windbreak tree. Hardy, except in very cold sections. Evergreen.

**BEAUTY BUSH**  
A shrub which grows to ten feet. Has bell-shaped blossoms with a beautiful shade of pink. Needs good drainage. Deciduous.

**PLANE TREE**  
Has large leaves similar to maple. Stands up well in the cities. There are trees now in the U.S. 300 to 400 years old. A popular street tree. Hardy to New England. Deciduous.

**FRAGRANT SUMAC**  
(Aromatic Sumac)  
A low spreading shrub growing from 2 to 6 feet, fragrant, hardy. Deciduous.

**JAPANESE BLACK PINE**  
Has dark green foliage, with dense, spreading and drooping branches. Suited to New England and does well on the seacoast. Much used in dwarfing trees. Evergreen.

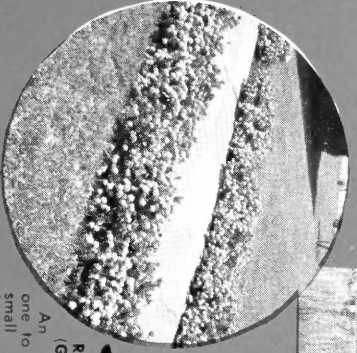
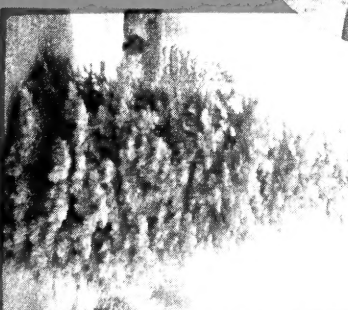
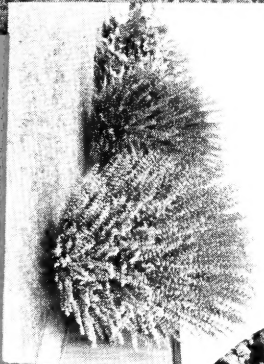
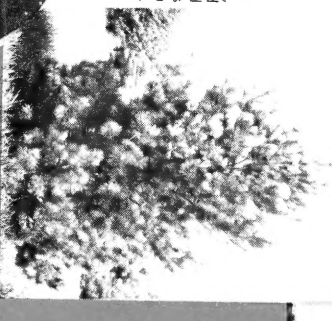
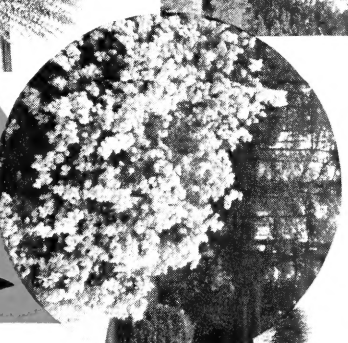
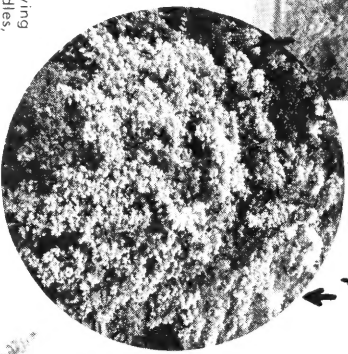
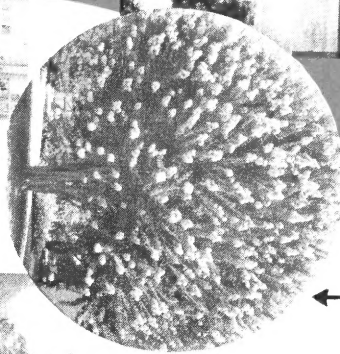
**ENGELMANN SPRUCE**  
A very hardy tree. One of the best spruces. Is pyramidal in appearance. Has evergreen foliage.

**CHINESE LILAC**  
(Rouen Lilac or Rowan Lilac)  
Has small clusters of purple-lilac flowers. Moderately hardy. Attains a height of 15 feet. Deciduous.

**CALIFORNIA PRIVET**  
Height to 15 feet. Is hardy to New England. Has lustrous green leaves. Small clusters of creamy white flowers. Semi-evergreen.

**SYCAMORE**  
(Button ball, Buttonwood)  
Probably the largest deciduous American tree. Is hardy. Some four to five hundred years old.

**ROSE DAPHNE**  
(Garland Flower)  
An evergreen growing one to two feet high. Has small and fragrant pink flowers.



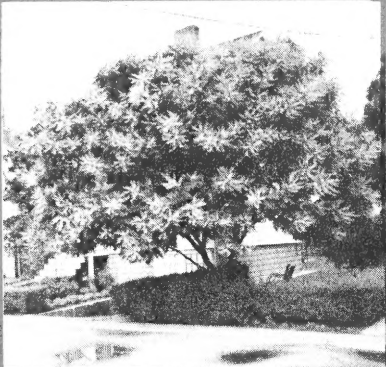
WOODLOT SEED CO. • NORWAY • MICHIGAN

Litho in U.S.A.

# SHRUBS AND TREES

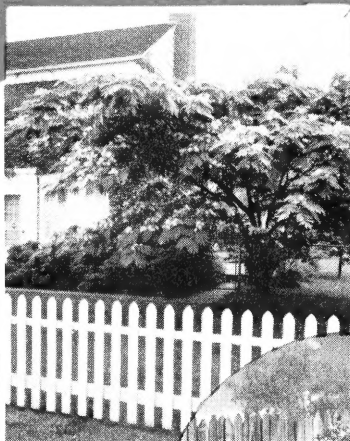
## GOLDEN RAIN TREE (Pride of India, China-Tree, Varnish Tree)

Grows to 30 feet. Flowers small and yellow, but in large clusters. Much used as a street tree in Ohio. Suited to many soils. Hardy to New England.



## SILK TREE

This is a beautiful tree which grows to 30 feet or more. Two kinds, one hardy, the other suited only to the South and California. Has a long flowering season. Pale pink flowers. Deciduous.



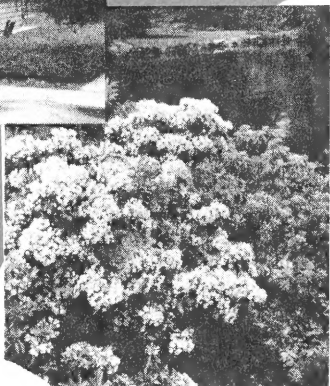
## SCARLET FIRETHORN

Grows six to ten feet, has small white flowers, bright red berries, dark green foliage. Suited to mild climates. Deciduous.



## WINGED SPINDLE TREE (Winged Euonymus, Winged Spindlewood)

Leaves are brilliant scarlet in fall. An attractive shrub to 9 feet. Hardy, deciduous. Easily grown.



## MOUNTAIN LAUREL

(Calico Bush, Kalmia Latifolia)

A very beautiful and lovely evergreen shrub which grows to 8 feet. Flowers from white to pink. Evergreen leaves greenish yellow below. A much planted shrub. Much used in foundation planting. Hardy.



**GROW YOUR  
OWN SHRUBS  
AND TREES  
FROM**

**SEED**

*Tips...*

## ON PLANTING

With your order will be sent additional TIPS ON PLANTING

## WITCH HAZEL

A shrub, deciduous, which grows to 15 feet. The last flowering shrub in the season. Useful for shade planting. Flowers are yellow.



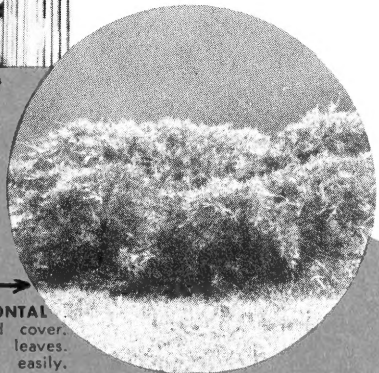
## RED MAPLE (Scarlet, Shoopeg, Swamp Maple)

Suited to yard or street use. Very hardy, a fast grower, deciduous. Flowers are small and red. In the fall the leaves turn a brilliant crimson. A good sized tree.



## SWEET MOCK ORANGE

Grows to nine feet in height, quite hardy. Grows well in dry situations, fragrant. Flowers white, leaves yellowish in fall. Deciduous.



## JUNIPER-HORIZONTAL

A good ground cover. With dark green leaves. Can be pruned easily. Hardy evergreen.



**WOODLOT SEED CO.**  
NORWAY • MICHIGAN