

Historic, Archive Document

Do not assume content reflects current scientific knowledge, policies, or practices.

62.89
Aug. 17, 1949

WOOD'S CROP SPECIAL

Giving Timely Information and Prices of Seasonable Seeds

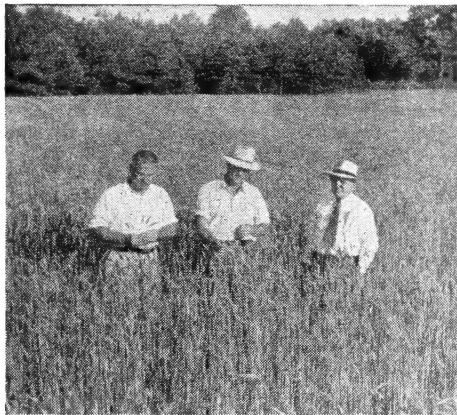
PUBLISHED BY T. W. WOOD & SONS SEEDSMEN RICHMOND VA.

Wood's Pedigreed Grain

We are the largest Southern breeders and growers of small grain seed, growing 6,269 acres from the finest Registered or Certified stock. To avoid mixing in the drill or combine, only one variety of a crop is grown on any one farm. No crop is planted in a field where any other small grain was grown last season. All fields are carefully rogued free of mixture. State Crop Improvement Associations closely inspect our breeding and production fields. They permit no crop mixture, objectionable weeds or seed borne disease in either the field or bin inspections for Foundation or Registered seeds. Every year more of our breeding fields pass this rigid test.



Dr. T. R. Stanton, chief oat breeder for the U. S. D. A. (right), watching our staff of experienced plant breeders harvest our oat breeding plots. We constantly improve our foundation strains of all our small grains. We hot water treat our foundation seed of wheat and barley to prevent smut.



THORNE wheat we grew for stock seed from hot water treated foundation seed. The Crop Improvement Association found no objectionable weeds, disease or crop mixture in it. C. S. Richardson, Forsyth Co., N. C., says: "Wet weather delayed wheat harvest 2 weeks, causing my old wheat to fall down badly. Your Thorne wheat stood up well and yielded 40 bus. per acre. I will plant all my crop in it next year.

It is recommended in the N. C. Mountains, where it has been the highest yielding wheat for years in experiment station tests, making 47 bu. per acre in 1948, resisting storm and winter.

NURED SMOOTH WHEAT

An improved strain of Forward; same stiff straw, long full heads and big plump grains, but more smut and rust resistant, higher yield and is replacing it. At the top in Tenn. and Va. tests 4 years. Made a record 49.2 bu. acre at Williamsburg. Earlier, shorter, more rust resistant than Vahart.

VAHART SMOOTH WHEAT

Va. recommends it. Highest average yield for 4 years at the 6 Va. experiment stations, and 9 years at V. P. I. A selection from Redhart, it averaged 5 bu. more per acre, is a week later with taller much stronger stalks and larger, plumper heads. It resists cold, mildew and smut. Most Vahart seed is mixed, but ours is field rogued.

REDHART SMOOTH WHEAT

Earliest maturing wheat. Recommended in S. C., N. C., Piedmont and Coast and Western Ky. Highest yield of any available wheat 2 years in N. C. Coast tests. Short, strong straw. Resists storms and stem rust. Good stooling.

WOOD'S SEED ABRUZZI RYE

We are the only recognized foundation growers of Abruzzi Rye. For years we have bred for quick fall and heavy winter growth and grain yields. This insures earlier fall and more winter pasture or cover. Our strain yielded a record 54.6 bu. of grain per acre at Clemson, S. C. We clean Rye on machinery devoted exclusively to Abruzzi.

It resists insects and disease, thrives on lighter land, with less fertilizer, can be sown over a longer period, is more winter hardy and gives more winter pasture than other small grains.



W. C. Johnson, King Wm. Co., Va., left, showing long compact heavy **Calhoun Barley**, heads well filled with 6 rows of big plump grain, says: "I liked my 25 acres of Calhoun so well I will plant no other small grain. It made 75 bu. per acre to 14 for my wheat and 50 for oats, sown in Sept., which looked like wonderful crops until harvest. The Calhoun, sown only 2 bu. per acre Dec. 23, stood the winter and stooled into a perfect stand. I cut it and sowed soybeans 2 weeks before the wheat and oats ripened. My Wong rusted badly, made only 1/3 as much grain, and fell down so it had to be hogged off. Calhoun did not rust and stood up perfectly just the right height to combine. The grain ripens before the straw, which holds up the heads long after harvest time. It does not shatter."

LEE COLD-PROOF OATS

Recommended in Piedmont N. C., Va., Md., Del. and N. J. Made highest average yield 2 years in Eastern Va. tests and 100.5 bu. per acre in Mountain Va. test. Yielded 107.8 bu. per acre in a N. C. test and 6 1/4 tons of hay per acre. Best winter oat in N. J., Del., and for 3 years in Md. tests. Extreme winter resistance. Highest test weight grain. Tall, strong stalk. Tops for hay pasture or combine. "Your Lee yielded 86 bu. per acre of very nice, 37-lb. per bu. oats."—N. H. Bichtel, Chester Co., Pa.

FORKEDEER OATS

Highest yielding variety at the 6 Va. experiment stations 2 years, 5 years in Tenn., and 4 years in Del. Most winter hardy. Recommended in Piedmont and Mountain Va., Ky., and in N. C. Mountains testing 110 bu. per acre with good hay yield and mosaic resistance. Medium tall stiff straw. Easily combined. Mid-season. Heavy grains, less hull.

STANTON OATS

Recommended from Eastern Va. to Miss. Made a record 117.1 bu. per acre in a N. C. experiment station test and since 1945, the highest average yield in 20 tests, and the most hay in 16 tests, averaging 5,520 lbs. per acre, and is rated tops in yield, winter hardiness and straw strength, mid-tall and mid-season. Made 101.3 bu. per acre in a Va. test, and 106.3 in a S. C. test.

FULGRAIN OATS

Earliest, shortest, stiffest straw and most popular recommended oat from N. C. and S. C. Coast and Piedmont to Miss. Made 101.3 bu. per acre in a Va. test. Only 1% lodged, others up to 45%. Ideal to combine. Tillers profusely. Matures before hot weather. Resists rust and smut. Heads are long, well balanced and fruit heavily. Grains plump, heavy, of high feeding value.



WOOD'S FULGRAIN, Strain 3

Bred from the original Fulgrain variety 10 years thru severe Va. Winters, it is far more vigorous and heavy yielding than later Fulgrain strains which were crossed on Victoria. It made the highest yield of any available oat in the 1949 Pee Dee, S. C. test, 15.1 bu. per acre more than Fulgrain 1949 B. F. S. It matures before rust and resists cold, smut and the dread Victoria blight, which can wipe out other Fulgrains.



Preferred

LONG DISTANCE TELEPHONE 3-2138
WE MAKE NO CHARGE FOR BAGS

ON THE BEST FARMS

WOODS
TESTED
SEEDS

Always Dependable

T.W. WOOD & SONS

RICHMOND, VIRGINIA

SEEDSMEN SINCE 1879

WOOD'S SEEDS ARE TESTED

And we know that they will grow before they are sent out. Even then they occasionally do not come up due to causes over which we have no control, such as covering too deeply or not deeply enough, too little or too much manure; cold weather, insects, or a crust through which the sprouts cannot penetrate, etc.; therefore, T. W. Wood & Sons give no warranty, express or implied, as to the description (name and kind), productiveness or any other matter of any seeds, bulbs or plants we sell, and will not be in any way responsible for the crop. Our liability in all instances is limited to the purchase price of the seed.

CLOVER and GRASS SEEDS

	—Prices F.O.B. Richmond—			—Postpaid Prices—			
	100-lb. lots, 25 to 99, 5 to 24, per lb.	25 to 99, 5 to 24, per lb.	per lb.	25 lbs.	10 lbs.	5 lbs.	1 lb.
CLOVERS							
CRIMSON CLOVER, 500 lbs. 23c. lb.	.23½	.24	.26	\$5.85	\$3.05	\$1.60	\$.45
DIXIE RESEEDING CRIMSON CLOVER, 99½% Pure	.42	.43	.44	11.60	4.85	2.50	...
AUSTRIAN WINTER PEAS	.08¾	.10	.12	3.35	1.65	.90	.30
HAIRY VETCH, Sow 25 lbs. acre	.25	.26	.28	7.35	3.25	1.70	.45
RED CLOVER, Sow 12 lbs. acre..	.50	.51	.53	13.60	5.75	2.95	.70
MAMMOTH CLOVER (Sapling) ..	.50	.51	.53	13.60	5.75	2.95	.70
ALFALFA, Okla. grown, Approved.	.67	.68	.70	17.85	7.45	3.80	.85
ALSIKE CLOVER, 5 to 8 lbs. acre.	.37½	.38	.40	10.35	4.45	2.30	.60
WHITE SWEET CLOVER	.25	.26	.28	7.35	3.25	1.70	.45
WHITE DUTCH CLOVER, Lb. \$1.20	1.05	1.10	1.15	28.35	11.95	6.05	1.35
Wood's Dix'e. Lb. \$1.25	1.10	1.15	1.20	29.60	12.45	6.30	1.40
LADINO CLOVER, Lb. \$1.80	1.65	1.70	1.75	43.35	17.95	9.05	1.95
Certified Domestic Blue Tag Ladino, Lb., \$2.00	1.85	1.90	1.95	48.35	19.95	10.05	2.15
BURR CLOVER—Hulled	.72	.73	.75	19.10	7.95	4.05	.95
LESPEDEZA—100-lb. bags:							
Korean, 25 lbs. acre, 500 lbs. 10½c.	.11	.12	.14	3.85	1.85	1.00	.35
Korean, Dodder free, 500 lbs., 11½c.	.12	.13	.15	4.10	1.95	1.05	.35
Sericea—Scarified	.27	.28	.30	7.35	3.45	1.80	.50
GRASS SEEDS							
TIMOTHY	.27	.28	.30	7.85	3.45	1.80	.45
RYE GRASS, Domestic, 25c. lb...	.16	.17	.19	5.10	2.35	1.25	.35
PERENNIAL RYE GRASS, 30c. lb.	.19	.20	.22	5.85	2.65	1.40	.40
ORCHARD GRASS							
Fancy, Va. grown, Trace onion..	.27	.28	.30	7.85	3.45	1.80	.50
Extra Fancy, Onion free	.32	.33	.35	9.10	3.95	2.05	.55
BROME GRASS (Smooth)	.45	.46	.48	12.35	5.25	2.70	.65
KENTUCKY BLUE, 85% pure...	.57	.58	.60	15.35	6.45	3.30	.75
RED TOP or HERDS, 92% pure..	.67	.68	.70	17.85	7.45	3.80	.85
CHEWINGS FESCUE, 30 lbs. acre	.50	.51	.53	13.60	5.75	2.95	.70
CREEPING RED FESCUE	.52	.53	.55	14.10	5.95	3.05	.75
ALTA FESCUE	.52	.53	.55	14.10	5.95	3.05	.75
CERTIFIED KY. 31 FESCUE	.67	.68	.70	17.85	7.45	3.80	.90
KENTUCKY 31 FESCUE	.52	.53	.55	14.10	5.95	3.05	.75
MEADOW FESCUE	.27	.28	.30	7.85	3.45	1.80	.45
BENT GRASS:							
Certified Seaside Bent, Lb. \$1.10	.95	1.00	1.05	25.85	10.95	5.55	1.25
Certified Highland Bent, Lb. \$1.05	.90	.95	1.00	24.60	10.45	5.30	1.20
Colonial Bent, Lb. \$1.05	.90	.95	1.00	24.60	10.45	5.30	1.20
Certified Astoria, Lb. \$1.30	1.15	1.20	1.25	30.85	12.95	6.55	1.45
BERMUDA GRASS, Unhulled,							
Lb., 75c.	.65	.66	.68	17.35	7.25	3.70	.85
Hulled, Lb., \$1.05	.95	.96	.98	24.85	10.25	5.20	1.15
DALLAS GRASS, Imported	.55	.57	.60	15.10	6.45	3.30	.80
CARPET GRASS, Domestic	.52	.53	.55	14.10	5.95	3.05	.75
CARPET GRASS—Impt. 98% pure	.57	.58	.60	15.25	6.45	3.30	.80
SUDAN GRASS, 25 lbs. acre ...	1.0½	.11	.12	3.60	1.65	.90	.30
No. 23 Sudan Grass	.13	.14	.16	4.35	2.05	1.10	.35
Sweet Sudan Grass	.14	.15	.17	4.60	2.15	1.15	.35
Certified Sweet Sudan	.17	.18	.20	5.35	2.45	1.30	.40
WOOD'S GRAIN PASTURE MIXT.	.08½	.09	.11	3.35	1.65	.90	.30
WOOD'S HAY GRAIN MIXTURE.	.08½	.09	.11	3.35	1.65	.90	.30
WOOD'S SPECIAL GRASS and CLOVER MIXTURES:							
Permanent Pasture Mixt. Nos. 1 to 3	.39	.40	.42	10.85	4.65	2.40	.60
Permanent Hay Mixt. Nos. 6 to 8.	.39	.40	.42	10.85	4.65	2.40	.60
Southern Permanent Mixture No. 12	.39	.40	.42	10.85	4.65	2.40	.60

ONION SETS

1-Bushel Open Mesh Bags Included

	Per lb.	Per peck	Per bu., 32 lbs.
Yellow Ebenezer ..	\$.25	\$1.00	\$3.25
White Silver Skin..	.25	1.10	3.45

10-bus. lots and over, 10c. bus. less.

Postpaid prices add 15c. lb.; peck 40c.; bushel \$1.05.

Shipped by express or truck line only.
Railroad freight too slow for perishables.

Wood's Pedigreed Grain

We are the largest Southern breeders and growers of small grain seed, growing 6,269 acres from the finest Registered or Certified stock. To avoid mixing in the drill or combine, only one variety of a crop is grown on any one farm. No crop is planted in a field where any other small grain was grown last season. All fields are carefully rogued free of mixture. State Crop Improvement Associations closely inspect our breeding and production fields. They permit no crop mixture, objectionable weeds or seed-borne disease in either the field or bin inspections for Foundation or Registered seeds. Every year more of our breeding fields pass this rigid test.

WOOD'S
SEED INOCULATION

Specify Group Wanted.	Prices	Postpaid
GROUP 1—Alfalfa, Sweet	1 bus.	.50
Clover, Bur Clover	2½ bus.	1.00
GROUP 2—Clovers, Red		
Crimson, Alsike, Ladino,	1 bus.	.50
Dixie and White Dutch	2½ bus.	1.00
GROUP 3—All Lespedezas	100 lbs.	.50
GROUP 4—Soybeans, all	2 bus.	.30
varieties	5 bus.	.55
	25 bus.	2.50
	30 bus.	3.00
GROUP 5—Cowpeas, Pea-	2 bus.	.30
nuts, Lima Beans, Velvet	5 bus.	.55
Beans, Crotalaria, Kudsu,	25 bus.	2.50
Sesbania, Beggar Weed	30 bus.	3.00
GROUP 6—Beans, Snap,		
Wax, Pole, Navy, Kidney	1 bus.	.35
GROUP 7—Vetch		
Peas: Austrian, Canada,	1 bus.	.35
Garden, Sweet	100 lbs.	.55
GROUP 8—Garden Beans,	5 lbs. or	
Peas, Sweet Peas, Lupine	less	.15

ARASAN—For Soybeans, Cowpeas, Peanuts, Corn and Vegetable Seeds. Seeds treated with Arasan are protected against rotting and produce healthier and more vigorous plants, and protects seeds from birds and rodents. By mail postpaid, ¼-oz. size, 30c.; 8-oz. size, 95c.; 4-lb. size, \$5.50. Not postpaid, ¼-oz. size, 25c.; 8-oz. size, 80c.; 4-lb. size, \$5.16; 25 lbs., \$30.00; 100 lbs., \$115.00.

WOOD'S LAWN GRASSES

Wood's Evergreen, Lb. 75c.	.65	.67	.70	17.50	7.45	3.80	.90
Wood's Emerald Park, Lb. 60c.	.50	.52	.55	13.30	5.95	3.05	.75
Wood's Super-Green, Lb. 90c.	.80	.82	.85	21.35	8.95	4.55	1.05
Wood's Dixie, Lb. 70c.	.60	.62	.65	16.35	6.95	3.55	.85
Wood's Shady Park, Lb. 85c.	.75	.77	.80	20.15	8.45	4.30	1.00
Wood's Winter Green, Lb. 45c.	.37	.38	.40	10.35	4.45	2.30	.60

WOOD'S High Grade

GARDEN SEEDS

Green Pod Bush Snap Beans Plant up to Aug 15th 1 lb. plants 100 feet; 75 lbs. an acre.

	Postpaid			
	Pkt.	½ lb.	1 lb.	5 lbs.
Full Measure Stringless Green Pod...	.10	.35	.60	2.30
Giant Stringless Green Pod, 52 days	.10	.35	.60	2.15
Burpee's Stringless Green Pod	.10	.35	.60	2.15
Tennessee Green Pod, 54 days	.10	.35	.60	2.25
Sulphur or Brimstone, 55 days	.10	.35	.65	2.55

GARDEN BEETS Plant now for winter storage. 1 oz. will plant 50 ft. row. 6 to 8 lbs. one acre.

	Postpaid			
	Pkt.	Oz.	¼ lb.	Lb.
Early Wonder, 50 days	.10	.15	.45	1.50
Crosby's Egyptian, 50 days	.10	.15	.45	1.50
Improved Early Blood, 55 days	.10	.15	.45	1.50
Detroit Dark Red, 55 days	.10	.15	.45	1.50
Crimson Globe, 55 days	.10	.15	.45	1.50
Extra Early Egyptian, 45 days	.10	.15	.45	1.50



Copenhagen Market

CABBAGE One ounce will plant 100-foot row and will produce about 2,000 plants; 6 to 8 ounces will make enough plants for 1 acre.

	Postpaid			
	Pkt.	Oz.	¼ lb.	Lb.
Copenhagen Market, 70 day	.10	.25	.70	2.50
Wood's Sel. Ey. Jersey Wakefield, 65 days	.10	.30	.95	3.50
Wood's Charleston Wakefield, 75 days	.10	.25	.85	3.00
All Head Early, 85 days	.10	.25	.70	2.50
Early Flat Dutch, 85 days	.10	.25	.70	2.50
Perfection Drumhead Savoy, 90 days	.10	.30	.90	3.25
Chinese Petsai or Celery Cabbage, 80 days	.10	.20	.60	2.00

YELLOW RESISTANT CABBAGES

Marion Market, 75 days	.10	.30	.95	3.50
Wisconsin All Seasons	.10	.30	.95	3.50

CARROTS One ounce will plant 100 feet of drill, 3 to 4 pounds to the acre.

	Postpaid			
	Pkt.	Oz.	¼ lb.	Lb.
Red Cored Chantenay, 70 days	.10	.15	.45	1.50
Danvers Half Long, 75 days	.10	.15	.45	1.50
Wood's Scarlet Intermediate, 75 days	.10	.20	.60	1.75
Imperator, 75 days	.10	.15	.45	1.50
Improved Long Orange, 85 days	.10	.15	.45	1.50
Large White Belgian	.10	.15	.45	1.50

COLLARDS

	Postpaid			
	Pkt.	Oz.	¼ lb.	Lb.
Carolina Header	.10	.20	.60	2.25
North Carolina Short Stem, 80 days	.10	.15	.35	1.00
White or Cabbage, 80 days	.10	.15	.30	.90
Georgia or Southern, 80 days	.10	.15	.30	.90

CRESS

Upland, 60 days	.10	.15	.45	1.50
Curled or Pepper Grass, 40 days	.10	.20	.60	2.00

ENDIVE

	Postpaid			
	Pkt.	Oz.	¼ lb.	Lb.
Green Curled, 90 days	.10	.15	.50	1.50
Broad Leaved Batavian, 95 days	.10	.15	.50	1.50

KOHL RABI

	Postpaid			
	Pkt.	Oz.	¼ lb.	Lb.
Early White Vienna	.10	.30	.95	3.50

LEEK

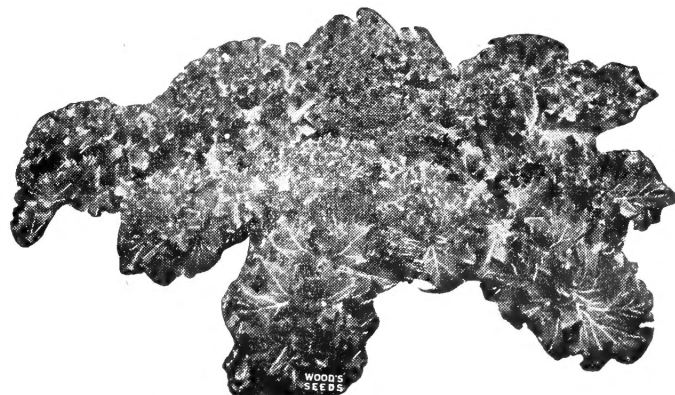
	Postpaid			
	Pkt.	Oz.	¼ lb.	Lb.
Large Flag	.10	.45	1.40	5.00

LETTUCE

	Postpaid			
	Pkt.	Oz.	¼ lb.	Lb.
One ounce produces about 1,500 plants; 2 lbs. an acre.				
Wood's Cabbage, 65 days	.10	.20	.65	\$2.25
Improved Big Boston, 75 days	.10	.15	.50	1.75
Iceberg, 80 days	.10	.25	.75	2.50
Great Lakes, 82 days	.10	.40	1.40	5.00
Kentucky Bibb, 60 days	.10	.20	.60	2.00
Imperial, 44 days	.10	.25	.85	3.25
Cos or Romaine, 65 days	.10	.15	.50	1.75
Early Curled Simpson, 50 days	.10	.15	.50	1.75
Grand Rapids, 45 days	.10	.15	.50	1.75
Black Seeded Simpson, 50 days	.10	.15	.50	1.75
Chicken Lettuce, 55 days	.10	.15	.50	1.75

MUSTARD One ounce will plant 100 feet of row. 5 to 6 pounds per acre.

	Postpaid			
	Pkt.	Oz.	¼ lb.	Lb.
Southern Giant Curled, 35 days	.10	.15	.40	1.25
Old Fashion	.10	.20	.45	1.50
Chinese Broadleaved, 40 days	.10	.15	.40	1.25
Florida Broad Leaved, 40 days	.10	.15	.40	1.25
Tendergreen or Mustard Spinach, 25 days	.10	.15	.30	.90



Early Curled Siberian or Blue Kale.

KALE One ounce plants 100 feet of drill; 8 pounds to the acre broadcast; 4 to 5 pounds in drills.

	Postpaid			
	Pkt.	Oz.	¼ lb.	Lb.
Early Curled Siberian, 65 days	.10	.15	.40	1.25
Blue Curled Scotch or Norfolk	.10	.15	.45	1.50
Spring Kale or Hanover Salad, 30 days	.1015	.50

ONION

	Postpaid			
	Pkt.	Oz.	¼ lb.	Lb.
Extra Early White Pearl, 85 days	.10	.35	1.15	4.00
Prize Taker or Spanish King, 100 days	.10	.30	1.00	3.75
Valencia Sweet Spanish	.10	.30	1.00	3.75
Yellow Globe Danvers, 110 days	.10	.25	.90	3.25
Silver Skin or White Portugal, 100 days	.10	.30	1.00	3.75

PARSLEY One ounce will plant 100 feet.

	Postpaid			
	Pkt.	Oz.	¼ lb.	Lb.
Champion Moss Curled, 70 days	.10	.15	.40	1.25
Plain or Single, 70 days	.10	.15	.45	1.50
Hamburg Parsnip Rooted, 90 days	.10	.15	.45	1.50

GARDEN PEAS

	Postpaid			
	Pkt.	½ lb.	1 lb.	5 lbs.
Thomas Laxton, 55 days	.10	.30	.50	1.75
Laxton's Progress' 53 days	.10	.30	.50	1.80
Laxtonian or Hundredfold, 53 days	.10	.30	.50	1.80
Early Bird or Laxton's Superb, 55 days	.10	.30	.50	1.75
Little Marvel, 55 days	.10	.30	.50	1.75

WINTER RADISHES

	Postpaid			
	Pkt.	Oz.	¼ lb.	Lb.
One ounce will plant 50 feet, 8 to 10 pounds an acre.				
Rose China Winter, 60 days	.10	.15	.40	1.25
Chinese or Celestial, 60 days	.10	.15	.40	1.25
Long Black Spanish, 60 days	.10	.15	.40	1.25

SPINACH Two ounces will plant 100 feet of drill; 12 to 15 lbs. one acre.

	Postpaid			
	Pkt.	Oz.	¼ lb.	Lb.
New Zealand, 55 days	.10	.15	.30	1.00
Norfolk Savoy or Bloomsdale, 45 days10	.25	.75
Long Standing Bloomsdale, 50 days10	.25	.75
Virginia Blight Resistant10	.25	.75

TURNIP One ounce plants 100 feet of drill; 1½ lbs. plants 1 acre in drills; 2 lbs. 1 acre broadcast; salad varieties, 3 pounds to the acre.

	Postpaid			
	Oz.	¼ lb.	Lb.	
Improved Purple Top White Globe	.10	.40	1.25	
Mammoth Purple Top White Globe	.10	.35	1.15	
Purple Top Strapleaf	.10	.35	1.15	
Early White Flat Dutch	.10	.35	1.15	
Pomeranian White Globe	.10	.35	1.15	
Long White Cowhorn	.10	.35	1.15	
White Egg	.10	.35	1.15	
Purple Top Yellow Aberdeen	.10	.35	1.15	
Large Amber or Yellow Globe	.10	.35	1.15	
Golden Ball	.10	.35	1.15	
Seven Top (Salad Variety)	.10	.25	.75	
Southern Prize (Salad Variety)	.10	.25	.75	
Shogoin (Japanese Salad)	.15	.30	1.00	

RUTABAGA

Improved Purple Top Yellow	.15	.40	1.25
Purple Top Yellow	.15	.35	1.15

INSECTICIDES



Japanese Beetle



APHIS



CODLING MOTH



RED SPIDER



ANTS

Arsenate of Lead For all Leaf-Eating Insects. Sticks to the leaf. Use 1 to 2 pounds to 50 gallons of water (one level tablespoonful to gallon), for general spraying. Postpaid, 1-lb. pkg. 55c.; 4-lb. pkg. \$1.85. Not postpaid, 1 lb. 45c.; 4 lbs. \$1.60.

Barsprout A sprout inhibitor for treating potatoes and other root crops from sprouting and reduce shrinkage in storage. Postpaid, 12-oz. sifter top, \$1.15; 5-lb. size, \$5.75. Not postpaid, 12-oz. sifter top, \$1.00; 5-lb. size, \$5.50.

Black Leaf 40 For Sucking Insects and Poultry Lice. Kills plant lice on roses, shrubbery, fruits and vegetables. A concentrated solution of nicotine sulphate. Dilute 1 to 2 teaspoonfuls to a gallon of water, as directed. By mail postpaid, 1-oz. bottle, 45c.; 5-oz. pkg., \$1.15; 1 lb., \$2.60; 2 lbs., \$4.40. Not postpaid, 1 oz. 36c.; 5 ozs., \$1.05; 1 lb., \$2.45; 2 lbs., \$4.15; 5 lbs., \$7.90; 10 lbs., \$13.75.

Blue Stone Copper Sulphate or Blue Vitriol (Pulverized Snow). For early spraying, for making Bordeaux mixture and copper solution. Postpaid, 5 lbs., \$1.45; 10 lbs., \$2.50. Not postpaid, 5 lbs., \$1.15; 10 lbs., \$2.10; 25 lbs., \$4.25; 50 lbs., \$8.00; 100 lbs., \$15.50.

Bordeaux Mixture For Blight, Scab, Mildew, etc. Prevents blight, scab, rust, mildew, black-rot and other fungus diseases of plants and fruits and improves the quality and increases the yield. 8 pounds to 50 gallons water makes a 4-4-50 mixture (3 level tablespoonfuls to 1 gallon). Postpaid, 1-lb. size, 55c.; 4-lb. size, \$1.20. Not postpaid, 1-lb. size, 40c.; 4-lb. size, 95c.

Carbon Bisulphide Kills weevil, bugs and insects generally in beans, peas and grains while in storage. When placed on top of either bulk or sacked grains the fumes permeate the entire bulk. 2½-lb. can, \$1.60; 5-lb. can, \$1.75 each. Cannot be mailed.

Copper Carbonate For Treating Wheat. 2 to 3 ounces will treat one bushel. By mail, postpaid, 1-lb. pkgs., 40c. each; 5-lb. pkgs., \$1.50 each. Not postpaid, 1-lb. pkgs., 30c. each; 5-lb. pkgs., \$1.25 each.

New Improved Ceresan For Oats, Barley and Wheat. Effective in controlling covered smut and stripe of barley, oat smuts, and bunt or stinking smut of wheat. It improves the stand and yield of grains 1 to 5 bushels to the acre. A pound treats 32 bushels at cost of 1½ to 2½ cents a bushel. By mail postpaid, 4-oz. size, 50c.; 1-lb. size, \$1.15; 4-lb. size, \$3.60. Not postpaid, 4-oz. size, 45c.; 1-lb. size, \$1.00; 4-lb. size, \$3.40; 40-lb. drum, \$28.75; 100-lb. drum, \$69.00.

Cyanogas A Dust Kills field mice, moles, rats, cray fish, ground hogs, bed bugs, clothes moths, ants, wasps, yellow jackets, grape leaf hopper, grasshopper, locusts, etc. By mail postpaid, 1-lb. can, \$1.15; 5-lb. can, \$4.00. Not postpaid, 1-lb. can, \$1.00; 5-lb. can, \$3.75; 25 lbs., \$12.50; 100 lbs., \$30.00.

Cyanogas Dusters Foot Duster. Postpaid, \$11.30. Not postpaid, \$11.00.

Cyanogas Ant Killer For ants in the garden and lawn. Kills millions. By mail postpaid, 50c. Not postpaid, 40c.

"Dogzoff" Repels dogs, cats, moles, mice and rabbits. Protects shrubs, plants, porch furniture and trees. A single application lasts several weeks. By mail postpaid, 70c. Not postpaid, 60c.

Rootone Makes Cuttings Easy to Root. Dip cuttings in Rootone before planting to give faster and better rooting. Stimulates root growth on cuttings, quickens germination of seed and bulbs, reduces damping off, and wards off fungus attack. ¼-oz. pkg. (treats 400 cuttings), 25c.; 2-oz. jar, \$1.00; 1 lb., \$5.00, postpaid.

Triogen Destroys leaf-eating insects like rose slugs, caterpillars, webworm, red spider, plant lice, aster beetles, etc.; controls mildew, black spot, canker, and rust on roses and other plants; yellows and fungus diseases on many flowering plants.

	By mail postpaid	Not Postpaid
Economy Kit, makes 8 quarts	\$1.50	\$1.35
A—Small Kit, makes 16 quarts	2.50	2.25
B—Medium Kit, makes 64 quarts	6.40	6.00
C—Large Kit, makes 32 gallons	9.50	9.00
D—Estate Size, makes 128 gallons		30.00

Zinc Sulphate For control of peach bacterial spot and possibly brown-rot and scab. The recommended formula is 4 pounds each of zinc sulphate and fresh hydrated or slaked lime to 50 gallons water. The addition of 1 pound zinc sulphate to 100 gallons lead arsenate spray corrects the spray injury. By mail postpaid, 5 lbs., \$1.15; 10 lbs., \$2.15; 25 lbs., \$4.00. Not postpaid, 5 lbs., 90c.; 10 lbs., \$1.75; 25 lbs., \$3.25.

D-X Rotenone-Pyrethrum Spray A pyrethrum and rotenone contact spray for aphids, Japanese beetles, Mexican bean beetles, tent caterpillars, canker worms, thrips, and web worms, chewing and sucking insects; kills and repels cabbage worms, leaf hopper and many similar insects. Dilutes 1 to 800 for aphids—stronger for more resistant insects. By mail postpaid, 1½-oz. size, 55c.; ¼-pt. size, \$1.90; 1-qt. size, \$5.70. Not postpaid, 1½-oz. size, 50c.; ¼-pt. size, \$1.75; 1-qt. size, \$5.25; 1-gal. size, \$13.50.

Dry Lime-Sulphur For San Jose Scale. The most generally used and very effective remedy for San Jose Scale. Exactly like lime-sulphur solution, except that the water has been taken out. For fall and spring spraying use 12 to 15 lbs. to 50 gallons water. Summer spraying, 2½ to 3 lbs. to 50 gallons water. Postpaid, 1-lb., 55c.; 5 lbs., \$1.90; 12½ lbs., \$2.80. Not postpaid, 1 lb., 40c.; 5 lbs., \$1.65; 12½ lbs., \$2.50; 100-lb. drum, \$19.00.

Lime-Sulphur Solution Our solution retains its strength indefinitely and does not crystallize if kept from air and freezing. For fall and spring spraying use 1 gallon to 8 gallons of water. For summer spraying, 1½ gallons to 50 gallons of water. 50-gallon barrel, \$15.00.

Scalecide For San Jose Scale. It is especially recommended for spraying trees, shrubs, etc., while in the dormant state. Kills aphid and red mites and destroys the eggs and larvae wintering in inaccessible places on the bark of trees. It spreads rapidly into cracks and crevices and covers rough bark thoroughly. Mix one part Scalecide with 15 parts water. By mail postpaid, 1 quart, \$1.25; 1 gallon, \$2.90. Not postpaid, 1 quart, \$1.00; 1 gallon, \$2.40; 5 gallons, \$8.10; 15 gallons \$19.00; 55-gallon drum, \$45.00.

Dusting Sulphur Apply it for red spider, brown rot, scab, mildew, leaf-spot, rust and other fungus diseases. Use it on potatoes when cut for planting to prevent scab and bleeding. Postpaid, 5 lbs., 70c.; 10 lbs., \$1.20. Not postpaid, 5 lbs., 45c.; 10 lbs., 80c.; 25 lbs., \$1.55; 50 lbs., \$2.90; 100 lbs., \$5.50.

Para-Scalcide For controlling peach tree borers. Para-Scalcide is applied in the early fall or in the spring when the ground temperatures are not colder than 60 degrees F. Dilute one gallon Para-Scalcide with 7 gallons of water. One gallon treats approximately 125 one to two-year old trees, 64 three or four-year old trees. Postpaid, 1-qt. can, \$1.50; 1-gallon can, \$3.30. Not postpaid, 1-qt. can, \$1.25; 1-gallon can, \$2.90; 5-gallon can, \$9.10; 15-gallon drum, \$21.80.

Para-di-Chloro-Benzene For controlling peach tree borer. Apply when the ground is dry, in September or October. This will have to be used at once when ordered, on account of evaporation. One pound treats ten trees. By mail postpaid, 1-lb. pkg., 60c.; 2½-lb. pkg., \$1.20; 5-lb. pkg., \$2.00. Not postpaid, 1-lb. pkg., 50c.; 2½-lb. pkg., \$1.00; 5-lb. pkg., \$1.75.

PlanTabbs Contains Vitamin B1 and analyzes 11% nitrogen, 15% phosphoric acid and 20% potash, just the proper plant food to encourage a vigorous, healthy growth. A complete plant food in odorless, ready to use tablet form. 30 tablets, 25c.; 75 tablets, 50c.; 200 tablets, \$1.00; 1,000 tablets, \$3.50, postpaid.

WEED KILLERS

Ammate Weed Killer Kills Poison Ivy. Exterminates weeds in walks, driveways, tennis courts, etc. Deadly to vegetation but harmless to humans, animals and birds. Entirely free from fire and explosion hazards, and exerts only temporary soil sterilization. 1 lb. to a gallon of water kills poison ivy; 1 to 3 lbs. to a gallon kills deep rooted perennials and is enough for 100 square feet of heavy growth. By mail postpaid, 2-lb. size, \$1.15; 6-lb. size, \$2.65. Not postpaid, 2-lb. size, 85c.; 6-lb. size, \$2.25; 50-lb. drum, \$13.00.

Weedone—2-4-D Weed Killer Kills weeds underground as well as above ground, right down to the root tips. Kills poison oak, poison ivy, wild morning glory, Japanese honeysuckle, sassafras, black locust, choke cherry and many other weeds. Postpaid, 6-oz. size, 85c.; 1-qt. can, \$2.90; 1-gal. can, \$7.00. Not postpaid, 6-oz. size, 75c.; 1-qt. can, \$2.50; 1-gal. can, \$6.50; 5-gal. drum, \$21.25; 54-gal. drum, \$216.00.

DDT SPRAYS and DUSTS

50% DDT Dry Wettable Dust

A dry wettable 50% DDT powder that mixes readily. 2 lbs. of Pratt's 50% DDT in 100 gallons of water is generally used to control codling moth, Japanese beetles, oriental peach moth and other insects. Postpaid, 1-lb. size 90c.; 4-lb. size, \$2.25. Not postpaid, 1-lb. size, 75c.; 4-lb. size, \$2.00.

Wood's Grains

99.8% Pure. 90% Germination

In New Bags. Triple Cleaned to Eliminate Weeds and Shrivelled Grains. Grow More Vigorously. Make Bumper Crops of High Quality Grain that Brings Top Prices on the Market. All Wood's Seed Wheat, Oats and Barley are Ceresan Treated to insure better stands and Disease-Free Crops. Certified Grains Sold Subject to Passing Bin Inspection.

BEARDLESS WHEAT

Plant 1 1/2 bus. acre.	20-bu. Per bu.
2-bus. bags. Treated.	lots. 60 lbs.

THORNE\$3.05 \$3.15

Certified Thorne 3.30 3.40

Has outyielded all other wheats and has the highest recommendation by experiment stations throughout the Upper South and East, where it is replacing other wheats as rapidly as seed is increased. It is more smut and rust resistant, winter hardy, stands up better and combines easier. Has large heads, big, plump grain, high milling quality.

It made 48.3 bu. per acre in a Williamsburg, Va. test, making the highest average yield 2 years. Also in West Va. and for 7 years in Pa. tests.

NURED\$3.05 \$3.15

FORWARD 3.05 3.15

LEAP'S PROLIFIC 3.05 3.15

Certified Leap's Prolific .. 3.30 3.40

From registered hot water treated stock. Recommended in Piedmont and Mountains Va. and North. High yield in N. C. mountain tests. Resists cold, smut, stem rust and lodging. Big heads.

VAHART\$3.30 \$3.40

Certified Vahart 3.55 3.65

REDHART 3.05 3.15

Certified Redhart 3.30 3.40

RED MAY 3.05 3.15

HARDIRED 3.05 3.15

Certified Hardired 3.30 3.40

Recommended in S. C. and N. C. Piedmont and Coast, where it made the highest average yield in 20 tests since 1944, making 46.5 bu. per acre in a 1948 test. Highest in North Ala. tests 3 years, making 47.3 bu. per acre in one test. Medium early. Resists rust and cold. Medium tall, stools profusely. Long, square, well filled heads. High milling quality. Our strain outyielded Hardired 1949 B. F. S. 10% in the 1948 Pee Dee, S. C., test.

Bearded Wheat 20-bu. Per bu.

V. P. I. 131\$3.05 \$3.15

Certified V. P. I. 131 3.30 3.40

FULCASTER 3.05 3.15

STONER 3.05 3.15

NITTANY or PA. 44 3.30 3.40

The highest yielding bearded wheat. Recommended in Va., Md., Pa., and N. C. Mountains. An improved strain of Fulcaster, replacing it and V. P. I. 131, more resistant to smut, mildew, cold and storm. Top milling quality.

WONG BARLEY

Most popular small grain in the East. Semi-beardless, its short awns break off at harvest. Can harvest it and plant summer crops 1 to 2 weeks before wheat and oats ripen. Highly resistant to cold, rust, mildew, leaf spot and lodging. Stiff straw easy to combine. Heavy tiller, wide leaves, superior winter grazing. Good feed substitute for corn. Tremendous yields. At experiment stations it made 61 bu. per acre at Clemson, S. C., 74 bu. in a N. C. test, 87.6 in a Va. test, and highest in Del., and for 3 years in Md. N. J., and Pa. also recommend it.

WOOD'S WINTER OATS

Sow 2 bu. per acre.	30-bu. Per bu.
Treated. New 3-bu. bags.	lots 32 lbs.

FULGRAIN\$1.55 \$1.65

WOOD'S FULGRAIN 3 ... 1.70 1.80

Our Fulgrain Oats for stock seed passed registered requirements with no variety or crop mixture, weeds, or disease, yielding over 70 bu. per acre.

FORKEDEER\$1.85 \$1.95

LEE COLD PROOF 1.75 1.85

STANTON 1.75 1.85

VICTORGRAIN 1.60 1.70

LETORIA 1.75 1.85

Has all good qualities of Lee but more rust and smut resistant. Recommended in N. C., Va., Piedmont and Coast, and S. C. Mountains. In a N. C. test it made 101.2 bu. per acre. Our Letonia outyielded all winter oats in West Va. in 1948 and made 102.1 bu. per acre in an Alabama test. Mid-season. Mid-tall. High hay yield. Resists storms and cold. Heavy grain.

WOOD'S SEED BARLEY

Treated. 2-bu. bags.	20-bu. Per bu.
Sow 2 bu. acre.	lots 48 lbs.

WONG\$1.65 \$1.75

BEARDLESS 2.30 2.40

CALHOUN 2.35 2.45

A new beardless barley, high in feeding value, that should become the most popular small grain in the Southeast. S. C., N. C. and Va. recommend it. It looks like Wong without its stubby beards, is earlier, more rust and smut resistant, and has shorter, stronger straw, ideal to combine, where other grains lodge. Made 87.6 bu. per acre in a Va. test. At the 6 N. C. experiment stations it made the highest yield, 8 bu. per acre more than Wong, 90 bu. per acre in one test. It made 62.5 bu. per acre, tops at Clemson, S. C., and in Alabama tests 3 years.

ABRUZZI RYE\$2.50 \$2.60

Pedigree Abruzzi Rye, grown from Certified Seed, Onion

Free 2.70 2.80

Sow 1 1/2 bu. acre. 2-bu. bags. Bu. 56 lbs.

Sorghum--Millet--Peanuts, Etc.

No Charge for Bags	—Prices F.O.B. Richmond—			Postpaid Prices			
	100-lb. lots, 25 to 99, 5 to 24,	per lb.	per lb.	25 lbs.	10 lbs.	5 lbs.	1 lb.
SORGHUM —Early Amber08	.09	.11	\$3.10	\$1.55	\$.85	\$.30
Early Orange. 50 lbs. acre08	.08 1/2	.11	3.10	1.55	.95	.30
Sugar Drip, for syrup. 8 lbs. acre	.12 1/2	.13	.15	4.10	1.95	1.05	.35
Honey (Texas Seeded Ribbon Cane),							
Certified17 1/2	.18	.20	5.35	2.45	1.30	.40
HEGARI —Certified08	.08 1/2	.10	3.00	1.45	.80	.30
Certified Early Combine Hegari ..	.08 1/2	.09	.11	3.10	1.55	.85	.30
Certified Martin's Combine Milo ..	.08 1/2	.09	.11	3.10	1.55	.85	.30
Certified Caproc Combine Milo ..	.08 1/2	.09	.11	3.10	1.55	.85	.30
MILLET —Tenn. Cultivated German	.09 1/2	.10	.12	3.35	1.65	.90	.30
Pearl or Cattail. Drill 8 lbs. acre	.17	.18	.20	5.35	2.45	1.30	.40
Proso or Hog Millet08 1/2	.09	.11	3.10	1.55	.85	.30
Brown Top Millet17	.19	.21	5.60	2.55	1.35	.40
PEANUTS —Holland Jumbo22	.23	.25	6.85	2.95	1.55	.45
DWARF ESSEX RAPE16	.17	.19	5.10	2.35	1.25	.35
Wood's Quail Planting Mixture16 1/2	.17	.19	5.10	2.35	1.25	.35
Wood's Bird Scatter Food10 1/2	.11	.13	3.60	1.75	.95	.30
SESBANIA22	.23	.25	6.60	2.95	1.55	.45
BENE32	.33	.35	9.10	3.95	2.05	.55
CANADA FIELD PEAS09 1/2	.10	.12	3.35	1.65	.90	.30

SUNFLOWER—Mammoth Russian

	100-lb. Bags			
Gray Striped (large size), for seed	.27 1/2	.28	.30	7.85 3.45 1.80 .50
Gray Striped (med. size), for seed	.25	.26	.28	7.35 3.25 1.70 .45
Dark Striped Sunflower, for feed	.15	.16	.18	4.85 2.25 1.20 .35

EDIBLE PEAS

Early Wilt Resistant Ramshorn ..	.15	.16	.18	4.85 2.25 1.20 .40
Giant Wilt Resistant Ramshorn ..	.16	.17	.19	5.10 2.35 1.25 .40
Blue Goose or Gray Crowder16	.17	.19	5.10 2.35 1.25 .40
Brown Sugar Crowder20	.21	.23	6.10 2.75 1.45 .45
Red Speckled Crowder20	.21	.23	6.10 2.75 1.45 .45
Early Six Weeks Browneye20	.21	.23	6.10 2.75 1.45 .45
Blackeye White Crowder18	.19	.21	5.60 2.55 1.35 .40
Large Black Peas19	.20	.21	5.85 2.55 1.35 .40
Conch (Wood's Sumptuous)20	.21	.23	6.10 2.75 1.45 .45
Dixie Queen Browneye22	.23	.25	6.60 2.95 1.55 .45

POSTPAID PRICES above apply to Va., N. C., W. Va., Md., Del., N. J., Penn. **POSTAGE ON FIELD SEED TO OTHER STATES:** To S. C., Ga., Ky., Tenn., Ohio, Ind., N. Y., New England and Mich., add 2c per pound to postpaid prices. To Ala., Ark., Fla., Ill., Iowa, La., Miss., Mo., and Wisc., add 4c. per pound. To Texas, Okla., Kansas and Neb., add 6c. per lb. to postpaid prices

WOOD'S FERTILIZERS

MILORGANITE—The All Organic Fertilizer. Nitrogen 6%; Phosphoric Acid 2%. 25-lb. bag, \$1.50; 50-lb. bag, \$2.50; 100-lb. bag, \$4.00. Will not burn.

WOOD'S SPECIAL ALL CROP FERTILIZER—Analysis: 5% Nitrogen; 10% Phosphoric Acid; 5% Potash. Prices: 25 lbs., \$1.00 100 lbs., \$2.75.

WOOD'S HIGH-GRADE SHEEP MANURE—The Great Natural Fertilizer. Prices: F. O. B. Richmond, 25 lbs., \$1.00; 50 lbs., \$1.75.

WOOD'S HIGH-GRADE COW MANURE—Prices F. O. B. Richmond: 25 lbs., \$1.00; 50 lbs., \$1.75.

DRICONURE—Composed of cow manure, sheep manure and peat moss. 7 1/2-lb. bag, 60c.; 50-lb. bag, \$2.25; 10-bag lots, \$2.15 per bag.

WOOD'S GARDEN PEAT MOSS—Extra large bale, \$5.65.

VIGORO—Regular Stock for Lawns and Flowers. Analysis, 4-12-4. Prices F. O. B. Richmond: 5 lbs., 50c.; 10 lbs., 90c.; 25 lbs., \$1.60; 100 lbs., \$4.25.

HYDRATED LIME—Prices F.O.B. Richmond: 10 lbs., 25c.; 50 lbs., 75c.

STEAMED BONE MEAL—\$5.00 per 100-lb. bag; \$2.60 per 50-lb. bag.

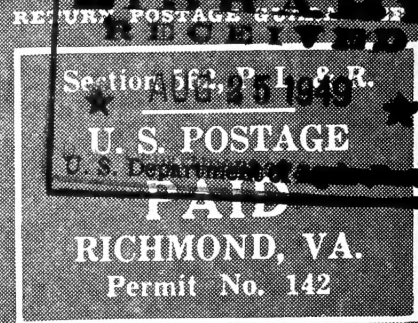
T. W. WOOD & SONS,

SEEDSMEN SINCE 1879

Richmond, Virginia

WOOD'S SEEDS

The Sign of Good Seeds



Aug. 17, 1949

LIBRARIAN, U.S. DEPT. OF AGRIC.
WASHINGTON, 25, D.C.

Feeds and Baby Chick Prices

WOOD'S FEEDS—Mash and Mixed Feeds in Print Cloth Bags

For Making Dresses, Curtains, etc. Worth About 50c. Each

CHICKEN FEEDS	F.O.B. Richmond.	10 lbs.	50 lbs.	100 lbs.
HOLLYBROOK LAYING MASH				
With dried milk and cod liver oil55	\$2.30	\$4.45	
HOLLYBROOK GROWING MASH				
With dried milk and cod liver oil60	2.35	4.55	
HOLLYBROOK STARTING MASH				
With cod liver oil and dried milk60	2.35	4.55	
PAMUNKEY SCRATCH ..	.45	1.90	3.60	
Includes cracked corn, wheat, etc., but no grit.				
HOLLYBROOK CHICK GRAINS60	2.35	4.55	
HOLLYBROOK DEVELOPING FOOD50	2.20	4.15	
PAMUNKEY PIGEON, With Corn65	2.70	5.25	
HOLLYBROOK PIGEON, No Corn70	3.35	6.40	

MISCELLANEOUS FEEDS:

YELLOW CRACKED CORN40	1.70	3.25	
WHITE CRACKED CORN40	1.65	3.15	
POULTRY GRIT, Coarse, Fine, Medium (80-lb. bag) ..	.20	.65	1.10	
OYSTER SHELLS—For Poultry20	.70	1.20	
FAUST PIGEON HEALTH GRIT35	1.50	2.90	
CHARCOAL—Medium, Fine, Coarse (50-lb. bags)65	2.25	...	
RABBIT PELLETS75	2.90	5.60	
GAME BIRD SCATTER FOOD	1.30	5.50	10.50	

DOG FOODS—F.O.B. Richmond.	5 lbs.	10 lbs.	25 lbs.	50 lbs.	100 lbs.
HUNT CLUB CUBES65	\$1.20	\$2.50	\$4.80	\$9.35
HUNT CLUB DOG FOOD—MEAL65	1.20	2.50	4.80	9.35
PARD DOG FOOD, Swift's—1-lb. can, 15c.; 48 cans, \$6.75.					

SUNDAY SHOWER—Kills ticks and fleas. Pint, \$1.00; postpaid, \$1.25.

BIRD SEED

- MIXED BIRD SEEDS—By mail postpaid, lb. 40c.; 5 lbs., \$1.40; 10 lbs., \$2.45. Not postpaid, lb. 25c.; 5 lbs. \$1.15; 10 lbs. \$2.00.
- CANARY SEED—By mail postpaid, lb. 40c.; 5 lbs. \$1.40; 10 lbs. \$2.45. Not postpaid, lb. 25c.; 5 lbs. \$1.10; 10 lbs. \$2.00.
- LOVE BIRD and PARAKEET SEED—By mail postpaid, lb. 40c.; 5 lbs. \$1.40; 10 lbs. \$2.45. Not postpaid, lb. 25c.; 5 lbs. \$1.10; 10 lbs. \$2.00.
- BIRD MILLET—By mail postpaid, lb. 25c.; 5 lbs. 85c.; 10 lbs. \$1.55. Not postpaid, lb. 15c.; 5 lbs. 45c.; 10 lbs. \$1.05.
- BIRD RAPE—By mail postpaid, lb. 35c.; 5 lbs. \$1.25; 10 lbs. \$2.35. Not postpaid, lb. 25c.; 5 lbs. 95c.; 10 lbs. \$1.90.

VEGETABLE PLANTS

READY FOR SEPTEMBER 15th DELIVERY

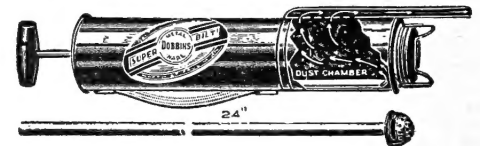
- CABBAGE PLANTS—Late Flat Dutch. 70c. per 100; 500 for \$2.90; \$5.20 per 1,000, postpaid. Not postpaid, 50c per 100; 500 for \$2.40; \$4.50 per 1,000.
- COLLARD PLANTS—70c. per 100; 500 for \$2.65; \$4.70 per 1,000, postpaid. Not postpaid, 50c. per 100; 500 for \$2.25; \$4.00 per 1,000.
- HORSE RADISH ROOTS—50c. per dozen; 50 for \$1.25; \$2.00 per 100, postpaid.

Cyclone Seed Sower



The Cyclone is a splendid seed sower that will pay for itself in a few days in the time it will save, besides sowing grass and clover seeds and grain of all kinds faster and more evenly and uniformly than is possible by hand. It will sow as fast as you can walk, and the quantity can be regulated to any amount to the acre. By mail postpaid, \$3.60. Not postpaid, \$3.25.

No. 132. Garden Duster



A serviceable duster for small gardens, one that distributes dry powder insecticides perfectly to the last particle either on top or under the leaves. The filler cap is easy to remove for refilling. By mail postpaid, \$1.85. Not postpaid, \$1.50.

INSECTICIDES

- ARSENATE OF LEAD—For All Leaf-eating Insects. By mail postpaid, 1-lb. pkg. 75c.; 4-lb. pkg. \$1.85. Not postpaid, 1-lb. pkg. 60c.; 4-lb. pkg. \$1.60.
- BLACK LEAF 40—For Sucking Insects and Poultry Lice. By mail postpaid, 1-oz. size, 45c.; 5-oz. size, \$1.20; 1-lb. size, \$2.65; 2-lb. size, \$4.40; 5-lb. size, \$8.25. Not postpaid, 1-oz. size, 36c.; 5-oz. size, \$1.05; 1 lb. \$2.42; 2 lbs. \$4.15; 5 lbs. \$7.90; 10 lbs. \$13.75.
- .75 ROTENONE DUST—By mail postpaid, 1-lb. pkg. 65c.; 4-lb. pkg. \$1.30. Not postpaid, 1-lb. pkg. 50c.; 4-lb. pkg. \$1.00; 50 lbs. \$9.00.
- 20% SABADILLA DUST—By mail postpaid, 2-lb. pkg. 95c.; 5-lb. pkg. \$2.25. Not postpaid, 2-lb. pkg. 80c.; 5-lb. pkg. \$1.85.

DDT SPRAYS and DUSTS

- DuPONT 5% DDT INSECT SPRAY—Postpaid, 1-pint bottle, 60c.; 1-quart bottle, \$1.00. Not postpaid, 1 pint, 45c.; 1 quart, 75c.