

62
SB115
Z9B7
R

[1959]

"AMERICA'S FAVORITE FLOWERING TREE"

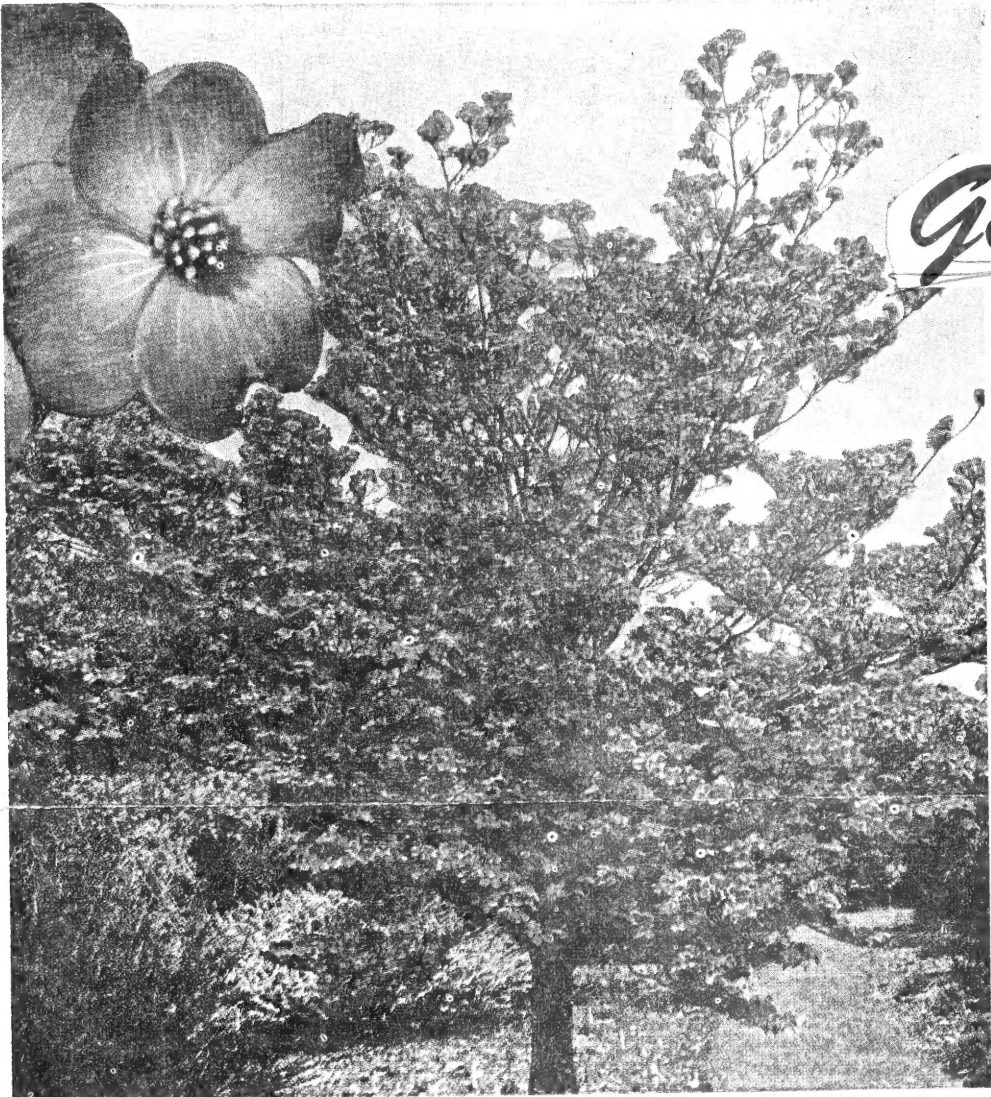
Pink Flowering Dogwood

LOOK ...



SPECIAL PRICES

Garden Clubs



WHITE FLOWERING DOGWOOD

One of the most beautiful of all our native trees. Flowers are large, white and produced in clusters before leaves appear; the flowers are followed in the Fall by numerous red berries and Autumn color of foliage is quite brilliant. A fine specimen tree for lawn. Attractive when planted with Red Bud.

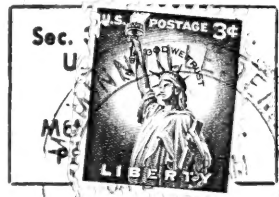
			EACH
18-24"	Branched	@	0.25
2-3'	"	@	0.50
3-4'	"	@	0.75
4-5'	"	@	1.00

DOGWOOD - PINK FLOWERING

(*Cornus Florida Rubra*.) This unique tree is rapidly becoming the most popular of the FANCY FLOWERING TREES. It is called the Aristocrat among the finest plantings in America. This small, uniform tree is literally covered with large, sparkling, rose-red flowers often measuring three to four inches in diameter before the leaves appear in the early spring. Its grayish-green foliage makes it attractive during Summer, and in early Autumn the foliage turns to a glistening rich crimson. Our select trees are propagated from buds taken from fine specimen trees which have the largest and most vivid colored blooms. The tree is extremely hardy and will thrive in most sections of the United States. Our trees will often bloom the same season planted. The Red Flowering Dogwood is conceded to be the most outstanding and the most distinct flowering tree in America. This year we are able to price this magnificent tree in reach of all. The following size trees are all large, branched, transplanted trees.

PRICES, PINK FLOWERING DOGWOOD

18-24"	BRANCHED	@	\$1.00	EACH
2-3'	"	@	1.50	EACH
3-4'	"	@	2.00	EACH
4-5'	"	@	3.00	EACH



LIBRARY RECEIVED
★ FEB 13 1959 ★
U. S. Department of Agriculture

DIVISION
LIBRARY, U. S. DEPT. OF AGRICULTURE,
WASHINGTON 25, D. C.

BOYD NURSERY COMPANY • McMinnville, Tennessee

Prices are per each tree, F. O. B. McMinnville, Tennessee.

Boyd's OUTSTANDING Flowering Trees



Flowering Cherries Grown Along the Tidal Basin in Washington, D. C.
This same effect may be produced by planting Flowering Crabs which are hardy everywhere.

The Best In Flowering Cherries

Pink Flowering

CHERRY

PRUNUS KWAZAN, Flowering Cherry

Double dark pink flowers.

Same color of flowering cherry as planted in Washington, D.C.—beautiful double pink flowers. Its beauty in the spring is unsurpassed by any flowering tree.

PRICES, KWAZAN FLW. CHERRY, (3 YR. GRAFTED TREES)

3-4' BRANCHED	@	3.00	EACH
4-5' " "	@	4.00	EACH

PRUNUS SUBHIRELLA

Higan Cherry

In the early spring, covered with lovely small pink blooms. The branches are graceful

PRICES, PINK FLOWERING HIGAN CHERRY, TWO-YEAR SEEDLING TREES

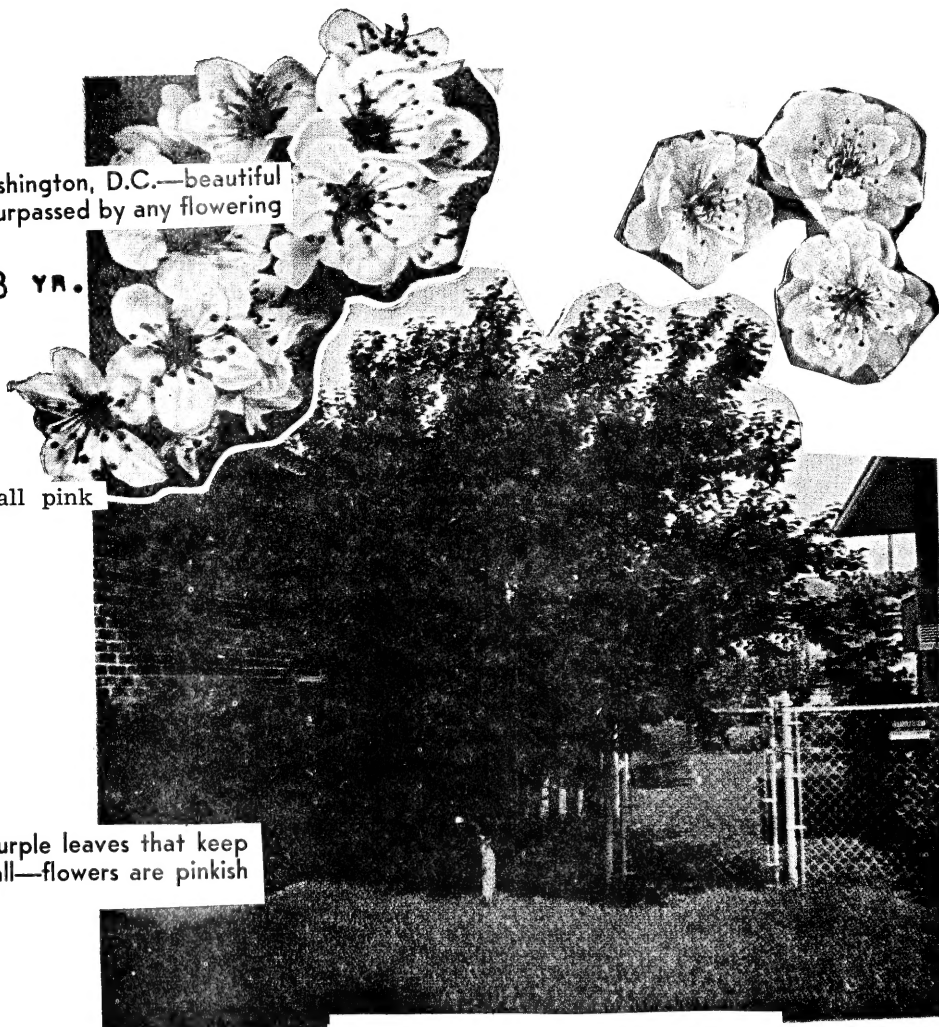
18-24" WHIPS	@	.40¢	EACH
2-3' " "	@	.50¢	EACH
3-4' " "	@	.60¢	EACH

"New" Purple-Leaf Plum

One of the outstanding of all foliage trees—dark purple leaves that keep their lustrous coloring throughout the summer and fall—flowers are pinkish white appearing in month of May.

PRICES, NEW PURPLE LEAF PLUM

2-3' BRANCHED	@	.40¢	EACH
3-4' " "	@	.60¢	EACH
4-5' " "	@	.80¢	EACH



PURPLE LEAF PLUM

BOYD NURSERY COMPANY • McMinnville, Tennessee

FLOWERING CRABS

Eleyi Flowering Crab

Beautiful Purple Foliage—attractive pink blossoms. An amazing, dazing beauty, early spring until frost.

Hopa Flowering Crab

The tree of amazing beauty—hardy and easy to grow spring beauty of bronzy red foliage, then the whole tree burst into bloom—the most magnificent fragrant pink flowers—showy red apples during summer—makes delicious jellies.

PRICES, ELEYI CRAB & HOPACRAB

2-3'	WHIPS	@	.50¢	EACH
3-4'	"	@	.75¢	EACH
4-5'	BRANCHED	@	1.00	EACH
5-6'	"	@	1.50	EACH

Has Your Garden or Civic Club Started on the Plant America Program?

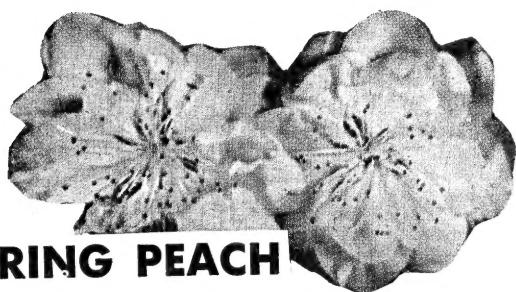
SENSATIONAL! NEW!

Almey-Flowering Crab

Almey takes its place as the most beautiful flowering crab in America. The tree is upright, vigorous and hardy. Almey blooms young. Each spring the two year old trees in the nursery are covered with blooms. Almey is the only variety that does this. It is hardy and will do well in any location. The fruits are maroon, and last into the winter season.

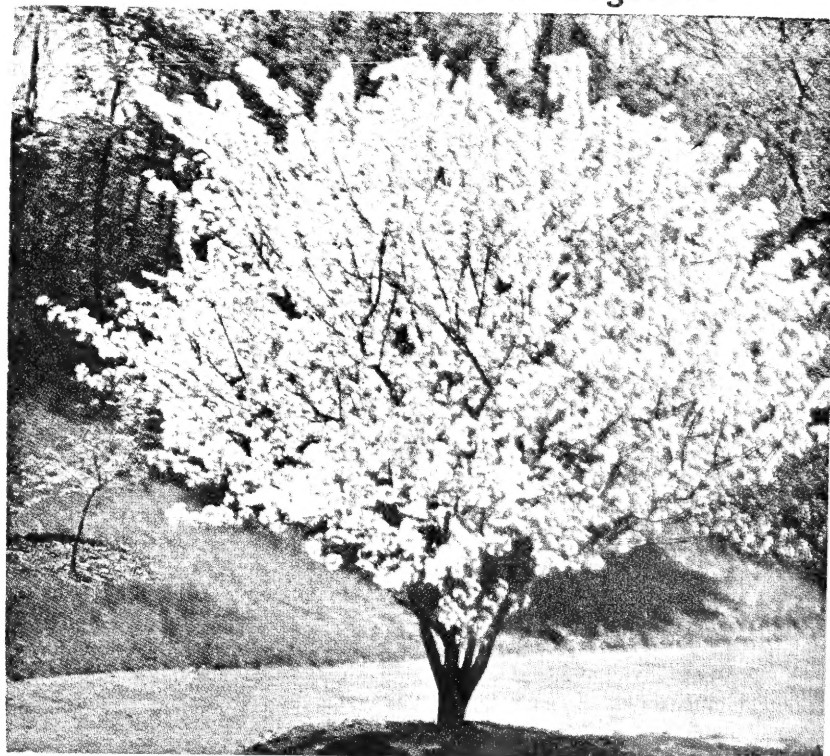
PRICES, "NEW" ALMEY CRAB

2-3'	BRANCHED	@	1.00	EACH
3-4'	"	@	1.50	EACH
4-5'	"	@	2.00	EACH



FLOWERING PEACH DOUBLE RED

2-3'	@	40¢	Eac h
3-4'	@	60¢	"
4-5'	@	80¢	"



MALUS CORONARIUS, Wild Sweet Crab

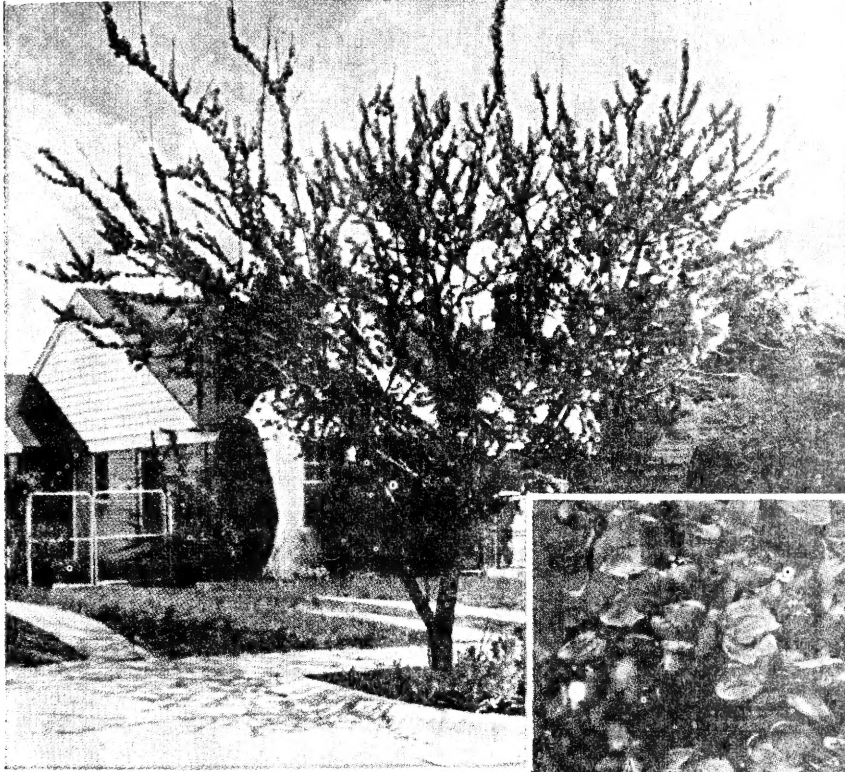
Deep pink blossoms fading to white. Delicately fragrant. Yellow fruits. Strong, vigorous grower. Late bloomer.

PRICES, MALUS CORONARIUS, WILD SWEET CRAB, WHITE FLOWERING CRAB

18-24"	@	.30¢	EACH
2-3'	@	.40¢	EACH
3-4'	@	.50¢	EACH

Red Bud

Also called the Judas Tree. One of the oldest trees known. It's beauty is unexcelled in the early spring when the rose-pink blossoms literally cover the trees before the leaves appear. The heart-shape leaf is about the most beautiful leaf of any tree.



PRINTED
IN
U.S.A.

REDBUD

(Cercis)

Prices, RED BUD

			Each
2-3'	Branched	@	40¢
3-4'	"	@	60¢
4-5'	"	@	80¢
5-6'	"	@	1.00

Mimosa Tree

Hardy only in the South. But really a beautiful tree, with its fern like foliage—fragrant pink blossoms in June. The foliage resembles tropical plants. Do not plant north of the Ohio River.

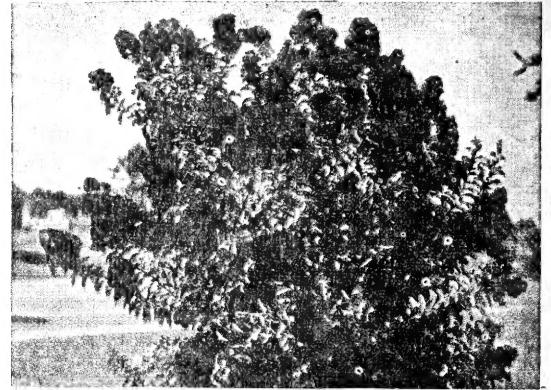
PRICES, MIMOSA TREES

18-24"	@	.30¢	EACH
2-3'	@	.40¢	EACH
3-4'	@	.50¢	EACH
4-5'	@	.60¢	EACH

MIMOSA

(Albizzia Julibrissin)

GRAPE MYRTLE



BLOOMS CONTINUOUSLY FROM MID-SUMMER TO FROST. IMMENSE, ATTRACTIVE, BRILLIANT FLOWERS FOR THREE MONTHS.

Crape Myrtle, the South's most beautiful Shrub, can now be grown successfully in the North. We have secured a strain which is much hardier. In the extreme Northern States, grow it just like Everblooming Roses, giving it Winter protection by mounding up dirt about 8 inches high before severely cold weather. In Spring, uncover. Like Roses, Crape Myrtle makes its blooms on new wood and if the tops are killed back to the ground, it will send up new tops in the Spring, which will be covered with huge blossoms from July to frost. Select

PRICES, RED CREEP MYRTLE

12-18"	BRANCHED	@	.30¢	EACH
18-24"	"	@	.40¢	EACH
2-3'	"	@	.50¢	EACH

