

Historic, Archive Document

Do not assume content reflects current scientific knowledge, policies, or practices.

02.01
Today's Quotations

SEEDS

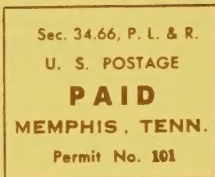
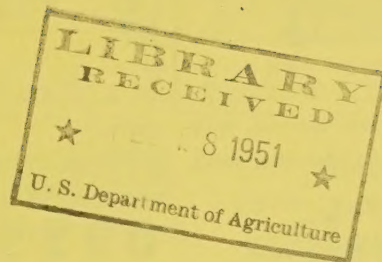
from . . .

W. B. MALLORY & SONS CO.

Memphis 2, Tenn.

P. O. Box 2486

21951-3



LIBRARY
U.S. DEPT. OF AGRICULTURE
WASHINGTON 25, D.C.

Return Postage Guaranteed

FIELD SEEDS **W. B. Mallory & Sons Co.** GARDEN SEEDS

Warehouse and Office
431 S. Main St.

P. O. BOX 2486
MEMPHIS, TENNESSEE

Telephone
5-7661

All Items Quoted F.O.B. Memphis and Subject to Stock on Hand when Order is Received, or any Radical Market Changes in Price.
W. B. MALLORY & SONS CO. GIVE NO WARRANTY, EXPRESS OR IMPLIED, AS TO THE PRODUCTIVENESS OF ANY SEEDS WE SELL AND WE WILL NOT BE IN ANY WAY RESPONSIBLE FOR THE CROP. (OUR LIABILITY IN ALL INSTANCES IS LIMITED TO THE PURCHASE PRICE OF THE SEED.)

D. & P. L. 15

Not Certified First Year 76% Germination
Treated & Delinted

Price Ton Lots, per ton	\$240.00
Less than ton, per bag	\$ 12.25

COTTON SEED

EMPIRE

Certified	First Year From Breeder
Treated and Delinted, per ton	\$280.00
Less than ton lots, per bag	\$ 14.25

CERTIFIED STONEVILLE 2B

Grade "A" Red Tag, Treated & Delinted

Price Ton Lots, per ton	\$270.00
Less than ton, per bag	\$ 13.75



	Per. Bu.
Keystone 38 (Early Yellow)—Delta Land	9.75
Keystone 222 (Full Season Yellow) Delta and Hill Land	8.75
Keystone U. S. 13 (Early Yellow) Delta and Hill Land	8.25
Keystone—106W—Early White— Miss., Ark. only	10.75
Dixie 17—Med. White—Fertile Soil	10.50
Tennessee 10 (Medium Maturity White) —Fertile Soil	10.50
Dixie 33 (Medium Maturity White) — Fertile Soil	10.50
Dixie 22—Med.—2 Ear Yellow	10.50
Trucker's Favorite Hybrid (Extra Early White) Net	11.00

Ask for Quantity Discount

FIELD CORN (open pollinated) NUBBED AND TIPPED

YELLOW DENT, 2½ Bu. Bags, per bu.	4.35
WHITE DENT (90 day), per bu.	Later
MOSBY PROLIFIC, 2½ Bu. Bags, per bu.	4.35
TENN. RED COB, 2½ bu. bags, per bu.	4.35
NEAL'S PAYMASTER, 2½ Bu. Bags, per bu.	4.35
NEAL'S PAYMASTER (Certified), per bu.	5.35
JARVIS PROLIFIC, 2½ Bu. Bags, per bu.	4.35
JARVIS PROLIFIC (Certified), per bu.	5.35
THOMPSON'S PROLIFIC, 2½ Bu. Bags, per bu.	4.65
JELLCOURSE, 2½ Bu. Bags	4.35
TRUCKER'S FAVORITE, 2 Bu. Bags	6.00
EARLY SURPRISE, 2 Bu. Bags	6.00

FORAGE SEEDS

ORANGE CANE, 100 lb. bags, per cwt.	Later
AMBER CANE, 100 lb. bags, per cwt.	Later
ATLAS SORGO, 100 lb. bags, per cwt.	Later
HEGARI, 100 lb. bags, per cwt.	Later
MARTIN MILO, 120 lb. bags, per lb.	Later
GERMAN MILLETT, 100 lb. bags, per cwt.	Later

CLOVERS

Ladino Clover, per pound, Non Cert.	1.65
Red Clover, per pound	.53
White Dutch Fancy, per pound	1.00
White Dutch, 10 Lbs. for	10.50
Alsike Clover, per pound	Later

GRASSES

	100-lb. Lots	Per lb.
BERMUDA GRASS (Hulled) per lb.	.50	
HULLED BERMUDA, 10 lbs. for	5.50	
BERMUDA GRASS (Unhulled) per lb.	.35	
UNHULLED BERMUDA, 10 lbs.	4.00	
DALLAS, per pound (imported)	Later	
ORCHARD, per pound	.40	
RED TOP (Herd's Grass), per pound	.55	
RYE GRASS, per pound	.11½	
SUDAN, 100-lb. bags, per pound	.14	
SWEET SUDAN, per pound	.14	
TIMOTHY, per pound	.20	
KENTUCKY BLUE GRASS, per pound	.68	
CERTIFIED KY. 31 FESCUE, per lb.	Later	
KENTUCKY 31 FESCUE, per lb.	Later	
Pasture Mixture, Per lb.	.50	

This mixture contains the following Ladino, White Dutch, Red & Hop Clovers, Ky. Blue, Red Top, Orchard, Rye Grass, Timothy.

LESPEDEZA

KOBE, 100 lb. bags, per pound	.15½
KOREAN, No. 1, 100 lb. bags, per pound	.09½
SERICEA, hulled and scarified, per pound	.20

SEED OATS

Victor Grain—4 Bu. Bags, per bu.	1.65
Ferguson 922—4 Bu. Bags	1.65

ALFALFA

Oklahoma, 150 pound bags, U. S. Verified Origin, per pound	Later
---	-------

WATERMELON

WE DO NOT SELL LESS THAN 1 LB. OF MELON SEED

	100 lb. Lots	30 to 100 lb. Lots	Less than 30 lbs.
DIXIE QUEEN, per lb.	1.15	1.20	1.25
STONE MOUNTAIN, per lb.	.80	.85	.90
TOM WATSON, per lb.	.80	.85	.90
KLECKLEY'S SWEET, per lb.	.80	.85	.90
WINONA, per lb.	1.30	1.35	1.40

CANE SEED (For Syrup)

SAPLIN SORGHUM, 100 lb. bags, per lb.	.13
Less than bag lots, per lb.	.14

SEED SOWERS

CYCLONE	ea. \$3.00
---------	------------

TURNIP SEED

	100 lb. Lots	30 to 100 lb. Lots	Less than 30 lbs.
Purple Top White Globe	.35	.37	.39
Large White Globe	.35	.37	.39
Seven Top	.35	.37	.39
Rutabaga	.35	.37	.39
Mixed	.30	.32	.34
Shogoin	.38	.40	.42
Purple Top Strap Leaf	.35	.37	.39

SPINACH

Bloomsdale Savoy Reselected	.33	.34	.36
-----------------------------	-----	-----	-----

MUSTARD

Tendergreen	.38	.40	.42
Southern Giant Curled	.38	.40	.42
Fla. Broadleaf, (Smooth)	.38	.40	.42
RAPE, DWARF ESSEX	.17	.18	.19
OKRA, WHITE VELVET	.45	.50	.55
DWARF GREEN	.45	.50	.55
KALE, DWARF SIBERIAN		per lb.	.80
Kentucky Field PUMPKIN	.50	.55	.60
CANTALOUPE, Hale's Best—No. 36		per lb.	1.00

CORN (Garden Varieties)

	100 lb. Lots	30 to 100 lb. Lots	Less than 30 lbs.
GOLDEN BANTAM (Sweet) per lb.	.16	.18	.20
GOLDEN CROSS HYBRID	.27	.29	.31
TRUCKER'S FAVORITE, per lb.	.10½	.12½	.14½
ADAMS EARLY	.14	.16	.18
EARLY SURPRISE, per lb.	.10½	.12½	.14½
YELLOW DYNAMITE, per lb.	.14	.16	.18

SOY BEANS

TANNER (for hay), 2 bu. bags, per bu.	3.75
VIRGINIA (for hay), 2½ bu. bags, per bu.	4.10
MAMMOTH BROWN, 2½ bu. bags, per bu.	5.00
LAREDO (for hay), 2½ bu. bags, per bu.	4.85
S-100, 2 bu. bags, per bu.	4.10
MAMLOXI, 2 bu. bags, per bu.	Later
BROWN BILOXI, 2 bu. bags, per bu.	Later
ARKSOY, 2 bu. bags, per bu.	Later
OGDEN, 2 bu. bags, per bu.	4.10
OGDEN, Certified, 2 bu. bags	4.85
S-100, Certified, 2 bu. bags, per bu.	4.85

PEANUTS

TENN. RED (Improved) 100 lb. bags, per lb.	.24
Less than sack lots, per lb.	.25

SEED BAGS

COFFEE BAGS— Good used, for Soy Beans and Oats, each	.35
---	-----

GARDEN PEAS

	100 lb. Lots	30 to 100 lb. Lots	Less than 30 lbs.
PURPLE HULL			Later
WHITE CROWDER PEAS			Later
SUGAR CROWDER			Later
BROWN CROWDER PEAS			Later
CALIF. BLACK EYE PEAS	.16	.18	.20
EARLY ALASKA PEAS	.11½	.13½	.15½
THOMAS LAXTON PEAS	.16½	.18½	.20½
LAXTONIA PEAS	.20	.22	.24
TALL TELEPHONE PEAS	.17	.19	.21
LARGE MARROWFAT PEAS	.15½	.17½	.19½

GARDEN SEED

WE DO NOT SELL LESS THAN 5 LBS. OF BEANS

	100 lb. Lots	30 to 100 lb. Lots	Less than 30 lbs.
BEANS—			
BOUNTIFUL STRINGLESS (Bush) Beans	.23½	.25½	.27½
GIANT STRINGLESS G. P. (Bush) Beans	.23	.25	.27
BURPEES, STRINGLESS G. P. (Bush) Beans	.22½	.24½	.25½
RED VALENTINE STRINGLESS (Bush) Beans	.25	.27	.29
TENN. GREEN POD (Bush) Beans	.23½	.25½	.27½
KENTUCKY WONDER (Pole) Beans	.21	.22	.23
WHITE CORNFIELD (Genuine) (Pole) Beans	.26	.28	.30
STRIPED CREASEBACK (Pole) Beans	.22½	.24½	.26½
HENDERSON (Bush) Lima Beans	.20	.22	.24
FLORIDA SPECKLED (Pole) Lima Beans	.20	.22	.24
SIEVA or CAROLINA WHITE (Pole) Lima Beans	.18	.20	.22
GIANT BUTTER Speckled (Pole) Lima Beans	.20½	.22½	.24½
JACKSON WONDER (Calico) (Bush)	.20	.22	.24
BLACK VALENTINE (Stringless) (Bush)	.22	.25	.27

ROTENONE MIXTURE

Formerly Derris Mixture
FOR CONTROL MEXICAN BEETLE
AND OTHER INSECTS

12/1-lb. CASE, per case	1.95
6/5-lb. CASE, per case	4.15

RED STAG

LEAF MOLD—PEAT MOSS

	Price Per Case	Suggested Retail Price—Each
Leaf Mold Packed		
12½ Peck—Per Case	3.72	.60
½ Bushel Packed Single	.85 each	1.25
1 Bushel Packed Single	1.25 each	1.89
75 Lb. Bags (2½ Bu.) Single	2.50 each	3.75
Peat Moss Packed		
12½ Peck—Per Case	3.72	.60
½ Bushel Bags—Single	.85 each	1.25
1 Bushel Bags—Single	1.25 each	1.89

PREMIER

PEAT MOSS

Large Bale 36", each	3.50
Medium Size Handy Bale 30", each	2.50

LEGUME-AID

"THE INOCULANT IN THE BIG CARTON"
Always specify unit size and kind of seed to be inoculated

VARIETY	UNIT SIZE	UNITS per case	UNIT PRICES W/retail
Single Alfalfa			
Sweet, Bur. Hubam	100-Lb.	10	.32 each .50
Single Clover			
Red, White, Crimson, Alsike, Ladino, etc.	100-Lb.	10	.32 each .50
Peas & Vetch			
Austrian Winter Peas, Field and Garden Peas	100-Lb.	10	.32 each .50
Lupines			
Blue, White, Yellow.	100-Lb.	10	.32 each .50
Lespedeza			
All Varieties	100-Lb.	10	.30 each .50
Cowpeas—Peanuts			
Lima, Mung, Crotalaria, Kudzu, Alyce Clover	100-Lb.	10	.20 each .30
Soybeans	5-Bu.	10	.35 each .55
All Varieties	50-Bu.	1	3.50 each 5.00
Combination Alfalfa and Clovers			
	1-Bu.	10	.32 each .50
	2½-Bu.	10	.65 each 1.00
Packet Unit Sizes			
Trefoil, Birdsfoot, Ladino Clover,	10-Lb.	—	.15 each .25
Garden Peas & Beans	5-Lb.	—	.09 each .15



Red Stag

LEAF MOLD

FROM REAL LIVE OAKS

Nature's Plant Food that Brings
New Blooming Beauty to Flowers
and Flowering Shrubs

"Nature's Soil Builder"
For Lovelier

AZALEAS
GARDENIAS
CAMELLIAS
HYDRANGEAS
ROSES

FIELD CROPS PLANTING CHART

KIND OF SEED	Lbs. per Std. Bu.	Rate to Sow Lbs. per Acre	Time to Sow	Depth to Sow Inches	KIND OF SEED	Lbs. per Std. Bu.	Rate to Sow Lbs. per Acre	Time to Sow	Depth to Sow Inches
Alfalfa—broadcast	60	18 to 22	Spring & ea. Fall	1 to 1½	Kale, Thousand Headed	50	4 to 5	Mar., Apr., May, Aug., Sept.	½
Alfalfa—drilled	60	12 to 15	Spring & ea. Fall	½ to 1	Lawn Grass mixed		125	Ea. spring, ea. fall	½
Artichokes, Jerusalem	50	150 to 200	March, April, May	4	Lespedeza—Common	25	25-30	Ea. spring after frost	1 to 2
Barley, Spring	48	120 to 150	March, April	1 to 1½	Lespedeza—Kobe	25	20-25	Ea. spring after frost	1 to 2
Barley, Winter	48	120 to 150	Aug. to Oct.	1 to 1½	Lespedeza—Korean	25	20-25	Ea. spring after frost	1 to 2
Beet, Mangel Stock	30	6 to 8	April, May, June	1	Lespedeza Sericea (hulled)	60	25 to 30	Early spring	1 to 2
Beans, Navy, Field (Small)	60	60	May, June, July	1	Millet— for hay	50	30	Late May to ea. July	½ to 1
Beans, Gt. Northern (Large Navy)	60	60	May, June, July	1	Millet— for Seed	50	15	Late May to ea. July	½ to 1
Bermuda Grass	40	5 to 6	March to May	½	Millet, Hungarian, for Hay	48	48	Late May to ea. July	½ to 1
Black Medic	60	18 to 20	Feb., March, April	½	Millet, Hungarian, for Seed	48	30	Late May to ea. July	½ to 1
Blue Grass, Ky., for lawns	14*	125	Ea. spring, ea. Sept.	½	Millet—Japanese	35	20 to 30	Late May to ea. July	½ to 1
Blue Grass, Ky., for pastures	14*	20 to 30	Ea. spring, ea. Sept.	½	Mung Beans	60	10 to 15	May, June, July	½ to 1
Blue Grass, Canada, for lawns	14*	125	Ea. spring, ea. Sept.	½	Oats	32	60 to 80	March, April	1 to 1½
Blue Grass, Canada, for pastures	14*	20	Ea. spring, ea. Sept.	½	Orchard Grass for Hay	14*	21 to 28	Ea. spring-fall	½ to 1
Brome Grass	14*	20	Spring	½ to 2	Orchard Grass for Seed	14*	10 to 14	Ea. spring-fall	½ to 1
Broom Corn	48	5 to 8	April, May	1 to 1½	Pasture Mixtures		30 to 40	Ea. spring-fall	½ to 1
Buckwheat	52	50 to 60	Late spring	1 to 1½	Peanuts	22	35 to 40	May, June	1½ to 2
Carpet Grass	18	8 to 10	Jan. to June	½	Peas, Austrian Winter	60	30 to 35	Aug., Sept., Oct.	2
Caster Beans—Hills	46	5	Late Spring	1 to 2	Peas, Canada Field (broadcast)	60	120 to 150	Early spring	1 to 2
Clover, Alsike	60	5 to 6	Winter to April	½ to 1	Peas, Canada Field, with oats	60	75 to 90	Early spring	
Clover, Alsike—in mixture	60	2 to 4	Winter to April	½ to 1	Peas, Cow, broadcast	60	75 to 90	May or June	1 to 2
Clover, Alsike & Timothy mixed	60	8 to 10	Winter to April	½ to 1	Peas, Cow, drilled	60	25	May or June	1 to 2
Clover, Burr	12	30 to 40	August, Sept., Oct.	½	Peas, Cow, in drill with corn	60	20 to 30	May or June	1 to 2
Clover, Crimson	60	12 to 15	July to Oct.	½ to 1	Rape, broadcast	50	5 to 8	Ea. May to late July	½ to 1½
Clover, Hop	60	10 to 12	Feb., Mar., Apr., Sept.	½	Rape, drilled	50	4 to 5	Ea. May to late July	½ to 1½
Clover, Ladino	60	4 to 6	Spring, Fall	½	Red Top, Solid Seed	14*	6 to 8	Apr. or ea. Sept.	½
Clover, Mammoth	60	6 to 10	Winter, early April	½ to 1	Red Top, Unhulled	14*	20 to 25	Apr. or ea. Sept.	½
Clover, Mammoth in mixture	60	4 to 6	Winter to April	½ to 1	Reed Canary Grass	44	10 to 12	Ea. spring, Aug., Sept.	½
Clover, Red	60	6 to 10	Winter, early April	½ to 1	Rye, Grain	56	84 to 112	Sept. to Nov.	1 to 1½
Clover, Red, in mixture	60	4 to 6	Winter to April	½ to 1	Rye, Grass	24	28 to 35	Apr. or ea. Sept.	½
Clover, Persian	60	6 to 8	Feb., March	½	Sorghum	50	8 to 10	Apr., May, June, July	1
Clover, Sweet, white or yellow	60	12 to 15	Ea. spg., Aug., Sept.	½ to 1	Sorghum Forage, broadcast	50	40 to 50	May, June	1 to 1½
Clover, Sweet, white (unhulled)	30	25 to 30	Oct. to Feb.	1	Sorghum Forage, drilled	50	8 to 10	May, June	1 to 1½
Clover, White Dutch	60	6 to 8	March to April	½ to 1	Sorghum Syrup	50	8 to 10	May, June	1 to 1½
Corn	56	8 to 10	Late spring	1 to 1½	Sorghum, grain varieties, broadcast	56	40 to 50	May, June	1 to 1½
Corn, for Silage	56	40 to 56	Late spring	1 to 1½	Sorghum, grain varieties, drilled	56	10 to 15	May, June	1 to 1½
Corn, Pop	56	3 to 5	May, June	1	Soy Beans, broadcast	60	75 to 120	May, June	1 to 2
Cottonseed Fuzzy	32	32 to 50	March, April, May	1 to 1½	Soy Beans, drilled	60	25	May, June	1 to 2
Crested Wheat Grass	22	10 to 12	Ea. spring, Aug., Sept.	½	Soy Beans, in drill with corn	60	15 to 20	May, June	1 to 2
Cretalaria	40	12 to 15	April, May, June	½	Sudan Grass, broadcast	40	20 to 30	Late May to ea. July	½ to 1
Dallas Grass	10	8 to 10	March, April, May	½	Sudan Grass, drilled	40	10 to 15	Late May to ea. July	½ to 1
Fescue, Meadow	24*	20 to 30	Ea. spg., Aug., Sept.	½	Sunflower	32	6 to 8	May	1 to 2
Fescue, other varieties	14*	28 to 35	Ea. spg., Aug., Sept.	½	Tall Meadow Oat Grass	14	30 to 50	Ea. spring, Aug., Sept.	½
Fescue, Tall	30	10 to 15	Ea. Spg., Aug., Sept.	½	Timothy	45	8 to 10	Spring & Fall	½
Flax	52	30 to 50	March, April	½	Velvet Beans	60	15 to 30	May, June	3 to 4
Johnson Grass	28	20 to 30	April to July	1	Vetch, Winter or Hairy	60	40 to 60	June to Sept.	1 to 2
Kaffir-Milo-Feterita-Grohoma-Atlas Sorgo-Hegari (drill)	56	10 to 15	May, June	1 to 1½	Vetch, Spring	60	40 to 60	March or April	1 to 2
Kaffir-Milo-Feterita-Grohoma-Atlas Sorgo-Hegari (broadcast)	56	40 to 50	May, June	1 to 1½	Wheat, Winter	60	75 to 90	Sept. to Nov.	1 to 1½
					Wheat, Egyptian, Shallow	50	10 to 12	May, June, July	1½ to 2

*Note:—Weights per bushel for certain grasses are old standards. Good cleaned seed is usually heavier.

"VERTAGREEN" PRICES

RETAIL PRICE

100-lb. Bags.....	\$4.25	10-lb. Bags.....	\$0.90
50-lb. Bags.....	\$2.65	5-lb. Bags.....	\$0.50
25-lb. Bags.....	\$1.60	1-lb. Bags.....	\$0.15

DEALERS ONLY—WHOLESALE PRICE

100-lb. Bags.....	\$2.90	10-lb. Bags.....	\$0.59 (6 per bale)
50-lb. Bags.....	\$1.85	5-lb. Bags.....	\$0.32 (12 per bale)
25-lb. Bags.....	\$1.05	1-lb. Bags.....	\$0.09 (32 per bale)

VERTAGREEN

WHAT IT IS

Vertagreen is a high quality, scientifically blended and balanced plant food, excellent for obtaining more prolific growth of lawns, flowers, shrubs, trees, garden vegetables and field crops. It is clean, odorless and easy to apply.

New Life

FOR YOUR SOIL

To have a healthy garden you must first have *healthy soil*. Don't waste time, seed and fertilizer on poor soil. Premier Peat Moss, 97% organic, gives your soil loam-like texture, making it more productive. It absorbs 20 times its own weight in moisture . . . loosens and aerates heavy soil . . . adds body to light soil . . . prevents leaching. Water and fertilizer penetrate deeply, feeding the roots as needed.

Remember, your garden can be no better than your soil. Get Premier Peat Moss, with the certified seal.

PREMIER PEAT MOSS

We have it!



FOR
LAWNS, FLOWERS
TREES, GARDEN VEGETABLES, SHRUBS
AND ALL FIELD CROPS
PLACE YOUR ORDER NOW