

Historic, Archive Document

Do not assume content reflects current scientific knowledge, policies, or practices.



Today's Quotations

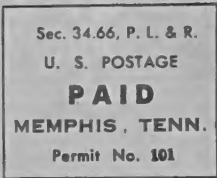
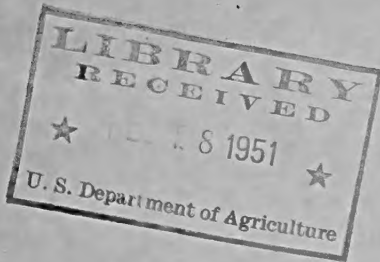
SEEDS

from . . .

W. B. MALLORY & SONS CO.

Memphis 2, Tenn.

P. O. Box 2486



LIBRARY
U.S. DEPT. OF AGRICULTURE
WASHINGTON 25, D.C.

Return Postage Guaranteed

FIELD SEEDS

W. B. Mallory & Sons Co.

GARDEN SEEDS

Warehouse and Office
431 S. Main St.

**P. O. BOX 2486
MEMPHIS, TENNESSEE**

Telephone
5-7661

All Items Quoted F.O.B. Memphis and Subject to Stock on Hand when Order is Received, or any Radical Market Changes in Price.
W. B. MALLORY & SONS CO. GIVE NO WARRANTY, EXPRESS OR IMPLIED, AS TO THE PRODUCTIVENESS OF ANY SEEDS WE SELL AND WE WILL NOT BE IN ANY WAY RESPONSIBLE FOR THE CROP. (OUR LIABILITY IN ALL INSTANCES IS LIMITED TO THE PURCHASE PRICE OF THE SEED.)

D. & P. L. 15

Not Certified First Year 76% Germination
Treated & Delinted

Price Ton Lots, per ton	\$240.00
Less than ton, per bag	\$ 12.25

COTTON SEED
EMPIRE

Certified First Year From Breeder

Treated and Delinted, per ton	\$280.00
Less than ton lots, per bag	\$ 14.25

CERTIFIED STONEVILLE 2B

Grade "A" Red Tag, Treated & Delinted

Price Ton Lots, per ton	\$270.00
Less than ton, per bag	\$ 13.75



	Per Bu.
Keystone 38 (Early Yellow)—Delta Land	9.75
Keystone 222 (Full Season Yellow) Delta and Hill Land	8.75
Keystone U. S. 13 (Early Yellow) Delta and Hill Land	8.25
Keystone—106W—Early White— Miss., Ark. only	10.75
Dixie 17—Med. White—Fertile Soil	10.50
Tennessee 10 (Medium Maturity White) —Fertile Soil	10.50
Dixie 33 (Medium Maturity White) — Fertile Soil	10.50
Dixie 22—Med.—2 Ear Yellow	10.50
Trucker's Favorite Hybrid (Extra Early White) Net	11.00

Ask for Quantity Discount

**FIELD CORN (open pollinated)
NUBBED AND TIPPED**

YELLOW DENT, 2½ Bu. Bags, per bu.	4.35
WHITE DENT (90 day), per bu.	Later
MOSBY PROLIFIC, 2½ Bu. Bags, per bu.	4.35
TENN. RED COB, 2½ bu. bags, per bu.	4.35
NEAL'S PAYMASTER, 2½ Bu. Bags, per bu.	4.35
NEAL'S PAYMASTER (Certified), per bu.	5.35
JARVIS PROLIFIC, 2½ Bu. Bags, per bu.	4.35
JARVIS PROLIFIC (Certified), per bu.	5.35
THOMPSON'S PROLIFIC, 2½ Bu. Bags, per bu.	4.65
JELLCOURSE, 2½ Bu. Bags	4.35
TRUCKER'S FAVORITE, 2 Bu. Bags	6.00
EARLY SURPRISE, 2 Bu. Bags	6.00

FORAGE SEEDS

ORANGE CANE, 100 lb. bags, per cwt.	Later
AMBER CANE, 100 lb. bags, per cwt.	Later
ATLAS SORGO, 100 lb. bags, per cwt.	Later
HEGARI, 100 lb. bags, per cwt.	Later
MARTIN MILO, 120 lb. bags, per lb.	Later
GERMAN MILLETT, 100 lb. bags, per cwt.	Later

CLOVERS

Ladino Clover, per pound, Non Cert.	1.65
Red Clover, per pound	.53
White Dutch Fancy, per pound	1.00
White Dutch, 10 Lbs. for	10.50
Alsike Clover, per pound	Later

GRASSES

	100-lb. Lots	Per lb.
BERMUDA GRASS (Hulled) per lb.	.50	
HULLED BERMUDA, 10 lbs. for	5.50	
BERMUDA GRASS (Unhulled) per lb.	.35	
UNHULLED BERMUDA, 10 lbs.	4.00	
DALLAS, per pound (imported)	Later	
ORCHARD, per pound	.40	
RED TOP (Herd's Grass), per pound	.55	
RYE GRASS, per pound	.11½	
SUDAN, 100-lb. bags, per pound	.14	
SWEET SUDAN, per pound	.14	
TIMOTHY, per pound	.20	
KENTUCKY BLUE GRASS, per pound	.68	
CERTIFIED KY. 31 FESCUE, per lb.	Later	
KENTUCKY 31 FESCUE, per lb.	Later	
Pasture Mixture, Per lb.	.50	

This mixture contains the following Ladino, White Dutch, Red & Hop Clovers, Ky. Blue, Red Top, Orchard, Rye Grass, Timothy.

LESPEDEZA

KOBE, 100 lb. bags, per pound	.15¼
KOREAN, No. 1, 100 lb. bags, per pound	.09¼
SERICEA, hulled and scarified, per pound	.20

SEED OATS

Victor Grain—4 Bu. Bags, per bu.	1.65
Ferguson 922—4 Bu. Bags	1.65

ALFALFA

Oklahoma, 150 pound bags, U. S. Verified Origin, per pound	Later
---	-------

WATERMELON

WE DO NOT SELL LESS THAN 1 LB. OF MELON SEED

	100 lb. Lots	30 to 100 lb. Lots	Less than 30 lbs.
DIXIE QUEEN, per lb.	1.15	1.20	1.25
STONE MOUNTAIN, per lb.	.80	.85	.90
TOM WATSON, per lb.	.80	.85	.90
KLECKLEY'S SWEET, per lb.	.80	.85	.90
WINONA, per lb.	1.30	1.35	1.40

CANE SEED (For Syrup)

SAPLIN SORGHUM, 100 lb. bags, per lb.	.13
Less than bag lots, per lb.	.14

SEED SOWERS

CYCLONE	ea. \$3.00
---------	------------

TURNIP SEED

	100 lb. Lots	30 to 100 lb. Lots	Less than 30 lbs.
Purple Top White Globe	.35	.37	.39
Large White Globe	.35	.37	.39
Seven Top	.35	.37	.39
Rutabaga	.35	.37	.39
Mixed	.30	.32	.34
Shogoin	.38	.40	.42
Purple Top Strap Leaf	.35	.37	.39

SPINACH

Bloomsdale Savoy Reselected	.33	.34	.36
-----------------------------	-----	-----	-----

MUSTARD

Tendergreen	.38	.40	.42
Southern Giant Curled	.38	.40	.42
Fla. Broadleaf, (Smooth)	.38	.40	.42

	100 lb. Lots	30 to 100 lb. Lots	Less than 30 lbs.
RAPE, DWARF ESSEX	.17	.18	.19
OKRA, WHITE VELVET	.45	.50	.55
DWARF GREEN	.45	.50	.55
KALE, DWARF SIBERIAN		per lb.	.80
Kentucky Field PUMPKIN	.50	.55	.60
CANTALOUPE, Hale's Best—No. 36		per lb.	1.00

CORN (Garden Varieties)

	100 lb. Lots	30 to 100 lb. Lots	Less than 30 lbs.
GOLDEN BANTAM (Sweet) per lb.	.16	.18	.20
GOLDEN CROSS HYBRID	.27	.29	.31
TRUCKER'S FAVORITE, per lb.	.10½	.12½	.14½
ADAMS EARLY	.14	.16	.18
EARLY SURPRISE, per lb.	.10½	.12½	.14½
YELLOW DYNAMITE, per lb.	.14	.16	.18

SOY BEANS

TANNER (for hay), 2 bu. bags, per bu.	3.75
VIRGINIA (for hay), 2½ bu. bags, per bu.	4.10
MAMMOTH BROWN, 2½ bu. bags, per bu.	5.00
LAREDO (for hay), 2½ bu. bags, per bu.	4.85
S-100, 2 bu. bags, per bu.	4.10
MAMLOXI, 2 bu. bags, per bu.	Later
BROWN BILOXI, 2 bu. bags, per bu.	Later
ARKSOY, 2 bu. bags, per bu.	Later
OGDEN, 2 bu. bags, per bu.	4.10
OGDEN, Certified, 2 bu. bags	4.85
S-100, Certified, 2 bu. bags, per bu.	4.85

PEANUTS

TENN. RED (Improved) 100 lb. bags, per lb.	.24
Less than sack lots, per lb.	.25

SEED BAGS

COFFEE BAGS— Good used, for Soy Beans and Oats, each	.35
---	-----

GARDEN PEAS

	100 lb. Lots	30 to 100 lb. Lots	Less than 30 lbs.
PURPLE HULL		Later	
WHITE CROWDER PEAS		Later	
SUGAR CROWDER		Later	
BROWN CROWDER PEAS		Later	
CALIF. BLACK EYE PEAS	.16	.18	.20
EARLY ALASKA PEAS	.11¼	.13¼	.15¼
THOMAS LAXTON PEAS	.16½	.18½	.20½
LAXTONIA PEAS	.20	.22	.24
TALL TELEPHONE PEAS	.17	.19	.21
LARGE MARROWFAT PEAS	.15½	.17½	.19½

GARDEN SEED

WE DO NOT SELL LESS THAN 5 LBS. OF BEANS

	100 lb. Lots	30 to 100 lb. Lots	Less than 30 lbs.
BEANS—			
BOUNTIFUL STRINGLESS (Bush) Beans	.23½	.25½	.27½
GIANT STRINGLESS G. P. (Bush) Beans	.23	.25	.27
BURPEES, STRINGLESS G. P. (Bush) Beans	.22½	.24½	.25½
RED VALENTINE STRINGLESS (Bush) Beans	.25	.27	.29
TENN. GREEN POD (Bush) Beans	.23½	.25½	.27½
KENTUCKY WONDER (Pole) Beans	.21	.22	.23
WHITE CORNFIELD (Genuine) (Pole) Beans	.26	.28	.30
STRIPED CREASEBACK (Pole) Beans	.22½	.24½	.26½
HENDERSON (Bush) Lima Beans	.20	.22	.24
FLORIDA SPECKLED (Pole) Lima Beans	.20	.22	.24
SIEVA or CAROLINA WHITE (Pole) Lima Beans	.18	.20	.22
GIANT BUTTER Speckled (Pole) Lima Beans	.20¼	.22¼	.24¼
JACKSON WONDER (Calico) (Bush)	.20	.22	.24
BLACK VALENTINE (Stringless) (Bush)	.22	.25	.27

ROTENONE MIXTURE

Formerly Derris Mixture
FOR CONTROL MEXICAN BEETLE
AND OTHER INSECTS

12/1-lb. CASE, per case	1.95
6/5-lb. CASE, per case	4.15

RED STAG

LEAF MOLD—PEAT MOSS

	Price Per Case	Suggested Retail Price—Each
Leaf Mold Packed		
12½ Peck—Per Case	3.72	.60
½ Bushel Packed Single	.85 each	1.25
1 Bushel Packed Single	1.25 each	1.89
75 Lb. Bags (2¼ Bu.) Single	2.50 each	3.75
Peat Moss Packed		
12½ Peck—Per Case	3.72	.60
½ Bushel Bags—Single	.85 each	1.25
1 Bushel Bags—Single	1.25 each	1.89

PREMIER PEAT MOSS

Large Bale 36", each	3.50
Medium Size Handy Bale 30", each	2.50

LEGUME-AID

"THE INOCULANT IN THE BIG CARTON"
Always specify unit size and kind of seed to be inoculated

VARIETY	UNIT SIZE	UNITS per case	UNIT PRICES Wholesale	Retail
Single Alfalfa Sweet, Bur. Huhum	100-Lb.	10	.32 each	.50
Single Clover Red, White, Crimson, Alsike, Ladino, etc.	100-Lb.	10	.32 each	.50
Peas & Vetch Austrian Winter Peas, Field and Garden Peas	100-Lb.	10	.32 each	.50
Lupines Blue, White, Yellow	100-Lb.	10	.32 each	.50
Lespedeza All Varieties	100-Lb.	10	.30 each	.50
Cowpeas—Peanuts Lima, Mung, Crotalaria Kudzu, Alyce Clover	100-Lb.	10	.20 each	.30
Soybeans All Varieties	5-Bu.	10	.35 each	.55
	50-Bu.	1	3.50 each	5.00
Combination Alfalfa and Clovers	1-Bu.	10	.32 each	.50
	2½-Bu.	10	.65 each	1.00
Packet Unit Sizes				
Trefoil, Birdsfoot, Ladino Clover,	10-Lb.	—	.15 each	.25
Garden Peas & Beans	10-Lb.	—	.15 each	.25
	5-Lb.	—	.09 each	.15



Red Stag LEAF MOLD
FROM REAL LIVE OAKS

Nature's Plant Food that Brings
New Blooming Beauty to Flowers
and Flowering Shrubs

"Nature's Soil Builder"
For Lovelier

- A Z A L E A S
- G A R D E N I A S
- C A M E L L I A S
- H Y D R A N G E A S
- R O S E S



FIELD CROPS PLANTING CHART

KIND OF SEED	Lbs. per Std. Bu.	Rate to Sow Lbs. per Acre	Time to Sow	Depth to Sow Inches	KIND OF SEED	Lbs. per Std. Bu.	Rate to Sow Lbs. per Acre	Time to Sow				Depth to Sow Inches
								Mar.	Apr.	May	Aug.	
Alfalfa—broadcast	60	18 to 22	Spring & ea. Fall	1 to 1½	Kale, Thousand Headed	50	4 to 5	Mar., Sept.	Apr.	May	Aug.	½
Alfalfa—drilled	60	12 to 15	Spring & ea. Fall	½ to 1	Lawn Grass mixed		125	Ea. spring, ea. fall				½
Artichokes, Jerusalem	50	150 to 200	March, April, May	4	Lespedeza—Common	25	25-30	Ea. spring after frost				1 to 2
Barley, Spring	48	120 to 150	March, April	1 to 1½	Lespedeza—Kobe	25	20-25	Ea. spring after frost				1 to 2
Barley, Winter	48	120 to 150	Aug. to Oct.	1 to 1½	Lespedeza—Korean	25	20-25	Ea. spring after frost				1 to 2
Beet, Mangel Stock	30	6 to 8	April, May, June	1	Lespedeza Sericea (hulled)	60	25 to 30	Early spring				1 to 2
Beans, Navy, Field (Small)	60	60	May, June, July	1	Millets—for hay	50	30	Late May to ea. July				½ to 1
Beans, Gt. Northern (Large Navy)	60	60	May, June, July	1	Millets—Hungarian, for Hay	50	15	Late May to ea. July				½ to 1
Bermuda Grass	40	5 to 6	March to May	½	Millets, Hungarian, for Seed	48	30	Late May to ea. July				½ to 1
Black Medic	60	18 to 20	Feb., March, April	½	Millets—Japanese	35	20 to 30	Late May to ea. July				½ to 1
Blue Grass, Ky., for lawns	14*	125	Ea. spring, ea. Sept.	½	Mung Beans	60	10 to 15	May, June, July				½ to 1
Blue Grass, Ky., for pastures	14*	20 to 30	Ea. spring, ea. Sept.	½	Oats	32	60 to 80	March, April				1 to 1½
Blue Grass, Canada, for lawns	14*	125	Ea. spring, ea. Sept.	½	Orchard Grass for Hay	14*	21 to 28	Ea. spring-fall				½ to 1
Blue Grass, Canada, for pastures	14*	20	Ea. spring, ea. Sept.	½	Orchard Grass for Seed	14*	10 to 14	Ea. spring-fall				½ to 1
Brome Grass	14*	20	Spring	1½ to 2	Pasture Mixtures		30 to 40	Ea. spring-fall				1½ to 2
Broom Corn	48	5 to 8	April, May	1 to 1½	Peanuts	22	35 to 40	May, June				1½ to 2
Buckwheat	52	50 to 60	Late spring	1 to 1½	Peas, Austrian Winter	80	30 to 35	Aug., Sept., Oct.				2
Carpet Grass	18	8 to 10	Jan. to June	½	Peas, Canada Field (broadcast)	60	120 to 150	Early spring				1 to 2
Caster Beans—Hills	46	5	Late Spring	1 to 2	Peas, Canada Field, with oats	60	75 to 90	Early spring				1 to 2
Clover, Alsike	60	5 to 6	Winter to April	½ to 1	Peas, Cow, broadcast	60	75 to 90	May or June				1 to 2
Clover, Alsike—In mixture	60	2 to 4	Winter to April	½ to 1	Peas, Cow, drilled	60	25	May or June				1 to 2
Clover, Alsike & Timothy mixed	60	8 to 10	Winter to April	½ to 1	Peas, Cow, in drill with corn	60	20 to 30	May or June				1 to 2
Clover, Burr	12	30 to 40	August, Sept., Oct.	½	Rape, broadcast	50	5 to 8	Ea. May to late July				½ to 1½
Clover, Crimson	60	12 to 15	July to Oct.	½ to 1	Rape, drilled	50	4 to 5	Ea. May to late July				½ to 1½
Clover, Hop	60	10 to 12	Feb., Mar., Apr., Sept.	¼	Red Top, Solid Seed	14*	6 to 8	Apr. or ea. Sept.				½
Clover, Ladino	60	4 to 6	Spring, Fall	½	Red Top, Unhulled	14*	20 to 25	Apr. or ea. Sept.				½
Clover, Mammoth	60	6 to 10	Winter, early April	½ to 1	Reed Canary Grass	44	10 to 12	Ea. spring, Aug., Sept.				½
Clover, Mammoth in mixture	60	4 to 6	Winter to April	½ to 1	Rye, Grain	58	84 to 112	Sept. to Nov.				1 to 1½
Clover, Red	60	6 to 10	Winter, early April	½ to 1	Rye, Grass	24	28 to 35	Apr. or ea. Sept.				½
Clover, Red, in mixture	60	4 to 6	Winter to April	½ to 1	Sorghum	50	8 to 10	Apr., May, June, July				1
Clover, Persian	60	6 to 8	Feb., March	½	Sorghum Forage, broadcast	50	40 to 50	May, June				1 to 1½
Clover, Sweet, white or yellow	60	12 to 15	Ea. spg., Aug., Sept.	½ to 1	Sorghum Forage, drilled	50	8 to 10	May, June				1 to 1½
Clover, Sweet, white (unhulled)	30	25 to 30	Oct. to Feb.	1	Sorghum Syrup	50	8 to 10	May, June				1 to 1½
Clover, White Dutch	60	6 to 8	March to April	½ to 1	Sorghum, grain varieties, broadcast	56	40 to 50	May, June				1 to 1½
Corn	56	8 to 10	Late spring	1 to 1½	Sorghum, grain varieties, drilled	58	10 to 15	May, June				1 to 1½
Corn, for Silage	56	40 to 56	Late spring	1 to 1½	Soy Beans, broadcast	60	75 to 120	May, June				1 to 2
Corn, Pop	56	3 to 5	May, June	1	Soy Beans, drilled	60	25	May, June				1 to 2
Cottonseed Fuzzy	32	32 to 50	March, April, May	1 to 1½	Soy Beans, in drill with corn	60	15 to 20	May, June				1 to 2
Crested Wheat Grass	22	10 to 12	Ea. spring, Aug., Sept.	½	Sudan Grass, broadcast	40	20 to 30	Late May to ea. July				½ to 1
Crotalaria	40	12 to 15	April, May, June	¾	Sudan Grass, drilled	40	10 to 15	Late May to ea. July				½ to 1
Dallas Grass	10	8 to 10	March, April, May	½	Sunflower	32	6 to 8	May				1 to 2
Fescue, Meadow	24*	20 to 30	Ea. spg., Aug., Sept.	½	Tall Meadow Oat Grass	14	30 to 50	Ea. spring, Aug., Sept.				½
Fescue, other varieties	14*	28 to 35	Ea. spg., Aug., Sept.	½	Timothy	45	8 to 10	Spring & Fall				½
Fescue, Tall	30	10 to 15	Ea. spg., Aug., Sept.	½	Velvet Beans	60	15 to 30	May, June				3 to 4
Flax	52	30 to 50	March, April	½	Vetch, Winter or Hairy	80	40 to 60	June to Sept.				1 to 2
Johnson Grass	28	20 to 30	April to July	1	Vetch, Spring	80	40 to 60	March or April				1 to 2
Kaffir-Milo-Feterita-Grohoma-Atlas Sorgo-Hogari (drill)	56	10 to 15	May, June	1 to 1½	Wheat, Winter	80	75 to 90	Sept. to Nov.				1 to 1½
Kaffir-Milo-Feterita-Grohoma-Atlas Sorgo-Hogari (broadcast)	56	40 to 50	May, June	1 to 1½	Wheat, Egyptian, Shallow	50	10 to 12	May, June, July				1½ to 2

*Note:—Weights per bushel for certain grasses are old standards. Good cleaned seed is usually heavier.

"VERTAGREEN" PRICES

RETAIL PRICE

100-lb. Bags	\$4.25	10-lb. Bags	\$0.90
50-lb. Bags	\$2.65	5-lb. Bags	\$0.50
25-lb. Bags	\$1.60	1-lb. Bags	\$0.15

DEALERS ONLY—WHOLESALE PRICE

100-lb. Bags	\$2.90	10-lb. Bags	\$0.59 (6 per bale)
50-lb. Bags	\$1.85	5-lb. Bags	\$0.32 (12 per bale)
25 lb. Bags	\$1.05	1-lb. Bags	\$0.09 (32 per bale)

VERTAGREEN

WHAT IT IS

Vertagreen is a high quality, scientifically blended and balanced plant food, excellent for obtaining more prolific growth of lawns, flowers, shrubs, trees, garden vegetables and field crops. It is clean, odorless and easy to apply.

New Life

FOR YOUR SOIL

To have a healthy garden you must first have healthy soil. Don't waste time, seed and fertilizer on poor soil. Premier Peat Moss, 97% organic, gives your soil loam-like texture, making it more productive. It absorbs 20 times its own weight in moisture . . . loosens and aerates heavy soil . . . adds body to light soil . . . prevents leaching. Water and fertilizer penetrate deeply, feeding the roots as needed.

Remember, your garden can be no better than your soil. Get Premier Peat Moss, with the certified seal.

PREMIER PEAT MOSS

We have it!



FOR

LAWNS, FLOWERS
TREES, GARDEN VEGETABLES, SHRUBS

AND ALL FIELD CROPS

PLACE YOUR ORDER NOW