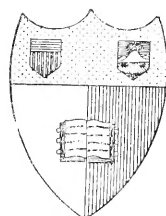


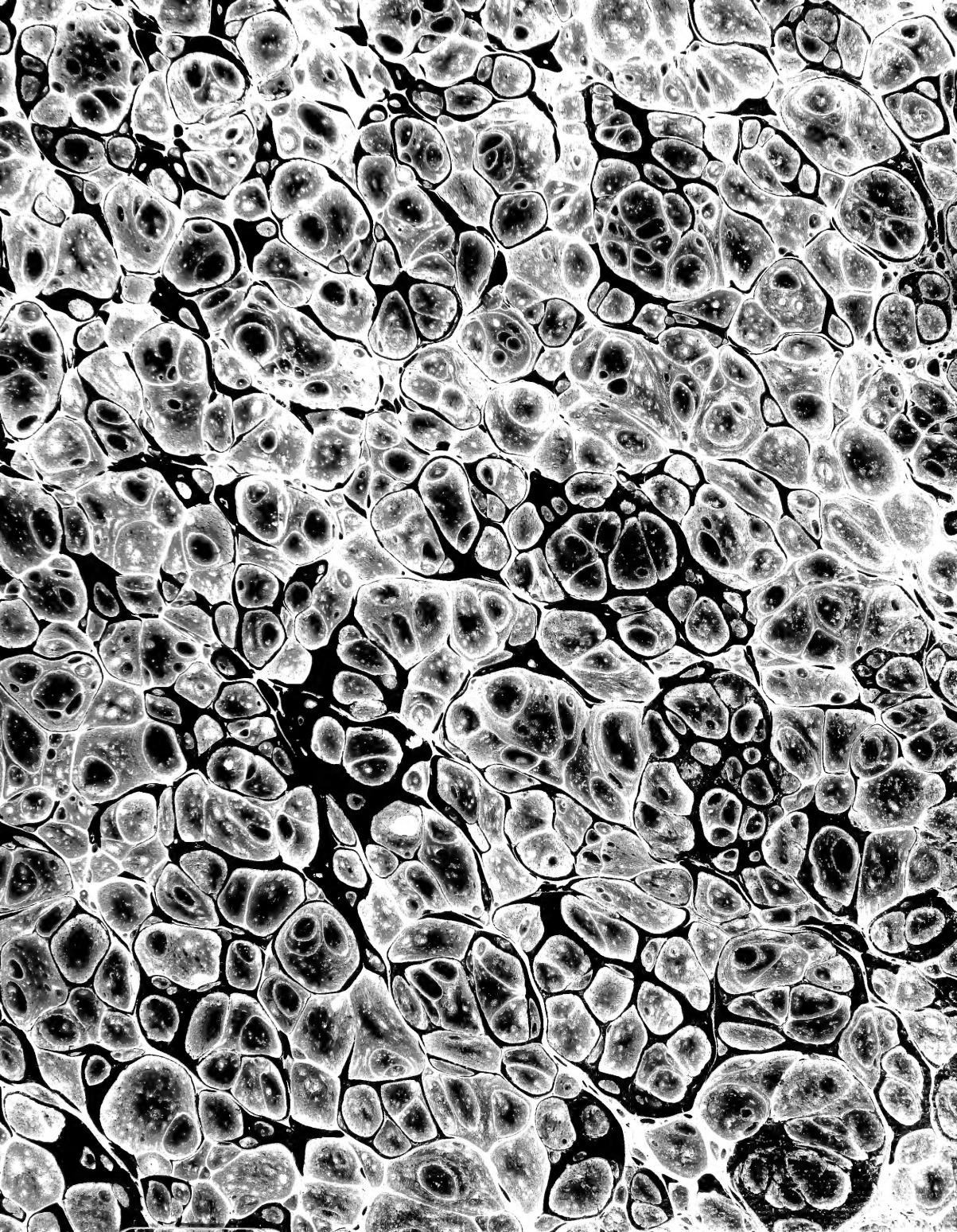


Lübbert & Schubert,  
Buch- Musikalien- u. Landcharten-  
Handlung in Hamburg. auf dem Berge  
No. 204.



New York  
State College of Agriculture  
At Cornell University  
Ithaca, N. Y.

Library



AL543  
H88

1936  
Sponges 25  
Pombyco 69  
176

~~1623 2/17~~

3 Bots u. 1 Klappst  
ep 67





Geschichte

europäischer

Schmetterlinge,

gesammelt

von

Jacob Sjöström

in

Uppsala



@  
QL543  
H88  
V.1

Ente.  
LOCKED  
PRESS

@ 42094





*1. a. b. Cynthia.*

*2. a. Nysia.*

*3. a. b. Artemis.*



*Larve Lepidopt. I. Papiliones, I. Nymphales, A. b.*



*1. a. Delia.*

*2. a. Caxia.*

*3. a. b. Trivia.*



Larve Lepidopt. I.

Papiliones, I.

Symphales, A. c.



1. a. *Phœbe*.

2. a. b. *Matioma*.

3. a. *Corythalia*.



*Larva Lepidopt. I.*

*Papiliones, I.*

*Nymphales, A. d.*

1.



1. a. b. *Lucina*.





*Larva Lepidopt. I.*

*Papiliones, I.*

*Nymphales, B. b.*



1. a. b. *Euphrasie*. c. *Silene* ?



*Larvæ Lepidopt. I. Papiliones, I. Nymphales, B. b. c.*



1. a. b. *Selene*.

2. a. b. *Amathusia*.



*Luzes Lepidopt. I.*

*Papiliones, I.*

*Nymphales, B. c. d.*



*1. a. Diu.*

*2. a. b. Lathona.*



*Larvæ. Lepidopt. I.*

*Papiliones, I.*

*Nymphales, B. d.*



*1. a. b. Dictynna.*

*2. a. b. Daphne.*





*Larve Lepidopt. I. Papiliones, I. Nymphales, B. e.*



*1. a. Adippe.*

*b. c. Aglaja.*

... ..

...

*Larvæ Lepidopt. I.*

*Papiliones, I.*

*Nymphales, B. f.*



1. a. *Viola*.

2. a. b. *Paphia*.



*Larvæ, Lepidopt. I.*

*Papiliones, I.*

*Nymphales, C. a.*



*1. a. b. c. Cardui.*

*2. a. b. Atalanta.*



*Larvæ Lepidopt. I.*

*Papiliones. I.*

*Nymphales. C. a.*



*1. a. b. c. Antiope.*





*Larvæ Lepidopt. I. Papiliones, I. Nymphales, C. c.*



*1. a. b. Polychloros.*

*2. a. Nalbum.*





*1. a. b. c. Urtica.*



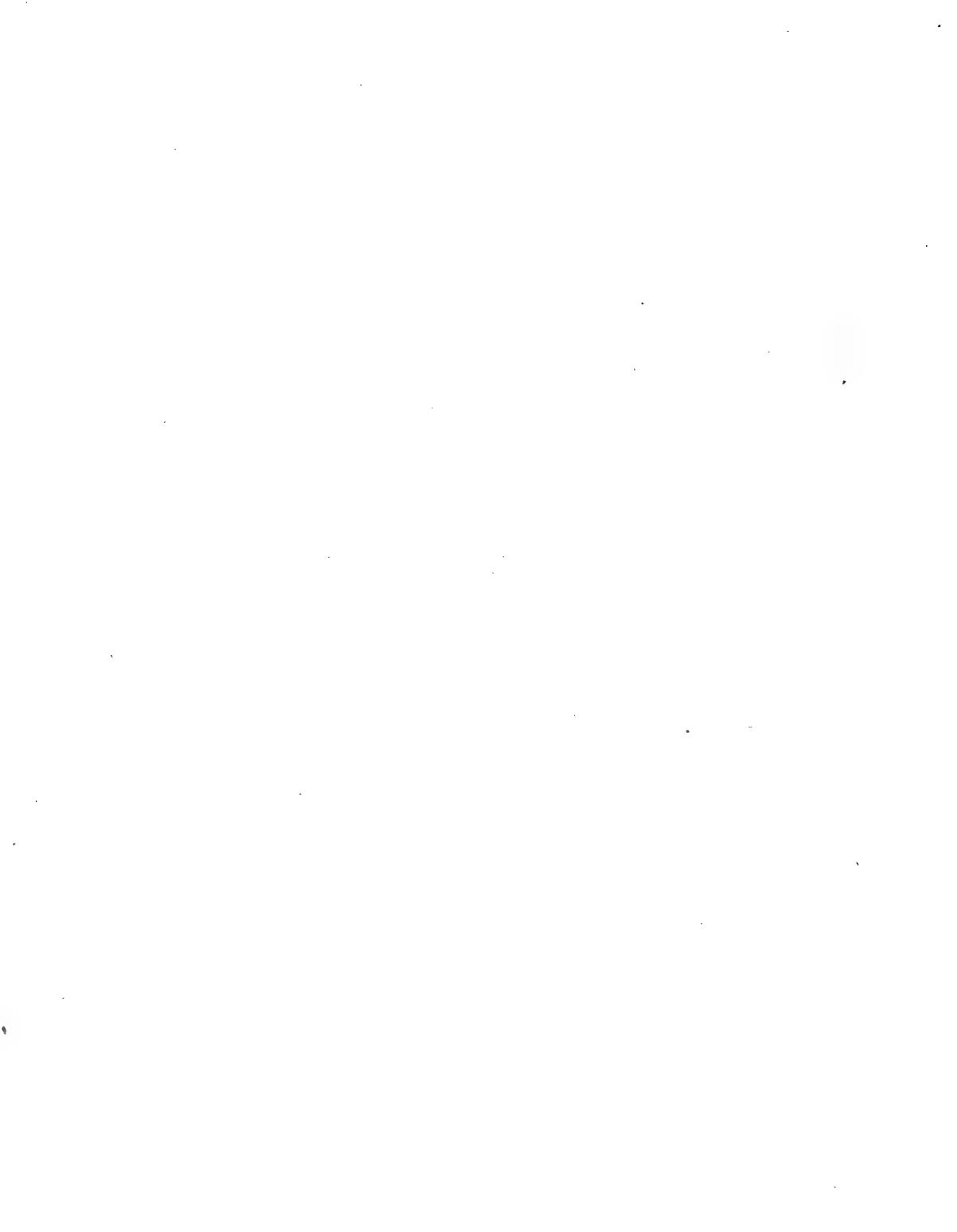
*Larve Lepidopt. I.*

*Papiliones, I.*

*Nymphales, C. d.*



*1. a. b. C album.*





*1. a. b. Levana. c. Prorsa.*





*Larve Lepidopt. I. Papiliones I. Nymphales, D. b.*



*1. a. b. Pityllus.*

*2. a. b. Camilla.*



*Larva Lepidopt. I. Papiliones, I. Nymphales, D. c.*



*1. a. b. c. Populi.*



*Larvæ Lepidopt. I.*

*Papiliones, I.*

*Nymphales, E. a.*



*3. - 4. Uredonis.*



*Larva Lepidopt. I.*

*Papiliones, I.*

*Nymphales, E. b.*



*1. a. b. c. Clytie.*





*Parva Lepidopt. I.*

*Papiliones, I.*

*Nymphales, E. c.*



*1. a. b. c. Iris.*



*Larvæ Lipidopt. I.*

*Papiliones, I.*

*Nymphales, F.*



1. a. b. *Proserpina.*

2. a. b. *Nemiene.*

3. a. *Phodra.*



*Larva Lepidopt. I. Papiliones, I. Nymphales, F. a.*



*1. a - d. Eudora.*



Larvæ Lepidopt. I.

Papiliones, I.

Nymphales, F. a. b.



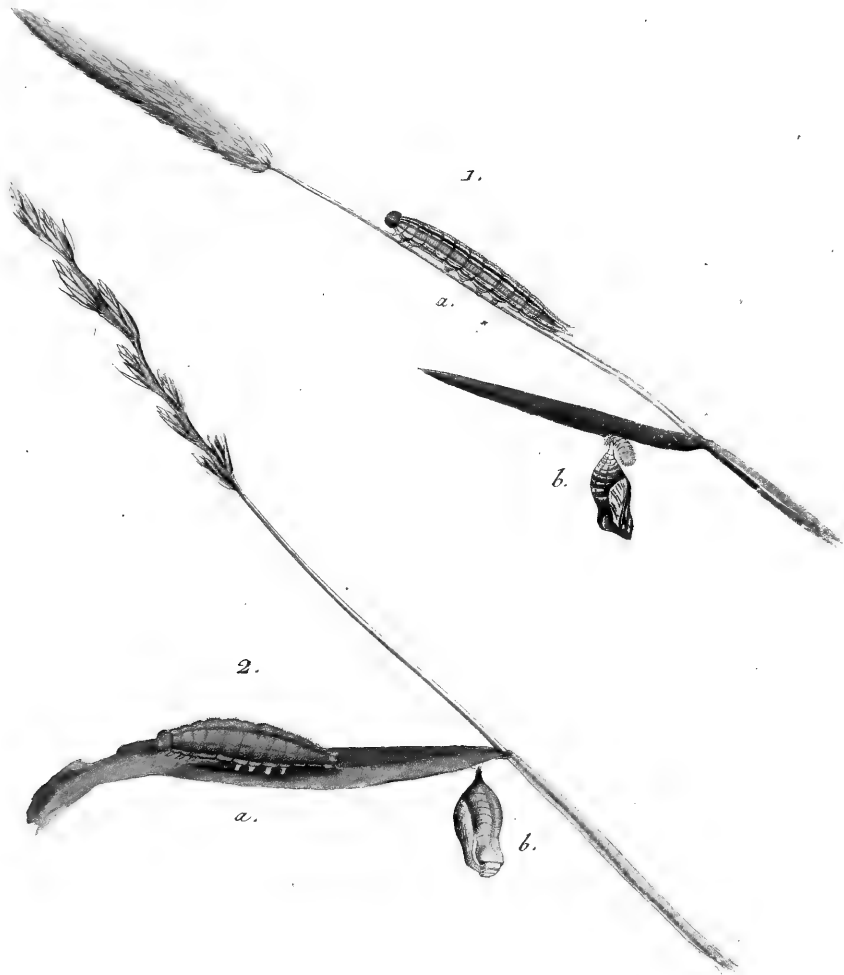
1. a. *Dejanira*.

2. a. b. *Polymeda*.





*Larvæ Lepidopt. I. Papiliones, I. Nymphales, F. 6.*



*1. a. b. Aegeria.*

*2. a. b. Galathea.*



*Larvæ Lepidopt. I. Papiliones, I. Nymphales F. D.*



*1. a. Medusa.*

*2. a. Ligea.*



*Larva Lepidopt. I.*

*Papiliones, II.*

*Gens. A. a.*



*1. a. b. Damietus.*

*2. a. Damon.*





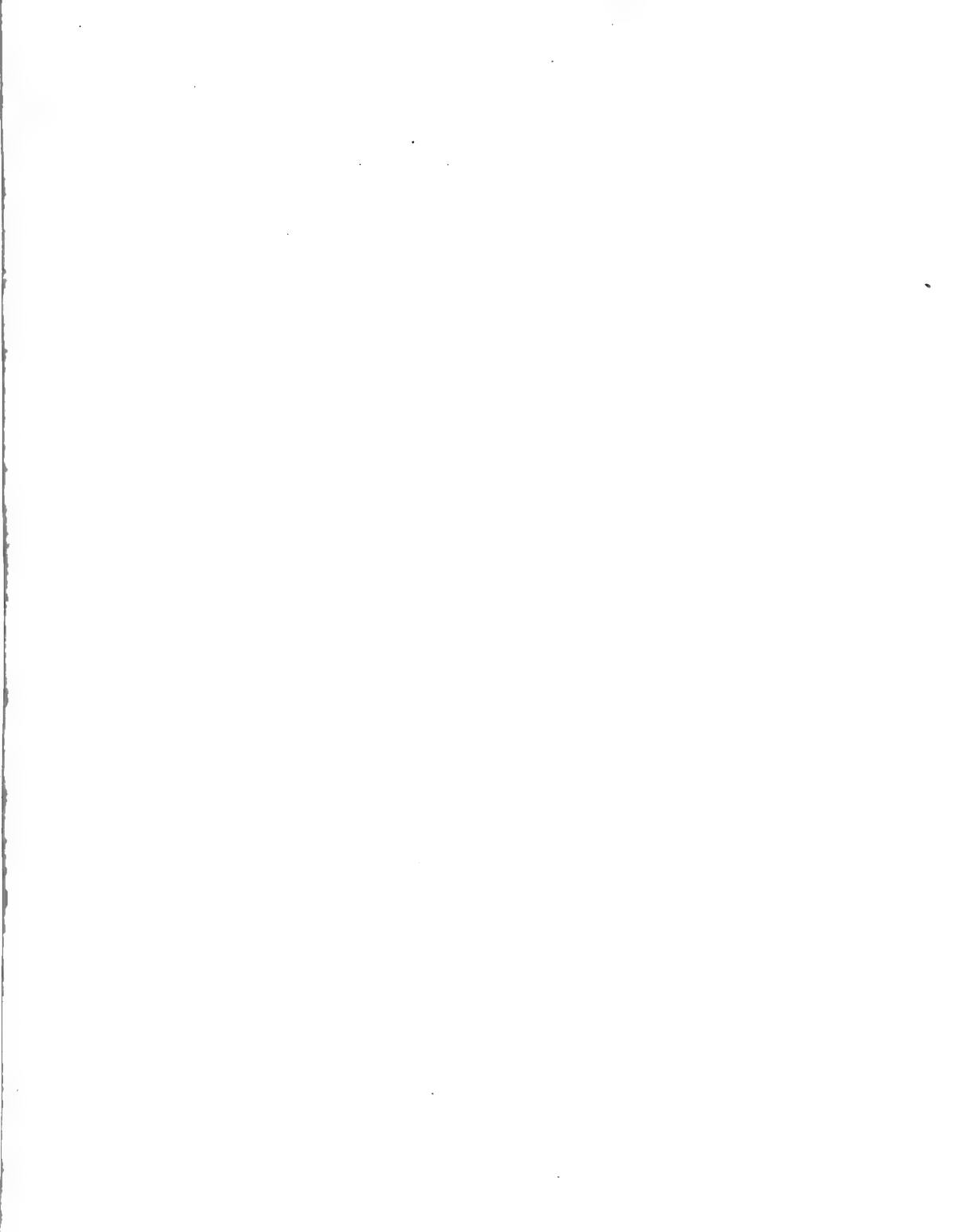
*1. a. b. Dametas. c. d. Alfus..*







*1. a. b. c. Corydon.*



*Larvæ Lepidopt. I.*

*Papilionés. II.*

*Gens. A. a. a.*



*1. a. b. Argus.*

*2. a. b. Argon.*





*s. a. b. Alexis.*



*Larve Lepidopt, I.*

*Papiliones, II.*

*Gens, A. b. b.*



*I. a. b. Virgaurca.*

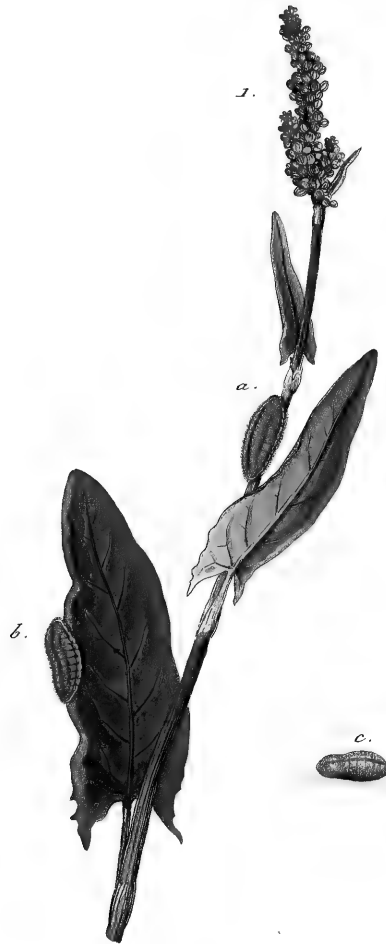




*Larvæ Lepidopt. I.*

*Papiliones II.*

*Gens A. b. c.*



*s. a. b. c. Phlaeas.*





*1. a. b. Rubi.*

*2. a. b. c. Quercus.*





1. a. b. *Spini*.

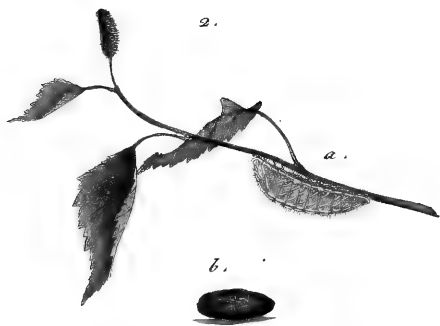
2. a. b. c. *Sticis*.



1.



2.



1. a. b. *Pruni.*

2. a. b. *Betula.*





*Larve Lepidopt. I.*

*Papiliones, II.*

*Gens. B. a.*



*1. a. b. Loddalyrius.*

*2. a. b. Machaon.*





a. b. c. Machaon.



*Larva Lepidopt. I.*

*Papilionés, II.*

*Gens, C. a. b.*



*1. a. b. Cratagi.*

*2. a. b. Brassicae.*





*1. a. b. c. Rapa.*

*2. a. b. c. Napi.*







*1. a. b. c. Daphniphyllum.*



*Larva Lepidopt. I.*

*Papiliones, II.*

*Gens, C. c.*



*1. a. b. Cardamines.*

*2. a. b. Sinapis.*



*Larvæ Lepidopt. I.*

*Papiliones, II.*

*Gen. C, d.*



*1. a. Puleno.*

*2. a. b. Hyale.*



*Larvae Lepidopt. I.*

*Papiliones. II.*

*Gentiles. C. d.*



*1. a. b. c. Hyale.*





*Larvæ. Lepidopt. I.*

*Papiliones, II.*

*Genæ, E, a.*



*1. a. b. Malva.*

*2. a. b. Fagus.*



*Larva, Lepidopt. I.*

*Papiliones, II.*

*Gens E. b.*



*1. a - b. Alceolus.*



*Larva Lepidopt. I.*

*Papiliones, II.*

*Gens, E. c.*



*1. a. Brontes.*

*2. a. b. Linea.*



Larvae Lepidopt. II.

Sphinges I.

Papilionoides, A. a.



1. a. b. *Globulariae*.

2. a - d. *Statice*.

3. a. b. *Pruni*.





*Larvae, Lepidopt. II.*

*Sphinxes, I.*

*Papilionides, A. b.*



*1. a. Erica.*

*1. a. b. Infausta.*



Larve, Lepidopt. II.

Sphinges, I.

Papilionoides, B. a.



1. a. b. *Mimos*.

2. a. *Loti*.

3. a. *Vicia*.



*Larvae, Lepidopt. II. Sphinges, I. Papilionoides, B. b.*



1. a. b. c. *Fausta*.

2. a. b. *Onobrychis*.



*Larva Lepidopt. II. Sphinges I. Papilionoides, B. b. c.*



*1. a. Falcata.*

*b. Coronilla.*





*Larva Lepidopt. II.*

*Sphinges, I.*

*Papilionoides, B. c.*



*1. a. b. Lonicera.*

*c. d. Filipendula.*

*2. a. b. c. Hippocrepidis.*



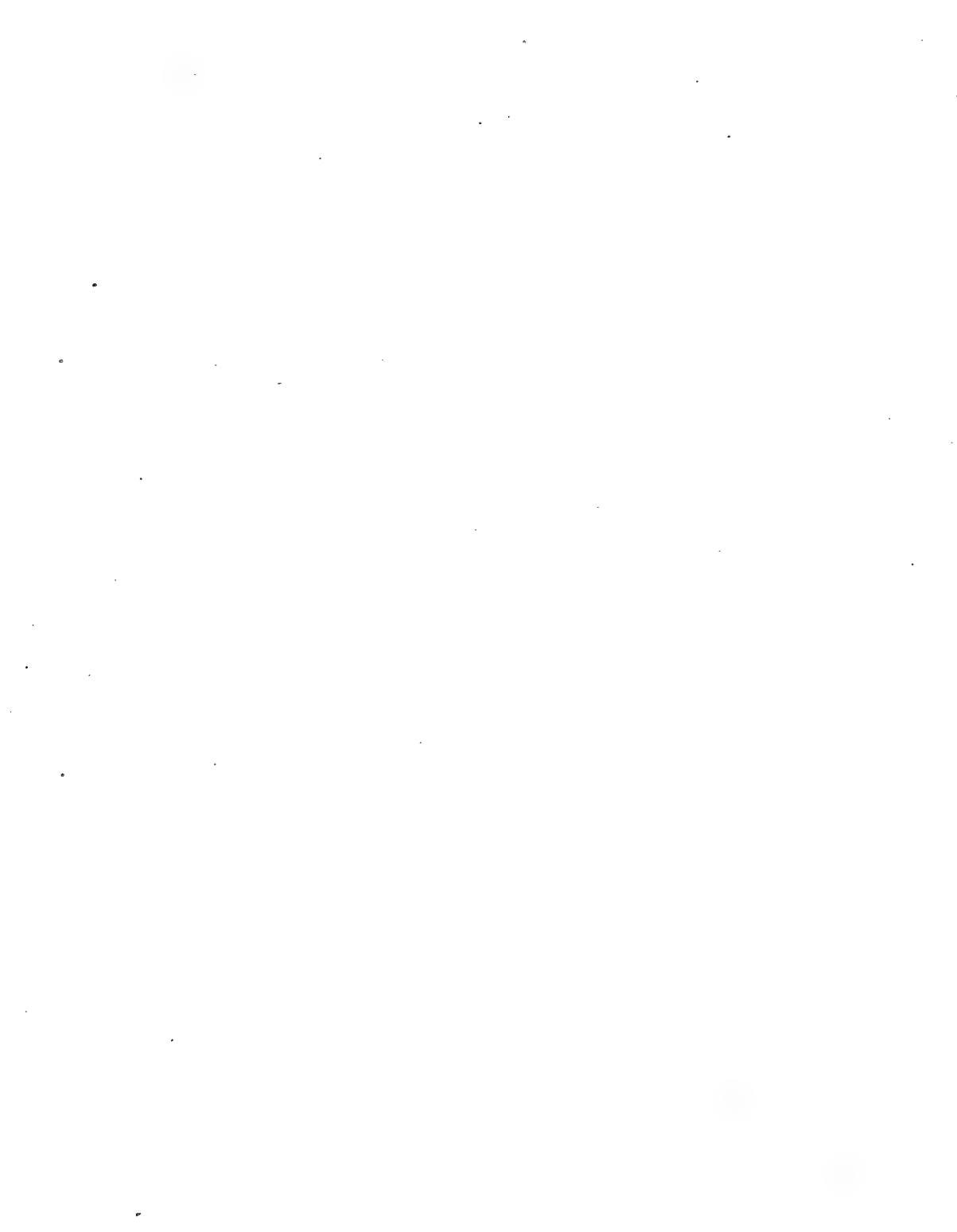
*Larve Lepidopt. II.*

*Sphingea, I.*

*Papilionoides, B. e.*



1. a. b. *Phoegea*.



*Larve Lepidopt. II.*

*Sphinxes, II.*

*Hymenopteroides, B.*



*1. a. b. Apiformis.*

*2. a. Fyuliformis.*

*3. a. Nomadiformis.*



*Paroc, Lepidopt. II.*

*Sphinges, III.*

*Legitimæ, A. b.*



1. a - d. *Fuciiformis.*

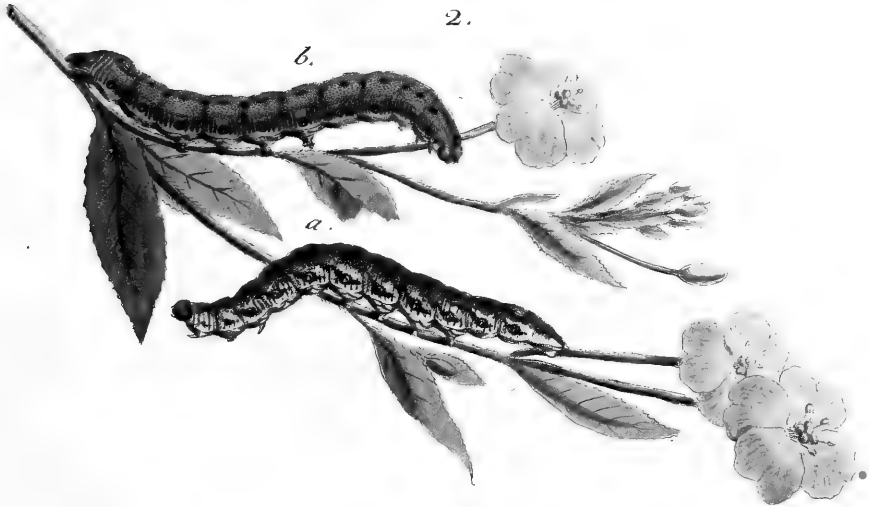
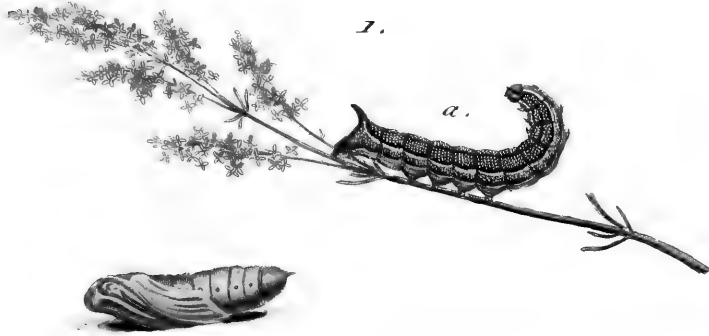




Larvæ Lepidopt. II.

Sphinges, III.

Legitimæ, A. b. c.



1. a. b. *Stellatarum*.

2. a. b. *Oenotheræ*.



*Larva Lepidopt. II.*

*Sphinges, III.*

*Legitima B. a.*



*1. a. b. Nera.*



*Larva, Lepidopt. II. Sphinges, III. Legitima, B. a. b.*



*1. a. b. Celerio.*



*Larvæ Lepidopt. II.*

*Sphinges, III.*

*Legitima, B. b.*



1. a. b. *Porcellus*.

2. a. b. *Elpenor*.

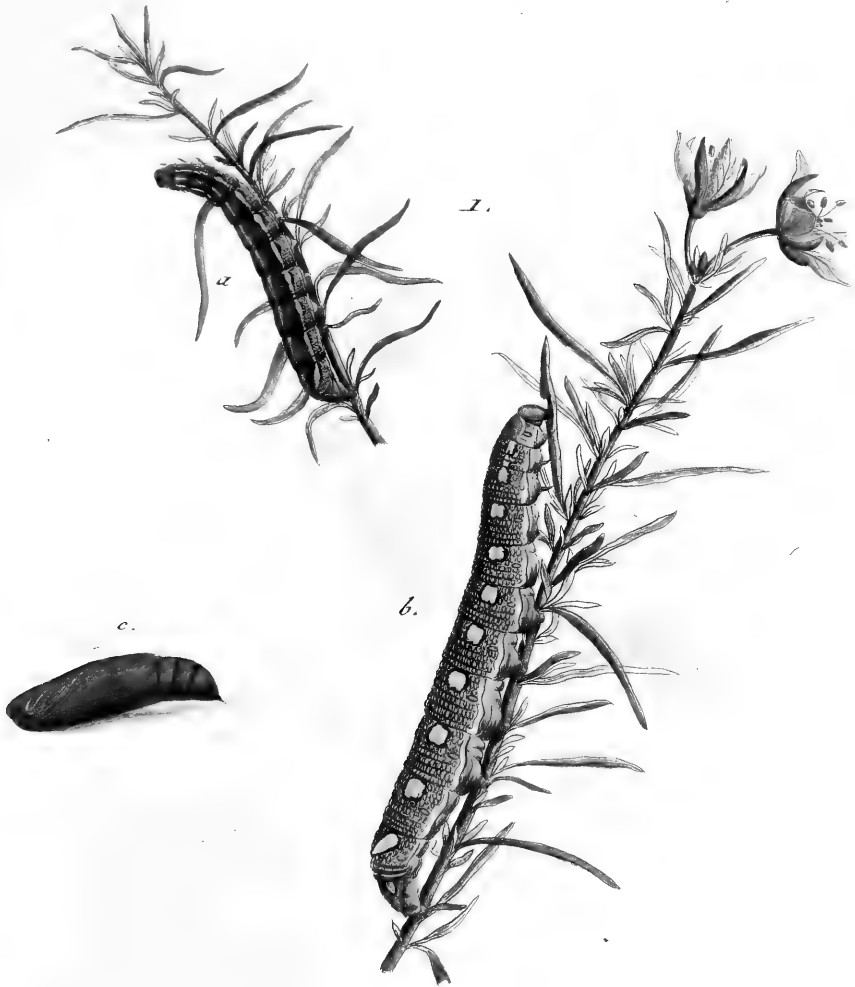




*Parva Lepidopt. II.*

*Sphinges, III.*

*Legitimæ, B. 6.*



*s. a. b. c. Vespertilio.*



Larvae, Lepidopt. II.

Sphinges, III.

Legitimae, B. b. c.



1. a. b. c. *Hippophæes*.



*Larvæ, Lepidopt. II.*

*Sphinges, III.*

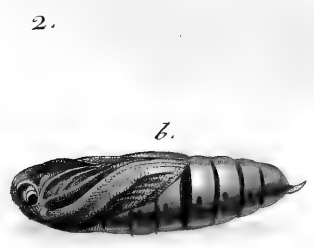
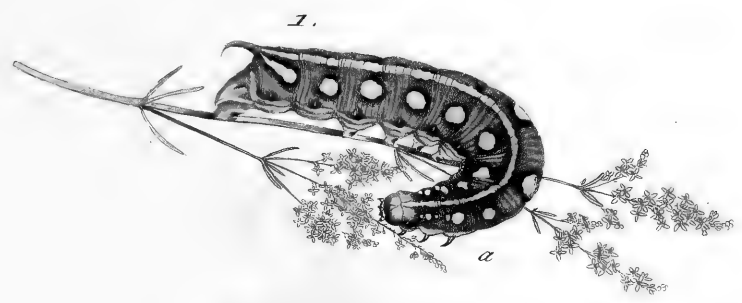
*Legitimæ, B. c.*



*1. a. b. c. Livornica.*

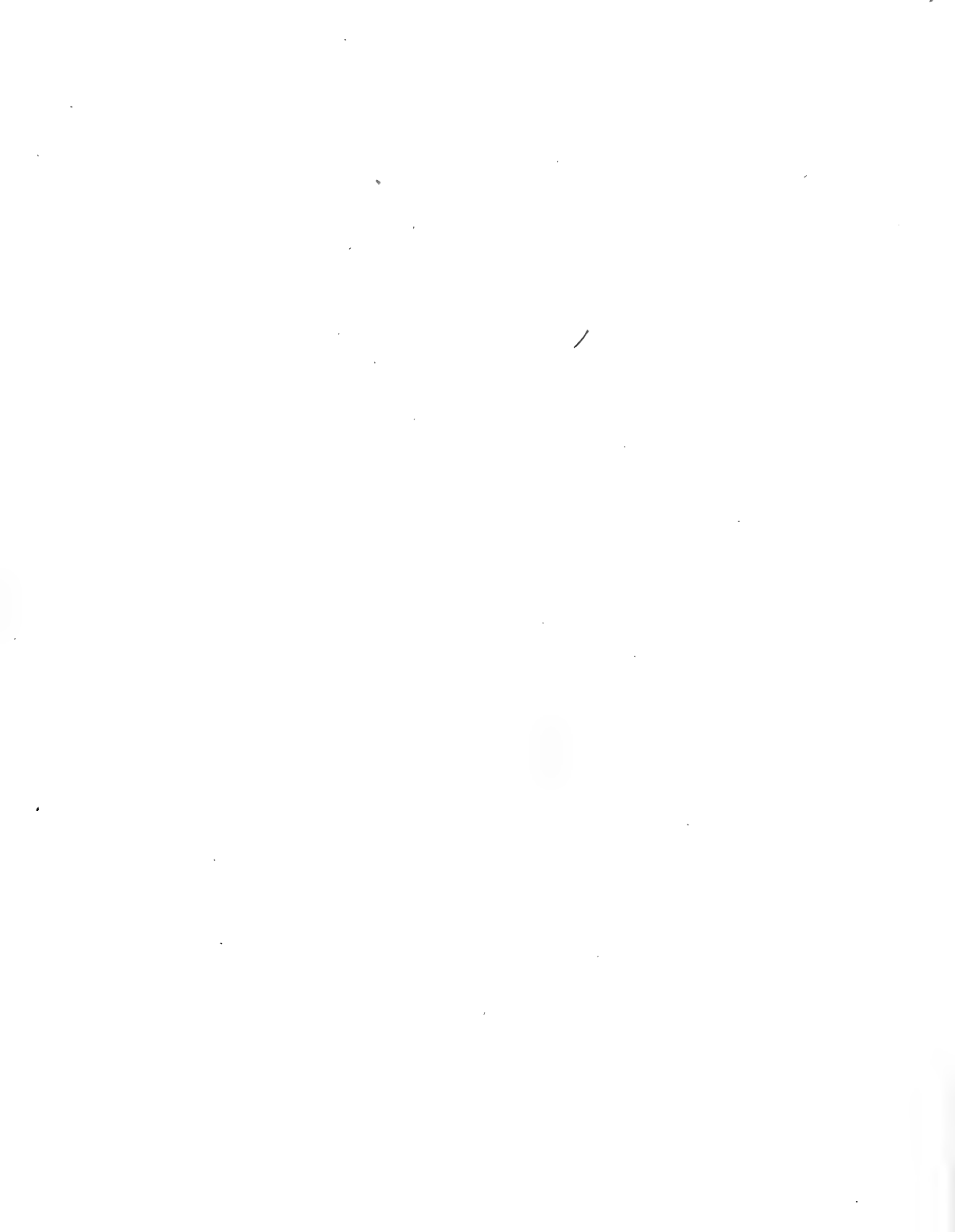


Larve Lepidopt. II. Sphinges, III. Legitimæ, B. d.



1. a. Galii.

2. a. b. Euphorbiae.





Larvæ, Lepidopt. II.

Sphinges, III.

Legitimæ, B. d.



1. a. *Euphorbiæ.*

2. a. b. *Galii.*



Larvæ, Lepidopt. II.

Sphinges III.

Legitima B. e.



a. b. c. Cypariffia.





1. a. *Convolvuli.*

2. a. b. *Ligustri.*



*Larva Lepidopt. II. Sphinges, III. Legitima, C. a.*



*1. a. b. c. d. Pinastri.*





Larvæ, Lepidopt. II.

Sphinges, III.

Legitimæ, C. b.



1. a. b. *Convoluti*.



*Larva, Lepidopt. II.*

*Sphinxes, III.*

*Legitimæ, C. a.*



*1. a. b. Atropos.*



*Larva, Lepidopt. II.*

*Sphinges, III.*

*Legitima, C. a. b.*

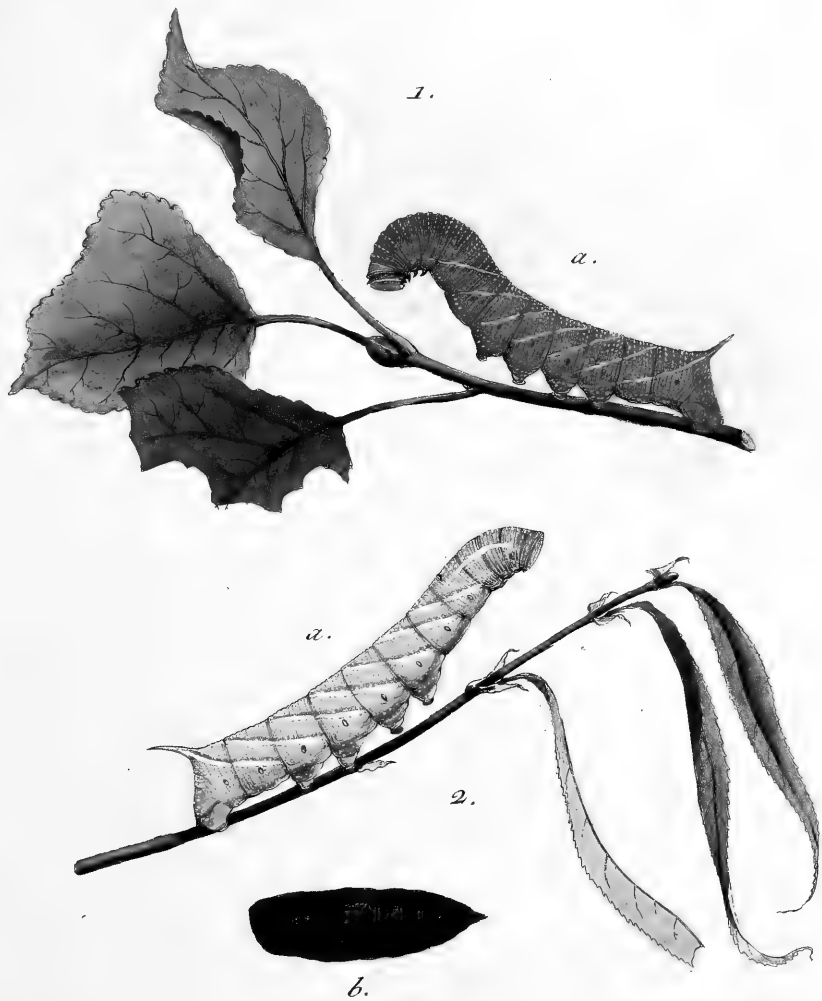
1.



1. a. *Atropos.*



*Parvæ Lepidopt. II. Sphinges, III. Legitimæ, D, a.*



*1. a. Populi.*

*2. a. b. Salicis.*





*Lepidoptera. II.*

*Sphinges. III.*

*Legitimae D. a. b.*



1. a. *Salicis.* 2. a. b. *Populi.*



*Larvæ, Lepidopt. II. Sphinges, II. Legitimæ, D. b.*



*1. a. b. Quercus.*

*2. a. Filix.*



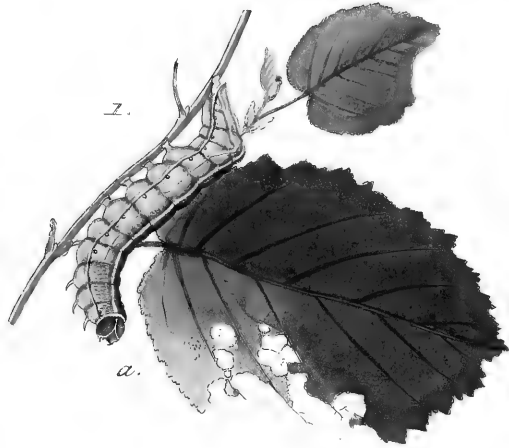
*Larva Lepidopte. III. Bombyces, I. Sphingoides, A.*



*1. a. b. Verficoloria.*



*Parva Lepidopt. III. Bombyces, I. Sphingoides, B. a.*



*1. a. Cassinia.*

*2. a. b. Sphinx.*





*Parvae Lepidopt. III. Bombyces, I. Sphingoides, C. a.*



*1. a. Querna.*

*2. a. b. Chaonia.*



*Larvæ Lepidopt. III.*

*Bombyces, I.*

*Sphingoides, C. b.*



1. a. *Melagone.* b. c. *Austera.*



*Larvæ, Lepidopt. III.*

*Bombyces, I.*

*Sphingoides, C. bc.*



*1. a. b. c. d. Plumigera.*





1. a. *Thalictri*.

2. a. *Camelina*.

3. a. *Cucullina*.





*Larvæ, Lepidopt. III.*

*Bombyces, I.*

*Sphingoides C.*



*1. a. b. Buccphaloides.*



*Parva Lepidopt. III. Bombyces I. Sphingoides C. d. e.*



*1. a. Dictaoides b. c. Dictaea.*



*Larvæ Lepidopt. III. Bombyces, I. Sphingoides, C, e.*



1. a. b. *Lixæ.*

2. a. *Tritophus.*



*Larva Lepidopt. III.*

*Bombyces I.*

*Sphingoides C. f.*



*1. a. b. Tritaphus. c. d. Torva.*

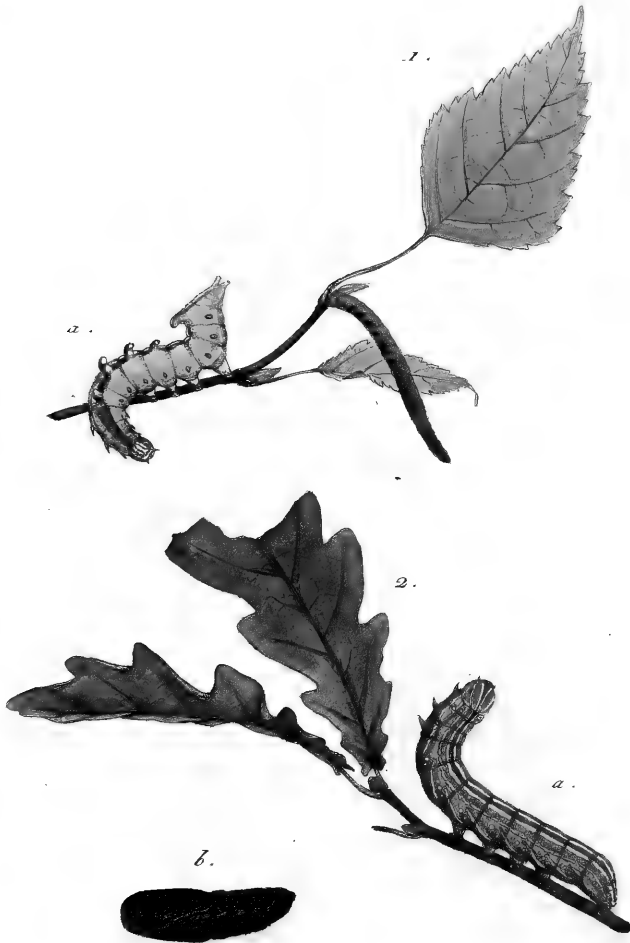




*Larva, Lepidopt. III.*

*Bombyces, I.*

*Sphingoides, C. g.*



*1. a. Dromedarius.*

*2. a. b. Tremula.*



*Parve Lepidopt. III. Bombyces, I. Sphingoides, D. a. b.*



*1. a. Fagi.*

*2. a. b. c. Ferrifera.*



*Larvae Lepidopt. III. Bombyces. I. Sphingiformes. E. a.*



*1. a. b. c. Erminea.*



*Larva Lepidopt. III.*

*Bombyces, I.*

*Sphingoides, Er. a.*



*1. a. b. c. Virula .*







*1. a. Bifida.*

*2. a. b. Furcula.*

*3. a. Bicuspis.*



*Larva Lepidopt. III.*

*Bombyces, I.*

*Sphingoides, F. a. b.*

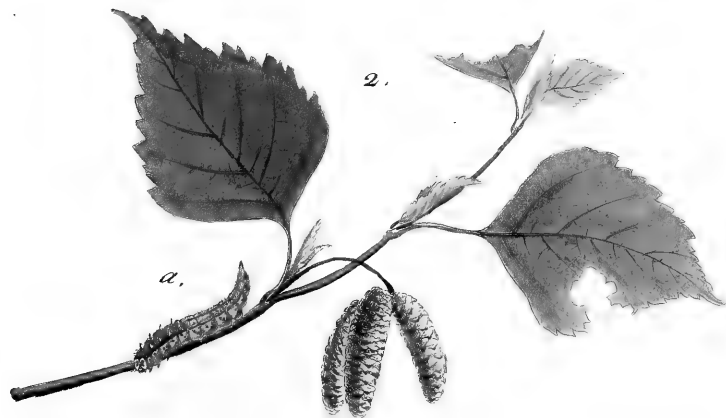


*1. a. b. Spinula.*

*2. a. b. Sicula.*



*Larvæ Lepidopt. III. Bombyces, I. Sphingoides, F. b.*



*1. a. b. Harpagula.*

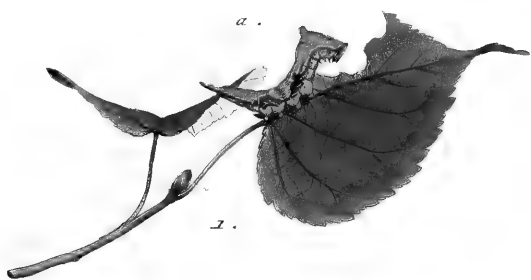
*2. a. Falcula.*



*Larva Lepidopt. III.*

*Bombyces, I.*

*Sphingoides, F.c.*



1. a. b. *Picala*.

2. a. b. *Lucertula*.





*Larvæ, Lepidopt. III.*

*Bombyces, I.*

*Sphingoides, G. a.*



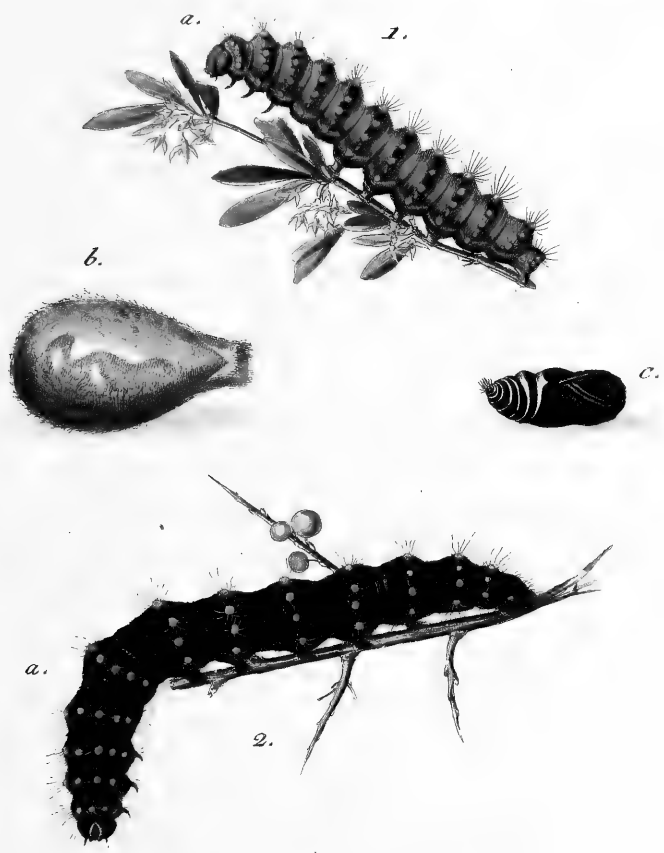
*1. a - c. Fav.*



*Larvæ Lepidopt. III.*

*Bombyces, II.*

*Vera, A.*



*1. a. b. c. Carpini.*

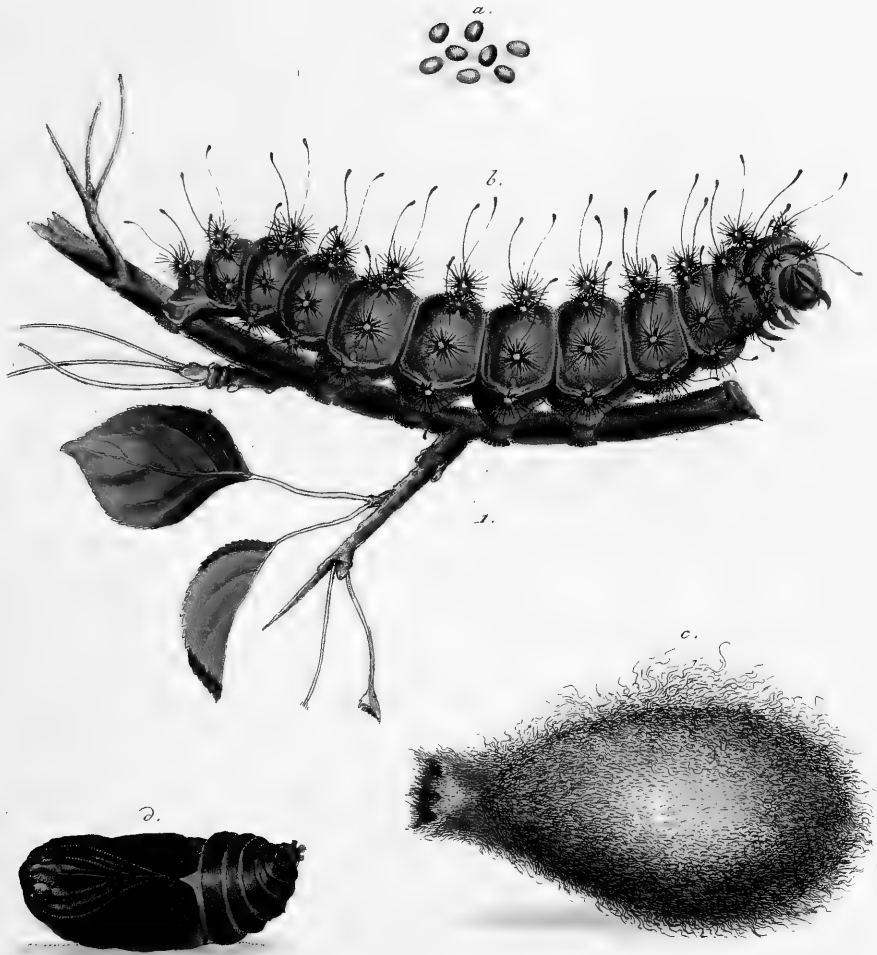
*2. a. Spini.*



Larvae, Lepidopt. III.

Bombyces, II.

Verac, A. b.



1. a - d. *Pyri*.



*Larvæ Lepidopt. III.*

*Rombyces, II.*

*Veræ, B. a. b.*



*1. a. b. c. Morio.*

*2. a. Detrita.*





*Larva, Lepidopt. III.*

*Bombyces, II.*

*Vera, B, b.*



*1. a. b. Rubra.*



Larvæ Lepidopt, III.

Bombyces, II.

Vere, C. a.



1. a. b. c. *Chrysotheca*.

2. a. b. c. *Auriflua*.



Larvæ Lepidopt. III.

Bombyces, II.

Vere, C. b.



1. a. b. *Salix*.

2. a. b. *Nivosa*.





*1. a. b. Monacha.*

*2. a. b. c. Dispar.*





Larvae Lepidopt. III.

Bombyces II.\*

Verae D. a.



1. a. b. c. Antiquoides.





1. a. b. c. *Antiqua*.

2. a. *Genostigma*.



Larvae, Lepidopt. III.

Bombyces, II.

Veræ, D. b.



1. a. b. c. *Lathyrus*.

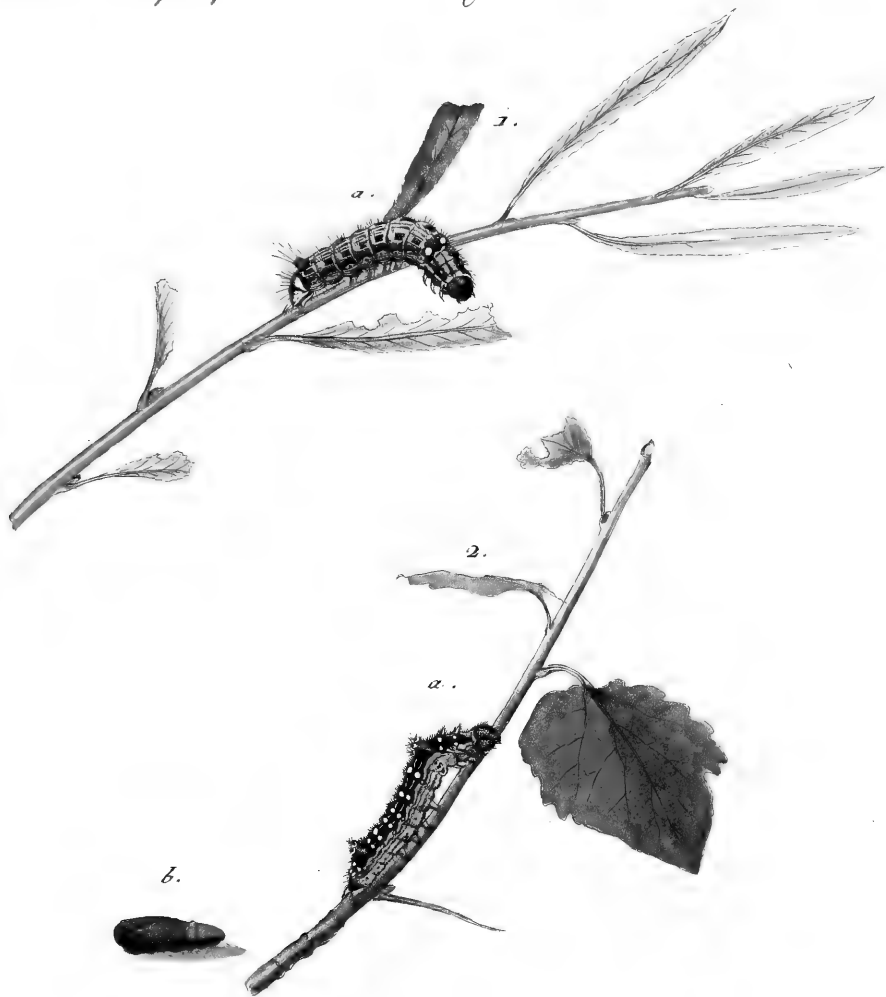
2. a - d. *Fascelina*.



*Larvæ Lepidopt. III.*

*Bombyces, II.*

*Veræ, I. a.*



*1. a. Anachoreta.*

*2. a. b. Anastamofis.*







*1. a. b. Curtula.*

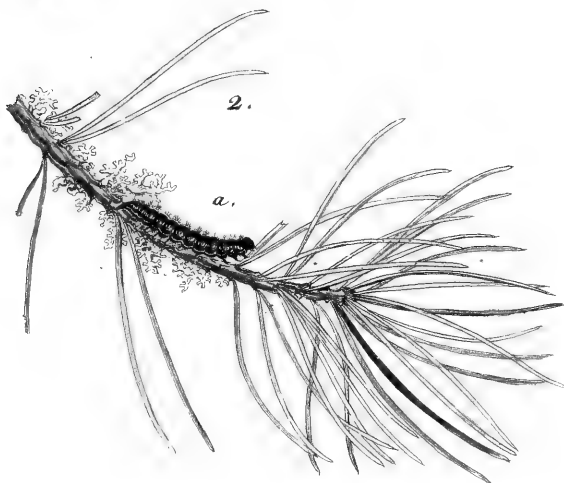
*2. a. b. Reclusa.*



Larvæ Lepidopt. III.

Bombyces. II.

Veræ, F. a. b.



1. a. *Ochroea*.

2. a. *Plumbeola*.





1. a. *Aureola* . b. c. d. *Rubicollis* .



*Larva, Lepidopt. III.*

*Bombyces, II.*

*Vera, F. 3.*



1. a. *Vitta*. b. c. *Quadra*.





Larvæ Lepidopt. III.

Bombyces II.

Veræ F. c.



1. a. - d. *Elorina*. 2. a. b. c. *Rubicunda*.



Larvae Lepidopt. III.

Bombyces. II.

Verae. G. a. b.



1. a - d. *Jacobaeae*.



*Larve Lqudopt. III.*

*Bombyces II.*

*Pere G.*



*1. a. Pulchra.*

*2. a. Ancilla.*





1. a. b. c. *Gramma*.

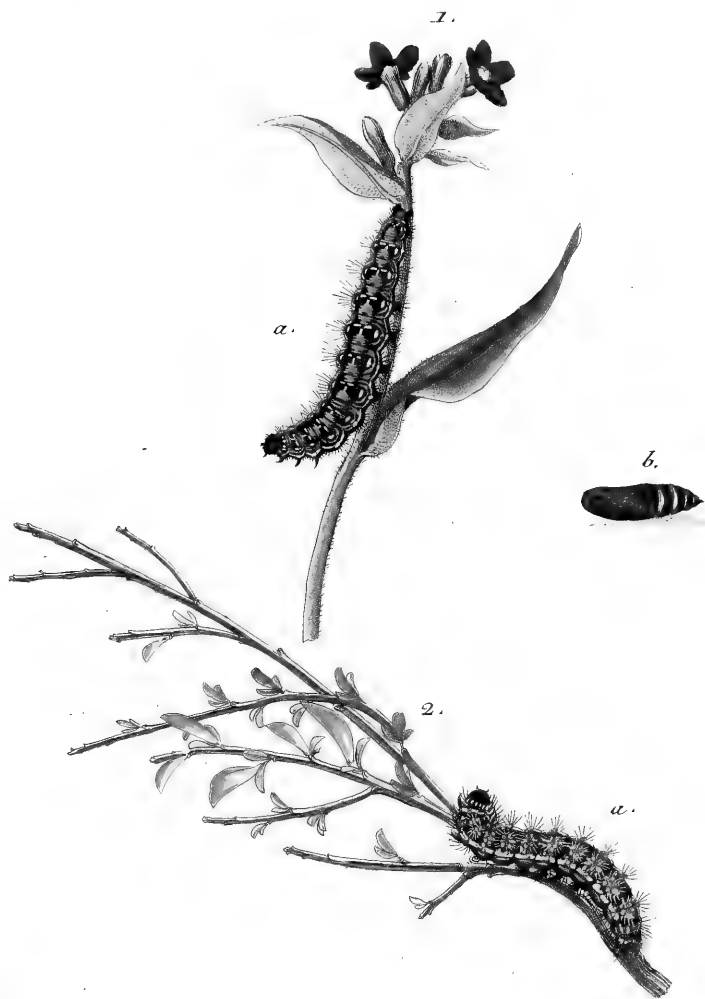




*Parva Lepidopt. III.*

*Bombyces, II.*

*Veræ, H.*



*1. a. b. Domina.*

*2. a. Hera.*





1. a. *Ruffula* . b. c. d. *Plantaginis* .







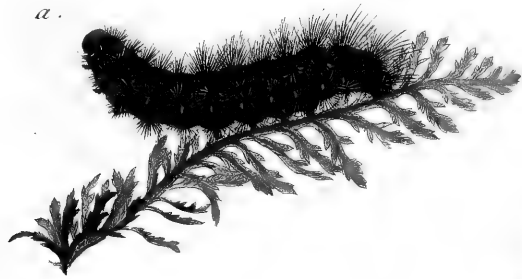
*Parve Lepidopt. III.*

*Bombyces, II.*

*Veræ, K. a. b.*

2.

a.



1.

a.



1. a. *Hebe.*

2. a. *Vitlica.*





*Larva Lepidopt. III.*

*Bombyces, II.*

*Venz, K.c.*



*1. a. b. c. Caja .*



*Larva Lepidopt. III.*

*Bombyces, II.*

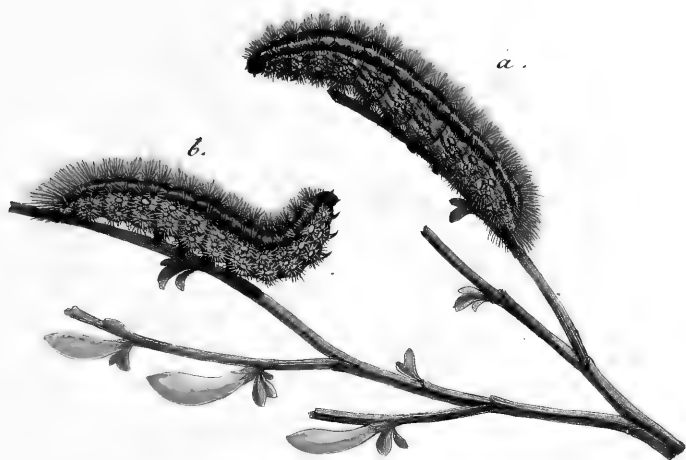
*Vera, K. D.*



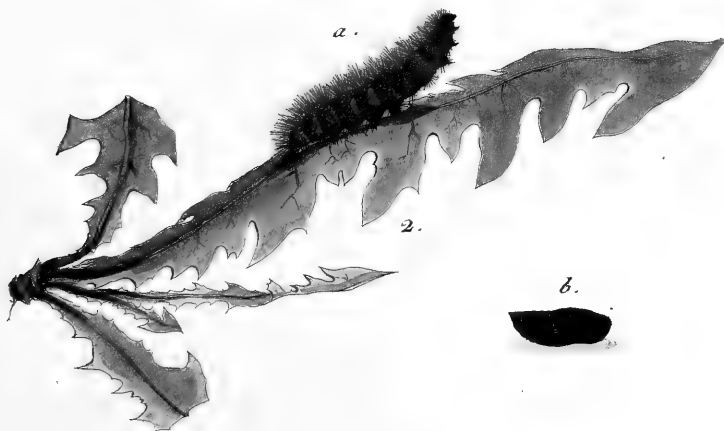
*1. a. b. c. d. Matriona .*



1.



a.



2.

b.

1. a. b. *Purpurea*.

2. a. b. *Fuliginosa*.



*Larvæ Lepidopt. III.*

*Bombyces, II.*

*Veræ, K. f.*



*1. a. Maculosa.*

*2. a. Parasita.*





*Larvæ, Lepidopt. III.*

*Bombyces, II.*

*Veræ, I, a.*



*1. a. b. Luctifera.*

*2. a. b. Mendica.*





*1. a. Menthastris.*

*b, c. Urtica.*

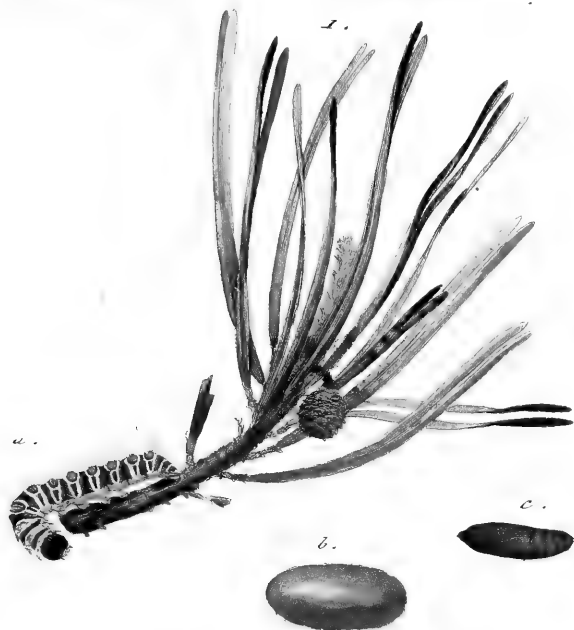
*d. e. Lubricipeda.*



Larvæ, Lepidopt. III.

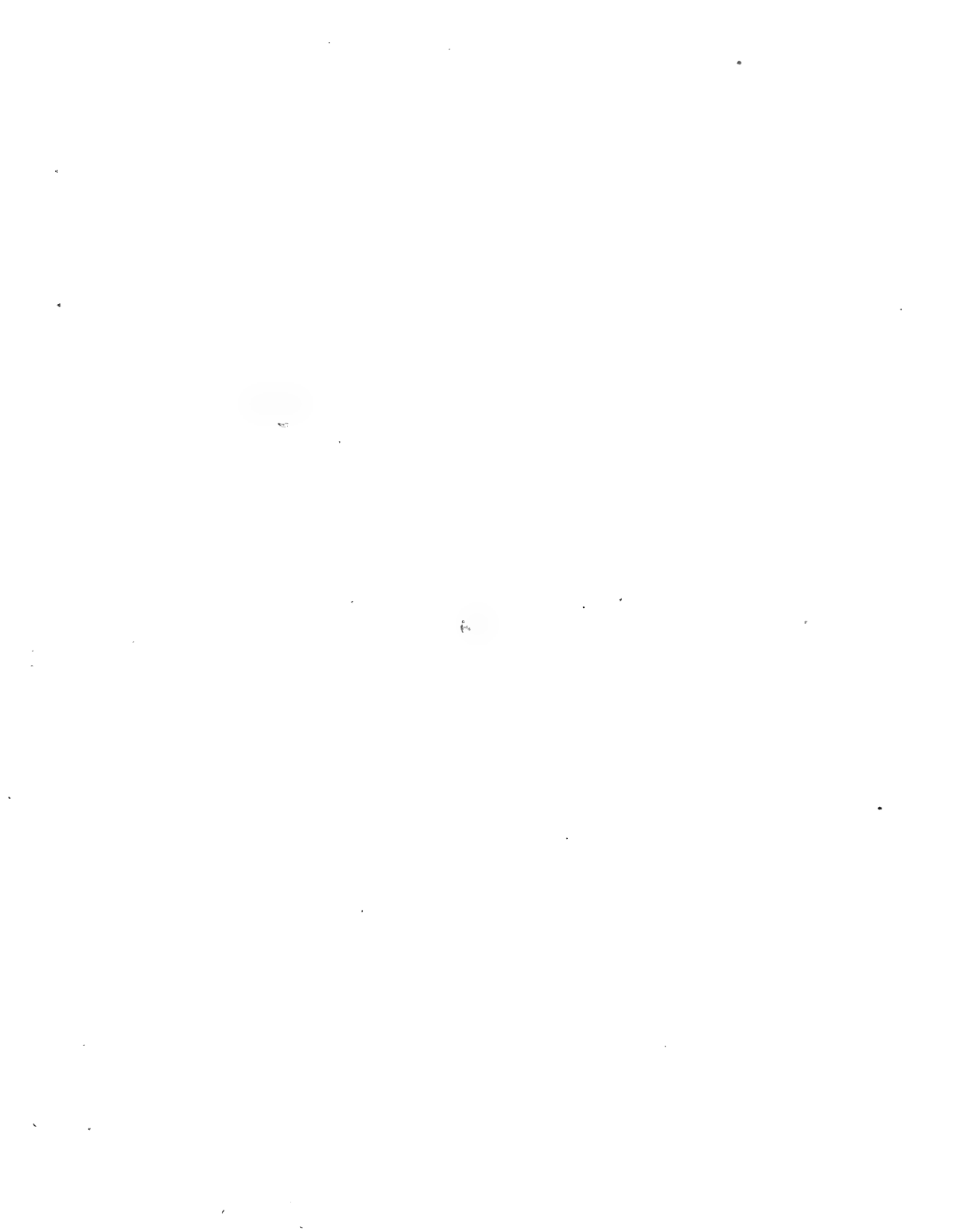
Bombyces, II.

Vere, M. v.



i. a. b. c. *Pityocampa*.

2. a. *Procesfionea*.



*Larva Lepidopt. III.*

*Bombyces, II.*

*Verce, M. 6.*



*1. a. b. c. Populi.*

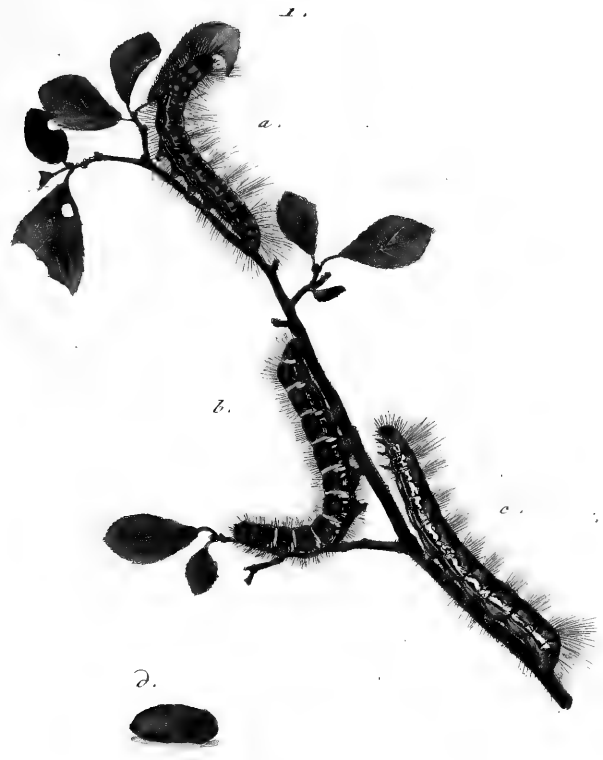




Larva Lepidopt. III.

Bombyces, II.

Vera; M. 3.



1. a. - d. Crategi.



Larvæ Lepidopt. III.

Bombyces II.

Veræ, N. 6.



1. a. *Dumeti.*

2. *Taraxaci.*





*1. a. Catax.*

*2. a. b. c. Everia.*





1. a. *Lanestris*.

2. a. b. c. *Catax*.





*Larva Lepidopt. III.*

*Bombyces II.*

*Vera P. a.*



*1. a. b. Trifolii.*

*2. a. b. c. d. Quercus.*





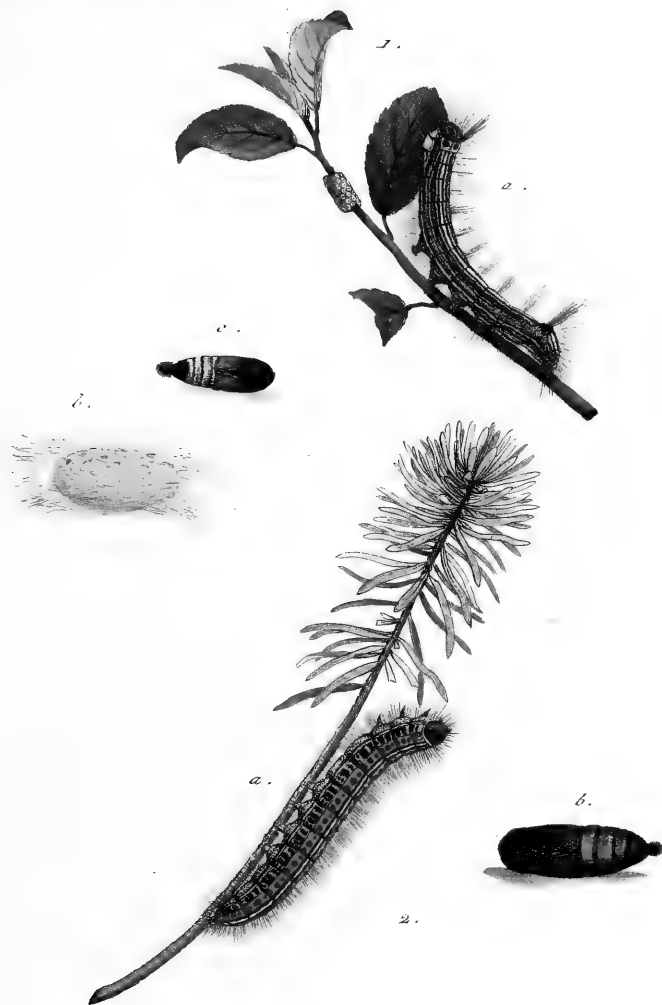
*1. a. b. c. d. Rubi.*



Larvæ Lepidopt. III.

Bombyces, II.

Vera, Q. a. b.



1. a. b. c. Neustria.

2. a. b. Cystralis.





*1. a. Lobulina.*

*2. a. b. Lunigera.*





*Parva Lepidopt. III. Bombyces, II. Vera, R. b.*



*a. b. c. d. e. Potatoria.*



*Parva Lepidopt. III.*

*Bombyces, II.*

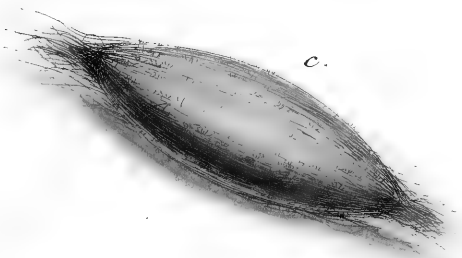
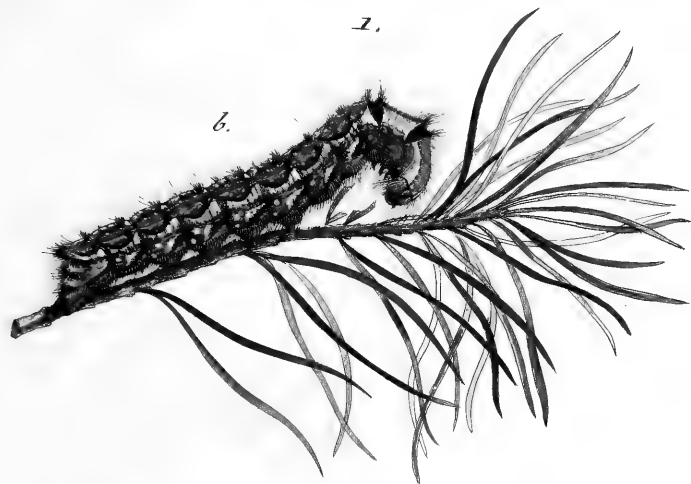
*Vera, S. a.*



*1. a. b. c. Pruni.*



*Larva Lepidopt. III. Bombyces, II. Verre, S. a.*



*1. a. b. c. d. Pini.*



*Parva Lepidopt. III.*

*Bombijces II.*

*Vera S. a. b.*



*1. a. - 2. Quercifolia.*





*Larve Lepidopt. III.*

*Bombyces, II.*

*Vera S. a. b.*



*1. a. b. Populifolia .*



*Larva Lepidopt. III.*

*Bombyces, II.*

*Veræ, S. b. c.*



*1. a. Betulifolia.*

*2. a. Glicifolia.*



*Parva Lepidopt. III.*

*Bombyces, II.*

*Verax, S. & d.*



*a - e Mori.*





1. a. b. *Buccophala*.

2. a. b. *Cœruleocephala*.





*Larvae, Lepidopt. III.*

*Bombyces, III.*

*Teredines, A. a. b.*



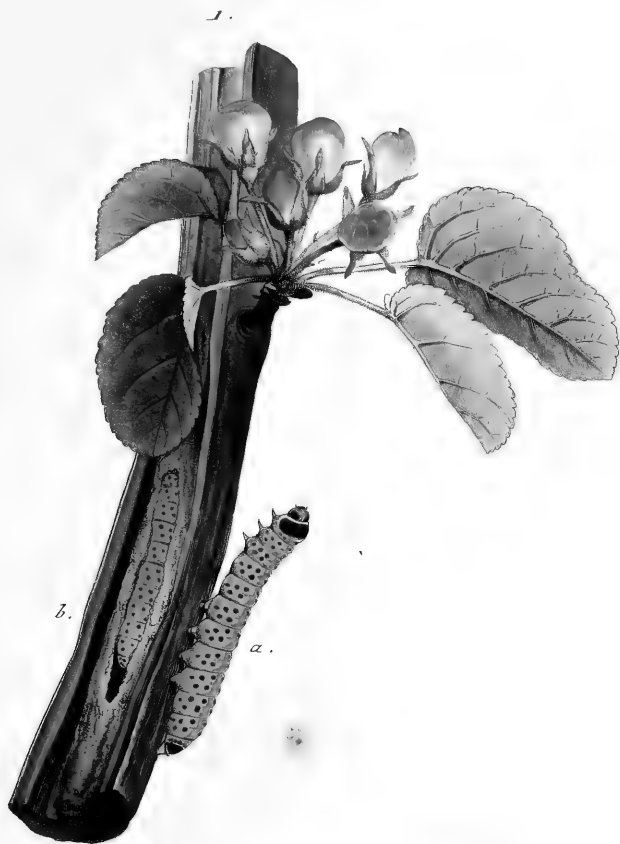
*1. a. b. c. Coffus .*



*Larva, Lepidopt. III.*

*Bombices, III.*

*Teredines, B. b.*



*1. a. b. Asculli.*



*Larva Lepidopt. III. Bombyces, III. Teredines, C. a.*



*1. a. b. c. Stimuli.*





