

**CATALOGUE**  
OF  
**Daffodils**  
... and ...  
**Narcissi.**

**AWARDED THE GOLD MEDAL  
OF THE ROYAL HORTICULTURAL SOCIETY.**

— SEASON, 1909. —

**CARTWRIGHT & GOODWIN,**  
Bulb Growers,  
KIDDERMINSTER,  
ENGLAND.

*Cable & Telegraphic Address :—*

“DAFFODIL, KIDDERMINSTER.”







Narcissus "ETHEREAL."

## INTRODUCTION.

ESTABLISHED 1907.

### **THE PREMIER HOUSE FOR DAFFODILS,** — KIDDERMINSTER, —

July, 1909.

IT is with especial pride that we enclose you our complete

## List of Daffodils and Narcissi

for the present season.

Only 18 months have elapsed since we had the pleasure of sending you our first price list, in which we stated that we hoped to soon make Worcestershire "**noted for Bulbs.**"

We little thought when we penned these words that our hopes would have met with such a speedy realisation. Our record for 1908, as set forth in our Preliminary List, was indeed a remarkable one, but this has been completely eclipsed by the phenomenal and unsurpassed successes of the present year. On another page we append a list of these.

For two years in succession we have secured the **Championship** of the great Midland Daffodil Society's Show, in itself a not inconsiderable feat for a firm of only two year's standing; but when we were awarded the highest possible honour, viz., the **Gold Medal of the Royal Horticultural Society** for our superb groups of new seedlings at Birmingham, the height of our ambition was attained.

These successes afford a striking testimony to the great care and attention that we bestow upon the culture of all our bulbs, and no words of ours are needed to endorse this fact.

We need scarcely add that it will be our earnest endeavour to maintain this high standard of excellence of our **English Grown Bulbs.**

## LOW PRICES.

With such a reputation to uphold we do not attempt to compete with those houses who undersell us at the expense of quality, but in comparing our prices with those of other firms we would remind our customers that

- (1). **We pay carriage.**
  - (2). **We make no charges for boxes or packing.**
  - (3). **We allow a good discount for cash.**
- 
- 

## ORDER EARLY.

**Early** orders are always very much appreciated, as they allow us to make headway with their preparation before the press of the Autumn Season commences.

To the Customer, the advantages of ordering early, may be summed up as follows :—

- (1). It secures the **first pick** of the Bulbs.
- (2). As all orders have the **personal attention** of either Mr. Cartwright or Mr. Goodwin, and are taken in **strict rotation**, it enables delivery to be made during August, which facilitates early planting or potting. This in itself is a matter of considerable importance, because to secure first-rate flowers and the maximum of increase **Daffodils must be planted early.**

To emphasise this point, we have only to mention the fact that Mr. Engleheart, to whom we owe the wonderful new strain of Pheasant Eye Narcissi, commences to replant his bulbs of these in July.

---

---

## How to Grow Daffodils from Seed.

Our Pamphlet on the above subject met with the liveliest appreciation from both Amateur and Professional Gardeners. With the small clerical staff at our disposal it has been quite impossible to reply to the thousands of letters—most of them couched in the most flattering terms—which we have received, congratulating us upon its publication, and we now desire to tender to all our correspondents our most hearty thanks for their kindness.

We quite intended issuing a revised edition with our present Bulb List, which would contain the results of our hybridising experiments for the past season, but we have found this impossible to accomplish without seriously delaying the list. We have therefore postponed its publication until next Spring. As soon as it is ready a copy will be posted to all our friends and correspondents.

**A few copies of the 1908 Edition may still be had on application.**

---

---

### Special Note.

We have also to thank the hundreds of customers who gave us their support last season. The first year of a new firm is always a most critical one, but the kindness of our friends exceeded our most sanguine expectations, and we were inundated with orders from all parts of the United Kingdom and the Colonies.

From the very numerous testimonials since received we are proud to think that our bulbs have given general and complete satisfaction.

**N.B.**—We enclose with this List a Post Card, and shall be most grateful to those of our supporters who will furnish us with the names and addresses of any lovers of the Daffodil to whom we could send it.

In return for this slight trouble it is our intention to present to the friend who secures us the largest number of new customers by **September 30th**, a bulb of the exquisite variety "**Northern Light**."

---

---

### —::— **Terms.** —::—

The prices in this List only hold good till **October 14th**, and only so long as we are unsold.

**All orders for Bulbs** to the value of 10/- and upwards will be sent **carriage paid** to any Railway Station in the United Kingdom.

**No charge will be made for packages.**

Orders for bulbs under 10/- in value will be sent carriage forward, but an allowance in bulbs for carriage to the value of 5% of the value of the order will be added to all orders over 5/-.

**Collections and special quotations are not subject to discount.**

All orders of £2 and over will be subject to a discount of 5 per cent when cash is sent with order.

Not less than 6 at dozen rate or 25 at 100 rate.

---

### **Notices to our Foreign & Colonial Correspondents.**

Foreign and Colonial orders are welcomed, but must be accompanied by a remittance or draft.

No discount can be allowed on account of the extra care and attention involved, but **if 5 per cent. be added to the amount of order postage will be paid** on orders over £1 0s. 0d. in value. Parcels too heavy for post are sent carriage forward per mail steamer.

*Cartwright & Goodwin.*

(R. Chatwin Cartwright, Arthur R. Goodwin.)



# :: Prize List, 1909 ::

**"Nothing Succeeds like Success."**



March 9th.—**Royal Horticultural Society**, Forced Bulb Show. **Silver Gilt Flora Medal**. The **Premier** award on this occasion.

March 9th.—**Royal Horticultural Society**. Award of Merit to Narcissus Circlet.

March 23rd.—**Royal Horticultural Society**. Silver Gilt Banksian Medal. The **Premier** award on this occasion.

April 6th.—**Royal Horticultural Society**. Silver Flora Medal. The **Premier** award on this occasion.

April 15th.—**Cornwall Daffodil Society**. Awards of Merit to "Royal Sovereign" and "Scarlet Eye." Also Cultural Commendation for "Scarlet Eye."

April 22nd.—**Midland Daffodil Society**. Large Silver Medal as Champions of the All England Classes. **98 points to next Competitor's 38.**

AWARD OF MERIT to Poctaz "Scarlet Gem."

AWARD OF MERIT to Double "Red & Gold."

AWARD OF MERIT to Incomp. "Giraffe."

SECOND for 50 Distinet Varieties.

FIRST for 12 Distinet Trumpets.

FIRST for 6 Distinet Short Trumpets.

FIRST for 12 Distinet Large Cups.

FIRST for 12 Distinet Parvi.

FIRST for 6 Distinet Engleheartii or Flat Cups.

FIRST for 3 Distinet Doubles.

FIRST for 6 Distinet Poeticus.

SECOND for 6 Distinet Bunch Flowered.

SECOND for The Cartwright Challenge Cup.

THIRD for Single Bloom White Ajax (Ailsa).

SECOND for Single Bloom Parvi (Cirelet).

April 22nd.—**Royal Horticultural Society**.

**Gold Medal** for New Seedlings.

(The Highest possible Award).

:: :: :: SOME OF :: :: ::

# Our Winning Flowers

— AT —

The Great Birmingham Show, 1909.

---

**Twelve Ajax.**—Weardale Perfection, Peter Barr, Lord Roberts, King Alfred, Mme. de Graaff, Hamlet, Cygnet, Mrs. H. J. Veitch, Empress, Horsfieldii, Admiral Makaroff and Alice Knights.

**Six Short Trumpets.**—Lady Margaret Boscawen, Arnold Rogers, Giraffe, Heroine,\* Lowdham Beauty and Lemon Star. \*(Owing to a mis-classification).

**Twelve Large Cups.**—Evangeline, Marina, Duke of Leinster, Lucifer, Blackwell, Northern Light, Fairy Queen; Ayacanora, Diana, White Cloud, Princess Mary and Homespun.

**Twelve Parvi.**—White Slave, Scarlet Eye, Eyebright, Redbreast, Dorothy, Inga, Ethelbert, Oriflamme, Fusilier, Alton Locke, Tom Tit and Cirlet.

**Six Engleheartii.**—Armeline, Incognita, Coreen, Mariette, Dorothy Pearson and Amyas Leigh.

**Six True Poeticus.**—Cassandra, Sir John Suckling, Rhymster, Oliver Goldsmith, Virgil and Laureate.

**Three Doubles.**—Argent, Red & Gold and Gollywog.

**Twelve Distinct Varieties not in commerce more than 4 years (Cartwright Cup):—**

Ben Wyvis, White Rose, Rising Sun, Ailsa, Lowdham Beauty, Lemon Star, Red & Gold, Diamond, Scarlet Gem, Chloe, Inga and Giraffe.

## SPECIAL NOTE.

As successful growers and exhibitors we take every pains in the growth of our bulbs and keeping the stocks clean, healthy, and true to name. Our bulb farm is situated 500 feet above sea level, on loamy soil overlying red sandstone.

All orders will have the personal attention of either Mr. CARTWRIGHT or Mr. GOODWIN.

## CLASSIFICATION.

Until there is more unanimity on the subject we have decided to **retain** the classification which has done duty for so many years.

Copies of the Royal Horticultural Society's "Classified List of Daffodil Names" may be obtained from us, PRICE 1/-.

A.M., R.H.S., = Award of Merit Royal Horticultural Society. F.C.C., = First Class Certificate.

# Magni-Coronati.

## Ajax or Trumpet Daffodils.

### Yellow Varieties.

#### DESCRIPTION.

	100 doz. each
<p><b>Alert.</b> (Pearson). A chance seedling from Tenby, opening about the same time as that variety. Trumpet deep yellow, segments very firm and imbricated, paler than trumpet. A very lasting flower that seeds freely and is of splendid growth and constitution. Gives charming seedlings by pollen of N. Cyclamineus. A.M., R.H.S., 1904</p>	... .. 6/-
<p><b>Admiral Makaroff.</b> Fine large bold flower of Emperor type, perianth primose, broad, smooth and imbricated, trumpet straight, soft yellow. We exhibited this in our First Prize stand of 12 distinct Trumpets at Birmingham, where it was greatly admired. Height 20 inches.</p>	... .. 5/6
<p><b>Admiral Togo.</b> Exhibited in our First Prize Stand of 9 yellow Ajax, Birmingham, 1908. A useful flower with broad yellow perianth and bold golden trumpet with expanded mouth. Most floriferous. Height 20 in.</p>	... 30/- 2/9

## DESCRIPTION.

100 doz. each

<b>Bennett-Poë</b> (Engleheart) A splendid hybrid from Emperor, crossed triandrus albus, Perianth creamy yellow, bold straight primrose trumpet, of grand constitution and very free. Height 15 inches. Exhibited in our 1st prize stand of 9 yellow Ajax, B'ham 1908, A.M., R.H.S.	...	...	10/6
<b>Ben Wyvis</b> (Brodie) Raised from a cross between Emperor (seed) and Santa Maria. A plant of gigantic vigour, with a remarkably bold trumpet, very solid and fleshy with an extraordinary frilling on the edge. Perianth, bright yellow of good substance, slightly twisted; trumpet deep rich orange. Exhibited by us in "The Cartwright Cup" competition. Pollen extremely fertile and should be invaluable for breeding from	...	...	100/-
<b>Captain Nelson</b> (Leeds). F.C.C., 1887. An old but useful variety of clear light yellow, with very fine trumpet and spreading perianth	...	...	5/6 6d.
<b>Cleopatra</b> (Barr). In our opinion this is one of the very finest yellow Trumpets. In the way of Monarch, but larger and far more refined. Very broad, overlapping perianth, long bold deep yellow trumpet. A.M., R.H.S., April 21st, 1903. A.M., Birmingham, April 16th, 1903. This has seeded freely with us to King Alfred, and as a pollen parent it is most reliable. <i>Stock very limited.</i>	...	...	42/-
<b>Cornelia</b> (Van Waveren). A large uniform soft yellow of perfect form, broad, smooth, imbricated perianth, large, well-expanded trumpet. A rather late flower of great substance, a free seeder and of splendid constitution. Extremely fine at Truro, 1909. A.M., R.H.S., 1905. <i>Very strongly recommended.</i>	...	...	55/- 5/-
<b>Emperor</b> (Backhouse). The best all round yellow Trumpet for the garden. Splendid under glass. Extra large bulbs, Good bulbs,	7/6 6/-	1/2 10d.	...
<b>Excelsior</b> . Of Dutch origin. Resembles Golden Spur, but has more substance and is richer in colour. Forces splendidly but not so quickly as Spur. Seeds. <i>Strongly recommended.</i>	...	...	12/6 1/9 2d.
<b>Fairy</b> . A most promising new variety that we feel sure will prove an acquisition. Large expanded trumpet of dark yellow with lighter perianth. A tall grower	...	...	5/- 6d.
<b>Felicity</b> (Welchman). An extremely early Trumpet of most delightful shape and colouring. The whole flower is of an exquisite and unique shade of soft luminous light yellow. The perianth segments are of pointed shape and the well-expanded trumpet has a beautifully frilled and recurved rim. We highly recommend this flower as it is a good seeder, quick increaser and quite distinct	...	...	50/- 5/-
<b>Glory of Leiden</b> (de Graaff). A bold and striking variety, the flowers staring one full in the face and proving most effective in the garden. Trumpet, rich, full yellow, perianth, streaky yellow. F.C.C. May 10th, 1887	...	...	40/- 5/- 6d.

## DESCRIPTION.

	100	doz.	each
<b>Golden Bell</b> (Engleheart). A very large deep yellow Trumpet with widely expanded brim, broad perianth segments of pale yellow and somewhat twisted. A graceful drooping flower of fine effect in the garden and a rapid increaser. Is particularly good in Australia and New Zealand. F.C.C., R.H.S., April 12th, 1902	...	15/-	1/6
<b>Gold Cup</b> (Engleheart). A very early flower, midway between obvallaris & maximus, not large but extremely high quality and very lasting. A glorified Tenby, colour a brilliant gold, most distinct. Plant of stiff, erect growth, strong and vigorous. Seeds freely	...	...	25/-
<b>Gold Finch</b> . A most beautiful deep golden self of excellent shape and good substance. Will be in great demand when its merits are known. <i>Scuree</i>	...	...	2/6
<b>Goldseeker</b> (Dawson). A flower of rare beauty and perfect form, entirely distinct from anything we have seen. In shape the flower resembles Tenby but is considerably larger and has a fine recurring rim. The colour is a rich deep glowing orange yellow, surpassing Santa Maria in intensity. The well proportioned trumpet is 1½ inches across at the mouth, while the perianth segments twist slightly. A strong grower, quick increaser, forming large bulbs. Pollen very fertile and seeds well. First Prize, Birmingham, 1908.	...	...	150/-
<b>Golden Spur</b> . The best of all the early yellow trumpets for garden purposes. A large flower, rich golden yellow. Magnificent under glass.			
Selected Bulbs for forcing	...	7/6	1/2 ...
Good ordinary Bulbs	...	6/-	10d. ...
<b>Golden Trumpet</b> (Pearson). Earlier than H. Irving and Golden Spur. Trumpet very large and expanded, segments rather narrow; whole flower a bright clear yellow. Strongly recommended to our Australian customers on account of its earliness	...	7/6	9d.
<b>Hamlet</b> (Haydon). After the style of Emperor but more refined. Large broad flat primrose perianth, and a well-built trumpet of full yellow. Premier Yellow Ajax, Truro, 1908. First Prize, Birmingham, 1909. A magnificent flower; quite indispensable to exhibitors and raisers. A good doer	...	60/-	5/6
<b>Henry Irving</b> . Broad spreading yellow perianth, large yellow trumpet. An uncertain grower, but does splendidly on some soils	...	6/-	10d. ...
<b>John Nelson</b> (Leeds). A very distinct, large rounded, drooping, soft yellow flower	...	4/6	5d.
<b>Johnston</b> (Queen of Spain). One of the most beautiful of all the wild daffodils; colour light self-yellow with gracefully reflexing perianth and long elegant trumpet. Most distinct. Exquisite in grass	...	17/6	2/6 ...
<b>Kaiser</b> (C. J. Backhouse). A selection from Emperor, somewhat earlier and a freer seeder	...	11/-	1/-

## DESCRIPTION.

	100 doz.	each
<b>King Alfred</b> (Kendall). The Giant Golden Trumpet Daffodil, quite the finest introduction of recent years. Flowers of the greatest size and substance, intense rich gold. Has probably taken more prizes for Premier bloom than any other variety. First Class Cert. R.H.S. March 28th, 1899. Special price ... ..	72/-	6/6
<b>King's Norton</b> (Pope). An immense, rich, deep yellow variety, very strong grower. A.M.,R.H.S.,F.C.C.,R.H.S. ... ..	...	40/-
<b>Lord Medway</b> (Haydon). A seedling from Monarch but flowering after that variety. Flower something like a very large Emperor, but far more perfect and refined in shape, with much expanded trumpet, and beautifully rounded segments. A very strong grower, most potent pollen parent, and always seeds. Quite first class ... ..	...	200/-
<b>Lord Roberts</b> (Barr). A bright golden yellow flower of large size, great substance, and splendid quality. Seeds freely and grows as strongly as Emperor. F.C.C., R.H.S., 1901. ... ..	140/-	12/6
<b>Maximus</b> . Rich deep golden yellow ... ..	7/6	1/-
<b>Mervyn</b> (Cartwright). A fine, bold handsome flower of uniform soft yellow. Raised from Emperor and obvallaris and opens a few days before the former. Trumpet bold and straight, with recurving rim; perianth very firm and well formed. Comes best on two year plants. A very good pollen flower. Stock all sold for this Season. ... ..		
<b>M. J. Berkeley</b> (Backhouse). A clear yellow variety with a large bold trumpet, much expanded and reflexed at the brim, of Maximus type, but larger and of paler colouring. Foliage deep blue. Invaluable to the hybridist as it gives excellent seedlings. ... ..	8/6	1/3
<b>Mrs. H. J. Veltch</b> (Van Waveren). A giant Emperor. Perianth pale yellow, large open trumpet of golden yellow. A flower of great substance and refinement. Has seeded well with us, both to triandrus and King Alfred pollen. One of the finest and most effective yellow Trumpets in our First Prize stand of 12 Ajax at Birmingham, 1909. <i>Strongly recommended</i> . ... ..	55/-	5/-
<b>Monarch</b> (Barr). A grand flower, one of the finest in this section and indispensable for hybridising. Perianth and trumpet rich full yellow, of perfect form and splendid substance. A good sturdy grower, type of P. R. Barr. ... ..	55/-	5/-
<b>Obvallaris</b> (The Tenby Daffodil). One of the most charming Daffodils for pots and may easily be had in bloom at Christmas. A dwarf, sturdy grower of neat habit. Flower of perfect shape, uniform full yellow. A sure seeder. ... ..	5/-	9d. ...

## DESCRIPTION.

	100	Doz.	each
<b>Outpost</b> (Engleheart). A magnificent trumpet Daffodil in the way of Emperor, but larger, rounder and of softer and more refined colour. It comes a week or ten days before Emperor; is wonderfully profuse in bloom, and an extremely strong grower. Has proved a sure seeder and most reliable pollen parent. A grand novelty that we can most strongly recommend ... ..	...	60/-	5/6
<b>Phil May</b> . A really fine Daffodil of sturdy growth. Large bold trumpet of bright yellow, perianth paler, broad and of good substance. ... ..	...	48/-	4/6
<b>P. R. Barr</b> (Backhouse). A smaller and more refined Emperor, opening slightly lighter than that variety. Trumpet rich yellow, perianth primrose. A grand grower, free seeder and most floriferous. ... ..	...	6/-	1/-
<b>Pope's King</b> (Pope). Something after the style of Golden Spur, but larger and with a distinct greeny tinge, in the perianth segments. Extremely good with us this year. A.M., R.H.S., 1899. Seeds ... ..	...	36/-	3/6
<b>Queen of Holland</b> . A large pure yellow Ajax, with twisted perianth. Comes very fine with us and is splendid under glass. ... ..	...	5/-	6d.
<b>The Rising Sun</b> (Welchman). A glorious flower opening about the same time as "Golden Spur," and lasting fully three weeks upon the plant. The outstanding feature of the flower lies in the exquisitely formed trumpet, which is finely recurved, and frilled and gashed at the rim. The broad, overlapping pointed perianth segments are of great substance and of perfect form; the whole flower being well-proportioned and of large size. The plant is vigorous, possesses a sound healthy constitution, seeds freely, and is remarkably effective as a pollen parent. Unanimous A.M., R.H.S., April 3, 1906. A.M. Cornwall Daffodil Society, 1908; A.M. Glamorgan Daffodil Society, 1908; First Prize, Birmingham, 1908. <i>The Gardeners' Chronicle</i> of April 7th, 1906, voices the general opinion of all those who saw this magnificent flower: "This is one of the very best formed Trumpet Daffodils, as regular and symmetrical as any florist could desire. The trumpet is expanded at the apex, and very much frilled, and the colour of perianth and trumpet is of the richest yellow." Only a few bulbs left ... ..	...	150/-	
<b>Van Waveren's Giant</b> (Van Waveren) A gigantic flower of Emperor type; perianth primrose and of rather campanulate form, bright yellow trumpet with very large open mouth, flanged at brim. Grows nearly 3 feet high and has leaves like a flag Iris. The forerunner of the coming race of giant Trumpet Daffodils. A reliable seeder and good pollen plant; indispensable to every hybridist who wants to get size into his trumpets. F.C.C., R.H.S., 1900. Stock very limited. ... ..	...	40/-	
<b>Santa Maria</b> . A wild Spanish Daffodil of great beauty. Very rich deep orange yellow. Perianth elegantly twisted. Early ... ..	...	3/-	4d.

## DESCRIPTION.

<b>Sol</b> (Engleheart). A large flower with firm, well set perianth of soft, pale yellow and a very long crown of deep, rich yellow. An excellent grower, with broad dark green foliage. The few seedlings from this variety that we have seen, have confirmed our impression of its great value. Rather late, but a good seeder and reliable pollen flower. Stock limited. ...	100 doz. each	...	...	84/-	7/6
--	---------------	-----	-----	------	-----

**Bicolor Trumpet Daffodils.**

**Chloe.** Raised by T. Batson, Esq., this fine variety created the greatest surprise and delight at the last great Birmingham Show, where it was the only flower that gained an A.M.. The following press notices help to confirm our opinion that this is unquestionably the finest triandrus hybrid yet seen.

*Midland Daffodil Society Report for 1908.*

"A beautiful refined flower of slightly drooping habit, pure white perianth, measuring  $4\frac{1}{2}$  inches across, pale lemon trumpet with a distinct narrow white edge round the rim. Emperor x triandrus albus."

*The Garden, May 2nd, 1908.*

"A soft coloured giant Johnstoni, with a beautiful refined perianth. It received a unanimous A.M."

*The Gardeners' Chronicle, May 2nd, 1908.*

"A beautiful shaped flower, with a broad cream-coloured perianth, and a soft canary or pale yellow cup."

*The Gardeners' Magazine, May 9th, 1908.*

"A typical giant Johnstoni with pale soft colouring and a flat overlapping perianth. It is a decided acquisition."

We, ourselves, carefully tested the pollen of this magnificent hybrid, and are glad to say that it proved quite fertile. The plant is a perfectly healthy grower. We have purchased the entire stock, but as it is a very small one we have only two bulbs to offer in 1909. ... .. 210/-

**Cygnets** (Haydon). Very bold white perianth, broad and elegantly twisted, long bold trumpet of a soft canary yellow, elegantly rolled back at mouth. One of the loveliest of all bicolors. A.M., R.H.S., 1902, A.M., Birmingham, 1903. ... .. 105/-

**Dorothy Kingsmill** (Engleheart). A cross between Grandee and N. Calathinus, faultless in form and of exquisite colour. Perianth pure white, long straight lemon yellow trumpet of drooping habit. F.C.C., R.H.S., 1900. First Prize in 12 Ajax, Birmingham, 1909. ... .. 25/-

**Duke of Bedford.** Opens before Horsfieldii and is twice as large and much more refined. Very large broad perianth, pure white; large bold trumpet of clear soft yellow. A striking flower of fine form and great substance. Very free seeder. A.M., R.H.S., 1899. ... 84/- 7/6



## DESCRIPTION.

100 doz. each

- Empress.** (W. Backhouse) Pure white perianth, bright yellow trumpet. The best all round bicolor for the garden and a worthy companion to Emperor. Opens about a week later than *Horsfieldii* and has decidedly more substance and lasting qualities. A good forcer.  
 Extra large bulbs 7/- 1/  
 Good bulbs ... 5/- 9d.
- Glory of Noordwijk** (de Groot). A magnificent flower of the same colouring as Empress, but twice the size and of enormous growth and vigour. Of good substance and refinement, trumpet well frilled and of good shape. Early and a very free seeder. ... 55/- 5/-
- Grandee** (Leeds). The latest in this section. A flower of wonderful substance and lasting qualities. Pure white, stiff massive perianth with flat overlapping segments. Long straight yellow trumpet. Rather short in the stem, grand in pots. Selected bulbs. ... 3/9 7d.
- Horsfieldii** (John Horsfield). Bears a close resemblance to Empress but is earlier, slightly dwarfer and flowers possess less substance. ... 5/- 9d
- J. B. M. Camm** (W. Backhouse) One of the most lovely and refined Daffodils. Trumpet pale yellow, fading to delicate straw or cream colour, and elegantly gashed at brim; perianth segments delicate ivory white, standing out well from trumpet. An excellent grower with handsome erect dark green foliage. Forces splendidly and comes almost pure white ... 17/6 2/- ...
- John Davidson.** A handsome flower with large creamy white perianth, and bold clear yellow trumpet frilled and expanded at mouth ... 7/6 9d.
- Judge Bird** (Engleheart). The largest bicolor we have ever seen, and one of the most striking flowers at the 1908 Birmingham Show. Much larger than Glory of Noordwijk, and of more substance. Highly recommended ... 42/-
- Madame Plemp.** A very strong grower but rather coarse. Fine bold bright yellow trumpet of great substance, large white twisted perianth. Very floriferous and good in pots ... 12/6 1/9 ...
- Marle Hall.** A very large triandrus hybrid, with bold straight trumpet, wide at the mouth, and of a soft sulphur passing to pure white; perianth pure white, broad and overlapping, and recurves very gracefully, giving it a most distinct character. Late. A.M.,R.H.S., 1905. Pollen very fertile ... 100/-
- Mrs. W. T. Ware.** A small flower of perfect form. Trumpet, golden yellow, well expanded; pure white perianth. Rather short in stem. Early and a free seeder 9/6 1/4 ...
- Princeps** (Giant variety). A cheap forcing variety, useful for cutting during December and January ... 3/- ...

## DESCRIPTION.

	100	doz.	each
<b>Princess Ena.</b> A very refined late-flowering variety of large size. Long trumpet, slightly frilled at mouth, of a beautiful shade of sulphur; broad creamy white perianth. Seeds. A.M., R.H.S., 1906 ... ..	...	...	80/-
<b>Trewhiddle Bicolor</b> (Shilson). A very neat early bicolor, small but a great beauty ... ..	...	...	2/6
<b>Victoria.</b> One of the finest flowers in this section; perianth of great breadth and solidity creamy white; bold, clear yellow trumpet of great substance, beautifully frilled and flanged at mouth. Rather a small bulb, but most floriferous, and magnificent under glass. A.M., R.H.S. 7/- 1/- ...	7/-	1/-	...
<b>Weardale Perfection</b> (W. Backhouse). One of the largest and finest Daffodils. Very large, broad, creamy white segments, overlapping and of great substance; immense, bold, well-shaped trumpet of delicate primrose yellow. A grand grower of splendid constitution. Indispensable to raisers and exhibitors. F.C.C., R.H.S., ... ..	...	...	5/6

### White Trumpet Daffodils.

<b>Ailsa</b> (Crosfield). A peerless flower of the purest white with the growth and carriage of Empress. Segments of Mme. de Graaff character, large bold trumpet with much recurved rim. A splendid grower of great vigour, and a sure seeder. Very finely shown by us at B'ham this year. Unanimous A.M., R.H.S., April 30th, 1907. <i>The Garden</i> , July 13th, 1907:— "The whitest trumpet Daffodil yet raised, and a good flower in all respects."	...	...	150/-
<b>Alice Knights</b> (Barr). The earliest of this section. Perianth white, trumpet creamy white, of elegant form with prettily frilled open mouth; whole flower of great substance, and lasts a long time whether cut or on the plant. A good doer and most floriferous. Seeds ... ..	...	...	12/6
<b>Florence</b> (Engleheart). Another very early Ajax of great beauty with long elegant trumpet of ivory-maize colouring. A free seeder, but in our experience seeds more freely to Parvi and Picticus varieties than to Trumpets. Has given some excellent Leedsii flowers, and is strongly recommended to raisers. A.M., R.H.S., 1901 ... ..	...	...	8/-
<b>Lady Audrey</b> (Barr). A flower of great beauty, white perianth slightly campanulate and a long straight bold trumpet, widening at mouth, very pale creamy primrose, passing off white, most floriferous. A splendid Daffodil, and one that we can highly recommend. A sure seeder. A.M., Birmingham, April 24th, 1902 ... ..	...	...	15/-

## DESCRIPTION.

100 doz. each

<b>Madame de Graaff</b> (de Graaff). The finest of all the creamy white Trumpet Daffodils at a moderate price; a strong grower and quick increaser. Perianth of good substance, and semi-drooping in character, opening lemon white, changing to cream white. Fine bold trumpet elegantly rolled back at the brim; rich primrose or pale primrose, changing after a few days to a beautiful waxy white. A sure seeder. F.C.C. May 10th, 1887 ... ..	55/-	7/6	8d.
<b>Mrs. Betteridge</b> (de Graaff). An exquisitely formed flower of a uniform, clear, ivory white throughout; well-formed perianth, with broad expanding petals, long, straight trumpet, beautifully fringed at brim. A sure seeder, giving seedlings of the purest white. Highly recommended ... ..	...	140/-	12/-
<b>Mrs. Robert Sydenham</b> (de Graaff). An exquisite and most refined pure white Daffodil of perfect shape. Broad, firm, white perianth of great substance and a fine bold trumpet that is pure white even before expanding; elegantly frilled and recurved ... ..	...	...	120/-
<b>Mrs. Camm</b> (W. Backhouse). A large, bold flower with elegant cream white perianth, and sulphur white trumpet, fading with age ... ..	...	3/6	4d.
<b>Peter Barr</b> (Barr). A noble flower with pure white campanulate perianth and large ivory white trumpet. Strong grower, free bloomer and sure seeder. F.C.C., R.H.S., April 8th, 1902 ... ..	...	...	100/-
<b>W. P. Milner</b> . A charming and most floriferous little Daffodil of pendulous habit, with dainty sulphur coloured flowers; most distinct and of good constitution. Strongly recommended for rockgardens, and also for pots	10/6	1/6	...

---

## Medio-Coronati.

---

### Leedsii Daffodils.

## DESCRIPTION.

100 doz. each

<b>Argosy</b> (Engleheart). A superb new Giant Leedsii, after the type of White Queen, <i>but much earlier</i> . Stock limited. ... ..	...	...	100/-
<b>Amazon</b> (Smith). One of the very best of the new giant-flowered race. A remarkably handsome flower of fine form and great substance, perianth pure white, cup canary, a strong grower and free bloomer. ... ..	...	48/-	4/6

## DESCRIPTION.

	100 doz.	each
<b>Ariadne</b> (Engleheart). One of the most exquisite flowers in this section. Perianth white, very large wide saucer-shaped cup of ivory white, prettily frilled at margin. Very lasting and a quick increaser. Will not seed but is a grand pollen flower. A.M., R.H.S., 1905. ...	10/6	1/-
<b>Citron</b> (Engleheart). An exquisite variety with loose creamy white segments and a long crown of apricot-citron colour. Sweet scented. Splendid under glass. ...	5/-	6d.
<b>Diamond</b> (Copeland). A most refined chaste pure white flower of exquisite purity raised from Minnie Hume and Calathinus. Broad, flat, overlapping perianth; large egg-shaped crown. A good healthy tall grower of most graceful habit, frequently bearing two flowers on a stem. Quite one of the loveliest hybrids that we have seen. Second prize in Seedling Class for Medios, Birmingham, 1906. Second prize, Cartwright Cup, Birmingham, 1909. ... ..	...	100/-
<b>Duchess of Westminster</b> . A most refined and graceful variety, with glaucous blue green foliage. Very fine pure white spreading perianth, long cup of pale canary-yellow, edged orange on opening, the whole passing to pure white. A well-formed star-like flower of erect habit. F.C.C., R.H.S. ... ..	25/-	3/6 4d.
<b>Eoster</b> (Engleheart). A charming little plant and flower of much distinction, very thick hollowed foliage, flowers of medium size, fine round perianth of broad overlapping segments, crown cup-formed, light clear canary citron, refined and novel. A.M., R.H.S., and Birmingham, 1906. ... ..	...	15/-
<b>Ermine</b> (Engleheart) A remarkable flower of large size and perfect form, segments glistening white, very round and of fine substance; cup small and crinkled, bright yellow. <i>Late</i> . ... ..	...	15/
<b>Evangeline</b> (Engleheart). This magnificent flower was introduced by us at the R.H.S meeting on March 30th, 1908, when it caused quite a furore among lovers of the Narcissus. Writing in 'The Garden' for April 18th, the Rev. J. Jacob described it as a "white Home-spun," — a description which will convey some idea as to the exquisite modelling of the flower. The pure white petals, which are much overlapping, are of remarkable breadth, texture, smoothness and solidity. The plant is a strong, vigorous, tall grower. Figured in "The Gardeners' Chronicle," April, 1908. First Prize, Birmingham, 1909 .... ..	...	15/-
<b>Fairy Queen</b> . A much improved Minnie Hume with pure white perianth and straight creamy white cup, prettily fluted. Strongly recommended ... ..	...	6/6 7d.
<b>Hon. Mrs. Barton</b> (W. Backhouse). Pure white perianth, cup expanded and passing from primrose to white. A rather delicate grower, but succeeds well with us. The parent of Moonbeam and Ethereal, indispensable to the hybridist as it gives most exquisite seedlings by pollen of triandrus and poeticus. Also very beautiful under glass ... ..	17/6	2/6 3d.



Narcissus "ROYAL SOVEREIGN."



## DESCRIPTION.

	100	doz.	each
<b>Katherine Spurrell</b> (Leeds). A most charming flower of great substance, perianth pure white, broad and overlapping; cup pale canary yellow. One of the most lasting Daffodils in a cut state ... ..	17/6	2/6	3d.
<b>Lemon Star</b> (Copeland). This remarkable shapely flower was exhibited in the class for single blooms of Medio-Coronati with white perianths, at the 1907 Birmingham Show, by the raiser W. F. M. Copeland, Esq. Out of nineteen exhibits Lemon Star was placed second to Mr. Crosfield's Empire, beating both Pilgrim and White Queen. The flower is of large size, with broad lemon white segments, very flat and overlapping, and large open lemon yellow cup that fades with age. Extremely lasting and keeps its form wonderfully. An excellent grower and seeds. Second Prize Cartwright Cup, Birmingham, 1909 ... ..	...	...	63/-
<b>Libra</b> (Copeland). A fine shapely Giant Leedsii, raised from Minnie Hume (seed) and Mme. de Graaff. Broad overlapping ivory white perianth. Large light yellow crown, spreading at end and frilled. A flower of great substance. Seeds freely ... ..	...	...	10/6
<b>Lowdham Beauty</b> (Pearson). The finest of all the Minnie Hume and Mme. de Graaff hybrids. The flower is 4 inches across the perianth and 1½ inches across the crown, which is very slightly crinkled and daintily frilled. The broad perianth segments are firm and perfect in texture and the whole flower is of a glistening ivory-white. A grand doer. A.M., R.H.S., 1909. Second Prize Cartwright Cup, B'ham, 1909 ... ..	...	...	105/-
<b>Madge Matthew</b> (W. Backhouse). An early variety with white perianth and elegant white cup ... ..	16/-	2/3	3d.
<b>Minnie Hume</b> (W. Backhouse). Large white perianth and large spreading cup, passing from bright lemon to white. Still indispensable to the hybridist and a grand flower under glass ... ..	3/6	6d.	...
<b>M. Magdaline de Graaff</b> (W. Backhouse). Broad well-formed pure white perianth, cup large and spreading, yellow suffused with rich orange or terra-cotta shade. Seeds ... ..	7/-	1/-	...
<b>Mrs. Langtry</b> (W. Backhouse) Broad perianth segments of good substance, creamy white on opening, changing to white. Large full crinkled cup opening pale primrose and fading to white. Most floriferous and a quick increaser ... ..	3/-	6d.	...
<b>Moonbeam</b> (Mrs. R. O. Backhouse). For perfection of form this stands unrivalled among Leedsii varieties. Raised from Hon. Mrs. Barton (seed) crossed poeticus recurvus, this variety is a most potent pollen parent and both Weardale and Mme. de Graaff seed freely to its pollen. A very perfect pure white flower, the petals beautifully formed and overlapping, of great substance and durability; short white cup ... ..	...	...	150/-

## DESCRIPTION.

	100 doz.	each
<b>Neptune</b> (Copeland). A cross between M. Hume (seed) and Grandee, of immense vigour. Perianth stiff and overlapping, opening yellow and changing to white. Very long straight narrow trumpet of intense rich yellow. A striking flower exhibited by us at Birmingham, 1909. Quite distinct from any other Leedsii, and seeds	...	42/-
<b>Phyllis</b> (Engleheart). Perianth large and pure white, straight cup of a beautiful citron-buff colour with frilled brim. A most floriferous variety	...	5/- 6d.
<b>Pilgrim</b> (Engleheart). A flower of the same shape as White Lady but much earlier. Segments pointed, broad and much overlapping, opening creamy yellow and fading to creamy white. Crown longer than in White Lady, crinkled and bright lemon in colour. A.M., Truro. Indispensable to exhibitors and a good seed and pollen parent	...	20/-
<b>Trilogy</b> (Copeland). A remarkable hybrid between Lady M. Boscawen (seed) and calathinus. Of graceful pendulous habit with 3 flowers on a stem. Flat white perianth, clear yellow cup, cylindrical but smaller at base and clean cut at brim. Light shining green foliage.	Entire stock for disposal. Price on application.	
<b>Trimpley Gem</b> (Goodwin) A cross between M. Hume and Madame de Graaff with stiff, much overlapping white petals and finely frilled crown. Seeds freely and is a splendid doer. Exhibited at Birmingham, 1909	...	10/6
<b>Una</b> (Engleheart) A very large flower and a strong grower. Creamy white petals and long straight crown of bright citron tinged apricot	...	1/-
<b>Waterwitch</b> (Engleheart). A pure white drooping flower of exquisite grace and purity. Segments long, cup bell-shaped. A most floriferous plant with splendid long stems and dark green foliage. Strongly recommended for planting in the grass, and has been largely used in this way at Sandringham...	22/6	3/6 4d.
<b>White Nectarine</b> (Copeland). One of the most exquisite new seedlings exhibited by us in our 50 at B'ham, 1909. Large, broad, overlapping, even perianth of remarkable whiteness. Fine bold spreading cup of purest white tinged citron yellow at rim. A striking flower. Raised from an early white Ajax (seed) crossed poeticus	...	42/-
<b>White Lady</b> (Engleheart). Probably the finest garden plant in this section, being most floriferous and of very strong growth and quick increase. Fine round overlapping perianth of great solidity, cup beautifully crinkled, of pale canary yellow. Superb under glass. A very shy seeder. A.M., R.H.S., April, 1898	...	8/- 9d.



## DESCRIPTION.

100 doz. each

<b>White Queen</b> (Engleheart)	One of the loveliest Narcissi. In the way of a refined "Sir Watkin," but having the large broad smooth white perianth of glistening white and the very large, bold, straight cup of pale citron passing to white, with an exquisitely frilled edge. F. C. C., R. H. S., 1898. Indispensable to exhibitors	...	...	20/-
<b>White Slave</b> (Engleheart).	A vastly improved White Lady and considerably earlier than that variety. Always flat and smooth and of extraordinary lasting qualities. Broad, much overlapping perianth of poeticus white; cup elegantly frilled and fluted, pale citron. One of the loveliest and most striking flowers in this section and a grand grower. A. M., Birmingham, 1909	...	...	17/6

## Incomparabilis, Barrii, and Nelsoni Daffodils.

### With Yellow Perianths.

## DESCRIPTION.

100 doz. each

<b>Autocrat</b> (W. Backhouse).	A splendid flower when well grown. Large broad perianth of perfect form, much expanded cup; colour uniform soft clear yellow. Will not seed but is a good pollen flower	...	4/6	8d.	...
<b>Beauty</b> (W. Backhouse).	A fine bold flower with broad segments of sulphur yellow and long deep yellow cup richly edged orange-scarlet. A grand garden plant	...	8/-	1/3	...
<b>Blackwell</b> (W. Backhouse).	One of the earliest in this section and a splendid forcing variety. Perianth of good substance, primrose yellow, bright orange red cup crinkled at brim. A very lasting flower and an excellent seeder	...	...	10/-	1/-
<b>Cigar</b> (Copeland).	Soft light yellow thin perianth of reflexing habit and slightly overlapping. Very wide spreading cup, much frilled and crinkled, intense glowing orange. A good healthy grower, blooms held upright, most floriferous. Height 17 inches. Much more brilliant than Gloria Mundi	...	...	...	21/-
<b>Commodore</b> (Engleheart).	A large quite round flower with remarkably broad, overlapping segments of great substance, colour soft saffron yellow. Wide yellow crown edged orange. One of the varieties comprised in our First Prize Stand of Nine Yellow Incomps. at Birmingham, 1908. <i>Strongly recommended.</i>	...	...	3/-	4d.
<b>Conspicuous</b> (Barri).	(W. Backhouse). Large broad spreading yellow perianth, short broad cup, richly edged orange. The most useful of all Narcissi. F. C. C., R. H. S., 1886	...	...	25/-	1000
				<i>Selected Bulbs.</i>	3/- 6d. ...

## DESCRIPTION.

	100 doz.	each
<b>Firelight</b> (R. O. Backhouse). A very bright coloured bedding Daffodil, flower of medium size, bright yellow perianth, and straight golden yellow crown, prettily fluted and stained with intense orange red. Height 14 inches. A.M., R.H.S., 1903 ...	...	6/6 7d.
<b>Flambeau</b> (Engleheart). Yellow perianth and glowing orange red crown. A.M., R.H.S., April 18th, 1899 ...	...	... 1/6
<b>Flamingo</b> (Engleheart). Full yellow perianth, long funnel shaped crown of vivid red ...	...	... 1/-
<b>Frank Miles</b> (Leeds). A uniform soft clear yellow flower, with large perianth of gracefully twisting habit. Seeds.	5/-	9d.
<b>Giraffe</b> (Crosfield). A gigantic flower, the outcome of a cross between Mme. de Graaff and Princess Mary. Was first exhibited by the raiser at B'ham, 1907, in First Prize stand of 12 distinct seedlings. At the 1908 B'ham show it was one of the 12 varieties which won the Challenge Cup offered by our Mr. Cartwright. The plant is of enormous vigour and grows much taller than either of its parents. Perianth overlapping and of great substance, huge spreading crown, much frilled at edge. Quite a new type. A.M., B'ham, 1909 ...	...	... 63/-
<b>Gloria Mundi</b> (W. Backhouse) A glorious flower with smooth overlapping clear rich yellow segments and large spreading cup, heavily stained with dusky red. Indispensable to exhibitors and hybridists. F.C.C., R.H.S., 1887 ...	...	... 15/- 1/6
<b>Gwyther</b> (W. Backhouse). A very useful flower for pots. Clear yellow petals, cup stained orange ...	6/6	10d. ...
<b>Homespun</b> (Engleheart). This is easily the finest of all yellow Incomps. A faultless flower of most perfect form, substance and quality; extremely durable both on the plant and when cut. Colour an exquisite uniform clear yellow. Broad flat overlapping segments of very strong texture, fine expanded crown. Has received more prizes and awards than almost any other flower. Seldom seeds.		
<b>Joan of Arc</b> (Engleheart). A fine well-shaped flower of good size and substance, quite first class. Broad flat perianth of creamy yellow with a wide open cup of glowing fiery scarlet. Has proved an excellent pollen flower with us ...	...	... 42/-
<b>Kingcup</b> (Lemesle Adams). One of the grandest of the prize flowers in the Single Bloom Classes at B'ham 1909. Raised from the same parentage as Homespun, (Golden Spur (seed) x Poet. ornatus), to which it bears considerable resemblance, this is a much stronger plant. Perianth segments overlapping and of splendid shape and substance, 1½ inches broad, pale lemon yellow. Wide open cup, deep cowslip yellow, expanding to 1¼ in. frilled at edge and ¾ in. deep. Flower stands boldly up, stalk 18 inches. A most potent pollen parent. Whole flower over 5 inches across and of grand form ...	...	... 150/-

## DESCRIPTION.

	100	doz.	each
<b>Leonie</b> (Van der Schoot). A most floriferous variety with broad, deep primrose perianth and fine open cup of slightly deeper colouring. Not a free seeder but has seeded to poets with us of late ... ..			
	10/6	1/6	...
<b>Lightsome.</b> A refined soft yellow flower of good form and substance. Exhibited well at B'ham, 1908. Early ... ..		10/-	1/-
<b>Marigold</b> (Engleheart). Raised from a very early yellow Ajax crossed by Gloria Mundi pollen. Opens a week before Blackwell. A well-made flower of extreme durability with broad, flat, overlapping segments and a very wide spreading cup of Gloria Mundi type and colour. A splendid grower and great acquisition. <i>Very strongly recommended</i> ... ..			21/-
<b>Noble</b> (Engleheart) A splendid great Daffodil of the "Lady Margaret Boscawen" type, but larger in flower and plant. The entire bloom is of a beautiful pale yellow, and of magnificent build and substance. Indispensable for crossing ... ..			42/-
<b>Northern Light</b> (Engleheart). A flower of great refinement and superb quality with wide, overlapping segments of rich yellow. Crown crinkled, of medium size and bright orange. A strong grower, forming very large bulbs, and most floriferous. Splendidly exhibited by us at B'ham, 1909. <i>Scarce</i> ... ..			20/-
<b>Princess Mary</b> (Leeds). Indispensable to the hybridist and a splendid flower under glass. Broad creamy yellow perianth, large and much expanded cup suffused orange ... ..	10/6	1/6	...
<b>Queen Sophia</b> (W. Backhouse). Thin sulphur yellow petals, large spreading frilled cup of a peculiar shade of bright orange-apricot. A unique flower. F.C.C., R.H.S., 1884 ... ..		8/-	9d.
<b>Resolute</b> (Engleheart). A hybrid from Grandee, of the Nelson type. A pendulous flower with broad creamy yellow perianth and long straight crown of clear yellow ... ..		7/6	9d.
<b>Sir Watkin.</b> The best all round yellow Incomparabilis for the garden. A giant flower and deservedly most popular. A splendid forcer ... ..	6/-	10d.	...
<b>Soifatare.</b> (Engleheart). A magnificent flower, very large, somewhat of Sir Watkin form, but of Nelsoni-like texture. Large, flat, broad-petalled perianth; long, widely expanded crown. Whole flower of a uniform, very delicate lemon-yellow, pale and refined. Perfect in habit and a strong grower ... ..			15/-
<b>Torch</b> (Engleheart). A huge decorative flower with twisted yellow petals and an exceedingly fine, large, vividly red cup. Maximus (seed) x poetarum. A.M., R.H.S., 1902 ... ..		20/-	2/-
<b>Torchlight</b> (Engleheart). Broad, overlapping, pale primrose perianth, bold open crown of dark orange suffused scarlet. A well shaped flower and should be most useful for hybridising ... ..			30/-

## Incomparabilis, Barri, and Nelsoni Daffodils.

With White Perianths.

### DESCRIPTION.

	100	doz.	each
<b>Albatross</b> (Engleheart). A fine large spreading flower of good shape and substance. Large, broad, flat white perianth; large citron yellow cup with deep orange red eye and prettily frilled rim. F.C.C., R.H.S., 1894 ...	9/-		10d.
<b>Artemis</b> (Engleheart). A very early variety with stiff white perianth and much expanded yellow cup. Seeds freely ...	8/-		9d.
<b>Aurantius</b> (Nelsoni). (Leeds). Broad flat white perianth, cup ribbed and well expanded, clear yellow suffused glowing orange-red. F.C.C., R.H.S., 1886 ...	4/-		5d.
<b>Branston</b> (Melville). A magnificent sport from Barri conspicuous with pure white perianth segments. This is quite distinct from and superior to Lady Godiva, which we have discarded. A.M., R.H.S., 1903. B'ham, 1902 ...	...	...	4/6
<b>Brigadier</b> (Engleheart). Comes near to Lady Margaret Boscawen in style and beauty. In the way of a bicolor Sir Wakin, but of a far superior form and finish. Ample, flat-set, white perianth, very large open crown of deep yellow, very free in bloom and increase, perfectly robust; altogether a splendid daffodil. A.M., R.H.S., 1899. <i>Strongly recommended</i> ...	...	...	2/6
<b>Cardinal</b> (Engleheart). A small but very early flower with creamy white perianth and long cup of rich orange ...	21/-		2/-
<b>Castile</b> (Engleheart). A tall vigorous grower and quick increaser, rather late. Spreading segments of good shape and breadth, sulphur tinted white, crown coffee cup shape, of rich Seville orange, toned apricot. A flower of unique colouring, very durable and particularly good under glass. A.M., B'ham, 1903 ...	45/-		4/-
<b>Ceres</b> (Engleheart). Nelsoni section. A hybrid between Grandee and poeticus. Pure white pointed segments, clear yellow cup. Flower of drooping habit, exquisite in the rock-garden ...	3/6		4d.
<b>Chancellor</b> (Engleheart). A highly refined giant incomparabilis of "Lady M. Boscawen" type, but smaller and more Nelsoni-like. Large, broad, overlapping, ivory white segments of circular shape and great substance, handsome, straight crown, prettily fluted, rather open and clear light yellow. A very bold and striking flower, well shown at Truro the last two years. A grand pollen parent. <i>Strongly recommended</i> . A.M., R.H.S., April 1900. ...	...	...	15/-
<b>Crown Prince</b> (W. Backhouse). A very fine Daffodil with large white petals, and yellow cup stained orange. Very fine in pots and a grand grower ...	3/6		4d.
<b>Dorothy Wemyss</b> (W. Backhouse). A large bold flower, rather late. Large creamy white perianth, canary yellow cup margined orange-red. Not suitable for pots. A.M., R.H.S., 1901 ...	9/-		10d.

## DESCRIPTION.

	100	doz.	each
<b>Duke of Leinster</b> (Engleheart). This might well be described as a glorified Queen Sophia, and in our opinion is one of the most magnificent coloured Nareissi. A large flower of great substance with firm creamy white perianth and an enormous spreading shallow crown of brilliant orange. <i>Very scarce</i> ...	...	...	252/-
<b>Flora Wilson</b> (W. Baekhouse). A deliciously scented flower with pure white perianth and lemon cup heavily stained orange ...	12/-	1/9	...
<b>George Nicholson</b> . A flower of fine form and great substance, perianth pure white and clear yellow cup ...	...	1/6	2d.
<b>Great Warley</b> (Engleheart). A gigantic flower measuring fully 5 inches across when well grown, with large, substantial, creamy white segments and a very fine, rich golden-yellow, broadly bell-shaped crown, 1½ in. across. Much larger than Lady M. Boseawen. <i>A few bulbs. Price on application</i> ...	...	...	...
<b>Heroine</b> (Engleheart). This flower was superbly shown by us at Birmingham, 1909, and created a positive sensation. It may be best described as a giant form of the now well-known "Albatross." Is very much larger in every way, and the red edging to the cup is deeper and richer. A really glorious flower. <i>Scarce</i> ...	...	...	120/-
<b>Lady Margaret Boscawen</b> (Engleheart) One of the most splendid Daffodils in cultivation and a magnificent garden plant. Very large flower of the "Sir Watkin" class, with remarkably broad, flat segments of clear white and a large bold expanded deep yellow cup. Seeds freely and is indispensable to every exhibitor. F.C.C., R.H.S., 1900. <i>Special price</i> ...	...	...	8/6
<b>Lucifer</b> (Lawrenson). Long white segments, long narrow cup, colour intense glowing orange-scarlet. A splendid garden plant as colour lasts well in the sun. F.C.C., R.H.S., 1901 ...	...	18/-	1/9
<b>Lulworth</b> . This variety is a chance seedling and received a F.C.C. from the R.H.S. in 1894. A flower of exquisite beauty with broad, ample and slightly drooping perianth segments; at first very pale sulphur, but afterwards pure white; cup large, bell-shaped, and of a peculiarly vivid red. A free seeder ...	...	3/6	4d.
<b>Marina</b> (Engleheart). A superb flower of very high quality. Creamy white spreading perianth with large shallow open crown of pale lemon. A.M., R.H.S., 1899. Rather late ...	...	...	2/9
<b>Mrs. C. Bowley</b> (W. Baekhouse). White perianth, rich orange cup. A good flower that seeds most freely ...	12/-	1/9	2d.
<b>Mohican</b> (R. O. Baekhouse). Broad chaste creamy-white perianth segments stained with yellow at the base. Small open cup, rich yellow deeply margined bright orange-red. A very attractive flower. Height 20 in. A.M., R.H.S., 1903 ...	...	...	7/6

## DESCRIPTION.

	100 doz.	each
<b>Orangeman</b> (Engleheart). An extraordinarily vigorous plant and one of the most striking Daffodils in cultivation. Flat white segments, 3 of a fine almond shape, 3 narrower; short broad crown of wonderful substance, broader than long, plaited and lobed, of deep warm orange. A most sensational colour. <i>Very highly recommended</i> ... ..	...	30/- 3/-
<b>Ormonde</b> (Engleheart). One of the most remarkable Daffodils that we have ever seen. Segments pure white, very large spreading fluted crown heavily gashed into 3 divisions; colour a brilliant escholtzia-orange. Rather late. A grand pollen flower. <i>Very scarce</i> ... ..	...	... 21/-
<b>Perfectus</b> . To the hybridist this variety is invaluable from the fact that it is of most perfect symmetry and seeds freely. The plant is a most vigorous grower and reaches 2 feet in height. Flower of great substance with shapely stiff white perianth and expanded canary-yellow cup faintly tinged orange ... ..	...	5/- 6d.
<b>Scarletta</b> (Engleheart). A most lovely flower with creamy white perianth, segments rather narrow but of great lasting quality, keeping flat until the flower is quite dead. Rather narrow cup, brightest orange throughout; very vivid and telling. A grand grower and seeds well ... ..	...	... 12/-
<b>Seagull</b> (Engleheart). This variety resembles "Albatross" and was from the same seed pod. Large white spreading perianth and canary cup edged apricot ... ..	...	7/6 8d.
<b>Steadfast</b> (Engleheart). A superb hybrid from Grandee. Segments white, of great substance, smooth and overlapping. Cup narrow and nearly cylindrical, bright rich yellow. Plant very vigorous and floriferous. A very perfect flower. Late ... ..	...	... 5/-
<b>Stella superba</b> . Large clear white pointed perianth, bright yellow cup ... ..	6/-	10d. ...
<b>White Wings</b> (Engleheart). A.M., R.H.S., 1898. A most perfectly formed flower, with round, white perianth and expanded crown of clear yellow. Seeds freely, and by pollen of N. Calathinus we have obtained some most exquisite seedlings from it ... ..	...	5/- 6d.

---

## Parvi-Coronati.

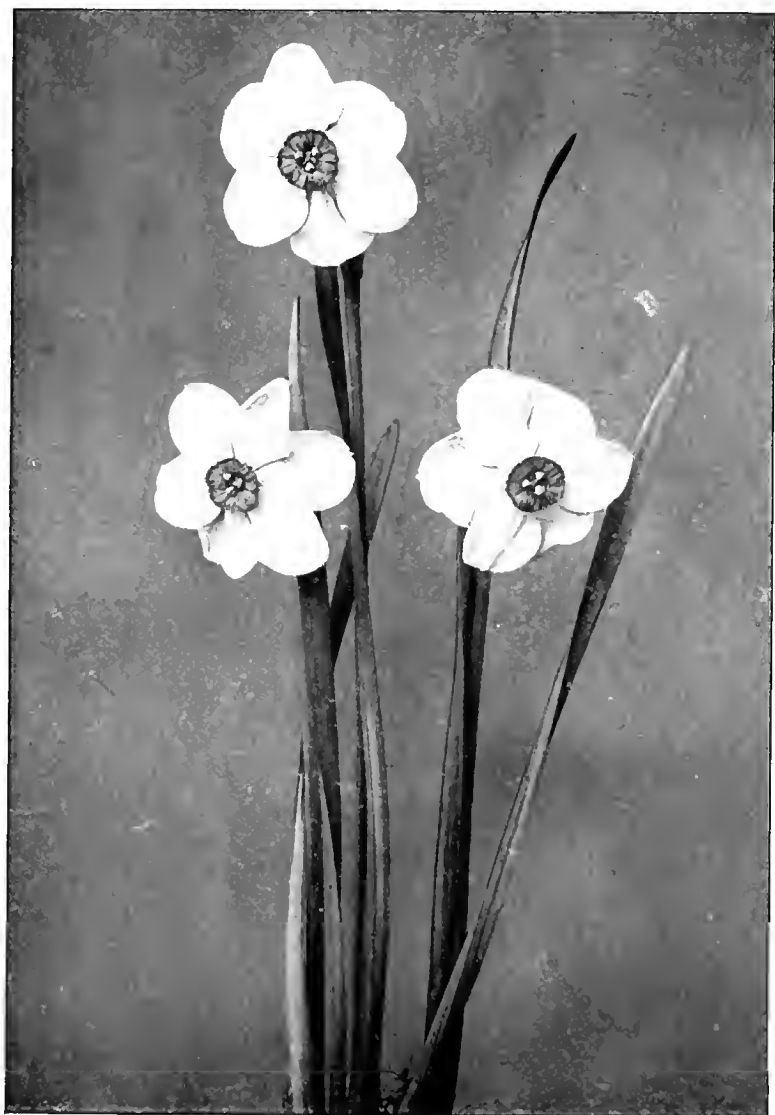
---



### True Poeticus.

## DESCRIPTION.

	100 doz.	each
<b>Almira</b> . Raised in Holland. A most distinct variety with broad, undulating well-rounded perianth of great substance and a large eye beautifully edged with very rich red ... ..	12/6	1/9 2d.



Narcissus "OLIVER GOLDSMITH."





## DESCRIPTION.

100 doz. each

- Barcarolle** (Engleheart). This may be best described as a glorified "Cassandra," and specimens have been exhibited with petals measuring  $1\frac{1}{2}$  in. in width. Flower rounded, symmetrical, remarkably flat, rather small eye rimmed with red. A most durable flower. *Strongly recommended. Special Price* ... .. 7/6
- Cassandra** (Engleheart). An extremely distinct variety with a rather small eye deeply rimmed with red and a very broad perianth of great substance and solidity. A strong tall grower and of rapid increase. Most invaluable to the hybridist. A.M., R.H.S., 1899 ... 19/6 1/9
- Chaucer** (Engleheart). The earliest of the new Poeticus varieties and a grand plant for forcing and early hybridising work. Fine rounded perianth, large flat eye, vivid scarlet ... .. 15/- 1/6
- Child Harold** (Engleheart). A magnificent tall growing plant of vigorous growth, with large flat yellow eye rimmed with light red. Perianth segments very round, short, broad and overlapping, most distinct. The whole flower is very round and of great substance and the eye stands out well from the perianth. Late, opening the last week in April ... .. 21/-
- Comus** (Engleheart). A rather late variety of extreme durability and great vigour. Very fine broad-petalled segments of superb purity, finish and texture. The large eye has a ribbon edge of brilliant red which stands both sun and frost well. A grand seeder. *Highly recommended* ... .. 18/- 1/9
- Dante** (Engleheart). A cross between Poeticus ornatus and P. poetarum. Well formed, round, broad-petalled perianth; eye citron deeply suffused madder red. Fairly early. F.C.C., R.H.S., 1896 ... .. 10/6 1/-
- Epic** (Engleheart). One of the very finest in this section. A strong grower but a shy seeder. A large refined flower of great size; eye canary rimmed with brilliant red. Late ... .. 18/- 1/9
- Glory.** A Dutch seedling with a perianth after the old Poeticus grandiflorus type and a small brilliant eye. Very large well-formed petals ... .. 12/- 1/3
- Herrick** (Engleheart). A hybrid between P. ornatus and P. poetarum with substantial segments and a deep red eye. Rather late and of medium height. A.M., R.H.S., 1901 ... .. 12/- 1/3
- Hildegarde** (Engleheart) A very large flower of the highest quality and refinement. Stout overlapping segments, very broad and round, rather approaching those of "Cassandra" in size, but of twice the substance and solidity. Large eye of citron yellow, bordered with a heavy band of rich intense crimson as bright as "Horace." Vastly superior in every way to "Tennyson," being of even better form and much

DESCRIPTION.		100	doz.	each
richer in colouring. The flower lasts in good condition for an enormous length of time, and the plant is a grand grower. Opened with us this year 3 days after Birmingham show ... ..		...	...	147/-
<b>Homer</b> (Engleheart).	Very large broad Ornatus-like perianth; eye orange with a very broad band of clear deep crimson. Stiff erect habit. F.C.C., R.H.S., 1898	...	20/-	2/-
<b>Horace</b> (Engleheart).	Is best described as a much improved <i>P. poetarum</i> . Overlapping, rounded perianth segments, with flat and entirely scarlet eye. The flowers attain 3½ inches in width. A good sceder, and quickly grows into large clumps. Must be cut young to retain its full colouring	...	18/-	1/9
<b>Ibbs</b> (P. D. Williams).	A superb flower grandly shown at Truro this year. Broad, solid, overlapping perianth of great purity, and rich crimson eye. In our opinion this will be one of the best varieties to breed from. Second Prize B'ham, 1909, for Finest Single bloom of Poeticus	...	...	17/6
<b>Juliet</b> (Engleheart).	Of Ornatus type but flowering somewhat earlier. Flowers of fine shape with broad, overlapping petals; eye canary thinly edged with madder-red	...	15/-	1/6
<b>Kestrel</b> (P. D. Williams).	A huge flower with round, overlapping perianth, segments of extraordinary thick substance; very wide, flat eye of heavy crimson scarlet; the whole flower is well balanced and of perfect quality. A tall and stately plant. A.M., B'ham, 1907	..	...	105/-
<b>Laureate</b> (Engleheart).	A very large flower with slightly reflexing, rounded petals and an extremely large eye with heavy red rim. Late	...	...	5/-
<b>Musidorus</b> (Engleheart).	Quite a new type of Poeticus, bred by Mr. Engleheart from Poeticus of Linnæus, and one that will be of great value to the hybridist. A small flower of good form, immense substance and great solidity. Petals much overlapping; eye dark citron lightly rimmed with red. The flowers last in excellent condition for three weeks on the plant and seem absolutely sun-proof. Seeds freely and makes very large pods. Opens about the same time as Epic. <i>Highly recommended</i>	...	10/6	1/-
<b>Oliver Goldsmith</b> (Engleheart).	This variety probably came in for more admiration at the last Birmingham Show than any other Poeticus. The flower is of medium size, very neat and of the very highest form and quality. The flat, broad, rounded petals are very smooth, overlapping, and of grand texture and solidity. The eye is large and flat, centre deep brilliant green, surrounded by pale citron and brilliantly edged with bright orange-red	...	...	21/-
<b>Poem</b> .	An extremely neat late variety of Dutch origin. Probably a cross between Ornatus and Recurvus	...	3/6	4d.

## DESCRIPTION.

	100	doz.	each
<b>Poetarum.</b> One of the oldest varieties and the parent of most of the fine sorts now in commerce. Segments thin and slightly recurving, eye solid bright red throughout. Still of great value to the hybridist ...	3/-	6d.	...
<b>Rhymster</b> (Engleheart). A very shapely circular flower of medium size, with smooth, flat, broad petals, stout and overlapping. Eye clear yellow, rimmed and suffused deep crimson. A.M., Birmingham, 1902 ...	...	...	5/-
<b>Recurvus.</b> The old May-flowering Pheasant Eye, with reflexing petals and margined red eye. Will not force and is of no use in pots ...	17/6	1000	2/- 4d. ...
<b>Sir John Suckling</b> (Engleheart). This was grandly shown by us this year at Birmingham. A flower of medium size, perianth 2½ inches across. Fine solid petals, very smooth and overlapping. The eye is of most delightful colouring, rich yellow edged brilliant scarlet, with a tube of vivid green, ½-in. across ...	...	...	21/-
<b>Sir Phillip Sidney</b> (Engleheart). A flower of large size and admirable quality, with broad, substantial perianth and a rich orange eye with deep red edge. Size 3¾ inches across the perianth, eye ¾ inches across. Quite distinct and strongly recommended ...	...	...	15/-
<b>Virgil</b> (Engleheart). The finest of the older varieties, flowers very large and of perfect form, with broad overlapping petals of great substance and purity. Eye of large size and suffused with much dark rich red. Fairly early. A.M., R.H.S., 1900. Premier Poeticus. Birmingham, 1906 ...	...	...	3/-

---



---

### Burbidgei or Small-Crowned Daffodils.

## DESCRIPTION.

	100	doz.	each
<b>Agnes Barr</b> (W. Backhouse). Perianth creamy white, cup yellow, good form. Most floriferous ...	4/-	8d.	...
<b>Alton Locke</b> (Engleheart). A superb Princess Mary seedling, with broad, substantial segments of the purest glistening white, slightly overlapping. Crown mid-way between the Poeticus section and the Engleheartii section and is over 1 inch across; colour a luminous citron edged with a riband of orange-red. A potent pollen flower. Forces splendidly and is one of the most exquisite pot plants we have seen. Included in our First Prize stand of 12 Parvi varieties, B'ham, 1908 ...	33/-	3/-	3/-
<b>Beatrice Heseltine.</b> A very late flower, small but of the finest form. Perianth creamy white, flat primrose cup conspicuously edged orange scarlet. Has given us several excellent seedlings this year ...	...	3/6	4d.

## DESCRIPTION.

	100	doz.	each
<b>Beacon</b> (Engleheart). Broad, firm, sulphur-white petals; crown shallow and plaited, of fiery red. A good grower and free seeder. F.C.C., R.H.S., 1897	...	...	4/6
<b>Blood Orange</b> (Engleheart). Broad lemon petals with very bright orange-scarlet eye. F.C.C., Birmingham, 1900. Silver Medal as best Parvi, B'ham, 1902. Seeds	...	10/6	1/-
<b>Broadwing</b> (Engleheart). A flower of singular beauty with pure white glistening perianth and disc-like crown of light orange-yellow, edged deep orange. Flowers 3½ inches across. A.M., Birmingham, 1903	...	...	5/-
<b>Bullfinch</b> (Engleheart). A symmetrical flower, with overlapping lemon perianth, fading to white; cup heavily edged orange-scarlet. Seeds freely	...	10/6	1/-
<b>Edlth</b> (Cartwright). Broad creamy white perianth, of good substance and form. Large shallow cup of glowing orange. Seeds	...	...	10/6
<b>Ellen Barr</b> (W. Backhouse). Broad white perianth, citron cup stained orange	...	6/-	1/-
<b>Ethelbert</b> (Mrs. R. O. Backhouse). A charmingly neat flower with very pure glistening white petals, much overlapping and of singular solidity, and a dainty saucer-shaped cup, the centre of which is tinged with soft lemon and citron, the edge being margined with an attractive shade of light orange red. Breadth of flower 2½ inches. Always seeds with us and is an excellent pollen parent. A.M. Birmingham, 1904	...	...	42/-
<b>Eyebright</b> (Engleheart). Closely approaching the Poeticus section, this variety is of great beauty and of most distinct character. Perianth pure white, overlapping, and of great substance; eye heavily margined with bright orange red. A large flower and quite early. A good seeder and reliable pollen flower	...	27/-	2/6
<b>Falstaff</b> (W. Backhouse). Pure white perianth, lemon cup margined orange	...	3/6	6d.
<b>Firebrand</b> (Engleheart). Creamy white perianth and intense fiery red cup. A most telling flower and a sure seeder	...	20/-	1/9
<b>Fusiller</b> (Engleheart). One of the most striking flowers we have seen. Stiff overlapping creamy white perianth, and a flat cup of brilliant scarlet. A grand plant. <i>Strongly recommended</i>	...	24/-	2/6
<b>Hyacinth</b> (Engleheart). A late variety with pure white perianth and large flat yellow eye. Deliciously scented, a very strong grower and free seeder. A.M., Birmingham, 1903	...	5/-	6d.
<b>John Bain</b> (W. Backhouse). Pure white petals, small citron yellow cup. Early. Specially recommended for planting in grass	...	5/-	9d.
<b>Orflamme</b> (Engleheart). Fine circular creamy white perianth, entire cup of fiery red. Seeds	...	...	3/6

## DESCRIPTION.

100 doz. each

- Queen Alexandra** (Kendall). This is just on the borderland between the Incomp. and Parvi sections. Has been particularly fine this year and was a prize-winner in the Single Bloom class for "Large Cups" at Birmingham. White perianth of good substance, cup wide and open, of a distinct shade of orange. A most potent pollen parent ... .. 2/6
- Queen of Scots** (Engleheart). A flower of medium size, sulphur white perianth, large crown of poetarum-like scarlet; a wonderful keeper if opened in water ... 5/- 6d.
- Radiant** (Engleheart). Quite one of the most striking and beautiful flowers in Mr. Crosfield's recent exhibits. Large, broad, overlapping, pure white petals and large, open, spreading crown with deep golden and green centre very broadly margined intense dark fiery red. A grand pollen flower. *Strongly recommended* ... .. 147/-
- Redbreast** (Engleheart). A nicely proportioned flower, with cream white perianth and short flattened cup of a uniform orange-red, with bright green tube. A very tall grower ... .. 2/-
- Robert Browning** (Engleheart). A very vigorous, free, long stemmed variety, perianth sulphur-white of good substance, not a large flower, but its short shallow cup has the remarkable quality of opening dull coffee-colour and developing into orange terra-cotta.  
N.B. This gives seedlings of very high quality, and we most strongly recommend it *Special price* ... 5/- 6d.
- Robinet** (Engleheart). A recurvus hybrid of great beauty and distinction. Ivory perianth, overlapping and  $2\frac{1}{2}$  in across. Eye orange and scarlet. An extremely free seeder. Late ... .. 10/-
- Rosalind** (Engleheart). A very handsome flower, late and of great durability. Broad, solid, white perianth of slightly reflexing habit. Cup bright yellow margined with fiery scarlet. A good seeder ... 18/- 1/9
- Saturn** (Engleheart). Fine, large, spreading perianth, broad eye of coppery orange. A free seeder and splendid doer 7/- 1/- ...
- Scarlet Eye** (Engleheart). Closely approaches Poeticus. One of the most striking flowers in this section; a good seeder and most reliable pollen flower. Firm, pure white perianth with rather pointed, overlapping segments. Large flat eye of vivid orange-scarlet. Quite early. A.M., Truro, 1909.  
*Very strongly recommended* ... .. 7/6
- Scarlet Runner** (Engleheart). White petals of good substance, with very bright orange-scarlet cup. Very stiff habit ... .. 2/6
- Sceptre** (Engleheart). Delicate primrose perianth, cup prettily fluted and of a very bright and intense orange-red ... .. 5/-

## DESCRIPTION.

	100	doz.	each
<b>Southern Star</b> (Engleheart). Well-shaped, overlapping, pointed, white perianth. Broad, expanded crown of bright yellow, banded with orange. A slow increaser. Early. Remarkably fine under glass ...	...	...	7/6
<b>Stonechat</b> (Engleheart). Firm, bright yellow perianth, segments pointed and overlapping. Cup spreading, suffused with bright crimson-orange ...	...	15/-	1/6
<b>Tangerine</b> (Engleheart). A distinct flower, stiff and upright, very bright solid orange scarlet cup and neat perianth, which becomes pure white; seeds well. Successfully exhibited as a Parvi, Birmingham, 1900, 1901; Truro, 1902. Stock limited ...	...	...	3/-
<b>Tom Tit</b> (Engleheart). A small but extremely shapely flower, with lemon yellow, overlapping petals. Cup very large and expanded, the colour being sharp orange at the rim and the cup similarly stained. Early, and makes large seed pods ...	...	...	2/6,
<b>Vivid</b> (Engleheart). Ivory white perianth, flat cup, glowing orange red. Gives good seedlings ...	...	...	2/6
<b>Wheat ear</b> (Engleheart). A very neat flower. White perianth, with cup of a pretty combination of red and green; an erect plant and robust. Seeds ...	...	...	3/-

---

**Engleheartii or Flat-Crowned Daffodils.**

	100	doz.	each
<b>Amyas Leigh</b> (Engleheart). A magnificent flower of grand quality. Fine pure white perianth of great substance, 2½ in. across; eye rich orange, edged deep crimson, with bright green tube. Very free seeder. Scarce ...	...	...	30/-
<b>Armeline</b> (Engleheart). A glorious flower, with fine, bold sulphur-cream perianth of great substance. Large, flattened crown of bright yellow, edged orange. Early and a very free seeder. <i>Most strongly recommended</i> ...	...	...	21/-
<b>Armored</b> (Engleheart). The earliest flower in this section. Splendidly shown in London this season where it attracted great attention. Very large, broad, overlapping, pointed white perianth, with flat crinkled eye edged apricot orange. A flower of very high quality, seeds, and is strongly recommended ...	...	84/-	7/6
<b>Astrardente</b> (Engleheart). Pure white segments, not overlapping. Much expanded, flattened crown of a beautiful salmon shade, with darker edge. An indispensable pollen flower. A.M., R.H.S., 1903 ...	...	...	20/-
<b>Astrophel</b> (Engleheart). A large and beautiful flower greatly admired at Truro this year. Perianth pure white, with very large disc-like, crinkled crown of pale canary yellow. Very early and seeds ...	...	...	10/6

## DESCRIPTION.

	100 doz.	each
<b>Circlet</b> (Engleheart) This is undoubtedly the grandest flower in this section and is indispensable alike to the exhibitor and hybridist. Broad, pure white, much overlapping, rounded petals of perfect shape and great substance. Large, flat, yellowish eye edged orange scarlet. A flower of most exquisite modelling. Has been magnificently exhibited by us this season. A.M., R.H.S., 1909. <i>Very strongly recommended</i> ... ..	...	12/6
<b>Concord</b> (Engleheart). An absolutely circular flower with broad, round, overlapping petals, white tinted buff. Eye quite flat, 1½ in., of strong saffron-buff, in some seasons dark copper orange, with dark green eye. A.M., R.H.S., 1903 ... ..	...	20/-
<b>Coreen</b> (Engleheart). A flower of the most perfect shape and substance. Broad, stout, creamy white perianth 3 inches across. Flat eye, 1 inch wide, rich yellow suffused deep orange. A grand doer and seeds freely. <i>Strongly recommended</i> ... ..	...	10/6
<b>Derwent</b> (Engleheart). A small but particularly well formed flower, with sulphur perianth and rich eye, suffused orange ... ..	...	2/6
<b>Dorothy Pearson</b> (Engleheart) Grandly shown by us at Birmingham this year. A well-formed flower, segments creamy white, rounded and firm. Disc wide and regular, of a bright orange tint. Plant healthy and free, and a rapid increaser. <i>Strongly recommended</i> ... ..	...	63/-
<b>Harold Finn</b> (Engleheart) A superb Engleheartii with flat wafer-like scarlet eye, poeticus petal and habit, and free in growth; comes particularly good if cut young and expanded in water. Seeds. <i>Scarce</i> ... ..	...	25/-
<b>Incognita</b> (Engleheart). Flower of large size, with wafer-like crown of "Queen Sophia" colour, a beautiful and peculiar shade of orange-apricot, and flat, well-set, white, almond-pointed petals. Indispensable alike to the hybridist and exhibitor. A.M., R.H.S., 1902 ... ..	...	15/-
<b>Inga</b> (P. D. Williams). Premier Parvi, Truro, 1908. A remarkable flower of the highest quality and perfect form. Broad, substantial, overlapping petals of purest glistening white, and a large, solid, crown of deep orange apricot. A greatly improved "Incognita." A very good doer and quite early ... ..	...	160/-
<b>Mariette</b> (Engleheart). This flower has been greatly admired in our exhibits this season. Clear white perianth, overlapping and of great substance, 2 inches across. Flat saucer eye of deep orange, edged brilliant scarlet. <i>Strongly recommended</i> ... ..	...	5/-
<b>Pole Star</b> . A late flowering variety, with white perianth and large, expanded, flat cup, prettily fluted, and of a soft pale canary colour. Crossed by pollen of Cassandra this has given some excellent seedlings with flat yellow eyes ... ..	...	5/6 6d.

## DESCRIPTION.

		100 doz.	each
<b>Salamander</b> (Engleheart). One of the most strikingly beautiful flowers that Mr. Engleheart has raised. It was grandly shown by us at the R.H.S. on March 23rd of this year, where it won universal encomiums. A most refined flower of large size and exquisite shape, with broad, overlapping, ovate segments of soft sulphur yellow. Crown shallow and flattened, 1½ inches, bright yellow banded with brilliant orange	...	...	120/- 10/6
<b>Semiramis</b> (Engleheart). This was one of the finest flowers in our grounds this year but was unfortunately too late for the Birmingham Show. Large, broad, circular perianth of great substance and durability. Very large, broad, flat, yellow eye edged bright scarlet. A first class flower of striking beauty. Seeds and is a splendid pollen flower. <i>Most strongly recommended</i>	...	...	84/-
<b>Yellow Eye</b> (Engleheart). <i>Price on Application</i>	...	...	...

### Double Daffodils.

		100 doz.	each
<b>Amphion</b> (Copeland). An elegant, shapely, semi-double flower of "Argent" build. Three to four sets of creamy lemon petals, coronal segments bright citron yellow edged orange red, and frilled. Good stout stems, most floriferous, height 21 inches N.B.—This variety produces plenty of pollen and seeds. Exhibited in our 50 at Birmingham, 1909	...	...	105/-
<b>Argent</b> (Engleheart). A semi-double, star-shaped flower with creamy white petals, centre yellow. An elegant and decorative variety, forces early, most floriferous and a good doer. Stalk extremely strong, standing rough weather well, 18 inches high. Of great value to the hybridist from the fact that it will seed	...	10/-	1/-
<b>Dubloon</b> (Engleheart). A cross between <i>Telamonius plenus</i> and <i>poeticus ornatus</i> , with 4 to 5 sets of rich yellow segments and an orange centre. Very fine, strong in stem	...	...	2/-
<b>Golden Phoenix</b> . Large, double, rose-shaped flower, yellow with golden coronal segments	...	4/9	8d. ...
<b>Gollywog</b> (Copeland). An immense very double flower, with 5 or 6 sets of stout lemon petals and light yellow coronal segments edged orange. Petals turn right back and hide stem, making a round massive ball of flower. First prize Birmingham, 1909	...	...	105/-
<b>Golden Rose</b> . Very large, round, full, symmetrical flower, with rich light yellow petals and orange coronal segments. A grand flower. Height 17 inches. <i>Strongly recommended</i>	...	4/-	5d.





Narcissus "AMYAS LEIGH."



## DESCRIPTION.

	100	doz.	each
<b>King Canute</b> (Copeland). A flower that attracted considerable attention at Birmingham this year. May be best described as of the same build as <i>Argent</i> , but rather a smaller flower. Petals pure white, coronal segments of brilliant orange, a most striking combination. Height 17 inches. (Poet. poetarum x tel. plenus) ...	...	...	105/-
<b>Orange Phoenix</b> ("Eggs and Bacon"). Large double rose-shaped flowers, white with reddish orange coronal segments ...	4/9	8d.	...
<b>Plenipo</b> (Engleheart). A full double without being heavy, strong grower, stout stem and erect habit. Yellow primrose and white ...	...	...	2/-
<b>Poeticus plenus</b> . The well-known "Gardenia-flowered" <i>Narcissus</i> . Requires a damp position and deep planting. Very sweet ...	25/-	1000	3/6 6d. ...
<b>Rags and Tatters</b> (Copeland). Three sets of soft lemon yellow segments, 1½-inch long. Flat Engleheartii-like cup, deep yellow edged orange. Flowers held erect on stiff stems, height 17 inches. Glauous foliage. A most floriferous variety opening 1st week in April ...	...	...	105/-
<b>Red and Gold</b> (Copeland). A flower of most gorgeous colouring. Three sets of rich yellow, long, pointed petals, deep yellow fringed coronal segments, heavily margined with orange red. Most floriferous and a grand doer. Height 21 inches. A.M., Birmingham, 1909, and First prize in Doubles class ...	...	...	147/-
<i>The Garden, May 8th, 1909.</i>			
<b>"Red and Gold"</b> marks a distinct advance in highly coloured doubles. It is a loosely-put-together flower, with, as its name implies, deep yellow petals and the red, split-up corona peeping up between them."			
<b>Royal Sovereign</b> (Copeland). A semi-double of unsurpassable beauty and unique in shape and colouring. Large, smooth, ivory white perianth of <i>Minnie Hume</i> character. Bright yellow much frilled cup, with a second row of ivory white petals which are smaller than the outer ones. Good healthy upright grower, height 14 inches, very stiff stems. Created a sensation at Truro, where it received a unanimous Award of Merit. A cross between <i>Minnie Hume</i> and tel. plenus. Opens 1st week in April.	Entire stock for sale. Price on application.		
<b>Shock-headed Peter</b> (Copeland). Three rows of ovate, pointed, creamy white segments, coronal segments rich orange yellow, frilled. Flower of fine shape, plant most floriferous. Stiff ribbed stems, flowers held erect, 18 inches. Opens 1st week in April ...	...	...	105/-
<b>Sulphur Phoenix</b> ("Codlings and Cream"). Large double, white, rose-shaped flowers with sulphur centre. An exquisitely chaste variety and superb under glass	8/-	1/2	...
<b>Telamonius plenus</b> . The old double <i>Yellow Daffodil</i> . A fine garden plant and of great service to the hybridist	5/-	9d.	...

## DESCRIPTION.

	100 doz.	each
<b>Umbriel</b> (Copeland). A flower of "Argent" build with 4 to 5 sets of long, loose, pointed creamy segments; coronal segments frilled, bright orange with yellow base. Height 17 inches .. .. .	...	63/-
<b>Valhalla</b> (Copeland). A flower of large size, with 4 sets of broad soft sulphur segments, coronal segments of <i>pluminius plenus</i> colour. Stem strong and erect, height 15 inches. Opens end of March. ... ..	...	105/-
<b>Wairilgig</b> Copeland. A very distinct flower of unique shape. Perianth segments creamy white, 1 3/4 inches long, evenly but loosely disposed. Coronal segments rich orange. A most effective garden plant, the blooms being held erect on stiff stalks, 18 inches high. Growth very vigorous, foliage glaucous, of very pretty semi-drooping habit. Most floriferous, quite small bulbs producing 3 blooms. Opens end of March. ... ..	...	63/-

## New Narcissus Poetaz Hybrids.

### (N. poeticus x N. polyanthus varieties).

We cannot too strongly recommend this superb new race of plants to our customers both for the outdoor garden and for growing in pots. They are perfectly hardy, force most easily and were one of the prominent features of our magnificent group at the R. H. S. exhibition of forced bulbs on March 9th this year.

To the hybridist they offer unique opportunities as we find that they will seed to pollen of Horace and other Poeticus varieties.

	100 doz.	each
<b>Alsace</b> (Van der Schoot). Petals pure white, with yellow eye, when bursting into flower the eye is slightly edged reddish, broad large flower of true poeticus form, one of the earliest, is earlier than its seed parent, "Ornatus," mostly 3 flowers on a stem. <i>Highly recommended.</i> .. .. .	10/6	1/6 ...
<b>Aspasia</b> Van der Schoot). Perianth pure white, with yellow eye, true poeticus form, large flowers, borne on very tall stems, grows 2 feet high, 3 to 4 flowers on a stem. A variety of striking beauty. <i>Most strongly recommended</i> ... ..	10/6	1/6 ...
<b>Elvra</b> (Van der Schoot). A large flower of remarkable substance, with poeticus segments and yellow eye, 3 to 4 flowers on a stem. A strong, sturdy, tall grower with erect dark green foliage. A grand bedding plant and superb under glass. A.M., R.H.S., 1904 ... ..	8/-	1/2 ...
<b>Ideal</b> (Van der Schoot). White petals with dark orange eye, large truss of 6 or 7 flowers. ... ..	21/-	3/- ...
<b>Irene</b> (Van der Schoot) Pale primrose petals and orange eye prettily fluted. Large broad truss bearing 8 to 9 flowers. ... ..	14/6	2/- ...

## DESCRIPTION,

	100 doz.	each
<b>Jaune a Mervelle</b> (Van der Schoot). A most exquisite variety with soft yellow perianth of circular shape and deep golden yellow eye, 7 to 8 flowers on a stem. <i>Very scarce</i> ... ..	...	2/6
<b>Klondyke</b> (Van der Schoot). A superb variety that was greatly admired in our exhibits this season. Perianth yellow, with deep golden eye; one of the deepest yellows, 6 to 7 flowers on a truss <i>Highly recommended.</i> ... ..	21/-	3/- ...
<b>Lucia</b> (Van der Schoot). Another grand variety with yellow perianth and golden yellow eye. A tall grower, 7 to 8 flowers on stem. <i>Highly recommended</i>	21/-	3/- ...
<b>Scarlet Gem</b> (P. D. Williams). This strikingly beautiful new seedling was first exhibited by us in 1908 at the Swansea show of the Glamorgan Daffodil Society, where it gained an A.M. At the last Birmingham show it excited intense admiration and received a unanimous A.M. Flowers borne 4 on a stem, each individual bloom being two inches across and perfectly round. Eye $\frac{3}{4}$ inch, flat and crinkled, bright brick red. Petals very overlapping, rich apricot yellow tinted at their base with the colour of the eye. <i>Very rare.</i> All bulbs sold for this year.		
<i>The Garden, May 8th, 1909.</i> —"The only Poetaz with a red cup, and it will be a very valuable addition to this group."		
<b>Sunset</b> (Van der Schoot). This variety must on no account be confused with " <i>intermedius Sunset</i> " a vastly inferior plant. Fine, broad, overlapping soft yellow petals with rich orange eye. Flowers large, 6 on a stem. One of the grandest garden plants we have seen. Magnificent under glass <i>Very highly recommended</i> ... ..	...	27/- 2/6

### Polyanthus Narcissus.

	100 doz.	each
<b>Grand Monarque.</b> Fine white perianth, primrose yellow cup, very large truss of bloom ... ..	8/-	1/2 ...
<b>Gloriosa.</b> An early variety that we recommend for forcing, with white perianth and orange cup	8/-	1/2 ...
<b>Maestro.</b> A large flower with fine creamy white petals and rich flat orange cup. Quite the most distinct, a strong grower and most useful to the hybridist	16/-	2/3 ...
<b>Mont Cenis.</b> The finest variety and quite the most floriferous. Splendid white petals, rich yellow cup. Dwarf grower ... ..	8/-	1/2 ...

## White-Crowned Parvi.

	100 doz. each
<b>Ethereal</b> (H. Backhouse). Raised from Hon. Mrs. Barton x Cassandra (pollen). Crown perfectly flat as in poeticus but pure white; perianth of good substance also pure white. A most choice and beautiful flower and quite unique. All Bulbs sold for this year.	... ..

*The New Zealand Graphic* (Sept. 23rd, 1908) says:—

### "NARCISSUS ETHEREAL."

"An absolutely pure white (Parvi) Narcissus is a very uncommon thing. Messrs. Cartwright & Goodwin, Kidderminster, have produced an hybrid to which they give the above name, and which is pure white when it expands. The outer segments are oblong and broad, while the inner ones are ovate and all of them overlapping. The crown is widely cup-shaped, flat and plaited. It is very chaste or ethereal, and someone procured one of the bulbs at a fabulous price for a Daffodil."

## N. Cyclamineus.

	100 doz. each
Collected bulbs	... .. 2/3 3d.

## N. Triandrus.

<b>Albus.</b> Large size bulbs	... .. 8/6 1/3 ...
<b>Calathinus.</b> Scarce	... .. 17/6 1/8

## The Copeland Red Cups.

We offer this strain of un-named seedlings with the greatest confidence. The seedlings are mostly Incomparabilis varieties with red or orange cups, and were produced by crossing various well-known yellow and bicolor trumpets by pollen of the newer Poeticus varieties. They were raised by W. F. M. Copeland, Esq., a member of the R. H. S. Narcissus Com., who has selected a few of the very best for naming, and has placed the remainder in our hands for distribution. Purchasers may rely upon getting a selection of pretty and interesting flowers

... .. 4/- ...

## The Copeland Leedsii.

A magnificent strain of un-named seedlings raised by intercrossing Madame de Graaff and Minnie Hume. These are all Giant Leedsii and are far superior to the majority of named Leedsii now in cultivation. **Lemon Star** was picked out from this batch of seedlings. Very limited stock

... .. 55/- 5/-

## The Copeland Triandrus Hybrids.

### DESCRIPTION.

100 doz. each

A superb race of most exquisite flowers produced by crossing the well-known Leedsii Minnie Hume with pollen of *N. triandrus albus*. These have all been most rigidly selected by Mr. Copeland, and we can honestly say that all of them are worth naming. The pure, intense snow-white flowers are of the highest type of beauty and refinement, and when exhibited by us at Truro this season were the admiration of all who saw them. Stock very limited. Strongly recommended

... .. 21/-

## A few Additional Varieties of Bulbs.

### For Autumn Planting.

100 doz. each

**Anemone Blanda.** A lovely plant from the hills of Greece and Asia Minor, of an exquisite sky-blue. Should find a place in every garden. Flowers in March and is of the easiest cultivation ...

10/- 2/- 3d.

### Chionodoxa.

#### (Glory of the Snow).

100 doz. each

**Gigantea.** Very large flowers of fine lavender blue. Strong habit. Most beautiful ...

30/- 1000 3/3 6d. ...

**Lucillæ.** Brilliant light blue with zone of white

30/- 1000 3/3 6d. ...

**Sardenis.** Dark porcelain blue with white eye. A brilliant colour. ... ..

30/- 1000 3/3 6d. ...

### Snowdrops.

**Galanthus Elwesii.** The giant Snowdrop ...

3/6 ... ..

# Special Collections of Daffodils.

---

The following collections have been especially selected by us to suit the needs of both the exhibitor and the hybridiser. All the bulbs contained in them will be of strictly **tip top quality and true to name**. No substitution will be made without at first consulting the wishes of the purchaser, and no charge will be made for carriage or packing in the United Kingdom. **Discount cannot** be allowed on these collections, and all orders must be accompanied with **Cash**. Foreign and colonial orders are welcomed, but must be accompanied with remittances to include all postal charges. In ordering these collections it is only necessary to give the letter affixed to each.

**Special Note.**—Orders for these collections must be received **before September 30th**.

---

## A. Six Grand New Self-Yellow Trumpet Daffodils.

Cornelia	King Alfred.	Mrs. H. J. Veitch.
Felicity.	Lord Roberts.	Outpost.
One bulb of each	...	£1 15s. 0d.
Three bulbs do.	...	£5 0s. 0d.

## B. Twelve Good Self-Yellow Trumpet Daffodils.

Admiral Makaroff.	Gold Cup	Mrs. H. J. Veitch.
Cornelia.	Hamlet.	Monarch.
Felicity.	King Alfred.	Outpost.
Golden Bell.	Lord Roberts.	Pope's King.
One bulb of each	...	£4 4s. 0d.

## C. Six Magnificent White or Bicolor Daffodils.

Duke of Bedford.	Glory of Noordwijk.
Mrs. Betteridge.	Florence.
Madame de Graaff.	Weardale Perfection.
One bulb of each	... £1 17s. 6d.
Three bulbs do.	... £5 8s. 0d.



**D. Nine Good White or Bicolor Trumpet Daffodils.**

Empress.	J. B. M. Camm.	Mrs. Camm.
Grandee.	Mme. Plemp.	Mme. de Graaff.
Horsfieldii.	Mrs. W. T. Ware.	Victoria.
Three bulbs of each	...	5/-
Six bulbs do.	...	9/9
Twelve bulbs do.	...	19/-

**E. Nine Superb Trumpet Daffodils.**

Cornelia.	King Alfred.	Mme. de Graaff.
Duke of Bedford.	Monarch.	Outpost.
Glory of Noordwijk.	Mrs. H. D. Betteridge.	
	Weardale Perfection.	
One bulb of each	...	£2 7s. 6d.
Three bulbs do	...	£7 0s. 0d.

**F. Six Splendid Incomparabilis and Barrii Daffodils.**

(With White Perianths).

Albatross.	Branston.	Lucifer.
Brigadier.	Castile.	Orangeman.
One bulb of each	...	15/-
Three bulbs do	...	£2 0s. 0d.
Six bulbs do	...	£3 17s. 6d.

**G. Six Good Incomparabilis and Barrii Daffodils.**

(With White Perianths).

Artemis.	George Nicholson.	Perfectus.
Crown Prince.	Lulworth.	Seagull.
Three bulbs of each	...	7/9
Six bulbs do	...	13/6
Twelve bulbs do	...	£1 6s. 6d.

**H. Six Superb Incomparabilis and Barrii Daffodils.**

(With Yellow Perianths).

Firelight.	Lightsome.	Queen Sophia.
Gloria Mundi.	Northern Light.	Torch.
One bulb of each	...	£1 5s. 0d.
Three bulbs do.	...	£3 10s. 0d.

**I. Six Good Incomparabilis and Barrii Daffodils.**

(With Yellow Perianths).

Autocrat.	Commodore.	Leonie.
Beauty.	Frank Miles.	Princess Mary.
Six bulbs of each	...	4/8
Twelve bulbs do	...	9/3

**J. Six Superb New Varieties of Leedsii Daffodils.**

Ariadne.	Fairy Queen.	Waterwitch.
Citron.	Phyllis.	White Lady.
One bulb of each...		4/-
Three bulbs do ...		11/6
Six do ...		22/6

**K. Nine Good Leedsii Daffodils.**

Citron.	Katherine Spurrell.	Mrs. Langtry.
Duchess of Westminster.	Minnie Hume.	Waterwitch.
Hon. Mrs. Barton.	M. Mag. de Graaff.	White Lady.
Three bulbs of each	...	8/-
Six bulbs do	...	15/6
Twelve bulbs do	...	£1 10s. 0d.

**L. The Six Best True Poeticus.**

(All raised by Mr. Engleheart.)

Barcarolle.	Comus.	Sir Phillip Sidney.
Cassandra.	Horace.	Virgil.
One bulb of each	...	£1 7s. 6d.
Three bulbs do.	...	£4 5s. 0d.

**M. Nine Good True Poeticus.**

(All raised by Mr. Engleheart.)

Almira.	Herrick.	Juliet.
Comus.	Homer.	Musidorus.
Dante.	Horace.	Virgil.
One bulb of each	...	12/6
Three bulbs do.	...	£1 15s. 0d.
Six bulbs do.	...	£3 8s. 6d.

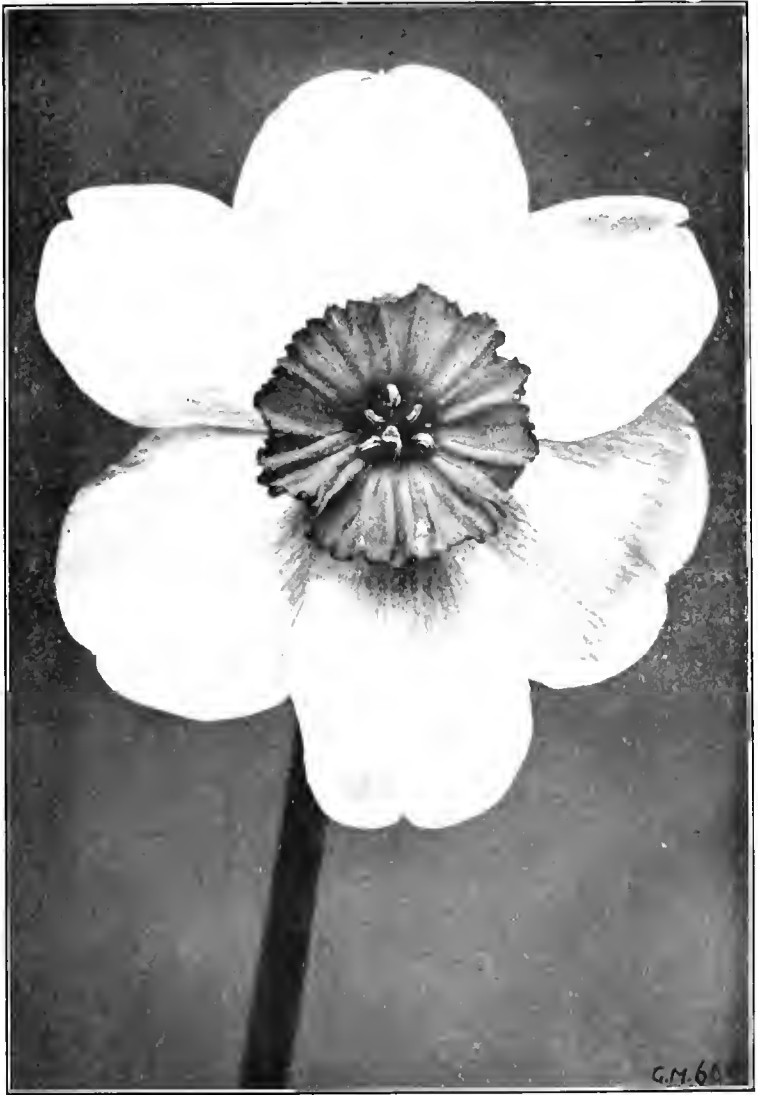
**N. Six Grand Parvi or Small-crowned Daffodils.**

(All raised by Mr. Engleheart.)

Alton Locke.	Eyebright.	Scarlet Eye.
Beacon.	Firebrand.	Sceptre.
One bulb of each	...	£1 2s. 6d.
Three bulbs do.	...	£3 5s. 0d.

**O. Nine Fine Parvi or Small-crowned Daffodils.**

Blood Orange.	Hyacinth.	Robert Browning.
Broadwing.	Queen of Scots.	Stonechat.
Bullfinch.	Redbreast.	Tom Tit.
One bulb of each	...	13/6
Three bulbs do.	...	£1 19s. 0d.



Narcissus "CIRCLET."



## P. Six Grand Engleheartii or Flat-crowned Daffodils.

(All raised by Mr. Engleheart.)

Armored.	Coreen.	Mariette.
Circlet.	Incognita.	Salamander.

One bulb of each for £2 17s. 6d.

## Q. Six Splendid Double Daffodils.

Argent.	Golden Phœnix.	Plenipo.
Dubloon.	Orange Phœnix.	Sulphur Phœnix.

One bulb of each	...	4/6
Three bulbs do.	...	12/6
Six bulbs do.	...	£1 3s. 0d.

---

## The "Engleheart" Daffodil Note Book.

---

Every Daffodil grower, more especially those who are seedling raisers, should possess one of these most useful note books.

Most people who grow rare Daffodils are fully aware that it is quite the safest and wisest plan to label them by means of numbers instead of their own names.

**The "Engleheart" Note Book** is admirably conceived for the purpose of carrying out this idea. It is a long narrow book (9 in. x 3¼ in.) with stout black cover, and consists of 108 pages. Each page is divided into six spaces, which are numbered consecutively from 1 to 999, only a few pages at the end being left perfectly blank.

The ample space allotted to each number enables every particular such as parentage, description, name, etc., to be entered as well as the number of bulbs.

This note book was planned by Mr. Engleheart, and is regularly used by him. We heartily recommend it to all our numerous customers and correspondents.

**Price 3/6 each post free.**

**If ordered with bulbs 3/- each.**

## The Wood Plant Club Labels.

---



**Labels** are an important item to the raiser of seedling Daffodils. We have tried numerous forms and have come to the conclusion that these are by far the best.



**The Ordinary Size**, 9½ in. long, name-plate 2¾ in. x 1¼ in.

Price 1/2 per doz., 16/2 per gross.

This is admirable for labelling Daffodil beds.

**The Small Size**, 5 in. long, name-plate 2½ in. x 1⅛ in.

Price 1/- per doz., 10/9 per gross.

Recommended for Seed boxes.

**Ink for these Labels**, 2/- and 3/- per bottle.

A quill pen must be used.

If ordered with bulbs the labels will be sent Carriage Paid,  
otherwise Carriage Forward.



**"The Book of the Daffodil"** by the late REV. S. E. BOURNE.  
The best work on the subject. 2/9 post free; if  
ordered with bulbs, 2/6.

**Glass-topped Boxes** for preserving pollen. 1/9 per dozen,  
post free.

**Forceps** for extracting the anthers. **Special Pattern**,  
1/6 each, post free 1/8.

## PRESS NOTICES.

---



"The Gardening World," April, 1908.

EDITORIAL.

---

### "THE LATEST HOBBY."

The well-known and enthusiastic florists, Mr. R. C. Cartwright and Mr. A. R. Goodwin, have lately gone into partnership, as bulb growers at Kidderminster, Worcestershire, and have signalled their commencement by the issue of a pamphlet on how to raise Daffodils from seed, with a list of the finest varieties. Much has been written about Daffodils from one point of view or another, but least of all, perhaps, about seedlings and how to raise them. Anyway, they have got together a considerable amount of information, giving the history of the subject from various notable writers on gardening from the earliest times down to the present.

The authors, after dealing with the general history of the Daffodil in this way, proceed to give the history of each section and sub-section, mentioning the most suitable varieties that have been used or should be used in the raising of new varieties. For instance, under the heading of self yellow trumpet Daffodils, mention is made of the Tenby Daffodil, Golden Bell, Gold Cup, Felicity, Golden Spur, Henry Irving, Santa Maria, King Alfred, Maximus, Emperor, Monarch, and various others of the most handsome Daffodils to grow, or which can be used with the object of procuring something better than we already have.

We have frequently seen the exhibits of these enthusiastic amateur growers, and now that they have commenced trading on their own account, they have left the roll of amateurs, and we have no doubt they will prove equally successful growers as hitherto.

---

"The Gardener," May 9th, 1908.

### "A NEW INTEREST."

Up to now the raising of new varieties from seed has been in the hands of the few. The knowledge of how to do it successfully has been so carefully guarded, and the best varieties for the purpose have been so expensive, that the inevitable result has followed, and the pleasure of seedling raising has remained a *terra incognita* to the ordinary Daffodil lover. This Spring, however, a notable event has happened. The new firm of Messrs. Cartwright and Goodwin, with a sort of prophetic prescience, have issued a little green covered book called "The Latest Hobby," but which is really a pamphlet which might well be dubbed "Seedling Raising Explained and Made Easy for Ordinary Folk." What to do and what not to do is made clear. The best seed bearers and pollen parents are indicated, and full cultural details are given, from the time of sowing the seed till, after the lapse of from five to seven years, the sower is rewarded by a flower. In olden days men in humble spheres of life took a deep and often a successful interest in this cult. John Horsfield, a Lancashire weaver, it must not be forgotten, raised *Horsfieldii* (and this is still one of our best bicolors) in the 'fifties of last century with but slender resources. What he accomplished then can be done to-day in the smallest of gardens, provided, of course, the necessary requisites of knowledge and patience are among the owner's stock in trade.

JOSEPH JACOB.

## The "Gardeners' Chronicle," May 8th, 1909.

### WORCESTERSHIRE DAFFODILS.

A FEW days after the Birmingham Daffodil show, I was afforded an opportunity of inspecting Mr. Arthur Goodwin's *Narcissi*, which are grown in a garden on the high ground near Kidderminster, commanding an extensive view over the Severn Valley, and situated at an altitude of 500 feet above sea-level. The soil, which is of fertile loam interspersed with small nodules of sandstone, is excellently adapted to Daffodil culture, as the plants were all in the most perfect health and bore flowers of very large size. Messrs. Cartwright and Goodwin were very successful at Birmingham, winning the Champion prize for the greatest number of points and exhibiting several remarkable flowers, among which were Giraffe, Scarlet Gem, a new seedling between *Horæc* and *Jaune à Merveille*, and the double *Red and Gold*, all of which received Awards of Merit, as well as *Chloë*, *Lemon Star*, *Inga* and *Evangeline*. Mr. Goodwin must, at the present moment, have fully 50,000 seedlings raised from the best varieties, that have not yet flowered. *M. J. Berkeley*, a variety that sometimes proves difficult to grow, was in the best of health with deep blue-green foliage, and was bearing seed; *Golden Spur*, fertilised with special pollen, had the seed-pods well formed. A batch of *Lucifer* seedlings were flowering for the first time, some being very brilliant in the colouring of their cups. *Glory of Noordwijk*, *Weardale Perfection*, and *Emperor* were bearing enormous flowers, and *Lady Margaret Boscawen* was exceptionally fine; a seedling between the last-named variety and *N. calathinus* bearing three flowers on a stem, was very pretty. A cross between *Madame de Graaff* and *Minnie Hume* showed a distinct break in having the trumpet edged with apricot. A very beautiful picture was presented by thousands of the delicate, white *Waterwitch* with drooping blossoms swaying in the breeze. *Madame de Graaff* was doing very well, and *Princess Ena* (Award of Merit, R.H.S.) was very similar in appearance. A beautiful flower with a flat, white perianth and green-centered cup edged with glowing orange, was a hybrid between *N. Bernardii*, from the Pyrenees, and a variety of *N. poeticus*. *Cirelet*, which obtained an Award of Merit from the R.H.S. in Mareh, and has a wide, overlapping, white perianth and spreading, yellow cup, was present in numbers. Of trumpets, *Mrs. H. J. Veitch* is one of the best yellows; *Cornelia*, of the same colour, is fine in quality and large; and *Cleopatra*, another golden trumpet, is a striking flower, while *Ailsa*, the whitest of the white trumpets, is a beautiful flower. *Musidornis* is a good late variety raised by Mr. Engleheart from *N. poeticus* of Linnæus. Others of Mr. Engleheart's raising were *Commodore*, a very healthy grower of good habit; *Resolute*, a hybrid from *Grandeë*; *Sceptre*, and the double *Argent*. One of the best of the parvi-coronati section was *Ethelbert*, raised by Mrs. Baekhouse, of Hereford, and shown at Birmingham. There was a lovely collection of *Minnie Hume* and *triandrus* seedlings with scarcely a bad flower amongst them, mostly with two blossoms on the stem; and some pretty seedlings between *Mme. de Graaff* and *Minnie Hume*. A cross between *King Alfred* and *N. triandrus* was flowering in its third year and bearing pale yellow trumpet flowers of exquisite shape. *Elvira*, a *poetaz*, was being fertilised with the pollen of brightly-coloured varieties of *N. poeticus*, and *Perfectus*, an *incomparabilis*, with very flat, broad perianth, was being used as a seed-bearer. An unnamed seedling, with pure white, overlapping perianth  $4\frac{1}{2}$  inches across and deep yellow cup edged with orange scarlet, should make a sensation when distributed. Other notable flowers were *Giraffe*, a hybrid between *Princess Mary* and *Mme. de Graaff*; *Evangeline*, with white, broad-petalled perianth and rich yellow cup; *Alton Locke*; *Fusilier*, very bright; *Ariadne*, white spreading perianth, lemon cup; *Fairy Queen*, a lovely, pure white, one of the most beautiful of all Daffodils; *Beacon*; *Ceres*, a cross between *Grandeë* and *N. poeticus*; the popular *Citron*, *Arnold Rogers* (a flower of high merit); *Homespun*, *Incognita*, *Seagull*, *Albatross*, *Blackwell*, *Katherine Spurrell* and *J. B. M. Camm*. F.



## "The Garden," March 20th, 1909.

Messrs. Cartwright & Goodwin, Kidderminster, staged a delightful lot of Narcissi, such as Blackwell, Victoria, Felicity (a clear yellow), Duke of Bedford, White Lady, Scarlet Eye, King Alfred, Mme. de Graaff, Ariadne, Citron, Monarch and Emperor being extra well shown. Cirelet is a very handsome variety. Some beautiful Poeticus varieties were also shown.

---

## "The Garden," April 3rd, 1909.

### A NEW FEATURE IN THE EARLY SPRING SHOWS AT VINCENT SQUARE.

We are accustomed in April and May to see orthodox exhibits of Daffodils; in fact, we have no hesitation in saying that we believe we are voicing the feelings of a great many people when we say that we look forward to them very much from year to year. Whether Messrs. Cartwright and Goodwin are endowed with a sort of second sight it is impossible to say, but it looks almost as if they were. Last year, when they made their first appearance on the Daffodil dealer's stage, they heralded their advent by an exceedingly cleverly conceived pamphlet and list, inasmuch as it gave just the information about seedling raising that everyone wanted to know. Now, when everyone wants to see their favourite Daffodils once again, and when everyone has pretty well made up their minds that they will have to wait longer than usual for their wish to be gratified, they again anticipate our wants, and on March 9, and again on March 23 staged two very charming collections of good varieties. For the former they received a silver-gilt Flora medal. It was well worthy of the award and attracted a great deal of attention. The flowers were arranged in a shallow semi-circle, and the staging was draped with little pots of the hanging Grass, *Isolepis gracilis*. Cirelet, which is quite a new variety with an *Engleheartii* yellow eye and a wide, overlapping perianth of pure white, received, we noticed, an award as a good variety for pots. But as the exhibit demonstrated, there are others of the newer varieties equally good, viz., Lucifer, Mme. de Graaff, White Lady, Blackwell (excellent), Artemis, Citron, Mrs. W. T. Ware and Duke of Bedford. We visited the Royal Horticultural Society on the 23rd ult., and again had the pleasure of seeing another similar collection. This time they were awarded a silver-gilt Banksian medal. A fortnight makes a considerable difference in March, and this was reflected in the greater variety that we saw on the stand. Just to mention one or two: Evangeline, the beautiful bicolor Homespun; Salamander, a lovely shade of citrony yellow with an almost *Engleheartii* cup, relieved by a wide edge of red; Coreen, a small, perfectly formed *Engleheartii*; Castile, with its unique colouring, all the more refined for being pot grown; the floriferous Seagull; and the exquisite Mrs. H. J. Veitch, which may be described as a deep yellow Emperor, were among those that contributed to this refreshing exhibition.

---

## The Garden, April 10, 1909.

At Vincent Square, on March 23, the backwardness of the season was very much in evidence. There was not a single Daffodil exhibited that had been grown in the open. Perhaps it is as well that we should have late seasons every now and again; they serve to remind us that we must be prepared to meet the fickleness of our climate. As far as Daffodils are concerned, only a few years ago our choice of varieties for pots was exceedingly

limited, or possibly I should say we severely limited ourselves in our choice. For very early work it is not very different to-day, but for later work—that is, for flowering under glass immediately before the outdoor ones come in—we have a very large choice. Messrs. Cartwright and Goodwin had a similar collection to that which they put up on the 9th ult. Anyone who wished to make a selection of what to buy for pot work in March had a splendid opportunity for making notes, because the flowers then exhibited had been grown under the exact conditions for which they would be wanted.

Salamander and Coreen are two quite new *Engleheartii* cupped varieties. The former has a sort of Castile coloured perianth, with a deeper shade of the same in the eye, which has a wide orange red edge. It is a large, striking flower. The latter is much smaller and has an ivory white perianth, with a rather crinkled cup faintly tinted and edged with red. There were two or three vases of the lovely Leedsii *Evangeline*. Mr. Cartwright told me that my description of it as a "bicolor Homespun" had "caught on." I do not think any description can convey a better idea of its appearance than this. Seagull is a splendid thing to grow in pots; it is so very floriferous and it responds so easily to gentle heat. Glory of Leiden is a general favourite and a variety that I can strongly recommend. Castile looked more beautiful than ever. I had never seen it grown under glass before, and now I have seen it I must have a potful next year. Mrs. H. J. Veitch is a deeper-coloured Emperor, with an almost Tenby shaped perianth. Autoerat, the old soft yellow *incomparabilis*, is still without a rival in its own particular type. I have found out this year how well it does in pots. These and many others, such as White Lady, Sunset, Mme. de Graaff and Johnstonii Queen of Spain were all to be seen in excellent condition.

JOSEPH JACOB.

---

### "The Garden," April 17, 1909.

Messrs. Cartwright and Goodwin, Kidderminster, displayed a fine lot of Daffodils, such as King Alfred, Brigadier, Orangeman, Weardale Perfection, Pilgrim, Duke of Bedford, *Evangeline*, Fusilier, White Lady, Coreen, and many more. A very charming exhibit of sterling varieties. Silver Flora medal.

---

### "The Garden," April 24, 1909.

At Vincent Square on April 6, there were some very nice groups shown. Messrs. Cartwright and Goodwin had another beautiful exhibit of flowers opened under glass for which they received a silver Flora medal. There were three or four varieties that were particularly fine, *e.g.*, Weardale Perfection, Fusilier, Beacon, and Castile. The last named seems peculiarly suited for growing in pots for very late forcing. The unique colouring is softened and the amber of the perianth seems just the shade to go with the apricot orange cup. There was a good vase of Outpost, which may be described as a handsome, early, large trumpet with Glory of Leiden colouring. It opens with me at the same time as Duke of Bedford, and on this account is valuable. Armored is another early variety; it has rather a pointed white perianth and a flat cup with a distinct orange red edge. Mariette is a pretty little flower with a deep yellow, flat cup, edged red.

---

### "The Garden," March 27, 1909.

Messrs. Cartwright and Goodwin, Kidderminster, exhibited a delightful collection of Narcissi, in which Queen of Spain, White Lady, *Evangeline*, Seagull, Mme. de Graaff, Queen of Holland, Weardale Perfection, and a great variety of others were noticed. This was a truly wonderful group, and fully deserved the silver-gilt Banksian medal which was awarded.

The firm of Messrs. Cartwright and Goodwin staged in a shallow semi-circle about 100 vases, which must have represented quite eighty varieties. The whole had a graceful appearance, for between each vase there was a small pot of that pretty drooping Grass, *Isolepis gracilis*. There is no mistake; the employment of this particular plant was an inspiration—it harmonised so well with both flowers and background. Visitors saw such varieties as Mme. de Graaff, Lucifer, King Alfred, White Lady, Torch, Blackwell (exceptionally good), Artemis, Citron, Duke of Bedford, several of the new Poetaz varieties, a few new seedlings not in commerce, together with the bright-cupped Scarlet Eye, with its fine Poetarum-looking perianth, and Circlet, a quite new *Engleheartii* of great substance and beautiful symmetry. These were all good and afforded the public an idea of how the all-too-short open-air season of some of the choicer things may be prolonged.

---

### “The Garden,” May 1st, 1900. Birmingham Show.

Messrs. Cartwright and Goodwin once more showed their resourcefulness in the way in which they were able to compete in each of the eight classes in Division I. Their record is a splendid one, viz., six firsts and two seconds. We congratulate them, too, on their first gold medal.

---

### “The Gardeners’ Chronicle,” May 1st, 1909.

Messrs. CARTWRIGHT & GOODWIN were awarded 1st prizes in each of the following six classes:—(1) Twelve distinct varieties of long-trumpet Daffodils; (2) six distinct varieties of short-trumpet Daffodils; (3) 12 distinct varieties of large-cupped Daffodils; (4) 12 distinct varieties of small-cupped Daffodils; (5) six distinct varieties of flat-cupped Daffodils; and (6) three distinct varieties of double Daffodils. It is difficult to particularise where flowers were so numerous and the quality uniformly high, but the specimens exhibited by Messrs. CARTWRIGHT & GOODWIN were models of good culture and refinement and artistically arranged.

---

### “The Gardeners’ Chronicle,” March 27th, 1909.

Messrs. CARTWRIGHT & GOODWIN, Kidderminster, staged a collection of Narcissus. The group was arranged in the shape of a crescent, the flowers being excellent examples. Among the more notable varieties were Evangeline, a chaste and beautiful creamy-white flower with lemon-coloured cup; Seagull; Blood-Orange, with a fiery-coloured crown; Fairy Queen, a variety of Leedsii group; the bold and beautiful Weardale Perfection, Victoria, Glory of Leiden, Mrs. H. J. Veitch (a fine yellow Ajax), Salamander, of the *Engleheartii* set, with fine spreading crowns, and Queen Sophia that resembles a pale form of the well known variety Will Scarlett. The peerless Mme. de Graaff and the drooping Johnstonei Queen of Spain were also shown in excellent condition. (Silver-gilt Banksian Medal.)

---

### “The Gardeners’ Magazine,” March 27, 1909.

Messrs. Cartwright and Goodwin, Kidderminster, contributed a charming exhibit of early Daffodils, arranged in vases. Among the many delightful varieties so prettily presented we made special note of Queen of Holland, Dubloon, Evangeline, Mme. de Graaff, Chaucer, Coreen, Salamander, Hamlet, White Lady, Beauty, Victoria, Sunset—a pretty variety, Alton Locke, and Autocrat.

### "The Gardeners' Magazine," March 27, 1909.

At the recent show of spring flowers held at the Royal Horticultural Hall, Westminster, Messrs. Cartwright and Goodwin, of Kidderminster, exhibited one of the best grown collections of early daffodils we have seen. Both flowers and foliage were finely developed, and the varieties were especially good ones. These included the perfectly formed Victoria, and such gems as Cirelet, Waterwitch, Blackwell, Lucifer, Beauty, Fairy Queen, Chaucer, Scarlet Eye, Sunset, Aspasia, Felicity, Grandee, Emperor, Empress, Autocrat, and Firebrand. We may add that these flowers were admirably staged in a setting of *Isolopis gracilis*.

### "The Journal of Horticulture," March 11, 1909.

Messrs. Cartwright and Goodwin, Kidderminster, had a charming display of forced Narcissi, beautifully fresh and strong. A silver-gilt Flora medal was awarded; and two varieties received certificates. Besides some very promising seedlings, there were also such well-known kinds as Ariadne, Blackwell, White Lady (very fine), Lucifer, Firebrand, and Fairy Queen. Some good trumpets were also on show; and a most attractive collection of the poetaz varieties, including Irene, Sunset, Triumph, Alsace, Klondyke, and Aspasia

### "The Journal of Horticulture," March 25, 1909.

Messrs. Cartwright and Goodwin, Kidderminster, again obtained the highest of the awards. The collection was a little more extensive on this occasion, and comprised the beautiful poetaz varieties Sunset and Klondyke, each pale yellow; also Fairy Queen, a pure white Leeds; with White Lady, Evangeline, and Amazon. Mme. de Graaff was also included, and the fine yellow trumpet, Mrs. H. J. Veitch. Among red cups there was Firebrand, Broadwing, Queen Sophia, Castile, and Robert Browning. These are all, we presume, in the "small cup" section. Waterwitch, a drooping white type, and the handsome trumpet bicolor, Glory of Noordwijk, were included. (Silver-gilt Banksian medal.)

### 'The Horticultural Advertiser," March 17, 1909.

#### DAFFODILS.

Messrs. Cartwright & Goodwin, Kidderminster, set up a very well-grown group of cut Narcissi, showing considerable skill in producing a good general collection, well up to size and colour. We noted three good Poetaz—Sunset, Alsace, and Aspasia. Cirelet, a well-formed Engleheartii, was in good form. Blackwell, Waterwitch, Lucifer, King Alfred, Mme. de Graaff, Golden Phoenix, and Duke of Bedford all commanding attention. S. G. F. Medal.

### "The Horticultural Advertiser," March 31, 1909.

Messrs. Cartwright & Goodwin staged a beautiful collection of Daffodils, including a large proportion of new and rare sorts. Among the best were Evangeline, a grand white Leeds, and Salamander, a very showy red cup; Mrs. H. J. Veitch, in the Emperor style, was also worthy of note.

### "Amateur Gardening," April 3, 1909.

A splendid collection of Narcissi was shown by Messrs. Cartwright and Goodwin, of Kidderminster. This firm is making a speciality of the Narcissi, and their lovely collection, as staged at the R.H.S., testifies that they are on the right track for making themselves famous in connection with this popular Spring flower. Award, a Silver-gilt Banksian Medal.

**ORDER SHEET FOR 1909.**

---

To **CARTWRIGHT & GOODWIN,**

The Premier House for Daffodils,

✧ ✧ **KIDDERMINSTER.**

Telegrams:—

“Daffodil, Kidderminster.”

Name .....

Postal Address .....

Nearest Station ..... on ..... Railway.

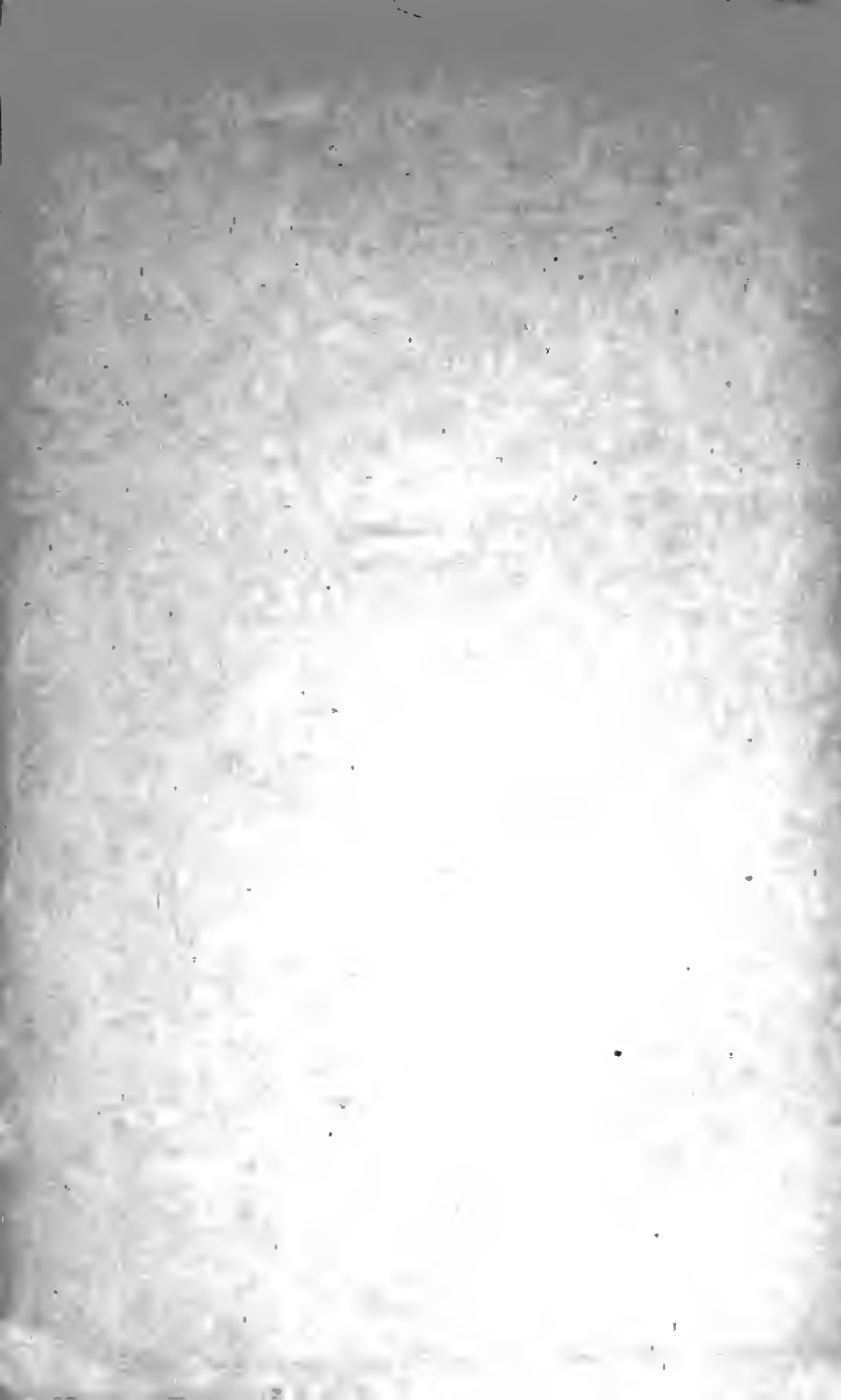
Amount Enclosed .....

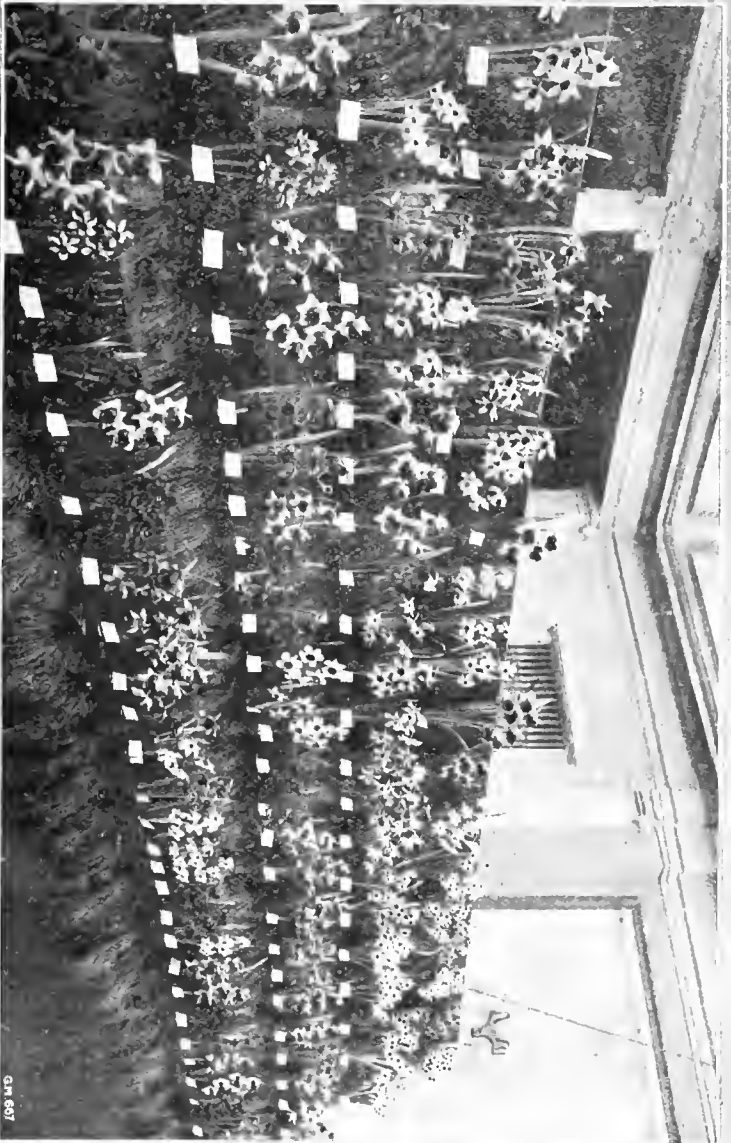
**IMPORTANT NOTICE—**

C. & G. pay carriage to nearest Station on all orders over 10/-

Quantity Required.	Names of Varieties.	£	s.	d.







GM 697

**Our First Prize Exhibit**  
at the Royal Horticultural Society's Forced Bulb Show on March 9th.