

..CATALOGUE..  
OF  
JAPANESE FLORAL  
AND  
ARBOREAL PLANTS



TO BE SOLD BY AUCTION AT  
CLEARY & CO.'S HORTICULTURAL SALESROOMS  
60 VESEY STREET

ON  
WEDNESDAY AND THURSDAY AFTERNOONS

December 6th and 7th, 1899, at 2 o'clock

On FREE view until 9 p. m., beginning Monday, Dec. 4, until the day of the sale *late*

CLEARY & CO., AUCTIONEERS, NEW YORK

# SPECIAL NOTICE!



1. Both the amateur and grower should not miss this superb opportunity to secure a stock of the plants offered in this catalogue. The plants are in perfect order and bound to afford entire satisfaction.

2. Packing done by experienced men, for which is made a small charge to cover cost of materials used.

3. Claims for deductions not allowed unless made immediately on receipt of goods.

4. Purchasers unable to attend this Sale (although attendance is urged) may send us orders to buy, naming a limit beyond which they do not wish us to bid. Same will be carefully attended to.

5. No Plants sent C. O. D., unless a deposit of 25 per cent. of bill be paid previous to shipping.

**TERMS, CASH.**

An Exhibition of a Rare and Beautiful  
Collection

OF

JAPANESE PLANTS

AND

GARDEN ORNAMENTATIONS

An Interesting and Marvelous showing. And all to be sold absolutely  
without reserve by order of the importers

Messrs. Kushibiki & Arai

TOKIO, JAPAN

BY

CLEARY & CO., HORTICULTURAL AUCTIONEERS

At their Salesrooms, 60 Vesey Street, N. Y. City

WEDNESDAY, DEC. 6, & THURSDAY, DEC. 7, '99

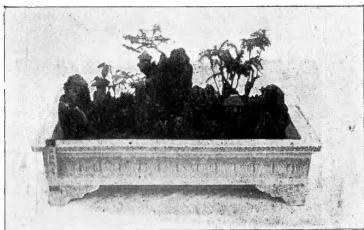
Beginning at 2 p. m. each day

---

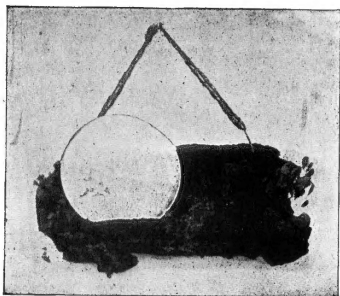
On FREE exhibition until 9 p. m. on the two days previous to sale,  
beginning Monday, December 4th

---

JOHN P. CLEARY, AUCTIONEER



**BON KEI ON ROCK.**



**HANGING ORNAMENT.**

# CATALOGUE.

## First Day's Sale

Wednesday Afternoon, December 6, at 2 P. M.

---

- 1 **Sago Palm** (*Cycas Revoluta*).  
Its beautiful evergreen leaves will equally resist both gas and dust; one of the most suitable house ornamental plants. Easily taken care of, and in very best condition. Three bulbs in the pot. Seven leaves. Length, 8 to 10 inches. Height, 1¼ feet. Pot, blue and white.
- 2 **Bon Kei**.  
It is a representation of a famous landscape painting of Motonobu, a celebrated Japanese artist. Goyo-matsu (a pine), Chosen-gaya (*Cephalotaxus Drupacea*), and many other valuable plants vigorously and harmoniously growing together. A bridge, a house, a lantern and the other figures are noticeable. Size, 17x12 inches.
- 3 **Chosen-kaya** (*Cephalotaxus Drupacea*).  
An ornamental evergreen tree of easy culture. Perfectly hardy. Two plants in elegant condition. Height, 1¾ feet. Pot, Seiji.
- 4 **Ibuki** (*Juniperus Chinensis*).  
It is highly admired on account of its beautiful leaf variegation. It is also an extremely ornamental evergreen. Height, 1½ feet. Pot, blue and white.
- 5 **Chabo-hiba** (*Thuja Oblusa Nana*).  
Trained in the shape of "Nakasu," by Fukubei, of Tokio. Age, 43 years. Height, 1½ feet. Pot, Kuri.

NOTE:—The cultivation of the Chabo-hiba is undoubtedly one of the highest arts and professions in horticulture. The Japanese alone possess this art, and only gardeners of great skill and ability can succeed in dwarfing and training this plant so that it will remain diminutive, but still a perfectly formed tree. The Japanese of this generation however, with an eye to immediate business, do not display the required attention nor wait for results which only come after many years of toil and application. Consequently these trees become scarcer and scarcer with each successive year; hence Messrs. Kushibiki & Arai regret that it is only a question of a very short time when they will have no more of these interesting trees to offer. The gardens have been denuded of these specimens to such a great extent in the last few years that very few remain.

"Nakasu."—A shape of a tree growing on an island having branches overhanging the water. A very beautiful specimen worthy of especial attention.

- 6 **Hiragi** (*Olea aquifolium*).  
An evergreen tree. In autumn it bears fragrant, small, white flowers in clusters in the axils of leaves, being succeeded with small, oval fruits, which are purplish blue when ripe. The leaves are beautifully variegated. Height, 11 inches. Pot, blue and white.
- 7 **Bon Kei**. (See No. 2.)  
A fernery on rocky hill. It is equally beautiful from any point of view. (Observe the numerous small figures here and there.) Size, 12x17 inches. Dish, wood.
- 8 **Shuro-chiku** (*Rhapis Flabelliformis*).  
The leaves being deeply cut into segments and umbrella shaped, whence it is commonly called "umbrella palm." This, as Sago palm, will resist gas and dust, and is accordingly most suitable for a house decoration. Six stems handsomely grown. Height, 2½ feet. Pot, Seiji.
- 9 **Ibuki** (*Juniperus Chinensis*).  
Golden variety. A pretty cabinet ornament. 9 inches high. Pot, blue and white.
- 10 **Suwo-chiku** (*Bambusa Swo*).  
There are nearly three hundred different varieties of bamboos, and this is one of the most highly esteemed species, on account of its beautiful green stripes on the yellow ground of the stems. When the stems are young they are red with green longitudinal stripes. Two main stems with numerous young sprouts. Height, 3 feet. Pot, blue and white.
- 11 **Camellia Japonica**.  
An evergreen with many buds, which will develop into red flowers about Christmas. Height, 1¼ feet. Pot, Seiji.
- 12 **Hanging Ornament**.  
Made from hego (a root of tree fern), on which Tsuru-Masaki (*Euonymus Japonica*) Buxus, Pteris, competing their own beauties.
- 13 **Sago Palm** (*Cycas Revoluta*).  
Six leaves in elegant condition. Length of leaves, 1½ feet. Height, 1¼ feet. Pot, Seiji.
- 14 **Hego** (*Cyathea Spinulosa*).  
An ornamental evergreen, found in the Southern regions of Japan. The lower part of the trunk is covered with coarse dark brown hair. Two leaves, length 2½ feet. Height, 3 feet. Pot, blue and white.
- 15 **Omoto** (*Rhodea Japonica*).  
This is highly esteemed on account of its beautiful evergreen leaves, which are broad and variegated. It produces small flowers, being succeeded with a cluster of beautiful red berries. Height, 13 inches. Pot, Seiji.
- 16 **Chabo-hiba** (*Thuja Obtusa Nana*).  
Trained in the "Nakasu" shape and semi-"Ne-agari." (See No. 5.) This is one of the most peculiar arrangements of branches. It has had years of careful and conscientious training at the hands of Heitaro, of Tokio, a master of the tree trainers. Age, about 75 years. Height, 2 feet. Pot, blue and white.
- NOTE: "Ne-agari."—A plant having the roots exposed.
- 17 **Tsuru-Masaki** (*Euonymus Japonica*).  
Growing on hego, root of tree fern. Height, 1¼ feet. Pot, Kenzan.

- 18 **Bon Sai.**  
Dwarfed bamboo. It is highly ornamental. Height,  $1\frac{3}{4}$  feet.  
Pot, green.
- NOTE: "Bon Sai.—Interpreted means a large tree of the forest that the tree trainer has taken as a model and trained in miniature to show every detail, even to the number of branches and shape of trunk, etc., that the large tree possesses, literally meaning a "tree on a tray."
- 19 **Bon Kei.** (See No. 2.)  
A scene of a rocky hill. It is made by Kato, a well-known Bon Kei artist. Ibuki (*Juniperus Chinensis*) masaki (*Euonymus*) and Chosen-kaya (*Cephalotaxus Drupacea*) are seen around the rocks. Two figures standing are representing Hakui and Shikusei, Chinese hermits. Size, 11x12 inches. Dish, wood.
- 20 **A Cabinet Ornament.**  
A pair of cocos and ferns in unique flower pots with artistic stands.
- 21 **Sago Palm** (*Cycas Revolata*).  
(See No. 1 for description.) Six leaves in splendid condition. Length of the leaves, 2 feet. Height, 2 feet. Pot, Seiji.
- 22 **Chabo-hiba** (*Thuya Obtusa*).  
Of erect training. Height,  $2\frac{1}{4}$  feet. Pot, blue and white.
- 23 **Bon Kei.** (See No. 2.)  
It is the reproduction in miniature of the view of Matsu-shima (Pine-islands), and one of the masterpieces of Sakuzo, of Tokio. Houses on the hills, fishes in the pond, man, monkey, birds, etc., are seen here and there. Size, 17x29 inches. Dish, wood.
- 24 **Camellia Japonica.**  
Three plants. Ready to bloom. Height,  $1\frac{1}{2}$  feet. Pot, blue and white.
- 25 **Masaki** (*Euonymus Japonica*).  
In early summer it bears white flowers on the branches, and in late autumn the berries expose red seeds. An unique cabinet ornamentation. Height, 10 inches. Pot, blue and white.
- 26 **Tea Plant** (*Thea Chinensis*).  
In late autumn it produces the white flowers, and in early summer the young leaves are gathered for tea. Height, 7 inches. Pot, blue and white.
- 27 **Chabo-hiba** (*Thuya Obtusa Nana*).  
Of "Ne-agari" shape (see Nos. 8 and 16). Trained by Muto, of Tokio. Age, 45 years. Height,  $1\frac{1}{4}$  feet. Pot, mirror black.
- 28 **A Hanging Ornament.**  
Asparagus Sprengeri in Chinese Yoko dish.
- 29 **Shuro** (*Chamaerops Excelsa*).  
Three plants in the pot. It is very suitable for a house decoration. Height, 2 feet. Pot, blue and white.
- 30 **Sago Palm** (*Hoso*).  
It differs from ordinary sago palms,—its bulb being narrow, compared with the others, and sending out small bulbs from the main stalk, giving an appearance of a tree, whence it is sometimes called "tree-formed sago palm." Three bulbs, with ten leaves. Height, 1 foot. Pot, Seiji.
- 31 **Ibuki** (*Juniperus Chinensis*).  
Beautifully variegated. It is an evergreen tree ornamental. Height,  $2\frac{1}{2}$  feet. Pot, blue and white.
- 32 **Tanyo-sho** (*Pinus Densiflora*).  
An ornamental evergreen, of round-top training. Height, 2 feet. Pot, wood.

- 33 **A Jardiniere.**  
A handsomely wrought specimen Shigaraki-ware, decorated with rattan. Diameter, 1 foot. Height, 8 inches.
- 34 **Taisan-chiku** (*Bambusa Vulgaris*).  
It is highly esteemed as an ornamental house plant. The stem is deep green, with low, even knots, and the leaves are broad and beautiful. Height, 4 feet. Pot, wood.
- 35 **Chabo-hiba** (*Thuja Obtusa Nana*). (See No. 5.)  
*This is one of the best chabo-hibas in the collection.* A careful examination of the unusual size of the trunk, which measures 4 inches in diameter, is invited. Secured from Grenhoji, of Tokio. The training was originally started by Tokichi. Age, over a century. Height, 1 $\frac{3}{4}$  feet. Pot, blue and white.
- 36 **Sago Palm** (*Cycas Revoluta*).  
For full description see No. 1. Six leaves in elegant condition. Length of the leaves, 1-1 $\frac{1}{4}$  feet. Height, 1 $\frac{1}{4}$  feet. Pot, Ruri.
- 37 **Tsuru-masaki** (*Euonymus japonica*).  
Growing on hego, a root of tree fern. Height, 14 inches. Pot, blue and white.
- 38 **Bon Kei.** (See No. 2.)  
Subject "Imoyama and Seyama." A girl standing on a hill talking to her sweetheart on an adjoining hill. It is made by Kato after a scene of the popular Japanese drama "Imo-se-yama," written by Chikamatsu, who has been known as the "Shakespeare of Japan." Size, 12x17 inches. Dish, wood.
- 39 **Hiragi.** (*Olea aquifolium*).  
Variegated. Perfectly hardy. Height, 1 $\frac{1}{4}$  feet. Pot, Seiji.
- 40 **Sago Palm** (*Cycas Revoluta*). (See No. 1.)  
Fourteen leaves which are 1-1 $\frac{1}{2}$  feet long. Height, 1 $\frac{3}{4}$  feet. Pot, blue and white.
- 41 **Shuro-chiku** (*Rhapis Flabelliformis*).  
For detail see No. 8. Five stems in the pot. Height, 2 $\frac{1}{2}$  feet. Pot, blue and white.
- 42 **Bon Kei.** (See No. 2.)  
It is made after a famous old Chinese painting, "Birth place of Confucius." It is done amazingly, similar to the original painting in every detail. Size 14x14 inches. Dish, wood.
- 43 **Bon Sai.** (See No. 18.)  
Wakoku-hiba, variegated. An ornamental evergreen, suitable for table decoration. Height, 1 foot. Age, 28 years. Pot, green.
- 44 **Chabo-hiba.** (See No. 5.)  
Trained in the graceful shape of "Jikka," by Grenko, of Tokio. Age, 40 years. Height, 1 $\frac{1}{4}$  feet. Pot, blue and white.
- NOTE:—"Jikka," is a shape of tree having a regular and proportional arrangement of the branches, giving a conical shape to the tree. This tree is always planted in the center or important position of the gardens.
- 45 **Sago Palm** (*Cycas Revoluta*).  
For description see No. 1. Four leaves in vigorous condition. Suitable for a cabinet ornamentation. Height, 10 inches. Pot, blue and white.
- 46 **Fukura-mochi** (*Ilex Integra*).  
*Only one in this collection.* Obtained from the collection of Kakoyen, of Tokio, by whom it was highly admired on account of its rarity. Height, 2 feet. Age, about 50 years. Pot, blue and white.

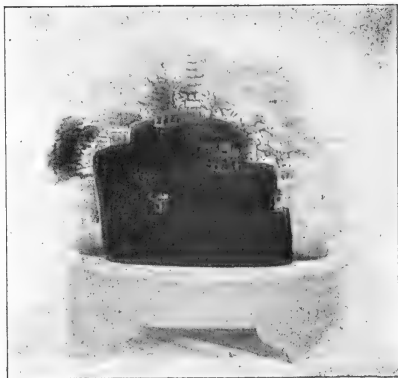


- 47 **A Fernery on Hego.**  
Sword Fern and others grown harmoniously on hego, a root of tree fern. It is suitable for a table decoration. Dish, wood.
- 48 **Chosen-kaya** (*Cephalotaxus drupacea*).  
An ornamental evergreen. Two plants in the pot. Height, 1¾ feet. Pot, blue and white.
- 49 **Camellia Japonica.**  
It is full of buds, which will bloom about Christmas, the flowers being *double* and *red*. Height, 1½ feet. Pot, Ruri.
- 50 **Chabo-hiba** (*Thuja Obtusa*).  
Of erect training. Height, 2¼ feet. Pot, Seiji.
- 51 **Tsuge** (*Buxus Japonica*).  
A cabinet specimen. Observe its beautiful variegation on the leaves. The buxus is the only one in the collection. Height, 9 inches. Pot, blue and white.
- 52 **Okimono** (an ornament).  
An antique figure of a man who is surprised to see a badger unexpectedly under a tea kettle, on which two cacti and chirimen vines are beautifully growing.
- 53 **Sago Palm** (*Cycas Revoluta*).  
Fourteen leaves in elegant condition. Length of the leaves, 1½ to 1¾ feet. Height, 1¾ feet. Pot, blue and white.
- 54 **Ibuki** (*Juniperus Chinensis*).  
(Of the golden variety.) It is highly esteemed by the Japanese on account of its beautiful color of the leaves, golden yellow. This is only one of the kind in this collection. Height, 1¼ feet. Pot, Seiji.
- 55 **Omoto** (*Rhodesa Japonica*).  
It produces small flowers, being succeeded with a cluster of beautiful red berries. It is an ornamental evergreen. Height, 1 foot. Pot, Seiji.
- 56 **Hanging Ornament.**  
It is made in the shape of Japanese water bucket. It could be used as a bouquet holder. An unusually well-made Kochi-ware specimen.
- 57 **Bon Kei.** (See No. 2.)  
It is reproduction in miniature of the garden of Chorinji Temple, of Kanazowa, which is widely known in Northern Japan (more by the keeping of many cranes, which are exceedingly rare elsewhere) than by the temple itself. Several cranes are seen on the scene. Notice the house made of metal in the center of the garden. Size, 17x17 inches. Dish, wood.
- 58 **Chabo-hiba** (*Thuja Obtusa Nana*).  
Two chabo-hibas, of "Kengai" and of "Mikoshi," growing fast together on a rock, called by Japanese "a happy couple." This is frequently used in a wedding decoration. Only one of the kind in the collection. Age, 32 years. Height, 1 foot. Pot, creamy white.
- NOTE: "Kengai"—A shape to represent a tree overhanging a cliff.  
"Mikoshi"—A shape of tree having generally no branches at the bottom, as this plant is always placed behind something, and only the top branches show; the literal meaning of "Mikoshi" being "to look over."
- 59 **Sonare** (*Juniperus Chinensis*).  
Differing from all others. Its stems creep over, instead of standing straight, the ground for several feet. The branches are spreading over the pot 2½ feet. Pot, Seiji.
- 60 **A Garden Lantern.**  
Made in the shape of a house. It is an unique garden ornament, and in tea gardens it is rather more useful than decorative.

- 61 **Sago Palm** (*Cycas Revoluta*).  
Three bulbs with six leaves. A fanciful table ornamentation.  
Pot, Seiji.
- 62 **Camellia Japonica**.  
Ready to bloom. Height,  $1\frac{3}{4}$  feet. Pot, blue and white.
- 63 **Bon Kei**. (See No. 2).  
This is a beautiful Bon Kei on hego, or a root of tree fern, having a Thuya, Kiara, Maranta and Thym on the scene. Height,  $1\frac{1}{2}$  feet. Dish, wood.
- 64 **A Cabinet Ornament**.  
Chabo-hiba, 20 years of age, growing by a stone in an unique jardiniere of blue and white. Height, 6 inches.
- 65 **A Garden Seat**.  
Seto-ware of blue and white. The view of gardens being certainly spoiled by using ordinary chairs, these garden seats are more useful than ornamental.
- 66 **Sekisho** (*Acorus Gramineus*).  
Growing on a rock. It is sometimes called sweet fern. An evergreen with sweet odor. Dish, blue and white.
- 67 **Sago Palm** (*Cycas Revoluta*).  
Three bulbs with nine leaves, length of which one inch to one foot. Height,  $1\frac{1}{2}$  feet. Pot, blue and white.
- 68 **Bon Kei**. (See No. 2).  
The view of Mirror Lake in Mount Kasuga, where deer was said to be sacred, and accordingly they abound there even to the present day. A stag standing on a rock one side of the lake, while a doe reclining on a rock on the opposite side. A most interesting specimen. Size, 17x24 inches. Dish, wood.
- 69 **Chabo-hiba** (*Thuya Obtusa Nana*). (See No. 5).  
One of the best and largest of the collection. It is an exquisite-well-trained "Jikka." (See No. 44.) It was originally trained by the famous Tokio gardener, Muto, through whose efforts it reached its present perfect state. Its trunk is measured three inches in diameter. Age, 125 years. Height,  $2\frac{1}{4}$  feet. Pot, wood.
- 70 **A Garden Screen**.  
This is one of the most ornamental "sodegaki," or garden screen,  $3\frac{3}{4}$  feet in height.
- 71 **Shuro-chiku** (*Rhapis Flabelliformis*).  
For description, see No. 8. It is commonly called umbrella palm. Ten stems in elegant condition. Height,  $2\frac{1}{2}$  feet. Pot, Seiji.
- 72 **Bon Kei**. (See No. 2.)  
*Juniperus variegata*, *Euonymus Japonica*, dwarf Azalea, etc., on hego. Height, 2 feet. Dish, wood.
- 73 **Ibuki** (*Juniperus Chinensis*).  
An ornamental evergreen. It is highly admired on account of the beautiful variegation of the leaves. Age, 18 years. Height, 1 foot. Pot, Seiji.
- 74 **Chabo-hiba** (*Thuya Obtusa Nana*). (See No. 5.)  
This is a good example of "Jikka," trained by Genbei, of Tokio. (Observe the peculiar shape of the trunk.) Age, 60 years. Height,  $2\frac{1}{2}$  feet. Pot, blue and white.
- 75 **Hego** (*Cyathea Spinulosa*).  
An evergreen suitable for a house ornament. It is commonly named "tree fern." The lower part of the trunk is covered with coarse dark brown hair. Three leaves,  $2\frac{1}{4}$  feet in length. Height, 2 feet. Pot, blue and white.



**BAMBOO.**



**BON KEI ON HEGO.**

- 76 **Sago Palm** (*Cycas Revoluta*).  
Three bulbs with 21 leaves, length of which measure  $\frac{3}{4}$  to  $1\frac{1}{4}$  feet. Height,  $1\frac{3}{4}$  feet. Pot, Ruri, lotus shape.
- 77 **Chosen-kaya** (*Cephalotaxus drupacea*).  
Three plants in the pot. Height,  $1\frac{1}{2}$  feet. Pot, blue and white.
- 78 **Bon Kei.** (See No. 2.)  
A model of a tea garden, being surrounded by Ibuki (*Juniperus Chinensis*), Hinoki (*Chamaecyparis obtosa*), Fukura-mochi (*Ilex integra*), Hiragi (*Olea aquifolium*), and Kochoki, which will bloom in spring. Size, 17x17 inches. Pot, wood.
- 79 **Chabo-hiba** (*Thuya Obtusa Nana*). (See No. 5.)  
Trained in the shape of "Jikka" (see No. 44), the branches being unusually well proportioned and regularly arranged. It was obtained from the private garden of Matsudaira, a daimeo, by whose chief gardener Heikichi (the father of that Heikichi who is now a gardener in the Royal Gardens), it was originally trained. Age, 75 years about. Pot, brown.
- 80 **A Porch Ornament.**  
Tanyo-sho (*Pinus densyflora*),  $2\frac{1}{4}$  feet high, with Sonare (*Juniperus Chinensis*), which is spreading over  $2\frac{1}{2}$  feet, growing most beautifully in old Seto jardiniere of blue and white, with stand, which is also Seto-ware. As magnificent a piece as this is very seldom seen even in Japanese collections.
- 81 **A Garden Screen.**  
This is an unique "sode-gaki," or a garden screen of the style of "Nidan-gaki."
- 82 **Bambusa Suwo.**  
Five main stems with numerous young sprouts. It is highly prized by having its beautiful green stripes on the yellow ground of the stems. Height,  $4\frac{1}{2}$  feet. Pot, wood.
- 83 **Bon Kei.** (See No. 2.)  
A view of a rocky hill. A man resting under a tree is noticeable. Dish, wood.
- 84 **Chabo-hiba** (*Thuya Obtusa Nana*).  
Of erect variety. Age, about 23 years. Height,  $2\frac{1}{2}$  feet. Pot, Ruri.
- 85 **Sago Palm** (*Cycas Revoluta*).  
Five leaves. Length of the leaves, 7 inches. Height,  $1\frac{1}{4}$  feet. Pot, Ruri.
- 86 **Taisan-chiku** (*Bambusa Vulgaris*).  
Two plants in the pot, both of them in splendid condition. Height,  $5\frac{1}{2}$  feet. Pot, wood.
- 87 **Camellia Japonica.**  
It is well furnished with buds which will bloom about Christmas. Height,  $1\frac{3}{4}$  feet. Pot, blue and white.
- 88 **Chabo-hiba** (*Thuya Obtusa Nana*). (See No. 5.)  
It is an exquisitely handsome example of Nakasu shape (See No. 5), trained by Tukubei, of Tokio, who is one of the best tree trainers in Japan. Age about a century. Pot, wood.
- 89 **Bon Kei.** (See No. 2.)  
This is the grandest of all the Bon Keis, from points of its design, size and arrangement. The figure of a devil, who carries two baskets of plants, is very well made of antique Kioto-ware. Sonare (*Juniperus Chinensis*), Tanyo-sho (*Pinus Densyflora*), are seen. It was made by Muto, an expert Bon Kei artist. Size,  $2\frac{1}{2}$ x $3\frac{1}{2}$  feet. Dish, wood.
- 90 **Camellia Japonica.**  
Ready to bloom. The flowers, variegated, will be seen about Christmas. Height,  $1\frac{1}{4}$  feet. Pot, blue and white.

- 91 **Ibuki** (*Juniperus Chinensis*).  
The leaves are beautifully variegated. It is an ornamental evergreen. Age, 22 years. Height, 1 foot. Pot, Seiji.
- 92 **Sonare** (*Juniperus Chinensis*).  
This is the most peculiar shaped tree in the collection, the branches spreading over 5 feet. Age, perhaps, over 35 years. Pot, Seiji.
- 93 **Sago Palm** (*Cycas Revoluta*). (See No. 1.)  
Sixteen leaves in vigorous condition. Length of the leaves, 1½ feet. Diameter of the bulb, 6 inches. Height, 2 feet. Pot, blue and white.
- 94 **Bon Kei**. (See No. 2.)  
Scene of a forest by a stream. This is one of the masterpieces of Sakuzo, a well-known Bon Kei artist. Size, 15x18 inches. Dish, wood.
- 95 **Hanging Ornament**.  
Asparagus fern, etc., in artistic bamboo dish, with antique bronze chain. A dish of this style is highly admired by the art-loving Japanese public.
- 96 **Chabo-hiba** (*Thuja Oblusa Nana*). (See No. 5.)  
This is one of the best and largest trees in the collection. A perfect tree as this could hardly be duplicated. Observe how beautifully the branches are arranged and trained, giving the tree the shape of "Jikka." (See No. 44). Careful examination is also invited to the trunk, which makes a knot in the center. It was originally trained by Zaru-cho, of Tokio, from whose grandson this tree was obtained. Age, about a century. Height, 2¼ feet. Pot, wood.
- 97 **Tanyo-sho** (*Pinus Densiflora*).  
An ornamental evergreen. Height, 2½ feet. Pot, wood.
- 98 **A Garden Lantern**.  
This is an antique garden lantern of Fuji-yaka ware, in the shape of Momoya-ma. It was kept over one hundred and fifty years in the private garden of Akiba, from where this was specially secured for this collection. Height, 3½ feet.
- 99 **Bon Kei**. (See No. 2.)  
It is the reproduction of miniature or a part of the Royal Summer Garden in Hakone, which is famous for its simplicity, having no ornamental materials but stones and trees. His Royal Highness, the Crown Prince of Japan, though he is still young, loves beauties of nature and not ornamentations, and accordingly the garden made for him is without luxurious decorations. Size, 15x15 inches. Dish, wood.
- 100 **Sago Palm** (*Cycas Revoluta*).  
A full description. (See No. 1.) Six leaves, which measured 1 foot in length. Pot, blue and white.
- 100A **Onagi-dori** (Long-tail rooster.)  
A rooster, the tail of which grows naturally 12 to 15 feet in length, accompanied by a hen. This is a bird like the red-headed crane, very rare even in Japan. The bird is taken very often for a subject for Japanese arts, especially for poems, since Hitomaro wrote over a thousand years ago of a long-tail rooster the best poem a Japanese poet ever produced. The pair are in a beautiful cage.
- 100B **Chabo-hiba** (*Thuja Oblusa Nana*). (See No. 5.)  
It is very well-proportioned "Jikka" (see No. 44), trained by Ushitaro, of Idzu. Age, 40 years. Height, 1½ feet. Pot, blue and white.

- 100C **A Bronze Crane.**  
For a garden ornament. Height,  $5\frac{1}{2}$  feet.
- 100D **A Sun Parlor Ornament.**  
It is made to imitate an eagle on a rock hunting its prey. Whole piece made of hego, a root of tree fern. *Maranta*, *Chamaecyparis obtusa*, *Hiyoku cedar*, etc., on the scene. Dish, wood.
- 100E **A Hanging Lantern.**  
It is called "Semi-toro," or a lantern with cicada, for the lanterns of this style have always a cicada or locust on some part. Without this lantern tea house decoration is said not to be completed. Nine inches in diameter. Ten inches in height.
- 100F **Tea Plant** (*Thea sinensis*).  
An unique cabinet ornamentation. Height, 6 inches. Pot, blue and white.
- 100G **A Hanging Ornamentation.**  
Sword fern, *microlepia cristata* and lotus, grown beautifully in unique pot.
- 100H **Chabo-hiba** (*Thuja Obtusa Nana*). (See No. 5.)  
Of the "Jikka" shape, trained by Hanko, of Tokio. Age, about 50 years. Height,  $1\frac{1}{4}$  feet. Pot, blue and white.
- 100I **A Jardiniere.**  
An unique jardiniere of Shigaraki-ware, decorated with rattan. Height, 10 inches. Diameter,  $1\frac{1}{4}$  feet.
- 100J **Bon Kei.** (See No. 2.)  
Two kinds of junipers, *hiyoku-hiba* and ferns, grown harmoniously on hego, or a root of tree fern. Height,  $1\frac{3}{4}$  feet. Dish, wood.
- 100K **Masaki** (*Euonymus Japonica*).  
An ornamental evergreen tree. Height, 11 inches. Pot, blue and white.
- 100L **Sword Fern and Asparagus.**  
In cute Tokonabe jardiniere. It is suitable for a table ornament. Height, 2 feet, with stand.
- 100M **A Garden Screen.**  
"Nidan-gaki" style. Careful examination of the artistic work in the lower part is invited. It is more useful in the Japanese gardens than ornamental. Height,  $3\frac{3}{4}$  feet.
- 100N **Chabo-hiba** (*Thuja Obtusa Nana*). (See No. 5.)  
This is one of the best specimens in the collection. It was obtained from the family of Kakogen, of Tokio, by whom it was so perfectly trained in the shape of "Jikka." (See No. 44.) The trunk is 4 inches in diameter. Age, over 120 years. Height, 2 feet. Pot, Seiji.
- 100O **Okimond.** (An ornament.)  
This is an antique wood carving in the shape of a bird on a rock. *Carex variegata* and *acorus gramineus* in individual pot are seen at the foot of the figure, on an artistic wooden stand.
- 100P **Sago Palm, Hosu.** (See No. 30.)  
The main stalk with six small bulbs, crowned, nine leaves. Age, 16 years. Height, 1 foot. Pot, blue and white.
- 100Q **A Garden Lantern.**  
It is an antique stone lantern in the style of Jizo-gata. This was obtained from the private collection of Count Okuma, ex-premier, and the largest collector of rare plants and garden ornaments, and said by him to be over one hundred and fifty years old. Height,  $2\frac{1}{2}$  feet.

100r **A Fern on Hego.**

It is an unique ornamentation, a fern growing on a hego, or a root of tree fern. With a beautifully decorated bamboo stand.

100s **Chabo-hiba** (*Thuya Obtusa Nana*). (See No. 5.)

This is the rarest tree in the collection, the leaves being beautifully variegated. It is sometimes called Hatsu-yuki chabo, or first snow thuya. A more beautiful specimen than this could never be found. It was originally trained in the shape of "Jikka" by Zarucho, of Tokio, who was known as one of the best tree trainers Japan ever had. Age, 120 years. Height,  $2\frac{1}{4}$  feet. Pot, wood.

100t **A Jardiniere with Stand.**

This is an exquisitely well-made Shigaraki-ware. Fourteen inches in diameter.

100u **Ibuku** (*Juniperus Chinensis*).

Of golden variety. A cute cabinet ornamentation. Height, 10 inches. Pot, Kenzan.

100v **Bon Kei.** (See No. 2.)

A view of forest. Two summer houses and a horse in the scene. Made by Kato, a Bon Kei artist.

100w **Asparagus and Sword Fern.**

In unique Shigaraki pot, on an artistic wooden stand. Height,  $2\frac{3}{4}$  feet, including the stand.

100x **A Table Ornament.**

A tree fern, asparagus and sweet fern in individual unique pot on an artistic wooden stand. This is one of the most ornamental works in the collection.

100y **Chabo-hiba** (*Thuya Obtusa Nana*). (See No. 5.)

It is trained in the shape of "Jikka." (See No. 44.) This was one of the most favorite trees of the family of Genko, the owner and trainer, from whom it was obtained. Age, 76 years. Height,  $1\frac{1}{4}$  feet. Pot, Seiji.

100z **A Garden Lantern.**

An antique stone lantern made by Chokichi, of Kioto, about two hundred years ago. It is a grand garden ornamentation, without which no Japanese gardener considers his garden complete.

## Second Day's Sale

Thursday Afternoon, December 7, at 2 P. M.

- 101 **Bon Kei.** (See No. 2.)  
This is the supposed view of the residence of Horoku in Chinese legend, who was said, instead of studying his theory of philosophy in his own home at the summit of the hill, spent most of his days inside of the cliff below, to avoid visitors. It was also said that he had two favorite animals, a cat and a monkey, which are noticed in the scene.
- 102 **Sago Palm** (*Cycas Revoluta*). (See No. 1.)  
Six leaves, eight inches in length. Height,  $1\frac{1}{4}$  feet. Pot, blue and white.
- 103 **Chabo-hiba** (*Thuja Obtusa Nana*). (See No. 5.)  
Trained by Kintaro, of Tokio, in the shape of "Jikka." (See No. 44.) Observe the enormous size of the trunk, which measures over three inches in diameter. Age, 50 years. Height,  $1\frac{1}{2}$  feet. Pot, Seiji.
- 104 **Camellia Japonica.**  
It is filled with buds which will bloom about Christmas. Height,  $1\frac{3}{4}$  feet. Pot, Seiji.
- 105 **Ibuki** (*Juniperus Chinensis*).  
It is highly esteemed on account of the beautiful variegation in the leaves. Height,  $1\frac{1}{4}$  feet. Pot, Seiji.
- 106 **Hiragi** (*Olea Aquifolium*).  
An ornamental evergreen, with beautiful variegation in the leaves. Height, 1 foot. Pot, blue and white.
- 107 **Bon Kei.** (See No. 2.)  
Ibuki variegated, hiyoku cedar and many others grown beautifully on hego, a root of tree fern. Height,  $1\frac{3}{4}$  feet. Dish, wood.
- 108 **Tea Plant** (*Thea Chinensis*).  
From the young leaves of this tree Japanese tea is made. Height, 7 inches. Pot Seiji.
- 109 **Chosen-Kaya** (*Cephalotaxus Drupacea*).  
Two plants in the pot. It is an ornamental evergreen. Height,  $1\frac{3}{4}$  feet. Pot, Seiji.
- 110 **A Cabinet Ornamentation.**  
A pair of cocos, *microlepis cristata* and other ferns in unique jardinières, three each, on an artistic stand.
- 111 **Sago Palm** (*Cycas Revoluta*). (See No. 1.)  
Three stalks, crowned with ten leaves. Height, 1 foot. Pot, blue and white.
- 112 **Shuro-Chiku** (*Rhapis Flabelliformis*).  
For description see No. 8. Ten stems in elegant condition. It is suitable for a house decoration, resisting equally both gas and dust. Height,  $2\frac{1}{4}$  feet. Pot, Seiji.
- 113 **Bon Kei.** (See No. 2.)  
It is made to represent the view of Kumamoto Castle, being surrounded by Ibuki (*Juniperus Chinensis*), Chosen-Kaya (*Cephalotaxus Drupacea*), and so forth. Two men on horseback are noticeable.



- 114 **Hego** (*Cyathea Spinulosa*).  
Or tree fern. Three leaves, which are measured from 1 $\frac{3}{4}$  feet to 2 $\frac{1}{2}$  feet.
- 115 **Chabo-hiba** (*Thuja Obtusa Nana*).  
Trained in the shape of a standard "Jikka" (see No. 44), by a famous tree trainer. Hanko, by whom Mr. Iseya, of one of the richest families of Japan, bought and kept until four years ago, whence it came to the collector's hands. Diameter of the trunk is measured 4 inches. Age, between 95 and 100 years. Height, 2 $\frac{1}{2}$  feet. Pot, blue and white.
- 116 **A Jar.**  
It is frequently used by Japanese florists as a store ornament. Shigaraki-ware, with beautiful running glaze, in round shape. Eighteen inches in diameter, and 38 inches high.
- 117 **Hiyoku-hiba** (*Thuja pisiifera*).  
Observe its beautiful golden variegation on the leaves. It is very rare even in Japan collection. Height, 8 inches. Pot, Seiji.
- 118 **Bon Kei.** (See No. 2.)  
A view of forest, dwarf azalea, juniper, kiara and hiyoku cedar being on the scene. Size, 12x17 inches. Dish, wood.
- 119 **A Jardiniere.**  
An unique Shigaraki-ware, decorated with rattan. Diameter, 1 $\frac{1}{4}$  feet. Height, 9 inches.
- 120 **Sago Palm** (*Cycas Revoluta*). (See No. 1.)  
Three bulbs with twenty-two leaves which are measured 1 foot in length. Height, 1 $\frac{1}{2}$  feet. Pot, Seiji.
- 121 **Ibuki** (*Juniperus Chinensis*).  
Of the golden variety. It is an unique cabinet ornament. Height, 10 inches. Pot, blue and white.
- 122 **Suwo-chiku** (*Bambusa Suo*).  
Observe its beautiful green stripes on yellow ground of the stems, by which it is highly prized. Eight main stems with numerous young sprouts. Height, 5 feet. Pot, wood.
- 123 **Bon Kei.** (See No. 2.)  
Scene of a part of the Mount Hikosan. It is made by Sakuzo, of Amakusa. Azalea and Euonymus in vigorous condition are on the scene. Size, 13 x 16 inches. Pot, wood.
- 124 **Omoto** (*Rhodea Japonica*).  
An ornamental evergreen. Height, 1 foot. Pot, blue and white.
- 125 **Kiara** (*Taxus Tardiva*).  
A beautiful evergreen. In a handsome Shigaraki jardiniere, decorated with rattan. Height, 1 $\frac{1}{2}$  feet.
- 126 **Chabo-hiba** (*Thuja Obtusa Nana*). (See No. 5).  
This is decidedly well trained "Jikka" shape. (See No. 44). Its training was first started by either Hanskei or Ohoji, of Tokio; both of them were expert tree trainers contemporaneously. Age, 85 to 87 years. Height, 1 $\frac{3}{4}$  feet. Pot, blue and white.
- 127 **A Table Ornament.**  
Maranta, asparagus, lotus and ferns grown harmoniously on hego, or a root of tree fern, which is made in the shape of a sail-boat.
- 128 **Sago Palm** (*Cycas Revoluta*). (See No. 1.)  
Eleven leaves in healthy condition. Length of the leaves, 1 $\frac{1}{4}$  feet. Diameter of the bulb, 6 inches. Height, 1 $\frac{3}{4}$  feet. Pot, blue and white.

- 129 **Bon Kei.** (See No. 2.)  
One of the largest and best made Bon Keis in this collection. It is made to show a country view of modern Japan. There are mimic trains on a tiny railroad. Telegraph posts with wire are also seen. Two country houses made of metal are on the scene. This was designed and made by Muto, of Tokio, who is now one of the head gardeners in Japanese Tea Garden, Atlantic City, N. J. Size, 22x30 inches. Pot, wood.
- 130 **A Coco Palm and a Fern.**  
Grown vigorously in an artistic pot made of the inner or hardest part of hego, a root of tree fern, which is exceedingly rare. Height, 1½ feet, including the stand.
- 131 **Ibuki** (*Juniperus Chinensis*).  
Beautifully variegated. Two plants in the pot. Height, 1½ feet. Pot, blue and white.
- 132 **Chabo-hiba** (*Thuja Obtusa*).  
This is the chabo-hiba of erect training. Height, 2 feet. Pot, Kenzan.
- 133 **Bon Kei.** (See No. 2.)  
*Retinospora obtusa nana* accompanied with a Juniper, *Thuja* and *Buxus* grown handsomely on hego, representing the scene of Yabakei-cliff. It was trained by Sakuzo, a well-known Bon Kei artist. Height, 1¾ feet. Pot, wood.
- 134 **A Garden Seat.**  
A beautiful Seto-ware of blue and white. It is always used in Japanese gardens instead of a chair. Height, 1¾ feet.
- 135 **Sonare** (*Juniperus Chinensis*).  
This is one of the rarest specimens in the collection. Two trees in the pot, the branches spreading over 2½ feet. Age, 30 years. Pot, blue and white.
- 136 **Sago Palm** (*Cycus Revoluta*). (See No. 1).  
Two stalks in the pot. This is one of the best in the collection. Height, 6 inches. Pot, blue and white.
- 137 **Chabo-hiba** (*Thuja Obtusa Nana*). (See No. 5.)  
From a point of age, also from a point of size, this tree could not be called the superior to the others, yet this one excels because of its historical view and the perfection of its training. It is the rarest of rarities from the Japanese point of view. It was in the possession of the last Shogun or Takun of the Tokugawa Regency, by whom this tree was highly admired. At the time Shogun's power was overthrown, thirty-four years ago, this tree was secured with the only map of the garden of Yedo castle by Yamashita, a "samurai," and an expert botanist of the age. Observe its most artistic and peculiar shape of the trunk, which is only seen in the works of Kobei, one of the best tree trainers Japan ever had. Age, over a century. Height, 1¾ feet. Pot, wood.
- 138 **Bon Kei.** (See No. 2.)  
This is one of the best Bon Keis on hego, or a root of tree fern. The select varieties of Ibukis (*Juniperus Chinensis*) and *Kiaras* (*Taxus tardiva*) competing own beauties, one with its handsome variegation and the other with its golden brightness. Size, 15x20 inches. Dish, wood.
- 139 **Sekisho** (*Acorus Gramineus*).  
It is sometimes called sweet fern. This is an unique table ornamentation, being an evergreen and growing on a rock.
- 140 **Hamamokkoku** (*Rhaphiolepis Japonica*).  
This is only one of the kind in this collection. In early summer, it bears white flowers, being succeeded with dark purple berries. Height, 13 inches. Pot, blue and white.

- 141 **A Garden Screen.**  
An ornamental garden screen of the style of "Tamabishi."
- 142 **Tsuru-masaki** (*Euonymus Japonica*).  
A beautiful specimen of the kind. Height,  $1\frac{1}{4}$  feet. Pot, Namako.
- 143 **A Parlor Ornament.**  
This is an antique Japanese figure in shape of a country boy bearing a large basket on his back, in which a fern, *microlepia cristata*, is growing beautifully. With an artistic wooden stand.
- 144 **Sago Palm** (*Cycas Revoluta*). (See No. 1.)  
Eleven leaves, length of which  $\frac{3}{4}$ -1 foot. Diameter of the bulb, 5 inches. Height,  $1\frac{1}{4}$  feet. Pot, mirror black.
- 145 **Aoki** (*Aucuba Japonica*).  
It is an ornamental evergreen, with handsome variegation on the leaves. This is only one in the collection. Height,  $1\frac{3}{4}$  feet. Pot, blue and white.
- 146 **Hego** (*Cyathea Spinulosa*).  
Three leaves in elegant condition. Length of the leaves,  $1\frac{3}{4}$  feet. Height,  $1\frac{3}{4}$  feet. Pot, Seiji.
- 147 **Bon Kei.** (See No. 2.)  
This is the view of the Isis shrine, and one of the best designed Bon Keis in the collection. Size, 18x24 inches. Dish, wood.
- 148 **Chabo-hiba** (*Thuya Obtusa Nana*). (See No. 5.)  
In the shape of "Jikka." (See No. 44.) Having been trained by Unokichi, of Tokio, who was greatly celebrated for Jikka training. Secured from Shinkoyen, of Kawasaki, in where this was kept and cared over sixty years. It is one of the largest and best trained trees in the collection. Observe the enormous size of the trunk, which measures 4 inches in diameter. Age 100 to 110 years. Height, 2 feet. Pot, wood.
- 149 **Masaki** (*Euonymus Japonica*).  
A decorative evergreen. Height,  $1\frac{1}{4}$  feet. Pot, Seiji.
- 150 **Chabo-hiba** (*Thuya Obtusa Nana*). (See No. 5)  
This is a thuya of erect variety, or sometimes called Tachi-chabo. Height, 2 feet. Pot, blue and white.
- 151 **Ibuku** (*Juniperus Chinensis*).  
Observe its beautiful variegation on the leaves. Height,  $2\frac{3}{4}$  feet. Pot, blue and white.
152. **Sago Palm, Hosō.** (See No. 30.)  
Three bulbs, crowned with nine leaves, which are measured  $\frac{3}{4}$  feet in length. Height,  $1\frac{1}{4}$  feet. Pot, blue and white.
- 153 **Bon Kei.** (See No. 2.)  
It is made by Kato, a Bon Kei artist, to represent the view of Futami Bay, where two precipitous stones stand on the water having the sacred rope made of straws hanging between. One of the stones is said to be male and the other female; so they are sometimes called "The stones of matrimony." Two tiny temples are seen on the hills opposite each other. Size, 15x24 inches. Dish, wood.
- 154 **Omoto** (*Rhodea Japonica*).  
An ornamental evergreen which produces small flowers, being succeeded with a cluster of beautiful red berries. Height, 1 foot. Pot, Seiji.
- 155 **A Hanging Lantern.**  
An antique hanging lantern, called "Semitoro," or a lantern with cicada or locust. It is an unique tea house ornament and sometimes used in "machi-ai" or waiting house.

- 156 **Chabo-hiba** (*Thuja Obtusa Nana*). (See No. 5.)  
Trained in the shape of combination, Jikka and Nea-gari (see No. 16 and No. 44), by Kintaro, of Tokio. Height, 1 foot. Pot, blue and white.
- 157 **Bon Kei**. (See No. 2.)  
The scene of Yano Islands, Made by Kato, of Mikawa. Size, 17x17 inches. Dish, wood.
- 158 **Wakoku** (*Thuja Akaque*).  
One of the prettiest specimens, having beautiful golden variegation on the leaves. Age, 29 years about. Height, 1 foot. Pot, Kenzan.
- 159 **Kampo-ran**. (An orchid.)  
This is the only orchid in the collection. It blooms in early summer and continues till the late autumn. The jardiniere, plain white, is made by Chikusen, of Kioto, who is one of the best artists in Japan. It is simple, yet tasteful. It is plain, yet artful. The signature which is seen on only his best made wares, will be found on the bottom of the jardiniere. Height, 3 feet, including the stand.
- 160 **Chabo-hiba** (*Thuja Obtusa Nana*). (See No. 5.)  
This is the most curious tree in the collection on account of having a stone at the boundary of the trunk and roots. Trained by Heishiro, a master of tree trainers, in the shape of Jikka. (See No. 44.) Age, 70 years. Height, 1 $\frac{3}{4}$  feet. Pot, brown.
- 161 **Hanging Ornament**.  
It is made by Heizo, one of the best porcelain makers of Seto, ware, in the shape of well bucket. It is over 50 years old—perhaps about 65 years. This might be used as a bouquet holder. Three pieces in set, a pulley and two buckets.
- 162 **Sago Palm** (*Cycas Revoluta*). (See No. 1.)  
Three bulbs with eight leaves. Length of the leaves, 7 to 12 inches. Height, 1 foot. Pot, Seiji.
- 163 **Bon Kei**. (See No. 2.)  
The scene of Hakone Spring, the most well-known summer resort in the Orient. It is very well imitated in every detail. Made by Kato, a skillful Bon Kei artist. Size, 15x15 inches. Dish, wood.
- 164 **Cabinet Ornament**.  
Two most ornamental jardiniere made in the shape of Japanese tube on an artistic stand, being planted a parrot feather in the one and acorus variegata in the other. Height, 1 $\frac{1}{2}$  feet.
- 165 **Chabo-hiba** (*Thuja Obtusa Nana*). (See No. 5.)  
It differs from all other Chabo-hibas from the point of training, the branches being trained individually in a horizontal round shape, giving the tree a conical form, which is called "Tama-tsu-kuri." This is the only one of the kind in the collection. It was obtained from Kakoyen, of Tokio, by whose grandfather the tree was originally trained. Height, 2 $\frac{1}{2}$  feet. Age, 95 years. Pot, wood.
- 166 **Bon Sai**. (See No. 18.)  
Bambusa Kinmei, a dwarfed bamboo, grown handsomely in an unique Tokonabe jardiniere. It is an equally beautiful ornament for a centerpiece of dining table. Height, 7 inches.
- 167 **Tanyo-sho** (*Pinus Densiflora*).  
This is one of the most beautiful evergreens. Trained in the round-top style. Height, 2 $\frac{1}{2}$  feet. Pot, wood.



**SOGO PALM, HOSO.**



**CHABO-HIBA IN WOODEN POT,**

- 168 **Bon Sai.** (See No. 18.)  
This is the best and largest work in the collection on hego, or a root of tree fern. A chabo-hiba of the age of 70 in the shape of "Jikka" is growing with Ibuki of golden variety, hiyoku cedar and ferns. Height, 3 feet. Dish, Seto-ware of blue and white (slightly damaged).
- 169 **Sago Palm** (*Cycas Revoluta*). (See No. 1.)  
This is the best sago palm in the collection. Twenty leaves in splendid condition. Length of the leaves,  $1\frac{1}{4}$  to  $1\frac{1}{2}$  feet. Diameter of the bulb, 6 inches.
- 170 **Chabo-hiba** (*Thuya Obtusa Nana*). (See No. 5.)  
Trained in the shape of "Jikka" (see No. 44) you will observe that the arrangement of the branches is decidedly unusual, which characterizes the work of Sato, of Tokio, many of whose pupils are now in this country to study American gardening. Notice the large trunk, which is 4 inches in diameter. Age, 75 years. Height,  $1\frac{3}{4}$  feet. Pot, wood.
- 171 **Bon Kei.** (See No. 2.)  
The scene of Yabakei, of Kinshin, Japan, made out of hego, a root of tree fern. There are four houses and a bridge noticeable. Height  $1\frac{3}{4}$  feet. Dish, wood.
- 172 **Bon Sai.** (See No. 18.)  
This is the most artistic and curious plant in the collection, three pines growing fast on a rock with dwarf azaleas, which will bloom in early summer. A more artistic plant does not exist. Age, 28 years. Height,  $1\frac{1}{4}$  feet. Pot, Ruri oblong.
- 173 **Chosen-kaya** (*Cephalotaxus Drupeacea*).  
Two plants in the pot. It is a beautiful evergreen. Height,  $1\frac{3}{4}$  feet. Pot, Seiji.
- 174 **Ibuki** (*Juniperus Chinensis*).  
It is an ornamental evergreen, with beautiful variegation. This is suitable for a cabinet ornamentation. Height, 1 foot. Pot, Seiji, in lotus shape.
- 175 **A Hanging Lantern.**  
An antique hanging garden lantern, in age over one hundred years, of yoko-ware. It was damaged slightly on the way from Japan.
- 176 **Sago Palm, Hosō.** (See No. 30.)  
This is one of the best Hosos, having four main stalks with several small bulbs, crowned with twenty-three leaves. Height,  $1\frac{3}{4}$  feet. Pot, green in lotus shape.
- 177 **An Antique Bouquet Holder.**  
This is an antique bouquet holder, made in the shape of Japanese flower tube, with the decoration of a rising dragon.
- 178 **Bon Kei.** (See No. 2.)  
This is one of the best Bon Keis, made in the nearest imaginable manner to Horai in Chinese legend, by a Chinese artist, Kiraku. Whole view made of one piece of rock. Count Okuma, of Japan, obtained this from *Li Hung Chang*, of China, a few months after Chino-Japan war was settled, and from the Count the collectors secured this. Height,  $1\frac{1}{2}$  feet. Pot, Chinese shide, very old.
- 179 **Chabo-hiba** (*Thuya Obtusa Nana*). (See No. 5.)  
This is a very good specimen, in the shapes of Nakasu and Ne-agari. (See No. 5 and No. 16.) It is supposed to be trained by Genko, of Tokio. Age, about 60 years. Height,  $1\frac{1}{2}$  feet. Pot, blue and white.

- 180 **Sonare** (*Juniperus Chinensis*).  
It is a perfect specimen of the kind. The branches are spreading over two feet. Pot, Seiji.
- 181 **Hiragi** (*Olea Aquifolium*).  
A beautiful evergreen. Height,  $1\frac{1}{4}$  feet. Pot, Seiji.
- 182 **Shuro-chiku** (*Rhapis Flabelliformis*).  
For description see No. 8. Seven stems in elegant condition.
- 183 **Bon Kei.** (See No. 2.)  
This is one of the best arranged Bon Keis in the collection. The house was made by Musashi and the garden by Kato. It is the reproduction in miniature of a tea garden of summer style, being surrounded by juniperus ibuki, thuya hiyoku and hinoki obtusa. Special examination of the careful arrangement of the garden is invited. Size,  $2\frac{1}{2} \times 3$  feet.
- 184 **Chabo-hiba** (*Thuya Obtusa Nana*). (See No. 5.)  
This is the only tree in the collection trained by Kikuji, of Tokio, who was celebrated by the peculiar training of the dwarf trees, and the shape of this kind is said could not be done by any other tree trainer. We could hardly find that this is one tree or two, the branches horizontally spreading over  $2\frac{1}{2}$  feet, while the height is less than 10 inches. Age, about 65 years. Pot, brown.
- 185 **A Jardiniere.**  
An unique jardiniere of Shigaraki-ware, decorated with rattan. One foot in diameter and eight inches in height.
- 186 **Sago Palm** (*Cycas Revoluta*).  
For description see No. 1. Three main stalks with several small bulbs, crowned with 24 beautiful leaves. Height, 2 feet. Pot, blue and white.
- 187 **Sword Fern and Asparagus.**  
Growing in an artistic hanging tubes made in the shape of Japanese well bucket. It is made out of hego, or a root of tree fern, by Muto, an expert gardener.
- 188 **Ibuki** (*Juniperus Chinensis*).  
Of the golden variety. It is a pretty cabinet ornamentation. Height, 10 inches. Pot, Seiji.
- 189 **Bon Kei.** (See No. 2.)  
It is made to represent the view of the castle of Li Hung Chang, from a photograph taken ten years ago. Size,  $16 \times 10$  inches. Dish, wood.
- 190 **A Garden Screen.**  
This is an elegant "sode-gaki" or garden-screen made out of white bamboos. Height,  $3\frac{3}{4}$  feet.
- 191 **Porch Ornamentation.**  
Tanyo-sho (*Pinus densyflora*), of  $2\frac{1}{4}$  feet high, accompanied with a Sonare (*Juniperus chinensis*), which is spreading over  $2\frac{1}{2}$  feet, in an antique Seto jardiniere. This is one of the grandest in this collection. Height of the jardiniere,  $2\frac{1}{2}$  feet.
- 192 **Chosen-kaya** (*Cephalotaxus drupacea*).  
Three plants in the pot. Height,  $1\frac{3}{4}$  feet. Pot, blue and white.
- 193 **Bon Kei.** (See No. 2.)  
This is a masterpiece of Sakugo, an expert Bon Kei artist, *Retinospora obtusa nana*, dwarf azalea, *Taxus tardiva*, etc., growing on hego, a root of tree fern. Height, 2 feet. Dish, wood.

- 194 **Sago Palm Hosō.** (See No. 30.)  
This is the best sago palm of Hosō variety, or tree-formed sago palm. Five stalks from one root, crowned 16 leaves in splendid condition. Age, 40 years. Height,  $1\frac{1}{2}$  feet. Pot blue, and white.
- 195 **A Jar.**  
An antique Shigaraki-ware in round shape. Twelve inches in diameter.
- 196 **Chabo-hiba** (*Thuya Obtusa Nana*). (See No. 5.)  
This is the best, largest and oldest of all the trees in this collection. All the branches are most carefully trained in full accord with the shapes, which are "Jikka" (see No. 44), and semi-"ne-agari." (See No. 16). It was trained by Tubuki, of Tokio, and kept in Genrokuji, a well-known Buddhist temple, from where it was obtained by Mr. Arai, one of the collectors of this exhibition. It is perfect in every detail. A more marvelous tree could never be produced. Age, 250 years. Height  $2\frac{3}{4}$  feet. Pot, wood.
- 197 **Omoto** (*Rhodea Japonica*).  
It is a beautiful evergreen. Height, 1 foot. Pot, Ruri.
- 198 **Chabo-hiba** (*Thuya Obtusa*).  
Of the erect training. This is one of the best specimens of the kind. Height,  $2\frac{1}{2}$  feet. Pot, Seiji.
- 199 **Bon Kei.** (See No. 2.)  
This is only Bon Kei made with artificial materials. It is, therefore, the strongest of all Bon Keis. There is no trouble of watering, and it stands both the sun and shade. Made by Muto, an expert Bon Kei artist, and one of the head gardeners of the Japanese Tea Gardens, of Atlantic City, N. J., to represent the model of a best made tea garden, Baisa-tei, of Japan. Observe the house on the scene; it is made to show every detail of a Japanese tea house. Size,  $26 \times 35$  inches. Dish, wood.
- 200 **Sago Palm** (*Cycus Revoluta*). (See No. 1.)  
Ten leaves in vigorous condition. Length of the leaves,  $1\frac{1}{4}$  feet. Diameter of the bulb, 6 inches. Height,  $1\frac{1}{2}$  feet. Pot, blue and white.
- 201 **Ibuki** (*Juniperus Chinensis*).  
The leaves are beautifully variegated. Pot, Seiji.
- 202 **Hego** (*Cyathea Spinulosa*).  
Or sometimes called tree fern. Six leaves in elegant condition, length of which measures 1-2 feet. This is the best hego in this collection. Height,  $2\frac{1}{4}$  feet. Pot, Seiji.
- 203 **Bon Kei.** (See No. 2.)  
This is the reproduction in miniature of the view of the Byōbiwa, literal meaning of which is screen stones, of Hida, being surrounded by Ibuki and Masaki. Size,  $12 \times 17$  inches. Dish, wood.
- 204 **Taisan-chiku** (*Bambusa Vulgaris*).  
Observe its new sprout growing vigorously. It is an ornamental evergreen. Height, 7 feet. Pot, wood.
- 205 **Sago Palm and Sonares.**  
A sago palm crowned with 13 leaves, accompanied with three beautiful Sonares (*Juniperus chinensis*) grown harmoniously in Seto jardinières of blue and white in the shape of Japanese boat, with an unique bamboo stand.
- 206 **Chabo-hiba** (*Thuya Obtusa Nana*). (See No. 5.)  
This is an exquisite example of "Ne-agari" and "Jikka." Trained by Heitaro, of Tokio. Age, 50 years. Height,  $1\frac{1}{4}$  feet. Pot, Seiji.



- 207 **Shuro-chiku** (*Rhapis flabelliformis*).  
 Or umbrella palm. Fourteen stems in excellent condition.  
 Height, 3 feet. Pot, blue and white.
- 208 **Bon Kei.** (See No. 2.)  
 This is the reproduction in miniature of the view of the cliff houses of Taro-zan, where a tiger (captured in Corea by Goto, one of the generals under Taiko, at the time of Korean expedition three hundred years ago) was kept. Size, 18x18 inches. Dish, wood.
- 209 **Suwo-chiku.** (*Bambusa Suo*).  
 The beautiful green stripes on the yellow ground of the stems could never be seen on any other bamboo. It is a highly ornamental house plant. Height, 3½ feet. Pot, blue and white.
- 210 **Ibuki** (*Juniperus Chinensis*).  
 This is a beautiful juniper of golden variety. Height, 10 inches. Pot, Seiji.
- 211 **Tea Plant** (*Thea Chinensis*).  
 An evergreen. In late autumn the white flowers are produced and in early summer the young leaves are gathered for tea, which is prepared by steaming, rubbing, rolling and drying. Height, 7 inches. Pot, blue and white.
- 212 **Sago Palm** (*Cycas Revoluta*). (See No. 1.)  
 Three bulbs with 20 leaves. Height, 1¼ feet. Pot, blue and white.
- 213 **Bon Kei.** (See No. 2.)  
 A country view of modern Japan, having telegraph posts along the road. Size, 15x21 inches. Pot, wood.
- 214 **Tanyo-sho** (*Pinus Densiflora*).  
 Of the round-top training. Height, 2 feet. Pot, wood.
- 215 **Sago Palm** (*Cycas Revoluta*). (See No. 1.)  
 Fourteen leaves, length of which 1¼ feet. Diameter of the bulb, 6 inches. Height, 1¼ feet. Pot, blue and white.
- 216 **Chabo-hiba** (*Thuja Obtusa Nana*). (See No. 5.)  
 Trained in the "Jikka" shape (see No. 44) by Genko, of Tokio. Age, 40 years. Height, 1¼ feet. Pot, Ruri.
- 217 **Camellia Japonica.**  
 Ready to bloom. Height, 1¾ feet. Pot, blue and white.
- 218 **Chabo-hiba** (*Thuja Obtusa*).  
 Of the erect variety. Height, 2½ feet. Pot, blue and white.
- 219 **Bon Kei.** (See No. 2.)  
 The scene of Uji-dera being surrounded by *Taxus elegantissima* and many other valuable plants. An unique metal house is seen on the scene. Size, 12x18 inches. Pot, wood.
- 220 **Sago Palm Hoso.** (See No. 30.)  
 Three bulbs with 12 leaves which measured 1½ feet. Height, 1¾ feet. Pot, green, in lotus shape.
- 221 **Chabo-hiba** (*Thuja Obtusa Nana*). (See No. 5.)  
 This is the best example of "Kengai" shape (see No. 58), which is sometimes called "hachi-kobore." Trained by Hyozo, of Tokio, who was famous by the training of this style. The shape is highly esteemed by Japanese on account of rarity. Age, 75 years. Height, 1¾ feet. Pot, Seiji.
- 222 **Sun Parlor Ornamentation.**  
*Juniperus stricta*, *Asparagus plumosa*, *Thym* and *acorus* in artistic bamboo dish, on unique stand.

- 223 **A Garden Lantern.**  
This is an antique garden lantern over 350 years old. It was brought from Corea by Kato, commander-in-chief of Taiko's army that overwhelmed the Korean Kingdom and fought with great Chinese troops 300 years ago. Height, 5 feet.
- 224 **A Stone Pagoda.**  
This was originally made to the order of Misses Tora and Shioshio for the memory of Goro and Juro, two brothers, who were their sweethearts, and killed at the foot of Mount Fuji by means of the famous night attack which is now dramatized under the name of "Soga-monogatari." Many years had passed, the memorial pagoda returned to garden ornament. It was in the possession of a "daimio," Inaba, from whom Korokuyen obtained and kept until the collectors purchased. Pagoda is very popularly taken by Japanese artists for a subject of painting, carving, etc. This is undoubtedly the most marvelous piece in the collection.
- 225 **Chabo-hiba** (*Thuja Obtusa Nana*). (See No. 5.)  
Trained in the shape of "Jikka" (see No. 44) by Genko, of Tokio, a well-known tree trainer. Age, 47 years. Height, 1¼ feet. Pot, blue and white.
- 226 **Kampo-ran** (an orchid).  
It blooms in early summer to late autumn. It is highly odorous. In an unique Shigaraki jardiniere, decorated with rattan. Height, 2¼ feet.
- 227 **A Cabinet Ornament.**  
Kaira of over ten years old growing by a stone in an antique Tetsukune jardiniere of creamy white, on Kasuga styled stand, which is also an antique.
- 228 **A Garden Lantern.**  
An antique lantern of "Oribe" style. It is excellently ornamental.

