

Cleary & Co.

1901

Friday,
April 19

CATALOGUE

Friday,
April 19

OF

SANDER'S

Annual Spring Sale

OF

ORCHIDS

Consisting of many choice and beautiful species collected from all parts of the tropical world at a very heavy expense, and only the most useful, showy, easy-growing and free-flowering kinds are offered. They come from the largest importers and growers in the world,

F. SANDER & CO., St. Albans, England, and Belgium.

Plants are lotted to suit all purchasers, are very healthy, and amateurs and the trade will find this an excellent opportunity to secure a stock of these interesting and fascinating plants. Many rare Hybrids and Species are offered for the first time. The whole in excellent health and condition, which

Messrs. **CLEARY & CO.**, Auctioneers,

60 VESEY ST., NEW YORK,

WILL SELL ON

FRIDAY, APRIL 19, 1901,

At 12:30 P. M.



...SPECIAL NOTICE...



THE plants here offered are selected entirely on account of their free-flowering and easy-growing qualities. The present season is the best to establish imported plants, as the spring and summer months are the best for growing.

Both amateurs and trade buyers should not miss this most important sale. Many of the plants offered will grow in a palm house or cool greenhouse, and where stage room is limited they will thrive and flower with freedom suspended from the roof in baskets, pans, or on blocks.

Colored illustrations of the varieties offered on view day of sale.

Baskets, Peat, Moss and all other requisites for Orchid culture can be supplied by the Auctioneers.

We pack to ship any distance, and gentlemen unable to attend the sale will have their bids carefully executed.

Claims for deductions not allowed unless made immediately on receipt of goods.

...TERMS CASH...

CATALOGUE.

CYPRIPEDIUM CALLOSUM.

A typical slipper Orchid for the florist; flowers large, beautiful, long lasting, finely shaped and borne on tall, erect stalks; fine for cutting.

Lot

1 to 5 Sound established and leafy plant

CYPRIPEDIUM LAWRENCEANUM.

A grand species; blooms in winter, with handsomely marked foliage. Flowers purple-red, white, shaded with green and tinted with brown, borne on tall scapes. In the variety Hyeantum the flowers are pure white, veined with green.

Lot

6 Twosound, leafy, unflowered
plants

7 do do

8 do do

9 do do

10 do do

Lot

11 Two sound, leafy, unflowered
plants

12 do do

13 do do

14 do do

15 do do

Cattleya Forbesii Splendens.

The finest type procurable of this free-flowering Cattleya. One of the most distinct of the summer-flowering species. It is adapted for cutting and all florists' purposes. The flowers are like those of the well known *C. Harrisonæ* in shape and are borne several on a spike, but the sepals and petals are a dainty shade of buff yellow, while the yellow lip is beautifully streaked with red, especially on the side lobes; the front lobe is prettily frilled and altogether it

forms a beautiful, pleasing addition to the Cattleya house, and should be grown in quantity wherever long-lasting flowers are wanted for cutting.

Lot

16 to 20 Two good imported plants

Lot

21 Four good imported plants

22 do do

23 do do

24 do do

25 do do

Lot

31 Six smaller imported plants

32 do do

33 do do

34 do do

35 do do

36 do do

37 do do

38 do do

Lot

26 Four good imported plants

27 do do

28 do do

29 do do

30 do do

Lot

39 Six smaller imported plants

40 do do

41 do do

42 do do

43 do do

44 do do

45 do do

AMARYLLIS HYBRIDS.

A grand strain of beautiful hybrids. Flowers of great size, vividly colored, in various rich tints of scarlet, crimson and white.

Lot

46 to 51 Two sound selected plants

DENDROBIUM SPECTABLE.

Very Rare.

Beautiful and very distinct. Flowers, white, yellow, crimson and purple; large and showy. Awarded a first-class certificate by the Royal Horticultural Society of England.

Lot

52 One established plant

The white and red spotted Philippine Moth Orchid

PHALÆNOPSIS STUARTIANA.

Lot

53 to 55 Established plant of this rare species

Epidendrum Vitellinum Autumnalis.

The long-spiked, many-flowered autumn and winter-blooming type.

The blooms are a brilliant vermilion-red, most showy and effective, carried on long spikes and hence most useful for cutting.

We know of few colors more effective and few flowers better adapted to the florist's requirements. The plants are of most simple culture, growing freely in a cool house. The plants should be potted at once, and no doubt very many will yield a crop of their useful, brilliant blooms this coming autumn and winter. It is a plant of the easiest culture and specially adapted to the florist, and we have not had the pleasure of offering this beautiful Orchid for many years.

Lot	Lot
56 Four healthy imported plants	64 Four healthy imported plants
57 do do	65 do do
58 do do	66 do do
59 do do	67 do do
60 do do	68 do do
61 do do	69 do do
62 do do	70 do do
63 do do	

Lot	Lot
71 Eight good imported plants	76 Eight good imported plants
72 do do	77 do do
73 do do	78 do do
74 do do	79 do do
75 do do	80 do do

HYBRID ORCHIDS

Raised in our own nurseries and selected with the greatest care. The finest varieties only used as parents, and the results will undoubtedly produce beautiful forms. Only **HEALTHY, WELL-GROWN PLANTS** offered.

Lot

- 81 *Laelia Cinnabarina* x *Cattleya Mossiae Aurea*
- 82 *Cattleya Bowringiana* x *Laelia Cattleya Clive*
- 83 *Laelia Tenebrosa* x *Cattleya Warneri*
- 84 *Cattleya Gaskelliana* x *Cattleya Harrisoniae Violacea*
- 85 *Laelia Euterpe (Crispa x Dayana)* x *Cattleya Warneri*
- 86 *Cypripedium Chamberlainianum* x *C. insigne*
- 87 *Cypripedium Lathamianum* x *C. Exul*
- 88 *Cypripedium Nitens Superbum* x *C. Leeanum Princeps*
- 89 *Cypripedium Lawrenceanum* x *C. Haynaldianum*
- 90 *Cypripedium Lathamianum* x *C. Nitens Sanders var.*



DENDROBIUM PHALÆNOPSIS SCHRODERIANUM.

The Florists' Dendrobe,

DENDROBIUM PHALÆNOPSIS

SCHRODERIANUM.

The King of the Genus.

Universally admired, unrivaled and invaluable for all cutting purposes. The flowers are always in request, always appreciated. Twenty to thirty large blooms borne on a stem 2 to 3 feet in length during a season when Orchid blossoms are in much demand. It requires very little room, grows most freely suspended in a palm house and yields in great profusion its numerous spikes covered with flowers, which are

Most useful for all cutting and decorative purposes. Color purest white to deep magenta.

The flowers remain 4 to 6 weeks in a fresh state on the plants, and are produced with the utmost freedom.

Lot				Lot			
91	Two	sound	established	104	Two	sound	established
		plants				plants	
92	do		do	105	do		do
93	do		do	106	do		do
94	do		do	107	do		do
95	do		do	108	do		do
96	do		do	109	do		do
97	do		do	110	do		do
98	do		do	111	do		do
99	do		do	112	do		do
100	do		do	113	do		do
101	do		do	114	do		do
102	do		do	115	do		do
103	do		do				

CATTLEYA AUREA CHRYSOTOXA.

Unflowered plants of this splendid golden yellow, primrose yellow and rich crimson flowered species.

Lot

116 to 118 Sound established plant

Watsonia Ardernei.

Well-ripened bulbs in splendid order. Owing to the war and the scarcity of this splendid Watsonia, we have had great difficulty in securing only a few of this remarkable bulb.

This magnificent white-flowered Gladiolus-like plant is the finest of all white Watsonias.

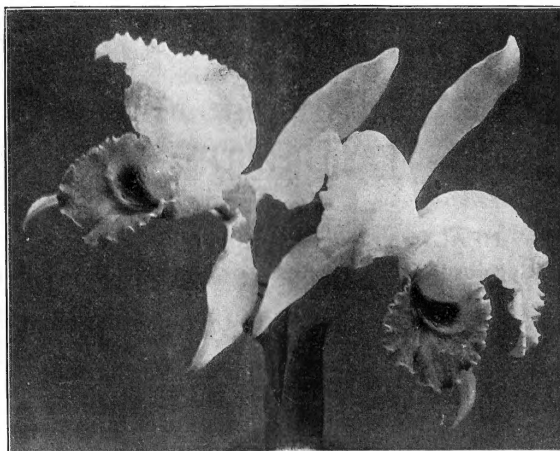
For the cool greenhouse, conservatory, for the warm south border in the open air, for wreaths, bouquets and for all floral decorations it is unrivaled and unapproachable. Very floriferous; of easy culture.

This Cape bulbous plant has flowers of the purest white on tall, erect, many-branched panicles, producing a succession of flowers from the base to the summit.

Lot			Lot		
119	Two selected bulbs		145	Two selected bulbs	
120	do	do	146	do	do
121	do	do	147	do	do
122	do	do	148	do	do
123	do	do	149	do	do
124	do	do	150	do	do
125	do	do	151	do	do
126	do	do	152	do	do
127	do	do	153	do	do
128	do	do	154	do	do
129	do	do	155	do	do
130	do	do	156	do	do
131	do	do	157	do	do
132	do	do	158	do	do
133	do	do	159	do	do
134	do	do	160	do	do
135	do	do	161	do	do
136	do	do	162	do	do
137	do	do	163	do	do
138	do	do	164	do	do
139	do	do	165	do	do
140	do	do	166	do	do
141	do	do	167	do	do
142	do	do	168	do	do
143	do	do	169	do	do
144	do	do	170	do	do

Lot		
171	Four good sound bulbs	
172	do	do
173	do	do
174	do	do
175	do	do
176	do	do
177	do	do
178	do	do
179	do	do
180	do	do
181	do	do
182	do	do
183	do	do
184	do	do
185	do	do
186	do	do
187	do	do
188	do	do
189	do	do
190	do	do

Lot		
191	Four good sound bulbs	
192	do	do
193	do	do
194	do	do
195	do	do
196	do	do
197	do	do
198	do	do
199	do	do
200	do	do
201	do	do
202	do	do
203	do	do
204	do	do
205	do	do
206	do	do
207	do	do
208	do	do
209	do	do
210	do	do



CATTLEYA TRIANÆ.

CATTLEYA TRIANÆ.

The celebrated Ibague type, the finest of all. A grand winter-flowering species.

Lot 211 to 215 Strong established plant

Dracæna Godseffiana.

Splendid for decoration. Foliage deep glossy green maculated with creamy white, elegant habit.

Lot

216 to 217 Fine exhibition specimen in hanging basket

DENDROBIUM WARDIANUM GIGANTEUM.

A superb species, blooms in winter, grand for cutting. Flowers very large, freely produced on large pendent bulbs, sepals and petals waxy white, tipped with deep amethyst purple, lip tipped with the same color, but ocher yellow, with two blood-red basal blotches.

Lot				Lot			
218	Two	healthy	established	225	Two	healthy	established
			plants				plants
219	do		do	226	do		do
220	do		do	227	do		do
221	do		do	228	do		do
222	do		do	229	do		do
223	do		do	230	do		do
224	do		do				

HYBRIDS

Same as lots 81 to 90.

HEALTHY, WELL-GROWN PLANTS

- 231 *Cypripedium Villosum Aureum* x *C. Leeanum Giganteum*
- 232 *Cypripedium Leeanum Giganteum* x *C. Chamberlainianum*
- 233 *Cypripedium Hirsutissimum* x *C. Vexillarium*
- 234 *Lælia Tenebrosa* x *Cattleya Warszewiczii*
- 235 *Cattleya Flossiæ Aurea* x *Lælia Purpurata*
- 236 *Phaius Amabilis* x *P. Tuberculosis*
- 237 *Phaius Marthæ* x *P. Cooksonii*
- 238 *Phaius Blumei* x *P. Tuberculosis*
- 239 *Phaius Grandifolius* x *P. Tuberculosis*
- 240 *Fpidendrum Endresii* x *E. Endresii-Wallisii*

DENDROBIUM NOBILE.

Our celebrated Long Tang Mountain strain.

Unequaled for the profusion of distinct, beautiful and valuable varieties obtained from it, notably from previous importations, magnificent varieties, such as *Dendrobium nobile* Amesiae, *D. n. Sanderæ*, *D. n. Sanderianum*, *D. n. Ballianum*, *D. n. Rolfiæ*, *D. n. grandiflorum*, *D. n. Majus*, and many other brilliant and superior forms. A very fine Orchid for all kinds of floral work.

Lot

241 to 250 Very good imported plant

251 to 254 Two do do plants

SOBRALIA DELLESE.

A beautiful hybrid, between *S. Lowii* and *S. leucoxantha*.

Lot

255 Healthy, well-grown plant

EPIDENDRUM BURTONII.

E. Ibaguense x *E. O'Brienianum*, a splendid subject for planting against pillars, etc.

Lot

256 to 257 Healthy, well-grown plant

ONCIDIUM INCURVUM.

Also known as *O. albo-violaceum* (white and violet), from the color of the flowers, which are borne in profusion in tall branching scapes often 7 feet high.

Lot

258 to 262 Two well-grown established plants

Cattleya Intermedia.

A beautiful summer-flowering *Cattleya*, very floriferous and easily grown. Most serviceable for all floral purposes, the flowers lasting a long time, while their distinct and beautiful coloration renders them very effective for sprays, bouquets, buttonholes, etc. The sepals and petals are of a dainty rose-blush, while the lip is of an intense amethyst-purple—a most charming combination. The flowers are of great substance, and always attract attention and admiration.

Lot

263 to 270 Selected, strong imported plant

Lot			Lot		
271	Two good sound imported plants		276	Two good sound imported plants	
272	do	do	277	do	do
273	do	do	278	do	do
274	do	do	279	do	do
275	do	do	280	do	do
Lot					
281 to 285	Six good imported plants				



LÆLIA PURPURATA.

SPECIMENS OF

Lælia Purpurata.

Aptly Termed the King of Lælias.

It is difficult to find a more superb exhibition plant. The very large blossoms appear 4 and 5 together on a stem during spring, white and light rose, with a rich dark crimson lip and a golden yellow throat. It is one of the easiest and most satisfactory Orchids to grow, either for exhibition or cutting purposes.

Lot		Lot	
286	Grand strong-bulbed specimens, many leads	291	Grand strong-bulbed specimens, many leads
287	do do	292	do do
288	do do	293	do do
289	do do	294	do do
290	do do	295	do do
Lot			
296 to 300	Two selected half specimens many leads		

DENDROBIUM HYBRIDS

A superb collection of beautiful varieties; only the very finest parents have been utilized and well-grown, healthy plants are offered.

Lot

- 301 **Dendrobium Wiganiae** (nobile x signatum) and **D. Curtisii** (Cassiope x aureum).
- 302 **Dendrobium nobile Cooksonii x D. Findlayanum.**
- 303 **Dendrobium Findlayanum x D. nobile** and **D. Curtisii.**
- 304 **Dendrobium Findlayanum x D. nobile** and **D. Curtisii.**
- 305 **Dendrobium nobile x D. Findlayanum.**
- 306 **Dendrobium nobile x D. Findlayanum** and **D. Curtisii.**
- 307 **Dendrobium nobile Cooksonii x D. Findlayanum** and **D. Cassiope.**
- 308 **Dendrobium nobile Cooksonii** and **D. Findlayanum.**
- 309 **Dendrobium Germinyanum** (D. aureum Philippinense x D. nobile pendulum).

SPATHOGLOTTIS PAULLINÆ.

Flowers rose-purple.

Lot

- 310 Strong established plant



CATTLEYA LEOPOLDII.

Cattleya Leopoldii.

True.

Without doubt *Cattleya Leopoldii* is the grandest in this section of Orchids, having from 12 to 30 substantial blossoms in a glorious umbel. Individually the large flowers have the sepals and petals of a rich bronzy chocolate, spotted with blood-erimson, while the velvety lip is of the richest purple, retaining these brilliant hues for about three weeks or a month.

The plants offered are in the best possible order, exhibiting great variation, and containing many distinct-looking plants. They were found growing with *Laelia purpurata*.

Many splendid forms are already known, notably *Illicina*, *Prinzii*, *punctulata*, *Keteleeri*, *Williamsii*, etc., while, owing to natural causes, crossing and intercrossing is greatly facilitated in this region, and an abundance of natural hybrids obtained, more so than in any other district we know of—*Laelia purpurata* with *Cattleya Leopoldii* and *C. intermedia*, *Leopoldii* with *intermedia* and the products, *Laelio-Cattleya elegans*, *L.-C. Schilleriana*, and *Cattleya intricata*, with themselves and with the parent species. Hence these plants are particularly interesting and promising, and we strongly recommend them. Potted now the plants should at once commence to grow and yield in abundance their noble-looking fragrant blossoms this season.

Lot		Lot	
311	Selected imported plant	316	Selected imported plant
312	do do	317	do do
313	do do	318	do do
314	do do	319	do do
315	do do	320	do do
Lot		Lot	
321	Two very good imported plants	326	Two very good imported plants
322	do do	327	do do
323	do do	328	do do
324	do do	329	do do
325	do do	330	do do
Lot			
331 to 333	Four good imported plants		

CCELOGYNE CRISTATA.

Lot		Lot	
334	Healthy, well-grown plant	339	Healthy, well-grown plant
335	do do	340	do do
336	do do	341	do do
337	do do	342	do do
338	do do	343	do do

LYCASTE SKINNERI.

A splendid winter-flowering cool house Orchid. Of the greatest possible use to the florist. The large, fleshy, long-lasting flowers vary in color from pure white to deep crimson and light rose, fine for cutting.

Lot

344 to 348 Four good established plants

CATTLEYA DUBUYSSONIANA.

A magnificent Cattleya. This is a variety of *C. Schofieldiana*, but the flowers have golden yellow sepals and petals. The lip is of a rich magenta-purple, broadly spread dots of the same color being often present on the sepals and petals. Varieties may be among these plants.

Lot

349 to 353 Two healthy, sound plants

CYPRIPEDIUM GODEFROYÆ.

From the same locality which yielded the at present unique variety *C. Godefroyæ* *Leucochilum* *Godseffianum*, a hitherto matchless form of great size and beauty, the lip being absolutely white, while the broad segments are marked with the deepest maroon.

Lot

Lot	Two sound imported plants	Lot	Two sound imported plants
354	do do	360	do do
355	do do	361	do do
356	do do	362	do do
357	do do	363	do do
358	do do	364	do do
359	do do	365	do do

CATTLEYA MENDELI.

A grand summer-flowering Orchid.

Lot

366 to 370 Sound, healthy, established plant

LÆLIA YULA.

***L. purpurata* x *L. cinnabarina*. A splendid hybrid; lip very intense in color.**

Lot

371 **Healthy, well-leaved plant.**

CATTLEYA MOSSIÆ.

A most beautiful species, flowers very rich in color and most variable.

Lot			Lot		
372	Established,	well-grown	377	Established,	well-grown
		plant			plant
373	do	do	378	do	do
374	do	do	379	do	do
375	do	do	380	do	do
376	do	do	381	do	do

VANDA CÆRULEA.

The blue-flowered Orchid, an ideal species for cutting.

Lot
382 to 386 Six imported plants

ONCIDIUM VARICOSUM ROGERSII.

A grand Orchid for cutting, often producing 150 large golden-yellow flowers on a single spike, presenting a magnificent spike, and of the greatest possible utility for cutting and all florists' purposes, blooming at a valuable season.

Lot			Lot		
387	Strong, well-grown	speci-	392	Strong, well-grown	speci-
		men plant			men plant
388	do	do	393	do	do
389	do	do	394	do	do
390	do	do	395	do	do
391	do	do	396	do	do
Lot			Lot		
397	Two stout-bulbed	plants	402	Two stout-bulbed	plants
398	do do	do	403	do do	do
399	do do	do	404	do do	do
400	do do	do	405	do do	do
401	do do	do	406	do do	do



CATTLEYA MOSSIE.

Cypripedium Hybrids.

The following plants will be found very interesting, showing great variation in the foliage. The parentage has been lost, but as only the very finest forms have been utilized for crossing, only the very finest forms may be expected.

Lot

407 to 412 **Strong leafy plant**

Lot

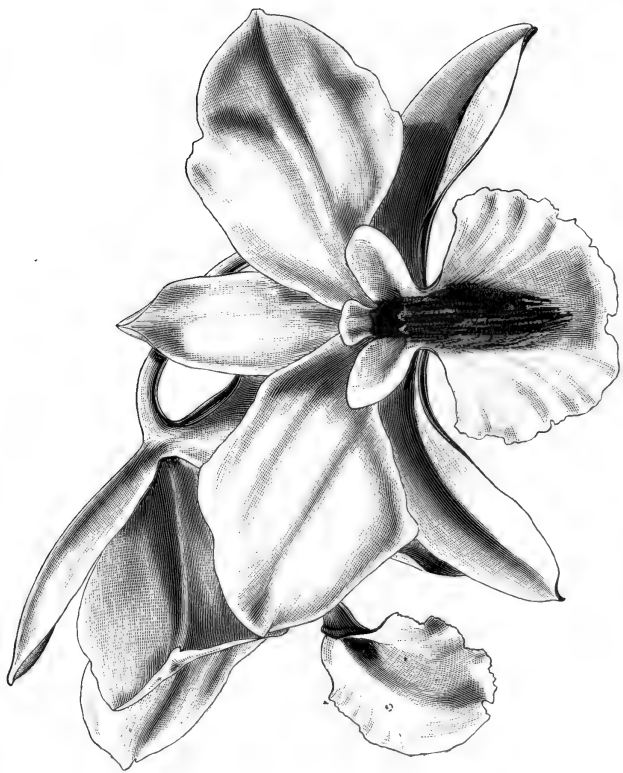
413 to 415 **Two smaller good plants**

HABENARIA CARNEA.

Just to hand from the native habitat of this superb species, in perfect condition, just ready to grow. Should be potted at once, and if given the temperature of the Cattleya house or stove they should be beautifully in flower in May. We have great pleasure in offering this free-blooming splendid Orchid, now, unfortunately, very rare and difficult to procure. It is a perfect gem, well worthy of the First Class Certificate awarded it by the Orchid Committee of the R.H.S. The handsome flowers are of a beautiful soft salmon-pink, a most exquisite color. The variety *nivosa* has flowers of the purest white.

Lot

416 to 420 **Two sound dormant tubers**



DENDROBIUM FORMOSUM GIGANTEUM.

A Dendrobium for Florists.

Flowers snow-white, 4 to 5 inches across,
carried in clusters.

DENDROBIUM FORMOSUM GIGANTEUM.

Easy to Grow. Free to Flower. Useful to Cut.

Every florist should have a stock of this grand and most useful Orchid. It is truly a florist's Orchid, one of the best for cutting; great clusters of snow-white blooms appear at the apex of the bulbs and are larger than any known Dendrobe. Utilized with great effect both by the florist and decorator.

Lot				Lot			
421	Strong	selected	imported	431	Strong	selected	imported
		plant				plant	
422	do	do		432	do	do	
423	do	do		433	do	do	
424	do	do		434	do	do	
425	do	do		435	do	do	
426	do	do		436	do	do	
427	do	do		437	do	do	
428	do	do		438	do	do	
429	do	do		439	do	do	
430	do	do		440	do	do	
Lot				Lot			
441	Two fine imported plants			451	Two fine imported plants		
442	do	do		452	do	do	
443	do	do		453	do	do	
444	do	do		454	do	do	
445	do	do		455	do	do	
446	do	do		456	do	do	
447	do	do		457	do	do	
448	do	do		458	do	do	
449	do	do		459	do	do	
450	do	do		460	do	do	

Lot			Lot		
461	Four good imported plants		466	Four good imported plants	
462	do	do	467	do	do
463	do	do	468	do	do
464	do	do	469	do	do
465	do	do	470	do	do
Lot					
471 to 475	Eight good imported plants				



CATTELYA LABIATA.

Cattleya Labiata.

The true old autumn flowering Cattleya. It is the easiest Cattleya to grow; one of the finest for cutting; five and six large blossoms on a spike; long lasting and very useful.

Lot		Lot	
476	Large and sound plant	487	Large and sound plant
477	do do	488	do do
478	do do	489	do do
479	do do	490	do do
480	do do	491	do do
481	do do	492	do do
482	do do	493	do do
483	do do	494	do do
484	do do	495	do do
485	do do	496	do do
486	do do		
Lot		Lot	
497	Two sound and good plants	502	Two sound and good plants
498	do do	503	do do
499	do do	504	do do
500	do do	505	do do
501	do do	506	do do

LÆLIA PUMILA DAYANA.

A dwarf-growing, large-flowered, cool-house Lælia. The parents of many very handsome and valuable hybrids; sepals and petals rose-purple; lip deep purple with purple keels.

Lot		Lot	
507	Two sound, healthy plants	512	Two sound, healthy plants
508	do do	513	do do
509	do do	514	do do
510	do do	515	do do
511	do do	516	do do

CATTLEYA HARRISONIÆ.

Rivals C. labiata in usefulness, but flowers at a different season. The large open flowers are borne several on a spike, varying in

color from light mauve to deep rose-lilac. Specially effective in wreaths, bouquets, etc. Grand for exhibition.

Lot		Lot	
517	Large, many-bulbed plant	522	Large, many-bulbed plant
518	do do	523	do do
519	do do	524	do do
520	do do	525	do do
521	do do	526	do do

Lot
527 to 530 Two sound, healthy plants

Laelia autumnalis atro-rubens.

A few plants just to hand of this grand Orchid in the finest possible condition,

The deep red-purple blossoms of which are finer than anything known, and produced on big, long, sturdy spikes, a great number on a spike; often nine and ten flowers, each five inches across, are produced on a single spike. For intense coloration and effectiveness, nothing can equal this grand *Lælia* at its time of flowering, late autumn and winter. The flowers are a glowing dark crimson-red, with a purplish hue suffusing them; the lip being more intense than the sepals and petals in color. The column is deep crimson and the infolding lobes pure white, thus giving the flowers an indescribably grand and conspicuous appearance.

Lot		Lot	
531	Selected imported plant	541	Selected imported plant
532	do do	542	do do
533	do do	543	do do
534	do do	544	do do
535	do do	545	do do
536	do do	546	do do
537	do do	547	do do
538	do do	548	do do
539	do do	549	do do
540	do do	550	do do

Lot
551 to 555 Four good imported plants

ODONTOGLOSSUM INSLEAYI.

Resembles *O. grande* in habit, but the spikes often bear 8 or 10 flowers. The sepals and petals are yellow barred with chestnut and bright yellow margined with crimson spots.

Lot

556 to 560 Two good established plants

THUNIA MARSHALLIANA.

A splendid Orchid, grand for exhibition, easily grown, free-flowing; producing nodding panicles of large, handsome blossoms, with pure white sepals and petals and dense golden-fringed keels on the labellums. The plants will grow in any warm house, and the elegant leafy stems yield added charms to the beautiful blossoms, which are always admired.

Lot

561 Six good imported plants

562 do do

563 do do

564 do do

565 do do

566 do do

567 do do

568 do do

Lot

569 Six good imported plants

570 do do

571 do do

572 do do

573 do do

574 do do

575 do do

ONCIDIUM SARCODES.

Produces tall branching panicles, bearing numerous large flowers—glossy chestnut, brown and bright yellow, fine for cutting.

Lot

576 to 580 Two good established plants

GLORIOSA SUPERBA.

The vermilion and old-gold Climbing Lily.

Among the showiest and certainly the most distinct, beautiful and interesting in the genus, the segments being twisted like corkscrews, most brilliantly colored and fascinating; the flowers are unequalled for cutting for all decorative purposes.

Lot

581 Six sound tubers

582 do do

583 do do

584 do do

585 do do

Lot

586 Six sound tubers

587 do do

588 do do

589 do do

590 do do

Lot			Lot		
591	Twelve	good sound tubers	596	Twelve	good sound tubers
592	do	do	597	do	do
593	do	do	598	do	do
594	do	do	599	do	do
595	do	do	600	do	do

CYPRIPEDIUM EXUL.

One of the best, distinct and showy, lasting long in flower. See drawing on day of sale.

Lot
601 to 605 Two good established plants

CATTLEYA NOBILIOR.

A most beautiful summer-flowering species, with large rose-colored blossoms.

Lot
606 to 610 Two good plants

CATTLEYA INTERMEDIA.

Same as lots 263 to 285.

Lot			Lot		
613	Two	splendid plants	618	Two	splendid plants
614	do	do	619	do	do
615	do	do	620	do	do
616	do	do	621	do	do
617	do	do	622	do	do

LÆLIA JONGHEANA.

This beautiful *Lælia* has flowered very profusely in this country and shows great variation among its blossoms, producing large, well shaped flowers of a charming rose color, varying considerably. It has a dwarf habit and is a very free, cool growing Orchid, and the blossoms remain in a fresh state for a long time.

Lot			Lot		
623	One	splendid plant	628	One	splendid plant
624	do	do	629	do	do
625	do	do	630	do	do
626	do	do	631	do	do
627	do	do	632	do	do

Lot
633 to 637 Two fine plants

ANOTHER PROPERTY.

Aerides Japonicum.

Lot

638 One fine plant in basket

ANGRÆCEUM FALCATUM.

Lot

639 One fine plant in basket

CATTLEYA ELDERADO.

A beautiful, sweet-scented species, fine rose sepals and petals and dark lip.

Lot

640 One strong plant

CATTLEYA TRIANÆ.

A fine lot of this popular florists' Cattleya.

Lot

641 One large plant well leaved
and established

642 do do

643 do do

644 do do

645 do do

Lot

651 Strong plant

652 do

653 do

654 do

655 do

Lot

661 Two fine plants

662 do

663 do

664 do

665 do

Lot

671 to 673 Four good plants

Lot

646 One large plant well leaved
and established

647 do do

648 do do

649 do do

650 do do

Lot

656 Strong plant

657 do

658 do

659 do

660 do

Lot

666 Two fine plants

667 do

668 do

669 do

670 do

CATTLEYA GIGAS.

A grand large-flowering Cattleya.

Lot

674 to 677 Strong, well-leaved plant with flower sheath

Cattleya Gigas Splendens.

This is a most beautiful form with giant flowers of splendid form and a superb broad, dark lip finely frilled.

Lot

678 Strong, healthy plant with flower sheath

THE RARE

Cattleya Hardyana.

This is a guaranteed variety and one of the finest forms yet flowered. The plant in very healthy and in perfect condition.

Lot

679 The above plant with eight bulbs and two leads

CATTLEYA SPECIOSISSIMA.

A grand large-flowered winter-blooming variety.

Lot

680 to 682 One strong plant

DENDROBIUM CHRYSOTOSUM.

The variety produces bunches of golden-yellow flowers.

Lot

683 to 685 Two fine plants

DENDROBIUM DALHOUSIANUM.

Lot

686 to 688 Two strong plants

DENDROBIUM FINDLAYANUM.

Lot

689 to 693 Strong plant in bud or flower

DENDROBIUM NOBILE.

Lot

694 Fine specimen, 40 bulbs, 8 leads

695 do 30 do 9 do

696 do fine variety, 20 bulbs, 7 leads

DENDROBIUM PIERARDI.

Lot
697 Two fine plants

DENDROBIUM WARDIANUM

Fine Winter-Blooming Variety.

Lot
698 to 702 Two fine and strong plants

DENDROBIUM WARDIANUM.

Lot
703 Extra strong plant in flower, 15 bulbs, 4 growths, flowering
bulbs 30 inches long

DENDROBIUM CAPILLIPES.

Lot
704 One good plant

DENDROBIUM ATROVIOLACEUM.

Lot
705 to 707 Two well-established plants

EPIDENDRUM ATROPURPUREUM.

Lot
708 to 712 Two strong plants

ODONTOGLOSSUM CITROSMUM.

Lot
713 to 715 Two very good plants

CATASETUM BUNGEROTHI.

Lot
716 One good plant

DENDROBIUM HETEROCARPUM.

Sweet scented, very free flowering.

Lot
717 Two good plants

**ONCIDIUM FORBESI, O. MARSHALLI-
ANUM, O. CRISPUM.**

Lot
718 to 722 Two strong plants

Lot
723 *Oncidium incurvum*, fine plant

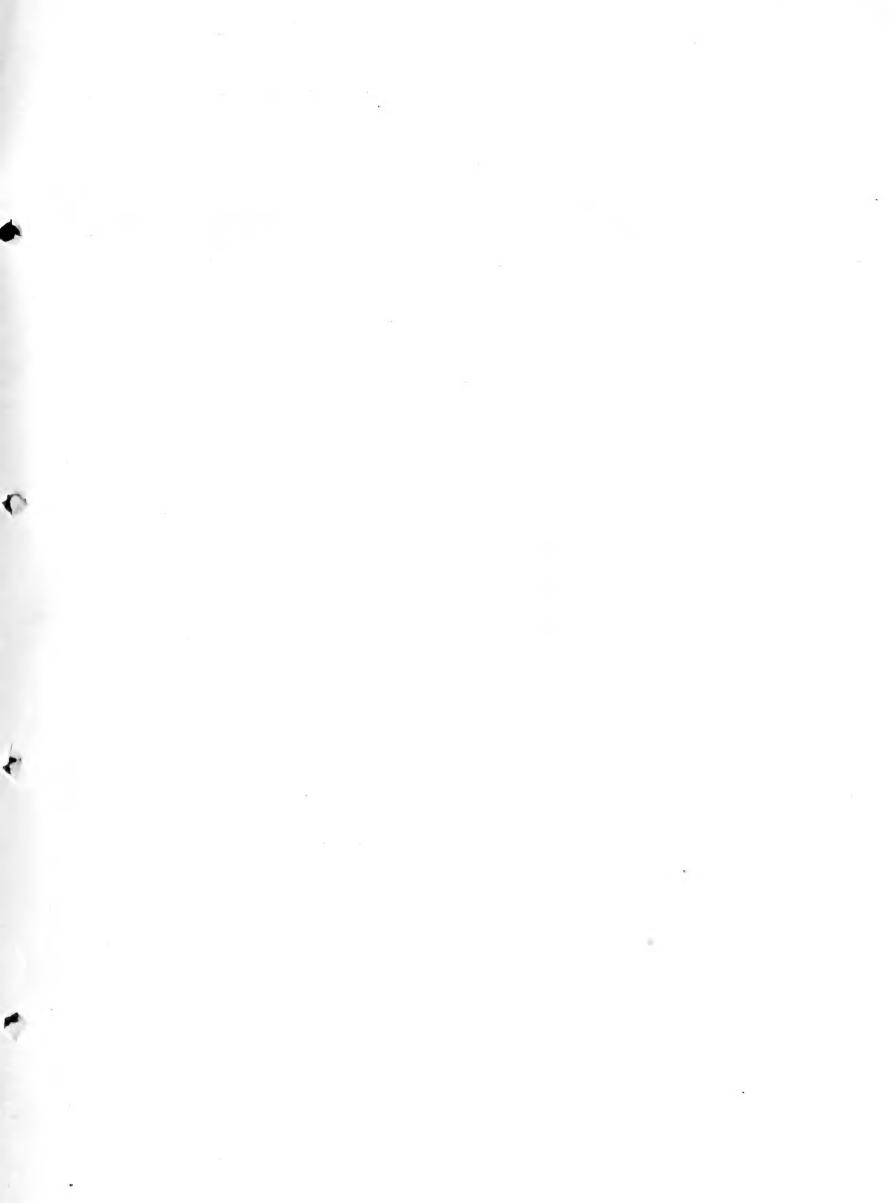
Lot
724 do *ornithorhynchum*, fine plant

SOBRALIA VEITCHII.

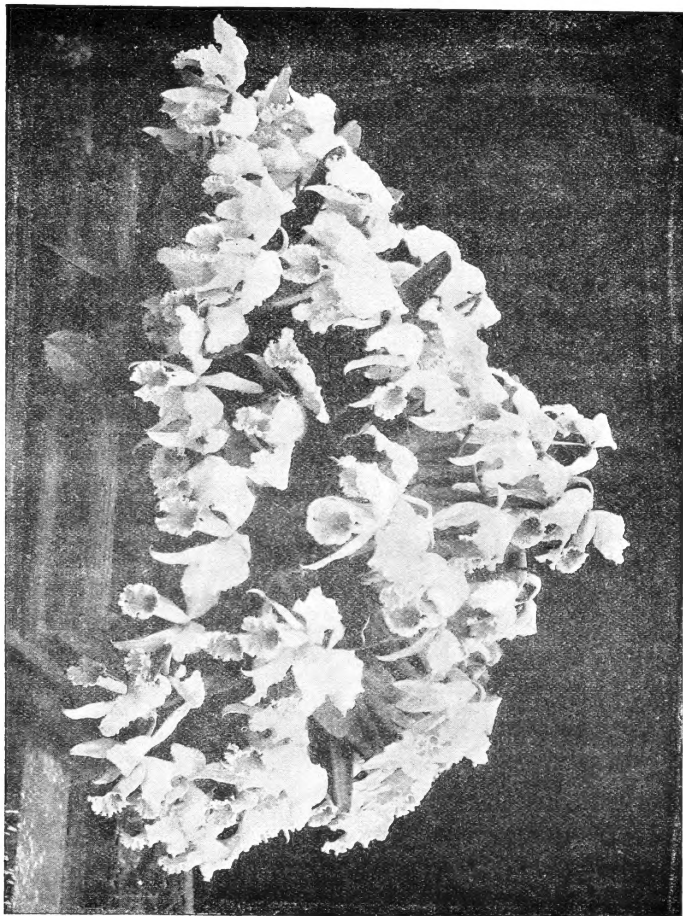
- Lot
725 Splendid plant of this rare and beautiful species
Lot
726 *Saccolabum giganteum*, 3 fine plants
Lot
727 *Oncidium Carthaginense*, 3 fine plants
Lot
728 *Oncidium*, species on board, fine plant



- Lot
729 *Dendrochilum glumaceum*, the Chain Orchid, strong plant
Lot
730 *Dendrobium aggregatum*, 2 plants



Messrs. SANDER & CO.,
The Largest Importers and Growers of Orchids in the World,



CATTELYA MOSSIAE.

ST. ALBANS, ENGLAND, ..and.. BRUGES, BELGIUM.