

R

Special Offer of Imported Orchids.

A MARVELLOUS IMPORTATION OF

10,000

Phalænopsis Rimestadiana

Collected and brought to Bradford by the discoverer, M. Rimestad. (See inside particulars.)

Together with a fine lot of

Dendrobium Phalænopsis 'Schröderianum,' Cœlogyne pandurata
Habenaria Susaniæ, Vanda Hookeriana, Etc.

PHALÆNOPSIS AMABILIS.

Some Fine Specimen Plants.

An Entirely New Dendrobium. OFFERED FOR
THE FIRST TIME.

We have also to hand, from Colombia, a fine consignment of

CATTLEYA TRIANÆ.

Well leaved; exceedingly sound eyes, in nice condition for potting up.

Charlesworth & Co., Heaton, Bradford.

MO. BOT. GARDEN
1911

Phalænopsis Rimestadiana.

We have been much interested in this magnificent species from its first discovery, some few years ago by M. Rimestad, who then claimed for it that

"It is of a very free growing and free flowering habit."

"Can be grown in an ordinary Cattleya-house, or warm intermediate house temperature."

"That as a popular and useful Orchid, it would prove a good rival to *Odontoglossum crispum*."

Since then, we, as well as many of our customers, have had full opportunity of testing its merits, and so pleased have we been with results, that we commissioned M. Rimestad to start from Bradford last year, collect as many plants as he could possibly obtain, and bring them to us under his personal care to arrive in May, so that a good growing period was before the plants.

M. Rimestad has executed our instructions to the letter, and accompanied by his faithful Chinese servant, has just arrived with 10,000 magnificent plants (the largest consignment ever shipped to Europe), in such fine condition that one can scarcely credit that the plants were growing in their native home a few months ago.

Only those closely acquainted with importing Orchids can realize the amount of work, anxiety, and expense attached to such an undertaking. From the moment the plants were collected, they had to be handled with great care, to prevent the large fleshy leaves from being bruised. They were brought to headquarters, where rafts were prepared, on which they were fastened and thus established for export, as shown in illustration. For months they were jealously guarded by M. Rimestad's followers, until arrangements were made for shipment, on one of the fastest steamers sailing from the East, the well-known S.S. Goentoer, one of the only boats affording the proper accommodation for such a consignment.

Barrels of fresh water were shipped, and daily M. Rimestad and his man attended to the requirements of the plants.

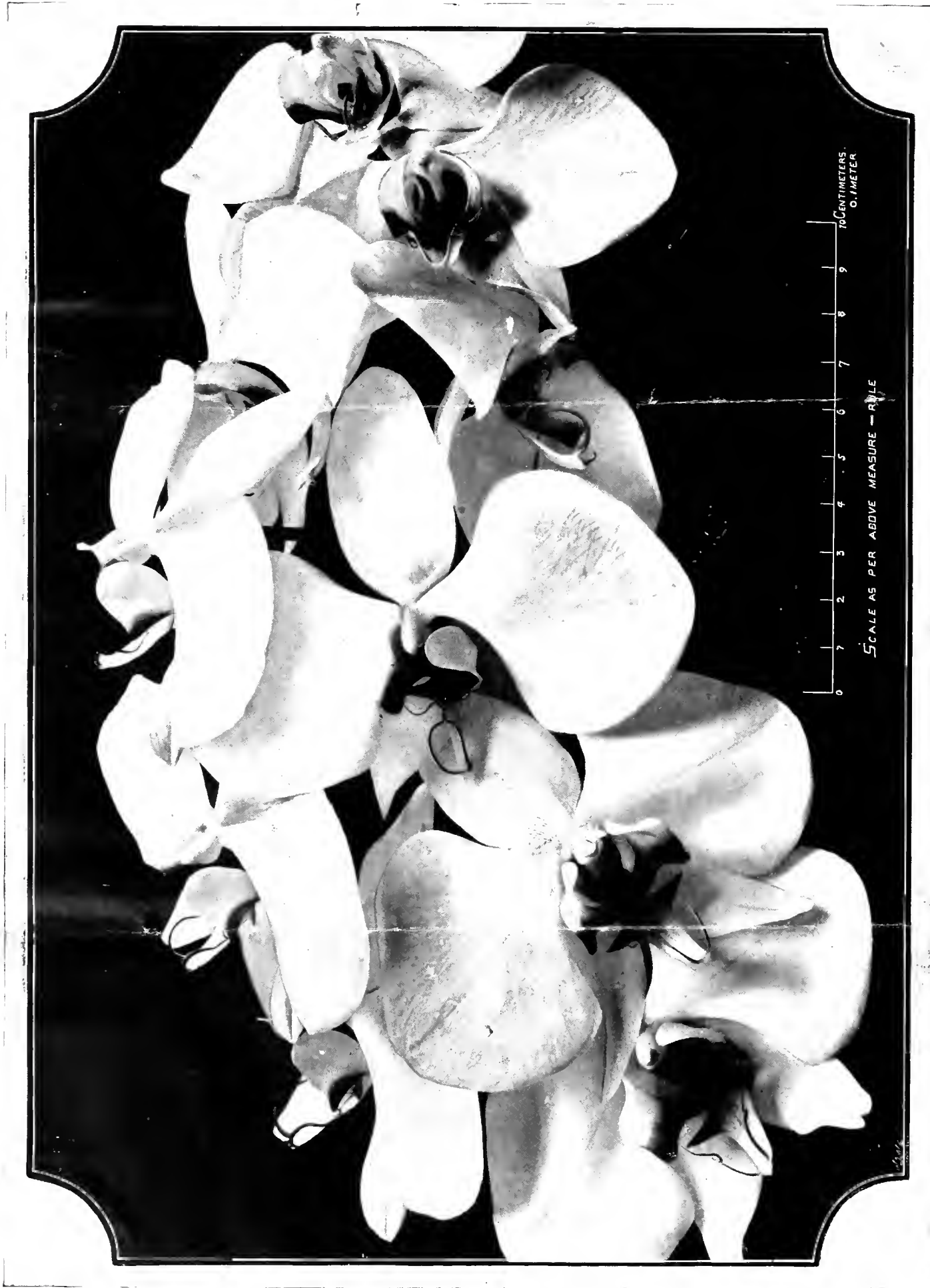
Together with the other species brought home, we are now offering our customers probably the largest, finest, and most interesting selection of plants ever received from the East.

The flowering season of *Phalænopsis Rimestadiana* can be extended from January to June, and the wonderful lasting qualities of its flowers make it a plant worthy of the consideration of both amateur and florist.

As to the prices, it is most questionable whether they will again be offered at such low figures, as the quantity collected has drained a large area, each journey becomes more expensive, and unless a large number is secured and every foresight given to the importing, they cannot be placed on the market within the range of our prices.

The importation is well worthy of inspection, and amateurs who have had no success with other species of *Phalænopsis*, need have no fear in trying *Phalænopsis Rimestadiana*.

ALL ORDERS WILL BE EXECUTED IN STRICT ROTATION.



Phalaenopsis Rimestadiana (natural size).

Reproduced by kind permission of "The Gardeners' Chronicle, Ltd."

Phalænopsis Rimestadiana.

	£	s.	d.	£	s.	d.	£	s.	d.
A. Nice crowns, with 1 strong leaf or 2 good leaves	0	4	0	2	8	0	20	0	0
B. Strong crowns, with 2 very fine leaves, or 3 good leaves ..	0	5	0	2	18	0	24	0	0
C. Very strong crowns, with 2 and 3 very fine leaves	0	6	0	3	10	0	28	10	0
D. Extra strong crowns, with 2 grand or 3 extra fine leaves ..	0	7	6	4	7	0	35	10	0
E. Splendid crowns with 3 grand leaves	0	10	6	6	2	0	50	0	0
F. Selected crowns, with 3 and 4 magnificent leaves	0	15	0	8	15	0	70	0	0
G. Model crowns, with 3 and 4 specially fine leaves	1	1	0	12	5	0	100	0	0

The following are a selection of wonderfully fine specimens, probably the finest plants ever seen.

No.	£	s.	d.
1 Marvellous specimen, with 3 specially strong crowns, 3 and 4 leaves each, measuring from 7 to 14 inches	6	6	0
2 Magnificent specimen, 4 handsome broad leathery leaves, measuring from 9 to 13 inches	5	5	0
3 Beautiful specimen, 4 splendid leaves, measuring from 16 to 18 inches and making a strong new leaf ..	5	15	6
4 Handsome plant, 2 strong crowns, 3 and 5 leaves each, measuring from 6 to 12 inches	4	14	6
5 Extraordinary specimen, with 5 distinct crowns, 2 small, 3 good, 4 very fine, 3 grand, and 5 specially fine leaves, longest measuring 12 inches	8	8	0
6 Handsome specimen, 5 splendid leaves, 1 is new and measures 6 inches, longest leaf measures 12 inches..	4	4	0
7 Very compact and handsome specimen, 6 very broad leaves, measuring 8 to 10 inches	5	5	0
8 Grand specimen, 4 specially fine broad leathery leaves, measuring from 8 to 12 inches	4	14	6
9 Beautiful plant, 5 magnificent leaves, 1 of which is growing, measuring from 7 to 16 inches long ..	5	15	6
10 Splendid specimen, 4 beautiful leaves, making a new leaf, longest 14 inches	4	4	0
11 Handsome plant, 5 very fine broad leaves, measuring from 5 to 13 inches	4	4	0
12 Most handsome plant, 5 beautiful leaves, measuring 8 and 9 inches, pushing a strong new leaf ..	4	4	0
13 Splendid specimen, 6 fine leaves, measuring from 7 to 10 inches	4	14	6
14 Grand specimen, 3 specially fine leaves, measuring from 8 to 12 inches, and making a strong new leaf ..	3	13	6
15 Splendid plant, 3 magnificent leaves, measuring from 11 to 15 inches, and pushing a strong new leaf ..	4	4	0
16 Grand specimen, 3 beautiful leaves, measuring from 12 to 16 inches and making a new leaf; already 5 inches	4	4	0
17 Handsome plant, 3 specially strong broad leathery leaves, measuring 9 and 10 inches, pushing a strong new leaf	3	13	6
18 Selected plant, 5 beautiful leaves, measuring from 5 to 11 inches	3	13	6
19 Sturdy looking plant, 4 grand leaves, measuring from 8 to 10 inches	3	5	0
20 Grand plant, 4 beautiful leaves, measuring from 9 to 12 inches, and pushing strong new leaf ..	3	13	6
21 Pretty plant, 3 grand leaves, measuring from 10 to 13 inches	3	13	6
22 Selected plant, 3 sturdy leaves, measuring from 10 inches and pushing strong new leaf	3	15	0

Phalænopsis Rimestadiana (Specimens continued).

No.		£	s.	d.
23	Splendid plant, 4 specially fine leaves, measuring 9 and 10 inches	3	15	0
24	Handsome plant, 3 grand leaves, measuring from 9 to 12 inches, making a strong new leaf	3	15	0
25	Pretty plant, 3 beautiful leaves, measuring 11, 11 and 13 inches	3	15	0
26	Robust looking plant, 3 sturdy leaves, measuring from 9 to 11 inches and making strong new leaf	3	10	0
27	Pleasing looking plant, 3 fine leaves, measuring 8, 9 and 11 inches	3	10	0
28	Magnificent plant, 5 beautiful leaves, measuring from 8 to 11 inches	4	4	0
29	Grand plant, 3 exceedingly fine leaves, measuring 7, 9, and 12 inches	3	3	0
30	Vigorous plant, 4 strong leaves, measuring from 7 to 10 inches	3	15	0
31	Most handsome looking plant, 4 grand leaves, measuring from 6 to 10 inches	3	10	0
32	Grand plant, 5 strong healthy leaves, measuring from 8 to 16 inches	4	10	0
33	Sturdy plant, 3 grand leaves, measuring from 6 to 10 inches	3	3	0
34	Strong plant, 2 vigorous healthy leaves, measuring from 10 to 12 inches	2	2	0
35	Grand plant, 3 very fine strong leaves, measuring 9 and 10 inches, making a strong new leaf	3	5	0
36	Selected plant, 3 vigorous leaves, measuring 5, 9 and 12 inches	2	10	0
37	Pretty plant, 3 fine leaves, measuring 8 and 9 inches	3	0	0
38	Handsome plant, 3 perfect leaves, measuring 7, 8 and 9 inches, pushing a new leaf	3	3	0
39	Magnificent plant, 4 splendid leaves, measuring 8 to 12 inches, pushing a strong new leaf	4	4	0
40	Grand plant, 4 extra fine leaves, measuring 8 to 10 inches	3	3	0
41	Sturdy plant, 3 fine broad leaves, measuring 7 and 8 inches	2	2	0
42	Selected plant, 3 strong leaves, measuring 7, 9 and 11 inches	2	10	0
43	Grand plant, 4 fine leaves, measuring from 6 to 9 inches	3	3	0
44	Pleasing plant, 4 fine leaves, measuring from 5 to 9 inches	2	10	0
45	Extra fine plant, 3 strong leaves, measuring from 7 to 9 inches and making a strong new leaf	2	2	0
46	Grand plant, 4 splendid leaves, measuring from 5 to 10 inches	2	10	0
47	Selected plant, 3 strong leaves, measuring 9 inches each	2	2	0
48	Splendid plant, 3 fine leaves, measuring from 10 to 12 inches and making a strong new leaf	2	5	0
49	Pretty plant, 3 very fine leaves, measuring 7 and 8 inches	2	2	0
50	Selected plant, 4 strong leaves, measuring from 4 to 11 inches	2	2	0

The following are specimen plants, proved fine varieties by M. Rimestad, and established on tripods for export; offered as received.

	£	s.	d.
Tripod No. 1.	Containing 4 grand specimen plants, (1 with double crown) 3, 5, 5, 5 and 5 leaves each, measuring from 8 to 14 inches	15	15 0
Tripod No. 2.	Containing 2 magnificent specimens, each with 5 gigantic leaves, measuring from 8 to 13 inches	10	10 0
Tripod No. 3.	Containing 2 splendid specimens, with 3 magnificent leaves each, measuring from 11 to 13 inches	9	9 0
Tripod No. 4.	Containing 2 magnificent specimens, with 4 and 5 grand leaves, measuring from 10 to 14 inches	10	10 0
Tripod No. 5.	Containing 2 grand plants, 3 and 5 splendid leaves, measuring from 7 to 11 inches	7	7 0
Tripod No. 6.	Containing splendid plant, 3 grand leaves, measuring from 8 to 14 inches	5	5 0
Tripod No. 7.	Containing 2 grand plants, 3 fine leaves, measuring from 6 to 9 inches	4	4 0
Tripod No. 8.	Containing 2 pretty plants, 3 vigorous leaves, measuring from 8 to 10 inches	5	5 0
Tripod No. 9.	Containing 2 grand plants, with 3 and 4 leaves each, measuring from 6 to 11 inches	6	6 0
Tripod No. 10.	Containing grand specimen with 4 magnificent leaves, measuring from 5 to 11 inches and small plant 2 leaves, 6 to 8 inches	6	6 0
Tripod No. 11.	Containing selected specimen with 4 grand leaves, measuring from 4 to 10 inches	3	13 6
Tripod No. 12.	Containing fine specimen with 4 fine leaves, measuring from 4 to 9 inches	3	3 0



Phalænopsis Rimestadiana on rafts ; ready for export.

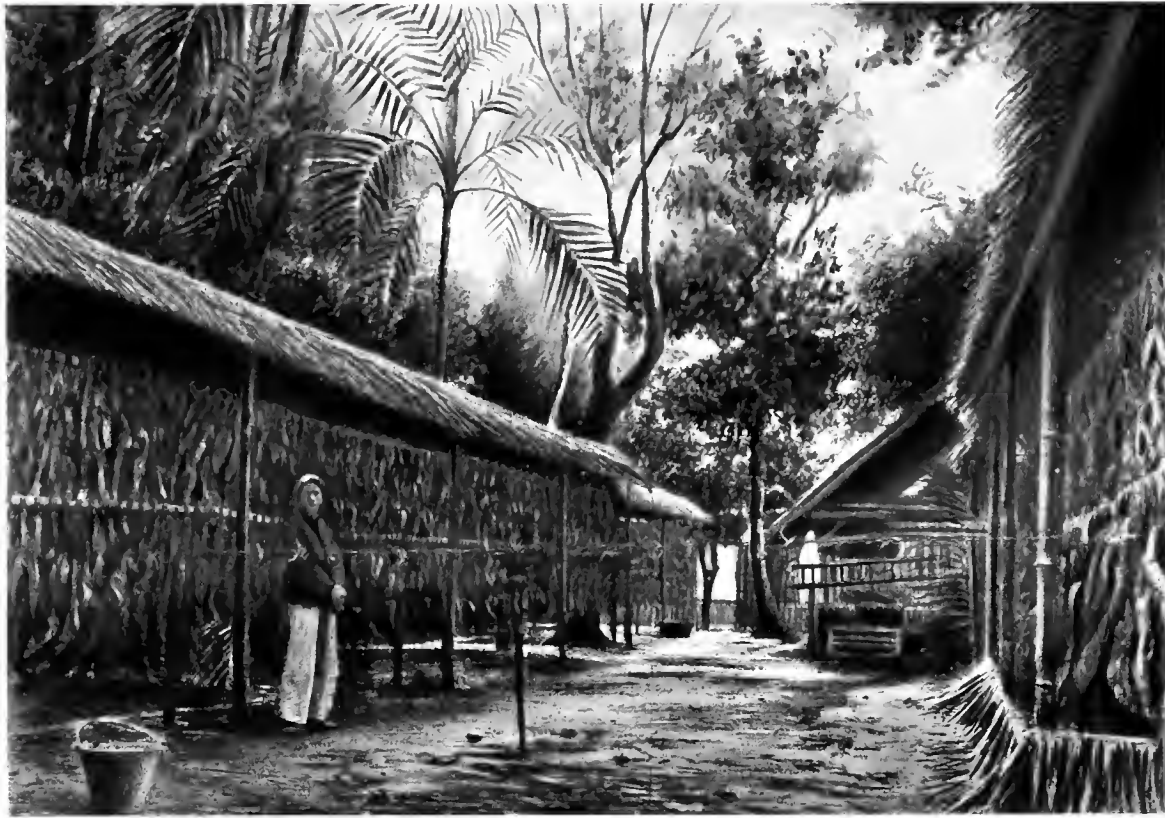
We have pleasure in offering a few of the best rafts as received.

							£	s.	d.
Raft No. 1.	Containing 32 fine healthy plants, with 1, 2, 3 and 4 fine leaves	Price 11	0	0
Raft No. 2.	Containing 33 stronger plants, with 1, 2, 3 and 4 fine leaves	Price 12	0	0
Raft No. 3.	Containing 36 very fine plants, with 1, 2, 3 and 4 very fine leaves	Price 14	0	0
Raft No. 4.	Containing 37 fine sturdy plants, with 1, 2, 3 and 4 very fine leaves	Price 15	0	0
Raft No. 5.	Containing 26 splendid plants, with 2, 3 and 4 strong healthy leaves	Price 13	10	0
Raft No. 6.	Containing 34 specially fine plants, with 1, 2, 3 and 4 very fine sturdy leaves	Price 16	0	0

Cœlogyne pandurata.

Some very pretty plants of this lovely species.

							£	s.	d.	
A	Nice plants, 2 and 3 good bulbs, 1 of which is a lead	0	7	6
B.	Good plants, 3 and 4 very good bulbs, 1 of which is a lead	0	10	6
C.	Very good plants, 3 and 4 strong bulbs, 1 of which is a lead	0	15	0
D.	Fine plants, 3 and 4 extra strong bulbs, 1 of which is lead	1	1	0
E.	Very fine plants, 3 and 4 specially fine bulbs, 1 of which is a lead	1	5	0
F.	Specially fine plants, 4 and 5 grand bulbs, 1 of which is a lead	1	11	6



Phalænopsis Rimestadiana establishing for export.

Phalænopsis amabilis.

A wonderful lot of this free-flowering species. The majority are fine specimen plants established on tripods for export. We can say with confidence that finer plants have never been imported.

		£ s. d.
No. 1 Tripod.	Handsome specimen, 5 magnificent leaves, measuring from 8 to 12 inches, broadest leaf 3 $\frac{3}{4}$ inches across	5 5 0
No. 2 Tripod.	Handsome specimen, 4 grand leaves, measuring from 7 to 11 inches, broadest leaf 3 $\frac{1}{2}$ inches	3 13 6
No. 3 Tripod.	Grand specimen, 3 magnificent leaves, 8 to 12 inches, making a new leaf, broadest leaf 3 $\frac{1}{2}$ inches.. .. .	3 10 0
No. 4 Tripod.	Handsome specimen, 3 magnificent leaves, 5 $\frac{1}{2}$ to 13 inches, broadest leaf 3 $\frac{1}{4}$ inches ..	3 3 0
No. 5 Tripod.	Fine specimen, 3 sturdy leaves, measuring from 7 to 9 inches, broadest leaf 3 $\frac{1}{4}$ inches ..	3 0 0
No. 6 Tripod.	Grand plant, 4 fine leaves, measuring from 3 to 10 inches, broadest leaf 3 inches ..	2 12 6
No. 7 Tripod.	Pretty plant, 3 perfect leaves, measuring from 6 to 11 inches, broadest leaf 2 $\frac{3}{4}$ inches ..	3 0 0
No. 8 Tripod.	Handsome plant, 4 vigorous leaves, measuring from 5 to 10 inches, broadest leaf 3 inches ..	2 12 6

Phalænopsis amabilis (Continued).

		£	s.	d.
No. 9	Tripod. Fine specimen with 2 crowns, 2 and 3 leaves each, measuring from 3 to 10 inches, broadest leaf 2 $\frac{3}{4}$ inches	3	13	6
No. 10	Tripod. Good specimen with 3 strong leaves, measuring 7 and 8 inches, broadest leaf 2 $\frac{3}{4}$ inches ..	2	2	0
A.	Fine healthy plants, 2 good leaves each	0	10	6
B.	Strong plants, 2 very fine leaves	0	12	6
C.	Extra strong plants, 2 and 3 extra fine leaves.. .. .	0	15	0
D.	Grand plants, 3 and 4 very strong leaves	1	1	0
E.	Splendid plants, 3 and 4 extra strong leaves	1	5	0
F.	Selected plants, 3 and 4 specially fine leaves	1	11	6

Dendrobium Phalænopsis “Schröderianum.”

A.	Nice plants, 4 to 6 bulbs, 1 lead each	0	1	0
B.	Good plants, 4 to 6 bulbs, 1 good lead	0	1	6
C.	Fine plants, 5 to 7 very good bulbs, 1 and 2 good leads	0	2	0
D.	Strong plants, 5 to 7 fine bulbs, 1 and 2 strong leads	0	2	6

Habenaria Susaniæ.

Good sound tubers of this pretty species, at 2/6 and 3/6 each.



A Wonderful New Dendrobium

Species.

We are pleased to be able to offer this new discovery to our patrons, and only regret that although M. Rimestad's men searched the island on which it was discovered for many days, only twenty plants could be found.

M. Rimestad says "when he saw it in flower, he at first sight took it for a pure white form of Dendrobium Phalenopsis. On closer examination, he could see that it was somewhat distinct in the bulbs from that species, and therefore must be new." The habit of the plant is similar to Dendrobium Phalenopsis and the flowers produced in a like manner.

From the old flower spikes, it appears very floriferous. M. Rimestad relates the most trying experiences in the collection of these plants. We therefore recommend them as a speculation to buyers, and feel convinced that they will prove very valuable plants.

No.		£	s.	d.
1	Healthy plant, 5 bulbs, 1 of which is a lead measuring 6 inches	3	3	0
2	Nice plant, 3 good bulbs, 1 of which is a lead, measuring 8 inches and making a new growth	3	13	6
3	Nice plant, 3 bulbs, 1 of which is a lead, measuring 7 inches	4	4	0
4	Good plant, 7 bulbs, 1 of which is a lead, measuring 10 inches	4	14	6
5	Very good plant, 7 bulbs, 1 of which is a lead, measuring 3 inches	4	4	0
6	Fine plant, 4 good bulbs, 1 of which is a lead, measuring 9 inches	4	4	0
7	Sturdy plant, 2 strong bulbs, 1 of which is a lead, measuring 10 inches and making a new growth	4	14	6
8	Nice plant, 4 bulbs, 1 of which is a lead, measuring 5 inches	4	4	0
9	Distinct looking plant, 2 very strong bulbs, measuring 17 and 22 inches, longest is a strong lead	5	5	0
10	Strong plant, 3 grand bulbs, 1 of which is a lead, measuring 13 inches	5	5	0
11	Good plant, 5 bulbs, 1 of which is a lead, measuring 7 inches	4	14	6
12	Fine plant, 3 sturdy bulbs, 1 of which is a lead, measuring 9 inches	4	14	6
13	Very fine plant, 4 good bulbs, 1 of which is a lead, measuring 11 inches	5	5	0
14	Very fine plant, 3 strong bulbs, longest measuring 11 inches, pushing a new growth from the back bulb	5	5	0
15	Good plant, 7 good bulbs, 1 of which is a lead, measuring 7 inches	6	6	0
16	Very fine plant, 5 grand bulbs, 1 of which is a lead, measuring 9 inches	6	6	0
17	Extra strong plant, 8 strong bulbs, longest measuring 16 inches, pushing a new growth from the back bulb	7	7	0
18	Fine plant, 7 bulbs, 1 of which is a lead, longest bulb measures 14 inches	7	7	0
19	Grand plant, 9 splendid bulbs, 1 is an extra strong lead, measuring 17 inches	8	8	0
20	Grand plant, 8 fine bulbs, 1 of which is a lead, longest bulb measures 18 inches	10	10	0

Cattleya Trianae.

This importation is undoubtedly one of the best consignments of Cattleyas we have ever received. The plants have carried their leaves remarkably well, the eyes are exceedingly sound and dormant; in the most perfect condition for potting up.

They are from the same locality as our last importation of this species, and many purchasers from that consignment had cause to congratulate themselves on the magnificent varieties flowered.

	£	s.	d.		£	s.	d.
A. Good plants, 4 to 6 bulbs, well leaved, 1 lead	0	3	6	each	2	0	0
B. Very good plants, 6 to 9 bulbs, well leaved, 1 and 2 leads	0	5	0	doz.	17	6	
C. Fine plants, 10 to 12 bulbs, well leaved, 2 and 3 leads	0	7	6	doz.	4	5	0
D. Very fine plants, 15 to 20 very fine bulbs, well leaved, 3 to 5 strong leads	0	10	6	doz.	6	0	0
E. Extra fine plants, 20 to 25 very fine bulbs, well leaved, 3 to 5 very strong leads	0	15	0	doz.	8	10	0
F. Selected plants, 25 to 30 extra strong bulbs, well leaved, 4 to 6 very strong leads	1	1	0	doz.	12	0	0

A few specially fine specimens @ £1 11 6, £2 2 0, £3 3 0, £4 4 0 and £5 5 0 each.

Vanda Hookeriana.

A nice consignment in splendid condition.

	£	s.	d.
A. Good plants, about 3 feet high, well leaved	0	7	6
B. Strong plants, about 3 feet high, well leaved	0	10	6
C. Very fine plants, from 3 to 4 feet high, well leaved	0	15	0
D. Extra strong plants, about 4 feet high, well leaved	1	1	0



