

Season 1901-1902.

Comal
Springs
Nursery



OTTO LOCKE, Proprietor,

New Braunfels, Texas.

Please Read Carefully Before Ordering.

When ordering write your order plainly on the order sheet found in this catalogue and make perfectly clear what is wanted.

Filling. Orders are filled as soon after reception as possible. Should, at the time the order is received, the supply of a certain variety be exhausted and no substitution be allowed, the order will be filled only as far as assortment allows.

Mistakes are made by us as well as by anybody else, but we always cheerfully correct them if they are reported.

Packing. We bear all cost of packing, we pack in the very best manner, and goods packed by us can safely be sent all over the American continent. Good packing pays us and pays our customers. Everything is labeled.

Shipping. We deliver all goods, free of charge, at the freight or Express office of New Braunfels; after that they are out of our hands, beyond our control, and we are not responsible for any mishaps that may occur to them on the road. Please always state plainly to what point you wish the goods to be shipped, and whether you wish them sent by freight or express! We would however advise everybody to order by express, as in many cases it is cheaper than freight, and, besides, express takes only from 1 to 4 days while freight takes from 1 to 3 weeks to reach you and stock may suffer if it is on the road too long.

Transportation Charges are not paid by us, but we put trees and plants in free of charge to about cover the amount you pay for expressage. If, however, customers wish to get the goods laid down at their nearest express office, prepaid, we will gladly send them that way, provided 15 per cent of the total amount of the order is added to the same when the order does not call for more than \$5 worth of stock; 10 per cent to orders from \$5 to \$10; 5 per cent to orders amounting to more than \$10.

Terms, Invariably Cash with Order. No plants sent C. O. D. Our prices are too low to allow any deviation from this rule.

Shipping Season begins November 1st and extends to March 1st.

No Agents. Please notice that we have no agents to call on you and solicit your orders. This book is our sole agent.

Guaranty. We exercise the utmost care to prevent errors, and sell our stock only with the express understanding that, should a mistake occur and any variety prove untrue to label, we will, upon proper proof thereof, refund the money paid or refill the order free, but for no sum greater than that originally received.

Discount. We allow a reasonable per cent on large orders, and for planting in church, school or grave yards and in city parks. Write for low rates if stock is desired for such purpose.

Best Assortment is most successfully secured by leaving the selection, in part at least, to us. We have had years of experience in testing the different varieties, but we desire everyone to have his or her choice as near as possible.

Evergreens, Ornamental and Flowering Shrubs.

We have the largest stock and the finest assortment in the South and can please everybody.

Wonder Trees. We do not handle any such as "Tree Blackberries, Neverfalling Almonds or Apricots, California Seedling Peach at \$1 each," and other such frauds. It is the province of the traveling tree peddler to supply these rare novelties; they claim exclusive right to such trade and we fully grant their claims.

COMAL SPRINGS NURSERY, Otto Locke, Prop., New Braunfels, Texas.

Season 1901-1902.

A A A

Comal
Springs
Nursery.

A A A

Otto Locke, Proprietor,
New Braunfels, Texas.

Greetings.

Herewith I send you my 10th annual catalogue, and extend to all my friends and patrons my heartiest thanks for the great confidence which you have had in the honesty of my dealings since the foundation of this business to the present day. To show you how much I appreciate your patronage, I shall continue to treat my customers as I wish to be treated as such. My motto has been, and will be at all times, "A pleased customer is worth more to me than my pocket filled with dollars."

Since the building of the M. K. & T. R. R. through New Braunfels, I am now able to ship quicker and cheaper to many places than I have heretofore been able to do. Two express companies are now operating at this point: the Pacific with the I. & G. N. and the American with the M. K. & T.



I do not prepay the expressage on trees or plants, but if you will kindly compare my prices with those of nurseries who do pay transportation charges, you will find that my prices are still one-third less than the others, after you have allowed for expressage. Besides, I always send some things gratis to about cover your expenses.

If, however, you wish to receive your trees prepaid to your nearest express office, you may add 15 per cent of the cost of the trees, etc., to all orders not amounting to more than \$5, 10 per cent to orders amounting from \$5 to \$10, and 5 per cent to all orders amounting to more than \$10.

I have a stock of over 100,000 trees and plants to offer for this season's trade, and for such persons who wish to get trees of large size and of fine form, I have grown some with special care and have produced trees as fine as ever any were offered.

Apples.

Prices—strong, 4 to 6 feet trees grafted on whole roots, 15 cents; \$10 per 100.
Extra large selected trees and new varieties, 25 cents each.

The apple is not very profitably grown in Southern and Western Texas. There are only few varieties that grow, and only certain localities where these do succeed. The latter are in the mountainous regions of Texas and Mexico. The best results are obtained on heavy clay soil. Light or sandy soil should be manured before apples can successfully be grown on same. The apple we grow in our state has a very fine aromatic flavor, more so than that grown in the North, and people who think that their soil may be adapted to its culture, should experiment with a few trees. Trees grown in the North should however never be planted: they will never prove a success. The best apples for Western Texas are Bismark and the Texas apples.

The following is a collection of those that I have found worthy of planting in the South.

Der Apfel ist nicht sehr profitabel in Süd- und West-Texas und sind es nur wenige Sorten die gedeihen. Auf den Gebirgshöhen und Lande mit reichem Lehmboden bringt der Apfelbaum die reichsten Früchte. Ist der Boden leicht und sandig, so sollte tüchtig gedüngt werden. Der Apfel, der in unserem Klima gezogen wird, hat ein sehr reiches Aroma und ist als Tafel-Obst beliebt. Bäume, die aus dem Norden stammen, sollten niemals gepflanzt werden, da sie nie gedeihen. Am besten für unsere Gegend eignen sich der Bismark- und die Texas-Apfel. Folgende sind die besten Sorten für den Süden:

Red June, medium to large, oblong, dark red, crisp, sometimes almost mealy tender, high flavored. Ripe June 5, and sometimes until July.

Red Astrachan, large size, crimson and yellow, juicy, crisp, valuable for cooking. Tree a fine grower and very prolific. June 1 to July 15.

Yellow Transparent, Russian variety, medium, pale yellow, early.

Yellow Horse, known throughout the South as the best all purpose summer apple, large, yellow, sometimes with red blush, firm, splendid for cooking, eating and drying. August 15.

Fall Queen, tree upright, spreading and long-lived, fruit large, yellow, with bright red cheeks, very rich and juicy. September and October.

Kinnard's Choice, fruit medium mostly covered with a dark red: flesh yellow, tender, juicy and aromatic. Very hardy and productive.

Winesap, tree a strong grower and productive, fruit of medium size, red flesh, crisp, juicy, high flavored, valuable for table, market and cider. Ripe in October.

Black Twig, tree upright grower, fruit like Winesap but one fourth larger.

Ben Davls, everyone has seen this apple, as it is sold by grocers in fall and winter; large, red and yellow striped, subacid, valuable. October.

Hershal Cox, a new winter apple from Tennessee. Fruit and tree resemble Ben Davis but fruit smaller, better quality and better keeper.

Bismark, This most valuable New Zealand apple has only been introduced a few years ago, and the popularity it is now enjoying is proof enough of its great value. It not only possesses high quality but the tree is very hardy. Just the apple for our climate. 25 cents each.

McKlnley Greening, an apple which I have not tried myself, but which comes to me described as follows: Tree slow grower, but fruit the very finest yellow imaginable, and keeps all winter. I shall give it fair trial hereand.

have some trees for my customers out West, who have better soil for apples 20 cents each.

Heidemeyer, imported about 1850 from Stuttgart, Germany. Roundish, conical, color golden yellow, flesh yellowish, juicy, aromatic, rich, quality very good to best. Season August, bears heavy crops every year; it is one of the best apples for Southwest Texas. Price, 25 cents.

Texas Red, East Texas fruit growers consider this their best apple. I have not fruited it here, but think it should be tried out west where apples grow very well. Described as follows: Medium, milky red in the shade, dark in the sun; tree vigorous grower and hardy. Ripens in November. 25 cents each.

Crab Apples.

Price, 15 cents each.

This pretty little apple is especially adapted for preserves and is always sure to bring a good crop.

Tiefer ohne, kleine Apfel ist als Preserve sehr beliebt und bringt hier immer ühere, reiche Ernten. Der Baum wachst schnell und kräftig.

Hyslop, ornamental as well as useful. Vigorous growing tree, produces in great abundance crimson apples. Fruit good for preserves.

Transcendent, (Siberian) an attractive yellow color, splashed and striped with red; bears very young, annual crops thereafter. We value it highly for preserves. Buds and blossoms exquisitely beautiful. Ripens in July.

Whitney No. 20. This is the best of all the crab apples as far as the quality of the fruit is concerned, which is of good size, very sweet and aromatic. Tree upright grower and very regular bearer, and succeeds remarkably well with me. Color of fruit yellow with heavy crimson stripes. 20 cents each.

Yates, bright red, covered with white specks; quality fine, very productive, long keeper. This is one of the best apples known.

Pears.

In order of ripening. 2 years, 25 cents each; \$2.50 per 12, \$20 per 100. 1 year trees, 20 cents each; \$15 per 100. Extra large and new varieties 6 to 7 feet, 50 cents.

The pear is the most profitable fruit we know of. After a tree has once begun to bear, it will bear regularly every year. The tree is very long lived if it has a favorable locality where it can send its roots deep into the ground for a supply of moisture; for this reason pear trees can only be planted where the subsoil is rich and deep.

The soil most adapted to pear culture is rich loam, which contains a good supply of humus. Sandy soil with clay subsoil is also good if well manured. Pear trees should however never be planted on soil where the roots of cotton and potatoes rot, as such soil has the same effect upon pear trees.

The following are the best varieties.

Die Birne ist die profitabelste von allen hier bekannten Obstarten, da sie immer ühere Ernten bringt. Die Wurzel des Birn-Baumes geht tief in das Erdreich hinein und dort, wo guter, tiefer Untergrund ist und die Wurzel ge-

ugend Feuchtigheit findet, erreicht der Baum ein hohes Alter und bringt sichere, reiche Ernten. Eine gute, reife Birne wird fast von einem Jeden, anderem Obst vorgezogen. Man pflanze aber ja keinen Birn-Baum auf Boden wo Wurzeliaule (root rot) ist, dort stirbt der Birn-Baum ab. Die Birne gedeiht am besten auf humusreichen, schwarzen oder auf Lehmboden; doch auch auf Sandboden mit Lehm-Untergrund wird sie mit dem allerbesten Erfolg gezogen. Folgendes sind die besten Sorten:

Lawson, one of the most beautiful, when fully ripe a brilliant crimson, on a clear yellow ground; flesh is rich, juicy and pleasant. Ripe the first week in June.

Koonce, (new,) very early, of the very best quality, does not rot at the core. The fruit is of a straw color with red cheek and brown dots. Tree of vigorous growth, healthy and is very hardy in bud and bloom, so that late frosts will not kill the blossoms.

Early Harvest, fruit medium to large, skin pale yellow, with blush next to sun, flesh white, tender, sweet; one of the best of its season. July.

Clapp's Favorite, prolific, red cheek, large, excellent, one of the best table pears.

Summer Beauty, first raised in 1873 and introduced in 1893 by us. This pear is the finest fruit and the surest bearer of all varieties that ever have



been tested so far south. The trees have not failed to produce heavy crops every year since 1880. It is a vigorous, symmetrical grower and late bloomer, so that spring frosts will not injure it. The fruit is very large and handsome, of yellow color with a bright, red cheek, flavor sweet, sugary, rich, aromatic and pleasant, excellent quality, always grows in clusters of from three to five. One of the rarest and most productive pears in cultivation. Ripening the end of July. Price of well rooted one year old trees, 50 cts each.

Flemish Beauty, medium, beautiful, juicy, melting, rich and firm, does well here.

Bartlett, Everyone is acquainted with this large yellow pear. Fruit is very rich and highly aromatic, the reason why this pear can always be sold while others may be refused. Tree grows dense, and of even and conical shape.

Buffum, medium size, yellow shaded with reddish brown and russet; sweet and fine. Ripens in August and September.

Howell, large, waxen yellow with red cheeks, rich, buttery, sweet and perfumed, strong grower, productive and valuable.

Vermont Beauty, in color it is a rich yellow, with beautiful bright carmine cheek. The fruit is of medium size and the flesh is of the finest quality, being rich, juicy and aromatic. 50 cts. each.

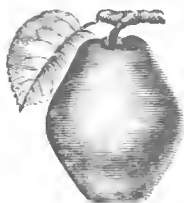
Smith's Hybrid, trees resemble Le Conte, fruit earlier, larger, richer and more melting, one of the best pears.

Le Conte, of remarkable vigor and beauty of growth. The fruit is bell-shaped; of a rich creamy yellow when ripe; very smooth and fine looking, and a good shipper.

Duchess, pale yellow, very large; has a peculiar taste for which many people prefer it to other pears.

Winter Butter, This new and very valuable pear was imported by us from Falkenau, Sachsen, Germany several years ago. It is the finest pear found on the markets of Falkenau, and commands the very highest price there. My young trees in the orchard are doing fine, and I feel quite sure that this will add a very valuable variety to our list of pears for the market. I have very fine young trees for sale, and every lover of fine fruit should experiment with a few trees. 50 cts. each.

Kiefer Hybrid, called by many the "Queen of Pears." Fruit large to



very large, skin yellow, with a bright vermilion cheek, flesh brittle, very juicy, with a marked musky aroma. Tree very vigorous and very prolific. Considered the best all around pear.

Magnolia, a distinct variety of the oriental type, late y introduced by the Alabama and Georgia Nurseries. The bark of the tree is very dark, covered with white specks. Fruit said to be very large, brown and red color. Ripens shortly after Kiefer. 50 cts. each.

Garber Hybrid, oriental strain, like the Smith's, fruit resembles the Kiefer in size, shape and color, ripe three weeks later.

Lincoln Coreless, almost without core or seed, unusually large, rich golden color when ripe, excellent quality, keeps perfectly sound until March.

Quinces.

25 cents each; \$2.50 per 12.

The quince likes a rich, deep, moist and at the same time loose soil and requires careful cultivation. The fruit is only used in a cooked state and it is a great favorite with the women, owing to its rich aroma, which makes it fit for all kinds of preserves and jellies.

Die Quince liebt einen sehr reichen, tiefen, losem Boden und gebraucht eine sorgfältige Kultur. Die Frucht wird nur gekocht genossen, da sie roh hart und holzig ist. Sie ist bei der Hausfrau sehr beliebt, da sie ein feines Aroma hat und wird beim Einkochen von anderem Obst verwendet, da sie demselben einen feinen Geschmack giebt.

Orange, large, roundish, bright golden yellow, cooks tender, and is of excellent flavor. Valuable for preserves or flavoring, very productive; one of the most popular and extensively cultivated of the old varieties. Ripens in October.

Champion, Fruit very large, fair and handsome. Tree very productive, bears when young, flesh cooks as tender as the apple, flavor very delicate, imparting an exquisite taste and odor to any fruit with which it is cooked.

Neeches, a vigorous grower and immensely productive. The fruit is

large, orange yellow, of great beauty and delightful fragrance. Excellent for cooking.

Almonds.

2 year trees, 25 cents each : 1 year trees, 20 cents each.

The almond succeeds in Western Texas, Arizona, New and Old Mexico and California where irrigation is practicable. As the tree blooms very early, the crops are often destroyed by late frosts.

Die Mandel gedeiht mit Bewässerung in West-Texas, Merito, Arizona und Californien. Da sie sehr früh blüht, so wird die Ernte häufig durch Spätfrost zerstört.

Sultana, large kernels, soft shell. Tree is a strong, upright grower.

Apricots.

In order of ripening, 25 cents each ; \$2.50 per 12.

Light trees, 20 cents each ; \$2 per 12.

The apricot is one of those fruits that do fairly well on limestone soil ; a rich, heavy soil is however preferred. As the apricot blooms early, it should not be planted extensively in localities visited by late frosts. The fruit is much beloved for its rich and aromatic flavor, and the apricot should be represented by a few trees, at least, in every garden.

The culture is about the same as that of the peach.

Die Aprikose gedeiht gut auf Mattboden auch liebt sie einen mehr feinen als tosen Boden. Sie blüht früh und ist die Ernte nicht immer sicher, da sie oft durch Spätfrost zerstört wird. Es ist die erste Frucht die reift und von einem köstlichen Aroma. Ein Jeder sollte einige Bäume dieser lieblichen Frucht anpflanzen. Der Baum sollte wie ein Birnch-Baum behandelt werden.

Myer's Early, ripens early in May, is of medium size and of white color.

Eureka, very early, large, fine, prolific.

Blendheim, Russian, large, golden yellow with a red cheek, good quality, bears well.

Moorpark, large, excellent ; an old favorite and one of the best bearers.

Chinese, is the largest of all apricots, and the latest bloomer.

Clustér, of beautiful symmetrical growth, very vigorous and hardy ; fruit medium, transparent yellow, excellent quality.

Cherries.

35 cents each.

The cherry succeeds well on the elevated plateaus of Texas, New Mexico, Arizona, California and Mexico. We should however not recommend its planting in the low lands.

The following varieties have proved the most successful in the South.

Die Kirsche gedeiht auf reichen Boden der Höhenzüge von Texas, Merito und Californien ; trägt aber sehr selten in den Niederungen von Süd- und West-Texas. Folgende Sorten sind die profitabelsten :

Early Richmond, Medium, red, juicy, rich, acid ; one of the most valuable cherries for this climate.

Large Montmorency, fruit very large, color red, flavor acid.

Ostheime, Russian slender grower, very hardy. Of good size and quality. Productive. June.

Black Tartarian, very large, purplish black, half tender, flavor mild and pleasant. Tree remarkably vigorous, erect, beautiful grower and very popular. May and June.

Nectarines.

25 cents each.

The nectarine is a fruit similar to a peach, but it has a smooth skin like that of a plum. It is however not advisable to plant it extensively in Texas as the curculio almost invariably destroys the most of the fruit while the tree is in bloom. It is successfully grown in some parts of Mexico and California.

Die Nectarine ist eine Frucht der Birnen ähnlich, doch mit glatter Schale wie die Pflaume. Sie ist hier nicht profitabel, da die Frucht größtentheils durch den Curculio vernichtet wird; gedeiht aber gut in Theilen von Mexico und Californien.

Boston, large, deep yellow, with a bright blush and mottling of red; sweet and a peculiar pleasant flavor. Freestone.

Coosa, very large, red, flesh white; a new seedling from upper Georgia.

Victoria, medium, purple, brown cheek.

Figs.

20 cents each; \$15 per hundred.

We might almost say there is no tree which so abundantly repays its owner for the little trouble it requires than the fig. From July to October ripe fruit may be had almost daily from the same tree, provided there is enough moisture to constantly keep the tree growing during this time.

The best place for a fig tree is near a well or a spring or any other place where there is always a plentiful supply of water. During extreme cold weather figs sometimes freeze to the ground, but they sprout from the roots again in the spring. This however happens only every 10 or 15 years, if only the hardiest varieties are planted.

Wohl keine Obstart bringt hier im Süden so reiche Ernten als die Feige. Von Juli bis Ende October kann man täglich reife Früchte von einem Feigen-Baum pflücken, wenn er genügend Feuchtigkeit hat um beständig wachsen zu können. Die Feige sollte an Brunnen, Quellen oder dort, wo der Boden beständig feucht ist, angepflanzt werden. Es kommt vor, daß die Feigen-Bäume in strengen Wintern bis auf den Boden abfrieren, sie treiben aber im Frühjahre immer wieder von neuem aus den Wurzeln.

Green Ischia, green, medium size of excellent quality.

Magnolia, large, rich fruit, yellowish white. Hardy here, small one year plants bear fruit first summer.

Brown Turkey, medium, brown, very sweet and excellent; very prolific and hardy. The most reliable fig for open field culture.

Brunswick, brown or violet, quality excellent.

Celestial, small, pale violet, with bloom; very sweet, prolific and hardy.

Peaches.

In order of ripening, 4 to 6 feet, 15 cents each; 810 per 100, except where noted.
 Extra large, selected trees, 25 cents each. Selected
 light grade, 10 cents each; 88 per 100.

The peach is probably more extensively cultivated in our country than any other fruit, and it well deserves its popularity amongst the American people, as there is nothing that exceeds a luscious, red-ripe peach. Much has however been complained of late that the finer varieties do not bear enough in Texas. People claim this to the drought, yet the failure in most cases is due to the ignorance of the people. The traveling tree agents from other states introduce new varieties every year, that are in most cases not at all adapted to our climate. Therefore, never buy a tree unless you know that it is grown by a reliable nurseryman in your own state. West Texas is a dry country, but nevertheless good peaches can be raised, and plenty of them besides, provided the proper varieties are planted.

The peach succeeds in almost any soil, but it prefers sandy soil with red clay subsoil to any other.

The following varieties are all thoroughly tested by me and I consider them the best collection that can be made for our climate. They are selected from 400 different varieties, and as each variety has a ripening period of from 10 to 15 days, peaches may be had all the time from the middle of May until November. I have arranged them in order of ripening for the convenience of the buyer.

Die Pflanz in die am meisten hier angepflanzte Sorten und das mit recht, denn nichts geht über eine gute, reife, saftige Pflanz. Leider wird die letzten Jahre so viel geklagt, daß die Bäume keine Früchte tragen, zum Theil wird wohl die Trockenheit Schuld haben, aber die größte Schuld liegt daran, daß durch die Baum-Agenten Bäume massenhaft in den Markt gebracht werden, die im Norden oder Californien gezogen wurden: solche Bäume wachsen sehr gut aber bringen doch selten Frucht, deshalb pflanzt niemals Pflanz Bäume, wenn ihr nicht bestimmt wißt, daß sie im Süden gezogen sind. Die hier folgenden Sorten sind die besten aus nahezu 100 Sorten, welche ich die letzten 15 Jahre hindurch verucht habe. Jede Sorte hat eine Reifezeit von 10 bis 15 Tagen und in dieser Liste sind alle Sorten enthalten, die von Mitte Mai bis November reifen. Der Pflanz Baum gedeiht am liebsten jeden Boden, am besten auf Sandboden mit rothen Lehm als Untergrund.

1. Ripening here from May 20 to June 10.

Victor, (new) Originator says it is earlier than Sneed. Young trees made rank growth, but have not fruited with me.

Sneed, Ripe 10 days before Alexander, of Chinese type. Tree of vigorous growth and drooping habit.

Greensboro, (new) earlier and larger than Alexander, fine flavor and attractive appearance.

Dwarf Japan Blood, Tree of dwarf habit, surest bearer of all the early peaches. Fruit is large, pointed, red cheek and eye, and sometimes blood red flesh.

Alexander, good quality, high color, flesh greenish white. Best bearing May peach.

Jessie Kerr, originated from seed of Hales Early; about the size of same season with Alexander, bears well.

Triumph, (new), "The earliest yellow peach in the world." A perfect yellow free-stone, of excellent quality. Ripens after Alexander. A good keeper, very prolific. Two year old trees bore $\frac{1}{2}$ bushel each.

Carman, (new), the best Texas Seedling Peach, size very large and of finest flavor, ripening after Alexander, vigorous, prolific.

Bokara, the hardest peach known. It is of fine quality and a good bearer. Does remarkably well here.

Honey, medium size, oblong, pointed, very sweet, bears well, an early bloomer. A peach for Southern Texas.

Gov. Hogg, (new). This peach was originated near Tyler, where it is now being planted extensively. It is one of the most valuable peaches we now have. It is a pure cling stone, and ripens just after Alexander, or with the Rivers and Mamie Ross. Flesh is creamy white and the skin a clear white almost entirely covered with a bright red. Size is very large, doubtless the largest of all the early peaches.

II. Ripening June 5 to 20.

Early Rivers, large; light straw color, with a pink cheek; fleshy, juicy and melting, with a rich flavor. One of the beautiful early peaches. Free-stone.

Southern Early, this is the largest of all early peaches, good quality, very prolific, sweet and juicy.

Pearson, similar to Mamie Ross, but as large as Chinese Cling. A perfect freestone, ripe before Mamie Ross. It is a hardy, prolific and a very valuable new peach.

June Rose, a large peach with red cheek and white flesh. Very juicy and well flavored. Tree latest bloomer.

Mamie Ross, a seedling of Chinese Cling. Fruit very large, white nearly covered with delicate carmine; flesh white, juicy and of good quality, a regular and very prolific bearer.

Rogers, extra large, red cheek, juicy, aromatic, sure bearer. A seedling of Chinese Cling and one of our best peaches.

Yellow Mystery, yellow freestone, early, a good bearer.

George the 4th, large, flesh white, red cheek, productive, a good freestone.

Husted Early, large size. In shape roundish, skin smooth and of light yellow color, with a beautiful red cheek on the sunny side. Flesh light cream color, flavor rich and delicious, melting, juicy and vinous.

Aurora, very large, globular, red cheek to the sunny side, juicy and of good flavor, bears well. A fine new peach, freestone.

Cleveland Free, a seedling of Thurber. Fruit large, creamy white, red cheek, juicy, rich and excellent.

Lady Ingold, very large, oblong; dark, orange yellow, juicy and rich. One of the best yellow freestones.

III. Ripening June 20 to July 15.

Mountain Rose, large, round, white flesh, red cheek, free.

Pallas, large, flesh white, melting, with a rich vinous aroma, profuse annual bearer.

Gen. R. E. Lee, cling similar to Chinese Cling, but earlier and more prolific.

Barnard, a peach of medium size but very showy and enormously productive. Red cheek and yellow flesh.

Crosby, medium, fine rich yellow color, with streaks and shades of orange.

Hero, a splendid variety for canning purposes. The tree grows of very large size, and produces beautifully colored, white fleshed, juicy, clingstone peaches in great abundance, sure to bear every year.

IV. Ripening July 15 to August 10.

Carpenter's Cling, large, white with a tinge of red, sweet, juicy, very productive.

Elberta, very large, yellow red cheek, tree, firm, sure, prolific.

Old Mixon Free, large, greenish white, with red cheek; flesh white, juicy, and of a good flavor. Ripening in July.

Comal Cling, [new] the best, largest and finest yellow clingstone.



The original tree was found growing behind an old house at one of my neighbors 15 years ago. Fruit very large, dark yellow with dark red cheeks to the sunny side, flesh yellow, juicy and sweet. Trees growing to a large size. Leaves very large. A regular bearer. Ripens July 1 to 15.

Old Mixon Cling, large, white flesh, red cheeks, prolific, very good.

Chilow, a large yellow peach like Elberta, but a clingstone. Originated near Austin. A good bearer and shipper.

Thurber, very large, white flesh, red cheek, sure productive.

Lemon Cling, large, yellow, sure bearer and highly flavored.

Indian Blood, large, dark colored

with red veins, downy; flesh a deep red, very juicy, vinous and refreshing. August, clingstone.

Everbearing, a new introduction from Georgia. Agents are selling this variety for \$1 each all over the country. My young trees are making better growth than many of the leading varieties, but I have not yet fruited any. A friend sent me a twig with fruit in all stages of development, from half grown to ripe. The ripe fruit was of good size, measuring three inches long and two and one-half inches broad. Its flavor was sweet and pleasant, and the fruit was very juicy. Originator says: The fruit begins to ripen about the 15th of July and continues to ripen until the 15th of September. Blooms at intervals, consequently no danger of frost killing entire crop of fruit. 25 cents each.

V Ripening August 10 to September 1.

Snow Cling, one of the best peaches for canning. Size medium, flesh clear, creamy white throughout; juicy, melting, sweet and sprightly flavor. Enormous bearer.

Matthews' Beauty, a large, new, yellow peach of the Sauck strain, but of extra good quality; very showy and a valuable shipper. 25 cents.

Indian Free, very productive and of excellent quality. One year good late peach.

Ward's Late, large, globular, white with red cheek, very good, prolific.

VI. Ripening September 1 to October 1.

Lemon Free, light yellow flesh, melting, a large late peach; prolific.

Caruth, yellow freestone, very prolific, hardy and good quality.

Stump the World, very large, white with bright cheek; flesh white juicy and of good flavor. A fine market peach.

Heath White, large oval with sharp apex; skin, creamy white, juicy, sweet and good aroma. A very popular clingstone. September.

VII. Ripening into October.

October Indian, of medium size and with red cheek. Very hardy and good bearer.

Wonderful, a remarkably fine yellow freestone.

Leopard, One of the latest peaches known. In 1899 I had fresh fruit at Christmas. Tree looks very healthy and is long lived. The fruit is large and round; flesh white and brittle.

November, this is the latest of all peaches ripe in November, good tree stone. Has been grown near New Braunfels for the last 50 years.

True Honey Seedlings. Those who want peaches every year and lots of them, ought to plant the True Honey Seedling. 10 cents each; \$1 per dozen.

Seedlings, of the very best varieties will bear well and bring good fruit. 10 cents each, \$1 per 12, \$7 per 100.

Common Seedlings, extra strong, 5 cents each; \$4 per 100.

Plums.

In order of ripening 4 to 6 feet, 20 cents each; \$2.25 per 12; \$18 per 100.

Extra large, 2 years selected trees, and some new plums, 35 cents each. Light grade, 15 cents each; \$12 per 100.

There is no fruit tree that bears such an abundance of fruit at so early an age as does the plum. Many varieties bear the first year after planting, and for this single reason it should be most extensively planted. A plum tree requires very little care, but for the fact that it produces its fruit in such a great abundance the tree does not live very long and new trees ought to be planted every year to always have an abundance of this useful fruit. The American or Chickasaw varieties are mostly used for preserves and jellies, while the Japanese varieties are used for the table.

Rich loam with gravel subsoil is the best soil for plum culture, while sandy soil is almost as good if manured.

The following is the best collection for the South, and cannot be excelled by any.

Es giebt keinen anderen Obbaum, der schon so jung nach dem Verpflanzen Frucht hervorbringt, als der Pflaumen-Baum. Von manchen Sorten sind schon einjährige Bäume mit Früchten beladen. Dieser Obbaum sollte hier mehr angepflanzt werden, da er ja wenig Kultur verlangt und eine der dankbarsten Obbaumarten ist. Die amerikanischen Sorten eignen sich besonders gut zum Einkochen und die japanischen sind als Tafel Obst sehr beliebt. Da der Pflaumen Baum in unserem Klima so überreich trägt, ist seine Lebensdauer

kurz und sollte man jedes Jahr einige Bäume anpflanzen um immer gesunde, tragende Bäume zu haben. Keiner Lehmboden sagt den Bäumen am besten zu. Folgende Auswahl von Sorten ist die allerbeste für den Süden und Westen und kann nicht übertroffen werden.

McCartney, new, of Texas, larger than Wild Goose, 14 days earlier, egg-shaped, golden yellow color, enormous bearer. This is the best yellow plum. 25 cts. each.

Mrs. Clifford, larger than Wild Goose, pear-shaped, red, meaty, with a fine pine-apple flavor.

Transparent. One of the best yellow Chickasaw plums. Tree is very productive and sure every year. The fruit is so transparent that you can almost see the pit through the skin, and is very delicious.

Lone Star, tree grows very round and spreading, and produces a beautiful shade tree. Bears red plums of medium to large size, which are very juicy and sweet.

Yellow Japan, one of the earliest Japanese plums. It is a heavy and regular bearer. Color a clear yellow. Fruit, heart-shaped, of good size, very sweet and firm. Ripens end of May and beginning of June. 25 cts. each.

Excelsior, new, seedling of Kelsey Japan. Fruit medium, sweet, juicy, melting, color reddish purple. A good early plum.

Wild Goose, Chickasaw, vigorous, red, large, very good, abundant when fertilized.

Mikado, a very large plum of greenish yellow color, nearly round, very little suture, a rapid grower, more so than any other. This is the most remarkable of all plums for its enormous size, beauty and good quality. It is probably the largest plum in existence.

Mariana, vigorous, red, medium, good bearer, very fine for a shade tree, 15 cts. each; \$10 per 100; 6 to 7 feet, well branched. 25 cts. each.

Sweet Botan, Japanese, one of the finest older varieties which is so popular to need long description.

Gonzales, a cross between the American and Japan plum. The fruit is as large as a large Botan, it is sweet and juicy and will keep a week after ripening. The tree is a good grower and is very prolific. It ripens the middle of June. 25 cts. each; \$20 per 100.

Climax, a cross of Simoni and Botan. Very large, and so fragrant a whole house is perfumed with a single fruit. Mr. Burbank says, "Productive as Burbank, several times as large, two or three weeks earlier and very much more nicely colored. The most wonderful plum ever grown and one that will change the whole business of early fruit shipping." 1 and 2 year old trees 25 cts. each.

Shiro, a combination of Robinson, Myrobolan and Wickson. Rank grower, enormously productive. Fruit will keep a month, and is so transparent the pit can be seen through the flesh. Egg-shaped. Ripens two weeks before Burbank. 1 and 2 year trees 25 cts. each.

America, a seedling of Robinson, crossed with Botan. The most beautiful of all plums in appearance. It is of large size, a little above the average size of Japanese plums, and from four to sixteen times as large as the popular American varieties. Flesh of a light yellow color, moderately firm and very delicious. Ripens two or three weeks earlier than Burbank. Exceedingly prolific. 25 cts. each.

White Kelsey, this is a duplicate in size and shape of the common Kelsey, except it is of a pale, creamy color, almost white, when ripe; does not rot before maturity like the Kelsey, it is much earlier to ripen and later to bloom; fruit of delicious flavor.

Red June, vigorous, hardy, upright, spreading tree, productive, fruit medium deep vermilion red, flesh light lemon yellow and of pleasant quality early.

Everbearing, This is certainly a fine plum. The fruit is small, but deliciously flavored and very sweet, and is produced in great abundance. Should be gathered under the tree (not picked off) every morning. Begins to ripen about the middle of June, and continues to about the middle of August. The last fruit being just as good as the first. 25 cts. each.

Wassu, this is a valuable new plum. The growth of the tree, size of fruit and productiveness are the same as the Burbank, but the fruit is much sweeter and of a fine flavor, ripens a few days before Burbank.

Chalco, a cross between Burbank and Simoni, the beautiful, fragrant Asiatic plum, and is the first one of the strain ever produced. The fruit, which ripens just before Burbank, is large, flat like a tomato, deep reddish purple, with very sweet, rather firm, exceedingly fragrant, yellow flesh, and a small seed. The fruit completely surrounds the older branches as thick as it can stick, like kernels on a huge ear of corn. Good keeping quality. 3 to 4 feet trees 25 cts. each.

Burbank, Japanese, named after the introducer of this and most of the other good pinks. The best bearing variety we have. When fully ripe, the fruit is deliciously sweet.

Cluck, Chickasaw, large red, excellent flavor and a good heavy bearer. Ripe July 10th.

Normand's Japan, Japanese; beautiful golden color, larger than Burbank, apple-shape, ripe end of June.

Wickson, Japanese, tree grows in vase form, sturdy and upright. The fruit is evenly distributed all over the tree, it changes to white when about half grown and remains so until a few days before ripening, when it changes to a glowing carmine. Small stone, the flesh is of fine texture, firm, sugary and delicious, and will keep two weeks after ripening. A fine, rare plum.

Bartlett, a cross between Simoni and Delaware. Said to have exactly the quality, flavor and fragrance of the Bartlett Pear, but the Bartlett Plum is so much superior to the pear, that no one will ever eat the pear if this plum is at hand. Fruit turns deep crimson when fully ripe. Light, salmon-colored flesh. 1 and 2 year old trees, 25 cts. each.

Satsuma, a very large and well flavored plum with blood-red flesh. Skin bluish red. Pit is very small. Tree grows very large and odd, and is a very good bearer.

Chabot or Red Japan, Japanese, large, red, good, prolific, enormous bearer.

Robinson, tree spreading and round in shape. About the most productive of all. The fruit is of medium size and often colors up two weeks before it can be gathered. Has to be soft before edible. Robinson has stood droughts better than any other with me.

Kelsey's Japan, vigorous, greenish yellow, very large, excellent, prolific, sweetest of all pinks, early bloomer.

Hale, trees good grower, fruit very large, beautiful colored, of best quality, ripe August. Does well on poor soil.

Sultan, a cross between Wickson and Satsuma, and the flesh is wine or garnet colored like that of Satsuma. The fruit is of unusual size and of remarkable beauty of form and color, 1 and 2 year old trees 25 cts. each.

Mulberries.

6 to 8 feet, 25 cents each ; \$2.50 per 12.

As shade tree for the chicken yard the mulberry is about the best tree to be had. Chickens eat the fruit as soon as it drops from the tree. The finer varieties are also eaten by children. The tree grows very quickly and is easily transplanted.

Als Schattenbaum und für den Hühnerhof kann der Maulbeerbaum nicht übertroffen werden, da die Hühner die Frucht gerne freßen. Kinder lieben die Früchte sehr. Der Baum wächst schnell und ist leicht zu verpflanzen.

Hicks Everbearing, profuse, 3 months, fine grower for shade, and the best of all trees for the fowl yard.

Russian, unquestionably the best as shade tree. The tree is very hardy and long lived, and grows rapidly to a beautiful round shape. The fruit is small and does not drop from the tree when ripe ; some trees do not produce fruit at all. It is very much sought for street planting, for the shining leaves stand the dust well. 4 and 5 feet, 15 cents ; 6 to 7 feet, 20 cents.

English, A very quick growing mulberry, with very large and well shaped leaves. The fruit is very large and of black color. Stem is very straight and can be topped at most any desired height.

Japan Persimmons.

This remarkable fruit does well all throughout the South. 35 cents each.

The Japanese Persimmon is the sweetest of all fruits. It ripens in fall and is not good until after the first frost—that is, it can be used before that time but it has not its right flavor before it is not frozen. As it ripens so late when all other fruit is gone, it should be in every orchard.

The tree grows slowly and in a more shrubby than tree like form, but it bears when quite young and produces its fruits in great abundance. The young tree is however a little difficult to transplant, for it usually has but one tap root. Late frosts often kill part of the twigs, but this never harms the vigor of the tree much.

Die japanesische Persimone ist die süßeste aller Früchte und erst im Herbst, nachdem sie einen kleinen Frost bekommen hat, genießbar. Der Baum wächst langsam und ist mehr strauchartig, trägt aber sehr jung und reichlich. Der Baum ist etwas schwierig umzupflanzen da er nur eine Pfahlwurzel hat, auch wird das Holz oft im Frühjahr nach der Steigung des Saftes durch Spatfröste getödtet.

Hachiya, very large, oblong, vermilion, very fine.

Hyakume, very large, round, vermilion, delicious, late.

Tani Nashi or Seedless, large, oblong, yellow, fine for drying,

Yedoichi, large, round, flat at stem, vermilion, best quality.

Yemon, delicious when ripened in drawers or boxes covered tightly, tomato shape.

Pomegranates.

The pomegranate seems especially given to our dry climate. It succeeds in any soil and bears regularly an abundance of the most refreshing fruit.

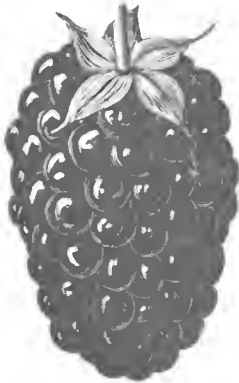
Little trouble is required for its culture. It is always free from all diseases, and grows in any deserted corner of the garden where no other fruit succeeds. The fruit is very sweet and refreshing, and ripens during August and September.

Der Granat-Apfel scheint speziell für unser heißes, trockenes Klima geschaffen zu sein, da er auch in der größten Dürre Periode noch wächst; auch ist er frei von jeder Krankheit und Ungeziefer. Er trägt reich, die Früchte sind groß, wenn reif, sehr süß und von erfrischendem Wohlgeschmack. Reifezeit: August und September.

Old Favorite is the best of all the fruiting pomegranates. I call it Old Favorite because it has been grown here at New Braunfels for at least 50 years, and it has proved to be far superior to all the other fruiting kinds which were introduced later. The fruit is the very largest, and refreshing and sweet. The tree or shrub is extremely hardy, and has glossy green leaves. Flowers are large and crimson in color. 25 cents each.

Dewberries and Blackberries.

In Succession.



The Blackberry is not so successfully cultivated in our part of the State, as it is in North Texas, but the *Maye's Dewberry* reaches its greatest perfection here. It produces fruit of enormous size, of good flavor and in great abundance. Every lover of berries ought to have it.

Die Brombeere gedeiht hier nicht so gut wie im nördlichen Texas; aber die Traube (Maye's Dewberry) erreicht hier ihre größte Vollkommenheit. Sie bringt erstaunlich reiche Ernten von riesengroßen Früchten. Jeder Beerenliebhaber sollte davon pflanzen.

Maye's Dewberry, (like cut) new, very large, early, glossy black, highly flavored. Its roots deep, is very prolific and never fails. Price 50 cents per 12; \$2.50 per 100.

White Dewberry, ripe 14 days before Maye's, a good sweet berry. 50 cents per 12.

Red or Pink Dewberry, like the white dewberry, from Denton Co. When fully ripe the color is a rich pink. Ripens between the White and Maye's. 50 cents per 12.

Dallas, (blackberry) very vigorous, drooping, thorny, productive, large, fine. 50 cents per 12; \$2.50 per 100; \$15 per 1000.

Strawberries.

25 cents per 12; \$1 per 100; \$5 per 1000.

To grow strawberries with success, irrigation is required in Western

Texas, but where water may be had plentifully it is very valuable, being about the first fruit in spring.



Die Erdbeere kann in West-Texas und anderen trockenen Gegenden nur mit Hilfe von Bewässerung gezogen werden, ist aber dann profitabel und das erste Obst das reift.

Michel's Early, earliest of all; large, vigorous, perfect flower, a fine pollinator for other kinds.

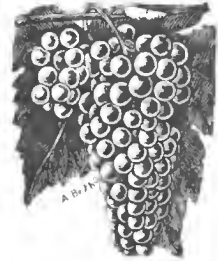
Crescent, early, prolific, bright, excellent market, pistillate; needs Michel's Early to fertilize it.

Grapes. Standard List.

In succession. Finest quality. This list contains the Best and Most successful. 10 cents each; \$5 per 100 except where noted.

The grape thrives in almost any soil, and is successfully grown all over the South. With but little skill and labor it brings abundant crops every year. The following are the best Southern varieties.

Die Weintraube gedeiht fast in jedem Boden und in jeder Gegend des Südens, mit etwas Mühe und Arbeit bringt sie reiche Ernten. Folgende sind gute Sorten:



Early Ohio, said to be the earliest black grape. Bunches large, compact and shouldered; berries of medium size and adhere firmly to the stem. Foliage thick, leathery and healthy. Very productive sort. 20 cents each.

Moore's Early, very large, black, good market.

Moore's Diamond, One of the finest American grapes.

Lutie, berries large, beautiful lilac color, of superior flavor and unusually free from rot; a very desirable grape. 15 cents.

Worden, very large, black, good market; improved Concord.

Niagara, large, white, very good table and market grape.

Martha, large, white, table, market.

Concord, large, black, table, market.

Jacquez, (Black Spanish, Le Noir, Blue French) small, large cluster, black, red wine. 2 years, 10 cents; \$8 per 100.

Herbemont, (McKee; Bottsi; Brown French) small, large cluster, purple, finest quality, table wine, best old grape in Southwest Texas. 10 cents, \$8 per 100.

Scuppernong, clusters of two to six. Berries large, round and of bronze color. Skin thin; free from rot. 25 cents each.

Shade and Ornamental Trees.

6 feet, 25 cents; 8 feet, 35 cents; 8 to 10 feet, 50 cents.

All shade trees are nursery grown, are straight and have splendid roots.

The physical welfare of yourself and those that you hold dear is greatly

advantaged by the trees and plants which surround your home. What a deserted impression does a splendid house make if not a tree or plant is near, and what a pleasant feeling comes to you if you see a small hut surrounded by beautiful shade and ornamental trees. What a comfort does not a single shade tree afford the farmer when, after he comes home from his toil in the field, he can recline under the same and take his afternoon nap.

Therefore, plant shade and ornamental trees around your house and you will be repaid for your trouble in many different ways.

Deine Zufriedenheit, Gesundheit und Wohlergehen liegt im anpflanzen von Schatten und Bierbäumen um deine Wohnung und im Hofe. Was für einen oden und ungemüthlichen Eindrud macht das allerfchönste Haus, wenn kein grüner Baum oder Strauch zu sehen ist; und was für einen einladenden und erfrischenden Eindrud macht eben die kleinste Hütte, wenn sie von Schattenbäumen umgeben und ein Bier oder Blumengarten davor zu finden ist; deshalb pflanzt Schattenbäume, Biertraucher und Blumen, ihr werdet reichlich belohnt durch den Genuß, welchen ihr daran findet.

Pyramidal Arbor Vitæ will make a large fine evergreen shade tree, quick growing, easily transplanted. Trimmed, with straight stem, 5 to 6 feet 50 cents; 3 to 5 feet, 25 cents; untrimmed, 2 to 3 feet, 15 cents each.

Ligustrum Japonicum makes a splendid evergreen shade tree. Leaves dark green, pointed, 2 by 2½ inches long; produces large bunches of creamy white flowers, followed in autumn by purple berries. Price of trees, well trimmed, 3 to 4 feet, 25 cents; 5 to 6 feet, well headed, \$1.00 each.

American Elm, broad leaved, long lived, easily transplanted, 5 to 6 feet, 25 cents.

Catalpa Japan Hy., a very pretty and extremely hardy, as well as ornamental shade tree. The leaves are 6-10 inches across. Tree produces large clusters of very beautiful yellow flowers in spring. 5 to 6 feet, 25 cents.

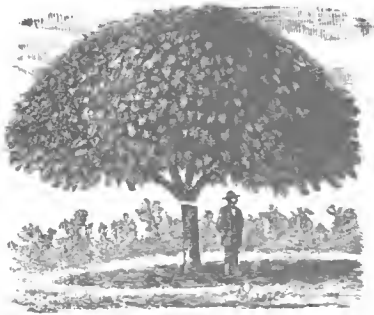
Cottonwood, a delightful, quick growing shade tree, 6 to 8 feet, branched, 25 cents.

Sterculia Platanifolia (Japan Varnish Tree), a very hardy, and at the same time very beautiful shade tree. It is particularly adapted to this climate, but not very well known. The stem is always straight and smooth, and has the same color as the leaves, which is a beautiful light green. The leaves are from 6 to 10 inches across. Tree produces a spreading and dense top, and grows to very large size. A fancy tree of appearance, but stands as much drought as a hackberry. 2 to 3 feet, 25 cents; 3 to 5 feet, 50 cents.

Silver Leaved Poplar, leaves bluish green on upper side, white underneath. When the leaves are stirred by the breeze the tree presents the appearance of being loaded with large white flowers. 25 and 35 cents each.

Flowering Willow, while this tree is commonly called a willow, it does not belong to the willow family. In appearance it is between a wild willow and a mesquite. The flowering willow is a native of the dry section of Western Texas and New Mexico. It blooms constantly from May until late fall, and in the extreme dry heat of summer it blooms most profusely. It grows on any soil, and is long lived. Nothing nicer for cemeteries. The face-like flowers are about an inch and a half long and are borne in clusters, 25 cents each.

Weeping Willow, a grand old tree for the cemetery and for the lawn. Should be planted in deep, rich soil, where it is constantly moist. 25 cents.



Umbrella China, a native of Harris Co., and now widely known over the State. It is the finest and quickest growing of all shade trees. I think I have the largest stock of them in Texas. (See cut.

7 to 8 feet, branched, extra large, 50 cts.

5 to 6 feet, branched, 25 cts.

3 to 5 feet, not branched, 15 cts. each.

Shrubs.

All tested and successful in Texas.

All the following shrubs have been tested for years, and found to be especially adapted to the South. I have a splendid stock of fine plants for this year's trade.

Alle die folgenden sind seit Jahren hier verpflanzt und als die besten für unser Klima gefunden worden. Ich habe einen grossen Vorrath davon und starke, fräftige Pflanzen.

ALTHEAS.

One of the best hardy flowering shrubs that we know of, and most especially adapted to West Texas, for the reason that it blooms during the entire summer, even then when monthly roses and other everblooming flowers are not in bloom. The flowers are not in the least affected by the hot sun in July and August, but are just as beautiful then as they are in the cooler months. Price of strong plants 25 cents each, \$2.50 for 12; smaller, 15 cents.

Banner, double striped, white, pink and red, very beautiful sort.

Boule de Feu, double red like Pompon Rogue. 25 cts.

Double Red Althea, the old double red, which produces the prettiest and largest flowers of all. It is one of the most desirable, and most profuse blooming. 20 cts. each.

Double White, double, pure white flowers. Robust grower.

Double White Pearl, very large and full creamy-white flowers with carmine center. Profuse bloomer.

Frank Vestal, flowers double, red when first open and turning deep purple when fading, thus one plant appears to produce two different colors.

Leopoldii. Very beautiful and rare kind, the color being pink and the flower double. 25 cts.

Lucy, Largest double red Althea: flowers are very double and bright in color.

Nechan's Double White, pure white flowers with large, fiery center.

Pompon Rogue, pretty double red flowers. 25 cts.

Pulcherima, very double flowers, color beautiful, white shading to pink. 25 cts.

Totus Alba, single, pure pearly white; dwarf habit; earliest of all Altheas to bloom, and blooms freely. Don't overlook this sort, because it is single, it is very desirable.

CRAPE MYRTLES.

The Crape Myrtle has reached such a high degree of popularity that there is hardly a flower garden without a few of these lovely flowering shrubs. They are lately being used for hedges, which produces the most striking effect, and such a hedge is admired by all who see it. The first flowers appear early in May, and from then until frost the plant is continuously a mass of flowers. Price of strong plants, 2 to 3 feet, 25 cents each; 3 to 4 feet, 35 cents each.

Pink the earliest of all Crape Myrtles to bloom. Tree is of rather dwarfish habit, but produces more flowers in one season than any of the others.

Crimson, grows to a good sized tree and is almost always in bloom. The flowers are of a very rich crimson color.

Purple, the largest of all; produces very pretty purple flowers in great clusters.

White, always rare. The white Crape Myrtle is a very profuse bloomer but slow grower.

Laburnum, (Golden chain, Goldregen). Another shrub which does very well here. Always looking thrifty and healthy, and requires no more water than our annual rainfall. Tree sheds yellow flowers in spring, and often in fall, the reason why it is called the "Goldrain-tree." 25 cts.

Tartarlan or Bush Honey Suckle, an upright growing honey suckle, which has the same foliage as the climbing honey suckle, and produces very pretty red flowers, which are followed by deep red berries. I have red and yellow. 25 cts. each.

Lilac, large, purple, well known favorite. 15 cts.

Lilac Japanese Tree, white, growing 15 to 20 feet in height. Flowers creamy white in long thyrses. 25 cts.

Pomegranates, flowering, Double Red, and Variegated. 25 cents.

Spireavan Houteii, large, white flowers. 25 cents.

Broad-leaved Evergreens.

These are easily transplanted and grow very rapidly; therefore, they should never be overlooked when ordering. You will always have a vacant place for a few. All the leaves should however be cut off before planting, otherwise they often fail to grow.

Folgendes sind die allerbesten Sorten und sollten nicht übersehen werden. Sie sind leicht und sicher zu verpflanzen, nur sollte alles Laub beim Verpflanzen abgeschnitten werden, sonst vertrocknen sie häufig.

Buxus Arborea, or English Tree Box, succeeds almost everywhere. It is of rather slow growth compared with other evergreens, but remarkable for its longlivity, and finally gets to be 10 to 12 feet high. Strong bushes, 25 cts. each; small plants for hedges, \$4 per 100. The Buxus makes the finest evergreen hedge.

Buxus Trimifolia, a small leaf dwarf box, very choice. 25 cents.

The Buxus are one of the finest evergreens and stand the smoke and dust of large cities well. Give them a trial.

Cape Jasmin, This lovely plant is most too well known to need any description. It does very well on sandy land, but does not grow in black soil. 1 to 2 feet, 35 cents each.

California Privet, splendid for specimens, screens or hedges. 2 to 3 feet, 10 cents; for hedging, \$2.50 per 100. Have large stock.

Japan Privet, this is the best of all privets, having dark green, pointed leaves, 2 by 2½ inches, fast growth; fine for hedges or single specimen. It produces large bunches of creamy white flowers. It is strictly evergreen, \$6 per 100.

Euonimus Japonicus, one of the fastest growing evergreen shrubs, suitable for either hedge or single specimen; can be greatly improved by cutting back to induce bushy form. No evergreen has such a bright, dark green color in winter as this. For quick results this excels. Fine, strong plants, 20 cts. \$2 per 12.

Magnolia Grandiflora, one of our grandest evergreens. 2 to 3 feet, 50 cts.

Japan Medlar, the fruit is like a small plum, yellow and of delicious taste. Leaves large, blue green. One of the most beautiful broad-leaved evergreens. 25 cents.

Pittosporum Tobira, the finest of all evergreen shrubs, which is well adapted for trimming, grows round and compact. 50 cents.

Cone-bearing Evergreens.

We do not think we exaggerate when we say that we have the largest stock of the cone-bearing evergreens in the State. We have in fact almost overstocked ourselves with them, and can afford to sell extra fine plants at a very low price. We grow all and only such varieties that succeed in Texas. Sizes are from 1 foot up to 7 feet and the prices, as you will notice, are lower than those of any other nursery, taking in consideration the quality of the plants.

Ich glaube nicht zu viel zu sagen, wenn ich behaupte dieses Jahr den größten Vorrath und die feinsten Exemplare von immergrünen Nadelbäumen in Texas zu haben. Ich habe alle Arten, welche hier gedeihen und alle Größen von einem Fuß an bis zu sieben Fuß Höhe und wird mein Preis niedriger sein, als irgendwo anders, für Waaren derselben Güte.

Biota Aurea Nana, a new Golden Arbor Vitæ of a dwarf and compact habit, perfect gem for small gardens or cemetery lots, will not grow higher than 6 to 8 feet. 3 feet high, 50 cents; 12 to 18 inches, 25 cts.

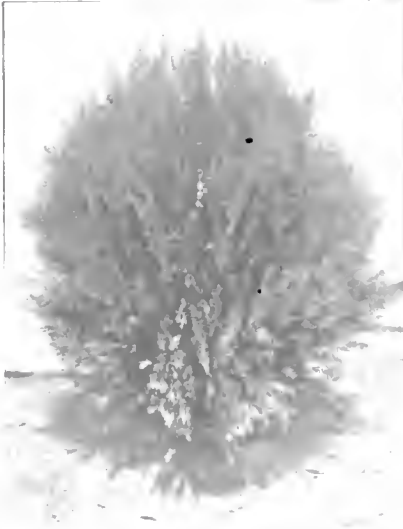
Golden Arbor Vitæ, this is the handsomest and most compact of the Arbor Vitæ s, green with a beautiful golden tint. True grafted trees, 3 to 4 feet, 50 cents; 1 foot, 25 cents.

Pyramidal Arbor Vitæ, 4 to 5 feet, 25 cents; 1 to 2 feet, 15 cents.

Chinese Arbor Vitæ, dark green, vigorous, hardy, desirable, 3 to 5 feet, 25 cents; 1 to 2 feet, 15 cts.



Rosedale Arbor Vitæ, very compact growth, with the sugar-leaf form of the Golden Arbor Vitæ, but with fine, cedar-like foliage of a bluish cast. Makes a beautiful ornament; perfectly hardy and of vigorous growth; the most beautiful of all arbor vitæ's. 2 feet, 25 cents; 3 feet, 50 cents; extra large, fine plants, 75 cents.



Compacta Arbor Vitæ, a compact growing Arbor Vitæ, of a lively dark green color, and of globular shape (like cut). 3 to 4 feet, 50 cents; 1 to 2 feet, 25 cents.

Red Cedar, One of the finest evergreens, which grows on almost any soil, and which requires much less water and care than the Arbor Vitæ. Will acquire any particular shape or size if properly trimmed. Trimmed to pyramidal (or conical) form, 2 to 3 feet, 35 cents; 1 to 2 ft., 25 cents per plant.

Cupressus Pyramidalis, this is a beautiful, tall, columnar evergreen, does well in Texas, a little tender in far north. 8 to 12 inch, 25 cts.; 3 to 4 feet, 50 cts.

Cupressus Horizontalis, like above, of rapid growth, but branches spreading. 2 to 3 feet, 28 cents; 3 to 4 feet, 50 cents.

Roses.

Strong. Open ground. One year, 25 cents; \$2.50 per 12, except where noted. Two years and budded on Manetti, 35 cents each; 3.50 per 12.

Those marked (x) we have both on Manetti and own roots.

Roses have always been our leading specialty, and we put more time and care on them than on most anything else, and have spent a good deal of money to have only the very best collection that can be had for this part of the country.

You may buy cheaper roses, but you can not get roses as good and healthy for the same price I have them quoted.

My roses are all grown in the open field, strong and healthy plants that grow in any garden and bloom the first year after planting. They are not so apt to die after transplanting as



roses grown in the greenhouses. Roses like those that I herewith offer, are nowhere to be bought for less than 50 or 75 cts. The following list contains the finest and most beloved roses in cultivation, no better collection can be made.

Mein Vorrath an Rosen ist der größte in Texas und die Auswahl der Sorten ist die reichste.

Meine Rosen sind harte, im freien Felde gewachsene Büsche, die den ganzen Sommer hindurch geblüht haben und sind ja nicht mit den im Norden in Treibhäusern gezogenen, fingerlangen Topf Pflanzen zu verwechseln. Diese Rosen, welche ich hier offerire, werden von anderen zu 50 bis 75 Cents angeboten. Folgende Liste enthält die besten und allerfeinsten Rosen, welche es giebt und kann keine bessere Auswahl getroffen werden :

CRIMSON AND RED.

American Beauty, hardy rose, of largest size, having the everblooming qualities of the Tea Rose, with the delicious odor of the Damask or Moss Rose. In color it is a brilliant red, shading to a rich carmine crimson. The flowers are borne on long stiff stems, thus a splendid rose for cutting.

Anna de Diesbach, a superb flower of immense size. Rich, dazzling crimson.

Baldwin, a new Hybrid Tea rose. About the best crimson out door bedding rose we now have. It is very strong growing, and healthy, and produces very large and double roses of a glowing carmine color, which are as sweet as a June Rose. 35 cts. each.

The Burbank, raised by Mr. Luther Burbank, of California, known the world over as the "Wizard of Horticulture." The color is described as cherry-crimson, it is, in other words, the very deepest and brightest pink rose in cultivation. One of the freest bloomers and perfectly hardy.

Dinsmore, a continuous bloomer of dwarf, compact, habit. Flowers are large and very double, of a beautiful deep crimson shade.

Francois Dubreuil, This is a grand new, red rose. The color is deep, vivid crimson, with rich, velvety shadings. Fine for open ground planting. Has long stiff stems and is therefore valuable for cut flowers.

General Jacqueminot, a rich, velvety crimson. A magnificent rose, equally beautiful in the bud state or open. This is the best known of all Hybrid Perpetuals, and is without a rival in fragrance and richness in color.

Gruss an Teplitz. We unhesitatingly say that for bedding no rose we offer will compare with "Gruss an Teplitz." It is a perfect sheet of rich crimson-scarlet all Summer. When we say that we know of no rose that has such bright colors in it as this variety, we are stating facts. The nearest we can describe is that it is the richest velvety, crimson, overlaid with the brightest penetrating scarlet. 35 cts. each.

Liberty, pronounced the greatest crimson scarlet rose ever introduced. A grand new Hybrid Tea, of the color and character of Gen'l. Jacqueminot. Most nearly approached by Meteor in color, but far surpassing that excellent variety in brilliancy and purity of color, as well in size and freedom in bloom. 50 cts. each.

Madame Chas. Wood, a true perpetual bloomer. The flowers are extra large, very double and full and quite fragrant. Color is a bright fiery scarlet, passing to fine, rosy-crimson, elegantly shaded with maroon.

Meteor, a velvety red, ever-bloomer of the deepest glowing crimson, as fine as a Hybrid. Flowers very double, and petals slightly recurving. A beautiful open rose.

Queen's Scarlet, freest bloomer of all deep crimson roses. Very hardy and of great value for out-door planting.

PINK.

Bridesmaid, the pink sport of Catherine Mermet. It is a stronger grower than its parent, has handsome foliage, and the flowers are a much livelier pink. The most popular pink rose ever introduced.

Champion of the World, a remarkable new sort, which combines the most desirable qualities. It is a perpetual bloomer, summer and winter. The flowers, which are produced in the greatest profusion, are perfectly double and of perfect shape, they are of a deep rosy pink and delightfully fragrant.

Duchess of Albany, Red La France, very large, deep pink, full and highly perfumed.

Glorie de Bordeaux, a sport of grand old Paul Neyron, with striped flowers, light pink on the deeper shade. All the blooms are not constant in variegation, but every bloom is beautiful.

Hermosa, the best pink bedder. The freest and most perpetual bloomer in existence.

La France, perhaps no rose is better known or more highly valued for a garden rose, than La France. It is a Hybrid Tea, very beautiful form and color; an early and constant bloomer, producing a wonderful profusion of buds and flowers all through the growing season; it is exceedingly sweet and handsome, and altogether one of the loveliest and most desirable roses one can plant. The color is a delicate shade of peach blossom, changing to amber rose, elegantly tinged with crimson.

Malmaison, this is certainly one of the choicest androses for general cultivation unsurpassed. The color is a beautiful, rich, creamy flesh, with a rose center; flowers very large, perfectly double and deliciously fragrant; a strictly first class rose in every respect.

Mad. de Waterville, color a remarkable shade of creamy yellow, richly colored with rosy pink. Its large petals are bordered with bright crimson, which gives it a very striking appearance. Profuse bloomer.

Beaute Inconstante, this is a very remarkable new rose from France. On one bush may be seen roses coppery-yellow, deep rose, blush pink, mottled yellow and apricot, and light and dark crimson. Sometimes all these beautiful colors mottled in one flower. The buds of the flower are large, delightfully fragrant, and as may be imagined, exquisitely beautiful. It is a constant bloomer and very valuable for garden culture, 35 cts. each.

Paul Neyron, deep pink, very large, an extra fine rose and very free bloomer. A rose without thorns.

President Carnot, the flowers are large, full and double, exquisitely shaped, with heavy, thick, shell-shaped petals. The buds are wonderfully beautiful—long and pointed like Niphetos—perfection in every line. The color is a new, delicate rosy blush, shaded a trifle deep at center of flower. Fragrance delicious, strong grower and free bloomer. 35 cents each.

Vick's Caprice, a beautiful striped rose, perfectly hardy, color bright rose, distinctly striped deep carmine or crimson. On Manettii only, 35 cts.

YELLOW.

Etolle de Lyon, sulphur yellow, very large, full and fine form; one of the best

Helene Gambrier. This lovely, coppery-yellow, Hybrid Tea, ever-blooming rose, will fill a long-felt want, from the fact that everybody has been looking and longing for a good yellow rose that combined vigorous hardiness with rich color and free blooming qualities. This Helene Gambrier does. Flowers are of a delightful shade of deep, rich, coppery-yellow. 35 cts. each.

Marle Van Hutte, light canary yellow, sometimes almost white. Very large and perfect.

Mademoiselle Cecile Berthold, most beautiful in bud and flower, which is a deep golden yellow; in fact, the deepest yellow in color of any rose we grow. Altogether a grand rose and always in bloom.

Mosella, strong but compact grower. Foliage shining green. Flowers of good size, borne in great clusters. Very double. Color white, shading to clear yellow.

Perte des Jardins, golden yellow, large, double, free bloomer; the finest yellow rose in cultivation.

Sunrise, has a long and very beautiful bud, but is equally beautiful when fully open. The color cannot be called yellow, but it is nearer yellow than anything else. The inside of the petals is yellow and the outside copper-colored. It shows great freedom of bloom here, and the plants are very healthy and quick growing. 50 cents each.

WHITE.

Coquette des Alps, a lovely, pure white rose. Very full and free in flower. Breat growth and delicious fragrance.

Chlothilde Supert, Polyantha Rose, pearl white, very double and sweet.

Kaiserin Augusta Victoria. This is one of the grandest of all roses. It is a strong, vigorous grower, producing buds and flowers of enormous size. Color pure ivory white. We have no hesitancy in saying that this rose is unequalled by any other in its color. A grand garden rose on account of its vigorous growth and hardiness.

Marle Guillot, moderate grower, white, large, very full, none finer.

Niphotos, color pure white. Highly valued for its lovely buds, which are large and pointed and borne on long stems. A grand button-hole rose.

Snow Flake, one of the most beautiful white roses I have ever grown. The flowers are not very large, but always open to perfection. A very quick growing variety, and one that produces a tremendous amount of flowers the year round. A gentleman in Eagle Pass who bought two plants in winter, wrote me in spring that he would not sell his two Snow Flake for \$10.

The Bride, this is decidedly the most beautiful white Tea Rose. It is a sprout from Catherine Mermet, with which it is identical in growth and shape of flowers. The flowers are very large and double, on long, stiff stems, of fine texture and substance, and last a long time after being cut, making one of the best varieties for corsage wear or bouquets. During extreme hot weather it becomes a pinkish white, at other times a beautiful pure white.

White la France, pure white, large flowers, free bloomer, strong grower.

CLIMBERS.

Climbing La France, identical with La France in every respect except

in style of growth which, in this new rose, is of a strong, climbing habit, making it an excellent pillar or porch rose. It is a sport of La France, and retains the charming peach, pink color and the exquisite fragrance which have made La France the favorite.

Climbing Paul Neyron, a grand, new rose. Paul Neyron has always been known as the largest rose extant. In Climbing Paul Neyron we have this large size, coupled with its bright, fresh pink color, that rose excels; and it is also a true perpetual bloomer.

Climbing Meteor is of strong, vigorous habit of growth, producing in great profusion throughout the season magnificently formed buds and flowers which in color are of a dark velvety crimson, the equal of any rose in cultivation, and if anything, more glowing than its illustrious parent.

Climbing Perle des Jardins, a sport from Perle des Jardins, the most popular of all yellow tea roses. Climbing Perle is a strong, vigorous climbing Tea, with beautiful, large, double golden yellow flowers; larger and brighter than Perle.

Empress of China, a tree, flowering climbing rose of Chinese origin. The plant is a strong, healthy grower, and produces its medium sized flowers in great profusion. Comes nearer being a perpetual bloomer than any hardy climbing rose known. Color, soft red, changing to light pink when fully grown.

La Marque, purest white, a splendid climber and the freest and finest for winter blooming; has to be trimmed and trained well.

Marshal Nell, beautiful deep yellow, very large, full, globular form sweet, free bloomer; the finest climbing rose. Budded upon Manetti, 35 cts.; own roots, 25 cents each.

Mary Washington, a hardy, perpetual blooming climber, producing large, double, snow white blossoms in great profusion from spring until frost, it is a sweet and most valuable sort.

Reine Marie Henrietta, a strong growing climber, making a great pillar rose. Flowers full and well formed; rich, brilliant crimson. A fine companion of Marechal Niel.

White Marshal Niel, the fame of Marechal Niel, with its deep golden yellow flowers, is so world-wide that nothing further need be said of this new variety to make it instantly popular than that it is the exact counterpart in every respect of Marechal Niel, save color, which is a pure white. 35 cts. each.

W. Allen Richardson, the coloring of this rose is simply exquisite. The base and back of the petals are a bright yellow, the center highly colored with glowing copper and rose; first-class climber. Try it.

Aglala, the Golden Rambler. Habit of crimson Rambler. The only difference is in the color of the flowers, which are of a golden yellow.

Thalia, the White Rambler. This is a charming new rose of the Rambler family. It climbs rapidly, is entirely hardy, produces immense clusters of pure white roses, perfectly double, of delightful fragrance and an immaculate white.

Euphrosine, the Pink Rambler, embraces the entire range of cardinal colors that can be embraced in the beautiful climbing roses. We now have the Crimson Rambler, the Yellow Rambler, the White Rambler and the Pink Rambler. This rose is as charming as any of its rivals; embraces all their good qualities of hardiness, vigorous growth profuse blooming and delightful fragrance.

Crimson Rambler, imported from Japan, the land of wonders. It is a rapid grower, and very quickly makes heavy canes of great length, covered with peculiar, shining foliage. Blooms are produced in great bouquets, and are of a most peculiar and lovely shade of crimson, perfectly hardy.

POLYANTHA OR FAIRY ROSES.

Mignonette, a lovely Fairy Rose with regular flowers, perfectly double and deliciously perfumed. Color a clear pink, passing to white, tinged with pale or rose.

Mademoiselle A. E. Nolte, flowers small, full, of perfect form, color, deep yellow, passing to rosy-white. A true "Fairy Rose."

Miniature, this is the smallest of all roses, but of perfect form, regular compact, fairy-like flowers, fully double and very fragrant. The color is creamy-rose, flushed with a peach-red.

Paquerette, we consider this variety the best of all the Polyantha Roses. The flowers are pure white, about 1 inch in diameter and appear in clusters of from five to fifty blossoms.

Perle D'Or, charming and very distinct. Color, a coppery gold, changing to lawn and salmon, flat-rayed form and very double and elegantly perfumed.

Climbing, Clinging and Creeping Plants.

These long lived plants are the most popular and best of the South to cover arbors, galleries, old trees, etc. in a very short time.

Diese ausdauernden Kletter Pflanzen sind die beliebtesten und besten für den Süden und eignen sich besonders für Lauben, Verandas und Ueberdecken von alten Bäumen, Säulen etc.

Antigonum Leptophus, Queen's Wreath, a splendid plant from Central Mexico, producing rose-colored flowers in racemes two feet long. The profusion of bloom is such as to give the resemblance of roses at a distance, hence its name, "Rosa de Montana," or Mount in Rose. Will live out in the winter anywhere in the South. The vines are killed by frost, but it quickly shoots up in the spring and develops its flowers from May until frost. This is one of the most lovely vines. 25c.

Wisteria, a beautiful, vigorous climber, that bears transplanting well. Produces large clusters of bluish purple, pea-shaped flowers. 25 cts. each.

Trumpet Creeper, a clinging vine of rampant growth; clings to wood or stone, walls or trees; very hardy; produces clusters of long, trumpet-shaped, orange scarlet flowers from early spring to late fall. 15 cts.

HONEY SUCKLES.

Evergreen, the quickest growing of all. It produces very large bunches of flowers, which open white and turn deep yellow. A bunch looks as if it was composed of flowers from two different plants. Extra large 25 cts, smaller 15 cents each.

Everblooming, produces large flowers all the year round, which are of pink color on the outside and white on the inside. 25 cts. each.

Halleana, pure white with very large flowers and dense foliage. A desirable kind. 25 cts. each.

Japan Golden Honey Suckle, a beautiful evergreen vine with a dark-

green foliage, netted and mottled with gold, flowers white and very desirable. The leaves change to dark-green and purple in winter. 25 cts.

Sinensis Perposia, the buds are pink and the open flower is pure white. Leaves are very large, and of dark-green color. The vines are brown in color. 25 cts. each.

Chinese Matrimony Vine, when trained, is a most vigorous and desirable hardy climber. It sends out numerous side branches, so that it covers a great space in a short time and every new vine is at once covered with bright purple flowers, which are succeeded by brilliant scarlet berries nearly an inch long. The contrast between the dark-green foliage and shining scarlet fruit is beautiful. 15 cts. each.

English Ivy, a splendid evergreen climber, with dark glossy leaves; clings firmly to stone or brick walls without trellis or support, covering them closely with its splendid foliage. Price for large plants, 15 cts.

German Ivy, Quicker growing than the English; otherwise serves the same purpose. Leaves are not so dark in color. Can be used for hanging baskets. Price for strong plants, 25 cts. each.

Clematis Paniculata, one of the most beautiful of our hardy climbing vines. The flowers are pure white, and are borne in great panicles or clusters of bloom, fairly covering the plant so that it is a mass or sheet of fleecy white. The fragrance is delicious, resembling the English Hawthorne Blossoms, and so subtle and penetrating that a large plant in bloom fills the air with its exquisite fragrance. 25 cts. each.

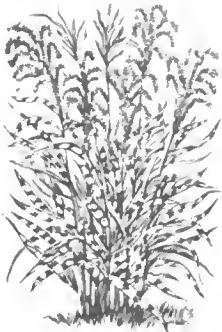
Vinca Elegantissima, (trailing), variegated silver-green, strong plants, 15c each, \$1.50 per dozen.

Vinca Harrisemii, (trailing), two shades of green and gold, strong plants, 15c each, \$1.50 per dozen.

Vinca Evergreen, (trailing), dark-green. 15c each, per 12, \$1.50.

Ornamental Grasses.

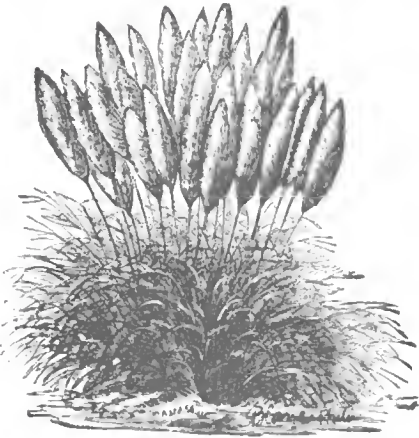
No garden is complete without a few of these beautiful grasses. They are so easily transplanted and grow with so little care, that everybody can afford to have them. The beautiful plumes they produce keep for years, if cut at the right time and properly dried.



Kein Garten ist vollständig in welchem diese schönen Fiergräser fehlen und da sie so leicht zu verpflanzen sind und fast gar keine Pflege beanspruchen, so sollte ein Jeder einige pflanzen, da ja auch die Blüthen so beliebt sind. Stränge und Büschel sind und wenn gut getrocknet, Jahre lang halten.

Eulalia Japonica Zebrina, (Zebrina Grass) bright green blades with white bars across them; grows to a height of five to six feet, producing fine lace-like plumes which last for years if cut when fresh. Perfectly hardy. 15 cts.

Eulalia Japonica Variegata, a variegated hardy grass from Japan. In appearance it somewhat resembles the Ribbon Grass, while in a young state.



It forms compact clumps, six feet in diameter; its flower stalks are very graceful and numerous. 15 cts.

Eulalia Univittatae, very hardy and graceful, with elegant little plumes, two or three feet. 15 cts.

Gynierium Argenteum, (Pampas Grass), enormous bunches of long, handsome, dark-green blades, producing long stalks of silver-white plumes, 5 to 6 feet. 25 cts.

Gynierium Elegans, plumes silvery white, produced upon very long stems; blooms early; a graceful new variety, 4 to 5 feet. 25 cts.



Lemon Grass came from Malabar, where, as in many other parts of the world, the tea made from it is a favorite beverage. A delightful perfume is extracted from the leaves. Highly valued for its medicinal properties and sweet fragrance, height 4 to 5 feet, large clumps, 25 cents.

Pennisetum Ruppeleanum Something altogether new, a purple fountain plant. A wonderful hardy ornamental grass of surprising beauty. As valuable for groups as a solitaire plant, as also for drying purposes and for vases. 25 cts. each.

Gy. Roi des Roses, Plumes very compact, of delicate rose color, very fine blooming and compact growing; new variety, 5 to 6 feet. 25 cents.

Palms, Oranges and Lemons.

The Palm is becoming more and more popular amongst the ladies as a decorative plant for the conservatory, dining-room, etc. To accommodate our customers, we have grown some fine specimens of the following well known varieties. The prices include 8 and 10 inch pots.

Die Palme ist in letzter Zeit die beliebteste und begehrteste Zierpflanze für das Gewächshaus, Wohnzimmer und für Dekorations-Zwecke. Ich führe hier einige der gefuchtesten Sorten auf, welche ich in schönen, harten Exemplaren vorrätig habe. Der Preis ist mit 8- oder 10 zölligem Topf.

Cycas Revoluta, (Sago Palm) hardy has a great number of beautiful pinnate, dark green leaves. It is a magnificent plant, available for scenic

planting in the open air and grand for apartments. In 8 and 10 inch pots, \$1 to \$3.

Latania Borbonica, the well known Chinese fan palm. Leaves are fan shaped and of a pleasant shade of green. Very popular in decorative work and capable of standing considerable cold. In 6 and 8 inch pots, \$1.50 to \$3.

Palms. I have on hand fine specimens of the following kinds, and should be pleased to make quotations on application: Cycas Revoluta, Latania Borbonica, Arecia Lutescens, Chamaerops Excelsa, Cocos Weddelliana, Corypha Australis, Phoenix Reclinata, Scaevola Elegans, and Zamia integrifolia.

Otaheite Orange, this is a grand new plant for indoor decoration. It is a dwarf orange which grows, blooms and fruits freely in pots when but one foot high. The fruit is very sweet and delicious. The blossoms are produced in great abundance at various times of the year. They are delicate and beautiful, and rich in delicious perfume. 50 cents each.

Genoa Lemon, A fine plant for the house, as the lemon bears abundantly when of small size. Flowers are pinkish white, scented and handsome. 50 cents each.

Cannas.

Dry, divided roots, the best to transplant. 15 cents each; \$1.50 per 12.

This is one of the most thankful of flowers. It produces its flowers from spring until the frost kills the top of the plant, and in such different and exquisite colors that nobody can help admiring them. The plant needs plenty of watering and can only be had where there is a plentiful supply of same.



Dieses ist eine der dankbarsten Blumen, da sie vom Frühjahr bis zum Herbst, wenn der Frost ihren Wuchs endet, blüht und zwar in solch herrlichen, leuchtenden Farben, daß einem ein bleibendes Ganna Beet große Freude bereitet. Diese Pflanze ge braucht viel Wasser und kann nur dort gezogen werden, wo solches zur Verfügung steht.

Alphonse Bouvier, in color it is the most intensely brilliant crimson yet introduced, and is undoubtedly the best bedding variety for planting in masses. The foliage is rich green; the plant is of strong, robust habit.

Austria, (new), the gorgeous new orchid-flowered canna a hybrid with "Canna Flaccida," as one parent; flowers of immense size, 5 or 6 inches across. Color golden yellow.

Burbank, (new), the flowers are of immense size, spreading fully seven inches. Form is semi-double. Color, a rich canary-yellow, with spots of deep, fine crimson toward the inner part of the lower petals. The leaves are of a rich green, somewhat of the appearance of large rubber tree leaves.

Florence Vaughan, flowers very large and broad, yellow-spotted bright scarlet; free blooming and strong habit. This is one of the best varieties in cultivation.

Italia, another giant flowering variety of the same sort as Austria, and

by some would be called the more showy of the two. The flowers, while not quite as large, are even more gorgeous on account of their glowing colors. The three upper petals are golden yellow, with a large blotch or orange scarlet in center of each, the center and lower petals scarlet with a narrow edge of golden yellow.

Gladiolus.

Bulbs extra large, $1\frac{1}{2}$ to 2 inches in diameter, of the finest varieties that money can buy, 5 cents each; 50 cents per 12; \$2.50 per 100.

The gladiolus blooms only once, and although its beauty only lasts a short time it is beloved by everybody who knows it. The flowers are borne on spikes 2 to 3 feet long, and bloom in succession for about 8 to 14 days, the lower flowers blooming first. To have a continuance of bloom the bulbs ought to be planted at intervals every two weeks, from March first until the end of May. My bulbs are extra large, well matured and taken only from the finest varieties.



Die Gladiolus blüht nur einmal, doch ist die Blüte eine wahre Pracht, da jeder Stengel eine andere Farbe oder Schattirung hervorbringt. Um lange Zeit von diesen prächtigen Blumen zu haben, sollte man Knollen im März, April und Mai pflanzen. Meine Knollen sind groß und gesund und die beste Mischung die zu haben ist.

Try a hundred of my extra large and extra fine bulbs, and have the grandest flower you ever saw of all colors, Yellow, Crimson, Buff, Salmon, Lemon, Pink, Rose, White, Maroon Cherry, Scarlet, and in fact all odd marked sorts that one can think of.

Flowering Plants.

Hardy Garden Pinks, Very hardy variety of pinks used for fringing flower beds. They are very sweet scented, and of various colors. 5c each, 50c per dozen.

Dianthus Chinensis, (Chinese Pinks), best mixture of the oddest and rarest colors. All my plants bloomed during summer, and not two plants produced the same flowers. 5 cts. each, 50c per dozen.

Carnations. The Carnation excels all other flowers, the rose alone excepted. If planted in the open ground it will bloom all summer, and if taken out and brought indoor at the approach of cold weather, it will bloom in winter.

I have grown very strong plants in the open field, which are well hardened, and which have all bloomed here.

Mixed Colors. (Seedlings.) Grown from the very best Italian seeds. 10c each, 75c per dozen.

In Varieties, as follows: America, large flowered red; Peru, very pure white; Marquis, bright Pink, of fine form and size; Mrs. Bradt, clear white, edged and striped scarlet; California Gold, golden yellow with markings of soft red; Francis Joost, Beautiful pink carnation. 15 cts. each.

Verbenas. There has always been a great demand for Verbena plants, so I have procured the very choicest Verbena seed that can be bought, and

have grown very strong and vigorous one year old plants of the same, all of which have bloomed with me, and have produced large and beautiful flowers of all the different shades and colors found in Verbena flowers. One year filed grown plants, (no small plants sold.) 5c each; 50c per dozen; \$3.00 per 100.

Luxome Violets, a new violet with flowers as large as those of the California Violets, but of much sweeter odor. Have found this to be the only violet which stands the hot weather in summer well. 5c each. 50c per dozen, \$3.00 per 100.

Giant Flowering Pansies, (*Viola Tricolor Maxima*.) I have imported the finest mixed pansy seed that I could get in Europe, and have very strong plants to offer of the same, at 25 cts. per dozen, \$1.50 per 100.

Flower Seeds.

All the flower seeds that I offer are guaranteed to be fresh and of the very highest standard quality. These seeds have been imported by myself from Italy (except those where otherwise stated) and I tested them as soon as they arrived here.

Balsams, improved rose flowered, extra double, 10c per package.

Dianthus Chinensis, Chinese pinks, very best mixed, 5c per package.

Garden Pinks, (home grown seed) single and double and all different colors mixed, 5c per package.

Dahlia Variabilis, Double mixed, 10c per package.

Margaret Carnations, Dwarf mixed, brilliant colors, 10c per package.

Japanese Morning Glory, 5 cts per package (home grown.)

Coxcomb, best mixed, 5cts a package (home grown).

Phlox Drummondii, best mixed, 5c per package.

Cypress Vine, a most beautiful climber, with delicate, dark green, feathery foliage, and an abundance of bright, star shaped, scarlet and white blossoms, 5cts. package, (home grown.)

Verbenas, Giant flowered, 5c per package.

Winter Stocks, mixture of all colors, 15cts. per package.

Zinnias, (home grown seed), all colors mixed, 5 cts. per package

VEGETABLE SEEDS.

Tomato, Wonder of Italy. A wonderfully productive tomato which I grew for the first time last summer. It grows in huge clusters of from 40 to 60 tomatoes on each. The fruit is oval and not quite half the size of a well grown Livingstone's Beauty. It is very fleshy and highly aromatic; more so than large tomatoes. People who have had it prefer it to the large tomatoes for canning. It has a tough skin which peels off very easy, and can be canned without being cut to pieces, which makes it look very luscious when served. It is certainly a wonderful tomato. 25 cts. per package.

Tomato, Leicester's Prolific. I have found this to be the best bearer of all the large fruited tomatoes. The quality of the fruit is the very best. Color is very attractive. 10c per package.

Cucumber, Prince. A cucumber which is nearly all flesh, and of excellent quality; never gets bitter. Smooth and round, and easy to peel. 10 cts. per package.

Water Melon, Giant of Castelmare. A fine melon with red flesh. 10c per package.

Mexican June Corn. this corn will bring a good crop if planted in June stands our dry, hot summer well. 10 cts. per pound, \$1.00 per bushel, home grown

Sweet Potatoes, small seed for planting, of the GENESEE KING, the finest of all Sweet Potatoes, \$1 per bushel, home grown

White Cuba Yam, very large and productive, \$1 per bushel.

Pruning Shears, Wiss kind made, the best Pruning Shear made. No. 109, 9 inch long, \$2.25 each; No. 110, 10 inch long, \$2.50 each.

AMIS CLIENTES EN MÉJICO.

Muy grato me es, el noticiar a mis numerosos favorecedores en Méjico que he cultivado exclusivamente para ellos un vasto campo de árboles frutales y plantas de lo más rico y selecto en esta especie, cuidando siempre el cultivo su prolijección por todas aquellas de superior calidad.

Dichos árboles y plantas están adaptados especialmente para el clima de Méjico, y para su remisión procuramos escoger los más aptos que se adaptan en mejor condición y tomamos toda nuestra atención en su empaque para que lleguen á su destino sin deterioro alguno, y con lo mayor et cañón posible, esto nos ha contribuido mucho para hereditar el nuestro, caso, y que ha ya llegado al grado de popularidad que hoy en día goza en Méjico.

Respecto á los precios, prometemos en relación con nuestros artículos, serán sumamente baratos y que ningún otro caso y en los Estados Unidos ó en cualquier otro país pueda competir, en lo anterior, con la nuestra.

Los pedidos que tengan á bien hacernos serán esmeradamente atendidos y en obsequio de ellos ofrecemos que siempre que estos excedan de \$10.00 dólares Moneda Americana, será su remisión libre de todo gasto, cualquiera estación de ferrocarril en la República, en caso de que el pedido no remitiéndose en cachés \$10.00 en tal caso, los gastos que originen, serán por cuenta del comprador.

Como el tiempo que tengo designado para remitir mis plantas y árboles es exclusivamente de el 1. de Noviembre al 1. de Marzo, suplico á todos los que deseen poseer algunas de estas, aprovechen, de este tiempo para hacerlo.

Si desearsen detalles de tal ó cual planto, árbol, pueden dirijirse, y les responderemos con todo gusto.

Los precios que á continuación anotamos, son en oro ó Moneda Americana.

Manzanos, clase superior, de gran vigorosidad y fortaleza, cada uno	40c
Perales, clase superior, de gran vigorosidad y fortaleza, cada uno	60c
Melocotoneros, clase superior, de gran vigorosidad y fortaleza, cada uno	40c
Aimendras, clase superior, de gran vigorosidad y fortaleza, cada uno	50c
Albaricoqueros, clase superior, de gran vigorosidad y fortaleza, cada uno	50c
Nectarinos, clase superior, de gran vigorosidad y fortaleza, cada uno	50c
Cerezos, clase superior, de gran vigorosidad y fortaleza, cada uno	50c
Ciruelos, clase superior, de gran vigorosidad y fortaleza, cada uno	50c
Moreras, clase superior, de gran vigorosidad y fortaleza, cada uno	50c
Higueras, clase superior, de gran vigorosidad y fortaleza, cada uno	40c
Guayacano, clase superior, de gran vigorosidad y fortaleza, cada uno	60c
Granados, clase superior, de gran vigorosidad y fortaleza, cada uno	50c

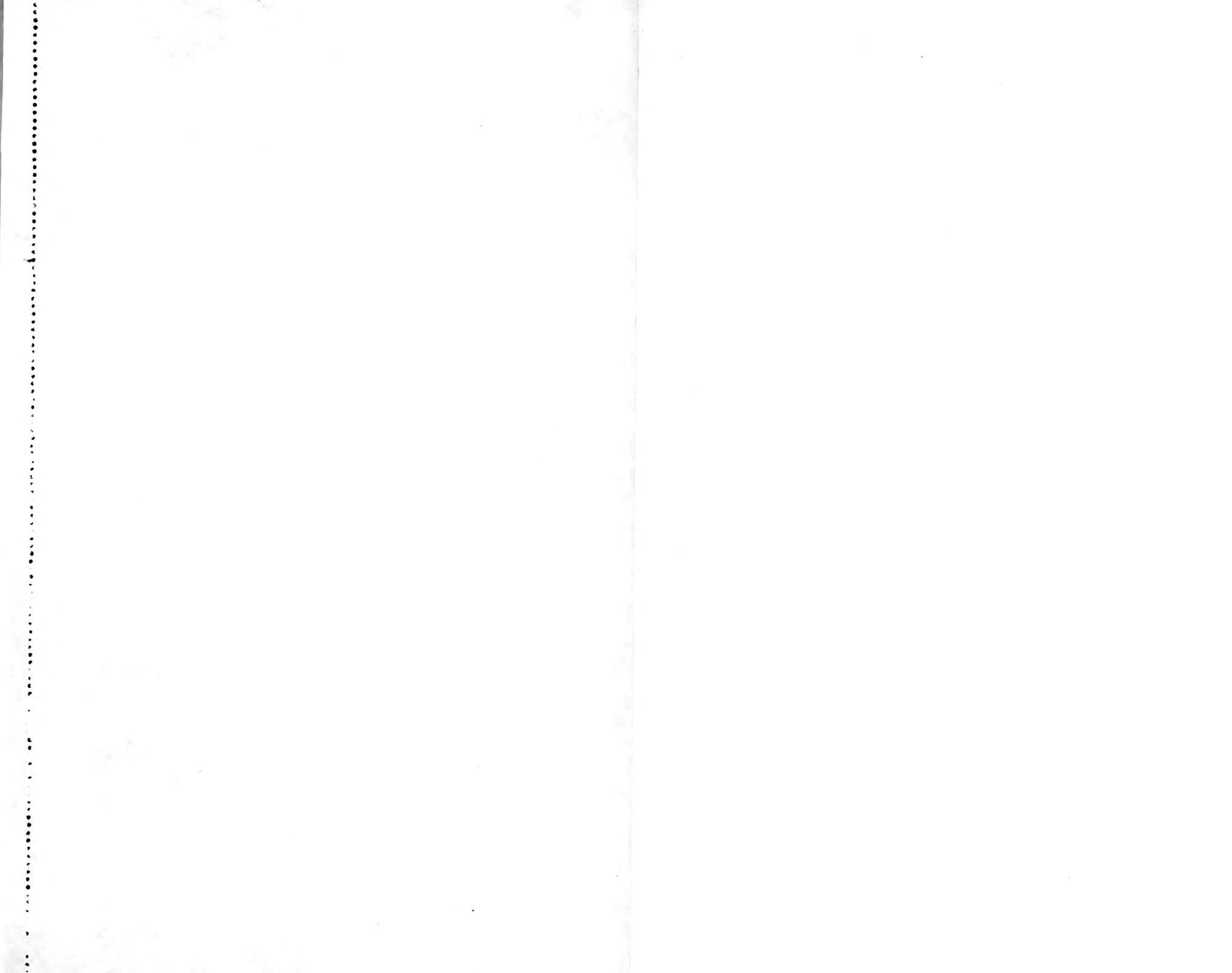
Zaramoras , por docena \$1.00; por cien.	\$ 5.00
Fresales , " " " " " " " " " " " " " " " "	2.00
Frambuesos , " " " " " " " " " " " " " " " "	5.00
Vinas , cada uno, 25 c.; por cien.	15.00
Arboles de Hermosa Foliage , que producen deliciosa sombra, cada uno.	75c.
Arbustos de Preciosa Apariencia , para adornos de jardines y parques, cada uno 50 c. y.	1.00
Siempre Vivas , cada uno 50 c. y.	1.00
Siempre Vivas , (arbusto de menos talla) Golden Compacta y Rose-dale, cada uno 2 pies 75 c.; 3 pies.	1.00
Siempre Vivas , Chinesa, Pyramidalis etc., 2 á 3 pies, cada uno.	50c.
Cedro Rojo , 2 á 3 pies, cada uno.	1.00
Rosales Injertados en Manetti , una fina y extensa variedad, de todas hermosos colores, 2 años cada uno.	50c.
Rosales de Enredadera , en distintos colores, cada uno.	50c.
Plantas Ornamentales , ornamental grasses, cada uno.	50c.
Cannas , 10 colores diferentes, cada uno.	25c.
Gladiolas , cada uno 10 c.; por docena 75 c.; por cien.	5.00
Clavelas, y Clavellinas , de hermosos colores y gran magnificencia, por docena.	1.00

Para todas aquellas personas que deseen hacer grandes plantaciones tenemos otros árboles de menos longitud y los que podemos ofrecerles á precios excesivamente bajos.

Toda la correspondencia s'rvanse dirijirla á

COMAL SPRINGS NURSERY,

New Braunfels, Comal County, Texas.



ORDER SHEET FOR NURSERY STOCK.

OTTO LOCKE, New Braunfels, Texas.

Am't enclosed, Postoffice Order, \$ _____

" " Express Money Order, \$ _____

" " Draft, \$ _____

" " Cash, \$ _____

" " Postage Stamps, \$ _____

Total, \$ _____

Write plainly on lines below:

Your name _____

Postoffice _____

How to be sent—by Freight, Express or Mail,

Name of Freight or Express Office,

If different from Postoffice.

County _____

State _____

Date _____

190 _____

Quantity _____

Name of Variety _____

Price _____

Quantity _____

Name of Variety _____

Price _____

An meine deutschen Kunden.

Zuerst sage ich allen meinen Kunden und Gönnern meinen besten Dank für das Vertrauen, welches sie mir bisher geschenkt haben und bitte alle mich auch ferner mit ihrer Kundschafft zu beehren und Freunden und Bekannten meine Baumschule bestens zu empfehlen.

Wie immer so bin ich auch jetzt bestrebt, alle meine Kunden so zu behandeln, wie auch ich als solcher behandelt zu werden wünsche. Sollte der Eine oder Andere mit irgend etwas unzufrieden sein, so bitte ich ihn mir seine Beschwerde zukommen zu lassen, dann werde ich versuchen, ihn zufrieden zu stellen, wenn es in meiner Möglichkeit liegt, denn ich wünsche daß alle mit meinen Bäumen und Pflanzen zufrieden sind. Ich halte mich jedoch in keinem Falle verpflichtet, Bäume und Pflanzen zu ersetzen, die durch Unkenntniß oder Nachlässigkeit beim Verpflanzen, ungünstige Witterung, Insekten- oder Hasenfraß zu Grunde gehen. Ich verpflichte mich aber, nur gesunde, lebensfähige Bäume und Pflanzen zu versenden, die mit der nöthigen Pflege gedeihen werden.

Meine Preise sind so niedrig gesetzt wie es irgend möglich ist gute, namensrechte Bäume und Pflanzen zu ziehen und da ich weder Agenten noch Arbeiter angestellt habe und alle Arbeit allein mit meinen Söhnen besorge, so bin ich in der Lage zu den niedrigsten Preisen zu verkaufen.

Da es mein eigenes Interesse ist, daß von mir bezogene Bäume und Pflanzen auch wachsen, so bitte ich folgendes zu beachten. Beim Empfang püße man die Bäume sofort aus und können sie nicht sofort gepflanzt werden, so grabe man sie einzeln in feuchter Erde ein und gieße genügend Wasser daran, achte aber ja darauf, daß so wenig Luft wie möglich und keine Sonne an die Wurzeln kommt. Immergrüne Sträucher sollten sofort gepflanzt werden, denn diese sind sehr empfindlich. Man schneide alle dicken Hauptwurzeln mit einem scharfen Messer so weit zurück bis man gesundes, weißes Holz hat und schneide auch die Hälfte von dem Oberholz bei allen Obstbäumen ab. Der Baum sollte nie tiefer gepflanzt werden als er in der Baumschule gestanden hat, auch sollten die Wurzeln mit 2 bis 3 Eimer Wasser gut eingeschlänmt werden. Alle Bäume und Sträucher, die nicht zum Nadel-Holz gehören, müssen gut beschnitten werden.

Bäume sollten immer per Express bestellt werden, außer sie sind sehr schwer und die Entfernung ist nicht groß, dann können sie bei Fracht gesandt werden. Die Express-Raten auf Bäume und Pflanzen sind 20% niedriger als am Kaufmannsakt. Bei jeder Bestellung lege ich Bäume frei bei, um den größten Theil der Kosten zu decken.

Bäume und Neben, die einen bis drei Dollars das Stück kosten, habe ich nicht, solche schwindelhafte Neuheiten überlasse ich den jungenwändigen Baum-Agenten.

Man schreibe ja seine Adresse deutlich und schicke niemals Geld im offenen Brief, sondern durch Post Money Order oder im registrierten Brief.

Der Betrag muß jeder Bestellung beiliegen, es werden keine Bäume C. O. D. versandt.

Allen deutschen Farmern empfehle ich "Feld und Flur," Dallas, Texas, als eine gute, deutsche Fachschrift: sie kostet nur 50 Cents das Jahr. Dieselbe gebe ich auch als Prämie für ein Jahr bei jeder Bestellung im Betrage von \$5.00 wenn gewünscht. Adresse:

Otto Locke,

Neu-Bransfels, Comal County, Texas.

EXPRESS RATES.

For the convenience of our customers we have obtained the correct express rates on trees (100 lbs.) to some of the stations to which we are making our principal shipments. The rates given below are on 100 lbs. and it is easy to determine how much your bundle should cost you, and if you think that the rate the agent charges you is incorrect, be sure and have him figure it out. Tell him to take Merchandise Rates, and if the shipment was forwarded only by one company, the correct rate on trees is 20 per cent less than Merchandise. If trees went over two different companies, each Company figures at 20 per cent less than Merchandise Rates, and allows additional 10 per cent on what is left thus, if two Companies forwarded your bundle, and the Merchandise Rate from here to your station is \$1.00, the correct rate on trees is 72c.

San Marcos.....	\$ 35	Big Springs.....	2 25	Eagle Pass.....	1 17
Reedville.....	35	Stanton.....	2 50	Brackettville.....	1 17
Maxwell.....	35	Midland.....	2 50	Del Rio.....	1 17
Lockhart.....	35	Pecos.....	2 50	Comstock.....	1 35
Dale.....	35	El Paso.....	2 40	Langtry.....	1 35
Red Rock.....	35	San Angelo.....	1 80	Lozier.....	1 49
Rosansky.....	50	Coleman.....	1 68	Sanderson.....	1 71
Smithville.....	50	Mullen.....	1 50	San Antonio.....	40
West Point.....	50	Goldwaithe.....	1 45	Leon.....	40
LaGrange.....	50	Lampassas.....	1 26	Medina.....	45
Fayetteville.....	60	Copperas Cove.....	1 22	Lytle.....	50
New Ulm.....	60	Camanche.....	1 90	Devine.....	50
Cat Springs.....	60	Luling.....	81	Moore Station.....	55
Sealy.....	60	Harwood.....	81	Pearsall.....	65
Brookshire.....	60	Platonia.....	95	Dilley.....	75
Bastrop.....	50	Engle.....	55	Millett.....	75
Coupland.....	60	Schulenburg.....	1 04	Cotulla.....	75
Bartlett.....	60	Weimar.....	1 04	Tyohig.....	85
Temple.....	75	Columbus.....	1 04	Ercinal.....	90
Waco.....	90	Eagle Lake.....	1 13	Laredo.....	90
Haymond.....	1 35	E. Bernhard.....	1 17	Kyle.....	40
Marthon.....	1 35	Rosenberg.....	1 17	Austin.....	45
Alpine.....	1 35	Runge.....	86	Round Rock.....	55
Marfa.....	1 60	Yorktown.....	95	Winchester.....	1 00
Elmendorf.....	68	Cuero.....	1 04	Giddings.....	86
Floresville.....	72	Sweet Home.....	1 13	Lexington.....	1 00
Karnes City.....	81	Hallettsville.....	1 13	Lott.....	1 80
Kennedy.....	81	Shiner.....	31	McDade.....	77
Beeville.....	95	Sublime.....	1 17	Paige.....	86
Mesquital.....	1 13	Moulton.....	81	Ledbetter.....	90
Boerne.....	77	Muldoon.....	86	Carmine.....	90
Welfare.....	77	Rockdale.....	65	Burton.....	95
Kerrville.....	86	Palestine.....	1 10	Brenham.....	1 00
Comfort.....	81	McDona.....	68	Hempstead.....	1 08
Converse.....	68	LaCoste.....	72	Hockley.....	1 17
Marion.....	72	Dunlay.....	72	Llano.....	1 00
Seguín.....	72	Hondo City.....	77	Kingsland.....	95
Kingsbury.....	77	D'Hanis.....	81	Fairland.....	90
Eastland.....	1 95	Sabinal.....	86	Marble Falls.....	95
Abilene.....	2 00	Uvalde.....	95		
Sweet Water.....	2 25	Cline.....	1 04		
Colorado.....	2 25	Spofford.....	1 13		