

Estd.

1844.

PURVEYORS OF SEEDS

TO HIS MAJESTY KING GEORGE V.
BY APPOINTMENT

ALSO TO HIS LATE MAJESTY
KING EDWARD VII

SPRING

1912.

Catalogue of
**HOME-GROWN
FARM SEEDS**

DANIELS·BROS·L^{TD}
Royal·Arcade.
NORWICH

*Stand 132.
CORN·HALL
NORWICH*

QUALITY AND PRICE OF SEEDS.

The very severe and protracted drought of last Summer proved very disastrous to the growing crops of Mangel Seeds, and resulted in a great shortage in the yield. As a consequence the prices for reliable stocks of good growth must show a decided advance on those of last year. We hope, however, to be able to meet the requirements of our regular customers, and will give them the preference if they will order early. Our prices, we are confident, will be found to compare favourably with those of any other firm of good standing.

Swedes and Turnips were a fair crop, and we offer our fine selected stocks of these at very moderate prices.

Rye Grasses, both Perennial and Italian, yielded an excellent crop of seeds, and good samples of these are offered at very reasonable prices.

Natural Grasses. These yielded but short crops in most varieties, and prices are therefore necessarily somewhat higher.

Red Clover. A heavy crop of grand quality was saved in this country, but owing to the heavy demand from America prices have risen considerably. The Seed we offer is of excellent quality and first-class germinating powers.

Trefoil was a very short crop, but of good quality. Prices rule higher than usual.

Alsike was a medium crop of very good quality, but prices are likely to advance later in the season.

White Clover. A very short crop, but of the most splendid quality. This is much higher in price than for many years past.

To Grass and Clover Seeds we give the closest attention, and by a careful selection and the employment of the best machinery we are enabled to offer our Customers samples of exceptionally fine quality and free from weeds. We would particularly direct the attention of agriculturists to our splendid mixtures of Grasses for Permanent Pasture and other purposes. These are carefully made up according to soil and invariably give the highest satisfaction.

The germinating powers of all our Seeds are carefully tested before they are sent out, and they may therefore be relied on as of first-class growing quality; we also take the greatest care that they are free from adulteration.

As we cannot possibly replace our own selected stocks of Seeds should our supplies become exhausted, we cannot be bound by these prices indefinitely, and orders should therefore be sent in as early as convenient.

TERMS OF BUSINESS.

ACCOUNTS—DISCOUNTS.—We allow a discount of 5 per cent. on all orders of 20s. and upwards, when accompanied by a remittance, or when paid within fourteen days of date of invoice. Otherwise accounts are due nett at three months.

CHEQUES & POSTAL ORDERS.—Should be made payable to "DANIELS BROS. LTD.," and crossed "BARCLAY & Co., LTD., Bankers, Norwich." Letters containing coin must be registered according to Post Office regulations.

NEW CUSTOMERS.—All orders from unknown Correspondents should be accompanied by a remittance, or by a Bankers' or other satisfactory references.

CARRIAGE.—All Seed Orders of not less than 20s. in value will be sent Carriage Paid to any railway station in England or Wales. If of £2 value and upwards free to any railway station in Scotland or port in Ireland.

PACKAGES.—All packages are charged at cost price, but will be allowed for in full if returned in good condition, and Carriage Paid, within fourteen days of receipt of goods. Customers are particularly requested to put their name and address on each package, and to advise us by post when returned, otherwise it is impossible to credit them correctly.

WARRANTY.—We take the greatest possible care to supply only reliable Seeds of the finest stocks and growing quality; it must however be distinctly understood that we give no warranty, express or implied, as to description, quality, productiveness, or any other matter relating to the seeds we send out, and will not in any way be held responsible for any failure of crop. All orders received for Seeds named in this Catalogue will be executed on these conditions only, and if not accepted on these terms must be returned at once.

DANIELS BROS. LTD., NORWICH,

Seed Growers by Appointment to His Majesty the King.

Head Office:—
ROYAL ARCADE.

Seed Warehouse:—
BEDFORD STREET.

Nurseries and Seed Grounds:—
NEWMARKET ROAD & EATON.

Stand:—132 CORN HALL, NORWICH. Also Attend YARMOUTH MARKET.

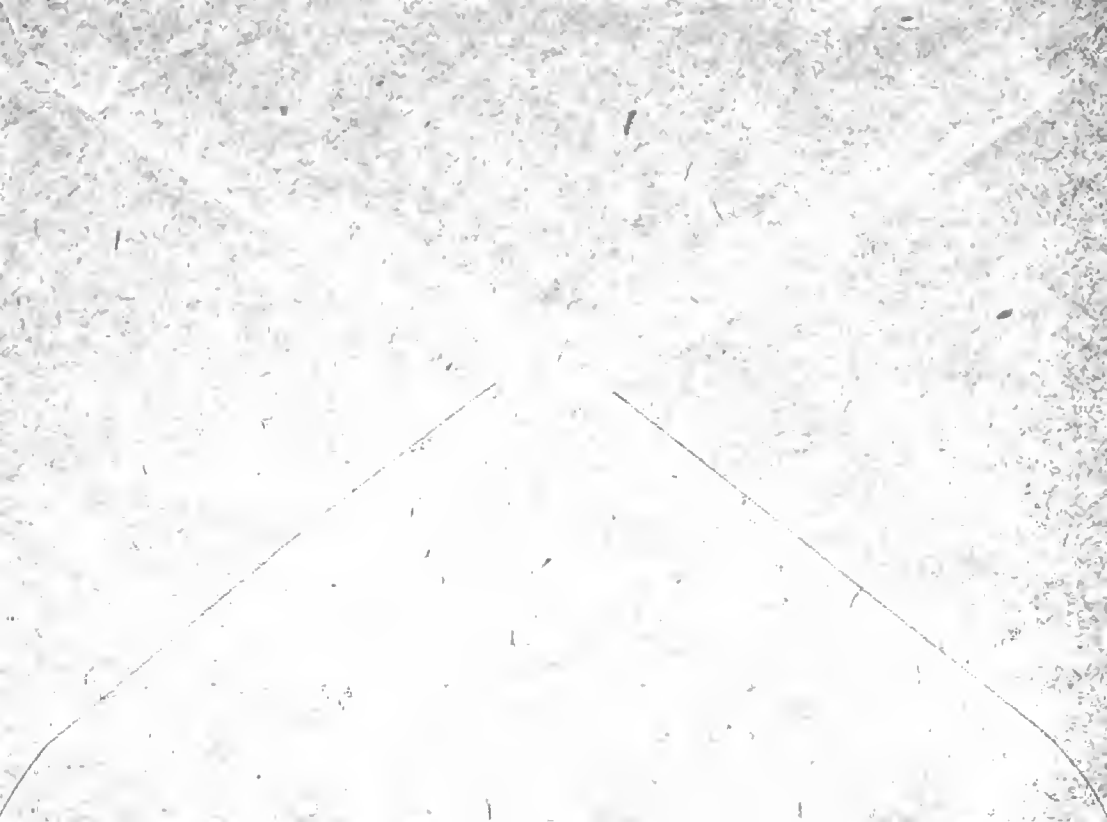


MESSRS DANIELS BROS LTD.

Seed Growers · ✕
✕ & Nurserymen ✕



NORWICH



Spring 1912.

FARM SEED ORDER.

To DANIELS BROS. Ltd., NORWICH.

Name

Address

Post-town

County

Nearest Railway Station }
and distance from same }

Date

1912.

Amount enclosed:—

£ s. d.

Cheque ...

Postal Order

QUANTITY
REQUIRED.

£ s. d.

From the "EASTERN DAILY PRESS," 13th November, 1911.

ROOT SHOW AT NORWICH.

DANIELS BROS. LIMITED.

Messrs. Daniels, Limited, the well-known seedsmen of Norwich, on Saturday held their show of roots, grown from seed supplied by them to their customers all over the Kingdom. The exhibition as usual was held in the firm's spacious warehouse in Bedford Street, and the duties of judging were again carried out by Mr. W. Case of Tuttington, and Mr. Charles Waters of Postwick, who for years have acted in a similar capacity. There was quite an average entry in the various classes, and considering the dry season the size and quality of the roots in some of the classes were most surprising. Daniels' Coronation Globe Mangel seemed to have stood the drought better than most sorts. This variety, which comprises the yellow flesh of the globe and the quality of the tankard, produces a much heavier weight per acre than most varieties. The six first prize roots, which were excellent specimens, turned the scale at 97 lbs. Norfolk Gate-posts, although not quite so large as usual, comprised some very neat roots of nice quality true to type, clean, and well shown. In the class for Golden Tankards there were to be seen some extraordinarily fine roots both with regard to size and quality, the six leading roots weighing 90 lbs. This variety, which is of exceedingly good quality, produced a very strong class, and generally the roots were of as good a formation as seen anywhere this season. For the first time there was a class for Red Intermediate Mangel, an improvement on the old Long Red, the roots being shorter and more compact. This variety, which produces an enormously heavy crop, is becoming a great favourite for early cow-feeding, and the exhibits staged were of good type and quality, the winning specimens scaling 126 lbs. On account of the extraordinarily dry season the swede classes were smaller than usual, and the roots generally only about half the average size. Notwithstanding the excessive drought some fair quality specimens were shown, but it must be remembered that the past season has been practically the worst year for swedes for a quarter of a century, and that in some places the crop has been altogether a dismal failure. Giant Purple Tops were about half the size, and Improved Purple Tops were represented by some nice specimens, although not so large as in some seasons. In addition to the competitive classes Messrs. Daniels showed a grand collection of roots grown on their seed farm at Eaton.

The following were the awards:—

For the best Six Roots, Daniels' Coronation Globe Mangel.

MANGEL, DANIELS' CORONATION GLOBE.—1st, E. T. Learner, Burgh; 2nd, F. Topham, Northwick; 3rd, J. Bell, Hickling; 4th, G. Wallage, Knapton; hc, J. Sparrow, Bawburgh.

For the best Six Roots, Daniels' Gate-post Mangel.

MANGEL, DANIELS' GATE-POST.—1st, A. W. Ballance, Herringswell; 2nd, J. Sparrow, Bawburgh; 3rd, F. Nash, Hassingham; 4th, F. Brown, Tibbenham; hc, S. R. Norton, Great Melton.

For the best Six Roots, Daniels' Golden Tankard Mangel.

MANGEL, DANIELS' GOLDEN TANKARD.—1st, J. Bell, Hickling; 2nd, F. Topham, Northwick; 3rd, J. Sparrow, Bawburgh; 4th, E. March, Rumburgh; hc, J. G. Pilgrim, Bacton.

For the best Six Roots, Daniels' Red Intermediate Mangel.

MANGEL, DANIELS' RED INTERMEDIATE.—1st, F. Topham, Northwick; 2nd, F. Nash, Hassingham; 3rd, G. E. Theobald, Reymersstone; 4th, J. G. Pilgrim, Bacton; hc, D. G. W. Braddock, Somerton.

For the best Six Roots, Daniels' Norfolk Giant Swede.

SWEDE, DANIELS' NORFOLK GIANT.—1st, E. T. Learner, Burgh; 2nd, D. G. W. Braddock, Somerton; 3rd, J. Bell, Hickling; 4th, F. Nash, Hassingham; hc, W. B. Mickelburgh, Aldoby.

For the best Six Roots, Daniels' Improved Purple-top Swede.

SWEDE, DANIELS' IMPROVED PURPLE TOP.—1st, J. G. Pilgrim, Bacton; 2nd, F. Nash, Hassingham; 3rd, G. Wallage, Knapton; 4th, W. B. Mickelburgh, Aldeby; hc, J. Bell, Hickling.

For the best Six Roots, Daniels' Norfolk Green Round Turnip.

TURNIP, DANIELS' NORFOLK GREEN ROUND.—1st, F. Nash, Hassingham; 2nd, J. G. Palmer, Saxlingham.

£25 CASH PRIZES

OFFERED BY

DANIELS BROS. LTD.,

AT THEIR

Annual Root Show, November, 1912.

IMPORTANT NOTICE.

For many years past we have offered Prizes amongst our Customers for the produce of our select stocks of Mangel, Swede, and Turnip, and that these offers have been appreciated is proved by the fine show of Roots sent in for Competition.

We beg to inform our Patrons that, in connection with the NORFOLK AND NORWICH FAT CATTLE SHOW, to be held in November next, we shall have much pleasure in again offering the following Prizes for Roots grown from Seeds obtained direct from us during the present year. The Roots exhibited to be drawn from not less than the acreage stated. Date of Show, and further full particulars, will be sent in advance to all Customers eligible to compete.

These Prizes are open to all our Customers, without entrance fee, and we pay carriage on all exhibits grown within a radius of 50 miles from Norwich.

| | 1st Prize. | | | 2nd Prize. | | | 3rd Prize. | | 4th Prize. | | |
|--|------------|----|----|------------|----|----|------------|----|------------|----|---|
| | £ | s. | d. | £ | s. | d. | s. | d. | s. | d. | |
| Daniels' Coronation Globe Mangel | = | 2 | 0 | 0 | 1 | 0 | 0 | 12 | 6 | 10 | 0 |
| For the best Six Roots, <i>From Two Acres</i> | | | | | | | | | | | |
| Daniels' Gate-post Mangel | = | 2 | 0 | 0 | 1 | 0 | 0 | 12 | 6 | 10 | 0 |
| For the best Six Roots, <i>From Four Acres</i> | | | | | | | | | | | |
| Daniels' Golden Tankard Mangel | = | 2 | 0 | 0 | 1 | 0 | 0 | 12 | 6 | 10 | 0 |
| For the best Six Roots, <i>From Four Acres</i> | | | | | | | | | | | |
| Daniels' Red Intermediate Mangel | = | 2 | 0 | 0 | 1 | 0 | 0 | 12 | 6 | 10 | 0 |
| For the best Six Roots, <i>From Two Acres</i> | | | | | | | | | | | |
| Daniels' Norfolk Giant Purple-top Swede | = | 2 | 0 | 0 | 1 | 0 | 0 | 12 | 6 | 10 | 0 |
| For the best Six Roots, <i>From Four Acres</i> | | | | | | | | | | | |
| Daniels' Improved Purple-top Swede | = | 1 | 10 | 0 | 15 | 0 | 10 | 0 | 7 | 6 | |
| For the best Six Roots, <i>From Two Acres</i> | | | | | | | | | | | |
| Daniels' Norfolk Green Round Turnip | = | 1 | 0 | 0 | 10 | 0 | 7 | 6 | 5 | 0 | |
| For the best Six Roots, <i>From Two Acres</i> | | | | | | | | | | | |

A Report of last year's Competition and Names of Prizewinners will be found on back of Order Sheet.

DANIELS BROS. Ltd., Seed Growers, NORWICH.

BY APPOINTMENT TO HIS MAJESTY THE KING.

DANIELS' SELECTED MANGELS.

PEDIGREE STOCKS.



DANIELS' CORONATION GLOBE.

This very fine Mangel, introduced by us, has become highly popular. It is a cross between Golden Tankard and Orange Globe, and represents the most perfect type of Globe Mangel. It is of splendid size, a rich orange red in colour, very solid, of most symmetrical form, with single tap-root, and in richness of saccharine matter and feeding qualities, rivals the famous Golden Tankard, whilst it produces a much heavier weight per acre.

Per lb., 1s.; per cwt., 105s.

DANIELS' CHAMPION ORANGE GLOBE—

A grand stock of Globe Mangel, specially selected for its clear skin, neat top, and tap-root, also its highly nutritious qualities. It grows a very heavy weight per acre, is easily stored, and an excellent keeper. Can be recommended as one of the best for general use. Our own unequalled stock.

Per lb., 1s.; per cwt., 105s.

Sow six to eight pounds per acre.

We carefully test the growth of all Seeds before sending out.

DANIELS' SELECTED MANGELS.

GLOBE VARIETIES.



DANIELS' SELECTED YELLOW GLOBE.

DANIELS' SELECTED YELLOW GLOBE.

A grand stock, specially selected for its neat top, splendid shape, and single tap root, at the same time it grows to a large size and keeps well.

per lb., 11d.; per cwt., 90s.

| | per lb. | per cwt. | |
|--|---------|----------|-------|
| | s. | d. | s. d. |
| Monarch Yellow Globe —A new selection, producing a heavy weight per acre; the roots grow to a large size without becoming unduly coarse | 1 | 0 | 105 0 |
| Prizewinner Yellow Globe —A fine type of Yellow Globe growing to a large size, produces a heavy crop of good quality | 1 | 0 | 105 0 |
| Somerset Yellow Globe —A very useful variety, noted for its fine neat tops, and good shape and quality of the roots | 1 | 0 | 105 0 |
| Orange Globe —Good Stock | 0 | 11 | 90 0 |
| Yellow Globe —Ordinary Stock | 0 | 10 | 80 0 |

Sow six to eight pounds per acre.

Seed Growers by Appointment to His Majesty the King.

DANIELS'

SELECTED MANGELS.

INTERMEDIATE AND LONG VARIETIES.



DANIELS' IMPROVED GATE-POST.

DANIELS' IMPROVED GATE-POST INTERMEDIATE.

This is one of the finest Mangels ever introduced, giving great satisfaction wherever grown. The crop is uniform, and the roots heavy, handsome, and clean, with single tap-root, and of the richest and most nutritious quality. Its fine shape and single root permit the crop to be raised at a small cost, whilst it requires very little cleaning before use. Our selected Stock of this grand variety cannot be surpassed.

Per lb., 1s.; per cwt., 105s.

DANIELS' RED INTERMEDIATE—

An improvement on the Long Red, and very useful for shallow soils. The roots are broader and shorter than that variety, and much easier to raise, whilst it comes fit for use quite as early, and produces a very heavy crop of nice clean roots

per lb.
s. d. per cwt.
s. d.

.... 1 3 130 0

DANIELS' MAMMOTH LONG RED—

The most useful variety for early use, and contains a large percentage of saccharine matter, at the same time producing a very heavy crop. Our own selected Stock (scarce)

.... 1 0 105 0

Sow six to eight pounds per acre.

We carefully test the growth of all Seeds before sending out.

DANIELS'

SELECTED MANGELS.

INTERMEDIATE AND LONG VARIETIES.



DANIELS' SELECTED GOLDEN TANKARD.

DANIELS' SELECTED GOLDEN TANKARD.

A very superior variety for shallow soils, highly nutritious and stores well. This stock is specially selected for its yellow or golden flesh, its richness in saccharine matter, and handsome shape, having but a small top and a single tap-root.

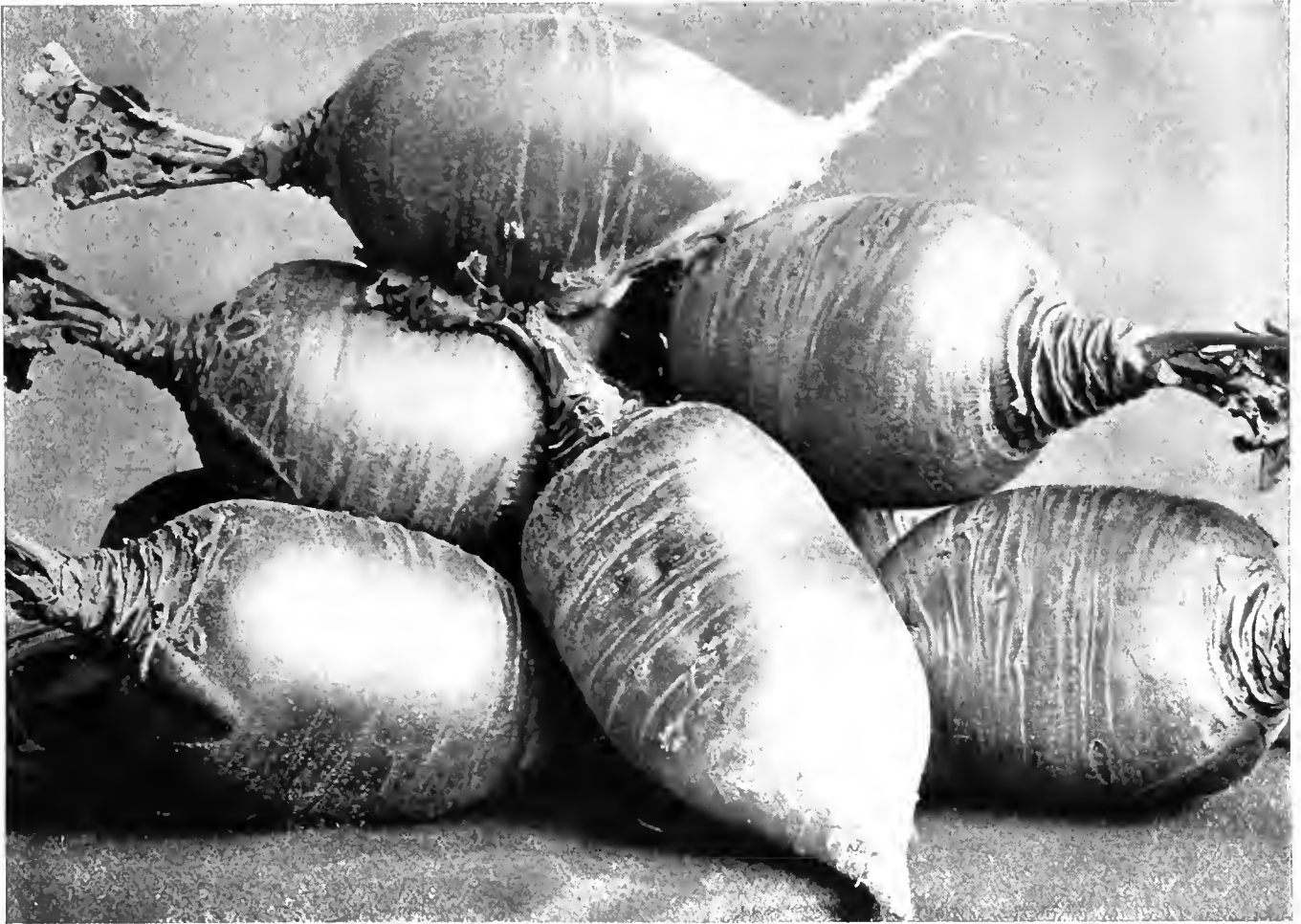
per lb., 1s. 3d. ; per cwt., 130s.

| | per lb. | d. | per cwt. | s. | d. |
|--|---------|----|----------|----|----|
| Daniels' Selected Long Yellow—First-class, very nutritious. This we can highly recommend as a select stock of Long Yellow with single tap-root, being easy to pull, and a heavy cropper | 1 | 3 | — | | |
| Golden Tankard—Ordinary stock | 1 | 0 | 105 | 0 | |
| Yellow Intermediate—A good selected stock, giving great weight per acre; keeps well | 0 | 11 | 90 | 0 | |

Sow six to eight pounds per acre.

Seed Growers by Appointment to His Majesty the King.

DANIELS' SELECTED SWEDES.



DANIELS' NORFOLK GIANT SWEDE

DANIELS' NORFOLK GIANT PURPLE-TOP—

This grand variety has now become very popular amongst our customers. The roots are symmetrical in shape, and uniform in size, producing a heavier weight per acre than any other sort, and are remarkably good keepers. Our own selected stock

| | |
|---------|-----------|
| per lb. | per bush. |
| s. d. | s. d. |

| | | | |
|---|---|----|---|
| 0 | 8 | 32 | 0 |
|---|---|----|---|

DANIELS' IMPROVED PURPLE-TOP—

A carefully selected and splendid variety; remarkably heavy cropper of unsurpassable quality. Is exceedingly hardy and stores well. Highly recommended

| | | | |
|---|---|----|---|
| 0 | 7 | 28 | 0 |
|---|---|----|---|

Sow three to four pounds per acre.

Ground intended for Swedes should be fairly, but not too liberally manured, and the soil should always be well-broken up and brought into fine tilth before sowing. Ridge cultivation is most in favour in the Eastern Counties, the ridges being about two feet apart, and the plants thinned out to about a foot apart in the row. Clean cultivation is highly essential in the production of good crops, the frequent stirring of the surface by the hoe being of great benefit to the growing crop. The latter part of May or early in June may generally be reckoned about the time for sowing, and the seed should be drilled at the rate of 3 or 4 lbs. per acre. Swedes are of a much higher nutritive quality than White Turnips, and although hardy enough in the general way to stand the Winter, they are much better when stored before being injured by frost.

Seed Growers by Appointment to His Majesty the King.

DANIELS' SELECTED SWEDES.



DANIELS' DEFIANCE GREEN-TOP SWEDE.

| | per lb. | | per bush. |
|--|---------|----|-----------|
| | s. | d. | s. d. |
| DANIELS' DEFIANCE GREEN-TOP— This variety has withstood the severest Winters when other kinds have failed. A first-class sort for grazing purposes, keeping solid and nutritious far into the Spring. Highly recommended | 0 | 9 | 34 0 |
| Best of All —A handsome purple-top variety of hardy constitution, producing a heavy crop of fine shaped roots, which are very solid, and of splendid keeping quality | 0 | 8 | 30 0 |
| Elephant or Monarch —One of the best for early use. The roots are of splendid shape, and very heavy. It is an excellent cropper, and keeps well | 0 | 8 | 30 0 |
| Kangaroo —A fine green-top Swede of similar shape to the Monarch, but much hardier than that variety, and of first class feeding quality | 0 | 10 | 40 0 |
| Magnum Bonum —A very fine hardy Swede of excellent feeding qualities. Produces a great weight per acre of handsome roots. Highly recommended | 0 | 10 | 40 0 |
| Champion Improved —A fine hardy Swede, one of the heaviest-cropping in cultivation, but not suitable to very poor or light soils | 0 | 7 | 28 0 |
| Purple-Top —A good selected stock | 0 | 6 | 25 0 |

Sow three to four pounds per acre.

DANIELS' WHITE-FLESHED TURNIPS.

SELECTED STOCKS.

Sow in May or early in June for Summer feeding, and in July and August for late Autumn or Winter use.



DANIELS' NORFOLK GREEN ROUND.

DANIELS' NORFOLK GREEN ROUND—

A fine hardy stock, much superior to the usual stocks of Green Round, the roots are of grand shape and quality. If not sown too early it will stand the winter well

| per lb. | per bush. |
|---------|-----------|
| s. d. | s. d. |
| 0 7 | 28 0 |

DANIELS' PURPLE-TOP MAMMOTH—

A grand Turnip for early sowing, grows to a large size, and produces a heavy weight per acre. Our stock of this has been grown from transplanted bulbs, and can be relied on as really first-class

| | |
|-----|------|
| 0 9 | 34 0 |
|-----|------|

Green Round—Ordinary stock

| | |
|-----|------|
| 0 6 | 24 0 |
|-----|------|

Bell or Decanter—Good old variety, extra fine selected stock, grown from transplanted roots

| | |
|-----|------|
| 0 9 | 34 0 |
|-----|------|

Devonshire Grey Stone—The largest of white-fleshed Turnips

| | |
|-----|------|
| 0 9 | 35 0 |
|-----|------|

Norfolk White Loaf—Well-known, useful sort for early sowing

| | |
|-----|------|
| 0 8 | 30 0 |
|-----|------|

Pomeranian or White Globe—A fine Turnip for early use

| | |
|-----|------|
| 0 9 | 34 0 |
|-----|------|

Stone or Stubble—First-class for late sowing

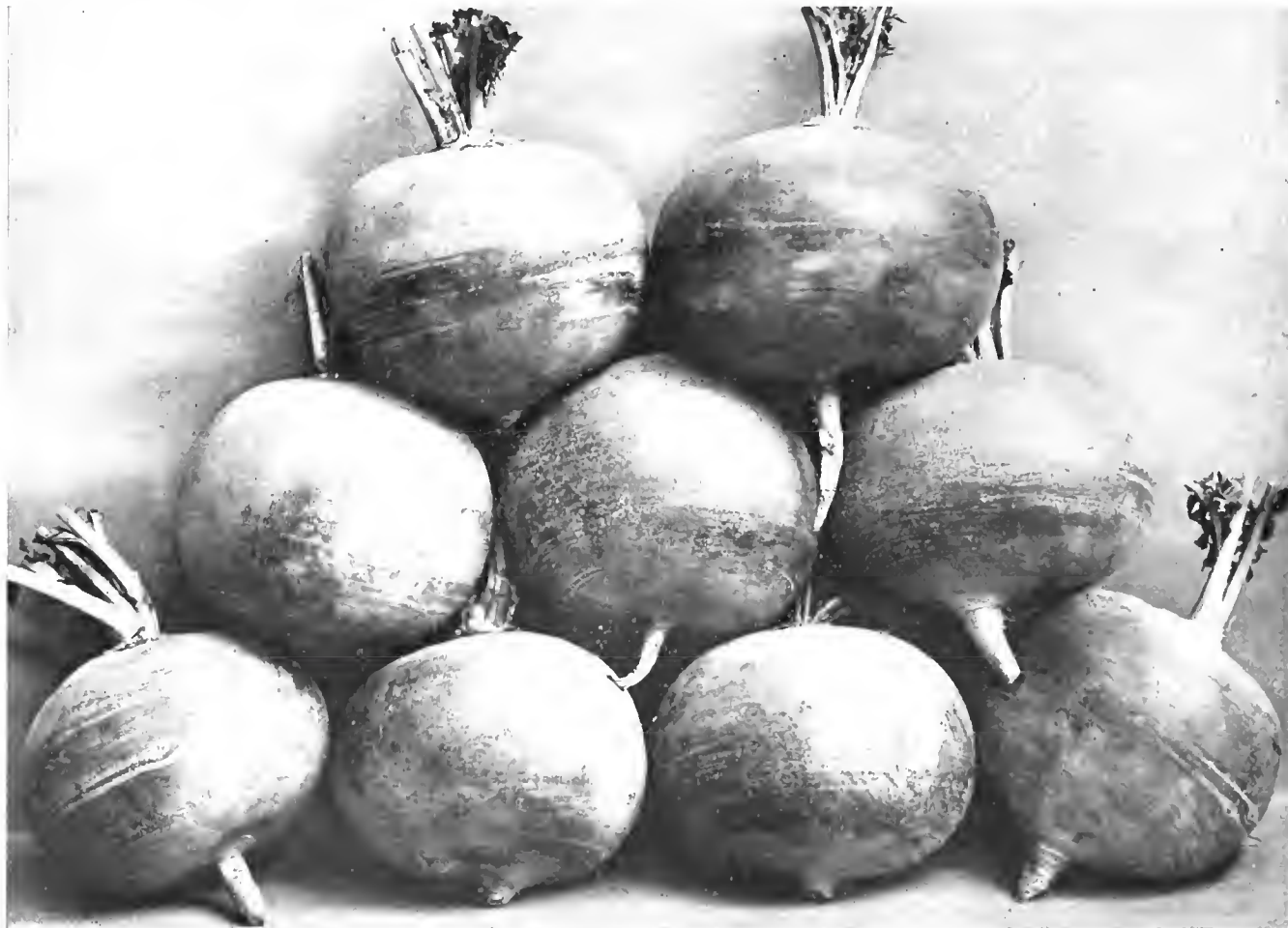
| | |
|-----|------|
| 0 9 | 34 0 |
|-----|------|

Sow three to four pounds per acre.

DANIELS'

YELLOW-FLESHED or HYBRID TURNIPS

Yellow-fleshed Turnips should be sown in June or July. The produce is much more nutritious than that of the White-fleshed varieties, besides which, they are hardier and better keepers.

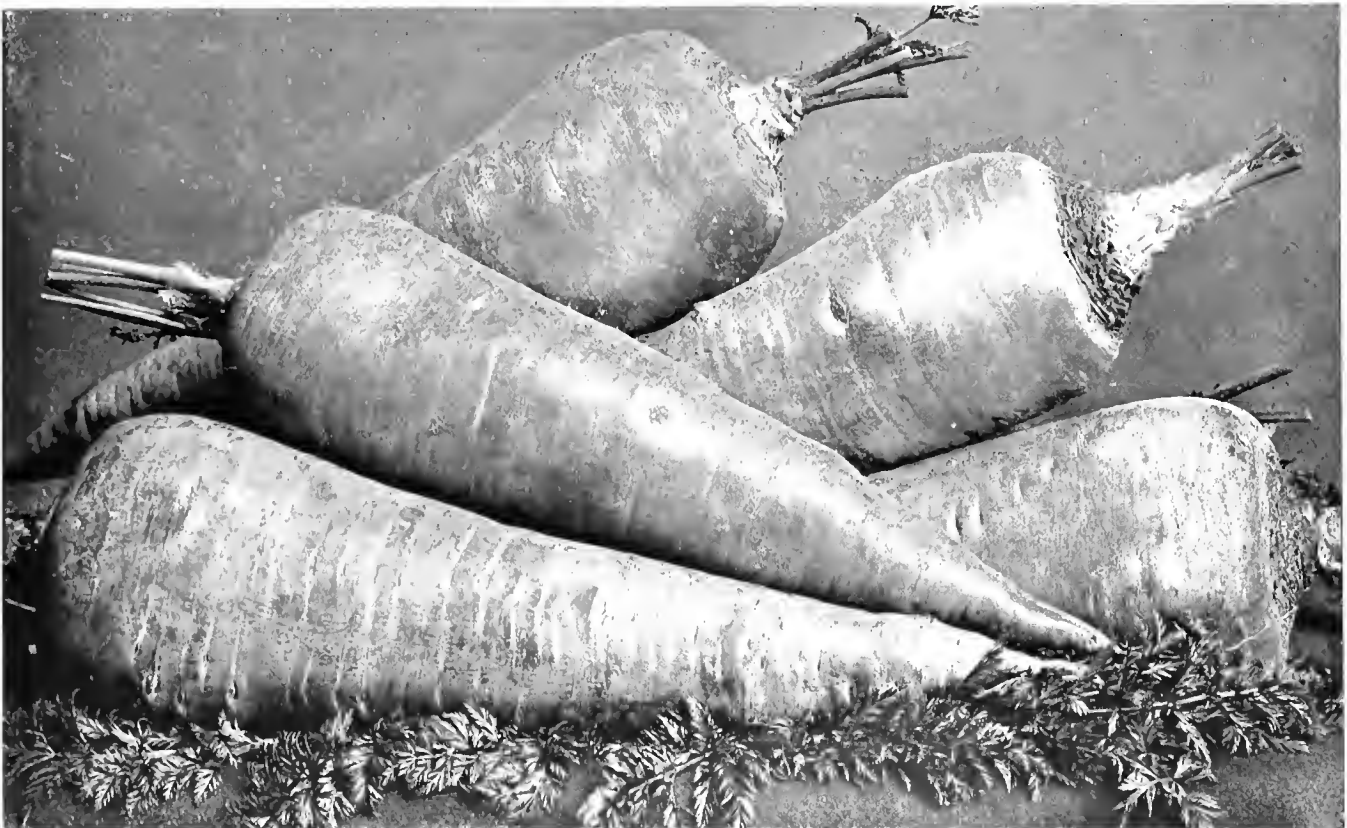


DANIELS' GREEN TOP YELLOW SCOTCH.

| | per lb. | per bush. |
|---|---------|-----------|
| | s. d. | s. d. |
| DANIELS' GREEN-TOP YELLOW SCOTCH— | | |
| Grows a heavy crop, flesh solid and juicy, much relished by cattle. A capital variety for early Spring feeding; highly recommended. Our own selected stock, grown from transplanted roots | 0 9 | 34 0 |
| Daniels' Purple-top Yellow Scotch— A very superior variety, nearly equal to the Swede in quality, and may be sown much later with the certainty of a crop | 0 9 | 34 0 |
| Early Sheepfold— The earliest of the Green-top Scotch varieties, coming into use nearly as soon as the Green Round, and of excellent feeding quality | 0 9 | 34 0 |
| Orange Jelly or Golden Ball— Excellent for late sowing | 0 10 | 38 0 |
| Yellow Tankard— Comes early into use, large cropper | 0 9 | 34 0 |
| Green-top Scotch— Ordinary stock | 0 8 | 30 0 |
| Sow three to four pounds per acre | | |

Seed Growers by Appointment to His Majesty the King.

CARROTS FOR FIELD CULTURE.



CARROT. DANIELS' GIANT YELLOW INTERMEDIATE. Much reduced from a Photograph.

The cultivation of Carrots as a field crop has been much on the increase of late years, and where the soil is favourable, they undoubtedly constitute one of the most profitable crops for the farmer. Carrots contain a large proportion of saccharine matter, are highly nutritious, and all kinds of stock will eat them with relish. They are of especial value as a food for horses, and are always in demand as a marketable article. A rather light, deep and fairly rich soil is the most favourable for growing really good Carrots, and the ground should, if possible, be deeply ploughed in Autumn or early Spring, using a sufficiency of well-decayed manure. Fresh manure applied immediately before sowing being detrimental to the good form and quality of the roots.

Sow the seeds in April or early in May in shallow drills twelve or fifteen inches apart, using 8 lbs. of seed to the acre. Hoe between the rows as soon as the plants can be seen and soon as they are large enough to handle, thin out to six or eight inches apart in the drill, keeping them clean afterwards by occasional hoeings and weedings. In growing for market the plants require very little thinning out, the smaller roots generally making the best price, whilst the large roots can be used for horses or cattle.

Lift the roots in October or November, cut off the tops fairly close to the crown, and store when dry in a similar way to Mangels.

| | |
|---|--------------------------|
| DANIELS' GIANT YELLOW INTERMEDIATE. This grand stock has been carefully selected by us for several years past. It is a heavy cropping variety, of rich quality, and well adapted for shallow soils | per lb.—s. d. ... 6 0 |
| Altrincham Improved. Very fine | ... 5 0 |

| | |
|---|----------------------|
| James' Scarlet Intermediate. Suitable for shallow soils. A fine selected stock | per lb.—s. d. 5 0 |
| Belgian, White. One of the largest | ... 5 0 |
| Belgian, Yellow. Very nutritious, large cropper | 5 0 |
| Wiltshire Giant White. Extra fine stock | 6 0 |

The above are all Clean Seed, and are therefore much easier for sowing.

PARSNIPS FOR FIELD CULTURE.

Parsnips as a field crop are not nearly appreciated to the extent they deserve, and we strongly advise farmers who have not already grown them for feeding purposes, to give them a trial. Parsnips are very rich in saccharine matter, and contain more nutriment than either Mangels or Swedes. They are of great value for feeding cattle, and are first class as a rich and plentiful milk-producer for Cows, whilst pigs, fed on boiled parsnips and barley meal, will fatten much quicker than with any other food.

Ground intended for Parsnips should be deeply cultivated and liberally manured. The seeds should be sown, at the rate of 8 lbs. to the acre, any time from the end of February to the last week in March. The drills should be about fifteen inches apart, and the plants afterwards thinned out to six or eight inches apart in the rows. The crop may be lifted in October or November, and stored in the same way as Mangels or they may be left in the ground and drawn as required. They will, however, take no harm from frost, which is considered by many to improve their quality.

| | |
|--|--------------------------|
| Hollow-crowned. Largest and best for general use, a fine selected stock | per lb.—s. d. ... 1 6 |
| Large Guernsey. A fine, large, heavy cropping variety | ... 1 6 |
| Student. A good useful variety, but requires a good depth of soil | ... 1 6 |

We carefully test the growth of all Seeds before sending out.

KOHL RABI.



KOHL RABI, DANIELS' LARGE GREEN. *Much reduced from a Photograph.*

This may be described as a Cabbage with a very much expanded stem, having somewhat the appearance of a Turnip. It is exceedingly hardy, highly nutritious, and is eaten with avidity by horses and all kinds of cattle and sheep. It is less liable to attacks of insects and mildew, and resists drought better than Turnips. It yields an excellent crop, and is of especial value for feeding milch cows, not imparting that peculiar, strong taste to the milk which it so often acquires when the cows are fed on Turnips. The seeds should be sown, on well prepared ground, in April or May, in drills eighteen inches or two feet apart, and the plants thinned out to about a foot apart in the row. The seeds may also be sown in March or April on beds for planting out in the way of Cabbages, and plants raised in this way will be found very useful for filling up any blank spaces amongst the Mangels or other root crops. Where the seed is drilled, about 4 lbs. to the acre should be used; when sown for planting out, 2 lbs. to the acre will be sufficient.

| | | | |
|---------------------------------------|---|------------|-----|
| DANIELS' SELECTED SHORT-TOPPED GREEN. | A very superior stock | per lb.—s. | d. |
| DANIELS' LARGE GREEN. | Grows to a large size, and the best for general use | | 2 0 |
| Large Purple. | Very hardy | | 1 6 |
| | | | 3 6 |

THOUSAND-HEADED KALE.

This is of immense value and should be considered indispensable where stock are kept. It produces an enormous quantity of valuable food which is highly relished by sheep. It is of especial value during the Winter and Spring months when there is often a scarcity of green foods, and by judicious sowings may be had in abundance almost throughout the entire year. The plants grow from three to four feet high, throwing out numerous branches quite from the ground, and are extremely hardy, resisting the severest frost. For Autumn and Winter use the seeds should be sown in March or April, at the rate of 4 lbs. to the acre, in drills 2½ feet apart, and the plants afterwards thinned out to two feet apart in the row. For Spring and Summer use, August and September are the best months for sowing. Ground intended for these should be well broken up, and will well repay a liberal dressing of manure.

| | | | | | | |
|-------------------|------|------|------|------|----------|---------|
| DANIELS' IMPROVED | | | | | per lb., | 1s. 3d. |
| ORDINARY STOCK | | | | | ,, | 1s. 0d. |

Seed Growers by Appointment to His Majesty the King.

CABBAGES FOR FIELD CULTURE.



DANIELS' EARLY DRUMHEAD CABBAGE.

DANIELS' EARLY DRUMHEAD—

A very valuable variety for sheep feed. The heads being very solid, habit dwarf and compact, it can be planted somewhat closer than the other Drumhead varieties. Sown early in March it is fit for use in September, and produces a great abundance of nutritious food

per lb.
s. d.

3 6

Daniels' Improved Champion Drumhead—A very fine selected variety producing extraordinarily large heads, and a great weight per acre. First class to store for Winter use

3 0

Daniels' Dwarf Drumhead—A fine, compact growing variety, early

3 0

Robinson's Drumhead—Capital stock

2 6

Ellam's Early—A first-class early Cabbage, and one of the very best for market

4 0

Enfield Market—Excellent main crop variety, also useful for market purposes

3 0

Nonpareil—Extra fine for early feed

4 0

Large York—Very useful, turns in quickly, and continues fit for use a long time

4 0

Early York—A fine, dwarf, and early sort

4 0

SAVOY CABBAGE.

DRUMHEAD, DANIELS' SELECTED—

Large solid heads, producing an abundance of feed

2 6

Ground intended for Cabbages should be well broken up and liberally manured. For Summer and Autumn use the seed should be sown or drilled in March or April, whilst for late Spring and early Summer use, a sowing should be made in August. When the seed is drilled it should be used at the rate of 4 or 5 lbs. to the acre, and when the seed is sown on beds for planting out, 1 lb. of seed should be allowed to each acre to be planted. For the larger varieties of Drumhead, the drills should be 2½ feet apart, and the plants thinned out to a similar distance apart in the row. For the Early Drumhead, which is of smaller growth, two feet apart will be sufficient both for drills and plants.

We carefully test the growth of all Seeds before sending out.

VEGETABLES FOR MARKETING.



DANIELS' IMPROVED WHITE SPANISH. *Reduced from a Photograph.*

BROAD BEANS.

| | per bush.—s. | d. |
|---------------------------|--------------|----|
| Broad Windsor | 20 | 0 |
| Johnson's Wonderful... .. | 16 | 0 |
| Early Long-pod | 15 | 0 |

DWARF FRENCH BEANS.

| | per bush.—s. | d. |
|---------------------------------------|--------------|----|
| Canadian Wonder. Very prolific | 30 | 0 |
| Ne Plus Ultra | 24 | 0 |
| Early Buff | 28 | 0 |

RUNNER BEANS.

| | per bush.—s. | d. |
|---------------------------|--------------|----|
| Old Scarlet Runner | 45 | 0 |
| White Dutch | 26 | 0 |

CAULIFLOWER.

| | per lb.—s. | d. |
|-------------------------------------|------------|----|
| Autumn Giant. Fine stock | 12 | 0 |
| Self-protecting Autumn Giant | 10 | 0 |
| Early London White | 12 | 0 |

ONIONS.

| | per lb.—s. | d. |
|--|------------|----|
| Daniels' Improved White Spanish. A fine and carefully selected stock, producing bulbs of large size, very even, and of mild flavour | 15 | 0 |
| White Spanish. Ordinary stock | 8 | 0 |
| Zitteau Giant Yellow | 12 | 0 |
| Bedfordshire Champion | 10 | 0 |
| James' Keeping | 12 | 0 |
| White Lisbon | 8 | 0 |

BRUSSELS SPROUTS.

| | per lb.—s. | d. |
|---|------------|----|
| Daniels' Colossal. Fine Selected Stock | 6 | 0 |
| Daniels' Defiance. Very fine | 6 | 0 |
| Dalkeith | 4 | 0 |
| Scrymger's Giant | 3 | 6 |

BROCCOLI.

| | per lb.—s. | d. |
|---|------------|----|
| Adams' Early | 5 | 6 |
| Daniels' Latest White. Splendid late variety | 8 | 0 |
| Daniels' King. Very fine stock | 10 | 0 |
| Leamington | 8 | 0 |
| Walcheren | 10 | 0 |

From Mr. W. WRIGHT, Peterborough.

"I won 32 First and Special, also 14 Second Prizes with produce from your Seeds."

From Mr. F. DEW, Sunny Hill.

"I might say that I have grown your Seeds for upwards of 12 years, and always had good results."

Seed Growers by Appointment to His Majesty the King.

CLOVER SEEDS.

EXTRA MACHINE CLEANED, AND OF TESTED GROWTH.



TREFOIL OR BLACK.



BROAD-LEAVED ENGLISH RED CLOVER

Daniels' Giant Red Clover. A fine strong growing Clover, producing a heavy crop, and has the advantage of standing longer than the ordinary Red Clover. Highly recommended. *Sow 16 to 20 lbs. per acre.*

Per lb. 1s. to 1s. 3d.; per bush. 72s. to 84s.

Red or Broad-leaved (*T. pratense*). Our choice re-cleaned samples produce plants of a strong, luxuriant habit of growth, which adds considerably to the quality and bulk of the crop. *Sow 16 to 20 lbs. per acre.*

Per lb. 1s. to 1s. 2d.; per bush. 62s. 6d. to 80s.

Giant Cow Grass or Perennial Red (*T. perenne*). The flowers, foliage, and stems of this variety will be found darker in colour, with narrower leaves, and is much more permanent than the Common Red Clover; very highly esteemed for permanent pasture mixtures. *Sow 16 to 20 lbs. per acre.*

Per lb. 1s. 1d. to 1s. 3d.; per bush. 72s. to 84s.

Alsike or Hybrid (*Trifolium hybridum*). In habit of growth not so upright as the Common Red Clover; thrives well on soils termed *clover-sick*, is exceedingly hardy, producing a large quantity of excellent foliage. *Sow 12 to 16 lbs. per acre.*

Per lb. 1s. to 1s. 2d.; per bush. 65s. to 80s.

White or Dutch (*T. repens*). One of the most valuable for pastures, being adapted to a great variety of soils, growing naturally in some of our oldest and finest meadows. *Sow 12 to 16 lbs. per acre.* Per lb. 1s. 7d. to 1s. 9d.; per bush. 108s. to 120s.

Trefoil or Black (*Medicago lupulina*). Grows naturally in dry pastures and cultivated lands, adding considerably to the bulk of the hay crop. *Sow 16 to 20 lbs. per acre.*

Per lb. 7d. to 9d.; per bush. 38s. to 50s.

Yellow or Red Suckling (*T. minus vel. filiforme*). Though this variety is considered too small for pastures, it is exceedingly valuable for sowing in Autumn, and will help to make a good bottom on a thin plant of Clover. *Sow 12 to 16 lbs. per acre.* Per lb. 1s.

Clovers mixed for alternate husbandry. May be sown with a corn crop for mowing and grazing the following year.

Per lb. 1s.; per bush. 65s.

Clovers mixed for Lawns. A choice selection of dwarf compact-growing sorts, adding considerably to the beauty and closeness of the turf.

Per lb. 1s. 9d.

Crimson Clover (*Trifolium incarnatum*). Sown in August and September it will be fit for cutting by the beginning of June, when the land can be prepared and sown for another crop; it yields very abundantly and makes capital hay, which is much relished by all kinds of stock, especially horses.

Sow from 20 to 25 lbs. per acre.

Market Price.

Perennial Clovers. A mixture of the most valuable varieties suitable for permanent pasture, especially adapted for sowing on lands where the Common Red Clover is known to fail. *Sow 12 to 20 lbs. per acre.* Per lb. 1s. 3d.; per bush. 84s.; per cwt. 135s.

N.B.—All the above are sold 70 lbs. to the bushel.

IMPORTANT NOTICE.

As the prices of Clovers are subject to market variations, and much depending on quality, we shall be pleased at any time to submit samples and quotations, free of charge, when requested. The importance of buying Seeds of tested growth, cannot be over estimated.

We carefully test the growth of all Seeds before sending out.

RYE GRASSES.

DANIELS' SUPERFINE ITALIAN RYE GRASSES.

EXTRA CLEANED BY THE BEST MACHINERY.

Sow for a Crop, from three to four Bushels per Acre.

For Sowing with Clovers for "leys," from one to two Pecks per acre is sufficient.

Daniels' Finest Imported Italian. This well-known variety arrives sooner at maturity, and produces a greater abundance of light green-coloured foliage than the Common Perennial Rye Grass

per bush.—s. d.

| | | | |
|---|------|------------|-----|
| Italian, English Grown | | 5s. 0d. to | 6 0 |
| Italian, Finest Recleaned | | 5s. 6d. to | 6 6 |
| Italian, as Imported in Bales, about 2 cwt. | | | |
| Lowest price per Bale on application. | | | |



PACEY'S PERENNIAL.

Western-Wolths. New Annual Rye Grass.

This remarkable variety is a purely annual form of Italian Rye Grass, but is of much quicker and stronger growth than that variety. It is very valuable for green feed in Summer, as it can be cut three or four times the same season. Sown in March it will, under favourable circumstances, be fit to cut in May; care should be taken to cut as soon as fully grown, otherwise it will become wiry. It is very useful for mending leys, etc.; if sown early in Spring its quick growth will enable it to grow simultaneously with the other grasses and clovers, and add considerably to the bulk of the hay crop. For a green crop or for hay it is best sown by itself at the rate of 2 to 3 bushels per acre.

We have a limited quantity of seed, and should advise all to give it a trial per bushel 10s. 6d.

PERENNIAL RYE GRASSES.

per bush.—s. d.

| | | |
|---|------|-----|
| Perennial, Pacey's (first quality). The best for permanent pasture, being of the true perennial character; is also well adapted for Pleasure Grounds and Park Mixtures | | 7 0 |
| Perennial, Pacey's (good quality) | | 6 0 |
| Perennial, Evergreen. Suitable for almost every variety of soil, and grows naturally in meadows and old pastures; one of our most valuable grasses for alternate husbandry, and is largely used in Permanent Pasture Mixtures. Finest quality | | 6 6 |
| Perennial, Common (for alternate husbandry). This variety produces a bulky crop the first season, and is more suitable for one year's crop of hay or one year's ley | | 5 6 |

SPECIAL LOW QUOTATIONS FOR LARGE QUANTITIES. PRICES SUBJECT TO MARKET VARIATIONS.

Seed Growers by Appointment to His Majesty the King.



COCKSFOOT.



TALL MEADOW FESCUE.

DANIELS' GRASS SEEDS FOR PERMANENT PASTURE.

SUITABLE FOR ALL SOILS AND SITUATIONS.

These Mixtures are made up of the finest samples procurable, and the growth of all is carefully tested before sending out and our customers may thoroughly rely on being supplied with none but genuine seeds of first-class germinating power.

We annually supply large quantities of our Grass Mixtures to all parts of the Kingdom, and shall be pleased at all times to advise our clients as to the best and most suitable Grasses for their particular soil and district.

DANIELS' PERMANENT MIXTURES.

For Light, Medium and Heavy Soils.

| | | per acre—s. | d. |
|----------------|--|-------------|----|
| No. 1 MIXTURE. | Composed of Grasses and Clovers of the finest quality only | 35 | 0 |
| No. 2 MIXTURE. | Second Quality | 30 | 0 |
| No. 3 MIXTURE. | Good | 27 | 6 |
| No. 4 MIXTURE. | Useful | 22 | 6 |

For quantities of ten acres and upwards a reduction will be made; for extra large quantities we shall always be pleased to make special quotations.

CUSTOMERS' OWN PRESCRIPTIONS MADE UP IF REQUIRED.

For Prices of separate Grasses, see pages 18 and 19.

All Orders should be accompanied with a description of the land to be laid down and the measurement in statute acres.

DANIELS' SUPERIOR LAWN GRASS SEEDS.

For many years we have given close attention to the selection of the most suitable Grasses for producing the best Lawns, Tennis Courts, Cricket Grounds, Golf Links, &c., and we have much pleasure in recommending the splendid mixtures we offer as the very best procurable for the purposes named. March and April are the best months for sowing in Spring, and September for Autumn sowing. These Grass Seeds are usually supplied without Clover, but in all cases Clover will be added if desired.

To produce a fine sward, sow one pound to the rod or six bushels to the acre.

Carriage Free in quantities of not less than 2 lbs.

| | per bush. | per lb. s. | d. |
|---|-------------------------|----------------------|----|
| Daniels' Mixture of Dwarf Grasses, for producing a fine close turf | 20s. | 1 | 0 |
| Daniels' Fine Mixture of Dwarf Grasses, for producing a dark green velvety turf | 25s. | 1 | 6 |
| Daniels' Special Mixture for Lawns extra choice | 30s. | 2 | 0 |
| Daniels' Mixture for Shady Lawns and under Trees | 25s. | 1 | 6 |
| Daniels' Peerless Mixtures of fine growing Grasses (without Perennial Rye-Grass) for Garden and Tennis Lawns. | Per lb. 1s. 6d. & 22s.; | per bush. 5s. & 30s. | |



TALL OAT GRASS.



TIMOTHY GRASS.

DANIELS' MIXTURES FOR ROTATION CROPS.

The following Mixtures are made up from fine samples of English Clovers, Rye Grass, and other useful Grasses, in proportions most suitable for the production of the largest hay crops.

FOR ONE YEAR'S LEY.

For Light, Medium, and Heavy Soils.

| | Per acre—s. | d. |
|--|-------------|----|
| Trefoil (Black) & Rye Grasses, 14s. 0d. to | 16 | 0 |
| Red Clover & Rye Grasses, 16s. 0d. to | 18 | 0 |
| Mixed Clovers & Grasses, 15s. 0d. to | 17 | 0 |

FOR TWO YEARS' LEY.

| | | | |
|---------------------------------------|---------|----|---|
| Mixed Grasses & Clovers, for Mowing, | 14s. to | 16 | 0 |
| Mixed Grasses & Clovers, for Grazing, | 16s. to | 18 | 0 |

FOR THREE AND FOUR YEARS' LEY.

| | | |
|--|----|---|
| Mixed Clovers, Rye Grasses, and other useful Grasses in good proportion, 18s. to | 21 | 0 |
|--|----|---|

MIXTURES FOR TEMPORARY PASTURES.

| | Per acre—s. | d. |
|------------------|-------------|----|
| For Light Soils | 21 | 0 |
| For Medium Soils | 24 | 0 |
| For Heavy Soils | 27 | 6 |

RENOVATING GRASSES & CLOVERS.

A selection of quick growing Grasses and Clovers for improving weak bottoms, and increasing the bulk of the hay crop.

Sow 8 to 12 lbs. per acre.

Per lb. 1s., per bush. 20s., per cwt. 105s.

DANIELS' SUPERIOR MIXTURES

FOR PARKS, ORNAMENTAL GROUNDS, EMBANKMENTS, &c.

Made up from a choice selection of the most useful Grasses and Clovers.

| | Per acre—s. | d. |
|----------------|-------------|------|
| Best Quality | 35s. 0d. to | 40 0 |
| Second Quality | 30s. 0d. to | 32 6 |

We shall at all times be pleased to make Special Quotation for any of the above Mixtures, to Customers requiring large quantities.

NATURAL GRASS SEEDS

USED IN

DANIELS BROS.' MIXTURES.

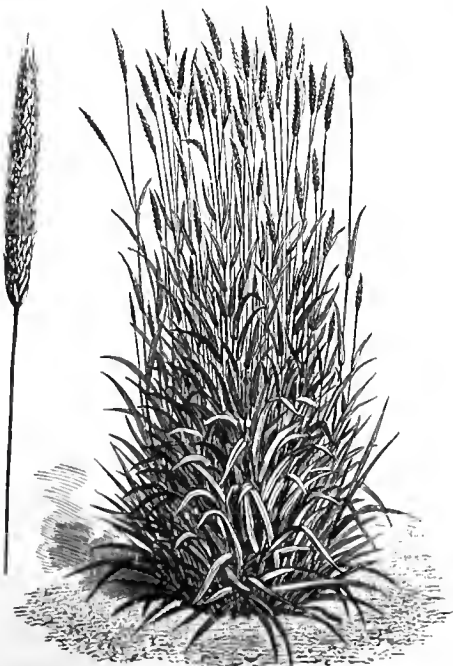
The following are the principal varieties of Natural Grasses used in our Permanent Pasture and other Mixtures.



CRESTED DOGSTAIL.



HARD FESCUE.



MEADOW FOXTAIL.

Meadow Foxtail (*Alopecurus pratensis*). One of the best known varieties of our Meadow Grasses, may be found growing naturally in most of our old pastures; it is one of the earliest-flowering and quick growing varieties, producing an abundant crop after being eaten down by cattle, one of the best for Permanent Pasture Mixtures ... ^{per lb.—s. d.} 1s. 8d. to 2 0

Sweet Vernal (*Anthoxanthum odoratum*). Grows naturally on dry pastures, comes early into use, is well known as producing the fine fragrance to be found in newly mown meadow hay, and is highly esteemed for sheep pasture ... 3 6

Tall Oat (*Avena elatior*). Yields a large quantity of early foliage, and grows rapidly after being cropped; is best adapted for sowing in coverts and lands for game ... 1 2

Yellow Oat (*Avena flavescens*). May be found growing in dry light lands, where it yields a considerable amount of fine herbage of highly nutritious quality; grows naturally in dry pastures on light good soils, and is eagerly sought after by sheep ... 4 0

Crested Dogtail or Gold Grass (*Cynosurus cristatus*). One of the finest foliaged, dwarf, and compact-growing varieties of our natural grasses, adapting itself to almost every variety of soil and situation, producing a close, springy turf; is largely used in all mixtures for lawns, croquet, and cricket grounds, also invaluable for permanent pasture ... 1s. 2d. to 1 4

Hard Fescue (*Festuca duriuscula*). One of the best known varieties; the foliage is very fine, retaining a deep green colour during the Winter months; it is specially adapted for sowing in parks and pleasure grounds, and is much relished by sheep; it is also highly suitable for lawns, and will thrive on dry sandy soils where other sorts would fail ... 10d. to 1 0

Meadow Fescue (*Festuca pratensis*). One of the best varieties for alternate husbandry or permanent pasture; superior to the Common Rye Grass, and produces an abundant herbage of which cattle are particularly fond; it also adds considerably to the bulk of the hay crop ... 1s. 6d. to 1 9

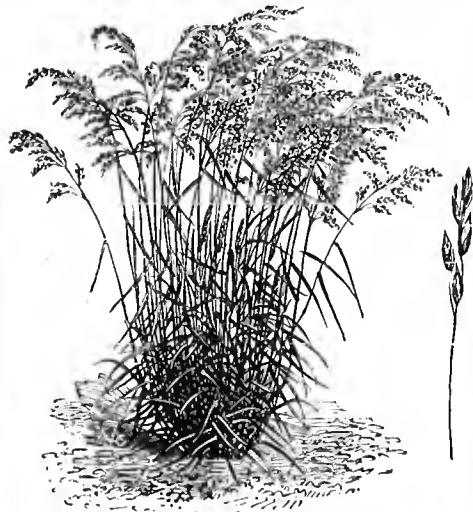
Tall Meadow Fescue (*Festuca elatior*). Grows abundantly on damp, retentive soils, in shady places, and may be found near the sea coast and inland river banks; although a comparatively coarse-growing grass, it is much relished by cattle, and is valuable for hay or permanent pasture ... 1 9

Sheep's Fescue (*Festuca ovina*). May be found on high mountainous lands; well adapted for sheep pasture, and adds considerably to the superiority of the flesh and fineness of the wool; very valuable for lawns, especially on dry sandy soils ... 1s. to 1 2

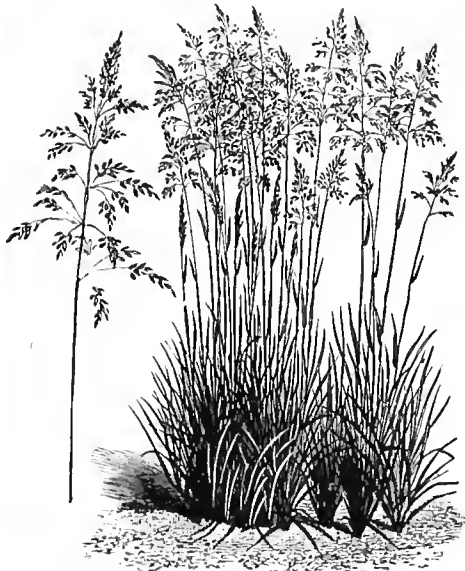
NATURAL GRASS SEEDS

USED IN

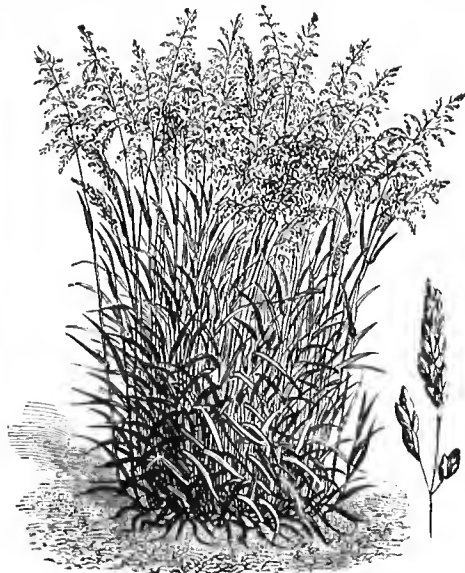
DANIELS BROS.' MIXTURES.



WOOD MEADOW GRASS.



SMOOTH-STALKED MEADOW GRASS.



ROUGH-STALKED MEADOW GRASS.

| | |
|---|-----------------------------|
| Fine-leaved Fescue (<i>Festuca tenuifolia</i>). Exceedingly valuable for lawns, tennis grounds, &c. ... | per lb.—s. d. 1 6 |
| Red Fescue (<i>Festuca rubra</i>). A useful variety for growing on light soils, embankments, &c. ... | ... 1s. to 1 2 |
| Cocksfoot (<i>Dactylis glomerata</i>). A most valuable Grass, on account of the great quantity of produce it yields, and the rapidity with which the leaves grow after being cut. It is much relished by sheep. A most excellent variety for leys, adding considerably to the bulk of the hay crop ... | ... 1 3 |
| Timothy (<i>Phleum pratense</i>). A most valuable Grass for hay, but must be combined with other species. It is especially useful for leys and Permanent Pastures ... | ... 1 0 |
| Wood Meadow (<i>Poa nemoralis</i>). This produces a fine, close turf, and grows abundantly in shady places and under trees; it also does well in exposed places, is valuable for permanent pastures and lawn mixtures ... | ... 2 6 |
| Smooth-stalked Meadow (<i>Poa pratensis</i>). Comes very early into use, and is found on very dry soils; it is capable of resisting great drought ... | ... 1s. 6d. to 1 9 |
| Rough-stalked Meadow (<i>Poa trivialis</i>). Is recommended for sowing on wet soils and lands partially shaded by trees, and is suitable for sowing on sewage farms; it retains its dark green colour during the Winter months ... | ... 1s. 7d. to 1 9 |
| Sea Reed or Sea Sand Grass (<i>Ammophila arundinacea</i>). A most useful variety for sowing in drifting sands and banks on the Sea Coast, the long creeping roots greatly assist in holding these together ... | ... 2 6 |
| Various-leaved Fescue (<i>Festuca heterophylla</i>). Produces a fine dark green foliage, is very useful for ornamental grounds, is also very useful for pastures, adding largely to the bulk of the hay crop ... | ... 2 0 |

ALL SORTS MUCH CHEAPER BY THE CWT.

SPECIAL QUOTATIONS FOR LARGE QUANTITIES.

As Grasses never thrive on ground exhausted by previous crops or neglected cultivation, it is of the first importance that, whatever the nature of the soil, land intended for laying down to grass should be in good condition and as free as possible from weeds. For this reason, the root crop which generally precedes grass, should be heavily manured and as early in Autumn as convenient, the ground should be deeply ploughed and left rough for the Winter. In the Spring, it should be thoroughly scarified, harrowed, and rolled to bring the soil into a thoroughly pulverized level and firm condition before seeding. The best time for sowing is from about the middle of March to the third week in April, although good results may sometimes be had by later sowings. After sowing, roll the ground as firmly as possible, and when the young plants are a few inches high, cut over with the scythe and give a good rolling. Remove all large weeds and re-sow any bare or weak patches. Top-dressings of well-decayed manure in Winter are very beneficial, and will always pay for the outlay in the larger yield.

We carefully test the growth of all Seeds before sending out.

Green Crop, Covert, Forage Plants, &c.

| | |
|--|----------------------|
| Broom (<i>Cytisus scoparius</i>). (Sow fifteen to twenty pounds per acre). Much used for covert planting Price per cwt. on application | per lb.—s. d. 0 9 |
| Buckwheat or Brank (<i>Polygonum fagopyrum</i>). (Sow two to three bushels per acre). Extensively used for sowing on ridges close to the sides of coverts. Pheasants are particularly fond of it, and it is much frequented by bees when in flower ... Price on application | — |
| Furze or Gorse (<i>Ulex Europæus</i>). (Sow thirty pounds per acre). One of the best plants for fox and game coverts, it also constitutes one of the best green foods for horses and milch cows; it requires to be crushed and mixed with other food Price per cwt. on application | 3 6 |
| Kidney Vetch or Yellow Sand Clover (<i>Anthyllis vulneraria</i>) ... Market price | — |
| Mustard . (Sow twenty pounds or one peck and a half per acre). Grown extensively for sheep feeding; it also forms a valuable manure ploughed in when green ... Market price | — |

| | |
|--|--------------------|
| Parsley (Sheep's) . Very nutritious, prevents swelling in cattle and liver-rot in sheep; of great utility in pastures Price on application | per lb.—s. d. — |
| Rib Grass (<i>Plantago lanceolata</i>). Valuable for poor lands and sheep pastures ... | 0 3 |
| Rye, Giant . Market price. | — |
| RAPE or COLE . (Sow six pounds or half peck per acre). May be sown in drills or broadcast for eating off with sheep, or converted into manure the same as mustard Price per bushel on application | — |
| SAINFOIN, GIANT . (Sow four bushels per acre). Specially adapted for growing on light, dry, chalky soils, producing a considerable amount of bulk for using green; it also makes very good hay ... Price on application | — |
| SAINFOIN, Common Price on application | — |
| TARES or VETCHES (Spring) Market price | — |
| „ „ (Winter) Market price | — |

We shall be pleased to submit samples of the above on application.

MAIZE OR INDIAN CORN, White Horse Tooth. Sow end of May and beginning of June at the rate of 1½ to 2 bushels per acre, in rows two feet apart. Price on application.

LUPIN. Sow at the rate of two bushels per acre. Price on application.

SUGAR BEET. Klein Wanzleben. A superior kind, containing a high percentage of sugar, 1/3 per lb. Sow twelve pounds per acre.



LUCERNE

(*Medicago sativa*).

This splendid perennial forage plant should be much more freely grown than at present. All kinds of farm animals will eat it readily. It is very abundant in its yield of green food, and may always be depended on to produce a heavy crop in the driest season. After sowing, it will remain in profit for ten or twelve years, and may be cut four or five times a year. Lucerne succeeds well on light chalky soil, but, as it sends its roots deep into the ground, land intended for this should be well broken up, clean, and in good condition; ground that has previously grown a crop of potatoes or turnips will suit it well. The seed may be sown broadcast or in drills, the latter for preference, as sown in drills the yield is much better, and the crop is more easily kept clean by hoeing and weeding. Sow the seeds in April or May in drills about nine inches apart, clean with the hoe when the plants come up, and thin out where they are too thick. A cutting may generally be made the first year, but it is not till the third season that the plant arrives at its full yield. A top dressing of well-rotted farmyard manure in Winter will be found of great benefit in increasing the yield of the following season.

For sowing broadcast about 28 lbs. of seed per acre should be used.

For sowing in drills 20 lbs. of seed will be sufficient.

Lucerne ... per lb. 1s. ; per cwt. 105s.

We carefully test the growth of all Seeds before sending out.

KITCHEN GARDEN SEEDS

DANIELS' COMPLETE COLLECTIONS.

In addition to our extensive business in Agricultural Seeds, we are large growers of choice Kitchen Garden Seeds, our retail trade in these being one of the largest in the United Kingdom.

The following Collections, of which we annually sell immense quantities, are carefully made up with seeds of finest quality in best varieties from each class with a view of furnishing an ample supply of Choice Vegetables throughout the year, and will be found extremely valuable for those who have not sufficient time or experience for making their own selection.

No. 7. Daniels' Complete Collection, 12s. 6d.

Package and Carriage Free. All the best kinds for succession.

| | | |
|---|-------------------------------------|---|
| 6 pints - Peas, Early, Medium, and Late | 1 pkt. - Cauliflower, Choice | 1 pkt. - Melon, Choice |
| 1 pint - Broad Beans | 1 pkt. - Celery | 1 pkt. - Parsley, Fine Curled |
| 1 pint - French Beans | 4 ozs. - Cress, Plain & Curled | 1 oz. - Parsnip, Hollow-crowned |
| ½ pint - Runner Beans | 2 pkts. - Cucumber, Ridge and Frame | 2 ozs. - Radish, Long and Turnip |
| 1 pkt. - Beet, Dark-leaved | 1 pkt. - Endive, Curled | 2 ozs. - Spinach, Round and Prickly |
| 1 pkt. - Borecole, Curled | 1 pkt. - Gourd or Pumpkin | 1½ ozs. - Turnip, Snowball and Orange Jelly |
| 1 pkt. - Brussels Sprouts | 1 pkt. - Leek, Giant | 1 pkt. - Vegetable Marrow |
| 2 pkts. - Broccoli, Choice Sorts | 2 pkts. - Lettuce, Cos and Cabbage | 3 pkts. - Herbs, Sweet and Pot |
| 2 pkts. - Cabbage, Choice Sorts | 3 ozs. - Mustard, White | 2 pkts. - Tomato |
| 1 pkt. - Savoy, Drumhead | 2 ozs. - Onion, White Spanish, &c. | |
| 2 pkts. - Carrot, Intermediate, &c. | | |

No. 8. Daniels' Complete Collection, 7s. 6d.

Package and Carriage Free. All the best kinds for succession.

| | | |
|--|------------------------------------|----------------------------------|
| 3 pints - Peas, Early, Medium and Late | 1 oz. - Carrot, Intermediate | 1 pkt. - Parsley, Fine Curled |
| ½ pint - Broad Beans | 1 pkt. - Cauliflower, Autumn Giant | 1 oz. - Parsnip, Hollow-crowned |
| ½ pint - French Beans | 1 pkt. - Celery, Red and White | 1 pkt. - Pumpkin |
| ½ pint - Runner Beans | 2 ozs. - Cress, Plain | 2 ozs. - Radish, Long and Turnip |
| 1 pkt. - Beet, Dark-leaved | 1 pkt. - Cucumber, Ridge | 1 oz. - Spinach, Summer |
| 1 pkt. - Borecole, Curled | 2 pkts. - Lettuce, Cos and Cabbage | 1 oz. - Turnip, Snowball |
| 1 pkt. - Brussels Sprouts | 1 pkt. - Leek, Musselburgh | 1 pkt. - Vegetable Marrow |
| 1 pkt. - Broccoli | 1 oz. - Mustard, White | 2 pkts. - Herbs |
| 1 pkt. - Savoy, Drumhead | 1 oz. - Onion, White Spanish | 1 pkt. - Tomato |
| 1 pkt. - Cabbage | | |

OTHER COLLECTIONS OF KITCHEN GARDEN SEEDS.

2s. 9d.; 5s.; 10s. 6d.; £1 1s.; £1 11s. 6d.; £2 2s.; and upwards. All Carriage Free.

Daniels' Complete Collections of CHOICE FLOWER SEEDS for AMATEURS

Collection B—Price 7s. 6d. Post Free.

| | | |
|---|--|--------------------------------|
| 6 Choice vars. Comet Aster | 1 Packet Balsam, choice double | 1 Packet Petunia, finest mixed |
| 1 Packet Ostrich Plume Aster | 6 Half-hardy Annuals, including Phlox, Marigold, Portulaca | 1 „ Zinnia, finest double |
| 6 Choice vars. Dwarf Ten-week Stock, large-flowered | 9 Distinct varieties Sweet Peas, Eckford's large-flowered | 1 „ Helichrysum, mixed |
| 8 Choice Hardy Annuals | | 1 „ Rhodanthe maculata |
| | | 1 „ Salpiglossis, mixed |

OTHER COLLECTIONS OF CHOICE FLOWER SEEDS, 10s. 6d.; 21s.; 31s. 6d.; 42s.; 63s.; 84s.; 100s.

If you have a FLOWER or VEGETABLE GARDEN, send us a Post Card for our ILLUSTRATED GUIDE. It contains lists of Everything required for the Garden.

We have a splendid stock of FRUIT TREES, ROSES, SHRUBS, FENCING PLANTS, &c., at our Nurseries, Newmarket Road, an inspection of which is invited.

Estd.

1844.



SPRING

ALSO TO HIS LATE MAJESTY
KING EDWARD VII

1912.

Catalogue of
**HOME-GROWN
FARM SEEDS**

DANIELS·BROS·L^{TD}
Royal·Arcade.
NORWICH

*Stand 132.
CORN·HALL
NORWICH*