

1907 no. 2

California

Vernon Bailey

1907

Calif.

July 22 Santa Ana
Orange

Olive
Santa Ana R.

Opuntia occidentalis, spines above
" " spines " a few
" " wood " a few

Nicotiana glauca abun. com

Baccharis vinea " cr.

Croton californicus " abun.

Eremocarya setigera " com

Conoclinium " "

Salix along stream

" " "

" " "

Populus fremontii up canyon

Platanus on flats

Acerens acrifolia on foothills

Rhus laurina " "

Eriogonum fasciculatum " "

Athanasia calif. " "

Ranunculus polystachia " "

" *stachyoides* " "

Pseudotsuga macrocarpa
(in the gulches of Santa Ana mts)

Corona

Eriogonum setigerum abn

Artemisia californica "

Eriogonum fasciculatum "

Canyon

Rhus laurina "

" ovata com

Rhamnus crocea "

Platanus long ca.

Ranunculus polytachia com

" stachyoides "

Eriogonum tomentosum "

Boehmeria reflexa "

Rhamnus calif "

Quercus agrifolia on foothills

Heteromeles com

Rhus trilobata "

Pentstemon antirrhinoides yellow "

Cercocarpus parvifolius "

Romulea coultteri "

Rhamnus tomentosa "

Yucca whippleyi "

Linaria "

Rosa "

Rubus 2 "

Mimulus glutinosus "

Acer macrophyllum a few

Adiantum abn high up

Dudleya a few

Pseudotsuga macrocarpa high up

Rubus blue current a few

Chenopodium ~~trifidum~~ ^{gaspacholius} "

" intergerminus? "

Fraxinus "

Alnus diversifolia com

Daphniphyllum red a few

Melospiza a few

Saxifraga 2 com

" "

Barbarea virginica large cr.

Hosackia glabra abn

Semiothisa douglasi com

Zemescal

Odocoileus

Citellus beecheyi

Neotoma macrotis

" intermedia

Peromyscus

"

"

Microtus californicus

Perodipus

Thomomys pallidus

Canis

Urocyon

Procyon

Lynx

Felis

Scapanus

Vesperugo fuscus

July 23 Corona W

Ere	Old Water Canyon, Glen Ivy	
Er	July 24 -	Hotel 1400 ft
	Platanus racemosa	- 2500
Rhu	Alnus	- x
"	Quercus agrifolia	x
Rha	Alnus	x
Pte	Salix	x
Ra	"	x
	Populus fremonti	1000-1500
Ere	Rhamnus californica	1400 - x
Pte	" tomentella	" - x
R	" crocea ilicifolia	x - x
R	Ceanothus	1200 - x
He	Rhus laurina	" - x
R	" ovata	x - x
P	" divaricata	1200 - x
A	Cercocarpus parvifolius ^{in valley}	" - x
R	Fraxinus	1500 - x
R	Acer macrophylla	" - x
Y	Arctostaphylos	1400 - x
Z	Adiantum fasciculatum	1500 - x
R	Vitis	1400 - x
R	Rubus	" - x
Y	"	
C	Umbellularia	a few
C	Quercus wislizeni	"
	duroia	"
P	Penstemon	1400 - x yellow thro

Ranunc	polypodioides	1200 - x
"	stachyoides	" - x
Mimulus	luteus	
"	scarlet	
"	glaberrima	
Pteris		
Woodsia		
Adiantum		
Common fern	& others	
Araba		
Ribes	sanguinum	
"	spiny	
"	fuzzy	
Eriogonum	fasciculatum	
Yucca	whitfeldii	1400 - x
Zonitella	subspicata	
Eridodictyon	tomentosum	
Artemisia	californica	
Romneya	coulteri	
Dubia	puberulentum	
Pseudotsuga	macrocarpa	2500 - 5500
Prunus	ilicifolia	below hotel
Opuntia	occidentalis	in valley
"	brunneifolia	"
Eremocarpus	setigerus	"
Biscutella	chrysantha	"
Baccharis	virnacea	"
"	leafless	"
Sambucus	glauca	"
Rhamnus	crocea?	"

Temescal

C *Sanicula douglasii* in valley
 Ere *Croton californicus* " "
 Ar *Cucurbita* "
 Er *Medica* "
Artemisia? tall "

Eremocarpus setigerus abn.
Croton californicus "
Medica elegans "
Quercus divergens, tall "
Trichostema lanceolatum "

July 2nd To Elsinore

Rha *Juniperus monosperma* 6 trees
 Pt *Baccharis viminea* along cr.
 Pa " *erosyi* "
 " *Plucea borealis* "
 Ere *Opuntia occidentalis* abn.
 " *berlandina* "
 " *Ceanothus divaricatus* a few.
 " *Eremocarpus setigerus* abn.
 He *Croton californicus* "

Oranges in town + country
 Lemons west of lake
 Olives " "
 Pepper trees inland, abn.
 Alacias "
 Opuntia " trees, 2
 Agave gigantea + marginata com

Elsinore

C *Artemisia californica* on hill
 R *Ramona polystachia* "
 R " *laevis* "
 Y *Eriogonum fasciculatum* "
 R *Salix nigra villoida* along plow
 R " *microstachia* silky "
 Y " *lasiolepis* "
 C " *lavigata* high up "
 C *Plucea borealis* along lake
 R *Baccharis viminea* "
 P " *erosyi* "

July 29 Elsinore 7 A.M.

Perris -
 On hills - same bushes
 In valley

Eriogonum fasciculatum
Quercus agrifolia
Trichostema lanceolatum
Atriplex
Abroma

Hemet

Washingtonia
Phoenix
Agaves big
Orange
Lemon grapefruit
Olive
Loquat
Pomegranate
Walnut
Pepper Tree
Apricots
Peaches
Pears
Figs
Eucalyptus
Catalpa
Almonds
Almond
Gravel

Hemet 1600 ft
 July 30

Eriogonum fasciculatum - 2500
Quercus agrifolia - 2500
Abroma umbellata? - 2500
Coccoloba foetidissima - 2500
" - 2000
Atriplex - 2500
Salvia - "
Mexilix pink - "
Helianthus annuus - "
Atriplex - 2000
Baccharis viminea - 2500
" - 2000
Madia elegans - 2000
Amaranthus - "
Opuntia aciculata - 2500
Populus fremontii - 3000
Quercus agrifolia - 2000
Gambusia glauca - 5500
Yucca novboracensis - 2500
pot hills 1900
Ranunculus polytachus - 3000
" - 2000
Eriogonum tomentosum - 5000
Hosackia glabra - 4000
Eriogonum fasciculatum - 4500
Artemisia californica - 3000
Phoradendron on cottonwood - 2500
Platanus - 4000
Spentia sericea - 2500

C	<i>Quercus agrifolia</i>	2000-2500	<i>Quercus agrifolia</i>	4500
Ere	<i>Rhamnus</i> sp. <i>alcea</i> ?	2000-4500	<i>Quercus</i>	2500-5000
Wi	" <i>ilicifolia</i>	" 5000 -4500	<i>Pinus ponderosa</i>	4500-
Er	<i>Solidago macrostachya</i>	1800-2000	<i>Libocedrus</i>	" -
	<i>Opuntia bernardiniana</i>	" 2500	<i>Cercocarpus parvifolius</i>	2500-5000
Rhu	<i>Cercocarpus parvifolius</i>	2240-2500	<i>Adrostephanos</i> <i>sparifolium</i> kj	3000-5000
"	<i>Rhus trilobata</i>	2000-3000	<i>Arctostaphylos</i> <i>patula</i>	2000-
Rho	" <i>ovata</i>	" 2500	<i>Quercus calif</i>	4500-
Pl	" <i>laurina</i>	" "	<i>Pseudotsuga mucronata</i>	3300-5000 ²²
Ra	" <i>divisiloba</i>	" 2000	<i>Pinus jeffreyi</i>	4500-
	<i>Arctostaphylos</i> <i>uva-ursi</i>	2500-5000	<i>Arctostaphylos</i>	2000-3500
Er	<i>Arctostaphylos</i> <i>uva-ursi</i>	2500-5000	<i>Ceanothus integerrimus</i>	" -
R	<i>Astragalus</i> <i>bilobatus</i>	a few at 1200	<i>Quercus californica</i>	4500-
R	<i>Rhus</i>	2000	" <i>wislizeni</i>	2500-5000
R	<i>Rubus</i>	bush 2500	<i>Juncus</i>	- 1500
He	<i>Yucca whippleyi</i>	2200-3000	"	pin leaves - 4
R	<i>Alnus</i>	2000-5000	<i>Psoralea</i>	big - 6000
P	<i>Solidago</i>	" -	<i>Gilia</i>	flur - "
Q	" <i>nigra</i>	" - 2500	<i>Fragaria</i>	- "
R	<i>Ceanothus diversiflorus</i>	2000-	<i>Apocynum</i>	- "
R	" <i>integerrimus</i> ?	"	<i>Asclepias</i>	big - "
Y	<i>Hebe</i>	2000-4000	<i>Asclepiadora</i>	- "
Y	<i>Lawsonia</i> <i>berberis</i>	" 3500		
R	<i>Quercus</i>	" 5000	<i>Quercus wislizeni</i>	2500-5000
R	<i>Vitis</i>	" 2500	<i>Ceanothus cuneatus</i> ?	2500-5000
R	<i>Rosa</i>	3000-6000	<i>Solidago</i>	5000-6500
C	<i>Hibiscus</i> <i>trif.</i>	" 3000	<i>Eriogonum</i> <i>shrubby</i>	" - "
C	<i>Cotoneaster</i> "2240"	"		
S	<i>Phacelia</i> <i>torreyi</i>	1 bunch 2500		
P	<i>Passiflora</i> <i>glabra</i>	2500		
	<i>Microrhiza</i> <i>glauca</i>	a few "		

Edgewild

C	<i>Pinus contorta</i>	4500 - 7000 ^{SW}
Ere	" <i>ponderosa</i>	4500 - 8400
Ar	" <i>jeffreyi</i>	" - 9500 ^{SW}
Er	" <i>lambertiana</i>	6000 - 8500 ^{SW}
	<i>Libocedrus brevens</i>	4500 - 7700 ^{SW}
Rh	<i>Abies concolor</i>	6000 - 9500 ^{SW}
"	<i>Quercus californicus</i>	4500 - 7700
Rho	" <i>chrysolepis</i>	4000 - 7000
Al	<i>Alnus rhombifolia</i>	2000 - 6500
Ra	<i>Salix</i>	" - 6500
Er	"	"
P	"	"
Ar	<i>Arctostaphylos viscida</i>	- 6500
"	"	"
He	"	"
R	<i>Ceanothus divaricatus</i>	- 6500
P	" <i>intergricus</i>	4500
C	<i>Rhamnus tomentella</i>	- 6500
R	<i>Sambucus</i>	- 6000
R	<i>Ribes nevadensis</i> <i>sanguineum</i>	- 6000
R	<i>Rosa californica</i>	- "
R	<i>Rubus nutkanus (parviflorus)</i>	- 8500
R	<i>Rhododendron occidentale</i>	5000 - 6000
R	<i>Lonicera</i>	2500 - 5000
P	<i>Pentstemon ternata</i> ^{scarlet}	- 8500
C	" <i>antiochioides</i> , ^{lush}	- 5000
C	"	"
"	"	"
R	"	"
	<i>Cercocarpus parvifolius</i>	2500 - 3000
"	" <i>ledifolius</i>	1 inch 7700

Up Mts Aug. 3.

	<i>Castanopsis</i>	SW 7700 - 10800
	<i>Arctostaphylos</i>	" - 9300 ^{SW}
	<i>Pinus flexilis</i>	8200 - 10800
	" <i>murrayana</i>	" - "
	<i>Symphoricarpos</i>	" 9500
	<i>Ribes nevadensis</i>	" 10800
	<i>Prunus</i>	- 9300
	<i>Lupinus</i> ^{narrow leaf}	" 10000
	<i>Veratrum</i> ^{narrow leaf}	" - 9000
	<i>Dodecatheon</i>	" - "
	<i>Polygonum</i>	" - "
	<i>Castilleja</i> ^{red}	" 9700
	<i>Salix</i>	- 8000
	<i>Campot Cabin</i>	8500
	<i>Pinus jeffreyi</i>	- 9100 ^{SW}
	<i>Abies concolor</i>	- 9100 ^{SW}
	<i>Pinus murrayana</i>	8000 - 10800
	" <i>flexilis</i>	" - "
	<i>Ribes nevadensis</i> (scarlet)	" - 10800
	" <i>laevis</i> (spiny berry)	8500 - 9000
	" (cut leaf)	9000 - 9500
	<i>Symphoricarpos</i>	- 10000 ^{SW}
	<i>Ceanothus intergricus</i>	- 9500
	<i>Castanopsis</i>	- 10800
	<i>Lupinus</i> ^{big pink}	- 9000 ^{SW}
	" ^{big blue}	8500
	" ^{narrow leaf, light blue}	- 10000 ^{SW}
	<i>Pteris</i>	5000 - 9700
	<i>Common fern</i>	"
	<i>Cymopterus?</i> ^{big}	- 9700
	<i>Thalictrum</i>	- 9000 ^{SW}
	<i>Actinaria</i>	8000 - 9000

C	Castilleja	red. viscid	-9800
Ere	Geranium		-9000
Wi	Geum 'tortiflorum'		-8500
Es	Potentilla	white	-9000
	Artemisia		-8500
Rh	Phacelia		-9200
"	Lilium parryi		-9000
Rh	Veratrum		-9000
Pl	Mimulus luteus? big siliques		-9500
Ra	" little siliques		-9500
	Prunus		-9300 ^{SW}
Er	Aplopappus "blowenii" - not		-9100 ^{SW}
	Zent, Aug. 4	9000	
	Peak 10800 - San Jacinto		
	Castroville S.W.	10800	
He	Ribes nevadensis		"
R	Pinus flexilis	dwarf	"
P	" muricata	"	"
P	Arceuthobium	"	"
C	Carex	"	"
F	Sporagium umbellata	9000	"
R	Clatonia	"	"
Y	Holodiscus	"	"
Z	Silene	yellow 8500-10700	
R	Ribes "prostratum"	8600	
R	Pinus jeffreyi	-9200	
?	Abies concolor	-9200	

Aug. 7 up Lakeview Peak
 Cercocarpus ledifolius 1 of 8826
 Chrysophila picta 1 of 8500

Aug. 11 to Hermit Reservoir
 Artemisia tridentata 4300 - 4500
 Monarda " - 4500
 Malvastrum " "
 Argemone a few - 4300
 Eriogonum fasciculatum - 4500
 Gutierrezia euthamiae - 4400
 Wyethia 4300-4500
 Solidago 3000-4000
 Eriogonum shrubby " - 4500

Aug. 13, Idylwild to Hermit.
 Geophytum 4500 - 6000
 Monardella " - "
 Achillea " - "
 Euphorbia " - "
 Astragalus " - "
 Mimulus glutinosus - 5000
 Ribes speciosum 3000 - 4400
 " malvaecum viridifolium 3000 - 4000
 Salvia - 2500
 Cassia - 2000
 Lupinus pinky - "
 " fallax? - "

Back to Idylwild Aug. 5,

Aug. 3 San Jacinto Mts.

Dendroica auduboni, com 8000-9500
Junco -10700
Melospiza ^{feeding ya at} com, nest at 9000.
Zonotrichia obs at 8500-10500
Spizella arizonae -8000
Oreortyx 2, 4, 5 yg. 8000-9000
Oreospiza 8000-9500
Uro-mantes com at 9500
Dryobates hyloscopus 2 at 9000
Picoides 1 at "
Zenaidura 3 at "
Sialia -9200
Empidonax difficilis yg 8500+9000
Spinus pinus head 9000
Perisoreus gambeli obs
Sitta pygmaea 8500
" aculeata "
Mniotilta 1 at 9000
Melospiza lincolni feeding ya at 9000
Troglodytes com -9700
Sialoparus platycircus?
" rufus?
Phrynosoma yg. at 1 at 10500
Corvus brachyrhynchos 16 at 10800
Salpinctes 1 at 10500
Accipiter velox 1 " "
Certhia 2 - 9500
Dendroica auduboni + yg at 9000 + 9500
Troglodytes yg 9500
Pipilo megalonyx 1 im. 9300
Sphyrapicus thyroideus 1 ♂ 9000

Odontaspis 5300-9500
Sciurus f. bayardi 5000-9100
Citellus beecheyi -9500
Dipodomys merriami 45300
" stephensi 8000-10700
Peromyscus gambeli 45300-8000
" texensis 5500-
Neotoma "
Microtus calif. "
" 8500-9000
Thomomys -9700
Lynx
Urocyon
Felis Trade at 8500
Procyon trades -9000
Mephitis
Skorex 9000
Scioporus 8000
Scioporus 5300-9000
Vulpes ? "
Myotis ? "
Erethizon on P. musgum gravings at 9500.
Taxidea at Hunt Mrs. holes 4400
Perodipus, *Lepus calif.*
Zampepeltis multivittatus 1 at 5400
Crotalus molossus 5000-8000
Pituophis 1, 4500
Eutania 1, 5400
Phrynosoma 1, 5300
Sceloporus big -5500
" bicaratus
Uta stansburiana
Cnemidophorus tigris 74500

C. Colaptes - 8700
 Ere Helminthophila c. lotseus - 8700
 Wa. Contopus richardsoni - 8500
 Er. Cyanocitta - 8000
 M. melanerpes formicivorus acrobolus - 6500
 Ph. Geococcyx 1 + tracks of 5000.

Aug 11 to Ken Camp + Hunt Res.
 P. Pipilo fuscus seminula 3 - 5000
 Ra. Myiarchus 3 - 5000
 Aphelocoma com - "
 Er. T. ruficeps 49, 4300-4500
 Pa. Chondestes com - "
 D. Falco sparverius 7 4300-4500
 He. T. s. passadus 1 "
 R. Catherpes 1 "
 P. Habia uclavosephala 2 "
 C. P. ruficeps 1 "
 F. P. ruficeps com - "
 R. P. ruficeps 4 4300
 V. Buteo calurus 1 "
 D. Sitta pygmaea abu "
 R. S. n. n. 1 "
 F. Tachycineta abu "
 C. Amphispiza nevadensis com "
 C. Sitta n. abu "
 C. Euphagus 3 "
 F. Chondestes 2+ 4300-4500
 F. T. v. v. 3 "
 F. Lanius 2 4500

D. Sitta 4500
 Corvus 2 at 4
 Spizella "
 Sitta abu. 4300-5300
 Colaptes collaris com. 4300-
 Sitta pygmaea com. "
 7

Aug. 14, Hemet + San Jacinto

C	<i>Eremocarpus setigerus</i>		abu
Ere	<i>Croton californicus</i>		"
Wa	<i>Senandra virgata</i> (madr)		"
Es	<i>Ptilocis virgata</i> (chocoma)		"
	" <i>plurocarpa</i> "		"
Rhu	<i>Gnaphalium</i>		com.
"	<i>Helianthus annuus</i>		"
Rho	<i>Gutierrezia dioica</i>		"
Pt	<i>Xanthium</i>	weed	"
Ra	Mealot thistle	"	"
	<i>Abronia</i>		abu
Er	<i>Latura</i>		com.
P	<i>Cucurbita foetidissima</i>		"
	"		"
	Horchound	weed	"
He	<i>Amsinckia</i>		"
R	<i>Oenothera</i>	1219 1220	a few
P	' <i>Semiothis</i> '	1215	com
C	"	1214	-
F	<i>Mertensia glauca</i>		"
R	"	annual	"
Y	<i>Artemisia californica</i>	on foothills	"
Z	<i>Ranunculus polyglochis</i>	"	"
R	" <i>stachyoides</i>	"	"
R	<i>Hosackia glabra</i>	"	"
	<i>Opuntia nevadensis</i>	"	"
	" <i>occidentalis</i>	"	"
	" <i>tenuis</i> ?	big, open areas	a few
	<i>Gutierrezia euthamiae</i> ?	on foothills	com
F	<i>Simoes douglasii</i>	"	a few

<i>Baccharis viridis</i>	com
" leafless	1211 in places
" 'pilularia'	1212 "
" "pilularis" ?	"
<i>Argemone platyceras</i>	a few
<i>Helianthus</i>	1215 foothills, com
"	" "
<i>Chilopsis linearis</i>	long weed, abu
<i>Prosopis juliflora</i>	3 patches
" <i>pubescens</i>	2 trees
<i>Malvastrum fasciculatum</i>	a few
<i>Trichostema lanceolatum</i>	abu
<i>Heliotropium curassavicum</i>	"
<i>Salix nigra villoida</i>	in places
"	"
<i>Populus fremonti</i>	abu
<i>Sambucus glauca</i>	com
<i>Phoradendron</i>	"
<i>Platanus</i>	"
<i>Suaeda suffruticosa</i>	+ smaller, abu.
<i>Salicornia</i>	"
" <i>Stachia</i> "	1216 "
<i>Atriplex canescens</i>	"
"	annual
<i>Juncus lacustris</i>	"
" <i>balteus</i> ?	"
<i>Distachne viridina</i>	"
<i>Tetradymus canescens</i>	com

Aug. 14, Santa + San Jacinto

Ere Citellus beecheyi com
 Ar Motomys intermedius in cactus, "
 Er Perognathus 1, abn.
 Mus musculus 1 on barb wire
 Perodipus tracks, com
 Dipodomys " "
 Thomomys pallidus "
 Lepus auduboni 1 com "
 Ra " californicus 1 " "
 Canis tracks "
 Er Vulpes macrotis "
 Pro Urocyon "
 Mephitis tracks "
 He " "
 R " "
 P " "
 C " "
 F " "
 M " "
 V " "
 L " "
 R " "
 R " "
 C " "
 C " "
 T " "

Riverside Aug. 14

Thomomys
 Perodipus
 Dipodomys
 Lepus auduboni
 Canis
 |

Aug. 16, Riverside

Euroscapus setigerus abn
 Oryza californicus "
 Baccharis viridis "
 Tetradymia squamiflora com
 Baccharis morisy, fig leaf "
 " pulchellus? "
 Philoxera virgata abn.
 " pluricauda "
 " "Emiliae" 1213 + 44 "
 " " 1214. "
 Helianthus annuus "
 Desmodium virgatum "
 Hordeum weed "
 Amaranthus " com
 Gutierrezia euthamiae? "
 Sarcobatus "
 Cucurbita "
 Cuscuta "
 Mentzelia glauca a few
 Opuntia breviflora on foothills com
 " occidentalis " "
 " " " "
 Salix n. vallicola fig, in yards com
 " macrocarpa "
 Populus fremontii "
 P. latifolia "
 Sambucus glauca "
 Scirpus dreyeri "
 Eriogonum fasciculatum "
 " "

C	<i>Hosackia</i>	<i>globra</i>	on foothills	com
Ere	<i>Artemisia</i>	<i>tridactyla</i>	"	"
W	<i>Ranona</i>	<i>polystachia</i>	"	"
Es	"	<i>stachyoides</i>	"	"
	"	"	12/5	"
Rhu	<i>Rhus</i>	<i>laurina</i>	on hills	a few
"	"	<i>trilobata</i>	"	com
Rho	<i>Adiantum</i>	<i>parvifolium</i>	on hilltops	"

Er
 P
 R
 He
 R
 P
 C
 F
 A
 Y
 Z
 R
 A
 T

Aug. 17, Redlands 1200ft

C	<i>Eriogonum nitens</i>	1200 ²	2000
Ere	<i>Croton californicus</i>	in canyon	3500
Wi	<i>Baccharis viminea</i>	in canyon	3500
Er	"	hops	2500
	" <i>Semeioides</i>	1213.	"
Rhu	"	1214.	"
	<i>Benardia virgata</i>	"	"
Rho	<i>Ptilopia virgata</i>	"	"
Pl	" <i>plurocarpa</i>	"	"
Ra	<i>Helianthus annuus</i>		- 2500
	<i>Gutierrezia divergens</i>		- 2000
Er	<i>Opuntia brevidens</i>		- 2500
	" <i>occidentalis</i>		"
	" <i>small pods</i>		- 2000
Sal	<i>Salix nigra</i>		- 2500
He	" <i>macrostachya</i>		- "
R	"		- 3000
P	<i>Populus fremontii</i>		- 3500
Q	<i>Platanus</i>		- 3000
F	<i>Ficoidia glutinosa</i>	1800	- 4500
H	<i>Hosackia globosa</i>		- 5500
	"		- 3500
A	<i>Astragalus californicus</i>		2500
R	<i>Ranunculus polytachia</i>		3500
	" <i>tachyoides</i>		2500
	" <i>parva</i>		3500-6500
E	<i>Eriogonum fasciculatum</i>		3500
L	<i>Lupinus pallidus</i>		- 2500
S	<i>Scaberrima glauca</i>	1200	6200
	"		4500
N	<i>Nicotiana glauca</i>	1200-2000	
M	<i>Malvastrum pasadenatum</i>	"	- 2000
C	<i>Chenopodium</i>		6000
	"		- 3500
P	<i>Pentstemon antiochioides</i>	2000-3500	
H	<i>Hosackia globosa</i>	S.W.	- 3500

<i>Triostema lanatum</i>	3500-6500
<i>Juniperus occidentalis</i>	1800-2000
<i>Adiantum pringlei</i>	" - 6500
<i>Yucca whipplei</i>	" - 6000
<i>Rhus trilobata</i>	2000 4500
" <i>diversiloba</i>	" - 4000
" <i>ovata</i>	" 4300
<i>Ceanothus crassifolius</i>	" 4000
" <i>thyrsiflorus</i>	- 6500
<i>Cercocarpus betulifolia</i>	" 5000
<i>Quercus dumosa</i>	" "
" <i>wislizeni</i>	" 6000
<i>Purshia ilicifolia</i>	" 4000
" <i>californicus</i>	" 6000
<i>Prunus ilicifolia</i>	" 3500
<i>Salix v. v. v.</i>	" - 5500
"	" 9500
<i>Populus trichocarpa</i>	"
<i>Alnus chrysolepis</i>	1800-5500
<i>Pseudotsuga mucronata</i>	SW. 4500-6500 NE. 2700-5000
<i>Quercus chrysolepis</i>	3500-7500
Left Creek	"
<i>Garrya v. palmeri</i>	" 5000
<i>Arctostaphylos tomentosa</i>	" 6500
<i>Juniperus glauca?</i>	2000-6000
<i>Juniperus subrepens</i>	2000-5500
<i>Quercus</i>	3000-5000
<i>Ceanothus</i>	4500-6000
<i>Arctostaphylos manzanita</i>	4500-6000
<i>Pinus ponderosa</i>	a few
<i>Artemisia tridentata</i>	E. 6700-7500 " 4700-6200
<i>Fragaria</i>	" 5-7500

Co. E	<i>Parthenocarpus</i> ^{terrestris} scrub bush	2500-4000
Cre. C	<i>Prunus</i> ^{denigata} abundant	4500-5000
Ar. B	<i>Baccharis</i>	" - 7300
Es.	<i>Rhamnus</i> ^{torreyana}	" - 6000
15	<i>Pinus Coulteri</i>	5000 - 6200
Rh.	" <i>amblyocarpa</i>	" -
" B	<u>Clark</u>	" -
Rh. Pl	<i>Tibocedrus</i>	" -
Pl.	<i>Heteromela</i>	3500-4300
R. Hd.	<i>Ceanothus</i>	
Ge.	<u>transitions on SW</u>	6500
Er. Q	<i>Abies</i>	6500 -
Pa.	<i>Pinus jeffreyi</i>	" - SW 9500
A.	<i>Ceanothus intergrifolius</i>	6500 - 7000
Se.	<i>Pentstemon</i> ^{laevis}	" 9000
H.	<i>Gilia</i> ^{blue}	" - 6000 " - 7000
R.	<i>Castilleja</i>	" -
P. Pa.	<i>Arctostaphylos patula</i> , green	7000-9500
C. Pl.	<i>Castilleja</i>	" - 10500
F. E.	<i>Ribes</i> ^{big ophrys}	4500 -
1 Ho.	<u>Top of ridge</u>	7700
2 A.	<u>Bluff Lake</u>	7500
2 R.	<i>Veratrum californicum</i>	" - 8500
R.	<i>Dodecatheon alpinum</i>	
1 E.		
2		
3		
4		
5		
6		
7		
8		
9		
10		

Bluff Lake

<i>Pinus ponderosa</i>	
" <i>jeffreyi</i>	
" <i>lawsoniana</i>	
" <i>resinosa</i>	
<i>Tibocedrus densus</i>	
<i>Abies concolor</i>	
<i>Arctostaphylos patula</i>	
<i>Ceanothus divaricatus</i> ?	- 8500
<i>Castilleja</i>	
<i>Salix</i>	in meadow
<i>Veratrum</i>	"
<i>Dodecatheon alpinum</i>	"
<i>Erigeron</i>	"
<i>Symphoricarpos parishii</i>	
<i>Pentstemon laevis</i>	
<i>Ribes nevadensis</i>	
<i>Prunus emarginata</i>	SW - 8500
<i>Solidago</i>	-
<i>Helianthus bigelovii</i>	in meadow, 7500
<i>Anemone californica</i>	

Redland, Aug. 17

Minus 2
 Carpodacus frontalis com
 Pipilo serripes "
 Zonotrichia a few
 Lophortyx com
 Polioptila 1
 Chrysomitris a few
 Cathartes 4 2000
 Salpinctes 3 "
 Aphelocoma com 2000-6200
 Ceryle 1 2700
 Chamaea com 2000-6200
 Oreortyx 5000
 Sitta pygmaea 7000-9000
 Junco "
 Spizella arizonae "
 Arremonax 4000-6000

Aug. 18 Bluff Lake

Junco thurberi abu
 Spizella arizonae abu
 Carpodacus mexicanus com - 8200
 Empidonax a few spec. 7500-8000
 Selosphorus rufus 1
 Crotopus richardsoni com
 Parus gambeli "
 Dendroica auduboni 4 yg. abn. 10000
 " townsendi
 Piranga ludoviciana com
 Sialia abu
 Troglodytes

Nucifraga 3 heard at 8000
 Oreospiza com
 Hylodytes ?
 Merula migratoria pro - 4
 Bubo - heard + feathers pond
 Aug. 19 Bluff Lake

Passerella
 Cyanocitta - 9100
 Spinus pinus
 Melospiza c. lutescens 7500-8000
 Wilsonia pusilla
 Calypte anna
 Pipilo megalonyx 1
 Sphyrapicus thyroides 1
 Empidonax com. yg. abn. 1500-8000
 Colaptes
 Pachycephala thalassina

Aug. 20 to Dry Lake

Cyanocitta 6 at 7300
 Aphelocoma - 6500
 Chamaea "
 Buteo b. calurus 2 others

Aug. 21

Nucifraga 9000-10000 a few
 Junco abu - 114000
 Aquila chrysaetos 3 2 at 1500
 Chordeiles virginiana com 9000

Aug. 22

Cinclus 2 at 9000
 Pittalorus 1 at 8000
 Cyanocitta - 9100
 Hylodytes 1 at 8000
 Venus americana a pair at 8000



Redland, Aug. 17

Minus 2
 Carpodacus frontalis com
 Pipilo sericeus "
 Zonotrichia a few
 Lophortyx com
 Polioptila 1
 Chrysomitris a few
 Cathartes 4 2000-
 Salpinctes 3 "

Aphelocoma com 2000-6200
 Ceryle 1 2700-
 Chamaea com 2000-6200
 Oreortyx 5000-
 Sitta pygmaea 7000-9000
 Junco "
 Spizella arizonae "
 Aeronautes 4000-6000

Aug. 18 Bluff Lake

Junco thurberii abu
 Spizella arizonae abu
 Carpodacus mexicanus com - 8200
 Empidonax a few spec. 7500-8000
 Selosphorus rufus 1
 Coturnix richardsoni com
 Parus gambeli "
 Dendroica auduboni + yg. abu. 10000
 " townsendi
 Piranga ludoviciana com
 Sialia abu
 Troglodytes

Nucifraga 3 heard at 8000
 Oreospiza com
 Hydrochelidon ?
 Merula migratoria pro - 4
 Bubo - heard + feathers found
 Aug. 19 Bluff Lake

Passercula
 Cyanocitta - 9150
 Spinus pinus
 Melospiza c. lutescens 7500-8000
 Wilsonia pusilla
 Calypte alba
 Pipilo megalonyx 1
 Sphyrapicus thyroideus 1
 Troglodytes com. yg. 10000-8000
 Colaptes
 Tachycineta thalassina

Aug. 20 to Dry Lake

Cyanocitta 6 at 7300
 Aphelocoma - 6200
 Chamaea "
 Buteo b. calurus 2 at 6000

Aug. 21

Nucifraga 9000-10000 a few
 Junco abu - 11400
 Aquila chrysaetos 3 2 at 11500
 Chordeiles virginiana com 9000

Aug. 22

Cinclus 2 at 9000
 Melospiza 1 at 8000
 Cyanocitta - 9100
 Hydrochelidon 1 at 8000
 Venus americana a pair at 8000

Aug. 20

Quercus californica 7300

Cercocarpus ledifolius "

Cornus occidentalis "

Amelanchier a. venulosa

Populus angustifolia "

Rosa

Bear Valley 7250

Summit 7500

Upper Sonoran 4500 SW

Bottom of slope 4200

Santa Ana R. 5400

Artemisia tridentata 5400-6000

Bigelovia canescens " 5600

Opuntia occidentalis at 5500 SW

Amorpha californica 5400-6000

Libocedrus 5400-

Arctostaphylos patula 8000-9500

Holodiscus 8000-10000

Head of S. Fork 8000

Pinus muricata 8000-11500

Ribes cereum 8000-9500

Pinus flexilis 9000-10000 NE

Dry Lake 9000

Hudsonian 1000 SW - 11480 NE

Bryanthus breweri 1000 NE - 11000

Paronychia " - 11480

Stipa composita " "

Hieracium " "

Coryx 10000-11000

Sibaldia procumbens 11000-11480

Helenium ? " "

Aster: yellow " "

Grass Festuca minor? 10000 "

" Setaninum rigidum " "

Antennaria alpina 11000 "

Eriogonum caespitosum " "

Phlox douglasii 11200 "

Ranunculus 10000 "

Ribes 11000 "

Oxotropus " "

Senecio minutella " "

Dry Lake

Artemisia low

Aster

Eriogonum

Trifolium

Cynopterus

Catalpa

Eriogonum

Aug. 22 down

Juniperus occidentalis 1 at 8700 NE

Chrysothamnus - 8500

Head of S. Fork 8500

Sambucus - 8500

Aug. 25 Bear Lake

- Podilymbus com
 - Fulica 2000
 - Euphagus 3
 - Sturnella com
 - Otocoris 2000
 - Falco sparverius 13 seen
 - Sialia ^{pyrrhuloxa} occidentalis com
 - Spizella "
 - Amphispiza nevadensis com
 - Colaptes cafer "
 - Godwits 100
 - Oxyechus vociferus 10
 - Tringa small 6
 - Fringilla montana 6, com
 - Sayornis saya (1)
 - Doble
 - Oreortyx 12 in west pines
 - Aphelocoma com
 - Cyanocephalus "
 - Nycticorax cinereus 1 seen
- Baldwin Lake
- Colymbus auritus + yg com
 - Podilymbus "
 - Fulica + yg "
 - Sesmeria alba 20
 - Ptychocheilus lunifrons - a few

Bear Lake

- Artemisia tridentata com
- " ^{monta}
- Gnerrigia nuttiana? com
- Bigelovia tortifolia "
- Lupinus (caespitosus) "
- " silvius "
- Juniperus occidentalis "
- Pinus monophylla
- Juniperus californica
- Cercocarpus ledifolius
- Amelanchier a. uteriflora
- Bigelovia graveolens
- ~~Sayornis saya~~
- ~~Kuhnia glandulosa~~
- Doble
- Doble & summit
- Ephedra antisiphilitica - 7000
- Carex cuneatus "
- Andropogon inaequalis "
- Styrag "
- Yucca brevifolia "
- Ceruus "
- Opuntia "
- Ceruus engelmanni? "
- Tetradymia canescens "

San Bernardino Mts.

Odocoileus hemionus ^{several}
Spermophilus ^{supabundant}
Spermophilus n. anthonyi ^{com}
Citellus beecheyi "
Callospermophilus berlandieris "
Eutamias merriami ^{a few}
 " *callipeplus* ^{prevalent}
Peromyscus sonoriensis "
Neotoma "
 " "
Microtus californicus "
 " *m. berlandieri* "
Thomomys alvicolis "
Perodipus ^{traces}
Erethizon ^{com}
Lepus arizonae, ^{at Double}
Canis latrans ^{a few}
Urocyon ^{com}
Lynx "
Felis ?
Mephitis ?
Taxidea ^{traces}
 " ^{traces}
Sciurus
Vesperugo fuscus ^{com}
Myotis "
 "

Redlands

Eriogonum virgatum,
Antennaria nudicaulis, ^{local to trail}
Artemisia barbata
Ceanothus foeniculosa

Aug. 29 Redlands, Santa Ana Mts

Juniperus calif "
Rhus ovata "
Rhamnus tomentella "
Erechtia glutinosa "
Purshia "
Yucca whipplei "

Krynitzkia intermedia
Aptodesma palmari
Persea microcephala
Eriogonum fasciculatum
Hemlockia globosa
Ranunculus polytachis
Senecio douglasii
Tetradymia squarrosa
Opuntia berlandieri
 " *occidentalis*
Lupinus foliatus ?
Baccharis viminea
Corethrogyne virgata berlandieri
Ersilia parviflora
Baccharis viminea
 " *enryi* (toward San Bernardino)
Tetradymia squarrosa
 " *concolor*
Helianthus annuus
 " *gracilentus*
Fraxinea
Zinnia californica
Euphorbia albomarginata
Chilopsis
Atriplex canescens

Sept. 3 San Bernardino to Glen Ranch

- Eriosema farinosum - 2500
- " californicum
- Senecio douglasii
- Gutierrezia divaricata
- Helianthus annuus
- Madia? (1247)
- Baccharis viminea
- Lycopodium squaratum
- Tetradymia ~~divaricata~~ in wash - 5000
- Tetradymia ~~divaricata~~ - 2500
- Artemisia californica
- Comanthrocyne berardii
- Eriosema setigerum abn
- Croton californicus
- Amelanchier
- Opuntia occidentalis
- " berardii
- Hoserelia glabra
- Ranunculus polytachia - 350
- " stachysoides
- Eriogonum fasciculatum - 5000
- Anemone
- Cucurbita
- Cuscuta - 5000
- Dotura

1500 feet

- Adiantum pseudoternatum SW 2000-4000 NS 1500-6000
- Yucca whipplei n 6300
- Ceanothus crassifolius "sp. totali" - 2000
- " " 2000-4000

- Cercocarpus betulifolia 1500-5500
- Rhus trilobata " - 1000
- " diversiloba " - "
- Eriodictyon glaberrimum " 6000
- Prunus ilicifolia " 5000
- Platimus
- Populus fremontii
- Juglans rostrata California 1500-
- Sambucus glauca - 7000
- Rhamnus crocea 1500-2000

2000 feet

- Aretostaphylos glauca 2000-3500
- Rhamnus lilicifolia " 5500
- Garrea poliberi " 6300
- Psadotunga macrocarpa } S.W. 3000 -
N.E. 2000 - 4500
- Quercus dumosa N.E. 2000-4000
- " wislizeni " 6000
- Ceanothus divaricatus (no 1258) " 6000

Glen Ranch 3260
Mrs. Applewhite

- Rhamnus californicus com - 7000
- Aretostaphylos tomentosa - few - 5000
- Alnus rhombifolia - 7000
- Salix - 7000

- Pinus ponderosa 4000 a few 5500-
- Abies concolor "
- Ceanothus thyrsiflorus 5000-
- Pentstemon ~~terrestris~~ "

Sept 3. up Lytel Cr.

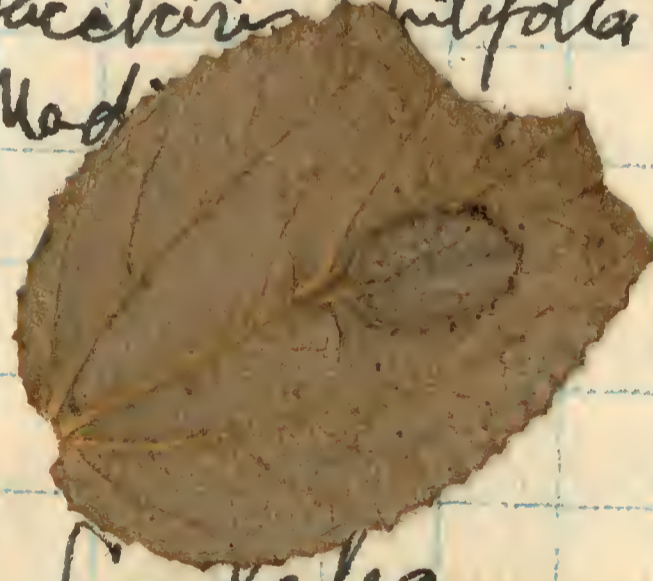
- *Styrax?* 3300-6500
- *Ceanothus thursiflorus* 5000-7000
- *Artemisia tridentata* " - 6500
- *Quercus chrysolepis* " - 7000
- *Pentstemon texanus* " - 6000
- *Pinus ponderosa* (separ at 4700) 5500-7000
- *Abies concolor* " - 8500
- *Prunus emarginata* 5600-
- *Libocedrus* 5700-7000
- *Pibes sanguineum* " - 7000
- " *curran* spiny 5500-7500
- *Ceanothus divaricus* 6500-7500
- *Arctostaphylos nana*? 6000-6500
- *Pinus lambertiana* 6300-7500
- " *juffrayi* 7000-9000
- *Arctostaphylos patula* " - 9000
- *Cedropsis* 7000-9000

Summit 7700.

- *Pinus flexilis* 8000-10000
- " *hurrayana* S.W. 8500-10000
N.E. 8000-10000
- *Cercocarpus ledifolius* 8000-9000
- *Rubus* blackcaps - 7000
- *Pteris* - 7000
- *Solidago* - "
- *Penstemon latifolius* " *speciosus*" - "
- *Chokeberry* 27 6000-7000
- *Quercus wislizeni* - 6000
- *Heteranthes* 2500-3000
- " *Penaphyllon* 2000-4000
- *Louisa subopicata* " - 5000

Summit Sep. 4.

- *Adeostoma fasciculata* abn
- *Arctostaphylos glauca* "
- *Quercus v. palmeri* "
- *Ceanothus cuneatus* "
- " *crassifolius* "
- *Yucca whipplei* "
- *Yucca brevifolia* abn 2 mi. N.
- *Quercus dumosa* com
- *Cercocarpus betulacarpa* "
- *Artemisia tridentata* "
- *Erigeron fasciculatus* "
- *Prunus ilicifolia* "
- *Rhamnus ilicifolia* "
- *Rhus trilobata* "
- *Quercus wislizeni* abn
- *Lonicera subspicata* com
- *Eudictiona glutinosa* 19
- *Baccharis 'hillebrandii'* (1212)
- *Medicago* (1262)



Cordelia 4 bushes
Ephedra woodiusii 1 bush



Sept 3. up Lytel Cr.

Styrax?	3300-6500
Leayothus thursiflorus	5000-7000
Artemisia tridentata	" - 6500
Quercus chrysolepis	" - 7000
Pentstemon texanus	" - 6000
Pinus ponderosa (seen at 4700)	5500-7000
Abies concolor	" - 8500
Prunus emarginata	5600-
Libocedrus	5700-7000
Picea sanguinea	" - 7000
" " spiny	5500-7500
Ceanothus divirgens	6500-7500
Arctostaphylos ⁽¹²⁶²⁾ marginata?	6000-6500
Pinus lambertiana	6500-7500
" juffrayi	7000-9000
Arctostaphylos patula	" . 9000
Castanopsis	7000-9000

Summit 7700.

Pinus flexilis	8000-10000
" Murrayana	Sw. 8500-10000 NE. 8000-10000
Cercocarpus ledifolius	8000-9000
Rubus blackcaps	- 7000
Pteris	- 7000
Solidago	- "
Pentstemon latifolius " speciosus"	- "
Chokeberry 27	6000-7000
Quercus wislizeni	- 6000
Heteranthes	2500-3000
" Penaphyllon"	2000-4000
Lourea subopacata	" - 5000

Summit Sep. 4.

Adeostoma fasciculata,	abn
Arctostaphylos glauca	"
Quercus v. Palmeri	"
Ceanothus cuneatus	"
" crassifolius	"
Yucca whipplei	"
Yucca brevifolia	abn 2 mi. N.
Quercus dumosa	com
Cercocarpus betulifolia	"
Artemisia tridentata	"
Eriogonum fasciculatum	"
Prunus ilicifolia	"
Rhamnus ilicifolia	"
Rhus trilobata	"
Quercus wislizeni	abn
Lonicera subspicata	com
Eudictiona glutinosa	"
Baccharis "pilifolia" (1212)	
"Media" (1262)	

Cordalea 4 bushes
Ephedra nevadensis 1 bush

Sept. 3 Glen Ranch

- Buteo elegans 1
- Aphelocoma
- Pipilo arcula
- Carpodacus frontalis
- Spinus
- Spizella arizonae
- Chonka
- Habia melanocephala 2 Com.
- Vireo cassinii? heard
- Troglodytes 1
- Tamias 1
- Sialia occidentalis Com.

- Parus gambeli com 4000-8000
- Sitta pygmaea " 700
- Cyanocitta " "
- Picicorvus heard 6500-8500
- Colaptes? " "
- Junco com " "
- Dendroica auduboni 6900-8500
- Castroville
- Geothlypis trichas 1 at 8500
- Regulus 1 " "
- Aquila chrysaetos 2 at 9000
- Falco mexicanus 1 at 8000
- Troctilus arua com 3300-7000
- Sayornis nigricans 1 at 3300
- Zenaidura 1 " "
- Taxostoma 1 " "
- Pipilo megalonyx 1 " "
- Amphispiza com 3300-6000

- Oreortyx com.
- Dryobates hyloscopus 3300-7000
- Cataptes " "

Summit

- Phainopepla 1 ♂
- Aphelocoma com
- Carpodacus "
- Amphispiza 2
- Zenaidura a few

San Gabriel Mts.

- Adocoides a few
- Seurus anthony " "
- Citellus richardi com
- Eutamias merriami 3300-6000
- " " spicatus 7000-8500
- Nestora
- Thomomys
- Lepus auduboni
- " badmani?
- Canis
- Urocyon
- Lynx
- Felis
- Scapanus up to 8000
- Vesperugo 9300

Banning Sept. 8

- Abutilon* *annuus*
- Achillea* *palmeri*
- Penicillaria* *longicaulis*
- Artemisia* *dracunculoides*
- " *californica*
- Philoxera* *versata*
- " *pluricaarpa*
- Eriogonum* *retigerum* com
- Croton* *californicus* a
- Quercus* *divergens?*
- Tetradymia* *canescens*
- Ephedra* 3 leaved
- Corethrospira* *peruviana*
- Gilia* *attractoides*
- Eriogonum* *elongatum*
- " *virginicum*
- Opuntia* *fernandina*
- " *basilaris* var.
- " *ang. occidentalis*
- Acacia* *greggii*, abn.
- Eriogonum* *fasciculatum*
- Hosackia* *glabra*
- Eriogonum* *parviflorum*
- " *californicum*
- Ranunculus* *stachysoides*
- " *polytaenia*
- Salvia*
- Baccharis* *ovata*
- " *serotina*
- Leptopodium* *squamatum*
- Chilopsis*

- ~~*Coleogyne*~~
 - Covillea* *argens*, abn.
 - Acacia* *greggii*
 - Dalea*
 - "
 - Franzeria* *dumosa*
 - Ephedra*
 - Opuntia* *basilaris*
 - " *californicum?*
 - Yucca* *macrocarpa*
 - Ranunculus* *canescens*
 - Chilopsis* abn.
 - Baccharis* *microcephala* com
 - " *glaberrima*
 - " *virginica*
 - Eriogonum* *parviflorum*
 - " *californicum*
 - Cercis* *englemanni*, abn.
 - Eriogonum* *integrifolium* begins
 - ~~*Chilopsis*~~
 - Isomeria* *arborescens*
- Banning on foothills, South
- Adiantum* *fasciculatum* abn
 - Prunus* *ilicifolia* com
 - " *lingua*" u
 - Eriogonum* *torreyana* u
 - Rhus* *ovata* u
- In Valley, Santa
- Achillea* *palmeri* com
 - (1213) u
 - (1214) u
 - Cucurbita* 24.

White water Ranch

- Prosopis glandulosa* abn.
- Opuntia* sp. *spinos* *spinos*
- Echinosactus locouti* " "
- Thamnosma* " "

- Palatovia flayi*
- Sicoria canescens* (Hall)

- Balsalis* *microphylla*
- serithodes* ?

- Blueja peruvialis*
- Orndalea*
- Penny* *lucroni* ?
- Quercus*
- Salazaria*
- Quercus dumosa*
- Juniperus*

Ridge 2600

Mojave Valley 2600

- Prosopis glandulosa*, com
- pubescens* " "

- Chlopsis* " "
- Covillea* " "
- Acacia guggi* " "
- Proceris* *primo* " "
- serethodes* " "

- Pinus borealis* " "
- Ephedra* " "

- Opuntia schroederae* com
- brevifolia* " "
- Echinosactus locouti* " "
- Cereus engelmanni* " "
- Yucca* *rotundifolia* " "
- Dalea* " "

- Salazaria inflata* " "
- Traneria californica* " "
- Eriogonum inflatum* " "
- studia* " "
- pusculatum* " "
- Artemisia glabra* " "
- Croton californicus* " "

- Yucca brevifolia* 3100-
- Juniperus californica* NE 3000-
- Prunus* " 3000-
- Quercus dumosa* " "

Dwells 3300

Warrens Well 3100

- Yucca brevifolia* abn
- microvallis* " "
- Opuntia erinocarpa* " "
- leptocaulis* " "
- Cereus engelmanni* " "
- Covillea* " "
- Traneria greggii* " "
- Chlopsis linearifolia* " "

Prosopis glandulosa com

Ephedra 2

obs

Salizaria

1

Coleogyne

"

Lysichiton andersonii

"

" big leaf

"

Gutierrezia

veg

1

Apolopepus ?

-

Zinnia canescens

"

Encelia farinosa dwarf

-

"

Cleomea

leafless

"

Eriogonum fasciculatum dwarf

-

"

inflatum

"

"

nodosum

"

Salvia

1

"

4

Hosackia glabra

Com. in places

Croton californicus

"

Quercus grisea

"

Chamaecyparis

obs

on ridges, N slope

Juniperus californica

Quercus dumosa

Arctostaphylos glauca

Arctostaphylos

Eriogonum fasciculatum

Coleogyne canescens?

Birds

Archibuteo

4

Falco mex

2

" sparrow

5

Zonotrichia querula

obs

Zenaidura

"

Bubo

1 heard

Sayornis

1

Sayornis

1

Cathartes aura

Corvus sinuatus

1

Amphispiza

1

Euphagus

1

Agelaius

2

Condalia frutescens

Amphispiza bilineata

Otocorys

obs

Sialia

1

Pipilo

"

Parus gambeli

1

Helminthophila

com

Whitehats

- Acapitacopecis* 17 on fence
 - Buteo calurus* 2 "
 - Barn owl 2 "
 - Sparrow hawk 2 "
 - Night heron 2 "
 - Ardea herodias 1 dead
 - Cornus amomum* 1 "
 - Zenaidura* 1 "
 - Spizella* com
 - Hirundo* a few
 - Coccyz corax* 3 or 4
 - Sturnella* com
 - Quercus* "
 - Haliaeetus* a few
 - Heliodytes* "
 - Dryobates s bairdi* 2
 - Sayornis nigricans* a few
 - Troglodytes aedon* (taken, com)
- Marionette
- Buteo* head
 - Xanthocephalus* 1
 - Lophortyx gambeli* obs
 - Melospiza* com
 - Quercus* 2
 - Dryobates s bairdi* 1
 - Heliodytes* com
 - Zenaidura* com
 - Campylorhynchus b. nevadensis* a few
 - Heliodytes*
 - Hirundo* a few at Warren

Plant Catalogue 1907

Santa Ana Mts. Coldwater canyon
1188. *Ribes amarum* (C) fuzzy

1189. *Arctostaphylos*

1170. *Ceanothus*

Zenuseal, July 25

1191. *Opuntia bernardina*

1192. *Juniperus monosperma*

1193. *Rhamnus crocea*

1194. *Rhamnus ilicifolia*

Idylwild

July 30

1195. *Adeucostoma sparsifolium*

1196. *Arctostaphylos manzanita*, July 5000-5500

1197. " *p. drupacea?* 5000-6500

1198. " *'glabra'* 4000

1199. " *tomentosa* 2500-5000

1200. " *petula?* (3100-9300)
Aug 5

San Jacinto Mts.

1201. Ribes nevadensis (C) 8000-8600

~~1202.~~

1202. " Cereum (C) 8000-10000

±

1203. " montigenum (C) 9000-9500

±

1204. Heuchera 11800

1205. Ceanothus cordulatus - 9500

~~1206.~~

1207. Cercocarpus "pubescens" 8000

1208. " ledifolius? 8826

1208. Ribes nevadensis (C) 4300-6000

Hybrid of Aug. 8

1209. Ceanothus integrifolius

Hybrid

X 1210. Ceanothus cuneatus, Aug. 13,

2000-5000 feet

San Jacinto Aug. 14,

1211. ~~Podocarpus~~ squarrosus leafless

1212. Baccharis linearifolia

Ericaceae pinnifolia

1213. Heterotheca florabunda

1214. Chrysopsis sessilifolia

1215. "Empetrum" shrubby suffrutescent

1216. Gatt weed as at San Diego sp.

1217. Spiny blue flowered weed

1218. Cheiride

1219. Onoclea fern

San Bernardino Mts. Aug. 21-26

1220. Ribes aureum (C) 9000 feet

1221. Ribes sanguineum nevadensis (C) 6000

1222. Ribes rozli (= unictum) (C) 6000 very spiny

1223. Ribes montigenum (C) 11480

Top of Graybock 11480 feet

1224. Heuchera elegans

5 Erigeron Kennedyi

6. Astragalus Oxytropis orophila

7. Draba corrugata

8. Sibbaldia procumbens

9. Phlox filica purpurea - a few of.

1230. Saxifraga hircosa capitata subulifera

1 Antennaria alba media

2 Erigeron compositis discoides

3 Erigeron concinnus aphanactis

4 Artemisia media

Top of Grayback

1235. ~~Helianthus~~ vestata pygmaea

6. Ranunculus oxigenotis

7. Grass Festuca minor

8. " Setanum rigidum

~~S. ...~~
Side of Grayback

1239. Bryanthus breweri 10000-11000

Bear Valley

1240. Amelanchier 7000

1241. Cereocarpus ledifolius "

1242. Populus angustifolia "

1243. Artemisia tridentata "

4. " Rothrock's ovata "

Bear Valley, east end - 7000

1245. Gutierrezia ~~puberula~~ lucida

6. Audubertia ~~puberula~~ compacta

7. Ceanothus cuneatus

8. Cowania nuneana

9. Ephedra virida

Bear Lake

1250. ~~Caryophyllus~~ tortifolius
Bigalovia tortifolia

1. Gutierrezia

2.

S. Slope of Mts.

1252. Bigalovia "comosa" 6000 ft

Bear Valley, east end

1253. Juniperus occidentalis 7000 ft

San Bernardino Mts. S. slope

1254. Arctostaphylos tomentosa 6000

1255. Arctostaphylos glauca? 4000

1256. Ceanothus thursiflorus 6000

1257. Ceanothus ~~cordulatus~~ cordulatus? 5000

1258. Ceanothus cordulatus thorny 5000

1259. Ceanothus crassifolius 4000

1260. Ranora (p. 11000) 4000-6000

Mentone Aug. 29.

1261. Corethrogyne v. berlandieri topotype

1262. ~~Thymus~~ ^{Larrea} glandulosa

San Gabriel Mts. E. base San Antonio Peak

1263. Arctostaphylos ~~potula~~ 6000 ft

1264. Arctostaphylos potula 7000

1265. Ceanothus divaricatus 7000

1266. Ceanothus thursiflorus 6000

Cajon Pass

1267. Ceanothus crassifolius 3000

Cajon Pass

1268. *Ceanothus* ~~*crossifolius*~~ ¹²⁶⁰

1269. *Rhamnus crocea* 1200

1270. *Rhamnus ilicifolia* 2000

San Bernardino

1271. *Juglans californicus*

Rollands

1272. *Tetradymia comosa*

1273. *Rhamnus crocea*

1274. ~~*Rhamnus*~~ *tormentosus* or var.

Mohave Desert, Warner's Wall

1275. *Simmondsia frutgarum*

1276. *Arctostaphylos glauca*

1277. *Prunus andersonii* ?

1278. *Opuntia bigelovii*
~~*torrosa*~~
by Moro Mission Creek

1279. *Opuntia tessellata nevadensis*

1280. *Opuntia basselaris nevadensis*

1281. *Opuntia echinocarpa*

Morongo Valley

1282. *Baccharis serotrochus*

Whitewater

1283. *Cereus engelmannii*

San Jacinto Valley, Sept. 19

1284. *Opuntia bernardinia*

Beauwont (4 mi. S.) "

1285. *Arctostaphylos glauca*

1286. *Ceanothus crossifolius*

Mt. Lowe, Sept. 25

1887. *Arctostaphylos tormentosa*

1888. *Quercus v. palmeri*

1889. *Ceanothus thyrsiflorus*

1890. *Eredition californica*

San Gabriel Canyon 2000 ft

1299. *Quercus undulata* ?

San Pedro

1292. *Lesqueris globosa*

1293. *Rhus integrifolia*

1294. *Opuntia prolifera*

1295. " *occidentalis littoralis*

San Diego. Oct. 12

- 1296. ~~Leptospartum~~
Baccharis sergiloides
- 1297. Baccharis sergiloides?
Baccharis sergiloides
- 1298. ~~Chrysothamnus~~ brachylepis

- 1299. ~~Leptospartum~~ hymenoclea monogyna
- 1300. Adolphia
- 11.

Tamul

- 1301. Quercus dumosa? ~~1299~~

Dulzura

- 1302. Quercus dumosa
Cottonwood Cr.
- 1303. ~~Chrysothamnus?~~
Isocoma vernonioides
- 1304. Ephedra
- 1305. oval leaf

- 1306. Ambrosia shrubby

- 1307. ~~Chrysothamnus~~ ilicifolia?
Atriplex (Argardii) squarrosa
Patrero

- 1308. Cercocarpus
- 11 9. Ceanothus crassifolius
- 1310. Ceanothus incanus?
- 11 1. " " patula?
- 2. Condalia

- 1313. Aretostaphylos bicolor

- 14. " ~~tomentosa~~
- 15. " tomentosa
- 16. " "

Cuimpo, 2600 ft

- 7. Garrya v. palmari
- 8 Aretostaphylos wagneri
- 9 " "

- 1320. Ceanothus cuneatus
- 1. Rhamnus tomentella
- 2. Eriodictyon glutinosum
- 3. Cercocarpus parvifolia 3900
Cuyamaca Mtn. Oct. 15+16

- 1324. Aretostaphylos
- 11 5. Ceanothus big green
- 11 6, 7, 8, 9. " "
- 1330. Ceanothus tomentosus?

- 11 1. " "
- 2. Aretostaphylos p. drupacea
- 3. Cercocarpus parvifolius
- 4. Symphoricarpos mollis
- 5. " racemosa

Cuyamaca to Tuben Oct. 17

- 1335. Symphoricarpos racemosa
- 11 6. Berberis
- 11 7. Ceanothus "pubescens"
- 11 8. " foliolosus

Mesa Gauche, Oct. 17

- 1339. Styrax
- 1340. Fremontodendron

Santa Pasqual Canyon, Oct. 20.

- 1341. *Ceanothus tomentosus?*
- 2. *Cordalea*
- 3. *Ceanothus crassifolius*
- 4. *Cercocarpus glaberrima*

Poway Station, Oct. 21.

- 1345. *Ceanothus spinatus*
- 1346. *Rhus integrifolia*

Rosedale, near San Diego Oct. 21.

- 1347. *Ceanothus 'obovatus'*

Banning

- Lophortyx valliscola* abn
- Zenaidura* com
- Corvus sinuatus* a few
- Euphagus* com
- Sturnella* "
- Otocoris* "
- Myiarchus cinerascens* 1
- Amphispiza belli* com
- " *bilineata*? yg + ad. "
- Spizella*
- Poaeetes* 2
- Chondestes* a few
- Pipilo sinicola* com
- Troglodytes*
- Hirundo* abn, 5 nests in one cavity
- Lanius* a few
- Carpodacus mexicanus*
- Quercus*
- Agelaius tricolor* 1
- Chrysomitris hesperophilus* com
- Mimus p. leucophaea* 1

Fernando, Oct. 29.

- 1400. *Opuntia* rotundifolia
- 1401. " rotundifolia
- 1402. *Ribes hesperum?* (conilla)

Banning

Apricots com. ~~60~~ 100
 Prunes "
 Grapes " + winery
 Peaches "
 Pears com,
 Figs a few
 Olives " good
 Orange trees, a few, big bears
 Almonds good, for market
 Walnuts a few, poor
 Pepper trees abn.
 Eucalyptus a few.
 Palms a few small,

Beaumont to San Jacinto Lake

Oedostoma josevialtum
Quercus wislizeni
 " *dumosa*
Rhus ovata
 " *trilobata*
Heteromeles
Arctostaphylos glauca
Prunus ilicifolia
Rhamnus crocea
Ceanothus crassifolia
Fouquieria subspicata
Fraxinus
Atriplex canescens
Erythronium josevialtum
 " *elongatum*
Ranunculus polytaetia
 " *stachyoides*
Fraxinus
Hosackia glabra
Chilicothe
Yucca whipplei
 " *noveboracensis*
Pentstemon antiochioides
Artemisia californica
Fouquieria californica
Juniperus a few at Idles
Rhamnus ilicifolia a few

San Juan

- Eurocarpus setigerus* abn
- Croton calif.* -
- Trichostema lanceolatum*
- Phytolacca virgata*
- " *phurocarpa*
- Crotonoideus bernardina*
- Helianthus annuus*
- Artemisia dracunculoides*
- " *californica*
- Ambrosia*
- Cucurbita*

2 mi. West

- Opuntia bernardina* com
- Prosopis* a few

Pasadena, Sept. 23+24.

- Trichostema lanceolatum* - 1700
- Eurocarpus setigerus* - "
- Quercus agrifolia* - 2000
- " *wislizenii* - 7500 -
- Pratinus engelmanni* - 750 -
- " *redwasa* - 4500
- Artemisia californica* - 2000
- Ranunculus polytachia* - 4000
- " *stachyoides* - "
- Hosackia globosa* - 2000
- Horehound* - 1800
- Gnaphalium* - 3000
- Escholtzia* - 1500
- Phytolacca virgata* - 1800
- " *phurocarpa* - "
- Eriogonum elongatum* - 4000
- Opuntia occidentalis* -
- Senecio douglasii* - 3000
- Helianthus annuus* - 1500
- Eriogonum fasciculatum* - 3000

Up Mt. Snow Sept. 24.

- *Onoreus agrifolia* - 2200
- " *wisliginii* 2000 - top
- " *leucosa* 2200 -
- " *chrysolepis* 2000 - top
- *Platanus racemosa* 2000 - 5000
- *Rhus laurina* 1500 - 4000
- " *ovata* 5000 - 5400
- " *trilobata*
- " *diversiloba* 2000 - 5000
- *Rhamnus californica* 2000 - 5500
- " *ilicifolia* 2000 - 5400
- *Ceanothus divaricatus* 2300 - 5500
- " *crassifolius* 2000 - 4000
- *Sambucus glauca* 4000 - top
- 2000
- *Adenostoma fasciculatum* 2000 - 5400
- *Ranunculus polytachia* - 4000
- " *stachyoides* - 4000
- *Dipsacus longiflorus* 4000 - 5500
- ~~*Thalictrum glaberrimum* (poor)~~
- *Heteranthes* 2000 - 4500
- *Arctostaphylos tomentosa* 3000 - top
- " *glauca* 4000 - 5200
- *Garrya* 3000 - top
- *Lonicera subspicata* " - "
- *Yucca whipplei* " - 5400
- *Zauschneria californica* 2000 - 4400
- *Arceuthobium peruvianum* 3200 - 5500
- *Pseudotsuga macrocarpa* 2000 - top
- *Umbellularia* 2000 - "
- *Parsonsia ilicifolia* 2500 - 5400
- *Eredition tomentosum* 3500 - 4500
- " *glutinosum* " - 5400

Open Alpine tundra 4500

- *Acacia macrophylla* 2000 - 4500 -
- *Pentstemon tomentosus* 4000 - top
- *Pentstemon* wide leaf " - "
- *Ribes spinescens* N. 5400 -
- *Holodiscus* N. " -
- *Hemichia* (small) " - "
- *Pinus monophylla* - 1 on top
- *Ceanothus tomentosus* 2000 - 4000

Wt. Snow

- *Adiantum* 2000 - 5500 ft
- *Senecio nigripes* " to 4500
- *Citellus beecheyi* " to top
- *Eutamias merriami* " 2000 - top
- *Neotoma*, houses at 4500 - 5500
- *Urocyon* tracks to top

Arroyo Seco Sep. 27, 1100

Top 5500

- *Quercus berberidifolia* - 1200
- " *occidentalis* - "
- *Leptospartum squarrosum* - 200
- *Quercus agrifolia* - "
- *Ranunculus polytachia* - "
- " - "
- *Asteriscus californicus* 2000
- *Hasocaria globosa* "
- *Sambucus* "
- *Senecio douglasii* "
- *Baccharis viminea* 1500
- *Mitella glauca* - 1200
- *Rhamnus californica* 1200 - Top
- *Vitis* "
- *Rhamnus discolor* " top
- *Prunus dioica* " "
- *Alnus* " - 7800
- *Salix* "
- *Adiantum* E. 1200 -
- *Populus trichocarpa* "
- *Ceanothus tomentosus* "
- *Arceuthobium pauciflorum* " top
- *Endicottia tomentosa* "
- *Rhamnus tomentosa* "
- *Ambrosia* "
- *Rhus ovata* "
- *Diplopia longifolia* "
- *Ceanothus crassifolius* -
- *Lonicera*

- *Ceanothus tomentosus* 1400 - top
- *Pendula* " "
- *Hottel* "
- *Rhus malvifolia* 1300 -
- " *spiny?* "
- *Menyanthes corymbosa* "
- *Protophyllis tomentosa* " top
- " *glauca* " "
- *Ceanothus divaricatus* 1100 - "
- *Cercocarpus* "
- *Pteris aquilina* " 7500
- *Quercus dumosa* 1200 -
- *Berberis fendleri* "
- *Artemisia rigida* "
- Switzer's Camp 3000
- *Rhus trilobata* "
- *Pinus contorta* " N.E. 3000 -
- *Bigelovia grandis* " - top
- *Ceanothus serotinus* " "
- *Pinus contorta* " N.E. 3000 -
- *Libocedrus* said to be on N.E. slope

Arundo donax
Chamaecrista
Papilio remicula
Dendroica auduboni
Achiloeoma
Leptostichis calif
Quercus agrifolia
Platanus
Psathura hesperophilus
Sagorinus myricinus
Psaltirius
Colaptes
Catherpes
Cyanocitta 1600 -
Polyphila 2000 -
Pipilo megalonyx
Contopus richardsoni 1, 1500 -
Euphonia 1 1000 -
Colaptes auratus " -
Oryzopsis nuttalli 1 of 3500
Cinclus 1 " 1500
Certhia " 3500 - top
Geothlypis
Geothlypis intermedia 2, 4000 -
Geococcyx 1 of 5500
Toxostoma a few 1200 - 3500

Sept 28, Colby Camp 3500,
 La Janga Cr. 3200.
Pinus contorta 3200 - 6100
 " *ponderosa* 1 tree at " ~~2000~~
Pseudotsuga ~~varia~~ " - 5500
Artemisia tridentata " - 7000
Ceanothus cuneatus " - 5000
Quercus wislizeni " - 5500
Pinus ponderosa 5200 - 8000
 " *jeffreyi* " - "
 " *tanacetifolia* " " "
Libocedrus decurrens 5300 - 7700
Solidago californica " - 7700
 Sept. 29, to Buckhorn
Abies concolor 6000 - 8000
Acer glabrum ~~inceptum~~ " -
Cercocarpus ledifolius " - 7500
Hesperis in cold gulch " "
Amelanchier " 6500
Arctostaphylos uva-ursi? " "
 " *potula* 6300 - 7500
Ceanothus cordulatus " " "
Nyctelia 6000 -
Bignonia " "
 " " "
Ceanothus n2 7000 - 7500
Pinus flexilis? " " - 8000
Ribes sanguinum 6000 - 7700
Lupinus silvery 7000 - 8000
Sambucus 6000 - 7500
Holodiscus " - 7800
Rubus nutkanus 8500 - 10800

~~Sept. 30 Buckhorn to Lake~~
~~Quercus chrysolepis~~ ^{SW.} 7500

La Jungs Canyon 2p. 28

Tinca thurberii	a few	3200-5500
Zonotrichia	a few	
Aphelocoma	com	
Pipilo megalonyx	com	
Chamaea	com all along	
Perisoreus griseus	2	3900
Chrysomitris lawrencei	heard	at 4000
Sitta pygmaea	com	5200
" acrobata	a few	"
Cyanocitta		"
Dendroica auduboni	com	
Syrnium nebulosum	heard	5500-

Sept. 28, to Buckhorn

Oreortyx	com. - a flock	5500
Carpodacus	a few	"
Passerella	com	5500
Zenaidura	com	5600
Catalpa	1	5600
Melanerpes formicivorus	3, 1	6000
Ardea		"
Meipiza	com	"
Myadestes	1	7000
Archibuteo	1	"
Aquila	1	7900
Accipiter cooperii	1	6500
Falco sparverius	1	8000
Helminthophila cincta	1	6500
Selasphorus fallax	1	7000

Sept. 30 Bushhorn to Islip &

Kinglet	heard
Catherpes	1 at 6500
Junco	com
Dendroica auduboni	"
Corpodacus frontalis	1
Spinus pinus	heard at 7000
Passerella	com
Pipilo megalonyx	"
Buteo calurus	one at 7000
Aquila	1 "
Parus gambeli	com
Sialia occidentalis	"
Cyanocitta	"
Colaptes	"
Dryobates hyloscopus	"
Wilsonia	1 at 6500
Oreortyx	6 " 7000
Cyanoccephalus	heard at "
Mucifraga	" 7500
Alcedo	" 6500
Megascops	" "
Columba fasciata	2 at 7000

Sept. 30. Bushhorn to Islip

Quercus chrysolepis	-7500
Ceanothus cordulatus	-8000
Arctostaphylos patula	- "
Ribes spumosa	- 7800
Prunella	

over ridge to Cienega

Sept. 30. Down to Squirrel Run.

Artemisia tridentata	-6500
Yucca whipplei	-6500
Ceanothus divaricatus	-6000
Rhamnus calif.	- "
Arceuthobium parvifolium	-5500
Quercus wislizeni	-
" " dumosa	5000
Arctostaphylos glauca	5500
" " mariantha? a few	"
" " torreyana	"
Pseudotsuga	-6000
Pentstemon trinoctus	-5500
Prunus ilicifolia	- "
Rhamnus "	- "
Adiantum	-5200
Ceanothus cuneifolius	-4000

Squirrel Run 3300

Quercus agrifolia	-3300
Platanus	- "
Salix	- "
Alnus	- "
Umbellularia	- "

Squirrels

- * Procyon lotor, tracks to 5500
- C Eutamias merriami - 6000
- A Citellus beecheyi - "
- S Neotoma house - "

- S Zonotrichia 10, 6000
- C Thyroperca 2 of 4000
- C Pipilo maculosa "
- S Zonotrichia "
- V Cathartes 3000
- R Lophortyx urophasianus 2000
- C Amphispiza belli 1000
- T Lophortyx v. californicus 2000

Flora

- Asteroides 3300
- Ranunculus polytachus "
- Toxicaria 3000
- Rhus trilobata "
- Lepidospartum squarrosa "
- Opuntia occidentalis a few "
- Ceanothus thyrsiflorus "
- Tamara "

Rumex

2000

- Ranunculus acris -
- Hesperis matronalis -
- Eriogonum fasciculatum "
- Rhus latifolia "
- Baccharis viridis 1200
- Fragaria a few "
- Heterostemma floribunda 1000
- Citrus californicus "
- Ambrosia "
- Lasiacis glandulosa "
- Corchorus baccatus "
- Artemisia californica "
- Senecio californicus 2000
- Baccharis linearis "
- Juniperus californica 1000
- Opuntia missouriensis "
- Eriogonum setigerum "

San Pedro, Oct. 6 - 8

Eriogonum st *virgata* com

Croton *calif* - "

Baccharis? small, "

Muhlenbergia? "

Polypogon *palmeri* "

Heterotheca *floribunda* "

Artemisia *calif* "

Lycium

Atriplex

Opuntia *occidentalis*

" *protifera*

Microrhiza *globosa*

Heliotropium *curassavicum*

Dalmanella

Suaeda

Messembrium

"

Distichlis *spaldingii*

Eriogonum *calif*?

Wild mustard abr.

Marrubium *vulgare* "

Isomeris *globosa* com

Corethrospiza *virgata* com

Grasshopper

San Pedro

Bonaparte 1

Larus

Ardea *herodias* com

Numenius *longirostris* 3

Agelaius 6

Oct. 12 Sand Diego

Platanus racemosa elongata

Nicotiana glauca com.

Sambucus "

Heteromeles com.

Rhus integrifolia

" laurina

" divicidlo

Rhus crocea

Eriodictyon tomentosum

Lonicera subspicata

Opuntia occidentalis

" bernardina

Artemisia californica

Achillea

Leptochloa

Baccharis viminea

Amorpha polystachya

Asadella glabra

Graphalium

Cnicus

Baccharis?

Yucca mohavensis?

Isomeris

Opuntia prolifera abn.

Eriogonum fasciculatum

longatum

Eriogonum siliquosum

Zinnia laurifolia

Hesperis

Stewart's R.

Populus fremontii

Salix v. vallicola

" lasiolepis

Quercus agrifolia

Gutierrezia divergens

Phacelia virgata

Juniperus = Steel Canyon

Quercus engelmannii

" dumosa

Adiantum

Arctostaphylos ~~triflorus~~

Rhus ovata

Desmodium virgata

Januel Ranch

Oct. 13

Dulquea

Plucca borealis

Cottonwood

Pentstemon antirrhinoides

Rhamnus ilicifolia

" crocea

Ceanothus corallatus?

" diversicaulis?

" crassifolius

Prunus ilicifolia

Quercus dumosa

" engelmannii

" agrifolia

Prosopis glandulosa, 1 bush

Arctostaphylos bicolor
 " tomentosa
 Cercocarpus parvifolia
 " luteo-parvifolia

Yucca whipplei
 Adenostoma
 Romneyi coulteri
 Ephedra
 Tetradymia comosa,
 Rhus trilobata
 Rhamnus ilicifolia

Arctostaphylos glauca
 " manginuta?

Erediction glutinosa
 Artemisia tridentata
 Ceanothus cuneatus
 Oval leaf bush

2600 feet
 3900
 S = Summit

Oct. 14, Campo

Quercus agrifolia S
 " engelmanni S
 " dumosa S
 Rhus ovata S
 " diversiloba S
 " trilobata S
 Ceanothus divaricatus? S-1
 " cuneatus S
 " crossifolius S
 Arctostaphylos manginuta? S
 " glauca S
 Adenostoma sp. S
 " spicatum S
 Artemisia tridentata S
 Rhamnus ilicifolia S
 " longistylis S-1
 " ilicifolia S
 Cercocarpus parvifolius S
 Ephedra S
 Yucca wotawensis, a little S
 " whipplei com. S-8
 Opuntia occidentalis, a few or wobs S
 " berlandieri? " S
 Lonicera subspicata S
 Garrya v. polverii S
 Tetradymia comosa, a few
 " canescens
 Gutszigia divergens S
 Chrysothamnus? S
 "

Sambucus S-
 Salix S-1
 " " S-1
 Populus fremonti, cut out, S-1
 Rhamnus polyastochia, a few
 " "parvus" S
 Erriogonum pseculato S-
 " "droopum S-1
 " "dwarf S
 Noackia glabra S
 Rosa
 Solidago
 Prosopis glandulosa 1 S-2
 Symphoricarpos S-2
 Rhamnus frouri S

Oct. 15 Campo to Cayamaea

Adiantum sparsifolium abn-
 Chrysothamnus bigelovii 23500
 Symphoricarpos racemosa? 4000
 Pentstemon torvaldii -6500

Cayamaea Top of Peak 6515
 Pinus coulteri a few at 4000
 " jeffreyi 4000 - top
 Libocedrus " - top
 Quercus californica " - "
 " chrysolepis " - "
 Alnus rhombifolia
 Cornus californica 4400-
 Ceanothus big, 4400 - top
 Prunus demissa 41200-5500
 Amelanchier alnifolia 4000-4500
 Erriogonum for "capitatum"
 " " "dwarf"
 " " "speciosum" - top
 Prunus marginatus 6000-
 Abies concolor 5500 - top
 Pinus lambertiana " - "
 Symphoricarpos mollis " - "
 Ribes -6400
 Cornus nuttallii 1 bunch "
 Escallonia vulpina -top
 Ceanothus not touched "
 Actinostaphylos ^{drupacea} ~~torvaldii~~ 5000 - top
 Creosotus - "
 Rhamnus torvaldii - "
 Prunus emarginatus 6000-

Oct. 18 Mesa Grande ^{top (4055)} Black Mt.

Quercus agrifolia
 " *engelmanni*
 " *dimosa* top
 " *californica*
 " *bigleaf*
Platanus
Arctostaphylos glauca
 " *tormentosa* top
Rhamnus tomentella "
 " *ilicifolia* "
Ceanothus incanus "
 " *foliolosus* 3500-"
 " "
Heteranthes Top
Rhus trilobata
 " *diversiloba*
Cercocarpus betulifolia mastop
 " *"glabrata"* mastop
Lonicera subspicata
Symphoricarpos racemosus
Eriogonum fasciculatum
Ranunculus polytachia top
Hosackia glabra abn. - 3500
Sambucus glauca
Eremocarpus setigerus abn
Opuntia on rocks
Aedonostoma fasciculatum top
Garaya v. palmeri "
Ranunculus californicus "
 " *"pumila"* "

Yucca whippleyi - top
Fragaria "
Pinus coulteri "
Rhus ovata "
Chrysothamnus ~~tormentosa~~ "
Styrax
Psidium ilicifolia mastop
Woodwardia
Pteris aquilina
Artemisia californica
Rhus laurina - mastop
Fremontodendron com. at
Dudleya pulverulenta a few
Solidago californica com.

Oct. 18 Misa Grande

- Tophostyx vallioides* abn.
- Colaptes cafer collaris* com.
- Dryobates*
- Melanerpes formicivorus*
- Colaptes auratus* 1
- Pipilo sinuatus* com.
- Zonotrichia* "
- Pipilo megalonyx* heard
- Aphelocoma* com.
- Carpodacus* "
- Hedymeles ruber* 3
- Baeolophus inornatus* 2
- Psalliparus* com.
- Ammodramus* -top
- Zenaidura macroura* 6 at water

Oct 19. To Rancho

Oct. 20. To Escondido

San Pasqual Valley

Oct. 21, To San Diego

Cearathus etc

Oct. 23, To Los Angeles and Banning

Oct. 24. To Whitewater & look to Beaumont and Riverside

Oct. 25, to San Bernardino

Oct 20 San Pasqual Valley

- Opuntia occidentalis* abn.
- Atriplex* *condensata*
- Helianthus annuus*
- "
- Arachnis virginica* big
- " *arvensis?* a few
- Chrysothamnus*
- Heterotheca pinnatifida*
- Ptilia pluricaulis*
- Leucostele trichostema*
- Dracopis*
- Trichostema* *torreyi*
- Horseweed

Oct. 27 Catalina Island

- Rhus laurina* big & com.
- " *integrifolia* "
- Heteromeles* "
- Lourea subspicata* "
- Rhus diversiloba*, on rocks
- Artemisia californica* com.
- Zauschneria californica* "
- Opuntia littoralis* "
- " *occidentalis*

Oct. 28 Ferrarado, Tuzunga Wash.

Opuntia berlandieri? abn

" *occidentalis*? "

" small pads "

Platanus com

Sambucus "

Juniperus californicus "

Rhus laurina "

" *integrifolia* "

Yucca whipplei "

Eriogonum fasciculatum "

Artemisia californica abn.

Baccharis viminea com

Leptospartum squamatum abn

Ranunculus stadioides com

" *polypetalus* "

Hosackia glabra "

Gutierrezia divaricata? "

Arctostaphylos glauca a few

Eredition tomentosum com

Senecio bigelovii "

Ceanothus crassifolius a few

Rhamnus crocea com

Artemisia a few

Thectaria glauca, common in places

Pseudotsuga macrocarpa - on hills

cones in wash.

Valley out of Wash -

Eriogonum setigerum abn

Oroton californica "

Triebastema lanceolata "

Ambrosia fig com

Lesqueria "

Horrorumal "

Helianthus annuus "

Aphelappus palmeri "

Oct. 29

Juglans calif. along washes

Oct. 30 2 tunnels

Juglans californica along wash

Quercus agrifolia on foothills

Olives - fine, abn.

Oranges abn. good.

Oct. 29, Santa Monica Mts. + foothills

Platanus racemosa ^{with} above
Juglans californica
Quercus lobata, a large patch
Rhus laurina
Eriogonum fasciculatum
Artemisia californica
Ranunculus polytachus
" stachyoides
Opuntia occidentalis
" littoralis?

Eriogonum arizonicum
Aplopappus palmeri?
Humboldt
Trichostema
Lupinus albus - in washes
Quercus dumosa
Rhamnus ilicifolia
Adeucostoma
Ceanothus "glabra" sp. nov.
Rhus ovata
Lonicera subspicata
Ranunculus "nivea"
Zauschneria californica
Quercus agrifolia
Heteromeles
Ribes nuxsei?
Malvastrum fasciculatum
Ceanothus cuneatus
Cercocarpus glabra

opposite Fernando

Prunus trifolia com
~~Chorizanthe~~ ^{Baccharis} ~~arborescens~~ ^{pillularis?} 1 bush
Yucca whipplei com.
Rhus diversiloba "
Diplazium longifolium "
Rosa clematis
Ferns - 3 kinds

Fernando Valley

Citellus beecheyi com
Neotoma macrotis? "
Thomomys "
Perodipus "
Taxidea holes + tracks
Lepus bachmani? tracks
Canis coyote "

Saugus Oct. 30 + up canyon -
Valley species

Eriogonum sibiricum obs

Croton californicus "

Trielostema

Horobard

Senecio bigelovii

Opuntia longburnii obs

" basalis

" rotundifolia

Quercus lobata com.

" agrifolia

Baccharis viminea

Leptospartum squamatum

Quercus divaricata?

Platanus racemosa

Atriplex canescens

Juglans californica

Populus fremontii

Sambucus glauca

Eredition tomentosum

Salix

"

Asplenium platyneuron?

" big
Crotogeomys merriami

Opuntia small pod

Medicago lanuginosa

Datura

Hesperis matronalis

Pinus borealis obs

On ridges + up canyon

Quercus engelmannii

Arctostaphylos glauca

Juniperus californica

Rhus ovata

" trilobata

Ceanothus cuneatus

Rhamnus crocea

Prunus ilicifolia

Prunus

Adiantum fasciculatum

Eriogonum fasciculatum

Ranunculus polystachyus

" stachyoides

" nivea

" ~~angustifolia~~

Hesperis globosa

Artemisia californica

" tridentata

Lonicera subspicata

Yucca whipplei

Gambusia microphylla

Rosa

Ceanothus crassifolius

Caulis

Bruges

Pomegranate

Olive

Apple

Caster beans

Eucalyptus

Medicago glauca

Pepper tree

Oct. 31 Santa Barbara

Quercus agrifolia 0 - 1600
Platanus 0 - 1200
Sambucus glauca ²⁰⁰ rip fruit 1000
Salix
 "
Rhus laurina 200 - 600
 " *integrifolia* 200 - 500
 " *divinifolia* 300 - 2500
Arctostaphylos (globed) sp. 200 - 2500
Rhamnus crocea 200 - 1000
 " *californica* 200
Artimisia californica 200 - 1200
Baccharis pilularis? 200 - 400
Heteromeles 400 - top
 Forest Res. Post 500?
Ranunculus polyactis 300 - 500
 " *angustifolia* " "
 " *strobiliferus* 500 - 2000
Cercocarpus galea " - 3000
Arctostaphylos macrocarpa " - top
Quercus douglasii " - top
Adiantum " - "
Diphysa 600 - 2500
Quercus 900?
Prunus ilicifolia 700 - 3700
Hosackia globosa " - top
Molvastrum fasciculatum? "
Lonicera subspicata 900 - 2500
Umbellularia 1000 - top
Arctostaphylos tomentosa? " - top

Miss 1000?

Arctostaphylos rigidula 1000 - 3900
Arctostaphylos tomentosa? 1500 - top?
 " *glauca* 1600 - 3600
 Ridge above road 2000 =
Pinus coulteri " - top
Eredition ~~frankiae~~ *frankiae* " - 3900
Quercus " *globata* 2500 - top
Quercus laevis 2500 - "
Thymus 3000 - 3500
Cercocarpus betulifolia " - 3700
Rhamnus ilicifolia " - 3200
Xylothermia montana 3300 - top
Arctostaphylos *crassifolia* " - "
Arctostaphylos " " "
Yucca whipplei " - "
Quercus chrysolepis 3500 - 4000
 " *densiflora* 3700 - 4000
Chrysantha "linearifolia" 1. 3900
Rhus ovata 2000 - 3700
Eriogonum fasciculatum 300 - "
Rhamnus tomentosa 1 bush at "
Ribes sanguineum 1 2500
 " *mexicanum?* 1 600 - 1000
Stella praevenosa 2500
Garrya *v. puberula* "
Alnus - 1000
Arctostaphylos - "

H. T. Blake, Oceanside, hotel
Mrs. B. W. Murry, San Diego
~~New York~~
~~American Hotel~~

Miss G. V. Blaine
2428 Pine St. San Fran

Mrs. C. E. Brock, Santa Ana
519 - 4th St

Mr. T. E. Ellis, Elsinore
A. H. Willits, Hemet
W. L. Abdill, Idylwild

C. O. Barber, Banning
brother-in-law of Misses Roth

Altavista Hotel, Banning

Bennett, caught 90 coyotes
Plainville, Minn.

L. M. Bothwell, cook + packer
Westchesterfield, N. H.

Thurman, Bluff Lake

Roger S. Palmer
North Pomona

George Robertson, botanist,
Mentone - seed fennel + D. V. Rys.

William Sikola, for coyotes
Redlands, skulls 25, skins \$1.50

S. G. Howard
Redlands wants to get coyotes

Dr. H. A. Alwood, Riverside
operat house block

Walter L. Richardson
120 Arroyo Drive, Pasadena

Chas. H. Richardson (Summit 2392)
48 N. Wilson Ave, Pasadena,

Francis E. Leupp
U.S. Com. Indian Affairs

W. W. Morria, 3749, 4th St.

E. W. Colby, Pasadena, box 324

Mrs Chas. Curtis
2103 Thompson St. - For Angeles

H. T

Mrs

at

Miss

24

Mrs.

Mrs.

at

W.

C. O. P.

bi

Altal

Plain

L. I.

Wes

Rog

Geor

Me

Will

Rud

S. C.

Rud

Dr. H.

op

2590 1/4

Waller, Missouri

Mrs. Adolph Kistner
Occidental, First floor

Telephone

Miss S. L. Dole
2608 La Salle Ave.

Will Flemming
Sevier City

Mrs E. L. Jackson
Redlands, 909 W. St.

Dolf Kolb, Banning

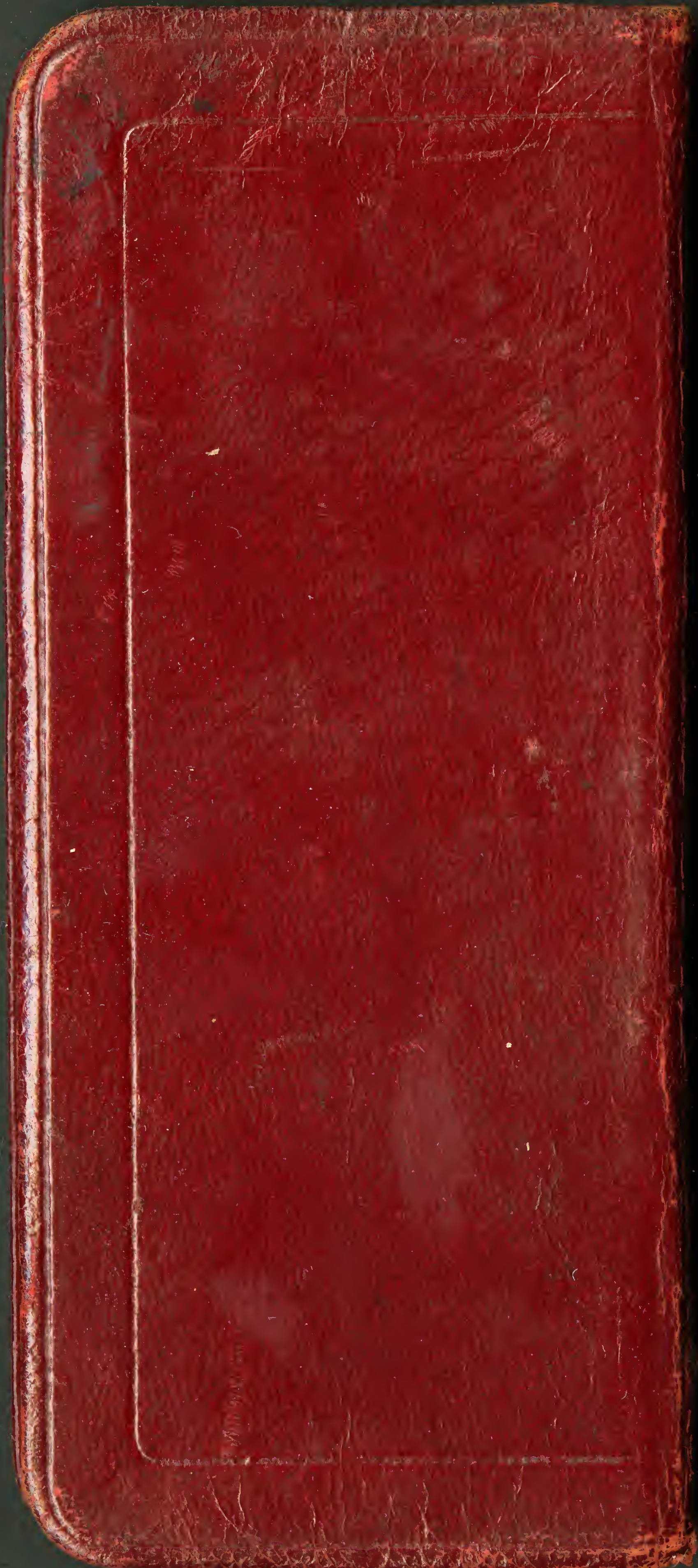
For Vance of Queer, see
German Seed Co., Los Angeles.

Dr. Wm. Zitt
5th + Wall Sts. Los Angeles

For Fossil birds get off at
Rosemary on Santa Monica
+ go NW

8846

Red Bluff, 405 Britton St



Santa Cruz Mts. Oct. 31

Aquila	2 at top
Falco sparverius	1
Aphelocoma	com
Chondestes	com
Psaltriparus	1
Catherpes	2
Pipilo fuscus	com
Melospiza	a few
Carpodacus	"
Astrogalinus	a few lower down

Scurus harrisi heard at 3000

Eutamias merriami 700 - 4000
com.