

1906.

Aug. 1. - Nov. 16

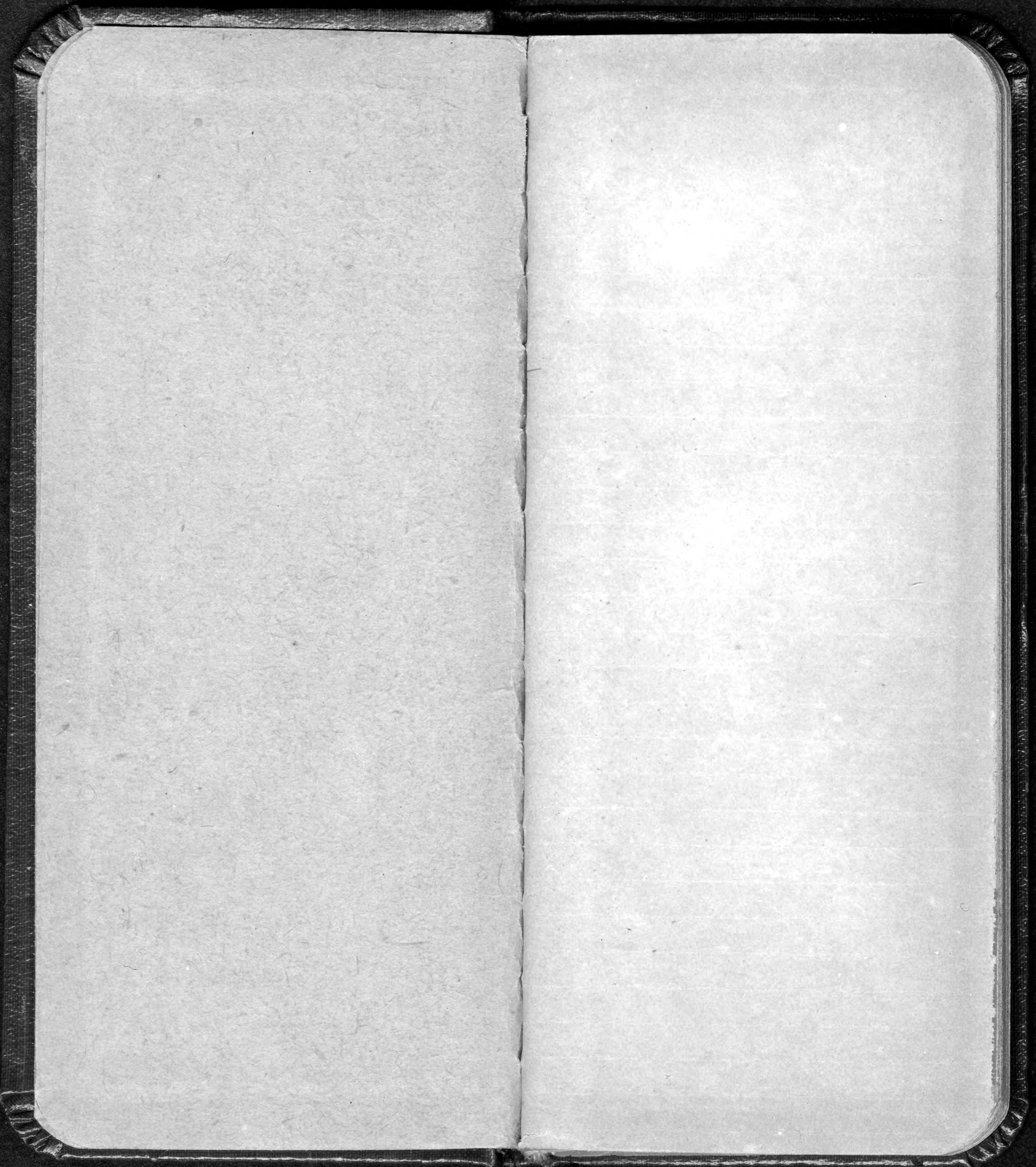
Oklahoma

New Mexico

U. S. Dec. 31  
1906.

1906.

U. S.



Aug 1, 1906

C + O

Left Washington 4.30 PM

Charlottesville dark

Aug. 3

Springfield, Mo. 7 AM  
slightly rolling country  
all cultivated, rich soil &  
crops.

Apples - abundant, full fruit  
Peaches - common good  
Blue plums, a few  
Corn abn., good.  
Wheat stacks  
Timothy & clover, good  
Tomatoes good  
potatoes "  
Beans  
Millet one field  
Pear 1 young orchard

Aurora

town grade to  
Monett

Plowing stubble fields  
Tyrannus tyrannus 3  
Sturnella abn.  
Zenaidura com.  
Uruba virens 3  
Quiscalus 1

Springfield

Quercus micilanthica? (nigra) abn.  
" bur oak  
" red oak & post oak

Hickoria  
Ulmus fulva  
Acer  
Juglans nigra  
Saspar com. on grove  
Betula sp. "  
Rhus  
Sambucus com.  
Gleditsia triacanthos? "

Solidago com. in places  
Helianthus "  
Lepachys a "  
Lespedeza r "  
Celastrus scandens a "  
Monarda "  
Phytolacca  
Monett

Prunus  
Catalpa  
Acer  
Ulmus americana  
Morus  
Fraxinus

Monett

platinus com.  
vitis abn.  
oats in shock, a few  
Cyanocitta cristata 1  
Passer domesticus, com.  
Ardea herodias 2  
Crows brachyphala, 1

Suaeda fruticosa  
Circus  
Thosha

Wyndotte

Thosha R. Grand R.

Nelumbo luteum, pond full

Agelaius 40 in marsh  
Sturnella 7  
Zenaidura com  
Colaptes 1  
Cathartes 4

big prairie  
Apton

Corn  
Wheat  
Hay  
Baptisia abn.  
P. talostemon com  
Amorpha canescens 5  
Erythronium 1

Vinita

mainly prairie  
timbered ridges in distance

Zonotrichia 3  
Agelaius 1 at pond  
Falco sparverius 1  
baling wild hay  
big corn

Betula along stream  
Acer u  
Salix nigra u

Chelsea

mainly prairie  
Coccyzus - acres of it  
Claytonia  
Mimus polyglottos 1  
Tyrannus tyrannus 2

Woods along valley

River

Colinus virginianus 1  
Cotton field in Mass., first  
Botulink 1  
Prairie  
P. trochiloides 50  
Melospiza cythrocephala 1  
Mimus 2  
Cuckoo 2

Coal spit down  
Zulsa

Arkansas R

Cotton fields  
oil wells

Red Fork

post oak & prairie country

Mitulus 1

" ? 3

Mimus 1

Sayulpa dinner

Cotton

Corn

Sorghum

Catt. - good

Kellyville

Babwitis 2

Passiflora

Cotton fields com

Mitulus 2

Bristoe

Strout

Cots of cotton

Chardis loads of peaches

Euphorbia warguata com

Indigo bird 2

Wellston

Cyanocitta 1

Tyrannus tyrannus 2

Red head 1

Feathered vulture com

Crested

Purple prairie lily

Timothy hay

Luther

Petrochelidon - hundreds

Millet

Corn

Cotton

alfalfa 1 field

W

Sorghum

Cottonwood com

Zonotrichia 2

Crows 1

Mitulus 1

George's hills - first

sandy soil scrub oak

Night hawk 3

Masters 20

Spencer

Blackbirds - flock

George's hills

Brookgreen

Cardinal 1

Nighthawks 10

Martins 2

Kingbirds com

Meadow lark in town com

Oklahoma City - 7 P.M.

Hotel Rasbach

Aug 4, Left Oklahoma 10 AM

Elm  
Cults

Corn Peaches, fine

Wheat Apples, a few

Grass  
Zinnias com

Mimulus 1

Red head 2

Stemless com

Otocaris "

Scissortail 1?

Night hawk

Buteo b. calurus 1

Shrike 1

Zyanurus tyrannus com

Blackbirds "

Wheatland open prairie

Scissortail 2

Orcut 1

Group hills 1/2

Lycium glauca

Prairie lily, big blue

Cotton fields, a few

Sorghum com

Kaffee corn com

Alfalfa a few

Corn com

Wheat fields, obs. big plowed.

Mustang prairie

Cottonwood along road

Mimulus crinitifolius "

Cults "

Pear "

Crows "

Grass "

Plum + Magnolia "

Congaree River

Populus fremontii com

Salix nigra a few

+ some as above

Euphorbia maculata

Parthenoclea

Baptisia

Falco sparverius 2

Crows 3

Buteo 2

Cucurbita



Chickasha

open plains

Laverty

Quail many flocks

Corn & poor cotton

Cement in Keech hills

bushy + scrub oaks

Watermelons - car loads

Fletcher

Cynomys - 20 acres

Edgers

Watermelons car loads

Cynomys 5 acres

Night hawks 2

Buteo swainsoni 1

Fort Sill

Cynomys at station a few

Lawton

Cuckoo 1

Scissortail 1

Opuntia a few patches

Mosquitoes, first

Cochise

Aug. 5 Morrissey's

Quercus prinoides - bushes abu.

Quercus laevis? post oak

" " coccinea? black oak

" " meridiana? black jack

Ulmus crassifolia along trees

Juglans nigra? small

Populus fremontii, scarce

Celtis helberi?

Negundo com

Acer on peaks

Juniperus "

Bursera bushes

Prosopis glandulosa, com. in valley

Rhus glabra? com

" aromatica on peaks

Fraxinus viridis

Prunus americana - red plums

Cornus

Cephalanthus

Amarycpha canescens

Shrubby

Hoffmannseggia

Mimosa

Petalostemon violaceae

" " white

Dismodium

- *Ceanothus americanus* com
- *Prunus*
- *Vitis* <sup>mustang</sup> <sup>geocarpium</sup>
- " <sup>tree grape</sup>
- ~~*Celastrus scaber*~~
- *Ampelopsis quinquefolia*
- *Smilax*
- *Mimus fulva* com
- *Galix*
- *Symphoricarpos* com
- *Morus rubra*
- *Diospiros* <sup>blackberry</sup>
- *Rubus* <sup>blackberry</sup>
- " <sup>black cap</sup>
- *Rhus toxicodendron*
- *Crataegus*
- " <sup>blackberry</sup>
- ~~*Veronica*~~
- *Ambrosia*
- *Coccyzus*
- *Wyethia*
- *Achillea*
- *Galliardia*
- *Sylphium laciniatum*
- *Grindelia*
- *Rudbeckia*
- *Cnicus*
- *Centura*
- *Asteriscus ludoviciana*
- *Solidago*
- *Chrysothamnus*

## Wichita Res.

Aug. 4 to

- *Columba texensis* com. yg.
- *Zenaidura* a few
- *Cathartes* com
- *Buteo?*
- *Accipiter cooperi* 2+ nest
- *Icthyophaga mississippiensis* com
- *Chordeiles* "
- *Coccyus brachyphinctus* "
- *Sturnella* "
- *Spizella socialis* 1
- ~~*Ardea*~~
- *Spiza americana* 1 ♀ this
- *Pranga rubra* 2
- *Vireo olivaceus* nest
- *Geothlypis phoebe*
- *Thryothorus ludovicianus* nest
- *Thryomanes b.* 2
- *Trochylus colubris* ♀
- *Geococcyx* reported
- *Melospiza* "
- *Cortopus richardsoni* com. <sup>young</sup> a few "
- *Poliaptila* com. & yg.
- *Sitta* com
- *Chondestes* com
- *Sialia sialis* com
- *Ceryle alcyon* 1
- *Negascops* heard
- *Mimus* 1

6 wolf pups shot all ♀ but one,  
 2 pups got away. bites killed  
 but not found till later.  
 Dog came back was shot.  
 two pups were shot later in  
 day as they returned & howled  
 tracks of one old & 2 yg.

Aug. 1<sup>st</sup>

3 poisoned in July.

- *Gilia aggregata*
- "Hardiscantoids"
- *Baptisia*
- *Pellaea*
- *Croton*
- *Erythra*
- *Opuntia*
- *Echinocactus*
- *Laba comosa*
- *Psaralea tenuifolia*
- *Oenothera*
- *Gaura*
- "
- *Solanum rostratum*
- "
- "
- *Yucca*

*Cardinalis* 2 ♂  
*Quirica* 1 ♂  
*Cyanospiza cyana* old & young  
*Melanerpes formicivorus* 2  
*Parus carolinensis* com.  
*Lophophanes* 1 shot  
*Eremophila alpestris* com.  
*Melospiza* 15 at Cache

*Crotalus texana* ?  
*Agkistrodon contortrix* 1  
*Natrix* com.  
*Bascarnion* 2

*Crotaphytus collaris* com.  
*Sceloporus* small, 1  
*Eumeces* blue tail 2

*Centipede* 1 large  
*Myriapods* large, abn.

Aug 10 ~~Mountain Park~~

10 AM 2600

Cache 2300

Snyder 2400

Aug 11 Snyder 8:30 AM 2350

Mountain Park

Mesquite abu

Short grass

Past oak around rock

Black jack

Euphorbia marginata abu

Helianthus annuus

Agave along stream

Ulmus crassifolia

Grape vines

Sabir nigra

Populus fremontii

Juglans nigra, small

Celtis on rocks

Bumelia

Rhus glabra

Roosevelt 2450

open plain, less mesquite

Hobart 2500

Divide (4 mi. N.) 2600

Snyder Aug 11

Cotton abu

Corn com

Grain stacks & stubble

Sorghum & Caffecorn com

Melons

Roosevelt

Alfalfa several fields

Cotton

Corn

Milo maize

Caffecorn

Grain

Less mesquite, all plains

Hobart

all plains, but to west as far as one can see

same crops

Rocky

same crops

a few peach orchards in fruit

all plains

Corn nearly ripe, rest by hand

Candell

Candell

Candell

Chintan

Washita River

(narrow line of timber)

- Populus fremontii com
- Ulmus crassifolia "
- Salix nigra "
- Juglans nigra, dwarf "
- Post oak a few
- Arceuthobium ditto 2550

Same trees along stream

All high grass prairie

good crops, same kinds

Custer City 2800

Millet - com

No cotton

Corn

grain

peaches

Wheat

Cattle corn

high prairie, short grass

Thompson 2775

one small cotton field, good

Canadian R. 2600

high, red mud, much drift

Populus fremontii along R.

Salix nigra "

Ulmus crassifolia "

Quercus tex - pasture, along R.

Juglans nigra "

Juniperus virginiana? "

Cereus "

Fraxinus viridis "

Aster multifidus on sands

Yucca glauca "

Post oak "

Black jack "

Fay

Quercus prinoides scrub

Black jack "

Post oak "

Cotton 2 fields, poor.

" a few more "

Eagle City 2750

River

Group hills

Carlton

scrub oak country

Plaster mill & gypsum hills

Mesquite - com, scattered along

Bepitria ang. oak, red soil, com.

Prairie dog, old holes

Mesquite to

Barrow 2350

Mesquite scattered

Prairie dog holes old

weaving owl 1

muskrats in creek.  
 lots of grain & corn  
 no cotton  
Okese  
 Mesquite, a little near town.

Cimarron R. 2300

wide sand flats

Artemisia filifolia - on sand

Rhus crassifolia along stream

Populus fremonti "

Salix nigra "

Past oak "

Black jack "

Walnut "

Group hills com

Corn abu

Grain "

one small cotton field

Ames - scrub oak

Peaches good

Apples "

Grapes "

Corn ocean of it

Coffee corn cov

Sunflower 2300

all prairie

End

Shattuck Aug. 12  
 out to Ivanhoe Lake, 5 mi.

Populus fremonti com.

Salix nigra "

Rhus crassifolia "

Celtis "

Sapindus "

Negundo in yard

Prunus abu

Rhus aromatica "

Vitis mustang "

" the grape com

Artemisia filifolia abu.

" holovici "

Cephalanthus com

Euphorbia marginata "

Croton "

Helianthus annuus abu

Solidago "

Grundelia "

Celastris sc com

Vernonia "

Mentzelia "

Opuntia a few

Galliardii com

Callascoe a few

"Blue Lily" com

Scirpus laeustris "

Typha latifolia "

*Glycerhiza lepidota* com  
*Anaspta carolinensis* "  
*Schrankia* "  
*Hoffmannseggia* "  
*Baccharis*

*Diapirra* said to be  
 common - Canadian R.  
 south of here

Cotton gives at all times  
 Broomegan, best crop  
 \$500 to \$1000 a ton  
 Corn, common & good  
 grain, com.

*Phrynosoma*, spotted blood,

Bull frog com  
 Entomolga "

Statute

*Cervus*, Elk used  
 to be here, horns found &  
 signs seen in 1886.  
*Odocoileus macrourus*, once  
 a few years ago, now <sup>a few</sup> on Canadian  
 River south of here  
*Antelope* a few <sup>months</sup> ago  
*Cynomys* com  
*Citellus spilosoma* heard  
*Caster* com  
*Fiber* "  
*Geomys* "  
*Hipus alba* 1  
 " *texensis* 1  
*Canis griseus*, once obs.  
 " *ubrasensis* com.  
*Procyon* "  
*Mephitis* "  
*Spilogale* 1  
*Scalopus* com  
*Sciurus hudo* - a few  
*Neotoma microps* "  
*Lepus* "

Aug. 15

Shattuck 3, a.m.

♂ east tail 1  
Pampa

Washburn

Fairy ring - 50 feet across  
Amariho 7 1/3

Missouri, full of beans  
Canadian R.

Prairie

Calamospiza 6 flocks 20-100  
Channing

Salbert

Curtis heard in night

Aug. 14

Lucasari

Santa Rosa

Missouri up to rim of Plains  
Pampa

open plains

Louisa

open plains

Santa Fe crossing

Scrubby live oak

nut pine

Juniper

open plains again.

~~Salt Springs and hills~~

nut pine abn

Juniper "

Yellow pine top & cold slopes

Scrub live oak

Durham

Yellow pine on hills to west

Opuntia arborescens abn on plain

Gutierrezia abn

Helianthella "

Torrance

Open plain,

Opuntia arborescens c

Gutierrezia abn. in flower

Helianthella abn



Willard

Salt Basin & salt ponds

*Atriplex canescens* abn.

*Estameia* dimer

same kind of valley

Moravities

*Dipodomys spectabilis* nests, com

*Gutierrezia* abn

*Eurotia lanata* com

good soil, good grass in places

Corn a little, peas

Cuppe corn " "

*Opuntia arborescens* abn

Canada

Santa Fe

Aug. 17

Santa Fe,

Esparola

Aug. 17. Esparola

*Populus fremontii*

*Salix nigra*

*Rhus trilobata*

*Bigelovia* green

" " gray

*Scirpus torus* in blossom

*Datura* fig, "

*Falugia parviflora* com

Cotton "

*Opuntia arborescens* & others "

Aug. 20 up Santa Clara Camp

*Juniperus monosperma* abn

" *scopulorum* a few

*Pinus edulis* com

*Salix nigra* above creek "

" *cardata* "

*Populus angustifolia* "

*Nequedo* a few

*Alnus* "

*Betula occidentalis* "

*Ribes cereum* "

" black "

*Bigelovia canescens* fig com

" small green, "

*Falugia* "

*Rhus trilobata* "

*Opuntia arborescens* com

*Opuntia engelmannii*, small com  
*Yucca angustifolia* "  
12 miles up canon

*Quercus gambelii* com  
 " *grisea?* (S. slope) a few  
*Pinus ponderosa* com  
 in canyon - on N slopes  
*Populus angustifolia*  
*Cercocarpus parvifolius*  
*Berberis "spatulata"*  
*Yucca baccata*  
Camp 15 miles up

Aug. 21

Moved camp 2 miles up canyon

Aug 22, Remained at camp

Aug. 23

*Neotoma fallax* 3  
*Thomomys f. caryinus* 1  
*C. grammurus* com  
*S. aberti* "  
Up canyon one mile

*Cleome*  
*Gilia agrigata*  
*Pentstemon ruber*?  
*Malvastrum munroanum*

Aug 23. 18 mi. from Esparola

*Acer glabrum*  
*Abies concolor*  
*Picea pungens*  
*Pseudotsuga*  
*Betula occidentalis*  
*Alnus*  
*Prunus* chokeberry  
*Solanum tuberosum* abn  
*Sambucus*  
*Holodiscus*  
*Populus tremuloides* (1 mi. above camp)  
*Pseudocasia monurica*  
*Amelanchier canadensis* a few  
*Cornus asperifolia*

*Ribes*  
*Hops*  
*Viola canadensis*  
*Oreohis violacea*  
*Aralia* of pink wood  
 " cut both 8000  
*Geranium* red "  
 " pink "  
*Rosa* "  
*Senecio* "  
*Fragaria* rough "



Aug. 28 <sup>goat</sup> up Peak

*Picea engelmannii* Top  
*Abies lasiocarpa* "  
*Rubus nutkanus* "  
*Spiraea* "  
*Linnaea* 8500 - 10000  
*Vaccinium* top  
*Pachystima* "  
*Chimaphila umbellata* "  
*Pyrola* "  
*Aconitum* "  
*Streptopus* "  
*Aralia* end of path  
*Mertensia*  
*Fragera*  
*Viburnum canadense*  
*Ferns* 2  
*Ribes* mostly 9000 - 10000  
*Lonicera involucrata* 9000 - 10000  
*Physocarpus* - 10000 NE  
*Juniperus communis* to top  
*Saxifraga bronchialis* N.E. 9000 - 10000  
*Pseudotsuga* - 10000 NE  
*Pinus flexilis* - 10000 NE  
 " *ponderosa*  
*Acer glabrum* - 10000 NE  
*Sambucus* " "  
*Salix* *blue stem*  
*Shepherdia canadensis* - 10000

On top - 10400 feet Goat Peak

*Populus tremuloides*  
*Picea pungens* SW  
 " *engelmannii* NE  
*Abies lasiocarpa* NE  
*Aster* NW SW  
*Sambucus* 3 SW  
*Compositae* "  
*Achillea* "  
*Fragera* "  
*Zygadenis* "

Sept. 4 <sup>at top of</sup> Trip James Peak

Plant Name	Location	Notes
Picea pungens dwarf	11000 on top	
Ribes oxycanthoides	"	
"	"	blue
Rhododora	"	
Pentstemon	"	
Oxyboaspos ?	"	
Cymopterus	"	
Composita	"	
Antennaria	"	
Mertensia ?	"	
Achillea	"	
Graba	"	
Aster ?	"	
Solidago	"	
Senecio	"	
Potentilla	"	
Antennaria	"	
Sibaldia procumbens ?	"	
<del>Fragaria glauca</del>	"	
Grass	"	
Sambucus	"	
Fragera	"	big
Aquilegia cuneata	"	10000-
Schwarzia	"	
Pseudotsuga	-1000 SW	
Abies concolor	"	
"	"	arizonica
Picea engelmanni	"	
Populus	-10500 SW	
Pinus flexilis	" "	
Taxus glabra	-1000 "	
Physocarpus	" "	
Senecio	" "	big
Geranium	" "	pink

Sept. 5. to San Antonio Valley

Camp 8500.

Sept. 6, up Pecos Peak

to 11200

Ribes sanguinum

" ophyanthoides

Draba

Fragaria & cuneata

Solidago

Aster or Erigeron

Helianthus? Wyethia big

Achillea

Antennaria

Composita

Potentilla 2

Pentstemon

Fragaria big

Sambucus

Amorpha

Some grass as on Santa Clara Mts.

Lycium pungens

" engelmannii

Abies arizonica

Saxifraga

Vaccinium microphyllum to 11000

Pachystima "

Lonicera involucrata "

Valle Santa Rosa, 8500 ft

meadow plants

Schwertia

Gentiana (

closed,

Parnassia

Anthocarpus white

Ranunculus

Potentilla cuneata?

Polemonium big, scented,

Hyssopus

Saxifraga

Paranthe fruticosa

Aster

Rumex

Achillea

Pentstemon

Menyanthes

Trifolium white

Timothy

Red top

Composita uniflora

blue

Geranium

pink

Sept. 5. to San Antonio Valley

Camp 8500.

Sept. 6, up Pecos Peak  
to 11200

Ribes sanguinum

" ophyanthoides

Draba

Fragaria glauca

Solidago

Aster or Erigeron

Helianthus - Wyethia big

Achillea

Antennaria

Companula

Potentilla 2

Pentstemon

Fragaria big

Sambucus

Amaria

Some grass as on Santa Clara Pt.

Lycium pungens

" engelmannii

Apies arizonica

Saxifraga

Vaccinium microphyllum to 11000

Pachystima

Lonicera involucrata

Valle Santa Rosa, 8500 feet

meadow plants

Schwertia

Gentiana

" closed,

Parnassia

Orthocarpus white

Ranunculus

Potentilla cuneata?

Polemonium big, scented,

Hypericum

Saxifraga

Potentilla fruticosa

Aster

Rumex

Achillea

Pentstemon

Mimulus

Trifolium white

Timothy

Red top

Companula uniflora

" blue

Geranium pale

Sept. 8

Down James Cr. to S. Fork  
to 7700 feet

Sulphur sp. 2000

Sept. 9 To James Cr. <sup>near</sup> Pueblo

Juniperus & Nut pines to 7000 SW

Populus angustifolia 7000 cotton

Salix nigra along cr.

James Springs

Ptelea tripartita

Forestiera

Quercus grisea?

Atriplex canescens

Opuntia arborescens

" engelmanni?

Populus fremontii

Cleome

Fallugia

Lysichiton pallidum

Helianthus annuus

Gnaphalium

Helianthella

Yucca rigida

Malvastrum munroanum

Senecio douglasii

Rhus aromatica

Ribes cereum

" (Hondo)

Ampelopsis

Croton texensis

Sept. 10

To Pueblo - San Ysidro 10 mi

Juniperus 2

Pinus edulis

Sarcobatus

Atriplex canescens

Suaeda

Cleome

Umbrosia

Glycerhiza

Aster purple

" multiflora

Corn

Alfalfa

Wheat

Beans

Chili

Squash

Melons 2

Grapes

Peaches

apples

Nectarines

Scoloporus small

Phryganone heernandesi  
Pistropheus  
Crotaphytus baileyi  
Cnemidophorus



Sept 11 San Yacobe &  
Soda Springs

Sarcobatus

Atriplex canescens  
metallii  
confertifolia

Suaeda

Salicaria

Opuntia arborescens

Rio Salada

Chuco Tank

Neotoma micropus

Perodipus

Dipodomys spectabilis

Onychomys

Lepus arizonae

p. texensis

Canis latrans

Taxidea

Cynomys gunnisoni

Sept 12

To Cabezone

Puere valley to Juan Zapoya

Salazar Sept. 13.

Toy Zapoya

Honouys aureus

Dipodomys spectabilis

Perodipus

Perognathus

Onychomys pollicens

Neotoma crowfordi

Citellus grammurus

Neotoma

Cynomys gunnisoni

Taxidea

Canis latrans

Lepus arizonae

Juniperus monosperma

Pinus edulis

Quercus grisea

" gambelii

Pinus ponderosa

Populus fremontii

Gutierrezia euthamiae

Helianthus annuus

Helianthella

Opuntia arborescens

" clavata

" engelmannii

Yucca glauca.

Sept. 14 Joan Topoya  
to Cebollita Cr.

Sept. 15 to Laguna

*Populus fremonti*

*Pinus edulis*

*Juniperus novosperma*

*Rhus trilobata*

*Atriplex canescens*

"

" - annual.

*Suaeda*

*Helianthus annuus*

*Gravillia*

*Bigelovia*  $\left\{ \begin{array}{l} \text{gray} \\ \text{green} \end{array} \right.$

*Senecio douglasii*

"

*filifolia*

(1005)

*Gutierrezia euthamiae*

"

*grandiflora*

*Atriplex confertifolia*

"

*Aster*

*Baccharis*

*Artemisia filifolia*

"

*Cnicus*

*Xanthum*

*Ambrosia*

*Eurotia lanata*

*Cleome integrifolia*  
*Eriogonum* 2  
*Mentzelia*  
*Malvastrum nummularium*  
*Verbena bracteosa*  
*Fallegia paradoxa*  
*Opuntia deborensis*  
" *clavata*  
" *englemanni*, little  
" *white opuntia*  
" *fine white opuntia*  
*Yucca glauca*  
*Gysseum pallidum*  
*Salsola fornosa*  
*Achragalus* 2  
*Plantago patagonica*

*Geomys luteus*  
*Neotoma fallax*  
*Peromyscus*  
*Perognathus* 2  
*Perodipus*  
*Lepus arizonae*  
  
*Cynomys*  
*Canis*  
*Taxidea*

Sept 20 Lagunato San Mateo

Cubero

- Salix nigra*
- Rhus aromatica*
- Sarcobatus*
- Atriplex canescens*
- Eurotia*
- Gutierrezia*
- Bigelovia*
- Opuntia arborescens* gray
- " *clavata*
- " *englemanni minor*
- Yucca angustifolia*
- Juniperus monosperma*
- " *pachyphloea*
- Pinus edulis*
- Helianthus annuus*
- " *laevidata*
- Quercus grisea*
- Falugia*

Sept 21 up San Mateo

*Quercus gambelii*

*Pinus ponderosa*

*Nequede*

*Salix cordata*

" "albaticolens"

" yellow

*Clematis*

*Alnus*

*Picea pungens*

*Gilia aggregata*

*Prutetimon*

*Berberis*

*Ceanothus*

*Rosa*

*Cornus asperifolia*

*Senecio ~~laevis~~ *marcapolia**

*Aster* polidul

*Chokeberry*

*Amelanchier*

- top

up San Mateos

Populus tremuloides 7000-10000

Pseudotsuga " "

Acer glabrum " "

Ribes irriguum  
" hondo

Rubus strigosus - top

" nutkanus

Cabins 8500

Wyethia

Geranium red

Companula

Abies arizonica 8400 - top

Jambucus red 9200 -

Ribes <sup>spiny berry</sup> 9600-10000

Notodiscus " top

Juniperus communis " top

- Left horse at 9200

Ribes oxycanthoides 10000 - top

Top of ridge 10000

Peak 10100!

Draba

Potentilla

Aster

Solidago

Achillea

Companula

Senecio

Hemeroc

Lomara

Ribes

up San Mateos Sp. 27.

Accipiter velox 2

Colaptes

Melanerpes

Sitta pygmaea

~~Parus~~ ~~caprimus~~ psathura

Vireo

Hesperophona 5

Cyanocitta

Aphelocoma

Sialia bairdi

" arctica

Dendroica auduboni

Spizella

Zonotrichia

Junco cinereus

~~Spizella~~ ~~caprimus~~ thyroides 4

Geothlypis cooperi 2

Perisoreus gambeli

Regulus

Cathartes aura

Troglodytes

9500

Lophia

Sitta nelsoni

Buteo borealis calurus 4 imm.

Accipiter striatus

Troglodytes

Alcedo gularis

Hyalocichla

Aquila

4 at top

Salpinctes

Melospiza lincolni

8500



Jamez Mts

Opulaster  
1013. Physocarpus

1014. Ribes <sup>wolffi?</sup> sanguineum

1015. Aster <sup>Senecio</sup> big

1016. ~~Aster~~ <sup>Senecio</sup> big purple 8500

1017. Ribes oxycanthoides?

1018. ~~Rhodola~~ <sup>Clematis</sup> rhodantha 8100

1019. Solidago

" Solidago

1020. Grass

1021. Aster

1022. Antennaria

1023. Senecio

1024. Achillea

1025. Draba

1026. ~~Silvestria~~ palustris?

1027. Patenilla

1028. Silvestria procumbens?

1029. ~~Silvestria~~ <sup>Zosterium</sup> aquaticum

1030.

9000 1031. Campanula 11000

1000 1032. Arvaia fendleri "

1033. Pentstemon glaucus "

8500 1034. Myrtensia "

1035. Cymopterus "

8500 1036. Orthocarpus "

Valli Santa Rosa 8500 feet

1050 1037. Polyanthus foliolosissimus

1038. Orthocarpus white

1039. Hesperis, pinnatum

1040. ~~Silvestria~~ palustris

Laguna Sept 18.

" 1041. Baccharis emeryi

" 2. Artemisia filifolia

" 3. " gnaphalodes not here.

4. Aplopappus tortifolia

5. ~~Antennaria~~ <sup>Antennaria</sup> entbanae?

6. ~~Grindelia~~ <sup>Grindelia</sup>

7. Bigelovia?

8. Aster?

9. Gaillardia

1050. ~~Silphium~~ <sup>Silphium</sup> foliacios bracts

1051. Bigelovia douglasi

" 2. Chrysopsis dissected leaves

" 3. Bigelovia gray

" 4. ~~Chrysantha~~ <sup>Chrysantha</sup> grandiflora

Rip San Francisco, N.M.

1055. *Platanus wrightii*

~~1056.~~ Alma, N.M. Oct. 15

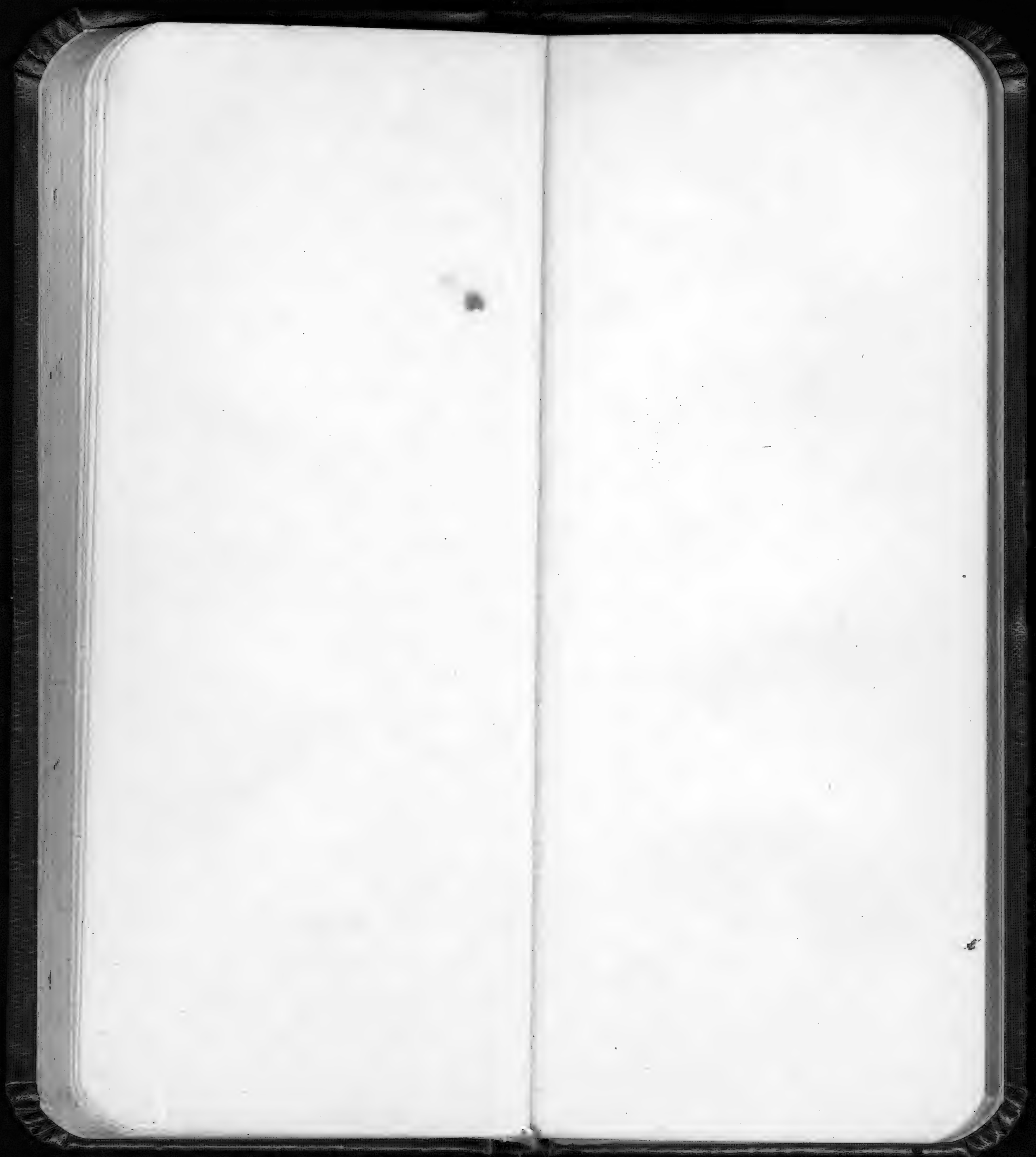
1056. *Populus wislizeni*

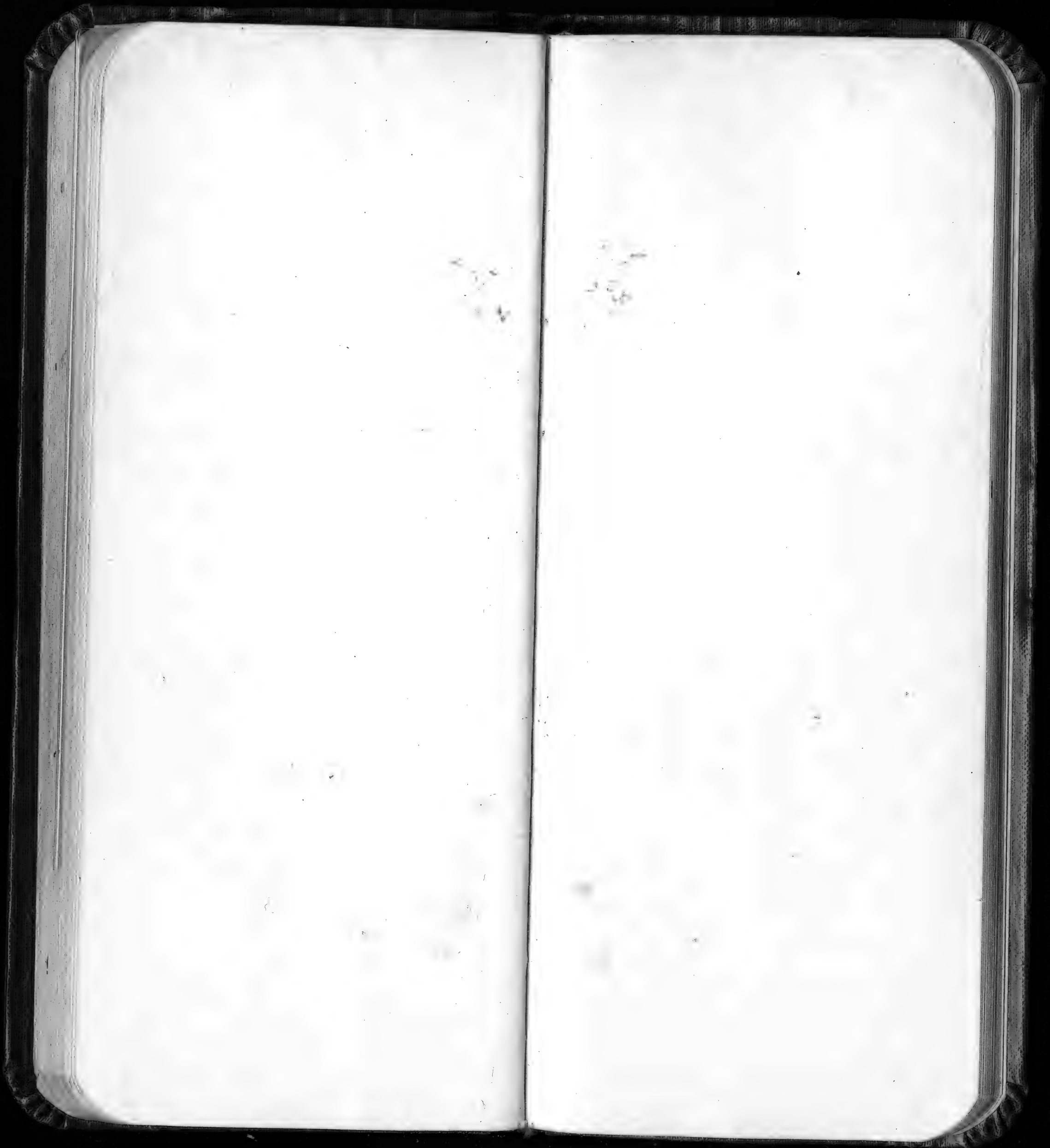
" 57. *P. acuminata*  
~~*argusifolia*?~~

" 58. *Quercus arizonica*?

1057. *Alnus oblongifolia*







Sept. 23 to Cuernavaca + Acapulco

Acapulco Valley Lower part

Sarcobatus

Atriplex canescens

- nuttallii

" " unusual

Cleome integrifolia

Hedranthus 2

Helianthella

Quercus emmenanthes

Pinus edulis

Juniperus monosperma

Senecio (1005)

Opuntia 3

Thomomys aureus

D. spectabilis

Perodipus

Perognathus

Eutamias

Neotoma

Cynomys

Lepus arizonae

Coyote

Badger

Yucca glauca

Dalea pinnata

Palafoxia

white

Sept 24 camp 6350

Acrona Pueblo 6550  
Eutamias dorsalis  
Crotalus confluentus

up slope of canyon  
Camp at top 7200

Sciurus gambeli  
" grisea

Sept 25, 10 AM, Camp 7100  
Nut pines

Juniperus monosperma  
Berberis fendleri 1  
Eucrota  
Atriplex canescens  
Bigelovia, green, ~~gray~~

" <sup>gray</sup>  
" <sup>gray</sup>  
Gutierrezia euthamiae <sup>trilobis</sup>  
Lycium

Helianthus 2  
Helianthella  
~~Gracillaria~~  
Mirabilis  
Artemisia "tridentoides"  
" "figoides"

Acer glabrum  
" gambeli a few  
Pinus ponderosa, on n. slopes  
Lysichiton <sup>com.</sup>

Brown Mtn. Camp, 10 AM. 7350

Sept 24 - Camp all day.

Peromyscus leucopus, big ears 4  
Onychomys l. dark, 3  
Neotoma pallax? com

Cynomys com  
Cytellus 13 lineatus 1 seen.

Lepus arizonae 3  
" tex. 2

Perodipus com  
D. spectabilis "

Procyon lotor "  
Thomomys curvus? "

Canis latrans "  
" occidentalis? signs

Taxidea com  
Eutamias dorsalis? a few

Sept. 27 Camp 1 P.M. 7200

Pinus ponderosa  
Quercus gambelii  
Bigelovia big green  
" anal gray  
Quercus undulatus? com

Camp at reservoir, 10 m. 7700

Sept. 28 Camp 9 A.M. 7600

Top of ridge 7800  
Sobolito Spr. 7450

Punta Malpais 6900

Sept. 29, 9:30 6900

Lunch 7025

Edge of timber 7200  
top of divide 7300  
Camp 7000

Sept. 30 Camp 7000

Salt Valley 6900  
Rim of valley 7100  
Camp at Lathrop Spr. 7200  
Antilocapra tracks  
Odocoileus hemionus " + horn  
Lepus tex. com  
" arizonae "

Cynomys  
Sturnias heard  
Thomomys com  
Coyote "  
Badger "  
Perodipus "

Sept. 1 Camp 7250  
Ridge 7450

Rita Colorado 7000

Camp on Rio Largo 7100

Sarcobatus  
Atriplex canescens  
Suaeda  
Bigelovia big green, + gray  
Gutierrezia  
Koeberlinia

Oct. 2, Camp. 9.

Rio Largo

- Populus angustifolia
- Juniperus monosperma
- Pinus edulis
- Rhus aromatica
- Bigelovia, gray + big green
- Atriplex canescens
- Eurotia
- Lycium pallidum
- Fresticia
- Cleome
- Mentzelia
- Mirabilis
- Suaeda (1003)
- Helianthus
- Helianthella
- Amaranthus
- Krynitzkia
- Yucca glauca
- Ephedra - small englemanni

Camp 5 mi. up Largo 7350

- Salix nigra
- Rosa
- Ribes cereum
- Juniperus scopulorum

7100 Sept. 3 up Peak

Camp 8, a.m., 7350

- Yellow pine N.E. 7400-
- Bougainvillea - 7800-
- Quercus gambelii "
- Abies 8800-
- Gilia diffusa 7600
- Pentstemon

Let horses

- Populus tremuloides 8800-
- Berberis repens W. 4
- Physocarpus " "
- Holodiscus " "
- Symphoricarpos " "
- Rosa " "
- Pinus flexilis N.E. 9200-
- Saddle 9250
- Acer glabrum 9600-
- Juniperus communis 9500-

Top 9750

probably 10000.

- Pinus edulis
- Juniperus monosperma
- " scopulorum
- " pachyphloea

Oct. 5 Camp 9:30 AM. 7250

*Odocoileus* tracks com.  
*Cynomys gunnisoni* com.  
*Citellus grammurus*, heard!  
*Neotoma fallax* com.  
 " *albigula* "  
*Peromyscus rufinus* "  
*Onychomys* "  
*Perognathus bairdi* "  
*Perodipus* "  
*Thomomys rufus* abn.  
*Lepus arizonae* com.  
 " *texianus* "  
*Erethizon* 2 mt pine  
 3 *grawleyi*  
*Canis latrans maris* 8  
*Taxidea* holes abn.

up Largo 5 mi.  
 over ridge 7700  
 Camp, 15 miles, 8050  
*Populus tremuloides* n.n.e. dip  
 Lobo tracks

Oct. 9 Camp 9. 8000

Divide 8100  
 valley 7650  
 Palo Verde 7700  
 Ridge 7800  
 Tularosa 6800

Oct. 10, Tularosa, 9 AM, 6750

*Pinus edulis*  
*Juniperus pachyphloea*  
 " *monosperma*  
*Quercus grisea*  
*Lycium pallida*  
*Sedum ingens*  
*Rhus trilobata*  
*Helenium amers*  
*Eucetia lanata*  
*Atriplex canescens*  
*Begonia*  
*Helianthus*  
*Chenop*  
*Adiantum muscivorum*  
*Yucca glauca*  
 " *baccata*  
*Nolina*

*Pinus ponderosa*  
*Populus angustifolia*  
*Quercus gambelii*

Joseph 6500  
 Negundo  
*Tuglans rupestris*  
*Vitis*  
*Forsythera*  
*Lalua parviflora*  
*Opuntia engelmannii* var.  
 " *arborescens*  
*Agave pringlei*  
*Clematis*  
*Prunus salicifolia*  
*Smilax hirsuta* (1005)  
 " *douglasii*  
*Quercus*

Frises 6000  


---

*Peromyscus* *leucurus* 2  
*Perodipus* *filix*  
*Perognathus* *tyux*  
*Urocyon* *taxid*  
*Procyon* *lephites*  
*Cariacus manni* + *loba*

(\*top of peak)

Oct. 13 Camp at Joseph 6550  
 Crossing of Tuleasa 6450  
 Spring in Largo Canyon 6650  
 Top of mesa 7050

*Pseudotsuga* N.E. 7800\*  
*Abies concolor* N.E. 8200\*  
*Populus tremuloides* " "  
*Pinus flexilis* " "  
*C. concolor* 2 " "  
 Left horse 2 PM 8550  
*Berberis repens*  
*Ceanothus*  
*Pachystima* 8550\*  
 Peak near Engle Peak S.W. 9450

*Symphoricarpos orophilus* " "  
*Pseudocercia* 9000- 1170  
*Odocoileus hemionus* 3  
 " *concolor* 2  
*Sciurus f. woodhousensis* com  
 " *oberti* "  
*C. grammurus* "  
*Callospermophilus lateralis* 1  
*Eutamias* *quercus* com  
 " *dorsalis* "  
*Cynomys gunnisoni*  
*Neotoma fella*  
 " *orophilus*  
*Thomomys talpae*



Oct. 13, Joseph 1 P.M. 6750  
Trisco 6100

Camp in Canyon 5950  
(5 miles below Trisco)

Oct. 14 Camp 5850

Odocalus hemius 1 "  
Parus wolwebori "  
Populus fremonti; first "  
Opuntia schottii "  
Alnus rhombifolia "  
Fraxinus virida "  
Ptelea "  
Opuntia petrya "  
Grapes "  
Pseudotsuga <sup>over the 3700</sup> "  
Spiraea <sup>"</sup> "  
Platanus 5700 "  
Rigulosa "perpallida" 5650 "  
Celtis belleri "  
Morus microphylla "  
Pinus ponderosa "  
" edulis "  
Juniperus monosperma "  
" pachyphloea "  
Populus angustifolia "  
" fremonti "  
Quercus gambelii "  
" grisea "  
Regundo

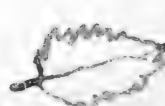
Yucca angustifolia  
" baccata

Agave pinnatis  
Nolina  
Opuntia engelmannii  
" schottii

Cercus pitja  
Forestiera  
Cleome

Helianthus  
Argemone  
Kelley Ranch

Prosopis "  
Acacia ? "

Yucca radicata "  
Quercus arizonica  "

over ridge & mesa 6000

Camp 5600

Alta 5200

above Mogollon

Alnus tree -7000  
Juglans -7000  
Regundo - "

Oct. 15  
Camp 8 A.M.

Alma

Camp

Oct. 16, Camp 11,

Top of grade

Wapallan

Camp in gulch

Garryia

Quercus leucophylla?

Sambucus

Agave

Alnus

Dasylium

Ceanothus

"

Rhamnus purshiana 7000-

Acer grandidentatum 1 back 7000

Upper Sonoran S.W. - 7500

" " N.E. - 6500

Transition " 6500-8000

" " S.W. 8000-

Canadian N.E. 8000-

" in gulch " 7500-

" " S.W. "

5550

5200

5250

5200

7300

6850

7850

7000-

6800-7000

7500

6800-7000

7000-

- 7500

- 6500

6500-8000

8000-

8000-

7500-

"

Oct. 17 - Camp 9 A.M. 7850

Sawmill 8700

Summit 9250

Camp on ridge for lunch 9450

Abies concolor 8500-

Populus tremuloides " "

Pseudotsuga " "

Pinus flexilis " "

Picea engelmannii 8500-

Abies concolor 8800-

highest part of road 9300

Camp on ridge 9000

Oct. 18 down to creek

Camp 9000

Left wagons "

Camp in gulch 8500

Oct. 19.

Down to Rangers cabin back.

Oct. 20

Went to town & killed deer

Oct. 21 Sunday

Snowed

Oct. 22, S.

Snowed, hunted, got nothing

Oct 23 up Peak, Camp 8500

<i>Pinus ponderosa</i>	{ 8000-9500 7500-8000 8500-9500
<i>Emerus gambeli</i>	{ 8000-9500 6500-8000
<i>Pseudotsuga</i>	7000-9500
<i>Pseudotsuga monodonta</i>	7000-9500
<i>Sambucus</i>	8500
<i>Hododiscus</i>	-10900
<i>Ceanothus</i>	-9500
<i>Rosa</i>	-9500
<i>Berberis repens</i>	-9500
<i>Cornus asperifolia</i>	-8600
<i>Lentimon scarlet</i>	-9500
<i>Gilia agrigata</i>	-9500
<i>Wyethia</i>	

*O. covei* bucks at 9500 + 1000.  
*Lepus pictus* tracks at 9000-10200  
*Felis* tracks at 10000.

<i>Populus tremuloides</i>	{ 9000-10900 8000-10000
<i>Picea pungens</i>	{ 8500-11000 9500-10500
" <i>unglwanii</i>	9000-10500
<i>Abies concolor</i>	9500-11000
" <i>arizonica</i>	8000-10000 9500-11000 8500-10000
<i>Pinus flexilis</i>	7500-9500
<i>Salix cordata</i>	-11000
"	+
<i>Alnus longistruata</i>	9000
<i>Sanguinaria</i>	10200
<i>Juncus communis</i>	10200 11000
<i>Acer glabrum</i>	-9500 +10000
<i>Vaccinium mesocarpium</i>	
<i>Pachystima</i>	9000-10500
<i>Rubus nutkanus</i>	8000-9000
<i>Veratrum</i>	
<i>Pyrola pecta</i>	
<i>Chrysothrix</i>	
<i>Hododiscus</i>	-10900
<i>Lonicera involucrata</i>	8600-11000
<i>Pteris</i>	8500-11000
<i>Ribes purpureum</i>	8000-9500
" <i>garguennum</i>	8500
<i>Symphoricarpos asplundii</i>	8500-10000

*Aster* 11000  
*Erigeron* "  
*Solidago divar* "  
*Potentilla* "

Oct. 30, Camp 9000

Divide 9250

Mr. Galloway 6850

Camp by mill in gulch 7000

Oct. 31 Camp 7000

Top of grade 7300

Top of mesa 6900

Quercus emoryi 5100

White water Cr. 5000

Camp 4000

Nov. 1-5

Prosopis glandulosa abn

Mimosa biuncifera "

Platanus "

Rhus woolly leg. "

Opuntia engelmanni, big, "

" schottii "

Cercus petyja a few

Lasiacis "

Elaeagnus by fence

Yucca radiosa

Photodendron flavescens abn

Juglans "arizona" "

Populus fremonti com.

" angustifolia a few

Salix nigra com

" yellow willow tree "

" "

Quercus grisea abn.

" emoryi com

Juglans (not capensis) com

Fraxinus "

Sapindus "

Pteris "

Platanus "

Alnus tree "

Pinus edulis abn

Juniperus monosperma "

" pachyphloea "

Rhus aromatica "

" velvet leaf "

" glabra "

Ceanothus rigidus com

Cowania mex. "

Cereopsis parvidius "

Vitis part grapes "

Cleome "

~~Moraea~~ microphylla on rocks, a few

Nequendo com

Garryia a few.

*Helianthus annuus*  
 " "  
*Helianthella*  
*Gutierrezia*  
*Senecio douglasii*  
 " "  
*Linum catharticum*  
*Argemone*  
*Fallugia parviflora*  
*Mentzelia*  
*Eurotia lanata*  
  
*Sciurus arizonensis* 1- com  
*Eutamias dorsalis*  
*Citellus grammurus* com  
 " *epilusoma*, hibernated  
*Rhithrodontomys* com  
*Peromyscus truei, boylii, sonoriensis* com  
*Onychomys torridus* com  
*Neotoma albigula & cumulator* com  
*Thomomys folvus* abn  
*Perodipus* com  
*Perognathus flavus* "  
*Lepus arizonae* "  
*Lynx baileyi* tracks  
*Canis neomexi* com  
*Urocyon* "  
*Procyon* "  
*Taxidea* "  
*Comptosia* "  
*Mipipitis* "  
*Spilogale* "

Nov. 5. 9 AM 5000  
 Over ridge to S.F. Valley  
*Sagurus chilopus* com  
*Alth* "  
*Cracca roemeriana* "  
 Lone Pine  
 Down end of valley 4900  
 Dry Creek 5100  
 (Lus Station 5180)  
 U.S.G.S. stake — 4884  
 (Barometer set at " )  
 Top of ridge 5235  
 Cactus flat camp 5300  
*Cynomys ludovicianus*  
*Lepus arizonae & tex*  
*Neotoma*  
*Perodipus*  
*Lepus*  
*Onychomys*  
*Taxidea*  
  
*Campylorhynchus*  
*Hesperomys*  
*Spizella*  
*Chondestes*  
*Calcarius ornatus?*

Nov. 6 Camp 9:30. 520

Yucca radiosa abn.  
Opuntia Sebottii "  
Top of ridge 5300

White House lunch 41596

Chilopsis saligna abn.  
Lesqueria "salicifolia" "  
Yuccas + Cactus + mesquite

Cliff at river - Camp 4471

Ephedra virida  
Rhamnus californica  
Forestiera  
Atriplex canescens  
Populus fremontii  
Salix biga  
- big yellow

Unguis  
Juglans  
Chilopsis  
Prosopis  
Celtis  
Quercus grisea  
" emoryi

Pinus edulis  
Juniperus monosperma  
Opuntia adbotlii  
" engelmannii sarsa  
- brown spined con  
Cercus ?

Yucca radiosa abn.

Fallopia parviflora

Ceanothus rigidus

Lycium pallidum

Rhus aromatica

Antennaria veg

Senecio Douglasii

Helianthus annuus abn.

Helianthella

Artemisia

Whitegilia

Xanthoxylum

Cleome integrifolia

Croton texensis ?

Nov. 9 10 AM, 4470

up Greenwood Cr.  
over ridge 4900

Wangas Valley 4800  
Left valley at 4980

Dry Camp 5400

Nov. 10. Camp 5400

Top of ridge 6200

Silver City 6000

Camped at Mr. Pinkerton's  
in orchard by pond.

Nov. 11

Packed up & took train to  
Deming -

Nov. 12 to El Paso.

Left El Paso at 7 P.M.







Transportation Orders

44361, L.A. No. 512  
Washington to Cache  
Aug. 1, 1906, \$38.95  
40362, L.A. No. 512  
Saltport to Santa Fe.  
Aug. 16, \$15.15  
40363. Silver to Wash.  
Nov. 11, 1906. \$55.45

Expense

Aug.	<del>38.95 + 15.15 + 121.59</del>
"	175.69
Sept.	130.65
Oct. ok	132.75
Nov.	75.85

Manuel Mendrogon, Taos

C.C. Brattie, Española

Wm. E. Griffen, Game Warden  
Santa Fe.

T.F. Leavenworth, Fiero

Victor Culbertson

Mr. Lamb, Reclamation Service  
sends regards to Mr. Titus  
for Snyder, Okla.

Charles Dickson, Cuba

Acama Indian

Vesse Lewis, Albuquerque

*[Faint handwriting]*

*[Faint handwriting]*

*[Faint handwriting]*

*[Faint handwriting]*

H.S. Delgar, Aragon,

W. J. Andrews

Hackensack, N.J.

Bill Lewis, Florida

good partner & companion

Pittsburg Poultry Fencing  
Pittsburg Steel Co., Pittsburg, Pa.  
Poultry fence 5-2 inches high  
1 1/2 to 2 inches mesh, 6 inch cross

and made of heavy wire  
to give greater durability of fence

read manual  
Pittsburg  
around  
hulls

PURIFY WATER.—Add half a grain  
to each gallon of water for  
as not injure the precipitate the  
it will precipitate it the  
it will precipitate it the  
it will precipitate it the

Put poison in  
entry of wire

~~roadrunner~~

~~Carantula~~

~~Melospiza~~

~~Xantho~~

~~acorn~~

~~shells~~

~~melosp~~

~~whist~~

~~melosp~~

~~Robins the~~

~~Woodpecker~~

~~new~~

Went to get newspaper  
J. L. Mitchell  
Canada Ariz

Mr. J. B. Moore

!!

Mr. Perry  
Agent

St. Michael's  
Fort Defiance Ariz  
Willy Day

White boy  
Charles Good  
~~best~~  
spat. always

Walt writes for tapes

Put prison in eggs for society

HOW TO PURIFY WATER.—Add half a grain of pure alum to each gallon of water. This small quantity does not injure the water for any purpose, and yet it will precipitate the earthy and vegetable matters and with it the bacteria that the water may contain, or at least, so nearly clear the water that you need not fear to drink it.



---

# PREMIUM

---

KS FOR PREMIUMS.

OF THE THE MOS

Pittsburg Paper Feeding  
Pittsburg Steel Co., Pittsburg, Pa.

Poultry fence 52 inches high 15  
1 1/2 to 6 mesh mesh, 6 inch cross

2  
3

695 X 130 X 110, 9 Zepher  
White Water Baldy, 10950  
S.C. by Lt Stanley Koch  
5th Cav. Ft. Huachuca

11.5.11

11.11.23

CHARLES P. SWETT PRICE.  
STATIONER  
913 F ST. N.W.  
WASHINGTON, D.C.

1/24

