

1955

Aug 11.

Oklahoma

A11<sup>1</sup> Shale and thin ls beds on east side of road underlying a limestone marked as Frenaley ls. I think. This may be where I collected in 1947. *M. haydenensis* is fairly common. I estimate the Frenaley ls to be 0.28 mile south of the bridge over Oil Creek. The Frenaley thin ls is in the NW<sup>1</sup>/<sub>4</sub> SE<sup>1</sup>/<sub>4</sub> 32-35-4E, Johnston Co.

A11<sup>2</sup> Is the shale just under the Frenaley limestone. Abundant *Mesolobus*. This is where I collected in 1947.

A11<sup>3</sup> also about 1000' SE of road and just above a thin limestone

sp. rocky.

Frenaley

Aug. 12.

A12<sup>1</sup> Pumpkin Creek, 0.1 mile south of NW cor 29-35-2E, Carter Co.

A12<sup>2</sup> Some 100 yds E of NW cor. 29-35-2E.

A12<sup>3</sup> 0.1 mile N of road, SW<sup>1</sup>/<sub>4</sub> SE<sup>1</sup>/<sub>4</sub> 44-35-1E, Carter Co. Dirty loc. 4035.

A12<sup>4</sup> NW cor 33-35-1E, Carter Co., Okla  
Williams

A12<sup>5</sup> Otterville - 600 feet S of NW cor 5-65-2E, Love Co., Okla.

Aug. 16.

Four kegs packed at Muskogee, all of maybes. Keg #4 contains one lot on top half of keg without label. This was collected Aug. 16 in afternoon inside loop of Okla 10

ca 3 1/2 to 4 miles SE of Fort Gibson, about center S 1/2 of NW 1/4 21-15N-20E, Hulbert □, Oklahoma

Beds with big productid + *Centronella* very near top of Moorefield. These are underlain by granular ls. with large *Flexaria* and *Inflatia* like *I. inflatus* of the Chester. These however underlie the big productid bed which has *Moorefieldella*.

Beds with big *Spirifer* just underlie the *Flexaria* beds and under these is a layer teeming with *Moorefieldella*. Under this some distance comes

*Martinia* - big *Sino-productus* bed. Below that the rocks are quite shaly.

Beds with big *Spirifer* and *Tentaculites* is just below the *Flexaria* bed.

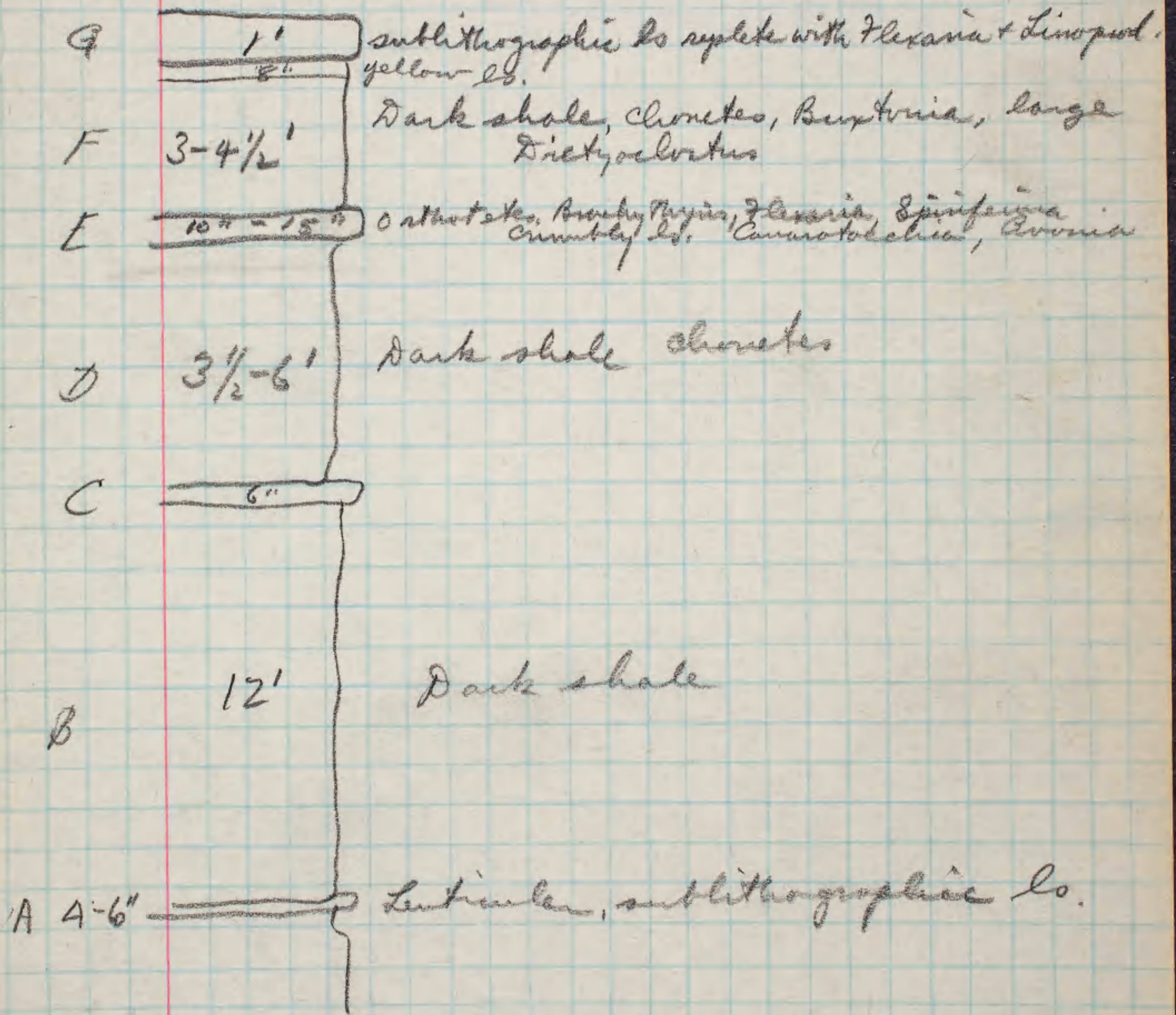
*Athyrid* in Fayetteville on Okla 10 is near base of shale. This near center SE 1/4 NW 1/4 21-15N-20E.

0844

August 18

Section on east-facing bluff

SE 1/4 NE 1/4 7-22N-20E, Mayes Co., OK.



Exposure at NW 1/4 SE 1/4 31-23N-20E  
Mayes Co. seems to be same horizon  
as E.

0845

August 15

A1855 - Granular limestone with  
Archimedes, Diaphragmus, probably  
Hindsville

1855' Quarry in upper part Hindsville  
Camarotoechia common, Perditocardinia  
Rare.

SW cor. 15 - 25 N - 21 E, Craig Co., Okla.  
Where I got big *Sigantopioductus*-  
like brachiopods is certainly  
Hindsville.

A1855<sup>2</sup> - Fayetteville - many *Orthotetes*  
Center S<sup>1</sup>/<sub>2</sub> NE<sup>1</sup>/<sub>4</sub> 10 - 25 N - 21 E, Craig Co.

Aug. 22

Abandoned by about SE<sup>1</sup>/<sub>4</sub> NW<sup>1</sup>/<sub>4</sub>  
34 - 26 N - 31 W, 4<sup>1</sup>/<sub>2</sub> mi. SSE of  
Diamond, MO.

0846

August 27

Section at Grand Summit  
about 1.2 miles NE of Station.

Slabs with interiors of *Juresania*  
come on top of limestone capping  
the Florana (= Merrill ls.) or  
Stearns shale

===== *Juresania* common  
===== Thick ls.

xxxxe sh + nodular ls, level of fossils  
===== ls.

sh.

===== ls.  
Red sh ls.

sh.

===== } Thick ls.

Aug. 28

Old locality for silicified *Barbyia*  
is  $3\frac{1}{2}$  mi. N of center of Dexter  
about center east line 36-325-6E

First cut from S is 3 mi north  
of Dexter. Second cut is 3.5 miles  
N and is one from which most  
silicified stuff come. Second cut  
is about 0.1 mi. S of NE $\frac{1}{4}$  36-325-6E

0847

at junction Kans. 38+15 exposure  
of flinty limestone = Florence  
ls. We collected from a shale  
possibly Blue Spring shale.

Just east (downhill) from  
intersection is roadcut with  
*Derbyia cymbula* at base  
This is in cherty ls., The Waeford  
and is about  $\frac{1}{4}$  mile E of Florence  
chert cut and probably 50' + below  
it.

0.2 mile W of Elk-Cowley Co.  
line, good Florence beside road

Just over RR track about 1 mile  
on US 166 is a poor cut in top  
Florence. Second cut about 0.2 mi. W  
and 30' higher is in algae beds  
same as seen just east of  
Hoover. *Derbyia hooverensis*  
must therefore be out of the  
Florence

Aug 30  
US 77 about 5 1/2 mi S of Junction City

5.0  
9.5  
-----  
5.5

Fort Riley

non-cherty yellow ls  
8-10'

shale, bright blue  
*Squamaria* 4-5'

cherty ls 3'

shale blue 1-2'

cherty ls.

Cherty

ls.

15'  
cherty  
ls

blue  
5-6'

Blue & chocolate shale  
20-25'

0849

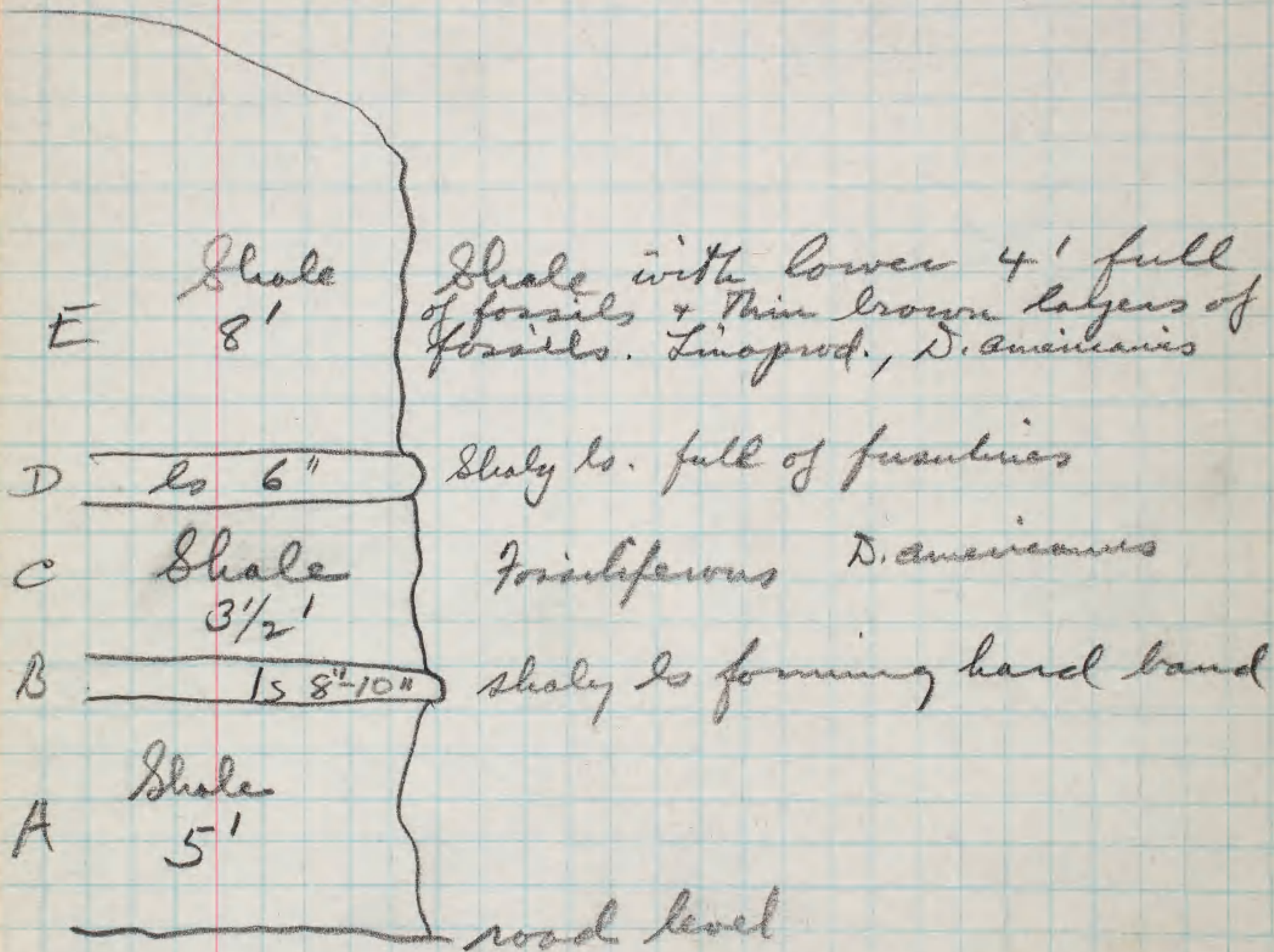
Locality Stop 7 Kansas Guide #6

At Stop 7 on W side Mo. Pac.  
overpass Dubois ls in ditch &  
Holt sh just above. Along RR  
to NW about 1/4 mile nodular  
limestone full of fossils. The  
*Derbyia bennetti* comes from just  
above the Dubois while the larger  
fossils come from about middle  
of Holt shale. All belongs to  
Topeka fm.



Sept 5

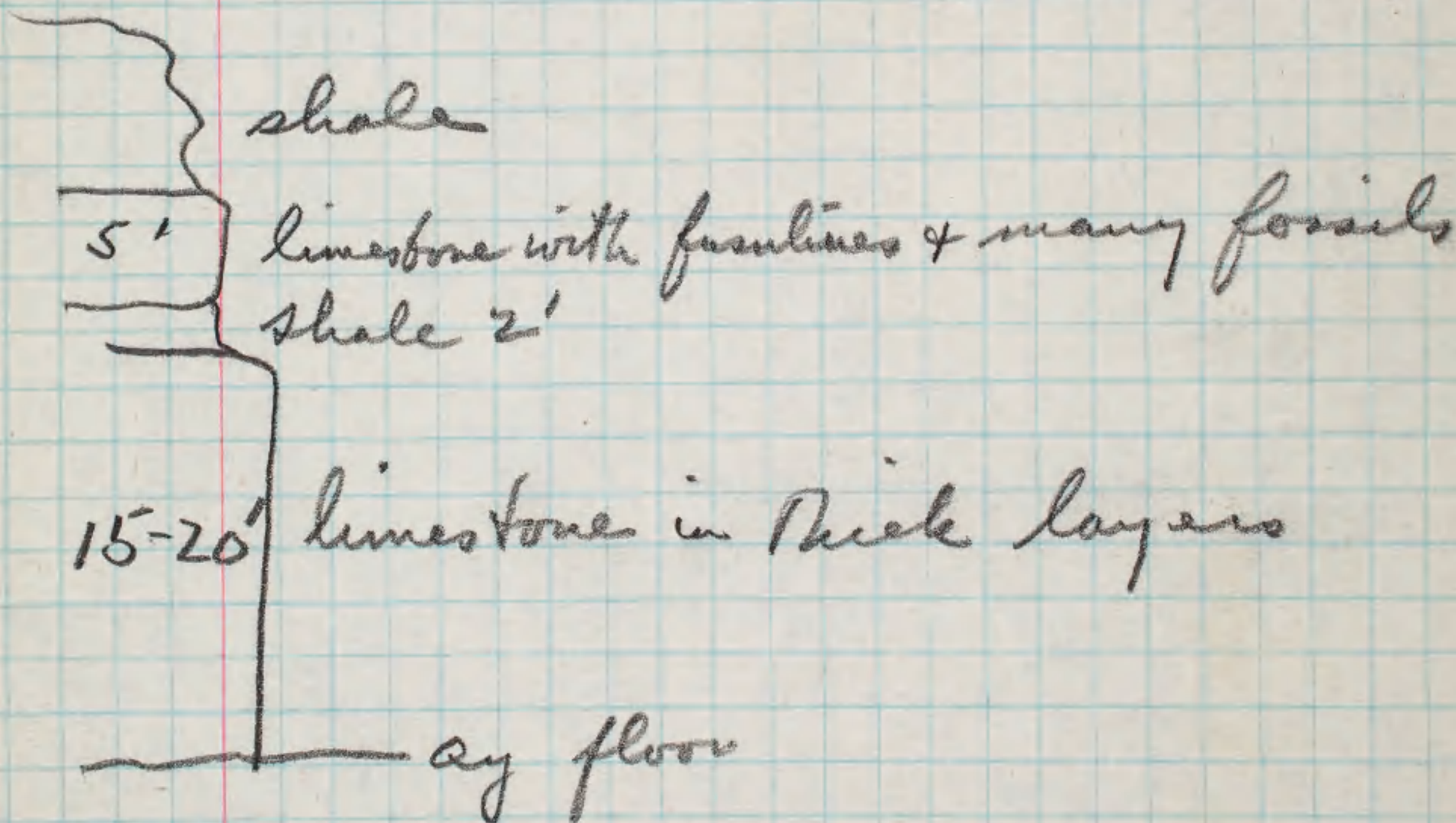
Section just east of western bend  
of 3 bend on US 95 south of  
Dawson.



Fossils from C, D & lower half E.

Sept. 5.

0.2 mile east of junction  
 US 24 & US 59, N of US 24 about  
 0.2 mile Hamm's Quarry <sup>3 miles</sup> east  
 of Perry. The 5' bed is irregularly  
 bedded, light blue when fresh,  
 but turns brown on exposure.



Sept 6

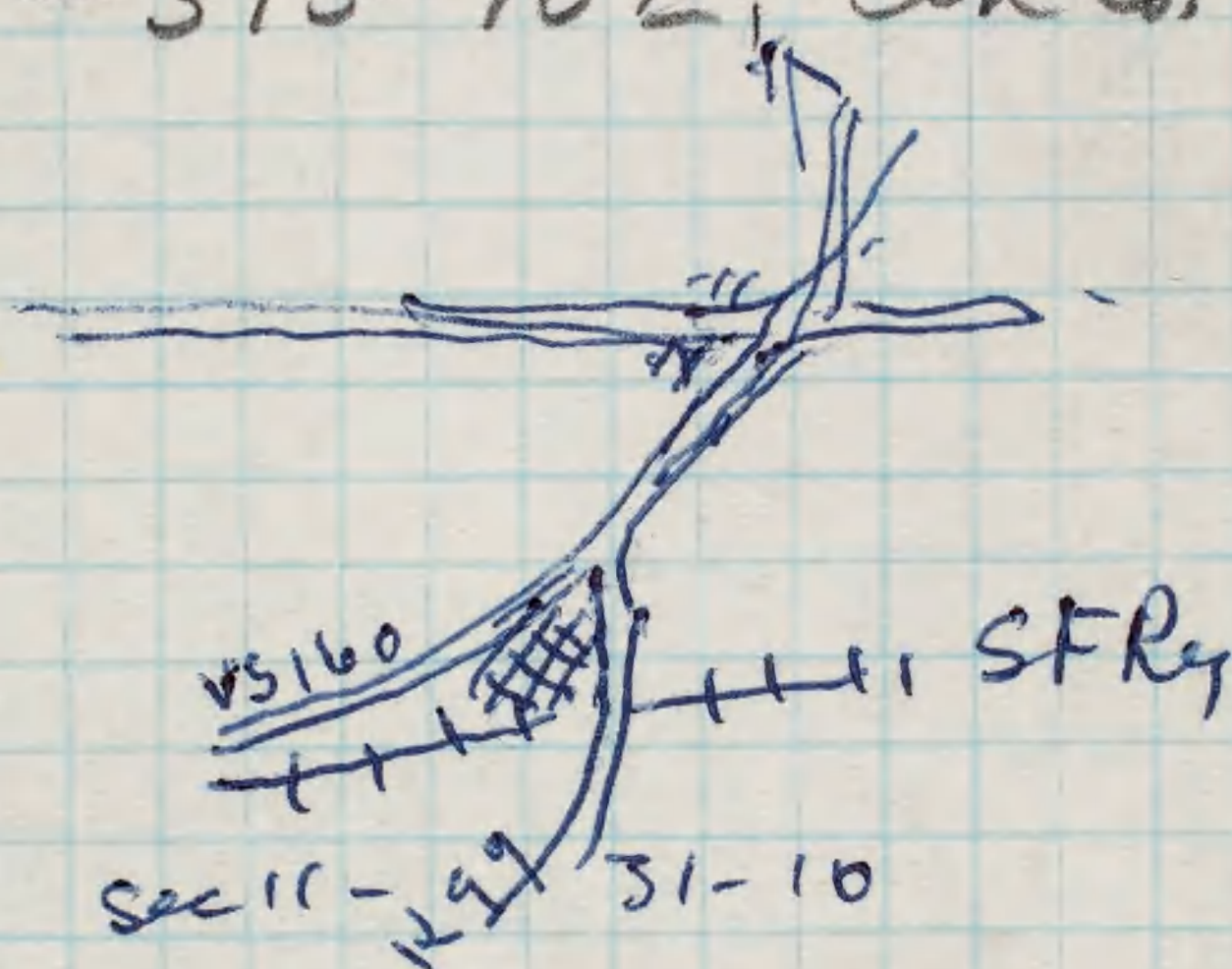
Letter to R.C.M. about Treatise  
status, word from Williams, etc.

Moline (1 mi NE)  
Just W.

Borrow pit at junction 99 + 160.

just N of RR just W section  
11-315-10 E, Elk Co.

check



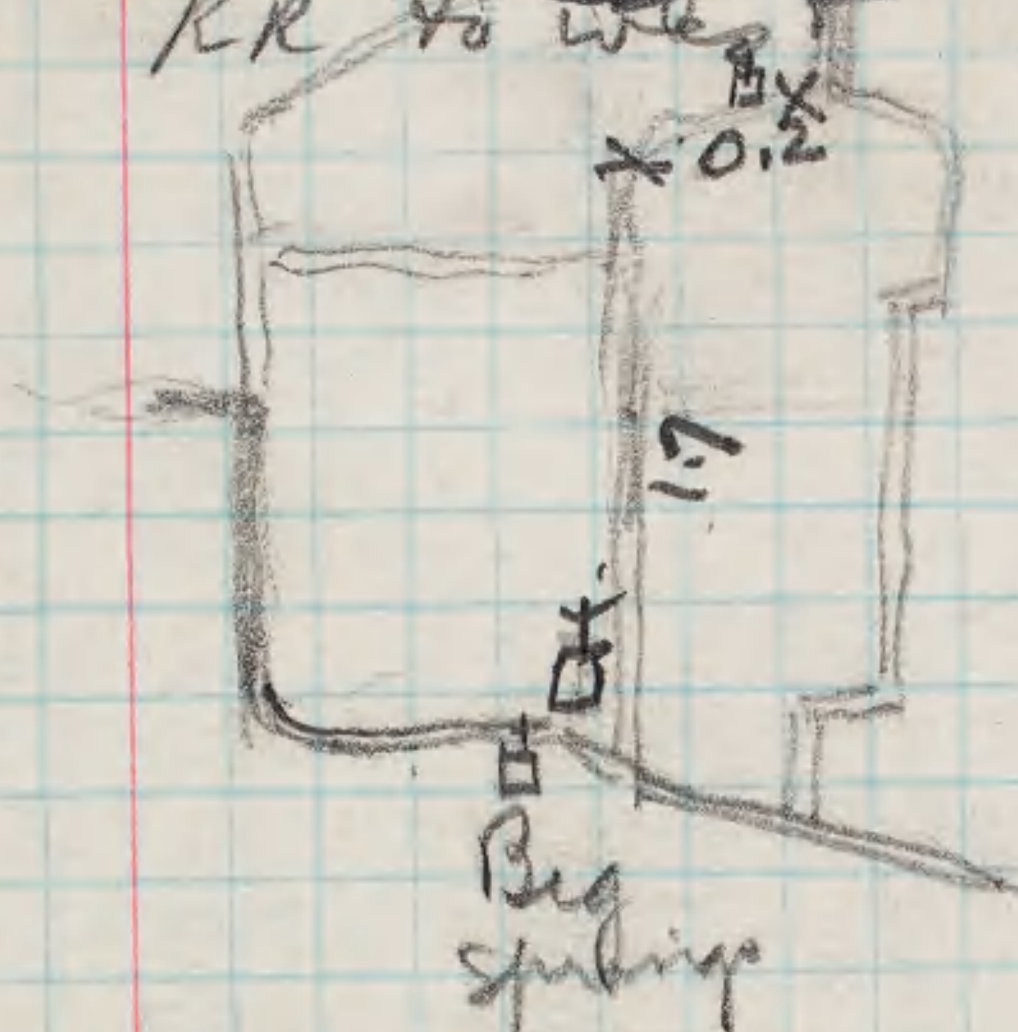
Quarry at Lecompton for Keeford

~~Lecompton~~ Upper part is Keeford  
Look for Poikilosakos

Quarry at Midland - one mile  
west quarry in Quad. for Poikilosakos

North of Big Springs for  
Leumonton (Bill)

Big Springs, take road just E of  
B.S., go N 2 miles to school, take  
road ~~that~~ school, locality, along  
RR to west



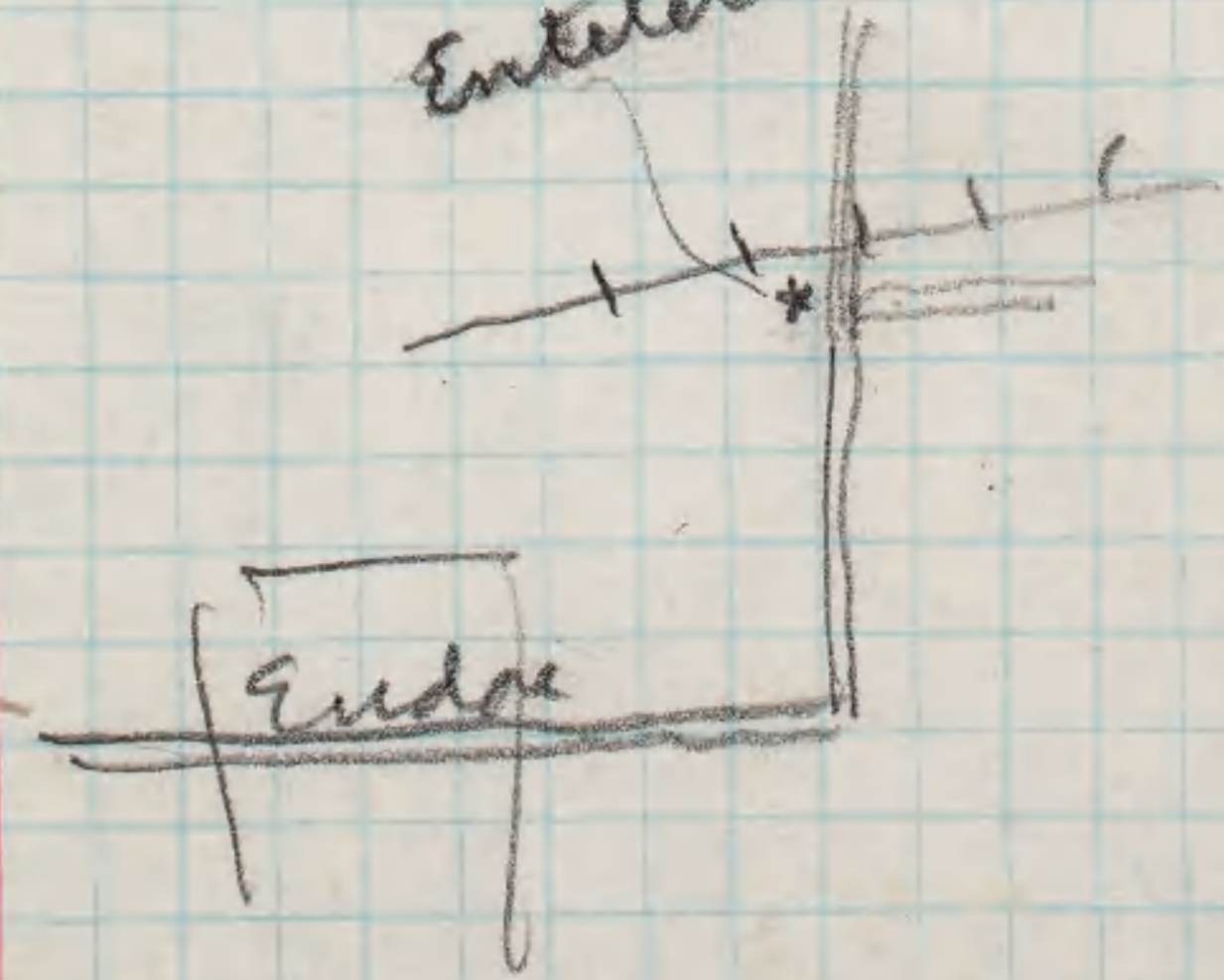
76.90  
76.45 at RR  
75.6  
75.4  
73.7      3.4

3.4 miles N to RR,  
1/2 mi west along  
RR tracks.

---

Endora

Enteleter



Endora

0854

Mr. L. Stryker at Fredonia - Oil  
geologist Fredonia Og in  
Stanton.

Chamite

Vilas - W of Chamite

1/2 mi E of Vilas, cut on RR  
E of road crossing. Crossing  
of RR of by 39

Just S of Humboldt, Og in Iowa

Quarry for Iowa in cement  
Og south of Iowa on E.

✓ Abandoned Quarry for Iowa ls.  
just N of Mildred about one  
mile, west of road.

RR cut at Hoover is south of  
US 160 on big loop.

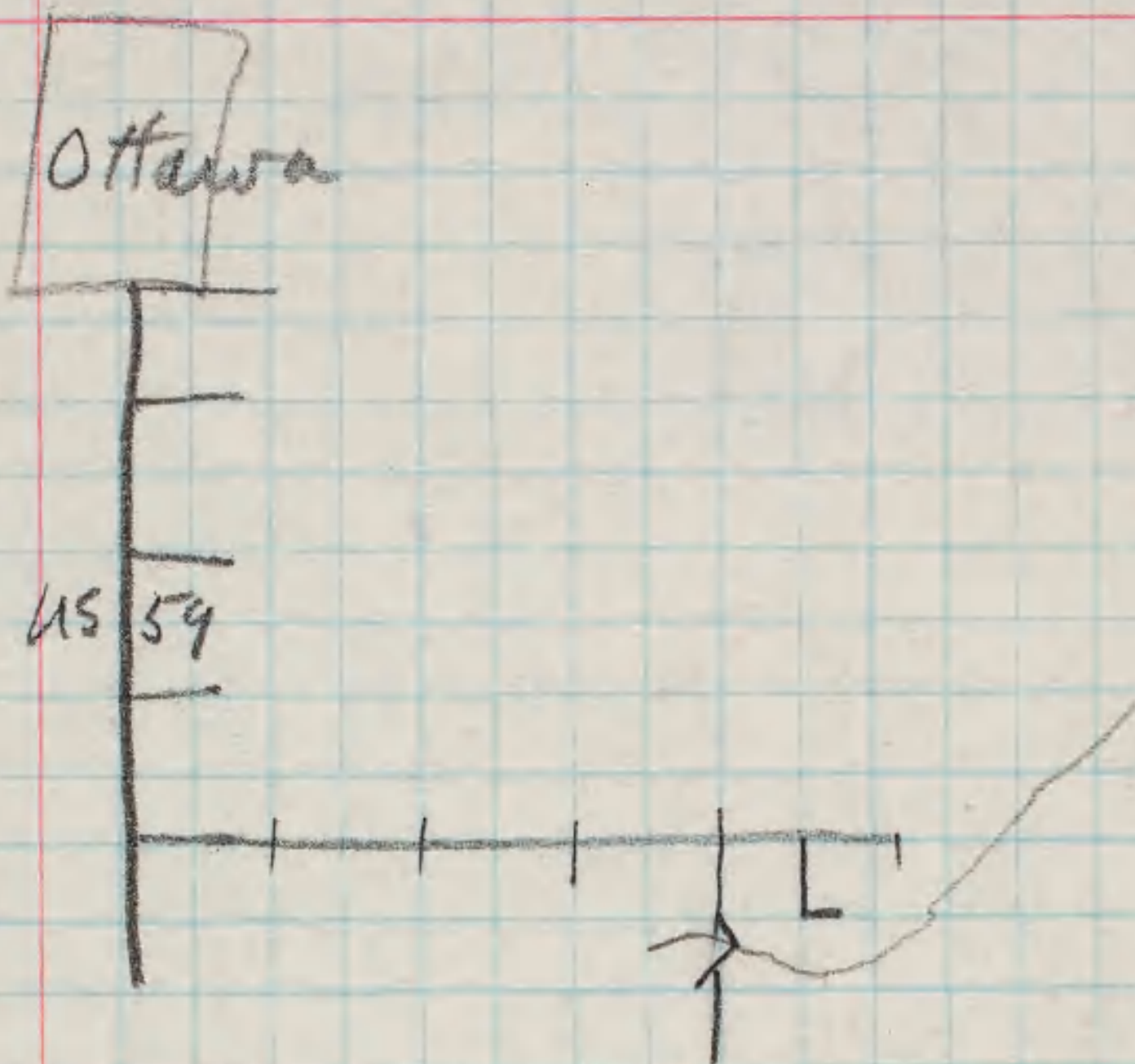
0855

Check + send Ray general  
Survey on coverage

Meibum - Hedge of tower.

Send Ralph King Mexican Permian

NW 1/4 27-17S-20E

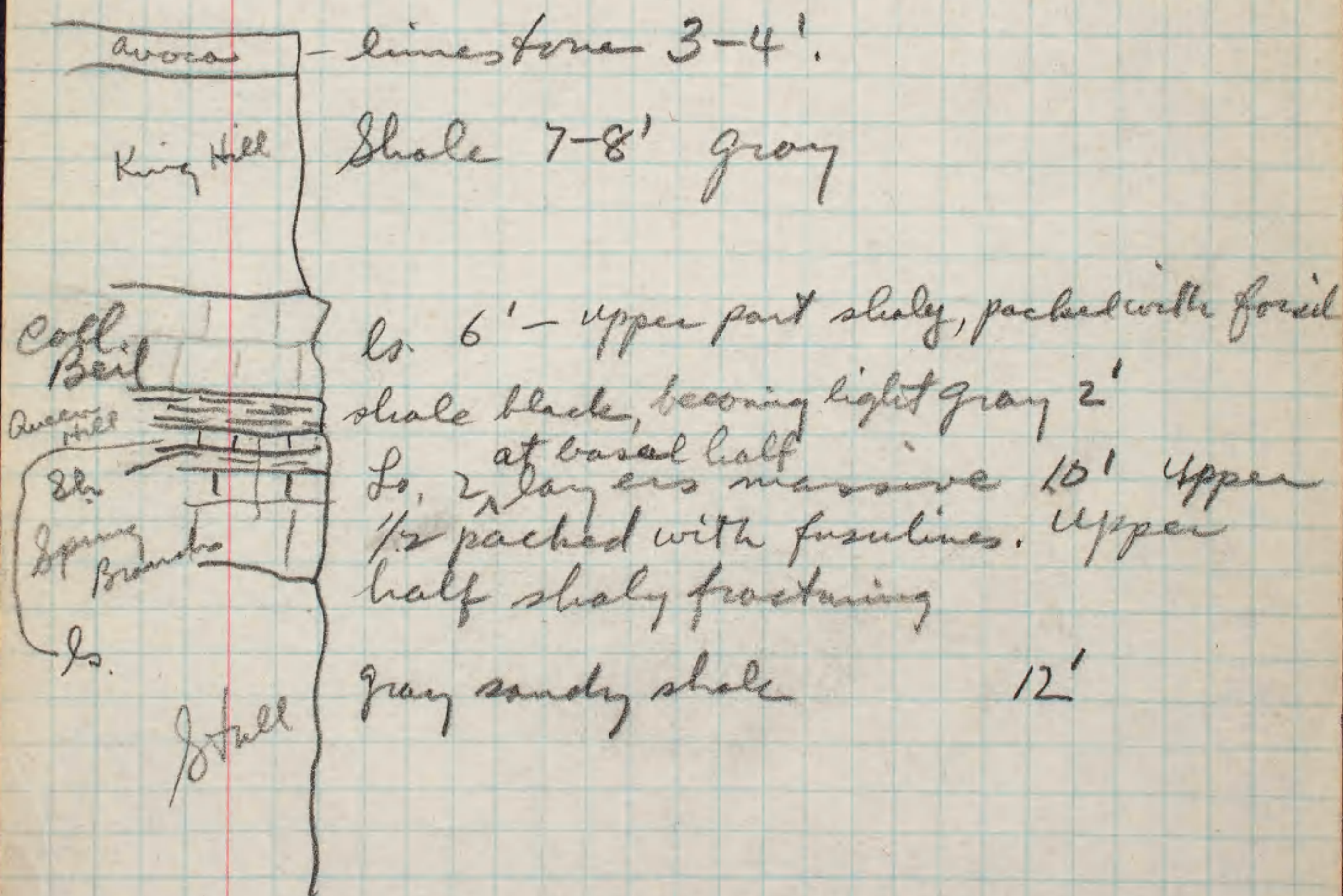


Sept 7

2nd east rd 5 of Miligan Valley  
to RR tracks, 1/4 mile south  
on RR.

Sept 9.

Along RR 3.5 mi N + 1/2 mile W  
of Big Springs, Kansas





76

May 12, 1953  
Hill east of Pompey Center on US 20

Hard irregularly  
bedded ss. with 16'  
Tanomus near top  
of Delphinstation at head of road.

Crumbly but  
firmer than  
below, many  
mollusks scattered  
in rock 38'

Crumbly gray  
shale with  
Bambaxia + Loxoneura 38'

Juridoleptus zone 5-6'

98'

Mottville 15'

Fully one mile west of Cuyler has 6-7'  
of Finkens Falls member at base.