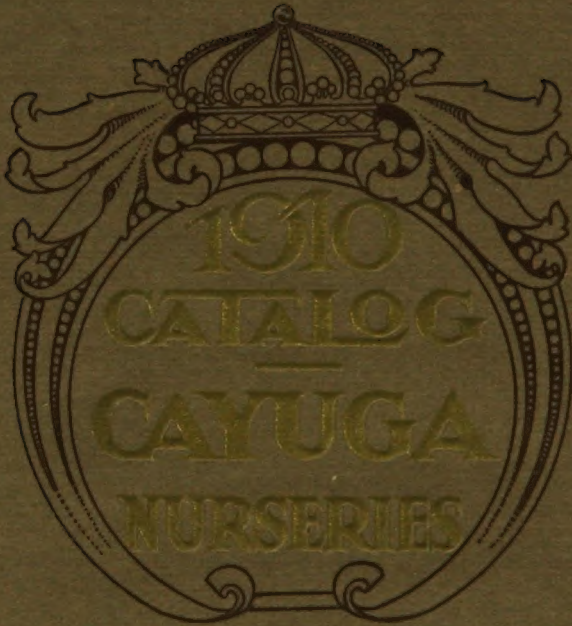


H. S. WILEY

S. SCOTT WILEY



H. S. WILEY & SON
CAYUGA, N. Y.

The Prices Herein Annul All Previous Quotations

READ BEFORE YOU ORDER

PLEASE READ THE FOLLOWING DIRECTIONS,
TERMS, ETC., BEFORE MAKING YOUR ORDER,
AND IT WILL SAVE MUCH CORRESPONDENCE

YOUR NAME, POST-OFFICE AND STATE should be distinctly written, and be sure that neither is omitted. This may seem to many an unnecessary request, yet we receive many letters with either signature, post-office or state omitted. No matter if you write several times, always give full name and post-office address.

TERMS, CASH WITH ORDER—Goods are sent by Express C. O. D., if desired, providing one-third of the amount is sent with order; but this is a somewhat more costly mode of remitting. We cannot ship C. O. D. by freight.

HOW TO SEND MONEY—Remittances should be made by Post-Office or Express Money Orders, Registered Mail or Bank Drafts at our risk. Remittances in any other way are entirely at the sender's risk.

SPECIAL TERMS—For the benefit of customers who wish to order early, but who do not care to spare all of the money when order is sent, would say—We will accept early orders accompanied by one-third cash, and reserve the stock for you. Balance to be sent us when stock is ordered shipped.

GUARANTEE OF GENUINENESS—Only experienced and careful help will be used in putting up orders. And we sell our stock, believing it is true to name and of quality represented with the express understanding and agreement that should any not prove true to name, we will replace the same on proper proof, without charge, or will refund the money paid for such stock, but are not liable at any time for damages other than above named. All orders are accepted by us with this understanding.

ORDER EARLY

WHY—We can only afford to give the discounts named below on the basis of early orders. You are more likely to get your order shipped just when you want it, if we receive it early.

HOW TO ORDER—Always use our Order Sheet, bound in back of the Catalog. Be careful to fill out blank spaces at the top for shipping directions, etc. Write plainly. Be sure to sign your name and give post-office and state. Say whether by freight or express. When we choose mode of shipment we will route by our best judgment, but our responsibility, ends when goods are delivered in proper condition to forwarders, because then they are beyond our control.

APPORTIONMENT AND RATES—At prices quoted $\frac{1}{2}$ doz. at dozen rates, 50 at 100 rates and 500 at 1,000 rates. Long lists of one or two of a kind must be taken at single tree prices.

EXPRESS RATES—On trees and plants are about one-fifth less than on general merchandise. It is usually best to have small orders sent by express.

SELECTION—Not unfrequently customers consider it a kindness for us to make a selection for them in case we are out of a given variety ordered; if you do not care to permit this, say so. This does not apply in any sense to commercial varieties, ordered in quantities for which we never make substitution.

PRICES—Our prices will be found as low as stock of **QUALITY** and **GRADES** mentioned can be grown and packed. It is well to remember there is as much difference in the quality of nursery stock as in any other commodity. A tree with an inferior, unhealthy growth, grown on soil not adapted to it, will be found poor property at any price. The prices herein annul previous quotations.

SHIPPING ADVANTAGES—Being located on the N. Y. C. & H. R. R. R., and at the northern terminus of a branch of the Lehigh Valley Railroad, gives us facilities for shipping our products surpassed by none.

ERRORS—Our customers are requested to notify us instantly of any errors, so that we may at once make ample amends. In the absence of such notice we will understand there are no errors and therefore no cause for complaint.

SPECIAL INDUCEMENTS ON CLUB ORDERS for Granges and kindred organizations.

LARGE ORDERS—If large orders are wanted, send list of kinds for estimates. We can frequently do better on some varieties than others, as we are always "Long" on some kinds, and on such we will be glad to give you every advantage.

REFERENCES—The hundreds of Fruiting Orchards of our stock all over the country. Ask for names of men who have them. Also any of the business men of our town, or Banking House of Wm. H. Seward & Co., Auburn, N. Y.

DISCOUNTS—On all orders received prior to March 10th at catalog price a discount of 5 per cent. will be given when remittance for full amount is made. This discount is offered as an inducement to get your order booked before the rush of the packing season begins. Your orders can be handled with less confusion and we can assure you of better service on early orders. Discounts do not apply to collections. Neither do they apply after date above named.

ALL AGREEMENTS and contracts are made subject to loss of stock by drouth, floods, fire, insects, or other unavoidable causes.

ORDER NOW, and trees will be carefully reserved for you

H. S. WILEY & SON, CAYUGA, N. Y.

CAYUGA NURSERIES

Established by John Morse
in 1847

We have extensive plantings also at Newark, Rochester and
Dansville, N. Y.

INTRODUCTION

We are pleased to hand you our priced catalog for 1910. We feel under many and renewed obligations to our numerous customers for their continuous patronage during the years we have tried to serve them. Most of all we appreciate the kindly interest demonstrated by many of our patrons in advertising our trees among their friends and neighbors. It is our purpose to continue to furnish you with only the best and at as low cost as we can, consistent with high quality.

NEW STORAGE

Our new storage (see cut) will allow us to handle from one-third to one-half more business than ever before in the same length of time. In other words we are better prepared than ever to take care of your orders.

Our system of disposing of our trees direct to the planter with a guarantee of satisfaction is, we believe, the most practical and cheapest way for the planter.

Do not overlook our hints on transplanting and after care. This is more fully set forth in our eighty page descriptive catalog which will be mailed to customers on request.

Our diagram explanatory of the filler system we introduce on another page because it brought us last year so many thanks from people who did not seem to know what the filler system signified.



No. 100

State of New York

Department of Agriculture

CERTIFICATE OF INSPECTION OF NURSERY STOCK

This is to certify that the stock in the nursery of H. S. Wiley & Son of Cayuga, County of Cayuga, State of New York, was duly examined in compliance with the provisions of Section 83 of the Agricultural Law, and it was found to be apparently free from any contagious or infectious disease or diseases, or the San Jose scale or other dangerously injurious insect pest or pests. This certificate expires September 1, 1910.

Dated, Albany, N. Y., Sept. 10, 1909.

R. A. PEARSON,

Commissioner of Agriculture.

Old Customers. Nothing affords us more pleasure than to receive year after year orders from the same persons. While we are very anxious for new customers, the annual return of the old ones gives us much satisfaction; the fact of our retaining our customers so universally is a strong proof why you, who have never tried our stock, might do so to advantage.

A Standing Advertisement. It has been truthfully said that a satisfied customer is a good advertisement.

We could introduce many letters like the following: "My trees showed fruit this year and every one is true to name." It seems to us that this is the real test. Does it signify anything to you who have never tried our trees? Much disappointment is experienced in buying inferior stuff; a poor tree is dear property at any price. It is always well to remember in buying trees that there are as many different qualities as in cloth or leather. Start right with stock carefully grown and carefully handled, true to label, and the results will be satisfactory.

FUMIGATION

All stock thoroughly fumigated with hydrocyanic acid gas unless otherwise ordered. Some who are quite determined not to go to this expense claim it is injurious to stock. The highest authorities in the United States, after most thorough tests, advocate this practice as the most effective way to rid trees and plants of the numerous insect pests to which they are subject. No orchardist of intelligence will plant trees unless they have been fumigated. It is safer for you to place your order with one who willingly fumigates, than to send it elsewhere. Our system of fumigation, together with careful State inspection, should make you feel safe in placing your order with us. See Certificate on page 1.

Hints on Transplanting, Etc.

Preparation of the Soil—Prepare a rich, deep bed of mellow soil, and have the land sufficiently drained to relieve the roots from standing water. To insure a fine growth land should be in as good condition as is required for a crop of wheat, corn or potatoes.

Preparation of Trees or Other Stock—We use great care in digging and packing, but the loss of some small roots and fibers is unavoidable. If stock is properly prepared before it is planted, no permanent injury will result from this, but the preservation of the natural balance between top and roots renders a vigorous cutting back of the former absolutely necessary in most cases. And, therefore, prune off broken ends of roots, if any (a smooth cut root granulates or makes ready to extend sooner than one broken off), cut back the tops to the extent of about one-half the previous season's growth, taking care at all times to prune in such a manner as will tend to develop a well-formed head, sufficiently open to admit air and light freely. Evergreen and other ornamental trees, the beauty of which depends on preserving their natural form, should be pruned very little. Hence, great pains should be taken in planting and caring for these. If not ready to plant when the stock arrives, "heel it in" by placing the roots in a trench and covering them with mellow earth, well packed.

Planting—Make the holes large enough to admit the roots without any cramping or bending, and deep enough to bring the tree to its natural depth. The fine surface soil should be used in covering the roots, and this should be carefully worked among them. If the ground is dry it is well to pour in some water when the hole is partially filled. See that the ground is firmly and solidly packed over all parts of the roots by exerting the full weight of the planter upon it, so that there will be no opportunity for dry air or frost to enter and destroy roots deprived of the full benefit of their natural protection. Omission to pack the earth solidly is a most frequent cause of failure in planting nursery stock. Fill the holes full enough to be even with the surrounding surface after the fresh earth settles. Always remove the label when planting. If this is left until the tree is grown, the connecting wire often cuts into and destroys the tree or branch to which it may be attached. When planting dwarf trees set them low enough to cover the stock upon which they are budded, three or four inches.

Mulching—When trees or bushes are planted, they should be mulched or covered with a layer of coarse manure or litter from three to six inches deep for a space of say, two feet more in diameter than the extent of the roots. This keeps the earth moist and even temperature.

After-Culture—Grass should not be allowed to grow about young trees or plants. The ground should be cultivated for a space of at least a foot outside the roots. If the ground is poor it should be enriched with surface applications of manure. Pruning should be varied according to the condition of the tree and the purpose of the planter. It should be done regularly every spring before the buds swell any. In this way the removal of large branches will be avoided.

Fall Planting—When planted in the fall, all trees should be banked up at least one foot high until spring. This overcomes the tendency of the trees to heave out, protects them from mice and prevents the roots from freezing before they have taken hold of the soil. In planting roses, shrubs, vines, and other delicate stock in the fall, the tops should be nearly or quite buried with mellow earth during the first winter. The surplus earth should be removed early in the spring.

Injured Trees—If trees are received in a frozen state, place the package unopened in a cellar, away from frost and heat, until thawed out and then unpack. If partially dried from long exposure, bury entirely in the ground or place in water from 12 to 24 hours.

PLANT YOUNG TREES

We cannot too strongly recommend our customers to procure young trees, especially for orchard planting. They cost less, they can be taken up with more perfect roots, are much more likely to live, and will become sooner established in a new location. They can also be more readily trained to any desired shape. The largest and most successful planters invariably select young, thrifty trees. We would call special attention to the young stock offered on page 16.


DISTANCES FOR PLANTING

Standard Apples	40 feet apart each way
Standard Pears and Strong Growing Cherries.....	20 " " " "
Duke and Morello Cherries.....	18 " " " "
Standard Plums, Peaches, Apricots and Nectarines.....	16 to 18 " " " "
Dwarf Pears	10 to 12 " " " "
Dwarf Apples	10 to 12 " " " "
Quinces	10 to 12 " " " "
Grapes	rows of 10 to 16 feet apart; 7 to 16 feet in rows.
Currants and Gooseberries	4 feet apart.
Raspberries and Blackberries	3 to 4 by 5 to 7 feet.
Strawberries, for field culture	1 by 3 to 3½ feet.
Strawberries for garden culture	1 to 2 feet apart.

NUMBER OF TREES ON AN ACRE

40 feet apart each way.....	28	10 feet apart each way.....	435
30 " " " "	48	8 " " " "	680
25 " " " "	70	6 " " " "	1210
20 " " " "	110	5 " " " "	1745
18 " " " "	135	4 " " " "	2725
15 " " " "	205	3 " " " "	4840
12 " " " "	300		

RULE—Multiply the distance in feet between the rows by the distance the plants are apart in the rows, and the product will be the number of square feet, for each plant or hill, which, divided into the number of square feet in an acre (43,560) will give the number of plants or trees to the acre.

 See page 16 for bargains in 2-Yr. Cherry and Light Apple, Peach and Plum

ENDORSEMENTS

Covering Years of Actual Fruitage. Does This Signify Anything?

Hal's Corners, Jan. 18, 1907.

Messrs. H. S. Wiley & Son: I believe your stock is in all respects reliable, and I am advising my orchard friends to that effect. I can also assure planters that whatever you say regarding your stock can be depended upon every time.

T. B. WILSON, Vice-Pres., W. N. Y. Hort. Society.

I had 1,600 baskets of peaches this year from your trees, every variety true to name.
SAMUEL B. WHITE, Westchester Co., N. Y.

You may say what you please about the 1,800 apple trees sold me some years ago. It is a fine orchard, of which I am proud, and all trees have proved true to name.

W. M. Hart, Dutchess Co., N. Y.

Your trees have come true to name, and I have planted a good many of them, beginning some eighteen years ago.
Franklin Co., Me.
P. WHITTIER.

I began dealing with you some eighteen years ago. I have hundreds of your trees now in bearing, and the varieties always come right. Your trees are hardy, too, and do well here.
Kennebec Co., Me.
T. G. JENNINGS.

Your stock which has come into fruiting is O. K. Wickson and Burbank fruited last year. My Clifton Park peach went through last winter all right. I have made a success with my Quinces.
Addison Co., Vt.
JOHN McL. STEVENS.

Would say that the trees you shipped us in spring of 1908 are doing finely; the best trees we ever planted.
131 South Water St., Chicago, Ill., January 4, 1909.
F. NEWHALL & SON.

January 2, 1909.

The trees you sent us last spring have done exceptionally well. I am well pleased with them in every sense of the word.

CHARLES T. LOGAN, Binghamton, N. Y.

From the Former Editor of the Maine Farmer.

Many of our growers have purchased fruit trees of Mr. Wiley, and everyone confirms the experience of the editor who has found his trees just as represented. It is a pleasure to do business with a man who backs up every promise, and the Farmer would advise all those wishing fruit trees to write to this reliable grower.

DR. G. M. TWITCHELL.

People have come many miles to look at my trees. Everyone pleased. Only lost one out of the five hundred.
B. B. DOUGLAS, Sagadahoc Co., Me.

Every tree and plant as fresh and moist as could be. Am well satisfied.
W. P. KEAYS, Johnson Co., Wyoming.

Trees came in good condition; much larger than I expected. Thanks for extras.
G. LIBERMAN, Alameda Co., California.

All parties well pleased; gladly recommend your stock.
NICKERSON BROS., Kennebec Co., Me.

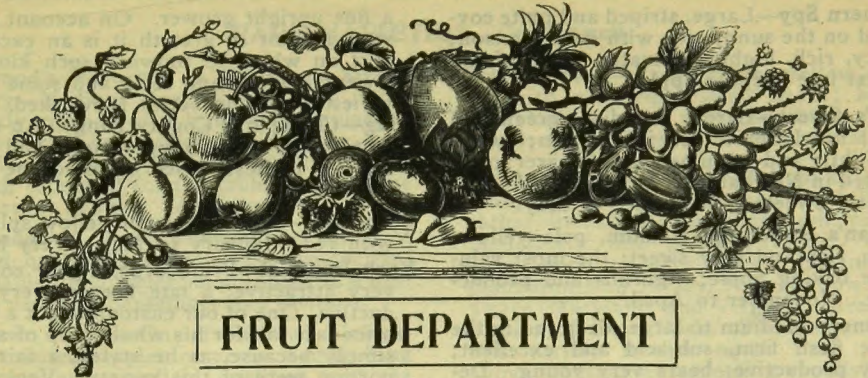
We shall be glad to furnish the full address of any of the parties whose letters appear, if you desire them.

DOES THE ABOVE PROVE ANYTHING?

We yield to no one in the business in the strength of the references we are able to furnish covering the character and quality of the stock we offer you.

H. S. WILEY & SON.

The above ought to satisfy the most critical. In regard to our further responsibility, by permission, we would refer you to the Banking House of Wm. H. Seward & Co. Auburn, N. Y.



FRUIT DEPARTMENT

APPLES

PRICE OF APPLES EXCEPT AS OTHERWISE NOTED

	Each.	Doz.	100.
Five to seven feet, selected	\$0.35	\$3.60	\$30.00
Five to six feet25	3.00	25.00
Four to five feet, well branched.....	.20	2.00	15.00

For price on lighter grade of apples see page 16

GENERAL LIST.

Summer Apples.

- Early Harvest**—Medium, pale yellow, tender, juicy; one of the best.
- Red Astrachan**—Large, beautiful deep crimson. August.
- Sweet Bough**—Large, pale yellow, tender, sweet. August.
- Yellow Transparent**—Earliest and best; white, tender, juicy, sprightly, sub-acid. July.
- Primate**—Light yellow, juicy and fine quality. August and September.

Autumn Apples.

- Gravenstein**—Large, striped and beautiful; tender, juicy and high flavored; productive. September and October.
- Wealthy**—Originated near St. Paul, Minn. Fruit medium; skin smooth, mostly covered with dark red; flesh white, fine, juicy, very good. October.
- Bailey Sweet**—Large, mottled and striped deep red; good. October.
- Maiden's Blush**—Medium size, flat, quite smooth and fair; pale yellow, with beautiful red cheek; pleasant acid flavor. September and October.
- Fameuse**—(Snow Apple.) Medium size, roundish, oblate; striped with deep red; flesh very white, juicy and pleasant. Tree very hardy, one of the most valuable Northern sorts. November and December.
- Gano**—Originated in Missouri. Form conical, good size and smooth; deep red, shaded on sunny side to mahogany; very attractive; flesh pale yellow, mild sub acid; is a good shipper and keeper; tree

- healthy, vigorous and hardy. An annual and prolific bearer. February to May.
- Duchess of Oldenburg**—Of Russian origin. Large size, roundish, streaked with red and yellow; juicy; flavor sprightly, sub-acid; tree a vigorous grower, very hardy, early and abundant bearer. September.
- Fall Pippin**—Large, yellow, tender and rich. One of the most valuable of its season. October to December.

Winter Apples

- Stark**—Esteemed as a long keeper and valuable market fruit. Fruit large, roundish; skin greenish-yellow, much shaded with light and dark red. January to May.
- Golden Russet**—Medium size, dull russet, with a tinge of red on the exposed side; flesh greenish, crisp, juicy and high flavored; popular and extensively grown in Western New York and Wisconsin. November to April.
- Hubbardston** — (Hubbardston Nonesuch). Large; striped yellow and red; tender, juicy and fine; a free grower and great bearer. Native of Massachusetts. Annual bearer. One of the best. November to January. Listed by some as American Blush.
- Baldwin**—Large, bright red, crisp, juicy and rich. Tree vigorous, upright and productive. One of the most popular and profitable sorts for either table or market. December to March.
- Ben Davis**—A large, handsome striped apple. Tree very hardy, vigorous and productive; a late keeper; highly esteemed for its long keeping and market value.

- Northern Spy**—Large, striped and quite covered on the sunny side with dark crimson; juicy, rich, highly aromatic. One of the finest late keeping apples.
- Lady's Sweet**—Large, roundish, green and red; nearly quite red in the sun; sweet, sprightly and perfumed; good bearer; originated in Newburg, N. Y. One of the best winter sweets. November to May.
- Tolman's Sweeting**—Medium, pale yellow; firm, rich and very sweet; the most valuable baking apple; vigorous and productive. November to April.
- Wagener**—Medium to large; deep red in the sun; flesh firm, sub-acid and excellent; very productive; bears very young. December to May.
- Rhode Island Greening**—Large; greenish yellow, tender, juicy and rich; growing strong and spreading, and an abundant bearer. December to April.
- Roxbury Russet**—Medium to large; surface rough; greenish covered with russet. Its great popularity is due to its productiveness and long keeping.
- Pumpkin Sweet**—(Pound Sweet). Very large, greenish, excellent for baking; productive. December.
- Northwestern Greening**—This apple is the best keeper we have, keeping in good condition generally till May. The apple is very large and of beautiful form, and being of fair quality is bound to become very popular. The tree, when young, is a fine upright grower. On account of its strong habit of growth it is an excellent sort on which to topwork such kinds as Twenty Ounce and King and some other varieties that do better topworked.
- King**—(Tompkins County King). An excellent, large, red, showy variety, and commands highest price. Should be topworked.
- Pewaukee**—Medium, bright yellow splashed with red. January to May. Very hardy.
- York Imperial**—Fruit large, highly colored, very attractive; a late keeper; very productive. One of our customers got a fancy price last fall for his whole crop of apples simply because, as he stated, a fair proportion were of this variety. Very valuable for market. December to March.
- Wolf River**—Tree very hardy and productive, fruit large and handsome, red color; flesh very white and of exceedingly fine quality; sub-acid. December to March.
- Sutton Beauty**—Our crop of this variety the past season exceeded in quantity, beauty and quality we think, any claims that have been made for this variety. Fruit large, waxy yellow, striped with crimson; flesh white, tender, juicy, mild acid; quality good; very productive. One of the most valuable market sorts in Western New York. December to March.
- Bottle Greening**—Resembles Rhode Island Greening, but tree a better grower and much hardier. A native of Vermont. December to March.

CRAB APPLES

- Excelsior**—As large as a fair sized Red Astrachan, which it resembles; very valuable in cold climate, quality good. September. Price, 50 cents.
- Paul's Imperial and Whitney**, 35 cents each.
- VanWyck Sweet**—Large size, bright red, white flesh, firm, sweet, a good grower and productive. Price, 50 cents.
- Also **Martha**, **Hyslop** and **Transcendent**.

Select List of RARE VARIETIES, With Some More Recently Introduced

Price, 40c. each; \$4.00 per doz., unless otherwise noted.

- Cox's Orange Pippin**—Yellow, streaked with red, size medium, best in quality, a fine dessert variety.
- Jonathan**—Medium size, red, juicy and rich; one of the most valuable as a dessert fruit and for market. November to March.
- Williams Favorite**—Large, red, excellent, good bearer and very desirable. August.
- Bismarck**—From New Zealand. A large, beautiful red apple of fair quality and bears very early; usually 2-year trees show specimens of fine fruit in Nursery; promises to be valuable for market. Early winter.
- Esopus Spitzenburg**—Large, deep red with gray spots, and delicately coated with bloom; flesh yellow, crisp, rich and excellent. Esteemed as one of the very best. November to April.
- Fanny**—Large; deep, rich crimson; tender, juicy, pleasant, sub-acid. Tree vigorous, spreading, and very productive. August.
- McIntosh Red**—A very fine apple of the Fameuse class, hardy; large, dark red, flesh white, very tender, splendid quality. A prolific bearer. November to February.

RARE VARIETIES—Continued

Sherwood's Favorite, or Chenango Strawberry—Medium size; oblong and indistinctly ribbed; of a light color, splashed with dark crimson; flesh white, juicy, very mild and tender, slightly sub-acid. Very much esteemed for the table, and popular wherever grown. September.

Alexander—A large, beautiful red apple of good quality and immensely productive; valuable for commercial purposes as a dessert variety. September and October.

Newtown Pippin—One of the most celebrated American apples, on account of its long keeping and excellent qualities, and the high price it commands abroad; but its success is confined to certain districts and soils. It attains its greatest perfection on Long Island and the Hudson River Valley. It requires rich and high culture. November to June. 50 cents each.

Rome Beauty—Large, yellow, shaded with bright red; flesh yellowish, tender, juicy, sub-acid; moderate grower. November to February.

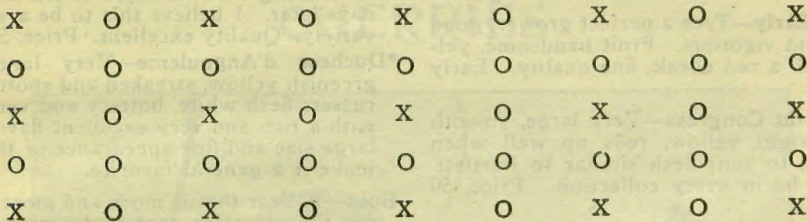
Winter Banana—Large golden yellow shaded with red; rich, spicy flavor; hardy, good keeper, and a very early bearer. Demands high prices. November to May.

Stayman Winesap—Fruit medium to large, uniform in size and shape, color dull red, rather indistinctly striped; flesh yellow, moderately fine grained, tender, crisp, juicy, good to very good. Extensively planted in New Jersey, Pennsylvania, Delaware, Maryland, and Virginia. Beach in Apples of New York. The demand for this variety further north than states above mentioned is growing rapidly.

Boiken—Annual bearer, perfect foliage, vigorous grower. Fair size, yellow, tart acid, long keeper; at its best in spring, when it is unexcelled for cooking.

Black Gillflower—An old variety, greatly esteemed by many; mild, sub-acid, good for dessert and market; dark red. November to February.

DIAGRAM.—Explanation below.



NOTE—The above was first introduced in our 1908 catalog. It brought so many favorable comments from people who did not understand the plan of setting fillers among permanent trees that we again give it space. The editor of the "Rural New Yorker" in commenting on it said: "It is excellent, the clearest description of how to plant fillers among permanent trees I have seen."

THE FILLER SYSTEM—See Diagram Above

The most modern method of planting Apple Orchards in Western New York, called the Filler System is indicated by the diagram on page 8. The cross X represents the permanent tree of whatever variety selected, to be planted 40 or 50 feet apart each way as the planter may choose.

The circle O represents the filler or early fruiting variety, as Duchess, Ben Davis, Wealthy (if of apple), or whatever variety may be considered by the planter most profitable. Not unfrequently the planter chooses to fill with Peach or sometimes with Pear. If permanent trees are planted 40 feet each way it will readily be seen that when the orchard is completed the trees will stand 20 feet each way; this is called the Filler System. In using this plan it is the purpose of the planter to cut out the fillers when, or before, they begin to crowd the permanent trees. The advantage is to use all the ground and secure as many crops of fruit from the filler as possible before they interfere with the permanent trees.

PEARS

STANDARD PEARS—PRICES EXCEPT AS OTHERWISE NOTED

	Each	Dozen	100
Five to seven feet, XXX.....	\$0.40	\$4.00	\$35.00
Five to six feet, No. 1.....	.30	3.00	25.00

Dwarf Pears supplied in varieties marked (*).

Dwarf Pears No. 1, 25c each; \$3.00 per doz.; \$18.00 per 100.

STANDARD AND DWARF

Standard Summer Pears

***Bartlett**—One of the most popular Pears. Large, often with a beautiful blush next the sun. Last of August and first of September.

***Clapp's Favorite**—Large, pale lemon-yellow, with red cheek; flesh fine-grained, juicy, melting, rich and buttery. August and September.

Doyenne d'Ete—Small, yellow, with a blush on sunny side, melting and sweet. August.

Tyson—Above medium size, deep yellow at full maturity, with a crimson cheek; one of the finest summer varieties. August.

***Wilder Early**—Tree a perfect grower, good form and vigorous. Fruit handsome, yellow with a red cheek, fine quality. Early August.

Souvenir du Congress—Very large, smooth skin, bright yellow, reds up well when exposed to sun; flesh similar to Bartlett. Should be in every collection. Price, 50 cents.

Autumn Pears

***Anjou**—(Beurre d'Anjou). A large, handsome Pear, buttery and melting, with sprightly, vinous flavor; keeps into mid-winter.

***Louise Bonne**—Large, oblong, pale green in the shade, but overspread with brownish red in the sun; rich and excellent flavor. September.

Clairgeau—Its large size, early fruiting qualities and handsome appearance make it a valuable market variety.

Sheldon—Large, roundish, greenish yellow, mostly covered with thin, light russet; melting, sweet and vinous. October and November.

Worden Seckel—A seedling of the Seckel raised by Mr. Sylvester Worden, the originator of the now famous Worden Grape. Fruit medium size, borne in clusters, juicy, buttery, fine-grained. Ripens in October. Price, 50 cents.

***Vermont Beauty**—Ripens a little later than Seckel. Fruit of full, medium size, yellow, and covered on the sunny side with a bright carmine red. Perfectly hardy. October and November.

***Seckel**—Small, yellow russet, with a peculiarly rich flavor, the richest and finest variety known. A most prolific bearer. September and October.

***Howell**—One of the finest late September Pears; very productive; large and handsome, and of good quality; desirable.

Bartlett Seckel—A cross between Bartlett and Seckel, size of Bartlett and closely resembling that variety, but ten to twelve days later. I believe this to be a valuable variety. Quality excellent. Price, 50 cents.

***Duchess d'Angouleme**—Very large, dull greenish yellow, streaked and spotted with russet; flesh white, buttery and very juicy, with a rich and very excellent flavor. The large size and fine appearance of this fruit make it a general favorite.

Bosc—A Pear that is more and more receiving the attention that it deserves, and is one of the leading business Pears for New England. It is an ideal Pear, combining as it does good looks and size with the best of quality, equaling the Seckel in flavor, and is large to very large. The Bosc is usually grown by top working, for the simple reason that it is difficult to get a good formed tree if budded at the ground. September to October. Price, 50 cents.

Kieffer's Hybrid—Said to be a hybrid between Bartlett and the Chinese Sand Pear. The tree is a vigorous grower, an early and regular bearer, and very productive. Fruit large, yellow, tinged with red. Ripens in October and November. Unequaled for canning and is being planted heavy as a commercial variety. No. 1, \$25.00 per 100.

Selected List, Winter Pears

Lawrence—Above medium size, yellow, tender and melting; of excellent quality, and one of the best winter Pears. In season during midwinter.

PEARS—Continued

President Drouard—A variety recently introduced from France, highly recommended for its rich flavor and great keeping qualities. Tree a vigorous grower. Fruit large and handsome, melting and juicy, with a delicious perfume. March to May. Price, 50 cents.

Dorset—A very handsome late-keeping Pear. Large, golden yellow, with a bright red on sunny side; flesh juicy, melting, sweet, of good quality. Keeps and ships well and

is a valuable late pear. Ripe in February, but keeps in perfection till May. Tree a vigorous grower. Price, 75 cents.

Winter Nellis—A superb winter Pear of highest quality. A good bearer and should be in every collection. In perfection in December and January. Price, 75 cents.

***Josephine de Malines**—One of the best early winter Pears, often keeping till mid-winter; size medium; of a sweet, peculiar flavor. Price, 75 cents.

APRICOTS

Apricots are a rich, delicious fruit, coming between cherries and peaches, very much like the peach in outward appearance, but like the plum in quality and texture. One of the finest fruits for drying, and they fill a season when there are no other large fruits.

Early Golden—Small, pale orange, juicy and

sweet; hardy, productive. July. Price, 40 cents.

Harris Apricot—Rich golden yellow; large size, very fine quality; hardy, early bearer and immensely prolific. Price, 40 cents.

Moorpark—Large, orange and red, firm, juicy, rich flavor; very productive. August. Price, 40 cents.

CHERRIES



MONTMORENCY

CHERRIES—Continued

There are few more desirable fruits than the Cherry. The trees thrive in any well drained location. The Duke and Morello, or acid varieties, are thoroughly hardy, while the Heart and Bigarreau, or sweet sorts, will successfully resist very cold weather, and may be grown in most places.

Prices for Cherry except otherwise noted:

	Each.	Doz.	100
Sweet varieties, selected trees	\$0.50	\$4.00	\$35.00
Sweet varieties, medium grade30	3.50	25.00
Sour varieties, selected..	.50	4.00	25.00
Sour varieties, medium grade30	3.50	18.00

Sour Cherries

Montmorency, English Morello,
Early Richmond, Louis Phillippe.

New Sour Cherry, Baldwin

This variety is reported to be the Earliest of the Morello type, immensely productive and very hardy.

Sweet Cherries

Napoleon Bigarreau—Very large, pale yellow or red; very firm, juicy and sweet; one of the best. First of July.

Rockport Bigarreau—Large; pale amber, a very excellent cherry; good grower and bearer. Last of June.

Coe's Transparent—Medium, pale yellow, red cheek, sweet and fine; one of the best. End of June.

Governor Wood—Very large, rich; light yellow with red cheek; juicy and sweet. Early July.

Schmidt's Bigarreau—A most promising cherry; fruit of immense size, rich, deep black; flesh dark, tender, very juicy, with a fine flavor; bears abundantly and makes a most delicious dish for the table.

Windsor—New seedling, originated at Windsor, Canada. Fruit large, liver-colored; flesh remarkably firm and of fine quality. Tree hardy and very prolific. A valuable late variety for market and for family use.

Black Tartarian—Very large, bright purplish black, half tender, juicy, very rich, excellent flavor. Last of June.

Dikeman Cherry—Latest ripening sweet cherry known, placed on the market three weeks after all other sorts are gone, it commands the highest price. Large, black, and of fine quality.

May Duke—Large, red, juicy and rich; an old, excellent variety; vigorous and productive. Middle of June.

Yellow Spanish—Large, pale yellow with red cheek; firm, juicy and excellent; one of the best. Last of June.

See page 16 for smaller grades of Cherry.

PEACHES

The ease with which Peach trees may be cultivated, their comparative freedom from disease, the short period before they become productive, with the immense demand for the fruit, and the facility with which it may be shipped to distant markets, make Peach-growing extremely profitable. To secure healthy, vigorous and fruitful trees the ground must be kept clean and mellow, and it should receive an occasional dressing of wood ashes. It should be remembered that Peaches are all borne on wood of the previous season's growth, and that this makes it absolutely necessary to prune the tree yearly, to remove dead branches, to let in light and air, and to keep the trees in good shape to produce bearing wood.

PRICES OF GENERAL LIST OF PEACHES

Except as otherwise noted.

	Each.	Doz.	100	1,000
Selected large size..	\$0.20	\$2.00	\$15.00	
Light First Class,				
3 to 4 feet15	1.50	10.00	
2½ to 3 feet.....	.10	1.00	7.00	60.00

GENERAL LIST OF PEACHES

We are especially anxious to correspond with you on large quantities.

Crawford's Early—A magnificent large yellow peach of good quality. Its fine size, beauty and productiveness make it one of the most popular sorts. Early September.

Champion—Creamy white, with red cheek, flavor delicious, sweet, rich and juicy; productive. August. New.

PEACHES—Continued

Elberta—The great market peach. It is perfectly hardy at the North, and is confidently believed by the most experienced growers of the North, to be one of the very best peaches for home use or market. Ripens after Crawford's Early. The great commercial peach of to-day. See cut.

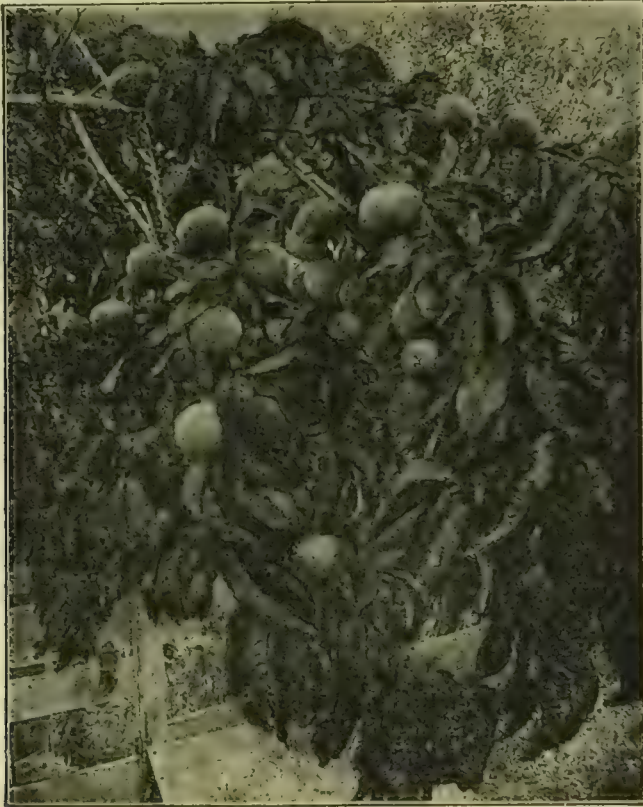
Crawford's Late Melocoton—(Late Crawford). Fruit of large size, skin yellow, with dull red cheek; flesh yellow, one of the finest late sorts. Last of September.

Old Mixon Free—Large, pale yellow, tender, rich and good; one of the best. First to middle of September.

Foster—Large, deep orange red, becoming very dark on the sunny side; flesh yellow. Ripens with Early Crawford. Very handsome.

Mr. H. S. Wiley, Cayuga, N. Y.:

Dear Sir: I am sending you to-day a photo of a branch of one of my Elberta



ELBERTA

trees you sold me three years ago. The actual diameter of the branch close to the stem is $\frac{7}{8}$ of an inch and contains 65 perfectly developed specimens at this date, Sept. 28. I have to support it by tying it up to the main trunk in two places.

Very truly yours,

G. W. BAKER, Oswego Co., N. Y.

Crosby—Bright yellow orange, a desirable, hardy, productive variety. Ripens between

Early and Late Crawford. Excellent quality.

Garfield or Brigdon—A new peach, originated in Cayuga County, N. Y. Flesh yellow, very rich and juicy; color deep orange-red. Middle of September.

Globe—A rapid, vigorous grower and enormous bearer. Fruit very large, globular in form; flesh firm, juicy, yellow, quality very rich and luscious. September and October.

PEACHES—Continued

- Hill's Chili**—Tree very hardy, slow grower, great bearer, excellent; late.
- Stevens' Rareripec**—Large; white, shaded and mottled red; flesh white, juicy, vinous and of good quality. Last of September. Great market variety.
- Chair's Choice**—Fruit of very large size, yellow with a red cheek, flesh yellow, firm and of good quality. Season October first. Valuable.
- Lamont**—Large, yellow, free stone, season between Early and Late Crawford.
- Gold Drop**—Medium size, hardy and productive the last of September.
- Smock**—Free, above medium, creamy white, valuable market variety.
- Stump the World**—Very large, roundish; skin white, with a bright red cheek; flesh white, juicy and good. Last of September.
- Mountain Rose**—Large, roundish; skin whitish, nearly covered with dark red; flesh white, juicy, very good. An excellent market variety.
- Fitzgerald**—A native seedling, as large or larger than Crawford; freestone, very best quality. A heavy bearer, fruiting very young, almost invariably the second year after planting. Very hardy. Ripens just after Crawford's Early.
- Peaches More Recently Introduced**
- Triumph**—This variety supplies a long felt want for an early, yellow-fleshed, freestone Peach. The tree is hardy and vigorous, blooms late; comes into bearing very young, and yields immense crops. Pit small, and free when perfectly ripe.
- Greensboro**—This wonderful peach is of the Chinese family; color a beautiful crimson, with a yellow cast; ripens before Alexander.
- Early Rivers**—Large, creamy white, with pink cheek, juicy and melting. August.
- Engle's Mammoth**—Large, yellow; resembles Late Crawford, more productive and later. October.
- Belle of Georgia**—Very large; skin white with red cheek; flesh white, firm and of excellent flavor; fruit uniformly large and showy; tree a rapid grower and productive; very prolific; free. End of September. Price, 25 cents.
- Bokara**—Raised from seed procured from Bokara, Asia, a number of seedlings being produced that proved 30 per cent. hardier than the old strain of peach trees. One of the seedlings, No. 3, proved decidedly the best; has been fruited in Iowa several years and found the hardiest and best peach known there. It is highly recommended by prominent horticulturists, including Prof. Budd and Silas Wilson. Tree has stood 28 degrees below zero with but little injury to tips, and produced fair crops after 21 below. Fruit large, yellow, with red cheek, of good quality, perfect freestone; skin tough; a fine shipper. Price, 25 cents.

NIAGARA PEACH.

A new variety which is gaining a great reputation in Niagara County, where it is said to have originated. Peach growers in that county are planting largely of it. I attended to cutting our buds for this stock personally, at Mr. Woodward's orchard of this variety, near Lockport, N. Y. The fruit is very large, of fine quality and handsome appearance, a little later than Early Crawford, of which it is said to be a seedling. Tree has a remarkably healthy appearance, and is said not to show any defect in foliage. Freestone, color yellow, with fine red cheek. Price, 25 cents.

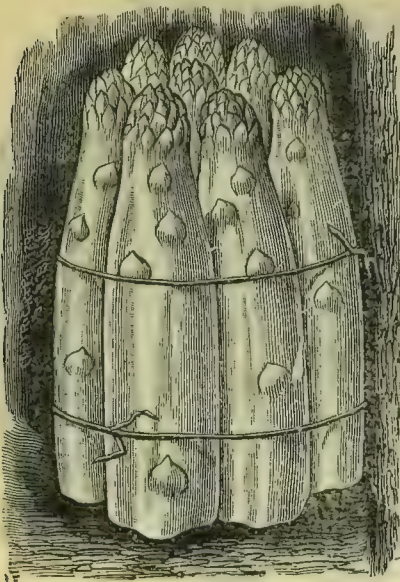
Carman—Large, resembles Elberta in shape; color creamy white or pale yellow with deep blush; skin very tough, flesh tender, fine flavor and quite juicy. Ripens with Early Rivers. One of the hardiest in bud.

Yellow St. John—Nearly as large as Crawford; fully equal in color. Fruit round, brilliant, showy; one of the earliest yellow peaches. August.



See Page 16 for Bargains in Cherry, Apple, Peach and Plum

ASPARAGUS



Barrs Mammoth—A distinct variety, producing large white shoots. A profitable variety of superior quality.

Conovers Colossal—An old standard variety of large size and delicious quality.

Palmetto—Early, an excellent yielder and a great favorite.

PRICE:

\$1.00 per 100; \$6.00 per 1,000, strong 2-year roots.

Orleans Co., N. Y., Oct., 1908.

The 1,500 Quinces have all fruited and are O. K.

H. L. BROWN.

Chambersburg, Pa., Jan., 1909.

The quantity of apple trees bought from you some years ago have borne fruit and are satisfactory.

WM. KEEFER.

PLUMS

On a strong clay soil the Plum grows most thriftily, and suffers least from "curculio" and "black-knot." By giving a little extra care there is no difficulty in protecting the crop of Plums from attacks of curculio. Immediately after the trees have blossomed, and when the fruit is in its first stages of growth, make the ground clean and smooth under each tree, and spread a sheet upon it, so that it will extend as far as the outside edge of the outer branches; then suddenly jar the tree, so as to shake down all the stung fruit and insects, which should be destroyed. If this operation be carried on daily for a short time, it will insure a full crop of delicious Plums, and will repay the little daily attention given. It is very important that this should be done early in the morning, while the insects are sluggish.

General List of Plums—Large Size Trees

Price, 35 cents each; \$3.50 per dozen; \$22.00 per 100.

Bradshaw, Coe's Golden Drop, Duane's Purple, German Prune, Gueii, Lombard, Shipper's Pride, Reine Claude, Washington, Yellow Egg, Moore's Arctic, Imperial Gage.

October Purple—It is a splendid grower; ripens up its wood early to the tips; bears

enormously every season; fruits "all over" the old wood on spurs, instead of away out on the branches like many other varieties. Fruit very uniform and large. We had many fruits the past year measuring fully two inches in diameter. See cut.



OCTOBER PURPLE

JAPAN PLUMS.

The introduction of the Japan varieties of Plums has placed before us a class of fruits that are in many respects very desirable, and in many localities they are fast supplanting the old European kinds. They are extremely hardy and immensely productive, and come into fruiting usually the second year after transplanting. If you want fruit quick and plenty of it order the Japan varieties. For orchard planting the selected one-year trees are preferable.

Each. Doz. 100

XXX, 2 year ...\$0.35 \$3.50 \$22.00

Ogon—Tree very vigorous and quite hardy, fruit large, roundish; bright golden yellow, with faint bloom; flesh firm, rich, sweet and dry; freestone; an excellent variety for canning; one of the earliest. Late July.

Abundance—Large, bright red, with yellow cheek; flesh light yellow, very juicy, tender, with delicious sweetness; annual bearer. Early August.

Burbank—Large, globular, cherry-red, mottled yellow color; flesh yellow, melting. One of the best. End of August.

Satsuma—The fruit has a pleasant flavor, and unlike all others, has red flesh, with a remarkably small stone. One of the best canning varieties. September.

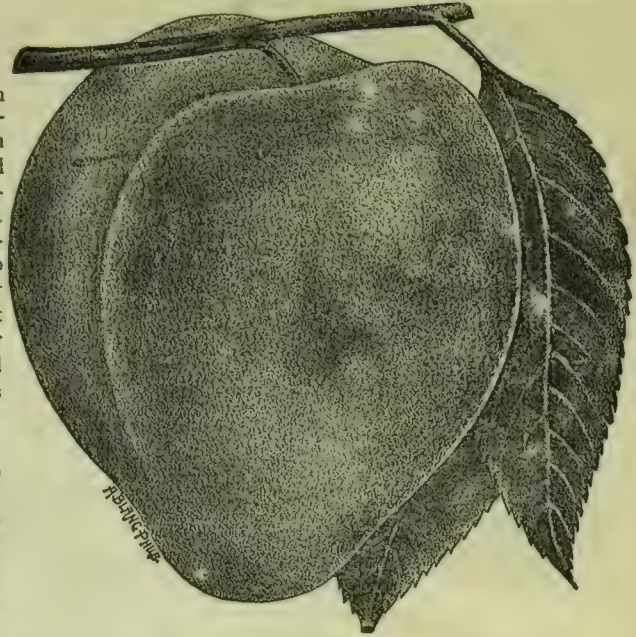
Red June—(Red Nagate). Medium size, pointed; color deep red-purple; flesh yellow; quality good. The earliest variety.

Wickson—Very large, growing carmine with a heavy white bloom; flesh firm, sugary, delicious; stone small.

Special Choice Varieties, 2 Yrs.

Our Plums are all budded on Plum roots. Price, 40 cents each; \$4.00 per dozen; \$22.00 per 100.

See page 16 for medium grade of Plums.



OGON

Tennant Prune—From California. Large, dark purple with blue bloom, nice, delicious, hardy and productive.

Fellemburg—(Italian Prune, York State Prune). We have fruited it for fifteen years; it is an annual bearer, much larger than German, and always commands high prices on account of its superior size, beauty and quality.

French Damson—New and choice, the best of all of the Damsons. Very hardy; fruit medium, dark copper color, with a rich bloom. Two weeks later than Shropshire.

Grand Duke—This is another fine English Plum, recently introduced. Color dark purple. Ripens last of September.

Diamond—Very large purple, a choice variety.

Giant Prune—Large, firm and sweet; very productive.

QUINCES

Strong plants, 50 cents each; \$6.00 per dozen; \$35.00 per 100.

Orange—Large; bright golden yellow; one of the most desirable.

Bourgeat—(New). The strongest and most distinct grower of all Quinces, with very handsome fruit.

Champion—Fruit very large, fair and handsome; tree very productive; bears abundantly while young.

Rea's—(Rea's Mammoth). The largest and in every respect the finest variety of the Quince. A superior strain of Orange Quince.

MULBERRIES

New American—Equal to Downing in all respects, and a much hardier tree. Vigorous grower; very productive; the best variety for fruit.

Downing's Everbearing—Very large, black, handsome, sweet, rich and excellent.

Strong one-year stems, 5 to 6 feet; price, 75 cents each.



MULBERRIES

See Page 16 for Bargains in Cherry, Apple, Peach and Plum.

GRAPES

The soil for the Grape should be dry, and when not naturally so should be drained. No grounds are so small but that the owner can grow at least a few Grapes. They thrive admirably everywhere. The soil should be made rich and mellow, and the vines planted in rows eight feet apart, and eight to ten feet apart in the rows. The fruit should be thinned in order to insure the best results.

Grapes, 3-yr. XX.—We can supply in limited numbers only, the following kinds in 3-yr. plants, fruiting age at 50c each, \$5.00 per dozen.

Brighton, Concord, Worden, Delaware,	Moore's Early, Niagara, Salem.
---	--------------------------------------

Selected List of Grapes, 2 Year XX.

Price, 25 cents each; \$2.50 per dozen.

Brighton—Large, red; excellent quality; very fine; early.

Campbell's Early—New, black. Price, 50 cents.

Concord—Large, black, good; succeeds everywhere; is a very popular variety, and deservedly so; mid-season.

Delaware—Medium, light red; delicious; a feeble grower; early.

Empire State—Medium, white, sweet; vigorous and productive; early.

Gaertner—(Rogers' No. 14). Bunch and berry large, brilliant red; early, of fine quality.

Green Mountain—(Winchell). New early white. Price, 50 cents.

Martha—Large, white, foxy; vigorous, mid-season.

Moore's Early—Large, black; vigorous; very early.

Niagara—Large, greenish white; midseason.

Salem—(Rogers' No. 22). Bunch and berry large, chestnut colored, of high flavor; ripens with Concord; keeps till December.

Wilder—(Rogers' No. 4). Large, black; good grower; midseason.

Woodruff—Very large, red, showy; vigorous; early.

Worden—Resembles Concord; larger, of better quality; earlier.

WE MAIL THEM. If to go by mail add 25 cents per dozen for two-year vines.

RHUBARB OR PIEPLANT

Myatt's Linnaeus—Strong, undivided roots. Price, each, 10 cents; \$1.00 per doz.; \$5.00 per 100.

Bargains in 2-Year Cherry, Light Apple and Plum

Below are offered some good values. This is not old cleaning off stock but young, thrifty, well rooted trees.

Do not confound the Apple, Plum and Cherry below named with light mailing stock offered by many. Many of these trees are 4 feet above the roots, well branched and cannot be mailed.

CHERRIES

2-year 3 to 4½ feet; \$8.00 per hundred, \$70.00 per 1,000.

Sour Varieties

Montmorency	Ostheim
English Morello	Olivet
Early Richmond	Baldwin

Sweet Varieties

Black Tartarian	Windsor
Gov. Wood	Yellow Spanish
Napoleon	

PLUMS

2-year light, 3 feet; \$7.00 per 100.

No less than one hundred will be sold at price named. Varieties:

Geuii	Wickson
Thanksgiving Prune	Lombard
Red June	Bradshaw
German Prune	Shropshire Damson

2-year, medium, well formed and well rooted; \$2.00 per doz., \$13.00 per 100.

Varieties

Abundance	Burbank
Wickson	Climax
Shrop. Damson	German Prune
Red June	M. Artie
October Purple	Beauty Naples

2-year, larger size 5 to 6 feet; \$2.50 per doz., \$17.00 per 100.

Varieties

Burbank	Abundance
Niagara	Shrop. Damson
Lombard	German Prune
October Purple	Bradshaw

APPLES

3 to 4 feet, some whips, some branched \$10 per 100 except otherwise noted.

Varieties

York Imperial	Transcendent Crab
Ben Davis	Northern Spy, 12c.
Stark	R. I. Greening, 12c.
N. W. Greening	Jonathan
King	Wealthy
Gano	Walbridge
Yellow Transparent	Sutton Beauty
Pewaukee	McIntosh, 15c.
Wolf River	Red Astrachan
Baldwin, 12c.	Tolman Sweet
Fall Pippin	

We cannot make up little orders of two or three trees each; not less than 100 trees may be taken at price named, but may be made up of several varieties. We cannot too strongly urge the planting of light, well rooted, young trees.

A few thousand light Peaches, 2½ to 3 feet at \$60.00 per 1,000 general assortment.

These prices hold good only while this surplus remains unsold.

STRAWBERRIES

Prices, per 100, \$1.00; per 1,000, \$5.00.

We offer only the finest varieties of Strawberries, including the latest improvement in this valuable fruit.

Fertilization—Varieties marked (P) have imperfect flowers and need other perfect flowered sorts planted every third or fourth row to fertilize the blossoms. If only one kind is wanted, choose a perfect flowering sort.

Bismarck—Plant resembles Bubach, but is more robust and stocky, with the same ironclad foliage. Fruit produced in abundance, outyielding Bubach. Shape obtuse, conical, never coxcombed; the heaviest, most solid berry ever grown or handled. Color bright scarlet, no green tips, very firm, good flavor, season medium to very late, size larger than Bubach. Perfect blossom.

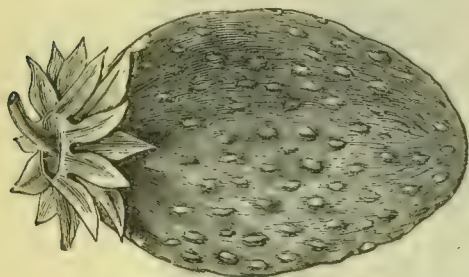


BUBACH

of the native wild strawberry. It is a remarkably fine keeper and carrier, which will commend it to all growers for the market.

Nick Ohmer—Plant very large and stocky, vigorous and productive; fruit the very largest size, a giant among strawberries. It is never misshapen. Its only departure from the regular, roundish, conical form is when, under high culture, it is somewhat triangular. Dark glossy red, firm and of excellent flavor.

William Belt—Berries large, conical, rather long, regular in outline; bright red, glossy; quality good, moderately firm. Plant vigorous, healthy and quite prolific.



BRANDYWINE

Brandywine—Berries very large, regular, conical, never coxcombed; the heaviest, most firm and of very excellent quality. Its very large size, beauty of form and color, firmness and high quality will make it a desirable variety for any purpose.

Glen Mary—Berries large, bright deep red, rich, sweet and good. One of the most productive and holds its size well to the end. Medium to late.

Marshall—Color very dark rich crimson to the core, flesh fine grained and of a delicious flavor and with the peculiar aroma

ADDITIONAL VARIETIES.

Beder Wood.	Michel's Early.
Bubach No. 5 (P).	Parker Early.
Crescent (P).	Sample (P).
Corsican.	Senator Dunlap.
Haverland.	Sharpless.
Jessie.	Warfield.
	Wilson.

We were obliged to refuse a great many orders last Spring for strawberry plants because orders reached us so late. All orders for plants should reach us by April 1st.

BLACKBERRIES

All following varieties, good, strong plants, \$1.00 per 12; \$2.00 per 100, except as noted.
Mailed at the dozen price.

This excellent and profitable fruit should be planted for garden use in rows six feet apart, with plants four feet apart in the rows; for market, in rows eight feet apart, with plants three feet apart in the rows. Give the plants the same cultivation as Raspberries. If properly grown, and successive varieties are chosen, this fruit extends over a very considerable period,

and affords a steady income for marketing. **Agawam**—Ripens earlier than other kinds, and has a flavor similar and equal to the wild berry; perfectly hardy.

Eldorado—A new seedling from Ohio claimed to be the best all-round berry yet produced, combining nearly all the good qualities found in a blackberry. \$3.00 per 100.



MERSEREAU

BLACKBERRIES—Continued

Kittatinny—Large, black, sweet; soft when black; very hardy; ripens up gradually like the Lawton. One of the best.

Rathbun—Origin Western New York. Bush perfectly healthy, vigorous, but not a high-growing sort, and very rarely suckers from the roots but propagates itself from tips like the black raspberry; fruit of largest size, highest quality, borne in wonderful profusion.

Snyder—Extremely hardy; enormously productive; medium size; no hard, sour core; half as many thorns as Kittatinny or Lawton.

Taylor's Prolific—It is so extremely hardy as to have stood 30 degrees below zero unharmed. Berries large and of the highest quality.

THE MERSEREAU, the Prince of all Blackberries

See Cut

Named by PROF. BAILEY of Cornell University. See Cornell Bulletin, No. 99, Aug., '95

We are always obliged toward the close of the packing season to refuse orders for the Mersereau. Order Early.

"A variety resembling Snyder and derived from it. Some ten years ago the originator noticed an extra large, strong bush among his Snyders, and began to propagate from it. He is now gradually changing his whole plantation over to this new variety. It is one of the most promising varieties I know."
PROF. BAILEY.

Its points of superiority are: 1st, Extreme hardiness; 2nd, Larger size and greater productiveness; 3rd, Less tendency to turn red after being picked than Snyder; 4th, Delicious quality; 5th, Remains in bearing as late as September 1 to 10; 6th, Selling two or three cents higher per quart than any other variety.

See Bulletins issued from New York State Experimental station at Geneva, N. Y., on this variety.

Mersereau Blackberry—Largest, sweetest, hardiest, and best in all points. Fruited for ten years. Main crop, season of Snyder, but continues in bearing as late as September 10th, several crates picked this last season after September 1st selling at fabulous prices. We exhibited trusses of this fruit at New York State Fair, first week in September in fine condition, which attracted universal attention.

Price, 85 cents per doz. by mail; \$3.00 per 100, express not paid; \$30.00 per 1,000.

Neither the Amateur nor Market Gardener can make any mistake in planting the Mersereau.

GOOSEBERRIES

Plant in good, rich soil and give a liberal dressing of manure every season. Regular pruning every year is essential for the production of fine fruit. The English varieties especially do best in partial shade and should be heavily mulched.

GOOSEBERRIES—English Varieties


Price of English Varieties, \$2.50 per dozen; 25 cents each.

Industry—Berries of largest size, excellent flavor, pleasant and rich; dark red color

when fully ripe. Strong, upright grower; an immense cropper, less subject to mildew than most of the foreign varieties. The best known and most successful English sort.

Crown Bob—Large, roundish oval; red, hairy, of best quality.

Whitesmith—Large, roundish oval; yellowish white slightly downy; of good quality.
American Varieties—Gooseberries—Joselyn, Downing and Houghton, \$1.50 per dozen.

 See Page 16 for Bargains in Cherries, Apples, Peaches and Plums

RASPBERRIES



PLUM FARMER RASPBERRY

Plum Farmer Raspberry—Equal in size to Cumberland, just as productive; a strong grower and one of the best market varieties ever introduced. We have thought for several years that the Cumberland would hold first place among all comers, but the market growers are now planting Plum Farmer in large quantity; 75c per dozen, \$2.00 per 100, \$12.00 per 1,000.

Cumberland Black Raspberry—Seven plants yielded the dry season, 28 quarts fifteen months from planting. Large, plants; price, dozen, \$1.00 by mail. Price, \$2.00 per 100; express, purchaser's expense.

You cannot make a mistake if you plant the CUMBERLAND.

Other Varieties of Black Caps

Gregg—For many years the leading standard, best known market sort.

Kansas—Strong, vigorous grower, standing extremes of drought and cold, and bearing immense crops. Early, ripening just after Palmer's. Berries size of Gregg.

Palmer's—The first to ripen; fruit good size and quality; canes wonderfully productive, vigorous and hardy; ripens its crops in short time.

Black Diamond—One of the prize winners; fruit large, fine quality, firm, few seeds, hardy and productive. \$2.00 per 100.

Ohio—The standard early berry. Very productive. Fine quality; very hardy.

Price of above Blackcaps, \$2.00 per 100; \$10.00 per 1,000. Except as noted.

RASPBERRIES—Red Varieties

Price, 75 cents per doz.; \$2.00 per 100, except otherwise noted.

Cuthbert, or Queen of the Market—A remarkably strong, hardy, variety; stands the northern winters and southern summers equal to any. Rich crimson, very handsome, and so firm they can be shipped hundreds of miles by rail in good condition. \$12.00 per 1,000.

Marlboro—The old standard early market variety. Price, \$12.00 per 1,000.

Loudon—The best red midseason berry. Its points of superiority are: vigor of growth, large fruit, beautiful rich, dark crimson color, good quality and marvelous productiveness and hardness.

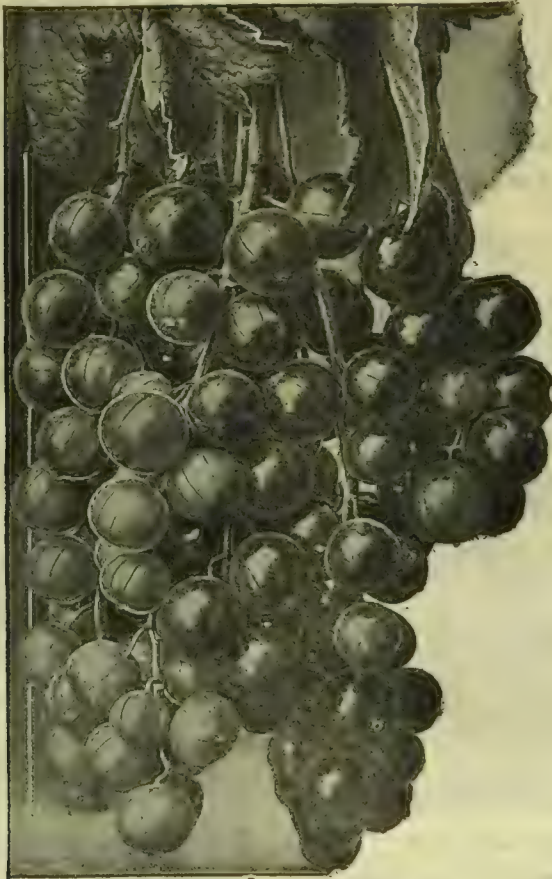
Columbian—Fruit resembles Shaffer's; very large, purplish color, rather soft; rich, sprightly flavor, unrivalled for canning, making jam, jelly, etc. Price, 75 cents per doz.; \$2.00 per 100; \$15.00 per 1,000.

THE NEW RED RUBY RASPBERRY

This grand variety was originated by L. E. Wardell, of Ulster County, N. Y., and is a seedling of the well-known variety "Marlboro." It ripens with the earliest, and continues picking a long season. Its fruit is large, bright red in color, exceedingly firm and of good flavor. It has been grown commercially for six years, and to-day stands ahead of all others as a berry for the grower to plant for profit.

Price, \$1.00 per doz.; \$2.00 per 100; \$15.00 per 1,000.

CURRENTS



PERFECTION CURRENTS

	• Doz.	100
Cherry —Very large. The standard red sort, rather acid.....	\$1.00	\$5.00
Fay's Prolific —Red, very large and fine	1.00	5.00
Lee's Prolific —Black and of superior quality for wine or jelly	1.00	5.00
White Imperial —A large white currant, the most delicious for table use of anything we ever planted. Your collection is incomplete without it. Price, per doz., \$1.50.		

NEW CURRANT PERFECTION.

First fruit to be awarded the \$50 Gold Berry Medal of the Western New York

Horticultural Society; also received highest award of any new fruit at Pan-American Exposition. Also Gold Medal at St. Louis Exposition. The color is a beautiful bright red. Size as large or larger than the Fay, the clusters averaging longer. The size of berry is well maintained to the end of the bunch. Quality rich, mild sub-acid, plenty of pulp with few seeds. Less acid and of better quality than any other large currant in cultivation. See cut.

Price, 25 cents each; \$2.50 per dozen; ½ doz. at dozen rates. One-year plants of Perfection, \$1.75 per doz., \$12.00 per 100, \$100.00 per 1,000.

ORNAMENTALS

NOTE.—All orders for Ornaments should be received by April 1st. Why? So the trees and plants may be lifted and placed in sand in cool cellars before the buds are swollen, to await proper time for shipment. If our customers would remember this they would be saved the loss of many plants.

Weeping Deciduous Trees

BIRCH, Cut-leaved Weeping—The finest lawn tree grown. Price, \$1.00.



Cut-Leaved Weeping Birch

ELM, Camperdown—A very attractive drooping lawn tree. Price, \$1.50.

MOUNTAIN ASH, Weeping—Covered with beautiful scarlet berries. Price, \$1.00.

WILLOW, Kilmarnock—A low headed weeping tree. Price, 75 cents.

New American—Is a large tree of the Weeping Willow type. Price, \$1.00.

Babylonica—Our common Willow, and nothing is more graceful. Price, 75 cents.

WEeping CHERRY—Japan rose colored, flowers very striking. Price, 75 cents.

Flowering Ornamental Trees

This class of trees is most desirable for lawn and street planting. The Catalpas bloom in July.

CATALPA, Bungei—A species from China, of dwarf habit, growing only from three to five feet high. Foliage large and glossy. Price, \$1.25.

Speciosa—A variety originating in the West; more upright and symmetrical in its growth than the common Catalpa, and blossoms two or three weeks earlier. Price, 60 cents.

Teas' Japan Hybrid—Of spreading habit; flowers white, with purple dots; fragrant; a most profuse bloomer, remaining in bloom several weeks. Price, 75 cents.

CHERRY, Dwarf White-flowering—A variety of the Morello, with double white flowers. Both this and the succeeding are very ornamental. Price, 75 cents.

Large Double-flowering—A variety of the Heart Cherry, with pretty double flowers. Price, \$1.00.

CHESTNUT, American—A well-known forest and nut-bearing tree; of great value for ornamental purposes. Price, 75 cents.

HORSE-CHESTNUT, White-flowering—A very beautiful, well-known tree, with round, dense head, dark green foliage, and an abundance of showy flowers in early spring. Price, 75 cents.

JUDAS TREE, or RED BUD, American—small growing tree; covered with delicate pink flowers before the leaves appear. Price, 75 cents.

LABURNUM, Golden Chain—Bears long, pendent racemes of yellow flowers in June; showy and beautiful. Should be on every lawn. Price, 75 cents.

DOGWOOD, American White—A native tree of fine form and beautiful foliage, growing from 20 to 25 feet high, producing white flowers three inches in diameter early in the spring before the leaves appear. A very desirable tree. Price, 75 cents.

MAGNOLIA—One of the most beautiful species of flowering trees. Being difficult to transplant, small trees three or four feet high are preferable.

Acuminata—A beautiful pyramidal-growing native species, growing to the height of sixty or seventy feet; large glossy leaves; flowers yellow, tinted with bluish-purple. Price, \$1.50.

Conspicua—Tree of medium size and shrub-like growth. Flowers are large, pure white, very numerous and appear before the leaves. Price, \$2.00; with balled roots and blossom buds, \$2.50 each.

ORNAMENTALS—Continued

COLORADO BLUE SPRUCE (*Picea Pungens*). One of the Choicest Evergreens. One of the hardiest and most beautiful of the spruces. The cut below was made from a specimen on our lawn, said by good judges to be the finest in color and form they ever saw. We can furnish fine specimens with ball of earth, twice transplanted, at \$5.00 each.



Colorado Blue Spruce
Picea Pungens

Soulangiana—A French hybrid; rather irregular grower; foliage large, glossy and massive; flowers very large, three to five inches in diameter, white and purple. Very effective. Price, \$2.00; with balled roots and blossom buds, \$3.00 each.

Speciosa—A good grower; tree generally round-headed and of fine form; flowers a little smaller and of a lighter color than those of *Soulangiana*, but being produced in wonderful profusion this is one of the best varieties. Price, \$1.75.

MAIDEN HAIR TREE—One of the most beautiful of lawn trees. A native of Japan. Of medium size, rapid growth and rich, glossy fern-like foliage. Rare and elegant. Price, 75 cents.

THORN, Double Scarlet—Flowers deep crimson with scarlet shade; very double and considered larger than the double red; fine rich foliage. Price, 75 cents.

Double White—Has small double white flowers. Price, 75 cents.

Upright Deciduous Trees

ALDER, Imperial Cut-leaf—A charming tree of stately, graceful growth, having large and deeply cut foliage. Vigorous and hardy; one of the best lawn trees. Price, \$1.00.

BEECH, Fern-leaved—An elegant tree of symmetrical habit, having beautifully cut foliage. Price, \$1.75.

Purple-leaved—Discovered in a German forest. An elegant, vigorous tree growing forty to fifty feet high. Foliage deep purple, changing to crimson. Price, \$1.25.

ELM, American White—The noble, spreading, drooping tree of our own woods. One of the grandest and hardiest of park or street trees. Price, \$1.00.

English—An erect, lofty tree, with rather small leaves. Price, \$1.00.

MAPLE, Ash-leaved—A fine, rapid growing variety, with handsome light green pinnated foliage and spreading head. Very hardy. Price, 75 cents.

Norway—A native of Europe. Its large, compact habit, broad, deep green shining foliage, and its vigorous growth render it one of the most desirable species for streets, parks and lawns. Price \$1.00.

Purple-leaved Sycamore—A strong, rapid grower, foliage deep green on the upper surface and purplish-red underneath. Price, \$1.25.

Scarlet—A native variety of medium size, producing deep red blossoms before the leaves appear. In autumn the leaves change to a brilliant scarlet. Price, \$1.00.

Sugar, or Rock—The well-known native variety, valuable both for the production of sugar and as an ornament in lining unpaved streets and avenues. A stately form of fine, rich foliage render it justly popular as a shade tree. Price, 75 cents.

ORNAMENTALS—Continued

- Silver-leaved**—One of the most ornamental of the species; the under surface of the leaves a soft white. It is exceedingly rapid in its growth, often making shoots six feet long in a season; valuable as a street tree. Price, 50 cents.
- Wier's Cut-leaved**—A Silver Maple with remarkable and beautiful dissected foliage. Of rapid growth; shoots slender and drooping, giving it a very graceful appearance. Should be in every collection. Price, \$1.00.
- MOUNTAIN ASH, European**—A fine, hardy tree; head dense and regular; covered from July till winter with large clusters of bright red berries. Price, \$1.00.
- Oak-leaved**—A hardy tree of fine habit; height and breadth from twenty to thirty feet; foliage simple and deeply lobed. A very fine lawn tree. Price, 75 cents.
- POPLAR, Carolina**—Pyramidal in form and robust in growth; leaves large, pale to deep green. Price, 60 cents.
- Lombardy**—Well known for its erect, rapid growth and commanding form; very desirable in large grounds and along roads to break the average height and forms of other trees. Price, 60 cents.
- Street and Lawn Trees in Quantity**
- We shall be glad to make most favorable quotations on Elm, Poplar and Maple in quantity for Street or Park planting. Prices above noted are for single specimen.
- Upright Deciduous Flowering Shrubs**
- ALTHEA, or Rose of Sharon**—The Altheas are fine, free growing, flowering shrubs of very easy cultivation. Desirable on account of flowering in August and September, when nearly all other trees and shrubs are out of bloom. Price, 35 cents.
- Double Red**—(Rubra flore pleno).
- Double Purple**—(Purpurea flore pleno).
- Double White**—(Alba flore pleno).
- Variegated-leaved Double Flowering**—(Flore pleno fol. variegata)—A conspicuous variety, with foliage finely marked with light yellow. Flowers double purple. One of the finest variegated-leaved shrubs. Price, 35 cents.
- ALMOND (Prunus), Double Rose Flowering**—A beautiful small shrub, bearing in May, before the leaves appear, small, double, rose-like flowers, closely set upon the twigs. Price, 35 cents.
- Double White Flowering**—Produces beautiful white flowers in May. Price, 35 cents.
- CALYCANTHUS, or SWEET SCENTED SHRUB**—The wood is fragrant, foliage rich, flowers of rare chocolate color, having a peculiarly agreeable odor. Flowers in June and at intervals afterward. Price, 30 cents.
- CRAB, Bechtel's Double Flowering American Crab**—A medium sized, hardy ornamental tree of great beauty. When in bloom this tree presents the appearance of being covered with roses, scenting the atmosphere for a long distance with a perfume equal to that of any rose. Price, 75 cents.
- DAPHNE, Common Mezereon**—A native of Northern Europe. Small, branches erect with clusters of pink flowers in March. The earliest flowering shrub we have. Price, 30 cents.
- QUINCE, JAPAN (Cydonia), Scarlet**—Has bright scarlet crimson flowers in great profusion, early in spring; one of the best hardy shrubs; makes a beautiful, ornamental hedge. Price, 25 cents.
- DEUTZIA**—This valuable species of plant comes to us from Japan. The flowers are produced in June in racemes four to six inches long.
- Double Flowering (Crenata flore pleno)**—Flowers double white, tinged with rose. One of the most desirable flowering shrubs in cultivation. Price, 25 cents.
- Pride of Rochester**—A new variety raised from Deutzia Crenata, and exceeding all others in size of flowers, length of panicle, profuseness of bloom and vigorous habit. Price, 30 cents.
- Slender Branched (Gracilis)**—A charming variety introduced by Dr. Siebold. Flowers pure white, and so delicate that they are very desirable for decorative purposes. Price, 30 cents.
- DOGWOOD (Cornus), Red-branched (Sanguinea)**—A native species, very conspicuous and ornamental in the winter, when the bark is a blood red. Price, 75 cents.
- Elegantissima Variegata**—An improvement on the preceding and one of the finest variegated shrubs; of rapid growth, foliage beautifully marked with creamy white and tinged with red, while some leaves are entirely white. Price, Price 50 cents.

ORNAMENTALS—Continued

- GLOBE FLOWER** (*Kerria Japonica*)—A slender, green branched shrub five or six feet high, with globular, yellow flowers from July to October. Price, 50 cents.
- ELDER** (*Sambucus*)—A well known shrub which blossoms in the spring and afterwards is covered with handsome berries; there are several varieties. Price, 50 cents.
- Golden** (*S. Aurea*)—A beautiful variety with light yellow leaves which hold their color well, and render the plant very conspicuous and effective. Price, 50 cents.
- FORSYTHIA**, or **GOLDEN BELL**—A very singular and quite ornamental shrub. Its branches in the early spring before the leaves appear are covered with bright golden yellow pendulous flowers. Price, 35 cents.
- FRINGE**, **Purple**, or **Smoke Tree**—A very elegant and ornamental large shrub, with curious, hair-like flowers which, being a pinkish brown color, give it the names "Purple Fringe" and "Smoke Tree." The blossoms appear in July, sometimes literally covering the tree and remaining all summer. Price, 50 cents.
- White** (*Chionanthus Virginica*)—An entirely different plant from the preceding; has handsome, large foliage and racemes of delicate white flowers that hang like finely cut shreds or fringes of white paper. Price, 75 cents.
- HALESIA** (*Snow Drop Tree*), **Silver Bell**—A beautiful large shrub, with handsome, white, bell-shaped flowers in May. Very desirable. Price, 35 cents.
- HONEYSUCKLE** (*Lonicera*), **Red Tartarian**—A beautiful shrub; vigorous and producing large, bright red flowers striped with white, in June. Price, 25 cents.
- White Tartarian**—A large shrub having white flowers in May and June. Price, 25 cents.
- HYDRANGEA**, **Standard Hydrangea**—The *Hydrangea Paniculata Grandiflora* is one of the very finest of hardy shrubs, but when grown in standard or tree shape, it is especially showy and striking. It forms a graceful and dwarfish tree, not reaching more than eight or ten feet in height, and is extremely effective for lawn decorations, whether standing singly or in masses; 3 to 4 feet, price 50 cents; 4 to 5 feet, 75 cents.
- *LILAC**, **Ludwig Spaeth**—New and believed to be the finest of its class. Color purplish red. A great acquisition. Price, 35 cents.
- *Marie Le Graye**—A free grower, producing large trusses of purest white flowers which are very fragrant and showy. Highly recommended as perhaps the best of the white lilacs. Price, 50 cents.
- *Madam Lemoine**—New and very promising. Flower double white. Price, 50 cents.
- Purple, Common** (*Vulgaris*)—The well-known sort. Price, 25 cents.
- Red** (*Rubra Insignis*)—New, and one of the choicest of its colors. Price, 50 cents.
- Large Flowering White** (*Alba Grandiflora*)—Very large; pure white tufts of flowers. Price, 25 cents.
- SNOWBALL** (*Viburnum*), **Common** (*V. opulus*)—A well-known favorite shrub of large size, with globular clusters of pure white flowers in the latter part of May. Price, 30 cents.
- Japanese** (*Viburnum Plicatum*)—From North China; has very rich, deep green foliage, of handsome form and beautiful globular heads of pure white flowers, quite distinct from those of the common sort. A very desirable shrub. Price, 50 cents.
- SPIRAEA**, **Spiraea Anthony Waterer**—This beautiful variety has the same habits as its parent, the *Bumalda*. It blooms about the close of June, continuing throughout the entire season. It is useful for edging, planting in masses, or as a single specimen where a low bushy shrub is required. Price, 30 cents.
- Billardii** (*Billard's Spiraea*)—Rose-colored, blooms nearly all summer. Price, 30 cents.
- Bumalda**—New, and considered one of the finest of this class. Flowers brilliant pink, with variegated foliage. Price, 30 cents.
- Golden-leaved** (*Foliis Aureis*)—A beautiful dwarf plant with golden yellow foliage. It keeps its color the entire season, and creates a very pleasing effect among other shrubs. Price, 30 cents.

The varieties marked with an asterisk (*) are from the best in the Highland Park collection at Rochester, N. Y.

ORNAMENTALS—Continued

- Reevesii, or Lance-leaved**—A charming shrub, with narrow pointed leaves and large, round clusters of white flowers that cover the whole plant. Price, 30 cents.
- SYRINGA**—Price, 35 cents each. **European Fragrant, or "Mock Orange"** (*Philadelphica coronarius*)—A well-known very hardy shrub, with showy white flowers which are very fragrant.
- Golden-leaved** (*P. Foliis Aureis*)—A beautiful new variety with bright yellow foliage, which affords pretty contrasts with other shrubs, especially with the purple-leaved variety. Price, 35 cents.
- WEIGELA** (*Diervilla*)—Price, 30 cents. **Amabilis, or Splendens**—Of robust habit, large foliage and pink flowers; blooms freely in autumn; a great acquisition.
- Candida**—Thought by some to be the best of all. Of vigorous habit, an erect grower, flowers pure white, produced in great profusion in June, the plants continuing in bloom through the summer. 30 cents.
- Rosea**—An elegant shrub with fine rose-colored flowers. Introduced from China by Mr. Fortune, and considered one of the finest plants he has discovered; quite hardy; blooms in May. 30 cents.
- Variiegated-leaved** (*Fol. Variiegated*)—Leaves bordered with yellowish-white, finely marked; flowers bright pink. 30 cents.

Hardy Climbing Shrubs

- AMPELOPSIS**—**American Ivy, or Virginia Creeper** (*A. Quinquefolia*)—A native vine of rapid growth, with large luxuriant foliage, which in autumn assumes the most gorgeous crimson and purple coloring. Price, 25 cents.
- A Veitchii** (*Veitchii's Ampelopsis*)—Japan. Leaves a trifle smaller and more ivy-like in form than the foregoing. Overlapping each other they form a dense sheet of green. It grows rapidly and clings to the surface of even a painted brick wall with great tenacity. The foliage is especially handsome in summer and changes to a scarlet crimson in autumn. For covering walls, stumps or trees, rocks, etc., no plant is more useful or beautiful. Price, 35 cents.
- ARISTOLOCHIA, or DUTCHMAN'S PIPE**—*Sypho*—A rapid growing vine with magnificent foliage ten to twelve inches in diameter, and curious pipe-shaped, yellowish-brown flowers. Price, 75 cents.
- HONEYSUCKLE** (*Lonicera*) — **Chinese Twining** (*Japonica*)—A well-known vine, holding its foliage nearly all winter. Blooms in July and September and is very sweet. Price, 25 cents.
- Hall's Japan**—A strong, vigorous, ever-green variety, with pure white flowers, changing to yellow. Very fragrant, covered with flowers from June to November. Price, 25 cents.
- Monthly Fragrant** (*Belgica*)—Blooms all summer. Flowers red and yellow. Very sweet. Price, 35 cents.
- Scarlet Trumpet** (*Sempervirens*) — A strong grower, and produces scarlet in-odorous flowers all summer. Price, 35 cents.
- WISTARIA, Chinese Purple** (*Sinensis*)—A most beautiful climber of rapid growth, and producing long, pendulous clusters of pale blue flowers. When well established makes an enormous growth; it is very hardy and one of the most superb vines ever introduced. Price, 50 cents.
- Chinese White** (*Sinensis Alba*)—Introduced by Mr. Fortune, from China, and regarded as one of his greatest acquisitions. Rather tender. Price, 50 cents.

CLEMATIS

None among hardy perennials exceed in beauty and effectiveness the finer sorts of Clematis. As a climber for the veranda, a screen for fences, for pillars along the garden walks, for training on walls or arbors, in masses on rockwork, or cultivation in pots, it has no rival among strong-growing blossoming plants. The leading and best varieties of the large flowering kinds are Jackmanni, Henryii, Mme. Edouard Andre, Paniculata and Ramona.

Clematis, Large Flowering—2-year field grown. Price, 50 cents each.

Henryii—This is the finest of all white Clematis, and should find a place in every collection. It is not only a vigorous grower, it is a remarkably free and continuous bloomer, beginning with the earliest and holding on with the latest. June to October.

Our Clematis are 2-yr. field grown and will bloom the first year.

ORNAMENTALS—Continued

Jackmanni—This is, perhaps, the best known of the fine perpetual Clematis, and should have credit for the great popularity now attending this family of beautiful climbers. The plant is free in its form of growth and an abundant and successful bloomer, producing flowers until frozen up. The flowers large, of an intense violet purple, remarkable for its velvety richness. The Jackmanni has no superior and very few, if any, equals. July to October.

Madame Edouard Andre—First seen in this country at the World's Fair at Chicago; flowers large, abundant and of a beautiful reddish color. Beyond doubt the finest of its class.

Ramona—Said to be an American seedling of the Jackmanni type; one of the

strongest growers; flowers lavender blue, similar to the Gem.

The following small flowering varieties may be had, 2-year field grown plants, at 30 cents:

Coccinea—Distinct from other varieties; bright coral scarlet flowers. July to October. Price, 30 cents.

Paniculata—A native of Japan. A beautiful and rapid growing climber which in a very brief time will cover any ordinary veranda. The flowers are small, pure white and delightfully fragrant, and are borne in enormous masses, almost concealing the foliage. Entirely free from blight, and regarded as a great acquisition. Price, 30 cents.

ROSES

Will Bloom Freely First Year—Mostly on Own Roots.

OUR ROSES are hardy, strong, 2-year field-grown plants, and are in every way preferable to soft plants directly from the greenhouse, if you wish immediate results. In making a comparison of prices, do not fail to compare size, age and general character of the plants. Prices, except as noted, each 35 cents, dozen \$4.00. These plants are too heavy to be mailed.

Hybrid Perpetual Roses

General Jacqueminot—Brilliant crimson, large and very fine; one of the handsomest and most showy roses of this color.

Marchioness of Lorne (H.)—New. Rich and fulgent rose; color shaded with vivid carmine; large, full, cupped; buds long and handsome; remarkable for its perpetual habit.

John Hopper—Bright rose with carmine center; large and full. A profuse bloomer and standard sort.

La France—Delicate silvery-rose; very large and full; an almost constant bloomer, equal in delicacy to a Tea rose; the most pleasing fragrance of all roses; only a moderate grower but most desirable.

Clio—A rose of remarkable beauty, having received two first-class certificates and Reward of Merit. On the style of

Baroness Rothschild, having, like it, large, handsome flowers of fine globular form, which are produced in great abundance; color a delicate flesh. Price, 50 cents. See cut.

Coquette des Blanches—Pure white, sometimes faintly tinged with pink; flowers of medium size, somewhat flat, but full and very pretty; one of the hardiest.

Fisher Holmes—One of the choicest of perpetual roses. Bush is vigorous and produces freely of superb blossoms. Color brilliant carmine crimson.

Anne de Diesbach—One of the best and most satisfactory Hybrid Perpetual Roses. Extremely hardy, producing very large, double flowers of a lovely shade of carmine and delightfully fragrant.

American Beauty—Large, globular; deep pink, shaded with carmine; delicious odor. Price, 50 cents.

Margaret Dickson—Of magnificent form, white, with pale flesh center; petals very large, shell shaped, and of great substance; foliage very large, dark green. Price, 50 cents.

Magna Charta—Bright pink, suffused with carmine; very large, full and fragrant, with magnificent foliage. A free bloomer.

ROSES—Continued

Marshall P. Wilder—Of vigorous growth, with healthy foliage; flowers large, semi-globular, full, well formed; color cherry-carmine.

Paul Neyron—This magnificent rose is by far the largest variety in cultivation; very double and full, of a beautiful, deep rose color and delightfully fragrant; borne upon vigorous, upright shoots in great abundance throughout the entire season.

Persian Yellow—Deep, bright yellow; small but handsome; double; a very early bloomer, and much the finest hardy yellow rose.

Prince Camille de Rohan—Deep, velvety crimson, large, moderately full. One of the darkest in cultivation and a splendid rose.

Ulrich Brunner—A superb rose; extra large, bold flowers; petals large and of good substance; color rich, glowing crimson, elegantly lighted with scarlet; fragrant.

Francois Levet (H.)—Cherry red; medium size, well formed; very free bloomer.

Frau Karl Druschki, or Snow Queen—Flowers very large, beautiful, pure silvery white, with very deep bud. This is the best white Hybrid Perpetual yet introduced and one of the best novelties of recent years. Price, 50 cents.

Moss Roses

Strong field grown plants, price 35 cents.

Blanche Moreau—Pure white, large, full and of perfect form; the buds and flowers produced in clusters and freely furnished with a deep green moss. A valuable variety.

Countess de Murinais—Pure white, large, very desirable; the finest white moss.

Crested—Deep pink buds surrounded with mossy fringe and crest; very beautiful and fragrant; growth slender.

Hardy Climbing Roses

Strong, 2-year field grown plants, price 35 cents.

Dorothy Perkins, a Splendid New Climbing Rose.

The Most Valuable Rose Novelty Since Crimson Rambler.

In its foliage, growth and habit of blooming in immense clusters it is remarkably like

Crimson Rambler, but the flowers are more double and of a beautiful shell-pink color. Price reduced to 35 cents.



DOROTHY PERKINS

Baltimore Belle—Pale blush, nearly white; double; the best white climbing rose.

Crimson Rambler—A wonderful new rose from Japan, bearing immense trusses of deep crimson flowers which hold their beautiful color a long time without fading. When in full bloom and covered as it is with its great trusses of flowers containing thirty to fifty blossoms, it is a most magnificent sight. It has proved entirely hardy in this country, and is a very great acquisition to our rose garden.

Gem of the Prairie—Carmine crimson, occasionally blotched with white; a cross hybrid between Madame Laffay and Queen of the Prairie.

Pink Rambler—Flowers medium size, pink, in clusters. Very pretty.

Queen of the Prairie—Bright rosy red, frequently striped with white; large.

ROSES—Continued

Yellow Rambler—The hardiest yellow climbing rose yet introduced. Very fragrant and a very vigorous grower; a worthy companion to the wonderful **Crimson Rambler**.

White Rambler—Small, medium daisy-like, pretty white flowers in large clusters.

All 2-year field grown too heavy to mail.

THE WORLD'S
GREATEST ROSE **BABY RAMBLER**

OR THE EVERBLOOMING DWARF CRIMSON RAMBLER

It is the **Crimson Rambler** in dwarf form—It is the **Greatest of forcing Roses**—Think of **Roses every day from June until late frosts**.

THE NEW ROSE **BABY RAMBLER**

The flowers are borne in clusters, frequently 25 or 30 in one cluster. They are in many ways like the **Crimson Rambler**, but are produced perpetually, blooming constantly till November. We cannot too highly recommend this variety for bedding purposes.

No. 1, 2-year, field grown plants, 35c. Medium grade, field grown plants, 25c. No. 1 and medium grade may be mailed.

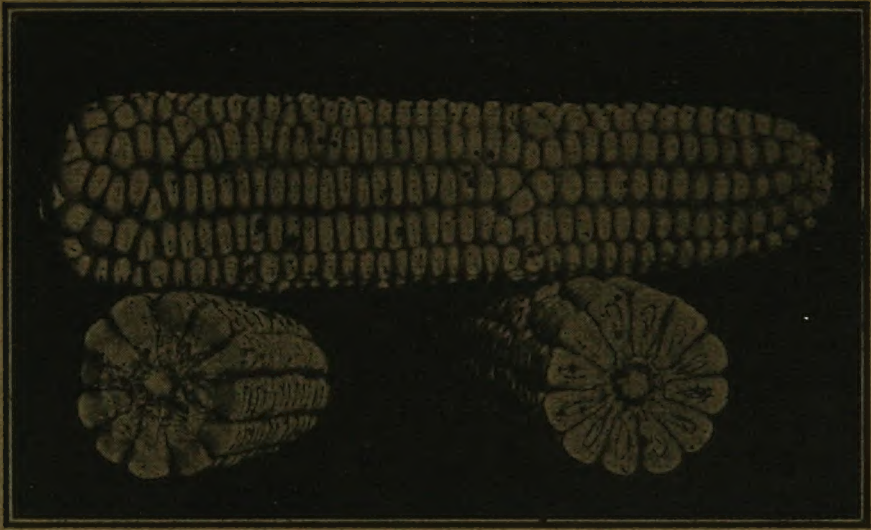


BABY RAMBLER



STANDARD TREE HYDRANGEA—Tree Form. See Page 25

*See Page 16 for Bargains in Cherry,
Apple, Peach and Plum*



CAREFULLY SELECTED SEED CORN, SILVER DENT
Origin, Northern Michigan

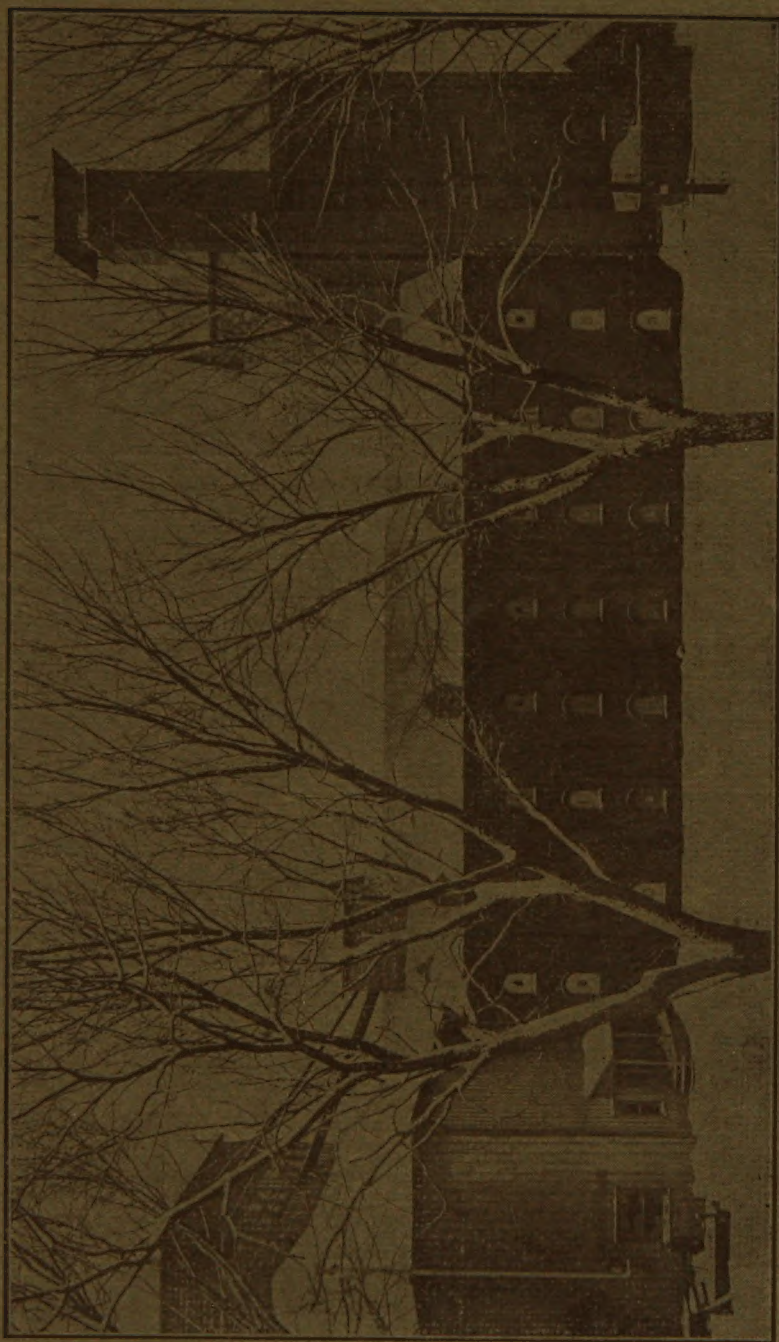
The past season was a very poor corn year yet this variety turned better than 100 bushels to the acre and ripened well, small cob (see cut), very leafy stalk, no suckers. This can be called less than a 90 day variety. Kernel well formed the whole length of the ear, cut by hand 35 hills to the shock and many shocks turned two bushels each. In this variety we believe we are offering to our customers a very valuable and dependable variety; bushel \$2.00, new bags 12c. each, by freight or express, buyer's expense.

2,000 XX One Year McIntosh, \$27 per 100

2,000 XXX One Year Orange Quince, \$28 per 100

We are especially anxious to correspond
with you on trees in 500 and 1,000 lots

H. S. WILEY & SON, CAYUGA, N. Y.



OUR NEW STORAGE AND WAREHOUSE. CAPACITY, 40 CAR LOADS